

Lamb County Leader

Serving Texas' Second Largest Agricultural Producing County

18 Pages
10c

VOLUME 31

LITTLEFIELD, LAMB COUNTY, TEXAS, THURSDAY, MARCH 17, 1966

NUMBER 45

SCHOOL BOARD VOTES

Mandatory Retirement For Teachers

In a three hour session Monday night, the Littlefield School Board instituted a teachers mandatory retirement program; approved the 1966-67 school calendar, which included the change of spring vacation; drew for the way the candidates will be listed on the school board election ballot and acted on four other items.

The mandatory retirement program which provides that a teacher must retire at age 62 unless requested by the school administration to continue teaching will go into effect during the 1966-67 school year. In January, 1967 school administrators will make a decision on the retention of teachers that will reach age 62 prior to August 31, 1967. Teachers of retirement age who are not requested to continue teaching must retire at the end of the 1966-67 school year.

The school calendar for 1966-67 approved by the board calls for classes to begin September 1, 1966 and the school year to end May 26. The calendar also provides for a Christmas vacation from December 21 through January 1 and for two additional holidays, Labor Day, September 5 and teacher clerical day January 20 at the close of the first semester.

The board also approved the changing of the spring vacation period at the request of the Littlefield Ministerial Alliance. Rev. William H. Remmert appeared before the board as spokesman for the Ministerial Alliance to request the board to change the dates of the spring vacation period so they would not be in conjunction with Easter Sunday.

Candidates names for the forthcoming school board election April 2 were then drawn to determine the order in which their names will appear on the ballot. Gerald Kirby's name will be listed first followed by Dr. William Nowlin, Calvin Price, R.M. Nicholas, Werner Birkelbach and Dick Hopping.

In other business I.D. Onstead was appointed to the Board of Equalization along with Floyd Coffman, Jarold Jones, Carl Locke and Alvin Bagwell all of whom were re-appointed for another year by the school board, and tentatively set their first meeting for June 21.

The Board also approved the recommendations of the Text Book Committee concerning the books to be used in the school system for the coming year. Head football coach George Kirk appeared before the board to outline the athletic program for the remainder of the school year and give a progress report since his taking over the coaching reins March 1.

Little League Sign-up Set For April 4

The signing-up of boys wishing to participate in the Little League baseball program this year will be held Monday evening, April 4 from 7 to 9 p.m. in the Junior High School auditorium.

Boys who will be nine before August 1, 1966 and will not be 13 prior to August 1 will be eligible to participate in the Little League program.

Boys when signing-up must have their birth certificate and all boys who participated last year must sign-up again this year to be eligible to participate.

Plans are to have six major league teams, WOW, Lions Club, Rotary, Optimists Club, Littlefield Butane and a new team Citadel Insurance replacing the JC's team. There will be either six or eight minor league teams, depending on the number of boys signing-up April 4.

Tryouts for the boys will be held April 14 and 15 and the (See LITTLE LEAGUE Page 8)

131 Entries For Area Stock Show And Sale

A total of 131 entries have been received for the second annual Littlefield area stock show and sale scheduled for Friday and Saturday, March 25 and 26 at the Lamb County barns.

Hogs lead the entry list as a total of 60 swine have been entered with the Duroc class being by far the largest with a total of 28 entered. Crossbreds are the next largest with 17 entries with the remainder being divided among Hampshires with 12 entered and two Poland Chinas and only one entered in the Chester White class.

Fine Wool entries accounted for almost three-fourths of the Lamb entries as 27 are entered in the class with seven to be shown in the Southdown division and four and three respectively in the Crosses and Fine Wool division.

Herefords far outnumber the Angus entered in the show and sale as 22 have been entered in the Hereford division and only eight in the Angus breed.

Judging for the show, which is open to FFA, FHA and 4-H Club members in Littlefield, Amherst and Spade area will start Friday night at 5:30 p.m. with the lamb judging. Swine will be judged Friday immediately following the lambs and the calves will be judged starting at 9 a.m. Saturday morning, followed by the sale starting at 1 p.m. Saturday afternoon.

Donald Carr, president of the Board of Directors for the show



ENJOY SPRING WEATHER WHILE PLANNING STYLE SHOW - The three ladies pictured above are taking advantage of the beautiful spring-like weather as they discuss the program for the "Tour the USA--Fashionway" style show to be Friday at 8 p.m. in the senior high auditorium, sponsored by Tau Chi Chapter of Beta Sigma Phi. Carolyn West, center, is chairman of the program committee. Other members are LaVerne Franklin, left, and Claire Sawyer.

Commissioners Court Hears Plea For Accident Victim

The Lamb County Commissioners Court passed six orders at their meeting held Monday, and met with Mrs. Bobby Malone and Mr. I.D. Foley concerning Mrs. Eunice Jones who is currently in Saint Mary's Hospital in Lubbock, suffering injuries sustained in an automobile accident last year.

After approving the paying of bills the Commissioners passed an order approving the reports submitted by County Agent Buddy Longsdon, Assistant Agent Ronnie McNutt and Home Demonstration Agent Lady Clare Phillips.

The Commissioners then approved the payment of \$1,839.90 to Mid-American Pipeline Co. for work completed on a utilities adjustment project on Farm to Market Road 1072.

Also approved was the payment of \$1,180.40 to the BSC Pump Co. for work done concerning irrigation wells along the same Farm to Market Road. The next order passed by the Commissioners was the approval of a cost estimate submitted by Pioneer Natural Gas Co. of \$2,856.65 to relocate a two inch gas line along Farm Road 2901.

The Court then named Dr. Bernard Perlman, Medical Arts Hospital as County Health Doctor effective March 15 at a salary of \$50 per month. He succeeds Dr. Barney Klein.

Mrs. Malone, who is Mrs. Jones' daughter and Foley who is her father, appeared before the court to ask for assistance from the court in paying a portion of Mrs. Jones' hospital bill.

Mrs. Jones, a longtime Littlefield resident was severely injured in a one car accident east of Littlefield August 31, 1965 and in seven months of hospitalization at Amarillo and Lubbock hospitals, her bill is nearly \$7,000.

The Commissioners also met with Mr. and Mrs. L.E. Slate, Sudan representing the Lamb County Historical Survey Committee. The Court approved a payment of \$500 to the County Historical Group for their work.

Jury Rules For Defendant

A jury returned a verdict in the favor of the defendant in the 154th Judicial District Court Tuesday afternoon in the civil case of Tutwick Carpet Inc. against Price Hamilton.

The case, in which the carpet company was suing Hamilton over the cost of carpet laid in his home, resulted in a hung jury when it was heard in the January session of the District Court.

The court which will be in session through the week was scheduled to hear the case of Jack O. Kendrick versus Edward Elliott and Kendrick versus Cephas Glover.

Both cases concerned the payment for fertilizer which the defendants claim damaged their land and therefore refuse to pay. James F. Moore is the attorney for the plaintiff in the suits and the firm of Kirby and Ratliff are the attorneys for the defendants.

Wildcats Win Denver City Track Meet

Led by Larry Schovajsa and Fred Koontz the Wildcat track team rolled up a total of 79 points to win the Denver City track meet last Saturday.

Koontz broke the meet pole vault record as he cleared 12-3/4 and Schovajsa not only won the 440 yard run in 49.6 only one-tenth of a second off the record but led the 440 yard relay team to a meet record of 43.8 and as the anchor man on the mile relay team brought the Wildcats a second place finish.

Billy Wayne Henderson in addition to running on the two relay teams also placed second in the 220 yard dash losing by one step in a race in which the meet record was broken by .6 of a second.

Other point producers for the Wildcats were Mike Grissom with a third place finish in the low hurdles and Hank Thompson ran the best mile of his career as he had a 4.45 clocking to finish second.

Other members of the relay teams were Steve Lewis and Richard Wright on the winning 440 yard team and Nevill Manning, Bernard Wall on the mile relay foursome.

Coach Hal Stanislaw said the team will participate in the Levelland meet Saturday and he should get a good line on the Wildcats' district chances as all members of the district except Sweetwater and Lakeview will have teams entered in the meet.

The preliminaries will start at 9:30 Saturday morning with the finals set to begin at 1:30 Saturday afternoon.

Ex-Students To Meet Tonight

The Littlefield Ex-Students Association will hold a meeting tonight, March 17 at 8 p.m. in the Reddy Room of the Southwestern Public Service building.

Emil Macha, president of the association stated that the principal topic to be discussed at the meeting will be the selection of students to receive the Ex-Students Association Scholarship.

Other business will also be discussed at the meeting to which all ex-students of Littlefield schools are invited.

South Plains Cotton Crop Quality Declines

The 1965-66 South Plains cotton crop was lower in quality than the 1964-65 crop, according to W.K. Palmer, in charge of the Lubbock Cotton Classing Office of the USDA.

This season's crop was one of the largest ever harvested on the South Plains but was slightly lower in grade and staple and much lower in micronaire than the 1964-65 crop.

Final harvesting figures of this season's crop have not been completed but estimates indicate that approximately 2,175,000 bales will be harvested. The 1964-65 season produced approximately 1,863,000 bales.

Fifty-six per cent of the South Plains cotton this season was classed in the White grades and the remaining 44 per cent in the Light Spotted, Spotted and Tinged grades. During the 1964-65 season, 64 per cent was classed in the White grades and 36 per cent in the Light Spotted and Spotted grades.

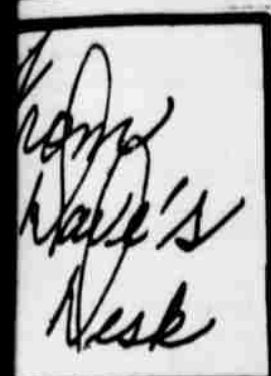
The average staple length of the South Plains crop remained the same as the 1964-65 average -- 30.0/32nds-inch, or 15/16 of an inch. Average staple length was very good during the early part of the season but declined as the season progressed.

The most significant aspect of this season's crop was the low average micronaire. Only 35 per cent of the crop was in the desirable category of 3.5 and better, compared to 63 per cent of the 1964-65 crop. Waxy cotton made up 8 per cent of this season's crop, compared to only 3 per cent of the 1964-65 crop. Micronaire began declining in October and continued to decline as the season progressed. During the week ending October 19th, the week ending October 19th, Lubbock had micronaire of 3.5 and better. During the week ending December 21st, only 27 per cent was in this desirable category of 3.5 and better.

Most of the cotton having micronaire of 3.2 and below was harvested after December 1st.



ST. PATRICK'S DAY - And when would be a better excuse for running a picnic of the Emerald Isle, with its thatched roof cottages, hay stacks, square towers, piles of Peat and the potato fields than on March 17.



ST. PATRICK'S DAY - And when would be a better excuse for running a picnic of the Emerald Isle, with its thatched roof cottages, hay stacks, square towers, piles of Peat and the potato fields than on March 17.

Edwin Hall Announces For School Post

The Littlefield Publishing Company has been authorized to officially announce the candidacy of Edwin Hall for the office of County School Superintendent of Lamb County.

I wish to announce my candidacy for the office of County School Superintendent of Lamb County. I was born in Lamb County and attended the public schools here. I believe that I am qualified by both experience and education to fill this office and to bring to it a larger scope of service and guidance to the Schools of Lamb County.

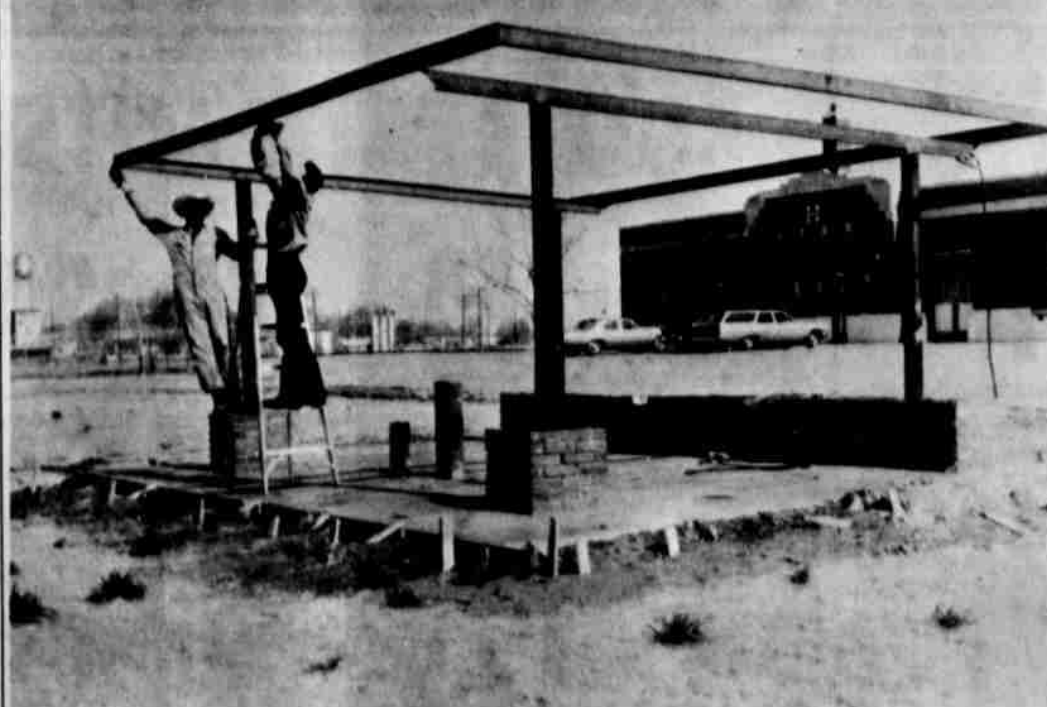
I am for the continuation of the office and the implementing of more and better service to the tax paying citizens of this community. I am convinced that this office can and should be of great benefit to the schools of the county. For every dollar of tax money invested there should be a dollar of benefit to the educational systems of the county. The person elected to this office should work in cooperation with the independent school districts, county, state and national boards of education. The office of county superintendent should have first and foremost in its efforts the sincere interest in the development of our area needs upgrading in this office needs upgrading in service to the school districts of Lamb County to meet the changing needs. I propose a program that would do just that. We should have greater in-

universally shared.

(See HALL Page 8)



should be of great benefit to the schools of the county. For every dollar of tax money invested there should be a dollar of benefit to the educational systems of the county. The person elected to this office should work in cooperation with the independent school districts, county, state and national boards of education. The office of county superintendent should have first and foremost in its efforts the sincere interest in the development of our area needs upgrading in this office needs upgrading in service to the school districts of Lamb County to meet the changing needs. I propose a program that would do just that. We should have greater in-



FRAME WORK GOING UP - Doyle Smith and Buddy Usery, Texas State Highway Department employees are shown putting up the steel frame work for the canopy over the rest stop being constructed on the Santa Fe park at the north end of Phelps Ave. Tables and benches will be placed in the rest stop for which the Littlefield Woman's Club donated the materials and the State Highway Department is donating the labor.

Wedding Plans Told

Mr. and Mrs. Verble Baker, Pecos, Texas, announce the engagement of their daughter, Torressa Darlene, to Ronald Loy Kilgore, son of Mr. and Mrs. Loy Kilgore, also of Pecos. The couple will be married at 8 p.m. June 25 at the First Baptist Church in Pecos, by Rev. Glen Edwards, pastor of the First Baptist Church, Pecos. The bride-elect, a former resident of Amherst, is a graduate of Pecos High School, and for the past four years has attended Baylor University, where she will graduate in June with a B.M.E. degree in Music Education. She has been a member of the Baylor A Cappella Choir and the Baylor Oratorio Chorus. She is a member of the Music Educator's National Conference serving as secretary and vice-president of the Baylor chapter, and also a member of Mu Phi Epsilon, International, professional music sorority. In 1964, she was selected as "Golden Girl of the Old West" in the "West of the Pecos" Beauty Pageant. She is the granddaughter of W.S. Baker, 115 East 14th Street, Littlefield. Mr. Kilgore, a graduate of Pecos High School, received a B.A. degree from Baylor University, Waco, and is presently in the University of Tennessee, Knoxville. He is a member of Omicron, National professional dental fraternity.

Club Has Meeting

ANTON - The Anton Home Demonstration Club met March 10 in the home of Ray Peacock for a progressive Italian cookery. President, Mrs. Bill Mader presided over the meeting. Roll call was taken with "My biggest blunder bride". Mr. Peacock and Mrs. G. Whirley served a spaghetti dinner to Mrs. Molder, Mrs. Craig, Tommy Cuddeback, Mills, Bob Harrell, Coursey, Thurman Davis, Buck Gossett. The next meeting will be March 23 in the Legion

News of Women

LOIS VRUBEL.....SOCIETY EDITOR



LAYETTES GIVEN FOR NEEDY - the Zeta Delta Chapter of Epsilon Sigma Alpha Sorority last week purchased layette items for the needy. Three of the members are shown above presenting one of the seven layettes to Lt. H.F. Harwell of the Salvation Army. Members of the sorority are (L-R) Mrs. Bob Wilson, Littlefield, Mrs. Jacky Van Ness and Mrs. Donna Testerman, Sudan.

MERLE NORMAN COSMETIC STUDIO
FREE INSTRUCTION IN
Complexion Care And Individual Beauty Make-Up
HAZEL'S BEAUTY SHOP
404 PHELPS LITTLEFIELD 385-4212

MEDICAL ARTS
CLINIC-HOSPITAL
ANNOUNCES THE ASSOCIATION
OF
GORDON T. STEWART, M.D.
GENERAL PRACTICE
AND
OBSTETRICS
500 LITTLEFIELD DRIVE LITTLEFIELD, TEXAS PHONE 385-5191



OFFICERS DISCUSS FASHION SHOW - Mrs. Bob Martin, center, ticket chairman for the Beta Sigma Phi Fashion Show, is showing the tickets to the sorority president, Ann Pullig, while Joyce Branham, corresponding secretary, looks on. Mrs. Branham, who was in charge of the location for the style show, announces that the show will be in the senior high auditorium Friday at 8 p.m. Tickets are \$1 per person and are available from any member of Beta Sigma Phi.

Sorority Sets Annual Spring Fashion Show Friday Night

Eighty-five models representing six local stores will present the annual fashion show of the Tau Chi Chapter of Beta Sigma Phi Friday at 8 p.m. in the senior high school auditorium. "Tour the U.S.A. -- Fashion-way" will be the theme for the style show. A travel decor will be used in decorations. Proceeds will be used for a scholarship for some deserving Littlefield student and the remainder will be given to the Cystic Fibrosis Foundation. Tickets may be obtained at the door or from any member of Beta Sigma Phi. They are \$1 per person and 50¢ for children.

Vaughn-Gee Vows Read In Dimmitt

AMHERST - Double wedding ring vows were pledged by Earlyne Vaughn and Jerry E. Gee at 7:30 p.m. March 4 in the First Methodist Church, Dimmitt. The pastor, Rev. Weldon McCormick, officiated. The bride wore a light blue suit with matching accessories. Mrs. Wynona Adams was matron of honor and the groom's brother, Billy G. Gee of Dallas served as bestman. Seating the guests were Gaylon Long of Amherst and Charlie Nichols of Sudan. Mrs. Gee is the daughter of Mr. and Mrs. J.E. Taylor of Dimmitt. She is a graduate of Dimmitt High School and West Texas State University. The bridegroom is the son of Mr. and Mrs. E.E. Gee of Amherst. He is a graduate of Amherst High School and West Texas State University. He served two years in the Army, 18 months of which were spent in Germany.

Shower Given Paula Green

Mrs. David Dailey was hostess Friday night for a miscellaneous bridal shower honoring Miss Paula Green, bride-elect of Dudley Strickland of Levelland. Guests were registered by Mrs. Frank Crone. The honoree's chosen colors of orchid and white were featured in the table decor. A lace cloth over orchid covered the table. The centerpiece was a white net umbrella accented with orchid bows and flowers. Refreshments of raspberry sherbet punch, cupcakes topped with silver wedding rings, and coffee were served by Kitty and Gloria Yeager of Carlsbad, N.M., cousins of the honoree. Silver and crystal appointments were used. Special guests included Paula's mother, Mrs. Billy Wells, and her grandmother, Mrs. John Stockinger, both of Littlefield. Any tax policy that discourages reforestation and good forest management in East Texas, is not in the best public interest, according to the Texas Forestry Association.

The Isle of Man covers 277 square miles in the Irish Sea, 20 miles from Scotland. Its mild climate attracts tourists. I Wish To Thank The Ladies Of Littlefield For Their Warm Reception To Fashion 220 Cosmetics And For Attending The Open House Friday And Saturday. ANN MEEKS Coordinator-Consultant

PRE-EASTER SALE

STARTS FRIDAY AT 9 00 AM

ONE GROUP MEN'S SHOES PRICED UP TO 12.95
NOW ON SALE \$5

LADIES NYLON GOWNS AND BABY DOLL 6 DIFFERENT COLORS REGULAR 1.98
NOW ONLY 99¢

MEN'S WESTERN BOOTS VALUES TO 21.98
10.99

ONE GROUP OF LADIES DRESSES VALUES TO 7.98
ON SALE \$4

SINGLE & DOUBLE BED Blankets REGULAR 3.98
NOW ONLY 99¢
LIMIT 1 TO A CUSTOMER

LADIES SANDALS BLACK-BROWN-WHITE NOW 2.99 AND 3.99
2 PAIRS 4.50

BABY DIAPER SETS S-M-L REGULAR 1.77
NOW ONLY 99¢

NYLON HOSE SHEER SEAMLESS REGULAR 79¢
NOW ON SALE 39¢

BOYS AND GIRL'S NEW STYLE EASTER SHOES
2 PAIRS 4.50

LADIES BRAS SIZE 32 TO 44 REGULAR 1.00
2 FOR 99¢

MEN'S WELLINGTON BOOTS VALUES TO 12.98
NOW ON SALE 7.77

BOY'S LONG SLEEVE SHIRTS
NOW ONLY 1.59

BOYS WESTERN BOOTS 7.98 VALUES
ON SALE 4.88

BOYS STAY PREST PANTS SIZES UP TO 12
NOW ON SALE 2 PAIRS \$6.33

JUST ARRIVED! A NEW SHIPMENT OF GIRLS & LADIES WHITE GO-GO BOOTS

ONE GROUP OF LADIES SHOES REGULAR 2.99
NOW ON SALE 1.59

MEN'S FRUIT OF THE LOOM T-SHIRTS REG. 3 FOR 1.45
3 FOR 99¢

MEN'S STAY PREST PANTS VALUES TO 7.98
NOW ON SALE 4.88

SHOP AND SAVE FOR EASTER AT THE NEWLY REMODELED FAIR

LADIES AND GIRLS EASTER BAGS ON SALE 1.97

MEN'S SPORT SHIRTS REGULAR 3.98
2 FOR \$5

White Bible Ceremony Honors Bride-Elect

Miss Carol Tubbs was honored with a White Bible Ceremony last Wednesday evening in the home of Mrs. Ralph Nelson, Director of the First Baptist Church. This is a traditional ceremony for YWA members or former members at the time of marriage. Miss Tubbs, who became the bride of Danne Nelson Thursday evening, has been an active member of the First Baptist Church since she joined in the summer of 1965. She was a part of a mission trip who conducted a Bible school in the little village of Sotomayo, in the Sangre de Cristo Mountains on New Mexico.

The ceremony was held in front of the open fireplace where a table featured an open Bible and a lighted candle. As the bride and groom stood before the altar, with the Word of God in front of them, the opening prayer was rendered in song by Misses Ann Farmer, Martha For, Jackie Maner, and Nelda Baker, who sang "God Give Us Christian Homes."

Miss Linda Williams, president, explained the symbolism of the hearth, representing the home. As the YWA members

lighted tall white tapers from the burning candle, Miss Williams expressed the desire of the group for the young couple as she sang, "Bless This House."

As the young women formed a circle around the couple, Miss Farmer voiced their prayer as she sang, "Bless This House."

Mrs. Nelson explained the need of God's Word in the home and the meaning of the use of the YWA colors, green and white.

The song, "Thy Word is a Lamp Unto My Feet," introduced the text for the presentation address given by Rev. Robert D. Longshore, pastor, as he presented a white Bible to Miss Tubbs.

The benediction in song, "O Perfect Love," was brought by Miss Walker.

Following the ceremony, the traditional White Bible reception was held. The tea table was laid with white lace and featured a styrofoam YWA emblem. Fruit punch and tiny filled cookies were served from milk glass appointments. Miss Glenda McWilliams, vice-president, presided at the tea table.

Taking part in the candle-lighting ceremony were Misses Kim Harp, Pat Alexander, Janis Wilson, Stella Bussey, Frances Hampton, Edith Lynch, Cheryl Reast, Suzanne Tatum, Brenda Cunningham, Sandy Penn, Ann Minyard, Cindy Montgomery, and Diane Starnes. Guests present were the mothers of the couple, Mrs. Alvis Tubbs of Littlefield, and Mrs. B.B. Kelly of Amherst.



JUNIOR II GA's -- The girls shown above presented a program last Wednesday entitled "Annie Armstrong Offering At Work" as a climax to the Week of Prayer For Home Missions. Front Row, (l-r) are Kathy Wright, and Marsha Starnes; back row, Dena Reast, Donna Cunningham, Pam Stafford, Dixie Car-Joe Batson, Faith Longshore, Rebecca Howle, Gail Williams, Cathy Nelson and Sheila Harrell.

First Baptist GA's Give Special Program On Missions

The Junior II GA's of the First Baptist Church presented a special program last week

during the Week of Prayer for Home Missions. "Annie Armstrong Offering At Work" was

the title of the program. A crown edged in glitter and candles of the GA colors, green, gold and white were featured as the interest-center.

The program emphasized the importance of missions at home. Missionaries being able to witness to the people at home, soldiers on military bases and the many different nationalities were stressed as topics of special importance.

Following the program the group sang "America the Beautiful" and had special prayers for missionaries.

Attending were Mrs. Gene Spies, GA counselor, Mrs. Frank Crane, assistant, and members, Dena Reast, Donna Cunningham, Pam Stafford, Dixie Carter, Joey Batson, Faith Longshore, Rebecca Howle, Gail Williams, Cathy Nelson, Sheila Harrell, Kathy Wright and Marsha Starnes.

Appreciation Tea Given Teachers

WHITHARRAL -- An appreciation tea was given the Whitharral faculty Friday morning at the Lions Club hosted by the local PTA. Room representatives presented each teacher with a pie or cake. Orange juice, sweet rolls, and coffee were served by Mmes. Norman Thetford, Ralph Wade, Ervin Sadler, George Wade, Jr., Don Redding, and Bob Grant.

Present were Mr. and Mrs. Archie Sims, Mr. and Mrs. Joe Minter, Mr. and Mrs. E.W. Hallford, Mmes. John Claborn, Ray Keeling, Frank Salinas, Angie Garcia, Louis McCormack, Ronnie McNutt, Betty Oates, Mary Ellen Querry, Susie Bickley, R.L. Heard, J.D. Coursey, Jimmy Hisaw, Miss Kathy Morris and Mr. Lowell Herring.

On Thursday evening approximately 300 parents and friends attended open house which was followed by a band concert, directed by Mr. E.W. Hallford.

Jr. High MYF To Present Play

A two-act play, entitled "Aunt Billie From Texas" will be presented by the Junior High MYF of the First Methodist Church tonight, (Thursday) at 7:30 p.m., at the church.

Admission will be 75¢ for adults and 50¢ for students. Advance tickets may be obtained from any Junior High MYF member.

Mr. and Mrs. Buster Owens and Mr. and Mrs. Bob Roden, counselors, will direct the play, which deals with the story of a group of college girls and their chaperon vacationing in New York City, and the complications that arise as their activities become more involved.

Study Club To Hold Style Show, Buffet Supper

ANTON - The Anton Study Club will present its annual style show in combination with a buffet supper on Friday night, March 25 in the high school cafeteria. Local models will show clothing from Violas and the Anton Dry Goods. The program will feature a triosinging numbers from "Hello Dolly".

Proceeds from the show will go to the Carolyn Grundy Scholarship Fund. Each year the Anton Study Club gives a \$100 scholarship to a worthy high school student who wishes to enter college.

The public is cordially invited to attend the style show and supper. Tickets are \$1.25 for adults and 50¢ for children and may be bought from any Study Club member.



MARY CAROL WEISER Announces Engagement

SUDAN - Mr. and Mrs. D.L. Weister of Crane have announced the engagement of their daughter, Miss Mary Carol Weiser, to Ronald James Powell, son of Mr. and Mrs. Forest Powell of Sudan.

The couple will exchange vows May 28 at the First Christian Church of Crane.

The bride-elect is a graduate of Crane High School and is a junior at Texas Tech.

Powell is a graduate of Sudan High School, has served in the United States Army, and is now a junior at Texas Tech.

Disposable income averaged about \$2,400 for every man, woman and child in the nation last year, a report by the Federal Reserve Bank of New York has disclosed.

For a child's party that has a cowboy theme, make a holster to hold napkin and plastic spoon and fork, using either paper or felt.

Early Greek drama was closely related to religion and an actor was tendered the honor and respect due to one engaged in holy office.

Takes off like you're wearing spurs



NEW MUSTANG WITH 200-CU. IN. SIX



No wonder Mustang is America's hottest horse. Mustang's 6-cylinder engine thinks it's a V-8. And, seven main bearings on the crankshaft mean greater smoothness and longer engine life. This means savings to you! In fact, the 6-cylinder Mustang saves you money three ways: on low initial cost, low maintenance and low, low gas bills. Test-drive one!

Join the Mustang Stampede **FORD DEALER** ...at your

MITCHELL - FORD, INC.

525-529 PHELPS AVE.

LITTLEFIELD, TEXAS

JEAN SEBERG
HONOR BLACKMAN
SEAN GARRISON
Mervyn LeRoys
production of
Moment to Moment
TECHNICOLOR
ARTHUR HILL - GREGOIRE ASLAN
HENRY MANCINI
SUN-MON-TUE-WED
PALACE

Honored On 80th Birthday

Mrs. Homer Howard honored her father, W.L. Key of Amherst, on his 80th birthday Sunday with a dinner.

Attending were Mr. and Mrs. Robert Butler, Mr. and Mrs. Stephen Butler and Todd, Littlefield; Mr. and Mrs. Hubert Gammons, Muleshoe; Mr. and Mrs. Key, the host couple, and Butch and Larry.

Join the fun in Walt Disney's most hilarious comedy!
Walt Disney's THAT DARN CAT
TECHNICOLOR • ©1965 Walt Disney Productions
PALACE
LAST TIMES Thur-Fri-Sat

DOUBLE FEATURE
See Cuddly BIKINI GIRLS made to order!
FROM AMERICAN INTERNATIONAL PATHECOLOR and PANAVISION
DR. GOLDFOOT and the BIKINI MACHINE
PLUS
"Godzilla vs The Thing"
XIT Friday-Saturday
DRIVE-IN THEATRE Sunday

Sears Automatic Washer Sales Lead Every Brand In America
These Values Tell You Why... **Sears**
Kenmore 6-Cycle Automatic One-Dial-Control For All Fabrics
2 speeds, 6 cycles, 5 wash-rinse temperatures, Self-cleaning lint filter, bleach dispenser, infinite water level control. See it NOW!
OUR LOWEST PRICE EVER!!! **184.95** \$9. Monthly
2-Speed, 3-Cycle Kenmore... Terrific Features-Budget Prices
Washes everything from denims to delicates to wash 'n wear, just dial fabric and water temp. Built-in lint filter, 6-vane agitator. **149.95** 7.50 Monthly
SHOP AT SEARS AND SAVE **Sears** 406 PHELPS

Penneys ALWAYS FIRST QUALITY
IT'S OUR **64TH** ANNIVERSARY
never-iron **PENN-PREST** stretch togs... **REDUCED**
2 for \$5 2 for \$3
Reg. 2.98 big sisters' slacks. Slim-jim styling girls really go for! Cotton-nylon stretch denim with set-on waistband, side zipper, 7 to 16... NOW 2 for \$5
Reg. 2.79 mock-turtleneck shell. Helanca® nylon, bright spring hues. 6 to 16. NOW 2 for \$5
Reg. 1.59 and 1.98 big and little sisters' jamaicas, slacks! Cotton stretch nylon denims with set-on waistband, side zipper. Lots of bright new colors, too! 7-16 jamaicas, reg. 1.95 3-6x, reg. 1.59... NOW 2 for \$3
3-6x slacks, reg. 1.98... NOW 2 for \$3
SPECIAL VALUE! MEN'S RUGGED ARMY TWILL work pants 1.99 pair
pants that are built to really take it and still look neat and trim on the job, in sturdy cotton twill, suntan color waist 29-40
PENNEY-LOW PRICE FOR BOYS' PROPORTIONED WESTERN JEANS
2 for \$3
6 to 18 regular, slim.
The price is fantastic, two pairs for only \$3... come and get 'em boys! Lean, long-of-leg westerners in rough-tough 11 1/4 oz. cotton denim, cut to fit! Sand, indigo, faded blue.

STATE CAPITAL Highlights AND Sidelights

by Vern Sanford

Texas school districts are receiving speedup orders on desegregation.

Integration of facilities, as well as student bodies, is the aim of federal authorities in laying down new guidelines for compliance with the civil rights act of 1964.

Both the Texas Education Agency and the State Board of Education received the policy statements and promptly scheduled meetings over the state to post local school administrators as to the requirements.

Primarily concerned are 600 districts that submitted voluntary desegregation plans to the U.S. Office of Education for the 1965-66 school year to assure that they remained eligible for federal aid.

Districts already fully integrated, those whose assurances of compliance have been accepted and those operating under court desegregation orders are not immediately affected by the revised policies.

U.S. Commissioner of Education Harold Howe II estimates that revisions will result in doubling integration in 11 Southern states.

Guidelines provide that "race, color or national origin may not be a factor in hiring or assignment of teachers and other professional staff."

State Education Agency officials said evidence of compliance with this requirement is expected to be shown by next September.

Districts which have submitted desegregation plans, including those with geographical school attendance zones, must file by April 15 a form agreeing to observe the new guidelines.

Office of Education will review spring reports and schools judged to have shown no reasonable progress will be ordered to take further steps before fall.

School systems also must eliminate segregation in such programs as transportation, athletics and extra-curricular activities.

Where faculty members are displaced as a result of desegregation, staff vacancies later occurring must be filled by these ousted teachers if they qualify.

In other action the State Board of Education directed local school districts to raise the contributions to the foundation school program by \$6,100,000 next year.

Local fund assignment for 1966-67 is \$138,000,000 compared with \$132,500,000 for 1965-66.

Total cost of minimum foundation education program for the state this year is estimated officially at \$649,326,890.

Legislature set local school districts' contribution for 1966-67 and thereafter at 20 per cent of the total cost of the preceding year's program. State puts up the other 80 per cent.

Board also approved investment of about \$7,000,000 from the State Permanent School Fund. Some \$3,000,000 will be placed in common stocks, another \$3,000,000 in corporate bonds and an estimated \$1,000,000 in short-term Treasury bills.

Investment money will come from maturing Treasury bills, bonds and the regular monthly deposit from school land, oil and gas leases, says Paul Matthews, chairman of the investment committee.

APPOINTMENTS - Gov. John Connally named John L. Hill as Secretary of State. He replaces Crawford C. Martin of Hillsboro who resigned last week to devote full time to his campaign for attorney general.

Hill is an outstandingly successful Houston civil trial attorney. He has tried cases in district courts in most areas of Texas during the past 19 years. His term will run until next January.

Connally named L.D. (Red) Webster and reappointed Al Badger, both of Dallas, to the Texas Commission on Alcoholism.

Also reappointed were Robert B. Gilmore of Dallas and W.E. (Buck) Tinsley of Austin to the Water Development Board.

House Speaker Ben Barnes Repeals Gene Fondren of Taylor, George Cowden of Waco, Ralph W. Scoggins of El Paso, Rayford Price of Frankston and Lee Duggan Jr. of Houston to serve on a key election law study committee.

Lt. Gov. Preston Smith earlier has named Sens. Tom Creighton of Mineral Wells, Don Kennard of Fort Worth, Ralph M. Hall of Rockwall, Jack Hightower of Vernon and Abraham Kazen of Laredo to that panel.

AG RULING - Atty. Gen. Waggoner Carr has ruled that a domestic corporation can't pay dividends out of its earned surplus to anyone not a stockholder; and that a life insurance corporation may pay dividends to policyholders from surplus funds -- from profits made by the company.

In other action, the attorney general ruled that:

* Under present state law, a Commissioner's Court or qualified voters of a county may not create a precinct or multi-precinct Airport District and transfer a county-owned airport to such a district.

* Ward County school trustees should be elected April 2 from commissioners' precincts as they now exist rather than as they will be formed under the boundary change effective next January 1.

* Texas courts may enforce child support order of out of state courts but extradition should be carried out only after bonafide civil attempts have been made to collect payments.

* Public school-sponsored clubs which perpetuate their membership on the basis of decisions of their own members, rather than free choice of and qualified pupil, are prohibited.

* Jury fee must be paid before a jury is allowed in juvenile cases.

BONDS SOLD - Texas Water Development Board has sold \$15,000,000 worth of development bonds to the First National City Bank of New York City and associates, the low bidder.

Effective interest rate was 3.5 per cent of the 25-year issue.

First National City Bank was one of the five bidders for the bonds. This brings to \$85,000,000 the amount sold by the Board from an authorized total of \$200,000,000. Another \$200,000,000 authorization in water development bonds will be voted upon by Texans in November.

Bond money has been used to finance reservoir projects by the purchase of water storage space, and in the purchase of outstanding development bonds of Texas cities and water districts.

VERNON CENTER LAUDED - A model demonstration center for aged, to be located at Vernon, "will be finest of its kind in the nation," says Governor Connally.

According to the governor, the center will include facilities for all phases of geriatric care. It will provide cottage-type units for ambulatory patients and a per-admission unit of screen elderly persons considered for admission.

Center will place patients in community rest homes, nursing homes and convalescent centers in which they would receive proper care.

SADLER SPEAKS - Texas Land Commissioner Jerry Sadler, in testimony before a congressional committee in Washington, urged the creation of

Taylor Rites Held Monday

Funeral services for John M. Taylor, 90, longtime resident of Olton, were conducted at 2:30 p.m. Monday in the First Baptist Church at Olton, The Rev. Randall Ball, Cincinnati, Ohio, minister, and the Rev. John E. Lewis, Olton pastor, officiated.

A resident of Olton for 37 years and a retired farmer, Taylor died Saturday in Decatur.

Burial was in Olton Cemetery under direction of Parsons Funeral Home, Olton.

Survivors include one son, M.E., Olton; eight daughters, Mrs. L.L. Bernard, Sunray, Mrs. H.C. Buck, Arlington, Mrs. O.B. Palmer, Tucumcari, N.M., Mrs. Eddie Vaughn, Grand Prairie, Mrs. Gene Mitchell, Bridgeport, Mrs. R.H. Caviness, Mrs. R.W. Ball and Mrs. Ansil Miller, all of Olton; 24 grandchildren; 50 great-grandchildren and eight great-great-grandchildren.

Grandsons served as pallbearers.

Guadalupe Mountain National Park in Culberson and Hudspeth Counties.

However, he stated that while he is interested in the creation of the 71,650-acre park, he also is interested in the 45,171 acres of oil and gas rights which the state school fund owns in the proposed park.

According to Sadler, the mineral rights should be retained by the state for the benefit of the 3,000,000 schoolchildren aided by the Public Free School Fund, which is financed from mineral rights.

Sadler said the state and federal government should work together as partners in the project. This would mean that Texas and the federal government each would get half the benefits of the mineral deposits in the area.

SHORT SNORTS
South Texas crops will be tested for pesticide residue during the next three to six months as the Texas Department of Agriculture moves its new mobile laboratory to Pharr.

Governor Connally announced approval of Community Action Programs in Beaumont (\$21,364), Big Spring (\$33,161), Houston (\$33,955), Laredo (\$50,550), San Antonio (\$104,795), San Saba (\$11,489) and Yorktown (\$30,063).

Regional office of the Office of Economic Opportunity says Laredo will get a \$2,000,000 grant as a demonstration city in the war on poverty.

Governor Connally has picked the Texas Education Agency to draft plans for long-term vocational rehabilitation needs under amendments to the federal Vocational Rehabilitation Act.

W.A. Epperly Rites Friday

William Allen Epperly, 83, resident of Littlefield for 19 years, died at 5:40 p.m. Monday in the West Plains Hospital and Clinic at Muleshoe.

Funeral services will be at 3 p.m. Friday in the First Methodist Church, Amherst. The pastor, Rev. Patterson will officiate.

Burial will be in Amherst Cemetery under direction of Payne Funeral Home.

Epperly farmed in the Amherst community for 23 years before moving to Littlefield.

Survivors include his wife, two sons, Otis, Muleshoe; and Roy, Puyallup, Wash.; three daughters, Mrs. Clara Hillard, Lamar, Colo., Mrs. Millie Ellis, Sumner, Wash., and Mrs. Marie Chappall, Sudan; 17 grandchildren and 25 great-grandchildren.

Pallbearers will be Gaston Gage, Curtis Savage, Leslie Mills, Noel Lumpkin, Percy Harlen and Hoyt Robinson.

Services Pend. For J. Rotramel

Funeral services for J.V. (Bill) Rotramel, 57, were pending at press time at Payne Funeral Home, Amherst. Rotramel died at his home Sunday night of an apparent heart attack.

He had lived at Amherst a number of years and was a bookkeeper at the time of his death.

Survivors, all of Amherst, include his wife, Ethel; his mother, Mrs. Ida Hall; his father, John Rotramel; and one sister, Mrs. Edna Peal.

Tax Man Sam Sez

Congress has provided a number of benefits for taxpayers over 65. If you are over 65 and sell your house for less than \$20,000 you won't owe any taxes on the gain.

If you sell for more than \$20,000 you can exclude a portion of the gain. If you qualify, check the instructions carefully or go see the Internal Revenue Service for help.

CITY BIT

Guests of Mr. and Mrs. G.T. Corry Sunday were Mr. and Mrs. Bob Anthony and family, Cotton Center; Mr. and Mrs. Jim Schiermeyer, Lubbock; Don Cerveny of Irving. The Corry's son, PFC Clinton Corry, left Tuesday morning for Okinawa after spending about a month here. Clinton is stationed with the Special Forces in the Airborne Division.

Questions & Answers

Q -- I filed my return soon as I got my W-2 in January. When should I get my refund?

A -- A refund return filed early generally takes about six weeks to process. A missing signature, Social Security number or other error or omission will delay the processing. That is why Internal Revenue urges taxpayers to give their returns a final check for completion and accuracy before sending them in.

Q -- How do I handle the money my son earned last year? If it is under \$600 do I have to include it with my income since he is my dependent?

A -- No, you don't. Regardless of age, though, if your son earned \$600 or more during the year, he must file a return of his own.

If any tax was withheld from his pay, your son must file a return to get a refund even if his earnings were under \$600.

Q -- I just sold some property I inherited from my father. What do I use as the cost of the property -- what my father paid for it or the value when I inherited it?

A -- Generally you would use the value at the time of your father's death.

Q -- My bank keeps asking for my Social Security number. What right have they to do that?

A -- The law requires banks and other institutions to obtain the tax account number, usually the Social Security number, from individuals they pay dividends and interest to.

Q -- Where can I get a copy of "Your Federal Income Tax"?

A -- Get in touch with your local IRS office or write to either your District Director or the Superintendent of Documents, U.S. Printing Office, Washington, D.C., 20402. This booklet explains the individual income tax filing requirements in greater detail than the 1040 instructions. It costs 50 cents.

Q -- How long has April 15 been the filing deadline for federal income tax returns?

A -- It was changed by Congress in 1954. The deadline had been March 15.

Q -- A strike put me out of work for some time last year. For part of the time I had strike benefits and then I was able to get unemployment insurance. Is any of this income taxable?

A -- Strike benefits are generally taxable unless they are clearly intended as a gift. Unemployment payments are not taxable.

Q -- I had an illness last year that kept me off the job from November until late February. Do I have two waiting periods to establish for my sick pay exclusion since the illness covered two years?

A -- No. The waiting period applies to the time absent due to a specific illness whether it stretches from one year to another or not. There would only be another waiting period if you had returned to work and then suffered a relapse which kept you off the job again.

Q -- I'm itemizing my deductions and want to claim the amount of interest included in the carrying charges on my charge accounts. How do I do that?

A -- To determine your interest charges where they are not stated separately from carrying charges, add up all your monthly unpaid balances as noted on each of your monthly statements. Divide this total by 12 and then take 6 percent of the result.

Your interest deduction will be the lesser of that figure or the portion of the total carrying charge allocable to the year. To determine that portion, divide the carrying charge by the total number of monthly payments and then multiply the result by the number of months in the tax year.

Q -- I just moved and am not sure where I should file my returns.

A -- To determine your interest charges where they are not stated separately from carrying charges, add up all your monthly unpaid balances as noted on each of your monthly statements. Divide this total by 12 and then take 6 percent of the result.

Your interest deduction will be the lesser of that figure or the portion of the total carrying charge allocable to the year. To determine that portion, divide the carrying charge by the total number of monthly payments and then multiply the result by the number of months in the tax year.

Q -- I just moved and am not sure where I should file my returns.

A -- To determine your interest charges where they are not stated separately from carrying charges, add up all your monthly unpaid balances as noted on each of your monthly statements. Divide this total by 12 and then take 6 percent of the result.

Your interest deduction will be the lesser of that figure or the portion of the total carrying charge allocable to the year. To determine that portion, divide the carrying charge by the total number of monthly payments and then multiply the result by the number of months in the tax year.

turn. My old district office has a record of my estimated payments. Should I file the return with my new district office?

Q -- Our two daughters are very busy baby-sitting. Is there any chance they might have to pay tax on this income? They are only 14 and 15.

A -- Age is not a determining factor. If either of them earned \$600 or more during the year, an income-tax return must be filed, although no tax would be due on up to \$900 of earnings. If either earned \$400 or more for self-employment tax, a return would be required.

A billion in European mathematics is equal to a trillion in America.



"WHAT GOES ON in that silly blond head of yours?" is Dorothy Provine of Hayley Mills in Walt Disney's suspense comedy, "That Darn Cat." The Technicolor feature, also a Siamese cat that helps solve a crime, also stars Dean Cain and Roddy McDowall. "That Darn Cat" shows through Sunday at the Palace.

BU-TUF Irrigation tubing is a portable ditch

- Stops seepage and evaporation
- Puts water where you want it when you need it
- Economical
- Easy to install and retrieve
- Take it with you when you move
- Ends ditch maintenance

BU-TUF Irrigation Tubing on Your Farm Is Like Money in the Bank

"BU-TUF IS COMING TO THIS AREA IN TIME FOR SPRING IRRIGATION."

ANNOUNCEMENT OF DEALERS

Old car tired? RUNDOWN?

The man to see is your **M.D.**...
your wise old **Mercury Dealer.**

Your **M.D. (Mercury Dealer)** has a special for you!

It's the '66 Mercury. The perfect prescription if you want real luxury at a modest cost. Within a few hours you can be driving around in luxury without feeling like you've chucked out the old family budget. Here's the car that gives you everything you've ever wanted -- and then some. But you'll never know what it feels like to drive a '66 Mercury until you do it. So c'mon in. We'll be waiting for you with open arms and the key to a '66 Mercury.

Mercury

MITCHELL FORD INC.

525 PHELPS
LITTLEFIELD, TEXAS

Dairy Queen

ONE CENT SALE

THURSDAY & FRIDAY
MARCH 17-18

SUNDAES

Buy One -
AT REGULAR PRICE
GET ONE FOR
1¢

"LIVE A LITTLE"

Mr. And Mrs. Frank Robinson
1001 EAST 9TH ST
PHONE 385-3666



PIGGLY WIGGLY PRODUCE!
STRAWBERRIES

EXTRA FANCY
RED RIPE

29¢

PINT

RED ALL PURPOSE

POTATOES 15 LB. BAG 49¢



WATCHING COMPLETE PIECES
EXCEPTIONAL SAVINGS!

THESE PRICES GOOD
MARCH 17-19TH
RESERVE THE RIGHT TO
LIMIT QUANTITIES

LEANER
C & SPAN 4¢ OFF
LABEL REGULAR BOX **27¢**

TERGENT
OVER DUST. 15¢ OFF
LARGE KING SIZE BOX **1.32**

HOUSE
PLESAUCE 5 NO. 303 **\$1**
CANS

MARKIST. CHUNK
INA NO. 1/2 CAN **55¢**

ORR CHICKEN NOODLE. ONION. OR
UP MIX 4 1/2 OZ. PKG. **39¢**

ASSORTED COLORS 4-ROLL
ILET TISSUE PKG. **39¢**

HEALTH & BEAUTY AIDS!

SHAVE BOMB

55¢

PODENT. 7¢ OFF LABEL REG. 79¢
tothpaste KING SIZE **59¢**

HT GUARD. AREOSOL CAN. REG 79¢
odorant 3 OZ. CAN **55¢**

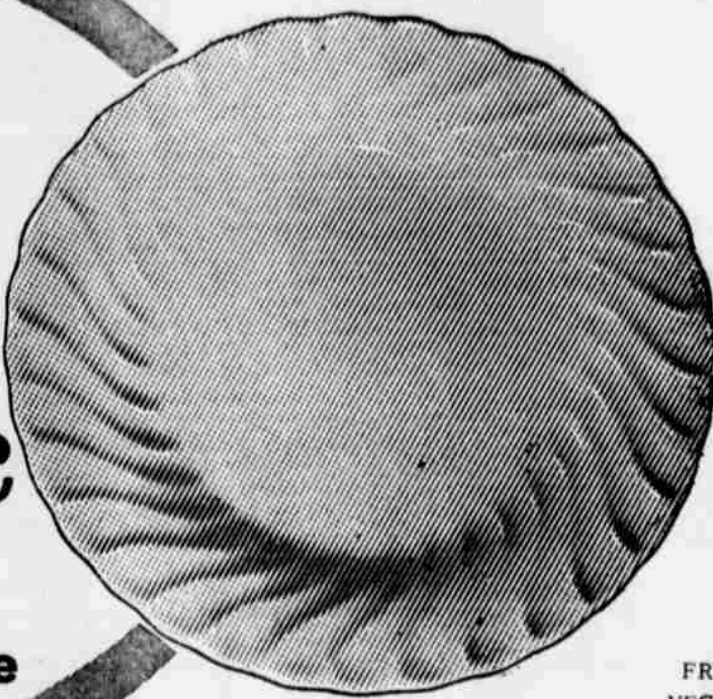
EX. WITH LID. REG \$1 VALUE
sserole 1 1/2 QT. SIZE **88¢**

This week
GET YOUR **Sheffield**
BONE WHITE
Bread & Butter Plate

Each week a piece of Sheffield
Dinner will be featured for just
9¢. For each \$5 in grocery pur-
chases, you are entitled to one
piece at this low price. There's
no limit . . . with a \$10 pur-
chase you can get two pieces
. . . and so on.

9¢

only
with every \$5 purchase



TEXSUN. UNSWEETENED

ORANGE JUICE 46 OZ. CAN **39¢**

SOFTPLY. ASSORTED COLORS
NAPKINS 160-COUNT PKG. **19¢**

AMERICAN BEAUTY ELBO
MACARONI 2 10 OZ. PKGS. **35¢**

MA BROWN DILLS. KOSHER DILLS. POLISH DILLS
PICKLES QUART JAR **39¢**

LOTUS. PIE SLICED
APPLES NO. 2 CAN **19¢**

BORDEN
BUTTERMILK 1/2 GALLON **39¢**

OR DR. PEPPER

COKES PLUS DEPOSIT 12 BTL. CTN. **69¢**

RUSTY

DOG FOOD 16 NO. 1 CANS **\$1**

STOKLEY'S FINEST CUT
GREEN BEANS 5 NO. 303 CANS **\$1**

SOFTPLY ASS'T. COLORS 2 PLY
FACIAL TISSUE 200 COUNT BOX **19¢**

FROZEN FOODS!

TREESWEET
Orange Juice 3 6 OZ. CAN **45¢**

ORE IDA
ONION RINGS 7 OZ. PKG. **37¢**

SEABROOK
WHOLE OKRA 2 10 OZ. PKG. **49¢**

PIZZA FOX DELUXE, ALL VARIETIES EACH **89¢**

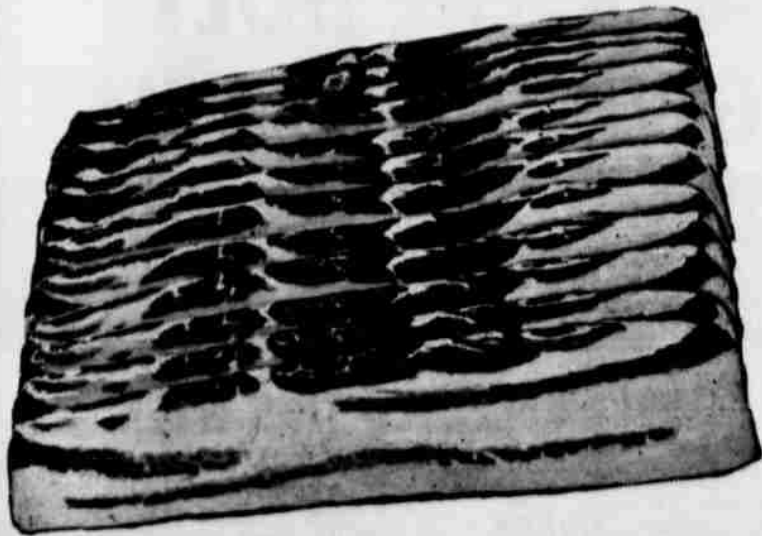
BABY FOOD

HEINZ STRAINED
FRUITS OR VEGETABLES 9 4 1/2 OZ. JARS **79¢**

GREEN PEAS

STOKLEY'S HONEY POD
NO. 303 CANS **\$1**

TURN YOUR MEAL INTO A FEAST! ALWAYS SERVE PIGGLY WIGGLY MEATS!



SLICED BACON

79¢

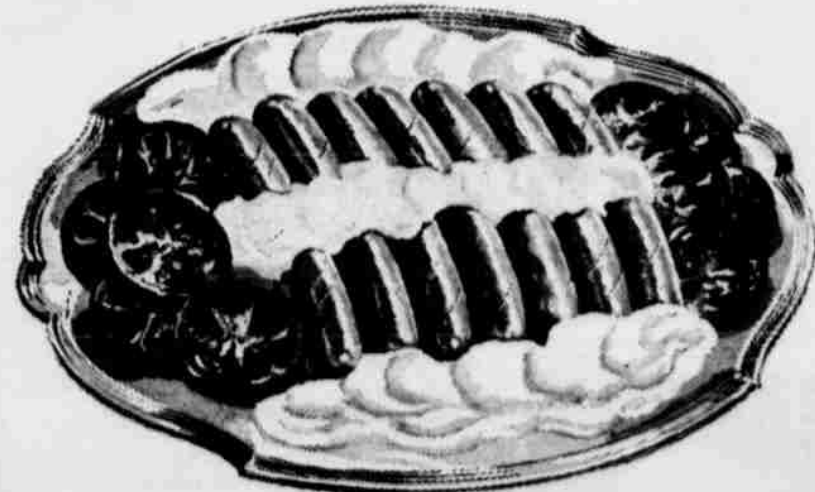
RODEO
2 OZ. PKG.



ROUND STEAK

98¢

USDA CHOICE
AGED, HEAVY
BEEF, VALU-
TRIMMED
POUND



ALL MEAT FRANKS

49¢

ARMOUR STAR
12 OZ. PKG.

USDA CHOICE AGED, HEAVY BEEF, VALU-
TRIMMED BONELESS
SHOULDER ROAST POUND **89¢**

ARMOUR STAR, ALL MEAT
SLICED BOLOGNA 12 OZ. PKG. **49¢**

USDA CHOICE, AGED, HEAVY BEEF, VALU-
TRIMMED
LUMP ROAST POUND **89¢**

LEAN, DATED TO ASSURE FRESHNESS
GROUND CHUCK POUND **59¢**

PEELED & DEVINED ICELANDIC
SHRIMP 12 OZ. PKG. **\$1.49**

EYE OF ROUND
BEEF STEAKS POUND **\$1.69**

BLUE MORROW'S QUICK FIXIN'
BEEF STEAK 16 OZ. PKG. **89¢**

LEAN NORTHERN PORK COUNTRY STYLE
PORK BACK BONE POUND **79¢**

Lowest Prices Greatest Variety always at

Piggly Wiggly



PRODUCER AND CAST - The hilarious suspense-comedy "That Dam Cat" produces laughs even off the set, as evidenced by the relaxed scene above. From left, stars Dean Jones, Dorothy Provine, Roddy McDowall and Hayley Mills, and producer Walt Disney. The Technicolor production is based on Mil-

dred and Gordon Gordon's best-seller, "Undercover Cat." The script was written by the Gordons and Bill Walsh. Robert Stevenson directed. Bill Walsh and Ron Miller co-produced with Walt Disney. "That Dam Cat" shows through Saturday at the Palace.

Tourist Information Center Report 17 Percent Increase

A preliminary Travel Industry Report by the Texas Highway Department reveals its Tourist Information Centers played host to a record 753,350 travelers last year. This total is an impressive 133,000 greater or a 17% increase over 1964.

The Department's information centers are located at key points-of-entry and in the vicinity of the State Capitol in Austin to provide professional travel counseling to the public. Visitors are provided with current travel information, literature on points of interest, travel maps and information about Texas' attractions. Current road condition reports are also available to motorists stopping at the centers.

The importance of the travel industry to the State's economy has long been recognized by the Texas Highway Department. Through its Travel and Information Division it strives to bring visitors to Texas in ever-increasing numbers. This is accomplished by publicizing the State's many attractions and providing information and descriptive literature to prospective visitors.

Last year alone, the Travel and Information Division, in addition to assisting 3/4-million visitors in its Tourist Informa-

tion Bureaus, also received and processed 224,092 mail inquiries for information and literature on Texas. Of this number 16% or 35,574 were coupons received by the Texas Tourist Development Agency as a result of its media advertising program.

A record 3,575,000 pieces of travel materials were distributed by the Travel and Information Division during 1965. Of this total, 2,000,000 were published by the Texas Highway Department and the rest provided by chambers of commerce and allied groups.

The Department points out that businesses catering to the basic needs of the traveler are the first to feel the impact of the travel dollar. However, every segment of the Texas economy soon benefits as the dollars flow throughout the State in a demand for more services, supplies and labor.

The Department is presently completing its annual Travel Industry Survey which is scheduled for publication within a few weeks. Preliminary indications point to 1965 as a record year for the industry which many feel is destined to become one of the state's leading, if not top, industries.

Easter Season Services Set At First Methodist

At the Sunday morning worship hour, 11 a.m., on March 20th, Dr. Timothy W. Guthrie, pastor of the First Methodist Church at Midland, will preach on the subject, "Satan Came Also." This begins a series of morning and evening services which will run through Thursday at the First Methodist Church here.

Bob Wert, from the First Methodist Church at Hereford, will be the guest singer. Breakfast will be served Monday through Thursday, promptly at 7 a.m., followed by singing and a brief message. Adjuvment will be at 7:50 a.m. Evening services will be each day at 7:30 p.m.

Other sermon topics are as follows: Sunday evening, 7 p.m., "When You've Had It"; Monday morning "Joyful Noises"; Monday evening, "Why Jesus Came"; Tuesday morning, "A Philosophy of Success"; Tuesday evening, "How Life is Measured"; Wednesday morning, "Why Forgive?"; Wednesday evening, "On Candid Camera"; Thursday morning, "What Do You Know For Sure?"; Thursday evening, "Asking the Right Questions."

Wayland To Sponsor Science Fair For Students

First place winners in the annual High Plains Science Fair sponsored by Wayland Baptist College will receive Government Savings Bonds and tuition scholarships to the college.

Students from grade school through high school are invited to enter their projects this year in competition.

Dates of the Fair are March 18-19, according to Dr. Dorothy McCoy, Science Fair Director. An entrance of \$1 and abstracts outlining projects being prepared by Fair entrants should be received by March 16.

Six Flags To Open Season April 15

Six Flags over Texas, the 115-acre theme amusement park located in Arlington, Texas, midway between Dallas and Fort Worth, will open its 1966 season on Friday, April 15 at 2 p.m.

The announcement came from Angus G. Wympe, Jr., president of Great Southwest Corporation, owner/operators of SIX FLAGS, which will be celebrating its fifth anniversary this year.

During the spring season, (April 15-May 27), the park will be in operation on Friday afternoons and all day Saturday and Sunday. Beginning May 28 and extending throughout the summer months until September 5 (Labor Day), SIX FLAGS will be open seven days a week from 10 a.m. to 10 p.m. Following September 5 until closing day, November 27, the park will be in operation on Saturdays and Sundays only.

SIX FLAGS, which was built at the cost of \$10,000,000, has attracted over 6.6 million visitors from all over the United States since opening in 1961. This figure includes the record 1,713,000 visitors last year.

The Texas Tourist Development Agency now ranks SIX FLAGS Over Texas as the most popular single tourist attraction in the Lone Star State.

CITY BIT

Mr. and Mrs. E.J. Bussanmas have returned home after spending the winter months in McAllen.

Don't throw lighted cigarettes from your automobile. Use your car's ash tray. Help Keep Texas Green! Your ash tray is a forest fire prevention tool in easy reach.

According to the United States Forest Service, many well-built frame structures have withstood dozens of hurricanes with winds exceeding 125 miles per hour.

Small ownerships prevent the forest land ownership in East Texas. There are approximately 120,000 acres of commercial forest land in East Texas.

Cotton Saver

Lanstan

Seedling diseases of cotton used to mean skips in rows, and replanting cost. Not now. There's Lanstan. Niagara's highly effective new soil fungicide. Rhizoctonia, Pythium, Tielaviopsis, Fusarium (sooty sheath, damping off, nub root, root rot)—Lanstan controls them. Try it. Granular, or in combination with FCNB—directly in the furrow. For a good even stand.

PARFIELD CHEMICALS - NIAGARA CHEMICAL DIVISION - MIDDLEPORT, N.Y.

Memberships In Concert Ass'n. Accepted This Week

The Lubbock Community Concert Association is a non-profit organization dedicated to bringing in a recital series of the finest professional artists of the musical world to Lubbock. Admission is by membership only; no tickets are sold to individual concerts. Members are also privileged to attend concerts at no extra cost in Levelland, Midland, Plainview, Canyon, Hobbs, Clovis and Roswell, where Community Concert Associations are also established.

Adult membership is \$8; Student membership is \$4. Members are assured of three concerts, but Lubbock's membership has been large enough from the beginning to bring four each year of the finest recitals available. A dated list will be mailed to each member as soon as the concerts are made available.

Two splendid concerts have already been booked for next year's series: the Oberkrichen Children's Choir, known as "Angels in Pigtails" and famous for the "Happy Wanderer's Song"; and the Beaux Arts Trio

(piano, violin, and cello), both of which we have tried for years to obtain. An outstanding pianist has always been included in the series.

Mrs. Schelin will be happy to answer any questions one may have or give you your membership card if they will call 385-3994 Thursday afternoon between 3:30 to 5:00 p.m. or Saturday, 10:30 to 5 p.m.

West Texas State Releases 1966 Schedule

A half-dozen home games, two new opponents and a twilight homecoming are the highlights of the 1966 West Texas State University Canyon football schedule.

The Buffs open the season at Canyon, Sept. 17, against Arlington State, Aerial-minded Texas Western, Richmond, New Mexico State, Memphis State and Western Michigan are the remaining teams on the home schedule.

Richmond and Western Michigan will be met for the first time in any athletic endeavor. Western Michigan is a member of the Mid-American Conference while Richmond belongs to the Southern Conference.

The twilight (6:30) starting time for the homecoming contest against Richmond was decided upon in order that the Alumni could schedule more post-game activities.

Four road trips are on tap with the Herd scheduled to travel to the University of the Pacific, Arizona State, Northern Arizona and Colorado State University.

The 1966 schedule: Sept. 17-Arlington State at Canyon--7:30

Sept. 24-Univ. of Pacific at Stockton--10:00

Oct. 1-Arizona State at Tempe--9:00

Oct. 8-Texas Western at Canyon--7:30

Oct. 15-Richmond at Canyon (Homecoming)--6:30

Oct. 22-New Mexico State at Canyon--7:30

Oct. 29-Memphis State at Canyon--7:30

Nov. 5-Northern Arizona at Flagstaff--3:00

Nov. 12-Coronado State U. at Fort Collins--2:30

Nov. 19-Western Michigan at Canyon--2:00

Note: All times are Central Standard.



RONNIE JOHNS

Ronnie Johns Joins Marines

ANTON - Ronnie Johns, son of Rev. and Mrs. Murrell Johns of Anton, was inducted into the U.S. Marine Corps, March 8. He left by plane from Amarillo for San Diego, Calif. where he will undergo boot training at the Marine Corps Base. Ronnie is a 1965 graduate of Anton High School and has been attending Texas Tech.



Something Wonderful Happens

when space-searching, capacity-craving, passenger-pleasing you take off in a '66 Plymouth Fury Wagon.

Maybe it's the car. Maybe it's the deal. But something wonderful happens when you...

Let yourself go... to your Plymouth Dealer's

GARLAND MOTOR CO. - Chrysler-Plymouth

720 E. 3RD. ST.

LITTLEFIELD, TEXAS

THE BOSS IS GONE



MARSENE HOLT IS GIVING 'EM AWAY

Yes- While The Boss Is Away-We'll Pay For The 1966 License Tags For Every Used Car Bought During This Sale

SPECIALS REPEATED THIS WEEK

- | | | | |
|------------------------------------------------------------------------------------------------------------------------------------------------------------------------------------------------------------------------------------------------------------------------------------------------------------------------------------|--------|---------------------------------------------------------------------------------------------------------------------------------------------------------------------------------------------------------------------------------------------------------------------------------------------------------------------------------|--------|
| 1965 PLYMOUTH FURY II
4 Dr. White-Met. Turq.
16,000 miles, 1 owner,
34,000 miles. Factory Warranty or 4 years..... | \$2625 | 1963 FORD GALAXIE
2 dr. H.T. Light Blue, 390
Engine, Stand, Trans. Radio
& Heater, Low mileage,
clean..... | \$1380 |
| 1962 PLYMOUTH FURY
4 Dr. Wagon White color,
Power steering, brakes,
factory air..... | \$1275 | 1964 CHEVROLET IMPALA
Fordor Sedan Turq. & White
Power Steering, Brakes,
Factor Air, Low mileage,
1 owner..... | \$2185 |
| 1964 CHEVROLET IMPALA
Tudor H.T. White & Turq.
327 Engine, Automatic,
Trans. Radio, Heater,
Clean, low mileage, 1
owner..... | \$1970 | 1962 CHRYSLER NEWPORT
Fordor Green Sedan,
Power steering, power brakes,
Factory Air. One
Owner..... | \$1295 |
| 1964 Crown Imperial 4 Dr.
1964 98 Oldsmobile 4 Dr.
1963 Ford 4 Dr.
1963 Chevrolet Bel Air 4 Dr.
1962 Chrysler 4 Dr. Sedan
1961 Dodge Pioneer 9 Pass. Wagon
1961 Dodge Pioneer 4 Dr. Wagon
1960 Chrysler Windsor 4 Dr.
1960 Imperial Crown 4 Dr.
1960 Chrysler Windsor 4 Dr.
1960 Dodge Pioneer 4 Dr. | | 1959 Ford Galaxie 500 4 Dr.
1959 Buick Invisca 4 Dr.
1959 Oldsmobile 88 4 Dr.
1957 Ford Fairlane 4 Dr.
1955 Dodge Coronet 4 Dr.
1964 Chevrolet 1/2 Ton V-8
Fleetside Pickup
1962 Dodge 1/2 Ton V-8 Pickup
1961 Chevrolet 1/2 Ton Pickup
1961 International 1/2 Ton Pickup
1960 GMC 1/2 Ton Pickup | |

Dependable USED CARS

Garland Motor Co

AUTHORIZED DEALER CHRYSLER MOTORS CORPORATION



Davis Rites Held Tuesday

General services for Virgil Clem Davis, 70, longtime resident of Littlefield, were conducted at 2 p.m. Tuesday in the Baptist Church. The pastor, Rev. Robert Longshore, officiated.

Burial was in Littlefield Memorial Park under direction of Lammons Funeral Home. Davis was killed late Saturday night in a three-car collision one-half mile south of Ster-City. He was alone in his car and returning to Littlefield to visit relatives in San Antonio. He was pronounced dead at the scene of the accident.

Retired farmer, he has lived in Littlefield since 1932, moving here from Lubbock.

Survivors include five sons, Raymond, Long Beach, Calif.; Melvin, Albuquerque, N.M.; Gene, N.M.; Melvin, Pueblo, Colo.; and Gordon, Lubbock; one daughter, Mrs. Frances Mentelmar, Calif.; two brothers, W.O., San Antonio, and Orange; two sisters, Mrs. Baetz and Mrs. Viola M... both of San Antonio; nine grandchildren and one great-grandchild.

King Antiochus I built a 150-foot-high funeral cairn 2,000 years ago on Nemrud Dagh, a mountain of Nimrod in southeast Turkey. At the time he was monarch of the tiny but strategically important kingdom of Commagene.

New York City's Verrazano Narrows Bridge, which links Brooklyn and Staten Island, handled 17 million vehicles and collected more than \$9 million in tolls during its first year of operation.

PHONE SUNDAY AND SAVE

DAYTIME LONG DISTANCE RATES ARE LOWER ON SATURDAYS THAN WEEKDAYS

GENERAL TELEPHONE

Shopping at **Furr's SUPER MARKETS** is More Exciting than Spring in Paris!



WIN UP TO \$1,000

WIN A COLOR TV

WIN FREE MERCHANDISE AND FRONTIER STAMPS

EXCLUSIVE EXTRA CARE SERVICE

When poets dream...they dream of spring in Paris...because there's romance in the air. And every day at Furr's there's romance in the air in EXTRA CARE SERVICE for all the customers...plus big cash prizes, merchandise, and Color TV sets to win. Have your new Dividend Sweepstakes card correctly punched for big prizes...at Furr's where EXCITING THINGS HAPPEN to everyone!

EXTRA CARE PRODUCE

ORANGES
TEXAS FULL OF JUICE
LB **7 1/2¢**

POTATOES COLO RUSSETS 10-LB BAG **49¢**

COFFEE FOOD CLUB ALL GRINDS 1-LB **69¢** 2-LB CAN **1.37**

TURKEYS RIVERSIDE USDA GRADE A 12-LBS & UP LB **39¢**



FRYER PARTS

BREASTS LB **59¢**
DRUMSTICKS LB **49¢**
THIGHS LB **49¢**
BACK & NECKS LB **19¢**
WINGS **23¢**



COLOR TV WINNER
MRS. HAROLD ROBERSON
AMHERST, TEXAS

FISH
TOP FROST. PERCH LB **49¢**
WHITING FILLETS LB **39¢**
SEA STAR FISH STICKS LB **49¢**

SAUSAGE LINKS

FARM PAC OR HORMEL 12 OZ **59¢**
BACON
FARM PAC LB **89¢**

MAKE A FRITOS CHILI PIE!

- AUSTEX CHILI
- FRITOS CORN CHIPS
- CHEESE
- ONIONS

SUGAR EGGS HOLLY BEET IMPERIAL OR C&H 5-LB BAG **49¢**
FARM PAC USDA GRADED A MED DOZ **47¢**

FRUIT PIES
Morton, fresh frozen, apple, peach, cherry or coconut, 22 oz. pkg **3 FOR \$1**

POT PIES
Morton, fresh frozen, chicken, beef, turkey, spaghetti or macaroni & cheese. **6 FOR \$1**

TATER GEMS SALAD DRESSING FRESH FROZEN 2-LB PKG **3 FOR \$1**
ELNA QT JAR **29¢**

- WHITE KING, 10¢ OFF LABEL DETERGENT GIANT PKG **75¢**
- WHITE KING WATER SOFTENER GIANT PKG **65¢**
- WHITE KING SOAP GIANT PKG **85¢**
- TRE-RIPE FREESTONE SYRUP PACKED PEACHES NO 2 1/2 CAN **25¢**
- HI VI DOG FOOD 26 OZ CAN **3/49¢**
- ARMSTRONG ONE STEP FLOOR WAX 32 OZ CAN **\$1.23**

- PATIO BEEF FRESH FROZEN ENCHILADA DINNERS 12 OZ PKG **39¢**
- BAR-T-RANCH SYRUP PACKED PEARS NO 2 1/2 CAN **3/\$1**
- FOOD CLUB ASSORTED FLAVORS CAKE MIX PKG **25¢**
- FOOD CLUB PRUNE JUICE 24 OZ BOTTLE **29¢**
- MAZOLA OLEO 1-LB SWANSDOWN ASSORTED FLAVORS CAKE MIX 18 OZ **45¢** **3/\$1**

FRESH FROZEN FOODS

- STILLWELL FRESH FROZEN TURNIPS & GREENS 10 OZ PKG **2/29¢**
- TOP FROST FRESH FROZEN FRENCH FRIED POTATOES 16 OZ. **25¢**
- DARTMOUTH, FRESH FROZEN CAULIFLOWER 10 OZ PKG **19¢**
- TOP FROST, FRESH FROZEN WHOLE OKRA 10 OZ PKG **19¢**
- LIBBY FRESH FROZEN ASSORTED FLAVORS DRINKS 6 OZ CAN **2/25¢**



LAWN SPRINKLER
PLASTIC ROUND EACH **79¢**

BARBEQUE GRILL
SMOKEY DAN EACH **6.97**



VINYL WEB ALUMINUM FRAME **LAWN CHAIR** 6X4X4 EACH **3.99**
GARDEN HOSE 3/8" 50 FT **79¢**
CAR WASH BRUSH LONG HANDLE **87¢**
COOLER CHEST 30 QT STYROFOAM **97¢**

BREEZE LGE SIZE **35¢**

LUX LIQUID 22 OZ **65¢**

TREND DRY GIANT SIZE **49¢**

WISK QUART **81¢**

AMMONIA LITTLE BO PEEP 1/2 GAL **39¢**

BEADS-O-BLEACH 1 1/2 OZ **53¢**



CLASSIFIED ADS WORK WONDERS

LEADER and NEWS
CLASSIFIEDS SELL!
TO USE THEM JUST CALL 5-4481 AND ASK FOR AD TAKER
— CLASSIFIED RATES —
First insertion, per word 5c
Second insertion, word 4c
All Additional Insertions, word 3c
 Minimum Charge For First Ad run, \$1; minimum charge per subsequent insertion, 50c.
MONTHLY RATE, per word 30c
 (All editions of Leader and News, two copy changes monthly)

DEADLINES FOR INSERTION:
LAMB COUNTY LEADER
 10: a. m. Wednesday
COUNTY WIDE NEWS
 10:00 a. m. Saturday

Help Wanted A-1
 WANTED: licensed vocational nurse to work in private residence two or three days per week. If interested, write to S.S., Box 72, Littlefield, 3-275

LADIES: take orders for Young Look cosmetics. Absolutely no commission involved. Splendid income. Write Ann Orr, 5412-32nd St., Lubbock or Loreta Crouch, 2011-45th St., Lubbock, 3-170

Card of Thanks A-10
 The FFA Chapter and 4-H Clubs of Whittarral would like to thank the following Littlefield merchants for their support in the Fat Stock Show and Sale at Levelland: First National Bank, Security State Bank, Lichte-Sullivan Fertilizer, Roberts Lumber Co., Luce and Nelson, Wilemon Butane, Byers Feed Store, Littlefield Butane, Brittain Pharmacy, Ware's Department Store and Roden Drug, 3-170

Apts. for Rent B-1
 3 large rooms and bath furnished apartment, fenced back yard, close in. Call 385-4643. TF-S

FOR RENT - 3 room brick apartment, furnished, bills paid. Also, furnished bedrooms. Close to town. Phone 385-5151. TF-M

Houses to Rent B-3
 FOR RENT: 2 bedroom house on Kirk Street. Phone 385-3654 after 6:00 p.m. TF-C

FOR RENT: 2 bedroom furnished house at 413 West 1st, Contact next door. TF-B

Work Wanted A-2
 WORK WANTED: 2 teenage boys want work after school and on Sat. Have small tractor to plow up gardens and do other yard work. Call 385-3035 and 385-3941 after 6. 3-17W

Personal Services A-8
 Will care for your children in my home like I would care for my own. Call Mrs. Alvin Lingna, 385-4131. TF-L

We offer competent and safe care, creative activity and individual guidance for your child. \$2.00 daily, \$8.50 - 5 day week, \$10.00 - 6 day week, \$11.50 - 7 day week. Happy Day Nursery, Phone 385-5031 or 385-3738 or come by 705 West 2nd. 4-3H

Card of Thanks A-10
 We wish to thank our many friends and neighbors for their kindness, and to all who extended comforting sympathy in our sorrow. Thanks to the ladies for the delicious food which was prepared and served. We want to thank the doctors and nurses at the Littlefield Hospital for their kindness. For the beautiful service, the floral offerings and to the personnel of the Hammons Funeral Home, we express our appreciation. To all our friends and relatives, may the richest blessings rest on each and everyone.
 Mrs. W.R. Archer
 Mrs. Lorene Cox
 Mr. and Mrs. Arnold Archer

Real Estate for Sale C-6
 FOR RENT - extra choice office space. Contact L. Peyton Reese. TF-R

Houses For Sale C-1
 FOR SALE: 7 room brick house and 4 large lots east of high school, 385-3137. TF-H

FOR SALE - 2 bedroom house. A bargain. L. Peyton Reese, TF-R

Real Estate for Sale C-6
 We cut our price on 3 bedroom brick home facing Crescent Drive. Phone 385-3252 or 385-3286. TF-B

3 bedroom brick home, 2 baths, fenced and double garage, Melvin Dutton, 122 E. 23rd, Phone 385-3711. 3-17D

Real Estate for Sale C-6
 Nice large 2 bedroom home, 220 wiring, plumbed for washer, fenced back yard, fruit trees and grape arbor. Phone 385-4853, 411 East 16th. TF-C

FOR SALE BY OWNER - 2 bedroom house, carpeted, plumbed for washer and wired for dryer. 504 E. 16th St. Phone 385-5268. TF-B

Real Estate for Sale C-6
 FOR SALE IN CRESCENT PARK: 3 bedrooms, 1 1/2 baths, den and kitchen combination, fireplace, double car garage and fenced back yard. Phone 385-4084. TF-E

2000 Sq. Ft., 3 bdr. house, washer & dryer outlets, large den, lots of built-in, storm cellar. Owner leaving town. Phone 385-4903. TF-L

Real Estate for Sale C-6
 3 bedroom brick house for sale, double carport at 517 E. 17th, Littlefield. Take up payments of \$75.01 with \$800.00 down. Call Leonard Sanders, Olton, 285-2751. TF-S

REDUCED EQUITY IN CRESCENT PARK - 3 bedroom, 2 bath, refrigerated air conditioning, electric kitchen, double garage, 113 E. 21st. Contact W.S. Westerfeld, Box 48117, Midland, Texas. TF-W

Real Estate for Sale C-6
 FOR SALE - 3 acres close in to town. L. Peyton Reese, TF-R

FARM LOANS
 L. PEYTON REESE
 110 YELLOW HOUSE BUILDING
 PHONE 385-5363

Real Estate for Sale C-6
 FOR SALE OR TRADE: 207 1/2 A. Good allotments, One 8", One 6" well. Fieldton area on pavement. O.B. Graham, Jr., 385-5095. TF-G

DON'T TELL YOUR FRIENDS
 You bought it. Tell 'em you stole it. That's what it will be when you buy this nice three bedroom brick house in the Crescent Park Addition.

This house has a nice large living room, kitchen with snack-bar, also a dining area, built-in General Electric cook top and oven. Place for an automatic washer and dryer, nice carpet on most of the house. 1 and 3/4 bath, central heat, attd. garage, new fenced in back yard, with several fruit trees. We have a new 10 x 14 foot solid concrete cellar. I can highly recommend this house to you, and I am sure you'll approve of the price. CALL TODAY.

PLAINS REAL ESTATE
 PH 385-3211
 Nite Ph.
 I. D. Onstead - 385-3009
 Roy Wade - 385-3790
 C. R. Onstead - 385-4879

Farms, Ranch-land C-7
 194.5 A. farm on pavement. 5 miles west of Littlefield, 61.5A, cotton, 1/2 minerals, 385-3137. TF-H

640-A, or two 320-A. 7 full 8" wells with pumps, underground pipe -- 4 miles West of Muleshoe, 200-A, bermuda grass, 18-A, cotton, 90-A, grain -- all fenced--house, 20% down -- 15 years on balance, 6% interest, \$350 per acre. OWNERS: PO3-5323 or PO3-7809, TF-MT

FARM LOANS
 Prompt Loan Service
 Low Interest-Long Term- No Commissions To Pay- No Stock To Buy
JIM MILLS REALTOR
 385-5989
 600 EAST 4TH.

Bus. Services D-3
 Rent convalescent equipment at Brittain Pharmacy. Wheelchairs, crutches, hospital beds, etc. Complete lines of convalescent needs.

Custom-flat breaking to 12", \$3.50; chiseling, \$1.60; listing, \$1.10 per acre. Call Walter Brantley, 385-5696 evenings. TF-B

1 DAY SERVICE
 WATCH REPAIRING
 Free Estimates Guaranteed Also Appliances Repaired
 Garcia Watch & Jewelry Repair
 302 Ltd. Drive
 Next To Nelson's

Real Estate for Sale C-6
 For Sale - Unimproved lot on 23rd Street, near restaurant - \$100.00 down and \$20.00 per month to party with approved credit desiring to make investment. 385-3571. 3-17M

Real Estate for Sale C-6
 Complete extermination SERVICE, household pests as roaches, mice, rats, termites, etc. Tree and lawn spraying, bird repellent, moth proofing. One year written service warranty. Low rate, \$2.00 a room crawling insects. Day or night call collect; Levelland 894-3824. Davidson Pest Control, 15 years experience. TF-D

Bus. Services D-3
 Tube Line New Guaranteed 3 Years
WESTERN PUMPCO
 PHONE 385-5137
 Nights 385-3110 or 385-4185
 304 Lake Ave. LITTLEFIELD
 894-5023 LEVELLAND

Real Estate for Sale C-6
 WE HAVE MOVED TO 600 E. 4TH

We have a 4 bedroom house that has just been redecorated inside and out, new roof. This house is located in very good neighborhood on extra large lot. Total price \$8,000 - 5% down.

100' lot with shade trees, 3 bedrooms, bath, living room, dining room and kitchen with new cabinets, 943 West 4th. \$6,000. Small down payment.

Real Estate for Sale C-6
 WE WISH TO THANK OUR MANY FRIENDS AND NEIGHBORS FOR THEIR KINDNESS, AND TO ALL WHO EXTENDED COMFORTING SYMPATHY IN OUR SORROW. THANKS TO THE LADIES FOR THE DELICIOUS FOOD WHICH WAS PREPARED AND SERVED. WE WANT TO THANK THE DOCTORS AND NURSES AT THE LITTLEFIELD HOSPITAL FOR THEIR KINDNESS. FOR THE BEAUTIFUL SERVICE, THE FLORAL OFFERINGS AND TO THE PERSONNEL OF THE HAMMONS FUNERAL HOME, WE EXPRESS OUR APPRECIATION. TO ALL OUR FRIENDS AND RELATIVES, MAY THE RICHEST BLESSINGS REST ON EACH AND EVERYONE.
 Mrs. W.R. Archer
 Mrs. Lorene Cox
 Mr. and Mrs. Arnold Archer

Real Estate for Sale C-6
 Comfortable bedrooms for men. New home, heated rooms. Phone 385-3604, 204 E. 9th St. TF-A

Bus. Services D-3
Bill Miller
The Kirby Man
 PH. 385-3357

TV service calls. Days, 385-3831. Nights, 385-3318. New and used TV sets, T.V. Corner, 601 W. Delano. Dial 385-3831.

Hutchins Building Supply is remodeling headquarters for this area from 1 room to complete house. No money down - up to 7 years to pay. Phone 385-5685, 100 Sunset Avenue, TF-H

INCOME TAX SERVICE
 Reasonable Rates
J. CALVIN YOUNG
 Phone 385-8980
 MOTEL L-F
 Littlefield, Texas

Farm Equipment E-1
 FOR SALE: 1 HC 300 utility LP tractor with T.A., live P.T.O. 2 pt.-hitch. Tires and tractor in extra good shape. \$800.00. Alvin Messamore, Sudan, Texas, 227-5007. TF-M

Enjoy Your Patio Without Insects
 Let Skilled Professional Service Control Ants - Mosquitoes, And Other Insects. Call Now
 PHONE 385-5637
UNITED PEST CONTROL

AUTOMOTIVE SUPPLY HEADQUARTERS
 700 E 4th - PH 385-4431
 Car Truck
 Tractor Industry
 Irrigation
 Motor Rebuilding
 Precision Machine Service
G & C AUTO SUPPLY
 CHANDLER'S MOTOR MACHINE & SUPPLY STORES In Littlefield, Anton, Sudan, Earth

Misc. For Sale H-3
 Will sacrifice nice 5 piece dinette suite. Call 385-5528 after 6 p.m. TF-M

Used appliances in good working condition - can be seen at Gilley Bro. Electric, 817 E. 9th. Phone 385-3617, 4-14G

Misc. For Sale H-3
 Anhydrous Ammonia For Sale - new equipment furnished for applicator. Call 385-5735, 3-17T

Quality blended dry fertilizer with trace elements and equipment furnished for application. Call 385-5735, 3-17T

B&C PUMPS & Machine Works
 W.H. "Dub" BERRY-
 JOHN M. CLAYTON- Owners
COMPLETE IRRIGATION SERVICE
 WELL CLEAN-OUT
 PUMP PULLING
 PUMP SETTING
 COMPLETE PUMP REPAIR

COX TIN & PLUMBING SHOP
 Plumbing Heating & Air Conditioning
 LENNOX Heating & Air Conditioning
 Sheet Metal Work
 Fixtures & Supplies
 Licensed-Insured-Bonded
 706 E. 3rd
 Dial 385-4020

TRUCK SEATS EXCHANGED 15 MINUTE SERVICE
McCORMICK'S TRIM SHOP
 PHONE 385-4555 227 MAIN

Misc. For Sale H-3
 FOR SALE: Tuberose bulbs, Mrs. D.W. Holladay, 900 Duncan Avenue, Phone 385-4573. TF-H

FOR SALE - portable Lincoln arc welder on GMC pickup with hoist rack, Floyd's Welding Shop, Amherst. 3-20F

Misc. For Sale H-3
 For sale or will trade for green stamps: 4 semi-formals, 1 moustache jacket - very nice. See at 611 E. 15th after 5:00. TF-J

SOUP'S on, the rug that is, so clean the spot with Blue Lustre. Rent electric shampooer \$1. Nelson Hardware & Supply. 3-20N

Autos, Trucks For Sale J-1
 1960 Volkswagen for sale, 1966 plates and inspection sticker. Phone 385-3813. 3-20G

1964 Thunderbird, fully loaded, low mileage, excellent condition. See Ronnie Onstead at Onstead Furniture, TF-O

1960 Ford, new upholstery and carpet, \$500.00. Inquire at C & O Cleaners, after 6:00 phone 385-5358, 4-10C

HALL
 (Continued From Page 1)

Interest in determining the economic index set by the State Education Agency each year. The local fund assignment for each school district is determined by using this factor. This represents the local tax money which each school must provide annually. It would be my purpose to attempt to keep this factor on an equitable basis for our tax paying citizens of Lamb County.

There is another desperate need and that is the establishment of a county wide counseling program with emphasis upon the Elementary level age child. After three years service as elementary counselor in this county I know the value of having competent personnel in detecting, diagnosing, referring children with learning problems. It is important to be able to correct those problems during the formative years of their lives. As I am the only certified elementary counselor in the county and with experience, I would be available to every school and child in our county through the office of County Superintendent. This would be a part of services rendered. At the present time many of the schools in our county have to go outside the county and hire a professional person to come in for this purpose.

I am for the establishment and maintenance of a competent and efficient recruiting and referral of new teachers in our Lamb County schools. The office of County Superintendent could and should be constantly seeking, interviewing and referring teachers to our excellent school systems with primary emphasis upon recruitment.

If you would choose to elect me to the office of County Superintendent in the Democratic Primary, May 7th, 1966, I pledge to you my complete dedication of service and usefulness through this office to the citizens of Lamb County.

LITTLE LEAGUE
 (Continued From Page 1)

Auction will be held the evening of April 15.

New officers for the year are Tom Donnelly, president; Clayton Cowan, secretary; Flannery secretary and Rev. Hillary Rin player-agent.

All coaches and managers are asked to be at the auction to assist with the signing of the boys on April 4.

THE FAMILY LAWYER
 Handle With Care

To clean her rugs a housewife made use of a powerful fluid. But, working in a room, she inhaled so much of the lethal fumes that she died. A manufacturer of the cleaning liquid was held liable for her death.

After a court test, the cause was indeed held liable - mainly because of a misleading label on the can. The brand name, in large letters, strongly implied the product was safe to use. In danger, the only warning was small and inconspicuous.

Damage suits are rising growing frequency in the "product liability" One key is the responsibility of a manufacturer to warn the consumer of a subtle danger.

POLITICAL CALENDAR
 STATE SENATOR
 30TH DISTRICT
JACK HIGHTOWER

COUNTY CLERK - LAMB COUNTY
CHARLES D. JONES

DISTRICT CLERK ERNEST OWENS

COUNTY SCHOOL SUPERINTENDENT
C. ROY STEVENS

COUNTY JUDGE
JIM MANGUM

COUNTY JUDGE
J.B. DAVIS

Misc. For Sale H-3
 Take up payments on 1966 repossessed 23" Early American console T.V. 385-4215. TF-S

Misc. For Sale H-3
 Only 3 wall heaters - get yours at this low price. Hutchins Building Supply, 100 Sunset. TF-H

Wanda Central Vacuum Cleaners - no noise, cords, bags or dust. Worlds of suction. Economical. Sold, installed and serviced from 312 Ltd Drive, Littlefield, Texas. Ph. 385-5555, 3-27W

Misc. For Sale H-3
 Need reliable party in the Littlefield area to take over payments on a late model Singer sewing machine in a 4 drawer walnut cabinet. Automatic zig-zagger, will buttonhole, blind hem, fancy designs, etc. \$5 payments at \$5.49 or \$30.00 cash. Write Credit Manager, 1114 19th Street, Lubbock, Texas. TF-L

Misc. For Sale H-3
 For sale or will trade for green stamps: 4 semi-formals, 1 moustache jacket - very nice. See at 611 E. 15th after 5:00. TF-J

Misc. For Sale H-3
 SOUP'S on, the rug that is, so clean the spot with Blue Lustre. Rent electric shampooer \$1. Nelson Hardware & Supply. 3-20N

Autos, Trucks For Sale J-1
 1960 Volkswagen for sale, 1966 plates and inspection sticker. Phone 385-3813. 3-20G

1964 Thunderbird, fully loaded, low mileage, excellent condition. See Ronnie Onstead at Onstead Furniture, TF-O

1960 Ford, new upholstery and carpet, \$500.00. Inquire at C & O Cleaners, after 6:00 phone 385-5358, 4-10C

Autos, Trucks For Sale J-1
 1960 Volkswagen for sale, 1966 plates and inspection sticker. Phone 385-3813. 3-20G

1964 Thunderbird, fully loaded, low mileage, excellent condition. See Ronnie Onstead at Onstead Furniture, TF-O

1960 Ford, new upholstery and carpet, \$500.00. Inquire at C & O Cleaners, after 6:00 phone 385-5358, 4-10C

Autos, Trucks For Sale J-1
 1960 Volkswagen for sale, 1966 plates and inspection sticker. Phone 385-3813. 3-20G

1964 Thunderbird, fully loaded, low mileage, excellent condition. See Ronnie Onstead at Onstead Furniture, TF-O

1960 Ford, new upholstery and carpet, \$500.00. Inquire at C & O Cleaners, after 6:00 phone 385-5358, 4-10C

Autos, Trucks For Sale J-1
 1960 Volkswagen for sale, 1966 plates and inspection sticker. Phone 385-3813. 3-20G

1964 Thunderbird, fully loaded, low mileage, excellent condition. See Ronnie Onstead at Onstead Furniture, TF-O

1960 Ford, new upholstery and carpet, \$500.00. Inquire at C & O Cleaners, after 6:00 phone 385-5358, 4-10C

Autos, Trucks For Sale J-1
 1960 Volkswagen for sale, 1966 plates and inspection sticker. Phone 385-3813. 3-20G

1964 Thunderbird, fully loaded, low mileage, excellent condition. See Ronnie Onstead at Onstead Furniture, TF-O

1960 Ford, new upholstery and carpet, \$500.00. Inquire at C & O Cleaners, after 6:00 phone 385-5358, 4-10C

Autos, Trucks For Sale J-1
 1960 Volkswagen for sale, 1966 plates and inspection sticker. Phone 385-3813. 3-20G

1964 Thunderbird, fully loaded, low mileage, excellent condition. See Ronnie Onstead at Onstead Furniture, TF-O

1960 Ford, new upholstery and carpet, \$500.00. Inquire at C & O Cleaners, after 6:00 phone 385-5358, 4-10C

SNAP
 NEWS PAPER ADS ARE SO EASY TO ORDER BRING SWIFT RESPONSE CALL US TODAY!

Ceremony At Camp Rio Blanco

Ground breaking ceremony held at 2:30 p.m. Sunday, March 20, 1966, at Camp Rio Blanco for two buildings to be built on the site. The camp is located northeast of Crosbyton and is being developed by the Caprock Girl Scout Council comprising eight counties. Construction of the two main structures will be completed immediately by C.H. Construction Company. The camp will have a dining and sleeping quarters for approximately 9,300 square feet with a dining space for 200 persons. It will serve as a station and convocation area

for large groups. There will be a large fireplace with wood storage bins. The kitchen of about 600 to 700 square feet, will be arranged with a serving counter dividing food servicing and preparation areas. In a basement under the dining hall there is to be a staff lounge, and a separate small bedroom for the camp handyman. A 1,000 square foot recreation area here will also serve as a storm shelter and winterized camp unit with a heating system. Ground will also be broken

for the 670 square foot quarters for kitchen personnel, planned convenient to the new lodge. It is to contain two bedrooms, a small sitting room, and complete bathroom facilities.

Camp Rio Blanco came into being in 1958 with the donation of 118 acres of ranch land by Mr. J.S. Bridwell and his daughter, Mrs. Margaret Bowdler of Wichita Falls. The land lies on the north and south

of the white river in Blanco Canyon five miles east of Crosbyton, on the South Plains of West Texas.

Summer sessions will begin June 12, 1966. Each session will be based on the Girl Scout

program in the out of doors. Camp activities include crafts, hikes, swimming, songs, campfires, cook-outs, nature study and star gazing. Six sessions are scheduled for girls of various age groups.

Mrs. David Vigness, Lubbock, is president of the Caprock Girl Scout Council. Those members of the camp development committee are: Paul Carpenter, Chairman, Mr. Robert Work, Crosbyton, Mr. Don

Anderson, Crosbyton, Mr. Max Dodson, Lubbock, Dr. A.W. Young, Lubbock, Miss Clara Pratt, Lubbock, Mr. Phil Simpson, Lubbock, Mr. Oscar Crain, Lubbock, and Dr. James Kitchen, Lubbock.

Tech To Host Pre-Med Day

High school and junior college students interested in careers in medicine will join Texas pre-med students in talks by authorities in medicine at Tech's 9th annual Pre-Med Day Saturday March 19.

The theme will be "Preparing for Opportunities in Medicine and in Dentistry." Separate conferences for high school, pre-med and pre-dental students are slated for 2 p.m. Dr. Cummins will be the principal speaker at the Pre-Med Society's Awards Dinner at 6 p.m. in the Coronado Room.

Mrs. Johnson Is Club Hostess

WHITHARRAL -- The Whitharral Coffee-Break Club met last Wednesday afternoon in the home of Mrs. Ed Johnson northeast of town. Bingo was the diversion for the afternoon. Mrs. A.B. Roberts drew the hostess gift, a crystal sugar bowl and cream pitcher.

A snack tray was passed and coffee, salad, pie and punch were served to Meses. Roberts and Ples Helms of Littlefield, Don Ketchum, Coy Grant, T.D. Northern, Brady Helms of Levelland, V.D. Hodges, David Mitchell, George Wade, Jr., and the hostess.

Mrs. Don Ketchum will host the April 6 meeting at her home at 202 Texas, Levelland.

Skit Presented By Luther League

The Luther League of St. Martin Lutheran Church met Sunday night. Several in the group gave a skit entitled, "Who's Calling." A discussion on our faith followed, part of which was a test of what our youth think of certain problems of today.

President Steve Brandt called the meeting to order. It was decided to have a tennis party and a weiner roast on April 1 at 7 p.m. LL business included paying dues to the Conference Luther League. Pastor Engel mentioned two Lutheran Bible Camps available this summer for the young people of the church to attend. One is Camp Christus, near Amarillo, at which Pastor Engel will be dean of men and Mrs. Engel, dean of women. Camp Chrysalis, near Kerrville, is also open to the young people, and Pastor Engel has been invited to participate in the program.

It was mentioned that the Northwest Conference Luther League Convention will be held at Midland Lutheran Church, March 26 and 27. Refreshments were served by Steve and Mike Brandt.

FREE ESTIMATES BODY REPAIR ALL MAKES JONES MOTOR

For COLDS take 666

Looking For Linoleum ? See HILL ROGERS

Caravan Klub Meet Saturday

Several different groups of high school talent, including bands and vocal groups will provide entertainment for the meeting of the Caravan Klub Saturday night at the Lamb County Community Center. The time of the meeting is 7:30 p.m. A contest will be conducted and the winning group of entertainers will be given a prize. The regular meeting of the Caravan Klub Board of Directors will be held Monday at 7:30 p.m. in the Reddy Room.

Scott Stephens Honored With Party

Mr. and Mrs. Miles Stephens honored their son Scott with a party on his first birthday Saturday. Refreshments of punch and day cake were served. The party was in the shape of a rocking chair, was baked by his aunt, Alma Reagan. Attending were Allen and Shirley Shockley, Ropesville; Marie and Dewayne Williams, Lufkin; Chris Fitzgerald, Littlefield; Linda Lewis, Plainfield; Mrs. Jarred Shockley, Ropesville; Mrs. Calud Goen, Ropesville. Also his grandmothers, Mrs. Lynn Williams, Anton; Mrs. M.H. Stephens, Littlefield; Mrs. S.D. Evitt, Littlefield.

MYF Has Skating Party Friday Night

PADE - The Junior MYF of the Spade Methodist Church invited their guests enjoy a social last Friday night. The group met in the annex of church at 6 p.m. for several refreshments of sandwiches, potato chips, cookies and cold drinks. They then went to Littlefield where they enjoyed skating. Attending were Debra Harp, Terri Nichols, Terri Wallace, Miss Moore, Cindy Poteet, Myona Neinst, Debbie Myron, Markeeta Leonard, David Keony Ramage, Ronnie Chris Wallace and Jim McCurry. Also attending were Sharon Wallace, Susan Keeler, Tommy Ramage, Betty and Fran Gray, Mrs. Roy Wallace and Craig, Mrs. Nancy Ramage, Mr. and Mrs. Tony Richardson and Tony, Mr. and Mrs. Duane Gray.

Lamb County Leader

Published every Thursday morning by the Littlefield Publishing Co., 506 Phelps Avenue, Littlefield, Texas, 79339. Entered as Second Class matter at the U.S. Post Office, Littlefield, Texas, March 19, Under the Acts of March 3, 1879.

General Manager Donnelly, Managing Editor (Mac) McShan, Advertising Mgr.

Subscription rates: by mail in Lamb and adjoining counties, \$10 per year. Elsewhere in Texas, \$7.10 per year. In City delivery 70¢ per month.

Member 1966 TEXAS PRESS ASSOCIATION




CRISCO
VEGETABLE SHORTENING
3 LB CAN
79¢

FLOUR	GLADIOLA	25 LB PAPER SACK	189
COFFEE	FOLGERS	ALL GRINDS	LB 69¢
OLEO	SHURFRESH		LB 19¢
VANILLA WAFERS	TENDER CRUST	11 OZ	19¢
MELLORINE	BELL	½ GAL	39¢

PRICES GO...

QUALITY MEATS-FLAVOR FRESH
PRODUCE...FAMOUS BRAND FOODS ALL
AT PRICES THAT ARE DOWN THIS WEEK AT PIONEER.

TUNA	SHURFINE	25¢
LIQUID DET	PINK	39¢
GENTLE	LOTION	QT
DEL MONTE CUT		29¢
GREEN BEANS	NO 303 CAN	



PORK CHOPS

FIRST CUTS POUND **69¢**

BOLOGNA

ARMOUR'S ALL MEAT LB **49¢**

Choice Chuck Roast

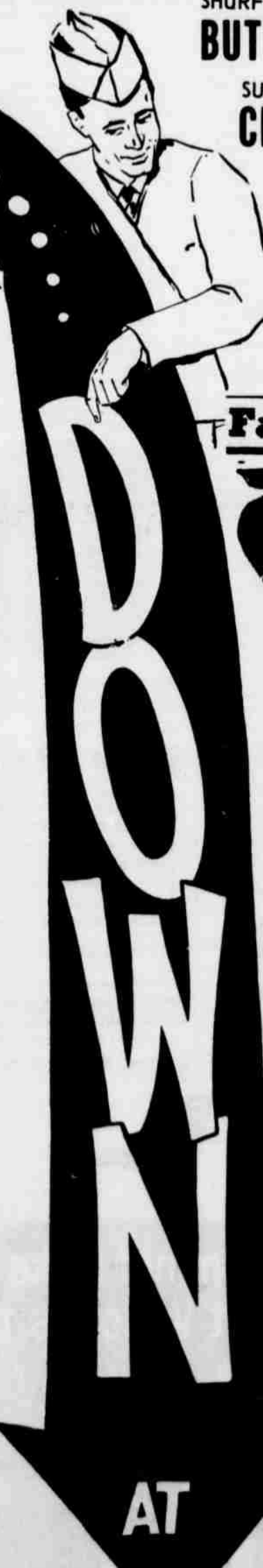
65¢

Sirloin Steak

89¢

HAMBURGER

FRESH GROUND 3 LB **\$1**



BUTTERMILK	SHURFRESH	½ GAL	39¢
CRACKERS	SUPREME	LB	33¢
DUMPLINGS	SKINNERS	8 OZ	25¢
NOODLES	SHURFINE	12 OZ	29¢
FOIL	VIKIN ALUMINUM	25 FT ROLL	29¢

Farm-Fresh PRODUCE

WASHINGTON DELICIOUS

APPLES		Lb. 15¢
Tomatoes	VINE RIPE	LB 15¢
Grapefruit	RUBY RED	5 LB BAG 39¢
Onions	YELLOW	LB 5¢
Lemons	CALIF	LB 19¢

SALAD DRESSING

SHURFINE

39¢

SHURFINE PINEAPPLE JUICE	46 OZ	41¢
SHURFINE SWEET POTATOES	N. 13 SQUAT	35¢



PIONEER
SUPER MARKET



SSGT. JOE D. COLLINS, Organizational Maintenance Sq., Walker AFB, New Mexico, gives 1421 the all-clear for another mission. The KC-135 crew chief has been with aircraft No. 1421 for 5 1/2 years and more than 700 sorties. Sgt. Collins is the son of Mr. and Mrs. Joe D. Collins Rt. 2 Littlefield.

Masten Named To Board Of Trustees

Fifteen new members of the Board of Trustees of the High Plains Research Foundation were elected along with officers for 1966 at the Semi-Annual meeting of the Board of Trustees in Plainview, February 26.

Dr. E.H. Collister, Director, was promoted to Executive Vice-President. Alton Schrander was named Business Manager. Jimmy Willson, Jr., Floydada, was elected to the Executive Committee. Other members were re-elected to the Board.

Officers re-elected were Harold Hinn, Plainview and Dallas, Chairman; Virgil Patterson, Amarillo, Vice-Chairman; Frank Moore, Plainview, President; Vice-Presidents, R. G. Peeler, Hereford; Ewalde Quebe, Lockney; and Steve Taylor, Dimmitt. Graddy Tunnell was re-elected Secretary-Treasurer.

New Board Members elected were: F.O. Masten, Sudan; Guy Victory, Fort Worth; Jack Payne, Lubbock; W.E. Miller, Springlake; Dick Brown, Hartley; Cone Donelson, Stratford; Athur Corse, Sunray; Steve Bavousett, Dawn; Henry Sears, Hereford; Jim Ed Waller, Lubbock; Noel Woodley, Plainview; Gordon Thornton, Tahoka; Russell Bean, Lubbock; Malcolm Garrett, Clovis, New Mexico; and Sid Muse, Amarillo.

The Board approved the Audit for the 1965 operations and received reports from the President and the Executive Vice-President. President Moore outlined the major achievements of the Foundation during the past 9 years. He outlined the major achievements of the Foundation, pointing out a number of major "break thru's" that have developed increased income of the agricultural industry in the High south plains of Texas.

Research projects planned for 1966 were presented by Dr. Collister. Some of the research projects will receive major attention this year are -- Trace Element Testing at the Foundation and in several farm-centered research projects; further development of the Foundation's Farming System of Interplanting at Halfway, and on 6 farms throughout the area in cooperation with farmers; Several new soybean strains with desirable characteristics to fit certain conditions, will be further tested and developed for eventual future release as new varieties. Further development of soil and water management through recharge, bench and irrigation studies; Hormone Studies on cotton and other crops; Chemical and Flame Weed Control; and Sorghum Midge elimination and control.

New Law Outlines Veterans Benefits

The Veterans Readjustment Benefits Act of 1966 which was signed into law Thursday, March 3, by President Johnson provides a permanent program of benefits to veterans who have served or who will serve in the U.S. Armed Forces since January 31, 1955. Chief among these benefits will be education, home loan guaranty and the extension of VA hospital benefits on the same priority basis as for wartime veterans. Thus approximately four million veterans discharged from the service since January 31, 1955, ranging from "cold war" veterans to those granted the veterans of World War II and the Korean Conflict. At the same time, provision has been made for 600,000 additional veterans who will be returning to civilian life each calendar year to participate in the same benefits. In all cases, to be eligible the veteran must have discharges that are other than dishonorable and they must not already have used up their eligibility under previous programs. All the new benefits, with the exception of the educational assistance program, went into effect immediately upon the President's signing of the bill. The educational assistance provisions will go into effect June 1, 1966.

The benefits established by the new law are: Educational assistance, home and farm loans, medical care, job counseling, job placement, Federal employment preference and the issuance of burial flags. A brief summary of each follows.

Education. Veterans with more than 180 days active duty, any part of which occurred on or after February 1, 1955, will be eligible for one month of college, vocational or similar education for each month or fraction of a month on active duty. Those taking full-time courses will receive \$100 per month if they have no dependents; \$125 a month one dependent.

Nice for Friday lunch: flaked cooked fish added to a well seasoned cheddar cheese sauce and served over toast. A sprinkling of minced parsley or paprika just before serving will make the dish look extra attractive.

and \$150 a month with more than one dependent. Proportional rates will be paid for part-time courses. The income of the veteran will not be considered. Application blanks and full information will be available at VA offices and at colleges and educational centers sometime in April, well in advance of the June 1, 1966, starting date. The maximum period allowed will be 36 months but this may be reduced by the amount of educational assistance previously received under a VA educational program and veterans will have eight years from the date of their last discharge from active service to complete their courses. However, the first cut-off date will not be until March 3, 1974.

Loan Program. Veterans with more than 180 days of active duty will be eligible for VA guaranteed home or farm loans of VA direct home loans in areas where such loans are authorized. They will have until ten years after the date of their last discharge from active service plus one year additional for each three-month period of active service to make such a loan, with a maximum deadline date of twenty years after the date of discharge from the qualifying service. For those veterans who have already been out of the service for a period of years, a minimum entitlement date has been set at ten years. VA guaranteed loans will be made at 5-1/2 percent interest rate. The new law authorizes the Administrator of Veterans Affairs to establish an interest rate as he determines the requirements of the loan market, but not to exceed the rate in effect for loans insured by FHA. A one-time non-recurring fee not to exceed one-half of one percent

of the loan amount is payable by the veteran but may be included in the loan and collected by the lender. However, it must be remitted to the VA before a guaranty certificate may be issued. In the direct loan program, the new law raises the maximum loan possible from \$15,000 to \$17,500. Veterans with unused and unexpired World War II or Korean Conflict entitlement will have that previous entitlement cancelled and will become eligible under the new law alone. However, during the period their cancelled entitlement would have been available such veterans not only need not pay the statutory guaranty or direct loan fee under the new law but they may also secure loans for business purposes as well as for home and farm purposes.

Medical Care. Veterans who have served after January 31, 1955, will be eligible for admission to VA hospitals on the same basis as wartime veterans. The priorities are: First-Veterans with service-connected disabilities have top priority for admission; Second - Veterans with service-connected disabilities but who are seeking treatment for some other ailment will be admitted as beds are available; Third - Veterans without service-connected disabilities may be admitted to VA hospitals if (1) hospitalization is deemed necessary, (2) they are financially unable to defray the cost of the hospitalization, and (3) beds are available.

Other Benefits. The new law also makes provisions for job counseling and job placement, both of these under the auspices of the Veterans Employment Service of the U.S. Department of Labor; and Civil Service preference in Federal employment. A United States Flag will be provided for use at the funeral of veterans who have served after January 31, 1955, and to be retained by the next of kin. Veterans who believe they are eligible for any of these benefits except the educational assistance program, can write, telephone or visit VA Offices located at 1400 North Valley Mills Drive, Waco, Texas; 2208 Main, Dallas, Texas; and 1612-20 19th Street, Lubbock, Texas. Veterans interested in the educational benefits are reminded that they cannot start any courses until after June 1, 1966, and it will not be until mid-April that the proper forms and instructions will be ready.

Both the educational assistance and Loan Guaranty provisions of the new law will apply to those persons who remain in the service after two years of military duty.

THIS WEEK'S SPECIALS

OUR HOTTEST SPECIAL
US No. 1 RUSSETT
POTATOES
10-lb. Bag
39

VINE RIPE
TOMATOES
2 LBS. **35¢**

RUBY RED
Grapefruit
PER POUND **5¢**

AVOCADOS
3 for **25¢**

GREEN ONIONS **5¢**

TURNIP & TOPS
MUSTARD
COLLARDS
2 for **25¢**

SAVE MONEY IN OUR NURSERY

ELBERTA PEACH TREES
2 FOR **3.50**
4-5 FOOT

BLUE CONE GOLDEN GLOBE ARBOR VITAE
2 FOR **\$5**

FLOWERING PLUM TREES
7-8 FOOT
2 FOR **\$6**

SPECIAL!
DWARF DOUBLE RED CANNON BULBS
2 FOR **25¢**

OUR TRUCKS WILL BE IN FRIDAY
With A Solid Truck Load of Trees, Plants, Shrubs, Weeping Willows, Honest Locust, Silver Maple, Umbrella and Others.

CITY FRUIT MARKET
BILL & BETTY SMITH

Texas Farmers To Help Make Planting Report

Texas farmers, at least a cross-section of them, will provide the information needed for making the 1966 Prospective Planting Report.

The survey cards will be mailed in late February and should be filled in and returned immediately to the Texas Crop and Livestock Reporting Service. Nationally, some 300,000 farmers will make reports. State Statistician Cary D. Palmer says the information reported by each farmer is kept strictly confidential. It is combined with the reports of other farmers and the totals for each crop are then used to prepare the state and national reports.

Farmers receiving the survey cards should first read the simple instructions and then fill in the two blank boxes for each crop listed that is grown on his farm; one for the acreage of the crops he expects

to grow this year, and the other for the acres grown last year.

Figures from the survey represent intentions to plant as of about March 1. Farmers who file reports are free to change their plans later on. One big reason for the survey, according to Palmer, is to help each farmer decide what to do, or what not to do, about planting a particular crop.

The national Prospective Planting Report is scheduled for release on March 18, Palmer says.



MAKE NEW WELLS BETTER AND OLD WELLS LIKE NEW WITH

DRY ACID

Developed and manufactured specifically for treating water wells to improve the flow.

PROVEN IN THOUSANDS OF WELLS DURING THE PAST 16 YEARS.

There is ONLY ONE DRY ACID

DEVELOPED AND MANUFACTURED ONLY BY
LOTZE CHEMICAL COMPANY
2701 AVE. G / SH 72096 / LUBBOCK, TEXAS



AGAIN AMERICA'S FAVORITES... CHEVROLET TRUCKS

566,664* NEW CHEVROLET TRUCKS WENT TO WORK LAST YEAR. THAT'S A RECORD FOR CUSTOMER ACCEPTANCE...EVEN FOR CHEVROLET!

Last year more people bought Chevrolet trucks than ever before. Stands to reason. Chevrolet makes a truck for almost every kind of job. So many components are offered you can set up a Chevy to do your special job the way you want it done. Cost is low. Resale high. Chevy's been the No. 1 truck since 1937. Put a new '66 model to work. It's bound to be No. 1 on your job for years.

*Source R. L. Polk & Co., Detroit, Michigan.

Get a No. 1 buy on the No. 1 truck during Double Dividend Days



ARMES CHEVROLET CO.
LITTLEFIELD, TEXAS

42-4810

HURRY-

DeKalb Sales are Booming! Make certain You get the right Varieties of

DEKALB BREAKTHRU Sorghum

DEKALB is a Registered Brand Name

SEE Your Dealer listed below-

- FARM CHEMICAL CO. EARTH
- NICHOLS OIL CO. SUDAN
- DLTON FARM SUPPLY OLTON
- FARM CHEMICAL CO. SPRINGLAKE
- YOHNER'S FEED, SEED & FERT. LITTLEFIELD
- SPADE HARDWARE SPADE



...TIME TO ENJOY THE GOOD THINGS IN LIFE!

Spring!



The signs are clear. There'll be scenic excitement all along the way... in new shapings, in look-again detailing, in off-the-beaten-track accessories. Men's stylings usher in the Year of the Peacock. *This* spring last year's wardrobe will *never* do! Young-set fashions have new individuality and non-stop ease of care. And there are new directions in decor to make your home a most charming setting! Head for your local merchants. See what the excitement is all about!

GET SET FOR EASTER 21 SHOPPING DAYS

A small illustration of a rabbit, likely representing the Easter Bunny, positioned next to the text.

**ATTEND THE BETA SIGMA
PHI STYLE SHOW**
FRIDAY 8:00
HIGH SCHOOL AUDITORIUM



LOVELY YOUNG MISSES - Models in Ware's Fabric Fashion Show Monday night were grouped in five age groups. These young ladies were among the younger participants in the show. Shown (L-R) are Carrie Ware, Cindy Drake, Lota Zoth, Kimberly Fisher and Karen Drake. They are standing before a large rainbow while other stage decorations included a wishing well and baskets of spring flowers. The fashion show held in the high school auditorium, was attended by about 600 persons. -- LEADER STAFF PHOTO

For Shoes, a Light, Feminine Feeling - the Look of the 30's

Here a new image in footwear is being evolved. The shoes will be light, airy, graceful and feminine. The pump will be shown sandalized with open sides or closed with low, swooping sides and a shelled vamp. The tailored, broguey look will decline and give way to the more opened up shoe. The "look of the thirties" will prevail as straps take over on all heel heights. You will see quarter straps, ankle straps, instep and vamp straps. The closed toe, open back, open shank will be the No. 1 choice in all heel heights.

HEELS
Again, a feeling of individuality asserts itself. No one heel shape or look will predominate. The heel has become an

integral part of a well-styled shoe. Where the shoes are light, feminine, and graceful the heels will be thin, wine-shaped and graceful. Heels will become heavier on the lower, fuller toe lasts. Chunky heels, museum shapes, blocky types will take over.

LASTS . . . will continue to go fuller. The full, rounded square is increasing in popularity. As the heel heights go up (1 1/8 and higher) the toe shapes remain virtually the same retaining a slightly tapered rounded look. The action and fashion excitement are on 1 1/8 heels and lower. Toes are broad and full and which style goes on what last is determined by the over-all look of the shoe. Eye appeal will determine how full the toe should be or on what last a style shall be manufactured.

A. More opened up shoes which are light, graceful and feminine.

B. Closed-toe, open back silhouettes will predominate.

C. Heavy, block-type heels on lower heels and fuller toes. **ELEGANCE**

Individuality is reflected more than ever in the ready-to-wear picture for Spring 1966.

The spare, stark look of a Courreges . . . The feminine body-clinging versions of Yves St. Laurent with his stylized versions of the look of the thirties . . . The simple, classic elegance of a Chanel . . . The Mod or Chelsea look of Mary Quant . . . The Mondrian look. Apparel fabrics continue a gamut of color in a new, softened mood. There is a gentler quality, a quieter toning, a wide range of tinted neutrals with a bare suggestion of coloring. Even the brights and shock colors have taken on a deeper, richer tone.

In silhouettes, the strength of the simple, straight shape continues. Hemlines are shorter, skirts have movement, coats

are shorter. Precise architectural lines are emphasized by welt seaming, angular silhouettes and strict tailoring. The softer more feminine look is found in coats and dresses cut on the bias or breaking into a bias flare placed low.

Color and fabrics provide

new excitement and stimulation for the expressions of individuality seen everywhere. Tweeds look new with tight twists of color on creamy backgrounds. Soft brushed mohair and lattice-weave tweeds appear in unusual combinations of color dominating the picture. Low-keyed neutrals . . . a soft, whitened, misty group of colors.

The fashion picture in shoes has changed rather radically in the past year. The unusual, the shocking, the new for the sake

of being new has run its course. For Spring, you will see a refined modified, molded and accepted by the mass consumer. Colors will be paler with whitened look. The color of clothes, legs and shoes next Spring's fashion statement. The emphasis which has been placed on line and silhouette for color to intensify feeling of freshness and activity in contemporary fashion. Fashion emphasis will be on the pale, misty look with "chalky-white base," the tones or pale neutrals.

FIELDTON NEWS Mrs. Allen Yoakum

GA's Visit In Olton

The Fieldton GA's went to Olton recently to visit the Olton GA's. They had mission study followed by supper and games. Going from here were Velda Lee, Tonya Pickrell, Kathy Langford and Donna Muller.

Mr. and Mrs. Jerry Armstrong and family visited his uncle and family. Mr. and Mrs. C.W. Armstrong of Earth, recently.

Mr. and Mrs. Jake Armstrong visited last week with her brother and family. Mr. and Mrs. Jack Stubbs of Knox City.

Mrs. W. J. Aldridge and Bill returned home Monday evening after a week's visit in San Antonio with Mrs. Aldridge's other son and family. Mr. and Mrs. Guy Aldridge.

Mr. and Mrs. C.C. Slaughter and Keith visited in Happy over the weekend with a cousin. Mr. and Mrs. Lewis Williams.

Visiting in the home of Mr. and Mrs. G.L. McLelland Sunday were their daughter and family. Mr. and Mrs. Bobby Leonard and baby of Lubbock.

Mr. and Mrs. Tom Laone, Mr. and Mrs. Clayton Cowan and Mr. and Mrs. Don Brestrup have returned home from a fishing trip to San Pedro, Mexico.

Mr. and Mrs. Mason Matthews have returned from Falcon where they have been fishing for a week.

Mrs. Wallace Cockerham of Reno, Nev. is spending a few days with her parents. Mr. and Mrs. Mason Matthews.

The Fieldton RA's met Thursday evening with the following attending: Edward Yoakum, Roger and Perry Muller, Connie Bowman, Mark and Marty Joplin, D.L. Solesbee, Dennis Cowan, Kippy McLelland, Jerry

and Ricky Stamps. They played basketball after the meeting.

Guests in the home of Mr. and Mrs. L.M. Sturgis have been Mr. and Mrs. Luther Skinner, Jimmy, Michael and Sandra and Mrs. C.H. Skinner, Iowa Park; Mrs. Loyce Pryor, Billy and Teresa, Linda Watson and Pat Byraus, Mr. and Mrs. Frank Sturgis, Delta, Darlene, all of Wichita Falls, Duane Pryor, Sudan and Dorothy Bethel, Littlefield.

Mr. and Mrs. Lige Griffin's granddaughter, Fonda Griffin of Muleshoe spent the weekend with the Griffins.

Mr. and Mrs. John Hayhurst are visiting their daughter in Phoenix, Ariz.

Mr. and Mrs. Bub Stewart attended the Rocky Ford annual birthday dinner at Amherst Sunday.

Mr. and Mrs. Doc Bowman and family and Dana Hoakum attended the basketball tournament at Lubbock last Saturday.

Mr. and Mrs. A. Clarence Smith of Lubbock spent Monday with Mr. and Mrs. Gilbert Lemmons.

Friends and relatives from out of town attending the funeral services of W.J. Aldridge and visiting in the home of Mrs. W.J. Aldridge were Mr. and Mrs. Orville Bibby of Wolf-orth; Mr. and Mrs. H.F. Gregg, Abernathy; Frank Streetman, Seminole, Okla.; Mr. and Mrs. Jack Streetman, Kanawa, Okla.; Mr. and Mrs. J.V. Aldridge, Dallas; Mr. and Mrs. L.F. Cowley, Hobbs, N.M.; Mrs. Travis Bean, Plains; Mr. and Mrs. Joe Spikes, Lamesa; Mr. and Mrs. Joe Burquin and Dan, Mt. Vernon; Also Mrs. Hiram Clinton.

Torres Student At Navy School Of Music

Seaman Apprentice Evaristo Torres, Jr., USN, son of Mr. and Mrs. Evaristo Torres of 703 S. Westside Ave., Littlefield, is attending the Basic Instrumentalist Course at the Naval School of Music at the Naval Amphibious Base, Little Creek, Va.

The six-month course will cover music theory and harmony, concert and dance band training, private instrumental lessons.

The school is staffed by veteran Navy, Marine Corps and Army musicians, and offers training to musicians on the basic, refresher and advanced levels.

Upon completion of the course, he will be assigned to a band at a ship or shore station, either overseas or in the continental United States.

Before entering the service in November 1965, Torres attended Texas Technological College at Lubbock.

Sing a Song of Springtime

ONE OF THE MANY
EXCITING NEW STYLES TO
BE SHOWN
AT THE

"TOUR THE U.S.A. FASHION WAY"

PRESENTED BY THE
BETA SIGMA PHI

HIGH SCHOOL AUDITORIUM
8 PM FRIDAY NIGHT

Proceeds Go To
CYSTIC FIBROSIS AND LOCAL SCHOLARSHIP FUND

Ware's

OF LITTLEFIELD



STYLE # 806

The silk shift at its very best. The fashion favorite impeccably tailored with contrasting color trim at the cuffs and under collar. 6-18.

\$65

There Are Only 21 Shopping Days Until Easter

Children's Fashions Take Their Cue from Grown-Ups'

The flowers that bloom in the spring, tra la, will be sniffed and admired by the most stylish little boys and girls in many a season, judging by the new crop of children's fashions.

Little girls will be putting their best foot forward for spring in lady-like dresses, prettily ruffled and trimmed.

Voiles, cotton batistes and cotton broadcloths in pretty combinations of pink and white, blue-and-white, yellow-and-white set a light-hearted mood, while little touches such as smocking, double collars, embroidered flowers and flowing ribbons complete the pretty picture.

As for the lads, they will look dapper in knickers, brought up-to-date with matching zip-front jackets in heavy cotton poplins, or the perennial shorts, topped with either a double-breasted overshirt or a plaid tuck-in shirt, and there's good news for mothers here, in the new durable press fabrics that are a feature of many boys' wear items this season.

The toddler set is well represented in spring fashions with charming little creations designed to melt a mother's heart when one is caught picking the tulips.

Girls' styles range from the simple A-line with matching bloomers to the simply elegant pleated A-line, featuring exquisite floral embroidery.

On the casual side are the new knicker styles for toddler girls, with matching capes, and little Miss Muffet dresses com-

plete with matching "mob" cap.

In the meantime, the "fellas" are ready for any fashion occasion in one-piece double knit cotton suits. After all, in the spring a young man's fancy, period.

The Mod Look is seen less in children's spring. Courreges has greater staying power as the A-line continues to be THE shape. Timid kindergarten tummies always look best hidden behind a concealing A-line. Natural-waistliners are still few and far between, but experts predict a retrenching.

COLORS A-BLOOM

When it comes to color, don't be alarmed at your seeing double, for this season one color will not stand alone. Pink is banded with gray . . . yellow with white . . . navy with red . . . lemon with lime . . . lavender with pale blue.

Heading the list of fabrics are hard-finished worsteds, followed closely by gabardines, twills and Shetlands. For refreshing variations, note the boucle textured woolens and soufflé-light silk-and-worsteds.

Spring fabrics are light and comfortable: Soft, pastel wools in suitings, country calicos, eggshell bonded knits, white cotton eyelets, sculptured white piques, cotton chiffons, dotted and flocked denims, misty voiles, paisley voiles, and lace, ecru and otherwise for the trimmings.

WHITHARRAL NEWS by MRS. EVA L. FRANK

Thetfords Attend Wedding Of Relative In Alpine

Mr. and Mrs. D.C. Thetford, and Mrs. Norman Thetford, David and Scott Mr. and Mrs. Billy Thetford, and Carry were in Alpine Friday and Saturday for wedding of their son and daughter, C.E. Thetford to Miss Reed Friday evening.

Mr. and Mrs. Norman Thetford and children also visited Alpine, Carlsbad, N.M., and Fort Stockton. They visited J.B. Lauderdale at Fort Stockton.

Mr. Omie Burnett is home on an extended stay with Mr. Mrs. J.N. Burnett at Morristown.

Mr. Will Raines and Mrs. Ella were in Olton.

New Stockings Show-Stoppers

In the year of the great leg, imaginative new designs in stockings take the spotlight in the spring fashion parade. Not only are new textures achieved by combinations of yarns and knitting techniques.

Plain fancy, one of a galaxy of intriguing new seamless stocking styles, is a crochet knit made of Antron and stretch nylon with a sheer heel lined to star with the new fashions.

Another flattering new stocking for city-country promenade according to Mrs. Kathie Bremond, styling consultant at Simply Sweet, a lacy net style in seamless stocking by Hanes made of Vyrene and nylon with a sheer

heel. This spring, colorful signals will enhance shapely legs. Navy tradition provides catching inspiration for a spring new style in knee length, Ensign, with five mini-signal flags decorating the stocking. Made of Orlon stretch nylon, the signal

style comes in white, flare royal shades. Commander, the innovation in the new seasonally inspired stockings introduces a cable stitch design in Wintul Orlon acrylic stretch nylon. Commander

comes in a wide range of color including tropical pink, cruise yellow, flare, watermelon, as well as black, white and camel.

First Mates are still another setting new style in seamless stockings, a knee high style made of stretch nylon.

For festive wear, Jewelites, made of shimmering Antron in a multi facet knit, like a new fashion note ending legs with a highly flaring sparkling effect. Jewelites in Candy Colors ranging from Peppermint Pink and

Friday afternoon for the former's grandchildren, Tommy, Peggy Jo and Mark who spent the weekend here. Other relatives in the Raines home during the weekend were Mr. and Mrs. Stanley Wright, Stanita, Todd and Kevin of Denver City, Mr. and Mrs. John Rankin of Wolfthorpe, Mr. and Mrs. Clifford Tuttle and Kimberley and Mr. and Mrs. Bill O'Neal, Kathy, Stephen and Laura of Lubbock and Mr. and Mrs. Melvin Raines of Olton.

Mr. and Mrs. W.R. McDaniel accompanied the former's cousin, Mr. and Mrs. Herman Clements of Vernon to Lovington, N.M. for a weekend visit with relatives. They returned Monday and the Clements went

on to Amarillo. Visiting Mr. and Mrs. Jack Milburn, Jennie and Billy and Mr. and Mrs. Aubrey Kirby, Cheryl and Mike at Walsh, Colo. were Mr. and Mrs. Henry Jones, Mrs. Vick Matthews, accompanied by Miss Jana Jines of Levelland.

Rev. and Mrs. Ed Dickerson, Jackie, Eddie and Johnny of Amarillo were weekend guests of Mrs. Dickerson's aunt, Mr. and Mrs. John L. Burnett. Dickerson filled the pulpit at the Whitharral Baptist Church Sunday morning. Weekend guests in the home of Mr. and Mrs. R.E. Edwards were Mr. and Mrs. Edgar Edwards, Lynn and Bryan of Odessa and Harlin Woolard of Fort Worth. Edwards preached Sunday morning at the 12th Street Church in Levelland. Accompanying him to Levelland were his mother, Mrs. R.E. Edwards, Mrs. S.J. Polk and Gary Polk.

Mr. and Mrs. M.R. Matthews of San Angelo have been here for several days visit with the latter's sister, Mr. and Mrs. Ross Sires who accompanied them to Lovington, N.M. for a visit with relatives.

Mr. and Mrs. Norman Hodges and Robin arrived Sunday from Gulfport, Miss. for a furlough before being transferred to Ramstein AFB near Kaiserslautern, Germany. They expect to leave the states shortly after April 1. They are visiting their parents, Mr. and Mrs. V.D. Hodges and Mrs. Elva T. Crank and other area relatives.

Mr. and Mrs. Donnie Blackman, Debbie and Dennis returned to Plainview Monday after visiting Mr. and Mrs. O.L. Martin Sunday and Monday. Mr. and Mrs. Martin and Mr. and Mrs. Dewey Hutson left Tuesday for a short visit to Rio Grande City and other South Texas points.

Mrs. J.D. Coursey, sixth grade teacher has been out of school for several days this week due to illness.

WHITHARRAL SCHOOL MENU MONDAY - Barbecue-on-bun, potato salad, buttered green beans, rolls and butter, chocolate no-bake cookies, milk.

TUESDAY - Pinto beans, buttered spinach, onions and relish, cornbread and butter, candied yams, cherry cobbler, milk.

WEDNESDAY - Oven-fried chicken, cream gravy, mashed potatoes, tossed salad, hot rolls and butter, plum jelly, milk.

THURSDAY - Roast beef and brown gravy, buttered rice, asparagus, tomato wedges, hot rolls and butter, fruit jello, milk.

FRIDAY - Tuna fish sandwiches, potato chips, pickles, buttered corn, blackeyed peas, peanut butter cookies, milk.

CITY BITS The Sunnydale Home Demonstration Club will meet today (Thursday) at 2 p.m. in the home of Mrs. J.G. Perkins.

Terry Smith, son of Mr. and Mrs. Otis Smith, was home for the weekend. Terry is enrolled at North Texas State University.



ACRYLIC PAINTING -- Mrs. William N. Orr, left, and Mrs. Cal Harvey demonstrated acrylic painting at the regular meeting of the Littlefield Art Club Monday in the Reddy Room. This type painting is done mostly with sponges. Members attending each painted with acrylic or tempera.

Make-Up Tips to Remember . . .

H (EYE) LIGHT ON EYES... everybody's thinking up new ways to make up the eyes. . . new colors to apply . . . new shaping still favorites, the brushes and tint boxes provide yet still another look at eye level. For inspiration, they went to the spice rack, scooped out colors like Olive, Curry, Mushroom for new shades. . . then they put them together with pastels like Whisper pink,

Whisper Beige, add a dark eyeliner like Black Olive and tip it all off with a flick of white. It's a smouldering kind of eye look, but lightened up with that pink or beige it comes out pretty. One they call A Drift of Smoke uses softsmoke shadow, a Whisper Pink high-light, a liner of slate and a flick of Sift White. Fashion uses the idea of the smoky and pastel balancing each other.

Earth School To Get Building

General Services Administration, Dallas, Texas, announced that two wood frame houses, Nos. 9 and 37, at the Exell Helium Plant, Master-son, Moore County, Texas, are being assigned to the Department of Health, Education, and Welfare by GSA's Utilization and Disposal Service, for conveyance to Springlake-Earth Independent School District, Earth, Texas and Waka In-

dependent School District, Waka, Texas. These houses are to be removed from their sites. They are identical in structure, each having five rooms with a bath. The overall area of each, including a service porch, is 1,092 square feet. Upon removal to their new locations, these houses will be used by the schools for educational purposes.

Castro County C of C Dinner Set March 21

The Annual Banquet of the Castro County Chamber of Commerce will be held Monday March 21, 1966 at 7:30 p.m. at the South Grade School Cafeteria. Citizens of the area will mark the end of another year of progress and the beginning of another.

Waggoner Carr, Texas Attorney General, will be the principal speaker at the banquet. Mr. Carr has many friends in the Panhandle-South Plains area and a large crowd is expected to hear this address. New officers of the chamber are C.W. Anthony, President and W.F. Bennett Vice-President. Retiring President Jack Miller will be in charge of the program. The chamber is currently developing proposals for airport improvement, recreation facilities including a nine-hole golf course, and various industrial projects.



Brand Classifieds Get Results Fast! Phone 385-4481 today and let us help you word your classified ad so that you get the maximum results for your money.



Olds Swing Fever is catching!

(Pass it on!)

Olds Swing Fever got you? Your Olds Dealer has just the cure: A Toronado-inspired Oldsmobile! Choose your own prescription: Elegant Ninety-Eight . . . action-packed 88 . . . low-priced F-85 . . . 40 Rocket Action models in all. And all priced to make waiting downright foolhardy. Feel your temperature rising? That's Swing Fever. Quick! Head for your Olds Dealer's . . . open your mouth and say "yeah!" **LOOK TO OLDS FOR THE NEW!**

OLDS SWING FEVER IS SWEEPING THE COUNTRY!

STEP OUT FRONT In a Rocket Action Car!

OLDSMOBILE

JONES MOTOR COMPANY LITTLEFIELD, TEXAS

Penney's ALWAYS FIRST QUALITY

We make fashion a family affair

With the first whiff of Spring, families come trooping into Penney's in threes and fours, fives and sixes, even tens and twelves. And they leave in a gale, bright-eyed with all their pretty Easter fashions. Families are our specialty. Tiny toddlers, swingy teens, bumptious boys, young moderns. From Mary Janes to the hatliest hat for mother, we zip the hot style news from the designer's board to you way ahead of time. No one's left out. And, father won't groan even once! He knows the tidy savings at Penney's will put more nest eggs in the family basket. That's why every year more families turn to Penney's for a well-turned-out Easter. Won't you join them?

It's Easter at Penney's Bring all the family and make fashion shopping fun for everyone!

AMHERST NEWS BY MRS. LESTER GRANGE

Girl's Basketball Team Has Excellent Record For Season

The girls of the Amherst High School basketball team are receiving praise for their excellent record in play this season, which included second place in regional competition. At the regionals at the West Texas State Field House in Canyon last Saturday morning they won their first game with Paint Creek but lost the championship game that night against Sundown and their chance to go to the state play-offs.

A large crowd from Amherst and the community were in Canyon for the games and many others listened to them through broadcasts on Radio Station KZZN in Littlefield.

Mr. and Mrs. Jim Templeton have returned from McKinney where they were called due to the illness of his father, J.A. Templeton. While they were there he had recovered sufficiently from pneumonia to be taken home.

Mrs. Bertha Thompson has moved into her home next door to her daughter, Mrs. Joe Brandstatt. The house has been remodeled since it was moved to town from her farm.

Guests of Mrs. Effie Tapley, Sunday were her granddaughters Mrs. Georgia Stephens and children of Lubbock, Jane Byers and Laura Jane Roberson of Littlefield.

Guests in the Jim Templeton home during the weekend were Mr. and Mrs. Roy Brannon of Portales.

Mr. and Mrs. N.B. Embry attended the Fred Waring Concert in the Lubbock Municipal Auditorium Saturday night of last week.

Sunday guests of Mr. and Mrs. Jim Bradley were their son and wife, Mr. and Mrs. Jack Bradley of Hereford.

Mr. and Mrs. Tommy Wheat of Pampa were here for the weekend with his parents, the Jim

Wheats. Recent guests of Mr. and Mrs. Lloyd Sturgis were their daughters and son and their families. John Faust continues to improve from a heart attack suffered in February. He was brought home from the Muleshoe Hospital, Tuesday.

Mr. and Mrs. George Harmon are on their annual vacation to Florida.

Mrs. Eva Attaway is a patient in the local hospital.

Mr. and Mrs. Michael Duffy have named their daughter, Laura Elizabeth. She was born March 4 in the Methodist Hospital in Lubbock, weighing six pounds and 13 1/2 ounces. They have another daughter and two sons.

Mrs. G.D. Lair accompanied her daughter, Mrs. Joe Stevens of Pampa to North Carolina where they will visit with the Joe Stevens Jr.

Mr. and Mrs. Verdell Burton and sons, Lonnie and Ronnie are in Houston this weekend to assist her uncle, Mr. and Mrs. Guy Rhodes in their move to Littlefield, Tuesday.

Guests of Mr. and Mrs. Albert Johnson Sunday were Mr. and Mrs. Baxter Flemmons and son of Edmondson.

Mr. and Mrs. J.R. Simmons visited her aunt, Mrs. Mary Moore in Winters last week.

Len and Connie Mixon, Roy Simmons and James McAdams were involved in a car accident as they were enroute to Mobeetie for a visit with relatives last week. Before reaching Mobeetie they struck a cow on the highway. The young people escaped without injury although the car was completely demolished and the cow killed.

Guests in the L.E. Vaughn home last weekend were his sister and daughter, Mrs. Owen

Taylor of Carlsbad and Mrs. Pete Gotsis and children of Lubbock.

Mr. and Mrs. Bob Simmons visited their daughter, Mrs. Sam McCormick and family in Amarillo last weekend.

Mr. and Mrs. Dale Pittman are fishing at Oak Creek Lake this weekend.

Rev. Jarrell Tharp and daughter, Lisa of Lubbock visited his parents Monday evening and attended the service at the Methodist Church. Others from out of town attending the service were Mr. and Mrs. Robert Groenewald and Mr. and Mrs. Joe Embry and Cynthia of Littlefield.

Mr. and Mrs. Allan White left Wednesday for a few days at their cabin at Tres Ritos, N.M.

Rev. and Mrs. Darvis L. Egger of Colorado City showed colored slides of their trip to Hawaii last fall, following the evening service of the revival at the Methodist Church. Mrs. Egger was the narrator. Emphasis was on the church's work on the islands.

The annual Week of Prayer for home missions will be observed at the First Baptist Church March 21-25.

In Olton for the tea given by the Epsilon Chapter of the Delta Kappa Gamma, teachers' sorority, last Saturday afternoon were Mes. Ray Blessing, Howard Cummings and Mrs. Willis Hedges. It was held in the H.P. Webb Elementary School. For the program Louella Grace Erdman of Amarillo reviewed her upcoming book, "Spring Comes Again".

Mrs. Mary E. Britt visited in Lovington, N.M. last week. Mr. and Mrs. E.E. Gee visited relatives in Lockney, Sun-

day. After their return home Mrs. Farrell Pickrell of Field-ton and Mrs. Nola Palvado of Dublin were their guests.

Mr. and Mrs. James Holland met Dr. and Mrs. Charles Craig of Floydada in Lubbock Saturday evening and they attended the N.C.A.A. Midwest Regional basketball games in the coliseum.

Mr. and Mrs. Arlis Humphreys and Mr. and Mrs. Barry Bearden and children visited the Norman Humphreys family in Lubbock Sunday. Kimely Humphreys celebrated her third birthday that day.

Dave Black was taken to the local hospital Sunday night after suffering an apparent heart attack.

Mr. and Mrs. Claud Stine and Mrs. H.D. Dutton attended a singing at Lazbuddie Sunday afternoon.

Guests in the Claud Stine home Friday night were their granddaughter and family, Mr. and Mrs. Bud Watson and children of Pampa.

Mr. and Mrs. Bill Workman attended the concert of several famous choral quartets in the Lubbock Municipal Auditorium last Sunday afternoon. Later

that day they visited her home. Mrs. Earl Franklin in Lubbock and Mrs. Oby Blanchard in Vernon due to the seriousness of her brother, J.J. Franklin. Mr. and Mrs. W.M. Tomes there also. Mrs. Frost and Tomes' sister.

Guests in the Alfred Schuler home Sunday were her parents, Mr. and Mrs. W.T. Tomes of Plains.

Mr. and Mrs. Victor Coe were in Namitou, Okla., Wednesday and attended the funeral services for Mrs. Charles (Jewel) Henricks who died at Fort Worth, Sunday. She had undergone surgery there many times.

Mr. and Mrs. Ray Elmer were guests of their son and family in Lubbock Sunday.

Mr. and Mrs. W.P. Stone and business visitors in Dallas during the weekend. There they were guests of Mr. and Mrs. J.B. Blackwell and Earth they visited the McGeaths.

A guest in the Lee Jordan home last week was Mrs. Bernice Jordan of Oakland, Cal.



Best Citizens: MICHAEL SADLER, VELMA STRICKLAND, Mr. and Miss WHS: Glenn Throckmorton, CATHLEEN HOWARD



Best All-Around: LEROY BRADLEY, SANDRA GAGE, Most Popular: STANLEY SADLER, PAULA REDANG



Most Athletic: JOHNNY TIPTON, MARY JANE PENCE

Whitharral Who's Who

Students recently elected to "Who's Who" at Whitharral High School, and announced by high school principal Joe B. Minter, include the following, who are pictured below. They will be featured in the school annual.

Bold Color Keynotes New Spring Jewelry

Color is the keynote in spring fashion jewelry, reports the Jewelry Industry Council. The soft airiness of spring clothing finds compatible contrast in glorious swinging ropes or chains of multi-colored stones and beads. Dramatic earrings, long and drop, make the mod scene, and huge rings, many adjustable, feature one colorful large stone.

From the Orient comes the use of pink quartz and gold filigree, or jade and filigree combinations. Arm bands, slave and spiral bracelets wrap in magic, and the well-dressed wrist often carries a multitude of different bracelets, interspersed with rigid bangles.

The popular "Granny Look" is reflected in the over-all fashion picture of feminine daintiness. Here we find choker-length necklaces, dainty pierced earrings, and delicate enamel pins combined with gold. Long chains and pendants in antique and heirloom designs, and dropped earrings also provide happy harmony.

The "fine look" in fashion depends as ever on golden jewelry. Light and airy for spring, the gold look promises a season of sunshine. For daytime wear silver has come up strong and it is now being made so fine it adds lovely elegance to evening too.

Holiday spirit comes to spring with ever-popular pins, particularly whimsy pins in adorable animal motifs. Flower pins too are fashion's favorite, and enamel daisies with sunny centers provide

a "spright" touch. Sea life themes surface, with delightful fish figures and with colorful coral. New emphasis on white coral is a particularly happy note in spring fashion.

Biggest news is the brave, bold approach to costume jewelry, featuring pavestone designs, three-dimensional geometrics, plastics, yards of textured beads, peau, velvet, lace, madras, patent, papier mache, enamels and woods, all helping to create a flamboyant fashion image.

CITY BITS

Jimmy Butler, a student at North Texas State University, visited over the weekend with his parents, Mr. and Mrs. Wayne Butler. His house guests were Terry Reynolds and Mike Holland, students at North Texas State University.

Eudene Glover, daughter of Mrs. J.C. Glover, 721, W. 8th, has been named to Abilene Christian College's Dean's Honor Roll for the Fall, 1965 semester. Members of the Honor Roll must take a minimum of 12 hours and must have a 3.5 grade point average. Miss Glover, a 1951 graduate of Littlefield High School, is a senior elementary education major.

"Costume-ary"

FOR EASTER



Yes The Full Length Coat Customary For Easter And Easter Is Not Far Off - Choose The Costume Of Your Choice From A Comprehensive Stock

From Jon McCauley Fred Rothchild Renlyn

FROM \$36 TO \$60

Be Sure To Attend The STYLE SHOW

FRIDAY NIGHT 8 PM HIGH SCHOOL AUDITORIUM

Norma's 426 Phelps



Compare! Whatever car you may be considering as your next, you should investigate the many superiorities of Cadillac. Its performance, luxury, distinction and lasting value will convince you that you could make no better motor car investment.

Match Cadillac against any other car at or near its price and it will prove its extra value beyond a doubt. For example, you'll find no other car of Cadillac's size that performs so nimbly or handles so deftly. Cadillac is respected by authoritative automotive writers as a "driver's car" for its outstanding road capabilities. No other automobile offers such a satisfying combination of comfort, roominess, luxury and conveniences. Cadillac is unexcelled in the motoring safeguards it offers as stand-

ard equipment. Finally, no other car in its class comes close to Cadillac in popularity, owner loyalty or high resale value. Only your personal experience at the wheel of a Cadillac can completely demonstrate how elegant, excellent and exciting your next automobile investment can be. See your nearby authorized dealer at your earliest opportunity. No one else knows Cadillac motor cars better... or is better prepared to offer the superior kind of service a fine car like Cadillac truly deserves.



Standard of the World



SEE AND DRIVE THE MAGNIFICENT 1966 CADILLAC AT YOUR AUTHORIZED CADILLAC DEALER

JONES MOTOR COMPANY 801 HALL AVENUE • LITTLEFIELD, TEXAS

FIND SOLACE FOR YOUR SORROW THROUGH... QUIETUDE

FEEL FREE TO CALL ON US AT ANY HOUR Hammons Funeral Home

ANTON NEWS

Honor Students Attend Banquet

The Anton honor students attended the annual Honor Banquet in Levelland last Tuesday night. They were Jeannette Bucher, Patsy Kelsey, John Medley, Karen Lyda, Danny Markham, Tom Landers, Stacy Gilchrist, Patsy Kelsey, John Medley, Karen Lyda, Danny Markham, Tom Landers, Stacy Gilchrist, Malva Tesgue, Debye Marmon and advisors, Mr. and Mrs. Sid Landers.

Ten area schools were invited to attend the banquet given to honor the area students who qualified for the honor roll.

Jim Bryant, Jr., pastor of Lawrence Street Church of Christ, brought the message at New Deal Church of Christ, Sunday night. His father, Jim Bryant Sr., of Abernathy spoke at the Lawrence Street Church of Christ.

The Anton FHA chapter held a regular meeting recently. The program was presented by Phil Booth, Rita Prichard, Zola Tesgue, Suzy Williams, and Karen Lyda.

The Central Baptist Church held their Week of Prayer for the Missions last Friday evening.

Mrs. Earl Giass, prayer chairman, was in charge. The week's theme was "So Send You". The group met with the Whitharral Church Monday.

Mrs. L.L. Anderson had charge of the program on Tuesday. Mrs. Morris Gregg on Wednesday. Mrs. Rudolph Shockley on Thursday and Mrs. C.O. Dooley on Friday. There was an average daily attendance of 13.

Mrs. Monroe Parker is a patient in the Littlefield Hospital where she had surgery Monday.

Mr. and Mrs. Bert Harper visited their daughter and family, Mr. and Mrs. B.J. Stephens, Mike and Jerry in Friona Friday.

Mrs. L.H. Williams, Mrs. S.D. Evtitt and Mrs. Claud Goen attended a birthday party for Mrs. Williams' grandson, Scott Stephens, in Littlefield Saturday afternoon.

Mrs. J.R. Minton of California is here for an extended visit with her daughter, Mrs. Claud Goen.

Mrs. Era Hagan and her son, J.J. Hagan of Lubbock returned home Sunday from Rising Star where they went to attend the funeral service for Mrs. Hagan's brother, Luel Hughes,

The service for Mr. Hughes was held in the Church of Christ in Rising Star, Saturday afternoon. Burial was in the Pioneer Cemetery.

Mrs. Lowrance's mother, Mrs. McCloud of Munday, who had spent the week here, returned to her home with them.

Mr. and Mrs. Lee Stone visited her brother, Virgil Jones of Slaton, in the Methodist Hospital Sunday. Mr. Jones, who has been critically ill, was reported to be improving.

Dinner guests of Mr. and Mrs. L.H. Williams Saturday night were: Mr. and Mrs. Rex Williams, Ronnie and Dewayne of Friona; Mr. and Mrs. Gene Williams and Jeanetta of Lubbock; Mr. and Mrs. W.J. Shockley and Stanley of Ropesville; Mr. and Mrs. Miles Stephens and Scott of Littlefield and Miss Linda Lewis of Plainview.

The Student Council of Anton High School met last Friday afternoon to elect officers. They are as follows: Suzy Williams, president; Scott Cate, vice president; Stacy Gilbert, treasurer; and Phyllis Booth, secretary.

Fashions for the Sugar 'n' Spice Set... also Snails and Puppy Tails

Young fashion-leaders this spring will be seen in... the easy little-nothing dress, copycat of mama's and sister's. The little knits are "big" for all ages, including the small ones who don't like being gussied up, be-ribboned and bowed.

T-shirt "easy" dress in cotton knit, (even on the toddler) with puppy applique on white and blue striped confection. . . . Even dotted Swiss in cotton knit, understated dress-up, sleeveless . . . with pleats placed low at the hip-line, arms and neck bound in contrasting colors.

Little gentleman's denim overall with reversible jacket, if you please . . . correct masculine touches on a small scale . . . Wool with a 'way-out' lining. Jumpers, coats, suits with a nappy tailored look . . . Little girls . . . nifty knit jumper in white with yellow striped top, coordinated with white sweater, to vie with the affodil and narcissus . . . two-piece wool suit for little ladies. Skirt in navy with single inverted front pleat. Jacket is in light orange and navy plaid.

Kiddie coat in navy banded with red, white and blue. In

wool hopsacking, it's a classic in well-bred simplicity. . . . a flowery mood in dresses. Look for big polka dots covering body and sleeves of a yellow-banded blue coatdress. . . . little sleeveless yellow hopsacking dress with yellow, pink and orange flowers running rampant over it.

COLORS, AHOY!

Modern toddlers will greet spring in precise shapes in bright, intense colors.

Three licks of color . . . A-shape in cotton blend . . . orange at the top . . . beige runs around the midriff . . . skirt is green.

Little toddler tent in bright colors . . . shocking pink, bright blue, yellow reverberate on dress in Vycron and cotton . . . both at Lilly Raugas.

Ship Ahoy in navy blue acrylic and wool bonded jersey . . . fly-away A-line shape . . . neck and arms edged in white . . . lighted with white stars.

LITTLE BOY LOUNGE LIZARDS will wear wicked blue and white pinstriped spring suits. Double-vented and breasted and nipped-in at the waist.

The Bold, Brave Handbags!

This Spring it's the brave, bold look in handbags . . . and the big bag walks away with the honors. For no matter how much the small bag is talked about this season, it's the big bag that ends up getting top billing.

This Spring welcomes a refreshing collection of gargantuan carry-alls for shopping, tripping and short jaunts to sports.

For shoppers . . . roomy bags of soft crocheted straw in over-the-shoulder duffles and hatbox vanities — all quilt lined. They are especially attractive in a coffee-brown shade trimmed in black calf.

The treasure-chest traveler is a handy shape for holding all these musts for travel, at the same time keeping it easy for you to be found.

A seasoned world traveler from Italy is the leather satchel with a paler suede insert.

The champion of all carriers is the bellows pocket tote. It expands to hold a fantastic number of items.

For the young miss on the go, it's the zip-top front pocket "suitcase" made of soft, lithe straw and leather.

Other spring handbags play the beaderie game with pearl, white wood or black and white beads caging in or completely covering slim leather shapes and little box styles.

Wonderful things are happening to kid this Spring. A shortie in slick white is shaped at the wrist and dips low in the back . . . it is glamorized with wrist detail in a lovely lattice of knots. This intriguing lattice work also appears in a four-button, softly-tailored kid glove, but this time the lattice runs up the side and is topped by a tiny bow. It is made in a neutral tone that goes well with many things.

Thar She Blows!



FINANCIAL HOUSE MONEY can lift a whole of a load off your mind when an emergency brings unexpected expenses; Manager Jim Weeks with a family of four, understands why folks can need money quickly. He also understands how to provide that money on a practical budget, thanks to his financial knowledge, experience and training. Call the Understanding Man now!

Interstate financial house
SECURITIES COMPANY OF TEXAS
425 Phelps 385-3822
See Jim Weeks . . . He Understands

DON'T MISS SPRING FASHION PARADE "TOUR THE U.S.A. FASHION WAY"



FRIDAY NIGHT 8 P.M. SENIOR HIGH AUDITORIUM

Lily Lynn



BREEZES YOU BLISSFULLY THROUGH SUMMER



1. A splash of print, a flutter of pleats and you'll dazzle your way through Summer. Tabs at waistline gather the soft skirt. In coolest-care 100% Dacron® polyester. Rose (shown), Blue or Gold. Sizes: 12-20. Brief Sizes: 12½-22½.

2. Saddle stitching crissps the pleated bodice; solid, linen-look inserts add bounce to kicky pleats. Millworth's all cotton "Cricketer" a new homespun type fabric. Brown (shown), Blue or Rose. Sizes: 12-20; Brief Sizes: 14½-24½.

3. This one-piece textured loop jersey, elasticized at the waist, is boldly banded with white. In Harry D. Spielberg's care-free 100% Arma® tricot. Black/White, Blue/White or Green/White. Sizes: 12-20; Brief Sizes: 12½-22½.

4. Sweetly demure yet decidedly sure of stealing any scene! Dotted Swiss returns beautifully in a floral striped print shirtwaist dress with romantic 'leaves and gently gathered skirt. In Avila's 72% Dacron® polyester and 28% cotton. White (shown), Pink or Blue. Sizes: 12-20; Brief Sizes: 12½-22½.

5. The suit you really can go to town in! Two piece costume of striped seersucker has a solid white bodice atop a striped sheath skirt, matched to the bolero jacket. In 63% Acetate, 37% cotton. Blue/White (shown), or Green/White. Sizes: 12-20; Brief Sizes: 14½-24½.

Famous Labels Of Fashions We Feature

DRESSES BY

- Kabro
- Lou-Jene
- Maggie Stover
- Lucerne
- Miss Dallas
- California Petites
- Petites By J.V.
- Judy Fisher
- D & P Originals
- Jeanne
- Lily Lynn

SPORTS WEAR BY

- Aileen
- Ralph's Originals
- Sun Ray Of Arizona
- McKell's
- Miss Dallas

BRAS BY

- Playtex
- Maiden Form
- Best Form

LINGERIE BY

- Lorraine
- Texsheen

HOSIERY BY

- Berkshire

SHOES BY

- Connie
- Jacquelin

HATS BY

- Kathy By Irvin

AMOS WARD'S

6. A two-piece ensemble, cool as shebet and just as refreshing! Button-front overblouse with its Rip tie tops a sheath skirt with fluid, slim lines. In check-textured pure Arma® tricot. Blue (shown), Pink or beige. Sizes: 12-20; Brief Sizes: 12½-22½.



1.

1. **PRETTY AS A PICTURE** -- Little Terrie Emmons is all spruced up in her blue and white cotton lace and matching bonnet, both trimmed in white cotton lace. Terrie will be one of the models for the Fashion Show Friday night. Her Easter frock was made by her grandmother, Mrs. Dan Cotham, manager of **STITCH IN TIME**. Terrie is the daughter of Mr. and Mrs. Albert Emmons.



2.

2. **READY FOR THE EASTER PARADE** -- Mrs. Salina Davis can certainly lead the Easter parade this year in her lovely white rayon linen costume with contrasting black braid trim over a sleeveless A-line skimmer. She compliments it with a black straw hat, and bag, black patent shoes and white kid gloves. Salina's outfit is by Renlyn of New York, found at **NORMA'S**.

3. **RIDING IN STYLE** -- Pam Ward will be one of the models in the Beta Sigma Phi Fashion Show Friday night showing garments from her father's store, **AMOS WARDS**. The gold nylon double knit stretch pants and long sleeve acetate blouse in colors of black, gold, green and blue are Ralph Originals. She is wearing black canvas shoes by Autry.



3.

4. **BLACK PATENT ACCESSORIES** -- Almost a must for any spring wardrobe are shoes and bag of black patent. Mrs. Bud Durham is modeling patent shoes by Valentine and bag by Stylecraft, along with black leather gloves. They accent the beige and black diagonal plaid dress of dacron. She is one of **HAYDON'S** models for the Beta Sigma Phi Fashion Show Friday night.

5. **SPRING BRIGHT PINK** -- the color of Mrs. Clayton Cowan's permanent pressed cotton pants by Mr. Thomson. The overblouse, also by Mr. Thomson, is of matching color with orange tropical flowers applied on the sleeves. She is wearing pink Mercury shoes. Mary Zoe's entire outfit from **WARE'S**. A number of other garments from Ware will also be shown Friday night at the Tour the U.S.A. - Fashion Way style show.

6. **THE COUNTRY LOOK** is very popular this year, especially in swim suits. Penny Weige, daughter of Mr. and Mrs. William Weige, is ready for the swimming pool in her two-piece red and white suit. The checked top is accented with white dacron ruffles trimmed in red. A red and white checked bow accents the front waistline of the red stretch pants. Penny will be one of **SEARS'** models at the Beta Sigma Phi Style Show Friday night at the high school auditorium.

LIVELY AS THE NEW SEASON itself, fashions for smart children and young adults, as well as their elders are beginning to brighten Littlefield shops these days with the first day of Spring being only a few days away, followed by Easter in three weeks. Colors that suggest spring gaiety, yellow of sunlight, the sky's deepest azure, green of the first leaves, and all the shades of tulip blooms, are reflected in easy-care fabrics that delight children and their mothers.

ATTEND THE

BETA SIGMA PHI

"TOUR THE U.S.A. FASHION WAY"

FRIDAY - MARCH 18TH

HIGH SCHOOL AUDITORIUM

8PM



4.



5.



6.



INTRODUCING GUESTS -- Johnnie Harper of Littlefield is introducing the guests that attended the anniversary celebration of the Harpers held at the Crescent House Restaurant here Thursday night. Barely shown on the left are the Harpers' daughter and son-in-law, Rev. and Mrs. Bill Springfield, Lubbock, Others (L-R) are Mr. and Mrs. L.C. Anderson, Mr. and Mrs. Johnnie Harper, Mr. and Mrs. Bill Springfield, Lubbock.

Johnnie Harpers Host Party On Anniversary Thursday

Mr. and Mrs. Johnnie Harper, longtime residents of Anton, who celebrated their 38th anniversary Thursday, wanted to show appreciation to their many friends who in the past eight years since Mr. Harper was seriously injured in an automobile accident, have extended many courtesies to them. In lieu of allowing friends and relatives to honor them with an anniversary celebration, they hosted a "thank you" party in the Crescent House Restaurant.

Ninety-one guests were present, including three of their four children and their families--Mr. and Mrs. L.C. Anderson of Muleshoe, Mr. and Mrs. Bill Springfield and Mr. and Mrs. James Minton, of Lubbock. Their only son, Johnnie Jr., Anton, was unable to attend, as he was attending to farming interests of the Harpers in Nevada. However, Mrs. Johnnie Harper Jr. was present.

A St. Patrick's Day theme was used. Following the dinner, which included a large anniversary cake, entertainment was furnished by John Clayton leading the group in sing old-time songs, accompanied by Mrs. J.H. Parkman at the piano. Mrs. Sharon Small of Anton sang a solo; Mrs. Dave Tullis, Littlefield, and Mrs. Carl Harrington, Anton, a duet; Ed Hart, Anton, and Mrs. Carl Harrington, a duet; Mrs. Harrington, Mrs. Bob Andrews and John Clayton, a trio.

Elmer B. East, president of the Lubbock National Bank and longtime friend of the Harpers, climaxed the evening with a speech.

Cut of town guests were from Lubbock, Anton, Littlefield, Levelland and Muleshoe.

Harper moved to Anton in 1926 from Goldthwaite and Mrs. Harper, the former Naomi Kennedy of Haskell, moved to Anton with her parents a year later. They were married March 10, 1928 in Anton and soon after purchased a farm two miles north of Anton where they lived until 1956, when Mr. Harper retired and moved back to Anton.

Harper has been active in numerous church, civic and business affairs. He is a Master Mason, charter member of the Anton Co-op Gin, stockholder in the Lubbock National Bank, longtime member of the REA Board and Anton School Board, was active in building the First Baptist Church at Anton, and has served as a deacon, is a director of the Crescent House Restaurant, has oil interest in and farm land in Hockley County. He also has farm land in Nevada.

Mrs. Harper has been active in church work at Anton and club activities in Lubbock.

Church News

FIRST METHODIST

The annual North West Texas Conference Laymen's Retreat will be held Friday and Saturday at Camp Butman. Outstanding speakers and leaders will be a part of this leadership training opportunity with Bishop and Dr. Paul M. Harpers, Lubbock, as highlight speakers for this retreat.

A motion picture film on "The Lord's Prayer" was shown Sunday night, for the purpose of preparing for Easter.

EMMANUEL LUTHERAN

The members of Emmanuel Lutheran Church who partook of "Operation Commitment" Redeemer Lutheran Church Lubbock Sunday afternoon at the Clarence Hobrantsch, H. Gohlke, V.J. Hobrantsch, E.J. Brandt, Harry Hill and Harry Synatsch, in attendance was Rev. H. Remmert, pastor of Emmanuel Lutheran.

Those present, representing Emmanuel Lutheran Church, advised the resolution to bring the stability of an "officers retreat" to the attention of the assembly of the Emmanuel parish.

Those attending the Board of St. Martin's meeting Monday night were E. Lorenz, E.J. Brandt, Herman Gohlke.

The Stewardship Board will meet at a later date.

On Wednesday night, Pastor Remmert, continuing the Lenten services, spoke on the theme "The Look That Spoke Volumes".

ST. MARTIN LUTHERAN

The Sunday School Staff of St. Martin Lutheran Church met Monday and was called to order by Superintendent Cecil Price. Pastor Engel had the devotion.

"The Lutheran Teacher," a monthly publication which is the

Calendar of Events

- THURSDAY**
Ladies Bible Class at Crescent Park Church of Christ
Optimist Club meets in Crescent House Restaurant
Rotary Club meets in Community Center
Sundale Home Demonstration Club meets in home of Mrs. J.G. Perkins
Oklahoma Avenue HD Club meets
Palette Art Club meets in Rumbak Building
Eastern Star covered dish supper in Masonic Hall
Sunday School staff meets at First Assembly of God
Lamb County Sheriff's Posse meets in County Court Room
Adult Instruction Class meets at St. Martin Lutheran
Women of Woodcraft meets in Oddfellow Hall
Circle Eight Square Dance Club meets in Community Center
- FRIDAY**
Beta Sigma Phi Fashion Show in senior high school auditorium
- SATURDAY**
Catechism Class at St. Martin Lutheran Church
Karavan Klub meets in Community Center
Home Builders Class of Spade Methodist Church meets in annex for social

Acrylic Painting Shown At Art Club Meeting Monday

Mary Myatt Hagler was hostess Monday for the regular meeting of the Art Club of Littlefield in the Reddy Room.

Lella Mae Orr and Dorothy Harvey demonstrated acrylic painting, with members attending painting in acrylic and tempera.

Dick Cheatham of Texas Tech will demonstrate water color sketching April 6 at 8 p.m. in the Reddy Room.

Attending were two guests, Owen Jones and Mrs. A.D. Ward, art teachers in the school system, and members, Hewitt, Mamie Lyman, Lella Mae Orr, Dorothy Harvey, Katherine Nichols, Irene Steffey, Mutt Still, Louise Rogers, Louise Bennett, Maurine Mercer, and Ocia Stone.

Two Kindergarten Students Honored On Birthdays

The Williams Day Kindergarten was the scene Friday of two birthday parties, one for Angie Franklin and the other for Greg Moreland. Both children were celebrating their sixth birthday.

Mrs. Ray Franklin hosted the party for Angie in the Lollipop Room. Angie served green sherbet punch and cupcakes with her name on them to the boys and girls in her room. Her favors were balloons and chocolate covered Easter eggs.

Angie requested the story of "Cinderella" to be told for her special birthday story.

Greg was honored by his mother, Mrs. J.C. Moreland. Greg's sister, Susie, helped serve the refreshments of punch and cupcakes. Each child was given a plastic bag filled with bubble gum, candy and tiny story books as favors.

The children sat in a group and listened to the story books being read for story time.

Former Anton Principal Honored

ANTON -- James Cathey, former high school principal of the Anton Schools for 10 years, was honored recently at the annual appreciation banquet of the Greenville Classroom Teacher's Association.

D.A. McRae, supervisor of Vocational and industrial education for Area 7 of Texas Education Agency, presented the award naming Cathey the outstanding teacher of vocational and industrial education in the area covering 39 counties.

Cathey is president of District VII, Texas Industrial Vocational Association, vice president of Hunt County Unit of Texas State Teachers Association. He is a Lion and serves as chairman of the Community Service Committee. He taught at Anton High School and was principal for 10 years prior to moving to Greenville.

St. Patrick's Garden Party Set Tonight

The Littlefield Chapter Order of Eastern Star No. 742 will meet tonight (Thursday) at 6 p.m. in the Masonic Hall.

A special St. Patrick's garden party will be given.

All members are urged to attend and bring a salad and a dessert.

A SAVINGS PLAN THAT REALLY WORKS

ED McCANNIES
F.I.C. District Manager
421 E. 16th,
Phone 385-4304
Littlefield, Texas

Most people want to save money. The problem is keeping it saved. You need important reasons to help you stick to the saving habit; that's why Woodmen of the World Life Insurance savings plan really works. If you live, your savings will guarantee cash for special needs, or monthly income for your retirement, plus a good return. If you die, you guarantee cash or income for your wife, husband, children, or your parents.

Call today for details, plus the full story on Woodmen of the World's outstanding program of fraternal and social benefits.

Also investigate Woodmen's Health and Accident and Income Protection plan.

WOODMEN OF THE WORLD LIFE INSURANCE SOCIETY
HOME OFFICE OMAHA, NEBRASKA
"The FAMILY Fraternity"

Buick's \$1,000,000 Sweepstakes. You may have won \$2332.00 cash!

A new list every week from now until March 31st. 429 first prizes.

014	2171	2553	362K	3G74	3548	41535	4E74	4R42	4Z78	611	863L
0J4	2172	2572	363K	3G76	3552	41739	4E76	4S45	614B	618	864L
0K4	2174	2191	363S	3G78	3553	41839	4E78	4S63	614C	6J4	864W
114	2176	2192	3A43	3J2	3S68	452	4G51	4572	621M	6K4	874T
21135	2178	2161	3A47	3J51	3U43	453	4I2	4U60	622I	732	884P
21235	2K42	2U62	3A63	3J52	3U47	454	4J4	4U65	624F	762D	884P
21535	2N26	2U65	3A65	3J53	3U63	45315	4J45	4U66	625T	762L	894K
21545	2N63	2W53	3A66	3J58	3U65	45415	4J63	4U68	628K	774	816
262	2N64	2W72	3A69	3K48	3U66	45537	4J72	4U69	628W	7J4	8J4
263	2N67	2Y83	3E52	3K49	3U69	45837	4K4	4W45	630K	7K4	8K4
264	2N69	2Z53	3E53	3N60	3W67	473	4K6	4W63	632T	804M	962L
2E53	2P71	2Z72	3E53	3N64	3Z52	4A60	4N52	4W72	635C	814K	962S
2E72	2P72	31545	3E54	3N66	3Z53	4A64	4N53	4Y87	635L	814M	963A
2F42	2P74	31565	3E61	3N68	3Z54	4A66	4N54	4Z45	636C	824P	8J4
2G26	2P76	31635	3E62	3N72	3Z61	4A68	4N61	4Z63	638A	834A	8K4
2G63	2P78	31735	3E65	3R31	3Z62	4A69	4N62	4Z64	639W	834L	174
2G64	2R31	352	3E68	3R32	3Z65	4E45	4R31	4Z72	654	844M	
2G67	2532	353	3F49	3R41	41135	4E46	4R32	4Z74	662W	854W	
2G69	2542	354	3G72	3547	41235	4E72	4R41	4Z76	663P	862P	

If the first part of your vehicle identification number is here, you might be a winner.

Here's how it works. Look at the first symbols (the prefix) on your vehicle identification slip. Then look at the symbols listed above. If you find yours on the list, you've taken the first step toward being a winner. Now go see your Buick dealer. He has a list of 72 winners posted in his showroom. If you see your entire vehicle identification number on the poster--the symbols plus the rest of the numbers--\$2332 cash is yours. (If your prefix isn't listed in this ad, don't give up. Your numbers may have been posted during the past few weeks. And every week there are 72 new winners posted on the showroom wall. So watch for next week's list of new symbols in this newspaper.) No slogan to invent, no puzzles to solve. In fact, you don't even have to own a Buick to have a winning number. While you're in the showroom, get a good look at the Buick Special. The \$2332.00 happens to be its price. *Manufacturer's suggested retail price for Special V-6, 3-dr. coupe. Price includes Federal Excise Tax and suggested dealer delivery and handling charge.

Contest Rules: Residents of Kansas, Missouri and Nebraska may, if they prefer, send in a postcard to R. L. Polk and Co., P.O. Box 1347, Detroit, Michigan 48231 and receive the weekly list of winning numbers by mail for comparison with their own vehicle identification number. An official entry form will be included. Sweepstakes limited to persons over 21 living in the continental U.S. Not valid in Florida or states where prohibited by law.

Buick's \$1,000,000 Sweepstakes.
There's an authorized Buick dealer near you. See his Double-Checked used cars, too.

The loss to the country's retail merchants last year as a result of shoplifting, both professional and amateur, came to two billion dollars.

Stretch that lobster newburg by adding flaked cooked fish. Halibut, flounder, lemon sole and similar varieties are fine for this use.

Stay in the heart of (downtown) TEXAS

AMARILLO
4th and Park Streets
8 Miles from Amarillo
Phone 68-4571

CORPUS CHRISTI
Shurline & Schuster
Overlooking Beautiful
Corpus Christi Bay
Phone 714-4815

EL PASO
Main & Kansas Sts.
Three Blocks
from Main & Border
Phone 533-8241

AUSTIN
11th and San Jacinto Sts.
Across from
Capital Building
Phone 68-6751

FT. WORTH
10th & Houston Sts.
Across from City Hall
& Federal Courthouse
Phone 6D-2011

HOUSTON
Texas & Fannin Streets
15 Minutes from
New Astrodome Stadium
Phone 228-0911

Everything you need is DOWNTOWNER and at the DOWNTOWNER you're there

- Free parking
- Free ice
- Heated swimming pool with patio
- Free television and hi-fi music
- Over-size double beds
- Meeting and banquet rooms
- No charge for children under 13 occupying room with parents

For your traveling convenience, use our FREE WIRE RESERVATION service between DOWNTOWNERS

DOWNTOWNER MOTOR INNS
"THE SIGN OF HAPPY TRAVEL"

For the newest free directory of DOWNTOWNER Motor Inns, please write to:
The DOWNTOWNER Corporation
202 Union Avenue
Memphis, Tennessee 38103

WE REQUEST THE PLEASURE OF YOUR COMPANY AT THE Showing of all the Latest Styles by Valentines

We know you will want to step softly into spring... in the latest fashion. That means Valentines, of course. Come see our complete, colorful collection of new styles.

Size 5 1/2 - 10
4 A's To B
\$14 - \$15

WINNER
Black Calf
Black Patent
Bone Lustre
Pink Lustre

Attend The "Tour U.S.A. Fashion Way" Friday Night 8 PM High School See The Newest Fashions In Foot Wear

Haydon SHOES
301 PHELPS

THE MANY FASHION FACES OF KNITS

THE LOOK OF SOFT FAC-
ING... asymmetrical striping,
knits with personal "pow"...
all are part of the fashion sig-
nature story for Spring. Whether
on a Jamaican interlude, a
cross-country junket or just
shopping around town, these
on-the-go-knits can and do go
everywhere!

NEWEST TRAVELERS...
blended of cotton/anto, shows
up in two-piece dresses high-
lighting the bold stripings. The
architectural look, so typically
Courreges, registers in tex-
tured popcorn knits that spot-
light spanking white bandings.

PANTS — HERS... NOT
A TIGER BUT A "pant-her" is
in the streets. The weekend
country look is stalking the
city. Impeccably tailored pants
in new bonded knits have put
another face on fashion. The

bonding treatment fuses two
fabrics together invisibly, in-
creasing the shape and adding
new body to the knitted fabric.

WHEN IS SILK NOT SILK?
... when it shows up in
the glamorous man-made syn-
thetic with a silken hand. It
makes up in gay little transi-
tional shifts with flickering
low flare skirts that wear from
dawn to dusk. It also shows up
in a variety of patterns that
range from blocks of colors...

to horizontal and vertical bands
of color in a striped effect...
to kerchief prints.

"IN" CIDENTS"... new tex-
tured cotton-antron... with a
crepe feeling — printed or
striped... that's the latest
from fashion's knitted bag of
tricks... an incoming and
forthcoming "star."

IMPORTANT ACCESSORIES

Whether matching that new
dress or holding tresses in place
during a set of tennis, bands of
silk, jersey, pique and other
fabrics will be going to every-
one's head beautifully and
fashionably around the clock.

Bouquets of plastic flowers,
glittery bars of rhinestones and
clusters of pearls add an
especially glamorous note to
the swinging new geometric
cuts and elaborate hairdo's for
evening.

And while we're talking
about accessories, above all
loom the new spring hats! Most
popular silhouette this
season could very well be the
"southern planter" hat, a high-
rising, wide-brimmed straw
that is at once both feminine
and dashing.

Protestant Churches To Observe 'One Great Hour Of Sharing'

Special attention will be fo-
cused on world-wide Christian
service programs by St. Martin
Lutheran Church in Littlefield
and hundreds of other Protest-
ant congregations in the United
States Sunday, March 20.

Designated by Church World
Service as "One Great Hour of
Sharing Sunday," the day is
observed as an annual empha-
sis on the overseas relief, reha-
bilitation, and inter-church aid
programs of American Protest-
ant and Eastern Orthodox church-
es.

Church World Service is a
department of the Division of
Overseas Ministries of the Na-
tional Council of Churches
through which most affiliate
communities channel their as-
sistance abroad.

The aggregate of goals estab-
lished by participating church
for denominational and inter-
denominational programs of
emergency assistance and con-
tinuing assistance this year is
nearly \$19,000,000.

The goal of the 11,500 congre-
gations of the participating
church bodies of the National
Lutheran Council, the Lutheran
Church in America and the Amer-
ican Lutheran Church, amounts
to more than one-fourth of the
collective goal.

This year's \$4,574,831 goal is
sought through the benevolence
budgets of the two church bodies
and through specially-designated
gifts of Lutheran World
Action, the annual financial ap-
peal of the National Lutheran
Council.

While announcing the special

Colors, Prints Are 'Switched-On'

Whatever your age, spring is
always a delight... but it's
especially so when you're
young and lucky enough to be
able to wear the season's
charming new fashions for the
subteen miss.

Designers have had great
fun with young sportswear
styles this spring and we pre-
dict that the girls who wear
them will, too!

For instance, there are short
culottes in far-out designs such
as inverted U's splashed boldly
across them... or jumpers with
one huge pocket smack dab in
the middle... and they've gone
downright dotty when it comes
to colors and patterns!

Shifts, the going silhouette,
feature dotted trims and hair
bows or else are dotted all over,
while jumpers and blouses re-
verse dots instead of matching
them to make them really
lively.

Many sports outfits feature
matching hair-bows or caps for
the total look that's so very
popular today.

Coat designers are getting in
on the spring kick too, with
new looks for fashionable
young misses. Quadruple pock-
ets, pleats and double-breasted
buttonings and newsy trims
add zest to spring toppers in
herringbone pinks, navy blue
wools trimmed with white,
white wools trimmed with navy
blue.

So off with the old and on
with the new... it's spring and
it's great to be young in the
season's freshest new fashions!

The finishing touches to this
season's newest fashions are
the latest looks in gloves...
textured shortie and 8-button
longs in bold colors such as
pink or green, as well as softer
beiges and the most delightful
new sheer nude nylons.

observance, the Rev. Brian En-
gel, pastor of St. Martin Luth-
eran Church, noted that LWA
represents a major item in the
congregation's benevolence
goals.

One of the principal recipi-
ents of LWA funds is the Luth-
eran World Federation, an in-
ternational body of 72 member
churches with a combined mem-
bership of more than 55 million
members in more than 40 coun-
tries around the globe.

Its activities include inter-
church aid, community develop-
ment, self-help projects, mis-
sions, and theological studies.
It also aids refugees and minor-
ity churches, educational, voca-
tional training and medical in-
stitutions as well as orphanages.

Another recipient of LWA
funds is Lutheran World Re-
lief, an agency serving the NLC
and the Lutheran Church — Mis-
souri Synod Board of Worth
Relief in Christian social ser-
vice programs overseas, mainly
in projects involving material
aid.

The agency gathers more than
six million pounds of clothing
annually for distribution abroad.
It also distributes hundreds of
tons of food, medicines and other
relief supplies to the needy
throughout the world.

According to the Rev. Brian
Engel, the congregation here
will be gathering clothing this
year.

The food shipped abroad by
LWR is primarily surplus com-
modities supplied by the United
States government under its
Food for Peace program. It in-
cludes such items as powdered
milk, wheat, flour, corn and
edible oils.

In addition, LWA funds are
used for ministries to Armed
Forces personnel, assistant for
immigrants and refugees, and a
number of interdenominational
projects, carried out coopera-
tively.

Since the first LWA appeal
in 1940, it has served as a
channel for more than \$83,000,-
000 in American contributions
for spiritual and material aid
abroad.



MODELS IN FABRIC FASHION SHOW - Three of the 67 models who participated in Ware's Spring Fabric Fashion Show Monday night in the high school auditorium are pictured above. They are (L-R) Mrs. Charles Powell, Mrs. Alan Waldrop and Mrs. Dale Middlebrooks. Approximately 600 persons attended the show. All the garments worn by the models were made from fabric purchased at Ware's. — I.F.A.D.E.R. STAFF PHOTO

Random Fashion Notes

All-weather coats consisting
of the classic and basic rain-
wear types, fashion rainwear
in flat fabrics, and the new all-
purpose coats in the puffed and
alligator wet look, will be a
very potent part of this coming
Spring picture. Another part
of the all-weather story that
looks strong, the new novelty
fabrics with a great assortment
of tweeds and plaids, classic to
fashion styles.

Suits will dominate more of
the fashion story for this
season. Very big, the long coat
costume, the longer-line suit,
and 2- and 3-piece regular-
length suits.

A group of 200 American Ne-
groes emigrated to Liberia
from Savannah, Ga., on March
18, 1895.

Hightower To Address Demo Women

State Senator Jack Hightower
will be the principal speaker at
the Lamb County League of De-
mocratic Women Voters meet-
ing today (Thursday) in the Com-
munity Building in Earth.

In addition to the talk by
Hightower, the League of Wo-
men voters will discuss the
coming elections and will make
plans to get out the vote on elec-
tion day.

Mrs. Jack Hightower will be
a special guest for the monthly
meeting.

Mrs. Wade Hosts Valley View Club

WHITHARRAL -- The Val-
ley View Community Club held its
regular monthly meeting Thurs-
day at the home of Mrs. Wade.
Mrs. A. E. Roberts presided for a
brief business meeting.

Coffee, nuts, a snack
cake and punch were served.
Mrs. Coy Grant, Lewellen
Mrs. A. E. Roberts and
Jimmy Starnes of Littlefield
Mrs. J. C. Hodges of Antioch
Ray Denney, Mrs. Johnnie Miller,
Mrs. David Vaughn, Mrs.
Elva T. Crank, Buddy Miller,
Denney, Mrs. Buddy Miller,
Mrs. Hayes Denney,
Mrs. David Vaughn will be
the next meeting, April 14.



10,000 PAIRS

SPRING AND EASTER SHOES FOR THE ENTIRE FAMILY

NEW STYLES IN HEELS-FLATS-NARROW AND MEDIUM WIDTHS!

OPEN STOCK - ON DISPLAY PAY LESS AT

Abe's SHOES

327 PHELPS

LITTLEFIELD



Any car that looks like this is unfair to organized competition.

And if Wide-Track styling doesn't prove it for you, take a look at the way we're outselling all but two makes for the sixth straight year. Or take a look inside one of our 40 Pontiacs. You'll find carpeting, genuine walnut and all the roominess Pontiac is known for. Or peek at one

of the 15 renowned Pontiac engines. And if you're still hard to convince, take a look at what that price sticker does to those other cars. It's a conspiracy, that's what it is. And more people have been taking part in it than ever. How about you?

WIDE-TRACK PONTIAC

PRICE A TIGER AT YOUR PONTIAC DEALERS — A GOOD PLACE TO BUY USED CARS, TOO.

SUMRALL PONTIAC CO.

902-910 DELANO

LITTLEFIELD, TEXAS



To wear this very moment... and on through a fashion lovely spring and summer

Miss Lucy SHIRTWAIST DRESS

The simplest way we know to look wonderful... beautifully tailored of Klopman's® Super Vino, a blend of 80% Dacron® polyester and 20% cotton. True wash and wear performance, wrinkle resistant, quick drying, excellent color clarity.

THURSDAY - FRIDAY SATURDAY ONLY

\$9

136 inch sweep skirt
Roll-up sleeves
Inverted back pleat

Colors
Glacier Blue, Prissy Pink,
Lemon Ice, Aqua Lagoon,
and Coral Reef

A dress made for easy living... from the marvelous fabric to the simply tailored, elegantly fitting style. A dress to take you anywhere in confidence. With precisely notched collar, roll-sleeves and unpressed pleated skirt, inverted back pleat and the deep 5" hem. Sizes 8-20; 14 1/2-24 1/2.