



THE WHEELER TIMES

(USPS-681-960)
VOLUME 77, NUMBER 12

THURSDAY, MARCH 10, 2011

SINGLE COPY **50c**

"Wheeler; town of friendship and pride."

Annual Chamber Banquet Is Sat.

CWE CHAT WITH EDITOR
By Louis C. Stas

Time is running out to file for places on the City Councils (Wheeler and Mobeetie) area School Boards and/or Parkview Hospital Board. Filing ends at 5:00 Monday, March 14.

As reported Monday, we have three filing for Jim Hill's place on the city council.

Thursday Review Art Show and evening meal were a success with

(Continued Page 8)

STORM REPORT

As Reported by... Stormie Meriwether, First Grade Student

Dear Friends, It was a busy week. My dad took me to see the pictures at the art show! That was fun! The cowboy pictures are very good. I like the one catching the calf just like my cowboys.

I was so happy to see Shantell. I think she is the boss of that place.

At the night I very wanted my mom to go, but she said, "No, Sweetie Heart. You and dad go with Baba and Pop. I do not feel well." It was a little sad to leave my mom at home, but I very wanted to go.

Kyle's grandma (Deliese Atwood) sat at my table. She wants to know if I can play Chicken Bingo. I don't know what is Chicken Bingo. She says you have to put the numbers on the ground. If the chicken drops on your number, you are the winner! Eeew! That's yucky! What if it drops an egg? Are you the winner?

The cobbler looked delicious in the big black pots, but I picked the chocolate cookie. After we ate, my dad was going to take me home. I said, "Please, please, please, dad! I want to hear Miss Paula do her poem! Finally he said yes.

Miss Paula is so good! She reads like a lady! I am so happy my dad let me stay. I got to hear the cowboys sing too! It was a great day! (Continued Page 8)

50 YEARS AGO

the editor remembers!

March 2, 1961

The All-District Basketball teams were announced.

Briscoe Broncos placed five members on the first teams in the All-District Selections while Miami Warriors had a total of eight boys and girls on both the first and honorable mention teams.

Making the All-District girls' team were Charlene Fulks, Kay Vise and Sharon Hudson, Briscoe; Barbara Holland, Miami; Ruby Barton and Bobbye Adams, Wheeler; Anna Mae Gudgel and Sarah Barton, Mobeetie. On the honorable mention team were Jackie Gill, Karen Lyons and Glenda Dodson, Miami; and Dorothy Newman, Allison.

Leading the boys' team were Gerald Anderson, Miami; Gerald Waters and Jim Helton, Briscoe; Bob Riley, Wheeler and Garland Lancaster, Mobeetie. The honorable mention team was composed

(Continued Page 7)



Skylar Freeman won First Place in the 2400 meter race at the Fritch Jr. High Track meet on March 3, 2011. She is 13-years-old and in the seventh grade at White Deer Jr. High School. Skylar ran the 2400 meters in 11 minutes. She is the daughter of Mona & Johnny Freeman of White Deer and granddaughter of Larry and Bobby Jennings and great-granddaughter of Dorothy Ellis of Wheeler.

Outstanding Individual Awards To Be Presented

The Wheeler Chamber of Commerce will hold their Annual Installation Banquet on Saturday, March 12, 2011, at the Wheeler County Ag and Family Life Center.

Tickets are now on sale at the Chamber office, 505 S. Alan L. Bean Blvd., or Wheeler Vet Clinic at a cost of \$15.00 each. Individuals to contact are Kristi Petit, 334-1010; Chad Helton, 334-0558; Kenna Howard, 898-1840 or Matt Sullivan, 580/799-1853.

At this banquet, the chamber officers for the 2011 year will be introduced and the 2010 "Out-

standing Individuals" will be named. Outstanding Man, Woman, Employee, Teenager and Farmer/Rancher.

Other awards presented will be "Contribution to Agriculture, Contribution to the Community and Pioneer Spirit.

Entertainment for the evening will be Jake and Levi Ware.

The meal will be catered by Mr. Bar-B-Que

Chamber officers for the coming year will be Chad Helton, president; Kenna Howard, vice-

president, and Matt Sullivan, secretary. Directors continuing to

serve are Louis Stas, Drs. Ben Ed and Lee Ann Hillhouse, Bob and Zodel Swift, Jim and Frankie Jackson, Lyndon and Noveline Loyd, Robin and Ryan Smith, Maria and Robert Ford, Darrel and Sue Gaines, Heather Blackburn, Bill and Karly Howard.

The chamber meets every third Wednesday at noon—dutch. Meeting location will be announced prior to the meetings.

Make arrangements to be on hand Saturday, March 12, for the annual event and enjoy the excellent food, fellowship and entertainment.



INTRODUCTION: Delores Simmons introduced Jack Wells Thursday evening. The Thursday Review Study Club hosted a Western Art Showing Thursday afternoon and evening featuring the work of Jack Wells of Oklahoma City.



MUSICAL ENTERTAINMENT: Kory and Nathan McLaughlin entertained the group gathered at the Wheeler County Ag and Family Center Thursday evening. Nathan sang and played; he was accompanied by Kory.

Notice of Risa Keelin's Death Jan. 20

Risa J. Keelin, age 61 went to be with her Lord and Savior Thursday January 20, 2011 with her family gathered around her. She leaves to mourn her best friend and loving husband of 40 years, Joey. The absolute light of her life, were her three children, Tammy (James) of Goldthwaite, TX, Cindy (Jeff) of Pasadena, and Matthew of Pasadena.

She is also survived by 5 grandchildren, Ashley, Dee, Shelby, Cameron and Torie, and her mother, Frankie Atherton of Willis, TX as well as a host of loving family and friends.

Risa had a very special God-daughter Christen and her two children Taylor and Elizabeth all of Pasadena, TX.

Risa, enjoyed life to the fullest she also liked reading, crocheting,

cooking, her family but most of all her grandchildren.



Risa Keelin ... Nana

Cattle Prod. Meeting, Ranch Tour; Reservations Needed For Noon Meal

A cattle producer meeting will be held Thursday, March 17 in Old Mobeetie at the Mobeetie Jail Museum's Visitors Center, two blocks east of the Old Rock Jail, 310 O'Laughlin. The Museum is 3 blocks south of Hwy 152 at the intersection of FM 48. The program starts at 12 Noon with a meal catered by Mr. B.B.Q., Steve Walker. Please R.S.V.P. by calling (806) 845-2101 by March 15 to insure you have a plate.

Following the meal, Dr. Ted McCollum, Extension Beef Cattle

Specialist, will discuss ways to increase profits by reducing expenses. Discussion points will include protein and forage requirements and sources. Also, reproductive efficiency as influenced by cattle size and grass production will be discussed.

After the in-door program, the group will tour the nearby VanZandt Ranch to further discuss grass management, reseeding cropland to native grasses, raising cattle without feeding hay-

(Continued Page 8)

Candidates File

Filing Deadline Is Monday For Mayor, Council Places

The City of Wheeler will hold an election May 14, 2011, for the purpose of electing the mayor and (4) council members. Each position will be for a two year term. Also on the ballot is

The first day to file for Place on Ballot was February 12, 2011. The last day to apply for a place on the ballot is March 14, 2011.

Councilmembers, whose terms expire, are Barbra Koelzer, Jim Hill and Walter Simmons.

Voters will elect individual to serve the unexpired terms of the Mayor and Place 2 councilman. Individuals appointed to office only serve until the next city election.

Bob McCain filed with the city to have his name placed on the ballot as a candidate for Mayor. Bob was elected to the council in Wheeler I.S.D.

Three Places Open On Local Sch. Bd.

Filing Deadline March 14

The first day to apply for a place on the Wheeler ISD trustee ballot was February 12, 2011. The filing deadline is Monday, March 14. Applications may be obtained at the Wheeler ISD Business office, #1 Mustang Drive. The May 14 election will fill three full term positions currently being held by Dr. Mike Smith, Mark Marshall and Brian Richardson.

Dr. Smith and Brian Richardson have filed for was the first to file for re-election to his place on the board.

Thirteenth Annual Ja'Nae Goad Memorial Golf Tourn. April 16

The Thirteenth Annual Ja'Nae Goad Memorial Golf Tournament will be held Saturday, April 16 at the Shamrock Country Club. This tournament will be an 18 hole scramble format and will offer tee times of 8:30AM and 2PM. High School students wishing to enter the tournament will play on Friday afternoon. A putting contest for youngsters will also be held on Saturday. For more information please contact Cecil Thomas at 826-5809, Ida Goad at 826-5254 or Bobby Jennings at 826-3153. You may also log on to www.janaegoadgolf.com.

Donations of \$25 from businesses will go toward special prizes such as closest to pin, longest drive and longest putt. Donations from individuals or businesses of \$50 or more will sponsor a tee box. Individual gifts for door prizes are also accepted.

Chances to win various donated raffle items will also be available. The items will be on display at local businesses pre-

NRCS Can Help Landowners With Rangeland Recovery

Assistance Following Wildfires

High winds, low humidity and prolonged dry conditions in Texas have led to increased threats for wildfires. While some parts of the state have already been affected by damaging wildfires, other parts remain at risk.

Landowners impacted by recent wildfires are encouraged to contact their local USDA-Natural Resources Conservation Service (NRCS) district conservationist. The NRCS provides technical, and in some cases, financial assistance, to install measures that reduce post-fire damage and aid in the rehabilitation process.

"Wildfires can provide valuable control of brush species, but may cause damage to perennial grasses if special care is not taken to allow recovery of the range," states Mickey Black, Assistant State Conservationist for the High Plains and South Plains regions. "Loss of vegetation not only affects forages for livestock and wildlife habitat, but it can lead to increased soil loss due to erosion by wind and water."

Practices such as grazing deferment, cross fencing, reseeding and water development are effective post-fire strategies to help reduce erosion.

"We can also provide assistance that will enable landowners to accelerate the health and vigor of affected rangeland," said Black. He suggests landowners con-

1987 and as mayor pro-tem was appointed mayor after the death of Mayor Wanda Herd.

Keith Rose has filed to have his name placed on the ballot as a candidate for Mayor.

Don Rose is seeking the place he was appointed to in December. Barbra Koelzer and Walter have each filed for re-election. John Burrell, Justin Hefley and Joy Meadows have filed for the place presently held by Jim Hill.

Presently the only contested race is for Mayor.

Anyone interested in filing for an application for a place on the ballot should come by City Hall, 505 Alan Bean Blvd., Wheeler, TX.

Filing Deadline Mar. 14 Mayor, 2 Councilmen Places At Mobeetie

The City of Mobeetie will hold an election on May 14, 2011, for the purpose of electing the Mayor and two (2) City Council members. Each position will be for a 2-year term. The first day to file for a place on the ballot was February 12, 2011, and the last day to file for a place on the ballot is March 14, 2011.

The Council Members, whose terms expire are Mayor Gordon Estes, Council Member Place 1 Pam Jones; and Council Member Place 3 Patricia Kephart. Anyone interested in filing for a place on the ballot can come by: First State Bank, 101 S. Wheeler, Mobeetie, Texas, and see Stephanie Coulter, City Secretary.

Fire Dept. Omitted From Fire Story

In the story about the fire last week, Sunday, February 27, 2011. Five Volunteer Fire Departments were omitted from the list of responders.

Omitted were the Briscoe, Kelton, Mobeetie, Shamrock and Allison fire departments.

We do apologize for the omission. And, we do appreciate our volunteer firemen.

B. Umsted Omitted From Honor Roll

Brennan Umsted's name was

accidentally left off the Seventh Grade "All A" Honor Roll, when it was turned into the Times.

COWBOY POETRY: Paula Britt did some poetry reading Thursday evening, March 3 at Thursday Review's Western Art Showing.

One poem read was her version of "Cowboy Poetry".



Paula Britt did some poetry reading Thursday evening, March 3 at Thursday Review's Western Art Showing. One poem read was her version of "Cowboy Poetry".

THESE PICTURES SPONSORED BY:

FIRST STATE BANK

Mobeetie Office:
First & Wheeler St.
Mobeetie, Texas
845-2311

Wheeler Office:
1408 S. Alan Bean Blvd.
Wheeler, Texas
826-5546



Wheeler County COURT RECORDS

List of instruments filed in the Wheeler County Clerks office from February 25, 2011 - March 10, 2011.

FEBRUARY 25, 2011
PARTIAL ASSIGN.-Chesapeake Exploration LLC to Larchmont Resources LLC, 2-4-11, W/2 Sec. 60, Blk. A-7, H&GN Ry. Company Survey.

AFF-Miles C. Welke, et al to Chicano Oil & Gas Co., et al, 2-10-11.

ROW-Don Remling to Devon Energy Production Company LP, 1-25-10, Pt. W/2 SW/4 Sec. 20, Blk. R.E., Roberts & Eddleman Survey.

ROW-Dianna Kay Fields to Devon Energy Production Company LP, 1-24-10, Pt. W/2 SW/4 Sec. 20, Blk. R.E., Roberts & Eddleman Survey.

ROW-Charles C. Eden (Estate) to Devon Energy Production Company LP, 1-24-10, Pt. SW/4 SE/4; Pt. S/2 SE/4 SE/4 Sec. 11, Blk. R.E., Roberts & Eddleman Survey.

ROW-PMC Trust to Devon Energy Production Company LP, 1-25-10, Pt. SW/4 SE/4; Pt. S/2 SE/4 SE/4 Sec. 11, Blk. R.E., Roberts & Eddleman Survey.

ROW-James T. Eden to Devon Energy Production Company LP, 1-20-10, Pt. SW/4 SE/4; Pt. S/2 SE/4 SE/4 Sec. 11, Blk. R.E., Roberts & Eddleman Survey.

ROW-Stephen D. Eden to Devon Energy Production Company LP, 1-21-10, Pt. SW/4 SE/4; Pt. S/2 SE/4 SE/4 Sec. 11, Blk. R.E., Roberts & Eddleman Survey.

ROW-Stephen D. Eden to Devon Energy Production Company LP, 1-21-10, Pt. SW/4 SE/4; Pt. S/2 SE/4 SE/4 Sec. 11, Blk. R.E., Roberts & Eddleman Survey.

ROW-Hiram and Darena Begert Living Trust to Devon Energy Production Company LP, 1-28-10, Pt. N/2 S/2 Sec. 18, Blk. R.E., Roberts & Eddleman Survey.

ROW-Hiram and Darena Begert Living Trust to Devon Energy Production Company LP, 1-28-10, Pt. N/2 S/2 Sec. 18, Blk. R.E., Roberts & Eddleman Survey.

ROW-Lois E. Gossett to Devon Energy Production Company LP, 1-26-10, Pt. S/2 S/2 Sec. 18, Blk. R.E., Roberts & Eddleman Survey.

Map (from FSB Ad)

in which students use photos of festivals, music, crafts and sports to learn about the continent's colorful and diverse cultural life; "Walkabout: South America," which explores the numerous mountains, rivers, waterfalls and other geographic features; and "The Voyage of the H.M.S. Beagle," which retraces the voyage of Charles Darwin along the continent's coastline through excerpts from his journals. "Usually only super-athletes can run across South America," said Dan Beaupre, National Geographic's director of education partnerships for National Geographic Live. "With the introduction of this continent to our expanding roster of giant maps, we look forward to educating a new class of geographic explorers, whether they be kids or kids-at-heart." The students at Fort Elliott Elementary were excited that their school was one of the chosen schools. The students grades Pre-k thru 5th grade really enjoyed the walk through South America. National Geographic's Giant Traveling Maps program was introduced in 2006 with a map of Africa created after National Geographic magazine's 2005 special issue devoted entirely to that continent. Since then the program has expanded to maps of North America, Asia and South America. In the 2010-2011 school year it is estimated that more than 300,000 students will interact with one of these maps. In addition to school visits, the maps appear at National Geographic Live events around the country featuring explorers, scientists and journalists. The maps also help showcase My Wonderful World, a multiyear, National Geographic-led campaign to improve geographic literacy and to help students become more informed global citizens. The campaign (mywonderfulworld.org) is designed to improve the geographic literacy of young people ages 8-17 by motivating parents and educators to make geography more available and accessible in school, at home and in the community. To learn more about the Giant Traveling Map project, for borrowing information or to download map activities, visit www.nationalgeographic.com/giantmaps. The National Geographic Society is one of the world's largest nonprofit scientific and educational organizations. Founded in 1888 to "increase and diffuse geographic knowledge," the Society's mission is to inspire people to care about the planet. National Geographic reflects the world through its magazines, television programs, films, music and radio, books, DVDs, maps, exhibitions, live events, school publishing programs, interactive media and merchandise. National Geographic magazine, the Society's official journal, published in English and 33 local-language editions, is read by more than 38 million people each month. The National Geographic Channel reaches 330 million households in



THE WHEELER TIMES

PAGE 2 - Thursday, March 10, 2011
"Wheeler: town of friendship and pride."

DISTRIBUTION D-William F. Roden (Estate) to William F. Roden Bypass Trust, 1-31-11, Sec. 41, Blk. A-3, H&GN Ry. Company Survey.
CORR. ASSIGN.-Newfield Exploration Mid-Continent Inc. to Samson Lone Star LLC, 1-20-11, Sec. 31, Blk. A-3, H&GN Ry. Company Survey.
C/C PROBATE-Jerry Clay Woolldridge to Ex Parte, 2-18-11. FEBRUARY 28, 2011

pany Survey.
CORR. ASSIGN.-Newfield Exploration Mid-Continent Inc. to Samson Lone Star LLC, 1-20-11, Sec. 31, Blk. A-3, H&GN Ry. Company Survey.
C/C PROBATE-Jerry Clay Woolldridge to Ex Parte, 2-18-11. FEBRUARY 28, 2011

(Continued Page 3)

MOBEETIE NEWS

By Melba Corcoran

Those working at the museum this week were Louise Hogan, Maurita Stribling, Suzanne Lohberger, Ada Lou Lester, Gina Seitz and Melba Corcoran. Joe VanZandt, Bill Finsterwald and Dale Corcoran worked on the grounds this week. Bill and Dale were replacing a broken water line; Joe sprayed. Tuesday, the seniors worked for a few hours. The boys picked up limbs and cleaned the grounds. The girls cleaned on the buildings. Sure was a big help.

Curtis and Diane Ilkenhans of Utah visited Tuesday and Wednesday with Dale and Melba Corcoran. Curtis and Dale were in Air Force at Biloxi, Mississippi and Albany, Georgia. They hadn't seen each other for 50 years.

Scott called and said Neva got hurt; she was thrown off their horse. She got a concussion, broken ribs and cracked vertebrae. She is recovering at home. They didn't know why the horse started to buck.

D. L. and Colleen Rector of Amarillo came Saturday to visit with Dale and Melba. They had Matthew and Emily with them. Emily is their granddaughter and Matthew is their great-grandson. It was good to see all of them. We didn't know they were coming and we had gone to Pampa, so the

visit was cut short.

Mike Smith, a representative from SBTC, was the guest speaker at the Baptist Church Sunday. He explained the difference in the SBTC and SBC in Texas during the adult Sunday school time to the adults and youth department. Afterwards, he preached the morning services.

Sunday night, the Baptist Church was host to the First Sunday Night Singing. Allison First Baptist, Briscoe Church, Gageby and Mobeetie Church were all in attendance. Some good singing was presented. The group all had fellowship following the program.

Remember Wednesday is the Prayer Breakfast at the Cowboy Oasis at 7 AM. Jeff Kelley will bring the devotion.

Spring break will be March 14 to March 18. There will be no regular Wednesday night services that week.

Sister to Sister will not meet this Saturday.

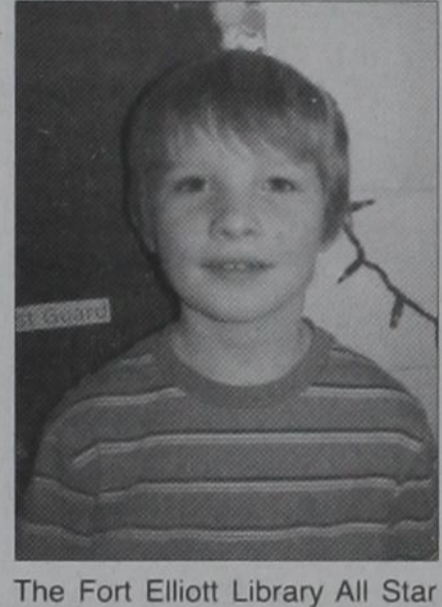
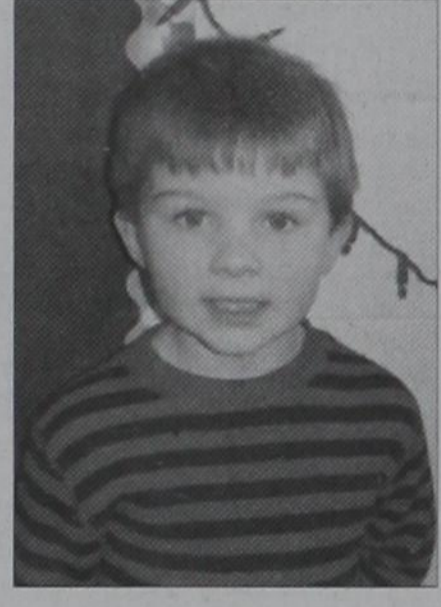
Maurita Stribling went to Elk City for Shane's birthday party. Then she attended a program that her great-granddaughters were in at Pampa. She enjoyed both.

Gene and Sue Harrison attended the funeral of his aunt, Novella Record in Carnegie, OK., on Saturday. Our sympathy goes out to them.

Hear the "Abundant Living Broadcast"
KPDR-FM, 90.5
WHEELER, TEXAS
Saturdays: 9:00 a.m. to Noon



The Kindergarten class at Fort Elliott Elementary have been learning how to write letters and address envelopes. Sending letters to their family and then they were off to the United Post Office to watch how a letter is sent through the mail. They were able to drop their own stamp, then drop their letter into the letter drop. Then they were able to watch as Mrs. Thompson, our post master stamped each letter with the official post mark from Mobeetie with the date their letter was sent, then sorted as to where the letter would be going, and how the post office bags the mail. They also were able to see how everyone mail is sorted and delivered in town. Students going to the post office were: Post Master, Mrs. Thompson, Boone Begert, Adriana Goldberg, Jacob Forward, Chasey Lane, Tyler Johnson, Mary Helton, Lily Forbs, Jenger Johns, and Van Jones.



The Fort Elliott Library All Star student this week is Roper Pigg. Some of Roper's favorite things are color "red and yellow", his favorite book is Grub E Dog, his favorite thing about school is "Math". Roper is 5 years old and his parents are Ben and Casey Pigg, and he is in the 1st grade.

The Fort Elliott Library All Star student this week is Gavin Boydston. Some of Gavin's favorite things are color red, his favorite books are any books about the United States Coast Guard, his favorite thing about school is "Math". Gavin is 8 years old, his parents are Greg and Tiffany Boydston and he is in the 2nd grade.



GIANT TRAVELING MAP OF SOUTH AMERICA FROM NATIONAL GEOGRAPHIC LANDS AT Fort Elliott Elementary IN Mobeetie, Texas Fort Elliott, -Students at the elementary has explored South America in a big way - with one of the world's largest maps of the continent. The map, measuring 35 feet by 26 feet and weighing 102 pounds, provided student explorers with a fun, interactive experience through rich content and exciting activities that enliven the study of geography. The map was at the school from February 11, 2011 through National Geographic's Giant Traveling Maps program, organized by National Geographic Live, the public programming division of the National Geographic Society. The South American map, designed for grades K-8, comes with a trunk of accessories that include interactive activities, games, books, videos and music that educate users about the physical characteristics of the continent as well as its rich history and varied cultures. Among the activities included with the South America map are "Cultural Geography Relay," (Col. 4)



500 AR Points Hanna Shephard is the 10 year old daughter of Charles and Tonia Shephard of Allison. Hannah's favorite color is blue and her favorite subject in school is social studies. She has 475 AR points and her goal is to reach 500 AR points by the end of this six weeks. Hannah loves to read and her favorite book to read are the Sweet Valley series of books by Kate Williams. GO Hannah!!!



The Fort Elliott 5th and 6th grade Little Dribblers coached by Amanda Salas and assisted by Jayton Childress and Jessie Johnson, placed 3rd in the Canadian CCC tournament. The boys played three great games, after losing to Canadian 5th they received third place medals. Great games boys!!! Back row: Coach Jayton Childress, Jarrett Childress, Garrett Childress, Dillon Forbs, Justin Williams, Coach Amanda Salas, Coach Jessie Johnson Front row: Tanner Johnson, Tate Ford, and Tysen Auldridge.

HOUSE HUNTERS-REALTOR
In Wheeler—15 Acres on County Road 15-A, Good Farmland, utilities available
Linda Laycock Broker, ABR, GREEN, SRES, e-Pro 806.662.1312
Larry Hadley Assoc. 806.662.2779
Jordan Oneal Assoc. 806.670.6623
Pampa MLS www.househunterspampa.com Amarillo MLS

RiverCrest Homes
Building distinctive custom homes designed for your one of a kind lot.
Quail Run Estates Coming Soon
1.5 to 5 acre lots across from Maxey's
Chip Hill 972-989-8019
chip@rivercrestproperty.com

UNDERWOOD
ATTORNEYS AND COUNSELORS AT LAW
KEN FIELDS, A SHAREHOLDER OF THE UNDERWOOD LAW FIRM, AND BRYAN GUYMON, ARE AVAILABLE FOR CONSULTATION AT THE WHEELER COUNTY OFFICE ON FRIDAYS FROM 9:00 A.M. TO 5:00 P.M. THE OFFICE IS LOCATED AT: 315 N. MAIN SHAMROCK, TEXAS 79079
APPOINTMENTS ARE ENCOURAGED. FOR AN APPOINTMENT WITH KEN FIELDS OR BRYAN GUYMON, PLEASE CALL OUR PAMPA OFFICE AT (806) 669-6851 SHAMROCK OFFICE PHONE NUMBER (806) 256-1474

GIFTS - CARLTON CARDS
HYLAND'S PHARMACY
HOURS: 8-5:30 M-F, 8:30-Noon Sat
109 W. TEX. ST. - WHEELER, TEXAS
Phone: 806/826-5561
WEDDING/BABY SHOWER REGISTRY

MARSHALL'S HEATING & AIR CONDITIONING
WHEELER, TX - PHONE: 664-5395 - CELL: 662-7876
NOW DOING... AIR DUCT CLEANING
TRANE
It's Hard To Stop A Trane -24 Hour Emergency Service-
LICENSED & INSURED
License No. TACL022710E
Mark Marshall, Owner

Planning Ahead Can Save Home From Wildfires

Writer: Linda Anderson



Jayden Hedley Mayfield, 11, is the son of Tim and Jennifer Mayfield of Summerville, SC. He is the grandson of Robert and Sue Mayfield of Mobeetie, TX, Nelson and Cindy Medley of Ft. Cobb, OK, and Judy and Gerry Portis of Shreveport, LA. He is the great-grandson of Carol Orthman of Dumas, TX, and Kaye Rhaeme of Wichita, KS.

For all your...
Insurance Needs, See Eastern Panhandle Insur. Agency, Inc.
117 W. Texas St. — Wheeler
806/826-3573
•Auto •Home •Life •Health
•Commercial •Bonds

COLLEGE STATION — In spite of recent rains in some parts of Texas, the drought isn't going away any time soon, said a Texas Cooperative Extension specialist. And with drought comes the increased risk of wildfires.

That's why taking steps to protect home and property in case of fire is so important, said Janie Harris, Extension housing and environment specialist.

She recommends following these steps from the Texas Forest Service:

- Keep propane gas tanks far enough from buildings so valves can be shut off in case of fire. The area around the tank should be cleared of any vegetation that might fuel for fire.
- Store gasoline in approved safety cans, and keep these cans away from occupied buildings.
- Keep combustibles — including firewood, wooden lawn furniture, boats and lumber — away from buildings.
- Clean roofs and gutters regularly to prevent buildup of leaves and other debris which could catch and spread fire.
- Keep fire-fighting tools handy, including ladders long enough to reach the roof, shovels, rakes and some buckets for carrying water.
- Keep garden hoses connected on all sides of the house for emergencies.
- Know all the emergency exits

from the house and from the neighborhood.

"You must plan ahead of time," Harris said. "If you live in area with big trees, you need a defensible space around home; you need to know that trees close to the house can be fire fuel."

To keep that risk down, Harris and the forest service recommended clearing trees and brush out an area at least 30 feet out from the house, she said.

"Cut tree limbs overhanging the roof; clean out gutters," Harris continued. "Choose fire-wise landscaping, such as hardwoods instead of evergreens. And clearly mark your home address from the main road, and make sure your driveway is accessible for fire-fighting equipment."

Knowing about burn bans in the area is also important, she said. On its Web site (<http://txforests.tamu.edu/>), the forest service maintains a current list of burn bans in the state. If burning is not banned, the forest service recommends:

- Clearing combustible material — such as grass, leaves, scrap wood and other debris — away from the site where the burn is to take place.
- Keeping a water hose ready at the site of the burn.
- Never leaving a burn pile unattended.

More information on protecting homes and property from wildfires can be found on the Texas Extension Disaster Education Network Web site at <http://texashelp.tamu.edu/>, Harris said. But preparing for a disaster such as wildfire means more than protecting buildings, she said. Families should always keep disaster supply kits prepared and available for every member. The kits should include such items as necessary medication, changes of clothing, food and water, battery-operated radios and flashlights.

Extension's Family and Consumer Sciences Web site (<http://fcs.tamu.edu/>) has more information on preparing disaster supply kits.

And if wildfire should become more than just a possibility, "know to leave if you feel least bit threatened," she said. "Know the ways to get out of your neighborhood — if there's only one way to leave, get out early."

"And listen to the authorities. The bottom line is: When they tell you to get out, get out."

Golf (from Page 1)
tivities. To date, the tournament has benefited 72 high school seniors from Wheeler County. Past recipients of the award have been Alan Segura, Kacie Schlegel, Amanda Reeves, Jacob Caldwell, Kinsey Cogburn, Jordan Jones, Cassie Crossland, Cody Schlegel, Sheldon Cornett, Laramie Wilson, Jade Hilburn, Darby Oldham, Chelsey Tallant, Kaylee Zaiontz, Cari Caldwell, Courtney Dame, Sarah Sweatt, Cami Creamer, Kaitlyn Otts, Clay Greenwalt, Tamra Jernigan, Briana Stewart, Cade Vinyard, Tandy Wright and

(Continued Page 7)

COUNTRY NEWS

By Verna Fillingim

Sincere sympathy to family and friends of Willie Renner, 91, in his death Sunday, Feb. 27. Services were to be Wednesday at 10:00 a.m. at Mobeetie Baptist Church with burial in Wheeler Cemetery. God bless you all. Ethel Grimes is his beloved sister.

Sincere sympathy to family and friends of Billie Ferguson, 84, in her death. Funeral services at Wheeler Baptist Church Wednesday with burial at Mobeetie Cemetery. Thanks for leaving the beautiful flowers at Wheeler Baptist Church. Many there to enjoy the good meal. God bless you all! Gene Ferguson is her son and there are many grandkids.

So sorry about all the people killed and homes destroyed by the fires. Sorry to hear about all the wind and things destroyed, but it could have been much worse. May God comfort each of you.

Nice to have a phone call and a good visit with Charlotte Austin at San Antonio. She can't remember everyone's name, either. Remember I love you even if I can't recall your name right away. Thanks for calling, Charlotte. Charlotte is married to Aubrey; they live in San Antonio and enjoy kids and grandkids. She lived in Briscoe.

Nice to have a visit Saturday from Charlie and Edie Phillis from White Deer. They had been to a ballgame to watch granddaughter play ball and came to visit me before the next game. So good to see them. They used to live in the Briscoe area. (Hope I got that right.) Special friends! Thanks for coming! Hope you will come again. God bless you!

Many thanks to the kind people who trimmed trees in front of my house. God bless you! That helps! I don't know who did it, but many thanks...looking good!

I couldn't get names of all who had helped by working on the new Baptist Church, but many thanks! And, God bless you all! A good crowd out to view the progress, enjoy the fellowship and enjoy delicious homemade ice cream and other goodies Sunday night. Many thanks to all! Looking good! Don't know when expected to be finished.

"Rooted"
Reflections on Family by Michelle Longoria

She is my mother...
I do not have her eyes, chin, or curly hair,

"Thank you, Dear Lord, for sending me a child," is still her evening prayer.

Peach undertones tinge her velvet skin while a dark year round tan runs over mine,

But she doesn't mind.
Our hearts sing and dance to the same beat; securely intertwined

My smile is her splendor, my tears her gloom,

She did not give me life; I grew in her heart not her womb
She is my mother...

He is my father...
When strangers say we look alike he flashes a wink and politely nods, we know the truth.

He was daddy, coach and Boss, a pillar of strength during my youth.

I did not inherit his hands, feet, or smile, but I am his little girl, his baby doll.

Three decades later, he still supports my dreams, big or small
The sweet sounds of his praise echo in the wind helping to shed my fears.

Regret was never a thought, only grateful for our years.
He is my father...

He is my brother...
Brown freckles, bushy eyebrows, and auburn red hair are his trademark.

How can it be? You don't look

Parkview Artery
Patient Safety Awareness Week

During this week, Parkview Hospital wants to share some ideas to make keeping important information handy when you need it.

Actions to take to help protect yourself:
Clean out your medicine cabinets of old or expired medications.

Bring your medications to your doctor or pharmacist for review.
Get copies of all of your healthcare records and keep them in a safe place.

Write down and carry with you all of your prescription and over the counter medications (including doses), as well as any allergies.

Write down and carry with you the names and numbers of all of your healthcare providers and pharmacies.

Identify an advocate (either family member or friend) who can accompany you and ask questions on your behalf.

Talk with your family or other close individuals about what your preferences are for your healthcare, in case you are unable to speak for yourself.

Safety starts with all of us. You can pick up A Medical Information Card at the Front Desk at Parkview Hospital. Fill it out and Keep it with you. Always

Medcat
Safety isn't expensive, its priceless.



THE WHEELER TIMES

PAGE 3 — Thursday, March 10, 2011
"Wheeler; town of friendship and pride."

alike? People unknowingly remark.

"My Rotten Redheaded Older Brother" he certainly was; he lived to poke, probe and prod.

Our sibling bond is not of blood, but he took well to his big brother job

He's offered frank words of advice like no other; sometimes I even listen

Even if just a smidgen
He is my brother...
They are my family...

Not because we share the same traits, but because we share similar love

Our treasure came years ago from our golden heaven above
Courageous, like Jochebed, she sent me down a river, wanting a better life for me.

May grace and glory fall upon her days, for her difficult decision was my family's destiny

Commitment, not genes, root us to our name

The memories and lessons will

always remain.

Don't you see...I am not ashamed or embarrassed if strangers don't understand,

My heart rests calmly; I am right where He wanted me to land.

They are my family.

Michelle Longoria was adopted in 1976 from Methodist Mission Home.

"God be with you till we meet again."

Canadian Supply & Redi-Mix
for all your Concrete Needs!

Jerry Smith, Owner
806-323-5379

Rock-N Okie
Complete Tree Service
Fully Insured

Mitch or Barbee Horstkoetter
580-243-7494
P.O. Box 327
Erick, Ok 73645
www.rocknokie.com

DOUG BOYD MOTOR CO.
Buy Here / Pay Here
No Credit Check • Areas Largest Selection
Pampa • Corner of Hwy 60 @ Hwy 70
806-669-6062 • www.dougboymotors.com

Dennis Edmondson
REALTOR

RE/MAX HOMETOWN 2100 Perryton Pkwy Pampa, Texas
MLS
LOVELY 2,023 SQ. FT. HOME on 400 acres. 3 Bedroom, 2 1/2 Baths, Fireplace, Sunroom, Huge Utility Room & Back Deck, 30'x60' Garage/Shop with Built-in Loft, Water Well, Windmills, Beautiful Trees & Storm Shelter. Peace & quiet in this gorgeous setting. County living at its best! Selling all or part of the 400 acres: The house and 200 acres for \$350,000; just 200 acres for \$200,000, or the house and another combination—the price depending on the acreage with the house. The house and 400 acres still listed for \$530,000. 8320 County Line Rd. Wheeler, To. TX. \$530,000. Call Dennis Edmondson (Agent) 806/662-7503. Re/Max Hometown. Patti Hudson/Broker 1/27/11

TENACIOUS LAND SERVICES

Tommy F. Yowell, CPL
PETROLEUM LANDMAN
211 MAIN ST. NOCONA, TEXAS 76255
OFFICE 940-825-5000
CELL 940-872-7000
TFYowell@aol.com

Wheeler United Methodist Church
Eighth at Main St. - P.O. Box 89
Wheeler, TX 79096
(806) 826-3114 - Fax 826-3780
wheelerumc@windstream.net
Sunday Schedule
Coffee & Donut Fellowship — 9:30 A.M.
Sunday School — 9:45 A.M.
Worship — 11:00 A.M.
Youth Fellowship — 5:00 P.M.
Pastor's Bible Study — 5:00 P.M.
Wednesday Schedule
Choir Rehearsal — 7:00 P.M.

Limited Time **5.03%** APY*
INSURED CD
Ask About IRA/401K Specials!

FIRST FIDELITY
Financial Group, LLC
Your Safe Money Solution®
1800 Washington, Suite 110 - Amarillo, TX
806-373-9480
1-800-371-9201
By appointment only

JENNINGS PLUMBING HEATING & AIR CONDITIONING
P.O. BOX 423 — Wheeler, Texas 79096
LARRY & BOBBY JENNINGS, Owners
Licensed, Insured & Bonded
(806) 826-3153
American Standard
HEATING & AIR CONDITIONING

TX# TACLB017641E
"A Flush... Is Better Than A Full House!!!"

KIM'S KITCHEN
Dine-in, Carry-out, & Catering
Hwy 152 & 83
806.826.5102
Daily Buffet — Bakery
Open Seven Days A Week

Come and join the Fun!
Instructor: Noemi Sardello

Where: Wheeler County Ag & Family Life Center
Mon. 7:00 p.m. - 8:00 p.m.
Wed. 7:00 p.m. - 8:00 p.m.
Fri. 7:00 p.m. - 8:00 p.m.
\$5.00 per class or \$40.00 a month

Robby Schaffer
Firearms, Ammunition & Reloading Supplies
602 Cheyenne • Wheeler, TX
806.826.0129 • 806.216.1322
E-mail: robschaf@windstream.net
Store Hours: Mon. to Fri. 5 P.M. to 9 P.M. Sat. 12 to 8 P.M.
I can order almost any gun now. Tell me the price you find and I will do my best to beat it.
• Selection of Ammunition in stock.
• Check with me if you have difficulty finding ammunition.
• Bring your gun in to have it cleaned.

When you get the Red Letters right...
Christianity finally makes sense.
www.ThinkRedInk.com
• 24 Hour Internet Radio & Television
• Weekly Live Radio Shows
• Comprehensive Database of Bible Classes, Seminars
• Videos, Audios and Printed Materials - Free - Really!
2/17-3/10

Want Ads

Garage Sale: Saturday March 12th 8:00-? 1000 Mobeetie Wheeler, Baskets, Mattress and Box springs, Kitchen stuff, Cookbooks, Plants, Wall decor, Clothes, Small lamps, Mirrors, Filing Cabinet, Fax machine 3/10C

SWIMMING POOL MANAGER
The City of Wheeler is accepting applications for a manager for the swimming pool for the 2011 swimming pool season. The City prefers the applicant to hold a Red Cross Life Savings Certificate. Applicant should review the contract at City Office before submitting application. Applications are to be reviewed at regular meeting March 21, 2011 at 7:00 p.m. The City reserves the right to accept or reject any or all applications. Send applications to City of Wheeler, P.O. Box 98, Wheeler, Texas 79096 or bring to City Office, 505 South Alan Bean Blvd. 3/10-17c

Applications being acceptable for **Infant/Toddler Care Giver** and for our **Food Preparation Position**. Apply in person at Ora Belinda Schoolhouse. 1320 S. Alan L. Bean Blvd. 3/10c

Oilfield Company in Elk City, OK is looking for flowhands to work in the Texas panhandle and Western Oklahoma area, oilfield experience necessary. Competitive salary, health insurance, dental available. Please apply in person, for direction you can call 580-225-6506; you can call between 8:00am to 5:00pm.

Driver Instructor: Pd. Training. Excellent wages & Benefits. Req. 10yrs. Min. CDL-A driving. ZERO

ENERCEPT INC. ROYALTY OWNER SERVICES

Are You Receiving Your Proper Share of Oil and Gas Sales?

We provide:
 • Accounting and Accuracy of Payment Verification
 • Accuracy of High Cost Severance Tax Charges
 • Identification, Resolution and Collection of Royalty Payment Errors. Provided on either an Ongoing or Project Basis
 Local References Available Upon Request.
Call Toll Free 1-800-658-7168
John McNab — Enercept, Inc.

DUI's/Felonies & pass DOT physical. Training held in Denver. email glenda.morales@pnh.com 3/10-17

Parkview Hospital Home Health is looking for Full Time CNA. Come by 306 E. 9th in Wheeler for application or call Susan Leffew, director, at 806-826-1370. 3/10trn

Mission Petroleum Carriers: Immediate Openings! Crude Oil Drivers. Home Daily, Competitive Weekly Pay, Great Training Pay, Excellent Benefits: Vacation, 401K, Medical, Life, Rx Plan, Dental and Vision. Class A CDL-X Required. 2 yrs T/T exp. or 1 yr w/ driving school req. Minimum age 23. Contact: John Townley 940-549-4578 Mon.-Fri. 8am-5pm EOE 3/3-10

A Pampa company is wanting experienced sales persons. Sales

will be over the phone at our office. Wages, commissions, and bonuses will be paid. Phone experience will be helpful but not required. Recovering addicts encouraged to apply. Send resume to LRCA, PO Box 1576, Pampa, TX 79066. 3/3-17c

Hay Grazer Hay for sale. Call 806/570-3900. 2/24trn

For Sale: **Maytag Washer & Dryer** (approx. 5 years old) and **Apartment Size Range**. 826-5762 2/24-3/10c

Hemphill County Hospital—RN Home Health Director needed. Great benefits, Competitive Pay, Insurance, PTO and Retirement. Fulltime hours Please call: Rayanna @ 806-323-6422 ext 231. 2/17trn

Exp. Roustabouts needed. Must have clean DL and pass drug-test. Call 845.1088 Mon - Fri, 8-4 2/10-3/3c

Exp. Leadmen for Roustabout Co. needed. Must have clean DL and pass drug-test. Must have good leadership abilities. Backhoe exp. CDL a plus. Call 845.1088 Mon - Fri, 8-4 2/10-3/3c

Parkview Hospital is now accepting applications for a **Nurses's Aide** for the 11 p.m.-7 a.m. Shift. Competitive Salary with full benefits. Please call Sue Stiles D.N.O. at 826-5581 or apply in person at 901 Sweetwater Street, Wheeler, Texas. 12/9trn.

HOUSE FOR SALE: 901 Canadian St., Wheeler. Spacious Brick Home on corner lot: 3 bedroom, 2 bath, 2 living areas, fireplace, heat and air, 2 garages (double & single), and storage bldg. Joyce Edwards, 806-826-5948 after 6:00 p.m. 11/4trn

Farrar Lawnmower and Small Engine Repair. 806/336-8960. 4/22trn

Lovegrass Hay For Sale Anhydrous: Call 375-2578 or 806-679-8891. 1/21trn

NOTICE TO CONTRACTORS OF PROPOSED TEXAS DEPARTMENT OF TRANSPORTATION (TxDOT) CONTRACTS
 Sealed proposals for contracts listed below will be received by TxDOT until the date(s) shown below, and then publicly read. **CONSTRUCTION/MAINTENANCE/BUILDING FACILITIES CONTRACT(S)**

Dist/Div: Childress
 Contract 6219-18-001 for ON-CALL STRIPING IN CHILDRESS County, etc will be opened on April 06, 2011 at 1:00 pm at the State Office for an estimate of \$1,401,594.40.

Plans and specifications are available for inspection, along with bidding proposals, and applications for the TxDOT Prequalified Contractor's list, at the applicable State and/or Dist/Div Offices listed below. If applicable, bidders must submit prequalification information to TxDOT at least 10 days prior to the bid date to be eligible to bid on a project. Prequalification materials may be requested from the State Office listed below. Plans for the above contract(s) are available from TxDOT's website at www.txdot.gov and from reproduction companies at the expense of the contractor.
 NPO: 35805
 State Office
 Constr./Maint. Division
 200 E. Riverside Dr.
 Austin, Texas 78704
 Phone: 512-416-2540
 Dist/Div Office(s)
 Childress District
 District Engineer
 7599 U.S. 287
 Childress, Texas 79201-9705
 Phone: 940-937-2571

Minimum wage rates are set out in bidding documents and the rates will be part of the contract. TxDOT ensures that bidders will not be discriminated against on the grounds of race, color, sex, or national origin. 3/10c

TEXAS DEPARTMENT OF TRANSPORTATION
 Childress District
 Transportation Maintenance Tech Wheeler County Maintenance-Shamrock Positions will close on March 22, 2011 at 5:00 p.m.
 A completed State of Texas

EASTEX CRUDE COMPANY

NOW ACCEPTING APPLICATIONS

Class A CDL-X Endorsement 401 Benefits, Etc. 800-443-8580 www.eastexcrude.com

ATTENTION MINERAL OWNERS
 Buying Oil & Gas Leases & Minerals in Wheeler & Hemphill Co's.
 Call: 806/334-0370 7/29trn

THE WHEELER TIMES
 PAGE 4 — Thursday, March 10, 2011
 "Wheeler: town of friendship and pride."

MEMBER 2009 TEXAS PRESS ASSOCIATION

City of Wheeler Turns 100
 Aug. 6, '05 Celebration Planned
 P.O. Box 1080
 Wheeler, Texas 79096
 Phone: 806/826-3123
 Entered as second-class matter December 18, 1933, at the Post Office at Wheeler, Texas 79096, under the act March 3, 1879.
 Postmaster: Send Address changes to *The Wheeler Times*, P.O. Box 1080, Wheeler, TX 79096-1080 — wtimes@centramedia.net
Louis C. Stas, Owner & Publisher
 SUBSCRIPTION RATES:
 Wheeler County...\$20.00 Outside County...\$22.00

THE BUSINESS DIRECTORY

CROSS COUNTRY BARN
 24 Hr. Gas & Diesel • Convenience Store
 • Hunt Bros. Pizza
 301 E. Oklahoma St.
 Wheeler, TX
 Phone: 806-826-2276
 Dale & Monica Kidd

It pays to Advertise in **The Wheeler Times**
 Phone & Fax: 826-3123
wtimes@centramedia.net
 Classified:
 Cash—\$4.00 for first 20 words
 Charge—\$6.00 for first 20 words
 15¢ for each additional word
 Open Rate: \$2.50 Per Col. In.
 Card of Thanks-\$5.00

Notice of Application for Commercial Oil and Gas Waste Disposal Well Permit
 Watershark, LLC, 1201 S. Sheb St. Erick, OK 73645 is applying to the Railroad Commission of Texas for a commercial permit to dispose of produced salt water or other oil and gas waste by well injection into a porous formation not productive of oil or gas.
 The applicant proposes to dispose of oil and gas waste into the Brown Dolomite formation, the Watershark SWD (DP 710573) Well No. 1. The proposed disposal well is located 1 mile S. of Kelton, TX, in the Mills Ranch (Granite Wash) field in Wheeler County. The waste water will be injected into strata in the subsurface depth interval from 4714 to 5350 feet.
 LEGAL AUTHORITY Chapter 27 of the Texas Water Code, as amended, Title 3 of the Texas Natural Resources Code, as amended, and the Statewide Rules of the Oil and Gas Division of the Railroad Commission of Texas.
 Requests for a public hearing from persons who can show they are adversely affected or requests for further information concerning any aspect of the application should be submitted in writing, within fifteen days of publication, to the Environmental Services Section, Oil and Gas Division, Railroad Commission of Texas, P.O. Box 12967, Austin, Texas 78711 (Telephone 512/463-6792).

Hear the "Abundant Living Broadcast"
KPDR-FM, 90.5
 WHEELER, TEXAS
 Saturdays: 9:00 a.m. to Noon

REAL ESTATE APPRAISAL & SALES
 Farm & Ranch Land Specialist
 State Certified Appraiser
 TEXAS SUNBELT SERVICES
 Lavon Williams
 806/826-0284
 or 334-0909

TEXAS STATEWIDE CLASSIFIED ADVERTISING NETWORK

TexSCAN

TexSCAN Week of March 6, 2011 AUCTIONS
HUGE PUBLIC AUCTION 300+ Travel Trailers, Mobile Homes & Camp Houses. No minimum price! Online bidding available, Saturday, March 12 at 10am. Carreno, LA. www.hendersonauctions.com 1-225-686-2252. Lic #136

DRIVERS
DRIVER: CDL-A: Texas regional run, mainly I-35 with great miles and excellent home time. Competitive rates & benefits. Must have CDL-A, 8 month OTR experience. 1-888-730-9312.

DRIVER-Dry or refrigerated positions. Single source dispatch. No tractor older than 3 years. Safety bonuses paid quarterly. CDL-A, 3 months current OTR experience. 1-800-414-9569. www.drivetruck.com

DRIVER-POSSIBLE home weekly. No touch freight, no forced NE/NC. 6 months experience. No felony/DUI last 5 years. Solos and teams wanted. New pay package. 1-877-740-6262. www.pbl-inc.com

DRIVERS-FLATBED owner operators up to \$1000 sign-on bonus. Earn \$1.85/mile or more! No age restriction on tractors. Aerials. CRST. Malone 1-800-743-0435. www.JoinMalone.com

DRIVERS-OWNER/OPERATORS Solo, teams, fleets. At least 2,800 miles per week. Home every 10-14 days. We have more freight than available trucks. 1-877-901-8591.

DRIVERS-PAID CDL training and a stable career! No credit check, no experience required! Trainers earn 49¢/mile! 1-888-417-7564. CRST Expedited. www.JoinCRST.com

DRIVERS-STUDENTS looking for a new career/guaranteed job? FFE is offering free tuition at our FFE driver academy in Fort Worth, Texas. Call 1-800-569-9232 or e-mail: recruit@ffe.net

YOU GOT THE drive, we have the direction. OTR drivers. APU Equipped. Pre-Pass. EZ-pass. Pets / passenger policy. Newer equipment. 100% NO touch. 1-800-528-7825 www.westernland.com

HELP WANTED
CALIFORNIA BOUND: Place in Vegas, hang in L.A. jet to New York. Hiring girls/guys. \$400-\$800 weekly. Paid expenses. call 1-877-259-6983.

BE YOUR OWN BOSS delivering trucks from TX to locations across the U.S. Average over \$33,000 net per year with immediate settlements each trip Call 1-866-764-1601 or www.qualitydriveaway.com

CALIFORNIA BOUND: Guys/Gals to travel USA with coed business group representing major Rock & Roll, fashion and sports publications. Transportation furnished. Must start ASAP. 1-888-802-8747

REAL ESTATE
\$106 MONTH BUYS land for RV, MH or cabin. Gated entry, \$690 down. (\$6900/10.91%/7yr) 90 days same as cash. Guaranteed financing. 1-936-377-3235

\$7.82 ACRES, SOUTH of Sonora. Heavy cover, end of road and well. White-tail, axis, aoudad, hogs, turkey. \$1125/acre, owner or TX vet financing. 1-800-876-9720. www.hillcountryranches.com

676 ACRES-REEVES County, 15 Miles North Pecos. River frontage. Call Jack 1-214-755-6224

AFFORDABLE RESORT LIVING on Lake Fork. RV and manufactured housing OK! Guaranteed Financing with 10% down. Lots starting as low as \$6900. Call Josh, 1-903-878-7265

ABSOLUTELY THE BEST VIEW Lake Medina/Bandera 1/4 acre tract, central W/S/E, RV/motor home/house, OK only \$830 down \$235 month (12.91%/10yr). Guaranteed financing. more information call 1-830-460-8354

MULE DEER, Terrell County, south of Sanderson. Remote 4-s4 country, corner of ranch, deer, birds, javelina. 381.27 acres, \$295/acre, more available, owner financed. 1-866-286-0199. www.westernland.com

RUIDOSO, NM AREA, 5 acres with city water and city maintained roads near small fishing pond and golf course. Only \$19,900, financing available. Call NMRS: 1-877-926-8201

SCHOOLS/TRAINING
AIRLINES ARE HIRING Train for high paying aviation career! FAA approved program. Financial aid if qualified, job placement assistance. Call Aviation Institute of Maintenance. 1-877-523-4531

HIGH SCHOOL DIPLOMA graduate in 4 weeks! Free brochure! Call now! 1-866-562-3650. ext. 55. www.southeasternHS.com

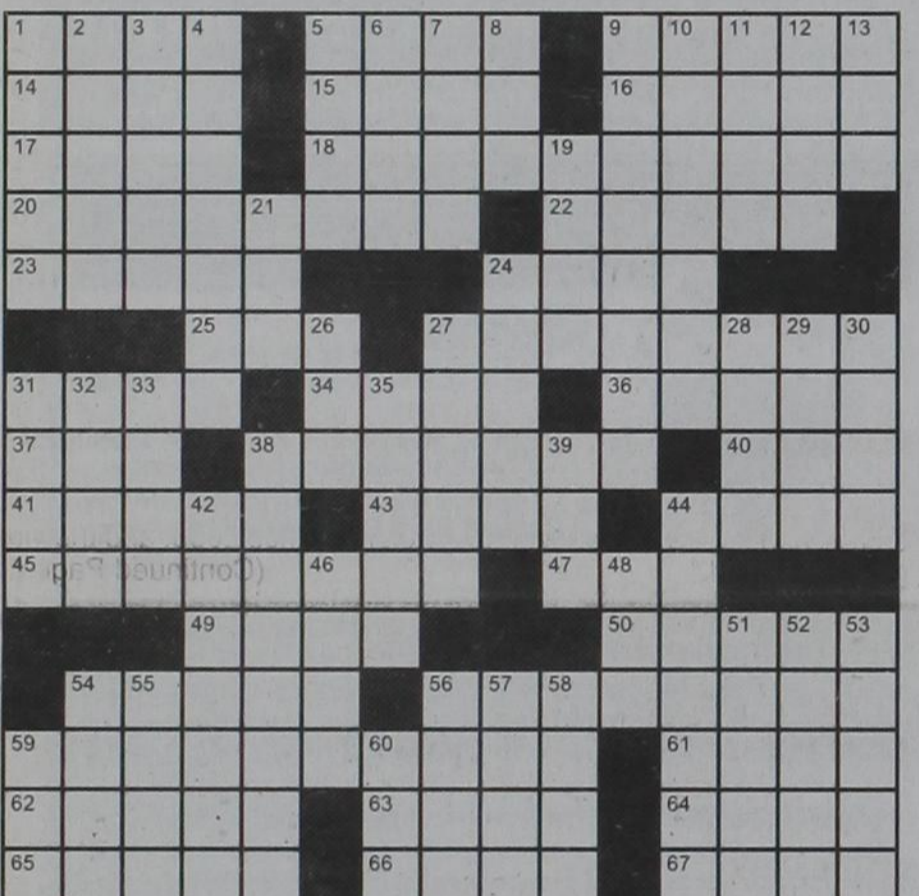
STEEL BUILDINGS
 2010 INVENTORY - Must go! Steel buildings at blow out prices, easy payments. Act now! 1-800-991-9251. www.usbuildingsystems.com

Run Your Ad In TexSCAN!
 Statewide Ad.....\$500
 301 Newspapers, 942,418 Circulation
 North Region Only.....\$230
 98 Newspapers, 283,811 Circulation
 South Region Only.....\$230
 101 Newspapers, 366,726 Circulation
 West Region Only.....\$230
 102 Newspapers, 311,881 Circulation
 To Order: Call this Newspaper direct, or call Texas Press Service at 1-800-749-4793 Today!

NOTICE: While most advertisers are reputable, we cannot guarantee products or services advertised. We urge readers to use caution and when in doubt, contact the Texas Attorney General at 1-800-621-0508 or the Federal Trade Commission at 1-877-FTC-HELP. The FTC web site is www.ftc.gov/bizop

Extend your advertising reach with TexSCAN, your Statewide Classified Ad Network.

Crossword PUZZLE



- Across
 1. Verse writer
 5. Mountaineer's worry
 9. Dismay
 14. Cleanse
 15. Musical finale
 16. Blessing
 17. Mouse manipulator
 18. Punctuation mark
 20. Kind of show
 22. Southeast Asian kebab
 23. Aromatic compound
 24. Peel
 25. Soap ingredient
 27. Showy yellow or orange flower
56. Change of mind
 59. A ships officer
 61. Capture
 62. Hitter of 755 home runs
 63. Farm sound
 64. All square
 65. Permit
19. Nicholas II, for one
 21. Give it a go
 24. It eats shoots and leaves
 26. Fall back
 27. Flowing tresses
 28. Rev. Roberts

H&H Tire & H&H Dirt Works
 403 S. Red River
 Wheeler, TX 79096
806/826-5759
 66. Deuce topper
 67. Rip apart
 Down
 1. Feather in one's cap

2. Desert sight
 3. News subject
 4. In a short and concise manner
 5. Mark for life
 6. Easy gait
 7. Hollywood favorite
 8. Dance step
 9. A person who advocates for farmers
 10. Someone who is mentored
 11. One of the Three Bears
 12. Stiff and sore
 13. Wranglers alternative
31. Whirling water
 34. Breakfast staple
 36. Eagle's home
 37. Owed and payable
 38. Leave behind
 40. "___ you sure?"
 41. Window pane
 43. Steady
 44. Happy
 45. Eclipsis
 47. Road crew's supply
 49. Told a whopper
 50. Catalogs
 54. Steeple

DIRECTV
 Direct Sat TV
1-800-360-1395
 Local Installers!
 Offers end 1/20/11 on approved credit. New customers only. Other restrictions apply. Call for details.

**285+ Channels
 160+ HD Channels**
Packages Start At \$29.99 Mo.
2 FREE Upgrades - HD DVR & HD Receiver - Ask How!
HBO SHOWTIME starz cinemax
For 3 Months

STOP LEG CRAMPS BEFORE THEY STOP YOU.

Calcel® is designed to help stop low calcium leg cramps. Just ask your pharmacist.

Calcel®
 Dual Calcium & Vitamin D3
 Helps fight leg cramps
 For those with milk allergies
 Fights osteoporosis

Mission PHARMACEUTICAL

OLD TIMES NOT FORGOTTEN

By Roland Miles

WE LOST OUR SCHOOL BUS!

Without knowing the circumstances, you might wonder; how in the world, could you lose a school bus? Well, the truth is, we just lost the use of it. We always knew where it was actually located. Here's pretty much how that came about.....

This was the bus that ran our route northeast of town. There were several small, dry, creek beds, or "draws" as we called them, that we had to cross every day. This was never a problem, even when it rained a little. We'd just drive right on through; only this particular time, it wasn't just a small rain...it was a genuine, "frog strangler." It was still running about a foot and a half or two feet deep out in the middle. This was a draw the driver had crossed several times before when the water was that deep, without any problem.

This time, for whatever reason, the bus drowned out and didn't want to fire back up. The rear end was so close to dry ground that the few remaining kids opened the emergency exit door and jumped out the back, without even getting their feet wet. The driver got out and walked to a neighbor's house. After talking to the farmer, they decided they were going to pull it out with a tractor, but by the time they got back, the bus was lying on its side. The water had washed away the sand from around the tires that were on the upstream side of the bus and that caused it to lay over. Water was now running through the windows. The tractor wouldn't budge it!

The next day, the county brought out a bulldozer. They tried to drag it out, but each time they pulled on it, part of the frame would tear loose. They finally took a cutting torch and salvaged the frame, tires, and engine. After that, they just ran over the body with the dozer a few times, then dumped several loads of caliche on top of it. After smoothing that out, it all

became part of the road. The next spring, it came another big rain that washed it up and tumbled it a couple a hundred yards down into Uncle Fat's pasture. For several years, it would move on down the draw a little farther each spring. I guess it's still down there in the pasture somewhere, just a relic from the past....

Oil & Gas NEWS

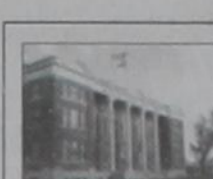
(New Location, Completion and Plugging Report made possible by Oil & Gas Reporting Service, 3930 Beaver St., Vemon, TX 76384. Doris Harrison, Phone: 940/552-6644.)

Week Ending March 3, 2011
 Intentions to Drill
HEMPHILL (BUFFALO WALLOW Granite Wash) Forest Oil Corp., for the following Horizontal wells: #1046H Cantwell, 250' from South & 550' from East line, Sec. 46, 41, H&TC, PD 17500' (BHL: 350' from North & 2650' from West Sec. line)
HEMPHILL (BUFFALO WALLOW Granite Wash) Jones Energy Ltd., #23H Zybach '66', 275' from South & 1745' from East line, Sec. 66, M-1, H&GN, PD 15700' (BHL: 467' from North & 1745' from East

Old Time Gospel Music
KPDR-FM, 90.5
 ... In Wheeler
 Sundays: 6:00 a.m. to 8:00 a.m.

Sec. line) Horizontal
**HEMPHILL (HEMPHILL Granite Wash) Devon Energy Producing Co. LP, #2H Young '52', 300' from South & 1325' from West line, Sec. 52, A-2, H&GN, PD 14500' (BHL: 375' from North & 1320' from West Sec. line) Horizontal
**ROBERTS (ALPAR-LIPS Tonkawa) Latigo Petroleum Inc., #5 Courson Ranch '157', 660' from South & 1158' from East line, Sec. 157, 13, T&NO, PD 5992'. Recompletion
**ROBERTS (N.W. MENDOTA Granite Wash) BP America Production Co., #13H J.C. Vollmert, 2051' from North & 1182' from East line, Sec. 2, -, BS&F, PD 10500' (BHL: 150' from North & 2019' from East Sec. line) Horizontal
ROBERTS (N. W. MENDOTA Granite Wash) Unit Petroleum Co., for the following Horizontal wells:
 #1H Chambers 'B', 820' from North & 2170' from East line, Sec. 65, B-1, H&GN, PD 10310' (BHL: 350' from South & 2430' from East Sec. line)
 #11H Vollmert 'B' SL, 350' from North & 1620' from East line, Sec. 9, -, BS&F, PD 10000' (BHL: 150' from South & 1620' from East Sec. line)
**ROBERTS (WILDCAT & ROBERTS CO. St. Louis) Range Production Co., #6079H J.L. Flowers, 230' from South & 614' from East line, Sec. 79, C, G&M, PD 14500' (BHL: 2238' from North & 502' from East Sec. line) Horizontal
**WHEELER (ALLISON-PARKS Granite Wash) Chesapeake Operating Inc., #2H Rogers '5', 350' from South & 2500' from East line, Sec. 5, RE, R&E, PD 14000' (BHL: 350' from North & 2500' from East Sec. line) Horizontal
**WHEELER (BUFFALO WALLOW Granite Wash) Devon Energy Producing Co., LP, #3 Karen Meek '71', 230' from South & 660' from East line, Sec. 71, M-1, H&GN, PD 14500' (BHL: 375' from North & 660' from East Sec. line) Horizontal
**WHEELER (BUFFALO WALLOW Granite Wash) Devon Energy Producing Co., LP, #6H Hefley '36', 200' from North & 1100' from East line, Sec. 36, M-1, H&GN, PD 14500' (BHL: 375' from South & 800' from East Sec. line) Horizontal
**WHEELER (MILLS RANCH Granite Wash) Watershark LLC, #1 Watershark SWD, 600' from South & 300' from West line, Sec. 2, -, BBB&C, PD 5700'. Injection well
WHEELER (STILES RANCH Granite Wash Cons.) Linn Operating Inc., #2H Dobson Ranch '40', 270' from South & 2720' from West line, Sec. 40, A-3, H&GN, PD 13309' (BHL: 367' from North & 2720' from West****************

Sec. line) Horizontal
**WHEELER (STILES RANCH Granite Wash Cons.) Pogo Production Co. LLC, #1026H Britt, 416' from North (off lease) & 678' from East (off lease) line, Sec. 15, A-3, H&GN, PD 18000' (BHL: 549' from North & 740' from East Sec. line) Horizontal
**WHEELER (WEST-PARK Granite Wash) Samson Lone Star LLC, #613H Zybach, 260' from North & 2555' from East line, Sec. 2, -, C&S, PD 12200' (BHL: 467' from South & 2640' from East Sec. line) Horizontal
**WHEELER (N.E. WHEELER Granite Wash) Chesapeake Operating Inc., #5H Meek '41', 200' from South & 550' from West line, Sec. 41, A-4, H&GN, PD 17000' (BHL: 350' from North & 550' from West Sec. line) Horizontal
**WHEELER (N.E. WHEELER Granite Wash) Forest Oil Corp., #1036H Lantern Tree, 200' from South & 550' from West line, Sec. 36, A-4, H&GN, PD 17500' (BHL: 300' from North & 550' from West Sec. line) Horizontal
**WHEELER (WILDCAT & BUFFALO WALLOW Granite Wash) Linn Operating Inc., #4H Donelson '15', 300' from South & 940' from East line, Sec. 15, RE, R&E, PD 12392' (BHL: 367' from North & 940' from East Sec. line) Horizontal
**WHEELER (WILDCAT & FRYE RANCH Consolidated) Linn Operating Inc., Reed '2', Sec. 2, 4, B&B, for the following Horizontal wells:
 #1H, 250' from South & 1800' from East line of Sec., PD 12559' (BHL: 367' from North & 2400' from East Sec. line)
 #2H, 250' from South & 550' from East line of Sec. PD 12580' (BHL: 367' from North & 550' from East Sec. line)
 #3H, 250' from South & 1000' from West line of Sec., PD 12487' (BHL: 367' from North & 700' from West Sec. line)
 Oil Well Completion
**HEMPHILL (FELDMAN Tonkawa) Chesapeake Operating Inc., #141H Bill, Sec. 14, 43, H&TC, spud 9-17-10, drlg. compl 10-9-10, tested 1-25-11. gas lift 112 bbls. of 45 grav. oil + 560 bbls. water on 24 hour test, GOR 1107, TVD 7525', MD 12240"-- Horizontal
 Gas Well Completions
**HEMPHILL (ALLISON-PARKS Granite Wash) Chesapeake Operating Inc., #301H Lohberger, Sec. 1, -, B&B, spud 9-25-10, drlg. compl 11-9-10, tested 2-15-11, potential 24452 MCF, TVD 11672', MD 16096"-- Horizontal
HEMPHILL (ALLISON-PARKS Granite Wash) Samson Lone Star, LLC, #3020H Aitkenhead, Sec. 20, Z-1, BS&F, spud 8-8-10, drlg. compl 10-7-10, tested 2-2-11, po-****************



tential 3855 MCF, TVD 11721', MD 16010"-- Horizontal
**HEMPHILL (ALLISON-PARKS Granite Wash) Samson Lone Star, LLC, #404H Young Trust, Sec. 4, M-1, H&GN, spud 10-17-10, drlg. compl 11-25-10, tested 2-1-11, potential 18725 MCF, TVD 11724', MD 15960"-- Horizontal
**HEMPHILL (BEGERT 10200) Laredo Petroleum Inc., #1 Washita River '34', Sec. 34, 41, H&TC, spud 5-31-10, drlg. compl 6-21-10, tested 8-16-10, potential 595 MCF, TD 13400', PBTD 13381"-- Horizontal
**HEMPHILL (BUFFALO WALLOW Granite Wash) Forest Oil Corp., #0902H RW, Sec. 9, 41, H&TC, spud 6-1-10, drlg. compl 9-19-10, tested 9-24-10, potential 20496 MCF, TVD 11210', MD 15465"-- Horizontal
HEMPHILL (BUFFALO WALLOW Granite Wash) Forest Oil Corp., #1101H Walker, Sec. 11, 41, H&TC, spud 9-14-10, drlg. compl 11-23-10, tested 11-29-10, potential 9576 MCF, TVD 11116', MD 14980"-- Horizontal******

Scholarship Deadline For '11 Seniors

AUSTIN, Texas — Texas high school seniors have until March 28 to apply for the Don't Mess with Texas scholarship.

The 8th annual scholarship is sponsored by Dow Chemical Company in partnership with Keep Texas Beautiful. The first-place winner will receive \$3,000. The second- and third-place winners will receive \$1,000 each. Don't Mess with Texas is the litter prevention campaign of the Texas Department of Transportation.

The scholarship is one of TxDOT's efforts to generate more youth involvement in Don't Mess with Texas, since research shows that age is the number-one predictor of littering behavior, with Texans ages 16-34 littering the most.

Any Texas high school senior who will attend a two- or four-year Texas college or university can apply. For the essay prompt, application, rules, and background information, visit <http://dontmesswithtexas.org/pro>

grams/scholarship/. Winners will be notified in April.

2011 marks the 25th anniversary of the Don't Mess with Texas campaign.

About Don't Mess with Texas
 Don't Mess with Texas has been educating Texans about litter prevention since 1986. TxDOT's litter prevention program includes Adopt-a-Highway and a grassroots partnership with Keep Texas Beautiful. Don't Mess with Texas activities also include a spring "Trash-Off," community outreach, a scholarship, a corporate partner program, and a photo album where Texans can share their iconic Texas images. For more information, visit www.DontMessWithTexas.org.

TxDOT's goals are to prepare for the future, enhance safety, maintain the transportation system, relieve congestion, enhance connectivity, and work with partners to identify funding strategies. For more information, visit www.txdot.gov.

DPS Discourages Travel To Mexico

The Texas Department of Public Safety is urging Spring Breakers to avoid traveling to Mexico because of continued violence—and reminding boaters to stay on the U.S. side of Falcon Lake.

Falcon Lake has been the scene of several robberies and a U.S. citizen's murder, and DPS is again warning boaters to steer clear of the Mexican side of the lake. Cartel activity remains high in that area.

"While drug cartel violence is most severe in northern Mexico, it is prominent in other parts of the country as well," said DPS Director Steven C. McCraw. "Various crime problems also exist in many popular resort areas, such as Acapulco and Cancun, and crimes against U.S. citizens often go unpunished."

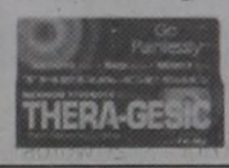
So far this year, an ICE agent was killed and another injured in a suspected ambush near San Luis Potosi February 15. Two El Paso teens were gunned down February 5 in Ciudad Juarez. In January, a Texas missionary was shot in the head when she and her husband ran an illegal road block in Nuevo Leon.

In addition to U.S. citizens killed so far this year, preliminary figures show as many as 65 Americans were killed in Mexico in 2010. Kidnapping, sexual assault, robbery and carjacking also are threats in parts of Mexico. Suspects have not been prosecuted in many of the cases. Meanwhile, more than 30,000 Mexican citizens have died in drug-related violence since 2006, and the violence is ongoing.

(Continued Page 6)

Sir Figalot Wins Again!

BEXAR COUNTY—Ricky Taylor, after using Thera-Gesic® on his sore shoulder due to a tip from local resident Tom W., was able to win his 4th Fig Eating Contest in a row. He ate 3.9 lbs. of figs in 10 minutes to secure the Blue Ribbon and retain his title of "Sir Figalot."

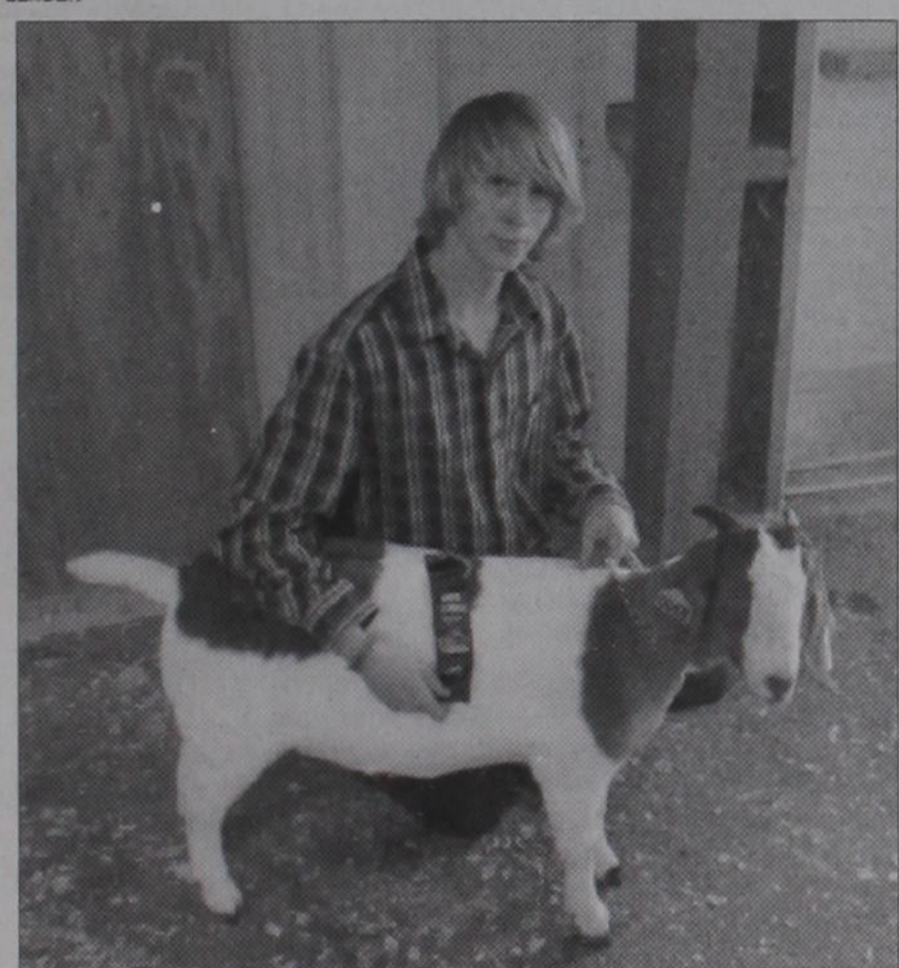


Go Painlessly.
 BUY, SAVE, WIN
 with THERA-GESIC®

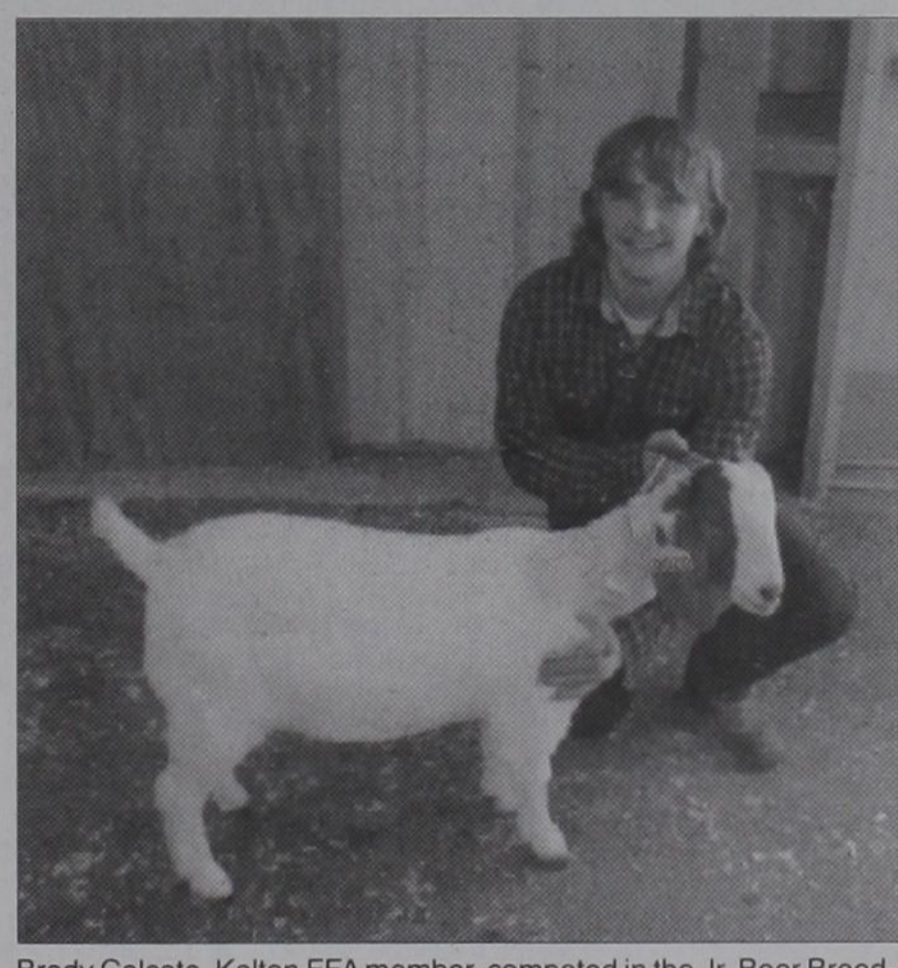


Citizens BANK

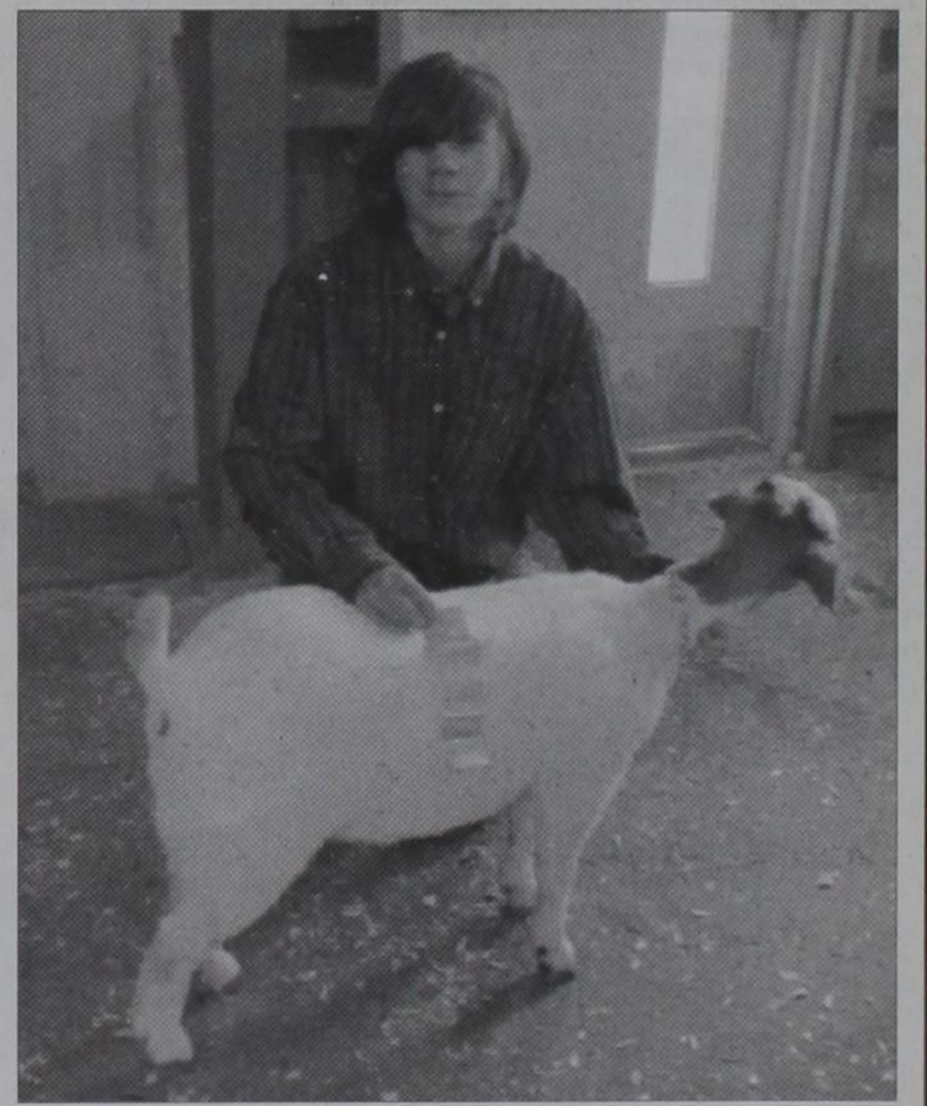
711 N. Main St. • Shamrock • 806.256.3255



Brett Johnson of the Kelton FFA Chapter competed in the Jr. Boer Breeding Show and the Star Doe of Texas Show at the San Angelo stock show on February 18. Brett placed 9th in the Star Doe of Texas Show in the Middle Heavy Weight Class.



Brody Calcote, Kelton FFA member, competed in the Jr. Boer Breeding Show and the Star Doe of Texas Show at the San Angelo Stock Show on February 18. Brody placed 5th in Class 1 of the Light Weight Does.



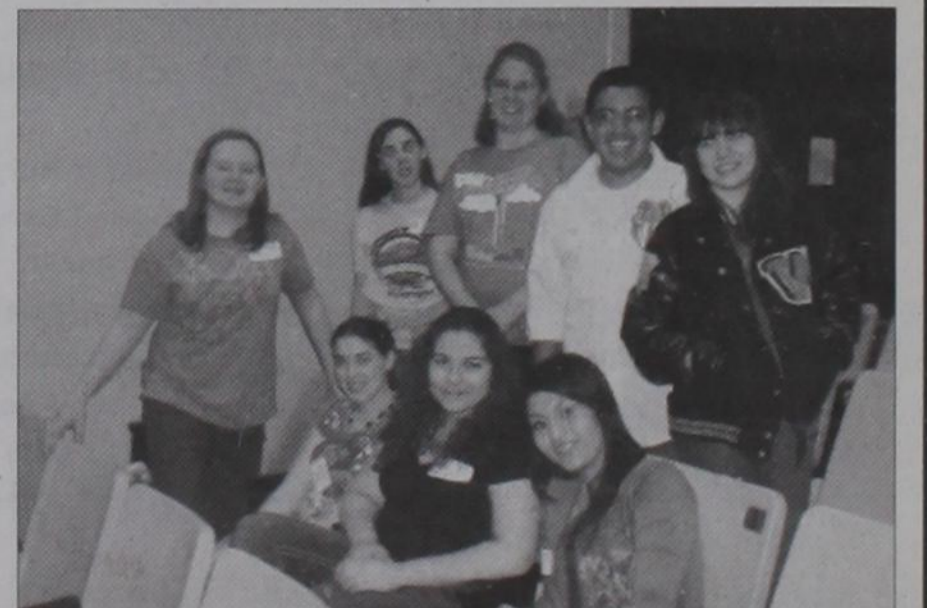
Kelton FFA member Ethan Johnson competed in Jr. Boer Breeding Show and the Star Doe of Texas Show at the San Angelo Stock Show on February 18. Ethan place 5th in the 1st Medium Weight Class.



Kelton's Stephanie Price, Sarah Garner, and Audra Weatherly placed 3rd in the Fruits and Vegetables in the Intermediate Division at the District 1 4-H Food Challenge in Amarillo.



(Right) Shai Dougherty of Kelton I.S.D. Only the top 8% of those competing at Regional in the Visual Art Scholastic Event go on to compete at State. Shai Dougherty was 1 of 13 in Division 1 to go on to State. In Division 1 there were 163 entries and only 13 got selected to go on to State.



All of these students received the highest rating you could get at Regional in the Visual Art Scholastic Event. They all did really well in their interviews and worked hard. Kelton students pictured here are Paul Luna, Paloma Contreras, Charmagne Hampton, Kristen Garner, Shai Dougherty, Tammy Lumpkin, Cierra Alvarado.

HOME PHONE SERVICE
 NO Pre-Payment • NO Deposit Required!
Rates from \$6.99 per month*
 (\$17/month including approximate taxes & fees)
FREE 1st Month of Service
 Caller ID & Call Waiting included in Packages**
New-Talk 866.934.3448

GET CASH NOW!
1-866-FUND-108
 Get cash for your structured settlement or annuity payments. High payouts. Rated A+ by the Better Business Bureau.
J.G. WENTWORTH™
www.jgwentworth.com

DISH Network's
 LOWEST ALL-DIGITAL PRICE!
 As low as \$24.99/mo plus **FREE HD FOR LIFE!**
 Call for limited time BONUS!
Call Now!
1-866-799-8039

Court (from Page 2)

AFF.-Ted D. Simmons, et al to Minco Oil and Gas LP, et al, 2-25-11, 6 acs. Sec. 33, Blk. 24, H&GN Ry. Company Survey.
 CONVEYANCE-Victor E. Salvino to Teal Royalties LLC, et al., 5-21-09, See Instrument.
 EXT. DT-Roy Dale Kidd, et al to National Bank of Commerce, 2-2-11, All Lots 7-10, W 100' S 40' Lot 11, Blk. 14, Wheeler.
 RATIFICATION OL-Ladona Kay Honeycutt to Sanguine Gas Exploration LLC, 1-24-11, Sec. 48, Blk. A-8, H&GN Ry. Company Survey.
 RATIFICATION OL-Teresa Burrell Kendall to Sanguine Gas Exploration LLC, 1-28-11, Sec. 48, Blk. A-8, H&GN Ry. Company Survey.
 RATIFICATION OL-Elisha Burrell-Bonner to Sanguine Gas Exploration LLC, 1-31-11, Sec. 48, Blk. A-8, H&GN Ry. Company Survey.
 RATIFICATION OL-Kelly L. Burrell to Sanguine Gas Exploration LLC, 2-14-11, Sec. 48, Blk. A-8, H&GN Ry. Company Survey.
 ASSIGN./CONVEYANCE-Trigg Drilling Company 1980-1 Joint Venture to Joe Dan Trigg Living Trust, 2-22-11, Sec. 2, Blk. 2, Brooks & Burleson Survey.
 POA-Stephen Arville Bruton to Barbara Ann Little, et vir, 11-29-10.
 MD-E. Keith Coltharp to Sheila R. Reynolds, 2-9-11, Sec. 34, Blk. A-7, H&GN Ry. Company Survey.
 MD-E. Keith Coltharp to Sheila R. Reynolds, 2-9-11, Sec. 35, Blk. A-7, H&GN Ry. Company Survey.
 MD-E. Keith Coltharp to Sheila R. Reynolds, 2-9-11, W/2 Sec. 51, Blk. A-7, H&GN Ry. Company Survey.
 OL-David Meriwether Bledsoe to Sanguine Gas Exploration LLC, 1-25-11, S/2 Sec. 2, Blk. A-2, H&GN Ry. Company Survey.
 OL-David Meriwether Bledsoe to Sanguine Gas Exploration LLC, 1-25-11, E/2 Sec. 88, Blk. A-5, H&GN Ry. Company Survey.
 OL-David Meriwether Bledsoe to Sanguine Gas Exploration LLC, 1-25-11, Sec. 93, Blk. A-5, H&GN Ry. Company Survey.
 OL-William Burnett Bledsoe to Sanguine Gas Exploration LLC, 1-25-11, S/2 Sec. 2, Blk. A-2, H&GN Ry. Company Survey.
 OL-William Burnett Bledsoe to Sanguine Gas Exploration LLC, 1-25-11, E/2 Sec. 88, Blk. A-5, H&GN Ry. Company Survey.
 OL-William Burnett Bledsoe to Sanguine Gas Exploration LLC, 1-25-11, Sec. 93, Blk. A-5, H&GN Ry. Company Survey.

Ry. Company Survey.
 OL-William Burnett Bledsoe to Sanguine Gas Exploration LLC, 1-25-11, Sec. 94, Blk. A-5, H&GN Ry. Company Survey.
 RATIFICATION OL-Markus W. Burrell to Sanguine Gas Exploration LLC, 2-17-11, Sec. 48, Blk. A-8, H&GN Ry. Company Survey.
 ASSUMPTION AGREE.-Chesapeake Energy Marketing Inc. to Chesapeake Midstream Gas Services LLC, 2-10-11, 231.79 acs. in North End Sec. 1, C&M Survey.
 PARTIAL ASSIGN./ASSUMPTION-Chesapeake Midstream Gas Services LLC to Chesapeake Operating Inc., 2-11-11, SE/4 Sec. 4, Blk. 5, Brooks & Burleson Survey.
 OL-Cecil Meadows to Cordillera Energy Partners III LLC, 2-3-11, W/2; NE/4 Sec. 21, Blk. A-4, H&GN Ry. Company Survey.
 ROW-Francis Bryan Pride, et ux to Forest Oil Corporation, 2-18-11, Pt. SE/4 Sec. 11, Blk. A-3, H&GN Ry. Company Survey.
 ROW-Jeraldine Pride, et vir to Forest Oil Corporation, 2-18-11, Pt. SE/4 Sec. 11, Blk. A-3, H&GN Ry. Company Survey.
 FTL-United States of America to Billy J. Henning, 2-22-11.
 ROW-Lott Family Limited Partnership, et al to Chesapeake Midstream Gas Services LLC, 2-7-11, Pt. NE/4 Sec. 16 and Pt. SE/4 Sec. 17, Blk. 3, Camp County School Land.
 ROW-Atherton Family Limited Partnership to Chesapeake Midstream Gas Services LLC, 2-4-11, Pt. W/2 W/2; E/2 SW/4; W/2 SE/4 Sec. 1 and Pt. E/2 E/2 Sec. 2, Blk. A-3, H&GN Ry. Company Survey.
 ROW-Mary Jane Dukes to Chesapeake Midstream Gas Services LLC, 12-27-10, Pt. NW/4 Sec. 21, Camp County School Land.
 ROW-Lott Family Limited Partnership, et al to Chesapeake Midstream Gas Services LLC, 12-17-10, Pt. NE/4 Sec. 16, Blk. 3, Camp County School Land.
 ROY/MD-Pearlene J. McManus to Southwest Petroleum Company, 1-24-11, Sec. 12, Blk. 24, H&GN Ry. Company Survey.
 REVOCATION LIVING TRUST-Ann Reed to The Public, 2-18-11.
 REVOCATION LIVING TRUST-L. G. Reed to The Public, 2-16-11.
 MD-Anna P. Reed to Louis Gene Reed, 2-17-11, SE/4 Sec. 11, Camp County School Land.
 DEED-Anna P. Reed to Louis Gene Reed, 2-17-11, W 322 acs. Sec. 70, Blk. A-7, H&GN Ry. Company Survey.
 MARCH 1, 2011
 THIRD AMEND. DT-Brigham Oil & Gas LP to Bank of America NA, 2-23-11, See Instrument.
 AMENDMENT ROW-Dean Tipps, et ux to Eagle Rock Field Services LP, 11-23-10, Pt. Sec. 13, Blk. R.E., Roberts & Eddleman Survey.

CORR. ASSIGN. BS-Apollo Investment to W. H. O'Brien, 2-11-11, See Instrument.
 DEED-Richard Dale Meadows, et al to Brady Fulton Meadows, 1-27-11, N 100' Blk. 52, Stanley Add., Wheeler.
 DEED-Brady Fulton Meadows to Joe R. Weatherly, et ux, 2-24-11, 100' x 140' Blk. 52, Stanley Add., Wheeler.
 OL-Bernice Hefley to R K Pinson & Associates (TX) LLC, 2-16-11, SW/4 SW/4 Sec. 4, BS&F Survey.
 ASSIGN.-R K Pinson & Associates (TX) LLC to Granite Operating Company, 2-23-11, W/2; NE/4 Sec. 21, Blk. A-4, H&GN Ry. Company Survey.
 OL-Areana Minerals & Investors to Cordillera Energy Partners III LLC, 12-23-10, S/2 NE/4 Sec. 26, Blk. R.E., Roberts & Eddleman Survey.
 OL-Connie Moore Baker to Cordillera Energy Partners III LLC, 12-29-10, S/2 NE/4 Sec. 26, Blk. R.E., Roberts & Eddleman Survey.
 OL-Leon Dale Moore to Cordillera Energy Partners III LLC, 12-23-10, S/2 NE/4 Sec. 26, Blk. R.E., Roberts & Eddleman Survey.
 OL-Charles and Margaret Pendleton Revocable Trust to Cordillera Energy Partners III LLC, 1-7-11, S/2 NE/4 Sec. 26, Blk. R.E., Roberts & Eddleman Survey.
 OL-Eileen Moore Huyck to Cordillera Energy Partners III LLC, 1-10-11, S/2 NE/4 Sec. 26, Blk. R.E., Roberts & Eddleman Survey.
 OL-Darrell Wayne Moore to Cordillera Energy Partners III LLC, 12-30-10, S/2 NE/4 Sec. 26, Blk. R.E., Roberts & Eddleman Survey.
 OL-Telenia Anthony to Cordillera Energy Partners III LLC, 1-7-11, S/2 NE/4 Sec. 26, Blk. R.E., Roberts & Eddleman Survey.
 OL-Maureta Croslin to Cordillera

Energy Partners III LLC, 1-3-11, S/2 NE/4 Sec. 26, Blk. R.E., Roberts & Eddleman Survey.
 HEIRSHIP AFF.-Margaret A. Vizio, et vir to Ann A. Habecker, 2-9-11, S/2 Sec. 47, Blk. 24, H&GN Ry. Company Survey.
 OL-Weatherly Family Limited Partnership to Manning Land LLC, 3-1-11, NE/4 Sec. 38, Blk. A-4, H&GN Ry. Company Survey.
 DEED-John Woodson Jones, et al to Stacy McCasland, 3-1-11, Pt. Lot 1 and All Lot 4, Blk. 3, Stanley's Second Addition, Wheeler.
 ASSIGN. OVERRID. ROYALTY-FC LLC (Custodian), et al to Sterling Trust (Custodian), 2-4-11, Sec. 60, Blk. M-1, H&GN Ry. Company Survey.
 DEED ASSIGN. BS-V B and Clara Mae West Trust to West-Miller Trust, 2-28-11, S/2 NW/4 Sec. 9, Blk. A-3, H&GN Ry. Company Survey.
 MARCH 2, 2011
 HEIRSHIP AFF.-Ronald Eugene Doss to Brenda J. Buchanan Doss (Deceased), 2-22-11.
 AFF.-Linda Cox, et al to Gaddy Vise (Deceased), et al, 2-23-11.
 QCMD-Charles Trochta, et ux to Trochta LLC, 2-27-11, SW/4; N/2 Sec. 18 and NW/4; SW/4 Sec. 4, Blk. A-3, H&GN Ry. Company Survey.
 QCMD-Charles Trochta, et ux to Trochta LLC, 2-27-11, SW/4 Sec. 19, Blk. A-3, H&GN Ry. Company Survey.
 OL-Brookline Minerals LLC to QEP Energy Company, 2-11-11, SW/4 Sec. 11, Blk. L, J. M. Lindsey Survey.
 UNIT DESIGN.-Linn Energy Holdings LLC, et al to Barbara Sue Miller, et al, 8-19-10, E/2 Sec. 22, Blk. 4, Camp County School Land.
 OL-Linda E. Calcote to Chesapeake Exploration LLC, 1-28-11, W/2 NW/4 Sec. 29, Blk. A-8, H&GN Ry. Company Survey.
 PARTIAL ASSIGN.-Chesapeake Exploration LLC to Larchmont Resources LLC, 1-29-11, See Instrument.
 ROW-Mark A. Arrington to Cross Texas Transmission LLC, 2-25-11, Pt. Sec. 49, Blk. 24, H&GN Ry. Company Survey.
 ROW-Ben H. Hill Jr. to Cross Texas Transmission LLC, 2-22-11, Pt. Sec. 46, Blk. 17, H&GN Ry. Company Survey.
 ROW-Darba Jo Moss Stevenson to Cross Texas Transmission LLC, 2-18-11, Pt. Sec. 46, Blk. 17, H&GN Ry. Company Survey.
 ROW-Charles R. Perez, et ux to Cross Texas Transmission LLC, 2-17-11, Pt. Sec. 89, Blk. 17, H&GN Ry. Company Survey.
 ROW-Ben H. Hill III to Cross Texas Transmission LLC, 2-25-11, Pt. Sec. 46, Blk. 17, H&GN Ry. Company Survey.
 ROW-Robert Lee Moss to Cross Texas Transmission LLC, 2-28-11, Pt. Sec. 46, Blk. 17, H&GN Ry. Company Survey.
 OL-James M. Verden, et ux to Sanguine Gas Exploration LLC, 2-17-11, NW/4; Pt. NE/4 Sec. 59, Blk. A-8, H&GN Ry. Company Survey.
 ASSIGN.-Multi-Financial Investments LLC to Sanguine Gas Exploration LLC, 2-18-11, Sec. 6, AB&M Survey.
 OL-Jerry Dan Hefley, et ux to Sanguine Gas Exploration LLC, 2-15-11, Sec. 59, Blk. A-8, H&GN Ry. Company Survey.
 AFF.-Scott Osborne to Sanguine Gas Exploration LLC, 2-25-11, Secs. 42, 58, 59, 60 Blk. A-5, H&GN Ry. Company Survey.
 DECLARATION-Sanguine Gas Exploration LLC to The Public, 2-24-11, S/2 N/2; S/2 Sec. 33, Blk. A-7, H&GN Ry. Company Survey.
 OL-Robert Chandler Bledsoe Jr. to Sanguine Gas Exploration LLC, 1-25-11, S/2 Sec. 2, Blk. A-2, H&GN Ry. Company Survey.
 OL-Robert Chandler Bledsoe Jr. to Sanguine Gas Exploration LLC, 1-25-11, E/2 Sec. 88, Blk. A-5, H&GN Ry. Company Survey.
 OL-Robert Chandler Bledsoe Jr. to Sanguine Gas Exploration LLC, 1-25-11, Sec. 93, Blk. A-5, H&GN Ry. Company Survey.
 OL-Robert Chandler Bledsoe Jr. to Sanguine Gas Exploration LLC, 1-25-11, Sec. 94, Blk. A-5, H&GN Ry. Company Survey.
 MARCH 3, 2011
 D-Sharon Patterson to Bobby Joe Edwards, 3-2-11, Lot 16, Blk. 11, PBA, Shamrock.
 QCMD-Gary Glyckherr to Gary Glyckherr, et ux, 2-28-11, E 45.714 acs. S/2 Sec. 53, Blk. 24, H&GN Ry. Company Survey.
 AOL-Texhoma Land Consultants Inc. to Kaiser Francis Mid Continent LLC, 12-30-10, NW/4; N 70 acs. SW/4; S 90 acs. NW/4 Sec. 9, Blk. A-3, H&GN Ry. Company Survey.
 ROW-Gary D. Hall, et ux to Forest Oil Corporation, 2-25-11, Sec. 25, Camp County School Land.
 AOL-Bob Weatherly to Sanguine Gas Exploration LLC, 1-18-11, Secs. 42, 58, 59, 60, Blk. A-5, H&GN Ry. Company Survey.
 AOL-Bob Weatherly to Sanguine Gas Exploration LLC, 1-18-11, Secs. 42, 58, 59, Blk. A-5, H&GN Ry. Company Survey.
 AOL-Bob Weatherly, et al to Sanguine Gas Exploration LLC, 1-18-11, Secs. 62 and 63, Blk. A-5, H&GN Ry. Company Survey.
 OL-Janet Laycock to Sanguine Gas Exploration LLC, 2-22-11, SE.4 Sec. 75, Blk. A-5, H&GN Ry. Company Survey.
 OL-Becky Kay Alexander to Sanguine Gas Exploration LLC, 2-23-11, S/2 Sec. 59, Blk. A-5, H&GN Ry. Company Survey.
 P OF ATTY.-Debra Kay Alexander to Verna Pauline Barnes, 7-12-10, No Land.
 MARCH 4, 2011
 RATIFICATION UNIT DESIGN.-Linda A. Holt to QEP Energy Com-

THE WHEELER TIMES
 PAGE 6 - Thursday, March 10, 2011
 "Wheeler; town of friendship and pride."

ALLISON NEWS
 By Juanita Boydston

THEREFORE being justified by faith, we have peace with God through our Lord Jesus Christ: By whom also we have access by faith unto his grace wherein we stand, and rejoice in hope of the glory of God. And not only so, but we glory in tribulations worketh patience; And patience, experience; and experience, hope: And hope maketh not ashamed, because the love of God is shed abroad in our hearts by the Holy Ghost which is given unto us. For when we were yet without strength, in due time Christ died for the ungodly. For scarcely for a righteous man will one die: yet preadventure for a good man some would men dare to die. But God commendeth his love to us, in that, while we were yet sinners, Christ died for us. Much more then, being now justified by his blood, we shall be saved from wrath through him. Romans 5:1-9

The Lord is my shepherd; I shall not want. He maketh me to lie down in green pastures: he leadeth me beside the still waters. He restoreth my soul: he leadeth me in the paths of righteousness for his name's sake. Yea, though I walk through the valley of the shadow of death, I will fear no evil: for thou art with me; thy rod and thy staff they comfort me. Thou preparest a table before me in the presence of mine enemies: thou anointest my head with oil; my cup runneth over. Surely goodness and mercy shall follow me all the days of my life: and I will dwell in the house of the Lord for ever. Psalm 23

The weather in Allison, Texas USA on this Tuesday morning is very foggy and wet and cold and windy. Yes what a day!! But the Lord hath made it and so we are to rejoice and be glad in it. Praise be to Jesus. This reporters mother said that it lightened and thundered in the late night or early morning hours and this reporter didn't even know it. Now isn't that amazing! Miracles never cease for sure. If you are in a deep deep sleep, you hear nothing and know nothing happens. Thus the beauty of a deep sleep. We are thankful for the moisture that we received altho it wasn't much, but still will make it not so dry around here. Praise God!!

Louise Boydston flew to Saharita, Arizona on February 12th and spent two weeks with her daughter, LaQuinta and son in

Where are the Hospital Notes?

One of our subscribers, Mrs. Charles Weibe, sent a note with her paper renewal, asking why we no longer had the "Hospital Notes". They are no longer available, as it may interfere with the patient's privacy. Patients names are no longer posted on the board at the hospital.

Travel (from Page 5)

lence shows no signs of abating "Drug violence has not discriminated-innocent bystanders and people who may have been in the wrong place at the wrong time are among the casualties. Underestimating the violence in Mexico would be a mistake for parents and students," said McCraw. "Our safety message is simple: avoid traveling to Mexico during Spring Break and stay alive."

DPS acknowledges that many travel to Mexico without incident, but the risks cannot be ignored. Travelers are encouraged to carefully research any planned trips. Travelers should always check the U.S. State Department website for the most up-to-date information related to security issues in Mexico. (See http://travel.state.gov/travel/cis_pa_tw/cis/cis_970.html or http://mexico.usembassy.gov/eng/eacs_MexicoSecurityUpdate.html).

U.S. citizens living or traveling in Mexico are urged to register with the nearest U.S. Embassy or Consulate through their website at <https://travelregistration.state.gov/ibrs/ui/>.

law, Mike Hulse. Had a great time visiting, shopping and eating out, playing games, sat by the lake and watched people as they walked around for exercise. The weather was a little cooler than normal for there.

Kim Thompson picked Louise up at the airport and Louise spent the night with Kim and the next morning, Louise and Kim went to Cheryl's house and had breakfast. Cody and Kristina, Sabrina, Makenna and Maddie came over also. Had a great visit and the baby is a doll. She has lots of black hair. They say she is such a good baby.

On return home, Louise Boydston went to Elk City, Oklahoma and visited her mother, Pearl Harrison.

Her cousin and wife, Charles and Geraldine Townsley were there and Louise enjoyed seeing them. They had buried Charles' sister, Laverne Townsley the day before. Louise was sorry she couldn't be there but could not get a flight out earlier.

Shirley Chadwick kept the home fires burning while Louise was gone. Sue Martin came over for a few days with her. Opal and Juanita Boydston also visited her from time to time.

We covet your prayers for Vance Boydston, he is beginning treatment for his cancer today and will require four more treatments, this treatment today was seven hours long, but the others should only be two half hours long. Also pray for his kidney's as well, he only has forty percent usage of his kidney's. But we serve a God who can heal anything and nothing is impossible thru him. Praise God!! We believe that all things are possible thru him. So now we have to believe that he is going to heal his body.

The Allison community and surrounding areas are so very thankful for the Lord sparing the fire from burning their houses or getting to them. Praise the Lord for his blessings to us. Thank the Lord put on stand by but thank the Lord didn't have to evacuate. Thank the Lord for his goodness. We are praying for those that wasn't so lucky in Amarillo that day. It is so tragic to loose everything, but are thankful no lives were lost. Praise God for that. We can't thank our firefighters enough for their tireless and many hours of hard work saving houses and what they could against a mighty high wind that day. Again a shout out to the firemen of our communities and to those in the Texas Panhandle, they are the among the best there is. Thanks!!

Just a reminder, PLEASE DON'T FORGET TO SPRING FORWARD AN HOUR ON SATURDAY NIGHT!! Daylight savings time here again. I do wish they would leave our time alone. Such is life in the fast lane tho.

Pete Gilmer stayed a few days in Rockport, Texas, relaxing and enjoying a really nice time. He enjoyed the delicious food there and also visiting with family and church. He reported a wonderful time. Would be nice to just kick back and have a great time I'm sure.

Opal and Juanita Boydston enjoyed a delicious meal in the home of Louise Boydston on February 28th and Juanita Boydston made homemade vanilla ice cream and Louise had prepared the meal and a cake that was my Juanita's uncle Roma Brown's birthday, so guess he helped him to celebrate altho he couldn't be with us. We enjoyed for him.

Opal and Juanita Boydston traveled to Elk City, Oklahoma and looked at cars at Auto Mart. Thomas Stevens from Oklahoma City, Oklahoma met Opal and Juanita there. After test driving a car and enjoying a meal at Elk Country Cafe, Opal, Juanita and Tom enjoyed visiting the Elk City Museum. You know I have lived in Allison for fifty some odd years and had not ever visited the museum, but it is well worth visiting. So very interesting. Needless to say we so very much enjoyed it, but did not near get all the build-

(Continued Page 7)



"I didn't know how I would manage on my own."

Speaking from the heart

I already had a doctor for my diabetes and another for my heart problems, but after I fell, they said I would need physical therapy. I didn't know how I would manage it all on my own. So I talked to my doctor, and he explained my options. I chose Accolade Homecare.

When I met Kathy, the nurse from Accolade, she taught me how to manage everything from the doctors and medications right down to my lifestyle, like what foods could help me. I had no idea Accolade did so much. Thanks to Kathy, I'm moving around again and am even healthier than before.

- Accolade Home Health Services**
 Include:
- Skilled Nursing
 - Wound Care
 - Telehealth/Cardiac
 - Memory Care
 - Lower Extremity Management
 - Diabetic Teaching/Training
 - Home Care Aide
 - Physical Therapy



Visit us online at www.AccoladeHomeCare.com.
 Serving over 220 counties in Texas, Oklahoma, and New Mexico

Sunday Nite Live
KPDR-FM, 90.5
 ... Live from Canadian
 9:00 p.m. to 10:00 p.m.

50 Years (from Page 1)
of Scotty Daugherty, Mark Arrington and Buck Seitz, Miami; Leslie Newsom, Joe Davie Marlin and Roy Dukes, Allison.

"50 Years Ago"
Headline March 9, 1961 reads: "Micro-Wave Is The Answer To

Co-Channell Interference" The waiting period is over. Television reception by microwave signal is here. It's good. Although there are a few small imperfections to be worked out, there is a great deal of pleasure in watching a television program free from co-channel and other interferences

caused by poor signal and weather conditions.

Residents To Have New Phone Numbering System

Mobeetie Telephone customers will be using a new numbering system beginning May 6, the date set for distribution of General Telephone Company of the Southwest's 1961 directory.

Known as the All Numerical Calling Plan (ANC), each telephone number will be composed of seven digits.

The present Mobeetie prefix is VIKING 5. Under the new ANC plan the "VI 5" will be replaced by 845.

Some of the businesses advertising were Ware Chevrolet, J-Lee Department Store, Hibler Implement, H&B Appliance, Chapman Service Station.

One ad carried an ad with coupons worth 4,550 (more than 3 full books) of "Gold Bond" stamps.

Briscoe 4-H Has Regular Meeting Present at the meeting were Suzie Sides, Lynda Blackburn, Judy Finsterwald, Ida Lou Helton, Larry Puryear, Helen Puryear, Larry Puryear, Helen Puryear, Garry Parker, Eddie Meadows, Bill Walker, Wayne Childress, Harvey Puryear, Rusty Atherton, Danny Fillingim, Tommy Hays, Orville Atherton, Melody Zybach and Diane Dodd. Adult leader was Mrs. Milton Finsterwald.

Showing at the Rogue Theatre in Wheeler was "I Aim At The Stars" and "Surprise Package".

"Ben Hur" was showing at Texas Theatre in Shamrock.

V&E Real Estate & Insurance had a ready market for your Oil and Gas Lease.

Work was almost complete on the remodeling of the First Baptist Church.

The bowling alley in Wheeler was getting ready to open Friday, March 9.

The Times carried "The Corral", the Semi-Monthly Wheeler School Paper.

Bobbie Hill was named head cheerleader for 1961. Other cheerleaders were Ruby Barton, Charlotte Hess, Liz Wiley and Annie Riley.

Bob Riley was the "Senior Mustang" for the week.

Stanley Baker from White Deer joined the Sophomore class.

Attending the Key Club Spring Rally in Borger were Jerry Burgess, Troyce Hunter and Richard Hampton.

How about Sirloin Steak for 79c a pound, Sugar was 98c for a 10 lb. bag and toilet tissue was 4 reg. rolls for 21c.

Wheeler's Fourth Six Weeks Elementary Honor Roll Listed

First Grade: All A's—Debra Caswell, Carol Ann Holt, Luinda Verden, Nicki Ware, Donna Weatherly, Rodney Weatherly.

A & B—Jimmy Cole, Noel Glazner, Elaine DePauw, Ronnie Henson, Ronald Lamb, Jackie May, Vickey Patterson, Archie Lee Trimble, Ricky Watson.

Second Grade: All A's—Debra

Blanton, Brenda McCasland, Carletta Earney, Phillip Risner, Randy Shields, Susan Ford, Stephen Dunn, Vicki Gaines, Cynthia Manning, Patricia Jones. A & B—Debra Kay Moore, Jeannie White, Ronnie Wagner, Cindy Johnson, Kathy Cox, Darrell Blevins

Third Grade: All A's—Janice Ware, A & B—Dixie DeArment, Dennis Moore, Larry Overcast, Geniva Shugart, Nancy Watts, Danny Weatherly

Fourth Grade: All A's—Steve Hampton, A & B—Tommy Cole, Ronald Rives, Jerry Bob Watts, Gale Caswell, Rita Davidson, Sidney Ann Kenady, Nancy Wiley

Fifth Grade: All A's—Tommy Levitt, A & B—Dennis Holt, Pam Garrison, Allen Lamb, Freddie Goad, Don Lang, John Moore, Richard Sechrist

Sixth Grade: All A's—Linda Moore, Johnny Hutchison, Nancy Moore. A & B—Linda Wallace, Patricia Baker, Judy Whitener,

Allison (from Page 6)

ings visited. To much walking for sure. But it sure brought back memories of the olden days, Opal especially enjoyed it so much. The trip over to Elk was so very foggy that at times we couldn't see the stripe in the road, very scary for sure. But Praise the Lord for his safety and goodness to us.

After viewing the museum, Opal and Juanita and Tom enjoyed a delicious meal at Pedro's. Then we headed home to Allison, Texas. Tom Stevens stayed a few days in Allison, Texas for a visit.

Tom and Juanita enjoyed a delicious meal at Mel's Diner after church on Sunday. Then they enjoyed a walk in the Wheeler park, it was such a beautiful day to walk and talk.

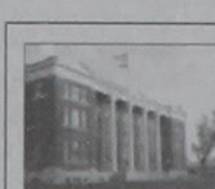
Saturday, Opal and Juanita Boydston visited Louise and saw her new safety shelter that she had installed that day. Cody and Kristina was also there visiting.

Sunday after church, Opal and Juanita Boydston enjoyed a delicious meal in the home of Louise Boydston and Shirley Chadwick. Others there were Sue Martin and Gary Boydston.

Monday afternoon, Opal and Juanita Boydston accompanied Louise Boydston to Reydon, Oklahoma where they enjoyed delicious meal at the Senior Citizen's Building. They served mexican cassrole, corn, salad and cherry cream cheese cake for dessert. Several others from Allison was there also. I would name them, but sure as I did I would leave out someone.

Friday the 11th of March, the Reydon Senior Citizens are serving another meal and it is to be chicken fried steak, mashed potatoes and gravy and I forgot what else, but know it will be good. So come out and enjoy the meal. It starts at four thirty to six thirty.

God Bless and Keep ya'll till next time!!



THE WHEELER TIMES
PAGE 7 — Thursday, March 10, 2011
"Wheeler; town of friendship and pride."

July Page, Martha Wofford
Seventh Grade: All A's—Beverly Clark, Donna Sue Ford, A & B—Glenda Ford, Lynda Beaty, Norma Kay McNeil, Kay

Callan
Eighth Grade: All A's—Lewis Miller, Vicki Walker, A & B—Larry Hampton, Jamie Moore, Eddie Richardson

Value Added Grant Program For Farmers

Deputy Agriculture Secretary Kathleen Merrigan today announced changes to the Value Added Producer Grant Program that will provide additional opportunities to beginning and socially disadvantaged farmers. The changes, outlined in an interim rule published in today's Federal Register, will also assist independent producers, farmer and rancher cooperatives, agricultural producer groups, and will support local and regional supply networks.

Provide up to 10 percent funding to beginner farmers and socially disadvantaged farmers and ranchers;

Golf (from Page 3)

from Shamrock High School; Curt Smith, Nathan Hefley, Julie Zybach, Justin Hefley, Stephanie Baker, Seth Meadows, Jason Hathaway, Kade Zybach, Holley McCurley, George Helton, Tamara Hefley, Russell Lohberger, Jason Boydston, Steven Kephart, Blaine Baker, Kelsey Zybach, Sarah Zybach, Lauren Baird, Chance Newman, Mayci Meadows, Megan Horn, Stormi Lancaster, Amber Maddox and Blake Baker from Fort Elliott High School; and JJ Johnson, Gavin McQueen, Jake Britt, Keri Marion, Dee Alston, Josh Miller, Jarrod Hanning, Landon Sams, Savannah Hampton, Samantha Chapman, Justin Lee, Lezli Finsterwald, J'Shay McCasland, Lauren Fite, Jonathan Hampton, Lacey Henson, Mikel Tucker, Ricky Salas, Jason Brownfield, Chase Horton, Katlin Rutherford, Jesus Gonzalez, Michael Mendoza, Jared Messer, Nicole Moore, Stefan Tucker, Cesar Gonzalez, Nick Hardcastle, Macie Miller, Braden Moore, Bailey Richardson, Whitney Reed, Brock Sabbe and Johnny Venzor from Wheeler High School.

"Improvements to this popular program will create additional economic and job opportunities by helping owners of small and medium-sized family farms sell their products in local and regional markets, part of our drive to 'win the future,'" Merrigan said. "USDA investments such as these are part of the Obama administration's work to support farmers, ranchers and rural businesses."

"The Value Added Producer Grant Program can strengthen rural Texas communities and create jobs by providing additional assistance to new and socially disadvantaged farm and ranch enterprises," said Paco Valentin, USDA Rural Development Texas State Director.

The regulations address program changes included in the 2008 Farm Bill. These revisions:

Are you eligible for tax relief?

Pick up a free copy of our pamphlet

Property Taxpayer Remedies

Learn about property tax remedies available in the following:

- ☛ How to protest property value
- ☛ What can be protested
- ☛ What is an ARB
- ☛ When are protests filed

You'll learn steps to take to prepare for a protest hearing so you can decide if the appraisal district's value is reasonable. And if you decide it isn't, *Property Taxpayer Remedies* will tell you how to prepare an appeal to the appraisal review board.

You'll learn the kinds of protests the appraisal review board can hear—and what kind of evidence you need to bring to your hearing.

Key dates are listed, so you'll know what you must do and when you're required to act.

Property Taxpayer Remedies is free. A Spanish language version is also available. Ask for yours today at:

WHEELER CO. APPRAISAL DISTRICT
BOX 1200, WHEELER, TX 79096
806-826-5900

or e-mail: ptad.cpa@cpa.state.tx.us

or write to:
Texas Comptroller Susan Combs
Property Tax Assistance Division
P.O. Box 13528
Austin, Texas 78711-3528

or call: (800) 252-9121, Ext. 2

or on the Web at: www.window.state.tx.us/taxinfo/proptax/

A public service announcement courtesy of your county appraisal district.

"Productivity appraisal" may lower the property taxes on your farm, ranch or timberland!

Texas law allows farmers, ranchers and timber growers to pay property taxes based upon the "productivity value" of their land rather than on market value. This means qualified land is taxed based on its ability to produce crops, livestock or timber—not on its value on the real estate market. And it can mean substantial property tax savings.

When is the application deadline?

If your land has never had a productivity appraisal or you are a new owner, you must apply to your local appraisal district before May 1 to take advantage of this benefit on your 2011 property taxes. You may get up to 60 extra days if you have a good reason and ask for it before May 1. If you miss this deadline, you may still be able to apply, but you will pay a penalty. Check with your appraisal district office.

Do you need to reapply annually?

If your land already receives agricultural or timber productivity appraisal, you normally don't need to reapply unless the chief appraiser requires you to do so. If a new application is required, the appraisal district will notify you by mail.

For more information, call or come by:

WHEELER CO. APPRAISAL DISTRICT
BOX 1200, WHEELER, TX 79096
806-826-5900

Or contact:

Texas Comptroller Susan Combs
Property Tax Assistance Division
P.O. Box 13528
Austin, Texas 78711-3528
or call: (800) 252-9121, Ext. 2

or on the Web at: www.window.state.tx.us/taxinfo/proptax/

A public service announcement courtesy of your county appraisal district.

A variety of homestead exemptions could lower your property taxes!

A homestead exemption lowers the property taxes on your home by lowering its taxable value. If your home is valued at \$50,000 and you receive a \$15,000 homestead exemption, your home will be taxed as if it were worth \$35,000.

Who qualifies for an exemption?

Anyone who owns a home on Jan. 1 and uses it as a primary residence on that date is entitled to a \$15,000 homestead exemption to lower school taxes this year...and it doesn't matter if your home is a house, condominium or mobile home. Counties, cities and special taxing districts may also offer homestead exemptions.

Are other exemptions available?

If you're disabled—or if you're 65 years old or older—you are entitled to an additional \$10,000 school tax exemption on your home. And if you qualify for the 65 or older or disabled exemption, you're also entitled to a permanent, locked-in "ceiling" on the school property taxes on your home. (The county, city or junior college may adopt a tax ceiling to lock in 2011 taxes as the highest amount for 65 and older or disabled homeowners.) The age 65 or older homeowners school tax ceiling transfers to the surviving spouse, if the spouse is 55 years of age or older at the time of death and lives in and owns the home. The age 65 or older homeowners (or their surviving spouses 55 years of age or older) also may transfer the percentage of school tax paid, based on their former home's school tax ceiling, to a new home.

If you're a disabled veteran who receives from the Veterans Affairs (VA)—(1) 100 percent disability compensation due to a service connected disability and (2) a rating of 100 percent disabled or a determination of individual unemployability, you are entitled to an exemption from taxation of the total appraised value of your resident homestead. A surviving spouse does not qualify.

Do I have to apply each year?

No. If you had a homestead exemption on your home in 2010, you won't need to reapply for 2011 unless your chief appraiser requires it. However, if you haven't received an exemption on your present home—or if you've moved to a new home—you'll need to file for an exemption for 2011. If you are 65 this year, you may file for the age 65 or older exemption up to one year after the date you turned 65. And if you became disabled, you need to file for the disabled person's exemption.

When and where should I file?

File applications before May 1 at your appraisal district office. If you need more time, contact us at:

WHEELER CO. APPRAISAL DISTRICT
BOX 1200, WHEELER, TX 79096
806-826-5900

Or contact:

Texas Comptroller Susan Combs
Property Tax Assistance Division
P.O. Box 13528
Austin, Texas 78711-3528
or call: (800) 252-9121, Ext. 2

or on the Web at: www.window.state.tx.us/taxinfo/proptax/

A public service announcement courtesy of your county appraisal district.

Don't get hit with a penalty! "Render" your taxable property by April 15.

A "rendition" is a report to your county appraisal district that lists all the taxable property you owned or controlled on Jan. 1 of this year.

Who must file a rendition?

You must file a rendition if you own tangible personal property that is used to produce income—such as the inventory and equipment used by a business. If you render late, don't render or file an incomplete or false rendition, a 10 percent to 50 percent penalty may be imposed.

Are there any advantages to you?

The advantages of filing a rendition are:

- ☛ You give your opinion of your property's value. The appraisal district must notify you in writing of any value change and explain how you can protest that value to the appraisal review board.
- ☛ You record your correct mailing address so your tax bills will go to the right address. If your bill is mailed to the wrong address, the law still holds you responsible for paying your taxes on time or paying extra charges for late payments.
- ☛ You can also file a "report of decreased value" to notify the appraisal district of significant depreciation of the value of your property in 2010. The district will look at your property before assigning a value in 2011.

What's the deadline?

The last day for filing 2011 renditions is April 15. You can get an automatic extension to May 15 (or the next business day if a weekend) if you ask for it in writing on or before the April 15 deadline. The chief appraiser may grant an additional 15 days after the deadline for an owner who shows good cause in writing.

Where do you file?

File renditions with your local appraisal district at:

WHEELER CO. APPRAISAL DISTRICT
BOX 1200, WHEELER, TX 79096
806-826-5900

Or contact:

Texas Comptroller Susan Combs
Property Tax Assistance Division
P.O. Box 13528
Austin, Texas 78711-3528
or call: (800) 252-9121, Ext. 2

or on the Web at: www.window.state.tx.us/taxinfo/proptax/

A public service announcement courtesy of your county appraisal district.

Visit... **FAMILY POOL FUN.COM**

- Our pools create Generations of Memories everyday, vacations never end!
- Aboveground & Inground pools at WHOLESALE PRICING
- SIMPLE DIY Pool Kit Assembly
- SAVE MONEY on All Pool Supplies & Accessories. Ships Fast

Call Today! **800-950-2210**

Boat Angel

www.boatangel.com

Donate Car • Boat • RV • Motorcycle
1-800-227-2643
www.charityboatsales.org
FREE 2-Night Vacation!

Chat (from Page 1)
a good attendance. The work of Jack J. Wells was on display at both events.

— cwe —
Paula's poetry reading was fantastic as usual.

— cwe —
The McLaughlin Brothers, Nathan and Kory played and sang **Tour** (from Page 1) using only protein cubes and free-choice mineral. The tour will be in private vehicles. There will be time for producer questions and the opportunity to see cattle raised with limited inputs.

for us and did a good job. We have some great local talent.

— cwe —
Track meets have started. We have the results of the Jr. High Girls' meet at Wellington. We will be expecting great things from our track teams.

Help (from Page 1)
NRCS services and programs are voluntary and offered without a fee to all agricultural producers. NRCS helps landowners and land managers protect and improve the natural resources on their property, including soil, water, air, plants, and animals.

— cwe —
People come into the office to look up something in our file of old papers. They usually get lost in what was going on at that time and spend more time just reading than looking up articles.

— cwe —
With that in mind, I got out the 1961 papers and have reprinted some of the articles found in the papers 'Fifty Years Ago'. Hope you enjoy.

— cwe —
Cards were played Monday evening; just not the same group or the same game. Stormie, Dwight and I played Skipbo and Uno.

Storm (from Page 1)

If you need a good recipe to make for your family, try this one.
Stormie's Cracker Salad
1 very big spoon of Maxey's cottage cheese
1 middle size spoon of Ranch Dressing
2 packages (4 squares) crackers
1 little spoon of yellow chopped cheese
3 big spots of hot sauce
1 big "Burrito" chip
2 halves of a big "Burrito" chip
Smash all the ingredients together and crumble the "Burrito"



THE WHEELER TIMES
PAGE 8 — Thursday, March 10, 2011
"Wheeler, town of friendship and pride."

chips on top.
This is 'specially good for a kid.
Even my dad loves it! That's it.

Listen to...
KPDR-FM, 90.5
WHEELER, TEXAS



OKLAHOMA
CHEYENNE • HINTON • EUFAULA
TEXAS
SHAMROCK • SUNRAY
WELLINGTON • WHEELER

AFFILIATED
FOODS INC.
MEMBER STORES

PRICES GOOD
WEDNESDAY, MARCH 9 THRU
TUESDAY, MARCH 15, 2011

NOT LIABLE FOR TYPOGRAPHICAL OR PICTORIAL ERRORS.
WE RESERVE THE RIGHT TO LIMIT QUANTITIES.
SOME ITEMS NOT AVAILABLE IN ALL STORES.

Red Ripe Strawberries
1 lb.
\$1.99

Ribeye Steaks
bone-in preferred trim
\$5.99 lb.

Texas 1015 Sweet Yellow Onions **59¢** lb.
Fancy Navel Oranges **59¢** lb.
Blueberries or Blackberries 6 oz. **2 \$5** for 5

Whole Center Cut Pork Loins boneless **\$2.59** lb.
Chuck Roast preferred trim boneless beef **\$3.29** lb.

Thriftway or Shurfine White Bread sandwich or large 24 oz. loaf **69¢**

PowerAde Sports Drink select varieties 32 oz. **79¢**

Dasani Water 24 pk. **\$4.99**

Tampico select varieties 128 oz. **99¢**

Van de Kamp's Fish Fillets or Sticks select varieties 21-26.4 oz. **\$3.99**

Malt-O-Meal Cereal select varieties 17.5-21 oz. **2 \$5** for 5

Knorr Sides select varieties 4-5.7 oz. **\$1.19**

Honey Boy Pink Salmon 14.75 oz. **2 \$4** for 4

Shurfine Chunk Light Tuna in water 5 oz. **2 \$1** for 1

Quilted Northern Bath Tissue soft & strong 12 double rolls or **Brawny Paper Towels** pick a size, 6 big rolls **\$6.99**

LOOKING TO SAVE? BE SURE AND CHECK OUT OUR PRIVATE LABEL PET FOOD PRODUCTS