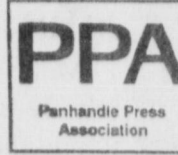




BAILEY COUNTY JOURNAL



Volume 35, No. 43

Published Every Sunday at Muleshoe, Bailey County, Texas 79347

Sunday, October 27, 1996

Lawyers still posturing in Lopez lawsuit

By RICK WHITE
Managing Editor

Although former Muleshoe Police officer Chris Lopez is seeking an unspecified amount in his whistleblower suit against the City of Muleshoe, his attorney hinted Wednesday about the settlement price.

Randall Pyles of the Plainview law firm of Burgess & Pyles said a recent case in which a Travis County jury awarded a former Lubbock County jailer \$2.7 million in a whistleblower suit that has striking similarities to Lopez' case.

"I'm not saying that is what I'll ask for, or that's what I think I'll get," Pyles said. "But there's a lot of similarity there."

In her suit against Lubbock County, a former jailer claimed she was fired because she complained about having to use hazardous cleaning chemicals without the proper protection, not as a result of disciplinary action, as county officials claimed.

Lopez was fired in April of 1995, four days after pulling over then City Manager Dave Marr, Jr. during a routine traffic stop. Lopez contends he was actually fired for making numerous allegations against Police Chief Julian Dominguez.

Lopez is seeking actual and compensatory damages, including mental anguish and public humiliation. He claims

"West Texas juries are notorious for being tight-fisted. Austin juries are not."

— Randall Pyles
attorney for Chris Lopez

reinstatement is not feasible.

Dominguez and Marr no longer work for the city.

Dominguez resigned in November of 1995 amid allegations of domestic violence involving his wife, who he has since divorced. He works as an investigator for local district attorney's office.

Marr resigned in June after 22 years. He now lives on a farm in east Texas.

Marr's resignation was portrayed as amicably. But he had several run ins with new city councilors before his sudden resignation.

Lopez, 27, worked for the city for almost two years before being fired. It was his second stint with the city. Lopez also worked as a city police officer from 1989-91.

He's now working his second stint with the Abernathy PD. He has also worked as an officer for the town of Earth, and for the Lamb County

Continued on page 7



Witches' brew

Three witches contemplate the king's future in Muleshoe High School theatre department's production of "Macbeth". Engaged in a scene of witchcraft are (from left) Amber Bruns, Megan Harlan and Brandi Whitt.

Characters in 'Macbeth' haunted by greed

By SAMUEL VILLARREAL
Journal staff writer

A man of greed, power, and ambition is trying to take over the country. This isn't the latest action flick at the movies, but Shakespeare.

The Muleshoe High School Theatre Department will present William Shakespeare's "Macbeth" as the 37th annual fall play. Performances are Oct. 28 and 31 at 7:30 p.m. in the MHS auditorium. Admission is \$2.

The play, written some time around 1606, centers on the Scottish nobleman Macbeth, played by senior Carlos Rojas, who conspires with his wife, Lady Macbeth, to become king of Scotland during the middle ages. His rise to power is driven by the superstitious prophecy

of three witches, performed by Megan Harlan, Amber Bruns, and Brandi Whitt, as well as the ambitious drive of Lady Macbeth, played by senior Cari Faver.

"The play tells the tale of a person who is tempted, and how the evilness of a man comes through when he is tempted," said Dr. Kerry Moore, director, and theatre and speech teacher at MHS.

In his quest for power, Macbeth murders Duncan, King of Scotland (Adam Graves) to gain his grasp on power. Lady Macbeth wipes the blood of the murder weapons on Duncan's servants to draw the guilt away from Macbeth. Prince Donalbain (Nathan Keller) and Prince Malcolm (Adrian King) flee for fear of their lives. Suspicion of the mur-

ders falls on them in their absence, and Macbeth is crowned king.

In order to keep his reign of power, Macbeth orders the murder of Banquo (Scotty Mills) who the witches predict will be the "father of kings", to keep all possible threats to his power away. Banquo is killed, however, his son escapes.

In the meantime, both Macbeth and Lady Macbeth are tormented by the guilt of their actions. Lady Macbeth fears that she will never remove the stains of blood from her body and confesses to the murders while sleepwalking. In the meantime, Macbeth is tormented by the ghost of Banquo and Duncan.

Continued on page 2

MAMC conducting community survey

The Muleshoe Area Medical Center will be conducting a community needs medical survey by phone within the next couple of weeks.

Bailey County residents selected at random will be asked to answer 15 short questions in an attempt to determine if the county's medical needs are being met.

The survey will take about three minutes and individual responses will be kept confidential.

Between 100-120 people will be contacted during the day and the evening.

"I've done this kind of survey before and it's worked out



well," said Jim Bone, interim administrator for the Muleshoe Area Health District. "Medical aid wants to ensure you are doing something to determine what the community needs are."

The hospital is required to conduct some kind of community needs assessment at least every two years to receive

Continued on page 7



Champ for a day

Fourth-grader Mitci Hawkins tries on her new cap with the help of her father Keith Hawkins Thursday during DeShazo Elementary's Circle of Champions ceremony.

School district promotes parenting conference

By SAMUEL VILLARREAL
Journal staff writer

Muleshoe Independent School District is teaming up with the Partners for Parenting Coalition to build strong families.

MISD is encouraging people in the community to participate in the "Tools for Success" parenting conference to be held Nov. 7 at the Armed Forces Guard Reserve Center in Lubbock to learn more about building strong families. The registration fee is \$5 per person and includes a catered luncheon.

"This seminar is not just for parents," said MISD federal program director Georgia Pena. "It is for parents, grandparents, and any family members who would like to learn new ways to develop new family skills."

The seminar will cover a wide range of topics, including gangs, parent-child discipline, drugs, and coping with family stress. Each of the five sessions will last approximately one hour, with sessions running continuously during the morning and afternoon. Sessions conducted in Spanish are also

available.

"Just because parents think that gangs and drugs are not a problem in small towns doesn't mean that the problems are not there," said Region 17 Education service coordinator Twila Albertson. "Small towns in this area are having increasing problems with gangs and drugs. Parents should be prepared to cope with these problems."

The conference will also provide participants with the opportunity for social contact and networking with other parents and professionals.

"Muleshoe is not far removed from big cities," said MISD assistant superintendent Adrian Meador. "Families face the same problems of drugs and violence that families in big cities do. There are plenty of opportunities for local kids to come in contact with these kinds of problems. Parents should inform themselves about these situations."

MISD is also providing transportation for those who will need it. Anybody who may need transportation can contact MISD at 272-5230.

Muleshoe snaps 18-game losing streak with 25-14 win

FRITCH—Sophomore quarterback Matt McClanhan accounted for three touchdowns as Muleshoe snapped an 18-game losing streak Friday with a 25-14 District 1-3A win over Sanford-Fritch.

McClanhan completed 9 of 16 passes for 144 yards, including a 10-yard touchdown pass to Louis Hines late in the third quarter that gave the Mules an 18-14 lead.

Muleshoe (1-7 over all, 1-4 in district) upped its lead to 25-14 with three minutes

left in the game on a 1-yard plunge by Douglass Field fowling a Sanford-Fritch turnover. Field led MHS with 91 yards on 17 carries.

Cory Williams' interception with 30 seconds left sealed the Mules' first win in nearly two years.

The Mules scored 25 unanswered points after Sanford-Fritch (2-6, 1-4) took a 14-0 lead six minutes into the game.

McClanhan scored twice in the second

quarter on short runs as Muleshoe cut Sanford-Fritch's lead to 14-12 at half time.

Travis Holland rushed for 159 yards in two touchdowns for Sanford-Fritch.

Muleshoe gained a season-high 334 yards and had 23 first downs. The Eagles finished with 248 yards.

Jarrod Redwine saved a touchdown with Muleshoe leading 18-14. Redwine chased down Holland at the Muleshoe 5-yard line after a 63-yard run.

AROUND MULESHOE

MHS hosting college info night

Muleshoe High School will be hosting College Night Oct. 29 from 5:30 p.m. -7:30 p.m. in the MHS cafeteria. Representatives from more than 20 colleges and universities will be present. Any interested student or community members are invited. Students from other school districts are also invited.

Bailey County 4'H selling fruit

Bailey County 4-H'ers are selling mixed fruit boxes as well as Wisconsin cheese and sausage items. If you wish to purchase, you may contact the Bailey County Extension office or any 4-H member. Orders will be taken until Nov. 12 and will be delivered by early to mid-December. Proceeds will be used to support Bailey County 4-H.

MISD board meeting Monday, Oct. 28

The Board of Trustees of the Muleshoe Independent School District will hold their regular bi-monthly meeting Oct. 28 beginning at 7 p.m. at the MISD administration building.

Topics on the agenda grading policies, school district surveys, and election of a Trustee to serve on the Bailey County Central Appraisal District Board. Administrative reports will also be received.

Muleshoe City Council meeting Tuesday

The Muleshoe City Council will meet in special session Oct. 29 at 8:30 a.m. in the council chambers of city hall.

Topics on the agenda include discussion on the city's ground water storage tank, as well as consultation on pending litigation.

Lamb County FSA honoring worker

The Lamb County Farm Service Agency will host a reception to honor Betty Patterson for 20 years of service.

The reception will be from 2-4 p.m. at the Lamb County Farm Service Agency, 200 Marshal Howard Blvd. in Littlefield.

Slaton Athenian hosting craft bazaar

The 20th Annual Holiday Bazaar sponsored by the Athenian Study Club of Slaton will be held from Nov. 2 from 9 a.m. to 4 p.m. at Slaton Junior High, 1000 South 10th Street.

Booths include fresh and dry wreaths, ornaments, floral, decor, wood crafts, puppets, as well as other crafts.

A \$1 entry fee registers you for door prizes.

MHS junior class holding turkey dinner

The Muleshoe High School Junior class is sponsoring a turkey and dressing supper before the Tulia football game

Nov. 1 from 5-7 p.m. at the high school cafeteria.

Tickets are \$5 for adults and \$3 for children. Deliveries are available until 6:30 p.m. by calling 272-4360.

St. Ann's holding annual turkey dinner

BOVINA—St. Ann's Catholic Church will hold their annual turkey dinner Nov. 3 from 11:30 a.m. - 2 p.m. at the church parish hall, 401 3rd Street. Tickets are \$6 for adults and \$3 for children 6 and under.

A quilt will be also be raffled off at the dinner. Tickets for the raffle can be purchased at the dinner for \$1 each from any member of St. Ann's.

MASH looking for volunteers

The Muleshoe Association to Serve the Hungry is looking for volunteers for its beans and cornbread supper to be held Feb. 10, 1997.

For more information, or to volunteer your time, call Sharon Grant at 272-5766.

Foundation offering scholarships

The Educational Communications Scholarship Foundation is offering a \$100 college scholarship. High school students who are U.S. citizens and have a grade point average of 'B' or better are eligible.

To receive an application send a request by Dec. 15 to the Educational Communications Scholarship Foundation at 721 North McKinley Road, PO Box 5012, Lake Forest, IL 60045-5012. Fax can also be sent to (847) 295-3972. Request can also be made via e-mail at "scholar@ecilf.com".

All request for applications must include the student's name, permanent home address, city, state, zip code, name of high school, approximate GPA, and year in school during the 1996-1997 academic year.

Art show slated at ENMU

PORTALES—The fifth annual National Art Exhibition entitled Scene Unseen hosted by Eastern New Mexico University will open Nov. 4. The exhibition will be held in the Golden Library Rannels Gallery on the ENMU campus through Nov. 29 and will feature an artist's reception on Nov. 8 from 4-6 p.m.

For more information about the National Art Exhibition, contact the Art Department at ENMU-Portales at (505) 562-2778.

MHS theatre presenting 'Macbeth'

The Muleshoe High School Theatre Department will present William Shakespeare's "Macbeth" October 28 and 31.

The play will begin at 7:30 p.m. each evening in the MHS auditorium. Admission will be \$2 per person.

Macbeth

Continued from page 1

Macbeth then orders the murder of the wife and children of his enemy Macduff. Macduff (Kermit Price) kills Macbeth, avenging the death of his family. Prince Malcolm then returns and takes his rightful place as king of Scotland.

Moore believes that Shakespeare is often perceived as foreign and difficult to understand.

"Shakespeare is much easier to understand than most people think because his plays use a very smooth flow of word in a poetic form," Moore said. "Shakespeare is also successful because his messages are so timely.

"Classic plays are often more enjoyed than contemporary productions. The actors can create the elements of classic plays, with their witchcraft, fog, and lightning. It provides more chances to be creative than a play with a living room scene."

Moore also give credit to any play's success on the actors and crew involved.

"The key to a good play is the character," Moore said. "Intense study is required for any character, especially Shakespeare. Together, with a stage crew to create the design of the stage, they put on a successful production."

Bailey County Journal USPS 040-200
 Established March 31, 1963. Published by Triple S Publishing, Inc. Every Sunday at 304 W. Second. Box 449, Muleshoe, TX 79347.
 Second Class Postage paid at Muleshoe, TX.
 POSTMASTER: Send address changes to the Bailey County Journal, P.O. Box 449, Muleshoe, TX 79347.
 We are qualified members of:
 Panhandle Press Association, National Newspaper Association, West Texas Press Association and Texas Press Association

WEST TEXAS PRESS ASSOCIATION MEMBER 1996

PPA Panhandle Press Association

TEXAS PRESS ASSOCIATION

Scot Stinnett, Publisher
 Lisa Stinnett, Vice-President/Comptroller
 Rick White, Editor
 Holly Millsap, Classifieds
 Pat Durben, Advertising

© 1990

NNA NATIONAL NEWSPAPER ASSOCIATION

SUBSCRIPTIONS: Muleshoe Journal and Bailey County Journal
 By Carrier Yearly - \$22.00
 Bailey and surrounding counties: by mail - \$24.00
 Elsewhere - \$26.00
 Advertising Rate Cards on Application

Advertisers should check their ad the first day of insertion. The Journals will not be liable for failure to publish an ad or for a typographical error or errors in publications except to the extent of the cost of the ad for the first day of insertion. Adjustment for errors will be limited to the cost of that portion of the ad where the error occurred.

Subscribe today!
Call 272-4536

314 Wheeler • Texico, NM

Rip's Western Wear in Texico

OCTOBER Super Sale

All Halloween Apparel **30% OFF**

NEW ARRIVAL AT RIP'S
Ariat Ropers
 For Men & Women

40% OFF
 Select Groups of
Men's Sports Coats and Ladies' Fall Clothing

20% OFF
 All
Men's Shirts and Ladies' Fall Clothing

Justin Belly Ostrich Boots
 Reg. \$250.00, #1 quality
NOW \$189⁹⁸

Justin Calfskin Boots
 Reg. \$130.00, #1 quality
NOW \$99⁹⁸

9 a.m.-6:30 p.m. cdt
 482-3363
 1-800-748-2459

Local news about local folks.
Muleshoe Journal
 To subscribe, call 272-4536

1996 Ford Explorer 4X4

LOADED



Half-tone repro art (75 line screen) is intended to be reproduced at the size provided. Reducing or enlarging may affect the quality of the half-tone reproduction. Line art may be resized as needed.

5 TO CHOOSE FROM
ONLY \$22,200

Lowest Price Around!!
Special Financing Available
SHOP AND SAVE AT
MULESHOE MOTOR CO.

"We want to be your car and truck dealer!"

Ford Credit

MULESHOE MOTOR CO.

1225 W. American Blvd. Muleshoe, TX 79347
 1-800-432-7617 272-4251

Nights of fright for area youth at County EMS spook house

By **SAMUEL VILLARREAL**
Journal staff writer

The Bailey County Emergency Medical Service is preparing to give Muleshoe a scare.

Bailey County EMS is sponsoring a spook house from 7-9 p.m. Oct. 28 and 29 and 7-10 p.m. Halloween night at the old Muleshoe airport north of town on the Plainview highway. Admission is \$2.

The spook house project has been underway for almost two months now, according to EMS technician Steve Clifton.

Workers have also been busy turning the various rooms of the spook house into chambers of horror. Glowing skeleton, ghouls, and a small assortment of coffins complement the feeling of fright. Assorted rats give the finishing touches to the scene.

Special lights and glow-in-the-dark effects are also being incorporated to add a mystical effect to the spook house. Even the clothes of the people walking through the rooms come to life with a seemingly magic glow.



"When we started, the main part of the house was two large rooms. We put up new walls and drywall, and now we have nine rooms," Clifton said. "It's been a lot of work, but it will make it easier in future years."

Local businesses and organizations have donated building supplies to help renovate the building. Muleshoe Area Medical Clinic is also donating a large outdoor tent in case of inclement weather, and the Muleshoe Independent School District donated paint.

The EMS will also be selling sodas at the spook house to raise additional funds. Money raised through the Spook House will go to the Bailey County EMS equipment fund.

"EMS uses the equipment fund to buy additional equipment not normally budgeted," said EMS technician Starla Ellis.

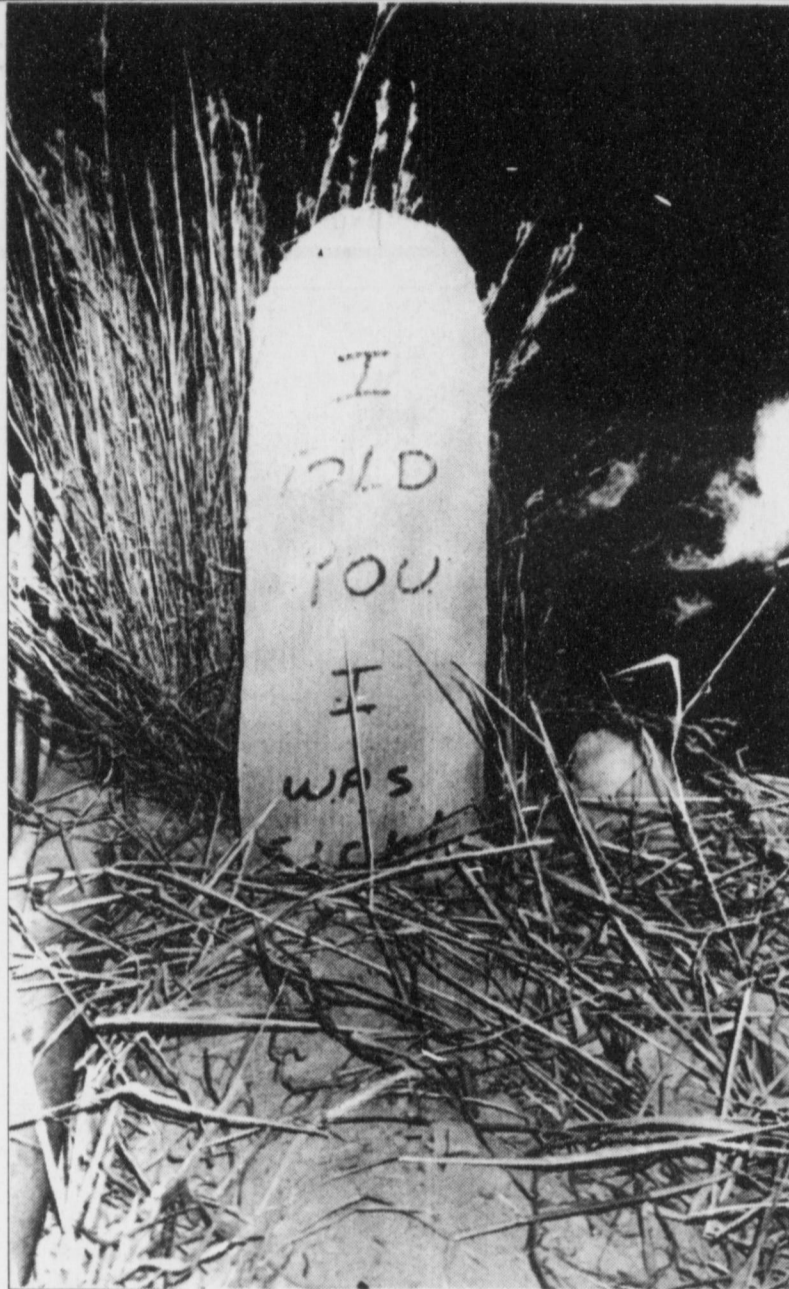


PHOTO BY SAMUEL VILLARREAL

Grave message

A small graveyard scene awaits the visitors of the EMS Spook House, located at the old Muleshoe airport north of town. EMS technicians promise plenty of spooks just in time for Halloween.

WANDA BROWND, INC.

would like to announce that she has moved from 118 E. Ave. C to
104 W. 12th
272-7548

T. Rose MD

Lady Cancer Specialist

- Board Certified in Oncology, Internal Medicine
- Specialized in Breast & Female Reproductive Organ Cancers
- Chemotherapy, Immunotherapy, Second Opinion
- Free Counselling, Education & New Cancer Screening Methods.
- Hodges Cancer Center and Other Cancer Institutions
- Clinical Trials In All Male & Female Cancers

LUBBOCK DIAGNOSTIC CENTER

3506 21st Street No: 303 Lubbock, TX 79410
24 hours/7 days a week
806-788-8105 or 806-741-8648

Harmonee House

Long Term and Rehabilitative Services
With A Difference



1400 Main Street
P.O. Box 320
Amherst, Texas 79312
(806) 246-2461



OPENING SOON!

- Private Pay
- 24 Hour License Nursing Care
- Therapeutic Whirlpool Baths Available
- Spacious Private & Semi Private Rooms
- Individual Heating & Cooling in the Rooms
- Private Restrooms and Showers
- In-House Chapel for Private & Group Services
- Adjacent to St. Mary Clinic and South Plains Pharmacy
- Smoke Free Environment

Women's group dissolving after 40 years

Members of the Muleshoe branch of the American Association of University Women recently made a generous gift to promote educational opportunities for area college students.

In September, AAUW members voted to contribute more than \$2,525 to The Opportunity Plan, Inc. in Canyon.

The funds were evenly divided between the Jack Allison Loan Division and the Elizabeth Watson Scholarship. Both of these funds were established in previous years to benefit students from Muleshoe.

The Jack Allison Loan Division was created in March of 1977 in memory of Jack by family, friends, teachers and classmates. The son of Mrs. Jean Allison of Earth and her late husband, Harold Allison, Jack grew up in Muleshoe where he was a member of the high school football team, the local FFA chapter and the First United Methodist Church. He attended New Mexico State University for two years prior to his death.

Students from Muleshoe have borrowed more than \$20,000 from the Jack Allison

Loan Division over the years to help meet their college expenses.

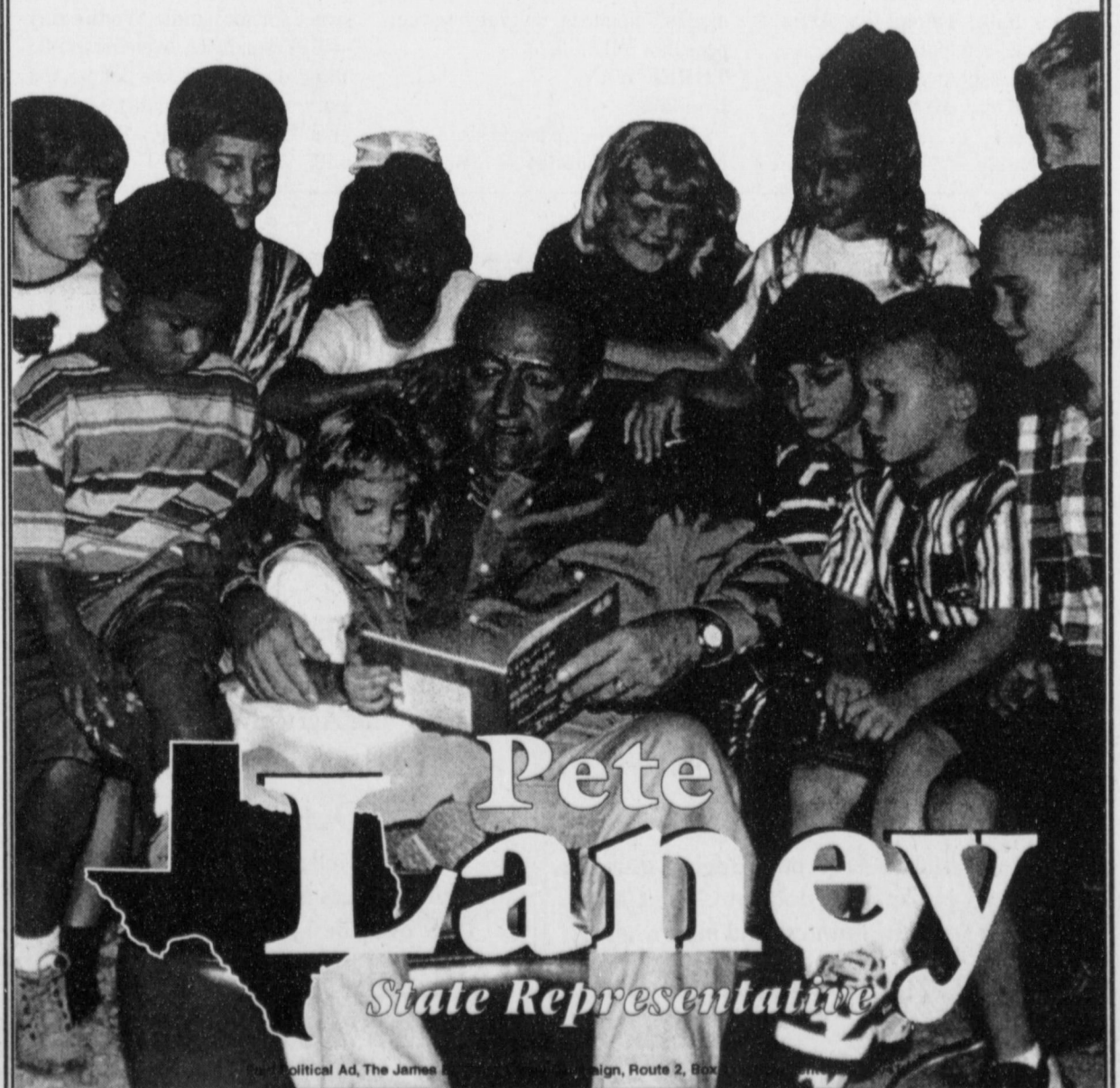
The Elizabeth Watson Scholarship was established in 1992 to honor her when she retired from the field of education after 50 years of service. Forty-six of these years were spent in the classrooms and administrative offices of MISD. Mrs. Watson has served as teacher, principal and assistant superintendent over the years. This scholarship benefits students who plan to major in the field of education. Five graduates of Muleshoe

High School have received the Elizabeth Watson Scholarship since 1992.

A member of the Muleshoe branch of AAUW since 1956, Mrs. Watson served as Fellow-

Continued on page 7

Pete Laney—Working to strengthen local control of our schools and put computers into every classroom.



Pete Laney
State Representative

MR. COTTON PRODUCER

Don't take a chance!
Trust your cotton seed with the most experienced and qualified delinter, Levelland Delinting.



124 Years Combined Experience!



Call Levelland Delinting or your local gin to have your cotton seed delinted and we will reward you with a beautifully loomed 100% cotton "Cotton Country" Afghan! The 51" x 69" Cotton Country afghan illustrates the 7 primary steps in growing cotton.

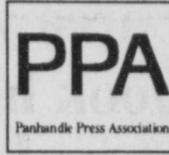
For 22 years, Levelland Delinting has been providing:

- Quality Delinting - Both Standard and Custom
- Prompt Service and Competitive Prices
- Complete Tests on All Seed
- Free Pickup, Delivery and Storage
- All Warehouses And Seed Fully Insured
- Ask About Our Bulk System
- Complete Fumigation Program
- All Seed Treated With Captan & Lorsban at no charge

Levelland Delinting, Inc. and All-Tex Seeds, Inc.
806-894-4901 • 1-800-7ALLTEX (725-5839)
Box 1057 Levelland, Texas 79336



Bailey County Journal



SPORTS EXTRA

Volume 35, No. 43

Published every Sunday at Muleshoe, Bailey County, Texas 79347

Sunday, October 27, 1996



Getting sidetracked

Springlake-Earth quarterback Chance Furr tries to cut up inside WJHS' Raul Romero (83) while Landon Nichols pursues from behind Thursday during a junior high game at Benny Douglass Stadium.

Watson Junior High 7th & 8th-graders continue on roll

Darrell Lewis rushed for two touchdowns and Zack Barrett passed for two touchdowns, leading the Watson Junior High School 8th-grade Mules to a 37-0 win over Dimmitt Tuesday in a District 1-3A game at Benny Douglass Stadium. WJHS has won five games

in a row and is 6-1 overall, 4-0 in district. Lewis scored on runs of 7 and 20 yards. Barrett threw touchdown passes of 15 yards to tight end Jeffrey Shelburne and 27 yards to wide receiver Danny Ramirez. Jerrell Otwell added a 3-

yard run for the Mules and Jonathan Pacheco kick a 30-yard field goal and converted two of three extra points. WJHS coach Jimmy Orr said the offensive line of David Morris, Louie Pacheco, Aubrey Ruthhardt, Jason Bond, Tommy Barrera, Shelburne and

Joey Stone opened up huge holes for the backs. **7th Mules, 20-8** Michael Johnson scored on two long touchdowns as the undefeated Mules won their fifth-straight game.

Continued on page 5

CROSS COUNTRY

Mules keep improving

LEVELLAND — Muleshoe coach Jim Gruhlkey said the boys cross country team continues to work hard and show progress.

Barry Givens and Jeffrey Bruns recorded personal bests at the South Plains Cross Country Festival Oct. 19.

Givens led the way, touring the sandy, three-mile layout in 19 minutes and 39 seconds, which bettered his personal best by more than a minute. Clint Black finished just two seconds off his personal best with a time of 20:04. Bruns lopped 12 seconds off his best time, finishing at 20:26, and Aaron Faver clocked a 20:27 in his first meet.

Givens, Bruns and Black are freshmen. Faver is a sophomore.

"They may not be winning meets or finishing in the top 10, but these guys have showed a lot of character and have improved tremendously," Gruhlkey said.

Lady Mule JV captures 1st

LEVELLAND — The Muleshoe junior varsity girls placed first the South Plains College Cross Country Festival Saturday, Oct. 19.

Keisha Whitt led the Lady Mules with a time of 16 minutes and 15 seconds on the two-mile course.

Other Muleshoe runners and times: Lucila Flores, 18:50; Rhonda Copley, 19:13; Melissa Williams, 19:24; Lela Hancock, 19:05; Misty Angeley, 19:49; Amanda Messenger, 20:18; Christi Adrian, 20:48.

WJHS boys win third straight

LEVELLAND — The Watson Junior High School boys swept the top eight spots and the team title Saturday, Oct. 19 in the junior high division of the South Plains College Cross Country Festival.

Kyle Atwood and Moises Garcia led the way for the Mules, who have won all three of their meets this year.

Atwood finished first and Garcia second, both with a time of 13 minutes and 22 seconds

Continued on page 5

SCHOOL MENUS

For the week of Oct. 28 - Nov. 1

MULESHOE

Dillman & DeShazo

Breakfast

Monday — French toast, fruit or juice, milk. Tuesday — peach bread, fruit or juice, milk. Wednesday — biscuit w/gravy, fruit or juice, milk. Thursday — scrambled egg/toast, fruit or juice, milk. Friday — cinnamon roll, fruit or juice, milk.

Lunch

Monday — Tacos, lettuce & tomatoes, Mexican squash, peanut butter cookie, milk. Tuesday — hamburger, oven fries, lettuce & tomatoes, sliced apples, milk. Wednesday — oven-fried chicken, mashed potatoes w/gravy, crinkle cut carrots, hot roll, milk. Thursday — corn dog, vegetable soup, cinnamon roll, Halloween ice cream, milk. Friday — steak fingers, mashed potatoes w/gravy, sweet peas, hot roll, milk.

Jr. High and High School

Breakfast

Monday — French toast, fruit

or juice, milk. Tuesday — peach bread, fruit or juice, milk. Wednesday — biscuit w/gravy, fruit or juice, milk. Thursday — scrambled eggs, toast, fruit or juice, milk. Friday — cinnamon roll, fruit or juice, milk.

Lunch

Monday — Tacos, pizza & fries, hamburger & fries, lettuce & tomatoes, Mexican squash, peanut butter cookie, milk. Tuesday — Texas red stew, pizza & fries, hamburger & fries, whole kernel corn, sliced peaches, cornbread, milk. Wednesday — fried chicken, pizza & fries, hamburger & fries, mashed potatoes w/gravy, crinkle cut carrots, hot rolls, milk. Thursday — corn dog, pizza & fries, hamburger & fries, vegetable soup, cinnamon roll, sliced peaches, milk. Friday — chicken fried steak, mashed potatoes, w/gravy, sweet peas, hot roll, milk.

THREE WAY

Breakfast

Monday — pancakes, sausage, juice, milk. Tuesday — cinnamon

roll, juice, milk. Wednesday — eggs, biscuit, juice, milk. Thursday — Cereal, graham crackers, juice, milk. Friday — waffles, sausage, juice, milk.

Lunch

Monday — Hotdogs, tator tots, broccoli/cheese, cherry bread, milk. Tuesday — Steak fingers w/gravy, green beans, baked potato, wheat rolls, apricots, milk. Wednesday — Cheeseburger, fries, frozen milk shake, milk. Thursday — Submarine sandwich, lettuce, tomato, pickles, chips, orange, milk. Friday — pizza, salad, corn, peach cobbler, milk.

LAZBUDDIE

Lunch

Monday — Swiss steak, rice, milk. Tuesday — Turkey noodle, sweet potatoes, milk. Wednesday — BBQ Sandwich, oven fries, milk. Thursday — Chicken pot pie, (no extra veg.), milk. Friday — Lasagna, Normandy blend veggies, milk.

Temperatures are falling...

And so are our prices!

No one knows your GM vehicle better than we do.

And no one works harder to maintain high standards of honesty and respect for you! We're your GM Goodwrench Service dealer with the GM training, tools, equipment and genuine GM parts that you can count on.

NOW ONLY **\$15⁰⁰**
Lube, Oil & Filter Change

- GM Goodwrench quality motor oil
 - AC Duraguard® Oil Filter
 - Chassis tube
- Offer expires 10/31/96

Goodwrench Service



Cooling System Service **\$25⁰⁰**

We will drain and renew coolant - up to 1 gallon coolant. Inspect belts, hoses and pressure test system.

Bailey Co. EMS Spook House

Oct. 26 9 pm - 12 am, Oct. 28 & 29 7 pm - 9 pm
Oct. 31 7 pm - 10 pm
At Old Airport PRICE \$2 PER PERSON

<p>Muleshoe Chamber of Commerce and Agriculture Costume Contest Oct. 26</p> <p>Enter at 4:30 pm, judging starts at 5 pm at front door of Civic Center. Scariest, funniest and most original.</p>	<p>Muleshoe Chamber of Commerce and Agriculture Jack-O-Lantern Contest Oct. 26</p> <p>Enter at 7 pm, judging starts at 8 pm at the Mulelot. Ages 6 & under, 7-12, 13-18, 19 & over. Best judged in each group</p>
---	--

MULESHOE PTA FALL FESTIVAL
- Civic Center from 6 pm - 9 pm
For All Ages

Delco Batteries
Starting at **\$70⁰⁰**

6 & 7 Year Batteries,
18-24 Month Free Replacement
Cold Cranking Amps up to 770

United Antifreeze **\$4⁰⁰** gallon

Interstate Batteries
Starting at **\$51⁰⁰**

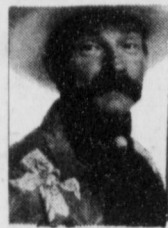
5 Year Battery
18 Month Free Replacement
Cold Cranking Amps up to 685

DOC STEWART

CHEVROLET • GEO • BUICK

2500 Mabry Drive
Clovis, NM
505-763-4465
1-800-530-8842

Lunatics lose!



**BAXTER
BLACK**

ON THE EDGE OF COMMON SENSE

"CLINTON SIGNS DELANEY REFORM BILL", was how the headline read but most of us in the scientific community interpreted the headline to read, "Lunatics Lose!"

I remember in 1993 when President Clinton's newly appointed EPA Administrator Carol Browner announced that she was in favor of reforming the Delaney Clause to the Food Additives Amendment. It was unexpected in the midst of the Al Gore - Bruce Babbitt - Chicken Little mindless pseudo-environmentalist squawking.

The Delaney Clause passed in 1958 says, in effect "Any substance that is shown to be carcinogenic in any quantity in any mouse trial is banned from use on or in any products destined for human consumption."

It was well intentioned bill when it was passed. But scientific technology has increased so rapidly it is to the point where we now can pick up one part in one billion. The Delaney Clause prevented or disapproved the use of many essential tools in modern agriculture, including chemicals whose tremendous benefits far outweighed the virtually non-existent risk to human health.

The Delaney Reform Bill allows common sense to be considered before a product is banned.

And yet there are many special interest groups who opposed the Reform bill. They are the same groups who opposed allowing common sense to be applied to the Endan-

gered Species Act and numerous other policies that pit "Doers" against "Anti's".

The Anti's should be credited with making Doer's consider the social and environmental implications of their projects. The Doer's need to be imbued with a sense of responsibility which, by the 'nature of the beast', they lack. They are concerned with the bottom line.

I am an NRA member and support them even though I don't think it is responsible for our country to sell automatic machine guns to any one that walks in off the street. The NRA doesn't believe that either, but they do feel each concession to the gun control lobby is another step towards disarming the citizenry, and I agree with them. Unfortunately there is no room for common sense.

Regarding the Delaney Reform Bill, my thanks go out to Ms. Browner for admitting common sense into the equation. Still part of the problem is that both sides lack a neutral referee who can look at the problem and using good judgement come to a conclusion both sides can accept.

So, what is the solution?

I am reminded of a trip I took to Washington, D.C. in 1984. I asked a black cabbie who he was voting for. "Mondale", he said. "I voted for Reagan in '80."

"You didn't like him?" I asked.

"Yeah," he said. "He was alright. But I have a philosophy about politicians. Never let the #()@(! get a foothold!"

Cross country football

Continued from page 4

Other WJHS finishers were Jerrell Otwell, 3rd (13:35); Lincoln Riley, 4th (13:45); Lindy Pineda, 5th (13:56); Zac Yanis, 6th (14:33); Duane Pedigo, 7th (14:37); Dan Williams, 8th (14:56); A.J. Buhman, 11 (15:18); Roddy Spradling, 12th (15:28); Michael Johnson, 13th (15:45); Zach Barrett, 18th (16:13); Jeff King, 19th (16:38).

Maddox qualifies for 1A regionals

LUBBOCK — Freshman CheLyn Maddox of Springlake-Earth finished third at the District 2-1A meet Oct. 19 at Mae Simons Park.

Maddox advances the Region I meet Nov. 2 at Mae Simons Park. Maddox is the daughter of Gary and Cherrie Maddox and the granddaughter of Lynn and Judy Maddox of Muleshoe.



Maddox

Continued from page 4

A 37-yard run by Johnson and a 32-yard run by Jaime Mendoza gave the Mules a 12-0 halftime lead.

Johnson gave the Mules a 20-0 lead in the third quarter on a 50-yard run in the third quarter, picking up a key block from Brandon Mount.

Stephan Shelburne caught a two-point conversion and a 35-yard pass from Lincoln Riley.

Fermin Gonzales and Bryan Smith paced the WJHS defense with two sacks each.

Mules lose, 8-6

Springlake-Earth defeated the Watson Junior High gray & white team Thursday, 8-6.

Jose Hernandez scored on a 25-yard run with about three minutes left in the game to pull WJHS to within 8-6. But Landon Nichols was sacked trying to pass for the two-point conversion.

On the Mules' scoring drive, Nichols completed a 15-yard pass to fullback Travis Tunnell and a 20-yard pass to Blake Gable. Raul Romero kept the

drive alive by racing 25 yards on a reverse on fourth down.

On defense, Rocky DeHoyos caused a fumble. Chuck Fabela recovered a fumble.

The gray & white team is comprised of both 7th & 8th graders.

Federal Land Bank Association

316 Main St., Muleshoe
806-272-3010

Long Term Financing for Farms, Ranches, Rural Housing, Operating and Improvements.

Current Variable Rate 7.95%.

Fixed rates are available.

Call for quote.

A Property Rights Advocate and Equal Opportunity Lender.

FARM SERVICE AGENCY NEWS

FSA Committee elections

This is a reminder that Oct. 28 is the last day to file nominated petitions in this year's election for County FSA Committee/Alternates.

This is for LAA-1 (A) community. Ballots will be mailed to eligible voters on Nov. 18 and the ballots must be returned or postmarked by Dec. 2. Farm owners, operators, tenants and sharecroppers, of legal voting age can vote if they are eligible to take part in any GSA program and are qualified to vote in the LAA-1 community.

CRP grazing extension

Bailey County has been approved to graze CRP acreage through Nov. 30. This is a new sign-up period and applies to all CRP producers, including those producers who previously requested CRP grazing. The same rules will apply as far as the cost to graze CRP acreage. Haying of CRP acreage does not apply.

Direct deposit

Direct Deposit allows producer payments to be electronically deposited into their bank account faster than with a paper check. It also improves security and reliability. The Debt Collection Improvement Act of 1996 mandates that any federal payments paid to a recipient who signs into a program contract after July 25, 1996 be made by electronic funds transfer. Any payments made to contracts signed prior to this date can either be by check or the electronic funds transfer. A waiver may be granted through Dec. 31, 1998, if a producer does not have an account with a financial institution or authorized payment agent.

1997 CRP news

From information that has been received, it appears that there will be sign-up for everyone to submit bids for acreage for CRP program. This will

allow new acreage in counties, that had reached the maximum acreage limit, to compete for approval with the existing CRP acreage. Bailey County has submitted the soil rental rate to the Texas State Committee for approval. The bids are to be for a 10 year contract and future signups will be scheduled each year.

Producers are invited to submit written comments on the future of CRP. Comments will be accepted through the end of October. Written comments should be submitted to Cheryl Zavodny, Farm Service Agency, CEPD, P.O. Box 2415, Stop 0513 Washington, D.C. 20050-0513.

1996/1997 PFC payments

The final 1996 PFC payments have been issued, completing the first year of the 7-year program. The 1997 advance PFC payments will be automatically reduced for the corn and grain sorghum deficiency overpayments and any other outstanding overpayments. There will be no interest accrued on the overpayment amount to be offset from PFC payments. Producers who elected to receive their 1997 advance payment in December should complete all 1997 updates. This includes the designation of shares for 1997, update crop insurance, payroll limit forms and 1026 forms etc. If you are not sure all necessary forms are completed, please

check with this office. If you have undesignated payment shares on the farm contract for 1997, please call for an appointment to update your contract in order for payments for 1997 to be made timely.

Ag credit news

This is to inform producers that the mailing address for Ag Credit (formerly FmHA) has changed. Effective immediately the mailing address for all correspondence to Ag Credit is P.O. Box 406, Muleshoe, Texas 79347.

Farm changes

Any changes that result in the need to divide or combine farms need to be reported to this office as soon as possible. This will allow us time to make the necessary changes in our records. Any owner/operator changes, address changes etc. should be reported also.

NRCS news

The Blackwater Valley Soil and Water Conservation District will be hosting a conservation work group meeting to identify and assess local conservation needs. This meeting will be the standards for future cost share programs in Bailey County. Your input is extremely important and needed for success. The meeting is set for Nov. 7, 1996, at the Bailey County Coliseum, at 9 a.m. You are encouraged to attend this meeting. For more information, call NRCS Office at 806-272-5124.

ELECT
Gary Don Gartin
as Bailey County Constable
Precinct 1
On Nov. 5th
YOUR VOTE WILL BE APPRECIATED
POLITICAL AD PAID FOR BY GARY DON GARTIN

Prices So LOW It's SCARY!

ALLSUP'S

<p>ALL VARIETIES 6 PK. 12 OZ. CANS PEPSI \$1.99</p>	<p>ALLSUP'S COMBO MEAL BBQ Sandwich Potato Wedges and Tallsup \$1.99</p>
<p>SHURFINE APPLE CIDER OR Apple Juice 64 OZ. \$1.49</p>	<p>ALLSUP'S Chimichanga EACH 99¢</p>

SPOOKTACULAR PRICES at ALLSUP'S

<p>BLUE BUNNY Nutt'n Better Bar EACH 2\$1 FOR</p>	<p>THORN APPLE VALLEY Chopped Ham 10 OZ. PKG. 99¢</p>	<p>ALL FLAVORS Jack Link Beef Steak REG. \$1.19 99¢</p>
<p>SAVE ON Doritos or Ruffles Grab Bags REG. 79¢ 49¢</p>	<p>ALL VARIETIES Lance Big Value Chips REG. 59¢ 2.89¢ FOR</p>	

Store #34 318 W. American Blvd. 272-4862 MULESHOE

HAM OR SAUSAGE BREAKFAST BURRITO ...	99¢	CORN DOGS	79¢
---	-----	-----------------	-----

LOW PRICES, GREAT PRODUCTS 24 HOURS A DAY

ALLSUP'S Always

PRICES EFFECTIVE OCTOBER 27-NOVEMBER 2, 1996 OFFER GOOD WHILE SUPPLIES LAST

Subscribe Today! Call 272-4536

CIRCLE OF CHAMPIONS

The following students were inducted into the Mary DeSahzo Elementary School Circle of Champions during an awards ceremony Thursday. The Circle of Champions recognizes students for citizenship, attendance and academic excellence.

Grade 3 — Zannie Avila, Brett Lee Bamert, Brady Rex Black, Cody Garrett Black, Brook Nicole Bottleman, David Leo Campos, Wendy Cuevas Cano, Daniel Armando Caraveo, Kristina Marie Castorena, Ashley Dickson, Kourtnee Leigh Dowty, Jarad Paul Flores, Jennafec Free, Angelita Sita Garcia, Arturo Garcia, Arsenio Parker Geter, Felicia Reann Glover, Rudy Michael Gonzales Jr., Samantha Renee Gonzalez, Lauren Ashley Gray, Denise Marie Gutierrez, Zachary Mark Hall, Jason Mark Hartline, Joseph Edward Iuliano, William Myles James, Anthony Lewis, Chelsea Ann Lopez, Vanessa Marie Lopez, Veronica Alice Martinez, Kelsey Kaye McDearmon, Jacob Mendoza, Rodrigo Mendoza, Leonardo Mendoza, Ruby Antoinette Morales, Florencio Muniz.

Also, Rashida Norman, Lorenzo Antonio Nunez, Alejandro Olivarez Jr., Christina Denne Orozco, Luz M. Ortega, Janice Pacheco, Monica Posadas, Randall Wayne Radford, Jenna LeAnn Rasco, Shyla D'Nae Rater, Sarah Rey, Cecilia Ann Reyna, Trisha Nicole Robertson, Amalia Ruiz, Douglas Logan Ruthardt, Elizabeth Salamanca, Sarah Jean Sexton, Hillary Ann Tipps, Amanda Toscano, Alfredo R. Tovar, Trevor Len Turnbow, Cami Jo Vandiver, Vanessa Vasquez, Erica Villa, Hilario Lee Villa, Lidia Armida Villegas, Corey Heath Wallace, Brittany Michelle Williams, Brandi Wood and Emily Ann Zackoski.

Grade 4 — Elena Aburto, Yuri Ivy Aguirre, Cristobal Almanza, Kelsey Lynette Beggs, Ashley Nicole Beggs, Michael Trent Black, Robert Franklin Bomer, Traci Gene Bond, Thomas Jordan Bonds, Mandy J. Brantley, Kami Lynn Brown, Brady Wayne Broyles, Thomas Rojas Buenrostro, Branda Jazmin Caraveo, Jamie Shantell Carpenter, Paul Anthony Carrion, Melissa Catano, Joe Lewis Carlos Ceja, Charissa Diann Conner, Arcisa Deann Cooks, Jeremy William Copley, Felisha Nicole Costilla, Amber LeAnne Cowart, Aaron Lee Crawford, Paje DePalma, Silbestra Diaz, Erika Diaz, Daniel Diaz, Sarah Marie Dominquez, Ruth Mendes Elizalde, Erica Lynn Estrada, Veronica Louise Florez, Triaston



Another champ
DeSahzo 4th-grader LaTasha Glover accepts her Circle of Champion certificate from Muleshoe ISD Assistant Superintendent Adrian Meador.

Foster, Mylinda Sue Franco, Erin Kendall Gallman, Patricia Lynn Garza, Homero Garza, Christopher Gathright, Niclas Shayne Green, Bobby Harold Grumbles, Ashley Gutierrez, Jessica Mae Hall, Amanda Ruth Hardt, Mitci Kay Hawkins, Bradley Don Henry, Jennifer Ann Heredia, Tristen Jaye Herington, Maricela Hernandez, Maria Hernandez, Maria Del Herrera, Coli Don Hunt, Joseph Jaramillo, Kristi Elise Johnson, Shalisa Dawn Ladd, Vanessa Marie Lewis, Amanda Beth Lopez, Laura Lorena Marquez, Ester Martinez, Minerva Ann Martinez, Esther Marie Mendoza, Gorje Mendoza, Misty Gail Miller, Carmen Mojica, Michelle Morales, April Morgan, Barry Keith Morris, Luis Raul Muniz, Jesseca Murillo.

Also Eric Presley Newton, Jeremy Norman, Juan Sanchez Nunez, Lorena Olivas, Juan Carlos Orozco,

Priscilla Lynn Orozco, Prisma Villegas Ortiz, Ritamarie Ortiz, Sarah Kristen Pace, Andrew Lee Padilla, Adam Darrel Pierce, Derek Wilson Purdy, Brady Lynn Radford, Laura Ramirez, Armdia Munoz Rascon, Shanna Marie Rempe, Cecilia Reyes, Ricky Reyes, Juan Carlos Reyes, Ricardo Ivan Ruvalcaba, Joel Jesus

Salcido, Erik Bryan Sanchez, Karen Schaffer, Michael Paul Sexton, Joshua Clint Shelburne, Eliana L. Sifuentes, Rosa Marie Sotelo, Kayla Dawn Spradling, Brittany Ann Thomason, Tamara JoAnn Thompson, Irene Torres, Isabel Triana, Claye Parker Tunnell, Cami Jo Valdez, Francisco Vidana, Nathan Timothy Villa, Brenda Cynthia Villegas, Randie Lanette Williams, Tanner Judd Winkler and Tyler Wood.

Grade 5 — Rosa Andrade, Robbie Jan Barrett, Casey Barrier, Sara Benham, Marlie Black, Stacy Bond, Thad Charles Brown, Alejandrina Contreras, Keri Copley, Elida Diaz, Daniela Flores, Jessica Garcia, Nathan (Anthony) Garcia, Tyrel Gear, Ariana Gonzales, Amanda Gonzales, Joseph Gonzalez, Haley Hamilton, Erin Hancock, Aubrey (Tatom) Heathington, Emma Hernandez, Laura Lizet Holguin, Perla Juarez, Bryan King, Ashley Lopez, Marisela Loya, Jonathan Marlow, Yuri Marzuez, Megan Mason, Stacey Mata, Lizbeth Melero, Juanita Mendoza, Angelica Mojica and Christy Morgan.

Also Tabatha Obenhaus, Eliana Ramirez, Yessenia Regalado, Valentina Reyes, Milagros Reyes, Moraima Romero, Stephanie Rubio, Oralia Ruiz, Baldemar Torres, Marlo Valdez, Amanda Vega, Brandi Whalin, Meghan Wills, Leland Chase Winkler and Kyle Yell.

Federal Land Bank considering merger

Bill Liles, president of the Federal Land Bank Association of Muleshoe, announced recently that ballots have been mailed to stockholders, asking them to consider a merger between nine area associations. The Associations involved are Muleshoe, Littlefield, Dalhart, Childress, Dimmitt, Lubbock, Spur, Levelland and Lamesa.

Liles stated that in January of this year he had recommended to the FLBA of Muleshoe's Board of Directors that a study be made of a proposed merger of associations. After several meetings and diligent study, the board unanimously voted to approve a merger subject to approval of the 10th District Farm Credit Bank of Texas; the Farm Credit regulators, the Farm Credit Administration and the local stockholders. He reported that the District Bank and Farm Credit Administration have approved the merger. A meet-

ing of the Muleshoe Association stockholders will be held Wednesday, Nov. 6, 3 p.m. at the Bailey County Coliseum to enable stockholders to vote for or against the proposal.

He stated that the Muleshoe board recognized the benefits of this merger, citing the improved efficiency of operation, reduced regulatory expense, and an improved capital base. The improved capital base will allow borrower stock to be reduced from 5% to 2%. The reduction of stock will be in place by Jan. 1, 1997 if the stockholders approve the

merger. There will be no changes in the Muleshoe office and this merger will eliminate territorial boundaries of the merged association which should allow for improved customers service.

For further information contact Bill Liles at 806-272-3010.

Christmas wouldn't be Christmas without The Salvation Army.

The Salvation Army changes lives for the better. Please give when you see the red kettle this holiday - I do.

Sadina Sw. Barbara Bush

FREE ADMISSION

Chili & Bean Dinner

Honoring Speaker Pete Laney

October 29, 1996
6:30 to 8:30 p.m.

Bailey County Civic Center
"Evening of Fun & Entertainment"
Honoring Speaker Pete Laney"

Pol. Ad -- Sponsored by West Plains Activity Committee

Just Thinking About "Time in a Bottle"

What is a grain of wheat? Paul Tournier asks. "It contains a whole plant you cannot yet see. What is a silkworm? You cannot define it without seeing in advance all its metamorphosis. What is a child? You cannot describe him without thinking of the whole life of the man, with all its unknowns, for which he is preparing."



Focus On Faith
Curtis Shelburne

As I first read those words years ago, I sat at my desk and examined the little Christmas present I had just received from my mother. It was a very simple little thing—a small bottle with a glass stopper. Inside were ten or fifteen marbles. A little blue ribbon was tied around the small bottle.

Once it was a vitamin bottle, but now it was becoming a very special paperweight. I remembered the marbles, every one. They were mine—or at least they once were. The bottle? The bottle once sat by my aged grandparents' bed. It had held just enough water to use to take a pill or to wet a dry throat. (I'll be thinking of my grandparents this weekend as I join my three brothers and my now 83-year-old father to work

and reminisce at the old "home place" at Robert Lee, Texas.)

Dr. Tournier writes of the metamorphosis, the transformation, that changes caterpillars into butterflies and blonde-headed boys into graying grandfathers. That little bottle is for me an appropriate symbol of the process. Nestled inside the glass bottle of the aged are the glass trinkets of childhood. Encapsulated by a marble-filled bottle is the whole spectrum of life from spring to winter, youth to old age.

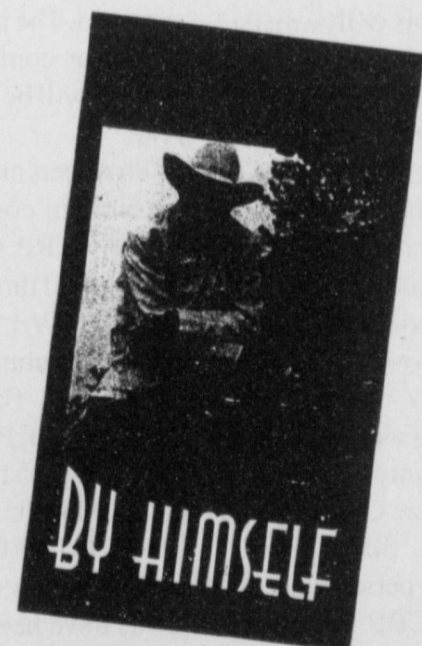
With each tick of the clock every one of us is being transformed. No one is immune to the metamorphosis wrought by time. Dr. Tournier is right. We see a small boy and wonder what the man will be like. We wonder about the many unknowns life holds for graduates walking across the stage—and for each of us as we remember what we ourselves have been and wonder what we may yet become. How quickly the present has become the past, and the future races to meet us!

But Christians needn't be frightened of the future. All of us 're being changed, but for God's man or woman, the transformation may be a source of joy and hope as God works in our lives, changing us "into Christ's likeness from one degree of glory to another" (2 Corinthians 3:18).

Curtis Shelburne is minister of the 16th & D Church of Christ in Muleshoe.

A Brand New Video... BAXTER BLACK by Himself

BAXTER PERFORMING HIS POETRY, ONE-ON-ONE. JOIN HIM AS HE TAKES YOU TO THE CORRAL FOR *THE SQUEEZE CHUTE* AND *JOSÉ AND THE HOODOO COW*. OR GO TO THE WOODS WITH HIM IN *SPRINGTIME IN THE ROCKIES* AND *THE WILDERNESS WALL*. AND OF COURSE WE CAN'T FORGET THE ARENA WITH *THE ROPER'S RULE*, *HEADER OR HEELER?* AND *THE DOG AND THE RABBIT*.
17 IN ALL, AND ALL PURE BAXTER...



Yes, send me copies of BAXTER BLACK by Himself at \$22.95 each = \$

More? You want more? ... help yourself!

- NEW BAXTER BLACK - COWBOY PRIDE** (cassette tape) \$ 9.99
- NEW BAXTER BLACK BUCKS OFF** (cassette tape) \$ 9.99
- DUNNY AND THE DUCK** (64 pg softcover book) \$12.95
- HEY, COWBOY, WANNA GET LUCKY?** (223 pg hardback book) \$21.00
- CROUTONS ON A COW PIE, VOLUME II** (203 pg hardback book) \$24.95
- COYOTE COWBOY POETRY** (208 pg hardback book) \$24.95
- BAXTER BLACK'S FIRST VIDEO** (62 min/video) \$19.95
- BAXTER BLACK LIVE ON PUBLIC TV** (78 min/video) \$19.95
- BAXTER BLACK LIVE UPTOWN** (cassette tape) \$ 9.99
- BAXTER BLACK LIVE AT THE GRANGE** (cassette tape) \$ 9.99
- BAXTER BLACK ON MONDAY** (cassette tape - 3 VOLUMES Available) ... \$ 9.99
(Please select one or more Tape #1, Tape #2 or Tape #3 at \$9.99 each)
- 4 PAK Cassette Collection** (4 cassette tape set) \$25.75
(Baxter Black Live, Baxter Black & Friends, Generic Cowboy Poetry & The Buckskin Mare)

Shipping Charges	Order total:	Add
	Up to \$20.00	\$2.00
	\$20.01 to \$35.00	\$3.00
	\$35.01 to \$50.00	\$4.00
	\$50.01 to \$75.00	\$5.00
	\$75.01 & up	\$6.00

Total \$

Shipping Charges \$

Grand Total \$
(U.S. Funds)

Please send your check or money order to: **COYOTE COWBOY COMPANY**

NAME _____

ADDRESS: _____

CITY: _____ STATE: _____ ZIP: _____

ATTN: DEPT MULE

P.O. BOX 190
BRIGHTON, CO 80601
MC & VISA

AAUW

Continued from page 3

ship Chairman for the Texas Division of AAUW during the 1967-68 term. She attended numerous state and regional meetings and served as president of the Muleshoe branch of AAUW during the 1965-67 term.

The purpose of AAUW is to enable college women to continue their own intellectual growth, to further the advancement of women, and to discharge the special responsibilities to society of those who have enjoyed the advantages of higher education. Branches of AAUW are composed of graduates of colleges and universities which are on the association's approved list.

The Muleshoe branch of AAUW was organized in Oct. of 1956 by Joyeline Costen, Jimmie Henson and Roberta Biles. The branch held a char-

ter membership of 18 women with an additional six members joining the following month. The Muleshoe branch supported a number of community projects over the years including the Texas Summer Reading Club at the public library, the children's theater, the Muleshoe Heritage Foundation and the "Girl of the Month" program to honor junior and senior high school girls.

The contribution to the Jack Allison Division and the Elizabeth Watson Scholarship of The Opportunity Plan serves as a final act of service for the Muleshoe branch of AAUW. Following a 40-year history, members have voted to dissolve the Muleshoe branch. Their record of support and commitment to the Muleshoe area will be remembered for many years to come.

Survey

Continued from page 1

Medicaid disproportionate share funding.


The federal and state program helps offset some of the money the hospital is not able to recover from Medicaid patients.

Last year, the hospital received \$300,000 from the program.


HAVE A NICE DAY

Re-Elect
RICH MAGBY
as Bailey County Constable
Precinct 1
as a Write-In Candidate
On Nov. 5th
POLITICAL AD PAID FOR BY RICH MAGBY

Who's A Nifty-Fifty?



Your friends will never tell!





Beer bash

Muleshoe Police officer Benny Parker slides cases of confiscated beer of a flatbed truck Tuesday. Officers from the Texas Alcohol & Beverage Commission, the Muleshoe PD and the Bailey County Sheriff's Office destroyed more than 100 cases of beer and three cases of alcohol confiscated during the past 2-3 years.

Lopez

Continued from page 1

Sheriff's Office. He was fired from Lamb County amid allegations of sexually harassing a woman during a traffic stop before being hired by Dominguez.

Lopez' suit was filed in Travis County in May, 1995, under a provision that allows whistleblower suits to be filed in the capital city instead of the county of residence of the parties involved.

"West Texas juries are notorious for being tight-fisted," Pyles said. "Austin juries are not."

The Texas Whistleblower Act was passed as an incentive to report governmental wrongdoings.

Both parties are nearly through with the discovery phase, in which attorneys conduct pre-trial interviews with potential witnesses and exchange documents. The case

could go to trial in the next two to four months.

Pyles said he would listen to a settlement offer, but none have been made.

Dominguez and Marr gave depositions in August.

"The had some very interesting responses to the questions," Pyles said. "Obviously, I didn't ask all the questions I could."

Pyles wouldn't say if he felt Dominguez and Marr were lying.

Bill Moss, a Lubbock attorney retained by the city through the Texas Municipal League, said the city denies all of Lopez' allegations.

"We expect to bring up evidence to cast doubt on the allegations," Moss said. "Other than that, I'm not going to comment on the case."

The lawsuit claims that in November of 1994,

Dominguez ordered Lopez "to cover his ass" in case Dominguez' wife found out about an affair he was having with Mary Ann Smith, a Department of Public Safety drug informant who was working with the city.

Lopez was also one of two MPD officers to respond to a Feb. 3, 1995 domestic violence call involving Dominguez and his former wife. Lopez claims Dominguez asked him to remain quiet about the incident.

No charges were filed against Dominguez in either of the two domestic violence incidents.

Dominguez reportedly lives with Smith.

**Local News
About Local
Folks
THE MULESHOE
JOURNAL**

CREDIT MAN

Clovis, Melrose, Muleshoe & Friona Area

**Experience Counts!
Call Scott or Ed For
1 Hour Response!**



Scott Emeson Credit Man Ed Butler General Manager

8:30-6:30

1-800-755-2260

Rebuild Your Credit With A New Car!

Strebeck Auto Network

CALL 24 HOURS A DAY

Bring this ad in for a complimentary genuine diamond necklace with credit approval.

Name: _____
Address: _____
City: _____ State: _____ Zip: _____
Birthdate: _____ Phone: _____ SS #: _____
Employer: _____ Signature: _____

I Authorize STREBECK AUTO NETWORK to run an INSTANT credit check on myself.
Mail to: STREBECK AUTOWORK, 2118 Mabry Dr., Clovis, NM 88101

Subscribe Today!



**Muleshoe Journal
and
Bailey County Journal**

SUBSCRIPTION RATES

Carrier \$22⁰⁰ Year
Muleshoe-By Mail \$24⁰⁰ Year
Out Of Town \$26⁰⁰ Year

*Call Today
272-4536*

Having A Garage Sale?

Call 272-4536

NURSING HOME NEWS

By Joy Stancell

Thursday morning pastor David McIntire, J.C. Shanks and Clara Lou Jones directed our devotional Gospel singing time. Melvin Griffin was a special visitor.

Friday, the residents made Rice Krispie treats in cooking class. Later, they watched a movie on the big screen TV.

Thursday afternoon, Grace Scarbrough, Tennie McCormick, Gladys McAlister and Jean O'Brien came to play games with Lora Dale, Rosa Sneed, Leonard McCormick, Bootie Tiller, Helen Tinskey and Vera Engleking. Florence Harvey watched from the sidelines.

Sunday afternoon, the New Covenant Church came for

church services. Melvin and Wanda Griffin directed the Bingo Party Saturday afternoon. The residents are always waiting and watching for this event.

Aline Locke's family are here visiting. Her daughter took her out Friday. Mrs. Locke brought back her cracking corn bread recipe which she shared with us.

Joyeline Costen and Lona Embry visited the Healthcare Center Friday.

Claudine Embry, Beverly Wagnon, Lanell Stancell, Pat Watson and the Activity Dept. shampooed and set the ladies hair Tuesday afternoon. Velta Fyfe (the magazine lady) brought us books and visited

the residents. Zoada Gibbs was visited by out of state relatives Thursday and Friday.

Hazel Riddle was visited by her grandson Aaron from San Angelo Tuesday. Harold Burge and Aaron took Mrs. Riddle to the hospital to visit with her daughter Mary Jo.

Wednesday morning Buster and Wanda Kittrell and Jane Reeder hosted Coffee/Donut time. Loyce Killingsworth and Buster led and directed the Gospel Sing-a-long and devotional time. Jim Claunch, Anna B. Lane and LaJuana Lee also participated.

Glenda Jennings, the puppets and Jonessa Brockman came Wednesday to entertain

and direct us in singing our "Ol Favorite" hymns and songs.

Volunteers Plus, who is always there to be of service, had our piano tuned Friday.

Mr. and Mrs. Marcus McCormick, son and daughter-in-law of Leonard McCormick, visited him Tuesday. Also visiting was his wife, Tennie, and son, Van McCormick.

Van McCormick loaned us a very special video to watch on our big screen T.V.

Buster Kittrell brought us fresh homegrown turnips Tuesday.

Zeffa Shaffer watched the baseball game with her granddaughter Wednesday night. Sherry Gibbs also came

Wednesday and gave her a shampoo and set.

Marilyn Wilson visited the Healthcare Center Wednesday.

October Birthdays include: Nannie Blackman, 10/8; Lora Dale, 10/20; Bill Darnell, 10/23; Roma Davis, 10/30; Vera Downing, 10/15; Vera Engelking, 10/14; Kenneth

Everett, 10/1; Leonard McCormick, 10/5; Ruby Steinbock, 10/6; Oneita Wagnon, 10/27.

Our October birthday party was held Thursday with Jane Reeder and Volunteer Plus as hostesses, entertainment was by Rev. and Mrs. Stone and Lasting Impressions furnished the flowers.

MULESHOE AREA RETIRED TEACHERS

The Muleshoe Area Retired Teachers met Oct. 18 for a day of fun with Margie Moore and Elizabeth Watson as hostesses.

After lunch at Leal's, the group attended the movie "Good Morning Miss Dove" at the 16th and D Church of Christ.

Popcorn with prizes and drinks were enjoyed during the movie. The door prize was won by Jean Allison.

A game identifying actors and their roles during the 40's and 50's was played.

Everyone was encouraged to vote on Nov. 5.

BAILEY COUNTY DEVOTIONAL PAGE

Scoggin Ag Center, Inc.
"Where Fertilizer Is Our Business"
1532 W. American Blvd.
272-4613

IRRIGATION PUMPS & POWER
ZIMMATIC CENTER-PIVOTS
W. Hwy. 84 272-4483

MAPLE COOP GIN
927-5501
Maple, Texas

Leal's Tortilla Factory, Inc.
"Serving West Texas since 1957"
107 E. Ash 272-5772 Muleshoe, TX

Muleshoe Country Club & Golf Shop
900 Country Club Dr. 272-4250
Swimming, Dining, Golf Lessons Available Golf Accessories & Clothing

Discount Computer & Repair Service
Computek
1-800-687-3816
272-5404

BOBO INSURANCE AGENCY
108 E. Ave. C 272-4264

Shipman's Body Shop
Auto Painting • Wrecker Service • Free Estimates
Tractor Glass & Windshields
410 N. 1st Muleshoe, TX 272-4408
272-4408 FAX 272-3366

SAIN IRRIGATION & MACHINES
Complete Pump Service
W. American Blvd. 272-4397
Walt Sain Muleshoe, TX 272-4148

Bob STOVALL Printing
Quality -- Service
221 E. AVE. B 272-3373
C.R. & EVA NELL DALE MULESHOE

Ellis Funeral Homes
Muleshoe - Morton - Earth - Sudan Texas

RONNIE HOLT INSURANCE AGENCY
Specializing in Crop, Life & Health Insurance
Western 66 Office Bldg.
272-4271 Muleshoe, TX

PACO FEED YARD, INC.
Commercial Cattle Feeders
P.O. Box 956 265-3281
Friona, TX
Feller Hughes-Mgr.

WEST CAMP GIN, INC.
Better Ginning & Courteous Service
Rt 2, Box 1000
925-6681 Muleshoe, TX
James Shepard • Phyllis Shepard

JAMES CRANE TIRE CO., INC.
322 N. First 272-4594
Mike Hahn Muleshoe, TX

Facts About The BIBLE BY JOHN LEHTI

WE DO IT EVERY NIGHT OF OUR LIVES, WITHOUT EVEN THINKING ABOUT IT—BUT, IN BIBLICAL TIMES, IT COULD HAVE A VERY SERIOUS CONNOTATION!

THE TAKING OFF OF A SHOE IN BIBLICAL TIMES WAS THE SIGN A MAN USED TO SHOW THAT HE WAS NOT WILLING TO MAKE A DEAD BROTHER'S WIDOW HIS WIFE—THIS WAS A LEVIRATE DUTY WHICH ENABLED THE DEAD MAN'S NAME TO BE KEPT ALIVE IN ISRAEL, FOR THE FIRST SON OF THIS UNION WOULD BE COUNTED AS THE DEAD MAN'S SON AND WOULD RECEIVE HIS INHERITANCE. BOAZ, A NEAR-KINSMAN OF THE WIDOW RUTH (RUTH 4:1-14) WISHED TO MARRY HER BUT THERE WAS A NEARER KINSMAN TO WHOM THE PRIVILEGE BELONGED. HOWEVER, THIS MAN WAS UNWILLING AND, IN THE PRESENCE OF TEN ELDERS AS WITNESSES, HE TOOK OFF HIS SHOE AND GAVE IT TO BOAZ, SHOWING HE DIDN'T WISH TO "STAND IN THE SHOES OF THE DEAD MAN," THUS BOAZ WAS FREE TO MARRY RUTH AS NEXT OF KIN, WHICH RESOLVED THE MATTER HAPPILY—HOWEVER....

...IT DIDN'T ALWAYS WORK OUT AS EASILY AS THAT! THE LAW, AS STATED IN DEUT. 25:5-10, HELD THAT A BROTHER OR NEAREST OF KIN WAS DUTY-BOUND TO TAKE HIS BROTHER'S WIDOW TO WIFE IF THE BROTHER DIED CHILDLESS (IF THE WIDOW HAD CHILDREN, THEY HAD TO CARE FOR HER IN HER OLD AGE). NOW, IF A MAN REFUSE TO TAKE HIS BROTHER'S CHILDLESS WIDOW AS A WIFE, THEN, BEFORE THE ASSEMBLY OF THE TRIBE, SHE WOULD "LOOSE HIS SHOE FROM OFF HIS FOOT, AND SPIT IN HIS FACE", BECAUSE THE CULPRIT WOULDN'T DO HIS DUTY TO HIS DEAD BROTHER BY GIVING HIM A LIVING SON! HIS NAME WOULD THEN BE KNOWN THROUGHOUT ISRAEL AS "THE HOUSE OF HIM THAT HATH HIS SHOE LOOSED". SO TO REFUSE THIS DUTY WAS A MARK OF SHAME TO THESE ANCIENT PEOPLE—BEFORE A MAN DID THAT, HE'D BE BETTER TO—in the JARGON OF TODAY'S YOUNG PEOPLE—"COOL IT WITH THAT SHOE, MAN!"

15 SAVE THIS FOR YOUR SUNDAY SCHOOL SCRAP-BOOK

NEXT WEEK: LET'S GO HUNTING!

This devotional & directory is made possible by these businesses who encourage all of us to attend worship services.

- | | | |
|---|--|--|
| <p>ASSEMBLY OF GOD
FIRST ASSEMBLY OF GOD
521 South First Street • 272-3017
Jack Stone, Min. • 272-3984
S.S. 9:45 a.m., W.S. 11 a.m. & 6:30 p.m., Wed. 7:30 p.m.</p> | <p>ST. MATTHEWS BAPTIST
Corner of W. Boston & W. Birch
Floyd R. Monroe, Min.
TRINITY BAPTIST
314 E. Ave. B
Robert Brown, Min.</p> | <p>LUTHERAN
ST. JOHN LUTHERAN
Lariat, TX
Richard Greenhaner, Min.
S.S. 10:30 a.m.; W.S. 9:30 a.m.</p> |
| <p>BAPTIST
CALVARY BAPTIST
1733 W. Ave. C.
Ben Davis, Min.
CIRCLE BACK BAPTIST
Intersection FM 3397 & FM 298
Jessie Shaver, Min • 946-3676
EMMANUEL BAPTIST
107 East Third
Isaias Cardenas, Min.
FIRST BAPTIST
220 West Ave. E.
Stacey Conner, Min.
FIRST BAPTIST
Lazbuddie • 965-2126
PRIMERA IGLESIA BAUTISTA
223 E. Ave. B
Roy Martinez, Min.
PRIMITIVE BAPTIST
621 South First
Elder Cleveland Bass, Min.
PROGRESS BAPTIST
Progress, TX
PROGRESS SECOND BAPTIST
Arthur Hays, Min.
1st & 3rd Sundays
RICHLAND HILLS BAPTIST
17th & West Ave. D
Brad Gathright, Min.</p> | <p>CATHOLIC
IMMACULATE CONCEPTION CATHOLIC
805 E. Hickory
Joseph Augustine, Min.
CHRISTIAN
THE CHRISTIAN CENTER
Morton Hwy. • 272-5105
Reydon Stanford, Min.</p> <p>CHURCH OF CHRIST
LARIAT CHURCH OF CHRIST
Sam Billingsley, Min.
S.S. 10 a.m.; W.S. 11 a.m. & 6 p.m., Wed. 7 p.m.
LAZBUDDIE CHURCH OF CHRIST
Nathan Crawford, Min.
S.S. 9:30 a.m.; W.S. 10:20 a.m. & 5 p.m.; Wed. 7 p.m.
MULESHOE CHURCH OF CHRIST
22nd & W. American Blvd.
John Knox, Min.
S.S. 9:30 a.m.; W.S. 10:20 a.m. & 6 p.m.; Wed. 7:30 p.m.
SIXTEENTH & AVE. D CHURCH OF CHRIST
Curtis Shelburne, Min. • 272-4619
W.S. 10:30 a.m. & 6 p.m.; Wed. 7:30 p.m.</p> | <p>METHODIST
EL DIVINO SALVADOR METHODIST
E. 5th and E. Ave. D
Guadalupe Ballinas, Min.
FIRST UNITED METHODIST
507 W. 2nd St.
John Wagoner, Pastor
9 a.m. Holy Communion-Chapel, 9:45 a.m. Sunday School, 11 a.m. Morning Worship
LAZBUDDIE METHODIST
965-2121</p> <p>NAZARENE
NEW VISION CHURCH OF THE NAZARENE
814 W. Ave. C • 272-3622
David R. McIntire</p> <p>PENTECOSTAL
IGLESIA PENTECOSTAL UNDIS
207 East Ave. G • 272-3636
Wencelado Trevino, Min.</p> <p>OTHER
NEW COVENANT
Plainview Hwy.
Jimmy Low, Min.
W.S. 10 a.m.; Wed. 7 p.m.</p> |

1ST BANK MEMBER FDIC
202 South First 272-4515

WES-TEX FEED YARDS, INC.
Custom Cattle Feeding
272-7555 Muleshoe, TX

AMERICAN AVI ALLEY VALLEY INC. West Hiway 84 272-4266 Muleshoe

BAILEY GIN COMPANY, INC.
946-3397
Sudan, TX
Peanut Hawkins, MGR

WESTERN DRUG
114 Main 272-3106 Muleshoe

Church's CHICKEN 272-5581
1411 W. American Blvd., Muleshoe

HERITAGE HOUSE INN
2301 W. American Blvd. 272-7575
Muleshoe, Texas
Clint & Evelyn Peat - Resident Owners
Reservations 1-800-253-5896

BRUCE, INC. AIR CONDITIONING
Hwy. 214 North 272-5114
Muleshoe, TX
TACL-B003360C, LP08638

MULESHOE COOPERATIVE GINS
P.O. Box 569
272-4794 Muleshoe, TX

MULESHOE AREA HEALTHCARE Center
"Committed to Caring"
106 W. Ave. H Muleshoe 272-7578

MULESHOE MOTOR CO.
1225 W. American Blvd. 272-4251

"THE FIVE AREA TELEPHONE COOPERATIVE ORGANIZATION"
West Plains Telecommunications Co.
Five Area Systems, Inc., Plateau-Cellular Network
Five Area Long Distance - Five Area Internet
302 Uvalde Muleshoe, USA (806)373-5533

WANDA BROWND INSURANCE AGENCY
104 W. 12th Muleshoe 272-7548

Since 1957 - The Original
Leal's Mexican Restaurant
1010 W. American Blvd. 272-3294
Muleshoe, TX Victor & Debbie Leal

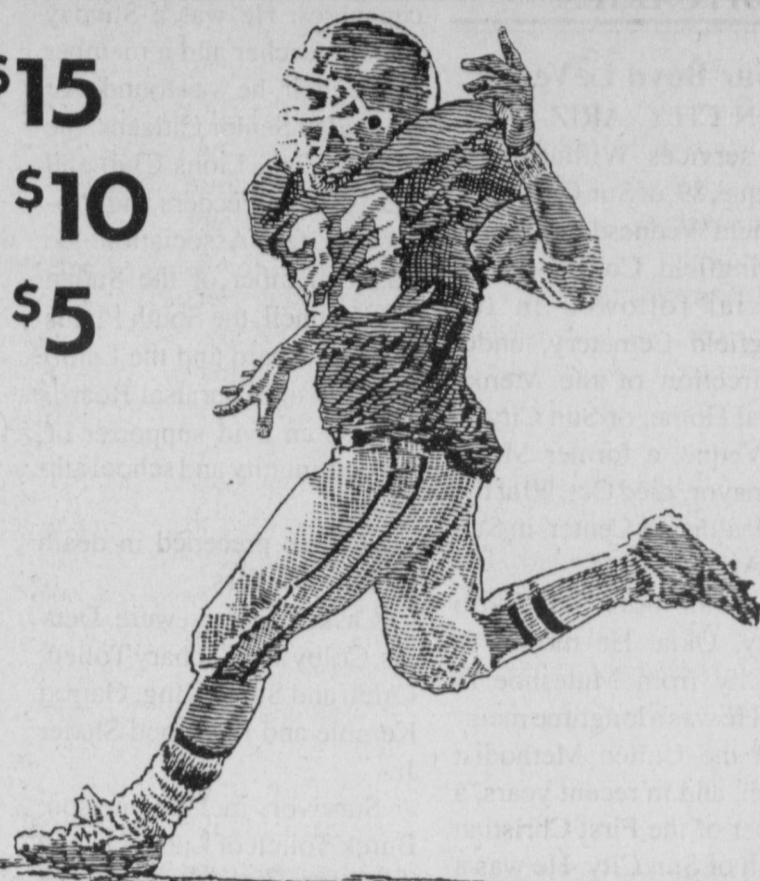
Risinger Plumbing
Serving Muleshoe Area
All Plumbing Repairs
272-6772

Bailey County Journal's

\$30 awarded each week!

FOOTBALL CONTEST

1ST PRIZE \$15
 2ND PLACE \$10
 3RD PLACE \$5



Name _____
 Address _____
 Phone () _____

GAMES OF
 NOVEMBER 1-3, 1996

TIE BREAKER

Denver at Oakland
 Combined total of both teams _____

— RULES —

1. Circle your choice as the winning team in each of the 18 games.
2. The entry with the most correct selections will win. In the event of a tie, the entry which picks the closest to the actual tie breaker score will win.
3. Entries may be mailed to Muleshoe Journal, P.O. Box 449, Muleshoe, TX 79347 or drop off at the office during business hours (8:30-5:00). Please mark the envelope FOOTBALL CONTEST.
4. Entries for this week's contest must be received by the Muleshoe Journal or postmarked by 5:00 p.m. Friday, Nov. 1, 1996.
5. Muleshoe Journal employees are not eligible for the contest.
6. Decision of the judges will be final.

Adrian Photography
 218 W. 2nd
 272-3487



Stacy Locker

Tulia at Muleshoe

Bruce Electric
 Bill Bruce
 Muleshoe
 272-5114



Don Burch

Philadelphia at Dallas

James Crane Tire Co.
 322 N. 1st
 272-4594



Mandy Myers

Whitharral at Lazbuddie

Wes Tex Feed Yards
 Custom Cattle Feeding
 272-7555



Matt Mason

Perryton at Friona

Sudduth Field & Co.
 104 W. 2nd St.
 272-4291



Colby Latham

Miami at New England

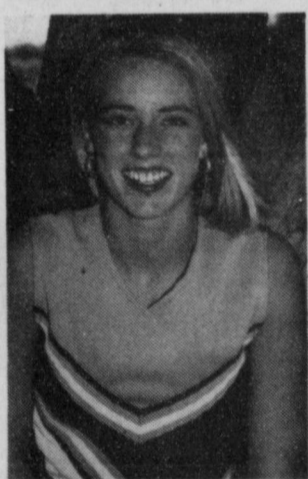
Bailey County Farm Bureau
 Rickey Barrett, Mgr.
 Dale Vise, Agt. Allen Mount, Agt.
 1612 W. American Blvd. 272-4567



Bobbie Martha

Kansas at Iowa State

Muleshoe Co-Op Gin
 Manager Chader Marrow, 272-4794



Brandi Harrison

Cotton Center at Three Way

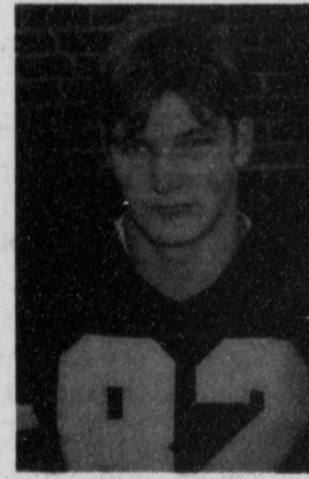
Bob Stovall Printing
 221 E. Ave. B
 272-3373



Greg Pena

Seminole at Littlefield

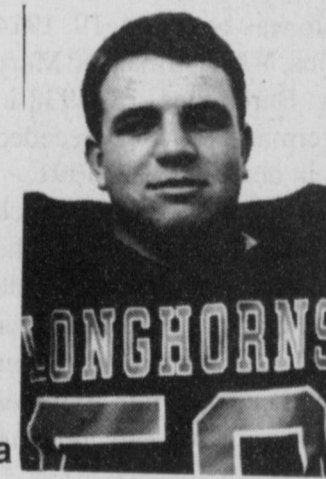
Bailey Gin Co.
 Sudan
 946-3397



Justin Lee

Houston at Seattle

West Camp Gin, Inc.
 West Camp
 925-6681



Edward Terry

Syracuse at West Virginia

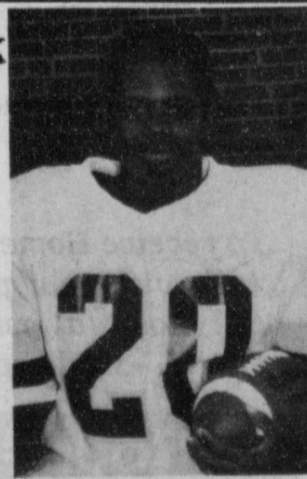
Muleshoe Feed Barn
 311 W. American Blvd.
 272-5626



Lynsie Black

River Road at Dimmitt

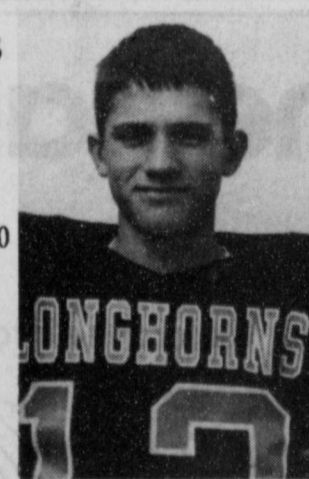
McCormick Seed, Inc.
 400 E. Ash Ave.
 272-3156



Louis Hines

Sudan at Farwell

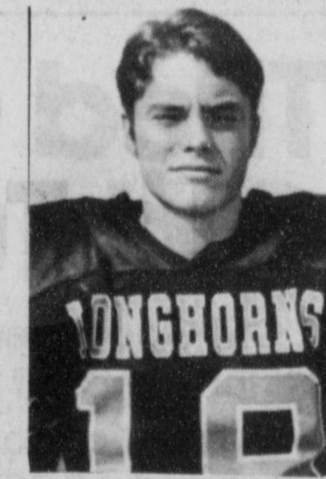
Decorators Floral & Gifts
 616 S. 1st 272-4340



Josh Morris

Kansas City at Minnesota

Wilson Drilling
 W. Hiway 84
 272-5521



Cameron Turner

Colorado State at Air Force

Hi-Tek Automotive
 215 N. 1st
 272-3480



Matt McClanahan

Sanford-Fritch at Dalhart

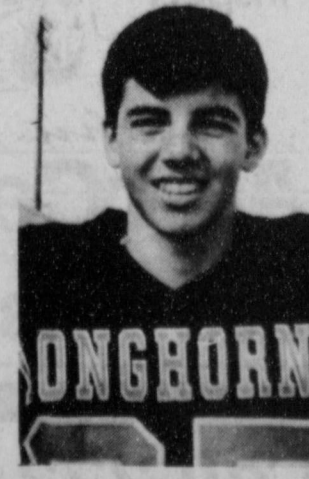
Leals Restaurant
 1010 W. American Blvd.
 272-3294



Judd Glover

Portales at Lovington

Ag Aviation, Inc.
 Friona Hwy.
 272-3534



Deon Gallman

Washington at Buffalo

Western Drug Co.
 114 Main
 272-3106



Seth Black

Northwestern at Penn State

PUBLIC RECORD

OBITUARIES

Wilbur Boyd LeVeque

SUN CITY, ARIZ.—Funeral services for Wilbur Boyd LeVeque, 89, of Sun City, Ariz. were held Wednesday, Oct. 23, at Springfield, Colo.

Burial followed in the Springfield Cemetery, under the direction of the Menke Funeral Home, of Sun City.

LeVeque, a former Muleshoe mayor, died Oct. 20 at the Sun Healthcare Center in Sun City, Ariz.

He was born in Cado County, Okla. He moved to Sun City from Muleshoe in 1980. He was a longtime member of the United Methodist Church, and in recent years, a member of the First Christian Church of Sun City. He was a member of the Masonic Lodge and the Lions Club. He was a loan officer for Production Credit Association from 1946-1972.

Survivors include his wife, Nina of Sun City; two grandchildren, Marc and Christi; two great-grandchildren, Ian and Jessica, all of Amarillo; one step-son, John; four step-grandchildren, Jenny, Sean, Ashley and Brett; one step-great-granddaughter, Alexandria.

Marvin H. Tollett

SUDAN — Funeral services for Marvin H. Tollett, 82, of Lubbock, were held Saturday at the First United Methodist Church with the Rev. Vance Roberts, pastor, and the Rev. Jim Hawthorne, former pastor, now of Amarillo, officiating.

Burial followed in the Sudan Cemetery under the direction of the Ellis Funeral Home of Sudan.

Mr. Tollett died Wednesday, Oct. 23, at the Carillon Medical Center in Lubbock after a lengthy illness.

He was born Oct. 19, 1914 in Inez, N.M. He married Mary Edna Burck Dec. 18, 1938 in Hagerman, N.M. She preceded him in death Jan. 22, 1991.

He had moved to Lubbock in 1992 from Sudan, where he had lived most of his life. He was a grain elevator manager for 34 years. He was manager of the Feeders Grain Elevator in Sudan for 20 years, retiring in 1981.

He was a life long member of the Methodist Church and

had served in many volunteer capacities. He was a Sunday School teacher and a member of the choir. He was founder of the Sudan Senior Citizens, the Rotary Club, Lions Club and Texas Cattle Feeders and Producers Grain Association. He was a member of the Sudan City Council, the South Plains Hospital Board and the Lamb County Tax Appraisal Board. He was an avid supporter of the community and school athletics.

He was preceded in death by four brothers.

Casket bearers were Dennis, Colby and Zachary Tollett, Caleb and Steve King, Garrett Kemble and Raymond Shafer Jr.

Survivors include one son, Burck Tollett of Lubbock; one daughter, Zerlinda Shafer of Beaumont, Texas; one brother, Wayne Tollett of Rogers, N.M.; three grandchildren, Rehnea Raines, Raymond Shafer Jr., and Zachary Tollett; two great-grandchildren, Ashlee and Garrett Kemble.

The family suggests memorial to the First United Methodist Memorial Fund of Sudan.

Martha M. Baker

SUDAN — Funeral services for Martha M. Baker, 98, of Sudan, were held Saturday, at the First Baptist Church of Sudan with the Rev. Cliff Hargrove, pastor, officiating.

Burial followed in the Sudan Cemetery under the direction of the Ellis Funeral Home of Sudan.

Mrs. Baker died Wednesday, Oct. 23 at the Lamb Healthcare Center of Littlefield, after a lengthy illness.

She was born Dec. 20, 1897 in Sunset, Texas. She married Osa O. Baker, Dec. 21, 1913 in Chillicothe, Texas. He died April 26, 1977.

She moved to the Sudan Community in 1933 from Chillicothe. She was a homemaker and a member of the First Baptist Church of Sudan.

Grandsons will be casket bearers.

Survivors include three sons, Dexter Baker and Calvin Baker of Sudan and Billy Baker of Spearman; one daughter Mildred V. Lance of Sudan; one brother, Charlie R. Walser of Hereford; 16 grandchildren; 45 great-grandchildren and 15 great-great-grandchildren.

The family suggests memo-

rials to the City of Sudan Restoration Project, in care of the First National Bank of Sudan, or to the First Baptist Church of Sudan.

BIRTHS

Shelby Jaelyn McCamish

Terry McCamish announces the birth of a daughter born Oct. 17, at Clovis High Plains Hospital.

Shelby Jaelyn McCamish weighed 6 lbs. 14 oz. at birth.

Grandparents are Barbara and Clark McCamish of Muleshoe. Other family includes her uncles, Ronnie Altman, and Darryl McCamish of Muleshoe, and her aunt, Sheryl Altman of Muleshoe.

HOSPITAL ADMISSIONS

The Muleshoe Area Medical Center has reported the following admissions:

Oct. 18 — Stacey Beasley, Mary Madrigal, Irma Mendez, Santana Chavez, Baby Girl Loya

Oct. 19 — Martin Ramirez, Stacey Beasley, Mary Madrigal

Oct. 20 — Martin Ramirez, Olene Watts, Stacey Beasley, Stancie Dale, Frank Ellis, Mary Jo Burge, Joe Ray

Oct. 21 — Martin Ramirez, Tyler Roland, Olene Watts, Belinda Morris, Stancie Dale, Mary Jo Burge, Joe Ray, Maria Cuevas, Kenneth Martin

Oct. 22 — Tyler Roland, Olene Watts, Belinda Morris, Stancie Dale, Joe Ray, Maria Cuevas

Oct. 23 — Sara Olivarez, Olene Watts, Frankie Daniell, Ramona Lopez, Ruby Wilson, Joe Ray, Minnie Parham, maria Cuevas, Jim Claunch

Oct. 24 — Sara Olivarez, Olene Watts, Frankie Daniell, Ramona Lopez, Ruby Wilson, Joe Ray, Minnie Parham, Maria Cuevas, Jim Claunch

POLICE LOG

Arrest Report Muleshoe Police Department

Oct. 18 — Troy Jefferson Sliger, 27, charged with two counts of issuance of a bad check.

Oct. 19 — Rosa Maria (Guillen) Davis, 36, charged with seven counts of issuance of a bad check.

Oct. 19 — Jose Isidro

Torrez, 41, charged with public intoxication.

Oct. 19 — Jimmy Harold Steptoe, 43, charged with public intoxication.

Oct. 19 — Rafael Villa Pacheco, 52, charged with public intoxication.

Oct. 19 — Benedicto Torrez, Jr., 52, charged with driving while intoxicated, driving with a suspended license, and driving with a fictitious license.

Oct. 20 — Isidro Rivera Juarez, 30, charged with failure to maintain proof of financial responsibility, driving without a license, and driving without registration.

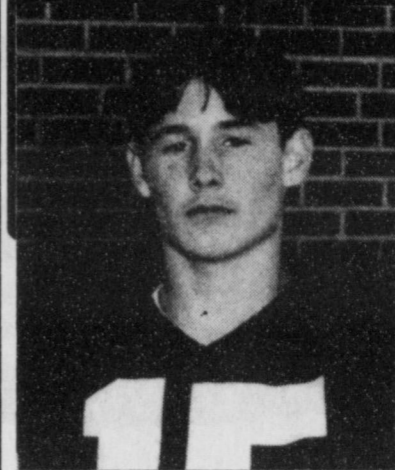
Oct. 20 — Fernando Romero, Sr., 37, charged with driving while intoxicated.

Oct. 20 — John Issac Segovia, 19, charged with driving while intoxicated.

Sheriff's Department
Oct. 14 — Johnny Calderon, 30, charged with driving while intoxicated.

Oct. 19 — Rafael Pacheco Villa, 52, charged with public intoxication.

**Western 66
Congratulates the Mule &
Lady Mule of the Week!**



BRECK BROWN

Sophomore Breck Brown, JV quarterback, is doing a real good job. He led the team to 4 wins in the last game. Breck is the son of Darrell and Latsy Brown.



LUCILA FLORES

Senior Lucila Flores loves to run and supports the cross country team. She is the daughter of Rito and Celia Flores.



The CardStop

24 Hour Fuel Service

715 W.

American Blvd.,
Muleshoe

To apply for a card,
contact WESTERN 66

272-4556

We have diesel!

**Local news
about
local folks.**

**Muleshoe
Journal**

To subscribe
call 272-4536

Home Folks Caring For Folks At Home.



**MULESHOE AREA
HOME HEALTH**

Agency

Featured Employee

Amy Smith has lived in Earth for a year, since moving from Turkey, TX. She is married to Brandon Smith, a coach at Earth High School.

Amy enjoys doing crafts, shopping and being with friends and family. She and Brandon go to Springlake Baptist Church.

A nurses aide with the Muleshoe Area Home Health Agency, Amy enjoys working with the people there. She also loves working with the homebound people in the Muleshoe area.



Amy Smith

To receive Home Health Services,
talk with your physician or talk
with hospital personnel when you
are hospitalized.

24 Hour # 272-3346

Local Nurse on call 24 hours a
day to offer prompt service.

We accept Medicare, Medicaid
and Private Insurance

It Is Your Right To Choose The
Home Health Agency You Prefer.



Affiliated with

LUBBOCK METHODIST HOSPITAL SYSTEM

FREE Information On Advance Directives

Also known as Living Wills or Right To Die Directives.

You may call our agency 272-3346 for these directives. You may also obtain these forms and assistance at 623 West 2nd Street.

**Tired Of The Same
Old Tune?**

A GM Goodwrench Engine Tune-Up can revitalize the performance of your GM car or light truck:

- Engine diagnosis • Install AC Spark Plugs and AC PCV Valve • Check ignition system, timing and belts • Set idle
- Check fuel filter and air filter • Inspect battery terminals



\$69⁹⁵ + tax

John Roley's
AutoCenter
LITTLEFIELD

GM Goodwrench Service 385-6464

Subscribe today! Call 272-4536

Journal Classifieds

Call 272-4536

Deadlines: For Thursday, 5 p.m. Monday; for Sunday, 5 p.m. Thursday

Call 272-4536

Public Notice

LAMB COUNTY ELECTRIC COOPERATIVE, INC. NOTICE OF NEW LARGE GENERAL SERVICE - PRIMARY VOLTAGE RATE

Notice is hereby given that Lamb County Electric Cooperative, Inc. (the "Cooperative") intends to offer a rate for three-phase primary (approximately 12,460 volts phase-to-phase electric service supplies at one point of delivery, and measured through one metering point, where facilities of adequate capacity and suitable voltage are available.

This rate is a new rate, and has not been previously offered by the Cooperative.

This rate could increase the total revenues of the Cooperative by approximately \$300,000. However, this amount cannot be accurately estimated, because the extent of usage of this

amount cannot be accurately estimated, because the extent of usage of this rate by the customers cannot be predicted.

The proposed rate will be effective on January 17, 1997, or as soon thereafter as may be permitted by law.

There are four (4) customers in the Large Commercial class and seven (7) customers in the Oil Well class that may be affected by the proposed rate. The rate will not cause an increase in the rate of any of these customers. No other class of customers is affected by the proposed rate.

Information concerning this new rate is available at the General Office of the Cooperative, located at 2415 South Phelps Avenue, Littlefield, Texas 79339. Inquiries should be directed to Mr. Delbert Smith, General manager (Phone 806-385-5191).

On or about November 15, 1996, the Cooperative will file with the Public Util-

ity Commission of Texas a Statement of Intent to Introduce a New Rate, setting forth the details of the rate. Requests to intervene must be filed no later than 45 days after the application filing date; thus, the Cooperative anticipates the deadline for intervening and objecting to the new rate will be January 2, 1997. Persons who wish to intervene or otherwise participate in these proceedings should notify the Commission as soon as possible. A request to intervene, participate, or for further information should be mailed to the Public Utility Commission of Texas, 1701 N. Congress Ave., P.O. Box 13326, Austin, Texas 78711-3326. Further information may also be obtained by calling the Public Utility Commission Consumer Affairs Division at (512) 936-7120, or (512) 936-7147 tele-type-writer for the deaf.

Published in the Bailey County Journal, Oct. 20, Oct. 27, Nov. 3 and Nov. 10.

Help Wanted

Feed Yard A/P-A/R Clerk. experienced with turnkey and 123 software. 806-647-4398 43t-2tc

Route driver needed for Muleshoe area. Top wages with house and utilities provided. Class B CDL license, Drug screen and good driving record needed. Call your Local Used Cow Dealer 1-800-535-1388, ask for Rick. 43t-tfc

Saturday and Sunday Feedyard data entry and scale operator. 806-647-4398 43t-2tc

Accounting Personnel needed. Experience required, computer background required. Send Resume to P.O. Box 132, Muleshoe, Texas 79347 44s-4tc

TEXAS REFINERY CORP. needs person in MULESHOE. Write W.B. Hopkins, Dept. W-79347, Box 711, Ft. Worth, TX 76101-0711 44s-2 sun pd

For Sale

Singer 1996 New unsold Heavy Duty School Models. Sews silk, canvas, leather, knits & Jeans. Sews straight, zigzag, buttonholes, monograms, serge seam finish. 10 year Factory warranty, \$198 w/ad; \$498 w/out. Free UPS statewide. **Singer Sewing Center** 5418 Slide Rd. Lubbock 806-788-0608 37t-tfc

For Sale: Beautiful Country Home on 5 acres near Springlake/Earth Schools. Brick 3 bdrm, 2 bath, 2 living, dream kitchen, fire place, skylights, Central Heat and Air, 2 car garage and barn. For more information Call 806-558-4013, evenings. 43s-2sun c

For Sale: GE washer and dryer - almond color, \$175.00 Call (505) 985-2239 or (505) 799-4757, leave message 40t-nc

Business Opportunity

PERSON WANTED to own and operate retail candy shop in Muleshoe area. Low investment. For information call Mrs. Burden's Gourmet Candy Company, Dallas, TX (972) 991-8239 44s-4tpd

Real Estate

For Sale By Owner: 3 bdrm, 1 3/4 bath, single garage in Richland Hills addition of Muleshoe. For more information call 806-965-2477. 40t-tfc

For Sale: Beautiful Country Home on 5 acres near Springlake/Earth Schools. Brick 3 bdrm, 2 bath, 2 living, dream kitchen, fire place, skylights, Central Heat and Air, 2 car garage and barn. For more information Call 806-558-4013, evenings. 43s-2sun c

HAY FOR SALE

German millet hay, haygrazer and large round bales. Delivery available discounts on quantity. Call (505) 276-7522, 477-2220, 359-0947, 276-7527 41t-tfc

Miscellaneous

Start Dating Tonight! Have fun playing the Texas Dating Game 1-800-ROMANCE ext. 4743 42t-13tpd

Must Sell! 3 New Arch Type steel buildings 25x30, 30x58. Financing in Place. Must sell immediately. Great for Backyard and Garages. Call Today 1-800-527-4044. 43t-4tpd

Classifieds Sell! 272-4536

For Rent

House For Lease or Rent Nice 3 bdrm, one bath, in Lenau addition. Call 272-3920 leave message. 44s-3tc

Nice 3 bedroom house for rent located 3 miles west on CR 123, (which is one mile west of Progress). \$350 per month with utilities furnished. References requested. Call 925-6763. 44s-6tc

For Rent or Sale: 3 bedroom house, 1 3/4 bath, with large kitchen dining area, living room, single garage with storage area. Call 272-5607. 44s-tfc

Automobile

For sale: '93 Ford XLT Supercab 4x4 pickup. Very clean. \$9,500 OBO. 272-3102 or 925-6766. 31s-tfc

For Sale: '93 Buick Century, 3.3L-V6, automatic, loaded, excellent condition, very clean, 54,000 miles, \$9,000. 272-3587, leave message. 43t-2tpd

'90 Chevy 1/2 ton PU, one owner, 47,500 miles, 350 eng., A.T., A.C., P.W., P.L., AM/FM Cass., sliding rear window, \$10,700 obo, Green Bros. Inc., 705 North Frist, 806-272-3157. 44s-2tpd

'96 Chevy extended cab, 4x4, 6.5 turbo diesel, automatic, Silverado, loaded, \$25,995. (505) 359-1775, Portales, NM

'91 Chevy extended cab, Silverado, 4x4, automatic, 350, red, \$14,995. (505) 359-0947, Portales, NM

'88 Jeep Cherokee, limited, 4x4, V-6, loaded, including leather interior and cellular phone, \$12,900. (505) 359-1775, Portales, NM

'93 Dodge Dakota club cab, red and silver, extra nice, \$10,995. (505) 359-0947, Portales, NM

'88 Dodge D-250, 3/4 ton, white, special \$4,995. (505) 359-1775, Portales, NM

Wanted

\$\$\$WANTED\$\$\$ We buy used mobile homes. We pay top dollar, any year, any condition. We need your used mobile home. Please call 1-800-404-1321. 7t-tfc

PRIMESTAR

\$50 off installation call Gabriel for details 272-3072 or 1-800-815-2358 pin 9240 38s-tfc

Byrd Realty Ronald Byrd Farwell, Texas Licensed Broker

Crista Bass Sales Associate Home (806) 925-6464

78 Acres NW of Muleshoe, Highway Frontage. Excellent development property. Owner will sell as one unit for \$40,000 or will divide into 5 or 10 acre tracts at \$750.00 per acre. If you have wanted a small acreage, this is your prime opportunity

320 Acres N.E. of Muleshoe. 4 wells, 2-Electric sprinklers, large 2 story stucco house, large barn, lays well

James F. Hayes & Co. AGRICULTURAL REAL ESTATE SERVICES

656 Acres of C.R.P. — Clays Corner Hub Area. Two years left on contract. 3 irrigation wells, 1 domestic well. 90% lays good with good soils. Will be productive farm when it comes out of C.R.P.

640 Acres Oklahoma Lane — 2 Sprinklers, 4 irrigation wells, 115 Acres of pasture, modest home, 2 domestic wells

120 acres west of Muleshoe. 2 wells. Good soil. Lays good. Immediate possession available. \$250.00 per acre.

160 Acres Northeast of Muleshoe in Parmer County. Excellent water. Excellent soil. Electric Center Pivot Sprinkler. New set of bowls on pump. Top Notch Farm

317 Acres in Lamb County on Bailey County line. 3 wells, 1 sprinkler, lays good. Call for details!

Vic Coker, Agent 310 Main St. Suite 103 Muleshoe Office 272-3100 Home 965-2468 WHEN LAND INVOLVES COWS AND PLOWS

BETTER LIVING

MOBILE HOMES CLEARANCE

All '96 Models Must Go! Come Check Us Out — Fantastic Savings On All Homes 1-800-404-1321 Portales, NM (505) 356-5448 Lic. # D00681 'Se Habla Espanol'

CLASSIFIED RATES

15 Words And Under, First Run: \$3.75 Every Run After The Initial Run: \$3.00 16 Words And Over: 1st Run .25 Per Word 16 Words And Over: 2nd Run .20 Per Word **CLASSIFIED DISPLAY RATES \$3.20 Per Column Inch DEADLINES** For Thursday Paper, 5 p.m. Monday For Sunday Paper, 5 p.m. Thursday To Receive The Reduced Rate After The First Insertion, The Ad Must Run Continuously. We Reserve The Right To Classify, Revise, Or Reject Any Ad. We Are Not Responsible For Any Error After Ad Has Run Once

Christmas wouldn't be Christmas without The Salvation Army. The Salvation Army changes lives for the better. Please give when you see the red kettle this holiday - I do. Barbara Bush

Need A Home To Call Your Own? **Need A Vet To Treat Your Pet?** **Need A Place To Put Your Case?** **Need A Heater For Your Two Seater?** Find What You're Looking For In The Classifieds! It's the first place to look and the last word on buying, selling or renting any item or service under the sun. When you're in the market for just about anything at all...go to the marketplace that has it all...The Classifieds! CALL 272-4536 TO PLACE YOUR AD **Muleshoe & Bailey County Journals**

Nieman Realty George Nieman, Broker 272-5285 or 272-5286

RICHLAND HILLS JUST LISTED-IMMACULATE 3-2-2 Brick Home, Geo. Heat Pump, Built-ins, FP, Nice landscaped yd., Stor. Bldg., MORE!!! \$70's!!! RH3

NICE 3-3-1 Brick, cent. Heat, Evap. Air, built-ins, 2000' + lv. area, fenced yd., stor. bldg., MORE!! \$60's!!! RH-2

NICE 3-2-2 Brick, cent. A&H, built-ins, FP, approx. 2150' lv. area, fenced yd., MORE!!! \$69K!!! RH-7

VERY NICE 3-2-1 Brick, Cent. A&H, built-ins, fans, new paint, carpet, & drapes, fenced yd. \$60K!!! RH-1

HIGHLAND AREA 2 Bdrm, 1 bath home, fenced yard. \$16,500!!! HL-4

VERY NICE 3-2-2 Brick, Cent. A&H, built-ins, fenced yd., spktr. sys., MUCH MORE!!! \$60's!!! HL-1

VERY NICE 3-2-1 carport Home, heat pump, built-ins, nice carpet, fans, storage-workshop! MUCH MORE!!! \$40's!!! HL-6

NICE 3-2 Home, Heat Pump, FP, fenced yd., stor. bldg. \$30's!!! HL-3

NICELY REMODELED 3-2-1 Brick, Cent. A&H, built-ins, FP, nice carpet & tile, fenced yard, storage building, MORE!!! \$60's!!! HS-8

PARKRIDGE NICE 3-2-2- Brick, Cent. A&H, built-ins, FP, cov. patio, fenced yd. \$50's!!!

COUNTRY CLUB - 2-1-1 Carport Home, wall furnace heat, nice carpet, storm shelter, stor. bldg., fenced yd. \$20's!!!

RURAL HOMES NICE 3-2-2+2 Carport Brick Home on 2.5 acres on pavement, clc to town, Heat Pump, built-ins, FP, MUCH MORE \$70K !!! HR-3

JUST LISTED -3-2-2 Home 1.36 ac. on pavement, Cent. A&H, built-ins, freshly painted interior & exterior, fans, fenced yd., 31' x 40' barn !!! \$40's!!! HR-2

2-2-1 carport Mobile Home on .665 acres on pavement close to town, Cent. heat, evap., air, DW, large barn, stor. bldg. and MORE!! \$25K!!! HR-5

VERY NICE 3-11/2-1 Home on 8 acres, on pavement close to town, Cent. A&H, built-ins, sun room, concrete cellar, storage bldgs., fenced yd., RV cover, mobile home hookups, stock pens, fenced acreage, & MORE !!! \$50's!!! HR-6

LENAU ADDITION NICE 3-2-1 Brick, Heat Pump, built-ins, fans, fenced yd., stor. bldg. \$30's!!! L-4

NICE 2-2-2 Brick, on corner lot, heat pump, fenced yard, storage bldg., MORE! \$40's!!! L-1

PRICE REDUCED 3-2-1 carport Home, geothermal heat pump, fenced yd., storage bldg. \$24,500!!! L-3

NICELY REMODELED 3-1 1/2- 1 + 2 Carport home, Cent. A&H, DW., fenced yd., Stor.-wkshp., MORE!!! \$30's!!! L-2

HIGH SCHOOL VERY NICE 3-1-1 Brick, Heat Pump, nice carpet, fenced yd., stor. bldg. \$30's!!! HS-3

NICE 2-1-1 Brick, Heat Pump, nice carpets, well insulated, storm windows & doors. \$30's!!! HS6

JUST LISTED -2-1-1 Home, floor & wall furnace, evap. air, siding exterior, stor. bldg., fenced yard !!! \$20's!!! HS-7

JUST LISTED-NICE 2-1-1 Home, nice carpets, stove, refrig., wall furnace, covered deck, fenced yd., stor. bldg., MORE !!! \$20's!!! HS-4

NICE 4-3 Home on corner lot, Heat Pump, built-ins, FP, fenced yd., stor. bldg., 3100' + Lv. area, storage basement, MORE!!! \$70's!!! HS-9

ASK ABOUT OUR COMMERCIAL LISTINGS!!! 160 acre tract, 8" well, circle spktr. w/drops, fully allotted!!!

PARMER - BAILEY CO. Area-Elevator & Cleaning Facility - 12 million lb. Capacity, Scales, Dryer, & Office on approx. 6.5 acres!!! PRICED TO SELL !!! POSSIBLE OWNER FINANCING!!!

treat yourself to these HALLOWEEN BUYS



ALL TYPES
Coca-Cola • Sprite • Dr Pepper **179**

ALL TYPES
Coca-Cola • Sprite • Dr Pepper **139**

3 liter btl.

MEAT

Wilson Thick Sliced or Regular
Meat **\$1.39**

Wilson Regular or Polish
Smoked Sausage 1 lb. pkg. **\$1.99**

Corn King
Sliced Bacon 12 oz. pkg. **\$1.59**

Corn King
Sliced Ham 2 lb. pkg. **\$4.99**

Corn King
Meat Franks 12 oz. pkg. **89¢**



Seasoned Boneless Skinless
Chicken Breast
\$1.89

lb.



U.S.D.A. Select Beef Rump Roast
\$1.49

lb.

Value Pack
Beef Tripe
lb. **39¢**

U.S.D.A. Select Beef
Eye-Of-Round Steak
lb. **\$2.49**

U.S.D.A. Select Beef
Eye-Of-Round Roast
lb. **\$2.29**

U.S.D.A. Select Beef, Value Pack
Bottom Round Steak
lb. **\$1.69**

PRODUCE

Halloween Pumpkins
each **\$1.39**

Cello Tomatoes 4 pack **99¢**

Washington Red or D'Anjou Pears lb. **69¢**

Fresh Green Bell Peppers **5/\$1**

Garden Fresh Cilantro bunches **3/\$1**



Washington Fancy
Red Delicious or Granny Smith
Apples
10 for \$1

Candy or Carmel Apples each **69¢**

Mini Pumpkins **5 for \$1**

STARTING OCT. 27
WE WILL BE OPEN
MONDAY-SATURDAY
7:30 A.M.-8:00 P.M.,
SUNDAY
8:00 A.M.-7:00 P.M.

Presenting A Special Offer On This Beautiful, Contemporary Stoneware...

Now On Sale!
A \$7.99 Value Save \$5.00
Per Place Setting With Our Exclusive Offer!

Touch of Elegance
FINE DINNERWARE
\$2.99

4-PC. PLACE SETTING ONLY With Each \$10.00 Purchase

Cordinate Accessories Also Available... See Store Display For Complete Details. And Start Your Set Today!
At Participating Affiliated Foods Member Stores

SHURSAVING, ALL PURPOSE
Flour
25 lb. bag **\$2.99**

Tombstone Assorted 12" Pizza **2/\$5**

Shurfine Apple, 64 oz. bfl. **\$1.19**

Cider or Juice **\$1.19**

Schilling, .75 oz. bfl. **\$3.88**

Cinnamon Sticks ... **99¢**

Brach's, 9 oz. pkg., Cinnamon Imperials **99¢**

SHURSAVING PURE GRANULATED
Sugar
4 lb. bag **\$1.29**

BREW UP SOME SAVINGS

KLEENEX COTTONELLE BAKING SODA OR ULTRA SOFT Bath Tissue **89¢**

KLEENEX ASSORTED Facial Tissue **99¢**

KLEENEX VIVA ULTRA Paper Towels **79¢**

ASSORTED 13-17 CT. PULL-UPS, 18-24 CT. ULTRATHIMS, OVERNITE OR SUPREME Huggies Diapers **5.99**

ASSORTED DEPEND® Poise Pads 16-24 ct. pkg. **3.99**

ASSORTED NEW FREEDOM PADS OR KOTEX Maxi Pads or Tampons 14-24 ct. pkg. **2.55**

ASSORTED MILKY WAY, TWIX, SNICKERS, 3 MUSKETEERS, M&M'S PLAIN PEANUT, OR M&M'S ALMOND BAR M&M's Fun Size Candy **1.97**

ARCOR ORIGINAL OR BLACK WITCHY Starlight Mints **99¢**

AMERICAN CANDY Party Mix **2.53**

MELSTER ORANGE & BLACK Peanut Butter Kisses **89¢**

PIC-A-MIX Candy **1.59**

WITH PEANUTS Fiddle Faddle **2.51**

treat yourself to these HALLOWEEN BUYS

CARAMEL CORN RECIPE
1 cup brown sugar
1/4 cup white syrup
1 stick margarine
1/2 cup pecans (broken)
1/2 cup of popcorn kernels

Pop popcorn. Roll sugar, syrup and margarine about 5 minutes. Place popped corn in 9 x 13 pan. Scatter pecans over popped corn. Pour the syrup over the corn and stir. Place in oven at 250° for at least one hour. This should be stirred about 3 times while baking. If stored in a tight container, it will keep for months.

ASSORTED MILKY WAY, TWIX, SNICKERS, 3 MUSKETEERS, M&M'S PLAIN PEANUT, OR M&M'S ALMOND BAR M&M's Fun Size Candy **1.97**

ARCOR ORIGINAL OR BLACK WITCHY Starlight Mints **99¢**

AMERICAN CANDY Party Mix **2.53**

MELSTER ORANGE & BLACK Peanut Butter Kisses **89¢**

PIC-A-MIX Candy **1.59**

WITH PEANUTS Fiddle Faddle **2.51**

FROZEN & DAIRY

BLUE BUNNY 1/2 GAL. WHERE BLUE BELL NOT AVAILABLE
YOGURT OR ASSORTED ICE CREAM Blue Bell **2.88**

ASSORTED BANQUET Dinners or Pasta Favorites **99¢**

TROPICANA REGULAR OR HOMESTYLE SEASON'S BEST Orange Juice **2.99**

BANQUET ORIGINAL, SKINLESS, HOT-SPICY, COUNTRY, OR SOUTHERN Fried Chicken **2.55**

MOZZARELLA CHEESE OR ORIGINAL Banquet Chicken Nuggets **2.44**

BANQUET LEMON, BANANA, CHOCOLATE, OR COCONUT Cream Pies **4.55**

CURLY OOO, TATER BABIES, OR FAJITA Inland Valley Fries **2.53**

REGULAR OR LIGHT Parkay Spread **1.88**

ASSORTED HUNT'S SNACK PACK Juicy Gels or Pudding **99¢**

CAMPBELL'S Chicken Noodle Soup **5.53**

REGULAR OR BOLD A-1 Steak Sauce **2.99**

NABISCO SNACKWELL'S ASSORTED Crackers or Cookies **1.79**

SHURSAVING Bleach **69¢**

ALPO ASSORTED Dog Food **5.52**

FACE HOT, MILD, OR MEDIUM Picante Sauce **1.69**

SHURSAVING Shortening **99¢**

FRITO LAY'S® Frito Lunch or Flavor Packs **2.54**

KRAFT MILD MEXICAN, ORIGINAL, OR JALAPENO Cheez Whiz **1.79**

TACO BELL Taco Dinner Kit **1.79**

ASSORTED KRAFT FREE Fat Free Dressing **1.39**

KRAFT TANGY ITALIAN OR CHICKEN Egg Noodle Dinner **4.55**

KRAFT Spaghetti Meat Sauce Dinner **2.55**

ASSORTED HUNT'S SNACK PACK Juicy Gels or Pudding **99¢**

CAMPBELL'S Chicken Noodle Soup **5.53**

REGULAR OR BOLD A-1 Steak Sauce **2.99**

NABISCO SNACKWELL'S ASSORTED Crackers or Cookies **1.79**

SHURSAVING Bleach **69¢**

ALPO ASSORTED Dog Food **5.52**

FACE HOT, MILD, OR MEDIUM Picante Sauce **1.69**

SHURSAVING Shortening **99¢**

FRITO LAY'S® Frito Lunch or Flavor Packs **2.54**

HEALTH & BEAUTY

ASSORTED Style Hairspray or Shampoo/Conditioner **79¢**

AA OR AAA Duracell Batteries **2.99**

1 PACK 9 VOLT OR 2 PACK DC Duracell Batteries **1.99**

WESTERN FAMILY 100 COSMETIC PUFFS **2.51**

WESTERN UNION MONEY TRANSFER™
"The fastest way to send money"

Pay-n-Save

515 W. American Blvd.
Muleshoe 272-4406

Lowe's MARKETPLACE

401 W. American Blvd.
Muleshoe 272-4585

PRICES EFFECTIVE OCT. 23-29, 1996
OPEN MONDAY-SATURDAY 7:30 A.M. - 9:00 P.M., SUNDAY 8:00 A.M. - 8:00 P.M.

WE RESERVE THE RIGHT TO LIMIT QUANTITIES IN TEXAS