

# The Wheeler Times

Serving Wheeler, Hemphill and Beckham Counties  
THURSDAY, OCTOBER 6, 1960

SINGLE COPY 5c

## Chevy Beautifies, Expands Lines for '61



Three for the road—here are three smart new Chevrolet passenger cars which will make their bow to the public on October 7. Left—One of the newcomers in the Corvair line . . . the Green-brier Sports Wagon designed for multiple cargo jobs and outdoor living with seats that may be re-positioned to accommodate many varied arrangements. Center—The sleek Impala Convertible with its soft, graceful body lines converging into an entirely new styling motif. Right—Another new model is the challenging Corvair Lakewood Station Wagon with rear-engine and second folding seat. Front and rear compartments combined give unusual amount of cargo space.

## Wheeler PTA To Host District Nineteen Meeting

### rites Held For Mrs. Evans

Funeral services for Mrs. A. B. Evans were held Sunday, Oct. 2nd in the School Auditorium at 2:30 p.m. with Rev. Jessie Lovett pastor of the Baptist Church officiating.

Mrs. Evans passed away at her home Friday at the age of 76 years 10 months and 10 days. She was born Georgia V. Hall at Bushy Creek in Anderson County, Tex., Nov. 20 1883 and was married to A. B. Evans Nov. 16 1902 at Bushy Creek. She came with her husband from Looney, Okla., in February, 1908 and they resided on farms in Wheeler, Kelton and Allison communities since that time. She was a member of the Methodist Church at Bushy Creek. Mrs. Evans had been in poor health for some time and very seriously ill for the past several weeks. She bore her suffering with much patience, was a faithful companion and loving mother.

### LAST RITES HELD FOR MRS. F. T. YORK

Funeral services were held for Florence T. York at the Church of Christ in Sweetwater, Okla., October 5, 1960 at 2:00 P.M. with Minister Homer Hinkle pastor of the local church officiating.

Mrs. York passed away Oct. 3 1960 at the age of 81 years, 8 months and 26 days. She had lived with her children since the death of her husband in 1938 except for the past two years spent at the Hodges rest home in Elk City, Oklahoma.

Mrs. York had been in the Community hospital in Elk City for 6 days before she passed away. Florence York married Mr. York Sept. 3, 1899. They came to Brinkham, Okla., in 1903, moved to Sweetwater, Okla., in 1933.

Survivors are the Children: Everett J. York of Snider, Tex. Fred C. York of Huntington Beach, Calif. Mrs. Hazel Daniels, Wichita, Kan. Mrs. Vivian Nolan, Eunice, N.M. Mrs. Fal Eason and Woodrow York of Andrews, Tex. Durwood York of Sweetwater, Okla. Also surviving are 25 grandchildren, and 38 great grandchildren. Her husband and 3 sisters preceded her in death.

Interment was in the cemetery at Brinkham, Okla., under the direction of Kirk Funeral Home.

### Mobeetic Hornets Down Morse Mustangs

The Mobeetic Hornets passed by the Morse Mustangs 54-26 Friday night.

In the first quarter Garland Lancaster made Mobeetic's first TD and the extra 2 points. Gene Dee Harrison and Ray Corcoran came through in the second quarter for TD's and Ray made a conversion for 2 points. In the third quarter, Ray Corcoran and Garland Lancaster made a TD apiece, with Gene Coward and Garland making conversions. In the fourth quarter, Ray Corcoran and Gene Coward ran over for a TD apiece.

In the first quarter Larry Kelly of Morse made two TD's with Frank Pittman making one conversion. In the second quarter, Frank Pittman scored for the Mustangs and in the fourth quarter Larry Kelly scored making Morse's final score 26.

Mobeetic made 71 yards rushing, attempted 4 passes and completed 2, made 3 first downs and got 65 yards for penalties.

Morse got 9 first downs, 3 fumbles, 219 yards rushing and 45 yards for penalties.

The Mobeetic Hornets will go to Darrouzett Friday night.

### Top Of Texas District F.F.A. Met Sept. 27

The Top of Texas district F.F.A. met September 27 in the Wheeler High School. Election of officers was the first item of business. The new officers of the District are: President, David Hefley of Briscoe; Vice-President, Paul Thompson of Miami; Secretary, Richard Hampton of Wheeler; Treasurer, Kelly Miller of Allison; Reporter, Leonard Keeton of Canadian; Sentinel, Jerry Kulon of Pampa; Adviser, Jim Jacobs of Allison.

The District will have their election of Sweetheart at the District Banquet. District Dues were set at 30c.

## Re-surfacing of City Streets to begin Soon

Ned Barrow of the Red-Mix Concrete Company of Shamrock has been awarded the contract to apply a seal coat to all of the city streets. The project will get underway immediately.

The project will include approximately 34 blocks of re-surfacing which will cost the city \$8,000. The project will be under the direct supervision of Doris Hutchison, city councilman. Hutchison must approve all work before the contractor is paid and all of the re-surfacing will be done to state specifications.

Mayor Daughtry and the other city Councilmen were careful to point out that the city will pay for the re-surfacing of the original 34 blocks of paving. "Many city residents will want their drives seal coated and some have areas directly in front of their house which will not come under the city project."

"Any re-surfacing costs, other than the original city streets must be born by the property owner."

Those desiring additional paving, curbing or re-surfacing should contact Ned Barrow of Shamrock, Mayor Daughtry, Councilman Hutchison or Dr. H. E. Nicholson.

### Record Number Attends Showing Of New Ford

Pete Burton and Bud Vanpool, owners of the Vanpool-Burton Motor Company of Wheeler, reported one of their most successful new car showings in history. An estimated 50 persons attended the 3-day showing.

Door prizes awarded included Silverware set, Bill Buckingham, Twitty; Electric Blanket, Mrs. Lee Laycock, Dumas; Dishes, Joe Weathers, Wheeler; International Muffler, Curtis Hamilton, Shamrock; Front End Alignment, Jody Johnson, Wheeler, and one case of Amalie oil, Mrs. J. W. Lamb, Wheeler.

Gifts were presented to all of the kiddoes.

In addition to the showing of the new Ford and Ford Falcon, Vanpool-Burton announced their appointment as representatives in this area for the Massey-Ferguson line of Tractors, combines and other farm equipment. Three Massey-Ferguson factory representatives attended the showing.

### Funeral Services Are Held For Mrs. Ann Hamilton

Funeral services for Mrs. Ann Hamilton were held Tuesday, Oct. 4 at the Methodist Church at Wheeler, at 3 o'clock with Rev. Hubert Bratcher from Pampa and Rev. R. O. Browder from Big Springs, Tex., officiating.

Ann O. Hamilton was born at Parsley Scotland and came to America at the age of 19. On March 2, 1916 at Salt Lake City, Utah, she was married to Monroe Hamilton and in so doing became a citizen of the United States.

They came to Allison Zybach Community from Salt Lake and remained there until about 4 years ago when they moved to Pampa to be near medical care. She was a member of the Latter Day Saints in Salt Lake.

Survivors are, besides her husband, M. M. Hamilton; two daughters, Mrs. Edith Aikenhead of St. Louis, Mo., and Mrs. Emma Rogers of Allison; one sister, Mrs. Mary Wood of Salt Lake City and 4 grandchildren. Two brothers and three sisters preceded her in death.

Pall bearers were: Dave Kiker, Sam Beget, Wayne Taylor, Vern Lohberger, Glen Elmore and G. L. Aderholt.

Interment was in the Wheeler Cemetery with Kirk Funeral Home of Wheeler in charge of the rites.

**VISITORS**  
Mrs. Gladys Eden from Pampa, Calif., is visiting in the Dick Guyenes home this week.

### Last Rites Are Held For Aunt Of John Geyer

Services were held Friday at Meridan, Okla., for Alice Geyer, aunt of John Geyer of Wheeler, Texas.

Alice Geyer was born Dec. 29, 1882, in Missouri to Mr. and Mrs. Pam Moody. She departed this life Thursday morning Sept. 29 at the Erick Hospital at the age of 77 years and 9 months. She was united in marriage Nov. 11, 1900 at Tecumseh, Okla., to Matt Geyer. To this union 6 daughters and 4 sons were born. Her husband, 1 daughter and 3 sons preceded her in death.

Mrs. Geyer and her husband came from Eastern Okla., to the Meridan Community in 1908 and has resided there since.

### Free Show To Be At The Rogue

Next week, Oct. 11, the "Trade at Home" merchants free show will be presented at the Rogue Theatre.

Due to the uncertainty of the weather, also to give an advantage to people who are not able to go to the Drive-in, the remainder of these free shows (through Nov. 15) will be run at the down town theatre.

As for the length of time the Mustang will be open, it depends on the weather. During wet cold weather, the show will be run at the Rogue.

### PTA To Have Annual Meeting

Wheeler PTA will be Monday night, October 10, 7:30 P.M. in the cafeteria. Mrs. Gordon Whitener will be the speaker. Program topic will be "Family Weather . . . Fair? Cloudy? Unsettled?"

Plans for the annual Turkey Dinner and Fun Night will be made and committee appointed. Come and bring a friend. The PTA is what you make it. **HOW DO YOU STAND?**

### NEW FREIGHT AGENT

The Hrcnciar Transports Co. of Oklahoma City has appointed A. B. Gunter as their freight agent in Wheeler. Mr. Gunter will deliver the freight from Oklahoma City to the Wheeler merchants and customers.

This is a new service to Wheeler and should improve the delivery service on freight out of or through Oklahoma City.

### Fair Board To Have Meeting

The Wheeler Fair Board will meet Tuesday at 7:30 P.M. in the commissioners court room in Wheeler to discuss plans for the 1961 fair.

Most of the evening will be used to discuss a recent proposal by Paul Byrnes, a member of the armed services, stationed in New York. Paul has agreed to give the fair board a long-term lease, 99 years at \$1.00 per year, on a two acre tract located just north of the state highway barn.

If the board votes to accept the offer, it may mean that Wheeler will have a "Fair Barn" in time for the fair next year.

Everyone is invited to attend the meeting.

### Larry Hunter To Preach Sunday

Larry Hunter, graduate of Wheeler High School, will preach at the Nazarene Church of Wheeler Sunday morning at 9:30.

Larry is now attending Bethany Nazarene College at Bethany, Oklahoma.

Everyone is cordially invited to attend.

### KIWANIS SPEAKER

Harry Wofford was the speaker at the regular meeting of the Wheeler Kiwanis Club Monday.

Harry told the group about his recent trip to Amarillo where he attended the annual District Kiwanis Convention.



Mrs. James Lewis

### LAST RITES HELD FOR MRS. F. T. YORK

Funeral services were held for Florence T. York at the Church of Christ in Sweetwater, Okla., October 5, 1960 at 2:00 P.M. with Minister Homer Hinkle pastor of the local church officiating.

Mrs. York passed away Oct. 3 1960 at the age of 81 years, 8 months and 26 days. She had lived with her children since the death of her husband in 1938 except for the past two years spent at the Hodges rest home in Elk City, Oklahoma.

Mrs. York had been in the Community hospital in Elk City for 6 days before she passed away.

Florence York married Mr. York Sept. 3, 1899. They came to Brinkham, Okla., in 1903, moved to Sweetwater, Okla., in 1933.

Survivors are the Children: Everett J. York of Snider, Tex. Fred C. York of Huntington Beach, Calif. Mrs. Hazel Daniels, Wichita, Kan. Mrs. Vivian Nolan, Eunice, N.M. Mrs. Fal Eason and Woodrow York of Andrews, Tex. Durwood York of Sweetwater, Okla. Also surviving are 25 grandchildren, and 38 great grandchildren. Her husband and 3 sisters preceded her in death.

Interment was in the cemetery at Brinkham, Okla., under the direction of Kirk Funeral Home.

### Mobeetic Hornets Down Morse Mustangs

The Mobeetic Hornets passed by the Morse Mustangs 54-26 Friday night.

In the first quarter Garland Lancaster made Mobeetic's first TD and the extra 2 points. Gene Dee Harrison and Ray Corcoran came through in the second quarter for TD's and Ray made a conversion for 2 points. In the third quarter, Ray Corcoran and Garland Lancaster made a TD apiece, with Gene Coward and Garland making conversions. In the fourth quarter, Ray Corcoran and Gene Coward ran over for a TD apiece.

In the first quarter Larry Kelly of Morse made two TD's with Frank Pittman making one conversion. In the second quarter, Frank Pittman scored for the Mustangs and in the fourth quarter Larry Kelly scored making Morse's final score 26.

Mobeetic made 71 yards rushing, attempted 4 passes and completed 2, made 3 first downs and got 65 yards for penalties.

Morse got 9 first downs, 3 fumbles, 219 yards rushing and 45 yards for penalties.

The Mobeetic Hornets will go to Darrouzett Friday night.

### Top Of Texas District F.F.A. Met Sept. 27

The Top of Texas district F.F.A. met September 27 in the Wheeler High School. Election of officers was the first item of business. The new officers of the District are: President, David Hefley of Briscoe; Vice-President, Paul Thompson of Miami; Secretary, Richard Hampton of Wheeler; Treasurer, Kelly Miller of Allison; Reporter, Leonard Keeton of Canadian; Sentinel, Jerry Kulon of Pampa; Adviser, Jim Jacobs of Allison.

The District will have their election of Sweetheart at the District Banquet. District Dues were set at 30c.

The Wheeler Parents Teachers Association will chalk up a big first in its history next week when it is host to District Nineteen Parents and Teachers for the annual fall workshop. This will mark the first time that a PTA meeting this size will be held in Wheeler. The workshop will convene Tuesday morning, October 11, at 9:30 A.M. in the Wheeler Grade School auditorium.

The workshop is for leadership training from the state to the district to the local unit. Participants will go back to their associations better informed about PTA and its role in the world today, to help carry on the work at the local community level.

The Theme will be "The American Family Today . . . And the P.T.A."

Some of the purposes of the new workshop as outlined by Mrs. T. W. Whaley, President of Texas Congress of Parents and Teachers are:

To identify family and community problems which need united action.

To illustrate how local units can develop plans for action.

To demonstrate the interrelatedness of the efforts of all P.T.A. chairmen in working in a total program.

To reaffirm the role of the P.T.A. in strengthening our democratic way of life.

Miss Ruth Huey, director Home and Family Life Education, Texas Education Agency, Austin, will be moderator of the panel. Other members of the panel are: Ronald Hubbard, Presbyterian Church minister, Pampa; John Hamilton, Superintendent of Schools, Childers; Mrs. Ben Sheppard, Hutchinson County Juvenile Officer, Borger; David M. Warren, President of Panhandle State Bank and President of Borger School Board, Borger; and two high school students from Borger.

Miss Esther Sorenson, Area I supervisor of Home and Family Life Education, Texas Education Agency, Plainview, will accompany Miss Huey to Wheeler.

After the panel discussion the audience will be divided for group sessions to be led by persons that attended the state workshop in Austin.

The Wheeler Band Boosters will serve lunch for \$1.50 per plate in the American Legion Building at noon. Call Mrs. Walter Dunn for your reservation now. All reservations to be picked up or cancelled not later than 9:00 A.M. Tuesday.

Chairmen working with Mrs. Loyde Weatherly, president, are Mrs. Neal Raymond, Mrs. Walter Dunn, Mrs. Thurman Rives, Mrs. Doris Hutchison, Mrs. Joe Weatherly, Mrs. Wayne Edwards, and Mrs. W. A. Goad, Jr.

The Wheeler PTA invites everyone interested in the welfare of children and youth to attend Registration will begin at the PTA meeting Monday night for local people and resume at 8:30 Tuesday morning in the School Auditorium. (PTA Program Schedule, Page 5)

### Thomas W. Owen Attends Bear School

Mr. Thomas W. Owen of 206 Main Street in Wheeler has just completed his training at Bear Manufacturing Company's world-famous Automotive Safety Service School in Rock Island Illinois.

Mr. Owen received intensive training in Alignment, Balancing and Frame straightening, learning the latest techniques in this important Safety Service. The Bear School is the largest of its kind anywhere and attracts students from all over the World.

Mr. Thomas W. Owen will apply his expert ability to make cars run safer, smoother, more comfortable and more economically at his own shop, Owen's Service Station at 309 Shamrock Street, Wheeler.

## Briscoe HD Club To Have Bean Supper

Feel that nip in the air? That's the signal we've been waiting for. It's time for the annual Bean Supper at Briscoe.

Come out and eat some of the best cooking that ever tickled your taste buds.

Beans, beans, beans! Every kind of bean—your choice of beans, potato salad, green salad, pickles,

relishes, rolls or cornbread and drink—50c for adults and 25c for 12 year and under. Your choice of pie for 15c if desired.

We'll be looking for you to come and eat with us and play 42 after supper.

The date to remember is Oct. 11; time, 6 to 8:30 p.m.; place, Briscoe School lunchroom; sponsored by Briscoe H.D. Club.

Chat with The Editor

Oct. 13 is the date for Kiwanis Broom Sale. . . .

CARR, MAYOR OF PA, DIES

These In

99

99

MATCH YOUR MATE WITH LLAR TTE

99

99

99

99

99

99

99



TROPHY: O. F. Holt of Wheeler is pictured with pound sweet potatoe he raised in his garden. . . .

Yam has been on display in the Times office past week. In addition to the sweetpotatoes, Mr. Holt has raised 7 or 8 hundred dollars worth of tomatoes each well as numerous other vegetables.

# Nash Will Show 1961 Pontiac Here Today

That long awaited moment has arrived... You can now see the 1961 Pontiac with its new sleek body styling and exciting new interior.

The Nash Appliance and Supply will show the new Pontiac Thursday, Friday and Saturday, October 6, 7, and 8th.

Prizes for everyone... And everyone is welcome.

"Pontiac for 1961 has combined dynamic new styling concepts with significant engineering advances to present the most exciting new car in its 53-year history," said S. E. Knudsen, General Motors vice president and Pontiac Motor Division general manager, in announcing Pontiac's new line of automobiles.

"Fifteen new eye-catching models in four versatile series are precision designed to set new standards in car beauty, reliability, performance and motoring comfort," Knudsen declared. "With this new line we intend to strengthen with narrow fenders to meet

then our position of leadership in the medium price field."

The new Pontiac is as much as 9 inch lower, four inches shorter, and 2.5 inches narrower, Knudsen revealed, yet important dimensions have been improved. Pontiac's famous wide track design, prevailing in each series, is also proportionately increased.

Knudsen also cited a new perimeter frame, new front and rear suspension systems, and a lighter weight, more efficient V-8 engine among the cars completely new engineering features.

**Dynamic New Styling**  
Pontiac's dynamic new styling approach for 1961 conveys an overall impression of distinguished simplicity and unmistakable identity.

Accentuating the wide, low front end appearance is an expansive hood, channeled on either side of its centerline, which tapers forward with narrow fenders to meet

ses dual headlamps and an impressive two bar type wrap around bumper adds further prominence to the front end design.

Long sweeping sculptured lines highlight the side view. A central jet-like boom, mounting a tasteful chrome moulding, gracefully spans the entire length of the car. A channeled surface on the boom centerline provides an ideal location for series designations.

A unique bumper design, attractively integrated with the body, distinguishes a sharply protruding cap the rear fenders, the bumper frames a low, rear-tiled rear end. Sweeping abruptly forward slanting trunk lid and a narrow panel containing tail lamps and Pontiac or series name. Bonneville and Star Chiefs feature three matching tail lamps of circular design while Catalinas and Venturas are equipped with an oval shaped, dual bulb lamp. Safari tail lamps are integral with the chrome rear fender caps.

**New Windshield**

Curving pillars framing a generous Vista-Panoramic windshield combine with the sharper lines of the side windows and rakish, slim-line roof to create a new custom appeal. The new design eliminates the windshield corner extension on all models and the triangular rear side window on four-door sedans.

Enhancing the new car's exterior styling appeal is a dazzling array of Magic Mirror finishes. The brilliant, highly durable acrylic lacquer is available in 15 solid colors and 57 two-tone combinations. Harmonizing with exterior colors are 88 interior trim combinations in beautiful Jeweltone Morrokide, nylon faced and wool pattern cloths, and genuine leather.

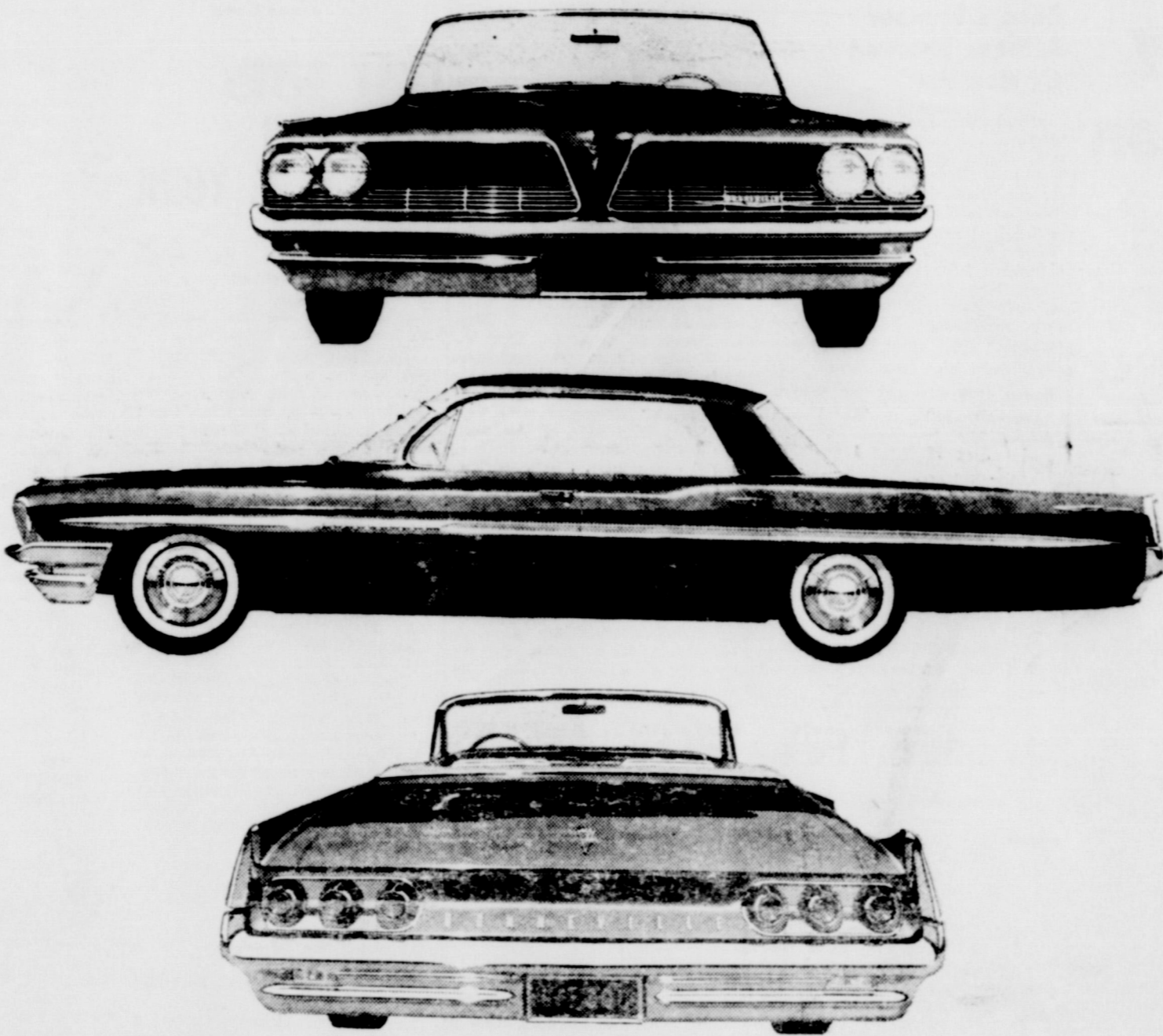
**New Instrument Panels**

**Roomier Interiors**  
New Pontiac instrument panels feature a cushion extending around the cove area on the front face of the panel. New instrument clusters, gauges, and control knobs are designed for the ultimate in driver



**MOST POPULAR PONTIAC BODY STYLE**, the rakish four-door Vista hardtop, is beautiful than ever in the new 1961 Bonneville series. Curving windshield pillars, line roof, and crisply defined side windows create a new custom appeal. Distinctive Bonneville features include the high performing Trophy V-8 engine with four carburetor and luxurious upholstery of patterned cloths and Jeweltone Morrokide. Exciting Vista also is available in the Star Chief, Ventura, and Catalina series.

THE '61 PONTIAC IS OUT TODAY!



*It's All Pontiac!*  
*on a new Wide-Track!*

**New track-to-body proportion!** The track is the width between the wheels. Pontiac is the only Wide-Track car. Body width is reduced, shaving side overhang, balancing more weight between the wheels. Best relationship of body width to wheel width ever tailored. Lean and sway are ancient history.

**Announcing the new Pontiac Trophy V-8 Engine!** We've improved the engine the experts said was perfect. New fuel induction system saves gas by using more air in the gasoline mixture. This makes the engine breathe more efficiently, giving you better acceleration. Eleven versions to choose from. Horsepowers range from 215 to 348. For best economy, specify the Trophy Economy V-8. Its lower compression ratio lets you use regular gas.

**More headroom, legroom, footroom for greater comfort!** You'll take great comfort in the extra roominess we've built into the '61 Pontiac.

Seats are higher, yet there's more clearance beneath the steering wheel and more headroom over your head. There is more legroom, more footroom. Doors are wider and designed to swing open farther. The more highway you put behind you (Pontiac specializes in this) the more you'll appreciate the new room that's all around you. It's all new '61.



**THE ONLY WIDE-TRACK CAR!**  
Body width trimmed to reduce side overhang. More weight balanced between the wheels. No other car hugs the road with such sure-footed stability and precision.

ISN'T THIS YOUR BIG YEAR FOR A WIDE-TRACK PONTIAC? IT'S ALL PONTIAC!  
BONNEVILLE • STAR CHIEF • VENTURA • CATALINA

ON DISPLAY NOW AT YOUR LOCAL AUTHORIZED PONTIAC DEALER

**NASH APPLIANCE & SUPPLY COMPANY**

Phone 3131

See the Victor Borge Show Tonight! ABC-TV!

Wheeler, Texas

and passenger convenience.

Providing increased interior comfort are: a 12 per cent increase in front seat to steering wheel clearance and wider opening doors for greater ease of entrance and exit; a 2.3 inch increase in front seat height on most models for a more natural, relaxed sitting position; and a reduction in floor tunnel height. Head room has been improved by as much as two inches.

**Significant Dimensions**

Wheelbases measure 119 inches with Catalina and Ventura models and the Bonneville Safari; 123 inches with Star Chiefs and the other Bonneville models. Overall lengths begin at 209.7 inches with all Safari models and extend to 217 inches with sedans and coupes in the Star Chief and Bonneville series. Heights range from 54.9 inches with convertibles up to 56.9 inches with station wagons. All new Pontiacs have overall width of 78.2 inches. Although the new car is reduced 2.5 inches in width, Pontiac's frame wide track is only decreased 1.5 to insure continued superb roadability.

**Bonneville Series**

New 1961 Pontiac customers with a taste for elegance may select from four custom designed Bonneville models: a two-door sport coupe, four-door Vista hardtop, a convertible, and a four-door, six-passenger Safari station wagon.

Pontiac's top-of-the-line series features such standard equipment as: the big Trophy 425 V-8 engine with four-barrel carburetor; new two-speed, overlapping electric windshield wipers; a richly appointed new instrument panel with electric clock, instrument panel custom passenger assist rail, courtesy lamp, and dual ash trays; luxurious interior fabrics of wool, Jeweltone Morrokide, and genuine leather with deep pile carpeting; new custom steering wheel, deluxe wheels discs, and aluminumized tail pipes.

The Bonneville is easily recognized by block letter series names mounted on the left grille, forward side mouldings, and panel beneath the trunk lid. Adding a regal touch are symbolic Bonneville crests, positioned under the grill series name and above each rear fender moulding.

**Star Chief Series**

Perennially popular as a luxury car with big family roominess, the new Star Chief series, is available in stylish four-door sedan and four-door Vista hardtop body styles.

Spacious seats covered with expertly matched patterns in nylon faced cloth and Jeweltone Morrokide bring living room comfort to Star Chief interiors. Other standard "extras" include: two-speed electric windshield wipers, distinctive instrument panel decor, custom steering wheel, electric clock, dual ash trays, deluxe wheel discs, and aluminumized tail pipes.

Readily identifying the Star Chiefs are script series names accented by chrome mouldings in the front doors and three slender stars in the upper area of the rear fenders.

**Ventura Series**

Comprising Pontiac's Ventura series, which achieved widespread public acceptance during its initial year of production, are a two-door sport coupe and four-door Vista hardtop.

The new hardtops convey a distinct youthful appeal with exclusive decor and exciting multitone combinations of Jeweltone Morrokide seat coverings. A new three forward speed Hydra-Matic transmission, designed especially for Ventura and Catalina models, adds a sports car flavor.

New electric, single speed, tandem type windshield wipers, custom steering wheel, electric clock, dual ash trays, and deluxe wheel discs had an imposing list of standard items.

**Catalina Series**

Designed to serve a broad band of customer requirements are seven entirely different Catalina models. The versatile lower priced series, distinctive in its styling simplicity, includes a two-door sport sedan, four-door sedan, two-door sport coupe, four door Vista hardtop, convertible, and four-

door six and nine-passenger station wagons.

Among new features are: electric tandem type wipers, three speed transmission, distinctive instrument panel, new hub wide selection of upholstery fabrics to match with interior.

**Safari Have Larger**

The new line's classic Safari trio has a substantial improvement in rear compartment area. Rear compartment is 2.5 inches longer, 2.2 inches wider, and four inches deeper. A new luggage compartment is built into the rear deck, providing eight cubic feet of storage in six-passenger models and 5.5 cubic feet in the six-passenger Catalina.

**Wide Selection of**

Renowned for its performance, efficiency, and economy, the 389 cubic inch "Trophy 425" is offered in a wide selection of standard versions with major advances and improvements. Standard and optional with major design and improved economy. Standard transmission is regular with 86:1 compression ratio. Premium fuel V-8s with compression ratios are available on all models equipped with automatic transmission. Regular economy engine compression ratio and carburetor operates with fuel and is a no-extra cost option. Other options available include: premium fuel and three-two barrel engines with compression ratios up to 10.75:1.

**New Perimeter Frame**  
Contributing largely to the increase in passenger space is a new perimeter frame. Parallel side rails encircle the passenger compartment to permit lowering of chassis components and natural rigidity. More than 100 lbs. of insulating body material against the transmission and noise to the body.

Pontiac's reputation for excellent ride characteristics further enhanced by improved suspension. Stronger lower control arms swept backward for improved control and new spring absorbers of maximum life are employed in the front suspension.

New control arms and another upper arm, use of sound absorber bushings highlight the link rear suspension system. Additional new features include a new 25 gallon fuel tank, but Safari models, improved steering and mechanicals, lighter weight components, a smoother suspension, and a relocated spare tire in Catalina coupes and sedans for available luggage space.

**NEW TEMPTRESS SERIES MARKS PONTIAC'S GREATEST ADVANCE**

"Following years of research, development and styling, the new Temptress is a completely new Pontiac which we feel introduces the most advanced styling, engineering and mobile design ever to be revealed by our Division," stated S. E. Knudsen, GM vice president and general manager of Pontiac.

"Unique in conception and styling, the Temptress is a truly new personality in the automobile world, yet it is a Pontiac," Knudsen revealed details of the wheelbase series consisting of four-door sedan and a four-door station wagon.

"Along with traditional high performance, economy, superb quality styling, the Temptress engineering features were classified as first in production in the industry," Knudsen said.

# Memory Lane

By Lavell Stephens

movie, "A Star Is Born." Seniors who made the trip were: Ada Pierce, Katie Pierce, Lonelle Lee, Pat Fride, Janice Jaco, Janet Russ, Glenda Richards, Francine Harris, Bonnie Moore, Annrose McCormick, Jaunita Sanders, Robert Denson, Jerry Barton, Jimmie Jackson, Joe Van Zandt, Arden Kenady, Rondell Childress, Rondell Richardson, Burley Owen, and J. T. Grimes. Sponsors attending were Supt. and Mrs. Brown, Mrs. Bill Owens, Mrs. R. G. Russ and Mrs. Jess Moore.

## LOCAL CAGERS WIN HONORS IN TOURNEY — 1957

Wheeler High School basketball teams, coached by J. D. Atwell, won a large share of honors in the annual invitational tournament held in Shamrock last weekend.

The Wheeler Mustangs placed second in the three-day meet, losing by a one-point margin to the Shamrock Eagles in the finals Saturday night. Wheeler lost the game as Shamrock dropped in a goal as the final whistle sounded to go ahead, 48-47.

The Wheeler girls lost their option honors in their basket defeating Shamrock 51-41.

In addition to the team trophies brought back to Wheeler by the cagers, two players were placed on

the all-tournament teams. Ranked on the all-star team were: Sharon Green, girls and Joe Jaco, boys.

Ten boys teams and 11 girls teams participated in the tourney. The Mustangs defeated Texola and Quail to go into the finals with Shamrock.

The Wheeler girls lost their opening game to Quail to go into the consolation bracket. They then defeated Kelton to go into the finals with Shamrock.

Wheeler teams played the Allison teams at Allison Tuesday night and won both games. The girls won by two points in an over-time 75-42. The boys by a score of 75-42. The girls score was 52-51.

Phillis Richardson was high point with 24 points and Tilly Green made 22 Wilsford was high point for the boys with 24 points.

The Wheeler Teams will play Shamrock Friday night, December 21 on the home court.

## ATTENDS MEETING

Mrs. Bill Smith attended a Sarah Coventry Business Meeting in Pampa at the Coronado Inn in the Cibola Room on Friday, Sept. 17 at 10:00 p.m.

Lunch was served at noon in the dining room. Those attending were Mrs. Bill Smith of Wheeler, Jean Alehey of Pampa, a Do'ohy Davis of Pampa, Mary Keatts of Pampa, Dorothea DeMoss of Pampa, Barbara Turbo of Pampa, Ahlene Rutler of Groom and Margaret Whittaker of Amarillo.

Guests in the T. A. Treadwell home Sunday were Slots Treadwell and son, Jerry of Hobbs, N. M., and Mr. and Mrs. Vendall Treadwell of Pampa, Tex.



Got to see one of them expensive balloons that the government is sendin' up to gather information from outer space. I happened to be out in the yard the other night and one of them things come whizzin' over. Course me bein' nosy and wantin' to get my money's worth, I had to watch till it got plum out of sight. Next day I went around town with my head stuck right straight up and a devil of a crick in my back. What I want is for Uncle Sam to get them things to go faster or to give all of us peacetime observers a balloon watchin' hammock, cause a feller could completely throw his back out of shape and be unable for combat when them sugar peddlers get ready to start a ruckus.

## Hospital

Mrs. R. L. McClain of Wheeler was admitted 9-23-60 and dismissed 10-1-60.

Mr. Elmer Simpson of Wheeler was admitted 9-24-60.

Debra Dale Caswell of Wheeler was admitted 9-22-60 and dismissed 9-28-60.

Clydene Markham of Allison was admitted 9-23-60 and dismissed 10-2-60.

Bobby Powell of Mobeetie was admitted 9-28-60 and dismissed 9-30-60.

Mrs. Bob Rogers of Wheeler was admitted 9-28-60 and dismissed 10-1-60.

Mr. L. S. Burnett of Canadian was admitted 10-2-60.

Mrs. Walber Shields of Wheeler was admitted 10-2-60.

Annette Reeves of Twitty was admitted 10-3-60.

Mr. E. P. Ridgeway of Mobeetie was admitted 10-2-60.

## Chevy adds Corvair Station Wagon



Chevrolet stylists adroitly meshed the requirements of a roomy and versatile vehicle with the crisp, smart design of the Corvair line and came up with this sparkling new Corvair Lakewood Station Wagon. The car with its air-cooled engine in the rear, folding seat and forward luggage compartment is readily adaptable to almost any job... commercial or pleasure. In addition to the Lakewood, Chevrolet added a sports wagon and three half-ton trucks to the Corvair line for '61.

## Versatility aplenty in 1961 Corvair Greenbrier Sports Wagon



Chevrolet will raise the lid on a real surprise package when they reveal the 1961 Greenbrier Sports Wagon. A promising addition to the Corvair line is this 95-inch wheelbase vehicle with a commercial-courtesy-installed engine and independent suspension. The Greenbrier is certain to fit transportation needs from backwoods camps to swank hotels. Seats may be repositioned to fit specialized requirements. There also is a commercial counterpart—a delivery vehicle named the Corvair.

# QUALITY FOODS

3 lb. Can	79c
10 lb. Bag	98c
25 lb. Bag	1.69

U.S. No. 1 Red POTATOES	Del APPLES
10 lb. Bag	2 lbs.
29c	25c

BACON SQ.	23c
SHOULDERS	29c
LOGNA	39c

Sunshine CRACKERS	Maxwell House COFFEE	Sunshine MARSHMALLOWS
1 lb. Box	6 oz. Jar	1 lb. Bag
25c	98c	33c

PHILI	No. 2 Can	59c
GREEN BEANS	2—No. 303 Cans	29c
ISSUE	3 Rolls	25c

These Prices Good Friday and Saturday.  
Free Stamps Every Wednesday on Purchase of \$2.50 or More

# Puckett's WHEELER, TEXAS

## FOOD MARKET

## GOVERNMENT SURPLUS SALES

NOW anyone can buy DIRECT from U.S. GOVERNMENT SURPLUS DEPOTS by mail for yourself or for resale. Cameras, binoculars, cars, jeeps, trucks, boats, hardware, office machines and equipment, tents, tools and tens of thousands of other items at a fraction of their original cost. Many items brand new. For list of hundreds of U. S. Government Surplus and overseas with pamphlet "How Government Can Ship Direct To You," plus procedures. HOW TO BUY and how to get FREE SURPLUS, mail \$2.00 to SURPLUS SALES INFORMATION SERVICES, P.O. Box No. 1818, Washington 5, D. C.

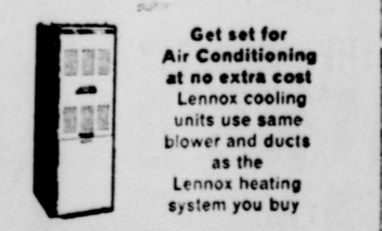
check! for perfect comfort the air you live in must be...

- always the perfect temperature
- filtered clean
- humidity-controlled
- in constant motion
- quietly distributed
- automatically handled

you get All Six with **LENNOX**

**PERIMA-FLO HEATING**

While Perima-flo Heating does all this for air—it does even more for you. You look better, feel better, eat, sleep, act better. You're a new kind of person in a new kind of air—conditioned for comfort the winter through.



Get set for Air Conditioning at no extra cost. Lennox cooling units use same blower and ducts as the Lennox heating system you buy.

Any questions? Give us a call or come in!

**ROBERTSON REFRIGERATION**  
9th Houston  
BL 6-3707  
SHAMROCK, TEXAS.

Your certified Lennox dealer-export

## "Kelton's Korner"

**Mrs. Joe Weldon**  
Rev. and Mrs. Gene Louder attended the call session of the North West Texas Annual Conference of the Methodist Church, at the First Methodist Church in Lubbock Wednesday. The new Bishop Paul Galloway presided at the meeting. That evening they attended an Evangelist Rally, the Bishop A. J. Moore was the speaker for this. While away Rev. and Mrs. Louder visited his parents, Mr. and Mrs. Earl Louder of Lubbock and Mrs. Lester La Grange, they returned Friday afternoon.

Miss Bobby Woodring, a school teacher in Dumas spent the weekend here.

Mr. and Mrs. Charles Britian and family spent the weekend with his parents, Mr. and Mrs. Charles Britian and sisters, Lynn and Gwen. The Britians are from Fritch, Texas.

Guests in the home of Mr. and Mrs. Tom Killingsworth Sunday were the sister and husband of Mrs. Killingsworth, Mr. and Mrs. Paul David of Dumas.

The T.E.L. Class at the Baptist Church will have their monthly meeting this afternoon in the home of Mrs. John Daberry.

Guests in the home of Mrs. Joe Weldon Friday and Saturday were Rev. and Mrs. Dorman Kinard and Children of Plainview, Tex. Miss Beth Rathen came with them from Plainview where she is attending Wayland Baptist College. While in Kelton Beth stayed with her parents, Mr. and Mrs. Leonard Rathen and Sister Doris. She returned to Plainview with the

party afterwards.

Monday Rev. and Mrs. Gene Louder had dinner in the home of Mr. and Mrs. Olen Smith.

Monday, Mrs. Gene Louder began teaching the Third and Fourth grades at Kelton School. Mrs. Louder has had six years teaching as a Primary teacher.

Mrs. Charlie McCartney attended a funeral in Spearman Sunday.

Mr. and Mrs. Charlie Lang's daughter Laurann of Pampa spent Sunday with her parents.

Mrs. Jim Ogle and Mrs. S. A. Blackburn went to Borger this weekend to visit several relatives Mrs. Jimmie Ogle and boys, Mr. and Mrs. Joel Syrus and Vic Cattrell.

Mrs. J. R. Clemmens and Mrs. Edgar Blocker visited Mrs. Pike who is in Crosbyton Hospital near Lubbock this weekend. While in Lubbock they visited with Jimmy Don and Pat Clemmens.

## STOCKER - FEEDER CONSIGNMENT SALE

Of Angus And Herford Breeds  
**2,500 HEAD**  
WEDNESDAY, OCT. 12th  
Starting at 1:00 P.M., Rain or Shine  
**WOODWARD LIVESTOCK COMMISSION CO.**  
Woodward, Okla.  
For Information, Phone AL 45548  
Unexcelled Trucking & Rail Facilities  
Everywhere

## ATTENTION HOG FEEDERS!

**Birth to Market on a MoorMan Program (Estimated)**

Pig Starter	\$ .82
Pig Minstrate for Growing	2.09
Hog 45 for Finishing	2.66
Milo 600 lbs.	8.40
Average Total Cost Complete	
Feed \$50.00 Per Ton	Total \$3.97

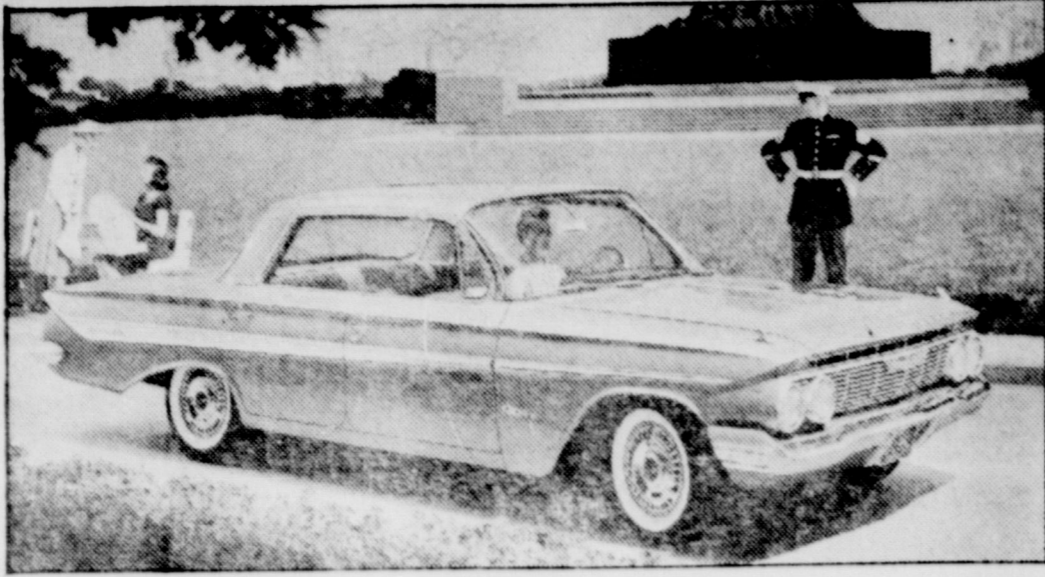
A 220-225 pound plus hog at a feed cost of only \$15 or \$16! What other concentrate feed can help your Milo build that much pork on each pig at that low-cost figure? Less than 8c per pound of pork!

Figuring the total feeding job needed to be done brings a Moor-Man Pig building ration (including a pig producer's own Milo to only \$50 to \$52 per ton. That will seem mighty low to the hog man who has been paying \$110 a ton for a pig grower, and \$60 to \$70 for a finisher!

# JAY BOOTHE

Moor-Mans, Salesman  
Phone VI 5-2801 or VI 5-2509  
Mobeetie, Texas

## Sleek Impala One of 20 New Chevrolets



Designers have applied smooth, graceful lines to the '61 Chevrolet Impala, Bel Air and Biscayne passenger car lines. Wings on the rear deck have been smoothed into the body. Roof lines, as noted in the Impala Sport Sedan (above) are freshly contoured and are separately styled for each

model. Overall body design features gently sloping lines. Rear trunk deck lid now opens flush with top of bumper affording easier loading and unloading. Fuel tank has been repositioned for greater safety. The Impala Sport Sedan is one of 20 body styles in the standard Chevrolet line.

# Ware To Show New Chevrolet & Corvair

**FREE GIFTS FOR KIDDIES THURS. OCT. 6**

Don't miss the showing of the big new 1961 Chevrolet at Ware's Chevrolet in Wheeler. The new dream car will go on display 7:00 P.M. until 9:00 P.M. Thursday evening. The showing will continue through Saturday evening.

Ware plans to stay open from 7:00 P.M. until 9:00 P.M. Thursday night especially for the showing.

Free gifts will be given to the kids and a treat will be in store for Mom and Dad too when they see the fresh new styling of the 1961 Chevrolet and Corvair.

Top seller of 1960 automobiles Chevrolet promises to solidify its position in 1961 by significantly broadening its range of passenger cars.

Scheduled for display at dealer showrooms Friday, Oct. 7, are 23 freshly styled conventional models: nine Corvairs including new passenger and commercial models, and the spirited two-place Corvette.

Complete new body styling, which provides easier loading for both passengers and baggage and establishes new heights in motorist comfort and convenience, is featured in the regular line of passenger cars.

The entire body, from floor to roof and grill to rear bumper, is all new. Prime design emphasis has been placed on functionality with thrift.

High on the list of advantages of the all-new body are:

1. Easier entrance to passenger compartments.
2. Large, more accessible luggage space, with the trunk-loading level lowered as much as 10.5 inches.
3. Improved chair height and over-the-hood visibility which will increase the ease of parking and add to driving safety.
4. Other safety items include improved brakes, overlap electric windshield wipers, and a new placement for the fuel tank which protects it from road hazards such as hard bumps and flying stones.

Although the conventional cars are shorter, narrower and slightly lower, the interior roominess remains about the same or better than comparable 1960 models. Riding comforts is improved.

From a styling standpoint, the new models feature gentle curves and smooth lines and a generally cleaner and airier appearance from all angles.

The Corvair models to be unveiled Friday also blossom out into a complete line of passenger and commercial vehicles. They include:

Passenger cars—Club coupes, four-door sedans and a new Lakewood Station Wagon in the "500" and "700" series, plus the deluxe Monza Sport Coupe and the new Greenbrier Sports Wagon.

Commercial—Corvair, Rampside and Loadside trucks.

Basic mechanical features of the Corvair—the air-cooled engine, combination of transmission and axle at the rear, and frame-body integration—are continued. So is the basic body styling, although exterior ornamentation provides a fresh appearance and the interiors are completely new.

Significant engineering improvements have been made, however, which will greatly improve luggage space, engine performance and fuel economy.

Other innovations include a 14-gallon fuel tank; a manual choke and more precise fuel metering to the carburetor; a new pattern of air circulation in the engine compartment to quicken warmup; an increase in engine displacement to 145 cubic inches; an optional 98-horsepower engine and a four-speed transmission.

The spotlight in the Corvair

field is expected to center importantly in the new Lakewood Station Wagon and the Greenbrier Sports Wagon.

Equipped with six doors and rated for a 1,600-pound payload, the brand new 95-inch wheelbase Greenbrier can readily be converted from a nine-passenger bus to a wide assortment of duties. It can carry six passengers and a 700-pound cargo or, with an optional third seat, nine passengers and 250 pounds of cargo.

The Lakewood Station Wagon is a four-door, conventional type six-passenger model. But with the second seat folded down, it offers 68 cubic feet of cargo capacity. One exclusive feature is the 10-cubic feet of lockable storage space under the hood.

Revised styling of the Corvair reflects the influence of Chevrolets recently displayed XP-700 experimental vehicle, especially in its streamlined rear quarters. A new underbody which slims down the transmission hump, better engine cooling and use of an aluminum transmission case are some of the other features.

As in 1960, the lineup in the conventional-size passenger cars will be offered in the Impala, Bel Air and Biscayne series. But, they have been expanded to include an Impala two-door Sedan not previously available.

The station wagon series also has been expanded so that there is a choice of either six or nine-passenger accommodations in each of them—the Nomad, Parkwood & Brookwood.

Reversal of the trend to longer, wider bodies also is noted in the fact that the new passenger cars are 1.5 inches shorter and 2.4 inches narrower. Overall length is 209.3 inches and overall width is 78.4 inches.

Distinctive design effects are achieved by matching exclusive roof contours of body types. Particularly noteworthy is the elimination of small, triangular windows at the rear of four-door sedans and station wagons. Also, the rear corner pillars of sport sedans have been widened to create a slightly hooded effect.

Chevrolet's ingenious, rear-power Corvair blossoms out as a full line of automobiles for 1961.

In addition to the 3 half-ton commercial cars previously announced the company disclosed today that station and sports wagons will join the family at dealer showings of new models Friday, October 7.

Thus, the superior riding and performance qualities which the Corvair pioneers in the small car field a year ago will become available to a majority of all transportation requirements.

Here is Corvair's lineup for 1961: Passenger car—Club coupes, four-door sedans and a new Lakewood Station wagon in the "500" and "700" series plus the deluxe Monza Sport Coupe and the new Greenbrier Sports Wagon.

Commercial—Corvair, Rampside and Loadside trucks.

In appearance, the latest Corvair retains its lithe, symmetrical form. New styling touches and beautified interiors clearly distinguish the models as 1961's, but the low-slung, appearing profile remains unchanged.

Also untouched are the engineering fundamentals which have made the Corvair the most talked-about automobile in America. The flat, air-cooled engine and transmission-axle combination are continued at the rear. Compact body-frame integration lends it special staunchness to all models.

To supplement the primary excellence of the Corvair features, however, several improvements have been adopted. Fuel economy especially benefits from the lower-numerical axle ratio and the new non-gas burning heater which will improve fuel economy even beyond the excellent miles per gallon now achieved. A hot air heater is now offered as optional equipment. Increased luggage capacity is made possible by moving the spare tire

from under the hood to the engine compartment. A 14 gallon fuel tank is substituted for the former 11-gallon tank.

Although most chassis specifications are common throughout

the line—all models carry certain family relationship—structural differences distinguish newcomers from earlier body types.

The rear-engine mounting proves itself extremely suitable to the commercial Lakewood Station Station Wagon, the Greenbrier Sports Wagon and the Corvair—the commercial panel van. The absence of a transmission tunnel provides cargo and passenger loading convenience impossible with the conventional small car.

The Greenbrier is a totally new forward control vehicle designed on a 95-inch wheelbase. The normal car hood has been eliminated. A full-width driver's seat mounts over the front wheels. The roomy body will accommodate two additional seats, positioned conventionally or facing each other.

For ready accessibility, the Greenbrier is equipped with six doors—one on each side of the driver's compartment—and double doors at the curb-side and at the rear. Side and rear doors open a full 180 degrees.

Nominally rated as 1,600-pound capacity, the Greenbrier's Speedy conversion from a commercial to a pleasure vehicle recommends it to varied utility. As a bus, nine passengers and 250 pounds of luggage or six passengers and 700 pounds of luggage can be transported. With single, three-passenger seat the cargo accommodation totals 175 cubic feet.

The Lakewood Station Wagon, which like the Greenbrier, houses its six-cylinder engine under the flat luggage compartment floor, is built with the same airy superstructure that characterizes the larger 1961 Chevrolet Station Wagon.

The Vehicle is approximately two inches higher than Corvair sedans and is equipped with four doors and a folding rear seat.

1961 Corvair

## Rampside is inclined to save work



With an exclusive hinged side-loading ramp, powered by the rear-mounted 88-hp. air-cooled Corvair engine for low operating costs, the Rampside offers economical operation, low loading height, easy inch wheelbase, it has a loading height of 48 inches at the side gate and 26.5 inches at the

Cargo space is surprisingly generous. With seat down, the enclosed load can reach nearly 6.5 feet in length. In total, the body adds 58 cubic feet of cargo capacity to the 10 cubic feet under the load.

To aid operating economy, a manual choke replaces the former automatic. Deceleration of engine cooling air, more precise fuel metering and a lower rear axle ratio

also furthers gas mileage. At the same time, torque has been boosted by increasing engine displacement to 145 cubic inches. Engines of 80 or 93 horsepower in specified models and three and four-speed manual shifts are available as well as automatic transmission.

Listed among the optional items is a "perimeter hot air heater" which employs a mixing chamber back of and a blower to pre-warm through ducts to the engine compartment.

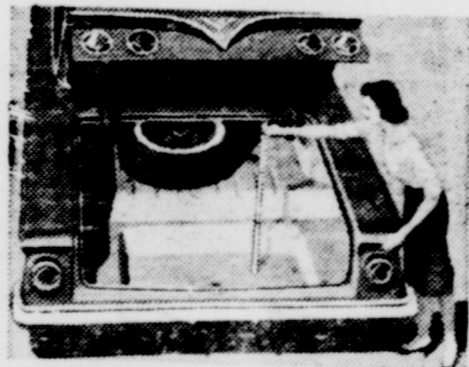
built near the floor of the front seat and rear seat. The gas used in 1960 is also used in 1961 as an accessory.

# FRIDAY! THE GREATEST SIXTY-ONE DERFUL CHEVROLET

Here's the car that reads you loud and clear—the new-size, you-size '61 Chevrolet. We started out by trimming the outside size a bit (to give you extra inches of clearance for parking and maneuvering) but inside we left you a full measure of Chevy comfort. Door openings are as much as 6 inches wider to give feet, knees, and elbows the undisputed right of way. And the new easy-chair seats are as much as 14% higher—just right for seeing, just right for sitting.

Once you've settled inside you'll have high and wide praises for Chevrolet's spacious new dimensions (in the Sport Coupes, for example, head room has been upped as much as 2 inches, and there's more leg room, too—front and rear). Chevy's new trunk is something else that will please you hugely—what with its deep-well shape and bumper-level loading it holds things you've never been able to get in a trunk before.

Yet, generously endowed as this car is with spaciousness and clean-etched elegance, it holds steadfastly to all the thrifty, dependable virtues Chevrolet buyers have come to take for granted. Your dealer's the man to see for all the details.

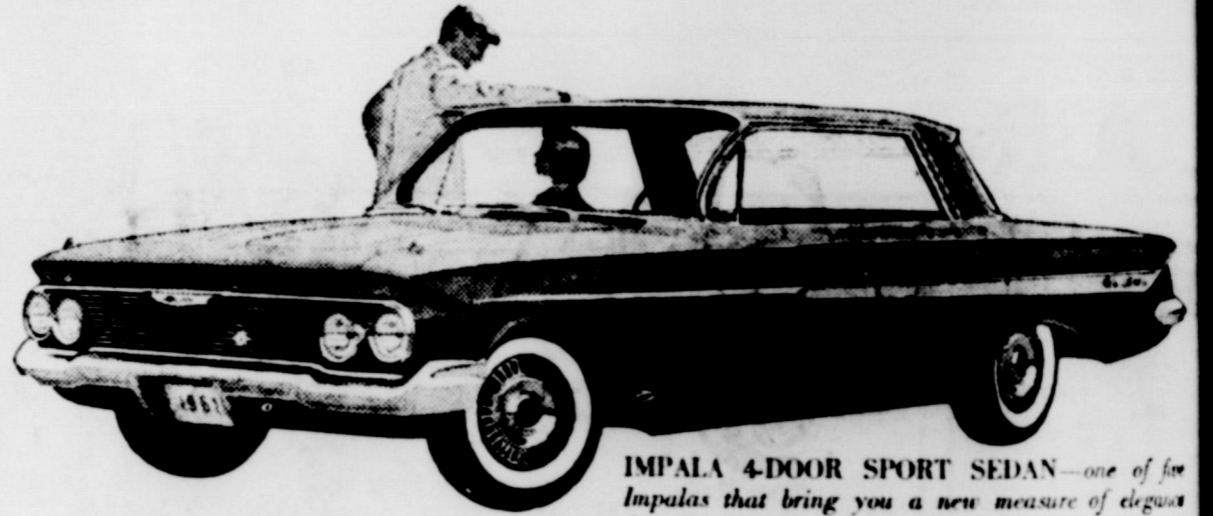


There's never been a trunk like it before! The floor's recessed more than half a foot and the loading height is as much as 10 1/2 inches lower.

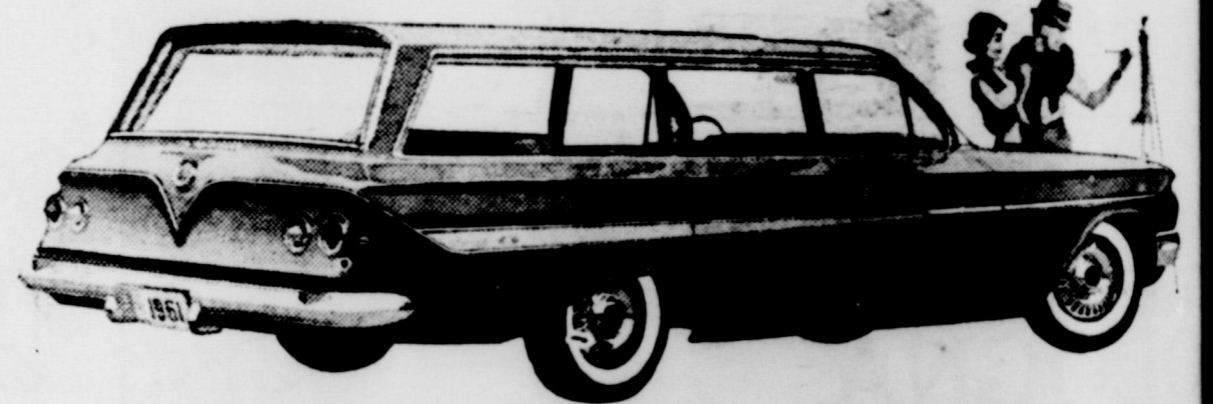
## INTRODUCING THE '61 CHEVY BISCAYNE 6

the lowest priced full-sized Chevy with big-car comfort at small-car prices!

Chevy's new '61 Biscaynes—6 or V8—give you a full measure of Chevrolet quality, roominess and proved performance—yet they're priced down with many cars that give you a lot less! Now you can have economy and comfort, too!



IMPALA 4-DOOR SPORT SEDAN—one of the Impalas that bring you a new measure of elegance from the most elegant Chevrolets of all.



NOMAD 9-PASSENGER STATION WAGON. You have a choice of six Chevrolet wagons, each with a cave-sized cargo opening nearly 5 feet across.



BEL AIR 2-DOOR SEDAN, like all '61 Chevrolets, brings you Body by Fisher newness—more front seat leg room.



Biscayne 4-Door Sedan

See the new Chevrolet cars, Chevy Corvairs and the new Corvette at your local authorized Chevrolet dealer's

# WARE CHEVROLET COMPANY

PHONE 3101

WHEELER, TEXAS

# Myant-Godwin Vows Exchanged

Wedding ceremony performed in San Jacinto Church, Miss Patricia Bryant, daughter of Mr. J. B. Bryant, 3900 Fountain, became the bride of Myant Godwin of 2713 Semple. Mr. and Mrs. Willard Kirk, pastor of the church, officiated at the double ceremony. Before the altar with a white kneeling basket of white gladioli, carnations and asters. Her hair was styled in a colonial arrangement of asters and feathered carnations. Bridesmaids were Miss Shelia George, Miss Patricia Nichols and Mrs. Ronnie Davis. They wore dresses styled identically to that of the maid of honor, Bernice Bryant, niece of the bride, who wore a colonial arrangement of asters and feathered carnations. Those worn by the other attend-

ants. Bill Godwin, brother of the bride, was best man. Groomsman were Drew Godwin, brother of the groom, Lawayne Hogan, and Geoffrey Caldwell. Ushers were Jerry Polvada and Dennis Thompson.

A reception in the Fellowship Hall of the church followed the ceremony. The bride's table was laid with net over orchid tablecloth. Mrs. Don Howington registered the guests, assisting with serving were Mrs. Bill Fry and Mrs. Jimmy Estes and Miss Lynna Spitz.

She is a graduate of Tascosa High School and is employed at the First National Bank. She is a graduate of Mobeetie High School, attended Texas Technological College in Lubbock and is employed at the First National Bank in Amarillo.

# Wednesday Study Club Has Meetings

The Wednesday Study Club had its first meeting of the year Sept. 14, 1960 at 10:00 a.m. in the home of Mrs. Frank Wofford, the new president, with Mrs. Nelson Foster and Mrs. Carl Laffin as co-hostesses.

Coffee was served on a table festive with fine linen, China and silver and laden with delicious foods.

After all were served, Mrs. Max Wiley conducted a federated quiz to familiarize us with our state and district officers.

Mrs. Laffin introduced the New Year Book study course.

The meeting was closed with the Club Collect.

One guest was present, Mrs. V. N. Moore from Cleburne, Texas, who formerly lived in Wheeler.

There were 23 members present including Mrs. Bob Ely who is a complimentary member.



TREASURER'S CONVENTION: Mrs. O. T. Jarvis, left, Brown County Treasurer and official hostess for the 12th annual County Treasurers' Assn of Texas convention, which was held in Brownwood, Texas. The meeting opened with the registration of Mrs. Arthur Singleton, county treasurer of Edinburg, Texas; Neva McGregor, Corpus Christi; and Mrs. Ayora Owens of Alpine. Also at the annual meeting was Palmer Sivage, County Treasurer of Wheeler. Some 150 county treasurers attended the convention.

# Mobeetie News

## Mrs. G. B. Dunn

Mrs. Warren Witt were Mrs. Arlie Jeffus home afternoon. The Witt family through earlier week on the way to City to visit Mr. Witt's out of town guests. Mrs. Henry Freeman of Geom, uncle of Mrs. Jeffus, Mr. Ralph Freeman and Mr. and Mrs. Galtor of Berger. Mrs. Arlie Jeffus attended funerals in Miami Thursday. Mrs. Thomas visited her son McNeal Tuesday in Pampa. Congratulations to Mr. and

Mrs. Doyce Watson, a girl born September 27th, Mr. and Mrs. Curtis Lancaster are the maternal grandparents.

Mr. and Mrs. Brit Hathaway and Mrs. Walter Coward spent some time in Lubbock during the week-end.

Mrs. Eva Myers is spending some time with her daughter and family, Mrs. London in Geom.

Mrs. Jimmy Coward and children spent Sunday and Monday with Mr. and Mrs. Walter Coward.

Mrs. Laverne Scribner left for Tulsa Monday. Mrs. Cruce is in-law of Mrs. Albert Scribner was killed in a car wreck. Visitors in the home of Mr. and

Mrs. Doug Sims were Carl Wood, Mrs. Willy Lamb of McLean, Mr. and Mrs. Carl Zebeck and Mrs. Kate Ford of Canadian.

Visitors in the home of Mr. and Mrs. A. A. Burch during the week-end were Mrs. Burch's sister and husband, Mr. and Mrs. J. D. Speck and her nephews and wife Mr. and Mrs. Walter Speck of Rochester, Tex. Her brother Faris Pounds of Bovina, Mr. and Mrs. C. W. Burch and Mr. and Mrs. Beck and Glenna of Mobeetie.

Mr. and Mrs. Hoyt Dunn and boys of Amarillo visited in the home of Mrs. John Dunn over the week-end.

Mr. and Mrs. Lester Leonard attended the wedding of Jewell's sister Edna May in Pampa, Oct. 1.

Mr. Bill Overcast and boys, Mrs. Fat Jones and girls made a trip to Amarillo Friday and returned Saturday.

The Wednesday Study Club met Sept. 28 with Mrs. T. M. Britt in her lovely ranch home.

The program was given by Mrs. E. H. Morris, vice president of the Top of Texas District. Her subject was History of Federation. She made it very interesting with pictures and books. One of which was Mrs. Pennebacker's History of Texas, a rare collector's item. Mrs. Pennebacker was National President of Federated Clubs.

Mrs. Morris was accompanied by Mrs. Lindsey, both ladies were from Canadian.

Other guests present were Mesdames F. J. Ross, Harry Wolford, Lee Guthrie, R. H. Foster, Geo. Taylor, Madge Porter, Geo. Parter, Carl Laffin, M. Melhany, C. J. Meek, D. O. Beene, N. D. Ware, Sr., Tom Dearen, Fred Farmer, Cora Hyatt, C. J. VanZand, Max Wiley, Tom Puryear, H. M. Wiley, and the hostess, Mrs. Britt.

## Number One

Mr. Carr was preceded in death by his wife in September, 1941. Amarillo; two daughters, Bonnie of Wheeler and Edna of Lefors; seven grandchildren and 12 great grandchildren and a sister, Mrs. Nella Mae Smith of Abilene.

Palmares were the grandsons, Edward Vincent, Robert Carr, Vincent, R. J. Holt, Jr., Alvin Carr, Ralph Wilson and Ernest Eads, J.

PAGE 5 — THE WHEELER TIMES, WHEELER, TEXAS THURSDAY, OCTOBER 6, 1960

## PTA WORKSHOP PROGRAM

THEME — "The American Family Today . . . And the P.T.A." Panel Moderator and Evaluation — Mrs. Ruth Huey, Director, Home and Family Life Education, Texas Education Agency, Austin

- 8:30 - 9:15 Registration — School Auditorium
- 9:30 Call to Order
- Invocation — E. M. Borden, Jr.
- Introductions
- 9:15 - 10:45 Panel — Miss Huey, Moderator; Ronald Hubbard, minister; John Hamilton, superintendent; Mrs. Ben Sheppard, Juvenile Officer; David M. Warren, J., Banker; two young people.
- 11:00 - 11:45 Group Sessions
- 12:00 - 1:00 Lunch — \$1.50
- 1:00 - 1:30 Evaluation — Miss Huey
- 1:30 Adjourn

## James Coward Is With Seventh Fleet

SAN FRANCISCO, Calif.—Marine Sgt. James W. Coward, son of Mr. and Mrs. Walter R. Coward of Mobeetie, Tex., and husband of the former Miss Margaret F. Campbell of Shamrock is serving with the Floating Battalion of the Third Marine Division aboard ships of the Seventh Fleet operating in the Far East.

The battalion, made up of the Second Battalion, 11th Marine Regiment, will participate in joint exercises with troops of other free nations in the Western Pacific and will call at ports in the Philippines, Hong Kong and Korea.

The unit is expected to return to Okinawa in October when it will be replaced by a similar force.

## NEWS

Jim Adams donated three books. Thank you Jim.

We have more of Hill's novels now. Have "Golden Arm" by Freddie Gage. (Thanks to Mrs. Grimes)

If you farmers need to brush up on college subjects such as "Soil Conservation", Livestock Care and Feeding Grain Crops, etc. we have the books you will want.

## BRIDAL SHOWER

A bridal shower was given to Mr. and Mrs. Autry Wallis Thursday night in the Lion's Hut. A very nice assortment of gifts were received by the couple. Refreshments were served by the following hostesses: Mes. Bonnie Hogan, Lorene Rector, Faye Rowell, Mattie Williams, Marie Gudgel, Leta Gatling, Letha Coreoran, Oreta Baird, Laura Hill and Melba Burck.

## GIRLS AUXILIARY

The Junior Girls Auxiliary met Monday, Oct. 3rd at the First Baptist Church with their leader, Mrs. Elbert Smith for the community Missions and business.

Cynthia Smith, president, presided over the meeting. Margaret Brickley led the opening prayer. After the business meeting, refreshments of cakes and cookies were enjoyed by the following girls:

Darla Risner, Billie Ruth Smith, Judy Whitener, Martha Wofford, Margaret Brickley, Sibel Richardson, Sally Richardson, Nancy Weatherly, Diane Weatherly, Cynthia Smith, Connie Richardson, Olene White, Gloria Wilson, and Mrs. Elbert Smith.

The G.A.s then went visiting and visited a shut in, Mrs. A. C. Mitchell. They cheered her up with the group singing songs. The Jr. G. A.s met very Monday at 4:00 p.m. (ages 9-13) at the First Baptist Church. All girls are invited to attend.

## STITCH AND CHATTER CLUB

The Stitch and Chatter Club met Friday in the home of Mrs. Charlie McCartney. The day was spent quilting.

During the business meeting conducted by Mrs. Claud Crouch, plans were made to meet in the home of Mrs. M. P. Rogers on Oct. 14.

At noon a covered dish luncheon was served to the following members: Mes. W. E. Bowen, J. W. Hooker, Claude Crouch, M. P. Rogers, W. E. Burke, John Barr and the hostess, Mrs. Charlie McCartney.

## MEETING

The Women's Missionary Union met at the First Baptist Church on Monday at 7:30 p.m. for Royal Service Program and business meeting. Mrs. Albert Marshall, president, presided over the meeting.

Mary Wofford, prayer chairman opened the meeting by reading the prayer calendar and led in prayer for Missionaries listed on the calendar. Martha Manning, secretary of the last meeting, reported that we had lots of books and supplies ordered and there was a need for more money. She also gave the amount that the WMU and the Auxiliary gave for State Missions. It was decided to teach the leadership course on two Saturday mornings. The women voted to take turns providing refreshments for the Auxiliaries. After the business meeting Mr. George Gandy took charge of the Royal Service Program. The Message of God's Son) which consisted of the following:

1. Call to Worship: Jesus Shall Reign—Psalms 67 with Call to Prayer—Mrs. George Gandy.
2. The Message of God's Son: Mrs. Frank Ross
3. Senders of the Message in Portuguese: Mrs. John Manning
4. Senders of the Message in Spanish: Mrs. Albert Marshall
5. Message Received
  - a. By an illiterate Woman: Mrs. Helen May
  - b. By a Notional Leader: Mrs. Bill Smith
  - c. Through Hospital Experience: Mrs. Vise
  - d. By Hunger For Bibles: Mrs. Harold Hill
  - e. By a Night Club Dancer: Mrs. Roy Bailey

The program was concluded by Mrs. Gandy who stated that messengers were needed and that 95 per cent of the native white citizens are literate, but 16 percent of our negroes cannot read or write. Could you teach someone to read or supply a Bible to a family that does not have one? You are witness "of these things" Love constrains us" to be concerned. Mrs. Harold Lloyd Lee led the group in singing: "Christ For The Whole Wide World."

## PROGRESSIVE STUDY CLUB

PUBLIC AFFAIRS CITIZENSHIP The Progressive Study Club met in the home of Mrs. Jess Moore, Sept. 22.

The meeting was opened with reading of the Club Collect and pledge to the flag.

Mrs. Wayne Edwards, president, presided over the business meeting. The Club voted to install a water fountain in the school cafeteria. Panel "Our Government"

Executive Power, Doraean Owens, Legislative Power, Curtia Moore; Judicial Power, Opal Daughtry.

Refreshments were served by the hostess to Mes. Roy Bailey, Ailing Cordell, Thomas Daughtry, Irene Dyer, Oma Dyer, Wayne Edwards, Ebb Farmer, Ocie Ford, C. B. Kirk, Lewis Lancaster, Clarence Robison, Bill Owens, Carl Rodgers, Lyndon Sims, A. O. Var pool and the hostess, Curtis Moore.

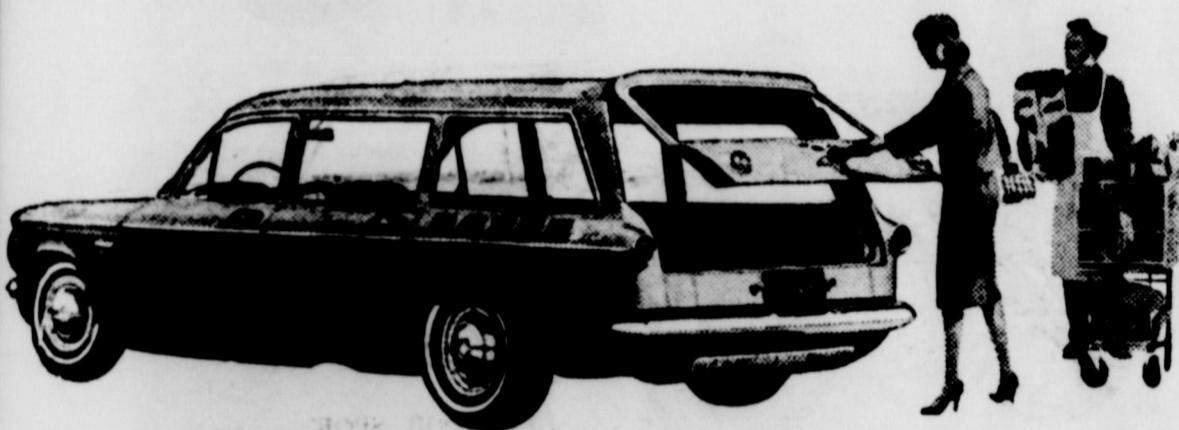
Mr. and Mrs. Jerry Maunce and Teresa of Shamrock spent Sunday with Mr. and Mrs. W. E. Burke.

Mr. and Mrs. R. T. Burke were shopping in Shamrock Saturday.

# SHOW ON WORTH! CHEVROLET

## NEW '61 CHEVY CORVAIR

More space . . . more spunk and wagons, too!



The newest car in America: the CORVAIR 700 LAKEWOOD 4-DOOR STATION WAGON.



CORVAIR 700 CLUB COUPE. Like all coupes and sedans, it has a longer range fuel tank.



CORVAIR 700 4-DOOR SEDAN. Provisions for heating ducts are built right into its body by Fisher.



Here's the new Chevy Corvair for '61 with a complete line of complete thrift cars.

To start with, every Corvair has a budget-pleasing price tag. And Corvair goes on from there to save you even more. With extra miles per gallon . . . quicker-than-ever cold-start warmup so you start saving sooner . . . a new extra-cost optional heater that warms everyone evenly. Riding with this extra economy: more room inside for you, more room up front for your luggage (sedans and coupes have almost 12% more usable trunk space).

And our new wagons? You'll love them—think they're the greatest thing for families since houses. The Lakewood Station Wagon does a man-sized job with cargo, up to 68 cubic feet of it. The Greenbrier Sports Wagon you're going to have to see—it gives you up to 175.5 cubic feet of space for you and your things.

Corvair's whole thrifty lineup gets its pep from a spunkier 145-cu.-in. air-cooled rear engine. Same rear-engine traction, same smooth 4-wheel independent-suspension ride. See the polished and refined 1961 Corvair first chance you get at your Chevrolet dealer's.



Spare tire is in the rear in coupes and sedans—leaving more luggage space up front.



Even middle-seat passengers sit pretty, thanks to Corvair's practically flat floor.

Now in production—the GREENBRIER SPORTS WAGON with up to twice as much room as ordinary wagons (third seat optional at extra cost).

See the new Chevrolet cars, Chevy Corvairs and the new Corvette at your local authorized Chevrolet dealer's

# WARE CHEVROLET COMPANY

118 West Oklahoma

Wheeler Texas

Phone 3101

# Briscoe News

By Mrs. Bob Ramsey



## HI THERE

By Lavell Stephens

Boy! I'm here to tell you we've sure had fun at our house lately. We been "seek" that is ole Mari and me, not what you call sick et ther, just couldn't breath. That gasping for every breath you breathe, has just gotta go. (I'm gonna tell you about all our aches and pains cause I might not see all of you personally.)

To start this mess out we had a "ticky throat" then that ache became the gasping for that wonderful stuff called air—you know one doesn't think much about this stuff we breath long as it flows nice and easy—but old buddy just wait till some body some where cuts it off, I'm gonna tell you now that that's worse than gettin' your "water cut off."

What happens tho — one starts out coughing easy like, then you try it again, then again, pretty soon you're wound up and the first thing you know, you're having a worm with a helmet on it and no-body do a thing to help you—just stand there and watch you turn blue in the face.

Well, by this time you decide it is time to call your Dr. You call — you want him NOW—you know come quick like a jungle bunny—but he's in no hurry—when you are sure you're not long for this world. But the Dr. finally arrives, with a big grin and a happy hello, how're you? When you know if he'd loo at you he'd know you were dying. Anyway he gives you a shot, and a bucket of pills, take these every three hours, and these every four and these before you go to bed. And all this time you're half blind and can't read—deaf and can't hear. Now you're all fixed up the ole Dr. leaves and you start in on the medicine.

Soon things are fine, you go to

sleep — BUT BROTHER ALL OF SUDDEN YOU'RE AWAKE — NO AIR! So what do you do? Call your Dr. naturally you want something done—and done now, but what happens—another kind of pill, another shot—and here you go again. Dr's are wonderful, I love 'em their first thing I want when I'm sick—but to tell you the truth I believe what we had would have taken us a week to get over but with the Doctors help it only took 7 days. And I don't know when I'm the sickest when I'm really sick or when I get my Dr. bill.

Now everybody at our house having "what we had" wasn't enough—we had two ole sows that found a barrel of pigs—we had pigs all over the place, the windmill stopped wind milling, the sewer stopped up, the telephone literally fell off the wall, we lost an ole cow, and to top the thing off—we had some kin folk with 5 kids come and stay 4 days. If all this isn't enough to make a body shoot herself—then what is?

Mrs. Marl Jacob and Lavell were in Amarillo Saturday.

Bill and Voneva Robertson of Amarillo visited with Mr. and Mrs. Walter Hooker Mrs. Bessie Robertson came with them and visited friends.

Dr. Walker was in Dallas Saturday to a medical meeting.

Mrs. Grainger McIlhany went to Dallas Saturday.

Mr. and Mrs. Darrell Greenhouse and family from Borger visited the J. C. Bradstreet and Mrs. B. Greenhouse.

We though we had found one woman who had spent a whole week at home but then she thought awhile and said, "No I had to go to Pampa one day to take the TV." That was Mrs. Farmer Hefley.

Mrs. Jack Mitchell and children of Pampa, Mrs. Olen Maxwell of Phillips and Mrs. Kate McCord of Suisun, Calif., spent the day with the Milton Finsterwalds last Thursday.

Mr. and Mrs. J. A. Wood of LeGrand, Calif., and Mr. and Mrs. A. J. Wood and son of Amarillo spent Saturday night with Mr. and Mrs. L. S. Aderholt and they spent the day Sunday with Mr. and Mrs. Venson Smith and girls.

Mrs. Bill Finsterwald and Mrs. John C. Vise shopped in Pampa Wednesday.

Visiting with Mr. and Mrs. Elbert and David night were Mr. and Mrs. Curtis Hall and Kathy of Amarillo.

Mr. and Mrs. Tom Helton spent the weekend in Lubbock visiting their sons Mr. and Mrs. Bill Helton and children and Mr. and Mrs. Jack Helton.

Mrs. Gene Haddock returned Tuesday from Fayetteville, North Carolina where she had visited her husband who is in the Armed Forces and stationed at Fayetteville.

Mr. and Mrs. Olen Maxwell of Phillips spent Sunday night and Monday with the Milton Finsterwalds. On Monday Mr. and Mrs. Maxwell and Mr. and Mrs. Finsterwald and Joel drove up to see the new dams, to Ft. Elliot, to the old jail and the cemetery in Mobeetie and over to see the new bridge at Kellerville.

Guests of Mr. and Mrs. F. Hefley last Thursday evening for a chicken barbecue were Mr. and Mrs. Bill Finsterwald and Mr. and Mrs. Pymon Martin.

Mrs. Lucille Tipps spent Saturday in Shamrock with her daughter and family the Douglas Robertsons.

Shopping in Pampa Saturday

were Mrs. B. F. Meadows, VonNell and Lou and Mrs. Fulton Meadows. Mrs. Henry Lee and Mrs. Ve Ann Savage visited Mrs. Bob Ramsey last week.

Mrs. John McCarroll is sick with a cold.

Mrs. Doyle Standlee and Mrs. Cliff Walker spent Thursday and Thursday night in Pampa.

Visiting with Mrs. Henry Lee last Thursday was Mrs. Herbert Finsterwald.

Mr. Oran Horn's mother, Mrs. Evans of Wheeler is sick in a Pampa hospital.

Visiting with Mrs. Doyle Standlee Tuesday afternoon were Mrs. Grady Dodd and Diane.

Mrs. Lottie Lee, Mrs. Lola B. Eden and Mrs. Ollie Bruns of Shamrock visited the Henry Lees Friday afternoon.

Briscoe exstudents away at school are Grant Meek, Larry Finsterwald, Jean Zybach, and Laurel Singleton attending W.T.S.C. at Canyon, C. G. and Jackie Dodd David Strawbridge, Jimmy Wright, Sandra Meek, Bill and Jack Helton attending Texas Tech at Lubbock Leonard Kiker is attending college in Las Vegas, N.M.

Billie Douthit and Inez Standlee are attending Beauty school in Pampa and Charolette Elard is attending Draughts Business school in Dallas.

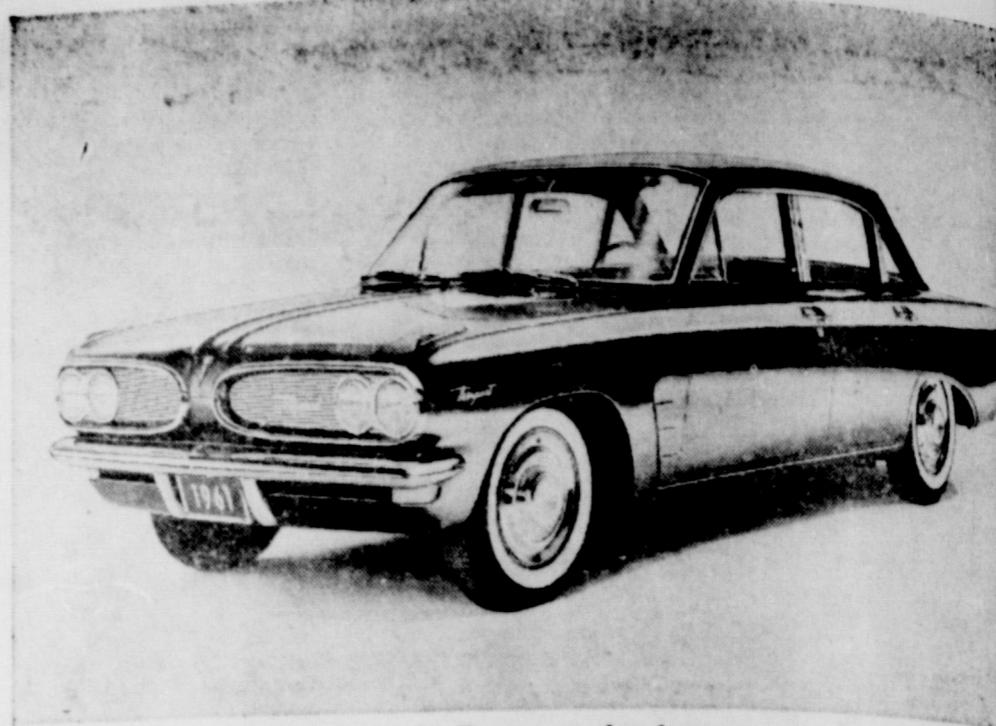
Mr. and Mrs. Milton Finsterwald and Joel took her aunt, Mrs. Kate McCord, to Sweetwater, Okla., Sunday afternoon to visit relatives. July spent the afternoon with her grandmother, Mrs. George Warren in Wheeler.

Ray Hudson is in the Air Force and stationed at Wichita Falls where he will be in a Maintenance and Missile school for the next year for the next eight months.

The Junior Ball team has a game Thursday night with Abilene at Briscoe.

The F.H.A. girls had their Formal Initiation Monday night.

Mr. and Mrs. Travis Keel went to Wheeler Monday evening on business.



BUILT on a 112-inch wheelbase the Tempest sedan features a 4-cylinder, front-mount engine, a rear transmission and unit body construction, with an overall length of 141 inches. Carrying out Pontiac's famous wide track design, this family-sized car has a roomy interior, a flat floor and a spacious rear luggage compartment. Fifteen exterior colors in durable acrylic lacquer and luxurious interiors in 14 different trim combinations are available.

Mrs. Cedar Hudson and Mrs. L. S. Hudson went to Annett, Okla. last week on business.

Mr. and Mrs. Lee Barry visited relatives in Amarillo Sunday and Monday. They left Tuesday for Hays and Wells, Texas where they visited Mr. Barry's Sisters.

They attended a fox hunt at Carlsbad, Texas which is called the heart of the pines hunt. They also went over to L-15anna.

Mrs. Ray Hudson spent a few days last week with the Cedar Hudsons.

Mr. and Mrs. Troy Tidwell and family of Pampa visited the Jeff Puryears Sunday afternoon. Shopping in Pampa Saturday were Mr. and Mrs. Melvin Helton and boys.

Mrs. Roy Waters has been having to go to Pampa to the dentist's.

Visiting with the Exell Steen Sunday were Mr. and Mrs. Howard Steen of Magee City, Mrs. Mary Canabier and Grandira Steen of

Canadian.

Mrs. Doyle Standlee and Inez visited Mrs. Jeff Puryear Monday morning.

Dinner guests Sunday of the Cliff Walkers were Mrs. Floyd Hunter, Verena and Regina, Mrs. Lucile Tipps and Mr. Le Berger and Morris.

Floyd Ray Morris of Wheeler spent Thursday with the H. W.

Mrs. Henry Lee and Mrs. Alva White and girls visited the Steens Friday night.

Billie Douthit of Pampa spent the weekend with her folks, the Kenneth Douthits.

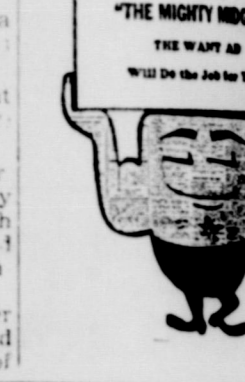
Spending the weekend with Mr. and Mrs. Fat Childre's and family were Mr. and Mrs. Buster Smith and Glenn of McCain and Mr. and Mrs. Roy Swait and boys of Wichita Falls.

Friends of Mr. and Mrs. Porter Rogers and Louise wish to extend sincere sympathy in the loss of

their loved one, Mrs. Edna this.

We are sorry that we let Mrs. Marge Meadows the typing class list.

When you help someone a bit, you're a little bit up yourself.



# NOTICE

YOU CAN SAVE 3% ON YOUR TAXES

## If You Pay During OCTOBER

The Commissioner's Court of Wheeler County has authorized the Tax Collector to give the discount on all 1960 taxes as provided by the Legislature, as follows:

3% IF PAID DURING OCTOBER, 1960

2% IF PAID DURING NOVEMBER, 1960

1% IF PAID DURING DECEMBER, 1960

This discount is on all State and County Taxes that are collected by the County Tax Collector and applied to all School District Taxes collected by this office.

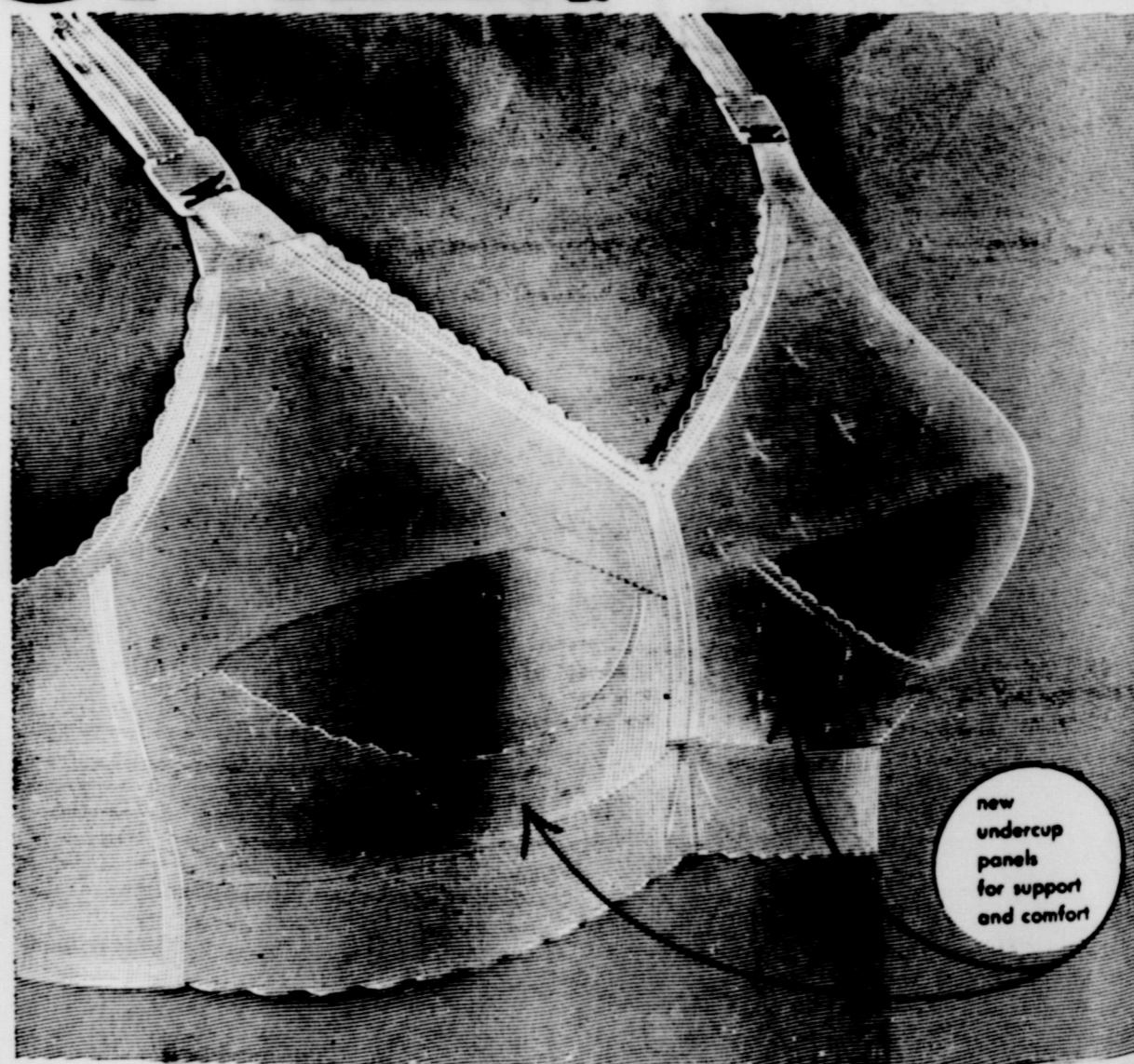
### Thurman Rives

Tax Assessor-Collector of Wheeler County

# SALE 2 for 3.99

reg. 2.50 ea.

## SAVE 1.01



new undercup panels for support and comfort

# PLAYTEX

fashion-magic bra

The makers of Playtex offer this exciting "get acquainted" sale because they're sure that once you wear a Playtex Fashion-Magic Bra you will always wear one. The exclusive undercup panels of softest cotton give you new comfort, lasting support where you need it most. And this bra keeps its shape and yours month after month...even after 65 machine washings.

Hurry in and take advantage of this special offer today. You save \$1.01 for a limited time only.

White 32A to 40C. Reg. \$2.50 each—now 2 for \$3.99. "D" sizes reg. \$3.50 each—now 2 for \$5.99.

Please send me the following Playtex Fashion-Magic Bra at the low sale price:

Style	Color	Size	Price	How many
Fashion magic bra				

NAME \_\_\_\_\_  
ADDRESS \_\_\_\_\_  
CITY \_\_\_\_\_ STATE \_\_\_\_\_  
 charge  check  money order  cash

©1960 by International Leisure Corp. Printed in U.S.A. Patent, Trade Dress, Design.

J-LEE DEPARTMENT STORE

# Birthdays

**October 6, 1960**  
Patsy Wiley Wood  
Mrs. W. L. Williams  
Mrs. Melvin Helton  
Mrs. Ruby Williams  
Re Lunnus

**October 7, 1960**  
Celeste Wiley  
Gary Kite Montgomery  
Mrs. Pearl Bowerman  
Mrs. J. M. Burgess

**October 8, 1960**  
Gladys Higgins  
Albert Don Chapman

**October 9, 1930**  
Mary Elizabeth Holt  
Mrs. Ida Farmer  
Thurman Rives  
Irene Hunt Norman  
J. M. Burgess

**October 10, 1960**  
Johnny Hutchison  
R. D. Massey  
Terry M. Hall  
Annie Christine Casper

**October 11, 1960**  
Jill Starkey  
Reba Wofford

**October 12, 1930**  
Mrs. Terrell Gunter  
Carolyn Sims

# Allison News

by Mrs. Lester Levitt

The John Megee family and Mrs. Lavesta Barber and children accompanied by Elmer Brown Jr. and family from Amarillo attended the funeral of Mrs. Megee's mother, Mrs. Lela O'Pry at Morton, Tex., Saturday. Mrs. O'Pry was ill only a short time before her death and was 82 years old. The infant son of Mr. and Mrs. Willie Parker is in an Amarillo hospital for observation and possible surgery. He is on the critical list.

Clydene Markham was a patient in the Wheeler hospital most of last week for treatment of a severe cold.

Leonard Hagerman and family from Sweetwater, Okla., and Coy Caudell and family from Pampa visited in the Verlin Hagerman home Sunday.

Kenneth Hamon and family from Pampa spent the weekend with the George Parkers.

Mr. and Mrs. Jack Sloan from Pampa were guests in Aubra Bowers home Sunday. Mrs. Bowers came home from the Highland General hospital Saturday where she is rapidly recovering from surgery.

Mrs. Fred Voigt and Mrs. Vera Moore visited relatives in Tuttle and Sayre, Okla., over the weekend.

Jimmy Jackson spent the weekend at Pampa with his parents. Mr. and Mrs. J. H. Jackson, Sr. Bob Markham and family were in Amarillo Saturday for medical reasons.

Mr. and Mrs. J. T. Childress were in Wheeler Sunday on business.

Robert O. Nations and family from Shamrock were supper guests in the James Hall home Sunday.

Frank Begert and family from Umbarger and Mrs. Tommy Hall and son from Sunray visited Mrs. Lois Richardson and children Sunday.

Raymond Jones and family from Pampa spent the weekend in the parental Rayburn Hall home.

Joe McNutt and family from Pampa were guests in the A. M.

Reynolds home over the weekend. Nell, Oneta and Everett Childress and Densel Reed and family visited Earl Miller and family Sunday.

Odel Gregg and family and Mr. and Mrs. Love from Tulia visited Leonard Powledge and family Sunday.

Ed Walker and family were dinner guests in the Dave Gilmer home Sunday.

Jess Hall and family visited in the Vernon Hall home Sunday afternoon.

W. E. Cornell and family motored to Plainview Friday and spent the weekend with the Bobby Cornells.

Phyllis Elmore, Johnny Dukes and Toots Begert, students at West Texas State at Canyon spent the weekend here with home folks. Larry Elmore and Diana Dukes accompanied them back to Canyon on Sunday.

W. H. Boydston and family were dinner guests in the Clifton Boydston home Sunday.

Mr. and Mrs. Leroy Parker from Guyman, Okla., spent the weekend in the parental Glen Markham home.

L. W. Grayson and family from Panhandle, Irskin Grayson and family from Dumas, Mr. and Mrs. D. Vinson from Chandler, Ariz., Mr. and Mrs. O. Webster from Erick, Okla., and Mr. and Mrs. Gus Norrell from Sunray were guests in the Bob Grayson home over the weekend.

Mr. and Mrs. Willie Begert and Hiram had as their guests over the weekend; Mr. and Mrs. Sam A. Begert from Pampa; Frank Begert and family from Umbarger, H. Bilbray and family from Weatherford, Mr. and Mrs. J. E. Bowen from Plainview, Mr. and Mrs. M. L. James from Wellington, Mr. and Mrs. Ernest Begert and Toots and Fred Begert.

Dwayne Howard and family from Amarillo spent Saturday and Sunday with the Clyde Dukes' family.

Mr. and Mrs. Dave Kiker visited in LasCruces this week.

Mr. N. P. Woosley and Jamie Patricia, Richard and Linda Mahan from Borger visited in the Mrs. B. Greenhouse home Saturday and Sunday.

### CARD OF THANKS

We wish to take this means to thank each and every one for all the acts of kindness Especially Friday evening and spent the night in the home of Mr. and Mrs. Louis Stas and Ronal Wayne.

The A. B. Evans Family

Maxie Herd returned from Fortnosa the 25th of September. He and Wanda Sue and children will make their home in San Angelo where he is stationed.

J. D. Herd and family from Skelleytown visited in Wheeler over the weekend.

### VISITORS

Mr. and Mrs. Gene Arnold of Stillwater, Okla., came to Wheeler Friday evening and spent the night in the home of Mr. and Mrs. Louis Stas and Ronal Wayne.

Waymond and Helen, LeRoy and Mary Jo Herd from Amarillo were in Wheeler Sunday.

Mr. and Mrs. Fred Waters visited their son in Borger Sunday.

Mrs. B. Greenhouse and Dorothy visited Mr. and Mrs. Henry Greenhouse Sunday afternoon. Henry has been real sick.

**OF THANKS**  
to thank all who sent...  
Mrs. John Megee  
Mrs. Donald Barber  
Mrs. Elmer Brown Jr.  
Mrs. Arthur Hathaway  
Mrs. Fred Waters this  
Mrs. Hathaway is Mrs.

**M. V. COBB**  
Dentist  
BL 6-1133  
South Main  
Wheeler, Texas

**DON'T MISS THE BIG 75<sup>th</sup> BIRTHDAY PARTY**  
**STATE FAIR OF TEXAS**  
DIAMOND JUBILEE EXPOSITION

MANY OF STELLAR ATTRACTIONS  
THE ROADWAY HIT  
ROCK DRUM SONG  
ICE CAPEDES  
SHOW OF STARS  
HORSE SHOWS  
STATE FAIR  
Texas International Trade Fair  
Exciting Cotton Bowl Football  
MILLION-DOLLAR MIDWAY  
MUSIC, SKY REVUE  
Wonderful and new exhibits and displays  
**OCT. 8-23 - DALLAS**



**Melroy Cox Dairy**

**THE GREAT CHANGE**

**IS TO THE ELECTRIC RANGE!**

AND YOU CAN MAKE THAT CHANGE NOW EASILY — ECONOMICALLY — QUICKLY

Yes, your Reddy Kilowatt Electric Appliance Dealer is ready to help you make the big change to the modern range — of course, it's electric. See his new models — ask about the special wiring allowance — learn about his easy terms.

The age is electric — and so is the best way to cook. ASK ABOUT WIRING INSTALLATION ALLOWANCE

SEE YOUR REDDY KILOWATT APPLIANCE DEALER

**PUBLIC SERVICE COMPANY**

LIVE BETTER ELECTRICALLY

**Mr. & Mrs. Qualified Voter!**

**THIS IS REALLY A CRUCIAL YEAR IN THE LIFE OF OUR NATION. THE SOCIALIST OF OUR OWN LAND, ARE WORKING HARD UNDER THE BANNER OF THE DEMOCRATIC PARTY TO CONVERT OUR COUNTRY INTO A WELFARE STATE.**

**THE COMMUNIST FROM FOREIGN LANDS ARE NOW IN OUR COUNTRY IN GREAT HERDS, AS MEMBERS OF THE UNITED NATIONS, DOING THEIR BIT TO HELP THE SOCIALIST IN HOPE THAT THE AMERICAN PEOPLE WILL ACCEPT SOCIALISM, BECAUSE THEY KNOW IT IS BUT A SHORT STEP FROM SOCIALISM TO COMMUNISM.**

**IF OUR COUNTRY IS GOING TO WIN THE STRUGGLE AGAINST WORLD COMMUNISM, WE MUST HAVE LESS SOCIALISM, NOT MORE SOCIALISM.**

**THE ISSUE FACING US TODAY, IS WHICH OF THE CANDIDATES FOR PRESIDENT WILL BEST SERVE AMERICA AND KEEP AMERICA FREE.**

**IF MR. KHRUSHCHEV DECIDES NEXT YEAR THAT IT IS GOING TO TAKE ARMED CONFLICT TO TAKE THE WORLD OVER, WHICH OF THE CANDIDATES WOULD YOU RATHER HAVE AT THE HELM OF STATE TO MEET THE ONSLAUGHT?**

**THAT IS WHY THIS IS A CRUCIAL YEAR.**

**VOTE FOR RICHARD M. NIXON, FOR PRESIDENT OF THE UNITED STATES.**

**D. O. BEENE**

**NICE GROUP OF MENS & BOYS  
JACKETS  
1/2 PRICE**

**McIlhany**  
WHEELER, TEXAS  
**DRY GOODS**  
Thank 2011  
"FOR Everything YOU WEAR"

**Want Ads**

**FOR SALE**

**FEDERAL LAND BANK  
LOANS**

For Details See  
**RAYBURN L. SMITH**  
Manager  
Shamrock, Texas  
111 North Main St.

Monuments, Markers, Grave Covers,  
Curling, Surface Burial  
Vaults. Will Warren. 4-tfc

FOR SALE: 1953 Allis-Chalmers,  
cut less than 500 acres. Ready to  
go. 12 ft. Ghrum Heome Plow. Cheap.  
2 young duroc Boars. Subject to  
register. C. Walser and Son, Mo-  
betite, Texas. 2tc-44

FOR SALE: Model J-57 Nation-  
line Jet Pump. Tom Christner.  
Briscoe. 2tc-43

Reposessed Speed Queen dryer,  
excellent condition. Original price  
\$229.95 now \$179.95. H and B Ap-  
pliance. 2tc-43

CAFE: Doing good business, liv-  
ing quarters, lease or rent. \$650  
for inventory of goods on hand  
starts you. Act fast. Eagle Cafe,  
Higgins, Texas. 2tc-43

FOR SALE: Butane System for  
Tractor or Combine. Registered  
Heredford Bulls. Frank Walker.  
Phone 3622. Wheeler. 3tp-43

FOR SALE: New 2-bedroom home  
on Sweetwater street. Phone 2591.  
Wheeler. 2tc-43

**FOR SALE CHEAP:** The follow-  
ing natural gas furnaces. One new  
50,000 BTU Coleman floor furnace.  
One nearly new Coleman wall fur-  
nace, with three speed blower.  
Above complete with Honeywell  
Thermostats (Electric). See R.  
J. Hoyt. 2tc-43

**FOR SALE:** My home, just west  
of Gaddy Vise. Can be seen Sat-  
urday afternoon and Sundays. Mrs.  
Joe King. 2 tp-44

**Odds and Ends Sale** — Must sell  
to restock with 1961 models. New  
GE Combination washer-dryer —  
only one — real bargain. Retail  
price 149.95 now only 349.95 with  
trade in washer. Lay away for  
Christmas! H and B Appliance.

Gibson refrigerator. Big 14 cu.  
ft. Dial defrost. Retail \$329. Trade.  
Now only \$239.00 with trade.  
New Sunray gas range — Priced  
to move at only \$119.00  
H and B Appliance

**MISCELLANEOUS**

**WANTED:** Custom Bundle cut-  
ting. I have a three row broad  
cut binder and I do good work.  
Call 2653. \$3.00 per acre. Jimmy  
Harris. 2tp-43

**WANTED TO BUY:** Several used  
pianos. See Adrain Risner. Whee-  
ler. 2tc-43

**SAVE MONEY:** Test your own ra-  
dio and television tubes, free of  
charge. Nash Appliance and Sup-  
ply Company. 2tc-43



**PLANS PTA WORKSHOP:** Planning the Fall PTA workshop was the purpose of the recent meeting of area PTA officials. Mrs. James Lewis, district nineteen president, met with the local planning committee in the home of Mrs. Lloyd Wayne Weatherly. Those attending the meeting included: (right to left) Mrs. Dud Goad, Mrs. Wayne Edwards, Mrs. Walter Dunn, Mrs. Dorsie Hutchison, Mrs. James Lewis, Mrs. Thurman Rives, Mrs. Lloyd Wayne Weatherly and Mrs. Nea Raymond.

From the office of the . . .

**SUPERINTENDENT**

**Wheeler Schools  
Arling Cordell, Supt.**

We are completing our first six weeks period this week and the teachers are testing the students the latter part of this week.

Friday will be regular assembly morning and we will have our guest speaker, Larry Hunter, an ex-student of Wheeler High School who is studying for the ministry. Mr. Carroll Killingsworth's speech will be in charge of the rest of the program. Visitors are always welcome to our regular assemblies.

We would like to remind our fans that our football game previously scheduled this week (Oct. 7) with Boys Ranch has been postponed until October 21st. We will have an open date this week.

The Stage Band, consisting of Richard Parks, Bill Stiles, Kitty Hibler, Gary Waters, David Dunn, Joe Loter, Gwen Barnes and Marian Holcomb under the direction of Miss Ann McMurry and Supt. Cordell were very glad of the opportunity to present the program to the Kelton PTA meeting Mon-

day evening. The contract is fulfilled and the lighting system for the football field has been okeyed by the school board.

**KELTON SCHOOL**  
Charles Lamb, Superintendent  
Here is our annual staff for 1960-61:

Editor: Karen Moore  
Co-Editor — Dolores Beasley  
Picture Editor — Rody Lummus  
Copy Editor — Sue Pitcock  
Typist — Gayle Dale  
Business Manager — Joan Addison  
Sports Editor — Ed Pitcock  
Co-Sponsors — Mr. and Mrs. Bill White

Mr. and Mrs. Richard Dickey from Brownfield and brother Rusty Cole, journeyed to Canyon Sunday where they were met by her parents, Mr. and Mrs. T. J. Cole, Jr., at his sister's home. Mr. and Mrs. Jack Sims. They all enjoyed dinner in the Sims home, then Rusty returned home with his parents to Wheeler after a 3 1/2 week visit with Zinnia Kaye.

**GUESTS**

Mrs. A. B. Griffin had as house guests the past week, Mr. and Mrs. Cecil Clark of Van Buren, Ark. Mr. and Mrs. Joe Griffin of Pampa, Mrs. Hallie Crowder of Albuquerque, N.M., Mr. Jeff Griffin of Hobbs, N.M.

Mr. Clark is recuperating from gall bladder surgery. He and Mrs. Clark left Tuesday for Childress to visit their daughter and other relatives in Dodson and Amarillo before returning to Arkansas.

**CARD OF THANKS**

We wish to thank each and everyone for the act of kindness shown during the passing of our dear Aunt Kate. May God richly Bless each one.

A. C. Cochran  
Vincent Cochran  
Hattie Cook  
Raymond Wright and family  
Harold Jones and family  
Horace Rivers and family

Weekend visitors in the Louis Stas home were Mr. and Mrs. Bill Raulston and Segan of Oklahoma City, Mrs. Wayne Mason and Cindy and Francis Porter of Hinton; and Mr. and Mrs. Eugene Stas of Calumet, Okla.

**Bluebonnet Club  
Has Meeting**

The Bluebonnet Club met in the home of Mrs. A. D. Sims in Shamrock recently at 2:30 p.m.

Mrs. E. D. Sims, president, called the meeting to order with the members repeating the club prayer in unison. The members sang together, "Home on the Range." Roll call was answered with activities my family enjoys doing together most.

The business session consisted of plans for the fair and election of officers.

The new officers for the new year are president, Mrs. Bill Smith; vice president, Mrs. E. D. Moore, sec. and treasurer, Mrs. C. D. Evans; council delegate, Wade Willis; alternate delegate, Mrs. J. P. Hall; Parliamentarian, Mrs. T. E. Smith and reporter, Mrs. R. L. Pike.

Mrs. Sanders was reported ill in the hospital.

The meeting was adjourned. Refreshments were served to Mrs. Bill Smith, Mrs. Wade Willis, Mrs. Ruby Bureham, Mrs. C. E. Evans, Mrs. T. E. Smith, Mrs. T. M. Morgan, Mrs. E. C. Williams and the hostess, Mrs. E. D. Sims.

The next meeting will be held in the home of Mrs. Bill Smith of Wheeler.

**Briscoe FHA Home  
Annual Initiative**

The Briscoe FHA held its annual Mock Initiative on Monday, October 11, at the school hours with each initiative praying and singing.

A formal candle lighting at 7:30. The girls in the organization were Wheeler, Martha Hebel, Smith and Beth Heffley attending the initiative.

Those who were: Mrs. Roy Meador, Home Ec teacher, Mr. Fred Blackburn, and Mrs. Venson Smith, FHA president.

Bobby Swift was elected chairman.

It was decided to take for fruit sales to be before Thanksgiving.

The newly elected officers are: President, Kay Vise; Secretary, M. A. Strawbridge; Sherry Douthett, Parliamentarian, Cheryl Wheeler; Program man, Charlene Fulk; Secretary, Martha Hebel; Chairman, Sharon Hudson; chairwoman, Charlotte Adair; reporter, Beth Heffley.

Mrs. A. B. Talley of Wheeler is FHA Advisor.

**VOTE FOR TEXAS**

**RICHARD M. NIXON,**  
candidate for President,  
is a Californian, but he  
thinks the Texas way.  
Richard Nixon stands for:



- A strong national economy and defense so that America will not have to apologize to Khrushchev for anything;
- A sensible farm program that will attack and solve the present problems.
- Texas retaining its tidelands, and a tax policy favorable to Texas.
- Local control of our schools.

If you will read and compare Nixon's platform with that of his opponent, you will agree that a vote for Nixon is a vote for the best interests of Texas.

**TEXAS DEMOCRATS FOR NIXON & LODGE**  
ALLAN SHIVERS, Chairman  
308 W. 15th, Austin

**Series Special!**



—Model 21C3440  
Mahogany Color Textured Finish  
on Pressed Wood Fibers

- ★ A CONSOLE MODEL!
- ★ Cuts as much as 8 inches from the depth of older cabinets.
- ★ 110" Aluminized Picture Tube—gives larger picture in a trimmer cabinet.
- ★ Direct sound—front-mounted Dynapower speaker.
- ★ Tilted dark safety glass for reduced glare.
- ★ Set-and-forget volume control.

NEW 1960

**General Electric  
CONSOLE  
TV**



**H & B Appliance Center**

HENRY RISNER, Owner

Phone Night 2263 — Day 2061

Wheeler, Texas

**AUCTION SALE**

We will sell entire herd of dairy cows, milking equipment, and farm machinery. Located 4 miles east of Briscoe, Texas or 7 miles west of Allison to same point on ment, then 1 1/2 mile south.

**Thurs., Oct. 13 - 11 a.m.**

**39 HEAD CATTLE**

- 17—Ayrshire Cows, age 3 to 7. Registered or subject to
- 6—Holstien Cows, age 4 to 9 years
- 10—Ayrshire Heifers, age 1 to 2 years
- 6—Ayrshire Calves

Seventeen of the above cows are in production and 2 will be fresh soon. All cows in good condition.

**MILKING EQUIPMENT**

- 1—300 gal. EM-BEE Vacuum sealed tank (Subject to private sale)
- 1—T33 Zero milk coler, 10 can size
- 1—Hinman milking machine. Complete line with 2 milking units, and about 20-10 gal. milk cans
- 1—30 gal. water heater, nearly new
- 1—Stainless steel wash vat

**IMPLEMENTS**

- 1—Forney Welder, 180 amp.
- 1—1949 model B John Deere tractor with 2 row lister and cultivator, knife attachment, rotary hoes and disc hillers

- 1—3 section harrow with fold up nearly new
- 1—2 bottom 14" John Deere broad plow, no. 44
- 1—4 ft. tumble bug Fresno
- 1—2 row stalk cutter
- 1—2 wheel trailer
- 1—4 wheel trailer with cotton frame
- 1—8 row cotton sprayer
- 1—8' disc harrow
- 1—16x8 IHC grain drill
- 1—John Deere 10" hammer mill and H
- 1—John Deere Manure spreader, H
- 1—John Deere row binder (old)
- 1—8' disc harrow
- 1—2 row godevil
- 1—John Deere 2 way Hydraulic Cylinder and hoses
- 5—feed troughs and some empty drums

Other articles too numerous to mention.

**LUNCH TO BE SERVED BY BRISCOE CLUB LADIES**

**TERMS CASH**

**A. S. CAUDELL (owner)**

SHELBY PETTIT, Auctioneer

Wheeler, Texas



# Business Directory -

TRACTORS — IMPLEMENTS  
PARTS and SERVICE

**WIBLER IMPLEMENT CO.**  
Wheeler, Texas

**JOHN DEERE**  
Farm Equipment and Service

**OLDEMAN IMPLEMENT CO.**  
Wheeler, Texas

**ROOFING**

Bonded & Approved

FREE ESTIMATES

**SNIDER ROOFING CO.**  
Clinton, Okla.

**DR. JOEL M. GOOCH**

OPTOMETRIST

207 N. Wall

Phone 800  
SHAMROCK, TEXAS

**SERVICE**

TO FARMERS  
OF THIS AREA  
SINCE  
1940

**RICHERSON**

Grain & Fertilizer  
Your Grain Dealer

People

DO

Read Small  
Ads. You did.

Walter L. Williams

Termite Exterminator Service

Stop that costly termite  
damage to your home  
Dial 3623 Wheeler

**AUCTIONEER  
SHELBY PETTIT**

Phone 3561 — Wheeler, Texas

Will cry your sale  
any time or place

We have the  
Finest Equipped Printing  
Department in the Texas  
Panhandle

**LET US  
DO YOUR  
PRINTING**

The Wheeler Times  
Phone 5011



TRY OUR  
EXPERT  
**WASH & LUBE**

**ALBERTS  
SHAMROCK SERVICE**  
Wheeler, Texas

FOR ALL OF YOUR  
PAINTING NEEDS  
SEE  
WHEELER COUNTY  
PRODUCE  
Wheeler, Texas

Let Me Write It  
**GEO. RICHARDSON**  
All Types Of  
INSURANCE

Ab Gunter  
**LIFE INSURANCE**

**DR.  
R. J. MADSEN**

Optometrist

In Wheeler

**SATURDAY 9-5**

TERMS ARRANGED —  
For Appointments  
Call 2232

You can't stay ahead of your  
bills if you allow them to do  
all the running.

See Our  
Complete Line Of  
**LIGHT FIXTURES**

Cicero Smith  
Lumber Company  
Wheeler, Texas

**THE JOLLY**



Molds For Plastic Casts  
Plastic Flowers,  
Picture Framing  
Coin Holders  
Ceramics

**EXPERT  
TV And Appliance  
REPAIR**  
On All Brands  
**H & B APPLIANCE**  
Wheeler, Texas

**FORD TRACTOR**  
And Implement Parts  
Hydraulic Parts  
Mower Parts

and all types of Ford Tractors  
and Implements

**Shira's Ford Tractor**  
And Implement Co.  
Phone 4461 Wheeler, Texas



An accident takes  
you from work.

Does your accident  
insurance help you  
meet your living  
expenses while  
you're laid up?

For the answer to this, or  
any other insurance question

John C. Vise  
**V & E REAL ESTATE  
and Insurance**

Phone 5011 Wheeler, Texas  
Representing THE TRAVELERS, Hartford

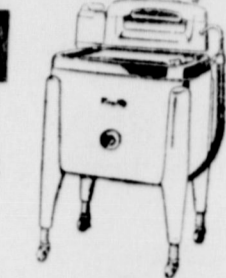
**TOT'S DAY SPECIALS**

EACH THURSDAY  
6 Years and Under  
By Appointment Only  
9 A.M. to 6 P.M.  
Phone BL 6-3238

The Vearner Studio  
714 S. Main St.  
SHAMROCK, TEXAS

today's best  
washer buy!

**MAYTAG**



America's finest  
washer, the luxury  
you can afford.  
for as little as  
\$2.00  
per week

**NASH**

Appliance & Supply

Wheeler, Texas

**ROGUE**

**THEATRE**

WHEELER, TEXAS

Fri. - Sat. Oct. 7 - 8

"THE SIGN OF  
ZORRO"

Guy Williams

Pre. - Sun. - Mon.

Oct. 9 - 10

"THIRD MAN ON  
THE MOUNTAIN"

Michael Rennie  
James MacArthur  
Janet Munro

Wed. - Thurs. Oct. 12-13

"BELLS ARE  
RINGING"

Judy Holiday  
Dean Martin

## FOR SALE

The following list of farms, houses and business  
buildings are just a few of the many which we  
have. Stop in and let us show you what we have  
to offer.

200 acre farm with 18 acre cotton allotment. \$65.00 per acre. 160 acre farm. 1/2 minerals go at \$50.00.

Extra nice 4-room home with attached garage and a good burn. \$0 acre farm with small house windmill and out buildings.

Small house and 2 1/2 acres. \$4,000. 6-room modern house, back porch, basement. 75'x150' lot. Own water system, septic tank.

320 acre farm. Near Wheeler. Cotton allotment. Want to sell your property or business? Contact us now.

We have numerous other choice building locations and several acreages listed. 1/2 section of land. 110 acres in soil bank at \$9.00 per acre. 50 acres in cultivation. 45 acre cotton allotment.

2 Bedroom Home with wall to wall carpet about 1300 ft floor space. 6-50 ft lots on paving. water, sewer and gas.

Cafe—All fixtures, priced to sell. Nice 3 bedroom home with bath and half, large lot. \$8,500.

3 Bedroom Home for \$5,250.00. Extra nice 3-bedroom home.

Oil And Gas Leases

## V & E Real Estate COMPANY

Phone 5011 — John C. Vise — Wheeler  
"Located in the Wheeler Times Building"

READ THE  
BUSINESS DIRECTORY  
OF THE WHEELER TIMES

**DIRT WORK**

Cellars  
Ceptic Tanks  
Ditches  
Call

**FRED ROGERS  
and SON**  
Phone 2265 Wheeler

Ab Gunter  
District Representative  
of  
**OSGOOD  
MONUMENT CO.**

Stone Eternal  
Rock Of Ages  
Georgia Marble

Phone 3361 or 4321  
Wheeler, Texas

We can Supply All Your need  
for

**READY MIX  
CONCRETE**

BATCH DESIGN MADE AND  
APPROVED BY AMARILLO  
CONCRETE TESTING LAB  
ORATORIES.

**Redi-Mix Concrete  
Plant**

Ned Bearrow, Mgr. & Sales  
Hwy. 83 N. Phone BL 6-3243

**Dr. Marion N. Roberts**

OPTOMETRIST

112 W. Kingsmill

Pampa, Texas

Telephone 4-3333

## The Wheeler Times

TEXAS PRESS ASSOCIATION  
Member 1960

Published every Thursday at Wheeler County  
Texas By

**The Wheeler Times**

Entered as second-class matter December 18, 1933, at the postoffice  
at Wheeler, Texas, under act of March 3, 1879.

Don Earney, Editor and Publisher  
Lavell Stephens, Society Editor  
Victor Porter, Shop Foreman  
Louis Stas, Linotype Operator  
Bill Pearce, Sterotyper

See Our  
**COMPLETE STOCK**  
OF  
**RECORDS**

**H & B APPLIANCE**  
Wheeler, Texas

**ABSTRACTS  
and  
INSURANCE**

Thurman Rives  
Hiram Whitener

**TITLE  
ABSTRACT CO.**

Wheeler, Texas — Phone 2221

**NOTICE  
TO PUBLIC**

We have in stock International  
Mufflers guaranteed for life of  
your car at no extra cost.  
We will give a written guarantee  
with each muffler purchased.

Mufflers to fit most makes  
and models.

**VANPOOL - BURTON  
MOTOR COMPANY**  
Phone 2311 Wheeler, Tex.

Let Us Make Your  
**KEYS**

**DAUGHTRY'S**  
Wheeler, Texas

**TYPEWRITER  
REPAIR**

Phone  
5011

The Wheeler Times

**ZENITH**

RADIOS  
TELEVISIONS  
RECORD PLAYERS  
Sales & Service

**Wheeler Radio**

& Refrigeration  
Phone 2331 Wheeler, Tex.

**REPAIR & REMODEL**

— LOANS —

NO MONEY DOWN

Loans For:  
Bath Rooms  
Additions to Houses, Barns, and  
Chicken Houses  
Most Any Type of Repair Work  
**FREE ESTIMATES**

**WHEELER LUMBER CO**

Phone 3431 Wheeler  
Wayne Edwards — 3691

T. M. Bowman — 4852  
Fine Service for Fine People

YOU ARE

# LOSING MONEY

If you are  
getting your printing done  
out of town

with our new equipment  
we can do your work faster  
more efficiently and at a  
smaller cost than you are  
now PAYING.

The Wheeler Times  
Phone 5011



The Wheeler Times  
Phone 5011

**CHAN WEBBER**

**RUG & CARPET  
CLEANING  
SERVICE**

Machine cleaned with a built  
in vacuum that takes up the  
dirt and excess moisture in one  
operation.

Dries In 2 Hours

Phone BL 6-1646  
Shamrock, Texas

you don't have to  
**HOWL**  
for it  
when you  
use the



**WANT ADS**

IN THE WHEELER TIMES

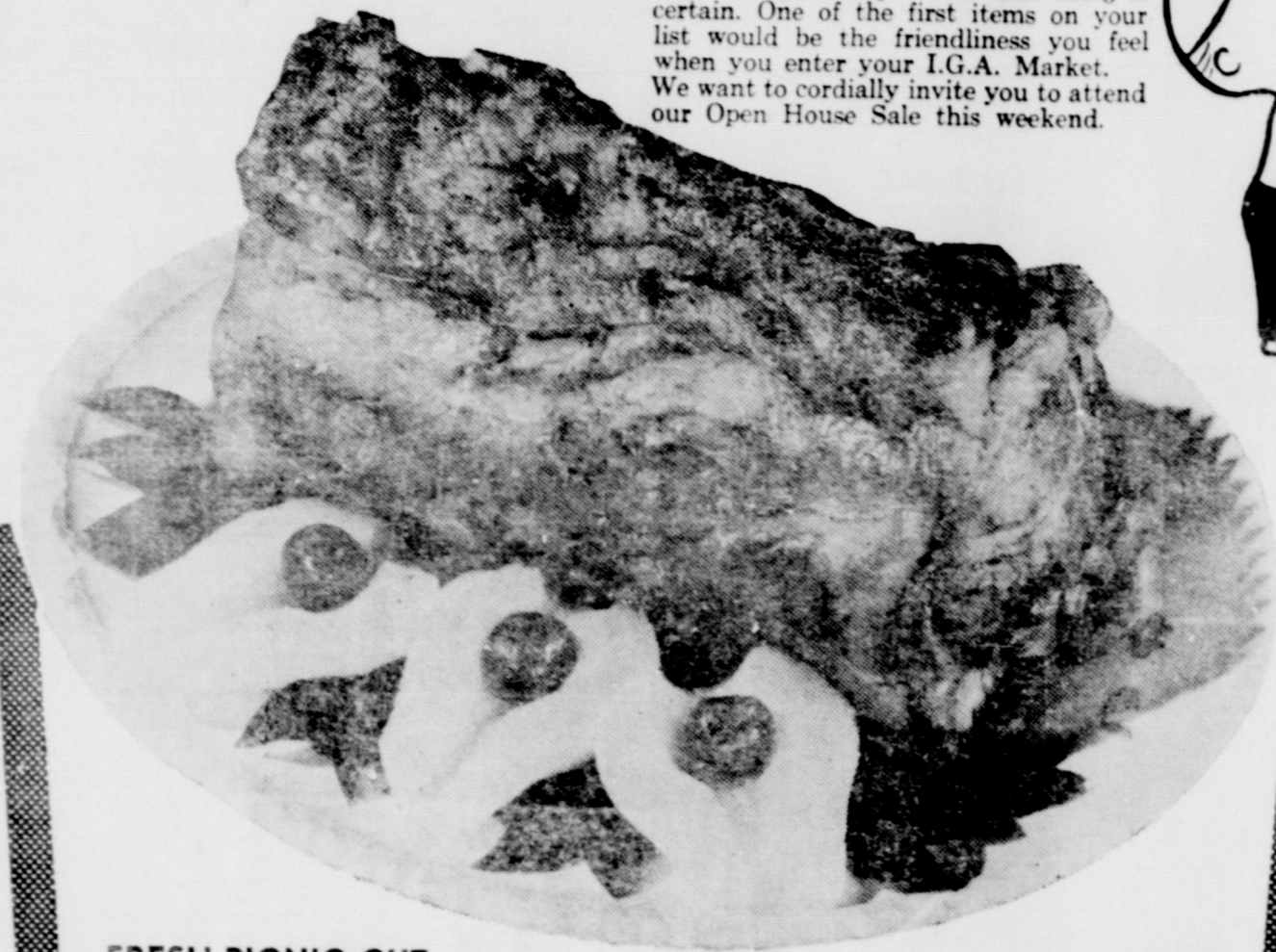
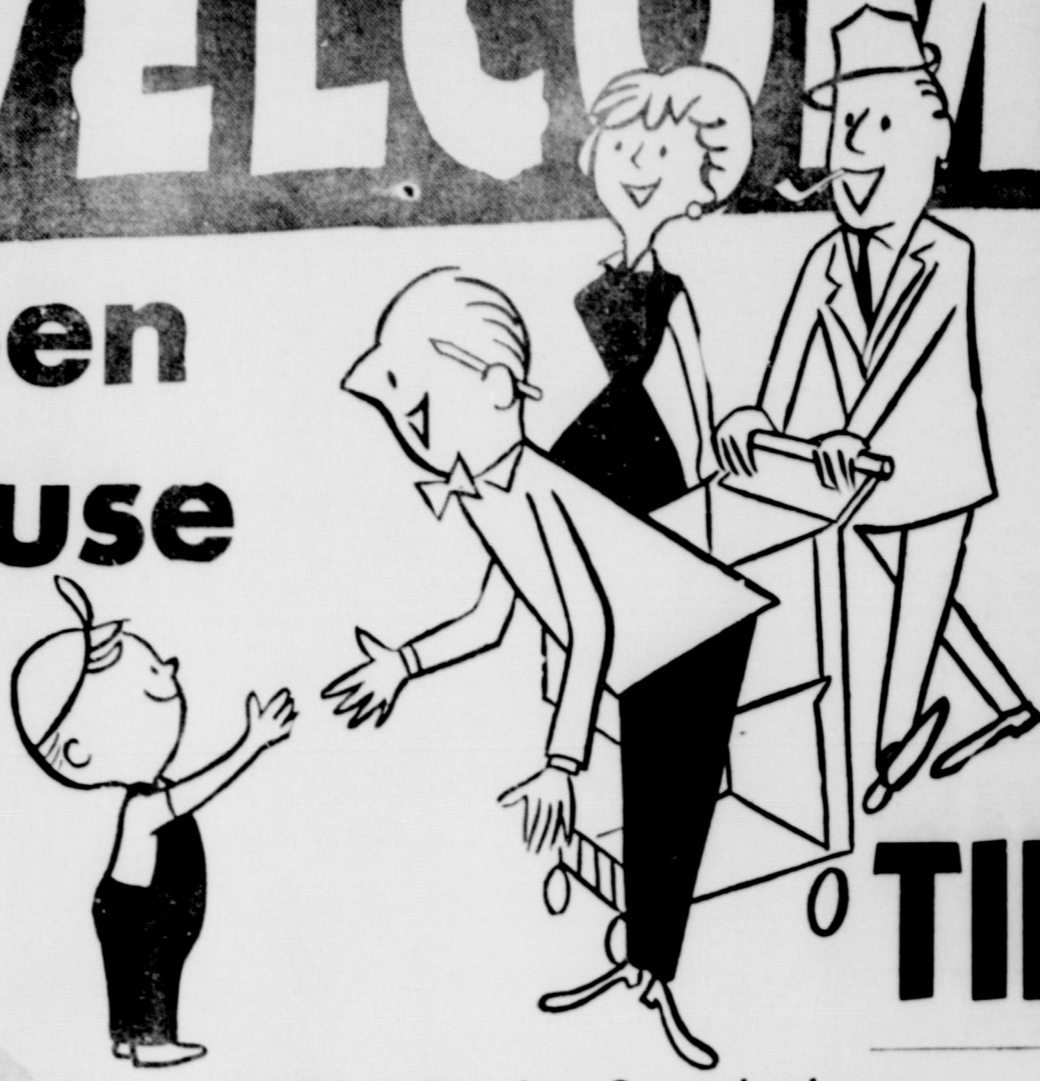


# WELCOME

The Perfect Topping For Pumpkin Pies  
**DREAM WHIP**  
 2 oz. Package  
**2 FOR 43¢**

to our **Open House**

Have you ever considered the many reasons that you shop I.G.A. One thing is certain. One of the first items on your list would be the friendliness you feel when you enter your I.G.A. Market. We want to cordially invite you to attend our Open House Sale this weekend.



FRESH PICNIC CUT  
**Pork Roast** **29¢** Pound

TOP-O-TEXAS — All Meat  
**WEINERS** **49¢** Found

Good Value  
**BACON**  
 Hickory Smoked  
**2** lb. Pkg. **97¢**

Pork  
**STEAK**  
 Lean Tender  
**lb.** **39¢**

PERFECT COBPANION FOR ANY MEAT  
**Cranberries** **25¢** 1 lb. Box

TASTY WITH HAM  
**Sweet Potatoes** **9¢** Pound

FRESH TENDER  
**Green Beans** **2** LBS. **29¢**

RED McCLURE — Served Fried, Mashed or With Roast  
**Potatoes** **37¢** 10 lb. Bag

BAKERS — Chocolate, Caramel or Lemon  
**CHIPS** **2 FOR 4**

APPLES — BLACK CHERRY  
 BLACK RASBERRY  
 CHERRY — GRAPE  
 LEMON — LIME  
 ORANGE — RASPBERRYS  
 STRAWBERRY

**JELLO**  
 3 oz. Pkg.

**4 FOR 35¢**

**JELLO**  
 BUTTER SCOTCH — CHOCO  
 COCONUT — LEMON  
 VANILLA

**PUDDING**  
 3 1/2 oz. Pkg.

**4 FOR 35¢**

Log Cabin  
**SYRUP**

LANES  
**MELLORINE** **3** 1/2 Gal. Ctn.

HI - C  
**ORANGE DRINK**

**PINEAPPLE GRAPEFRUIT**

**GRAPE DRINK**

Your Choice

**3** 46 oz. Cans **89¢**

CAROL  
**COOKIES** **4 FOR**

FLAVOR KIST THIN  
**SALTINES** **2 FOR**

FLAVORITE — CANDY  
**Orange Slices**

TRU-VU  
**Pinto Beans**

KING JAMES  
**Holy Bible**



These Prices Good Friday and Saturday, Oct. 7 - 8  
 Save Prudential Stamps — Double On Wednesday  
 We Reserve The Right to Limit Quantities

# CLAY Food Store

**Free Delivery**  
 On \$2.50 Orders or more

UIT BAS  
 of the  
 PANHAND  
 E 37. NUM  
 Cho  
 with  
 The Ed  
 ARNER'S TH  
 at the s  
 penter was  
 Out of th  
 three packag  
 rakes of soa  
 lotion, a bo  
 a jar of fat  
 mas work 1  
 edies, four 1  
 eries, two  
 egg record, a  
 flowers, six  
 a quart of m  
 T dinner and  
 chicken.  
 laly paid h  
 "Food is so  
 No wonder t  
 rich!"  
 \*\*\*  
 ing contrac  
 star, re-sur  
 nesday. He  
 heavy rail  
 has been de  
 As soon as t  
 city plan  
 a seal  
 y 34 city blo  
 or new payin  
 officials of  
 nore and C  
 groups have  
 for new p  
 an 30 bloc  
 being planne  
 ent, you as  
 to have pay  
 in front of  
 your drive-  
 lar Thomso  
 I. Nicholson.  
 \*\*\*  
 THE SQUAR  
 Wofford  
 as city  
 et has been  
 Wheel  
 eived a m  
 ay. Report  
 eived as m  
 heeler  
 ackers plan  
 Friday af  
 prior to at  
 hett Footba  
 ay night . . .  
 If you a  
 ating please  
 eting for 3  
 School, Octob  
 an Jr. was  
 owing of the  
 stand N. D  
 uring the  
 ments  
 and down mil  
 new Pontiac  
 and looking  
 ay those t  
 use that if yo  
 want. If y  
 her year had  
 I percent a  
 et you will a  
 est. Penaltie  
 If you are  
 tip or ary  
 article, see a  
 Club  
 Thursday  
 finance com  
 Several more  
 to move in  
 week. They  
 No housing  
 minor class pl  
 this Satur  
 9 A.M. If yo  
 ver washed,  
 at 3211. Was  
 Junior Cl  
 ns for the h  
 \*\*\*  
 Griffin d  
 alion has thro  
 . . .  
 Association  
 Meeting  
 Walker, presi  
 Fair Associati  
 that a meet  
 will be he  
 at 7:30 P.  
 County Cour  
 and those in  
 urged to a  
 \*\*\*  
 ter Is Nev  
 Supply Em  
 er is a new e  
 Ed comes t  
 Okla., and  
 erence as a  
 three childr  
 Edwin Lawre  
 1 year old.  
 eers plan to  
 Wheeler just  
 zoning can b