

# The Wheeler Times

Serving Wheeler, Hemphill and Beckham Counties  
WHEELER, TEXAS, OCTOBER 8, 1959

SINGLE COPY 5c



## Chat with The Editor

**SUPPER:** The Briscoe Demonstration Club has their annual bean supper on Friday, October 9, 6:00 till 8:30 p.m. They will have an assortment of green beans, baked beans, barbecue beans, and brown beans. In addition to the beans they will have potato salad, green peas, pickles, onions, rolls, and coffee. 50 cents and children 25 cents extra for choice of dessert.

At the supper everyone will be in the gym and play an evening of fun that you don't want to miss.

**P. T. A. are asked to** help Mrs. Adrian Risner or Mrs. Mae Wegner.

**DAN** with the bandaged leg explaining to a friend: "In my way home from last night. And I would be okay, but while I was on the street to my home drunk came whizzing over my hand."

**MODEL** was bitten by a mad dog. He was advised to make a run for it. There was the possibility of rabies. She wrote further two hours.

It was like an unusually long lawyer said, "Who's writing a will?" "That's a list of people to be buried."

**THE RISK** of being hanged was quartered and burned. He was on the corner of 152 by a horde of irate fans. I am going to forego my purely personal opinion and present a spectacle on Friday night on the gridiron.

With leather-lunged Satchel directing each player gyrating along the field like a spastic jackrabbit, kids that keep your feet going to the end and then to the bathroom spilling big orange juice back on route, third yards from the 1937 team set up a play-by-play complete with personal commentary. It's the greatest of all.

With silver haired old ladies never gone anything but put the cat out will shriek "KILL 'EM!" even a fuzzy-cheeked halfback on the other side gets two yards.

The blocking, tackling, elbowing, sneaking, fielding, and illegal use of the hands inside the fence is disgusting compared with the one during halftime as the fans just outside the end.

There's always the drunk who over the fence during the halftime performance batters bitterly about these "formations" coaches say nowadays.

When they say, you pays your money and you takes your choice, there else can you raise hell for only a few minutes without winding up in jail.

My football-enemy partner, football season's time of the year you can down the street with a one arm and a blanket and get away with it.

**THE SQUARE:** It was a year ago this week that the Bureau decided to sponsor a translator system. . . . The showing of the Ford today, Pete and Bud and a new Falcon to . . . Been a lot of serious talk about Wheeler about purchasing an Audiometer for this . . . This would be a nice piece of the area civic machine would be used of the area schools served county health nurse . . . hat to Mr. and Mrs. . . . The 66 Cafe is really good.

## HOW WELL SHOULD A CHILD HEAR

By George Gandy

Increased emphasis is being placed on the early detection of physical handicaps among school children. Of these, none has more frequently gone unnoticed in the past than a hearing loss, which has been well termed "the hidden handicap".

This means that from 5% to 7% of the pupils in your school this year will have a hearing defect of such degree as to warrant medical diagnosis and treatment.

The Wheeler Chapter of the American Red Cross attempted to purchase an AUDIOMETER for use by the School Nurse in the Schools in the North part of the County in which she serves. Due to Regulations prohibiting the use of Funds for such purchases; therefore it seems necessary that in order to purchase such a machine for use in detecting the defects that are bound to be found in the schools served by the School Nurse, a subscription must be conducted to raise the money.

The Wheeler Chapter of the American Red Cross has agreed to aid in collecting the necessary funds and hereby request that you make your contributions to either Harry Wofford or George S. Gandy and same will be duly earmarked for purchase of the AUDIOMETER for the above purpose.

The cost of the Audiometer will be \$338.00 and when purchased will be assigned to the School Nurse, home office in the Wheeler High School, for use throughout the County but more especially in the schools in the North part of Wheeler County.

Your support and contribution is urgently needed and will be appreciated.

## HORNETS CLIP CHANNING 51-25

The Mobeetie Hornets clipped the Channing team 51-25 Friday night at Mobeetie before a small crowd, due to the rain. The teams played on a very muddy field. In the first quarter the Mobeetie team scored twice, with Garland Lancaster making the first TD and Dan Hathaway running over the extra point. Dan made the second TD and ran the extra point. Channing's no. 10 made their first TD and also ran the extra point.

In the second quarter Dan Hathaway ran two TD's with Garland making one extra point. No. 18 of Channing came through with a TD for Channing leaving the score 26-13 at the half.

Jimmy Simpson came through with a TD in the third quarter with Dan intercepting a pass for the second TD and making the extra point. In the fourth quarter George Patton and Benton Rodgers made the two TD's for Mobeetie with no. 31 of Channing making two TD's, leaving the score 51-25.

The next game will be the 16th at Miami.

## KIDWELL IS GRID QUEEN

Barbara Gail Kidwell, 17 year old daughter of Mr. and Mrs. Curtis Kidwell of Wheeler was crowned football queen Friday night prior to the Homecoming game between Wheeler and Estelline.

The coronation program was cut short because of the rain. However, several hundred loyal football fans saw Miss Kidwell along with her attendants, Audie Jo Holdeman, Frances Alexander and Joan Chapman march onto the field and receive the traditional football crown.

Barbara is a senior at Wheeler High. She is a member of the First Baptist Church, is a Rainbow Girl, vice president of the senior class and is a cheer leader. She plans to attend a beauty school after graduation.

## The Courthouse Gang:



**COUNTY CLERK:** Harry Wofford is the member of the courthouse gang to be featured this week. In addition to his duties as county clerk, Harry is a very active church member, Kiwanian and Chamber of Commerce booster. Harry and his lovely wife, Mary, live at 508 Shamrock Street.

## OKLAHOMA AND TEXAS GOSPEL SINGERS TO MEET AT WELLINGTON

The 30th annual session of the Oklahoma and Texas Gospel Singers two state convention will convene in the city auditorium in Wellington, Texas, October 10th and 11th for two days of gospel singing. Singers will be coming from all parts of the nation to attend this nationally known song festival of gospel singers, the greatest of its kind in the nation.

## HOME TALENT SHOW

The Mobeetie junior class is sponsoring a Home Talent Show Friday night at 7:30 p.m. in the Mobeetie high school gym. Admission is 20c for children and 35c for adults. Everyone is invited to attend.

## P. T. A. WILL MEET

The Wheeler P. T. A. will meet Monday, October 12 at 7:30 p.m. in the school cafeteria, according to president Mrs. Adrian Risner. All parents and teachers are urged to attend the meeting. An interesting program has been planned.

## NOMINATING COMMITTEE

Watson Burgess, president of the Wheeler Kiwanis Club, appointed George Gandy, George Hefley and Frank Wofford as committee men on a nominating committee, that will nominate officers to be elected for the forthcoming year.

## WHEELER VISITORS

Peggy Pride, daughter of Mr. and Mrs. Morgan Pride, was visiting in Wheeler over the week end. Peggy is attending Draughts Business College in Amarillo. Peggy's roommate, Bonnie Cook, Roy, New Mexico also visited in Wheeler with Peggy.

## UHF T.V. Is Better; Maybe 3rd Channel

Observers from the Hemphill County line area as well as those from Wheeler, Mobeetie and Shamrock have indicated that Farm Bureau Television reception has improved a great deal in the past few days.

## RIVES SAYS POLL TAX MUST BE PAID TO VOTE

Every year is election year and all citizens will want to have their poll taxes paid. Wheeler County Tax Assessor and Collector Thurman Rives warned this week.

Many county residents are already paying 1959 taxes in order to take advantage of the 3 per cent discount, and some are overlooking the poll tax payments, Rives said.

Under Texas law, poll taxes cannot be assessed along with property taxes, and the poll tax, prerequisite to voting in Texas, does not appear on the tax statement.

Poll taxes must be paid before January 31, if citizens are to vote in the next year's primary and general elections.

## To Honor SCS Employees

A special Banquet will be held Monday night 7:00 p.m. at Nora's Cafe in honor of Soil Conservation workers stationed in Wheeler. Approximately 20 men have moved into Wheeler during the past few weeks from all parts of the state to make preliminary plans and survey the sites for the 8 flood prevention structures to be constructed in Wheeler County.

Chamber of Commerce president Don Earney said the purpose of the banquet was, "to show our appreciation to the men for locating in Wheeler and to encourage them to pick Wheeler as their future home when actual construction of the dams begin".

## First Concert To Be Held Monday In Shamrock

Members of the Shamrock Community Concert Association are reminded of the first concert of the series on Monday night, October 12, Red Camp of Corpus Christi, Texas, famous jazz pianist, will present a concert of jazz in a style which critics have termed "unique, talented and impressive."

The concert will be presented in Clark Auditorium beginning promptly at 8:15 p.m.

Academically trained in the University of Texas music department, at Columbia University and at the Juillard school of music in New York, Red Camp brings to the piano a valuable experience of a lifetime of jazz improvising and association with some of the nation's leading jazz musicians.

In his program, divided into two parts labeled "Jazz Now and Then," and "Jazz Here and Now," Camp displays his wide knowledge of the entire field of music, but in particular the world of jazz.

## Governor Appoints New Chief Justice For This Area

A new chief justice of the Seventh Court of Civil Appeals, which serves this county and 45 others in the Panhandle and South Plains areas, was officially sworn in at Amarillo, Wednesday (October 7).

He is Chief Justice James G. Denton, for the past six years judge of the 99th District Court at Lubbock.

Governor Price Daniel named Denton last week for the appellate post to replace Chief Justice E. L. Pitts, who died last month. Gov. Daniel also named Howard Davison, Lubbock attorney, to replace Denton on the 99th district bench.

Both Denton and Davison had been unanimously endorsed for their new offices by the members of the Lubbock County Bar Association.

A Texas Tech graduate, Denton received a degree in government (Continued on Page 8 No. 3).

## MUSTANGS ROMP ESTELLINE IN HOMECOMING TILT; SHAMROCK IS NEXT OPPONENT

The rains nor the might of the highly ranked Estelline Bearcubs could slow down Wheeler's Mustangs last Friday night as the local boys rose up and ran roughshod over the visitors, 32-0.

The game marked the second consecutive victory for the rapidly improving boys of Coach Boynton and set the stage for the annual grudge battle with the Shamrock Irish this week.

With a heavy rain falling, the Mustangs received the opening kickoff and the mud battle was under way. A few plays later, the Mustangs committed the first fumble of the evening and the Bearcubs recovered but two plays

later the ball changed hands once more via a fumble and the Mustangs took over on their own 45. Handling the ball this series like it was on a dry field, the Mustangs began to drive for their quarter on their own 24 yard line. Trimble picked up one through the middle on the next play. Marvin Cox broke over his left side and raced 75 yards for a touchdown. Good blocks broke Cox loose into the secondary and then he outran the Estelline defenders. Atherton passed to Holcomb for the extra point and the Mustangs went in front 16-0. The Bearcubs came fighting back and put together a series of first downs that carried them to the

Wheeler nine. Gandy recovered a Bearcub fumble at this point and the Mustangs took over once more. On the first play after the recovery, Cox broke off his left side again and this time went 91 yards to paydirt.

Marshall Watson carried wide around his left end for the extra point and the score rose to 24-0. Mustangs and that was the way it stood when the teams left the field at halftime. Although scoring two touchdowns, the Mustangs put the ball in play only three downs in the second quarter.

The rain let up slightly for the third quarter but both the Mustangs and Bearcubs were denied entry into the end zone and the Wheeler fans were feeling quite sure of an upset with the local boys ahead by 24 going into the final quarter.

On one of their two possessions of the pigskin in the 4th quarter, the Mustangs racked up their last touchdown of the game. The highlight of this drive was a fine 20 yard run by Trimble who almost broke into the clear for another long run for a TD. Atherton climaxed this drive by going over from one yard out on a quarterback sneak. Atherton passed to Holcomb for the extra point and the final tally read (Continued on Page 8 No. 4)

## Hospital Notes

George Caudell, Briscoe, admitted 10-1-59, dismissed 10-5-59.  
Mrs. Clara King, Wheeler, admitted 10-2-59, dismissed 10-4-59.  
Mr. J. A. Reynolds, Mobeetie, admitted 10-2-59, dismissed 10-4-59.  
Joe Loter, Wheeler, admitted 10-2-59, dismissed 10-5-59.  
Mr. Euell Steen, Briscoe, admitted 10-2-59.  
Mr. T. G. Tinsley, Wheeler, admitted 10-5-59.  
Mrs. Jack Harris, Twitty, admitted 10-5-59.  
Mrs. Gwenn Henderson, Twitty, admitted 10-5-59.

## Mobeetie Girls To Play Football

In an effort to raise money for their king and queen candidate the senior girls at Mobeetie have challenged their lower classmen (girls only) to a football contest. The game will be held Thursday, October 15 at 7:00 p.m. at Mobeetie. Admission will be 50c and 25c.

## Amarillo Negro Injured As Auto Overturns Near Wheeler

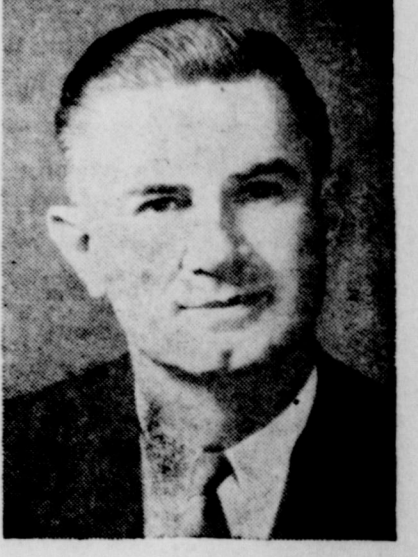
Ernest Coates Jr. of Amarillo was hospitalized a few minutes after 12:00 Saturday night. Coates was driving a 1951 Oldsmobile when he failed to make the sharp curve on the west edge of Wheeler. He was traveling West when the accident occurred. Two other occupants in the car were uninjured.

## IT'S A GIRL

A baby girl was born to Mr. and Mrs. Gwenn Henderson at 7:45 Tuesday morning in the Wheeler hospital.

## BAND BOOSTERS

The latest donor to the Band Boosters Club is Max Wiley. His contribution was \$20.00.



James G. Denton  
**Governor Appoints New Chief Justice For This Area**



# Vanpool-Burton To Show New '60 Ford Thursday, October 8

The 1960 Ford car line, which already has received widespread honor for styling elegance, will go on display at the Vanpool-Burton Motor Company in Wheeler Thursday, October 8. A. O. Vanpool and Pete Burton announced today.

The 1960 Ford car is new in concept and new in style. Bud and Pete said. The 1960 styling theme is good taste, a result of consumer demand for more elegance and dignity in automotive styling as opposed to gaudiness or extremism, they added.

There will be gifts available for the women and kiddoes at the showing of the new 1960 Ford.

The 1960 Ford represents a styling theme originally created for later use but brought forward because of the spontaneous enthusiasm of company management when they first saw the car in advance studios.

J. O. Wright, Ford Motor Company vice president and Ford Division general manager, said the 1960 Ford was redesigned from bumper to bumper because "we wanted to increase passenger

space and comfort and improve the roadability and handling ease and performance."

He said, "After the car originally planned for 1960 was well under way, the advanced styling office showed us some designs for Ford Motor Company cars even farther advanced than our planned 1960 model.

"One of these was called 'Quicksilver,'" he said. "It captured everyone's imagination immediately, and we began to explore the possibility of advancing it to the 1960 models. We were

faced with a crucial decision involving millions of dollars.

"When the engineers pointed out that a complete new car also would enable them to design additional quality features into the vehicle, company management gave the go-ahead.

"One of the most important features of the new Ford," Mr. Wright said, "is that it has been 'comfort-engineered.' There is substantially more hip room, shoulder room, leg room and head room in the 1960 Ford than there was in the 1959 model - which ranked far above its competitors in these vital comfort areas.

"With the new body design, the new frame, redesigned suspension and improved power trains, the 1960 Ford rides better, handles better and performs better than any Ford in history," Mr. Wright said.

Passenger comfort and convenience have been given particular attention in the design of the new Ford cars. New, swept-back windshield pillars have eliminated the troublesome "dog-leg" found in cars with the full-wrap windshield.

Yet, the new model Ford has 17 per cent more windshield area than last year's Ford, provides better visibility out over the hood, and has a windshield wiper pattern one-third greater than in 1959.

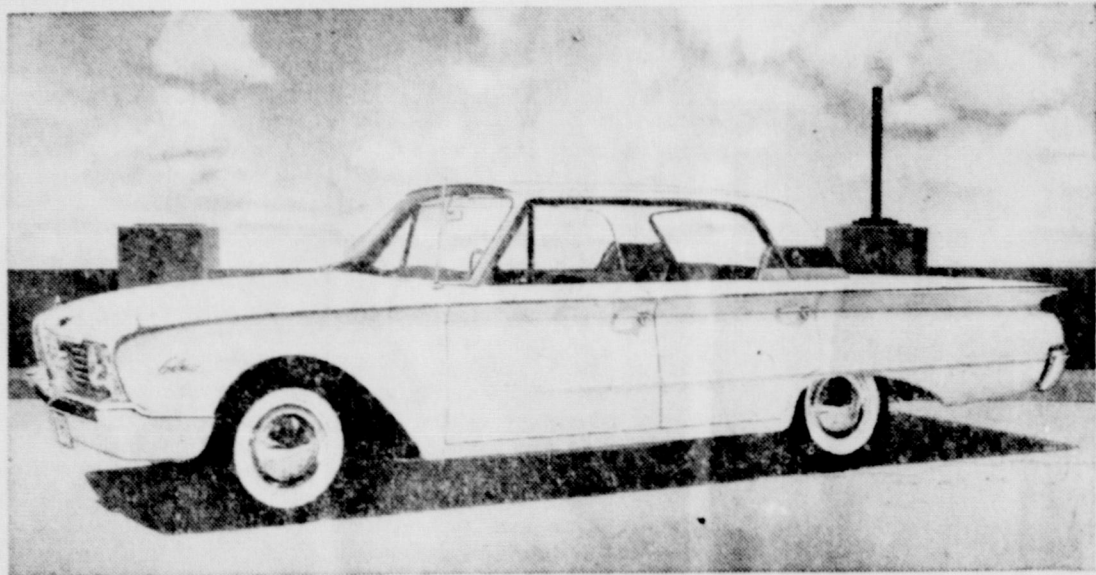
Ford's "posture-perfect" seats permit the driver and passengers to sit in comfort on foam padding and at what Ford research has proven to be the most comfortable seating angle.

Adding to the convenience of the new Ford line are such features as a trunk opening that is only 27 inches from the ground, a foot-operated parking brake with the release knob located on the instrument panel, and two-stage door checks.

The 1960 Ford line includes 15 models that offer a total of six different roof lines. At the low end of the line is the Fairlane series, which includes a two- and four-door sedan and a business Tudor. In the Fairlane 500 series are two models, a two- and four-door sedan. The popular Galaxie



The 1960 Ford Sunliner is one of 15 models in the new Ford line which will be introduced October 8 in Ford dealer showrooms across the nation. Featuring the strikingly modern rear deck flaring motif, the new Fords are five inches longer, five inches wider and have more interior leg, shoulder and head room than before. Ford's new integrated design, harmonizing the interior and exterior styling, is proof that modern styling need not be radical or eccentric.



This 1960 Ford Galaxie Town Victoria shares the all-new styling characteristics of the other Ford models, yet bears unmistakable resemblance to the elegant Thunderbird profile. The new Galaxie is one inch lower than the 1959 model, but has more interior room for six big persons than ever before. The Galaxie also is available as a two- or four-door sedan. All Fords for 1960 have the slim-line, forward sloping front roof pillar that eliminates the "dog leg" for easier entry.

## Announcing! A WONDERFUL NEW WORLD OF FORDS FOR 1960

### FINEST FORDS OF A LIFETIME

This new Ford Galaxie, like all the new, beautifully proportioned 1960 Fords, is styled from a new viewpoint. Traditional automotive elegance combines with modern design in the style of a new decade!



In 1960, for the first time in history, your Ford Dealer presents not one, not two, but three new lines of Ford cars . . .

1. The 1960 Fords—The Finest Fords of a Lifetime! Economy-minded Fairlanes. Big value Fairlane 500's. Elegant Galaxies. A breath-taking new Sunliner convertible and a brand-new hard-top model, the flashing Starliner. Then there's a whole new world of Station Wagon Living, too. It all adds up to 15 glittering variations of the world's newest, most elegant styling theme!
2. The 1960 Falcon—The New-size Ford, the world's most experienced new car and the easiest car in the world to own!
3. The 1960 Thunderbird . . . The World's Most Wanted Car!

### Introducing the New-Size Ford . . . the 1960 Ford Falcon

Meet the New-size Ford—the Falcon! Here's a car with plenty of room for six big adults and all their luggage. It's sized to handle and park like a "small" car . . . powered to pass and climb like a "big" car . . . and built like no other car for savings!

It gives you up to 30 miles per gallon on regular gas. Aluminized mufflers normally last twice as long as ordinary kinds. A Full-Flow oil filter lets you go 4,000 miles between oil changes. Even insurance can cost you less! And this Falcon is the world's most experienced new car. It was driven over every mile of numbered Federal Highway in EXPERIENCE RUN, U.S.A.—a grueling demonstration climaxing Ford's 3 years of development and testing.

The Falcon has the features that American car buyers expect. Its gearshift is on the steering column—not on the floor. Its engine is located up front for greater stability and safety. Best news of all is the Falcon's low, low price. See it at your Ford Dealer's . . . and see the difference!

Now you can see them—the Finest Fords of a Lifetime! Economy-minded Fairlanes. Big value Fairlane 500's. Elegant Galaxies. A breath-taking new Sunliner convertible and a brand-new hard-top model, the flashing Starliner. Then there's a whole new world of Station Wagon Living, too. It all adds up to 15 glittering variations of the world's newest, most elegant styling theme!

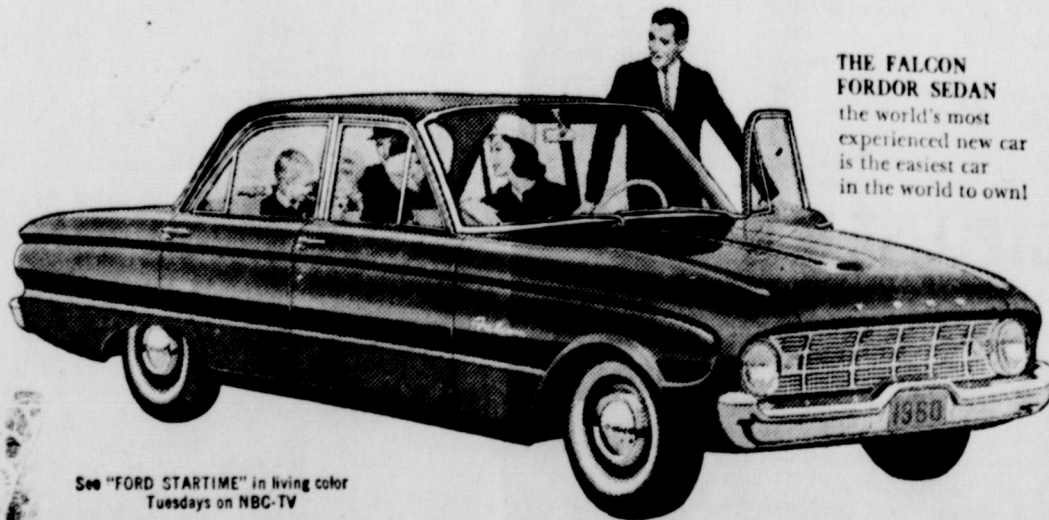
And Ford sets the new trend in power. Ford's Thunderbird 292 V-8 and 352 V-8, like the famous Mileage Maker Six, bring a new world of smoother, hotter performance—on regular gas.

To top it all, the Finest Fords of a Lifetime are priced for savings. Ford is still priced to outvalue all comparable models of its major competitors.

Ford savings, however, only begin with a low price. You save still more with engines that thrive on regular gas and save up to a dollar on every tankful . . . a Full-Flow oil filter that lets you go 4,000 miles between oil changes . . . Diamond Lustre Finish that never needs waxing . . . aluminized mufflers that normally last twice as long as conventional types . . . new, safer, Truck-Size brakes that are the biggest ever in Ford's history . . . and new soft-tread, Tyrex cord tires that run quieter, last longer.

In every way these are the Finest Fords of your Lifetime! See them at your Ford Dealer's!

FORD DIVISION, Ford Motor Company,



See "FORD STARTIME" in living color Tuesdays on NBC-TV

FORD BUILDS THE WORLD'S MOST BEAUTIFULLY PROPORTIONED CARS

THE FALCON FORDOR SEDAN the world's most experienced new car is the easiest car in the world to own!

FORD—The Finest Fords of a Lifetime

FALCON—The New-Size Ford

THUNDERBIRD—The World's Most Wanted Car

## VANPOOL-BURTON MOTOR COMPANY

Phone 2311

Wheeler, Texas

### 1960 FORD TRUCK WILL CUT EXPENSES FOR SMALL OPERATORS

"Ford's 1960 truck line is the culmination of a direct and concentrated engineering effort aimed at assisting single-unit and fleet truck operators in combating inflationary-type operating expenses that have been effecting the trucking industry," Wilbur Chase, Ford Division truck marketing manager said today.

Extensive research has shown an intensified effort on the part of truck operators to resist the effect of rising cost through increased vehicle operating and maintenance economy as well as increased personnel efficiency, electronic traffic control and accounting equipment, improved facilities and modern cargo handling equipment," Mr. Chase said.

From 1948 to 1958, according to trade sources, special taxes paid by the trucking industry more than doubled and today amount to more than two-and-a-half billion dollars annually, the federal excise tax rate has risen 100 per cent, the average trucking

employee is enjoying a 60 per cent higher than new facility construction have risen 50 per cent these rising operational the average trucking to been increased only by minimum.

"In concentrating truck resources on the ment and production truck line with approved economy, versus durability, we feel the real contribution has been in assisting truck operators combat these inflationary expenses," Mr. Chase said.

Mr. Chase also said 1960 Ford truck line of production and maintenance advantages of an already design while incorporating than 2,000 mechanical, aural engineering advances achieve greater operational economy increased durability."



Maximum gross vehicle ratings on the 1960 model Ford have been increased to 21,000 pounds and the additional optional 16,000-pound two-speed rear axle provides up to 10 per cent greater torque capacity. Advanced engineering in the 1960 truck line permits greater versatility and improved operational economy and durability. The popular F-350 model offers a choice of four gross vehicle weight ratings—17,000, 19,500 or 21,000 pounds.



Here's a trio of STARS ready to . . .

# "Team up for Good Eating!"



Guaranteed  
NO CENTER  
SLICES  
REMOVED

for that old-fashioned flavor select a TV tender ham . . . m-m-m!

## HAMS

BUTT PORTION  
4 to 6 lbs.

SHANK PORTION  
4 to 6 lbs.

**lb. 39¢**

**lb. 33¢**

Good Value All Meat

**Weiners**

12 Oz. Pkg.

**39¢**

Good Value Sliced

**Bacon**

2 Lb. Pkg.

**85¢**

Wilsos's Certified Sliced

**Bacon**

1 Lb. Pkg.

**49¢**

**Dairy Foods**

Table-Rite American or Pimento  
**SLICED CHEESE**  
8 OZ. PKG. **29¢**

Table-Rite  
**LONGHORN CHEESE**  
10 OZ. PKG. **39¢**

Kraft's  
**VELVEETA**  
Fine For Slicing  
2 LB. BOX **79¢**

Sharp Wedge Cracker Barrel  
**CHEESE**  
13 1/4 OZ. WEDGE PKG. **69¢**

New Pack I. G. A.

**Tomato Juice 4**

For

46 Oz. Cans  
**\$1.00**

I.G. A. Fancy Cream Style or Whole Kernel

**Golden Corn 3**

For

No. 303 Cans  
**43¢**

**PRODUCE**

Red Delicious  
**APPLES**  
3 LBS. **39¢**

Florida Pink  
**GRAPEFRUIT**  
6 FOR **39¢**

U. S. No. 1 Idaho Russet  
**POTATOES**  
10 LB. BAG **59¢**

U. S. No. 1  
**SWEET POTATOES**  
4 LBS. **25¢**

Cello  
**CARROTS**  
2 LB. PKGS. **19¢**

Good 'N Rich  
Chocolate, Yellow or White  
**CAKE MIXES**

**3 Pkgs. 29¢**

I. G. A  
Fancy Sifted June  
**PEAS**

6 303 Cans **\$1.00**

First Pick Pure  
Strawberry  
**PRESERVES**

3 18 Oz. Jars **\$1.00**

I. G. A. Fruit  
**COCKTAIL**

3 2 1/2 Cans **\$1.00**

Rainbow Red  
Pitted  
**CHERRIES**

5 303 Cans **\$1**

**FROZEN FOODS**

T. V. 2 - 6 Oz. Cans  
**ORANGE JUICE 43¢**

T. V. 10 Oz. Package  
**PEAS 15¢**

T. V. Chicken, Beef or Turkey  
**MEAT PIES 6 FOR \$1.00**

Lane's Chocolate, Vanilla or Strawberry  
**MELLORINE 1/2 GAL. 49¢**

**IGA'S DIME TIME . . .**

Assorted Colors — 60 Ct. Pkg.  
**MAPKINS 10¢**

No. 300 Can  
**TOMATO JUICE 10¢**

No. 303 Can  
**RAINBOW CUT GREEN BEANS 10¢**

No. 300 Can  
**GOOD VALUE RED KIDNEY BEANS 10¢**

No. 300 Can  
**GOOD VALUE CHILI BOTTED BEANS 10¢**

No. 300 Can  
**GOOD VALUE JUMBO BUTTER BEANS 10¢**

No. 300 Can  
**WELLS' ROPE STRING POTATOES 10¢**

No. 303 Can  
**RAINBOW SPINACH 10¢**

No. 300 Can  
**TEL TOMATOES 10¢**

26 Oz. Pkg.  
**IODIZED SALT 10¢**

26 Oz. Pkg.  
**PLAIN SALT 10¢**

Prices Good Fri. and Sat. — October 9 and 10  
Save Prudential Stamps — Double On Wednesday  
We Reserve The Right to Limit Quantities



**CLAY**

*Food Store*

*Free*

*Delivery*

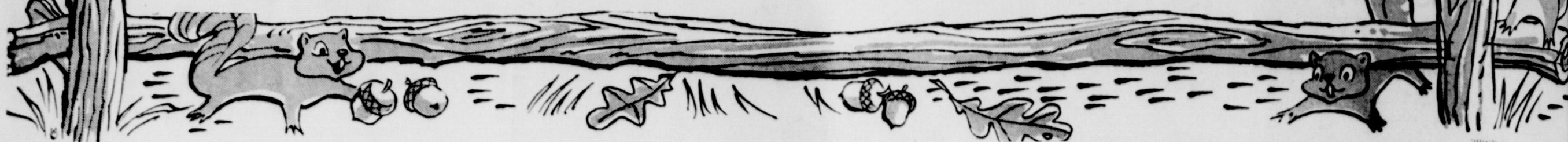
On \$2.50 Orders or More





ATTENTION

**UHF - TV - VIEWERS**

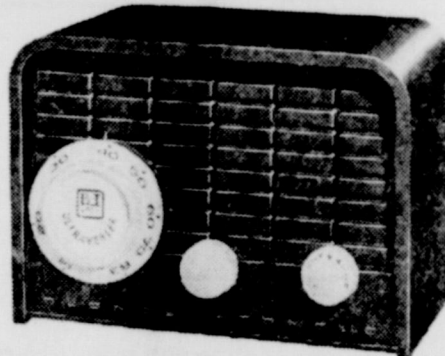


# DON'T SETTLE FOR INFERIOR EQUIPMENT

**B-T LABS** *Ultraverter*

Model BTU-2R

only  
**\$39.95**



- HIGHER GAIN
- AUTOMATICALLY TURNS ON AND OFF WITH SET OPERATION
- MODERN TWO-TONE PLASTIC CABINET

- MEETS FCC TUNER STANDARDS
- IDEAL FOR COLOR
- UL APPROVED

*The Most Powerful UHF Converter Ever Made!*

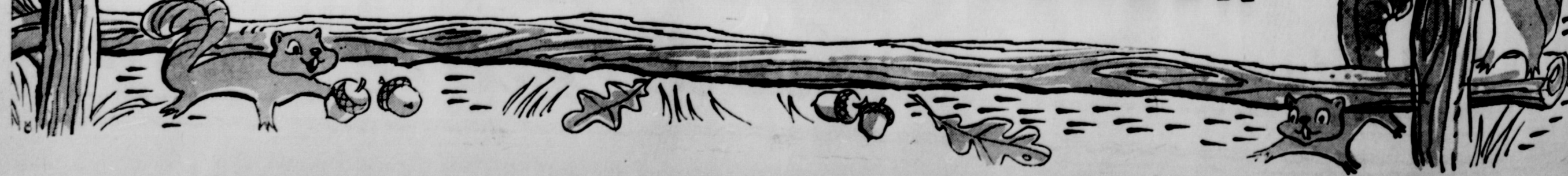
THE EXCLUSIVE

## B - T ULTRAVERTER



See It Today At . . .

**YOUR LOCAL DEALER**





# ZENITH

**RADIOS  
TELEVISIONS  
STEROPHONIC — HI FI  
RECORD PLAYERS**

See Them At . . .

**WHEELER RADIO  
AND  
REFRIGERATION SERVICE**

2231

Wheeler, Texas

Mr. and Mrs. W. O. Weatherly and Mr. and Mrs. Haskall Weatherly went to the Jess Mullins home in Turkey to get Mrs. Virgie Weatherly.

Mr. and Mrs. Thomas Daughtry, Mrs. Lula Clay of Shamrock, and Mr. and Mrs. L. G. Clay of Twitty visited the Harold Westmoreland family and also the Charles Payne family in Amarillo Sunday.

Visiting in the home of Mr. and Mrs. Henry Risner this week end were Mr. and Mrs. Bob Douthit and children of Memphis, Mr. and Mrs. M. B. Ripley of Odessa, Mr. and Mrs. Eddie Ripley of Midland, Mrs. Joanne Thomasson and Suzanne of Lubbock and Lt. and Mrs. Roy Ripley and Cindy of Clovis.

Mr. and Mrs. Ebb Farmer spent the week end in Midland with their son, Mr. and Mrs. Glen Farmer and sons, David and Brian.

Mr. and Mrs. A. E. Brown of Burkburnett visited in the home of Mr. and Mrs. R. B. Mann over the week end. Nancy Brown of Amarillo was also a guest in the Mann home.

Mrs. John Cornelius, 78, Wheeler, fell in her home Friday and pulled her left arm out of socket. Her daughter, Marie Bowles, said she was resting well.

## Want Ads

### FOR SALE

**FOR SALE** — Chord Organs. Ask for a free demonstration in your home or in the store. Ernest Lee Hardware.

**FOR SALE** — 4 room house with bath. 608 main. See Donald Rives or Roy Ford. 41-rtr

**FOR SALE** — 13½ cu. ft. G.E. Upright Home Freezer. 4 Year Factory Warranty. 1st class condition. Wheeler Radio and Refrigeration. 43-rtn

**SPINET PIANO** — Responsible party can arrange most attractive purchase of fine spinet piano. Small monthly payments. Write McFarland Music Co., 722 W. 3rd, Elk City, Okla. 1tp

**FOR SALE** — Used Furniture: 1 two piece living room suite; 2 platform rockers; 1 hide-a-bed and matching chair; 1 rocker. See Mrs. Lee Guthrie.

**FOR SALE** — One used Divan. Fair condition. Call 4602 Wheeler. 1tp

**HAY FOR SALE** — Extra good Hegira Hay. Gaddy Vise. Phone 3533. Wheeler.

**FOR SALE** — 1 sow and pigs. Also some pigs and shoats. Lee Black. Wheeler. 1tp

**FOR SALE** — All channel TV antenna. Phone 2131.

**FOR SALE** — 1950 Chevrolet, 36 passenger school bus for sale. This bus is in fair condition. If interested submit your bid to the Briscoe Board of School Trustees, Lafoy Vise, president.

**FOR SALE** — Used upright piano. \$50.00. C. W. Strubling, Mobeetie. 42-rtn

**FOR SALE** — Model 60 A-C combine with hydraulic lift. In good condition. Has been kept in shed when not in use. See Grady W. Harris or O. L. Vernon. Mobeetie, Texas. 42-rtn

### FOR SALE

**WANTED:** Quarter or half section of grass land, unimproved.

**WANTED:** Small acreage near Wheeler.

2-bedroom home, corner location. 100 by 150 ft. lot. Excellent location.

9 room home with 18 acres of land. 8 acres in orchard. G. I. Loan. Down Payment is \$1,500.

320 Acre Farm. 150 acres in feed. 63½ acres of cotton, house, windmill, irrigation well, ¼ royalties. Crops go with place. Approximately 250 acres in cultivation, rest in grass.

Combination Grocery Store, Fill-in Station, home and small acreage. Will sell or trade for home in Wheeler.

160 acre farm. Modern 4-room house. Electricity and butane. Pressure pump and well. Lake stocked with fish. With or without ½ of minerals. 72 acres in soil bank.

Business building for sale.

55 acres, ½ mineral rights, East of Wheeler.

Choice 100 ft. lot. Paving, water, sewer and gas.

80 acre farm with small house, windmill and out buildings.

One-half section of grass land located near Wheeler on highway.

6 room modern house, back porch, basement. 75 by 150 ft. lot. Own water system, septic tank.

2-bedroom home located in Shamrock.

We have numerous other choice building locations and several acreages listed.

Want to sell your property or business? Contact us now.

### V AND E REAL ESTATE

Phone 5011 Wheeler, Texas  
John C. Vise, Realtor

Monuments, Markers, Grave Covers, Curbing, Surface Burial Vaults. Will Warren. 4-tfe

### FOR RENT

**FOR RENT** — Marl Jaco building. Next to Nash Appliance. See Marl Jaco.

### HELP WANTED

**WANTED** — Cotton pullers. Phone 3533. Gaddy Vise. Wheeler.

### MISCELLANEOUS

Typewriter Repair. The Wheeler Times.

### SEE US BEFORE YOU BUY

We are now the Wheeler County Dealer for Dunlap Tires. We have a complete selection.

**Owen's Service Station**  
Wheeler, Texas

### Amy Lewis Is Bridal Attendant

Miss Amy Lewis, Texas Wesleyan College freshman from Wheeler, was recently selected as one of the bridal attendants in the traditional Old Student-New Student Wedding which is held at the beginning of each fall semester.

Dr. Law Sone, TWC president, conducted the ceremony. The wedding symbolizes a bond of friendship between the new students, who are represented by a bride from the freshman class, and the old students. Dennis Jackson, students body president, represented the old students.

Amy is the daughter of Mrs. C. L. Lewis of 512 Reynolds St., Wheeler. She is a 1959 graduate of Wheeler High School.

### BIRTHDAY PARTY

Phil Risner was honored with a surprise birthday party Saturday night at his home. Those attending were Mr. and Mrs. Bob Douthit, David, Meredith and Rickey, Mr. and Mrs. Adrian Risner and Darla, Lt. and Mrs. Roy Ripley and Cindy, and Mr. and Mrs. Henry Risner and Aletha.

Mr. and Mrs. George Warren visited the Herman Toppers in Pampa and Shelleytown Sunday.

Sunday evening visitors in the Gene Mack home was Mr. and Mrs. Jim Litsch.

Mr. and Mrs. Buddy Errington and Brenda flew to Los Angeles Saturday night to see the world series. While in Los Angeles they plan to visit Mr. and Mrs. Vernon Lummus and other friends and relatives.

## Wheeler County FARM FACTS

By Bryan Swaim

### Gilt Show Results

The County Sear's Gilt show was judged by Mr. James Murphy, Farm Management Specialist, Amarillo, Texas. These gilts placed as follows: Kathy Baily, Kelton 4-H, 1st; Bobby Robinson, Shamrock 4-H, 2nd; Fred Goad, Wheeler 4-H, 5th. Sear's provides prize money to be used in purchasing swine equipment to further their swine demonstrations as follows: 1st, \$8.00; 2nd, \$7.00; 3rd, \$6.00; 4th, \$5.00; 5th, \$4.00; equaling a total of \$30.00 prize money.

### County Girl Wins

The County Sear's Swine winners exhibited their swine demonstrations in the Tri-State Fair, Sear's Store Area Show, and placed as follows: Kathy Baily, second, gilt class and won \$35.00 prize money which is to be used

in purchasing equipment to further her swine demonstrations. Don Henry, Twitty, showed the county boar that did not place in the money. Bryan Swaim, County Agent, said even though the boar did not place he thought it was what we need in our county and had the boar been older it would have placed in the top end of the boar class. Swaim added he thought the program was going fine and the 4-H members are making a good record.

### Kay Callan Has Birthday Party

Kay Callan, daughter of Mrs. Verna Callan, was honored Saturday in the Ruth Mae Wall home, with a birthday party. Kay was 12 years old on October 2.

Those attending the party were: Terry McCasland, Larry Hampton, Beverly Clark, Donna Ford, Danny Dorman, Linda Hall, Lynda Beatty, Randy Callan, Ken Daughtry, Frances Bradstreet and Myra Wall.

**Your  
Automatic Transmission  
needs  
checking  
regularly**



If fluid is not kept at proper level, or needs changing, your automatic transmission can be seriously damaged. Repairs are mighty costly. Stop by every 1,000 miles for a fluid level check. And when you need a refill at the mileage specified by your car's manufacturer, you'll get the best — Texaco Texamatic Fluid.

### OWEN'S

**SERVICE STATION**

Phone 4401 Wheeler



## CUSTOM MADE DRAPES

For Wheeler Home Owners

Phone 777 Collect. We'll measure your windows and estimate the cost for one window or the entire house. No obligation. Hundreds of patterns in prints and solids. One price for drapes, hardware and installation. Finance plan . . . Small Down Payment.

## SHAMROCK BUILDERS SUPPLY

SHAMROCK, TEXAS  
CABOT BRANNON — OWNER

PHONE 777

## Better Living Family Style!

WITH A COMPLETE

## Kitchen-Laundry

BY GENERAL ELECTRIC



The whole family will love it . . .

### \* MORE FREE TIME . . .

Puts extra hours of leisure in the day! G-E appliances keep food fresh and tasty, cook meals, wash dishes, dispose of garbage, and automatically wash and dry clothes!

### \* BETTER PERFORMING APPLIANCES . . .

Incomparable G-E quality plus advanced engineering offer many work-

saving features, long life and greater satisfaction.

### \* BEAUTIFUL ENTERTAINING CENTER . . .

Watch your kitchen become a gathering place for family and friends! Available in 5 Mix-or-Match colors, plus white—elegantly style appliances and cabinets can be color-integrated with specially created floor-coverings, wallpapers, and fabrics.

We offer a complete service . . . including planning, installation and financing!

## H & B Appliance Center

HENRY RISNER, Owner

Wheeler, Texas

Night 2263 — Day 2061

## SURE THING it's going to get GOLD



And We Have A  
COMPLETE SUPPLY  
OF  
MUD CHAINS  
And  
MUD AND SNOW  
TIRES

## Chapman's Truck Stop

"YOUR SHAMROCK JOBBER"

Phone 3211

Wheeler, Texas

Guaranteed Lowest Prices  
In Town



# Briscoe News

By Mrs. Henry Lee

Euell Steen is in the Wheeler Hospital where he was rushed Friday night when he suffered a heart attack. He remained under oxygen much of the time for three days but was reported as resting some better late Monday.

Ruth and Evelyn Fillingim were home from school at Canyon over the week end in their shiny new car. Evelyn will finish as a home ec. major at mid-term this January, while Ruth is a junior in Canyon college.

Weldon Strawbridge of Amarillo was in Briscoe over the week end visiting his parents, the Willard Strawbridge family and his grandmother, Mrs. Josie Strawbridge.

Mrs. Lucile Tipps and Mr. and Mrs. Dean Tipps and Dwight met her daughter (Patsy) Mr. and Mrs. Doug Robertson of Wichita Falls at the home of her daughter (Dorothy) Mr. and Mrs. Jimmy Ault in Amarillo where they all had dinner and spent the day visiting together.

Mr. and Mrs. Cliff Walker and sons Jim and Billy walked to Pampa Sunday and visited their daughter, Mr. and Mrs. Charles Davis and family and her sister, Mrs. Merri Hunter and girls. They returned by Wheeler where they visited Euell Steen in the hospital.

Callers in the Henry Lee home Sunday were Mr. and Mrs. Stacy

Arnold of Mobeetie and Mrs. Myrtle Lane and Bob of Wheeler.

Patsy Ramsey and Mona Finsterwald were involved in a two car head on accident Saturday afternoon about three o'clock 1 mile west of Pampa on highway 60 when a boy in a '57 Chevrolet entered the highway just too close in front of their car and each car was completely demolished. No one was seriously hurt although all three people were taken to a Pampa Hospital where they were treated and released. Mona suffered a fractured left hand and Patsy several cuts and bruises. Neither was seriously injured but were not able to return to the duties of their work Monday.

Mrs. Mable Ault of Allison visited Mrs. Lucille Tipps Monday.

Olene and Jeannie White rode the Pampa mail car to Pampa Saturday and spent the week end with Philis and Becky Cole.

Let us remind you again of the Bean Supper in the Briscoe school cafeteria October 16 beginning at 6:30 p.m. It's a benefit supper for the Home Demonstration Club. Eat your choice of beans, bread, salad, relish and a

**AUCTIONEER**  
SHELBY PETTIT  
Phone 3561 — Wheeler, Texas  
Will cry your sale any time or place

drink for 50 then there will be many kinds of pie for sale. There will be 42 tables for those who like to play 42. Remember October 16 is the date.

Mr. and Mrs. Eugene Tompson and children and Mr. and Mrs. Bill Wood and baby all of Amarillo came Sunday to visit their uncle Euell Steen in the Wheeler Hospital.

Mr. and Mrs. Marvin Dixon of Borger, brother of Mrs. J. E. Steen came Sunday night to sit with Euell in the hospital also a brother Homer Steen of Kellerville and a sister Mary Cansler of Canadiana were at his bed side Sunday.

Mr. Jim Mason of Wheeler was in Briscoe Monday and said a brother from Arkansas came Sunday to visit several days.

Royce Zybach has been on the sick list for several days but was reported better Sunday.

## People You Know

Mr. and Mrs. Ray Giddens of Casper, Wyoming are visiting in the home of Mr. and Mrs. Glen Elmore in Allison.

Mrs. Gene Mack spent Saturday in Pampa shopping.

## Vacuum Cleaner SERVICE

Parts and repair most makes. Rebuilt and late model used. Authorized Kirby Dealer. In Wheeler area each week. Earl E. Kerr, P. O. Box 932, Pampa, Texas.

Mrs. E. T. McClaskey from Brownfield, Mr. and Mrs. Leonard Shelton from Gilmer and Miss Ila Young from Ft. Worth are visiting Mrs. Sanford Miller and other relatives this week.

Mrs. W. O. Weatherly and Mrs. Roy Ford and Teresa spent Thursday shopping in Pampa. They also visited Mrs. Donald Reeves and Melinda.

Mr. and Mrs. Bus Dorman and Becky visited their daughter and family, Mr. and Mrs. Doyle Brown in Lubbock last week end.

**Walter L. Williams**  
Termite Exterminator Service  
Stop that costly termite damage to your home  
Dial 3623 Wheeler

## ROGUE THEATRE

WHEELER, TEXAS

Fri.-Sat. Oct. 9-10

### 30-FOOT BRIDE OF CANDYROCK

A far-fetched comedy that is unusual.

Lou Costello  
Dorothy Provine

Prev.-Sun.-Mon.  
October 10-11-12

### ALIAS JESSIE JAMES

Bob Hope on the prowl. Plenty funny.

Bob Hope  
Rhonda Fleming

Wed.-Thurs. Oct. 14-15

### MAN IN THE NET

A different murder mystery.

Alan Ladd  
Carolyn Jones

## NOTICE

See It At The Mustang On Mon., Wed., Thurs., Fri. and At The Rogue Sat., Preview and Sunday.

# J-LEE DEPT. STORE



Solid Color  
ALL WOOL  
SLIM SKIRT

\$3.98

SWEATERS

Made of 100% Terylene  
NYLON!

Short Sleeve Slip

\$2.98

Long Sleeve Cardigan

\$3.98

**DYED-TO-MATCH**

Coordinate

Two or Three

Piece Set!

Colors: Lark Blue, Red, Ivy Green and Taupe

## PIONEER DRIVE-IN THEATRE

Shamrock, Texas

Friday and Saturday

A HERO WITH REAL HAIR ON HIS CHEST AND A DOLL WHO'S A LITTLE LAMB!

**The Littlest Hobo**

STARRING LONDON FLEECE  
The Dog BUDDY HART • WENDY STUART

AN ALLIED ARTISTS PICTURE

PLUS Two Cartoons

Sunday, Monday and Tuesday

MGM presents

**The MYSTERIANS**

IN BIG SCREEN COLOR

PLUS Two Cartoons

Next Wednesday and Thursday  
SIDNEY POITIER  
IN  
**'MARK OF THE HAWK'**  
It's In Technicolor

## TEXAS THEATRE

Shamrock, Texas

Now Showing Thru Saturday

It started where civilization stopped!



STARRING FRED MAC MURRAY  
COLOR BY DE LUXE  
WILLIAM BISHOP • NINA SHIPMAN  
Gloria Talbot • Henry Hull • John Carradine  
Richard Widmark • Gene Fowler • Louis Witte  
CINEMASCOPE STEREO SOUND

PLUS Bugs Bunny and Tweety Pie

Sunday, Monday and Tuesday

THE FUNNIEST IDEA FOR MAKING A MALE INTO A MATE THAT EVER HIT THE SCREEN!

M-G-M presents

DAVID NIVEN / SHIRLEY MacLAINE

## GIG YOUNG



**"ASK ANY GIRL"**

co-starring  
ROD TAYLOR  
JIM BACKUS  
CLAIRE KELLY

Screen Play by GEORGE WELLS  
Based on the novel by CHARLES WALTERS • Produced by JOE PASTERNAK

ALSO Late World News and Cartoon

# Another fresh one...from Pontiac!



The 1960 Catalina Convertible

You find it attractive because of the simplicity of lines, the absence of over-design.

You're drawn to its crisp freedom, its perfect form, its exhilarating freshness.

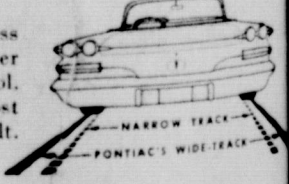
You'll find it amiably obedient because of Wide-Track Wheels and a thoroughly new suspension system. Wide-Track firms the foundation, stabilizes, balances. A softer suspension makes it responsive, quick and easy to take direction.

Pontiac's Tempest engines for 1960 are more

vigorous than ever. You have a wide choice of V-8 power packages, ranging from the high performance 425 to the economical 425E which prefers regular grade gasoline.

The car, the keys, the catalog, the courtesy—all await you at your Pontiac dealer.

Wide-Track Wheels give you maneuverability, solid comfort. You may never with skillful sureness, accurate control. It's the sweetest, most precise, most rewarding driving you've ever felt.



**PONTIAC** THE ONLY CAR WITH WIDE-TRACK WHEELS

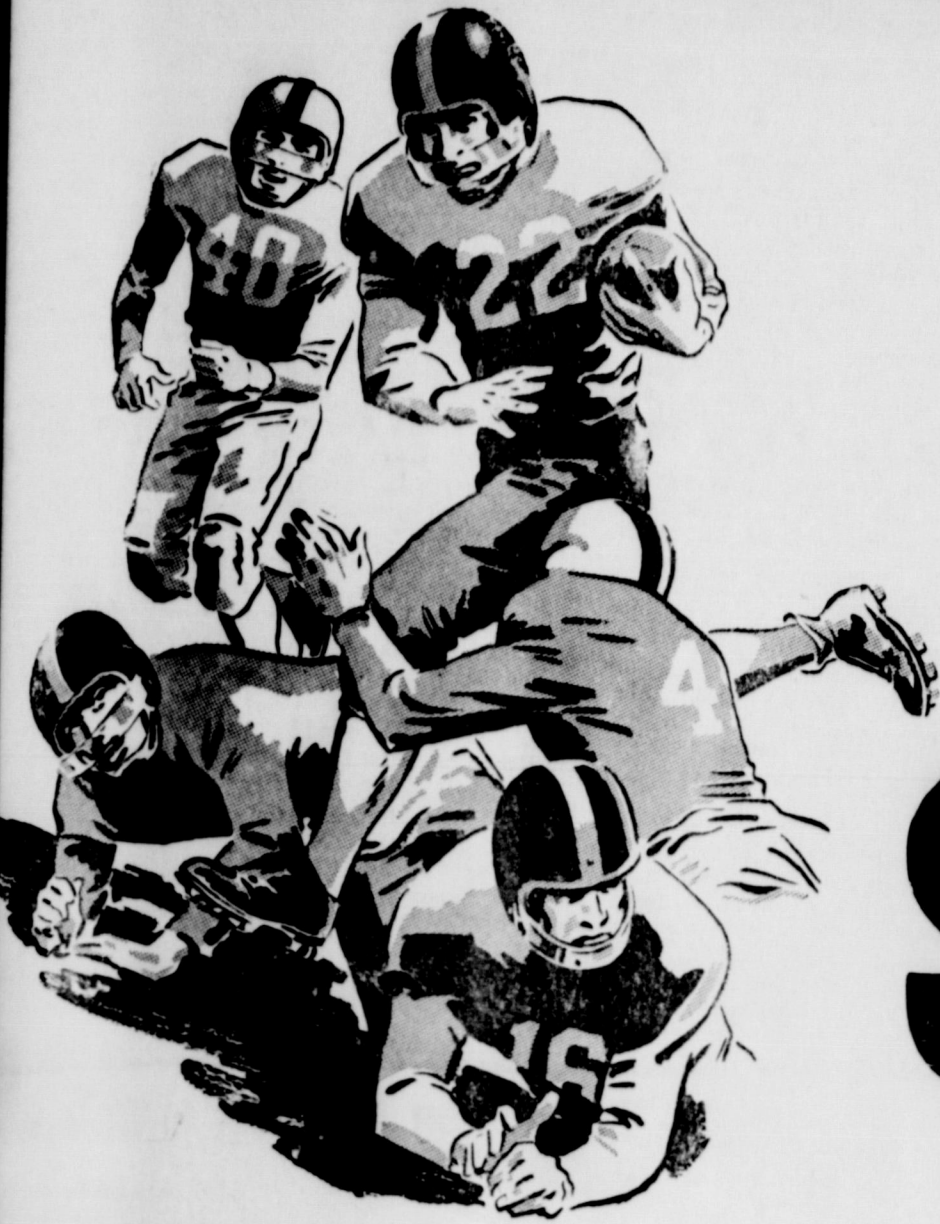
SEE YOUR LOCAL AUTHORIZED PONTIAC DEALER

**NASH APPLIANCE & SUPPLY CO.**

115 West Oklahoma



Shamrock - - - 8:00 P.M.



# WHEELER -VS- SHAMROCK

### WHEELER MUSTANGS

10	Bill Green	100	QB
11	Jimmy Atherton	155	QE
12	Buck Holcomb	150	E
13	Donald Gandy	155	E
14	Larry Levitt	150	E
15	Charles Moore	150	G
16	David Tremble	150	B
17	Troyce Hunter	160	T
18	Marshall Watson	165	B
19	Johnny Ruff	140	E
20	Joe Miller	165	T
21	Harold Ford	165	G
22	Kenneth McCasland	140	E
23	Leon Watson	155	T
24	Frank Walker	160	C
25	Bob Riley	170	T
26	Marvin Cox	150	B
27	Jim Jolly	145	B
28	Monroe Page	140	H
29	Bobby Meadows	140	C
30	Wayne Hill	150	E
31	Kenneth Farris	170	T
32	Mickey Pride	120	E
33	Jerry Hefley	135	B
34	Jerry Burgess	145	B
35	James Hutchison	135	G

### COACHES

Louis Boynton                      Richard Gaines

## SCHEDULE

Oct. 9 — Shamrock, There	Oct. 30 — Groom, There
Oct. 16 — Texline, Here	Nov. 6 — Claude, There
Oct. 23 — Follett, Here	Nov. 13 — Darouzett, There

The progressive Wheeler merchants listed on either side of this ad wish to invite you to attend the football game Friday night in Shamrock. And by your attendance voice your confidence and approval of the boys that will be playing.



**Be A Booster All The Way**

## GOAL POST BOOSTERS

Farm Bureau

Pucketts Food Store

P & G Laundry

Wheeler Lumber Co.

The Wheeler Times

Clay Food Store

Daughtry's 5 and 10 Store

Percy's Garage

Wheeler Co. Produce Assoc.

H & B Appliance

Reid Barber Shop

Yreva's Beauty Shop

O. J. Smith "Leather Crafter"

City Drug

## GOAL POST BOOSTERS

"The 66 Cafe"

Kirk Funeral Home

Chapman Service Station

Vanpool-Burton Motor Co.

Wheeler Gas Co.

Holdeman Implement Co.

Cicero Smith Lumber Co.

Richerson Grain Co.

Fred Farmer Machine Shop

McIlhany Dry Goods

Ware Chevrolet Co.

Service Cleaners

Owen's Texaco Service

Nora's Cafe



**Number Seven**

\$17,000 and expects to receive an additional \$5,000 from the three Amarillo television stations. Channel 7 will contribute \$2,000 provided equipment is installed to pickup their station. Making a total of \$13,000 and if contributions continue to come in the remaining \$2,000 will probably be raised within the next few months.

**GUEST SPEAKER**

Rev. R. L. Whitiker, pastor of the First Baptist Church in Twitty was the guest speaker at the noon meeting of the Wheeler Kiwanis club held Monday.

Mr. and Mrs. R. B. Mann took supper in Perryton Sunday night with their daughter, Mr. and Mrs. Don Alexander and son Russ.

**Number Four**

Wheeler 32 - Estelline 0.

With a lot of improvement under their belts, the Mustangs have high hopes of going to Shamrock this Friday night and getting even for their defeat at the hands of the Irish last year. Crisp blocking and tackling was the order of the night against Estelline even though the game was played under most adverse conditions. Cox was the big ground gainer for the Mustangs with 202 yards gained on 9 carries. Atherton called perhaps his best game of the season and all the Mustangs are to be commended for the way they carried the fight to the bigger Bears.

**Unofficial Statistics**

	W	E
First Down	13	10
Yards Rushing	263	119
Yards Passing	36	0
Total Yards Gained	299	119
Passes Attempted	3	3
Passes Completed	2	0
Opp. Passes Intercept.	0	9
Punts	1-27	2-26
Fumbles	3	2
Fumbles Lost	2	2
Penalties	3-25	3-25

**Jaxie Short Circle Has Regular Meeting**

The "Jaxie Short Circle" met Tuesday October 6 at the First Baptist Church for Bible Study.

Mrs. Frank Ross, chairman, presided over the business meeting and Mrs. Tom Bradstreet led the opening prayer.

Mrs. Frank Wofford, Bible Study chairman, presented the lesson, "The Christian Home" from the book "New Testament Answers To New Testament Questions". Mrs. George Gandy led the closing prayer.

Those enjoying the lesson were Mrs. Frank Wofford, Mrs. Laura Guthrie, Mrs. Harry Wofford, Mrs. Donnie Davis, Mrs. Clara Bradstreet, Mrs. George Gandy, Mrs. Frank Ross and Mrs. Bill Smith. The next meeting will be Tuesday October 13th. All ladies are invited to attend.

Mr. and Mrs. Virgil Helton visited in the Ben Helton home Sunday afternoon.

**Allison News**

By Mrs. Lester Levitt

Mr. and Mrs. Ray D. Brown spent Sunday at Stratford with Mr. and Mrs. Jimmy Greenwood.

Mr. and Mrs. Austin Carnegie and baby from Ulysses, Kansas spent the week end in the parental Ed Walker home.

Mr. and Mrs. Ray Giddens and daughters from Casper, Wyoming are spending a few weeks with Mr. and Mrs. Glen Elmore and family and Mrs. Norville Giddens.

Mrs. Carl Satterwhite and son Mack from Higgins spent Sunday and Monday with her sister, Mrs. Leo Peterman and Mr. Peterman.

Mrs. Forace Evans is recovering from major surgery in the Highland General Hospital in Pampa. Mrs. Evans entered the hospital Wednesday and went into surgery Thursday morning. Her daughter Mrs. Betty Gene Aaron from Snyder is staying in the Evans home looking after the family.

Mr. and Mrs. Troy Dean Jones and children from Coleman, Billy Ray Jones and family from Durmas, Harold Jones and family from White Deer were week end guests in the L. L. Jones home.

Mr. and Mrs. Aaron Eddings from Reydon, Oklahoma were dinner guests in the Doyle Cor-

nell home Sunday.

Rev. Jessie Leverett was a dinner guest in the Boyd Huff home. Zeland Rainey and family have moved into the house which was formerly the Baptist parsonage to make their home.

Bob Mabry and family from Reydon, Oklahoma visited in the Elmer Brown Sr. home Sunday.

Mrs. Mae Morse from Denver, Colorado is spending several days here with relatives. Mr. and Mrs. L. W. Curlee and Joe Rogers and family from Amarillo visited Mr. and Mrs. C. C. Curlee last week.

J. W. Laney and family moved their house hold furniture Monday to Dalhart from the Carl Levitt property. The Laney's have been living in Dalhart for some time but hadn't moved their furniture.

Nathan Taylor and family from Amarillo visited in the parental Grady Gilmer home recently.

Lloyd Jones and family and Troy Dean Jones and family were in Perryton Saturday on business.

Mr. and Mrs. Bruce Harrison visited her sister, Mrs. Inis Townsley and family at Crawford Oklahoma Sunday.

Misses Elizabeth Malin and Gayle Hall students at Canyon College were week end guests in the D. L. Malin and Rayburn Hall homes.

**Number Three**

ment from the Lubbock 1938, then graduated Texas University 1941.

During World War aboard mine sweeper and was a part-time government at Tech.

Lubbock County named Denton the newly organized at-law in March, 1951. He continued in 1951. He continued Judge until elected January, 1953.

In regard to his ment Denton has following statement:


"I would like to express appreciation to the confidence he has placed in me by entrusting me with a most important post and many friends in the area who have supported this appointment."

"I will strive to discharge the duties of the office as well as justly placed in me, dealing impartially with all things before the court."

Denton and his children: Tommy, James Jr., 9, and...

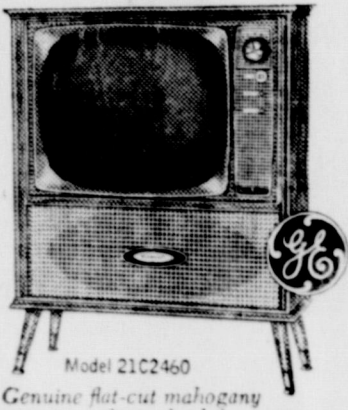
Grainger, Malin, Elko, Nevada on last week.

IT'S "HEAR" WITH G-E's  
**BIGGEST SPEAKER**  
IN TELEVISION



Now Tone Matches Crystal Clear Picture

- New COAXIAL SPEAKER SYSTEM - 21" x 9"
- Front mounted speaker system. Reproduces full sound range.
- Convenient, up-front controls.
- New Hy-Power Chassis with full power transformer.
- Set-and-forget volume control.
- Slim Silhouette styling.
- New 110° aluminized picture tube



Model 21C2460  
Genuine flat-cut magnesium veneers and wood solids. 26 2/3 sq. in. viewable picture.

**\$2.80**  
Per Week

Come in for a Free Demonstration

Buy Now for EXTRA VALUES at

**H & B**  
APPLIANCE CENTER

Phone Night 2263 - Day 2061

Wheeler, Tex.

A Good Selection of  
**LADIES FALL SHOES**  
In Flats - - Values To \$5.95 Pair For  
**\$1.98**  
A Large Group of  
**CHILDRENS COWBOY BOOTS**  
**1/2 Price**  
**McIlhany** WHEELER TEXAS  
**DRY GOODS**  
Phone 2011  
"FOR Everything YOU WEAR."

**A WONDERFUL NEW WORLD OF FORDS FOR 1960**



60 FORDS

FORD - The Finest Fords of a Lifetime

FALCON - The New-size Ford

THUNDERBIRD - The World's Most V

FORD BUILDS THE WORLD'S MOST BEAUTIFULLY PROPORTIONED CARS

THE NEW-SIZE FORD  
**FORD Falcon**

EASIEST CAR IN THE WORLD TO OWN

**VANPOOL-BURTON MOTOR COMPANY**

Phone 2311

Wheeler, Texas

**SAVE NOW**  
ON FOODS FOR BETTER MEALS

Pure Cane <b>SUGAR</b>	U. S. No. 1 White 10 Lb. Bag <b>POTATOES</b>	Texas <b>ORANGE</b> 5 Lb. Bag
Cock 'O The Walk <b>PEACHES</b>	<b>15¢</b>	<b>49¢</b>
Flavor-Wright <b>CRISCO</b>	<b>27¢</b>	<b>39¢</b>
Fresh <b>TOMATOES</b> Pound	<b>29¢</b>	<b>39¢</b>
All Meat <b>BOLOGNA</b>	<b>27¢</b>	<b>39¢</b>
Cinch <b>CAKE</b>	<b>27¢</b>	<b>39¢</b>
Nabisco <b>CRACKERS</b> 1 Lb. Box	<b>29¢</b>	<b>39¢</b>
Mile High <b>GREEN BEANS</b> 2 - No. 303 Cans	<b>29¢</b>	<b>39¢</b>
Nabisco <b>COOKIE</b> 11 Oz. Box	<b>29¢</b>	<b>39¢</b>
Northern <b>TOWELS</b>	<b>29¢</b>	<b>39¢</b>
Northern <b>NAPKINS</b>	<b>29¢</b>	<b>39¢</b>
Northern <b>TISSUE</b>	<b>29¢</b>	<b>39¢</b>

These Prices Good Friday and Saturday  
Double Stamps Every Wednesday on Purchase of \$2.50 or more

**Puckett's** WHEELER, TEXAS  
**FOOD MARKET**



# Mobeetie News

By Mrs. G. B. Dunn

and Mrs. Woodford Willard visited at Spade, Texas and Lee. The little man has an eye for an eye.

and Mrs. Vernie Mixon are proud parents of a baby son, Lee. The little man has an eye for an eye.

and Mrs. T. A. Greenhouse all in elective terms.

and Mrs. Boyd Kennedy came again for a few days.

and Mrs. Jimmy Coward, formerly of California, are here

We were sorry to hear of the death of Mr. E. Z. Millstead, father of Mrs. Helen Reaves. Mr. Millstead died with a heart attack. He lived at Easterly, Texas.

Mr. and Mrs. Judd Rector and Mr. and Mrs. C. W. Burch are visiting Jud's parents in Arkansas for a few days.

Those in the hospital in Pampa are Mrs. Mildred Treadwell, Carl Lya Hilton and Mr. Tom Lamson.

Mr. and Mrs. C. C. Dyson were in Pampa Friday and Mrs. Dyson stayed for medical treatment.

Mr. and Mrs. Jimmy Coward, formerly of California, are here

on leave visiting with Mr. and Mrs. Walter Coward. Jimmy is going overseas this month for 14 months and his family will stay here and at Shamrock with Margaret's parents.

Mr. and Mrs. Walter Coward spent Sunday in Wheeler visiting with Mr. and Mrs. Durham.

Mr. and Mrs. Willard Harrison and Gene Dee spent Sunday in Amarillo with Mr. and Mrs. Tony Thomas.

Mrs. Edith Corcoran gave her husband, John Corcoran, a surprise birthday party Friday night. Those attending the party were Mr. and Mrs. Willard Harrison, Mr. and Mrs. Harper Scott, Mr. and Mrs. Bill Corcoran, Mr. and Mrs. Reley Richardson and two couples from Pampa.

Mr. and Mrs. Wheeler Carville are on a vacation in Arkansas.

Friday night the Junior Class of Mobeetie are sponsoring a Home Talent Show at 7:30 in the High School Gym. Everyone is urged to attend.

October the 20th the Sophomore class is sponsoring a basketball game between the sophomore class and the outsiders. Watch for further details.

The High School Carnival will be held October the 30th in the gym and high school building.

Visitors in the home of Mrs. Burke during the week were her sister and family, Mr. and Mrs. J. T. Herst of Ellis, Kansas.



Sometime a feller's better judgement sort of gets slammed around quite a bit and durned if right now aint the time of year it gets more abuse than other. All these new cars commin out and havin them Eye apeal gadgets slung all over em from one end to the other. Now you take that seat on one of the popular models, the durn thing throws you right out of the car when you open the door. I noticed one car that come out of that aint got no seats, just a throw rug that you lay on. I figured they would come up with somethin like that since they got the seat so low last year you could hardly walk after a spin around town but apparently the Auto industrie is preparin us for Rockets or Flyin Saucers. Anyhow gettin back to the better judgement busness, just you wait and see if your better judgement dont come up second best when you get around the Slick New Models that are sittin down at the Automobile Stores.

Mr. and Mrs. Earl Brown of Burkburnett met their daughter, Nancy, in Wheeler for the homecoming game.

Mr. and Mrs. R. N. Byers visited Mr. and Mrs. F. J. Burgess in the Methodist Hospital in Lubbock last week.

## People You Know

Mrs. Della Horn of Marlow, Oklahoma is visiting her sister, Mrs. H. M. Wiley.

Mrs. Lema Dill from Idalou, Texas is visiting her daughter and family, Mr. and Mrs. Max Wiley.

Mr. and Mrs. Gwyn Edwards of Wheeler are visiting relatives in Maryland and his father in North Carolina.

Sharon Beaty spent the week end in the home of her parents, Mr. and Mrs. J. D. Beaty.

**DR. JOEL M. GOOCH**

**OPTOMETRIST**

207 N. Wall

Phone 800

SHAMROCK, TEXAS

**INSURANCE ABSTRACTS TITLE ABSTRACT CO.**  
Thurman Rives  
Phone 2221

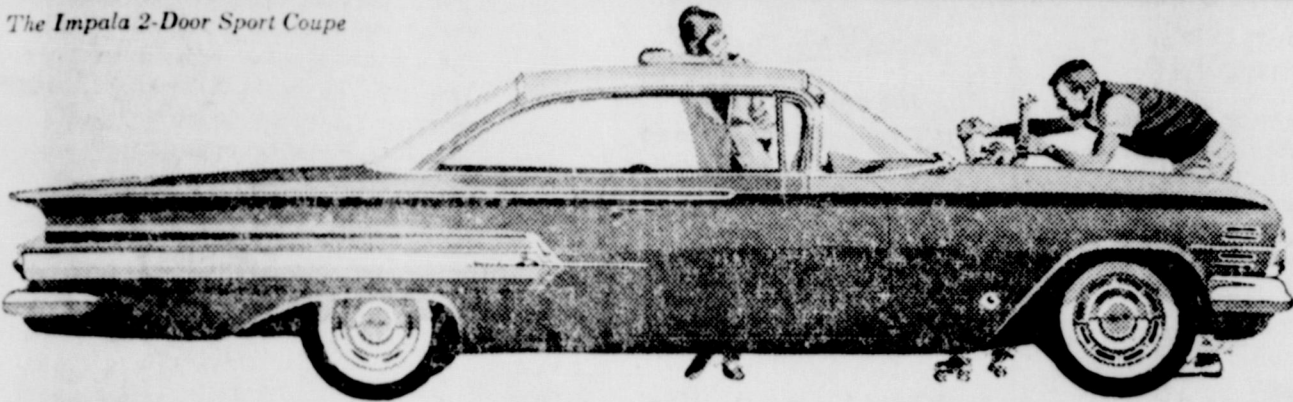
See the SHOW that TOPS 'em all!

Ice Capades!  
Pan-American Livestock Exposition!  
Horse Shows!  
The McGuire Sisters in "Star Light! Star Bright!"  
Shower of Stars!

59 State Fair of Texas

Oct. 9-25 DALLAS

The Impala 2-Door Sport Coupe



SEE IT NOW AND SEE ALL THESE

# new and different things IN THE 1960 Chevy!

**!new!**

**easy loading luggage compartment**

New convenience has been built into Chevy's big, vacation-sized luggage compartment by lowering the loading height.

**NEW**

**spaciousness inside**

Inside you'll find room and more room. There's room to sprawl in, room to sit tall in—and the roofline has a respect for hats. A new flatter transmission tunnel is a boon to the middle man. Here is the kind of space that invites the family.

**THRIFTIER !!!new!!! VS POWER**

Under the hood thrift is accentuated in a new standard V8, engineered to deliver up to 10% more miles for every gallon while giving you more zest at normal speeds. Or you might choose its teammate—Chevy's Hi-Thrift 6—the engine that starts saving the moment you flip the ignition switch.

**NEW QUIET AND COMFORT**

Thicker, newly designed body mounts insulate you from road shock and noise, insuring an almost cocoon-like quiet. Full Coil spring suspension melts bumps as no other suspension system can. Oil hushed hydraulic

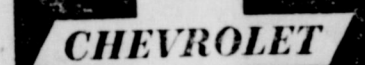
valve lifters reduce engine noise to a whisper.

**!NEW!**

**refinements for the driver**

Everybody will want to be the driver when he sees the kind of pleasure a turn at the wheel brings. The driver finds Chevy has further cushioned him from engine impulses by an improved clutch linkage system. He'll also find a convenient new parking brake that automatically returns to normal height after application.

NEAREST TO PERFECTION A LOW-PRICED CAR EVER CAME!



Top entertainment—The Dinah Shore Chevy Show—Sundays NBC-TV—Pat Boone Chevy Showroom—Weekly ABC-TV—Red Skelton, Chevy Special Friday, October 9, CBS-TV.

See your local authorized Chevrolet dealer

## WARE CHEVROLET CO.

118 West Oklahoma

Wheeler Texas

Phone 3101

**Dr. Marion N. Roberts**

112 W. Kingsmill

Pampa, Texas

Telephone 4-3333

**OPTOMETRIST**

# JR.

If you have a "Junior" mis or mister in your home, then this information is for you. Right now is the time to prepare for his education . . . his future . . . with Modern Woodmen's special plan for boys and girls.

Do you know that for only \$8.40 per year (if your child is under 5) you can obtain \$2,000 life insurance. Rates are slightly higher at older ages. Polio benefits are included at no extra cost.

Futures are made in the present. Plan for your child's NOW. Call or write about Modern Woodmen Junior Insurance—it could well be one of the most important things you've ever done!

MODERN WOODMEN of America

**EMORY L. ARCHER Jr.**

District Manager  
202 W. Benton Sayre, Okla.  
Phone 286

## Ft. Elliott Study Club Begins New Year

The reading of the Club Collect, lead by Mrs. Ella Johnston, opened the October 1st meeting of the Fort Elliott Study Club at the home of Mrs. Mary Finsterwald. Members present answered roll call by relating Historical Facts of the Panhandle. During the brief business meeting, a card from Mrs. Dysart thanking the club for the food delivered to their home after the Husbands Dinner was read.

The year books were distributed by the President, Mrs. Agnes Morgan.

The program for the day was on "Fort Elliott". Mrs. Hattie Lee gave a most interesting part on the Origin of Ft. Elliott and the Abandonment of Ft. Elliott. Mrs. Ella Johnston discussed Life of the Times.

Refreshments were served by the hostess, Mrs. Mary Finsterwald, to one guest, Mrs. Loyd Taylor, and the following members: Mrs. Beulah Shelton, Mrs. Lawrence Kennedy, Mrs. Pat Johnston, Mrs. Agnes Morgan, Mrs. Fleda Godwin, Mrs. Martha Oglesby, Mrs. Ella Johnston, Mrs. Bessie Galmor, Mrs. Hattie Lee, Mrs. Edith Flanagan, Mrs. Elnita Atkins, and Mrs. Carrie Willis.

Mr. and Mrs. R. J. Holt Jr. entertained in their home after the homecoming game Friday night. Those attending were Mr. and Mrs. N. D. Ware Jr., Mr. and Mrs. Thurman Rives, Mr. and Mrs. David Britt, and Mr. and Mrs. Harrison Hall.

Mr. Letcher Edwards of Quanah visited his sister, Mrs. Floyd Atherton and Darfile Atherton Sunday.

Mr. and Mrs. Dosie Nickols and family and Mr. and Mrs. Sunny Wilburn and family of Pampa were week end guests in the Albert Chapman home.

**REPAIR & REMODEL — LOANS — NO MONEY DOWN**

Loans For:

Bath Rooms  
Additions to Houses, Barns, and Chicken Houses

Most Any Type of Repair Work

**FREE ESTIMATES**

**WHEELER LUMBER CO**

Phone 3431  
Wayne Edwards — 3691

T. M. Bowman — 4851

Fine Service for Fine People

## INSURANCE and ABSTRACTS

Northwest Corner of The Square

**DORIS FORRESTER**

**INSURANCE AGENCY**

Wheeler, Texas — Phone 5111



Harper's WATCH and CLOCK REPAIR SHOP

**ROY HARPER** In My Home  
2 1/2 Blocks N. Courthouse  
609 N. Russell  
Pampa, Texas

— All Work Guaranteed — 40 Yrs. Experience — Day and Night Service — Get Better Work For Less — All Watches Electronically Checked  
Phone MO 9-9275

## USED TYPEWRITERS FOR SALE

We have several Used ROYAL and REMINGTON Typewriters For Sale.

These Machines are in excellent condition and will carry a Times guarantee.

Don't let this Low Price Fool You. These are Late Model Machines - Almost As Good As New.

# \$69.50

**THE WHEELER TIMES**

# ATTENTION FARM BUREAU MEMBERS

## SEE ALL UHF CHANNELS

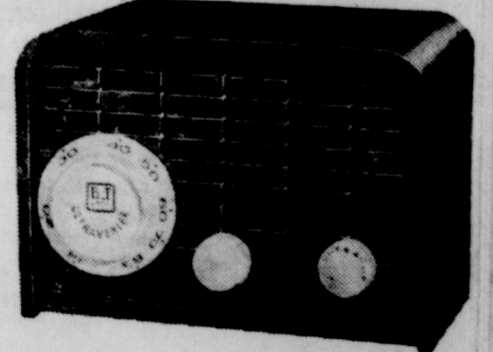
on your TV set

... clear, sharp pictures even in difficult reception areas



Model BTU-2R

only \$39.95



Makes your TV set a modern, powerful 82-channel receiver  
Outperforms all others in the field

- ★ higher gain ★ meets FCC tuner standards
- ★ ideal for color ★ UL approved
- ★ automatically turns on/off with set operation

See it today at

**YOUR LOCAL DEALER**

## 4 REASONS WHY your family deserves an Automatic ELECTRIC RANGE

**COOKING ELECTRICALLY IS CLEAN**

Pots and pans stay bright and clean — walls and curtains keep that fresh, new look. There's no flame, no fumes, no combustion deposits.

**COOKING ELECTRICALLY MAKES MEAL PLANNING FUN**

Electric heat is accurate — your recipes cook to perfection. Automatic controls free you from the kitchen for family and fun.

**COOKING ELECTRICALLY IS ECONOMICAL**

It costs about two cents a meal. But you save dollars on decorating — and don't lose any of your cooking heat.

**COOKING ELECTRICALLY IS COOL**

All the heat from your electric range goes into the cooking. You cook the food, but the cook keeps cool.

SEE YOUR REDDY KILOWATT APPLIANCE DEALER



**SOUTHWESTERN PUBLIC SERVICE COMPANY**



**ELECTRIC**

OF COURSE, IT'S MODERN



# Court Records

List of instruments filed in the office of the County Clerk and District Clerk of Wheeler County, Texas from September 28, 1959 through October 2, 1959.

**September 28, 1959**  
**P OF ATTY**—Lawyers Surety Corp. to Thurman Lee Rives et al 9-22-59.

**MML**—Southwestern States Oil & Gas Co. to Dowell Div. of the Dow Chemical Co. 9-25-59 SW 1/4 Sec. 55 Blk. 24.

**RATIF OL**—Fred L. Jackson et al to John H. Grinn 8-31-59 S 1/2 SE 1/4 & NE 1/4 Sec. 11 Blk. 12.

**AMEND OL**—Continental Oil Co. to Norvel Douglas 9-21-59 SW 1/4 Sec. 58 Blk. 24 exc NE 1/4.

**AOL**—Sooner Pipe and Supply Corp. to Roy Barker et al 9-22-59 E 1/2 SW 1/4 Sec. 42 Blk. 24.

**QCD**—Lula A. Williams to J. H. Jackson 9-9-59 W 70' N 1/2 Lot II & W 70' Lot 12 Blk. 28 Shamrock.

**D**—J. H. Jackson et ux to Howard Biter 8-14-59 W 70' N 1/2 Lot II & W 70' Lot 12 Blk. 28 Shamrock.

**C/C DISSOLUTION**—State of Texas to Dixie Royalty Oil Co. 9-22-59.

**C/C RELEASE ASSIGN**—Martha Mai Golay et al to M. S. Church et al 3-13-54 Estate of Tuett B. Cranfill.

**MML**—Ford Newkirk et ux to Robert N. Foster 9-25-59 Lots 13, 14 Blk. 204 Shamrock VHTA.

**TMML**—Robert N. Foster to Cicero Smith Lumber Co. 9-25-59 Lots 13, 14 Blk. 204 Shamrock VHTA.

**TVL**—Merita Bumpers et vir to Far & Mer St. Blk. Shamrock 9-26-59 Sec. 58 & 44 Blk. 24.

**RDT**—Raymond Moore to Jewell Rimmer 9-25-59 Lots 3, 6 Blk. 3 Wheeler, Stanley's 2nd Ad.

**September 29, 1959**

**D**—J. B. Woodington to Donald L. Barber et ux 9-14-59 S 82' Blk. A Shamrock, Mont-Lew Ad.

**TVL**—J. B. Woodington to Lumbermen's Investment Corp. of Texas 9-14-59 S 82' Blk. A Shamrock, Mont-Lew Ad.

**DT**—Donald L. Barber et ux to Lumbermen's Invest. Corp. of Tex. 9-14-59 S 82' Blk. A Shamrock.

Mont-Lew Ad.

**TDT**—Lumbermen's Invest. Corp. of Tex. to Federal Mtge. Invest. Assn. 9-23-59 S 82' Blk. A Shamrock, Mont-Lew Ad.

**D**—Roy W. Horton et ux to Veterans' Land Board of Texas 8-31-59 SE 1/4 Sec. 101 Blk. 23 exc MI.

**CONTRACT**—Veteran's Ld. Bd. of Texas to Vernon L. Turner 9-3-59 SE 1/4 Sec. 101 Blk. 23.

**EXEC MD**—Muriel Ely Kyle to Guy Hardin 9-28-59 60 ac Int. E 1/2 Sec. 78 Blk. 13.

**EXEC MD**—Muriel Ely Kyle to Guy Hardin 9-28-59 150 a Int. W 1/2 Sec. 105 Blk. 23.

**EXEC MD**—Muriel Ely Kyle to Guy Hardin 9-28-59 1/16 Int. 20 ac NE 1/4 Sec. 68 Blk. 13.

**EXEC D**—Muriel Ely Kyle to Guy Hardin 9-28-59 40 ac NE 1/4 Sec. 66 Blk. 13.

**EXEC MD**—Muriel Ely Kyle to Guy Hardin 9-28-59 1/3 Int. NW 1/4 Sec. 47 Blk. 13.

**September 30, 1959**

**OL**—Leona J. McDonald et al to Gulf Oil Corp. 8-14-59 W 1/2 Sec. 11 Blk. A-5.

**DIV ORDER**—Eldon D. Shuffelbarger et al to El Paso Natural Gas Co. 2-19-59 SE 1/4 Sec. 39 Blk. 17.

**DIV ORDER**—Christian deGuigne to El Paso Natural Gas Co. 2-19-59 SE 1/4 Sec. 39 Blk. 17.

**WHEELER TIMES**  
 Published every Thursday at Wheeler County, Texas by  
 D. AND E. PUBLISHING CO.

Entered as second-class matter December 18, 1933, at the postoffice at Wheeler, Texas under act of March 3, 1879.

**DON D. EARNEY**  
 Editor and Publisher  
 TELEPHONE 5011

**SUBSCRIPTION RATES:**  
 In Wheeler, Beckham and Hemphill Counties:  
 One Year \$3.00  
 Elsewhere: \$4.00

**NOTICE TO PUBLIC**  
 We have in stock International Mufflers guaranteed for life of your car at no extra cost. We will give a written guarantee with each muffler purchased. Mufflers to fit most makes and models.

**VANPOOL-BURTON**  
 MOTOR COMPANY  
 Phone 2311 Wheeler, Tex.

Co. 6-26-59 NE 1/4 Sec. 34 Blk. 17.  
**TDT**—J. M. Tindall to E. C. Hunter 9-28-59 SE 1/4 Sec. 2 AB&M Survey.

**EXECUTION**—Vinson Supply Co. to A. O. LeBlanc 9-30-59.

**ROL**—Cities Service Production Co. to D. G. Sims et al 8-31-59 NW 1/4 & NE 1/4 Sec. 18 Blk. A-5.

**ASSIGNMENT OF CONTRACT**—Thurman Lee Rives et ux to Harry J. Garrison Jr. 9-10-59 126.65 ac Sec. 25 Blk. A-4.

**D**—E. Douglas Carver et al to Murray B. Davis 8-26-59 Lot 7 Blk. 65 Shamrock, WSSA.

**AFF**—E. K. Caperton et al to W. H. Whitehurst et ux 9-22-59.

**AFF**—O. J. Walker et al to John Reuben Carver et ux 9-26-59.

**RVL**—Esther Blackledge et vir to Vernon Carver 9-25-59 Lot 7 Blk. 65 Shamrock, WSSA.

**October 1, 1959**

**AFF**—O. J. Walker et al to A. J. Montgomery et ux 9-29-59 Lot 21 Blk. 6 Shamrock, Mont-Lew Ad.

**D**—T. H. Gothard et ux to James C. Bryant 9-24-59 Lot 21 Blk. 6 Shamrock, Mont-Lew Ad.

**D**—W. W. Stowe et ux to Wayne Whitaker 9-28-59 50' x 150' S 1/2 Blk. LXII Shamrock.

**CHG OF DEP**—L. M. Oles to Gulf Oil Corp. 9-29-59 S 212 ac E 1/2 Sec. 6 Blk. A-7 & E 1/2 95 Blk. 13.

**MD**—Ethel Manor Brown et al to Mildred Manor Pierson 9-23-59 8.9600 Int. S 1/2 Sec. 48 Blk. 24.

**C/C REMOVAL OF DISABILITIES OF MINORITY**—Billy Carl Conner 10-1-59.

**C/C DIVORCE DECREE**—Kate Bates vs Wm. D. Bates 9-28-59 S 1/2 Sec. 62 Blk. 24.

**C/C PROBATE PROCEEDINGS**—Wm. D. Bates 9-22-59 S 1/2 Sec. 62 Blk. 24.

**C/C PROBATE PROCEEDINGS**—Frances F. Bates 8-28-59 S 1/2 Sec. 62 Blk. 24.

**D**—R. C. Carter et ux to Lester Hathaway 10-1-59 N 1/2 Sec. 85 Blk. A-5.

**October 2, 1959**

**MML**—Southwestern States Oil & Gas Co. to Dowell Div. of the Dow Chem. Co. 9-25-59 NW 1/4 Sec. 55 Blk. 24.

**DT**—John D. Merchant to First Natl. Bk. in Pampa 9-30-59 1/4 of 7.8 Min. Int. SW 1/4 & SE 1/4 SE 1/4 NE 1/4 & S 1/2 SW 1/4 NE 1/4 & SW 1/4 SE 1/4 NE 1/4 & NE 1/4 SE 1/4 Sec. 54

THE WHEELER TIMES, WHEELER, TEXAS  
 Thursday, October 8, 1959

**Blk. 24.**  
**RMML**—Leo H. Moore to Clyde C. Johnson et ux 9-26-59 Lot 4 Blk. 46 Wheeler Stanley Ad.  
**RVL**—Leo H. Moore to Clyde C. Johnson et ux 9-26-59 Lot 4 Blk. 46 Wheeler Stanley Ad.  
**District Clerk's Office**  
 No. 4899 Paul G. Harmon vs Wanda Jean Harmon 9-28-59 Divorce.  
 No. 4900 Virginia Poindexter vs Donald Poindexter 9-29-59 Divorce.  
 No. 4901 J. W. Chesnut McCormick 9-29-59 Suit.  
 No. 4902 Billy Carl Conner Removal of Disabilities Act.  
**Marriage License**  
 N. G. Grice and Mrs. Johnson 9-25-59.  
 Donald Wesley Vernon da Lawayne Copeland to Robert Rothenberger Janelle Goodrum 10-2-59.

By Request . . . 2nd Special

**STOCKER-FEEDER S-A-L-E**

2,500-3,000 CHOICE QUALITY CALVES AND YEARLINGS FROM NORTHWEST OKLAHOMA AND THE TEXAS PANHANDLE

**WEDNESDAY, OCT. 14**  
 BEGINNING AT 11:00 A.M.

CATTLE TO BE SOLD IN ORDER THEY ARE CONSIGNED!

**Woodward Livestock Commission Company**  
 WOODWARD, OKLAHOMA

Western Oklahoma's Best Livestock Market  
 ON MAIN LINE SANTA FE RAILROAD, AND AMPLE TRUCKING FACILITIES

REGULAR CATTLE SALE EACH FRIDAY, 8 A.M.  
 PHONE 218—LD—1003—WOODWARD

For further information contact—  
**HUGH JONES** Phone 1781  
**BUDDY REGER** Phone 1528  
 AT WOODWARD, OKLA.

**LOOK!**  
 add all UHF channels  
 . . . EVEN IN DIFFICULT RECEPTION AREAS

**Ultravert**  
 Model BTU-2R

the most powerful UHF converter ever made  
 only \$39.95 list

- UL Approved
- Ideal for color
- Modern two-tone plastic cabinet
- Meets FCC tuner standards

See it today at  
 Your Local Dealer

**Toughest Driver in Town!**

Careful Percy McFidget—who would believe that he's harder on his car than anybody in town? Why, he never goes over 35 or takes a trip over 10 miles! Actually this kind of driving is very hard on a car engine because the engine seldom gets "warmed up" sufficiently. The oil tends to be sluggish. Sludge forms in the crankcase. The way is open for dangerous wear and corrosion.

But there's something you can do about this, to protect your motor. If you have to do a lot of start-and-stop driving at low speeds, as most of us do, use **Trop-Artic** Motor Oil. It flows fast . . . resists sludge formation . . . helps your car run better, longer. Get Trop-Artic Motor Oil at any station where you see the Phillips 66 Shield.

**PHILLIPS 66**

**PLUMBING WORK**  
 New Installation  
 Repair Work  
 Free Estimates  
 All Work Guaranteed  
**R. M. GREEN**  
 Phone 2241

**NOTICE TO PUBLIC**  
 We have in stock International Mufflers guaranteed for life of your car at no extra cost. We will give a written guarantee with each muffler purchased. Mufflers to fit most makes and models.  
**VANPOOL-BURTON**  
 MOTOR COMPANY  
 Phone 2311 Wheeler, Tex.

**Announcing!**  
**A WONDERFUL NEW WORLD OF FORDS FOR 1960**

**FINEST FORDS OF A LIFETIME**

This new Ford Galaxie, like all the new, beautifully proportioned 1960 Fords, is styled from a new viewpoint. Traditional automotive elegance combines with modern design in the style of a new decade!

In 1960, for the first time in history, your Ford Dealer presents not one, not two, but **three new lines** of Ford cars . . .

1. The 1960 Fords—The Finest Fords of a Lifetime, beautiful from any Point of View, worth more from every Point of Value!
2. The 1960 Falcon—The New-size Ford, the world's most experienced new car and the easiest car in the world to own!
3. The 1960 Thunderbird . . . The World's Most Wanted Car!

**Introducing the New-Size Ford . . . the 1960 Ford Falcon**

Meet the New-size Ford—the Falcon! Here's a car with plenty of room for six big adults and all their luggage. It's sized to handle and park like a "small" car . . . powered to pass and climb like a "big" car . . . and built like no other car for savings!

It gives you up to 30 miles per gallon on regular gas. Aluminized mufflers normally last twice as long as ordinary kinds. A Full-Flow oil filter lets you go 4,000 miles between oil changes. Even insurance can cost you less! And this Falcon is the world's most experienced new car. It was driven over every mile of numbered Federal Highway in EXPERIENCE RUN, U.S.A.—a grueling demonstration climaxing Ford's 3 years of development and testing.

The Falcon has the features that American car buyers expect. Its gearshift is on the steering column—not on the floor. Its engine is located up front for greater stability and safety. Best news of all is the Falcon's low, low price. See it at your Ford Dealer's . . . and see the difference!

Now you can see them—the Finest Fords of a Lifetime! Economy-minded Fairlanes. Big-value Fairlane 500's. Elegant Galaxies. A breath-taking new Sunliner convertible and a brand-new hard-top model, the flashing Starliner. Then there's a whole new world of Station Wagon Living. Too. It all adds up to 15 glittering variations of the world's newest, most elegant styling theme!

And Ford sets the new trend in power. Ford's Thunderbird 292 V-8 and 352 V-8, like the famous Mileage Maker Six, bring a new world of smoother, hotter performance—on regular gas.

To top it all, the Finest Fords of a Lifetime are priced for savings. Ford is still priced to outvalue all comparable models of its major competitors.

Ford savings, however, only begin with a low price. You save still more with engines that thrive on regular gas and save up to a dollar on every tankful . . . a Full-Flow oil filter that lets you go 4,000 miles between oil changes . . . Diamond Lustre Finish that never needs waxing . . . aluminized mufflers that normally last twice as long as conventional types . . . new, safer, Truck-Size brakes that are the biggest ever in Ford's history . . . and new soft-tread, Tyrex cord tires that run quieter, last longer.

In every way these are the Finest Fords of your Lifetime! See them at your Ford Dealer's!

FORD DIVISION, Ford Motor Company.

**THE FALCON FORDOR SEDAN**  
 the world's most experienced new car is the easiest car in the world to own!

See "FORD STARTIME" in living color Tuesdays on NBC-TV

**FORD BUILDS THE WORLD'S MOST BEAUTIFULLY PROPORTIONED CARS**

**FORD**—The Finest Fords of a Lifetime  
**FALCON**—The New-Size Ford  
**THUNDERBIRD**—The World's Most Wanted Car

**VANPOOL-BURTON MOTOR COMPANY**  
 Phone 2311  
 Wheeler, Texas

**"I THOUGHT ALL TRACTORS WERE PRETTY MUCH ALIKE . . .**

**... until I had a Case-o-matic.**

**PROOF DEMONSTRATION!"**

Let's face it . . . most tractors are pretty much alike. But get a Case-o-matic tractor proof demonstration and you'll feel a POWERFUL difference! Case-o-matic Drive tractors sense changing loads instantly . . . automatically increase pull-power up to 100% without clutching, shifting or stalling. Try Case-o-matic . . . and you'll never want to be without it!

**GET YOUR FREE RAINCOAT**  
 It's our "thank you" for the privilege of demonstrating. Call us right away and let's make a demonstration date. No obligation, of course.

**Now is the time to TRADE and get our Special extra generous allowance!**

SEE US TODAY:

**NASH** APPLIANCE & SUPPLY CO.  
 Phone 3131 Wheeler, Texas