

JOIN the JAMBOREE of SAVINGS...HELP Us CELEBRATE our Big Jubilee

IGA

27TH

Jubilee

IGA... your independently, home-owned and operated food stores are celebrating, this week, their 27th Jubilee. For 27 years, your neighbor and home-town businessman has brought you the quality foods, the low prices and the warm cordial shopping atmosphere for which IGA is famous the world over. We're saying thank you this week for these past years of confidence and patronage with a gigantic array of famous-brand foods from all departments... all at IGA's traditional Low, Low prices!



PRICES EFFECTIVE
Thurs., Fri., & Sat.,
Oct. 31, Nov. 1 & 2

- Bar-B Q Sauce** 28-oz. Bottle 29c
- Coffee** Fleming's Flavor-rich Reg. Drip or Fine 2 -Lb. \$1.19
- Coffee** Folger's Mountain Grown 2 -Lb. \$1.34
- Punch** Hawaiian Red or Yellow 3 46-oz. Cans 93c
- Cocktail** IGA Fancy Fruit In Heavy Syrup 3 303 Cans 69c

USDA CHOICE P.S. BEEF FULL CUTS OR BOTTOM ROUND



PRESERVES IGA STRAWBERRY, PEACH, APRICOT OR RED PLUM 3 18-oz. Glass \$1

APPLE SAUCE IGA FANCY NEW PACK 3 303 Cans 49c

CORN IGA GOLDEN CREAM STYLE OR WHOLE KERNEL-DELICIOUS 7 303 Cans \$1

FLOUR IGA TOP QUALITY FOR ALL YOUR BAKING SO ECONOMICAL TOO 5 -Lb. Bag 39c

TISSUE SCOTTS FAMOUS SOFTWEAVE WHITE OR COLORS 2 Rolls 22c

Peaches IGA Ripe 'N Ragged Sliced In Heavy Syrup 3 303 Cans 59c

Pineapple IGA Hawaiian Crushed 2 No. 2 Cans 59c

Fancy Peas IGA Sifted 6 303 Cans \$1

Dog Stew Hi Vi A Complete Meal 4 300 Cans 53c

Vienna Sausage Armour's Delicious 5 4-oz. Cans \$1

Beef Stew Armour's For Easy Fix Meals 2 24-oz. Cans 89c

Treat Armour's Serve Hot or Cold 2 12-oz. Cans 89c

Chopped Ham Armour's For Easy Fix Meals 12-oz. Can 63c

Cat Food Puss 'n Boots 6 8-oz. Cans 49c 4 15-oz. Cans 59c

Noodles Tru-Vu Wide or Extra Wide 2 12-oz. Pkgs. 39c

Corn Meal Shawnee's Self Rising 5 -Lb. Bag 39c

Flour Shawnee's Self Rising 5 -Lb. Bag 55c

Raisins Tru-Vu Seedless 24-oz. Pkg. 49c

Candy Nestle's Assorted Chocolate Bars 10 Bar Pkg. 35c

Wax Bruce's Self Polishing Qt. 59c

ROUND STEAK LB. 75c

Bologna Armour Star All Meat Sliced Lb. 49c

Sirloin Steak USDA Choice Thick For Broiling Lb. 89c

Boneless Stew Choice Cuts of Lean Meat Lb. 59c

Short Ribs Ideal for Barbecuing Lb. 29c

Canned Hams Armour Star Easy to Prepare 5

Franks Armour Star All Meat

Bacon Armour Star Tray Pack

Bacon Armour Campfire 2 -Lb. Pkg.

VELVEETA KRAFT FAMOUS CHEESE FOR SNACKS AND SANDWICHES 2 -Lb. Pkg. 79c

Margarine Kraft Miracle Lb. 29c

Longhorn Cheese Kraft Chunk 10-oz. Sliced Pkg.

Cheese Sticks Kraft's Cracker Barrel 10-oz. Pkg. 49c

Swiss Cheese Kraft's Muenster 6-oz. Pkg.

FROZEN PIES MORTONS APPLE PEACH OR COCONUT CUSTARD 4 22-oz. Pkgs.

Strawberries TV Sliced Fresh Frozen 3 16-oz. Pkgs. 89c

Cakes Colonial Fudge, Banana or Coconut 24-oz. Pkg.

ORANGE JUICE TV FROZEN FRESH 4 6-oz. Cans

Wax Remover Bruce's For Floors Qt. 69c

Shoe Polish Johnson's Liquid Self Polishing Can 29c

Crackers Sunshine Krispie 1 lb. Box. 29c

Salad Dressing Kraft French or Miracle French 4 8-oz. Bils. \$1

Kraft Dinners Mild Spaghetti or Macaroni 2 Pkgs. 35c

Scotties White or Colored Facial Tissue Box of 400

Kaiser Foil 5c Off Quilted 25 Ft. Roll

Glade Johnson's Ass't Room Deodorizer 7-oz. Can

Ketchup Heinz Rich Delicious 4 14-oz. Bottles

Volume 9 GOLDEN BOOK ENCYCLOPEDIA THIS WEEK \$1

JUBILEE PRODUCE SPECIAL

Potatoes U.S. NO. 1 LARGE RUSSET 10 LB. BAG 39c

Potatoes U.S. No. 1 Russels 20 -Lb. Bag 69c

Sweet Potatoes Pineywood Premium 3 Lbs. 25c

Grapefruit Indian River Ruby Red 2 Lbs. 19c

Tomatoes Vine Ripened Red Slicers Lb. 19c

Cello Carrots T.C.P. Long Crisp 2 -Lb. Pkgs. 19c

LANE'S MELLORINE 3 1/2 Gal. Ctns. \$1.00

CLAY Food Store

Save Gold Bonds Stamps — Double On Wednesday
We Reserve The Right to Limit Quantities

Big Our **GOOD BUYS** Add Up To **GOOD LUCK SAVINGS** For **YOU!**

GIBSON'S DISCOUNT CENTER

Pampa, Texas

2211 Perryton Highway - Open 9-9

"Where You Always Buy The Best For Less"

No More Going To Amarillo

WESTINGHOUSE "25"
ELECTRIC SHAYER
For The Man
REG. PRICE 29.95
GIBSON'S DISCOUNT PRICE
\$14.97

LADY RONSON
ELECTRIC SHAYER
REGULAR PRICE 19.50
GIBSON'S DISCOUNT PRICE
\$10.97

SCOTCH OVEN... The Easy Way To
Toast Or Broil
REGULAR PRICE \$4.95

GIBSON'S DISCOUNT PRICE **\$2.97**
NO. A05

CON-FORM BABY SEAT.. Adjustable
Repeat Of A Sell-Out. Reg. \$5.95

GIBSON'S DISCOUNT PRICE **2.97**

Westinghouse Portable Hand Mixer
Speed Control No. PM 581, Reg. \$16.95

GIBSON'S DISCOUNT PRICE **9.97**

Sunbeam 4-Slice Electric Toaster
Automatic, Family Size, Radiant Control
Regular Price 29.95, No. T 55

GIBSON'S DISCOUNT PRICE **17.97**

**Dormeyer Automatic Electric
Combination Grill & Waffle Iron**
No. WC - 1 - CH, Regularly \$22.50

GIBSON'S DISCOUNT PRICE **\$14.97**

ALL BRANDS CIGARETTES
\$2.55 Carton

STP ADDITIVE
Regularly 1.39
GIBSON'S PRICE **67c**

USE
OUR
Lay-Away
PLAN FOR
XMAS

PRELL SHAMPOO, Large . . 57c

SO SOFT HAIR SPRAY, Jumbo Can
Reg. \$2. Gibson's Discount Price **77c**

OLD SPICE AFTER SHAVE LOTION
Reg. 1.98, Gibson's Discount Price **\$1.17**

BAN DEODORANT, Economy Size **67c**

BUFFERIN, 100's, Regular 1.29
Gibson's Discount Price . . **79c**

**New Schick Double Edge
Razor Blades**
Stainless Steel, Reg. Price **79c**
Gibson's Discount Price . . **47c**

PRESTONE ANTI-FREEZE, Reg. 2.95
Gibson's Discount Price, Gal. **1.57**
NO LIMITS

PREMIUM QUALITY SEAT BELTS
6000 Lb. Test, Metal To Metal
13 Colors, Reg. Price \$6.95
Gibson's Discount Price, Each **\$2.97**

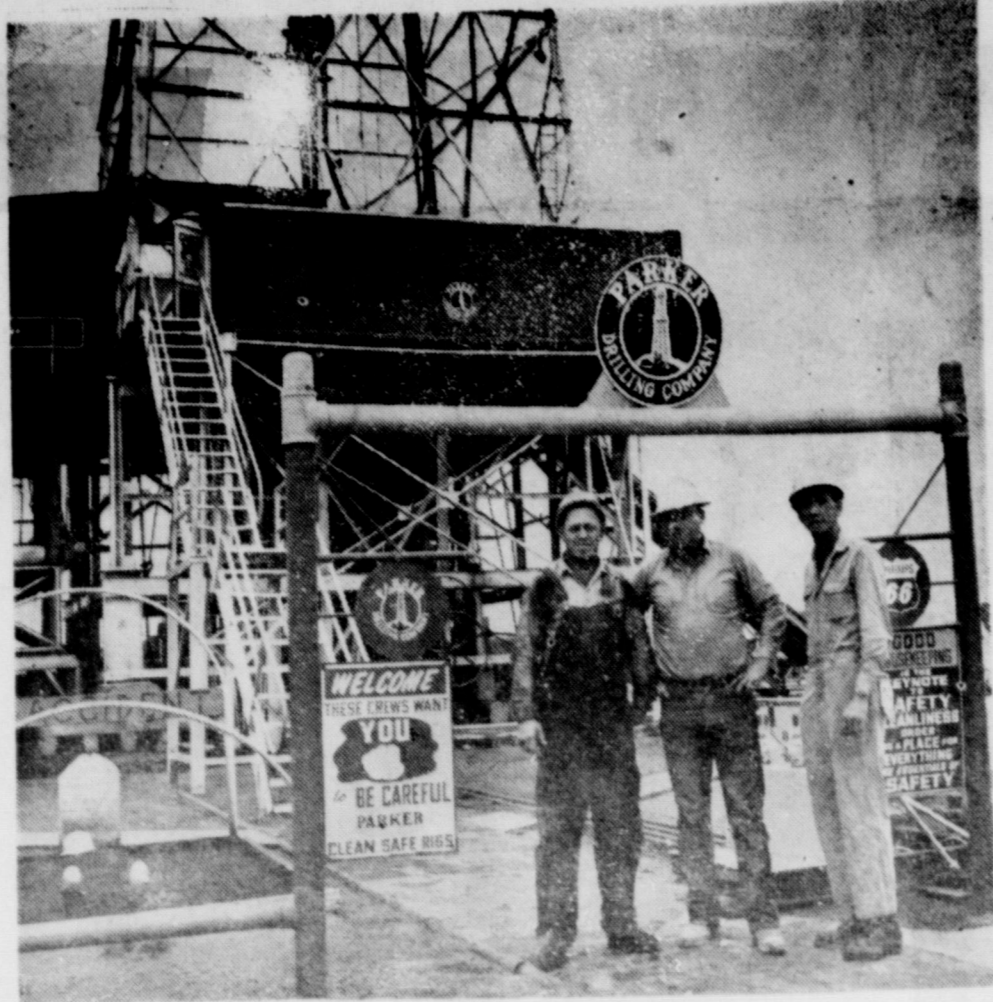
6 VOLT LANTERN BATTERY
Large Size, Reg. \$1.98, GIBSON'S PRICE **87c**
COLEMAN MANTLES . . . For The Famous
Coleman Lanterns, Regularly **39c**
GIBSON'S DISCOUNT PRICE, 2 For **17c**
MITY-LIFTER DEER HOIST, 100% Nylon
950 Lb. Test, Reg. \$3.98, Gibson's Price **\$2.47**
FEDERAL HIGH-POWER SHOTGUN SHELLS
Max. Load 3 3/4 x 1 1/4 12 Gauge **\$2.27**
16 and 20 Gauge **\$2.17**
LARGE 2-BURNER CAMP STOVE
\$19.95 Value, GIBSON'S PRICE **\$12.97**

Gibson's Have One Of The Largest
Selections Of Rifles, Shotguns,
And Pistols In The Panhandle.
Check Our Prices First. They
Can't Be Beat Even In Amarillo.

ATC STAINLESS
STEEL WINDPROOF
CIGARETTE LIGHTER
GIBSON'S DISCOUNT PRICE
27c

ANSCO 8MM COLOR
MOVIE FILM
GIBSON'S DISCOUNT
INCLUDES DEVELOPING
PRICE **\$2.27**

All Of Your Prescription Needs Can Be Filled At The **MODERN GIBSON DISCOUNT PHARMACY**. Our Prices On All Prescriptions Are 25% To 40% Less. In Addition To These Low Prices, All Senior Citizens Will Be Given An Extra 15% Off. Come To Pampa. Shop The Largest, Newest, Home-Owned Retail Store In The Panhandle!



Drilling At Wheeler Wildcat

Three members of the daylight tour on Parker Drilling Co. rig 57 stand under the entrance to the steps to the rig floor of the Phillips No. 1 Car-wile "A". The deep wildcat is an indicated discovery in the Hunton and is located some four miles northeast of New Mobeetie. Seen in the picture are J. R. Childress, left, crew foreman; Freddy Newsom, floorman; and Charlie Gryder, driller. Childress lives in Canadian while the other two live in Wheeler. In the left foreground is a mock grave warning all who go on the rig to be careful.

From The ... Office Of ... The County Agent

By CHARLES D. JACKSON
County Agri. Agent

Wheeler County farmers and ranchers are reminded that Jack Frost will visit this area before long and there are certain precautions that should be taken where Johnsongrass and sorghum is raised for livestock forage. These two plants sometimes develop a high prussic acid content after frost and can cause a lot of trouble when grazed by livestock. Certain chemical changes occur in the frost wilted plants, and are responsible for the prussic acid development. The poison acts quickly and can kill an animal within a very short time after the damaged plant is eaten. A poisoned animal can be saved if a veterinarian can get to it quickly.

Frosted Johnsongrass and sorghum should not be graded until it is completely dry. If it is ready to cut for hay before a frost, it may be cut the first day after frost if care is taken to see that it is completely cured before baling.

Frost-wilted plants may also be used for silage. Generally enough prussic acid is lost in gaseous form during the ensiling process and as the silage is removed and fed to

make it safe for livestock. Animals should not be allowed to self-feed from a silo filled with frosted sudan or sorghum. If there is any doubt about the silage, it should be tested. This can be done by a veterinarian or by feeding the silage to one or two inferior animals.

During the past few days, questions have arisen concerning the use of Co-Ral sprays for screwworm control. Some confusion has resulted from label information regarding the cut-off date for cattle grub control with Co-Ral. The material should not be used after October 1 as a 0.25% spray, as recommended for grub control. However, the 0.25% spray, as recommended for screwworm control, can be used at any time.

As with most pesticides caution should be exercised when using Co-Ral for the control or prevention of screwworms. Reports have indicated that weak, stressed or anemic animals occasionally die following the spraying of Co-Ral. Cause of death usually cannot be attributed to a particular factor, and death may merely coincide with the application of the spray. In some instances, such as after the administration of anthelmintic drugs, animals have died merely as a result of handling and undue excitement. Any death following the use of a chemical should be thoroughly investigated,

including a complete post-mortem examination, to accurately determine the factors contributing to death. When using Co-Ral or other chemicals, following explicitly all directions, precautions and restrictions on the manufacturer's label.

34 Study Club Meets In C. C. Crowder Home

The 34 Study Club met Monday night, Oct. 28, 1963 in the home of Mrs. C. C. Crowder.

The meeting was called to order by the President, Mrs. Fred Wood. "Ask not what America will do for you but what together we can do for the freedom of men."

The business meeting was discussed and tended to.

The program was on International Affairs. Mrs. Isaac Carter discussed "Why U.S. in NATO". Mrs. Fred Wood discussed "One Minute to Midnight." The program closed with the Club Collect.

These present were: Mmes. Wm. B. Brooks, Isaac Carter, Loyd Davidson, Harvey Davis, Carl Levitt, Lemis Rogers, Osa Underwood, Fred Wood and the hostess, Mrs. C. C. Crowder.

Guests in the Albert Chapman home over the weekend were their children, Mr. and Mrs. Dossie Nickel and boys of Pamela and Mr. and Mrs. Jim Atherton and girls of Weatherford, Okla.

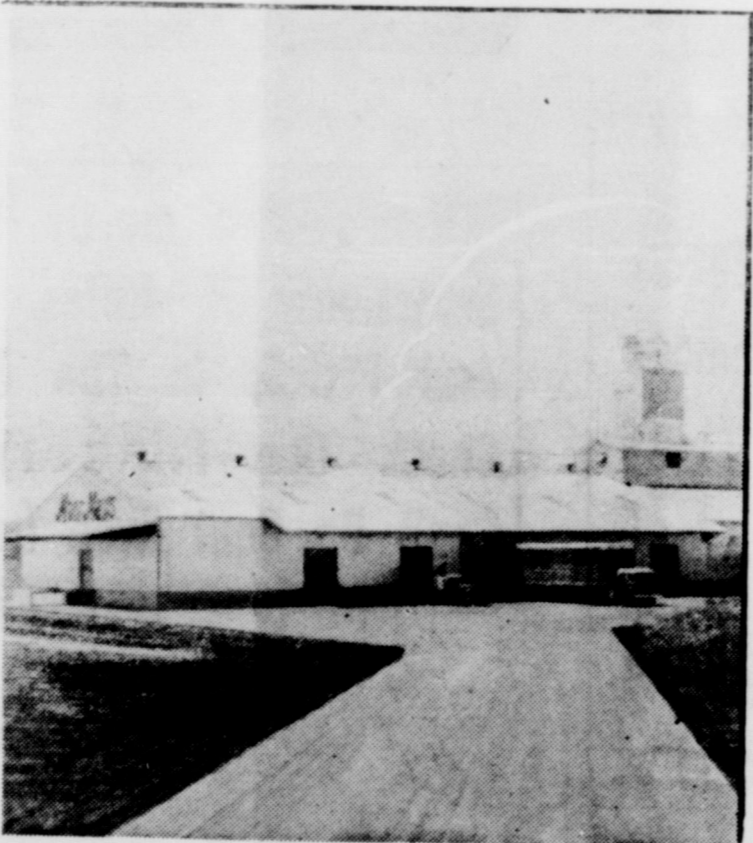
GENERAL TELEPHONE TOWNS ON THE MOVE

MoorMan

Manufacturing

comes to

Comanche



When a Texas town of about 4000 population gains a branch plant of one of the Nation's top manufacturers of livestock mineral and protein concentrates, it is a shining example of civic progress.

Because this is the heart of a vast market area, the Comanche Chamber of Commerce was able to secure a division of MoorMan Manufacturing Company. In its new plant, MoorMan makes a large number of products with other products warehoused

and distributed from the Comanche facility. This is another reason we say big things are happening in General Telephone towns.

These towns are on the move. Community improvements are under way, local resources are being developed, new businesses, new industries are coming in. If your town seeks additional information about expansion, perhaps we can help. Just write our Community Development Department, Box 1001, San Angelo, Texas.

GENERAL TELEPHONE

OF THE SOUTHWEST



David Dunn Is Singing In Lubbock Choir

Dave Dunn of Wheeler is singing in the second tenor section of the 52-voice A Cappella Chorus at Lubbock Christian College, Lubbock, Texas.

According to Director Wayne Hinds, Head of the Music Department at LCC, members of the chorus are chosen by auditions held at the first of each school year and are a cross section of the student body, which consists of 468 students from 205 towns in 17 states and two foreign countries.

Mr. and Mrs. Albert Chapman, Don and Von were in Amarillo Saturday on Business.

Speed to ... Nash Appliance and ... Save Money



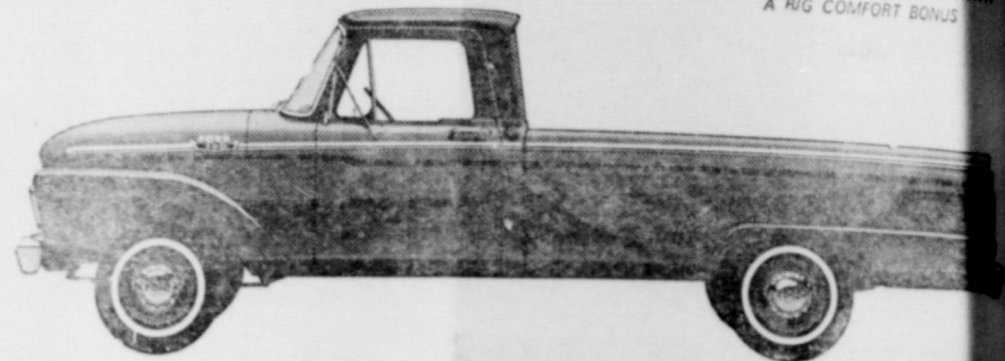
4 S289K1 ceeg e ETAQI EIT
FREE—12.30 Cup Coffee Maker
with purchase of Philco Electric
Range. See it on our display floor!
All Weather Insulator Boots \$7.50

- All Weather INSULATED BOOTS \$7.50
- 4-Buckle OVERSHOES \$4.95
- METAL TOOL BOX Reg. -1.50 98c
- 1—Used Electric RECORD PLAYER \$9.50
- 1 Used Frigidaire WASHER \$99.50
- 1—Used Maytag WASHER \$100
- 1—Used Maytag Clothes DRYER \$85.00

We have a complete line of guns and ammunition

NASH APPLIANCE & SUPPLY
YOU WILL BE PLEASED
Phone 3131 Wheeler

LOADED WITH "NEWS!"



SEE THEM, TRY THEM TODAY! SEE YOUR

'64 FORD PICKUPS

FORD DEALERS

Bring your Ford back home to your FORD DEALERSHIP for service!

VANPOOL-BURTON FORD

Phone 2311

Wheeler

TOMORROW AND SATURDAY ONLY!



New Nylons with Tufsyn

BUY 2 FOR ONLY \$16

size 6.70 x 15 black tube-type, plus tax and 2 recappable tires. Add \$4 if trade-ins are not recappable. Other sizes equally low priced. Buy Now!

3-T Nylon cord gives this tire greater strength than other economy-line tires. And Tufsyn, Goodyear's super-mileage rubber is the toughest auto tire rubber Goodyear has ever used.

NO MONEY DOWN WITH RECAPABLE TRADE-INS
FREE MOUNTING • EASY TERMS

NATION-WIDE ROAD HAZARD AND QUALITY GUARANTEE IN WRITING — All New Goodyear Auto Tires are Guaranteed Nation-Wide: 1. Against normal punctures. Limited to original owner for number of months specified. 2. Against any defects in workmanship and material without limit as to time or mileage. Goodyear tire dealers in U.S. or Canada will make adjustment "Goodyear price".

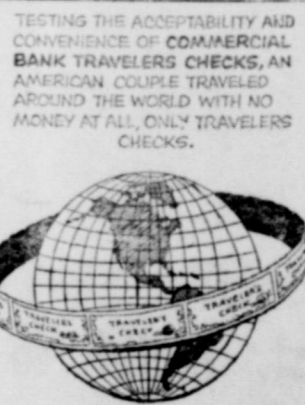
OWEN'S SERVICE STATION

Phone 4401

Wheeler, Texas

BANK NOTES by M...

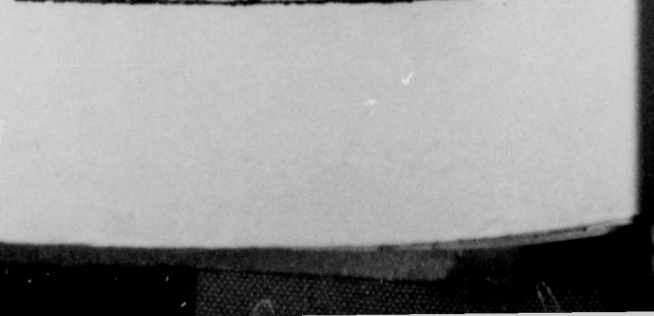
DID YOU KNOW...



BANK NOTES by M...

DID YOU KNOW...

IN SAN FRANCISCO A CONTRIBUTION TO "THE PARTY OF YOUR CHOICE" IN MAJORITY ELECTIONS IS WATCHED OVER BY A LOCAL BANK WHICH COLLECTS AND DISPENSES CAMPAIGN FUNDS FOR ALL BONA FIDE CANDIDATES AS A FREE PUBLIC SERVICE.



Williams of Shamrock year's theme "An Upward Reach" and her instructions were much enjoyed by all. She highly commended the officers in their work. Members from the Shamrock and Mobeetie Chapters were guests expressing the appreciation.

1963 CHEVROLET BISCAYNE
6-Cylinder with heater, Standard Transmission
\$795.00

1958 CHEVROLET BEL AIR
250 HP V-8 Engine, Power Glide Transmission, Radio and Heater
\$695.00

1955 INTERNATIONAL PICKUP
Speed & Cylinder, Good Cheap Transmission
\$285.00

1963 CHEVROLET PICKUPS
New Models. Priced to Sell! Each **\$125**

1963 CHEVROLET BEL AIR
6-Cylinder, Standard Transmission, Overdrive Radio and Heater, New Tires

1958 CHEVROLET PICKUP
Whee! Base, V-8 Engine, 3-Speed Transmission

1960 CHEVROLET PICKUP
Whee! Base, 4 Speed Transmission, Overdrive Engine

1958 CHEVROLET PICKUP
Whee! Base, 6-Cylinder Engine, 3-Speed Transmission

1963 Chevrolet Co.
Wheeler, Texas

Court Records

List of instruments filed in the office of the County Clerk and District Clerk of Wheeler County, Texas from October 18 through October 25, 1963.

October 18, 1963
D—First Natl Bk of Shamrock to Jack W. Young 9-14-63 SE 1/4 Sec 69 Blk 13
DT—Jack W. Young et ux to Federal Land Bk of Houston 9-30-63 314 ac N 1/2 Sec 20 Blk L & S 1/4 69 Blk 13
TDT—Nolita Jean Humphreys et al to Federal Land Bk of Houston 10-8-63 314 ac N 1/2 Sec 20 Blk L, J.M. Lindsey Survey
A of JUDG—Marion Stevens et al vs John Anthony Baggerman et ux 4-10-63
MML—C. A. Morgan to Bryce Clay 10-18-63 150x150' Sec 49 Blk 17

October 21, 1963
SUB OL—Southwestern Life Ins Co to Phillips Pet Co 9-12-63 Sec 1 D Tindale Su & S 1/2 SE 1/4 & S 1/2 N 1/2 SE 1/4 Sec 19 Blk J. M. Lindsay Survey
ROL—Gulf Oil Corp to C. V. McCraw et al 8-30-63 92594 ac Sec 44 Blk A-5
ROL—Gulf Oil Corp to Duane Glen Porter 9-30-63 Sec 46 Blk A-8
ROL—Gulf Oil Corp to James Marshall Porter 9-30-63 Sec 46 Blk A-8
ROL—Gulf Oil Corp to Duane Glen Porter 9-30-63 Sec 30 Blk A-9
ROL—Gulf Oil Corp to Duane Glen Porter Sec 47 Blk A-8
ROL—Gulf Oil Corp to James Marshall Porter 9-30-63 Sec 30 B A-8
ROL—Gulf Oil Corp to Duane Glen Porter 9-30-63 Sec 29 B A-9
ROL—Gulf Oil Corp to James Marshall Porter 9-30-63 Sec 29 B A-9
ROL—Gulf Oil Corp to E. M. Clay 8-30-63 NW 1/4 Sec 6 IRR Co Survey
TDT-TVL—Charles N. Staggs et ux to First Natl Bk in Big Springs 10-9-63 SW 1/4 Sec 63 B 17
AOL—James R. Fancher to Yale University 8-19-63 NW 1/4 S 28, 29, 33, 34 SE 1/4 29 B 17
AOL—Irving Mathews to Yale University 8-9-63 same as above
AOL—Harry E. Jones to Yale University 9-17-63 same as above
C.C. ORDER—Ethel R. Kelley of Ex Parte 9-27-63
RENTAL DIVISION ORDER—Ruth Horn et vir to Oren Horn et ux 6-3-63 SE 1/4 Sec 56 Blk A-5
AOL—John C. Vise et ux to Standard Oil Co of Texas 6-3-63 SE 1/4 Sec 56 Blk A-5
OL—Oren Horn et ux to John C. Vise 5-29-63 SE 1/4 Sec 56 Blk A-5
OL—Kathleen M. Blasdel to Standard Oil Co of Texas 10-3-63 70,489 ac Mobeetie, Blasdel Adls
CHG OF DEP—Grady W. Harris et ux to Kerr McGee Oil Industries Inc 7-1-63 W 1/2 Sec 66 A-5
CHG OF DEP—Stella Mae (Harris) Morris to Kerr McGee Oil Industries 7-2-63 W 1/2 Sec 66 A-5
DT—Bob Black et ux to City of Wheeler 10-19-63 NW 1/4

October 22, 1963
FED TAX LIEN—Leon Cowley to United States of America 10-21-63 RATEE & CHG OF DEP—David Venson Smith et ux to Ozark-Mahoning Co 10-17-63 E 1/2 72 M 1/2 1 ex N 120.9 acres
OL—Mrs. J. H. Jackson to Phillips Pet Co 10-3-63 98 ac Sec 15 Blk A-8
AFF—H. B. Hill et al to M. W. Burcham et ux 10-4-63
GCD—M. W. Burcham to J. P. Tidwell et ux 10-4-63 M 54.5 ac W 292.5 ac Sec 27 Blk 24
DT—Hershel Smith et al to American Natl Bk in McLean 10-8-36 M 54 a W 292.4 a 27 Blk 24
D—J. T. Tidwell et ux to Hershel Smith et al 10-8-63 M 54 a W 292.5 a 27 Blk 24
RDT—Federal Land Bk of Houston to T. C. Lott et ux 10-15-63 N 200 a E 1/2 Sec 2 Blk 3 B&B Sur

October 23, 1963
Ozark-Mahoning Co 8-7-63 185, 160 int SE 1/4 Sec 100 Blk A-5
ROY D—Don Earney et ux to Don Earney 8-7-63 1/4 int SE 1/4 Sec 100 Blk A-5
ROY D—Don Earney et ux to Fenelon Boesche 8-8-63 215/160 int SE 1/4 SE 1/4 Sec 100B 2-5
ROL D—Emil J. Seedig et ux to Don Earney 8-7-63 1/4 int SE 1/4 Sec 100 Blk A-5
ROY D—Don Earney et ux to Fenelon Boesche 8-8-63 215/160 int SE 1/4 SE 1/4 Sec 100 B A-5
ROY D—Dean Tipps et ux to int SEB Sec 100 Blk A-5
Don Earney 8-7-63 c int SE 1/4 Sec 100 Blk A-5
DOY D—Don Earney et ux to Ozark-Mahoning Co 8-7-63 185, 160 int SE 1/4 Sec 100 B A-5
ROY D—Don Earney et ux to Fenelon Boesche 8-8-63 183/140 int SE 1/4 SE 1/4 Sec 100 B A-5
ROY D—Don Earney et ux to Ozark-Mahoning Co 8-8-63 1617/140 int S140 a SW 1/4 81 A-5
ROY D—Oren Horn et ux to Thurman Horn 8-8-63 35/140 int S 140 a SW 1/4 81 A-5
ROY D—Thurman Horn et ux to Don Earney 8-8-63 35/140 int S140 a SW 1/4 81 A-5
D—Robert H. Mauldin et ux to G. H. Kyle et ux 10-17-63 N 1/2 Sec 36 Blk A-5
OL—Thomas C. Braly et al to Gulf Oil Corp 6-16-63 N 1/2 Sec 7 Blk A-2
EXT AGREE—H. F. Sowder et al to O. J. Walker 10-21-63 Lot 13 Blk 11 Shamrock PBA
AOL—Standard Oil Co of Texas to J. O. Clark Jr 10-10-63 E 1/2 Sec 53 Blk A-5
AOL—Pendleton Development Co to Walter Pendleton 10-23-63 NE 1/4 SE 1/4 & S 1/2 NE 1/4 & S 1/2 NW 1/4 NE 1/4 & E 1/2 NW 1/4 NW 1/4 & N 1/2 SE 1/4 SE 1/4 NW 1/4 5 Blk A-8

October 24, 1963
RDT—F. R. Mer St Bk Shamrock to William J. Shaffer et ux



TEXLINE IS NEXT ON THE LIST: Coach Burnett, center, is probably warning veteran quarterback Richard Wallace to watch Texline, which will test the Mustangs at Nicholson Field Friday night. They were stiff competition last year, and this year is no different. Assistant Coach Richard Gaines is pictured to the right.

NEWS & VIEWS

By J. Loyd Rice

Say they are sure messing up the road between here and Wheeler. Had to detour around big machinery last Friday when I drove over there. I was looking for Bill Overcast. Didn't find him. He may be looking for me now. I left a note on his pickup.

When they get that new road completed from here to Wheeler, it will make travel between the two towns easier. A better road should bind these two fine communities closer together. I am talking about Shamrock and Wheeler.

You know when I was a kid we never thought of taking a dog to the vet. In fact we did well to get the kids to the doctor. Hospitals were out of our reach. The doctor drove out in the country to see us, when we had to have his help.

We did a lot of doctoring at home, and if something happened to a dog, or he got sick, we doctor him. If he lived we were happy, if he died, we could not help it.

This afternoon, Monday, October 28 I was working on my horse pasture fence. We had the corner open as we worked on the corner post and its anchors (dead men). The shetlands came up, nosing around, looking for a hand out. The

cunning little warts would slob by and get out of the pasture if our backs were turned. I was trying to run them away when our little Buckles dog got kicked. He ran up to the heels of a three quarter shetland yarling. I yelled at him and he came back. I turned around to go to work and heard a lick and a yelling. As I looked little Buckles was lying on the ground and the colt walking around. The dog's left eye was hurt badly. Doctor Sarge of Shamrock, was out of town. You know we drove all the way to Elk City, Okla., to take the little pet to Dr. Hunt. The Dr. thinks he can save the dog's eye. We hope so.
How Times Have Changed.

Wed. Study Club Meet

The Wednesday Study Club met in the home of Mrs. O. W. Nowlin October 23rd for an Americanism Program. The American Creed and the Salute to the Flag were given in Urison.
The dangers of the Disarmament program which was capably discussed by Mrs. D. O. Beene was well received by members. A Discussion period followed.
Your Flag and my Flag, read with much patriotic fervor by Mrs. D. O. Beene, followed the discussion and Mrs. Cora Hyatt led the group in singing "America" and "America the Beautiful". Meeting closed with a patriotic prayer by Mrs. Max Wiley.
Delicious refreshments were served by the hostess to Mmes. D. O. Beene, T. M. Britt, R. H. Forrester, Lee Guthrie, Harold Hill, Cora Hyatt, M. McIlhany, Ray Miller, Shelby Pettit, George Porter, Nelson Porter, Frank Walker, N. D. Ware, Max Wiley, Harry Wofford, C. R. Weatherly, Frank Ross, J. W. Barr, and C. J. VanZandt.

Mrs. Jess Moore Hosts Progressive Study Club

The Progressive Study Club met Thursday evening, Oct. 24 in the home of Mrs. Jess Moore. The president, Mrs. Novella Vanpool, opened the club by repeating the club collect in unison. Business was taken care of and the program in Arts and Crafts was "As the Sun Colors Flowers, so does art color life."
"Art in everyday living was presented by Zinnie Bailey. Each member of the club brought something they had made and it was auctioned off. Mrs. Ocie Ford made a first class auctioneer for the project and her talent was the delight of all.
The Moore home was beautifully decorated in Fall Flowers. Following the program, refreshments were served to those present who were: Mmes. Ray Bailey, R. N. Dyer, Ebb Farmer, Ocie Ford, Paul Green, C. B. Kirk, Lewis Lancaster, Elmer Lowrie, J. C. Moore, Bill Owen, C. C. Robison, Lyndon Sims, and A. O. Vanpool.

Coffee Honors Two Guests Last Week.

A coffee was given for Mrs. John D. Foreman and Sharee in the home of her parents, Grady Dodd. Those attending were: Mrs. Claude Barker, Mrs. H. J. Finsterwald, Mrs. Doyd Standlee, Mrs. Albert Zybach, Mrs. F. A. Martin, Mrs. Venson Smith and Patricia, Mrs. Clarence Zybach, Mrs. Ernest Zybach, Mrs. Jim Irvin and Georgia, Mrs. John McCarroll, Mrs. Florence Dodd and Mrs. M. Barker, Mrs. John Francis, Mrs. Clark Reagan, Mrs. Tom Helton, Mrs. Jack Meek, Mrs. Roy Meadows, Mrs. Marvin Cox and Bill, Mrs. Milton Finsterwald, Mrs. Thurman Horn and Keith.

Mr. and Mrs. Albert Chapman Don and Von and grandson, Joe Nickells, visited in Pampa last Wednesday night with the Dossie Nickells. They all attended football game in which another grandson, Audie Lee Nickells plays quarterback, scoring 12 points. Their team won 18-12.

Perk up your home life with modern electric cooking ■ Electric cooking frees you for more pleasant things ■ electricity's automatic features make it so ■ Your Reddy Kilowatt dealer will be glad to give you a complete demonstration and, if you buy your electric range now and are a customer of Southwestern Public Service Company, you'll get a free 12 to 30 cup West Bend Party Perk ■ Better see your dealer this week ■

GIANT

"Halloween Prev.!!"

THURS. NITE OCT. 31
PREVIEW STARTS AT 11:15 SHARP
FIRST SHOW STARTS AT 7:30

SATURDAY ONLY

WAR HUNT

JOHN SAXON

PRE. SUN. MON.

FOR LOVE OR MONEY

KIRK DOUGLAS
MITZI GAYNOR GIG YOUNG

NO MORE WEDNESDAY - THURSDAY SHOWS
UNTIL FURTHER NOTICE

ROGUE THEATRE

EDIT RATING IS YOUR SOCIAL REPUTATION. TO GET IT A GOOD ONE YOU MUST BE IN ONE PLACE SO YOUR ER GETS TO KNOW YOU.

FOOTBALL

MUSTANGS

VS.

TEXLINE

7:30 P.M.

AT WHEELER

WHEELER MUSTANGS

No.	NAME	Wt.	Pos.	Cl.
80	Sims, Kent	175	E	Se
82	Moore, Jemie	150	E	Ju
33	Blevins, Roy	189	E	Fr
40	Hardcastle, Gary	139	E	Fr
81	Ely, Bobby	150	E	Se
70	Rogers, Neil	205	T	Se
71	Dorman, Dan	175	T	So
73	Adams, Jimmy	190	T	Ju
50	Jimmy Jamison	205	T-G	Ju
62	Farmer, Butch	160	G	So
60	Overcast, Billy	150	G	Ju
63	Sabbe, Joey	150	G	Se
61	Gene Watson	150	G-C	Ju
51	Terry McCasland	155	C	Ju
19	Wallace, Richard	155	QB	Ju
11	Hunter, Mendall	170	B	Se
14	Porter, Dunk	170	B	Ju
21	Snelgrooves, Daryl	155	B	Se
31	Vanpool, Terry	140	B	Ju
41	Vanpool, Bobby	135	B	Fr
26	Burks, Don	155	B	Ju
30	Hutchison, Johnny	150	B	Fr
12	Goad, Mike	130	QB	So
	David Jamison		QB	Fr.
	Tommy Wiley			Fr.

COACHES: Grady Burnett and Richard Gaines
MANAGERS: Mike Gandy, James Hubble,
and Jerry Tucker

NASH APPLIANCE

CLAY FOOD

WHEELER LUMBER CO.

CICERO SMITH LUMBER

SHAMROCK PRODUCTS

PRODUCTION CREDIT ASS'N

WHEELER GIN

RIVES-WHITENER AGENCY

WHEELER CO. PRODUCE

REID'S BARBER SHOP

WHEELER TV SYSTEM

FIRST NATIONAL BANK

WHEELER DRUG

OWEN TEXACO SERVICE

GARRISON SERVICE

ALBERT'S SHAMROCK SERV.

LEON'S 66 TRUCK STOP

KIRK FUNERAL HOME

CHAPMAN'S TRUCK STOP

JOHN C. VISE AGENCY

THE WHEELER TIMES

PUCKETT'S FOOD STORE

FRED WOOD'S BARBER SHOP

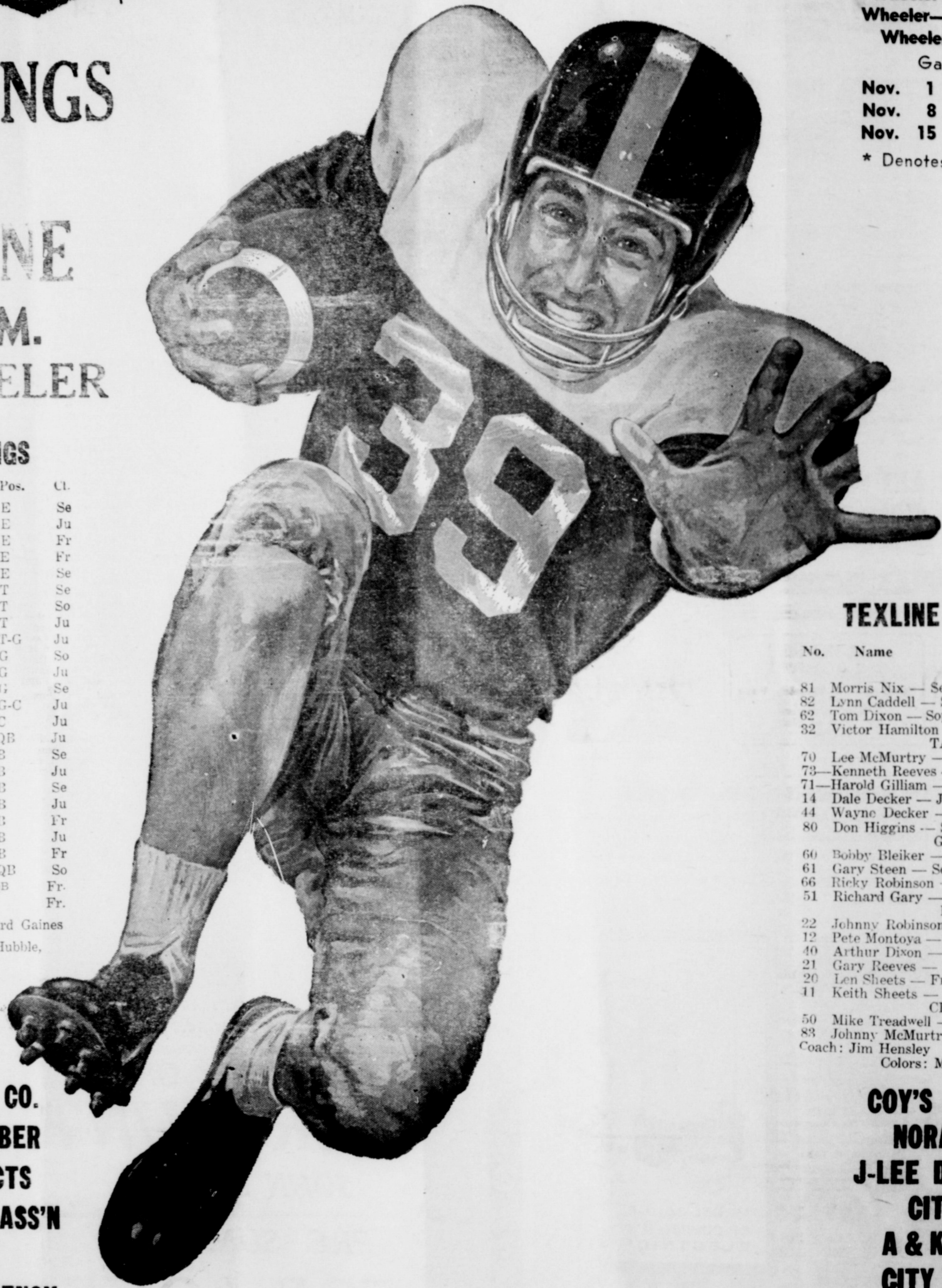
MUSTANG CAFE

VOGUE BEAUTY SHOP

VANPOOL-BURTON MOTOR

TOPPER'S WELDING

HIBLER IMPLEMENT CO.



MUSTANG SCHEDULE

- Wheeler—12
- Wheeler—28
- Wheeler—40
- Wheeler—52
- Wheeler—28
- Wheeler—32
- Wheeler—38

Game Time: 7:30

- Nov. 1 Texline*
- Nov. 8 Groom*
- Nov. 15 Claude*

* Denotes Conference Game

TEXLINE TORNADOES

No.	Name	Pos.	Cl.
81	Morris Nix	Senior	ENDS
82	Lynn Caddell	Senior	ENDS
62	Tom Dixon	Sophomore	ENDS
32	Victor Hamilton	Junior	ENDS
			TACKLES
70	Lee McMurtry	Senior	TACKLES
73	Kenneth Reeves	Sophomore	TACKLES
71	Harold Gilliam	Senior	TACKLES
14	Dale Decker	Junior	TACKLES
44	Wayne Decker	Fresh	TACKLES
80	Don Higgins	Senior	TACKLES
			GUARDS
60	Bobby Bleiker	Senior	GUARDS
61	Gary Steen	Sophomore	GUARDS
66	Ricky Robinson	Freshman	GUARDS
51	Richard Gary	Sophomore	GUARDS
			BACKS
22	Johnny Robinson	Senior	BACKS
12	Pete Montoya	Sophomore	BACKS
40	Arthur Dixon	Junior	BACKS
21	Gary Reeves	Freshman	BACKS
20	Len Sheets	Freshman	BACKS
11	Keith Sheets	Junior	BACKS
			CENTERS
50	Mike Treadwell	Freshman	CENTERS
83	Johnny McMurtry	Sophomore	CENTERS

Coach: Jim Hensley Manager—Earl
Colors: Maroon & White

COY'S GARAGE

NORA'S CAFE

J-LEE DEPT. STORE

CITY DRUG

A & K WELDING

CITY CLEANERS

GEO. & VENA RICHARDSON

WARE CHEVROLET

PERCY'S GARAGE

MCILHANY DRY GOODS

H & B APPLIANCE CENTER

WHEELER GAS COMPANY

LEE HDWE. & FURNITURE

SERVICE CLEANERS

H & H MILLING CO.

SPECK'S CAFE

THE WHEELER THURSDAY, O
THE E
DIREC
Whe
TEXAS P
number
The W
The W
C. Stas.
Bill Pearce
Joe Hawn.
NOW OPEN—
Ford's Beauty
Shop
Operat
Call 5431
TV - RADIO
& SERVICE
Call 2231
Radio & Refri
Service
Lafin, Owner
N. Robe
TOMETRIST
W. Kingmill
Texas
4-3333
ALL OF YOUR
Supply Need
WHEELER COUNTY
PRODUCE
Richardson
Me Write It
RICHARDSON
All Types Of
INSURANCE
For All Of Yo
WORK
TERRA
KEEP PLOWING
Topper
2861 Whele
4-4788 Shamro
GUARANTEED
TO GLASS
INSTALLATION
Only Repair
SON SERV
Wheeler, Texas
WORK
Cellars
Septic Tanks
Ditches
Call
ROGER
and SON
2265 Wht
Supply All You
for
READY MIX
CONCRETE
DESIGN MADE
BY AMAI
TESTING
Mix Concr
Plant
Mgr. &
N. Phone BL
HIB

