















**Oil**  
(from Page 4)  
08, potential 1167 MCF, TD 10850', PBD 10810'  
ROBERTS (RED DEER CREEK Granite Wash) Cimarex Energy Co. of Colorado, #24 Byrum '27', Sec. 27, B-1, H&GN, spud 6-7-08, drlg. compl 6-25-08, tested 8-5-08, potential 1627 MCF, TD 10650', PBD 10565'  
ROBERTS (RED DEER CREEK Granite Wash) Cimarex Energy Co. of Colorado, #28 Marian Osborne '26', Sec. 26, B-1, H&GN, spud 6-19-08, drlg. compl 7-7-08, tested 8-5-08, potential 3443 MCF, TD 10600', PBD 10517'  
ROBERTS (RED DEER CREEK Granite Wash) Cimarex

Energy Co. of Colorado, #30 Marian Osborne '26', Sec. 26, B-1, H&GN, spud 6-1-08, drlg. compl 6-15-08, tested 7-29-08, potential 13269 MCF, TD 10650', PBD 10558'  
WHEELER (WILDCAT) Apache Corp., #101 R. Moore, Sec. 1, L, J.M. Lindsey, spud 2-11-08, drlg. compl 3-21-08, tested 5-12-08, potential 11511 MCF, TD 15100', PBD 15014'  
WHEELER (WILDCAT) Plantation Opt. L.L.C., #2A Mole, Sec. 2, BS&F, spud 4-6-08, drlg. compl 6-2-08, tested 6-15-08, potential 850 MCF, TD 16643', PBD 16580'  
WHEELER (ALLISON-BRITT 12350') Chesapeake Operating, Inc., #5 Legg '6', Sec. 6, E, G.W. Jacobs, spud 3-26-08, drlg. compl

4-18-08, tested 7-15-08, potential 21948 MCF, potential 3140 MCF, TD 14800', PBD 7-15-08 —  
WHEELER (B&B Granite Wash) Chesapeake Operating, Inc., #7H Reed 'T', Thomas James Survey, spud 4-7-08, drlg. compl 5-14-08, tested 7-14-08, potential 83263 MCF, TD 14570', PBD 15426'  
WHEELER (BUFFALO WALLOW Granite Wash) Devon Energy Production Co., L.P., #1736 Hefley, Sec. 36, M-1, H&GN, spud 3-19-08, drlg. compl 4-9-08, tested 5-26-08, TD 13750', PBD 13700' —  
WHEELER (BUFFALO WALLOW Granite Wash) Samsco Lone Star, L.L.C., #25 Hefley '47', Sec. 47, M-1, H&GN, spud 5-12-08, drlg. compl 6-1-08, tested 8-

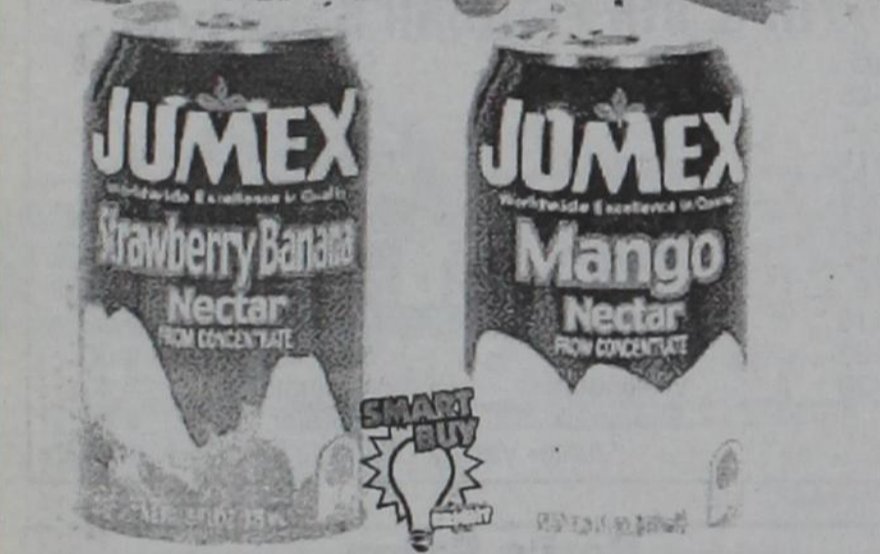
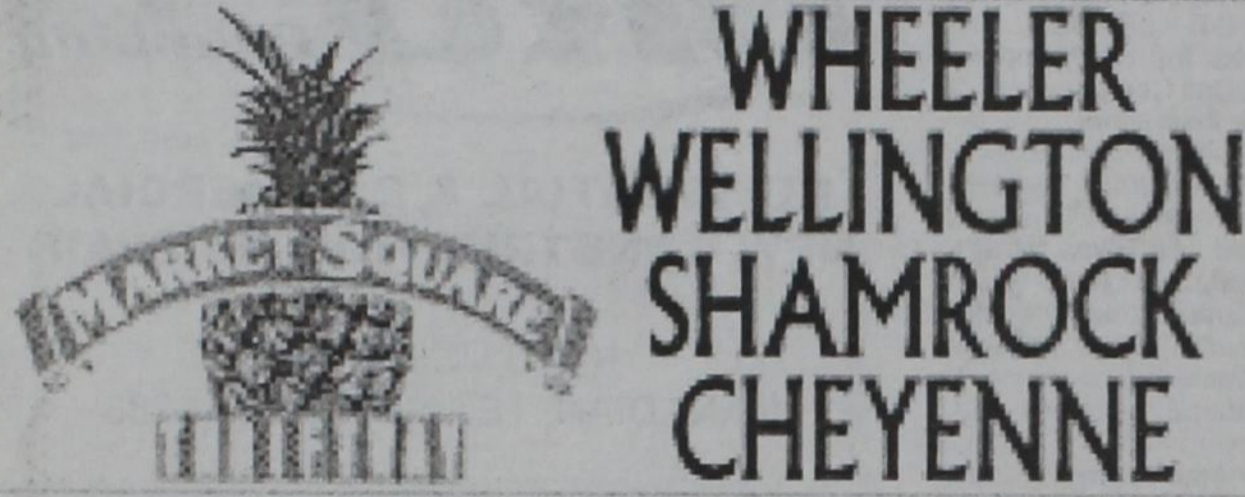
8-08, TD 13504', PBD 13480' —  
WHEELER (FRYE RANCH Consolidated) Linn Operating, Inc., #3 Puryear '28' Sec. 28, A-3, H&GN, spud 3-1-08, drlg. compl 3-31-08, tested 5-29-08, TD 15709', PBD 15556' —  
WHEELER (NORTH WHEELER Morrow) Questar E&P Co., #1 Methodist Home '2', Sec. 2, H&GN, spud 3-25-08, drlg. compl 5-21-08, tested 7-1-08, potential 6743 MCF, TD 15457', PBD 15328' —  
Hear the "Abundant Living Broadcast"  
**KPDR-FM, 90.5**  
WHEELER, TEXAS  
Saturdays: 9:00 a.m. to Noon

| Hospital Notes             |  |
|----------------------------|--|
| <b>Assisted Living:</b>    | 9/2 Learline Biter<br>Kenneth Stone<br>Bettie Warren |
| Jack Hefley                | 9/3 Fern Hillbrunner                                 |
| Jane Seitz                 | 9/6 Jayton Smith                                     |
| Tom Frye                   | 9/7 Norma Wagner<br>Beth Shelton                     |
| Iona May                   | <b>Dismissals</b>                                    |
| Julia Buckingham           | 8/25 Jamie Trimble Brogdin                           |
| <b>Admissions</b>          | 8/28 Peggy Chandler                                  |
| 8/25 Jamie Trimble Brogdin | 9/2 Peggy Chandler                                   |
| 8/27 Peggy Chandler        | 9/5 Learline Biter                                   |
| Billy J. Brown             | Fern Hillbrunner                                     |
| 9/1 Peggy Chandler         |  |

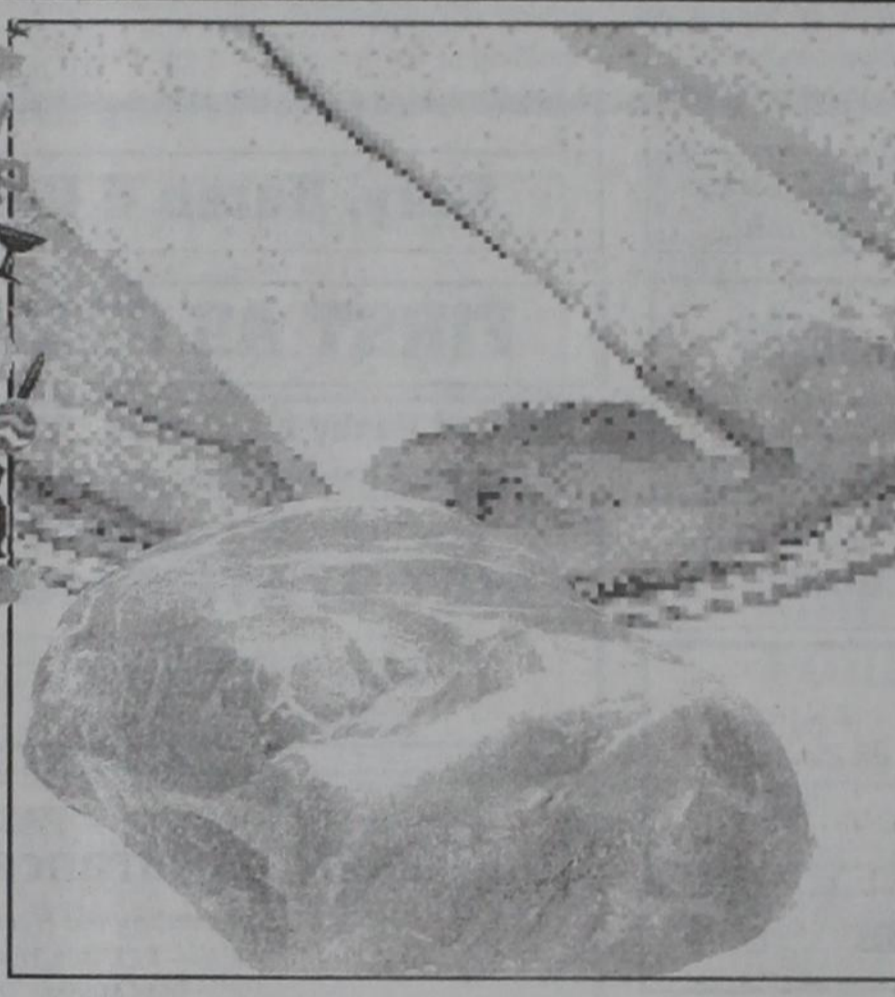
**Wheeler County's Exclusive source for Plains & Shurfine Products!**  
Your source for the freshest ★ PRODUCE ★ MEATS ★ DAIRY  
300 E. Oklahoma Ave. — Wheeler, Texas  
"Support Your Local Merchants" **806-826-5944**

PRICES GOOD  
WEDNESDAY SEPTEMBER 10 THRU  
TUESDAY SEPTEMBER 16, 2008

ASSORTED SIZES  
**Pampers Diapers**  
JUMBO PACK **\$8.99**



**Jumex Nectar**  
select varieties  
11.3 oz.  
**3 for \$1**



**Boston Butt Pork Roast**  
fresh  
**\$1.69**  
lb.



**Shurfine Pinto Beans**  
dried  
4 lb. bag



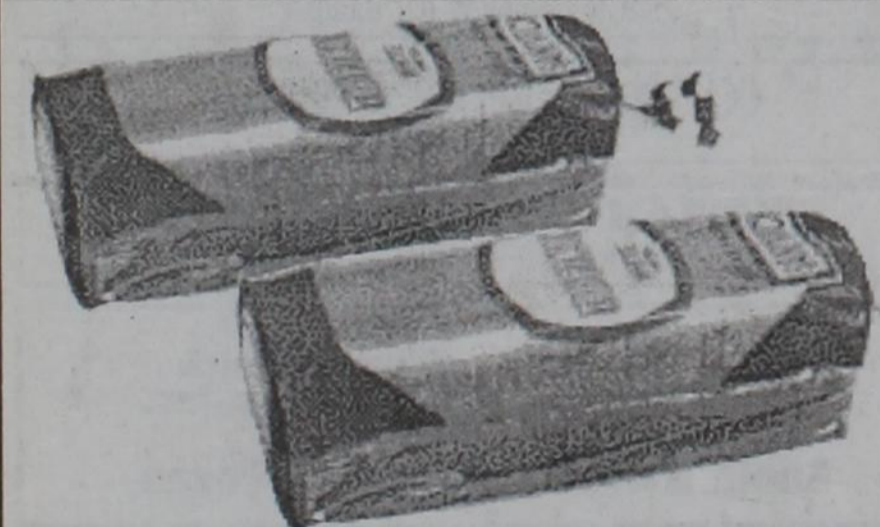
**Pilgrim's Pride Drumsticks or Thighs**  
family pack  
**99¢**  
lb.



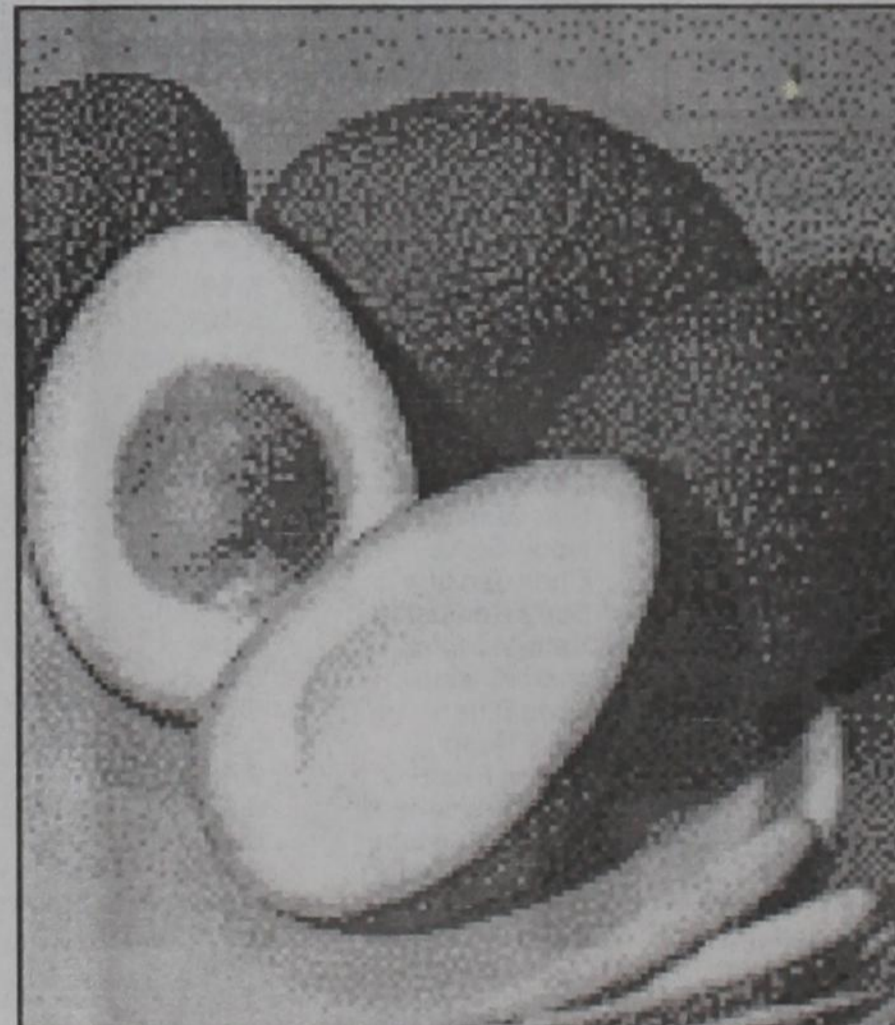
**Shur Saving Tomato Sauce**  
8 oz.  
**2 for \$3**



**Bottom Round Steak**  
family pack  
preferred trim boneless beef  
**\$2.79**  
lb.



**Thriftway White Sandwich Bread**  
24 oz.  
**99¢**



**Salad Size Avocados**  
**3 for \$1**



**Shurfine Ice Cream**  
select varieties  
half gallon rounds



**Hothouse Tomatoes large**  
**2 lbs. \$3**



**Soft'n Gentle Bathroom Tissue**  
12 rolls  
**\$2.99**



**Crisp Lettuce**  
**79¢ ea.**