

Final Performance At 2:00 P.M.



The three Marys, left to right: Sue Bakker, Myrna Dabney, and Frances Dreinhof.

### School Back On Schedule

Beginning Monday, March 18, all Eastland Public School students will return to their regular schedules. For several weeks the schools have operated on a schedule some thirty minutes later than normal due to the return of daylight saving time in the winter months.

Elementary students, kindergarten through sixth grade, will begin classes at 8:15 a.m. Kindergarten and grades one, two and three will dismiss at 2:30 p.m. Grades four, five and six will dismiss at 3:20 p.m.

High School and Junior High will begin classes at 8:00 a.m. and dismiss at 3:30 p.m. Junior High lunch period will be from 11:30 until 12:00 noon. Lunch period for High School begins at 12:00 noon and ends at 12:30 p.m.

# EASTLAND TELEGRAM

EASTLAND, TEXAS 76448: Today's CENTER for tomorrow's FUTURE!

Volume No. 105

Sunday, March 17, 1974

Number 22

## Lone Star Gas Co. To Locate In New S. Seaman Building

### 112 Families With Company In County

DALLAS -- In an effort to consolidate operations and bring more local authority to the Eastland County area, Lone Star Gas Co. has recently located its new District Distribution Office in Eastland. Building operations have already begun on the new \$40,000 one-story Lone Star district office building on the corner of Seaman and Plummer, which is expected to be completed in early May.

Lone Star local offices in Eastland, Cisco, Ranger and Gorman formerly reported to the Regional Office in Abilene. Under the new organization, these local office managers will report to Lone Star's new District Manager in Eastland, Mr. Wilbert Simmel. Simmel was promoted from local manager in Cisco when the reorganization took place several months ago. In another effort to better handle operations in the district, Lone Star has moved its Construction and Maintenance office to Eastland, with Mr. Jack Whitehead, who resides in Cisco, as Construction Supervisor.

Replacing Simmel as manager in Cisco is Mr. Wayne West, who was formerly the Lone Star manager in Hamlin. Mr. Doug Hill remains as manager in Ranger, as does Mr. Cliff Steddum in Gorman.

The new Lone Star building in Eastland will cover some 2,700 square feet. Construction was contracted with T.M. Fullen of Eastland, who will be the owner and has agreed to a 20 year lease with Lone Star. The building will be a metal structure, with a brick and glass entry front on Seaman, with attractive landscaping planned for the exterior trim.

According to Lone Star's Abilene Regional Manager, C.C. Elliott, "We felt that it was important to bring more local authority to the Eastland District of this region. The new district setup will enable our people to give more complete and faster service to our customers in this area."

Most of the natural gas sold in the Eastland County area by Lone Star is produced in West Texas. Supplies are supplemented by natural gas from the giant Lone Star West Texas Supply System, in far West Texas, (Pecos area). A 36" diameter pipeline spanning 400 miles from the Delaware Basin in West Texas. Supplies from this pipeline are tied into the Lone Star distribution pipelines at Gordon.

Heading up the Southwest Region Transmission Division are H.B. Dempsey, D.R. Martin, T.D. Crowder, F.D. Scott and C.L. Foster.

The Transmission Division technicians constantly monitor the natural gas flowing through pipelines in the region to assure the proper quality and pressure of gas for Lone Star customers.

There are 112 Lone Star families living and working in

the Eastland County area, including those working for two other Lone Star subsidiaries: Lone Star Producing Co. and LSG Transstexas Gas Company.

Total Lone Star payroll in the area exceeds \$1,013,000, annually.

Taxes and franchise fees paid by Lone Star and its subsidiaries in the Eastland County area to incorporated towns and taxing authorities

during 1973 were almost \$153,000, which directly benefited schools and hospitals in the communities served by Lone Star.

The Eastland District is directly responsible for Lone Star Gas Service to more than 6,800 customers in the Eastland County area.



Wayne West  
Manager Cisco



Doug Hill  
Manager Ranger



Cliff Steddum  
Manager Gorman

### Funeral Services Held Saturday For Mrs. Eva Davis

Mrs. J.H. (Eva) Davis, 97, longtime Abilene resident, died Thursday at 4:30 a.m. in her home in Eastland.

Services were held at 10 a.m. Saturday in the Bakker Funeral Chapel with Rev. J.E. Robertson of Abilene officiating.

Burial was in Cedar Hill Cemetery in Abilene.

She married Doc Davis October 31, 1895, in Ellis County. She was a resident of Abilene from 1916 to 1955, spending the last 12 years in Eastland County.

She was a member of the Primitive Baptist Church.

Survivors are one son, James (Harpo) Davis, Jr. of Dallas; two daughters, Mrs. H.Z. (Verda) Matthews of Eastland, and Mrs. D.L. (Naomi) Norton of Vernon; three grandchildren, and a number of nieces and nephews.

**FREYSLAG INSURANCE**  
WEATHER REPORT  
Considerable cloudiness with slight chance of thunderstorms

**FULLEN MOTOR CO.**  
Laugh A Day  
A flea circus may be a good act, but it takes termites to bring the house down.



W.L. Simmel  
District Manager Distribution



T.D. Crowder  
Manager Ranger Pipeline District Transmission



F.D. Scott  
Technical Services Transmission



Jack Whitehead  
Construction Supervisor



H. B. Dempsey  
Regional Manager Transmission



D.R. Martin  
District Manager Transmission



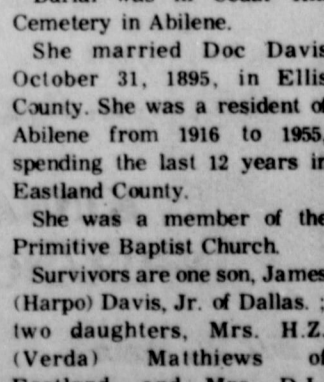
C.L. Foster  
District Supervisor Production Operations



Wayne West  
Manager Cisco



Doug Hill  
Manager Ranger



Cliff Steddum  
Manager Gorman

## Rising Star 4-H'er Takes Show Honors

There is a girl from Rising Star who has more than proven herself as a top competitor in livestock shows at the ripe old age of 13.

It was only two weeks ago when Theresa Scott showed a steer she had raised to grand champion honors at the Houston Livestock Show (a steer which was auctioned for a record \$40,000) - and at the Eastland County Junior Livestock Show Friday out of a large number of top hogs, the 4-H'er came through with her light weight crossbred barrow to capture grand champion market hog honors in the afternoon's swine competition.

Though a seasoned steer showlady - it was her first time to ever venture in to showing swine. Theresa said the 225 pound crossbred was purchased at Plainview and she brought him to the Big Country to finish him out. Theresa's brother, Neil, 11, had the reserve champion barrow in the crossbred competition with a heavy weight. Their parents are Mr. and Mrs. Payton Scott of Rising Star.

But Jack Jackson, a Gorman FFA member, was right behind Theresa for the second top honors showing his heavy weight Hampshire to reserve grand champion market hog honors. Jackson had also taken the champion black market hog championship with the animal in that division.

In other market hog competition, Kim Miller, an Eastland FFA'er, took a light weight Duroc arrow to champion red market hog distinction.

In the Breeding Swine Show, Bill Scott, Abilene High School vocational agriculture teacher, went to a young gilt of Pat Duran's for the champion black female gilt. Later, when all of the different champions of the various breeds were brought together before the veteran agriculture teacher's skeptical eye, Scott again turned to the Gorman FFA'er and his Hampshire for the grand champion female honors. Scotty Mauney, another Gorman FFA'er received Scott's approval for reserve grand champion honors with a champion white female crossbred which had topped her class. Duran's parents are Mr. and Mrs. Charles Duran of Gorman.

### DAIRY SHOW

Class 2, Guernseys - 1. Jerry Harris, Rising Star 4 - H.

Class 4, heifers just calved up to 3 years - 1. Kimberly Jeanne Harris, Rising Star 4 - H; 2. Jeanene Pharr, Cisco FFA; shown by Buster Pharr, Cisco FFA; 3. Konnie Harris, Rising Star 4 - H

Grand champion dairy cow - Kimberly Jeanne Harris, Guernsey.

Reserve grand champion dairy cow - Jeanene Pharr, Jersey.

### SWINE SHOW

Breeding Female Competition Predominantly Red

Gilts, 4 - 7 months old - 1. Tony Ripley, Gorman FFA; 2. Eddie White, Gorman FFA; 3. Jerry Taylor, Cisco FFA.

Gilts, 8 months prior to first litter - 1. Kenneth Butler, (Continued inside)

## To Hold Revival Services

### EVANGELIST



TRUMAN WALKER

Rev. Truman Walker, Pastor, Dallas Baptist Temple will be the Evangelist for Revival Services, March 17th thru 24th at the Calvary Baptist Church of Eastland. He has been Pastor of Dallas Baptist Temple for the past 12 years and during this time the church has experienced a strong growth with the emphasis on soul winning and Bible teaching.

Rev. Walker began his Ministry in 1946 and is no stranger to Eastland. He was ordained to the Ministry in 1950 during a Tent Revival on the property where the Telephone Building now stands. He pastored North Lamar Baptist in Eastland before moving to

### GUEST SINGER



J. C. WALKER

Hobbs, New Mexico, in 1952. Following a four year Pastorship of the Central Baptist Church in Hobbs, he served two years as Associate Pastor of Dallas Baptist Temple. He then pastored churches in Stephenville and Handley, Texas, before returning to Dallas as Pastor of the Dallas Baptist Temple in 1962.

J.C. Walker, Younger Brother of Rev. Truman Walker will be the guest singer and choir director for Revival Services at Calvary Baptist Church.

Rev. L.C. Williams, Pastor of Calvary Baptist extends a welcome for everyone to attend the Revival Services.

## TIDBITS

By HVO

HAPPY St. Patrick's Day you.

ONE MORE performance only of "Family Portrait" at Eastland Civic Theatre, at Bell Hurst Playhouse, at 2 p.m. Don't miss it - reservations at 629 - 1141.

Opening night audience Thursday was treated to a powerful play, and the giant cast (29) to a person, turned in excellent performances. It is a dramatization of "what could have happened" and as such, is to be enjoyed.

OUR TOWN will be host beginning Thursday to some 150 women attending the Heart of Texas District, Texas Federated Women's Clubs, convention when the State President, Mrs. Hughes will be among the honored guests.

A STRONG Jaycee Club is the goal of the Eastland Club as President Tom Holland and members extend special invitations to former and prospective members to attend an Old Timers Night Monday at 8 at the Jaycee Hall on the south side of the square. The Jaycees have a proud record in Eastland and deserve the support of one and all.

Scanning the history, you find:

That Eastland Jaycees:

1. Host the Texas State Peanut Queen Pageant;
2. Host the Nation's Earliest Bowl Game, the Peanut Bowl;
3. Have the Area's Largest Parade Before the Game;
4. Have a U.S. F Flag Service;
5. Have a Labor Day Rest Stop;
6. Helped Build the Airport Runway;
7. Repair and Buy Toys at Christmas for Needy Tots;
8. Sponsor Blood Drives;
9. Have Clean Up Days for City Parks;
10. And in Many Other Ways Serve the Citizens of Eastland.

Jaycees have a twin objective for the young man (age 18 to 36) of self-betterment and community betterment. If you would like to learn more about Jaycees please attend our "Old Timers Night", Monday, March 25, at 8:00 p.m. at Jaycee Hall on the south side of the square. It will be an informal coffee break and all interested parties are invited.

Which brings to mind John Ben Sheppard's famous article "What is a Jaycee?" Remember?

"A Jaycee is ignorant, and he has a distorted sense of values. He is so ignorant that he doesn't know some things are impossible, and he goes ahead and does them. He is so backward that he still believes in the old ideals that made his country great. He denies the proposition that it's not what you know, but whom you know, and thinks that success comes to the man who can deliver the goods. He is so mixed up that he thinks it's better to be right than to be rich, and that he can rise highest by staying on the level. He thinks it is better to be free than to be secure - better to run his own

government than to beg from it - and he looks for a helping hand at the end of his own arm.

"A Jaycee is so inexperienced that he can't solve a community problem by sitting in an air-conditioned office and drifting off into the cool stratosphere of abstract thought. He has to put his shoulder to the wheel and his hand in God's hand, and pray like a lost sinner while he totes the barges and lifts the bales.

continued inside

## Harold Freeman Announces For State Representative



HAROLD FREEMAN

Harold Freeman has formally announced that he is a candidate for State Representative for the Fifty-fourth District. This district is composed of Eastland, Jac, Montague, Palo Pinto and Stephens Counties.

Mr. Freeman is a resident of Forestburg, Montague County, where he graduated from high school in 1967. From there he attended Fort Worth Christian College on a basketball scholarship. He graduated from the junior college in 1969 where he ranked second in his class scholastically and was also Student Body President. In 1971 he received his B.A. from Midwestern University where he qualified to graduate magna cum laude. From there he attended Southern Methodist University Law School on a partial scholarship where he is presently in his third and final year. Mr. Freeman was selected as the 1972-73 Jackson, Walker, Winstead, Cantwell and Miller Scholarship Award winner at SMU Law School.

Mr. Freeman has outlined several program areas which he hopes to stress. Prominent among these are state programs to encourage rural development, programs to assist the large number of elderly in the district, a re-evaluation of the state taxing system and a reform to avoid the regressiveness of some of the taxes, and the repeal of Daylight Savings Time during the dead of winter.

It is the hope of Mr. Freeman to speak with every citizen in the District and to get their ideas on his program areas and also to listen to any comments or ideas in any other area. He feels that only through personal communication between the candidate and the people can there truly be "representative government."



# TELEGRAM classified

Phone  
629-1707

For Want Ads

## FOR SALE

AVON SUGGESTS - - - Swing into Spring as an Avon Representative. Great time to start earning money in your spare time. Sell Avon jewelry and daily needs (as well as our world-famous line of cosmetics), right in your own neighborhood. I'll train you. Call collect: (915) 597-2915 or write: Jeanette Chew, 1105 W. 12th, Brady, Texas, 76825. 1-22

FOR SALE - FOR better cleaning, to keep colors gleaming, use Blue Lustre carpet cleaner. Rent electric shampooer \$1. Coats Furniture. 1-22

FOR SALE - Choice Coastal Hay. \$1.50 bale. Call 758-2645. 1-25

FOR SALE - Good solid frame dwelling, garage, pecan trees, good location. Carl D. Gorr, Real Estate Brokerage. 1-17

FOR SALE - Dependable Argus C-3, 35mm camera in excellent condition. Ideal for family slides and photos. Complete with wide angle and telephoto lens. All in good protective leather cases. Total price \$75. See at the Eastland Telegram. 1-17

FOR SALE - 1970 Pontiac Catalina, 4 door, power steering, power brakes, radio, heater, air conditioner, clean. 1970 Maverick Standard shift, radio, heater, clean. Just overhauled. See at 1312 Spring Rd., Ranger. Call 647-3543. 1-209

MISC. FOR SALE - EXCELLENT, efficient and economical, that's Blue Lustre carpet and upholstery cleaner. Rent electric shampooer \$1. Perry Brothers. 1-22

FOR SALE - Almost new, remote control Zenith black and white TV with nice stand. Also nice piece' quilt tops, antique dresser. Call Mrs. W.F. Collins 653-2202. 1-28

HOUSEHOLD SALE - GE electrical appliances, late models like new; modern cycle washer and dryer; range with self cleaning oven; and self defrosting refrigerator. Redwood loungers chairs; combined umbrella table and chairs; love seat and round coffee table. Portable kitchen bar, complete window unit, baseboard heater, clothesline pens and misc. Lake Leon - call 629-1846 for directions. 1-23

FOR SALE - Raleigh 26" woman's bicycle. Perfect condition. \$45.00. 629-1077. 1-22

FOR SALE - 4 room house. Corner lot. Completely furnished. Copper tone appliances. Priced for quick sale. Shown by appointment only 416 E. Sadosa. Call 629-2241. 1-22

## FOR SALE

FOR SALE - A 20,000 BTU window refrigerated air conditioner, used 1 season, \$200. 7 piece Spanish dinette set \$60.00. Call 442-3205, Cisco. 1-22

SINGER SEWING MACHINE \$32.00. We also clean and adjust all makes and models. Call 629-2920, or 442-3283. 1-23

FOR SALE - Johnson's Portable buildings 8 ft. x 12 ft. and up, 2 x 4 framing with floor. Free delivery. Phone 734-5377, Gorman, Texas, Hiway 6 West. 1-17

FOR SALE - Ferguson 10-20 Tractor, 3 pt. hitch, disk harrow. 1-26

GI TRENCH JACKETS \$12.95 Rubber boots, rain suits, cold weather caps. CISCO ARMY SURPLUS 1201 AVE. D. 442-3620

FOR SALE - Firewood. \$25 per cord. Call 647-1832. 1-23

INTERIOR AND EXTERIOR PAINTING Brush Roll, Airless Spray. All Material 20 percent off. Call 442-9927, Cisco

FOR SALE - 1971, 12 x 50 mobile home. Never lived in. Total Electric Heat and Air. Stove and Refrigerator included. \$3,250. H&W Development Co. Call 629-1702. 1-17

FOR SALE - 1969 Half ton Chevrolet pickup. 6 cylinder standard with overdrive. Excellent mechanical condition. Also playground equipment. Maypole, Merry go round, etc. 653-2204. 1-24

FOR SALE - 9 acres Peanut Allotment, 640 pound yield at 15 cents per pound or lease at 2 cents per pound. C.F. Offield, Jr., 200 W. First, Breckenridge, Texas, 76024. Ph. 817-559-5277. 1-28

FOR SALE - 3 bedroom frame house and 5 acres. 7 miles south of Eastland on paved road. Good water well. \$9,200. Call 639-2571. 1-22

FOR SALE IN EASTLAND - Nice 3 bedroom, 1 bath, brick home. Fully carpeted and paneled. Central heating and air. Easy terms. Citizens Realty. 629-2404. 1-17

FOR SALE - 6 month old gas range by Brown. Call 629-2907. 1-22

LIVESTOCK 2 Young Brahmer Cross cows with calves. 1 Black, white faced 8 month springer heifer. Call Cisco 442-3017. 1-22

FOR SALE - 80 acres, near Carbon, sandy, fenced, partially wooded, minerals, electricity, owner financing. James T. Daniel, Realtor, Box 52, Cleburne, 76031. Call 817-645-4381, nights, 817-293-5694. 1-29

## Wanted

FUQUA HOMES accepting applications for qualified assembly line personnel. Apply Fuqua Homes, Hwy. 6, North, Eastland, Texas. 1-24

WANTED - Trailer space for 12 x 60 trailer. Need to have garden space. Call 629-2110. 1-23

WANTED - Steam presser. Apply in person at J&H Ind., 300 Pine St. Ranger. 1-17

WANTED - Experienced or inexperienced cutter and helper for night shift. Apply at Boss Manufacturing, Cisco, Texas 442-1110.

WANTED - Would like to buy some unimproved land in South Eastland County. Send details to P.O. Box 543, Rising Star.

LVN NEEDED - Good pay with chance for advancement. Apply to Mrs. Lou Nix, Hickman Nursing Home, Eastland. 1-17

WANTED - Car pool to Arleton. Leave Eastland 7:45 a.m. Tuesday and Thursday. Call Mrs. Green at 629-1986 for details. 1-17

WANTED - Welders needed. Apply at Fambro Gate & Panel Co., 501 East 18th, Cisco

HELP WANTED: Welders wanted for construction work at Comyn, Texas. Call W.T. Shell at 817-893-2034 during the day or 817-734-2225 at night. 1-17

WANTED - Licensed Vocational Nurse. Above Average Salary and Fringe Benefits. Excellent Working Conditions. Western Manor, Ranger, Texas, Tel. 647-3111.

## NOTICES

DONNA BROWN'S Three - D Bride Shop will be closed March 18 thru 26. Open again March 27.

WHITTENTON TV SERVICE will be in Eastland every Friday. Call Stephenville 965-3312 for your television repair. 1-26

OUTBOARD MOTOR REPAIR 27 Yrs. experience 304 N. Seaman, Eastland. Phone 629-1409. 1-26

**M. L. TERRELL REAL ESTATE**  
FARM BUREAU BLDG. - HIGHWAY 80 EAST  
PHONE 629-1725 NIGHTS 629-2443

BUSINESS PROPERTY Station with other business combined with 1/2 Acre of land in Eastland with good location. Terms.

- HOUSES
- 2 Bedroom House with 3 lots, Good terms.
  - 2 Bedroom House, good location, \$5,775.00
  - 2 Bedroom House carpeted and paneled \$7,875.00
  - 2 Small, 2 bedroom Houses, good investment property.
  - 3 Bedroom House with some appliances, \$11,500.
  - 3 Bedroom House with 2 lots, good location.
  - 2 Bedroom House with Beauty shop equipment.
  - 2 Bedroom 1 Bath and half. Buy equity take up loan.
  - 3 Bedroom Home 2 bath, central air and heat. Nice sized lot, built ins. Close to schools.
  - 3 Bedroom Home, 2 baths. Total Electric Home close to all schools. Built in oven range, dishwasher, disposal, central air and heat.

SMALL ACREAGE

- 2 Acres on I-20 with small house, city water, well
- 5 Acres and 3 bedroom home on pavement, some fruit trees and water well.
- 6 Acres and house. Some pecan trees.

FARMS AND RANCHES

- 60 Acres with house near Ranger.
- 80 Acres with 2 bedroom house and well.
- 80 Acres irrigated, 60 acres peanut allotment.
- 150 Acres access to city water, new fences, 130 acres of coastal.
- 160 Acres, 29 acres peanut allotment, house, city water and natural gas near Carbon.
- 224 Acres, 70 acres of coastal, other improved grasses, metal pens, good fences.
- 320 Acres near Carbon, 60 acres of coastal
- 328 Acres near Eastland, 2 bedroom home, city water, mile of Leon River.
- 864 Acres near Cross Plains, Deer and turkey. Terms can be arranged.

Have other Tracts Large and Small  
RODGER TERRELL Home Phone 629-2896  
M. L. TERRELL Home Phone 629-2443  
Eastland, Texas

Listings will be Appreciated.  
OFFICE PHONE 629-1725  
FARM BUREAU BLDG.  
HIWAY 80 EAST  
EASTLAND, TEXAS  
**REAL ESTATE**

## FOR RENT

FOR RENT - Close in. Old house. Needs cleaning up. \$30.00 per month. 602 S. Connellee. Look then call 817-261-0901 collect. Or write R. Smith, 2801 Olympia Drive, Arlington, Texas 76013. 1-17

FOR RENT - Furnished and unfurnished apartments. Close in. Bills paid. Call 629-8062. 1-23

FOR RENT: Modern, carpeted, air conditioned downtown office. Excellent location at 104 N. Lamar St. See M.H. Perry. 1-17

FOR RENT: Furnished, private 3 room cottages with carpets. Daily, weekly, or monthly. Pleasant Place Motel west edge of Eastland. Call 629-8878. 1-17

FOR RENT: Furnished mobile homes and mobile home spaces 653-2220. 1-17

FURNISHED OR UNFURNISHED APARTMENTS FOR RENT Royal Oaks Apartments 1304 Royal Lane, Cisco 442-3232 442-2709

FOR RENT - Nice, furnished apartment. Close in, bills paid, including cable and telephone. Call 629-1731, 629-2125, or 629-2772. 1-22

FOR RENT - Extra clean 2 bedroom house. Hardwood floors, lots of closet space. Location at 709 S. Halbryan. Rent to adults only. No pets. Ben Hamner, 1001 S. Seaman. 1-17

HILLSIDE APTS. Attractive 1 bedroom and efficiencies \$66.50 per mo. and up. All utilities pd. TV Cable service. Ask about our weekly rates. Call 629-1374 (monthly.)

## Eastland Co. T.V.

### TURN ON'S



605 W. Sadosa Ph. 629-2287

## NOTICES

NOTICE - Mattresses. Complete bedding made by Western Mattress Co., San Angelo. Best quality, low price, renovate or exchange new. Every other Wednesday. They're guaranteed. For home appointment, call Lois Mezell, 629-2703, leave name. 1-17

**CANCER INSURANCE UP TO \$100,000 M.H. Perry**  
104 N. Lamar  
629-1566

PAINTING Spray or Brush Acoustic Ceilings Free Estimates Call Harold Phippen 442-1585, Cisco, Texas

NOTICE: Lost gold money clip Thursday or Friday. Please contact James T. Wright. Reward offered. 629-2332 or 629-2468 or 629-1074.

LOST - White gold wedding ring with 6 small diamonds. Much sentimental value. Lost at Eastland Elementary School 2 weeks ago. Call 629-1856. 1-23

Singer Sewing Machine Repair Center Servicing all makes, New and Used for Sale. Complete line of parts. WRIGHT AUCTION COMPANY 106 S. Seaman 629-2468

"We handle anything but litterbugs" GOODE PEST CONTROL Phone 629-1179 after 3:00 310 N. Ammerman

Roaches, Ants, Termites, Moths, Spiders. ALL GUARANTEED

Money Available for Lease Purchases of All New Farm Equipment, Pickups, and Trucks. Call.

W.A. (Bill) Gattis 442-2099 Rt. 4, Cisco, Tex.

Senkel's Cabinet Shop 303 N. College Custom Built Cabinets Mobile Home Repair General Carpentry Work Call 629-1289 after 5

For Your Complete Auto Parts Service See Bill Green Or L.C. Swinson At S & G AUTO PARTS 115 Mulberry St. Day: 629-2831 Night: 629-2307 629-1831 Open 8-5:30 P.M. 6 Days A Week Can Provide Overnight Parts Service

**SOUTHLAND LIFE INSURANCE M. H. PERRY**  
104 N. Lamar  
629-1566  
629-1095

## SERVICES

OLDEN SHARP SHOP - Circle and hand saws of all kinds sharpened. Any kind of tool that needs sharpening, scissors, etc. All kinds of handles installed. Small electrical appliances repaired. Olden, 653-2224. 1-17

**GREGORY PLUMBING & HEATING**  
629-2844 Res. 639-2340  
Mercers Appliance Repair, Dishwashers, washers, dryers, stoves, disposals, and ovens. G.R. Mercer, Olden, Texas. Call 653-2473

Custom Plowing, Cutting & Baling Call Jack Johnson 647-3679

MILLER'S REMODELING Additional rooms, formica tops, painting, sheetrock, paneling, custom cabinets, acoustical ceilings, etc. Tel. 647-3005 in Ranger

ROOFING Doyle Squires, Contr. Olden, Texas. 653-2212. Call after 6 p.m.

WE BUILD aluminum screen windows. Contact Dewey Webb. 629-1186, 411 Pershing. 1-22

Do our companies give Bumper Discounts; Driver Training Credit; National Safety Council's Defensive Driving Course Credit; Second Car Credit; Dividends and Easy Payment Plans for all eligible policy holders? You bet! Come see us. Freyschlag Insurance Agency on North Side of Square.

JOHNSON'S GREENHOUSE Lake Leon east side. Call 647-3679. This is retail and wholesale tomatoes, peppers, flowers, etc. 1-25

IS YOUR CAR READY FOR THE RACE?  
At So-Lo Auto Parts 300 S. Seaman 629-2158 Open Sat. Till 4:00 Doug Lucas Mgr.

Apply Now Cooks & Waitresses Needed At Ramada Inn I-20 East Of Eastland Good Benefits Hospitalization Contact MGR Ramada Inn

If You Are 65 Or Over And Need Automobile Insurance, We Are Interested In You. Contact D.L. Kinnaird General Insurance 207 West Main 629-2544 Sunday, March 17, 1974

DONNA BROWN'S Three - D Bride Shop will be closed March 18 thru 26. Open again March 27. 1-25

IRRIGATION EQUIPMENT A complete line of irrigation equipment. Pumps, pipe, fittings, volume guns and circle systems. Let us help you with your irrigation needs. Largest supply in Central Texas. KIMMEL IRRIGATION SUPPLY INC. Hwy. 16 DeLeon, Texas 76411 Phone 817-893-6266 (Sunday's only to 1-62)

FABRIC SHOP 1208 W. Main 629-1001 Open 9-5 Closed Fridays Bolt Fabrics and Double Knit Remnants

Self Storage U-Lock-It U-Keep the Key Inquire at Taylor Center, 805 W. Main. 629-8074.

LOST: Reddish-brown male dog, with light colored flea collar. Answers to name, Bear. Reward. Call 629-2881 after 6 p.m. 1-29

BOWER ELECTRIC Residential, commercial and industrial wiring. New or old construction. House power specialists for 220 volt appliances. Eastland Dial 629-1003 1-30

**Kincaid's Real Estate Corner**  
LAND  
160 acres southwest of Rising Star, 106 acres of good coastal, 25 acres timber. Excellent grass place.  
100 acres, 60 coastal, 40 love grass, well established. Cross fenced with good fences. Carbon area.  
302 acres, irrigated farm, 83 ac. peanuts, coastal, good fences, all metal hay barn and small house, 260 cult, over 100 ac. new ground. Some terms or trade.  
750 acres, Interstate 20 frontage, excellent hunting, scenic, good fence and stock water, some terms.  
200 acres, Interstate 20 frontage, 15 ac. lake, commercial development potential, good hunting and good fences. Some terms available.  
314 acres, 60 acres, hwy. frontage, 3/4 mile river frontage, minerals. Owner financed or trade possible.  
30 acres south of Cisco, 20 ac. peanuts. Some underground water, new land, pavement frontage, pecans.  
80 acres, 5 miles west of Eastland, all native pasture, 2 bdrm. frame house, 1/4 minerals.  
60 acres Leon River bottom, approx. 1/2 in cult., hiway frontage, river frontage. Also business location on Highway. Don't miss this place.  
90 acres Cross Plains area, peanut allot., 80 ac. cult., city water available, on pavement, excellent location.  
204 acres, coastal, creek, good road frontage, excellent grass place, 2 wells 6 miles from Eastland, 1/4 minerals.  
230 acres, 70 acres peanuts, Coastal, Love grass, irrigation lake, good fences, irrigation equipment.  
HOUSES  
3 bdrm., bath and 1/2, almost new mobile home, 14 x 65, carpeted, central heat and air, washer - dryer, fully furnished.  
4 bdrm., 1 bath, living room, kitchen, washer - dryer hookup, close to all schools, cyclone fence. \$5300.00.  
3 bdrm., bath and 1/2, nice corner lot and location, central heat. \$13,700.00.  
3 bdrm., 1 bath, 100 x 40 lot, paneled. \$5,200.00.  
2 bdrm., 1 bath, washer - dryer hookup. Oaklawn \$8,500.00.  
2 story brick, 4 bdrm., 2 1/2 baths, central air and heat, garage apt. Nice place.  
4 bdrm., 2 bath, close to school, or can be used as 3 bdrm and 1 bdrm apt. \$11,500.00.  
3 bdrm. frame, 75 x 150 corner lot, newly remodeled, chain link fence. \$14,000.00.  
2 apt. duplex, living room, kitchen, 2 bdrm., close to town.  
3 bdrm., 1 bath, frame on leased lot, Lake Leon, \$7,500.00.  
In Ranger 3 bdrm., 1 1/2 baths, brick home, central heat, attached garage. \$15,600.00.  
10 rooms, 3 bdrm., 1 bath, fireplace, 4 1/2 extra lots, \$14,700.00.  
3 bdrm., 1 and 1/2 bath, 75 x 150 lot, 2 car garage. Some terms. \$11,000.00.  
**Robert M. Kincaid**  
Eddie Kincaid, Salesman Res. 629-1918 Eastland  
J.W. Elder, Salesman Res. 647-1321 Ranger  
100 So. Seaman Eastland, Tex. 629-1781 Res. 629-2721

**We Want To Insure Your Car.**  
We offer:  
1. Multiple Car Discounts  
2. Participation & Dividend Plans  
3. Bumper Discounts  
4. Defensive Driving Credits  
5. Driver Training Credit  
6. Easy Payment Plans  
Call us for all of your automobile insurance needs.  
**KINNAIRD INSURANCE AGENCY**  
207 W. Main Since 1919  
Don Kinnaird Eastland 629-2544



**Permanent Employment Opportunities**  
Apply In Person  
**House Of Webster Ceramics**

1208 S. Bassett Eastland, Texas

**Hospital Notes**

Patients in Ranger General Hospital Saturday morning were:

Bonnie Davis  
Minnie Beck  
Utile Ashcraft  
Margie Bishop

**ROOFING**  
Doyle Squires Contr. Olden, Texas. 653 - 2212. Call after 6 p.m. p-tf

Mary Featherston  
Aaron Anderson  
J.D. Barker  
Curtis Sharp  
Katie Smith  
R.L. Edwards  
Hiram Hooper  
Emma Quinn  
Max Ohr  
Charlotte Barnes  
Baby Girl Barnes  
Teresa Williams  
Baby Boy Williams  
Ann Eaton

Baby Girl Eaton  
Mary Dark  
Irene Visentine  
Roxie Knowlton

Patients in Eastland Memorial Hospital Saturday morning were:

Cordie Mask  
Effie Gilmore  
Lillie GGattis  
Ellen Horn  
Ruby Caffey  
John Hernandez  
George West  
Homer White  
Roy Mayfield  
Jeff Williams  
Bertha Richardson

Zula Collie  
Sallie Postert  
Velma Hunt  
Mary Carroll  
Mary Black  
Winona Davis  
Edith Norris  
Lula Baines  
Gail Graham  
H.C. Ables  
Michael Siebert  
Goldie Taylor  
Ada Jordan  
Vida Niver  
Von Siebert  
May Marshall  
Pauline Hill  
James Hughes  
William Gibbons

Ruth Carter  
Maurine Stephenson  
Clarence Ham  
Jerry Ables  
Lavada Lockhart  
Velma Brown  
Cecil Lindsey  
Ethel Rowch  
Inez Cornelius  
Coyle Carter  
Walter Denton  
John Armstrong  
Clarence Hastings  
Bess Jones  
Lola Henderson  
Ruby Ramsey  
Georgia McKellar  
Pam Garrett  
Kava Thompson

Sarah Schneider  
Lela Malone  
Fred Keith  
Robert Howell  
Alfonso Gaeta  
Deana Pelfrey  
Eugenia Chesshir  
Loyce Scott  
Baby Boy Lockhart  
Preston Deaton  
Grady Rogers  
Gay Kirk  
William McKinney  
Stella Thurman  
Ina Bean  
Millie Baggett

March 17, 1974

**J R B**

**SAVES YOU MOST SERVES YOU BEST**

BROWNWOOD, COLEMAN, CROSS PLAINS, ABILENE, RANGER, EASTLAND, CISCO, DE LEON, BRADY, WICHITA FALLS, LLANO, STAMFORD. NO SALES TO DEALERS

JRB MEATS ARE U.S. GOVERNMENT INSPECTED. IF FOR ANY REASON YOU ARE NOT SATISFIED, WE WILL CHEERFULLY RETURN YOUR MONEY.

Wilson Certified

**BACON**

1 lb. Carton

**\$1.19**

Tender Fed Beef Seven Bone

**CHUCK ROAST lb. 79¢**

Tender Fed Beef Full Cut

**ROUND STEAK lb. \$1.19**

Tender Fed Beef

**FAMILY STEAK lb. 99¢**

**GROUND MEAT Lean Ground Fresh Daily lb. 99¢**

**GROUND MEAT Extra Lean Ground Fresh Daily lb. \$1.29**

**TOP ROUND Tender Fed Beef Boneless lb. \$1.29**

**BOTTOM ROUND Tender Fed Beef Boneless Tenderized lb. \$1.29**

**CUTLET Tender Fed Beef Boneless Tenderized lb. \$1.29**

**ROAST ARM Tender Fed Beef Bone In lb. 99¢**

**ROAST RUMP Tender Fed Beef Bone In lb. \$1.19**

**ROAST RUMP Tender Fed Beef Boneless lb. \$1.29**

**FRANKS Wilson Certified 12 oz. cello pk 89¢**

**SIRLOIN STEAK Tender Fed Beef lb. \$1.29**

**T BONE STEAK Tender Fed Beef lb. \$1.29**

**BACON Wilson Crispbite Sliced Slab lb. 99¢**

**SAUSAGE Rath 1 lb. roll 79¢**

**Tender Fed Beef Boneless STEW MEAT lb. \$1.29**

**Tender Fed Beef ARM ROAST lb. 99¢**



Eastland, Ranger, Cisco

**We Honor Government Food Stamps**

We Reserve The Right To Limit Quantity  
**NO SALES TO DEALERS**

**We Have Savings! YOU Buy for Less!**

**Prices Good Monday - Saturday**

**GARDEN FRESH PRODUCE**

Golden Ripe

**BANANAS**

lb. 10¢

Calif. Navel

**ORANGES**

4 lbs. \$1.00

**TOMATOES**

lb. 29¢

Texas Red

**GRAPEFRUIT**

lb. 19¢

Yellow

**ONIONS**

19¢

Puss'n Boots Fish

**CAT FOOD 15 1/2 oz. 2 FOR 39¢**

Aunt Jemima

**PANCAKE SYRUP 24 oz. 69¢**

10¢ JRB SAVE 10¢ 584-DAL 10¢

Aunt Jemima

**COMPLETE PANCAKE MIX**

2 lb. 59¢

Hunt's

**TOMATO JUICE 6 300 Can \$1**

Parade

**PEANUT BUTTER 18 oz. 69¢**

Franco American

**SPAGHETTI 15 oz. 5/\$1.00**

American Beauty Long

**SPAGHETTI 10 oz. 33¢**

Maxwell House

**COFFEE 2 lb. Can \$1.57**

Maxwell House With With Coupon

**COFFEE 10 oz. \$1.44**

Nabisco Premium

**CRACKERS 1 lb. Box 45¢**

Gold Medal

**FLOUR**

25 lb. Bag

**\$4.39**

10¢ J.R.B. HURRY! COUPON 10¢

Aunt Jemima

**PANCAKE SYRUP**

24 oz.

3-23-74 **69¢** 10¢

**LIQUID DISHWASHER Giant Size 10¢ Off Label 52¢**

**OXYDOL DETERGENT King Size 25¢ Off Label \$1.30**

**ANTISEPTIC 20 oz. Reg. \$1.99 99¢**

**DEODORANT 9 oz. Reg. \$1.19 \$1.19**

**SHAVE LATHER Reg. \$1.18 79¢**

**TOOTH PASTE Reg. \$1.18 69¢**

**MOUTHWASH Reg. \$1.29 79¢**

**HAIR SPRAY 13 oz. Reg. \$2.35 \$1.49**

**DETERGENT ALL CONCENTRATE 10¢ Off Label 75¢**

**PRUNE JUICE 40 oz. 73¢**

Our Darling Whole Kernel CORN Golden 303 can 4/\$1.00  
Allens CUT GREEN BEANS 303 can 5/\$1.00  
Ranch Style BEANS 15 oz. 4/\$1.00  
Parade SPINACH 303 can 4/\$1.00  
Parade MIXED GREENS 303 can 5/\$1.00  
Parade PEAS 303 can 4/\$1.00  
Wagners BREAKFAST DRINKS 32 oz. Assorted flavors 3/\$1.00

**save 50¢ WITH THIS COUPON WHEN YOU BUY A 10 OZ. JAR OF INSTANT MAXWELL HOUSE COFFEE AT JRB 10 OZ. JAR ONLY \$1.44 WITH COUPON ONE COUPON PER FAMILY - OFFER EXPIRES 3-23-74**

60¢ **save 60¢ WITH THIS COUPON WHEN YOU BUY THE 2 LB. CAN OF MAXWELL HOUSE COFFEE AT JRB 2 LB. CAN ONLY \$1.57 WITH COUPON ONE COUPON PER FAMILY - OFFER EXPIRES 3-23-74**

60¢ **A-1 - 5 oz. STEAK SAUCE 45¢**  
**A-1 10 oz. STEAK SAUCE 79¢**  
**Giant Size 10¢ Off Label DETERGENT ALL CONCENTRATE 75¢**



NEW CAR REGISTRATIONS  
Harold G. S. Swift - Ford - Eastland  
Eastland  
J.C. Squyres - Chev. - Breck  
B.B. Alexander - B Buick - Eastland  
B.W. Robertson - Chev. - Eastland  
Gary L. Henderson - Chev. - Pkup - Dublin  
J.C. Noble - Ford - Cisco

**Custom Built Homes**  
Main Office Has Recently Moved To A New Location To Help You Even More With Your New Home Needs  
**H & W Development Co.**  
216 S. Seaman Eastland  
629-1702

Roy Huffmyer - Ford - Cisco  
Clara June Park - Chev. - Eastland  
91st DISTRICT COURT  
Ella Sue McBride vs. Charles David McBride - divorce  
Pioneer Farmers Cooperative vs. Robbie N. Aury - suit on debt  
Winfrey Feed and Peanut Inc. vs. Jerry Cogburn - suit on account  
Winfrey Feed and Peanut, Inc. vs. George Plummer - suit on account  
Robert W. Fox vs. Petco, Inc., a Tex. Corp. - suit for damages  
Tom B. Stark, doing business alone National Ins. Agcy. vs. Melvin G. Sandler - suit on acct' on insurance claim  
Paulo a Jo Black vs. Robert Lee Black - divorce  
MARRIAGE LICENSE  
Emery Lee Harris and Vivian Alleta Johnson  
INSTRUMENTS FILED  
COUNTY CLERK'S OFFICE  
Larry Armstrong and wife to 1st Fed S&L Ass'n - deed of trust  
Charlie Burnett to Fred McDaniel - warranty deed  
Charlie Burnett and wife to Otelia Hubbard - warranty deed  
Alva Burnett to Reuben Andrade - warranty deed  
Ewing Baker and wife to J.E. Conner - oil, gas, mineral lease  
Brazos Elec. Power Coop Inc. to U.S.A. - supplementary agreement  
F.J. Bimler and wife to Iona B. Hutton - deed of trust  
Ben H. Blizzard and wife to Eastland Nat'l Bk. - deed of trust  
Ben H. Blizzard and wife to Norman Richardson - deed of trust  
Cecil C. Collings and wife to Robert L. Kirk - warranty deed  
Wayne T. Castleberry and others to Larry Armstrong and wife - warranty deed  
William D. Culpepper and wife to L.Rozelle M. Uffelmann - deed of trust

Victor Cornelius and wife to Laverne C. Meeks - warranty deed  
Rube Cozart to Stephen J. Cozart and wife - warranty deed  
Dr. J.C. Comack and others to B.E. Hanson - warranty deed  
R.W. Drake and wife to Sidney W. Gill Jr. - oil, gas lease  
Eastland Nat'l Bank to Donald A. Jones and wife - release mechanics, materials lease  
First Nat'l Bk., Cisco to Benny Hagan - release deed of trust  
1st St. Bk., Ranger to 1st Nat'l Bk., Cisco - assign. deed of trust  
1st Fed S&L Ass'n to Elsie Glenn - release deed of trust  
Tom L. Fox to J.H. Greer and wife - release deed of trust, vendors lien  
1st St. Bk., Ranger to Walter Henry and wife - release deed of trust  
1st Nat'l Bk., Gordon to A.R. Jennings - release vendors lien  
1st St. Bk., Ranger to J.T. Carr and wife - release deed of trust  
Lois H. Glover to Petroleum Corp of Tex. - oil, gas, mineral lease  
Ronald E. Guess and wife to 1st St. Bk., Ranger - deed of trust  
Roy Holly and wife to William B. Kimbrough and wife - warranty deed  
L.P. Holder and wife to A.C. Scott - oil, gas lease  
Roy V. Hamilton to West Tex. Utilities Co. - esmt & right of way  
Iona B. Hutton to T.J. Bimler and wife - warranty deed  
B.E. Hanson to Tex. Elec. Serv. Co. - warranty deed  
B.E. Hanson to Roy H. Simmons and wife - warranty deed  
Vernon A. Harrison and wife to Billy J. Moore - oil, gas lease

**Machine Operators Needed**

No Experience Needed

Apply In Person

**Vassarette**

202 N. College Eastland, Texas

Equal Opportunity Employer



we welcome  
FOOD STAMP  
SHOPPERS

<p><b>Dog Food</b> Favorite, Thrifty! Safeway Big Buy! 15.5-oz. Can <b>11¢</b></p>	<p><b>Soft Drinks</b> Cragmont, 10-oz. Bottles (Plus Deposit) Safeway Special! 6-Pak. Ctn. <b>38¢</b></p>
<p><b>Waffles</b> Bel-air, Frozen. Safeway Big Buy! 5-oz. Pkg. <b>14¢</b></p>	<p><b>Alcohol</b> Rubbing, Isopropyl, Clear! Safeway Big Buy! 16-oz. Bottle <b>17¢</b></p>
<p><b>Meat Pies</b> Spare Time (Except Beef) Safeway Big Buy! 6-oz. Pkg. <b>19¢</b></p>	<p><b>Cake Mixes</b> Py-O-My, Easy! Safeway Big Buy! Reg. Pkg. <b>15¢</b></p>

**YOU KNOW...SAFEWAY MAKES SENSE!**

I've shopped around, comparing things like prices, quality and service. Safeway has Low Everyday Prices, plus Specials throughout the store. I trust Safeway's quality, from the Garden Fresh Fruits and Vegetables to the Fine Meats that are Guaranteed to please! I get all of this at Safeway Plus Excellent Service. I guess that's why Safeway is my People-to-People Store.

**SAFEWAY...**  
YOUR People-to-People STORE!

**The Light Touch**

By Clint Bray

Safeway Meats Are Guaranteed to Please!

**FRESH FRYERS 39¢**  
USDA Inspected Grade 'A' (Cut-up Fryers 47¢) Whole -Lb.

**Beef Short Ribs 49¢**  
USDA Choice Grade Heavy Beef -Lb.

**Rib Steaks \$1.29**  
USDA Choice Grade Heavy Beef -Lb.



Finest Quality Meats at Safeway!

**Armour Bacon \$1.19**  
Armour Star, Mira-Cure, 1-Lb. Pkg.

**Rath Bacon \$1.19**  
Hickory Smoked, Sliced, 1-Lb. Pkg.

**Eckrich Sausage \$1.49**  
Smoked, Heat & Serve!, 1-Lb.

**Wieners 69¢**  
Safeway, Plump & Tender! (Armour Hot Dogs 75¢) 12-oz. Pkg.

**Chipped Meats 45¢**  
Safeway, Thin Sliced, 3-oz. Pkg.

**Lunch Meat 48¢**  
Safeway, Sliced, Beef Bologna, Microwave & Cheese, Spiced, Olive, Pickle-Pimento, 6-oz. Pkg.

**Sliced Salami 55¢**  
Safeway, Cooked, 6-oz. Pkg.

**Sliced Bologna 89¢**  
Safeway, Large Size, 12-oz. Pkg.

**Pinwheel Pack 79¢**  
4 Thick, 4 Drumsticks, From USDA Insp. Grade 'A' Fryers, -Lb.

**Split Breasts 89¢**  
With Ribs, from USDA Insp. Grade 'A' Fryers, -Lb.

**Lean Ground Beef \$1.19**  
Freshly Ground!, -Lb.

**Top Sirloin Steak \$1.89**  
Boneless, USDA Choice Grade Heavy Beef, -Lb.

**Beef Patties 99¢**  
Pre-Cooked, Breaded, -Lb.

**Fish Sticks 89¢**  
Pre-Cooked, Large Size, -Lb.

**Turbot Fillets 89¢**  
Greenland, Fresh-Frozen, -Lb.

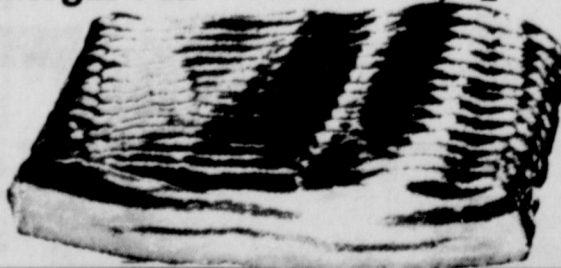
**Hot Links 85¢**  
Mexican Sausage, -Lb.

**Beef Wieners \$1.05**  
Safeway, Ready to Eat!, 1-Lb. Pkg.

**Smorgas Pak \$1.29**  
Eckrich, Beef, 12-oz. Pkg.

Breakfast Favorite!

**Sliced Bacon 89¢**  
Slab, Rindless, Delicious! (Safeway Bacon \$1.09) -Lb.



Everyday Low Prices!

**Corn Flakes 31¢**  
Safeway, Favorite! 12-oz. Box

**Cleanser 15¢**  
White Magic, Disinfects! 14-oz. Can

**Table Salt 10¢**  
\*Plain or \*Iodized Crown Colony 26-oz. Box

**WEXFORD CRYSTAL 39¢**  
FOURTH WEEK STEMMED WINE

**TOPAZ Hand-Painted STONEWARE 49¢**  
WEEKLY FEATURE SAUCER WITH EACH \$3.00 PURCHASE

**Oranges 17¢**  
Sunkist Navel, California, Sweet & Juicy! Great Snacks! -Lb.

**Tomatoes 25¢**  
Zesty Flavor! 10-oz. Pkg.

**Avocados 3 for \$1**  
California, Fuerte, Large Size, Each

**Garden Fresh Fruits & Vegetables!**

**Red Delicious 25¢**  
Apples, Extra Fancy, Washington, -Lb.

**D'Anjou Pears 39¢**  
Washington, Extra Fancy, -Lb.

**Pineapples 59¢**  
Cayenne Variety, -Each

**Lemon Juice 39¢**  
Sicilia, Ready to Use!, 4-oz. Plastic

**Orange Juice 95¢**  
Safeway, Pure, 1/2-Gal. Decan.

**Cucumbers 19¢**  
Firm & Crisp!, -Each

**Bell Peppers 2 for 29¢**  
For Stuffing!

**Green Onions 2 for 29¢**  
Long Shank, Bunch

**Crisp Radishes 2 for 29¢**  
Adds Color to Salads!

**Red Lettuce 29¢**  
New Crop, Tender!, -Each

Inflation has changed things. Now one can live as cheaply as two used to.

Quickest way to get a child interested in doing something with you is to start doing something you really want to do by yourself.

Teenager, after bumping into another car: "Why didn't you signal that you were parked?"

Our friend is so popular that when he went to Yellowstone National Park, a bear took his picture.

Arguing with your kids is a gamble. You never know how soon you'll lose.

Here's a sure thing: a good deal on a great new wardrobe at BRAY'S in Eastland and Ranger.

**PUBLIC AUCTION**  
Large Saddle Co. must reduce inventory. We have \$29,500 worth of merchandise to be sold to high bidder.

We have 52 name brand Western and English Saddles. Some saddles guaranteed for life, 5 years, and 1 year.

Other articles to be sold are: Sunbeam clippers, ear clippers, saddle pads, winter blankets, bits, spurs, bridles, halters, leads, chaps. Many more items too numerous to mention.

**SUNDAY, MARCH 24**  
at 1 p.m.  
Belvania Club  
Hwy. 180 E. Breckenridge.  
Checks accepted with proper ID  
Auctioneer:  
Weaver Callaway

<p>Imperial <b>Margarine</b> Stick, Light Flavor! 1-Lb. Pkg. <b>59¢</b></p>	<p>Promise <b>Margarine</b> Spreads Easily! 2 1/2-Lb. Tubs <b>69¢</b></p>	<p>Schick <b>Razor Blades</b> Super Chromium Double Edge 5-Ct. Pkg. <b>89¢</b></p>	<p>Pillsbury Flour *Regular 5-Lb. Bag <b>\$1.09</b> *Unbleached</p> <p>Taster's Choice Freeze Dried Coffee *4-oz. Jar <b>\$1.35</b> } *8-oz. Jar <b>\$2.43</b></p>
---	---	--	--

Price Effective Mon., Tues. & Wed., March 18, 19 & 20, in EASTLAND. No Sales to Dealers.

**SAFEWAY**

© Copyright 1974, Safeway Stores, Incorporated.

**SAVE EVERY DAY AT SAFEWAY**



**POSITION OPEN**

GENERAL OFFICE WORK

— Call or Apply —

**VICTOR CORNELIUS MENUS**

Eastland, Texas — Phone 629-2626

Sunday, March 17, 1974

**Can This Be A Good Time To Buy A Home**

AUSTIN -- Inflation, recessed economy, bear market, high interest rates. Can this be the best time to buy a home?

Surprisingly, most experts say yes. Waiting for interest rates to come down probably will cost you more in the long run as labor, building materials, and real estate continue to become more expensive. The price of homes is expected to head steadily upward as the present housing shortage grows more serious.

Congress has estimated that 26 million additional housing units will be needed nationally by 1980. Efforts to meet this goal are lagging. And housing will have to be provided for 100 million more Americans over the next 30 years -- in addition to replacing approximately half of all existing residences.

Statistics like these leave little doubt that the time to buy a home is now -- as soon as you can afford it. Real Estate authorities indicate that a home generally is an excellent long-range investment, even with today's rising costs. The purchase of a home also is the largest investment most people ever make, so it's wise to buy carefully.

Prudent purchasing begins with becoming well informed on home buying before you enter a real estate transaction. Preparations should include consideration of all factors affecting your investment, and of steps to safeguard your financial interest from possible

land title problems. The Texas Land Title Association recommends that thought be given the following points as you contemplate home ownership.

When you engage in a real estate transaction, make sure your interests as a buyer are well represented.

As you consider the purchase of a particular home, check its location for nearness to facilities that are important to you -- such as shopping, schools, public transportation, etc. Also, look around the neighborhood for signs of healthy growth -- or deterioration. And check at city hall and - or the court house regarding the outlook for the area in terms of planning and zoning.

Investigate financing that's available and obtain the latest information -- whether you are obtaining a conventional, FHA, or VA loan. Calculate the impact secondary financing will have on your budget if this type of assistance is needed. Find out about closing costs you will need to pay for items including services to protect purchaser and lender. Review the amount you will need for down payment, and for monthly outlays to cover principal, interest, taxes, utilities, hazard insurance, and maintenance.

Ask about an up-to-date land title search of separately located public records for possible defects that could threaten the security of your real estate investment. Examples are unpaid taxes and special assessments, unsatisfied mortgages, and pending lawsuits. There are many other possibilities. Any defects of record that exist should be brought to your attention so they can be cleared up before your purchase is completed.

Look into obtaining owner's title insurance, which offers financial protection from loss due to defects in the title as insured, including those hidden defects even the most thorough search won't reveal. Some examples of these hidden hazards are forged deed that transfers no title, a claim by a missing heir, mistakes in the records, and others. For a one-time premium, owner's title insurance pays for defending against an attack on a title as insured and pays claims proved to be valid. Remember that lender's title insurance, sometimes called mortgagee's policies, required in many transactions, is protection for

the lender only. If desired, you simultaneously can obtain owners title insurance to safeguard you, the buyer -- usually for a small additional premium.

Becoming well informed on home buying -- before you enter a real estate deal -- will help you in making important decisions and in protecting your interests. As a result, chances will improve for your enjoyment of home ownership with peace of mind.

For free literature on things you need to know in buying a home, write to the Texas Land Title Association, 220 West 7th Street, Austin, Texas 78701.

**TFB Says Agri Exports Essential**

WACO -- The Texas Farm Bureau is urging President Nixon and Congress to resist any efforts to place restrictions on farm exports.

A resolution adopted by the TFB Board of Directors this week and sent to the President and members of the Texas delegation in Congress states that "agricultural exports are absolutely essential to farmers and ranchers and are vitally important to the nation as a whole."

The resolution said that "embargoes placed on any commodities are invitations to economic disaster."

Text of the resolution continues:

"Loss of our farm export market would force us to cut production by one-fifth. Thousands of rural people would flock to cities. Workers in industries related to agriculture would flood the labor market looking for jobs.

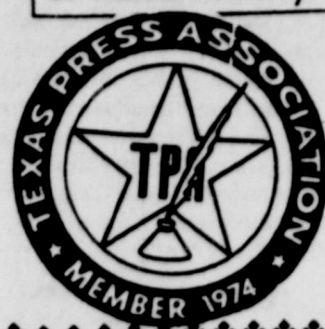
"On the other hand, if we can maintain our strong export market all segments of the economy will reap the benefits.

"Full production, which is dependent upon exports, enables us to cut per unit costs. This is reflected in lower prices in supermarkets and clothing stores. The consumer is the ultimate and major beneficiary. Full production in agriculture assures jobs in businesses related to agriculture. Nearly 40 percent of our work force is involved directly or indirectly in agriculture.

"Farm exports are a principal source of this Nation's foreign exchange, and have helped give us a favorable balance of trade for the first time since 1970.

"Because of the importance of our overseas markets, the Texas Farm Bureau strongly urges that the President and Congress resist any efforts to restrict farm exports."

Register before April 4 to be a voter May 4.



**Fountains of DeLeon**  
 (Licensee) For the Joy of a Beautiful Complexion For Whatever Your Complexion  
 Non-Surgical! Problem May Be "Look Younger as You Grow Older"  
 Free Private Consultations  
 401 Navarro (Hwy. 66 161)  
 Call DeLeon  
 393 6377 DeLeon, Texas

**Eastland's Newest & Finest Nursing Care Center Valley View & Eastland Manor**



**Golden Years Can Be Best Time of Life**



We do everything to make them so. You'll find every minute can be engaged in relaxing or exhilarating activities. All under the supervision of a trained staff. (24 Hour Nursing Care Under Supervision Of R.N. At E.M.)

For professional care in a luxury atmosphere, unsurpassed by any other nursing home

**VALLEY VIEW LODGE**

700 S. Ostrom 629-1779  
 Shirley Frost, Adm.

**EASTLAND MANOR**

New Offers You

24 Hour Nursing Care Supervised by a Registered Nurse at Eastland Manor Call or Come By Today and Let Our Friendly Staff Show You Around

1405 W. Commerce 629-2686  
 Eugene Frost, Adm.

**Roofing**  
 New & Repair All Buildings & Houses Estimates Made.  
**Tri-Cities Roofing**  
 Call Noble Squiers  
 629-2370

**Rita's Fashion Fabrics**  
 1-20 E Next To Ramada Inn Eastland  
**New Assortment Of Co-ordinated Polyester Denims**  
**Polyester Dotted-Swiss Knits**



Discontinued upholstery patterns. Nylons and velvets. \$3.50 to \$5.90 per yard. Remnants 50c yard and up. Eddie's Upholstery Shop, 205 N. Dixie, 629-1304. 1-28

**FOR COASTAL SPRIGGING**  
 Call **H.L. Perrin, Jr.**  
 Tel. 647-1028  
 In Ranger

**Roy Lane Jr. can help.**  
 He'll listen to your questions about insurance. He'll understand your needs and show you how Allstate's low rates may help. **Allstate**  
 See or phone **SEARS**  
**Roy Lane Jr.**  
 Each Thursday Evening 12 Noon to 5:30 442 - 2601 or Eastland Resident's Call 629 - 1758

You Are Cordially Invited To Attend The Third Annual JAN HERRING ART EXHIBIT On Display In The Lobby And Conference Room Of The EASTLAND NATIONAL BANK During Banking Hours March 11, 1974 - March 22, 1974

**Save on Long Distance by choosing when and how you call.**

For example, a three-minute call to Seattle costs:

<b>\$3.10</b>	<b>\$1.70</b>	<b>\$1.35</b>
A three-minute person-to-person call costs the same, all days and all hours. Rates for extra minutes, however, are lower between 5 p.m. and 8 a.m. Monday through Friday and all hours Saturday and Sunday.	That's the rate for a credit card, third number or collect call Monday through Friday, 8 a.m. to 5 p.m. The same rate applies on calls from coin phones or hotels.	Dial your call One-Plus Monday through Friday between 8 a.m. and 5 p.m.
<b>\$1.30</b>	<b>75¢</b>	<b>65¢</b>
Make a credit card, third number or collect call--or phone from a coin or hotel telephone--Monday through Friday, 5 p.m. to 8 a.m. or any time Saturday or Sunday.	Just dial the One-Plus way Sunday through Friday evenings between 5 p.m. and 11 p.m.	Rates are lowest when you dial One-Plus between 11 p.m. and 8 a.m. daily, all day Saturday and until 5 p.m. Sunday.

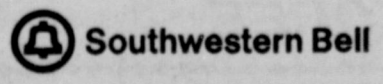
One-Plus rates are not available on calls from coin telephones. Rates above do not include tax.

Being choosy can result in real savings, so take your pick. Then travel by Long Distance... and stay awhile.

Like to have more information about Long Distance rates? Fill out and mail the coupon. We'll send you a free guide that shows you the best times to call and gives examples of rates to major cities.

Southwestern Bell  
 P. O. Box 787  
 St. Louis, Missouri 63188

Name \_\_\_\_\_  
 Address \_\_\_\_\_  
 City \_\_\_\_\_ State \_\_\_\_\_ Zip \_\_\_\_\_





# Southern Television Systems Inc.

## CHURCH SERVICES

CALVARY TEMPLE  
ASSEMBLY OF GOD  
1608 W. Commerce  
Sunday morning worship 10:00 a.m.  
Sunday night service 7:00 p.m. Tuesday  
night midweek service 7:00 p.m. John  
Pratt, pas, or. 629-1623.

## EASTLAND CHRISTIAN SCIENCE SOCIETY

Corner of  
Plummer and Lamar  
Sunday morning services 11:00. Services  
on first Wednesday of month 7:30 p.m. All  
are welcome.

## FIRST UNITED METHODIST CHURCH

Rev. Ben Marney  
Sunday School 9:45 a.m.; Morning Wor-  
ship 11:00 a.m.; E. Young People's Meet  
4:00 p.m. Sunday Evening Worship 7:00  
p.m.; Ladies Prayer Group 9:30 a.m.  
Wednesday: Choir Practice Wednesday  
7:30 p.m.

## UNITED PENTECOSTAL CHURCH

Rev. E.D. Norman  
Sunday School 9:45 a.m.; Morning Wor-  
ship 11:00 a.m.; 5 Evening Worship 7:30  
p.m.

## NORTH OSTROM ST. CHURCH OF CHRIST

H.S. Lewis  
Worship 10:30 a.m.; Evening Worship 5:00  
p.m.; Wednesday Service 7:00 p.m.

## FIRST BAPTIST CHURCH

Rev. Haston Brewer  
Sunday School 9:45 a.m.; Morning Wor-  
ship 11:00 a.m.; Evening Worship 7:30 p.m.

## BETHEL BAPTIST CHURCH

Rev. Bill Betts  
Sunday School 9:45 a.m.; C Morning  
Worship 10:45 a.m.; Ev Training Union  
4:00 p.m.; Evening Worship 7:00 p.m.

## CALVARY BAPTIST CHURCH

Rev. L.C. Williams  
Sunday School 10:00 a.m.; Morning  
Worship 10:45 a.m.; Training Union 4:00  
p.m.; Evening Worship 6:30 p.m.; Wed-  
nesday Night Service 7:00 p.m.

## FIRST BAPTIST CHURCH

NO. SEAMAN ST.  
Rev. G.L. Norris  
Sunday School 9:30 a.m.; Morning Wor-  
ship 11:00 a.m.; Baptist Training Union  
4:00 p.m.; Evening Worship 7:00 p.m.;  
Wednesday Night Service 7:00 p.m.

## HARMONY BAPTIST CHURCH

Minister  
Sunday School 9:45 a.m.; Morning Wor-  
ship 11:00 a.m.; Evening Worship 7:30  
p.m.; Wednesday Night Service 7:30 p.m.

## MANGUM BAPTIST CHURCH

Rev. A.J. Thomas  
Sunday School 10:00 a.m.; Morning  
Worship 11:00 a.m.; Training Union 4:00  
p.m.; Evening Worship 7:00 p.m.

## ST. FRANCES CATHOLIC CHURCH

Priest John Mitchell  
Mass Saturdays at 6:30 p.m.

## FIRST PRESBYTERIAN CHURCH

Rev. Robert W. Marsh  
Sunday School 10:00 a.m.; Morning  
Worship 11:00 a.m.

## FIRST CHRISTIAN DISCIPLES OF CHRIST

Steven Church  
Mo. Sunday School 9:30 a.m.; Morning  
Worship 10:55 a.m.; Evening Worship 4:00  
p.m.

## CHURCH OF GOD

Main & Connellee  
Rev. Ronald Bear  
Sunday School 10:00 a.m.; Morning  
Worship 11:00 a.m.; Family Training 4:00  
p.m.; Evening Worship 7:00 p.m.; Wed-  
nesday Night Service 7:30 p.m.

## CHURCH OF CHRIST

Daugherty St.  
Jim Pennington  
Sunday School 9:30 a.m.; Morning Wor-  
ship 10:30 a.m.; Evening Worship 4:00  
p.m.

## HOLY TRINITY EPISCOPAL CHURCH

Priest Raleigh Denison  
Sunday School 11 a.m.; Holy Com-  
munion 11 a.m.

## CARBON FIRST BAPTIST CHURCH

Rev. Delbert Smith  
Sunday School 10:00; Morning Worship,  
11:00 a.m.; Ev Training Union 5:30 p.m.;  
Evening Worship 6:30 p.m.; Wednesday  
Night Service 8:00 p.m.

## CHURCH OF CHRIST

Jack Landrum  
Sunday School 10:00 a.m.; Morning  
Worship 10:50 a.m.; Evening Worship 4:00  
p.m.; Wednesday Night Worship 7:30 p.m.

## FIRST UNITED METHODIST CHURCH

Rev. C.C. Shultz  
Sunday School 10:30 a.m.; Morning  
Worship 9:30 a.m.

## OLDEN BAPTIST CHURCH

Rev. Howard Meeker  
Sunday School 10:00 a.m.; Morning  
Worship 11:00 a.m.; Evening Prayer  
Service 7:00 p.m.; Evening Worship 7:30  
p.m. Wednesday Night Service 7:00 p.m.

## CHURCH OF CHRIST

Frank Kilbourne  
Bible Class 10:00 a.m.; Morning Worship  
11:00 a.m.; Evening Worship 7:00 p.m.

## FLATWOOD CHURCH OF CHRIST

Wilkie E. Moore  
Sunday School 9:45 a.m.; Morning  
Worship 11:00 a.m.; Evening Worship 4:00  
p.m.; Wednesday evening 8:00 p.m.

## SOUTHSIDE PENTECOSTAL CHURCH

Rev. A.J. Woodard 107 New St.  
Morning Worship 11  
Wed. night 7:15

Sunday, March 17, 1974

## BIRTHS

Mr. and Mrs. Gary Wilson are proud to announce the birth of a son, Brandon Wayne, born March 6, 1974. Brandon weighed 7 pounds and was 21 inches long. Grandparents are Mr. and Mrs. Ellis Wilson of Winters and Mr. and Mrs. E.B. McCown of Abilene. They have one other son, David, age 8½.

## Political Announcements

The following persons have authorized this newspaper to announce their candidacy for political offices:

### STATE REPRESENTATIVE

- Joe Hanna (Re - Election)
- Harold Freeman CONGRESSMAN
- Omar Burleson (Re - Election)
- COUNTY SCHOOL SUPERINTENDENT Jimmy Hughes
- Alton Rowan Carlos Turner
- O.C. (Stubby) Warden
- COMMISSIONER PRECINCT 2 Pat Moseley
- COUNTY JUDGE Scott Bailey
- Re - election Carl Garrett
- JUSTICE OF PEACE Wells Dalton
- (Re - Election) Buddy Rowch
- DISTRICT CLERK Joe T. Gray
- (Re - Election) COUNTY TREASURER Mrs. Ellen Justice
- (Re - Election) Dick Foster
- CRIMINAL DISTRICT ATTORNEY Emory Walton
- (Re - Election) COUNTY CLERK Carol Senkel
- Johnson Smith
- (Re - Election) JUSTICE OF THE PEACE PRECINCT TWO John E. (Jack) Tyson

## TELEGRAM

H.V. O'BRIEN  
Publisher and Editor  
Second Class Postage paid at Eastland Texas under Act of Congress on March 1870.

Published semi-weekly Thursdays and Sundays by Eastland County Newspapers, Inc.

**SUBSCRIPTION RATES:** By carrier in city, 15 cents a week or 65 cents a month; one year by mail in county, \$5; city P.O. Boxes, \$6; one year elsewhere in state, \$7; out of state, \$8.

**NOTICE:** Any erroneous reflection upon the character, standing or reputation of any person, firm or corporation which may appear in the columns of this newspaper will be gladly corrected upon being brought to the attention of the editor.

## BIRTHS

Mr. and Mrs. Richard Watson are proud to announce the arrival of their new baby girl.

Her name is Leah Karen. She was born on March 11 at 1:20 p.m.

Mr. and Mrs. Watson have one other daughter, Rachael. The maternal grandparents are Mr. and Mrs. Wade Coan of Monahans. Paternal grandparents are Mr. and Mrs. R.H. Watson of Gorman.

Maternal great-grandmother is Mrs. Ada Bowen of DeLeon. Paternal great-grandmother is Mrs. D.L. Bond of Gorman.

## STOCK MARKET

Sales Every Tuesday  
Phone 629 - 1761  
Highway 80 East Eastland, Texas

Stocker Steer & Hfr.  
Calves ..... 47.50 to 69.00  
Stocker Steer & Hfr. Yrls 43 to 58  
Stocker Cows ..... 300 to 400  
Pairs ..... 375 to 550  
Butcher Hogs ..... 36 to 37.20  
Sows ..... 30 to 34

3 - 12 - 74  
All classes of cattle from \$2.00 to \$10.00 per hundred higher. Cows and calves by the pair \$25.00 to \$75.00 higher.  
560 Cattle sold; 532 hogs sold; 109 goats sold. 185 Consignors and 84 buyers.  
Butcher Bulls ..... 39 to 45  
Stocker Bulls ..... 47.50 to 64  
Butcher Cows ..... 20 to 35.50

### SEPTIC TANK SERVICE

Clean out cesspools and cess tanks. Install and repair septic tanks. Repair and build drain lines.  
D.M. WARD  
419 Old Strawn Road  
647 - 3494  
Ranger, Texas

ATTENTION: DO IT YOURSELFERS FOR sale or trade for what have you? 3 bedroom 2 bath unfurnished house on 60 x 100 ft. corner lot, abstract to date. Phone Gorman 734-5497. 1-24

BOWER ELECTRIC  
Residential, commercial and industrial wiring. New or old construction, house power specialists. For 220 volt appliances. Eastland, Call 629 - 1003. p-30

## DID YOU KNOW? Automobile Service Tips

STEERING LINKAGE - THE TIE RODS JOINED BY A THREADED ADJUSTING SLEEVE AND CONNECTED TO A CENTER LINK. TURN THE FRONT WHEELS IN UNISON. DAMAGE TO THESE PARTS, OR LOOSENESS AT CONNECTING POINTS, PERMITS EXCESS MOVEMENT WHICH AFFECTS WHEEL POSITIONS AND ALIGNMENT. CAUSES TIRE WEAR, AND RESULTS IN UNSAFE DRIVING. ALL WORN OR DAMAGED PARTS SHOULD BE REPLACED.



Tune-Up \$9.50 Plus Parts

### Pipkin Motor Co.

### JOB OPPORTUNITY

The Board of Directors of the Eastland County Water Supply District will accept applications through April 5, 1974, for a position as operator at the Filtration Plant. File application with plant Supt. Jesse White at the Filter Plant or mail to Eastland County Water Supply District, Box 117, Ranger, Texas, giving age, educational background, previous employment, references and mailing address and telephone number.



If you employ a few people...

MFA Insurance may have an Employee Security Plan especially suited to your business. See your MFA Insurance agent for details of a Franchise Group Life and Health benefit plan issued by MFA Life Insurance Company.

Agent  
**Richard Rossander**  
Ph. 629-2563



# Revival

March 17th Thru March 24th  
Evangelist: Rev. Truman Walker  
Guest Singer: J.C. Walker  
7:00 P.M. Everyone Welcome

## Calvary Baptist Church

205 N. Oak Eastland, Texas

## PHOTOS AVAILABLE

Photographs Appearing In The Eastland Telegram Are Available! \$1.00 Each At The Telegram Office Phone 629-1707

## Jody's Pizza

Announces Their Call In Order Special:  
Call In An Order For A Large Pizza And Pay For A Small Pizza  
Only During 11:30 To 1:30 Tuesday Thru Saturday  
West Side Of Square Ph. 629-8838

## Complete GE Stereo Component Set

COMPARE THESE FEATURES... With Units Selling For Much More



- 1 Record player with dust cover
- 2 Continuous or manual 8-track tape player
- 3 Two large closed speakers
- 4 FM/AM/FM stereo radio
- 5 Headphone set
- 6 Record storage rack
- 7 Wood and metal roll-about stand

PLAYS RECORDS 8 TRACK TAPES AM/FM/FM STEREO RADIO

### Discover The World of Stereo Today

- Four channel adaptable
- 6 record-capacity 9" turntable player has automatic shut-off repeat precision cueing control, 45 RPM adapter, ceramic cartridge with diamond stylus
- Tape player has channel indicator lights, cartridge opening dust-guard lid
- Matched 17" x 11" x 7" closed speakers with 8" woofer, 3" tweeter
- Stereo Star shows FM reception
- Lightweight headphone with padded ear cuffs
- Fold-up record storage shelves - Walnut finished
- Easy-roll casters give deluxe component stand easy mobility. Model SC 3201.

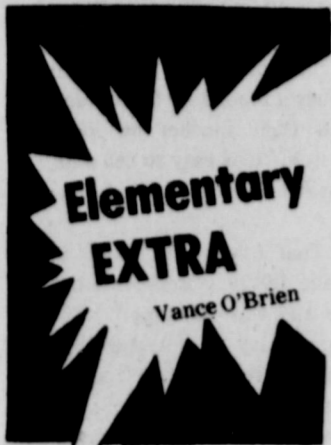
# \$198.95

306 E. Main Eastland  
**GOOD YEAR SERVICE STORES** 629-2662



HISTORY CAN BE FUN - Miniature antique cars provide a "ride into the past" for visitors to Six Flags Over Texas. In the background is the Arlington theme park's landmark Oil Derrick. From observation platforms atop the 300-foot tower, guests can see the skylines of both Dallas and Fort Worth.





**MISS YOUNG KINDERGARTEN**  
In kindergarten this week we have studied about St. Patrick and what he did for Ireland. We also read a story about a little Irish boy named Paudein. We made shamrock girls and boys and leprechaun puppets. Thursday we got to see Lisa walk on her crutches and we are so happy for her.

**MISS SIMMS FIRST GRADE**  
We have been busy practicing our program for the PTO. The program will be performed Tuesday afternoon, March 19.

Our Green Monster reading group started a new book Monday. We have all been learning many new keys for sounding out words.

**MRS. COOPER FIRST GRADE**

Our PTO program is next week, so we really have been practicing on it. David Brashear was chosen by his classmates as having Good Manners three days in a row! We are real proud of him. Everyone was looking forward to the day off from school so that they could go to the County Livestock Show.

**MRS. DALLAS SECOND GRADE**

We have been very excited this week about our holiday Friday. We are learning how to make new cursive letters each day. We have been working with the verbs was and were and saw and seen. We watched a film on Science Wednesday and The Emperor's Oblong Pancake on Thursday.

**MRS. COATS**

**SECOND GRADE**  
We did our spelling test in cursive. Our bean plant died. We saw a science film. We had peanut butter cake this week and Danny in Mrs. Allmand's room broke his arm.

**MRS. ALLMAND SECOND GRADE**  
We have been writing in cursive letters. We learned S., G., L.

We have a new boy and girl. Their names are Danny Gwinn and Stephanie Johnson.

We didn't get to fly our kites because the wind isn't blowing. We took our plants home.

We put celery in red water and its turning red.

We don't come to school Friday

**Reporters Nora Rodriguez and Bekky Rollins**

**MRS. TURNER THIRD GRADE**

We have been doing a play in our room called "The Trial of Mother Goose". Everybody had a part in the play. We all are excited about spring. We have been making wooden cars for the display cabinet. We have a Holiday on Friday because of the livestock show. Most of the kids in our class have pets and cattle for the show.

Christa Sowell was sick Monday but back today. Everybody is glad that Friday is a holiday, so they will get to go to the livestock show. They are really excited about it. We got to read the first story in our new readers yesterday. We saw a film about the Aztec Indians yesterday. We are going back to school the same time we used to. We are very glad about that.

**By Joni Flinn**

**MRS. ADAIR FOURTH GRADE**

Lunchroom awards this week went to Ricky Herrera and Jennifer Stevens.

We have been busy this week with fractions. They are fun but a bit difficult, too.

In reading we are having a play called "Why the Sea is Salt". Some of us are the

characters and others of us are in charge of props.

In science we have been studying insecticides. We had two debate teams. One for using insecticides...the other against. Both sides presented good arguments.

We wrote outlines and reports in Language. We choose a famous event or person to write about

**MRS. GREEN FOURTH GRADE**

We are going to get out of school Friday for the stock show.

Last Friday we played the other fourth grade and got beat 14 - 1 in their favor. That's about all for now. Our fractions are getting easier now.

**Robert Henson**

**MRS. WELCH SIXTH GRADE**

This week was a boring week for the sixth grade. Monday we got a new boy in our class. We started on multiplying decimal

fractions and made psychedelic shamrocks. Tuesday we got our last science test back and most people did pretty good. Tuesday, Wednesday and Thursday afternoon Coach Dallas came to talk to the boys about football. Wednesday we made posters about what you should do in emergencies and learned to write a bibliography. Thursday was the best day because it was the last day of school this week.

**Your friend Kerry Watson**  
P.S. The new boy in our room is named Rocky

**MRS. LITTLE SIXTH GRADE**

We started off the week like we always do, with a lot of homework. We took home our Nursery Rhymes this week. We are all glad that Friday is a holiday. We are starting back to school on regular time Monday. Some of us are glad we are going back to our old time and of course, some of us



MONDAY, MARCH 18

aren't. We didn't have very many people absent this week. That's about all.

**Your friend, Kerry Petty**

We had fun this week but most of all last week. We had open house. We made poems and stars with our pictures on it. We also made maps of the neighborhood on our streets. I hope you have fun.

**Debra Jo O'Banion**

???

Last Thursday evening we had open house for our parents from 7:30 until 8:30 p.m. We appreciated the interest shown in our work and our school during Public School week.

We are pleased to have a holiday on Friday this week.

- Steak & gravy
- Buttered rice
- Green peas
- Carrot sticks
- Hot rolls
- Pineapple pie
- TUESDAY, MARCH 19
- Barbecue chicken
- Whipped potatoes
- Green beans
- Stuffed celery
- Sliced bread
- Cake squares
- WEDNESDAY, MARCH 20
- Pigs in a blanket
- Pinto beans
- Buttered cabbage
- Lettuce wedges
- Corn bread
- Fruit cobbler
- THURSDAY, MARCH 21
- Tacos
- Blackeye peas
- Sliced beets
- Cabbage & carrot salad
- Corn bread
- Oatmeal cookies
- FRIDAY, March 22
- Hamburgers
- Buttered corn
- Jello with fruit

**BAKKER Funeral Home**



Dear friends,

There are so many negative influences on our children in the magazines, movies, TV, and music of this dollar-conscious era.

More than ever, we should honor and support our teachers, clergymen, scouting, 4-H leaders, and many others who work against heavy odds to teach and inspire our youth in creative living.

Sincerely,



# BULLETIN: EMERGENCY TIRE SALE

AT YOUR GOODYEAR SERVICE STORES

Goodyear Service Stores have a limited supply of special tires that they must move out of inventory... special because they are discontinued-design tires slashed to slightly-above cost to move them out! These tires are all new Goodyear tires that we were selling by the hundreds just a year ago at much higher prices!



**"MARATHON 83" NYLON CORD**  
ALL SIZES ONE PRICE

**\$16**

plus \$1.72 to \$2.80 F.E.T. per tire. No trade needed. Whitewalls \$2.00 More

**"MARATHON 78" POLYESTER**  
ALL SIZES ONE PRICE

**\$18**

plus \$1.78 to \$3.13 F.E.T. per tire. No trade needed. Whitewalls \$2.00 More

**DURABELT POLYESTER BELTED**  
ALL SIZES ONE PRICE

**\$20**

Whitewalls \$2.00 More

**PROFESSIONAL 4-WHEEL BRAKE OVERHAUL**

**\$49<sup>95</sup>**



\*Except disc brakes, foreign cars - Wheel Cylinders \$8.50 ea. IF NEEDED

Includes the following parts & labor:  
New brake linings all 4 wheels • New Front Grease Seals • New Return Springs • Turn Drums • Arc linings for total-contact • Add new fluid • Remove & clean front wheel bearings • Inspect, repack bearings • Adjust all 4 brakes

**FOR MAXIMUM TIRE MILEAGE FRONT-END ALIGNMENT**

**\$7<sup>77</sup>**

ANY U.S. CAR PLUS PARTS IF NEEDED.  
• Complete front end inspection  
• Camber, caster, and toe-in set by precision equipment

**FUEL SAVER FULL ENGINE TUNE-UP**

**\$27<sup>77</sup>**

• NEW Plugs, Points, Condenser • Set dwell, choke - Time engine - Balance carb. • Test starting, charging, compression, acceleration.  
Includes VW's, Toyotas, Datsun

**CAR CARE VALUE LUBE AND OIL CHANGE**

**\$4<sup>44</sup>**

• Transmission and differential oil check  
• Complete chassis lubrication  
• Price includes up to 5 qts of oil, and all labor  
• By appointment only

**3 WAYS TO CHARGE**  
• Our Own Customer Credit Plan • MasterCard • BankAmericard

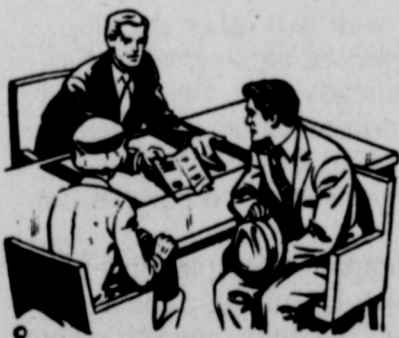
**Where Your Health Always Comes First**

Rely on us to care for your family health needs... fill prescriptions with care and courtesy... swiftly and professionally. Open daily. Delivery around the clock.



**Central Drug**  
North Side Of Square

**Dignity... Consolation... Concern**



**Trust Our Experience**

Our reputation is based on competence and caring. Every detail is taken care of.

**Arrington Funeral Home**  
Ph. 629-2611 - Eastland  
*Friendly Personalized Service*

306 E. Main

**GOODYEAR SERVICE STORE**

629-2662

GOODYEAR

GOODYEAR





Pictured above is an FFAer preparing his hog for showing in the Eastland County Stock Show that was held this weekend. (Staff photo by Steve Haines).

### Stock Show

#### From Page 1

Gorman FFA.  
Sows, any age -- 1. Roy Fambro, Ranger FFA; 2. David Conner, Ranger FFA.  
Champion Duroc female -- Ripley  
Reserve champion Duroc female -- Eddie White.



get off to a good start with State Farm's Junior Protector life insurance. Let me show you why.

See me.  
James O. Wortman  
705 W. Main St.  
Eastland  
Ph. 629-1096



Insurance Companies  
Home Offices: Bloomington, Illinois

Reserve Champion Red Market Hog -- Ronnie Parsley, Cisco FFA.

Predominantly Black Lightweights -- 1. Buster Pharr, Cisco FFA; 2. Bob Wooley, Carbon FFA; 3. Scott Zellerman, Cisco FFA.

Heavyweights -- 1. Jack Jackson, Gorman FFA; 2. Clint Tucker, Carbon 4 - H; 3. Kem Rodgers, Carbon 4 - H.

Champion Black Market Hog -- Jackson.

Reserve Champion Black Market Hog -- Tucker.

Predominantly White Lightweights -- 1. Theresa Scott, Rising Star 4 - H; 2. Kelly Mauney, Gorman FFA; 3. Ricky Klappenback, Gorman FFA.

Heavyweights -- 1. Neil Scott, Rising Star 4 - H; 2. Gary Mauney, Gorman FFA; 2. Robin Griffin, Carbon FFA.

Champion White Market Hog -- Theresa Scott.

Reserve Champion White Hog -- Neil Scott.

Grand Champion Market Hog -- Theresa Scott, (white crossbred).

Reserve Grand Champion Market Hog -- Jack Jackson (black heavyweight.)

#### GOATS

Junior Angora

Angor A Goat Does -- 1. Angie Owens, Cisco FFA; 2. Tracy Owens, Cisco 4 - H.

Grand Champion Doe -- Angie Owens.

Reserve Grand Champion Doe -- Tracy Owens.

#### BREEDING SHEEP

##### FINE WOOLS

Fine Wool Ewes two tooth and under -- 1. Billy Gary, Cisco FFA; 2. David Wenge, Cisco FFA; 3. Jimmy Rains, Cisco FFA.

Fine Wool Ewes, four teeth and over -- 1. Tracy Owens, Cisco 4 - H.

Champion Fine Wool Ewe -- Tracy Owens.

Reserve Champion Ewe -- Gary.

Fine Wool Rams -- 1. David Wenge

Champion Ram -- Wenge

#### MEDIUM WOOL

##### BREEDING SHEEP

Ewes, two tooth and under -- 1. Warren Carlile, Cisco FFA; 3. Ernest Thompson, Cisco FFA.

#### LEGAL NOTICE

Notice is hereby given by the Parks and Wildlife Department that a public hearing will be held at 10 a.m. on March 27, 1974, at the County Courthouse at Eastland for the purpose of gathering information concerning proposed hunting, fishing and trapping regulations for Eastland County.

As the result of action by the Texas Legislature, the Texas Parks and Wildlife Commission is responsible for the setting of seasons, bag limits, and means and methods of taking the wildlife resources in Eastland County. All interested persons are urged to attend and comment upon the proposed regulations. (3-17-74)

Arts and Craft Shop selling due to personal reasons. Some financing available. Located on the square. Call 629-8004, home phone 629-2867. 1-29

#### CARD OF THANKS

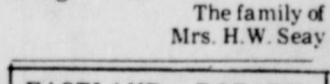
Words cannot fully express our deep appreciation for the kindness and sympathy extended to us by our friends at the loss of our loved one, Leanna Seay.

Thank you from the bottom of our hearts for the beautiful flowers, cards, and food, you brought to us.

The family of Mrs. H.W. Seay

#### EASTLAND ROTARY CLUB

Charles Marshall, president



Meets each Monday  
MASONIC LODGE NO. 467



Meets second Thursday of each month at 7:30 p.m. in the Masonic Hall. Call L.D. Keith, W.M., at 629-1676 or L.E. Huckabay, sec'y at 629-1391 for information.

Ewes, four teeth and over --

1. Craig Starr, Cisco FFA; 2. Thompson.  
Champion Medium Wool Ewe -- STARR.

Reserve Champion Medium Wool Ewe -- Carlile.  
Medium Wool Rams -- 1. Wayne Pinson, Cisco FFA.

Champion Medium Wool Ram -- Pinson.

#### SOUTH DOWNS

Two tooth and under ewes -- 1. Jeff Cermin, Cisco FFA; 2. Roger Autry, Cisco FFA.

Four teeth and over -- 1. 2. Terry Simmons, Cisco FFA; 3. Terry Kent, Cisco FFA.

Champion Southdown Ewe -- Cermin.

Reserve Champion Southdown Ewe -- Simmons

Southdown Rams -- 1. Terry Kent.

Champion Southdown Ram -- Kent

#### MARKET LAMBS

Fine Wool

Fine Wool Market Lambs -- 1. Ronnie Webb, Cisco FFA; 2. Jim Cook, Carbon FFA; 3. John Hill, Cisco FFA.

Champion Fine Wool Market Lamb -- Webb.

Reserve Champion Fine Wool Market Lamb -- Cook.

Fine Wool Cross Lambs -- 1. Neil Scott, Rising Star 4 - H; 2. Wesley Adams, Carbon FFA; 3. Thad Chambers, Rising Star 4 - H.

Champion Fine Wool Cross -- Neil Scott.

Reserve Champion Fine Wool Cross -- Wesley Adams.

#### MEDIUM WOOL

Medium Wool Market Lambs -- 1. 2. Clint Tucker, Carbon 4 - H; 3. Mart Tucker, Carbon 4 - H.

Champion and Reserve Champion Medium Wool Market Lambs -- Clint Tucker.

Southdown Lambs

Southdown Market Lambs -- 1. Terri Agnew, Cisco 4 - H; 2. Sharon Agnew, Cisco 4 - H; 3. Brad Collins, Ranger FFA.

RABBIT SHOW

White Does -- 1. Vicki Brown, Gorman 4 - H; 2. Dale Spurling, Eastland 4 - H.

Colored Does -- 1. Viola Steddum, Cisco 4 - H; 2. Paula Eaves, Gorman 4 - H; 3. Dale Spurling.

Champion Doe -- Viola Steddum.

Reserve Champion Doe -- Vicki Brown.

White Bucks -- 1. Vicki

Brown; 2. Dale Spurling.

Colored Bucks -- 1. Paula Eaves; 2 - 3 Tommy Spurling, Eastland 4 - H.

Champion Buck -- Paula Eaves.

Reserve Champion Buck -- Vicki Brown.



"You can't recognize a Jaycee just by looking at him. To thousands of poor children at Christmas time, he looks like Santa Claus. To millions of citizens who see him sweating in the summer heat to get out the vote, he looks like Uncle Sam in a limp shirt. To the forgotten people in the polio wards and the TB hospitals who depend on fellows like him to gather the money that saves human life, he looks like an angel. And the political crooks and demagogues who creep into the local governments to pull down the wool curtain of secrecy, close the open doors of public office, and steal away the people's liberties, he looks like the hangman.

"And even if you know a Jaycee today, you won't know him tomorrow. Today he may be an obscure clerk; but after a while in the Jaycees -- after getting into bloodstream of community affairs -- he'll be hiring and firing clerks by the dozen. Today he may be a follower; tomorrow he'll be a leader. But in the meantime he'll spend time on committees, or running around on cold nights helping on some kind of improvement project or standing on the street corner with a loud speaker telling people to give, and vote, and go, and come, and listen, and be concerned. And he'll start getting public recognition; and people he doesn't know from Adam will call him by name on the street; and he will be on speaking terms with hundreds he never knew before; and his boss will begin to realize what a valuable employee he is; and his fellow citizens will be turning to him for leadership. And he'll be lucky if his wife loves him enough to gripe like the dickens because he doesn't spend more time at

home.  
"But his real reward will be the comfortable realization that he is doing things that build communities and states and nations. He can say with solemn pride that while others stayed in the background, he came forward and threw down the gauntlet to every problem or injustice that hung over his community and his neighbors. He can say that while others were following the crowd, he followed his conscience; and that he was working to keep every dot and dash in the Constitution while others were concerned only with putting dollar signs on the ledger. When some were merely yelling "Throw the rascals out!" he was ready to step in. While others just pointed at the dirt, he was swinging a broom."

home.  
"But his real reward will be the comfortable realization that he is doing things that build communities and states and nations. He can say with solemn pride that while others stayed in the background, he came forward and threw down the gauntlet to every problem or injustice that hung over his community and his neighbors. He can say that while others were following the crowd, he followed his conscience; and that he was working to keep every dot and dash in the Constitution while others were concerned only with putting dollar signs on the ledger. When some were merely yelling "Throw the rascals out!" he was ready to step in. While others just pointed at the dirt, he was swinging a broom."

Visiting in the home of Mr. and Mrs. Walter Tucker of Eastland are her daughter and husband Mr. and Mrs. Kenneth Anderson of Langdon, North Dakota.

FOR RENT - 3 bedroom house, 1 1/2 bath utility at 203 S. Walnut. Call 672-5570 for appointment. 1-23

HILLSIDE APARTMENTS  
Attractive one bedroom and efficiencies. All utilities paid including TV cable. Call 629-8097 or 629-2812. 1-f

FOR SALE  
Ferguson 220 Tractor; 3 pl. hitch disk harrow. B.L. Phillips 653-2223. 1-28

LOYD BRYANT  
Rebuilt Standard  
Transmissions Guaranteed  
647-3576, Ranger  
1-30

NORTHWEST  
EXTERMINATING CO.  
Complete Termite and Pest Control. Tree and Lawn Spraying. Free inspection & estimates. All jobs guaranteed - Reasonable rates. Call 647-3576 or 647-1607, Ranger. 1-30

A boy was asked, "What's the boss is out, and I don't know when he'll return." But a lie is always crippled. It cannot stand alone. It needs a second lie for a brace, and then another lie for a crutch. It is easy to tell a lie, but it is hard to tell only one lie.

That is why one prayed in Psalm 119:29, "Remove from me the way of lying." But Christianity is not negative, it is positive. It is not enough that one does not lie anymore, but that he speaks the truth. So the Psalmist continued, "Help me to obey Your laws, for I have chosen to do right."

There is the in-the-house lie... like "I'm sorry, but my wife came home with an awful headache, so we can't go out with you tonight."

And there is the at-the-church lie... like "Have Thine Own Way, Lord," but with my neighbor.

Then there is the on-the-job lie... like, "I'm sorry, but

## The shoe that holds its own with anything

Basic shoemanship. A timeless style that will have you dressed the part-- anytime, anyplace. Its refined look comes from rich-looking grain leather and a softly squared toe.

Try a pair. For all your wearing. **\$19.95**

Pedwin.

**THE MAN'S STORE**  
Bob Elliott  
CISCO

(leather refers to uppers)

## A-1 SALES

Dale & Jerry Maston  
Day 629-2102 Night 629-2464

### HOME REPAIRS

Room Remodeling  
Garages Converted  
Roofing-Sideing  
Panneling-Sheetrocking  
Cabinets-Shelving  
Patios-Car Ports

### TRAILER HOUSE

Leveling-Underpinning  
Porches-Carports

## A-1 SALES ON THE SQUARE

Between Perrys & Mode O Day

### LITTLE MISS EASTLAND PAGEANT ENTRY FORM

Name \_\_\_\_\_  
Please print full name

Age \_\_\_\_\_ Birthdate \_\_\_\_\_

Parent's name \_\_\_\_\_

Address \_\_\_\_\_ Phone no. \_\_\_\_\_

Sponsoring firm, ind., or org. \_\_\_\_\_

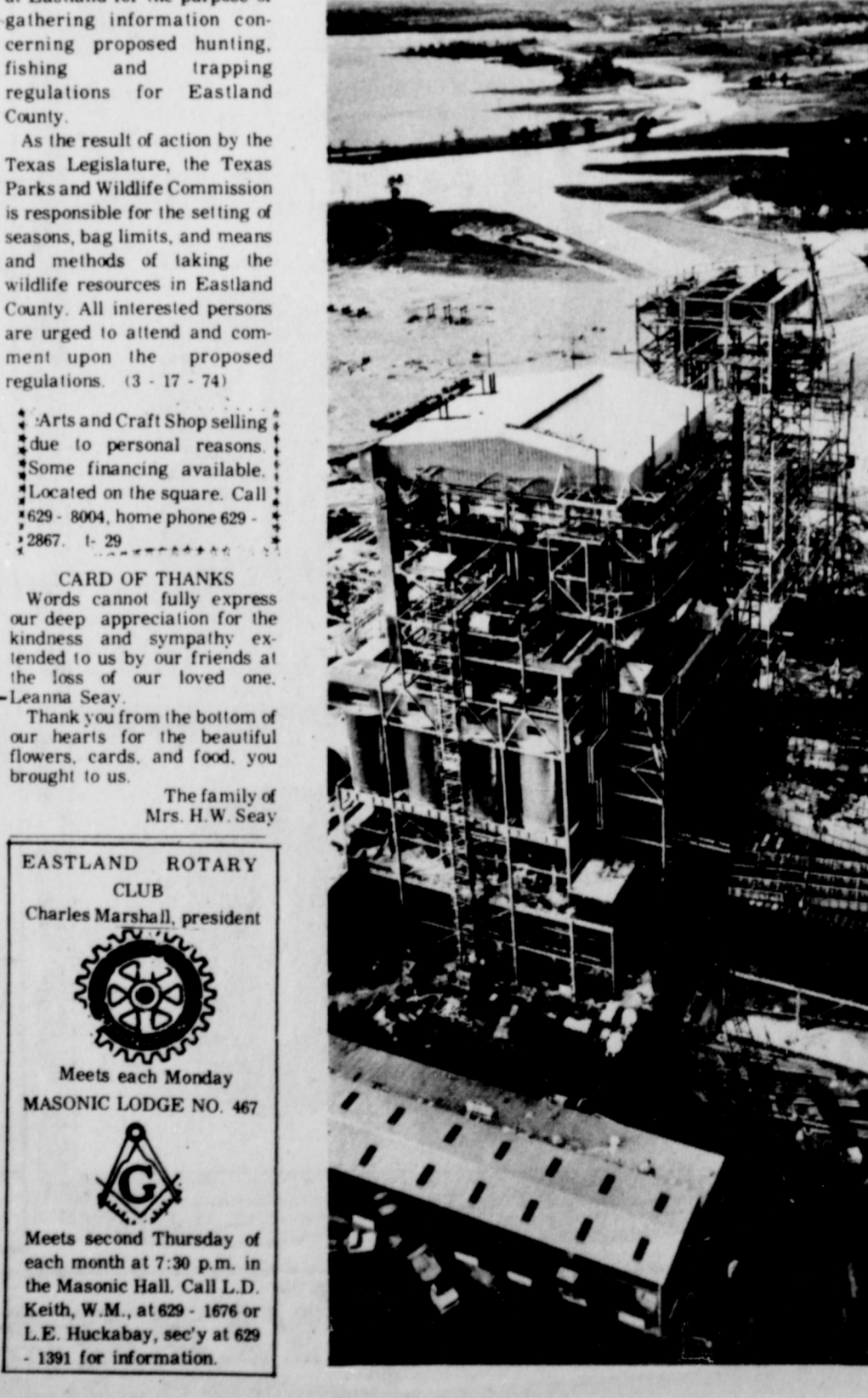
Address \_\_\_\_\_ Phone no. \_\_\_\_\_

I hereby give Zeta Pi chapter of Beta Sigma Phi full permission to use my daughter's name and picture in connection with any advertising or promotion of the "Little Miss Eastland" Pageant.

Parent's Signature \_\_\_\_\_

Mail to: Little Miss Eastland Pageant  
c/o Sandi Alsop 413 Pershing  
Eastland, Texas 76448

Note: Be sure to enclose \$3 entry fee and small photograph of child, either black and white or colored.  
Entry deadline March 25 1974.



What TESCO is doing to provide the electricity you'll need:

## We're building lignite coal-fired power plants to decrease our dependence on natural gas.

### But they're costing twice as much.

Texas Electric has traditionally used natural gas as its major fuel to generate electricity, with oil used as a standby fuel.

We must depend on these fuels for many years, but because there are growing shortages of natural gas and oil, our long-range plans call for diversifying to other fuels.

Texas Electric, along with two other electric utilities, has acquired supplies of lignite coal in East Texas. Together we have already built a lignite-fired generating plant, and two more are under construction.

While these units will help keep our system strong, they cost about twice as much to build as our gas-fired units.

By 1980, the three companies are planning to diversify to still another fuel, by adding a nuclear power plant near Glen Rose. But again, nuclear plants are much more expensive than gas-fired plants -- more than three times as costly, in fact.

The point is, if we are going to be able to supply the electricity you need in the years ahead we must diversify our fuels. Expenditures of \$700 million for new construction must be made in the next five years alone.

We're working to supply the electricity you need, but it's costing more to make it all the time.

**TEXAS ELECTRIC SERVICE COMPANY**  
F. N. SAYRE, Manager, Phone 629-2651