



EASTLAND, TEXAS, THURSDAY, APRIL 28, 1960



SGT. ANN PACE seeks all ex-WAC's

Ex-WACs Plan Celebration Of Birthday

M-Sgt. Ann Pace, Women's Army Corps counselor for this area, was in Eastland this week conferring with Mrs. Marene Johnson, postmaster, a former member of the WAC.

A call has been issued to all former members of the Women's Army Corps, the Women's Army Auxiliary Corps and Navy-Marines to take part in the 18th Anniversary of the WAC to be held in Abilene Sunday afternoon, May 15.

Preparations are now under way to celebrate the event throughout the world, Sgt. Pace said, and she asked that all former WAC's in the area contact her collect (OR 2-5665) and plan to take part in the local observance to be held at the YWCA, 1350 North 10th, Abilene, or they may contact Mrs. Johnson in Eastland.

W. L. Keith Dies Suddenly Of Heart Attack

Funeral services are pending for W. L. Keith, 1015 W. Main, who suffered a heart attack at his home Wednesday night at 7 p.m. Surviving Mr. Keith is his wife, four sons, Forrest D. of Tulsa, Carl D. of Abilene, Melvin E. of Odessa and Billy, who is serving in the Air Force; five daughters, Mrs. Perry C. Vines of Lubbock, Mrs. Wanda Black of Clyde, Mrs. Albert Honea of Abilene, Mrs. Paul M. May of Odessa and Judy of the home.

Edwin Campbell Fatally Injured In Car Accident

Edwin Dean Campbell, 35, of Odessa was fatally injured in a car accident Tuesday. Mr. Campbell was a former resident of Eastland and was employed by the Texas Electric Service Company. He has one brother, C. W. Campbell Jr. of Eastland and an uncle, Gene Perdue, also of Eastland.

Funeral services will be held in Odessa Thursday with burial also in Odessa. Survivors include his parents, Mr. and Mrs. C. W. Campbell, Sr. of Odessa and one brother, Robert Allen Campbell of Wisconsin.

Rhodes' Roundup

By ORAN RHODES

Howdy! You better watch out! You better not cry! You better not pout! I'm telling you why. The invitations have reached town!

The senior invitations came in this past week and everyone has really enjoyed looking on their name cards and invitations. After much work by the class officers in checking and getting everything in order, they were handed out so that the work could begin. Tomorrow morning, the Junior-Senior Breakfast will be held at the city park. Each year a senior chooses a junior slave who cooks his or her breakfast. Altogether, from experience, it is a fine thing which everyone enjoys.

Tuesday afternoon, a gentleman from Dallas spoke to us on the by-products of the gas-oil industry. EASTLAND NATIONAL BANK "On The Square" MEMBER F. D. I. C.

LETTER FROM PERKINS

Swiss Hotels Take Care of Tourists

(Editor's Note: The following article was written Easter Sunday in Locarno, Switzerland.)

By JOSEPH M. PERKINS I am in extreme southern Switzerland, that part which extends down into Italy. This is a lake resort on beautiful Lake Locarno a mountain lake with snow capped mountains beyond. The last few days have been spent in the high Alpine country, the area between the sources of two great rivers, the Rhine and the Rhone. In the low valleys apple trees are in bloom and the Swiss pines are a thing of beauty. Some are about three inches and of the most beautiful colors.

This part of Switzerland has several private railroads, narrow gauge, that climb over high mountain passes and serve tiny mountain villages. These trains have a ladder track located midway between the rails. The grades are so steep that this is necessary. I have been over most of these lines and the steep grades, sharp curves, tunnels and high stone bridges which span deep ravines are fascinating. Below the snowline are many wild flowers, yellow, pink and blue. Above the snowline skiing is the popular recreation for men, women and children—gray haired grandmothers included. Some trains cater entirely to skiing parties.

I have seen a few Saint Bernard dogs but the flasks of brandy seemed to be missing on all of them. A few days ago I left Montreaux with its watch and chocolate factories for a trip over one of these lines. The electric train headed for Spiez—climbed up through green meadows where sheep were grazing. The cattle are still penned up in stone or log barns on the mountainsides. There were frequent stops at mountain villages, where there were fine homes as well as large hotels closed until the tourist season awakens them to life.

A copy of the New York Herald Tribune remained unread on the seat beside me. It could not compete with the scene from the car window. Occasionally I would catch sight of the track already traveled a thousand feet below. Cascades of icy water from tumbling streams of melting snow draped themselves gracefully over cliffs, then plunged down narrow valleys amid pines and spruces. After coming about 10 miles from Montreaux the train changed its mind about entering the snow, and started cautiously back down the mountain from the summit. There were neat farmhouses near the track each with a woodpile attesting to the fact that the Swiss are addicted to two winter activities—skiing and wood cutting.

Twice I have seen wooden covered bridges similar to those we so often see in northern New England. Next day I took a lake steamer, the "Schiller", for a few hours trip on Lake Lucerne. It was a side wheeler, built in 1906 and designed to carry a thousand passengers. In spite of its old age it is still a spry ship as it steams from one landing to another on the beautiful lake. The shores are wooded and dotted with fine homes and many swank hotels. Back a few miles from the shore tower the snow covered Alps, a beautiful background for the

smooth ol'green waters of the lake. The interior woodwork of the "Schiller" is worth attention, with its cherry and ebony paneling with mother-of-pearl inlay. The furnishings, tables, foot stools, and chairs are designed to match the woodwork. It is all a fine example of superb old craftsmanship in wood. Along the shore, under a limestone cliff appeared the stone monument erected in 1860 to the memory of F. Schiller, known throughout the world for his "William Tell."

Later we passed another ship, a toy sailboat two feet long that evidently had escaped from its youthful master and was bravely sailing a course of its own, alone on Lake Lucerne. At the end of my trip, by the boat dock a swan was trying to swallow a soda straw that he found floating. After several tries he gave it up as an undesirable worm.

The Swiss hotels certainly know how to cater to tourists. When dinner is being served in a hotel dining room a candle plate warmer is placed on the table. It has two short lighted candles under it and it keeps the dinner plate warm until the soup course is finished then the plate of vegetables and meat while that course is being eaten. All beds have good warm feather beds.

Yesterday I went to the little village of Samedin where a Mr. Bott makes authentic replicas of old 14th century clock. The clock is made mostly of wood, has a nine inch dial and only one hand, the hour hand, as in the old days only the hours were counted on the clock. It is weight driven and runs a few hours until it has to be wound again. The shop is a small room in the rear of a store and the owner and his two sons assemble the parts, which are made elsewhere by contractors. These are interesting clocks but are not too practical for use today.

In this southern Switzerland I noticed that granite is used very extensively. The streets are paved with small red granite blocks. Gray granite is used instead of wooden fenceposts, and even for support posts in the vineyards. Fences of granite are made by placing the slabs edge to edge.

Tomorrow I will leave Germany and go to western Germany and then to Denmark, Sweden and Norway.

After the Norway address where I pick up mail write to me (if you wish) "Empress of England" sailing May 6, in care of Canadian Pacific S. S. Co., Liverpool, England.

Summer Band Program Is Planned Here

Eastland High Band Master Philip Hewett has announced plans for a summer band program which will include two concerts.

"The summer band will give your child a chance to continue his music education and at the same time have some summer fun," Hewett explained. "The program will be open to all students now in the band program. The band will meet three times a week for a total of six hours each week. Since this program must be self operating a tuition charge of \$10 will be necessary."

Concerts are scheduled for June 18 at 6:30 p.m., during the Homecoming, and again July 15 at City Park. On the afternoon of July 15 the band will hold a picnic at the park before the concert.

Hewett also said that he would offer a summer program for beginners if as many as 15 want to participate. Parents of beginners should contact Hewett before May 26.

Surplus Foods Issue Dates Are Announced

Next issue date for the USDA Surplus Foods for Eastland County will be as follows:

- Monday May 9—Eastland, Olden and Ranger.
- Tuesday, May 10—Rising Star, Pioneer, Okra, Carbon, Gorman and Desdemona.
- Wednesday, May 11—Cisco, Scranton and Nimrod.

To get a little fellowship, goodwill and inspiration in your life, try coming to the Men's Fellowship Bible Class of the First Christian Church. (Adv.)



EASTLAND COUNTY CHAMPS—Conrad Schaefer of Rising Star (left) was named a county corn growing champion at a recent banquet. Schaefer had the high yield of 56.39 bushels per acre for Eastland County in the 1959 National Selected 5 Acre DeKalb Corn Growing Contest. L. D. Belyeu of Gorman (not pictured) was named a county sorghum growing champion at the banquet. Belyeu had the high yield of 7076.12 pounds per acre for Eastland County in the 1959 National Selected 5 Acre DeKalb Sorghum Growing Contest. The runner-up champion for the county was Schaefer who had a yield of 5661.38 pounds. Ranking as the third place winner was Herman Schaefer of Cisco (right) who produced a 4764.38 pounds per acre yield.

HOLLYWOOD HAPPENINGS

news from the HOLLYWOOD V-ETTE VASSARETTE FACTORY By GEORGIA GOSNELL

Happy Birthday to Opal Watson, Joy Daniel, Zola Lovelace, Gracie Lewis, Lefean Howell and Anita Whitley.

Well, it's drawing near to inventory time out our way so everyone is trying to give someone else their "scraps" one way or another. The major question is "who has an empty box?"

Have you noticed the lovely red roses in front of our plant? If you haven't, drive by soon and see them.

Visiting Odie and Ruby Guy this past week-end were their son and daughter-in-law, James and Peggy Snyder.

Floy Hudnall and Ruby Guy have been spending the nights over in Cisco with their mother, Mrs. C. A. Lucas, who is ill. We wish Mrs. Lucas a speedy recovery under such good care.

Mrs. Ethel Rowch made a trip to Ft. Worth last weekend to be at the bedside of her granddaughter, Miss Lenda Adams. Lenda was seriously injured while returning in a car wreck while returning from a banquet. She was reported in fair condition Monday.

Adult Class In Homemaking Is Planned Here

A class for adults will be held in June for homemakers who are interested in learning more about foods and nutrition. The class will be taught by Miss Loretta Morris, Eastland High School homemaking teacher. The classes will be held in the homemaking department where there is adequate equipment for meal preparation.

All people who think they would like to enroll in the class are asked to call the office of the high school in the next few days and leave their name and address. The phone numbers are MA 9-2646 and MA 9-2685.

Miss Morris will then make contacts to work out the most convenient days of the week and time of day for the classes. There is no expense involved and a nursery will be provided for the mothers of small children.

Lenda is a student at T. C. U. and the daughter of Mr. and Mrs. J. B. Adams. She is in the St. Joseph Hospital in Fort Worth. We send our prayers for a speedy recovery and to Lenda "cheer up, you have the best physician of all on your side."

This week as supervisor in the spotlight is Mrs. Frances B. Dooley. Frances became a member of our "family" on Jan. 22, 1957. She finished high school at Colony and now resides at Ranger. She is a member of the First Christian Church.

Frances started out as a machine operator on line 7 making 8035 backs. She now supervises on line two, assembly back line for styles 1245 and 1296.

She is married to Chester A. Dooley, an employee for Premier Pipe Lines and they have one daughter, Mrs. Conrad D. Miller of Big Spring. Frances has one granddaughter, Sheryl Ann.

Frances is well liked by the women on her line and is a quiet sort of person. Incidentally, I hear that she is a good cook, especially in pastries and sweets of all kinds.

Faye Freeman is out this week to be with her husband, L. C. Freeman, who underwent major surgery Monday and is in Room 15 of the Eastland Memorial Hospital. We also wish him a nice recovery.

Anita Whitley and family are going to San Antonio this week-end. Yep, to see her son, Miss DeWay Nance of Cisco will accompany them.

Robert Johnson is home on a furlough from Camp Ord, California to be with his mother, Johnny and family.

Sorry to hear that Florence Crabbs' father is ill. Mr. Cook is in a hospital in Abilene and is under oxygen. We wish Mr. Cook good health soon.

The local Rebekah Lodge No. 177 is entertaining the Oil Belt Association here in Eastland tonight and several of the employees are members.

If anyone asks you directions to the County Sheriff's Posse Barn, we would appreciate it very much if you will direct them out that way. (Hope our lovely roses are still in full bloom as they will pass our plant.)

See you next week?

Rain Benefits Eastland Area

Eastland County got a highly beneficial rainfall during the past three days and was fortunate enough to miss the heavy and

damaging hail which fell in some parts of West Texas.

The official reading in Eastland for the week climbed to 1.92 inches. Since Tuesday morning a total of 1.16 inches fell.

The Eastland County rains were welcomed by area farmers and businessmen. Lakes in the area already were nearly full, and the additional rainfall sent them near capacity.

More rain is forecast for the area. The weatherman predicts scattered thundershowers today.

In San Angelo, hailstones caused an estimated \$3 million worth of damage Tuesday. Other areas, including Moran, were also hit, but no hail was reported in Eastland County.

Commemorative Stamp for Water Conservation

No other resource so directly affects the welfare, comfort and happiness of all the people as does water. Our national and personal need for water for domestic use, for sanitation, for manufacture, and for agriculture is multiplied each year by our expanding population, says Lynn Pittard, assistant extension soil and water conservation specialist.

In view of this great role water plays in our lives, the first water conservation stamp in history was released April 18 in Washington, D. C. The four-cent stamp is the latest in the series of conservation commemorative postage stamps.

This stamp should impress on every American the value of water conservation.

We know there is only so much water on the earth, and this much (Continued on page two)

C-C Highway Committee to Meet Friday

A meeting of the Eastland Chamber of Commerce highway committee will be held Friday at 11 a.m. in the Chamber office, at which time Cecil Warren of Abilene, president of the U. S. Highway Texas Association will speak.

H. J. Tanner, manager, said Warren and a number of other Association officials will outline a plan for further popularizing and advertising the aims of the U. S. 80-Interstate 20 Association.

Tanner said that members of the highway committee are urged to attend and the meeting will be open to all other interested persons.

Members of the committee include Chairman Hood King, Harold Reese, W. Q. Verner, Bruce Pipkin, Don Pierson, E. E. Freyschlag and Virgil Seaberry Sr.

County-wide Golf Tourney To Begin Sat.

The Eastland Lakeside Country Club has announced plans for a county wide golf tournament scheduled for Saturday and Sunday, April 30 and May 1.

All Eastland County golfers are eligible to enter the tournament.

The tournament play will be medal play to a flight, and will be medal play. Eighteen holes on Saturday beginning at 1 p.m. and eighteen holes Sunday beginning at 1 p.m. Qualification scores may be turned in at any time up to 12:30 p.m. Saturday.

Entry fees will be \$3.00 per entry. There will be three prizes in each flight. Winner of each flight will receive one dozen top grade golf balls, runner-up will receive eight and consolation winner will receive four.

Janis Little to Study In Europe On Scholarship

Two University of Texas senior co-eds from West Texas, both honor students and both active in a variety of campus organizations, have been awarded Fulbright scholarships for 1960-61 graduate study in Europe.

Martha Jane Mast of Midland will study French literature at the University of Toulouse, France, and Janis Virginia Little of Eastland will study German literature at the University of Goettingen, Germany. Dr. Joe W. Neal, campus Fulbright advisor, announced.

Earlier this spring, both were named Woodrow Wilson Fellows. The Fellowships are for first-year graduate work leading to careers in college teaching.

Both Miss Mast and Miss Little are following the "Plan II" route to the Bachelor of Arts degree.

The special four-year liberal arts program is open only to selected undergraduates with outstanding high school records. Both are members of Phi Beta Kappa, top liberal arts scholastic fraternity.

Miss Mast was a 1959 Sweetheart nominee and is a member of Orange Jackets, girls' service organization, and Kappa Alpha Theta social sorority.

Miss Little is a member of Der Eulenspiegelverein, German language club; International Club; Delta Phi Alpha, honorary society for students of German; Alpha Lambda Delta, to which she was elected for high freshman grades, and Mortar Board, honorary society for senior women.

Olden Seniors To Present Play Friday

Olden seniors will present their senior play Friday night in the school gymnasium. The play, "Hobgoblin House," begins at 8 p.m.

A mystery-comedy in three acts, the play is directed by Jackie Heath. The excitement and frightening events that occur in the old Hobgoblin house when Miss Priscilla Carter and her two nieces arrive will keep the audience wondering all night. Miss Carter's three servants provide the laughs.

Admission prices will be 60c for adults and 35c for students.

Promotions Listed By Texas Electric

Texas Electric Service Co. this week announced several promotions which involve Eastland District personnel.

District Manager Frank Syre disclosed that two Eastland employees have been transferred, one has been promoted and a TESCO employee from Gorman has been transferred to Eastland. Here are the promotions announced:

Ray Kinard, superintendent of the Leon Plant, has been transferred to Colorado City. Kinard has been here since 1955, first as assistant plant superintendent. He has been active in civic affairs, and is presently president of the Lions Club and president of the West Ward P.T.A.

M. K. Beazley, assistant plant superintendent at the Leon Plant, has been promoted to superintendent.

Beazley has been in Eastland since February of 1959. He has been a TESCO employee for nine years, is married and is a deacon in the First Christian Church.

Harold White, Eastland District commercial manager, has been transferred to Midland as commercial manager. White has been in Eastland since June, 1956. He came here from Wichita Falls. He is also been an active civic and church leader.

Jim Parks will be transferred to Eastland as District commercial manager. He comes here from Graham. A company employee since 1948, he is married and the father of an eight-year-old daughter.

EASTLAND NATIONAL BANK "On The Square" MEMBER F. D. I. C.



MONKEY ON HIS BACK—After you've used it, it doesn't bother you. Dr. Ernst Lang, director of the Basel, Switzerland, zoo, gives a six-month-old ape a ride. An accepted method of transportation in the jungle, this little guy thinks Dr. Lang is his mother.

MOORE about... EASTLAND Virgil E. Moore... you now and then someone confused by whose opinion... it once more justly... you read an opinion in column, and you will read of them if you follow... Moore. Quite often, in we disagree with our... When we do we have... to have the privilege of... for a man who really... in freedom of the press... us the right to say any... that we want to so long... Our personal motto is this: we can write anything you... enough nerve to write, but... member the public can also... anything about it they choose... you must face the conse... through the years we've... a few of those consequ... We've been grabbed... and the collar just about as... as anybody else's news... editor, and we have been... more than once. But... we climb back of this old... writer we sometimes get... are digressing though. We... telling you about whose... is whose. We've touched... this particular column, now... mention editorials. article labeled "editorial"... Telegram should immedi... let you know that the... gram editor and publisher... giving you their combined... It is the entire news... speaking. also publish quite a few... columns and articles. We... insist on running by w... that you will know who wrote... Opinions expressed in... columns are the opinions... the writers and the editor... publisher of the Telegram... necessarily agree with... opinions. Some of the col... include "Gray Matter"... by Gray, "Marie Boney"... by Mrs. Marie Boney... "Roundup" by Oran... and "Hollywood Happen... by Georgia Gosnell. also print letters to the... So if you disagree... enough with what we... what one of our column... we will be pleased to... your letter. S.—We also accept letters... people who aren't even... House was through East... Tuesday and spent the night... Village Hotel. Boyce, as... was full of wit, and we en... talking to him. Eastland and Eastland County... a real friend in this famous... Now engaged in public... work, Boyce travels all... the country, and you can... your hat that he tells plenty... about Eastland County. really should put him... on chamber of commerce pay... but then if we did his work... as effective. found out, after coming... in favor for Jim D. Bowner... Judge of the Texas Court... Criminal Appeals, that the... ple attorney is a first... of Mrs. Ben McKinnis of... land. That should prove that... is good enough for the job. ETERY WORKING SET... will be a cemetery work... the Long Branch Cemetery... and all persons interest... helping have been asked to be... REYSCHLAG INSURANCE AGENCY presents the... ATHER NEWS... 70... 58... 1.16... 2.12... 7.88... 25.83... Cloudy and Mild... See and Drive the New... TURBINE DRIVE BUICK... WITH THE WILDCAT ENGINE... WIRHEAD MOTOR CO.

Eastland Telegram

Eastland County Record established in 1881, consolidated August 31, 1961. Chronicle established 1887, Telegram established 1928. Entered as second class matter at the Post Office in Eastland, Texas under the act of Congress of March 3, 1879.

TIMES PUBLISHING COMPANY
Published Tri-Weekly—Tuesdays - Thursdays - Sundays
Onous Dick and Joe Dennis, Publishers
Virgil E. Moore, Editor

Per week by carrier in city 15
One month by carrier in city 45
One year by mail in County 2.95
One year by mail in state 4.95
One year by mail out of state 6.95

NOTICE TO PUBLIC—Any erroneous reflection upon the character, standing or reputation of any person, firm or corporation which may appear in the columns of this newspaper will be gladly corrected upon being brought to the attention of the publishers.

WANT ADS!

Cards of Thanks charged for at rate of \$2.00 Each

MISC FOR SALE

ELECTROLUX (R) Cleaners factory rebuilt and guaranteed. Authorized Sales & Service. 1992 Sayles, Abilene, P.O. OR 3-1185.

FOR SALE OR TRADE: Boat dock, barbecue pit, picnic table. Phone 2579, Carbon apt. 5.

Gifts, dresses, lingerie, blouses and hose. Lay it away for Mother's Day at Mode O'Day, East side of the Square.

PLANTS FOR SALE: Red cloud, porter and Texas sure crop tomato plants also hot and sweet pepper plants. See Dick Pennington on Desdemona Highway, Gorman.

PIANO BARGAIN: Responsible party can arrange most attractive purchase of fine spinet piano. Small monthly payments. Write McFarland Music Co., 722 W. 3rd Street, Elk City, Oklahoma.

FOR SALE: Two one ton air conditioners. Call Mr. Shaw, MA 9-8881.

FOR SALE: Good kitchen range. We're installing built in stove and must sacrifice this three-year-old range. Phone MA 9-1392 or MA 9-1707.

FOR SALE: T. V. antennae. A good buy for someone. We're going cable ourselves. Phone MA 9-1392 or MA 9-1707.

FOR SALE: Five burner Dearborn heater in excellent condition. You can buy it a lot cheaper than you can next winter. Phone MA 9-1392 or MA 9-1707.

FOR SALE: A good lawn mower at a real bargain. Phone MA 9-1392 or MA 9-1707.

FOR SALE: Coronet Deluxe air conditioner. South side apartment in old Eastland Hospital.

FOR SALE: Kitchen range, good condition. Phone MA 9-2478.

FOR SALE: Good used television sets 17" and 21". \$40 up. Robertson Radio & T.V. next door to Lone Star gas office.

FOR SALE: 3 - piece bathroom set. 410 N. Dixie. Call MA 9-2229.

FOR SALE: Feeder pigs. Phone MA 9-2775.

Want To Lease

WANT TO LEASE: 200 - 300 acres land. Must have well, shade and good drainage. Phone MA 9-2667.

FOR SALE

New quality built 3 bedroom, one and one-half baths, homes on South Dixie. Should be ready for you to move in soon. G. I. nothing down, F. H. A. approximately \$350 down. Payments like rent. Choose yours early for a lifetime of family happiness.

Don Pierson

Suite 210 Village Hotel

Wanted To Trade

WANT TO TRADE: Nice three room and bath, house in Goldsmith, Texas furnished. Fast growing town, near Odessa, school, churches, two paved highways, three town. For small tract of land. Pay or take difference. Write owner, A. D. Lewis, Sr., 1319 East 2nd Street, Odessa, Texas, or call Don Lewis, VA 7-3612, Goldsmith, Texas.

MATTRESSES

Save up to 50% renovating, choice of color and firmness. Complete bedding. Made and guaranteed by WESTERN MATTRESS CO., San Angelo. Phone MA 9-2689, Eastland and leave address.

SPECIAL NOTICE

NEW LOCATION: Linda's sewing alterations, monograms, button holes, all work guaranteed. Moved from 209 N. Lamar to 313 N. Lamar.

NOTICE: Rock underpinning and house leveling. Cement porches at reasonable prices. 609 W. Plummer. Phone MA 9-1690.

THE proven carpet cleaner. Blue Lustre is easy on the budget. Restores forgotten colors. Coats Furniture and Carpet Co.

SPECIAL NOTICE: Bankrupt manufacturer paint. Regular \$6 value sacrifice \$2.70 gallon. Outside white, inside colors. Paramount Hotel, Ranger. Also nice rooms, tile baths. \$5 week. TV.

ELECTROLUX cleaners - new and rebuilt in stock. Authorized sales and service. Roy Gann, Phone MA 9-2474.

Eastland Masonic Lodge No. 467
Reg. Stated meetings 2nd Thursday of each month, at 8:00 p.m.
H. G. Weathersby, W. M.
L. E. Hunkaby, Secretary

GOLDEN AGE NURSING HOME - home atmosphere... care for all types of patients... special diet. 24 hour nursing care... doctor on call 24 hours. Phone HI 2-2579 Cisco, Texas

NOTICE: Will stay with sick day or night. Will accompany anyone home from hospital. Phone MA 9-2133. Nursing for 8 years.

FOR RENT: Newly decorated apartments. Hillside. Phone MA 9-8847.

ENJOY LIFE DOWNTOWN, close to everything. 100 lovely redecorated rooms with 100 private baths, all with ceiling fans and heated with warm steam heat, for only \$39.50 per month, which includes maid service. Delicious Coffee Shop. Also apartments custom made to any size for permanent guests. Contact Mrs. Robinson, manager, the friendly Villare Hotel (formerly the Connellee, Eastland, Texas).

FOR RENT: Three bedroom unfurnished house. 302 S. Connellee. Phone MA 9-1522 or MA 9-1238.

FOR RENT: Two bedroom house in Olden. See Jeff Woods in Olden.

WANTED: Lady to stay with elderly woman. Call Mrs. Miller. Phone MA 9-2143.

WANTED: Car-hop, Dairy Treat.

RURAL LADIES: There is earning opportunity for you representing Avon Cosmetics and toiletries in your community. Opening in Staff and Lake Leon. Write Avon Manager, Mrs. Ellis, 1641 Bridge Avenue, Abilene.

WANTED: Lady to stay with elderly woman. Call Mrs. Miller. Phone MA 9-2143.

WANTED: Lady to stay with elderly woman. Call Mrs. Miller. Phone MA 9-2143.

WANTED: Lady to stay with elderly woman. Call Mrs. Miller. Phone MA 9-2143.

WANTED: Lady to stay with elderly woman. Call Mrs. Miller. Phone MA 9-2143.

WANTED: Lady to stay with elderly woman. Call Mrs. Miller. Phone MA 9-2143.

WANTED: Lady to stay with elderly woman. Call Mrs. Miller. Phone MA 9-2143.

WANTED: Lady to stay with elderly woman. Call Mrs. Miller. Phone MA 9-2143.

WANTED: Lady to stay with elderly woman. Call Mrs. Miller. Phone MA 9-2143.

WANTED: Lady to stay with elderly woman. Call Mrs. Miller. Phone MA 9-2143.

WANTED: Lady to stay with elderly woman. Call Mrs. Miller. Phone MA 9-2143.

WANTED: Lady to stay with elderly woman. Call Mrs. Miller. Phone MA 9-2143.

WANTED: Lady to stay with elderly woman. Call Mrs. Miller. Phone MA 9-2143.

WANTED: Lady to stay with elderly woman. Call Mrs. Miller. Phone MA 9-2143.

WANTED: Lady to stay with elderly woman. Call Mrs. Miller. Phone MA 9-2143.

WANTED: Lady to stay with elderly woman. Call Mrs. Miller. Phone MA 9-2143.

WANTED: Lady to stay with elderly woman. Call Mrs. Miller. Phone MA 9-2143.

Attention Homeowners: Enjoy privacy and a beautiful yard with one of our lovely fences. Chain Link, Texas Red Cedar, Redwood-Fatios-Brick, Western Cedar-Cinder Block. Our prices can't be beat. We stand behind every fence built. FHA Title I. No downpayment - 36 months. First payment 45 days after installation.
STEADMAN FENCE
Abilene, Texas
Look for future display Hwy. 80, East of Cisco. Call me for Free estimate today. Sales representative:
Mrs. Louise Galloway
Mi 2-1201, Cisco

REAL ESTATE FOR SALE

FOR SALE: House, 608 S. Bassett.

FOR SALE: Three bedroom house. Good location. Call MA 9-1485.

FOR SALE: Small four room house, double garage, 6/10 acre land at Morton Valley. M. L. Mueller, 507 Terril St., Ranger.

FOR SALE: Remodeled three or four bedroom house, nice location. Call MA 9-1095.

FOR SALE: Equity in FHA home. Two years old. Phone MA 9-2549.

FOR SALE: Small four room house with bath to be moved from Gorman. See Shorty Lawrence, Gorman.

FOR SALE OR LEASE: Three acres, well improved. All modern. Close in on Highway. Jack Chamberlain. Phone MA 9-1742.

FOR SALE: 10 acres land at Olden. South end of land joins highway 80 and hard surfaced road on west side of 10 acres. See Mrs. L. B. Mann, Olden.

HOUSE FOR SALE: Practically new three-bedroom, family room, two-bath, lots of built-ins, central heat, financed. H. E. White, 604 South Dixie.

FOR SALE: Three bedroom home, good neighborhood, corner lot, 105 x 120. Owner says sell at once. Priced to move it quickly. T. L. Fagg, Phone MA 9-2619.

FOR SALE: Five rooms household furniture. Reasonable. 416 N. Lamar or Call MA 9-2133.

Spring Special



SEIBERLING

Portage 670-15

NYLON

Black Tube Type Standard Warranty

13.95

Plus Tax and your old tire

Jim Horton

Tire Service

East Main Eastland

Special Offer on Converting Cotton Mattresses to Innersprings

Regular \$28.95

Only \$24.95

All layer built, guaranteed 10 years. 2 Day Service.



New Mattresses

at a good savings. Jones Mattress Co. 703 AVE. A. CISCO Phone HI 2-2787

Hospital News

Mrs. Mozell Martin, Eastland, medical
Mrs. Burney Walter, Ranger, medical
Mrs. L. J. Baggett, Eastland, medical
Mrs. Roy Stroud, Eastland, medical
Louis Cavin Freeman, Eastland, surgical
Pat Armstrong, Eastland, medical
Mrs. Sarah Owens, Eastland, medical
R. W. Nixon Jr., Eastland, medical
Mrs. W. H. Shirley, Cisco, medical
Mrs. C. C. Hearn, Brownwood, surgical
Will Lee Van Geem, Eastland, medical
F. M. Wilhite, Eastland, medical
Bobby Dobbs, Opal, Wyo., medical
Jimmy Culpepper, Eastland, medical
Mrs. Georgia Trammell, Cisco, surgical
Michael Wayne Reid, Ranger, medical
James Frank Mitchell, Gordon, medical
Sammy Smith, Eastland, accident
Mrs. Lucy Ables, Eastland, surgical

Memorative

(Continued from Page One)
ply remains constant. The only way we can meet the vital and rising demands for water is by reducing needless waste and pollution, by protecting the watershed upon which our water falls as rain and snow, and by finding more efficient methods for its use, Pittard said.

The unique two-panel stamp portrays a close-up view of a drop of water falling from a leaf, symbolizing watershed influences upon water supply. This design leads the eye to a right-hand panel depicting an actual watershed panorama. A town and farm in the foreground are dependent on the upstream watershed with its well-managed farm and forest lands and small dams for flood prevention and storage.

The next time you need stamps make sure you get the new conservation issue. They are available at all local post offices.

ATTEND THE CHURCH OF YOUR CHOICE EACH SUNDAY

Best Buys In Town

1958 Ford 2-door Custom 300, 6-cyl., r&h and overdrive. Real nice.

1957 Fairlane Ford, 8-cyl., 2-door. Real low mileage and extra clean.

1956 Mercury Monterey, 4-door, extra nice and low mileage.

1950 4-door Dodge, real clean.

1951 Chevrolet, two-door.

1951 V-8 Ford pickup. Extra good half-ton pickup.

Good Commercial Trucks—1953 White 3000 Dip-Cab, fifth wheel and saddle tanks, ready to roll.

1952 Chevrolet, 2-ton, 2-speed axle and a brown s/p. Fish plated frame and in tip-top condition.

SEE THESE BARGAINS at

Hood King Motor Co.

100 East Main Phone MA 9-1786

Now, That it is Spring Again -

... we are reminded of the many joys and pleasant memories for which this season is noted. But Spring may bring hail and windstorms, too, which are not so pleasant, and sometimes they bring death and much destruction of property, without warning. If you are not carrying this type of insurance give us a ring today. Remember, it is better to have it and not need it than to need it and not have it.

EARL BENDER & COMPANY

Eastland, (Insurance since 1924) Texas

"EFFICIENT EXTERMINATION" OF

• Roaches • Silver Fish • Ants

• Mice • Fleas • Ticks

• Scorpions and other Pests

Member National Pest Control Ass'n.

Lester Humphrey

PEST CONTROL SERVICE

Surity Bonded Termite Control—

FOR SALE

Lease on lots 13 and 13A LAKE SHORE ADDITION North Shore of Lake Leon. One hundred feet shoreline.

CALL

Larry McGraw - MA 9-1244

Look Who's New

Mrs. and Mrs. Richard (Dick) Bumpass of 2808 University Drive in Ft. Worth announced the arrival of their first baby daughter, Lee Ann Lee Ann was born May 1st at the Terrell Hospital in Terrell. She weighed eight pounds and two ounces.
Mr. and Mrs. Anna Grace Bumpass of Eastland is the paternal grandmother and Mrs. Elizabeth Butler of Eastland is the great grandmother. Mr. and Mrs. W. L. Roberts of Terrell are the maternal grandparents.

LACASA LINES

Mrs. D. B. Raney

Nancy Veale is undergoing surgery at Baylor Hospital at this writing. Her parents, Mr. and Mrs. C. C. Veale and other relatives are with her. Many contributions to the Nancy Veale Fund are being made through the Commercial State Bank, the New Hope Baptist Church, the Ranger Times, and the Lacasa Community Club.

Mr. and Mrs. James Stanford of Alpine were recent visitors to his parents, Mr. and Mrs. D. M. Stanford and carried home their children, Cindy and Wade, who had spent two weeks visiting the grandparents.

Mrs. Maude Wimberly, sister of Frank Bargesley and Mrs. Vallie Jones, died at Ft. Worth, Tuesday, April 19. She had been ill for several years.

Mr. M. I. Lasiter remains critically ill in the Ranger General Hospital.

Ann Raney, who won a second place in the Ready Writers Contest of the Interscholastic League District Meet at Graham, April 9, won another second place at the regional meet at Dallas, April 22. She is eligible to enter the State Meet at Austin May 6-7. Ann is a Sophomore in Breckenridge High School and a member of the Ready Writers Club.

Linda Truesdell, daughter of Mr. and Mrs. Melvin Truesdell, granddaughter of Mr. and Mrs. Clark McNabb, and a Junior in Breckenridge High School was chosen as Sweetheart of the National Guard Unit, April 22. Linda will be entered in the Battalion contest next week.

Ann Raney attended the Association of Girls Auxiliary Executive meeting for Cisco Association at Eastland Sunday afternoon, April 24. Ann is Association president.

There will be cemetery work at Macedonia, April 30 and at Mount Zion, May 7. The cemetery committees of the Community Progressers have set out some shrubs

VOTE FOR

JIM D. BOWMER

of Bell County for

COURT OF CRIMINAL APPEALS

• Law graduate—Baylor University

• Four years army service—two overseas

• Taught criminal law—Baylor

• Former county attorney

• Member State Bar Committee on revision criminal code

• Past president local bar association

• Board chairman, Pythian Children's Home

• Rancher—Church & civic leader

"Apply the law with common sense"

Vote for **JIM D. BOWMER**

COURT OF CRIMINAL APPEALS

(Pd. Pol. Adv.)

FOR POSITIVE REPRESENTATION VOTE FOR DON KINCAID

for State Representative 76th District

Eastland - Shackelford Callahan Counties (Pd. Pol. Adv.)

DIXIE

EASTLAND RANGER HIGHWAY

Box Office Opens 7:00 Show Starts

Box Office Closes Admission 50c - Children Under 12 FREE

Each Wednesday Is Bargain Night—Adults 25c

THURSDAY - FRIDAY - SATURDAY, APRIL 28, 29, 30

The Greatest Event in Motion Picture History

THE TEN COMMANDMENTS

CHARLTON HESTON - YUL BRYNNER - ANNE BAXTER - EDWARD G. ROBINSON - EDWARD G. ROBINSON - EDWARD G. ROBINSON

REGULAR ADMISSIONS—Children Under 12 FREE

PLUS: Color Cartoon and Sports Reel

SUNDAY - MONDAY - TUESDAY, MAY 1, 2, 3

GARY GRANT & TONY CURTIS

in Eastmar COLOF

OPERATION PETTICOAT

JOAN O'BRIEN - DINA MERRILL - GENE EVANS - DICK SARGENT

and **ARTHUR O'CONNELL**

PLUS: Color Cartoon and Sports Parade

RANGER DRIVE-IN

HIGHWAY 80 EAST ON RANGER HILL

Box Office Opens 7:00—Show Starts at Dusk

Adults 50c—Kiddies Under 11 Free

Only Eastland County Drive-In Open All Year

THURSDAY - FRIDAY - SATURDAY

Plunderers of Painted Flat

CALVET CARROLL HOMEIER

FREEVUE EVERY SATURDAY NITE

SUNDAY - MONDAY - TUESDAY

JULIUS VERNE'S JOURNEY TO THE CENTER OF THE EARTH

PAT BOONE JAMES MASC

ARLENE DAHL - DIAN BAK

CINEMASCOPE COLOR BY DE LU

JOY DRIVE

Cisco - Eastland Highway Thursday - Friday

MY DOG BUDDY

DOG STAR OF "THE LITTLEST BOY"

—plus—

ROBERT COMINGS

The Barefoot Mailman

SATURDAY

THRILL TO NEW WHO LAUGHING AT 1000 ARAI RIGGS

—plus—

ALAN LADD

DRUM BEAT

A hundred others dared not go

—plus—

ALAN LADD

DRUM BEAT

A hundred others dared not go

—plus—

ALAN LADD

DRUM BEAT

A hundred others dared not go

—plus—

ALAN LADD



Springtime values at our...

DEL MONTE



GARDEN SHOW

Register Free for KERC Radio!

A wonderful Sylvania Transistor Radio will be given away by Station KERC to some Lucky Person who Registers at Worth Food Mart - Now thru May 7. 3 RADIOS - 3 WINNERS each in Cisco, Ranger and Eastland - No Purchase Necessary

Prices Effective Thursday thru Saturday

WORTH FOOD MART

Limit Rights Reserved

Del Monte-Mix or Match!

Tomatoes or Green Beans **4** No. 303 Cans **85¢**

ASPIRIN **79¢** Vitamin Tablets Reg. \$1.98

Frozen Foods Specials!

Meat Pies **5** 8-Oz. Pkgs. **99¢**

Lemonade **3** Big 12-Oz. Cans **69¢**

Apple Juice 3 46-Oz. Cans 1.00
Orange-Apricot 3 29-Oz. Cans 1.00
Green Beans No. 303 Can 27c
Asparagus Picnic Can 31c
Potatoes No. 303 Can 29c



Ground Beef **39¢** Worth Quality, Fresh Lb.

Chuck Roast **45¢** Worth Controlled Quality, Finest Heavy Beef Lb.

COFFEE **59¢** Folger's All Grinds Lb. Can

Bananas **10¢** Large, Golden Central American Lb.

Winkist Oranges **15¢** California Juicy Valencias Lb.

Winkist Lemons **15¢** Large Size, Full of Juice Lb.

Winkist Celery **25¢** California Fancy, Extra-Crisp 2 Large Stalks

Peaches **4** Del Monte Cling, Sliced or 1/2s SAVE 32c No. 2 1/2 Cans **1.00**

Cocktail **5** Del Monte Fancy, Fruit SAVE 25c No. 303 Cans **1.00**

Pineapple **4** Del Monte Crushed SAVE 24c No. 2 Cans **1.00**

Catsup **6** Del Monte Finest YOU SAVE 17c 14-Oz. Botls. **1.00**

PEAS or CORN **6** Del Monte Golden Mix or Cream Style Match No. 303 Cans **1.00**

Pear Halves **4** Del Monte, in Heavy Syrup No. 303 Cans **1.00**

Tomato Juice **29¢** Del Monte, Tangy YOU SAVE 6c 46-Oz. Can

Pineapple-G'fruit **4** Del Monte Drink, You SAVE 34c 46-Oz. Cans **1.00**

Tomato Sauce **12** Del Monte SAVE 16c 8-Oz. Cans **1.00**



Fryer Pieces **49¢** Mrs. Chessher's Frozen DRUMSTICKS Lb. Pkg. **69¢** BREASTS Lb. Pkg.

Beef Arm Roast **55¢** W. C. Q. Shoulder Lb. **59¢** Kraft Sliced American Cheese Lb.

Sliced Bologna **49¢** Swift's Premium Lb. **59¢** Swift's Premium, Loaf Pickle-Pimiento Lb.

WORTH FOOD MART

Citizenship Winners Are Announced at DAR Meet

The Charles Crawford Chapter of the Daughters of the American Revolution met Monday at the residence of Mrs. Sam Kimmell in

Cisco for a program on American History with special emphasis on local county history.

Presiding was Mrs. Edward Horigan, Regent, of Ranger. The recent convention in Washington D. C. was reported in round table from newspaper and magazine accounts and the delegate, Mrs. F. E. Harrell, will report further upon her return from Washington.

Mrs. T. C. Williams, Good Citizenship Chairman, announced the winners of the annual awards, gold medals, to the following: Misses Beverly Moser of Eastland, Mary Wayne Huston of Cisco and Linda Drennan of Ranger. These will be presented formally at the May meeting of the chapter.

The program, titled American History, honored Mrs. M. H. Hagaman, who was the leader for the afternoon. She was present and chose Mrs. Samuel Butler to be the guest speaker. Mrs. Butler has had access to early records and had a fascinating presentation of Eastland County's early days.

She was assisted by Mrs. Grace Reed, who quoted extensively from early correspondence which told of the first post offices of the county, the first court house at Merriman, the two-story stone building erected in Eastland city, its second floor to be used for the courthouse. The old stone walls are still visible on the south side of the Corner Drug building second story. C. U. Connelley, and his part in the establishment of the county, was one of the personalities presented and many of the leaders of the various communities were described.

Special credit was given by Mrs. Butler to the three Cisco women who meant much to early organizations for the betterment of the area, Mrs. Butts, Mrs. Fee and Mrs. Reagan, and for the founding of the Eastland County Federation, credit went to Mrs. Phillip Pettit of the Charles Crawford Chapter.

The first Home Demonstration Agent, Miss Ruth Ramey, was hired because of the interest of the women of the county. The "new" courthouse received assistance in the furnishings from the County Federation, Eastland Civic League and other organizations in order that a large room might be

made pleasant for the rural women who came to town on Saturdays. The early libraries of the towns were placed in operation by clubs of women.

Mansker Lake, McGough Springs, Red Gap, Dan Horn, Nimrod and other names were part of the story and the suggestion was made that a whole program could be devoted to the interesting place names of the rivers, creeks and communities.

The street names and their origin were discussed. The finding of Indian relics on the Hagaman ranch, where Mrs. Bernie McRea now lives, and tales of Indians in the area were vividly related.

Refreshments were served to the women from the three towns, Ranger, Eastland and Cisco, and spirited discussion of early days continued throughout the social hour.

— READ THE CLASSIFIEDS —

Mrs. Coke Martin Speaks at Meet Of Thursday Club

"Hands that Collect Ancient Arts" was the subject for the Thursday Afternoon Club when it met Thursday, April 21, in the Woman's Club.

Each member answered roll call by displaying a favorite antique. Mrs. Coke Martin of Martin's Antiques in Weatherford was the special guest for the program. She and Mrs. Harold Durham discussed antiques, "Ancient Aesthetic Appeals."

Mrs. Iral Inzer, president, presided during the business meeting with Mrs. Burton reading the minutes.

"Heart of Texas" is the new name given to the new district which includes the Thursday Af-

ternoon Club. Mrs. Cecil Collings is the new vice-president of the new district.

Mrs. Burton displayed the award for "Outstanding Library Project" won by the library and when read the letter of congratulations from the Texas Library Association.

Mrs. Iral Inzer and Mrs. Cecil Collings were named delegates to attend the state convention in Austin.

Members present at the meeting were the following: Meses. Harold Bulgerin, Burton, Frank Castleberry, Turner Collie, Collings, Frank Davenport, Durham, Ben Hamner, C. W. Hoffmann, James Horton, Inzer, Larry Kinard, W. P. Leslie, Milburn Long, Frank Lovett, W. A. Martin, Grady Pipkin, Frank Sayre, E. T. Townsend, Escó Walter, I. C. Heck, Roy Young, Frank Crowell, B. W. Patterson, Joseph Perkins and Robert Perkins.

— Call MA 9-1707 for Classified Ads

8 out of 10 WOMEN GET RELIEF FROM the awful nervousness and "hot flashes" of CHANGE-OF-LIFE

in scientific clinical tests by noted doctor! Every case tested got striking relief from awful discomforts of change-of-life. Nervousness was reduced for as many as 87%... "hot flashes" 75%!

No Costly Shots Needed—Female Ailments Relieved! Results were credited entirely to Lydia E. Pinkham's Vegetable Compound. Acting through the sympathetic nervous system, it has remarkable power to relieve this functionally-caused distress. Don't suffer needlessly. See if that tension, irritability, you don't escape suffocating "flashes" that made change-of-life so hard to bear. Today, get Lydia E. Pinkham's Vegetable Compound at all drug stores.

SLEEP 8 HOURS—WAKE UP TIGHT! When due to simple iron deficiency anemia, take Pinkham's Tablets. Rich in iron, they start to strengthen your iron starved blood within one day.

Political Announcements

The Eastland Telegram has been authorized to announce candidates for public office in the Democratic first primary election May 7 as follows:

FOR SHERIFF:

- J. B. Williams, re-election
- Lee Horn
- W. E. (Bill) Reid
- Oscar M. (Hop) White

FOR TAX ASSESSOR-COLLECTOR:

- J. C. Allison (re-election)

FOR STATE REPRESENTATIVE 6TH DISTRICT:

- Paul Brashear (re-election)
- Don Kincaid
- Scott Bailey

FOR COUNTY COMMISSIONER 4TH DISTRICT NO. 1:

- J. B. (Tip) Arther
- E. W. (Bud) Griffin
- O. R. (Ott) Ervin

FOR STATE SENATOR, DISTRICT 22:

- Tom Creighton, Palo Pinto Co
- Floyd Bradshaw, Parker County

FOR CONGRESS, 17TH CONGRESSIONAL DISTRICT:

- Roy Skaggs of Abilene
- R. M. Wagstaff
- Omar Burleson

FOR CONSTABLE PRECINCT 1:

- J. H. (Hoover) Pittman
- Porter O. Woods

Visit Our Display Yard in EASTLAND before you choose your MONUMENT Located across street from Coats Furniture Co. Willard Griffin, Dealer Ph. MA 9-2557 — Eastland Built by: Rilev-Gardner Memorial Co., Hamilton, Texas



VOTE FOR PAUL BRASHEAR
State Representative
76th District
'Qualified by Experience'
(Pd. Pol. Adv.)



SINCE 1884
... quality workmanship and efficient service, approved throughout this area.

ALEX RAWLINS & SONS

Designers and Builders of Monuments Since 1884
Weatherford Phone LY 4-2726 Texas

SPECIAL NOTICE

GOING AT WHOLESALE!

Due To Our Other Business Interests We Are CLOSING OUT OUR ENTIRE STOCK OF BOATS — MOTORS — TRAILERS AND OTHER FISHING EQUIPMENT.

WE NEED THE ROOM... COME AND GET 'EM

- 3 Only 15-ft. 4-in. Glasco Boats Completely Equipped
- One Only 14-ft. Sports Craft Boat
- Two 14-Ft. Sport Craft Fishing Boats

These Boats carry a one year guarantee and we will be here to back it up. Don't wait and let the other fellow get the bargains.

Jack's Marine Sales

EASTLAND, TEXAS

ONE BLOCK SOUTH OF EASTLAND NATIONAL BANK

100 EXTRA GOLD BOND stamps!

AND IT'S EASY AS...
Just think! 100 EXTRA GOLD BOND STAMPS can be yours... just by shopping the friendly GOLD BOND merchants as you always do... and following these simple rules.

Read carefully... and clip the coupon today!

PLEASE NOTE THE EXPIRATION DATE ON THE COUPON — WE DON'T WANT YOU TO MISS YOUR FREE STAMP!

VISIT ANY SERVICE STATION giving Gold Bond Stamps. With any purchase of \$1 or more, you get a special sticker labeled "GOLD". Paste it in the space marked "GOLD" on coupon below.

VISIT ANY SUPERMARKET giving Gold Bond Stamps. With purchase of \$1 or more, you get a special sticker labeled "STAMPS". Paste it on the coupon.

THEN... turn in the coupon with all stickers pasted in position at the Supermarket and you'll immediately get 100 EXTRA GOLD BOND STAMPS!

100 EXTRA GOLD BOND STAMPS

When 2 Stickers are pasted in blanks below

Paste GOLD sticker here

Paste STAMPS sticker here

Get your "GOLD" sticker with purchase of \$1 or more at any Gold Bond service station listed under GOLD on this page.

Get your "STAMPS" sticker with purchase of \$1 or more at any Supermarket listed under STAMPS on this page, THEN turn in coupon at the Supermarket for 100 GOLD BOND STAMPS.

NAME _____
ADDRESS _____
CITY _____ ZONE _____ STATE _____

LIMIT... 100 STAMPS PER FAMILY

This Coupon Expires Thursday, May 12th

GET YOUR STICKERS FROM THESE GOLD BOND MERCHANTS

Otis Coleman Humble Service
400 East Main — Eastland

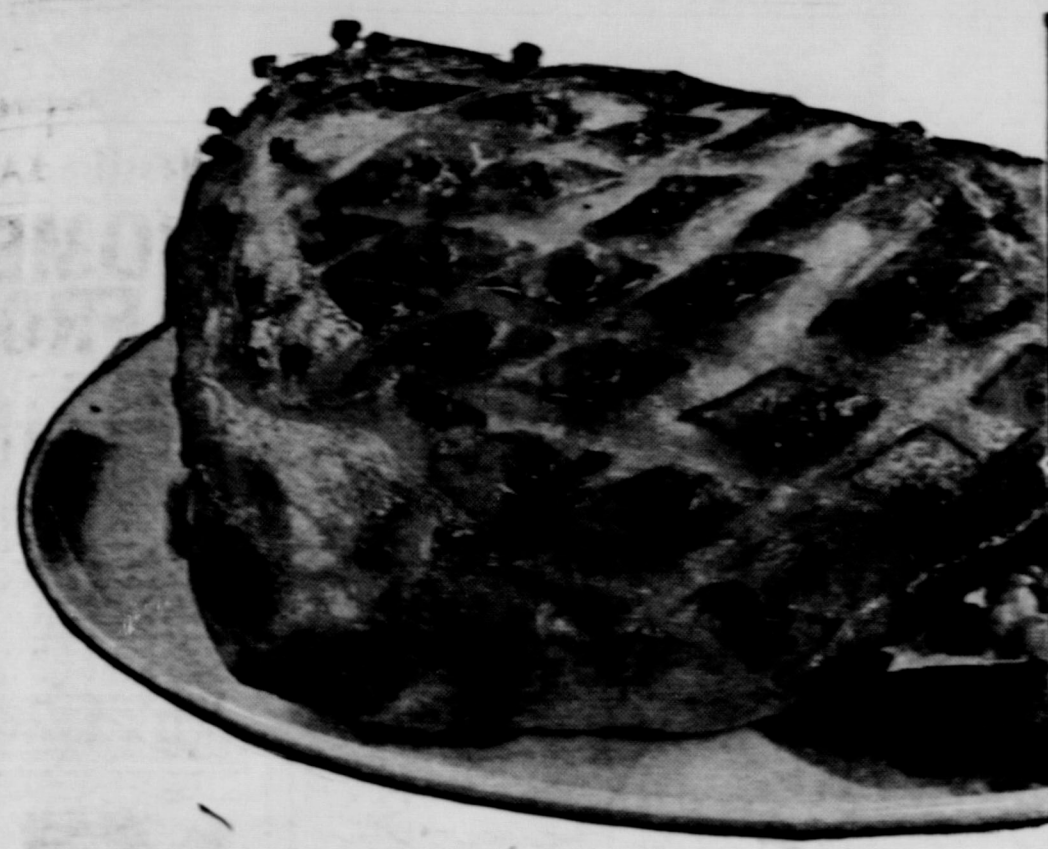
Williams Humble Service
Desdemona

McAfee's Mobil Service
301 E. Main — Eastland

Tucker Texaco Service
Eastland

Reed's Gulf Service
Highway 80 East — Ranger

SAFEWAY
STORES
504 East Main — Eastland



Bargain Buys!

- | | | |
|---|----------------|------------|
| Margarine Coldbrook. Table Spread. So economical. | 2 1-Lb. Pkgs. | 27¢ |
| Tomato Juice Libby—Vitamin high, calorie low. | 2 48-Oz. Cans | 59¢ |
| Spinach Del Monte—Add variety to your menu. | 3 No. 303 Cans | 39¢ |
| Tomatoes Gardenside—Perfect with spaghetti or casseroles. | 3 No. 303 Cans | 39¢ |
| Vienna Sausage Libby—Rich in proteins. | 2 No. 1/2 Cans | 39¢ |
| Canned Biscuits Bellard sweetmilk or Pillsbury buttermilk. | 3 8-Oz. Cans | 29¢ |
| Applesauce Cookies Sunshine—Perfect for lunches. | 1-Lb. Pkg. | 43¢ |
| Sauerkraut Long House. So economical. | 2 No. 303 Cans | 27¢ |
| Dog Food Red Heart. Assorted Flavors. | 3 1-Lb. Cans | 39¢ |

Bag These Bargains!

- | | | |
|---|----------------|---------------|
| Airway Coffee Mellow and Mild Flavor. (2-Lb. Bag . . \$1.10) | 1-Lb. Bag | 57¢ |
| Salad Dressing Piedmont—Adds the finishing touches to any salad. | Quart Jar | 35¢ |
| Crisco Shortening (4c off label) | 3 1-Lb. Cans | 71¢ |
| Strawberries Bel-Air Frozen sliced. | 5 10-Oz. Pkgs. | \$1.00 |

- | | | |
|--|-----------------|------------|
| Morton Potato Chips Fresh and crisp. | 1-Oz. Pkg. | 39¢ |
| Ritz Crackers NBC—Perfect for snacks and parties. | 1-Lb. Box | 35¢ |
| Pizza Pie Mix Chef-Boy-Ar-Dee. | 15 1/2-Oz. Pkg. | 49¢ |
- Top your Pizza with **Rath's Pepperoni**

75 SAFEWAY COUPON 75

This Coupon Worth 75 (75.00) **FREE GOLD BOND STAMPS**

Plus your regularly earned Gold Bond Stamps with the Purchase of

THREE — No. 2 1/2 Cans Del Monte Fruit Cocktail

Limit One Per Customer. Coupon Expires April 30, 1962.

75 FREE GOLD BOND STAMPS 75

100 SAFEWAY COUPON 100

This Coupon Worth 100 (100.00) **FREE GOLD BOND STAMPS**

Plus your regularly earned Gold Bond Stamps with the Purchase of

THREE — 20-Oz. Jars Empress PRESERVES

Limit One Per Customer. Coupon Expires April 30, 1962.

100 FREE GOLD BOND STAMPS 100

25 SAFEWAY COUPON 25

This Coupon Worth 25 (25.00) **FREE GOLD BOND STAMPS**

Plus your regularly earned Gold Bond Stamps with the Purchase of

1-Lb. Pkg. Town House PRUNES

Limit One Per Customer. Coupon Expires April 30, 1962.

25 FREE GOLD BOND STAMPS 25

PICNICS

SMOKED—

6 to 10-Lb. Average. Whole. Ready to cook. Delicate pink texture. Lean and tender for finest eating.

Lb. 29¢

Chicken Hens

3 1/2 to 6-Lb. average. Plump and tender. U.S.D.A. Inspected Grade A. **Lb. 39¢**

Sliced Bacon

Thick-sliced to retain that delicious smoked flavor. **2-Lb. Pkg. 89¢**

Round Steak or Round Roast. U.S.D.A. Choice Grade Heavy Beef. **Lb. 89¢**

Sliced Jumbo Bologna For your cold cut plate. Full Pound Pkg. **49¢**

Smoked Hams 10 to 16-Lb. Average. Half or whole. **Lb. 49¢**

BANANAS

Golden ripe tropical fruit. Ripened a better unhurried way. **Lb. 10¢**

STRAWBERRIES

California's finest. Red ripe and flavorful. Plump berries of uniform size. **Pint 35¢ or 3 Full Pints \$1.00**

Green Beans Kentucky Wonder beans. Snappy fresh. Young and tender. **2 Lb. 25¢**

New Potatoes Florida's Fresh. Perfect with Kentucky Wonder Beans. **Lb. 10¢**

Asparagus Spears Young and tender spears. Delicious served with cheese sauce. **Lb. 15¢**

Get 100 EXTRA GOLD BOND STAMPS!

With special "GOLD," "BOND," and "STAMPS" stickers available from merchants giving GOLD BOND STAMPS

Get STAMPS Sticker Here!

Complete Details on page _____ of this paper

Bargains Galore!

Safeway Values!

- | | | | | | |
|--|--------------|------------|---|---------------|------------|
| Vel Beauty Bar Mild as a lotion. | 2 8-Oz. Bars | 39¢ | Ad Detergent Dishware Pack. | 40-Oz. Box | 83¢ |
| Palmolive Soap Gives new life to your complexion. | 3 8-Oz. Bars | 29¢ | Liquid Detergent Vel Pink—For instant dishwashing. | 22-Oz. Can | 65¢ |
| Palmolive Soap No drying detergents. | 2 8-Oz. Bars | 27¢ | Clorox Bleach Liquid—Removes hidden dirt. | Quart Bottle | 19¢ |
| Fab Detergent Contains a miracle ingredient called Durates. | Large Box | 32¢ | Ajax Cleanser Removes grease and grime (5c off label) | 2 Giant Cans | 41¢ |
| Vel Detergent Cuts grease so fast, gets dishes clean. | Large Box | 32¢ | Aerosol Deodorant (10c off label) Colgate Florant Soave or Floral. | 5 1/2-Oz. Can | 65¢ |

Bakery Feature of the Week!

- | | | |
|---|----------------|------------|
| Multi-Grain Bread Perfect for Toast Regular 22c Value. | 1-Lb. Loaf | 19¢ |
| French Rolls Skyline sour—6-Oz. Regular 22c Value. | 12-Oz. Pkg. | 21¢ |
| Coffee Cake Curly—Wonderful early morning pastry. | 11-Oz. Cake | 35¢ |
| Boysenberry Pie Bel-air frozen. Large 8-inch size. | 24-Oz. Pie | 55¢ |
| Mrs. Wright's Bread | 1 1/2-Lb. Loaf | 24¢ |

2¢ OFF Bakery Special!

Other Money Savers!

- | | | |
|---|--------------|------------|
| Biscuits Mrs. Wright's — Canned Sweetmilk or Buttermilk. | 2 8-Oz. Cans | 15¢ |
| Giant Tide Detergent Tide's in - Dirt's out. (5c off label.) | Giant Box | 69¢ |
| Detergent White Magic. For a whiter wash. | Giant Box | 59¢ |

Safeway Fresh Eggs!

- | | | |
|--|--------|------------|
| Grade "A" Eggs Breakfast Ome. Grade "A" quality. Small size. | 3 Doz. | \$1 |
| Large "AA" Eggs Cream O the Coop. Grade "AA" quality. Large size. | Doz. | 53¢ |



- | | | |
|---|------------------|------------|
| Hershey Instant Cocoa Children love it. | 1-Lb. Pkg. | 45¢ |
| Spaghetti Dinner Chef-Boy-Ar-Dee. With mushrooms or meat. | 18 1/2-Oz. Pkg. | 45¢ |
| Lipton Instant Tea Orange Pekoe—Pure refreshing drink. | 16-Oz. Jar | 49¢ |
| Karo Syrup Blue Label. Perfect for all your cooking needs. | 1 1/2-Lb. Bottle | 25¢ |
| Mazola Corn Oil Pure—Cholesterol free. | Quart Bottle | 59¢ |

25 SAFEWAY COUPON 25

This Coupon Worth 25 (25.00) **FREE GOLD BOND STAMPS**

Plus your regularly earned Gold Bond Stamps with the Purchase of

15-Oz. White Magic All-Purpose LIQUID CLEANER

Limit One Per Customer. Coupon Expires April 30, 1962.

25 FREE GOLD BOND STAMPS 25

50 SAFEWAY COUPON 50

This Coupon Worth 50 (50.00) **FREE GOLD BOND STAMPS**

Plus your regularly earned Gold Bond Stamps with the Purchase of

FOUR — Quart Bottles Cragmont BEVERAGES Flavors Only.

Limit One Per Customer. Coupon Expires April 30, 1962.

50 FREE GOLD BOND STAMPS 50

50 SAFEWAY COUPON 50

This Coupon Worth 50 (50.00) **FREE GOLD BOND STAMPS**

Plus your regularly earned Gold Bond Stamps with the Purchase of

Half-Gallon Carton Joyett MELLORINE

Limit One Per Customer. Coupon Expires April 30, 1962.

50 FREE GOLD BOND STAMPS 50



SAFEWAY

Conveniently Located to Serve you at 504 E. Main

Prices and Coupons Effective Thurs., Fri. and Sat., April 26, 27 and 28 in. We Reserve the Right to Limit Quantities. No Sales to Dealers.

'Queen's Court' Is Attended by Nine Local Girls

Nine Intermediate girls who had attained the step of queen or above and their counselor attended the statewide Queens' Court at Howard Payne College in Brownwood during the Easter holidays.

The girls represented the Estelle Freeland Girls' Auxiliary of First Baptist Church of Eastland. Girls attending were Donna Ford, Roy Lynn Gann, Anna Smith, Janice Kimbler, Sharon Sayre, Carol Walter, Mary Ann Manning, Wanda Lane, Brenda Jenkins, and a n d Counselor Mrs. Neal Edwards. Mrs. Esco Walter and Mr. and Mrs. Frank Sayre assisted with transportation.

Theme for the three day meeting was "Crowned... Committed... Committed." Court Pastor was Rev. Maple Avery from University Baptist Church of Abilene. Missionary Marjorie Jones who serves in Ghana and Home Missionary Mrs. Allegra LaPrairie from Sellers Home, New Orleans were featured speakers.

GUESTS

Mrs. Dean Butler of Phoenix, Ariz., and Mrs. Coin White of Clovis N. M., were guests in the home of Mr. and Mrs. S. E. Hazard Sunday afternoon.

Charlotte Cavitt And Ted Snider Wed Saturday

Miss Charlotte Cavitt of DeLeon became the bride of Ted Snider, son of Mr. and Mrs. C. L. (Pete) Snider of Gorman Saturday at 7 p.m. in the home of Rev. Jackie Heath of Olden.

Rev. Heath, pastor of the Kokomo Baptist Church, performed the double ring ceremony.

Attendants for the couple were Mr. and Mrs. Gary Echols of Gorman.

The bride wore a street length dress of lilac organdy with white accessories. Her corsage was a white orchid surrounded by white carnations.

After a short wedding trip, the couple will make their home in DeLeon. Mrs. Snider is employed by Golden Oak Feed Mill and the groom will continue his farm operations.

RETURNS HOME

Mrs. L. O. Langlitz has returned home after visiting with her daughter and son-in-law, Mr. and Mrs. R. L. Caraway in Blanding, Utah. Mr. Caraway is employed by the El Paso Gas Company. Mrs. Langlitz enjoyed a month of visiting and sight-seeing.

— READ THE CLASSIFIEDS —

Betty Gail Gardenhire, Bride-Elect, Honored With Bridal Shower Friday

Miss Betty Gail Gardenhire, bride-elect of Mike Reese of Eastland, was complimented with a bridal shower Friday, April 22, from 7:30 until 9:30 p.m., at the home of Mrs. W. B. Emfinger, 615 West Main Street, Ranger.

Guests were greeted by Mrs. Emfinger; the honoree, Betty Gail; her mother, Mrs. Harless Gardenhire; and Mrs. Harold Reese of Eastland, mother of the prospective bridegroom. All wore corsages of white carnations.

An arrangement of white carnations and shasta daisies in a blue and white hand-painted vase centered the table where the guests were registered by Mrs. Harris Tibbels.

The gifts on display were shown by Mrs. Mae Carr. Arrangements of spring flowers were used throughout the house.

The dining table was covered with a lace cloth over blue. Centering the table was an arrangement of white carnations with blue heather leaf fern and miniature rice bags, accented with blue net and lilies-of-the-valley attached to white candles. Appointments of crystal and silver were used.

Frosted punch, white cake squares decorated with blue, and nuts were served by Norma Gayle Emfinger and Barbara Crabb to about fifty-five guests.

Hostesses for the occasion were Mrs. Mae Carr, J. H. Greer, Brownie King, Charlie Rose, L. E. Gray, Luther Burnett, Clark Bradford, Myrtle George, Raymond Rogers, M. D. Cox, Ralph Roberts, Charlie Hamilton, and Wright Emfinger.

SOCIAL CALENDAR

Thursday, April 28
The Martha Dorcas Sunday School party will be held in the home of Mrs. W. A. Martin, 1103 S. Seaman.

Friday, April 29
7:30 p.m. — The next in a series of game tournaments will be held in the Woman's Club. Recreation and entertainment will be available.

Saturday, April 30
7:30 p.m. — The Morton Valley Community Social will be held in the Morton Valley community clubhouse. Games of 42 and dominoes and refreshments will be available.

Monday, May 2
7:30 p.m. — The Oddfellow Lodge will meet in the IOOF Hall for their regular meeting.

7:30 p.m. — The Pythian Sisters will hold their regular meeting in Castle Hall.

7:30 p.m. — The monthly meeting of the Posse Anns will be held in the Court House.

7:30 — "Swing Low" will be presented by Mrs. Little and "Tumbling Tumbleweed" by Mrs. Smith at the meeting of Las Lelas Club.

Tuesday, May 3
7:30 p.m. — The regular meeting of the Eastern Star will be held in the Masonic Hall.

2 p.m. — The Eastland Art Club will be held in the home of Mrs. Ita Parrish.

Wednesday, May 4
7:30 p.m. — The Wesleyan Service Guild will hold their regular meeting in the Methodist Church.

Thursday, May 5th
2 p.m. — The Flatwood Home Demonstration Club will hold their regular meeting in the home of Mrs. Juanita Massengale.

3 p.m. — "Gone Are the Days" by Bruce Bell will be reviewed by Mrs. Ronald Burton at the regular meeting of the Thursday Afternoon Club.

VISITS IN EASTLAND

Mr. and Mrs. Arthur Horn of El Paso, formerly of Eastland, are here visiting with their relatives, Mr. and Mrs. S. E. Hazard of Eastland, Mr. and Mrs. Jeff Woods, Mr. and Mrs. Truman Horn and Mr. and Mrs. F. M. Higgins of Olden.

Mr. and Mrs. Horn visited in Eastland after returning from a Caravan's Club in San Marcos. Mr. and Mrs. Horn are members of the Wiley Byams Caravan's Club. The Horn's will tour southern Canada after attending a

VISITS IN COLORADO SPRINGS

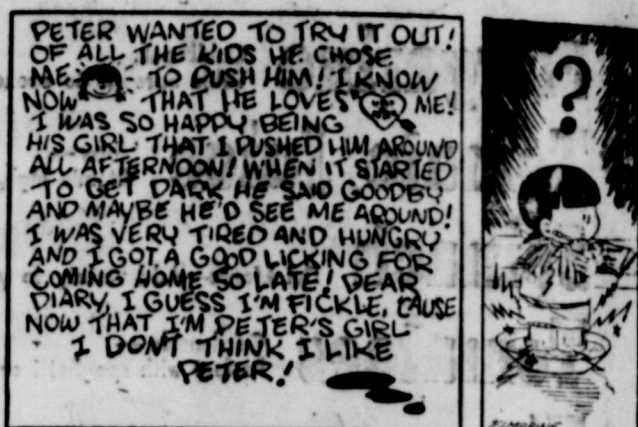
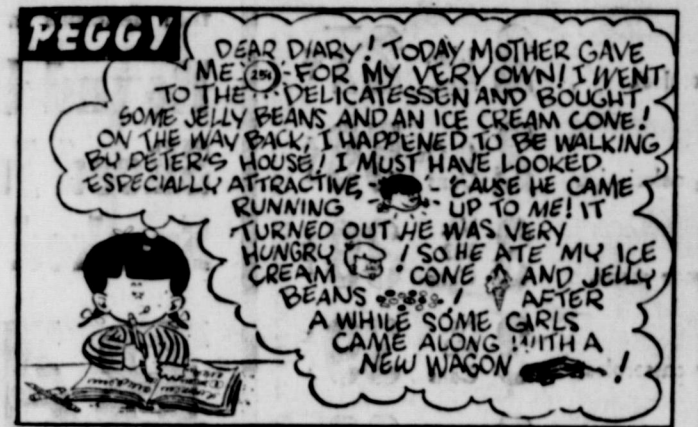
meeting in Colorado Springs, Colo. in July.

VISITS LOUISIANA

Mr. and Mrs. J. M. Smith have returned from a visit with their son and family, Mr. and Mrs. Barney Smith, pastor of a church in New Orleans, La. They also traveled through Tennessee and Mississippi. They took their niece, Brenda Joyce back to Lee College in Cleveland, Tenn., where she is a student. Mr. and Mrs. Smith returned home Monday.

VISITS IN OLDEN

Mr. and Mrs. Dean Butler of Phoenix, Ariz., visited recently with her parents, Mr. and Mrs. Jeff Woods in Olden.



McGraw Motor Co.

CARS	DODGE—STUDEBAKER Parts and Service	TRUCKS
461 South Seaman		Phone MA 9-1244
THURSDAY	FRIDAY	SATURDAY
6:30 Cont. Class 3:00 Comedy Pk-hse 7:00 Today 4:00 Adv. in Music 8:00 Today 4:30 Com. Pres. 9:00 Dough Re Mi 5:30 3 Stooges 9:30 Play Yr Hunch 6:00 News 10:00 Price Is Right 6:10 Weather 10:30 Concentration 6:15 Huntley Rept. 11:00 Truth or Con. 6:30 Jr. to Underst. 11:30 Could Be You 7:00 Shotgun Slide 12:00 News, Wthr. 7:30 Prod. Choice 12:15 Devotions 8:00 Bach. Father 12:20 Air Force 8:38 Erie Ford 12:25 3 Stooges 9:00 Bet Yr. Life 1:00 Queen for Day 9:30 State Trooper 1:30 Loretta Young 10:00 News 2:00 Dr. Malone 10:10 Weather 2:30 From Roots 10:15 Com. Pres.	6:30 Cont. Class 3:00 Comedy Pk-hse 7:00 Today 4:00 Adv. in Music 8:00 Today 4:30 Com. Pres. 9:00 Dough Re Mi 5:30 3 Stooges 9:30 Play Yr Hunch 6:00 News 10:00 Price Is Right 6:10 Weather 10:30 Concentration 6:15 Huntley Rept. 11:00 Truth or Con. 6:30 Jr. to Underst. 11:30 Could Be You 7:00 Kit Carson 12:00 News, Wthr. 7:30 Mark Twain 12:15 Devotions 8:30 Favorite Story 12:20 3 Stooges 9:00 Cav. of Sports 1:00 Queen for Day 9:45 Bowling 1:30 Loretta Young 10:00 News 2:00 Dr. Malone 10:10 Weather 2:30 From Roots 10:15 Com. Pres.	8:00 Cartoons 6:30 Bonanza 9:00 Howdy Dood 7:30 Star Parade 9:30 Ruff & Reddy 8:00 The Deputy 10:00 Fury 8:30 World Wide 40 10:30 Circus Boy 9:30 Man from Int. 11:00 True Story 10:00 Texas News 11:30 Dvt. Diary 10:10 Weather 11:20 TBA 10:15 Gospelairs 12:30 Baseball 10:45 Movie 3:30 Cartoons

THURSDAY	FRIDAY	SATURDAY
7:30 Cartoons 3:15 Secret Storm 8:00 News 3:30 Edge of Night 8:15 Cap. Kangaroo 4:00 Movie 9:00 Red Rowe 5:15 Party Time 9:30 On the Go 6:00 News 10:00 I Love Lucy 6:15 Weather 10:30 Dec. Bride 6:15 News 11:00 Love of Life 6:30 Tell Truth 11:30 Search for Tr. 7:00 Betty Hutt 11:45 Guiding Light 7:30 Pony Expre 12:00 News 8:00 Zone Grey 12:15 Newsreel 8:30 Markham 12:30 As Wrid. Turns 9:00 Revelation Revue 1:00 Better or Wrs. 10:00 News 1:30 House Party 10:15 Weather 2:00 Millionaire 10:20 People & Pics. 2:30 Verdict is Yrs. 10:30 W. Carr 3:00 Brighter Day 10:45 MovieTime	7:29 Sign On 2:30 Verdict is Yrs. 7:30 Cartoons 3:15 Secret Storm 8:00 News 3:30 Edge of Nite 8:15 Cap. Kangaroo 4:00 Movie 9:00 Red Rowe 5:15 Party Time 9:30 On the Go 6:00 News 10:00 I Love Lucy 6:10 Weather 10:30 Dec. Bride 6:15 News 11:00 Love of Life 6:30 Rawhide 11:30 Search for Tr. 7:30 Hotel Parae 11:45 Guiding Light 8:00 Desila 12:00 News 9:00 Twite. Zone 12:15 Fashions in Fct. 9:30 Person to Person 12:30 As Wrid Turns 10:00 News 1:00 Better or Wrs. 10:15 Weather 1:30 House Ptry. 10:20 Pte & Pics. 2:00 Millionaire 10:30 MovieTime	8:00 Cap. Kangaroo 4:30 Com. Perf. 9:00 Heckle & J'mo 5:00 Wrestling 9:30 Mty. Mouse 6:00 News 10:00 Lone Ranger 6:15 Police Report 10:30 I Love Lucy 6:20 Weather 11:00 Sky King 6:30 Perry Mason 11:30 Comedy Time 7:30 Wasted 12:00 Farm & Grdn. 8:00 Mr. Lucky 12:15 TV Xtra 8:30 Have Gun 12:30 Spotlight 9:00 Jack Benny 12:45 Baseball 10:00 News 1:45 Ice Hpekey 10:15 Weather 3:15 Cartoons 10:20 People & Pics. 3:30 Travel for Fun 10:30 MovieTime 4:00 The Gourmet 12:00 Yester

THURSDAY	FRIDAY	SATURDAY
8:29 Sign On 4:30 Popeye 8:30 Mickey & A. 5:00 Susie 9:00 Little Rascals 5:30 Amos & Andy 9:30 Jack La Lanne 6:00 H. Hound 10:00 Trb'l w. Fhr. 6:30 Three Stooges 10:30 Rendezvous 7:00 Treasure 12:15 Ann Alden 7:30 Rescue 8 12:30 Ranger Jim 8:00 Son Fran. Beat 1:00 Matinee 8:30 Trackdowns 2:30 I Mar'd Jean 9:00 Phil Silvers 4:00 Bugs Bunny 9:30 Paul Coates 10:00 Theatre	8:29 Sign Cr 4:30 Popeye 8:30 Mickey & A. 5:00 Susie 9:00 Little Rascals 5:30 Amos & Andy 9:30 Jack La Lanne 6:00 Jim Bowie 10:00 Trb'l w. Fhr. 6:30 Three Stooges 10:30 Rendezvous 7:00 7 League Boots 12:15 Ann Alden 7:30 Divorce Court 12:30 Ranger Jim 8:30 Sheriff Cochise 1:00 Matinee 9:00 Johnny Ringo 7:30 Cartoons 9:30 Paul Coates 4:00 Bugs Bunny 10:00 Theatre	11:00 Easter Telecast 8:00 Without Gun 12:00 Theatre 8:30 Dial 999 12:55 Traf. Safety 9:00 Nite Court 1:00 Matinee Th. 9:30 Int. Det 3:00 Theatre 10:00 Man Dawson 4:30 Movie 10:30 Theatre 6:00 Movie 12:15 Theatre 7:00 Kingd. of Sea 10:30 Theatre 7:30 People's Court 12:00 Theatre

THURSDAY	FRIDAY	SATURDAY
5:55 Newsreel 5:30 Downbeat 6:00 Cont. Class/rm. 5:55 Newsreel 7:00 Today 6:00 News 7:25 Weather 6:10 Weather 8:25 News 6:15 Huntley Rept. 9:00 Dough Re Mi 6:30 Jr. to Underst. 9:30 Play Yr Hunch 7:00 Bat Mastersan 10:00 Price Is Right 7:30 Prod. Choice 10:30 Concentration 8:00 Bach. Father 11:00 Tr. or Conies. 8:30 Erie Ford 11:30 Could Be You 9:00 Groucho Marx 12:00 Noon News 9:30 Doodline 12:30 Great Life 10:00 Texas News 1:00 Queen for Day 10:15 Weather 1:30 Loretta Young 10:25 News Final 2:00 Dr. Malone 10:30 Sports 2:30 From Roots 10:35 Jack Paar 3:00 Com. Theatre 12:00 Midnite News 3:30 Adv. Theatre 12:05 Newsreel 4:00 Fam. Theatre 12:10 Late Show	5:55 Newsreel 5:30 Downbeat 6:00 Cont. Cls/rm 5:55 Newsreel 7:00 Today 6:00 News 7:25 Weather 6:10 Weather 8:25 News 6:15 Huntley Rept. 9:00 Dough Re Mi 6:30 Jr. to Underst. 9:30 Play Yr Hunch 7:00 T'blshooters 10:00 Price Is Right 7:30 Project 20 10:30 Concentration 8:30 Mass. Party 11:00 Truth or Con. 9:00 Cav. of Sports 11:30 Could Be You 9:45 Bowling 12:00 News 10:00 Texas News 12:30 Great Life 10:15 Weather 1:00 Queen for Day 10:25 News Final 1:30 Loretta Young 10:30 Sports 2:00 Dr. Malone 10:35 Jack Paar 2:30 From Roots 12:00 News 3:00 Com. Theatre 12:05 Newsreel 3:30 Adv. Theatre 12:15 Late Show 4:00 Fam. Theatre	8:00 Cartoons 4:00 Judge Bean 9:00 Howdy Doo 4:30 Curley Broyles 9:30 Ruff and 5:00 Showcase 10:00 Fury 6:00 Bonanza 10:30 Circus Boy 7:30 Star Parade 11:00 True Story 8:00 The Deputy 11:30 Dvt. Diary 8:30 World Wide 12:30 Cartoons 9:30 Man Interpol 12:30 Basketball 10:00 News 1:00 Basketball 10:15 Weather 1:25 Baseball 10:25 News 1:15 Pre Gm. Show 10:30 Sports 3:00 Newsreel 10:35 Theatre 3:30 Com. Pres.

THURSDAY	FRIDAY	SATURDAY
7:25 Devotional 5:30 Cartoon Strip 7:30 Cartoons 6:00 Newsreel 8:00 Margie 6:10 News 8:30 Romper Rm. 6:15 Weather 9:30 Life of Riley 6:22 Sports 10:00 Julie Benell 6:30 Rough Riders 11:00 Hour of Stars 7:00 Donna Reed 11:55 News 7:30 Real McCoy 12:00 Restless Gun 8:00 Pat Boone 12:30 Love that Bob 8:30 Unfathomables 1:00 About Faces 9:30 Erie Kovac 1:30 Medic 10:00 Newsreel 2:00 Day in Court 10:10 News 2:30 Gale Storm 10:15 Weather 3:00 Beat Clock 10:22 Sports 3:30 Who Do Ya 10:30 Man Hunt 4:00 Amer. Band 11:00 Theatre 5:00 Robin Hood 12:30 News	7:25 Devotional 5:00 Robin Hood 7:30 Cartoons 5:30 Cartoon Strip 8:00 Margie 6:00 Newsreel 8:30 Romper Rm. 6:10 News 9:30 Life of Riley 6:15 Weather 10:00 Julie Benell 6:22 Sports 11:00 Hour of Stars 6:30 Walt Disney 11:55 News 7:30 Black Hawk 12:00 Restless Gun 8:00 77 Sunset Strip 12:30 Love that Bob 9:00 The Detectives 1:00 About Faces 9:30 Black Saddle 1:30 Medic 10:00 Newsreel 2:00 Day in Court 10:10 News 2:30 Gale Storm 10:15 Weather 3:00 Beat Clock 10:22 Sports 3:30 Who Do Ya 10:30 Sea Hunt 4:00 Amer. Band. 11:00 Dallas Aff. Dark 11:30 Theatre	7:30 Ag. on Parade 3:00 Baseball 7:45 Tru Portable 6:00 Loatup 8:00 Son. Special 6:30 Dick Clark 10:30 My Lit. Margie 7:00 High Road 11:00 Hop. Cassidy 7:30 Lv. It to Beaver 11:30 Life of Riley 8:00 L. Walk 12:00 Suppy Salan 9:00 Tomestone 12:30 Robin Hood 10:00 Newsreel 1:00 Af. Patrol 10:10 News 1:30 Mr. D. A. 10:15 Weather 2:00 Counterpoint 10:22 Sports 2:30 Bowling 10:30 Theatre

BASEBALL SEASON IS HERE!

You can really enjoy the TV Games when you have Cable service Community Television, Inc.

Village Hotel

Phone MA 8-171F

★ UNITED STATES OF AMERICA ★

1960 Census of Population

WERE YOU COUNTED?

The enumeration of Americans in the 1960 Census is now almost finished. As you know, it is very important that the Census be complete and correct. If you believe that you were not counted, please fill out the form below and mail it immediately to:

U. S. Census Dist. Office
174 Cypress
Abilene, Texas

- I have checked with the members of my household, and I believe that one (or more) of us was NOT counted, here or anywhere else, in the 1960 Census.
- On April 1, 1960, I lived at _____ (House Number) _____ (Street or Road) _____ (City) _____ (State) _____ (Apartment Number or Location)
- This address is located between _____ (Name of Street or Road) and _____ (Name of Street or Road)
- I am listing below the name and required information for myself and each member of my household.

PLEASE LIST:

- Everyone who usually lives in this household, whether related to you or not.
- All persons staying here who have no other home.

PLEASE BE SURE TO LIST—

- All members of your family living with you, including babies.
- All other relatives living here.
- Lodgers and boarders living here.
- Servants, hired hands, others not related to you who are living here.
- Anyone else staying here but who has no other home.

ALSO LIST—

Persons who usually live here but who are away temporarily on business, on vacation, or in a general hospital.

DO NOT LIST—

- College students who are away at college (or who are here only on vacation).
- Persons stationed away from here in the Armed Forces.
- Persons away in institutions, such as a sanitarium, nursing home, home for the aged, mental hospital.

They will be counted there.

NAMES OF PERSONS LIVING IN THIS HOUSEHOLD ON APRIL 1, 1960, AND THOSE STAYING HERE WHO HAVE NO OTHER HOME			What is the relationship of each person to the head of this household? (For example, wife, son, daughter, grandson, mother-in-law, lodger, lodger's wife)	Male or Female (M or F)	Is this person— White Negro American Indian Japanese Chinese Filipino Hawaiian Port Hawaiian Aleut Eskimo (ec.)?	When was this person born? Month Year	Is this person— Married Widowed Divorced Separated Single (never married)? (Leave blank for children born after March 31, 1946)
Write names in this order (If you list more than 6 persons, use an additional sheet)	Head of household on first line Wife of head Unmarried children, oldest first Married children and their families Other relatives Others not related to head of household	Last name					

● Name of person who filled this form: _____

CONFIDENTIAL—The Census is required by the United States Constitution and further authorized by 13 U.S.C. § 9, 161, 221-4. The law requires that the inquiries be answered completely and accurately, and guarantees that the information furnished will be accorded confidential treatment. The Census report cannot be used for purposes of taxation, investigation, or regulation.

Budget Bureau No. 41-5000
Approval expires 12-31-60
Form 9099-18