



FOR THE BIRDS

Mrs. C.'s Gourds ---Time Will Tell

The geranium patch which Victor Cornelius has taken pride in for several years has had problems this year. To begin with, it got off to a bad start when good strong plants were not available and rather scrawny ones were set out about Easter.

Then to add to Cornelius' woes the Martins didn't seem to care for the expensive 24 unit bird apartment house he had installed for them.

In May when Mrs. Cornelius visited relatives in Mississippi she was impressed with the use of enormous gourds for birdhouses. She returned with some seed and without much

fanfare scattered a few among her husband's geraniums, in a spot shaded by limbs from a tree belonging to the Bob Vaughns next door.

For years Cornelius has been fussing with his wife for infiltrating his flowers with black-eyed peas, Portor tomatoes and multi-colored petunias. But this year, he says she's overdone it! And the picture bears him out.

Now he fears his beautiful high rise Martin house will next year be replaced with individual bird housing units, made four gourds, grown in his own geranium patch.



CONGRATULATIONS ARE in order and thanks are due to two Eastlanders seriously interested in education. Attorney Mike Siebert has been elected to a post on the executive board of the Region 14 Educational Service Center. Mike's job is to fill the shoes of retiring member M.H. Perry, who's served that key organization since its beginning in about 1966. Both attended, with their wives, a dinner and ceremony in Abilene Thursday evening.

SCOUTS REPORT that Wade Freeman and Grover Hallmark have been elected to serve on Eastland's Industrial Foundation, replacing Retiring Directors H.T. Wilson and Frank Sayre, who've done a fantastic job over the years in helping with this important local organization.

WHO DOESN'T enjoy looking at lod catalogs and dreaming about how prices used to be. Oldest such we've seen is a reprint of a 1900 Sears loaned us by one of our favorite Postal Service People Travis Harrell. It's interesting to note that the book then was called a "consumers guide" - proving that there's not much new on earth today. A three - page concise history of the mail order firm is fascinating, but doesn't reveal all we'd heard about the Roebuck partner.

WELCOME NEW BABY: Darren Joe, eight pounds, born 3 p.m. Friday at Eastland Memorial Hospital. He's the first son of Mr. and Mrs. Eddie Sadler. He has two sisters, Darla and Dana, and his grandparents are Mr. and Mrs. Finis Johnson.

Early reports from 14 out of some 80 parks show that many Texans had their last summer outdoor flings in state parks over the Labor Day weekend.

Park officials at the Texas Parks and Wildlife Department say that visitors flocked to the state parks despite bad weather and early school openings.

Note To Parents

Dear Parents, Did your son ever say, "I wish I could be a Cub Scout!" If he is 8, 9, or 10 years old; here is his chance.

Cub Scouting is for the whole family, not just the Cub Scout. There is fun for all at the meetings of his Pack and at home as he works on the skills Cub Scouting teaches. Share the work and the play with your son. He will enjoy his years as a Cub Scout more if you do-and so will you.

So we invited you and your son to this meeting where he can join the Cub Scouts and you can learn how to help him succeed in his activities. Cub

Scouting requires the participation and cooperation of parents.

DATE: September 23, 1975 (Tuesday evening). TIME: 7:30 p.m.

PLACE: First United Methodist Church Fellowship Hall. It looks as though many boys will want to join. So if you want your son to be a Cub Scout your attendance is vital.

Mark this date on your calendar for we are looking forward to seeing you at this Cub Scout Meeting.

Yours for better boyhood
Herman Alsop, Cubmaster



EASTLAND TELEGRAM

Eastland, Texas 76448: Today's Center For Tomorrow's Future!

Volume 46 Number 76

Sunday, September 21, 1975



14 Pages
In 2 Sections

10¢ EACH



ROBERT LONG
.. ASSISTANT SECRETARY
OF AGRICULTURE



R.M. DAVIS
.. SCS ADMINISTRATOR



EDWARD THOMAS
.. STATE CONSERVATIONIST

Top USDA Officials To Visit Here Thursday

Federal and State Soil Conservation officials will tour conservation work in the Leon-Bosque Resource conservation and development project and

proposed work on the Eastland High School campus this week. State conservationist Edward Thomas of the Soil Conservation Service (SCS), Temple, Texas

will host SCS Administrator, Mel Davis, and Assistant Secretary of Agriculture, Robert Long, Washington D.C. on a tour of conservation projects in the Leon-Bosque Resource Conservation and Development Project (RC&D) area of Texas. The delegation will be in Eastland Thursday.

The RC&D area is composed of Eastland and 4 adjacent counties.

The RC&D project is a local project, usually covering several counties, in which residents work to improve their economy through conservation, development, and better utilization of their natural resources.

According to Ronald Bailey, District Conservationist, at Eastland, the first stop on the tour will be at Eastland High School campus on Thursday. The group will be met by James Reid, Eastland School Board Chairman, and Bailey. Various phases of the proposed conservation work on high school hill will be discussed by Reid and Bailey.

The tour group will leave Eastland and look at other projects along the route to Stephenville, by way of Lake Leon.

Thursday night the group will meet with the Executive Council of the RC&D Project. Representing Eastland County on the Executive Council are Sam Powers, Desdemona and H.V. O'Brien, Eastland. Other guests at the meeting will be the county judges of the 5 counties in the project, including Judge Scott Bailey.

He directs the work of more than 13,000 employees across the United States in varied programs of soil and water conservation assistance to private landowners and communities.

Mr. Davis began his SCS career as a soil conservationist in 1952 in North Dakota. After serving as district conservationist at several locations there, he was promoted to area conservationist in 1958 and served at Devils Lake and Minot.

He was named Assistant State Conservationist in Pennsylvania in 1963, and advanced to State Conservationist there in 1968. In 1972, he was assigned to the dual position of Administrator's field representative for the 14 northeastern states and director of the SCS technical service center at Upper Darby, Pennsylvania. In 1974 he became Assistant Administrator at SCS headquarters in Washington, D.C.

A native of Ambrose, North Dakota, Mr. Davis was graduated from North Dakota State University with a B.S. degree in agricultural education in 1949. He taught vocational agricul-

To See
EHS Project
(See sketch inside)

Locals Take 3 From DeLeon

Many things could be said for the Mavericks Friday night, in DeLeon, against the DeLeon Bearcats. One of those things might well be and should be, that the Mavericks played a very tough game with a better looking offense than in weeks prior, emerging onto the field.

Although the Mavericks were held to minimum yardage in the way of rushing throughout the night, the form in which they tried to gain yardage was showing improvement, but against a team which outweighed the Mavs extensively, and looked to most fans sitting in the packed Maverick side of the field, as the land of the giants, with DeLeons 14 players all over 6ft. tall.

Mavericks came onto the field red hot after losing the toss of the coin kicked to the DeLeon Bearcats and held them on their 37 yard line for three plays. On third down Bearcats fumbled and Eastlands John Hill recovered putting a first and ten situation for the Mavs on the Bearcat 27 yard line.

Eleven plays later after several wellmade runs by John Hill for the Mavs, Hill takes the honor and puts the first points on the board in for its Mavs. Eastland 6 DeLeon 0.

With 1:55 left to play in the first quarter, DeLeon took their first turn at the scoring process, with a Quarterback sneak from Bearcat Craig Smith going from the Eastland 1 yard line. Kicker Toby Harris extra point was good, and the Bearcats take the lead.

DeLeon then got together with more in the second quarter, once on a 40 yard drive which gave Mark McWilliams his first of three touchdowns, and the second, on a 40 yard pitchout play to Joe Haddellston. Leaving a halftime score of Eastland 6, DeLeon 21.

The Mavericks' Marching Band gave an excellent performance Friday night with their special selection of Boogie Woogie Buggle Boy as a special event.

Following the half time performances by both Bands, action resumed on the field with the Mavs receiving the kick.

After the kick the Mavs were forced to punt on the 4th thus setting the pace as to what they would look like to some degree the rest of the night. Except for brief but successful flurries of screen passes which the Mavs had practiced well at. The passing featured the arm of Quarterback Mike Lewis and receivers Brian Haun, who did an excellent job throughout the night on his pass defense and pass receptions and also receiver Randy Wharton who was injured in the first half.

McWilly's scored on runs of 10 and one yard in the third period. Hare kicked both extra point scores including a 17 yard field goal making a final score of Eastland 6 and DeLeon 38.

First Downs-Eastland 7 and DeLeon 17.
Rushing - Eastland 27 and DeLeon 261

Revival Starts Wed.

Make preparations now to attend a five night revival at the Assembly of God 1608 W. Commerce in Eastland. Beginning Wednesday night Sept. 24 through Sunday night Sept. 28. Gospel singing nightly congregational and special. The word of God will be brought nightly at 7:30 by Rev. Don Woods of Abilene. Brother and Sister Don Woods are accomplished singers and musicians. Rev. G.L. Huffman pastor of the Eastland Assembly of God invites everyone to attend the revival.

Passing Yardage - Eastland 72 and DeLeon 74.
Passes - Eastland 12-22-2, and DeLeon 2-4-1.
Fumbles Lost Eastland 0 and DeLeon 3.
Penalties - Eastland 9-90 and DeLeon 5-55.
Punting - Eastland 10-29.5 and DeLeon 1-30.
Other scores included: Ranger 20 and Merkel 14.
Cisco 20 and Cohoama 14.
Hamlin 40 and Clyde 0.
Stephenville 14 and Breckenridge 14. by Steve Haines.)

Field Day Thursday

Eastland teams had a field day in Maverick Stadium Thursday night-holding their trio of visitors absolutely scoreless. Locals put together a total of 32 points during the night.

The Seventh Grade continued its winning streak, defeating a De Leon Seventh, 14-0. The EJHS Dogies wiped DeLeon, 6-0, and the EHS Junior Varsity, playing in the rain, won over DeLeon, 12-0.

Next Thursday evening the three local teams host visitors from Albany here.

ROSTERS

8TH GRADE

Barry Reese, Tracy Jones, Lane Lowrance, Seth Smith, Ken Swift.

ronnie Bagwell, Kerry Watson, Charlie Franklin, Ernie Herrera.

Brian Lund, Gary Peak, Randy May, Steve Hallmark.

Eddie Gibson, Johnny Ames, Sidney Woods, Scotty Frost.

Gregg Garrett, Larry Galley, Ricky Patton, Jimmy Alexander

Ray Bruce, Paul Reed, Max Squires, Marq Gordon.

7TH GRADE

Les Johnson, Jeff Krantz, Joe Flinn, Mike Duncan, Shannon Housson.

Dennis Petty, Randy Alexander, Randy Bagwell, Lee Fonville, Jody O'Neal, Wayne Burkett.

Blake Mahan, Kenneth Alford, Mark Michael, Larry Martin, Dwight Lewis.

Jeff Bakker, Harry Novak, Tony Shook, Michael Collins, Jimmy Watson, and Steve O'Brien.

JR. VARSITY

Jim Owen, Kenny O'Neal, Scott Spradling, Nathan Washington, Tommy Quiroga, Robert May.

David Guthrie, Elwyn Davidson, Dusty Garrett, Gary Bagwell, Eddie Duncan.

Billy Adams, Lee Johnson, Jimmy Sharp, Mack Walker, Buddy Kirkpatrick.

Tony Woods, Doug May, Willard Collins, Ray Pate, and Sylvester Wilson.

FREYSCHLAG Insurance weather

Partly cloudy

FULLEN MOTOR CO. PUNCH LINE OF THE WEEK

A realist is a man who has figured out that the government never gave him anything except what it took away from him first.

The 5 counties and the upper Leon and the Bosque Soil and Water Conservation Districts are sponsors of the overall project.

Robert Long, has been a land management and banking official for more than 20 years. Born in Chicago, he finished public school there, joined the Irvine Company, Tustin, Calif., after a year of graduate study at the University of California, and was vice president in charge of agricultural and land management operations when he left the company in 1967 to join Bank of America.

At the Department of Agriculture, Mr. Long is the first nominee to the newly realigned position of assistant secretary for conservation, research and education. The department agencies responsible to this assistant secretary are Forest Service, Soil Conservation Service, Agricultural Research Service, Cooperative State Research Service, Extension Service and National Agricultural Library.

Mel Davis, a career conservationist, has been Administrator for the Soil Conservation Service (SCS) since June 1975.

He directs the work of more than 13,000 employees across the United States in varied programs of soil and water conservation assistance to private landowners and communities.

Mr. Davis began his SCS career as a soil conservationist in 1952 in North Dakota. After serving as district conservationist at several locations there, he was promoted to area conservationist in 1958 and served at Devils Lake and Minot.

He was named Assistant State Conservationist in Pennsylvania in 1963, and advanced to State Conservationist there in 1968. In 1972, he was assigned to the dual position of Administrator's field representative for the 14 northeastern states and director of the SCS technical service center at Upper Darby, Pennsylvania. In 1974 he became Assistant Administrator at SCS headquarters in Washington, D.C.

A native of Ambrose, North Dakota, Mr. Davis was graduated from North Dakota State University with a B.S. degree in agricultural education in 1949. He taught vocational agricul-

ture in North Dakota for a few years. He served in the U.S. Navy in 1945 and 1946. Edward E. Thomas is a native Texan. Although he was born in Hale County near Plainview, he grew up near Vernon and was educated in the Vernon school system.

Thomas has progressed through SCS ranks, having held a variety of positions. He started his conservation career in 1954 at Lubbock. He was a district conservationist at two locations in West Texas. Then was an area conservationist at Pecos and then Harlingen.

He was an assistant state conservationist at Temple and a deputy state conservationist in Tennessee, prior to being named state conservationist for Texas in May 1972.

Thomas is a 1954 graduate of Texas A&M University. He served as an Army officer in Korea.

He is a member of the Soil Conservation Society of America and the American Society of Ranger Management.

Grandparents Brag Corner

Katrina Marie 2 Yrs.

Parents:
Mr. and Mrs. Juan J. Smith

Grandparents:
Mr. and Mrs. C.J. Perelka
Mr. and Mrs. Homer Smith

FOR SALE

HUBBARD LAKE
Sharps Cafe-grocery-bait and gas. Mom and Pop operation that makes \$555. Nice brick home included. Breckenridge Real Estate. R.B. McCormick, broker. 817-559-3272 or 559-2737. t-78

FOR SALE--CARPETS and life too can be beautiful if you use Blue Lustre. Rent electric shampooer. Coats Furniture. t-76

MISC. FOR SALE--IT'S inexpensive to clean rugs and upholstery with Blue Lustre. Rent electric shampooer. Perry Brothers. t-76

FOR SALE--Flock of pigeons. 647-3174. Ranger. t-77

FOR SALE 3 bedroom brick home. Central heat and air. Beautiful kitchen with birch cabinets, built-in range and over, disposal, dish washer. Enjoy plush shag carpet that is accented with birch paneling in living room. And dining room. 2 car garage with storage, washer and dryer hookups. 3 blocks from high school. Assume 8 1/2 percent FHA loan. Call 442-2544. t-76

FOR SALE--Big selection of construction paper. Just in time for school. Priced to sell. Eastland Telegram. t-77

FOR SALE--30c compasses for 10¢ while they last. Eastland Telegram. t-77

FOR SALE--1967 Rambler. Will make good work car. \$200. Good gas mileage. See at 305 N. Walnut or call 629-1032 after 6 p.m. t-77

FOR SALE
New Mobile Homes. FHA financing available. VA financing now available. Many models and sizes to choose from. Low down payment. Low monthly payments. Eastland Direct Factory Outlet, Olden, Texas. Office phone 653-2432 or home phone 629-2117. t-77

For Sale-Yamaha 500 MX in good condition. 639-2328 ask for David. t-85

Reduce safe and fast with GoBese Tablest and E-Vap "water pill." Central Drug. 103 W. Main. t-76

FOR SALE
Used Norge dryer with instructions book. Needs repairs. \$35 cash. Call 629-2413. t-77

Chairs, files, safes, fire files, tables, desk, cash and carry. Save 20-50%. Large selection. 9 to 5:30 week days. Saturday 9-1. Value City. 1030 Butternut. Abilene. t-77

THRIFT SHOP
has received pickup load of out of town clothing for all family. 510 East 7th, Cisco. 442-2564. t-78

Unprocessed Honey For Sale. 1 and 2 lb. jars. Call 442-1317 or come by 1611 Ave. D. Cisco. We deliver if necessary. t-80

FOR SALE
Extra fuel tanks complete hook-up 442-2289.

HOUSE FOR SALE BY OWNER--4 rooms and bath and partially furnished. 406 E. 7th, Cisco. Phone 629-1040. t-78

BOWER ELECTRIC
Residential, commercial and industrial wiring. New or old construction, house power specialists. For 220 volt appliances. Eastland. Call 629-1003. t-77

CARD OF THANKS
With grateful hearts, we would like to express our great appreciation for all the acts of kindness, food and great comfort extended to us in the loss of our much loved one. We are especially grateful to Bro. Pierce, Bro. Meeker, to Dr. Treadwell the nurses and ambulances attendant and a host of friends and relatives. May god richly Bless each and everyone of you.
The Family of E.W. Griffen

WANTED

Guarantee you future with Guaranteed Training. If you've got what it takes, the Navy will guarantee advanced technical training. Oppy. to learn skills that can lead to future in wide variety of technical job fields. Great pay as you train. Top benefits. Earn 30 days paid vacation a year. Contact your Navy recruiter at 157 Pine, P.O. Box 1192 Abilene. t-76

Experienced Mobil Home truck driver need by local firm. Must have good driving record. Fringe benefits. Apply in person to Fequa Homes. Equal Opportunity Employer. t-84

Want to buy Study library table. Jeane Grimshaw. 639-2441. t-77

Connell Welding Service
All types of farm and shop welding. 24 hr. service. 647-3606. Rt. 1 Box 153. t-84

Acoustical Ceilings Blown or with Ceiling Texture. (Gold or Silver Gitter Added at no extra cost) Phone 629-2189 After 4 p.m. Billy J. Keith. Call for Free estimate Local or Rural. t-84

WANTED
Hay Baling. Call 629-1591 or see Elmer Sullivent in Olden, Texas. t-83

Urgent-needed for immediate occupancy 1 or 2 bedroom, furnished or unfurnished apartment. Please call Mr. Swich, 629-1766, between 8 a.m. and 6 p.m. t-77

WANTED--Lady to stay in home from noon to 5 p.m. Monday thru Friday. 629-1574. t-78

WANTED--LVN for 3 to 11 shift; better than average working conditions. Salary and other benefits. Apply in person or call Western Manor, Ranger, 647-3111. t-77

WANTED--Mature woman to help care for invalid boy. No lifting. Salary and house furnished. Would prefer married couple in house. Call 629-2019, Eastland. t-77

HELP WANTED
Relief LVNs and aides. Apply to Cisco Nursing Center, 1404 Front St., Cisco, or call 442-1471. t-78

WANTED
Carpenter work, building or remodeling. All general carpenter work. Free estimates. Call 629-1654. U.V. Williams. t-77

WANTED--2 or 3 bedroom unfurnished house to rent in or around Eastland. References available. Please call 629-1825. t-80

CUSTOM HAY BALING
Call Hollis Williams 442-1933
Hay Hauling Also Available t-76

C.B. RADIOS From \$99.95
Antennas, Etc. In Stock
MONTGOMERY WARD
Eastland Ranger

Central Drug
North Side Of Square

PRESCRIPTIONS
Filled Promptly And Accurately

JUST CALL
For All Your
Drug Needs
WE DELIVER

WANTED

HELP WANTED--Immediate openings for experienced fork lift operators and mill hand. Contact Jim Wilson, Birdsong Peanuts, Gorman, Texas t-78

WANTED TO BUY--Used guns. 629-1128 or 629-2446 after 6 p.m. t-77

WANTED--Cooks and waitresses at the White Elephant in Cisco. See Paul Gill or Mike Sabo. t-77

WANTED--Middle age couple to live in small furnished house on premises. Rent free, plus salary for woman to assist with household duties, two in family. No hard work involved, ideal, permanent position for couple. Worth investigating. Write P.O. Box 695, Eastland, Texas. Give name and address, will contact you. t-77

WANT TO BUY or lease, one to one and one-half acres outside city limits with access to highway. Tel. 647-3590 after 10 a.m. t-77

WANTED--Cooks needed at Northview Center, 401 W. Moss, Eastland. t-77

WANTED--Cooks needed at Northview Center, 401 W. Moss, Eastland. t-77

Connell Welding Service
All Types of Farm and Shop Welding. 24 hr. Service. 647-3606. Rt. 1 Box 153

NOTICE
Eastland, Cisco, Ranger and Olden, Barber Shops announce that all Barber work has an increase in prices effective Sept. 16, 1975. New prices will be \$2.50 for a hair cut. t-76

NOTICE
Venetian blind repair service. 1301 Liggett, Cisco. 442-1513, Chester Allen. t-83

BUCK KNIVES
FAMOUS FOR HOLDING AN EDGE

Available At
H & R Lumber
715 West Main
629-2104

ALL SIZES
Wash jeans, corduroy and permanent press work - pants, \$2.50 pr. Ladies and girls shoes, choice \$2.00 pr.; 3 prs. for \$5. Ladies nylon hoses, 4 prs. for \$1. CISO ARMY SURPLUS. 1201 Ave. D. 442-3620.

WANTED--2 or 3 bedroom unfurnished house to rent in or around Eastland. References available. Please call 629-1825. t-80

C.B. RADIOS From \$99.95
Antennas, Etc. In Stock
MONTGOMERY WARD
Eastland Ranger

Central Drug
North Side Of Square

PRESCRIPTIONS
Filled Promptly And Accurately

JUST CALL
For All Your
Drug Needs
WE DELIVER

FOR RENT

HILLSIDE APARTMENTS
Attractive one bedroom and efficiencies. All utilities paid including TV cable. Call 629-8097 or 629-2812. p-77

FOR RENT: Furnished private 3 room cottages with carpets. Daily, weekly, or monthly. Pleasant Place Motel, west edge of Eastland. Call 629-887. t-77

FURNISHED OR UNFURNISHED APARTMENTS
RENT at
Loyal Oaks Apartments
1304 Royal Lane, Cisco
442-3232 442-2709

FOR RENT--Furnished mobile home spaces. 653-2220. t-77

FOR RENT--Attractive 1 and 2 bedroom apartments. Also nice bedroom and bath. All bills paid including cable. Call 629-1731 or 629-2125. t-77

FOR RENT--Mobile Home and mobile home spaces 653-2220. t-77

NOTICE

"We handle anything but litterbugs!"
GOODE PEST CONTROL
Phone 629-1179 after 3:00
310 N. Ammerman
Roaches, Ants, Termites, Moths, Spiders
ALL GUARANTEED

SENKEL'S CABINET SHOP
303 N. College
Phone 629-1269 after 5:00.
Custom Built Cabinets, Mobile Home Set-up, and Repair, Remodeling and General Carpentry Work.
Richard Senkel
Owner

SCOTTY'S BARN MISCELLENOUS PAINTING
1315 S. Lamar - Eastland, Tex. 1 paint lawn furniture - appliances - stock trailers - metal awnings - boat trailers - metal gates - Corral panels - tractors - Also polish and wax Automobiles. Come by, or Call L.A. Scott t-77

All Types Of Sewing
629-1371
From 9:00 a.m. - 5:00 p.m.
Janie Sanders

RESPONSIBLE... RELIABLE... READY-TO-GO

AMBULANCE SERVICE
2504 AUG 71 A.P. 50

Assurance ... It Matters
Depend on us when there's a need for immediate ambulance service. Call us day or night for fast action.
Modest Rates

Arrington Funeral Home
Ph. 629-2611

City Cab
629-2812

J&F POODLE GROOMING
14 MILES SOUTH OF CISO ON HIGHWAY 206. PHONE 725-6540

WATKINS DEALER
Vera Sherrill
406 S. Bassett, Eastland
Leave name and address during day. Phone 629-8019

Mercers Appliance Repair. Dishwashers, washers, dryers, stoves, disposals, and ovens. G.R. Mercer, Olden, Texas. 653-2473

SINGER SEWING MACHINE Repair Center. Servicing all makes. New and used for sale. Complete line of parts. Our work is guaranteed. 629-1604. t-76

NOTICE--For your aluminum storm windows, screens, doors, window awnings, and carports, call Otis Coleman. 629-1644. t-77

Do our companies give Bumper Discounts; Driver Training Credit; National Safety Council's Defensive Driving Course Credit; Second Car Credit; Dividends and Easy Payment Plans for all eligible policy holders? You bet! Come see us. Freyschlag Insurance Agency on North Side of Square.

MORE
cars are insured with us than with any other company. Find out why now!

James O. Wortman
705 W. Main St.
Eastland
Ph. 629-1096

STATE FARM
Mutual Automobile Insurance Company
Home Office - Bloomington, Illinois

FAMILY PROTECTOR
Call: James O. Wortman
705 W. Main St.
Eastland Ph. 629-1096
State Farm Life Insurance Company

Scott Paint & Body Works
★ Body & Fender Work
★ Wrecks Rebuilt
★ Painting
629-2372
300 W. Commerce

GREGORY PLUMBING & HEATING
629-2753
Res. 639-2340

THIS SPACE FOR RENT
\$3.00 MONTH

FARM AUCTION SERVICE
Turn your farm equipment to CASH. Bramlett & Nichols Auction Service. Office 965-5154; 965-3480. James Nichols 445-2234
Donnie Bramlett 968-2305

White and Elna authorized sewing machine dealer. Repair all kinds, by factory trained mechanic. DAVIS FABRICS, 610 W. 2nd, Cisco. p-77

Singer Sewing Machine Repair Center. Servicing all makes. New and Used for Sale. Complete line of parts. WRIGHT AUCTION COMPANY. 106 S. Seaman 629-2468

NOTICE--Mattresses. Complete bedding made by Western Mattress Co., San Angelo. Best quality, low price, renovate or exchange new. Every other Wednesday. They're guaranteed. For home appointment call Lois Mezell, 629-2703, leave name. t-77

WHITE PINE ELECTRIC is open for business and is here to stay. 24 hour service with licensed men on duty. Commercial, residential and industrial and mobil home electrical repair. Denver Stagner Jr., owner 629-2881. t-77

WIESEN'S MAGNETIC SIGNS
All Types
Tel. 647-1676 or 647-1665 in Ranger

MASONIC LODGE NO. 467
Meets second Thursday of each month at 8:00 p.m. in the Masonic Hall. Call Joseph Housson, W.M., at 629-1314 or L.E. Huckabay, Sec'y, at 629-1391 for information.

Complete Car Service ...
Bring your car to us for any type of repair. We give you fast, quality service. Stop in.

Reasonable SCOTT PAINT AND BODY WORKS
629-2372
300 W. Commerce
Sam Beggs-Owner

Eastland Telegram
629-1707

H.V. OBRIEN PUBLISHER AND EDITOR
Second Class Postage paid at Eastland Texas under Act of Congress on March 1870
Published semi-weekly Thursdays and Sundays by Eastland County Newspapers Inc.
SUBSCRIPTION RATES: By carrier in city, 15 cents a week or 65 cents a month; one year by mail in county \$5; city P.O. Boxes \$6; one year elsewhere in state \$7; out of state, \$10.00 per year.

NOTICE: Any erroneous reflection upon the character standing or reputation of any person, firm or corporation, which may appear in the columns of this newspaper will be gladly corrected upon being brought to the attention of the editor.

"This newspaper will not knowingly accept any advertising for real estate which is in violation of the law. Our readers are informed that all dwellings advertised in this newspaper are available on an equal opportunity basis."

"All real estate advertised in this newspaper is subject to Federal Fair Housing Act of 1968 which makes it illegal to advertise "any preference, limitation, or discrimination based on race, color, religion, sex, or natural origin, or an intention to make any such preference, limitation, or discrimination."

IMPORTANT
Check your ad the First Day it appears. In event of errors, please call immediately to have it corrected. No Claims will be allowed for more than one incorrect insertion. The publishers liability shall be limited to only the amount of space consumed by these errors.

FARM AUCTION SERVICE
Turn your farm equipment to CASH. Bramlett & Nichols Auction Service. Office 965-5154; 965-3480. James Nichols 445-2234
Donnie Bramlett 968-2305

White and Elna authorized sewing machine dealer. Repair all kinds, by factory trained mechanic. DAVIS FABRICS, 610 W. 2nd, Cisco. p-77

Singer Sewing Machine Repair Center. Servicing all makes. New and Used for Sale. Complete line of parts. WRIGHT AUCTION COMPANY. 106 S. Seaman 629-2468

NOTICE--Mattresses. Complete bedding made by Western Mattress Co., San Angelo. Best quality, low price, renovate or exchange new. Every other Wednesday. They're guaranteed. For home appointment call Lois Mezell, 629-2703, leave name. t-77

WHITE PINE ELECTRIC is open for business and is here to stay. 24 hour service with licensed men on duty. Commercial, residential and industrial and mobil home electrical repair. Denver Stagner Jr., owner 629-2881. t-77

WIESEN'S MAGNETIC SIGNS
All Types
Tel. 647-1676 or 647-1665 in Ranger

MASONIC LODGE NO. 467
Meets second Thursday of each month at 8:00 p.m. in the Masonic Hall. Call Joseph Housson, W.M., at 629-1314 or L.E. Huckabay, Sec'y, at 629-1391 for information.

Complete Car Service ...
Bring your car to us for any type of repair. We give you fast, quality service. Stop in.

Reasonable SCOTT PAINT AND BODY WORKS
629-2372
300 W. Commerce
Sam Beggs-Owner

National Farmers Union Insurance Companies
LARRY ARMSTRONG
605 W. Sadosa
Eastland, Texas
629-1342

Offering Complete Multiple-Line Insurance Service

One-Stop Insurance Service for Home, Family and Farm

Ed's Used Cars
609 E. 8th St. Cisco

For Sale

72 Vega 2300 \$775⁰⁰
72 V-8 Be Air \$950⁰⁰
67 Thunderbird
67 Opal
71 1/2 Ton V-8 Chevy \$950⁰⁰

So Lo Auto Parts
817-629-2158
Open Saturday Till 4:00 p.m.

300 S. SEAMAN
EASTLAND, TEXAS 76448

QUALITY IS NO ACCIDENT

Custom New Homes
Turn Key Service From Plans To Financing

B.G. BROWN CONST. CO., INC.
820 W. Main, Eastland
629-2404
Nights 629-8082

A-1 SALES
DALE JERRY MASTON
215 S. WALNUT-EASTLAND
PHONE DAY-NIGHT 629-2102

ROOFING SIDING
COMPLETE REMODELING
ALL TYPES HOME REPAIRS

NEW HAIL GUARD
SIDING - WITH
15 YEARS ON FINISH
25 YEARS ON SIDING
NON-PROTATED GUARANTY!

VINAL IS FINAL
WE HANDLE SOLID VINAL SIDING
SOLID COLOR ALL THE WAY THROUGH
SCRATCHES DO NOT SHOW
BEAUTY-INSULATION-DURABILTY
20 YEAR PRORATED GUARANTY


CALL 629-2102 FOR
FREE ESTIMATE
ON ANY REPAIR JOB
PROMPT COURTEOUS SERVICE

JRB

SUPERMARKETS

Brownwood, Coleman, Cross Plains, Abilene, Ranger, Eastland, Cisco, DeLeon, Brady, Wichita Falls, Stamford, Llano, Hamlin, Springtown, Bridgeport, Newark.

Unbeatable Values!

We feature national brands! And you get  Green Stamps, too!

Unbeatable Stamps!

We Honor U.S. Government Food Stamps

Double Stamps
Wednesday & Saturday
Prices Effective
Thru Sat., September 27
Hours: 8 a.m. to 8 p.m.
Eastland Store Only

We Reserve The Right To Limit Quantity
NO SALES TO DEALERS

COME OVER



GENUINE CALF

LIVER
49¢

PLUS  STAMPS

JRB Meats Are U.S. Government Inspected. If For Any Reason You Are Not Satisfied, We Will Cheerfully Return Your Money.

HEAVY CALF BLADE CUT CHUCK ROAST HEAVY CALF 7 - BONE	lb.	69¢	DECKER 12 oz. PACKAGE BOLOGNA AND SALAMI DECKER	lb.	89¢
CHUCK ROAST HEAVY CALF	lb.	79¢	FRANKS 12 oz. PACKAGE	each	79¢
ARM ROAST LEAN BONELESS	lb.	89¢	2 lb. STICK CRACKER SIZE BOLOGNA	lb.	89¢
STEW MEAT HEAVY CALF	lb.	99¢	GLOVER 6 oz. PACKAGE (Bologna, Pickle & Pimento, Olive Loaf, Luncheon Loaf, Cooked Salami) each	each	49¢
SHORT RIBS FAMILY PACK	lb.	69¢	GLOVER 12 oz. PACKAGE GERMAN SAUSAGE	each	99¢
GROUND BEEF DANKWORTH	lb.	79¢	ARMOUR STAR GRILL DOGS 1 lb. PACKAGE	each	\$1.09
BEEF PATTIES 1 lb. PACKAGE	lb.	\$1.09	ARMOUR STAR BOLOGNA MARKET SLICED	lb.	99¢
ARMOUR CAMPFIRE HOT LINKS	each	89¢	TEXAS ARMOUR CERVELAT	lb.	89¢
DECKER BACON 12 oz. PACKAGE	each	\$1.49	JIMMY DEAN Hot or Regular SAUSAGE 12 oz. \$1.49 24 oz. \$2.89	lb.	99¢
DECKER 3 lb. BACON ENDS AND PIECES	each	\$2.49	LEAN GROUND BEEF	lb.	99¢



HEAVY CALF ARM CUT

SWISS STEAK
99¢

PLUS  STAMPS

LOW, LOW PRICE!

HEAVY CALF CHUCK CUT

FAMILY STEAK

89¢

PLUS  STAMPS

EVERY DAY LOW PRICES

THRILL LIQUID DETERGENT 13c Off Label Giant Size	69¢	DUZ DETERGENT Giant Size	\$1.29
--	------------	---------------------------------------	---------------

VAN CAMP WHITE OR GOLD
HOMINY 300 Can
FOLGERS INSTANT
COFFEE 10 oz. Jar \$2.79
CARNATION POWERED
MILK 8 qt. Box \$1.89
JOHNSONS GLORY \$1.79
RUG CLEANER 24 oz. Can \$2.49
JOHNSONS FUTURE
FLOOR FINISH 46 oz. Bottle

STRONG HEART
DOG & CAT FOOD 6 Cans **\$1.00**

MINUTE
RICE 28 oz. Bag \$1.45
STRONG HEART
CAT FOOD 6 Cans \$1.00
HUC ALL FLAVORS
FRUIT DRINKS 46 oz. Can 57¢
NABISCO PREMIUM SALTINES 59¢
CRACKERS 1 lb. Box 69¢
KEEBLER CHOC FUDGE OR PITTER PATTY 85¢
CARNATION ALL VARIETIES
SPREADABLES 7 oz. Can 2/47¢
PUSS & BOOTS ALL VARIETIES
CAT FOOD FLAT CAN 6/55¢
UNSWEETENED
KOOL AID REG SIZE PKG. 49¢
SWEETENED
KOOL AID 2 qt. Size \$2.21
BRER RABBIT
SYRUP 24 oz. Bottle \$1.25 43 oz. Bottle 75¢
AMERICAN BEAUTY
ELBO RONI 24 oz. Pkg.

DAIRY & FROZEN FOODS

MINUTE MAID ORANGE JUICE 6 oz. Cans	3/\$1.00	MINUTE MAID ORANGE JUICE 16 oz. Cans	79¢
--	-----------------	---	------------

MINUTE MAID ORANGE JUICE 12 oz. Cans	59¢	MINUTE MAID ORANGE JUICE 32 oz. Cans	\$1.59
---	------------	---	---------------

JRB ALL FLAVORS
ICE CREAM 1/2 Gal. Ctn. 79¢
GANDYS QUALITY CHECKED
SOUR CREAM 8 oz. Ctn. 29¢

PARADE SOFT
MARGARINE 1 lb. Bowl 59¢

MINUTE MAID
LEMONADE PINK OR REGULAR 6 oz. Cans 4/\$1.00
MINUTE MAID
LEMONADE PINK OR REGULAR 12 oz. Cans 49¢

FLAY R PACK 10 oz. Pkg. 3/\$1.00
VEGETABLES CHOP BROCC OR BRUS SPROUTS \$1.39

BOOTH
SHRIMP STICKS 14 oz. \$2.39
BOOTH BREADED
SHRIMP 1 lb. 69¢

IMPERIAL SOFT SPREAD
MARGARINE 1 lb. Tub 59¢

PROMISE
MARGARINE 1 lb. Quarters 89¢

PILLSBURY CHOC CHIP
COOKIES 16 oz. Pkg.

COME OVER & SAVE

HEAVY CALF
CLUB STEAK

99¢

PLUS  STAMPS

ALLENS CUT
GREEN BEANS

303 Can
5/\$1.00

HUNTS
FRUIT COCKTAIL

306 Can
3/\$1.00

HUNTS
CATSUP

20 oz. Bottle
49¢

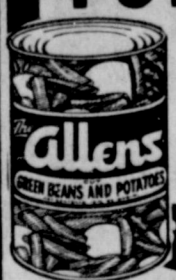
HUNTS WHOLE
TOMATOES

300 Can
3/\$1.00

UNBEATABLE VALUE

ALLENS
BEANS & POTATOES

3/\$1



PLUS  STAMPS

AIM TOOTH PASTE LARGE Reg. 93c	BAN ROLL ON DEODORANT 1 1/2 oz. Reg. \$1.36	ULTRA BAN DEODORANT 5000 Regular Reg. \$1.52	EXCEDRIN TABLETS 100's Reg. \$1.97 \$1.29 PM TABLETS 30's Reg. \$1.39 69¢	WOVEN FLOOR MATS Reg. \$3.99 FOR \$2.69
				TV & PICNIC TRAYS Reg. \$2.99 FOR \$1.79
				STRAW TABLE MATS Regular 59c FOR 29¢

UNBEATABLE VALUE

CHIFFON SCENIC'S
FACIAL TISSUE

200 Count Box
49¢

PLUS  STAMPS

GARDEN FRESH PRODUCE

TOMATOES Large Size	lb.	29¢
POTATOES Russet	8 lb. Bag	99¢
ONIONS Yellow	New Crop	lb. 23¢
PLUMS Santa Rosa	lb.	49¢
ORANGES Calif.	3 lbs.	\$1.00

UNBEATABLE VALUE

MARINA
TOILET TISSUE

WHITE OR ASST
4 Roll Pack.
69¢

PLUS  STAMPS

UNBEATABLE VALUE

HUNTS WHOLE
TOMATOES

300 Can
3/\$1.00

PLUS  STAMPS

TRAPPEY JALAPENO
BLACK EYE PEAS

300 Can
4/\$1.00

Courthouse NEWS

NEW CAR REGISTRATION
 Ricky L. Taylor Pont. Caddo.
 Shirley Ann Jackson Chev. Ranger
 Moore Bolt. Co. Dugan Flatbed Cisco.
 Joe D. Gallaway Chev. Ft. Worth
 W.T. Sadler Ford Ranger.
 Weidon D. Tankersley Chev. Pkup Eastland
 Richard Wende Olds. Cisco.

MARRIAGE LICENSES
 Robert Eugent Guenthen and Dorothy Gene Prickett.
 James Lee Dixon and Melinda Joyce Henry.
 Coy Lee Wesley and Cynthia Ann Williams
 Kenneth Darrell Jones and Carolyn Sue Vandenoop.
 Robert Dale Butler and Susan Irene Hamilton.

INSTRUMENTS FIELD
 Wm. E. Austin and wife to First Natl Bk. Cisco m-m Land asgm.
 Clifton V. Andrews to Paul Foster Deed of Trust.
 Stanley M. Abbott, dec'd to the Public Prrof of Hdenship
 William R. Bollinger and wife to B.G. Brown Const. Co. Warranty Deed.
 B.G. Brown Const. Co. to First St. Bk. Ranger Deed of Trust.
 Troyce F. Bagley and wife to Citizens Natl. Bk. Abilene Asgn. Lk. Lse.
 Dleanor Mary Byans and

ROOFING
 Doyle Squires, Contr., Olden, Texas. 653-2212. Call after 6 p.m.

husband to Eula Cauble Warranty Deed.
 Banks and Ruby Drilling Co. to Don M. Connally, agent m-m-l affd.
 Joseph E. Bunk and wife to Ralph D. Proctor and wife Warranty Deed.
 B.G. Brown Const. Co. to Thomas W. Wilson and wife warranty deed.
 Maude L. Bounland to T.U. Bounland Jr. Power of Atty.
 Bobby G. Brown and wife to Robert V. Robinson Warranty Deed.
 Myrtle Ann Bolding to Rhodes Drilling Co. o-g-m-l.
 Burelle Bolding to Rhodes Drilling Co. o-g-m-l.
 J.E. Bolding to Rhodes Drilling Co. o-g-m-l.
 Louise Culwell to Robert L. Shults Warranty Deed.
 Robert L. Carroll and wife to Jerry D. Taylor and wife Warranty Deed.
 City of Cisco to J.H. Penn Cemetery Deed.
 W.Z. Creager and wife to Charles Arnett Rev. v-l and D-T
 Robert L. Carroll to Eastland Natl. Bk. Sub v-l and d-t.
 John All Curtis to John R. Shaw, Jr. Deed of Trust.
 J.D. Carr and wife to Larry W. Ledbetter and wife Warranty Deed.
 N.T. Cate and wife-dec'd to the Public Proof of heinship will attached.
 Marilyn Maxwell Chadler to Vet. Ld. Board Assumption Purchase con't.
 Jerry M. Colling to J.D. May contract
 Mike Collins and wife to J.D. May Warranty Deed.
 Donnie C. Chestnut and wife to 1st Fed and s&l assn. Deed of

trust.
 City of Carbon To Richard N. Burgess Quit Claim dec'd.
 J.C. Carr and wife to Vet. Ld. Bd. Warranty Deed.
 E.A. Connel to Eastland National Bank Deed of Trust.
 Ruby Mae Qualls Degge to Calvin Michelson rafication o-g-l.
 Alice Brown Dowling to 1st Natl. Bk. and Trust Co. Deed.
 E.F. Eaves and wife to Hilton Shahan o-g-l.
 City of Eastland to Bill Hunter Cemetery Deed.
 City of Eastland to M.G. Cartwright Cemetery Deed.
 Eastland Natl. Bk. to Nel B. Eaves and wife Rel. Deed of Trust.
 N.B. Eaves and wife to D.F. Eaves and wife warranty deed.
 First Natl. Bk. Abilene to T.B. Simpson and wife Re. Deed of Trust.
 O.A. Fox s&l Assn. to Anlton E. Smith Rel Deed of Trust.
 O.A. Fox and wife to Tri Mark Dev. Inc. Notice pendens
 Frank Genlack Oil Co. to W.D. Gattis abstract of judgement.
 First Fed S&L Ass. to J.D. Carr and wife Re. Deed of Trust.
 First Fed S&L Assn. To B.E. Hansen and wife Rel. Deed of Trust.
 1st St. Bk. Ranger to Mike Collins Pant. Rel. Deed of Trust.
 First Fed S&L assn. To A.N. Lanson and wife Rel. Deed of Trust.
 Paul A. Forster and wife to Vet. Ld. Bd. Warranty Deed.
 W.C. Garrett to Lillian V. Garrett Warranty Deed.
 Emily I. Graves to Ira O. Greenwood Rel. d-t and v-l.
 Russell Hill and wife to Vernon R. Walker and wife Rel. v-l and d-t.
 Raymond M. Hendricks dec'd to the Public Proof of Heinship.
 Billy A Highsmith to Tri Mark Dev. Inc. Rel v-l and d-t.
 Estate of Leona Hundleston, dec'd to the Public Certified copy probate.
 B.E. Hansen and wife to Lee A. Lowrance and wife Deed of Trust.
 B.E. Hansen and wife to Lee A. Lowrance and wife Warranty Deed.
 Charles L. Hill and wife to Lester B. Atkinson and wife deed of trust.
 J.&R. Oil Co. to the Public assumed name.
 J.L.H. Inc. to Ralph G. Wheat and others Rel. v-l and d-t.
 Bill J. Johnson and wife to Search Drilling Co. Contract.
 Nelma N. Bolding Jones to Rhodes Drilling Co. o-g and m-l.
 Lela Josey and others to Rhodes Drilling Co. o-g and m-l.
 J.H. Kent to J.M. Moates Warranty Deed.
 Lawndale, Inc. To Ray D. Blair and others Deed of Trust.
 Len's Premier to the Public assumed name.
 C.A. Livingston and wife to Tri Mark Dev. Inc. m-m-l.
 Larry W. Ledbetter and wife to Tarrant Sav. Assn. deed of trust.
 W.B. Lansford and others to Rhodes Drilling Co. o-g and m-l.
 Adrain M. Manley to Calvin Michaelson o-g and m-l.
 J.D. May and wife to 1st St. Bk. Ranger deed of trust.
 Moran Natl. Bk. to J.C. Carr and wife Pant. Rel. d-t.
 J.D. McNeely and others to Hilton Shahan o-g-l.
 Walter B. McMenany to Calvin Michaelson o-g-l.
 Alfred C. McAfee, dec'd to the Public certified copy probate.
 B.E. Osborn and wife to W.E. Colbunn warranty deed.
 Stanley J. Pirtle to J&R Oil Co. asgn. o-g-l.
 Stanley J. Pirtle to J&R Oil Co. asgn. Royalty Int.
 Jim Pate and wife to B.G. Brown Const. Co. Warranty Deed.
 City of Ranger to James B. Henry Special warranty deed.
 Garland W. Rogers and wife to William Lacy Page warranty deed.
 Wendell Reed and wife to Max Anderson warranty deed.
 Ruth Ramsey dec'd to Donald R. Smith and wife Rel. v-l and

d-t.
 J.D. Rogers to C.E. Parks tuit claim deed.
 Robert V. Robinson to Lomas and Nettleton deed of trust.
 Lewis S. Starr to Hope S. Higgins warranty deed.
 Lena P. Smith and others to James Williams to m-m-l and asgn.
 John R. Shaw Jr. and wife to John Allen Curtis warranty deed.
 Sears, Robuck and Co. to W.D. Gattis and wife abstract of judgement.
 William J. Tipton and wife to Julia Weterman Deed of Trust.
 Vantage Management Co. to John R. Shaw and other abstract of judgement.
 Vet. Ld. Bd. to Angilena Pruitt contract S&P.
 Vet. Ld. Bd. to Paul A. Foster Deed.
 Vet. Ld. Bd. to Virgil Clifton Andrews contract S&P.
 Floyd C. West and others to M.L. Denson and wife warranty deed.
 Hall Walker to the Public aff'd.
 Wilma Waters to 1st Natl. Bk. Cisco to J.C. Brasheans m-m-l and asgn.
 Nancy Allene Warden to Guy Edward Wanden quic claim deed.
 Ruth Warren. Indiv and others to Rhodis Drilling Co. o-g and m-l.
 B.H. Westerman and wife to William Tipton Warranty Deed.
 91ST DIST COURT.
 Mosse Edward Green vs. Charline Green -Divorce.
 A.W. Roberts vs. Vestal Roberts -Divorce.
 O.A. Fox adn wife vs. Tri-Mark Dev. Inc. Judgement for Title and Possession.
 Alvin Morton, Guardian vs. D.J. Townsent Partition of Land.
 Estate of Clyde Bond, deceased and Mary Louise Christian vs. Modelyn Bond Andrist -Suit of Accounty.
 Emily Jane Mazon vs. Willie Ray Mazon -Divorce.
 Archie Lee Hull vs. Elizabeth Ann Hull-Divorce.
 Robert Bruce Swindle vs. Debra Suzanne Swindle-Divorce
 Vennell Creech vs. George Nolan Creech -Divorce.
 The First Natl. Bk. Gorman vs. Ray Hughes Suit on Note.
 The First Natl. Bk. Gorman vs. Robert Lewis Martin Suit on Note.
 The First Natl. Bank, Gorman vs. A.G. Sims Suit on Note.
 The First Natl. Bank, Gorman vs. O. Battenfield Suit on Note.
 The First Natl. Bank, Gorman vs. Leo P. Vaughn -Suit on Note.
 The First Natl. Bank, Gorman vs. Louie roberts -Suit on note.
 The First Natl. Bank, vs. Nelda Duke and husband, Elmon Duke-Suit on Note.
From The Living Bible
 For a pastor must be a good man whose life cannot be spoken against. He must have only one wife, and he must be hard working and thoughtful, orderly, and full of good deeds. He must enjoy having guests in his home, and must be a good Bible teacher. He must not be a drinker or quarrelsome, but he must be gentle and kind, and not be one who loves money. He must have a well-behaved family, with children who obey quickly and quietly. For if a man can't make his own little family behave, how can he help the whole church?
1 Timothy 3:1-5

Safe-Dependable-Insured
VERNON'S MOBILE HOME TOWING
 Local or Long Distance
 F.V. HAYDEN
 108 East Maple
 817-559-3584
 Breckenridge

RCG Leasing, Inc.
 Medicare Approved
 Medical Supplies
 ★ ★ ★
 Sales & Rentals
 629-8052
 104 W. Commerce Eastland

drive

Tony Lowrance
Dirt Contractor
 Sand & Gravel Hauling - Yard Grading & Leveling - Backhoe Service
 Install Concret Septic Tanks
Call 629-8191

Macrame Classes Are Forming Each Week At
Morrens Gift Shop
 In Eastland
A. Free Instruction
B. Evening Classes
 Starting At 6:00
Plus Morrens Has A Large Selection Of Creative Knotting Supplies.
Morrens Also Carries Hand Painted Shirts & Patterns For Shirt Paintings.
Film Processing Drop Station With Over Night Service.
Morren's Plumbing And Gift Shop
 1013 West Main
 629-2092

B. & H. Trading Post
 311 N. Seaman
B & H Trading Post Has Expanded To Include New And Used Furniture At Our Same Low Prices.
 We Also Will Have Old Glass, Avon Collections, And Other Curios For Your Inspection. Stop By Saturday, Sept. 20th For The Grand Opening Of The B & H "Old Texas Room" At 311 North Seaman Eastland, Texas.
Tom & Cheril Mandelke
 New Managers

CITIZENS REALTY

820 W. Main Eastland
 629-1769 or 629-2404
WE SELL FARMS - NOT JUST LIST THEM

84 ACRES - join EASTLAND CITY LIMITS, pecan trees, River bottom. 48 acres in coastal, 12 acres of alfalfa, irrigation, terms
 8 ACRES - OLDEN - U.S. 90, two bath home, has out building, more acreage **SOLD** one, 90 percent loan available
 28 ACRES on FM 570, frontage on ST OF EASTLAND, will consider G.I. 25 ac. coastal, 3000 feet highway frontage, co-op water available, **SOLD** trees.
 177 ACRES - SOUTH OF RANGER, five bedroom home, three tanks, good terms available.
 134 ACRES - ERATH COUNTY - irrigation equipment, 54 acres pasture, 30 ac. irrigated cropland, 50 ac. irrigated pasture, Bosque River bottom. Pecan trees, GOOD TERMS.
 49 ACRES - EASTLAND - two bedroom home, 175 pecan trees, city water, TERMS.
 70 ACRES - I.H. 20 South of Eastland, will consider G.I., live oaks, highway frontage, 4 good tanks, \$5,000 down or will G.I.
 140 ACRES - NORTH OF CISCO, tank native grass, owner will finance, \$265 an acre.
 21 ACRES - SW OF CISCO, highway frontage, plenty of good water, also 1972 mobile home 14' x 76'.
 65 ACRES - NEAR SCRANTON, 40 acres cultivation, large older home, fruit trees, spring, good well water.
 30 ACRES - SOUTH OF CISCO - Owner will finance.
 36 ACRES - NEAR OLDEN - use your G.I. on this one.
 26 ACRES - ERATH COUNTY - will accept G.I., Highway Frontage, 7 ac. coastal, creek, co-op water.
 58 ACRES - NEAR LAKE LEON - creek, timber, some cultivation, use your G.I.
 486 ACRES - LAKE LEON bottom land - two bedroom home, lake frontage, irrigation equipment, good fences, terms.
 30 ACRES - COMANCHE COUNTY - Coastal, live oaks, three tanks, two wells, VERY NICE, barn and lots, G.I.
 40 ACRES - COMANCHE COUNTY - COASTAL, stock tanks, cross fenced, windmill, hay barn and cattle pens, G.I.
 85 ACRES - COMANCHE COUNTY - coastal, nice creek, three tanks, cattle pens and barn.
 116 ACRES - COMANCHE COUNTY - 26 ac. peanut allotment - Highway frontage on Hwy. 16 with county road on two sides, owner will divide for G.I.
 134 ACRES - COMANCHE COUNTY - 30 ac. peanuts, 100 ac. coastal, 100 pecan trees, 20 ac. bottom land, two irrigation wells, irrigation equipment, TERMS.
 143 ACRES - COMANCHE COUNTY - COASTAL BORDERS, Procter Lake, TERMS.
 123 ACRES - COMANCHE COUNTY - All in coastal, stock tank, water well.
 295 ACRES - EASTLAND COUNTY - 40 ac. peanuts, 14 ac. lovegrass, 60 ac. coastal, good 25 ac. oat field, two irrigation wells, deer, turkey, \$20,000 down.
 640 ACRES - REAGAN COUNTY - Grassland, water well with windmill, \$6,580 down with balance of note carried at 8 percent, 15 years, owner finance.
 143 ACRES - NORTH OF RANGER - love grass, coastal, three irrigation wells, 52 ac. field, GOOD TERMS.
 200 ACRE DAIRY - ERATH COUNTY - Nice three bedroom home, new milking barn, big hay barn, owner finance.
 425 ACRES - YOUNG COUNTY - good hunting - grasses - pretty place.
 150 ACRES - EASTLAND COUNTY - 140 ac. coastal - irrigation well.

RAY MOODY - ASSOCIATE 1-725-7279
 Hours: 8-6 Mon - Fri, 8-2 Sat, 1-4 Sun.
 WAYNE DURHAM - ASSOCIATE 629-2743
 B.G. BROWN - BROKER 629-8082

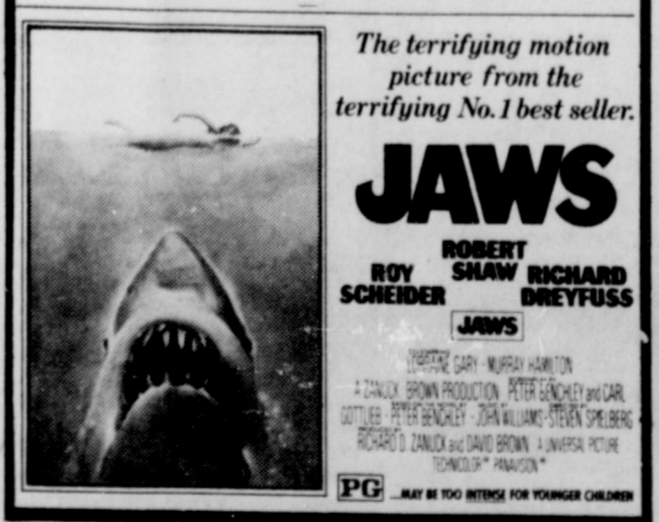
Majestic Theatre

Eastland 629-1220
No Thru Thurs.
 In the tradition of Shane and High Noon, a new Western Classic is born! **BITE THE BULLET**



GENE HACKMAN
 CANDICE BERGEN JAMES COBURN
BITE THE BULLET
 IAN BANNEN JAN-MICHAEL VINCENT
 and BEN JOHNSON as "Mister"
 RICHARD BROOKS PG

No Fri. Late Show This Week
 Starts Fri. Regular Admission Prices.
 See At 7 & 9:15 p.m. No Passes.



The terrifying motion picture from the terrifying No. 1 best seller.
JAWS
 ROY SCHEIDER ROBERT SHAW RICHARD DREYFUSS
 JAWS
 PG MAY BE TOO INTENSE FOR YOUNGER CHILDREN

CITIZENS REALTY

820 WEST MAIN STREET, EASTLAND COUNTY'S VOLUME RESIDENTIAL DEALER
 629-1769 629-2404

X- EXERCISE your right as an American citizen. Federal Housing Administration commitment on this lovely home in EASTLAND'S VALLEY VIEW ESTATES ADDITION, three bedrooms, hollywood bath, two car garage, central heat and air "tomorrow's home today". Under construction.
 X - AMINE this **SOLD** 1, three bath home IN CISCO. Isolated master be **SOLD** 100 sq. ft. of living comfort, back entry drive.
 X- PECT to see a neatnick when you look at this 2 bedroom, 1 bath home IN RANGER. One car garage with workshop in back, fenced yard, fruit trees. Low equity and assume loan, good location.
 X- PERIENCE the pride of ownership when you move into this four bedroom, two bath home IN WEST CISCO. Luxurious, all built - ins, carpet, gas central heat and air, fireplace. LOW down.
 X - PLORE the value of this three bedroom, two bath older home IN CISCO, with natural wood burning fireplace in family room.
 X - TRA effort has gone into this beautiful three bedroom home with private back entry drive. Close to all schools, storage building in back, 6 foot cedar fence, well - groomed yard, an abundance of storage space with versatile additional room for game room or fourth bedroom. Friendly, pleasant Eastland neighborhood.
 WEEKEND RETREAT - Country living and privacy with 'in - town' conveniences. Very nice two bedroom, cottage with scenic view and plenty of room to "do your own thing". Located on edge of Eastland's city limits, with city water, a storm shelter, beautiful fruit bearing pecan trees. Recently re - decorated in charming color - coordinated wall coverings, paneling and pattern sculptured shag carpeting. Sunken master bedroom with large modern bathroom. Covered enclosed patio, lovely double fireplace, ref. air conditioning. Call today.
 WHY RENT AN **SOLD** y, good location IN OLDEN, cute two bedroom, one **SOLD** at a pin.
 FREE SQUIRRELS!!! No charge for the squirrels playing in the big oak trees around this charmer. It's a two bedroom dollhouse, good location IN CISCO, small equity and assume loan.
 YOUR ATTENTION PLEASE, if you are a discriminated home buyer, looking for an outstanding buy, we have the property for you. IN CISCO a lovely two bedroom brick home with central heat and air, carport. Low down, appx. \$99 per month.
 ONCE IN A BLUE MOON you can find a buy like this. We have a 14' x 65' NEW MOON Mobile Home. Two bedroom, one bath, total electric. Lot size is 100' x 150', shag carpet, appliances including self - clean eye level, washer and dryer connection. Good location IN EASTLAND.
 LAKE PROPERTY located on CISCO LAKE, with a 20' x 40' covered boat dock. Big lot, lovely yard with curbs and fence. Over 1400 sq. ft. Two bedroom, two bath, all paneled. Extra large family room. Individual water system. Good buy.
 COMMERCIAL PROPERTY IN CISCO, service station, main street. Included is building, tools, equipment, tanks, pumps. Will inventory property (gas, oil, tires) at jobbers prices. Owner will finance.
 INCOME PROPERTY IN CISCO, four rent houses in Humbletown. Occupied, storage house, ten pecan trees, storm shelter, trailer hook - up. Good location, good investment.
 Hours: 8-6 Mon - Fri., 8-2 Sat. 1-4 Sun.
 B.G. BROWN - BROKER 629-8082
 KARLA BROWN - BROKER 629-8082
 Richard E. Ward - Associate 442-3524
 Beth Ward - Associate 442-3524
 CALL US - WE CARE
 DORIS NORTON - ASSOCIATE 653-2263
 REALTOR®

SHOW STARTS AT DUSK
RANGER DRIVE-IN THEATRE
 Eastland
 SUNDAY Sept. 21
 A DUO OF BANK BUNGLERS... all three of 'em!
The APPLE DUMPLING GANG
 TECHNICOLOR
 NEXT ATTRACTION **SEE**
 In the tradition of Shane and High Noon, a new Western Classic is born! **BITE THE BULLET**
 COLUMBIA PICTURES presents
GENE HACKMAN CANDICE BERGEN JAMES COBURN
BITE THE BULLET
 Co-starring IAN BANNEN JAN-MICHAEL VINCENT and BEN JOHNSON as "Mister"
 RICHARD BROOKS
 PG

ECFB Directors And Officers Will Be Elected At Meet

Farm Bureau policies for next year will be adopted and directors and officers will be elected at the annual meeting of the Eastland County Farm Bureau. The meeting will be held at 7:30 p.m. at the First Christian Church Annex in Eastland.

Speakers will be Nelda Little, daughter of Mr. and Mrs. Jimmy Little, Route 1, Gorman; and Benny Butler, son of Mr. and Mrs. Hugh Butler, Route 3, Gorman.

Adopted resolutions on county matters became County Farm Bureau policies for 1975. Approved resolutions dealing with state and national issues became recommendations for the Texas Farm Bureau convention.

The state convention will be held in San Antonio, November 30-December 3. Approved resolutions dealing with state matters became state policies, and likewise, national resolutions adopted became recommendations to the annual meeting of the American Farm Bureau Federation, which will

be held in St. Louis, Mo., January 4-8. National policies adopted there became policies for all Farm Bureau everywhere.

The county Policy Development Committee will draft tentative resolutions to be voted on at the County Convention. Chairman of this committee is J.R. Grimshaw, Route 1, Desdemona.

Current officers of the Eastland County Farm Bureau are: President, C.M. Guthery, Desdemona; 1st Vice President, J.R. Grimshaw, Desdemona; 2nd Vice President, Pete Hathcock, Ranger; and Secretary and Treasurer, Ray A. Norris, Eastland.

John Miller, President of IPAA, will address the Advisory Board and the Board of Directors of WeCTOGA at 2 p.m. in the clubhouse at the Sweetwater County Club September 25. This meeting is being held as a part of the Association's Annual Barbecue and the membership is invited to attend the Board Meeting.

Shannon Wilson Accepted Toward MOFA Degree In Drama



Shannon Wilson of Eastland has been accepted for work toward a Master of Fine Arts degree in drama at Dallas Theater Center. An affiliate of Trinity University in San Antonio, Dallas Theater Center is under nationally known managing director Paul Baker.

Shannon is a graduate of Eastland High School and a graduate cum laude of Tarleton State University with a Bachelor of Arts degree. She spent this past summer as a member of the Granbury Opera House Repertory Company. This group of college students and graduates from six universities obtained college credit for presentation of some seventy-two performances of four different plays at the newly remodeled Granbury Opera House.

Shannon is the daughter of

Mr. and Mrs. H. Tom Wilson and has one sister, Victoria.



Mrs. Zeluer Lusk and her sister, Kate Gipson enjoyed the weekend attending the reunion of the "Lusk Cousins" held at the Fire hall in Dickens, Texas. There were 61 kissing and hugging cousins, and tables of very good food, and much chatting and reminiscing during the day. The next meeting will be at the Hendricks boys ranch, north of Lueders, Texas.

While in Dickens, Mrs. Lusk and Mrs. Gibson also visited their sister, Mr. and Mrs. Cecil Meadors, and attended church with them.



Palmer Stocks Of Carbon, Shows Part Of His Fall Potato Harvest: Two Five Pound Potatoes

Southern Television Systems Inc

CHURCH SERVICES

CHURCH OF GOD Main & Connelley Rev. Ronald Bear

Sunday School 9:45 a.m.;
Morning Worship 11:00 a.m.;
Evening Worship 7:00 p.m.;
Wednesday Night Service, 7:30 p.m.;
Ladies Prayer Meeting 8:15 a.m. Thursday.

CALVARY BAPTIST Rev. L.C. Williams

Sunday School 10:00 a.m.;
Morning Worship 10:45 a.m.;
Training Union 6:30 p.m.;
Evening Worship 7:00 p.m.;
Wednesday night Service 7:30 p.m.

FIRST BAPTIST CHURCH N. Seaman St.

Rev. J.L. Norris
Sunday School 9:30 a.m.;
Morning Worship 11:00 a.m.;
Baptist Training Union 6:00 p.m.;
Evening Worship 7:00 p.m.;
Wednesday Night Service 7:00 p.m.

HARMONY BAPTIST CHURCH Rudy Fambrough, Minister

Sunday School 9:45 a.m.;
Morning Worship 11:00 a.m.;
Evening Worship 7:00 p.m.;
Wednesday Night Service 7:00 p.m.

FIRST PRESBYTERIAN CHURCH Rev. Robert W. Marsh

Sunday School 10:00 a.m.;
Morning Worship 11:00 a.m.

FIRST CHRISTIAN DISCIPLES OF CHRIST Steven Church

Sunday School 9:30 a.m.;
Morning Worship 10:55 a.m.;
Evening Worship 6:00 p.m.

FIRST CHURCH OF GOD 212 W. Valley

Sam R. Wilson, Pastor
Sunday School, 9:30 a.m.;
Morning Worship, 10:45 a.m.;
Evening Worship, 7:30 p.m.;
Midweek Service, 7:30 p.m.

ASSEMBLY OF GOD 1608 W. Commerce G.L. Huffman, Pastor

Sunday Morning Worship, 10:00 a.m.;
Sunday Night Service, 7:00 p.m.;
Wednesday Night Service, 7:30 p.m.;
Friday Night C.A. Service, 7:30 p.m.

ST. FRANCIS CATHOLIC Priest John Mitchell

Liturgy Saturdays at 6:30 p.m.

CHURCH OF CHRIST Audy Moore, Minister

Sunday School, 9:30 a.m.;
Morning Worship, 10:20 a.m.;
Evening Worship, 6:00 p.m.;
Wednesday Worship, 7:00 p.m.

EPISCOPAL CHURCH Priest Raleigh Denison

Sunday School 11:00 a.m.;
Holy Communion 11:00 a.m.

EASTLAND CHRISTIAN SCIENCE SOCIETY Corner of Plummer and Lamar

Sunday Morning Services, 11:00 a.m.;
Services on first Wednesday of month 7:30 p.m.
All are welcome.

FIRST UNITED METHODIST CHURCH (Rev. Ben Marney)

Sunday School 9:45 a.m.;
Morning Worship 11:00 a.m.;
Evening Worship 6:00 p.m.;
Youth Meeting 7:00 p.m.
Sunday; Cora Davis Prayer Group 9:30 a.m. Wednesday;
Choir Practice Wednesday 7:30 p.m.

UNITED PENTECOSTAL CHURCH Rev. E.D. Norman

Sunday School 9:45 a.m.;
Morning Worship 11:00 a.m.;
Evening Worship 7:30 p.m.

NORTH OSTRUM ST. CHURCH OF CHRIST H.S. Lewis

Norman Carlisle
Worship 10:30 a.m.;
Evening Worship 5:00 p.m.;
Wednesday Evening Service 6:00 p.m.
Daily Pray Service Monday thru Friday, 6:00 p.m.

FIRST BAPTIST Rev. Hasston Brewer

Sunday School 9:45 a.m.;
Morning Worship 11:00 a.m.;
Training Union 6:15 p.m.;
Evening Worship 7:30 p.m.

SOUTHSIDE PENTECOSTAL 107 New Street A.J. Woodard

Sunday School 9:45 a.m.;
Sunday Evening Service, 7:30 p.m.;
Midweek Service, 7:30 p.m. Thursday

BETHEL BAPTIST Rev. Paul Edwards, Pastor

Sunday School 9:45 a.m.;
Morning Worship 11:00 a.m.;
Evening Training Union 6:00 p.m.;
Evening Worship 7:00 p.m.

FULL GOSPEL CHURCH Claude Harris, Pastor

Sunday Morning Worship, 10:30;
Sunday Evening Worship 7:00;
Wednesday Evening Worship 7:00.
All denominations welcome to study and worship with us.

OLDEN CHURCHES BAPTIST CHURCH Rev. Howard Meeker

Sunday School 10:00 a.m.;
Morning Worship 11:00 a.m.;
Evening Prayer Service 7:00 p.m.
Evening Worship 7:30 p.m.;
Wednesday Night Service 7:00 p.m.

OLDEN CHURCH OF CHRIST Damon Smith

Bible Class, 10:00 a.m.;
Morning Worship 11:00 a.m.;
Evening Worship, 6:00 p.m.

FLATWOOD CHURCH OF CHRIST Wilkie E. Moore

Sunday School 9:45 a.m.;
Morning Worship 10:30 a.m.;
Evening Worship 6:00 p.m.;
Wednesday Evening 7:00 p.m.

CARBON CHURCHES CARBON FIRST BAPTIST Rev. Delbert Smith, Pastor

Sunday School 10:00 a.m.;
Morning Worship, 11:00 a.m.;
Training Union, 6:00 p.m.;
Evening Worship, 7:00 p.m.;
Wednesday Night Service, 8:00 p.m.

CHURCH OF CHRIST Jack Landrum

Sunday School 10:00 a.m.;
Morning Worship 10:50 a.m.;
Evening Worship 6:00 p.m.;
Wednesday Night Worship 7:30 p.m.

FIRST UNITED METHODIST Rev. C.C. Shultz

Sunday School 10:30 a.m.;
Morning Worship 9:30 a.m.

MANGUM BAPTIST CHURCH Rev. A.J. Thomas

Sunday School 10:00 a.m.;
Morning Worship 11:00 a.m.;
Training Union 6:00 p.m.;
Evening Worship 7:00 p.m.;
Wed. Evening Worship 7:00 p.m.

FULL GOSPEL CHURCH (Charismatic) Claude Harris, Pastor

Sunday School (from nursery through adults) 10:00 a.m.;
Sunday Morning Worship 10:50 a.m.;
Evening services for young people 7:00 p.m.;
Regular Sunday Evening Worship 7:00 p.m.;
Wednesday N Night Worship 7:00 p.m.
Everyone is welcome to attend.

Recent Memorials To Centennial Memorial Library

Mr. and Mrs. Joe M. Perkins, In Memory of Chester Geue, \$5.00

Mr. and Mrs. Jos M. Perkins, In Honor of Marene Johnson, \$10.00

Dr. and Mrs. Robert Moreton, In Memory of Ben Davenport, \$15.00

Mrs. J.E. Hickman, In Memory of Joe W. Jones, \$10.00

Pioneer Club, In Memory of Prudie Hardeman, \$5.00

Jack and Carmen Ammer, In Memory of Clarence L. Little, \$10.00

H.S. Packwood, In Memory of G.D. Nicholson, \$5.00

Mrs. Anna Paterson, In Memory of Prudie Hardeman, \$7.50

Mr. and Mrs. J.L. Owen, In Memory of Susan Groves, \$6.00

Mr. and Mrs. Bill Hallmark, In Memory of Johnnie A. Holloway, \$5.00

Anonymous, In Memory of Mr. Nicholson, \$7.50

Anonymous, In Memory of Mrs. J.U. Johnson, \$7.50

Anonymous, In Memory of Mrs. C.M. Kelly, \$5.00

Anonymous, In Memory of

Mrs. Frank Crowell, \$5.00

Anonymous, In Memory of Mr. Ernest Varner, \$5.00

Anonymous, In Memory of Mr. Bill Bordeaux, Sr., \$5.00

The latest contributions to the 1776 Club: Mr. and Mrs. H.C. Tindall, \$10.00.

Mab Lynn Hill, \$10.00

Elva Lee Jones, \$5.00

Anonymous, \$1.00

Nancy Frost, \$10.00

Memorial Books presented to the Library:

"Journey" by Massie given in memory of Chester Geue by Mrs. James Horton.

The Charles Crawford Chapter of the Daughters of the American Revolution gave as their Bicentennial project the following books: "Going to School in 1776," "American Freedom and the Bill of Rights," "Many Moons," "Mei Li".

Two children's books, "The Boy Who Honked and the Girl Who Squeaker" and "The Wiggle 'n Giggie Crum" were given by Chris Frost Crum in memory of Andy Harris, 4 year old son of Mr. and Mrs. G.L. Harris.

35 Coyotes Taken In County

Thirty five coyotes have been taken in Eastland County by the district field trapper, Vervon Durant, since he began work on May 1st. In May, 18 coyotes were trapped while 13 were trapped in June. One coyote was taken in July and three in August.

Durant points out that July and August are always slow months for trapping, but trapping usually picks up in September, due to the cooler

weather, when animals are more active.

Durant says that both the success and value of the program are not necessarily found in the number of predators taken. The policy of the predator animal control program is to remove predators at the location of livestock, poultry, crops, and game animal losses. This takes more time and is often more difficult than just going out and taking predators for the sake of killing large numbers. Durant said their policy is not to eradicate coyotes, but only to get rid of the ones doing the damage to livestock or other property.

County De Gordon said the predator animal control program is being supported by the County Commissioners in cooperation with U.S. Fish and Wildlife Service. Stockmen who wish to join the county predator animal control organization and receive the services of the trapper, may do so by contacting Jim Choate, at the First National Bank, in Cisco or the County Agent.

Gordon says the possibility of another control program using helicopter this winter looks promising.

"JAWS" Starts Fri., Sept. 26

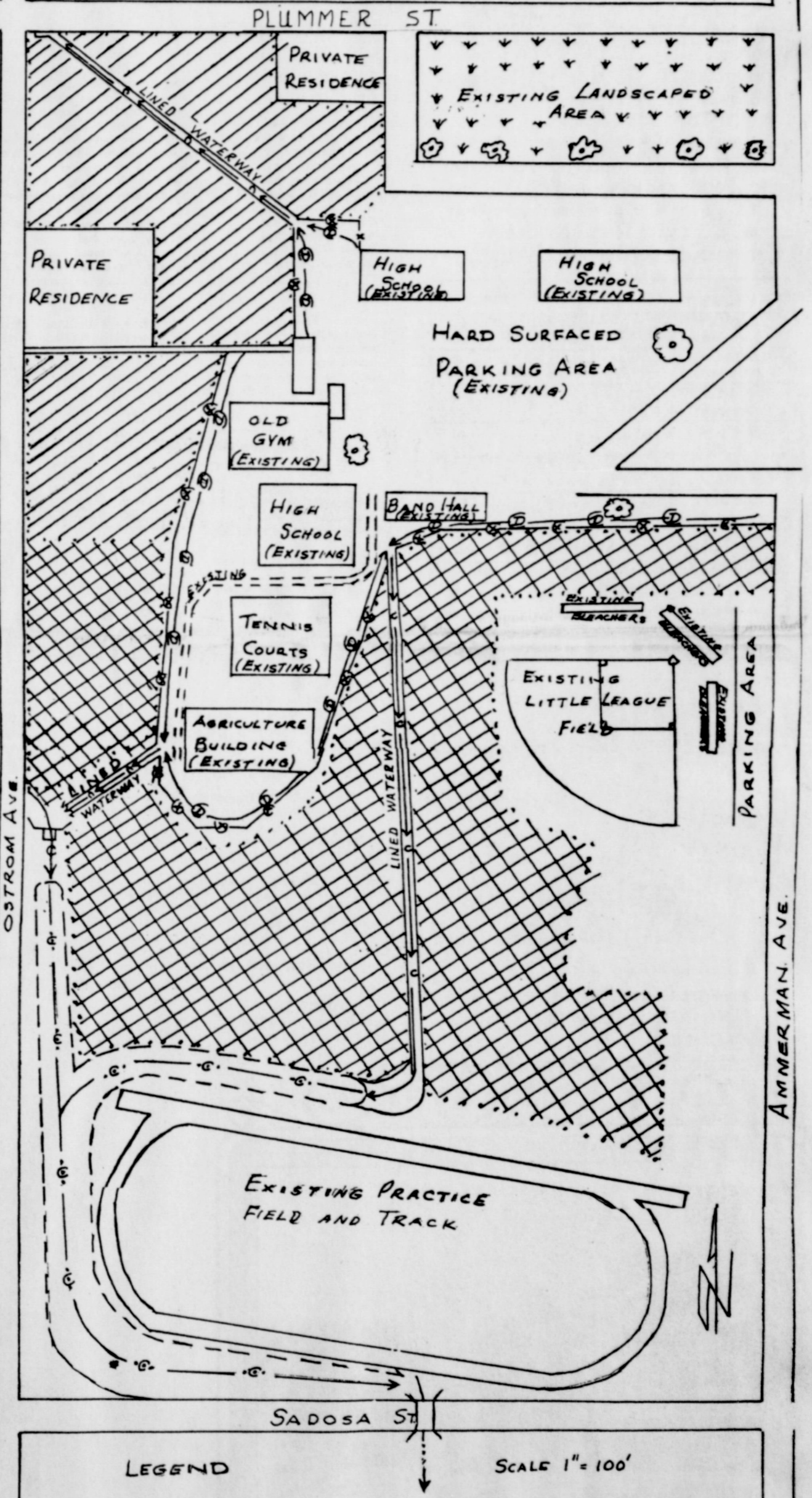


Chief of Police Brody (ROY SCHEIDER) and his wife, Ellen (LORRAINE GARY) huddle anxiously over their son, Michael (CHRIS REBELLO), in shock after witnessing an attack by a great white shark on an adult swimmer.

IF YOU MISS YOUR TELEGRAM CALL 629-2214

Purse Pleasers
Hollands Drive In
Quality, Quantity, Quickness
And Reasonable Prices
Highway 80 West Of Eastland
Phone In Orders 629-2215 Member TRA

SCS PROPSAL FOR HIGH SCHOOL HILL



LEGEND

- ROAD
- - - FENCE (TO BE CONSTRUCTED)
- - - DIVERSION (TO BE CONSTRUCTED)
- - - VEGETATED WATERWAY (TO BE CONSTRUCTED)
- - - LINED WATERWAY (TO BE CONSTRUCTED)
- - - PIPE DROP STRUCTURE (TO BE CONSTRUCTED)
- - - SHAPE AND VEGETATE
- - - VEGETATE ONLY
- - - EXISTING TREES
- - - EXISTING CULVERT

SCALE 1" = 100'

FIGURE 2
EASTLAND ISD CRITICAL AREA DEVELOPMENT RCGD MEASURE PLAN LEON BOSQUE RCGD PROJECT
U. S. DEPARTMENT OF AGRICULTURE SOIL CONSERVATION SERVICE

Drawn	Date	Approved by
Checked	Title	
	Scale	
	Sheet	
	Drawing No.	

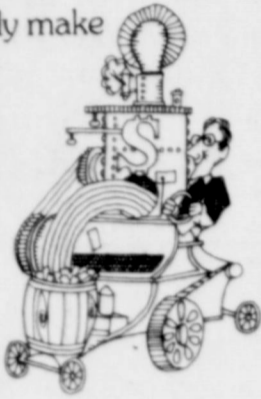
SCHOOL NEWS

BY AMY O'BRIEN

GRADE 4 MRS. GREEN
We have been busy this week. We had a spelling test and social study test. We have been making posters this week. They are about tooth care. We have a new work book and reader. We got a new boy this week his name is Patrick

The Great Green Machine is a money maker.

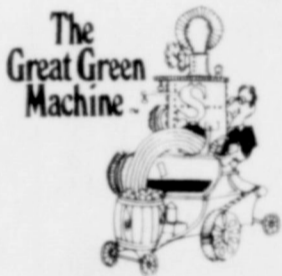
Machines usually make things. The Great Green Machine is no exception. It makes money. Specifically, it takes your money and turns it into more money. The amount it can make for you depends on how much you have to put into it, and how long you leave it there. It's against the law to print your own money. But with The Great Green Machine, you get the next best thing.



Minimum invested	Rate	Yield
\$1,000.00 or more	5½% 3 mos. cert.	5.65 per Annum
\$1,000.00 or more	5¾% 6 mos. cert.	5.92 per Annum
\$1,000.00 or more	6½% 1 yr. cert.	6.72 per Annum
\$1,000.00 or more	6¾% 2½ yr. cert.	6.98 per Annum
\$1,000.00 or more	7½% 4 yr. cert.	7.79 per Annum
\$1000.00 or more	7¾% 6 yr. cert.	8.06 per Annum
Passbook \$5.00 or more	5¼%	5.39 per Annum

Federal regulations require a substantial penalty on withdrawals prior to maturity.

Let one of our savings specialists show you the many savings plans we offer. There's bound to be one to fit your personal needs.



daily compounding on all accounts including passbook

Southwest Savings & Loan

340 Hickory at North 4th
2625 Barrow at South 27th
853 North Judge at E. N. 10th
Abilene, Texas

Jackson. Well thats all. Jeanette Housson.

GRADE 4 MRS. ADAIR
We have study hard this week. In Social studies we have been studying about deserts. In health we are studying how we grow. In English we wrote poems. Here are a few:
Sue Maxwell

LIKES
I like to ride bikes
Big bikes and little
Fat ones and skinny ones
Even ones that look like a fiddle
Bikes come in all colors and shapes
They come in red, yellow, black
White. They even come in
outright like dy-no-mite!
Jack Lowrance

ROLLERCOASTERS
I like rollercoasters.
I scream and scream when I get on one.
Every curve that goes around tickles me all over.
The rollercoasters are so fun!
Cathi Coan

FLYING
I like to go flying
Way up in the air.
Where there is not a sound anywhere.
When I am flying it's like floating on a cloud, sailing along smooth as can be.
When I'm flying I'm up above everything. It's fun to go flying
Way up in the air.
Lorrie Smith.

TAP
I like to tap.
Because I like
To hear nice sounds.
And I like to swish my feet.
My feet go swish swish, swish.
Jodi Bakker.

RIDING CALFS
Calf riding is very fun
I could ride forever
Your can fell the wind hit your face
It hurts when you hit the ground!
How fun it is to ride a calf!
Derrch Fox

SUGAR
I have a little cat
She's fat, but she's a cat
She chase's the dog
She eat's like a hog
I try to catch her
She runs under the car
And sometimes she goes very very far
She bites and plays all kinds of ways.
Kim Truran

MY DUNE BUGGY
I like to ride my dune buggy.
It makes me feel so free.
Just my dune buggy and me.
When I'm behind the wheel
It's a real neat deal
Because when I push on the gas
I go real fast.
Kevin Wright

FOOTBALL
I like to play football.
And run with the ball.

To make a touchdown.
And not get tackled at all.
Shawn Alsop

If wish I could drive a car
To places near and far.
And places where I want to be
And no one would have to take me.
If only I could drive a car.
Marty Williamson

GRADE 3 MRS. YOUNG
Hi, we had a test. We studies about dry cells, and how to make a bell. P.E. is fun.
Tammie Barron

GRADE 5 MRS. BESKOW
We have been doing division this week. Some of us think it's hard. The other think it is easy.
We run lots of races at P.E. We have finished our tests.
David Nelms has been sick this week. He came back Wednesday.
Tammy Garrett

GRADE 6A MRS. WELCH
It's the fifth of week of school and we're all making it fine. It's about time for our next Social Studies test. Last week we saw a film about th Nile River. In English we have been writing poems and commercials. We have a lot of duties in our room and Mrs. Welch can't do them all. So, we have a chart in our room this has a list of some of the duties. Each week she calls out our name and we go and sign up for some duty, like running arrends, taking up papers, passing out homework, or taking care of the blackboards.
In P.E. we do the same thing everyday, but with Coach Adair it's a lot of fun.
Cindy O'Brien

GRADE 3 MRS. TURNER
We have been studying a lot of everything. We have been learning a lot about order and grouping in arithmetic. And in English we have been learning statements and questions and Today in reading we read the Scary Old House. We throught it was scary.
Candi Creecy

GRADE 6B Mrs. little
Hi. This week is the 5th week of school. Yes we're getting on up there.
This week in English we're drawing posters. In Math we are Reviewing subtraction. In Social Studies we are studing different types of old man.
In P.E. we're having our fitness test.
Tamatha Lancaster has been sick every day this week.
In band all of us are settled in and learning to make a sound. That's all with us. See ya!
Lowell Lowrance



- MONDAY SEPT. 22**
Baked beans with weiners
Buttered spinach
Glaced carrots
Cabbage slaw
Corn Bread
Chocolate pudding.
- TUESDAY SEPT. 23**
Barbecue beef patties
Macaroni & Cheese
Green beans
Lettuced wedges & dressing
Hot rolls
Cake squares
- WEDNESDAY SEPT. 24**
Roast & gravy
Whipped potatoes
Green peas
Lettuce & Tomato salad
Sliced bread
Fruit cobbler



SEVENTH GRADE TEAM (Photo by Vance O'Brien.)



EIGHTH GRADE TEAM (Photo by Steve Haines)

Whatever you want in a luxury car, Cadillac has it.



International size. Seville... built in America to be at home anywhere in the world. Timeless in styling. Cadillac in craftsmanship. A car of performance and luxury. Maneuverable. Responsive—a 5.7 Liter, Electronic-Fuel-Injected Engine is standard. And efficient. In EPA tests—Seville got 21 miles per gallon highway and 15 mpg city. But remember, the mileage you get will be strongly influenced by how and where you drive. For California figures, see your Cadillac Dealer. **Seville**



Family size. In cars engineered to take it. Coupe deVille (shown). Sedan deVille. Fleetwood Brougham. The Calais. Cadillac Limousines. Plus Special Editions available with new "contoured pillow" seating. New colors and fabrics. Plus unseen advancements like the Freedom Battery that never needs water. And you may order Cadillac's Electronic-Fuel-Injected Engine. The choice of '76 is at your Cadillac Dealer's now. **Cadillac '76**



Personal size. Coupe, Custom Cabriolet or Convertible... Eldorado '76 is one of the world's most exciting cars. With that rare blend of sportiness and luxury that is Eldorado. Plus the maneuverability and added front seat roominess of front-wheel drive. Together with Variable Ratio Power Steering, Automatic Level Control and refinements for 1976, it adds up to remarkable roadability. **Eldorado '76**

The choice of '76 is at your Cadillac Dealer's now.



RAWLINS MONUMENTS
SINCE 1884
MONUMENTS OF DISTINCTION
BAKKER FUNERAL HOME
PHONE 629-1726

Bakker Funeral Home 629-1726

Livestock Report

RANGER LIVESTOCK MARKET REPORT
Sept. 18, 1975.
Receipts: Cattle 765.
BULLS: Bologna bulls 24 to 26.50, Light bulls 22 to 24.
BUTCHER COWS: Canner and Cutter 18 to 22.50, Old shells 12 to 14.
BUTCHER CALVES AND YEARLINGS: Choice 30 to 33, Good 28 to 30, Standard 24 to

26.
FEEDER STEER Yearlings: Choice 35 to 38, Good 33 to 35, Medium 30 to 33.
FEEDER HEIFER Yearlings: Choice 30 to 33, Good 28 to 30, Medium 26 to 28.
STOCKER STEER Calves: Choice 33 to 35, Good 31 to 33, Medium 28 to 30.
STOCKER HEIFER Calves: Choice 25 to 27.50, Good 23 to 25, Medium 21 to 23.
COWS AND CALVES: Pairs 175.00 to 250.00, Springer Cows 125.00 to 175.00.
COMMENTS: All cattle sold steady here today on a run of 765 head of cattle. Buyers attendance good. Fred Rodgers



Eastland Pump & Construction

H.L. "Hoot" Ferguson

Backhoe Sewer Lines
Water Lines
Dirt Work

Box 693
Eastland, Texas
817-629-2311

Announcing the Opening of HUSE CHIROPRACTIC OFFICES
By Dr. Ronnie R. Huse D.C.

799 W. Washington Stephenville, Texas
Telephone 817 - 965 - 3538

Office Hours:
Mon. Thru Fri. 7:00 a.m. to 12:30 p.m.
1:00 p.m. to 6:00 p.m.
Sat. - - 7:00 a.m. to Noon
Sunday by Appointment

Fall Greetings

2 New Luxurious Air Conditioned Homes

THE ULTIMATE IN NURSING HOMES

And Extended Care Facilities

Mr. & Mrs. Morris Shook - Coordinators
Private & Semi-Private Rooms
Full Time Social Activities Program
"We Invite Your Inspection"

24 HOUR NURSING SERVICE

Chapel
Lounge
Telephones



Beauty Shop
Cable TV
Barber Shop

Luxurious Dining & Recreation Room

Organ, Piano & Game Tables

EASTLAND MANOR VALLEY VIEW LODGE
Telephone 817 - 629-2686 Telephone 817 - 629-1779
1405 W. COMMERCE 700 S. OSTRUM

HOSPITAL NEWS

Patients in the Ranger General Hospital were listed as follows:

Ellie Lambert
Bill Ogden
Ollie Hennessee
Florence Brown
Goldie Rudder
Albert Young
Eary Wallace
Hazel Newnham
Betty Shattock
Ida Brashear
Mary Caraway
W.R. McMinn
Collier Jackson
Sudie Strong
Glenda Chan and baby girl
Clyde Campbell
Vyola Bowles
Bea Allen

Patients in the Eastland Memorial Hospital September 21 were listed as follows:

Annie Ledbetter
Walter Ledbetter
Edna Barnes
Laura Trammell
Sophie Harris
Maggie Christian
Eleanor Wright
Eugene Chesshir
Carrie Montgomery
Lene Williams

Francis Kanady
Cliff Wilson
Pogue Vera
Eunice Barrett
Carl Garrett
Louise Gergory
Jess Siebert
Mary Evans
Thelma Lasater
Maurne Johnson
Michael Norman
Jerry Williams
Nannie Allmon
Charles Ann Espinoza
Henry Werley
Thomas Biburn
C.B. Harris
Leo Pitts
Tonya Warren
Gene Rhodes
Claude Dennis
Lonnie Bohannon
Gazena Fletcher
Oleta Werley
Shela Trail
Bernice McCullough
Neppie Williams
Lois Coplen
Minnie Lay
Sandra Sandlin
Enis Nabers
Minnie Farmer
Ava Mason
Mildred Davis
Nola Donohog

Bessie Lamb
Sherry Johnson
Ora Franklin
Mary Webb
Emma Kennedy
Linda Sadler
Teresa Ingram
Loia Baughman
Ora Lyeria
Ninie Davis
Peggy Bullock
Frances Russell
Opal Griffin
Mary Jackson
Fannie Turner
Claudia Murry
Ruby Pledger
Nina Almiquist
Margaret Thomas
Pebble Boles
Lanham Burkhalter
Mike Glenn
James Jones
Baby Girl Ingram

Patients in the E.L. Graham Memorial Hospital were listed as follows:

Nancy Rhyne
Baby Girl Rhyne
Gloria Dominguez
Mary Smith
Pearl Williams
Mrs. Willie Kent
Rachel Haynes
Helen Jackson
Laura Beene
Cinda McCallister
Edith Terry
Carlos Turner
Johnny Childers
Charley Phippen
Evelyn Boriack
Edith Bransford.

"WE SELL IT LIKE IT IS"

3 BEDROOM, 2 full baths, carpet less than one year old, like new, central heat - air, painted inside and out in the last few months, total electric, this is nice, on water front leased lot.

122 1/2 Acres, 45 acres costal, good water and fences, barn and steel corral, plus 22 brangus cows, 1 bull, 20 calves, these cattle are some of the best to be found, total price for all \$48,000.00 - 29 percent down owner will carry balance up to 15 years at 8 percent.

36 Acres, has some nice trees, close in, Priced right.

215 Acres, costal, water, fishing, some nice trees, close in, prices to sell.

722 Acres, on Hi - way I - 20 - lots of frontage, on of the best deer hunting places to be found any where, good terms.

Approx; 1,750 Acres, Approx; 150 acres costal, lots of water 5 wells and several tanks, real good improvements, on 2 hi - way's, 2 all weather country roads, owner will take some trade, and some cash, and carry balance.

Approx; 1100 Acres, one of the best ranches to be found anywhere. 300 acres costal, good improvements, some irrigation and irrigation equipment, lots of bottom land, plus a large additional of income other than stock - farming, black top roads on 2 sides. Prices right.

For more information on the above places, or if interested in any other real estate, or if you have anything to sell or trade, would appreciate your listing, and would appreciate the opportunity of serving you if you are buying or selling.

Call or write

J.D. VANDERGRIF
REAL ESTATE (BROKER)
Phone 817 - 629 - 8137
Write
112 E. Lens Street
EASTLAND, TEXAS 76448

Sunday, September 21,
1975

Gordon Spot

The Nimrod Community is celebrating their 20th anniversary in the Texas Community Improvement Program, Monday night, September 22. No other community in Texas has equaled this achievement. We are proud of Nimrod and hope they enjoy another twenty years of progress.

Fruit growers in Eastland County could get some valuable information at the Texas Fruit Conference, October 7 and 8. It will be held at the Rudder Tower on the Campus of Texas A&M University.

"Stepping Stones to Profitable Fruit Production" has been chosen for the theme. The complete orchard management concept will be emphasized. This program is designed to be of value to the experienced commercial fruit grower and will have a special section of interest to the new grower.

A Texas Grape Day will follow the Texas Fruit Conference on Thursday, October 9. Grape growers and people interested in growing grapes are urged to attend.

The 1975 Texas Pecan Orchard Management Short Course is planned for September 29-October 3. It will also be held at the Rudder Conference Tower at Texas A&M.

Farmers in Eastland County who are getting ready to plant small grains should give close attention to proper fertilization. Fertilization of small grains is essential for profitable production, with nitrogen especially playing a key role. Phosphorus is also a key element in small grain production while potassium is needed in only a few areas.

Apply phosphorus at or before planting since it is essential for seedling development, early vegetative growth

The Light Touch



By Clint Bray

Work like a dog, eat like a horse, think like a fox - and see your veterinarian one a year.

Just when you've mastered the art of saying the right thing and the right time, nobody will listen.

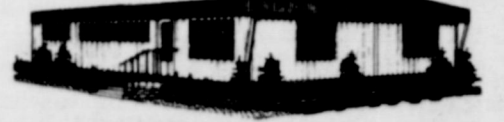
There's only one problem with a second childhood. This time, you can't blame your parents.

A scientist says he can repel sharks by an electric method. Probably shows them a utility bill.

This'll give you a charge: Our Clothes For Active Kids Have Room For Growing at BRAY'S IN EASTLAND AND RANGER.

and root formation. A range of application rates from 15 to 60 pounds per acre is suggested, with the higher rate to be used in soils quite low in phosphorus. How much nitrogen to be used depends on several factors. Such as type or crop, yield potential and whether or not the crop is to be grazed. A range of rates would be from 40 to 120 pounds of nitrogen per acre. Since plants should not be allowed to become severely nitrogen deficient, some nitrogen should be applied in the fall, with about 30 pounds per acre a minimum rate. The remainder of the nitrogen may be put down in one or two additional applications through the season. If a soil test shows a need for potassium, this element should be applied along with the phosphorus at or before planting. Both forage and grain production were reduced last year because a number of producers skimped on fertilizer. With fertilizer supplies increasing, he advises producers to take a close look at their fertilization program and to base fertilizer use on the need of the crop and on the production potential they hope to reach.

ANNIVERSARY SALE



CONCORD HOUSE
Under \$121.00 a month

- FULLY FURNISHED
- CENTRAL AIR CONDITIONING
- FROST FREE REFRIGERATOR
- WASHER
- DRYER
- DISHWASHER
- CARPETED
- SHEETROCK WALL PANELLING

960 Sq. Ft.

SEE THE CONCORD AND MANY MORE AS TEXAS' LARGEST DEALER CELEBRATES ANNIVERSARY TIME!!



Abilene Mobile Homes

4618 N. 1st

672-6666

Beil's Draperies

FASHIONABLE INTERIORS

For Distinctive Draperies Call

Pearline Beil

515 S. HILLCREST • EASTLAND, TEXAS 76448 • PHONE 629-1319

More For Less!

Feature for feature - dollar for dollar there is no finer home investment!

TREND-SETTING FEATURES:

- CENTRAL AIR CONDITIONING AND HEATING
- TWO CAR GARAGE
- Separate Utility Room
- Large Covered Overhang
- Drop In Oven and Range
- Hood and Fan in Kitchen
- Custom Styled Vanities
- Silent Light Switches



Eastland's Quality Builders
H & W Development Co.

Complete Building Service
One Call Does It All

FHA-VA-CONVENTIONAL
Financing Available
216 S. Seaman
629-1702

SPECIAL ANNOUNCEMENT
Jammie's Restaurant

LUNCHEONS
Choice of 2 Vegetables

Sunday

TURKEY & DRESSING
CHOPPED SIRLOIN
(BACON WRAPPED)
CHICKEN ALA KING OVER PASTRY
GREEN BEANS
1/2 BAKED POTATO
WHOLE BUTTERED CARROTS
FRUIT SALAD
JELLO PIE - ROLLS

Monday

FRIED CHICKEN
MEATLOAF
CREAMED POTATOES
PINTO BEANS
SPINACH
CORNBREAD - ROLLS
BANANA PUDDING
SALAD

Specializing in Baked Goods for Weddings, Birthdays, and Anniversaries.

Tuesday

GOULASH
BEEF TIPS OVER RICE
FRIED OKRA
B.E. PEAS
CREAMED POTATOES
ROLLS - CORNBREAD
PIE
SALAD

Wednesday

SPAGHETTI WITH MEAT & SAUCE
CHICKEN FRIED STEAK
ENGLISH PEAS
MACARONI & CHEESE
CABBAGE
SALAD
COCOANUT CAKE
ROLLS - CORNBREAD

Thursday

PIT BAR - B - QUE
HAMBURGER MOUNDS
POTATO SALAD
PINTO BEANS
SPINACH
CABBAGE SLAW
ROLLS - CORNBREAD
PIE

Friday

ROAST BEEF WITH GRAVY
FRIED FISH
FRENCH FRIES
GREEN BEANS
SQUASH
SALAD
ROLLS - CORNBREAD
PIE

Saturday

SPARE RIBS
FRIED CHICKEN
CREAMED POTATOES
CORN
SQUASH
SALAD
ROLLS - CORNBREAD
PIE

HOMEMADE ROLLS & PIES

CATERING AVAILABLE

Mrs. Evelyn Wheat, formerly with Cisco Jr. College, is now managing "Jammie's Restaurant".

Do You Remember

BY HERMAN DEMPSEY

In the early 1920's, the United States government realized the importance of having young men trained for military service and subject to call at any time. They developed a program they called C.M.T.C. (Citizens Military Training Camp) which young men could attend one month each summer. The first summer training covered basic military training. The next summer, the young men could choose the type training best suited to his desires. After four years of four summer months of training the young man could accept an appointment to an officer's training program and upon successful completion be commissioned an officer in the branch of service he had selected.

Many of the communities in our section of Texas were to send interested young men to Fort Sam Houston for their training. The Government furnished transportation and meals from the communities to the

camp to which they were assigned. In those days the passenger trains were still in service and a number of the young men in our community had signed up to go to the training camp. The group was given passenger train tickets to the destination. The group was to change trains in Fort Worth where they would board a train to San Antonio and would be picked up at the station by military trucks that would deliver them to the base camp.

Here, they checked in all their civilian possessions and were issued army uniforms with other military equipment needed in the program. As our home town group of men began to gather at the railroad depot and looking forward to the training camp with anticipation, some of the boys stopped by the drug store to buy chewing gum along with other things they felt they might need. One in the group felt he might need a laxative sometime on the trip.

Little Tag Along

Papa often called her "Tag Along". She walked so closely behind him as he went from chore to chore, only her breath separated them. I watched them with warm delight as their mutual trust and admiration for one another grew and deepened

so he bought a box of the medicine that looked the same as the chewing gum they were buying. After the boys had settled on the train and they were enroute, a man came through the aisle shouting "apples, candy, tobacco and chewing gum" for sale. Our boy thought he could the situation some, so he put one of his laxative pills in his chewing gum box and when the man came back through the coach, he offered the man one of his pieces of gum. He thanked the boy very much, put the supposedly gum in his mouth and started chewing. The man never came back to sell gum to the boys anymore.

in satisfaction. Papa loved her following and so did she. It reminded us so much of another love in our lives twenty years ago. Friskie started everyone's day with joy and brightness. No one could resist her love. She brought the best out of the worst of us. She worked at it--as if God sent her to keep peace in the family, reminding us that the best of life doesn't come from status, business success, professional acclaim, money in the savings account, highest grades in school, three shining cars on the rose bordered circular driveway in college hills, or the Neiman Marcus labels even on the boys underwear--we did enjoy those things with pride (perhaps too much pride). But those things faded so quickly when the front--or the back door opened and we were greeted with those shining golden brown eyes which clearly declared (with warm moist lips). "Oh, I love you, I'm so glad you are home!"

No childhood quarrel could

endure when she rubbed her caressing nose on an unhappy participant.

The years passed, boys grew into young men and went away to college. Only Papa, Friskie and I were left at home. Easter morning Papa had a severe heart attack and I rushed him to the hospital before the first cock crew.

I who had never known deep fear, came in that night alone terrified. Though Friskie was half as big as I, she slept on the foot of my bed that night. After I locked every door, and pushed a triple dresser in front of the bedroom door, I huddled on the floor clutching Friskie in my arms. I talked to her through my tears and she nuzzled, listening, caressing me and absorbing my tears. She gave me comfort and security. I wasn't alone in this frightful silence. She, too, missed him, but she would be my protector, and then I knew I would never have to push the furniture over doorways again. I could face the tomorrows. I almost believed as I looked into her strong warm eyes--oh no, we shouldn't believe in reincarnation--and yet the intensity of those eyes commanded supreme respect--she so reminded me of Mama! Mama, God bless her sainted life had been in heaven thirty years. Could she, Friskie, be that deep wisdom, quiet love

and compassion sent to stabilize a family which suddenly needed so much of each of those virtues?

Each morning I told her I was going to the hospital to see Papa and each evening I would tell her of his progress and give her a special hug for him. She always listened in rapt attention and concern. And when I'd say give me a hug for Papa, she tightened her front feet around my neck and pressed her head deeply against my throat with a caress peculiar to her only.

Then the day came when Friskie and I went to the hospital to bring him home! Oh, glorious day! I left her locked in the car with only a small opening in a window. As I left her I said "Hold on there, buddy! I'll have that Daddy Dear out here before you know it!"

The nurses, an orderly and I reached those large metal doors of the emergency entrance with Papa in his wheel chair. With affectionate goodbyes and well wishing, we swung the big doors open and boom! Friskie leaped into the wheel chair with arms around her master's neck and groanings and loving known only to the pure in heart. Somehow she had managed to escape through that narrow opening and she waited at the door I had entered.

Her uncontrolled ecstasy

SENIOR CITIZENS BAZAAR

Highlights of this year's Senior Citizen's Bazaar will be the recognition of the oldest man and woman resident in Eastland County. Also, sharing moved us all to tears as we watched the encounter. People in the operating room stood at the window watching. They had seen her waiting at the door and now they shared her joy--for she had not waited in vain.

As the weeks passed, she would scarcely leave his bed side even for her necessary routine. When he was allowed to walk, she held the hem of his robe in her mouth. She massaged his steps and watched his face for signs of fatigue. She never pushed him, but gently led him, guarded his tolerance as if by celebration. Play was never in her fabulous mind. She had a job to do while I finished my school year and even through the summer. From bedside to den--then the yard, later a block at a time as he slowed--she waited for him to rest a minute, then turn homeward. On and on, day by day until he was stronger and he would offer her the game of "throw and fetch". Happiness and progress were hand in hand, heart to heart cemented this most loyal companionship.

Two year later, she went away to the University to restore love and orderliness to the two brothers who now had rented a house and fenced yard. She did it too. They loved her, showed her off to campus executives and friends. She came to the B.S.U. Building each afternoon to walk her "brother" home. Her faithful timing was uncanny. Her regal pride was a hallmark of her destiny. She could be counted on rain or shine.

Then one day in May, she wasn't there. She wasn't home! Police and firemen joined the two brothers and students searching streets, alleys, vacant lots, no trace--had she been kidnapped, perhaps sold to medical lab in Dallas for research? She was perfect for parallel human research, for you see--she had a heart and mind of an extraordinary person. One life was not enough for her, she would give it unreservedly for others--so great was her noble love.

How sad for all of us who had gained so much from our 13 years with her. Could there be another to fill that gaping void in our lives?

Years passed, another Easter and another heart attack. A new black Shepherd was brought to us. She too, had extra perception. She too, loved totally and obedience and watchfulness captured our hearts. And so she became affectionately called "Tag Along".

Today while I sewed and Papa listened to his football game, she restlessly ventured through the drizzle to the highway. I heard a "thud!" I could only see the car--it never slowed down. I knew the sound. I'd heard it once when I was a college girl sitting at my writing desk. It happened as my father and his dog crossed the highway. Neither driver stopped. Yet they knew they had snuffed out a precious life--Why did they speed away? Was it fear? Did they not care? Couldn't they have stopped and said to me as I ran crying to the blood spattered body, "I am truly sorry, I know what it means to lose a dear one." It would have helped, maybe. I'll reread the book of Job and as day breaks, I'll look into the hills from whence my comfort will come.

Mrs. G.E. Massey

COUNTY BAR OPPOSES CONSTITUTION

A RESOLUTION OF THE MEMBERS OF THE EASTLAND COUNTY BAR ASSOCIATION DECLARING ITS UNANIMOUS OPPOSITION TO THE PROPOSED NEW TEXAS CONSTITUTION, AS PASSED BY THE LEGISLATURE OF THE STATE OF TEXAS IN 1975, AND RECOMMENDING THAT THE VOTERS OF THIS COUNTY AND STATE VOTE AGAINST THE ADOPTION OF THE PROPOSED CONSTITUTION.

WHEREAS, the Legislature of the State of Texas has proposed a new constitution and the citizens of Texas have an opportunity to vote for or against its adoption on November 4, 1975; and

WHEREAS, the members of the Legislature of the State of Texas sitting as a Legislature, in very rapid order brought out this proposed constitution which they could or would not do sitting as a constitutional convention; and

WHEREAS, the State Comptroller has warned that the financing of this proposed constitution could break the backs of the taxpayers of Texas in that the cost estimates are upward from over one billion dollars (\$1,000,000,000.00) with many additional costs being hidden and undeterminable; and

WHEREAS, this proposed constitution will create uncertainty in the taxation laws for the schools, cities, counties, and State in its provisions for the executive and judicial branches of the State of Texas by setting the stage for expensive and time-consuming lawsuits to determine and interpret the proposed constitution's new and revolutionary concepts of government; and

WHEREAS, section after section of this proposed constitution provides a basis for an erosion of individual rights and the expansion of state and local government into activities which either have been prohibited by the present Texas Constitution or not called for at all; and

WHEREAS, this proposed constitution contains at least six (6) provisions which were previously submitted to the voters of Texas as constitutional amendments and which were defeated by the voters at the polls; and, WHEREAS, this proposed constitution is a permissive constitution for the Legislature rather than the people in that it creates and delegates unlimited power and authority to the Legislature, provides for annual legislative sessions at the expense of the taxpayers, and allows the members of the Legislature to have their salaries and expenses determined by a Salary Commission, a body which will not be accountable to the people of Texas;

NOW: THEREFORE, BE IT RESOLVED BY THE MEMBERS OF THE EASTLAND COUNTY BAR ASSOCIATION:

SECTION 1: That we believe this proposed constitution, which has already cost the taxpayers of Texas millions of dollars, will not only legally cloud many of the provisions regarding the basic rights of the citizens of Texas but will set off lawsuits and court rulings for years to come, that it will result in higher taxes, and that it will eventually result in more governmental control at the sole expense of the citizens of Texas.

SECTION 2: That we believe the citizens of this County and State are becoming more aware of and concerned about the ever increasing bureaucratic powers in our state and federal governments unto themselves at every opportunity.

SECTION 3: That we are unanimously opposed to this proposed new constitution for the State of Texas, and we would recommend to the voters of this County and State that they seriously consider their decisions and urge them to vote against the adoption of the proposed constitution on November 4, 1975.

ADOPTED by unanimous vote of the members of the Eastland County Bar Association, at a regular meeting in Eastland, Texas on the 18th day of July, A.D. 1975.



WAREHOUSE TIRES

1600 W. Walker
BRECKENRIDGE, TEXAS

sale

**One Week Only — Now
Thru Saturday, Sept. 27th**



JTW La Prix
4-Ply Polyester Cord

SAVE 4 FOR \$79.95

White Walls
Size C-78-13
Plus 1" per tire and 4 recappable tires

ALL SIZES ON SALE!

ALL SIZES ON SALE—ALL TIRES MOUNTED FREE

<p>● E-78-14 4 for</p> <h2 style="font-size: 40px; margin: 0;">\$119.95</h2> <p>● F-78-14</p> <p>● G-78-14</p> <p>● G-78-15</p> <p style="font-size: 10px;">Plus F.E.T. and recappable tire</p>	<p>● H-78-14 4 for</p> <h2 style="font-size: 40px; margin: 0;">\$139.95</h2> <p>● H-78-15</p> <p>● J-78-15</p> <p>● L-78-15</p> <p style="font-size: 10px;">Plus F.E.T. and recappable tire</p>
--	--

WAREHOUSE TIRES

1600 W. Walker Breckenridge, Texas (817) 559-2464

PITT GRILL

Fine Food



BREAKFAST SUGGESTIONS

Served Round the Clock

Pitt Grill Special Breakfast—Two Eggs, Chopped Sirloin Steak, Hash Brown Potatoes, Texas Toast and Jelly. 2.00

<p>Two Eggs, Any Style, HAM, BACON or SAUSAGE, Served with Toast, Jelly and Hash Brown Potatoes 1.55</p> <p>One Egg, Any Style, HAM, BACON or SAUSAGE, Served with Toast, Jelly and Hash Brown Potatoes 1.35</p> <p>Pitt Grill Cream Waffle, with Butter and Syrup80</p> <p>With Ham, Bacon or Sausage 1.50</p> <p>Pecan Waffle with Butter and Syrup90</p> <p>Two Eggs, Any Style with Toast, Jelly and Hash Brown Potatoes85</p> <p>One Egg, Any Style with Toast, Jelly and Hash Brown Potatoes65</p>	<p>SIDE ORDERS</p> <p>Bacon70</p> <p>Ham70</p> <p>Rudy Farms Sausage (Patties) .70</p> <p>Hash Brown Potatoes45</p> <p>French Fries45</p> <p>Toast and Jelly30</p> <p>Individual Dry Cereal with Milk55</p> <p>JUICES</p> <p>Chilled Orange Juice30</p> <p>Chilled Grapefruit Juice30</p> <p>Chilled Tomato Juice30</p>
---	---

ENJOY THESE AND THE OTHER FINE FOODS AT OUR CLEAN AND FRIENDLY PLACE!

Carbon School News

Organizational Meeting For C.Y.H. Sept. 23

You are invited to attend the organizational meeting of the Carbon Young Homemakers of Texas, Tuesday, Sept. 23, at 1:30 p.m., in the Homemaking Cottage. All women who live in the Carbon area are urged to attend.

Here are some of the facts about Young Homemakers of Texas:

winners of Merit Scholarships are chosen from the highly able group of Finalists.

Every Finalist competes for one of the 1,000 National Merit \$1000 Scholarships. A Finalist competes with all other Finalists a state for the scholarships allocated to that state. The allocation procedure is the same as the method used to name Semifinalists. The National Merit \$1000 Scholarships are one-time, nonrenewable awards supported by business and industrial sponsors and by NMSC's own funds. A Selection Committee of professionals in college admissions and counseling is convened to select the 1,000 winners nationwide.

Finalists who meet the qualifications that sponsors of four-year Merit Scholarships designate for winners of their awards will also be considered for about 2,800 of these awards to be offered in 1976. The list of sponsors includes corporations, foundations, colleges, unions, and professional associations. Depending upon the minimum and maximum value established by the four-year Merit Scholarship sponsor, a winner may receive up to \$1,500 or more during each of the four college undergraduate years. The 1976 competition is the twenty-first NMSC has conducted since 1956. In the twenty annual Merit Programs completed to date, over 41,800 students have won Merit Scholarships valued at more than \$113 million.

NMSC will release the names of Merit Scholarship winners through the news media in three public announcements in 1976: winners of corporate-sponsored four-year Merit Scholarships will be announced on April 8; winners of one-time National Merit \$1000 Scholarship will be named on April 22; the announcement of college-sponsored four-year Merit Scholarship winners will be made on April 29.

What is the State Association of Young Homemakers?

The state Association of Young Homemakers of Texas is a chartered organization for young women interested in homemaking.

Who sponsors the Young Homemakers of Texas?

The organization functions under the direction of the Division of Homemaking Education, Texas Education Agency, in cooperation with the local school and the homemaking teacher who serves as chapter advisor.

What is the purpose of the Young Homemakers?

The organization is formed exclusively for educational purposes with the particular reference to the area of homemaking. The over-all goal of the Young Homemakers of Texas is to provide creative opportunities for young women in maintaining effective personal, family and community life.

Through the program of work, members of the Young Homemakers have opportunities to accomplish these purposes:

Develop skills, gaining information on new and improved methods of homemaking, and keeping informed on matters affecting people engaged in homemaking.

Develop a deeper understanding of the home and its influence upon the community.

Planning and carrying out activities designed to improve the home and community.

Providing wholesome social and recreational activities.

Becoming better acquainted with the products and information of current consumer trends.

Supporting the Future Homemakers of America and other groups working for the improvement of the home.

Encouraging democracy in home and community life.

Maintaining spiritual values in the home.

Who may join the Young Homemakers of Texas?

Active membership is open to women not enrolled in high school and who are not over 35 years of age. Eligible members may be single or married. Women over 35 years of age may become associate members upon payment of dues, with the rights and privileges of active members, except that of holding office and voting.

How much are the dues?
Area and State dues combined are \$1.50 per member. The chapter decides on the total amount when a decision is made on how much is to be kept in the local treasury. The total amount is generally under \$5.00 per year.

Please accept this invitation to join us Sept. 23, in the homemaking cottage at Carbon.

CARBON GRADE SCHOOL FOOTBALL SCHEDULE

Sept. 9, Bryson, at Carbon at 6:30.

Sept. 16, May at May at 6:00.

Sept. 23, Sidney, at Carbon at 6:00.

Sept. 30 Gordon, at Gordon, at 7:00.

Oct. 7, Strawn at Carbon at 7:00.

Oct. 14, Sidney at Sidney at 6:00.

Oct. 21, Santo at Santo at 7:00.

Oct. 28, Moran at Moran at 7:00.

Nov. 4, Bryson at Bryson at 6:30.

ROSTER OF CARBON GRADE SCHOOL FOOTBALL PLAYERS

Members of the team include the following: Roy Lee Adain, David Ishmael, Gary Don McGinn, Tommy Rice, James Wood, and Gary Bledsoe.

Also included is David Files, Stanley Hickman, Clay Millican, Cordell Shook, Mart Tucker, Jerry Carlton, Tommy McCoy, Rudy Pack and Edward Stephens.



Sun., Mon., Tues., Wed., Thurs.-Sept. 21-25
Academy Award winner Gene Hackman is a hard-nosed cowboy and adventurer who rides in a grueling horse endurance contest in "Bite the Bullet," written and directed by Richard Brooks. The Columbia Pictures release co-starring Candice Bergen, James Coburn, Ben Johnson, Ian Bannen, Jan-Michael Vincent

IMPORTANT NOTICE
The annual meeting of the contributors of the Eastland Memorial Hospital will be held on Sept. 23, 1975, at 7:30 p.m. in the Board of Directors Room of Eastland Memorial Hospital, Eastland, Texas.
Directors will be elected for ensuing year.
R.P. Haun, Jr.
Secretary
Board of Directors -
Eastland Memorial Hospital

M. L. TERRELL REAL ESTATE
FARM BUREAU BLDG. - HIGHWAY 80 EAST
PHONE 629-1725 - NIGHTS 629-2443

HOUSES
2 bedroom home, corner lot with 2 extra rent houses, \$13,500.00
Lake lot and one room cabin at Lake Leon \$5,250.00
3 bedroom, 2 bath, central air and heat, built in oven, range, and dishwasher, new carpet and drapes. Extra nice. 150 x 150' corner lot. Shown by appointment only, \$29,500.00
2 bedroom, nice yard, with good repair located on North Daugherty Street.
2 acres with a 3 bedroom, 2 bath, home in Olden.
8 city lots suited for trailer park. \$6,500.00
6 city lots in Ranger, well located.
Store building, station, living quarters, fixtures and stock at Morton Valley, \$8,000.00
Duplex on South Walnut, shown by appointment only, \$6,850.00
4 bedroom home, corner lot with 1 1/2 bath. Shown by appointment only, \$25,000.00
Nice 2 bedroom, 2 bath home with 10 lots, city and well water, and several pecan trees. \$12,600.00
2 bedroom, 1 bath home on Daugherty Street.

SMALL ACREAGE
5 acres, 3 bedroom, fireplace, den, and 2 bath home, Northwest of Cisco. \$25,000.00.
8 acres on Interstate, Ranger, Texas, Good Location.
2 tracts on Interstate 20 near Cisco, Will G.I.
26 acres near Eastland with city water \$12,600.00.
Small tracts of land near Lake Leon.
4 acres at Olden, well, and city water, orchard, with trailer home \$15,000.00.
11 acres with 2 bedroom, rock home extra nice, good barns, city water, well water, on pavement, some coastal, North of Eastland.

FARMS AND RANCHES
668 acres some improved grasses with a 2 bedroom house, good barns, good well water, located in Stephens County.
210 acres North of Eastland, 60 acres of cultivation, on pavement, good fences, city water, \$300 per acre. \$12,000 down, owner will finance, 7 1/2 percent.
138 acres, 11 acres peanut allotment, 5 miles West of Rising Star. \$235 per acre.
80 acres Southwest of Cisco with 2 bedroom home \$29,400.00.
120 acres on Sabanna River, pecan trees, deer and turkey, 1/2 minerals. Good terms.
74 acres North of Eastland with city water on pavement \$400 per acre.
140 acres close to Eastland with 2 bedroom home, good barns, good fences, \$450 per acre.
74 acres with cultivation on County Road North of Eastland with city water on pavement \$400 per acre.
143 acres Northwest of Ranger, with 52 acres of peanuts, \$375 per acre.
150 acres South of Eastland, 140 acres in coastal, good fences on County Road, city water \$425.00 per acre.
160 acres Southwest of Ranger, deed, and 1/2 minerals, \$300 per acre.
177 acres with 4 bedroom home south of Ranger some improved grasses, good fences \$350 per acre.
198 acres with 3 bedroom home on pavement with city water, 70 acres of cultivation, near Lake Leon.
224 acres improved grasses with good fences and good set of pens. \$10,000 down, owner financed. \$315 per acre. Located in or near Carbon.

245 acres, 7 miles Southeast of Eastland with city water 1/2 minerals \$325 per acre.
215 acres near Olden with good fences and good stock tanks.
491 acres in Eastland County with nice brick home, some coastal, fenced and crossed fences. Approx. 1/2 minerals. Shown by appointment only.
220 acres Northwest of Cisco, with cultivation, on pavement, no minerals. \$210 per acre with good terms.
320 acres near Carbon, 60 acres of coastal, fair fences, 1/2 minerals. \$315 per acre.
320 acres with all improved grasses, good fences, 1/2 minerals. \$350 per acre with good terms.
486 acres near Lake Leon with 2 bedroom rock home, irrigation, and good fences, on pavement.
544 acres with coastal and other improved grasses, good terms, some minerals.
815 acres south of Cross Plains with deer and trukey. Approximately 1/2 minerals.
1450 acres near Albany, with approx. \$500 a month oil income on pavement. \$210 per acre.
2000 acre ranch in Bosque County, extra nice improvements. Owner will finance.
1297 acres in Eastland County with some cultivation and improved grasses, good place.
150 acres North of Eastland on pavement with 77 acres of cultivation, and city water, \$400 per acre.
We have other tracts large and small, and all listings will be appreciated.

RODGER TERRELL
Home Phone 629-2896
M.L. TERRELL
Home Phone 629-2443
Eastland, Texas



by Steve Haines

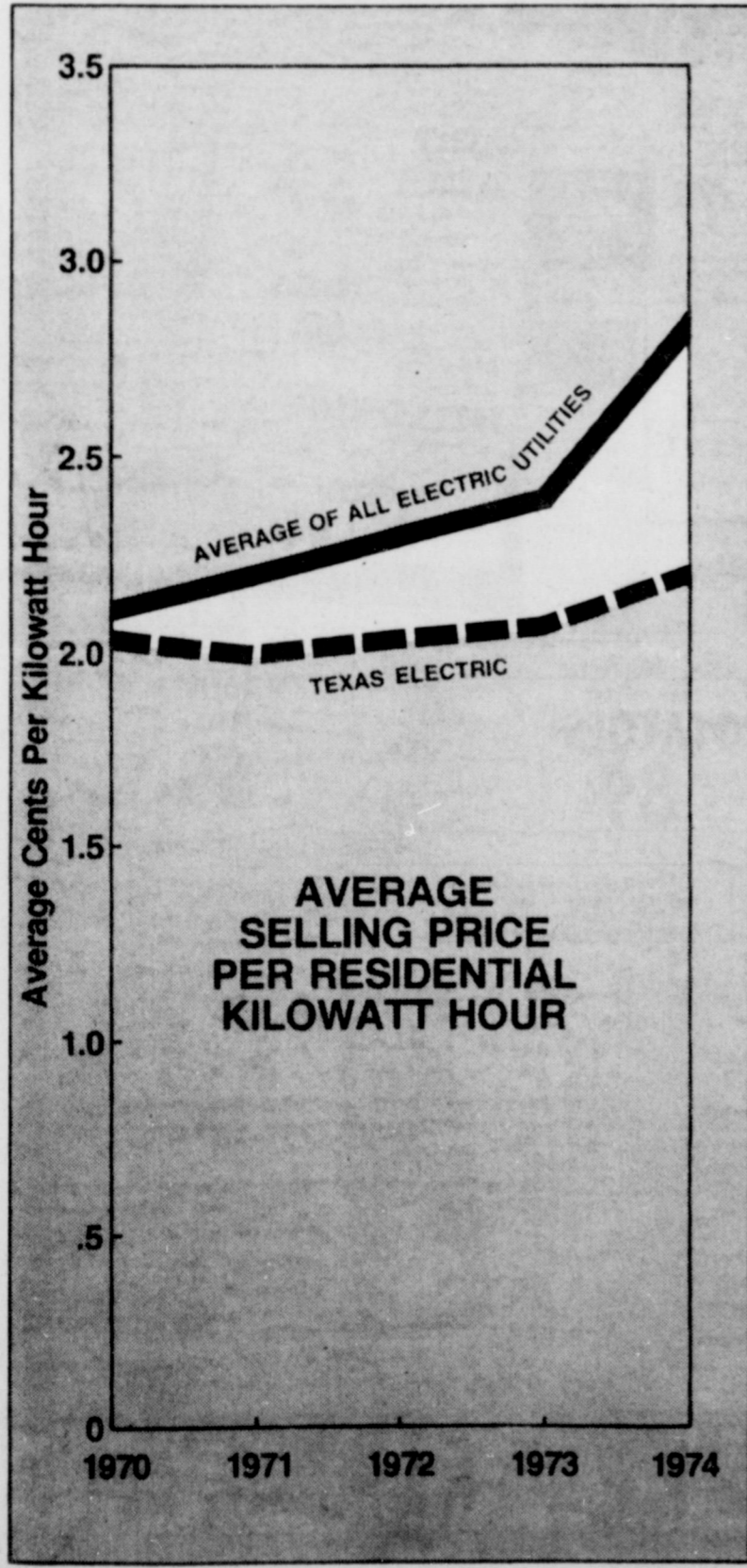
Radall Eugene Frost Named Semifinalist In National Merit Scholarship Program Of EHS

The counselor, Charles P. Marshall, has announced that one student, Radall Eugene Frost, at Eastland High School has been named Semifinalist in the 1976 National Merit Scholarship Program. This student is among 15,000 who will continue in the competition for about 3,800 Merit Scholarships to be awarded next spring. Randy Frost is the son of Mr. and Mrs. Eugene Frost of Eastland.

Scholastic Aptitude Test National Merit Scholarship Qualifying test. The Semifinalists are the highest-scoring students in each state; the number named in each state is proportional to the state's percentage of the nation's graduating high school senior class. The Semifinalists, most of whom will complete high school and enter college in 1976, represent the top half of one percent of the nation's most academically talented young people.

Semifinalists must advance in Finalist standing by meeting a number of requirements that include being fully endorsed and recommended for scholarship consideration by their secondary schools, presenting school records and substantiate high academic standing, and confirming their high PSAT-NMSQT scores with equivalent scores on the Scholastic Aptitude Test (SAT). Over 90 percent of the Semifinalists are expected to qualify as Finalists and to receive Certificates of Merit next February. All

To continue in competition,



Your cost for electricity is below the national average.

And the gap is widening.

Today your electric bill is much lower than it would be in most other parts of the country. And while electricity costs are rising everywhere, your cost isn't rising as fast.

That's because Texas Electric is doing everything possible to keep the price of electricity down. For one thing, we're using the supplies of low-cost natural gas we acquired many years ago for fuel. And as our cost for gas goes up, we're building power plants to use cheaper lignite and nuclear fuels.

At Texas Electric, we're working to supply the electricity you need — at the lowest possible cost.

TEXAS ELECTRIC SERVICE COMPANY
F. N. SAYRE, Manager, Phone 629-2651

UMW Meet in Regular Session

The United Methodist Women met in the Church parlor in regular session this week with Mike Siebert as special guest speaker.

Mr. Siebert explained why he and the attorneys of Eastland County are against the new proposed Constitution which we will vote on in November.

He stated that our present constitution was framed because citizens of Texas were tired of too much Government control after the Civil War and they framed a constitution in 1876 that put checks on all branches of government. The new proposed constitution gives much power to each body of the State Government he said.

The people of the State of Texas have voted down many of the proposed changes in amendments but they have put them back in the new constitution. For instance the People of Texas voted down salary raises and annual sessions, of the Legislature but they are back in the new one.

In reading the new proposed constitution there are many things everyone likes but to accept them all would give politicians what they want most of all: more power! He finished with a question and answer period.

The Rev. Ben Marney gave a timely Devotion based on the fact that the disciples didn't always understand the great things that were to come to pass of which Jesus often spoke. When we face the future, we can be sure that Jesus provided us with a Comforter, the Holy Spirit, ever present wherever we are gathered.

Mrs. H.L. Hassell presided over a short business session and welcomed a new member, Mrs. Jackie Wilson. Mrs. Hassell announced the District Conference would be held in Brownwood, Oct. 3 and 4th. Mrs. A.E. Cushman, reporter

Mrs. Irene Maynard Petree spent Tuesday night with Mr. and Mrs. Sherman Arms at Lometa. Mrs. Searlett of Cisco, Mrs. Irene Petree of Eastland went shopping in Abilene Wednesday.

CITY NEWS

City Hall
Eastland, Texas

Subject:
Public Drinking Water Supply
City of Eastland
Eastland County, Texas

On July 24, 1975, our representative, Robert C. Harrison, R.S.* in company with Mr. Don McClendon, Water Superintendent, conducted a sanitary survey of the water system serving the City of Eastland. As a result of that survey we are pleased to note that the City of Eastland appears to be operating and maintaining its water system in compliance with state statutes and this Department's minimum requirements.

We would like to express the thanks and appreciation of our representatives for the courtesies extended to him during his visit. If we can be of assistance at any time, please do not hesitate to call on us.

Sincerely,
Thomas D. Tiner, P.E., Chief
Domestic Water Supply Branch
Division of Environmental
Engineering

Public Notices

LEGAL NOTICE
NOTICE OF MEETING AND
ELECTION Pursuant to the provisions of S.B. 329, 63rd
Legislature, Regular Session,
1975, all Texas dental licensees

Kincaid's Real Estate Corner

LAKE PROPERTY

Approximately 12 acres land with 950 square ft. house, good water frontage, Lake Leon, wooden pier at waterfront, nice trees, variety of fruit, garden spot, etc. Will G.I. \$17,000.

Deeded lot, 4 bedroom house, 1 1/2 bath, Lake Leon, \$14,000.
24 Acres land approximately 1500 ft. water front, consider 2 G.I.'s \$24,000.

16 Acres Lodge and 6 rental cabins, large recreation building Possum Kingdom, for sale or trade, clear of debt, terms available.

HOMES

2 bedroom frame house, 75 x 100 ft. lot, \$8,750 existing loan \$4,200. payments \$69 per month. Ranger.

3 bedroom, 115 Scurry St., Gorman, \$11,500. Terms considered.
One bedroom frame house, bath, dining room - kitchen combination, 3 lots, nice trees, storage, \$6,500. 1415 Harrell St., Eastland.

2 bedrooms frame home, close in, Eastland, 500 S. Green, \$7,500. Loan balance, \$75 per month, \$11,750.

Completely remodeled 3 bedroom frame house, dining room, den, utility room, 2100 sq. ft. double garage with storage, nice trees, several extra lots, plus rent house, and mobile home rental space in Cisco.

2 bedroom frame house, 8 acres approximately 5 miles out, city water and well.

8 1/2 acres Carbon on pavement.

LAND

160 acres irrigated peanut farm completely equipped, 70 acres peanut allotment, excellent fences, Gorman area \$600 per acre.

135 acres peanut farm, 47 ac. allotment, orchard, 4 wells, \$350 per acre, terms or trade in for larger place.

107 acres, 8 miles northeast of Rising Star, two - thirds farm, creek, some peanuts, owner financing 20 percent down, \$325 per acre.

130 acres Ranger, trees, old improvements, some coastal, \$350 per acre. Terms.

150 acres, good house, on pavement, Rising Star area, live creek and springs, \$35,000.

130 acres Lake Leon area on pavement, \$300 per acre.

125 acres peanut farm, old house, barns, Carbon area \$315 per acre.

50 acres, 3 miles from Eastland. Trees, tank, 1/2 minerals, \$19,750.

550 acres, well, several tanks, some cultivation \$275 per acre, terms available.

480 acre farm, Colorado City for sale or trade for Eastland County property \$210 per acre.

One section grass, live creek, excellent hunting, \$275 per acre, terms.

1100 improved ranch \$325 per acre.
Large ranches and farms, up to 150,000 acres, Texas and adjoining states, please contact for details.

KINCAID REAL ESTATE

100 South Seaman, Eastland, Texas 817 - 629 - 1781

Robert Kincaid - Nite Phone 629 - 2815

in the hereinafter named Texas Counties and hereby notified that on the 21st day of October, 1975, at 7:30 o'clock, p.m., at Hendrick Memorial Hospital Auditorium in the city of Abilene, Taylor County, Texas, a meeting will be held for the purpose of electing from the Texas dental licensees practicing in such Counties six (6) dental licensees or members of an area or local Peer Review or Grievance Committee as authorized by said law. The Counties to be represented are: Haskell, Scurry, Fisher, Jones, Shackelford, Stephens, Mitchell, Nolan, Taylor, Callahan, Eastland, Comanche, and Hamilton. (Sept. 21 & Oct. 11).

LEGAL NOTICE
AN ORDINANCE FIXING AND DETERMINING THE GENERAL SERVICE RATE TO BE CHARGED FOR SALES OF NATURAL GAS TO RESIDENTIAL AND COMMERCIAL CONSUMERS WITHIN THE CITY LIMITS OF EASTLAND, EASTLAND COUNTY, TEXAS, AND PROVIDING FOR THE MANNER IN WHICH SUCH RATE MAY BE CHANGED, ADJUSTED AND AMENDED.

BE IT ORDAINED BY THE CITY COMMISSION OF THE CITY OF EASTLAND:

SECTION 1. Effective with the first gas bills rendered from and after thirty (30) days from the date of final passage of this ordinance, the maximum general service rate for sales of natural gas rendered to residential and commercial consumers within the city limits of Eastland by Lone Star Gas Company, a Texas corporation, its successors and assigns, is hereby fixed and determined as follows:

First 1,000 Cu. Ft. or Fraction Thereof \$3.1277 Gross; \$2.8149 Net.

Next 3,000 Cu. Ft. \$1.8499 Per Mcf Gross; \$1.6649 Per Mcf Net.

Next 6,000 Cu. Ft. \$1.7388 Per Mcf Gross; \$1.5649 Per Mcf Net.

Next 15,000 Cu. Ft. \$1.6499 Per Mcf Gross; \$1.4849 Per Mcf Net.

Next 75,000 Cu. Ft. \$1.5943 Per Mcf Gross; \$1.4349 Per Mcf Net.

Over 100,000 Cu. Ft. \$1.5610 Per Mcf Gross; \$1.4049 Per Mcf Net.

No gas bill will be rendered to any residential or commercial consumer served under the above rate not consuming any gas during any monthly billing period, except that where customer's only use for gas service is in an outdoor grill and or a fireplace starter, the amount shown for the first



Mr., Mrs. L.D. (Dick) Yielding To Celebrate 50th Anniversary

Mr. and Mrs. L.D. (Dick) Yielding of 417 S. Green will celebrate their 50th wedding anniversary at the Eastland National Bank conference Room Saturday, September 27 from 2 to 4 p.m. All friends and relatives are invited to attend.

consumption block shall constitute a minimum monthly bill.

ADJUSTMENTS

The amount of each net monthly bill computed at the above stated rates shall be subject to the following adjustments: Plus or minus the amount of any increase or decrease, respectively, above or below the \$1.0399 per Mcf level in the intracompany city gate charge as authorized by the Railroad Commission of the State of Texas or other regulatory body having jurisdiction for gas delivered to Lone Star Gas Company's distribution system for sale to residential and commercial consumers where such changes are caused by increases or decreases in the cost of gas purchased by the Company; plus an amount equivalent to the proportionate part of any new tax, or increased tax, or any other governmental imposition, rental fee or charge (except state, county, city and special district ad valorem taxes and taxes on net income) levied, assessed or imposed subsequent to July 1, 1975, upon or allocable to the Company's distribution operations, by any new or amended law, ordinance or contract. Each gross monthly bill shall be adjusted proportionately. Company, if its option, may forego the application of any adjustment if such adjustment would result in an increase in the monthly bill; however, failure of Company to apply any adjustment shall not constitute a waiver of Company's right for time to time, or at any time, to make any adjustment, in whole or in part, in any subsequent current monthly bill that may be applicable to such bill.

Net rate shall apply to all bills paid within ten days from monthly billing date; gross rate shall be applicable thereafter. The above rate is applicable to each residential and commercial consumer per meter per month or for any part of a month for which gas is used at the same location.

In addition to the aforesaid rates, Company shall have the right to collect such reasonable charges as are necessary to conduct its business and to carry out its reasonable rules and regulations in effect.

SECTION 2. The rate set forth in Section 1 may be changed and amended by either the City or Company furnishing gas in the manner provided by law. Service hereunder is subject to the orders of regulatory bodies having jurisdiction, and to the Company's Rules and Regulations currently on file in the Company's office.

SECTION 3. It is hereby found and determined that the meeting at which this ordinance was passed was open to the public, as required by Texas Law, and that advance public notice of the time, place and purpose of said meeting was given.

PASSED AND APPROVED on this the 19th day of August, A.D. 1975.

FINALLY PASSED AND APPROVED on second reading on this the 19th day of September, A.D. 1975.

Secretary
Lewis Tiner
Mayor
H.V. O'Brien
City of Eastland, Texas

I, Lewis Tiner, Secretary of the City of Eastland, Eastland County, Texas, hereby certify that the above and foregoing is a true and correct copy of an ordinance passed by the City Commission of first reading on the 19th day of August, 1975 and was finally passed and approved by the City Commission on second and final reading on the 19th day of September, 1975, all as appears of record in the Minutes of said City, in Book 6, page

WITNESS MY HAND AND SEAL OF SAID CITY, this the 19th day of September, A.D. 1975.

Lewis Tiner
Secretary,
City of Eastland, Texas



Engagement Announced

Mr. and Mrs. Volney S. Day of Eastland, announce the engagement and approaching marriage of their daughter Trena Larue to James Lewis Stansell, son of Mr. and Mrs. J.C. Stansell of Eastland.

Trena is a 1974 graduate of Eastland High School. After

Mrs. Boles Returns Austin

Mrs. C.W. Boles has returned from Austin after visiting with her brother Gilbert Hargus and wife Bessie.

Mr. and Mrs. Hargus celebrated their Golden wedding anniversary Sept. 7, 1975.

Others attending from Eastland were Mrs. Joyce Eaves, Mrs. Esther Luttrell, Mrs. Lora Graham and Mrs. Esther Jumper.

The party was given by their daughter and family Mr. and Mrs. Bill Wheless and son Robert.

NOTICE

You're invited! There will be a meeting of interested women in the Eastland area who wish to belong to a home demonstration club on Monday, September 22, 10 to 11 a.m., Texas Electric Reddy Room in Eastland.

What is home demonstration Club? By belonging to a home demonstration club you get latest information on what's new for your home and family. You learn how to do things you want or need to know. It's also an opportunity to go places and do things that are of an interest to women.

Lodge To Meet

The Rebekah Lodge will meet at 300 N. Lamar, Monday at 8 p.m. in the Lodge Hall. They will be observing the 124th Anniversary Founding of the Rebekah's. All members are urged to attend this meeting.

DO YOU NEED AN APARTMENT?

1 & 2 Bedroom, Unfurnished, \$120 Up, Bills Paid, To Be Available About Jan. 1, 1976.
If Interested Call Carl Gorr, 442-3642, Days Or 442-1642 Nights Or See At 807 Ave. D.
For Further Information.



Qualify for a \$1,500 tax deduction. Next year... every year.

If you work for yourself, work at a small firm, or work for a large corporation, there's a new law that could save you a lot of money. Here's how: if you're not currently participating in a qualified retirement plan (most Americans aren't), you can set up your own Individual Retirement Annuity. Contributions to your annuity, up to \$1,500 a year (or 15% of your earned income, whichever is less) are fully tax deductible. 100% of your I.R.A. is subtracted from your gross income when figuring taxes.

It's like giving your own money to yourself. And deducting it, instead of paying taxes on it as usual. Some call it a tax shelter.

Your Southland Agent can answer any questions you may have. Send him this coupon... it'll be to your benefit. Next year, and every year 'til retirement.

Southland Life INSURANCE COMPANY
M.H. PERRY
Box 568
Eastland, 76448
629-1566 or 629-1095

Please provide me with more detailed information about how I can qualify for a tax deduction up to \$1,500 and save for retirement at the same time.

Name _____
Address _____
City _____ State _____ Zip _____
Birthdate _____

For Lease

- Approximately 500 Square Feet Of Office Space
- Large Reception Area With Two Small Offices
- Central Heat & Air
- Ground Level On Square

RCG Leasing Building

101 West Commerce 629-8052 In Eastland

Your Automobile Insurance

Are You Between 25 And 50?

If So, Contact Us For Your Automobile Insurance.

If You Don't, We Both Lose Money.

CALL **D.L. Kinnaird** General Insurance

207 W. Main 629-2544

SINCE 1919

"Your Automobile Insurance Specialist"

FALL SAVINGS TIME

<p>Choice BEEF SALE</p> <p>SIRLOIN STEAK Pound \$1.59</p> <p>ROUND STEAK Pound \$1.69</p> <p>T-BONE STEAK Pound \$1.89</p> <p>CLUB STEAK Pound \$1.49</p> <p>CHUCK ROAST Pound 89¢</p>	<p>LAMB'S PRIDE FRANKS 12-Oz. Pkg. 59¢</p> <p>LAMB'S PRIDE BACON 1-lb. Pkg. \$1.75</p> <p>PICNIC 6-8 lbs. 95¢</p> <p>USDA 1/2 lb. CHICKEN HENS Pound 69¢</p> <p>FRESH CREAM GROUND BEEF Pound 99¢</p>	<p>VELVETA CHEESE 1-lb. Can. \$1.89</p> <p>LYSOL CLEANER 40-Oz. Can. \$1.19</p> <p>NO STICK SPRAY 12-Oz. Can. \$1.19</p> <p>COMET CLEANER 21.5-Oz. Can. 39¢</p> <p>DOWNWASHER DETERGENT 16-Oz. Box 69¢</p>	<p>7-UP MR. PIBB COCA-COLA Returnable Bottles 5 \$1.00</p> <p>NIBLETS CORN 3 12-Oz. Cans \$1.00</p> <p>PUREX BLEACH 39¢ Gal. Btl.</p> <p>CHICKEN of the SEA CHUNK LIGHT TUNA 49¢ 6.5-Oz. Can</p> <p>Borden's MELLORINE ASSORTED FLAVORS 1/2-Gal. Cn. 69¢</p> <p>DETERGENT FAB 99¢ 49-Oz. Box</p>
<p>DEL MONTE SPINACH 4 15-Oz. Cans \$1.00</p> <p>TOMATO CATSUP 32-Oz. Btl. 69¢</p>	<p>FLAV-R BROWN HASH BROWN POTATOES 2-lb. Bag 39¢</p> <p>WEST PAC CUT CORN 20-Oz. Pkg. 59¢</p> <p>GOLDEN NIP ORANGE JUICE 4 6-Oz. Cans 88¢</p> <p>KRAFT'S MIRACLE BOWL MARGARINE 1-lb. Cn. 59¢</p> <p>GREEN CABBAGE 10¢ Pound</p> <p>CRISP BELL PEPPER 10¢ Each</p> <p>ECONOMY RUSSET POTATOES 10-Lb. Bag 89¢</p> <p>WASHINGTON EXTRA FANCY RED DELICIOUS APPLES 39¢ Pound</p> <p>VINE RIPE TOMATOES 39¢ Pound</p>	<p>DETERGENT PALMOLIVE LIQUID 59¢ 22-Oz. Btl.</p> <p>DEL MONTE FRENCH STYLE or CUT GREEN BEANS 3 16-Oz. Cans \$1.00</p> <p>DEL MONTE WHOLE NEW POTATOES 4 16-Oz. Cans \$1.00</p> <p>DEL MONTE SLICED or HALVES PEACHES 29-Oz. Can 49¢</p>	<p>Health & Beauty Aids</p> <p>SOFT & DRI DEOD \$1.19</p> <p>ULTRA BAN DEOD \$1.99</p> <p>GILLETTE FOOT GUARD \$1.89</p> <p>BABY SHAMPOO \$1.19</p> <p>PHISOAC CREAM \$1.79</p> <p>JOHNSON'S SWABS \$1.19</p> <p>NASAL SPRAY \$1.19</p> <p>PLAYTEX DEOD. TAMPONS \$1.98</p> <p>SUMMER'S EVE DOUCHE \$1.49</p> <p>COFE \$1.79</p> <p>SUCRETS (TOOTH POWDER) \$1.19</p> <p>VANQUISH \$1.19</p> <p>SUCRETS (TOOTH PASTE) \$1.19</p> <p>ALKA 2 TABLETS \$1.19</p> <p>HEAD & SHOULDERS \$1.19</p> <p>PEPSODENT TOOTH PASTE \$1.19</p>

PRICES GOOD THROUGH SATURDAY, SEPTEMBER 27

Everyday more and more people just like yourself discover how they can get bigger food savings by shopping SUPER SAVE MKTS! Isn't it time for you to join the other smart shoppers and discover greater values for your family?

SUPER SAVE

G.A. WHITE Manager
629-1191 400 S. Seaman