



THE NEW CAR CAPITAL

EASTLAND, TEXAS, SUNDAY, MARCH 31, 1963

PRICE 10c

150 Attend 9:49's Annual Father-Son Banquet Here

By LARRY GOLDSTON
Monday night the 9:49 class of the Methodist Church sponsored the annual Father and Son Banquet. The invocation was given by Rev. Bill Fisher, pastor of the local church. The banquet started with a very fine meal. Afterwards, Pat Miller led the men and boys, which numbered about 150, in "America."
Joe Gray, who is the president of the class, recognized honorees.
Those who have attended all of the 33 banquets are: Fred Davenport, Claude Boles, Earl Bender, and Jay Whatley.
The oldest father present was

R. W. (Walter) Smith, who is 91.
On the other hand the youngest father was Mike Collins. About 7 charter members were present. Mrs. Tom Hailley, the only woman ever to be a member of the 9:49 class, was present.
A solo, "The Wayfaring Stranger," was sung by Miller, who is the teacher of the class.
Joe Bray introduced the guest speaker, Dr. Durwood Dr. Fleming enjoys reading Southwestern University. Fleming, President of the Robert Louis Stephenson and Thomas Edison, because these men did not know when to quit, he said.
Dr. Fleming cited three points: first, that "every man will fall in life, so every man must know how to fall. This is the challenge," he said, "and gives every man must then start to work."
The second point he stressed was, "a man must know how to get up." A boy shouldn't get away with winning his way through life. If you fall, and you will, you should get up and conquer what has made you fall."
The third point was how to tap reserve reservoirs of strength. "A relationship with God is joint partnership," he said.
"The kind of world we live in today is Freedom versus Communism or tyranny. So men are pigmy spirits in a giant frame," Dr. Fleming said.
The benediction was led by Tom Amos.

SKYS WATCHED .81 Inch Of Rain In March

It rained one day last month and that's all.
On the 11th day of March, .81 of an inch of rain fell in Eastland, and that's the official report for the month, according to Weather Observer James Smith.
It was the driest first quarter since 1935. The total first three months rain this year amounts to only 1.28 inches. (In 1925, it was 1.06).
Eastland had .25 of an inch in January this year and .22 of an inch in February.
Last year the first two months were dry too, but March came through with 1.39 — but not so this year.
There has been reports of good moisture below the surface recently, but with the continuing high winds, spilling over into April, the stored dampness isn't expected to last long.
Residents were watching floating clouds this week, and were especially hopeful Tuesday that the rains would come.

Marcus O'Dell Nominated As Lions Club President

Marcus O'Dell, finance clerk at the Eastland Post Office, has been nominated president of the Eastland Lions Club.
The slate of new officers for the coming year was read Tuesday by Retiring President Bill Walters.
The club will vote on the slate in two weeks and the new officers will be installed at the beginning of the club year in July.
Other nominees include: Glyn Gilliam, first vice president; Bill Frazier, second vice president; Jim Parks, third vice president; James Reid, secretary-treasurer; H. V. O'Brien, lion tamer; Bill Leslie, assistant lion tamer; Glenn Scallorn, tail twister; J. C. Poe, assistant tail twister; Bruce Pipkin, song leader; and Lee Ellis, bulletin editor.
Nominated sweetheart of the Club is Patricia Liles. O'Dell is a native of Com-

anche, and has lived in Eastland for the past 17 years. He has been with the post office department 15 years.
He and his wife live at 1105 W. Commerce St. They have one son, Michael Don, 9. The family attends Bethel Baptist Church, where he is a deacon, General Sunday School Superintendent and director of the Young People's Training Union.

Nominated as directors were O'Dell, Gilliam, Frazier, Parks, Reid and Walters.
Scallorn was in charge of the program Tuesday and presented a film on CAT (Community Antenna Television Association), and explained the development of cable television in this area. He is co-owner and manager of Southern TV Television Systems Corp., Inc.
Club guests included Lewis Mallory of Eastland, Lloyd Barker and Chuck Maloy, both Del Rio; O. L. Stamey, Charles Sandler, J. T. Herrington, C. E. McCanlies, Winston Heidenheimer and J. W. Sitton, all of Cisco.

School Board Election Set For Saturday

Dr. F. H. Lund and Dr. J. O. Jolly will seek re-election to the Eastland Independent School Board Saturday.
The polls will open at 8 a. m. and close at 7 p. m. Ballots will be cast in the first floor lounge of the Eastland County Courthouse.
E. E. Layton of Eastland will serve as judge for the election.



'WHICH ONE?' — This jaunty, unidentified, Eastland dandy was observed this past week in a local retail store, desperately trying to decide on a new straw hat. He, like other "best-dressed" gentlemen in Eastland, plans to don his new straw cover Saturday, because that's Official Straw Hat Day in Eastland. (A&C Photo)

New Hospital Wing Dedicated 'To Glory of God, Need of Man'

"Eternal and Almighty God; Creator of all things good; Sustainer of all; Redeemer of all that thou doest choose; Determiner of the destiny of all creation, of which we are a part; we would recognize Thy sovereignty and Thy grace. Thy plans and purposes are sure. Thy loving kindness is over all that Thou hast made.
"O Holy God; who hast revealed Thy will and saving power in Jesus Christ, Thy Son, our Lord. He went about continually doing good, healing all manner of illness and all manner of disease among the people; continue, we beseech Thee, this Thy gracious work among us; cheer, heal, and sanctify the sick and wounded; grant to the administrators, the physicians, the surgeons, the nurses, the dieticians, the cooks, those in the office, the janitors, wisdom and skill, sympathy and patience; and send down Thy

blessing on all who labor to prevent needless suffering and to forward Thy purposes of love for all mankind.
"And now we come at this time to ask Thy blessing upon those who have labored toward this day and upon this enlarged hospital, the result of their labors. We come to dedicate this well-appointed and beautiful enlarged hospital to the glory of God and the need of man. Sanctify and bless Thy Holy Spirit our intentions and efforts to this end, for we recognize Thee as the ultimate Source of all strength and loving kindness, the very Life of our lives, our joy and our peace.
"In deep gratitude we pray, in the name of Christ, that Name above every name, and for his sake — our Redeemer and our Lord. Amen."
This prayer of dedication was given by Rev. Eugene H. Surface, pastor of the First

Presbyterian Church, Tuesday at the open house and ribbon cutting ceremony of the new East wing of the Eastland Memorial Hospital.
Jim Parks, Chairman of the Board of Directors, in a brief address to the audience, stated that all additions to the hospital including the newest wing was made possible through hospital funds and that "not one penny" had been borrowed for the expansion.
Parks announced that semi-private rooms in the East wing will be \$11 per day the smaller private rooms, \$16 and large private rooms, \$17. Private rooms in the older wings are \$15 per day and the semi-private rooms, \$10 per day.
Some patients had been moved into the new East Wing, but those making the tour were able to view several of the private and semi-private rooms.
The 14 new rooms feature private and semi-private television sets with remote controls as well as new furniture.
A large crowd attended the open house held from 2 to 4 p. m.



OFFICIAL OPENING — Bill Frost, past board president, puts the scissors to the ribbon and officially opens the new wing of Eastland Memorial Hospital Tuesday afternoon. Looking on is Earl Conner Jr., as were many other residents who attended the dedication service. Frost was president of the board during most of the planning of the East Wing, and is credited with its inception. (A&C Studio)

Deaton, Troutt, Treadwell Win City Commission Posts

Eastland voters, more than expected, turned out Tuesday and elected themselves three new city commissioners.
Leading the ticket of six candidates was Frank Deaton who drew 368 votes. Dale Troutt was second with 368 and Dr. M. A. Treadwell, Jr., third with 332.
Three places were to be filled, and these top three men

will be sworn in, probably at the next commission meeting, set for Monday, April 22.
Losing candidates were Bruce Pipkin, Roy Lee Smith and James Smith. Pipkin had 198; Roy Smith, 234; and James Smith, 274.
Eastlanders just might be in for a reduced summer water rate because two (Deaton and Troutt) of the three new commissioners stated prior to the election that they favor such a reduction and Commissioner Don Pierson who was not up for re-election this year, has also sought cheaper water during his first year in office.
Virgil Seaberry Jr., presently chairman of the commission, is the other hold-over member of the commission.
Commissioners Jack Germony, Milton Fullen and Bob Perkins did not seek re-election when their terms ended this year.
Total vote Tuesday was 598 — about 98 votes more than most anticipated. Last year's total vote, when two seats were up for election, was 770.
Voting was steady all day. Election Judge Guy Parker said, with the heaviest onrush after 5 p. m., until the 7 p. m. poll closing.
Votes were tallied by 7:30. Deaton is owner-manager of Eastland Auto Parts, is a member of the Board of Stewards of the First Methodist Church, and came to Eastland from Ranger several years ago. He is immediate past president of the Chamber of Commerce, and has served the Rotary Club as president. He is a member of chamber board of directors.
Dr. Treadwell is a well-known Eastland County general practitioner and surgeon, and is owner-manager of Eastland Medical and Surgical Clinic. He is a deacon at First Baptist Church, and is currently on the board of directors of the chamber of commerce.
Troutt, who was defeated in his first bid last year, for a city commission post, is co-owner and manager of Central Drug, is a member of the chamber board of directors and is a member of the First Baptist Church.

Aubrey McBee Dies Saturday; Services Sunday

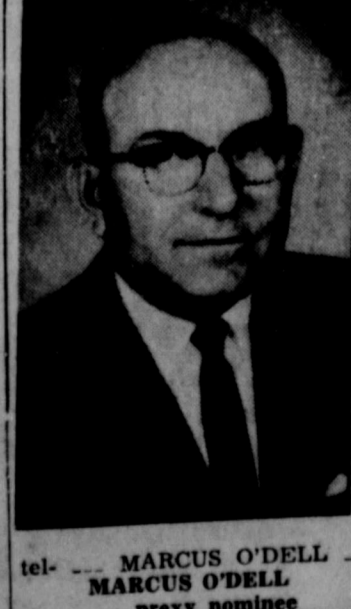
Funeral for Aubrey M. McBee, 56, of 204 S. Dixie, was held Sunday at 2:30 p. m. in the Hamner Funeral Chapel with Rev. Haston Brewer officiating assisted by Rev. Bud May.
Born June 3, 1906 in Eastland County, Mr. McBee died Saturday in the Eastland Memorial Hospital. He was married to Tina Mae Wooley on Nov. 15, 1931 in Eastland. Mr. McBee was employed with the Western Auto Associate Store for many years.
Surviving are the wife; one son, George Wilson McBee of Austin; two brothers, Floyd McBee of Eastland and Earl McBee of Kermit; two sisters, Mrs. W. A. Phelps of Wichita Falls and Mrs. Dave Putnam of Stamford; and one grandson.

Curry Hearing Is Postponed To Monday At 9:30

The change of venue hearing in the Nathan Curry murder case has been postponed for the second time, and is now scheduled for 9:30 a. m. Monday.
Originally set for Monday (April 1), Judge T. M. Collier set the case for 9:30 a. m. Thursday (today), but due to the severe illness of a relative of one of the attorneys in the case, the hearing has been postponed again.
The 65 witnesses subpoenaed by District Attorney Earl Conner Jr. were being notified at mid-week by the Sheriff's Dept.
Young Curry, his parents, and their attorney John Watts of Odessa are expected to be present for the hearing.
Witnesses subpoenaed by Conner are the following:
Eastland: T. M. Fullen, Charlie Lucas, Arthur Murrell, Helen Murrell, Guy Parker, Curtis Koen, Lindell Levens, Veon Howard, Bruce Pipkin, C. T. Harp, Robert Perkins, Jim Horton, Ray Laney and James Smith.
Cisco: Ben Krauskoph, H. T. (Cowboy) Huffman, Harry Schaefer, O. W. Keen, Tom B. Start, W. E. Dean, Roy M. Benter, L. H. (Coo) Dawson, J. L. Thornton, C. C. Pippen, C. E. Parkinson, Carlton Holder, Dr. C. H. Ballew, John Holder, John Webb, A. C. Berg, Charlie Creech and W. V. Gardenhire.
Ranger: V. V. Cooper Jr., Gerald Dugan, Maybelle Oyler, Lloyd Bruce, Ott Irvin, James Ratliff, Morris Campbell and E. N. Varner.
Rising Star: L. H. Morrison, Mrs. L. H. Morrison, Odus A. Criswell, G. G. Crowell, C. M. Cox, Robert Butler, C. M. Carroll and George Carter.
Others include Mrs. W. E. Lusk of Sabanno, C. T. Dawkins of Sabanno, Jack Cozar of Nimrod, B. M. Lusk of Sabanno, M. H. Byrd of Carbon, Otis Guy of Carbon, and Jeff Harbin, Guy Lyerla, Am Justice and Cyrus Justice, all of Flatwood, and Willie O. Parr, Luke Palmer, Dean Bennett, J. B. Williams, Keith Whitt and E. L. Dennis, all of Gorman.
Lindbergh received the first Distinguished Flying Cross awarded by the U.S.

Methodist Revival To Begin Sunday

The Holy Week Revival at the First Methodist Church will begin Sunday morning at the 11 o'clock services and continue nightly through the following Friday night.
The Sunday evening services will begin at 7 p. m., and week-night services at 7:30 p. m.
Evangelist for the meeting will be the local pastor, Rev. William S. Fisher. Rev. Fisher began his ministry in the Methodist Church at Sipe Springs and has held pastorates in several churches in this area. In his early ministry, he was quite active in evangelistic work and for a time was co-evangelist with his father, Rev. W. E. Fisher. Before coming to Eastland, he served pastorates in Fort Worth, Corsicana and Waxahachie.
Song services for the revival will be led by Pat Miller with a full choir and special music each evening.
Nightly prayer services will be held each evening beginning at 7:10 p. m.
A pastor's class for children will be held each afternoon beginning at 3:30 p. m.
A cordial invitation is extended to one and all to join in these services, a spokesman for the church said.
The first U. S. World's Fair was held in New York City in 1853 and 1854.



MARCUS O'DELL
... proxy nominee

Auto Air Conditioning Specialists, Sales and Service. Any Make or Model. COLEMAN HUMBLE SERVICE 400 E. Main — MA 9-2543

EASTLAND TELEGRAM

Eastland County Record established in 1931, consolidated August 31, 1951. Chronicle established 1887, Telegram established 1923. Entered as second class matter at the Post Office in Eastland, Texas under the Act of Congress of March 3, 1879.

Published Semi Weekly—Thursdays and Sundays
By Eastland County Newspapers, Inc.
H. V. O'BRIEN, Editor

One Week by carrier in city	.15
One month by carrier in city	.65
One year by mail in county	2.95
One year by mail out of state	6.95

NOTICE TO PUBLIC—Any erroneous reflection upon the character, standing or reputation of any person, firm or corporation which may appear in the columns of this newspaper will be gladly corrected upon being brought to the attention of the publishers.

EASTLAND'S HOSPITAL

(The following editorial appeared Tuesday morning in the Abilene Reporter-News.) Eastland Memorial Hospital

marks another milestone in its story of progress and service to its area Tuesday.

A ribbon cutting service will be held at 2 p. m., with open house to follow until 4, on a new 14-room, 22-bed addition to the hospital.

This makes the hospital's present patient capacity 66, a fine facility indeed for a city the size of Eastland. It may be pointed out that Abilene is now in a campaign seeking money to build a new 100-bed hospital.

There are two amazing aspects to the Eastland hospital. It was built originally, and the new wing added, without a dime of state or federal financial assistance.

Secondly, the entire hospital is now completely debt free.

This is a favorable situation not many other communities can match.

Mr. and Mrs. Esco Walter members of the wedding party of Miss Stephen Maryyla Walter in Abilene last Saturday.

GAS-TOONS



"You'll have to pour that oil FASTER 'Ole... I'm in a HURRY."

We'll go a LONG WAY to give you the FASTEST SERVICE!

OBIE'S HUMBLE SERVICE STATION
802 W. Main
MA 9-8866

\$12,000 A YEAR? Red Cross Blood Program Could Save County Money

Most would agree that any project that would keep \$12,000 in additional circulation in Eastland County every year, is a good project.

Add to that the fact that every individual in the county would also receive a life-saving service, and the project does take on appeal.

That's what Les Kraft, field representative for the American Red Cross, had to say about the Red Cross blood program, in Eastland this week.

The program is new and requires total county participation, but the benefits are many, Kraft said.

Talking with Mrs. Carl Lamb Monday, he said that people in the county now use 683 pints of blood per year, based on the national average and the population of the county, and that at \$20 per pint, the total cost to Eastland County is about \$13,660 annually.

Cost of participation would be \$1,562.08 yearly, figured at eight cents per person for the 19,526 population, plus 683

pints of blood donated annually. The amount of blood is based on the average of three and one-half pints per 100 persons (the national average need.)

Blood would be available to every member of the county anywhere in the U.S. or Canada without cost to the patient for the blood itself, although there would be a charge for the administration of the blood in most cases, he said.

Mrs. Lamb is County Red Cross Representative.

Kraft further explained that if the county were to join the program, pay its share of the money and donate its share of the blood, the money saved from the first 78 pints used during the first year would pay the total yearly cost.

Any blood used in excess of the first 78 pints would realize a \$20 savings per pint and if the county's blood usage is average, this could mean a potential savings of \$12,098 that would be spent for something else within the county.

Report From College...

(ED. NOTE: We receive regular reports from Eastland college students and here's an interesting one from Lydia Eidson, daughter of Mr. and Mrs. J. W. Eidson. Lydia attends Texas Tech and writes of customs there.)

Well, that time of the year is here again when the smell of spring is in the air and all college students begin to get somewhat restless.

Mid-semester tests are coming to an end and students are finding themselves with a little free time than what they've had in the last few weeks.

Now is the time of the year when boys start thinking of other things besides studies (ha) and the threat of a panty-raid hangs heavy over the colleges. Last week, for instance, Texas Christian University had a panty-raid but it was quelled in time by the city police. To prevent any such extracurricular activity, most colleges give the students a spring vacation and believe-you-me it is most welcomed.

Texas Tech's spring vacation begins on April 7 and continues through April 15. Most of the students here all seem to express the same opinion — that April 7 will never get here.

In order to raise money for

the World University Service here on Tech campus, Drane Hall, a freshman girl's dorm, had "Dare Day."

On dare day some co-ed dared another co-ed to do a certain thing and if she didn't she had to pay the money. The minimum was 25 cents and the dares ranged from 25 cents to over \$10.

The girls took the dares and there were quite a few odd sights over the campus that day. One co-ed spent her time wading in the library fountain while still others brushed their teeth in the dorm lobby while their dates looked on.

The Drane Hall housemother took a dare and dressed up in a wrap-around skirt and tennis shoes and then greeted each boy personally when he came to pick up his date. Still other girls wore odd combinations to class like high heeled shoes with wrap-around skirts and uncombed hair and some wore their clothes turned around backward.

Besides providing many laughs for curious on-lookers, the girls succeeded in raising money for WUS.

"Time will pass, will it". That is my motto and if I don't get busy studying I might regret it.

Sincerely,
Lydia Eidson

June 10 Deadline For Notary Appointments

Eastland County Clerk Johnson Smith announced that all qualified Notaries Public desiring re-appointment for the new term ending June 1, 1965 must re-qualify by the payment of the required fee of \$3 and the filing of a new oath and bond with the County Clerk's office, of his residence between June 1, 1963 and June 10, 1963.

Smith emphasized that Notaries Public should not send requests for re-appointment or for commissions directly to the Secretary of State. The law specifically requires that the County Clerks approve notary bonds.

Any person not now a Notary Public who desires appointment should apply to his County Clerk between April 1, 1963 and May 20, 1963. Application during this period

will assure prompt attention before the rush procedure of re-appointing present Notaries.

The County Clerk further pointed out that each person applying for a commission as a Notary Public must be at least 21 years of age and a resident of the county for which he is appointed. The exact name and permanent address of the applicant must be furnished the County Clerk.

4-H Sewing Club Meets Saturday

Members of the Eastland 4-H Sewing Club met Saturday in the home of Mrs. B. R. Sullivent to work on their projects.

Satisfactory progress has been reported on the skirts, and members hope to have them completed for the 4-H Dress Revue to be held this month.

Attending the meeting were Irene Sullivent, hostess, Barbara White, Betty Sullivent, Pat Sullivent, a new member and Mrs. Sullivent.

18,700 Acres Of Small Grain To Be Harvested

There are 18,700 acres of small grain crops to be harvested in Eastland County, according to the Texas Employment Commission.

Of that total, 4,700 is in wheat; 10,000 in oats; 1,000 in barley; and 3,000 in rye.

The figures are estimates. Dry, hard, freezes during the winter caused extensive damage to wheat in some areas and even more damage to other small grain. This coupled, with the fact that moisture is urgently needed over practically the entire Texas Wheat Belt, will probably reduce production considerably.

The Commission estimates that there are 4, 181, 972 acres of small grain in the state to be harvested.

Among out of towners who attended and participated in the Eastland Band Boosters ariety Show Friday night were Miss Judy Slaughter, Miss Pat Golemon, Mr. and Mrs. Morris Smith, Mr. and Mrs. R. L. Slaughter, James Stanley Webb, Jimmy Jeffcoat, Ronnie Awalt, Roy Thackerason, Cliff Clary and others, all of Cisco.

Miss Judy Slaughter was a visitor in the home of Mr. and Mrs. A. D. Taylor and Karen Friday evening.

Mr. and Mrs. R. L. Slaughter of Cisco visited Mr. and Mrs. Artie Liles and daughter, Patricia, Friday night and attended the Band Boosters ariety Show.

Music Study Club To Present Boys' Choir

The Eastland Music Study Club will present the Breckenridge Boys' Choir in an all sacred music program on Palm Sunday, April 7, at 3:30 p. m. in the First Baptist Church.

The program will honor all Eastland junior musicians.

The community choir consisting of boys of all faiths in its 11th season, began with two selections of unchanged voices. It is now the Cathedral type choir and features soprano, alto, tenor and bass.

The 30 boys range in ages from 9 to 17 years of age. They have made appearances in several states, approximately 14 cities and appeared on the third concert in youth series at the White House with the Greater Boston Youth Symphony, and also on radio and television.

Mrs. Ben J. Dean Jr. had been their only director until this semester. Larry Peterson, organ scholarship student

at the Texas Christian University, and a student of Emmett Smith, is the present director.

The public is cordially invited to attend the program.

Bowling...

(Continued from Page 1.)

Jordan's Drive Inn, Central Drug, Scott's Bait House, T. A. Newman, Altman's, Koen Salvage, Modern Cleaners, K-ERC-Fiesta, Poe Floral, Hollywood Vassarette, Johnson's Appliance and Lou Dell's Shop.

Trophies will be presented at the annual banquet to be held in May.

First place winners will also receive patches from the W.I.B.C.

Any participant who bowls a 200 game will be awarded a bracelet by the Eastland County Women's Bowling Association.

Tidbits...

(Continued from Page One)

The Eastland Chamber of Commerce is a broad-minded organization.

So far it hasn't done a thing to replace its Vice President Bill Fox, who isn't even in Eastland any more.

MCCAIN BUYS ANGUS
C. M. McCain of Eastland recently purchased an Aberdeen-Angus bull from Jesse L. Garrett of Cisco. McCain, a farmer and rancher, lives south of Eastland.

VISITS HERE

Mr. and Mrs. Snide Gattis of Scranton visited on Sunday with Mr. and Mrs. Joe Lawrence, 609 S. Lamar.

CARD OF THANKS
We wish to express our appreciation to all our friends for the many acts of kindness and sympathy shown to us during the loss of one. May God bless every one of you. The Family of McBee

Boswell's English Toffee ICE CREAM
It's the coolest, old boy! Creamy ice cream chunks of chocolate-covered English toffee swirled-in. At a party, for dessert, even for his smashing. Try Boswell's English Toffee Cream today. You'll agree it's jolly good.

DIXIE Drive EASTLAND RANGER HIGHWAY

FREE - TWO BIG DAYS!
Wednesday & Thursday, April 3
Another Big Annual Free Theatre Party - Days This Time! April 3rd & 4th. Come Enjoy an Evening With Us. - I. B. Walker Box Office Opens 7:00-Show Starts 7:30-Box Office Admission 60c - Children Under 12 Free Each Wednesday & Thursday Are Bargain Day-Ad

"The Savage Guns"
RICHARD BASEHART
IN COLOR

FRIDAY - SATURDAY
"If a Man Answers"
SANDRA DEE
BOBBY DARIN
IN COLOR

MONUMENT
SINCE 1888

SAVE BORDEN'S CARTON TOPS OR BOTTLE CAPS FOR
FREE BOWLING AT FIESTA BOWL
EASTLAND
Bowl any day from 9 a. m. to 5 p. m. (not redeemable for league play) FOUR CARTON TOPS
... OR BOTTLE CAPS
from Borden's fine dairy products listed are all you need to enjoy one FREE game of bowling. No limit to the number of game bowl as long as you have four Borden caps for each game.
MILK IN CARTON Save the complete gable top from a half gallon Borden's Homogenized Milk, Buttermilk, Gail Borden Milk, Higher-Protein Skim Milk or Santa Maria Milk.
MILK IN BOTTLE Save only the Borden caps from all Borden's Homogenized Milk, Higher-Protein Skim Milk, or Santa Maria Milk.

Borden's FINE DAIRY PRODUCTS
are better than they have to be!

FURNITURE CARPET APPLIANCES
Quality Merchandise at Every Day Low Prices
FREE DELIVERY—NO CARRYING CHARGES ON FURNITURE and CARPETS FOR 1 FULL YEAR
Ranger Furniture Exchange
"BRASHER'S"
123 N. Rusk Ranger Phone MT 7-1404

Hill Crest Food Market
WHEN YOU RUN OUT — RUN IN
1401 WEST MAIN - PHONE MA 9-1600

BANANAS	2 lbs.	25c
Russet Potatoes	10 lbs.	39c
FROZEN STRAWBERRIES	3 10-oz. pkgs.	59c
MRS. TUCKER'S SHORTENING	3 lb. can	59c
FOLGER'S INSTANT COFFEE	6-oz. jar	75c
KOUNTY KIST CORN	(whole kernel) 2 12-oz. can	29c
GOLD CROSS MILK	4 lge. cans	59c
MIRACLE WHIP Salad Dressing	qt.	49c
KRAFT SALAD OIL	qt.	49c
OLEO	lb.	19c
GGOSH'S BLUE RIBBON — All Meat WEINERS	lb.	49c
FORDEN'S or FOREMOST MILK	gal. (plus bottle)	89c
MORTON'S FROZEN FRUIT PIES	3 for	\$1.00
NORTHERN BATH TISSUE	4 for	29c

RANGER DRIVE-IN
ADULTS 50c KIDDIES UNDER 11 FREE
Box Office Opens 6:45 — Show Starts at Dusk
FRIDAY - SATURDAY - SUNDAY
APRIL 5 - 6 - 7
FRANK SINATRA LAURENCE HARVEY JANET LEIGH
You'll swear you've never seen anything quite like it!
"The MANCHURIAN CANDIDATE"
LANSBURY - SILVA - GREGORY - PARRISH

MAJESTIC
Now Thru Sat.
Thu. Fri. 4:45-5:00-7:20-9:40
Sat. 12:45-1:35-4:05-6:40-9:10
KOLLYWOOD PREVIEW ENGAGEMENT
of a new first-run fun-hit
Every boy needs a Mother but Pop doesn't want to get married-until Eddie lines up a beautiful blonde, an ultra sophisticated brunette and a thermonuclear redhead...then lights the fuse!
the Courtship of Eddie's Father
Metro-Goldwyn-Mayer presents
IN COLOR
Glenn FORD • Shirley JONES
STELLA STEVENS • DINA MERRILL • ROBERTA SHERWOOD,
RONNY HOWARD • JERRY VAN DYKE • JOHN GAY
(From VINCENTE MINNELLI • Lyrics by JOE PASTERNAK • Music by BOB DEVER)

PROVERSIAL BILL HAS RESTING EXPERIENCES

WINE GIBBENS
House, 63rd Dist.

of a controver-
the Legislature has,
east, some interest-
As author of
1910 I am receiving
for and against
in general, the pro-
to have more
knowledge of what
attempts to do than
ests.

encourages me to
reach of the oppo-
Bill 510 is
of information,
ation.

ns for having a
in Texas are fair-
I would phrase
llows:

Texas oil industry is
needs help. Respon-
sible say a pool-
ould help. And what
oil is bound to
in the form of
y and taxes.

st court decisions
lear that there is
link in an other-
oil and gas com-
de in Texas. The
Commission does not
the authority to deal
ems caused by
ers of land in a com-
munity. Great inequi-
resulted in the past
tract wells were
over-produce. The
is now invalidated
ge.

legal and moral
remains of what to
the small tract. Al-
well which would
and gas from neigh-
is wrong. Leav-
drained by neigh-
is wrong. The
able answer is an
ent for putting acre-
with the owners
ests and proceeds
to their hold-
as the method pro-
House Bill 510.
sume opposition to
of this bill which

Marvel To Revival Armony

Marvel, pastor of the
Baptist Church in
alley, will hold re-
vices each night at
beginning Sunday
ing through East-
April 14.
ights to be ob-
ing the revival are
g:

Night, Pastor Pack
Night. The pastor
own himself to pack
The public is in-
tend all services,
dly Monday night,
night, Sunday
The church will
the Sunday School
ns on this night.
ay Night, Church
church members,
members and prospec-
members are in-

Night, Ladies
this night all ladies
ers will be honored.
Night, Men's Night.
ight all men and
be honored.
Night, will be Old
Night. Services
as in the years
erosene lamps will
no one is to wear
Women may wear
resses and bonnets
se will worship to-
old fashioned way.
ight will be Bap-
The public is to
ee how the Lord
the church in this

ony Baptist
the country church
untry preacher."

PURPOSE ONE OIL Everything nts Rust



PLANS COMPLETED MONDAY FOR EASTER SUNRISE SERVICE

Plans are complete for the annual Easter Sunrise Service at a meeting of the Eastland Ministerial Association held Monday morning at the White Elephant.

The Sunrise services will be held Sunday, April 14, at 6 a. m. at the Bethel Baptist Church, and is sponsored by the Ministerial Association.

Rev. Eugene H. Surface, pastor of the First Presbyterian Church, will bring the Easter message. His topic will be "Alive Unto God".

Program for the service will be as follows:
Prelude, Homer Terry.
Call to Worship, Rev. Ray McKamy, First Christian Church.
Hymn, "All Hail the Power of Jesus' Name"

Invocation, Rev. Hoston Brewer, First Baptist Church
Hymn, "He Lives"
Scripture Lesson, Rev. William Fisher, First Methodist Church
Prayer, Rev. Joe Downs, First Church of God
Offering, Rev. H. B. Terry, Bethel Baptist Church
Hymn, "Christ Arose"
Easter Message, Rev. Surface
Benediction, Rev. Clarence Mangers, Church of the Nazarene.
Postlude, Homer Terry

Other business at the meeting was the assignment of weekly devotionals.

Lone Star Gas Gives Report On 1962 Earnings

DALLAS — Lone Star Gas Company and its wholly-owned subsidiaries — Lone Star Producing Company and Lone Star Gathering Company — had a consolidated net income

of \$17,268,033 in 1962, the largest ever attained. This was \$1,672,129, or 10.7 per cent more than net income for 1961, according to the annual report to shareholders.

After deducting dividends of \$68,172 paid on the convertible preferred stock, net earnings applicable to common stock were \$1.18 per share, based on 14,547,386 common shares outstanding at the end of 1962.

This compares with \$1.07 on

14,523,152 shares outstanding at the end of 1961. The slight increase in the shares of common stock outstanding is due entirely to conversions of the 4.84 per cent convertible preferred stock.

Operating revenues of the companies are derived from the sale of natural gas, oil, gasoline and other petroleum products and were \$140, 970, 938 in 1962. This is an increase of \$3,248,890 over 1961.

WORTH FOOD MART

The SURE SIGN OF QUALITY!

PEAS OR — 10-oz.		
Golden Corn Silverdale Frozen	10 pkgs.	\$1.00
FROZEN — All Varieties		
Banquet Dinners	11-oz. pkg.	49c
MEXICAN OR ENCHILADA PATIO DINNER	Each	53c

Listernine Antiseptic 14-oz. Btl. 59c
Lotion Shampoo Lustre Creme Large Btl. 39c

CLIP AND SAVE!

50 BONUS S&H GREEN STAMPS
With this Coupon and Purchase of Two (2) 1-lb. Pkgs. of BLUE BONNET MARGARINE
Void after Sat., April 6, 1963

WORTH FOOD MART

CLIP AND SAVE!

50 BONUS S&H GREEN STAMPS
With this Coupon and Purchase of An 11-oz. Jar of Powdered COFFEE MATE
Void after Sat., April 6, 1963

WORTH FOOD MART

CLIP AND SAVE!

25 BONUS S&H GREEN STAMPS
With This Coupon and Purchase of Two (2) 3-oz. Pkgs. of Regular or INSTANT ROYAL PUDDING
Void after Sat., April 6, 1963

WORTH FOOD MART

CLIP AND SAVE!

50 BONUS S&H GREEN STAMPS
With This Coupon and Purchase of A 6-oz. Jar of Nescafe INSTANT COFFEE
Void after Sat., April 6, 1963

WORTH FOOD MART

CLIP AND SAVE!

100 BONUS S&H GREEN STAMPS
With This Coupon and Purchase of A 46-oz. Bottle of Texize HOUSEHOLD CLEANER
Void after Sat., April 6, 1963

WORTH FOOD MART

SILVER DOLLAR DAYS

- FRUIT COCKTAIL Hunt's Fancy 6 No. 300 Cans \$1.
- VIENNA SAUSAGE Libby's Finest 5 4-oz. Cans \$1.
- Pineapple Dole Chunks 5 No. 211 Cans \$1.
- Golden Corn Kounty Kist Wh. Kernel 7 12-oz. Cans \$1.
- Tomato Juice Hunt's 4 46-oz. Cans \$1.
- Tomatoes Homefolk 8 No. 303 Cans \$1.
- Punch Hawaiian-Rosy Red or Sunshine Yellow 3 46-oz. Cans \$1.
- Lima Beans Seaside 8 No. 300 Cans \$1.
- Pickles Betty-Sour-Dill or Hamb. Sliced Dills 3 32-oz. Jars \$1.
- Hunt's Catsup 5 Bottles \$1.
- One Step Armstrong's Floor Care Quart Can \$1.
- Dog Food Ken-L-Ration 7 1-lb. Cans \$1.

Meat Features

- SIRLOIN STEAK Thirty-Cut Baby Beef Lb. 79c
- ROUND STEAK Thirty-Cut Baby Beef Lb. 79c
- T-BONE STEAK Thirty-Cut Baby Beef Lb. 95c
- RUMP ROAST Or Pike's Peak-Thirty-Cut Baby Beef Lb. 69c



- STRAWBERRIES Fresh First of the Season Pint Box 29c
- POTATOES Russet-Cello Bag. U. S. No. 1 10 Lb. Bag 59c
- AVOCADOS Medium Size Thin Skinned 2 For 25c
- GREEN ONIONS Garden Fresh 2 Large Bunches 15c

- Armour's Star Sliced Bacon Lb. Pkg. 49c
- Pork Liver Lb. 19c
- Cod Portions 12-oz. Pkg. 49c

FRYER PARTS
Breast-Thighs or Drumsticks
Mrs. Chessher's or Burgress-Frozen Lb. 69c

More Produce Values!

- Large Sunkist LEMONS Full of Juice 6 For 29c
- Cello Bag-Fresh CARROTS 2 1-lb. Bags 19c
- Fresh and Crisp PASCAL CELERY Stalk 15c
- New Crop-Texas WHITE ONIONS Lb. 10c

FREE ★ CONTINUE TO PLAY!
★ WIN UP TO \$1,000.00
★ MORE THAN 14200 Winners to Date

INSTANT BUCKS



\$25.00 WINNER — MRS. JOE VOSS
Ranger, Texas



\$25.00 WINNER — DAN MARTIN
W. Commerce, Eastland, Texas



\$25.00 WINNER — MRS. BILL HOOKS
Olden, Texas



\$25.00 WINNER — MRS. FRED BENNETT
Ranger, Texas

EASTLAND TELEGRAM

Eastland County Record established in 1931, consolidated August 31, 1951. Chronicle established 1887, Telegram established 1923. Entered as second class matter at the Post Office in Eastland, Texas under the Act of Congress of March 3, 1879.

Published Semi Weekly—Thursdays and Sundays
By Eastland County Newspapers, Inc.
H. V. O'BRIEN, Editor

One Week by carrier in city15
One month by carrier in city65
One year by mail in county2.95
One year by mail out of state6.95

NOTICE TO PUBLIC—Any erroneous reflection upon the character, standing or reputation of any person, firm or corporation which may appear in the columns of this newspaper will be gladly corrected upon being brought to the attention of the publishers.

EASTLAND'S HOSPITAL

(The following editorial appeared Tuesday morning in the Abilene Reporter-News.)
Eastland Memorial Hospital

marks another milestone in its story of progress and service to its area Tuesday.

A ribbon cutting service will be held at 2 p. m., with open house to follow until 4, on a new 14-room, 22-bed addition to the hospital.

This makes the hospital's present patient capacity 66, a fine facility indeed for a city the size of Eastland. It may be pointed out that Abilene is now in a campaign seeking money to build a new 100-bed hospital.

There are two amazing aspects to the Eastland hospital. It was built originally, and the new wing added, without a dime of state or federal financial assistance.

Secondly, the entire hospital is now completely debt free.

This is a favorable situation not many other communities can match.

Mr. and Mrs. Esco Walter members of the wedding party of Miss Stephen Marylla Walter in Abilene last Saturday.

GAS-TOONS

"You'll have to pour that oil FASTER, Oldie. I'm in a HURRY."

We'll go a LONG WAY to give you the FASTEST SERVICE!

OBI'S HUMBLY SERVICE STATION
802 W. Main
MA 9-8866

FURNITURE CARPET APPLIANCES

Quality Merchandise at Every Day Low Prices

FREE DELIVERY—NO CARRYING CHARGES ON FURNITURE and CARPETS FOR 1 FULL YEAR

Ranger Furniture Exchange
"BRASHIER'S"
123 N. Rusk Ranger Phone MI 7-1404

Hill Crest Food Market

WHEN YOU RUN OUT — RUN IN
1401 WEST MAIN - PHONE MA 9-1600

BANANAS	2 lbs.	25c
Russet Potatoes	10 lbs.	39c
FROZEN STRAWBERRIES	3 10-oz. pkgs.	59c
MRS. TUCKER'S SHORTENING	3 lb. can	59c
FOLGER'S INSTANT COFFEE	6-oz. jar	75c
KOUNTY KIST CORN (whole kernel)	2 12-oz. can	29c
GOLD CROSS MILK	4 1/2 gal. cans	59c
MIRACLE WHIP Salad Dressing	qt.	49c
KRAFT SALAD OIL	qt.	49c
DECKER'S OLEO	lb.	19c
GGOCI'S BLUE RIBBON — All Meat WEINERS	lb.	49c
FORDEN'S or FOREMOST MILK	gal. (plus bottle)	89c
MORTON'S FROZEN FRUIT PIES	3	for \$1.00
NORTHERN BATH TISSUE	4	for 29c

\$12,000 A YEAR? Red Cross Blood Program Could Save County Money

Most would agree that any project that would keep \$12,000 in additional circulation in Eastland County every year, is a good project.

Add to that the fact that every individual in the county would also receive a life-saving service, and the project does take on appeal.

That's what Les Kraft, field representative for the American Red Cross, had to say about the Red Cross blood program, in Eastland this week.

The program is new and requires total county participation, but the benefits are many, Kraft said.

Talking with Mrs. Carl Lamb Monday, he said that people in the county now use 683 pints of blood per year, based on the national average and the population of the county, and that at \$20 per pint, the total cost to Eastland County is about \$13,660 annually.

Cost of participation would be \$1,562.08 yearly, figured at eight cents per person for the 19,526 population, plus 683

pints of blood donated annually. The amount of blood is based on the average of three and one-half pints per 100 persons (the national average need.)

Blood would be available to every member of the county anywhere in the U.S. or Canada without cost to the patient for the blood itself, although there would be a charge for the administration of the blood in most cases, he said.

Mrs. Lamb is County Red Cross Representative.

Kraft further explained that if the county were to join the program, pay its share of the money and donate its share of the blood, the money saved from the first 73 pints used during the first year would pay the total yearly cost.

Any blood used in excess of the first 73 pints would realize a \$20 savings per pint and if the county's blood usage is average, this could mean a potential savings of \$12,098 that would be spent for something else within the county.

Report From College...

(ED. NOTE: We receive regular reports from Eastland college students and here's an interesting one from Lyndia Eidson, daughter of Mr. and Mrs. J. W. Eidson. Lyndia attends Texas Tech and writes of customs there.)

Well, that time of the year is here again when the smell of spring is in the air and all college students begin to get somewhat restless.

Mid-semester tests are coming to an end and students are finding themselves with a little free time than what they've had in the last few weeks.

Now is the time of the year when boys start thinking of other things besides studies (ha) and the threat of a panty-raid hangs heavy over the colleges. Last week, for instance, Texas Christian University had a panty-raid but it was quelled in time by the city police. To prevent any such extracurricular activity, most colleges give the students a spring vacation and believe-you-me it is most welcomed.

Texas Tech's spring vacation begins on April 7 and continues through April 15. Most of the students here all seem to express the same opinion — that April 7 will never get here.

In order to raise money for

the World University Service here on Tech campus, Drane Hall, a freshman girl's dorm, had "Dare Day."

On dare day some co-ed dared another co-ed to do a certain thing and if she didn't she had to pay the money. The minimum was 25 cents and the dares ranged from 25 cents to over \$10.

The girl's took the dares and there were quite a few odd sights over the campus that day. One co-ed spent her time wading in the library fountain while still others brushed their teeth in the dorm lobby while their dates looked on.

The Drane Hall housemother took a dare and dressed up in a wrap-around skirt and tennis shoes and then greeted each boy personally when he came to pick up his date. Still other girls wore odd combinations to class like high heeled shoes with wrap-around skirts and uncombed hair and some wore their clothes turned around backward.

Besides providing many laughs for curious on-lookers, the girl's succeeded in raising money for WUS.

"Time will pass, will it? That is my motto and if I don't get busy studying I might regret it.

Sincerely,
Lyndia Eidson

June 10 Deadline For Notary Appointments

Eastland County Clerk Johnson Smith announced that all qualified Notaries Public desiring re-appointment for the new term ending June 1, 1965 must re-qualify by the payment of the required fee of \$3 and the filing of a new oath and bond with the County Clerk's office, of his residence between June 1, 1963 and June 10, 1963.

Smith emphasized that Notaries Public should not send requests for re-appointment or for commissions directly to the Secretary of State. The law specifically requires that the County Clerks approve notary bonds.

Any person not now a Notary Public who desires appointment should apply to his County Clerk between April 1, 1963 and May 20, 1963. Application during this period

will assure prompt attention before the rush procedure of re-appointing present Notaries.

The County Clerk further pointed out that each person applying for a commission as a Notary Public must be at least 21 years of age and a resident of the county for which he is appointed. The exact name and permanent address of the applicant must be furnished the County Clerk.

4-H Sewing Club Meets Saturday

Members of the Eastland 4-H Sewing Club met Saturday in the home of Mrs. B. R. Sullivant to work on their projects.

Satisfactory progress has been reported on the skirts, and members hope to have them completed for the 4-H Dress Revue to be held this month.

Attending the meeting were Irene Sullivant, hostess, Barbara White, Betty Sullivant, Pat Sullivant, a new member and Mrs. Sullivant.

18,700 Acres Of Small Grain To Be Harvested

There are 18,700 acres of small grain crops to be harvested in Eastland County, according to the Texas Employment Commission.

Of that total, 4,700 is in wheat; 10,000 in oats; 1,000 in barley; and 3,000 in rye.

The figures are estimates. Dry, hard, freezes during the winter caused extensive damage to wheat in some areas and even more damage to other small grain. This coupled with the fact that moisture is urgently needed over practically the entire Texas Wheat Belt, will probably reduce production considerably.

The Commission estimates that there are 4, 181, 972 acres of small grain in the state to be harvested.

Among out of towners who attended and participated in the Eastland Band Boosters ariety Show Friday night were Miss Judy Slaughter, Miss Pat Golemon, Mr. and Mrs. Morris Smith, Mr. and Mrs. R. L. Slaughter, James Stanley Webb, Jimmy Jeffcoat, Ronnie Awalt, Roy Thackerson, Cliff Clary and others, all of Cisco.

Miss Judy Slaughter was a visitor in the home of Mr. and Mrs. A. D. Taylor and Karen Friday evening.

Mr. and Mrs. R. L. Slaughter of Cisco visited Mr. and Mrs. Artie Liles and daughter, Patricia, Friday night and attended the Band Boosters ariety Show.

Music Study Club To Present Boys' Choir

The Eastland Music Study Club will present the Breckenridge Boys' Choir in an all sacred music program on Palm Sunday, April 7, at 3:30 p. m. in the First Baptist Church.

The program will honor all Eastland junior musicians.

The community choir consisting of boys of all faiths in its 11th season, began with two selections of unchanged voices. It is now the Cathedral type choir and features soprano, alto, tenor and bass.

The 30 boys range in ages from 9 to 17 years of age.

They have made appearances in several states, approximately 14 cities and appeared on the third concert in youth series at the White House with the Greater Boston Youth Symphony, and also on radio and television.

Mrs. Ben J. Dean Jr. had been their only director until this semester. Larry Peterson, organ scholarship student

at the Texas Christian University, and a student of Emmett Smith, is the present director.

The public is cordially invited to attend the program.

Bowling . . .

(Continued from Page 1.)

Jordan's Drive Inn, Central Drug, Scott's Bait House, T. A. Newman, Altman's, Koen Salvage, Modern Cleaners, K-ERC-Fiesta, Poe Floral, Hollywood Vassarette, Johnson's Appliance and Lou Dell's Shop.

Trophies will be presented at the annual banquet to be held in May.

First place winners will also receive patches from the W.I.B.C.

Any participant who bowls a 200 game will be awarded a bracelet by the Eastland County Women's Bowling Association.

Tidbits . . .

(Continued from Page One)

The Eastland Chamber of Commerce is a broad-minded organization.

So far it hasn't done a thing to replace its Vice President Bill Fox, who isn't even in Eastland any more.

McCain Buys Angus

C. M. McCain of Eastland recently purchased an Aberdeen-Angus bull from Jesse L. Garrett of Cisco. McCain, a farmer and rancher, lives south of Eastland.

Visits Here

Mr. and Mrs. Snide Gattis of Scranton visited on Sunday with Mr. and Mrs. Joe Lawrence, 609 S. Lamar.

CARD OF THANKS
We wish to express our appreciation to all our friends for the many acts of kindness and sympathy shown to us during the loss of one. May God bless every one of you. The Family of McBee

Boswell's English Toffee
ICE CREAM

It's the coolest, old boy! Creamy ice cream chunks of chocolate-covered English swirled-in. At a party, for dessert, even for it's smashing. Try Boswell's English Toffee Cream today. You'll agree it's jolly good.

DIXIE Drive

EASTLAND RANGER HIGHWAY

FREE — TWO BIG DAYS!
Wednesday & Thursday, April 3 & 4
Another Big Annual Free Theatre Party — Days This Time! April 3rd & 4th. Come Enjoy an Evening With Us. — I. B. Walker Box Office Opens 7:00. Show Starts 7:30. Box Office Admission 60c — Children Under 12 Free. Each Wednesday & Thursday Are Bargain Day — Ad

"The Savage Guns"
RICHARD BASEHART
IN COLOR

FRIDAY — SATURDAY
"If a Man Answers"
SANDRA DEE BOBBY DARIN
IN COLOR

RANGER DRIVE-IN

Highway 60 East on Ranger Hill

Adults 50c Kids under 11 FREE
Box Office Opens 6:45 — Show Starts at Dusk

FRIDAY - SATURDAY - SUNDAY
APRIL 5 - 6 - 7

FRANK SINATRA LAURENCE HARVEY JANET LEIGH
"The MANCHURIAN CANDIDATE"

MAJESTIC
Now Thru Sat. Thu. Fri. 4:45-5:00-7:20-9:40 Sat. 12:45-1:35-4:05-6:40-9:10

KOLLYWOOD PREVIEW ENGAGEMENT

of a new first-run fun-hit!

Every boy needs a Mother but Pop doesn't want to get married-until Eddie lines up a beautiful blonde, an ultra sophisticated brunette and a thermonuclear redhead...then lights the fuse!

Metro-Goldwyn-Mayer presents
IN COLOR
The Courtship of Eddie's Father
Glenn FORD • Shirley JONES
STELLA STEVENS • DINA MERRILL • ROBERTA SHERWOOD
RONNY HOWARD • JERRY VAN DYKE • JOHN GAY
VINCENTE MINNELLI • JOE PASTERNAK • FRANK O'CONNOR • BETTINO

MONUMENT

WEATHERSOLD... PHONE 417-2724

SAVE BORDEN'S CARTON TO OR BOTTLE CAPS FOR

FREE BOWLING AT FIESTA BOWL

EASTLAND
Bowl any day from 9 a. m. to 5 p. m. (not redeemable for league play) FOUR CARTON TOPS

... OR BOTTLE CAPS
from Borden's fine dairy products listed are all you need to enjoy one FREE game bowling. No limit to the number of game bowl as long as you have four Borden's caps for each game.

MILK IN CARTON Save the complete gable top from a half gallon Borden's Homogenized Milk, Buttermilk, Gail Borden Milk, Higher-Protein Skim Milk or Santa Maria Milk.

MILK IN BOTTLE Save only the Borden's top from all Borden's Homogenized and gallon bottles of Borden's mogenized Milk.

Borden's
FINE DAIRY PRODUCTS
are better than they have to be!

**PROVERSIAL BILL HAS
RESTING EXPERIENCES**

W. GIBBENS
House, 63rd Dist.

of a controver-
Legislature has,
ast, some interest-
As author of
I am receiving
and against
general, the pro-
to have more
knowledge of what
to do than

encourages me to
each of the oppo-
Bill 510 is
of information,
ation.

for having a
Texas are fair-
I would phrase

ollows:
Texas oil industry is
help. Respon-
sors say a pool-
help. And what
oil is bound to
in the form of
and taxes.

er court decisions
ear that there is
link in an other-
oil and gas con-
in Texas. The
Commission does not
authority to deal
caused by

of land in a com-
Great inequi-
resulted in the past
tract wells were
ver-produce. The
now invalidated
age.

legal and moral
remains of what to
the small tract. Al-
well which would
and gas from neigh-
is wrong. Leav-
drained by neigh-
is wrong. The
able answer is an
ent for putting ac-
with the owners
ests and proceeds
to their hold-
is the method pro-
House Bill 510.
Some opposition to
of this bill which

**Marvel To
Revival
Harmony**

Marvel, pastor of the
Baptist Church in
Alley, will hold re-
vivals each night at
beginning Sunday
evening through East-
April 14.
ights to be ob-
serving the revival are
ing:

Monday Night, Pastor Pack
himself to pack
The public is in-
tend all services,
Monday night,
night, Sunday
at. The church will
the Sunday School
ers on this night.
Monday Night, Church
church members,
members and prospec-
members are in-

Monday Night, Ladies
this night all ladies
ers will be honored.
Monday Night, Men's
Night, all men and
be honored.
Monday Night, will be Old
Night, Services
ed as in the years
terosene lamps will
no one is to wear
Women may wear
resses and bonnets
se will worship to
aid fashioned way.
night will be Bapt-
at. The public is
see how the Lord
the church in this

Monday Baptist
the country church
country preacher."

**PURPOSE
ONE OIL
Everything
ents Rust**

SPRAY - ELECTRIC MOTOR



**PLANS COMPLETED MONDAY
FOR EASTER SUNRISE SERVICE**

Plans are complete for the
annual Easter Sunrise Service
at a meeting of the Eastland
Ministerial Association held
Monday morning at the White
Elephant.

The Sunrise services will be
held Sunday, April 14, at 6 a.
m. at the Bethel Baptist
Church, and is sponsored by
the Ministerial Association.
Rev. Eugene H. Surface,

pastor of the First Presby-
terian Church, will bring the
Easter message. His topic
will be "Alive Unto God".

Program for the service will
be as follows:

Prelude, Homer Terry.
Call to Worship, Rev. Ray
McKamy, First Christian
Church.
Hymn, "All Hail the Power
of Jesus' Name"

Invocation, Rev. Haston
Brewer, First Baptist Church
Hymn, "He Lives"
Scripture Lesson, Rev. Will-
iam Fisher, First Methodist
Church

Prayer, Rev. Joe Downs,
First Church of God
Offering, Rev. H. B. Terry,
Bethel Baptist Church
Hymn, "Christ Arose"
Easter Message, Rev. Sur-
face

Benediction, Rev. Clarence
Mannagers, Church of the Na-
zarene.
Postlude, Homer Terry

Other business at the meet-
ing was the assignment of
weekly devotionals.

**Lone Star Gas
Gives Report On
1962 Earnings**

DALLAS — Lone Star Gas
Company and its wholly-own-
ed subsidiaries — Lone Star
Producing Company and Lone
Star Gathering Company —
had a consolidated net income

of \$17,268,033 in 1962, the larg-
est ever attained. This was
\$1,672,129, or 10.7 per cent
more than net income for 1961,
according to the annual re-
port to shareholders.

After deducting dividends
of \$68,172 paid on the con-
vertible preferred stock, net
earnings applicable to com-
mon stock were \$1.18 per
share, based on 14,547,386 com-
mon shares outstanding at the
end of 1962.

This compares with \$1.07 on

14,523,152 shares outstanding
at the end of 1961. The slight
increase in the shares of com-
mon stock outstanding is due
entirely to conversions of the
4.84 per cent convertible pre-
ferred stock.

Operating revenues of the
companies are derived from
the sale of natural gas, oil,
gasoline and other petroleum
products and were \$140, 970,-
938 in 1962. This is an in-
crease of \$3,248,890 over 1961.

**WORTH
FOOD
MART**
The SURE SIGN OF QUALITY!

PEAS OR — 10-oz.		
Golden Corn Silverdale Frozen	10 pkgs.	\$1.00
FROZEN — All Varieties		
Banquet Dinners	11-oz. pkg.	49c
MEXICAN OR ENCHILADA		
PATIO DINNER ^c	Each	53c

Listernine Antiseptic	14-oz. Btl.	59c
Lotion Shampoo Lustre Creme Large Btl.		39c

CLIP AND SAVE!
50 BONUS S&H GREEN STAMPS
With this Coupon and Purchase of
Two (2) 1-lb. Pkgs. of
BLUE BONNET MARGARINE
Void after Sat., April 6, 1963
WORTH FOOD MART

CLIP AND SAVE!
50 BONUS S&H GREEN STAMPS
With this Coupon and Purchase of
An 11-oz. Jar of Powdered
COFFEE MATE
Void after Sat., April 6, 1963
WORTH FOOD MART

CLIP AND SAVE!
25 BONUS S&H GREEN STAMPS
With This Coupon and Purchase of
Two (2) 3-oz. Pkgs. of Regular or
INSTANT ROYAL PUDDING
Void after Sat., April 6, 1963
WORTH FOOD MART

CLIP AND SAVE!
50 BONUS S&H GREEN STAMPS
With This Coupon and Purchase of
A 6-oz. Jar of Nescafe
INSTANT COFFEE
Void after Sat., April 6, 1963
WORTH FOOD MART

CLIP AND SAVE!
100 BONUS S&H GREEN STAMPS
With this Coupon and Purchase of
A 46-oz. Bottle of Texize
HOUSEHOLD CLEANER
Void after Sat., April 6, 1963
WORTH FOOD MART

**SILVER
DOLLAR DAYS**

FRUIT COCKTAIL	Hunt's Fancy	6	No. 300 Cans	\$1.
VIENNA SAUSAGE	Libby's Finest	5	4-oz. Cans	\$1.
Pineapple	Dole Chunks	5	No. 211 Cans	\$1.
Golden Corn	Kounty Kist Wh. Kernel	7	12-oz. Cans	\$1.
Tomato Juice	Hunt's	4	46-oz. Cans	\$1.
Tomatoes	Homefolk	8	No. 303 Cans	\$1.
Punch	Hawaiian-Rosy Red or Sunshine Yellow	3	46-oz. Cans	\$1.
Lima Beans	Seaside	8	No. 300 Cans	\$1.
Pickles	Betty-Sour-Dill or Hamb. Sliced Dills	3	32-oz. Jars	\$1.
Hunt's Catsup		5	14-oz. Bottles	\$1.
One Step	Armstrong's Floor Care	1	Quart Can	\$1.
Dog Food	Ken-L-Ration	7	1-Lb. Cans	\$1.

Meat Features

SIRLOIN STEAK	Thirty-Cut Baby Beef	Lb.	79c
ROUND STEAK	Thirty-Cut Baby Beef	Lb.	79c
T-BONE STEAK	Thirty-Cut Baby Beef	Lb.	95c
RUMP ROAST	Or Pike's Peak-Thirty-Cut Baby Beef	Lb.	69c



STRAWBERRIES	Fresh First of the Season	Pint Box	29c
POTATOES	Russet-Cello Bag. U. S. No. 1	10 Lb. Bag	59c
AVOCADOS	Medium Size Thin Skinned	2 For	25c
GREEN ONIONS	Garden Fresh	2 Large Bunches	15c

Armour's Star Sliced Bacon	Fresh Sliced	Lb. Pkg.	49c
Pork Liver	Taste O'Sea-Frozen	Lb.	19c
Cod Portions		12-oz. Pkg.	49c

FRYER PARTS
Breast-Thighs or Drumsticks
Mrs. Chessher's or Burgess-Frozen
Lb. 69c

More Produce Values!

Large Sunkist LEMONS	Full of Juice	6 For	29c
Cello Bag-Fresh CARROTS		2 1-Lb. Bags	19c
Fresh and Crisp PASCAL CELERY		Stalk	15c
New Crop-Texas WHITE ONIONS		Lb.	10c

FREE ★ CONTINUE TO PLAY!
★ WIN UP TO \$1,000.00
★ MORE THAN 14200 Winners to Date
INSTANT BUCKS



\$25.00 WINNER — MRS. JOE VOSS
Ranger, Texas



\$25.00 WINNER — DAN MARTIN
W. Commerce, Eastland, Texas



\$25.00 WINNER — MRS. BILL HOOKS
Olden, Texas



\$25.00 WINNER — MRS. FRED BENNETT
Ranger, Texas

SELL AND PROFIT... BUY AND SAVE... GET A BETTER JOB... HIRE GOOD HELP!

Read and Use the Want Ads!

CALL MA 9-1707

ANNOUNCEMENTS

MASONIC LODGE NO. 467

Meets second Thursday of each month at 7:30 p.m. In the Masonic Hall. Call C. J. Langlitz for information or L. E. Huckabay, Sec., 9-1321, for information.

EASTLAND ROTARY CLUB

Elephant for noon luncheon Call Mike George, 9-1495, for each Monday.

SPECIAL NOTICE

GIFTS
of lasting beauty
GREEN LANTERN
GIFT SHOP
Phone MI 7-3610 - Ranger

APPALOOSA STUD SERVICE: Geronimo Return F-3984. Triple bred grandson of the Immortal Sire Mansfield's Comanche. Stop by and see his colorful 1963 foals. Mare care \$10 per month in pasture or \$1 per day in stall. Fee \$50 return in season. 12 colored foals from 15 solid mares in 1962. Contact Pete Yancey, South-Side of rodeo grounds on FM369 in Wichita Falls, Texas. Phone 692-1485. 30

SPECIAL NOTICE: Regular \$6.95 tuneup now on any make machine, clean oil and adjust machine by Singer expert mechanic for only \$2.95. Call MA 9-1314. 38

NOTICE: Complete gun repair service. Rebluing and hand loaded ammunition. Bill Cooper, Morton Valley, MA 9-2702. Eastland. 1f

HORSE BACK RIDING. \$1 per hour, weekends at old Presbyterian camp, Lake Cisco. Horses for 12 people. 34

SEWING: Plain and fancy. Call Mrs. Turner, HOME SERVICES, 517 E. Foch, MA 9-2286. 1f

SPECIAL NOTICE: For spraying under your house for termites, ants and etc., your trees, any type of shrubs and lawns and do any type of yard work. Phone MAIn 9-2434: 1f

SPECIAL NOTICE: Let us build you a new brick-veneer home - 3 Bedrooms, 2 full tile baths, built in kitchen - Total price \$11,000.00 and only \$400.00 down which includes closing costs. D. L. Kinnaid Real Estate - Phone MA 9-2544.

NOTICE: See Womack's Nursery between Gorman and De Leon for the latest pecan and fruit tree varieties. Also a wide selection of roses and landscape plants. 1f

SPECIAL NOTICE: Painting, carpenter work. All types home repairs. No job too small. Call R. C. Turner "Home Services", MA 9-2286, 517 E. Foch. 1f

SPECIAL NOTICE: COSTAL BERMUDA PLANTING. Three row and two row automatic machines. Good, clean sprigs delivered and hauled in insulated van for protection. Call or write for prices. Ardean Kimmell, Phone 3922, DeLeon, Texas. 37

SPECIAL NOTICE
\$15 cold wave for \$10.50
\$10.50 cold wave for \$8.50
\$8.50 cold wave for \$7.50
\$7.50 cold wave for \$6.50
All cold waves are quaranteen.
Hairdresser Beauty Shop
(rear 1302 S. Seaman)
(Phone MAIn 9-1430)

For plumbing, carpenter work, painting and floor covering CALL Don Daniels MAIn 9-1315

PERSONAL A5
If you are lonely, broken hearted, troubled in spirit or burdened with a sin-sick soul, you can find comfort, consolation and peace at First Methodist Church. 1f

EMPLOYMENT

HELP WANTED: Eastland Steam Laundry. Apply in person. 210 N. Lamar. 1f

HELP WANTED, MALE: Immediate opening for experienced offset pressman. Harris, Commander 24 and Multilith. Write full resume. Dobbs Printing Co, 521 N. Lee, Odessa, Texas. 29

CANVASERS AND SALESMEN: gas allowance and leads furnished! Contact Modern Homes Construction: write to P. O. Box 12381 Fort Worth, Texas or come to 4409 Benbrook Highway. Interviews from 9:00 to 11:00 A.M. Starting February 4th. 28

BUSINESS OPPORTUNITY: Do telephone solicitation from the privacy of your home. Five days per week, five hours per day, \$1.15 per hour. Write W. Vogel, Box 162, Ranger, Texas. **FOR SALE:** 17 inch Super-Crosley table model television. \$30. See at 209 N. Lamar, rear apartment. 27

MERCHANDISE K
FOR SALE: Minnows and Perch. Minnows 40c a dozen. West on Highway 80. Beside Harp Brothers Lumber Co. 30 **FOR SALE:** Dry coke box cheap. Smith's Car Lot, Olden. 29

FOR SALE: Tomato plants, several varieties. One and a half mile east, old Highway 80. Ruth's Gardens. 1f

FOR SALE: Carpets clean easier with the Blue Lustre Electric Shampooer only \$1 per day with purchase of Blue Lustre. Coat's Furniture and Carpet Co. 29

FOR SALE: Transportation economy. Like-new motor scooter for sale cheap. Perfect for round-town going economically. See at 1201 S. Seaman, Eastland. Call MAIn 9-2413. 1f

FOR SALE: "The Largest assortment of Used Trucks & Trailers, & New I H Trucks West of Ft. Worth. See Johnson Truck & Supply Cross Plains, Tex. We Buy, Sell & Trade"

FOR SALE: Six foot International tandem disc harrow. Contact B. H. Courtney, MA 91340. 1f

Complete Automobile Service
Ignition
Brakes
Minor Tune-up
"Your Best Battery Buy"
Night No. - Olden, 2653
A-1 AUTO SUPPLY 1004 W. Main MA 9-2077



FOR SALE: Collection of arrow heads. Call MAIn 9-2551. 29

RENTALS L
FOR RENT: Unfurnished 2 bedroom duplex. Real nice. Venetian blinds, hard wood floors, tile bath. Close in. Call MAIn 9-2485 after 6 p.m. 1f

FOR RENT: One and two room furnished apartments. 106 E. 14th Street, Cisco, Texas. 34

FOR RENT: Lovely furnished or unfurnished apartments, any size, bills paid, maid and hotel services included, very reasonable. Also comfortable rooms with tile baths only \$39.95 monthly. Throw away your high bills and troubles and come live with us. Mrs. Robinson, manager, Village Hotel, MA 9-1716.

FOR RENT: Small three bedroom unfurnished house—perfect location on top of park hill (south house) for schools, for swimming, play grounds. Only \$45. Call Don Pierson, MAIn 9-1033. 1f

FOR RENT: Large unfurnished apartments in duplex. 611 W. Plummer. 1f

PERMANENTS
\$10 Creme-Oil Waves \$6.50
\$12 Creme-Oil Waves \$7.50
\$12 Lanolin Waves \$8.50
Other waves \$10 and up
Basham Beauty Bar

WANTED
Good clean automobiles. Any make—Any Model Considered.

BLEVINS MOTOR CO.
See Jay Blevins, Ph. MA 9-2433 513 West Main Eastland

REAL ESTATE

FOR SALE: Three bedroom house. Close in, on small lot. Good neighborhood. Priced for quick sale. \$5,000.00 Phone MA 9-2261 after 5 p. m. and on weekends. 508 S. Daugherty St. 1f

FOR SALE: Modern two bedroom home on corner of S. Virginia and Plummer. Large living room and large ash paneled kitchen. Large lot, plenty of trees and chain link fence. Phone MA 9-2349 or MA 9-2681 for appointment. 1f

FOR SALE OR TRADE: Ten room house made into three apartments. All fully furnished and recently redecorated. Nice home for retired couple, plus income. Good location, near church. Walking distance of shopping districts. All local modern utilities connected. Paved street, three blocks from Courthouse. Presently all rented \$160 per month and should rent for more. Inspection of property by appointment only. Cotton Graham, MA 9-2362, Eastland, Texas. 31

FOR SALE: Main St. Service Station. 50 by 150 corner lot. 3 tanks, \$750 cash, finance balance. Total \$4,000. D. L. Kinnaid Agency. Phone MA 9-2544.

BARGAINS
3 DWELLINGS
ALL MODERN
3 BEDROOM
2 BEDROOM
APARTMENT
Close To School
\$7,500
\$2,000 Cash - Finance Balance
D. L. Kinnaid
Real Estate
Ph. MA 9-2544

FOR SALE BY OWNER
420 acres north central Arkansas (Izard County) on all weather road 2½ miles to pavement, 5 miles to town. School bus, R. E. A. Mail by door. 150 acres has been under cultivation now in native and improved pasture. Only 30 minutes drive to Lake Norfolk. \$50 per acre, some terms.
AROL THOMAS
Box 169
SMYER, TEXAS
After 6 p. m. Phone 2314 30

FOR SALE: Well established grocery and market. Well equipped. Corner location. Considered part trade. Reason for selling is illness. 125 N. Rusk, Ranger, Texas. Phone MI 7-3530. 4

FOR SALE OR TRADE: Will sell or trade equity in modern, roomy three bedroom home in Abilene for lake or local property. Has chain-link fence and down-drought air. Call MA 9-2413 or MA 9-1707 or write Box 29. 1f

FOR SALE: 3 bedroom home in good condition on paved street. 309 E. Sadosa. Call MAIn 9-2024 after 5 and on week ends. 22

CHICK'S RADIO AND TV
103 E. Main
Service Calls \$2.50
All work guaranteed
Phone MAIn 9-1374
Day or Night

POE FLORAL
• We're Not Too Big
• We're Not Too Small
• We're just the right size to give you the most personalized service in Eastland
• Creative arrangements of permanent flowers.
• Completely stocked at all times
When Its Flowers Say It With Ours
MA 9-1711 609 W. Main Eastland

EASTLAND AUTO PARTS MACHINE SHOP
300 S. Seaman MAIn 9-2158
FULLY - EQUIPPED
AUTOMOTIVE
VALVE GRINDING
BRAKE DRUM TURNING
HEAD SURFACING
VALVE JOBS
BLOCK BORING
SLEEVE INSERTING
VALVE SEATING
COMPLETE LINE
AUTOMOTIVE TRUCK TRACTOR PARTS
ALWAYS IN STOCK
AUTO PARTS
300 S. Seaman MAIn 9-2158 EASTLAND

4-H Elimination Contest Winners Are Announced

Winners of the County 4-H Elimination Contests held Saturday, March 23, in Eastland were announced this week by Assistant County Agent Roger Blackmon. Judges for the contests were Charles Marshall, Miss Martha Graves and Mrs. Cyrus Justice. Contest winners in the various divisions were the following:
Farm and Ranch Management Demonstrations: Bobby and Tommy Lee of the Cisco 4-H Club, sons of Mr. and Mrs. Jimmy Lee. They chose as their subject, the selection of Angora goats for increased mohair production.
Frank Claborn, son of Mr.

and Mrs. Bill Claborn, and Robert Harbin, son of Mr. and Mrs. Jeff Harbin, both of the Eastland 4-H Club, were winners in the Soil Demonstration. Share the Fun Contest winners were a group of junior Gorman 4-H Club members composed of Bobby Williams, Dwaine Snider, Jimmie Dean Warren, Connie Park, Annie Jean Taylor, Brenda Browder and Barbara Williams. Mrs. Ray Williams coached the group.
Rosa Boland and Linda Pharr, both of the Nimrod 4-H Club, were winners with a Safety Demonstration on Basic First Aid.
"Training your eyes for expert driving" was the title of a demonstration given by Rodney Harrelson and Ruby Wende, senior team members of the Nimrod 4-H Club.

LEGAL NOTICE
Notice of Sale
The board of trustees of the Eastland Independent School District will accept sealed bids until 5 p. m. April 16th at the school business office in the high school for the purpose of selling one 1951 model Ford pick-up. Vehicle may be inspected at the high school and bid forms for submitting bid may be secured in the business office. Right to reject any and all bids reserved. 30

Insurance and Real Estate
D. L. KINNAID
Life - Fire - Auto - Farm Policy - Bonds
42 years in the Insurance Business in Eastland

COMPLETE FURNITURE & UPHOLSTERING
Used Furniture Couches & Chairs
Eddie's Upholstery Spain's Feed Store Bldg.
311 N. Seaman Phone MAIn 9-1304

T. L. FAGG
REAL ESTATE
Property Management
Home and Farm Loans

MATTRESSES
Save up to 50% renovating choice of color and firmness. Complete bedding. Made and guaranteed by WESTERN MATTRESS CO., San Angelo. Phone MA 9-1342, Eastland and leave address.

EASTLAND AUTO PARTS MACHINE SHOP
300 S. Seaman MAIn 9-2158

See ahead with M. H. PERRY
107 W. Main Eastland MA 9-2275 MA 9-1095
He sells RETIREMENT INCOME Let him show you how little it costs to see ahead—and be sure.
Southland Life
INSURANCE COMPANY
Home Office - Southland Center - Dallas

County Wrecks Keep Patrolmen 'On the Move'

Highway Patrolmen were busy last weekend investigating a rash of auto accidents in the county.

Two were near Eastland, one near Cisco and one in Gorman. Friday at 12:10 p.m. a 1955 Chevrolet pickup driven by Geraldine Scitern of Gorman was involved in a collision with a 1952 International pickup driven by James Hattos of Gorman, in front of the Brown Jug Cafe in Gorman. There were no injuries but both vehicles were damaged.

Less than an hour later, a 1956 Plymouth driven by Homer Lee Hudson of Eastland, left U. S. 380, north of Cisco, ran off the road, hit power poles and came to rest on a 45 degree grade, about halfway down a 40 feet incline.

Patrolman E. M. Rogers, investigator, reported that the man was arrested by Cisco police about 5:15 p.m. and filed on for driving on the wrong side of the highway.

Resulting in the most damage was a tractor-auto crash four miles southeast of Eastland on FM 2214 about 4:25 p.m. Saturday.

A 1954 Chevrolet driven by Clifton Niles of Bonham and a farm tractor driven by Kenneth Foreman, 13, of Rt. 2, Eastland, collided.

Foreman was taken to Ranger General Hospital and Mrs. Niles, passenger in the auto was treated at Eastland Memorial Hospital. The auto was a total loss and damage to the tractor included a broken wheel, axle and transmission housing.

A 1957 Ford driven by Fred Stewart of Strawn left a county road (one-half mile west of Hwy. 6) hit a large tree and resulted in total damage to the auto and minor injuries to the driver, about 9:30 p.m. Saturday.

Another man took Stewart to Eastland Memorial Hospital, where a disturbance occurred and resulted in the arrests of both men.

Blackmon And Cooper To Attend Annual Pecan Budding Graft School At Cisco

County Agent J. M. Cooper and Assistant Roger Blackmon and co-workers from some 20 other wheat producing counties will meet in Abilene on Monday, April 8, to obtain detailed information on the approaching wheat referendum.

Similar meetings will be held in six other Texas cities, all conducted by a panel of A&M College specialists headed by John E. Hutchinson, director of the Texas Agricultural Extension Service.

In this series of meetings, agents will receive training and material which will prepare them to conduct needed educational programs designed to acquaint producers with all aspects of the referendum, the director stated.

As in the past, county Extension agents will take no sides in this issue, but will present factual, unbiased information so that wheat growers can decide for themselves, Hutchinson explained.

Lynn Ferree of Abilene and Cisco Junior College was a guest of Mrs. J. E. Turner and son, Billy Don, Turner Friday night.

GUESTS
Guests in the home of Mrs. J. W. Woods during the past week were her daughter, Robert Fitzgerald, and a niece, M. L. V. N. dridge of Midland.

Golden Age Nursing Home
104 East 4th Street Cisco Phone MI 7-3610
24 Hour Nursing Care, Good Meals - Special State Licensed and Approved For Well Patients
Jerry Stephens Administrator Mrs. Pauline Ray L. V. N.

SAVE YOUR LINE
for those extra-special occasions grace your informal table with beautiful, just-like-cloth napkins, accessories, from our new spring collection.
You'll find the gayest colors, and the most complimentary designs ever... (and so economical).
Come see... Napkins (all sizes) Place mats (20 for 59c) Coasters (to match all) Guest Towels (just right)

Selections are complete now!
EASTLAND TELEGRAM
Office Supply Center

USED CAR SPECIALS AT BLEVINS MOTOR CO.
Here are just a few of the bargain values found at BLEVINS MOTOR COMPANY. NOW...
1962 Volkswagen 2 Dr. Sedan, a real honey miles with the leather interior. You've only one for so long. Get this baby before it's gone. Only \$1500.
1961 Ford fordor sedan. Light blue color. Power steering and a real dandy. \$1700.
1958 Ford 4 Dr. It's a real buy. Black color. Has new W. W. tires — That's right only \$500.
1956 Ford 4 Dr. — Our real, real special week. Green color, V-8 engine with over 100,000 miles. A dandy value for only \$300.
See these and others on our lot before you. Every day a bargain day at Blevins Motor Co. 514 West Main Eastland, Texas

SATURDAY FEED SPECIALS
Per 100 Lbs. \$3.30 Texas King 20% Cube \$66
\$3.10 14% Creep Pellets \$62
\$2.70 No. 1 Feed Lot Pellets
\$1.10 100 Lbs. Ranch and Stock Salt
FREE ROPE WITH PURCHASE OF TON OR MORE
C. P. CLOUD & RIPPY BROS
WOOL & MOHAIR AND FEED
210 S. RUSK E. R. RIPPY

SATURDAY FEED SPECIALS
Per 100 Lbs. \$3.30 Texas King 20% Cube \$66
\$3.10 14% Creep Pellets \$62
\$2.70 No. 1 Feed Lot Pellets
\$1.10 100 Lbs. Ranch and Stock Salt
FREE ROPE WITH PURCHASE OF TON OR MORE
C. P. CLOUD & RIPPY BROS
WOOL & MOHAIR AND FEED
210 S. RUSK E. R. RIPPY

Desdemona News

Mabron Wilcoxson, who has been a patient in the Harris Hospital in Fort Worth for more than a week and underwent surgery, is reported home early this week.

Mr. and Mrs. W. H. Davis visited friends in Glen Rose Sunday afternoon and also went to the Glen Lake Methodist Camp.

The local cafe that has been closed for almost three months was reopened Saturday by Mrs. Louise McMasters.

Mr. and Mrs. J. N. Abernathy spent Sunday in the home of a daughter, Mr. and Mrs. Bob Carlton and children of Gorman. Another

daughter, Mrs. Loraine Wood of Wichita Falls also visited with them.

Derrel Blankenship of Mexico was home for the weekend with his parents, Mr. and Mrs. Bryant Blankenship.

The Lowell Johnson family of Amarillo spent the weekend here with her parents, Mr. and Mrs. R. A. Brown.

Quite a number of the Bud Carter children were home for the weekend.

Mrs. Eddie Lindley a n d baby, who have been in Germany, returned home Friday. Mr. Lindley will follow in about six weeks.

Mrs. B. E. Belyeu underwent surgery at the Gorman hospital last week and is reported to be doing well.

Bates Duke and family of Odessa were here for the weekend with his mother, Mrs. Marie Duke, and brother, Mr. and Mrs. "Humpty" Duke and family.

Dale Ables, a student at Ranger Junior College, was home for the weekend with his parents, Mr. and Mrs. Hubert Ables.

Earl Wayne Whitlock and family of Fort Worth spent the past weekend here with his mother, Mrs. George Whitlock and other relatives.

Mrs. H. T. Lane, accompanied by Mrs. Garland Dean of Gorman, spent Monday in Abilene with the McMills, former employees of the Magnolia Co. here.

The Bobby Burleson family of Okra spent the past weekend here with their parents, the A. L. Williamsons and the Russ Burlesons.

Mr. and Mrs. N. L. Bolins of Rosenberg, cousins of Mrs. Myrt Reed, were here last week. They fished at Lake Leon and reported some nice catches.

Mrs. O'Neal of Breckenridge is here this week visiting her daughter, Mr. and Mrs. Lloyd Glassen and family.

RIISING STAR NEWS

Joe Scasta Associated With Soil Conservation Staff Here

Joe Scasta, graduate of A&M College, from Bryan has joined the Soil Conservation staff at Rising Star, according to an announcement by John Lee, manager of the local office.

There were two candidates for the place of mayor in the Tuesday election, Walter Smith for re-election and L. H. Morrison, who ran a close race two years ago. Five candidates were seeking the three seats on the city council. They were Charlie Carroll and Elgie Crisp for re-election and Art Fisher, Floyd Joyce and Duwood Fussell.

The school district will name two trustees to fill the vacancies made by the expiration of the terms of Roy Holly and S. C. Cotton, Saturday. Guy McDonald will be judge for the election which will be held in the City Hall. Polls open at 8 a. m. and close at 7 p. m.

Rufus Hicks family have sold their farm in the Okra Community and have moved to the Clark estate residence on West Pioneer in Rising Star. He plans to retire.

The Rising Star Lions Club has approved the sale of brooms for the 1963 project to obtain funds for the various activities including purchasing corrective glasses for children with defective vision.

Harry Sone and Ed Croan were named to a committee to work out arrangements and set a date for the "Broom Sale."

A spring clean-up campaign for Rising Star has been set for the first week in May, according to Chamber of Commerce president, James Rutherford.

The annual program has been expanded this year to include several new projects: a street merchandising mart, an open-air carnival in which various clubs and organizations will be invited to place booths and-or furnish entertainment, a yard and lawn improvement contest, the winners to receive cash prizes from the CoC, emphasis on remodeling and modernization of more homes in the city and a thorough clean-up of community streets, alleys and residential premises.

Glen Henry, Ed Croan, Paul Maxwell and Bill Dennard were named by president Rutherford to a committee to

\$2,000 to \$3,000 per month from the sale of water to Great Western plus an unestimated amount from oil production when the flood project becomes effective.

The area reached the peak of its oil production in the late 1920s before Lake Eastland was built. It had 50 producers from 3,500 feet and was prorated in the Eastland County regular pool.

The lake was built in 1933 and is used now for recreation purposes. It is 50 feet deep in its deepest section.

Area 4. Land judging team members are Gene Burns, Franz Pittman, Davy Jones and Doug Fisher. This team took sixth place at ACC recently. Poultry judging team is composed of Arthur Jones, Jimmy Rutledge and Roger Goodwin.

Terry Geyer, Randy Lewis and John Gerhardt make up the Dairy team. Livestock judging team Tommy Darnell, Mike Pruett and Frazier Clark.

Meat judging members are Bruce and Charles Hubbard, Willie Vandivere and Danny Woolley. H. L. Geyer is the chapter advisor.



many "For many there is a tragedy. A family could afford to own a home, or have a home, or have an interest in a home had been often at a time when the tragedy of the families need help from loan specialists as our As-

with you to arrange for a loan that's as easy to handle as monthly rent.

FEDERAL SAVINGS & LOAN ASSOCIATION
Ranger, Texas MI 7-1611

YOURS! THIS LIVING CROSS EMBEDDED IN THE SACRED EARTH OF MT. CALVARY!

FREE! if you act now!

You'll receive an authentic large photograph from Mt. Calvary, the same view as seen by our dying Savior.

Hurry! Mail Coupon Today!

Enclosed is Cash Check
Money Order. Please rub Living Cross at \$2.50 each or 2 for \$5.00. Postage Paid. Enclosed is

NAME _____
ADDRESS _____
CITY _____ ZONE _____ STATE _____

CHRISTIAN IMPORTS
P. O. Box 7132 • St. Louis 77, Mo.

GIVE Round-Up STAMPS

WHITE SWAN - WHITE SWAN - WHITE SWAN

WHITENING 57¢
Round Can

WHICHES \$1.00
No. 2 1/2 Cans Sliced or Halves

FRUIT 12¢
Regular Cans

GOOD THROUGH SATURDAY, APRIL 6

Hawk Sliced **49¢**

Hawk All-Meat **49¢**

Hawk Sliced All-Meat **49¢**

Hawk Pure Pork **39¢**

Page 2 Lb. Bag **65¢**

Meat **39¢**
12-Oz. Can

You'll really go for the flavor!
10¢
300 Cans

32¢
12-Oz. Bottle

29¢
2-Pk. Cans

25¢
2-Pk. Bars

21¢
2-Pk. Bars

\$1.00
Why pay more?
Tall Cans

12 300 Cans
Apricot, Pineapple

3 18-Oz. Tumblers

Regular Box **32¢**

\$1.00
Dollar-Day Special!

303 Cans

3 48-Oz. Cans **89¢**

10-Oz. Package **19¢**

Assorted Flavors

Banquet CREAM PIES 39¢
14-Oz. Package

CAL. TREAT Frozen Strawberries 10-Oz. Package **19¢**

GULF GEM Frozen Breaded Shrimp 8-Oz. Package **49¢**

BOTH Frozen Catfish Pound Package **49¢**

FOLGER'S Instant Coffee 6-Oz. Jar **69¢**

QUANTITY RIGHTS RESERVED

WHITE SWAN TOMATO CATSUP 6 \$1.00
14-Oz. Bottles You'll enjoy the super savings!

Barillett Pears 3 No. 2 1/2 Cans \$1.00

Grape Juice 3 24-Oz. Bottles \$1.00

Tomato Juice 4 46-Oz. Cans \$1.00

WHITE SWAN Whole Blue Lake Green Beans 4 303 Cans **\$1.00**

WHITE SWAN Cream Style Golden Corn 7 303 Cans **\$1.00**

WHITE SWAN Tomato Sauce 12 8-Oz. Cans **\$1.00**

WHITE SWAN Fresh Cucumber Kosher Dill Pickles 3 Quart Jars **\$1.00**

WHITE SWAN Cut All Green Asparagus 5 Picnic Cans **\$1.00**

WHITE SWAN Luncheon Peas 6 303 Cans **\$1.00**

Perk up your breakfast!

WHITE SWAN COFFEE 57¢
Choice of Grinds Pound Can

WHITENING 57¢

WHICHES \$1.00

FRUIT 12¢

GOOD THROUGH SATURDAY, APRIL 6

Hawk Sliced **49¢**

Hawk All-Meat **49¢**

Hawk Sliced All-Meat **49¢**

Hawk Pure Pork **39¢**

Page 2 Lb. Bag **65¢**

Meat **39¢**
12-Oz. Can

You'll really go for the flavor!
10¢
300 Cans

32¢
12-Oz. Bottle

29¢
2-Pk. Cans

25¢
2-Pk. Bars

21¢
2-Pk. Bars

\$1.00
Why pay more?
Tall Cans

12 300 Cans
Apricot, Pineapple

3 18-Oz. Tumblers

Regular Box **32¢**

\$1.00
Dollar-Day Special!

303 Cans

3 48-Oz. Cans **89¢**

10-Oz. Package **19¢**

Assorted Flavors

Banquet CREAM PIES 39¢
14-Oz. Package

CAL. TREAT Frozen Strawberries 10-Oz. Package **19¢**

GULF GEM Frozen Breaded Shrimp 8-Oz. Package **49¢**

BOTH Frozen Catfish Pound Package **49¢**

FOLGER'S Instant Coffee 6-Oz. Jar **69¢**

QUANTITY RIGHTS RESERVED

WHITE SWAN TOMATO CATSUP 6 \$1.00
14-Oz. Bottles You'll enjoy the super savings!

Barillett Pears 3 No. 2 1/2 Cans \$1.00

Grape Juice 3 24-Oz. Bottles \$1.00

Tomato Juice 4 46-Oz. Cans \$1.00

WHITE SWAN Whole Blue Lake Green Beans 4 303 Cans **\$1.00**

WHITE SWAN Cream Style Golden Corn 7 303 Cans **\$1.00**

WHITE SWAN Tomato Sauce 12 8-Oz. Cans **\$1.00**

WHITE SWAN Fresh Cucumber Kosher Dill Pickles 3 Quart Jars **\$1.00**

WHITE SWAN Cut All Green Asparagus 5 Picnic Cans **\$1.00**

WHITE SWAN Luncheon Peas 6 303 Cans **\$1.00**

Perk up your breakfast!

WHITE SWAN COFFEE 57¢
Choice of Grinds Pound Can

WHITENING 57¢

WHICHES \$1.00

FRUIT 12¢

GOOD THROUGH SATURDAY, APRIL 6

Hawk Sliced **49¢**

Hawk All-Meat **49¢**

Hawk Sliced All-Meat **49¢**

Hawk Pure Pork **39¢**

Page 2 Lb. Bag **65¢**

Meat **39¢**
12-Oz. Can

You'll really go for the flavor!
10¢
300 Cans

32¢
12-Oz. Bottle

29¢
2-Pk. Cans

25¢
2-Pk. Bars

21¢
2-Pk. Bars

\$1.00
Why pay more?
Tall Cans

12 300 Cans
Apricot, Pineapple

3 18-Oz. Tumblers

Regular Box **32¢**

\$1.00
Dollar-Day Special!

303 Cans

3 48-Oz. Cans **89¢**

10-Oz. Package **19¢**

Assorted Flavors

Banquet CREAM PIES 39¢
14-Oz. Package

CAL. TREAT Frozen Strawberries 10-Oz. Package **19¢**

GULF GEM Frozen Breaded Shrimp 8-Oz. Package **49¢**

BOTH Frozen Catfish Pound Package **49¢**

FOLGER'S Instant Coffee 6-Oz. Jar **69¢**

QUANTITY RIGHTS RESERVED

WHITE SWAN TOMATO CATSUP 6 \$1.00
14-Oz. Bottles You'll enjoy the super savings!

Barillett Pears 3 No. 2 1/2 Cans \$1.00

Grape Juice 3 24-Oz. Bottles \$1.00

Tomato Juice 4 46-Oz. Cans \$1.00

WHITE SWAN Whole Blue Lake Green Beans 4 303 Cans **\$1.00**

WHITE SWAN Cream Style Golden Corn 7 303 Cans **\$1.00**

WHITE SWAN Tomato Sauce 12 8-Oz. Cans **\$1.00**

WHITE SWAN Fresh Cucumber Kosher Dill Pickles 3 Quart Jars **\$1.00**

WHITE SWAN Cut All Green Asparagus 5 Picnic Cans **\$1.00**

WHITE SWAN Luncheon Peas 6 303 Cans **\$1.00**

Perk up your breakfast!

WHITE SWAN COFFEE 57¢
Choice of Grinds Pound Can

WHITENING 57¢

WHICHES \$1.00

FRUIT 12¢

GOOD THROUGH SATURDAY, APRIL 6

Hawk Sliced **49¢**

Hawk All-Meat **49¢**

Hawk Sliced All-Meat **49¢**

Hawk Pure Pork **39¢**

Page 2 Lb. Bag **65¢**

Meat **39¢**
12-Oz. Can

You'll really go for the flavor!
10¢
300 Cans

32¢
12-Oz. Bottle

29¢
2-Pk. Cans

25¢
2-Pk. Bars

21¢
2-Pk. Bars

\$1.00
Why pay more?
Tall Cans

12 300 Cans
Apricot, Pineapple

3 18-Oz. Tumblers

Regular Box **32¢**

\$1.00
Dollar-Day Special!

303 Cans

3 48-Oz. Cans **89¢**

10-Oz. Package **19¢**

Assorted Flavors

Banquet CREAM PIES 39¢
14-Oz. Package

CAL. TREAT Frozen Strawberries 10-Oz. Package **19¢**

GULF GEM Frozen Breaded Shrimp 8-Oz. Package **49¢**

BOTH Frozen Catfish Pound Package **49¢**

FOLGER'S Instant Coffee 6-Oz. Jar **69¢**

QUANTITY RIGHTS RESERVED

WHITE SWAN TOMATO CATSUP 6 \$1.00
14-Oz. Bottles You'll enjoy the super savings!

Barillett Pears 3 No. 2 1/2 Cans \$1.00

Grape Juice 3 24-Oz. Bottles \$1.00

Tomato Juice 4 46-Oz. Cans \$1.00

WHITE SWAN Whole Blue Lake Green Beans 4 303 Cans **\$1.00**

WHITE SWAN Cream Style Golden Corn 7 303 Cans **\$1.00**

WHITE SWAN Tomato Sauce 12 8-Oz. Cans **\$1.00**

WHITE SWAN Fresh Cucumber Kosher Dill Pickles 3 Quart Jars **\$1.00**

WHITE SWAN Cut All Green Asparagus 5 Picnic Cans **\$1.00**

WHITE SWAN Luncheon Peas 6 303 Cans **\$1.00**

Perk up your breakfast!

WHITE SWAN COFFEE 57¢
Choice of Grinds Pound Can

Old Wells Revived In Water-Flood

Water will be injected under a portion of Lake Eastland, one mile northwest of Eastland, to revive oil production in an area virtually abandoned in the early 1930's when oil men moved out to cash in on Great Western Drilling Company. Midland will start the waterflood project Monday converting two of its eight oil producers into water injection wells. All the wells are on dry land.

The company will use water from Lake Leon, 10 miles southeast of Eastland, and some 13 miles from the waterflood project.

Approximately 1,245 acres are involved in the program. Great Western is the major leaseholder and the city of Eastland is the largest royalty owner, some 30 per cent, with the remainder scattered among several hundred interest holders. The city will profit by some

REVIVAL

FIRST METHODIST CHURCH

EASTLAND, TEXAS
THE REV. W. S. FISHER, Evangelist
PAT MILLER, Song Leader

Sunday, April 7 Thru Friday, April 12

7 p. m. Sunday evening services ...
7:30 p. m. each weekday evening ...

Sermon Subjects:

Sunday p. m.: "The Weeping Christ"

Monday p. m.: "Cleansing the Temple"

Tuesday p. m.: "Answering Questions"

Wed. p. m.: "The Betrayal"

Thurs. p. m.: "The Upper Room"

Fri. p. m.: "The Crucifixion"

PRAYER SERVICES
in Sunday School class groups each evening at 7:10 p. m.

PLAIN GOSPEL PREACHING ...
GREAT CONGREGATIONAL SINGING ...

EASTER is APRIL 14th

You can still find a complete selection of Easter needs at HARELIKS, Inc.

73 JUNIOR SIZE (7-15) DRESSES	58 HALF SIZE (12 1/2-24 1/2) DRESSES
Betty Barelay — Lois Young	Munos — Tiffany Traveler
Jean Leslie — Coquette	Better Half — Lois Young
147 REGULAR SIZE DRESSES (10-20)	251 NEW SPRING & EASTER LADIES HATS
Claire Tiffany — Sir Rob	143 NEW SPRING & EASTER LADIES HANDBAGS
Lois Young — Marcy Lee	

Shop HARELIKS for your Easter outfit

Safety Inspection Center

FOR EXPERT CAR SERVICE, DRIVE IN — WE DO THE REST!
We're always ready to serve you at all times with the most complete and expert automotive service anywhere! Drive in any time — it will be a pleasure to serve you!



COMPLETE AUTO REPAIRS

24 HOUR WRECKER SERVICE

Phones MA 9-2270 Night MA 9-2224
ALLEN AUTO REPAIR
AT RUSHING MOTOR CO.
215 SOUTH SEAMAN

Local Girls Go To IL Meeting

Patricia Liles, Sherry Decker, Laverne Hensley and Mary Ann Lewis attended an Interscholastic League contest in Clyde on Saturday. Miss Liles won first place in the Shorthand division and third place in the typing division. She will attend the Regional meeting to be held in Denton.

COUNTY FARM BUREAU EXCEEDS GOAL BY 14

Henry Fry, membership chairman, reported to members of the Board of Directors of the Eastland County Farm Bureau that the organization had met and exceeded their membership goal of 575 by 14 persons, bringing the total membership to 589. Fry made this report at a meeting of the Board held

Monday at 7:30 p. m. in the office location, 311 E. Main, Eastland.

Jack Cozart, president, presided over the meeting which was opened with the invocation by Don Kincaid. Minutes of the previous meeting were read and approved.

Following a short business session, refreshments were served to Mr. and Mrs. Albert Hendricks, Mrs. L. U. Ke Palmer and Mitchell Campbell, all of Gorman; Mr. and Mrs. Henry Fry, Mr. and Mrs. Clyde Coats, Mr. and Mrs. Aubrey Easter and Don Kincaid, all of Cisco; Mr. and Mrs. John Love and Mr. and Mrs. W. L. Cantwell, all of Ranger; Mrs. Ann Justice and Ray Norris, both of Eastland; Mr. and Mrs. Pat Moseley of Olden; Herman Schaefer and Jack Cozart of Nimrod. The next meeting will be held May 6th.

If You Own Farm Properties —

... it's a good time of the year to check up on your insurance. For one thing, it's hail and wind-storm season and there are grass fires all about us. Are you adequately insured — the house, furniture, barn, machinery and other valuables? Down on the farm there is no such thing as a partial loss. When it's all over everything is gone. Our Farm Department insures everything except the ashes — we pay for them. We might save you some money — let us try!

EARL BENDER & COMPANY
Eastland, Texas (Insurance since 1924)

Dutch Godden Honored With Birthday Party

Dutch Godden of Olden was honored with a birthday party Monday evening in the home of Mr. and Mrs. George B. Hull, 405 N. Daugherty.

The table was laid in lace and centered with French hurricane candle lights. Crystal and gold appointments completed the table decor.

Mrs. George Webb presided at the punch bowl and Mrs. Pete Warren served the birthday cake. Gifts were presented by Marvin and Laverne Godden, George and Lil Hull, George and Wanda Webb, Pete and Mo Warren, Bill and Ruby Angus, Shirley and Donny Cates, Denis Godden, Triena Warren, Matt Walker, Claudia Pitts and Neil Seabourne.

Mrs. Hendricks Is Honored With Birthday Party

Mrs. Raymond Hendricks was honored with a birthday party Tuesday evening in the home of her son and family, Mr. and Mrs. Jimmy Hendricks.

After the honoree opened and displayed the gifts, refreshments of coffee, cake and ice cream were served.

Attending were the following: Mrs. Hendricks, Mrs. Ella Garrett, Mr. and Mrs. Harold Hendricks, Dale and Dean of Cisco, Mr. and Mrs. Charles Little, Mr. and Mrs. David Wiloughby, Mr. and Mrs. A. K. Garrett, Mrs. Glen Garrett and Teresa of Iowa Park, and Mr. and Mrs. Jimmy Hendricks, Kathi and Kerrie.

HOSPITAL NEWS —

Patients in the Eastland Memorial Hospital are as follows:

- Arthur James, surgical, Gordon
- Lula M. Ayers, medical
- Trannie N. Stephens, medical, Gorman
- Minnie B. Ganow, medical
- Sallie Day, medical
- Ethel Harbin, surgical
- Mary Barton, medical
- Sherman M. Root, medical
- Jessie M. Simmons, surgical, Cisco
- J. L. Little, medical
- William Moore, medical
- W. W. Roberts, medical, Strawn
- Jocie Campbell, accident
- James Ward, medical
- Robert L. Jones, medical, Cisco
- L. Lowrance, medical
- Mrs. N. M. Pippin, medical, Cisco
- Maggie Fox, medical
- Velma C. Wells, medical, Ranger
- O. J. Moore, medical
- Robert Ed Townsend, medical, Cisco
- Etta Watt, medical, Cisco
- Lyman Leach, medical
- Sallie Moore, medical
- Addie P. Overstreet, medical
- Robert S. Hill, medical
- T. L. Fagg, medical
- Vernon Wright, medical
- John Chipman, medical, Gordon
- Frank Day, medical
- Joe T. Wheat, medical, Baird
- Frances M. Cogburn, medical
- Frank Sayre, medical
- Nora Payne, medical
- Mattie McPherson, medical, Cisco
- Mrs. Josie Robinson, medical.

This company has been in operation since 1942 selling policies to be used primarily for burial purposes. We write fire to \$600 and our policies are paid in cash, allows freedom in the selection of the Director of your choice. Ages from 1 month to 90 years. For further information come by to **Hammer Funeral Home, 301 S. Lamar, P. O. Box 431 Dial MAIn 9-2**

Hammer Life Insurance Company
Ben E. Hammer, President

RCA Victor
"The Pick Of The Portables"
slim, trim, great performance
• 18.0 Pictu
• Mon
• Ant
• Carry
• Hand
• Light
• Liveli
THE "ROOMMATE" Model 94A64-M
19" [overall diag.] 172 sq. inch picture
\$139⁹⁵

Robertson TV Sale & Service
100 W. Commerce — EASTLAND — MA

SAVE PLAID STAMPS FOR GIFT AFTER LOVELY GIFT! CHOOSE AP'S LOW PRICES FOR...

Cash Savings TRIP after THRIFTY TRIP!



U.S.D.A. INSPECTED WHOLE FRYERS 27¢ lb.

- "Super-Right" Grain Fed Heavy Calf
- CHUCK ROAST lb. 59c
- ARM ROAST lb. 69c
- LOIN STEAK lb. 89c
- PORK CHOPS Quarter Pork Loin Sliced in Chops lb. 53¢
- SLICED BACON ALL GOOD 1-lb. pkg. 45¢

PRICES GOOD THRU APRIL 6, 1963
Cap'n John's Frozen
Perch FILLETS .. lb. 49c
Fish Steaks 2 10-oz. Pkg. 59c
Flounder FILLETS lb. 59c
Scallop Dinner .. 8-oz. 49c

30 EXTRA PLAID STAMPS WITH "SUPER-RIGHT" PURE PORK SAUSAGE 2-lb. Bkg. 39c
25 EXTRA PLAID STAMPS WITH "SUPER-RIGHT" SMOKIES Brown 'n Serve 12-oz. Pkg. 79c

100 Extra Plaid Stamps
With a Purchase of \$10.00 or more (Excluding Cigarettes)
At your ASP Eastland, Texas
LIMIT ONE COUPON PER CUSTOMER
Del. 4/4/63 Coupon Good thru April 6, 1963

BANQUET FROZEN Coconut, Lemon, Choc., Banana or Strawberry
CREAM PIES 3 \$1.00 11-oz. Size

HORMEL MEAT Canned 6 3-oz. Cans 49¢
CRISPO-CIRCUS COOKIES 14-oz. Pkg. 29¢
KOBEY'S SHOESTRING POTATOES 2-oz. Can 10¢
ROYAL DISH TOMATO SAUCE 6 8-oz. Cans 39¢

HILBROS MEN'S OR WOMEN'S WATCHES Plus tax and \$39.95 in our register tapes, Ea. \$15.95
BEAUTIFUL SWISS WATCHES Plus tax and \$10.00 in our register tapes. Ea. \$7.95
THE GOLDEN ENCYCLOPEDIA OF SCIENCE Book No. 1 2.9 Ea. 49c Ea. 99c

100 Extra Plaid Stamps
With this Coupon and Purchase of WORTHMORE SOLID CHOC. STANDING RABBIT 4-oz. Each 35c
AT YOUR ASP SUPERMARKET
Coupon Good thru April 6, 1963

50 Extra Plaid Stamps
With this Coupon and Purchase of ASP BRAND INSTANT COFFEE 10-oz. Jar \$1.09
AT YOUR ASP SUPERMARKET
Coupon Good thru April 6, 1963

25 Extra Plaid Stamps
With this Coupon and Purchase of HANSCO SUGAR HONEY GRAHAMS 1-lb. Pkg. 35c
AT YOUR ASP SUPERMARKET
Coupon Good thru April 6, 1963

Jane Parker Bakery
BROWN 'N SERVE STIX 12-oz. Pkg. 19c
CHERRY OR CHOC. ICED WHITE LAYER CAKE Ea. 49c
FRESH GLAZED DONUTS 16-oz. Pkg. of 12 39c

25 Extra Plaid Stamps
With this Coupon and Purchase of ANN PAGE EXTRA WIDE, BROAD OR FINE NOODLES 1-lb. Pkg. 35c
AT YOUR ASP SUPERMARKET
Coupon Good thru April 6, 1963

25 Extra Plaid Stamps
With this Coupon and Purchase of ANN SPREAD CHED-O-BIT 2-lb. Leaf 79c
AT YOUR ASP SUPERMARKET
Coupon Good thru April 6, 1963

Sunnybrook Grade 'A' MEDIUM EGGS 2 doz. 79c

25 Extra Plaid Stamps
With this Coupon and Purchase of ANN PAGE REALLY FINE MAYONNAISE 1-lb. Jar 31c
AT YOUR ASP SUPERMARKET
Coupon Good thru April 6, 1963

50 Extra Plaid Stamps
With this Coupon and Purchase of JANE PARKER FRESH CHERRY PIES 24-oz. Each 49c
AT YOUR ASP SUPERMARKET
Coupon Good thru April 6, 1963

Fresh Produce Features
U. S. No. 1 Idaho RUSSETTS 10-lb. bag 49c
BELL PEPPERS 3 for 19c
CANTALOUPEs ... 3 for \$1.00
Florida Sweet CORN 6 ears 49c

25 Extra Plaid Stamps
With this Coupon and Purchase of ANN PAGE GRAPE JELLY 24-oz. 39c
AT YOUR ASP SUPERMARKET
Coupon Good thru April 6, 1963

25 Extra Plaid Stamps
With this Coupon and Purchase of SOME STRIKE MEDIUM RED SALMON 7 3/4-oz. can 51c
AT YOUR ASP SUPERMARKET
Coupon Good thru April 6, 1963

100 Extra Plaid Stamps
With this Coupon and Purchase of 1 Box of 2 Pair MELLOWMOOD NYLON HOSIERY DELUXE SHEERS Box of \$1.29
STRETCH SHEERS Box of \$1.59
SEAMLESS SHEERS Box of \$1.69
2 Pair

25 Extra Plaid Stamps
With this Coupon and Purchase of COLD STREAM PINK SALMON 16-oz. Can 69c
AT YOUR ASP SUPERMARKET
Coupon Good thru April 6, 1963

Mrs. Bullard Hosts Party For Co-Eds

Mrs. Kenneth Bullard was hostess to a "get acquainted" party for members of the Co-Ed Club and their guests Friday evening. Mrs. Bullard was recently elected new sponsor of the club. Members and guests were served hamburgers, dips, potato chips and cokes followed by a period of recreation.

TODAY'S BEST BUY TELEGRAM CLASSIFIEDS

Free Estimates On A New ROOF
Or Repair your old Roof Residential & Commercial
Eastland - Ranger Roofing Co.
Noble Squires
Ph. MA 9-2370 Eastland

WHEEL ALIGNING WHEEL BALANCING STARTER & GENERATOR SERVICE
VIC'S AUTO REPAIR
306 W. Main MA 9-2111

WEEKEND SPECIALS

Rosemary HAIR SPRAY
2 14-oz. cans for 1.69
Rosemary HAND LOTION
2 16-oz. Bottles 1.00

BLUE WATERS FLOW MINNOW BUCK 2.49
GASOLINE CAN 2 Gallon — All Metal Double Spout — 2.95
ROD AND REEL With Line — Ready To Use 5.95
Lifetime — Rust Proof MAIL BOXES By Rembrandt 1.98
MENS' LUNCH PAK All Metal 98c

GUARANTEED FOR EVER

7:30 p. m. Nightly Only

Central
S & H GREEN S
104 W. Main

7:30 p. m. Nightly Only

Free Estimates
On A New ROOF
Or Repair your old Roof Residential & Commercial
Eastland - Ranger Roofing Co.
Noble Squires
Ph. MA 9-2370 Eastland

JOHN 3:38
"HE THAT BELIEVETH ON THE SON HATH EVERLASTING LIFE — AND, HE THAT BELIEVETH NOT THE SON SHALL NOT SEE LIFE BUT, THE WRATH OF GOD ABIDETH ON HIM."

"LUCKY" LEROY MARVEL, Pastor HARMONY BAPTIST CHURCH Morton Valley
EXTENDS AN INVITATION TO EVERYONE TO COME TO OUR REVIVAL APRIL 7-14

SPECIAL NIGHTS
Mon. — Pastor Pack the Pew
Tues. — Sunday School
Wed. — Church Night
Thurs. — Womens Night
Fri. — Mens Night
Sat. — Old Fashion Night
Sun. — Baptizing Night

Singer: John Brothers — Musician: Wanda Skinner

SAFEWAY

SILVER DOLLAR DAYS

Books of Beauty
"The World's Great Religions"
 3 Fascinating Books.
 Books of Reverence.

- ★ Religions of the East
 - ★ Religions of the West
 - ★ The Glories of Christendom
- 3 Vol. \$4.17
 Set...

This Coupon Worth 50 Free Gold Bond Stamps
 Plus your regularly earned Gold Bond Stamps with the purchase of
1 1/2-Lb. Cello Pkg. Bel-air Frozen WHOLE STRAWBERRIES
 Coupon Expires April 6, 1963.

This Coupon Worth 50 Free Gold Bond Stamps
 Plus your regularly earned Gold Bond Stamps with the purchase of
Heavy Beef or Baby Beef BEEF ROAST
 Coupon Expires April 6, 1963.

- Tempest Tuna** Light Meat Grated Tuna. Serve a tuna casserole. **5 6-Oz. Cans \$1.00**
- Green Beans** Del Monte Whole. Add variety to your menu. **4 No. 303 Cans \$1.00**
- Canned Tomatoes** Gardenside. Juicy tomato chunks. **8 No. 303 Cans \$1.00**
- Early June Peas** Gardenside. Compliment any meal. **7 No. 303 Cans \$1.00**
- Fruit Cocktail** Town House. Five Delicious fruits blended. **5 No. 303 Cans \$1.00**
- Scot Tissue** White or Assorted Colors. Color for every bathroom. **8 Reg. Rolls \$1.00**

Redeem this coupon for 100 FREE GOLD BOND STAMPS
 With Purchase of \$10.00 or more (Excluding Cigarettes) One Per Family • Expires April 6, 1963.

This Coupon Worth 100 Free Gold Bond Stamps
 Plus your regularly earned Gold Bond Stamps with the purchase of
ONE MARIGOLD BROOM
 Coupon Expires April 6, 1963.

This Coupon Worth 75 Free Gold Bond Stamps
 Plus your regularly earned Gold Bond Stamps with the purchase of
6-Oz. Jar Folger's INSTANT COFFEE
 Coupon Expires April 6, 1963.

This Coupon Worth 50 Free Gold Bond Stamps
 Plus your regularly earned Gold Bond Stamps with the purchase of
7-Oz. Can Lucerne CREAM TOPPING
 Coupon Expires April 6, 1963.

U.S.D.A. Choice Heavy Beef Standing

Rib Roast
 "Naturally Aged:"
 1st thru 6th Ribs. 7-inch cut.
 Short ribs removed.
 Chine bone removed for easy carving.
Lb. 69¢



Michigan Peat
 The perfect soil conditioner. **100-Lb. Bag \$1.99**

- Bakery Features!*
- Rye Bread** 1-Lb. Loaf **19¢**
 - Cinnamon Rolls** 14-Oz. Pkg. **33¢**
 - Hot Cross Buns** Mrs. Wright's. 12-Oz. Pkg. **25¢**
 - Italiano Bread** D'Agostino. 1 1/2-Lb. Loaf **29¢**

- Pork Roast** Fresh Picnic Cut. 6 to 8-Lb. Avg. Whole. **Lb. 25¢**
- Sliced Bacon** Safeway. Thick Sliced. **Lb. 79¢**
- Beef Brisket** U. S. D. A. Choice Grade Heavy Beef. Perfect for braising. **Lb. 33¢**

More Meat Values!

- Skinless Franks** Safeway or Armour's Star. **1-Lb. Pkg. 49¢**
- Sausage** Wingate Pure Pork. Regular or Hot. **2-Lb. Roll 69¢**
- Canned Ham** Armour's Star. Ready-to-eat. **6-Lb. Can \$4.99**
- Quick Steaks** Buttered Beef. Easy to prepare. **Lb. 79¢**
- Jumbo Bologna** Sliced. A lunch box favorite. **1-Lb. Pkg. 49¢**

- Miracle Whip** Kraft Salad Dressing. (Nu Made Salad Dressing... 1/2 Qt. Jar 35¢) **Quart 49¢**
- Velveeta** Kraft Cheese Spread. Delicious mild flavor. **1-Lb. Pkg. 79¢**
- Cherries** Town House. Red sour pitted. **No. 303 Cans 6 \$1.00**
- Fruit Drink** La Lani. Pineapple-Grædfruit. **4 46-Oz. Cans \$1.00**

- Fillet** Captain's Choice. 1-Lb. Frozen Ocean Perch. **Pkg. 39¢**
- Pie** Bel-air Frozen. Large 8-inch family size. **1 1/2-Lb. Pie 35¢**
- Pinto Beans** Town House. **2-Lb. Cello 23¢**
- Salad Oil** Nu Made. For frying, baking and salad-making. **24-Oz. Bottle 29¢**
- Macaroni Salad** Lucerne. (Regular 39¢) **16-Oz. Ctn. 29¢**
- Brownie Mix** Duncan Hines Double Fudge. **15 1/2-Oz. Pkg. 45¢**

Personal Ivory Toilet Soap. It floats. 4 Reg. Bars 25¢	Fluffo Shortening Golden Fluffo. For all your baking. 3-Lb. Can 75¢
Camay Soap Complexion Soap. Assorted colors. 2 Reg. Bars 21¢	Duz Detergent Premium Pack. Duz does everything. Large Box 55¢
Camay Soap Assorted colors. For bathing. 2 Bath Bars 29¢	Oxydol Detergent With bleach added. Giant Box 69¢
West Beauty Bar Scented. So refreshing. 2 Reg. Bars 29¢	Dash Detergent With controlled suds. (Laundry size.) 20-Lb. 1-Oz. Box \$4.59
West Beauty Bar Scented. Complete protection. 2 Bath Bars 39¢	Tide Detergent With whitening power. Large Box 32¢
Ivory Snow Face Powder — For fine things. Large Box 33¢	Ivory Liquid Liquid detergent. For dishes. 12-Oz. Plastic 31¢
Calvo Tablets Measured Detergent. 24-Ct. Box 77¢	Joy Liquid Detergent. For dishes and fine fabrics. 22-Oz. Plastic 61¢
Clear Detergent Blue Cheer. For whiter clothes. Giant Box 68¢	Thrill Liquid Pink liquid detergent. 22-Oz. Plastic 61¢
Soft Hypoallergenic. For babies' undies. Large Box 33¢	Comet Cleanser Bleaches as it cleans. 2 14-Oz. Cans 33¢
Pen-L-Ration Dog Food 2 1-Lb. Cans 33¢	Mr. Clean Liquid Cleaner All purpose cleaner. 15-Oz. Bottle 39¢

Safeway Guaranteed Produce!

Potatoes
 U. S. No. 1 Red.
 The vegetable powerhouse.
 So good in so many ways.
 Ideal all purpose potatoes.
10-Lb. Bag 39¢

Fresh Corn U. S. No. 1. **3 Ears 25¢**



This Coupon Worth 25 Free Gold Bond Stamps
 Plus your regularly earned Gold Bond Stamps with the purchase of
Capri Tyler Rose Bushes (2 Bushes per package)
 Coupon Expires April 6, 1963.

Rose Bushes
 Capri Tyler Roset. Climber or bush type. (2 Bushes per pkg.) **2-Bush Pkg. 98¢**
 ← 25 FREE Stamps with coupon

- Radishes** Tender and appetizing. **6-Oz. Cello Bag 5¢**
- Onions** Green and flavorful. **Bunch 5¢**
- Asparagus** Fresh. California's finest. **Lb. 25¢**

Prices and Coupons Effective Thurs., Fri. and Sat., April 4, 5 and 6, in Eastland
 We Reserve the Right to Limit Quantities. No Sales to Dealers.



SAFEWAY

Tornadoes Most Frequent During Spring Season

AUSTIN — "If spring comes, can tornadoes be far behind?"

Texans can appreciate the paraphrase of Shelley's poem. In the past two years, the U. S. Weather Bureau tallied 253 tornadoes and 383 other severe storms which resulted in millions of dollars of property damage, 85 deaths and 668 injuries.

With tornado season soon to be in full swing, the Office of Defense and Disaster Relief of the Texas Department of Public Safety has issued a special leaflet containing safety information for coping with these destructive storms.

The leaflet details procedures to follow when tornadoes threaten, whether in open country, in cities and towns, schools, factories or industrial plants. Knowing a few basic rules of what to do when a tornado is approaching may mean the difference between life and death.

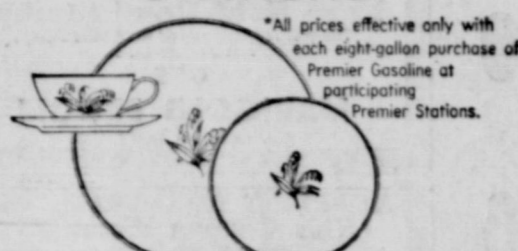
The leaflet also contains descriptive material on occurrence, frequency and weather conditions most apt to produce tornadoes.

Free copies of the special leaflet can be obtained through local civil defense directors and from the Office of Defense and Disaster Relief, Texas Department of Public Safety, in Austin.

IMPORTED TRANSLUCENT CHINA

99c*

4-PIECE PLACE SETTING AT YOUR PARTICIPATING



"Golden Rhapsody" is the lovely, translucent china you've dreamed of owning. Introduced in Vogue magazine and advertised for \$5.25 per place setting, this dainty imported china features graceful gold and smoke-grey leaves with twin sprigs of delicate blossoms on porcelain white china—rimmed with a fine golden border—and it's yours for less than the cost of pottery at participating Premier service stations. Start your set today with an eight gallon purchase of Premier Gasoline.

- COMPLETE YOUR SET WITH THESE SERVICE PIECES:
- CREAMER 99c ea.
 - COVERED SUGAR BOWL 99c ea.
 - SOUP PLATES 99c (set of 4)
 - EXTRA CUPS 99c (set of 4)
 - FRUIT DISH 99c (set of 3)
 - VEGETABLE DISH \$1.99 ea.
 - 12" MEAT PLATTER \$1.99 ea.
 - GRAVY BOAT and Dish \$1.99 set



ALL PURPOSE 3-IN-ONE OIL Oils Everything Prevents Rust

REGULAR — OIL SPRAY — ELECTRIC MOTOR

For civilized man, the toothbrush does for the teeth what raw, coarse and massaging foods did for the teeth of primitive man.

It removes the food debris in which the acid-producing bacteria of the mouth thrive. The function of the toothbrush is to clean the teeth and to help maintain the gums in a healthy condition.

There are three conditions that must exist in the mouth before decay results. These include bacteria, easily fermentable foods like sugars, and sheltered places which

WHAT IS POOLING?

In spite of all the jokes about "oil-rich Texans," most Texans aren't rich. Relatively few of them have even one oil well.

All Texans have a stake in the oil business, however, because it makes jobs, puts money into circulation, and pays taxes.

Texas oil operators have to compete with those in other states and foreign countries. This competition is tough and growing tougher. Improvements in production methods for greater efficiency are necessary in Texas. It is a question as to whether Texans prefer to do this job themselves or let the federal government do it.

Many of the most responsible people in the oil industry believe the Texas Legislature can solve some of the most troublesome problems by passing House Bill 510, an oil and gas pooling bill. "Pooling" in oil field language simply means putting separately-owned pieces of acreage together, sharing costs of drilling a well, and splitting any income proportionately.

A fair pooling law would create drilling blocks of uniform and proper size (according to the spacing pattern of the field). It would help the industry to cut down on unnecessary development drilling and thus free capital for more "wildcat" drilling. It would provide a legal way for landowners to divide their minerals in proportion to their holdings.

An outcry has been raised against House Bill 510 by the professional "small-tract drillers," who for many years have enjoyed the legal sanction to produce oil and gas which rightfully belonged to someone else. Advocates of pooling do NOT think that property rights should be confused with the "right" to take another man's property — or that free enterprise should cover the FREE CONFISCATION of another's oil and gas.

Contrary to claims of persons who, for reasons of their own, want to retain the outmoded methods of the past, House Bill 510 does NOT tie up large blocks of acreage with one well; it does not affect any wells already drilled or reservoirs already developed; it does not take away the landowner's bargaining power or change the terms of any lease except to the extent necessary to form a drilling block. House Bill 510 would merely give all landowners an opportunity to have their properties developed when some owners cannot be located or one owner seeks to obtain an unfair advantage. The rights of all would be EQUALLY protected.

Ask your Senator and Representative at Austin to support House Bill 510 — so Texas, too, will have a reasonable and legal way to assure each landowner his FAIR SHARE.

(For further information write Committee for Equitable Development of Texas Oil & Gas Resources, 341 Mellie Esperson Building, Houston 2.)

(Pol. Adv. — Paid for by Committee for Equitable Development of Tex. Oil & Gas Resources, C. W. Alcorn, Chairman.)

PAGE TWO

ABOUT YOUR HEALTH



A weekly public service feature from the Texas State Department of Health. HENRY A. NOLLE, M.D., Commissioner

The duty of the toothbrush is to interrupt these conditions by removing sugar residue before the decay-producing acids can be formed from them.

Another function of the toothbrush is to prevent deposits of debris, known as tartar or calculus. For a few hours, these deposits remain soft enough to be removed by the brush. But afterward, they become hardened to the extent that a dentist's steel instrument is necessary to scrap them off.

If tartar is left to accumulate, the gum tissue becomes irritated. This can lead to serious disturbances in the gums and supporting tooth structure.

Dentists emphasize the importance of correct tooth-brushing procedures to minimize injury to the gum tissues. Often, vigorous or improper brushing may cause the gums to bleed, but dentists say that there is no harm if this condition continues only a few days.

The tissues covering the gums will become toughened and thickened, just as calluses form on a hand doing hard labor. If, however, the bleeding persists from brushing, the condition should be checked by a dentist.

Brushing correctly is important. Equally important is regular brushing. It is the responsibility of parents to develop the habit of regular brushing after meals in each child so that regular brushing will become a natural pattern of his life.

Check with your dentist concerning the proper size toothbrush and grade of bristle. Also change toothbrushes when they become too soft.

Let's face it we don't eat the coarse, raw or abrading foods of primitive man, so we have to brush our teeth. (A weekly feature from Public Health Education Division, Texas State Department of Health.)

Lone Star Gas Gives Report On 1962 Earnings

DALLAS — Lone Star Gas Company and its wholly-owned subsidiaries — Lone Star Producing Company and Lone Star Gathering Company — had a consolidated net income of \$17,268,033 in 1962, the largest ever attained. This was \$1,672,129, or 10.7 per cent more than net income for 1961, according to the annual report to shareholders.

After deducting dividends of \$68,172 paid on the convertible preferred stock, net earnings applicable to common stock were \$1.18 per share, based on 14,547,336 common shares outstanding at the end of 1962.

This compares with \$1.07 on 14,523,152 shares outstanding at the end of 1961. The slight increase in the shares of common stock outstanding is due entirely to conversions of the 4.84 per cent convertible preferred stock.

Operating revenues of the companies are derived from the sale of natural gas, oil, gasoline and other petroleum products and were \$140,970,938 in 1962. This is an increase of \$3,248,890 over 1961.

Revenues from sales of natural gas were \$124,328,294, a gain of \$5,427,401 over 1961. A portion of this increase is due to additional customers served and a substantial increase in sales to and revenues from industrial and electric generation accounts.

can pay off in richer yields on less land this year.

Instruction sheets may be obtained from local branches of the Soil Conservation Service or direct from the testing laboratories. The practice varies in different areas but a composite sample from cores or slices of soil taken from 15 to 20 different spots is usually the rule. Small areas that differ in color, texture or drainage should be voided or sampled separately.

Soil testing should be considered on a crop rotation basis where it is possible. Sampling soils every three to five years, or once during a rotation cycle is sufficient to maintain an adequate mineral level and make necessary adjustments in fertilization practices.

The value of maintaining a healthy soil cannot be overestimated. Just like humans, soil can get "sick" due to deficiencies in its "diet". When planning crops for a certain plot of land, the farmer should know what that soil needs in the way of proper fertilizers. The initial cost will be returned in better yields.

Advantages Of Soil Testing

With one crop year just behind us, Texas farmers are already planning steps for starting the circle all over again.

One important step that can be taken now is to send soil samples to laboratories for analysis. This early sampling helps assure the farmer of getting the best results from their soil during 1963. And early testing gives plenty of time to place orders for the proper types of fertilizer which the soil may need.

A number of state and federally-operated laboratories, as well as private concerns, offer this service to the farmer. Those who want to get a diagnosis of their soil needs can consult their county agent for the location of the nearest laboratory. The test

how do you know you don't like to Bow

(if you've never bowled)

Bowling is habit-forming, we'll admit, but you know that you'll agree with us that once you've tried it, that it's a habit you'll like, and that it's the most relaxing and most relaxing exercise there is. Come try it.

(And it's easy: we have the shoes, we'll have with instructions and help you learn to keep

OPEN BOWLING TIMES

Monday — 8 a. m. to 6:30 p. m.
Tuesday — 8 a. m. to 7 p. m. & after 9 p. m.
Wednesday — 8 a. m. to 8:30 p. m. & after 10 p. m.
Thursday — 8 a. m. to 6:30 p. m.
Friday — 8 a. m. to Midnight
Saturday — 8 a. m. to Midnight
Sunday — 1 p. m. to Midnight

FIESTA BOWL

EASTLAND
Hwy. 80 East

SATURDAY IS STRAW HAT DAY

western straws by DOBBS

Whether for relaxing or working, Western Straws by Dobbs reflect both style and practicality. Light in weight, featuring the nized Dobbs custom-crafted hand detail:

BOY'S WESTERN ALL SIZES \$2.98 & \$4.00 \$4. to

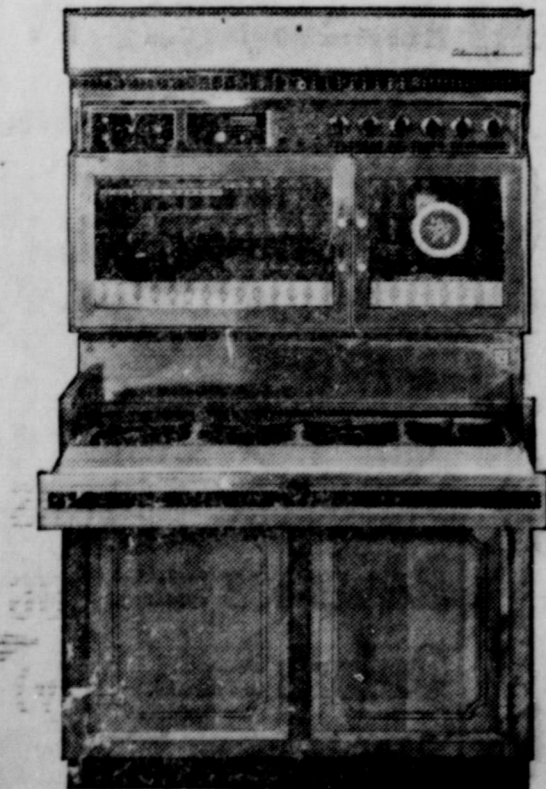
DOBBS MESSINA

Shaped of finely woven straw braid, always lightweight yet durable, Dobbs Messina is a hat for town or country. The pinch front styling of the elegant crown compliments the smart snap and curl of the brim.

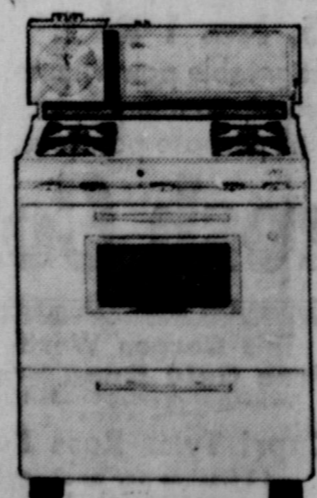
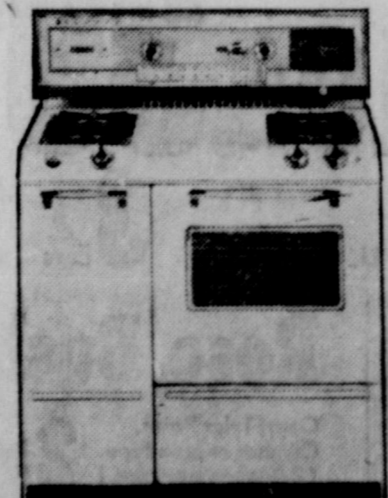
\$5.9

THE MEN'S SHO

EASTLAND



SALE!



9 big differences in clean, modern GAS cooking

If you're cooking on a teen-age range, you'll find worlds of difference in the good-looking, good-cooking gas ranges of 1963. **■** Burner-with-Brain ends pot-watching. **■** Cook 'n' Keep Oven cooks to perfection then automatically keeps food serving-hot for hours without over-cooking. **■** Lighted oven and window let you check foods without opening door. **■** Meat thermometer gives you perfect roasts automatically. **■** Automatic rotisserie adds a new dimension to cooking. **■** New styling that gives a built-in look also offers you lovely colors. **■** And there's a difference that no other range but gas gives you: **■** Closed-door broiling for a cleaner, cooler kitchen, **■** instant-hot, instant-off control, **■** 4-to-1 economy. Isn't it time you had a new gas range? Now's the time to buy... they're on sale!

discover worlds of difference with modern **GAS**

LONE STAR GAS COMPANY

FREE DURING THE SPRING GAS RANGE SALE. Get your Gas Range while it lasts! Also get your Dish-A-Dip recipe wheel at Gas Appliance Dealers and Lone Star Gas.

House
Gas Leases
Proceedings
Transfers
License
Change Licenses
 Bewaine Ashcraft
 Louise McGough.
 Lynn Mezell and

Margaret Jo Ann Dorsey.
 Lewis Edward Brooks and
 Gaylon Catrene Lukes.
Suits Filed
 The following suits were filed for record in the 91st District Court last week:
 In Re: Betty Jean Gatlin, et al, dependent or neglected children.
 Chanie Mae Lewis vs. Bernard Lewis, divorce and child custody.
 Federico Lopez Garza vs.

ANY MAKE - ANY MODEL!



1907 CADILLAC

Yesterday's Service Methods
 are Out-Dated too!

for all makes . . . minor
 complete brake service.
 specialists (wheel
 pack, etc.) Make our
 auto service center —
 you drive an old or a new

MOBIL
ICE STATION
 Main — MA 9-2220

ESCAPE ARTIST

If you'd like to escape everything but pure enchantment, try this Chevy II Nova SS with full Super Sport equipment. Special instrument cluster. Front bucket seats. All-vinyl interior. Distinctive SS identification. Full wheel disks. Choice of three-speed shift or floor-mounted Powerglide automatic* with sporty range selector console.

All this plus Chevy II standard features: flush-and-dry ventilating system that helps remove rust-causing elements from rocker panels; battery-easing Delco-tron generator; convenient self-adjusting brakes; longer lasting exhaust system; styling fresh as morning coffee, poured into a rugged Body by Fisher—and more. You'll find two can live as cheaply as one—when they're living it up in a new Chevy II! *Optional at extra cost.



Chevy II Nova 400 SS Convertible above. Also available as SS Coupe, Super Sport equipment optional at extra cost. Also a choice of 10 regular Chevy II models.

SEE WHAT'S NEW AT YOUR CHEVROLET DEALER'S

MULLEN MOTOR COMPANY INC.
 205 E. Main EASTLAND Phone MA9-2676

Irene Rameniz Garza, divorce.
 Jim Proctor, dba Proctor Sales & Service Co. vs. June Bunch, a widow, and Gardner Karnes, foreclosure of mechanic's lien.
 Ida Jo Brooks vs. Donald Charles Brooks, divorce.
Orders and Judgments
 The following orders and judgments were rendered from the 91st District Court last week:
 Patsy R. Long vs. Vernon L. Long, order.
 Patsy R. Long vs. Vernon L. Long, judgment.
 In Re: Betty Jean Gatlin, et al, order.
 Mary Carolyn Little vs. James Woodrow Little, Jr., order of dismissal.
 Betty L. Emerson vs. Roy Emerson, order.
 Beverly Jean Woodruff vs. Robert Charles Woodruff, judgment.
 Ex Parte: Larry Estel Patton and James Allen Patton, minors, order.
 Mrs. W. B. Rucker, a widow et al vs. C. E. Paul, default judgment.
 In Re: Betty Jean Gatlin, et al, dependent or neglected children, judgment.
 Don H. Elliott vs. Jess W. Cole, judgment.
 The following instruments were filed for record in the County Clerk's office last week:
 Mary L. Arnold et al to Guy P. Parker, power of attorney. Gerald Allison et al to A. A. Hutton, oil and gas lease. American Metal Chmax, Inc. to Lloyd L. Parks, power of attorney. Jack Bradley et ux to Hidalgo Oil & Gas Co., Inc., extension of lien.
 Calvin Brown et ux to Handley Kirk, release of vendor's lien. A. J. Blevins, Jr. et ux to Herbert Ekert, warranty deed. Earl Bender, et al to The Public, affidavit. E. P. Crawford et al to Housing Authority of Cisco, warranty deed. E. P. Crawford et al to City of Cisco, dedicated easement. Citizens National Bank of Waco to Bernal B.

Hickman, release deed of trust.
 Eula Mae Crouch et al to Troy Johnson, warranty deed. City of Eastland to Horace E. Horton, quit claim deed. J. B. Downtain et al to Guy P. Parker, power of attorney. Cordie Downtain et al to Guy P. Parker, power of attorney. Mrs. Florence Delaney to B. B. Hickman et ux, release deed of trust.
 Dallas Small Business Investment Co., Inc. to Trinity Capital Funds, Inc., assignment of deed of trust. Dallas Small Business Investment Co., Inc. to Trinity Capital Funds, Inc., assignment of MML Nancy M. Driskell by Earle C. Driskell, attorney-in-fact, to A. A. Hutton, oil and gas lease. C. A. Ditmore, et ux to The State of Texas, deed. Eastland National Bank to W. C. Dreinhofer, et ux, release of vendor's lien.
 Keith R. Engelhardt, et ux to First National Bank of Cisco, deed of trust. First Federal S&L Assn. of Ranger to Charlie T. Harp et ux release deed of trust. First Federal S&L Assn. of Ranger to Thomas J. Huling, release MML. First Federal S&L Assn. of Ranger to V. M. Tollett, et ux, release deed of trust.
 G. D. Falls, et ux to J. D. Rogers to First Federal S&L Assn. of Ranger, MML and assignment. W. D. Gattis et ux to Elizabeth McCracken Donica, deed of trust. Harold R. Gage et ux to B. W. Martin, warranty deed. General Land Office of Texas to Kermit E. Pierce, grazing lease. J. T. Gregory et ux to Harland B. O'Keeffe, et ux, warranty deed.
 Ada Gardner et al to E. O. Parsons, warranty deed. Mrs. Marie Gilman, et al to Mack Gray, et al release deed of trust. Wanda Faye Gary et vir to W. E. Tyler et al quit claim deed. Highland Finance Co. to Harding Bros. Oil & Gas Co., assignment of oil and gas lease. Don Hull to W. E. Hallenbeck et al warranty deed.
 Horace E. Horton et ux to Floyd A. Woods et ux warranty deed. Mrs. Florence Jacob et al to Guy P. Parker, power of attorney. Ina Barber Jones et al to British American Oil Prod. Co., lease.

Handley Kirk to Calvin Brown, warranty deed. H. W. Lee to Gladys Summers Lee, royalty deed. Medical Technicians School of Texas to The Public, assumed name.
 Neil A. Moore to Dale M. Thomson, (4) assignment of oil and gas lease. Maudie Montgomery to R. F. Wood et ux warranty deed. Leonard B. Morgan et ux to Joe B. Criswell, assignment of contract of sale and purchase. C. M. McCain et ux to Stephenville Production Credit Assn., renewal and extension of deed of trust. Elvis B. Nelms et ux to Martha E. Kilborn, et al, quit claim deed.
 Fred J. Perkins et ux to Jim Walter Corp., MML. W. C. Parsons et ux, deceased, to The Public, proof of heirship. Harry Smith et al to Guy P. Parker, power of attorney. John O. Smith, et ux to Ralph E. Kizer, assignment of contract of sale and purchase. Verlon Eakin Stacy et vir to E. G. Revels, et ux, warranty deed. Texaco, Inc. to Kermit E. Pierce et ux release oil, gas and mineral lease.
 Dale M. Thomson to Northwest Prod. Corp., et al, assignment of interest and option. United States of America to Ellis M. Slaughter et ux, release deed of trust. United States of America to Edward Don Rupe, notice of tax lien. United States of America to Edward S. Evans, notice of tax lien. William L. Vick, et al to Guy P. Parker, power of attorney.
 Pearl Williamson, dba Paramount Hotel & Coffee Shop to The State of Texas, state tax lien. Cora Walker to C. T. Walker, warranty deed. F. C. Williamson, Ex'r. Estate of Frank Williamson, deceased, et al to C. R. Byars, Jr., lease agreement. Floyd A. Woods et ux to First Federal S&L Assn. of Ranger, deed of trust.

SUNDAY GUESTS
 Mrs. W. H. Drake had as her guests Sunday her daughter, Mrs. Marjorie Wedding and daughters, Jan and Debbie, of Abilene.

TODAY'S BEST BUY
TELEGRAM CLASSIFIEDS

HAMNER FUNERAL HOME
 Ben E. Hamner, Owner

Serving Eastland County since 1924 with ambulance and funeral service. Our ambulances are oxygen equipped and air conditioned.

Through our nation-wide connections with other funeral directors, we can handle a funeral from any point in America. We offer this service knowing that we can relieve the family of all burdens incident to any death away from home.

Eastland Dial MA 9-2611

A & C STUDIO
 is a member of
 "The Professional Photographers Association of America."

TO SERVE YOU IN QUALITY . . .
 check our prices and our work first.

no high pressure used—all portraits retouched

A & C STUDIO
 east side of square
 102 S. Seaman St. Ph. MA 9-2616

ANNOUNCING . . .

WILLIE EAVES

is now located at Village Barber Shop. He and Owner-Manager George Carter invite you to drop by and avail yourself of the finest in modern, sanitary barber service. (P. S.: you'll like Willy's crew-cuts.) Eaves is a native of this county and is well-known here.

VILLAGE BARBER SHOP
 In the Village Hotel
 209 W. Main MAIn 9-2511

DISTRICT FEDERATION PICKS MRS. HILL AS TOP TEACHER

Mrs. Minnie Hill of Cisco was named Heart of Texas district Teacher of the Year at the district federated club convention held in Ozona Monday and Tuesday, March 25-26.



MRS. HILL

Mrs. Hill, a teacher for the past 23 years at Cisco Junior College, will compete with other district winners from throughout the state for the title of Texas Teacher of the Year, which will be announced at the state meeting to be held in Dallas in May.

Post Office Is Anxious To Have Correct Address

In grade school everybody learns that "April showers bring May flowers." And later in life everyone becomes aware that May showers bring June brides. But there are many who never realize till it's too late that invitations and announcements often bring frustration to the postal service and consternation to the mailer.

The local postmaster reports that this is not because anyone involved dislikes weddings, or showers, or receptions, or any of the other functions which have to do with getting married.

"So far as post office employees are concerned," says the postmaster, "everyone in the service is anxious to contribute whatever he can to the success of these fine occasions. But sometimes the ones most interested in getting people happily started in life make helping very difficult for those of us who are charged with getting mail quickly and accurately to its destination."

Take shower invitations for instance. If they are entirely printed, mimeographed, duplicated, or otherwise wholly reproduced by machine process, they may be mailed in unsealed envelopes — or in sealed envelopes endorsed "third class" — at the third-class rate of 4 cents each. If however, the date the hour, the place the shower is to be held, the name of the prospective bride, and other pertinent information is shown in handwriting, the first-class rate of postage must be applied, regardless of whether the invitations are in sealed or unsealed envelopes.

The same regulations apply, of course, to wedding announcements, receptions invitations, birth announcements, and similar printed items on which additional information is sometimes entered.

The postmaster added that "the postal service is anxious to carry the glad tidings of marriage and its many associated functions quickly and accurately to all who are concerned wherever they may be." Those who have questions about how to make up mail of any type should call the post office.

Mrs. Hill was sponsored by the Twentieth Century Club and endorsed by other local federated clubs.

Club women from Cisco attending the convention were Mrs. Henry Fry, president of Cisco City Federation; Mrs. R. E. Grantham, chairman of Fine Arts department; Mrs. Joe Clements, chairman of Teacher of the Year; Mrs. Raby Miller, chairman of national division of public affairs department; and Mrs. J. C. Dyer, Jr., delegate from the Twentieth Century Club. Awards won by the Cisco

clubs included the following:
 Cisco City Federation of Women's Clubs—1st in City Federation yearbooks; Industrial Arts Club—1st in yearbooks for senior clubs; 2nd in recreation division of conservation department.
 Industrial Arts Club, individual awards — Mrs. R. E. Grantham, 1st in department chairman reports; Mrs. T. C. Williams, 2nd in department chairman reports.
 Twentieth Century Club—1st in literacy division, education department; 2nd in library service, education department; 2nd in art division of fine arts department; 2nd in mineral and wild life division, conservation department.
 Distinguished guests attending the convention included Mrs. A. T. Carleton of Houston, state Texas Federation of Women's Clubs president; Mrs. J. L. Ginnings of Pilot Point, 1st vice president; and Mrs. L. E. Dudley of Abilene, state parliamentarian.

Call for Appointments

on Wash - Grease
 Oil Changes
ROLLINS & SONS
GULF SERVICE
 500 W. MAIN
 MAIN 9-8840

MODERNIZE Your PLUMBING NOW and SAVE!



Add Comfort, Convenience
 Up-date your plumbing so you can enjoy time-saving fixtures and appliances. Call for free estimates today!

PHONE MAIN 9-2422

Smith's PLUMBING

HEATING — — AIR CONDITIONING
 114 NORTH SEAMAN ST. — EASTLAND, TEX.

BABY CONTEST
 AGES FROM 0-2 2-4, & 4-6
 WEDNESDAY, APRIL 3rd TO WEDNESDAY, APRIL 10th

MANY GIFTS WILL BE GIVEN BY LOCAL MERCHANTS . . .
 These prizes can be seen at A&C STUDIO now.

Participating merchants include:

CENTRAL DRUG PERRY BROTHERS
SMITTY JEWELRY — EASTLAND DRUG
HOULE BABY SHOP (612 S. Daugherty)

No obligations on entrants . . .

A&C STUDIO
 EAST SIDE OF SQUARE
 1-2 S. Seaman Ph. MA 9-2616

42nd ANNIVERSARY SALE

ONLY 2 DAYS LEFT IN THIS BIG SAVINGS EVENT! SALE ENDS APRIL 6!

**10 to 40% Discount on all Merchandise
During Anniversary Sale**

*No Interest or Carrying Charges on furniture and carpets for one full year.
FREE DELIVERY - TERMS TO SUIT*

501 DUPONT Filament Nylon CARPET



8⁹⁵ Sq. Yd.
INSTALLED

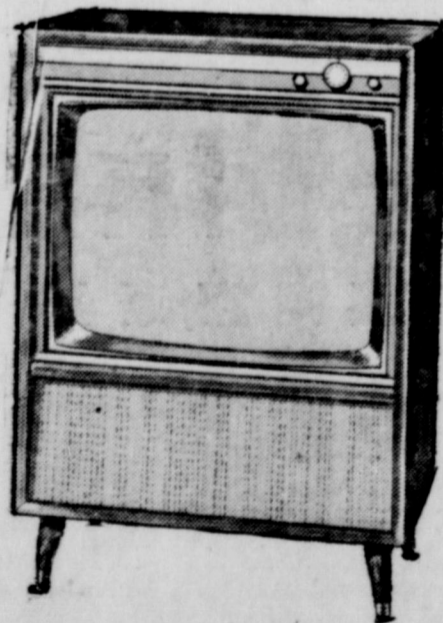
Lasting Star
by LEE'S



Wool-Nylon Acrylic	Sq. Yd.	4⁹⁵
Cork Tweed	Sq. Yd.	5⁹⁵
70% Wool - 30 %Nylon	Sq. Yd.	5⁹⁵
100% Wool Sandalwood Scrim Back	Sq. Yd.	6⁹⁵
100% 501 Label Nylon Lee's Lasting Star Choice of 22 patterns	Sq. Yd.	8⁹⁵
100% Lee's 501 Nylon Label Bon Bon Pattern	Sq. Yd.	8⁹⁵

ABOVE PRICES INCLUDE SMOOTHEDGE
INSTALLATION OVER 40-OZ. RUBBERIZED PAD.

Westinghouse TV



FINE AMERICAN CONTEMPORARY STYLING
WITH THE NEW "PICTURE WINDOW 23"

New 23" square-cornered picture tube opens up a full
278 square inches of viewing area • Big 8" wide-range
speaker provides outstanding static-free FM sound repro-
duction • "Up-Front" tuning • Set-and-forget volume
control • Push-button on/off switch. Walnut or Mahog-
any grain finishes on hardboard with selected wood
solids.

You can be sure... if it's WESTINGHOUSE

*Diagonal Measure

REG. 299.95

NOW

199⁴²

7-PIECE DINETTE SUITE

36 by 60-inch table
6 matching chairs
Various colors

Anniversary
Priced

59⁴²

KING SIZE BED

6 Inch Foam Mattress, Box Springs
Headboard Complete, Reg. 249.50

Only **199⁴²**

Great buy from WESTINGHOUSE

13 Ft. Ref.-Freezer With Trade **249⁴²**

COMPLETE FROST FREE
13 Ft. Ref.-Freezer With Trade **279⁴²**

12 Ft. Ref. 79 Lb. Locker With Trade **179⁴²**

174 LB. LOCKER
16 Ft. Ref.-Freezer With Trade **449⁴²**

ARMSTRONG OR GOLD SEAL VINYL LINOLEUM

Reg. 1.69 Sq. Yd.
Anniversary
Priced **1²⁴**
Sq. Yd.

POLE LAMPS

9⁹⁵ UP

TABLE LAMPS

2⁹⁵ UP

10% DISCOUNT ON ALL HEATERS

save for fall

ARMLESS SPOT CHAIRS

8¹⁰ Each

WESTINGHOUSE SPACE-MATES

Wash and dry 18 Lbs. at the same time in a Space
25 inches wide.

Both
Units
Only

299⁴²

Complete



LAUNDROMAT'S AUTOMATIC WASHER AND ELECTRIC DRYER

YOU CAN BE SURE... IF IT'S



Westinghouse

SOLID MAPLE BEDROOM



Triple Dresser 129.42 Panel Bed
Double Dresser 109.42 Chest
Book-Case Bed 57.42 End Table

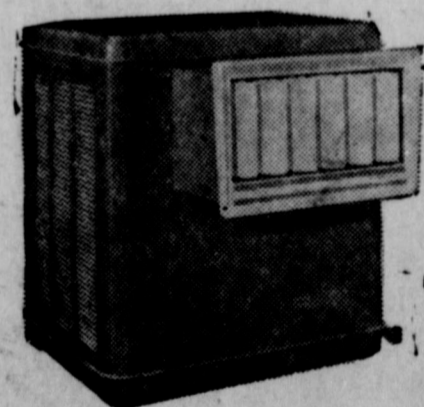
9x12 100 % RAYON RUG

• FOAM BACK • CHOICE OF COLORS
With the Purchase of Any 3-Piece
Bedroom Suite In Our Store

ONLY

4²

Obviously Better!



See the
wonderfully NEW
De'Longhi
Air Coolers.

Reg. 139⁹⁵ 4000 CFM

114

FREE NORMAL INSTALLATION

FREE DOOR PRIZES

Come in and register. No obligation — You do not have to be present to win.

FIRST PRIZE - \$100.00 WORTH OF REGULAR PRICE MERCHANDISE
SECOND PRIZE - \$50.00 WORTH OF REGULAR PRICE MERCHANDISE
THIRD PRIZE - \$25.00 WORTH OF REGULAR PRICE MECHANDISE

RANGER FURNITURE EXCHANGE

RANGER, TEX
123 N. Rusk S
Phone MI 7-14