

# EASTLAND TELEGRAM



VOLUME 94, NUMBER 72

EASTLAND, TEXAS 76448

SUNDAY, SEPTEMBER 7, 1969

PRICE: 70c

## EASTLAND JAYCEES GO TO BAT FOR ASTRO PRAYER IN SPACE

**CLUB ASKS: If you feel the same way — sign this letter and they'll deliver it to NASA Hdqs.**

N.A.S.A. Director  
In Care of Eastland Jaycees  
P. O. Box 202  
Eastland, Texas, 76448.

I just wanted to write you a short note expressing the fact that I have no objection to the astronauts of the future being granted the right to read aloud from the Holy Bible while in the midst of a space mission.

It is my opinion that to deny this privilege would be in direct conflict with our democratic way of life. Rather than continue to negate a means of spiritual inspiration in areas of public life, we would hope for the basic freedom for each individual to worship if he chooses. Thank you for considering this letter.

Sincerely,

(Address)

(City)



**OFFICIAL BUILDING TRANSFER** — On hand for the donation of a major facility given by Lone Star Gas Co. to three county organizations are from left: Jack Cozart, T. C. Fambrough, Doug Fry, Sam Kimmell, H. G. Hargus, Bill Braymar, Wilbert Simmel and James Zusspahn. (Photo by Cottons)

## Lone Star Donates Building To Youth, 3 Organizations

Youth of Eastland County are richer by some \$30,000 in property as the result of an expression of generosity on the part of Lone Star Gas Co.

The company Friday formally donated an all-steel building, valued at roughly that amount, to three county organizations for use in civic undertakings.

Official recipients are the Eastland County Sheriff's Posse, the Eastland County Livestock Raisers Association and the Eastland County Farm Bureau.

In informal ceremonies at the Farm Bureau Building in Eastland Friday afternoon, Mr. Bill Braymar, Lone Star Regional Manager from Abilene, made the presentation to

the group. A group of local residents and company officials were on hand for the event.

Mr. Doug Fry of Cisco, president of the Livestock Raisers Association, accepted on behalf of the groups. The Livestock Raisers and the Sheriff's Posse will be in direct control of the building's use. Plans call for the immediate removal of the masonry structure from the company's Pueblo Plant, north of Cisco, and the re-erection at the Livestock Raisers' and Sheriff Posse facilities north of Eastland on Lake Eastland. The building will be utilized in connection with the annual livestock show and other youth-oriented undertakings.

In use for approximately 30 years, the all-steel building measures 112 by 32 feet, and had been used by Lone Star to house a compressor plant. Recent modernization has resulted in causing the building not to be needed.

Other Lone Star officials included G. M. Hargus of near Morton Valley, pipeline superintendent; James Zusspahn, Eastland local manager; and Wilbert Simmel, Cisco local manager.

Hundreds of Eastland County 4-H Club and Future Farmers of America members participate in the annual livestock show event and other activities.

"You may start tearing that building down anytime," Mr. Braymar said, "it's yours to do with as you wish. And you can be sure that it's worth more than its appraised value."

### KINDERGARTEN NOTES

Parents who are interested in the Green Kindergarten are asked to contact Mrs. A. E. Cushman at Eastland Public Library on Monday, Wednesday, or Friday afternoons or Saturday mornings.

## TidBits



By H.V.O.

**THE MAVERICKS, 1969,** may well go down in history as the "clean team" — after Friday night's performance on the field and at the Stadium gates. In a scrimmage session with the Dublin Lions, the EHS'ers looked really good and moved the ball well. At the gate, fans responded to requests and showered the team with towels and soap; large holes of both greeted the team when they came off the field. It appeared to be a rather organized Dublin squad and the Mavericks took advantage of the situation, demonstrating speed and smart ball playing. Quarterback Craig Lutz proved to be up to his brother Steve's talent for "borrowing" the ball from the opposition; and at threading the needle with some nice passes to swift-footed receivers. (Continued on Page Four)

**Horton Tire Co.**  
Presents

## BREAD of Life

And we know that the Son of God is come, and hath given us an understanding, that we may know him that is true. — 1 John 5:20  
We know the Son of God has come;  
We know He died and rose;  
We know He liveth now  
At God's right hand above.

## Boyd Wollan, New Manager At Hollywood-Vassarette

Boyd K. Wollan, production manager of the brand grade division of Hollywood Vassarette, has announced the appointment of John B. Ryan, Jr. to plant manager of the Eastland, Texas, plant. He replaces John Whistler who has been named plant manager of the Paris, Texas, plant.

Ryan joined the company May 5, 1969, as assistant plant manager of the Eastland plant. Prior to joining Hollywood Vassarette, he had been with the H. D. Lee Company in the Kansas City area for five years. His last position with that company was quality control manager.

Ryan holds a bachelor's degree in business administration from Rockhurst College and a Masters in business administration from the University of Missouri.

John, his wife, Katay, and their 13 month old daughter make their home in Eastland. Effective date of the appointment was September 1.

### VISIT IN FORT WORTH

Mrs. Anne Harper is visiting her cousins, Mrs. Jemmie Smith and Mrs. Jake Gaunce, both of Fort Worth.

## Robert Jones Receives Top FB Presentation

Robert N. Jones of Lubbock, general claims supervisor for the Texas Farm Bureau Insurance Companies in the Lubbock area, received the Honorable Order of the Blue Goose, International, award at the Insurance Institute of America Awards Program September 4 in San Francisco.

Jones, who is 39, has been employed by TFB Insurance since 1960. He is a native of Big Spring and a graduate of Cisco High School and Texas Tech. He holds a BS degree in geology. He is a 32nd degree mason and a member of the Baptist Church.

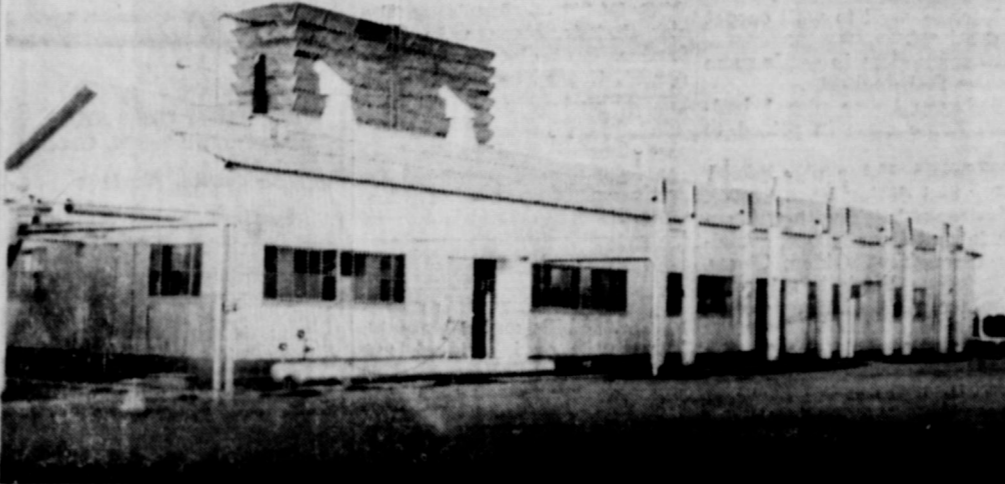
He is the son of Mr. and Mrs. Fritz Jones of Eastland and his wife, the former Mary Harlow, is the daughter of Mrs. Charlie Harlow of Eastland. They have two children, ages 12 and eight.

## Band Boosters Set Major Meet For Thursday

The Band Boosters will meet at 7:30 p.m. Tuesday, September 9, in the Band Hall. All parents of band students in the sixth grade, junior high, and high school are urged to attend.

Mrs. George Kloss, secretary, said "Enthusiastic plans for the coming year have been outlined and we feel sure all band parents will want to be a part of them."

Refreshments will be served after the meeting and a "get-acquainted" hour will be held. Paul Wallace is band director.



Pueblo Building Now Owned Locally

## Stew Supper Set By VFW Auxiliary

The VFW Ladies Auxiliary will hold a Stew Supper at 7 p.m. Thursday at the VFW Hall.

Tickets will be available at the door. All proceeds from the supper will go to purchase Gift Pacs for soldiers in Vietnam.

Games of "42" and dominoes will be played following the supper.

The public is urged to attend.

## FULLEN MOTOR CO. LAUGH-A-DAY

Gertie, the steno, was flashing a big diamond ring. "Where did you get that?" asked the boss.

"Oh," she replied, "Brandma left \$1,000 for a stone in her memory."

## W. T. Young Buried Friday In Eastland Rites

W. T. Young, 81, of Abilene, formerly of Eastland, died Thursday at Shady Oaks Lodge in Abilene, following a long illness.

Graveside rites were held at 4 p.m. Friday at Eastland Cemetery with the Rev. R. L. Kirk of Abilene, officiating.

Mr. Young was born October 31, 1887 at Canton and married Elizabeth Frances Fields at Staff in 1906. He was a plumber in Eastland prior to 1962, when he retired and moved to Abilene.

Survivors include three daughters, Mrs. Lavelle Bleuett of Lodi, Calif., Mrs. Hazel Mae Campbell of Lawndale, Calif., and Mrs. Frances Hile of Dallas; one son, W. K. Young of Abilene; eleven grandchildren and 13 great-grandchildren.



## Veteran Crop Analyzer Says County's Potential Is Great

Everett Martin of the Eastland County Agricultural Stabilization and Conservation Committee is shown measuring peanuts on the Drew Dan Jackson Farm southwest of Cisco. Mr. Martin has worked for the ASCS office for 26 years and presently serves as Field Performance Supervisor. In 1955 the U. S. Department of Agriculture presented him with an Outstanding Service Award of \$100.

Eastland County is the second largest peanut producing county in the United States. Our farmers annually collect an estimated five to six million dollars from sale of their peanuts.

Every three years peanut farmers across the country vote on whether to plant freely, or to plant an allotted number of acres with a price guaranteed to be supported by the government if the market drops. The peanut farmer have always chosen the allotment-price support system over free planting — usually by a majority of over 95%.

It is the job of the ASCS office to allot acreage and then check to see that the correct number of acres of peanuts, if a farmer plants too many peanuts, he is penalized 9c a pound.

Mr. Martin is concerned with checking the allotment acreage on Eastland County farms. There are over 32,000 acres of land planted in peanuts in Eastland County making it impossible for all farms to be checked, but the ASCS office makes random checks on 20% of the farms.

Mr. Martin checks the peanut acreage by using scaled aerial photos, chains, and a hand gauge. At one time there were fourteen men doing this work for which Mr. Martin is now personally responsible.

As to this year's peanut crop, Mr. Martin says that it is too early to speculate, but that prospects are good for one of the best peanut crops of recent years in Eastland County. He also pointed out that if market were available, Eastland County could produce three times as many peanuts as are produced.



**DELORES EAVES**  
DELORES EAVES, Parker County Princess for the Peanut Queen Pageant, is the daughter of Mr. and Mrs. Neil Eaves of Weatherford. A senior at Weatherford High School, she is a member of the band and stage band, Band Council, the Future Teachers of America. She attended Weatherford Beauty College this summer. Her entry in the talent competition will be a medley on the alto sax.



**SHANNON WILSON**  
SHANNON WILSON, 17, is the Eastland County Princess in the Peanut Queen Pageant. Daughter of Mr. and Mrs. H. T. Wilson of Eastland, Shannon is a senior at Eastland High School. She is a member of the Maverick Band, president of Eastland Youth Conference, Rotary Sweetheart, and member of Eastland Civic Theatre where she has appeared in many productions. She holds a student pilot's license and enjoys flying. She will present a dramatic monologue at the talent competition.



**MARSHA WHITE**  
MARSHA WHITE, daughter of Mr. and Mrs. L. W. White of Katy, is Mason County Princess for the Peanut Queen Pageant. She is a junior at Angelo State University and has attended Southwest Texas State Teacher's College at San Marcos, where she was a member of Delta Zeta Sorority. While in high school, Marsha was a twirler for the band, FFA Sweetheart, and District 7 Rodeo Queen. She will present a dance twirling act during the talent competition.



**ARLENE ADAMS**  
ARLENE ADAMS, a senior at Gustine High School, is Comanche County Princess for the Peanut Queen Pageant. She is the daughter of Mr. and Mrs. Wayne Adams of Gustine. She is a member of the National Honor Society, and is active in Future Homemakers of America and 4-H work. She is president of the Gustine FHA and has been selected to serve on the county 4-H chairman and a district 4-H officer. Her 4-H record book won her a trip to Purdue University, where she performed in the world famous Purdue Music Theatre. She placed in the top ten in the "World's Ideal Miss" Pageant in Baton Rouge, Louisiana and was the 1969 Rodeo Sweetheart. She sang the National Anthem at all performances of the State FFA Rodeo. She will sing during the talent competition at the pageant.

## First Bowl Queen Contestants Due in This County Thursday

Contestants for the first annual Texas State Peanut Queen Pageant will arrive in Eastland Thursday and will be honored that night at a Poolside Press Party at Lone Cedar Country Club. Representatives of area newspapers, radio, and television stations will be guests.

The Pageant, sponsored by the Southwestern Peanut Growers Association and the Peanut Shellers of Texas in conjunction with the Eastland Jaycees, will be held Friday, and Saturday nights at the Majestic Theatre in Eastland.

The pageant is under the direction of Mrs. C. J. Douglas of Abilene, who has worked with the Miss Abilene and the Miss Texas pageants for a number of years.

Friday night, the girls will be presented in formals and in swimwear. Each girl will speak two minutes on "The Peanut Industry in My County."

Saturday night, the girls will be presented wearing formals and each girl will give a program in talent competition. Pageant trophies will be presented to each contestant and Kernal Gene Baker of Gorman will present the "Miss Congeniality" trophy. The Queen will be crowned by a representative of the National Peanut Council and (Continued on page 4)

las of Abilene, who has worked with the Miss Abilene and the Miss Texas pageants for a number of years.

Friday night, the girls will be presented in formals and in swimwear. Each girl will speak two minutes on "The Peanut Industry in My County."

Saturday night, the girls will be presented wearing formals and each girl will give a program in talent competition. Pageant trophies will be presented to each contestant and Kernal Gene Baker of Gorman will present the "Miss Congeniality" trophy. The Queen will be crowned by a representative of the National Peanut Council and (Continued on page 4)

**Freyschlag**  
INSURANCE  
Presents the WEATHER — PARTLY CLOUDY with scattered thunderstorms through Sunday. No important temperature changes.

EASTLAND NATIONAL BANK  
EASTLAND, TEXAS



# CLASSIFIED ADS

## Announcements

**MASONIC LODGE NO. 447**  
Meets second Thursday of each month at 8:00 p.m. in the Masonic Hall. Call E. M. Simpson, W.M., at 629-1065 or L. E. Huckabay, sec'y, 629-1391 for information.

**EASTLAND ROTARY CLUB**  
Meets each Monday noon at White Elephant Restaurant in Eastland.  
Roy Lee Smith, resident

## Notice

NOTICE: Keep children in my home. Also want to do ironing. \$1.50 per mixed dozen. 304 North Walnut. C 111 629-1313.

NOTICE — CARPETS and life too can be beautiful if you use Blue Lustre. Rent electric shampoos \$1. Coats Furniture.

**WATSON UPHOLSTERERS**  
Ranger Des Moines (after 5) 647-1075 758-2597  
Custom Drapes & Upholstery  
Drape & Upholstery Fabric  
Free Estimates and  
Pickup and Delivery

NOTICE: Come to Eastland Pet Shop, 208 North Oaklawn for pets and pet supplies. Tropical fish, monkeys, snakes, cats, anything you need. Open 8:30 a.m. to 6 p.m. Monday through Saturday.

NOTICE — For antenna repair due to storm damage call MIKE SITTON Cisco, 442-2985 after 6 p.m.


**NOW! STEAMATIC CARPET CLEANING** service is available in Cisco through Endeavour Janitorial Supply. Free estimate. Call 442-3109.

NOTICE: Art Classes Resume this is registration week, classes taught by La Velle Jobs. Classes offered for beginners - children ages 9 - 12; beginners - teen age; advanced or life drawing - teen age; beginners - adult; advanced or life drawing - adult; Learn and enjoy with us starting Friday, Sept. 12. Something for everyone, but please register ahead of time. Contact Pinky "La Velle" Jobs, Gorman, phone RE 4-2265.

## For Sale

FOR SALE: 6 ply Himmeler Comm. Truck Tires. 670-15, \$21.95 plus \$2.40 F.E.T. 7-10-15, \$25.95 plus \$2.55 F.E.T. 790-15, \$37.95 plus \$2.85 F.E.T. 1,000-15, \$47.95 plus \$3.32 F.E.T. 9,00-20, \$73.95 plus \$7.32 F.E.T. 10,00x20 Uniroyal Co. \$73.00 each. 670-15, 6 ply Mud and Snow, \$24.95 plus \$2.96 F.E.T. 650-16, 6 ply mud and snow, \$28.95 plus \$2.96 F.E.T. Goodyear Service Store, Eastland.

FOR SALE: 6 room house \$7,000; owner will finance at 6 percent. 509 S. Seaman, Eastland.

**-NOTICE- EDDIE'S**  
  
IS HANDY FOR EVERYBODY!  
Right out here on West Main from anywhere. And you know what? We've got just about the best service there is. And you'll enjoy depending on us to take care of all your auto service needs.

**SERVICE CENTER**  
American Automobile Association  
Call 629-8838  
—Free Pickup—  
**GUARANTEED SERVICE & TOP PHILLIPS PRODUCTS**  
West Main St.

GET YOUR antenna repaired before football season begins and winter weather sets in. Contact Mike Sitton at 442-2985 or 442-1947 in Cisco after 6 p.m. 711fc

**FOR SALE Tire Bargains.** 670x15 mud and snow nylon sub-type 8 ply, \$20 plus \$2.76 federal excise tax; 650x16 mud and snow T. T. 6 ply, \$25.00 plus \$2.96 F. E. T.; 670x15 Rib High Miller Nylon T. T. 6 ply, \$19.00 plus \$2.42 F. E. T.; and 600x16 R. B. High Miller, Nylon T. T. 6 ply, \$16.95 plus \$2.39 F. E. T. GOODYEAR SERVICE STORE Eastland.

**FOR SALE:** Owner transferred. Five bedroom, two bath, one and one-half story home, located 1209 South Seaman. Downstairs carpeted. Garage with double carport. For information, call 629-2427.

**FOR SALE — 1966 Chev.** three quarter ton pickup long wide bed with 4 speed transmission. See pickup at 1207 Ave G. Call 442-1712, Cisco.

**FOR SALE:** Bargains: one flute, one clarinet, and one pair band shoes. Call 629-1387, Eastland.

**FOR SALE — Air-conditioner,** steam iron, electric range, dinette set, hi-fi, cameras, dresser, chest, chairs, books, refrigerator, box springs, antiques, tires. Call 647-1419 in Ranger.

## HOMES FOR SALE

2 Bedroom enclosed back porch good solid Home with large Lot, Ranger, Texas.  
3 Bedroom Brick 2 bath built-in kitchen, wall to wall carpet near school.  
3 Bedroom close in needs some repairs S. Daugherty.  
2 Bedroom Home atop 1 bedroom home close in priced to sell.  
2 Bedroom Home nice roomy living and dining area. Terms.  
3 Bedroom brick with 3 1/4 acres lots of floor space, paneled throughout, Olden, Texas.  
3 Bedroom Brick has 1 acre, fireplace, 1 1/2 bath, Olden, Texas.  
Small 3 bedroom home 2 acres on Interstate 20, Olden, Texas. Home and 12 acres of land priced to sell edge Eastland.  
4 Bedroom home, 3 acres, Olden, Texas.  
2 Bedroom Lake Leon Home South Side furnished, \$4750, good terms.  
Lake Leon Home completely furnished. Boat House, must see to appreciate. See us for Building Lots in Eastland.

## For Rent

**FOR RENT:** Furnished apartment. All bills and cable paid. For couple or individual. 203 North Dixie.

**FOR RENT:** Trailer space. All utilities available. 1318 S. Seaman. Call Emma Noble, 629-1475 between 8 a.m. and 4 p.m.; 629-1301 after 4 p.m.

**Exchange and Sales on Submersible Pumps — Service on Pressure Pumps and Wind Mills.**  
15 Years Experience  
**MANCILL SMITH**  
Ph. 629-1212  
Eastland, Texas  
203 E. Plummer

## FARMS AND RANCHES

80 Acres good Sandy Land, plenty water, native Burmudas on pavement.  
80 Acres Sandy Land, no improvements, no allotments.  
100 Acres good allotments good terms.  
340 Acres 138 Culf good Grass 3 bedroom House.  
500 Acres ranch on pavement, net fences \$100.00 acre.  
622 Acre improved Grass good fences, will consider trade.  
900 Acres Sandy Land some Corn and Love Grass, consider trade.  
1300 Acres good Deer Hunting Terms.  
1500 Acre ranch on pavement well improved terms.  
2800 Acre ranch, well improved, Lampass area.  
We have many other good Ranches this area and other parts of Texas, Okla, and Colo.  
Long Term Farm and Ranch Loans contact us.

## HOMES FOR SALE

3 Bedroom 2 bath home, south Hillcrest, central air & heat.  
2 Bedroom, 2 lots, Norwood Addition.  
2 Bedroom, and bath, South Am-merman.  
3 Bedroom, 1 1/4 acres, Olden.  
2 Bedroom, 6 acres, Olden.  
3 Bedroom, 13 acres, Lake Leon.  
2 Bedroom, 12 acres, near Eastland.  
**FARMS AND RANCHES**  
24 acres, Lake Leon, on pavement.  
38 acres, 3 bedrooms, near Ranger.  
115 acres So. Eastland, 50 Coastal, 32 peanuts, 400 pecans.  
188 acres near Lake Leon on pavement.  
220 acres near Eastland.  
226 acres North Eastland.  
274 acres East of Eastland.  
200 acres near Ranger on pavement.  
80 acres south Cisco, 2 bedroom home, lots water.  
650 acres south Carbon on Sabanno, good ranch.  
Have larger tracts in this area if needed.

## KINCAID REAL ESTATE

100 S. Seaman — 629-1788  
J. W. Elder, Robert Kincaid  
647-1321 — 629-2721

## ONE - STOP SERVICE

FOR Total-Car Care! That's D & M SERVICE CENTER 802 W. Main St.  
Humble Products  
General Repair  
Air - Conditioning  
Brake Work  
Road Service: 8 to 5  
Open 24 Hours  
• OBIE DUNCAN  
• ROBERT MANGUM  
Steam Cleaning  
Wash - Lubrication  
Tires Batteries  
Complete line accessories  
Dial 629-8866

**FOR SALE — Pearl Ghormley's "History of Eastland County", \$9.99 each at this newspaper office.** 1f

**FOR SALE:** Inspirational for devotions and super ideal for gifts — Drawing Toward God. Hardbound book of original drawings and text by Noted Texas Artist Jack Hamm. \$3.50 each. At the Telegram office exclusively.

**FOR SALE:** 1965 Mustang, automatic transmission. Must sell. Phone RE 4-5897.

**FOR SALE:** Plexi-Lite signs for car or truck, block letters for building signs. Expert workmanship, reasonable prices. Inquire at Telegram office.

**FOR SALE:** Have a good stock of good used tires. Horton Tire Co.

**FOR SALE — 1966 Chev.** 4 door Impala sedan extra clean, low mileage, power steering, power brakes, air conditioning and radio. See car at 200 E. 16th or call 442-1492. E-401fc

**NOTICE — Birthday? Anniversary? Christmas? HISTORY OF EASTLAND COUNTY.** \$9.50. Rupey Publishing Co. Box 11185, Salt Lake City, Utah. 84111. Order before December 1st.

**MISC. FOR Sale — Millions** of rugs have been cleaned with Blue Lustre. It's America's finest Rent electric shampooer \$1. Perry Bros. 72

**FOR SALE — Soup's on,** the rug that it clean with Blue Lustre. Rent electric shampooer \$1. Coats Furniture. 72

**FOR SALE:** Grocery and stationery located 1360 South Seaman. Completely equipped for operation. \$2000.00 total price. Call 629-2427.

## For Rent

**FOR RENT:** Furnished apartment. All bills and cable paid. For couple or individual. 203 North Dixie.

**FOR RENT:** Trailer space. All utilities available. 1318 S. Seaman. Call Emma Noble, 629-1475 between 8 a.m. and 4 p.m.; 629-1301 after 4 p.m.

**Exchange and Sales on Submersible Pumps — Service on Pressure Pumps and Wind Mills.**  
15 Years Experience  
**MANCILL SMITH**  
Ph. 629-1212  
Eastland, Texas  
203 E. Plummer

## FARMS AND RANCHES

80 Acres good Sandy Land, plenty water, native Burmudas on pavement.  
80 Acres Sandy Land, no improvements, no allotments.  
100 Acres good allotments good terms.  
340 Acres 138 Culf good Grass 3 bedroom House.  
500 Acres ranch on pavement, net fences \$100.00 acre.  
622 Acre improved Grass good fences, will consider trade.  
900 Acres Sandy Land some Corn and Love Grass, consider trade.  
1300 Acres good Deer Hunting Terms.  
1500 Acre ranch on pavement well improved terms.  
2800 Acre ranch, well improved, Lampass area.  
We have many other good Ranches this area and other parts of Texas, Okla, and Colo.  
Long Term Farm and Ranch Loans contact us.

## HOMES FOR SALE

3 Bedroom 2 bath home, south Hillcrest, central air & heat.  
2 Bedroom, 2 lots, Norwood Addition.  
2 Bedroom, and bath, South Am-merman.  
3 Bedroom, 1 1/4 acres, Olden.  
2 Bedroom, 6 acres, Olden.  
3 Bedroom, 13 acres, Lake Leon.  
2 Bedroom, 12 acres, near Eastland.  
**FARMS AND RANCHES**  
24 acres, Lake Leon, on pavement.  
38 acres, 3 bedrooms, near Ranger.  
115 acres So. Eastland, 50 Coastal, 32 peanuts, 400 pecans.  
188 acres near Lake Leon on pavement.  
220 acres near Eastland.  
226 acres North Eastland.  
274 acres East of Eastland.  
200 acres near Ranger on pavement.  
80 acres south Cisco, 2 bedroom home, lots water.  
650 acres south Carbon on Sabanno, good ranch.  
Have larger tracts in this area if needed.

## KINCAID REAL ESTATE

100 S. Seaman — 629-1788  
J. W. Elder, Robert Kincaid  
647-1321 — 629-2721

## ONE - STOP SERVICE

FOR Total-Car Care! That's D & M SERVICE CENTER 802 W. Main St.  
Humble Products  
General Repair  
Air - Conditioning  
Brake Work  
Road Service: 8 to 5  
Open 24 Hours  
• OBIE DUNCAN  
• ROBERT MANGUM  
Steam Cleaning  
Wash - Lubrication  
Tires Batteries  
Complete line accessories  
Dial 629-8866

## Wanted

**HELP WANTED:** Need a janitor and a cook. Apply in person, Hickman Nursing Home, Eastland.

**WANTED:** A ride to G.D. second shift. Contact M. L. Collins, Col. 64K, extension 2573.

**HELP WANTED:** L a d y to work three hours a day. Apply in person. Dairy Treat, 814 West Main.

**HELP WANTED:** Need responsible, once-a-week cleaning lady. Call 629-2413.

**WANTED—Hay hauling.** Call James or Danny Cook at 843-4417 or 643-2322. 33-4tc

**HELP WANTED:** General handyman and repairman. Smart enough to learn different jobs and dumb enough not to look for another job. Painting, yardwork, ranch work, run farm equipment. Salary consistent with ability. Write Box T, in care Eastland Telegram, P.O. Box 29, Eastland, Texas 76448.

**WANT TO BUY:** Used child's car seat to fit bucket seats. John Rodgers, phone 639-2551. Carbon.

## Trout's Lawnmower Repair

1308 S. Lamar  
629-2390

## GREEN ST. FLOWER & GIFT SHOP

Ita R. Parrish-200 N. Green  
Telephone 629-1101  
Eastland, Texas 76448

## Eastland Steam Laundry

FREE PICK UP AND DELIVERY  
Phone 629-2613  
210 N. Lamar

## Prevent Disease Loss at Small Cost

  
**USE OUR LIVESTOCK SUPPLY DEPARTMENT**  
EASTLAND DRUG

## TV SERVICE

**WHITENTON PLAZA COLOR TV**  
Stephenville  
Call 968-3312 collect  
Will be in Eastland each Friday  
Satisfaction Guaranteed!  
35 Years Experience!

## LOOK SHARP

• MAVERICKS  
• DOGIES  
• FANS  
At  
**MAVERICK BARBER SHOP**  
Floyd Williams  
East Side of Square  
Phone 629-1151

## LOOK SHARP

• MAVERICKS  
• DOGIES  
• FANS  
At  
**MAVERICK BARBER SHOP**  
Floyd Williams  
East Side of Square  
Phone 629-1151

## ROY LEE SMITH

distributor for  
Dayton  
Electric Motors  
offering complete motor replacement (Other brand motors available)  
Complete Line in stock at  
**Smith Plumbing Co.**  
114 N. Seaman 629-1724

## TERMITES!

**WOOD ANTS FREE INSPECTION Without Obligation**  
WE KILL ALL BUGS DEAD  
\$10.50 for any 2-or-3 bedroom home.  
All Work Guaranteed  
Call 442-1392  
200 East Control

## CARD OF THANKS

Our heartfelt thanks to all who extended comforting sympathy and help in our recent sorrow. For the beautiful service, floral offerings, food, and other kindnesses, we are deeply grateful.  
S. N. Poe.  
Mr. and Mrs. J. C. Poe and family.  
Mr. and Mrs. Bob Poe  
Mr. and Mrs. Bruce Campbell

## CARD OF THANKS

We want to thank all our friends who helped us while O. Z. was in the hospital. Your friendship is very much appreciated.  
O. Z. and Wanda Kellar.

## SPARE TIME INCOME

Refilling and collecting money from new type high-quality coin-operated dispensers in your area. No selling. To qualify you must have car, references, \$600 to \$2900 cash. Seven to twelve hours weekly can net excellent monthly income. More full time. For personal interview write United Distributing Co., Dept. A, P. O. Box 10605, Dallas, Texas 75207. Include phone number.

**NOTICE:** Men wanted for work on City Sanitation truck in Ranger. Apply in person at City Hall.

## ROOFING

New roofing and repairs. Also aluminum siding. Fifteen years experience. Free estimates.  
**R. D. OTT**  
Phone 672-5300  
Strawn, Texas, 76475

## EASTLAND AUCTION

Eastland Auction Report for September 2: market was active and strong; high on all classes of livestock; 1033 head of cattle, 273 hogs, 339 sheep and goats sold; 273 consignors; 77 buyers.

## NOTICE

**THE 3-D SHOP** closed until September 1, due to illness. Orders already accepted will be filled. For all baking and catering needs, call Donna Brown, 629-1823, after September 1.

## RICHARD LEVENS EXPERT TREE SERVICE

Removing, trimming, transplanting  
Also shrub work  
All trimmings hauled off  
Call 629-2193 after 5 p.m.

## Wells Brothers

Paint Contractors  
Spray or Brush  
Taping, Bedding,  
Textoning, Acoustics  
—Free Estimates—  
Call collect, Ranger  
647-1778 or 647-3049

## Wells Brothers

Paint Contractors  
Spray or Brush  
Taping, Bedding,  
Textoning, Acoustics  
—Free Estimates—  
Call collect, Ranger  
647-1778 or 647-3049

## Western Mattress Co.

Mattress, Box Springs,  
Custom built.  
Renovated or exchange.  
New Guarantee. Save 50%  
Call 629-1740 or 629-1398  
EASTLAND

## EMMET MORREN PLUMBING

COMPLETE REPAIR SERVICE  
—24 Hour Service—  
401 South Oak  
629-2092

## ROLLINS & SONS MOBIL SERVICE

Call for Appointments on Wash - Grease Oil Changes  
601 W. MAIN  
629-679

## Jeff Laughlins Celebrate 50th Anniversary

Mr. and Mrs. Jeff Laughlin celebrated their Golden Wedding Anniversary September 1.

Their grandson, Sam Melton, and his wife, Billie, had a large, beautiful cake taken to Hickman Nursing Home where Mr. Laughlin has lived for 18 months.

The administrator of the home and all his staff were invited to help eat the cake. A few friends came by the home that afternoon and night to wish the Laughlins happiness.

## Alliance Sets First Meeting Tuesday at 9

The Ministerial Alliance will hold its first meeting of the 1969-70 season at 9 a.m. Tuesday, September 9 at the First United Methodist Church.  
Officers will be elected and all ministers in Eastland are urged to attend the meeting.  
The meetings have previously been held on Mondays, but due to a conflict in schedules, Tuesday meetings are necessary.

## Olden Jr. High Schedule Is Given

Olden Coach Jerry Brock announced the Olden Junior High schedule:  
Sept. 16, Strawn there.  
Sept. 23, Strawn at Olden.  
Oct. 14, Carbon there.  
Nov. 4, Carbon at Olden.  
Nov. 11, Santo at Olden.  
Nov. 18, Gordon there.  
Brock announced two changes in the high school schedule. Olden will play Gordon November 29 and Moran October, 16.

## EASTLAND AUCTION

Eastland Auction Report for September 2: market was active and strong; high on all classes of livestock; 1033 head of cattle, 273 hogs, 339 sheep and goats sold; 273 consignors; 77 buyers.

## CITY ICE SERVICE

Groceries and Ice  
Minnows and Worms  
Open 6 a.m. to 7 p.m.  
410 West Commerce  
Phone 629-1701

## Wells Brothers

Pant Contractors  
Spray or Brush  
Taping, Bedding  
Textoning,  
Acoustics  
—Free Estimates—  
Call collect, Ranger  
647-1778 or 647-3049

## Wells Brothers

Paint Contractors  
Spray or Brush  
Taping, Bedding,  
Textoning, Acoustics  
—Free Estimates—  
Call collect, Ranger  
647-1778 or 647-3049

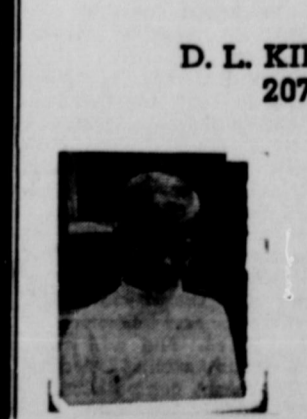
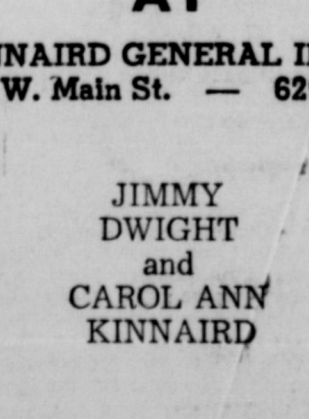
## ROOFING

Both new and repair work done. Contact Mike Siebert, 629-1421 Eastland.

## OUR DAD WANTS TO SELL YOU SOME INSURANCE HOW ABOUT SEEING HIM AT

**D. L. KINNAIRD GENERAL INSURANCE**  
207 W. Main St. — 629-2544

## JIMMY DWIGHT and CAROL ANN KINNAIRD

## EASTLAND TELEGRAM

Phone 629-1707  
110 W. Commerce St. — Eastland, Texas 76448

(Consolidate with Eastland Chronicle, established in 1887, and Eastland County Record, established in 1931)

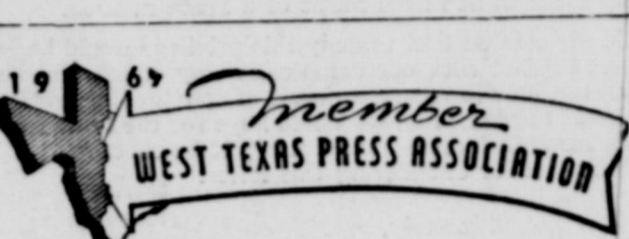
Second Class Postage paid as Eastland, Texas under the act of Congress of March 3, 1879

Published Semi-Weekly - Thursday and Sundays  
By Eastland County Newspapers, Inc.

SUBSCRIPTION RATES: By carrier in city, 15c week or 65c month; one year by mail in county, \$4 per year; one year by mail in city or elsewhere in state, \$6 per year; one year by mail outside state, \$7

NOTICE: Any erroneous reflection upon the character, standing or reputation of any person, firm or corporation which may appear in the columns of this newspaper will be promptly corrected upon being brought to the attention of the editor.

H. V. O'BRIEN, Editor



## Maybe you don't need Insurance—

... and possibly you don't if you are financially able to look out after yourself. But for the most of us, we are just a little bit afraid to take the risk so we buy insurance. Modern living has become so complex that the protection of property against its many hazards is a major problem and we should be insured. The individual you can always depend on for correct solutions of your insurance problems is the local agent. Try him first!

## Earl Bender & Company

Eastland (Insurance since 1924, Texas

## HE'S PROUD TO BE A GOOD MIXER...



PROFESSIONAL PRECISION IS THE EXTRA INGREDIENT  
Basic to the effectiveness of your doctor's prescription is the precision with which it is compounded by a skilled and experienced registered pharmacist. May we serve you?  
For Prompt Prescription Service,  
Free Delivery. Just Call!

## CENTRAL DRUG

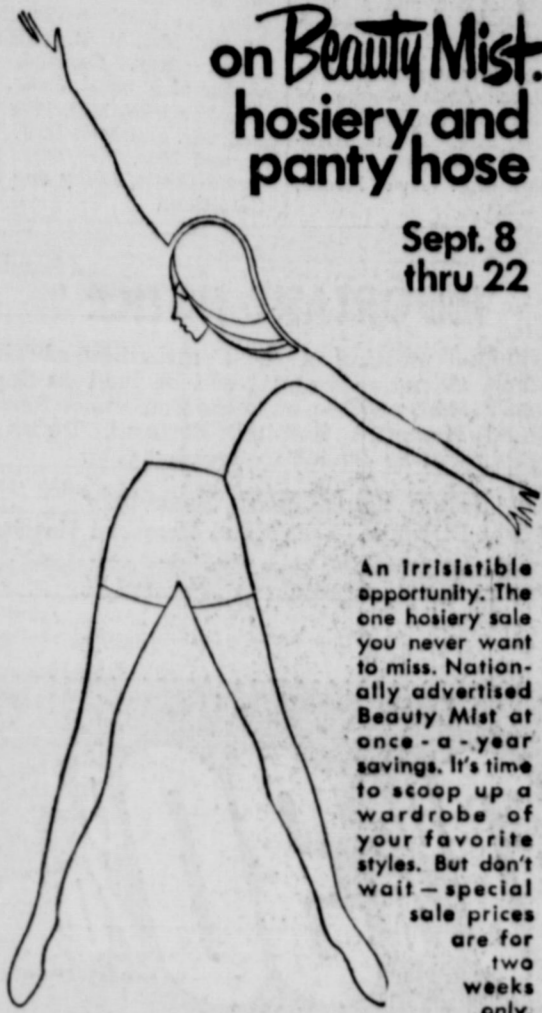
629-2681



Once a year sale!

Save 20%  
on *Beauty Mist*  
hosiery and  
panty hose

Sept. 8  
thru 22



An irresistible opportunity. The one hosiery sale you never want to miss. Nationally advertised Beauty Mist at once - a - year savings. It's time to scoop up a wardrobe of your favorite styles. But don't wait - special sale prices are for two weeks only.

Style	Reg. Price	Sale Price
Letter	1 pr. 6 prs.	
A Dress Sheer, heel & toe	\$1.00	\$ .79 \$4.70
B Dress Sheer, nude heel, demi-toe	1.00	.79 4.70
C Micro Mesh, heel & toe	1.00	.79 4.70
D Panty Hose Sheer	2.00	1.59 9.50
E Panty Hose Plain Knit - 20 denier	1.75	1.39 8.30
F Panty Hose Mesh - 20 denier	1.75	1.39 8.30
G Cantece*, nude heel, demi-toe	1.25	.99 5.90

# HARELIK'S

EASTLAND

How  
not to be  
poor at 65...

Start a retirement  
income plan  
now!



Something good happens when you see your "Heart of Gold" man  
**M. H. FERRY**  
107 W. Main, St.  
Office - 629-1566  
Residence - 629-1095

**Southland Life**  
INSURANCE COMPANY



Passing years have  
taught us much  
about the habits,  
customs, likes and  
dislikes of our neighbors.  
We respect them.

FRIENDLY, PERSONALIZED SERVICE

**ARRINGTON HAMNER  
FUNERAL HOME**

Eastland



MRS. SAMUEL BEGGS JR.  
... formerly Miss Marilyn White

## BEGGS-WHITE VOWS REPEATED SATURDAY

Miss Marilyn Gay White and Mr. Samuel Lee Beggs, Jr. were married at 8 p.m. Saturday, September 6, at the First United Methodist Church. The Rev. Len Layne, pastor, officiated at the double ring ceremony.

Parents of the couple are Mr. and Mrs. G. A. White and Mr. and Mrs. S. L. Beggs, Sr. The church was decorated with baskets of gladioli and mums and an arch covered with greenery. Colors were blue and white.

Candles were lighted by Randy Beggs, brother of the groom, and Billy White of Temple, Oklahoma, cousin of the bride.

Mrs. John Balt, of Grand Prairie, sister of the bride, was matron of honor. Bridesmaids were Misses Susie Sneed and Kay Alexander, both of Eastland; and Barbara White of Temple, Oklahoma.

They wore floor-length gowns of blue satin, fashioned with high waists and long sleeves. Headpieces were attached to blue satin bows encircled with small flowers. Mrs. Balt carried a cascade of blue and white carnations. The bridesmaids carried Victorian bouquets of mixed flowers on blue net.

Jenny Bezes of Eastland was best man. Groomsmen were Randy Butler of Eastland, Jerry Bezes of Austin, and Daniel Bezes of Cornus Christi. Grady Gregory, Alan Goode, and Howard Maynard, all of Eastland, were ushers.

Paul Balt of Grand Prairie was ring bearer and David Shoemaker of Corbon was flower girl.

Given in marriage by her father, the bride wore a straight, floor-length, high empire-waist dress made of silk organza over lined taffeta. The long, tapered, transparent sleeves and the high neckline had double silk organza ruffles. The dress was decorated at the neckline, sleeves and waist with reembroidered madallioned lace. The chapel train, attached to the waist in the back, was of single silk organza bordered with the reembroidered madallioned lace.

Her elbow-length veil of silk organza and lace was embroidered with pearls and crystal drops. It was attached to a headpiece of orange blossoms.

She carried a cascade bouquet of orchids and carnations. Her jewelry was a diamond pendant and a Dutch heirloom cameo, which is 350 years old.

Musical selections, "Whither Thou Goest, I Shall Go," and "The Twelfth of Never," were presented by J. L. Pittman soloist; Miss Mary Ann Turner, organist; and Mrs. Tom Clark, pianist.

The mother of the bride wore a gray sheath with matching coat, fastened with buttons. She carried matching accessories and wore a corsage of white orchids.

The mother of the groom wore a pink A-line dress with matching accessories and a

corsage of white orchids. A reception was held at the fellowship hall of the church. Serving were Mrs. Karen Morris, Miss Deborah Pryor, Miss Linda Perry, Miss Donna Doyle, and Mrs. Ed Ethridge.

The bride's table was laid with ice blue tulle over ice blue satin, and centered with four-branch candelabra and the bride's bouquet. The wedding cake was three-tiered with flower trim. It was topped with a miniature bride and groom under an arch.

The bride's going-away costume was a blue dress of silk chiffon over taffeta, with long transparent sleeves and a full belted skirt. Her accessories were of blue and she wore a corsage of white orchids.

Following a wedding trip to San Marcos, the couple will live at 513 North West Second Street, Mineral Wells.

The bride is a graduate of Eastland High School and attended the University of Texas at Arlington. She will work for Southwestern Bell Telephone Company in Mineral Wells after September 15.

The groom is a graduate of Eastland High School, attended Panzer Junior College. He is employed by Southwestern Bell Telephone Company in Mineral Wells.

### Wonderland Kindergarten

Opens Sept. 15

Wanda's Wonderland Kindergarten will open Sept. 15, with Mrs. Judy Jams as teacher.

Classes will be held from 9 to 11:45 a.m. Mondays, Tuesdays, and Wednesdays.

Parents are asked to call 629-1506 for more information.

### Homemakers To Meet Tuesday

The Young Homemakers will meet at 3:40 p.m. Tuesday, September 9, at Eastland High School.

Mrs. Floyd Robertson of Altman's Style Shop will discuss new styles and fashion trends.

### PERMANENTS

\$10 Cold Waves - \$8.50  
- Open 8:30 to 5:30 -  
Close noon Wed. & Sat.  
Basham Beauty Bar



# LOOK WHAT'S COMING TO EASTLAND

★ ★ ★

CHANNEL 2 - KDTV, Channel 39 in Dallas  
Independent Station.

CHANNEL 4 - KRLD, Channel 4, Dallas

CHANNEL 5 - WBAP, Fort Worth - Local News,  
Programming & Special Shows (Except for  
NBC), which will be carried on Ch. 9, Abilene.

CHANNEL 6 - 24 Hour Eastland Time and  
Weather. Channel originating in  
Eastland. (FM Background Music)

CHANNEL 7 - WFAA, Channel 8 in Dallas (ABC)

CHANNEL 9 - KRBC Abilene (NBC)

CHANNEL 11 - KTVT, Ft. Worth (Ind.)

CHANNEL 12 - KTSX-Sweetwater and Abilene  
(CBS)

★ ★ ★

TO BE IN EASTLAND  
BY SEPT. 15

# SOUTHERN TELEVISION SYSTEMS CORP.

214 S. SEAMAN

647-1580



## Fall Bowling Organizations Set Schedules

Fall Bowling leagues will be formed September 8 — 13 at Fiesta Bowl in Eastland.

The public is cordially invited to join leagues and instruction is available for those who wish it.

Schedule for organizational meetings:

Monday: Afternoon ladies at 1:30 p. m. and men at 7 p. m.

Tuesday: Ladies at 7 p. m.

Wednesday: Ladies at 7 p. m.

Thursday: Housewives at 9:30 a. m. and Couples at 6:30 p. m.

Friday: Couples at 7:30 p. m.

Saturday: Junior bowlers at 9:30 a. m.

## PEANUT BOWL — (Continued from Page 1)

Richard Rossander, chairman of the pageant, said the trophies are on display at the Eastland National Bank. Tickets to the pageant may be purchased at local Chamber of Commerce offices or at the door of the theatre. Dick Dixon is serving as advisor for the event and Larry Rollins has charge of the press party at Lone Cedar.

Installation of a beautiful three manual Baldwin electric organ is now completed in the Cisco Junior College Harrell Fine Arts auditorium. The instrument was donated by the Rockwell Foundation of Houston.

## Mrs. Guy Sherrill Elected President Flatwood HD Club

Mrs. Guy Sherrill was elected president of the Flatwood Home Demonstration Club at a Thursday afternoon meeting in the home of Mrs. Fannie O'Brien.

Other new officers elected were Mrs. Tina Graves, vice-president; Mrs. Clarence Hastings, reporter; Mrs. Pete Tucker, secretary-treasurer; and Mrs. Zelma Lusk, council delegate.

The meeting was called to order by Mrs. O'Brien, who read the creed, motto, and prayer. She read the devotional from Proverbs 17:16.

Mrs. Tucker called roll and members answered with "My First-Grade School Teacher".

The singing was led by Mrs. Lusk and the council report was given by Mrs. Sherrill. The Club will meet Thursday, September 18 in the home of Mrs. Hastings.

Present were Meses. Hastings, Lusk, Graves, Genoa Brown, Tucker, Horn, Grieger, Sherrill and O'Brien.

## Civic League's Preview Coffee Is Wednesday

Eastland Civic League and Garden Club will hold its annual Preview Coffee Wednesday, September 17, at the Woman's Club.

Hostesses will be Mrs. Eula Arrington, president; Mrs. Tommy Magness, chairman of the yearbook committee; and Meses. Dale Baker, Francis Bone, and Dick Johnson, members of the yearbook committee.

Coffee will be served between 9:30 and 11:30 a.m. Yearbooks will be distributed and programs will be highlighted by displays.

**CLASSIFIED ADS ARE THE PEOPLES' MARKET PLACE!**

## TIDBITS — (Continued From Page One.)

ers, who pushed the ball over the goal line at least three times.

At the stadium, you'll notice the east light poles are nice and straight now, and we can thank R. M. Sneed and his crew for a job well done.

AS SO often happens, the women do the work and the men get the credit — Mrs. Bill Angus was on of the business workers at the recent Jaycee Rest Stop and wouldn't you know that Bill got the credit in a recent article, so the club now wants to tip its hat to her.

CONSIDERING the number of juvenile marriages, we're not sure this item was a typographical error in a neighbor paper: "Miss (Blank) was accompanied by her sitter as maid of honor."

**★ READ THE CLASSIFIEDS ★**

## Graveside Rites At Eastland For Lexie Sellars

Mrs. Lexie Sellars, 80, of the Pinkerton Community of Knox County, sister of Mrs. Reba Armstrong of Eastland, died Thursday in the Knox County Hospital after a lengthy illness.

Funeral was held at 11 a. m. Saturday in the Pinkerton Baptist Church with the Rev. Walter Copeland of Haskell officiating.

Graveside rites were held at 3 p.m. Saturday in Eastland Cemetery, with the Rev. Bill Goff, pastor of Bethel Baptist Church, officiating.

Mrs. Sellars was born Lexie Kimbrough Dec. 27, 1888, at Morristown, Tennessee and married G. E. Sellars July 13, 1913 in Eastland. They moved to Pinkerton in 1926. She was a member of the Baptist Church.

Survivors include her hus-

## Reunions At Lake Leon Lodge

Boating, fishing, and swimming were the events of the day during Labor Day weekend reunion at Ward's Lodge on Lake Leon.

Children of Mr. and Mrs. J.

band; one brother, Carl Kimbrough of New Braunfels; five sisters, Mrs. Arda Cooke of Clyde, Mrs. Delia McGonigal of Pampa, Mrs. Reba Armstrong of Eastland, Mrs. Birdie Evans and Mrs. Ava Honea, both of Cisco.

L. Ward present were Mr. and Mrs. M. G. Morris of Longview; Mr. and Mrs. Bill Austermiller, Rudy, Jr. Kate, Liz, and Cindy of Houston; Mr. and Mrs. Mark of Eastland; Mike and Mark of Eastland; Mr. and Mrs. B. R. Williams, Bobby, Ray, Garland, and Johnny of Mineral Wells.

Visitors were Mrs. Mae Mitchell, Mr. and Mrs. D. J. Walker and Mac, Mr. and Mrs. Harold Cottle, Larry and Bob, of Eastland

## IMPORTANT NOTICE

The annual meeting of the Contributors of The Eastland Memorial Hospital will be held on September 23, 1969 at 7:30 p.m. in the Conference Room Eastland Memorial Hospital, Eastland, Texas. Directors will be elected for ensuing year.

**JEFF GLAZNER, Secretary**

Board of Directors — Eastland Memorial Hospital

HIGH SCHOOL GRADS . . .

ARE YOU

ENROLLED IN COLLEGE YET?

## CISCO JUNIOR COLLEGE

REGISTRATION WILL CONTINUE THRU SEPT. 12!

### CJC FEATURES:

- \* LOW COMMUTER COSTS — only \$150 (approximately) for tuition, fees, and books, per semester.
- \* LOW BOARDING COSTS — about \$450 for ALL costs — including room and board, per semester.
- \* MODERN FACILITIES — including air-conditioned classrooms, student building, and cafeteria.
- \* "MODERN TREND" SCHOOL CALENDAR — first semester ends before Christmas, and extended vacations for Christmas and Easter.

YOU Can Still Enroll! Contact Immediately: Dean of College, Cisco Junior College, Cisco

# OFFICIAL RCA COLOR TV CLEARANCE SALE

The 1970 Models are here . . . '69's must go!



Beautiful Early American with A.F.T. . . . at a price you can afford!

**\$498.00** with trade

SAVE on this RCA portable Color TV—enjoy color NOW!



WATCH FOOTBALL IN COLOR!

Lightweight Convenient Portable at the lowest price ever!

**Robertson TV**

SALES & SERVICE

South Side of Square

NOW ONLY

BL412 46" Diag.

# SAVE 10% 20% 30% GOODYEAR CLEARANCE

Plenty of free parking • Open 9 to 9 for this event • Use our Easy Pay Plan • Sorry No Mail or Phone Orders

## SAVE! SAVE! SAVE!

Save on selected Car & Home merchandise. All must go! We've chopped prices down, down, down. Hurry some items in limited supply.



### SAVE 10%

Quantity	Item	Price
4	G.E. CAN OPENERS	11.25
2	Molded PLASTIC ICE CHEST	6.02
3	IRONING TABLES	5.35
1	Electric ICE CREAM FREEZER	26.95
5	Goodyear AM/FM RADIOS	22.45
1	STEREO PHONOGRAPH	43.15
6	KM IRONS	7.15
2	G.E. POLISHERS	22.80
1	Upright VACUUM CLEANER	31.86
5	Canister VACUUM CLEANER	27.86
3	30 Cup COFFEE POTS	10.75
1	4 to 12 Cup COFFEE MAKER	13.46
1	4-Slice TOASTER	19.75
1	Hand or Stand MIXER	11.66
1	Oster 8-speed BLENDER	40.05
2	4-qt. automatic CORN POPPER	8.86
2	G.E. Electric SKILLETS	26.99
1	ICE CRUSHER	16.16

### SAVE 20%

Quantity	Item	Price
4	Deluxe Aluminum FOLDING BEDS	7.98
318	RECORDS	3.99
282	STEREO TAPES	5.59
8	20-inch WINDOW FANS	22.20
1	Teflon WAFFLE IRON	19.25
4	Automatic 2-slice TOASTER	11.96
1	Nasco 6-qt. OVAL ROASTER	26.96
3	padded high back ROCKERS	7.99
6	Redwood CHAIRS	5.59
1	set MAG WHEELS	65.60

### SAVE 30%

Quantity	Item	Price
10	18" 3 h.p. MOWER	38.47
8	22" 3 h.p. MOWER	48.15
1	Haulit-All CADET	12.00
1	Gasoline Driven EDGER/TRIMMER	66.55
2	Red Wood TABLES	19.00
1	Aluminum YARD TABLES	14.20
1	Aluminum COOKERS	18.90
10	Goodyear CLEANER POLISH	.78
4	Goodyear WASH and WAXER	1.35

# GOODYEAR SERVICE STORE

306-308 E. Main — Eastland — 629-2662



# HOSPITAL NEWS

Patients in Graham Hospital Saturday morning were:  
 Dr. E. L. Graham,  
 Ronnie Graminger,  
 Yolanda Weeks,  
 Mrs. M. K. Young,  
 Mrs. W. P. Stephens,  
 Mrs. Cora McGlasson,  
 Patricia Weeks,  
 Mrs. Dee Shoemaker,  
 Mrs. J. H. Chambliss,  
 O. M. Wilkerenson.

Mrs. J. L. Thorton,  
 G. H. Sublett.

Patients in Ranger General Hospital Saturday morning were:

Ronnie Green,  
 W. W. Jones,  
 Jim Vinson,  
 Marion Goforth,  
 Frankie Crews,  
 Billy Tribble,  
 T. I. Collins,  
 Raymond Boyd,  
 Melvin Kincaid,  
 Boe R. Sanderson,  
 Onis Littlefield,  
 Mrs. Mary Crabb,  
 Mrs. Frank Arrendale,  
 Mrs. Frances Maddox,  
 Mrs. Ruth Riddling,  
 Mrs. Nannie Parsons,  
 Mrs. Virginia Pounds,  
 Mrs. Louise Trippett,  
 Mrs. Lucille Hagar,  
 Mrs. Sandra Stewart,  
 Mrs. Raymond Boyd,  
 Mrs. W. L. Squiers

**NEW MATTRESSES BOX SPRINGS**  
 WE REBUILD INNERSPRING'S COTTON MATTRESSES AND BOX SPRINGS JONES  
 Mattress Co.  
 106 E. 8th — 442-3350  
 CISCO

**Horse-Shoeing**  
 Corrective Shoeing  
 Trimming  
 Anywhere - Anytime

**BILL BABER**  
 Route 2, Cisco  
 Phone  
 Eastland 629-2903

**FREE ESTIMATES ON new roofs only**  
 Repair of Your Old Roofs  
 Residential and Commercial  
 "ALL NEW WORK GUARANTEED"  
**TRI-CITIES ROOFING CO.**  
 Call  
 Nobil Squiers  
 629-2370  
 EASTLAND

**Ranger Air Service**  
 is now the Authorized  
**Evinrude Motor Dealer**  
 in the Ranger area  
 Also Specializing in  
 Parts and Repair Service

Patients listed in Eastland Memorial Hospital Saturday morning are as follows:

Edgar McColium  
 Lillie Brown,  
 Melvin Brown  
 Curtis Williams  
 Nell St. John  
 Debbie McCoy  
 Gertie Lasater  
 Gracie Snell, Carbon  
 Lockye Taylor, Strawn  
 Casey Meazell  
 Siron Cook, Cisco  
 Luther Jernigan, Cisco  
 Andy Taylor  
 Roland Earp, Rising Star  
 Pat McGough, Cisco  
 Melinda Simmons  
 Sodie Grozier, Cisco  
 Linnie Walker, Gorman.  
 R. J. Harris, Cisco.  
 E. J. McKellar,  
 Bernice Gilbert, Gorman.  
 Frankie Lambert, Cisco.  
 Bertie Ledbetter, Cisco.  
 Sallie Day,  
 N. K. Bailey, Rising Star.  
 Thomas Lockhart.  
 Jesse Brinkley,  
 Barney Hale,  
 Ora Lyerla,  
 Sarah Harrell,  
 L. E. Newton, Crosscut.  
 Harold Ray,  
 Margaret Tow,  
 Drusilla Berry, Cisco.  
 Ruth Haney,  
 Lupe Anaya, Cisco,  
 Pauline Barnett, Groesbeck,  
 Shirley Sellers, Cisco.  
 Edna Rains, Cisco.  
 Nola Howard, Gorman.  
 Henry Owens, Big Spring.  
 Ina Mae Hill,  
 Jessie Ray Williams, Gorman.  
 Jesse Musquiz, Floresville.  
 Sherry Norris, Springtown.  
 Lillie McMin, Olden.  
 Rittie Brown,  
 Baby Girl Norris, Springtown.

**Pleasant Hill Reunion Schedule Sunday, Sept. 14**

The Pleasant Hill Community Homecoming will be held Sunday, September 14, at the Pleasant Hill Baptist Church. Guests will register at 10 a. m. A testimony service will be held with the pastor serving as master of ceremonies. A recognition service will also be held. Music will be directed by Don Nicholas, song director, with Mrs. Charlie Livingston as pianist. The morning message will be presented by Dr. P. D. O'Brien. A basket lunch will be served at noon and the afternoon will be spent visiting.

**THE WORTH HOTEL**  
 FORT WORTH  
 7th & Taylor (817) 332-8151

- FREE INDOOR PARKING
- IN THE HEART OF EVERYTHING TO DO AND SEE
- FAMILY RATES
- TWO FINE RESTAURANTS

Mgr. Worth Hotel:  
 Please send me an "Honored Guest" Brochure giving rates & detailed information.  
 Signed \_\_\_\_\_  
 Address \_\_\_\_\_

**Gold Dividend WINNERS**  
**Hurry! GET YOUR GOLD DIVIDEND CARD**  
**EVERY CARD IS A ... WINNER !!**  
**\$1,000 WINNERS**

Start your "GOLD DIVIDEND" today!

**\$1,000 WINNERS**  
 Mrs. Gerald Bint, Cisco  
 Lois Miller, Brownwood  
 Mrs. Tom Mooring, Brady  
 Mrs. Lois Robertson, Wichita Falls  
 Mrs. C. T. Fleming  
 Mrs. D. L. Estess  
 Edd Stallings

**\$100.00 WINNERS**  
 Mrs. Betty Doyle, Eastland  
 Johnnie Young, Ranger  
 Mrs. Frances Carlisle, Cisco

**SHURFINE**  
 Sliced or Halves  
**PEACHES**  
 No. 2 1/2 Can  
**4 for \$1.00**

JRB MEATS are U.S. Government Inspected and Grade d. If for any reason you are not satisfied, we will cheerfully refund your money.

**CHOPPED SIRLOIN STEAKS**  
 5-oz. Steak  
 Excellent to Broil  
 pkg. of two **59c**

**Gooch's Blue Ribbon BEEF PATTIES** 20-oz. pkg. **\$1**  
**USDA Choice Chuck BONELESS ROAST** lb. **89c**  
**Ground Fresh Hourly GROUND BEEF** lb. **59c**  
**HAMBURGER PATTIES** pkg. of 10 **\$1**  
**Gooch's Blue Ribbon — 6-oz. pkg. LUNCH MEATS** Bologna, Olive-Pickle **3/\$1**  
**Decker's Jumbo Size FRANKS** lb. pkg. **69c**  
**USDA Grade A FRYERS** cut up, pan ready lb. **39c**  
**FRYERS** split, seasoned, ready to Bar-B-Q lb. **39c**

**BAKERITE SHORTENING** 3-lb. can **49c**  
**POTATO CHIPS** JRB Family Size **39c**  
**CRACKERS** Shurfresh 1-lb. box **19c**  
**OLEO** Jewel 1-lb. pkg. **5 for \$1**  
**Del Monte — No. 2 Can PINEAPPLE** Crushed or Sliced **3 for \$1**  
**MIRACLE WHIP** Kraft's qt. **49c**  
**JRB GRADE A LARGE EGGS** doz. **49c**  
**ARROW CELLO BAG PINTO BEANS** 2-lbs. **19c**

**MIX OR MATCH**

Seaside	303	<b>6 \$1</b>
Butter Beans	can	
Ranch Style Black Eye	15-oz.	
Peas and Bacon	can	
American Beauty	300	<b>7 \$1</b>
Mixed Vegetables	can	
Argo Cut	303	
Green Beans	can	
Food King	300	<b>8 \$1</b>
Butter Beans	can	
Ranch Style	300	
Pinto Beans	can	
Mayfield Cream Style	303	<b>7 \$1</b>
Corn	can	
Food King Green & White	300	
Limas	can	
Red Bird	1/2	<b>7 \$1</b>
Vienna Sausage	can	
Gold Tip Cut	303	
Green Beans	can	
Clear Sailing	300	<b>8 \$1</b>
Pork & Beans	can	
Uncle William's	300	
Hominy	can	
Alma	300	<b>7 \$1</b>
Pinto Beans	can	
Cozy Kitten	15-oz.	
Cat Food	can	

**DRUG DEPARTMENT**

Bayers  
**ASPIRIN** 98c size **79c**  
**CONTACT** Cold Capsule Reg. 1.59 **99c**  
 Minnen's  
**SKIN BRACER** Reg. 89c **69c**  
**TYPING PAPER** Reg. 49c **39c**

**Del Monte MIXED VEGETABLES**  
 303 Can  
**5 for \$1**

**FROZEN FOODS**  
 Morton's  
**CREAM PIES** each **29c**  
 Banquet — 8-oz.  
**POT PIES** **5 for \$1**  
 Banquet — Beef, Chicken, Turkey  
**DINNERS** **39c**

**DAIRY PRODUCTS**  
 JRB  
**ICE CREAM** 1/2-gal. **59c**  
 Yami  
**YOGURT** **25c**

**MEMBER AFFILIATED FOOD STORES**

**DOUBLE S&H GREEN STAMPS**  
 with purchase of \$2.50 or more every Wednesday

**JRB SUPERMARKETS**  
**S & H GREEN STAMPS**  
 WITH EVERY PURCHASE

PRICES GOOD THROUGH SATURDAY, SEPTEMBER 13  
 Quantity Rights Reserved — No Sales to Dealers  
 PRICES GOOD IN EASTLAND

*Garden Fresh Produce Features!*

**LETTUCE** large head **19c**  
 North Carolina Delicious  
**APPLES** lb. **25c**  
 New Crop, Tokay Sweet  
**GRAPES** lb. **25c**  
 California Sunkist  
**ORANGES** lb. **19c**  
**GREEN ONIONS** 2 bunches **19c**



## Conservation Plays Key Role In Increased Peanut Crop Yields

By E. E. McALISTER  
Soil Conservation Service

Central Texas peanut producers have experienced increased yields for several years through the effective use of a sound conservation cropping system which has

held maximum soil, water and soil fertility in place.

Cover crops of small grain or legumes are planted at time of peanut harvest to insure soil protection. Some farmers broadcast cover crop

seeds while others drill cover crops in following combining. Heavy applications of fertilizer based on current soils test is being applied to cover crops. This is becoming a more common practice with many producers.

Dry land producers regard strip cropping as a much needed conservation practice. Even some farmers having irrigated crops continue to use strips on their more critical "blow areas" in order to hold valuable top soil in place. The common strip crop pattern consists of 2 rows of well fertilized sudan, forage sorghum or 4 rows of grain sorghum alternated with 8 rows of peanuts. Strip crops also return large amounts of enduring residue.

Most producers state that they cannot afford to remove the peanut hay from their land since this high quality residue contributes so much to the protection and improvement of the soil. The leaving of the vines on the land as compared to removing a more vigorous growth on those crops that follow. Farmers state that no single operation is more important than seedbed preparation which incorporates this all important crop residue into the soil. Many believe that the potential production of their land is in ratio to the organic matter content of the soil. They also recognize the increasing need for a crop rotation due to incidence of disease, especially on irrigated crops.

Peanut farmers agree that the success and benefits of this conservation cropping system depends largely on the individuals understanding and the timely application of the above steps of operation in a workman-like manner.

Producers also realize that recent advancements such as improved adapted varieties, chemical weed control, disease and insect control and availability of the latest recommended digging, combining and curing procedures has contributed much to high peanut production of the area.



D. B. WARREN examining peanut litter returned to the land after harvest, one mile north of Gorman.



C. B. RONE shows height of Gilbert cane strips in his peanut field four miles west of Gorman. The cane was planted June 15.



A. J. RODGERS, right, and E. E. McAlister check peanuts during review of GPCP contract, strip cropped four rows sorghum, eight rows peanuts 10 miles southeast of Ranger.

Get Your . . .  
**HALLMARK CARDS, PARTY GOODS,  
STATIONARY & GIFTS**  
at  
**K-RACK GIFT HOUSE 104 W. 6th . . . Cisco**

## Hagan Reunion Held Aug. 30-31

The Hagan Reunion was held on Saturday and Sunday, August 30-31, at Camp Inspiration in Eastland with the descendants of the late Mr. and Mrs. J. R. Hagan attending. All six of the surviving children were present. There was a worship hour held in the tabernacle on Sunday morning, and the meals were served in the dining hall.

Those attending were Mr. and Mrs. Marcus Pagel, Houston; Mr. and Mrs. Nathan Kyle, Quannah; Mr. and Mrs. Lynn Hagan, Denise and Dennis Ray Hagan, and Rev. and Mrs. Benny Hagan, John Mark, James and Lucinda, all of Carbon; Mr. and Mrs. Dean Robinson, Penny, Andy, and Tempy, Mrs. Alva Hagan, and Mr. and Mrs. Elmer Robinson, Mesquite; Mr. and Mrs. Carson Woodall and Gayla Woodall, Tulsa, Okla.; Mr. and Mrs. Hoyt Bryant, Mrs. W. F. Bryant, Mr. and Mrs. Charles Bryant, Karen and Kevin, and Mr. and Mrs. Larry Bryant and Sue, all of Gorman; and Mr. and Mrs. Dennis Clover, Stenen and Shelly, Jacksboro.

Mr. and Mrs. Melvin Woodall, Sundown; Rev. and Mrs. W. E. Hallenbeck, Eastland; Mr. and Mrs. Jay Horn, Arlington; Mr. and Mrs. Ray Cummins and Tim, Ferris; Mr. and Mrs. James Darr and Vance, Garland; Mr. and Mrs. Roy Sisenbach, Roy J., Lane, Van and Neil, and Vicki Eisenbach, all of San Angelo; Mrs. Purnie Spaulding and Bob Spaulding, both of Yucca Valley, Calif.; Mr. and Mrs. Travis Kurklin, Abilene; Mrs. Joan Hardin, Rodney, Randy and Ronny, De Leon; Mr. and Mrs. Robert Butler and sons, Duncanville; Mr. and Mrs. Lynn Lemmons, Cedar Hill; and R. Q. Hagan, Moore, Okla.

**LVNA DIVISION MEET**  
The LVNA Division No. 64 will meet at 7 p. m., Monday, September 8, at the Eastland Memorial Hospital Conference Room for a board and committee meeting. It was announced. Tranto will be the guest speaker at 7:30 p. m.

**NOTICE**  
**LONE STAR PRODUCING COMPANY**  
proposes to sell its Cottages No. 329 and 331, situated at L.S.P. Company's Plant 108, West of Ranger on Breckenridge Highway; Cottages 308 and 311 situated at R.C.F. Plant in Ranger, Texas, and Lone Star Gas Co. Proposes to sell its Cottage No. 174, situated at Plant Site No. 3, West of Ranger on Breckenridge Highway.

Sale will be made to the highest bidder, for cash on an as is basis. The successful bidder will be required to pay 3 per cent State Sales Tax in addition to the bid submitted. The successful bidder will have 60 days after receipt of a Bill of Sale to remove the cottage. Bids shall be submitted two (2) ways as follows:  
(1) Remove the Cottage, clean up and remove all foundation materials, rocks, bricks, etc., leaving the premises in a good and orderly condition.  
(2) Remove the Cottage without obligation to remove foundation.

Submit written bids to Lone Star Producing Company, 301 South Harwood Street, Dallas, Texas, 75201, Attention: Mr. Joe H. Scott not later than 5 p. m., September 20, 1969, to be considered. Lone Star Producing Company reserves the right to refuse any and all bids.  
(9-4, 9-7, 9-11, 9-14, 9-18)

W. Q. SAYS . . .



**TROUBLE IS WHERE YOU FIND IT AN' I LIKE TO LEAVE IT RIGHT THERE!**

**PIPKIN  
MOTOR CO.**  
OLDS-CADILLAC RAMBLER  
GMC PICKUP

## LOSING YOUR TREAD?

ADD  
THE SECOND  
20,000\*  
MILES  
TO YOUR  
PRESENT TIRES  
\*Guaranteed



RETREAD WITH  
OUR SCIENTIFIC  
PROCESS and

**AIRCRAFT  
PREMIUM  
Tread Rubber**

About 75% of your tire cost went for the casings! So just add a top quality retread and you have another tire good as new at a portion of the cost of a new tire. They'll ride like new ones and just as safe... safer than new cheap tires!

Before you've lost all your tread come in for a free tire check and let us show you the advantages of retreading... besides saving money.

### PRE-WINTER SPECIAL

Limited Time Only

7:75x14 & 15 \$12<sup>95</sup> plus 3% tax  
7:15x14 & 15

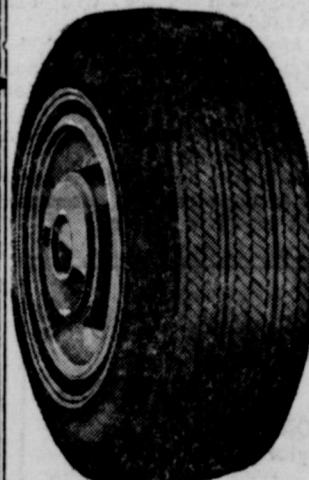
**RETREADS  
ARE SAFE**

**RETREADS  
ARE ECONOMICAL**

Retreads give thousands of miles of dependability worry-free driving — we use premium quality Tread Rubber.

# SALE

LIMITED TIME ONLY!!!



**RETREAD NOW**

**FOR MORE**

**SAFETY!**

- Retreads are Safe and Dependable
- Made with Premium Quality Tread Rubber
- You can Save up to 75% Over the Price of New Tires

# HORTON TIRE SERVICE

EASTLAND

**The Blackstone**  
ONCE MORE FORT WORTH'S  
HOTEL OF DISTINCTION

- \* **FINE FOOD**  
Home of the original Black Bottom Pie
- \* **HAREM CLUB**  
Entertainment plus Arabian Nights decor
- \* **ROOMS AND SUITES**  
Completely remodeled; beautifully decorated
- \* **BANQUETS & CONVENTIONS**  
Facilities to accommodate 1,000

**The Blackstone**  
Fifth at Main Street AC 817-332-7791  
FORT WORTH

LET YOUR SELF BOWL FOR FUN!

**FALL LEAGUES WILL BE FORMED  
AT FIESTA BOWL THIS WEEK**

BE SURE TO ATTEND THE  
MEETING OF YOUR CHOICE!  
Monday, September 8:

Afternoon Ladies at 1:30 p.m.  
Monday Men at 7 p.m.  
Tuesday, September 9:  
Tuesday Ladies, 7 p.m.  
Wednesday, September 10:  
Wednesday Ladies, 7 p.m.  
Thursday, September 11:  
Thursday Morning Housewives, 9:30 a.m.  
Thursday Couples, 6:30 p.m.  
Friday, September 12:  
Friday Couples, 7:30 p.m.  
Saturday, September 13:  
Juniors, 9:30 a.m.

Air Conditioning — Snack Bar  
**Fiesta Bowl—Eastland—629-2641**

**Make a Habit  
of Honey**  
Nature's Purest  
Food

**Raymond Sprawls  
APIARY**  
Cisco—Rt. 4

**HAY BAILING  
PLOWING**

Experienced  
Operators

Heulon Perrin, 647-1028  
Dwight Squires, 647-1397  
In Ranger

RANGER, TEXAS—THE BIG STORE

**MONTGOMERY  
WARD STOP!**

**COMPARE FEATURES—COMPARE PRICE...**

<b>MISSES, JR. MISS AND HALF-SIZE DRESSES!!</b> Regularly \$10 Values to \$15 Values Monday — Tuesday — Wednesday Only	<b>\$4<sup>00</sup></b>	<b>MISSES, JR. MISS AND HALF SIZE DRESSES</b> Regularly \$6.88 to \$8.00 Monday — Tuesday — Wednesday Only	<b>\$3<sup>00</sup></b>
<b>MISSES SKIRTS</b> Broken Sizes — Regular Values up to \$8 Monday — Tuesday — Wednesday Only	<b>\$3<sup>00</sup></b>	<b>MISSES BLOUSES</b> Broken Sizes — Regular Values up to \$8 While They Last!! Monday — Tuesday — Wednesday Only	<b>\$3<sup>00</sup></b>

**KEEP EASTLAND COUNTY TAX DOLLARS AT HOME!!**



# Borer Overshadows Big Crop; Rains May Help

Only one serious uncertainty appears to stand between the peanut grower of Eastland county and another bumper crop, County Agent DeMarquis Gordon said this week.

The villain is the lesser corn-ear borer, a turquoise-colored worm about an inch in length and banded with brown stripes.

This larvae of a small moth-like insect is casting an ominous shadow over the prospect of a county income equal to last year's record \$5.5 million, Gordon said.

The insect which has increased both in the intensity and extent of its voracious in-

festation more than at any time in the past, feeds upon the roots, pegs and pods of the peanuts. By the time that the infestation occurs it is usually too late or too difficult to control it with insecticides, Gordon said.

However some spraying is being done with Parathion and Diazinon which is placed within six inches of the stem so that it will penetrate to the affected areas and, hopefully, discourage the worm.

Aerial spraying or dusting is of doubtful value, it was explained because the insecticide thus applied will have little chance to do more than kill

the present insects on the leaves.

Of much more promise in controlling the worms are the recent rains and the change in the temperature of the weather, Gordon said.

Borers like hot dry weather for their work and a wet soil and a falling thermometer form an environment which they dislike.

Nevertheless the current infestation, even if it is effectively curbed, makes it unlikely that the otherwise highly promising outlook for peanut yields will result in production on par with that of last year. The trouble is that the damage has already been done to the formative early peanuts on the stems of the plants where the bulk of the yield is usually centered.

The plants had already put down pegs and were beginning to fruit heavily before the showers which fell during the latter weeks of August, and it is this part of the crop that suffered most from worm damage where there was infestation.

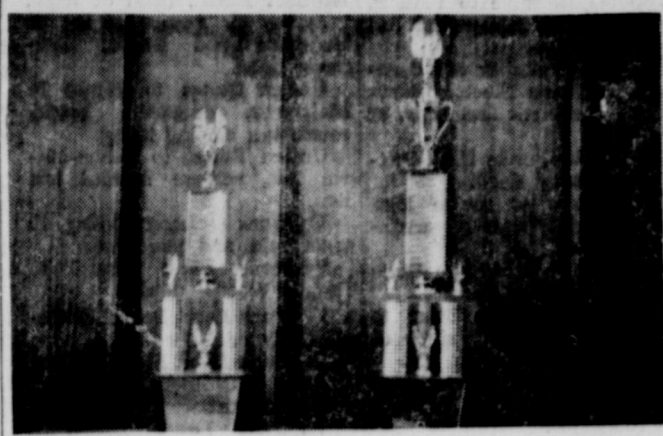
It is doubtful that pegs put down since the rains when

they should be more free of borer damage, can have time to produce mature and marketable peanuts within the 45 days required before there is a frost or cold weather severe enough to arrest development. If the cold weather holds off, as it has done in past years, this late crop should overcome some of the damage done to infested fields and insure a fair crop. Peanuts require at least an 80-degree day to fruit and mature.

The overall picture, however, is for a fair peanut crop, but not the bumper crop that the lush, green fields enriched by recent rains, apparently promise.

The irrigated acres, of which there are some 8,000 in the county, have suffered much less than the dry land from the borer activity, supporting the prediction that the late rains will curb the infestation.

# 1969 Peanut Bowl Queen Contest Trophies



# Lone Cedar Sees 140 Members In Prospect

The Lone Cedar Country Club has a total membership of 129 and prospects are bright for a total of 140 members or over before the first of the year, according to the president, Keith Whit. The numerous privileges available to club members are listed in the following paragraphs:

The Dance Club, which is within the framework of the Lone Cedar Country Club, holds regular monthly dances the first Saturday of each month. Each couple who attends is charged \$2 per dance and they may bring guests for \$2.25 per couple. Plans are being made for a Christmas dance the early part of December and a New Year's Eve dance.

The Lone Cedar Duplicate Bridge Club meets each Saturday at 1:30 p.m. and has a special club championship game the second Sunday of each month starting at 2 p.m. Also, the bridge club has been sponsoring special games about every two months with a luncheon served to players.

The Golf Club is open to the club members and their families. The guests may play by paying the daily green fees of \$2 per day during the week and \$3 per day on Saturday and Sunday.

The boat dock has been repaired and is available to any member. Any member may have the use of the club for special parties by making the proper arrangements with Mrs. Jean Meyers. The swimming pool is open to all members and their families. A buffet luncheon is served at noon on Sunday and a buffet dinner served each Tuesday evening, followed by the game night.

The board of directors have a meeting at 7:30 p.m. on Wednesday, September 3.

### MY GOD HOW CAN IT BE?

Mrs. Dewain Webb, whose sergeant husband is on duty in Vietnam, offers this anonymous poem for reader's consideration:

That one boy lies rotting from malnutrition and torture in a jungle prison camp in North Vietnam.

And another boy spits and tramples on the flag of his country on the steps of a University of Learning.

That one boy lies sightless in a U.S. Naval Hospital from Communist inflicted face wounds.

And another boy uses a Communist flag to drape himself in defiance of the law of his country.

That one man of medicine begins his thirteenth straight hour of standing over an operating table in pursuit of life for a man serving his country.

And another man of medicine implores crowds of young men to refuse to serve their country.

That one Negro holds the face of his dead white buddy in his arms and cries pitifully in a dirty mud hole.

And another Negro screams with hate against his white brother on the streets of countless American cities.

That one boy lies in a coffin beneath the ground because he believed in duty to his country.

And another boy lies on a dingy cot giving blood to the enemies of his country.

That one man of God shields a wounded boy from an enemy bayonet with his body and dies.

And another man of God uses his cloth as a shield to preach hate, dissension, and lawlessness.

EASTLAND TELEGRAM  
PAGE SEVEN Sunday, September 7, 1969

## RAWLINS MONUMENTS

WEATHERFORD PHONE 1121

IF WE MAY ASSIST YOU, CALL US COLLECT OR MAIL THIS AD

NAME \_\_\_\_\_ PHONE \_\_\_\_\_

ADDRESS \_\_\_\_\_ CITY \_\_\_\_\_

## MAJESTIC

EASTLAND PH. 629-1120

SUNDAY — MONDAY — TUESDAY  
Sun. open 1:15 — Show 1:40-3:30-5:20-7:15-9:05  
Mon.-Tues.: open 5:15 — Show 5:30-7:20-9:10

The great bunglers.

### THE GREAT BANK ROBBERY

TECHNICOLOR PANAVISION FROM WARNER BROS. SEVEN ARTS

STARTS WEDNESDAY  
Open 4:45 — Show 5:00-7:00-9:00

Sidney Poitier in his most exciting role!

### SIDNEY POITIER THE LOST MAN

A UNIVERSAL PICTURE / TECHNICOLOR - PANAVISION

### THE IMPORTANCE OF BABY RECORD BOOKS

Don't risk losing your priceless memories of baby's first year! Keep precious health records, the cute things he says and does, fresh and safe in a Gibson Baby Record Book.

Stop in soon and ask for the selection of beautifully illustrated Gibson Baby Books, handsomely bound in padded nylon cover or sturdy washable cloth. Attractive, lively boxes and make perfect baby gifts and shower presents!

C. F. GIBSON  
Gifts That Never Forget

## EASTLAND DRUG

PRESCRIPTIONS & GIFTS

## RANGER DRIVE-IN THEATRE

ADULTS 75¢ — KIDDIES UNDER 11 FREE  
SHOW STARTS AT DUSK

LAST TIMES SUNDAY  
SEPTEMBER 7

IF YOU DO NOT SEE BUT 2 PICTURES A YEAR, BE SURE TO MAKE ONE OF THEM—

Take someone you love to a nice, warm, funny picture about a nice, warm, unwed mother

A MELVIN FRANK FILM

### Buona Sera, Mrs. Campbell

Gina Lollobrigida · Shelley Winters

TECHNICOLOR United Artists

FRIDAY — SATURDAY — SUNDAY  
SEPTEMBER 12-13-14

### THE MAGNIFICENT SEVEN ARE BACK — AND THEY DON'T AIM TO PLEASE!

THE MIRISCH PRODUCTION COMPANY presents

### "Guns of the Magnificent Seven"

PANAVISION COLOR by DeLuxe · United Artists  
George Kennedy · James Whitmore

IDS now offers

IDS Progressive Fund, Inc.

A new fund that seeks Capital appreciation only

Ph. 442-2770

John McGuire  
P. O. Box 106  
Cisco, Texas

This mutual fund is dedicated to a single objective—capital appreciation possibilities primarily through common stocks.

For the important facts on this fund ask for a prospectus (information booklet).

NAME \_\_\_\_\_  
ADDRESS \_\_\_\_\_  
PHONE \_\_\_\_\_

I would like to have the free prospectus describing this "progressive" fund.

Name \_\_\_\_\_  
Address \_\_\_\_\_  
City \_\_\_\_\_ State \_\_\_\_\_ Zip \_\_\_\_\_

# Best buy in sight

## A study lamp with this tag

You can be sure you're providing your youngsters with the best possible light for home study when you choose a lamp with this tag. It comes in a variety of styles and certifies that the manufacturer has met the rigid specifications of the Better Light Better Sight Bureau and the Illuminating Engineering Society. A study lamp with this tag provides high level diffused illumination without direct glare from any angle. It is especially designed for the needs of young eyes spending long hours at homework.

Select one soon at your dealer's

TEXAS ELECTRIC SERVICE COMPANY



# COURT NEWS

Mrs. W. J. Matthews to State of Texas, deed.  
James P. McCracken to Lloyd L. London, appointment sub-trustee.  
Carl McCary to Edd McCary, quit claim deed.  
Damon Northcutt et ux to LeRoy Littleton, assignment lake lease.  
A. Z. Nolen, deceased, to the public, certificate no inheritance tax due.  
Eula Narry, deceased, to the public, certificate no inheritance tax due.

## Leo Thames Move To Abilene

Mr. and Mrs. Leo Thames and Philip have moved to Abilene, where he is supervising the Social Services Unit of the State Department of Public Welfare.  
They had lived in Eastland since September, 1964.

**Q. B. MEET MONDAY**  
The Quarterback Club will meet at 8 p.m. Monday at the Eastland Elementary School Cafeteria.  
All members are urged to attend.

**NURSES' SEMINAR**  
Registrations are now being taken for the "Coronary Care" seminar for Licensed Vocational Nurses. The meeting will be held on Saturday, September 20th, at the Holiday Inn at Mineral Wells, Texas from 8:00 a.m. to 4:00 p.m.  
Co-sponsors of the seminar are the L.V.N.A., Division No. 72 of Mineral Wells, the Texas Heart Association, and the Palo Pinto Heart Association. This seminar will help LVN's update their skills and techniques in the continued advances being made in heart care.

Licensed Vocational Nurses in nursing homes, hospitals, doctors offices, public health, private duty (special duty), students of vocational nursing and registered nurses may register and attend.

Morning sessions will be given on "An Introduction to Nursing in A Coronary Care Unit." The film will be followed by a lecture on "Emotional Aspects of Heart Disease" presented by Chaolain James Ansley, D. D., Harris Hospital, Fort Worth, Texas. The morning session will be opened with a welcome by W. A. O'Quin, M. D., Mineral Wells physician and President of the Palo Pinto County Heart Association.

A buffet lunch will be served and Rev. Don Turner will give the invocation.  
Post-lunch sessions will concentrate on "The Nurse in Emergency Resuscitation" followed by a Lecture by Andrew Megarity, M. D. and Vice-President of the Tarrant County Heart Association, with a follow-up question and answer period.

Registration fee is \$2.00, which includes luncheon. You are urged to get your advanced registration in early, as number is limited.

Registration forms and programs may be obtained from: Frances Kaminaky, LVN, Chairman of the Seminar, Rt. 1 Box 216, Millsap, Texas 76066, phone 682-4807, or any member of Division No. 72.

## YOUR FLORIST TALKS ABOUT FLOWERS

**SWEET BUNCH OF DAISIES**  
Daisy is a name given to many flowers. It means day's eye, because it seems like an eye (opening in morning, closing at night.) The American daisy is actually a wild chrysanthemum.

Our American daisy has been improved by plant breeders and is the flower of the month of April. The Shasta Daisy has four-inch blossoms and is one of our loveliest flowers. It was named by Luther Burbank who worked to develop it.

For floral arrangements with a special touch of the bright and colorful outdoors, call us. We will be happy to prepare them for you.

**POE FLORAL**  
609 W. Main  
Eastland  
689-1711

Lloyd Nail Jr., et ux to First State Bank, Ranger, deed of trust.  
Barnett M. Noble et ux to Texas Electric Service Co., right of way.  
George Owens et ux to Wallace S. Johnston, warranty deed.  
George Owens to George Lynn Reeves et ux, warranty deed.  
Sandra Oaks et al to Homer O. Smith, et ux, assignment lake lease.  
Dean H. Perry to Lone Star Gas Co., right of way and easement.  
Boswell Porter et ux to Stephenville Production Credit, extension deed of trust.  
Billy Ray Patton et ux to

Jessie Edna Kimbrough, deed of trust.  
Ben Prizning et ux to Veterans Land Board, warranty deed.  
Benton Pruet et ux to Federal Land Bank of Houston, deed of trust.  
Thomas H. Royce to Paul P. Cooper, et al, assignment oil and gas lease.  
Ranger Chamber of Commerce to Texas Electric Service Co., easement and right of way.  
City of Ranger to C. L. Pittman, warranty deed.  
G. H. Ross et ux to Mrs. Maud Pearl Bennett, warranty deed.  
W. A. Sneed et ux to State of Texas, deed.  
Elizabeth Jeffries Starr to Lone Star Gas Co., right of way and easement.  
Lew W. Star et ux to Lone State Gas Co., right of way and easement.  
State of Texas et al to John B. Swint, abstract of judgment.  
H. N. Sherman to Texas El-

ectric Service Co., easement and right of way.  
James M. Sherrill et ux to Guy M. Sherrill to Eastland National Bank, mechanic and materialman's lien and assignment.  
Robert L. Turner et ux to Herbert Ekru, deed of trust.  
James H. Turner et ux to Veterans Land Board, warranty deed.  
United States to James E. Matthews, deceased, estate, estate tax closing letter.  
United States to Jeane-Marie Inc., release federal tax lien.  
Veterans Land Board to tract sale and purchase.  
Veterans Land Board to Danny Woods, deed.  
Veterans Land Board to Gene C. Woods, deed.  
Veterans Land Board to Ronald D. Childers, contract sale and purchase.  
Veterans Land Board to Lawson Clinton Brown, contract sale and purchase.  
Veterans Land Board to

William E d w i n Lammus, contract sale and purchase.  
Veterans Land Board to Billy Eugene Guess, contract sale and purchase.  
Veterans Land Board to Don Darrel Lavender, Contract sale and purchase.  
Veterans Land Board to Lester Daniel Reed, contract sale and purchase.  
Veterans Land Board to Lone Star Gas Co., easement and right of way.  
David L. Williams et ux to James Wesley Childress et ux, warranty deed.  
Dorothy Wooley et al to Veterans Land Board, warranty deed.  
L. W. Wooley, deceased, to the public, certificate copy probate.  
Anne Matthews et al to H. G. Adams, et ux, warranty deed.  
Howard F. Wade et ux to Fred K. Moseley, warranty deed.  
Wilda Warren et al to J. W. Cagle, et ux, warranty

deed.  
Altha M. Woods to G l y n Gilliam, release vendor's lien and deed of trust.  
Jim L. Webb to First National Bank, Cisco, deed of trust.  
**Marriage Licenses**  
Virgie Lee Thompson and Virdie Lee Helton.  
Billy Clyde Palmer and Cathy Jo Ensor.  
Jimmy Dale Cole and Shirley Ann Rose.  
Jim Tom Garrett and Katrina Bea Watson.  
Thomas L. Isbell and Mrs. Madel Christine Mathews.  
Donal Ray Woodall and Marlene Fonville.  
Kenneth Wayne Goff and Mrs. Billie Jean Cherry.  
Randy Joe Speegle and Charlotte LaNell Nix.  
Robert Wesley Gibbs Jr. and Sharon Ann Spradling.  
Carl Charles Perry and Burdett Clark.  
**Suits Filed**  
Johnnie Chancellor vs. N.D. Chancellor, divorce, custody of minors and property settle-

ment.  
John Thomas Duncan, independent executor, vs. Estella Myrick Duncan, damages.  
Patsy Marlene Holly vs. Robert Alan Holly, divorce, child custody, and division of property.  
John A. Hallum vs. Texas Employers' Insurance Association, to collect compensation.  
N. D. Chancellor vs. Johnnie Chancellor et al, habeas corpus.  
L. B. Russell vs. Clarence Noah Russell, divorce.  
Dee Shoemaker vs. Arthur D. Shoemaker, divorce, restoration of property settlement.  
Montgomery Ward and Co., Inc., vs. Hall Walker, suit on account.  
C. W. Blacklock vs. Perry P. Pierson et al, suit on note.  
Jimmy A. Rodriguez vs. Houston Fire and Casualty Insurance Co., workman's compensation.  
Christy Patsy Chew vs. Tommy Darrell Chew, divorce.  
Melinda Beth Hallmark vs.

Leland Audice Hallmark, divorce and child custody.  
James E. Whitlock vs. Grace Irene Whitlock, divorce and child custody.  
J. D. Chapman vs. Raymond Earl Watson, suit on account.  
Herman Reimers et ux vs. Bertha Key et al, trespass to try title.  
Barbara Joy Shupp vs. Billy Dean Shupp, divorce and custody of minors.  
Johnnie Chancellor vs. N.D. Chancellor, re-adjudication of custody.  
Elizabeth Bralley vs. James Monroe Bralley, divorce and division of property.  
Virgie Lee Thompson vs. Virdie Lee Thompson, divorce.  
Mary Kathleen Tyrone vs. Jackson Wade Tyrone, divorce.  
Helen Troutt vs. Billy Earl Troutt, divorce.  
Homer Mentie Patterson vs. Pauline Patterson, divorce and custody of minor children.  
Virginia Lucille Fox vs. George Louis Fox, reciprocal child support.

# SAFEGWAY COMPARE LOW, LOW EVERYDAY PRICES!

Serving You Better ... Saving You More!

**Safeway Special!**  
**Margarine**  
Coldbrook Solids  
1-lb. Pkg. **10¢**

**Safeway Big Buy!**  
**Dog Food**  
Twin Pet  
13-oz. Can **8¢**



**SAVE MONEY EVERY DAY at SAFEGWAY!**  
Sure ... Every day you see "DISCOUNT PRICES" advertised ... but only a few leader items. At Safeway you get **LOW, LOW EVERYDAY PRICES** on all items in every department and **SPECIALS** on many items Every Day!

**Compare These Money-Saving Values!**

<b>Enriched Flour</b> Harvest Blossom 5-Lb. Bag <b>39¢</b>	<b>Liquid Bleach</b> White Magic Gallon Plastic <b>39¢</b>
<b>Detergent</b> Parade, For the Whole Family Wash 49-oz. Box <b>49¢</b>	

**Safeway Big Buy!**

<b>Tomato Soup</b> Town House 10 1/2-oz. Can <b>10¢</b>	<b>Soda Crackers</b> Melrose 1-lb. Box <b>19¢</b>
<b>Waffles</b> Bel-air, Frozen 5-oz. Pkg. <b>10¢</b>	<b>Cheese Spread</b> Breeze, Imitation Process 2-lb. Box <b>59¢</b>

**Compare ... Why Pay More?**

<b>Lemonade</b> Scotch Treat, Regular, Frozen 6-oz. Can <b>10¢</b>	<b>Sno-White Salt</b> 2-lb. Bag <b>10¢</b>
<b>Biscuits</b> Mrs. Wright's 2-lb. Bag <b>8¢</b>	<b>Potato Chips</b> Party Pride 2-lb. Bag <b>49¢</b>

**More Low, Low Prices!**

<b>Banquet Dinners</b> Assorted, Frozen Regular Pkg. <b>39¢</b>	<b>Salad Dressing</b> Fildament Quart Jar <b>37¢</b>
<b>Aluminum Foil</b> Kitchen Craft 25 x 12 1/2 13-oz. Roll <b>25¢</b>	<b>Hair Spray</b> Truly Hot 13-oz. Can <b>59¢</b>

**Shop and Compare These Low, Low Prices!**

<b>Sarah Lee Danish CINNAMON ROLLS</b> 9-oz. pkg. <b>69¢</b>	<b>Patio Dinners</b> Frozen, 8 Combustion *Cheese Enchilada *Enchilada 12-oz. Pkg. <b>49¢</b>
---	--

**Volume 4 Funk & Wagnalls Standard Reference ENCYCLOPEDIA**  
This Week! **1.99** Each  
With any \$3 Food Purchase  
Volumes 2 thru 25 **1.69** Each

**Safeway Meats Are Unconditionally Guaranteed to Please!**

**Beef Liver**  
Fresh, Sliced, Skinned & Deveined. **-Lb. 49¢**

**Sliced Bacon**  
Capitol, Lean & Tender **-1-Lb. Pkg. 69¢**

**Compare These Safeway Meat Values!**

<b>Rath Bacon</b> Roth Black Hawk, Sliced 1-Lb. Pkg. <b>85¢</b>	<b>Corn Dogs</b> Bulk Pack 10-Ct. Pkg. <b>98¢</b>
<b>All Meat Franks</b> Safeway 12-oz. Pkg. <b>49¢</b>	<b>Chunk Bologna</b> Large, Starling, By the Piece -Lb. <b>55¢</b>
<b>Beef Cube Steaks</b> Major House 20-oz. Pkg. <b>99¢</b>	<b>Smorgas Pak</b> Eckrich, 4 Varieties in Pkg. 1-Lb. Pkg. <b>99¢</b>
<b>Hamburger Steaks</b> Farmed and Ready for the Grill -Lb. <b>69¢</b>	<b>Link Sausage</b> Park, Safeway 1-Lb. Pkg. <b>69¢</b>
<b>Ground Chuck</b> Lean Beef -Lb. <b>79¢</b>	<b>Pork Chops</b> Quarter Sliced Loin -Lb. <b>79¢</b>
<b>Ground Beef</b> Safeway Handy 2-Lb. Cans <b>\$1.25</b>	<b>Pork Backbone</b> Country-Style -Lb. <b>69¢</b>
<b>Beef Patties</b> Chicken Fried, Shortloins or 3/4-Slice Steaks, Pre-Cooked -Lb. <b>98¢</b>	<b>Pork Neckbones</b> Fresh-Frozen -Lb. <b>29¢</b>
<b>Short Ribs</b> Baby Beef -Lb. <b>35¢</b>	<b>Jumbo Fish Sticks</b> Pre-Cooked -Lb. <b>49¢</b>
<b>Boneless Brisket</b> Baby Beef -Lb. <b>89¢</b>	<b>Perch Fillets</b> Large, Pre-Cooked -Lb. <b>59¢</b>
<b>Lunch Meat</b> Safeway Sliced, 3/4-Slice Portions 1/2-Slice Slices & Slices 4-oz. Pkg. <b>35¢</b>	<b>Haddock Fillets</b> Pre-Cooked -Lb. <b>79¢</b>

**USDA Inspected Grade**

**FANCY FRYERS 33¢**  
Whole, Everyday Low Price!  
(Cut-Up Fresh or Frozen -Lb. 39¢) **-Lb. 33¢**

Split Breasts <b>75¢</b>	Fryer Thighs <b>69¢</b>
Drumsticks <b>69¢</b>	Fryer Backs <b>15¢</b>

**Fresh Fruits & Vegetables!**

**Fresh Corn** **5¢** Each  
Tender (For Freezing or Canning Full Ears (By the Crate—5 Doz. \$2.18))

**Peaches** Large, Yellow Freestone **-Lb. 19¢**

**Prunes** Italian, Extra Fancy **2-Lb. 29¢**

**Variety & Quality At Safeway!**

<b>Sunkist Lemons</b> Refreshing Dues Catic 39¢	<b>Green Cabbage</b> New Fall Harvest -Lb. <b>7¢</b>
<b>Seedless Grapes</b> Thompson US No. 1 -Lb. <b>29¢</b>	<b>Cucumbers</b> Sliced Sizes, Each 2 for <b>23¢</b>
<b>Red Grapes</b> Malaga or Tokays US No. 1 -Lb. <b>29¢</b>	<b>Bell Peppers</b> For Salads or Stuffing, Large, Each 2 for <b>23¢</b>
<b>Ribier Grapes</b> Dark, US No. 1 -Lb. <b>29¢</b>	<b>White Onions</b> Medium or Large US No. 1 2-lb. <b>29¢</b>
<b>Orange Juice</b> Safeway, Pure, From Florida Quart Decanter <b>39¢</b>	<b>Red Potatoes</b> US No. 1A 10-Lb. Bag <b>69¢</b>

**Check This Safeway Special!**

**Golden Ripe Bananas 2 Lbs. 25¢**  
Delicate Flavor, Ideal Lunchbox Treat, Delicious & Nutritious.

**Safeway Has Everything for Your Shopping Pleasure!**

<b>Cascade Detergent</b> For Automatic Dishwashers -35-oz. Box <b>78¢</b>	<b>Wisk Liquid</b> Laundry Detergent -32-oz. Plastic <b>81¢</b>
<b>Fabric Softener</b> Sta-Puff, See & Feel the Difference! -1/2-Gal. Plastic <b>85¢</b>	<b>Cold Water All</b> Liquid Detergent -16-oz. Plastic <b>\$2.33</b>
<b>Vigo Dog Food</b> *Blue or *Yellow Label 2 16-oz. Cans <b>23¢</b>	<b>Surf Detergent</b> Put Sunshine in Your Wash -3-Lb., 2-oz. Box <b>83¢</b>
<b>Liquid Woolite</b> For Washing Fine Woollens 8-oz. Bottle <b>69¢</b>	<b>Pancake Mix</b> Pillsbury Extra Light (4-oz. Label)-1-Lb. Box <b>24¢</b>
<b>Combread Mix</b> Light Crust-7 1/2-oz. Pkg. <b>10¢</b>	<b>Jumbo Tamales</b> Gibbard's-28-oz. Can <b>39¢</b>
<b>Shelf Paper</b> No Bugs M-Lady-25 x 12 1/2 Roll <b>49¢</b>	<b>FPS Deodorant</b> Justitia Spray-4-oz. Can <b>\$1.29</b>

**Prices Effective Mon., Tues. and Wed., Sept. 8, 9 and 10, in Eastland**  
We Reserve the Right to Limit Quantities. No Sales to Dealers.

