

EASTLAND TELEGRAM

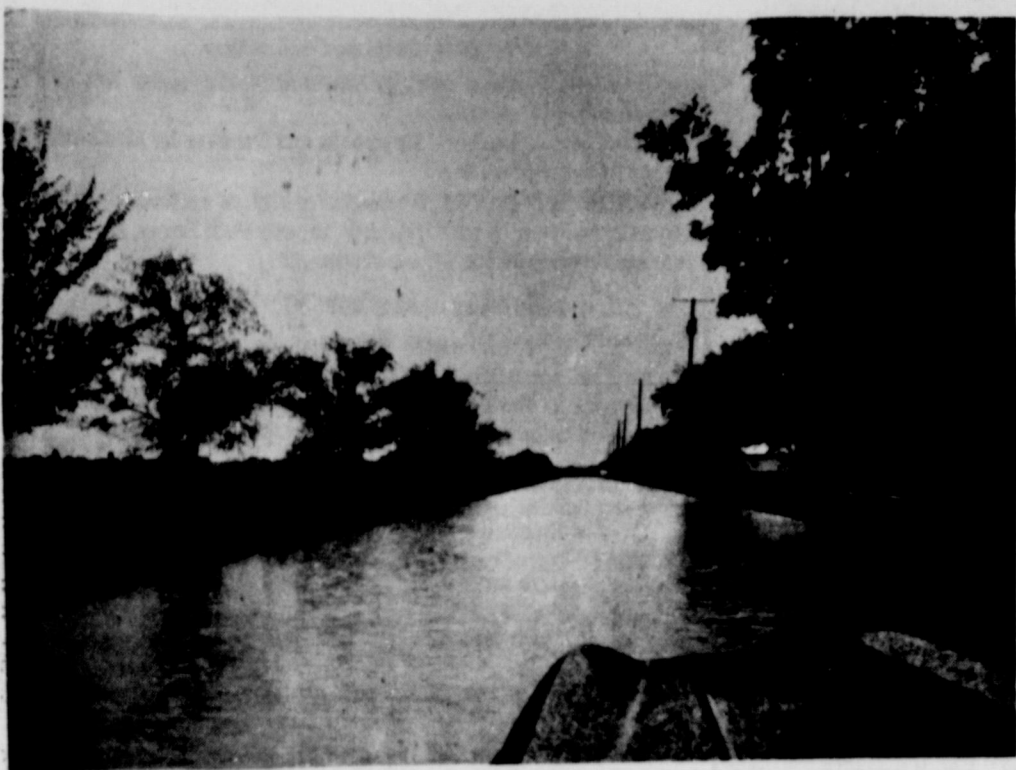
EASTLAND, TEXAS 76448: Today's CENTER for tomorrow's FUTURE!

Volume No. 104 Number 82

Sunday, October 14, 1973

REMEMBER

The Olden Church of Christ will hold a series of gospel meetings October 15 - 21. Gary Adams, formerly of Eastland, will be preaching nightly at 7:30 p.m. Charles Chesshire of Cross Plains will lead the singing. The public is cordially invited to attend these meetings.



OLD MAN RIVER? - Not really; it's S. Daugherty St. as it looked Friday afternoon during the torrential rains that fell as a cool front moved through the Eastland area. Official rainfall was recorded at 2.25 inches, bringing the two-day total to 4.37 in the rain which began early Thursday morning. Creeks, ditches, tanks and streams are reported full, with good water running into the lakes.

Mavericks Splash It 7-7 With Buckaroos In Mud Bath

By Steve Haines
The Mighty Mavericks of Eastland held the

Breckenridge Buckaroos in a hard fought ball game Friday night with field conditions at their worst, to a 7-7 tie.

Both teams fought desperately during the first half but both failed to put anything on the scoreboard.

At the close of the second quarter the score was Eastland 6 - Breckenridge 3.

But as the third quarter unfolded the Bucks gained possession of the ball at their 31 yard line and from there started their only touchdown drive which consisted of several ground plays and passes that ended with a short pass to Robertson for about a 30 yard pass run touchdown.

With the extra point good Breckenridge led 7-0.

With 6:45 left in the third quarter some 2:69 after Breckenridge's touchdown, Eastland had their first touchdown play from a 54 yard pass play which involved Tommy Morren throwing the ball to B.W. Robertson.

The Maverick drive started at their 47 yard line.

With the extra point good by Morren the Mavericks tied the ball game up for also the final score of the game.

The one major factor that hampered the game came from the heavy rains that fell during Friday up to and during game time. But considering this neither team encountered as many fumbles as some of the fans had predicted.

This leaves the Mavericks with a 1-1-3 record so far this season. With the Mavericks hosting Coleman next week the Mavericks are still very much a dangerous threat to the district play-offs.

Key players for the Mavericks were: Terry Ensor, Tony Thomas, Tom Morren, John Marshall, Charles Harvey, Doug Almond, Isaac Orozco, Clay Wheat, David Baze, John Hart, Billy Daniels, B.W. Robertson, and Brent Parker.

Funeral Services For Mrs. Cora Davis Sunday At 3 P.M.

Mrs. Cora Davis, 74 of Eastland, passed away at approximately 9:20 a.m. Saturday in Eastland Memorial Hospital after a ten day illness.

Funeral services will be at 3 p.m. Sunday in the First United Methodist Church in Eastland with the Rev. Ben Marney, pastor, officiating.

Interment will be in Eastland Cemetery under the direction of Arrington Funeral Home.

Mrs. Davis was born Sept. 23, 1899, in Shawnee, Oklahoma. She married Oliver Davis in February of 1963 in Dallas. She moved to Eastland in 1966 from Dallas after retiring from business.

She is survived by her husband Oliver; two daughters, Mrs. Eula Cauble of Eastland and Mrs. Jerri Wishard of Dallas; one sister, Mrs. Nancy Pearl Furlow and two grandchildren.

The Eastland Music Study Club will meet Oct. 17 at 3:30 p.m. in the Women's Club with Mrs. Richard Rossander, club president, presiding.



BUCKS TO BE GIVEN - Another suitcase of Old Rip Auction Bucks are to be distributed by Eastland participating merchants this week in preparation for the Gigantic Auction to be held Saturday, Oct. 20 in connection with the New Car, Truck and Farm Equipment Show and Sidewalk Sale in Eastland. Chamber Manager James Wright gets ready to deliver the second case full of valuable auction Bucks to local merchants. They're given to customers on a dollar for dollar basis all through this week. These Bucks may be used to "buy" valuable gifts being given by Eastland Merchants. Staff Photo

Fund Drive Looks For Tuesday Wrap-Up

Eastland's United Fund Drive Chairman E.A. Connel reports that about 25 percent of the total 9,425 goal has been reached.

Due to the fact that progress is somewhat slower this year than in previous years, everyone is urged to dig a little deeper into their pockets and give generously.

Tuesday is "V Day" for Eastland's United Fund.

That's the day set for goal achievement in the current drive to raise \$9,425 for 16 worthy agencies benefitted by the local United Fund.

Drive Chairman E.A. Connel and President Emmett Lasater are urging workers to get cards

picked up Monday so that the final accountings may be made.

The Eastland United Fund has never failed to reach its goal and certainly, with the many worth while projects it supports, it cannot afford to do less than exceed that goal as in the past, workers report.

The drive was launched Sept. 25 and response has been good, officials say, but the closing, big push is now needed to bring the drive to a successful culmination on schedule.

The agencies and their share of UF dollars is as follows:

Camp Fire Girls \$200

Teenage League	1,100
Boy Scouts	1,500
Salvation Army	775
Muscular Dystrophy	450
Red Cross	1,000
U.S.O.	200
Little League	1,300
Birth Defects and Arthritis	100
Cancer	100
Heart	100
Texas United Fund	50
Eastland Welfare Association	500
West Texas Rehabilitation Center	1400
Local Contingency Fund	100
Girls' Softball	500
Campaign Expenses	50

Has \$6,000 Need

Eastland Centennial Memorial Library is settling beautifully into its new facilities at 210 S. Lamar St. and the public is finding the new quarters comfortable and efficient, it is reported here.

Hours are 2 to 5 p.m. Monday, Wednesday, Friday and Saturday with librarian Mrs. Trudy Cushman reporting brisk business, after having been closed for a couple of weeks during "moving in" time.

The sponsoring Thursday Afternoon Club is still providing member hostesses for escorted tours during regular hours, and President Mrs. Dan Childress, relaxed a

little after the grand opening, but still busy with the many details, reports that the Club had to borrow \$6,000 to finish off the bills for the remodeling.

So the club is continuing its need for contributions to the first-class center, and with an eye to the future, would welcome sustaining gifts to meet operating costs.

"All bills are paid," Mrs. Childress said, "but of course, we must retire the loan as soon as possible, and we're going to need continuing help to offer the type of library services that Eastland deserves."

Contributions may be made to Treasurer James Reid, Post Office 391 Eastland, 76448.

Crawford Named To Key Post

NEW YORK - Dr. W.P. Crawford has been appointed vice president and general manager of animal health operations in the Pfizer Agricultural Division.

Dr. W.P. Crawford is the son of Mr. and Mrs. Pat Crawford of 507 S. Mulberry St. in Eastland. Mrs. W.P. Crawford is the former Ellen Geue, daughter of Mr. and Mrs. C.W. Geue, former residents of Eastland now residing in Fort Worth.

R.M. Hendrickson, division president, said Dr. Crawford's appointment to the newly created position is in line with formation of two distinct operations in the Pfizer Agricultural Division. Earlier in the year, F.B. Johnston was named vice president and general manager of genetics operations.

"The two operations have been formed to provide their specialized management required to insure continued growth in the changing markets within the agricultural industry," Mr. Hendrickson said.

Dr. Crawford, who presently is responsible for sales and marketing, now assumes the additional responsibility for all production and scientific functions in animal health operations. Reporting to him will be Dr. John Hawbaker, director of scientific affairs; E.T. Hughes, director of sales; D.M. Perusse, director of marketing; C.R. Tevebaugh, director of production; C.J. Westmoreland, director of marketing services and communications and A.E. Wilson, special products manager.

Dr. Crawford joined Pfizer in 1958 after obtaining his Ph.D. in biochemistry from Texas A&M, where earlier he earned B.S. and M.S. degrees. His initial assignment with Pfizer was as a nutritionist in Terre Haute, Ind. He moved to New York in 1963 as manager of technical services for the division. He became director of developmental research in 1965 and was named vice president of marketing in 1969.

Dr. Crawford is a member of the American Society of Animal Science, the Poultry Science Association and the American Chemical Society, and is active in affairs of the Animal Health Institute.

Dr. Crawford and his wife, the former Ellen Geue, are the parents of two daughters and a son. They reside at 500 Island Way in Franklin Lakes, N.J.

The Pfizer Agricultural Division is one of the nation's largest suppliers of animal health products, marketing more than 100 proprietary and ethical veterinary products and a broad range of feed supplements. Pfizer Inc. is a multinational organization with worldwide facilities which include 86 production units in 34 countries. Sales of the corporation exceeded 21 billion in 1972.



DR. W.P. CRAWFORD

Get Bucks Bid Big!

The demand for auction bucks is greater than ever now as the second week of distribution gets underway Monday.

On Saturday, Oct. 20, a 15 minute auction will be held every hour on the hour beginning at 1 p.m.

Big Demand

BOOTS, LUGGAGE, SAVINGS BONDS, CAMERAS, BANTAM ROOSTER, GROCERIES, CLOTHES, APPLIANCES, JEWELRY, FURNITURE, CAR AND HOME ACCESSORIES.

Where else in the world but Eastland could you get all this and more without paying a penny?

It's the Old Rip Auction Rip-Off to be held Saturday, Oct. 20, in connection with the New Car, Truck and Farm Equipment Show and Sidewalk Sale.

The Auction Bucks are Free! You get 'em, dollar for dollar, with purchases made in Eastland this week. When you buy something, be sure you get your Bucks; they're Auction Power to Buy, Buy things you need, things you want.

Merchants report a swift demand this past week from customers stacking up their Bucks in anticipation of the Auction coming up.

What a day, it'll be! There'll be a 15 minute auction every hour on the hour, right down on the square.

In between, there'll be treats a-plenty, what with a close up look at all the beautiful 1974 automobiles, trucks and farm equipment shown by Eastland dealers.

Then, too, there'll be bargains galore, all around the square on the Sidewalks, where visitors will be able to evaluate the wares in bright sunshine. Merchants all over town have made special purchases especially for this Sidewalk Event, and too, you'll find special reductions on regular merchandise, marked down to "move out".

TIDBITS

By HVO

LET'S CONGRATULATE M.H. Perry, the Gold-Hearted insurance man. He's been elected chairman of the board of directors of the Region 14, Educational Service Center which encompasses some 14 counties in this area of West Texas. It's an important post and Mr. P. will be in an even better position to help provide good educational facilities for public schoolers; as he's done for years. A long time member of the Eastland board of trustees, which he served as president, and a member of the Service Center Board since its inception, he's keenly concerned with providing the best possible for youngsters. Dr. Thomas Lawrence is executive director and the Center has an annual budget of some \$500,000. Another Eastlander, Judge Rawleigh Brown of the 11th Court of Civil Appeals, is a former member and chairman of the Center Board.

SWEET TOOTH DEPT.: The Original Deluxe Gift Fruit Cake baked in Corsicana since 1896, is now available in Eastland County by Mrs. Aubrey (Ouida Harbin) Van Hoy. She's taking orders now, with displays and information at Roy's Repair Service on S. Lamar St. When the Van Hoy's lived in Corsicana, before retiring to their Lake Leon home here last year, she was employed by the Collin St. Bakery which produces the excellent cakes. Her literature indicates that the firm has quite a distinguished clientele for the Christmas treats.

GOT YOUR BUCKS? Save 'em up, and spend 'em Saturday, Oct. 20, at the BIG, BIG New Car, Truck and Farm Equipment, Sidewalk Sale and Auction in Eastland. See you in Eastland Saturday. You hear?

FARM PRICES nationwide are changing to meet the changing needs of the nation's economy and to best utilize local conditions, David Martin, Eastland County ASCS supervisor, said in a slide presentation for the Lions Club this week. Most evident example is the tremendous boom in feed-lot operations in the Panhandles of Texas and Oklahoma where ideal feeding conditions, plus the availability of locally-grown feeds exist. Guests at the Ramada Inn meeting were Tom Stark and Truman Kirk, both of Cisco. President Darwin Miller presided and announced that the Lion Halloween Candy Sale will be Oct. 23, and the Club's Pancake Supper will be Nov. 2 at the Elementary School. Monroe Rollins is in charge of the Pancake feed and Tip Arther will head up the Candy Sale. JRB will supply Pancake Supper supplies.

Eastland Elementary P.T.O. Halloween Carnival is Oct. 27, 1973, from 6:30 - 9 p.m. at the High School brick and tin gyms. Everyone is urged to attend. All proceeds go to Eastland Elementary projects. There will be foods, prizes, games and fun for all. Classes for booths this year are:

- Kindergarten: Miss Dianne Young - Sponge Throw
- 1st Grade: Mrs. Cooper - Ringer Game
- 1st Grade: Miss Simms - Sling Shot
- 2nd Grade: Mrs. Patsy Coats - Wheel of Fortune
- 2nd Grade: Mrs. Christine Dallas - Cake Walk
- 2nd Grade: Mrs. Loys Allmand - Hospital
- 3rd Grade: Mrs. Mildred Turner - Toy Walk
- 3rd Grade: Mrs. Marjorie Young - Spook House
- 4th Grade: Mrs. Mildred Adair - Fish Pond
- 4th Grade: Mrs. Hazel Green - Pool Shoot
- 5th Grades: Miss Hearn and Mrs. Cooper - Food Booth
- 6th Grades: Mrs. Welch and Mrs. Little - Country Store

Last year was our biggest and best carnival. We hope this year will be even greater. There will be four new booths and all new and better prizes. Please help us so we may help our children. Thank You.

Signed
Eastland Elem. P.T.O.
Finance Chairman

Fund Started For FFA

A scholarship fund has been started by the Eastland High School Future Farmers of America Chapter. An initial amount of \$50.00 was donated to the chapter by Gary Thomas. Gary is an honorary member of the chapter who graduated from high school in 1971. While in the FFA, Gary was very active in leadership and judging contests. He also showed hogs and sheep. Gary attended one year at Cisco Junior College where he majored in Agriculture.

Gary's reason for wanting to help the chapter is that in the future, small scholarships can be given to deserving members as they graduate from high school and plan to continue their education in Agriculture. Plans are to deposit the 50.00 in a savings account and a chapter match it with another 50.00 and give a 1974 graduating senior a 100.00 scholarship. Each year an outstanding boy will be selected to receive the scholarship award.

FULLEN MOTOR CO. Laugh A Day

Why do women need a constitutional amendment to guarantee their rights? Men never needed one. All they needed was permission from their mothers, sweethearts and wives.

Hospital Notes

Patients in Ranger General Hospital Saturday morning were:

Agnes Bourdeau
Ida Shubert
Mittie Pugh
Edna Bilby
Virginia Pounds
Mary Clark
Lela Peersall
J.G. McGee
Dorothy Cozart
M.C. Sharp
Early Henderson
Elva Taylor
Addie Grumbles
Ed Snider
Jo Ann Wallace
Marvin Sparger


Patients in Eastland Memorial Hospital Saturday morning were:

Jesse Riggan
Brittie Carter
Martha Cashion
Gracie Hamilton
Minnie Perdue, Cisco
Mary Mehaffey, Gorman
Christell Gaines, Cisco
Thomas Lockhart
Noah Cate, Cisco
Marcus Grieger
Virginia Parr, Gorman
Della Reynolds
Elosia Renteria, Ranger
Millie Peel
Ethel Levens
Bertie Poe
Viola Gattis, Cisco
Walter Kuykendall
Bobby Elliot
Lula Hester, Olden
Lillian Bledsoe, Carbon
Geraldine Wishard, Dallas
Sally Pearl Evans, Abilene
William Stoner, Cisco
L.C. Hail
Cora Davis, Olden
Edna Chapman
Bedford Hill
Guy Houser, Comanche
Edna Kimbrough
Ethelyne Niver
Georgia Henderson, Cisco
Linda Woolridge,
Weatherford
Dean Collins, Gorman

Fountains of DeLeon
"Licensee" For the Joy... of a Beautiful Complexion...
For Whatever Your Complexion Problem May Be...
Non-Surgical...
Call DeLeon, Texas

EASTLAND CO. Color TV
Serving All of Eastland County
629 - 2287 Repair

Visiting Hours Eastland Memorial Hospital
2:30 to 4 p. m.
7 to 8:30 p. m.

The Light Touch

By Clint Bray

Kissing is when two people get so close together, they can't see anything wrong with each other.

The best way to cure the itch for money is to scratch for it.

If you always say what you think, you can become courageous, respected - and unpopular.

Sign in obstetrician's office: "Pay - As - You - Grow".

Trouble with retirement is, when you take a coffee break, you're wasting your own time.

Take a break - spend some time browsing through the goodies at BRAY'S in Eastland and Ranger.

Gordon Spot

Peanut harvest was making good progress across the county before rain stopped harvest operations last week. We need a lot of dry clear weather now until all peanuts are harvested. Some very good yields are being reported on both irrigated and dry land peanuts.

Peanuts that are found to have a certain mold in the sample that is pulled from each load go into segregation No. 3. There is a 50 dollar per ton deduction in price on a load going into segregation No. 3. We understand that the possibility exists for an even greater reduction in price next year.

A special effort is being made by the Extension Service to determine the main causes of

the mold. A questionnaire is being sent to every grower who sells segregation No. 3 peanuts. Growers are requested to complete and return the questionnaire. If specific practices or conditions can be pointed out that are common to a high percentage of producers of segregation No. 3 peanuts, then we might be able to reduce these losses.

Thus far producers have been very prompt in returning the questionnaires. We believe that the results of these questionnaires will be valuable information to peanut growers.

About 15 county pecan producers were given a tour of the Brownwood Pecan Field Station last week. The station has done some very important

pecan research. The most notable is the release of 14 new improved varieties. The group took a walking tour of an orchard that contained the new varieties plus many experimental varieties.

The latest variety developed and named is the Tejas pecan. This tree created more interest than any of the others.

The Tejas looks like the best yard pecan tree I have seen. George Madden, Superintendent of the station, said this was the most vigorous tree ever tested at Brownwood. It produces great numbers of lateral branches with strong crotch angles. The foliage of Tejas is dark green and quite dense. The tree comes into production early and is highly productive. The nuts are ideal shape for cracking and shelling, a high percent of whole kernel halves are obtained. The nuts are medium size, ranging from 50 - 75 per pound. The shell is medium in thickness with the kernel

content ranging from 50 to 56 percent of the weight of the whole nut.

I would like to mention two publications we now have that will be of interest to hunters. One is titled "Field Dressing a Deer". It gives one method of field dressing and skinning a deer. Any method resulting in a clean, well bled carcass is satisfactory. Unpleasant experiences with venison usually result from lack of care before the meat reaches the kitchen.

The other publication is titled "Wild Game Care Cooking". This publication describes the time-tested methods of handling game in the field until it is tastefully served on your table. It not only tells how to cook venison, but also how to cook other large game, small game, and game birds. The publications are available in the County Extension offices in the courthouse.

SEEDS FROM THE SOWER
By Michael A. Guido, Metter, Georgia



The sick man was an unwilling patient. "Personally," warned the man, "I have no faith in medical science."

"That's all right," replied the doctor. "The mule has no faith in the veterinary surgeon, but he cures him."

But faith is a vital thing for man. It is essential to salvation. The Gospel Gem states, "For God so loved the world, that He gave His only begotten Son, that whosoever believeth in Him should not perish, but have everlasting life." Salvation is placed within man's reach. Faith is the hand that lays hold of it.

Faith is a visual thing. People should be able to see by our lives what we speak with our lips. Pious language cannot camouflage a profane life. The world will listen to the lips speak about Christ, if the life shows a likeness to Christ. Witnessing is what a Christian is, not merely what he says.

Faith is a vocal thing. "I believe," said the man of God in Psalm 116:10, "therefore

have I spoken." A faith that is unspoken is unreal. If we believe, we have Someone to speak about. Things cannot satisfy. But this Person satisfies in all things. If we are true to Him we will testify for our satisfying Saviour.

LOW LOW PRICES Plus SPECIALS EVERY DAY!

Safeway Special!

Baby Food
 Heinz, Strained, *Fruits *Desserts and *Vegetables
12 Reg. \$1
Jars

Safeway Special!

Soft Drinks
Cragmont, Refreshing.
10-oz. Bottles. (Plus Deposit)
3 6-Pak \$1
Cartons

Safeway Big Buy!

Apple Sauce
Highway, Smooth and Tangy
5 16-oz. \$1
Cans

Safeway Special!

Margarine
Sunnybank, Corn Oil
3 16-oz. \$1
Cans

Tomato Catsup 23¢
Highway, Thick
14-oz. Bottle

Saltines Malrose, Soda Crackers 1-lb. Box 29¢

Plain Chili Town House 15-oz. Can 55¢

Tomato Soup Town House 10.75-oz. Can 11¢

Bel-air Waffles 11¢
Breakfast Treat!
5-oz. Pkg.

Pork & Beans Van Camp's 16-oz. Can 17¢

Black Pepper Trader Horn 4-oz. Can 39¢

Tomatoes Gardenside 16-oz. Can 21¢

Potato Chips 53¢
Party Pride, A People Pleaser!
7.5-oz. Bag

Chips for Dips Lucerne 8-oz. Carton 38¢

Chunk Tuna Van Camp's 4.5-oz. Can 39¢

Fruit Drinks Cragmont 46-oz. Can 25¢

Liquid Bleach 37¢
White Magic.
Gallon Plastic

Detergent Parade, For a Clean Wash 49¢
Box

Aluminum Foil Kitchen Craft, 12 Inches Wide 25¢
Roll

Cleanser White Magic, Name Helper 14¢
Can

Safeway Special!

Dog Food
Pooch, For Cats Too!
11 15.5-oz. \$1
Cans

HERE'S HOW YOU CAN SAVE MONEY!
Safeway has its own family of products that are of the finest quality. These products are priced well below nationally advertised items. Safeway Brands like Town House, Bel-air and Lucerne can save you money and Lower Your Total Food Bill. If you're unhappy over current grocery prices, compare Your brands to Safeway's, then You will see why Safeway is **YOUR PEOPLE TO PEOPLE STORE!**

Safeway Special!

Jell-well
Gelatin, Quick and Easy!
10 3-oz. \$1
Pkgs.


Fresh Pork Chops 94¢
Taste Tempting Flavor!
Economic Family Pack!
-lb.


Sliced Bacon \$1.05
Slab, Rindless, Tasty!
(Safeway Bacon 1-lb. Pkg. \$1.18) -lb.


Safeway Wieners 79¢
Plump and Tender!
Lunchtime Favorite!
12-oz. Pkg.


FRESH FRYERS 45¢
USDA Insp. Grade 'A'
(Cut-up Regular -lb. 53¢) Whole -lb.

Ground Beef 89¢
Regular, Safeway -lb.

Lean Ground Beef Flavorful -lb. \$1.09

Top Sirloin Steak Boneless, USDA Choice Grade -lb. \$1.98

New York Steak Boneless Strip, USDA Choice Grade -lb. \$2.49

Eckrich Sausage Smoked, Heat & Serve! -lb. \$1.53

Beef Short Ribs 59¢
USDA Choice Grade Heavy Beef -lb.

Pork Spareribs Fresh, 1 1/2 to 3-lb. Avg. -lb. 94¢

Fresh Pork Steak Lean Butt Cuts -lb. \$1.05

Link Sausage Park, Safeway 1-lb. Pkg. 95¢

Armour Bacon Armour Star, MiraCare 1-lb. Pkg. \$1.25

Chipped Meats 45¢
Safeway, Sliced, 6 Varieties -3-oz. Pkg.

Lunch Meat Safeway Sliced *All Beef *Cooked Salami 8-oz. Pkg. 55¢

Sliced Bologna Oscar Mayer, All Meat 8-oz. Pkg. 69¢

Armour Hot Dogs Armour Star, Tender! 12-oz. Pkg. 85¢

All Beef Wieners Safeway, Ready to Eat! 1-lb. Pkg. \$1.09

Pinwheel Pack 85¢
44 Thighs *44 Drumsticks.
From USDA Insp. Grade 'A' Fryers -lb.

Split Breasts 95¢
With Rib, From USDA Insp. Grade 'A' Fryers -lb.

Fish Sticks 75¢
Pre-Cooked, Large Size -lb.

Turbot Fillets 83¢
Greenland, Fresh-frozen -lb.

Corn Dogs \$1.39
Easy to Prepare! 10-Ct. Pkg.


Potatoes 10 Lb. 99¢
Russet, US #1, For Baking! Bag


Delicious Apples 29¢
Washington State
*Red or *Golden, Extra Fancy! -lb.


Green Cabbage 10¢
New Crop! Solid Heads! -lb.

Check These Low Prices!

Light Bulbs \$1.40
General Electric, 40, 75, or 100 Watt -4-Bulb Pack

Liquid Floor Care \$1.33
Step Saver, -32-oz. Bottle

Funk & Wagnalls Students Encyclopedia On Sale Now! Volume 9 - 10 \$1.69

CHINA DINNER PLATES 89¢
EACH with every \$5 purchase Regularly \$1.80

Green Beans 39¢
Kentucky Wonder Variety -lb.

Clip-Top Turnips Purple Top -lb. 29¢

Italian Squash US #1, Tender! -lb. 35¢

White Onions US #1, Mild! -lb. 25¢

Red Grapes 39¢
California, July! -lb.

Candy Apple Kits Snack Treat! 3-oz. Pkg. 35¢

Breakfast Prunes Gardenside 2-lb. Pkg. \$1.19

Waldorf Dates Regular 12-oz. Pkg. 49¢

Crisp Carrots 19¢
Safeway, Vitamin Rich! -1-lb. Cello

Texas Yams Delicious -lb. 29¢

Green Onions Long Shank -Bunch 15¢

Red Radishes Safeway, Tasty! 2 3-oz. Cellos 25¢

Head & Shoulders Shampoo 11-oz. Bottle \$1.99 | 7-oz. Tube \$1.97

Baby Powder Johnson's 14-oz. Can \$1.09

Toothpaste Pepsodent 3-oz. Tube 46¢

Sure Super Dry Deodorant 9-oz. Can \$1.47 | *Scented or *Unscented 6-oz. Can 99¢

Sanitary Napkins Modess 24-Ct. Box 88¢

Prices Effective Mon., Tues. & Wed., Oct. 15, 16 & 17, in EASTLAND. No Sales to Dealers.

SAFEWAY

© Copyright 1980, Safeway Stores, Incorporated.



To Celebrate Anniversary

Mr. and Mrs. R.F. Wood of Rt. 1, Carbon will celebrate their 50th wedding anniversary Sunday, Oct. 21 from 2 - 5 p.m. in the Kokomo Community Center.

Hosting the reception will be their children: Mrs. J.B. Etheridge of Seguin; Mr. Clifton Wood of Imperial, Nebraska; Mr. James W. Wood of Carbon; and Mr. Gene Wood of Odessa.

Mr. Randal Floyd Wood was born March 13, 1899 at Gun-sight. Mrs. Daisy Wood was born June 3, 1902 at Kokomo. The couple met in 1910 when they were schoolmates at the Kokomo school which sat on the present site of the Kokomo Community Center where the celebration will be held. They were married on October 21, 1923 at the bride's home in Kokomo with Rev. Willie Skaggs officiating.

During their 50 years of marriage they have lived in the Kokomo Community and surrounding areas. They moved to Carbon in 1963 after retiring from farming.

Mr. and Mrs. Wood are both

members of the First Methodist Church in Carbon.

Mr. Wood likes to fish, play cards and 42. Mrs. Wood's hobbies include gardening, playing cards and 42, and handcrafts.

The Woods have ten grandchildren and one great-grandchild.

All friends and relatives of Mr. and Mrs. R.F. Wood are invited to attend the reception and help them celebrate their Golden Wedding Anniversary.

COLLEGE STATION

Donald F. Elkins of Gordon has earned "Distinguished Student" ranking at Texas A&M University, announced Registrar Robert A. Lacey.

The undergraduate honor is awarded students who have excelled academically. Recipients must earn at least a 3.25 grade point ratio (out of a possible 4.0) during the most recent grading period.

"Distinguished Student" ranking is limited to 10 percent of TAMU's undergraduate enrollment.

H.D. News

A record turnout is expected at the 5th Annual County - Wide Senior Citizen's Bazaar scheduled for this Friday and Saturday, Oct. 19 - 20 in the vacant Majestic Cafe building on the south side of the square in Eastland.

The official opening will be at 9:30 a.m. on Friday, Oct. 19th. Highlight of the opening program will be the presentation of the "Oldest Man and Woman Exhibitor".

The honorees will officially cut the ribbon to open the Bazaar to the public at that time. Special welcomes will be extended by County Judge Scott Bailey and James Wright, Eastland Chamber of Commerce Manager.

Any person 60 years of age or older and a resident of Eastland County is extended an invitation to show and sell their handmade articles. All exhibits must be entered on an individual basis. Proceeds from sales will go to the owner.

For more information, you are invited to call the county extension office at the courthouse 629 - 1729.

As prices rise, homemakers are looking for ways to cut costs in the supermarket. Food is a necessity, but who needs a special cleaning solution for floors, another formula for sinks and a separate mixture for appliances? One general cleaning and deodorizing product works on practically everything. Baking soda can

convention was very busy but most interesting and enjoyable.

Business conducted included plans for sponsoring the senior citizen bazaar concessions and bake sale. The concessions will feature homemade pies, cakes, and fried pies. Also homemade stew and sandwiches will be sold.

Kokomo, Flatwood, and Morton Valley H.D. Clubs will sponsor and work in the concessions on Friday, Oct. 19; and Pleasant Hill, Lake Cisco, and Word H.D. Clubs will provide food on Saturday, Oct. 20th.

Mrs. R.W. Gordon, Council Chairman, presided over the business meeting.

Many entries are expected at this year's Senior Citizen Bazaar. The Bazaar will be on Oct. 19 and 20th in the old Majestic Cafe Building in Eastland. If you are 60 years of age or older and live in Eastland County you are invited to enter your handmade articles to show or sell. All money from the sales will go to the owner.

For more information, you are invited to call the county extension office at the courthouse 629 - 1729.

As prices rise, homemakers are looking for ways to cut costs in the supermarket. Food is a necessity, but who needs a special cleaning solution for floors, another formula for sinks and a separate mixture for appliances? One general cleaning and deodorizing product works on practically everything. Baking soda can

An antique car parade will be on Saturday morning Oct. 20th at 9 a.m. All owners of cars are invited to join the parade which will begin at the Fire Station on South Seaman Street. Following the parade the Antique or "old" cars may be parked on the square in a reserved area for show.

Quilts, afghans, oil paintings, stuffed toys, dolls, knitted sweaters, wood work, and ceramics are just some of the hundreds of lovely articles that will be on sale and display. The Bazaar is sponsored by the Eastland County Senior Citizens, Home Demonstration Clubs in cooperation with the Eastland County Extension Service. Mrs. Janet Thomas, County Extension Agent, stated that this is a county wide project and entries are expected from every town in the county. She also reminds the public that this would be a grand time to buy those special Christmas gifts.

The purpose of the Bazaar is "to recognize the talents and abilities of senior citizens and to provide them with the opportunity of displaying and selling things they have made." All proceeds from sales are returned to the men and women whose products have been bought.

Hundreds of lovely handmade articles will be on sale at the 5th annual County Wide Senior Citizen's Bazaar. Exhibitors from all over the county are expected on October 19th - 20th at the vacant building which was formerly the Majestic Cafe on the Eastland square. Last year's Bazaar had 63 individuals selling over \$794, and a record turnout is expected this year.

All entries are welcome! The Home Demonstration Clubs will sponsor the concessions and bake sale. Homemade stew, sandwiches, baked pies, cakes, and fried pies will be provided for your enjoyment.

The County Home Demonstration Council met this week in the Eastland National Bank Civic Room. Mrs. Zelma Lusk a delegate to the State THDA meeting in Waco, from our county reported on the convention activities. Mrs. Lusk reported that over 850 ladies throughout the state were represented. The workshops in Health, Citizenship, Safety, 4 - H, Cultural Arts, and Family Life provided interesting speakers and good program materials. Keynote speakers were Rev. Robert McLeod, pastor of Waco First Baptist Church; and Congressman Omar Burleson. Mrs. Lusk stated that the three day

Association Meets Oct. 15

The 89th annual session of the Cisco Baptist Association, in cooperation with the Baptist General Convention of Texas, will meet October 15, 1973, at 2:30 p.m. with the First Baptist Church in Eastland. At 3:45 p.m. Rev. Frank Crosby, pastor of Second Baptist Church in Ranger, will bring a missionary message. At 4:50 Dr. E. Eugene Greer of Dallas

will speak on "Texas Baptists". At 8:00 p.m. Rev. Tom Satterwhite, pastor of First Baptist Church in Ranger, will bring the annual sermon.

Officers of the Association are Rev. Haston Brewer, moderator; Rev. Russell Pogue, clerk; and Rev. Lynn Bridges, treasurer.

Bowling News

FIESTA BOWL

Eastland
Thursday Morning
Ladies' League
Week of Oct. 11, 1973

Standings

1. Citizens National Bank
 2. Rita's Fabrics
 3. Eastland Livestock Auction
 4. Hubbard Lake Steak House
 5. Whoa - N - Go Car Wash
 6. Endebrook Janitorial Supply
- 1st High Team 3 Games: Rita's Fabrics, 1661; 2nd - Citizens National Bank, 1651; 3rd - Endebrook Janitorial Supply, 1586.
- 1st High Ind. 3 Games - Betty Tomlin, 586; 2nd - Dorothy

replace scores of high priced cans, bottles, and aerosol sprays!

Consider the tasks baking soda is good for. Using a solution of three tablespoons of baking soda to one quart of water, you can wash the floor, walls, woodwork, range, portable appliances and refrigerator, inside and out. Some other good cleaning hints are: wash shower curtain and bathroom tile with baking soda solution to remove mildew and soap residue; sprinkle dry soda on damp sponge to polish chrome; when babies spit up rub with damp sponge sprinkled with dry soda to prevent stains and odor. Another good hint for removing grease stains from carpeting is to rub dry baking soda into the carpet nap. Let stand and then vacuum.

Baking soda is pure and safe, won't scratch, and doesn't pollute. Like a magic genie, baking soda can replace a whole shelf full of special cleaners thus lowering that every rising supermarket bill.

Appointed Administrator

The Executive Committee of Gonzales Warm Springs Foundation has announced the appointment of William E. Hisey as Administrator of Texas Rehabilitation Hospital.

Mr. Hisey takes over the position formerly held by Lynn Smith, Sr., who recently retired.

Mr. Hisey came to Warm Springs from Walnut Ridge, Ark., where he served as administrator of Lawrence Memorial Hospital and Lawrence Hall Nursing Home. Hisey attended Taft (Texas) High School, Del Mar Jr. College and Trinity University where he studied Hospital Administration. He is a member of the American

Academy of Medical Administrators, American Hospital Assn., Texas Hospital Assn., Arkansas Hospital Assn., Arkansas Nursing Home Assn., and Kiwanis Int'l. He is married to the former Mary Jean Allen of McAllen, Texas. The Hiseys have six children.

Sunday, October 14, 1973

NEED CEMENT WORK?
Call Kinchloe Concrete Co.
Free Estimates
629 - 8092.

Roofing
New & Repair All
Buildings & Houses
Estimates Made.
Tri-Citys Roofing
Call Nobel Squires
629-3270

FAMILY STYLE CATFISH DINNERS

All You Can Eat \$2.75 -- CHILDREN UNDER 6 FREE
10 Pieces Catfish, Hushpuppies & Tartar Sauce \$3.75
TO GO ORDERS ALSO

FONTAIN BLUE

Hwy. 6 Gorman
Ph. 743-5808

Of Interest to Women

SENIOR CITIZEN'S FALL BAZAAR
Old Majestic Cafe Bldg.,
Eastland
October 18 - 19 - 20, 1973

PROGRAM

THURSDAY, OCTOBER 18

1 - 5 p.m. - Registration & Set Up Exhibits
FRIDAY, OCTOBER 19
9:30 a.m. - Official Opening Ceremonies
PRESENTATION OF OLDEST MAN & WOMAN
EXHIBITOR
RIBBON CUTTING

9:40 a.m. - 9 p.m. - Bazaar Open to Public

SATURDAY, OCTOBER 20

9 a.m. - Antique Car Parade & Show
9 - 4 p.m. - Bazaar Open to Public
THE BAZAAR IS OPEN TO THE PUBLIC ...ALL
ENTRIES WELCOMED

SPONSORED BY: Eastland County Extension Service with the Senior Citizen's Clubs and Home Demonstration Clubs in the county cooperating.
Bake Sale and Concessions will be sponsored by the Eastland County Home Demonstration Clubs.

RULES AND REGULATIONS

1. All exhibitors must be age 60 years or older; and residents of Eastland Co. The exception to this rule is: any handicapped person 50 years or older may participate.

2. Any entry must be handmade and entered by the person making it. Entries do not have to be made during the current year.

3. Entries may include such items as oil paintings, quilting, knitting, crochet, ceramics, wood work, household articles, and any other miscellaneous items.

4. Exhibits must be entered on an individual basis. No organizations may sell. No articles entered will be judged on a competitive basis.

5. Because of growing interest and participation, exhibitors may use no more than 1/2 of a table space for the show or sale of their items. Tables will be furnished. Participants may replenish their exhibits as articles are sold.

6. Exhibits should have a card attached giving the NAME, ADDRESS of owner, and PRICE of article if the article is to be sold. Money from the sale of articles will go to the owner.

7. The Bazaar will be held in the vacant Majestic Cafe building on the south side of the square in Eastland. Entries should be brought in on Thursday afternoon, Oct. 18 between 1 & 5 p.m. All articles not sold should be removed by 4 p.m. on Saturday, Oct. 20th.

8. Past winners of the "Oldest Man and Woman" exhibitor award are ineligible to receive the honor during the current year's Bazaar.

9. Exhibitors are encouraged to bring paper bags and old newspapers for wrapping articles that are sold.

10. Checks will be mailed by the Bazaar financial committee the following week to exhibitors. No checks will be issued during the Bazaar.



JOIN THE RACE

...THE HUMAN RACE!
Help Those Less Fortunate!

UNITED WE STAND TO
GIVE THEM HOPE...

They're out there — the countless thousands. People without homes or families. Old people... young folk... afflicted with physical ills and emotional anguish... People trying to cope with life. They're looking to us for hope...

for the extended hand that holds understanding and support. Reach them all by giving the United Way. Give generously when they call on you.

EASTLAND MANOR

1405 W. Commerce
629-2686
Gene Frost, Adm.

VALLEY VIEW LODGE

700 S. Ostrom
629-1779
Shirley Frost, Adm.

COURTHOUSE NEWS

NEW CAR REGISTRATIONS
 Billy J. Hare - Ford Pkup - Stephenville
 Leemon L. Foster - Chev. Pkup - Lometa
 Jackie D. Wood - Buick - Eastland
 Mrs. Pauline Lewis - Pont. - Eastland
 Betty Penn Kinser - Chev. - Gorman
 W.L. Saunders - Chev. - Dublin

91st DISTRICT COURT
 Mary Elizabeth Carter vs. Joseph T. Carter - divorce
 First National Bank of Gordon vs. Bill A. Davis - sequestration
 Bobby Pennington vs. Frank A. Robinson - suit for damages
 R.C. Simmans vs. Burdett Hitt - suit on note
 Larry Cohen Indv. and as next friend of Robert Cohen, a minor vs. Shelley Suzanne Polk and Peggy Polk - suit for damages
 Barbara Ann Carpenter vs. Kenneth Leon Carpenter - divorce and child custody
 Cynthia Ann Williams vs.

Donald Gene Williams, Sr. - divorce and child custody
 Burt C. Blue, Jr. vs. Tex. Employment Ins. Ass'n - workman's compensation
MARRIAGE LICENSE
 Howard Mitchell Holder and Barbara Marie Taylor
 Paul Timothy Wooley and Florence Mae Stanley
 Jerry Don Britt and Dolores Kay Vinson
 Clina Howard Roberts and Bonnie Kay Wood
 Johnny Evans Ferrell, Jr. and Patricia Ann Knotts
 Rickey Lee Browder and Sharon Elaine Jessup
 David P. Elizalda and Isabel

INSTRUMENTS FILED COUNTY CLERK'S OFFICE
 Jerry L. Alford and wife to Citizens Nat'l Mortgage Corp. - deed of trust
 A.D. Alexander, Jr. - to State Holding Co. - asgn. lease
 Robbie G. Brown and wife to Jerry L. Alford and wife - warranty deed
 J.B. Bynum and wife to Abilene Savings Ass'n - deed of trust
 B.G. Brown, Inc. to Kenny J. Cogburn and wife - warranty deed
 Alton M. Beaty and others to Donald C. Holder and wife -

warranty deed
 Dale O. Bakker to Lucille Taylor - deed of trust
 Raymon Bryan and others to Robert Butler and others - warranty deed
 Robert Butler and others to 1st St. Bk., Ranger - deed of trust
 Othell Clark and wife to 1st Nat'l Bank, Gorman to James Kinser - mechanics and materials lien and asgn.
 Costat St. Gas Prod. Co. and others to the Bank of New York - 16th supplement and indenture
 L.N. Carlile, deceased to the Public - proof of heirship

L.B. Carlile and others to Wilma Morris - warranty deed
 May B. Cottingham to Billy Ray Patton and wife - warranty deed
 Conn. Mutual Life Ins. Co. to B.J. Greenhaw and wife - partial release deed of trust
 Loal Dean Dennis and wife to J.B. Bynum and wife - warranty deed
 W.T. Fillon, deceased to the Public - proof of heirship
 Eastland Nat'l Bank to Bobbie G. Brown and wife - release deed of trust venders lien and M - M - L
 Benny Ray Evans and wife to F.H. Howell - warranty deed

Eastland National Bank to W.H. Newcomb and wife - release deed of trust
 First State Bank, Ranger to E.R. Overstreet and wife - release deed of trust
 Bobbie L. Glasson and others to State of Texas - notice state tax lien
 Thelma Greenhaw and others to Cook Lumber Co. - oil, gas lease
 B.J. Greenhaw to Donald Holder and wife - release venders and deed of trust
 James S. Hatton, deceased to the Public - proof of heirship
 F.D. Howell to First State Bank, Ranger - deed of trust

Thru. Oct. 20-73

You can't help saving at J.R.B.

Double Stamps Wednesday & Saturday

Eastland, Ranger, Cisco

We Reserve The Right To Limit Quantity
 NO SALES TO DEALERS



SAVES YOU MOST
 SERVES YOU BEST

BROWNWOOD, COLEMAN, CROSS PLAINS, ABILENE, RANGER, EASTLAND, CISCO, DE LEON, BRADY, WICHITA FALLS, LLANO, STAMFORD.
 NO SALES TO DEALERS

30¢ VALUABLE COUPON 30¢
 5 LB. 4 OZ. KING SIZE DL 30
TIDE
 ONLY \$1.19
 WITH THIS COUPON
 OFFER EXPIRES 10-20-73

30¢ LIMIT 1 COUPON PER PURCHASE 30¢
 25¢ save 25¢
 WITH THIS COUPON WHEN YOU BUY THE 1 LB. CAN OF
MAXWELL HOUSE COFFEE
 AT J.R.B.
 25¢ 1 LB. CAN ONLY 75¢ WITH COUPON
 ONE COUPON PER FAMILY - OFFER EXPIRES 10-20-73 25¢

Maxwell House
COFFEE
 All Grinds, With 25¢
 Coupon 1 Lb. **75¢**

Stix, Betty Crocker
PIE CRUST 22 Oz. **59¢**

Tide, With 30¢ Coupon King Size
DETERGENT \$1.19

Comet 2 Off Label Reg. Size
CLEANSER 2/31¢

Duncan Hines 23 Oz.
BROWNIE MIX 69¢

All Purpose Mr. Clean
CLEANER King Size 89¢

Betty Crocker All Except Layer Angel Food
CAKE MIX 42¢

FABRIC Downy
SOFTNER Giant Size 69¢

Ivory 20 Off Label
LIQUID DETERGENT
 King Size 63¢

PORK STEAK Lean lb. **99¢**

PORK ROAST Lean Semi Boneless lb. **89¢**

PORK CHOPS Family Pack lb. **\$1.09**

PORK CHOPS Center Cut lb. **\$1.19**

PORK CHOPS Breakfast Thin lb. **\$1.29**

BACON JRB Hickory Smoked lb. Pkg. **\$1.09**

SAUSAGE Jimmy Dean 24 Oz. Pkg. **\$1.69**

JRB MEATS ARE U.S. GOVERNMENT INSPECTED. IF FOR ANY REASON YOU ARE NOT SATISFIED, WE WILL CHEERFULLY RETURN YOUR MONEY.

Decker 12 Oz. Pkg. **BACON** **99¢**

Gooch Blue Ribbon **HOT LINKS** lb. **99¢**

Shop Made **SAUSAGE** lb. **89¢**

Decker All Meat 12 Oz. Pkg. **FRANKS** Each **89¢**

Decker All Meat Mkt. Sliced **BOLOGNA** lb. **\$1.09**

Dairy Specials

Foremost 24 Oz. **COTTAGE CHEESE** **69¢**

Yami 8 Oz. **YOGURT** **4/\$1**

Parade Satin Whip **MARGARINE** 1 lb. Bowl **2/89¢**

Promise 1 lb. **MARGARINE** Quarters **59¢**

Trophy **STRAWBERRIES** 10 Oz. **4/\$1**

Parade **WHIP TOPPING** 10 Oz. **49¢**

Sara Lee **POUND CAKES** **89¢**

HEALTH AND BEAUTY AIDS
 Close Up, Reg. Or Mint Family Size **TOOTH PASTE** **79¢**
 Reg. \$1.15

New Breacol 3 Oz. **COUGH MEDICINE** Reg. \$1.29 **69¢**

Pepsodent Med. **TOOTH PASTE** Med. **49¢**
 Reg. 69¢

Jergens Ex-Dry 9 Oz. **LOTION** Reg. \$1.29 **89¢**

Throat Oracin 18's **LOZENGES** Reg. 86¢ **69¢**

60's **EFFERDENT** Tablets Reg. \$1.29 **99¢**

St. Joseph 72's **ASPRIN** Reg. 89¢ **69¢**

White Rain, Reg. Or Ex. Hold Reg. \$1.19 **HAIR SPRAY** 13 Oz. **89¢**

Lemon Up, Concentrate 5 Oz. **SHAMPOO** Reg. \$1.50 **\$1.09**

Balsam & Body 8 Oz. **TAME** Reg. \$1.29 **89¢**

Gillette Trac II **BLADES** 5's **\$1.09**
 Reg. \$1.19

MIX OR MATCH 8/\$1.00

JELLO All Flavors 3 Oz.

LUNCH BAGS Zee 20 Oz. Ct. Pkg

KLEENEX Little Travelers 70 Ct. Box

DOG FOOD Pal-A-Mine 300 Can

SYRUP Hershey 5 Oz.

HOMINY Van Camp, White Or Golden 300 Can

Large Shell Skinners **MACARONI** 12 Oz. **34¢**

Instant Maxwell House **COFFEE** With 50¢ Coupon 10 Oz. **\$1.29**

Breeze 15¢ Off Label **DETERGENT** King Size **73¢**

Kal Kan, Beef, Heart, Meal Time **CAT FOOD** 6 Oz. **2/39¢**

MIX OR MATCH 3/\$1.00

FRUIT DRINKS Hi-C 46 Oz. Can

SPAGHETTI Franco American 26 Oz.

TURNIPS With Sunshine No. 2 1/2 Can

NAPKINS Parade 180 G. Pkg.

save 50¢
 WITH THIS COUPON WHEN YOU BUY A 10 OZ. JAR OF INSTANT
MAXWELL HOUSE COFFEE
 AT J.R.B.
 10 OZ. JAR ONLY \$1.29 WITH COUPON
 ONE COUPON PER FAMILY - OFFER EXPIRES 10-20-73 50¢

C.C. Biggs, Keebler **COOKIES** 14 Oz. **59¢**

Yardleys' **BATH SOAP** Bath Size **49¢**

Jif 18 Oz. **PEANUT BUTTER** **67¢**

Unbeatable produce

Large Size **TOMATOES** Lb. **29¢**

Red Delicious **APPLES** 4 For Lb. **\$1.00**

Large Heads **LETTUCE** Each **29¢**

Large Stock **CELERY** Lb. **29¢**

Italian Sweet Red **ONIONS** Lb. **29¢**



you're invited

to view our

FASHIONS

for

Fall

THE YOUNG AGE SHOP

"Everything You Need From Tots To Teens"

1-20 Main Ranger

RANGER DRIVE-IN THEATRE

LAST TIMES
Sunday
OCT. 14

GEORGE C. SCOTT
FAYE DUNAWAY
JOHN MILLS
JACK PALANCE

OKLAHOMA CRUDE

Friday - Saturday & Sunday
OCTOBER 19 - 20 - 21

Nigger Charley Is
On The Loose Again.
And This Time He's
Got His Soul Brothers
With Him!

WATCH OUT!

Paramount Pictures Presents
A Larry G. Spangler Production
"The SOUL of NIGGER CHARLEY"

In Color Paramount A Paramount Picture

Boosters Can Help Or Hurt Athletic Clubs Can Build Or Break Sports Programs

BY DR. RHEA H. WILLIAMS

League Director
In practically all communities in Texas, groups of football fans are meeting regularly as Quarterback Clubs, Booster Clubs, Athletic Clubs, or under similar names. These clubs vary widely in membership, purposes and objectives.

Such clubs, if properly directed, have a valuable function in the promotion of high school athletics. Some legitimate functions for these clubs are advertising athletic events, assisting in ticket sales, creating better relationships between school and community, and conducting programs to create better sportsmanship.

Publicity Attitude
Unfortunately some clubs assume a press agent attitude toward high school athletics. They often think of athletics as an advertisement for the home town in terms of financial returns and winning, rather than the educational experiences accruing to students. This attitude will lead inevitably to interference in the high school athletic program.

Such practices as recruiting, pressure to pass athletes in school work, hiring and dismissing of coaches, winning at all costs, and divided allegiance of the coaching staff between school authorities and key men in the club are end results of such a policy.

In practically all cases of proselyting, the state office has investigated, there has been an active quarterback club in the community, and impetus for the recruiting usually can be traced to members of this organization.

Divided Allegiance
Clubs of this type often collect large bonuses and expensive gifts, such as cars, to give the coaching staff after a successful season. Experience has shown that the same group which gives the coaching staff such gifts is the first to insist that it be dismissed if it does not produce constant winners.

In my opinion any coach who accepts such valuable consideration is definitely placing his allegiance at least partially in the hands of a group of downtown quarterbacks. It is an unwritten law that to accept valuable consideration places one under obligation to the donors. A person cannot serve two masters. Often the policy of accepting gifts places a coaching staff in a position where it must choose between the educational viewpoint of the school administrators, or the "win at all costs" viewpoint of a downtown club.

Educational Values

It is difficult to convince other teachers in a school system that coaches using most precious natural resources of the community, the youth, and being paid a commensurate salary, are due any extra compensation for doing their duty. This has been a sore spot in many communities for years. The coach can make a valuable contribution to school morale by assuming a strict educational viewpoint.

Superintendent's Responsibility
The League holds the superintendent of schools responsible for the enforcement of eligibility rules and the management and control of athletics. Athletic councils and various organizations are not recognized by the League, but instead, complete responsibility is placed on the administrative head of the school system, the superintendent, for the proper conduct of the sports program.

In cases of protest against a high school and with a resultant investigation revealing that the superintendent did not have veto powers over decisions of the athletic council, then, in my opinion, the school would be in violation of League rules. The superintendent of schools must have veto power over the action of the athletic council. Otherwise, it would seem to indicate that control was outside school administration. The League strongly advises against athletic councils organized outside the school system. If such committees are formed outside the school, they should be purely advisory.

Dynamite
All people interested in the welfare of high school athletics should strive to see that quarterback clubs, booster

clubs and athletic councils are guided in the correct direction. School administrators and coaches should belong to all such groups and should be present at all meetings to guide and direct activities into desirable educational channels. Performing their proper functions they are valuable. If allowed to go astray, they are veritable kegs of dynamite in a school's high school athletic program.

In 1973, the National 4 - H Service Committee, Chicago, will distribute more than three million copies of literature designed to aid 4 - H'ers in their projects. The Committee also supplies pins, jewelry and clothing articles for members, leaders and extension personnel, as well as publishing National 4 - H News, a monthly magazine for 4 - H teen and adult leaders.

Every year, 8 to 10 4 - H members are selected to participate in a Report - to - the - Nation program. An example of the finished product produced by 4 - H, these young people travel to various parts of the country promoting 4 - H ideals and the 4 - H program.

Custom Built Homes

By H. & W. Development Co.

1201 W. Commerce

Eastland, Ph 629-1702

abc **Interstate's MAJESTIC** 629-1120 Sunday
DOWNTOWN EASTLAND
SSSSSSSS 2:30 - 5:55 - 9:10
Werewolf 4:14 - 7:39

Once this motion picture sinks its fangs into you, you'll never be the same.

"SSSSSSSS" (Don't say it, hiss it)

STROTHER MARTIN DIRK BENEDICT HEATHER MIENZIES
DIRECTED BY RICHARD D. ZANUCK AND DAVID BROWN A UNIVERSAL PICTURE
AND
POSSIBLE IN THIS DAY AND AGE?
"THOSE WHO DON'T BELIEVE... ARE DEAD!"
The Boy Who Cried Werewolf



THE MAN'S STORE

Bob Elliott
CISCO



McGREGOR

PRO RIB GOLFER... There's no match for McGregor's ribbed double knit golf jacket. Knitted of 100% Fortrel® polyester, it zips into action for any game. \$27.50

With costs up for about everything, you may have concluded that you can't get much for your telephone dollar anymore. Right?

WRONG.

If you're not using your phone for all it's worth, maybe we can help.

Because we think your telephone should be more useful and economical, we want you to have The Bargain Book. Thirty valuable tips to help you get the most from your service.

You'll find, for example, six tips to help you save money when calling Long Distance. And five easy ways to shop or conduct business by phone. We offer something of value to your whole family... even a handy telephone identification card for your children's use in emergencies.

To get The Bargain Book, fill out and mail the coupon.

Southwestern Bell
P. O. Box 972
St. Louis, Missouri 63188

Name _____ (last) _____ (first)
Address _____
City _____ State _____ Zip _____



For Professional Care in an Atmosphere of Family Living

Hickman Nursing Home

Offers You

- 24 hour nursing care supervised by a Registered Nurse
- Special diet management by an A.D.A. dietitian
- Full program of recreation and entertainment
- Private rooms

629-2624

411 West Moss
Eastland, Texas

WE CARE FOR YOU... WE CARE ABOUT YOU

Fountains of DeLeon
Licenses For the Joy...
of a Beautiful Complexion
For Whatever Your Complexion
Non-surgical Problem May Be
"Look Younger as You Grow Older"
Free Private Consultations
101 Navarro Hwy. #516
Call DeLeon
193-1371 DeLeon, Texas

HILLSIDE APTS.
Under new management
Attractive 1 bedroom &
efficiencies \$66.50 per mo. &
up. All utilities pd TV. Cable
service. Ask about our
weekly rates. Call 629-8097.
(monthly)

FOR SALE: Beautiful, well-built, ideally located two bedroom family home in Eastland with central heating and air conditioning, area rugs and draperies. Attached garage and beautifully landscaped, good sized lot. Call 629-2442 for information and appointment to see. t-tf

Celebrates 90th



Four score and 10 years ago, October 6, Dr. and Mrs. W.T. Jeffries became the parents of a daughter and 16 years later she became the wife of the late W.B. Starr in Jefferson County Colorado.

Mr. Starr came to Cisco as a traveling salesman and a banker in Cisco took him out to look at some hogs he had. Mr. Starr sold the banker some calendars and saw what he liked in the country and the following fall came back with his bride and settled.

The Starrs arrived in Cisco December 20, 1903, and moved to the farm January 1, 1904.

Except for two years spent in Midland when Mr. Starr was manager of the Chamber of Commerce there from 1914 through 1916, and two years spent in Nebraska when Mrs. Starr's mother died, she has lived on the Highland Springs Farm since moving to Cisco even to this day.

The Starrs celebrated their 60th wedding anniversary in

Engagement Announced

Mr. and Mrs. Ray Carey of 307 E. Sadosa announce the engagement of their daughter, Sherry Carey to Phillip Arther, son of Mr. and Mrs. Robert L. Rowch of 1307 S. Green.

Sherry is a 1972 graduate of Eastland High School and a graduate of Glenn and Lottie's School of Beauty in Abilene. She is now a hairdresser at the Hair - Em in Eastland.

Phillip is a Senior at Eastland High School and is employed by Ramada Inn.

The couple plans to be married in June.

Almost Like Having Your Own Hearing Back Again!

The nearest thing to having your own hearing back again is now possible by simply inserting a tiny transistorized amplifier comfortably and completely in your ear. Thousands now hear clearly in church, family groups and business meetings where understanding is important.

It is truly a blessing for those with Nerve Deafness.

The United States Patent Office has granted patents to Dahlberg Electronics, the inventors of this amazing device. The name is **MIRACLE EAR** and it is available only at WES-TEX Hearing Aid Center. Details will be sent to everyone interested. Phone 688-2777 visit our offices or mail coupon.

Wes-Tex Hearing Aid Center
Westgate Shopping Capitol
Abilene, Texas 79605
Address: _____
Name _____
City _____ State _____ Zip _____

Pre-Season Heating Sale

15% OFF Heating And Blown-in Insulation
Through October, 31
Conserve Fuel-INSULATE

When it Comes to Air Conditioning

When it comes to air conditioning and heating, Don't make the same mistake others do. Don't think cheap is a bargain. Deal with a professional...Central Air Inc., where quality and reputable service are not just words. Your Satisfaction Is Guaranteed.

Central Air
Heating, Air Conditioning
Plumbing and Insulation
201 Mesquite - Abilene, Texas

CALL: 673-9571
For Free Estimate
Terms Available

9 New Families For Eastland

Eastland gained nine new families during the month of September. Sgt. and Mrs. John R. Harris, formerly of Puerto Rico, are residing at 215 N. Hillcrest. They have a daughter six years old and a son 18 months old. Sgt. Harris is assigned with the U.S. Air Force.

Mr. and Mrs. Tom M. Richards are residing at 303 S. Madera. They moved here from Shreveport, La. They have two daughters, ages 3 and 5. Mr. Richards is a salesman for Fuqua Homes.

Mr. Ross I. Hancock, formerly of Colorado, is making his home at the Village Hotel. He is the Dance Master at the Dance Arts Center.

Mr. and Mrs. Earl C. Bradley, formerly of Richardson, are residing at 807 S. Seamon. They have two sons, ages 12 and 16, and one daughter, age 13. Mr. Bradley is Supervisor of EBAA Iron Foundry.

Mr. and Mrs. Cornelius Brewster, formerly of Tyler, are living at 1407 S. Harrell. They have a son, age 3, and a daughter, age 2.

Mr. E.C. Meroney, formerly of Breckenridge, is residing at 1065 W. Commerce. She is retired.

Mr. and Mrs. E.J. Johnson, formerly of Austin, are residing at 203 S. Walnut. They have one daughter eight years old. Mr. Johnson is a self-employed plumber.

Mr. and Mrs. Lem C. Devildiss, formerly of Carrizo

Springs, are living at 205 N. Oak. Mr. Devildiss is employed by Texas Railroad Cars in Ranger.

Mr. and Mrs. Cecil A. Clark are residing at 205 N. Oak. They moved to Eastland from Wichita Falls. Mr. Clark is Supervisor for Miller Homes.

Beta Sigma Participating In UNICEF

The Zeta Pi chapter of Beta Sigma Phi is participating in the United States Committee for United Nations Children's Fund "UNICEF" "Treat of Life" program for 1973.

This annual program provides millions of needy children around the world with school supplies, vitamins and vaccines. Nationally advertised products will pay UNICEF cash for every label that is sent into the program. This money goes to aid the children affected by poverty in the world's developing countries.

The following participants will contribute cash to UNICEF for these labels:

Blue Bonnet Margarine - 1c for each large picture of Blue Bonnet Sue from any package.

Chocks, Chocks - Bugs Bunny, or Flintstones Brand Vitamins - 25c for every front panel.

Dentyne and Trident gums - 1c for every empty outer pack wrapper.

Dentyne Bonus Pak or Trident Val-u-Pak wrappers count as 2 regular wrappers.

Kool-Aid Brand Soft Drink Mix - 1c for every front panel.

Welch's James, Jellies, Preserves - 5c for every label.

Last year over 2145,000 was collected nationally for this program.

"For the past few years, Zeta Pi has participated in this program and we feel that in this small way we have helped children less fortunate than our own. We would like to do even more this year and want to ask anyone who wishes to save these labels with us. The deadline for mailing is December 1, 1973. Zeta Pi members will collect and mail the labels shortly before this time. We would like to ask individuals or groups to help us collect the labels so that we can again support the 'Treat of Life' program," stated Mrs. H.D. Alsop, project chairman.

BIRTHS

Mr. and Mrs. Tony Lowrance of Eastland announce the arrival of a baby girl born Monday, Oct. 8 at 8:27 a.m. in Stephens Memorial Hospital, Breckenridge. She weighed 7 lbs. 1 oz., and has been named Annie Laurie.

Paternal grandparents are Mr. and Mrs. L.A. Lowrance Jr. of Eastland.

Maternal grandparents are Mr. and Mrs. W.A. McIntire of Breckenridge.

Great grandparents are Mr. and Mrs. W.S. Vinson of Ranger and Walter McIntire of Breckenridge.

Economics

Sarah Jean Brewer, daughter of Rev. and Mrs. Haston Brewer, is a sophomore home economics major at Texas Wesleyan College in Fort Worth. She is a 1972 graduate of Eastland High School.

Zeta Pi September Activities

September activities of the Zeta Pi chapter of Beta Sigma Phi were as follows:

Members began the repainting of playground equipment at Eastland Elementary School over the Labor Day holiday weekend.

Second place was awarded the "Little Miss Eastland" float in the 14th annual Peanut Bowl Parade September 15.

A spaghetti supper was held September 20 in the home of Mr. and Mrs. David Mohon. Others attending were Mrs. H.D. Alsop; Mr. and Mrs. Robert Mangum; Mr. and Mrs. Kenny Payne; Mr. and Mrs. Russell Walker; and Mr. and Mrs. Richard Wilhelm.

The collection of product labels for the UNICEF "Treat of Life" project was begun.

On Monday, Sept. 24, the sorority met in the home of Mr. David Mohon. Mrs. Richard Wilhelm presided.

Members set a date for the completion of repainting playground equipment at Eastland Elementary School; planned social and service projects for October; and made final arrangements to donate the remaining prizes from the Centennial Bingo the the Eastland Parent - Teacher Organization for use in the Halloween Carnival. Mrs. Robert Mangum was appointed chairman of the project.

Also, the organization decided to again support the UNICEF "Treat of Life" project. Mrs. H.D. Alsop is in charge of this project.

Mrs. Alsop gave the program on "Travel". She presented home movies and brochures of her four week summer trip to North Bay, Oshawa, and Toronto, Ontario, Canada.

Refreshments of sandwiches, chips, relishes, pudding and cokes were served to Mmes. Wilhelm, Mangum, Alsop, Kenny Payne, and Russell Walker by the hostess.

Transferred

Mr. and Mrs. Jim D. Garner of Olden have received word that their son, Fireman Apprentice E - 2 Larry Wayne Lennox has been transferred to the ship U.S.S. Little Rock. The ship's home port is Gaeta, Italy.

Larry attended school in Olden and Eastland. He will be stationed in Europe for two

E.M. Pritchard Retired, Lawrence E. Schulz Named

AUSTIN - State Highway Engineer B.L. DeBerry today announced the retirement of E.M. Pritchard as district engineer of the Texas Highway Department in Brownwood and named Lawrence E. Schulz of Austin as his successor.

Pritchard has been district engineer in charge of Highway Department operations in nine Central Texas Counties since 1960. The district includes McCulloch, San Saba, Lampasas, Coleman, Brown, Mills, Comanche, Eastland and Stephens Counties.

"Elmer Pritchard has developed a well-balanced system of primary and rural highways in the Brownwood district which attest to his ability as an administrator and engineer," DeBerry said.

He began work with the Highway Department in 1936 in the Brownwood district. In 1952, he was named assistant district engineer and district engineer eight years later. His retirement is effective November 30.

Schulz, 53, is a native of Austin and attended public schools in Austin. He began work with the Highway Department in 1940, but resigned to re-enter school. He graduated from the University of Texas in 1942 and rejoined the Highway Department in 1946 after service in the U.S. Army Air Corps. Schulz presently is

servicing as assistant district engineer in Austin. He and his wife Lorine have a son and a daughter. They are affiliated with the Lutheran Church.

Graves, Horton Attend TFWC Meet

Miss Martha Graves of Cisco and Mrs. James Horton of Eastland attended the Texas Federation of Women's Clubs, board of directors' meeting October 1-4, in Galveston. The theme for the meeting was "Our American Heritage - Respect".

Miss Graves, first vice president of Heart of Texas, District of Texas Federation of Women's Clubs, represented the Delphian Study Club. Mrs. Horton was a representative of the Thursday Afternoon Club.

Miss Graves gave several reports in the absence of the district president.

Speaker at the Tuesday noon luncheon was the Honorable John Hill, Attorney General of Texas. He spoke on "Respect for Our Country". "There are regional offices located in Lubbock, El Paso, Houston, Dallas and San Antonio," he said. Quotes from his speech include "Drop Your Bucket Where You Are, Trust and Have Confidence in the Austin scene, Use Our Minds to Have Thought Processes and Express Them on Our Problems, and Talk Quietly and Not Loudly".

Jim Murdoch of Tyler, assistant Attorney General, was present at the luncheon.

Miss Graves and Mrs. Horton toured the Big Thicket and the home of the former John Shriver enroute home.

To Be Closed

The Green Tot Kindergarten will be closed Oct. 15 and 22, along with Eastland Public Schools.

Ferne Green, teacher, announces that any time public schools are closed, the kindergarten will be also due to the request of the mothers. This includes bad weather close downs.

Music Club Meets Oct. 17

The Eastland Music Study Club will meet Oct. 17 at 3:30 p.m. in the Women's Club with Mrs. Richard Rossander, club president, presiding. Mrs. Marene Johnson - Johnson will present the first and second acts of the Cole Porter Story by David Awen. All members are urged to attend.

Club Reporter
Marjorie van Hoose

years. He has already been to Greece and will be in Spain for two weeks. Then he will go back to his home port.

HELPING TO SAFEGUARD HEALTH

Your pharmacist should be your friend. Someone to help. Someone who's always there with careful attention to prescriptions.

And, as your doctor's back-up man, your pharmacist follows his instructions with precision.

Bandages, Strips
Central Drug
103 W. Main Eastland 629-2681

Southern Television Systems Inc.

Encourages You To Attend The Church Of Your Choice!

- EASTLAND CHRISTIAN SCIENCE SOCIETY**
Corner of Plummer and Lamar
Sunday morning services 11:00. Services on first Wednesday of month 7:30 p.m. All are welcome.
- FIRST UNITED METHODIST CHURCH**
Rev. Ben Marney
Sunday School 9:45 a.m.; Morning Worship 11:00 a.m.; E. Young People's Meet 6:00 p.m.; Sunday Evening Worship 7:00 p.m.; Ladies Prayer Group 7:30 a.m.; Wednesday: Choir Practice Wednesday 7:30 p.m.
- UNITED PENTECOSTAL CHURCH**
Rev. E.D. Norman
Sunday School 9:45 a.m.; Morning Worship 11:00 a.m.; 5 Evening Worship 7:30 p.m.
- NORTH OSTROM ST. CHURCH OF CHRIST**
H.S. Lewis
Worship 9:30 a.m.; Evening Worship 5:00 p.m.; Wednesday Evening Service 7:00 p.m.
- FIRST BAPTIST**
Rev. Haston Brewer
Sunday School 9:45 a.m.; Morning Worship 11:00 a.m.; Evening Worship 7:30 p.m.
- BETHEL BAPTIST**
Rev. Bill Betts
Sunday School 9:45 a.m.; C Morning Worship 10:00 a.m.; Ev Training Union 6:00 p.m.; Evening Worship 6:30 p.m.; Wednesday Night Service 7:00 p.m.
- FIRST BAPTIST CHURCH NO. SEAMAN ST.**
Rev. G.L. Norris
Sunday School 9:30 a.m.; Morning Worship 11:00 a.m.; Baptist Training Union 6:00 p.m.; Wednesday Night Service 7:00 p.m.; Wednesday Night Service 7:00 p.m.
- HARMONY BAPTIST CHURCH**
Rev. George Simms
Sunday School 9:45 a.m.; Morning Worship 11:00 a.m.; Evening Worship 7:30 p.m.; Wednesday Night Service 7:30 p.m.
- MANGUM BAPTIST CHURCH**
Rev. A.J. Thomas
Sunday School 10:00 a.m.; Morning Worship 11:00 a.m.; Training Union 6:00 p.m.; Evening Worship 7:00 p.m.
- ST. FRANCES CATHOLIC**
Priest John Mitchell
Mass Saturdays at 6:30 p.m.
- FIRST PRESBYTERIAN CHURCH**
Rev. Robert W. Marsh
Sunday School 10:00 a.m.; Morning Worship 11:00 a.m.
- FIRST CHRISTIAN DISCIPLES OF CHRIST**
Steven Church
Mo Sunday School 9:30 a.m.; Morning Worship 10:55 a.m.; Evening Worship 6:00 p.m.
- CHURCH OF GOD**
Main & Connelley
Rev. Ronald Beer
Sunday School 10:00 a.m.; Morning Worship 11:00 a.m.; Training Union 6:00 p.m.; Evening Worship 7:00 p.m.; Wednesday Night Service 7:30 p.m.
- CHURCH OF CHRIST**
Daugherty St.
Jim Pennington
Sunday School 9:30 a.m.; Morning Worship 10:30 a.m.; Evening Worship 6:00 p.m.
- HOLY TRINITY EPISCOPAL CHURCH**
Priest Raleigh Denison
Sunday School 11 a.m.; Holy Communion 11 a.m.
- CARBON FIRST BAPTIST**
Rev. Darbert Smith
Sunday School 10:00; Morning Worship 11:00 a.m.; Ev Training Union 5:30 p.m.; Evening Worship 6:30 p.m.; Wednesday Night Service 8:00 p.m.
- CHURCH OF CHRIST**
Jack Landrum
Sunday School 10:00 a.m.; Morning Worship 10:30 a.m.; Evening Worship 6:00 p.m.; Wednesday Night Worship 7:30 p.m.
- FIRST UNITED METHODIST**
Rev. C.C. Shotts
Sunday School 10:30 a.m.; Morning Worship 9:30 a.m.
- OLDEN BAPTIST CHURCH**
Rev. Howard Mosler
Sunday School 10:00 a.m.; Morning Worship 11:00 a.m.; Evening Prayer Service 7:00 p.m.; Evening Worship 7:30 p.m.; Wednesday Night Service 7:00 p.m.
- CHURCH OF CHRIST**
Frank Kibaerno
Bible Class 10:00 a.m.; Morning Worship 11:00 a.m.; Evening Worship 7:00 p.m.
- PLATWOOD CHURCH OF CHRIST**
Willie E. Moore
Sunday School 9:45 a.m.; Morning Worship 11:00 a.m.; Evening Worship 6:00 p.m.; Wednesday evening 6:00 p.m.

ORDER CHRISTMAS CARDS NOW

1/4 Off

See Our Complete Lines At
Eastland Telegram

BAKKER FUNERAL HOME

Dear friends,

To be selected as a pallbearer is a distinct honor. It denotes both a close relationship with the deceased and also a sense of esteem by the bereaved family. Those who are chosen to be pallbearers should be promptly notified so that they may make personal arrangements to perform this final act of respect for their departed friend.

Respectfully,
Dale O. Bakker



Members of the 1973 Eastland High School Band sit for formal portrait Friday, 12, 1973. Picture was taken in Eastland High School Gymnasium. Members of band are, left to right, front row: Shirley Ford, Patti Robinson, Ricky Honea, Kathy Jordon, Cecelia Glenn, Debra Williams, Elaine Fox, Cynthia Pinkerton and Janet Williams. 2nd Row: Jana Ragland, Kalinda Amburn, Janet Frost, Debra Honea, Stella Brown, Betty Britt, Garrey Cannon, Emily Perkins (hidden from view), Victoria Wilson, Nancy Harrison, Kim Miller, Sylvia Garces, and Jean Williams. 3rd Row: Randy Frost, Jane Krantz, Kren Plowman, Lana Arrington, Donna Trout, Steve Williams, Barton Marney, David Elliott, Yvonne Wilson, Phil Williams, Kren Jones, Roy Don Grisham, Sandra Aldredge, Tenna Sanders, Daniel Baker, David Pennington, John Eric Dabney and John Frost. 4th Row: Steve Johnson, Steve Walker, Director Bobby Bingham, Robert Hallmark, Gail Swift, and Clint Hall. Absent when picture taken was Debra Whaley. (Photo by Myrna Dabney)

FHA Offers Prevention Fires

Farm fires are potentially the most dangerous, because the farmer, his family and his property are usually miles away from the nearest fire department and from his neighbors who could lend assistance. Never is a farm so isolated than when a fire strikes.

Farm families should take all precautions to prevent accidental fires and they should use all methods of fighting fires if they do start, says Charles H. Henderson, Farmers Home Administration county supervisor in Eastland.

The Farmers Home Administration, in observance of National Fire Prevention Week, offers this list of fire prevention and protection ideas:

1. Make sure every member of your family knows how to call the fire department. Post the fire department number at the telephone. Also make sure your fire department knows the layout of your farm, house and barn, and the location of water supplies.
2. Check condition of heating equipment, including chimneys and flues. Make all repairs necessary for safe operation.
3. Check electric wiring for wear and loads -- replace worn and inadequate wiring. Use only 15 - ampere fuses unless a circuit has been especially designed for larger loads.
4. Keep fire fighting tools accessible in an emergency.
5. Have ladders ready for escape and for fighting roof fires.
6. Keep fire extinguishers on hand. Check them frequently and recharge them when necessary. Also, protect them

Marine Lance Corporal Van E. Pettigrew, son of Mrs. Billie J. Pettigrew of 410 Sadosa, Eastland, was promoted to his present rank while serving at the Marine Corps Air Station in El Toro, California.

from freezing during winter months.

7. Maintain a water supply in cisterns and stock ponds. They may be the only source of water for fighting fires.

Car Show, Sidewalk Event Saturday

Chamber Manager James Wright has released the following incomplete list of participating merchants and the gifts that will be given to be auctioned Saturday:

- Quality Shoe Shop - Cowboy Boots
- Bray's - Sampsonite Luggage
- KERC Radio - Record Albums
- Ed Sargent Bantam Ranch - Bantam Rooster and Hen
- M.H. Perry - Policy wallet
- Bank - \$25.00 bond
- Vasserette of Munsingwear - golf shirt
- Central Drug - kodak instamatic
- Texas Electric - Eave Light
- Eastland Telegram - Attache Case
- Coats Furniture - Lamps
- Hillcrest Grocery - Box of Groceries
- Wanda's 7 - 11 - Box of Groceries, mop and broom
- Super Save - Box of Groceries
- H&R Lumber - 5 gal. paint
- Altman's - Purses
- Rogers Grocery - Box of Groceries
- Hareliks - Bedspread
- Western Auto - 20" 2 speed fan and station wagon pad.
- Kendrick Music Center - 10 stereo tapes
- Goodyear - Misc. merchandise
- Quetta's Boutique - pant suits
- Triple D. Discount - electric

can opener, needle point kit, popcorn popper

Robertson TV - RCA Transistor radio

Eastland Ranch Equipment 10' gate

Mode o'Day - gown, bag and sweater

Rita's Fashion Fabrics - \$20.00 gift certificate

U - Save Pharmacy - electric toothbrush

Wright Auction Co. - buttonhole attachment

JRB Grocery - boxes of groceries

Smith Plumbing - misc. merchandise

Eastland Drug - 2 Kindness 20 instant hair setting

Perkins Implement Co. - MAAS Dam Powerpull come

Squires Farm Store - misc. farm supp.

Fullen Motor Co. - misc.

Prescription Pharmacy - remington steamall

City Garage - misc.

Bairds TV and Radio Shack - cassette,

Tharp Tire Co. - New tires

Photos & Things - misc. jewelry and clothing

King Motor Co. - misc.

Crain Motor Co. - misc.

TUESDAY, OCTOBER 16

Steak & Gravy

Whipped potatoes

Green beans

Tossed salad

Hot rolls

Cake squares

WEDNESDAY, OCTOBER 17

Homemade chili

Pinto beans

Buttered corn

Lettuce & tomato salad

Cornbread

Fruit cobbler

THURSDAY, OCTOBER 18

Fish sticks

Tartar sauce

Green peas

Buttered carrots

Lettuce wedges

Hot rolls

Banana pudding

FRIDAY, OCTOBER 19

Hamburgers

Round - Up salad

Potato chips

Cookies

Lone Star Gas Rejects Interim Rates

DALLAS - Lone Star Gas Company has rejected the new interim rates allowed by a recent Texas Railroad Commission order for natural gas delivered to customers of Lone Star Gathering Co. The Railroad Commission recently granted Lone Star an interim increase in its already - contracted rates to include the cost of gas, to be adjusted on a monthly basis, plus five cents per 1,000 cubic feet.

In a letter written today to the Railroad Commission, Lone Star confirmed that it will refuse to pay the additional rates to Lone Star because of contracts the two companies entered into in 1968, which were entered into "in good faith".

The Railroad Commission's order stipulates that any Lone Star customers who reject the new higher rates will not have

access to any additional deliverability Lone Star may develop in the future. Lone Star also stated a refusal to accept this aspect of the commission's order, asserting that the company would not relinquish the right to any additional gas availability to which Lone Star is entitled under the terms of its contract with Lone Star and Coastal. The Company also indicated that Lone Star would continue to take such action as may be necessary to protect the rights of its shareholders and customers.

CARD OF THANKS
We wish to thank all our neighbors, friends, and loved ones, Dr. Bulgerin, Dr. Alexander, and the employees of Valley View and Eastland Manor for your words, prayers, food, music, and flowers during the illness and loss of our mother, Mrs. Emma Fox. Family of Mrs. Emma Fox

October Is Month For L-R Eligibility SSI

October is the month for persons whose last names start with L - R to see about possible eligibility for the new Supplemental Security Income, SSI, program administered by social security, according to

R.R. Tuley, Jr., district manager in Abilene.

This will replace, in January 1974, the adult assistance programs now operated by the State Department of Public Welfare -- Old - Age

Assistance, Aid to the Needy Blind, Aid to the Permanently and Totally Disabled. No monies from the social security trust funds are to be used in SSI, he added.

As mentioned in earlier months, as a general rule any person aged 65 or older, or who is blind or disabled,

<p>mode o'day</p> <p>SUPER SAVINGS!</p> <p>SWEATERS \$8. Compare at \$10.99</p>	<p>mode o'day</p> <p>SPECIAL PURCHASE!</p> <p>SLIPPERS \$2.49 pair</p> <p>For sublime comfort... fluffy high pile slippers of 100% Orlon® that machine wash. Great gift idea! Sizes S/M/L.</p>
<p>mode o'day</p> <p>SAVE BIG!</p> <p>HIGH PILE ROBES \$10. Compare at \$14.99</p>	<p>mode o'day</p> <p>EXTRA VALUE!</p> <p>SLEEPWEAR \$3. Compare at \$4.99</p> <p>Dreamy savings on brushed acetate/nylon tricot sleepwear. Classic and granny styles in sizes M/L/XL. Buy now for smart gift giving.</p>

HARVEST OF SAVINGS

HURRY, REAP THESE SUPER SAVINGS DURING OUR OCTOBER FASHION HARVEST!

<p>mode o'day</p> <p>SAVE BIG!</p> <p>HIGH PILE ROBES \$10. Compare at \$14.99</p>	<p>mode o'day</p> <p>EXTRA VALUE!</p> <p>SLEEPWEAR \$3. Compare at \$4.99</p> <p>Dreamy savings on brushed acetate/nylon tricot sleepwear. Classic and granny styles in sizes M/L/XL. Buy now for smart gift giving.</p>
--	--

Dignity . . . Consolation . . . Concern

Trust Our Experience

Our reputation is based on competence and caring. Every detail is taken care of.

Arrington Funeral Home
Ph. 629-2611 -- Eastland

Friendly Personalized Service

TUNE UP
Install Points, Plugs And Condenser (If Needed) Set Timing-Adjust Dwell-Adjust Auto Choke Adjust Idle- Check Fluid Levels **\$9.50** Plus Parts

FRONT END ALIGNMENT
Adjust Camber-Casters-Toein Check Front Shocks Check For Worn Parts **\$9.50**

WHEEL BALANCING
(Spin Balance) Each Wheel **\$1.50** Plus Wts.

CHARGE AIR CONDITIONER SYSTEM
Check System For Leaks (Freon Extra) **\$3.50**

These are our everyday low prices
Authorized State Inspection Station

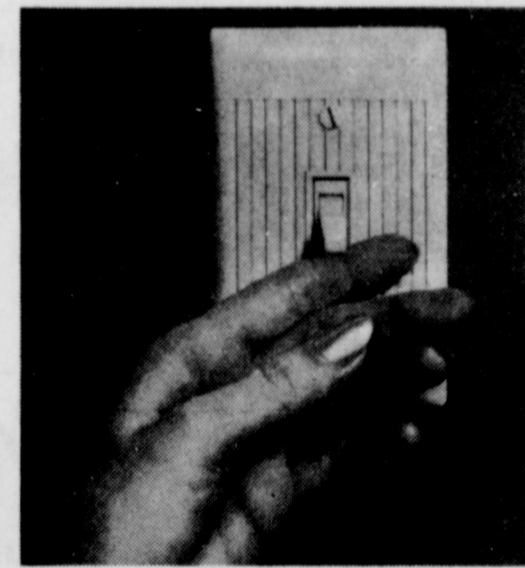
Cadillac-Buick-Olds-Pont-GMC
Bruce Pipkin Motor Co.
314 W. Main St. 629-2636

Let us help you get your new car

Buying a new car can be easier than you'd expect-if you let us handle the financing for you.

For Information Call
Richard Rossander
Agent
Ph. 629-2563
Eastland, Texas
Financing services by
MFA Security Service Co.

Now, more than ever, electricity is worth using wisely.



Electricity, like all forms of energy, should be used wisely -- especially now, with growing shortages in supplies of natural gas and oil, the basic fuels used to generate electricity in Texas.

At Texas Electric, natural gas is our major fuel supply with oil used on a standby basis. To reduce our dependency on these fuels, we have well developed, long range plans to diversify our fuel sources.

We have joined with Dallas Power & Light and Texas Power & Light in acquiring long range supplies of east Texas lignite. We now have one lignite plant in

operation and two others under construction. The three companies have also announced plans to have a nuclear fueled plant in operation by 1980.

One big advantage of lignite and nuclear fuels is that neither is being used extensively for any purpose other than the generation of electricity. A disadvantage is that generating plants that use these fuels cost much more to build. And, because of the long lead time required to plan and build these plants, it will be many years before natural gas can be replaced as our major fuel supply.

Barring difficulties with our existing natural gas supplies or delays in the development of our lignite and nuclear generating capability, we will be able to provide the electricity our customers need. However, the much higher cost of diversifying our fuels and inflation make it inevitable that the price of electric service will rise.

As rising costs and the energy squeeze make electricity increasingly valuable, we will continue to encourage its efficient use. Now, more than ever, electricity is worth using wisely.

TEXAS ELECTRIC SERVICE COMPANY
F. N. SAYRE, Manager, Phone 629-2651