

Mavericks Seek Second In Row Over Ranger

MOORE about... EASTLAND

by Virgil E. Moore

This is the week the Eastland Mavericks, for once and for all, put an end to a reign of terror by the Ranger Bulldogs. The Mavs of Eastland High School will defeat the Dogs this Friday night, and will do it in convincing fashion.

Yes, this is the week when Eastland will, for the second time in history, down Ranger two years in a row. In so doing, Eastland will start their own reign, for the Mavs are coming into their own as a football power.

Not since 1937 has Eastland turned the trick of beating Ranger twice in a row. In 1935, 1936 and 1937 Mavs teams hung up victories. So this will be the second time in history that Eastland has beaten Ranger two consecutive years.

Ronald Waters, Ranger editor, used up his entire column Tuesday telling how bad Ranger is going to beat Eastland. Seems we can recall some similar threats of a year ago.

If the Mavs want to win it Friday, and if we just don't have too many boys out because of injuries and sickness, Eastland will be a happy community Saturday morning.

With three for three last week in the prediction department, now have a .771 average for the year, hitting 27 of 35 games played by District 7-AA teams. Here's the final week's predictions:

Cisco over Coleman, 41-14.
Ballinger to top Winters, 33-6.
Eastland over the Hound Dogs, 22-6. (For the year we have correctly predicted the outcome of all nine Maverick games, and this certainly is a lousy time to miss one.)

Dear Disgruntled Citizen: While we agree with your letter to the editor in most parts, our policy will not allow us to publish an unsigned letter. Sorry.

Noticed that a wreath was placed on the Memorial plaque on the courthouse lawn some time Memorial Day after all.

Eastland had another cattle round-up Wednesday. A cow (owner undetermined) jumped out of a pick-up truck in front of Earnest Frozen Foods and headed for freedom. The cow made a right turn on Highway 80, but didn't get far before he was roped by a cool-thinking rancher.

"Calm down, son," said the father of the marriageable daughter to the fidgeting young man. "I bet you want to marry my daughter and you're shy about asking for her. Well, take her, my boy, marry her and good luck to you."

"Oh no, it wasn't that, Mr. Smith," the suitor answered. "I just wondered if you could lend me \$5."

"Lend you \$5," exploded Dad. "I should say not! Why, I hardly know you boy!"

Never did get around to commending the Eastland band for their fine showing at Ballinger last week. We heard several folks say the band was at its best. Take a long look at the band this Friday, and you will certainly note a remarkable improvement.

Winner of last week's Myate. (Continued on Page Four)

FREYSSCHLAG INSURANCE AGENCY
presents the
WEATHER NEWS

High	72
Low	60
Rain	0
Total Rain In Oct.	1.31
Avg. Rain In Oct.	2.74
Total Rain for Year	26.40
12 Months Avg. Rain	25.83
Lake Leon Level	75
Forecast	Cloudy and Mild

McGraw Motor Co. New Authorized Studebaker Lark Dealer For Area

McGraw Motor Co. has been named as new authorized dealer for the new Studebaker Lark series.

L. E. McGraw, owner, said the new Lark will go on display here Friday morning.

Establishing a revolutionary new concept of automotive transportation, the brand new 1959 Studebaker Larks were newly de-

signed from tires to roof-top to meet the specific demands of today's driving needs, McGraw said. The new Larks are smaller in overall size, yet actually are roomier inside than previous models. This was accomplished primarily by reducing front and rear "overhang" to a minimum, while at the same time maintaining a "big car" passenger compartment to enable six adults to ride in comfort.

The wheelbase of sedan and hardtop models is 108-1/2 inches while over-all length is only 175 inches—shorter than previous models by more than two feet. Yet, front leg room is equal to last year's Studebaker, and rear leg room is actually greater. (The new station wagons measure 113 inches in wheelbase, 184-1/2 inches in over-all length.)

Although slightly lower-overall, the new Studebaker Lark provides headroom that is unexcelled in the low-price field. Shoulder and hip room are similar to last year's models.

Available in Deluxe and Regal versions, the 1959 Larks by Studebaker are richly and tastefully appointed both inside and out to appeal to the public's desire for luxurious transportation. Yet, despite this luxury concept, the new models are priced below other cars in the low-price field, McGraw declared.

In describing the new models, Studebaker-Packard President Harold E. Churchill explained that "the completely new 1959 Studebaker Lark is the car the motoring public has told us it wants—and has urged us to build. It is a car of modest price, yet featuring the high quality, sound engineering and distinctive styling that is traditional with Studebaker. It is a functional, comfortable, family-size car that is economical to buy, economical to own, and economical to operate. And it establishes a wholly new concept of handling and parking ease among American cars."

Studebaker's reputation for style leadership is further advanced by its distinctive, modern design of its 1959 Larks. The basic design theme reflects elegance, tasteful simplicity and functional purpose.

Duncan McRae, Studebaker-Packard's director of styling, pointed out that "because the 1959 Lark by Studebaker is based on sound engineering principles, rather than on exaggerated styling cliches, the car achieves a permanence of design that will result in higher resale value. The new models were designed deliberately to stay in style indefinitely."

A. W. Stokes Dies In Houston

Word was received in Eastland Wednesday that A. W. Stokes of Houston died there Tuesday after a lengthy illness.

Mr. Stokes was the brother of Mrs. C. E. Owen of Eastland and formerly was employed by Texas Electric Service Co. at the Leon Plant.

Word was received in Eastland Wednesday that A. W. Stokes of Houston died there Tuesday after a lengthy illness.

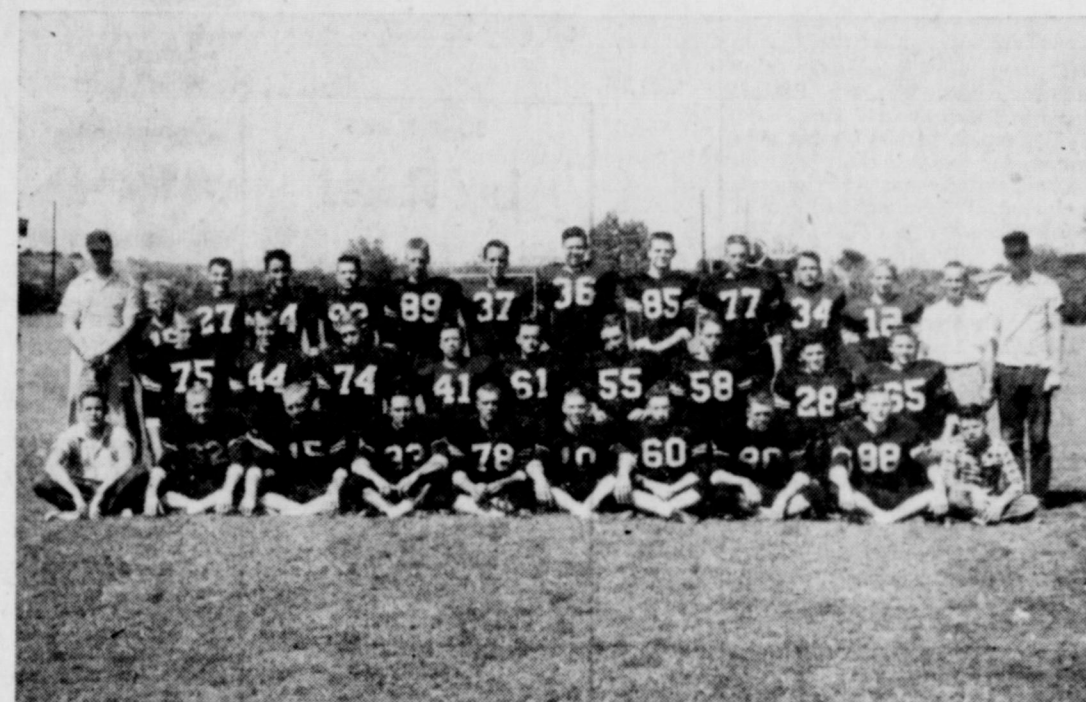
Mr. Stokes was the brother of Mrs. C. E. Owen of Eastland and formerly was employed by Texas Electric Service Co. at the Leon Plant.

Word was received in Eastland Wednesday that A. W. Stokes of Houston died there Tuesday after a lengthy illness.

Word was received in Eastland Wednesday that A. W. Stokes of Houston died there Tuesday after a lengthy illness.

Word was received in Eastland Wednesday that A. W. Stokes of Houston died there Tuesday after a lengthy illness.

Word was received in Eastland Wednesday that A. W. Stokes of Houston died there Tuesday after a lengthy illness.



HERE THEY ARE MAVERICKS—Here are the 1958 Ranger Bulldogs. On the back row, from left to right, are: Head Coach Harold Barrett, Terry Townzen, Richard Wilhelm, Edward Mendez, Alex Eakin, "Chuck" Garrett, Maurice "Butch" Owen, David Pickrell, Dean Richey, Tommy Robinson, Richard Guest and Joe Barker. Coaches, standing to the right, are O. C. "Stubby" Warden, offensive and defensive line coach; and Frank Bevers, new junior high coach who is also acting as defensive secondary coach. On the middle row, from left to right, are: Earnest Stephen, Bert Young, Ronnie Daskevich, Billy Joe Johnson, Tommy Ford, Homer Montgomery, Jimmy Robinson, Charles White and Richard Robie. On the front row, from left to right, are: David Lockwood (manager), David Russell, Jake Basham, Joe Bradford, Lee King, Charles Veale, Walter Hutchins and Jerry Anderson, and James Henry (manager). (Photo by Capps Studio.)

New Furniture Store Open For Business

The grand opening of Eastland's newest store, Tri-Cities Furniture Co., was announced today by Clyde Shoemaker and Marcell Daniel, owners.

Tri-Cities Furniture is located on the northeast corner of the square where White's Auto Store formerly operated. The firm, which opened its doors this week, will carry a complete stock of home furnishings and appliances, the two new Eastland businessmen declared.

Both Shoemaker and Daniel are former residents of Eastland. Shoemaker formerly was in business here for himself and Daniel was employed by Willy-Willys Furniture Co. here for several years.

Shoemaker returns to Eastland from Abilene and Daniel from Albany.

Shoemaker will make his home at 504 Dixie. He is married and the father of three children, Johnny Lloyd, 15, Elizabeth Ann, 14, and Ronny Klye, 12. The Shoemakers are members of the Baptist Church.

Daniel is also married and also has three children. The Daniels are making their home at 501 Madera. Their children are Gregg, 9, Brenda Lee, 4, and Billy Earl, 2.

"We invite everyone to come by and look over our new store," Daniel and Shoemaker said. "We want to renew our old friendships and make new friends too."

The two said they selected Eastland as their location because of its central location and because they felt that this city has "wonderful prospects."

Rural Carriers To Distribute Survey Cards

Postmaster Marlene Johnson-Johnson announced today that Rural Mail Carriers will begin distributing Dec. 1 Livestock Survey Cards to patrons on their route Nov. 20.

This annual livestock survey, which your Post Office and Agriculture Departments cooperatively have made since 1924, provides basic information to the Texas Crop and Livestock Reporting Service in Austin for estimating number of cattle, hogs, sheep and chickens on Texas farms and ranches.

In order that our area be well represented in the survey, Mrs. Johnson requests that each patron receiving a card fill out and return it to his mail box for prompt pick up. Rural mail carriers working on this project are Harry Woods, Route one, and George Parraek, Route Two.

L. C. PHAGAN, PREMIER JOBER
1206 W. Bliss — Phone LI 2-1660
All types of oils and greases for farm, industrial and commercial users.
Only local oil firm imported oil used in making Premier Products.

Two Teams Battle For Cellar Honors

The 1958 Mavericks have an opportunity to make history Friday night. If the Mavs can down the fired-up Ranger Bulldogs, they will become the second Eastland team ever to whip Ranger two consecutive years.

Eastland upset the vaunted Legs last year for the first time in 10 years. The Mavs won a hard-fought 14-13 victory in turning back the Bulldogs winners of District 7-AA and bi-district honors.

This year the two teams will have only honor at stake when they meet at 8 p.m. Friday in Panger. For another Eastland County eleven, the C'sco Loboes, have already grabbed the big sack of marbles—the 7-AA crown—and Eastland and Ranger will be battling to stay out of the cellar. Both teams have identical records of four wins and five defeats. The winner will end the season with an even record, while the loser will be charged with a losing season.

Eastland, under Coach Carroll Elton, hasn't failed to win as many as it lost in the past four years and the Mavs will want this one badly.

Ranger, however, has one of the outstanding young coaches in Coach Harold Barrett, and the Bulldogs will be trying to win this one for him.

Eastland and Ranger both have 1-3 conference records, and both teams won their only district game at the expense of the Winters Elizzards.

Here are the records:

EASTLAND	
Hamlin 20, Eastland 14	
Eastland 39, Dublin 12	
Eastland 8, DeLeon 0	
Eastland 28, Cross Plains 6	
Albany 37, Eastland 14	
Coleman 24, Eastland 19*	
Eastland 12, Winters 0*	
Cisco 28, Eastland 6*	
Ballinger 33, Eastland 0*	
RANGER	
Ranger 26, Gatesville 12	
Mineral Wells 30, Ranger 22	
Diamond Hill 14, Ranger 12	
Ranger 14, DeLeon 12	
Ranger 26, Dublin 12	
Ranger 20, Winters 14*	
Cisco 36, Ranger 7*	
Pallinger 48, Ranger 14*	

Big Game Season Should Be Good

COLLEGE STATION — The upcoming big game hunting season in Texas should be a good one, reports Ed Cooper, wildlife specialist for the Texas Agricultural Extension Service. Favorable weather throughout the year, he adds, has provided plenty of food for game animals, game birds and waterfowl.

But, warns the specialist, when the thousands of hunters take to the highways and byways and then to the woods and fields, there'll be many who will never go home again under their power unless the rules of safety are followed.

Approximately two-thirds of all hunting accidents can be traced to three causes, says Cooper. He lists these as humans in the line of fire, mistaking humans for game and careless handling of firearms which includes hunting with the safety catch off.

Safe hunting depends on the common sense, courtesy and vigilance of all hunters.

(Continued on Page Two)

EASTLAND NATIONAL BANK
"On The Square"
MEMBER F. D. I. C.

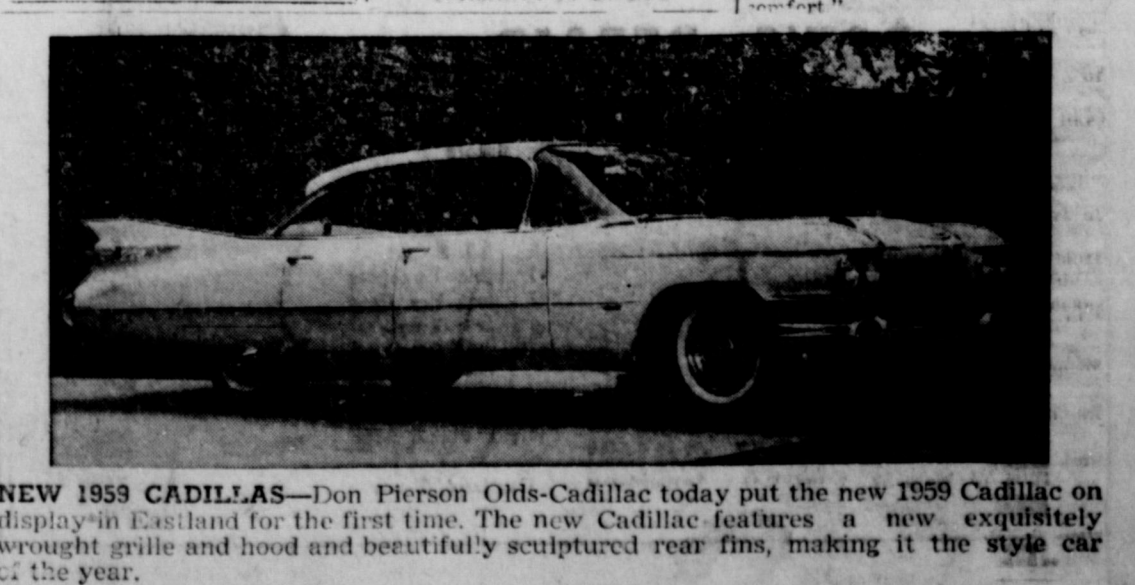
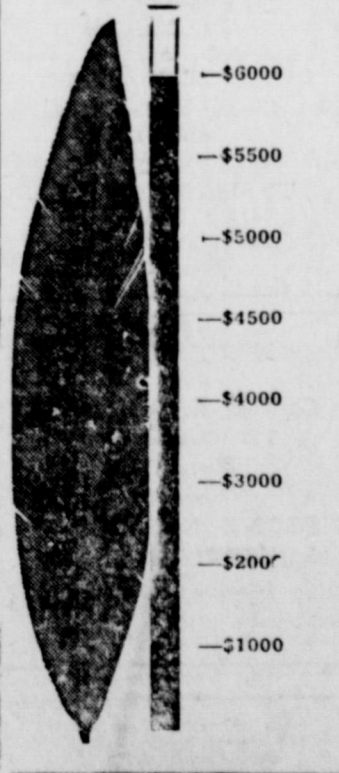
Grid Ducats... On Sale Here

Tickets for the Eastland-Ranger football game are on sale now at the High School business office.

Wendell Siebert, superintendent, said tickets will sell for \$1. The seats are not reserved, but Siebert pointed out that pre-game purchase will avoid waiting at the gate for admission.

EASTLAND NATIONAL BANK
"On The Square"
MEMBER F. D. I. C.

ONLY 43 DAYS TILL CHRISTMAS



NEW 1959 CADILLAC—Don Pierson Olds-Cadillac today put the new 1959 Cadillac on display in Eastland for the first time. The new Cadillac features a new exquisitely wrought grille and hood and beautifully sculptured rear fins, making it the style car of the year.

Eastland Telegram

Eastland County Record established in 1931, consolidated August 31, 1951. Chronicle established 1887, Telegram established 1923. Entered as second class matter at the Post Office at Eastland, Texas under the act of Congress of March 3, 1879.

TIMMS PUBLISHING COMPANY
Published Tri-Weekly—Tuesdays - Thursdays - Sundays
OMOUS DICK and JOE DENNIS, Publishers
VIRGIL E. MOORE, Editor
CAROLYN COLLINS, Society Editor

NOTICE TO PUBLIC—Any erroneous reflection upon the character, standing or reputation of any person, firm or corporation which may appear in the columns of this newspaper will be gladly corrected upon being brought to the attention of the publishers.

WANT ADS

Cards of Thanks charged for at rate of \$2.00 Each

FOR RENT

FOR RENT: Three room house, 310 E. Main.
FOR RENT: Newly decorated furnished four room apartment. Phone 90.
FOR RENT: Four room unfurnished apartment. Call 394-J.
FOR RENT: 3 bedroom unfurnished house, 302 South Connellee. Phone 446-J. or 270.
FOR RENT: Newly decorated apartment. Duplex Hillside Apartments. Phone 9520.
FOR RENT: 5 room unfurnished house, 1404 Slay. Call 823-J.
FOR RENT: Newly decorated apartments. Adults. Phone 1085-W.

MISC FOR SALE

FOR SALE: White ripe and green tomatoes. Jeff Norton, Olden.
FOR SALE: Good used piano. For information see Aubrey Kincaid or see at Lakeside Country Club.
FOR SALE: Deep Freeze, 18 cubic feet, chest type. \$175. See at Lovelace Transfer and Storage. Carl Butler.
SIX months to pay for an Ed V. Price tailored suit. Made to your individual measurements. NO interest, NO carrying charges.
C. L. FIELDS
103 W. Valley Phone 571
FOR SALE: Nine foot Westinghouse refrigerator. Has deep freeze in top. Late model, in perfect condition. Eastland Telegram Office.
ELECTROLUX (R) Cleaners factory rebuilt and guaranteed. Authorized Sales & Service. 1392 Sayles, Abilene. Ph.-OR 3-1135.
FOR SALE: Our close-out sale continues. Starting Wednesday 1/4 off on entire stock. WILSON'S VARIETY STORE.
FOR SALE: Used refrigerator, stove and dinette set. Call 523.
FOR SALE: Gilts, Hampshire and Landrace Cross. Four feed lot gilts 180 to 200 pounds. Ready now \$50 each. W. D. Preston, Phone 20, Gorman.

M. H. PERRY
Representing
Southland Life
Life - Retirement Income Partnership
Mortgage Cancellation
Educational - Annuities
Accident - Sickness
Hospitalization - Group
Call 173 or 128
107 W. Main ★ Eastland

Sunshine Laundry
Has installed
SPEED QUEEN COIN
OPERATED AUTOMATIC
WASHERS... top loading
with gyrators and three dryers
for your convenience to dry clothes.
20c LOAD WASH
TWO LOADS DRIED, 25c
Sunshine Laundry
106 East Plummer St.

TRADE WITH YOUR
HOMETOWN MERCHANTS

FOR YOUR CONVENIENCE
**LORISE'S
PET PARLOR**
Featuring complete line supplies for your pets' needs—Also Aquarium supplies. Quality at a minimum.
Take advantage of our free bulletin board if you have a pet for sale or placement. Pups or kittens available.
PHONE 541—TWO STORY BRICK
OLD GORMAN ROAD
DELSON, TEXAS

BUSINESS OPPORTUNITY

Local Area Man or Lady, wanted to service and collect from coin-operated dispensing equipment. 4 to 9 hours weekly earns operator up to \$290 monthly. No age limit or selling but must have car, references and \$402 to \$804 working capital. For interview give personal particulars, phone number. Write Box 4728, Dallas 6, Texas.

REAL ESTATE FOR SALE

FOR SALE: Small house to be moved. 311 E. Valley.
FOR SALE: 3 bedroom house, 28 x 36, to be moved. Lee Fields, Carbon.
FOR SALE: 4 room and bath modern house, 601 S. Lamar.
FOR SALE: By owner, five room house 1313 S. Bassett, Eastland. \$4,500 cash, would consider home trade. Write James E. Meador, Box 572, Seminole, Texas.

SPECIAL NOTICE

HAVE TAX PROBLEMS? Now you can get a "Personal Tax Secretary" for just \$1. This is a simple system for keeping personal and small business earnings and deductions to enable you to claim and prove your maximum deductions. Get yours today at the Eastland Telegram.

MISC. WANTED

EMPLOYMENT WANTED:—Getting out of Navy Dec. 1. Want full or part time work. Twelve years clerical experience, age 32, married, three children. Do not drink or smoke. Box X, Eastland Telegram.

100% G. I. LOAN
If you are interested in using your G. I. Loan, CALL...
M. A. Treadwell
Phone 152

TRADE WITH YOUR
HOMETOWN MERCHANTS

FHA Hears Fire Chief Johnson at Tuesday Meeting

Billy Jack Johnson, fire chief, presented a talk to the Future Homemakers of America on Civil Defense at the meeting Tuesday in the High School Auditorium. In his talk, Fire Chief Johnson stated a number of things which one should do in case of a bomb emergency. He also stated that every family should always

Olden Junior-Hi Highlights

By Caroline Covington

The Olden Junior High basketball teams are having their first game tonight. We play Putnam here in Olden at 6:30 p.m. We expect to play some good games for the public to view this season. So why don't you parents and students come out and give us more encouragement than ever this year?
Members of the Boys team are Donnie Kelley, captain, Roger Thomas, Bubba Everett, Danny Meazelle, Dave Fox, Weldon Thomas, Billy Horn, Bob Boyett, Cliff Thomas, Raymond Fox, Benny Stewart, Jackie Stevenson and Ronald Patton, Managers are Milton Hood and Ricky Hobbs.
On the Girls team are Caroline Covington, captain, Linda Meazelle, Carol Hillard, Darla Cooper, Kay Jackson, Verna Napier, Edith Cate, Wanda Thomas, Sharron Lawrence and Darlene Reigor. Our coach is Gene Woods.

Big Game—

(Continued from Page One)

Illness of all those who engage in this sport. Accidents can be reduced, says Cooper, if the most common causes are avoided. Treat your gun as if it were loaded, even when you are positive it is empty. Keep it empty whenever possible with the action open except when you are ready to shoot, advises Cooper. Keep the muzzle pointed away from anything you do not intend to shoot and wear distinctive clothing to keep other hunters from picking a mistaken target.

Cooper warns against climbing trees or crossing fences or jumping ditches with a loaded gun. Never, he adds, pull a gun toward you by the muzzle and never engage in horseplay while holding a gun. And, finally, the specialist warns, alcohol does not mix with either gasoline or gun powder.

Shrinks Hemorrhoids Without Surgery Stops Itch—Relieves Pain

For the first time science has found a new healing substance with the astonishing ability to shrink hemorrhoids and to relieve pain—without surgery. In case after case, while gently relieving pain, actual reduction (shrinkage) took place. Most amazing of all—results were so thorough that sufferers made astonishing statements like "Flies have ceased to be a problem!" The secret is a new healing substance (Bio-Dyne)—discovery of a world-famous research institute. This substance is now available in suppository or ointment form called Preparation H. At all drug counters—money back guarantee.

Typewriters
Adding Machines
Cash Registers
BUY SELL RENT
New Electric Adding Machines \$127.45
**STEPHENS
TYPEWRITER CO.**
417 S. Lamar St.
EASTLAND, TEX.
Phone 639

NOTICE!
Contact A. D. Stewart
711 West Patterson
Phone 1185
Agent for
**MASON'S NATIONALLY
ADVERTISED SHOES**
Most comfortable shoe made.
Reasonable priced.

Have a 7-day supply of food and water on hand.

president, Jan Robertson, the colors, Mike Potts led the entire student body in giving the pledge to the flag. Sandy Taylor, accompanied on the piano by

Justice Crabtree, led the group in singing "The Star Spangled Banner". After the devotional, "From

Darkness to Light," was given by Laura Harris. The group extended their thanks to him for a most educational talk.

ANY REGULAR A&P SHOPPER CAN TELL YOU...

DEPENDABILITY *is our* WATCHWORD

No Limits at A&P
Closed
all day Sunday.



SATISFACTION IS YOUR REWARD!

CUT GREEN BEANS RELIABLE BRAND 2 16-oz. Cans 25¢



ARMOUR'S STAR VIENNA SAUSAGE 2 4-oz. Cans 39¢

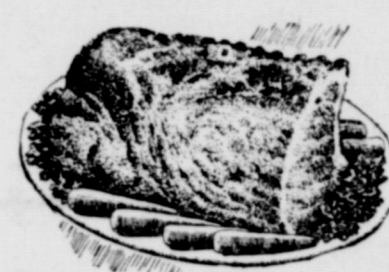
A&P FANCY CRUSHED PINEAPPLE 2 20-oz. Cans 45¢

A&P FANCY CHUNKS PINEAPPLE 2 20-oz. Cans 49¢

DEL MONTE WHOLE KERNEL GOLDEN CORN 2 16-oz. Cans 33c
EXQUISITE FREESTONE SLICED PEACHES 29-oz. Can 25c

LIBBY EARLY GARDEN GREEN PEAS 2 16-oz. Cans 39c
ICMA YELLOW CLING SLICES OR HALVES PEACHES 29-oz. Can 31c

"Super-Right" Fresh Pork Sale



FRESH PORK ROAST

"SUPER-RIGHT" FRESH PORK RIB END Pound 39¢
"SUPER-RIGHT" FRESH PORK LOIN END Pound 45¢

Center Cut Pork Chops "SUPER-RIGHT" FRESH PORK RIB CUT lb. 59¢ LOIN CUT lb. 65¢
"Super-Right" Fresh Pork Loins RIB HALF lb. 53¢ LOIN HALF lb. 59¢
Fresh Pork Country Style Backbones "SUPER-RIGHT" lb. 43¢

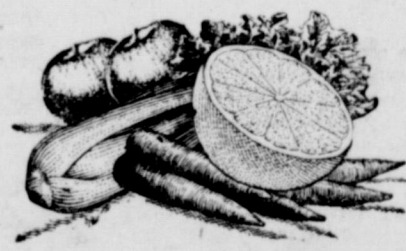
ALLGOOD BRAND SLICED BACON 1-lb. Pkg. 49¢

"SUPER-RIGHT" **SMOKIES** 12-oz. Pkg. 59¢

SWANSON FROZEN MEAT PIES 2 Pies 45¢

OCEAN SPRAY CRANBERRY Sauce WHOLE OR STRAINED No. 300 Can 25¢

DOLE FROZEN CHUNKS Pineapple 13 1/2-oz. Can 25¢



Fresh Produce

TEXAS JUICY—Cello Oranges ... 5-lb. bag 39c

COLORADO YELLOW Onions ... lb. 5c

OREGON BARTLET —1-g. Size Pears ... lb. 15c

IDAHO RUSSET U. S. NO. 1—Mesh Bag Potatoes ... 10-lbs. 49c

FRESH—Large Size Coconuts ... 2 for 29c

FLORIDA—Large Size Cucumbers ... 3 for 19c

TEXAS—Cello Bag Carrots ... 2-lbs. 19c

OCEAN SPRAY FRESH Cranberries 1-lb. Box 25¢



ANN PAGE PRES STRAWBERRY Preserves 2 59¢

Sale!
EIGHT O'CLOCK COFFEE 1-lb. BAG 59¢
3-lb. Bag \$1.69

DOLE FROZEN PINEAPPLE JUICE 6-oz. Can 19¢

DOLE FROZEN BLENDED JUICE Orange-Pineapple 6-oz. Can 23¢

DOLE FROZEN BLENDED JUICE Pineapple-Grapefruit 6-oz. Can 21¢



JANE PARKER Spanish Bar REG. 35c SPECIAL 27¢

JANE PARKER 8-INCH SIZE Cherry Pie REG. 53c SPECIAL 43¢

JANE PARKER DELICIOUS

FRUIT CAKES

1 1/2-lb. Size 135
3-lb. Size 265
5-lb. Size 385

BE WISE send it to ... ROY'S REPAIR
LET US REPAIR YOUR APPLIANCES
Refrigerators, Deep Freezers, Milk Coolers, Window Coolers, Evaporative Coolers, Automatic Washers, Clothes Dryers, Dish Washers, Disposals, Percolators, Coffee Makers, Electric Irons, Food Mixers, Food Blenders, Electric Sweepers, Electric Fry Pans, Electric Roasters, Electric Ranges
Reasonable Rates — Work Guaranteed — Call 785
Located at Brown Plumbing 1006 W. Main St. **ROY GANN** Eastland, Texas



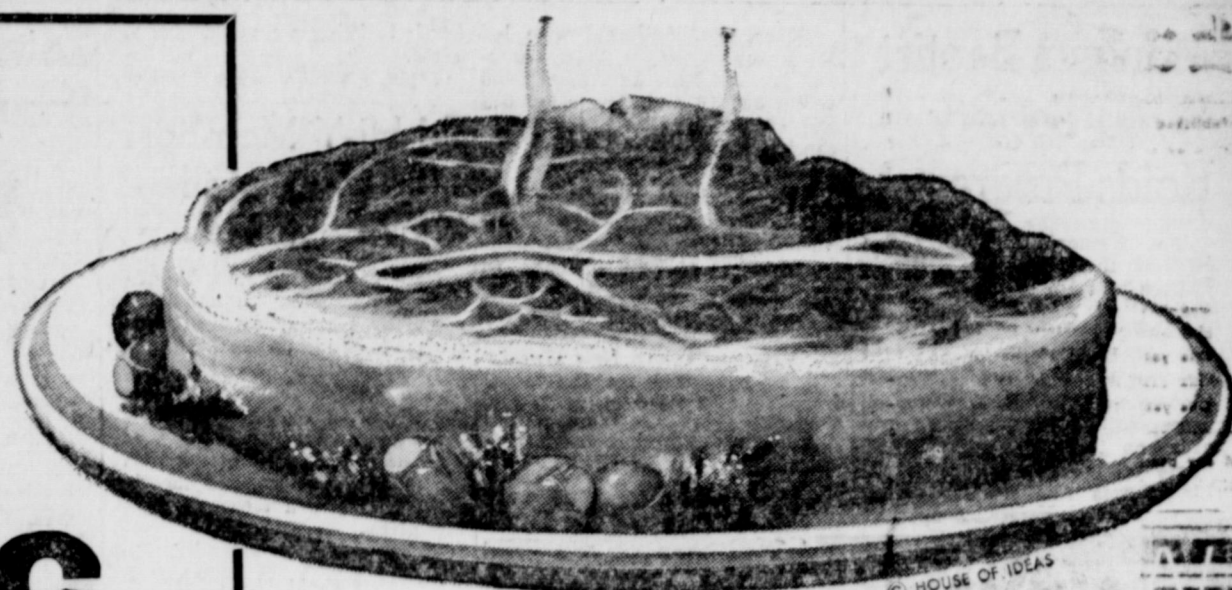


Roast

Worth Controlled Quality
Heavy Beef-Chuck Blade

At Worth
Lb.

49c



Prices Effective Thursday, Friday and Saturday
We Reserve the Right to Limit Quantities

- Pork Sausage RATH'S BLACKHAWK Lb. Roll 39¢
- Medium, White Shrimp 5 -Lb. Box 3.29
- Family Fish Sticks TASTE O'SEA 1-Lb. Pkg. 59¢
- Flounder Fillets TASTE O'SEA 1-Lb. Pkg. 59¢

TURKEY HENS

Sunco Fancy, Tender
10 to 14 Lbs. Average

Lb. 45¢

PREMIUM BACON

Swift's Sliced

Lb. Pkg. 59¢

Extra Savings with "S&H" Green Stamps

- Meat Pies SWANSON'S—CHICKEN, BEEF OR TURKEY 3 8-Oz. Pkgs. 89¢
- Beef Tacos EL CHICO FROZEN 13 1/2-Oz. Pkg. 49¢
- Enchilada Dinners PATIO FROZEN 14-Oz. Pkg. 55¢

Spiced Peaches Hemet Whole

4 No. 2 1/2 Cans 100

Mayonnaise Kraft's Famous—"Kitchen-Fresh"

Pint Jar 39¢

Whole Green Beans Campfire

2 No. 303 Cans 25¢

Custard Pumpkin Libby's

2 No. 303 Cans 25¢

- ORANGE JUICE Garden Gate Big 12-oz. Can 51¢
- ONION RINGS Taste O'Sea French-Fried 2 4-oz. Pkgs. 49¢
- BELL PEPPERS Holloway House Stuffed 14-oz. Pkg. 65¢
- BABY OKRA Trappey's Whole 2 10-oz. Pkg. 39¢

Take Your Choice—Save Either Way—Libby's or Silverdale!

- BROCCOLI SPEARS LIBBY'S 10-Oz. Pkg. 27¢
- FROZEN CORN LIBBY'S CUT OR CREAM STYLE 10-Oz. Pkg. 21¢
- SWEET PEAS LIBBY'S TENDER 10-Oz. Pkg. 21¢
- CAULIFLOWER LIBBY'S 15-Oz. Pkg. 27¢
- GREEN BEANS LIBBY'S CUT OR FRENCH STYLE 9-Oz. Pkg. 25¢
- FROZEN SPINACH LIBBY'S LEAF OR CHOPPED 10-Oz. Pkg. 21¢
- SILVERDALE 8-oz. Pkg. 21¢
- SILVERDALE CUT 10-Oz. Pkg. 19¢
- SILVERDALE 10-Oz. Pkg. 17¢
- SILVERDALE 10-oz. Pkg. 23¢
- SILVERDALE CUT 9-oz. Pkg. 19¢
- SILVERDALE LEAF 10-oz. Pkg. 17¢

RED PLUM JAM Bama 20-oz. Tumbler 29¢	PEACEMAKER FLOUR 5 -Lb. Bag 29¢	DRIP or REGULAR Coffee Hixon's Lb. Can 65¢
---	--	---

Whole Potatoes Homefolk

3 No. 303 Cans 29¢

Welchade Grape Drink Made With Welch's Juice

3 Quart Cans 89¢

Gleem Tooth Paste

Large Size 39¢

Tonight Try Delicious
MARSHMALLOW CREME FUDGE

• MARSHMALLOW CREME

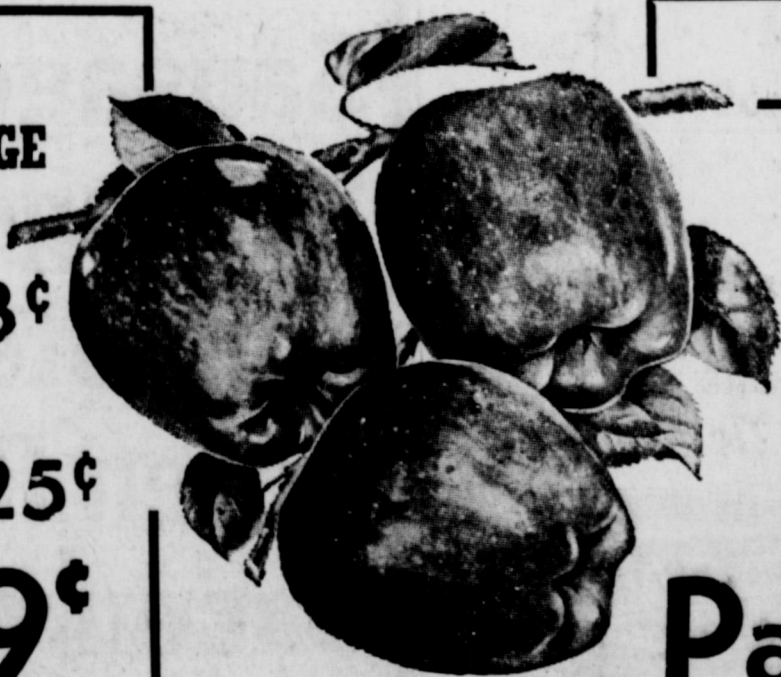
HIP-O-LITE Pint Jar 23¢

• NESTLE'S MORSELS

SEMI-SWEET CHOCOLATE 6-Oz. Pkg. 25¢

ELLIS—PIECES

Pecans 12-Oz. Cello 89¢



APPLE SALE!

Washington State
Delicious
Extra Fancy RedLb.

Rosy-Red
ROME
BEAUTY

2 Lbs. 27¢

Pascal Celery CRISP STALKS

Lb. 12¢

Low, Low Prices - Everyday Savings!

- FOOD MART—NEW BISCUITS SWEET MILK OR BUTTERMILK 3 Cans 29¢
- PLAIN OR IODIZED FOOD MART SALT 26-Oz. Pkg. 10¢
- HEINZ HOT DOG OR HAMBURGER RELISH 11-Oz. Jar 33¢
- THE FAVORITE OF MILLIONS—11-Oz. Pkg. SKINNER'S RAISIN BRAN 24¢
- VEGETABLE JUICE LIBBY'S 'VIM' 32-Oz. Can 29¢

- FRUIT-FLAVORED DRINK HAWAIIAN PUNCH 46-Oz. Can 39¢
- CHOCOLATE OR PLAIN OVALTINE Large 14-Oz. Jar 79¢
- FAMOUS BAMA PEANUT BUTTER 10-Oz. Ref. Jar 49¢
- COMET PRE-FLUFFED RICE 12-Oz. Pkg. 19¢

- AUSTEX TAMALES No. 300 Can 27¢
- AUSTEX BEEF STEW No. 300 Can 35¢
- TEXAS FAVORITE RANCH STYLE BEANS 2 No. 300 cans 29¢
- WHITE SWAN PINTO BEANS 2 No. 300 cans 25¢

- BEST MAID SALAD DRESSING Quart Jar 39¢
- PREPARED PORK OR BEEF WORTH DOG FOOD 1-Lb. Can 10¢
- CHOCOLATE SYRUP COCOA MARSH With Pump 24-Oz. Jar 63¢
- CAMEO—10¢ OFF LABEL COPPER CLEANER 15-Oz. Can (Net) 39¢
- SLICED OR CHIPPED IRELAND'S BARBECUE No. 300 Can 73¢

WORTH FOOD MART

Mangum Baptist WMU Society Holds Program

The Woman's Missionary Society of the Mangum Baptist Church met Monday evening for their royal service program in the church.

Mrs. H. R. Casey opened the meeting with prayer. Mrs. Everett Clower and Mrs. R. L. Campbell presented the royal service program on "The Ransomed Shall Come with Songs." "Send the Light" was also sung.

After Mrs. Arthur Brown led the group in prayer, Mrs. Campbell presented the devotional from Isaiah 35: 10 and Revelation 5:9 and 15:14. Mrs. E. E. Donaldson concluded the program with prayer.

During the business meeting with Mrs. Campbell, president, presided, the group voted to make Monday evening at 7:30 o'clock as their regular meeting time. Mrs. Arthur Brown, secretary, assisted Mrs. Campbell.

The book, "Into a New World," will be presented for the WMU from 10 a.m. to 2 p.m. Friday, Nov. 21, at the church with a covered dish luncheon. The book review will be presented by Mrs. Nedford of Gorman. Each mem-

ber is to bring a covered dish and a pie. Eight members were present.

Tri-Hi-Y Members Meet to Install New Officers

New officers of the Tri-Hi-Y were installed in a candlelight ceremony recently as members of the Tri-Hi-Y met in the Y building.

New members were introduced to the group. Toni Horton led the group in saying the "Lord's Prayer."

During the business meeting minutes of the previous meeting were read and a treasury report was given.

Thirty members attended the meeting. Mrs. V. T. Seaberry Jr. is sponsor.

VISITS IN STAMFORD

Mr. and Mrs. Herbert Weaver visited with Mrs. Weaver's brother and sister-in-law, Mr. and Mrs. Clyde Sims in Stamford, Armistice Day.

Zeta Pi Chapter of BSP Wins Second in Area Yearbook Contest

A letter was read from the West Texas Area Convention chairman, stating that the Zeta Pi Chapter of Beta Sigma Phi had won second place in the Yearbook contest, as the members of the Sorority met Tuesday evening.

Members of the Xi Alpha Zeta Chapter of BSP were guests of the Zeta Pi Chapter as the sorority met to plan the banquet to be held Saturday evening at 7 o'clock in the Connellee Hotel Roof Garden for the members of the sorority and their husbands.

Mrs. Virgil Moore, president of the Zeta Pi Chapter, presided over the short business meeting during which the Ways and Means Committee reported that the Culinary Art Show was "highly successful."

Mrs. Melvin Bailey, teacher in Cisco High School, presented a book review on "The Far Journey" as the program.

Mrs. Don Kincaid was hostess to the meeting in her home on the Cisco highway with Mrs. Celynn Hedges as co-hostess.

The serving table, laid with a beautiful beige cloth was centered with an arrangement formed of yellow chrysantheums. Mrs. Virgil Moore poured spiced tea from the silver tea service and Mrs. Hedges served the pumpkin tarts topped with whipped cream. Nuts and Hors d'oeuvres were also served.

Guests of the Xi Alpha Zeta Chapter attending were Mmes. W. M. Culver, Don Doyle, Fehrman Lund, Bill Collings, Bernice Pettit, M. H. Perru and Bill Leslie.

Members attending were Mmes. Kerma Bond, J. D. Earley, Marlene Johnson, Earline Vincent, James K. Smith, Bruno Kaufus, Les Strawn, Bob Verhetsel, Willis Moore, Celynn Hedges, Don Kincaid and Virgil Moore.

Assisting Mrs. Leslie as hostesses were Mmes. Guy Quinn, C. M. Pogue and Clara Young. Mrs. W. A. Martin presided at the coffee service. Nut bread, cookies and grapes were also served.

Mrs. J. L. Cottingham, a former resident of Eastland, now of Garland, was a visitor.

Attending were Mmes. H. J. Bulgerin, F. W. Davenport, B. O. Liarrell, Etta Harlow, M. B. Titsworth, Marguerite Welch, O. M. White, W. A. Martin, E. S. Ierdue, C. M. Pogue, Guy Quinn, Jack Horn, T. M. Johnson, Clara Young, Charles Harris, B. B. Alexander, I. C. Heck, Frank Castleberry, James Horton, Floyd Robinson and the hostess, Mrs. Leslie.

Attending were Tony Lowrance, Rhett Smith, Bryan Garner, Bi Day, Steve Lund, Stevie Duke, Mark Layton, Paul Chapman, Ibra White, Dianne Yancey, Don Hart, Karen Green, Peggy Duplap, Sherry Carroll, Clara Smith, Jennie Freyschlag, Linda Ann Perry, Susie Sneed and Martha Kiar.

Mrs. Betty Bennett, grandmother of the honoree, was also present for the party.

CALL 601 FOR CLASSIFIED ADVERTISEMENTS

Martin Circle of WSCS Meets with Mrs. W. P. Leslie

Members of the Martin Circle of the Woman's Society of Christian Service of the First Methodist Church met in the newly decorated home of Mrs. W. P. Leslie for their yearbook program.

"Crown Thy Good with Brotherhood" was the program topic which was presented with Mrs. B. O. Harrell as program leader. Others participating in the program were Mrs. B. B. Alexander and Mrs. H. J. Bulgerin.

The program was presented in form of a press interview which included a study on missions in Alaska, Mexico, Hawaii, Canada and South America countries.

Mrs. C. M. Pogue read a leaflet on Veteran's Day. Mrs. W. A. Martin presented the devotional.

After the program, Mrs. Leslie invited members to tour her remodeled home.

Assisting Mrs. Leslie as hostesses were Mmes. Guy Quinn, C. M. Pogue and Clara Young. Mrs. W. A. Martin presided at the coffee service. Nut bread, cookies and grapes were also served.

Mrs. J. L. Cottingham, a former resident of Eastland, now of Garland, was a visitor.

Attending were Mmes. H. J. Bulgerin, F. W. Davenport, B. O. Liarrell, Etta Harlow, M. B. Titsworth, Marguerite Welch, O. M. White, W. A. Martin, E. S. Ierdue, C. M. Pogue, Guy Quinn, Jack Horn, T. M. Johnson, Clara Young, Charles Harris, B. B. Alexander, I. C. Heck, Frank Castleberry, James Horton, Floyd Robinson and the hostess, Mrs. Leslie.

Hospital News

Patients in the Eastland Memorial Hospital are:

Mrs. Clifton Walton and baby girl

Billy Perkins, medical

Mrs. J. B. Hill, medical

Mrs. J. T. Sawyer, surgical

Rev. J. W. Haynes, medical, Cisco

Johnny Tennyson, medical, Cisco

Mrs. Jim Blakley, medical, Abilene

M. W. Johnson, medical

Ed Haynes, medical, Olden

Mrs. Montez Warren, medical

William Garrett, surgical

Bobby Phillips, medical

Joe Fossett, surgical

Omar Finley, medical

Mrs. Gilda Smith, surgical

Mrs. Benny Nichols, surgical, Cisco

W. H. Watkins, medical

Mrs. Thomas Samuels, surgical, Frownwood

Clifton Wood, surgical

Mrs. M. B. Inzer, medical

Dismissed were Mrs. J. D. Hitt, Mrs. Lydia Ziehr and Mrs. Helen Lucas.

Mrs. Betty Steddum and baby boy of Eastland have been dismissed from the Ranger General Hospital.

Judy Beth Crosby Is Honored with Birthday Party

A patio party was given in honor of Judy Beth Crosby, daughter of Mr. and Mrs. A. G. Crosby, her ninth birthday Friday afternoon in her home at 510 South Oaklawn.

Ice cream sodas were served with Judy Beth's birthday cake which was a large white cake topped with a "Little Bo Peep" dressed in pink.

The group enjoyed volleyball and badminton during the afternoon as Mrs. Crosby took movie pictures of the party.

Attending were Tony Lowrance, Rhett Smith, Bryan Garner, Bi Day, Steve Lund, Stevie Duke, Mark Layton, Paul Chapman, Ibra White, Dianne Yancey, Don Hart, Karen Green, Peggy Duplap, Sherry Carroll, Clara Smith, Jennie Freyschlag, Linda Ann Perry, Susie Sneed and Martha Kiar.

Mrs. Betty Bennett, grandmother of the honoree, was also present for the party.

CALL 601 FOR CLASSIFIED ADVERTISEMENTS

NOTICE

TRUMAN BROWN or BROWN'S PLUMBING Is Not Leaving Eastland THE RUMOR IS FALSE

YOUR BUSINESS APPRECIATED

Maybe You Don't Need Insurance

... If you don't own a home, furniture, jewelry or a car you can get along without the services of an insurance agent. But for the most of us life is not that simple. Modern living has become so complex that the protection of property and liability is a major problem, and we must be insured. The individual you can always depend on for accurate solutions of your insurance problems is your local agent.

EARL BENDER & COMPANY

Eastland, (Insurance since 1924) Texas

VISITS SON
Mr. and Mrs. I. E. Talley have returned to their home in Olden after visiting his son and daughter-in-law, Mr. and Mrs. I. E. Talley Jr., in Tulsa, Oklahoma. Mr. Talley and son played golf on the Mahawk Park Municipal Golf Course there. They also visited Mr. Talley's parents, Mr. and Mrs. U. W. Talley in Denison.

RETURNS HOME
Mrs. Bill Beaty and son, David and James, were guests in the home of her parents, Mr. and Mrs. J. C. Allison, and her sister, Miss Verne Allison, while Rev. Beaty attended the Southern Baptist Convention in San Antonio. The guests returned to their home near Anson Thursday.



Cadillac

PROUDLY PRESENTS FOR 1959 A DRAMATIC NEW REALM OF

Motoring Majesty

A single glance tells you, beyond any question, that these are the newest and most magnificent Cadillac cars ever created. Dazzling in their beauty, enchanting in their grace and elegance, and inspiring in their Fleetwood luxury and appointments—they introduce a new realm of motoring majesty. And a single journey at the wheel will reveal another unquestionable fact—that these are the finest performing Cadillacs ever produced. With a spectacular new engine, with a more responsive Hydra-Matic drive, and with improved qualities of ride and handling, they provide a totally new sense of mastery over time and distance.

This brilliant new Cadillac beauty and performance are offered in thirteen individual body styles. To see and drive any of them is to recognize a new dimension in automotive quality and goodness. Why not do both—soon? Your Cadillac dealer invites you to visit his showroom at your earliest opportunity.

By appointment to the world's most discriminating motorists!



THE FLEETWOOD SIXTY SPECIAL SEDAN

Cadillac's noblest advancement in styling and engineering!



THE SIXTY-TWO COUPE



THE ELDORADO BIARRITZ

VISIT YOUR LOCAL AUTHORIZED CADILLAC DEALER

DON PIERSON OLDS -- CADILLAC

314 West Main Street Phone 801 Eastland, Texas

Moore About—
(Continued From Page One)
ry Farm Contest was Mrs. J. B. Downtain. She correctly identified the farm as the home of Mr. and Mrs. Carey Hightower and formerly the Coxs Hunter place. Two tickets to the Majestic theatre will be coming her way.

—vnm—
See you in Ranger Friday night.

SUNDAY GUESTS
Mr. and Mrs. Marvin Frazier and children of Brownwood visited Sunday afternoon with Mrs. Frazier's parents, Mr. and Mrs. G. C. Flaherty in the Mangum Community.

Trade With Your Hometown Merchants

Cold or Hot—It Hits the Spot!

Boswell's

Chocolate Milk!



You'll like Boswell's Chocolate Milk cold or hot. The quick and easy way to make delicious Hot Chocolate is to heat and serve Boswell's Chocolate Milk. It's made from nourishing, whole Boswell's Milk.

OUR LOW PRICES PUT

MORE MEAT ON YOUR TABLE



FRESH Side Pork	Lb.	49¢
Pork Roast	Lean Cuts	Lb. 45¢
Sausage	Whole Hog	Lb. 49¢
Sausage	Country Style	3 Lbs. \$1
Loin Steak	Lb.	79¢
Seven Roast	Lb.	49¢
Bacon	GOOCH'S THICK SLICED	2 Lbs. 99¢
LEAN BONELESS Stew Meat	Lb.	59¢
PIT COOKED Bar-B-Q	Lb.	89¢
Chili	HOMEMADE	Lb. 59¢

EARNEST

Frozen Food Center

210 South Lamar
Phone 11

DESDEMONA
NEWS FROM

"Aunt" Sallie Eaton is quite improved but is still confined to her home.

ill for several weeks. He entered Veterans Hospital at Dallas two weeks ago and has been undergoing a series of medical tests. He is expected to be at his home here from Saturday until Monday when he had to report back to the hospital for a series of medical treat-

ments. He is considered improved and hopes to be home again soon.

Odis Herrell of Oklahoma, brother-in-law of the Genoways was buried here Monday. More information will follow next week.

Mrs. Willis Worden and her daughter-in-law, Mrs. Carl Worden of Dallas, made a business trip to San Angelo Monday.

Mr. and Mrs. Charlie Worden of Kermit were here visiting his parents, Mr. and Mrs. Willis Worden.

Mr. and Mrs. Mack Keith and son, Mike, left Friday for their home in Monahan after spending a two weeks vacation here with their parents.

Mr. and Mrs. Homer Abernathy spent a few days last week visiting in San Angelo with their son and daughter-in-law, Mr. and Mrs. Melvin Abernathy.

Mrs. Maggie Pool accompanied her son and daughter-in-law, Mr. and Mrs. Joe Pool and Becky, to Dallas to spend the weekend with a son and brother and his family, Mr. and Mrs. James Pool and Jim.

Mr. and Mrs. Burl Partain and children of California visited one day last week with his aunt, Mrs. Ethel Keith and grandmother, Mrs. N. S. Partain.

Also visiting in the Keith home were a nephew and family, Mr. and Mrs. Loyd Jones and sons, Bob and Bruce of Fort Worth, Saturday of last week.

Miss Laveda Carr of Midland spent a week vacation here lately with her parents, Mr. and Mrs. Cecil Carr.

Mr. and Mrs. Burl Scott and son, Mark, spent the weekend here with her parents, Mr. and Mrs. R. Joiner. Mr. and Mrs. Bob Mears of Arlington were also visiting here.

Mr. and Mrs. W. T. Hardley and Leo Williams of Odessa and Midland spent the weekend here with their parents, Mr. and Mrs. C. H. Williams.

The Desdemona 4-H Club met at the school library Friday to discuss clothing. Trudie Watkins was welcomed as a new member. Miss Sandra Kirkland reports all the club members to be enjoying their club work.

Ruby Ann Lewis is reporter. Mr. and Mr. Davis motored to

Glenrose Sunday afternoon.

Coleman Wier left here to enter Veterans Hospital at Dallas for a general checkup.

Mrs. Row Northcutt spent last week in Wichita Falls with her daughter and son-in-law, Mr. and Mrs. "Whistle" Luker and son, Jimmie.

Harold "Euckshot" Lewis left Sunday for Camp Shaffey, Ark., where he is stationed with the Army. Harold is the son of Mr. and Mrs. Ferrel Lewis.

Carolyn's
MOVIE
Comments
By Carolyn Collins

"The Big Country," a story adapted from Post magazine, stars Gregory Peck, Jean Simmons, Carroll Baker and Charlton Heston and co-stars Burl Ives and Charles Bickford.

This is the story of the old west with a young and handsome Baltimorean (Peck) as the center of the story. Peck runs a foul of vicious entrenched ranch interests when he comes west to make his new life.

The story of a young wife, who is released from a mental hospital and is struggling to regain her place in normal society and hold her husband's love, is told in "Home Before Dark."

"Home Before Dark" stars Jean Simmons and Dan O'Herlihy as her husband. Other stars included Rhonda Fleming and Etienne Zimmerman Jr.

"Hell Squad" starring Wally Campo and Brandon Carroll tells the story of one man's indelible stamp of World War II.

Also featured with "Hell Squad" will be "Tank Battalion" which is the story of a group of young American men in battle with only the fleeting moments of happiness which are with the army nurses. "Tank Battalion" stars Don Kelly and Majorie Helten.

"The Littlest Hobo" stars two of the most remarkable characters you'll ever meet, London, the dog, and Fleece the lamb. This is a story of a hobo shepherd dog who saves the life of the little lamb from the slaughter house and plays a big part in restoring happiness to a little boy and girl.



Mr. and Mrs. F. C. Williamson

Mr. and Mrs. Frank Williamson Celebrate Golden Anniversary

Mr. and Mrs. F. C. Williamson were honored on their fiftieth wedding anniversary with an open house from two until six o'clock p.m. Sunday, November 9, in their home at Lake Leon. Their sons and daughters-in-law, Mr. and Mrs. Eddie Williamson of Wichita Falls, Mr. and Mrs. F. C. Williamson of Carlsbad, New Mexico, and Mr. and Mrs. Terrell Williamson of Ranger, were hosts and hostesses.

Mrs. Williamson wore a corsage of gold and bronze chrysanthemums. Mr. Williamson and his three sons wore bronze Boutonnieres.

Guests were greeted by Mrs. Vonelle Hopper of Ranger, Mrs. Blanche Heinlen of Odessa, and Mrs. Johnny White of Gorman. Beautiful arrangements of bronze and yellow mums were used throughout the house. Mrs. Leon Bourland of Eastland and Mrs. Betty Butler of Dallas alternated at the registry table, which was centered with an arrangement of bronze and gold pom-poms and green fern in a small container.

The table was laid with a white cutwork cloth and centered with an arrangement of bronze mums and pom-poms in a bronze epergne. Refreshments consisted of cake squares, punch, and mints. The cake squares were topped with white icing and gold rosebuds. Red, yellow and green fruit bits were in the gold-colored punch. Yellow napkins imprinted with "Frank and Earle" were used.

SKIN ITCH HOW TO RELIEVE IT, IN JUST 15 MINUTES

If not pleased, your 48¢ back at any drug store. ITCH-ME-NOT deadens itch and burning in minutes; kills germs, fungi on contact. Wonderful for eczema, foot itch, ringworms, insect bites, surface rashes. Today at Eastland Drug.

CALL OUT FOR CLASSIFIEDS

JOY DRIVE-IN Thurs. - Fri. - Sat.
Cisco - Eastland Highway Open 6:15 - Starts 6:30

WARNER BROS. PRESENT THE C.V. WHITNEY PICTURE
STARRING **JOHN WAYNE** in **"THE SEARCHERS"**
JEFFREY HUNTER - VERA MILES
WARD BOND - NATALIE WOOD
DIRECTED BY JOHN FORD

DIXIE Drive-In
EASTLAND RANGER HIGHWAY

Box Office Opens 6:30 Show Starts 6:45
Box Office Closes 9:00

—HEATED PATIO NOW OPEN—
Don't Let the Rain and Cold Keep You Home
Admission Never Over 50¢
Adults 50¢—Child Under 12 FREE

WEDNESDAY - THURSDAY, NOVEMBER 12 - 13

UNIVERSAL INTERNATIONAL PRESENTS **ERNEST K. GANN'S MIGHTIEST BEST SELLER**
ROCK HUDSON **CYD CHARISSE**
"WILIGHT FOR THE GODS"
ARTHUR KENNEDY LEIF ERICKSON CHARLES MCGRAW ERNEST TRUER RICHARD HAYTON
JUDITH EVELYN WALLACE FORD Directed by JOSEPH PENEY Written by ERNEST K. GANN Produced by GORDON HUB

PLUS: Two Color Cartoons

FRIDAY & SATURDAY, NOVEMBER 14 - 15

THE DEADLIEST THUNDER THAT EVER ROLLED ACROSS THE WEST!
LEX BARKER BOB TAYLOR BEN JOHNSON
COLOR by De Luxe

PLUS: Color Cartoon and Sports Reel

RANGER DRIVE-IN
HIGHWAY 80 EAST ON RANGER HILL PHONE 13

Adults 50¢—Kiddies Under 11 Free
Box Office Opens 6:30 - Show Starts 7:00

LAST TIMES THURSDAY

The market place of crime!
WELL ON DEVIL'S ISLAND
A REGALSCOPE PICTURE
DANTINE - ZALMAN - MARTELL - WILLES - INGRAM

Plus Our Second Feature

a connubial comedy
Jose Ferrer in **The High Cost of Loving**
Joanne Gilbert
Jim Backus
introducing **Gena Rowlands**
in CinemaScope

FRIDAY AND SATURDAY

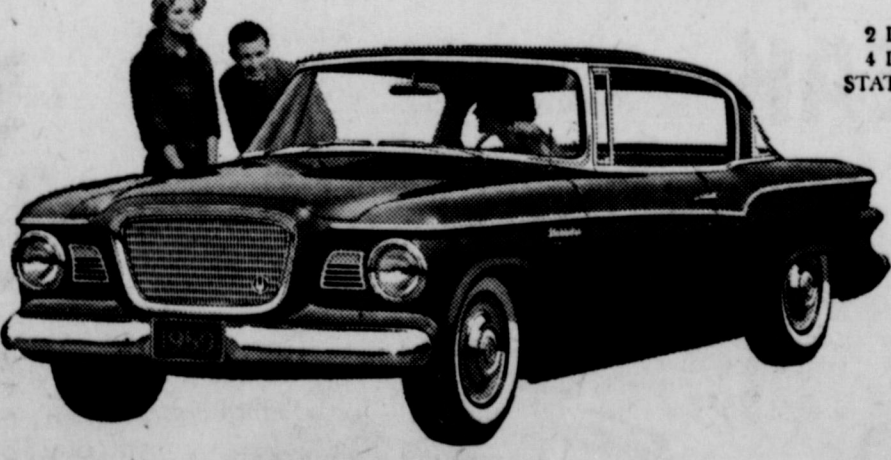
HE HAD STOOD ON BOTH SIDES OF THE LAW - AND THIS WAS THE SHOWDOWN!
ROBERT TAYLOR - RICHARD WIDMARK
THERE WAS A COLD, KILLING FURY IN THE FEUD BETWEEN...
"THE LAW AND JAKE WADE"
STARRING PATRICIA OWENS - BOB MIDDLETON - HENRY SILVA

PLUS: Freevue Every Saturday Night

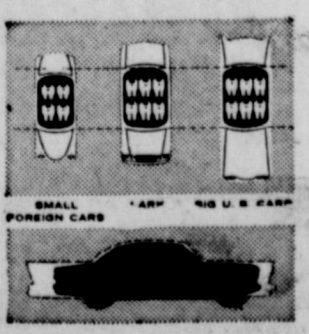
ANNOUNCING

The Lark by Studebaker your new dimension in motoring—the one car perfectly sized for today's driving needs—big six-passenger roominess inside, nearly three feet shorter than conventional cars outside—runs miles and miles on a hatful of gas—regular, low-cost gas—peak performance from either the spirited six or super-responsive V-8 engine—behaves like a lady, parks on a postage stamp, turns on a dime—beautifully built and engineered by the knowing craftsmen of Studebaker—simple, clean, and classic in styling—no non-functional ornamentation—distinctively rich, fashion-right interiors, upholstered in fine pleated fabrics and vinyl—costs less to buy, far less to operate—prices begin under \$2000—you knew a car like this had to happen—and when you drive the Lark—you'll be glad it did. It's your car, the one you've been wanting—you'll love it!

THE LARK BY STUDEBAKER



HARD TOPS
2 DOOR SEDANS
4 DOOR SEDANS
STATION WAGONS



MEET AND DRIVE THE LARK BY STUDEBAKER AT YOUR DEALER TODAY!

McGraw Motor Company

416 S. Seaman St. Eastland Phone 80

Round-up STAMPS With Every Purchase

SOFA PILLOWS Wide Selection Of Patterns **79¢**

Lane Cedar Chest Values to 69.50 **48.88**

Metal Utility Cabinet Double Door **12.88**

DOUBLE DRESSER Bookcase Bed Tilt Mirror Center Guides **68.88**

Stratoresters Plastic and Fabric Upholster **59.88**

3 Dinette Suites In Bronze Legs Values to 119.50 YOUR CHOICE **69.50**

FOAM RUBBER SOFASLEEPER Complete with 220 Coil Innerspring Mattress Beige and Brown **169⁰⁰** Regular 219.00

ANNIVERSARY Sale Cut yourself a slice of these values!

FREE 15.000 Round-Up Stamps To be given away on Nov. 19th. Nothing to buy. You do not have to be present to win.

9 x 12 RUGS Linoleum Assorted Patterns **3.99**

220 COIL Innerspring Mattress Reg. 39.95 NOW **26.88**

Bolster Back Sofa Makes Single Bed **24.88**

COMPLETE Maple Twin Bed Mattress Bed Springs **44.00**

2-PIECE FOAM RUBBER Living Room Suite 3 Colors Values to 229.00 With Trade **169⁰⁰**

YOUR CHOICE 99¢ END TABLE, TISSUE BOX, PLASTIC PITCHER, AND ASSORTED ITEMS, VALUES TO 1.98

Coats Furniture Ltd. 305 So. Seaman Phone 585

SOCIAL CALENDAR

Thursday, Nov. 13
 2 p.m.—The Morton Valley Community Club House will be the meeting place of the Morton Valley Community Club as they meet for a regular meeting.
 3 p.m.—"Need for More Nurses" will be the program topic of the Alpha Delphin Club as they meet in the Woman's Club. Mrs. N. N. Rosenquest will be leader with Mrs. D. J. Fiensy and Mrs. C. M. Pogue participating on the program. Mrs. Marguerite Welch will be hostess.
Friday, Nov. 14
 9:30 a.m. to 3 p.m.—The Eastland Art Club will sponsor an Art Exhibit in the Victor Cornelius building. The public is cordially invited to attend the exhibit. The exhibit will continue through Saturday.

Saturday, November 15
 7 p.m.—The Connellee Roof Garden will be the scene of the Delta Sigma Phi banquet with the husbands of the members as guests.
 4 p.m.—Members of the EGBDF League Club will meet in the home of Mrs. H. E. White, 495 South Walnut, with Debra and Deb as hostesses.
Monday, Nov. 17
 7:30 p.m.—Mrs. Wynne Caten will present the program on "The Time of the Dragons" as the members of Las Leñas Club meet in the Woman's Club. Mrs. J. M. Cooper will be hostess.
 7:30 p.m.—The members of the Oddfellow Lodge will meet in the IOOF Hall for their regular meeting.
Tuesday, Nov. 18
 7:30 p.m.—The Rebekah Lodge will meet in the IOOF Hall for their regular meeting.

Wednesday, Nov. 19
 3:30 p.m.—Mrs. Joseph M. Perkins will be honored at a guest tea by the Music Study Club in the Woman's Club.
 9:30 a.m.—The Rachel Group of the CWF of the First Christian Church will meet in the church annex with Mrs. Gerald Ables as hostess.
 7:30 p.m.—Wesleyan Service Guild of the First Methodist Church will meet at the church for their regular meeting.
 12 noon—Mrs. R. B. Bradley will be hostess to a covered dish luncheon in her home, 493 South Daugherty, for the members of the 50 Year Pioneer Club.
Thursday, November 20
 9:30 a.m.—Members of the Woman's Society of Christian Service will meet in the church for their regular meeting. After the meeting, a kitchen workday will be held. At 9 o'clock prior to the meeting, a prayer meeting will be held.

Mrs. W. M. Bagwell Gives Devotional For Lydia Group

Mrs. W. M. Bagley presented the devotional on "Total Surrender" to the members of the Lydia Group of the Christian Woman's Fellowship in the annex of the First Christian Church Monday afternoon.
 Mrs. Bagley presented her devotional from Revelation 3:15-22. Joe Tow presented the lesson on "Whosoever seeks to gain his life shall lose it. But whosoever loses his life will preserve it." Scripture verses read covering the lesson were Mmes. L. C. McNatt, Eugene Day, and Ray Heckendorn. An open discussion was held following the lesson.
 The program was opened with a prayer by Mrs. Heckendorn and a song with Mrs. N. L. Smitham at the piano. The missionary benediction in unison concluded the program.
 Mrs. Winnie Wynne, chairman, presided over the meeting with Mrs. D. J. Fiensy, secretary, assisting.
 Mrs. Smitham, hostess, served the members cookies, olives, cheese whiz and coffee.
 Those present were Mmes. Wynne, McNatt, Fiensy, Bagley, J. A. Bendy, Day, Henry Ferrell, Smitham, Tow, Heckendorn, Miss Folly Day and Kathy and Christi Heckendorn.

EGBDF Club... Meets Sat.

Members of the EGBDF Music Club will meet in the home of Mr. and Mrs. H. E. White, 405 South Walnut Saturday afternoon at 4 o'clock.
 Marsha and Debra, daughters of Mr. and Mrs. White, will be hostesses. Mike Siebert, president, will preside over the meeting.
 Mrs. F. L. Dragoo, teacher and counselor, urges all members to be present.

MARLAND VISITORS

Mrs. Grace Adams and her granddaughter, Nancy Lee Campbell, of Marland are here visiting with Mr. and Mrs. R. L. Campbell in the Mangum community. Nancy Lee is attending school in Carbon.



Who? Where? What'd you say?

STAMPEDES, MASSACRES, GUN SMOKE needn't mess up your phone conversations. With conveniently located extension telephones around the house, you just shut a door and shut out noise. Choose from nine beautiful decorator colors or standard black. For color, there's a one-time-only charge. Call the telephone business office.

End "One-Phone" Problems. Handy Additional Telephones Are Just \$1.00 A Month (plus tax and installation)



IT'S WINNING TEXAS—as it won the Fashion-Wise at the Brussels World's Fair!

You never had it so beautiful and so all-out new...

59 FORDS

AWARDED THE GOLD MEDAL for beautiful proportions—by the Comité Français de l'Élégance at the Brussels World's Fair



THE WORLD'S MOST BEAUTIFULLY PROPORTIONED CARS

are packed with surprises!

Expect to be dazzled when you see these totally new Fords! Each one of Ford's 19 new models is completely and refreshingly changed in every square inch. Each, in its own way, is the world's most beautifully proportioned car. Each has Thunderbird elegance.

Look for something new and just right in size... and you'll find it! The lowest-priced Fords are 6 stunning inches longer... have 2 extra inches of smooth-riding wheelbase.

Expect something wonderful in savings. For instance, Ford prices for '59 are traditionally down-to-earth prices. (Every model's priced below the equivalent model of Ford's nearest competitor.) Ford's aluminum mufflers—standard equipment—last twice as long as conventional mufflers. Ford's standard V-8 and Six save up to 5¢ a gallon because they require only regular gas. Ford cars need oil changes only every 4000 miles. And Ford's new super enamels never need waxing.

Look for something special in performance. New V-8's concentrate their new punch at speeds from 30 to 70 mph, where you need it most.

Look for newness everywhere... right down to the new Tyrex tires. Let your Ford Dealer show you. You've never had it so new!



The wonderful new Fairlane 500 Club Victoria... one of 19 all-new Fords for '59

*Based on manufacturers' suggested retail delivered prices.

F.D.A.P.

FORD DEALERS OF TEXAS

King Motor Company

100 E. Main

EASTLAND

Phone 42

BETTER EATING BIGGER SAVINGS

CRISCO

3 Lb. Can **85¢**

WASHING POWDER BREEZE

LARGE BOX **29¢**

<p>L & M Cigarettes Carton 2.19</p> <p>LILT HOME Permanent Reg. \$2 plus tax Tax Incl. 1.49</p> <p>CLOVER FARM Margarine Lb. 19¢</p> <p>KRAFT JET PUFFED Marshmallows 10-Oz. Pkg. 17¢</p> <p>GLENDALE HAND PACKED Tomatoes 2 No. 303 Cans 25¢</p> <p>SUNSHINE KRISPY Crackers Lb. Box 27¢</p> <p>KIL DRIED East Tex. Yams Lb. 10¢</p> <p>NO. 1 RUSSET Potatoes 10 Lbs. 43¢</p> <p>TEXAS RUBY RED Grapefruit Lb. 12¢</p> <p>TEXAS JUICY Oranges Lb. 12¢</p>	<div style="border: 1px solid black; border-radius: 15px; padding: 5px; margin-bottom: 10px;"> <p style="text-align: center; font-size: small;">Delsey Toilet Tissue</p> <p style="text-align: center;">2 1000 Sheet Rolls 23c</p> </div> <div style="border: 1px solid black; border-radius: 15px; padding: 5px; margin-bottom: 10px;"> <p style="text-align: center; font-size: small;">Fleecy White BLEACH</p> <p style="text-align: center;">Quart 15c</p> </div> <div style="border: 1px solid black; border-radius: 15px; padding: 5px; margin-bottom: 10px;"> <p style="text-align: center; font-size: small;">Loose Leaf NOTE PAPER</p> <p style="text-align: center;">25c Pkg. 16c</p> </div> <div style="border: 1px solid black; border-radius: 15px; padding: 5px;"> <p style="text-align: center; font-size: small;">McCormick Black PEPPER</p> <p style="text-align: center;">1-Oz. Box 29c</p> </div>
--	--

ARMOUR'S MATCHLESS

Sliced Bacon

Lb. **49¢**

<div style="border: 1px solid black; border-radius: 15px; padding: 5px; width: fit-content; margin: auto;"> <p style="text-align: center; font-size: small;">PORK ROAST</p> <p style="text-align: center;">Lb. 49c</p> </div>	<p>ARMOUR'S COUNTRY STYLE PURE PORK Sausage 2 Lbs. 95¢</p> <p>GOOCH'S THICK Sliced Bacon 2 Lbs. 1.09</p>
<p>TENDER Pork Chops Lb. 69¢</p> <p>RIB STEAK Good Quality Lb. 69¢</p> <p>Canned Picnics 4 Lb. Can 2.86</p>	

Gooch's FRANKS

3 Lbs. **\$1.05**

It's QUALITY plus PRICE that counts when you buy Food gives you BOTH

H. B. MacMoy, Owner
 7:30 a.m. to 8:00 p.m. Weekdays
 7:30 a.m. to 9:00 p.m. Saturdays

Reduce Without Dieting
Use my Stauffer "reduce with low calorie diet" machine. Reasonable rates.
Mrs. Bert Fuller, 613 West Moss. Phone 653.

TOWN AND COUNTRY ANIMAL HOSPITAL
DR. SPENCER C. SPRUILL VETERINARIAN
Large Small Animal Practice
Bathing - Boarding - Clipping
Office Hours 8:00 to 12:00
2:00 to 5:00
Emergency Service
PHONE 6491 TWO STORY BRICK OLD GORMAN ROAD DELEON, TEXAS

T. L. FAGG REAL ESTATE
Property Management
Home and Farm Loans

IF IT'S METAL Decore Metal Products
306 E. Main Phone 288
SHOP WELDING PAINTING REPAIR

Insurance AND Real Estate D. L. KINNAIRD
Life - Fire - Auto - Farm
Folio - Bonds
39 years in the Insurance Business in Eastland

ABOUT YOUR HEALTH
A weekly public service feature from the Texas State Department of Health. HENRY A. HOLLE, M.D., Commissioner

What do people die from most? How many accidental deaths were there in 1957? What was the leading cause of death in 1932? These and other questions involving vital statistics are ever available from the Division of Vital Statistics of the State Health Department.

Most people look upon the Division of Vital Statistics as merely a place to obtain a copy of a birth certificate for a new job, or a copy of a death certificate for an inheritance.

This is true, but the division offers many other services as well. Some are familiar; others are unknown except to public health workers.

Let's take the first question: Just what do people die from most?

By careful compilation of death statistics, listing cause of death, place, conditions and other information, it is possible for statisticians to determine what diseases are killing the most people in Texas.

What value is this? It was just fifty years ago that tuberculosis was the leading cause of death. Medical and public health officials could see this frightening fact and direct their activities toward curbing the disease.

Year after year, employing various methods for lessening the occurrence and severity of tuberculosis, the researchers' only method of checking their progress was by checking statistical death records.

In this manner they were able to discern which measures were the most successful. Today, tuberculosis is no longer the leading killer it was.

Refined techniques are carried on today with emphasis on other diseases.

For instance, the M. D. Anderson Hospital and Tumor Clinic uses death records to check on past patients of the hospital. In this way they hope to find out how successful are certain methods of cure. The study is on a continuous basis, and began several years ago.

Similar studies can be applied to heart patients. Heart and cancer diseases are the two leading causes of death today.

The fourth-ranking killer is accidents. Traffic accidents lead, but how and where and in what manner do these and other accidents occur? By careful scrutiny of death records, answers may be found that will enable engineers to build safety into homes and highways.

The Division of Vital Statistics sends you certificates upon request, but the service doesn't end there—it only begins. (A widely public service feature from the Division of Public Health Education, Texas State Department of Health)



ELEDEST — Jose Maria Caro Cardinal Rodriguez, 92, of Chile, is the eldest member of the College of Cardinals to attend the meeting in Rome for selection of a successor to the late Pope Pius XII.

New Poultry Regulation To Go Into Effect

COLLEGE STATION — All poultry and poultry products which move for sale across State lines after Jan. 1, 1959, must bear a stamp of approval indicating that it has been inspected for wholesomeness by an agent of the U. S. Department of Agriculture.

At that time the Poultry Products Inspection Act becomes effective, and the poultry industry will join the meat industry in offering consumers assurance of Federal inspection in all plants processing poultry for interstate commerce.

To qualify for this service, a processing plant must meet a number of established standards for facilities, equipment, operating procedure, and labeling.

Any plant which has not already applied for inspection services, should do so as quickly as possible, Marshall Miller, extension poultry marketing specialist, reminds Texas poultry processors. Though special arrangements have been set up to make the qualification process as fast as possible, some time is required to meet the necessary requirements. The processor must have blueprints of his plant and premises approved, his water supply certified and a list of labels and chemical compounds used on products okayed.

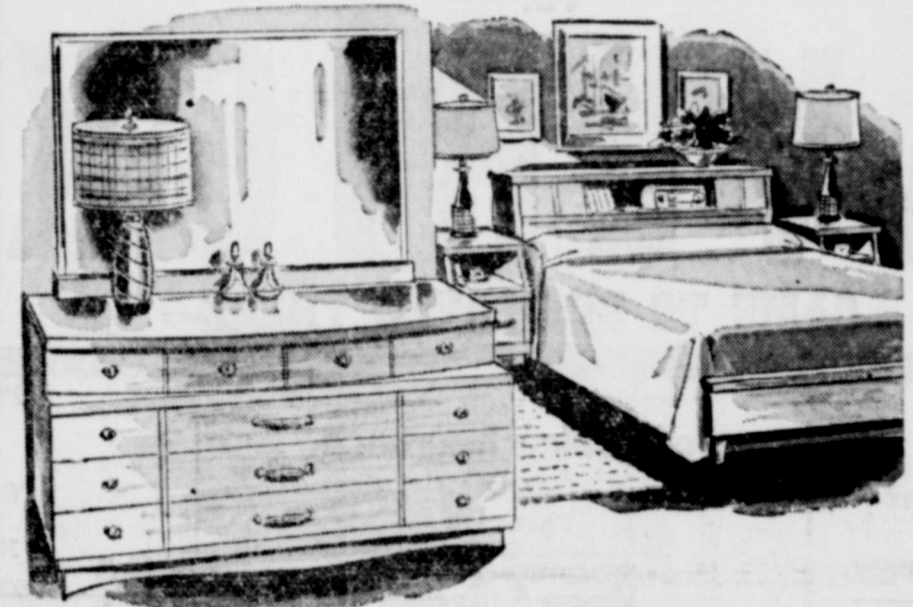
Copies of the regulations governing inspection and application forms may be obtained from the Poultry Division of the Agricultural Marketing Service, U. S. Department of Agriculture, Washington 25, D. C. or the southwestern area office at 708 Jackson Street, Dallas 2, Texas.

House Plans Drawn
Conventional, FHA, GI
JUDSON HARDY
315 Cooper Phone 315

NOTICE FRESH DRESSED FRYERS and Fresh Dressed Hens
At The Plant
PHONE 110
WALKER Dressing Plant

ANNOUNCING... GRAND OPENING OF TRI-CITIES FURNITURE
Friday, November 14th East Side of Square, Eastland

Tri-Cities Furniture Co. is proud to bring to Eastland County a complete line of home furnishings, plus experienced furniture businessmen. Our goal is to serve the Eastland County area with top grade home furnishings at rock bottom prices. Come by and see our complete line and let us explain how you can furnish your home for just a few dollars a month.



2-PC. BEDROOM SUITE
CHOICE OF COLORS
VANITY AND BED Reg. 99.50
69.50

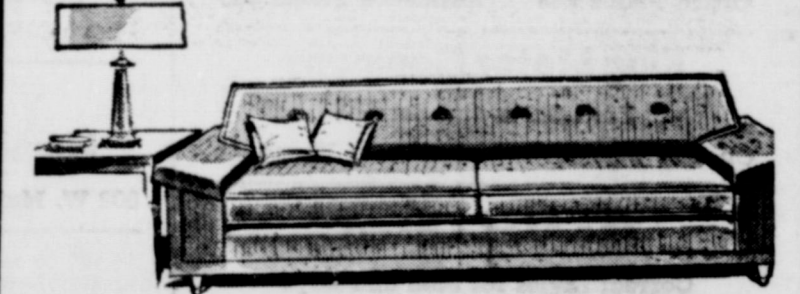
PLATFORM ROCKERS
19.95 up

9x12 FELT BASE RUGS
3.95

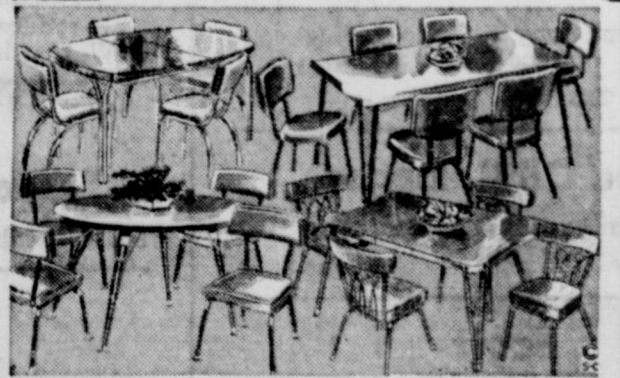
Blackstone Washing Machines
America's Oldest Manufacturers
249.50
Liberal Trade In

BABY BEDS
24.50 up

COFFEE TABLES
9.95 up



2-PC. LIVING ROOM SUITE
With Swivel Chair
Reg. 99.50 **79.00**



5-Pc. DINETTE SUITES
49.50 up

Brilliant Fire Room HEATERS
4,000 BTU, reg. 56.95 44.50
3,000 BTU, reg. 46.95 34.50



STRATA REST CHAIRS
Upholstered in combination Plastic and Fabric.
ONLY **59.88**
with Vibrator 74.88

TRI-CITIES FURNITURE
EAST SIDE OF SQUARE—EASTLAND
Clyde Shoemaker Marcell Daniel

HATS — CLEANED AND BLOCKED

- ★ Plain or Fancy Dry Cleaning
- ★ Bonded Fur Storage
- ★ Furs Cleaned and Glazed
- ★ Fancy Re-Weaving
- ★ Repair & Alterations

- ★ Tailored To Measure Clothing

★ PHONE 132
★ FREE Pickup, Delivery

★ Your clothes are insured while in our possession.

★ 210 South Seaman

modern dry cleaners SANITONE
James Wright, Owner

KEEP THIS AD!
Over 25,000 Arthritic and Rheumatic Sufferers have taken this Medicine since it has been on the market. It is inexpensive, can be taken in the home. For free information, give name and address to P. O. Box 874, Hot Springs, Arkansas.

**- TOYS -
- DOLLS -
- BIKES -**

USE OUR LAY-A-WAY

\$1.00 down holds any item

Bruce Pipkin's SPORT CENTER
Phone 525 - 304 E. Main

TERMITE CONTROL and all other types PEST EXTERMINATION
MODERN EXTERMINATING CO.
Box 312 RANGER
PHONE RANGER
Day 919—Night 911

NEW LOCATION
Tobby and Hops
Sewing Shop
Alterations
Alhambra Hotel - Phone 716

Overseas Veterans Welcome
Karl and Boyd Tanner
Post No. 4136
VETERANS OF FOREIGN WARS
Meets 2nd and 4th Thursday
8:00 p.m.

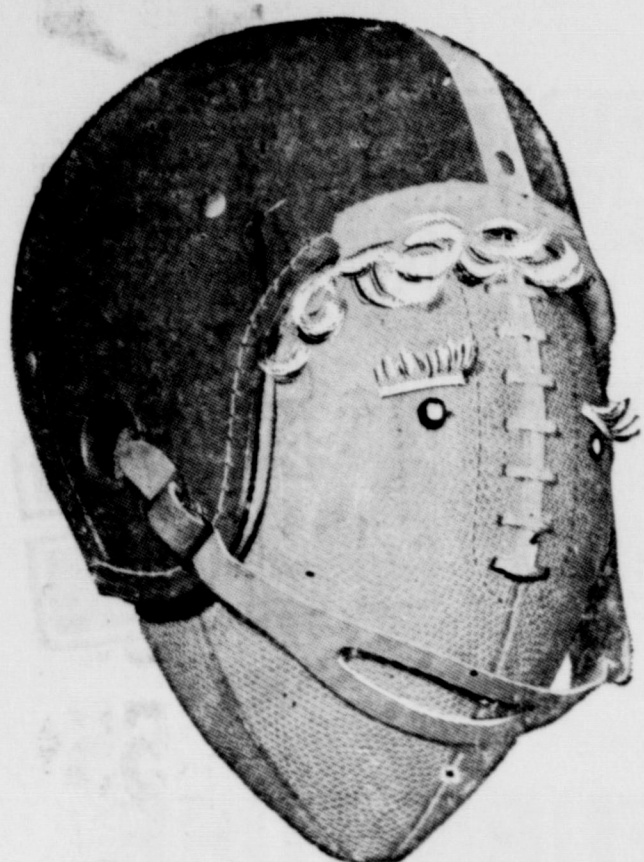
PAUL DYCARD is Coming!
THURSDAY AND FRIDAY
NOVEMBER 13th and 14th

with
The Famous Display of New Fall and Winter Fabrics

Be sure to see this outstanding collection of smart new fabrics for Custom Tailored Suits, Sport Coats, Topcoats and Slacks. Have your clothes Custom Tailored... It won't cost a penny more. Delivery now or later, as you prefer.

modern dry cleaners SANITONE
James Wright, Owner
210 S. Seaman Phone 132

Storrs-Schaefer Cincinnati
Tailors of Fine Clothes



**TIME FOR THE BIG
KICK-OFF!**

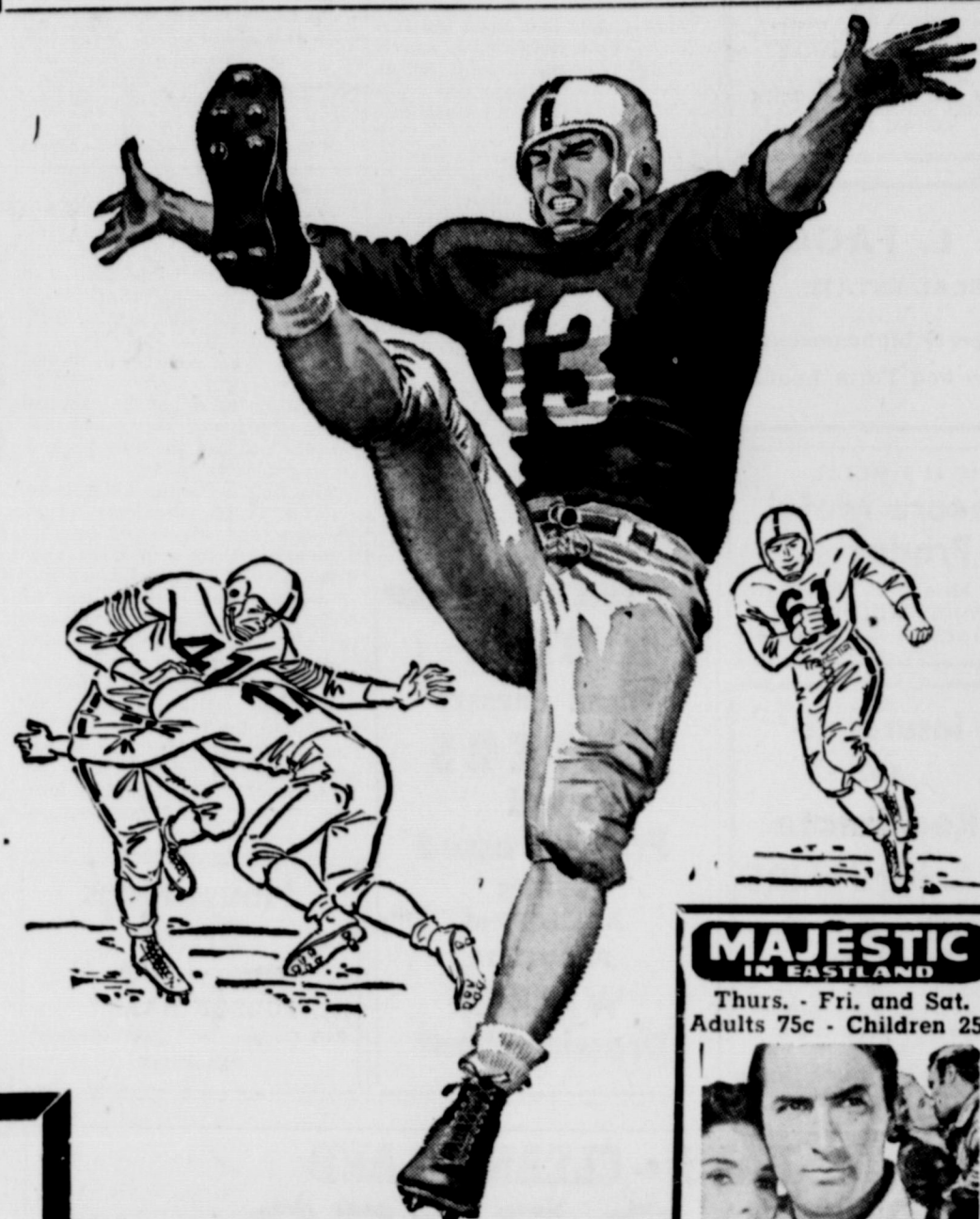
**Friday Night
8:00 O'clock**

**RANGER
VS.
MAVERICKS**

—GAME TO BE PLAYED THERE—

Mavericks 1958 Football Schedule

Date	Opponent	Location	Date	Opponent	Location
Sept. 5	Hamlin 20, Mavs 14		Oct. 17	Coleman 24, Mavs 19	
Sept. 12	Mavs 39, Dublin 12		Oct. 24	Mavs 12, Winters 0	
Sept. 19	Mavs 8, DeLeon 0		Oct. 31	Cisco 28, Mavs 6	
Sept. 26	Mavs 28, Cross Plains 6		Nov. 7	Ballinger 33, Mavs 0	
Oct. 3	Albany 37, Mavs 14		Nov. 14	Ranger	There
Oct. 10	Open			



**MAJESTIC
IN EASTLAND**
Thurs. - Fri. and Sat.
Adults 75c - Children 25c

THE BIG COUNTRY

Anderson's
Ladies' Apparel and Children's Wear
Gifts - Millinery - Accessories
North Side Square Eastland

Texas Electric Service Co.
F. N. Sayre, Mgr. Phone 18

R. M. Sneed
General Oil Field Construction
Office Phone 684 Residence Phone 889

King Motor Company
Ford Sales and Service
On The Square Phone 42

The Men's Shop
Correct Styles for Men and Boys

**Gregory
Milk Distributing Company**
Borden's Dairy Products
Serving: Eastland, Stephens, Brown,
Comanche Counties
P. O. Box 390 Eastland Tel. 36

Sunshine Laundry
Automatic - Conventional and Drying
Machines
Wet Wash - Rough Dry - Finish Work
Mr. and Mrs. J. B. Kendrick
106 E. Plummer Phone 155

City Garage
J. J. Finley, Proprietor
Engine, Starter and Generator Work
103 White St. Phone 995

Foremost Dairy Products
Clyde Manning, Mgr.
Eastland Phone 10

Eastland National Bank
"On the Square" Member F.D.I.C.

Eastland Iron & Metal Co.
East Main Street Phone 270

Brown Plumbing Shop
Mr. and Mrs. Truman Brown
214 E. Neblett Phone 735

**Freyschlag Insurance
Agency**
Phone 173

Koen Salvage
Your Scrap Metal Dealer
Highway 80 West Phone 680

Geneva Petroleum Co.
Chemical Division
Mfg. GEPCO Chemical Products
Phone 833 or 332 Eastland

**OBIE & DOC
Humble Service Station**
802 W. Main Phone 9535

Doc Davis Drug
Prescriptions Filled Accurately
South Side of Square Phone 696

**Lovelace
Transfer & Storage**
Local and Long Distance Moving
Since 1929
Eastland, Texas

Reed Oil Company
13 Major Brands Oil—Quart 35c
501 E. Main Phone 9550

**Scott
Paint & Body Works**
"We Make 'Em New Again"
300 W. Commerce Phone 977

Don Pierson
Olds - Cadillac
310 W. Main Phone 802

Quality Shoe Shop
For Extra Wear—from Good Shoe Repair
West Side of Square

McGraw Motor Co.
Dodge - Plymouth
416 S. Seaman Phone 80

Altman's
"Smart Womens Wear"
North Side of Square

**Connellee
Coffee Shop**
Mr. and Mrs. E. R. Overstreet

Muirhead Motor Co.
Buick - Pontiac
Sales and Service Phone 692

**Eastland Chamber of
Commerce**

Dairy Kreem
Highway 80—East
Harry Jordan Lawton Thompson

**Texas Lightweight
Aggregate Company**
Producers of Concrete Aggregates
C. W. Martin Phone 51

**Holloway
Texaco Service Station**
503 W. Main Phone 9545

**Ruby Lee's
Beauty Shop**
Lucille Taylor, Owner
• All Types Beauty Work •
403 S. Lamar Phone 66

**Eastland
Steam Laundry**
210 N. Lamar Phone 584

**White Elephant
Cafe**
724 W. Main Phone 9540

Graham's Trim Shop
708 W. Main Phone 170

**Bruce Pipkin's
Sport Center**
304 E. Main Phone 525

**Miller's
Phillips 66 Service Station**
513 W. Main Phone 565

**Otis K. Coleman's
Humble Service Station**
400 E. Main Phone 826

**PLUMBING & HEATING
AIR CONDITIONING**
J. M. Smith Plumbing & Tin
114 N. Seaman Phone 304

B & B Garage
Bob Sellers — Earnest Hood
COMPLETE AUTO REPAIRS
307 W. Commerce Phone 603

**Modern
Dry Cleaners**
Approved Sanitone Service
210 S. Seaman Phone 132

Dr. F. H. Lund
Optometrist
Exchange Bldg. Phone 30

**Kincaid's Feed &
Turkey Hatchery**
Eastland, Texas
Full-O-Pep Feeds

**If It's Metal
Decore Metal
Products**
306 E. Main Phone 288
Shop Welding
Painting Repair

**Earley
Tire Service**
Mobil Gas — Mobil Oil
302 W. Main Phone 208

**"Old Rip
Cafe"**
Mr. and Mrs. L. B.
Culpepper Jr.
412 E. Main Phone 9511

Eastland Mavericks 1958

No.	Name	Pos.	Wt.	No.	Name	Pos.	Wt.
10	*Larry Hollis	B	148	29	*Clint Humphreys	B	138
11	Bill Turner	B	135	30	Charles Chaney	G	180
12	John Stroud	B	157	31	Don Hull	T	165
13	Charles Martin	T	168	33	Marvin Agnew	T	175
14	Mickey Garner	C	152	34	Mike Lisenbee	G	146
15	Stanley Reed	E	160	36	Denny Dukes	E	155
18	Jerry Chaney	G	170	38	Gary Lusk	T	160
19	*Knicky Arther	G	165	Coaches: Carrol Shelton, Jon Tate and Bennett Ragsdale			
20	Roger Taylor	B	140	Managers: Clarence Mayers and Perry Miller			
22	Mike Manning	B	155	* Tri Captains			
23	Philip Lewis	E	170				
25	James McElreath	B	145				
27	Don Hazard	C	150				

Big Meat Buy of the Week!

SAFEWAY



Smoked Hams

12 to 16 Lb. Average Half or Whole Lb.

49¢

Shank End Cut Lb.

43¢

And what hams these are! They're lean and tender... with the delicate pink, fine-textured meat that says superb quality. These are the choicer medium-size hams—weighing from 12 to 16 pounds. The flavor is deliciously mild—brought to perfection by the latest and finest curing methods. Hurried from the smokehouse to reach your flavor-peak.

Sausage Wingate—Regular or Hot 2-Lb. Roll **2.69¢**

Poppy Bacon Sliced Distinctive "Smoky" Flavor 1-Lb. Pkg. **63¢**

Pot Roast Chuck Blade—U.S.D.A. Choice Grade Heavy Beef Lb. **55¢**

Safeway Franks All Meat—Family Favorite 1-Lb. Pkg. **55¢**

Order Your Thanksgiving Turkeys Now! Your Safeway Stores Are Now Taking Orders. Be Assured of the Exact Size You Will Want.

TIPS ON BUYING HAMS
Hams Are Sold Several Ways. You Can Buy: Whole Ham, Shank Half, Butt Half, Center Slices, Center Roast, Butt Portion, Shank Portion
All are good-eating cuts, but they should be priced differently, according to the value of each. Choicest part, of course, is the center. The two parts which are left when the center is removed from a ham are the "Shank Portion" and the "Butt Portion" (sometimes called Shank End and Butt End). These should not be confused with "Half Hams." When you buy a half ham, you are entitled to the full half, with no center slices removed. At Safeway, you always get the full half.
It pays to select the cut which fits your individual needs. The important thing is to be sure you are getting everything you pay for—not, for example, paying half ham prices for the Shank Portion or Butt Portion.

Sweet Potatoes Highway—Cut—Go perfect with hams No. 303 Cans **2.29¢**

Niblets Corn Extra Tender—fresh from the farm goodness 12-Oz. Cans **3.49¢**

Bartlett Pears Town House—Ideal for salads No. 2 1/2 Cans **\$1.00**

Applesauce Musselman's—a delicious blend of mellow apples No. 303 Cans **3.39¢**

Sweet Peas Town House—tender and delicious No. 303 Cans **2.29¢**

Pineapple Del Monte—Sliced—perfect for quick and easy desserts No. 1 Can **15¢**

Lima Beans Large—Town House—A real economical treat! 1-Lb. Cello **2.29¢**

French Mustard Perfect for Sandwiches or Hot Dogs 9-Oz. Jar **15¢**

Top Quality Values!
WHITE MAGIC
Liquid Starch
1-Oz. Bottle **19¢** 1/2-Gal. Can **37¢**

Lemonade
Bal-Air Frozen—plain or pink 5-Oz. Cans **2.25¢**

Here's an easy answer for those problem names on your Christmas Gift List...

SAFEWAY GIFT ORDER

GIFT ORDER \$5.00

FOR _____ FROM _____

THIS CERTIFICATE IS GOOD FOR MERCHANDISE SELECTED AT ANY SAFEWAY STORE

VOID

SEE CHECKER FOR FULL DETAILS

VARIETY OF DENOMINATIONS AVAILABLE

Good at any Safeway in U.S. or Canada

COFFEE SALE!
Edwards 2-Lb. Can **\$1.47** 1-Lb. Can **79¢**
Finest Quality Coffee for Less Money—All Grinds
Maxwell House 1-Lb. Can **82¢**
To Start Your Day Off Right Drink Maxwell House Coffee Can

Truly Fine **HOSIERY**
99¢ Sunbrite—Knee Hi 60 gauge 15 denier stretch Pr. **89¢**
Seamless—Pr.

Sandwich Cookies Nabisco—Chocolate Fudge 1-Lb. Bag **49¢**
Applesauce Cookies Sunshine—Kiddies Favorite 1-Lb. Bag **41¢**
Mortons Potato Chips 7-Oz. Pkg. **39¢**
Tea Timer Crackers Perfect with salads Full 1-Lb. Box **29¢**

Light Crust Flour For better baking 5-Lb. Box **49¢**
Brown Sugar Imperial or Domino—Light 2 1-Lb. Boxes **27¢**
Fluffiest Marshmallows Perfect with hot chocolate Cello 1-Lb. **35¢**
Chunk Style Tuna Breast O' Chicken Light Meat Green Label No. 1/2 Can **33¢**

U.S. No. 1 RUSSET Potatoes Ideal for Baking, Boiling or Frying 10-Lb. Bag **10.45¢**



Red Rome Apples
Crisp, Crunchy—Perfect for Pies, Gleaming red and full of flavor tang. Lb. **13¢**

Bakery Feature of the Week!
FRENCH ROLLS
Stylark—Poppyseed, Regular 23c—10 1/2-Oz. Pkg. **19¢** Thursday, Friday and Saturday only
Mrs. Wrights Bread Regular or Sandwich Sliced 1 1/2-Lb. Loaf **24¢**
Party Rye Bread Stylark—Delicious With Cheese 1-Lb. Loaf **29¢**

Holiday Treats
FRUIT CAKES
Curtsy Sliced Bar 14-Oz. Pkg. **79¢**
Holiday Loaf 14-Oz. Pkg. **59¢**
Holiday Ring 1 Lb., 5 Oz. Pkg. **89¢**

Chow Mein Noodles La Choy No. 303 Can **19¢**
Whole Cloves Crown Colony 1 1/2-Oz. Pkg. **21¢**
Bib Orange Juice Perfect for your baby 4 4-Oz. Cans **35¢**
Supreme Club Crackers Salted just right Box **37¢**
Bisquick Baking Mix 40-Oz. Box **45¢** 20-Oz. Box **25¢**
Crisco Shortening Better for All Your Baking 3-Lb. Can **87¢**
Gaines Dog Food Best for Your Pet 2 1-Lb. Cans **31¢**

Spaghetti Dinner Kraft—so easy to prepare 8-Oz. Pkg. **27¢**
Banquet Dinners Frozen Chicken, Beef or Turkey 11-Oz. Pkg. **59¢**
Charmin Tissue Assorted Colors—Toilet 4 Roll **35¢**
Charmin Napkins Paper—80 Ct. 2 Pkg. **29¢**
Modess Napkins Regular 48-Ct. Box **\$1.39**
Palmolive Toilet Soap So economical 2 Reg. Bars **19¢**
Palmolive Toilet Soap Goes so far 2 Bath Bars **27¢**

Joyett Dessert
Delicious Mellorine—Vanilla, Chocolate, Strawberry or Chocolate 1/2-Gal. Ctn. **49¢**
Vel Beauty Bar Toilet Soap 2 Reg. Bars **39¢**
Fab Detergent For a whiter wash Large Box **32¢**
Supersuds Detergent The washday miracle Large Box **33¢**
Vel Detergent Ideal for dishes, too! Large Box **32¢**

Breakfast Gems Eggs Grade A Quality, Medium Size Doz. **49¢**
Vel Liquid Detergent 4x Off Pink—for shiny dishes 12-Oz. Can **35¢**
Clorox Bleach Liquid—For whiter clothes 1-Oz. Bot. **19¢**
Ajax Cleanser 2x off Gets Dirt Twice As Fast 2 14-Oz. Cans **27¢**
Colgate Deodorant Menthol Mint—Pine, Spice, or Floral Aerosol 5 1/2-Oz. Can **75¢**

SAFEWAY

Prices effective Thursday, Friday and Saturday, Nov. 13-14-15, in Eastland. We reserve the right to limit quantities. No sales to dealers.



ALL BY HIMSELF—An unwelcome guest on the main street of Wakefield, R.I., may be wondering (if skunks wander) why the streets are deserted. Pedestrians kept their distance until the swined fellow disappeared.

COURTHOUSE NEWS AND RECORDS

Real Estate Transfers, Marriages, Suits Filed
Court Judgments, Orders, Etc.

INSTRUMENTS FILED County Clerk's Office

James Ed Agnew to Specialty Roofing, MML.
W. L. Andrus to V. E. Overstreet, release of vendor's lien.
Fankers Trust Company to James H. Snowden, release of deed of trust.
Zan Burroughs to James D. Young, assignment.
T. F. Boggs to Rising Star Roping Club, Inc., warranty deed.
Buckners Orphan Home to The Public, resolution.
Fackners Orphan Home to J. M. Cook, quit claim deed.
C. C. Broyles to Mike George, warranty deed.
G. C. Burke to Jane Burke, warranty deed.
Roxie Butler to O. M. Evans, oil and gas lease.
Edna Butler to C. M. Evans, oil and gas lease.
Griffin Brown to The Public, proof of heirship.
J. E. Bacon to Flury McDaniel, oil and gas lease.
Callihan Interests, Inc. to J. E. Connally, assignment.

W. T. Cook to The Public, affidavit.
W. T. Cook to Doyle Johnson, warranty deed.
Paul W. Cornelius to Corvette Oil Corp., oil and gas lease.
City of Eastland to Norma Reagan Cook, cemetery deed.
George E. Davis to Fred H. Horne, warranty deed.
O. J. Dugan to Mary Gates, deed of trust.
Edward M. Dunn to Jane Cockring, warranty deed.
Lois Dunlap to Eastland National Bank, deed of trust.
L. E. Reynolds to J. H. Reynolds, assignment.
Federal Land Bank, Houston to Roy Lane, release of deed of trust.
W. L. Fetty to Brady Wilson, warranty deed.
First State Bank, Rising Star to E. A. Dupuy, release of deed of trust.
First Federal S&L Association to First S&L Assn. to Izetta Smith, release of deed of trust.
First Federal S&L Assn. to L. T. Rushing, release of deed of trust.
First Federal S&L Assn. to First Baptist Church, Ranger, release of deed of trust.
T. B. Garrett to M. J. Hale, warranty deed.
Mike George to Stephenville Savings & Loan Assn., deed of trust.
Acie O. Hoover to Ranger Lbr. & Supply Co., MML.
Fred H. Horne to B. G. Doss, deed of trust.
Donald Jones to Graham National Bank, deed of trust.
Jarbe Oil Company to Irish Drilling Company, operating agreement.
Kellogg-Citizens National Bank to O. L. Burns, oil and gas lease.
Roy L. Lane to John Edward Morgan, warranty deed.
Leonard's v. Claud S. Kline, abstract of judgment.
Clyde Lewis to Costal States Gas Prod. Co., oil and gas lease.
Clyde Lewis to The Public, affidavit.
A. W. Lenz to Jannette Johnson, warranty deed.
Peterson P. Mangum to Alliance Trust Co., release of oil and gas lease.
Ben H. Mayfield to Specialty Roofing Co., MML.

Ruth Oldham May to Carrie L. Capers, warranty deed.
James P. McCracken to The Public, affidavit.
H. C. Nix to First National Bank, Cisco, assignment.
Iaul W. Powers v. J. W. Bartlett, abstract of judgment.
Jeffie Paul to Charles D. Langford, warranty deed.
Guy Parker to J. W. Gerhardt, receiver's deed.
Guy Quinn, Sr. to Erie L. Conner, warranty deed.
J. T. Rose to Troy Vines, warranty deed.
Victor O. Rumley to Riley B. Williams, warranty deed.
Donald Russell to The Public, affidavit.
S&S Oil Company to J. R. Wilton, partial assignment.
John W. Shipman to Superior Edg. Supply, MML.
W. J. Snedeger to T. F. Boggs, warranty deed.
Maggie Smith to J. M. Cook, quit claim deed.
Herman D. Sessum to Federal Land Bank, deed of trust.
Bobby Schuman to Federal Land Bank, Houston, transfer.
J. L. Stafford to The Public, affidavit.

Grain Production Gains Over 100 Million Bushels

COLLEGE STATION — Grain sorghum has taken a place of prominence in Texas agriculture. Annual grain sorghum production in Texas has been more than 100 million bushels five times since 1949 with a maximum production of 238 million bushels in 1957. The average annual monetary value of the crop in Texas since 1949 has been 130 million dollars and it is the second crop in Texas in money value, being exceeded only by cotton. Sorghum as a grain crop in the United States is exceeded in production only by wheat and corn. As a world food grain, sorghum ranks third behind rice and wheat. The chief use for sorghum grain in the U. S. is feed for poultry, cattle, sheep and swine. The grain, which contains 12 percent protein, 3 percent fat and 70 percent carbohydrates, compares favorably with corn as a feed grain. The starch from the grain can be used for food products, adhesives and sizing for paper and fabrics. Sorghum is grown for grain on substantial acreage in about 135 Texas counties. Cultural practices are similar to those required by other row crops such as cotton and corn. The method of seedbed preparation and later cultivation depends largely on the soil, climate and kind of equipment available. The Texas Agricultural Experiment Station has released a bulletin entitled "Grain Sorghum Production in Texas." This 35-page publication contains discussions on practically every phase of grain sorghum production. It may be obtained from the Agricultural Information Office, College Station, Texas. Ask for Bulletin 912.

Ben F. Mathews v. Jensen-Falsbury Laboratories, Inc., judgment.
Martha Sellers v. Barney Lee Sellers, judgment.
Mamie Edna Forehand v. R. B. Forehand, order.
Wanda McGoough v. Melvin McGoough, judgment.
Patsy Naylor Cozart v. Department of Public Safety, order.
D. C. Cox v. T&F Supply, Inc. order dismissing with prejudice.
T. L. Brown, et al v. George Brown, et al, order.
J. W. Barnes, et al v. Mack Creswell, et al, order.

INGROWN NAIL HURTING YOU?
Immediate Relief!
A few drops of OUTGRO bring blessed relief from torments of ingrown nail. OUTGRO toughens the skin underneath the nail, allows the nail to be cut and thus prevents further pain and infection. OUTGRO is available at all drug counters.

ALEX RAWLINS & SONS MONUMENTS WEATHERFORD, TEX.
Serving This Community Since 1884
Phone LY4-2726

Trade With Your Hometown Merchants

Funeral Directors HAMNER FUNERAL HOMES
Ben E. Hamner
Oxygen Equipped - Air Conditioned
Eastland Phone 17 Cisco Phone Hillcrest 21211
AMBULANCE SERVICE ANY WHERE ANY TIME
Nominal Cost Burial Insurance
For The Entire Family

NOTICE... Come To Kendrick Drive-In Dairy
(Serving This Territory Since 1940)
FOR
Good, Clean JERSEY Sweet Milk
Price - 70c Gal.
Phone 896-J-2 - Located Halfway between Eastland and Cisco

SINGER SEWING MACHINES and VACUUM CLEANERS
New and Used
Call
Dois Morton
Phone 985-W-1 after 5 p.m.
Service All Makes

J. L. Stafford to Mary C. Overall, deed of trust.
E. C. Schwalbe to George C. Eureka, warranty deed.
Homer O. Smith to Federal Land Bank, Houston, deed of trust.
A. H. Smith to Church of Christ, deed of trust.
Jim W. Swindle to C. E. Dawson, warranty deed.
J. C. Thomas, Jr. to James R. Field, assignment of oil and gas lease.
W. T. Waggoner, Jr. to James D. Young, assignment of oil and gas lease.
L. A. Warren to Jack Scott, assignment of oil and gas lease.
States Gas Prod. Co., oil and gas lease.
M. C. Walker, Jr. to J. O. Vaughn, warranty deed.

PROBATE
Homer Lee Carroll, Jr., minor, application for temporary guardianship.
J. R. Allen, deceased, application to probate will.

MARRIAGE LICENSE
Fuel Laven Peevy and Wanda Ann Dunlap.

SUITS FILED
91st District Court
Mamie Edna Forehand v. R. B. Forehand, divorce.
Margaret Zander v. Alton Zander, divorce.
Sally Archer v. Vernon Archer, divorce.
Edith Burns v. J. H. Burns, divorce.
Patsy Naylor Cozart v. Department of Public Safety, injunction.
Ex Parte: Application of Francis D. Henderson for removal of disabilities & coverture.
Jacqueline L. Hooks v. Bobby Lloyd Hooks, divorce.
Audrey J. Steddum v. James W. Steddum, divorce.

ORDERS AND JUDGEMENTS
91st District Court
J. W. Barnes, et al v. Mack Creswell, order appointing attorney ad litem.

NEW . . . DEAL
RE-MODEL—REPAIR
Up To 60 Months To Pay \$3,500 Is The Limit
Well, if money is all you need, don't delay a minute more. It's easy and quick . . . obtaining one of our low-cost home loans. Like-rent monthly payments are tailored to suit your budget and needs. Call or come in!
YOUR FRIEND AND NEIGHBOR
HIGGINBOTHAM - BARTLETT CO.
Jack Elliott, Mgr.
301 W. Main Phone 112 or 1014

SEAT COVERS FOR YOUR CAR
New Patterns — Beautiful Fabrics
Every Piece Cut and Sewed To Fit Your Particular Car
PRICES FROM \$22.50
"Budget Terms If Desired"
SEE STAN THE MAN AT
BLEVINS MOTOR CO.
514 W. Main Phone 308



Don't fail to include a wedding portrait in your plans for this once in a life-time occasion.
For Appointment
Phone 46
CANARIS STUDIO

MY POP SAYS THIS MARKET HAS GOT TO COME BACK ANY DAY NOW ... BUT HE'S STILL BUYING...
MIXED SCRAP IRON
CLEAN CAST IRON
OIL FIELD CABLE
COMPLETE OLD CARS
TIN FOR OUR PRESS
COPPER WIRE
LEAD, BABBITT, ZINC
BRASS MIXED
RADIATORS BATTERIES
ALUMINUM MIXED
WE BUY AND SELL
NEW and USED PIPE
NEW and USED FITTINGS
NEW and USED...
STRUCTURAL REINFORCING BARS
• FLAT BARS
• ANGLES
• CHANNEL
• PLATE
• I-BEAMS
EASTLAND IRON & METAL CO.
OWNED AND OPERATED BY HENRY PULLMAN

Reliable
Bring Your BATTERY TROUBLES To Us!
Group One Fits Most 6 Volt Cars
8.95
Exchange
JIM HORTON
East Main St. Phone 258
Eastland, Texas

Best yet of the best sellers! New Might, New Models. New Money-Saving Power!
Chevrolet Task-Force 59
Take trucks that have shown themselves to be the biggest savers and biggest sellers. Add important engineering developments that mean still greater efficiency and endurance. You've got trucks that promise unparalleled reliability and economy. Here's how Task-Force 59 solidly backs up that promise to stay and save on your job!
CHEVROLET
more efficient **V8 POWER**
Six modern short-stroke V8's offer high horsepower ratings ranging from 160 to 230, new wear-saving thermostat control and new durability!
BUILT-TO-LAST BODIES
New Fleetside pickup, for example, offers double-walled sides, select-wood floor, steel skid strips!
durable, comfortable **cabs**
Sturdy new cross sill, new interior trim, easy Nu-Flex seat, High-Level ventilation, concealed Safety Steps!
bigger saving **6's**
You get new camshaft design, new valve train durability, high horsepower and torque!
TIRE SAVING TANDEM AXLE DESIGN
Axles "track" on curves, hike G.V.W. to 36,000 lbs!
POWERMATIC FIRST FULLY AUTOMATIC HEAVY-DUTY TRUCK TRANSMISSION
Extra-cost option Series 50 through 100.
positraction
New rear axle helps give sure-gripping traction. Extra-cost option, Series 31 and 32.
NEW CHASSIS REFINEMENTS
New brakes in lightweights, new huskier clutches, new rear axle durability in bigger Chevies!
See your local authorized Chevrolet dealer
FULLEN MOTOR COMPANY
305 E. MAIN EASTLAND PHONE 44