



BAILEY COUNTY JOURNAL

'The Community of Opportunity-Where Water Makes the Difference'

20¢

WEATHER

March 8 66 25
March 9 57 22
March 10 70 28

Vol. 22, No. 11

10 Pages Today

Published Every Sunday at Muleshoe, Bailey County, Texas 79347

Sunday, March 11, 1984



MOTEL GROUNDBREAKING...Members of the Muleshoe Chamber of Commerce and Agriculture, along with local businessmen were at the proposed site of a new motel for Muleshoe Thursday morning for groundbreaking ceremonies. In the center is J. Ken Smith, with the shovel, one of the developers of the motel. Dirtwork on the proposed motel is expected to begin in the first of this week and a target date for completion is sometime just after mid-year. This is a project headed up by the Muleshoe Industrial Development Corporation with members Jeff Smith, Bill Liles and Bailey County Judge Gordon H. 'Corky' Green

Construction Will Begin On New Motel This Week

Thursday morning, J. Ken Smith, one of the developers who will build a new 51 unit motel at the

west city limits of Muleshoe, turned the first shovels of dirt, symbolizing that construction on the new complex is imminent.

Smith explained that actual work on the motel will begin early this week when Pearson Construction (J.C. and Norene Pearson) begin the dirt work. Following leveling of the land, the actual construction is scheduled to begin. He projected no completion date for the motel.

Plans were released several months ago on the proposed motel to be constructed just west of the roadside park west of Muleshoe on Highway 84 and across the road from the Bailey County Civic Center and Coliseum.

Members of the Muleshoe Development Corporation, including Jeff Smith, Bill Liles and Gordon H. Green worked with the developers, the American Heritage Company, to obtain the new motel.

It will cost in excess of \$950,000 and is expected to

provide employment for several people in the future. The two developers, Smith and Ronald T. Betenbough, do not plan a restaurant at the motel at this time, al-

though such a possibility is not ruled out at some future time.

According to Smith, there will be a heated swimming pool at the new motel.

The Muleshoe Development Corporation was formed more than two years ago when other companies were looking at Muleshoe for a possible location for their businesses. The foundation was approved by Bailey County after being organized through the South Plains Association of Governments, to be used as an entity to enable the issuance of free tax bonds for the express purpose of creating

Con't Page 6, Col. 6

Wreck Victims Are Stable; King Released

At noon Friday, the nursing supervisor from Clovis High Plains Hospital said accident victim Jay Gleason is in serious, but stable, condition in the ICU unit at the hospital.

She reported that both Jeff Hamilton and his 14 year old sister, Jill, are in satisfactory and stable condition at this time, and that Casey King had been released from the hospital on Thursday.

The four were injured on Monday, February 27 in an accident that claimed the lives of Mr. and Mrs. Kenny Hamilton, Eddie Flowers and a Clovis man.

Three File For Election To Council

Three candidates have filed for the two positions up for election on the Muleshoe City Council on April 7. Both incumbents, Ronnie Shafer in Place Four and Paul Wilbanks, Place Three, have filed for re-election.

A newcomer to city politics has filed as a candidate for Place Four. Shortly before filing time ended Wednesday afternoon, Gerald K. Reid announced his candidacy, opposing Shafer.

Absentee voting will be conducted March 19-April 3 at the Muleshoe City Hall during regular business hours and the election will be held at the city hall on April 7.

3-Way School Will Elect Two To Board

With the terms of two members of the Three Way Independent School District Board of Trustees expiring, neither of the two candidates is opposed for re-election.

Members of the school board called for the April 7 election during a board meeting on Monday, March 19. Polls will be open 7 a.m. to 7 p.m. with Joe Sowder, election judge; Mutt Davis, alternate judge and Jean Parker as absentee clerk. Absentee voting gets underway on Monday, March 19 at the Three Way School and will end on April 3. Absentee voting will be held at the Three Way School business office, and the April 7 election will be in the Three Way School gym.

Incumbents who are unopposed and seeking re-election are Tommy Terrell and Gary Welch.

City Holding Its Own In Sales Tax Rebate

Local Defensa Gets Money For Migrants

Governor Mark White announced late last week that \$284,182 will be made available to Texas migrant and seasonal farmworkers and their families to purchase food, utility services and other basic needs.

Included in the amount scheduled to be disbursed, according to the Governor's office will be \$26,379 to the Defensa office located on East Avenue D in Muleshoe.

The program is administered by the Texas Department of Community Affairs and is funded under the Community Services Block Grant. Seven community service organizations have been awarded contracts to distribute the funds in the next few weeks. Contracts

became effective on March 1.

Eligible migrant and seasonal farmworkers may receive: food vouchers, assistance in purchasing gasoline or the payment of minor car repairs when an automobile is needed to find employment and assistance with utility payments to avoid termination of services.

According to Governor White, clothing, blankets and shelter will be provided by the participating organizations as part of their local efforts. He said more than 4,000 migrant and seasonal farmworkers and their families are expected to benefit from the program.

He added that the following non-profit organizations were selected to distribute program funds based on their experience with similar programs and their ability to generate additional funds for the program on a local level.

Asociacion Pro Servicio Sociales, Laredo, \$46,503; Community Agency for Self-Help, Crystal City, \$48,403; La Incorporacion del Valle Alto, El Paso, \$41,954; Salud y Educacion, San Antonio, San Antonio, \$45,302; Texas Migrant

Con't Page 6, Col. 2

Six Candidates Seek Election To School Board

A total of six candidates have filed, including the three incumbents for the Muleshoe ISD Board of Trustees. The election is scheduled for Saturday, April 7. Absentee voting gets underway at the Bailey County Clerk's office on Monday, March 19 and will conclude on Tuesday, April 3.

Three members will be elected to the board during the election. The slate of candidates will be listed on the ballot in the following order, following a drawing for placement at the business office:

Sam Harlan, Howard Watson, Ben Roming (incumbent), Dewey Moore (incumbent), Gene McGuire (incumbent), and Butch Vandiver.

4-H Youth Sell Fruit For Projects

Members of the Bailey County 4-H have begun to sell boxes of Fruit to raise money for various 4-H projects, according to an announcement made late last week.

The 4-H'ers will be selling California Navel Oranges, Florida Indian River Grapefruit and Washington Red Delicious Apples. And, as a special treat, this year they will have fresh pineapples by the box or sold one at a time.

Proceeds from the fruit sale will help families host 4-H'ers from Virginia. The Virginia 4-H'ers will be staying in this county from July 29 until August 4. This will complete the 4-H cultural exchange project that was begun last summer when 19 Bailey County 4-H'ers traveled to Appomattox, Virginia and stayed with host families for a week.

Other 4-H projects that the fruit sale will sponsor include camps, community service projects and educational equipment. 4-H is open to all youth in Bailey County ages 9-19, regardless of their race, religion, or economic background, stressed a spokesman.

Anyone interested in purchasing fruit can contact any Bailey County 4-H'er, or come by the Bailey County Extension office at the courthouse or call 272-4583. Fruit will be delivered around April 1.

Latest Check 'Up' From February '83

Following a 'bottom-out' for local business, with the recession now reported to be on an upward trend, the City of Muleshoe continues to hold its own in sales tax rebate checks, with the January, 1984 check being increased significantly over the check received for January, 1983.

Overall for the year, Muleshoe shows an increase in sales of 1.18 percent with figures to date for the year being reported at \$55,385.99, as compared to the \$54,742.69 received by the same time in 1983. Muleshoe's latest check was \$19,621.89, compared to the \$12,175.31 received at the same time last year for a total difference of \$7,446.58.

State Comptroller Bob Bullock last Tuesday sent checks totaling \$53.5 million in local sales tax payments

to the 985 cities that levy the one percent sales tax.

"Texas is pulling out strongly from the trough we were in last year," Bullock said. "Along the border, January sales were well above last year in Laredo, Brownsville, and El Paso. Among the 20 biggest sales tax cities, only Midland and Odessa are still running behind last year. Overall, sales tax receipts are up more than 12 percent."

March checks reflect sales made in January and reported to the Comptroller in late February.

Morton shows a whopping 10.97 percent increase for the same period, with a sales tax rebate this month of \$3,755.73, compared to \$1,712.96 during the same period last year. This brings Morton's payments for the

Con't Page 6, Col. 1

Muleshoe Roadriders Schedule March Rally

The Muleshoe Roadrider Motorcycle Club's second annual touring bike rally will be held here in Muleshoe on Saturday, March 17 at the Bailey County Coliseum.

Registration is scheduled to begin at 7 a.m. on March 17. The high point run, field events, games and bike show will begin at 9 a.m. that morning. Events will continue throughout the day.

An evening meal will be provided for cyclists who will be served at 6 p.m. that Saturday, followed by the awards presentation.

Muleshoe and surrounding area merchants and other interested citizens have again responded with

their help and support to the Muleshoe Roadriders in getting the rally underway, said Tommy Whaley spokesman for the group. "We hope that the merchants and others will come out to the show to see just what we do, as well as the changing image of touring-type motor cycling." Whaley stated.

The events of the day are scheduled for the registered motorcycle participants; however, the public is welcome. A number of entries have already been received some from Grand Prairie and the Austin area.

For additional information regarding the rally, call Don McDaniel at 272-4817, Billy Reese at 272-3661 or James Meason at 965-2437.

Lubbock Candidate Gives Announcement

Dr. John "Jack" Selby, candidate for congress representing Bailey County and 14 others in the 19th District, has announced his first priorities in office will be to "turn farming into a profitable business" and to work for continued deregulation of the oil and gas industry.

"West Texas agriculture has been plagued by bad policy decisions on the part of the government", Selby declared, "and we can no longer tolerate such churning of the agriculture economy with quick-fix temporary measures. We need long term decisions upon which to build a good, profitable farming industry."

Selby has been instrumental in founding several Lubbock medical institutions including Methodist Hos-

pital, where he served as its first chief of surgery in 1954. He was chief of surgery at St. Mary of the Plains Hospital in 1970 and later served as chief of staff in 1973.

Before coming to Lubbock in 1952, Selby served on active duty in the United States Navy for more than two years as a surgeon at Portsmouth Naval Hospital.

One of the area's most active civic workers for more than thirty years, Selby is president of the Lubbock-Crosby-Garza County Medical Society and has served on professional and hospital advisory committees including the financial advisory committee of the Lubbock County Hospital District.

He has been associated with the Texas Tech University School of Medicine as clinical professor of surgery and thoracic surgery. He is a member of the American College of Surgeons, the International College of Surgeons, the American Medical Association, the Texas Medical Association and many other professional groups.

Selby recently served for eight years as chairman of the South Plains Health Systems Agency, the health planning agency for a 15-county area around Lubbock, and as a result of his interest in health-related issues, was appointed by both Governors Briscoe and

Con't Page 6, Col. 4



The Bailey County Extension Homemakers will sponsor a "Candidate Speaking" at the Bailey County Civic Center on Monday, April 9. All county candidates are being asked to attend and speak. The public is urged to attend. Refreshments will be served.

Newly promoted Sgt. Keith A. Seales, son of Clark A. and Charlene Seales of Morenci, Ariz., has been decorated with the Army Achievement Medal at ramstein Air Base, West Germany.

The Achievement Medal is awarded to soldiers for accomplishment, meritorious service or acts of courage. Sgt. Seales is a vehicle driver with the 4th Transportation Command. His wife, Margaret, is the daughter of Chalmer and Mary Davis of Muleshoe.

Muleshoe ISD is now accepting applications for transfer of students from other school districts. All applications must be completed in the School Superintendent's office before May 1, 1984.

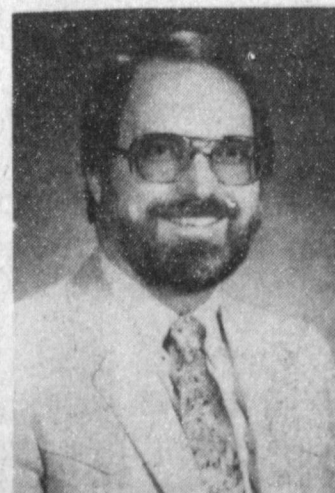
Members of the Muleshoe Fire Department were called to the Bobby Morris home on West Second Street Wednesday night for a suspected fire. The fire was found to be in a clothes dryer. The Morris family escaped without injury.

Muleshoe Youth Baseball will hold a meeting on Monday, March 12 at 7:30 p.m. in the Summit Savings and Loan community room.

All newly elected board members, new coaches, old coaches and anyone who would like to help the baseball program this year is urged to attend.

Jacqueline Bradley, daughter of former local residents, Mr. and Mrs. Sam Bradley, now of Hawkins, Tx., and granddaughter of Muleshoe residents, Mrs. Chellie Bradley and M.L. Carpenter, has been named to the United States Achievement Academy. A junior, she was

Con't Page 6, Col. 3



GARY D. CONDRA

Gary Condra Announces As Congress Candidate

Gary D. Condra, 39, a Lubbock agricultural economist, announced today that he has filed for the Democratic nomination to the 19th Congressional District seat being vacated by Kent Hance.

Condra, who has over 10 years experience as an economist and educator, brings a life-long involvement in agriculture to the race. Condra believes that his training and experience are particularly well-suited to representing this district because agriculture is such an important sector of our economy. He emphasized that "we must restore profit and stability to the U.S. agricultural economy; or West Texas agriculture, as we know it, will not survive." Condra also pointed out that "this is the real question which will face

Congress when it addresses the 1985 Farm Bill."

Condra is also confident that his economic training and experience will enable him to more effectively represent the district in dealing with economic problems like oil and gas pricing and the budget deficit.

Condra recognizes the need to maintain a first-rate educational system for the youth of America. "our young people are our most valuable resource", he said, "and we cannot maintain our greatness without a national commitment to their educational development." Condra also stressed that his experience and that of his wife, Betty, a former public school teacher, will insure that this district is well represented in the area of education.

Condra suggested that we should elect our Congressman just like we would hire any other employee. "First," he said, "look at the job description and requirements. Then look at the training and experience of the applicants."

Condra graduated from Ballinger High School and received a bachelor's degree in animal science from Texas Tech in 1969. After a tour of duty with the U.S. Army in Vietnam, he returned to Texas Tech where he received a master's degree in agricultural economics in

Con't Page 6, Col. 5

FREE MILK NESTLE CHOCOLATE
QUIK 2 LB. CAN **\$2.99**
 NABISCO CHOCOLATE SANDWICH COOKIES 20 OZ. PKG. **\$1.99**
OREO

Lots of Your Favorites Here!

SOMEHOW, NOTHING SATISFIES LIKE BEEF.

FRESHLY GROUND 73% LEAN GUARANTEED
GROUND BEEF **\$1.19** LB.

DECKER QUALITY SLICED BACON **\$1.49** 1 LB. PKG.

HEAVY GRAIN FED BEEF BONELESS CHUCK ROAST LB. \$1.69	HEAVY GRAIN FED BEEF BONELESS ARM SWISS STEAK LB. \$1.89
HORMEL OLD FASHIONED 2-3 LBS. CORNERED BEEF BRISKET LB. \$1.99	OSCAR MAYER SLICED COOKED HAM 6 OZ. PKG. \$1.59
HEAVY GRAIN FED BEEF BONELESS CHUCK STEAK LB. \$1.89	OSCAR MAYER SLICED CHOPPED HAM 8 OZ. PKG. \$1.49

CALIFORNIA SUNKIST NAVAL **ORANGES** LB. **29¢**

CALIFORNIA **GREEN AVOCADOS** 2 FOR **29¢**

CALIFORNIA SUNKIST **LEMONS** LB. **49¢**
 WASHINGTON D'ANJOU **PEARS** LB. **49¢**
 ALL PURPOSE RUSSET **POTATOES** 10 LB. BAG **\$1.49**
 CALIFORNIA GREEN PASCAL **CELERY** LB. **39¢**
 YELLOW STRAIGHT NECK OR ITALIAN GREEN **SQUASH** LB. **59¢**

DELSEY **BATHROOM TISSUE** 4 ROLL PKG. **89¢**

Doritos 50% OFF LABEL **KING SIZE FAB** WITH FABRIC SOFTENER KING SIZE **\$1.69**

LEMON FRESHENED BORAX **Fab** DORITOS BRAND **TORTILLA CHIPS** 2.09 SIZE **\$2.99**

10 OZ. REDUCED ACID 12 OZ. REG/MORE PULP MINUTE MAID **ORANGE JUICE** CAN **\$1.09**

30% OFF LABEL-LIQUID **PALMOLIVE** 32 OZ. BTL. **\$1.59**

ARMOUR VIENNA **SAUSAGE** 5 OZ. CANS **2.89¢**

VEGETABLE JUICE **V-8 COCKTAIL** 6 PACK 6 OZ. CANS **\$1.29**

HIGH PROTEIN DRY DOG FOOD **FIELD TRIAL** 25 LB. BAG **\$4.49**

TALL KITCHEN BAGS **HEFTY** 30 CT. PKG. **\$2.29**

FACIAL TISSUE **KLEENEX** 175 CT. BOX **79¢**

KELLOGG'S FROSTED **FLAKES** 20 OZ. BOX **\$1.99**

QUARTERED **BLUEBONNET MARGARINE** 1 LB. BOX **59¢**

- HEALTH & BEAUTY AID SAVINGS**
- REG. COND. LOTION HEAD & SHOULDERS **SHAMPOO** 11 OZ. BTL. **\$2.39**
 - REG. UNIC. HAND LOTION **WONDRA** 10 OZ. BTL. **\$1.59**
 - NOR OILY NON-DRY CONCENTRATE SHAMPOO **PRELL** 5 OZ. TUBE **\$1.99**
 - DURACELL C **BATTERIES** 2 CT. PKG. **\$1.99**
 - DURACELL AA **BATTERIES** 2 CT. PKG. **\$1.49**
 - DEL MONTE PEELLED WHOLE **TOMATOES** 69¢
 - SHURFINE 10 OZ. **PIZZAS** 79¢
 - GLADIOLA **FLOUR** 5 LB. **99¢**

- FROZEN FOOD SPECIALS**
- STIRWELL BREADED **OKRA** 24 OZ. PKG. **\$1.29**
 - PET RITZ ASSORTED FRUIT **COBBLERS** 26 OZ. PKG. **\$1.79**
 - AUNT JEMIMA JUMBO OR BLUEBERRY **WAFFLES** 10 OZ. PKG. **79¢**
 - 12 OZ. MRS. PAUL'S FRESH & NATURAL **FLOUNDER** **\$2.89**
 - 12 OZ. MRS. PAUL'S LIGHT & NATURAL **SOLE** **\$2.89**
 - CRISCO **SHORTENING** 3 LB. **\$2.49**

- TOTAL GROCERY SAVERS**
- 100% NATURAL REG. MEAT MUSHROOM **PREGO SAUCE** 32 OZ. JAR **\$1.69**
 - AMERICAN BEAUTY LONG **SPAGHETTI** 10 OZ. PKG. **49¢**
 - GREEN GIANT WHOLE OR SLICED **MUSHROOMS** 2 1/2 OZ. JAR **69¢**
 - HERSHEY MINI SEMI SW. MILK CHOCOLATE **CHIPS** 12 OZ. PKG. **\$1.79**
 - ALL GRIND MARYLAND CLUB **COFFEE** 1 LB. CAN **\$2.29**
 - LARSEN'S **VEG-ALL** 2 16 OZ. CANS **89¢**

- FRESH DAIRY SPECIALS**
- ASSY. VARIETIES HUNGRY JACK **BISCUITS** 3 5 CT. CANS **\$1.00**
 - KRAFT DELUXE AMER. PIM. SLICES **CHEESE** 12 OZ. PKG. **\$1.89**
 - KRAFT CRATED CHEESE **PARMESAN** 8 OZ. CAN **\$2.49**
 - BORDEN 1/2 GALLON **ROUND** **\$1.69**
 - BORDEN'S **COTTAGE CHEESE** 79¢
 - BORDEN HI-PRO **MILK** GAL **\$1.99**

COKE 2 LITER **99¢**

ON SALE THIS WEEK: **CUP** EACH WITH EACH \$5.00 PURCHASE **79¢**

401 West American **SERV-ALL** 272-4739 **THRIFTWAY**
 We're proud to give you more!

Thrifty McSaver **AT AFFILIATED FOODS INC.** MEMBER STORE
 PRICES EFFECTIVE MAR. 11-17, 1984
 WE RESERVE THE RIGHT TO LIMIT QUANTITIES
 WE ACCEPT FOOD STAMPS

Courthouse News

MARRIAGE LICENSE

Mickel Ray Rodriguez and Debra Ann Hurtado, Muleshoe.

George Gonzales and Matilda Morales, Dimmitt.

Michael Ray Langston and Debra Kay Archuleta, Muleshoe.

Eddy Leonard Gabbert, II, Farwell and Teresa Jane Gabbert, Canadian.

Mark Steve Miller, Floydada and Patty Beth Lane, Plainview.

Rickey Joe Barrett, Muleshoe and Theresa M. Baca, Clovis, N.M.

Francisco Javier Hernandez, Texico, N.M. and Sandra Lee Ulibarri, Clovis, N.M.

WARRANTY DEEDS

Esther Magby to Horace Burris--All of Lot Number (4), in Block Number (3), Warren Addition Number 2, to the Town of Muleshoe, Bailey County, Texas.

Olan Locker, W.G. Locker and Joe Bob Wells to Domingo Guillen and wife, Ceelia Guillen--Lots Numbers 1, 2, and 3 in Block No. 1, in the Robinson Addition to the Town of Maple, Bailey County, Texas.

Elvin Crow and wife, Mary Frances Crow to Boyd Ewing--TRACT I: All of Section Number (16) and the (S/2) of Section Number (15), in Block "Y", WD&FW Johnson Subdivision No. 2, Bailey County, Texas. TRACT II: Labors Numbers (1) Through (7), inclusive in League No. 189, Ector County School Land, Bailey County, Texas.

John W. Smith and wife, Billy Joan Smith, W.M. Pool, II and wife, Mary F.

Pool to Jim Hartline--All of Lot Number (1), in Block Number (2), Muleshoe Park Addition to the Town of Muleshoe, Bailey County, Texas.

Tom A. Little and wife, Rhonda Sue Little to Ernestine Little--All of the (SE/4) of Section Number (43), Block Y, WD&FW Johnson's Subdivision Number (2), in Bailey County, Texas.

Harold G. DeLoach and wife, Delle M. DeLoach to Martin Lee Davison--A 0.53 acre tract of land out of the Northeast part of the Northeast Quarter of Section 21, Block Y, WD&FW Johnson's Subdivision Number (2), in Bailey County, Texas.

Ramon Mara Sanchez to Juanita Loya Sanchez--Lot (24), Block (33), Old Town Addition to the Town of Muleshoe, Bailey County, Texas.

Tom S. Arnett and wife, Erma O. Arnett, Alyne A. Joplin to Darrell Stephens and wife, Eva Dean Stephens--160 acres out of the Southeast part of Section 5, Block S-3, John H. Stephens Survey, Patent 118, Volume 5, in Bailey County, Texas.

Debbie Green to J. Durk Green--All of my undivided one half interest in and to Lot 4, Jones Subdivision of Block 4, Hillcrest Addition No. 2, to the Town of Muleshoe, Bailey County, Texas.

G.B. Cotton, Inc., a Texas Corporation to Concord Oil Company--Tracts (9), (10), (11), (12), (29), (30), (32), (49) and (50), in League 163, Floyd County School Land in Bailey County, Texas.

Elbert Nowell and wife, Hazel Nowell to Mark Washington--The Westerly 46 feet of Lot (8), in Block 2, Legion Addition to the Town of Muleshoe, Bailey County, Texas.

Luydoit Magby and wife, Nell Magby to Lupe Pineda and wife, Ermila Pineda

---All of Lot Number (8), Block Number (4), Wagon Addition to the Town of Muleshoe, Bailey County, Texas.

Glen V. Cherry to Faye L. Houston--All of the North (42 1/2') of Lot (21), and all of the South (30') of Lot (20), Gatlin Addition to the Town of Muleshoe.

Carl Lee Houston to Faye Louise Houston--All of Lots (16), (17) and (18), Gatlin Addition to the Town of Muleshoe, Bailey County, Texas.

Ross Ayers and wife, Flora May Ayers to Tom S. Arnett and wife, Erma O. Arnett, Alyne A. Joplin--160 acres out of the Northeast part of Section 5, Block S-3, John H. Stephens Survey, Patent 118, Volume 5, in Bailey County, Texas.

Homer W. Richardson and wife, Doris Richardson to Ernest L. Tucker and wife, Jo Anne Tucker--A 2 acre tract of Land out of the Southeast Fourth of Section 15, League 145, Hansford County School Land, Bailey County, Texas.

COUNTY COURT ORDER DISCHARGING DEFENDANT FROM PROBATION

James Kent Zacoski, Paulette Foster, Robert Reynero, Waymon Gray and Mariano Perez

John William Chavez, DWI, 30 days jail, \$500 fine.

Darla M. Finney, Order of Dismissal

Cheryl Williams Puckett, DWI, 30 days jail, \$250 fine.

William Henry Wakeman, DWI, 30 days jail, \$250 fine.

Thomas Valdez, Order of Dismissal.

Gilbert Vela, DWI, 30 days jail, \$500 fine.

Salvador Villareal, Order of Dismissal.

Rojelio Perz, DWI, 30 days, \$250 fine.

Gary Maurice Hanks, DWI, 12 month probation, \$350 fine.

Gary Maurice Hanks, Order of Dismissal.

Benito Villanueva Alarcon, DWI, 30 days jail, \$250 fine.

Domingo Ramos, Jr., Unlawfully carrying weapon, \$100 fine.

Marjorie Olson, Public Intoxication, \$200 fine.

DISTRICT COURT Donald Puckett vs. Andy Douglass, Order of Dismissal.

Terry Don Newell and Kimberly Lynne Newell, DV NEW VEHICLES

Annie Laura Weaver, 1984 Olds 4dr, Robert D. Green, Inc.

Celso F. Gonzales, 1984

Chev 4dr, Robert D. Green, Inc.

Fidel Perez, 1983 GMC PU, Robert D. Green, Inc.

Friana Cablevision, Inc., 1984 Ford Club Wgn, Muleshoe Mtr. Co., Inc.

Eugene Hawkins, 1984 Dodge PU, Muleshoe Mtr. Co., Inc.

Mrs. Roxie Hoover, 1984 Ford 4dr, Muleshoe Mtr. Co., Inc.

Don W. Parker, 1984 Ford Hse Car, Muleshoe Mtr. Co., Inc.

Ford Mtr. Credit Co., DC, 1984 Ford 4dr, Muleshoe Mtr. Co., Inc.

Mrs. Mervin Wilterding, 1984 Merc 4dr, Muleshoe Mtr. Co., Inc.

Ford Mtr. Credit Co., 1984 Ford Broco II Wgn, Muleshoe Mtr. Co., Inc.

Duane Lloyd, 1984 Merc 4dr, Muleshoe Motor Co., Inc.

J.R. Johnson, 1984 Merc. 4dr, Muleshoe Mtr. Co., Inc.

Glover Farms, Inc., 1984 Ford PU, Muleshoe Mtr. Co., Inc.

Nickels Gin Co., 1984 Chev PU, Robert D. Green, Inc.

Guy Kendall, 1984 Chev PU, Robert D. Green, Inc.

Gene Hutto, 1984 GMC PU, Robert D. Green, Inc.

Tom A. King III, 1984 Chev Sub., Robert D. Green, Inc.



DAVID GUTIERREZ & ESTHER CONTRERAS

DeShazo Elementary Joins Balloon Race

"Countdown to the Great Balloon Race begins at 3:00 p.m. Wednesday, March 21, 1984" says Bill Taylor, Jr., principal of Mary DeShazo Elementary in Muleshoe. Students at Mary DeShazo will launch 400 helium-filled balloons as part of the Nationwide Writing Pals Balloon Contest sponsored by Weekly Reader, a classroom newspaper.

A message attached to each balloon explains the project and asks that the finder return it to Mary DeShazo," says Principal Taylor. "Weekly Reader" will present a \$500 prize to the school that gets back the message that has traveled the farthest distance. In addition, 100 runner-up prizes will be awarded," adds

Taylor. Since the annual balloon launch began, Weekly Reader has furnished about 2 1/2 million free balloons to schools participating in the Weekly Reader Writing Pals program, a pen pal program in which Weekly Reader pairs classes across the country. According to Principal Taylor, the balloon launch will be the climax of Mary DeShazo's year long participation in Weekly Reader Writing Pals. The goal of the program is to motivate children to write to, and to become familiar with, students in other parts of the country. "Mary DeShazo pupils will write to every person who sends back a message card from our balloons," declares Principal Taylor.

Contreras Gets TMC State Awards

Esther Contreras, daughter of Mr. and Mrs. Victor Contreras, Sr. was recently awarded two certificates of recognition from the Texas Migrant Council State office. She has been employed at the Muleshoe TMC Center for about four and one half years.

Contreras was the only one in the State who received two awards. The awards were for contributing to TMC's Educational Training

Manual and Developing and Designing Center Level Newsletters. Presenting the awards were Belia Sarabia, Education Trainer and David Gutierrez, TMC local director.

Always Right

An executive is a man who can make a decision and stick to it--no matter how wrong he is.

-Distributor, San Diego.

No weather's ill. If the wind be still.

-Thomas Fuller



STOP

WEEDS

also feeds lawn for deep green growth



KILL WEEDS · FEED YOUR LAWN



WEED & FEED SPECIAL

BAKER FARM SUPPLY

1532 W. American 272-4613

INCOME TAXES MADE EASY

Nearly nine million Americans continued to place their trust in H & R Block at tax time last year.

Why do millions of people keep coming back to H & R Block? Because they like many things about the service, including the care and accuracy of the work; the competency of the tax preparers and their thorough knowledge of all the new tax laws; and, especially, the tax dollars many have saved.

customers value the good year-round service; the courteous treatment they receive; the personal, confidential attention; and the peace of mind attained in knowing a difficult task was completed at a reasonable charge.

Join the millions who go to H & R Block! You'll be glad you did!

See your telephone directory for the office nearest you or call

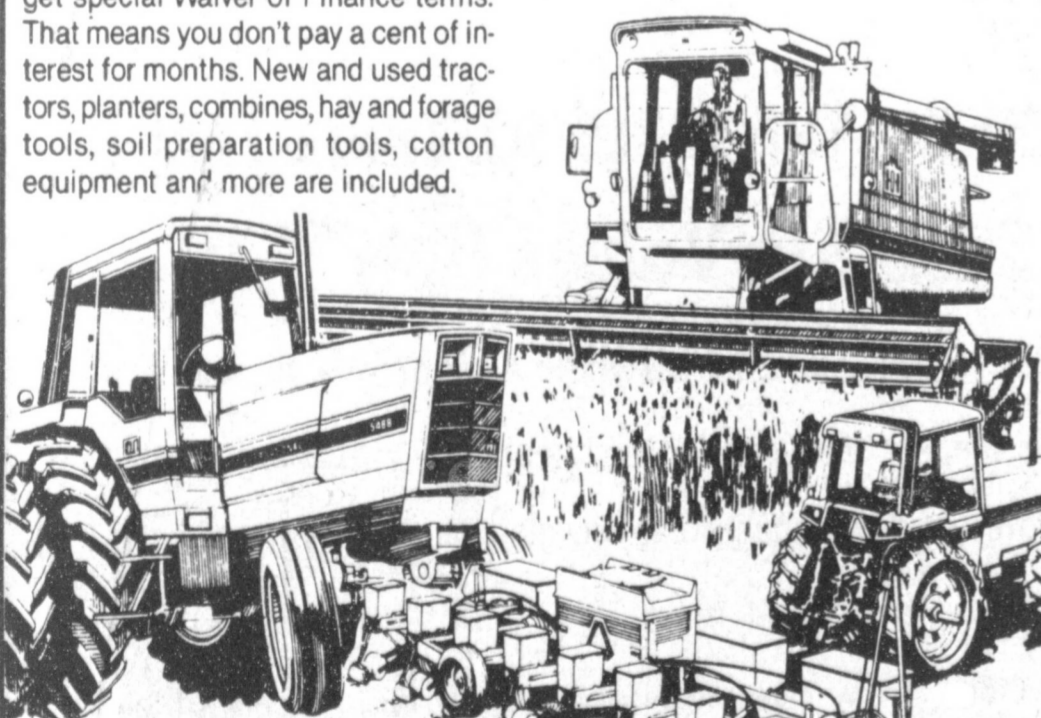
But that's not all. Block's

272-3332

PAY NO INTEREST on new and used equipment for months!

Get tremendous savings on new and used equipment if you buy now! Finance your purchase through International Harvester Credit Corporation and get special Waiver of Finance terms. That means you don't pay a cent of interest for months. New and used tractors, planters, combines, hay and forage tools, soil preparation tools, cotton equipment and more are included.

Cash rebates are available in lieu of finance waivers to cash buyers of most new International equipment. Buy now. Save big!



Waiver of Finance terms apply to the following:

- No interest until May 1, 1984 on new and used planters and cultivators
- No interest until June 1, 1984 on new and used tractors, new grain combines and hay tools
- No interest until September 1, 1984 on new corn, bean and rice combines, corn and grain headers, new and used forage tools, cotton pickers and harvesters
- No interest until January 1, 1985 on used combines, headers and corn heads



This offer subject to change or cancellation by International Harvester Company at any time without notice or obligation

Wooley International, Inc.
West Highway 70 -84 Muleshoe, Texas

Posadas Radiator Shop
East 6th & Ave F
272-3269
Muleshoe, Texas

ANNUAL STOREWIDE CLEARANCE

 LA-Z-BOY RECLINERS STARTING AT \$249⁰⁰	 ODD TABLES 1/2 PRICE	 6 PC. ALL WOOD BEDROOM SUITE REG. \$1549.00 \$999⁰⁰	 ONE GROUP SOFAS 1/2 PRICE	 PURE BRASS BEDS \$399⁰⁰ AND UP!	 ONE GROUP OCCASIONAL CHAIRS 1/2 PRICE
 HOME DESKS 25% OFF	 SIMMONS BEAUTYREST & CHIROPRACTIC MATTRESSES 30% OFF	 3 PC. WALL UNITS REG. \$1846.00 NOW \$990⁰⁰	 WALL ACCESSORIES, LAMPS & MIRRORS 20% OFF	 BUNK BEDS COMPLETE WITH MATTRESSES \$399⁰⁰	 DINETTES REG. \$850.00 NOW \$499⁰⁰
 BURLINGTON TABLE AND 4 CHAIRS WITH CHINA REGULAR \$2287.00 \$1599⁰⁰	 SOFA SLEEPERS TWIN, REGULAR, & QUEEN STARTING AT \$399⁰⁰	 BAR STOOLS 20% OFF	 MADDOX 2 PC. SECTIONAL 3 TO CHOOSE FROM ONE MAKES A BED REG. \$1289.00 SALE \$999⁰⁰	 BEDROOM SUITES 20% OFF TO 40% OFF WITH COMPLETE BEDROOM PURCHASE GET YOUR MATTRESS AT 1/2 PRICE!	 CHROMCRAFT DINING ROOM SET, TABLE, 6 CHAIRS AND CHINA REG. \$1727.00 \$1199⁰⁰

ShIPLEY Furniture
1305 MAIN STREET 763-7534

M D Anderson Hospital Named TFOWC Project

The Texas Federation of Women's Clubs has chosen M.D. Anderson Hospital at Houston as their project this year, according to Betty Jo Carpenter.

Contributions to this project may be given to Betty Carpenter or Mildred Nealey at the Muleshoe State Bank in the next two weeks or may be mailed to Volunteer Services in care of Mrs. Leonard D. Kemp, 5210 Moultrie, Corpus Christi, Texas 78413. You are asked to make all checks payable to Volunteer Services.

"MDA'S Speakers Bureau will come without charge and tell you about your State Cancer Hospital and the work they are doing" says Mrs. Kemp.

"As there is no cure... we must try to prevent cancer.

Cinderella Pageant Set Here April 7

A Cinderella Pageant is scheduled to be held Saturday, April 7 in the high school auditorium. Four age categories are to be offered, they include: Cinderella Tot-ages 3-6; Miniature Miss-ages 7-9; Cinderella Miss-ages 10-12; and Cinderella Teen-ages 13-17.

"The Cinderella Pageant is more than just a beauty pageant. It is a program that builds character and leadership abilities in young ladies" says Sue Bessire.

Girls of all ages are to model formal for the dressy dress competition. Talent division will also be offered but not a requirement.

For additional information or for registration entries you may contact Sue Bessire at 965-2757 after 6 p.m. or Debbie Cloud at 272-3584. Deadline for entries is March 21.

Speakers highly qualified to speak on cancer prevention and detection in general or specifically on breast, gynecological, prostate, skin, testicular cancers and self examinations of breast, head and neck, vulva or testicular. There is no charge and you are asked to please take advantage of these programs...the life you save may be your own" Mrs. Kemp continued.

For more information you may contact Linda White, R.R., Program Director -Cancer Prevention and Detection.

The number one service offered by Volunteer Services is the beauty shop. Some 800 to 900 patients are now utilizing beauty shop services each month. Donations of/or money to buy: scissors, electric or cordless clippers, blowdryers, Nor-elco razors, curling irons, combs, brushes, shampoo, conditioner and wigs as well as wigs and wig heads are needed.

"Also needed is tall bud vases (by the hundreds), wrapping paper and ribbon, new and almost new robes, pajamas and gowns for men and women (do not need childrens) and slippers for men, the library needs subscriptions for magazines for women, men and sports; blue denim or khaki twill fabric is needed to make pump bags (these are worn by patients who take the new infusion therapy and look something like a tote), monetary contributions could be designated for: sundries, deodorant, tooth brushes/paste, kleenex, shampoo, disposable razors and etc; and bright and colorful granny caps/turbans...soft fabric...a bare scalp is tender", added Mrs. Kemp.



JULY DATE SET... Mr. and Mrs. Darrell Turner announce the engagement and approaching marriage of their daughter, Cindy Gayle to Andrew W. Hardy II, son of Mr. and Mrs. Andrew Hardy of Cocoa, Florida. Miss Turner is a graduate of Muleshoe High School and a spring candidate for the associates degree in science at South Plains College at Levelland. Hardy graduated from Cocoa High School at Cocoa, Florida and is an Airman First Class in the U.S. Air Force stationed at Cannon AFB, Clovis, N.M. The couple will exchange vows July 7 in the First Baptist Church of Muleshoe.

Journal Files

50 Years Ago

1934
A Clovis Department Store advertised the following specials in the Journal this week: 200 house frocks 98 cents each; ladies slips 25 cents each; children's bloomers and panties 19 cents each; printed broadcloth 12 1/2 cents yard; men's work shoes \$1 pair; men's dress shirts 50 cents each; work pants 98 cents each; and 100 flannel shirts 25 cents each.

30 Years Ago

1954
LOCAL MARKETS
Eggs, dozen 37 cents; H. Hens, pound 18 cents; L. Hens, pound 14 cents; Cream, pound 60 cents; Hogs, cwt \$25.75; Grain, bushel \$2.30; and Wheat, bushel \$2.20.

20 Years Ago

1964
Mr. and Mrs. Bill James went to Ruidoso, N.M. to visit Mrs. James sister and family over the weekend.

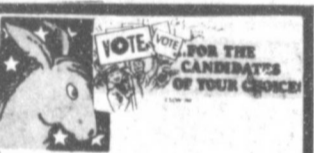
Mr. and Mrs. Irvin St. Clair and Mr. and Mrs. Bill Jim St. Clair will be leaving from Lubbock airport today aboard a chartered plane to Las Vegas, Nev.

They will be attending and participating in the Gold Cup Golf tournament at Desert Inn Country Club.

10 Years Ago

1974
Mrs. Owen Jones of Muleshoe was presented the District Award of Merit for outstanding service to scouts at the George White District Appreciation Dinner held Saturday, Feb. 16 in Littlefield.

At 12:01 a.m. Saturday morning, March 2 the U.S. Postal Service rate for ordinary letter goes up from eight cents to 10 cents and air mail letters from 11 cents to 13 cents.



The Journal has been authorized to announce the following candidates for public office:

SHERIFF
Tom Watson
Bob Henderson

TAX ASSESSOR /COLLECTOR
Kathleen Hayes

STATE SENATOR
Bill Sarpalius

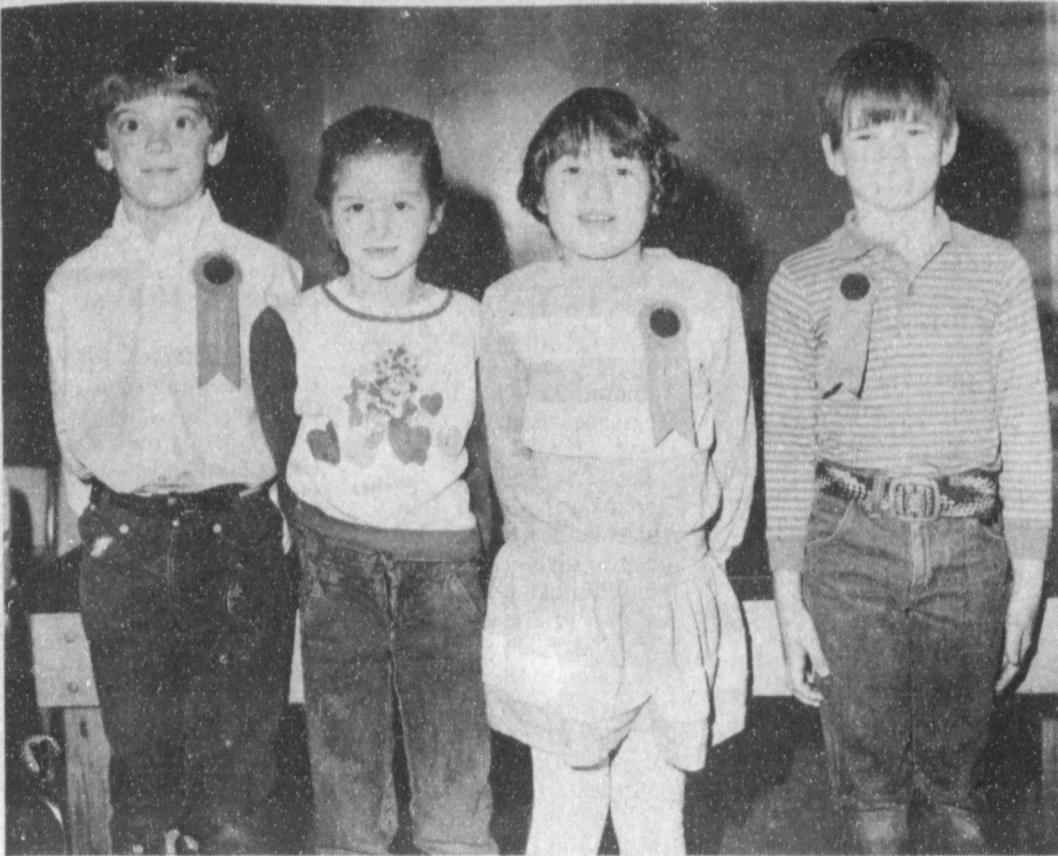
U.S. CONGRESS
Don R. Richards
Tom M. Richards

CO. COMMISSIONER
Precinct 1
R.L. Scott
G.L. 'Hoss' Gibson
R.O. Gregory
Marshall
'Catfish' Williams

CO. COMMISSIONER
Precinct 3
James Warren
Joey Kindle

COUNTY ATTORNEY
Linda Guelker

19th Congressional District Congressman
Gary D. Condra
Dr. John Selby



U.I.L. STORY CONTEST...The local second grade U.I.L. Story Hour contest was held Wednesday, March 7. First place winners will be participating at the District U.I.L. contest in Abernathy on Thursday, March 22. (From Left) Mason Conklin, Kelli Caldwell, Stacy Duncan and Scott Springfield.

WOTS Weekly Meeting

Kay Madry and Mildred Williams were the hostesses for the March 8th, WOTS luncheon at the community room of Summit Savings and Loan.

A bud vase and floral arrangement were given to Bettie Moore in honor of her birthday, along with the traditional card. Pauline Guinn was voted in as an honorary member.

Members present included: Kay Madry, Faye

Art Association Will Meet Tuesday

The Muleshoe Art Association will meet Tuesday, March 13 at 2 p.m. in the community room of Muleshoe State Bank. This month's guest will be Vera Triffin from Littlefield. She will present a pastel demonstration on a still life.

Everyone is asked to take a recently completed floral painting to display at the meeting.

Wellborn, Nora Flannary, Lois Martinec, Donnita Gotschall, Mildred Williams, June Durham, Pat Cummins, Marie Hendrix, Ada Thompson, Karen Mason and April Daily, Bettie Moore and La June Duran. Pauline Guinn was a guest.

Hostesses for the March 15th, luncheon will be Lois Martinec and June Dunham.

Children Home Associates Tack Quilts

The Muleshoe Associates of the Portales Christian Childrens Home met in the home of Vickie Hendricks Monday, March 5 to tack quilts for the benefit of the home.

Members present included: Nan Gatlin, Mae Provenge, Blanche Aubrey, Lillie Barnhouse, Bethlene Harper, Ethel Julian, Bernice Amerson, Mabel Caldwell, Florine Upchurch, Onedia Cornelison and the hostess, Ms. Hendricks, who served coffee, tea, soft drinks, chips, sandwiches and cake.

Mrs. Harper took divinity candy, Ms. Caldwell took sweet rolls and jelly and Ms. Amerson took a friendship cake.

The next meeting will be on Monday, April 2 with Blanche Aubrey as hostess.



The seed of the Seychelles coconut can outweigh a bushel of apples.

PLEASE EXCUSE OUR REMODELING & INCONVENIENCE

It's To Better Serve You In The Future



HOTEL CLOVIS

203 MAIN DOWNTOWN CLOVIS Charlie & Florence Jones

15% OFF

ALL Remaining Fall Merchandise New Spring Merchandise Arriving Daily

Lookin' Good

206 Main

272-5052

TAX ACCOUNTING WRITE UP QUARTERLY REPORTS

Robin E. Davis

TAX SERVICE

2433 S. FARWELL AVE. LITTLEFIELD, TEXAS 79339

806/395-6825

BRILLIANT BUY

ARTCARVED SILADIUM H.S. CLASS RINGS

NOW ONLY **\$74.95** WITH THIS AD

PLUS up to \$36 worth of custom features FREE!

Every ring is backed by the ArtCarved Full Lifetime Warranty. This offer expires May 31, 1984 and is to be used only for the purchase of ArtCarved Siladium class rings.

ARTCARVED CLASS RINGS INC.

Lindsey Jewelry

202 Main 272-3955

© 1984 ArtCarved Class Rings, Inc. 883 BRING THIS AD J-6288

The MULESHOE MERCHANTS

'SPONSORED BY THE GIRLS SOFTBALL LEAGUE'
OVER \$250⁰⁰ In Values Only \$19⁹⁵

It is truly the areas biggest and best bargain! A great way to save money and the same time support the Girls Softball League!! These participating merchants appreciate your patronage and are glad to serve you.....

★ A&M Farm And Ranch	★ Merle Norman	★ Latrell's Fashion
★ Muleshoe Floral And Gifts	★ Muleshoe Dance And Gymnastics	★ Ann's T-Shirts
★ Main St. Beauty Shop	★ Hurst Department Store	★ June's Ceramics
★ Lambert Cleaners	★ Leaf's Restaurant	★ Spudnut Shop
★ Johnnie's Safety Center	★ Williams Bros. Office Supply	★ Sonic Drive-in
★ Muleshoe Antenna Company	★ Damron Rexall Drug	★ Nina's Place
★ Higginbotham Bartlett Lumber Co.	★ Harvey Bass Appliance	★ Central Texaco
★ Muleshoe Diet Center	★ West Texas Karate Academy	★ Mule-Putt Golf Course
★ Wood's Photography Studio	★ Lindsey Credit Jewelers	★ San Francisco Cafe
★ Muleshoe Dairy Queen	★ IGA Muleshoe Supermarket	★ Nick's Car Wash

★ The Next Time Your Phone Rings It May Be Someone Calling You About

Common Household Products Causes Chemical Stains

The next time a mysterious carpet stain appears, don't rush to blame the kids or the dog. It may be from some seemingly harmless product -- like your face cream -- spilled months ago.

Brenda Flowers Named AAUW Girl Of Month

The American Association of University Women (AAUW) announces that Brenda Flowers, daughter of Mr. and Mrs. Charles Flowers, has been selected as their March Girl-of-the-Month.

Brenda will graduate from Muleshoe High School in May. She is a member of Student Council, Future Teachers of America and National Honor Society. She serves as Speech Club secretary and Student Council secretary.

Ms. Flowers has been Drum Major with the Mighty M Band for two years and has served as Speech president for two years.

She is a member of the Church of Christ and plans to attend Lubbock Christian College and major in business.

"Brenda is an outstanding young lady who is actively involved in all phases of community, school, and church. She always displays a pleasant and friendly personality to all those she comes in contact with," says a spokesman for the group.

poor handling of foods, liquids and household bleach will damage household furnishings, says Dr. Peggy Owens, a housing specialist with the Texas A&M University Agricultural Extension Service home economics program.

But few people realize that many common products containing chemicals can cause irreparable damage to valuable carpets, rugs, upholstery fabrics and other furnishings, she adds.

For example, acne medications, fade or age creams, some foot care products and some pet shampoos contain benzoyl peroxide as an active ingredient. Benzoyl peroxide is a strong bleaching agent which can destroy most dyes used in carpet and upholstery fabrics, as well as pillowcases, sheets, towels and clothing, says the specialist.

Spills of some liquid plant foods or leakage from house plants can also cause color changes in carpet, says Owens. Spots of this kind

typically develop near the backing and surface as a dull yellow stain days or weeks later.

Some pesticides and insecticides can cause discoloration of carpet. If the spray is directed to the carpet instead of the baseboard, fading around baseboards may be evident.

Even furniture polish can act as a catalytic agent to destroy red carpet dyes and create green or bluish discoloration. Because this usually occurs about the base of a piece of furniture, a stain can remain hidden until the furniture is moved, says the specialist.

One fiber manufacturer has estimated that more than 50 household products can cause stains or spots on home furnishings, says Owens.

The time between contact and appearance of the stain can be days or months until a change in humidity, temperature, moisture or sunlight activates the chemical reaction, she notes.

While common stains like food, dirt or oily substances can usually be removed, chemical stains actually change or destroy dyes. Generally, nothing can be done to restore the dye to its original color.

Today's dye stuffs represent the best that modern technology has produced. Yet there are few known dyes which are resistant to chemical degradation. As a result, chemical spots and stains are not covered under most manufacturer's warranties, says the specialist.

From the consumer's point of view, says Owens, the only real solution to chemical spots and stains is careful use of all household products.



BRENDA FLOWERS



STORY TELLING PARTICIPANTS...Back row (L-R) Freddy Santos, Keith Hughes, David Lewis, Juan Jaime, Catherine Espinosa, Virginia Sierra and Chris Page (Front row) Francisco Franco, Clifton Finch, Brooke Barrett, Gage Angeley, Darrell Whitaker and Jason Satterfield all participated in the local second grade U.I.L. Story Hour contest held Wednesday, March 7 at Dillman Elementary.

Artists Wanted In History Festival

The Living History Renaissance Festival urges artists, craftsmen, clubs, and organizations, to apply for booth space at its Bartholomew Faire to be held April 28 in Rotary Park in Portales, N.M. Wares, foods or services must relate to the Renaissance and groups will be responsible for booth decoration and costumes.

Booth space is 8' x 16' and a shell is provided. Booth rental fee is \$12.00 and prizes will be awarded for the cleverest and most authentic booths.

Wandering peddlers in Renaissance costume are also welcome. The peddling fee is \$8.00.

On the Faire Grounds will be two theatres for the performances of various kinds of Renaissance entertainment from jugglers, jesters,

Gussie Wooley Sudan Senior Spotlight

Gussie Mae Wooley is in the senior spotlight at Sudan High School this week. She is the 17 year old daughter of Mr. and Mrs. Ira Wooley, and was born on April 15, 1966, in Sudan. She has black hair and brown eyes and is now 5 feet and 5 inches tall.

When Gussie graduates from Sudan High School, she plans to attend South Plains College and become a basketball coach.

She says her mother is the most precious thing to her and Mexican Food is her favorite food. Blue is her favorite color with her mother being her favorite person. George Jefferson and Richard Pryor tops her list of actors and Marla Gibbs and Nell Carter her favorite actresses. "Gold Blood" is currently her favorite song with Rick James her favorite single.

She says Home Economics is her favorite subject at Sudan High School and all the teachers are her favorites. Basketball is her favorite sport. The Jeffersons and Kung Fu are her favorites on TV and Halloween III and The Toy are her favorite movies.

Number 22 is Gussie's favorite number and summer her favorite season. She prefers Soul music.

Miss Wooley has been in basketball for the past four years, three years in FHA, two years in FTA, has run track for the past three years and was sophomore class favorite. She wills her sense of humor to the junior class.

Playing basketball, softball, dancing, going out and talking about people are her hobbies. Her goal in life is to be a basketball coach.

Gussie states, "I have enjoyed my 12 years of school and it was terrible."

Dancers and Singers to Will Shakespeare

The Society for Creative Anachronism (SCA) will have a tournament of knights fighting in competition. An SCA bardic circle or entertainment contest, Renaissance green dancers, and an alchemist will be on hand.

Saturday evening Queen Elizabeth will be hostess at a Banquet of authentic Renaissance cuisine. Guests will once again enjoy Renaissance music and entertainment.

A Renaissance Mass will be celebrated on Sunday at 2:00 p.m. in St. Helen's Catholic Church. Chief celebrant Father Don Miller of the ENMU Newman Center,

and The ENMU Concert Choir will perform the mass in the original Latin text.

Out To Lunch Bunch

The weekly Out To Lunch Bunch social and luncheon was held on Friday, March 2 at Summit Savings and Loan. Board games were

Muleshoe Area Residents Attend Reception

Several Muleshoe area residents attended a wedding reception in Dallas recently in honor of Mr. and Mrs. Deryl Comer. Comer and the former Miss Kym Petty were married in a private ceremony at Rivers Lane Methodist Church preceding the reception on Saturday, March 3.

Those attending from this area included: Mrs. Cecil Cole of Muleshoe, Mr. and Mrs. Mickey Sowder and Jarrod and Mr. and Mrs. Bobby Sowder of Goodland and Mrs. P.T. Colhoun of Quantica, Va.

Mrs. Comer is the granddaughter of Mrs. Cole.

played before lunch, which was hosted by Mary Ann Ramirez.

Those attending were: Mary Ann Ramirez, Donna R Noriega, Kathleen Ward, Wilma Eggers, Pat Muddford, Kathy Railsback, Johnnie Ferris, Rhonda Hugg and Aimee, Dolores Scott and Josh, Glenda Duncan, Pam Acklin and Linda Sims.

NEW ARRIVALS

David Fidel Garcia

Mr. and Mrs. Fidel Garcia of Bovina are the proud parents of a son born at 7:12 p.m. March 6 in West Plains Medical Center.

The young man weighed six pounds 10 and a half ounces and has been named David Fidel. The couple have one other child, Brandie, three years of age.

Grandparents are Mr. and Mrs. Fito Viernes of Bovina and Mr. and Mrs. David Garcia of Mexico.

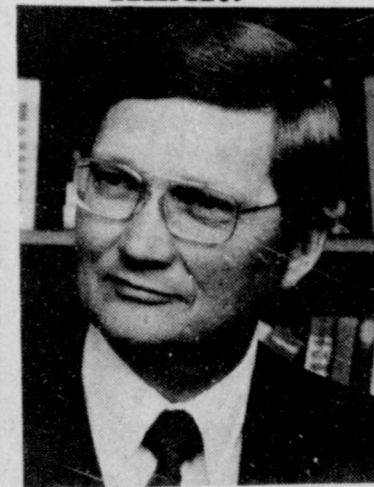
Great grandparents are Mr. and Mrs. Charlie Munez of Artesia, N.M. and Francisco Baltazar of Mexico.

You Are Invited TO OUR

GOSPEL MEETING

AT THE MULESHOE CHURCH OF CHRIST

HEAR!



Roy Lanier, Jr.

'A NEW LOOK AT ACTS'

March 11-14, 1984

SPECIAL SINGING

2 P.M. - SUNDAY - March 11

NIGHT SERVICES - 7:30 P.M.

SUNDAY MORNING

BIBLE CLASS - 9:30 A.M.

MORNING SERVICE - 10:20 A.M.

John Boor, MINISTER

Gift Selections

To Say

You Care!

Antiques & Junk

109 S. First

272-5275

WMU Weekly Meeting

WMU of the Trinity Baptist Church met at 10 a.m. Tuesday, March 6 at the church, for their monthly prayer session. Eva Ashford led the opening prayer. Their lesson was on "New Frontiers".

Five members were present for a covered dish luncheon. Those present included: Dora Barber, Eva Ashford, Florance Ruth Lackey, Clara Coffman and Wenona Spears.

"LOSE WEIGHT 20% FASTER IN THE FIRST TWO WEEKS"



Vivian Lipman Area Director

SCALE WEIGHT WATCHERS AMAZING NEW PROGRAM... QUICK START

It's no surprise that everybody is talking about QUICK START™. Weight Watchers sensational new program that helps you lose more weight in the first two weeks than ever before! And you'll do it the sensible Weight Watchers way while enjoying 3 well-balanced meals PLUS SNACKS. Best of all, now you can discover the wonders of QUICK START with a special introductory offer to attend 2 consecutive weekly meetings for the price of one. Do it now for yourself and the ones you love. Don't miss out...Offer ends March 31, 1984.

SPECIAL OFFER! 2 MEETINGS/\$6. PLUS \$13 REGISTRATION FEE.

Offer good through March 31, 1984. Offer only valid in locations listed. Areas 37, 96, 107. Offer valid for new and renewing members only. Not valid with any other promotion. © Weight Watchers International, Inc. 1984 owner of the Weight Watchers and Quick Start trademarks.

MEETING SCHEDULE:

MULESHOE CHURCH OF CHRIST 16th and Avenue D Tue. 6:30 p.m.

JOIN WEIGHT WATCHERS! 1-800-692-4329

March Best Meat Buys



1/2 BEEF \$1.29 lb.

Cut & Wrapped To Your Specification

Home Cured

BACON

2 lb. \$1.59 pkg lb.

FAMILY PACK

\$69.99 35 lb

FREEZER PACK

\$36.99 20 lb

Winkler Famous Homemade SAUSAGE

2 lb. \$1.50 stick lb.

Custom Processing Daily Call For Appointment

All Meat HAMBURGER PATTIES \$1.55 lb.

2 lb pkg

WINKLER MEAT CO.

401 Main

272-4703

Bailey County Journal LOTS 040-206
 Published March 11, 1984. Published by Muleshoe Publishing Co., Inc. Every Sunday at 304 W. Second, Box 401, Muleshoe, Texas, 79247. Second Class Postage paid at Muleshoe, Texas 79247.

MEMBER 1984 TEXAS PRESS ASSOCIATION

L.B. Hall President
 James Woods, Vice President
 Shirley Farmer, News
 Evelyn Harris, Society
 Una Williams, Advertising
 Lantana Hall, Bookkeeper

SUBSCRIPTIONS:
 Muleshoe Journal and Bailey County Journal \$11.95
 Bailey County Journal and Muleshoe Journal \$11.95
 Muleshoe Journal and Bailey County Journal \$12.95
 Muleshoe in Texas \$11.95
 Muleshoe Journal and Bailey County Journal \$11.95
 Outside of Texas \$11.95
 Yearly by Carry \$11.95

Advertising rates apply on application.

Taxes...

Cont. From Page 1
year to \$12,170.31 compared to \$10,967.04 during the same period of time last year.

Another area city showing a marked increase is Littlefield, in Lamb County, with a 14.67 percent increase over the same time last year. This year, Littlefield's January payment is \$22,825.53, compared to \$10,760.61 for the same time last year. To date in 1984, Littlefield has received a total of \$76,282.82, compared to \$66,523.59 during the same period last year.

In Parmer County, Friona's sales tax rebate check is up by 16.86 percent over the same time last year. They received a check this month in the amount of \$7,156.48, compared to \$1,759.68 during the same period of time last year. To date this year, Friona has received \$24,608.46, compared to \$21,057.82 at the same time last year.

Houston received the largest check--for \$9.7 million--which brings that city's 1984 total to \$37.2 million, up five percent over what it had received by this time last year.

Dallas check for \$6.7 million brought year-to-date payments to \$24.8 million,

up more than 15 percent over last year.

San Antonio's payment was \$2.9 million, up more than 36 percent over the same period last year. Austin's March check for \$2.3 million brought the city's yearly total to \$8.4 million, or nearly 22 percent ahead of 1983 totals.

Fort Worth received \$2 million, bringing the 1984 total to \$7.4 million, up more than seven percent over 1983. El Paso received \$1.2 million, with 1984's year-to-date total now running nearly 20 percent ahead of 1983.

Bullock also sent checks to the state's three Metropolitan Transit Authorities, including a first-ever check for \$4.9 million to DART, the new Dallas transit authority. The Houston MTA received \$11 million and the San Antonio MTA got a check for \$1.6 million.

Migrant...

Cont. From Page 1
Council, Hereford, \$49,262; South Plains Guadalupe Neighborhood Council, Lubbock, \$25,379 and Defensa.

One of the mysteries of life is how some people manage to think so much of themselves.



"I LOVE MULESHOE WALKATHON"... Approximately 68 walkers turned out last Saturday, March 3 for the Jennyslipper's fundraiser of the year, including a team from the Jennyslippers. Wendy Bland won the door prize of the Cabbage Patch Doll fashioned by Ellen Ladd. Participants will turn their pledges in to Mrs. Toni Eagle at De Shazo School or to Ann Camp at the library by March 16. The ones who are determined winners will be awarded their prizes on March 24 at 10 a.m. on the Courthouse Parking lot.

Muleshoe...

Cont. From Page 1

nominated for the honor by her science and physics teacher at Hawkins, Mrs. Cindy Price.

Rhea E. Bradley, supervising resident engineer, State Department of Highways and Public Transportation of Littlefield, is asking the driving public to obey laws, watch for haul trucks and warning signs, barricades and speed limits through the current construction from US 70 in Muleshoe to the Parmer County line of SH 214. He said the contractor is grading and replacing exist-

ing base material at this time.

Muleshoe Slowpitch Softball Tournament will be held Saturday and Sunday, March 24-25. Entry fees are \$75 per team plus one USSSA ball. Entry deadline is Monday, March 19. For more information, call Terry Field at 272-5551 or write P. O. Box 404, Muleshoe, Tx 79347.

Mrs. P. T. Calhoun and her baby daughter, Stefanie, left Wednesday to join her husband, 1st Lt. P. T. Calhoun, USMC. The Calhouns have been visiting her family, the Mickey Sowders, after returning from Japan where Lt. Calhoun completed a tour of duty at Camp Fuji. Lt. Calhoun is now stationed at Quantico, Va.

Candidate...

Cont. From Page 1

Clements to the Statewide Health Coordinating Council for eight years. Selby also serves as district governor of Rotary International and has been very active in both its local and regional activities.

Selby is married to the former Carolyn Symes, a native of Lubbock and an active community volunteer. As a graduate of Texas Tech University, Mrs. Selby taught high school English for several years and worked as a vocational counselor. She has served as president of the Lubbock Medical Auxiliary. She is active in the Lubbock Symphony Guild and was Panhellenic representative for Alpha Chi Omega sorority alumni.

Counties of the 19th Congressional District are: Deaf Smith, Parmer, Castro, Bailey, Lamb, Hale, Cochran, Hockley, Lubbock, Yoakum, Terry, Gaines, Dawson, Andrews and Ector.

Pd. Pol. Adv.

Local Police, Sheriff Report Low Activity

According to reports this week from the Muleshoe City Police Department and the Bailey County Sheriff's office, activities have been fairly light for the past week.

On February 29, Victoria Alarcon Cuevas, 28, was arrested by city officers on a charge of transporting alcoholic beverages. She posted a \$500 bond and was released.

Charles Roy Phares, 24, of Odessa was booked at 1:39 a.m. on March 2, on a charge of driving while intoxicated. He was released from the Bailey County jail on bond.

Also on March 2, Viola Ruth Lockridge reported a burglary at her home. She reported to city officers that a small pistol was the only thing missing.

Jerry Don Beasley, 49, was arrested by city officers at 4:06 a.m. on March 3, and booked on a charge of driving while intoxicated. He was later released on bond.

At 2 a.m. on March 4, William Ben Harmon, 22, was arrested by city officers on a charge of driving while intoxicated. He was released on bond.

Rene Terrazas, 24, was arrested on a charge of failure to appear on a city warrant. The Farwell resi-

Construction...

Cont. From Page 1

new jobs, adding to economic development and taxes.

Michael Caldwell serves as attorney for the MIDC.

When the motel is completed on the five-acre tract purchased from a private individual, the Heritage Inn is expected to be open for business just after mid-year. The developers and local officials are optimistic about the future of the motel, as it is in a location just across from the Civic Center, and the officials said many conventions could be booked into Muleshoe with the added motel space.

Although the motel will be located just outside the Muleshoe City limits, it is believed that the area will be annexed to the city in the near future.

Congress...

Cont. From Page 1

1973. In 1978 he was awarded a doctorate in agricultural Economics from Texas A&M.

Condra resigned his position as Extension Economist with the Texas A&M University System in September to evaluate this Congressional race. During his tenure with Texas A&M, he served with both the Texas Agricultural Extension Service and the Texas Water Resources Institute. He also has experience as a private consultant, real estate appraiser, irrigated farm operator, and feed-lot office manager.

Condra is married to the former Betty Ann Moore of Plainview and they have two children--Clay, 14, and Merinda, 13. The Condras are members of the Westmont Christian Church in Lubbock. Pd. Pol. Adv.

Best of Press



At Large
A delegate at large is a man who goes to a convention without his wife.

-News, Detroit.

Commissioner Agenda Full For Meeting

A meeting with representatives of Bravo Pipe Line Co., bids for a new sheriff's car and appointments to the 1984 salary grievance committee lead the list of items on the agenda for the Monday meeting of the Bailey County Commissioners Court.

Also scheduled will be interviews with applicants for the coliseum manager, considering budget amendments, reviewing departmental reports, payment of routine county bills and other miscellaneous items.

Meeting at 10 a.m. commissioners will be in session until all business is concluded, according to Bailey County Judge, Gordon H. Green.



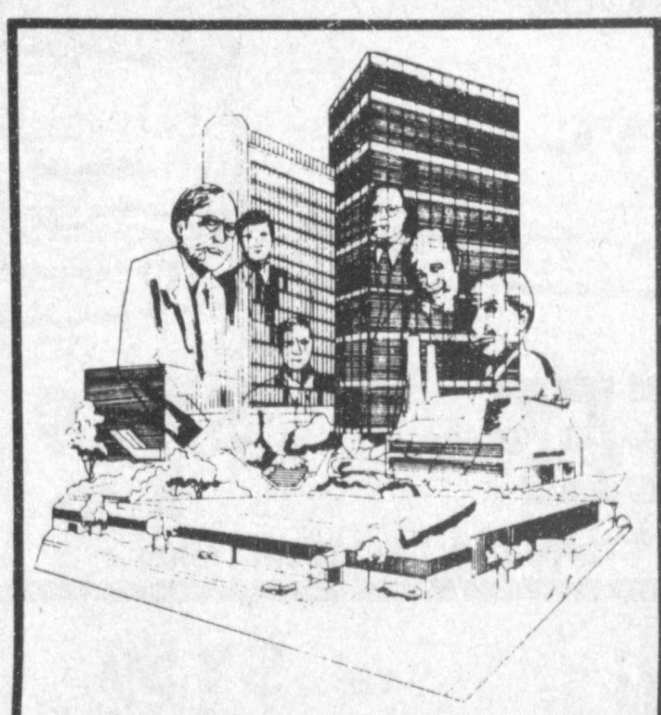
Lane Kirkland, AFL-CIO president, defending Mondale's endorsement:

"Nobody's in our pocket and we're not in anybody's pocket."

After wind cometh rain.
-Edward Haile.

ROBERT D. GREEN, INC.
 2400 W. AMERICAN BLVD. — MULESHOE, TEXAS 79347
 — HOME OF THE GREEN MACHINES —
 Terry Yell
 Sales Representative

A Community Grows With The Involvement Of Its Financial Institution



First Federal has been involved in the financial growth of Eastern New Mexico and West Texas for 50 years.

We continue our commitment to the Eastern New Mexico and West Texas area by aiding in the future financial growth of your family and business by offering the **LOWEST RATES** available since June 1980.

Take advantage **NOW**, of the money we have to lend for your home or business improvement needs.



FIRST FEDERAL
Savings & Loan Association of Clovis



Clovis • Portales



SAVINGS
 Save \$50 or \$90 on a riding mower. And up to \$400 on other John Deere products.

Our biggest sale of the year means savings like these: \$100 to \$400 toward the purchase price of a new 100 or 400 Series tractor. \$100 toward the purchase price of a rear-tine tiller. \$40 toward the purchase price of deluxe mowers, or 34G or 44G Gas Grills with LP attachments... up to \$50 on other selected products. Hurry in. Offers expire May 31, 1984.

Nothing Runs Like a Deere™

Dent-Rempe, Inc.
1516 W. Amer. Blvd
Muleshoe, Tx 79347
(806) 272-4296



"I want to keep good customers coming back, so I'm recommending XL-72aa again this year."

It takes a long time to build a good business reputation. So I only recommend a product if I know it works. That's why I'm recommending XL-72aa again this year.

Oh, I don't grow corn myself, but I do hear what my customers say about it. And when they brag about yields, even in a tough year like last, I know XL-72aa has to be good. Come to think of it, they brag about XL-72aa no matter what the weather—or the soil type. Maybe that's why they ask for it year after year.

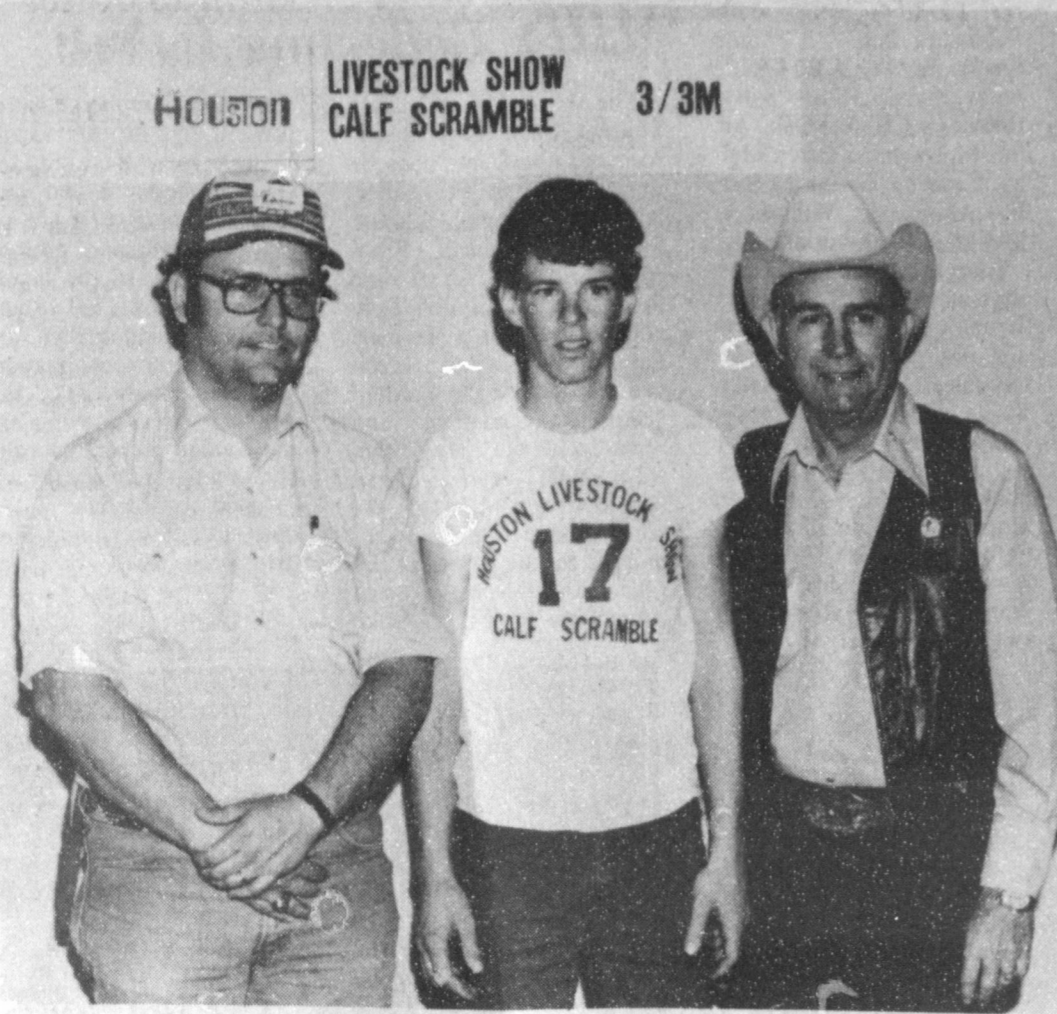
A long time ago, I learned that the best way to keep a customer is to keep giving him what he wants. Around here, that's XL-72aa.

Who's recommending only his best?

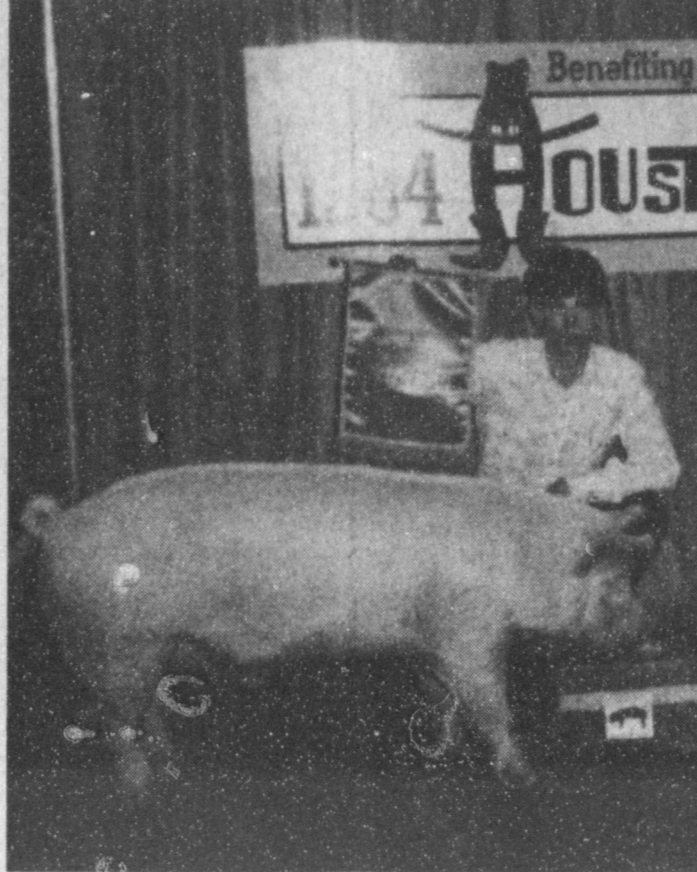
I am. **DEKALB-PFIZER GENETICS**

DEKALB is a registered brand name. Numbers designate hybrids and varieties. As a condition of sale, please note statement of limited warranty and remedy on DEKALB-PFIZER GENETICS orders and tags.

2000 Spanglers Road • DeKalb, Ga. 30019



WINNER OF CALF SCRAMBLE...Shane Mason, center, was a winner in the calf scramble at the Houston Livestock Show last week. On his left is his FFA advisor from Lazbuddie, Rick Copp. Shane also won several other honors during the annual show.



BREED CHAMPION...Sean Mason, FFA student from Lazbuddie High School, exhibited a breed champion during the Houston Livestock Show last week.



LIGHT WEIGHT HAMPSHIRE...A third place winner with his light weight Hampshire at the Houston Livestock Show last week was Shane Mason, FFA student from Lazbuddie.



WHO KNOWS

1. What religious event is observed on March 7?
2. What is its significance?
3. How is the date determined?
4. Name the stone and flower for March.
5. When was Florida admitted to the Union?
6. Who is attributed with saying "Never leave that till tomorrow which you can do today"?
7. When was the U.S. Girl Scouts organized?

Answers to Who Knows

1. Ash Wednesday.
2. It's the first day of Lent.
3. Lent begins forty days before Easter not counting Sundays.
4. The aquamarine is the stone and Jonquil the flower.
5. March 3, 1845.
6. Benjamin Franklin.
7. March 12, 1912.

Lazbuddie Youth Catches Calf Scramble Heifer

Lazbuddie FFA member, Shane Mason, son of Mr. and Mrs. Darrell Mason of Lazbuddie was one of the lucky winners Saturday night, March 3 in the Houston Livestock Show Calf Scramble event. Shane dragged his entry over the finish line and as a result, will receive a calf purchase certificate valued at \$600 towards the purchase of a registered beef or dairy heifer. Then, as for all calf scramble winners, Shane will enter into a year long program which is designed to provide a "hands on" learning experience. Accurate records of the calf's life must be kept and chronicled by photographs. Shane will then prepare a 500 word essay covering the year of care of the animal. All training and care will be under the supervision of his ag teacher, Rick Copp of Lazbuddie.

In the 1985 show, Shane will return to Houston for a special event that of the showing of his Calf Scramble Heifer, which may also then be entered in regular classes.

Other members of the

Lazbuddie FFA who placed in the largest livestock show in the United States included Sean Mason, who won the Breed Championship in the middle weight Swine-Other Pure Breeds Division. Shane also won third place with a light weight hamshire swine entry. Both of these animals made the premium sale.

Ginger Jesko placed 16th in the Other Pure Breed class, also making the premium sale. In the sheep show, Ginger Jesko showed a 22nd place light weight Fine Wool Sheep and Sheldon Mason showed a 34th place middle weight Suffolk, both of which made the premium sales.

In the steer show, Sheldon Mason showed a middle weight Red Angus, placing seventh, Shane Mason showed a heavy weight Santa Gertrudis and Sean showed a Brahman heifer, neither of which placed in the show.

FFA Supervisor and Ag Instructor Rick Copp was very pleased at the placings of the Lazbuddie FFA members and said that a lot of good, honest, hard work

paid for them. Counties in the South Plains and West Texas areas are notorious for taking top prizes in the Houston Show, and according to the record as it now stands, they will continue to do so for several years to come.

School Board Slates Meeting Monday Night

When the board of trustees of the Muleshoe Independent School District meet Monday night, they will be facing a full agenda of business items to take care of. They will meet in the school business office at 7 p.m.

Business items include ratifying the 1984 textbook committee report; approval of a seven period high school day for the 1984-85 school year; casting ballots for the election of directors for the Region XVII Education Service Center Board; Consider names of buildings in the Muleshoe ISD; Consider approving seal coating parking lots and the summer maintenance projects; consider soliciting bids on equipment the district has for sale and consider approval of updated substitute list.

They will also hear the tax collection report and will go into executive session and consider appropriate personnel action following the executive session.

Superintendent John Fuller will be presenting his report including activities and correspondence and a number of informational reports and financial reports will be given.

19 Permits For New Pipelines

Railroad Commission Chairman Mack Wallace has announced that 19 permits to operate new pipelines in Texas were granted by the RRC in January. In December, the Commission approved 25 permits, while 11 were granted in January 1983.

Fifteen of the new permits were for gathering pipelines, two were for trunk transmission lines, and two were for other types of lines. Gathering lines bring oil and gas from production leases, while a trunk transmission line is a larger diameter line into which smaller lines connect.

Sixteen of the newly-permitted lines will transport natural gas, and one each will carry crude oil, carbon dioxide, and products.

In January, five permits were granted to operate pipelines in Southeast Texas (District 3); three each in West Central Texas (District 7B) and the Midland area (District 8); two each in deep South Texas (District 4) and the Refugio (District 2) and Lubbock (District 8A) areas; and one each in East Central Texas (District 5) and the San Antonio area (District 1).

Definition
Chivalry: A man's inclination to defend a woman against every man but himself.
-Coast Guard Magazine.

1983 Texas Cotton Quality Looks Good

Despite numerous bouts with adverse weather, the 1983 Texas cotton crop is making a good showing as far as fiber quality is concerned, according to Dr. Carl G. Anderson, economist in cotton marketing with the Texas Agricultural Extension Service, Texas A&M University System.

"Traditionally, Texas has been labeled as a low quality cotton area and Texas-grown cotton has been discounted severely in the marketplace," Anderson points out. "But, it is clear that a sizeable amount of the state's cotton has very desirable spinning properties."

Widespread use of High Volume Instrument testing systems to evaluate key spinning properties of cotton fiber is providing growers and textile mill operators with more meaningful, reliable quality information about fiber length and strength for each bale of Texas cotton.

"Cotton growers need a cotton classing procedure and a pricing system that encourages producers to seek cotton varieties that upgrade quality," Anderson says. "The rapid acceptance of commercial HVI systems offers the potential to make dramatic improvements in describing spinning properties of cotton."

Although the market still discounts Texas cotton severely on the basis of micronaire readings, which indicate the fineness of individual cotton fibers, many spinning tests are showing that the micronaire reading is often meaningless, notes the economist. Micronaire tests do not necessarily indicate fiber maturity and dye acceptance.

"Genetically, cotton fiber can be fine, mature and strong -- desirable fiber characteristics, yet the current classing system discounts this cotton," says Anderson. "A fast and reli-

able indicator of fiber maturity would be a better quality measurement than micronaire."

A strength reading of 25 grams per tex or more is desirable in the textile industry, the economist notes. Cotton classes in the El Paso, Lamesa and Lubbock areas -- 60 percent of the Texas crop -- at year-end was averaging 25.8, 25.9 and 25.5 grams per tex.

"Texas cotton usually tends to be light spotted in color, but in 1983 a considerable amount of the crop fell into the white category," Anderson says. "But, because the marketing system is not fully ready to handle instrument readings for color and trash, classers are still assessing grade and visually judging trash content -- another area which needs more precise standards and evaluation."

Reductions in grade because of bark content are a major financial loss to Texas growers, points out the economist. But, the value lost in price to the grower may not be justifiable. Recent spinning tests at the Textile Research Center at Texas Tech University in Lubbock have found that the spinning performance of cotton reduced a grade because of bark performed surprisingly well.

However, Anderson predicts that roughly a third of

the 1983 Texas crop will be reduced at least one grade because of bark, and the total discount to producers will probably exceed \$15 million. The discount per pound depends on the grade before reduction, but he estimates an average discount of at least \$20 to \$25 per bale.

"Technological improvements, higher speed machinery and more precise standards for product quality have increased the importance of more exact evaluation of cotton quality characteristics," emphasizes Anderson. "These measurements can indicate the best use in manufacture and consumption and can enable

more efficient pricing of cotton in the marketplace."

A&M Five Point HI PROTEIN DOG FOOD

\$10⁵⁹

- A 26% crude protein dog food
- Formulated for hard working dogs
- For peak conditioning and performance.

John Deere Sweepstakes & Savings

Save up to \$1,400!
Win \$15,000!

Dent-Rempe

1516 W. American Blvd.
272-4296

Nothing Runs Like a Deere

"I know computers inside and out ... like Block knows taxes."

"I'm trained to know computers, not taxes. So I go to H&R Block for tax preparation. Block keeps up with the tax changes, and their preparers have done hundreds of tax returns. They're trained to spot every deduction and credit I'm entitled to. They must be good; three out of every four Block clients get a refund."

People who know their business go to

H&R BLOCK

224 W. 2nd. 272-3332

THINK - PIGGY BACK!

Piggy Back means insuring with Two Policies - **STRAIGHT HAIL** and **ALL RISK**. It **WORKS** - It's **Affordable** - And you get the **Best of Both Worlds**.

ALL RISK does have a sales closing **DATE**. You need to know your **Potential Coverage SOON!**

Contact: **Ronnie Holt**
965-2842 or 965-2764
Rt. 1, Box 151
Muleshoe, Tx. 79347

Bluff Farmers Mutual
100% Reinsured By
Omaha Indemnity
A Member of Travelers Company

Wally's business is regulated ... so is ours.

Wally makes and sells 25¢ milk shakes. If his friends ask why his price is 25¢, Wally explains he has to buy milk, ice cream, syrup, cups and straws ... and needs to make some money, too.

If the costs of making milk shakes should go up too much, Wally figures he should raise his price. Otherwise, he may as well get out of the business. But before Wally increases his price, he checks with his mother to see if she agrees with his decision.

Wally believes he makes good milk shakes and sells them at a fair price. He hopes his mother and his customers will understand that some costs are beyond his control.

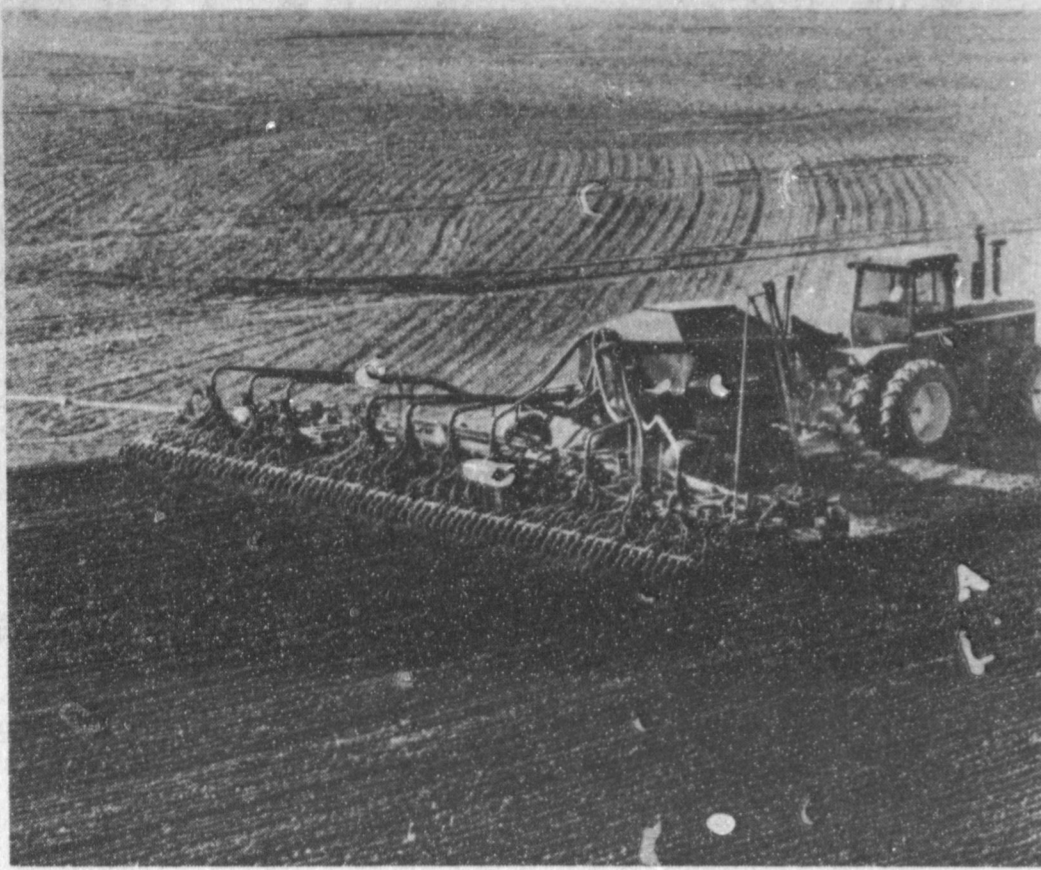
Many costs are reflected in the prices of products and services -- at Wally's milk shake stand or any other business, including Southwestern Public Service Company's business of making and delivering electricity.

Because SPS is a public utility, our business and our prices are government regulated.

Wally works hard to satisfy his customers. Like Wally, we at Southwestern Public Service Company are working to justify your trust.

Working to justify your trust

SPS
SOUTHWESTERN PUBLIC SERVICE COMPANY



NEW AIR DRILL...John Deere has come out with an all new air drill for seed pictured here at work in a field. According to information received, the new air drill is expected to cut seeding time in half.

Dent-Rempe, Inc. Has All-New Seed Air Drill

Dent-Rempe, Inc. the John Deere Dealer in Muleshoe, is now selling what Ronnie Dent called "the best air drill on the market--" the new John Deere 700

Mrs. Harris Graveside Services Held

Services for Ruby Esther Brashear Harris, 74, of Farmington, N.M. were held at 11 a.m. Saturday, March 10 in the Immanuel Baptist Church of Farmington N.M. with John Preston, pastor, officiating.

Rebekah graveside services will be conducted at 11 a.m. Monday in Bailey County Memorial Park with the Rev. V.L. Huggins, pastor of the Trinity Baptist Church of Muleshoe, officiating. Local arrangements will be under the direction of Ellis Funeral Home of Muleshoe. Mrs. Harris died Wednesday.

A native of Arch, N.M., Mrs. Harris was born June 23, 1909 and married John R. Harris Jan. 21, 1962, in Malaga, N.M. She was a member of the Immanuel Baptist Church and the Needmore Rebekah Lodge. Survivors include her husband, John R.; two sons, Glen M. Brashear of Farmington, N.M. and James R. Harris of Rock Springs, Wyoming; two sisters, Opal Cope of Santa Anna and Edith Kolb of Amado, Arizona; one brother, Amos Westfall of Abilene; six grandchildren and 12 great grandchildren.

series double-disk and hoe-type air drills that Dent says can cut seeding time in half. The disk drill uses field cultivator shanks to prepare the soil for double-disk openers spaced on 7-, 8- or 10-inch settings to place seed. Than 2x13 inch wheels firm soil around the seed, explained Dent.

He said the hoe version uses spring-trip single-point openers with individual depth control press wheels to place the seed and firm the soil around the seed.

"The disk drill does an excellent job in reduced-till conditions. The hoe drill has received high marks from farmers who tested the drill in heavy residue, minimum-till seeding," added Dent.

Two ground driven fluted feedcups meter the seed for these drills. Than a 1000-rpm PTO driven fan sends seed to openers quickly and smoothly for uniform seed monitoring, continued Dent. A 3-section folding John Deere field cultivator fram supplies the backbone for the double-disk drills, added the local man. The hoe-type drill utilizes a 3-section John Deere chisel plow frame for support. These drills have the flexibility to follow the contour of the land to deliver uniform seeding over terraces and down into washouts, he said.

The 80 bushel hitch mount drill comes in 24, 28 and 32 foot seeding widths. The 180 bushel 4 wheel tank handles 35 to 40 foot swaths, and Dent says that transporting these drills is "a snap." He says to touch a level, place transport locks

and you've folded the drill and are ready to go to the next field.

"To make these wide-open drills easier to handle," concluded Dent, "a monitor attachment is available to alert operators of plugged openers, low seed level in grain tanks and acres covered."

Lazbuddie School Menu

March 12-16, 1984
MONDAY BREAKFAST
 Cereal, Juice and Milk
LUNCH
 Salisbury Steak / Gravy, Mashed Potatoes, Black Eye Peas, Hot Rolls, Fruit and Milk

TUESDAY BREAKFAST
 Buttered Toast, Scrambled Eggs, Juice and Milk
LUNCH
 Meat & Cheese Nachos, Pinto Beans, Green Salad / Dressings, Peanut Butter Cookies and Milk

WEDNESDAY BREAKFAST
 Pancakes, Syrup, Juice and Milk

LUNCH
 Sausage & Cheese Pizza, Buttered Corn, French Fries / Catsup, Cake and Milk

THURSDAY BREAKFAST
 Hot Biscuits / Jelly, Sausage, Applesauce and Milk
LUNCH
 Chicken Patties / Gravy, Green Beans, French Fries / Catsup, Hot Rolls, Fruit / Jello and Milk

FRIDAY BREAKFAST
 Peanut Butter and Jelly Toast, Juice, and Milk
LUNCH
 Hamburgers, Pickles, Lettuce, Onion, French Fries / Catsup, Fruit and Chocolate or White Milk

Healthy Nation
 The trouble with the internal revenue people is they really believe the United States is a land of untold wealth.
 -Tribune, Great Bend, Kan.

West Plains Medical Center Report

PATIENTS IN WEST PLAINS MEDICAL CENTER

March 6--Elevina Espinoza, Terry Green, William J. Lancaster, Sallie Schuster, Floyd Grimsley, Alpha Laney, Lida Wilhite, Shara Taylor, Ruby Murdock, Tammy Cain, Annie Dunn, Sylvan Robison, Ira Lee Kit-chens, J.D. Bayless, Arthur

18. LEGAL NOTICES

NOTICE OF INTENTION TO INCORPORATE A GOING BUSINESS

Notice is hereby given that KC Mufflers & Manufacturing, Inc., a partnership composed of C.K. Castleberry and Duane Castleberry, doing business at 201 North 1st, Muleshoe, Texas, will be dissolved and that after February 10, 1984, the business will be conducted without a change of name by KC Mufflers & Manufacturing, Inc., trans-ferree, a Texas corporation, at 201 North 1st, Muleshoe, Texas. This notice is given Pursuant to Article 1302.2.02 of the Texas Miscellaneous Corporations Laws Act, section 6.103(7) of the Texas Business and Commerce Code, and section 35 of Article 5132b of the Texas Civil Statutes. k18-9s-4tsc

THE CITY OF MULESHOE WILL ACCEPT BIDS ON THE FOLLOWING VEHICLES:

1. 1977 Chevrolet 4 - Door (0589)
2. 1979 Chrysler 4 - Door (2608)
3. 1979 Chrysler 4 - Door (4501)

The vehicles will be sold "as is" and may be seen at the city barn. Sealed Bids should be received at City Hall, 215 South First Street, Muleshoe, Texas, no later than 5:00 p.m. on Friday March 23, 1984. Bids will be opened Monday morning at 9:00 a.m. March 26, 1984. A cashiers check or money order should accompany your bid. Checks or money orders will be returned to you if you do not get the bid. c18-11s-4tsc

NOTICE OF TRUSTEE ELECTION

(AVISO DE ELECCION DE REGENTES) The Lazbuddie Independent School District Board of Trustees hereby gives notice of an election to be held on April 7th, 1984, for the purpose of Electing two (2) trustees for full three year terms.

(Por la presente la junta de regentes del distrito escolar independiente da aviso que se llevara a cabo una eleccion el dia Abril 7th de 1984 con el proposito de elegir el numero de regentes indicado a un termino completo

ABSENTEE VOTING by personal appearance will begin on Monday, March 19th, 1984, and continue through Tuesday, April 3rd, 1984, from 8 a.m. to 4 p.m. on each day which is not a Saturday, Sunday or an official state holiday. (VOTACION POR AUSENCIA en persona comencera el Lunes de Marzo 19th de 1984 continuara hasta el Martes de Abril 3rd de 1984 desde las 8 a.m. hasta las 4 p.m. en todos los dias que no sean sabado, domingo, o dia oficial de vacaciones esta-tales.)

Absentee voting in person will be conducted at Lazbuddie I.S.D. Administration Office. Applications for absentee ballots by mail should be mailed to Lazbuddie I.S.D. Drawer A, Lazbuddie, Texas 79053. (Votando por ausencia personal va ser conducido acerca de Lazbuddie I.S.D. Oficina de Administracion. Solicitudes para una boleta de ausencia por correo deben dar vuelta por correo al Lazbuddie I.S.D. Drawer A, Lazbuddie, Texas 79053)

THE POLLING PLACES (S) designated below will be open from 7:00 a.m. to 7:00 p.m. on the day of the election. (Los sitios de votacion indicados abajo se abran desde las 7:00 a.m. to 7:00 p.m. el dia de la elec-cion.)

Pct. No. (num. de precin-to) 5 & 6, Location (Colo-cacion), Lazbuddie I.S.D. Auditorium. 118-11s-1tc

McDaniel, Ollie Sebring, Susie Medley, William C. McMahan, J.R. Castleberry, and April Guy.

March 7--Maxine Hess, Elevina Espinoza, Terry Green, William J. Lancas-

Writing Workshop Scheduled

Eastern New Mexico University's Department of Continuing Education will offer a workshop in English on March 17-18 from 8 a.m. to 5 p.m.

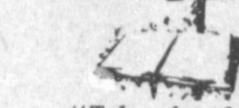
The workshop is designed to strengthen the writing skills of all participants, whatever their level of experience, with special attention to students preparing for the National Teachers Examination. There will be a rapid overview of grammar and essay-writing skills with in-class essay writing and immediate feedback. Proofreading practice and tips on approaching and organizing an essay response will also be discussed.

The two instructors for the course will be Dr. Patrice Caldwell and Dr. Chris Henson, assistant professors of English at ENMU. They can be contacted at the College of Liberal Arts, Rooms 212d and 212e, for additional information on the workshop.

The registration fee for the course will be \$36 and one semester credit hour will be awarded for the successful completion of the class.

ter, Floyd Grimsley, Sallie Schuster, Lida Wilhite, Shara Taylor, J.R. Castleberry, Annie Dunn, Sylvan Robison, J.D. Bayless, Arthur McDaniel, Kristen Mab- by, Catalina Garcia -- Baby Boy Garcia, William C. McMahan and April Guy. March 8--Maxine Hess, Elevina Espinoza, Terry Green, William J. Lancaster, Rotha Williams, Floyd Grimsley, Sallie Schuster, Shara Taylor, J.R. Castleberry, Alta Franks, Annie Dunn, Sylvan Robison, Arthur McDaniel, Kristen Magby, Catalina Garcia -- Baby Boy Garcia, Rosie Toscano, William C. McMahan, Wayne Taylor, April Guy and Antonia Herrera

BIBLE VERSE



"Take therefore no thought for the morrow: for the morrow shall take thought for the things of itself."

1. Does this verse advise a complete lack of planning in our daily lives?
2. Just what is its meaning?

Answers to Bible Verse

1. No.
2. That we are not to worry but should do our best and leave the future in the hands of God.

DAVIS COMMERCIAL PUMPING SERVICE
 Cess Pools Grease Pits Dipping Vats Mud Pits Septic Tanks
 'If it's part liquid & not over 20 ft. deep we'll try to drain it.'
 806-272-4673
 806-272-3467
 Muleshoe, Texas
 15-38s-stfc

Atlas - Hotpoint - Magic Chef
Rick's Repair Service
 Open For Business: January 2, 1984
 To Repair All Small Appliances & Lawnmowers
 Rick T. Galt, Owner
 Maple (806) 927-5595

MJHS Collecting Labels

The Muleshoe Jr. High Student Council members received a welcome boost in their campaign to collect labels from Campbell soup, Swanson products, Franco-American, V-8 and Recipe dog food. Bob Donaldson, manager of the local Pay-n-Save, has been involved in helping the student group for sometime, and recently he presented them with 30,000 labels. These had been collected at the store from patrons and employees for the benefit of the school. Donaldson worked in conjunction with Mike

Comealy, Campbell Soup representative for this district. Each year the Student Council students and their sponsors, Mary Scoggin and Mike Richardson, promote the collection of the labels, which are then used to purchase equipment for the school. Past accumulations have been used to get 2 sets of books, 5 cassette players and a video player/recorder. The labels for this year will be used to purchase 2 Dukane automatic sound film-strip projectors.

Senator Baker urges U.S.-Soviet summit talk.

SAVE 10%

Quality costs less during the John Deere oil filter sale
 Save 10% now on selected oil filters... there's one right for your hard-working equipment

The John Deere name means quality in equipment oil filters. Now, the John Deere name means competitive prices with special coupon savings, too. Stop in and stock up on the filters you'll need in the months ahead. Don't wait. Sale ends March 15th.

Charles Hamilton
 Parts Mgr.
Dent-Rempe Inc
 1516 W American Blvd
 Muleshoe, Tx 79347
 (806) 272-4296

WHY A SPIDER?

Don't be surprised to find a spider in your morning newspaper. The spider is merely looking to see which of the town's merchants is not advertising. He will then go to that store, spin his web across the door and lead a life of undisturbed peace!

NEWSPAPER ADVERTISING DOES MAKE THE DIFFERENCE

Muleshoe Publishing
 Call 272-4536 for YOUR Advertisement!

Hire the Right Man for the Job!
CONDRA FOR CONGRESS
GARY D. CONDRA
 Agricultural Economist
 Democrat
 Pd. Pol. Adv. by Condra for Congress Comm.
 P.O. Box 64309, Lubbock, Tx 79464 Tommy Swann.

True Value Hardware Stores

BARGAIN OF THE MONTH

4.99

2-Pc. Scissors Set
 8-in. and Shortcut™ scissors stay sharp. 10M24D/12
 Quantities Limited

TOOL VALUE OF THE MONTH

2.99

21-in. Pruner w/Grip
 Sturdy tubular steel frame with tension handle lever. MMP21P
 Quantities Limited

HARDWARE VALUE OF THE MONTH

13.88

8-in. Twin Handle Kitchen Faucet
 Brass construction, chrome finish. Without spray 97-410
 With Spray, 97-415 - 17.88
 Quantities Limited

Fry & Cox, Inc.
 401 S. First 272-4511

**BUY
SELL
AND
TRADE
WITH...**

CLASSIFIED ADS

**DEADLINE FOR
CLASSIFIED ADS IS
TUESDAYS AND FRIDAYS
11:00 A.M.**

CLASSIFIED RATES
1st Insertion
Per Word...\$1.15
Minimum Charge...\$2.30
2nd Insertion
Per Word...\$1.13
Minimum Charge...\$2.00
CARD OF THANKS
Per Word...\$2.20
CLASSIFIED DISPLAY
\$1.70...per column inch
BLIND AD RATES
50% more
DEADLINES
11 a.m. Tues for Thurs.
11 a.m. Fri. for Sun.
**WE RESERVE THE RIGHT
TO CLASSIFY REVISE OR
REJECT ANY AD.
NOT RESPONSIBLE FOR
ANY ERROR AFTER AD
HAS RUN ONCE.**

3. HELP WANTED

Excellent income for part time home assembly work. For Info. call 504-641-8003 Ext. 8911 Open Sun. g3-7s-4tpeosts
Nursery attendant position available. Christian, Non-Smoker, Adult. Salary Negotiable. 272-3017 for interview. a3-11s-tfc

GOVERNMENT JOBS-

Thousands of vacancies must be filled immediately. \$17,634 to \$50,112. Call 716-842-6000, Ext. 36336. 3-10t-2tp

Need LVN and CMA for employment. Part time or full time. 3 p.m.-11 p.m. shift and 11 p.m.-7 a.m. shift. Contact Jo Blackwell, Administrator, Prairie Acres, 201 East 15th Friona, Tx 79035, 806-247-3922. Please apply in person 9 a.m.-4 p.m. Mon.-Fri. p3-10s-4tc

Bailey County Sheriff's office part-time employment as jailer, must be 19 years of age or older. High School or GED required. Jail school optional, will train. Hospital and Life Insurance paid. Come by Sheriff's Office, 300 S. 1st. for application between 8 a.m. and 5 p.m. s3-10s-3tsc

Ag Salesman in this area, needs ag background. Start immediately. Call (915) 758-6071. w3-11s-6tc

Pump Maintenance Worker - Salary \$5.36 per hour. Part-time position. Maintaining pumps in City of Lubbock. Wellfield located in Bailey County. Requires mechanical experience and Texas Commercial Driver's license. For application, write or call: City of Lubbock, Personnel Department, P.O. Box 2000, Lubbock, Tx 79457 (806) 762-6411. Equal Opportunity Employer. c3-11s-1tc

5. APTS. FOR RENT

FOR RENT: 1 bedroom apartment, unfurnished. Some bills paid. Call 965-2188 or 272-4754. s5-8t-tfc

3. HELP WANTED

SEEKING WOMEN TO DO COLOR ANALYSIS FOR WARDROBE AND COSMETICS! You may be qualified to offer FREE Color Analysis while earning up to \$100 a day and more. Call Judith at (806) 965-2613. j3-11s-2tsc

Fish-n-Sea Industries is now looking for qualified men in the Muleshoe Area. Experience not necessary. Write Larry White, Box 96, Dumas, Tx. 79029. f3-11s-4tc

PROCESS MAIL AT HOME \$75.00 per hundred! NO experience. Part of Full time. Start immediately. Details send self-addressed stamped envelope to C.R.I. 5288, P.O. Box 3149, Stuart, Fl. 33495 3-10t-4tp

Jobs Overseas-Big money fast. \$20,000 to \$50,000 plus per year. Call 1-216-453-3000. Ext. 26047 3-10t-2tp

1. PERSONALS

1. PERSONALS

Thanks to each of you for the beautiful cards, visits, prayers, flowers and other acts of kindness shown during my recent hospital stay. May God Bless each of you

Myrtle Wells

8. REAL ESTATE FOR SALE

Nice 2 bedroom, 1 bath & garage in Lenau Addition. Central Heat, Large Kitchen, Patio. Mid 20's. 272-3123. b8-7s-1tp-stfc

FOR SALE

A nice 2 bedroom home, bath, double garage, 6 acres, good well, east of Enochs.

160 acres dryland, some grass, nice house, northwest of Goodland.

200 acres dryland, extra big, nice brick home, northwest Three Way School.

Wanda Layton 933-4631 18-11s-1tc

8. REAL ESTATE FOR SALE

BINGHAM & NIEMAN REALTY

116 E. Ave. C 272-5285-272-5286

WE CAN HELP OUR BUYERS WITH 9 7/8% A.R.M. INTEREST RATES ON 30 YEAR LOANS!!!!

RICHLAND HILLS
3-1 3/4-2 carport Brick, Cent. A&H, built ins, gas log fireplace, fenced yard, & PRICED TO SELL!!!!!!

3-1 3/4 Brick, Cent. heat, Evap. air, fireplace. A very nice home.....

3-2+2 carport Brick, Cent. A&H, built ins, 2 fireplaces, nice den & living area.....

2-1-1 home, Cent. heat, large rooms, fenced yard. Nice & only \$23,500!!!!!!

PRICE REDUCED 3-1-1 carport home, earthtone carpet, fenced yard. Very Nice.....

3-1-1 home on corner lot, Cent. heat, Evap. air, fenced yard!!!!!!

3-1 3/4-1 Carport home, cent. heat, nice carpet, fenced yard & more 30's..

COUNTRY CLUB

3-1 3/4-2 Brick home, Cent. A&H, built ins, nice fenced yard, & in a nice area.....

2-1 home on corner lot plus nice storage bldg....

ASSUME VA LOAN-3-1 3/4-1 carport home, Cent. A&H, utility, fenced yard. Small Equity & Close to Schools!!!!!!

ENJOY COUNTRY LIVING in this 3-1 3/4-2 home on 1 acre, Cent. A&H, built ins, nice large patio, fenced yard, storm shelter, fruit trees!!!!!!

2-1 home on 1 acre, built ins, nice carpet, on pavement.....

2-1-1 home on corner lot, freshly painted interior, includes furniture & other items. One Block to School.....

Nice 3-2 home on 1 acre, isolated master bdrm., Cent. A&H, built ins, fireplace, wet bar, fenced yard, & insulated storage. Mid 70's!!!!!!

3-1 3/4-1 carport, large master bdrm., nice workshop & storage bldg. Low 30's.....

2-1-1 home priced at only \$8,000!!!!!!

3-1 3/4 home on corner lot, Cent. A&H, built ins, isolated master, utility, & only \$42,500.....

A STEAL AT ONLY \$20,000 is this 3-1+1 carport home, Cent., heat, fenced yard, new roof, and more.....

8. REAL ESTATE FOR SALE

80 acres, 6" well, undergrd. tile, close to town.....

40 acres, 8" well, undergrd. line, & sideroll sprinkler.....

We also have a good selection of other farms, commercial property, & lots. Check with us for details on these listings.

"WE APPRECIATE YOUR BUSINESS"
GEORGE NIEMAN, BROKER
DIANNE NIEMAN, BROKER

8-10s-stfc

Henry Realty

111 W. Ave. B Muleshoe 272-4581

3 Bedroom - 1 Bath - 1 car garage in Lenau Addition.

800 Acres West of Muleshoe on HWY Excellent Improvements. Priced Right to Sell. Owner Financing.

38 Acres West of Muleshoe, 6 Inch Well, Sideroll, All Wheat.

One Acre Sites for Home Construction. 3 Miles of Muleshoe on HWY, 3 lots remain.

h8-8t-tfc

8. REAL ESTATE FOR SALE

8. REAL ESTATE FOR SALE

8. REAL ESTATE FOR SALE

8. REAL ESTATE FOR SALE

JUST LISTED 2-1-1 home new roof & freshly painted interior \$19,500.....

3-2 3/4 home on corner lot, Cent. A&H, built ins, 2 fireplaces, approx. 3,000 sq. ft. of living area, new carpet, & large gameroom.....50's.....

EARTH 3-1 3/4-2 Brick, isolated master, Cent. A&H, built ins, fireplace, finished basement, fenced yard, storage bldg., & only 4 yrs. old!!!!!!

EXTRA NICE 2-1+1 carport home, new paint, fenced yard, & storage bldg.....

3-1 3/4-2 home on corner lot, Cent. A&H, built ins, covered patio, fenced yard. Buy Equity & Assume!!!!!!

3-2-1+1 carport home, built-ins, Cent. heat, fireplace, fenced yard. \$47,500....

3-1 1/2-1 Brick near schools, fenced yard, nice large workshop. \$39,500!!!

3-1 3/4-1 carport Brick, Cent. A&H, built ins, storage area, fenced yard, on corner lot.....

CLOVIS HWY. 3-1 home & 2-1 home (rented) on approx. 4.4 acres, fenced, & has sprinkler system. \$42,500!!!!!!

2-1 3/4 Mobile home +2 carport, built ins, cable TV, plus large barn & corral, on 2 acres, on pavement close to town....

NICE CONVENIENCE STORE with video gameroom & gas pumps, good equipment. Owner will show books.....

CHURCH BLDG. on 2 lots, approx. 2350 sq. ft., paved parking.....

A 1.9 acre tract of commercial property with 3 bldgs. & approx. 360 ft. of Hwy. frontage.

1062 acres, 3 wells, 2 circles, large metal barn, 9% Owner financing.....

2-1-1 home on 32 acres. 6" well, fully allotted, close to town on pavement.....

80 acres, 6" well, undergrd. tile, close to town.....

40 acres, 8" well, undergrd. line, & sideroll sprinkler.....

We also have a good selection of other farms, commercial property, & lots. Check with us for details on these listings.

8. REAL ESTATE FOR SALE

80 acres, 6" well, undergrd. tile, close to town.....

40 acres, 8" well, undergrd. line, & sideroll sprinkler.....

We also have a good selection of other farms, commercial property, & lots. Check with us for details on these listings.

"WE APPRECIATE YOUR BUSINESS"
GEORGE NIEMAN, BROKER
DIANNE NIEMAN, BROKER

8-10s-stfc

8. REAL ESTATE FOR SALE

New Listing For Sale By Owner: 3 Br, 1 Bath, 1 Car Garage, Central Heat, Corner Lot. Priced to Sell. 402 E. Austin St. 272-4738 8-41t-tfc

8. REAL ESTATE FOR SALE

8. REAL ESTATE FOR SALE

8. REAL ESTATE FOR SALE

8. REAL ESTATE FOR SALE

8. REAL ESTATE FOR SALE

8. REAL ESTATE FOR SALE

8. REAL ESTATE FOR SALE

8. REAL ESTATE FOR SALE

8. REAL ESTATE FOR SALE

8. REAL ESTATE FOR SALE

8. REAL ESTATE FOR SALE

8. REAL ESTATE FOR SALE

8. REAL ESTATE FOR SALE

8. REAL ESTATE FOR SALE

8. REAL ESTATE FOR SALE

8. REAL ESTATE FOR SALE

8. REAL ESTATE FOR SALE

8. REAL ESTATE FOR SALE

8. REAL ESTATE FOR SALE

8. REAL ESTATE FOR SALE

8. REAL ESTATE FOR SALE

8. REAL ESTATE FOR SALE

8. REAL ESTATE FOR SALE

8. REAL ESTATE FOR SALE

8. REAL ESTATE FOR SALE

8. REAL ESTATE FOR SALE

8. REAL ESTATE FOR SALE

8. REAL ESTATE FOR SALE

8. REAL ESTATE FOR SALE

8. REAL ESTATE FOR SALE

8. REAL ESTATE FOR SALE

8. REAL ESTATE FOR SALE

8. REAL ESTATE FOR SALE

FOR SALE BY OWNER Large Brick Home on 10 acres. Plus 32' x 50' insulated shop building, small barn, fruit orchard, excellent well with sprinkler system. Locate 2 1/2 miles from city limits. \$93,500. Call 272-4957. m8-4s-tfc

8. REAL ESTATE FOR SALE

8. REAL ESTATE FOR SALE

8. REAL ESTATE FOR SALE

8. REAL ESTATE FOR SALE

8. REAL ESTATE FOR SALE

8. REAL ESTATE FOR SALE

8. REAL ESTATE FOR SALE

8. REAL ESTATE FOR SALE

8. REAL ESTATE FOR SALE

8. REAL ESTATE FOR SALE

8. REAL ESTATE FOR SALE

8. REAL ESTATE FOR SALE

8. REAL ESTATE FOR SALE

8. REAL ESTATE FOR SALE

8. REAL ESTATE FOR SALE

8. REAL ESTATE FOR SALE

8. REAL ESTATE FOR SALE

8. REAL ESTATE FOR SALE

8. REAL ESTATE FOR SALE

8. REAL ESTATE FOR SALE

8. REAL ESTATE FOR SALE

8. REAL ESTATE FOR SALE

8. REAL ESTATE FOR SALE

8. REAL ESTATE FOR SALE

8. REAL ESTATE FOR SALE

8. REAL ESTATE FOR SALE

8. REAL ESTATE FOR SALE

8. REAL ESTATE FOR SALE

8. REAL ESTATE FOR SALE

8. REAL ESTATE FOR SALE

8. REAL ESTATE FOR SALE

8. REAL ESTATE FOR SALE

SMALLWOOD REAL ESTATE

232 Main 272-4838
3 bedroom, 1 bath, East Birch, Priced to Sell.
2 Bedroom, 1 bath, \$500.00 Down Payment, \$174.00 a month for 10 years.

Mobile Home with 66 by 75 foot lot, \$500.00 Down Payment, \$129.00 a month.

For Rent -- 2 Bedroom, 2 Bath Apartment with Stove & Refrigerator.

s8-9s-tfc

JIMMIE CRAWFORD REAL ESTATE & INS.

1725 W Ave E Muleshoe, Texas Phone 272-3666

2-1-1 in Lenau Addition. Outside trim just painted.

2-1 with utility on 6th st. Will sell Lease-Pur.

3-1/2-2 with carport in Lenau Addition. Price reduced to sell.

3-2 with carport in Richland Hills. Very nice.

Lots of farm listings. Call for information.

8-10s-stfc

J.B. SUDDERTH REALTY, INC

Drawer 887 Farwell, Tx. 79325 Ph. 806-481-3288

160 Acre on Hwy. N.W. of Muleshoe, 2 wells, Excellent Financing. Priced for Immediate Sale.

320 Acre, 3-8 inch wells, 1 Circle. Lays Excellent. Oklahoma Lane Area.

320 Acre, 1 Circle, 2-8 inch wells, good water area. Oklahoma Lane Area.

480 Acres-irrigated with Circle Sprinklers, lays good, on highway-West of Muleshoe. Owner says sell!

50 acres in edge of Muleshoe 6 inch electric well. Barn, Corral, side roll sprinkler, City Water. Owner says Sell.

8-6s-tfc

Krebs Real Estate

201 W. Ave. D. Tele. 272-3191 We Make Appraisals Good 2 Br. house to be moved \$7500.

160 A. W. of Muleshoe, Terms

145 A. Close in. Good Terms.

Need 3 GI's to buy 3-20 A tracts.

Beautiful 320 A. Wheat - joins Tex. line. Priced to sell.

560 A. Estate - Good Wheat and Grass land. 160 A. Minerals.

Good hogfarm - 30 A. land, turn key operation. See This!

15 A on Hwy 84 - Close. Good Buy.

5 A land, beautiful home, 1-2 Br. rent house. Sprinkler system. Good Well, 2 trailer hookups.

Steel barn to be moved. See This!

Good corner lot - 100' x 150', \$2000.

Motel on Hwy 84, 23 units, 34 trailer hook-ups. We need to turn this.

8. REAL ESTATE FOR SALE

FOR ALL your Real Estate Needs in New Mexico. See Lily Morris at Prince Realty and Associates. 2905 North Prince, Clovis, N.M. (505) 769-2101 or residence 763-6981. m8-3t-stfc

TOWN and COUNTRY Real Estate

John W. Smith Broker 806-272-5335 223 East Ave. B Muleshoe, Tx 79347

9. AUTOMOBILES FOR SALE

1976 Suburban Low mileage. Excellent condition call after 5:00 272-3891. m9-11s-3tc

1974 Buick Limited. \$1,000. 2

LUCK O' THE IRISH FOOD BUYS



KRAFT
GRAPE JELLY
99¢
2 LB. JAR

ORE-IDA CRINKLE CUT
POTATOES
\$1.29
2 LB. BAG

BORDEN'S
CHOCOLATE MILK QT. **59¢**
LADY BORDEN ASSORTED
ICE CREAM 1/2 GAL. CTN. **\$2.19**
BORDEN ASSORTED DIPS OR
SOUR CREAM 2 8 OZ. CTNS. **\$1.00**
PET RITZ ASSTD. FRUIT EXCEPT CHERRY
COBBLERS 26 OZ. PKG. **\$1.59**
DOWNY FLAKE FROZEN
WAFFLES 12 OZ. PKG. **79¢**
SHEDD'S COUNTRY CROCK
MARGARINE 3 LB. BOX. **\$1.49**
PILLSBURY ALL READY
PIE CRUST 15 OZ. PKG. **\$1.29**
KRAFT HALF MOON LONGHORN
CHEESE CHEDDAR OR COLBY 16 OZ. PKG. **\$2.39**
KRAFT SLICED
VELVEETA 16 OZ. PKG. **\$1.99**

CLAIROL
CONDITIONER
SHAMPOO 16 OZ. BTL. **\$1.89**

LIGHT-ASH-PALE BLONDE
NICE-N-EASY
\$3.09
EACH

ASSORTED
LOVING CARE
\$2.59
EACH

CLAIROL
CONDITIONER II
16 OZ. BTL. **\$1.89**

30% OFF LABEL LIQUID
PALMOLIVE
\$1.59
32 OZ. BTL.

50% OFF LABEL W/FABRIC SOFTENER
KING FAB
\$2.99
84 OZ. BOX

ALL TYPES DORITOS
TORTILLA CHIPS
\$1.49
\$2.09 SIZE

V-8 COCKTAIL
JUICE
\$1.19
6 PAK-6 OZ. CANS

WELCH REG. OR WHITE
GRAPE JUICE
\$1.49
40 OZ. DECANTER

FOLGER'S FLAKED
COFFEE 13 OZ. CAN **\$2.19**
FOLGER'S COFFEE
CRYSTALS 8 OZ. JAR **\$3.59**
KELLOGG'S FROSTED FLAKES
CEREAL 20 OZ. BOX **\$1.98**
TRAPPEY'S JALAPENO W/BACON
PINTO BEANS 2 5 1/2 OZ. CANS **89¢**
KRAFT REDUCED CALORIE ITAL /FR /BTRMLK /
DRESSING CATALINA 8 OZ. BTL. **79¢**
KRAFT POURABLE ITAL /FR /BTRMLK /CATALINA
DRESSINGS 8 OZ. BTL. **79¢**
SUNSHINE VANILLA
WAFERS 11 OZ. BOX **89¢**

QUALITY MEAT SPECIALS
HEAVY GRAIN FED BEEF BONELESS
BLADE CUT
CHUCK ROAST
\$1.59
LB.

HEAVY GRAIN FED BEEF BONELESS CENTER CUT LB. **\$1.99**
HEAVY GRAIN FED BEEF BONELESS
CHUCK ROAST LB. **\$1.89**
EXTRA LEAN GUAR 81% LEAN
GROUND CHUCK LB. **\$1.69**
SELECTED SLICED YOUNG
BEEF LIVER LB. **89¢**
FRESH GUAR 73% LEAN
GROUND BEEF LB. **\$1.29**
ECHRICH REG /POLISH SMOKED
SAUSAGE LB. **\$1.99**

HORMEL OLD FASHIONED 2-4 LB. CORNED
St. Patrick's Day Special
BEEF BRISKET Pace Roast LB. **\$1.99**

TENDERCRUST SANDWICH WHEAT
BREAD
59¢
1 1/2 LB. LOAF

WHT./ASSTD. FACIAL TISSUE
KLEENEX
67¢
175 CT. BOX

12 OZ. CANS
DR. PEPPER
\$1.49
6 PAK

FIELD TRIAL HI-PRO DRY
DOG FOOD
\$4.39
25 LB. BAG

ASSORTED COLORS
HANDI WIPES
69¢
6 CT. PKG.

NEW FREEDOM DEOD./UNSC.
MAXI THINS
\$3.59
30 CT. BOX

CLAIROL
FINAL NET
8 OZ. BTL. **\$2.49**

Regular or Butter
CRISCO 3 lb. **\$2.39**
LAUNDRY DETERGENT
TIDE 49 OZ. BOX **\$1.88**
WINDOW CLEANER
SPRAY AWAY 19 oz. **\$1.45**

ALL GRINDS MOUNTAIN GROWN
FOLGER'S COFFEE
\$2.29
1 LB. CAN

FRESH FROM THE FARM PRODUCE
GOLDEN RIPE
BANANAS
3 99¢
LBS.
CALIFORNIA
GREEN ONIONS 2 49¢
CALIFORNIA
CARROTS 1 LB. PKG. **39¢**
6 OZ. CELLO
RADISHES 2 PKGS. **59¢**

STORE HOURS:

Mon - Sat 8:00 a.m. - 9:00 p.m.
Sun Only 9:00 a.m. - 7:00 p.m.



STORE ADDRESS:

515 Amer. Blvd.
Winner of The Stamps
Joyce Terrall

PRICES EFFECTIVE MARCH 11 THRU MARCH 17, 1984
WE RESERVE THE RIGHT TO LIMIT