



**WEATHER**

October 17	58	34
October 18	72	37
October 19	65	30
October 20	67	32

# BAILEY COUNTY JOURNAL

'The Community Of Opportunity-Where Water Makes the Difference'

Vol. 22, Number 43

12 Pages Today

Published Every Sunday at Muleshoe, Bailey County, Texas 79347

Sunday, October 21, 1984



**IT'S SPOOKS, GOBLINS AND GHOSTS**--Along with happy little ones nestled among the Halloween Decorations. Two trophies are shown on one of the bales of hay to be presented to a commercial winner and a home winner in the Muleshoe Chamber of Commerce and Agriculture decorating contest. The youngsters are from left, April Hugg, daughter of Gary and Rhonda Hugg; Jennifer Stegmoeller, daughter of Troy and Rhonda Stegmoeller; Micaela Eagle, daughter of Weldon and Toni Eagle; Amy Hugg, daughter of Gary and Rhonda Hugg and Clint Black, son of Steve and Vicki Black.

## Legislation Will Tighten School Policy

Because of the immediate, as well as future, impact on parents of current students in the Texas School Systems, not only the Muleshoe School System, the following condensed versions of changes in school procedures are given. All parents are urged to carefully study the changes, and

find out what changes are immediate, as well as the future changes, that will affect each and every school student in the State of Texas.

All school personnel are ready to answer questions and help with your concerns about the changes as mandated by the Texas State Legislature.

B-80-89  
C-70-79

F--Below 70

Beginning this school year, students may not receive credit for a course unless they have maintained a grade average of 70 and have no more than five unexcused absences in the course during the semester. *Students may not be promoted from one grade to another unless they maintain a school year grade average of 70.*

### REPORTING TO PARENTS

Muleshoe I.S.D. will send report cards to parents at the end of each six-week period in grades kindergarten through 12. The report card will provide a space for the signature of the parent and must be returned to the district.

If a student receives a grade of less than 70 on a scale of 100 in any class, the grade notice will state the need for a conference between the appropriate teacher and the parent. Parents will be given at least two alternative dates for the needed conference.

### GRADING SYSTEM

Grades provide for students, teachers, and parents reasonably accurate information concerning the student's achievement and progress in school. The percentage method will be used to calculate grades. The following percentages will be used in assigning letter grades on report cards.

A--90-100

### Around Muleshoe

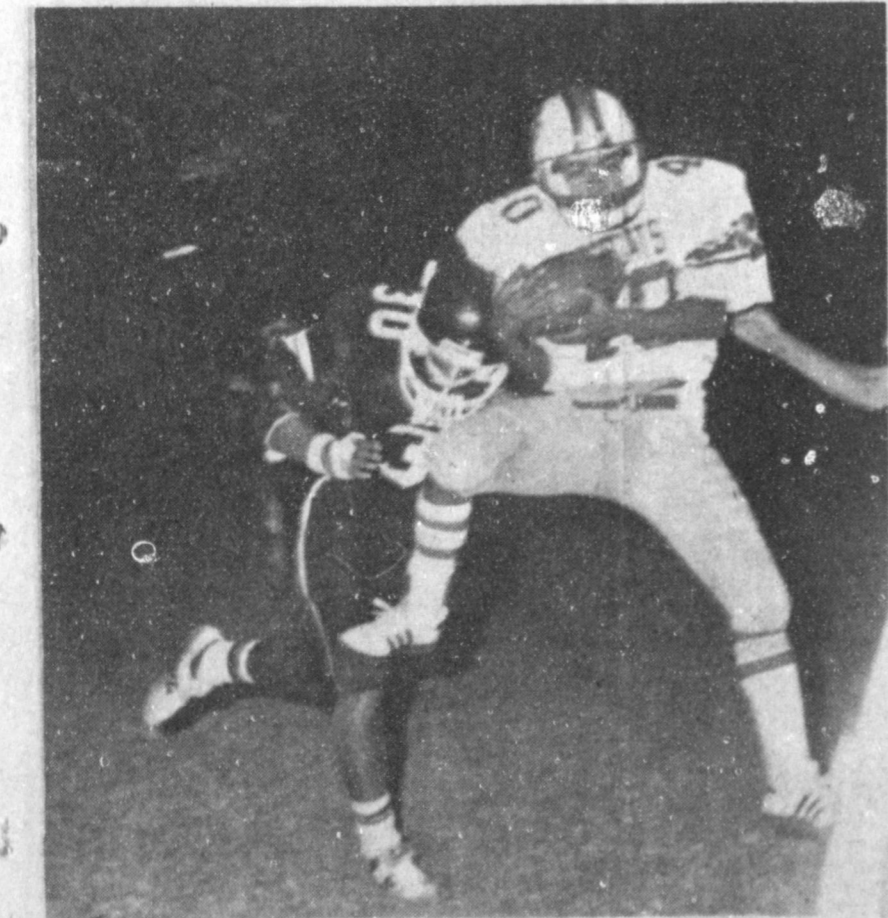
Deadline for entries in the essay contest "Why You Should Vote" for Muleshoe school students is Tuesday, October 30. Entries should be turned in to your teacher at the school, and the winners will be announced on Friday, November 2.

Savings Bonds will be presented the top winners in the essay contest.

Volunteers to load pumpkins for the PTA Halloween Carnival are asked to meet on the parking lot of the Dairy Queen at 3 p.m. on Sunday, October 21.

With volunteers to help, it is not expected to take a lot of time.

Con't Page 6, Col. 3



**PUTTING THE STOPPER ON**--Smiley Orozco, No. 30, lowers his shoulder and puts the stopper on Dimmitt Bobcat Nathan Nelson as he has just latched onto an aerial during the Muleshoe-Dimmitt game Friday night in Muleshoe. The Mules won the contest by a score of 28-13.

## Mules Kick Out 28-13 Victory Over Dimmitt

### Mark Moton Rambles For Four Touchdowns

#### FFA Selling Fruit And Sausage Now

October 31 will be the cutoff date for ordering sausage or fruit from the Muleshoe High School FFA Chapter, in a sale that got underway on Friday, according to Sonny Dickerson, Vo-Ag instructor.

FFA's famous Blue and Gold sausage is being sold in the pan stick, two and one half pounds for \$6; links for \$8 and patties for \$8. Delivery on the sausage will be prior to December 1.

In the fruit sale, to be delivered the first or second week, in December will be large grapefruit, 40 pound box, \$12.50; small grapefruit, 20 pound box, \$8; large oranges, 40 pound box, \$5; small oranges, 20 pound box, \$9.50.

Red apples will cost \$10.50 for one-third bushel and a combination box of 12 each grapefruit, oranges and apples will cost \$11.

Orders may be placed with any FFA member for future delivery, but be sure to place your order prior to the October 31 deadline.

#### Farm Program

#### Changes; County

#### Meetings Slated

"Most producers in Bailey County are knowledgeable in the new 1985 program," said Danny Noble, Executive Director of the local office of the Agricultural Stabilization and Conservation Service. "Since our recent newsletters there have been some changes that will affect everyone."

"Please help us help you and attend one of the three meetings that will be held in Bailey County," he added.

They are as follows: At 8 a.m. on Tuesday, October 23, at the Maple Co-op Gin in Maple.

Friday, October 26, at 8 a.m. at the Muleshoe State Bank meeting room and on Thursday, November 1, at 6:30 a.m. at the Bula School cafeteria at Bula during the Lions Club breakfast.

CLASS INTERRUPTIONS  
Beginning this school year, distractions from, interruptions to, and loss of scheduled class time by any activity during the school day will be limited.

Muleshoe I.S.D. will adopt a board policy to this effect, and seeks the assistance of parents in implementation of the policy.

TUTORIAL SERVICES  
The school district will provide tutorial services at each school. Students who desire additional assistance in any class or subject may attend tutorials two times a week.

Teachers will be available from the end of school on Tuesday and Thursday of each week to provide these tutorial services. Transportation for students attending must be provided by parents.

ATTENDANCE  
A student in grades kindergarten through 12 will not be given credit for a class if the student has more than five days of unexcused absences during a semester. According to House Bill 72, an excused absence is one of the following:

- \* personal illness
- \* illness or death in the family
- \* quarantine
- \* weather or road conditions making travel dangerous

Con't Page 6, Col. 1

### Farwell Hammers Lazbuddie 'Horns

Friday night, the Lazbuddie Longhorns, under the leadership of new Longhorn coach Steve Harris, lost to the Farwell Steers by a score of 21-0.

Felix Lucio started off the scoring for the Steers on the kickoff when he pounded out a 70 yard TD return.

This was followed by a 20 yard TD by Kevin Owens, with Roger Roberson booting the extra points for both scores.

The final TD was on a 35 yard pass from Quarterback Blake Kelly to Lucio.

It was almost a one man show Friday night as speedy Mark Moton scrambled for 246 yards, and tallied all four of the Muleshoe Mules' touchdowns to take a 28-13 victory over the visiting Dimmitt Bobcats.

Early in the game, Moton broke loose on his second carry in the game and after breaking out of the pack, raced downfield for 55 yards and into the end zone. With 10:38 left to play in what turned out to be a very long ball game, Ray Vinson booted through the extra point and the Mules started out with a lead they never relinquished during the evening.

Despite some very questionable decisions by the group in Muleshoe to referee the game, the Mules proved to be victorious. One referee would signal to stop the clock, then signal to start the clock, and another would come over and order seconds put back on the clock.

#### Altered Money

#### Orders Cause

#### Area Problems

According to information received in the Muleshoe Post Office, from J.H. Levacy Jr., manager, Retail Sales and Service for the U.S. Postal Service, there is an area problem with altered money orders.

Roland Bell, of the Muleshoe Post Office, told the Journal Thursday morning that no altered money orders have been received by the local post office, but the problem has been found in this area.

According to the release by Levacy:

"Every office should be very cautious in cashing money orders. There is presently a rash of altered money orders in the area. Small money orders have been purchased and then raised to \$500.

"These are being sent to church groups with an offer of a portion of the money to the group for cashing the money order. The group is instructed to send the remainder of the money to an enclosed address."

"Be very cautious about cashing large money orders. They should be closely examined for any signs of alterations."

This happened twice in a rather confusing situation for the time-keeper in the pressbox.

In a rather unusual situation, a referee called unsportsmanlike conduct on a Dimmitt coach and marched off 15 yards against the Dimmitt Bobcats. They appeared to be oblivious to flagrant violations, such as open tackling, pass interference and other game violations during the entire game.

At 9:57 of the second quarter, Moton broke loose again, and raced downfield, with futile pursuit by the Bobcats, for a 63 yard touchdown. Again, Ray Vinson's kick was good for the extra point.

But, the Mules were not through for the quarter, as Moton slammed through from three yards out with 2:11 left to play before halftime. Vinson's toe made it a 21-0 game at halftime.

In the second half, the Mules made their final score for the game when Moton again stretched out for long yardage in a 46 yard scamper to paydirt. Vinson made it 28-0 and the Mules were seeing 7:55 left in the third at this point.

Not satisfied to go home without anything, the Bobcats came back. They were held in the first half on the ground, so came out in the second taking to the airways.

Dimmitt's first score came at 6:27 of the third on a 78 yard pass-run from Bobcat Quarterback Woody Glass to Nathan Con't Page 6, Col. 2

### Three Way Eagles, Cotton Center

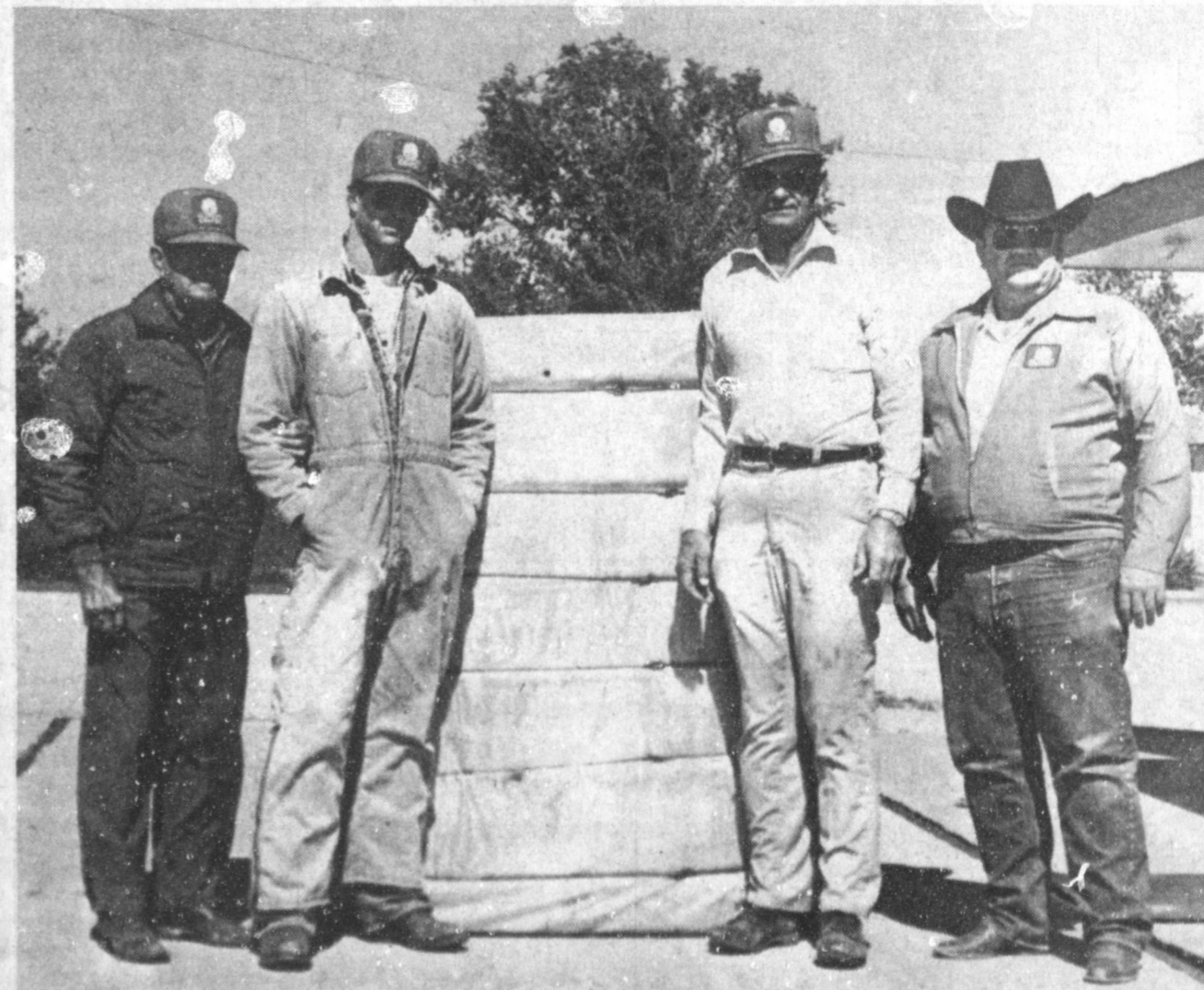
#### In 31-31- Tie

It was the evening for 'ties' for the Three Way Eagles and Cotton Center Elks, as the teams battled to a 31-31 tie in six man football at Cotton Center.

Brett Stegall passed for three Eagle TD's and John Poindexter passed for four touchdowns in

Stegall connected on passed of four yards, 20 yards and nine yards to Oscar Guillen. Elbert Zapata also rushed one yard for a TD.

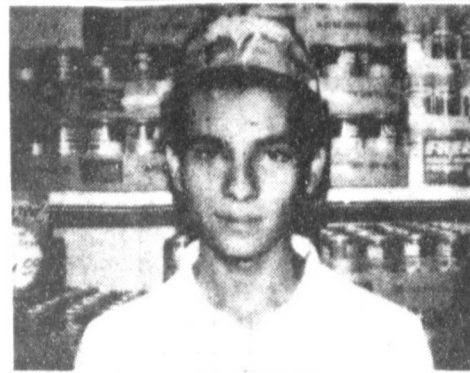
Poindexter three TD passes of 15, 10, 25 and 40 yards.



**FIRST BALE OF COTTON REPORTED IN COUNTY**--Wednesday, Bennie Claunch, far right, of Claunch Gin at Bula, reported ginning the first bale of cotton for Bailey County in 1984. The cotton was planted on May 14, and the SP-21 cotton was irrigated one time. Producer of the cotton was Dale Demel, second from left. Also pictured are Jim Claunch, left, and Dale Demel, second from right. Dale Demel said he brought out 3,000 pounds of cotton into the gin, and it took less than an acre to produce the 500 pound bale of cotton. The Demels farm approximately five miles east of Bula.



# DALLAS COWBOY PRO-FOOTBALL AT THRIFTWAY!



\$100 WINNER  
LOUIS CARRION  
MULESHOE, TEXAS



\$100 WINNER  
CARA J. SCHUSTER  
MULESHOE, TEXAS

### TV SPECIAL

TREE TOP APPLE JUICE OR  
**CIDER**  
**\$1.69**  
1/2 GAL. BTL.

PURINA  
**DOG CHOW**  
**\$14.99**  
50 LB. BAG

HEAVY GRAIN FED BEEF BONELESS

**CHUCK ROAST** LB.

**\$1.69**

HEAVY GRAIN FED BEEF BONELESS  
**CHUCK STEAK** LB. **\$1.89**  
WILSON'S REGULAR MEAT  
**FRANKS** 12 OZ. PKG. **99¢**  
WILSON'S SLICED MEAT  
**BOLOGNA** 12 OZ. PKG. **\$1.19**  
OSCAR MAYER SLICED  
**CHOPPED HAM** 8 OZ. PKG. **\$1.49**



81% LEAN FRESH  
**GROUND CHUCK**  
**\$1.59**  
LB.



BATHROOM TISSUE  
**NICE'N SOFT**  
**\$1.49**  
6 ROLL PKG.

TV SPECIAL  
NEW!! FABRIC SOFTENER  
**SNUGGLE**  
**89¢**  
33 OZ. BTL.



PURE VEGETABLE  
**CRISCO OIL**

**\$1.69**  
32 OZ. BTL.



TV SPECIAL  
NEW!!  
**SCOTTOWELS JUNIOR**

**2.88¢**  
ROLLS



Halloween Savings

FUN SIZE SNICKERS, MILKY WAY, 3-MUSKETEERS

**CANDY BARS**

**\$1.99**  
1 LB. BAG



REGULAR OR UNSCENTED  
**KING SIZE TIDE**

**\$3.19**  
84 OZ. BOX



CALIFORNIA CELLO WRAPPED  
**CAULIFLOWER**  
**79¢** EACH

WASHINGTON BARTLETT  
**PEARS**  
**49¢** LB

LARGE PERSIAN  
**LIMES**  
**39¢** LB

LONG GREEN SLICERS  
**CUCUMBERS**  
**29¢** LB



DURACELL AA BATTERIES 2 CT. PKG. **\$1.59**

DURACELL AA BATTERIES 4 CT. PKG. **\$2.79**  
DURACELL 9-VOLT BATTERY 1 CT. PKG. **\$1.99**  
DURACELL C OR D BATTERIES 2 CT. PKG. **\$1.99**  
DURACELL 9-VOLT BATTERIES 2 CT. PKG. **\$3.59**

PRELL SHAMPOO 11 OZ. BTL. **\$1.99**

HORMEL PLAIN CHILI 15 OZ. CAN **99¢**

SURE ROLL-ON ANTI-PERSPIRANT 2.25 OZ. BTL. **\$2.79**

HORMEL WITH BEAN CHILI 15 OZ. CAN **79¢**

ENCAPRIN CAPSULES EXTRA STRENGTH 50 CT. BTL. **\$2.99**

NESTLE MORSELS SEMI-SWEET, MILK CHOC. BTRST. 11.5 OZ. PKG. **\$1.89**

LUVS DIAPERS 32 LARGE, 48 MEDIUM, 66 NEWBORN CONV. PACK **\$8.99**

CREST MINT OR REGULAR 6.4 OZ. TUBE **\$1.29**

REGULAR OR LIGHT FRITOS \$1.79 SIZE **\$1.49**

### FROZEN FOOD & DAIRY

SHURFINE FROZEN CUT CORN 2 10 OZ. PKGS. **89¢**  
VAN DE KAMP FROZEN FISH STICKS 20 OZ. PKG. **\$2.59**  
MRS. SMITH'S CUSTARD STYLE PUMPKIN PIE 26 OZ. PKG. **\$1.89**  
CHILLED ORANGE JUICE CITRUS HILL 64 OZ. CTN. **\$1.89**  
BIG COUNTRY ASSORTED VARIETIES BISCUITS 2 10 CT. CANS **\$1.00**

KRAFT STACK PACK AMERICAN CHEESE SINGLES **\$2.29**  
1 LB. PKG.



VAN DE KAMP CHICKEN, BEEF, CHEESE ENCHILADAS 11 OZ. PKG. **\$1.59**



BORDEN 12 PACK PUDDING BARS **\$1.39**  
BORDEN 12 PACK ASSORTED POPSICLES **\$1.39**  
BORDEN 32 OZ. ORANGE JUICE **89¢**  
BORDEN 8 OZ. SOUR CREAM AND PARTY DIPS SHURFINE MEDIUM 1 DOZ. EGGS **2/\$1.00**  
**59¢**

Shop And Save... ...The Thrifty Way!

Double S&H Green Stamps On Wednesday With A Minimum Purchase Of \$5.00

2 LITER DIET COKE, SPRITE OR  
**COKE**  
**99¢**

WE'RE PROUD TO GIVE YOU MORE!  
WE ACCEPT FOOD STAMPS  
WE RESERVE THE RIGHT TO LIMIT QUANTITIES  
**THRIFTWAY**



PRICES EFFECTIVE  
OCT. 21-27, 1984

Thrifty McSaver

**Nursing Home News**

by Joyce Stancell

Our Hospital and Nursing Home Aux. came Tues. afternoon to shampoo and set the ladies hair, to give manicures and play Skip-Bo. We always look forward to their visits. They make our day.

The First Bapt. Church had Bible Study for the residents at 9:45 AM in the Day Room Sun. morning.

Members of the Muleshoe Church of Christ had a communion service Sun. morning.

J.C. Shanks came Sat. morning to give our men shaves and haircuts.

Glenda Jennings came Wed. afternoon to have a Sing-a-Long with the residents.

We were honored Thurs. night, to have the Kings Kids to come and sing for us. We had a nice group to come & listen. We appreciate our residents coming as well as visitors. Thank You Kings Kids, you were a blessing to all of us.

Among those visiting the Nursing Home this week were Bro. Bradley from the First Bapt. Church- Lida Wilhite, Elizabeth Harden, Carol Saxton & children, Robert Blackwood, Brenda and Adele.

A Big thank you goes to Tub Angeley for bringing us all the beautiful pumpkins.

Cleo Bellar is out visiting with her family at this time.

The Needmore Community Club will host our monthly Birthday Party Thurs. Oct. 25th at 2:30 P.M. We invite anyone interested in our community to attend, as well as the family & friends of our residents. Residents having a Birthday this month are Alva Shofer, Oct. 24, 1891, Blanche Cotton Oct. 4, 1904.

Edith Goucher had out of town guests Wed. afternoon.

Barbara Finney visits her mother, Blanche Cotton, every afternoon.

Margaret Beard received a

**Goblins To Roam Halloween Night**

The last day in October is a special day for some very special little "goblins." Once again hundreds of our children will take to the neighborhoods dressed in scary attire of all description. This is supposed to be a happy event for children but for some of them, trick or treat may well turn into tragedy. Major V.J. Cawthon, Commander of the Department of Public Safety, Region V, said, "A few extra precautions on the part of motorists, parents and children could prevent tragedies this Halloween." He also mentioned that adequate visibility of our children is of utmost importance, urging the use of retro-reflective material. This is an effective and inexpensive way to make little "monsters" readily seen.

Parents should also provide children with flashlights which serve a dual purpose of lighting their path and also warning motorists or cyclists of their location. A last minute reminder of basic pedestrian safety rules before they start off is also in order. Homeowners can help by providing porch and sidewalk lighting where possible and try to remove any items in your yard which may become a hazard after dark.

As motorists, be on the look out for kids darting into the street from between parked vehicles. Remember, they are excited and pre-occupied with trick or treating so drivers need to be extra alert.

So, let's all be aware of kids on streets, so they can enjoy their "trick or treats"!!

letter from Ann Rhea of Dallas Tex. Wed.

Rose Sebring attended the Sing-a-long Wed. afternoon. Mrs. Walter Sebrings visits Rose almost everyday.

Mr. & Mrs. Arnold Morris attended the Sing-a-long Wed.

Wed. was Mr. Fred Day, at the Nursing Home. The residents & staff honored Mr. Fred Peat. We all joined in to do special things for Mr. Fred Peat, like, "Have a Good Day Mr. Fred." would you like a cup of coffee Mr. Fred? He was greeted with a lot of smiles & pats. At the Wed. afternoon sing-a-Long a special song was sung for him.

The Lazbuddie Church of Christ came last Fri. afternoon for a Devotional. We are so glad they are coming. We don't have as large a crowd as we did. But if just one resident attended - isn't that enough?

Thursday afternoon Mad Kersey, Laverne James, Ruth Clements, Clara Crain came to play Skip-Bo and dominoes with B.B. Street, Lois Ethridge, Cleo Bellar, Edith Bruns, Mrs. Cannon, Mrs. Goucher, Alva Shofer, Ernest Kerr watched the games & gave us support. Lena Ruthardt & Lois Ethridge made popcorn & served it to

residents & visitors.

Our Halloween Party will be Mon. Oct. 29th at 2:30 P.M. Come join the fun.

We have a new resident. He is Hilton Moore. He was born June 13, 1897. Welcome Mr. Moore to our Nursing Home family.

Do not squander time for that is the stuff life is made of.

-Benjamin Franklin.

Take care of the minutes, for the hours will take care of themselves.

-Lord Chesterfield.

**American Anti-Freeze**

--Quality Coolant At Reasonable Prices

--Protect Engine Metals

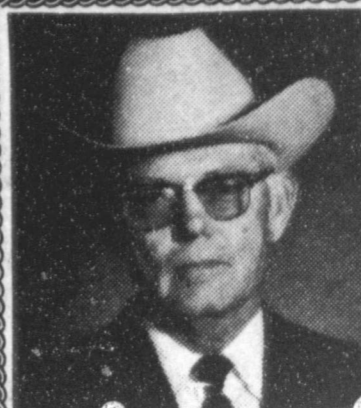
--Gallons Or 55 Gallon Barrels

Save At

**Baker Farm Supply**

1532 West American

272-4613



**RE-ELECT R.L. Scott**  
County Commissioner  
Precinct 1-Bailey County  
Democrat  
**November 6, 1984**

For Efficient Courteous And Unselfish Service Your vote and support will be sincerely appreciated.

PD BY R. L. SCOTT

**Ben Franklin**  
Better quality for less

2104 W. American Blvd  
272-3855 Open 9 a.m. - 8 p.m.

**KMUL - Ben Franklin Halloween Costume Contest**

Saturday, October 27 at 3:30 p.m.

To Be Held At Ben Franklin

Prizes:

Age 1-4

1st: Radio Flyer Wagon

2nd: Get-Along Gang Stuffed Toy

Age 9-13

1st: Sharp Stereo AM/FM Cassette Radio

2nd: Trivia Adventure Game

Age 5-8

1st: 20" Murray Super Charge 220 Team

Bicycle w/Power Bar

2nd: Lite Brite



**Snack Size Individual Wrapped**  
Hersey Milk Chocolate W/Almonds, Kit Kat, Mr. Goodbar  
12 oz. Pkg. **\$1.99**

**Peter Paul Almond Joy Snack Bars**  
12 oz. Pkg. **\$1.99**

**Pal Bubble Gum**  
97¢

**Wilton CandyMaker**  
**Products Are Here!**

Discover Candy Making At Home the Easy Way with Wilton!

- Quality molds, tools, flavors and colors
- Creamy Wilton Candy Melts are easy to use and come in a variety of appealing colors. Delicious and convenient, they make candy making fun!
- Idea/instruction books show and tell you how
- Candy Kits available with the tools you need
- Makes an extra special gift

See all the Wilton Candy Maker products at our display.

**Available Now!**  
1985 Wilton Yearbook and New Products

Hundreds of new and exciting Cake Decorating Ideas and Recipes.

- 1985 Yearbook includes an all new Calendar of Cake Celebrations - an exquisite collection of fabulous holiday cakes
- See our complete Wilton line, including New Products for 1985!
- Hurry in for the best selection

**Wilton CAKE DECORATING PRODUCTS AVAILABLE NOW**

A Complete Variety of Quality Tools, Pans, Supplies & Books

- Quality Decorating Sets and Special Tools
- Pans For All Occasions - Famous Characters And Special Shapes
- Instruction/Idea Books
- The Wilton Yearbook of Cake Decorating - Features hundreds of decorating ideas. How To Decorate section with recipes

**Snickers, Milky Ways & 3-Musketeers**  
1 lb. Bag **\$1.99**

**Full Life Like Adult Rubber Masks W/Hair**  
**\$5.97**

**Large Plastic Trick Or Treat Bags**  
**28¢**

Safe & Harmless  
Easy On - Easy Off

**101 Tweety Licious Pops**  
**\$1.78**

**Fun Size Baby Ruth & Butter Fingers**  
16oz. Bag **\$1.88**

**Tiny Tot Collegeville Costumes W/Mask**  
Sizes 3-5 **\$3.77**

**Make Up Kits**  
**82¢**

In Stock Party Goods Table Cloths Napkins Cups

GET YOUR GREAT HALLOWEEN SCARY STUFF HERE!

**Bailey County Journal**  
Established March 21, 1963. Published by M. Stov Publishing Co., Inc. Every Sunday at 304 W. Second, Box 449, Muleshoe, Texas, 79347. Second Class Postage paid at Muleshoe, Texas 79347.

**MEMBER 1984**  
TEXAS PRESS ASSOCIATION

L.B. Hall, President  
James Woods, Vice President  
Celia Williams, News Editor  
Evelyn Harris, Society Editor  
Hull Midway Advertising  
Little News-Circulation Classified  
Sammye Hall, Bookkeeper

**SUBSCRIPTIONS:**  
Muleshoe Journal and Bailey County Journal  
Bailey and surrounding counties  
Muleshoe Journal and Bailey County Journal  
Elsewhere in Texas \$12.95  
Muleshoe Journal and Bailey County Journal  
Outside of Texas \$13.95  
Yearly by Carrier \$11.50  
Advertising rate card on application

## Baby Shower Honors Mrs. Henry, Blake

Mrs. Monica Henry and son, Blake, were honored with a baby shower from 2 until 3 p.m. Sunday, Oct. 14 in the home of JoDean Neel.

Guests were greeted by Mrs. Neel and the honoree and registered by Tammy Elder.

Debbie Brown and Kendra Wilson served cake, punch and nuts from crystal appointments. The serving table was covered with an ecru linen tablecloth and accented with a mobile for a crib. The honoree's corsage was made of baby socks accented with clovers.

Special guests included: Glenda Dale and Marcie Henry, grandmothers of Blake; Mrs. L.R. Hall, great grandmother; and Kristi and Kacy Henry, aunts.

The hostesses gifts were a car seat and money. Hostesses for the occasion included: Holiye Hooten, Rhonda Hodges, Jo Dean Neel, Marie Darnell,

### Second Annual

### Ladies Retreat

### Held In Lubbock

The ladies of the Sudan Church of Christ held their second annual ladies retreat Oct. 5 and 6 at the Holiday Inn Civic Center in Lubbock.

Following the check-in at 6 p.m., dinner was served in the University Room. After the singing of songs, the speaker was introduced. The theme was "Live and Be Happy" by Mrs. Peggy Blanton, wife of Dr. Everret B. Blanton, dentist, of Amarillo. They conduct marriage enrichment seminars for marriage and family problems.

Mrs. Blanton also teaches the Ladies Bible Class and has spoken for many ladies retreats and lectures.

It was reported that following the speech, some entertainment was provided by the local women and swimming and visiting was enjoyed.

On Saturday morning, they had a devotional in the Atrium of the Inn with Mrs. Blanton speaking again followed by more singing.

A luncheon was served in the University room and during the lunch, Robert Spence School of Modeling of Lubbock held a modeling session.

"Mrs. Blanton brought another devotional and each of the Sudan ladies took part in different committees to make the retreat a great success and all had a good time and a spiritual upbuilding," said a spokesman for the group.

Seventy-three ladies from Sudan, Amherst, Littlefield, Anton, Roby, Houston, Wink, Midland, Lubbock, Levelland, Clovis, Wolforth and Amarillo attended. Some 40 ladies from Sudan attended.

Marilyn Wilson, Elinor Yerby, Tonya Wall, Dana Smith, Martha Young, Doris Vandiver, Johnette Marlow, Jo Harmon, Kerma McGuire, Diane Brown, Clara Sudduth and Pam Atwood.

### Sudan Fireman's

### Auxiliary

### Meeting Held

Sudan Fireman's Auxiliary met Monday night, Oct. 8th, in the community room of the First National Bank. Dorothy Hill, president, called the meeting to order and Doris May, secretary/treasurer, read the minutes of the September meeting. She reported some 27 donations have been made to the Fire Truck Fund. A financial report was given and the minutes were approved as read.

Final plans were made for the Chili and Bean supper to be served Friday, Oct. 26 from 5 to 7 p.m. at the school cafeteria prior to the Sudan-Amherst football game.

It was decided that the next meeting will be held at 7 p.m. Nov. 12 at the Community Center, prior to the program that will be for the Sudan and Amherst communities on Child Pornography. This program will be for parents only and everyone is invited to come to the Community Center at 7:30 p.m. Refreshments will be served.

The Auxiliary Christmas party is scheduled for Friday, Dec. 14 in Lubbock with the place and time being decided on at the next meeting.

Members present were: Ann Carson, Mary Gordon, Linda Summer, Doris May, Dorothy Hill, Louise DeLaRiva and Norma Burnett.

### Likely

Some statesmen are like buttons, popping off at the wrong time.

-Dealer, Cleveland.



**Classified Advertising Brings Great Results**  
Call 272-4536



MONICA HENRY AND BLAKE

### Merchants Break

### Dance Contest

### Set At Earth

Earth Merchants Break Dance Contest is scheduled for Saturday, Oct. 27 West of T-Bar Western Store, at 2 p.m.

Entry fee is five dollars per person for age groups: 5-9 years of age and 10-13 years of age. Entry fee for age 14 and over is

\$10 per person. Seventy percent of the entry fee will be paid to the winners, three places to be paid back to each age group.

It was reported that the entry fee must be in by Oct. 26. Money must be paid before contestant is allowed to compete-- Cashier's check or money order, please and there will be no refund of entry fee.

Time limit is two to three minutes per performance and each contestant is to provide their own music.

## Halloween Costume, Skating Party Scheduled Oct. 25

Ticket Tack Track, Prickly back cat--Now you have been given the Halloween curse of the black cat.

So at the cats meow and the spooks holler, because on Halloween night the kids will be safe and sound at a Halloween

skating party. Party time is 6:30 p.m. with the costume judging being at 7:30 p.m. Somewhere in the skating area there is a lost skeleton, if you find the skeleton you will win \$5.00. There will also be a parade of costumes, couples skating, spook whip.

Channel 6 and their crew will be there with their "Witch Watchers" to catch everyone in the act. So don't be left out in the cold, join your friends and have one "Howling" good night.

The Out to Lunch Bunch will be sponsoring the Halloween party at the Civic Center.

The following merchants and individuals contributing prizes or donations include: Ben Franklin, Poyner Whites, Perry's, Pizza Hut, Pay and Save, Sonic, Mr. and Mrs. Albert Ramirez, Pat and Jerry Mudford, Donna and Vic Noriega, Richard and Kathy Railsback, Claude and Linda Sims.

The next Out to Lunch Bunch luncheon will be held on Oct. 25 at Summit Savings and Loan at 12 noon.

### TOPS CLUB

Muleshoe TOPS Club chapter Tx. No. 34 met at 6:30 p.m. Thursday, Oct. 11 in the meeting room of Bailey County Electric.

Clara Lou Jones, leader, called the meeting to order. The TOPS pledge was recited and the fellowship song sung. Laverne James called the roll with seven members present. Evelene Harris read the minutes of the previous meeting and they were corrected.

It was decided to change the date that the present contest will run for two more weeks with the auction being on Nov. 1. A new point contest will begin on Nov. 1 and continue until Dec. 27.

Jewell Peeler was named best loser for the week. First runner up was Laverne James and Ruth Clements was second runner up.

The meeting was closed with the singing of the goodnight song.

### Best of Press

#### Which Way?

Some people are like blotters--soak it all in, but get it all backwards!

-Shipyard, Philadelphia.

Hi-Protein  
**Dog Food**

50 lb. Bag **\$9.75**

**The Great Pumpkin Is At Decorator's Nursery And Floral!**

Our Great Pumpkin consists of fall flowers arranged in a fresh pumpkin! What a great idea! Starting at \$15.00.

616 S. First  
272-4340  
272-3660

**DECORATOR'S**  
NURSERY AND FLORAL

**ANTI-HONORS**

We'll Keep You Looking Good for Less!

321 S. Main  
OPEN  
8:00 A.M. To 6:00 P.M.  
Phone 272-3478

**20% OFF**  
ENTIRE STOCK OF PLAYTEX AND BESTFORM BRAS AND GIRDLES.

**20% OFF**  
ENTIRE STOCK OF GIRLS, SWEATERS 2-4T, 4-6X, AND 7-14 SIZES, ASSORTED COLORS AND Styles.

**40% OFF**  
ENTIRE STOCK OF LUGGAGE, American Tourister And Samsonite. Large Selection To Choose From. Soft Side And Regular Styles.

**20% OFF**  
ENTIRE STOCK OF Mens, Womens, And Children Coats. For Those Cold Winter Days. Assorted Styles And Colors.

**20% OFF**  
ENTIRE STOCK of Junior Sweaters Assorted Styles And Colors.

We Accept  
AMERICAN EXPRESS  
VISA  
MasterCard

Use Our No Charge Layaway Plan.

COLD WEATHER SALE

PERRY BROTHERS

TODAY'S PORTRAIT... TOMORROW'S TREASURE

\$3.00 OFF With Coupon Only

Traditional Poses Only

\$12.95 95¢

Total Package / Deposit

2(8x10's) 3(5x7's) 15 wallets

\$3.00 OFF WITH COUPON ONLY

Present this coupon to our photographer with a deposit of 95 cents on your advertised portrait package. One coupon per family. Not valid with any other offer. \$1.00 sitting fee for each additional subject in same portrait. Offer valid on dates and at locations listed.

PERRY BROTHERS

Oct 23 - Oct 24	Tue 10-1,2-6
Tue Wed	Wed 10-1,2-5
	Lunch 1-2

We select the poses. A deposit of 95 cents is required for each photo package plus \$1.00 sitting fee for each additional subject. Additional portraits can be purchased.

## Local Woman Speaks At Workshop-On Aging

Joy Stancell, program coordinator at the Muleshoe Nursing Home, was the speaker recently at a workshop in Lubbock--on aging.

In her opening remarks, she thanked the Health Department, Mr. Barnett and the audience for giving her the privilege of speaking to them about the people she feels is a very important part of the health care team at the Muleshoe Nursing Home and West Plains Medical Center--The Auxiliary and Volunteers.

Mrs. Stancell said "First of all, let's recognize that the greatest problem faced by aged people in and out of the nursing home is the feeling of isolation, of loneliness, and of hopelessness. Studies have been made of children in orphanages and what happened to infants and children who did not have the stimulus of people to talk with them, to touch them, to love them, to have a positive self-concept."

"Although they were tended, fed, kept dry and comfortable, these children essentially withered. Many of them could not develop; some of them died. There were those who did not learn to communicate. A similarity can be drawn between these children in orphanages and old people in institutions--both have their physical needs of food, clothing and shelter provided, but their inner needs are often neglected."

Therefore, if isolation and loneliness are the chief indignities suffered by older people, then friendliness and personal recognition are therapies of kindness.

Here are four ways to say "I care":

1) Personalizing contact:



**LATEST ARRIVALS**

**Carmen Marie Ontiveros**  
Mr. and Mrs. Cecilio Ontiveros, Jr. of Olton are the proud parents of a daughter born at 12:28 a.m. Wednesday, Oct. 17 in West Plains Medical Center.

The young lady weighed eight pounds and two ounces and has been named Carmen Marie. The couple have one other child, Connie, two years of age.

Grandparents are Irene Vinson of Clarendon and Mr. and Mrs. Cecilio Ontiveros, Sr. of Springlake.

A friendly touch, a smile, reality orientation, consistent effort to use the individuals name (which will keep the residents reminded of who they are and where they are.

2) Personalizing grooming: All people respond to their own images. We most often act the way we look and the way we see ourselves reflected in others. Good grooming helps us react positively in behavior and attitudes.

3) Upgrading surroundings: Fresh flowers, seasonal decorations, neatness, cleanliness, beautifying surrounding (inside and out), can give zest to a day which would otherwise be monotonous.

4) Increasing Volunteerism: Volunteers bring laughter, recognition, recreation and variety. Good volunteers come in assorted sizes, colors and ages.

What do volunteers do? Almost everything. They come in groups, providing parties. They come singly, writing letters, reading, going for walks. They enter noisily, singing songs or playing instruments. They arrive quietly, sitting peacefully beside a resident.

"On the other hand, the staff helps provide the volunteers with an opportunity for growth and self-awareness. We can encourage them by showing an interest in things they are doing, by being courteous,

### Farmer's Festival

#### Scheduled Soon

#### At Plainview

The First Annual KKYN - Holley Fertilizer Farmers Festival kicks off on November 8th at 8:00 AM. The Festival, to be at the Hale County Agriculture Building, is the first of its kind in the Plainview area. Forty-six exhibits including computers, irrigation, fertilizer, seed, chemicals, and large equipment will be open all day.

The morning will consist of a film presented by Production Credit Association entitled "Agriculture 2000," followed by speakers. Dr. Bill Lyle speaking on "Irrigation Efficiency," Harrison and Rex Caldwell, "Converting to No-Till," Charles Hough - "Utilization of Center Pivots," and Levon Harman - "Application of Conservation Tillage."

A free bar-b-que lunch will be followed by Representative E. (Kika) de la Garza. Rep. Garza is the chairman of the House Agriculture Committee. A press conference will be held at 12:30. There will be no admission and door prizes will be given away. All interested in agriculture are urged to attend.

polite, giving them recognition for things they do, and treating them like one of the team. A simple "Thanks, you are doing a great job" means so much" continued Mrs. Stancell.

The Muleshoe Auxiliary was organized in 1967, and is a member of Texas Association of Hospital Auxiliaries. It is a tax free organization and has 25 active members.

In 1967, one or two ladies who had residents in the nursing home saw a need to do special things for the residents. This feeling stirred up interest in the community and the hospital and nursing home auxiliary was organized. They started with nothing but a great deal of compassion and a willingness to serve. At the end of their first fiscal year, their total income was \$398.40, total hours spent was 500.

In 1970, their total income was \$2,195.72 and total hours were 1,047. They started a Junior Volunteers, helped with therapy for two residents in the nursing home, decorated and completely furnished the Vending Machine room including all accessories and the Christmas Card project.

In 1972, a camera was purchased to take baby pictures at the hospital. This money is often used for activities in the nursing home. A Thrift Shop was opened in 1973. In the first 10 months, they raised \$3,500 and used this money to change the furnishings in the Day Room.

In 1979-81, two of the largest projects ever undertaken were remodeling the Day Room, providing a living room and remodeling the dining room of the nursing home.

In August of 1983, the patio for the nursing home was completed, at a cost of \$2,000.00

A brief summary of the 1982-83 year: Monetary gifts-cash and equipment is \$18,831.36. Gross income for the year was approximately \$30,000.00 and 4, 825 volunteer hours were given.

Her closing remarks were "Our Auxiliary has given so much, but the gift that excels is the gift of themselves. One auxiliary lady was asked how she could keep going down to the nursing home every week and working in the beauty shop, "Don't you get depressed?" and her reply was "How could you be depressed when the ladies start clapping when you come in the door?"

### Fire Chief

#### Presents Lazbuddie

#### 4-H Program

The Lazbuddie 4-H Club held their regular meeting on Monday, Oct. 8 with 11 members and six adults in attendance.

Games were played before the meeting began. The program was given by Glenn Lust, Lazbuddie Fire Chief. A film was shown on fire safety with a discussion period following.

Lori McBroom said "Lazbuddie was proud of their second place showing in the parmer County 4-H Fair".

The members are busy with food lessons in preparation for the county food show to be held in November. The instructor is Ettie Jesko.

It is excusable to get tired when you work hard but the trouble with the average person is a tendency to get tired before working.

### Journal Society Policy

A processing charge of \$3 is made when a photo accompanies any wedding, engagement, or anniversary with the exception of anniversary of 50 years or more.

Five dollars will be charged for any shower picture taken by the Journal and \$3 charged for any shower picture accompanying a story. Pictures may be picked up after the article appears in the paper.

Wedding, engagement, and anniversary stories must be in the Journal office by Monday noon for the Thursday paper, and by Thursday noon for the Sunday paper.

After that time, stories will be run on a space available basis. Any wedding more than two weeks old, when received, will be edited and only the basic information will be included.

Shower pictures will not be taken without a 24 hour notice and copy must be in the office by 5 p.m., Monday for the Thursday paper and 5 p.m. Thursday, for the Sunday paper.

## Tailgate Picnics Add Taste To Fall

Tailgate picnics have become football season classics, combining good food, friends and pre-game enthusiasm.

To plan a winning stadium-side celebration or backyard pre-game party, here are some tips:

- Plan menus with easy-to-serve recipes that can be prepared ahead. Add zest to beef sandwiches by marinating steaks in a spicy herb sauce for up to 24 hours before serving. Cover the marinade mixture securely with Saran Wrap™ plastic film to retain flavor.

- Broil steak and thinly slice (just before departing for the picnic site). Package meat in Saran Wrap and place in an insulated thermal container.

- Bring along a creative array of fresh fruits and cheeses or try a winning combination of favorites. Core and cut a pear in half, dipping in lemon juice to prevent browning. Fill the pear cavity with soft Brie cheese; sprinkle with chopped pecans. Pears can be wrapped individually in Saran Wrap and fastened with ribbons of team colors. These pears can be prepared ahead, wrapped as described, and frozen.

- Clean and slice crisp vegetables, wrapping in plastic wrap and neatly tucking into a picnic basket. Take along a simple dip to complete the course.

- Transport hot soups, stews and sauces in vacuum containers. Hot foods such as casseroles will stay warm in thermal units or cardboard boxes lined with newspaper for insulation. Keep foods cold in an insulated ice chest.

- Roll individual sets of silver or plasticware in plastic wrap or colorful napkins. Place in a basket on a picnic table extended from station wagon tailgate or a van. Additional napkins can cushion glasses or jars of mustard and jams for travel.

- Consider packaging individual meals in colorful lunch boxes or small shopping bags. Wrap sandwiches, fruits, cheeses and desserts in individual servings with plastic wrap. Include utensils and napkins in the portable picnic pack.

- Line picnic baskets and boxes with plastic wrap to protect from spills and to make clean up easy. Don't forget to pack garbage bags and damp cloths wrapped in plastic wrap for clean up.

To help plan creative tailgate picnics, the makers of Saran Wrap have prepared the following recipe suggestions.

#### Marinated Sirloin Steak Sandwiches

**Steak Marinade:**  
1/3 cup olive oil  
1/4 cup red wine vinegar  
2 tablespoons soy sauce  
1 teaspoon minced fresh ginger root  
1 clove garlic, sliced  
2 green onions, chopped  
Whisk together oil, red wine vinegar and soy sauce. Stir in ginger, garlic and onions. Place meat into marinade, turning several times. Cover with Saran Wrap, place in refrigerator for 6 hours or up to 24 hours.

1 sirloin steak, 1 1/2" thick, approximately 3 lbs.



CELEBRATE FALL FOOTBALL with a tailgate picnic featuring Marinated Sirloin Steak Sandwiches with Bleu Cheese Spread and Pears with Brie. The tasty sandwich and pears can be prepared in advance, wrapped in Saran Wrap plastic film and chilled until departing for the tailgate picnic site.

marinated overnight

#### Broiling Instructions:

Place marinated steak on broiler pan 5" from heat source. Broil 8 minutes on each side. Let stand 5 minutes. Slice very thin for sandwiches. Assemble on pita or pumpernickel bread, or hard rolls, with Bleu Cheese Spread for added zest. Sandwiches

can be topped with sliced onion rings, tomato and avocado slices. Wrap sandwiches individually in Saran Wrap.

#### Bleu Cheese Spread

3 oz. cream cheese  
1 tablespoon bleu cheese  
1/4 teaspoon hot sauce  
Soften the cream cheese, stir in bleu cheese and hot sauce. Mix to spreading consistency. Makes about 1/4 cup.

#### Pears With Brie

4 Bartlett pears, halved and cored  
Lemon juice  
4 oz. Brie, room temperature  
Chopped pecans  
Cut pears in half, lengthwise, and core. Dip cut edges in lemon juice to prevent browning. Fill cavity with soft Brie; sprinkle with pecans. Wrap halves individually in Saran Wrap. Chill until ready to pack in picnic lunch. Makes 8 one-half pear servings.

#### WHO KNOWS

1. Where is Valley Forge?  
2. The Cherokee Rose is the flower of what state?  
3. What is the flower and the stone for October?  
4. What is the main characteristic of a Manx Cat?

#### Answers to Who Knows

1. Pennsylvania.  
2. Georgia.  
3. The flower is Calendula and the stone is Opal.  
4. It has no tail.

Several persons have asked why there has been no write-ups on the JV nor Junior High football games. Nothing has been available to report. If someone is interested enough in getting this information, it would be appreciated.

Mr. and Mrs. G.C. Ritchie and Mr. and Mrs. Dewayne Phillips visited in Dallas during the weekend with their daughter and sister Mr. and Mrs. Tom Lamphere, Julie and April attended the Dallas Cowboy game.

Mr. and Mrs. B.A. Beauchamp and family hosted a breakfast Saturday for Comm. Arb Rylant, Lt. Comm. Giles Ragsdale and Lt. Gary Atkinson all of Whidbey Naval Air Base, Oak Harbor, Washington. They had been here to visit Arb's in-laws, Mr. and Mrs. G.C. Ritchie and Mr. and Mrs. Dewayne Phillips and to attend the Earth-Springlake Homecoming during the weekend.

Tuesday, October 23rd At

7:30 p.m. Hear

# The DEWEY Family

In Concert



A Musical Experience to Remember!

At FIRST ASSEMBLY OF GOD

"The Church On The Grow"

521 S. 1st.

Muleshoe

Steve Davis Pastor

Attended Nursery Provided

**TRU-TEST PAINTS**  
PAINTING HELP SPOKEN HERE.



### By Uncle Bob

Dear Bob:

I am planning to repaint two of my children's bedrooms soon and I want to do the entire project on a weekend. I plan to use a one coat coverage paint. Is it possible or am I dreaming?

Dear Mark:

Mark K.

You bet it's possible, providing your recover color is similar to the existing wall color. Be sure to have enough paint on hand so that you won't be tempted to spread the paint on too thin. (Check the coverage rate on the label of the paint can.)

The nap on your paint roller should match the texture of your wall surface, allowing you to apply the paint in even pressure strokes.

It's your children who will be dreaming peacefully when you select Tru-Test's E-Z Kare Latex Flat Enamel, giving you one coat coverage, 30 minute drying time, no lingering odor...AND...it's scrubbable.

Bob



**Fry & Cox, Inc.**

272-4511

401 South 1st

## School Legislation

Con't From Page 1

\* any other unusual case acceptable to the superintendent or principal of the school the child attends.

The reason for an excused absence must be stated in writing and signed by the parent or other person standing in parental relation to the student.

### SCHOOL-RELATED ABSENCES

Students may not participate in any school-related activities, on or off campus, that will require, permit, or allow them to be absent from any course more than 10 times during the 175 day school year.

### FOOD SERVICES

Muleshoe ISD serves nutritious meals every school day. Students may buy lunch for 80 cents in grades K-2, 85 cents in grades 3-5, and 90 cents in grades 6-12. Breakfast may be purchased for 40 cents (K-2), 45 cents (3-5), and 50 cents (6-12).

Applications for free and reduced meals may be obtained in the principal's office at each school.

### CLASS RATIO TO BE DECREASED

Beginning next year, classes in K-2 will be reduced to a ratio of 22 to 1. This will be costly, but it should help the district provide better academic training. By the 1988-89 school year this 22:1 ratio will be extended through the fourth grade.

### PRE-KINDERGARTEN

Beginning in 1985-86, Muleshoe ISD will offer a pre-kindergarten class (4 year olds) if 15 eligible children are identified. To be eligible the student must not be able to speak and comprehend the English language or be from a family where income is below subsistence level.

### SUMMER SCHOOL

Muleshoe ISD will offer a summer program for limited English proficient students who are eligible for admission to kindergarten or first grade. The program will be offered for one-half day for eight weeks preceding the opening of school.

### SCHOOL CALENDAR

Beginning next year school can not start before September 1.

### COMPETENCY TESTS

Beginning next year, minimum basic skills competency tests in reading, writing, and mathematics will be given at the first, third, fifth, seventh, ninth, and eleventh grades (currently the Texas Assessment of Basic Skills - TABS - is given at the third, fifth, and ninth grades). The secondary exit level test that is administered in the eleventh grade must be passed before a student can graduate from high school.

### ADVANCED PLACEMENT EXAMS

Muleshoe ISD along with other districts in the state will develop advanced placement exams. It will be possible to be double-promoted.

### TEACHERS

Better salaries - opportunity to participate in career ladder benefits - all teachers must take and pass a competency exam prior to September of 1986 in order to continue teaching.

### STUDENT DISCIPLINE MANAGEMENT PROGRAM

All school districts must develop a school discipline management program that will become effective as of September 1, 1986. Districts must adopt and implement a discipline management program, which must be approved by the Texas Education Agency. The program must require the development of a student code of conduct clearly describing the district's expectations and specifying the consequences for violating the provisions of the code. The Attorney General's Proposed Voluntary Student Code of Conduct of 1980 is suggested as a model.

Additional requirements include at least two parent-teacher conferences a year, parent training workshops, and consent by parents that they understand their responsibilities under the program. Each teacher must complete training in the discipline management system.

### SCHOOL DISTRICT PERFORMANCE REPORTS

Muleshoe ISD trustees will publish an annual performance report which will be available to the public and filed with the State Board of Education describing the district's educational performance and giving financial information related to the costs incurred by the district. The State Board of Education has been instructed to prescribe the form and content of the report.

### PARTICIPATION IN EXTRACURRICULAR ACTIVITIES

A student may participate in extracurricular activities on or off campus only if:

\* Beginning with the 1984-85

fall semester, the student passed at least three of the courses in which he or she was enrolled for the 1983-84 spring semester, and the student maintains a 70 average or better in at least four courses for the current semester.

\* Beginning with the 1984-85 spring semester, the student has maintained a 70 average or better in at least four of the courses in which he or she was enrolled for the prior semester.

\* No student from Muleshoe ISD will be allowed to miss any school time for any extra-curricular purpose unless the student is passing all subjects. (If a team has to leave school early to participate in a contest, students in this category are ineligible to participate in that event).

\* Muleshoe ISD will not sponsor any athletic tournaments during the school day.

\* All athletic schedules will be approved by the Superintendent of Schools.

\* Varsity Track teams are limited to one over-night track meet (below district level) per season.

\* Any student missing any more than 10 days of school during a semester becomes ineligible to participate in any extra-curricular activity sponsored by the school district. (Exceptions will be made for hospitalization and extended illness.)

\* Effective January 1985 any student failing any academic class in the prior six-weeks reporting period may not participate in any extracurricular activity during the next six-weeks reporting period.

### Muleshoe...

Con't From Page 1

Nelson, Bobby Nino booted through the extra point.

The Bobcats liked that, so they tried, successfully, an onside kick and another pass play, a 19 yarder from Woody Glass to Doug Nelson proved to pay off for the Bobcats. With 3:29 left in the third, the Bobcats had two TD's in just three minutes of play.

This time, however, the attempt for extra points failed, as the ball was bobbled from the center.

For the game, the Mules had 303 yards on the ground, and another 21 through the air for 324 total yards; Dimmitt had 75 yards on the ground, and 99 in the air for 174 total yards.

Muleshoe quarterback Todd Jones, who recovered one Dimmitt fumble, and had an interception to his credit for the evening, connected on one of four passes for 21 yards.

Woody Glass, quarterback for the Dimmitt Bobcats, connected for eight of 25 passes, good for 99 yards.

Muleshoe had 10 first downs in the game to 12 for Dimmitt and the Mules had two fumbles to one for the Bobcats.

Muleshoe now has a season record of 3-4, while Dimmitt dropped back to a 4-3 season record.

### PHYSICAL EDUCATION WAIVER

Students will be allowed to substitute certain physical activities for one and one-half required units of physical education. Students will be required to achieve an acceptable score on a physical fitness test in order to waive physical education (marching band, etc.) Students substituting athletics will not be required to take the physical fitness test.

### THE SCHOOL DAY

The official daily time schedule for schools in the Muleshoe ISD is as follows:

Muleshoe High School tardy bell rings at 8:20 a.m. and will

### Muleshoe...

Con't From Page 1

\*\*\* Tickets for the PTA Halloween Carnival will go on sale on Saturday, October 27, from 9 a.m.-2 p.m. at the Civic Center. At that time tickets will cost 5-51. If you wait to purchase tickets at the door when the carnival opens at 6 p.m. the cost will be 4-51.

\*\*\* The New Muleshoe City Directories are now at the Muleshoe Chamber of Commerce and Agriculture office. The cub Scouts will be delivering them within the next couple of weeks. If you haven't received one in two weeks, come by the Chamber office at 215 South First and pick one up.

\*\*\* New officers who will assume their duties on January 1, 1985 for the Muleshoe Chamber of Commerce and Agriculture include, Gerald Reid, president; Chuck Smith, vice president; Kathryn Taylor, treasurer; and directors, Tom Bonds, Margie Merritt, Brad Poyner, Tub Angeley and Tim McCormick. Phil Kent was elected to fill Brian Pohlmeier's unexpired term.

\*\*\* The City of Muleshoe held a pre-annexation hearing Wednesday morning at the meeting room of the Texas Department of Highways and Transportation office west of Muleshoe on High 84.

No one showed up for the hearing, except City Manager Dave Marr; City Secretary Mary Hicks; CofC Manager Toni Eagle; CofC President Lonnie Adrian and Cleta Williams of the Journal.

\*\*\* In plenty of time for Christmas giving! The Muleshoe Chamber of Commerce and Agriculture announces the arrival of the 'Muleshoe Board Games.'

Games already paid for may be picked up at the CofC office, or will be delivered.

Games will be on sale for \$10.95 each at the CofC office, KMUL Radio, IGA (Muleshoe Supermarket), Poyner's, Muleshoe State Bank, Lee's Western Wear, K-Bob's Steakhouse and Heritage House Inn.

Make sure you have your games reserved now.

dismiss at 3:45 p.m.

Watson Junior High tardy bell rings at 8:20 a.m. and will dismiss at 3:40 p.m.

DeShazo Elementary tardy bell rings at 8:20 a.m. and dismisses at 3:30 p.m.

Dillman Elementary tardy bell rings at 8:30 a.m. and dismisses at 3:00 p.m.

The first bell to class rings 10 minutes prior to the tardy bell.

During the school year it will be necessary to dismiss school an hour early for faculty meetings and/or school related activities. In order to preserve the school day, all classes will meet on an abbreviated schedule. This school district will make every effort to give advanced notice of early dismissals, but, during inclement weather please listen to weather advisories on the local radio station and cable TV station.

Early dismissal schedule is as follows: 2:00 - first bell elementary; 2:10 - second bell; 2:20 - Junior High Bell; 2:25 High School Bell; 2:30 - Buses leave High School Parking lot.

### FINANCE

Muleshoe ISD profited from the passage of House Bill 72 financially. Muleshoe received approximately \$800,000 new state dollars to help implement the new requirements. Hopefully, this additional State Funding will help defer a need for any substantial local tax increase.

## Cub Scout Committee Met Tuesday

On Tuesday, October 16, the Cub Scout Pack Committee met at a local restaurant, with Mary Watson, Judy Watson, Jim Lutz, Delton Wilhite, Johnny and Melinda Ziegenfuss, and Hugh and Pat Young.

Delton Wilhite and Melinda are new members, with Wilhite being named the new Pack Committee Chairman.

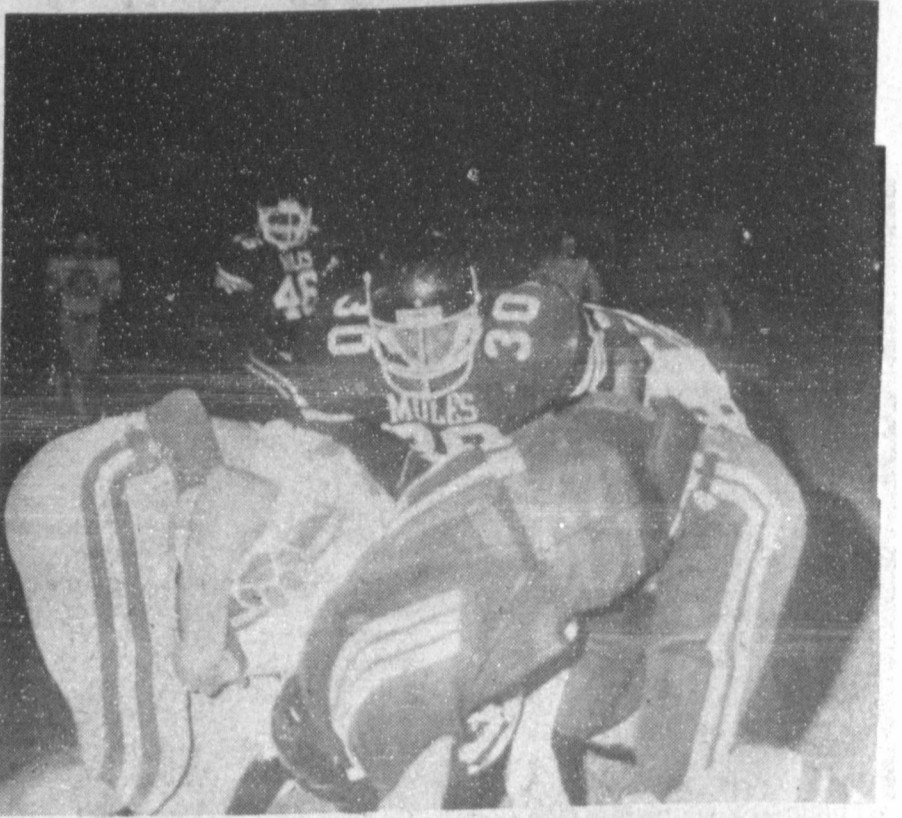
Discussed were a meeting place for the committee; a budget for the upcoming year; and plans for the November 10 Scout Show.

The date of January 12, 1985, with a back-up date of January 19, were decided for the Pinewood Derby. The district Pinewood Derby will be in Muleshoe on February 2.

The annual Blue and Gold Banquet is scheduled for Friday, February 8.

THE FUTURE: SOCIAL PROMOTION H.B. 72 does not allow local districts to grant social pro-

motion. School staff and parents must work together to see that students are properly assessed and placed in instructional programs.



IT'S HEADS DOWN TIME--Smiley Orozco, No. 30, and Todd Jones, combine to put the stop in a Dimmitt Bobcat in action in Benny Douglass Stadium Friday night. Dimmitt was held to only 75 yards on the ground during the game.

## Tree Seedling Applications Being Taken

Windbreak seedling applications for spring 1985 plantings are now available at the Bailey County Extension office in Muleshoe, according to Spencer Tanksley, County Extension Agent. Anyone interested in trees for windbreak purposes can get application forms by phoning the office (272-4583) or coming by and picking one up. Additional information on tree selection, tree maintenance, growth characteristics and recommended spacing is also available at the office.

Both barerooted hardwoods and containerized conifers will be available. The hardwood

species include Russian Olive, Honeylocust, Bur Oak, Hackberry, Native Plum, Skunkbush, Sumac, and Green Ash. These trees have 18 to 30 inch tops. The Conifers (evergreens) include Austrian pine, Ponderosa pine, Afghanistan pine, Scotch pine, and red cedar. These trees have 12 to 14 inch tops.

Tanksley said some species of trees are limited and priority will be given on "first-come, first served" basis. Deadline for ordering seedlings is February 15, 1985. Planters will pick up trees in Lubbock on March 7, 1985, at the Texas Agricultural Experiment Station.

## Steve's Vacuum Service

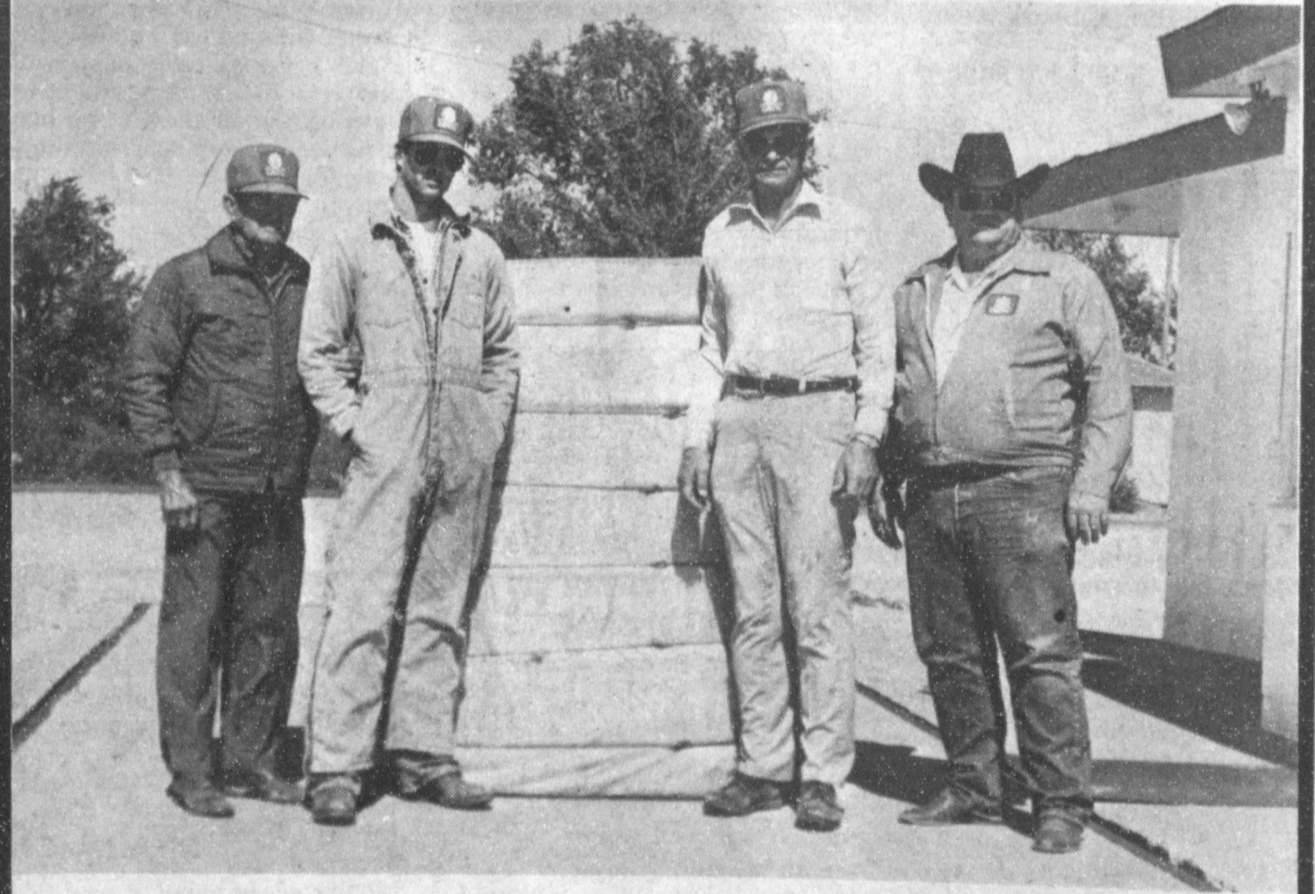
Repair On Kirby Eureka, Hoover And Others.

Fast Dependable Service

Phone: 272-5438

## Congratulations Dale Demel

For Producing The 1st Bale Of Cotton In Bailey County In 1984.



FIRST BALE OF COTTON--The first bale of cotton for 1984 in Bailey County was ginned at Claunch Gin at Bula on Wednesday morning, October 17. Dale Demel produced the cotton near Bula, he planted SP 21 May 14 and irrigated it one time on Highway 54 near Bula. Pictured with the bale are: Jim Claunch, Dale Demel, Gaubert Demel and Bennie Claunch.

## Claunch Gin

Bula, Texas

## ALLIS-CHALMERS Why Pay More?

Get A Factory Installed Burr Extractor And Leave

300 to 600 Pounds Of Trash In The Fields. This Means

A Saving In Transportation And Ginning Cost. If You Do

Not Buy A New 880 Cotton Harvester From Earl Ladd and

Sons Inc. In Muleshoe, You are Paying Too Much.

**Earl Ladd & Sons, Inc.**

(806) 272-3308

Muleshoe



## 'The Singing Deweys' Will Perform Concert

"One of America's most talented musical groups, The Dewey Family, will appear here at First Assembly of God Church, located at 521 South First Street in Muleshoe at 7:30 p.m. on Tuesday, October 23," said the pastor, Rev. Steve Davis.

"The Deweys have become famous for their ability to play over 30 musical instruments for the enjoyment of the crowds that come to their concerts," added the minister. "There is an intensity of excitement that builds when all the instruments are on the stage and the Deweys begin their ministry. Their vocal quality, musical

expertise, and unique sense of humor is superb."

The Dewey Family are regular telethon guests for Paul Crouch at TBN in Southern California. The network features the family at all their television stations on a regular basis as well. The TBN network airs in 42 different states in the U.S.

Recently, the Deweys have been the special guest of Jim Baker on the PTL program, and contact, the television program which airs five times per week on PTL satellite, and three times per week on Pat Robertson's CBN satellite network. They are easily recognized as the group that opens the regularly scheduled, Sing Out America, program from Nashville, Tenn. viewed in over 23 million homes each week.

This family travels in ministry all over the world. Appearing now in 25 different countries as missionary evangelists for the Assemblies of God, they recently received front page coverage in Lucknow, India. During that trip, the article states, "The Deweys are doing more for international relations than all the pacts and treaties put together."

"The great thing about this family is their humility, beauty and grace in their presentation," said Rev. Davis. "These are people who are ministers in the truest sense of the word."

A nursery attendant will be provided during the services.

## Farm Debt Program Will Provide Aid

"Final steps are being taken to start processing applications for restructuring farm debts under the farm credit initiatives announced recently by President Reagan," says Charles W. Shuman, administrator, Farmers Home Administration.

He added, "In fact, I have already directed that loan reviews be started as a first step in helping farmers who find themselves in severe economic difficulty through no fault of their own. Regular loan reviews are conducted to determine whether a borrower is showing progress in the farming operation."

An important part of this year's review is to determine which farmers would be eligible for assistance under the restructuring plan.

The plan announced by the President provides two alternative forms of assistance for those farmers. In both cases, the goal is to restore the farmer to a positive cash flow situation.

For a farmer with a FmHA loan, the agency can set aside up to 25 percent of the principal and interest--to a maximum of \$200,000--for five years. There would be no interest charged on the amount set aside.

For a farmer with a loan from a commercial lender, FmHA can guarantee a new loan if the lender will write down the existing loan at least 10 percent, up to the amount necessary to restore a positive cash flow, explained Shuman.

He added, Farmers with FmHA loans who think they might qualify for assistance under the restructuring plan should discuss it with the FmHA County Supervisor when the review is conducted.

## Church Of Christ Has New Minister

After being without a minister for the past five months, the Muleshoe Church of Christ has a new minister who begins his new pastorage today (Sunday).

He is David Alessandro, native of El Campo and Temple, who has moved to Muleshoe from Dallas. He has been a minister since June, 1958, and has served several churches and religious publications.

His latest church has been with the Sunset Church of Christ in Dallas and he has spoken in several Lectureships, Youth rallies and has held meetings in a number of states, as well as British Columbia.

He and his wife, Frances are the parents of four grown children.

## The Singing Deweys Eight Amendments Will Be Voted On

On November 6, when Texas voters go to the polls, they will find eight amendments to vote on. The Journal has decided to go ahead and print the amendments so voters will have time to study them, and make a decision on voting. At some point just before election, the amendments will again be published.

The following amendments will be voted upon by Texas voters during the general election, Nov. 6. They have been prepared in the exact order in which they will appear

on the ballot.

Proposition 1: "The constitutional amendment to provide state banks the same rights and privileges as national banks."

Proposition 2: "The constitutional amendment to create from general revenue a special higher education assistance fund for construction and related activities, to restructure the permanent university fund, and to increase the number of institutions eligible to benefit from the permanent university fund."

Proposition 3: "The constitutional amendment authorizing the legislature to provide for payment of assistance for the surviving dependent parents, brothers, and sisters of certain public servants killed while on duty."

Proposition 4: The constitutional amendment to abolish the office of county treasurer in Bexar and Collin counties.

Proposition 5: "The constitutional amendment authorizing the state senate to fill a vacancy in the office of lieutenant governor."

Proposition 6: "The constitutional amendment to permit use of public funds and credit for payment of premiums on certain insurance contracts of mutual insurance companies authorized to do business in Texas."

Proposition 7: "The constitutional amendment relating to the membership of the State Commission on Judicial Conduct and the authority and procedure to discipline active judges, certain retired and former judges, and certain masters and magistrates of the courts."

Proposition 8: "The constitutional amendment to provide a per diem for members of the legislature equal to the maximum daily amount allowed by federal law as a deduction for ordinary and necessary business expenses incurred by a state legislator."

## Red Cross Gets Grant To Buy Service Vehicle

The South Plains Regional Chapter of the American Red Cross has been named as the recipient of a \$15,000 grant from the Amoco Foundation, Inc. The grant will be used to purchase a field service vehicle which will aid in providing Red Cross services to the South Plains.

Known now as the South Plains Chapter, and formerly the Lubbock County Chapter, Red Cross provides aid to disaster victims, service to military families, and health and safety training throughout the region. The chapter serves Bailey, Cochran, Crosby, Hockley, Lamb and Lubbock counties.

The vehicle will be equipped with Red Cross frequency high-band and low band radios and with emergency lights. It will carry disaster response supplies and first aid equipment. The field service vehicle will also be used extensively in providing CPR, First Aid, and other safety courses throughout the region.

## Ellis Funeral Home

Pre-Need Funeral Plans

Supervised By Texas Department Of Banking  
Price Frozen At Time Of Purchase

## Christmas GIFT IDEAS



Now In Stock

Transformers

GoBots

My Little Pony

Farm Toys

## Fry & Cox, Inc.

401 S. First

272-4511



A&M CLUB PRESENTS SHOTGUN--Glen Kleeman, center, of Littlefield, was the winner of the Remington Model 1100 .12 gauge shotgun, given away by the Muleshoe Area A&M Club. He is pictured with Eddie Barron, left, who sold him the winning ticket and Max Crittenden, right, chairman of the fundraising event for the A&M Scholarship Fund.

\*\*\*\*  
The best laid plans will not produce dollars unless they are backed by energy and hard work.

\*\*\*\*  
Fathers and mothers very often punish children who behave exactly like father and mother.

## School Board Special Meet

### Slated Monday

An emergency meeting of the Muleshoe Independent School District Board of Trustees has been scheduled for 8 p.m. on Monday, March 22, in the school business office.

H. John Fuller, superintendent, said items will be to discuss and consider making decisions on local school policies relating to House Bill 72 and Chapter 75 of the Texas Education Code.

Also on the agenda will be to consider bids for ceiling fans, insulation, and ceiling panels for Dillman Elementary, De-Shazo Elementary and Watson Junior High School.

Board members will also consider a hardship transfer.

## Muleshoe Chamber Of Commerce & Agriculture Halloween Decoration Contest Entry

Business \_\_\_\_\_  
Address \_\_\_\_\_  
  
Home \_\_\_\_\_  
Address \_\_\_\_\_

Take To City Hall Or Mail To

P.O. Box 356,

Muleshoe, Texas 79347

Can you believe that Larry & Paula have been married a year?

Winklers Dry Cured Hams \$1.69 lb.

1/2 Beef \$1.29 lb.

Spare Ribs \$1.59 lb.

Extra Extra Lean Guaranteed 80% Lean Hamburger (No box trimming - Made FRESH) \$1.29 lb.

Breakfast Sausage \$1.50 lb. 2 lb. pkg.

Hamburger Patties \$1.39 lb.

5 lb. Box Chicken Fries \$14.75 box

# Winkler Meat Co.

401 Main 272-4703

**Courthouse News**

**WARRANTY DEEDS**  
Opal Palmer and Alta Palmer Bransgrove to Ray Reed and wife, Ruby Reed---37.68 acres of land out of Section Nos. 32 and 33, in Block "Y", WD&FW Johnson Subdivision in Bailey County, Texas.  
Joyce Stephens, Nicki E. Follis, Shirley D. Boyd, Sharon Gilliland, Zane L. Evans, Sr., Doyle T. Evans to Reynoldo Lira and wife, Sylvia Lira --- All of Lot (13), Block (1), Legion Addition to the Town of Muleshoe, Bailey County, Texas.

Summitt Savings Association to James L. Kirk and wife, Patricia A. Kirk ---A rectangular tract of land, 150 feet by 140 feet out of Section 33, Block Y, WD&FW Johnson Subdivision No. 2, Bailey County, Texas.  
Lillian Martin to Corine Oatman---Lots Numbers 14 in Block Number one, in the

**Raymond McCormick**

**Former Muleshoe**

**Resident Dies**

Services for Raymond McCormick, 36, of Andrews, and formerly of Muleshoe, are scheduled for 10 a.m. (MST) Monday at Steed-Todd Funeral Home Chapel in Clovis, with Charles Harvey officiating. Burial will follow in the Farwell Cemetery under direction of Steed-Todd Funeral Home.

He died at 11:30 a.m. Thursday in Clovis High Plains Hospital.

His survivors include his parents, Mr. and Mrs. George McCormick, Clovis; a son, Scott and a daughter, Melissa, both of Abilene; two brothers, Billy of Los Alamos, N.M. and Roy of Seminole; four sisters, Evelyn Fancher of Houston; Marion Omy of Clovis; Linda Wilhite and Phyllis Crenshaw, both of Muleshoe

**Russell Pfister**

**Services Pending**

**In California**

Funeral services for Russell C. Pfister, 66, of Clovis, N.M. were pending at press time. The body was shipped Friday to Chapel of Twin Cities Funeral Home at Yuba City, Calif.

Local arrangements were under the direction of Ellis Funeral Home of Muleshoe. Pfister died at 7:45 a.m. Wednesday in the William Beaumont Army Hospital in El Paso following a lengthy illness.

Pfister was born in Mahomet, Ill., and moved to Clovis in 1973, from Marysville, Calif. He married Lois Williams on May 7, 1972, in Clovis. He retired from the Air Force in 1965, and was a veteran of World War II. He was a retired maintenance engineer and a member of Highland Baptist Church.

Survivors include his wife; his mother, Mary of Socorro, N.M.; two sons, John C. of Sacramento, Calif., and Jim Williams of Tacoma, Wash.; three daughters, Elsie Reeves of Clovis, Karen Sue Stebins of Sparks, Nev., Ruth Wheeler of Fort Worth; one sister, Lary F. Finical of Plainview; three brothers, Paul M. of New Cumberland, Pa., Charles W. of Silver Springs, Md., Chester D. of Socorro, N.M.; and four grandchildren.

The family suggests memorials be made to the American Cancer Society.

One always has time enough, if only one applies it well.  
-J.W. Goethe.

**VOTE!**

County Commissioner Precinct I (Write In Candidate)

**R.O. Gregory**  
Incumbent

**R.L. Scott**

Northwest Addition to the Town of Muleshoe, Bailey County, Texas.  
**COUNTY COURT**  
J.C. Murphy DWI 5 Days Jail \$250 Fine  
Filiberto Flores DWI 72 Hours Jail \$250 Fine  
**DISTRICT COURT**  
Ozell Cherry VS Carl Houston Judgment  
Mary Colleen Griffiths and Prentice Lee Griffiths DV  
**MARRIAGE LICENSE**  
Victor Manuel Sanchez and Maria Elena Ireugas, Hereford  
**NEW VEHICLES**  
Steve Edwards, 1984 GMC Van, Robert D. Green, Inc. W.L. Broadhurst, 1984 GMC PU, Robert D. Green, Inc. Dale Cooper, 1985 Ply Sub, Muleshoe

Mtr. Co. Inc., Dorris M. White, 1984 Pont 4dr, Robert D. Green, Inc., Mrs. Charles L. Glover, 1984 Pont, 4dr, Robert D. Green, Inc. and Carl Patterson, 1985 Chev PU, Robert D. Green, Inc.

Jacques de Larosiere, IMF managing director: "...The industrial world is regaining the momentum in growth and the rapid deterioration of the debt situation has been reversed."

**ROBERT D. GREEN, INC.**  
2400 W. AMERICAN BLVD. - MULESHOE, TEXAS 79347  
— HOME OF THE GREEN MACHINES —  
BUS. PH. 806 272-4588  
TERRY YELL SALESMAN  
HOME PH. 806 272-9948

**Thank You**  
During a time like this we realize how much our friends really mean to us. Your expressions of Sympathy, Love, Prayers, Cards, food, flowers, and memorials will always be remembered by the family of Euna Reed  
**Thanks Again**  
Ruby Murdock, Gene Murdock & Family  
Cliff Murdock & Family Albert Murdock & Family,  
Don, Chris Bennett & Family, Bruce, Shirlene and Family,  
Bob Murdock, Bobby Murdock & Family

**McDANIEL'S INC. 31st**  
YOUR WALL TO WALL STORE

**Anniversary Sale**

For the past 31 years we, here at McDaniel's Furniture & Floor Covering, have been serving Clovis & the surrounding areas & we have really appreciated the opportunity to serve you. Both in celebration of our 31 years of business and for your continued support of our business we are now having our super anniversary sale with bargains in every department you will not want to miss. So come early for the best selection.

**ALL SOFAS, SLEEPERS, CHAIRS, ROCKERS, & LOVESEATS 20-50% OFF!!**

**ALL GUN CABINETS CURIO CABINETS DESKS TEA CARTS 30-40% OFF**

**ALL OCCASIONAL TABLES (good selection) 20% to 40% OFF**

**HURRY FOR BEST SELECTION !!!**

**ALL DINETTES (large selection) 20-30% OFF**

**ALL BOOKCASES 35% to 50% OFF**

**ALL PICTURES, WALL DECOR, & MIRRORS 30-50% OFF**

**ALL GAME SETS 30-40% OFF**

**ALL FLORAL ARRANGEMENTS 30% OFF**

**CEDAR CHESTS - FLOOR CLOCKS - WALL CLOCKS - TABLE CLOCKS 30% OFF**

**ALL BEDROOM SUITES 25-50% OFF!**

**LAY-A-WAY FOR CHRISTMAS!**

**ALL GIFTWARE 30-50% OFF**

**ALL RECLINERS 20-40% OFF GREAT SELECTION**

Sale Continues Through October 1020 Main - 1013 Mitchell 762-4481 Hours 8:30 - 5:30 OPEN SATURDAYS





**JAMES STORIE AND GENTLE COUNTRY**—Providing live entertainment throughout the evening at the Wooley International, Inc. customer appreciation dinner Thursday night was the ever-popular James Storie and Gentle Country. They are fast becoming a very sought-after group of musicians and provide entertainment pleasing to all ages.

## Lubbock Hospital Starts New Program

On Friday, October 5, 1984, West Texas Hospital began a new program which is structured to ease the financial demands of Medicare patients.

Medicare currently requires the patient to pay a \$356 deductible each 60 day period, when hospitalized. West Texas Hospital will now ease that financial burden by forgiving the \$356 deductible, and negating the Medicare patient's deductible obligation to the hospital.

This is not an insurance plan, there are no dues to pay, and there is nothing to join. All Medicare patients are eligible. The program is designed to aid those individuals, many of whom are living on a fixed income, faced with medical expenses made more difficult with the recurring \$356 expense per each 60 day period. In short, West Texas Hospital will absorb any out-of-pocket deductible amount owed, up to

\$356. The next time inpatient healthcare needs arise, consider the full service benefits West Texas Hospital provides, and put the \$356 to better use!! For additional information concerning the Medicare program at West Texas Hospital, call 765-9381.

West Texas Hospital is owned and operated by American Medical International. AMI owns and operates more than 150 hospitals and health care centers throughout the world and provides a variety of health care services to more than 500 communities on five continents. West Texas Hospital, serving Lubbock and the area since 1920, is located at 1401 Ninth Street, Lubbock, Texas.

All that really belongs to us is time; even he who has nothing else has that.

—Baltasar Gracian.

### Open Letter To The Public

Dear Citizens of Bailey County: On November 6, 1984, one of the most important events in the history of Texas Tech and all of higher education in Texas will occur. On that date, voting Texans will, hopefully, adopt Proposition Two on the constitutional amendment ballot as an amendment to the Texas Constitution.

Proposition Two, if enacted, would allow Texas Tech University and Texas Tech University Health Sciences Center to participate in an annual dedicated appropriation and eventually a dedicated fund similar to the Permanent University Fund. Money from the appropriation and the fund would be divided among the non-UT and A&M Universities on a non-political formula basis and would be used for construction, repair and renovation of facilities, capital equipment, academic enrichment, and library books and materials.

The passage of Proposition Two is crucial to Texas Tech. The Board of Regents, myself, and everyone involved or interested in continued development, growth, and excellence at Texas Tech are firmly convinced that Proposition Two is in the short and long-term best interest of Texas Tech.

The support of all friends of Texas Tech and higher education is essential and deeply

appreciated. Please vote for Proposition Two on November 6.

Sincerely,  
Lauro F. Cavazos, Ph.D.  
President

### REMINDER TO ALL AREA HUNTERS:

If you plan to participate in the crane or pheasant hunts be sure to secure permission from area land owners. Permission must be granted before you enter their land.

Also obey "NO HUNTING" or "POSTED" signs in the area.

The area people enjoy the hunts but do not want crops or land littered or damaged.

Thank you.

Sincerely,  
Toni Eagle  
Chamber Manager

Geraldine Ferraro, Vice Presidential Demo candidate:

"When it comes to arms control, it takes a leader not only to stand up to Russians, but it takes a leader to sit down with them and negotiate an agreement."

### West Plains Hospital Report

#### PATIENTS IN WEST PLAINS MEDICAL CENTER

October 16 - Vivian Villarreal, Myrtle Martin, Flois Toten, Laura Powell, Lester Baker, Mildred Glenn, Ray Bevers, April Torres, Jackie Gutierrez, Antonio Jaramillo, Thomas Schmitz, Rosa Rodriguez and Orby Jarman

October 17 - Juanita Lumbreira, Myrtle Martin, Flois Toten, Laura Powell, Lester Baker, Rosita Guerra, Ana Ontiveras, Mildred Glenn, Elmer Cole, April Torres, Thomas Schmitz, Marcie Cook, Rosa Rodriguez and Orby Jarman

October 18 - Juanita Lumbreira, Myrtle Martin, Flois Toten, Tony Rojas, Ana Ontiveras and baby girl, Mildred Glenn, Elmer Cole, Marcie Cook, Rosa Rodriguez and Orby Jarman

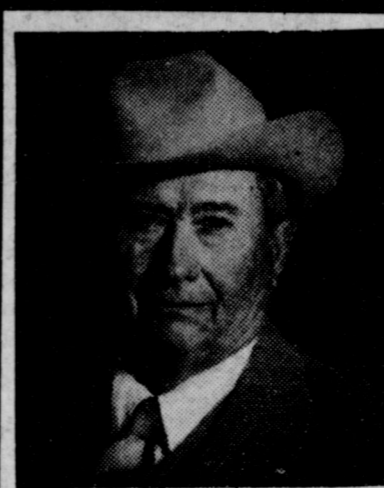
For Doctors Appointments Please Call Dr. Allgood --- 272-7526 or 272-7527, Dr. Purdy --- 272-7531, Dr. McCarty --- 272-5041, Dr. Muyschondt --- 272-3214.

George Shultz, Secretary of State, on Reagan-Gromyko talks:

"It was a very strong and useful interchange and Mr. Gromyko expressed his views very powerfully and aggressively..."

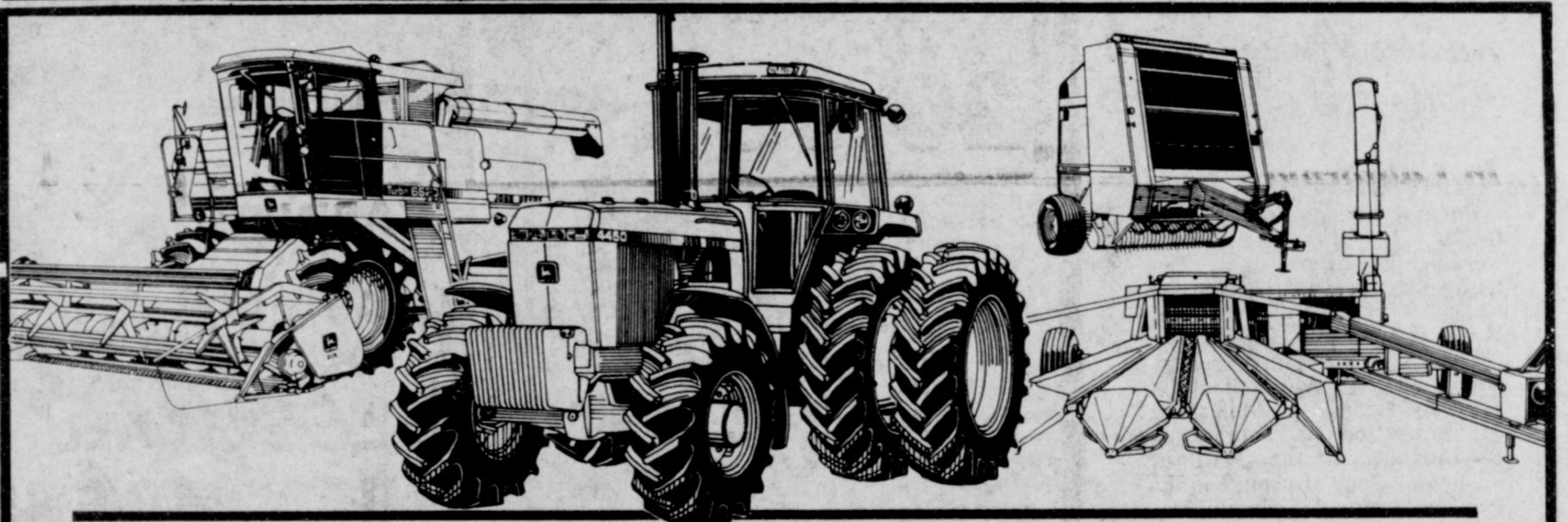
## Do You Need To Go To Lubbock For Medical Treatment And There Is No One To Carry You? Spartan Can!!

Phone 272-5130 Or Toll Free 1-800-462-TRIP



**Write In**  
**R.O. Gregory**  
For  
Bailey County Commissioner  
Precinct One.  
He is For The Betterment

Of Bailey County & Precinct One. He Has The Courage To Stand Up For His Personal Convictions. He will Be For Keeping Taxes At Minimum & Will Always Have An Open Mind On All Issues Concerning Bailey County & Precinct One.  
Pol. Ad. Pd. For By Concerned Citizens



## CLEAN UP DURING YOUR JOHN DEERE DEALER'S CLEAN OUT SALE

The John Deere factories are offering us tremendous allowances and we're passing them on to you. Some are in the thousands of dollars. And on top of that, you can choose cash rebates or interest-free financing periods on many items. It all adds up to big bucks. Look over these deals, then stop by our dealership and look over the equipment. We're cleaning out and you can clean up.

**NEW TRACTORS.** Special allowances on 50 Series (4050, 4250, 4450, 4650, 4850) worth up to many thousands of dollars. Generous allowances on utility and 4-WD models, too. If you finance with John Deere there are even greater savings: pay no interest until March 1, 1985 . . . or take a cash rebate as described in the chart.

**USED TRACTORS.** Finance a used tractor of 40 or more horsepower with John Deere and get it interest free until March 1, 1985.\*

**NEW COMBINES.** All models carry special factory allowances of multi-\$1000s.

**USED COMBINES.** Interest-free to January 1, 1985\*, if financed with John Deere.

**HAY AND FORAGE EQUIPMENT.** OFFER #1—Pick-A-Team cash rebates up to \$1600 on new John Deere hay and forage tools. Buy one now and receive a cash rebate. PLUS a certificate entitling you to a double cash rebate if you purchase a second tool anytime before April 30, 1985.

OFFER #2—Interest-free financing until January 1, 1985, on new and used SP and PTO forage harvesters.\*

**OFFER #3**—Interest-free John Deere financing until 1985\* season of use on new and used round and square balers, SP windrowers, mower/conditioners, mowers and rakes. (Cash in lieu of waivers on new units only, except mowers and rakes).

There'll never be a better time than RIGHT NOW to make this kind of savings. The factories have authorized it. Your dealer is waiting for you.

Model**	Cash Rebate in lieu of Waiver on Tractors		
	During Aug.	During Sep.	During Oct.
40-hp 1250 . . . . .	\$450 . . . . .	\$375 . . . . .	\$300 . . . . .
50-hp 1450 . . . . .	500 . . . . .	425 . . . . .	350 . . . . .
60-hp 1650 . . . . .	550 . . . . .	475 . . . . .	375 . . . . .
45-hp 2150 . . . . .	525 . . . . .	425 . . . . .	350 . . . . .
50-hp 2255*** . . . . .	475 . . . . .	400 . . . . .	325 . . . . .
55-hp 2350 . . . . .	600 . . . . .	500 . . . . .	425 . . . . .
65-hp 2550 . . . . .	675 . . . . .	575 . . . . .	475 . . . . .
75-hp 2750 . . . . .	775 . . . . .	650 . . . . .	525 . . . . .
85-hp 2950 . . . . .	900 . . . . .	750 . . . . .	625 . . . . .
100-hp 4050 . . . . .	1450 . . . . .	1225 . . . . .	1000 . . . . .
120-hp 4250 . . . . .	1675 . . . . .	1325 . . . . .	1075 . . . . .
140-hp 4450 . . . . .	1575 . . . . .	1400 . . . . .	1150 . . . . .
165-hp 4650 . . . . .	2000 . . . . .	1700 . . . . .	1400 . . . . .
190-hp 4850 . . . . .	2225 . . . . .	1875 . . . . .	1550 . . . . .
185-hp 8450 4WD . . . . .	2500 . . . . .	2100 . . . . .	1725 . . . . .
235-hp 8650 4WD . . . . .	3050 . . . . .	2575 . . . . .	2100 . . . . .
300-hp 8850 4WD . . . . .	3800 . . . . .	3225 . . . . .	2625 . . . . .

\* Availability of John Deere financing subject to approval of credit. These offers may be withdrawn at any time.  
\*\* A similar financing rebate offer applies to any 40 Series Tractors remaining in inventory. Ask for details.  
\*\*\* This model is not available for sale in Nebraska.

### JOHN DEERE FACTORY AUTHORIZED CLEARANCE

## Dent - Rempe

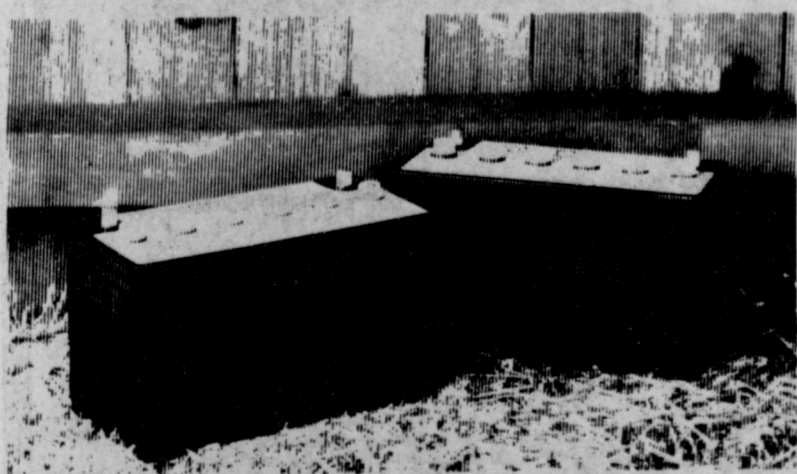
1516 W. Amer. Blvd.

272-4296



## BEST IN THE FIELD PARTS ROUNDUP

Buy one battery at regular price



Get a second battery at 1/2 price

See us today. Offer ends November 30.

Reynolds & Young, Inc.

803 W. American

272-4236





TO INTRODUCE A TRACTOR AND THANK CUSTOMERS--Bill Wooley, of Wooley International, Inc. hosted an appreciation dinner for his customers and friends Thursday night at the Bailey County Civic Center and Coliseum. Around 200 people enjoyed fish, chicken and all the trimmings, along with live entertainment and the presentation of door prizes. Wooley also briefly spoke about a new International Harvester tractor to be introduced in the near future. The new tractor is not the one shown in the picture.

**18. Legal Notice**

**PUBLIC NOTICE**  
The City of Muleshoe will accept bids on the following vehicles:

1. 1977 Chevrolet 4 Door
2. 1979 Chrysler 4 Door

These vehicles will be sold "as is" and may be seen at the City Barn. Sealed bids should be received at City Hall, 215 South First Street, Muleshoe, Texas, no later than 9:00 A.M. On Monday, November 5, 1984. The City reserves the right to reject any and all bids.

c18-43s-2tc

**To Late Too Classify**

**COTTON** Module builder for sale call 1st National Bank Muleshoe. 272-4515 titc

**Appropriate**

Magistrate -- What's your name and occupation and what are you charged with?

Prisoner--My name is Sparks, I'm an electrician and I'm charged with battery.

Magistrate--Put him in a dry cell.

**8. REAL ESTATE FOR SALE**

**WHITT-REID**  
REAL ESTATE-INSURANCE  
201 MAIN PH. 272-3611  
MULESHOE, TEXAS 79347

"WE TRY HARDER"

**NEW ON MARKET**-3-1 1/2-2 brick-Richland Hills new carpet in den, kitchen, hall and utility, fenced back yard.

\*\*\*

**NICE 3-1** on extra large lot in country, inside just redone.

\*\*\*

**LARGE 3-2-1** carport, 2 ceiling fans, basement, storage building. 1 rental unit, nice location.

\*\*\*

**A GOOD TIME** to go into business for yourself. Ceramic Shop with all bisque & greenware & lots more.

\*\*\*

**GOOD SOUND** practical home in Country Club addition. 3 bedroom, new carpet, central gas heat-well planned. \$25,000.00

\*\*\*

**17A.** 1 mile north of Y-L Pavement. 3 bedroom home, needs do-it-yourself-improvement-3 barns-Good for country living. Near Tolk Station-\$45,000.00

\*\*\*

**2700 sq.ft.** well located brick, 3 br., 1 isolated, 2 bath, fireplace, cellar, brick barbeque, patio. Near High School \$90,000.00

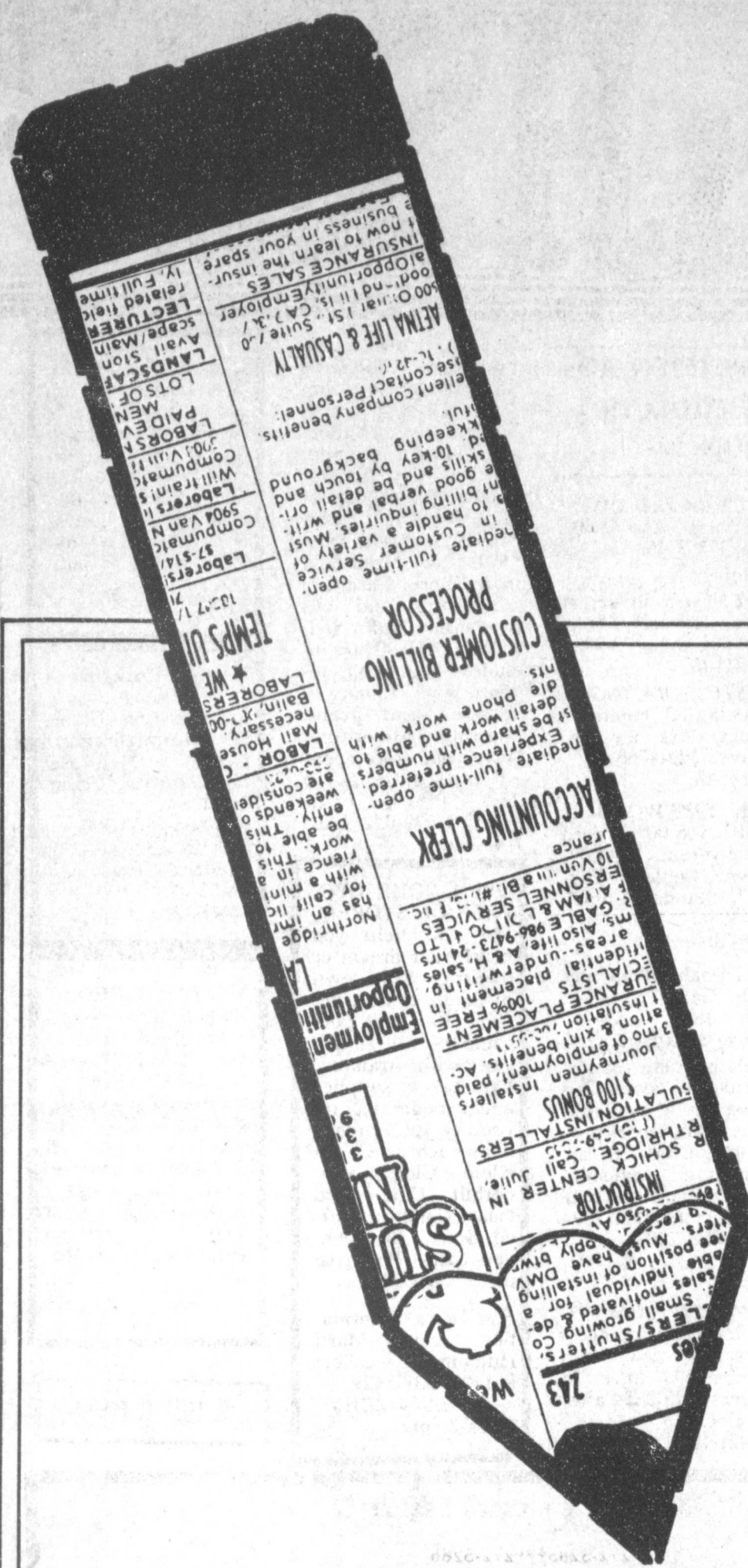
\*\*\*

**40 ACRES SQUARE**-No house- 1-8 inch irrigation 1 mile north of Muleshoe-Earth Hwy. Near Tolk station-Good location for farm home. \$790.00 A. Side Roll Sprinkler included.

\*\*\*

New brick homes-100% financing  
Roy Whitt 272-3058  
Thursie Reid 272-5318

8-43s-sc



*We'll Help You Write*  
**A GOOD AD!**

Let us help you find your market! Our experienced ad takers can advise you how to "tell all about it" in a low-cost classified ad.

**CALL ONE OF OUR FRIENDLY AD-VISORS TODAY!**  
CALL CLASSIFIED 272-4536

**Muleshoe & Bailey County Journals**

<p><b>TOOL VALUE OF THE MONTH</b></p> <p><b>449</b> While Supplies Last</p> <p>Multi-Purpose Nest of Saws Wood-cutting, metal-cutting and general-purpose blades fit into handle. 915975 QUANTITIES LIMITED</p>	<p><b>HARDWARE VALUE OF THE MONTH</b></p> <p><b>497</b> While Supplies Last</p> <p>Clip Lite Ideal as a spot or reading light. With almond finish. E72474 QUANTITIES LIMITED</p>	<p><b>BARGAIN OF THE MONTH</b></p> <p><b>999</b> While Supplies Last</p> <p>2-Pc. Cutlery Set 3-in. paring and 6-in. utility knives w/walnut handles. 640 QUANTITIES LIMITED</p>
---	--	--

**Fry & Cox Inc.**

401 S 1st

# CLASSIFIED ADS

**DEADLINE FOR CLASSIFIED ADS IS TUESDAYS AND FRIDAYS 12:00 NOON**

**CLASSIFIED RATES**  
1st Insertion Per Word...\$15  
Minimum Charge...\$2.30  
2nd Insertion Per Word...\$13  
Minimum Charge...\$2.00  
**CLASSIFIED DISPLAY**  
\$1.70... per column inch  
**BLIND AD RATES**  
50% more  
**DEADLINES**  
12 Noon Tues. for Thursday paper  
12 Noon Fri. for Sunday paper  
**WE RESERVE THE RIGHT TO CLASSIFY REVISE OR REJECT ANY AD NOT RESPONSIBLE FOR ANY ERROR AFTER AD HAS RUN ONCE**

**1. PERSONALS**

**FURNITURE** Upholstering & Repairs Burrows Upholstery Shop 209 W. 2nd Phone 272-4255 Home Phone 272-5722. b1-41t-tfc

**DECORATED** cakes-all types-Ann Johnson. 272-5746. j1-35t-tfc

**OPENINGS** in registered-daycare \$6.00 per day Call 272-3222 z1-21t-tfc

**CUSTOM BALING & Stacking.** 3 balers, 3 trucks. Ask for Leo Chavez 272-4768. c1-19t-tfc

**OAK FIREWOOD.** 1 cord- \$115.00, 1 cord - delivered, \$140.00, Wayne Copley 272-3697, Randal Copley 272-3886. j1-41s-3tsp

**WILL** babysit in my home. Call 272-5644. s1-41s-3tsc

**INTERNATIONAL** steel building manufacturer awarding dealership in available areas soon. Great profit potential in an expanding industry. For application call Wedgoc (303) 759-3200. Ext. 2403. 1-43s-1tpts

**I WOULD LIKE TO** do cotton stripping. I have 2 - 2 row brush strippers. I have 28 trailers. 946-3654 after 5 o'clock. d1-42t-4tc

Open your own highly profitable Children's Shop. Baby to Pre-Teen. All first quality merchandise. Nationally known brands. \*Health Tex \*Buster Brown \*Her Majesty \*Lee \*Levi \*Chic \*Jordache \*Doe Spun \*Rob Roy \*Izod and many more. Furniture -accessories and toys by Gerber and Nod-A-Way. \$14,900.00 includes beginning inventory - training - fixtures and grand opening promotions. Have your store opened in as little as 15 days. Prestige Fashions 501-329-8327 1-43s-1tpts

**OPEN YOUR OWN FASHION STORE!** We will help you make your dream or owning your own business come true. Our 10 year old company will supply you with training, fixtures, supplies and a beginning inventory of famous lines such as Calvin Klein, Gloria Vanderbilt, Chic, Lord Isaac, Condor, Stuffed Shirt, Jordache, and Zena. Purchase price is \$16,500.

For more information call Marti Hutchinson collect at (405) 238-5429. **THE SOURCE** 1-42s-2tsp

Custom Cabinet for your kitchen or bath room or any type of furniture making. We deliver and install. any where J/S Wood works 605 Connelley Clovis, N.M. Phone 769-0020 any time. Jimmy Trujillo T1-42t-1mct

**Ballou Insurance Agency** Representing Globe Life Hospitalization, Life, Medicare Supplements, Claim Service. Call 806-796-0390, P.O. Box 3256, Lubbock, Texas 79452 b1-42s-2tsc

**CONCERNED** About Someone's Drinking **HELP IS AVAILABLE** through Al-Anon Call 272-2350 or 965-2870 or Call 272-2350 or come to visit **T u e s d a y** nights. 8:00 p.m. at 1116 W. American Boulevard, Muleshoe

**2. LOST & FOUND**

**LOST** 2 cow caive pairs, they may not be branded but if so it has JH brand on the left hip. Mixed breed cows, calves weigh around 350 pounds. Call Matt Phelps 925-6485. p2-41s-6tc

**3. HELP WANTED**

**31 BED** acute care hospital located on western edge of Texas Panhandle is now taking applications for registered nurses. For more information call Triana Wilson RN or Pat Holland RN, 806-272-4524 ext. 226 or 219. w3-42s-7tc

**NEEDED- NURSERY** worker. Must be 18 years old or older. Apply in person, First Baptist Church, 220 W. Ave. E. 272-4224. f3-40t-6tc

**4. HOUSES FOR RENT**

**RUIDOSO CHALET** 4 bedroom for rent by day, weekend, or weekly. Call 505-257-2622 or 915-943-4261. Owner Dr. Albertson. a4-34s-10tsc

**8. REAL ESTATE FOR SALE**

2700 Sq. Ft. 320 W. Ave. J., 3-2-2 basement etc. 272-4737. w8-28t-tfc

**FOR SALE: HOUSE** on 1 acre; 3 br, 2 full baths, large den w/fireplace, built-ins and gun cabinet; Kitchen has all built-in appliances. Large storage room in back. Cinder block around house and lots of trees. Call 272-3318. s8-42t-5tc

**\$4,000 BELOW** appraisal. Richland Hills 3-2-2. Large den, with fireplace, Living room, Large Kitchen with all new appliances. Large fenced yard and covered patio. \$65,000. 1903 W. Ave. H 272-5002. z8-41t-tfc

**3 BDRM. 2 BATH,** brick home, double garage, 5 acres with livestock barn and corrals. Located at Maple, Tx. 927-5430. r8-41t-1mc

**2 BDRM. 1 BATH** with carport on 2 acres with fruit trees, cinder block cellar and good well. 1 mile west of Laz. on Hwy. 145. For sale by owner. 965-2133. m8-42t-4tc

**FOR SALE, House** and Lot located at 309 W Ave J, Muleshoe, Tx to the highest bidder for cash. Sealed bids only. Bid forms available at office. Bids to be opened 2:00 p.m. on 11/09/84. Dwelling for sale as is, will require renovation, specific restrictions available at FmHA office located in Pool Building at the corner of Ave D and South 1st St, Muleshoe. The Government reserves the right to reject any and all bids f8-42s-4tc

**FOR SALE- 37 acres** irrigated land. \$20,000 worth of hog pens & sheds, 3 yrs old. \$32,000. \$20,000 cash, the balance of \$12,000 on real estate contract. 505-478-2350. 8-43s-4tp

**FOR SALE BY OWNER** 2-1-1 on 2 lots. All fenced yard, storage building, fruit trees. \$17,500. Call 965-2320. L8-41s-stfc

**J.B. SUDDERTH REALTY INC.** Drawer 887 Farwell, Tx. 79325 Ph. 806-481-3288

Very nice 3 bdrm, 1 3/4 bath, brick home on corner with 2 car garage, fenced yard, with sprinkler system & storage shed, good neighborhood in Muleshoe.

Excellent 396 a irrigated two 10 inch wells, one 8 inch well approximately 180 to 200 feet of water, located 5 miles N.E. of Muleshoe on Hwy with 2 bdrm, stucko house owner says sell and will finance.

80 Acres, 2 wells, 1 electric motor. West of Muleshoe on highway. Owner says Sell!

480 Acres Irrigated with Circle Sprinklers, lays good, on highway-West of Muleshoe. Owner says Sell!

160 acres, 8 in well, lays nearly perfect, 5 miles South, 1 mile East of Clays Corner. Owner will finance.

Good 320 acres with 2 circles 2-8 in wells on highway South East of Lazbuddie. \$975 per acre cash with circle sprinkler included.

Excellent 160 acres with circle sprinkler 2-8 in wells Southeast of Clays Corner. Possible owner financing

130 acres 1-8 in well across road from above property, lays nearly perfect possible owner financing. 8-42s-tfc

**HENRY REALTY** 111 W. Ave. B Muleshoe, Texas 272-4581

320 Acres with large beautiful 3 - Bedroom, 3 bath, 3 car garage, spacious gameroom, central heating and air, underground sprinkler for yard 30' x 50' shop for building. 5 wells.

**80 ACRES** with 6" well and 8" well, underground pipe owner financing available. 7 miles west of Muleshoe.

**160 ACRES** with 2 wells and 7 tower sprinkler near Lazbuddie.

38 Acres West of Muleshoe, 6 Inch Well, Sideroll, All Wheat.

One Acre Sites for Home Construction. 3 Miles of Muleshoe on HWY. 3 lots remain.

**SMALLWOOD REAL ESTATE** 232 Main 272-4838

Just outside city limits, 0.8523 acre land, 3 bdrm, 1 1/4 baths, 1500 sq. ft. Small down payment.

3 B.R. Brick, 2 Bath, 2 Car Garage, 2 Storage Bldg. Central heat Refrigerated air, Fireplace, Electric Garage door openers, fenced back yard, good location. Priced to Sell!

8-23s-tfc

**KREBBS REAL ESTATE** 1004 W. 6th Phone--272-3191 Appraisals We Specialize In Farms And Ranches Cash lease - 300a irrigated land.

For Sale - 560a dryland - 160a minerals. k8-24s-tfc

**JIMMIE CRAWFORD** Real Estate & Insurance 1725 W. Ave E. Muleshoe, Texas Phone 272-3666

**9. AUTOMOBILES FOR SALE**

1972 CLASS A 21' Champion motor home loaded and clean 7 kw Onan Generator fully self-contained under 40,000 mi. \$10,000 Call 806-272-3139. p9-41s-tfc

**PRICE REDUCED, MUST SELL!** 15 ft. 1973 Red Dale Travel Trailer. Sleeps six, 3 way refrigerator, used very little, must see to appreciate. \$1800.00 Call 272-4343 after 6 p.m. or come by 302 W. 7th.

1978 FORD T-Bird Nice, Call day 272-4222 after 6:30 272-4342. 9-41s-3tsp

**10. FARM EQUIP. FOR SALE**

**FOR SALE:** 1-283 John Deere stripper, stored in barn. Phone 806-272-4744. j10-41t-tfc

283 JOHN DEERE Stripper for sale. Stripped only 600 acres. Call 965-2160. m10-40t-tfc

**FOR SALE** Ten all steel 8x9x24 ft. "Big 12" Cotton trailers. Five wood-wire, 8x8x20 "Big 12" Cotton trailers. Excellent condition. Call 965-2693 at night. w10-42t-tfc

**11. FOR SALE OR TRADE**

**FOR SALE** 2 Recliners, 1 Base Rocker, 2 Bar Stools. With new covers. Burrows Upholstrey Shop 209 W. 2nd. b11-41t-4tc

**GREENHOUSE AT** Progress, make offer. Call 272-3865. f11-39t-1mc

**FOR SALE** Dry Oak very mixed small round & split, Delivered 272-3987. w11-39s-tfc

**FOR SALE**-Refrigerator & adding machine. Call 272-4994. 11-43s-2tp

**FOR SALE** 12X60 Mobile Home. 2 bd, awning, skirting, good condition. Phone 272-4625. b11-42t-2tc

**SINGER TOUCH** and Sew II w/cabinet button hole attachment in excellent condition 965-2789. j11-42s-5tc

**13. PROPERTY FOR LEASE**

25 BY 140 ft. building on Main Street in Muleshoe for rent. Will remodel to suite. 385-6237 10 to 5 p.m. Littlefield Health Food Center. h13-43s-stfcs

**15. MISCELLANEOUS**

**TRAILER SPACE** for rent. 272-3718 b15-42s-3tsc

**HOME REPAIRS.** F.M. Saldana Construction Licensed and bonded plumber. Specialize in cement, carpenter work, remodeling, painting, acoustical ceilings. 272-4955. 15-16s-tfc

**BRUCE & MATTHEWS** Inc. Refrigeration & Electrical Contractor's Heating, Cooling, Appliance Service. 424 N. First. 272-5114. 15-44t-tfc

**FARMERS-**Don't miss this \$ crop. Lease your land for pheasant hunting. We charge no fee, pass information on to qualified hunters, they contact you-you make your own deal. Hurry - Season opens Dec. 8 call or write today 806-799-6390 after 6 pm. 3207 45th Lubbock, Tx 79413. w15-42t-3tc

**DAVIS COMMERCIAL PUMPING SERVICE**

Cess pools, Grease pits, Dipping vats, Mud pits, Septic Tanks. "If it's part liquid and not over 20 foot deep we'll try to drain it." 806-272-4673 806-272-3467 Muleshoe, Texas 15-39s-stfc

**18. Legal Notice**

**PUBLIC NOTICE THE MULESHOE INDEPENDENT**

**SCHOOL DISTRICT** is accepting bids for ceiling, insulation, and ceiling fan installation in Dillman Elementary, DeShazo Elementary and Watson Junior High School. Sealed bids must be received no later than 8:00 P.M. on Monday, October 8, 1984. Plans and specifications are available from Tom Jinks, Muleshoe I.S.D. Business Office, 514 West Avenue G, Muleshoe, Texas, 79347. Bids will be opened at the regular meeting Oct. 8, 1984, 8:00 P.M. at the School Business Office.

The Trustees of the Muleshoe Independent School District reserve the right to reject any and all bids and waive all formalities in the best interest of the District. m18-39s-3tsc



The pupil of the eye expands as much as 45 percent when a person looks at something pleasing.

**BINGHAM & NIEMAN REALTY** 116 E. Ave. C 272-5285\*\*\*272-5286 **WE CAN HELP OUR BUYERS WITH 10-7/8 % A.R.M. INTEREST RATES ON 30 YEAR LOANS!!!!**

**RICHLAND HILLS**

3-2 Brick, Cent. A&H, built-ins, fireplace, office, large utility, covered patio, storage bldg., & beautiful yard!!!  
3-1 3/4-1 Brick, Cent. A&H, stove DW, fenced yard. 40's...  
3-1 3/4-2 Brick with corner fireplace in den, built-ins, large sunny dining area with built-in planter...  
3-1 3/4-1 brick, Cent. A&H, built-ins, fireplace, large den, storage bldg.!!!  
**LUXURY LIVING** in this 3-2-2 Custom-built brick, loads of built-ins, wet bar, Jacuzzi whirlpool, atrium, basement, Cent. A&H, & more...  
3-1 3/4-2 carport Brick, Cent. A&H, built-ins, gas log fireplace, fenced yard!!!

**SHOWN BY APPOINTMENT ONLY** 3-2 3/4-1 carport Brick home, Cent. A&H, built-ins (microwave, range-oven, compact, disposal, gun cabinets, & bar), 2 fireplaces, large utility, patio, 2 storage bldgs., & approx. 3,025 sq. ft. of lv. area!!!!

**COUNTRY CLUB**

3-1 3/4-2 Brick, Cent. A&H, built-ins. \$40's!!!!!!  
3-1 1/4-1 Brick, repainted inside & out, built-in range, gas grill, storage bldg. Low 40's!!!  
**LENAU ADD.**  
**JUST LISTED--3-1 1/4-1** carport home, nice carpet, fireplace, covered patio, storage bldg., isolated master bdrm. \$30's!!!!!!  
3-1-1 home on corner lot, Cent. heat, Evap. air, fenced yard \$30's.  
3-1 3/4-1 carport, nice carpet, fenced yard. a neat well-kept home. 30's!!!!  
3-1 3/4-1 carport Brick, built-ins, new paint & paper, nice carpet, utility, & large storage. Mid 40's....

**NEAR TOLK STATION** 3-1 home on 5 acres, horse barn, fenced areas, & other barns & storage bldgs. \$30's!!!

3-(2 bdrm., 1 ba. duplex units), Cent. A&H, built-in, ports, & fenced yards....

3-1-1 home, Cent. A&H, paneling, nice carpets, fenced yard, storage bldgs. \$20's!!!!

3-1-1 home, corner lot, built-ins, Cent. A&H, nice carpet. 30's...  
**JUST LISTED-2-2 1/2** carport Mobile home, built-ins, Cent. A&H, utility, covered porch, storage bldg., shop, fenced yard. Close to schools!!!!  
3-1 home, built-ins, fireplace, wall furnace, fence yard, close to hospital. \$20,000...  
2-1-1 home on corner lot, close to schools. Priced to Sell!!!!  
**EXTRA NICE-2-1 1/2** carport home, new paint, countertop, fenced yard & storage bldg. \$19,500!!!!  
2-1 3/4 Mobile Home + 2 carport, covered porch, built-ins, cable TV, large barn & corrals on approx. 2 acres on pavement close to town. 30's....

4-1 on 5.3 acres, 5 hp. sub. pump, tractor & equip., barn & more. 40's...  
Building on 2 lots, approx. 2350 sq. ft., paved parking!!!!

**FARMS**

60 acres dryland, close to town.....  
80 acres, Stegall area. Good productive dryland farm....  
2-1 home on 20 acres, 20 hp. sub. pump, domestic well, large barn & corrals, 1/4 mile sprinkler pipe, & more. \$42,500...  
2-1 home on 32 acres, 6" well, close to town on pavement....  
120 acres- good 6" well, good farm, close to town. \$700 per acre....  
1062 acres, 3 wells, 2 circles, large metal barn, 9% Owner financing....  
**JUST LISTED-160** acres, well with 40 hp. Elec. motor. \$400 per acre...  
**JUST LISTED-320** acres good cultivated land, near Stegall area in Roosevelt County, N.M. \$250 per acre....

We have numerous other farms, commercial property, & lots listed. Contact us for details on these and other listings.

**"WE APPRECIATE YOUR BUSINESS"** GEORGE NIEMAN, BROKER DIANNE NIEMAN, BROKER

8-40s-stfc



MARGARINE QUARTERS  
**PARKAY**  
1 LB. PKG. **59¢**

BORDEN'S ASSORTED ICE CREAM 1/2 GAL. 90 CTN. **\$1.49**  
BORDEN ICE CREAM SANDWICHES 6 CT. PKG. **89¢**  
BORDEN'S CHOC. MILK QT. CTN. **59¢**  
BORDEN'S CREAMY BUTTERMILK 1/2 GAL. CTN. **99¢**  
KRAFT SLICED VELVEETA 12 OZ. PKG. **\$1.59**  
VAN DE CAMP ENCHILADA ASSORTED VARIETIES DINNERS 15 OZ. PKG. **\$1.69**  
CITRUS HILL CHILLED ORANGE JUICE 64 OZ. CTN. **\$1.69**  
MRS. SMITH'S PUMPKIN CUSTARD PIE 26 OZ. PKG. **\$1.69**

HORMEL VIENNA SAUSAGE 5 OZ. CANS **2 89¢**

HORMEL POTTED MEAT 3 OZ. CANS **4 \$1.00**

KEEBLER ZESTA SALTINE CRACKERS 1 LB. BOX **89¢**  
KEEBLER HONEY GRAHAM CRACKERS 1 LB. BOX **\$1.29**

REGULAR OR UNSCENTED KING TIDE 84 OZ. BOX **\$3.29**

# Shop AND Compare!

## U.S.D.A. GRADE "A" WHOLE FRYERS **57¢** LB.

HEAVY GRAIN FED BEEF PACKER TRIM WHOLE IN THE BAG 8-12 LB. AVG. BRISKETS **\$1.19** LB.

WHOLE CUT-UP PAN READY FRYERS LB. **69¢**  
FRESH SPLIT FRYER BREASTS LB. **\$1.39**  
FRESH FRYER THIGHS OR DRUMSTICKS LB. **\$1.19**  
FRESH GUARANTEED 73% LEAN GROUND BEEF LB. **\$1.29**  
EXTRA LEAN CHUCK QUAL. GUAR. 81% LEAN GROUND BEEF LB. **\$1.59**  
LOUIS RICH SMOKED FULLY COOKED TURKEY HAMS LB. **\$1.89**  
CLAUSSEN KOSHER "THE CHILL DILL" DILL PICKLES QT. JAR **\$1.49**  
CLAUSSEN BREAD & BUTTER OLD FASHIONED PICKLES 24 OZ. JAR **\$1.49**

TV SPECIAL  
TREE TOP CIDER OR APPLE JUICE **\$1.69**  
1/2 GAL. BTL.

TV SPECIAL  
NEW! JUNIOR SCOTT TOWELS 2 88¢  
ROLLS

ALL TYPES FRITOS CORN CHIPS **\$1.29**  
\$1.79 SIZE

TV SPECIAL  
NEW! SNUGGLE FABRIC SOFTENER **89¢**  
33 OZ. BTL.

HEFTY CINCH SAK TRASH BAGS **\$2.69**  
20 CT. BOX  
HEFTY CINCH SAK TALL KITCHEN BAGS **\$1.69**  
20 CT. BOX

32 OZ. PLUS DEPOSIT COCA-COLA 6 BTL. CTN. **\$2.19**

ZEE LUNCHEON NAPKINS 3 60 CT. PKGS. **\$1.00**

75% OFF LABEL LIQUID WISK 64 OZ. BTL. **\$2.99**

LUV'S CONVENIENCE PAK DIAPERS 66 SMALL/48 MED./32 LARGE BOX **\$8.99**

PORTALES SWEET YAMS **39¢** LB.

PLAYTEX DISPOSABLE BOTTLES 40 CT. PKG. **97¢**  
NESTLE PEANUT BUTTER MORSELS 12 OZ. PKG. **\$1.59**  
SUNSHINE CHIP-A-ROOS REG/CHOCOLATE COOKIES 17 1/2 OZ. PKG. **\$1.99**  
PLAIN OR PEANUT M & M'S CANDY 19.2 OZ. PKG. **\$1.99**

OCEAN SPRAY CRANBERRIES 12 OZ. PKG. **79¢**  
CALIFORNIA HASS AVOCADOS 4 FOR **\$1.00**  
CALIFORNIA SNOWWHITE CAULIFLOWER HEAD **\$1.09**  
REG./UNSC. DEODORANT SURE ROLL-ON 2.25 OZ. BTL. **\$2.29**  
EXTRA STRENGTH ENCAPRIN 50 CT. BTL. **\$2.89**  
PRELL 50% OFF LABEL SHAMPOO 11 OZ. BTL. **\$1.69**

DURACELL AAA & AA BATTERIES 2 CT. PKG. **\$1.39**  
DURACELL AA BATTERIES 4 CT. PKG. **\$2.39**  
DURACELL D OR C BATTERIES 2 CT. PKG. **\$1.79**  
DURACELL 9-VOLT BATTERY EACH **\$1.79**  
DURACELL 9-VOLT BATTERIES 2 CT. PKG. **\$2.99**



PRICES EFFECTIVE OCTOBER 22-27, 1984 WE RESERVE THE RIGHT TO LIMIT