

Refuge victim of national Govt. shutdown

By MARTHA TOLES FROST
City Editor

It's business as usual at the Muleshoe Post Office and in the United States Department of Agriculture offices in town during a national shutdown of selected federal government offices.

"Are we shutdown? Not as yet," said Jim Lutz, district conservationist at the Soil Conservation Service office. "The USDA was one of three agencies to get its budget approved back in October."

"All I know is, I'm still working," said Joyce Thompson, credit manager at the Farmers Home Administration. "The Ag Bill has already been approved. We've had no lost time or reduction in pay."

The Agricultural Stabilization and Conservation County Committee office also is still open.

• But no one is answering the phone at the Muleshoe National Wildlife Refuge, which is part of the Department of the Interior.

Refuge office assistant Glenda Copley, reached at home for comment, said the refuge, 20 miles south of Muleshoe on Highway 214, is closed along with the national shutdown and she is on furlough.

"It doesn't look like we will get paid. It's left up in the air," she said. "The visitor center is closed but there are no signs across the roads, which are still open. Volunteers live out there in case of a problem, but they're really not supposed to do anything either."

Copley said in the eight and a half years she has worked at

Continued on page 6



Journal photo by Martha Toles Frost

Lady of Spain?

Megan Harlan of Muleshoe is a finalist in the *Lubbock-Avalanche Journal's* Young Columbus '96 creative writing contest. The winner gets an all-expense-paid trip to Spain.

Olympics spark Harlan's dream

By MARTHA TOLES FROST
City Editor

If Megan Harlan wins a trip to Spain through the *Lubbock Avalanche-Journal's* Young Columbus '96 creative writing contest, it won't be the first time she has thought about visiting that country.

The Muleshoe High School junior remembers watching the 1992 Olympics in Barcelona, imagining someday going to Spain to "experience the warmth and love displayed to me on that summer day."

Megan is one of three finalists who will travel to the offices of the *Lubbock Avalanche-Journal* Tuesday for the final stage in the Young Columbus contest, an interview which will determine if she will be among 150 teens in America to win a all-expenses-paid trip to Spain this spring.

One of the requirements of the writing contest she entered through Johanna Wrinkle's creative writing class at MHS was to explain why

she would like to go to Spain.

"It would be a great opportunity to find out what type of cultural background they actually have instead of reading it out of a Spanish II book," Megan wrote, expressing curiosity about how people could get a thrill from the running of the bulls in Pamplona.

Besides wanting to travel beyond the borders of the United States, Megan considers Spain to be an intriguing country to visit, with its bull fights and unique architectural designs.

She has been looking through travel brochures to discover landmarks she doesn't want to miss if she wins the contest, like the Royal Palace in Madrid.

Meagan's involvement in one-act play contest sparked her interest in Spanish theatre, and the windmill-jousting Spanish gentleman Don Quixote is one of her favorite characters.

As another requirement of the contest, Megan

Continued on page 7

Bailey County Democratic when it come to elections

By MARTHA TOLES FROST
City Editor

The primary election in Bailey County on March 12 will truly be a Democratic process.

No Republicans filed by the 6 p.m. deadline on Jan 2 to run for the eight county offices up for election.

"There are some people in the county who vote Republican in national elections, but county offices traditionally have been held mostly by Democrats," said Republican Party Chairman Bruce Barrett.

Three incumbent Democrats will face challengers in the primary election, and five Democratic incumbents will be running uncontested.

The newly elected county officials will take office on Jan. 1, 1997, after the general election on Nov. 5, 1996.

Jack Dunham is running against Butch Vandiver for Commissioner, Precinct No. 1.

Also in Precinct No. 1, Gary Don Gartin and Jerrell Otwell have filed to challenge incumbent Constable Rich Magby.

"Competition is good for the incumbents," said Democratic Party Chairman Susan Copeland. "It gets candidates out to meet with people to find out their concerns."

Uncontested Democratic incumbents filing for candidacy include Sheriff Jerry Hicks, Tax Assessor-Collector Kathleen Hayes, County Attorney Paul Crosnoe and Commissioner Joey Kindle (Precinct No. 3).

Also running uncontested for re-election are Democratic Constables Curtis Hunt in Precinct No. 2 and Gerry Pierce in Precinct No. 3.

About the lack of competi-

"There are some people in the county who vote Republican in national elections, but county offices traditionally have been held mostly by Democrats."

— Republican Chairman
Bruce Barrett

tion coming from the Republicans, Copeland said, "It's a weird deal. I have found it odd."

Copeland said the Democratic Party has experienced a lot of changes in recent years.

"Most people here are Democrats on the county level," she said. "They believe in Democratic policies but tend to vote Republican when it comes to state and presidential elections. Democratic candidates on that level often have the reputation of being liberal."

County Clerk Billie Downing said a lot of Republicans talk about running for county office but don't want to do anything about it.

"It's always been the way of it," said County Judge Marilyn Cox, the most recent Democrat in Bailey County to face a G.O.P. challenge. "Texas was historically a Democratic state. It used to be a rarity for a Republican to be elected."

Cox was on the ticket with Republican James Warren in the 1990 general election the first time she ran for office.

Maybe we should just speak American

When my son Will and I went river rafting in Colorado, we met two women who weren't very good at paddling, but who had a handle on how language affects relationships.

One was an English teacher and the other was a psychologist working with troubled youth. They were writing a book about how dysfunctional families happen when people can't communicate effectively—when they scream at each other or hit one another instead of figuring out how to make themselves understood.

As a graduate teaching assistant at Eastern New Mexico University, I learned to focus on how a writer's words affect the reader—on getting several readers to respond to the writer's words helpfully.

My high school English teacher always told us what

Martha Frost
City Editor

we did right and what we did wrong. The wrong part usually outweighed the right part, and it was written in red ink all over the paper. But was that the point?

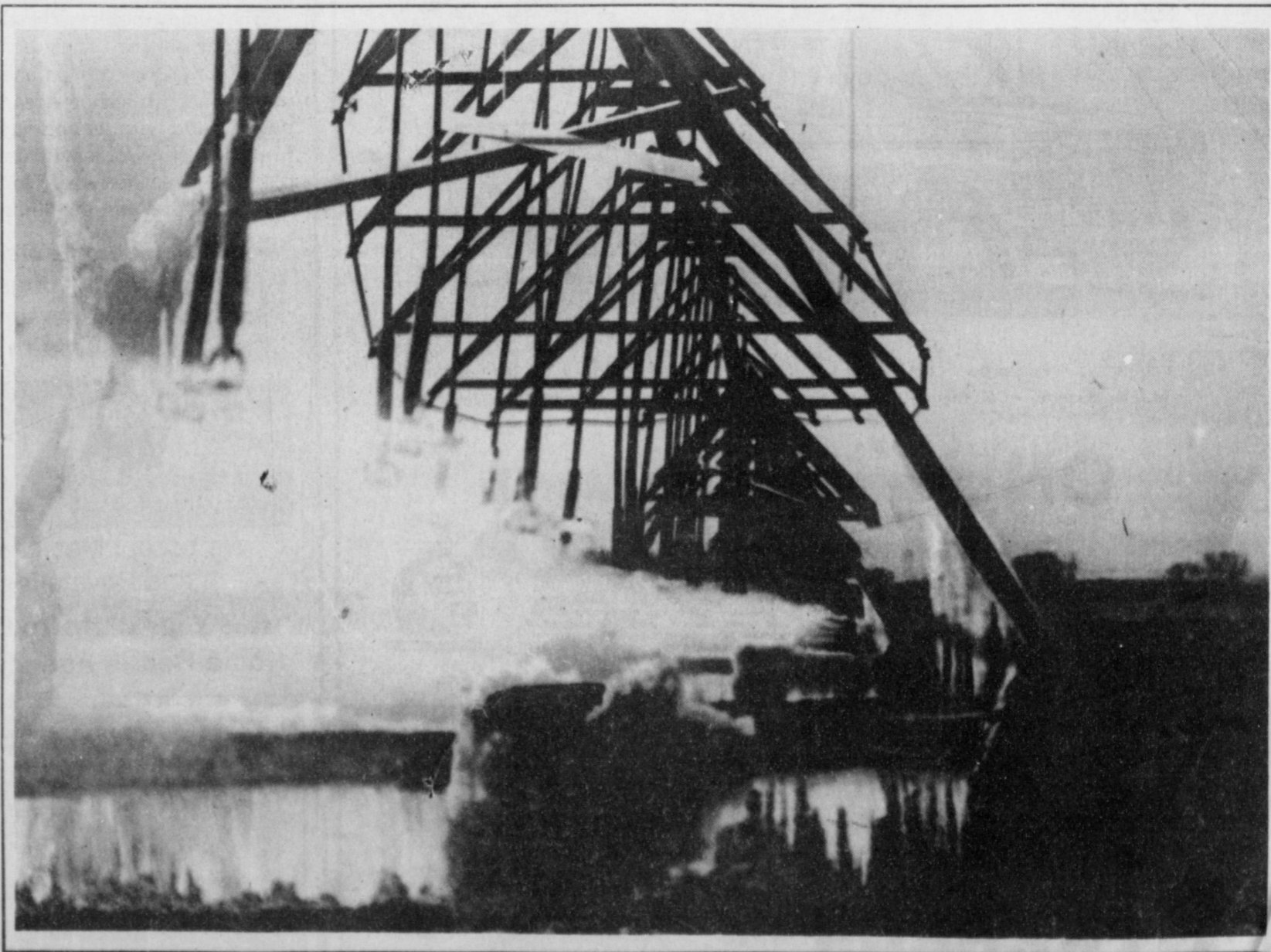
Whether or not we can put our thoughts into words and have another person understand them is the point—not whether we can edit our words as we go.

Sometimes the rules seem a little silly. Who made these rules anyway? Who decided what is standard and what is substandard English?

Who says a preposition is something you can't end a sentence with?

And who decided you can't start a sentence with

Continued on page 3



Natural ice sculpture

Overnight temperatures plunged into the 20s earlier this week, causing a pivot sprinkler along Kakawate Highway to ice up. Temperatures again were expected drop into the teens overnight this weekend.

AROUND MULESHOE

WJHS receiving academic reward

Watson Junior High School will receive a reward of \$1,888.53 from the Texas Successful Schools Awards System for significant gain in raising TAAS scores.

Speaker of the House Pete Laney will present the award in the Muleshoe High School Auditorium Monday, Jan. 8 at 9:30 a.m.

Preston joining MISD faculty

The Muleshoe School Board will meet Monday at 7 p.m., 514 W. Ave. G.

Business items include appointing County Agent Curtis Preston as an adjunct faculty member, receiving the remainder of Update 50 to the Board policy, discussing the status of the school finance agreement with Sudan ISD and selecting a date for the spring board/administrator workshop.

Trade Show in Amarillo Jan. 10

The Texas and High Plains Irrigation Conference and Trade Show is being held Jan. 10 at the Amarillo Civic Center.

Three hours of Continuing Education Units for pesticide applicators will be offered.

There is a \$7 registration fee that includes a catered luncheon. Registration starts at 8:25 a.m and the program begins an hour later.

For more information, contact the Bailey County Extension office at (806) 272-4583.

County residents on Water Board

Under a new agreement to the Texas Election Code, the High Plains Underground Water Conservation District No. 1 Board of Directors have declared that unopposed candidates in the Jan. 20 election are elected to their offices.

Bailey County Committee members James L. Wedel, Lloyd D. Throckmorton, Curtis Hunt, Cliff P. Heinrich and Jerry Nichols ran unopposed and were elected in Precinct Three.

In Parmer County, Alan Monroe, Tommy Williams, Todd Christian and Ellen Gallman were elected. Since there was no candidate for the committee's member at large, the board will appoint someone to the office.

Compassionate Friends meet Jan. 11

The Compassionate Friends support group will have its monthly meeting at 7:30 p.m. Jan. 11 in the educational building of the Lazbuddie Methodist Church.

The group offers friendship and understanding for bereaved families who have lost children.

For more information, contact Glenda Jennings at 965-2483.

Continued on page 7

What's Cooking?

Area school menus

Muleshoe High School Watson Junior High Breakfast

Monday-Breakfast on a stick, fruit or juice, milk
Tuesday-Breakfast pizza, fruit or juice, milk
Wednesday-Scrambled egg/toast, fruit or juice, milk
Thursday-Ham biscuit, fruit or juice, milk
Friday-Cinnamon roll, fruit or juice, milk

Lunch

Monday-BBQ sandwich, tator tots, cole slaw, milk
Tuesday-Baked potato, chili and cheese, tossed salad, hot roll, milk
Wednesday-Fajitas, lettuce and tomatoes, Mexicali corn, refried beans, milk
Thursday-Fish filet, macaroni and cheese, winter mix vegetables, fruit cocktail, milk
Friday-Fried chicken, mashed potatoes, green beans, hot roll, milk

Dillman, DeShazo Breakfast

Monday-Breakfast on a stick, fruit or juice, milk
Tuesday-Breakfast pizza, fruit or juice, milk
Wednesday-Scrambled egg/toast, fruit or juice, milk
Thursday-Ham biscuit, fruit or juice, milk
Friday-Cinnamon roll, fruit or juice, milk

Lunch

Monday-Cheeseburger, lettuce

and tomatoes, French fries, peanut butter cookie, milk
Tuesday-Chicken nuggets, mashed potatoes, whole baby carrots, hot roll, milk
Wednesday-Pizza, tator tots, sweet peas, mixed fruit, milk
Thursday-Crispy tacos, lettuce and tomatoes, refried beans, cornbread, milk
Friday-Chicken fingers, mashed potatoes, winter mix vegetables, hot roll, milk

Three Way Breakfast

Monday-Pancake, sausage, juice, milk
Tuesday-Gravy, biscuits, juice, milk
Wednesday-Two waffles, juice, milk
Thursday-Cinnamon roll, juice, milk
Friday-Cereal, raisins, graham cracker, milk

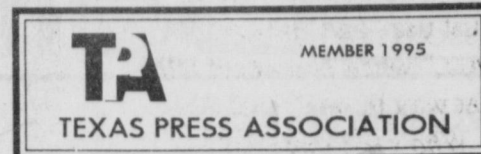
Lunch

Monday-Salisbury steak w-gravy, creamed potatoes, carrots, hot rolls, peaches, milk
Tuesday-Chicken nuggets, raw vegetable, corn, hot bread, orange, milk
Wednesday-Hamburger, crispy fries, pears, milk
Thursday-Taco salad, refried beans, crackers, peach bread, milk
Friday-Sandwich, lettuce, tomato, chips, apples, milk

Bailey County Journal USPS 040-200

Established March 31, 1963. Published by Triple S Publishing, Inc. Every Sunday at 304 W. Second, Box 449, Muleshoe, TX 79347.
 Second Class Postage paid at Muleshoe, TX.
 POSTMASTER: Send address changes to the Bailey County Journal, P.O. Box 449, Muleshoe, TX 79347.
 We are qualified members of:
 Panhandle Press Association, National Newspaper Association, West Texas Press Association and Texas Press Association

WEST TEXAS PRESS ASSOCIATION



PPA Panhandle Press Association

© 1990

Scot Stinnett, Publisher
 Lisa Stinnett, Vice-President/Comptroller
 Rick White, Editor
 Holly Millsap, Classifieds
 Pat Durben, Advertising

SUBSCRIPTIONS: Muleshoe Journal and Bailey County Journal By Carrier Yearly - \$15.00
 Bailey and surrounding counties: by mail - \$16.75
 Elsewhere - \$18.50
 Advertising Rate Cards on Application

Advertisers should check their ad the first day of insertion. The Journals will not be liable for failure to publish an ad or for a typographical error or errors in publications except to the extent of the cost of the ad for the first day of insertion. Adjustment for errors will be limited to the cost of that portion of the ad where the error occurred.

All Problems In Life Have A Solution!!

510 Quincy
 296-9115
 Plainview, TX

MISS DOREEN

7 Days A Week
 9 a.m. - 9 p.m.
 CALL TODAY!

Through Palm Reading, Card Readings, and Tarot Readings, I can tell you your past, present and future. Do you have bad luck? Do you suffer for a loved one? Do you feel deprived in life? Do you feel ill, weak or without the will to live? Are you an alcoholic, timid or impotent? Reunite your loved ones. Miss Doreen will rid your home of bad luck or envy (from others), and will help with all your problems. Do you have a spell on you? With her advice Miss Doreen will cleanse you of it, and will bring you to the road of happiness. She will also fix incense, candles, charms and oils for the blessing of your home. She will also pray for your health and happiness. **MAKE YOUR APPOINTMENT TODAY!**
 You will not regret it. In little time you will see results. Consultations are private and confidential.

Subscribe today!
272-4536

Home Folks Caring For Folks At Home.

MULESHOE AREA HOME HEALTH Agency

Featured Employees

Justin and Arlene Brozek enjoy working for the Muleshoe Area Medical Center and the Muleshoe Area Home Health Agency. They like a small town and being able to get to know the patients. They have one child, Jake Brozek.

Arlene grew up in Bovina and was in the first physical therapy class to graduate from Texas Tech in 1985. Justin grew up in Great Bend, Kansas. He graduated from the University of Kansas in 1989.

They enjoy the Home Health program because of the home setting. Their goal is to keep them as functional as they can. Arlene works with the hospital patients, Muleshoe Area Home Health Agency patients and with school kids in Bailey and Parmer County. Justin works with the hospital patients, out patients, Muleshoe Area Home Health Agency patients, and the Nursing home patients.

To receive Home Health Services, talk with your physician or talk with hospital personnel when you are hospitalized.

24 Hour # 272-3346

Local Nurse on call 24 hours a day to offer prompt service.

We accept Medicare, Medicaid and Private Insurance

It Is Your Right To Choose The Home Health Agency You Prefer.

Arlene & Justin Brozek

We care for you at home

Affiliated with LUBBOCK METHODIST HOSPITAL SYSTEM

FREE Information On Advance Directives
 Also known as Living Wills or Right To Die Directives.
 You may call our agency 272-3346 for these directives. You may also obtain these forms and assistance at 623 West 2nd Street.

WE'RE KICKIN' OFF THE NEW YEAR!

★ Brand New ★ Full-Size ★ Fully Loaded

Eddie Bauer F-150s

1996 Models

53 To Choose From

- Power Windows
- Power Door Locks
- Air Conditioning
- Cruise Control
- Tilt Steering Wheel
- AM/FM Cassette
- Cab Step
- 2 Tone Paint
- Aluminum Wheels
- Much, Much More!

ONLY \$198 A Month

On A 24 Month \$4,750 Prepaid Lease

Ford Credit

THE ARITHMETIC	
Single Lease Payment	\$4750.00
Number of Months	24
Refundable Security Deposit	10.00
Cash Down Payment	0.00
Total Amount Due at Inception	\$4750.00
Total of Payments	\$4750.00
Total Mileage Allowed	30,000
Message Charge Over 30,000	11c

* \$4750 advance single payment required at Red Carpet lease inception. Payments based on 30,000 mile contract. Lessee is responsible for excess wear and tear. Lease subject to credit approval and insurability as determined by Ford Credit. Payment excludes tax, title and license. Must qualify for \$300 commercial rebate assigned to dealer. Residual \$12,750.30 See dealer for end of lease options.

Red Carpet Lease

Offered For A Limited Time Only - Hurry In!

TEAGUE
STREBECK

1115 North Chicago
 Portales, NM
(On the first curve into Portales)
 (505) 356-8581 (505) 762-3845

The very best prices and service anywhere... We personally guarantee it!

Local news, local folks,
local products and services.
The Journal
272-4536

Frost

Continued from page 1

"and"?

Where does it say *one* must use "one" instead of "you," when *one* never talks that way in *one's* real life?

Who's the one who's deciding whose words are wrong?

English — it's driving its users crazy. They don't know whom to turn to, (or to whom to turn).

There's always that uncertainty about whether they're using "their" correctly or if it should be "there."

Why is it that *would've*, *should've* and *could've* sound so much like *would of*, *should of* and *could of*?

It's offal (sic) confusing.

If people could only use fragments.



Tumblin' along

A tumbleweed blows along the side of the Kakawate Highway near Muleshoe during Wednesday's blustery wind conditions.

dialects.

People forget that you are also a human being struggling to communicate your thoughts in words, just like they are— trying to form and keep relationships without being too dysfunctional.

Balanced national budget vital to farmers' interests

WASHINGTON, D.C. — U.S. Representative Larry Combest (R-Texas) said that bringing President Clinton to a balanced budget agreement is vital to farmers' interests as they plan for program sign-ups in February - March.

The 1990 Farm Bill expired three months ago with the new fiscal year in October. Combest noted that farmers are sitting down now with bankers without having the details of the new 1995 Farm Bill emerge from the overall seven-year balanced budget legislation

that the president refuses to sign.

In 1985, the Farm Bill was signed just days before Christmas, and it was the last week of November before the 1990 Farm Bill became law.

The five-year 1990 Farm Bill expired with the beginning of the government's budget year in October, but neither farmers nor the federal government have faced farm program deadlines during the intervening 3 months.

God, Not Things, Works For Our Good

One scripture which has comforted generations of Christians facing pain and distress is Romans 8:28. Most of us pushing forty (some of us pushing it pretty hard) or beyond will probably find our memories replaying this verse in the King James Version: "And we know that all things work

and hard about it before we allow ourselves to lightly quote this verse in a hospital room or by an open grave.)

Do all things really work together for good? No way.

A cancer does not work for your good; it works to kill you. Tragedy, in itself, does not contribute to your good; it may push you to despair. Only lunatics and people with an unhealthy need for pain say that pain is, in itself, a good thing. All things do not work together for good.

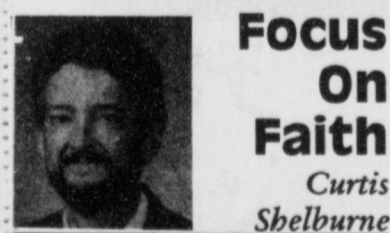
"But, wait!" someone may say, "Read further." "All things work together for good to them that love the Lord."

Sorry, that phrase does not solve the problem. Is suffering, in itself, any more the friend of the Christian than the unbeliever? I doubt it. All things do not work for good even for Christians.

But God does! And that's the great truth the Holy Spirit would teach us in this verse. As Elton Trueblood writes, "It is not things that are good, but God who works in them. God is not the author of tragedy, . . . but he can enter into tragedy and transform it."

There is the truth of Romans 8:28. It is God's love which enables his children facing the worst of pain to emerge, not easily, not quickly, but eventually, triumphant in trouble.

Curtis Shelburne is minister of the 16th & Avenue D Church of Christ in Muleshoe.



Focus On Faith

Curtis Shelburne

together for good to them that love God, to them who are called according to his purpose."

Some of the newer translations go at this verse from a bit different angle. Consider the NIV rendering, for example: "And we know that in all things God works for the good of those who love him, who have been called according to his purpose."

I try not to make a habit of taking potshots at any of the many good translations of the Bible we have available today. Each of them has its place, so please understand that I am not shooting at the King James Version (or motherhood or apple pie either!), but it seems to me that, in this case, there is a subtle but important difference in the renderings of this verse. (And we need to think long

ENJOY OUR 99¢ DAILY SPECIALS AT **SONIC**

MONDAY	2 Corndogs	
TUESDAY	Single Sonic Burger	with cheese \$1.24
WEDNESDAY	Steak Sandwich	with cheese \$1.24
THURSDAY	Single Sonic Burger	with cheese \$1.24
FRIDAY	Steak Sandwich	with cheese \$1.24
SATURDAY	2 Mini Burgers	with cheese \$1.24
SUNDAY	Single Sonic Burger	with cheese \$1.24

Not valid with any other special offers. No coupon necessary. Offers for a limited time, subject to change. Available at Muleshoe location only.

1633 AMERICAN BLVD., MULESHOE
CALL AHEAD!!! 272-3998

The start of 1996 is upon us and the staff at Henry Insurance Agency wishes to take this time to say to all of our customers...


Thank You

for allowing us to serve your insurance needs this past year. Your business is greatly appreciated. In a time when respect seems to be a lost notion amongst most folks ...it is the rule by which we work at Henry Insurance Agency. Thanks again for a fantastic year in 1995 and we look forward to serving you again in 1996.

Henry Insurance Agency

111 West Ave. B Muleshoe, Texas 79347
(806) 272-4581 Fax: (806) 272-5892
Jeri Chapman Rama Smalling
Lissa Leffler Mike McCallum

Q: What corn hybrid should you plant that's tough and adaptable?

A: 


Proven corn hybrids from Asgrow are the answers you need to achieve top performance for your High Plains farm. All three are well adapted to a wide range of growing conditions and deliver excellent standability for optimum harvest potential.

With these Asgrow hybrids you'll get a combination of high yields and good smut tolerance with an excellent grain quality rating - what more do you want?

All of this at a good price? Asgrow has the answer for that, too. Ask your dealer about our "early delivery, early pay" incentive that can save you money.

Call us for more information on the Asgrow corn hybrids. We'll help you decide which one will deliver proven performance for your farm.

Call Bennie Pickrell
1-800-880-2189



Have A Nice Day!



January INVENTORY REDUCTION SAVINGS GALORE!

Save Up To **50%**

On Selections Of Sofas, Rock City, Tell City, Etc.

La-Z-Boy Reclina-Rockers \$299 UP

Calton Furniture

507 E. 2nd Portales, NM 359-1442
Where Hwy. 70 Divides

Sports

More than a game

Holmans' studies include basketball

By RICK WHITE
Managing Editor

One day, the student will become the teacher.

For now, Kristin Holmans soaks up all the information she can get from her basketball coaches and works endless hours in the gym refining her game.

A self-described "gym rat," Holmans is captain of the New Mexico Junior College Lady Thunderbirds, who were 6-6 heading into the Christmas break.

The former Muleshoe High School standout hopes to play two more years at a four-year school, but when her playing days are over, she'd like slide over to the sideline and teach the game she loves.

Preferably, at the high school level.

"She'll be a good one," Muleshoe coach Jim Gruhlkey said. "She was a coach on the floor. She always knew what was going on."

Her versatility and leadership helped Muleshoe win its first district title in 32 years in 1994.

At 5-10, Holmans is a good ball handler and 3-point

shooter. After struggling as a freshman, Holmans is averaging 10.7 points and 5.6 rebounds in her second season at NMJC. She's shooting 40 percent from 3-point range.

The Lady Thunderbirds play in the always tough Western Junior College Athletic Conference. Hundreds of WJAC players have gone onto four-year schools, including Texas Tech all-American Sheryl Swoopes, who played at South Plains JC.

"Last year, I wasn't ready for it," Holmans said. "I didn't realize what it takes at this level to succeed. I was too tentative."

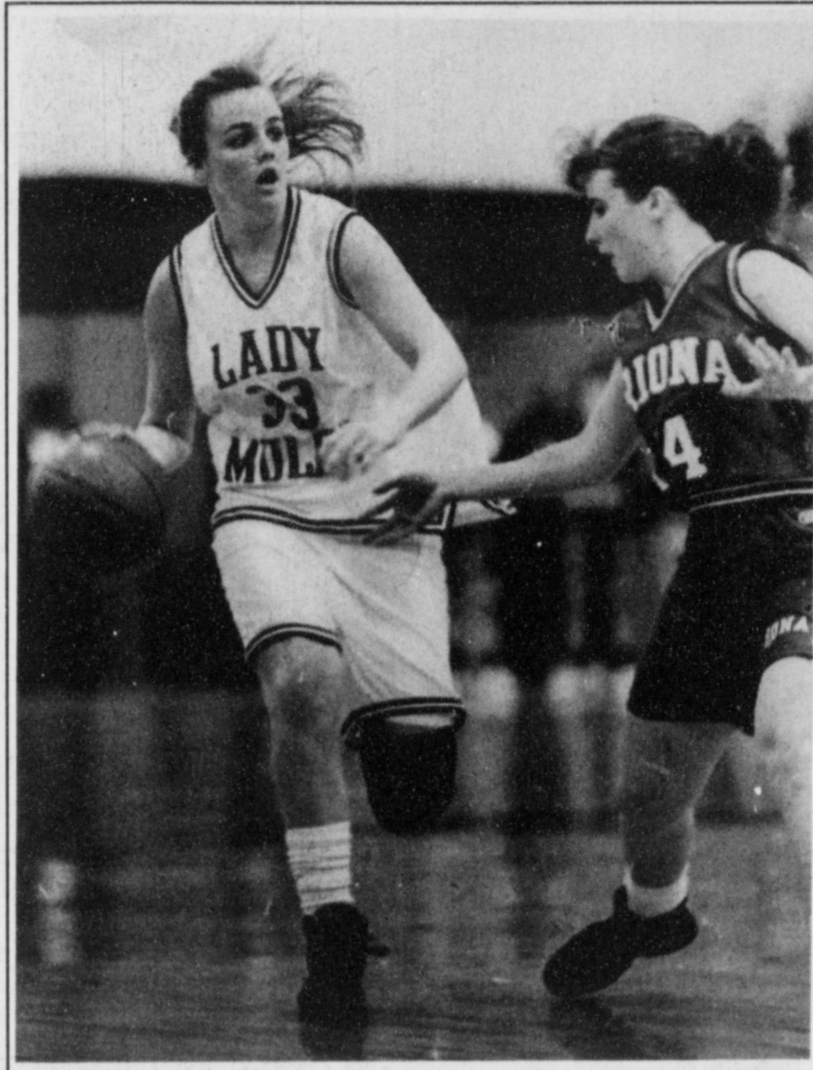
"The main thing is mental toughness. In college, everybody has talent."

MMJC coach Brent Palmer said Holmans has stepped up her game this season. And she's become a leader.

"She's playing with so much more confidence," Palmer said. "When it's crunch time, she wants the basketball."

Holmans was all-district and third-team all-state as a senior at Muleshoe.

But knee surgery in both her junior and senior years limited scholarship offers to just



Still a leader

Former MHS point guard Kristin Holmans is one of the leaders of the New Mexico Junior College Lady Thunderbirds this year in her sophomore season.

one — New Mexico JC.

And that probably had something to do with Gruhlkey and Palmer playing pickup games while both were students at West Texas State University.

"She spends more time in the gym working on her shooting than anybody I've ever had on my team," Palmer said. "She's a perfectionist, it kind of

goes with her personality. She hates to lose."

Holmans has gotten a few inquiries this year, including one from the University of Tulsa, which is starting a women's program and will play in the Western Athletic Conference next year.

One day, basketball will be Holmans' labor of love.

MHS squeaks past Shallowater, 50-48

SHALLOWATER— Muleshoe found a way to win, with seniors Mandy Cleavinger and Allyson Field showing the way.

Field scored a game-high 20 points and Cleavinger made two free throws with 11 seconds left as Muleshoe rallied from a nine-point fourth-quarter deficit with four minutes left and beat Shallowater, 50-48, in the District 2-3A opener for both teams.

Shallowater had a chance to send the game into overtime, but missed two free throws with a few seconds left and

Girls

Cleavinger grabbed the rebound. Cleavinger scored six of her eight points in the fourth quarter.

"As bad as it was going, darn it, we came back to win the game," Muleshoe coach Jim Gruhlkey said after losing an eight-point halftime lead and nearly the game. "You could see them grit their teeth and go out and do it."

Brandi Harrison had 10 points and two 3-pointers or Muleshoe (15-5 overall, 1-0 in district).

Muleshoe led by 12 in the first half and led 29-21 at the half. Shallowater (9-6, 0-1) switched to a different half-court press in the third quarter, which gave Muleshoe fits and got Shallowater

Continued on page 5

Lusk leads Indians past Mules, 68-33

SHALLOWATER—Playing at District 2-3A co-favorite Shallowater was a road test Muleshoe wasn't ready for Friday.

Jay Lusk scored 19 points and 6-5 post Cole Roberts added 10 points as the Indians breezed to a 68-33 win in the district opener for both teams.

"We didn't do a good job of executing," Muleshoe coach Ralph Mason said. "It's tough to beat them at home. We'd almost have to play perfect."

Boys

Muleshoe (4-14) hung

Continued on page 6

Lady Mules JV edge Dimmitt in 3 OTs, 43-42

SUDAN — Amy Locker scooped up a loose ball and scored on a layup with 10 seconds left, lifting the Muleshoe JV girls to a 43-42 triple-overtime win Thursday over Dimmitt in the first-round of the Sudan JV Tournament.

Locker led Muleshoe with 18 points, including six in overtime. Keisha Whitt scored all five of her points in overtime, including a pair of free throws to tie the score at 36 with four seconds left in the second overtime.

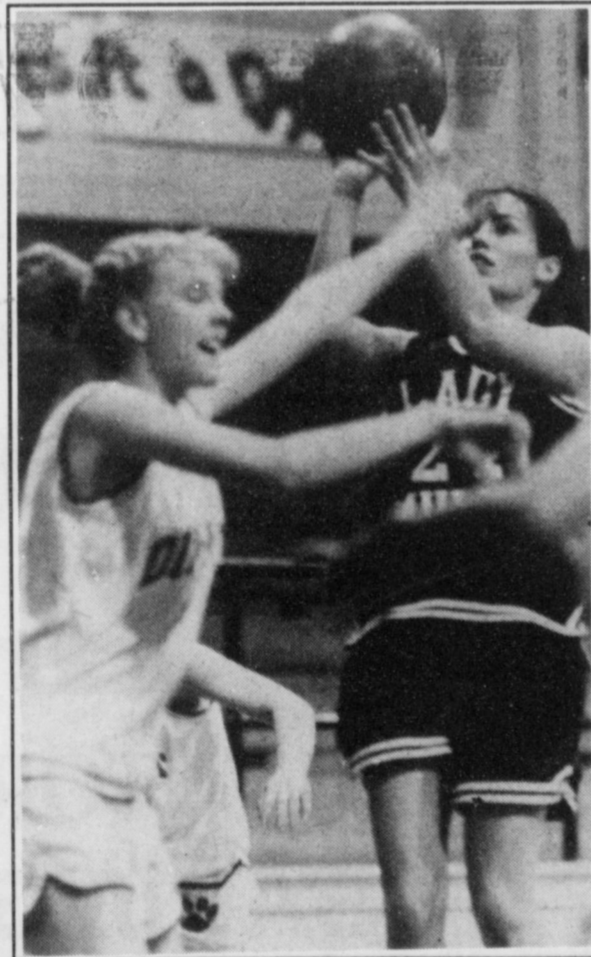
Muleshoe trailed by seven, 23-16, with 2 1/2 minutes left in regulation. Megan Harlan scored on an inbounds play with four seconds left, tying the game at 24 and sending it into overtime.

Harlan, Jo Beth Gilleland and Melinda Schuster added four points each for Muleshoe, which finished the round-robin tournament with a pair of games Saturday.

Dimmitt was just 4-of-18 from the free throw line. Muleshoe was 11-18. Locker was a perfect 8-of-8.

Muleshoe JV (43) — Harlan 20-0-4, B. Locker 0-0-0, Whitt 13-5-5, Faver 10-0-2, Powell 0-0-0, Benham 10-0-2, Gilleland 20-2-4, Kennedy 0-0-0, A. Locker 6-8-18, Slayden 10-1-2, Hooten 20-0-4, Schuster 20-0-4, Aguirre 0-0-0. Totals 161-118-43.

Dimmitt (42) — Weaver 10-2-2, Hand 7-1-2, Joplin



Finding a crack

MHS' Jo Beth Gilleland finds enough space to squeeze off a jumper against Dimmitt.

00-00, Gonzales 00-00, Sherman 6-2-4 14, Nelson 10-6-2, Langoria 3-0-0 6, Robertson 2-1-3 5, Wilkerson 00-00. Totals 19-4-18 42.

	1	2	3	4	ot	tot
Muleshoe JV	6	6	4	12	13	43
Dimmitt	6	6	6	10	12	42

BOYS

Roosevelt67
Muleshoe54

SUDAN — Lubbock Roosevelt dominated the boards and the second half, beating the Muleshoe JV, 67-54, in the first round of the Sudan JV Tournament.

Mason Sinclair scored 16 points and Aaron Purdy added 13 for Muleshoe, playing with a depleted roster because of injuries and academic casualties.

Muleshoe hit four 3-pointers while taking a 30-28 half-time lead. Sinclair, Purdy,

Continued on page 5

Winter Sale

40-50% OFF
Red Tag Items

Stephanie Thomas For Spring
Has Arrived. Sizes to 22W.

Other Spring Lines Arriving Daily

Tiffin II

715 E. Hwy 70 Earth 257-2223

Don't Let Your Pizza Get Away!!!



Tuesday
Night is
KIDS NIGHT

Pizza Hut
Delivers Great Taste!



Pizza
Hut.

1412 American Blvd.
Muleshoe 272-4213

Farwell holds off Longhorns again

LAZBUDDIE — Farwell held off Lazbuddie for the second-straight time Tuesday, 69-68, and took two of three games in the regular-season series between the two Farmer County rivals.

Lazbuddie (12-4) nearly rallied from a 10-point deficit at the start of the fourth quarter, but missed a shot and turned the ball over twice in the last 30 seconds trailing, 69-68.

Lazbuddie's Jason Thomas scored 27 points and Chris Smith and Justin St. Clair combined for 30 points and seven

3-pointers.

Farwell countered with balanced scoring led by Landon Lunsford's 14 points. Five Steers scored in double figures.

The Longhorns lost to Farwell, 63-60, in the championship game of the Farwell Tournament after beating the Steers, 67-56, a week earlier. Lazbuddie rallied after being down by 12 midway through the third quarter in the championship game.

Lazbuddie played in the Stafford Tournament this

weekend.

Farwell (69) — Taylor 1 0-0 2, Nichols 4 (1) 0-5 11, Hartage 3 3-5 9, Lunsford 7 0-0 14, Anderson 5 1-1 11, Williams 1 0-0 2, Littlejohn 4 2-2 10, Ketcherside 4 2-8 10. Totals 29 (1) 8-21 69.

Lazbuddie (68) — St. Clair 3 (3) 0-0 15, Nickels 1 0-0 2, Warren 2 3-5 7, Smith 0 (4) 3-6 15, Thomas 10 7-10 27, Lopez 0 2-2 2. Totals 16 (7) 13-21 68.

	1	2	3	4	tot
Farwell	15	18	26	10	69
lazbuddie	16	22	11	19	68

GIRLS

Farwell74
Lazbuddie59

LAZBUDDIE—Lazbuddie

couldn't contain Candace Travis and lost to Farwell, 74-59, Tuesday in a non-district game.

Travis scored 33 points for Farwell (9-6), which led 43-26 at halftime.

Roxann Warren led Lazbuddie (6-12) with 19 points, Mandy Magby added 18 and Shana Foster chipped in 11.

Lazbuddie played in the Stafford Tournament this weekend.

	1	2	3	4	tot
Farwell	22	21	16	15	74
Lazbuddie	15	11	9	24	59

Lady Mules

Continued from page 4

ter back in the game. The score was tied at 35 heading into the fourth quarter.

"It was awful," Gruhkey said. "We just started to turn the ball over against their press after picking it apart in the first half." Field scored five points in the fourth quarter, including a 3-pointer and Kristen Nichols added a key hoop in the rally.

Felicia Fuentes led Shallowater with 11 points. Muleshoe hosts Floydada at 6:30 p.m. Tuesday in its first game.

Muleshoe (50) — Field 8 (1) 1-5 20, Williams 1 0-0 2, Puckett 1 4-4 6, Nichols 2 0-0 4, M. Cleavinger 3 2-5 8, Schuster 0 0-1 0, Harrison 1 (2) 2-2 10. Totals 16 (3) 9-17 50.

Shallowater (48) — Dunham 1 1-2 3, Boyles 4 1-7 9, Lester 0 (1) 0-0 3, Fuentes 2 (1) 5-11 12, Huval 1 0-0 2, Neal 2 (1) 1-3 6, Cole 2 0-0 4, Jepson 2 0-0 4. Totals 14 (3) 8-20 48.

	1	2	3	4	total
Muleshoe	16	13	6	15	50
Shallowater	9	12	14	13	48

Mules

Continued from page 4

Michael Woodard and Aaron Favre hit from behind the arc.

But Lubbock Roosevelt doubled Muleshoe, 22-11, in the third quarter.

Muleshoe played Sudan and Abernathy Saturday in the round-robin tournament.

Muleshoe JV (54) — Sinclair 4 (2) 2-3 16, Favre 0 (1) 1-2 4, Gonzales 3 0-1 6, Ramage 0 1-2 1, Woodard 0 (1) 3-4 6, Mata 0 0-0 0, Campolla 3 1-2 7, Purdy 5 (1) 0-0 13, Turney 0 1-2 1.

	1	2	3	4	tot
Muleshoe	12	18	11	13	54
Roosevelt	12	16	22	17	67

Risinger Plumbing

Serving Muleshoe and Area
Gas Lines - Sewerlines - All Repairs

- No Service Call Charge •
- No Travel Time Charge •

1-800-749-4472 Pep, TX

Fashion Girl
Merle Norman Cosmetics
103 W. Second
359-0815

Winter Clothing
30%-50%-75% Off
Jewelry, Purses, Belts
20% Off

Bring In This Ad To Register
For A Free Dress.

Support the Muleshoe Mules!
Attend all school activities!!

Complete Line
Monuments - Markers
Memorials
Granites - Bronze
Muleshoe Memorial
Park Cemetery, Inc.
232 Main P.O. Box 373
Muleshoe, TX
272-5727 or 272-4670

Got a story
idea?
Let's here it.
Call 272-4536

AUCTION

Wednesday, January 17, 1996 — Sale Time: 10:00 a.m.

LOCATED: From Sudan, Texas, 3 Miles North On F.M. Hwy. 303; Or From Earth, Texas, 6 Miles West On Hwy. 70, Then 8 1/2 Miles South On F.M. Hwy. 303; Or From Muleshoe, Texas, 12 Miles East On Hwy. 70, Then 8 1/2 Miles South On F.M. Hwy. 303.

JOHN HUMPHREYS & OTHERS — Owners
Telephone: Mr. Humphreys (806) 227-2469 Or Auctioneers: Mervin Evans (806) 293-8195 Or Jim Summers (806) 864-3611
CONSIGNMENTS WELCOME - PLEASE CALL AUCTIONEERS FIRST.
I Am Reducing My Farming Operation And The Following Will Be Sold At Public Auction:

TRACTORS, COMBINE —

- 1-1983 John Deere 4650 M.F.W.D. Diesel Tractor, Cab, A.C. Hr., Radio, P/S Trans., W.F., 3-pt. D.H., Ws., 16.9x26 Front Rd., 20.8x38 P.D., 6.182 Hrs. & Clean, 2-Owner
- 1-1977 International 966 Diesel Tractor, Cab, A.C. Hr., Radio, T.A., W.F., 3-pt. D.P.T.O., D.H., Ws., 18.4x38 Rubber W/Hide Duals (6.449 Hrs.) 1-Owner
- 1-1967 Massey Ferguson 410 Gas Combine, Cab, Cool Coat, 252 Eng., 14' Header, Pickup Reel

COTTON EQUIPMENT —

- 1-1978 International 95, 2 Row Self Propelled Diesel Cotton Stripper, Cab, Blower, Radio, Hydrostatic, (810 Actual Hours, 1-Owner)
- 1-1982 Bohn 32 Cotton Module Bldgr, Cab (1-Owner)
- 6-12, 8.9x32 T.A. Exp. Metal Cotton Trainers
- 3-NICO 5th Wheel 20 Cotton Trailers
- 3-Cobey 8x24 Metal Cotton Trailers

HAY EQUIPMENT —

- 1-New Holland 855 Round Baler
- 1-New Holland 258 Hyd. D.T. Rake
- 1-New Holland 260 Hyd. D.T. Rake
- 1-New Holland Hitch Throws To Wind Rows in One

TRUCKS —

- 1-1978 Chevrolet C-65 T.A. Grain Truck, V-8 Eng., 5 Sp., 2 Sp. Trans., 22' Bed, T/C Host, 10.0x20 Rubber
- 1-1974 Ford S.A. Grain Truck, V-8 Eng., 4 Sp., 2 Sp. Trans., 16' Bed, Host, 9.0x20 Rubber, 28,000 Actual Miles

EQUIPMENT —

- 1-John Deere 8100, 8 Row, 3-pt. Buster Planter, G.W.D., F/G Boxes, Beline Insecticide Boxes

TRACTORS, COMBINE —

- 1-John Deere 6 Row, Double Row, 3-pt. Planter On Hamby 4x7 Toolbar, G.W.D., Metal Boxes
- 1-International 90, 8 Row, 3-pt. Lister Planter, G.W.D., 2 Sets G.W., F/G Boxes, Acra Plant Operator
- 1-Hamby 21', T.S.B., 3-pt. Chisel/Sweep Plow, D.G.W., L.T.M.
- 1-Bigham Bros 8 Row, D.S.B., 3-pt. Lister, G.W., Hyd. Row Markers, L.T.M., 2-Stabilizer Coulters
- 1-Krause Model 1488, 18' Offset Disc Plow, C.C.
- 1-Krause 14' Tandem Disc Plow, C.C.
- 1-White Model 508, 6-18' Semi-Mount Mouldboard Plow
- 1-Schlags 6 Bottom Plow Packer (2-3 Rows Combined)
- 1-Roto Cycle 14' D.T. Shredder, Belt Drive
- 1-Kent 22' D.T. Hydro-Cultivator Spring Tooth Harrow
- 1-M&W 1828, 8 Row, 3-pt. Rotary Hoe
- 1-S.M. 8 Row, 3-pt. Stalk Cutter, Seal Bearings
- 1-S.M. 8 Row, 3-pt. Hyd. Rowweeder W/Cleanouts, G.W.
- 1-Crabtree 8 Row, 3-pt. Knifing Rig
- 1-S&S 8 Row, D.S.B., 3-pt. Knifing Rig, 13" Shanks, G.W.
- 1-International 8 Row, 3-pt. Cultivator, 7x7" Bar, G.W.
- 1-International 8 Row, 3-pt. Cultivator, On 3 1/2"x3 1/2" Bar
- 1-Sam Stevens 18 Row, 3-pt. Hyd. F/W Sandlighter (Good)
- 1-17 Row D.T. Sandlighter 2-9 Row D.T. Sandlighters
- 1-9 Row, 3-pt. Sandlighter 1-3-pt. Lift Boom
- 1-Porter 8 Row, F.M. Wick Applicator, C.C., G.W.
- 1-Wyle 50 Gal. F/G Spray Rig, 3-pt. Hyd. Pump

IRRIGATION —

- 1-Chrysler 400 In. (Runnable)
- 2-Chevrolet 292 In. Engines (1-Good, 1-Parts)
- 1-Chrysler 318 In. (Runnable)
- 1-Ford 300 In. (Parts)
- 2-7x12" In. Hydrants
- 1-Lot 6' Risers
- 1-Lot 2" In. Tubes

Thursday, January 18, 1996 — Sale Time: 10:00 a.m.

LOCATED: From Muleshoe, Texas, 10 Miles West On Highway 70, Then 2 1/2 Miles North On F.M. Highway 1731; Or From Farwell, Texas, 9 Miles East On Highway 70 Then 2 1/2 Miles North On F.M. Highway 1731; Or From Bovina, Texas, 10 1/2 Miles South On F.M. Highway 1731

BILLY MAYFIELD ESTATE & NEIGHBORS — Owners
Telephone: Byron Mayfield (505) 683-5229 Or Bruce Mayfield (505) 389-5141 Or Jimmy Reeves (806) 864-3362
CONSIGNMENTS WELCOME ON LARGER ITEMS. PLEASE CALL FIRST!
Due To The Death Of Mr. Mayfield, The Following Will Be Sold At Public Auction:

TRACTORS —

- 1-1990 Case IH 7130 Diesel Tractor, Cab, A.C. Hr., Radio, P/S Trans., T.H., Ws., 18.4x32 Rub., Duals (8,990 Hrs.)
- 1-1984 Ford T.W. Diesel Tractor, Cab, A.C. Hr., Radio, Hi-Lo Trans., D.H., Ws., 20.8x38 Rubber

COTTON STRIPPER, COTTON RICKER —

- 1-1960 Allis Chalmers 880, Self Propelled, 4 Row Cotton Stripper, Hydrostat, Burr Extractor (1,779 Hrs.) Recent Overhaul On Engine
- 1-Rosebud Cotton Ricker W/Hyd. Tamper

TRUCKS, PICKUP —

- 1-1969 Kenworth Diesel T.A. Grain Truck, 250 Cummins Eng., 5 Sp-2 Sp., 22' Hobbs Grain Bed, Host
- 1-1967 Chevrolet T.A. Grain Truck, 366 Eng., 5 Sp-2 Sp., 24' Midwest Grain Bed, Host
- 1-S.M. T.A. S.A. Pup Grain Trailer, Elect. Host, Drill Fill Auger
- 1-1977 Chevrolet 3/4 Ton, 4 Wheel Drive Pickup, 350 Eng., A/T, P/S, Powers Utility Bed
- 1-1961 International S.A. Truck (For Parts)

GRAIN HANDLING SYSTEM —

- 1-Monarch 800.000 Lb. Round Grain Storage Bin
- 1-MFS 600.000 Lb. Round Grain Storage Bin
- 1-Cone Bottom Grain Holding Tank
- 1-Monarch 105 Elevator Leg W/Cleaner
- 1-Deluxe Continuous Flow Grain Dryer, N.G.
- 1-7x40' Unloading Auger
- 1-Grain System Elect. Panel Box

GRAIN CARTS, CORNHEADS —

- 1-ABL 650 Bu. T.A. Grain Cart
- 1-Big 12, 400 Bu. Grain Kart
- 1-John Deere 645, 6 Row, 40' Cornhead
- 1-Massey 1184, 6 Row, 40' Cornhead
- 1-Lot New Massey Cornhead Gathering Chais

EQUIPMENT —

- 1-John Deere 7100, Max Emerge 6 Row Plateless Planter, Monitor, V's
- 1-Crabtree 3-pt., 20' 6" Space Grain Drill
- 1-Hamby 3-pt., 8 Row, 40' A.A. Fertilizer Rig, D.S.B., L.T.M., G.W.
- 1-Yetter 3-pt., 28' Rotary Hoe, 4'x7" Bar
- 1-John Deere 4, 3-pt., 28' Rotary Hoe, 4'x7" Bar
- 1-Hamby 3-pt., 21' Rotary Hoe, 4'x7" Bar W/L.T.M.
- 1-John Deere 3-pt., 242, 21' Rotary Hoe

TANKS, TRACTOR & TOOLBAR MAKEUPS —

- 1-1,000 Gal. Diesel 4 Wheel Trailer W/Tuffhill 12 Volt Fuel Transfer Pump On Big 12 Chassis
- 1-20 Gal. Poly Tank, 4x4 Brackets
- 1-Set 20.8x38 J.D. Axle Duals, 4450 Hubs
- 1-Set 18.4x38 Axle Duals, 386 Hubs
- 1-8 Row Set Disc Lister Units, 4x4
- 1-J.D. Cat. III, 3-pt. Quick Hitch
- 1-Lynch Cat. III, 3-pt. Quick Hitch
- 1-Lot 1" D.I. Hamby Shanks
- 1-Lot 1 1/2" Hamby Shanks
- 1-Lot 4x4 Clamps
- 8-Knifing Units
- 1-Lot Shanks, Clamps, Spacers
- 1-Set R.A.C. Marker Disc
- 1-Lot Sweeps, Knives, Busters, Chisels

SHOP EQUIP., NON-CLASSIFIED —

- 1-Speedee 3 H.P. Gas Air Compressor
- 1-Cutting Torch W/Gauges & Hose
- 2-3 H.P. Gas Engines, Runnable
- 1-Land Measuring Wheel
- 1-Lot Scoops
- 1-Lot Tires & Wheels
- 1-1 Ton Hiss
- 1-Lot Chrysler & G.M. Alternators
- 2-New Hires (For Dodge Dakota Pickup)
- 1-Hand Fuel Transfer Pump
- 1-Back Pack Sprayer
- 1-Weed Burner
- 1-Lot Scrap Iron

Note: Any Announcement Sale Day Takes Precedence

EFFECTIVE JANUARY 7-13, 1996
318 W. American Blvd. 272-4862

ALLSUP'S

Welcome
New Year
1996

SAVE ON
Pepsi-Cola
12 pack, 12 oz. cans
\$3.69

ALL VARIETIES
Corn Nuts
1.7 OZ.
2 FOR **89¢**

ALL VARIETIES
Lay's®
Potato Chips
REGULAR \$2.99 SIZE
\$1.99

SAVE ON
**Allsup's
Chimichanga**
EACH
99¢

Beef, Cheese &
Green Chili

SAVE ON
**Wilson
Meat Bologna**
12 OZ. PKG.
79¢

SAVE ON
**Wilson
Russet Potatoes**
10 LB. BAG
\$1.39

SHURFINE
Grade A
Large Eggs
DOZEN
89¢

STOCK UP ON
**Allsup's
Motor Oil**
SAE 30 WT. QT.
89¢

SAVE ON
**Allsup's
Milk**
GALLON
\$1.99

ALLSUP'S MONEY ORDERS "UP TO \$299.00" FOR ONLY 29¢

Fresh Made
Chili Dogs
2/99¢

Valley Fare
Bathroom Tissue
4 roll pk. **79¢**

Mello Crisp
Bacon
16 oz. pk. **99¢**

Prestone
Anti Freeze
gallon **\$5.99**

Johnny
Rib-B-Que
99¢

Sunny
Cookies
6 oz. **2/\$1**

SUPER TALLSUP
FILLED WITH YOUR
FAVORITE FOUNTAIN DRINK
\$1.09
64 OZ.

NOTE: ANY ANNOUNCEMENT SALE DAY TAKES PRECEDENCE

Five Star Auctioneers
OFFICE PHONE: (806) 296-0379
BOX 1030 — PLAINVIEW, TEXAS 79073-1030

MERVIN W. EVANS (806) 293-8196
JIM SUMMERS (806) 864-3611
JIMMY REEVES (806) 864-3362

NOT RESPONSIBLE FOR ACCIDENTS
WE ARE AGENTS AND AGENTS ONLY
NOTE: PLEASE BRING YOUR OWN CHECK BOOK
— Terms of Sale: CASH —
All Accounts Settled Day Of Sale
Lunch Will Be Available

FSA office accepting emergency loan applications

Applications for emergency farm loan for losses caused by excessive rain, flood, hail and high winds are being accepted at the Farm Service Agency (FSA) office located at 115 E. Ave. D in Muleshoe, County Supervisor Joyce M. Thompson said today.

Bailey County is one of four in Texas recently named by Secretary of Agriculture Dan Glickman as eligible for loans to cover part of actual production losses resulting from excessive rain, flood, hail and high winds weather conditions.

Ms. Thompson said farmers may be eligible for loans of up to 80 percent of their actual losses or the operating loan needed to continue in business of \$500,000, whichever is less. For farmers unable to obtain credit from private commercial lenders, the interest is 3.75 percent.

"As a general rule, a farmer must have suffered at least a 30 percent loss of production to be eligible for an FSA emergency loan," Ms. Thompson said. Farmers participating in Federal Crop Insurance program will have to figure in proceeds from those programs in determining their loss.

Applications for loans under this emergency designation will be accepted until July

9, 1996, but farmers should apply as soon as possible. Delays in applying could create backlogs in processing and possible over into the new farming season," Ms. Thompson said. Farmers participating in Federal Crop Insurance program will have to figure in proceeds from those programs in determining their loss.

FSA is a credit agency of the U.S. Department of Agri-

culture. It is authorized to provide disaster emergency loans to recognized farmers who work at and rely on farming for a substantial part of their living. Eligibility is extended to individual farmers who are U.S. citizens and to farming partnerships, corporations or cooperatives in which U.S. citizens hold a majority interest.

The FSA office in Muleshoe is open from 8 a.m. to 5 p.m. Monday through Friday.

Road

Continued from page 4

around in the first quarter, trailing 20-13 after eight minutes.

That was it, as Shallowater outscored Muleshoe, 27-7, over the next two quarters to erase any thoughts Muleshoe entertained of pulling off a major upset.

Josh Slayden had 10 points and two 3-pointers for Muleshoe and freshman Dustin Cleavinger added eight points.

Muleshoe hosts Floydada Tuesday, right after the girls

game (6:30 p.m.).

Muleshoe (33) — Slayden 2 (2) 0-0 10, Olivias 3 0-0 6, A. Gonzales 0 2-4 2, J. Gonzales 10-0 2, Cleavinger 2 (1) 1-2 8, Sierra 0 1-4 1, Shelburne 0 0-2 0, Mendoza 1 1-3, Lewis 0 1-2 1, Mason 0 0-0, McClanahan 0 0-0 9 (3) 6-15 33.

Shallowater (68) — Martin 1 1-1 3, Guzman 2 1-2 5, Workman 2 4-8 8, Lemon 2 (1) 0-0 7, Ellison 5 0-0 10, Shannon 0 2-2 2, Lusk 7 (1) 2-2 19, Cody 0 4-4 4, Roberts 4 2-5 10. Totals 23 (2) 16-20 68.

	1	2	3	4	tot
Muleshoe	13	5	2	13	33
Shallowater	20	19	8	21	68

Public Record

Obituaries

Pauline Greene

MULESHOE — Graveside services for Pauline Greene, 82, of the Pleasant Valley Community near Muleshoe, were held Friday, Jan. 5, with the Rev. Bob Turner, pastor of the Lazbuddie Methodist Church, officiating.

Burial was in the Lazbuddie Cemetery in Lazbuddie under the direction of the Ellis Funeral Home of Muleshoe.

Mrs. Greene died January 3 at the Muleshoe Area Medical center after an illness. She was born Nov. 11, 1913 in McCloud, Okla. She married Leonard Forrest Greene Jan. 22, 1938 in Farwell. He died Dec. 6, 1976.

She was a member of the first graduating class of Lazbuddie High School. She was a homemaker and a member of the Lazbuddie Methodist Church. She moved to

Lazbuddie from McCloud, Okla. in 1926 and to the Pleasant Valley Community in 1944.

Survivors include one son, Richard Greene of Lubbock; one daughter, Mary Ann Guillems of Spring Branch; three brothers, Harvey Seaton of Mabank, R.B. Seaton of Houston and Jimmie Seaton of

Lazbuddie; three grandchildren, Martina, Phoebe and Jac Greene; and one great-grandchild, Andrew Greene

Federal Land Bank Association

316 Main St., Muleshoe
806-272-3010

Long Term Financing for Farms, Ranches, Rural Housing, Operating and Improvements.

Current Variable Rate 8.25%

Variable Rate beginning February 1, 7.8%

Fixed rates are available. Call for quote. A Property Rights Advocate and Equal Opportunity Lender.

If it needs insurance ...it needs Henry Insurance Agency.

A full service, independent insurance agency, Henry Insurance Agency sells most types of general insurance from home & auto to business coverages. Here are just a few of the coverages we offer:

- Auto
- Home
- Life
- Farm/Ranch
- Liability
- Fidelity Bonds
- Surety Bonds
- Combined General Liability
- Worker's Compensation
- Fire & Extended Coverages
- Texas Business Owners Policy
- Texas Commercial Package Policy
- Livestock
- Crop-Hail
- Multi-Peril Crop
- Cancer Policies
- Builder's Risk
- Health

Henry Insurance Agency

111 West Ave. B
Muleshoe, Texas 79347
(806) 272-4581
Where the customer is Number One!

Refuge

Continued from page 1

the refuge, this has never happened to her before except for three and a half days in November the refuge employees were sent home. They were later paid for the missed days. "We have had some E-mail from the regional office in Albuquerque," Copley said. "They simply told us we were let off and said we should listen to the media."

Also on furlough are Dean Gilliam, a maintenance worker at the refuge, and refuge manager Don Clapp, who could not be reached for comment.

Doctor's discovery may end obesity

HILTON HEAD, S.C. -- A doctor has discovered that an ingredient found in a small fruit grown in Asia, combined with an ingredient praised by the U.S. Department of Agriculture can help cause significant weight loss.

In a study published in a prestigious American medical journal, Dr. Anthony A. Conte, M.D. reported that the formula, now called Bio-Max 3000, caused patients to lose more than twice as much weight as a control group on the same fat reduced diet. Neither group was instructed to decrease the amount of food they ate or to increase their exercise levels. An article published in the *American Journal of Clinical Nutrition* confirms that you don't have to reduce the amount of food you eat to lose weight, provided that you limit the fat.

Scientists suggest that the mechanism behind the weight reduction includes decreasing sugar cravings and interruption of the "Krebs Cycle", an important step in the body's fat storage process. "The best part of this unique discovery is that it is not a drug, but a safe dietary food supplement" says Dr. Conte. The Asian fruit, called garcinia, is similar to citrus fruit found in the United States with one big exception-- it may help some people fight obesity! While Dr. Conte's study may be preliminary, the exclusive North American distributor, Phillips Gulf Corp., is calling the Bio-Max 3000 supplement "Nature's Ideal Diet Aid."

According to a spokesperson for the company, Bio-Max 3000 is now available on a limited basis through pharmacies and nutrition stores or call 1-800-729-8446. © 1995 Phillips Gulf Corp. Bio-Max 3000 is available locally at: DAMRON DRUG STORE 306 Main St. Muleshoe 272-4210

Author's Note: This statement has not been evaluated by the FDA. Bio-Max 3000 is not intended to diagnose, treat, cure, or prevent any disease.

Immaculate Conception Catholic Church

805 E. Hickory
Father Joseph Augustine

First Baptist Church

220 West Ave. E.
Pastor, Stacey Conner

Emmanuel Baptist Church

Iglesia Bautista Emmanuel
107 East Third
Isaias Cardenas, Pastor

Trinity Baptist Church

314 E. Ave. B
Pastor Robert Brown

Circle Back Baptist Church

Intersection FM 3397 & FM 298
Rev. Jessie Shaver
946-3876

Calvary Baptist Church

1733 W. Ave. C
Pastor Ben Davis

Progress Baptist Church

Progress, Texas

Richland Hills Baptist Church

17th & West Ave. D
Brad Gathright

St. Matthews Baptist Church

Corner of West Boston & West Birch
Pastor, Floyd R. Monroe

Progress Second Baptist Church

1st and 3rd Sundays
Rev. Arthur Hayes

Primitive Baptist Church

621 South First
Elder Cleveland Bass, Pastor

1st Baptist Church

Lazbuddie, Tx.
965-2126

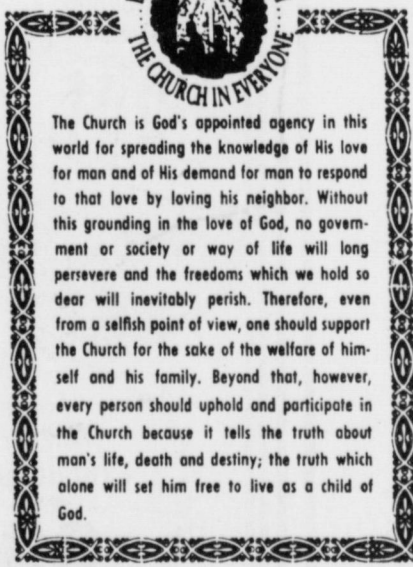


New Snows!

You can see by the car tracks that people are going places despite the heavy snows. Others, like you and me, perhaps, are going places because of it—because the new-fallen snow is beautiful and we want to enjoy it and look at the pictures it makes on the landscape. Also, that frosty, crackly wind that come with the first snows blows roses in our cheeks and new energy and expectations into our hearts. We can't wait to get out and do things and be with people.

A New Year is upon us. What wonderful things this year can bring. Does the New Year lying before you with its promise, fill you with new life and excite expectations like the new snow mentioned above

May your New Year be a happy and prosperous one, and may you find great peace every day through worship and spiritual blessings each week through attending church.



The Church is God's appointed agency in this world for spreading the knowledge of His love for man and of His demand for man to respond to that love by loving his neighbor. Without this grounding in the love of God, no government or society or way of life will long persevere and the freedoms which we hold so dear will inevitably perish. Therefore, even from a selfish point of view, one should support the Church for the sake of the welfare of himself and his family. Beyond that, however, every person should uphold and participate in the Church because it tells the truth about man's life, death and destiny; the truth which alone will set him free to live as a child of God.

©Coleman Adv. Ser.

Lazbuddie Church of Christ

Minister, Nathan Crawford
Sunday School 9:30 a.m.
Morning Services 10:20 a.m.
Evening Services 5:00 p.m.
Wednesday Night 7:00 p.m.

First Assembly of God

272-3017 or 272-3984
Rev. Darrell R. Sanderlin, Pastor
521 South First Street
Sunday Services:
9:45 & 11:00 a.m.
6:30 p.m.
Wednesday Services 7:30 p.m.

First United Methodist Church

507 W. 2nd Street
Dr. James Bell, Pastor

El Divino Salvador Methodist Church

E. 5th and E. Ave. D
Rev. Libney Peneda, Pastor

Shepherd's Chapel of the Sacred Heart of Jesus Christ

Non-Denominational Spirit Filled Fellowship Worship:
809 E. Fir, Muleshoe
Rev. Manuel A. Cruz-Medina
Sunday Services:
9:00 a.m. - En Espanol - Devine Services
11:00 a.m. - In English - Devine Services
6:00 p.m. - In English - Devine Services
The Doors Are open each day from 9 a.m. to 6 p.m. for whomever needs our Lord, Jesus Christ or to talk with the Pastor.

St. John Lutheran

Lariat, Texas
Sunday School and Bible Church Services 9:30 a.m.
Fellowship 10:30 a.m.
Classes 10:45 a.m.
Rev. Richard Greenthaner

The Christian Center

Morton Hwy.
Reydon Stanford
272-5105

New Convent Church

Plainview Hwy
Sunday School 9:00 a.m.
Sunday 10:00 a.m.
Wednesday 6:00 p.m.
Phil Ensminger, Pastor

Lazbuddie Methodist Church

965-2121
G. Scott Richards, Pastor

New Vision Church of The Nazarene

814 W. Ave. C
272-3622
Pastor David R. McIntire

Primera Iglesia Bautista

223 E. Ave. B
Roy Martinez, Pastor

"Iglesia Pentecostal Unida"

207 East Ave. G
272-3636
Pastor: Wenceslado Trevino

Lariat Church of Christ

Sunday School 10:00 a.m.
Worship 11:00 & 6:00
Wednesday Services 7:00 p.m.
Sam Billingsley, Minister

Muleshoe Church of Christ

22nd & W. Amer. Blvd
Sunday School 9:30 a.m.
Morning Worship 10:20
Evening Services 6 p.m.
Wed. Night 7:30 p.m.

16th & Ave. D Church of Christ

Sunday 10:30 a.m.
Evening 6:00 p.m.
Wednesday 7:30 p.m.
Curtis Shelburne, Minister
272-4619

Western Drug
114 Main 272-3106

Attend the church of your choice

American Valley, Inc.
W. Hwy 84 272-4266

Wes-Tex Feed Yards
272-3106

Irrigation Pumps & Power
W. Hwy 84 272-4483

James Crane Tire Co.
322 N. 1st 272-4594

First Bank
Member F.D.I.C.
202 South First 272-4515

Bailey Gin Co.
946-3397

Bobo Insurance Agency
108 E. Ave. C 272-4264

Bob Stovall Printing
221 E. Ave. B. 272-3373

5-Area Telephone Cooperative, Inc.
302 Uvalde 272-5533

Journal Classifieds

Call 272-4536 Deadlines: For Thursday, Noon Tuesday; for Sunday, Noon Friday Call 272-4536

Dream

Continued from page 1

wrote a brief research paper on teenage crime—why teens get into trouble, the causes and the consequences of teen violence, and her proposed solutions to the problem.

She described incidents reported in the *Lubbock Avalanche-Journal* of teens who took "the easiest route for teens to take when problems arise," like a teenage baby sitter who held her hand over the mouths of two children long enough to suffocate them, and a teenager who masterminded a bomb hoax to delay his calculus placement test.

She wrote about the personal consequences of their crimes—up to 40 years in prison for the babysitter, and two years in prison for the teenager involved in a bomb hoax.

Megan suggested solutions to teenage violence, including stricter safety plans on school campuses, better pre-natal care and teenage nutrition, more education for teenagers on the value of the dollar, and teenagers being good role models for other teens.

Around

Continued from page 2

SPS offers billing extension

The Southwestern Public Service Public will extend for up to 30 days the due date on electric bills owed by furloughed federal employees.

Furloughed employees can request the extended billing period at any SPS office with proof of government employment and furlough.

ENMU registration Jan. 10-11

Eastern New Mexico University in Portales will conduct spring registration Jan. 10-11 in the College of Business.

Registration for evening classes is from 5:30 p.m. to 7 p.m. Jan. 16-17 in the registrar's office.

The first day of classes is Jan. 16.

Notice To Bidders

The Muleshoe Independent School District is accepting sealed bids for material and/or labor to retrofit both the east and west football stadium seats at Benny Douglas Field. Specifications for bids may be secured by writing or calling Sam Whalin, Facilities Director, Muleshoe I.S.D., 514 W. Ave. G, Muleshoe, TX 79347, phone 806-272-4828 or 806-272-3911. Bids must be submitted in writing before 4:00 p.m. on January 18, 1996 in an envelope

marked "Sealed Bid". The bids will be opened at 4:15 p.m. on January 18. Muleshoe I.S.D. reserves the right to accept or reject any or all bids.

Published in the Bailey County Journal January 7 and January 13, 1996. 2s-2tsun chg

Help Wanted

POSTAL JOBS
Start \$12.08/hr. For exam and application info. call (219) 769-8301 ext TX 759, 8 a.m. - 8 p.m., Sun - Fri. 1s-8tpd

Real Estate

For Sale: 3 bedroom, 1 bath, brick home. Newly remodeled kitchen, 806-481-3502. 331-tfc

YOU WILL FALL IN LOVE with this beautiful house in Country Club estates, 3/2/2, recently renovated, isolated master bedroom, approx. 2200 sq. ft. Sun room, large brick-look patio, fireplace, central heat and air. Sprinkler system. Storage shed, landscaped yard. **Must see to appreciate. Possible Lease Option. Appointment 272-3380.**

51s-5tpd
Richland Hills - 3, 1 3/4, 2, Great location. Recently remodeled, lg storage building, low \$70. Call 806-272-4754.

32s-Sun tfc

For Sale: three bedroom, three bath, approx. 2100 sq. ft. home, in Richland Hills addition. For further information call (505) 763-6581 or (505) 372-6611. Only serious inquires please. 49s-4sun pd

Farm For Sale

320 Acres, Good Land, Good Yield, Good Water, 1 Sprinkler, Small House, Near Lazbuddie. \$1,000 an acre. Call 965-2695, Mobile 946-8078 51t-12tc

Well improved farm for sale. 80 Acres, with pivot sprinkler. Section 23-Y. 1 mile N. of Muleshoe on Cemetery road, 1/4 mile east of old dairy. Contact Sam Bradley, 903-769-3039 or Gene Bradley, 4401 S. Westmoreland, Dallas, TX 75237 1s-8tpd

Subscribe To The Muleshoe Journal Today!

Automobile

1990 Chevy suburban, 2 wheel drive, blue and white, 60,000 miles, \$12,900. (505) 359-1775, Portales

1992 Ford Aerostar, blue, \$6,295. (505) 359-0947, Portales

1991 GMC Jimmy 4x4, 4 door, 79,000 miles, \$12,400. (505) 359-1775, Portales

1995 Buick Roadmaster Limited. 14,000 miles, \$24,900. (505) 359-0947, Portales

1991 Ford Escort Stationwagon, grey color, 51,000 miles, \$5,600. (505) 359-1775, Portales

Miscellaneous

Concealed Handgun Courses Jan. 9-11, 6-9 p.m. Pre-Registration required Contact Toby Turpen 806-276-5668 52s-3sun chg.

SPRINKLER MAINTENANCE & SERVICE

Service gearboxes and center drives - check u-joints - air tires - install drops - change pads and nozzles - etc.

Call Tim Norton 806-481-3223 52s-4t sun pd

Wanted

House Cleaning - Bi-Weekly, Weekly and Monthly. Call Renee, 272-5957. 2s-7tpd.

For Sale

4 steel arch style buildings, 40x30 was \$6100 now \$2990; 40x58 was \$11,250 now \$5900; 50x76 was \$13,890 now \$8600; 50x150 was \$23,000 now \$15,900. Endwalls are available. 1-800-320-2340 52s-4tpd

Andy Miller Hay Big Round Bales \$20 - \$40 Wolforth, TX 806-762-8458 We Deliver 51s-8tc

For Sale Alfalfa Hay Small Square Bales 272-4367 or 946-7045 2s-7tpd

BIG UGLY RED SPA Will Make Deal 806-354-8091 2s-2tc

MUST SELL!! 14X24 MORGAN BARN Heavy Duty Floor 806-358-9597 2s-2tc

Oak Firewood For Sale Rick \$80.00 Cord \$150.00 Free Delivery Call 965-2874 Leave Message 51t-10tc

Estate Sale
Home, 208 Austin, Sudan Must Sell!! 2134 Sq. Ft., 2 bdrm, 2 bath, w/fireplace, enclosed patio w/BBQ Grill, Oversized Dbl. Garage w/ opener and extra closet storage. Sprinkler front and back. \$60,000 Call 227-2319. 2s-1tc

Ladies Apparel 50 - 75 % Off Regular Prices Last Sale Ever! The Collection 418 Main Clovis, NM 1t-4tc

Have A Nice Day!

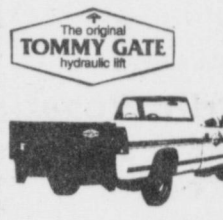
MUST SELL! 1995 Pontiac Grand Prix SE
AM/FM cassette, Anti lock brakes, dual air bags, power windows, power locks, power mirrors, custom wheel covers, V6, 4 speed automatic with overdrive, folding center console and much more No old contract to assume, no back payments to make, just need responsible party to make reasonable monthly payments. Contact Corey in the Credit Dept., Friona Motors, 806-247-2701

MUST SELL 1994 Mercury Cougar XR7
Champagne color with gold town landau package. Power windows, power drivers seat, dual power lumbar support, tinted windows, power locks, tilt, cruise, AM/FM cassette, power mirrors, rear defroster, dual air bags, full leather interior, luggage rack, 4 speed automatic with overdrive a and much more. No old contract to assume, no back payments to make, just need responsible party to make reasonable monthly payments. Contact Kim Humphrey in the credit dept. Friona Motors, 806-247-2701

MUST SELL! 1995 Chevy Lumina APV
Automatic transmission, power windows, power locks, power mirrors, tilt steering wheel, cruise control, AM/FM stereo cassette, driver side air bag, front and rear air conditioning, 7/8 passenger seating, ABS, aluminum wheels and much, more. No old contract to assume, no back payments to make, just need responsible party to make reasonable monthly payments. Call Kim in the credit dept. Friona Motors, 806-247-2701

MUST SELL! 1993 GMC Safari Ext. Van
SLX trim package, luggage rack, electric windows, electric locks, tilt, cruise, 7 passenger, AM/FM cassette player, over head console, very clean vehicle for family use. Good tire, white color with blue trim and much more. No old contract to assume, no back payments to make, just need responsible party to make reasonable monthly payments. Contact John Risher in the credit dept. Friona Motors, 806-247-2701

TOP QUALITY HAY FOR SALE
German millet hay, milo hay, haygrazer hay, wheat hay and oat hay. Large round bales. Discounts on quantity. Call 505-276-7522, 505-276-8482 or 595-276-7527. Delivery Available!

NEED A LIFT?
The Original TOMMY GATE

AMERICAN EQUIPMENT & TRAILER
3707 M.L.K. Jr. Blvd-Lubbock, TX 806-747-2991

BANKRUPTCIES
Have you had a bankruptcy? Do you want to purchase a mobile home? We have a program that will finance previous bankruptcies. You must meet those requirements: Bankruptcy is 3 years old, good credit for past 36 months, good vehicle purchase credit. If you meet these requirements and want to live in a new house, please call 505-356-5448 between 8:00 & 5:00. Proof of income tax refund accepted for down payments.

BETTER LIVING HOMES
Located 1/2 Mile North Of Portales On US 70
Lic. # D00681 505-356-5448

James F. Hayes & Co.
AGRICULTURAL REAL ESTATE SERVICES

152 Acres West of Muleshoe. Electric Center pivot sprinkler, 2 wells, 1/2 circle of improved grass. Good barbed wire fence. Priced for immediate sale.

120 acres west of Muleshoe. 2 wells. Good soil. Lays good. Immediate possession available.

Dodd Area - 160 acres with electric center pivot. Excellent soil and water.

320 Acres Northwest of Lariat. 2 centerpivot sprinklers, 2 wells, modest home, quonset barn.

480 Acres of C.R.P. West of Muleshoe One payment left \$150 per acre.

480 Acres on highway 1760, 3 miles from New Mexico state line. 6 wells, lots of underground pipe.

South of Lariat - 160 acres with center pivot. Priced to sell in order to settle estate.

639 Acres Northwest of Earth. 5 wells, 3 sprinklers, livestock feeding pens. Nice 4 bedroom home with basement. One 3 bedroom home for employee or to rent our. NICE COMPLETE OPERATION!

320 Acres East of Farwell on hwy 145. 2 Valley water drive sprinklers, 2 wells, excellent water.

NEW LISTING
160 Acres Northeast of Muleshoe in Parmer County. Excellent water. Excellent soil. Electric Center Pivot Sprinkler. New set of bowls on pump. Top Notch Farm labor of C.R.P. Southwest of Muleshoe. One year left on contract. \$200 per acre.

160 Acres East of Farwell on Hwy. 145 with modest home and large quonset barn

177 Acres with center pivot Southwest of Muleshoe Lays good, allotted.

120 Acres of C.R.P. in Stegal Area. Good soil, good turf. Price reduced to sell.

320 Acres East of Farwell on hwy 145. 2 Electric sprinklers, 3 wells, fully allotted. Excellent soils and water

Vic Coker, Agent
310 Main St. Suite 103 Muleshoe
Office 272-3100 Home 965-2468
WHEN LAND INVOLVES COWS AND PLOWS

HENRY REALTY

4-bedroom, 2 full baths, 2 half baths, attached 2-car garage, BV home, wood roof, new carpet, new tile floor coverings, freshh paint. Central heat, evaporative air, fireplace, ceiling fans, kitchen builtins, sunroom, storm cellar, great landscape, automatic lawn sprinkler front and back yards, fenced backyard, automatic garage door openers. Roomy home with excellent storage east of Muleshoe on Hwy 70. Call for appointment.

3 Bedroom, 1 bath, carpet located on 10th street. refrig. air window unit. Storm doors and windows.

80 acres in CRP with 2 bedroom, 1 bath house. 8 miles east of Muleshoe. Call for appointment

Near High School - 3 bedroom, 3 bath, BV central heat, ducted in evaporative air cond., carpet throughout, large den with rock fireplace, top grade wood paneling throughout. Storm windows and doors. Insulation in ceiling, large utility room and spacious storage area. Kitchen built-ins.

Country Club Addition, 29- 60' lots to sell as one package. Great opportunity for apartments or single family development.

COMMERCIAL PROPERTY

West American Boulevard 150' frontage. Priced to sell.

Mobile home park with 13 rental spaces includes 2 bedroom home with carpet and storage building. Duplex on property for rental. Great business opportunity.

4,000 Sq. Ft. Commercial Building. Ready to be occupied.

2 Bedroom, 1 bath, recently remodelled - new paint, new floor covering throughout. Wood fence. Storm doors and windows.

Four bedroom, 2 bath, 2 car garage, 2 - car carport. Refrig. air, central heat. Carpet, beautiful dining area with built-in china cabinet and paneled walls and other extras. Storm doors, storm windows and awnings. Concrete fence, front yard has automatic sprinkler. Kitchen built-ins. 1,000 sq. ft. storage. Large home with extra storage.

Small acreage on highway near Muleshoe. New development. Please call for information. 5 acres to 40 acres. Excellent location.

2 Bedroom, 1 bath, stucco. Ready for occupancy

1 bedroom, 1 bath on same property as above. Good for rental property

Near High School, 3 bedroom, 1 bath, floor furnace heat, roof ducted. Evaporative air cond, storm windows & doors, equipped for washer/dryer. Fenced back yard.

Ideal location on west American Blvd. 150' highway frontage. A great business opportunity.

Main street - good location. 1875 sq. ft. Modern heating and cooling. Excellent condition. Call to see property.

111 WEST AVENUE MULESHOE, TX 272-4581

Nieman Realty
116 E. Ave. C George Nieman, Broker 272-5285 or 272-5286

HIGHLAND AREA
2 Bdrm, 1 bath home, fenced yard. \$16,500!!! HL-4
VERY NICE 3-2-2 Brick, Cent. A&H, built-ins, fenced yd., spklr. sys., MUCH MORE!!! \$60's !!! HL-1
Very nice 3-1 1/2-2 carport home, Geothermal heat and air, dishwasher, fireplace, nice carpet, storage building, fenced yard. \$30's!!! HL-5
JUST LISTED 3-2-2 home, Cent. A&H, built-ins, fenced yd., corner lot. \$30's !!! HL-2
JUST LISTED - VERY NICE 3-2-1 carport Home, heat pump, built-ins, nice carpet, fans, storage-workshop! MUCH MORE!!! \$50,000 !!! HL-6

LENAU ADDITION
NICE 3-2-1 carport Home, geothermal heat pump, fenced yd., storage bldg. \$27,500!!! L-3
VERY NICE 3-2-1 Home, Heat Pump, storm windows & doors, extra insulation, nice carpet, spklr. sys. & MORE!!! \$30's!!!! L-2
JUST LISTED - Nice 2-2-2 Brick, on corner lot, heat pump, fenced yard, storage bldg., MORE! \$40's !!! L-1

COUNTRY CLUB
VERY NICE 3-2-2 Brick, Cent. A&H, built-ins, large screened porch, fenced yd., MORE!!! \$40's !!! CC-1
2-1-1 carport home, wall furnace heat, nice carpet, storm shelter, storage bldg., fenced yd. MORE!!! \$20'S.

HIGH SCHOOL
NICE 3-2 Home, Cent. A&H, built-ins, nice carpet, fans, stor. bldg., fenced yd. \$30's HS5
JUST LISTED - NICE 3-2-2 carport home, cent. A&H, built-ins, guest cottage or eff. apartment, insul. wkshop-stor. bldg. w/elect, fenced yd., & MORE!!! \$40's!!! HS2
NICE 3-2-2 Brick Home, Cent. Heat, built-ins, fenced yd., large shop & office (ideal for automotive-wood-working, etc.), storage, eff. apartment, MORE!! \$80's HS-3
JUST LISTED - 2-2-2 carport Mobile Home, Cent. Heat, built-ins, fenced yard, More!!! \$12K HS-1

RURAL HOMES
2-2-2 Carport Mobile Home on hwy close to town, 1.99 acres w/land and corrals. \$29,900!!! HL-1
IN CONTRACT
BEAUTIFUL 4-3-4 carport home on 2.4 acres on Highway, Geo. Heat pump, FP, nice carpets, loads of storage. SHOWN BY APPOINTMENT. \$90's!!! HR-4
VERY NICE 3-2-2+2 Carport Brick Home on 2.5 acres on pavement, close to town, Heat Pump, built-ins, FP, MUCH MORE. \$70K !!! HR-3

ASK ABOUT OUR COMMERCIAL LISTINGS!!!
PARMER - BAILEY CO. Area-Elevator & Cleaning Facility - 12 million lb. Capacity, Scales, Dryer, & Office on approx. 6.5 acres!!! PRICED TO SELL !!! POSSIBLE OWNER FINANCING!!!
COMMERCIAL-200'+ Hwy. 84 frontage-Former Richland Hills Texaco, excellent business location. PRICED TO SELL!!!!!!

LOWE'S PRICE MELTDOWN

Pay-n-Save MARKETPLACE SUPER SAVE

DOUBLE COUPONS EVERYDAY

All Types Lowe's 3 Liter Btl.

Drinks

88¢



Meat

Bone-In Country Style Pork Ribs

lb. **99¢**

Small Pack ... lb. **\$1.19**



Hormel Super Select Assorted Pork Chops

lb. **\$1.49**



Value Pack Whole Slab Pork Spare Ribs

lb. **\$1.49**

Small Pack ... lb. **\$1.69**

- Bone-In Center Cut Pork Loin Roast lb. **\$1.89**
- Excellent For Swiss Beef Boneless, Value Pack Arm Steak lb. **\$1.69**
- Small Pack lb. **\$1.89**
- Bar S, 12 oz. pkg. Meat Franks **69¢**
- Hormel Spiral Cut Half Ham lb. **\$1.99**
- Pork Neckbones ... lb. **49¢** Feet ... lb. **49¢**
- Value Pack, Chuck Quality Preferred Ground Beef lb. **\$1.39**
- Small Pack lb. **\$1.59**

- Value Pack, Asado Pork Stew Meat lb. **\$1.99**
- Whole Market Trimmed Beef Brisket lb. **\$1.69**
- Bar S Meat, 12 oz. pkg. Meat Bologna **79¢**

Value Pack, Bone-In Pork Butt Roasts

lb. **99¢**

Small Pack ... lb. **\$1.19**

Small Pack, Beef Boneless Arm Roast

lb. **\$1.49**

Value Pack, Bone-In Pork Steaks

lb. **\$1.39**

Small Pack ... lb. **\$1.59**

Produce



US #1 Russet Potatoes

5 lb. bag **69¢**



- Dole, 1 lb. pkg. Salad Mix **79¢**
- Cello, 4 pack Tomatoes **99¢**
- Cello Spinach ea. **\$1.29**
- Medium White Onions lbs **2/\$1**

Large Green Bell Peppers

5/\$1



Green Leaf Lettuce

3/\$1

LOWE'S LOW PRICES!

Assorted Lay's or Wavy Lay's Potato Chips
Reg. \$2.99 Size
\$1.89

Reduced Fat Nabisco Better For You!
Cheese Nips **2/\$3**
NABISCO REDUCED 20 oz. Oreo Cookies or 10 oz. Ritz Crackers **2/\$5**

Reduced Fat Nabisco Better For You!
Wheat Thins **3/\$5**
NABISCO REDUCED 6.5 oz. Better Cheddar or 9.5 oz. Wheat Thins or 8.5 oz. Triscuit

FROZEN Blue Bunny Assorted Ice Cream or Ice Milk
1/2 gal. sq. ctn. **\$1.99**

DAIRY Borden Regular, Low Fat or Fat Free Cottage Cheese
24 oz. ctn. **\$1.89**

Chips Ahoy! Sprinkled Chips Ahoy!
NABISCO ASSORTED Chips Ahoy! Cookies **2/\$5**
ALPO ASSORTED Dog Food **2.89¢**
FREE POUCHES OF ALPO DISHES **\$7.99**

HEALTH & BEAUTY

ASSORTED FORMULA 44 COUGH SYRUP OR VICKES NYQUIL DAYQUIL
Cold Medicine **\$2.99**

ALWAYS Maxi Pads **\$2.69**
ASSORTED Always Pantliners **89¢**

Aleve Tablets or Caplets **\$3.99**

ASSORTED Pantene Pro-V Shampoo or Conditioner **\$2.99**
ORIGINAL MINT OR PEPPERMINT Scope Mouthwash **\$3.69**

ASSORTED REGULAR OR 2 IN 1 Head & Shoulders Shampoo **\$3.39**

ASSORTED ROLL-ON OR ULTRA Sure Deodorant **\$1.59**
ASSORTED ROLL-ON OR ULTRA Secret Deodorant **\$1.59**
ASSORTED Crest Toothpaste **\$1.89**

Folgers Assorted Folgers Coffee
12-13 oz. can **\$2.39**

HONEY BOY Pink Salmon **2/\$3**

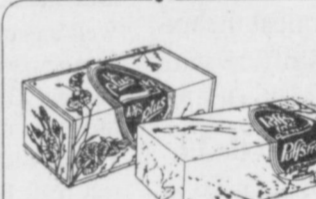
CRISCO Assorted Crisco Oil
32-48 oz. btl. **\$1.99**

SUNNY DELIGHT Florida, California, Lite, Plus Calcium, or Mango Citrus Punch **99¢**

Jif Assorted Jif Peanut Butter
18 oz. jar **\$1.79**



Assorted Bounty Paper Towels
Big Rolls **2/\$3**



Facial Tissue **2/\$3**

Charmin White or White Ultra Bath Tissue
12 roll pkg. **\$3.29**

Pampers Pampers
YOUR CHOICE **\$5.99**

Tide Ultra Tide Laundry Detergent
100 oz. jug **\$5.99**

Ultra Tide Laundry Detergent
98-110 oz. box **\$5.99**

Oil of Olay Bath Soap **\$1.99**
Zest Bath Soap **\$1.59**

Comet Heavy Duty Comet Cleanser **89¢**
Comet Bathroom Spray **\$1.69**
Spic Span Cinch **2/\$3**

Cascade Cascade **\$2.29**

Mr. Clean Mr. Clean **\$1.69**
Ultra Mr. Clean Top Job **\$1.99**
Newer Floor Mr. Clean **\$2.49**

Ultra Downy Bedlinen **\$3.99**

Downy Downy Sheets **\$1.99**

WESTERN MONEY UNION TRANSFER
"The Justest way to send money"
Lowe's MARKETPLACE
515 W. American Blvd.
401 W. American Blvd. Muleshoe 272-4585
Muleshoe 272-4406
WE RESERVE THE RIGHT TO LIMIT QUANTITIES IN TEXAS