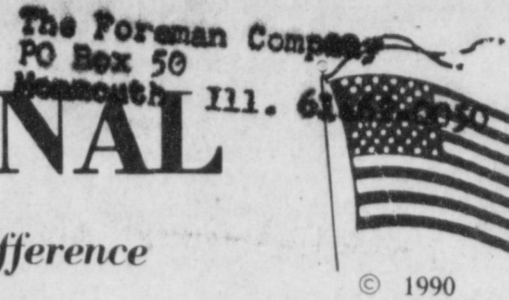


WEATHER

September 10--96 57
September 11--70 58
September 12--75 56

BAILEY COUNTY JOURNAL

'The Community Of Opportunity-Where Water Makes The Difference'



© 1990

Vol. 31, No. 37

Published Every Sunday At Muleshoe, Bailey County, Texas 79347

Member TEXAS PRESS ASSOCIATION

25¢

Sunday, September 13, 1992



SCRAMBLING FOR THE BALL---The Mules Freshman football team and the Idalou JV fought a hard battle Thursday night as they played in Benny Douglas Stadium. Idalou defeated the Mules 20 to 6.

(Journal Photo)

Workers To Receive Disaster Funds

Bailey County, along with 11 other West Texas counties have been declared a disaster area and gingers, farm workers and self-employed business owners will receive federal disaster help for recent floods, according to U.S.

Representative Larry Comb (R-Texas).

Wednesday, President Bush declared an eight-county area of the 19th Congressional District eligible for emergency unemployment assistance, in addition to four other surrounding counties.

This latest announcement is an additional and entirely different type of relief to the one the President announced in Shallowater regarding disaster payments for farmers.

The Federal Emergency Management Agency (FEMA) expects to fund an estimated \$8,013,500 in payments for workers who lost jobs because of heavy rains and hail in May and July of 1992.

FEMA officials report that the Texas Employment Commission expects 5,170 claims for the 10-week period covered by this Presidential Disaster Declaration for Lubbock, Hockley, Cochran, Bailey, Castro, Hale, Lamb, Parmer, Crosby, Floyd, Briscoe and Swisher counties.

President Bush continues to make good on his word to the people of this area to help them back on their feet, according to Larry Comb. The farmer's crop loss has been the ginner's loss that is multiplied in economic loss for

every business and community tied to agriculture.

Even with closed cotton gins and empty fields, rural families and communities have been financially pounded by hail and flood, but not broken.

The Texas Employment Commission will administer the job compensation payments to applicants, who have 30 days to apply for benefits.

Eligible applicants include workers, self-employed business owners and farm and ranch owners who cannot receive regular unemployment insurance benefits as a result of the flooding.

The funding of \$8.013 million in payments to workers who lost jobs due to the heavy rains and hail that pummeled the regional cotton and vegetable crops follows last week's release of \$755 million in nationwide farm relief, according to a statement from U.S. Rep. Larry Comb.

According to reports only two of the area gins, Muleshoe Co-Op and Maple Gin, will open this season.

Curtis Preston reported that Bailey County has approximately 4500 acres of cotton that survived adverse weather conditions.

The Texas Agricultural Statistics

Cont. Page 6, Col. 6

Wildcats Take Early Lead Over Mules

It was all the Idalou Wildcats game Friday night when they played the Muleshoe Mules in the Wildcat Stadium. The 2-A ranked Wildcats took an early lead scoring their first touchdown early in the first quarter. The Wildcats scored three more times in the half and once in the third quarter winning the game 33 to 0.

Edward Rodriguez, Mule, kicked off to the Wildcats, down to the Wildcat 35 yard line, and the Wildcats returned the ball back to the 47 yard line, giving them good field position. On the third play of the game, the Wildcats ran the ball 40 yards, moving down to the Mules 12 yard line. Two plays later they were penalized five yards. Mule Edward Rodriguez knocked a Wildcat pass away and the Mules took over on their own six yard line.

Unable to move the ball against the Wildcat defense, the Mules were forced to punt the ball back to the Wildcats.

The Wildcats put the ball into action on the Mules 49 yard line. A few plays later, with 4:58 left in the first quarter, Wildcat Eddie Martinez ran 45 yards for a touchdown. The point after-kick

was good and the Wildcats led 7 to 0 over the Mules.

The Mules put the ball into play on their own 19 yard line. Once again they were unable to move the ball and were forced to punt to the Wildcats. The Wildcats picked up good yardage in the next few plays before being penalized five more yards.

At the end of the first quarter, the Wildcats had the ball on the Mules 12 yard line. With 11:16 left in the half Wildcat Eddie Martinez scored again. The Mules blocked the point after kick and the score remained 13 to 0.

The Mules returned the kick to their 41 yard line, from the 15 yard line, but there were flags on the play, and the Mules were penalized five yards. A few plays later pass interference was called against the Wildcats and the Mules got their first first-down of the game.

After being unable to move the ball, the Mules were forced to punt the ball back to the Wildcats, with 8:51 left in the half. With 5:01 left in the half Tatum Lynn scored another TD for the Wildcats, bringing the score to 19 to 0. Following a two point conversion the Wildcats led 21 to 0.

The Mules took possession of the ball on their own eight yard line. Once again the Mules were unable to move the ball against the tough Wildcat defense, and were forced to punt the ball back to the Wildcats.

A 17 yard return found the Wildcats back on the Mules 23 yard line. With 3:01 left in the half, the Wildcats moved the ball into the endzone, only to have it called back due to a penalty. With 1:05 left in the half Eddie Martinez, Wildcat, made it into the endzone again. A two point conversion try was no

good and the score was Wildcats 27-Mules 0.

The second half of the game got underway when the Wildcats kicked to the Mules. The ball was put into play on the Mules 20 yard line.

With 8:25 left in the third quarter, the Mules were forced to punt to the Wildcats. The Wildcats picked up good yardage and received two penalties and with 2:32 left in the quarter Eddie Martinez scored again for the Wildcats, bringing the score to 33 to 0. The point after kick was no good and the score remained 33-0.

The Mules returned the ball 22 yards after the kick off. After picking up some yardage, the Mules received a five yard penalty. With 1:20 left in the quarter Muleshoe fumbled the ball and the Wildcats recovered on the 16 yard line.

Early in the the fourth quarter, the Wildcats were threatening to score again. A delay of game was called against the Wildcats and they were faced with a fourth and 10 from the Mules 10 yard line. Being unable to move the ball, the Mules took over on their own 10 yard line.

Three plays later, the Mules fumbled the ball and after a scramble, Idalou came up with the

Cont. Page 6, Col. 2

Lazbuddie ISD Board Meets In Regular Session

Leland Brockman, Joelle Weaver and Jody Copp gave presentations at the Lazbuddie ISD board meeting Tuesday night. Brockman's presentation was on Boy's State and Miss Weaver's presentation was on Girl's State. Copp had a presentation for Farm Bureau.

Tommy St. Clair was selected to fill the position on the board vacated by Scott Brown. This spot is to be filled at the next election.

The board voted to purchase band instruments.

A tax ordinance was set with 36.2 being proposed. A public meeting has been scheduled for 8 a.m. Sept. 21. According to Phil Warren, superintendent, this rate is an increase of 1.12 over last year.

The 1992 Harvest Festival and Halloween Carnival has been scheduled for Halloween night, October 31.

The board approved the DARE drug program. This is the third year Lazbuddie has participated in this program. It is a Parmer county program.

Another item on the agenda was the approval of the Secondary and Elementary attendance committee.

The 1992-93 calendar was adjusted and the spring break has been moved to March 3-5, in conjunction with the Houston Live Stock Show.

Group health insurance was raised \$10.00 from \$50 to \$60.

One name was added to the substitute teaching list, and the meeting was adjourned.

Cont. Page 6, Col. 1

around Muleshoe

The Three Way ISD board meeting scheduled for Thursday, Sept. 10 was canceled and rescheduled for Thursday, Sept. 17 according to a spokesperson in the superintendent's office.

A Booster Club meeting for all parents of all athletes in the Muleshoe schools and interested persons is scheduled for 7:30 p.m. Thursday, Sept. 17 in the high school cafeteria.

"Please join us as interested parents and citizens for all of our athletes," said Ladonna Holman.

Myrlene Read, Special Education teacher has been named Educator of the Week at Watson Junior High.

Principal Awards went to Ky Kennedy, sixth grade; Misty Angeley, seventh grade; and David Keller, eighth grade.

The governing body of the Muleshoe Independent School District will meet at 7 p.m. Monday, September 14 in the School Administration Building with the following items to be discussed:

1. Call to order
2. Invocation
3. Recognition of visitors and school officials present at meeting
4. Approval of minutes both the special and the regular meetings held on August 24, 1992.
5. Open Forum/Audience Participation
6. Business Items
 - 6.1 Approve Campus Plans for 1992-93
 - 6.2 Consider a waiver for the gifted and talented program at Dillman
 - 6.3 Receive the Academic Excellence Indicator System Report and take appropriate action
 - 6.4 Set the 1992-93 tax rate for the Muleshoe Independent School District
7. Informational Reports
 - 7.1 Board President
 - 7.2 Superintendent
 - 7.3 Assistant Superintendent for Instruction
 - 7.4 Assistant Superintendent for Operations
 - 7.5 Business Manager
8. Personnel Considerations
 - 8.1 Executive Session
 - 8.1a Accept Resignations
 - 8.1b Consider hiring new personnel
 - 8.1c Review the substitute teacher list
9. Take Appropriate Action Follow-up

Cont. Page 6, Col. 1

Out-Of-School TEAMS/TAAS Test Registration Set

The out-of-school examinee registration packets for the Texas Educational Assessment of Minimum Skills (TEAMS) and the Texas Assessment of Academic Skills (TAAS) exit level tests are now available at Muleshoe High School.

During each regular exit level test administration, individuals who are no longer enrolled in school and have not previously passed all

Grand Jurors To Report Monday

Persons selected to serve on the Grand Jury for the 287th Judicial District Court of Bailey County are to report at 9:30 a.m. Monday, September 14 at the Bailey County Courthouse.

Those making up the Grand Jury will be the following: Boyd Rex Black, Thurman Dale Myers, Ed W. Nickels, Jack Edwin Reeves, Royce Earl Harris, Clayton Dale Ramm, Laura Agnelia Leal, Bob M. Foley, Barry Leon Cowart, Troy Udale Scott, Lionel Patterson, Myron Eugene Shaw, Mary Helen Perez, Carolyn Cole Sowder, Nelda Redwine Hunt, Johnny Lucero Duarte, Dawn Barden Williams, Imogene Bryon Claunch, David Allen Faver, and Druscilla Damron Hutton.

sections of the TEAMS/TAAS test, but have met all other graduation requirements, may retake the section(s) not passed.

During the October administration, the TAAS writing test will be administered on Tuesday, October 27, the TEAMS/TAAS English/reading test on Wednesday October 28, and the TEAMS/TAAS mathematics on Thursday, October 29, 1992.

Individuals who are no longer enrolled in a Texas public school and wish to register to retake the exit level mathematics and/or English language arts test(s) may pick up a registration packet at any high school campus, district central office, or education service center.

Registration forms must be completed and returned in the pre-addressed envelope and are to be received in Iowa City, Iowa, no later than 5 p.m. October 6, 1992.

The Texas Education Agency and National Computer Systems will not be responsible for registration forms that are delayed or lost in the mail.

It is suggested that individuals registering for the test make arrangements with the appropriate postal agent for a proof of delivery notice.

Questions concerning out-of-school examinee testing should be directed to Linda Marr, counselor, Muleshoe High School, telephone 272-7571.

Kiwanis Club News

By R.A. Bradley

Ten Kiwanians, one honorary Kiwanian, Dee Morris, and one guest, Don Barnett from Hanford, California and Sweetheart, Summer Wiley, met for breakfast at the Dairy Queen Friday morning.

Barnett is the son of C.A. Barnett, and a brother of Barbara Puckett. He is in Muleshoe visiting with his dad. Barnett and a brother, Richard, have been updating the plumbing in his dad's house. We all know how much plumbing is, so Don we are sure you have enjoyed your visit.

It was good to have Don visit our club. Come back any and every time you are back in Muleshoe. It is always good to see Dee. We have sure been missing you Dee. Welcome back.

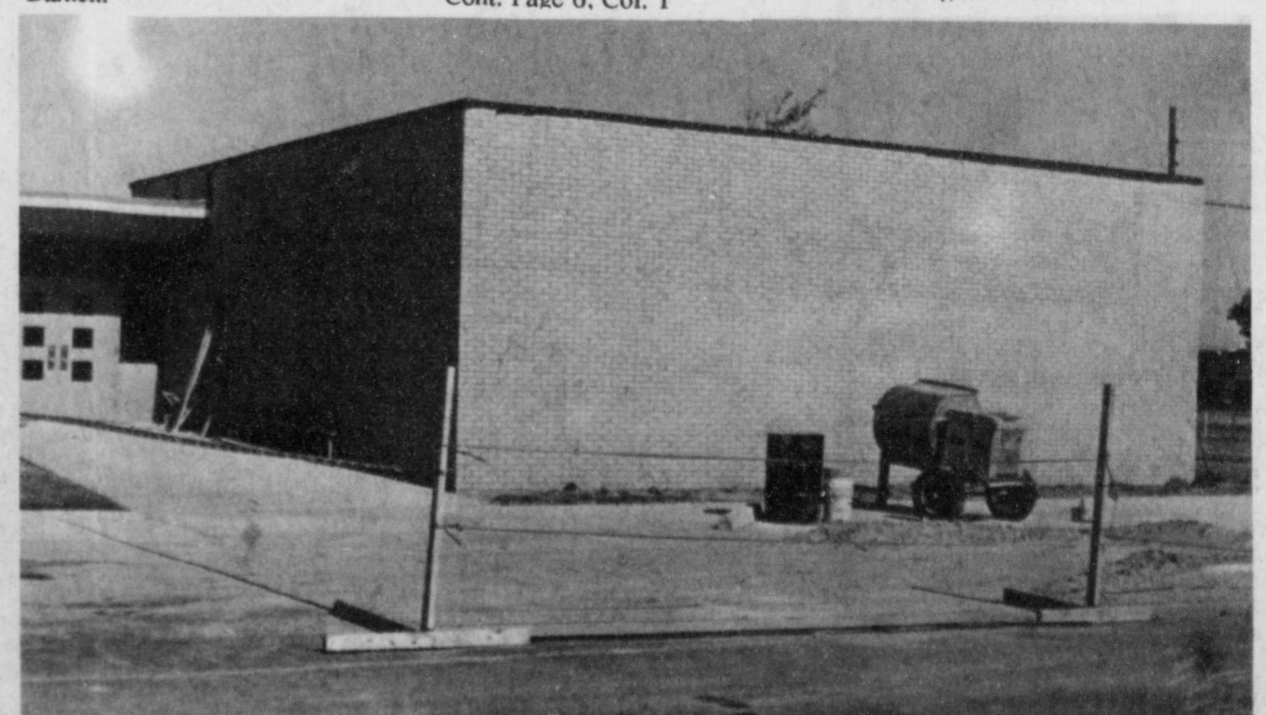
President Larry Parker called the meeting to order. Hugh Young led the club in the pledge to our flag and Eddie Morris gave the invocation.

Jim Lutz is at his mother-in-laws house helping and still looking for a friend.

The Kiwanis Club presented a set of ear rings and a necklace to Sweetheart Summer Wiley. Summer this is just a small way to say thank you for being our Sweetheart and we are looking forward to a wonderful year. Thanks for putting up with us.

The Kiwanis Club also voted to send \$100.00 to the Kiwanis International to distribute to clubs in need after the Hurricane Andrew in Florida and Louisiana.

We just had a round table discussion and visited with Don Barnett.



CONSTRUCTION CONTINUES---Construction of the new library at Dillman Elementary is almost complete, and should be finished in a short time. (Journal Photo)

Enochs News

by: Mrs. J.D. Bayless

Mr. and Mrs. Bob Newton and sons, Dennis and family, Tom and family, and Steve and family spent the Labor Day weekend at Ruidoso, N.M. One grandson, Patric was at college and was unable to attend.

Mr. and Mrs. Goldman Stroud visited their daughter the Craig Kirbys Sunday evening and three of the grandchildren Monty, Cody, and Cathy came home with them and spent Labor Day.

Four sisters Mrs. Elnita Key, Mrs. Marie Adams, Mrs. Doris Huff, and Mrs. Bonnie Long all went to Muleshoe shopping and ate out Friday.

Rev. and Mrs. Donnie Howell of Littlefield came by Enoch's Thursday and picked up Mrs. Ellen Bayless & Mrs. Inez Sanders, and stopped in Seminole and picked up Mrs. Winnie Byars, ate lunch in Andrews and drove to Midland to visit Dicie and Clifford Snitker. We had a good day visiting everyone.

Deca Elects Officers

Muleshoe High School Deca classes recently elected officers for the 1992-93 school year. The officers are as follows: President: Shanna Hardwick; Vice-President: Gonzalo Lazano; Secretary: Vanessa Greenhouse; Parliamentarian: Frank Guzman; Treasurer: David Ramirez; Historian: Rebecca Cortez; Reporter: Shane Glover; Chaplain: Shannon Robertson; and MHS Student Council Representative: Virginia Lira.

Upcoming events include the Leadership Development Conference in Amarillo, in October, the District Competition in February at Wichita Falls. Also State Competition at Arlington in March and National Competition in Orlando, Florida in May. Fundraisers and other moneymaking events are being prepared to allow for the travel to these places. Deca - Developing Future Leaders For Marketing and Distribution wish to have a productive and good 1992-93 school year.

Three Way News

by: Mrs. H.W. Garvin

Mr. and Mrs. Billy Knox from Lubbock spent Wednesday with her mother, Mrs. Andrew Whittner.

Monday the community received a good rain all over the community.

Mr. and Mrs. Robert Kindle are spending a few days at Lake Stanford fishing.

The Three Way Football team played Ropes there Friday night with Three Way losing.

Mr. and Mrs. R.L. Davis spent the week end visiting her sister the Truman Kelleys in Beaumont.

The Jack Lane family was in Littlefield Saturday attending a family reunion at Littlefield park.

Caton and J.W. Tyson are spending the week end in Beaumont visiting their sister the Truman Kelleys.

Mr. and Mrs. Scott Austin and son spent the week end with her parents the Bill Dolle family.

Several families in the community are taking a short vacation over the Labor Day weekend.

Dr. and Mrs. John Harris and children from Ft. Worth and Mrs. Doyce Cooper from Levelland attended Three Way Baptist Church Sunday. Dr. and Mrs. Harris are former Three Way graduates.

Marcus Huff from Lubbock spent part of the week with his parents. Also, Mr. and Mrs. Jason Huff and family from Abeline visited his parents, the Huffs.

Wednesday, Elneta Key Marie and Bonnie Long of Morton, and Doris Huff were shopping in Muleshoe.

Mrs. Paula Grant and children, Ashley and Chandler, of Amarillo spent the weekend with her parents, Mr. and Mrs. Dale Nichols.

Visitors at the Baptist Church Sunday were Bill & Cheryl Cunningham and daughters, Ashley and Anglee from Odessa, and Mrs. Paul Grant and children.

Rev. Cunningham and son, Bill and family, and Mrs. Ellen Bayless ate lunch at the Dairy Queen in Morton, then went over to see the old Cunningham house and farm and spent the afternoon with Ellen Bayless.

Mr. and Mrs. Bill Key visited his

sister Mr. and Mrs. Homer Howard in Littlefield one day this past week. Other guests were the Howard's daughter, the Bonnie Glovers from California and Lucill Butler.

Mrs. Ellen Bayless was in Littlefield Wednesday to visit her nephew, Jim Swanner. He has moved from Lubbock to Littlefield and is administrator at Littlefield Hospitality House.

Mr. and Mrs. Dennis Turney visited her parents, Mr. and Mrs. Truman Nix in Littlefield Saturday.

Sunday guests in the Harrie Pollard home were their daughters, Mrs.

Gwen Sinclair, Mason, and Brook of Muleshoe, Mrs. Charlene Lewis, Chelsa, Kridon, and Jacy and friend of Littlefield.

Mrs. Mutt Autry, Jo Ann, and her son Mr. and Mrs. Mitch Autry and four children all spent Labor Day weekend in the mountains.

Thomas and Terry Blackstone and baby, Seth of Odessa spent Friday until Monday with his parents, Mr. and Mrs. Harvey Blackstone, a daughter and husband, Nancy and James Peace and children, Jacly, Aclyn, and Tyler of Friona also visited with them.

Visiting Mr. and Mrs. Goldman

Stroud Sunday afternoon were daughter-in-laws Mrs. Ann Stroud of Dimmitt and Mrs. Carlene Stroud of Muleshoe.

Bill Clinton, presidential candidate:

"You know I never served in the military; you know I opposed the war in Vietnam...but I was never against the heroic men who served," speaking to American Legion convention.

Lawrence Eagleburger, acting Secretary of State:

"I think it's high time to take strong measures to bring Iraq and Iraqi leaders in accord with U.N. resolutions."

In Fashion

Layering, with several lightweight pieces, continues to be in forefront this fall to keep up with weather changes. For example, several layers consist of a turtle-neck, then add a shirt, and top these with a sleeveless knitted vest.

Layering can consist of a denim shirt and blazer over a mock-turtle cotton T-shirt.

A&M FARM & RANCH OPEN EVERY SUNDAY 11 A.M. - 5 P.M.

Swing In For The Biggest Selection Of Tires At The Best Prices Around!

FREE VALVE STEMS*

Attention Tire Buyers!



- S-Speed Rated
- Improved Handling
- M & S Rated - Good Overall Traction
- Free Replacement First 50% of Treadwear for Workmanship and Material

70,000 MILE TREAD WEAROUT WARRANTY

| Stock No. | Size | Ser. Desc. | Tred. Dep. | Price |
|-----------|------------|------------|------------|-------|
| 58C68 | P215/65R15 | 95S | 11/32 | 62.95 |
| 58C14 | P195/70R13 | 88S | 11/32 | 52.95 |
| 58C39 | P205/70R14 | 93S | 11/32 | 58.95 |
| 58C47 | P215/70R14 | 96S | 11/32 | 61.95 |
| 58C29 | P205/70R15 | 95S | 11/32 | 59.95 |
| 58C33 | P215/70R15 | 97S | 11/32 | 62.95 |
| 58C45 | P225/70R15 | 100S | 11/32 | 66.95 |
| 58C49 | P235/70R15 | 102S | 12/32 | 68.95 |
| 58C64 | P255/70R15 | 108S | 12/32 | 75.95 |
| 77C44* | P205/65R15 | 92S | 11/32 | 58.95 |
| 77C06* | P175/70R13 | 82S | 11/32 | 47.95 |
| 77C11* | P185/70R13 | 85S | 11/32 | 49.95 |
| 77C35* | P185/70R14 | 87S | 11/32 | 53.95 |
| 77C38* | P195/70R14 | 90S | 11/32 | 53.95 |

State of the art touring design. Radial Construction * BLACKWALL

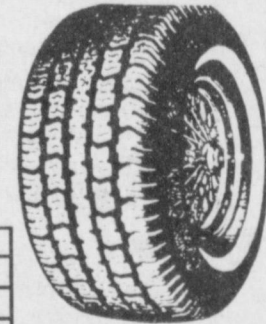


50,000 MILE TREAD WEAROUT WARRANTY

| Stock No. | Size | Trd. Dep. | Regular | Price |
|-----------|------------|-----------|---------|-------|
| 66C06 | P155/80R13 | 10/32 | 41.95 | 36.95 |
| 66C11 | P165/80R13 | 10/32 | 43.95 | 36.95 |
| 66C13 | P175/80R13 | 10/32 | 44.95 | 41.95 |
| 66C15 | P185/80R13 | 10/32 | 46.95 | 41.95 |
| 66C38 | P185/75R14 | 10/32 | 48.95 | 42.95 |
| 66C39 | P195/75R14 | 10/32 | 49.95 | 44.95 |
| 66C47 | P205/75R14 | 10/32 | 52.95 | 46.95 |
| 66C60 | P215/75R14 | 10/32 | 54.95 | 47.95 |
| 66C34 | P205/75R15 | 10/32 | 55.95 | 48.95 |
| 66C45 | P215/75R15 | 10/32 | 57.95 | 51.95 |
| 66C49 | P225/75R15 | 10/32 | 61.95 | 53.95 |
| 66C64 | P235/75R15 | 10/32 | 64.95 | 56.95 |

Two steel belts and body plies of polyester cord. Good traction on both wet and dry pavement. In many cases it eliminated winter tire changeover.

CENTRON POLYESTER STEEL WHITEWALL



FREE Computer Balancing*

A & M CORDOVAN ADVANTAGES.

All passenger, light truck, and RV tires have a full road hazard warranty (prorated for the life of the tread), as well as a warranty against defects in materials and workmanship (it too is prorated for the life of the tread.)

National road hazard limited warranty (Honored at thousands of Cordovan dealers.)

* W/Tire Purchase



GRAND PRIX

WINNING PERFORMANCE. **BATTERIES**

Grand Prix®

Groups 24, 24F, and 74 In GP Blue And Live One (Excluding Dual Terminal Ultralife)

Exceeds all performance standards. Provides maximum cold cranking power. GRAND PRIX® batteries meet or exceed original equipment requirements and offer a Nationwide Warranty!



Grand Prix Blue

65 Month **\$39.95** With Exchange 500 CCA



Live One

75 Month **\$49.95** With Exchange 675 CCA



Dual Terminal Ultralife

75 Month **\$59.95** With Exchange 650 CCA

Polar Starting Fluid

89¢ 8 oz can



FIVE POINT ANTI-FREEZE

One Gallon **\$3.09**



FIVE POINT ANTI-FREEZE

55 Gallon **\$149.95**



RV ANTI-FREEZE

\$2.69

Winterize "Now"



Windshield Washer 1 Gallon Freeze Protection **68¢**

Shop Muleshoe First

A&M FARM & RANCH SUPPLY

3 AREA LOCATIONS 2600 Mabry Drive, Clovis, NM 1601 S. Ave. D. Portales, NM 1302 W. American Blvd., Muleshoe, TX



All Stores Open Monday-Saturday 7:30 am - 6:00 pm Sundays 11:00 am - 5:00 pm

1-505-762-7717

1-505-356-8543

1-806-272-5571

RRC Issues 51 Horizontal Well Permits In July

The Railroad Commission granted a total of 51 permits for horizontal wells in July, marking a decrease from the previous month, according to RRC Chairman Lena Guerrero.

By comparison, 56 permits for the advanced technology wells were granted in June, while 62 such permits were issued in May.

So far, operators have applied for 419 permits to drill horizontal wells in 1992. The commission issued 574 horizontal permits during the comparable period last year.

Altogether, the Railroad Commission has issued a grand total of 2,643 permits for horizontal wells in Texas since 1984.

Six new horizontal permits were granted to operators in the Pearsall (Austin chalk) Field during July, while twenty-four permits were issued to those drilling horizontal permits have now been granted to operators in the Pearsall Field. Frio County continues to lead all others, accounting for 630 of that total.

Meantime, Dimmit County ranks second in the Pearsall Field with 185 horizontal permits issued through July 31, followed by Zavala County with 184 and LaSalle County with 166.

Likewise, the Commission has issued 692 permits for horizontal wells in the Giddings (Austin Chalk) Field through July 31. Burleson County leads the horizontal race there with 331, Fayette County is close behind with 275, followed by Lee County with 71, and Washington County with fifteen.

Meanwhile, drilling was completed on some 58 horizontal

wells during the month of July, raising to 1,876 the number of horizontal wells completed in Texas since 1984.

Overall, operators in 79 Texas counties have now received Railroad commission permits to drill horizontal wells. Besides the counties previously noted, 200 permits to drill horizontal wells. Besides the counties previously noted, 200 permits for horizontal wells have been granted to

Farmers Union Report

The president of the National Farmers Union has charged the Bush Administration with moving too slowly on initiatives that would boost the livelihoods of family farmers.

In a letter to leaders of congressional agriculture committees, NFU President Leland Swenson said inaction on crop disaster relief, Export Enhancement Program initiatives, and the possibility of encouraging ethanol fuel use as part of the Clean Air Act have cost farmers millions of dollars.

Swenson said he wants Congress to investigate the administration's "foot-dragging."

"These initiatives mean a lot to farmers and the president has held them hostage until closer to the election," he said. "He's created a gridlock that's unconscionable."

In the case of disaster assistance, Congress gave President Bush the authority to authorize \$755 million for 1992 crop losses.

Swenson's suspicions that Bush is playing politics with the disaster funding arose when Secretary of Agriculture Edward Madigan was asked by Nebraska farmers when the funding might be forthcoming. "There's an election on the 3rd of November. We're not going to release that money on the 4th of November," the secretary quipped.

While it was rumored that the president would announce a series of Export Enhancement Program initiatives totaling \$6 million this week, Swenson said those requests too have been "warehoused" until the fall campaign. "India made an EEP request in February," he said. "It's taken this long to put it together?"

The farm group is also concerned about a recent Environmental Protection Agency ruling that painted ethanol as damaging to the Earth's ozone layer and therefore excluded it from this year's Clean Air Act. NFU says the EPA made the ruling without considering the environmental benefits of ethanol and without examining ways the ozone concern could be mitigated.

"Here again, we keep hearing that Bush and Secretary Madigan are going to work this problem out—but when?" asked Swenson.

In all three cases, the consequences for grain producers have been significant, he said. "Wheat prices are down twenty-six cents from just a month ago. Corn prices are at their lowest level in four years. And, farmers from North Dakota to Texas have been virtually wiped out because of weather disasters."

"Farmers and ranchers are tired of being used as a political pawn," he wrote.

Howard Coble, Congressman (R-NC):

"We've got a good number of people here but there should be twenty-five times this many to remember those who paid the ultimate price for freedom," commenting on sparse turnout at recent Memorial Day ceremonies.

There's no way to economize without doing without something.

operators in Brazos County as drilling activity continues to intensify there, 195 horizontal permits have been issued for projects in Gonzales County, while 70 permits have been granted to operators drilling horizontal holes in Wilson County.

Horizontal drilling is a technique used to tap oil reserves that can't be recovered profitably using standard methods.

Courthouse News

WARRANTY DEEDS

Jimmy Van Thomas and wife, Sharon I. Thomas to Jackie Robinson a 1.82 acre tract of land out of the North 1/2 half of Section 77 of block Y.W.D. & F.W. Johnson Subdivision No. 2, Muleshoe, Bailey County, Tx.

A.M. Braasch, trustee of the Gunvor Anita Braasch estate, to Leo Chavez, Jr. and wife, Olga Chavez, all of that part of the Southwest Quarter (SW/4) of Section Number Seventy Five (75), Block Y.W.D. & F.W. Johnson Subdivision Number Two (2), Muleshoe, Bailey County, Texas.

Raymond W. Day and wife, Cathy L. Day, of the County of Ward, State of Texas, to Carl M. Ellington all of lot Forty Four (44), Richard Hills Addition, Muleshoe, Texas.

Joel John Soto and wife, Kimberly Soto, to Joe L. Smallwood all of Lot Number Sixteen (16) in Block Number Ten (10), Lenau Subdivision, Muleshoe, Bailey County, Texas.

Gloria H. Navarro to Antonio Garcia all of Lot Number Ten (10), Block number Thirty Seven (37), Muleshoe, Bailey County.

Wanda J. Naugle, executrix of the estate of Buddy Eugene Jones to Simone Orlando Chavez and wife, Nicholasa P. Chavez, all of lots numbers One (1), Two (2), Three (3), Four (4), Five (5), Six (6), Seven (7), Eight (8), Nine (9), and Ten (10), Jones Subdivision, Muleshoe, Bailey County, Texas.

Eric Stonecipher to Lorene Obenhaus all of lots numbers Thirteen (13), Fourteen (14), Fifteen (15), and Sixteen (16) in Block Number Two (2), Obenhaus Re-Subdivision of the Southeasterly one half (SE 1/2) of Tract number Seven (7) Warrants Acreage Subdivision located on Sections Numbers Y.W.D. & F.W., Johnson's Subdivision Number 2, Bailey County, Texas.

Glen Timmons and Curtis Timmons to T.L. Timmons all of the Northeast Quarter (NE/4) of Section Number Eight (8), Block Z.W.D. & F.W., Johnson's Subdivision in Bailey County.

Dale Nichols, J.E. Layton, and C.P. Price, trustees of the First Baptist Church of Enochs, to Darren R. Richardson all of Lots Numbers One (1), Two (2), and Three(3) in Block Number Fifteen (15) Townsite of Enochs, Bailey County, Texas.

Health Fraud

Half a million Caesarean sections are performed unnecessarily in the United States each year, sometimes just for the convenience—if not financial gain—of doctors and hospitals, a consumer group said.

Graciousness is a virtue many people mistake for weakness.

Muleshoe Menu

SEPT. 14-18

JR. HIGH & HIGH SCHOOL

MONDAY BREAKFAST

Breakfast On a Stick, Juice and Milk

LUNCH

Frito Pie, Chili Dog, French Fries, Chilled Fruit, Cornbread, Milk

TUESDAY BREAKFAST

Cinnamon Roll, Juice and Milk

LUNCH

Enchiladas, Tacos, Seasoned Beans, Spanish Rice, Chilled Fruit, Milk

WEDNESDAY BREAKFAST

Waffles, Juice and milk

LUNCH

BBQ On A Bun, Golden Chicken Nuggets, French Fries, Fresh Salad, Chilled Fruit, Dinner Roll, Milk

THURSDAY BREAKFAST

Cinnamon oatmeal, Toast, Juice, Milk

LUNCH

Chicken Fried Steak, Mashed Potatoes, Green Beans, Hot Cobbler Dinner Roll, Milk

FRIDAY BREAKFAST

Pancakes, Juice and Milk

LUNCH

Crispy Chalupa, Corn dog, Baked Beans, Chilled Fruit, Cornbread, Milk

DILLMAN & DESHAZO

MONDAY BREAKFAST

Breakfast On A Stick, Juice and Milk

LUNCH

Chicken Nuggets/Mac & Cheese Combo, Veg. Dippers, Chilled Fruit, Cookie Supreme, Dinner Roll, Milk

TUESDAY BREAKFAST

Cinnamon Roll, Juice and Milk

LUNCH

Hamburger, Baked Beans, French Fries, Milk

WEDNESDAY BREAKFAST

Waffles, Juice, Milk

LUNCH

Enchiladas, Spicy Red Beans, Chilled Fruit, Spanish Rice, Milk

THURSDAY BREAKFAST

Cinnamon Oatmeal, Toast, Juice, & Milk

LUNCH

Oven Fried Chicken, Mashed Potatoes, Chilled Fruit, Dinner Roll, Milk

FRIDAY BREAKFAST

Pancakes, Juice and Milk

LUNCH

BBQ On A Bun, Green Beans, Fruit Cobbler, Milk

Bailey County Journal

Established March 31, 1963. Published by Muleshoe Publishing Co., Inc. Every Sunday at 304 W. Second. Box 449, Muleshoe, Tx. 79347. Second Class Postage paid at Muleshoe, Tx. POSTMASTER: Send address changes to the Bailey County Journal, P.O. Box 449, Muleshoe, Tx. 79347.

TA

MEMBER 1992

TEXAS PRESS ASSOCIATION

L.B. Hall, Publisher
Sammye Hall, Vice-President/Comptroller
Evelene Harris, News
Annette Bottleman, Society
Holly Millsap, Advertising
Diana Bermea, Classified

SUBSCRIPTIONS
Muleshoe Journal and Bailey County Journal
By Carrier Yearly - \$14.00
Bailey and surrounding counties
By Mail - \$15.75
Elsewhere - \$17.50
Advertising Rate Cards on Application

"Advertisers should check their ad the first day of insertion. The Journals will not be liable for failure to publish an ad or for a typographical error or errors in publications except to the extent of the cost of the ad for the first day of insertion. Adjustment for errors will be limited to the cost of that portion of the ad where the error occurred."

Cholesterol, Diabetes and Blood Pressure Screening

Thursday
September 17, 1992
9:00 a.m. to 4:00 p.m.

Bailey County Electric Cooperative Office

305 E. Ave. B
Muleshoe, Texas

Provided By: "Texas Rural Electric Women's Association"
(An organization representing Bailey County Electric Coop.)

Conducted By: Texas Department of Health - Field Office Staff

Cost: \$4.00

Appointment: Call 272-5561 (Texas Dept. of Health) "Walk-ins will be accepted if time is available"

Mc Millans Celebrate 50th Wedding Anniversary

Mr. and Mrs. W. B. McMillan of Buffalo Springs Lake, formerly of Earth, will celebrate their 50th wedding anniversary on September 19th with a come and go reception from 2-4 p.m. at the Senior Citizens Center in Earth.

The event will be hosted by their son and daughter-in-law, Larry and Kelly Jo McMillan and their grandchildren, Allen and Amanda.

W.B. and the former Elsie Franklin were married September 15, 1942 at Clovis, New Mexico.



W.B. and Elsie McMillan

Enlightening Tips

I know to a lot of people it's early to start thinking about Christmas, but I have to get started early. Have you started your shopping yet? I've got lay-a-ways everywhere. Now, if I can just remember where they all are and come up with enough money to get them all out of hock, I'll be really proud of myself!

I've decided this year to make some of my gifts. There are lots of little things you can make that can be made easily and rather quickly. Here's a few tips.

Wrap a coffee can (whichever size you prefer) with Christmas wrapping paper and fill it with homemade cookies. Snap the lid on it with a bow, and you have a quick and easy gift of love.

Another idea that was passed down to me many years ago is the Cookie Dough Candy Jars:

2 C. Flour
1 C. Water
1 C. Salt
Mix ingredients together and form into shapes. Bake in oven at 300 degrees for 30 minutes. Brush with evaporated milk and bake again. Glue red dots on for decoration and brush with clear shilake.

If you have any dough left, you can make them up in little shapes or designs of your own and glue a piece of magnet strip to the back, and you have little refrigerator magnets. Don't forget to varnish or seal them with something so they will last.

One more little idea is to make your favorite "little friends" a batch of home made play dough. Here's the recipe:

1 C. Flour
1 1/2 C. Salt
2 t. Cream of Tarter
1 T. Cooking Oil
1 C. Water
Food Coloring
Mix together in a sauce pan and cook on low to medium heat until dough pulls away from pan. Immediately store in an airtight container
Happy Making!

Jennyslippers Will Have Food Booth At Fair

The Muleshoe Jennyslippers will have a food booth at the Bailey County West Plains Fair again this year. On the menu will be nachos, hot dogs, frito pie and soft drinks. The booth will open at 11 a.m. Friday, and from 10 a.m. to 4 p.m. on Saturday.

The regular Jennyslipper meeting was called to order by Nancy Kidd, president. Joy Stancell led the group in prayer.

Minutes of the previous meeting were approved as read and Donna Kidd, president, Joy Stancell led the report.

Joyline Costen asked the group for ideas for the Membership Meeting coming up the fourth Monday in October.

A committee report was given by Joyce Holmes, Food Committee Chairman.

A reception honoring Darrell Turner, former mayor of Muleshoe, was discussed.

Vivian White, chairman of the Barbecue Fund Raiser held each fall in conjunction with the bazaar, resigned. The barbecue was discussed.

The bus tour scheduled for June 1993 was discussed as was the Bakeless Bake Sale. The money raised from the Bakeless Bake Sale will go toward new carpet for Muleshoe Health Care Center.

With no further business, the meeting was adjourned.

New protein prevents organ rejection in mice.

American Intercultural Student Exchange

September 4, 1992

Dear Media Friend,

Thank you SO MUCH for your crucial and gracious help in our search for host families this fall. We are VERY GLAD to say that ALL students qualified-applicants under our responsibility and the files accepted by AISE for placement - - DID receive a well-screened appropriate home and host family and are now enrolled in a USA high school this fall! This is TREMENDOUS and we could not have done it without you.

As a non-profit organization, the PSA's or articles or features you ran for us were INVALUABLE. The limited amount of paid advertising for us was also helpful, well-placed, timely, and truly important.

Since there is a never-ending search for caring host families, it is desirable and appropriate to run our PSA's and promotions year-round. Our crisis time is April-August,

but we have on-going and general need for back up and second semester families every year. Any continuance is appreciated fully.

We would also like to offer you our services for articles, or as an informational source. Nationally we have access to over 3200 foreign highschoolers from 31 countries. We have many from Eastern Europe - from Germany, Croatia, Czechoslovakia, Poland, Hungary, and Turkey. We have Western Europeans, Japanese, South American, Mexican and other countries. All students are from 16-18 years of age and speak good English. If you would want a comment on a news event, or cultural information, or a feature of some sort, please feel free to call us. We will be able to give you a number of a student in your area to interview.

Again, thank you for being a part of our intercultural team.

Barb Meyers
Media Coordinator

Apricot Fruit Flip

1 can (12 oz.) apricot nectar
1 medium-size ripe banana
1/4 cup instant nonfat dry milk
Ice Cubes
2 Tlbs. lemon juice
1 Tlbs. honey
1 tsp. grated lemon rind

Combine all ingredients, except ice cubes, in container of electric blender. Add enough ice cubes to bring liquid measure to four cup line in blender. Blend until smooth. Serve immediately. Makes 5 servings.

Sunshine Chicken

1/2 cup prepared mustard
1/2 cup pineapple juice
2 Tlbs. brown sugar
4 chicken breasts, boned and skinned

In small mixing bowl, combine mustard, pineapple juice, and brown sugar, mixing until sugar is dissolved. Cut chicken breasts in half to make 8 pieces and coat with mustard sauce. Grill chicken for about 10 minutes, turning frequently and brushing on additional mustard sauce occasionally. To serve spoon remaining sauce over chicken or serve sauce on the side. Sprinkle brown sugar on top before serving. Makes 4 to 6 servings.

Rebekah Lodge

Aug. 18-I missed the meeting-sorry. Will try getting caught up with a few words for each meeting.

Aug. 25- N.G. Doris was under Dr.'s care, so V.G. Mildred was N.G. for the meeting. Our chaplain, Ruby reported that sister Wanda Scott, Clovis was having surgery. Louise reported Beck will have knee surgery soon.

Joyline served refreshments. Sept. 1- So wonderful to see our N.G. Doris back with us. She opened Lodge-our chaplain Ruby gave opening prayer. Flags were taken care of by Patsy and Terie. June and Mickey served fourteen members present. Our September birthday-Adele, Charles, Juanita, Pat and Dorothy.

Sept. 8- Our N.G. Doris after Sept. 1 meeting was rushed back to the Lubbock hospital. She had sinus surgery several days ago, and it had bursted loose. In the hospital for several days. V.G. Mildred not present, therefore Sec. June asked Terie to be our N.G. Business taken care of as usual. It was reported that Wanda Scott is doing very well. Mary Ann, mother-in-law in the hospital. Gladys Maddox had a hip replacement and Beck was having surgery also. Hope all of our sick people and those having surgery are feeling lots better and are back with us soon. We miss you that are not at the meetings. Thirteen members were served ice cream and cake by Patsy and Terie. Thank you, Terie for making the cake and doing my part. Just learned our N.G. Doris Lambert is out of the hospital.

Sept. 19 and 20- The state Secretary Clerks and Scribes meeting will be held in Waco.

We will have skating Friday evening, Sept. 11.

BIBLE VERSE

Therefore, now amend your ways and your doings, and obey the voice of the Lord, your God.

Creative Living

by: Sheryl Borden

Information on festive foods and mobile moms will be the featured topics on "CREATIVE LIVING" on Tuesday, September 15 at 12 noon and Saturday, September 19 at 2:00 p.m. (all times are mountain). "CREATIVE LIVING" airs on public broadcasting station, KENW-YV, from Eastern New Mexico University.

Connie Moyers, Marketing Home Economist with Southwestern Public Service Co., will share some delicious recipes, demonstrate energy efficient electrical appliances as she presents the 28th edition of Festive Foods. Ms. Moyers is from Clovis, New Mexico.

Kay Willis, Executive Director of Mothers Matter, will discuss how new inventions and new products allow parents to travel with their babies to places previously thought impossible. Ms. Willis is from Rutherford, N.J.

On Tuesday, September 15 at 9:30 p.m. and on Thursday, September 17 at 12 noon "CREATIVE LIVING" will present information on sewing for kids and gifts from the kitchen.

Carolyn Curtis, founder of Kids Can Sew, will explain how her program and patterns are designed to teach children between the ages of 6 to 16 how to sew. She will also discuss how to set up a sewing class for children. Ms. Curtis is from St. George, Ut.

Connie Moyers, Marketing Home Economist with Southwestern Public Service Co., will demonstrate delicious recipes and unique packaging for food gifts. Ms. Moyers is from Clovis, N.M.

"CREATIVE LIVING" is produced and hosted by Sheryl Borden. The show is carried on more than 100 PBS stations in the United States, Canada, Guam, and Puerto Rico and is distributed by Pacific Mountain Network, Denver, Co. Viewers can request copies of materials offered on the show by sending one 29 cent stamp for each handout requested. Send the stamps, along with your name, address, and booklets requested to:

"CREATIVE-LIVING" requests
% KENW-TV Station #52
Eastern New Mexico University

Muleshoe PTA Meets

Muleshoe's PTA's first meeting of 1992-91 was held on Sept. 8th at the Dillman gym. The meeting began with the invocation given by Curtis Shelburne. PTA President, Beverly Parker, introduced the 92-93 PTA officers. She then introduced MILD Superintendent Bill Moore. DeShazo Principal Barbara Finney introduced her staff and gave an inspirational talk on how our schools are working to improve our children's education. Dillman Principal, Helen Grigsby, introduced her staff and welcomed everyone. She then introduced all kindergarten teachers, their T.A.'s and their students. They recited Mother Goose Rhymes and sang a friendship song they have been learning in school. Muleshoe PTA would like to encourage all parents and teachers to join and attend the PTA meetings. The next PTA meeting will be October 12th in the DeShazo gym and the 5th grade will present a program.

Muleshoe HECÉ Meeting Held

Wednesday, September 2, 1992, HECÉ (Home Economic Co Operative Education) students hosted a welcoming party for the incoming HECÉ I students at the home of Mr. and Mrs. Frank Maldonado. The HECÉ II students served hamburgers and hot dogs. Mrs. Maldonado, the HECÉ teacher-coordinator, presented the HECÉ I students with a cake made by Ann Johnson of Muleshoe. The party had an excellent turn out. HECÉ I students would like to thank Mr. Maldonado and the HECÉ II students.

David Wilhelm, campaign manager for Governor Bill Clinton: "People are supporting the idea of Ross Perot rather than Perot himself," commenting on strong poll showing of Ross Perot, who hasn't taken a position on many controversial issues.

Steve Smith Plumbing

All Types Of Plumbing

No Job To Big Or To Small

Quality Guaranteed Work
For Appointment Call 272-5791

September Green Tag Sale

No Returns or Exchanges
20% to 50% off
Sale Ends September 26th

| | | |
|---|---|---|
| Cookware Seasonal Close-outs Air Conditioners Lawn and Garden Supplies Box Fans Fertilizer Porch Gliders | Tables J-B Paint Sale In Progress Sale Ends September 30th | Giftware Special Prices on Hand Tools Power Tools Plumbing Supplies Electrical Supplies Paints & Stains Locketts Builders Hardware |
|---|---|---|

| | |
|--|--|
| Dump Bin Supplies Monthly Specials Owens Corning Fiberglass Insulation R-13.....20¢ sq. ft. R-19.....24¢ sq. ft. R-25.....32¢ sq. ft. CHALK UP EXTRA ENERGY SAVINGS Check in Store for Details Owens Corning Roofing Classic 3-Tab.....19.95 sq. Supreme 3-Tab.....25.50 sq. Oakridge II.....34.75 sq. Oakridge.....46.95 sq. T-Locks.....39.50 sq. Cash & Carry Prices All Green Tag Items Cash, Check or Credit Card | Weekly Specials Seasonal Specials 5 yr. Latex Caulk 99¢ Low Lumber Prices White Woods 8' 10' 12' 14' 16' 1x4 1.50 1.90 2.25 2.65 3.05 2x4 2.49 3.09 3.69 4.29 4.89 2x6 3.69 4.59 5.49 6.49 7.39 Random Length Culls 2x4.....23¢ lin. ft. 2x6.....32¢ lin. ft. Sept. 11th, 18th, 25th Drawings For Eureka Quik-up Vacuums! Cash Register Receipts Will Be Used For Entry Tickets! Save on heating and cooling bills.* Insulate your remodeling project with Owens-Corning Pink Fiberglass Insulation. FREE NFL TEAM JACKET  \$44.95 VALUE Sale Ends Sept. 30th |
|--|--|

Fax Machine Available
Higginbotham-Bartlett Co.
"Quality And Service At The Right Price"
Muleshoe
215 Main      272-3351

JOURNAL FILES

60 years ago

The Muleshoe schools opened Monday with an enrollment of 315.

C.E. Newman, formerly connect with the Hart Lumber Co. has accepted a position with a Lumber Company in Olton. Bern Riddle is this week building a filling station on the highway opposite from the Muleshoe Elevator.

50 years ago

Discussions of the 25th Anniversary and the Farmer Stockman's part in helping win the war will be high

points at a meeting of the Western National Farm Loan Association on Friday September 11 at the Valley Theatre, according to Noel Woodley, Secretary-Treasurer.

40 years ago

Rationing of farm machinery began. Military requirements have forced drastic curtailment of materials normally going

to the making of farm machinery. Rationing has become necessary in

30 years ago

The first bail of 1952 Bailey County cotton was sold at auction here last Saturday afternoon,

bringing \$43.25, considerably more than market price. Jones Farm Store of Muleshoe bought the bail, and it is on view there.

20 years ago

For a second week in a row, L.C. Roddam walked off with the top prize for the week in the Journal's football

contest. Five bucks goes to the winner, and three to the second placer. Grand prize winner wins \$50.00 expense money and two tickets to the January 1 Cotton Bowl game.

10 years ago

The Earth Masonic Lodge will host a Post-Master night Thursday, September 21 in the Lodge Hall.

Speaking at the meeting will be Worshipful Grand Master, Jack Hightower. Senator Hightower is a native of Memphis, Texas, graduating from Memphis High School.

Enjoy Garden Delights Now And in the Chill of Winter

Bountiful vegetable gardens and fresh, high-quality produce are pleasures you can relish only in the summertime. With careful planning and a little work, you can appreciate the fruits of summer throughout the winter months.

Freezing is the perfect way to preserve the nutrients, fresh taste and rich color of your summer produce. By buying or picking your favorite vegetables when they are in season and freezing them in Ziploc® freezer bags, you will also avoid paying out-of-season prices. When you freeze, it is important to use the proper freezing techniques to ensure your summer produce maintains its fresh taste and quality. For best results, follow these basic guidelines:

- Air is the main enemy to quality frozen food as it causes freezer burn. Food will maintain its high quality freshness in your freezer for months as long as it is airtight.
- Foods should be frozen as possible to preserve their fresh-picked quality.
- Freezer temperature is critical to maintaining the quality of frozen foods. The freezer should be kept at 0°F or colder.
- Ziploc freezer bags offer the easiest and most effective solution to maintaining frozen food quality. They are transparent and durable, feature a write on label for easy identification of contents and freezer storage time, and can be resealed so you use only the food you need.

To provide you with additional information and tips on freezing, the makers of Ziploc freezer bags have recently introduced "Freeze It! Home Freezing Made Easy," a comprehensive guide to freezing fresh fruits, vegetables, meats, poultry, fish and baked goods. For

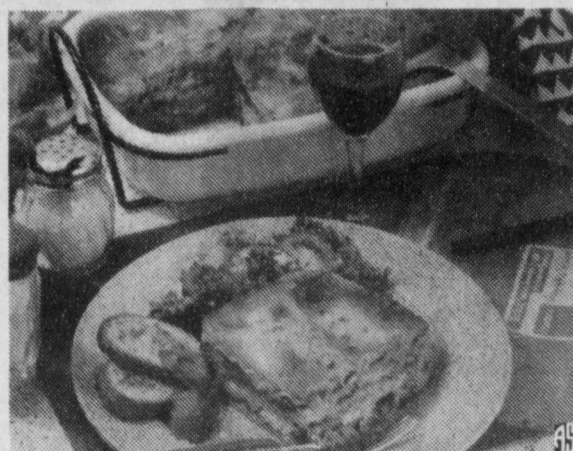
* Trademark of Dow Brands.

your free copy send your name and address to: Freeze It! Home Freezing Made Easy, Ziploc Freezer Bags, Department #3900-MR, P.O. Box 78980, New Augusta, IN 46268.

To enjoy some of our seasonal delights now, try this mouthwatering lasagna recipe, overflowing with fresh carrots, spinach and mushrooms. This recipe can be frozen and separated into either single- or family-sized portions for a quick, nutritious dinner during a busy week or an elegant meal when you entertain guests.

Vegetable Lasagna

- 2 cups ricotta cheese
 - 2 cups part-skim mozzarella cheese
 - 1/2 cup Parmesan cheese, grated
 - Basil-Tomato Sauce (recipe follows)
 - 2 cups fresh spinach, chopped
 - 1 1/2 cups mushrooms, sliced
 - 1 cup blanched carrots, thinly sliced
 - 1/4 cup parsley, minced
 - 1 box (16 ounces) of lasagna noodles, cooked (OR)
 - 2 packages (9 ounces each) refrigerated lasagna noodles
- Mix cheeses. Spread 1 cup tomato sauce in bottom of 13 x 9-inch baking pan. Layer 1/3 of the noodles over sauce; top with half the spinach, mushrooms, carrots and parsley. Spoon 1/3 of the cheese mixture over the vegetables. Repeat layers,



Rosa Maria Morena

Homero and Sylvia Moreno of Earth, Texas would like to announce the birth of their new daughter, Rosa Maria Morena. She was born September 7, 1992 at 11:23 p.m. in the Muleshoe Area Medical Center. She weighed 7 pounds and 10 ounces.

Fernando Banuelos

Mr. and Mrs. Elpidio Banuelos are the proud parents of a son, Fernando, born September 6, 1992 at 9:54 p.m. at the Muleshoe Area Medical Center. He weighed 8 pounds. Fernandos grandparents are Mr. and Mrs. Santos Banuelos of Mexico, and Mr. and Mrs. Eufemio

ending with layer of noodles, sauce and cheese on top. Bake, uncovered, in preheated 350 degree oven, about 1 hour. Cut into squares. Makes 8 main dish servings.

Basil-Tomato Sauce

- 1 cup onion, chopped
- 3 cloves garlic, minced
- 2 tablespoons olive or vegetable oil
- 2 teaspoons dried basil leaves
- 1 teaspoon dried oregano leaves
- 1/2 teaspoon dried thyme leaves
- 1 1/2 pounds ripe tomatoes, peeled, coarsely chopped
- 1/2 cup tomato paste
- 1/2 cup water
- 2 tablespoons parsley, minced
- Salt
- Pepper

Saute onion and garlic in oil in large saucepan until tender. Stir in herbs; cook 1 to 2 minutes. Stir in tomatoes, tomato paste and water; heat to boiling. Reduce heat and simmer, uncovered, until sauce is thickened. Stir in parsley; season to taste with salt and pepper. Makes 3 cups.

NEWS VIEWS

Charles Black, Bush campaign advisor: "We'll debate, but not so fast...we'll develop our goals and then be in touch," speaking to a reporter about televised presidential candidate debates.

Fire Ant Killer Approved

The Environmental Protection Agency and the U.S. Department of Agriculture have granted approval for BUSHWHACKER™ TM Guaranteed Fire Ant Killer, to be dispersed from the air using fixed-wing aircraft. The approval includes aerial application over non-crop and non-agricultural areas including large acreage, natural brushlands, forests, grasslands, wild plain areas and game and toxic game ranches.

"Environmental concerns have prevented land-owners from using conventional fire ant poisons and chemicals on their properties," says George Behthorum, Chairman of B Ushwack.er. "Before the development of BUSHWHACKER, aerial dispersion was out of the question because of the toxicity of all available fire ant pesticides."

Bethorum adds that the use of aircraft to dispense BUSHWHACKER over large areas, in addition to localized spreading by hand and with rotary spreaders, provides a potent addition to localized spreading by hand and with rotary spreaders, provides a potent weapon in the fight against the insidious march of fire ants through the southern regions of the U.S. "BUSHWHAACKER is the first effective method we've had to control fire ants since the EPA banned MIREX more than ten years ago.

"Fire ants have now infested more than 250 million acres in 13 southern states," says Bethorum.

"The pesticides sold to control them simply haven't worked, even after repeated applications. The fire ants are still there, and they are still spreading into more and more states."

Bethorum says that with or without aerial dispersion, conventional fast-acting poisons have been unable to control fire ant colonies because they only kill the workers. The queen and her brood are left untouched. A more effective method, according to Bethorum, is to use a slow-acting agent that permeates the complex food chain in the colony. "Food has to go through worker ants, pupae and nurses before before it is fed to the queen, so if you kill off the workers right away, the queen doesn't get the poison and she just moves to a new location and starts another colony.

The slow-acting agent in BUSHWHACKER is a low concentration of boric acid. This is mixed with a powerful bait that attracts the ants. One application of two or three pounds per acre is usually sufficient to totally clear the area. Texas Department of Agriculture tests have shown that once cleared, acreage stays free of ant mounds for a year and frequently much longer.

BUSHWHACKER is now being sprayed from the air in several locations in Texas. Additional southern states are expected to develop similar programs in the coming months.

Muleshoe PTA

Muleshoe Elementary PTA will be selling Muleshoe Mule T-Shirts and PTA memberships on these days: Friday, Sept. 11 (7:45-8:30 and 3:00-3:30), Wednesday, Sept. 16 (same hours), Thursday, Sept. 17 (same hours). Prices are: PTA Memberships: \$2.50, T-Shirts: \$6.00 Youth S(4-6) M(10-12) L(14-16), Adults: \$7.00 S,M,L,XL,XXL. The new t-shirts have a new mule design, but we still have some of the old designs left. Remember: Wear black and white on Fridays to show your support for the Mules.

Know The Weather

When does fall arrive this year? Are there any fall weather signs which tell whether the coming winter will be severe?

Fall arrives on the 22nd of September this year. From the 22nd until December 21, the days will continue to grow shorter and there will be more darkness than daylight every twenty-four hours.

The caterpillar known as the Woolly Bear is a clue many believe in.

If one will take a look at this caterpillar in the fall and note the width of his brown band in the center, that will forecast the winter, it is said. A wide band means a mild winter.

Others say animals tend to grow a thicker coat before a severe winter. See if you can prove one or more of these theories.



Stephen Cord, M.D.

Announces

the opening of his facilities on Saturday mornings **September 5 - November 7**

for the evaluation and treatment of sports injuries resulting from high school and junior high school athletic events.

9:00 - 11:30 a.m.

3601 - 22nd Street Lubbock

792-4329 1-800-765-4330

(There will be a charge for supplies and diagnostic x-rays)

For Your
Mary Kay Cosmetics
Josie Flowers
272-3865
8 a.m. - 12 noon
& after 6 p.m.

Delacruz of Mexico. Great grandparent is Panflia Ramirez.

Shayla Renee Parker

Damon and Katie Parker of Friona are the proud parents of their first new baby girl, Shayla Renee. She was born September 1, 1992 at 4:50 p.m. in the Clovis High Plains Hospital in Clovis, N.M.

Grandparents are C.B. and Cordelia Eddins of Friona and Alton and Elaine Parker of Muleshoe.

MICROWAVE TIPS

Why are potatoes the ideal food for microwave ovens?

The high moisture content attracts microwave energy and produces steam. The tight skin holds in the steam. Its uniform density helps it cook evenly.

Pierce well-scrubbed potatoes with a fork twice for baking and wrap in paper, to absorb moisture. After cooking on High (5-10 minutes for two), they can be wrapped in foil paper to remain hot, for up to thirty minutes.

Help EMS Identify You! Curb-House Number Painting

Name _____
Address _____
Day Phone _____ Night Phone _____

Mail or Take To: EMS Organization
715 W. 2nd. - Muleshoe, Tx. 79347

Three Great Offers... While Supplies Last!

1. Uniden Mobile Phone Just \$79!



Includes: Full 3 watts of power with signal strength indicator and handsfree capability. Installation of phone and antenna extra

2. Uniden Bag Phone Just \$99!



Includes: Magnetic mount antenna and signal strength indicator

3. Uniden Portable Just \$329!

Includes: Leather Case and Cigarette Lighter Adapter Signal Strength Indicator and 30-Number Memory **Smallest Portable on the Market!**



Requires: • New Service Activation • Annual Contract on Qualified Plan • Not good with any other offer



LIBERTY CELLULARPHONE NETWORK

Assuring You Quality Equipment and Quality Service After the Sale!

Liberty Cellularphone Network • 303 Avenue H, Levelland, TX 79336 • PHONE: 894-8004

Authorized Agent
WILSON APPLIANCE
272-5531

Around Muleshoe

Cont. From Page 1

owing Executive Session

10. Announcements
11. Adjournment

The Bailey County Commissioners Court will meet in regular session Monday, Sept. 14 in the Bailey County Courthouse.

Beginning at 10 a.m., the meeting will continue until all items on the agenda have been covered.

1. Approve the minutes of the previous meeting.
2. Review, approve and order payment of County bills.
3. Consider corrected Budget Amendment No. 11 and Budget Amendment No. 12 to FY 1992

MHS Council Elects Officers

The MHS Student Council is off to a great start for this 1992-93 school year.

The Student Council officers for this year include the following: president, Mandy Shipman; vice president, Stephanie Quintana; secretary, Angela Crawford; treasurer, Keetha Glover; reporter, Fara Black; historian, Aida Martinez; chaplain; Sonya Cisneros; parliamentarian, Crista Trussell.

In this new school year, Al Bishop, Buck Johnson and Bill Moore were instrumental in the district purchasing new picnic tables for the high school. The picnic tables are distributed over the campus. Our thanks to these men for their efforts.

Also in this school year, the high school has an improved cafeteria including a snack line, and a salad bar is coming soon. The cafeteria has been renovated and new seats and tables installed.

The Student Council is selling beat tags and sticker tattoos. Tattoos and beat tags can be purchased from the elementary schools or any MHS Student council member. The cost is \$2.25 for the beat tags and \$2.00 for a sheet of four tattoos. "Let's join together and show our support for the Muleshoe Mules," said a spokesperson from the Student Council.

"If any club, organization, business, or individual would like to contribute to our campus improvement plan, picnic tables may be purchased for donations at \$150 which includes having them cemented in."

A landscaping plan is in place and a tree or shrub may also be purchased with donations. If you are interested, please contact Lola Pyland or April Smith at the high school, (Phone 272-7571).

Telephone...

Cont. From Page 1

"Five Area Telephone Cooperative, Inc. is proud to participate in this celebration recognizing the contributions of small companies and their employees," said Hubert Kidd, manager. "We congratulate our employees and members on their continued dedication to building America through a modern telecommunications system.

Budget.

4. Approve payroll.
5. Review departmental reports.
6. Review and approve County Treasurer's Report for the month of August.
7. Set last meeting date for month of September.
8. Authorize Chief Adult Probation Officer to purchase computer as mandated by HB 2335.1
9. Conduct Public Hearing on proposed FY 1993 Budget. (1:00 p.m.)
10. Consider Sheriff's Fees.
11. Consider EMS Rates.
12. Designate date of the month for regular Commissioners Court meetings to be held in FY 1993.
13. Consider and adopt County Budget for FY 1993.
14. Consider and set General Fund & Farm to Market/Flood Control tax rates for 1992.
15. Approve soil conservation worksheets.
16. Appoint Bailey County representative and alternate to serve a three year term on the South Plains 9-1-1 Advisory Committee.

Mules...

Cont. From Page 1

ball on the Mules 40 yard line. The Wildcats moved the ball down to the Mules five yard line before fumbling the ball. The fumble was recovered by Roy Perez for the Mules.

The Mules began to move the ball and kept possession of the ball for the remainder of the game.

When time ran out on the scoreboard, the Mules had the ball on the Wildcats 12 yard line, threatening to score.

Next week the Muleshoe Mules will be playing Lubbock Cooper at Lubbock. All football fans are encouraged to go out to the game and support the Mules. They work hard and they play hard and they need your support.



Who Knows?

1. When did U.S. wartime rationing of gasoline and fuel oil end?
2. What president announced Japan's unconditional surrender in World War II?
3. Name the 1980 Democratic nominations for president and vice president.
4. Name the founder of modern nursing.
5. Who was the author of the novel "Of Human Bondage"?

Answers:

1. In 1945.
2. President Harry S. Truman.
3. President Jimmy Carter and Vice President Walter Mondale.
4. Florence Nightingale.
5. William Somerset Maugham.

Ask your LAND BANK ASSOCIATION about ...

financing to buy land or improve your farm.



Most farmers today are looking at ways to increase their productivity ... buy or improve land ... build new facilities.

Whatever specific needs you have, your LAND BANK ASSOCIATION can provide the long-term credit to help.

If you've got plans that need financing, see the people at the Land Bank Association to discuss our various loan options.

Variable Interest Rate is 8.75%. Fixed Rates are available for Land Purchase & Improvements for 10 years at 8.2% and 7.9% priced weekly.

Call us at 272-3010 or come by at 316 Main Street in Muleshoe



Texas Cattle Agreement With Mexico Promotes Trade

On both sides of the border, ranchers are demonstrating their desire for expanded international trade without high risks of introducing disease into their herds. Cattlemen and regulatory officials from Texas and the state of Chihuahua, Mexico, recently developed and signed an agreement that promotes trade, along with a closer watch for livestock disease along the border.

Texas groups working on the agreement included the Texas and Southwestern Cattle Raisers Association; Texas Cattle Feeders Association; and the Texas Animal Health Commission (TAHC), the state's regulatory agency for livestock health.

"Today's global economy requires international marketing," said Dr. Terry Beals, TAHC executive director. "The days are gone when countries could close their borders. This agreement allows both states to take managed risks that encourage trade but protect herds. It also will open doors to sharing disease data and building credibility."

Dr. Beals said the agreement specifically calls for improving methods for finding cattle along the border that are infected with brucellosis or tuberculosis, two bacterial diseases that are nearly eradicated in the U.S. As of September 1, only 148 of Texas' nearly 136,000 herds were quarantined because of brucellosis, an infection that can cause cows to

TRS Members Are Warned Of Sales Agents

Members and annuitants of TRS are cautioned to be leery of sales agents claiming to represent TRS and soliciting for sales of "TRS endorsed" health insurance policies or annuity plans. Others offer, for a fee, to provide information about a member's TRS account. This is false representation.

TRS does not endorse products, services or insurance benefit plans, other than TRS Care. Neither does it authorize any person or group to use its name in solicitations or sales presentations.

TRS employees do not contact members or retirees at their homes or schools unless they have been requested to do so. They also make no inquiries about salary, service or insurance coverage.

Information about member accounts is available free of charge by contacting TRS in writing. To protect confidentiality, members should include their name, mailing address, social security number, and signature. Each member also receives a report in an "Annual Statement of Account" mailed by TRS to member's home address each fall.

abort, deliver weak calves or produce less milk. Six Texas herds are quarantined due to tuberculosis, which can result in internal lesions and symptoms that may include coughing, spitting, weakness and fever.

"We have had an ongoing problem with cattle tuberculosis in the El Paso area and suspect there may be a possible disease link with dairies in Juarez, which is in the state of Chihuahua," said Dr. Beals.

"Chihuahua has formed a cattle tuberculosis eradication committee and will coordinate work by their state, their cattlemen's association and the Mexican federal government, he said. "They, like us, are committed to sharing information about the disease status of herds and advances made in infection control."

"We take statistics and number-crunching for granted in the U.S.," said Dr. Beals. "In some countries, such as Mexico, this data has not been gathered and processed on a regular basis. The Chihuahuan cattlemen are taking the lead in this effort to ensure information is available to them—and us."

Dr. Beals said the agreement also calls for Mexico to establish a uniform identification system for cattle, similar to the ear tags used on U. S. cattle. To help these activities along, two veterinarians from Mexico's federal department of agriculture will visit Texas for several days this fall for briefing on Texas and U.S. livestock health regulations, animal entry and quarantine procedures, and how livestock are handled at feedlots and packing plants.

The TAHC is working to learn more about Mexico's procedures for vaccinating heifers against brucellosis. Currently, heifers and cows entering Texas from Mexico are required to be revaccinated against the disease after arrival. Revaccination could be avoided, however, if Mexico's procedures are determined to provide adequate disease resistance and the vaccinated animals are adequately identified and the procedure is documented. Recently, USDA-APHIS regulations were changed to acknowledge the certification of Mexican veterinarians who conduct tests for brucellosis and tuberculosis on cattle being exported. A regional marketing plan between Chihuahua and Texas is also in the works.

"For the foreseeable future, this agreement will not change other state or federal regulations," Dr. Beals said. "At the border, USDA personnel will still inspect cattle for fever ticks and scabies mites and administer treatments when necessary. They'll also ensure that necessary tests for tuberculosis and brucellosis were conducted. In some instances, these tests are required to be run at the border by U.S. Personnel. Breeding cattle have to

be retested for brucellosis 45 to 120 days after entering Texas."

"The working relationship we hope to develop with Chihuahua through this agreement will give both states a way to resolve questions and protect herd health. I see this type of agreement eventually being made with all

Celebrating National Small Independent Telephone Week

EDITORS NOTE: The following article was taken from a pamphlet made available by United States Telephone Association. The week September 14-20 has been designated as National Small Independent Telephone Company Week.

Thanks to the more than 1,000 small independent telephone companies that make up our nation's telecommunications network, rural Americans currently have access to the most reliable and affordable telephone system in the world.

For more than 100 years, small telephone companies have played a distinctive role in shaping our country's past and will continue to do so well into the future. These companies, which serve as few as 35 and as many as 40,000 customers, have dedicated themselves to meeting our country's telecommunications needs. No other entity can claim this distinction. Moreover, small local telephone companies are an integral part of their community. Telephone company employees are solid members of the community.

Those are just some of the reasons the rural telephone industry is celebrating September 14-20 as "National Small Independent Telephone Company Week."

Even more importantly, Congress has introduced resolutions recognizing the crucial role telecommunications plays in the economic development of rural America. A state-of-the-art communications network will also help strengthen our healthcare system as well as increase educational opportunities.

Telephone service is no longer just "voice over wire." Small independent telephone companies have state-of-the-art communications capabilities and are installing and utilizing the latest technology to bring customers a mix of voice, video and data services.

For example, some small telephone companies have fiber optic technology that enables educators in rural areas to offer their students two-way interactive video classes (distance learning programs). These programs make it possible for an instructor at one school to teach students at other schools.

Mexican states that border Texas," Dr. Beals said. "We'll also be developing plans to manage emergency disease situations on both sides of the border. This will benefit both countries in their disease control efforts."

A brochure detailing Texas and U.S. requirements for importing cattle from Mexico is available by calling the TAHC at (512) 479-6697. The USDA-APHIS Veterinary Services area office in Austin can provide information on exporting cattle to Mexico. Their number is (512) 482-5551.

Not only is telecommunications revolutionizing our classrooms, but it is fast becoming a new way to deliver healthcare services to rural communities. These so-called "telemedicine" projects enable doctors to confer with patients through live, two-way audio and video transmission. They can save lives and cut down on administrative costs.

The arrival of sophisticated communications technology often attracts telemarketing and other telecommunications-related business. It is no wonder that many state and local governments are promoting the deployment of a modern telecommunications infrastructure.

I hope you will join us and the rest of our nation in celebrating the rich heritage of an American industry that has forever changed the way we live and work. John O'Neal NRTA

John Rose OPASTCO

Michael E. Brunner NTCA

John Sodolski USTA

Disaster...

Cont. From Page 1

Service has estimated the High Plains crop at 1.37 million bales, based on Aug. 1 conditions, down from last year's short crop of 2,333 million and the smallest since an output of 1.18 million in 1986. Failed acres totaled a record 1.55 million.

According to area farmers, the exact amount of loss will not be known until the crops are harvested and they all agreed that we definitely need a late freeze.

System To remodel a house, first figure the cost of materials. Then estimate the cost of labor, and multiply by three. -Herald, Miami

Sweet Oblivion Perhaps if we could forget our troubles as easily as our blessings we would live better. -Tribune, Oskaloosa, Ia.



Where in the world, Can I use Cellular 3?

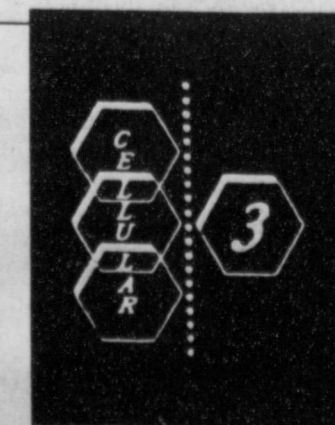
Currently Cellular 3 has major systems operating in Eastern New Mexico and West Texas. Besides this "home" area, Cellular 3 has "roaming" agreements across the entire United States and Hawaii. These agreements make it possible for Cellular 3 customers to communicate virtually anywhere they happen to be.

"FOLLOW ME" ROAMING NOW AVAILABLE IN YOUR AREA.

"Always in Touch with Cellular 3"

for information call:

5 Area Telephone Coop
272-5533



Growers Support Scientists Combating Seedling Diseases

Survival of the fittest is a harsh rule of nature. The stage of development is irrelevant, as demonstrated by the early attack on crops by seedling diseases, which this year have cost South Plains cotton farmers dearly.

With financial support of area growers, scientists at the Texas Agriculture Experiment Station (TAES) in Lubbock are working to develop cotton plants more resistant to seedling diseases and adverse weather.

Each year a small percentage of the cotton crop is lost to seedling diseases, said Dr. John Gannaway, associate professor of plant breeding at TAES in Lubbock. Seedling diseases are influenced by environmental factors, and the acreage loss resulting is usually in the thousands.

This year, the loss was exceptionally bad, he said. Wet weather blight, seedling diseases and the plant's lack of cold tolerance nearly destroyed the entire crop, he said. Cotton producers on the Texas High Plains intended to plant 3.2 million acres of cotton. About 90 percent, or 2.8 million acres, were planted when the influential environmental factors took effect. Only 1.4 million acres remain in cotton today. "Everything was almost ideal, and then everything turned sour," Gannaway said.

Nighttime temperatures below 40 degrees Fahrenheit proved to be very hard on the cotton crop. Along with the unusually low temperatures, wet weather prevented the cotton from normal development. A majority of this year's crop was lost to the cold, wet weather. The remaining crop is three to five weeks late.

The High Plains produces an average of about 2.2 million bales each year with the potential to generate revenue in excess of \$600 million. If the High Plains experiences a good, warm, open fall, approximately one million bales will be produced this year

Health News

Recognizing The Signs of a Heart Attack

Heart disease is the number one cause of death in the United States. Each year, countless Americans suffer heart attacks - more than half of such victims die before reaching the hospital, most within two hours of their first symptoms.

"The pain of a heart attack is not the same for every person," said Carla Frye, R.N., C.C.R.N., Cardiac Rehab nurse at Methodist Hospital's LifeStyle Center. "It might be quite intense for one person and so mild for another that it's mistaken for indigestion."

However, when a person is suffering a heart attack, every second counts. Heart attack victims have a better chance of survival if they seek medical attention immediately. The following is a list of the classic signs of a heart attack:

*Uncomfortable pressure, squeezing, fullness, tightness, burning, or aching under the breastbone that lasts two minutes or more and is not relieved by nitroglycerine tablets.

*Other common places for pain are neck and jaw, inside arm and shoulder (more frequently the left side than the right), upper abdomen, (often mistaken for indigestion) and between the shoulder blades.

*The pain may be continuous or may come and go.

*Often there is shortness of breath, dizziness, weakness, clamminess, sweating, nausea, vomiting and/or anxiety.

Other signs of a heart attack include:

*A feeling of apprehension or restlessness or sense of foreboding may be recognized, rather than an actual feeling of "pain."

*Some heart attack victims don't really look very sick or have all the "classic" symptoms. Many patients deny that they are having a heart attack.

When any of the above symptoms are present, the victim should lie down and rest. If after a two-minute wait the pain persists, EMS should be called, or the victim should be taken to the nearest emergency room which offers 24 hour cardiac care.

bringing in only \$300 million, Gannaway said. An early freeze could drop the production level to 600,000 or 700,000 bales. "The economic effect of that would be absolutely devastating," he said.

Producers can overcome seedling diseases in two ways: chemically treated seed and resistant breeding lines. Chemical seed treatments prove to be beneficial a majority of the time, Gannaway said. The chemicals, which usually last 21 to 28 days, were overpowered this year by the lengthy cold spell. "The chemically treated seed is worth the extra cost if it saves you a replant," he said.

Seedling diseases are also overcome through breeding programs. Lines that are genetically resistant to wet weather blight and seedling diseases and have good cold tolerance are being sought, Gannaway said. Of approximately 300 different cotton lines researched at TAES, 16 of them look promising under the 1992 field conditions. All 16 lines exhibit innate resistance as none have been treated chemically, he said.

The plants produced from those 16 seed lines will be self-pollinated for purification purposes. The seed produced will be sent to Mexico for the 1992-93 winter where it will again be self-pollinated to increase the volume of seed and continue the purification process. In the spring of 1993, these materials will be screened in fields and greenhouses. Based on quantity, producers' fields may be used for screening purposes, Gannaway said.

In an attempt to improve the acceptance of these materials, screening tests also will be conducted in the verticillium wilt and fiber quality nurseries. Based on the results, a decision will be made on whether the plants should be used as a parental line, re-selected for other characteristics, or improved for release, Gannaway said.

On the High Plains, acceptable seed should have verticillium wilt tolerance, an acceptable crop maturity level, enhanced fiber quality, good harvestability and good yield potential. "We absolutely have to have these characteristics," he said.

A seed ideal for the High Plains would include other characteristics such as resistance to the seedling disease complex and to the fusarium wilt-root knot nematode

EPA Releases Worker Protection Standards

The U.S. Environmental Protection Agency has announced that its long awaited Worker Protection Standards will be available soon, making Texas farmworkers, pesticide handlers and agricultural producers subject to three separate laws, Agriculture Commissioner Rick Perry said.

Agricultural pesticide use is regulated by the Texas Pesticide Law, and the federal standards, Perry said.

"Texas, with its Agricultural Hazard Communication Act, has been a pioneer in farmworker and farmer pesticide safety training," Perry said, noting that Texas was one of two states chosen by EPA to train other state regulators through the "Train the Trainer" program. "Nothing is more important than safety, because properly handled agricultural chemicals lead to a safer environment for us all."

"But in Texas, I'm afraid the federal standards will create a red tape mountain that will bury farmers' and farmworkers' right and responsibilities under a pile of red tape rocks."

To cut the red tape, the Texas Department of Agriculture is reviewing the new regulations to see how they interface with the existing laws and exploring ways to increase the effectiveness and efficiency of all the programs, Perry said.

The Worker Protection Standards are national regulations designed to help farmers, farmworkers and others who handle pesticides reduce exposure to agricultural chemicals in the workplace. The standards will also affect how chemicals are labeled.

The regulations address a wide range of issues including the proper use of personal protective equipment, decontamination procedures, farmworker training courses and re-entry intervals (the length of time farmworkers must wait before re-entering fields treated with pesticides). The standards will become fully effective in April 1994, but some provisions of the standards could be enforceable as early as September 1993.

complex, Gannaway said. It would also exhibit increased water and nutrient use efficiency and yield potential while decreasing the propensity to have high levels of foreign matter in the lint.

To reduce the amount of trash in the lint, a plant conformation change would need to occur, he said. A slender, stove-pipe stalk would replace the bushy plant of today. The slender plant, which takes up less space horizontally, would be adaptable to various row spacings also, Gannaway said. Planting 30-inch rows would be possible using the slender stalk plant.

The aggressive breeding program maintained by TAES research is enhanced due to funding from the Plains Cotton Improvement Program and their cotton check-off, he said. Producers pay 10 cents a bale in the check-off program for the purpose of improving cotton quality in the area.

Each year, significant funding is used in research to develop and increase germplasm lines for release to commercial seed companies in the local area. The seed companies then incorporate these lines into their own breeding programs as

they feel necessary.

The goal is to provide producers with cotton varieties that produce superior yields of high quality fiber that is in demand by the textile industry, Gannaway said.

In the future, TAES researchers hope to develop a stringent screening technique similar to this year's field conditions for us in a greenhouse. "We don't want to have to depend on the weather," Gannaway said. "We want a repetitive technique so we can get relatively quick results."

Has A Point

Professor: Can you tell me something about the word statistics?

Sophomore: Well, they're something like a bikini--what they reveal is interesting, but what they conceal is vital.

Good Ones Tool

"I represent the Mountain Wool Company, madam. Would you be interested in some coarse yarns?"

"Gosh, yes. Come in and tell me a couple."

Perry Praises Bush For Quick Response To Disaster Request

By releasing \$755 million for agricultural disaster relief, the Bush Administration has come through for agriculture-- and for Texas-- again, Agriculture Commissioner Rick Perry said.

"Today's announcement just proves what I've said all along," Perry said. "George Bush is an agriculture president who cares about Texas. In recent weeks, the President and his top advisors have been 'on the ground' in Texas and have seen Mother Nature's handiwork-- a patchwork quilt of agricultural devastation.

Instead of pulling the cover over their heads, the President and the Bush administration acted quickly to help farmers put the pieces back together."

Although the disaster aid will be spread throughout the nation, Texas farmers stand to benefit from the funds, Perry said. The funds will help offset some actual crop losses, but just as importantly, they will help

reassure lenders who are making production loans for next year's crops, Perry said.

In his Aug. 14 letter encouraging the President to authorize the disaster funds, Perry cited the 1992 cotton crop as a prime example of the Texas situation. In a 44-county area of the High Plains and the Panhandle, more than 1.9 million acres of cotton were lost or were never planted due to adverse conditions, and of the cotton that remains, yields are expected to be one-third of average, Perry said.

In addition, Texas has experienced substantial losses of wheat, corn, grain sorghum, hay, and various specialty crops, Perry said.

"Mother Nature clearly decided to flex her muscles this year," Perry said. "She pummeled agriculture, but thanks to President Bush she didn't score a K.O."

Voice of Experience

"My wife always lets me have the last word," exulted the husband of two months.

"Huh!" snorted a seasoned oltimer. "Just wait until you run out of compliments, young feller!"

The administration, staff and physicians
of



MULESHOE AREA

M E D I C A L

Center

cordially invite you to our

OPEN HOUSE

Sunday, September 20, 1992, from 2:00 - 5:00 p.m.

708 South First Street - Muleshoe, Texas

Come see our progress as we show off *Phase I* of our renovation project.

Enjoy refreshments and informal tours.

In addition to the existing services of...

- General Surgery
- OB/GYN
- Newborn Nursery
- Emergency Center
- Pediatric Unit with special Parent Accommodations
- Saturday Morning Physician Clinics

... we have added:

- Physical Therapy
- Birthing Room
- Laparoscopic Surgery

These combined services bring *Muleshoe Area Medical Center* to the forefront of the health care arena for community hospitals.

September 20th also marks the kickoff of our "*Adopt-a-Room*" Campaign as we gear up for *Phase II*. Find out how you can be recognized for your contribution to this special project.

Muleshoe Area Medical Center appreciates your support and looks forward to providing you continued excellence in health care.

For more information about *Muleshoe Area Medical Center* or the "*Adopt-a-Room*" Campaign, please call (806) 272-4524.

Accent On Health

If injured in school athletics this fall, try using RICE says a sports medicine expert at Baylor College of Medicine in Houston.

RICE is an acronym for rest, ice, compression and elevation -- the basics for treating athletic-related injuries, says Dr. Albert C. Hergenroeder, an associate professor of clinical pediatrics at Baylor.

"Injuries are common after a summer away from the sometimes demanding physical rigors of school athletics," said Hergenroeder. "It is important to know how to care for an injury so that a minor injury remains minor and so the player can return as soon as possible to the sport. Also, a more serious injury can be made worse if the initial treatment is not appropriate."

Hergenroeder recommends the following therapy for most injuries resulting from sports:

REST--Avoid doing anything that hurts the injured area. However, the athlete should become active as soon as they can, providing it does not cause pain.

ICE--A safe rule of thumb is to apply ice directly to injured area for 20 minutes each hour during the first 48 to 72 hours of injury or until swelling has ceased.

COMPRESSION-- Pressure bandages such as "Ace" bandages should be applied to the injured area as soon as possible to help reduce swelling. Wear the bandage at all times. But if the bandage feels too

tight or if the area below the bandage is blue/purple, it should be removed and a physician consulted. **ELEVATION**--Elevate the leg or arm as much as possible to prevent too much blood from collecting in the injured area.

"Of course these simple treatments should not take the place of professional medical advice," Hergenroeder cautioned. "But they are common sense ways to manage many athletic injuries."

After the injury heals, Hergenroeder suggests three ways to rehabilitate injured muscles and to keep uninjured muscles in top form: proper stretching for flexibility, endurance training such as cycling for leg muscles or swimming for arm and shoulder muscles, and weight training for strength.

"Working the muscles to recovery involves determination, patience, a supportive coach and a physician's care," Hergenroeder said. "The doctor should determine when the patient is ready to play sports again, but input from the coach and athlete is crucial in making the decision."

Football is the top sport for injuries, followed by wrestling and gymnastics. The most common chronic injury is overuse of the knee, which is seen in almost all sports.

Other common sports-related injuries include:

- *Tennis: calf strain, ankle and knee injuries, tennis elbow
- *Swimming: shoulder strain
- *Running: shin splints, stress fractures, knee injuries
- *Baseball: shoulder, elbow and knee injuries.

Nursing home News

by: Joy Stancell

Janetta Hukill was visited by her grandson Jerry from Arkansas recently.

The Family Support Group meets Monday, September 14 at 7:00 p.m. in the Conference room. All interested persons are invited to attend.

Joe Weeks was visited by his daughter Billie Mason Tuesday afternoon.

Cora Duncan was visited by Ruby Gamer and her daughter Ruby.

Ella Faubus has a new hair cut. She is visited everyday by her daughter Julia Patterson.

Vera Downing attended a family reunion in Lubbock on Saturday. She stated that she had a wonderful time.

Gladys Pierce was visited by her granddaughter Kinsey Pierce Tuesday afternoon.

Leonard McCormick had coffee with his wife Tennie McCormick in the Day Room Tuesday afternoon.

We always need Volunteers, if you would like to visit, read, write letters, help with parties, sit and hold a hand, Come by the Healthcare Center-- there are "friends" that need these services.

Thursday morning Bro. David McIntire assisted by Clara Lou Jones, Rue Kimbrough and Lona Embry conducted a memorial service for Concha Estrada and Pete Lucero.

Thursday afternoon Winnie Berry, Grace Scarbrough and J.E. Embry came to play Skip-Bo and

Dominoes and visit.

Friday afternoon Harold and Avis Carpenter from the Oklahoma Lane community came to have a Sing-A-Long with the residents. We wish to give our Congratulations to Harold and Avis on the birth of a grandson.

Each Sunday morning the Muleshoe Church of Christ conducts our Communion Service. Clara Lou Jones comes for Bible Study, Saturday morning J.C. Shanks comes to cut the men's hair and give them shaves. On Wednesday and Friday mornings Mr. Clifton Finley runs errands and goes shopping for the residents. Laverne James comes on Saturday to play Bingo with the residents.

Sunday afternoon the Calvary Baptist Church comes for Church Services.

Tuesday afternoon Laverne James, Beverly Wagnon, Beth Watson, Claudine Embry and Lynda Low came to Shampoo and set the ladies hair and give lots of T.L.C.

Our thanks to Five Area Telephone for having issues of the Ranger sent to us each week and to the Muleshoe Journal. We really enjoy and look forward to "paper day".

GOLDEN GLEAMS



Train up a child in the way he should go; and when he is old he will not depart from it.

-Proverbs 22:6

Teach your child to hold his tongue; he'll learn fast enough to speak.

-Benjamin Franklin

Perry Says Emergency Loans Available To Producers In Eight Texas Counties

Low-interest emergency loans are available to eligible farmers and ranchers in eight North Central Texas counties that were declared federal disaster areas due to hail storms April 28-29. Agriculture Commissioner Rick Perry said Wednesday, Sept. 2.

In making the declaration, U.S. Secretary of Agriculture Edward Madigan named Johnson County as a primary disaster area.

In addition, Bosque, Ellis, Hill, Hood, Parker, Somervell and Tarrant counties were declared contiguous disaster areas.

These declarations allow family-size farm operators in both the primary and contiguous areas to apply for emergency assistance from the Farmers Home Administration.

To be designated as a primary disaster area, the Farmers Home Administration determines whether a sufficient number of farmers in each county suffered losses of 30 percent or more. The counties designated as contiguous disaster areas were declared as such because they were adjacent to the primary disaster area but suffered fewer losses.

Each loan application will be considered on its own merits, taking into account the extent of losses, security available, repayment ability and other requirements.

For more information, producers should contact a local FmHA county office.

Barbara Bush, U.S. First Lady:

"Seeing the energy, excitement and commitment of the people who'll be leading our Republican campaigns this fall...was wonderful," commenting on recent G.O.P. convention.

Texas Native Returns To VA Regional Office

Secretary of Veterans Affairs Edward J. Derwinski has named Lois A. High as Director of the Waco VA Regional Office effective July 26, 1992.

Dr. High began her VA career in 1967 as a claims examiner at the Waco VA Regional Office. She advanced through progressively responsible adjudication positions at Waco and transferred to the VA Central Office in Washington, D.C. in October 1972.

During her six years in Washington, Dr. High served as a consultant on the VA Legislative Policy Staff and as Staff Assistant to the Director, Compensation and Pension Service.

In 1978, Dr. High transferred to Los Angeles Regional Office as Adjudication Officer, advancing to Assistant Director in 1980. She served as Director of the Los Angeles Regional Office, the Department's largest field benefits office from 1983 until reassignment to the Houston Regional Office in 1988.

Dr. High served as Special Field Operations Representative from March 1988 until November 1990, the only such position in the Department of Veterans Affairs. Assigned to the Houston Regional Office, she had the dual responsibility of serving as Associate Director of that facility.

As Special Field Operations Representative, Dr. High served as special advisor to the Chief Benefits Director. She coordinated special projects and chaired committees whose primary goals were to improve management efficiency and improve service to veterans. She moved to the position of Assistant Director upon completion of the reorganization of the Veterans Benefits Administration where she was

served until selected as Director of the VA Regional Office, Waco, Texas.

Dr. High has earned a continuing series of performance awards and special recognition during her VA career. She was a member of the first VA Leadership Program and the first VA Senior Executive Service (SES) Candidate Training Program. She has been a VA nominee for the Presidential Management Improvement Award and the Federal Woman's Award. Her distinguished career achievements led to back-to-back recognition as one of the top Federal Civil Servants in the Nation.

In 1987, she was awarded the SES Presidential Rank Award, and in August 1988, she won the Distinguished Executive Presidential Award Award, the highest form of recognition in Federal Civil Service. In 1989, she was invited to the Federal Executive Institute in Charlottesville, VA for a week as Presidential Bank Executive-in-residence.

Dr. High is a native of San Antonio. As an honor student, she received her Bachelor of Arts Degree in 1961 at age 19 from Baylor University. She earned her Masters Degree from Trinity University while teaching in the San Antonio public school system and received her doctorate in Educational Psychology from Baylor University in 1986 after serving there as a Teaching Fellow.

Dr. High is an avid reader and aspiring golfer. She supplements those leisure interests, and her challenging career, with an active community life which includes service as a vestry member and lay counselor in her church and as an advisor to the Council on Aging.

Panhandle South Plains Fair, Sept. 26-Oct. 3

Whether you farm thousands of acres or tend a small tract in your backyard, you can enter your best crops and compete for a share of the prize money during the open crop exhibits at the 75th "Diamond Jubilee" edition of the Panhandle South Plains Fair, Sept. 26 to Oct. 3.

Vocational agriculture students will also get a chance to be in the spotlight as they compete in the agriscience educational and agricultural mechanics exhibits.

The open crop exhibits are open to everyone and entries will be accepted on Friday, Sept. 25 from 3 to 7 p.m. and again on Saturday, Sept. 26 from 8 a.m. to noon. Each exhibitor is limited to one entry in each class and all entries must be grown in the South Plains area during the current crop year.

No chemically treated seed will be accepted and all cotton bolls must have opened naturally in the field.

In the South Plains Cotton division, classes offered include Tallest Cotton Stalk, Most Bolls Per Plant, Best Commercially Adapted Stalk and Best 20 Opened Bolls.

Divisions are also offered in Grains and Seeds, Sheaf Grains and Seeds, Grain Sorghum Heads, Hay, Corn, Vegetables, Fruit and Nuts and Miscellaneous Crops (which includes sunflowers, ornamental gourds and the largest or most unusual crop or vegetable).

Thomas Cotton Neely is general superintendent for the open crops. He is being assisted by Chris Kountz and David Schwertner.

Paul R. Vaughn Neely is general Superintendent for The agriscience educational exhibits. He is being assisted by Robert Terry.

Space for agriscience booths is limited to ten, and entries will be accepted in the order in which they are reserved. Exhibits will be judged according to general appearance, interest and educational value.

The top three exhibits will receive a blue rosette and \$250.

Judging for the agriscience agricultural mechanics exhibits will begin at noon on Saturday, Sept. 26, and the deadline for entering is Thursday, Sept. 24.

Entries will be accepted by Superintendent Lewis Eggenberger and Assistant Superintendent David Lawyer from 3 to 6 p.m. on Friday, Sept. 25 and from 8:30 to

11 a.m. on the fair's opening day.

Articles entered must be the work of students enrolled in agriscience at approved high schools and must have been constructed during the 1991-92 or 1992-93 school years.

Prize money will be awarded in the following categories: livestock and farm equipment, general shop projects, recreational and home convenience, finished wood projects, recreational livestock and farm equipment, general shop projects, recreational and home convenience finished wood projects and trailers.



ALLSUP'S

Prices Effective
September 13-19, 1992
318 W. Amer. Blvd.
272-4862

IN CONCERT

Jerry Jeff Walker

OPENING PERFORMER
REX FOSTER
SUNDAY, SEPT. 20, 1992
7:30 PM TEXAS TIME, EL CID ARENA
4 MILES NORTH OF FARWELL, TX
FARM-TO-MARKET 2396 - TICKETS ON SALE
AT ALL AREA ALLSUP'S LOCATIONS
\$12.00 ADVANCE
TICKETS \$15.00 AT EAST GATE
THE NIGHT OF THE PERFORMANCE

ALL TYPES
PEPSI COLA
12 oz. Cans, 12 Pk.
2.99



FAMOUS
ALLSUP'S BURRITOS
BUY ONE GET ONE
FREE!



CORN KING
MEAT FRANKS
12 OZ. PKG.
59¢



ASSORTED FLAVORS
MENTOS CANDY ROLLS
55¢ EACH OR
3 \$1

CORN KING
SLICED BACON
12 OZ. PKG.
89¢



FILLED WITH YOUR FAVORITE FOUNTAIN DRINK
ALLSUP'S HONCHO
BIG 44 OZ. DRINK FOR ONLY
79¢

EASY MONEY GAS FOR A YEAR WINNERS
LUZ CHAVARRIA-ABILENE, TX
MARY WESSNER-WHITE DEER, TX
KALEENA SOTELLO-MONAHANS, TX
FRED McMULLENS-MELROSE, NM
KATHY McCARTY-DUMAS, TX
DONNA ATKINS-HOBBS, NM
HUBERT LYONS-IOWA PARK, TX
MARTIN DODGE-ALBUQUERQUE, TX
ODIS KELLEY-RANGER, TX

CONGRATULATIONS TO MR. & MRS. LESLIE H. WEIS, JR. OF CRANE, TEXAS WINNERS OF THE NEW 1992 4 DOOR CAVALIER
PICTURED LEFT TO RIGHT: MARK ALLSUP, V.P. OF OPERATIONS PRESENTING KEYS TO MR. & MRS. LESLIE H. WEIS, JR.



COMBO OF THE MONTH
2 HOT POCKETS & A 32 OZ. TALLSUP FOR ONLY **\$1.99**

SAUSAGE & BISCUIT ONLY **69¢**

ALLSUP'S HOMOGENIZED MILK GALLON **\$1.99**

Amarillo Livestock Auction

Sales Every Tuesday

Special Fall Weaner Calf Sales

Begin Tuesday, Sept. 22nd, 1:00 p.m.

Call Us With Your Consignments

(806) 373-7464

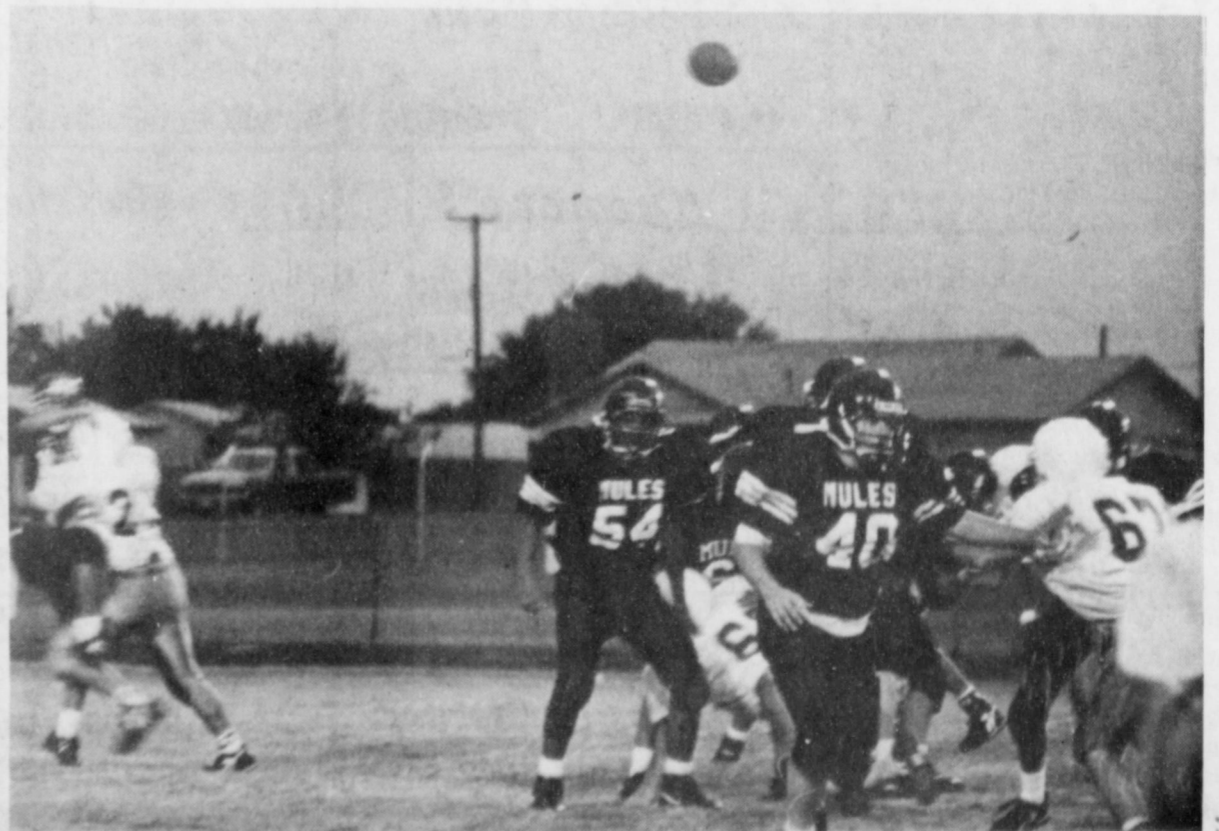
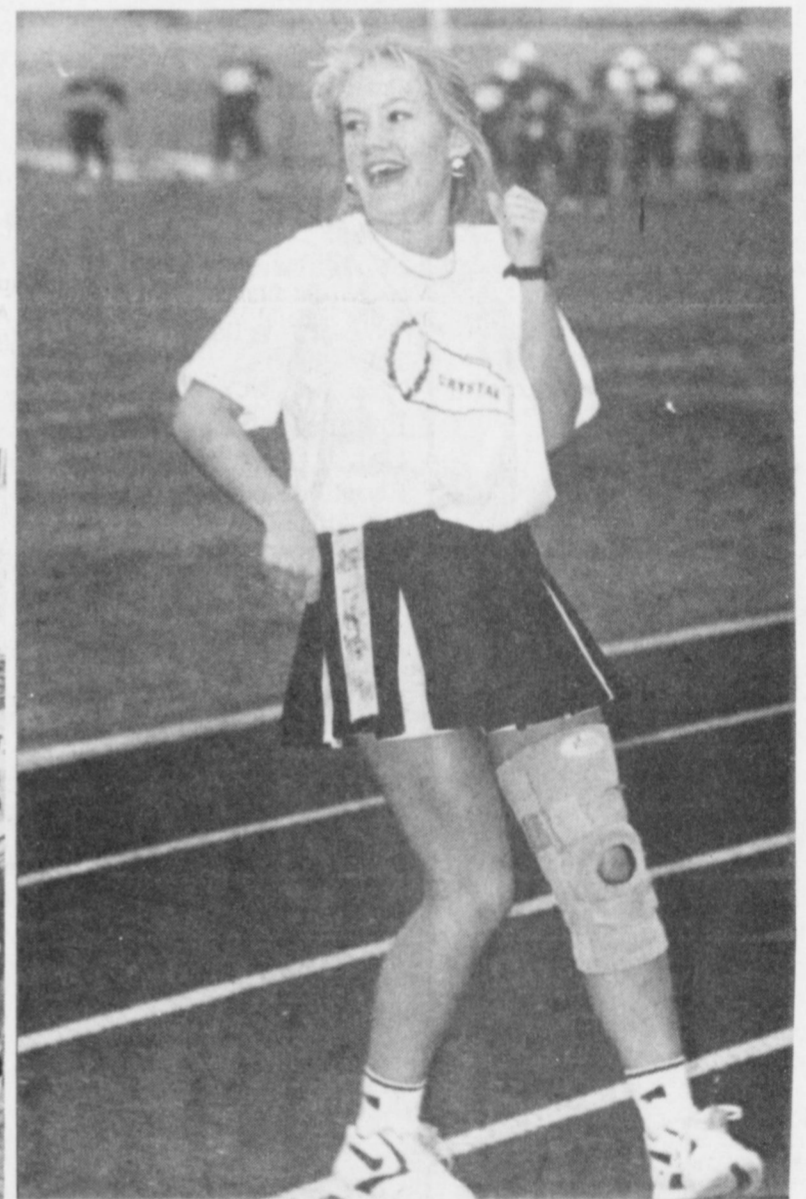
We Will Advertise Them On Our Radio Program, KGNC 710 at 6:55 a.m.

The Market For Stocker And Feeder Cattle

Charlie Alford, Mgr. Johnny Graves, Asst. Mgr.

Thursday Night Football

Freshmen Mules vs. Idalou J.V.



State "Surplus" A Case Of Mistaken Identity

By Lt. Governor Bob Bullock

At a press conference earlier this month, Comptroller John Sharp announced that the state will have a \$529 million positive cash balance by the end of this fiscal year. Almost before the end of the day, that fund balance became a "surplus." Just as quickly, Austin

Services For Jack Houk Held Friday

Services for Jack Houk, 63, of Lubbock were held at 4:00 p.m. Friday in Southwest Baptist Church with the Rev. Mike McEuen of Southwest Baptist and Leland Calloway of Nacogdoches University Baptist Church officiating.

Burial was in Resthaven Memorial Park under direction of Sanders Funeral Home.

Houk died at 12:56 p.m. Wednesday in Methodist Hospital after a brief illness.

He was born in Lubbock and graduated from Lubbock High School in 1958. He served in the U.S. Army during the Korean Conflict. He married Wanda Kimbrough on June 1, in Muleshoe. He was a charter member of Southwest Baptist Church and was a member of the American Business Men's Club. He was a sales representative, and retired in 1990.

Survivors include his wife; a son, Rand of Lubbock; and two grandchildren. He was the son-in-law of Mr. and Mrs. Finis Kimbrough of Muleshoe.

Pallbearers were Ralph Smith, R.C. Taylor, Bobby Williams, Alan Hill, Larry Elliot, and Donnie Isaacs.

Mrs. Velma M. Jenkins Services Held

Services for Mrs. Velma M. Jenkins, 69, of Clovis, New Mexico, were held Friday, September 11, 1992 at 2:00 p.m. in the Steed-Todd Chapel with the Rev. Tony Reynolds officiating. Burial was in the Mission Garden Of Memories in Clovis. Mrs. Jenkins died Tuesday, September 8, 1992 in Clovis High Plains Hospital.

Mrs. Jenkins was born December 27, 1922 in Clarksville, Texas. She married George Jenkins on December 16, 1941 in Lubbock, Texas, and moved to Clovis in 1979 from Carlsbad, N.M. She was a cashier, and a member of Forrest Heights Baptist Church.

Survivors are her husband George W. Jenkins of the home, one son and daughter-in-law, Rodney and Twilla Jenkins of Portales, N.M.; two daughters and sons-in-law: Jan and Gene Sanders of Clovis, N.M. and Robin and David Barker of Muleshoe, Texas.

Other survivors include nine grandchildren, two great grandchildren, two sisters: Malee Swanger of Post, Texas and Claudine Harris of Dumas, Texas. She was preceded in death by two sons, Darral and Randy, both in 1985.

Patients in Muleshoe Area Medical Center

SEPTEMBER 7, 1992

Jose Manuel Green, Sylvia Moreno and baby girl Moreno, Susanna Edwards, Maria Nieto, Tripp Townsend, Louva Kersey, Alene Weiss, Jewell Perry.

SEPTEMBER 8, 1992

Jose Manuel, Sylvia Moreno and baby girl Moreno, Susanne Edwards, Maria Nieto, Trinidad Ramirez, Tripp Townsend, Louva Kersey, Alene Weiss, Jewell Perry.

SEPTEMBER 9, 1992

Isabell Pena, Susanna Edwards, Javier Diaz, Trinidad Rameriz, Walter Bartholf, Maria Gutierrez, Louva Kersey, Alene Weiss, Antonio Monreal, Sylvia Moreno and Baby Girl Moreno.

SEPTEMBER 10, 1992

Isabel Pena, Sylvia Moreno, Walter Bartholf, Susanna Edwards, Javier Diaz, Trinidad Rameriz, Maria Gutierrez, Louva Kersey, Alene Weiss, Antonio Monreal, Baby Girl Moreno.

interest groups were dividing up the cash and lawmakers were crossing their fingers hoping the "extra money" was a sign Texas was past its biennial budget woes.

So is this \$529 million cash balance a sign that the state is out of the financial woods?

Hardly. A cash balance is a long way from a budget surplus. The state's cash balance is like a checking account. The middle of the month may show extra money. But that balance does not always include bills or checks outstanding.

Indeed, Comptroller Sharp's \$529 million budget is subject to some outstanding bills and restrictions that dramatically reduce the actual, unobligated size of the state's cash balance. \$77 million of the \$529 million balance must be plowed back into the lottery. A one-percent state employee payraise, certified by Comptroller Sharp last month,

restricts another \$46 million.

The fund balance total also includes \$260 million in oil overcharge funds which are obligated by court order.

Once these dedicated, obligated or restricted funds are subtracted-- Texas is actually \$146 million in the black, not the \$529 million showing on the books.

By all accounts, \$146 million is still a healthy balance, but what does it really mean?

For one thing, it means Texas Legislators have already made tough choices--choices that have allowed the state to do a better job of managing its money. And that's especially true when Texas is compared to other states like California. But \$146 million is less than one percent of this state's \$60 billion two-year budget. And as for the 1994-94 budget, it can't make a lot difference when compared to billions in projected

state shortfalls due to ever demands in education and criminal justice spending.

That is not to say \$146 million won't help. It will.

But it won't keep lawmakers, who return to Austin in January, from having to make more tough decisions about what other state services must be reduced or eliminated to keep Texas in the black.

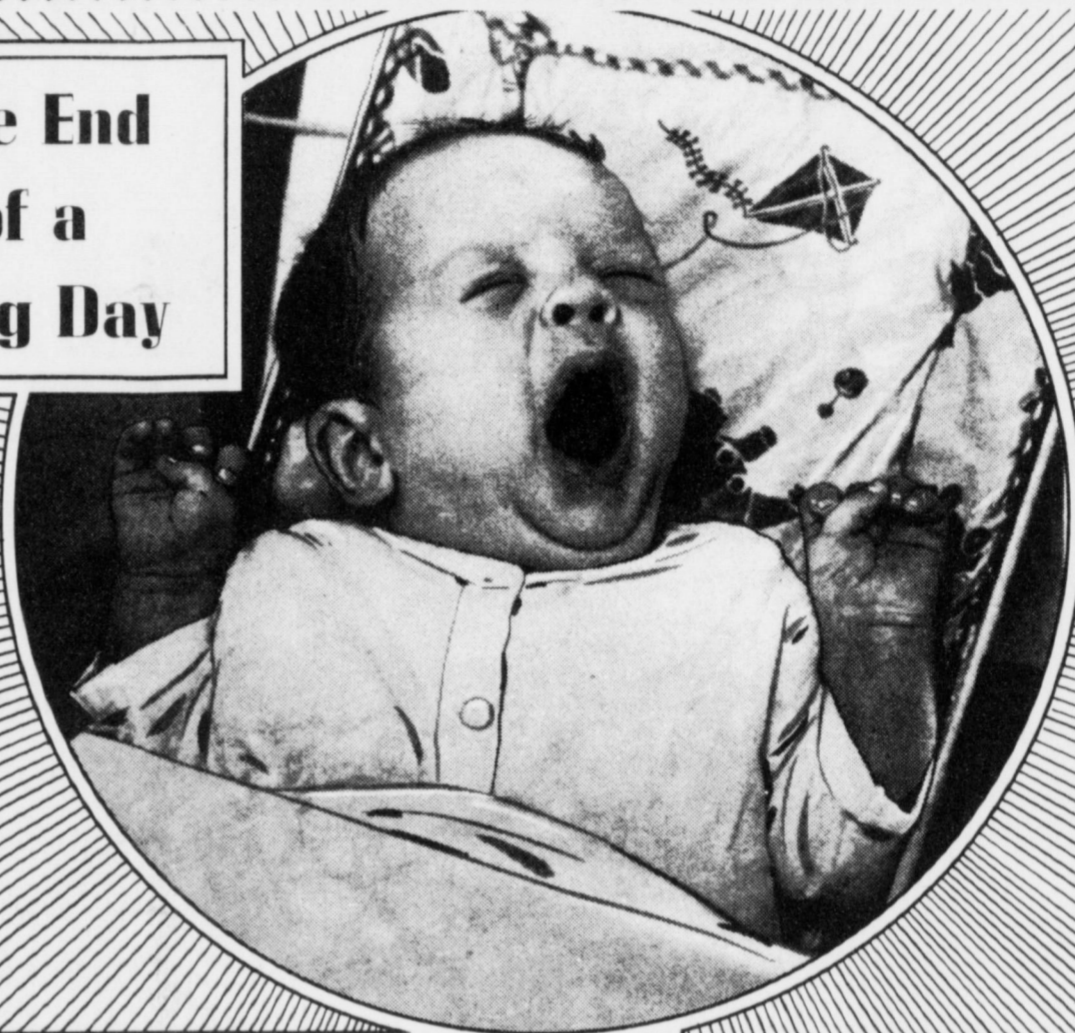
NOTES, COMMENT

Faith in one's self is the foundation of success.

Work hard, die early--your family will enjoy your insurance.

Hard work hurts few people because so few give it chance.

The End of a Long Day



Here is a young fellow just about ready for bed and a much deserved rest. Although he is still too young to do much more than sit in his chair, he is busy from early morning until night finding out about this new world in which he is a very important member.

He must rely upon his parents for food, warmth and protection and from those parents he also experiences the wonderful sharing of family love. As we owe this child love and devotion, so do we owe him the right to grow up in a home where God is an important part of family life. Do not deny your children the benefits of God's love which He gives you through the church. Become an active part of your church. Enjoy the peace of mind that regular church attendance can bring to you and to your family.



The Church is God's appointed agency in this world for spreading the knowledge of His love for man and of His demand for man to respond to that love by loving his neighbor. Without this grounding in the love of God, no government or society or way of life will long persevere and the freedoms which we hold so dear will inevitably perish. Therefore, even from a selfish point of view, one should support the Church for the sake of the welfare of himself and his family. Beyond that however, every person should uphold and participate in the Church because it tells the truth about man's life, death and destiny; the truth which alone will set him free to live as a child of God.

Immaculate Conception

Catholic Church
Father Patrick Maher
Northeast of City

First Baptist Church
220 West Ave. E.
Pastor Stacey Conner

Trinity Baptist Church
314 E. Ave. B
Rev. Dale Berry

Circle Back Baptist Church
Intersection FM 3397 & Fm 298
Rev. Jessie Shaver
946-3676

Calvary Baptist Church
1733 W. Ave. C.
Rev. Rick Michael

Church of Compassion
605 W. 8th
Jimmy Williams
272-5624

Progress Baptist Church
Alan Petersen
Progress, Texas

Richland Hills Baptist Church
17th and West Ave. D
Rev. Terry Taylor

St. Matthews Baptist Church
Corner of West Boston & West Birch
Pastor M.S. Brown

Progress Second Baptist Church
1st and 3rd Sundays
Rev. Arthur Hayes

Primitive Baptist Church
621 South First
Elder Cleveland Bass, Pastor

1st Baptist Church
Lazbuddie, Tx.,
Gary Wilcox, Pastor
965-2126

New Covenant Church
Plainview Hwy
Sunday 10:00 a.m.
Wednesday 7:00 p.m.
Jimmy Lowe, Pastor

St. John Lutheran
Sunday School and Bible
Classes 9:30 a.m.
Church Services 10:30 a.m.
Rev. Richard Greenthaner

"Iglesia Pentecostal Unida"
207 East Ave. G
272-5944
Pastor: Wenceslado Trevino

Lazbuddie Methodist Church
965-2121
Doug Chapman, Pastor

Jehovah Witness
Friona Hwy
Jack Tiffin, Minister
Warren Meeks, Minister

New Vision Church of the Nazarene
814 W. Ave. C
272-3622
Pastor David R. McIntire

Primera Iglesia Bautista
223 E. Ave. B
Roy Martinez, Pastor

Lariat Church of Christ
Sunday School 10:00 a.m.
Worship 11:00 & 6:00 p.m.
Wednesday Services 7:00 p.m.
Sam Billingsley, Minister

Muleshoe Church of Christ
Clovis Hwy
Bret McCasland, Minister

16th & Ave. D Church of Christ
Sunday 10:30 a.m.
Evening 6:00 p.m.
Wednesday 7:30 p.m.
Curtis Shelburne, Minister

Lazbuddie Church of Christ
Minister, Keith Courmier
Sunday School 9:30 a.m.
Morning Services 10:20 a.m.
Evening Services 5:00 p.m.
Wednesday Night 7:00 p.m.

First Assembly of God
Rev. G. Dean Reid, Pastor
Sunday School 9:45 a.m.
Morning Worship 11:00 a.m.
Evening Services 6:30 p.m.
Mid-Week Services 7:30 p.m.
272-3984

Spanish Assembly of God
East 6th and Ave. F.
Mike Doyle, Pastor

First United Methodist Church
507 W. 2nd Street
Richard Edwards, Pastor

El Divino Salvador Methodist Church
5th and E. Ave. D
Leonard Gonzales, Pastor

United Pentacostal Lighthouse Church
207 East Ave. G
Rev. N.W. Thompson
272-3258

The Christian Center
Morton Hwy
272-5992



Attend The Church Of Your Choice!



| | | | |
|---|---|--|---|
| Western Drug 114 Main 272-3106 | Throckmorton Refinishing Shop 319 E. Amer. Blvd. 272-5345 | Lowe's Marketplace 401 W. Amer. Blvd. 272-4585 | American Valley Inc. W. Hwy 84 272-4266 |
| Decorator's Floral & Gifts 616 S. 1st. 272-4340 | Bratcher Motor Supply 107 E. Ave. B 272-4288 | Richland Hills Texaco 1914 W. Amer. Blvd. 272-4875 | Bob Stovall Printing 221 E. Ave. 272-3373 |
| Dairy Queen 1204 W. Amer. Blvd. 272-3412 | Bobo Insurance Agency 108 E. Ave. C 272-4264 | Bailey County Farm Bureau 1612 W. Amer. Blvd. 272-4567 | Combination Motors & Salvage 272-4458 |
| Irrigation Pumps & Power W. Hwy 84 272-4483 | Wes-Tex Feed Yards, Inc. 272-7555 | Viola's Restaurant 2002 W. Amer. Blvd. 272-3838 | 5-Area Telephone Cooperative Inc. 302 Uvalde 272-5533 |

CLASSIFIEDS 272-4536

CLASSIFIED RATES
 15 Words & Under Minimum Charge \$2.30
 Thereafter \$2.00
 16 Words & Over 1st Insertion 15 cents per word
 2nd Insertion 13 cents per word

CLASSIFIED DISPLAY RATES
 \$1.75 Per Column Inch

DEADLINES
 12 noon Tues. For Thursday Paper
 12 noon Friday For Sunday Paper

To receive the reduced rate after the first insertion, ad must run continuously.

We reserve the right to classify, revise, or reject any ad. We are not responsible for any error after ad has run once.

1. Personals

CONCERNED
 About Someone's Drinking?
HELP IS AVAILABLE
 through Al-Anon
 Call 272-2350 or 965-2870 or come to visit Tuesday and Thursday nights, 8:00 p.m. & through AA call 965-2870 or come visit Tuesday nights, 8:00 at 620 W. 2nd, Muleshoe.

For more information and assistance regarding the investigation of get-rich-quick, work-at-home and other financial/business opportunities, The Muleshoe and Bailey County Journals urges its readers to contact the Better Business Bureau, 1206 14th St., #901, Lubbock, TX 79401 or call (806)763-0459

2. Lost & Found

STRAYED:
 One Hereford Cow. Weighing approximately 1,053 lbs. and 3 mixed yearlings weighing approximately 250 lbs. Branded on right hip--W-Bar-B. If found, call 272-4097
 C2-35t-tfc

3. Help Wanted

Experience Preferred-Sales Person. New & Used Cars. Call Richard Kelly at Doc Stewart Chevrolet in Clovis--(505) 763-4466.
 D3-37s-tfc

TRUCK & TRACTOR DRIVERS WANTED: Monthly salary, lots of travel. Job runs March-December. Contact Scott or Charles at SCB Farms, Inc. in Bovina, TX--(806)238-1206
 S3-31s-tfc

WANTED:
ROOFERS! Call GRAHAM CONSTRUCTION, INC. Clovis. 505-762-2838
 G3-36t-tfc

3. Help Wanted

NEEDED!
 AVON Representatives in Muleshoe Area, including Three Way, Needmore and Lazbuddie. Call 272-5607, 272-3208 or 272-4972.

\$200-\$500 WEEKLY
 Assemble products at home. Easy! No selling. You're paid direct. Fully guaranteed.
 FREE Information-24 Hour Hotline. 801-379-2900
 Copyright # Tx 340DH A3-31t-16tp

5. Apts. For Rent

2 Bedroom Apartment
 For Rent: Call 272-4622.
 K5-37s-tfc

9. Automobiles For Sale

CHEAP! FBI/U.S. SEIZED
 89 MERCEDES.....\$200
 86 VW.....\$50
 87 MERCEDES.....\$100
 65 MUSTANG.....\$50
 Choose from thousands starting \$25.
 FREE Information-24 Hour Hotline. 801-379-2929
 Copyright # Tx340JC A9-31t-16tp

1986 FORD PICK-UP Short Bed, Double Cab, Maroon & Red. Great Condition!! Asking Price--\$5,500. Call 965-2759 for more information anytime after 6:00 p.m.

FOR SALE: 1980 Ford Thunderbird. Gets good gas mileage. New battery and starter. For more information call (806)272-3153

11. For Sale Or Trade

FOR SALE:
TOMATOES AND PEPPERS
 across from John Deere house on the 84 bypass in Littlefield. B.E. Turner. 385-5980.
 T11-36t-tfc

FOR SALE: Three grain facilities with a 4,668,000 bushel total capacity located at Clay's Corner, Texas - Hwy. 145 and 214. "1,227,000 bushels" and two facilities in Muleshoe, Texas. "AAA - 609,000 bushels; Main - 2,432,000 bushels." Handles corn, milo, wheat and soybeans. All locations have an office and truck scale with a large gas fired dryer at the main location. The Muleshoe facilities are served by the Santa Fe Railroad. Contact Geoffrey P. Pivateau at (806)372-5050.
 M11-37s-2tc(S)

TAKE THE KEYS
 CALL A CAB
 TAKE A STAND

15. Misc.

Will Do Estate Sales Or Garage Sales. Call 272-5263. Helen Hall. H15-37s-4tc

MAJOR APPLIANCE AND MINOR HOME REPAIRS --CALL 272-4450.
HENDERSON SERVICE CO.

FOR RENT:
 Large Self Storage rooms with 24 hour a day access. Call J & J Self Storage at 272-4307.
 S15-27s-tfc

Garage Sale: Saturday 12th from 8:00-6:00. 1713 W. Ave. H. Lots of baby items!
 M15-37s-1tc

You can't lose—or get lost—with THE ROADS OF TEXAS!

Get your copy at MULESHOE PUB CO. Only 12.95

The cookbook everyone is talking about
TEXAS COUNTRY REPORTER COOKBOOK
 256 pages of recipes from the viewers of the popular tv show hosted by Bob Phillips
\$13.95
 Pick up your copy at MULESHOE PUB CO

8. Real Estate

116 E. Ave. C.
George Nieman, Broker
 272-5286 272-5285

RICHLAND HILLS
 PRICE REDUCED- 3-2-2 Brick, Cent. A&H, built-ins, FP, sunken lv. area, ceiling fans, earthtone carpets..... RH-1

3-3-1 Carport, Cent. A&H, built-ins, FP, abundant storage, covered patio!!!! RH-3

NICE RESIDENTIAL LOTS.....\$5,000 UP

JUST LISTED 4-2-2 Brick, Large living/dining combined...\$50's!!!! RH-5

3-2-1 Brick, Cent A&H, with fenced yard...\$50's! RH-6

JUST LISTED- 3-2-2 Brick with fireplace, 5 ceiling fans, new carpet & paint, new dual fuel heat pump, abundance of closet space...\$90's..RH-8

HIGH SCHOOL
 VERY NICE 2-2-1+1 carport, Cent. A&H, built-ins, low maintenance lawn. Much More!! \$30's! HS-1

IMMACULATE LARGE BRICK HOME 3-2-2
 Heat Pump, built-ins, Whirlpool, loads of storage, lg. shop-storage, \$70's!!!! HS-2

3-2 Remodeled, heat pump, built-ins, fenced yd., storage bldg. \$20's!!!! HS-3

4-2-2 Brick, Built-ins, Cent A&H, ceiling fans...\$40's!!!! HS-5

FmHA financing to a qualified buyer-3-1 1/2-1-1 Brick in tip-top shape...\$20's..H-6

HIGHLAND AREA
 3-2-1 Brick, Cent. A&H, FP, built-ins. MAKE OFFER!!!! HL-1

3-2-1 Home, wall furnace heat, window evap. air, \$20's!!!! HL-2

LENAU ADD.
 3-1-1 car carport-Den with fireplace, floor furnace, heat. Low \$20's...L-8

REMODELED BRICK 3-2-1 with Cent. heat, built-ins---- PRICE REDUCED!!!! L-2

15. Misc.

FOR RENT:
 Large Self Storage rooms with 24 hour a day access. Call J & J Self Storage at 272-4307.
 S15-27s-tfc

Garage Sale: Saturday 12th from 8:00-6:00. 1713 W. Ave. H. Lots of baby items!
 M15-37s-1tc

FOR RENT:
 Large Self Storage rooms with 24 hour a day access. Call J & J Self Storage at 272-4307.
 S15-27s-tfc

Garage Sale: Saturday 12th from 8:00-6:00. 1713 W. Ave. H. Lots of baby items!
 M15-37s-1tc

You can't lose—or get lost—with THE ROADS OF TEXAS!

Get your copy at MULESHOE PUB CO. Only 12.95

The cookbook everyone is talking about
TEXAS COUNTRY REPORTER COOKBOOK
 256 pages of recipes from the viewers of the popular tv show hosted by Bob Phillips
\$13.95
 Pick up your copy at MULESHOE PUB CO

8. Real Estate

116 E. Ave. C.
George Nieman, Broker
 272-5286 272-5285

RICHLAND HILLS
 PRICE REDUCED- 3-2-2 Brick, Cent. A&H, built-ins, FP, sunken lv. area, ceiling fans, earthtone carpets..... RH-1

3-3-1 Carport, Cent. A&H, built-ins, FP, abundant storage, covered patio!!!! RH-3

NICE RESIDENTIAL LOTS.....\$5,000 UP

JUST LISTED 4-2-2 Brick, Large living/dining combined...\$50's!!!! RH-5

3-2-1 Brick, Cent A&H, with fenced yard...\$50's! RH-6

JUST LISTED- 3-2-2 Brick with fireplace, 5 ceiling fans, new carpet & paint, new dual fuel heat pump, abundance of closet space...\$90's..RH-8

HIGH SCHOOL
 VERY NICE 2-2-1+1 carport, Cent. A&H, built-ins, low maintenance lawn. Much More!! \$30's! HS-1

IMMACULATE LARGE BRICK HOME 3-2-2
 Heat Pump, built-ins, Whirlpool, loads of storage, lg. shop-storage, \$70's!!!! HS-2

3-2 Remodeled, heat pump, built-ins, fenced yd., storage bldg. \$20's!!!! HS-3

4-2-2 Brick, Built-ins, Cent A&H, ceiling fans...\$40's!!!! HS-5

FmHA financing to a qualified buyer-3-1 1/2-1-1 Brick in tip-top shape...\$20's..H-6

HIGHLAND AREA
 3-2-1 Brick, Cent. A&H, FP, built-ins. MAKE OFFER!!!! HL-1

3-2-1 Home, wall furnace heat, window evap. air, \$20's!!!! HL-2

LENAU ADD.
 3-1-1 car carport-Den with fireplace, floor furnace, heat. Low \$20's...L-8

REMODELED BRICK 3-2-1 with Cent. heat, built-ins---- PRICE REDUCED!!!! L-2

19. Work Needed

HANDY MAN.
 ANY SMALL JOB!!!
 CALL DEON AT 272-3504.
 19-36s-6tp

G&S
 *Trees Removed *Demolition *Roofing
 *Yard Leveling *Painting *Landscaping
 *Concrete Work *Fences *Dump Truck Work
 *Backhoe Work *Remodeling
 *Certified Septic Tank & Lateral Line Installer
George Gallegos
 385-3304
 Insured 1-800-658-992 Bonded

9. Automobiles For Sale

1988 Chevy Pickup 1/2 Ton 4x4
1992 Ford Aerostar Van, Loaded
1991 F-150, Loaded
1990 Ford XLT Lariat, Loaded
1990 Nissan Pick-up, Extra Clean, Loaded!
1992 Ford Thunderbird, Loaded!
1992 Mercury Topaz, Loaded!
1992 Ford Mustang, Loaded!
1989 Chevy Beretta, Like New, Loaded!
1990 Ford Escort, Xtra Nice, Loaded!
 Example:

1986 Chevrolet Suburban
\$8999.00
 Minimum Trade **\$3000.00**
\$5999.00 Stock # RT2 A

MULESHOE MOTOR COMPANY, INC.
 1225 W. AMERICAN BLVD.
 MULESHOE, TX. 79347
 (806) 272-4251

8. Real Estate

3-2-2 Brick-Fireplace, built-ins, & large workshop/storage bldg. all on oversized corner lot... Low \$50's...CC-1

3-1-1 carport Home, Cent. A&H, built-ins, FP, fenced yd. \$20's!!!! L-3

3-1 1/2-1 Cent. heat, evap. air, cov. patio, fenced yd. L-4

3-2-1 carport Neat & Clean, built-ins, A&H, cov. patio, storage bldg...\$30's!!!! L-5

3-2-1+carport, Brick, ceiling fans, Approx. 2060 sq. ft...\$40's L-6

JUST LISTED-2-1-1 carport, fenced back yard, with two storage bldgs...Priced in the \$20's...L-7

4-3 Bath, Brick, on 2 acres built-ins, FP, Geothermal Ht. Pump, horse stalls, pens & tack rm...Also income producing shop on location or use for your own needs...\$80's!!!! Price Reduced!!

VERY NICE 4-2-2 Brick Home on 6 ac., Cent. A&H, 2300'+lv. area, MUCH MORE!!!!!! 70's!!!! HR-4

3-2-2 Brick, blt-ins, Ht. dump, FP, 2.5 acres on pavement. \$60's!!!! HR-3

3-2-3 Carport Mobile Home on 11 ac. edge of town, MAKE OFFER!!!!!! HR-5

3-2-1 on 1 acre, Cent. Heat, Evap. Air, Remodeled, \$30's!!!! HR-6

NICE 3-2-2 Brick on 1 ac. on hwy., Cent. A&H, built-ins, fenced yd. Make Offer!!! HR-7

3-1-2 Home on 1 1/2 acres storm cellar & storage bldg...\$20's...HR-8

3-2 Home on 40 acres barn and more...\$40's...HR-9

ASK ABOUT OUR COMMERCIAL LISTINGS
 320 acres Dryland, Three Way area. Reduced. \$225 per acre!!!!

PLEASANT VALLEY--160 acres, 8" well, Lindsey circle!!!!
 354 ac. S. of town, good allot. & yields!!!!!!

Call 272-4536
 Classify!

9. Automobiles For Sale

Who was Gabriel Fahrenheit?
 He was a Dutchman who invented the earliest scale for measuring temperature. (Freezing point, 32°, boiling point, 212°.)

Who was Anders Celsius?
 He was a Swedish man who proposed a scale on which the freezing point of water would be fixed at 0 degrees.

9. Automobiles For Sale

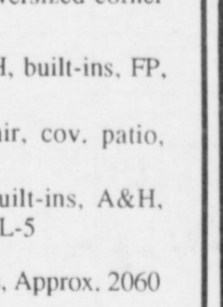
MUST SELL! 92 FORD Explorer 4-Door, 2-Wheel Drive, White w/Gray Leather, Privacy Glass, Power Windows, Power Door Locks, Tilt Steering Wheel, Cruise Control, AM-FM Stereo Cassette, Sport Tires and Wheels, Luggage Rack, Rear DeFogger, no old contract to assume, no back payments to make, just need responsible party to make reasonable monthly payments, call Doug Hulderman in the Credit Dept.
 FRIONA MOTORS 806/247-2701

9. Automobiles For Sale

MUST SELL! 91 Mercury Sable GS, 4-Door, Program Car, Automatic Transmission, Air Conditioning, Power Windows, Power Door Locks, Tilt Steering Wheel, Cruise Control, AM-FM Stereo, no old contract to assume, no back payments to make. Just need responsible party to make reasonable monthly payments, call Doug Hulderman in the Credit Dept.,
 FRIONA MOTORS 806/247-2701

8. Real Estate

HOUSE FOR SALE:
 3 bedroom, brick, 1 1/2 bath, double garage. Close to school, nice neighborhood. Low down payment. Owner will carry papers. 227-2367
 8-36t-8tp



SMALLWOOD REAL ESTATE
 232 MAIN 272-4838
LENAU ADDITION- 4 Bedroom, living room, large den free standing fireplace, 1 3/4 bath, extra nice kitchen, carpet. Lots of storage-will appraise for selling price.

20. Public Notice

NOTICE OF PUBLIC HEARING
 The Bailey County Commissioners Court will hold a Public Hearing for the purpose of adopting a budget for the 1993 fiscal year. The hearing will be held at the Bailey County Courthouse on Monday, September 14, 1992, at 1:00 p.m. All persons are invited to come and participate.
 B20-37s-tfc

Shock your friends with interesting climate info!

About 1,000 tons of meteor dust fall to earth every day.

Red and pink snow, colored by algae, is fairly common in the Arctic.

In 1969, in Sweden, black snow fell on a 16,000-square-mile area. The black color was possibly caused by the soot and pollution in the air.

If you notice a spider dismantling its web, gather your belongings and run for cover. A major storm is near.

It could take 20 or 30 minutes for raindrops to fall from a high cloud.

Who was Gabriel Fahrenheit?
 He was a Dutchman who invented the earliest scale for measuring temperature. (Freezing point, 32°, boiling point, 212°.)

Who was Anders Celsius?
 He was a Swedish man who proposed a scale on which the freezing point of water would be fixed at 0 degrees.

9. Automobiles For Sale

MUST SELL! 92 FORD Explorer 4-Door, 2-Wheel Drive, White w/Gray Leather, Privacy Glass, Power Windows, Power Door Locks, Tilt Steering Wheel, Cruise Control, AM-FM Stereo Cassette, Sport Tires and Wheels, Luggage Rack, Rear DeFogger, no old contract to assume, no back payments to make, just need responsible party to make reasonable monthly payments, call Doug Hulderman in the Credit Dept.
 FRIONA MOTORS 806/247-2701

9. Automobiles For Sale

MUST SELL! 91 Mercury Sable GS, 4-Door, Program Car, Automatic Transmission, Air Conditioning, Power Windows, Power Door Locks, Tilt Steering Wheel, Cruise Control, AM-FM Stereo, no old contract to assume, no back payments to make. Just need responsible party to make reasonable monthly payments, call Doug Hulderman in the Credit Dept.,
 FRIONA MOTORS 806/247-2701

8. Real Estate

MUST SELL! 88 Chevrolet, 3/4 Ton, 5 Speed w/Overdrive, 350 V-8 Engine, Air Conditioning, Power Steering, Power Brakes, Power Windows, Tilt Steering, Cruise Control, Power Door Locks, AM-FM Stereo w/Clock, no old contract to assume, no back payments to make. Just need responsible party to make reasonable monthly payments, call Doug Hulderman in the Credit Dept.,
 FRIONA MOTORS 806/247-2701

8. Real Estate

Assume Loan
 3-1-1 Brick, Blinds, Fans, Central Heat, Fenced yard. 1424 West Ave. C. 272-5234
 S8-36s-tfc

20. Public Notice

The Muleshoe Independent School District will accept bids to lease a new 84 passenger diesel school bus with an option to purchase at the conclusion of the lease. Specifications of this lease may be obtained by contacting Buck Johnson, Assistant Supt./Operations at Muleshoe ISD, 514 West Ave. G, Muleshoe, TX 79347 (806)272-3911. Sealed bids will be accepted until 1:00 p.m. on Monday, September 14, 1992. MISD reserves the right to accept / reject any or all bids.
 M18-36s-3tc

Classify!

Lowes

Pay-n-Save MARKETPLACE

8 Pack
Coca Cola
2 liter
\$1.39
Asst.

2 \$5
20 oz.
Asst. For

Bringing The Best Prices To You!

Lowes Pay-n-Save MARKETPLACE QUALITY

| | | |
|---|--|--|
| Beef T-Bone Steak \$2.97 lb. | Fresh Ground Beef 97¢ lb. | Market Trimmed Beef Tenderloin Steak \$4.97 lb. |
| Fresh Pork Spare Ribs \$1.47 lb. | Beef Cubed Steak \$2.67 lb. | Market Made Beef Steak Fingers \$2.87 lb. |
| Sliced Beef Liver 77¢ lb. | R.G. Beef Patties \$4.57 5 lb. Box | Hash Brown Tater Patties 97¢ lb. |
| Dubuque Boneless Half Ham \$1.97 lb. | Dubuque Cooked Ham \$1.77 8 oz. | Schooner Crunchy Perch Fish Fillets \$2.17 lb. |
| Kid's Corny Dogs \$1.37 16 oz. ea. | Corn King Sausage \$1.67 1 lb. | Dubuque Meat Bologna 97¢ 1/2 oz. Package |
| Schooner Crunchy Cod Fillets \$2.77 lb. | | Decker Cooked Chicken Breast Fillets \$3.77 lb. |

Guaranteed Freshness!

| | | |
|--|---|---|
| Red Delicious Lunch Box Size Apples 48¢ lb. | Bell Peppers 3 \$1 ea. For | Thompson Seedless Grapes 68¢ lb. |
| Long Green Chilies 2 lb. For \$1 | | Cucumbers 3 \$1 ea. For |
| Fresh Green Cabbage 4 \$1 lbs. For | Fresh Cello Mushrooms 98¢ pkg. | |

Check Our Insert In Today's Sunday, Bailey County Journal For More Meat Specials!

Mexican Independence Day Sale

| | | | |
|---|--|--|--|
| Old El Paso Taco Shells \$1.49 4.5 oz. 17 pack | Skinner Noodles \$1.29 24 oz. Asst. | Pace Picante Sauce \$1.49 16 oz. Asst. | Shurfine Half moon Cheddar/Colby \$2.79 16 oz. |
| Allen Senior Refried Beans 3 \$1 16 oz. For | Spaghetti O's | ShurSav Nacho Chips \$2.49 3 lb. | |
| Old El Paso Green Chilies 79¢ 4 oz. Whole Chopped | Masa Harina Preparada \$3.69 8 lb. | Soft'n Gentle Bath Tissue 2 \$1 4 Roll For | |
| Parkay Quarters Margarine 3 \$1 1 lb. Pkg For | Old El Paso Enchilada Sauce 79¢ 10 oz. | With Coupon Thereafter 69¢ | |

HEALTH & BEAUTY

| | |
|--|--|
| Finesse Shampoo & Conditioner, Hairspray & Styling Aids \$1.99 each Asst. | Blue Bunny Ice Cream 2 \$5 1/2 Gal. For |
| Kermit & Miss Piggy Bubble Bath \$1.69 10 oz. | Parkay Quarters Margarine 3 \$1 1 lb. Pkg For |
| Colgate Toothpaste \$1.58 4.6 oz. Asst. Tarter Control | Selsun Gold Dandruff Shampoo \$2.99 24 oz. For Women |

FROZEN FOOD

| | |
|---|--|
| Great Star Breakfast \$1.39 each | Banquet Creme Pies \$1.49 14 oz. Asst. |
| Shurfine Crinkle Cut Fries \$2.99 5 lb. | Sullwell Breaded Okra \$1.19 24 oz. |

DAIRY

| | |
|---|--|
| Kraft Lite Half Moon Cheese \$1.99 10 oz. | Sunny Delight Citrus Punch \$1.89 96 oz. |
| Shurfine 1/2% Or Skim Milk \$2.09 Gal. | Blue Bohnet Spread Bowl \$1.69 3 lb. |

| | |
|---|--|
| Parkay Quarters Margarine 3 \$1 1 lb. For | Soft'n Gentle Bath Tissue 2 \$1 4 Roll For |
|---|--|

Lowes Pay-n-Save MARKETPLACE

515 W. Amer. Blvd. Muleshoe 272-4406
401 W. Amer. Blvd. Muleshoe 272-4585

Prices effective September 13 - 19, 1992

WE RESERVE THE RIGHT TO LIMIT QUANTITIES IN TEXAS

Our Best to you!