

WEATHER

Wednesday afternoon and night, six inches of snow was recorded in Muleshoe. A combined total of rain and snow for Wednesday to Thursday yielded .90 in moisture.

BAILEY COUNTY JOURNAL

'The Community Of Opportunity-Where Water Makes The Difference'



Vol. 30, No. 2

10 PAGES TODAY

Published Every Sunday At Muleshoe, Bailey County, Texas 79347

Member
TEXAS PRESS
ASSOCIATION

20¢

SUNDAY, JANUARY 13, 1991

Tanksley, Schuster Show Top Swine

around Muleshoe

Jeff Hicks of Muleshoe was among 23 students named to the Merit List for the 1990 fall semester at Western Texas College, Snyder.

The Merit List is composed of students who are enrolled for at least but fewer than 15 hours of college credit work and have a grade point average of at least 3.5 on a 4.0 scale.

MHS Athletic Director Jim Stewart said the freshman basketball games for this week have been cancelled because of the weather.

Freshmen were to have had one game on Thursday, January 10, and two on Saturday. The games were to have been played in Dimmitt.

Eighth grade math teacher Dick Moore received the Watson Junior High School Educator of the Week Award for the past week.

Principal awards at the school went to James Cox, sixth grade; Michael Reyna, seventh grade and Josh Lindt, eighth grade.

An orientation meeting for 1991 Muleshoe Youth Basketball will be held on Thursday, January 17, at 7 p.m. in the Muleshoe State Bank community room.

All parents, coaches, and interested persons are urged to attend this meeting.

24 Items Listed

On Meet Agenda

For Commissioners

For her first meeting as Bailey County Judge, the new county judge, Marilyn Cox, and county commissioners will be facing an agenda with more than 20 items listed.

After approving minutes of the previous meeting and reviewing departmental reports, the commissioners still have a long day.

They will review the county treasurer report for December and complete disclosure affidavit; pay routine county bills; open and consider bids for the purchase of a new or used loader for Precinct Three; consider approval of bond for chief appraiser of Bailey County Appraisal District; Juvenile Probation Office; Justice of the Peace, Precinct Four and Deputy District Clerk.

They also will select members of salary grievance committee; set county holidays for the new year; set pay for jurors for the new year; set terms of court for Justice Court; set terms of court for County Court; appoint commissioners as road overseers; appoint County Historical Commission members for the coming two year term; consider authorizing county judge to attend TAC Judicial Educational Course in Lubbock, January 28-February 1, and to use monies from continuing Judicial Education Fund to pay registration fee.

They will also consider budget amendment No. 1 to FY1991 Budget; consider paying Precinct One road hand for time off as a result of job related injury; and Don Carter to discuss renovations to the Law Enforcement Center.

Also, consider waiving the probation period as to salary for Raul Garcia; designate a records management officer and order or ordinance to adopt records

Cont. Page 6, Col. 1



CITY OF MULESHOE WORKERS DESERVE PRAISE--Early Wednesday night, city workers, including the street department, the water and sewer employees and others, reported to work, taking out every piece of equipment the city owned and started cleaning streets. They were headed up by Marcos Lopez, street superintendent, who worked all night and into the morning on Thursday, to see that the streets of Muleshoe were easily traveled. By noon on Thursday, some 75 man-hours had been put in by city employees, but the city streets were in fantastic shape after six inches of snow. The City of Muleshoe employees, along with the State Highway Department, deserve your thanks for making our city streets and highways easy to drive down, regardless of the area of town where you reside. Tell them you thank them -- they deserve it!! (Journal Photo)

1991 Farm Program Proves To Be Complicated, Involved

Danny Noble, CEO of the Bailey County ASCS office, has released the following report for January, 1991:

1991 FARM PROGRAM PROVISIONS

1. Hopefully, signup will begin in early March. Exact date will be announced later.

2. The acreage reduction program requirements (ARP) are: wheat 15 percent; corn, grain sorghum and barley 7.5 percent; upland cotton, five percent; and oats 0 percent.

This means you can plant 85 percent of your wheat base, 92.5 percent of your corn, grain sorghum, and barley base; 95 percent of your cotton base and 100 percent of your oat base.

The required ACR no longer fluctuates, and is calculated as a fixed percentage of the crop acreage base (CAB).

3. Maximum payment acres (MPA), is the result of the base times 70 percent (wheat), 77.5 percent (corn), (Grain sorghum) and (Barley), 80 percent (cotton) and 85 percent (oats).

4. No paid diversion program will be offered for any program crop.

5. Yields - Program yields for 1991 through 1995 will be the same as those established in 1990. Additional yield payments are applicable.

6. Estimated deficiency payment rates and advances are:

Wheat, \$1.40 bu. estimated and \$.56 bu. advance; corn, \$.58 bu. estimated and \$.232 bu. advance; grain sorghum \$.56 bu. estimated and \$.224 bu. advance; barley \$.47 bu. estimated and \$.124 advance; cotton \$.10 lb. estimated and \$.04 advance; and oats \$.15 bu. estimated and \$.06 bu. advance.

All advanced payments will be made in cash.

7. Target prices are established at wheat \$4.00 bu., corn \$2.75 bu., grain sorghum \$2.61 bu., barley \$2.36 bu., oats \$1.45 bu., and cotton \$.729 lb.

8. Other oilseeds for which price support will be made available are sunflower seed, safflower, canola, rapeseed, mustard seed, and flax seed.

9. Marketing loan programs are in effect for upland cotton,

oilseeds, and honey. Under these programs, loan deficiency payments will be available to producers who agree to forego loan eligibility in return for such payments.

10. Planting flexibility -- Producers may plant crops other than the crop program on up to 25 percent of any participating program crop acreage base. This acreage will be known as "Flex" acreage.

Permitted crops on flex acres are: any program crop, any oilseed, any designated crop except fruits or vegetables (including potatoes, dry edible beans, lentils, and peas).

The Secretary may, however, prohibit the planting of any crop on flex acreage and is required to make available a list of any prohibited crops.

The first 15 percent of the

WJHS Construction

To Be Discussed

By MISD Board

Monday, January 14, the board of trustees of the Muleshoe Independent School District will meet in regular session at 7:30 p.m. in the school administration building.

After formally opening the meeting, Board President Cindy Purdy will lead the discussion in the following business items:

Review construction documents for Watson Junior High building project and take appropriate action; review proposal from Southwestern Public Service for lighting the high school parking lot and take appropriate action; and consider for adoption TASB Update 38 to the School Board Policy Books.

Board members will hear the tax collection report; financial reports and informational reports from the board president; superintendent; assistant superintendent for business and assistant superintendent for instruction.

Going into executive session, the board will consider various personnel decisions, and after concluding the executive session will have a school board self appraisal.

flex acreage will be known as "Normal Flex Acreage" (NFA) and the other 10 percent will be known as "Optional Flex Acreage" (OFA).

11. 0/92 Provision - Wheat and feed grain producers may devote a portion, or all of the MPA to conservation uses (CU) and be eligible to receive guaranteed deficiency payments on an acreage equal to the payment acreage on the farm for the commodity reduced by an acreage equivalent to eight percent of the MPA less the actual acreage planted to wheat or feed grains. Such acreage devoted to CU will be known as Pay/92 acreage.

The Pay/92 acreage (including the eight percent) may be devoted to sunflowers, rapeseed, canola, safflower, flaxseed, and mustard seed.

If producers choose to plant any of these oilseeds on pay/92 acres, they must agree to forego (1) deficiency on pay/92 acres planted to such oilseed, or (2) marketing loan eligibility for

Cont. Page 6, Col. 1

Shane Schuster Wins Overall Showmanship

On Friday night, the first part of the 1991 Bailey County Junior Livestock Show became history, with judging of the swine.

FmHA Lowers The 'Boom' On Borrowers

Farmers and bankers in Bailey County are reeling at this time from information received by the Bailey County FmHA office Wednesday afternoon.

Clinton Kennedy, District Director of an eight-county area for FmHA, of Plainview, told *The Journal* Friday morning that many farmers in Bailey County, will be unable to obtain operating funds this year.

Kennedy said he received a telephone call Tuesday afternoon from the state FmHA office at Temple informing him of the new provision of the 1991 Farm Bill.

When President Bush signed the new farm bill on November 28, it contained a provision that changed the "policy and instructions" of the FmHA, and that these will have to be re-written before loans can be approved for some farmers.

Kennedy was informed that FmHA cannot make any delinquent farmer loans. In other words, loan applications from farmers who are delinquent on payments will be put "on hold" until new servicing instructions are received.

The District Director explained that the form, 1951-S, a servicing program, was modified and changed by Congress.

Kennedy explained further that this affects programs that will have to be re-scheduled and re-written. Until then, the loan applications are held in abeyance.

Basically, this breaks down to the fact that people who have had loans, that have become delinquent as of January 1, or will become delinquent as of February 1, will not be able to receive operating funds for this farming year. By the time the law is re-written, it is expected that funding will not be made available until around August.

The FmHA official said quite

Cont. Page 6, Col. 1

Courney Tanksley exhibited her medium weight cross to the grand champion; and Shane Schuster won reserve grand champion with a york.

Shane Schuster won overall showmanship. She was champion in senior showmanship and Courtney Tanksley won reserve showman. For the juniors, Carolyn Schuster was champion showman and Kyle Kindle won reserve showman.

Senior showmanship contestants were Courtney Tanksley, Shane Schuster, Justin Gardner, Larry Robertson, John Noble, Marc Tucker, Gage Angeley and Clay Myers.

Competing in the junior showman division were Lissa Leffler, Kyle Kindle, Krystal Heathington, Keila Kennedy, LeAnn Altman, Carolyn Schuster, Kyle Embry and Mandy Myers.

Complete results of the swine show are as follows:

CLASS I - BERKS

Kyle Kindle, first and breed champion; Daniel Morris, second and reserve breed champion; Travis Copley, Jonathan Kindle, Bryce Embry and Marianne Toombs.

CLASS II - CHESTERS

Colin Tanksley, first and breed champion; John Noble, second and reserve breed champion; Russell Pollard, Brandon Thomason, Scotty Mills and Joshua Kitchens.

CLASS III

LIGHT WEIGHT DUROC

Krystal Heathington, Daniel Morris, Lynsie Black, Howie Zimmerman, Rebecca Robertson and Joshua Kitchens.

CLASS IV

LT. MEDIUM WEIGHT DUROC
John Bryan Cowart, Keila Kennedy, Shane Schuster, Carolyn Schuster, Larry Robertson and Kris Zimmerman.

CLASS V

MEDIUM WEIGHT DUROC

Courney Tanksley, Melissa Toombs, Katie Black, Scotty Killough, Daniel Reeves and Mandy Myers.

CLASS VI

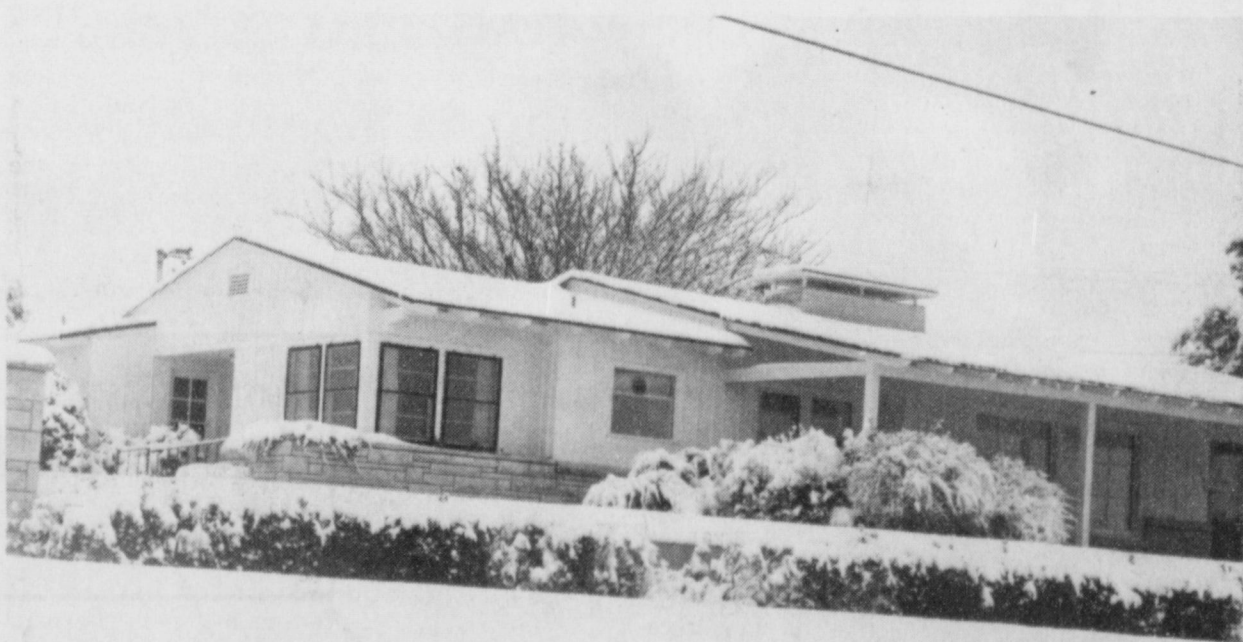
LT. HEAVY WEIGHT DUROC

Colin Tanksley, breed champion; Melinda Schuster, Steven Wauson, Joshua Kitchens and Jarrod Redwine.

CLASS VII

HEAVY WEIGHT DUROC

John Bryan Cowart, reserve breed champion; Heather Hoot-Cont. Page 6, Col. 3



SIX INCHES OF VERY WET SNOW--Wednesday afternoon's drizzle gave way to rain, then sleet, then six inches of snow before morning on Thursday. The home of Vere Fox shows how 'picture perfect' the snow fell. Muleshoe wore a mantle of white that fell straight down, and no snow drifting was noted, as no wind accompanied the snowfall. Friday morning, almost all streets were clear and dry and traveling was easy. (Journal Photo)

1981 Jennyslippers Celebrates Birthday 1991

What Is A Jennyslipper?

A JENNYSLIPPER IS THAT UNIQUE INDIVIDUAL WHO BELIEVES THAT WE ARE LIVING IN THE BEST OF TIMES, IN THE BEST TOWN, WITH THE BEST PEOPLE - AND LOVES HELPING TO KEEP IT THAT WAY. SHE IS WILLING TO WORK AT ADDING TO THESE HIGH QUALITIES.

A JENNYSLIPPER IS HAPPY: SHE FINDS MUCH TO SMILE ABOUT. JUST BEING AROUND A JENNYSLIPPER WILL LIFT YOUR SPIRITS.

A JENNYSLIPPER WORKS HARD, KNOWING THAT EFFORT PRODUCES RESULTS. SHE FEELS THAT THE RESULTS ARE WORTH THE EFFORT - OR MORE TO THE POINT - THAT MULESHOE IS WORTH THE EFFORT. SHE WILL SACRIFICE HER LEISURE TIME TO FURTHER ALL JENNYSLIPPER PROJECTS WHICH ALWAYS PROMOTE MULESHOE.

A JENNYSLIPPER CARES ABOUT OTHERS. THIS IS SEEN IN EVERYTHING SHE DOES: THE LOVE COMES SHINING THROUGH.

A JENNYSLIPPER HAS FUN. USUALLY THE FUN IS HAD IN CARRYING THROUGH A PROJECT. BUILDING A FLOAT FOR A PARADE IS A HILARIOUS UNDERTAKING. IN THE MIDDLE OF BUILDING ONE, I'VE WONDERED, "ARE WE REALLY GONNA SHOW THIS IN PUBLIC?" BUT IT TURNS OUT BEAUTIFUL EVERY TIME. BEAUTIFUL TO US, ANYWAY. OUR BIGGEST LAUGHS COME FROM REMEMBERING OUR SET-BACKS, OBSTACLES AND REVERSALS - AND HOW WE OVERCAME THEM. A JENNYSLIPPER IS DETERMINED, AS WELL AS VERSATILE AND ADAPTABLE.

A JENNYSLIPPER IS POSITIVE, OPTIMISTIC, ENTHUSIASTIC AND CAPABLE. SHE IS POSITIVE ENOUGH TO BELIEVE "SOMETHING" IS POSSIBLE, OPTIMISTIC ENOUGH TO UNDERTAKE IT, ENTHUSIASTIC ENOUGH TO ENJOY DOING IT AND CAPABLE ENOUGH TO SEE THE JOB FINISHED.

A JENNYSLIPPER IS SUPPORTIVE. BECOMING A JENNYSLIPPER IS LIKE SUDDENLY GAINING A LARGE FAMILY OF SISTERS. WE CARE ABOUT EACH OTHER. A PHONE CALL TO A SISTER JENNYSLIPPER, OR A VISIT, WILL MAKE IT BETTER. A CALL FOR HELP WITH A JENNYSLIPPER PROJECT ALWAYS BRINGS ASSISTANCE.

A JENNYSLIPPER IS A NICE PERSON, SOMEONE YOU WILL LIKE TO KNOW.... BEING A JENNYSLIPPER IS "FEELING GOOD ALL OVER."

NELDA MERRIOTT



JENNYSLIPPER OFFICERS---New officers were installed at the Jennyslipper banquet Tuesday night and include (From Left) Joyeline Costen, secretary; Mary Ann Ramirez, president; Evelyn Peat, president elect; and Donna Kirk, treasurer. (Journal Photo)



SPECIAL RECOGNITION---Margie Merritt, left, presented Nelda Merriott a plaque inscribed "Special Recognition, 10 years of Inspiration and Enthusiam 1981-1991", during the Jennyslippers banquet Tuesday night. (Journal Photo)



BANQUET---Entertainment for the Jennyslipper banquet Tuesday night was the Clovis Senior Citizen Kitchen Band. (Journal Photo)



JENNYSLIPPER OF THE YEAR---During the Jennyslipper banquet Thursday night, Mary Ann Ramirez, left, and Linda Tosh were named "Jennyslipper Of The Year". They have worked closely on almost every Jennyslipper project for about three years. (Journal Photo)



KITCHEN BAND---The Clovis Senior Citizens Kitchen Band entertained at the Jennyslipper banquet Tuesday night. (Journal Photo)

COMING TOGETHER IS A BEGINNING,
KEEPING TOGETHER IS PROGRESS,
WORKING TOGETHER IS SUCCESS!!



JOURNAL RECEIVES AWARD---Pat Langfitt, outgoing president of the Jennyslippers, presented Evelene Harris a certificate of appreciation for the Journal's publicity support of the Jennyslippers, at the banquet Tuesday night. (Journal Photo)

Creative Living

by: Sheryl Borden

Information on using rice cakes, protecting the exterior of homes, and convection cooking will be the featured topics on "Creative Living" on Tuesday, January 15 at 12 noon and Saturday, January 19 at 2 p.m. (All times are Mountain.)

Karen Babin, representative of the Rice Council in America located in Houston, TX, will prepare a variety of toppings that show the versatility of the low-calorie rice cake.

Bettie Dixon, with Thompson's Weatherproofing Products in Memphis, TN, is going to talk about 15 locations where water may be silently destroying your home and explain how to protect the exterior of your home to prolong its beauty and life.

Karen Linson, assistant product training manager for Sharp Electronics Corp., is going to show an appliance that is actually four ovens in one. She will prepare several recipes that demonstrate the uniqueness of the convection-microwave combination form of cooking. Linson is from Mahwah, New Jersey.

On Tuesday, January 15 at 9:30 p.m. and on Thursday, January 17 at 12 noon, "Creative Living" will present information on hosting a Caribbean party, the key to fitting when sewing, and a recipe for serving celery.

Florence, "Fo Fo", Voltaire, owner of a catering business in Albuquerque called Time Brokers, Inc., will explain what is involved in putting on a Caribbean themed party. She'll also share some authentic Caribbean recipes that she likes to serve at events she caters for her clients.

Virginia Nastiuk, from Bothell, WA, has her own business called Personal Patterns. She will discuss the shaping and placement of darts and explain how they are the key to achieving perfect fit when sewing apparel.

Robin Blackburn, representative of the American Celery Council, will prepare a delicious microwave recipe that can be served as a side dish vegetable or as a light main dish.

"Creative Living" is produced and hosted by Sheryl Borden. The show is carried on more than 100 PBS stations in the United States, Canada, Guam and Puerto Rico and is distributed by Pacific Mountain Network, Denver, CO. Viewers can request copies of materials offered on the show by sending one 25 cent stamp for each handout requested. Send the stamps, along with your name, address and booklets requested to:

"Creative Living" Requests
% KENW-TV Station #52
Eastern New Mexico University
Portales, N.M. 88130

CARIBBEAN RECIPES

CHICKEN CREOLE

- 4 lb. chicken wings, thighs or drumsticks
- 2 tsp. vinegar
- 4 tsp. brown sugar
- 1 shot of rum
- 1/4 tsp. Oregano
- 1 tsp. mustard
- 1/4 tsp. curry
- 6 bell peppers
- 2 large onions
- 4 tsp. garlic
- 2 tsp. salt
- 1/4 tsp. black pepper

1/4 cup oil

1 tsp. cayenne pepper

Clean chicken and wash with lemon or lime juice. Spice with garlic, salt, black pepper, and oregano. Saute in oil. Let cook for 15 minutes, then place in 350 degree oven until brown, approximately 15-20 minutes.

CREOLE SAUCE: Saute onions and bell peppers. Add chicken drippings, season with cayenne pepper to taste. Add 1/4 cup water, chicken pieces, brown sugar and rum. Cook on top of the stove for approximately 5 minutes. (Serves 4).

RICE CREOLE

- 1 lb. white rice
- 3 tsp. coconut extract or the juice of 1 fresh coconut
- 1 tsp salt
- 1 tsp. garlic
- 1 Tbsp. white sugar
- 1 lb. green lima beans or pigeon peas
- 3 Tbsp. oil
- 1 onion
- 4 whole cloves

Saute onion in oil. Add 3 cups of water. (Steam peas or limas separately). Add coconut, garlic and cloves when water is boiling. Rinse rice 3 times in cold water (until water runs clear). Add rice to broth and cook. When rice is done, add peas or limas. Cover and cook for 20-30 minutes.

Enochs News

by: Mrs. J.D. Bayless

Mr. and Mrs. John Lathem of Bula were guests in the home of Mr. and Mrs. Bill Key last Sunday afternoon.

Melinda Turney is home for the holidays and mid term break from college.

Mr. and Mrs. Dennis Turney and children were guests in the home of her parents, Mr. and Mrs. Trueman Nix Christmas Day at Littlefield.

Mrs. Myrna Turney had all of her children home for Christmas Eve. They were Mr. and Mrs. Dennis Turney and children of Enochs, Mr. and Mrs. Terry Drennan and children Lehman, Mr. and Mrs. Tom Newton and children of Morton, and Kenneth Turney and family.

Mr. and Mrs. J.E. Layton drove to Dell City Sunday afternoon. They visited his brother, Mr. and Mrs. Harold Layton.

Mr. and Mrs. Dasle Nichols met their son and wife, Mr. and Mrs. Donnie Nichols and children at Friona Wednesday and picked up the grandchildren, David and Bethany, who will spend till Saturday with them.

Mrs. Bonnie Belliveau of Lubbock fell Friday and broke University Hospital till Saturday. Her parents, Mr. and Mrs. Goldman Stroud went to visit her Sunday.

HEALTH INSURANCE
CALL Mark Morton
109 S. 1st Muleshoe
272-7519



GOLDEN ANNIVERSARY---Lucille and Ed Harp celebrated their 50th Wedding Anniversary with a reception Saturday afternoon hosted by their children, Jerry and Joy Harp and Keith and Sylvia Harp. A pair of doves topped the two tiered cake which was served along with lavender slush punch. Shades of lavender and gold were carried out in the table decorations. Approximately 70 attended from Olton, Amarillo, Morton, Sudan and Muleshoe. A granddaughter, Kelly Kidd registered the guests. Harp and the former Lucille Carter were married Jan. 5, 1941 in Morton.

(Journal Photo)

Eric Wright of San Diego, CA and brother Mich Wright of Tucson, AZ were guests in the home of their grandmother, Mrs. Inez Sanders for Christmas.

Mr. and Mrs. Clifford Snitker had their family Christmas dinner Sunday, Dec. 30. All of their sons were there, J.C. of Enochs, Curtis and wife of Heart, Stanley and wife of Midland and their children. There was 30 present. She had a sister-in-law, Mrs. Betty Shults, her daughter, Callie D. and a granddaughter, Shannon of Sundown.

Mrs. Wanda Wheeler of Grandberry visited her parents, Mr. and Mrs. Clyde Price from Dec. 21 until Jan. 5th.

Jewel and Ken Jackman of Mesa, AZ visited Mr. and Mrs. Bill Key Friday morning.

Mr. and Mrs. Clyde Ellison Trive, Steve Hinn of Crosbyton visited Mr. and Mrs. J.E. Layton New Years day.

Mrs. Lilly Snitker flew to Ft. Worth Thursday returning home Sunday from a visit with her daughter and family, Mr. and Mrs. Rodney Vosquez at Ft. Worth.

Word was received last Monday Rev. Charlie Shaw, a former pastor of Enochs Baptist Church, was in the hospital at Post, Texas.



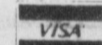
CELEBRATING FIFTY YEARS---Mr and Mrs Troy Page will celebrate their 50th Wedding Anniversary Saturday, January 19 with a reception at the Old Depot. The couple will receive guests between the hours of 2:00 p.m. and 4 p.m. Hosting the reception will be their children and grandchildren, Bill and Lawana Kadel of Ft. Worth, Jamie and Wendy; Troy Wayne Page of Wichita Falls; Sy and Ruby Underwood, Laurie, Kimberly, and John of Russellville, Ark. Page and the former Iela Middlebrooks were married Jan. 18, 1941 in Jacksboro. They have resided in Bailey County since 1946. The couple request no gifts. (Guest Photo)



Buddy Holmberg

Jewelry and WATCH REPAIR

- Ring Sizing 2 Day Service
- Remounting & Diamond Setting
- Full Line Watch Batteries
- Neck Chains Repaired
- Jewelry Appraised for Insurance
- Faster Service
- Diamond Re-Tipping
- Prongs Repaired



Holmberg Jewelry

312 Main Serving Clovis 49 years 762-9376

28th Anniversary

SALE

SUPER!



1990's Priced \$28 Over Invoice
We Have A Full Line Of
Ford, Dodge, Chrysler & Plymouth,

Come By Today & Talk To Robert Hooten
or Charles Mayhugh Today About A
New Or Used Car or Pickup!

We Have Enjoyed Serving You For The Past 28 Years
& Look Forward To Serving You
In The Future!

Muleshoe Motor Co.

"Car Capitol Of The West Plains"

1225 W. Amer. Blvd.

Muleshoe

272-4251

Dial Before You Dig!

Call Energas Company 48 hours before you plan to dig in streets, alleys, easements, or your yard. We will mark the location of underground gas pipelines free of charge.

Be certain you're safe. Call Energas before you dig.



ENERGAS
1-800-692-4694

Afternoon Ceremony Unites Miss Janet Shain, Curtis



MRS. WILLIAM BOYD CURTIS
[Nee Janet Shain]

Miss Janet Shain of Ft. Worth became the bride of William Boyd Curtis of Wichita Falls in an afternoon ceremony Saturday, Dec. 22, 1990, in the Loop 11 Church of Christ at Wichita Falls. Jack Cummings of Altus, Okla. read the double ring vows at 2:30 p.m.

Parents of the couple are Mr. and Mrs. Charles Shain of Muleshoe and Boyd Curtis of Wichita Falls and the late Mozelle Curtis.

Vows were exchanged before

Rebekah Lodge

Seven members of the Muleshoe Rebekah Lodge met Tuesday night, January 8 for their regular meeting with Dorothy Browning presiding.

Clara Lou Jones, acting chaplain, gave the opening prayer.

Fern Davis, Pro tem secretary called the roll and read the minutes of the previous meeting.

The members were reminded that next Tuesday night, Jan. 15 will be installation of officers and are asked to bring a covered dish. This will be a formal affair and everyone is asked to go formal if possible.

Refreshments were served by Dorothy Browning and Clara Lou Jones.

Fern Davis reported that everyone enjoyed the fellowship hour.

Drug Prevention,

Treatment Seminar

Being Offered

A series of seminars to help South Plains school personnel respond to substance use and related issues will begin Jan. 21 at Texas Tech University.

Two Texas Tech drug use prevention programs, Educators for Drug-Free Schools and Rural Education and Awareness in the Classroom and Home (R.E.A.-C.H.), will sponsor the series which will provide an in-depth look at substance use solutions and related issues.

Topics to be addressed will include: diagnosis, assessment and referral; screening--the Substance Abuse Subtle Screening Inventory; addiction and family dynamics; foundations of chemical dependency; and signs and symptoms of drug abuse.

The seminars will be conducted by Texas Tech faculty and drug prevention/treatment specialists. Sessions are open to classroom teachers, counselors, drug prevention coordinators/directors, administrators and members of civic organizations or councils that address substance use prevention in their communities. Continuing education units or academic credit are available for a nominal fee through the Division of Continuing Education.

Classes will meet every other Monday from 5-7:30 p.m. beginning Jan. 21 in the Home Economics Building Room 169. The series will culminate May 4 (Saturday) with a full day of activities scheduled from 9 a.m. to 4 p.m.

For more information or to register, telephone the College of Education at (806) 742-2041 or (806) 742-2313.

two heart shaped candelabras with boxwood and winter greenery. Pews were marked with green bows.

A group from the church sang "There is Love", "Sunrise Sunset", "Wedding Song", "To Me", "Sweet Sweet Spirit" and "Joy To The World." The groom sang "I Heard the Blue Bird Sing" as the bride was escorted down the aisle.

Fathers of the couple lit the unity candle.

Given in marriage by her parents and escorted by her father, the bride chose an informal wedding gown by Bridal Originals. The white lace and satin gown featured a Tabina neckline, coming to a "V" in the back, long sleeves and a fitted Mermaid torso of lace ending in a cut-away flare satin skirt with a lace bow at the side front. The skirt extended to floor length.

Her bridal veil of tulle was accented with pearl leaves and flowers with tulle loops with stripes down the back, decorated with pearls.

The bride carried a tear shaped bouquet consisting of eight calla lilies framed by lily of the valley, rose buds and pussywillow and ivy.

Julia Shain Diebold, sister of the bride, of Wilmington, Del. served as matron of honor. She wore a tea length gown featuring a lace bodice with a scoop neckline and puffed elbow length sleeves. Her hunter green full skirt of satin was gathered below a basque waist line.

She carried a calla lily framed by lily of the valley, rose buds, pussywillow and ivy.

Matthew Fisher, nephew of the groom, of Wichita Falls served as best man. Michael Fisher, nephew of the groom, was candle lighter. Ushers were Matthew Fisher, Michael Fisher and Billy Curtis.

Following the ceremony, a reception was held in the fellowship hall of the church. Kathleen McIntire registered

the guests.

The bride's table was covered with a lace table cloth and accented by a three tiered wedding cake and small satellite cakes, decorated with pale peach roses and green leaves. Christmas decorated mints and pale peach punch were served by Sandy Underwood and Tina Klinger.

A chocolate cake, with white icing, decorated with a music scale and fiddle was served by Sandy Underwood of Wichita Falls. Coffee was served from a silver coffee service.

Mrs. Karen Hestand and Mrs. Diane Fisher helped to prepare for the wedding and reception.

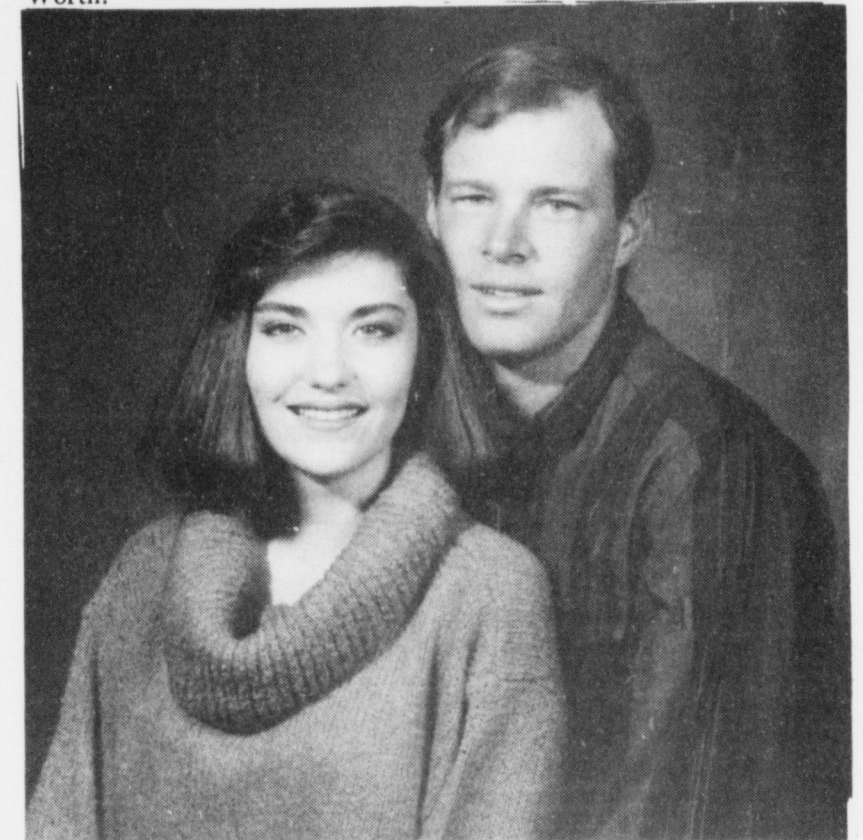
Following a wedding trip to San Antonio, the couple are making their home in Ft. Worth.

The bride is a 1982 graduate of Muleshoe High School, attended Midwestern State University. She received her B.S. degree in Mass Communications from East Texas State University in 1987, and received Medical Laboratory training at Sheppard Air Force Base at Wichita Falls and Carswell AFB at Ft. Worth in 1990-91.

A graduate of Hirschi High School at Wichita Falls, the groom attended Midwestern State University and received a degree in Chemistry in 1987. He is currently in a graduate program in Computer Science at M.S.U. He is employed by the Computer Store.

Out of town wedding guests included: Mr. and Mrs. Charles Shain of Muleshoe and Dr. and Mrs. Michael Diebold of Wilmington, Del.

The couple were honored with a rehearsal party at the Loop 11 Church of Christ fellowship hall, hosted by the groom's father and catered by BBQ Catering.



ENGAGEMENT ANNOUNCED---Mr and Mrs Lynn Hill of Earth and Mr and Mrs Darrell Mason of Lazbuddie announce the engagement and approaching marriage of their children, LaShea Wilson and Shane Mason. Vows will be exchanged at 2 p.m. Feb. 9 in the home of the groom's parents. The bride is a 1990, graduate of Springlake-Earth High School and is presently attending ENMU in Clovis, N.M. Mason is a 1987, graduate of Lazbuddie High School and is engaged in farming and raising show stock. The couple will make their home in Lazbuddie.

Strike Up The Band Now Being Featured

"Strike Up the Band," a weekly one-hour Portales band music program is now airing on KENW-FM and KMTH-FM every Sunday at 4 p.m.

"Strike Up the Band" is produced and hosted by Dr. David L. Eisler, Dean of the College of Fine Arts.

Dedicated to bringing you the best in band music, the program features recordings by professional, service, university, high school, and junior high school organizations. Together with interviews with the leaders in the band world, the program is designed to be entertaining and informative.

Once a month "Strike Up the Band" will highlight a local band program which has achieved a high standard of

excellence. A feature of every program will be a section of announcements about the bands in our area.

If you would like your concert and/or activities included in the segment, you may submit them approximately one month in advance to Dr. Eisler, % Station 16 ENMU, Portales, N.M. 88130.

If everyone would stop rushing, life would move along intelligently.

It will take a smart person to figure out what his taxes will be this year.

Frankly, the longer we travel this road of life, the less we know about it.

Happy 80th Birthday

Henry Landers

We Love You

Tina, Darin, Weston and Lindsay

Western Wear
In Texico
STORE HOURS
Mon. thru Sat. 9 A.M. till 6:30 P.M. (c.s.t.)

Rip's Super SALE

Fall and Winter Merchandise

50% to 75% OFF

Layaways Welcome Toll free phone
314 Wheeler WE ACCEPT: 800-748-2459
482-3363

Start The New Year Out Right.

Let Us Cater Your Parties!

<p>1/2 Beef \$1.59 lb. Cut & Wrapped To Your Specifications</p>	<p>Tenderized Beef Cutlets 5 lb. Box \$18.50</p>	
<p>Pork Loins By The Loin \$1.49 lb.</p>	<p>Pork Spare Ribs \$1.49 lb.</p>	<p>Larry's Breakfast Sausage 2 lb. Stick \$3.00</p>
<p>New York Strip Steaks By The Loin \$3.91 lb.</p>	<p>Home Made Smoked German Sausage \$2.19 lb.</p>	

Let Larry & Paula Cater Your Next Party!

Winkler Meat Co.

401 Main 272-4703

Jennyslippers Celebrate Birthday At Banquet

The Muleshoe Jennyslippers celebrated their tenth anniversary Tuesday night at their annual banquet. "It all started with an idea," said Nelda Merriott as she was giving a brief history of the Jennyslippers. "Linda Lee, who was secretary of the Chamber of

Commerce at that time, and I were talking, I had just joined the chamber and was enthusiastic and anxious to do something. As we were talking Linda said "what we need is a women's division of the chamber."

Since Littlefield had a

womens division, we called and later met with some of the ladies, who gave lots of advice and shortly the Jennyslippers roared into life" Mrs. Merriott continued.

Mrs. Merriott told of some of the accomplishments of the Jennyslippers over the past ten

years. These accomplishments have included a "back to School Parade" and watermelon feast, barbecues, skating, a Salute to Ole Pete on his 25th birthday, Texas Sesquicentennial Bells Across America, entertained the Oklahoma bus tour, walk-a-thons, Financial Aid Seminars, scholarships and parade floats, which have won several first places, just to name a few of the Jennyslipper activities.

One of the latest projects was the making of candy and cookies to send to the servicemen and women serving in Saudi Arabia. This project actually started with "Support Your Armed Forces" badges which were passed out at the Bells Across America ceremony. The group later voted to use the donations to make cookies to send to these service men and women. Norma Bruce read thank you letters from some of the servicemen who received these care packages.

"We thrive under pressure, just this last parade, we met on Tuesday and someone said "are we going to have a float in the Christmas parade? We sure did and won first place," Mrs. Merriott continued.

Lonnie Merriott gave the invocation prior to dinner being served by Blue Goose Catering.

The Clovis Senior Citizen Kitchen Band brought along their mop bucket, coffee pot and scrub board and entertained, the room filled audience.

Pledge of Allegiance was led by June Green.

Pat Langfitt, outgoing president, welcomed and recognized the guests which included: Dewayne and Sheryl Castleberry, Norman and Helen Head; Jack and Magann Rennals, Nancy Kidd, Chamber of Commerce manager; Harvey and Marie Bass, Norene Pierce, Cleta and Mark Jacobson, Howard Watson, Wanda Brown, April Watkins, Agnes Wolfe, Mrs. Sowder, Lona Embry, Ofemia Torres, Chamber of Commerce secretary; and Jennyslipper junior members, Amanda Ashford, April Franklin and Stacy Langfitt.

Margie Merritt, a former Jennyslipper member who now lives in Clovis, N.M. made a special presentation. She presented Nelda Merriott a plaque for her Enthusiasm.

Billie Downing presented the "Jennyslipper of the Year" Award to Mary Ann Ramirez

and Linda Tosh. In making the presentation, Mrs. Downing stated that they had been Jennyslippers for about three years and had worked on almost every project, especially youth activities. They are also active in PTA, Girl Scouts, Church and one is a member of the Firemens Auxiliary. They were presented plaques.

Pat Langfitt recognized the local news media and presented certificates to each, in appreciation of their support. Retiring officers and committee chairmen were recognized by Mrs. Langfitt and Donna Kirk and include: Pat Langfitt, president; Mary Ann Ramirez, president elect; Bobbie Harrison, secretary; and Norma Bruce, treasurer.

Retiring committee chairmen include: June Green, Joyeline Costen, Renee Rudd, Vivian White, Kathi Franks, Lorene Lynch, Doris Wedel, Linda Tosh, Billie Downing, Mary Ann Ramirez, Evelyn Peat, Bobbie Harrison, Nancy Kidd, Nelda Merriott and Terie Snell.

Officers for 1991 were install-

ed by Thursie Reid and Katheryn Taylor. These officers include: Mary Ann Ramirez, president; Evelyn Peat, president elect; Joyeline Costen, secretary; and Donna Kirk, treasurer.

It was noted that all past presidents of Jennyslippers, with the exception of Sandi Robinson who moved, were present. These past presidents include: Nelda Merriott, 1981-82; Marjorie Merritt, 1983; Kathryn Taylor, 1984; Vivian White, 1985; Thursie Reid, 1986; Billie Downing, 1987; Donna Kirk, 1988; and Sandi Robinson, 1989.

The banquet concluded with the incoming president's remarks and recognition of the 1991 committee chairmen, Mickey Montgomery, Public Relations; Joyeline Costen, Membership; Linda Tosh, Telephone; Pat Langfitt, Special Events; Ruby Green, Budget and Finance; Ellen Ladd, Agriculture; Thursie Reid, Business Development; Patsy Chance, Commercial Growth; Billie Downing, Service and Cultural Growth; Evelyn Peat, Bus Tour; Bobbie Harrison, Muleshoes and Game Sets; Nancy Kidd, Bakeless Bake Sale; and Nelda Merriott, Texas Toast.

Ruby Green gave the benediction.

Bridal Shower Honors Miss Brenda Mudford



MISS BRENDA MUDFORD

The home of Hellen Adrian was the scene of a bridal shower Sunday, Jan. 6 honoring Miss Brenda Mudford, bride elect of Scott Long.

Georgia Pena greeted the guests as they arrived between the hours of 2 and 3:30 p.m.

Miss Jenny Bennett and Miss Christi Pena served thumbprint cookies and orange pineapple punch from crystal appointments.

The serving table was covered with a teal table cloth with a lace overlay and accented with a teal and silver silk floral arrangement. The honoree's corsage consisted of teal, silver and ivory roses.

Special guest was Pat Mudford, mother of the bride elect.

The hostesses gift was Vision Cook Ware. Hostesses for the occasion included: Hellen Adrian, Betty Jo Davis, Holly Huckaby, Lanelle Skaggs, Louvenia Garlington, Marquita Adamson, Christi Pena, Johanna Wrinkle, Dani Heathington and Georgia Pena.

Top Ten Songs

For The Week

1. Unanswered Prayers By Garth Brooks
2. Forever's As Far As I'll Go By Alabama
3. I've Come To Expect It From You By George Strait
4. Life's Little Ups And Downs By Ricky Van Shelton
5. Come On Back By Carlene Carter
6. Rumor Has It By Reba McEntire
7. It won't Be Me By Tanya Tucker
8. Daddys Come Around By Paul Overstreet
9. Never Knew Lonely By Vince Gill
10. Brother Jukebox By Mark Chestnut

Top Amateur Chefs Compete At Texas Beef Cook-Off

The top amateur indoor cooks will gather in the scenic Texas Hill Country April 25-26 for the 1991 Texas Beef Cook-Off. The contest will take place at the YO Hilton in Kerrville.

At stake is a cash prize of \$3,000 and an expense-paid trip to the National Beef Cook-Off in the fall of 1991 for the first-place winner. The second place Texas Beef Cook-Off winner receives \$2,000, and the third place winner, \$1,000.

"The Texas Beef Cook-Off annually shows off the brightest new ideas in preparing beef dishes," Sharon Spenrath, chairman of the Texas Beef Cook-Off, said. "Each year, these amateur home cooks show the diversity, versatility and popularity of today's beef. Their talents indicate that beef has grown far beyond just steaks, roasts and patties."

Last year's winner featured an original adaption of caldo, a Mexican soup made from a strong beef stock base and

chunks of chunk roast. Anyone 18 years of age or older who resides in Texas and is not a food professional may enter the 1991 contest. Each contestant must have an original, innovative beef recipe. Although the call for entries covers indoor, outdoor barbecue and microwave categories, the Kerrville competition will declare a Texas indoor winner only. Outdoor barbecue and microwave winners are named in national competition.

Indoor entries will be judged by a five-member panel of national food experts. Dishes are rated on taste, ease of preparation, appeal and appearance. The first-place winner will be eligible to win an additional \$15,000 plus other prizes at the National Beef Cook-Off Sept. 22-24 at Colorado Springs, Colo.

Contestant entries must be postmarked by March 1. For an entry form and indormation, contact Sharon Spenrath, Texas Beef Cook-Off chairman, Rt. 1, Box 126, Confort, Texas 78013.

Bailey County Journal USPS 040-200
 Established March 31, 1963. Published by Muleshoe Publishing Co., Inc. Every Sunday at 304 W. Second, Box 449, Muleshoe, Tx 79347. Second Class Postage paid at Muleshoe, Tx. 79347.

MEMBER 1991
TEXAS PRESS ASSOCIATION

L. B. Hall, Publisher
 Sammye Hall, Vice President, Controller
 Cleta Williams-Jacobson, News
 Evelene Harris, Society
 Holly Millsap, Advertising
 Dora Tozcano, Classified

SUBSCRIPTIONS
 Muleshoe Journal and Bailey County Journal
 Bailey and surrounding counties
 Muleshoe Journal and Bailey County Journal
 Elsewhere in Texas \$14.75
 Muleshoe Journal and Bailey County Journal
 Outside Texas, \$16.50
 Yearly By Carrier \$12.50

Advertising Rate Card on Application
 *Advertisers should check their ad the first day of insertion. The Journals will not be liable for failure to publish an ad or for a typographical error or errors in publication except to the extent of the cost of the ad for the first day of insertion. Adjustment for errors will be limited to the cost of that portion of the ad where the error occurred.



ARTIST OF THE MONTH--Carol Ellis of Friona has been named "Artist of the Month" of January and some of her paintings are on display at the Muleshoe Public Library. She has been painting since she was 13 and studied commercial art at Chickasha, Okla. She later transferred to Texas Tech where she majored in Journalism. Mrs. Ellis has taken various workshops under LaWanda Calton of Portales, N.M. Gene Green of Olton, Danny Gamble of Amarillo and Arnie Vail of Irving. She and her husband, Bill are the owners and managers of the Friona Star, where Mrs. Ellis stated she has her own Art Gallery.

Congratulations Don Clapp



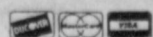
Don Clapp, manager of the Muleshoe Wildlife Refuge, was the lucky winner of a GE-VCR given away at Ben Franklin, during the Great Ben Franklin Video Dept. VCR Give-A-Way held during Christmas. All persons who rented movies during the last quarter of 1990 were automatically in the drawing.

The GE-VCR has features of on-screen remote control programming, 8-program, One-Year Warranty, 155 Channel capabilities, VHS Index Search System, Elapsed Time Counter and One-Touch Recording system.

The staff and management of Ben Franklin once again congratulate Don Clapp.

Ben Franklin
 Better quality for less

2104 W. Amer. Blvd.



272-3855

Mon. - Sat.
 8 a.m. - 8 p.m.
 Sun.
 12 - 5:00 p.m.

For Those Who Thought We Were Done We Have Just Begun In '91

Financing Available

New Store Hours: 8:00 - 6:00 p.m. Mon. - Sat.

2x4 Studs 99¢	1/2 Sheetrock \$2⁶⁹
Liquid Nail \$1⁵⁹	1/2 CD Plywood \$7⁹⁹
15 lb. Roofing Felt \$8⁹⁹	3/4x60 Electrical Tape 59¢

Many More In-Store Specials!



Higginbotham-Bartlett Co.

"Quality And Service At The Right Price"

215 Main

272-3351

1991 Farm Program

Cont. From Page 1

such oilseed which is planted on pay/92 acres and elsewhere on the farm.

12. 50/92 Provision -- Upland cotton producers may devote a portion or all of the MPA up to 50 percent of such acreage to CU if at least the other 50 percent is planted. The deficiency payment on the acreage devoted to CU, less an acreage equivalent to eight percent of the MPA, will be guaranteed at not less than the estimated rate.

13. Crop Acreage Base (CAB) -- The CAB's for wheat and feed grains is the average of planted and considered planted (P & CP) of the preceding five years. The CAB for cotton is the average of P & CP of the preceding three years, except, if the cotton crop was nonparticipating in 1989 and 1990 or in 1990 and 1991, the 1991 and 1992 CAB, respectively, will be calculated using the 1990 CAB rules, which is the smaller of, the last five year average excluding zero's or, the last two year average including zero's.

14. Zero Certification - Producers who certify that no acreage on the farm was planted to the program crop and that any fruit and vegetables planted on the farm was not in excess of normal plantings will have the entire program crop

FmHA...

Cont. From Page 1

a few Bailey County people, especially the south part of the county, will be affected. The north part of Bailey County will not be affected as much.

He said the delinquencies can be attributed to the extreme heat and dry conditions that would not allow farmers to plant last spring, thus they had no crops to help offset their FmHA loans.

Bailey County farmers said on Thursday and Friday that as much as 50-60 percent of the county farmers will be unable to obtain operating funds for this year.

Kennedy said, "I wish I knew something that would help. I know the farmers are hurting."

He further said this will affect all delinquent borrowers, whether they are getting a loan from PCA or a bank in connection with FmHA subordination, and who did not apply prior to November 28, 1990, before the new farm bill was signed.

Farmers are urging everyone, other farmers, ranchers, business people and private citizens to contact your Congressmen, your senators, and try to get immediate help to alleviate the condition.

As one farmer termed it, "Sixty percent of the farmers in this county will be dead -- we can't get operating funds, so we can't plant. If we can't plant, there will be no crops."

Commissioners...

Cont. From Page 1

management program; authorize county judge to take applications for county depository; consider whether reserve deputies should be covered by workers compensation insurance; authorize advertising to sell 1954 Chev. 3/4 ton pickup belonging to Precinct Four through competitive bidding process; approve soil conservation worksheets and discuss maintenance agreement for Law Enforcement Center telephone system.

acre base considered as planted for base retention purposes.

15. Limited cross compliance does not apply. However, nonparticipating crops, including oats, cannot increase their bases if there is a participating crop on the farm. Nonparticipating crop plantings may exceed CAB's, but P & CP will be limited to CAB's.

16. Payment Limitation will be limited to \$50,000. More on payment limits will be announced later.

17. 1991 Winter Wheat Exception -- Producers of 1991 winter wheat may waive the triple base payment reduction requirement. This means that maximum payment acres will equal the permitted acres.

If the flex acre reduction is waived producers must agree that the deficiency payment will be calculated on a 12-month basis, instead of the 5-month basis used for triple base participation.

18. Use of 0/25 Flex -- Crops planted on 0/25 flex are not eligible for deficiency payments, eligible for nonrecourse loan protection if applicable, and considered as P & CP credit for the applicable participating program crop.

Additional details of the 1991 wheat, feed grains, cotton and oilseed programs will be announced later.

"We will be holding producer meetings as soon as we receive more details on the 1991 program," concluded Noble.

WOOL AND MOHAIR

January 31, 1991 is the final date for filing your 1990 wool and mohair sales documents for the incentive payment.

RECONSTITUTIONS

ASCS needs to know now of any changes that would cause a farm or farms to be combined or divided for the 1991 crop year.

INTEREST RATE

The loan interest rate for January is 7.125 percent.

Assembly Of God

Planning Revival

Evangelist and Mrs. Paul McGeachie will begin evangelistic services at First Assembly of God Church, 521 South First Street, in Muleshoe, on Sunday, January 13.

Evangelist McGeachie has traveled extensively in the ministry, being guest minister for camp meetings, conventions, and unusually productive, revival meetings, says Dean Reid, pastor of First Assembly of God Church.

"This man's ministry has been greatly used of the Lord," said Pastor Reid, "and his many and varied experiences offer to all who attend, a wonderful opportunity to receive what is needed.

"We of First Assembly are expecting this Revival Meeting to be a blessing to our community, by seeing the sinner converted, the believer filled with the Holy Spirit and the sick healed," added the pastor.

"As your friend, we extend to each of you a cordial invitation to be our guest at any or all of the services."

Service times are 10:45 a.m. and 6:30 p.m. on Sunday, and each evening, Monday through Friday, at 7 p.m.

"Come and enjoy the service, and the friendliness, of First Assembly," concluded Pastor Dean Reid.

Livestock Show

Cont. From Page 1

en, Larry Wauson, Buck Angeley and Robin Cowart.

CLASS VIII

LIGHT WEIGHT HAMPS Katie Black, Russell Pollard, Keith Kindle, Ky Kennedy, Kayla Magby, Kourtnee Magby, and Howie Zimmerman.

CLASS IX

LT. MEDIUM WEIGHT HAMP Lysie Black, LeAnn Altman, Justin Gardner, Brittany Kirby, Brandi Harrison, Bryce Embry, and Heather Hooten.

CLASS X

MEDIUM WEIGHT HAMPS Gage Angeley, breed champion; Jarrod Redwine, Courtney Tanksley, Larry Robertson, Buck Angeley, Mandy Myers and Andy Ruiz.

CLASS XI

LT. HEAVY WEIGHT HAMPS Krystal Heathington, Monty Kirby, Marc Tucker, Katie Black, Amy Hooten, Travis Copley and Daniel Reeves.

CLASS XII

HEAVY WEIGHT HAMPS Carolyn Schuster, reserve breed champion; Robert Gardner, Steven Wauson, Andy Wilson, Clay Myers and Larry Wauson.

CLASS XIII

LIGHT WEIGHT POLAND Melinda Schuster, reserve breed champion; Toby Kitchens, Justin Gardner and Andy Ruiz.

CLASS XIV

HEAVY WEIGHT POLAND Gage Angeley, breed champion; Marc Tucker, Kyle Embry and Jarrod Redwine.

CLASS XV

LIGHT WEIGHT SPOT Scott Pollard, breed champion; Greg Pena, Brandi Harrison, Brandon Thomason and Misty Angeley.

CLASS XVI

MEDIUM WEIGHT SPOT John Noble, reserve breed champion; Justin Gardner, Scotty Mills, Robert Gardner and Jason Harmon.

CLASS XVII HEAVY WEIGHT SPOT Buck Angeley, Toby Kitchens, Robert Gardner, Kris Zimmerman and Howie Zimmerman.

CLASS XVIII LIGHT WEIGHT YORK Jason Harmon, reserve breed champion; Scott Pollard, Keila Kennedy, Lissa Leffler, Kyle Kennedy, Keith Kindle and Kyle Embry.

CLASS XIV HEAVY WEIGHT YORK Shane Schuster, breed champion and reserve grand champion; Gage Angeley, Justin Lee, Drew Ramm, Justin Lee and Audra Lee.

CLASS XX LIGHT WEIGHT CROSS Ky Kennedy, Colin Tanksley, LeAnn Altman, Heather Hooten, Monty Kirby, Marc Tucker, Amy Hooten and Daniel Morris.

CLASS XXI LT. MEDIUM WT. CROSS Andy Wilson, reserve breed champion; Dennis Reeder, Lissa Leffler, Daniel Reeves, Rebecca Robertson and Amy Hooten.

CLASS XXII MEDIUM WT. CROSS Courtney Tanksley, breed champion and grand champion; Jason Harmon, Brittany Kirby, Larry Wauson, Jeffrey Wheeler, Bryce Embry, and Krystal Heathington.

CLASS XXIII HEAVY MED. WT. CROSS Travis Copley, Kyle Embry, Mandy Myers, Kasey Wright, Clay Myers and Larry Robertson.

CLASS XXIV LT. HEAVY WT. CROSS Steven Wauson, Joshua Kitchens, Jonathan Kindle, Toby Kitchens, Scott Pollard and Greg Pena.

CLASS XXV HEAVY WEIGHT CROSS John Noble, Lissa Leffler, Justin Lee, Russell Pollard and

Keith Kindle.

(Editor's Note: The results from Saturday's Lamb and Cattle Show, and pictures will be in the Thursday, January 17 Muleshoe Journal.)

7th, 8th Grade

Basketball Boys

In Full Action

EIGHTH GRADE On January 7, the eighth grade Mules defeated Littlefield 37-28 to widen their yearly tally to 8-4 for the season.

In the first quarter, it was a close 9-5, and at halftime, the Littlefield eighth grade was leading 13-14. Coming back in the third, the Mules widened out the score 25-22, coming out as 37-28 victors.

In the game, J. Guana, B. Field and R. Kirven each had eight points; E. Rodriguez had six points. With two points each were A. Perez, A. Rodriguez and C. Edwards. Scoring one point was T. Shipman.

In previous games, on December 17, they defeated Floydada 49-47 in double overtime; on December 13-14-15, they played in the Abernathy tourney, taking the Championship with a 45-35 victory over Idalou. They also defeated Cooper 44-25 and Shallowater 46-41 in the first round.

SEVENTH The struggling seventh grade has a season record of 0-8 following a narrow 27-29 loss to Littlefield on January 7.

They trailed 3-9 ending the first stanza; and it was 7-13 at the half. In the third, the score was 13-23, and the seventh grade came within two points in the fourth quarter before losing 27-29.

D. Garbarino had 11 points; C. Johnson and J. Slayden each had six points; A. Gonzales scored two points and J. Rodriguez and M. Jaramillo each had one point.

The seventh grade Mules were scheduled to play in the Sudan Tourney on January 10-12. Their first opponent was to have been Hart, then Olton or Dimmitt on Friday.

Patients in Muleshoe Area Medical Center

JAN. 8-10 TUESDAY

Stephan Dominguez, Monica Galvan, Ovie Manasco, Edith Gilliland, Letha Beach, Mildred Nieman, Willie Mae Walker, Betty Vansandt, Pedro De Leon, Melgee Reinholt and Ray Edwards

WEDNESDAY

Stephan Dominguez, Dakota Gonzales, Monica Galvan, Melgie Reinholt, Edith Gilliland, Letha Beach, Mildred Nieman, Chess Phelps, Ray Edwards, Willie Mae Walker, Betty Vansandt, Pedro De Leon, and Alice Duncan

THURSDAY

Stephan Dominguez, Dakota Gonzales, Monica Galvan, Melgie Reinholt, Edith Gilliland, Letha Beach, Mildred Nieman, Chess Phelps, Ray Edwards, Willie Mae Walker, Betty Vansandt, Pedro De Leon and Alice Duncan

NEWS VIEWS

Khalid Bin Sultan, commander of joint forces in Saudi Arabia:

"If our friends are here to shed their blood with us, the least we can do is to put our forces right in front..."

Francois Mitterrand, President of France:

"Today, for the first time, men can cross the Channel underground. What a brilliant sign of the vitality of our two countries."

James A. Baker III, Secretary of State, on release movement:

"What is working is that we are beginning to get the clear message across to Saddam Hussein."

Lech Walsca, Poland's new President:

"There are terribly difficult tasks waiting for us...I hope that we will be building Poland's future together."



THE LITTLEST SNOWMAN--Before school time Thursday morning, some one on West Second Street took the time to construct a snowman. By Friday afternoon, a number of snow people could be seen in different locations all over Muleshoe. In the afternoon on Friday, 2-3 inches of snow was still on the ground. (Journal Photo)

**Attention
Driving Public!!!!**

**Look Who's
16
Love
Mom, Dad,
Brother**

A&M "CLEARANCE SALE"

Walls Vellux Duck Hooded Jacket Brown or Navy Sizes: SMR to 3XL-T Was: \$39.99 to \$47.99 Now: \$21.99	
Carhart Brown Duck Hooded Jacket	Brown, JR106, Blue, JR108, Brown JR116, Sizes Med. R. 4XL Was 39.99 - 44.99 Your Choice Med R-2XL Was 39.99 - 39.99 4XL-TL Was 43.99 - 48.99 \$21.99
Entire Stock of Boys Coats 1/2 Price "Hurry Be First"	
Men's Walls and Miller Coats Assorted Styles & Colors Selected Group 30% Off	
Wrangler Mens Jeans #13MWZBA, MT, CT, ME Was \$20.99-\$22.99 Now: \$12.99 (Selected Styles and Colors) Also #70HW Was: \$25.99 Now: \$14.99	
<p>Mens Sweaters 1/2 Price</p> <p>Laredo Racer Lacers Reg. \$94.50 Now: \$39⁹⁹</p> <p>Jordache Jeans (Clovis Store Only)</p> <p style="text-align: center;">1/2 Price also Jordache Tops are 1/2 Price</p> <p>Ladies Sweaters Assorted Styles & Colors 1/2 Price "Hurry"</p> <p>Mens Flannel Shirts Excellent Selections of Styles and Colors Med.-3XL Regular \$11.99-\$18.99 Now: \$7.99-\$14.99</p> <p style="font-size: x-small;">3 Locations To Better Serve You • 2600 E. Mabry Dr., Clovis, N.M. 369-762-7777 • 1601 S. Ave. D., Portales, N.M. 369-798-8542 • 1302 W. American Blvd., Muleshoe, Tex. 806-972-5571</p>	<p>Mens Western Shirts Selected Group Styles & Colors</p> <p>Ruddock: Was \$19.99.....\$9.99 \$21.99.....\$10.99 \$28.99.....\$14.99 \$18.99.....\$9.99</p> <p>Wrangler: "Super Specials" Was \$19.99.....\$9.99 \$20.79.....\$10.99 \$24.99.....\$12.49 \$25.99.....\$12.99</p> <p>Karmen: Was \$29.99.....\$10.99 \$32.99.....\$16.99</p> <p>Panhandle Slims: Was \$29.99.....\$14.99 \$32.99.....\$16.99</p> <p>Walls and Millers Navajo Style Jackets Stock on Hand Now: \$39⁹⁹</p> <p style="text-align: center;">FARM & RANCH SUPPLY</p> <p style="font-size: x-small;">All Stores Open Monday - Saturday 7:30 a.m. - 6:00 p.m. Sundays 11:00 a.m. - 5:00 p.m.</p>

WHY BUY A COPY WHEN YOU CAN AFFORD THE ORIGINAL?

There's no reason to settle for second best, when GM Goodwrench parts are readily available and competitively priced. GM Goodwrench parts are designed specifically for your GM vehicle. So they fit right, they work right, and they last longer.

GM Goodwrench branded parts are available only at your GM dealer. So stop in and discover the difference Mr. Goodwrench makes. Get genuine GM parts from Mr. Goodwrench at:

Robert D. Green, Inc.
2400 W. Amer. Blvd. 272-4588
It's not just a car, it's your freedom.

Mr. Goodwrench

Kiwanis News



By R.A. Bradley

Eleven days into a new year and with a beautiful snow and good moisture, 15 Kiwanians, four guests and sweetheart, Marsha Wilson met at 6:30 a.m. Friday, the best part of a new day at the La Placita Cafe.

Have you seen a prettier snow, which melted real good on Thursday, which gave us moisture we needed so bad. It was really welcomed.

I would like to say a big thank you to the crews for the City of Muleshoe and the State Department. I don't believe I have ever seen the streets bladed where you could travel them, so quickly and so thorough. Again, guys, thank you for a good job.

President Glen Morris called the meeting to order. Reggie Johnson led the club in the pledge to our wonderful flag and the invocation was given by Eddie Morris.

After much harassment, Robert Montgomery gave the friendship coin to Randy Lewis. Robert stated that anyone as friendly as Randy shouldn't have any trouble finding a friend. After all of the harassment, Robert stated that he didn't have to get up that early and come to Kiwanis to be treated like that. He could get that at home. Sharron, I really do not believe that!!

Hugh Young was in charge of the program and introduced Tadd Young, his son, Lisa Crafton from Bedford, Texas, a friend of Tisha, and Tisha Young, his daughter, who is in school at North Texas University. Tisha told the club thank you for their help and that she had completed the first semester and was leaving today to start the second semester. She was enjoying school very much. We could not get her to discuss her grades. Probably that was discussed with Pat and Hugh. We are not afraid of your GPA, we will let you worry about that. Study hard, have fun, and do real good. We are very proud of you. Lisa, come back to Muleshoe and visit us again.

Hugh then introduced Coach Steven Hatfield, one of our basketball coaches. Coach Hatfield told about the MHS basketball teams. Coach stated that MHS opened their conference with Littlefield on Tuesday and won.

Coach stated that MHS had a well balanced team. They were able to rotate and play 10 or more men. Coach said that was their secret. Muleshoe played 10 men to their opponent's five.

Keep it up coach, maybe they won't notice. They might think the extra guys are referees, etc. Coach praised the young men for their dedication, team work and stickability. It is hard to beat a team with five good men on the court and with five to 10 more on the bench who can come in and do the job just as well.

Sweetheart Marsha Wilson urged all to come out tonight and cheer the Mules on to victory over Dimmitt. Muleshoe has not beat Dimmitt since 1971. Tonight, let's break that spell -- Good Luck, Coach and Mules. Junior Varsity at 5 p.m., girls 6:30 and varsity boys to follow.

Don't forget our 4-H and FFA Junior Livestock Show - today and tomorrow.

Hugh, thanks for a good program.

Go Mules and Mulettes.

Sheriff's Report

The following reports were put in the books of the Sheriff's office.

December 16, 1990
One 21 yr. old male individual for-Driving While Intoxicated, \$750 bond set

December 17, 1990
One 21 yr. old male for Driving While Intoxicated, Carrying A Prohibited Weapon and Possession of Marijuana, 3 (three bonds were set)

December 17, 1990
One 24 yr. old male for Driving While Intoxicated, \$750 bond

December 18, 1990
One 32 yr. old female for-Murder

December 18, 1990
One 18 yr. old male for-Class B Misdemeanor, Theft, \$500 Bond

December 18, 1990
One 18 yr. old male for-Class B Misdemeanor, Theft, \$500 Bond

December 20, 1990
One 19 yr. old male for Burglary (Warrant) from another county

December 23, 1990
One 22 yr. old male for Possession of Marijuana under 2 oz., \$750 Bond

December 28, 1990
One 21 yr. old female for Driving While Intoxicated, \$750 Bond

December 30, 1990
One 38 yr. old male for Driving While License Suspended, \$500 Bond

December 31, 1990
One 28 yr. old male for Driving While Intoxicated, \$750 Bond

January 1, 1991
One 21 yr. old male for Driving While Intoxicated, \$750 Bond

January 3, 1991
One 36 yr. old male for a Tarrant Co., Warrant, \$3,000 Bond

January 4, 1991
One 47 yr. old male for Driving While Intoxicated, \$750 Bond

January 5, 1991
One 35 yr. old male for Driving While Intoxicated (Felony), \$2,500 Bond

January 5, 1991
One 30 yr. old male for Public Intoxication, laid out fine

January 5, 1991
One 26 yr. old female for Possession of Alcoholic Beverages intended for resale, \$750 Bond

January 6, 1991
One 25 yr. old male for Public Intoxication, \$212.50, fine

January 6, 1991
One 26 yr. old male for Driving While Intoxicated, \$750 Bond

**MISD Fine Arts Boosters
Need Something-HELP!**

Can you tell anyone what a fine arts booster is? This is an easy question with an easy answer, but not many people want to belong to an organization that works only for OUR KIDS.

Participation of parents in the Fine Arts Boosters has GREATLY fallen off. Due to this, several things have had to change. For example, the big calendar project has yet to get off the ground; secondly, the much loved, well attended Dinner Theater will be very different this year. There will be no style show this year.

It takes a lot of hard working, dedicated parents to put this together and the Fine Arts just don't have the support from the parents they need.

The few loyal parents who do attend meetings need to know from the other parents who have a student in ART, BAND or SPEECH if the group needs to continue.

All of the money the Fine Arts Booster makes goes right back into ART classes to help buy supplies when needed; into the SPEECH department to make costumes for the One-Act-Play, to get them to contest; the BAND to help buy instruments when needed, help pay for the Band trips to go to contest.

The kids deserve to have a good group supporting them like this group does -- but a small number of 6-10 people cannot do all the work that is needed.

"We want our KIDS to have the best supplies, costumes, trips and support," said a spokesperson, "so let's get up and help with the FINE ARTS BOOSTERS."

"After all, who but our one act play brings home a trophy from contest, our number 1 band brings home a trophy from marching and concert contest several years in a row?"

"Let's not let the kids down, they need to know that we, as parents, are behind them in every way. Please come back to a group that really needs its numbers once again."

For Your
Mary Kay Cosmetics
Josie Flowers
272-3865
8 a.m. - 12 noon
& after 6 p.m.

**Letter To
The Editor**

To The Editor:

A person who is chronically mentally ill or retarded sometimes lives a lonely, confusing and frustrating life. It is only due to the help and compassion of those of us who are not plagued by these problems that many mentally ill and retarded people experience relief from their problems and some pleasure in life.

Each year at Christmas, the Central Plains Center for Mental Health Retardation and Substance Abuse asks our friends in the communities we serve to donate gifts to our clients and consumers. Each year, I am amazed at your generosity. Without these donations, well over 150 people would have little or nothing for Christmas.

Again this year, the citizens of Hale, Swisher, Parmer, Floyd, Lamb, Briscoe, Bailey, Castro and Motley Counties showed your concern in a real and tangible way.

On behalf of our Board of Trustees and staff I want to thank you for providing a Merry Christmas for our clients and consumers. The individuals, clubs, civic and social organizations, churches and others who donated can feel good that you took the time, money and effort to demonstrate your love. Thank you for caring!

Rich Van Hersh
Executive Director
Central Plains Center for Mental Health Retardation & Substance Abuse

The best way to sleep soundly is to live sensibly and think sanely.

**Cash Rewards
Up To \$1,000
For Information!
Call
Bailey County
Crime Line
272-HELP**

Sincere 'Thanks'

Words cannot express my thanks and appreciation to the people of precinct 4, for the support given me during my twenty years of serving as your commissioner. My deep gratitude to Lloyd Stephens, Matt Dudley, and Robert Sanders, and the rest of the commissioners for the help given me.
Rudolph Moraw

INVENTORY CLEARANCE

Sale Starts 9:00 Monday
OPEN 9-5:30 Mon. Thru Sat.



Use Our Terms, Your Visa or MasterCard

1 Brass Quilt Rack
REG. 179.95
119.95

Silk Plants
In Basket
19.95

Pictures & Mirrors
1/3 OFF

La-Z-Boys
279.95
Limited Number At This Price!

1 Only
Sofa
REG. 699.95
499.95

1 Only
La-Z-Boy Sleeper
REG. 899.95
599.95

1 Southwest Queen Size
Sleeper & Love Seat
REG. \$1750
1250.00

1 Matching
Sofa & Love Seat
REG. \$1499.90
1000

Velvet Sofa/Love Seat
REG. \$1299.90
950

5 Pc. Sectional (Sleeper, 2 Recliners, Corner & Single Unit)
REG. \$2295
1695

Without Mattress
Over & Under Beds
379.95
579.95

With Mattress
2 Sets With Roll Out Units, Complete With Bunkles
579.95

Bunk Beds
1 REG. 2295 Parchment Oak
Wall Unit, Dresser
Stanley REG. \$1995
1395

4 Pc. Bedroom Group
1 REG. \$1795 with Cannonball Bed
1495

5 Pc. Honey Pine Bedroom Group
2 Only REG. 129.95
79.95

Bakers Racks
1 Only 33x68 REG. 948.00
Catswold Table
699.95

REG. 749.95
Sofa
549.95

Small REG. 169.95
Occasional Chairs
99.95

1 Only REG. 1129.00
Twin Size Recliners
749.95

Charles Custom REG. \$1699.90
Sofa & Love Seat
1195

1 REG. 337.50 Round Oak
Cocktail Table
249.95

1 REG. 249.95
Lamp Table
149.95

Set of 3 REG. 659.85
Brass & Glass Tables
330

REG. 109.95 2 Only
Tree Lamps
69.95

"Your Quality Furniture Store — Where You Always Find The Very Best Values"

Wicker Look
Twin Headboards, Chest, Dresser, Mirror, Night Stand
899.95

1 4 Pc. REG. 1395.00 French
Girls' Bedroom Group
Dresser, Mirror, Bed, Chest, Headboard
895.00

1 Set 4/6 Serta Regular
Mattress & Spring
Inventory Clearance Price
299.95

Spring Air Mattresses

TWIN SET
199.90

REGULAR
299.95

QUEEN
399.95

KING
499.95

2 Swivel
24" Bar Stools
89.95

1 Brass
Cheval Mirror
REG. 189.95
149.95

1 Only Natural & Blue
5 Pc.
Round Dinette
REG. 99.95
599.95

1
7 Pc. Dinette
REG. \$1050
630.00

CALTON FURNITURE

**Wayne Williams
Funeral Services
Held Saturday**

Funeral services for Wayne Williams, 70, were held at 2 p.m. Saturday, Jan. 12 in the First United Methodist Church with the Rev. Richard Edwards, pastor, officiating.

Masonic graveside services were conducted in Muleshoe Memorial Park. Burial was under the direction of Ellis Funeral Home of Muleshoe. Williams died at 11:15 a.m. Wednesday in St. Anthony's Hospital in Amarillo.

Born July 14, 1920, in Indiana, Williams had been a resident of Muleshoe since 1963, moving here from Lubbock. He was a partner in Williams Bros. Office Supply, a member of Muleshoe Masonic Lodge, Khiva Temple of Amarillo, Order of Eastern Star in Muleshoe and the Muleshoe First United Methodist Church. He was a veteran of WW II serving in the U.S. Air Force. He married Louise Dudden on April 22, 1944, in Vernon.

Survivors include his wife, Louise; a son, Roger Williams of Muleshoe; two daughters, Julie Bruns of Porterville, Calif. and Annette Watson of Amarillo; two sisters, Kleta Fredde of Rogers, Ark. and Clarice King of Burleson; a brother, Alex Williams of Kingsland; and six grandchildren.

The family suggests memorials be made to Scottish Rite Learning Center in Lubbock or the First United Methodist Church.

Muleshoe Menu	
JANUARY 14-18	MONDAY BREAKFAST
Cereal, Toast, Fruit and Milk	
LUNCH	
Burritos, Salad, Fried Okra, Fruit and Milk	
TUESDAY BREAKFAST	Pancakes, Syrup, Sausage, Fruit and Milk
LUNCH	
Hamburgers, Lettuce & Tomato, Pickles & Onions, French Fries, Cookies and Milk	
WEDNESDAY BREAKFAST	

Toast, Jelly, Sausage, Fruit and Milk
LUNCH
Taco's, Beans, Salad, Crackers, Fruit and Milk
THURSDAY BREAKFAST
Cheese Toast, Fruit and Milk
LUNCH
Spaghetti With Meat Sauce, Carrot Stick, Hot Rolls, Fruit and Milk
FRIDAY BREAKFAST
Oatmeal, Cinnamon Rolls, Fruit and Milk
LUNCH
Pizza, Mixed Vegetables, Pickles, Fruit and Milk

It is always a pleasure to find a really good cook, taking pride in his or her profession.

BIBLE VERSE

"As often as ye eat this bread, and drink this cup, ye do show the Lord's death 'til he come."

1. Who made the above statement?
2. To whom was he speaking?
3. With what Christian ordinance is it connected?
4. Where may this statement be found?

Answers:
 1. Paul, the Apostle.
 2. To the Christians at corinth.
 3. The observance of the Lord's Supper.
 4. I Corinthians 11:26.

Definition
 Hangover: Something to occupy a head that wasn't used the night before.
 -Review, Plymouth, Wisconsin.

Good Idea
 Few question the benefit of taking a brisk early-morning walk. Few take such walks.

1991 Crop			
	Sale	Flat	Month
Feed Corn.....	4.31,0.11ch		March
White Cobb Yellow.....	4.90,0.44ch		March
Red Cobb Yellow.....	4.51,0.22ch		March
White Food Corn.....	5.80,0.94ch		March
Milo.....	4.15,0.02ch		March
Soybeans.....	5.13,-0.48sh		March
Wheat.....	2.28,-0.30kwh		KW March
96%			
Prices effective Jan. 11, 1991			
Farmer's Co-Op Elevators			
272-7561			

Lazbuddie Menu

JAN. 15-18	MONDAY
NO SCHOOL	
TUESDAY BREAKFAST	Toast, Bacon, Juice and Milk
LUNCH	
Nachos, Pinto Beans, Green Salad, Pudding, and Milk	
WEDNESDAY BREAKFAST	French Toast, Fruit and Milk
LUNCH	
Hot Ham & Cheese Hoaggies, Potato Chips, Salad & Pickles, Cake and Milk	
THURSDAY BREAKFAST	Cereal, Juice and Milk
LUNCH	
Spagetti with Meat Sauce, Green Salad, Green Beans, Hot Rolls, Fruit and Milk	
FRIDAY BREAKFAST	Cinnamon Rolls, Fruit and Milk
LUNCH	
Hamburgers, French Fries, Salad, Pickles, Cookies and Milk	
SALAD BAR SERVED	
TUESDAY THRU THURSDAY	

Three Way Menu

JANUARY 14-18	MONDAY BREAKFAST
Pancake, Sausage, Juice and Milk	
LUNCH	
Hamburger w/Cheese, French Fries, Pudding and Milk	
TUESDAY BREAKFAST	Hot Cereal, Juice, Toast and Milk
LUNCH	
Beef Stew w/Cheese, Veg. Sticks, Cornbread, Peaches and Milk	
WEDNESDAY BREAKFAST	Biscuit, Gravy, Juice and Milk
LUNCH	
Frito Pie w/Cheese, Salad, Green Beans, Cookies and Milk	
THURSDAY BREAKFAST	Waffles, Bacon, Juice and Milk
LUNCH	
Chicken Strips w/Gravy, Corn, Creamed Potatoes, Rolls, Jello and Milk	
FRIDAY	NO SCHOOL

- Immaculate Conception Catholic Church**
Father Patrick Maher
Northeast of City
- First Baptist Church**
220 West Ave. E.
- Emmanuel Baptist Church**
Iglesia Bautista Emmanuel
107 East Third
Isaias Cardenas, Pastor
- Trinity Baptist Church**
314 E. Ave. B.
Rev. Dale Berry
- Circle Back Baptist Church**
Intersection FM 3397 & FM 298
Pastor, Glen Price
946-3676
- Calvary Baptist Church**
1733 W. Ave. C.
Rev. Rick Michael
- Victory Baptist Church**
605 West 8th
James Williams, Pastor
- Progress Baptist Church**
Charles Fisk, Pastor
Progress, Texas
- Richland Hills Baptist Church**
17th and West Av. D.
- St. Matthews Baptist Church**
Corner of West Boston & West Birch
M.S. Brown, Pastor
- Progress Second Baptist Church**
1st and 3rd Sunday
Rev. Arthur Hayes
- Primitive Baptist Church**
621 South First
Elder Cleveland Bass, Pastor
- 1st Baptist Church**
Lazbuddie, Tx.
Gary Wilcox, Pastor
965-2126



AFTER THE PARTY IS OVER

EVERYONE IN THE CHURCH
THE CHURCH IN EVERYONE

The Church is God's appointed agency in this world for spreading the knowledge of His love for man and of His demand for man to respond to that love by loving his neighbor. Without this grounding in the love of God, no government or society or way of life will long persevere and the freedoms which we hold so dear will inevitably perish. Therefore, even from a selfish point of view, one should support the Church for the sake of the welfare of himself and his family. Beyond that, however, every person should uphold and participate in the Church because it tells the truth about man's life, death and destiny; the truth which alone will set him free to live as a child of God.

©Coleman Adv. Ser.

Have you ever felt like this little girl after a big, exciting day at the Fair, or a party? You know how you feel — excited, exhausted; but you feel good, too. Sometimes you just want to lie down and think about it. But like the little one in this picture you, also, are too tired to remove your party hat or your shoes.

Sometimes it is delightful just to lie down and think of something good and wonderful and happy. It is good just to *be still* and sort of day-dream about what has happened.

There are other times in our lives when we need to achieve a sense of quietness and think of God. The Psalmist says, "Commune with your own heart upon your bed and be still." Psalm 4:4. God says in Psalms 46:10 "Be still and know that I am God."

We invite you to attend church and sense the still, quiet holiness that is God's presence in the midst of the congregation.

- Primera Iglesia Bautista**
223 E. Ave. B.
Roy Martinez, Pastor
- Lariat Church Of Christ**
Sunday School 10:00 a.m.
Worship 11:00 & 6:00 p.m.
Wednesday Services 7:00 p.m.
Sam Billingsley, Minister
- Muleshoe Church Of Christ**
Clovis Hwy
Bret McCasland, Minister
- 16th & Ave. D. Church Of Christ**
Sunday 10:30 a.m.
Evening 6:00 p.m.
Wednesday 8:00 p.m.
Curtis Shelburne, Minister
- Lazbuddie Church Of Christ**
Minister, Keith Courmier
Sunday School 9:30 a.m.
Morning Services 10:00 a.m.
Evening Services 6:30 p.m.
Wednesday Night 7:00 p.m.
- First Assembly Of God**
Rev. G. Dean Reid, Pastor
Sunday School 9:45 a.m.
Morning Worship 11:00 a.m.
Evening Services 6:30 p.m.
Mid-Week Services 7:30 p.m.
272-3984
- Spanish Assembly Of God**
East 6th and Ave. F.
Mike Doyle, Pastor
- First United Methodist Church**
507 W. 2nd Street
Richard Edwards, Pastor
- El Divino Salvador Methodist Church**
5th and Ave. D.
Jose M. Fernandez, Pastor
- United Pentacostal Lighthouse Church**
207 East Ave. G.
Rev. N.W. Thompson
272-3258
- Truth Tabernacle Pentecostal Church**
200 E. Itasca & Fir
Pastor, Les James
272-3391

Western Drug 114 Main 272-3106	Attend The Church Of Your Choice!		Dairy Queen 1204 W. Amer. Blvd. 272-3412
Wes-Tex Futures, Inc. 1910 W. Amer. Blvd. 272-5585	Serv-All Thriftway 401 W. Amer. Blvd. 272-4585	American Valley, Inc. W. Hwy 84 272-4266	Viola's Restaurant 2002 W. Amer. Blvd. 272-3838
Bob Stovall Printing 221 E. Ave. B 272-3373	Combination Motor & Salvage 272-4458	Farmer's Co-Op Elevators Muleshoe 272-4335	Bobo Insurance 108 E. Ave. C. 272-4264
Main Street Beauty Salon 115 Main 272-3448	W.T. Services, Inc. 319 E. Amer. Blvd. 272-4888	Bratcher Motor Supply 107 E. Ave. B. 272-4288	5-Area Telephone Cooperative, Inc. 302 Uvalde 272-5513
Irrigation Pumps & Power West Hwy 84 272-4483	Wes-Tex Feed Yards, Inc. 272-7555	Muleshoe Lawn & Leisure 522 W. Amer. Blvd. 272-3162	Richland Hills Texaco 1914 W. Amer. Blvd. 272-4875

CLASSIFIEDS 272-4536

CLASSIFIED RATES

15 Words & Under
Minimum Charge
\$2.30
Thereafter
\$2.00

16 Words & Over
1st Insertion
15 cents per word
2nd Insertion
13 cents per word

CLASSIFIED
DISPLAY RATES
\$1.75
Per Column Inch

DEADLINES
12 noon Tues.
For Thursday Paper
12 noon Friday
For Sunday Paper

To receive the re-
duce rate after the
first insertion ad
must run continous-
ly.

*We reserve the right
to classify, revise, or
reject any ad. We are
not responsible for
any error after ad
has run once.*

1. Personals

CONCERNED
About Someone's
Drinking?
HELP IS
AVAILABLE
through Al-Anon
Call 272-2350 or
965-2870 or come to
visit Tuesday and
Thursday nights,
8:00 p.m. & through
AA call 965-2870 or
come visit Tuesday
nights, 8:00 at 620
W. 2nd, Muleshoe.

3. Help Wanted

RN-LVN-EMT
exceptional opportu-
nity for endependent
professional to work
for a national para-
medical corporation.
Must draw blood. 1-
800-692-4485.
E3-2s-3tc

Muleshoe Indepen-
dent School District is
now accepting applica-
tions for male and/
or female-qualified
bus drivers.

Applicants must be
able to obtain, prior to
employment a Texas
Chauffeur's license,
pass a physical exam-
ination provided for
by the school, have a
safe driving record from
the Texas Department
of Public Safety, and
have completed or be
enrolled in a twenty
hour driving course
provided by the school.

Salary range is from
\$56.00 to \$90.00 per
week with driving
time being two to
three hours per day.
Application forms may
be picked up at the
school Business Of-
fice.

M3-2s-4tc

HELP WANTED
Bailey County EMS
taking applications for
one full time EMT or
EMT-SS. Thru Jan.
15, 1991. If interested
call 806-272-4390.
B3-11-4tc

Classify
Call
272-4536

3. Help Wanted

WANTED: Exper-
ienced machinist and
gearhead man. Call
(806) 238-1596 days or
238-1328 nights-- after
9 p.m.
B3-tfc

9. Automobiles For Sale

FOR SALE: 1979 Ford
Mustang. Great scho-
ol car-new stereo
system, rebuilt motor.
Call Paul Wilbanks
272-3106 or 272-3571
W9-2t-4tc

FOR SALE: 1987
Chevy Subaruu Silva-
rado. AM/FM Cas-
ette, tilt cruise, new
tires. 60,000 miles.
Call 272-5037.
P4-44t-tfc

FOR SALE: 1982 Ford
Mustang GT & 1980
Van (Starcraft Con-
version) Both are very
clean vehicles and in
good condition.
Ronnie Spies 272-3141
or 965-2720 after 4:00.
1 1/2 miles East of
Muleshoe on Lubbock
Hwy.
S9-52s-tfc

15. Misc.

GOLD CREDIT CARD
100% approved
\$1,500. credit line
money back guarantee
for complete info, call
1-900-329-0010 25. fee
A15-2s-4tp

PEERLESS SUBMERSIBLE PUMPS

Used part of one
season-Muleshoe Area
185' 6" 25 H.P.
160' 5" 15 H.P.
With Accessories
\$2500.00 each. Phone:
1-715-835-8372. Write:
Lila Schultz - 3834
Nimitz - Eau Claire,
Wis. 54701.
15-1s-3tpS

8. Real Estate

15. Misc.

FOR RENT: Large
Self storage rooms
with 24 hour a day
access. Call J&J Self
Storage at 272-4307.
S15-1s-tfc

LET OP'S MACHINE
QUILTING make a
beautiful finished
quilt with your quilt
tops. 795-7629.
15-2s-2tp

We need to buy
100,000 ft of alumin-
um pipe 2" to 8".
Also side row sprink-
lers. Contact T. L.
Timmons, State Line
Irrigation, Littlefield,
806-385-4487.
T15-tfc

18. Legals

LEGAL NOTICE
The Muleshoe Inde-
pendent School
District and cooperat-
ing schools are
accepting bids for the
lease/purchase of
eight school buses
that meet Texas
School Bus Specifica-
tions. Specifications
are available from
Tom Alvis, Muleshoe
I.S.D. Business Office
514 W Ave G, Mule-
shoe, Texas 79347.

Sealed bids must be
received by 2:00 p.m.,
Wednesday, February
6, 1991. Bids received
after stated time will
not be considered.

The Board of
Trustees reserves the
right to reject any or
all bids and to waive
formalities.

8. Real Estate

FOR SALE: Country
Home. 3 Bedroom, 2
Bath. 2200 sq. ft. with
3 Acres. 8 miles North
of Lazbuddie.
K8-51s-tfc

BAILEY COUNTY LAND
FOR SALE
Owner will finance the following six
blocks: 2-80 acres, 3-160 acres, 1920
acres, and 1-217 acres. Whang, mills and
cotton. Also 1/4 circle of
permanent grass. 7 Center Pivots. A Sweet
Cattle Setup.
If interested, contact T.L. Timmons
806-385-4487 806-925-6484
(Day) (Night)

18. Legals

NOTICE OF SHERIFFS SALE THE STATE OF TEXAS COUNTY OF BAILEY

Cause No.	Styling
5502	BAILEY COUNTY APPRAISAL DISTRICT V. GUADALUPE REYNA
5813	BAILEY COUNTY APPRAISAL DISTRICT V. MRS. E.A. EAKS
5875	BAILEY COUNTY APPRAISAL DISTRICT V. TOMMY CROW
6095	BAILEY COUNTY APPRAISAL DISTRICT V. LUZ G. DANIEL
6104	BAILEY COUNTY APPRAISAL DISTRICT V. DOMINGO RAMOS

and to me, as Sheriff, directed and
delivered, I will proceed to sell, at 12:00
O'clock P.M. on the 5TH DAY OF
FEBRUARY, 1991 which is the first
Tuesday of said month, at the EAST door
of the Courthouse of BAILEY County, in
the City of MULESHOE, Texas.

Levied on the 28th day of December,
1990 as the property of said defendants,
to satisfy the judgment rendered in the
above styled and numbered cause,
together with interest, at 10 per cent, per
annum, and all costs of suit in favor of
each jurisdiction.

GIVEN UNDER MY HAND THIS 28th
DAY OF December, 1990.

Jerry N. Hicks
SHERIFF, BAILEY COUNTY, TEXAS
BY Don L. Carter DEPUTY

8. Real Estate

For Sale or Trade in
Hagerman, N.M. area
Thriving Mechanic
business and country
home on 2 acres.
Landscaped and com-
pletely fenced. 4
Bedrooms, 2 1/2 Baths,
Carpport Patio. Auto-
motive & truck repair
business with 2 car
stall-shop. Only shop
within 25 miles.
Business is good.
Owners retiring. \$40,-
000. Call (806) 272-
3671.
G8-48s-StcS

HCR REAL ESTATE

3-1 1/2-2 On 2 1/2
Acres. Large utility
room and central
heating.

Thursie Reid
272-5318

FOR SALE: 1983
Wingate mobile home
by Fleetwood, 14 x
70, 2 bedroom, 2
bath, stove, refrigera-
tor and storm win-
dows. Good condition.
Phone 272-5489 or
965-2178.
D9-44t-tfc

18. Legals

By virtue of an Order of Sale issued out
of the Honorable 28TH Judicial District
Court of BAILEY County, on the 28th Day
of December, A.D. 1990 by the Clerk
thereof, in the case(s) styled as follows:

Legal Description
1. LOT 7, BLOCK 1, MURRAH ADDITION TO THE CITY OF MULESHOE, BAILEY COUNTY, TEXAS.
4. LOTS 7, 8, 9, 11, BLOCK 4, ORIGINAL TOWN ADDITION, BULA, BAILEY COUNTY TEXAS.
5. PART OF SECTION 54, BLOCK "Y" CITY, BASS SUBDIVISION, WD & FW JOHNSON SURVEY, 0.26 ACRES, BAILEY COUNTY, TEXAS.
6. LOTS 13-14, BLOCK 15, ORIGINAL TOWN ADDITION TO THE CITY OF MULESHOE, BAILEY COUNTY, TEXAS.
8. LOT 4, BLOCK 5, POOL ADDITION TO THE CITY OF MULESHOE, BAILEY COUNTY, TEXAS.

Smallwood Real Estate

232 Main 272-4838
Muleshoe



3 Bedroom, 1 Bath, Living Room, Kitchen
and Dining Area, Built-in Oven, Cook Top,
Dishwasher, 1 Car Garage, Patio and
Large Shop Building. \$25,000.00

On pavement in Country. 3 Bedroom, 2
Bath, Large Kitchen and Dining Area,
Living Room, Large Den, and Playroom. 1
Acre.

All electric energy efficient, Central Heat
and Air, 2 Bedroom, 1 1/2 Bath, Living
Room and Den, 1 Car Garage with
Storage. Corner Lot.

Brick- 3 Bedroom, 1 1/2 Bath, Kitchen,
Dining Area, Living Room, Central Heat
and Refrigerated Air. 1 Car Garage.

STUCCO-2 Bedroom, 1 1/2 Bath, Re-
modeled Kitchen, Dishwasher, 2 Oven
Stove, Central Heat and Air, Fireplace,
Nice Carpet. Good Terms.

Sudderth Realty, Inc. REALTOR

109 Fifth Street Farwell, Texas
Realtors/Certified Appraisers

*Have Buyers. Need Farm Land to Sell.

*Good 160 Acres Irrigated. Near Clays
Corner. Priced for immediate sale. Possible
owner finance.

*Excellent Farm and Grass lands near
Grady, N.M. 2900 Acres. Approx. 1/2
Grass Land, 1/2 Cultivated. Almost perfect
320 Acres Irrigated. 3 wells approx. 160
Acres growing wheat included. Owner will
finance.

*80 Acres Irrigated, 1 well. Lays good.
South of Lariat.

*46.6 Acres Irrigated on Hwy. South of
Lariat-will subdivide. Owner finance, small
tracts.

*626 Acres Irrigated NE of Farwell on
Hwy. Excellent Dairy location and large
barn in good water area.

*380 Acres Irrigated on Hwy East of
Farwell. Two circles. Excellent water area,
excellent Dairy location.

*480 Acres near Pleasant Hill. 320 dryland
and 160 Acres irrigated.

*Almost perfect 320 Acres irrigated, 3
wells. Approximately 160 acres wheat
growing will go, Lazbuddie area. Owner
will finance. Priced for immediate sale.

*Excellent 320 Acres Irrigated on highway
3 miles south of Lariat. 2 Circle Sprinklers.
Newly remodeled 3 bedroom home with
garage, barn, several storage buildings
and livestock corral. Possible Owner
Financing.
J.B. Sudderth Broker
Daren Sudderth Broker
Master Senior Appraiser
806-481-3288

LOUISA'S LETTER

Dear Louisa,
I am planning to be
married in February. A
big church wedding is
out of the question since
my parents-- are not
wealthy.

What I am trying to
decide is what kind of
wedding to have. If I
have a church wedding,
would it be proper for
my brides' maids to buy
their own flowers and
dresses and help decorate
the church, or should I
simply go to the
preacher's home and
have the ceremony
there?

What would you sug-
gest? I have about two
hundred dollars I could
spend.

B.H.-Ga.

Answer:
I think the best plan
for you is to have a
simple church wedding,
with one attendant for
yourself and a best man
for the groom. After-
wards relatives and close
friends could be enter-
tained in the church's
social room.

The groom should
pay for your bouquets.
If you have a friend
who will decorate the
church and hall, that
would help.
Louisa.

Dear Readers,

The holidays are over
and it seemed to me
that the real spirit of
Christmas was lacking
for many of us. We
were all so busy that we
forgot what we were
really celebrating--and
that was the birth of
our Lord who lived a
sinless life and who
taught us that love
should be the most
important thing in our
lives.

A little article by an
anonymous writer comes
to my mind when I
think about these things.

"I's a funny thing but
true that folks you don't
like don't like you. I
don't know why this
should be so, but just
the same I always know,
if I am sour friends are
few; if I am friendly
folks are too."

Sometimes I get up in
the morning wishing I
was never born. I make
a cross remark or two
and then my family
wishes too that I had
gone some other place
instead of showing them
my face.

But let me change my
little tune and sing and
smile, then pretty soon
the folks around me sing
and smile, I guess 'twas
catching, all the while.

Yes, it is a funny
thing but true that folks
you like will sure like
you."

This we might
consider when making
our resolutions for the
New Year 1991.

Happy New Year,
Louisa

SMILES

Almost
Bachelor to newlywed:
"How do you like mar-
ried life?"

Newlywed: "Just
great. It's almost like
being in love."

The Modern Way

He--It will be real
simple for us to get
married, darling. My
father is a minister.

She--Okay, let's give
it a whirl. Mine's an
attorney.

Time Enough
"Man can do no
wrong."
"Right. If there's a
mistake made at home,
it's the wife's fault; and
if there's one made at
the office, it's his secre-
tary's."



CELEBRATE WITH SAVINGS

ANNIVERSARY SALE

<p>HEAVY GRAIN FED BEEF BONELESS</p> <p>TOP SIRLOIN STEAK</p> <p>\$1.99</p> <p>LB.</p>		<p>MELLO CRISP</p> <p>SLICED BACON</p> <p>99¢</p> <p>1 LB. PKG.</p>
--	--	---

<p>FAMILY SCOTT</p>	<p>LAY'S®</p>	<p>ASSORTED HAIRSPRAY</p>	<p>5¢ OFF LABEL</p>	<p>ALL TYPES</p>
<p>BATH TISSUE</p> <p>6 ROLL PKG.</p> <p>\$1.39</p>	<p>POTATO CHIPS</p> <p>\$1.59 SIZE BAG</p> <p>99¢</p>	<p>AQUA NET</p> <p>9 OZ. CAN</p> <p>89¢</p>	<p>CLOROX BLEACH</p> <p>GALLON JUG</p> <p>89¢</p>	<p>COCA-COLA</p> <p>2 LITER BOTTLE</p> <p>\$1.09</p>
<p>JUMBO ROLL MARDI GRAS</p> <p>PAPER TOWELS</p> <p>69¢</p>	<p>39 OZ. BOX</p> <p>TIDE DETERGENT</p> <p>\$1.99</p>	<p>5 LB. BAG ENRICHED FLOUR</p> <p>GOLD MEDAL</p> <p>89¢</p>		

<p>FROZEN ASSORTED BANQUET DINNERS</p> <p>9 OZ. BOX</p> <p>\$1.29</p>	<p>RED RIPE</p> <p>TOMATOES</p> <p>LB.</p> <p>49¢</p>	<p>NO. 1 RUSSET</p> <p>POTATOES</p> <p>10 LB. BAG</p> <p>99¢</p>	<p>CHICKEN NOODLE SOUP</p> <p>BEEF NOODLE SOUP</p> <ul style="list-style-type: none"> •CHICKEN NOODLE •SPEC. REQUEST CHICK NOODLE •TURKEY NOODLE •BEEF NOODLE <p>CAMPBELL'S</p> <p>SOUP</p> <p>10 3/4 OZ. CANS</p> <p>2.89¢</p> <p>FOR</p>
--	---	--	--

IN-AD COUPON NOT SUBJECT TO DOUBLE COUPONS

Save \$1.00 AT THE CHECKOUT!

BUY: Any ONE (1) 24 oz. or larger Regular or Butterite Aunt Jemima® Syrup

PRESENT: This coupon to cashier along with purchase.

RECEIVE: \$1.00 OFF any ONE (1) 2 lb. Aunt Jemima® Original Complete or Buttermilk Complete Mix.

GOOD THRU JAN. 23, 1990

Only at: THRIFTWAY / LA TIENDA

50000 34076

PACE MED./MILD/HOT PICANTE SAUCE

24 OZ. JAR

\$1.99

ASSORTED SLIM FAST

15 OZ. CAN

\$3.99

AUNT JEMIMA ORIGINAL PANCAKE MIX

2 LB. BOX

\$1.19

AUNT JEMIMA REGULAR SYRUP

24 OZ. BTL.

\$2.49

thriftway

AFFILIATED FOODS INC. MEMBER STORE

WE ACCEPT FOOD STAMPS... WE RESERVE THE RIGHT TO LIMIT

PRICES EFFECTIVE JANUARY 13-19, 1991

CHILDRENS COLD LIQUID TYLENOL

4 OZ. BTL.

\$3.79