

WEATHER

January 23	45	14	.00
January 24	45	16	.00
January 25	47	22	.00

BAILEY COUNTY JOURNAL

'The Community Of Opportunity-Where Water Makes The Difference



© 1990

Vol. 30, No. 4

12 PAGES TODAY

Published Every Sunday At Muleshoe, Bailey County, Texas 79347

Member
TA TEXAS PRESS
ASSOCIATION

20¢ SUNDAY, JANUARY 27, 1991

Pollards, Robertson, Wright Winners

around Muleshoe

On tomorrow, Monday, the Muleshoe Elementary PTA will meet in Dillman Cafeteria at 7 p.m.

Members of the Muleshoe Police Department will present the program on bicycle safety and drugs. This is a program designed for both parents and their children.

Remember, the class with the most parents in attendance will receive a class party at the end of the school year.

John Stevens said the Muleshoe Activities Committee (MAC) would hold a drawing on Saturday, February 2, at 2 p.m.

MAC will be giving \$400 in MAC Bucks at the drawing at Main Street and Avenue C.

Pat King was named Educator of the Week at Watson Junior High School. She teaches sixth grade Social Studies.

Students of the Week at WJHS were Cori Faver, sixth grade; Brandi Morgan, seventh grade and Mikki Bowen, eighth grade.

Airman Gary L. Fly Jr. has graduated from Air Force basic training at Lackland Air Force Base, Texas.

Fly is the son of Gary L. Fly, Farwell and Kathy D. Barido of Woodward, OK.

GED Testing

Planned Here

Next Weekend

General Educational Development (GED) tests will be given in Muleshoe on Friday, February 1, and Saturday, February 2, at Muleshoe High School. Individuals interested in testing for a certificate of high school equivalency will need to be present at both sessions to take the required five (5) tests.

The following requirements apply to interested persons:

1. Must be a Texas resident
2. Individuals that are 17-years-old must meet strict requirements. Any interested 17-year-old should contact the Muleshoe High School counselor.
3. Must be officially withdrawn from school and must not have received a high school diploma from an accredited high school in the United States.

Testing will begin at 5:30 p.m. on Friday and continue at 8:30 a.m. on Saturday. Further information concerning registration may be obtained by calling Linda Mrr, GED Test Administrator, at Muleshoe High School at 272-3080.



GRAND CHAMPION STEER AT THREE WAY--Larry Robertson, son of Mr. and Mrs. Darwin Robertson, won Reserve Grand Championship with this steer at the Bailey County Livestock Show, then went on to Grand Champion honors at the Three Way Livestock Show last weekend at the Three Way School. (Journal Photo)

KC Muffler Shares Secret

Of Business Success - Service

(Editor's note: This weekend, we are completing the story of KC Muffler and Manufacturing, as featured in *The Exhaust News*, a monthly magazine.)

They give constant attention to updating their inventory to be sure they have what their muffler shop customers need and remain in a position to get the product to them in a timely manner at competitive prices. Kid, Duane and the people at KC have not been reluctant to change and increase their inventory to meet the needs of their customers. They now stock more different part numbers than at any time since they have been in business.

Sales of their IMCO Original Replacement direct-fit mufflers continue to increase. Fewer shops are relying on all universals to fill their needs. Pre-bent usage is up dramatically, as is aluminized tubing.

Many of the vehicles entering the replacement market have more complex exhaust systems and shop operators have a greater need for products that duplicate the configuration of what is coming off the car. Kid points out that one of their largest pre-bent customers is a specialty muffler shop with three benders. As in the case with OR mufflers with brackets and hangers welded in place, pre-bent helps him offer better and faster service.

Another change they are

noticing is the increase in UPS shipments. Many of these orders are for catalytic converters, especially the Car Sound direct fits. Some are for direct-fit OR mufflers.

KC customers are carrying more part numbers than ever before, and, as Kid points out, this means they must devote more attention to controlling inventory cost and still have the products they need to take care of most vehicles when they come in. Stocking more different part numbers make accurate forecasting difficult

Jennyslippers

Will Host

MHS Seminar

The Jennyslippers will sponsor the fourth annual High School Students/Parents night to give information on college financing on Monday, February 11.

The special seminar will be held at 7 p.m. in the Muleshoe High School cafeteria.

An informative meeting is being planned with all of the area college financial aid departments represented.

Speakers expected are: Jeanette Head, West Texas State University and the Opportunity Plan; Jim Ann Batenhorst, South Plains College; Leo Hatten, Eastern New Mexico University; Cecyle Newsom, South Plains College Coordinator of New Students Relations; Jeff Pettillo, Wayland Baptist University; Pat Prater, Student Loan Officer, Muleshoe State Bank; Linda Marr, High School Counselor and Joe Embry, South Plains J.T.P.A.

Other information has been compiled and updated by the Jennyslipper Education Committee.

Junior and senior students are expected to bring their parents to this seminar to receive the information and meet the representatives in order to receive personal interest when you progress with your financing arrangement.

Local citizens who have met the challenge to return to college will share their experiences.

and is the cause of some of the special UPS orders.

In other instances, UPS orders are because shops forgot something on their order and need the parts before their next Cont. Page 6, Col. 1

Marsha Wilson Thanks Rotary Club For Check

Muleshoe Rotary Club heard a Muleshoe High School senior for their program Tuesday at noon.

As no program had been scheduled, Bruce Purdy, president, introduced Marsha Wilson a MHS senior student.

Last week, Rotary voted to provide \$100 to help sponsor Marsha's entry in the Miss Teen Texas Scholarship Pageant in Houston.

Marsha thanked the Rotary and explained that the 100-150 entrants in the pageant will be judged on personality, evening gown competition and academic activities and career goals.

She spoke enthusiastically of her last eight months working for the Muleshoe Area Medical Center, especially in the therapy department.

She said she would like to go into therapy as a career. She talked about it taking personality and a warm feeling toward people to work successfully in the medical field.

"I found working at the hospital, helping people, makes me feel so good," said the teenager.

On being asked about some of her school activities, she said she had been in band for four years; with the jazz band for four years; was in the one-act play that went to state last year; is a cheerleader; in HECE; the HERO Club; SCAC; is Kiwanis Club Sweetheart; Fellowship of Christian Athletes; played basketball for two years and is vice president of the National Honor Society.

"I saw how much civic organizations contribute to the community, so wanted to get involved," she said, as to her reason for agreeing to become Kiwanis Club sweetheart.

She hopes to be able to go to South Plains College for two years; transfer to Texas Tech,

3-Way Livestock Show Bigger, Better This Year

It was a good day for a livestock show, with the weather cooperating beautifully, and a record number of entries were judged in the annual Three Way Livestock Show.

Larry Robertson exhibited the grand champion steer, with Brittany Kirby showing the Reserve Grand Champion.

Russell Pollard won a buckle as overall grand champion.

Brittany Kirby won a buckle for showmanship.

Others in showmanship were Russell Pollard, Wade Wilson, Larry Robertson and Joshua Tooley, who won reserve showmanship.

Russell Pollard showed the champion heifer and Wade Wilson had the reserve champion heifer, while Cody Wilson won third.

CLASS II ENGLISH STEERS

Rebecca Robertson had a first and breed champion, while Joshua Tooley was second and reserve breed champion; Scott Pollard, Larry Robertson and Robin Tooley.

CLASS III LIGHT CROSS STEERS

Brittany Kirby, Joshua Tooley, Monty Kirby, Robin Tooley and Larry Robertson.

CLASS IV HEAVY CROSS STEERS

Larry Robertson, first, breed champion and grand champion; Russell Pollard, second; Brit-

tany Kirby, third Reserve Grand Champion and Monty Kirby.

DIVISION II

SHEEP CLASS V

FINEWOOL

Cynthia Bennett, Daniel Reeves, second and breed champion; Daniel Reeves, second and third and reserve breed champion; Robin Tooley, Kenneth Gilbreath and Marvin McCaul.

CLASS VI FINEWOOL CROSS

Larry Robertson; Kyle Walker was second and had the reserve champion; Rebecca Robertson, Joshua Tooley, Carrie Kindle, fifth and champion cross; and Carrie Kindle, sixth.

CLASS VII SOUTHDOWN

Robin Tooley, Marvin McCaul was second and had champion southdown; Daniel Reeves, Robin Tooley, Joshua Tooley, and Lauren Foote was sixth and had reserve champion southdown.

CLASS EIGHT HAMPSHIRE

Robin Tooley, first and reserve breed champion; Joshua Tooley was first in class IX and had breed champion.

Robin Tooley, Larry Robertson, Rebecca Robertson and Missy Jeffcoat.

CLASS IX HAMPSHIRE

Joshua Tooley, Jonathan Bennett, Lauren Foote and Monty Turney.

Kasey Wright had the champion suffolk and Melissa Bennett showed the reserve champion suffolk.

Kasey Wright also showed the Grand Champion Lamb and Joshua Tooley had the Reserve Grand Champion Lamb.

CLASS X SUFFOLK

LIGHT WEIGHT

Melissa Bennett, Rebecca Robertson, Joshua Tooley, Lauren Foote, Kasey Wright.

CLASS XI SUFFOLK

MEDIUM WEIGHT

Kasey Wright, Larry Robertson, Kenneth Gilbreath, Robin Tooley and Monty Turney.

CLASS XII SUFFOLK

HEAVY WEIGHT

Melissa Bennett, first and second; Kyle Walker, Cynthia Cont. Page 6, Col. 5



POLLARD SHOWS GRAND CHAMPION SWINE--Scott Pollard, son of Mr. and Mrs. Terry Pollard, exhibited his swine to Grand Champion at the annual Three Way Livestock Show last Saturday at the Three Way School. (Journal Photo)



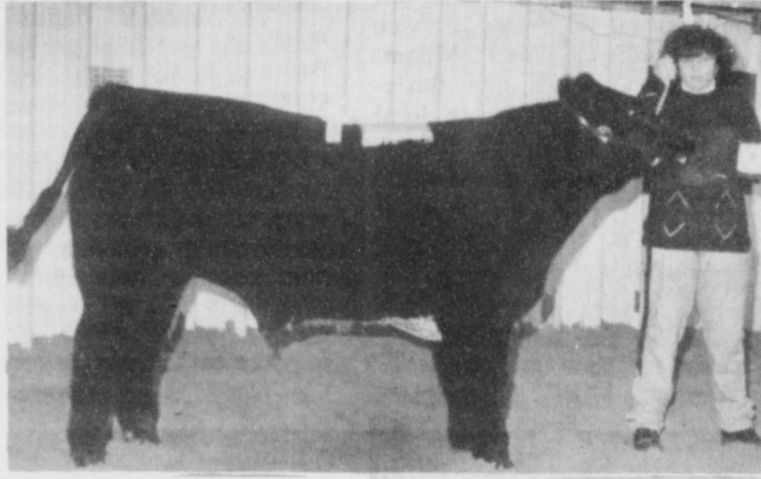
LAMB GRAND CHAMPION AT THREE WAY--Kasey Wright, son of Mrs. Murray Davis, exhibited his lamb to Grand Champion honors at the Three Way Livestock Show last Saturday. (Journal Photo)

Congratulations

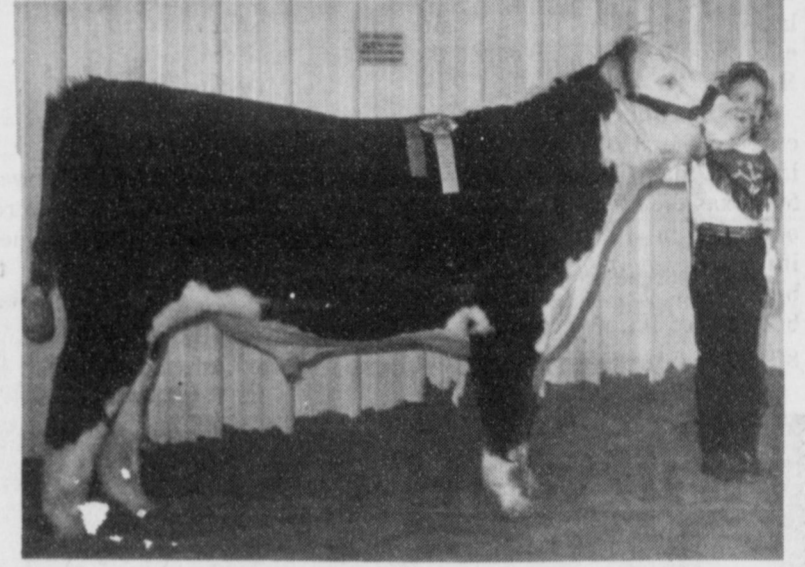
1991 Three Way Stock Show Winners!



GRAND CHAMPION STEER---Larry Robertson, son of Mr. and Mrs. Darwin Robertson exhibited his Heavy Weight Cross Steer to Grand Champion honors at the Three Way Stock Show held last weekend. Pictured along with Larry is his sister, Rebecca holding the banner. (Journal Photo)



RESERVE GRAND/BREED CHAMPION STEER---Brittany Kirby exhibited her Light Weight Cross Steer to Reserve Breed and Reserve Grand Champion honors at the Three Way Stock Show held last Saturday. Brittany is the daughter of Mr. and Mrs. Craig Kirby. (Journal Photo)



PUREBRED BREED CHAMPION---Rebecca Robertson, daughter of Mr. and Mrs. Darwin Robertson exhibited her Purebred Steer and walked away with the Breed Champion spot in that class at the Three Way Stock Show held last Saturday. (Journal Photo)



RESERVE BREED SUFFOLK---Melissa Bennett exhibited her Light Weight Suffolk to Reserve Breed Champion honors at the Three Way Stock Show held just recently. Melissa is the granddaughter of Mr. and Mrs. Jack Lane. (Journal Photo)



RESERVE BREED CHAMPION HAMPSHIRE---Robin Tooley exhibited her Light Weight Hampshire to Reserve Breed Champion honors at the Three Way Stock Show held last weekend. Robin is the daughter of Mr. and Mrs. Howard Tooley. (Journal Photo)



RESERVE GRAND CHAMPION HAMPSHIRE---Joshua Tooley walked away with the Reserve Grand Champion honor at the Three Way Stock Show with his Heavy Weight Hampshire. Joshua is the son of Mr. and Mrs. Howard Tooley. (Journal Photo)



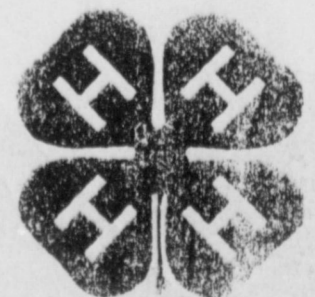
BREED CHAMPION FINEWOOL---Cynthia Bennett, granddaughter of Mr. and Mrs. Jack Lane walked away with the Breed Champion spot in the Finewool Class at the Three Way Stock Show held recently. (Journal Photo)



BREED CHAMPION SOUTHDOWN---Robin Tooley, daughter of Mr. and Mrs. Howard Tooley exhibited her Southdown Lamb to Breed Champion in the Southdown Class in the Sheep Division at the Three Way Stock Show held last Saturday. (Journal Photo)



This Page Proudly Sponsored By
The Following Civic-Minded Businesses:



1st State Bank
Member F.D.I.C.
-Morton

Viola's Restaurant

Serv-All Thriftway
-Muleshoe

Sunmark Grain
-Goodland

Cox Auto Supply
-Morton

Leal's Restaurant

Higginbotham-Bartlett Co.
-Morton

Wasps Mobilized To Battle Hessian Fly

Parasitic wasps have been moved from north to south Central Texas as allies for wheat growers in the biological fight against Hessian flies.

"These parasites are expected to help reduce the estimated \$9 million loss to the 1988-89 wheat crop in Central Texas caused by Hessian fly infestations," said Dr. Allen Knutson, Texas Agricultural Extension Service entomologist in Dallas. "These farmers' friends deposit their eggs on the Hessian fly larvae and when the parasite egg hatches, it devours the Hessian fly."

The mosquito-sized fly, which entered the state from the north in 1978, has spread into almost 50 Texas counties. After a major outbreak in 1984, Hessian fly infestations in North Texas began to decline, primarily because of the switch by wheat growers to resistant varieties.

"Another factor in this pest

becoming uncommon in North Texas, entomologists discovered, was that many of the Hessian flies were being killed by parasitic wasps," said Knutson.

nued its southward invasion into Central Texas. There the mild winter weather and susceptible wheat varieties, combined with early wheat planting for grazing, led to serious losses in the 1988-89 crop. Entire fields were lost to fall infestations of Hessian fly from Bosque County as far south as Milam and Williamson counties.

The Hessian fly was abundant in these newly infested areas, surveys showed, because the parasites had not yet followed their natural enemy to Central Texas. The solution seemed obvious—transport parasites to speed up their natural movement.

In the fall of 1989, a team of Texas A&M entomologists and

county Extension Service agents organized a parasite transport program. The Texas Wheat Producers Association and the Texas Farm Bureau provided financial support, and the Texas Pest Management Association assisted with the project.

Wheat stubble containing the parasitized flies was pulled from fields about 25 miles from the Red River and stored at the Texas A&M Research and Extension Center at Dallas.

Meanwhile, more than 200 miles away, Extension Service agents in Bosque, Bell, Milam, Williamson, Travis and Burleson counties worked with local wheat growers in establishing seven nurseries.

These nurseries were one- to two-acre plots of wheat susceptible to Hessian fly. The cooperating growers agreed to fence the plots from cattle grazing and to not treat the plots with insecticides. Thus,

the nurseries provided a safe haven for the transported parasites.

Bags of wheat stubble containing the Hessian fly parasites were distributed in each nursery field in early February 1990. Samples taken a that time showed no parasites, but Hessian flies were common at all sites to serve as prey on which the parasites could reproduce and increase through the spring.

In late May, the team returned to each nursery to collect wheat stubble they hoped would contain parasites which had reproduced. They were not disappointed.

"We were very excited that parasites were found at every nursery and in large numbers," said Dr. Jesse Cocke, Extension Service entomologist at Stephenville. "The program has been a tremendous success. These parasites should become more abundant and naturally disperse to attack Hessian fly throughout the area."

The presence of the Hessian fly parasites, together with planting resistant wheat varieties, should reduce the threat of Hessian fly for Central Texas wheat producers.

Research is now under way to

introduce a parasitic wasp from Indiana. That species, which is not found in Texas, attacks the egg stage and is more active in the fall, while native Texas parasitic wasps attack the larval stage and are most active in the spring.

Initial releases of the Indiana wasps were made in November in Hill and Milam counties, Knutson said.

"Together, the two should provide even better biological control of the Hessian fly," said Knutson.

BRIEFS

Bush sees mild, brief recession.

Proposals offered for banking overhaul.

Sears eliminating 21,000 non-selling jobs.

Study: Estrogen prolongs life, despite risks.



RIBBON CUTTING HELD FOR INSURANCE OFFICE--A ribbon cutting ceremony was conducted by the Muleshoe Chamber of Commerce and Agriculture Thursday morning for a new insurance office in Muleshoe, Wanda Brown Insurance Agency. Pictured from left, front row, are Mickey Trussell, Margarita Posadas, Jason Harmon, Guy Wiley and Manuel Elizarraraz; second row from left, Nancy Kidd, Jody Field, Ronda Scott, April Lane Watkins, Mary Ann Ramirez, Robert Montgomery, Wanda Brown (manager) Mayor Darrell Turner, Carolyn McJunkin (office manager from Lubbock) and Bill Hatchett (District Manager) third row from left, Jac Greene, Randy Lewis, Lonnie Adrian, George Nieman, Kid Castleberry and Duane Castleberry. (Journal Photo)

Henry Attends CIC Institute

Kenneth Henry, owner/manager of Henry Insurance Agency of Muleshoe, has successfully completed the Annual Continuing Education Requirement of the Society of Certified Insurance Counselors in Austin, Texas.

In order to earn the designation CIC (Certified Insurance Counselor), each individual must have attended five institutes covering all phases of the insurance business and passed five rigorous examinations. Additionally, the National Society requires annual attendance in the Program to maintain the designation.

Henry, a 26-year veteran of the industry, has been a CIC since 1975. Henry believes insurance consumers are best served by those who acquire and maintain a high level of professional excellence by meeting the continuing education requirements of the Certified Insurance Counselors Program.

Bailey County Journal USPS 040-200
Established March 31, 1903. Published by Muleshoe Publishing Co., Inc. Every Sunday at 304 W. Second, Box 449, Muleshoe, Tx 79347. Second Class Postage paid at Muleshoe, Tx 79347.

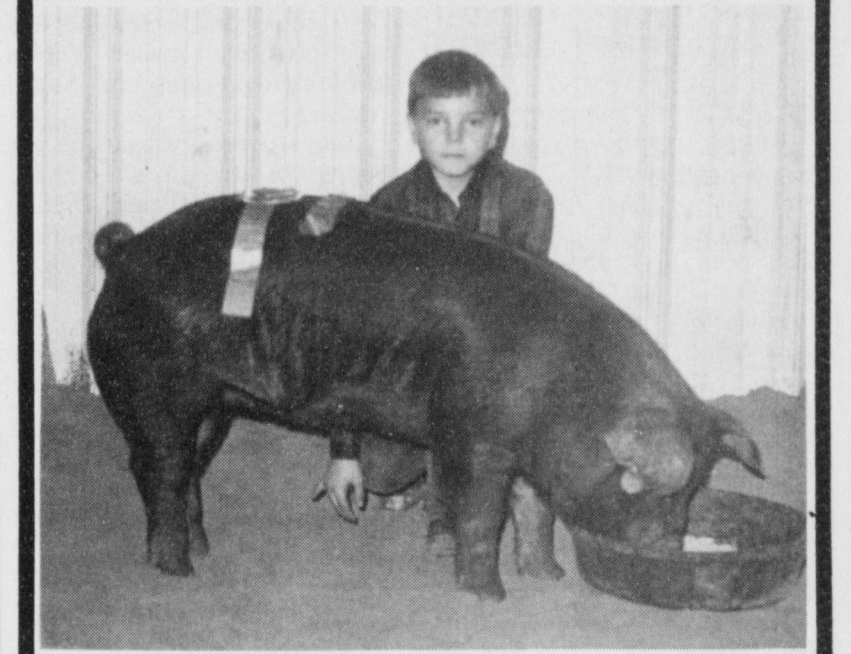
TA MEMBER 1991
TEXAS PRESS ASSOCIATION

L. B. Hall, Publisher
Sammy Hall, Vice President/Controller
Cleta Williams-Jacobson, News
Evelene Harris, Society
Holly Milne, Advertising
Dora Toscano, Classified

SUBSCRIPTIONS
Muleshoe Journal and Bailey County Journal
Bailey and surrounding counties
Muleshoe Journal and Bailey County Journal
Elsewhere in Texas \$14.75
Muleshoe Journal and Bailey County Journal
Outside Texas, \$16.50
Yearly By Carrier
\$12.50

Advertising Rate Card on Application
*Advertisers should check their ad the first day of insertion. The Journal will not be liable for failure to publish an ad or for a typographical error or errors in publication except to the extent of the cost of the ad for the first day of insertion. Adjustment for errors will be limited to the cost of that portion of the ad where the error occurred.

Congratulations



BREED CHAMPION DUROC--Daniel Reeves, son of Mr. and Mrs. Jack Reeves exhibited his Duroc in the Three Way Stock Show and took Breed Champion in that class. The stock show was held last Saturday. (Journal Photo)

Bula Gin Co.

Congratulations



RESERVE BREED BERKSHIRE--Jonathan Kindle exhibited his Berkshire at the Three Way Stock Show and walked away with the Reserve Breed Champion spot in the Berkshire Class. Jonathan is the son of Mr. and Mrs. Joey Kindle. (Journal Photo)



RESERVE GRAND CHAMPION SWINE--Monty Kirby, son of Mr. and Mrs. Craig Kirby exhibited his Light Weight Crossbred to Reserve Breed Champion honors at the Three Way Stock Show held last weekend. Monty also took Breed Champion in the same class as well. (Journal Photo)



RESERVE BREED CHAMPION HAMPSHIRE--Marvin McCaul showed his Heavy Weight Hampshire to Reserve Breed Champion honors at the Three Way Stock Show which was held last Saturday. (Journal Photo)



BREED CHAMPION BERKSHIRE - SHOWMANSHIP--Kyle Kindle, son of Mr. and Mrs. James Kindle showed his Berkshire to Breed Champion honors at the Three Way Stock Show held recently. Kyle also walked away with the Swine Showmanship award. (Journal Photo)



SHEEP SHOWMANSHIP--Carrie Kindle showed she could show Sheep at the Three Way Stock Show and walked away with the Sheep Showmanship award. The stock show was held last weekend. Carrie is the daughter of Mr. and Mrs. James Kindle. (Journal Photo)

**Farmer's
Co-Op
Elevators**



OFF TO THE PIZZA HUT--Students at Dillman Elementary School who had not missed a day of school the first semester, were treated to a pizza at the Pizza Hut at noon Monday. Barbara Finney, principal, went along with the students. (Journal Photo)

Rebekah Lodge

Ruby Green and Velma Howell served stew, cornbread and cake to all members of Muleshoe Rebekah Lodge No. 114, prior to their meeting on Tuesday, January 22.

After the meal, the meeting was called to order by Noble Grand Ruby Green. Patsy Chance presented the American flag and was escorted by Velma Howell and Mary Ann Ramirez.

It was reported that the members enjoyed music during the evening with Clara Lou Jones at the piano.

Roll call was taken by June Green, secretary. There were 20 members present. Mrs. Green also read the minutes of the previous meeting. Opening prayer was given by Doris Lambert, Chaplain.

Louise Allen, Acting District Deputy President appointed Pat Langfitt as Deputy Marshall and Doris Lambert as Deputy Chaplain and installed Clara Lou Jones as Musician, Della Puckett as Left Support Vice Grand, and Louise Allen as Right Support Vice Grand.

Valentines were passed around for all members to sign and these will be sent to relatives and friends serving in

the Armed Forces in Saudi Arabia. Terie Snell shared comments from letters she had received from Armed Forces personnel serving in Saudi Arabia.

Ruby Green reminded the Lodge of the South Plains Secretary, Clerk, and Scribe meeting in Abernathy on Feb. 10. Registration will be at 9:30, welcome beginning at 10. Following church service, the afternoon session will open at 1

Lazbuddie Young Homemakers

The Lazbuddie Young Homemakers held their monthly meeting January 15, with Kandy McWhorter, Bailey County Extension Agent, as a special guest.

Ms. McWhorter presented a program on "Stress Management." She explained that unplanned, sudden, or disagreeable change was one of the main causes. "These changes many times lead to depression" Ms. McWhorter continued. Through self-help worksheets, these homemakers were able to evaluate their individual stress levels. Ms. McWhorter closed her program by explaining ways to manage stress.

The business meeting began with the Young Homemakers planning Ladies Night Out for January 31. Also February 14 was the date set aside as

p.m. "All are invited to go to this meeting in Abernathy and enjoy good fellowship" said Pat Langfitt. "Several of our Lodge members will be assisting in the meeting.

The pre-planning meeting for the South Plains Association meeting will be in Muleshoe at the Lodge Hall on February 23 at 7:30 p.m. The Lodge will discuss refreshment plans and other plans concerning this meeting next week.

Sweetheart night, for their husbands. A covered dish meal and games were planned for that night.

The Homemakers set up a committee for eye-glasses, discussed the Senior Citizens Tea in March, and discussed the possibility of a new community cookbook. Ways were also discussed to make Phil Warren, the new Lazbuddie School Superintendent, feel welcome to the community.

Members attending were; Jamie Carroll, Lana Copp, Roxanne Gregory, Sherrie Nichols, Reta Mimms, Pat Randolph, Jana St. Clair, Chandra Sanchez, Mary Jo Schacher, Tonjua Scisson, Gina Wilkerson, Margie Galvan, Jan Vie and Barbara Lust, advisor.

Creative Living

by: Sheryl Borden

Information on teaching kids to sew and removing stains from carpet and upholstery will be the featured topics on "Creative Living" on Tuesday, January 29 at 12 noon and Saturday, February 2 at 2 p.m. (All times are Mountain.)

Carolyn Curtis, founder of "Kids Can Sew", is going to talk about a series of Pattern Book Packets used to systematically teach children, between the ages of 6 and 16, how to sew. The system Ms. Curtis is going to talk about is designed for sewing a wardrobe using knit fabrics. Ms. Curtis lives in St. George, Utah.

Joan McClain, representative of Iona Appliances and Milliken Textiles, will discuss some of the toughest stains on carpet and upholstery and explain ways that have been used in the past to try to remove the stains. She will then demonstrate a cleaning product called Capture, as well as a machine called the DryTech Carpet Cleaner, to clean many common household stains.

On Tuesday, January 29 at 9:30 p.m. and on Thursday, January 31 at 12 noon, "Creative Living" will present information on maintaining stain resistant carpets, new taste combinations with wine, and a program for patients who have suffered head injuries.

Joan McClain, spokesperson for Iona Appliances and Milliken Textiles, is going to explain how to maintain stain resistant carpets through a process called dry carpet cleaning. Ms. McClain lives in Manhattan Beach, CA.

Rose Hansen, food and wine consultant, will share some new taste combinations with wine and will explain which wine goes with which food. Ms. Hansen is from Sausalito, CA.

Debbie Mayes-Chambers is going to talk about a program that is specifically geared for helping patients who have had severe head injuries. She represents Re-entry and Transition Associates (R.E.A.T.A.) located in Lubbock, TX.

"Creative Living" is produced and hosted by Sheryl Borden. The show is carried on more than 100 PBS stations in the United States, Canada, Guam and Puerto Rico and is distributed by Pacific Mountain Network, Denver, CO. Viewers can request copies of materials offered on the show by sending one 25 cent stamp for each handout requested. Send the stamps, along with your name,

address and booklets requested to:

"Creative Living" Requests
% KENW-TV Station #52
Eastern New Mexico University
Portales, N.M. 88130

PORK CHOPS IN CHAMPAGNE GINGER SAUCE

(Eight servings)
8 pork chops
2 tablespoons vegetable oil
1/2 cup brut champagne
2 tablespoons chopped crystallized ginger
2 tablespoons butter, cut into bits
Salt and pepper to taste
2 shallots, minced
1/2 cup half-and-half
1 teaspoon Dijon-style mustard
1 or 2 teaspoons lemon juice
Chopped green onions, garnish

Season pork chops with salt and pepper. In large skillet, brown pork chops on both sides. Remove to platter and keep

warm.
Saute shallots in skillet 1 minutes. Pour in champagne and half-and-half; heat to boiling. Reduce heat to medium; cook until slightly thickened, about 8 minutes. Whisk in ginger, mustard, lemon juice and season with salt and pepper. Whisk in butter, bit by bit, until sauce is smooth. Return pork chops to skillet; cook until just heated through. Serve immediately, passing additional sauce. Garnish with green onions.

cherries and chocolate cream CHERRIES AND CHOCOLATE CREAM

(six Servings)
1/2 cup Cabernet Sauvignon or Zinfandel wine
1 cup whipping cream
Toasted slivered almonds
2 cans (16 ounces each) pitted whole cherries, drained
1/3 cup grated semisweet chocolate
Pour wine over cherries; let stand at room temperature at least one hour to marry flavors. Just before serving, whip cream until stiff; fold in chocolate. Spoon cherries into individual serving bowls; spoon chocolate cream over cherries.



OGALLALA AQUIFER PROGRAM--Carmon McCain, who is employed by the High Plains Underground Water Conservation District No. 1, located in Lubbock, gave a program on the Ogallala Aquifer and the conservation of water resources last Tuesday for Mrs. Sandi Chitwood's eighth grade Earth Science classes. The program was presented in conjunction with the students' study of the Earth's fresh water and underground water systems. (Journal Photo)



Day At The Beach
Mrs. Depama's Class



Shelby Rae Frierson

Becky and Kevin Frierson of Mesquite are the proud parents of a daughter, Shelby Rae, who was born Jan. 2.

The young lady weighed seven pounds and 13 ounces.

Grandparents are Georgeann Rasco of Sudan and Mr. and Mrs. Doyle Frierson of N. Little Rock, Arkansas.



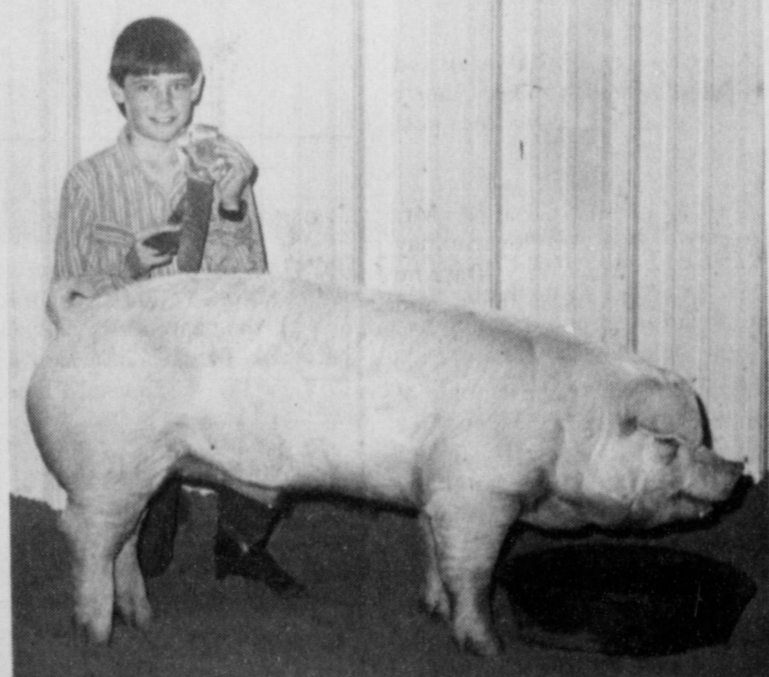
Thanks to medical research, people are alive today who surely would not have survived only a few years ago.

Clearance Sale

up to 50% off
All Sales Final
No Returns or Exchanges!

Latrell's Fashions
MERLE NORMAN COSMETICS
Phone 272-3459
1519 West American Boulevard
Muleshoe, Texas

Congratulations



BREED CHAMPION CHESTER WHITE---Russell Pollard showed his Chester White to Breed Champion honors at the Three Way Stock Show which was held last weekend. Russell is the son of Mr. and Mrs. Terry Pollard. (Journal Photo)

Maple Co-Op Gin

Congratulations



BREED CHAMPION HAMPSHIRE---Kyle Kindle exhibited his Light Weight Hampshire to Breed Champion honors at the Three Way Stock Show which was held recently. Kyle is the son of Mr. and Mrs. James Kindle. (Journal Photo)

Bailey County
Farm Bureau

NOTICE!

Leal's Restaurante Will Close
At 4:00 p.m. This Sunday Only,
January 27, 1991.

We Will Re-open On Tuesday,
January 29th At The Regular
Time!

Open Tuesday - Sunday
Closed Mondays

Leal's

1606 W. Amer. Blvd. 272-3294



ENGAGEMENT ANNOUNCED--Ray and Toni Hall of Roswell, N.M. announce the engagement and approaching marriage of their daughter, Kathleen Hall to Curtis Elder, son of James and Linda Elder of Muleshoe and Ruth and Bill Wimberly of Angel Fire, N.M. Vows will be exchanged on May 11 at Grace Temple Baptist Church in Denton. Miss Hall is employed at Humana Medical City Hospital in Dallas as a labor and delivery nurse. Elder is employed at the University of North Texas as a programmer/analyst. (Guest Photo)

Dudgeons' Honored With Reception And Shower

A reception and shower was held in the Sudan First Baptist Church, honoring Mr. and Mrs. Roy Dudgeon.

The serving table was covered

Janie Kiser

Honored With Baby Shower

Janie Kiser and son, Pete Anthony were honored with a baby shower Saturday, Jan. 12 with aunts of the honoree serving as hostesses.

Diane Grumbles registered the guests as they called at 2 p.m.

Janie Rodriguez and Christine Gonzales served punch, light blue mints, mixed nuts and cake.

The serving table was covered with a hand-crochet lace table cloth, made by the honoree's great grandmother, over a blue cloth. The table was accented with a brass sconce with crystal cups, blue candles and baby blue silk flowers.

Special guests included: Mary Espinosa of Muleshoe, great grandmother; Ramona Handy of Portales, N.M., grandmother; and cousins and friends.

with a white table cloth and punch, cookies, sausage balls and cheese and meat plate were served.

A money tree centered the table.

Mr. and Mrs. Dudgeon greeted the guest at the door, and Philda Dudgeon registered the guests.

Each hostess was greeted in Hawaii style by placing a Lei on each one. Hostesses for the occasion included: Joan Ellison, Susan Baker, Loretta Reid, Barbara Flowers, LaDelta Vernon, Georgeann Rasco and Bettye Withrow.

Also Marge Cardwell, Charls Ann Williams, Frances Gardner, Tracey Hill, Machelle Edwards, Waynette Fisher, Ruth Baker, Mildred Lance, Glyna Harrison, Patsy Kent, Jackie McAlpen, Norma Phillips, Mary Powell, Mary Wood, Cheryl Kinnie, Donna Lance, Juanda Fields and Elsie Cate.

A Good Question
Why worry about posterity? Our progenitors worried about us--and what good did it do?
-Journal, Atlanta.

Dilemma
Americans have more time-saving devices and less time than any other people in the world.
-W.O.W. Magazine.

Jennyslippers To Sponsor Toast To Texas March 2

The Jennyslippers had a lengthy agenda when they met at noon Tuesday. Mary Ann Ramirez called the meeting to order and read the correspondence, which included a letter from a serviceman in Saudi Arabia, a thankyou note from the E.M.S. and a seasons greeting card from Ben Franklin.

Mrs. Ramirez recognized Sharon Plott, a new member.

A report was given by Billie Downing, on the Financial Aid Seminar scheduled, Monday, Feb. 11 at 7 p.m. in the high school cafeteria. "Members are needed to help call the students" Mrs. Downing said.

The members voted on the third annual Merchant of the Year, which was named at the Chamber of Commerce banquet. This award is presented by the MAC Committee and the Jennyslippers.

The 1991 budget was presented and accepted.

Nelda Merriott reported on the Toast To Texas which is scheduled for Saturday, March 2, Texas Independence Day, at 2 p.m. at the Mule Memorial site. "We rated a terrific write-up in Texas Highways magazine, and all eyes are on us to continue this tradition" said Mrs. Merriott. "We'll again have our rest-stop which T.R. and Vivian White have graciously agreed to be rest-stop hosts--with our help" Mrs. Merriott continued. Mrs. Mrs. Ramirez has volunteered the Girl Scouts to make cookies again this year.

The following article, written by John Cagle, Texas Highways marketing manager, was taken from the Texas Highways magazine.

The festivities in 1991 will have to go a long way to top the 1990 celebration in the West Texas town of Muleshoe. The spirited little town put on a toast at the Mule Memorial on US 84/70. Events included singing, speeches, T-shirts for the occasion, and even Texas- and armadillo-shaped cookies baked by local Girl Scouts. Mayor Darrell Turner led the toast, and 300 people attended--quite a turnout for a town of 4,700. District clerk Nelda Merriott organized the event, making the rounds of local civic clubs and newspapers to drum up support for the toast. The local nursing home brought a van full of senior citizens, the entire fourth grade of the elementary school walked to the Mule Memorial, and the junior high principal led his school in the toast over the school's public address system.

Muleshoe folks and Texans throughout the world agree. Texas is ever-lasting in the hearts of her people.

In an executive meeting Monday night, it was agreed to raise the price of the Jenny-slipper lunches (first Tuesday's meeting) at the Old Depot from two to three dollars.

Enochs News
by: Mrs. J.D. Bayless

Visitors at the Baptist Church Sunday were Leta and Cleo Hall of Phoenix, Az. and Kristen and Landon Nichols.

Kelly Mosser of Slaton visited his grandparents The Shorty McCall's a few days the past weekend.

Guests in the home of Mr. and Mrs. Jack Stanley Sunday were their daughter, Darlene and husband Alton Jones and daughter Missy of Wolfforth.

Mr. and Mrs. Leon Dupler of Andrews and their daughter Susan Sears from Nashville, Tenn. visited their daughter, Mr. and Mrs. Jarrol Layton during the weekend.

For Your
Mary Kay Cosmetics
Josie Flowers
272-3865
8 a.m. - 12 noon
& after 6 p.m.

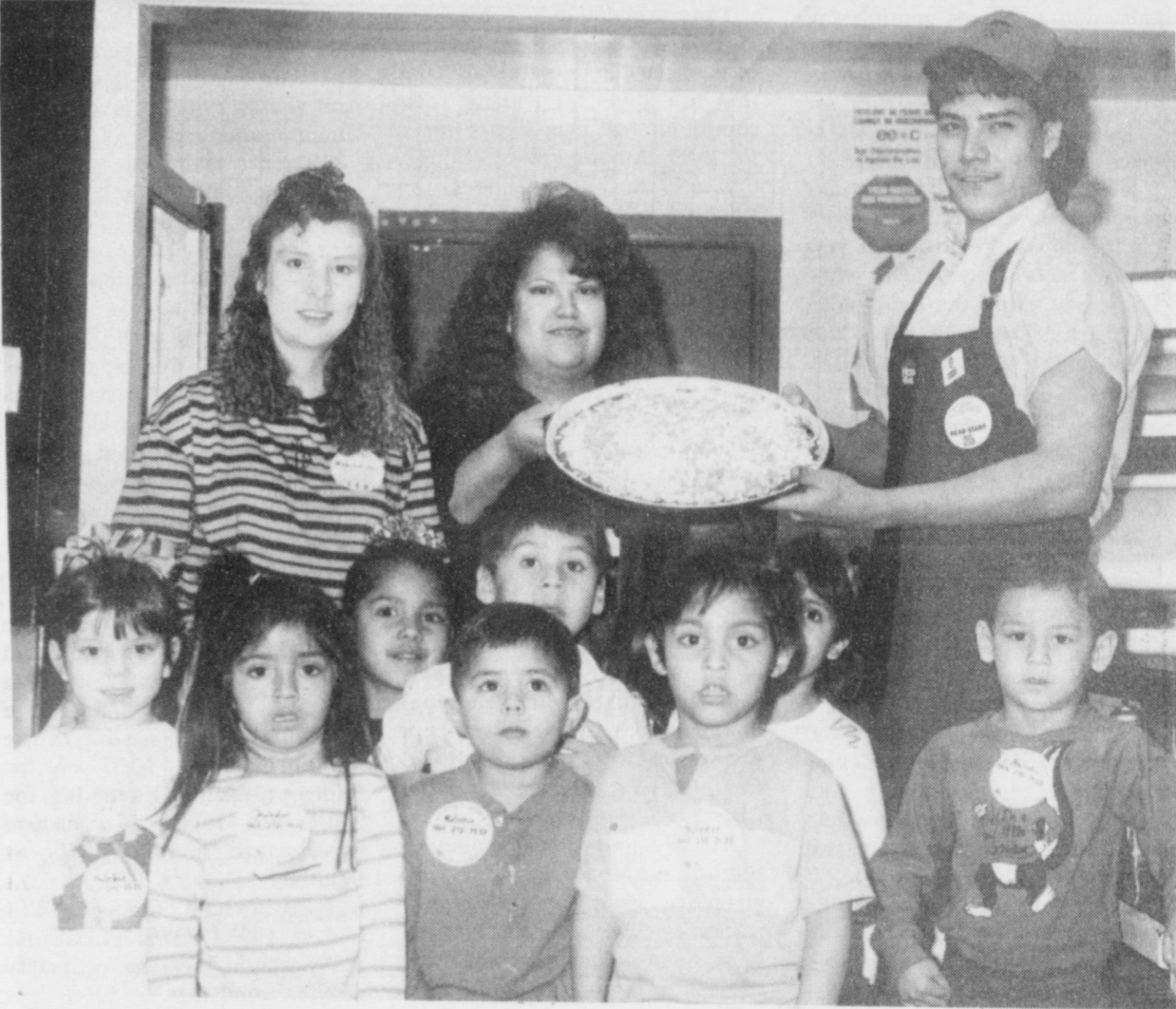
The possibility of changing the annual Walk-A-Thon to a Skate-A-Thon was discussed. Nelda Merriott and Pat Langfitt will look into this change and chair the project.

The annual Easter Egg hunt was also discussed. The hunt

will be held on Saturday, March 23.

Joyeline Costen, secretary, read the minutes of the previous meeting and they were approved as read. Donna Kirk, treasurer, gave the treasurer's report.

It was reported that several area towns are purchasing the "Support Our Servicemen" badges being made by the Jennyslippers. These badges are going to the Lubbock Court House, Texas Tech, Morton Lubbock and Idalou.



OCCUPATION WEEK--On Thursday, January 24, Frances Saldana and Corina Reyna took the Texas Migrant Council (TMC) students to the Pizza Hut for Occupation Week. Roland Ambriz showed the students how a pizza was made. After the pizza was done, they all had pizza and Coke.

(Journal Photo)

Need A Yard Man For 1991
I Can Do Anything You Need Done.

CALL
CAPPY GATEWOOD
ANYTIME
272-5435

ALLSUP'S
318 W. Amer. Blvd. Muleshoe 272-4862 JAN. 27 to FEB. 2nd

BREAD 1 1/2 lb. LOAF 2/99¢	POTATOES 10 lb. BAG 99¢
FRANKS 12 oz. pkg. 69¢	CORN KING FRANKS
Ham, Egg & Biscuit 79¢	Beef & Salsa Burritos 99¢
Pepsi 6 Pack 12 oz. cans \$1.99	TOM'S REG. \$1.29 CORN & TORTILLA SNACKS "all flavors" 99¢
CHEETOS REG. \$1.79 \$1.39	HOT FOODS MENU
Shursaving Corn or Green Beans 4/\$1.00	BARBECUE BEEF SANDWICH 99¢
Shurfine Frozen Strawberries 10 oz. 59¢	BARBECUE PORK RIBS (L.B.) \$3.99
Hot Links 2/99¢	BARBECUE WHOLE CHICKEN \$3.99
	ALLSUP'S BURNITO 79¢
	BREAKFAST BURNITO 99¢
	BURNITO \$1.19
	BEEF & SALSA DELICIOUS CHEESEBURGER 79¢
	CHICKEN FRIED STEAK \$1.59
	3 COUNT CHICKEN STRIPS \$1.49
	WIPOTATO WEDGES/CHICKEN 2 PCS/BISCUIT \$1.99
	9 PIECE BOX CHICKEN \$4.99
	BEEF & CHEESE CHIMCHANGA \$1.19
	BREADI CORN DOG 69¢
	DELICIOUS HAMBURGER 59¢
	WILSON HOT LINKS 99¢
	SAUSAGE ON A STICK \$1.59
	SAUSAGE & BISCUIT 79¢
	SAUSAGE EGG & BISCUIT \$1.09
	SAUTEYA SAUSAGE \$1.09
	4 COUNT STEAK FINGERS \$1.00

CALL-IN ORDERS WELCOME CHECK OUR WEEKLY SPECIALS

Rip's WESTERN WEAR IN TEXICO
314 Wheeler 482-3363
OPEN 8:00 a.m. - 6:30 p.m. c.s.f.
Layaways Welcome

LAST CALL SALE

All Bailey & Resistol FELT HATS..... 20% OFF

All Men's SUITS..... 20% OFF

All SPORT COATS..... 50% OFF

Men's SHIRTS..... 50% OFF

Men's DRESS TIES 20% OFF

All Winter & Fall LADIES WEAR 50-75% OFF
Ladies New Spring Fashions Arriving Daily

KC Mufflers

Cont. From Page 1

scheduled delivery. Not too long ago, many of them would have "made do" with what they had on hand. Today, more and more shops are ordering the right parts to do the job.

"This is especially true with catalytic converters," Duane said, noting that he continues to see increased evidence that shop operators are paying more attention to being sure they are following the EPA guidelines by installing the right converter.

KC uses its own trucks and people to make regular deliveries to shops spread over a very large territory. They cover West Texas, including the Panhandle, all of New Mexico, a big chunk of Colorado and parts of Oklahoma and Utah.

The "turn-around" shop on their longest route is more than 700 miles from the warehouse, making that route more than 1,400 miles. Duane usually runs this route himself, using a truck and trailer, because of the long hours, mountain roads and demanding schedule.

While many of their routes are long, the people at KC are never too busy to keep shop operators informed about new products and equipment and other changes that might affect their business or to stop and help with a problem. If it involves exhaust or catalytic converters, they can usually help the operator solve anything that might come up. The Castleberrys own three retail muffler shops. One is at their headquarters in Muleshoe and the other two are in Clovis and Tucumcari, N.M. In addition to being separate profit centers, the shops help them stay current with trends at the retail level. They also use the shops as training facilities for customers and their employees when the need arises.

KC also supplies a full line of new and used automotive service equipment, including tube benders, lifts, wheel service equipment and welders. Their lines of new equipment include Bend-Pak lifts and benders, Ben Pearson tube benders, AMMCO brake lathes and Coats wheel balancers and tire changers.

Although both their warehouse and muffler shops concentrate almost totally on exhaust products and services, they keep a brake lathe in their Muleshoe shop. They use that lathe both as a demonstrator and to turn drums and rotors for others in the community.

Kid and Duane have been an active part of their community since opening their first muffler shop in Muleshoe in 1980. Kid had previously owned a shop in Clovis for a couple of years.

This came after he "retired" from a career as a service station owner and from the 'Air Force.' In the meantime, Duane was pursuing a career as a professional musician, playing drums with various groups around the country before settling in as a studio musician in Hollywood.

It was a desire to work with his father that motivated Duane

to store his drums, and they opened the shop in Muleshoe, a town of about 4,500 people, located on the high plains of the Texas Panhandle about an hour and a half's drive northwest of Lubbock, Tex., and 30 minutes east of Clovis, N.M.

They are not only recognized as established business people, but as participants in activities that are aimed at making their community an ever better place to live. Among other things, the local hospital stands as an example of their participation. When the Muleshoe hospital closed a few years ago, the nearest place for such medical care was about 30 miles away. Kid and Duane joined other civic leaders in a successful drive to create a Hospital District and get the facility back in operation.

They were also honored by the local Chamber of Commerce for inviting U. S. Senator Phil Gramm to tour the KC facilities and use their warehouse for a "town hall" type meeting with other business and civic leaders. Both are active in the Chamber of Commerce and shortly before this issue went to press, Kid was elected as a member of the Chamber's Board of Directors.

Kid is a long-time member of the Muleshoe Rotary Club and an active worker in that organization's civic projects. Duane has been Chairman of the Muleshoe Industrial Foundation since it was created about three years ago. He and other members of the foundation have been successful in bringing new businesses to the community and creating more job opportunities.

KC also enjoys a reputation in the community as a good place to work. They have been successful in attracting and keeping competent people in both their manufacturing and muffler shop operations. Gary Lowman, their first employee, has managed the Tucumcari shop since it opened. Kevin Williams oversees operations at the Muleshoe retail facility, in addition to designing jogs and working in the manufacturing operation. Kent Smith, manager of the Clovis shop, assists in product design and testing and builds some prototypes. Duane's wife, Cheryl Castleberry, handles the telephones, works the counter and does the book work at the Clovis shop.

The progress of the KC operations, as they have grown from a two-man muffler shop, reflects the fact that they have consistently turned most of their profits back into further improving the businesses and service. The KC manufacturing operations began when they started making glass packs, mainly for their own use, in a corner of that first muffler shop.

As they gained efficiency, they began loading a pickup and selling to other shops. Many of these shops were soon ordering on a regular basis and asking them for other products. That laid the groundwork for the exhaust warehouse.

They have grown and changes with the market. While they still make and sell quantities of glass packs, that part of the business has been on the decline in recent years. They have more than compensated for this by manufacturing other products that fill a niche need in the market.

When asked about the reasons for their success, there are a number of observations. "The only reason we're here is the trust our customers have in us. And our service," is one way Duane responded.

"If you treat people right and pay your bills, you'll be all right," was one of Kid's observations.

It was a conversation with a local businessman the day he attended Rotary with Kid and Duane that, perhaps, best summed it all up. He nodded to the father and son, well out of hearing range and said, "They just like to leave things better than they were when they found them."

ASCS Gives Dates, Times For Three County Meets

Danny Noble, CED of the Bailey County Office of the ASCS has released a second report this month. It is as follows:

CORRECTION TO JANUARY 14, 1991 NEWSLETTER

We stated that the estimated wheat deficiency is \$1.40 per bushel and the advance payment will be \$.56 per bushel. This is correct on producers who choose to waive the triple base payment reduction requirement.

The regular wheat program has an estimated deficiency of \$1.47 per bushel with an advance payment of \$.588 per bushel.

We apologize for this error.

11th ANNUAL WINTER AG CONFERENCE

There will be a meeting January 24, 1991 in the Bailey County Coliseum (Note: The meeting was held) beginning at 8:00 a.m. for all interested producers.

This meeting concerned the 1991 Farm Program, Emergency FmHA Loans, Conservation Compliance, Control of Spider Mites in Corn, Tax Management, Oilseed Crops, Post-Directed Sprays for Weed Control, Reduced Tillage Systems to Increase Farm Profit, and Pesticide Licensing and Requirements.

COUNTY MEETINGS ON 1991 FARM PROGRAM

Maple Co-op Gin - 8 a.m., Monday, January 28.

Bula School House, 8 a.m., Thursday, January 31.

Muleshoe State Bank, 8 a.m., Friday, February 1.

Everyone is urged to attend one of these meetings. It will be of some help to each and everyone.

ACP
Specific signup periods have been replaced with a continuous signup throughout the year with six (6) approval periods. The County Committee will approve cost-share requests during their regular meetings for the months of January, February, March, April, August and September.

Bailey County has received approximately \$80,000 allocation so therefore, if you want cost share assistance for 1991 on underground pipe, permanent vegetative cover or terraces, you should sign up at this time.

1991 MEASUREMENT SERVICE RATES

1. Staking and Referencing -

Rotary...

Cont. From Page 1

He said the Mexican president came on the air, and from what he understood of his speech (which was in Spanish) the president was advocating that a peaceful solution needed to be found. The president also talked about Mexican economy, especially where Mexican oil fields were concerned.

"All the Mexican people seemed to be behind the U.S. We never saw or heard anything anti-American," added the Rotary president.

Ted Barnhill was winner of the Polio Plus drawing.

Visiting Rotarians were Jack Greathouse, Portales and Bill Boling, Farwell-Texico.

Livestock Show

Cont. From Page 1

Bennett and Jonathan Bennett.

Carrie Kindle won sheep showmanship. Others in the showmanship competition were Cynthia Bennett, Larry Robertson, Daniel Reeves, Rebecca Robertson, Melissa Bennett, Joshua Tooley and Robin Tooley.

Showing the Grand Champion Swine was Keith Kindle, with Monty Kirby exhibiting the Reserve Grand Champion.

Winning Swine Showmanship was Kyle Kindle with Marc Tucker the Reserve grand champion showman. Others in the competition were Keith Kindle, Russell Pollard, Larry Robertson, Brittany Kirby, Monty Kirby and Joshua Tooley.

SWINE CLASS XIII BERKSHIRE

Marc Tucker was third and showed the champion Berkshire;

Kyle Kindle, first and reserve champion berkshire and Jonathan Kindle.

CLASS XIV CHESTER WHITE

Keith Kindle, second and champion chester; Russell Pollard, first and reserve champion and Daniel Reeves.

CLASS XV DUROC

Daniel Reeves, Larry Robertson, second and breed champion; Marc Tucker, Marvin McCaul, fourth and reserve champion and Rebecca Robertson.

CLASS XVI HAMPSHIRE

Kyle Kindle showed the breed champion and Marvin McCaul the reserve champion.

LIGHTWEIGHT

Kyle Kindle, Brittany Kirby, Russell Pollard and Keith Kin-

dle.

HEAVYWEIGHT
Marvin McCaul, Monty Kirby, Daniel Reeves, Larry Robertson and Marc Tucker.

CLASS XVIII SPOTS

Scott Pollard, Marc Tucker, second and breed champion and Jonathan Kindle, third and reserve breed champion.

CLASS XIV YORK

Scott Pollard, Kyle Kindle, second and breed champion; Daniel Reeves, Keith Kindle and Robin Tooley, fifth and reserve breed champion.

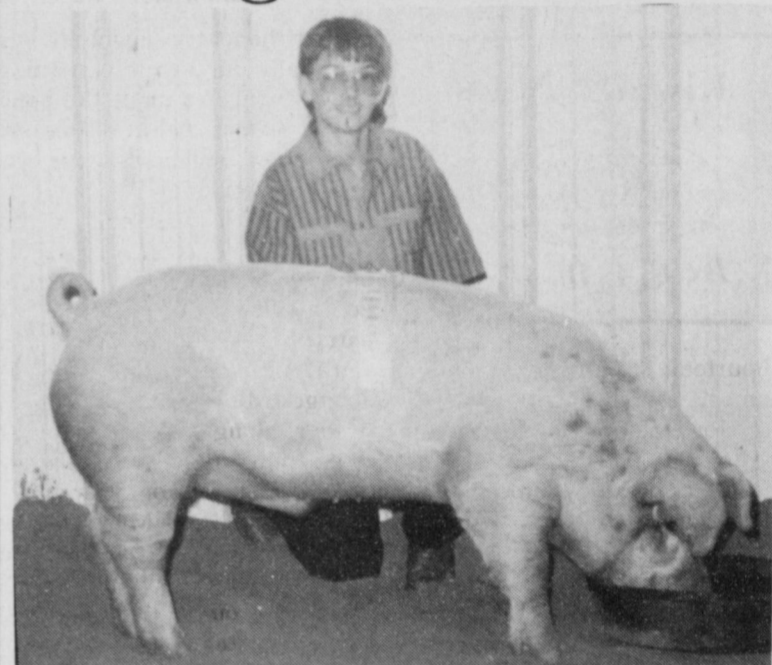
CLASS XX CROSSBRED LIGHTWEIGHT

Monty Kirby, first and breed champion; Daniel Reeves, second and reserve breed champion; Marc Tucker, Joshua Tooley, and Rebecca Robertson.

HEAVYWEIGHT

Brittany Kirby, Kasey Wright, Jonathan Kindle, Russell Pollard and Scott Pollard.

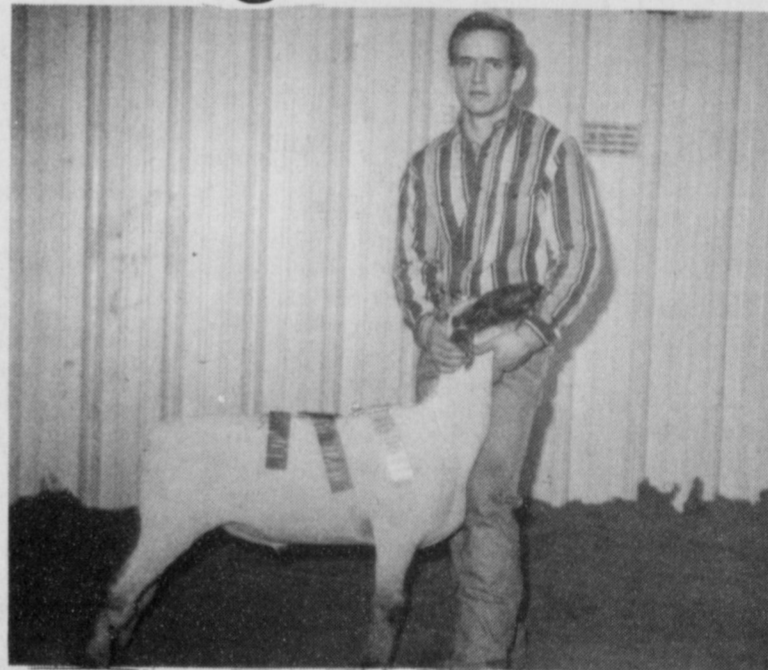
Congratulations



RESERVE BREED CHESTER WHITE---Keith Kindle, son of Mr. and Mrs. Joey Kindle exhibited his Chester White to Reserve Breed Champion at the Three Way Stock Show which was held recently. (Journal Photo)

Bailey County Electric Cooperative Assn.

Congratulations



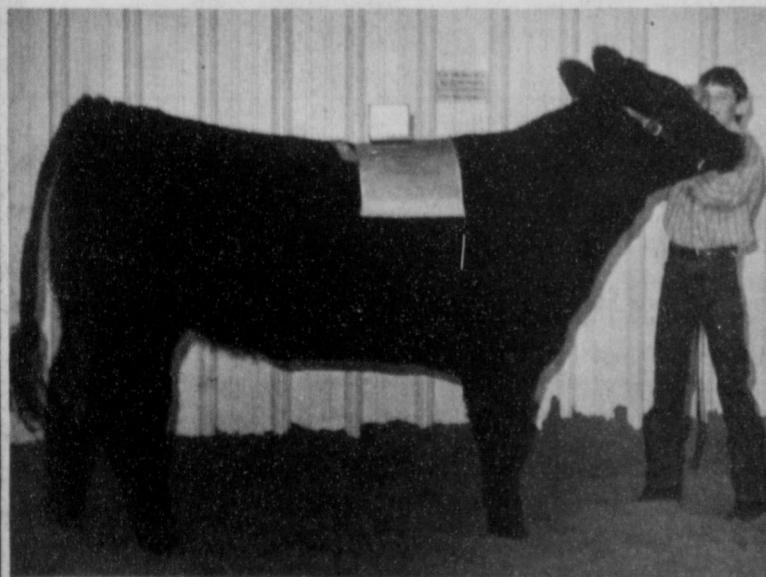
BREED CHAMPION FINEWOOL CROSS---Larry Robertson showed his Finewool Cross to Breed Champion honors at the Three Way Stock Show held last Saturday. Larry also walked away with the Reserve Showmanship award in the Sheep Division. Larry is the son of Mr. and Mrs. Darwin Robertson. (Journal Photo)



GRAND CHAMPION LAMB---Kasey Wright, son of Mr. and Mrs. Murray Davis exhibited his Medium Weight Suffolk to Grand Champion honors at the Three Way Stock Show held last Saturday. (Journal Photo)

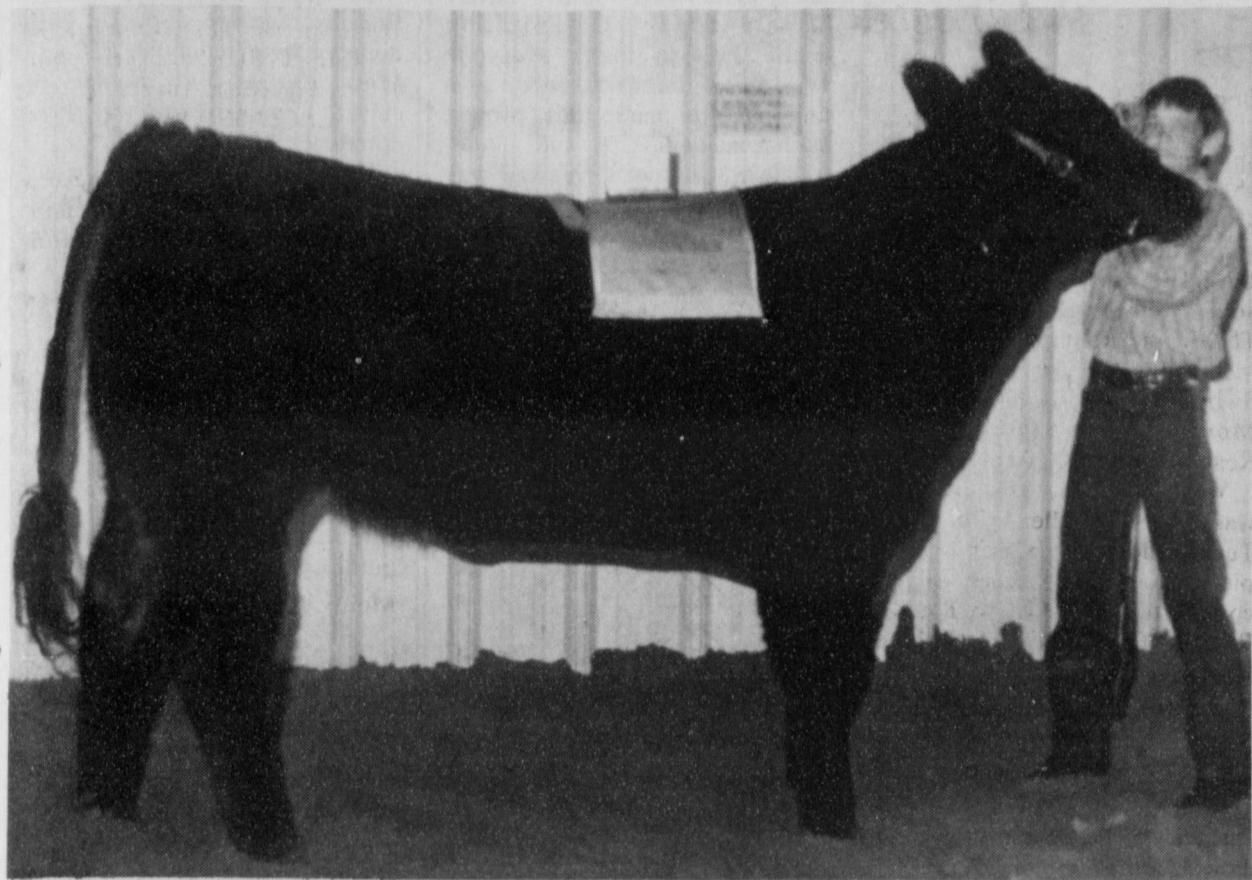
W.T. Services, Inc.

Congratulations



OVERALL GRAND CHAMPION---Russell Pollard showed his Heifer to Over-All Grand Champion honors in the Cattle Division at the Three Way Stock Show which was held recently. Russell is the son of Mr. and Mrs. Terry Pollard. (Journal Photo)

Bailey Gin Co.



WINNER OF OVERALL GRAND CHAMPION HONORS--Russell Pollard, son of Mr. and Mrs. Terry Pollard, showed his heifer to Grand Championship, then went on to take Grand Champion honors in the cattle division at the Three Way Livestock Show last Saturday. (Journal Photo)

Kiwanis News



By R.A. Bradley

Fourteen Kiwanians, two honorary Kiwanians, Lacy Morris and Jon Keith Turner, four guests and Sweetheart Marsha Wilson met Friday morning at the La Placita Cafe.

Guests were Cathy Wyant, Joe Wood, Earl Carter and Bob Reithel from the El Desayuno Kiwanis Club from Clovis, New Mexico.

These members are from the breakfast club in Clovis who meet at the Holiday Inn on Thursday mornings. We really appreciate the interest. We always welcome visitors.

Our honorary members are always welcomed. It is real good to see Lacy, well and back with us. We have always been proud

of our honorary members and especially our two this morning. Lacy Morris has made the honor roll in school. Lacy, I hope you know how much we love you and congratulations.

Jon Keith was one of our Kiwanis youngsters who participated in the Boy Scout-Cub Scout Pine Wood Derby last Saturday. We understand that Jon Keith won second. Also, his younger brother also was a winner, along with the youngest son of Jim Lutz. Congratulations to each and everyone of you.

President Glen Morris called the meeting to order. Kiwanian Larry Parker led the club in the pledge to our wonderful flag. The invocation was given by Kiwanian Lonnie Merriott. Honorary Kiwanian Lacy Morris searched hard and finally picked Larry Parker as a friend and gave him the friendship coin. Lacy, I am not so sure that you did so good. Are you sure that Larry is your friend? All kidding aside, I think you did a good job. Larry would be a good guy to have as a friend.

R. A. Bradley gave the program for Oscar Hernandez. Brad gave a short history of the oldest business in Muleshoe, Fry & Cox Inc.

Fry & Cox Bros. started into business where the parking lot is now of Joe Rhodes Boot Shop.

In 1921, Fry & Cox Bros. started as a blacksmith shop. Mr. Fry and Jack and Jim Cox made a living by hammering on steel - they then added bolts, sweeps, etc. Then a machine shop.

Fry & Cox Bros. moved to its present location in 1941. Fry & Cox Inc. in the past have been a blacksmith and machine shop. Delaers for Minneapolis-Moline-White farm equipment; New Holland, Hesston and Massey-Ferguson, along with a host of small dealerships.

In 1975, Fry & Cox, Inc. acquired True Value Hardware and a huge remodeling took place in 1976 to what it looks like today.

Here in 1991, will see another big change in Fry & Cox, Inc. as all farm machinery lines will be dropped and over 2,000 square feet will be added to the display area in the front and building supplies of all kinds of lumber, etc. will be added in our shop area.

To get rid of all of our farm equipment, shop equipment and parts, will be sold at public auction, February 14, 15 and 16.

Brad also stated that he had been with Fry & Cox, Inc. for 42 years and had no plans to retire. So, when you come into Fry & Cox, Inc. for your needs, you will still have to put up with him.

ATTENTION!! All Kiwanians- we meet next Friday, February 1 at the Dairy Queen at 6:30 a.m. -- BE THERE!!

Cash Rewards

Up To \$1,000

For Information!

Call

Bailey County

Crime Line

272-HELP

Bailey County Irrigators Increase Center Pivot Use

The use of center pivot systems continues to increase within Bailey County, according to a recent center pivot system inventory update conducted by the High Plains Underground Water Conservation District No. 1 in Lubbock.

In the portion of Bailey County within the Water District service area, approximately 28 additional center pivot systems have been installed between 1986 and 1990, according to the Water District's inventory. This brings the total number of center pivot systems in use within Bailey County to 599. The previous 1986 center pivot inventory indicated 571 center pivots in operation within the county.

The 28 additional center pivot system represent a \$840,000 investment in water conservation by Bailey County irrigators during the past four years, at an average cost of \$30,000 per system.

Approximately 1,383 center pivot systems were installed between 1986 and 1990 within the Water District, according to the recent inventory totals. This brings the total number of center pivot systems in operation within the District to 4,474.

"Center pivots, and especially low energy precision application (LEPA) systems are the wave of the future," says Ken Carver, Assistant Manager of the High Plains Water District. "Center pivot systems continue to be

installed because increased crop production, significant water savings, and reduced fuels and labor costs makes investment in these irrigation systems cost-effective.

Most center pivot systems currently in use within the Water District are partial drop-line systems which operate at about 80 percent water use efficiency. However, the number of LEPA systems in use increases each year as a result of the improved irrigation application efficiencies of about 95 percent, while conventional furrow irrigation has an irrigation application efficiency of about 60 percent.

LEPA center pivot systems can help reduce the amount of groundwater pumped for irrigation by as much as 25 percent by allowing smaller and more frequent water applications. LEPA systems can achieve irrigation application efficiencies of about 95 percent, while conventional furrow irrigation has an irrigation application efficiency of about 60 percent.

LEPA center pivot systems can help reduce the amount of groundwater pumped for irrigation by as much as 25 percent by allowing smaller and more frequent water applications. LEPA systems have also helped reduce labor costs by as much as 75 percent and irrigation fuel savings by 35 to 50 percent.

"Since pumping water from the Ogallala Aquifer and applying it to crops in a major input in High Plains farming operations, an important way to reduce cost is to apply irrigation water as efficiently as possible. Therefore as research continues to improve the efficiency of the

center pivot irrigation system, irrigators will continue to adopt the best available technology. We salute our area producers for their use of this water conservation tool," says Carver.

Additional information regarding center pivot irrigation systems is available by contacting the High Plains Underground Water Conservation District No. 1, 2930 Avenue Q, Randall, Texas 79405, or by calling (806) 762-0181.

Muleshoe Girls

Win Over

Littlefield 54-49

Friday night the Muleshoe High School girls basketball team won over Littlefield 54 to 49. High scorer for Muleshoe was Monica Swent with 13 points. Helidi Bohler scored 11.

At the end of the first quarter Muleshoe scored 7 points to Littlefield's 15, but came back in the second quarter with 17 to Littlefield's 10. At the end of the third quarter of play, Muleshoe had 32 points to Littlefield's 39. The Muleshoe girls scored 22 in the last quarter and Littlefield scored 10, ending the game with Muleshoe 54 and Littlefield 49.

The Junior varsity girls also won their game with a score of 47 to 38.

Littlefield slipped by the Muleshoe Mules 74 to 73 in overtime. Scoring by quarters went like this, Muleshoe 17-20-11-18 and OT-7. For Littlefield it was 17-16-23-10 and 8 in Ot -74.

Brian Bush was the top scorer for the Muleshoe Junior Varsity boys with 26 points. Adrain Pineda scored 14, leading the Junior Varsity to a win o

Farm prices for raw products declined in December.

Muleshoe Menu

JANUARY 28-FEBRUARY 1

MONDAY

BREAKFAST

Cereal, Toast, Fruit and Milk

LUNCH

Steak & Gravy, Creamed Potatoes, Green Beans, Hot Rolls, Fruit and Milk

TUESDAY

BREAKFAST

Cheese Toast, Fruit and Milk

LUNCH

Hamburgers, Lettuce & Tomato, Pickles & Onions, French Fries, Cobbler and Milk

WEDNESDAY

BREAKFAST

Blueberry Muffins, Juice and Milk

LUNCH

Burritos, Corn, Cole Slaw, Crackers, Fruit and Milk

THURSDAY

BREAKFAST

Pancakes, Syrup, Sausage, Fruit and Milk

LUNCH

Cheese Nacho's, Beans, Corn Bread, Salad, Fruit and Milk

FRIDAY

BREAKFAST

Oatmeal, Cinnamon Toast, Fruit and Milk

LUNCH

Hot Ham & Cheese On Bun, Pork & Beans, Tater Tots, Fruit and Milk

Congratulations

GRAND CHAMPION SWINE---Scott Pollard, son of Mr. and Mrs. Terry Pollard exhibited his York pig to Grand Champion honors at the Three Way Stock Show held last Saturday. Scott took Breed Champion honors in the same class as well. (Journal Photo)

Farmer's Co-Op Assn. of Enochs

Three Way Menu

JAN. 28- FEB. 1

MONDAY

BREAKFAST

Eggs, Hash Browns, Juice, Biscuit and Milk

LUNCH

Enchiladas, Spanish Rice, Salad, Dutch Apple Cake and Milk

TUESDAY

BREAKFAST

Pancake, Sausage, Juice, and Milk

LUNCH

Roast w/Brown Gravy, Creamed Potatoes, Green Beans, Rolls, Pears, and Milk

WEDNESDAY

BREAKFAST

Cereal, Fruit, Juice and Milk

LUNCH

Hamburger w/Cheese, Tator Tots, Lettuce, Tomatoes, Onion, Pickles, Applesauce and Milk

THURSDAY

BREAKFAST

Waffles, Ham, Juice and Milk

LUNCH

Chicken Fried Steak, Whipped Potatoes, Corn, Rolls, Glorified Rice and Milk

FRIDAY

BREAKFAST

Hot Cereal, Juice, Toast and Milk

LUNCH

Corndogs w/Mustard, Carrots, English Peas, Cookies and Milk

Lazbuddie Menu

JANUARY 28-FEBRUARY 1

MONDAY

BREAKFAST

Toast, Bacon, Juice and Milk

LUNCH

Pizza, Corn, Green Salad, Pudding, Milk

TUESDAY

BREAKFAST

Doughnuts, Fruit and Milk

LUNCH

Bar-B-Q Sausage, Potato Salad, Pinto Beans, Corn Bread, Fruit and Milk

WEDNESDAY

BREAKFAST

Toast, Scrambled, Fruit and Milk

LUNCH

Burritos, Corn, Eggs, Green Salad, Cake and Milk

THURSDAY

BREAKFAST

Cinnamon Rolls, Fruit and Milk

LUNCH

Hamburgers, French Fries, Salad, Cobbler and Milk

FRIDAY

BREAKFAST

Cereal, Juice and Milk

LUNCH

Baked Potatoes w/Chili Meat, Broccoli & Cheese, Sour Cream & Bacon Bits, Hot Rolls, Fruit and Milk

SALAD BAR SERVED MONDAY THROUGH WEDNESDAY

Notice To Taxpayers

Pursuant to Section 31.02 of the Texas Property Code, all 1990 taxes will become delinquent on February 1, 1991. Additional penalty and interest will be added if not paid by this date.

Bailey County Appraisal District

104 E. Ave. C.

Muleshoe

272- 5501

MOBILE TELEPHONE

The ***CELLULAR ALTERNATIVE** with **NO AIRTIME BILLING****

Single source networking thru-out West Texas & Eastern New Mexico.

FEATURES

- ★Telephone or Two-Way Dispatch
- ★Hands-Free Operation
- ★30 Number Memory
- ★Advanced Timer Features
- ★Last Number Redial/Saved In Memory
- ★System Scan and Group Scan
- ★Missed Call Indicator
- ★Horn Alert
- ★Automatic Power Off Timer

MOTOROLA-MIDLAND-UNIDEN-E.F. JOHNSON

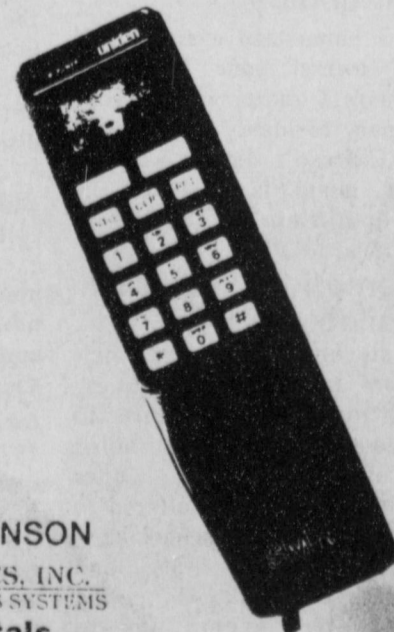
A & B ELECTRONICS, INC. COMMUNICATIONS SYSTEMS

SALES-Service-Rentals

Mobile Phones & Two Way Radios-Talk Back Paging 800 MHZ Trunking

Call Carol Nichols

A & B ELECTRONICS, INC. COMMUNICATIONS SYSTEMS
3914 N. Prince • 762-4870 • Clovis



**Mary Tollett
Funeral Services
Held Thursday**

Funeral services for Mary Tollett, 71, of Sudan were held at 2 p.m. Thursday, January 24 in the Sudan First United Methodist Church with the Rev. Jim Hawthorne, pastor, officiating.

Burial was in Sudan Cemetery under the direction of Ellis Funeral Home. Mrs. Tollett died at 9:55 a.m. Tuesday at her residence.

Born June 4, 1919, in Roswell, N.M., she had been a resident of Sudan since 1947, moving there from Las Vegas, N.M. She was a teacher a member of the Sudan First United Methodist Church, lifetime member of the Texas State Teachers Association; the Texas Business Teachers Association; the Sudan United Methodist

**Jimmy Parker
Funeral Services
Held At Morton**

Funeral services for Jimmy Parker, 51, of Odessa were held at 2 p.m. Wednesday, Jan. 23 in the Morton First Baptist Church with the Rev. John Culwell, pastor, officiating.

Burial was in Morton Memorial Park under the direction of Ellis Funeral Home of Morton.

Parker died at 12:30 p.m. Sunday in Odessa.

Born Oct. 4, 1939, in Bokchito, Okla., he had been a resident of Odessa since 1976, moving there from Morton, where he had lived since 1947. He was a truck driver.

Survivors include two sons, Jimmy Dee Parker and Coby Parker, both of Odessa; two daughters, Terry Waldron of Odessa and Cherry Hallum of San Angelo; his mother, Maye Parker of Morton; a sister, Donna Lemmons of Morton; a brother, Jerry Parker of Plainview; and five grandchildren.

He was preceded in death by his father, Owen Parker, in 1985.

Women, Delta Kappa Gamma, and Sudan Senior Citizens. The Sudan High School Future Teachers Association is named Nichols and Tollett. She married Marvin Tollett on Dec. 18, 1938, in Hagerman, N.M.

Survivors include her husband, Marvin; a son, Burck Tollett of Lubbock; a daughter, Zerlina Shafer of Beaumont; a sister, Hannah Kooiman of St. Pedro, Calif.; three grandchildren, Rehnea Kemble, Raymond Shafer and Zachary Tollett; two great grandchildren, Ashlee Kemble and Garrett Kemble.

**Daily Howell
Services Held
Here Saturday**

Funeral services for Daily Howell, 83, were held at 2 p.m. Saturday in Ellis Funeral Home Chapel of the Chimes with the Rev. Gerald Gladden, pastor of the Richland Hills Baptist Church, officiating.

Burial was in Muleshoe Cemetery under the direction of Ellis Funeral Home. Howell died at 9:36 a.m. Wednesday in the V.A. Hospital in Amarillo.

Born Sept. 18, 1907, in Temple, he had been a resident of Muleshoe since 1943, moving here from Paducah. He was a member of the Richland Hills Baptist Church and V.F.W. Post No. 8570. He was a mechanic and a veteran of W.W.II, serving in the U.S. Navy. He married Velma Lee on Jan. 5, 1936.

Survivors include his wife, Velma; two sons, James Howell of Aubrey, TX and Dwayne Holland of Bowling, Kentucky; three daughters, Latoya Sawyer of Arlington, Ariz., Peggy White of Sweetwater, and Shirley Savage of Littlefield; a sister, Mildred Taylor of Denton; two brothers, Burlice Howell of Crescent City, Calif. and Lee Howell of Milpitas, Calif.; fourteen grandchildren; and seven great grandchildren.

Never Lost
No opportunity is ever lost. The other person takes those you miss.

-Bulldozer, San Bruno.

**Allie Horsley
Funeral Services
Held Saturday**

Funeral services for Allie Horsley, 84, were held at 10 a.m. Saturday, Jan. 26 in the Richland Hills Baptist Church with the Rev. Gerald Gladden, pastor, officiating.

Burial was in Muleshoe Memorial Park under the direction of Ellis Funeral Home of Muleshoe. Mrs. Horsley died at 12 noon Wednesday, Jan. 23 in St. Mary's of the Plains Hospital in Lubbock.

Born January 11, 1907, in Emory, TX, she had been a resident of Muleshoe since 1930, moving here from Snyder. She was a homemaker and a member of the Richland Hills Baptist Church. She married Chet Horsley on Dec. 12, 1925, in Snyder. He died July 2, 1977.

Survivors include a son, Bruce Horsley of Gypsum, Colorado; a sister, Velma Floyd of Ackerly, TX; two grandchildren, Lee Horsley of L.A., Calif. and Van Horsley of Denver, Colorado; and four great grandchildren, Amber, Logan, Sean and Ryan.

She was preceded in death by a son, Ronnie Horsley.



by Kem Bales, Reporter

The members of Bailey County EMS Organization would like to wish everyone a happy and prosperous New Year.

For the month of December, Bailey County EMS ran a total of 34 calls. A breakdown shows, 22 local calls, 5 transfers to area hospitals and 7 were no transports.

During the year, 1990, Bailey County EMS ran a total of 345 calls, which averages out to 29 calls per month.

Bailey County EMS Organization would like to welcome 5 new members to the service. These people have completed their training and will be assigned spots on the schedule. The newest members are, Raph Sanchez ECA, Kay Lynn Brantley ECA, Pam Prather ECA, Sheila Black ECA and Sheryl Smith ECA.

The EMS Toy Project was a huge success. Due to the efforts of Curby Brantley, project chairman, the EMS members, the business community and interested individuals, there are 264 children that received Christ

mas gifts this year. Bailey County EMS Organization would like to thank everyone who donated money, food, toys and time to make this project such a success.

The EMS Boot Giveaway was also a big success. After expenses, the Organization cleared about \$3200.00 to be used for the purpose of purchasing some new equipment. As soon as the equipment is purchased we will publicize what we used this money for. Ricky Mata from Tucumcari, New Mexico was the winner of the \$400.00 of Full Quill Ostrich Boots. *Congratulations Ricky!*

The Tailfeather Contest had about 45 entries. Winners of the contest were:

Longest Tailfeather--Reggie Johnson who received a \$500.00 statue donated by Joe's Boat Shop.

Runner-up longest tailfeather--Calvin Meissner received a guncase donated by Poyner's.

Shortest tailfeather--Richard Barnett received a pocket knife donated by Wiedebush & Co. *Most Entries*--Jim Bohler received a pair of leather gloves donated by Fry & Cox.

Bailey County EMS would like to send a special "THANK YOU" to Joe and Darla Rhodes of Joe's Boot Shop for the support and help in these projects. Businesses and individuals like these realize that it is a major asset to this town and county to have a progressive Emergency Medical service.

The Can Project is still going strong, so keep putting those aluminum cans in the orange containers at Thriftway and Pay & Save grocery stores.

Since the first of the year, we've had several ICE related accidents. **WHEN ICY CONDITIONS PREVAIL, PLEASE, SLOW DOWN, BUCKLE YOUR SEATBELTS AND BE EXTREMELY CAREFULLY!**

Congratulations



BREED CHAMPION SPOT--Exhibiting his Spot pig at the Three Way Stock Show was Scott Pollard who took Breed Champion honors in that class. Scott is the son of Mr. and Mrs. Terry Pollard. (Journal Photo)

The Country Corner

-Morton

WHY BUY A COPY WHEN YOU CAN AFFORD THE ORIGINAL?



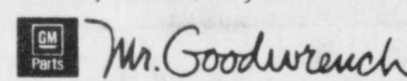
There's no reason to settle for second best, when GM Goodwrench parts are readily available and competitively priced. GM Goodwrench parts are designed specifically for your GM vehicle. So they fit right, they work right, and they last longer.

GM Goodwrench branded parts are available only at your GM dealer. So stop in and discover the difference Mr. Goodwrench makes. Get genuine GM parts from Mr. Goodwrench at

Robert D. Green, Inc.

2400 W. Amer. Blvd. 272-4588

It's not just a car, it's your freedom.



HOMESTEAD EXEMPTIONS



CAN LOWER THE PROPERTY TAXES ON YOUR HOME

A homestead Exemption

lowers the property taxes on your home by lowering its taxable value. For example, if your home is valued at \$50,000 and you receive a \$5,000 homestead exemption, your home will be taxed as if it were worth only \$45,000.

You qualify

for a homestead exemption if you owned your home on January 1 and used it as your primary residence on January 1. It doesn't matter whether your home is a house, a condominium or a mobile home.

Exemptions are available

to all homeowners on their school taxes. Additional exemptions are available to homeowners who are disabled or age 65 or over. Other exemptions may be offered to homeowners by school districts, counties, cities, and special districts. All taxing units offer exemptions to disabled veterans.

Apply to

your local appraisal district office at the address shown below for all exemptions you may qualify for. Application forms are available at this address.

if you received a homestead exemption on your present home in 1990 you won't need to apply again for 1991 unless the chief appraiser requires you to reapply.

However, if you passed your 65th birthday or became disabled before January 1, file a new application to receive additional exemptions.

If you haven't received an exemption on your present home, or if you moved to a new home, make a new application for 1991.

The deadline for applications is April 30, 1991. Contact your appraisal district before then if you need more time.

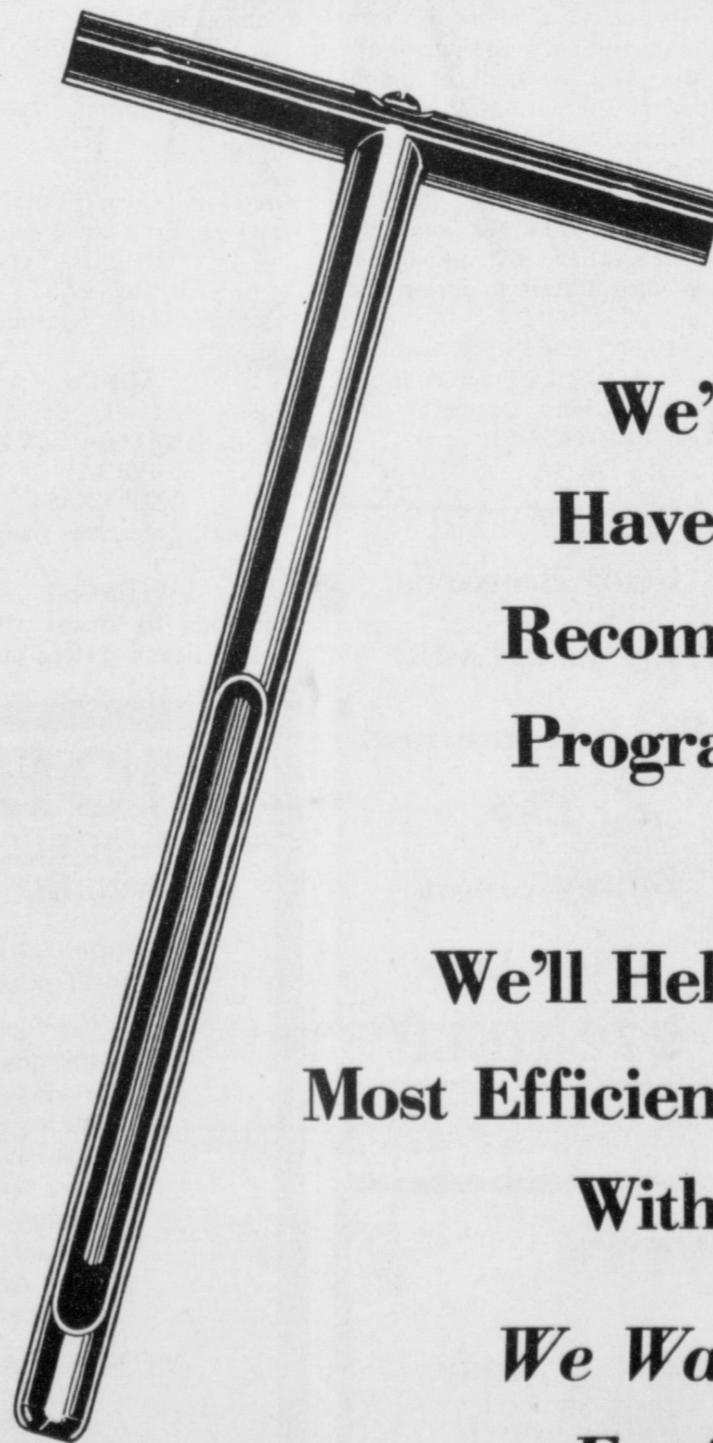
For more information, get a free copy of the pamphlet, *Taxpayer's Rights, Remedies, Responsibilities*, at your appraisal district office or from the State Property Tax Board in Austin.

**Bailey County
Appraisal District**

104 E. Ave. C.

272-5501

**Don't Guess -
Soil Test**



Start Out Right

**We'll Get Your Samples,
Have Them Analyzed, And
Recommend The Best Fertility
Program For Your Maximum
Economic Yield.**

**We'll Help You Work Out The
Most Efficient Timing And Placement
With Fluid Fertilizers.**

**We Want To Be Your
Fertilizer Dealer!**

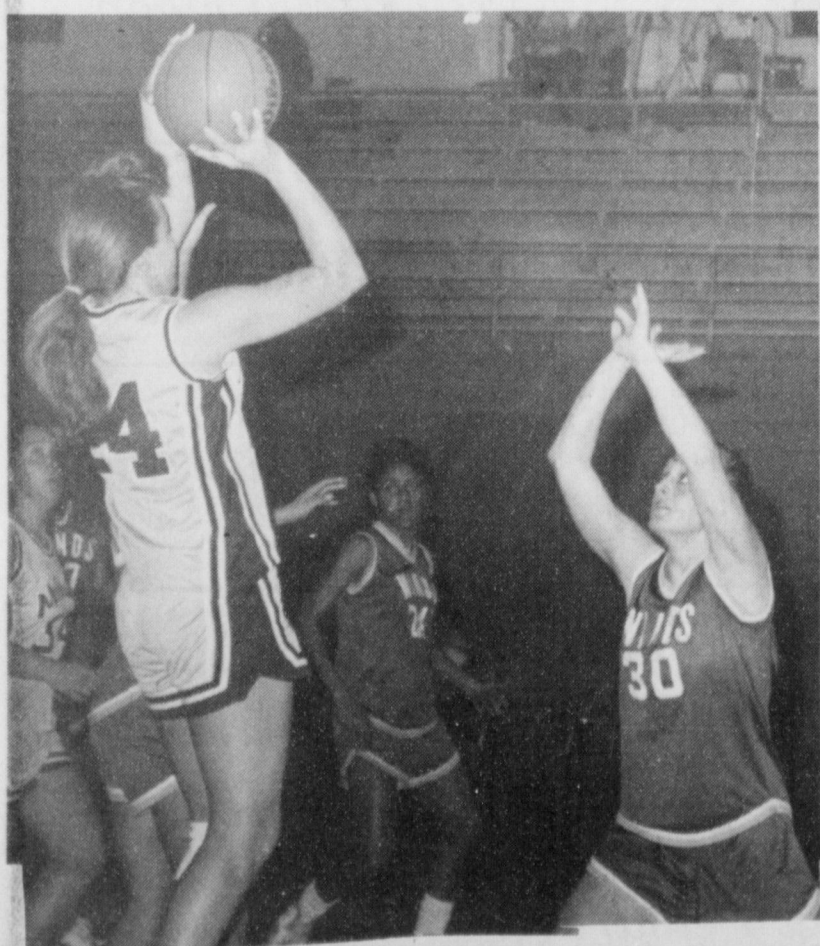
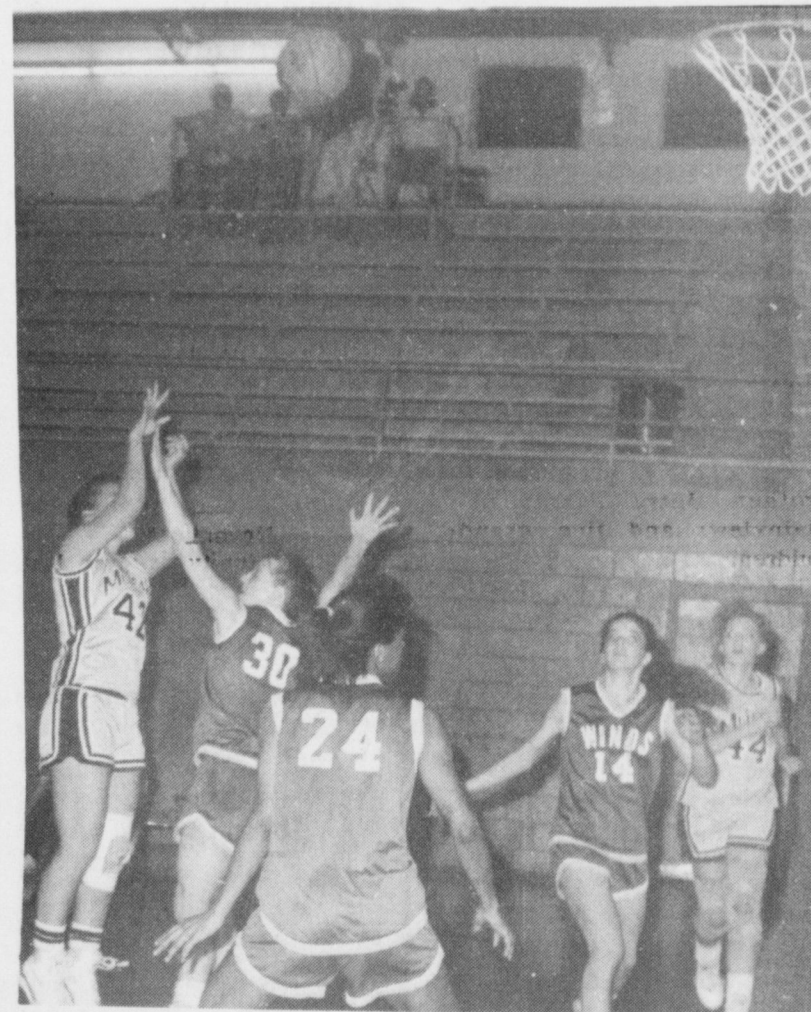
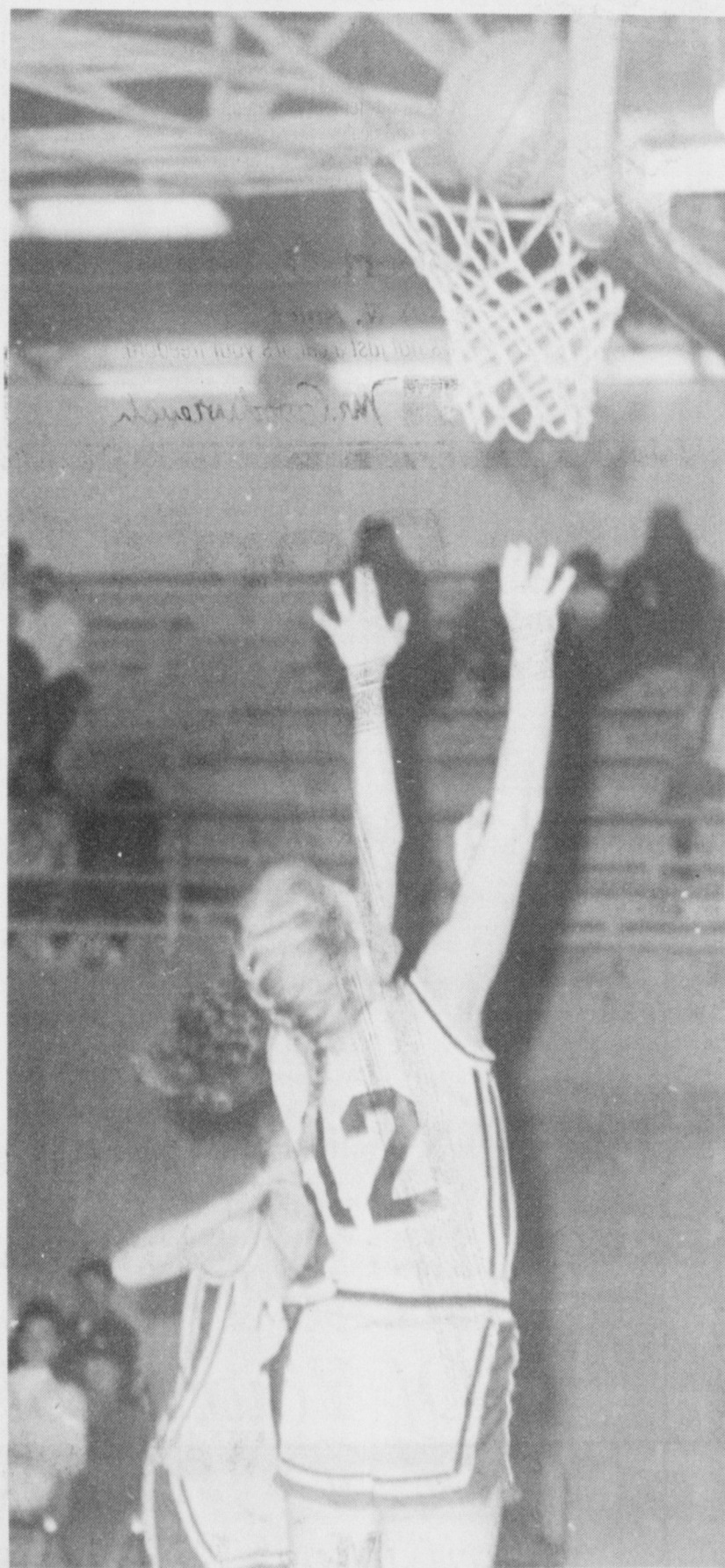
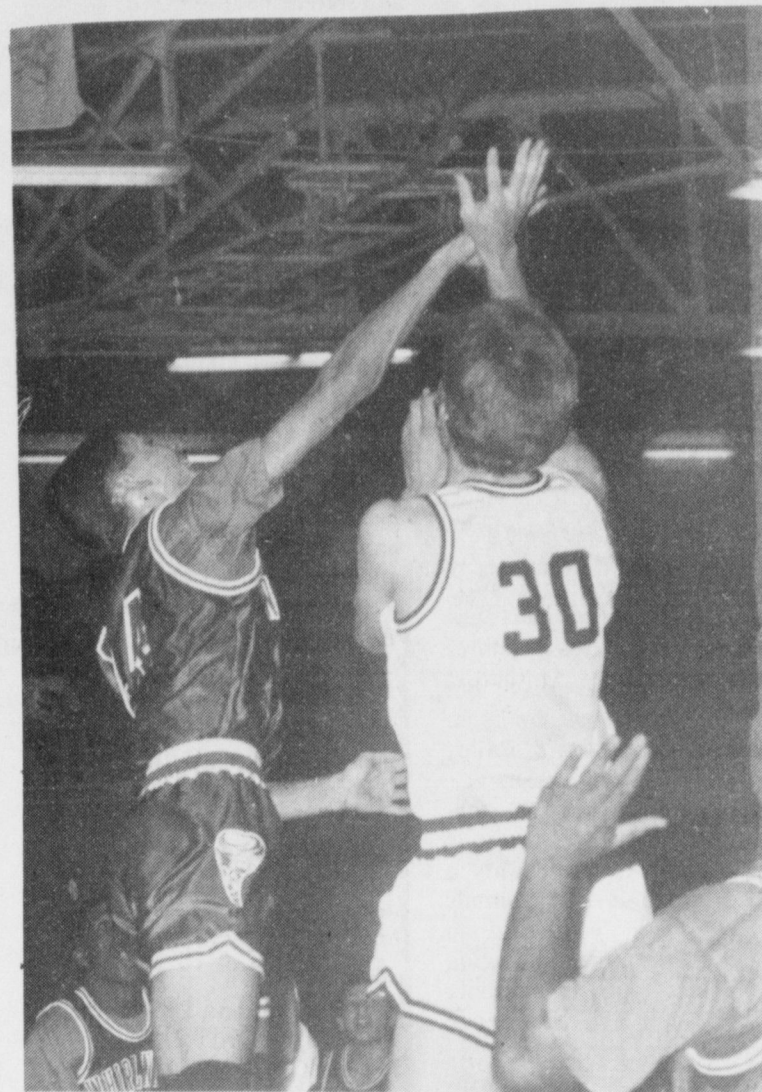
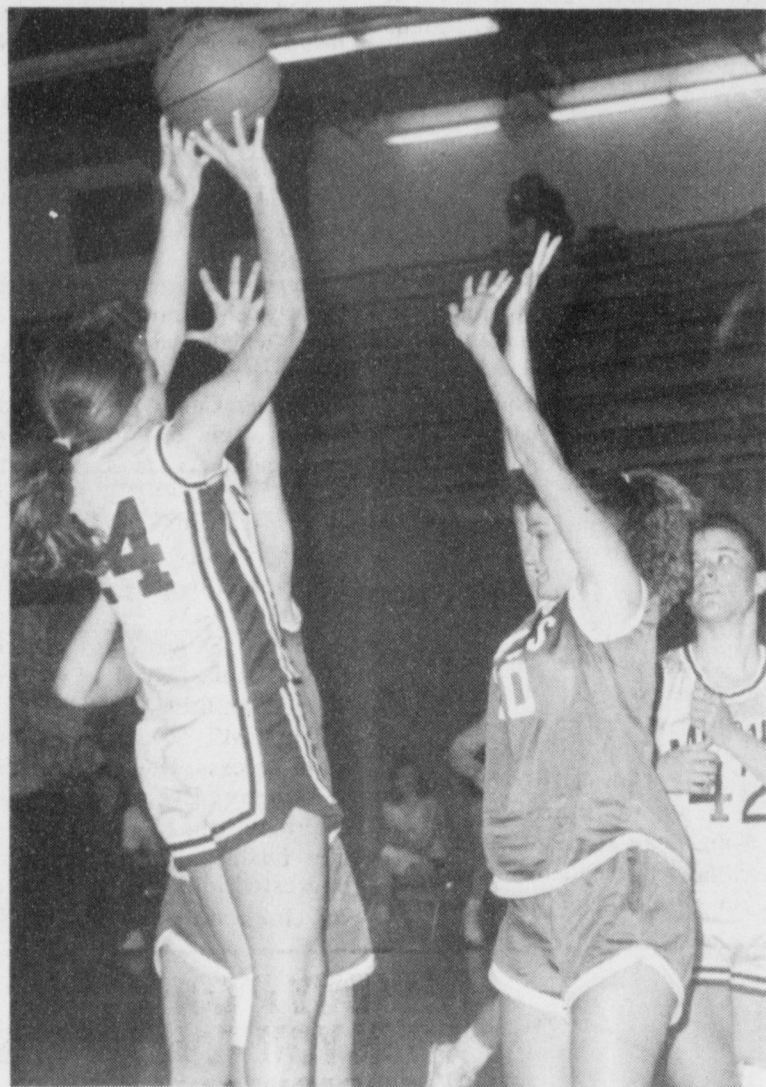
Western "66" Co.

Earth Hwy.

Muleshoe

272-4556

Lady Mules & Mules Against Floydada



Thomason Chosen International Head Of Agriculture Division

Dr. Ronald C. Thomason, professor of plant science, has been appointed interim head of the division of agriculture at West Texas State University and will begin his new responsibilities immediately. According to Dr. Steve Gamble, vice president for academic affairs, the action was taken in response to the resignation of Dr. Arden Collette, who will remain on

campus in a full-time teaching capacity. Colette joined the WTSU faculty in 1982 and was appointed head of the agriculture division in 1986.

Thomason, a graduate of Wellington High School (1958), West Texas State University (1962) and Colorado State University (1964, 1966), has been a fixture on the WTSU campus since joining the faculty in 1969. He was head of the department of plant science from 1976 until the department's consolidation during the University's reorganization in 1986 and served as interim dean of School of Agriculture in 1978-79.

"My primary concern is to maintain the emphasis placed on the importance of teaching and to do a good job in our

classrooms and laboratories," Thomason said. "I am looking forward to working with President Thompson and to continuing a close working relationship with The Texas A&M University System and area agriculturalists in order to better serve the people of the Panhandle."

In addition to his 20-plus years at West Texas State University, Thomason worked at the University of Missouri in 1968-69 and spent his summers from 1969-1972 as an associate research professor at Texas A&M University.

"We are very fortunate to have a faculty member like Dr. Thomason who has the ability, the qualifications and the experience to step in during this

time of transition," Dr. Horace Bailey, dean of the College of Agriculture, Nursing and Natural Sciences, said. "He has the respect of his peers, and I am very confident that he will do an exceptional job."

According to Bailey, no immediate plans have been made to open the position.

Pass the Gaff
Father--"Daughter, isn't that young man rather fast?"
Daughter--Yes, but I don't think he'll get away."

HEALTH INSURANCE
CALL Mark Morton 109 S. 1st Muleshoe 272-7519
State Farm Mutual Automobile Insurance Company, Home Office, Bloomington, Illinois

Contagious
"I hear they're starting a new campaign against malaria."
"Dear me! What have the Malarials done now?"

A Preference
Joker: Waiter, bring me a slab of political pie.
Waiter: Yes sir. Do you prefer the apple-sauce or the plum filling?

1991 Crop		
	Sale Flat	Month
Feed Corn.....	4.33,0.00ch	March
White Cobb Yellow.....	4.90,0.32ch	March
Red Cobb Yellow.....	4.53,0.11ch	March
White Food Corn.....	5.80,0.82ch	March
Milo.....	4.19,-0.08ch	March
Soybeans.....	5.18,-0.53sh	March
Wheat.....	2.30,-0.30kwh	KW March

96%
Prices effective Jan. 25, 1991

Farmer's Co-Op Elevators
272-7561

Letter To The Editor

Dear Editor:
OUR SPECIAL THANKS
To: Friends and Supporters of the Bailey County Junior Livestock Show

We want to express our sincere thanks to you for your help during this year's Bailey County Junior Livestock Show.

Once again, it was a top-notch show and gave the 4-H and FFA youth of our county a chance to exhibit the animals they have been preparing to show at this and other statewide shows. This type of activity builds character and confidence in these young people and so we feel that it is very worthwhile.

Without the help you gave, in whatever capacity, we could not have put together the facilities, given the prize money, and provided all the necessary things which made it successful. We sincerely appreciate YOU and the difference you made.

Bailey County Junior Livestock Show Board
Herman Morrison
Secretary-Treasurer

Courthouse News

MARRIAGE LICENSE
Duncan Eric Blackburn and Anne Marie Scroggins, Cannon AFB, NM.

DEEDS
Don Ott, individually and as attorney-in-fact for wife, Sherry, Ott to Johnny Collins and wife Venida Collins-A 1.0 acre tract of land out of the West side of the South (1/2) of Sect. No. 80, Block Y, W.D.&E.W. Johnson Subdivision No. 2, Bailey County, Texas.

CIVIL COURT
Rogelio Gonzales Martha -- Possession of alcoholic beverage-\$400 fine
Billy Mac Gunter--Reckless Conduct--20 days jail, \$750 fine, 6 months probation

Patients in Muleshoe Area Medical Center

JANUARY 22-24 TUESDAY
Alene Horn, Janie Moraw, Lawrence Blalack, Angelita Toscano, Mary Rosas, Beatrice Garcia, Erecia Whalin, Fred Mapes, Elizabeth King, Warren Gulley, Roy Warwick and Jean Cole

WEDNESDAY
Nancy Tarango, Joshua Percy, Alene Horn, Lawrence Blalack, Mary Rosas, Erica Whalin, Fred Mapes, Elizabeth King, Warren Gulley and Jean Cole

THURSDAY
Nancy Tarango, Joshua Percy, Alene Horn, Lawrence Blalack, Mary Rosas, Erica Whalin, Fred Mapes, Elizabeth King, Warren Gulley and Jean Cole

LOCAL DISTRIBUTION OPPORTUNITY FOR NATIONAL FIRM

Nation's Leading Car Care Product Co. is now selecting dealers - Partners for A Local Route. Accounts/Territory Protected. Minimum 10K Investment. Nets UP To 60K+ Per Year. 100% Secured.
Call Mr. Coy NOW!
1-800-771-7722

Immaculate Conception Catholic Church

Father Patrick Maher
Northeast of City

First Baptist Church
220 West Ave. E.

Emmanuel Baptist Church

Iglesia Bautista Emmanuel
107 East Third
Isaias Cardenas, Pastor

Trinity Baptist Church
314 E. Ave. B.
Rev. Dale Berry

Circle Back Baptist Church
Intersection FM 3397 & FM 298
Pastor, Glen Price
946-3676

Calvary Baptist Church
1733 W. Ave. C.
Rev. Rick Michael

Victory Baptist Church
605 West 8th
James Williams, Pastor

Progress Baptist Church
Charles Fisk, Pastor
Progress, Texas

Richland Hills Baptist Church
17th and West Av. D.

St. Matthews Baptist Church
Corner of West Boston & West Birch
M.S. Brown, Pastor

Progress Second Baptist Church

1st and 3rd Sunday
Rev. Arthur Hayes

Primitive Baptist Church

621 South First
Elder Cleveland Bass, Pastor
1st Baptist Church
Lazbuddie, Tx.
Gary Wilcox, Pastor
965-2126



Training is Important



The Church is God's appointed agency in this world for spreading the knowledge of His love for man and of His demand for man to respond to that love by loving his neighbor. Without this grounding in the love of God, no government or society or way of life will long persevere and the freedoms which we hold so dear will inevitably perish. Therefore, even from a selfish point of view, one should support the Church for the sake of the welfare of himself and his family. Beyond that however, every person should uphold and participate in the Church because it tells the truth about man's life, death and destiny; the truth which alone will set him free to live as a child of God.

The proper training of the young is one of the most important tasks in all the world.

Even the animals know this. The mother collie devotes patient hours to the training of her puppies. She will help them learn to walk and run; teach them when to bark and what to eat; warn them of possible dangers and show them whom to trust. Instinctively, she knows that it is her responsibility to provide for their safety and welfare by providing them with proper training.

The same thing is true in even larger measure of human parents. We know that, for their safety and welfare in life, it is important that our children receive the finest training possible -- and that we are responsible for helping to provide such training.

A part of the basic training of our children is, of course, moral and spiritual training. A good part of such training must come in the home and family -- but we are fortunate in having in our community so many churches, all of which specialize in moral and spiritual training, especially for the young. Wise parents see to it that their children take advantage of this special training which is available and so important for human lives.

Why not take your children -- the whole family -- to Sunday School and church this week? You will all be helped by the spiritual training you will receive.

"Train up a child in the way he should go; and when he is old, he will not depart from it." (Proverbs 22:6)

The Christian Center
Morton Hwy
272-5992

St. John Luthern
Sunday School and Bible Classes 9:30 a.m.
Church Services 10:30 a.m.
Rev. Mac Bearss, Pastor

Lazbuddie Methodist Church
965-2121
Doug Chapman, Pastor

New Covenant Church
Plainview Hwy
Sunday 10:00 a.m.
Wednesday 7:00 p.m.
Jimmy Lowe, Pastor

Jehovah Witness
Friona Hwy
Jack Tiffin, Minister
Warren Meeks, Minister

Templo Calvario
507 South Main
Sunday 10:00 a.m.
Sunday Evening 7:00 p.m.
Evangelistic Services
J.L. Soto, Pastor

Church Of The Nazarene
9th and Ave. C.

Primera Iglesia Bautista

223 E. Ave. B.
Roy Martinez, Pastor

Lariat Church Of Christ

Sunday School 10:00 a.m.
Worship 11:00 & 6:00 p.m.
Wednesday Services 7:00 p.m.
Sam Billingsley, Minister

Muleshoe Church Of Christ

Clovis Hwy
Bret McCasland, Minister

16th & Ave. D. Church Of Christ

Sunday 10:30 a.m.
Evening 6:00 p.m.
Wednesday 8:00 p.m.
Curtis Shelburne, Minister

Lazbuddie Church Of Christ

Minister, Keith Courmier
Sunday School 9:30 a.m.
Morning Services 10:00 a.m.
Evening Services 6:00 p.m.
Wednesday Night 7:00 p.m.

First Assembly Of God

Rev. G. Dean Reid, Pastor
Sunday School 9:45 a.m.
Morning Worship 11:00 a.m.
Evening Services 6:30 p.m.
Mid-Week Services 7:30 p.m.
272-3984

Spanish Assembly Of God

East 6th and Ave. F.
Mike Doyle, Pastor

First United Methodist Church

507 W. 2nd Street
Richard Edwards, Pastor

El Divino Salvador Methodist Church

5th and Ave. D.
Jose M. Fernandez, Pastor

United Pentacostal Lighthouse Church

207 East Ave. G.
Rev. N.W. Thompson
272-3258

Truth Tabernacle Pentecostal Church

200 E. Ithaca & Fir
Pastor, Les James
272-3391

Western Drug

114 Main 272-3106

Wes-Tex Futures, Inc.

1910 W. Amer. Blvd. 272-5585

Bob Stovall Printing

221 E. Ave. B 272-3373

Attend The Church Of Your Choice

Irrigation Pumps & Power

West Hwy 84 272-4483

Attend The Church Of Your Choice!

Serv-All Thriftway

401 W. Amer. Blvd. 272-4585

Combination Motor & Salvage

272-4458

W.T. Services, Inc.

319 E. Amer. Blvd. 272-4888

Wes-Tex Feed Yards, Inc.

272-7555

American Valley, Inc.

W. Hwy 84 272-4266

Farmer's Co-Op Elevators

Muleshoe 272-4335

Bratcher Motor Supply

107 E. Ave. B. 272-4288

Muleshoe Lawn & Leisure

522 W. Amer. Blvd. 272-3162

Dairy Queen

1204 W. Amer. Blvd. 272-3412

Viola's Restaurant

2002 W. Amer. Blvd. 272-3838

Bobo Insurance

108 E. Ave. C. 272-4264

5-Area Telephone Cooperative, Inc.

302 Uvalde 272-5533

Richland Hills Texaco

1914 W. Amer. Blvd. 272-4875

CLASSIFIEDS 272-4536

CLASSIFIED RATES

15 Words & Under
Minimum Charge
\$2.30
Thereafter
\$2.00

16 Words & Over
1st Insertion
15 cents per word
2nd Insertion
13 cents per word

CLASSIFIED DISPLAY RATES
\$1.75

Per Column Inch

DEADLINES
12 noon Tues.
For Thursday Paper
12 noon Friday
For Sunday Paper

To receive the reduce rate after the first insertion ad must run continuously.

We reserve the right to classify, revise, or reject any ad. We are not responsible for any error after ad has run once.

1. Personals

CONCERNED About Someone's Drinking? HELP IS AVAILABLE
through Al-Anon
Call 272-2350 or 965-2870 or come to visit Tuesday and Thursday nights, 8:00 p.m. & through AA call 965-2870 or come visit Tuesday nights, 8:00 at 620 W. 2nd, Muleshoe.

3. Help Wanted

Muleshoe Independent School District is now accepting applications for male and/or female qualified bus drivers.

Applicants must be able to obtain, prior to employment a Texas Chauffeur's license, pass a physical examination provided for by the school, have a safe driving record from the Texas Department of Public Safety, and have completed or be enrolled in a twenty hour driving course provided by the school.

Salary range is from \$56.00 to \$90.00 per week with driving time being two to three hours per day. Application forms may be picked up at the school Business Office.

WANTED: Experienced machinist and gearhead man. Call (806) 238-1596 days or 238-1328 nights-- after 9 p.m.
B3-tfc

9. Automobiles For Sale

FOR SALE: 1987 Chevy Subaru Silverado, AM/FM Casette, tilt cruise, new tires. 60,000 miles. Call 272-5037.
P4-44t-tfc

15. Misc.

GOLD CREDIT CARD
100% approved
\$1,500. credit line
money back guarantee
for complete info. call
1-900-329-0010 25. fee
A15-2s-4tp

FOR RENT: Large Self storage rooms with 24 hour a day access. Call J&J Self Storage at 272-4307.
S15-1s-tfc

We need to buy 100,000 ft of aluminum pipe 2" to 8". Also side row sprinklers. Contact T. L. Timmons, State Line Irrigation, Littlefield, 806-385-4487.
T15-tfc

8. Real Estate

For Sale or Trade in Hagerman, N.M. area Thriving Mechanic business and country home on 2 acres. Landscaped and completely fenced. 4 Bedrooms, 2 1/2 Baths, Carport Patio. Automotive & truck repair business with 2 car stall-shop. Only shop within 25 miles. Business is good. Owners retiring. \$40,000. Call (806) 272-3671.
G8-48s-5tcS

HOUSE FOR SALE: 3 Bedroom, 2 full baths, Central heat and air. Good storm cellar and well. On 2 Acres. 3 miles East on Hwy 70 and 1 mile North, then 200 yards East. 806-352-1715 or 352-1899 in Amarillo.
B8-4t-tfc

FOR SALE: Country Home. 3 Bedroom, 2 Bath. 220 sq. ft. with 3 Acres. 8 miles North of Lazbuddie.
K8-51s-tfc

8. Real Estate

Sudderth Realty, Inc.
109 Fifth Street Farwell, Texas
Realtors/Certified Appraisers

*Have Buyers. Need Farm Land to Sell.

*80 Acres Irrigated, 1 well. Lays good. South of Lariat.

*46.6 Acres Irrigated on Hwy. South of Lariat-will subdivide. Owner finance, small tracts.

*626 Acres Irrigated NE of Farwell on Hwy. Excellent Dairy location and large barn in good water area.

*Almost perfect 320 Acres irrigated, 3 wells. Approximately 160 acres wheat growing will go, Lazbuddie area. Owner will finance. Priced for immediate sale.

*Excellent 320 Acres Irrigated on highway 3 miles south of Lariat. 2 Circle Sprinklers. Newly remodeled 3 bedroom home with garage, barn, several storage buildings and livestock corral. Possible Owner Financing.

*320 Acres Irrigated. Two 8" wells, 1 Circle Sprinkler on Hwy. Oklahoma Lane area.

*640 Acres Irrigated. Good Water Area. Super Nice Large Brick Home with Good 50x100 steel barn. Oklahoma Lane Area.

J.B. Sudderth Broker
Daren Sudderth Broker
Master Senior Appraiser
806-481-3288

HCR REAL ESTATE
3-1 1/2-2 On 2 1/2 Acres. Large utility room and central heating.
Thursie Reid
272-5318

BAILEY COUNTY LAND FOR SALE
Owner will finance the following size blocks: 2-80 acres, 3-160 acres, 4-240 acres, and 1-277 acres. Wheat, milo and cotton allotments. 1/4 circles of permanent grass. 7 Center Pivots. A Sweet Cattle Setup.
If interested, contact T.L. Timmons
806-385-4487 (Day) 806-925-6484 (Night)

Group cites top 10 utilities as polluters.
FDA approves contraceptive implant device.

8. Real Estate

Smallwood Real Estate
232 Main Muleshoe 272-4838



3 Bedroom, 1 Bath, Living and Dining Area, Kitchen and Dishwasher, Garage, Patio and Large Shop building. \$25,000.00

On pavement in Country. 3 Bedroom, 2 Bath, Large Kitchen and Dining Area, Living Room, Large Den, and Playroom. 1 Acre. Owner will carry 2nd lien.

All electric energy efficient, Central Heat and Air, 2 Bedroom, 1 1/2 Bath, Living Room and Den, 1 Car Garage with Storage. Corner Lot.

Brick- 3 Bedroom, 1 1/2 Bath, Kitchen, Dining Area, Living Room, Central Heat and Refrigerated Air. 1 Car Garage.

STUCCO--2 Bedroom, 1 1/2 Bath, Remodeled Kitchen, Dishwasher, 2 Oven Stove, Central Heat and Air, Fireplace, Nice Carpet. Good Terms.

LAMB County Farm 145A on Bailey County line with Valley Circle Sprinkler. One-8 inch and One-6 inch well. Electric motors. 1/2 Circle Improved Grass, grass on 4 corners, Alotments-Wheat-28A. Corn 57A. Cotton 32.7A. Must sell by March 1.

15. Misc.

Seed Contracts
Excellent opportunity for producers with clean land and average water.
For Information Call office
1-800-274-4404
evening
806-293-7927

8. Real Estate

James F. Hayes & Co.
Agricultural Real Estate Sales & Appraisals
Vic Coker, Agent

114 ACRES-East of Muleshoe on HW 84. Allotted, Sideroll Sprinkler, Seller Motivated. Priced to Sell.

160 ACRES-West Camp Area-2 Wells, 1 Sprinkler Lays Perfect. Small House.

108 ACRES-East of Muleshoe in Lamb County. Good Water. Allotted and some grass. Nice part time operation. Terms Available.

177 ACRES-Near Circleback. Good Soil, Good Bases & Yields.

700 ACRES of grass in Lamb County. Good fences, Good turf submersible pump and steel tub for stock water. Nice!

143 ACRES-East of Muleshoe and North of Highway 70. 1-6" well pumps 500+ gallons. 13 acres of grass. Balance is allotted. Reasonably Priced.

177 ACRES-Light Water, Setup for Center Pivot Irrigation, Good Soil, Fully Allotted.

320 ACRES-With Two Sprinklers Near Hub. LEPA system. Excellent Soil & Water. PRICE REDUCED.

380 ACRES-2 New Sprinklers with injectometers and fertilizer tanks. 2 Wells, Excellent Water. Well motors go with sale. Fully Allotted.

320 ACRES-West Camp PRICE REDUCED! Lays good, good water, electric sprinkler, large but modest home. Terms possible.

160 ACRES-North of Progress. Excellent Water, Two Wells, Good Allotments, Pad & Pipe for Center Pivot Sprinkler.

220 ACRES at Baileyboro. Light Water, Fully Allotted, Lots of Depreciable Assets. Owner VERY Motivated.

590 ACRES in Two Tracts North of Baileyboro. Fully Allotted. Priced for IMMEDIATE Sale! Terms Possible.

480 ACRES-West of Clays Corner, 3 Sprinklers, On pavement, Good Water, Small House, Good Opportunity.

We have other listings available. We believe now is a very good time to be buying farmland. Come by and visit with Vic.

310 Main Street, Suite 103
Phone 272-3100
Home 965-2468
Muleshoe, Texas

4. Houses For Rent

HOUSE FOR RENT: 3 bedroom, 2 full baths, den, living room with fireplace. Fenced back yard. 618 W. 5th. Call 272-4446.
D4-4s-3tc

18. Legals

NOTICE OF SHERIFFS SALE
THE STATE OF TEXAS
COUNTY OF BAILEY

Cause No.	Legal Description	Styling
5813	BAILEY COUNTY APPRAISAL DISTRICT V. MRS. E.A. EAKS	4. LOTS 7, 8, 9, 11, BLOCK 4, ORIGINAL TOWN ADDITION, BULA, BAILEY COUNTY, TEXAS.
5875	BAILEY COUNTY APPRAISAL DISTRICT V. TOMMY CROW	5. PART OF SECTION 54, BLOCK "Y" CITY, BASS SUBDIVISION, WD & FW JOHNSON SURVEY, 0.26 ACRES, BAILEY COUNTY, TEXAS.
6095	BAILEY COUNTY APPRAISAL DISTRICT V. LUZ G. DANIEL	6. LOTS 13-14, BLOCK 15, ORIGINAL TOWN ADDITION TO THE CITY OF MULESHOE, BAILEY COUNTY, TEXAS.
6104	BAILEY COUNTY APPRAISAL DISTRICT V. DOMINGO RAMOS	8. LOT 4, BLOCK 5, POOL ADDITION TO THE CITY OF MULESHOE, BAILEY COUNTY, TEXAS.

and to me, as Sheriff, directed and delivered, I will proceed to sell, at 12:00 O'clock P.M. on the 5TH DAY OF FEBRUARY, 1991 which is the first Tuesday of said month, at the EAST door of the Courthouse of BAILEY County, in the City of MULESHOE, Texas.
Levied on the 28th day of December, 1990 as the property of said defendants, to satisfy the judgment rendered in the above styled and numbered cause, together with interest, at 10 per cent. per annum, and all costs of suit in favor of each jurisdiction.

GIVEN UNDER MY HAND THIS 28th DAY OF December, 1990.
Jerry N. Hicks
SHERIFF, BAILEY COUNTY, TEXAS
BY Don L. Carter DEPUTY



BRIEFS
Orders fall for durable goods.
Gorbachev says he won't abuse power.

Bingham & Nieman Realty

116 E. Ave. C George Nieman, Broker 272-5285 or 272-5286

IMMACULATE 3-2-2 Brick, Cent. A&H, Built-ins, FP, sunken lv. area with cathedral ceiling, ceiling fans, earthtones, storage bldg. \$50's!!!!

NICE RESIDENTIAL LOTS- \$5,000 UP.....

PRICE REDUCED-Nice 3-2-2 Brick, Cent. A&H, FP, Earthtone carpets, fenced yd. \$60's!!!!

3-2-2 Home. Heat pump, Built-ins, FP, earthtone carpets. Fenced yd., & more. PRICE REDUCED--\$30's!!!!

3-2-2 Brick, Corner Lot, Cent. A&H, Built-ins, FP, patio: \$50's!!!!

HIGH SCHOOL
3-2-1 Home 1900+sq. ft. of lv. area, heat pump, built-ins, FP, fenced yd., storage bldg., & much more. \$40's!!!!

PRICED REDUCED 3-1-1 Home, earthtone carpets, workshops, cellar, fenced yd.

2-1 1/2-1 Brick, fl. furn., Cent. Air, fenced yd., & more. \$20's!!!!

FmHA FINANCING to qualified buyer- 3-1-1 Brick, Cent. heat, earthtone carpet, \$20's

HIGHLAND AREA
NICE 3-2-1 Brick, built-ins, Heat Pump, FP, fans, energy eff., fenced yd., & storage. \$50's!!!!

JUST LISTED 2-2-2 Home, Cent. heat, evap. air, built-ins, fenced yd., & more.

VERY NICE 4-2-1 Brick, Cent. A&H, built-ins, earthtone carpets, util., encl., patio, storm win. & doors, grill, spktr. sys., stor. bldg., fenced yd. \$60's!!!!

PRICE REDUCED 2-2-2 Brick, corner lot, Cent. A&H, spacious rooms, utility, new carpet, & vinyl, cov. patio, fenced yd. \$30's!!!!

JUST LISTED- Nice 2-2-1 Brick, Cent. A&H, built-ins, HEATED POOL, spktr. Sys., fenced yd., corner lot, & more. \$50's!!!!

LENAU ADD.
Nice 4-2-2 carport home. Cent. A&H, built-ins, FP, Cent. Vac., Office, Sewing area, fenced yard. \$30's!!!!

3-2-2 Brick, heat pump, built-ins, nice carpets, fenced yd., & more!!!!

3-1 1/2-1 Brick, CH, Evap. Air, utility, fenced yd., corner lot. FmHA financing possible!!!!

3-1 Home, Corner lot, wall furn., fenced yd. \$20's!!!!

COUNTRY CLUB 3-2-2 Brick, Cent. A&H, built-ins, FP, 2,000+ lv. area, fenced yd., storage bldg., & more!!!!

COUNTRY CLUB IN CONTRACT nt. A&H, built-ins, painted, fenced yd.!!!!

JUST LISTED-VERY NICE 3-2-2 Brick, 3,000+ sq. ft. of lv. area incl. nice finished basement, built-ins, geothermal A&H, energy-eff., loads of closet & storage, on 7.86 acres, fence, stock tank, sideroll, & many more amenities, close to town. DON'T MISS THIS! \$90's!!!!

3-2-3 Carport Home on 11 ac. edge of town, Cent. A&H, built-ins, cellar, barns, & corral. MAKE OFFER!!!!

NICE 3-2-1 Home on 1 acre close to town, Cent. Heat, evap. air, nice carpets, remodeled. \$30's!!!!

GYMNASTICS STUDIO- BLDG & EQUIPMENT. PRICED TO SELL!!!!

RESTAURANT BLDG., LAND., & EQUIPMENT- A GOOD BUY!!!!

COMMERCIAL TRACT 175'X100' (Hwy. 70 & 84, RR spur access, approx. 1200 sq. ft. bldg. PRICED TO SELL!!!!

24 ac., W. Hwy. 84, 8" well, 3 homes, 14 mobile home hookups, & also has veg. & fruit stand!!!!

 DEL MONTE TOMATO KETCHUP 32 OZ. BTL. 89¢	 CORN OR VEGETABLE WESSON OIL 48 OZ. BTL. \$1.99	 SPECIAL BLEND BRICK MJB COFFEE 11.5 OZ. BAG \$1.39	 HUNT'S TOMATO SAUCE 8 OZ. CANS 5.99¢ FOR	 HORMEL PLAIN CHILI 19 OZ. CAN 99¢	 SUNSHINE REG. WHEAT/UNSALTED KRISPY CRACKERS 16 OZ. BOX 79¢	 CHICKEN OF THE SEA LIGHT WATER/OIL PAK CHUNK TUNA 6 1/2 OZ. CANS 2.99¢ FOR	 REG./UNSCENTED LAUNDRY DETERGENT* ULTRA TIDE 70 OZ. BOX \$4.69	 7-UP AND BIG RED 2 LITER 79¢
---	--	---	---	---	--	---	---	---

- BAKING MIX **\$1.79**
- BISQUICK 40 OZ. BOX
- HUNGRY JACK EX. LIGHT COMPLETE 2 LB. BOX **\$1.29**
- PANCAKE MIX 2 LB. BOX
- LONG GRAIN COMET RICE 28 OZ. BOX **99¢**
- REG./MM SWISS MISS HOT COCOA MIX 10 CT. BOX **\$1.69**
- ORVILLE REDENBACHER ASSTD. MICRO. POPCORN 3 CT. BOX **\$1.99**
- HUNTS TOMATO JUICE 46 OZ. CAN **89¢**
- AMERICAN BEAUTY LONG SPAGHETTI OR ELBO RONI 24 OZ. PKG. **\$1.19**
- ASSTD. VELVEETA & SHELLS 10 OZ. BOX **\$1.59**
- KRAFT DINNER

National Brands sale

- HUNGRY JACK PANCAKE SYRUP 24 OZ. BTL. **\$2.69**
- SUNSHINE TRU-BLU CHOC./LEMON/VAN. COOKIES 24 OZ. PKG. **\$1.99**
- SUNSHINE ASSTD./PLAIN SUGAR WAFERS 12 OZ. PKG. **\$1.99**
- KRAFT FREE...ASSORTED SALAD DRESSING 16 OZ. BTL. **\$1.99**
- ROSARITA MED./MILD/HOT PICANTE SAUCE 16 OZ. JAR **\$1.29**
- BRACHS STARLIGHT MINT/RED TWIST/ BUTTERSCOTCH. CANDY 7.5 OZ. PKG. **\$1.19**
- SCHILLING BLACK PEPPER 4 OZ. CAN **\$1.49**
- SCHILLING GARLIC SALT 6 1/2 OZ. BTL. **\$1.19**

- MACARONI & CHEESE KRAFT DINNER 7 1/2 OZ. BOX **59¢**
- ASSTD. HUNTS PUDDING SNACK PACK 4 CT. PAK **\$1.19**
- DEL MONTE YEL. CLING SLI./HAL. PEACHES 17 OZ. CAN **88¢**
- DEL MONTE FRUIT COCKTAIL 17 OZ. CAN **88¢**
- DEL MONTE HALVES PEARS 16 OZ. CAN **88¢**
- CAMPBELLS ASSORTED CREAM SOUP 5 10% OZ. CANS **\$3.00**
- CAMPBELLS CHICKEN 'N RICE OR CHICKEN NOODLE OS SOUP 5 10% OZ. CANS **\$3.00**
- FRANCO AMERICAN SPAGHETTIO S OR TEDDY-O'S 15 OZ. CAN **59¢**

 MARGARINE QUARTERS KRAFT PARKAY 2 1 LB. BOXES FOR 99¢	 TEXSUN PINK GRAPEFRUIT JUICE 46 OZ. CAN 89¢	 SPAM MEAT 12 OZ. CAN \$1.69	 RUFFLES ASSORTED POTATO CHIPS REG. \$1.69 99¢	 PILLSBURY ASSTD. R.T.S. FROSTING 16.5 OZ. CAN \$1.29	 PILLSBURY ASSTD. LAYER CAKE MIXES 18% OZ. BOX 89¢
---	---	---	--	---	--

- HORMEL PORK SAUSAGE LITTLE SIZZLERS 10 OZ. PATTIES/ 12 OZ. LINKS **99¢**
- HICKORY SMOKED SLAB WRIGHTS BACON 12 OZ. PKG. **\$1.29**
- DECKER MEAT SLICED BOLOGNA 12 OZ. PKG. **99¢**
- DECKER MEAT OR BEEF CORN DOGS 1 LB. PKG. **\$1.69**
- PEYTON MEAT WIENERS 12 OZ. PKG. **79¢**
- PEYTON CHORIZO 8 OZ. PKG. **89¢**
- PEYTON COOKED HAM 12 OZ. PKG. **\$3.29**
- LOUIS RICH GROUND TURKEY 1 LB. ROLL **88¢**
- LOUIS RICH TURKEY VARIETY PAK 12 OZ. PKG. **\$1.99**



SMALL PAK \$1.79 LB.

FAMILY PAK LEAN

GROUND BEEF

LB. **\$1.69**

BONELESS CORN KING FULLY COOKED

WHOLE HAMS

LB. **\$1.69**

HALF HAMS \$1.79 LB.



- PILLSBURY TB/M/SM BISCUITS 4 10 CT. CANS **99¢**
- MINUTE MAID FROZEN ORANGE JUICE 4 PAK 12 OZ. CANS **\$3.79** WHILE SUPPLIES LAST
- KRAFT SPREAD PARKAY 3 LB. TUB **\$1.99**
- KRAFT HALF MOON COLBY/CHEDDAR CHEESE 10 OZ. PKG. **\$2.29**
- KRAFT VELVEETA REG./EX. THICK SLICES 12 OZ. PKG. **\$2.39**
- JELLO ASSTD. SNACKS 5 CT. PAK **\$1.99**
- PUDDING 5 CT. PAK **\$1.99**
- BANQUET ASSORTED DINNERS 9 OZ. BOX **\$1.19**
- SAU SEA COOKED SHRIMP 5 OZ. PKG. **\$1.59**
- EGGO BUTTERMILK/HOMESTYLE WAFFLES 11 OZ. PKG. **\$1.39**
- TOTINO'S ASSORTED PIZZA 10 OZ. BOX **\$1.29**

- RED OR GOLDEN DELICIOUS APPLES 99¢ 3 LB. BAG
- FRESH GREEN BEANS 79¢ LB.
- PREMIUM RED POTATOES 4 LBS. **\$1.00**
- RED RIPE CELLO PAK TOMATOES 4 CT. PAK **69¢**
- FRESH...HOT JALAPENOS 69¢ LB.
- U.S. NO. 1 RED POTATOES 5 LB. BAG **79¢**
- U.S. NO. 1 RUSSET POTATOES 5 LB. BAG **79¢**
- FRESH GREEN CABBAGE 29¢ LB.
- CELLO PAK RADISHES 4 6 OZ. PKGS. **\$1.00**

GOLDEN RIPE

BANANAS

3 \$1

LBS.

GARDEN FRESH CUCUMBERS OR BELL PEPPERS 3 FOR \$1



PURINA DOG CHOW 25 LB. BAG \$7.88	FABRIC SOFTENER FINAL TOUCH 64 OZ. JUG \$1.89	SPEAS FARM APPLE JUICE 64 OZ. BTL. \$1.29	ASSTD. HUNTS-CHUNKY/HOMESTYLE/TRADITIONAL SPAGHETTI SAUCE 27.5 OZ. CAN 99¢	DEL MONTE REG. CUT/FRENCH SLI. GREEN BEANS 16 OZ. CANS 2.88¢ FOR	DEL MONTE C.S./W.K. GOLD CORN 17 OZ. CANS 2.88¢ FOR	DEL MONTE REGULAR OR CHOPPED SPINACH 15 OZ. CANS 2.88¢ FOR	KRAFT REG./LIGHT/CHOL FREE MIRACLE WHIP 32 OZ. JAR \$1.89	ASSORTED HI-DRI TOWELS JUMBO ROLL 2 FOR 99¢
---	---	---	--	--	---	--	---	---

- ### NATIONAL BRANDS SHELF SPECIALS
- SCHILLING LEMON PEPPER 3 1/2 OZ. BTL. **\$1.69**
 - CARNATION REG./LIGHT BONUS COFFEEMATE 20 OZ. JAR **\$2.19**
 - INSTANT COFFEE REG./DECAF TASTERS CHOICE 7 OZ. JAR **\$4.69**
 - FOR BREAKFAST TOTAL CEREAL 12 OZ. BOX **\$2.99**
 - FOR KIDS TRIX CEREAL 12 OZ. BOX **\$2.99**
 - BETTY CROCKER FAMILY BROWNIE MIX 21 1/2 OZ. BOX **\$1.29**
 - REG. LAUNDRY DETERGENT TIDE LIQUID 128 OZ. JUG **\$8.99**
 - BOLO REG./BEEF/LIVER DOG FOOD 4 15 OZ. CANS **89¢**
 - ASSTD. BATH BAR DOVE SOAP 2 BAR PAK **\$1.99**
 - AUTO DISH DETERGENT SUNLIGHT 50 OZ. BOX **\$2.39**
 - LIQUID CRISTAL REG./BLUE/LEMON CRYSTAL WHITE 40 OZ. BTL. **\$1.29**
 - REG./LEMON AUTO DISH LIQUID PALMOLIVE 50 OZ. BTL. **\$2.29**
 - ASSORTED FACIAL TISSUE KLEENEX 175 CT. BOX **89¢**
 - EXTRA STRENGTH CAPLETS TYLENOL 50 CT. BTL. **\$3.59**
 - CHILDRENS CHEWABLE REG./GRAPE TYLENOL 30 CT. BTL. **\$2.59**
 - DOUBLE STRENGTH MYLANTA II 12 OZ. BTL. **\$4.69**
 - CAPSULES REG./VITAMINS DEXATRIM 20 CT. PKG. **\$3.99**
 - BONUS TUBE ASSTD. TOOTHPASTE COLGATE 7.68 OZ. TUBE **\$1.89**
 - ASSORTED ULTRA SLIM FAST 15 OZ. CAN **\$5.49**
 - SYLVANIA SOFT WHITE 60/75/100 WATT LIGHT BULBS TWIN PAK **\$1.09**

THE GOLDEN BOOK ENCYCLOPEDIA

Volumes 2 through 19 only **\$2.99** each.

Volume 20 FREE with purchase of Volume 2.






thriftway AFFILIATED FOODS INC. MEMBER STORE

PRICES EFFECTIVE JAN. 27 thru FEB. 2, 1991
WE RESERVE THE RIGHT TO LIMIT QUANTITIES.