

THE

BORDEN

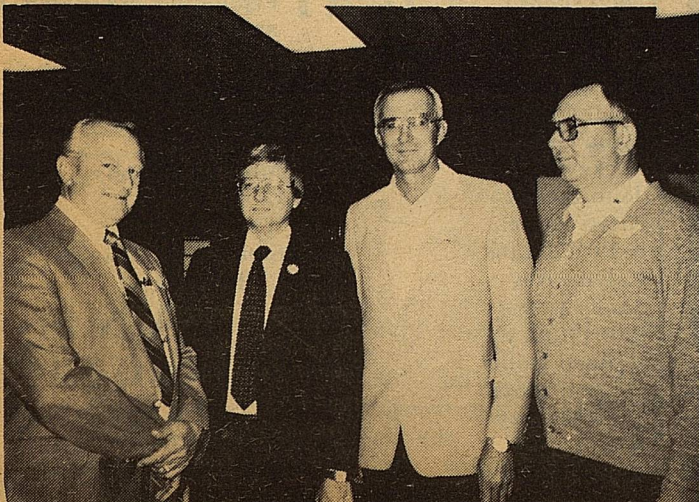
STAR

Volume X No. 40

April 28, 1982

Serving the Counties of Borden, Dawson, Garza, Howard, Lynn & Scurry

"Big Ranch Country"



Pictured above are James McLeroy, host for the Borden County School, John Montford, candidate for State Senator, Jarrell Edwards, Borden County campaign chairman and Judge Jim Burkett.

Montford supports farmers

John T. Montford, candidate for Texas State Senator, District 28 spoke to Borden County students last Tuesday. He is the Criminal District Attorney in Lubbock, Texas and discussed his job with students giving them a good idea of what an attorney does.

Some of Mr. Montford's feelings on important issues facing our area today are as follows:

Water: He is committed to providing the leadership and hard work necessary for a water program for West Texas. He believes it's time to stop talking and start digging.

Agriculture: He feels we must support our farmers by opening new markets and assisting in implementing new orderly

marketing concepts. John feels we should take action now, for without strong action, the farmers' demise could very well be our own.

Oil & Gas: John believes it's important that we support this industry and that we protect Texas' resources for Texans' benefit.

Education: John feels we must give our Children a quality education by hiring and retaining the highest quality teachers, paying them a decent salary and providing necessary tools to do their jobs effectively.

Crime: John would introduce a tough anti-crime package to attack our spiraling crime rate. This means tougher penalties for DWI offenders, preventive detention for criminals caught "redhanded" committing a serious offense, reexamination of our juvenile justice system and opposition to any attempt to repeal the Texas Habitual Offender Statute. John is committed to keeping the criminals off the streets and protecting the rights of law abiding citizens.

County Wednesday April 21.

Enroute, Dr. David Murrah, director of the Southwest Collection at Texas Tech University, and South Plains historian Bob Nash related stories of the ranches through which the buses traveled. Zoe Kirkpatrick of Post related legends of the wildflowers lining the roadways.

Murrah-author of "Rancher, Baptist, Banker" about Col. C.C. Slaughter, one of the first cattlemen to throw herds onto open range in Borden County-touched on many famous ranches along the way, including Borden's famous Magnolia Land and Cattle Co., the Bush and Tillar and the Jumbo.

Nash, an avid student of Capt. Nicholas Nolan's ill fated "Lost Battalion" expedition, traced the route of the 10th Cavalry's buffalo soldiers through the area, including a stopover near Mushaway Peak.

First stop for the Grayhound buses was the Borden County Museum. The eighty six visitors were greeted by a host of Museum

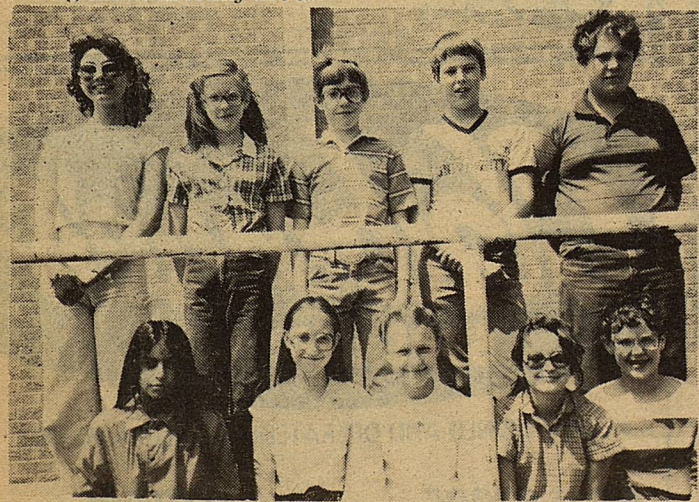
volunteers including Pauline and Vivian Clark, Barbara Farmer, Edna Miller, Mr. and Mrs. Roy Reeder, Mr. and Mrs. C C Nunnally, Mr. and Mrs. Swigels Beal, Dorothy Browne, Van York, and Marge Toombs.

Four members heard the story of the famous Ribbon War from Post's Tom Bouchier in the Borden County courthouse where much of it occurred.

Leaving the city of Gail, the buses traveled down Willow Road to the Bomb-site pens on the OB ranch. On the way to the pens, which are just west of the famous Mushaway peak, Mrs. Miller related the history of the OB ranch. They arrived in time to see cowboys moving the herd from the pens to pasture in a thrilling spectacle of horns and horses that brought the hardest tour members, cameras ready, pouring from the bus.

Coffee was served from the tailgate of a pickup, but a planned picnic took place in the buses.

Con't on Pg. 4



Elem. & Jr. High Beta Achievement-Top-Delane Epper, Kate Phinizy, Will Phinizy, Mickey Burkett, Randell Hollis, Front-Elvira Balaque, Shelly Lewis, Ralynn Key, D'Lynn Lloyd and Kate Porter. Unavailable for picture were Jeff Covington, Dana Gray, John Stephens, Kristi Stone, Kelli Williams.

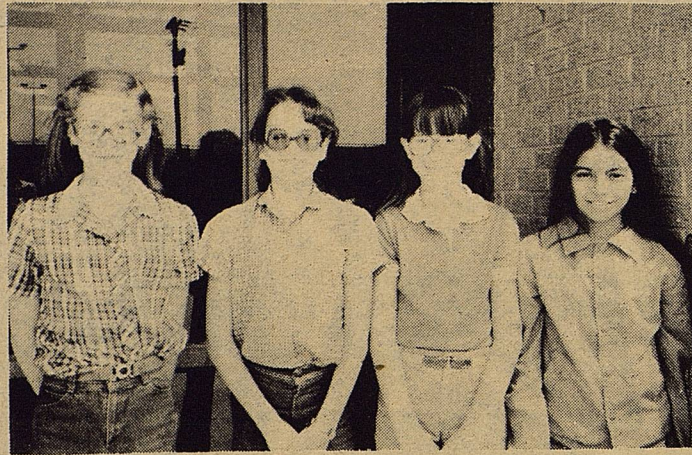


High School Beta Achievement-Tanya Hollis, Marquita Menix, Gena McLeroy and Jennifer Wilson. Not pictured Becky Massingill

BORDEN COUNTY SCHOOL NEWS



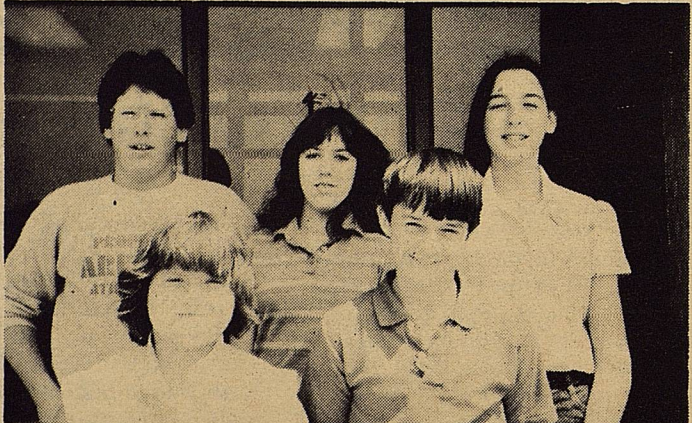
Dana Gray-1st place in Ready Writing and 2nd place in Spelling.



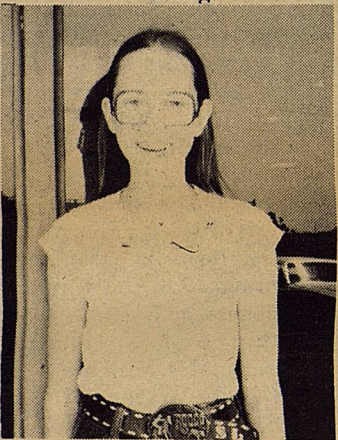
1st Place Picture Memory Team-Kate Phinizy (Kate also placed 4th in Spelling), D'Lyn Lloyd, Christy Holmes and Elvira Balaque.



Kristi Stone-4th place in Oral Reading.



Elem. & Jr. High Honor Roll-Back- Bric Turner, Cathy York and Kim Turner. Front-Sandy Buchanan and Michael Murphy.



Shelly Lewis-2nd place in Spelling



High School Honor Roll-Samantha Porter, Tammy Miller and Kevin Telchik. Not available for picture were Jeanette Massingill and Kelly Williams.

The Borden Star
 Publication No. 895520
 (USPS 895 520)
 Publication No. 895520
 Editor:
 Barbara Anderson

Published weekly except for Christmas and New Years, on Wednesday at Gail, Borden County Texas 79738, Box 137, Kincaid Street, Second Class postage paid at Gail, Texas.

Any errors that we make reflecting on the Reputation or Standing of any Firm Corporation or individual that may appear in the columns of the Borden Star will be gladly corrected when called to the attention of the staff.

Subscription Rates.
 \$8.00 per year

Borden Star Owners: James McLeroy, Barbara Anderson, Doris Rudd, Pat Porter, Bob Dyess, Edna Miller, Ruth Weathers, Mrs. Nathan Zant, Sonny Tucker, Eddie Simer, Loreen Jones, Martin Parks, Dan Turner, Lela Porter, and Glenn Toombs.

Borden Star Publishers, Inc.

Everybody's
THRIFTWAY
 A FRIENDLY Supermarket serving West Texans with Quality Foods at Competitive Prices.
 We give S&H Green Stamps - Double on Tuesday after 1 p.m. - All Day Wednesday.
 35th & College Avenue
 Snyder, Texas 79549



Kelly Ogden-4th place in Story Telling

ANNUALS

Annuals are now on sale in the Superintendent's office. Sale of annuals will close May 14, so everyone interested in purchasing an annual are urged to get theirs early. The annuals are selling for \$5.50 each.

HIGH HONORS

The following students achieved an academic evaluation of 90 or above in each subject

BETA ACHIEVEMENT

Gena McLeroy	12
Marquita Menix	12
Jennifer Wilson	11
Tanya Hollis	9
Becky Massingill	9

ELEM & JR. HIGH HONORS

The following students achieved an academic evaluation of 90 or above in each subject

BETA ACHIEVEMENT

Jeff Covington	8
Delane Eppers	8
Dana Gray	8
Mickey Burkett	7
John Stephens	7
Kristi Stone	7
Kelli Williams	7
Ralynn Key	6
Shelly Lewis	6
Will Phinizy	6
Randell Hollis	5
D'Lynn Lloyd	5
Kate Phinizy	5
Kate Porter	5
Elvira Balaque	5

SCHOOL

The following students achieved an academic average of 90, with no evaluation less than 85 in a subject.

HONOR ROLL

Kevin Telchik	11
Tammy Miller	10
Kelly Williams	10
Jeanette Massingill	9
Samantha Porter	9

The following students achieved an academic evaluation of 90 with no evaluation less than 85 in a subject.

HONOR ROLL

Cynthia Balaque	8
Shannon Biggs	8
Fric Turner	8
Michael Murphy	7
Gerry Smith	7
Kim Turner	6
Sandra Buchanan	5
Cathy York	8

BAND CONCERT

Thursday, May 6, 1982
 8:00 p.m.

AUDITORIUM

Featuring:
 High School Band
 6th Grade Band
 5th Grade Band
 4th Grade Recorder Class

Pre-School
 Day-May 14

IS AVAILABLE
 24 HOURS A DAY -
 SEVEN
 DAYS A WEEK

MR. CURREN C. MAKER

Security State Bank
 1411 GREEN BIG SPRING, TEXAS
 MEMBER F.D.I.C.

Claiborne's

SUPERMARKETS

• HOME OWNED AND OPERATED BY THE CLAIBORNES

NO. 1 STORE
 708 N. 1ST
 OPEN WEEKDAYS 7 TIL 7
 CLOSED SUNDAYS

NO. 2 STORE
 710 N. 4TH
 OPEN WEEKDAYS 8 TIL 8
 SUNDAYS 9 TIL 7

LAMESA, TEXAS

BORDEN COUNTY SCHOOL NEWS

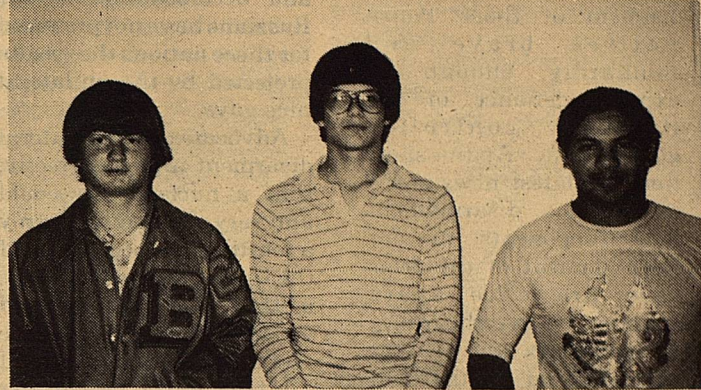
GIRLS REGIONAL TRACK

Jeanette Massingill, the District 5-A 800 meter champion, ran 6th in her heat at the regional meet in Levelland Friday. Jeanette's time was 2:45.9. The cold, damp weather was a definite factor for some of the runners. Although she did not qualify for the finals, she is to be congratulated on a fine track season. Being a freshman, she has three more years of competition remaining.

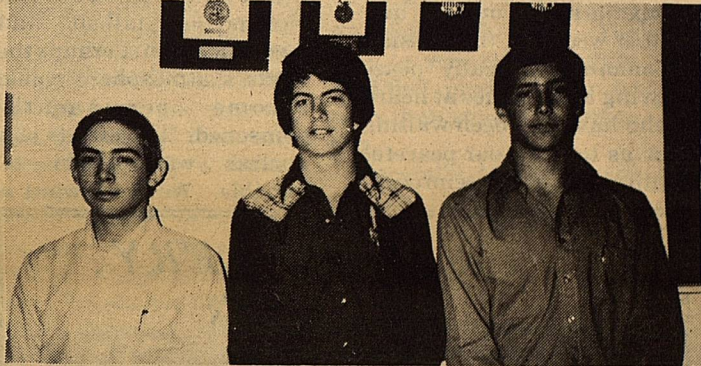
Jeanette is a freshman and will have three remaining years as a trackster.



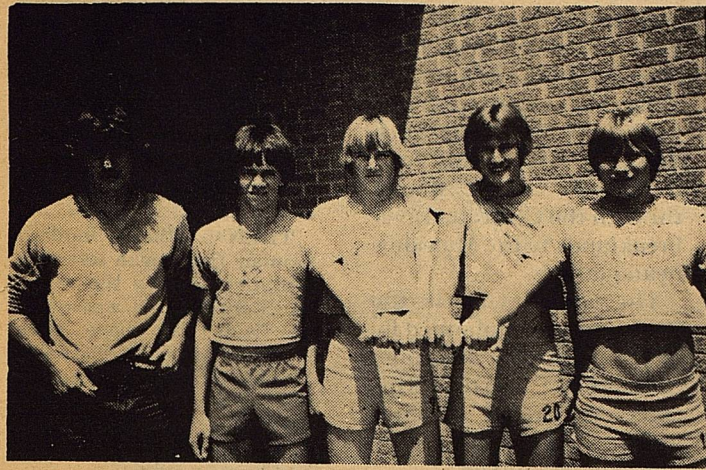
Wool Judging Team placed 1st in the Mesa District Contest. Team members are Glen Bacon, Cam Stone and Darrell Billington.



The FFA Dairy Judging Team placed 5th in District. Team members are Dennis Buchanan, Kirby Williams and Rene Ortiz.



The Livestock Judging Team placed 6th in District. Team members are Cody Stone, Roscoe Massingill and Keith Williams.



Qualifying for Boys Regional Track were Mike Peterson (alternate), Kevin Telchik, Darrell Green, Jym Rinehart and Sammy Williams.

HIGH SCHOOL DISTRICT TRACK

The Borden County Track Team placed 5th in the District Track Meet last week. Klondike was 1st with 153 points; 2nd Dawson, 106 points; 3rd Wellman, 77 points; 4th Sands, 56 points; Grady 6th, 43 1/2 points; Loop 7th, 24 points; 8th Union, 20 points.

Jym Rinehart-1st 100 meter, 3rd 200 meter, and Ran on 2nd place 400 relay team

Kevin Telchik-7th 110 Hurdles, ran on 2nd place 400 relay team and 5th Long Jump
Darrell Green-7th 200 Meter, Tied for 2nd in High

JR. HIGH TRACK

Borden County's Junior High Track Team finished 4th in the District Track Meet. 1st place was Sands with 114, 2nd place, Klondike-82 points; 3rd Loop-82 points; 5th Wellman-56 points; 6th Dawson-47 points; 7th Grady-26 points; 8th Union with 19 points.

Jump and ran on 2nd place 400 relay team
Sam Williams-5th pole Vault, and ran on second place 400 relay team
Doug Love-4th High Jump
Mike Peterson-5th High Jump
Charles LaRue-6th Discus
Michael Vaughn-6th Shot Put

All 10 track boys competed and did well all year long.

Jym Rinehart, Darrell Green, Sam Williams, and Kevin Telchik will be going to Regional.

Borden County Qualified the 400 relay for Regional and Jym Rinehart qualified in the 100 meter dash.

DISTRICT

Those tracksters placing at the district meet were: Chris Cooley, 3rd Long Jump, 3rd 200 meters, 3rd 100 meters, 1st High Jump, and ran on second place 400 relay team
Bric Turner-3rd Shot Put, 6th 100 meter, 6th 200 meter, and ran on the 2nd place 400 relay team.
Brice Key-Ran on the 2nd

place 400 relay team
Rocky Harber-Ran on the 2nd place relay team, 6th in 400 Dash
Tommy Soto-4th Shot Put
Mathew Massingill-6th Shot Put

Other runners for Borden County:

Jerry Green in 300 Hurdles and Mile Relay
Will Phinzy in 300 Hurdles.

He improved his time to 55.0 seconds and also ran 800 meter and mile relay
Wayne Daugherty-300 Hurdles, Mile Relay
John Stephens-400 Dash and Mile Relay
Mickey Burkett- 800 Meter and mile. He improved his time in the mile to 6:22.0
Michael Murphy-800 Meter and Mile. He improved his time to 6:24.0
Ray Martinez-Mile Run

The Junior High team competed in 5 meets and did not finish any lower than 5th in any meet.

They improved in each event and improved in all their times.

MAY 1982

Sunday	Monday	Tuesday	Wednesday	Thursday	Friday	Saturday
						1
2	3 4-H Meeting 10:16-10:46	4	5	6	7	8
9	10	11 2:00 p.m. 6-Parents Tea	12	13 9:00 p.m. Spring Concert	14	15
16	17	18 8:00 p.m. Awards Banquet	19	20	21 Senior Trip	22 Pre-School Day
23	24	25	26	27 8:00 p.m. Piano Recital	28	29
30 Baccalaureate 11:00 a.m.	31					
			2nd Semester Ends 8:00 p.m. H.S. Graduation	Teacher Workday 8:00 p.m. J.H. Graduation		

MENU

	Lunch	Breakfast
Monday	Meat Loaf Carrot Sticks Spinach Cornbread Fruit	Cinnamon Toast Fruit Juice Milk
Tuesday	Lasagna Vegetable Salad Green Beans Hot Rolls Cake Milk	Oatmeal Toast Fruit Juice Milk
Wednesday	Oven Fried Chicken Creamed Potatoes English Peas Hot Rolls Rice Pudding Milk	Hot Cakes Fruit Milk
Thursday	Hobo Stew Vegetable Salad Cornmeal Twists Milk	Bacon Hot Biscuits Jelly Fruit Juice Milk
Friday	Hamburgers Lettuce-Tomatoes-Pickles French Fries Brownies Milk	Toast & Jelly Fruit Juice Milk

GAGE FINA TRUCK STOP

Owner-Operator John Hamilton

OPEN 24 HRS. DAILY
IS 20W Sweetwater, Tex.



This year it has become fashionable for the press to be sympathetic with the Poles. Conditions in Poland haven't changed much in thirty years but it currently popular to deplore Russian repression of freedom in Poland and to laud the heroism of those Polish natives brave and foolhardy enough to express defiance of the Russia controlled government. At the same time the latest news is the unilateral disarmament fad. Proponents of our abandonment of the arms race are once again America's sweethearts. There is a new rival of the appealing old idea that when we declare that we no longer want to compete and that we are ready to concede superiority in nuclear and other weapons, the Russian Communists, really peace loving homebodies at heart, who have just been waiting for us to show our peaceful intentions, will reciprocate

by laying down their arms. We will dismantle all our bombs and live happily ever after in mutual trust, understanding and good will among men. Brotherly love will prevail, like that between the Russians and the Poles, presumably.

This fairy tale, a good bedtime story in the United States, has not had the anticipated happy ending in East Germany, Czechoslovakia, Hungary, Rumania, Bulgaria and most recently, Afghanistan. Disarmament, weakness and accomodation of the Russians have not produced for these nations the results projected by the unilateral nice guys.

Advocates of unilateral disarmament argue, correctly, that a nuclear war could and very well might destroy a fourth of the population of the United States and make a large part of its land uninhabitable. If we retaquate Russia would suffer similar consequences, and there would be great numbers of innocent, uninvolved victims of fallout and miscalculation. Perhaps the Earth's atmosphere would become permanently poisoned. The effects of a nuclear war would be horrible. We don't want it

on our conscience.

We might ask the Poles, though, about the consequences of disarmament and weakness. Approximately one third of the population of Poland was murdered by the Nazis before and during World War II seven million out of twenty one million people wiped out before nuclear weapons had been invented. After the war the Russians slaughtered countless more Polish patriots and enslaved what was left. How would the Poles vote on the disarmament issue, or the Afghans? Do the new disarmers have some special insight into the character of the Russian Communists that has never been revealed by history, or are we hearing again the old Pacifist cry, "It's better to be Red than Dead"?

Pity the poor Poles. Pity all the rest of the world if the United States quits the arms race.

by Bruce Pearson

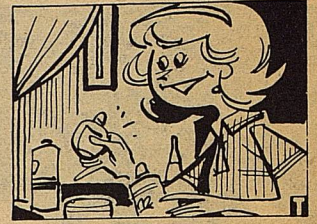
Ranch

Con't from Pg. 1

A special treat came from John R. Rich Anderson, manager of the OB and the Museshoe ranges, who spun lore of the Muleshoe ranch and the Claytons that built it as the buses wound through the Colorado River breaklands to the Muleshoe headquarters.

The trip to Gail is the third of a series planned by the WTMA's heritage committee. Earlier trips explored Crosby County and the Panhandle Plains Museum at Canyon.

At one time, women's role was confined to kitchen and kids. It's a picture that has changed greatly in just a few years.



THEN: When modern woman first began setting a tentative foot in the world of commerce, it was often in fields that have been termed "cottage industries." Women tried their hands—and often successfully—at endeavors involving cosmetics, fashion, handicrafts and home products.

— Your Vote Will Elect —

Melissa "Lisa" Ludecke

COUNTY TREASURER
BORDEN COUNTY

Subject to action of the Democratic Primaries

Paid for by Melissa Ludecke, Box 153, Gail, Texas 79738

H & M GROCERY STATION

Gail Hwy 669 South

Friendly Service
Specialty - Hotlinks
and Sandwiches

Phone 915-339-4333



Energized Cubes - Mineral - Minsrate Blocks

C. Wilson Howell
Salesman

Box 1066
Snyder, Texas 79549

Moorman Mfg. Co.

Phone 573-3826

YOUR PERSONAL DEALER

BOB BROWN

Olds-Cadillac-GMC



202 South 3rd
Lamesa, Texas



806-872-2144



Locals Place At Rodeo

Borden County was well represented at the Sundowners Rodeo in Snyder last weekend. Brice Key came away with a first place belt buckle in Breakaway roping and placed 2nd in ribbon roping. Dana Gray won a belt buckle by placing first in pole bending.

Kelly Ogden placed 5th in pole bending and Gayla Newton placed third in Flag racing, 4th in Breakaway roping and second in pole bending.

Other Borden County contestants were Glen Gray, Cathy York, Delana Eppers, Jim Ridenour, Julie Ridenour, Cody Newton and Jerri Eppers.

Clintonna Smith, granddaughter of Glenn and Tooter Swann did well in the rodeo and Jeff Hilton, Nephew of Kandy McWhorter won the 8 and under barrel race, 3rd in pole bending, 2nd in flags and the 8 and under all around belt buckle. John Bland place in the flag race and pole bending and Sarah Bland also competed.

They are grandchildren of Mr. and Mrs. J. R. Anderson.

Gretchen Hilton, niece of Kandy McWhorter, won the belt buckle in 9-12 flag racing. Jana Kincheloe competed in barrel racing and J J Kincheloe won the belt buckles for 8 and under calf riding, flag racing and pole bending. There are the grand children of Dorothy Browne of Gail.

Wrangler JUNIORS

Here's a sassy, little Wrangler® Juniors number. Our shorts are made to fit snug; they're cotton/poly stretch sheeting, that's also easy to care for. They come in blue, coral pink, khaki, white and yellow, in sizes 3-15. The stripes on our tulip-sleeve top "pick up" the colors of our shorts. It's an easy-to-care-for cotton/poly blend, in small, medium and large.

Cowboy Supply
WESTERN OUTFITTERS

Notice of Election

The State of Texas will hold primary elections on May 1, 1982. Absentee voting began on the 12th day of April 1982, and will continue through the 27th day of April 1982, from 8:00 a.m. to 5:00 p.m. on each day the Courthouse is open. Absentee voting in person shall be conducted at Borden County Courthouse. Applications for absentee ballots by mail should be mailed to Dorothy Browne, County Clerk, Gail, Texas 79738.

Notice that employers are required by statute to permit employees time off from work with pay to vote and that voters may only vote in the primary election of one political party, not in the primary elections of both parties.

The polling places designated below will be open from 7:00 a.m. to 7:00 p.m. on the day of the election.

Election Precincts	Polling Places
Box 1 (Same as Borden County Election Precinct No. 1)	Plains Community Center Community of Plains
Box 2 (Same as Borden County Election Precinct No. 2 and that part of the District in Howard County)	C. R. Porter Residence Vealmoor, Texas
Box 3 (Same as Borden County Election Precinct No. 3)	Borden County Courthouse Gail, Texas
Box 4 (Same as Borden County Election Precinct No. 4)	Election Precinct No. 4 Voting House
Box 5 (Same as Borden County Election Precinct No. 5)	Election Precinct No. 5 Voting House
Box 6 (Same as Borden County Election Precinct No. 6)	County Barn Gail, Texas
Box 7 (Same as Borden County Election Precinct No. 7)	Roy Reeder Residence Community of Fluvanna



CUTTING FOOD COSTS

If you are like most family food managers, you want to serve meals that are nutritious as well as good to eat, whether your budget is large or small.

The following tips may help you economize your food budget.

Check specials in food store advertisements.

Look at each food critically. Is it costly compared to other foods you might serve? Will your family eat and enjoy it? Do you have the time and skill to prepare it? If it is a convenience food, could you save by preparing it from basic ingredients?

Learn to estimate accurately the amounts of food needed to feed your family. No eating pleasure or nutrition comes from food that is bought and then thrown out.

Use unit pricing to determine the brand and container size of food that costs the least per pound, ounce, or pint and that can be stored properly without any waste.

Avoid foods that are packaged as individual servings. Extra packaging usually boosts the price.

Check dated on perishable foods and be sure that you can use it before it spoils.

Shop for low cost foods within each food group.

Use non fat dry milk, which is less expensive than milk, at least part of the time in cooking and as a beverage.

Buy fresh milk at a food or dairy store in 1/2 or 1 gallon containers. Milk usually costs more if it is home delivered, purchased from special service stores, or purchased in small containers.

When buying vegetables and fruits, take advantage of seasonal abundance. Foods in season are at their peak in quality and often are lower in cost.

Try low priced brands. They may be similar in quality to more expensive ones.

Examine the labels of both "new" products and old standbys. Compare prices, net contents, ingredient lists, and if available, nutrition information panels. The cost to you for a slightly modified product may be more than you are willing to pay.

Hopefully, these tips will help you to stretch your food budget in the future.



Parents should be aware of what a child really reels "inside" in order to understand why he behaves as he does "Outside."



Big Spring Automotive

306 Gregg
Big Spring, Texas 79720
915-267-6308

4-H Happenings

Four Borden County 4-H members participated in District 2 4-H Livestock Judging Contest Saturday April 24.

Mickey Burkett, Wayne Daugherty, James Smith and Gerry Smith placed 4th in the contest which was held in the Livestock pavilion on the Texas Tech University Campus.

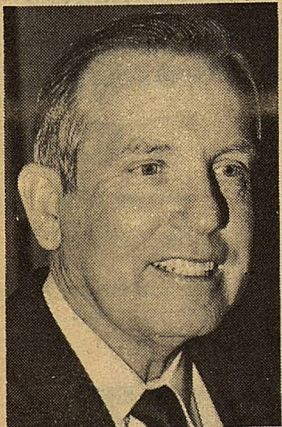
Parents Club Meeting

The Borden County Parents Club will hold its May meeting on Thursday, May 6. Mrs. Copeland and her kindergarten class will present the program at 2:00 in the school auditorium.

The club will have their meeting immediately following the program. Everyone is urged to attend the meeting as the kindergarten students have been working very hard the last couple of weeks in preparation for the program. Also this will be the last Parent's Club meeting during the school months and several important activities will be discussed and voted on.

Pete Snelson

Democrat
Texas Land Commissioner



- Dean of Texas Senate
- Chairman of Education Committee
- Named one of Ten Best Legislators, 1982 Session
- Combat veteran, World War II
- Married, four children

It's a matter of trust.

Pol. adv. pd. for by Snelson for Land Commissioner, Gary R. Rodgers, Treasurer, P.O. Box 13232, Austin, TX 78711.

**We're
PEOPLE
Like
YOU!**

FNB

First National Bank

3610 College
Snyder



573-4041

Annual Directors

Directors of The Borden Star, Inc. held their annual meeting Monday April 19.

After a financial report was read, the following motions were made regarding advertisement rates:

1. All disease related charities will not be billed for advertising.
2. A twenty-five percent discount on the regular ad rate will be offered to the following non profit organizations: Churches, 4-H, Jr. Livestock

Assoc., FFA-FHA, and Lions Club.

3. A minimum of two dollars will be assessed for all personal thank you notes. If the note exceeds one column inch or a request is made to change the standard display, an additional \$2.00 a column inch will be added.

4. General advertising rate will be set at \$2.00 a column inch.

5. Classified ad rate will be 15 cents a word. Classified ads will be set in regular type.

Meeting

6. Legal notice rate will be 12 cents a word, also set in regular type or agate.

All motions were seconded. During discussion it was brought out that in order to stay abreast of recent hikes in publishing and mailing expense, the adjustment in advertising rates was a financial necessity. All motions passed unanimously.

A vote of confidence was given to the staff for their service to the community,

some of which is still on a volunteer basis.

The interest shown in publishing the courthouse news was discussed. The request for an agenda to be published prior to court meetings was readily accepted.

Poor postal service from the regional terminal in Midland was discussed. All

subscribers having bad service will be urged to fill out a consumer service card at their local post office.

1982-83 officers for the Directors of the Borden Star are: Chairman James McLeroy; Vice Chairman, Lela Porter; Secretary Ruth Weathers. Seven directors were present representing a quorum.

Meeting was adjourned.

ASCS News

1982 ACP PROGRAM

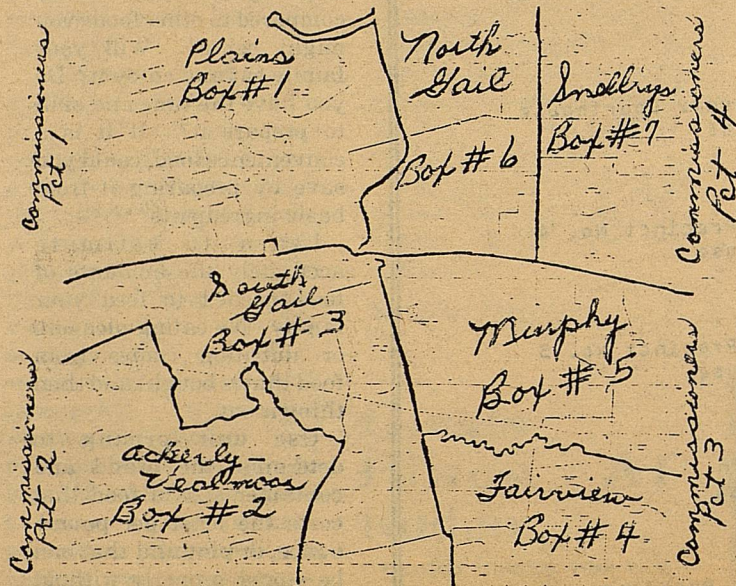
Producers wishing to apply for Cost Share Assistance on Brush Control Practices (Aerial Spraying) or other needed conservation practices to be completed in May or June, must file their Application by Monday May 3, 1982.

All applications received will be considered for approval by the County Committee during their regular meeting to be held May 4, 1982.

SMALL GRAIN CERTIFICATION

Operators of farms who have not yet made a report of small grain acreages (wheat, oats, and or barley) have until May 15, 1982, to file the planted acreage report. A report is needed on acreage for grain and for grazing.

BORDEN COUNTY VOTING PRECINCT MAP



ONE NAME YOU CAN VOTE FOR WITH CONFIDENCE:

DENTON

A proud record of public service . . . a record of independence, fairness and integrity!

DENTON

The overwhelming choice of informed attorneys throughout Texas!

DENTON

The choice of the Committee for a Qualified Judiciary! Re-Elect JUSTICE JAMES G.

DENTON

SUPREME COURT OF TEXAS

Pol. adv. paid for by Denton for Supreme Court Committee, Larry E. Temple, Treasurer, P.O. Box 12924, Austin, Texas 78711.

EAST SIDE OF THE SQUARE

The Finest
In Nationally
Known Brands
of
Western Wear
and
Sports Wear

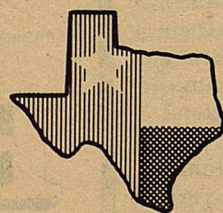
FENTON'S
Snyder 573-6111

AMBITION IS NOT ENOUGH!

A good public official should concentrate all his energies on being the best he can be in the office he holds. He cannot truly serve the people who elected him to one office if he is using time and energy to further his own personal political ambition.

State Senator E. L. Short rented out his farm and sold his business in Tahoka so he could serve the people of this 28th Senatorial District full time.

He has lived here all of his life, served 8 years in the House of Representatives and 4 years in the Senate. He knows this area and its people. We need E. L. Short in the Senate. He's the only listed farmer-rancher in the 31-member Texas Senate, and he's got the kind of experience that counts!



VOTE SATURDAY TO RE-ELECT

SENATOR E. L. SHORT

(Paid political advertisement by the committee to re-elect Senator E. L. Short, Joe Durham, treas., 3314 59th St., Lubbock)

National Consumers Week

April 24 - May 1, 1982

There's an old adage that goes: When the going gets tough the tough get going. It's usually applied to determined people of character, like outstanding athletes or business people under pressure, but the state of the economy has also made the tough swindlers "get going".

Some schemes to be wary of are medical promotions, health aids, work at home schemes, the selling of future contracts on gold, diamonds, chemicals or more recently coal or gas and travel "bargains" to good to be true. Although most mail order businesses are honest, here is some advise on how to minimize

Political Calendar

The Borden Star is authorized to announce the following candidates for political office weekly, subject to action of the Party Primaries on May 1, 1982. (Paid political advertising by candidates listed below.)

FOR COUNTY JUDGE

Van L. York (D)
Mrs. Pat Porter (D)
Jessie Johnson (D)

FOR CO. & DIST. CLERK

Dorothy Browne (D)

FOR COUNTY TREASURER

Don Cox (D)
Melissa "Lisa" Ludecke (D)

FOR JUSTICE OF THE PEACE

Carolyn Stone (D)

FOR COMMISSIONER PRECINCT TWO

Larry Smith (D)

FOR COMMISSIONER PRECINCT FOUR

Edward Rinehart (D)
Ricky Evans (D)
Vernon Miller (D)

FOR STATE SENATOR 28th DISTRICT

E. L. Short (D)

John J.C. O'Shea (R)

John T. Montford (D)

U.S. CONGRESSMAN
17th DISTRICT
Charles Stenholm (D)

FOR STATE REPRESENTATIVE
69th DISTRICT
Larry Don Shaw (D)

FOR STATE COMPTROLLER
Raymond Frank (R)

the chances of being taken by the few that aren't.

Be wary of what seems to be an exaggerated claim or a price that seems unusually low.

Don't be rushed, avoid offers that claim to be a last chance to get a bargain.

Keep a copy of the advertisement from which you are ordering.

Keep a record of the date of your order, don't send cash.

Consider the believability of the publication in which the product or service is advertised.

As a mail order customer, you do have rights, under Federal Trade Commission regulations, you have the right to be told of shipment delays, cancel the order and get your money back if the item isn't shipped on time. Companies must ship most orders within the time

promised or, if not stated, within 30 days, or offer to refund the buyer's money.

The customer must be notified of a delay in delivery and provide a cost free method to inform the company of cancellation. If the customer wants a refund, the company must return the money if it was paid by check, cash or money order. If the item was charged, the company is allowed one billing cycle to credit the account.

In the event the customer should have a problem arising under these programs, he or she should contact a local postmaster, postal inspector, or write Consumer Advocate, U. S. Postal Service, Washington, DC 20260. Remember to look for your Consumer Service Cards in your local post office.

Sweetwater Production Credit Association

★ Crop & Livestock Loans ★
Sweetwater - Central Office

Offices in Colorado City, Lamesa, Roby & Snyder



The record speaks for itself. Since he has served as our State Treasurer, that office has earned more income on public funds than the combined total of all previous earnings in the history of Texas!

Let's Re-elect

Warren G. Harding
State Treasurer



Pol. ad., paid for by the Warren G. Harding Campaign,
120 Perry Brooks Building, 8th & Brazos, Austin, Texas 78701

The Borden Star, Wednesday, April 28, 1982...7

BEAUTYREST FEELINGS

\$708⁰⁰

Queen size set

The Feelings flotation system by Simmons, the makers of Beautyrest, is a unique hybrid mattress consolidating the best features of an innerspring and a water mattress. This system features a perimeter of famous Beautyrest individually pocketed steel coils surrounding a water mattress. The result is a major breakthrough in sleeping comfort. The steel coils provide a soft comfortable edge allowing a gentle transition to the water mattress. The baffles prevent unwanted wave motion yet conform to your body. Feelings looks like a conventional mattress, takes standard sheets and spreads, fits a standard headboard. It even includes the heater. Not available in waterbed stores. Price includes required nine-legged base frame.

Full size set

\$594⁰⁰

King size set

\$819⁰⁰

FREE Delivery within 100 miles of Big Spring

CARTER'S FURNITURE

202 Scurry Street

Big Spring, Texas

re elect ★ ★ ★ ★ ★ ★ ★ ★ ★ ★

REAGAN V.

BROWN

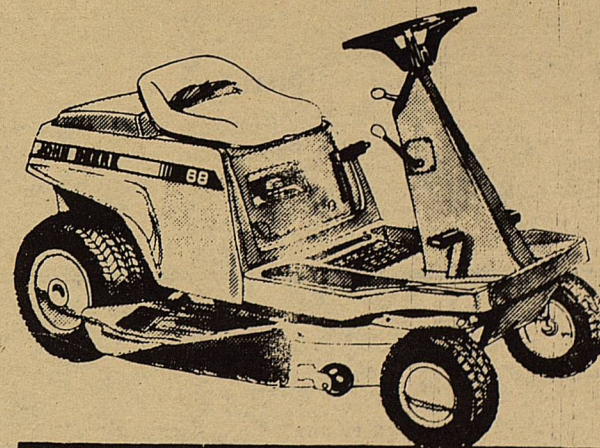
Democrat for Texas
Agriculture Commissioner

Vote for experience and good
government—vote for Reagan Brown.

Pol. Adv. Pd. by Reagan V. Brown Election Campaign Committee,
Reagan Brown, Treasurer, P.O. Box 26856, Austin, TX 78755



Save \$85 on this 68 rider,
up to \$400 on other popular
John Deere Lawn and
Leisure Products



It's our biggest sale of the season. Here's what you'll find:

- Save \$100 toward the purchase price of a new John Deere 108 or 111 Lawn Tractor.
- Save up to \$400 toward the purchase price of a new John Deere lawn and garden tractor. Hurry, all offers expire May 31.

Nothing Runs Like a Deere®



Wayland Taylor, Inc.

P.O. Box 308

O'Donnell, Texas 79351

(806)428-3245



John Deere Farm Equipment

**DEMOCRATIC PARTY
PRIMARY ELECTION**

ELIJKES PRIMARIJA DE LA PARTIDA DEMOCRATICA
A CIUDAD DE BORDEN, COUNTY, TEXAS

MAY 1, 1982
ELI MAYO DE 1982

SAMPLE BALLOT

BOLETA DE MUESTRA

INSTRUCTION NOTE
(NOTA DE INSTRUCCIONES)

Vote for the candidate of your choice in each race by placing an "X" in the square beside the candidate's name. (Vote por el candidato de su preferencia en cada candidatura marcando con una "X" el nombre al lado del nombre del candidato.)

Use a Ballot and judge my all to support the nominees of this primary. (Yo soy Demócrata y voy a votar por los candidatos nominados de esta primaria.)

- | | |
|--|--|
| <p>United States Senator
(Senador de la Estada Unida)</p> <p><input type="checkbox"/> Lloyd Bentsen
<input type="checkbox"/> Joe Sullivan</p> <p>State Representative, 15th District
(Representante de la Estada Unida, Condado de Borden)</p> <p><input type="checkbox"/> Charles W. Stenholm</p> <p>County Judge
(Jefe del Condado)</p> <p><input type="checkbox"/> David L. Young
<input type="checkbox"/> Bob Armstrong
<input type="checkbox"/> Mark White
<input type="checkbox"/> Don Beagle
<input type="checkbox"/> Ray Allen Mayo
<input type="checkbox"/> Buddy Temple</p> <p>Member, State Board of Education
(Miembro del Junta Estatal de Instruccion Educativa)</p> <p><input type="checkbox"/> Bill Hobby
<input type="checkbox"/> Troy Skates</p> <p>Member, General
(Miembro General)</p> <p><input type="checkbox"/> John Hannah
<input type="checkbox"/> Max Sherman
<input type="checkbox"/> Jack Ogg
<input type="checkbox"/> Jim Mattox</p> <p>County Judge, Precinct 2
(Jefe del Condado)</p> <p><input type="checkbox"/> Robert Calvert
<input type="checkbox"/> Bob Bullock</p> <p>State Representative
(Representante)</p> <p><input type="checkbox"/> Warren G. Harding
<input type="checkbox"/> Ann Richards
<input type="checkbox"/> Lane Denton
<input type="checkbox"/> John R. Cutright</p> <p>Member, County Board of Education
(Miembro del Consejo de la Estada de la Estada)</p> <p><input type="checkbox"/> Pete Snelson
<input type="checkbox"/> Garry Mauro
<input type="checkbox"/> George Fore
<input type="checkbox"/> Dan Kuttrak</p> <p>Member of the Board of Supervisors
(Miembro del Consejo de Supervisores)</p> <p><input type="checkbox"/> Reagan V. Brown
<input type="checkbox"/> Jim Hightower</p> <p>Member, Board of Commissioners
(Miembro del Consejo de Comisionados)</p> <p><input type="checkbox"/> James E. (Jim) Nuyent
<input type="checkbox"/> Ralph Pacheco</p> <p>Judge, Superior Court, Precinct 1
(Jefe del Condado)</p> <p><input type="checkbox"/> Ted Robertson
<input type="checkbox"/> John M. Barron</p> <p>Judge, Superior Court, Precinct 2
(Jefe del Condado)</p> <p><input type="checkbox"/> Lane G. Denton
<input type="checkbox"/> Bill Kagarlin</p> <p>Judge, Superior Court, Precinct 3
(Jefe del Condado)</p> <p><input type="checkbox"/> Charles W. Barrow
<input type="checkbox"/> Woodrow Wilson Bean</p> <p>Judge, Court of Criminal Appeals
(Jefe del Condado)</p> <p><input type="checkbox"/> John E. (Jack) Omon</p> <p>Judge, Court of Criminal Appeals, Precinct 4
(Jefe del Condado)</p> <p><input type="checkbox"/> Carl Dally
<input type="checkbox"/> John E. Humphreys
<input type="checkbox"/> Charles L. "Chick" Campbell Jr.
<input type="checkbox"/> William B. Phillips</p> | <p>Judge, Court of Criminal Appeals, Precinct 2
(Jefe, Corte de Apelaciones Criminales, Lugar Num. 2)</p> <p><input type="checkbox"/> Chuck Miller
<input type="checkbox"/> Roy Rawls
<input type="checkbox"/> Mel Bruder
<input type="checkbox"/> Bill Black
<input type="checkbox"/> Andrew Jackson Shuval</p> <p>State Senator, 25th District
(Senador Estada Unida, Condado de Distrito 25)</p> <p><input type="checkbox"/> E. L. Short
<input type="checkbox"/> John T. Montford</p> <p>State Representative, 69th District
(Representante Estada Unida, Condado de Distrito 69)</p> <p><input type="checkbox"/> Larry Don Shaw</p> <p>Member, State Board of Education, 110th District
(Miembro de la Junta Estatal de Instruccion Educativa, Condado de Distrito 110)</p> <p><input type="checkbox"/> Jewell Harris
<input type="checkbox"/> Curly Hays</p> <p>Chief Justice, Court of Appeals, 11th District
(Jefe Presidente, Corte de Apelaciones, Condado de Distrito 11)</p> <p><input type="checkbox"/> Austin McCloud</p> <p>County Judge
(Jefe del Condado)</p> <p><input type="checkbox"/> Van L. York
<input type="checkbox"/> Pat J. Porter
<input type="checkbox"/> Jesse Johnson</p> <p>District and County Clerk
(Secretario del Condado y Condado)</p> <p><input type="checkbox"/> Dorothy Browne</p> <p>County Treasurer
(Tesorero del Condado)</p> <p><input type="checkbox"/> Don Cox
<input type="checkbox"/> Melissa (Lisa) Ludecke</p> <p>County Commissioner, Precinct 2
(Comisionado del Condado, Precincto Num. 2)</p> <p><input type="checkbox"/> Larry Smith</p> <p>County Commissioner, Precinct 4
(Comisionado del Condado, Precincto Num. 4)</p> <p><input type="checkbox"/> Vernon Miller
<input type="checkbox"/> Rickey Evans
<input type="checkbox"/> Ed Kinchart</p> <p>Justice of the Peace
(Jefe del Condado)</p> <p><input type="checkbox"/> Carolyn F. Stone</p> <p>County Chairman</p> <p>Precinct Chairman Precinct</p> |
|--|--|

Notice

There will be no Republican party primary election in Borden County.

RE - ELECT

Dorothy Browne
District and County Clerk
Borden County

YOUR VOTE AND INFLUENCE APPRECIATED

Pd. Pol. Adv. By Dorothy Browne, Gail, Texas

ELECT

PAT J. PORTER

**COUNTY JUDGE
BORDEN COUNTY, TEXAS**

SUBJECT TO DEMOCRATIC PRIMARY, MAY 1, 1982

POLITICAL ADVERTISEMENT PAID FOR BY PAT J. PORTER

NOTICE

TO ALL GAIL WATER USERS

The Gail Water Supply Corp. has been notified by the Texas Department of Health that the water being supplied by our system exceeds the maximum constituent level for Fluoride established by the Department's "Drinkind Water Standards" which were promulgated as required by the Safe Drinking Water Act", Public Law 93-523 (U.S.) The limit for this area has been set at 1.6 milligrams of Fluoride per liter of water. The samples of water from our system contained 5.4 milligrams of Fluoride per liter. There is no immediate health hazard for drinking water containing Fluoride at this level. The excessive Fluoride content of the water may cause mottling of the teeth in children under 14 years of age. All dentists in this area are aware of the Fluoride level. The Gail water supply Corp. has applied to the Texas Department of Health for either a variance or exemption from the Fluoride requirement while we search for alternate sources of supply and investigate available treatment techniques to lower the Fluoride to allowable levels.

-s- Jim M. Burkett
County Judge

Thank You

We would like to thank all of the friends and neighbors for the calls, food, flowers, cards and words of condolences following the death of Joyce, our beloved wife, mother and friend.
s- The Donnie Everett Family

Thank You

Thanks to all those who sent cards, flowers, and called to check on me during my recent stay in the hospital. A special thanks to Ross Sharp and Gerald Boyd for the use of the ambulance.
^ Thanks again, Lisa Ludecke

**WANT AN
OIL & GAS LEASE**

ON YOUR ACREAGE?

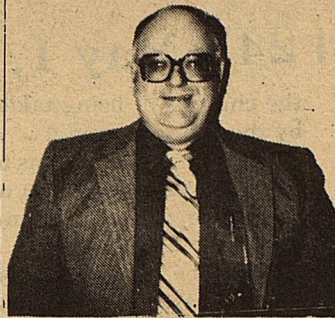
CALL TODAY ON
OUR NICKLE.

CALL TOLL FREE
1-800-592-1446
9 a.m. to 5 p.m. weekdays

OIL & GAS ASSOCIATES
P. O. DRAWER 952
MIDLAND, TEXAS 79702

VOTE

Jesse Johnson
County Judge



Vote for honesty & integrity. Vote for Jesse Johnson for County Judge.

Pd. Pol. Adv.

HAROLD LUCAS MOTORS

111 South Broadway
Post, Texas

**SPECIAL
SALE**

\$ PRICES \$

GMAC financing available



806-495-2825

Rickey Evans

Candidate for Commissioner Precinct #4
Borden County

Subject to Democratic Primary
YOUR VOTE AND INFLUENCE WILL BE APPRECIATED

Paid Pol. Adv. by Rickey Evans

ELECT

Van L. York

COUNTY JUDGE
BORDEN COUNTY

YOUR VOTE AND INFLUENCE APPRECIATED

PD. POL. ADV. BY VAN L. YORK, GAIL, TEXAS

Deadline Nears

For reduce land value, sign up before May 1, 1982.

Contact Borden County Appraisal Office for information.

**GAIL
Grocery & Station**

Open 7:00 a.m. - 6:00 p.m.
Monday - Saturday

Phone 856-4121

Jesse & Sara Johnson

THE

LYNN

BORDEN

SCURRY

STAR

Volume X No. 39

April 21, 1982

GARZA

DAWSON

HOWARD

Serving the Counties of Borden, Dawson, Garza, Howard, Lynn & Scurry



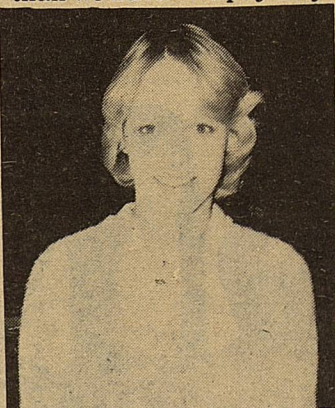
Congressman Charles Stenholm

Cong. Stenholm holds press conference here

Congressman Charles Stenholm took time off from a busy schedule to hold a press-conference for Borden County School students, Thursday, April 15.

Stenholm, nicknamed 'bollweivel' by fellow-congressmen, encouraged those present to be sure to vote in the upcoming election. He said voting is the most precious freedom in the United States.

'At the present time', said Stenholm, 'the United States owes 1.1 trillion dollars and in 1982 we are spending \$100 billion more than we have. We pay only



MARQUITA MENIA
Qualifies for State In
Headline Writing. Story
page 2.

the interest on this 1.1 trillion dollars, by taxation.'

Questions and Answers from the press conference are as follows:

Q. Is Social Security Going Broke? A. At the present, social security is paying more out than is coming in, but Congress plans to reduce payments going out or increase funds going into the fund in the near future. Stenholm supports reducing the increase being paid to those receiving Social Security. Social Security would save 6 billion dollars if they pay 4.6 per cent increase. He also supports raising the age for receiving benefits to 68, because the life expectancy has raised.

Q. In case of Nuclear War, would the U.S. be prepared for it? A. The United States and the Soviet Union could destroy each other if there were a nuclear war today. Between 60 and 80 million Americans would be killed in this type of war, but the U.S. cannot afford at the present time to stop their arms build up until the

Con't on Pg. 7

Taxable property must be rendered

Slick Sneed, chief appraiser for Borden County Appraisal District, announced today that all persons required to render taxable property must have these reports filed prior to May 1.

The Texas Property Tax Code is specific in listing property which must be rendered to the chief appraiser for property taxation purposes. These include:

All tangible personal property used for the production of income that is owned by a person or that he manages and controls as a fiduciary on January 1;

For banks located in Texas, a statement listing assets and liabilities;

In addition, the chief appraiser may require a person to render for taxation any other taxable property that he owns or manages and controls as a fiduciary on January 1.

According to Chief Appraiser Sneed, rendition statements are filed with the chief appraiser of the appraisal district where the taxable property is located.

Any taxpayer who believes that his property's value has decreased during the preceding tax year for any reason other than normal depreciation may file a report of decreased value. This report describes the property involved and states the nature and cause of the decrease.

Rendition and report of decreased value forms are available at the Borden County Appraisal District office. Anyone filing a rendition or report shall include all information required on the form, as well the signature of the property owner or an authorized individual.

For the first time, persons rendering property are not

required by law to state a market value for the property. However, a taxpayer may continue to state his opinion of the market value and assure himself of required notices if the value is changed.

Renditions and property reports are confidential and

Borden County scales show accurate rate

Borden County people can count on getting their money's worth in weight through the year if the products are weighed on local scales or gas pumps, Agriculture Commissioner Reagan V. Brown said today.

In the county there are eight weighing devices of different types, ranging from two fuel pumps to four supermarket scales.

'Our Department regularly checks the commercial scales in the county and has found that they conform to our previous surveys across the state. Of those that were above or below tolerance, not many scales were off by significant amounts. Also, as many were giving the customer too much of the product as were giving too little. Because of frequent checks, scales are not out of calibration very long,' Brown said.

'Business owners are glad to see us come in because as often as not, they have been losing money if their scales were not accurate,' Brown said.

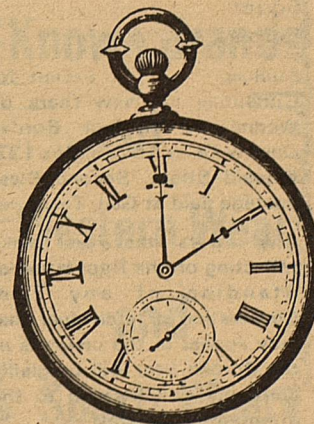
The Texas Department of Agriculture has inspectors assigned to every county. They are trained to check all different types of scales from those for medicines in a pharmacy to those for livestock and grain.

The inspectors also spot

no longer open to public inspection.

These forms must be filed with the appraisal office after January 1 and before May 1 at the Borden County courthouse. For more information call 915-856-4311.

check packaged goods, such as cereals and crackers, to make certain that the weight stated on the label is accurate. If on the average the weights of the packages are below the amount stated on the label, the shipment is put on a Stop-Sale order. The store owner then either returns the items to the processor or as is the case very often, gives them to charitable organizations. Meat packaged in the supermarket as well as processor packs are also checked by Department inspectors.



Set Clocks
FORWARD
One Hour
Sunday
April 25
2 a.m.