

Acquire Associates
 ...for all your insurance needs this spring!
 "Doing Business with people you know and trust!"
 Jim Patton
 1204 North Hobart
 Pampa, TX
 806-665-7261
 www.acquireassociates.com

*****ORIGIN MO:0 000
 0000471 12/31/2009
 BERT (P) MICROFILM
 4849 21ST AVE SW
 CEDAR RAPIDS, IA 52404-6309

West Texas Landscape
 Starting February! Get your Garden Ready!
 120 S Hobart St • 669-0158 • Mon-Sat 9am - 5pm

The PAMPA NEWS

Volume 105 • No. 268 **Weekend Issue** Saturday and Sunday, March 27-28, 2010 50¢ Daily • Weekend \$1.50

Weather slowing work on rodeo horse stalls

DAVID BOWSER
 dbowser@thepampanews.com

Winter weather has slowed the Top of Texas Rodeo Association's work on horse stalls next to the rodeo grounds, but Michael Craig, a true West Texan, said he's not complaining about the moisture.

The Pampa Economic Development Corporation put up \$9,999 toward building the

horse stalls.

Representing the Rodeo Association, Craig was at the PEDC meeting this past week to give the board an update on the project.

"We've been doing what we can do," Craig said, "on the days that we can do it."

He said the association has had the plans for three barns approved by an engineer, but the weather has slowed the dirt work that's necessary before the construction can begin.

"Everything's on go," Craig.

Plans have been approved and the necessary requirements have been met. Now it the weather will cooperate, construction can begin.

The plans call for three barns with 10-foot by 12-foot stalls for horses. It will be located at the northwest corner of the rodeo grounds, Craig said.

"They'll be three barns with 20 stalls in each

STALLS cont. on page 3

The Floor Store
 Where we strive to deliver the small town service you desire and deserve!
 Free Estimates!
 Tile, Wood, Laminate, Carpet and much more!
 New Owners:
 Steve Groomer & Chadd Giles
 Same Great Service and Quality Guaranteed!
 For sales related questions, please call (806) 665-4455 or email sales@pampafloorstore.com
 2110 Peyton Parkway
 (Across from Sherwin-Williams)

CHILDERS BROTHERS INC. HOUSE LEVELING
 Uneven Floors
 Floor Bracing
 Cracks In Bricks
 Sticking Doors & Windows
 Interior Wall Cracking
 FREE ESTIMATES
 1-800-299-9563
 WWW.CHILDERSLEVELING.COM

One STOP Flooring
 Specially Marked Carpets All **\$19.97** per yd installed
 Save \$4.00 to \$12.00 per yd installed (reg. \$23.97 to \$31.97sy)
 Store Hours:
 Monday-Friday 9am-5pm
 Saturday 10am-1pm
 1533 N. Hobart ~ Pampa, TX
 (806)665-0995 1986

MF10341 • LICENSED • INSURED
BOB'S PLUMBING
 PAMPA, TEXAS
 806-669-1940
 CELL# 806-584-0809
 HOURS MON-FRI 8-6 • SAT 8-12
 EMERGENCY ANYTIME
 OWNERS: BOBBY FAIRES / DUECE FAIRES

VISION SOURCE
 OAKELY
 MAUI JIM
 RAYBAN
 CARE CREDIT ACCEPTED
 1324 N. BANKS
 806.665.0771

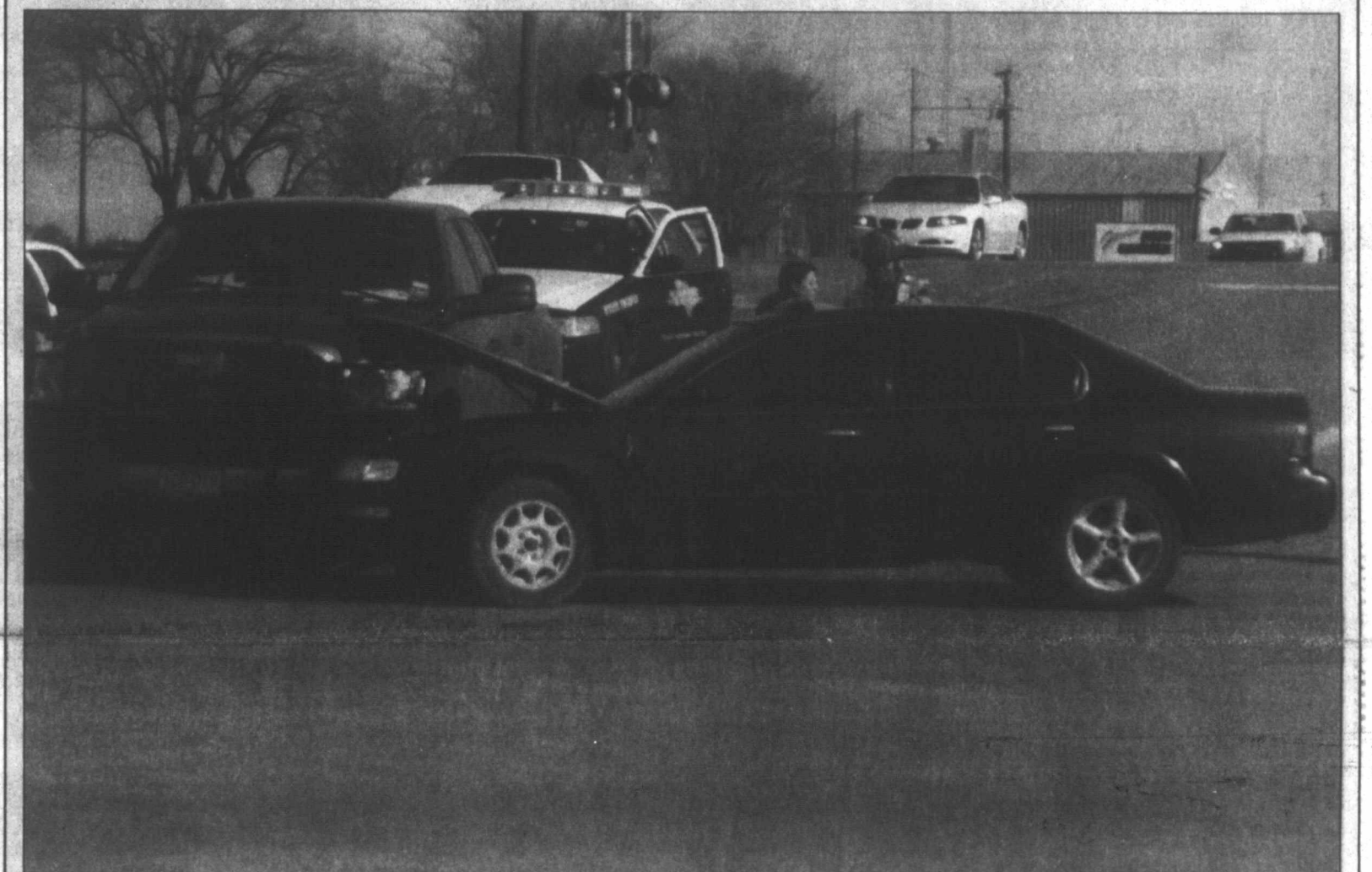
Vision
 COMPUTER SERVICES
 Ihavecomputerproblems.com
 806-665-HELP(4357)
 Combs-Worley Building
 120 W Kingsmill Ave
 Suite 303

MASSAGE DISCOUNTS
 BEST DEAL! \$39
 CALL PAMPA'S MASSAGE ADVANTAGE LOCATION TODAY!
 CALL: 806-665-7261
 18 First Fairs Community Resources & Wellness Center
 211 N. Paul R. Pate St

CRAWFORD RESIDENTIAL ROOFING
 • New Construction
 • Re-roofing
 • Gutter & Insulation
 Free Estimates
 662-2029

M & H Leasing TOP OF TEXAS
 Read the Bible in a year
 Josh 1-24
 Luke 1-3
 1945 N. Hobart • 665-2061

MORNING JOLT



staff photo by **Andrew Glover**

Traffic was briefly interrupted on the corner of U.S. Hwy. 60 and Price Road at about 9:55 Friday morning by a collision between a 1995 Nissan Maxima driven by Joshua Plaster of Pampa and a 2007 Dodge Ram driven by Pat Helton of Allison. The Gray County Sheriff's Department responded to the call, assisted by the Pampa Fire Department and EMS. According to Pampa Fire, the wreck took approximately 45 minutes to clear; no serious injuries were reported.

EMS looks to expand area services

DAVID BOWSER
 dbowser@thepampanews.com

The Emergency Services Foundation of Texas, parent company of Pampa EMS, says it wants to expand its services to include mobile intensive care units in the area.

Joe Anstey, chief administrative officer of The Emergency Services Foundation of Texas, a not-for-profit organization that provides ambulance services for Pampa, told the Pampa Economic Development Corporation that it is planning to grow its operation and hopes for almost \$400,000 in help from the PEDC.

"I think we're well on our way to accomplishing our first goal, which is revamping the medical services here at Pampa," Anstey



Anstey

said. "One of our long term goals was to establish a critical care transport system with the expansion of care and services that we see out at Pampa Regional Medical Center."

It will help Pampa's regional medical services to transport patients from smaller, outlying communities to where there is better care available. Regional hospitals, such as those in Dalhart, Canadian and Spearman, will become critical access points for acutely ill patients.

EMS cont. on page 3

City plans to mount cameras in city parks

DAVID BOWSER
 dbowser@thepampanews.com

City Engineer Donny Hooper and Pampa Police Chief Kelly Rushing talked to the PEDC Thursday about their plan to mount remote control cameras in city parks in an effort to battle vandalism.

The city has applied for federal matching grants to help buy the cameras and associated gear.

In other PEDC business:

- The PEDC board approved a new contract with the Entrepreneur Alliance.
- Clay Rice also reported on the Windpower 2010 conference scheduled this spring

in Houston. He said Pampa will have its own booth in the High Ground of Texas pavilion.

He also reported that some 95 people attended the Class 4 Winds networking luncheon in Pampa Thursday.

- Rice said that there would be a meeting in

PEDC cont. on page 6

Work nearly done on PISD ag barn

DAVID BOWSER
 dbowser@thepampanews.com

The Pampa Independent School District board of trustees are still in construction mode.

At their Thursday night meeting, they heard an update on the new ag barn on the south side of Pampa.

Randy Stephenson, who is overseeing the construction and renovation projects at the high school, new junior high and old junior high, reported that the construction of the new ag barn off what is referred to as Horse Alley is complete. Interior lighting systems, however, still need to be installed.

Stephenson said the district's maintenance department is working with the utility companies on that.

He said the completed cost would run about \$55,000 to \$50,000, the expected cost.

The new junior high is on tract to be completed in late May. The landscaping will follow this summer.

The teachers and faculty should begin to move in in May and June.

Any new furniture should be moved in during June and the existing furniture that will be used from other sites will be

PISD cont. on page 6



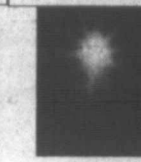
HOUSE HUNTERS - REALTOR
 Searching for the perfect home this spring? Call us!
 Linda Laycock Broker (806) 662-1312
 Jordan O'Neal Associate (806) 679-6623
 Larry Haskley Associate (806) 662-2773

Pampa Chamber
 Serving the Business Community for 85 Years
 Salutes Bourland - Leverich Supply Co.
 Since 1935



For the record

PAMPA FORECAST

Sunday	Monday	Tuesday
		
High 58 Low 36	High 67 Low 40	High 74 Low 48

Saturday Night: A 20 percent chance of showers before 1 a.m. Mostly cloudy, with a low around 36. Wind chill values between 28 and 33. Windy, with a north northwest wind between 15 and 25 mph, with gusts as high as 35 mph.

Sunday: Mostly sunny, with a high near 58. North northwest wind between 10 and 15 mph, with gusts as high as 20 mph.

Sunday Night: Mostly clear, with a low around 36. North northeast wind 5 to 10 mph becoming south southwest.

Monday: Sunny, with a high near 67. South southwest wind between 5 and 10 mph.

Monday Night: Mostly clear, with a low around 40. South wind between 10 and 15 mph, with gusts as high as 20 mph.

Tuesday: Sunny, with a high near 74. South southwest wind between 15 and 20 mph, with gusts as high as 30 mph.

Tuesday Night: Mostly clear, with a low around 48.

© This information brought to you by...

PRESTIGE

AUTOBODY & ACCESSORIES

101 S. HOBART 806-665-3500

AFTER THE SNOW IS GONE, WE CAN DETAIL YOUR CAR!

WE ALSO FIX ROCK CHIPS!

2065

SHERIFF'S OFFICE

According to Gray County Sheriff Officials, the following people were booked into Gray County Jail during the period between 7 a.m. Thursday, March 25 and 7 a.m.

Friday, March 26.

Juan Carlos Salazar, 31 of Pampa was arrested by Gray County Sheriff officers Thursday on assault causing bodily injury in Hutchinson County.

Michael Ambrose Earley, 64, of Cincinnati, Ohio, was arrested by Gray County Sheriff officers Thursday on a charge of bond surrendered possession of marijuana.

Johnny Lee Dorman, 41 of Lefors, was arrested by Gray County Sheriff officers Thursday on charges of possession of a controlled substance, possession and transporting

chemicals with intent to manufacture a controlled substance.

Ronald Wayne Brown of Pampa, was arrested by Gray County Sheriff officers on charges of possession of a controlled substance, possession and transporting chemicals with intent to manufacture a controlled substance.

Steven Craig Angel, 43 of Pampa was arrested by Pampa Police officers March 18 on a charge of bond surrender, driving with license invalid.

Montra Dwayne Jackson, 23 of Pampa was arrested by Pampa Police officers Friday on charges of possession of marijuana, open container, failure to appear and no valid drivers license.

Obituaries

Cecil Collum, 91

Pampa—Cecil Collum died March 24, 2010 in Big Spring, Texas.

Mr. Collum was born April 9, 1918 in Rockwall. He was a 1936 graduate of Lefors High School. He married Mildred Davis on March 2, 1941 in Pampa. He had been a resident of Pampa since 1943, moving to Big Spring in 2008 to be with his daughter. Cecil was a pumper for Texaco, retiring after 36 1/2 years of service. He was a member of the First Baptist Church from 1942 until 2008 where he served as a deacon. He and Mildred taught the 3-year-old class where he was known as "the gum man", and they worked with "Campers On A Mission." Cecil enjoyed fishing, hunting arrowheads, walking and gardening. The family would like to thank Crossroads Hospice of Big Spring and First Baptist Church of Big Spring for their love and care.

Survivors include his wife, Mildred Collum

of the home; daughter, Judy Husted and husband Carroll of Big Spring; son, Cecil Ray Collum and wife Tamara Lambert Collum of Pampa; seven grandchildren, Binky Collum of Odessa, Matt Collum and wife Sam of Amarillo, Debbie Husted Ramirez and husband Manuel, and Michelle Husted Grigg and husband Pank, all of Big Spring; Donn Lambert and wife Christine, April Lambert and Theresa Lambert, all of Pampa; eleven great-grandchildren, Randy Phillippe Ramirez of Lubbock, Matt Ramirez, Mason Grigg, Tucker Grigg, Cooper Grigg, all of Big Spring, Ethan Collum and Gabby Collum, both of San Angelo, Jace Collum, Missy Collum, both of Amarillo, Destiny Lambert and Emmalee Lambert, both of Pampa; two great-great-grandchildren; and special friends, Glenda Virden Kenner, Alice Virden Price, Sharon Virden and James and

Beadie Baird.

Graveside services will be at 10:30 a.m. Monday, March 29, 2010, at Fairview Cemetery with Dr. Johnny Funderburg, pastor of First Baptist Church, officiating. Arrangements are under the direction of Carmichael-Whatley Funeral Directors.

The family will receive friends at the funeral home from 4:00-6:00 p.m. Sunday, March 28, 2010.

Memorials may be made to First Baptist Church, P.O. Box 621, Pampa, TX 79066-0621.



Collum

Sign the online register at www.carmichael-whatley.com

Albracht Chiropractic of Pampa Welcomes

Dr. Kaci Cooper, DC

- Family Chiropractic
- Cold Laser Therapy
- Nutrition
- Neck & L.B.S. Decompression
- Axial Spinal Decompression

Now Open Saturday Mornings!

New Hours Monday - Friday.....8:30 - 12 ; 2 - 6
Saturday.....9:00 - 12:00

Albracht Chiropractic of Pampa

(806) 665-7161 | 2216 Coffee Street 2400

PAMPA PD

The Pampa Police Department responded to the following calls during the period between 7 a.m. Thursday, March 25 to 7 a.m.

Friday, March 26.

Animal Control Officers responded to 12 calls or stops.

Pampa Police Officers made six traffic stops, had six ongoing investigations, and responded to one request for

information.

A warrant was serviced in the 400 block of Dwight. Officers responded to Pit bulls at the intersection of Sumner and 23rd.

A welfare check was made in the 700 block of N. Bradley Drive.

Criminal mischief was reported in the Foster and Houston Intersection.

A welfare check was made in the 400 block of S. Graham Street.

Why settle for less?

4.07%

INSURED CD

Ask About IRA/401K Specials!

FIRST FIDELITY
Financial Group, LLC
Your Safe Money Solution

1800 Washington, Suite 110 - Amarillo, TX
806-373-9480
1-800-371-9201
By appointment only

First Fidelity is a financial services firm that issues FDIC insured bank deposits offering the highest CD yields nationwide. Minimum deposit \$500. Rate and deposit subject to availability, subject to change without notice, possibly by early withdrawal. CDs are FDIC insured to \$250,000 per institution. Actual bank rate may be lower than advertised rate. Any difference in rate will be provided by the bank. First Fidelity is not a Financial Institution. First Fidelity Financial Group is not a bank or federally insured financial institution, and is not affiliated with First Fidelity Bank, First Fidelity Trust, or First Fidelity Savings & Loan. Investment products, including third parties, are not insured by any bank, federal agency, or the FDIC. © 2010 First Fidelity Financial Group, LLC

Pampa/Gray County Crime Stoppers

Most Wanted

(806) 669-2222



Kermit Hartley
41 years old/ White
Male/6'01"/175 lb/
Blue Eyes/ Brown Hair

WANTED
DWI-3rd Offense



Melody Ann Feil "Epperson"
44 years old/ White
Female/5'05"/175lb/
Blue Eyes/Brown Hair

WANTED
Forgery
Probation Violation



George Russell Luster
44 years old/ White
Male/5'10"/200lb/
Hazel Eyes/Blonde Hair

WANTED
Illegal use of Credit Cards
Bond Secured



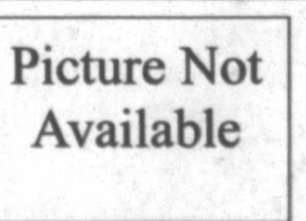
Lindsey Tatum Smith
23 years old/ White Female/
5'07"/ 143lb/ Blue Eyes/
Brown Hair

WANTED
Larceny



Gaspar Antonio Olivas
21 years old/ Hispanic
Male/5'08"/ 180lb/ Brown
Eyes/Brown Hair/ Tattoo on
right calf

WANTED
Injury to a Child Causing
Serious Bodily Injury
\$500 reward for the arrest of
Olivas



Oscar Espinoza
30 years old/Hispanic Male/
5'06"/220lb/Brown Eyes/
Brown Hair

WANTED
Aggravated Sexual Assault/
Indecency with a child
\$500.00 reward for the arrest
of Espinoza

Picture Not Available

LAST MINUTE ADS

The Pampa News is not responsible for the content of paid advertisement

1/2 OFF Jewelry & Purses at Carousel Expressions, 113 N. Cuyler-downtown.

CERAMIC TILE. Keith Taylor, 874-1779 lv. msg.

CLASSIFIED LINE Ad Specials for Mar., Apr. & May: 4 lines-5 days \$20.50, 6 lines-6 days, \$23.50 (does not include Last Minute ads on pg. 2). Call for deadlines Mon.-Fri. 8-4pm., 669-2525.

COMPUTER SICK? Call Mike, 665-2760.

DOUBLE RECLINER Couch for sale. Call for details 669-1901

ESTATE JEWELRY at Rheams Diamond Shop. Over 60 items, also a Tu-Tone Men's Rolex. 111 N. Cuyler.

MASSAGE THERAPY Sweetest Massage exfoliating body scrub. Foot scrub with massage. Brittany Shuman, call for appt., 669-0013. 1224 N. Hobart Ste. 9, NBC Plaza, Pampa, Texas 79065.

PAMPA SHRINE Club We Cater!! 50-200 people. (approx 3000 sq ft) available for rent. Weddings, Banquets, Company Parties or Family Reunions. Kitchen facilities avail. at no extra chrg. Call Ben Watson 665-3359 to reserve!

PAMPERED PETS Grooming! Call Missy, 662-1236.

PRICE REDUCED Beautiful 1 1/2 CT. Zales Diamond Wedding Ring Set. White Gold. Circle Cut. Size 6. \$1200, purchased for \$2600. Please call 662-5716 after 4 pm.

RUNOFF ELECTION Lynn Allison for Gray County Commissioner Pct. 4. Early voting Apr. 5-9. Pol. ad paid by Mrs. Lynn Allison, Treas.

STARTING A New Business? Need more room or better location? See 109 N. Cuyler, next to Rheams. 25'x90' bldg. 669-3333 or 669-3684.

If you have seen any of these people, please contact the Pampa/ Gray County Crime Stoppers at (806) 669-2222. Pampa/Gray County Crime Stoppers is offering up to a \$1000.00 reward for information that leads to the arrest or conviction of persons that commit felony crimes or drug dealing anywhere in the Pampa Gray County area. Remember, you will remain anonymous. The information contained on these fugitives was correct when published, but may no longer be current by the time it is read.

City Access system to be upgraded

THE PAMPA NEWS

Fred Courtney, Emergency Management Coordinator for the City of Pampa, has announced that he will begin upgrading the Messaging System Equipment that powers the City Access Channel (Channel 11 on CableOne's network).

Courtney will be replacing the current messaging system — one that is about ten years old — with new generation hardware. He will also be

installing a new weather station atop City Hall.

Courtney said that he hopes to begin the changeover on April 1. He has asked the community to bear with him as he undertakes this job, as the conversion could take several days.

During this time, there will not be a picture on Channel 11. You may see a snowy or a black screen.

For emergency weather, please tune in to your local radio and television stations.

Census 2010 seeking paid workers

THE PAMPA NEWS

The 2010 Census is currently seeking applicants to join their team as census takers in the community.

At 1 p.m. and 5 p.m. this Monday, representatives from the Census will be at Lovette Memorial Library, 111 N. Houston St., in Pampa to speak with and test interested applicants.

The job consists of locating households, explaining the purpose of the census, conducting brief personal

interviews with residents and recording their responses on paper forms. You must be at least 18 years old to qualify; U.S. citizens will be given preference. Bilingual speakers are encouraged to apply. An employment test will be administered that consists of 28 multiple choice questions.

Census takers are paid temporary employees. For more information, call the toll-free jobs line at 866-861-2010 or 806-318-9250, or visit www.census.gov/road/www/employ.html.

EMS

"Currently, the only model that exists similar to that," Anstey said, "would be the LifeStar program." A company called MedTrans operates the LifeStar helicopter program out of Pampa and Amarillo.

"They are the premier provider and they are the number one means of transport," Anstey said. However, he said there are times during which the helicopters cannot be used for a variety of reasons — including, as of late, inclement weather.

There are also times when the needed equipment can't operate within the cramped quarters of a helicopter.

"What we propose," Anstey said, "is that with assistance of the EDC, we'll establish our own critical care program."

It would create a "LifeStar-type system" on the ground, he said.

Anstey said his organization is working on a hybrid care and transportation system with MedTrans.

As part of the new program, Anstey said they are looking at an ambulance that's larger than the ones Pampa EMS uses locally.

It would be built on a Freightliner chassis with a 180-inch box on the back.

"It's big enough to allow three people to work in the back," he said.

The larger ambulances, mobile intensive care units, would also allow the use of more sophisticated medical equipment.

Anstey said they are already making plans to send their paramedics to school to learn the equipment.

The estimated costs of this, he said, is \$399,000.

Anstey said he hopes to add at least 12 new jobs in Pampa. The jobs would pay from about \$10 to \$18 an hour. The critical care employees are making over \$18 an hour.

"This will be stationed in Pampa," he said. "We're proud to do what we're doing in Pampa."

He said this would be one of the first operations of its kind in Texas. Houston has the only other such operations.

Anstey said this new expansion is in addition to Pampa EMS' operation.

"Right now, we employ 38," Anstey said.

cont. from page 1

The proposed 12 or more jobs would all be new.

Kathy Cota with the PEDC told the board that Pampa EMS is working with Clarendon College on training EMTs, paramedics, nurses and critical care personnel.

Anstey said they are working on a grant to bring the training to Pampa.

"It's not to send people off," he said. "It's to bring people in. We want to show off what we've got here."

Anstey said that the Texas Department of Transportation money for the building that's planned for LifeStar and Pampa EMS near Pampa Regional Medical Center is already allocated and that project is now moving forward.

Stalls

cont. from page 1

barn," Craig said.

He said the gates and alleys will allow a loader to be moved in and out of the barns.

The association has been working with local colleges concerning their welding programs. They've indicate that they can build the gates on campus.

"That's something they can do in their own shops," Craig said. "Building the gates would be a big assist to us."

He said that's 30 percent of the project.

Craig said that the cost of tin for the roofs has declined recently. He said that while they are using used pipe, the decision was made to use new tin. To build the barns with used tin would require patching it together. In addition to structural questions, Craig indicated that it would be particularly attractive.

Using new tin, he said, the tin would last longer and the insurance rates would be better.

"We looked at that used tin," Craig said.

The used pipe, he explained, is a different issue.

"Most of this pipe is old gas line," Craig said. "No salt water or anything has been in it."

He said he hopes to be finished by August.

"We've got to do a little dirt work to get it to drain properly," Craig said.

He said the plan is to build one barn at a time. They'll get their frame up the first barn and then order their tin.

"It depends upon what the weather does to us," Craig said. "I'd like to already be started, but we haven't been able to get started."

YOU TALK. WE LISTEN. IN PERSON.

Duane Harp
Financial Advisor
1921 N Hobart
Pampa, TX 79065
806-665-6753
www.edwardjones.com Member SIPC



Edward Jones
MAKING SENSE OF INVESTING

All You Can Eat
Catfish
On Saturdays Beginning at 5:30 p.m.

Best Fish in Town!

Served with your choice of potato or french fries and the all new 32 item salad bar!

Cooder's
Dixie
2537 Perryton Pkwy

Is Your Car Out of Alignment?

We Can Fit It!

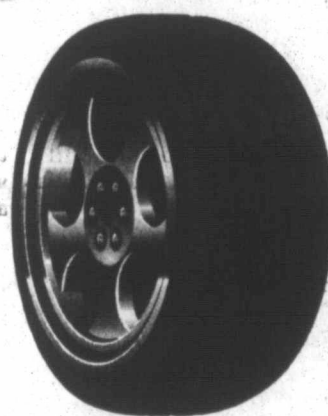
Front Wheel Alignment

\$49.95

\$69.95

4 Wheel Alignment

Call us today!
We guarantee quality service - AND you can SAVE your hard earned cash!



Gonzales Wheel Alignment & Tire
125 N. Somerville • 806-688-9056

THE FOUNTAIN AT HEARD JONES

Serving Breakfast and Lunch Specials
Monday through Saturday
Open at 8:30

MON	BREAKFAST Hotcake, Sausage & 2 Eggs	\$4.45
	LUNCH Chicken Strips, Mashed Potatoes, Gravy, Vegetable & Texas Toast	\$5.99
TUES	BREAKFAST 2 Eggs, Bacon, Hashbrowns & Toast	\$3.95
	LUNCH Smothered Hamburger Steak w/Sauteed Mushrooms & Onions in Brown Gravy, Mashed Potatoes, Vegetable & Hot Roll	\$5.99
WED	BREAKFAST French Toast & Sausage	\$2.95
	LUNCH Homemade Chicken Fried Steak & Gravy, Mashed Potatoes, Vegetable, Texas Toast & Cobbler	\$6.99
THURS	BREAKFAST Build your own Omelette, Hashbrowns & Toast	\$5.45
	LUNCH Enchiladas, Rice & Beans Served with Homemade Chips & Hot Sauce	\$6.99
FRI	BREAKFAST 2 Eggs, Sausage, Hashbrowns & Toast	\$3.95
	LUNCH Meatloaf, Mashed Potatoes, Gravy, Vegetable, Hot Roll & Cobbler	\$6.99
SAT	BREAKFAST French Toast & Sausage	\$2.95
	LUNCH Hamburger & Chips	99¢
	Chesburger & Chips	\$1.49

To Go Orders Welcomed - Chips are 35¢ Extra

III N CUYLER
800-7478

Pampa

Pampa ISD Events for the Week of March 29 - April 2

Watch this space every Sunday for a weekly listing of non-athletic events from every campus in our school district

Pampa High School

March 29-31 • Credit by Exam
March 29 - April 1 • Cheer Clinics 4:00 & 6:30 p.m.
March 29 • Student Council Meeting 7:30 p.m.
March 30 • UIL One Act Play WTAMU
March 31 - April 1 • UIL One Act Play Public Performance 7:00 p.m.
April 1 • Evening of Jazz 7:00 p.m. MK Brown
April 2-3 • Lubbock Jazz Blues Festival Lubbock

Pampa Jr. High

March 30-31 • 7th & 8th Grade Choir UIL Contest at St. Paul UMC Amarillo

Lamar Elementary

April 1 • Head Start Easter Egg Hunt
April 2 • Head Start Discovery Center Amarillo

Travis Elementary

March 31 • 1st Grade Music Program 1:30 p.m.

Wilson Elementary

March 31 - April 1 • 5th Grade TAKS Reading and Math Camp

For the most up-to-date Pampa ISD information, Go to the school website at <http://www.pampaisd.net> From the parent connection drop-down menu, click on the District Event Calendar

Viewpoints

Letters to the editor

To the Editor,

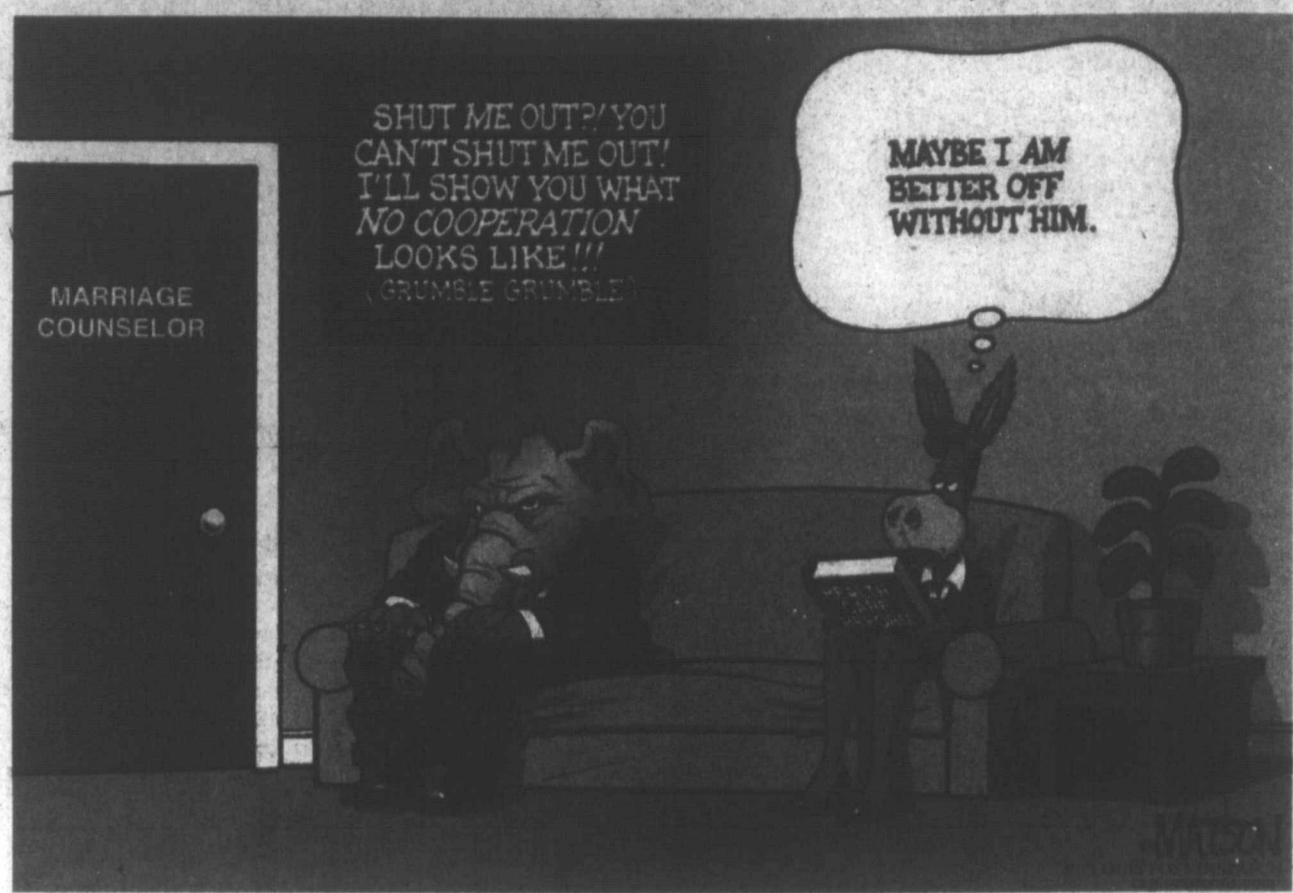
Is the United Methodist Church in support of the Obama Health Care Reform legislation?

Those who missed Nancy Pelosi's giggling Speaker of the House of Representatives celebratory speech, just before the voting on the Obama health care reform concluded, would have heard the speaker state the Catholic and the United States Methodist Churches support yes votes on the bill.

Contact, as was possible, on Monday disclosed it might have been the work of some ad hoc group within the church as the current tax free status of religious bodies would be a serious loss to both entities.

Local sources have no knowledge of a political preference in the legislative action on Sunday night.

Bill Reeves
McClellan



Today in History

Today is Saturday, March 27, the 86th day of 2010. There are 279 days left in the year.

Highlights in history on this date:

- 1512 - Spanish explorer Juan Ponce de Leon sights Florida.
- 1703 - Russia's Czar Peter the Great founds city of St. Petersburg.
- 1794 - U.S. President George Washington and Congress authorize creation of the U.S. Navy.
- 1836 - The first Mormon temple is dedicated, in Kirtland, Ohio.
- 1899 - Italian Guglielmo Marconi sends the first radio signals across the English Channel.
- 1933 - Japan announces plans to pull out of League of Nations.
- 1958 - Nikita Khrushchev becomes the Soviet premier in addition to First Secretary of the Communist Party.
- 1968 - Yuri Gagarin, Soviet cosmonaut who flew world's first manned space mission, is killed in crash of training plane.
- 1970 - Severe earthquake strikes western Turkey, killing at least 1,087 and leaving 90,000 homeless.
- 1976 - South Africa withdraws its military forces from Angola.
- 1989 - Ethnic unrest shakes Yugoslav province of Kosovo, killing two police officers and injuring at least eight other people.
- 1991 - Commandos storm a jetliner in Singapore with 120 passengers aboard, killing four Pakistani hijackers after a nine-hour standoff.
- 1992 - As fighting rages for a third day in the town of Bosanski Brod, Bosnian leaders appeal to the United Nations for a peacekeeping force.
- 1993 - Multiparty elections are held to end military rule in Lesotho.
- 1993 - Muslim extremists kill a Cairo police officer with a time bomb, the second policeman slain in 24 hours.
- 1995 - President Nelson Mandela fires his estranged wife, Winnie, from the government.
- 1996 - A group of Egyptians hijack an Egypt Air jetliner from Jeddah, Saudi Arabia to Libya when it is about to land in Cairo.
- 1997 - Seventeen people die in a gun battle in Albania, the most violent incident in two months of unrest in the former Communist country; Dexter King, son of Martin Luther King Jr., meets with James Earl Ray, the man in prison for having assassinated the civil rights leader. Ray denies having anything to do with the shooting, to which King replies, "I believe you."
- 1998 - Leading European aircraft makers agree on a merger that will create a single European aerospace and defense company; U.S. Food and Drug Administration approves the drug Viagra, made by Pfizer, saying it helped about two-thirds of impotent men improve their sexual function.
- 2000 - Fighting off a last-minute Communist surge, Vladimir Putin scores a convincing victory in presidential elections after promising to end years of political chaos and restore Russia as a global power.
- 2001 - An empty train riding on the wrong side of the tracks crashes into a crowded commuter train in central Belgium, killing eight.
- 2003 - Serbian police shoot and kill two reputed leaders of the Zemun clan, an organized crime group that the government implicated in the assassination of Serbian Premier Zoran Djindjic.
- 2004 - Nearly 500,000 people surround Taiwan's presidential office and block major streets to protest the recent disputed presidential election as President Chen Shui-bian promises again to back a recount of the election that he narrowly won.
- 2007 - A massive sewage reservoir in the northern Gaza Strip collapses, killing five people as a cascade of waste and mud swamp a village yards from the border with Israel.
- 2008 - A government-managed visit by foreign reporters to Tibet's capital backfires when Buddhist monks disrupt the tour, screaming that there is no religious freedom and that the Dalai Lama is not to blame for Lhasa's recent violence.
- 2009 - President Barack Obama launches fresh effort to defeat al-Qaida terrorists in both Pakistan and Afghanistan, sending in more troops and civilian advisers.

Today's Birthdays:

William von Roentgen, German physicist (1845-1923); Frederick Henry Royce, English auto engineer (1863-1933); Gloria Swanson, U.S. film actress (1898-1983); Michael York, English actor (1942-); Quentin Tarantino, U.S. film director (1963-); Mariah Carey, U.S. pop singer (1970-).

Thought For Today:

"Sometimes I think the surest sign that intelligent life exists elsewhere in the universe is that none of it has tried to contact us." - Bill Watterson, American cartoonist (1958 -).

'No' is not a difficult central message

WALTER MEARS
AP Special Correspondent

While Democrats were shaping and delivering health care change, Republicans waged a skilled and largely successful campaign to demonize the whole business.

They still are, still on message. That's not difficult when the central message is simple: No.

Answering simplicity with complexity is a political loser. That's the challenge for President Barack Obama and the Democrats as they to persuade Americans that a bill the size of a telephone book is in the national interest and their own.

"When I sign this bill, all of the overheated rhetoric over reform will finally confront the reality of reform," Obama said as he did so on Tuesday.

No way. As the campaign for Congress intensifies, the harsh words of the health care debate will grow harsher still.

Politically, health care will be a tough sell. Republicans in Congress, the tea party types who shouted their angry denunciations outside the Capitol, conservative opponents in general, all will be trying to punish Democrats who voted for the overhaul aimed at insuring 32 million Americans who don't have coverage now. And the opposition drumbeat appears to have succeeded in tipping opinion against the overhaul.

Public opinion surveys have indicated more Americans oppose than favor the overhaul, although a USA Today/Gallup survey said 49 percent thought its passage was a good thing, 40 percent not. Most other surveys have shown the public about evenly divided, if skeptical. Republicans insist that Americans are overwhelmingly against the measure.

"You may win this vote today through arm-twisting tricks and backroom deals, but let's see who's still here after the American people speak loud and clear in November," Rep. Connie Mack of Florida said in House debate.

"This is a bad bill that grows even more unpopular every single day," Rep. David Dreier of California said just before it passed. "...The process has been so tainted that we cannot

simply gloss over it."

Far from it. Opponents made the process a major talking point, an attack Democrats invited with deals that traded votes for legislative favors. In everyday conversation, away from Washington, the topic wasn't what the measure does; it was about the special deals doled out for crucial votes.

While major provisions of the new law won't take effect before 2014, its first features will be effective by late September, in the midst of the congressional election campaign. That should be good timing for Democrats, because those provisions are among the most popular.

Among them: Young people will be able to continue coverage under their parents' policies until they are 26; there no longer can be lifetime limits on coverage; children cannot be denied insurance because of pre-existing conditions; and seniors whose prescription drug spending has hit the gap in Medicare coverage will get \$250 rebates.

On itemized provisions like those, polls show broad public support. Indeed, on the broad goal of making sure that all Americans can get the health care they need, one survey showed 86 percent support. There is support, too, for requiring that everyone have at least some health insurance and that all companies provide some coverage to their workers.

So there are openings for Democrats to make a campaign case for the health care law while Republicans try to make it an issue against them and complain about the way it was enacted - by Democrats without a GOP vote in Congress.

"Never before has such a monumental change to our government been carried out without the support of both parties," said Ohio Rep. John Boehner, the Republican leader.

He's right, but it was Republicans who chose to play if that way, and while they claim they were frozen out of the process, they didn't really try to join it.

They showed no signs of interest in working on a compromise. Indeed, when a handful of Republican senators tried, they were rebuffed by their leaders and threatened politically at home by challengers on the right.

Republican leaders opposed Medicare in 1965, but when it passed, it got 65 GOP votes in the House and 13 in the Senate. Social Security got 77 Republican votes in the House and 14 in the Senate when it passed in 1935.

This time, Republicans were unanimous: No. As they told it, the measure was a government takeover, socialism, a step away from freedom toward tyranny, with "death panels" that would pull the plug on Grandma.

"You've been hearing a whole bunch of nonsense," Obama said in one of the last of his 54 speeches seeking passage. In the age of nonstop cable television talk, repeating a claim or a complaint makes it register. Republicans did it well; until the final days before the bill passed, Democrats did not.

So health care may well be a Democratic liability

in the off-year elections, always a difficult test for the party in White House power. Then again, Republicans have been known to overreach and foment a backlash, as when they blocked the budget and the government shut down temporarily in 1995 — an unintended favor for President Bill Clinton.

Now they are talking about undoing the health care law just enacted. "We're going to repeal this," said Arizona Sen. John McCain, the nominee who lost to Obama.

They can't, of course. No more than they could in 1936, when Republicans campaigned for the repeal of Social Security. President Franklin D. Roosevelt won every state but two.

Walter R. Mears reported on government and politics for The Associated Press for more than 40 years.

THE PAMPA NEWS

403 W. Atchison • Pampa, TX 79065
806-669-2525 • 800-687-3348
Fax: 806-669-2520

Randall Pribble
Publisher

rpribble@thepampanews.com

ReDonn Woods
Advertising Manager
rwoods@thepampanews.com

Sue Pribble
Advertising Representative
spribble@thepampanews.com

Beverly Taylor
Classified Advertising
btaylor@thepampanews.com

Kera Kent
Circulation
ckent@thepampanews.com

Carrie Hair
Accounting
chair@thepampanews.com

Amie Aurellano
Editor
aurellano@thepampanews.com

David Bowser
Reporter
dbowser@thepampanews.com

Andrew Glover
Reporter
aglover@thepampanews.com

Marcus Elkins
Press Supervisor
melkins@thepampanews.com

Chico Ramirez
Circulation Supervisor
chico@thepampanews.com

This newspaper (UPS 781-540) is published daily, except Sundays, Thanksgiving and Christmas Day, by The Pampa News. Periodicals postage paid at Pampa, Texas. Postmaster: Send address changes to The Pampa News, P.O. Drawer 2198, Pampa, TX 79066-2198.

All carriers are independent contractors and The Pampa News is not responsible for advance payments of two or more months made to the carrier. Please pay directly to the Pampa News any payment that exceeds the current collection period. There are no mail subscriptions available within the city limits of Pampa. Mail subscriptions must be paid three months in advance.

© 2010 The Pampa News

MEMBER
2010
TEXAS PRESS ASSOCIATION

Do you have an opinion?

Share it with our readers by e-mailing your letter to editor@thepampanews.com

Community

P.E.O. Sisterhood to host annual book review tomorrow

Chapter CS, the local chapter of the P.E.O. Sisterhood, will present its annual book review with Carol Smith Headrick at 1:30 p.m. today in the Chapel of the First Methodist Church (Foster & Ballard Streets).

Ms. Headrick will review "Martha Matilda Harper and The American Dream — How one woman changed the face of modern business," by Jane R. Plitt, published in 2000. Harper was one of the most successful and innovative female entrepreneurs of the late nineteenth and early twentieth centuries. An undereducated servant girl became an early woman entrepreneur and a pioneer in the beauty industry. She struggled for 25 years as a servant to change her life and that of other working-class women. She pioneered the idea of a public hairdressing salon based on health-conscious precepts. She advocated practices that were

progressive even by today's standards. This is the first biography of Harper who created America's first retail franchise network. She encouraged women to own businesses, to enrich themselves spiritually, professionally and personally. Carol Smith Headrick is a Texas native and a speech-language pathologist. She holds a bachelor of arts from Baylor University and a master's in communication disorders from the University of Oklahoma. A professor emerita from Oklahoma State University, Headrick was an educator for 24 years.

She and her husband, Charles, have three sons and three grandchildren. She reviews one book each spring and has been presenting book reviews to the public for 17 years. She memorizes her text and presents the review in first-person. The book review will be open to the public.

Tickets are \$10 each and will be available at the door. To purchase a ticket in advance, contact Frances May at 669-2177. Proceeds from the fundraiser will benefit the chapter's scholarship fund.



New Arrival

Macy Kate Shirley was born at 5:31 p.m. on January 26, 2010 at the Ephram McDowell Regional Medical Center in Danville, Kentucky. She was 8 pounds, 6 ounces, and 21 inches long. Proud parents are Tim and Cassie Shirley of Harrodsburg, Kentucky.

Macy's grandparents are Bill and Barbara Turner of Pampa, Texas and Floyd and Lea Shirley of Harrodsburg, Kentucky.

Two Great LA-Z-BOY® Chairs. One Low Price! OUR BIGGEST SALE OF THE YEAR



CHOOSE FROM OUR BIG STOCK OF LA-Z-Y BOY AND LANE RECLINERS. GET TWICE THE COMFORT FOR HALF THE PRICE!



PLUSH SWIVEL ROCKERS \$299

SOFAS \$499 • \$599 • \$699

SEE OUR BIG SELECTION AT LOW PRICES!

GLIDE ROCKER WITH MATCHING GLIDE OTTOMAN BOTH FOR ONLY \$429



SEALY LIMITED EDITION PLUSH EURO PILLOWTOP

QUEEN TWO PC SET \$699

FULL SET \$649 KING SET \$999

Better Sleep On A...



Posturepedic®

SEALY POSTURE PREMIER

QUEEN SET \$549

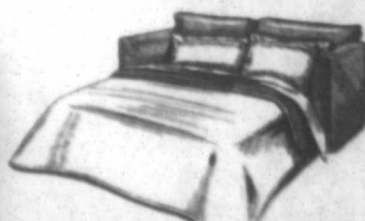
TWIN SET \$399 FULL SET \$499

SEALY "TIDEWATER"

TWIN 2 PC SET \$299

FULL 2 PC SET \$379

QUEEN 2 PC SET \$399



SLEEP SOFAS AS LOW AS \$699

2010 HARVESTER SPORTS SCHEDULE

SOFTBALL

MONDAY, MARCH 29

Lady Harvester JV VS Hereford • 5 pm at Hereford

TUESDAY, MARCH 30

Lady Harvesters VS Hereford • 5 pm at Hereford

THURSDAY, APRIL 1

Lady Harvesters VS Canyon • 5pm at Pampa

FRIDAY, APRIL 2

Lady Harvester JV VS Canyon • noon at Pampa

BASEBALL

MONDAY, MARCH 29

Harvester JV VS Caprock • 5 pm at Pampa

TUESDAY, MARCH 30

Harvesters at • 5 pm at Pampa

FRIDAY, APRIL 2

Harvester VS Hereford • 5 pm at Hereford

TENNIS

TUESDAY, MARCH 30

Harvester JV at Canyon Tournament

THURSDAY, APRIL 1

Harvesters at Flower Mound

GOLF

THURSDAY, APRIL 1

Lady Harvesters at Arrowhead

SATURDAY, APRIL 2

Harvesters at Perryton

TRACK

THURSDAY, APRIL 1

Harvesters at Dalhart

SOCCER: Cleats, Balls, Shinguards

BASEBALL: Gloves, Cleats, Bats, Pants, Socks,

Helmets

T-Ball Gloves Starting at

\$10.99

Many new items on our 50% off Clearance Racks!

Pampa Harvester Headquarters

HOLMES



est. 1982

306 S. CUYLER

665-2631

Proudly supporting the Pampa Harvesters

MON - SAT 9:00 AM TO 5:30 PM

Texas FURNITURE

1415 N. HOBART • 665-1623
PROUDLY SERVING PAMPA SINCE 1932

6 MONTHS NO INTEREST FINANCING WITH APPROVED CREDIT

Community

Pampa Senior Citizens, Inc. Menu March 29 - April 2, 2010

Monday	Wednesday
Chicken Fried Steak or Chicken Louisiana Mashed Potatoes Green Beans Beets Beans Cole Slaw Tossed Salad Jello Salad German Chocolate Cake or Cherry Creme Pie Hot Rolls or Cornbread	Roast Beef Brisket/ Brown Gravy or Cook's Choice Mashed Potatoes Mac & Cheese Fried Okra Beans Cole Slaw Tossed Salad Jello Salad Devil's Food Cake or Coconut Creme Pie Hot Rolls or Cornbread
Tuesday	Thursday
Swiss Steak or Fried Chicken Mashed Potatoes Creme Corn Carrots Beans Cole Slaw Tossed Salad Jello Salad Applesauce Cake or Lemon Icebox Pie Hot Rolls or Cornbread	Chicken Strips or BBQ Beef/ Onion Rings Potato Salad Winter Blend Spinach Baked Beans Cole Slaw Tossed Salad Jello Salad Cherry Chip Cake or Blackberry Cobbler Hot Rolls or Cornbread

• CLOSED for Good Friday •



Charles and Heather Swafford

Mr. and Mrs. Charles Swafford

Heather Elaine Wiley and Charles David Swafford were married on February 27, 2010 at the Central Baptist Church in Pampa. The mass was offered by Norman Rushing.

Parents of the couple are Preston and Cherily Wiley of Pampa and Bob and Claire McDowell of McLean and Jackie and Lori Swafford of Dallas. The grandparent of the couple is Charolett Fleming of Amarillo.

Standing with the bride were Danielle Atchley and Jackie Swafford. The groom was joined by Joshua and Jesse Swafford. The flower girl was Abby Watson and the ring bearer was Owen Swafford.

After the wedding, the couple enjoyed a reception with family and friends at the Central Baptist Church. They plan to make their home in Pampa.

PEDC

cont. from page 1

Pampa concerning the Lesser Prairie Chicken on April 6 and that the Small Business Development Center in Amarillo would hold a small business seminar in Pampa on May 10.

While the Pampa Economic Development Corporation audit is part of the City of Pampa's annual audit, Rice reported to the board that the EDC was exploring the possibility of splitting off from the city and having a separate audit done.

AXYDLBAAXR
is LONGFELLOW

One letter stands for another. In this sample, A is used for the three L's, X for the two O's, etc. Single letters, apostrophes, the length and formation of the words are all hints. Each day the code letters are different.

3-27

CRYPTOQUOTE

YK MGD'L ZCVIK EOCR'VKQZ
RX AZPDT LNK ZGQK JPDW CB
LNPDPDT YK AZKW YNKD YK
MOKGLKW LNKQ. — GVRKOL

K P D Z L K P D

Yesterday's Cryptoquote: IT TAKES COURAGE TO GROW UP AND BECOME WHO YOU REALLY ARE. — E.E. CUMMINGS

THE CHURCH OF CHRIST

The Church of Christ follows Christ's word.
Where he doth speak, there we are heard.
Where he is silent, we are too.
What Christ commands is what we do.

Jesus will add your name above,
If you'll believe, repent and love,
Confess His name before all men,
Be buried in water with Him.

The Church of Christ our Savior's bride,
For which He suffered, bled and died,
Is open to all who believe,
On Jesus Christ and Him receive.

Unto Christ be glory for aye,
Work through His church, don't go astray,
Oh follow not the mind of man,
For God gave us a perfect plan.

Work for the Master every day,
Help lead the erring to His way,
Believe His word, obey His command,
The Church of Christ will forever stand.

Church of Christ

Dale Meadows - (806) 440-2060

Look at Me!

See how easy that was?
Advertise here & get results.
Call 669-2525 today.

PISD

cont. from page 1

moved in July.

Stephenson said there would be a cornerstone ceremony at 2 p.m. on Saturday May 1.

Stephenson also reported that planning for the vocational building at the high school was proceeding.

The board also approved a resolution to pursue purchase of some property on Charles Street.

They also voted to purchase the copyright of "Reaper" artwork at \$2,700 that is expected to be painted on the wall in the gyms at the new junior high, but the board voted to hold off on painting the artwork yet.

The board approved the \$28,940.69 purchase of a pizza oven for the high school. They noted that the money was already in the budget for the purchase.

They approved the \$66,393 purchase of the IP Phone system for the new junior high. The system is similar to the one at the high school.

The board also approved the Textbook Selection Committee's list for English books. The individual selections from the list will be left to the needs of the teachers.

The district will also request a general waiver from the Texas Education Agency concerning career and technical education courses for high school students.

Pampa High Principal Tonya Larkin told the board that TEA had changed their rules to make the one-hour courses into two hours, but the district is still making them available as one-hour courses so the curriculum won't be upset by the state changes.

The board also voted to reword the district's policy on leaves and absences for teachers and staff to make it compatible with other wording. They also voted to update the district's policy for teacher retirement investment information.

Despite a lengthy debate on the district's policy concerning students' use of cell phones, they elected not to change the policy. While several board members objected to students having cell phones in school, particularly cell phones with cameras, Supt. Barry Haenisch said that many parents wanted their children to have cell phones in case of changes in the students' or parents' plans with regard to picking up or dropping off students at school or in case of emergency.

Haenisch said there are both good and bad uses of cell phones.

"It's a problem that has no answer right now," he said.

With regard to security and student monitoring, Haenisch said the district is planning on doing more monitoring via video although there are limitations where video cameras can be placed in a school.

The district plans on spending about \$200,000 on tennis dressing rooms and improve video security at several campuses that have been vandalized recently.

The board recognized PISD Business Manager Carol Fields after the district's bonds received an A+ rating, one of the few schools to get such a rating in the current nationwide economic slump.

Board President Derrell DeLoach reported on the district's health committee's activities during the past year.

They were active last fall during the H1N1 Flu outbreak.

"It was well contained," DeLoach said of the cases reported in Pampa.

He also addressed the abstinence policy of the district, noting that for now that is about the only policy approved by the state. He said, however, that may change.

DeLoach said there has been a sharp rise in the nation with regard to student pregnancy rates, but he said there were multiple reasons for the rise.

The board renewed all the contracts for administrative and professional staff, term contracts and probationary contract employees.

Prom Tuxedo Headquarters

- Today's hottest tuxedo styles... Choose from Calvin Klein, Ralph Lauren, Fubu, Perry Ellis America & many more!
- Mix & Match Over 500 Accessory Options to create your own unique look and match any dress color!
- Tuxedos To Fit Any Budget!



We will match
any price
PERIOD!

T-SHIRTS & MORE

(806) 665-3036

(806) 665-0239 fax

111 West Elgin St. Pampa, Tx. 79008
"COME BROWSE IN OUR STORE."

GREAT PRICES... GREAT SERVICE!

Bounty Basic Paper Towel (Limit 3)	69¢
Dawn Dish Soap 14 oz.	99¢
Dynamo 2X Laundry Detergent 50 oz.	\$2.99
Quilted Northern Double Roll Bath Tissue 6 pack	\$2.99
Ultra Foil Aluminum Foil 25 sq. ft.	39¢
Puffs Facial Tissue 108 ct.	99¢
Pillsbury Moist Supreme Cake Mix Asst. Flavors	89¢

EASTER SPECIALS!

Russel Stover Individually Wrapped Chocolate Covered Cream Eggs Asst. Flavors	49¢
Russel Stover Solid and Hollow Chocolate Bunnies Asst. Sizes and Prices	
Soft and Cuddly Plush Animals Starting at	\$2.49

Heard Jones Healthmart NOW WITH 2500 STORES NATIONWIDE

- Locally Owned
- Caring for Panhandle Families for over 81 years
- Accepts All Prescription Plans
- 24 Hour Emergency services for established customers
- Free City Wide Prescription Delivery
- Fast, friendly service by people who care about you!

Heard Jones HEALTHMART

114 N CUYLER • 669-7478

TRUCK MONTH

STAMPEDE  OF SAVINGS



'10 SUPER DUTY TX EDITION DIESEL

'10 F-150 TX EDITION SUPERCREW

0% APR -OR- UP TO \$6200 CASH BACK

0% APR -OR- UP TO \$4500 CASH BACK



'10 ESCAPE XLT

0% APR FOR 66 MONTHS

-OR-

\$2000 CASH BACK

Fenton

Cars really do cost less in Pampa!

123 N. Hobart St. • Pampa, TX • 688-6888

www.fentonpampa.com



BEST IN TEXAS
TEXASFORD.COM

*Classes are Full-Size Pickups under 8,500 lbs. GVWR and over 8,500 lbs. \$6,200 cash back includes \$1,200 TX Edition Bonus Cash and \$1,000 Ford Credit Bonus Cash. \$4,500 cash back includes \$1,000 TX Edition Bonus Cash and \$1,000 Ford Credit Bonus Cash which requires Ford Credit financing. Not all buyers will qualify for Ford Credit limited term financing. Flex Buy Purchase APR 0% months at \$12.99 per month per \$1000 financed for first 36 months and \$14.67 per month per \$1000 financed for months 37-66 regardless of down payment. For all offers, take new retail delivery from dealer stock by 3/31/10. See dealer for residency restrictions, qualifications and complete details.

You'd be a FOOL to miss these deals

Sale Ends April 5, 2010



C09050

Chevy Impala

MSRP	\$26,465
Rebate Total	5,000
Discount	972
Sale Price	20,493
Total Savings	\$5,972

GMC Sierra Crew Cab

MSRP	\$37,620
Rebate Total	6,500
Discount	2,594
Sale Price	28,526
Total Savings	\$9,094



G09059



C09032

Chevy HHR

MSRP	\$23,115
Rebate Total	3,000
Discount	916
Sale Price	19,199
Total Savings	\$3,916

Chevy Silverado Crew Cab

MSRP	\$36,110
Rebate Total	6,500
Discount	2,461
Sale Price	27,149
Total Savings	\$8,961



C09121



C09046

Chevy HHR

MSRP	\$23,270
Rebate Total	3,000
Discount	933
Sale Price	19,337
Total Savings	\$3,933

Culberson Stowers Inc.

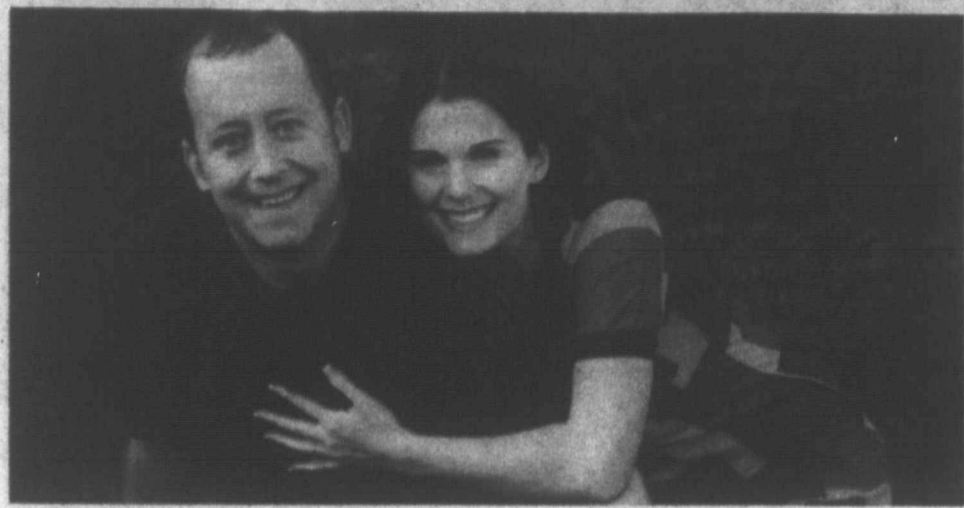
REVOLUTION
"An American Revolution"

805 N. Hobart • 665-1665

www.culbersonautos.com

GMC
"We Are Professional Grade"

Community



Jordan R. Holmes and Tara A. Dunn

Holmes-Dunn to exchange vows

Mr. and Mrs. Craig Dunn and Mr. and Mrs. Mitchell Maraschick all of Midland are proud to announce the engagement of their daughter Tara Ashley Dunn to Jordan Ronald Holmes. He is the son of Ronnie and Sharon Holmes of Pampa.

The bride-elect is a 2005 graduate of Lee High School and currently a senior at the University of Texas Permian Basin, where she is earning a degree in psychology and elementary education. She is currently employed at Mack Energy, Midland.

The prospective bridegroom is a 1999 graduate of Pampa High School. He graduated in 2004 from West Texas A&M University with a Bachelor's Degree in Music Education. He is currently the Head Band Director at Abell Junior High in Midland, Texas.

The wedding will be held on Saturday, June 19, 2010, 2 p.m. in the afternoon at Claydesta Atrium in Midland.

After a honeymoon trip to Jamaica, they plan to make their home in Midland.

CHECK THIS OUT



submitted photo

Marcus Parham presents a check from Chevron Oil Company to Pampa Meals on Wheels Director Jeane Autry.

Easter Specials

Easter Poppers Have Arrived!

SEIKO - CITIZEN WATCHES

25% to 50% OFF

DIAMOND EARRINGS, PENDANTS

25% OFF

ESTATE JEWELRY

Check out all the new items

DIAMOND CROSSES

30% OFF

WEDDING RINGS

25% OFF

Rheams Diamond Shop

"Business of the Year"

111 N. CUYLER • 665-2831

Hop in this Easter for BIG SAVINGS!

Coronado

Shopping Center of Pampa, TX



Hastings
Clearance Rentals
Buy 1
Get 1
For \$1
(806) 665-1020

Sheila Webb
Agent
STATE FARM
INSURANCE
COMPANIES
HOME OFFICES
BLOOMINGTON, ILLINOIS
806-669 3861
800-299 3861
"Like A Good Neighbor,
State Farm Is There"

LA PLAZA
RESTAURANT
DELICIOUS MEXICAN DISHES
806.688.0031

GO BEALLS
SHOE SALE
Buy One,
Get One 1/2 Off!
NEW! SJP NYC
Scents Available!

Dance Academy of Pampa
663-9103
Home of the Pampa Civic Ballet

Hoagies Deli
\$1 Off Any Entree!
w/coupon*
665-0292

AVENUES TOO!
"For all your Decorating Needs!"
For Appointments
Call Beth at:
665-0983
663-3511

Pampa Orthopedics & Rehab
We offer a full range of contemporary treatment options for joint & musculoskeletal pain, functional limitations, and sport/ work-related injuries, including the latest technology in underwater treadmill rehabilitation.
806.665.4820

Kings Row
Family Hair Care
665-8181

LA Nails
Come in & check out our selection of purses, jewelry and dress-up tutus!
Accepting Cash
665-0717

Watermill Express

For Leasing Information, Contact Irvine Riphahn at (806) 665-0717.

Sports

One run enough as Lady Harvesters down Caprock

BY ANDREW GLOVER
aglover@thepampnews.com

The Pampa Lady Harvesters only had three baserunners and scored one run, but that was enough to beat the Caprock Lady Longhorns 1-0 Friday at Pampa.

Head Coach Bobbi Gill said her team has struggled at the plate but did what they needed to win the game.

"When you are struggling at the plate, you've got to play good defense," Gill said. "Ashley (Facio) had a stellar performance on the mound. When we got into tight spots, she buckled down and did what she needed to do. When the defense needed to back her up they backed her up."

After she pitched a no-hitter last outing, Facio (6-4) threw seven shutout innings, gave up seven hits and struck out 13. Caprock's pitcher gave up one run on three hits and struck out two.

Neither team allowed a batter to reach base in the first inning. Facio only needed 13 pitches to get out of the first as she struck out one batter and got two groundouts. Pampa

went down in order in their half of the first, with two ground outs and a popup to the pitcher.

In the top of the second, Caprock led off with a double on a ball that went over Emilie Troxell's head in center field. The Lady Longhorns moved that runner to third with a two-out single. That's where the runner would stay, though, as Facio got her third strikeout of the inning. The Lady Harvesters went down in order again in their half of the second.

Facio set down the Lady Longhorns in order in the top of the third with a ground out, strikeout and a lineout to first baseman Carlyn Teichmann. The Lady Harvesters pitcher only needed 15 pitches to get out of the inning.

In the bottom of the third, Jordan Mayhew led off with a foul out to the catcher. Brooklyn Barker got the Lady Harvesters first hit of the game on a single, but the Lady Longhorns made a throwing error and Barker advanced all the way to third. Shanna Keown brought Barker home with a single to score the only run of the game.

Gill was proud of how Barker stepped up to help the team pull it out.

"It was a good job on her (Barker's) part to get a good jump and take home," Gill said. "That's part of being a senior winning the game. That's credit to her and good job for doing what we're asking her to do."

Keown would steal second and reached third on a sacrifice bunt by Facio, but would be stranded as the inning ended with Madi Shults grounding out to short.

The Lady Longhorns threatened in each of the last three innings. In the top of the fifth, Caprock hit a two-out double and advanced to third on a passed ball. Teichmann made a great play at the end of the inning, putting a tag on the runner after the throw drew her off the bag. The play kept the Longhorns runner on third from tying the game. In the sixth and seventh, Caprock stranded runners at second.

The Lady Harvesters (12-9-1, 2-1) will make up their game at Dumas 5 p.m. Monday. On Tuesday, Pampa plays at Hereford.



staff photo by Andrew Glover

Brooklyn Barker slides into home plate to score the only run of the game. Barker scored on a hit by Shanna Keown. The Lady Harvesters improved to 12-9-1 and 2-1 in district play. Pampa visits Dumas Monday and Hereford Tuesday.

JV's small ball too much for Horns

BY ANDREW GLOVER
aglover@thepampnews.com

The Pampa Lady Harvesters junior varsity softball team scored eight runs in the first inning to win 11-0 over Caprock Friday in Pampa.

Coach Jim Gill said the team has been working on "small ball" tactics and are executing them well.

"Bunting and slapping

and doing stuff like that," Gill said. "Any great team, college, pros, whatever can play small ball. You got to be able to put the ball down and bunt and make the other team make plays and that's what we did."

Heather Coffee was the starting pitcher for the Lady Harvesters and set Caprock down in order in the first inning. The Lady

Harvesters quickly took advantage in the bottom of the first, scoring eight runs on five hits. Pampa sent 13 batters to the plate and everyone except the lead-off batter scored a run.

Delaney Clendening was the Lady Harvesters first base runner as she walked and immediately stole second. Coffee singled to advance Clendening to

third. Coffee stole second and Clendening stole home after Coffee went for second. Calli Brewer walked and on an errant throw, Coffee scored. Caylee Steward drove in Brewer with a single. Nakayla Hardman scored on an error by the pitcher. The next three Lady

JV cont. on page 3B

Sudoku

Answer to yesterday's puzzle:

9	2	4	7	6	8	1	3	5
6	1	3	5	9	4	2	8	7
7	5	8	3	2	1	4	9	6
1	8	7	9	4	6	5	2	3
2	9	5	8	7	3	6	4	1
3	4	6	1	5	2	9	7	8
8	6	9	2	1	7	3	5	4
5	7	1	4	3	9	8	6	2
4	3	2	6	8	5	7	1	9

			4	2				1
	2	6				5		
7								
2				3	8	1		
1						8	6	
	3							7
			5			3		
		8		7		9	4	

Level: Advanced

Gold Nugget Refinery Presents

Hidden Treasures Roadshow

Pampa Chamber of Commerce 200 North Ballard Street Pampa, TX 79065

Thurs 4/1—Fri 4/2 10am-6pm Sat 4/3 9am-3pm

The Hidden Treasures Roadshow is on its way to Pampa NOW!

Looking to do something as a family this weekend? How about spring cleaning and making BIG MONEY! The Hidden Treasures Roadshow will be in town for three days, giving you and your family more money for your old gold, silver, coins, collectables, and much more! The average family has over \$225 in unused and unwanted gold and silver jewelry in their home! And with gold prices hovering near all time highs, there has never been a better time to cash in! Add in any other items you may have listed below and you could make more this weekend cleaning out your closet than you made all week long!

ASK ABOUT OUR FUNDRAISERS!

Raise THOUSANDS of dollars in one night! Ask us about our fundraisers for churches, sports teams and other organizations!

Raise over \$1,000 with as few as 15 members of your organization.

WHAT WE BUY

Musical Instruments

- Acoustic and electric guitars 1970 and before

War Memorabilia

- Civil War
- WW I
- WW II
- Medals
- Swords
- Bayonets

Trains

- Lionel
- American Flyer
- Marklin
- Hafner

WHAT WE BUY

- All gold, silver, and platinum jewelry
- Pocket watches
- Wristwatches
- Antique jewelry
- Victorian jewelry
- Class rings
- Wedding bands and rings
- Necklaces and pendants
- Bracelets
- Pins and cameos
- Char m bracelets
- Silverware
- Flatware
- Broken jewelry

Coins

- All silver and gold coins
- All coins pre 1964
- Buffalo nickels
- Indian head pennies
- Morgan silver dollars
- Barber coins
- Peace silver dollar
- And many, many more!

*Do not polish or shine your coins before bringing them in. It may affect the value.

For more information,
Call: 214-789-8438
E-mail: GoldNuggetRefinery@gmail.com

Not sure if your item is gold?
Bring it in!
We'll test it for FREE!

WHAT WE BUY

Consumer electronics

- Cell phones
- Laptops
- Mp3 Players
- Digital Cameras
- Video Cameras
- Hand Held Game Consoles
- GPS Devices
- Radar Detectors
- E Book Readers
- TI Graphing Calculators

3 Days Only!

*Bring the batteries and chargers for your electronics for even more money.

Watches and Pocket Watches

- Elgin
- Railroad
- Hamilton
- Waltham
- Ebel
- Rolex
- Chopard
- Bunn Special
- Cartier
- Tiffany
- Omega

GoldNugget
REFINERY

Bring this Coupon in and GNR will Donate an additional 10% to the Salvation Army Boys and Girls Club of Pampa. For more information dial (806) 665-7233

200 North Ballard Street, Pampa, TX 79065 PAMPA 4/1-4/3

Sports

JV

cont. from page 2B

Harvesters would score.

Coffee got the second out of the inning as she flied out to center, being the 11th batter to bat since Serena Reyes led off the game with a ground out. The inning ended when Clendening was thrown out trying to advance to third on a single by Brewer.

Caprock got their first base runner of the game when they reached on an error by the second baseman. Coffee retired the next three hitters to end the inning. The Lady Harvesters would expand their lead in the bottom of the second, scoring two runs. Steward and Hardman led off with singles. Steward would get thrown out advancing to third for the first out of the inning. Hardman scored on a single by Martecia Alexander. Alexander scored on a passed ball.

The Lady Longhorns got a runner to third in the top of the third, but they would be stranded there. Coffee struck out the last batter to finish the inning which would be Caprock's last. Pampa scored one more run in the bottom of the third. Clendening walked

and stole second and would score the final run of the game on a wild pitch.

Coffee pitched three shutout innings and only allowed one walk and struck out four. Gill said he is liking where his team is standing after three district games.

"I'm very proud of them," Gill said. "We're 3-0 in district. It doesn't get much better than how they are playing right now. I got girls we're working in that are backups that are just good as the ones I got out there. We got a lot of competition in practice everyday. They do a really good job."



staff photo by Andrew Glover

Delaney Clendening steals second base against the Lady Longhorns in Pampa Friday. The Lady Harvesters won 11-0 after three innings. Clendening scored two runs and stole two bases.

The junior varsity softball team is 3-0 in district and 23-3 overall. The junior varsity plays at Hereford Tuesday.

Great games, Lady Harvesters!!

DAILY HOROSCOPE

HAPPY BIRTHDAY for Monday, March 29, 2010:

This year, you frequently see situations as either-or. You are very creative and dynamic; others are clearly drawn to you. You learn that often both sides of an issue are relevant, and discover ways of accepting both possibilities. Your work and relationships with higher-ups and the community transform. Avoid power plays at any cost. If you are single, quite a few suitors might desire you, but which one is right for you? Enjoy the process of finding out. If you are attached, the two of you need to give up having situations a certain way. Remember to defer to your significant other more often. LIBRA can be challenging.

The Stars Show the Kind of Day You'll Have: 5-Dynamic; 4-Positive; 3-Average; 2-So-so; 1-Difficult

ARIES (March 21-April 19)

**** You could be dealing with a difficult person. You can try to energize this person, but your impact will be negligible. Pressure builds around work and a boss. Know when to back off. Tonight: Let others vent.

TAURUS (April 20-May 20)

**** If you feel that you have more than your fair share on your plate, you are right. Take breaks, relax and know what you want. Consider taking a class to brush up on a skill, or going back to school in your chosen field. Tonight: Know when to vanish.

GEMINI (May 21-June 20)

**** Where others hit a logjam, you discover another route. Your creativity marks the next few days. You could feel pressured by someone's expectations.

Let go and allow others to be themselves. Tonight: Let your imagination rock and roll.

CANCER (June 21-July 22)

**** You are coming from a place of security when making decisions. Key people are pushing you in another direction. Let a partnership evolve and become closer. Don't play into a control game. Tonight: Happy at home.

LEO (July 23-Aug. 22)

**** Keep discussions flowing. How you express dissatisfaction could change with time and thought. You could surprise someone with how vocal you can be. Try to detach some and understand your responses. Tonight: Catch up on a friend's news.

VIRGO (Aug. 23-Sept. 22)

**** Be sensitive to your needs and your limitations. Though someone might cheer you on, the path you are considering might not be the best. Creativity bubbles up from out of nowhere and could encourage risk-taking, like it or not. Tonight: Walk a conservative path.

LIBRA (Sept. 23-Oct. 22)

**** Know that you are on a high cycle and probably hard to stop. Nevertheless, others could toss a boomerang or two in your path. You'll skip right over, though you might want to make a note to rethink a certain personal situation. Tonight: Only what you want.

SCORPIO (Oct. 23-Nov. 21)

** If you feel a bit out of sorts, back off or take your leave. You might need time to come up with a better idea or a better way to communicate what is on your mind. Tap into your intuition when dealing with a boss. Tonight: A must appearance.

SAGITTARIUS (Nov. 22-Dec. 21)

***** Use a meeting to maximize your ability to create success and to encourage others' support. Don't completely shoulder a risk. Say "no." Juggle different concerns. Tonight: Whatever puts a smile on your face.

CAPRICORN (Dec. 22-Jan. 19)

**** You could be seeing a situation differently from many people. You might be looking at a change in how you project yourself, especially if you are hitting a wall in your path. Take charge. Others naturally look up to you. Tonight: Don't forget a family member!

AQUARIUS (Jan. 20-Feb. 18)

***** Keep the big picture in mind. You are able to make it past a problem because of your total perspective. A partner or associate could be lobbying for more of your time. A discussion might help, but you need to take action. Tonight: Let your mind wander.

PISCES (Feb. 19-March 20)

**** Your ability to relate openly is tested. You might wonder what is happening with a business or financial agreement. You might be in the process of re-evaluating your decisions and course of action. Put 100 percent into a project. Tonight: Listen to a friend or loved one's suggestion.

BORN TODAY

British prime minister John Major (1943), actress Lucy Lawless (1966), 10th U.S. President John Tyler (1790)

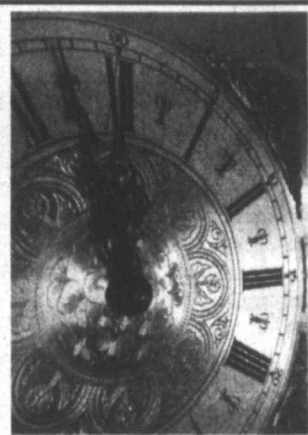
Jacqueline Bigar is on the Internet at www.jacquelinebigar.com.

© 2010 by King Features Syndicate Inc.

New Store Hours!
Starting April 1, 2010

Monday - Friday
8:30 am - 6:00 pm

Saturday
8:30 am - Noon

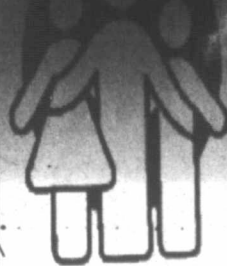


KEYES PHARMACY

928 N. Hobart
Pampa, Texas
(806) 669-1202

When life gets you down,
We'll get you back on your feet.

FORD FAMILY CHIROPRACTIC



REHABILITATION & WELLNESS CENTER

701 N. Price Rd
Pampa, TX
(806) 665-7261

Services Include:

- State of the Art Modern Chiropractic Care
- New digital X-ray services
- Surface EMG
- Computerized muscle strength & range of motion testing
- Personalized therapeutic rehabilitative exercise program
- Digital orthotics casting
- Soft tissue & myofascial release (medical massage) techniques
- Spinal distraction/decompression for disc problems
- Licensed physical therapist
- Weight loss program
- Cold laser therapy
- Children's activity area

Dr. Mark W. Ford, Jr. • Dr. Lance Krogh
Josh Link MPT

First State Bank of Miami



Rain or Shine, you're guaranteed to love our exemplary service! We consider our members as a part of our family, and treat them so. Join us today and become a part of the largest family in the Texas Panhandle.

Member FDIC

LENDER

We're also responsible for a wide range of convenient services!

ATM Debit Cards

Home Loans

Safe Deposit Boxes

Consumer Loans

Checking

CD

Savings

Commercial Loans

Miami Bank
806-868-2771
PO Box 8

Pampa Bank
806-665-3669
120 W. Kingsmill

Sports

Pampa Baseball team in position to accomplish postseason goals

BY ANDREW GLOVER
aglover@thepampanews.com

Before the season started, Head Baseball Coach Kaleb Snelgrooves said the goal for his team was to reach the playoffs. To Snelgrooves, it didn't matter if they entered as the district champion or with the fourth playoff spot he just wants his team to make it. Two games into the district schedule, the Harvesters are in position to make it.

Pampa started the season strong in the Cavalier Classic winning four of five games. The Harvesters beat Dalhart, Borger, Tulia and San Jacinto and lost to Bushland, who is currently ranked seventh in class 2A. After the strong start the Harvesters hit a rough stretch where they lost nine of their next 10 games.

Pampa competed in tournaments at Snyder and Burkburnett. In Snyder, Pampa lost to Lubbock Christian, Abilene Wylie and Canyon. The Harvesters beat Pecos to earn a 1-3 record in that tournament. In Burkburnett, Pampa



Andrew Glover

failed to crack the win column with losses to Rider, who is 10th in class 4A, Abilene Wylie, Birdville and Burkburnett. Pampa also dropped a contest with Perryton. The Harvesters finished non-district with a 5-9 record.

After Pampa opened district with a 10-0 loss to the eighth ranked Randall Raiders, they ten-run ruled the Palo Duro Dons 10-0, to even their district record and sit in fourth place. The top four teams in district advance to the playoffs. So, Pampa is where they need to be.

Pampa has good leadership from first year head

coach Snelgrooves. Pampa's coach has a great enthusiasm for the game and that rubs off on his players. Snelgrooves is also a good motivator even when it's not nice motivation.

Next, the Harvesters have a strong senior class with Braden Hunt, Mitchell Killgo and Anthony Allen. These three came close to the playoffs last year and our hoping to end their Harvester careers with a run in the playoffs. Hunt and Killgo will get to continue their baseball careers in college as they both signed letter of intents with Frank Phillips College in Borger. So far, Hunt and Killgo have the only home runs for Pampa. Allen is a great catcher and works well the pitchers. The senior catcher is also a threat on the basepaths. Credit to Snelgrooves for promoting aggression on the basepaths just about everyone on the team has a stolen base.

The Harvesters also have some good young talent that will pay dividends in the future. Before this year,

the last time Tyler Malone played baseball was when he was 12. Malone has already made an impact this year picking up two wins as a relief pitcher and coming up with timely base hits. Sophomore Cole Engle made varsity this year but has to check the lineup card to see where he is playing. Already this season Engle has played just about every position.

Pampa will have a tough district schedule with Randall and Canyon at the top of the district. Hereford is neck and neck with the Harvesters as they battle for third. Dumas is right behind Pampa and Palo Duro and Caprock could become contenders if they turn things around.

For the Harvesters to be successful they have to win often and keep improving as a team. Also, they have to avoid disaster innings because they are hard to come back from. If Pampa can do those things we may be talking about the Harvesters into May and beyond.

Schedule Change

The Pampa Lady Harvesters softball team will play at Dumas 5 p.m Monday.

District 3-4A Baseball Standings as of Mar. 26

Team	W	L	W%	W	L	T	W%
Canyon	3	0	1.000	16	2	0	.889
Randall	3	0	1.000	15	3	1	.816
Hereford	1	1	.500	6	10	1	.382
Pampa	1	1	.500	6	10	0	.375
Dumas	1	2	.333	8	11	0	.421
Palo Duro	0	2	.000	3	15	0	.167
Caprock	0	3	.000	9	12	0	.429

Lake Casa
Blanca Toyota
ShareLunker
Ignites Race
to 500

ATHENS — It's a done deal that the Texas Parks & Wildlife Foundation will pay \$500 per pound to the lucky angler who wins the race to Toyota ShareLunker 500.

With only 10 fish to go to get to the checkered flag, two big questions remain: Who will catch it? Where will they catch it?

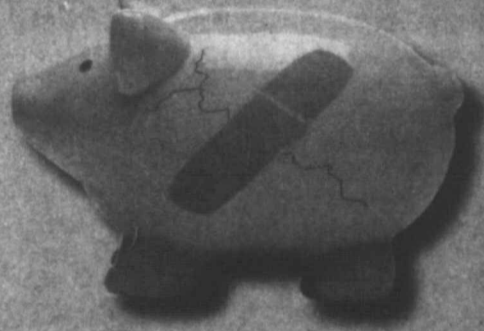
Speculation about where ShareLunker 500 will come from is sure to be a topic at lakeside restaurants all over the state in the coming weeks, although all anglers will be certain they will be the one to cross the finish line with it. Will fish 500 come from Lake Fork, The Bassyard? Or Amistad, The Jewel of the Desert? Or Falcon, bass fishing's Thunder Valley?

The latest entry into the program, No. 490, came from Lake Casa Blanca, near Laredo, on March 24. Jesse Garza Perez of Laredo caught a new lake record 14.79-pound bass from eight to 10 feet of water using a seven-inch junebug PowerBait worm.

"Previous stockings of Florida largemouth bass, rapid growth because of a year-round growing season, plentiful forage and minimal bass fishing effort are responsible for Lake Casa Blanca producing a relatively high number of ShareLunkers," said Randy Myers, the Texas Parks and Wildlife Department Inland Fisheries biologist.

Subscribe today!! Call 669-2525

Short on Cash?



We are the solution.

Call us today to talk about our lending program. Get your house remodeled, go on vacation, take a ride in your new car - and the best part is that you're building credit the whole time you are doing those things! In today's economy, good credit is essential to get almost anything. Let us be your solution. Call or visit today.

National Bank of Commerce

An Office of First National Bank Wampaca, WI

Remember, there is nothing wrong with wanting something better for yourself. Make the call today!



Calvary Assembly of God

The Church Built on Love.

Service Times

Sunday School 9:45 am
Worship Service 11:00 am
Children's Church 11:00 am
Evening Service 6:00 pm
Wed. Service 7:00 pm

Pastor Karel & Vanessa Cantrell

P.O. Box 1837 • 1030 Love • Pampa, TX 79066 • (806)669-7207

Childbirth Education Class

1. Pregnancy Topics/ Pain Theories/Labor Signs

2. Stages of Labor/ Comfort Measures/ Labor Positions

3. Interventions/ Pain Medications/ Cesarean Birth

4. Postpartum/ Newborn Procedures & Appearance/ Basic Breastfeeding

Call Terry Barnes at (806) 663-5874 to enroll or for more information.

PAMPA REGIONAL MEDICAL CENTER

KEEP YOUR VEHICLE

SHOWROOM



"Minor" problems like door dings, hail damage or paint scratches are a big deal when you care about your car. That's why we're here to help. We offer painless dent repair service, with no filling, grinding or repainting, so your car won't lose its lustrous factory finish! We also do collision work and insurance repairs, and estimates are always free. If you take pride in your vehicle's appearance you'll want to bring it to Culberson Stowers Collision Repair Shop, where we're just as obsessed with appearance as you are!



Culberson - Stowers, Inc.
SINCE 1927

Collision Repair Facility

Comics

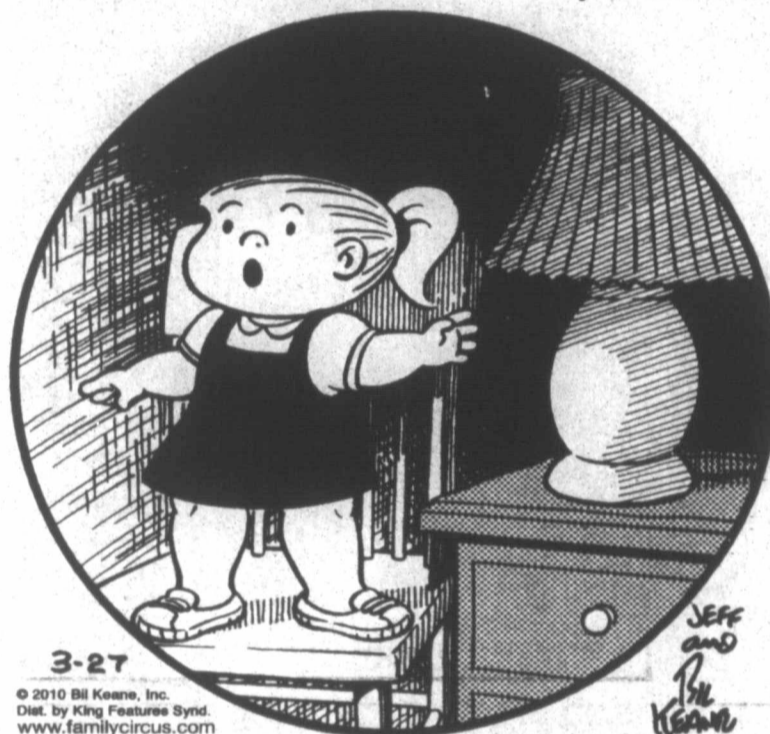
Marmaduke



"It's not a dog tag. It's a dog biscuit."

THE FAMILY CIRCUS

By Bil Keane



3-27

© 2010 Bil Keane, Inc. Dist. by King Features Synd. www.familycircus.com

"Mommy, the lightbulb in my lamp just ran out of 'lectricity."

Daily Crossword Puzzle

CROSSWORD

By THOMAS JOSEPH

ACROSS 40 Quite full

1 Seethe 41 Looks

5 Pie part after

10 Career 42 Muscle soldier quality

12 Link up

13 Forsaken

14 Put on a pedestal

15 Avarice, e.g.

16 Big shot

18 Wee dog, for short

19 Bank worker

21 Annoy

22 Star of

25-Across

24 Old symbols

25 1970 movie

29 Melt base

30 Nostalgic songs

32 Clumsy galoot

33 Half of dos

34 Pharaoh's symbol

35 Gets in

37 Alabama city

39 Ridiculous

S	O	F	A	S	D	A	W	N	S
I	R	A	T	E	E	T	H	I	C
M	I	L	A	N	V	O	I	C	E
P	O	L	S	K	I	M	P	O	N
E	L	I	E	O	S	I	L	E	
R	E	N	T	S	E	I	N	E	
T	A	M	S	A	T				
B	O	R	I	S	M	O	L	L	
S	O	P	L	P	S	S	E	A	
M	O	L	O	K	A	I	H	A	G
A	G	A	V	E	G	R	A	P	E
R	I	C	E	R	H	Y	P	E	R
T	E	E	N	S	S	E	E	D	S

Yesterday's answer

- 11 Income
- 17 Attaches, as
- 20 Caterpillar, e.g.
- 21 Fix a lawn
- 23 Annual statement
- 25 Tony winner Patti
- 26 Kind of band
- 27 Theater district
- 28 Toadies
- 29 Implied
- 31 Digging tool
- 33 Purposes amount
- 36 Purpose
- 38 Put away

NEW CROSSWORD BOOK! Send \$4.75 (check/m.o.) to Thomas Joseph Book 2, P.O. Box 536475, Orlando, FL 32853-6475

1	2	3	4	5	6	7	8	9
10			11		12			
13					14			
15			16	17		18		
19		20				21		
				22			23	
					24			
	25	26					27	28
29				30				31
32				33				34
35		36			37	38		
39					40			
41								42

For Better Or Worse



Zits



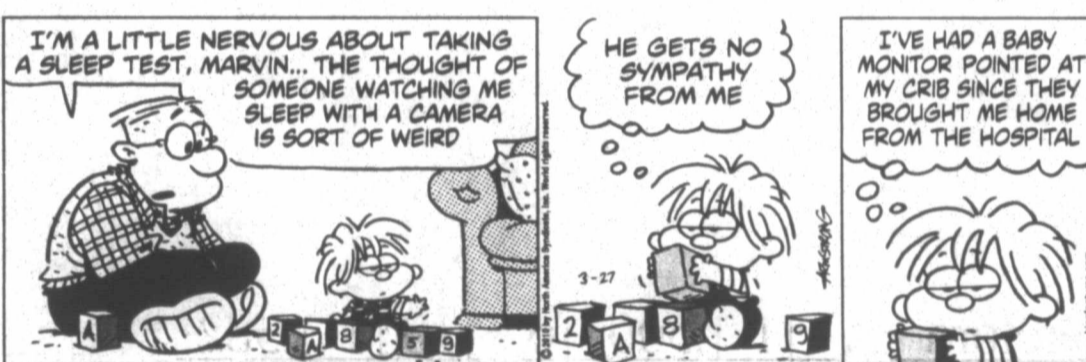
Garfield



Beetle Bailey



Marvin



B.C.



Hagar The Horrible



Peanuts



Blondie



Flo & Friends



The Pampa News' Classifieds

1 Public Notice

LEGAL NOTICE: This Texas Lottery Commission Scratch-Off game will close on April 10, 2010. You have until October 7, 2010, to redeem any tickets for this game: **#1191 Sparking 7's (\$7)** overall odds are 1 in 3.32. This Texas Lottery Commission Scratch-Off game will close on April 16, 2010. You have until October 13, 2010, to redeem any tickets for this game: **#1184 \$50,000 Cash Winfall (\$5)** overall odds are 1 in 4.18. This Texas Lottery Commission Scratch-Off game will close on April 22, 2010. You have until October 19, 2010, to redeem any tickets for this game: **#1090 \$250,000 Bingo (\$10)** overall odds are 1 in 3.14. This Texas Lottery Commission

Scratch-Off game will close on May 1, 2010. You have until October 28, 2010, to redeem any tickets for this game: **#1208 Tripler (\$3)** overall odds are 1 in 4.85. These Texas Lottery Commission Scratch-off games will close on June 2, 2010. You have until November 29, 2010, to redeem any tickets for these games: **#1189 Winter Winnings (\$5)** overall odds are 1 in 3.82; **#1188 Stocking Stuffer (\$3)** overall odds are 1 in 3.79; **#1192 Jingle Jumbo Bucks (\$10)** overall odds are 1 in 3.36; **#1185 Lucky Rider (\$5)** overall odds are 1 in 3.70; **#1206 Double Doubler (\$1)** overall odds are 1 in 4.37; **#1218 Veterans Cash (\$2)** overall odds are 1 in 4.72; **#1261 Dallas Cowboys (\$5)** overall odds are 1 in 3.85. The odds listed here are the overall odds of winning any prize in a game, including break-even prizes. Lottery retailers are authorized to redeem prizes of up to and including \$599. Prizes of \$500 or more must be claimed in person at a Lottery Claim Center or by mail with a completed Texas Lottery claim form; however, annuity prizes or prizes over \$999,999 must be claimed in person at the Commission Headquarters in Austin. Call Customer Service at 1-800-37LOTTO or visit the Lottery Web site at www.tlottery.org for more information and location of nearest Claim Center. The Texas Lottery is not responsible for lost or stolen tickets, or for tickets lost in the mail. Tickets,

transactions, players, and winners are subject to, and players and winners agree to abide by, all applicable laws, Commission rules, regulations, policies, directives, instructions, conditions, procedures and final decisions of the Executive Director. A scratch-off game may continue to be sold even when all the top prizes have been claimed. Must be 18 years of age or older to purchase a Texas Lottery ticket. **PLAY RESPONSIBLY.** The Texas Lottery Supports Texas Education. E-60 Mar. 28, 2010

ORDINANCE NO. 1518
AN ORDINANCE OF THE CITY OF PAMPA, TEXAS PROVIDING THAT THE CODE OF ORDINANCES BE AMENDED BY ADDING A NEW SECTION 3.03.004 TO CHAPTER 3 "BUILDING REGULATIONS", ARTICLE 3.03 "INTERNATIONAL RESIDENTIAL CODE"; ADOPTING THE JUNE 2008 EDITION OF THE PANHANDLE RESIDENTIAL FOUNDATION MANUAL (OPTIONAL FOUNDATION SYSTEMS FOR USE IN ONE AND TWO FAMILY DWELLINGS), PROVIDING FOR AN APPROVED STRUCTURAL FOUNDATION SYSTEM THAT COMPLIES OR EXCEEDS COMPLIANCE WITH SECTION 403.1 OF THE 2006 INTERNATIONAL RESIDENTIAL CODE FOR ONE AND TWO FAMILY DWELLINGS, PROVIDING FOR THE ISSUANCE OF PERMITS AND COLLECTION OF FEES THEREOF; AND REPEALING ALL OTHER ORDINANCES AND PARTS OF ORDINANCES INsofar as they are in conflict therewith; PROVIDING FOR PENALTIES; PROVIDING FOR A SAVINGS CLAUSE; AND PROVIDING FOR PUBLICATION. E-59 Mar. 28, Apr. 4, 2010

ORDINANCE NO. 1518
AN ORDINANCE OF THE CITY OF PAMPA, TEXAS PROVIDING THAT THE CODE OF ORDINANCES BE AMENDED BY ADDING A NEW SECTION 3.03.004 TO CHAPTER 3 "BUILDING REGULATIONS", ARTICLE 3.03 "INTERNATIONAL RESIDENTIAL CODE"; ADOPTING THE JUNE 2008 EDITION OF THE PANHANDLE RESIDENTIAL FOUNDATION MANUAL (OPTIONAL FOUNDATION SYSTEMS FOR USE IN ONE AND TWO FAMILY DWELLINGS), PROVIDING FOR AN APPROVED STRUCTURAL FOUNDATION SYSTEM THAT COMPLIES OR EXCEEDS COMPLIANCE WITH SECTION 403.1 OF THE 2006 INTERNATIONAL RESIDENTIAL CODE FOR ONE AND TWO FAMILY DWELLINGS, PROVIDING FOR THE ISSUANCE OF PERMITS AND COLLECTION OF FEES THEREOF; AND REPEALING ALL OTHER ORDINANCES AND PARTS OF ORDINANCES INsofar as they are in conflict therewith; PROVIDING FOR PENALTIES; PROVIDING FOR A SAVINGS CLAUSE; AND PROVIDING FOR PUBLICATION. E-58 Mar. 28, Apr. 4, 2010

COX Fence Company. Repair old fence or build new. Free estimates. Call 669-7769.

JH Concrete, specializing in all types of concrete incl stamp, stain Free est. 806-382-5408

SOLIS FENCING. New Fence / Fence Repairs. Free estimates. 806-486-1368, 662-2473

Power Wheelchair Sales, Service & Repair
Wheelchair Ramps & Lifts
Diabetic Footwear
Med-Link Mobility
806-874-0248

14h Gen. Serv.
NOW hiring LVN's and RN's. Call Stephanie at 435-5403 or apply at Senior Village, 3101 S. Main, Perryton, TX.

LARGE Independent Producer needs Lease Operator with min 5 yrs. exp. involving separators, compressors, meters, pumping units and control devices. Must provide own vehicle, truck allowance provided. Excellent benefits incl. medical, dental, 401k, SARs, vacation. Please apply online at www.rangeresources.com or in person, 1917 Alcock, St., Pampa, TX.

QUALITY Control earn up to \$15 hr. Evaluate retail stores. Training provided. 877-289-8554

21 Help Wanted
\$1500.00
SIGN-ON BONUS
Certified Nurse Aide
Pampa Nursing Center
has openings for CNA's on all shifts.
Apply in person, 1321 W. Kentucky.

THERAPIST TECH I ASCI-PAMPA
8am-4pm M-F
\$8.72 / hr
Responsibilities of this position include toileting, feeding and teaching social skills to verbal / non-verbal clients. Shares in workshop vocational programming responsibilities; planning and enforcing a program of activities for the day program including music, exercise, verbal building skills, small and large motor skill building; as well as any activities that will help to maintain and / or build mental functions for the clients in their care. Also calls for the implementation of daily scheduled training programs and required documentation for assigned caseloads. One on one care for assigned clients.
Qualifications: High School diploma or GED, minimum of eighth grade reading-comprehension level as evidenced by score on the Adult Basic Learning Exam (ABLE) test or one semester (12 semester hours) of accredited college work. Valid Texas driver's license; must be insurable under agency vehicle policy. reasonable accommodations may be made to enable individuals with disabilities to perform essential functions. **Preferred Qualifications:** Knowledge of therapeutic methods and techniques in the rehabilitation therapy of specialization, and of mental illness and mental retardation, plus six (6) months of work experience assisting in therapeutic activities. Skill in the use of equipment, tools and materials used in therapeutic service activities; ability to provide rehabilitative therapy; maintain records; prepare concise reports and communicate effectively; interact with people in a variety of situations and settings; verbal and written communication skills necessary.

Walmart
Hiring for Remodel / Set-Up
April 17, 2010
Apply at Kiosk in Store or
www.walmartstores.com
2801 N. Charles
Pampa, TX
806-665-0727

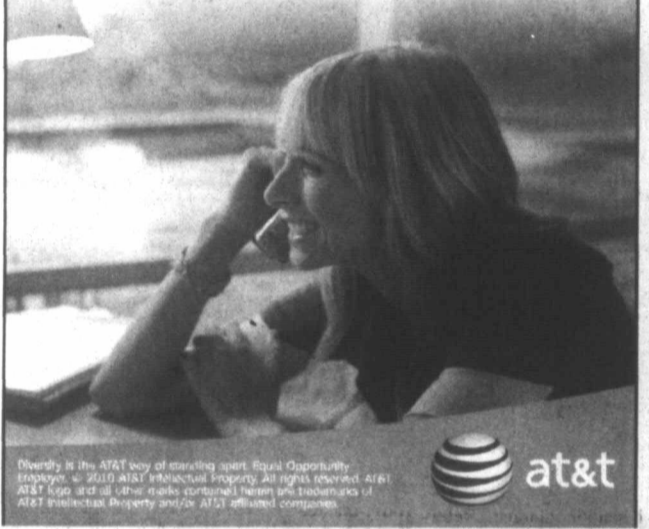
Now seeking a temporary Full/Part Time Dependable Salesperson to operate Pampa store. Duties: Assisting Customers, Maintaining Plants and Operating Cash Register. Starting pay: \$8.00 / hr., 40 hr. work week. No exp. necessary.
Hiring begins April 1st
Send resume to
D&C Greenhouse
36 Nelson Dr.
Spearman, TX 79081

career possibilities
join
cutting-edge products.

Ready for AT&T? Visible career paths. Trend-setting technologies. Together in one dynamic environment. Experience it for yourself.

Join us as a **RETAIL SALES CONSULTANT** at our Pampa Retail Store.

Apply online at www.att.jobs/redefine.



March GARAGE SALE SPECIAL (It's snow proof)

4 Lines - \$5
(plus a free garage sale kit)

Must run before March 31. In case of snow, same ad will run free of charge - (must be within the next 30 days.)

All ads paid in advance!
Call for deadlines 669-2525

Sell it
or get another month FREE!

\$75
1x3 classified display ad with photo 30-day contract

If it isn't sold within 30 days, we will run the same ad (no changes) for an additional 30 days!

Sell your car, your house, or that weight set gathering dust in the basement corner!

All ads paid in advance!
Call for deadlines - 669-2525

FOR SALE!
Barely used weight machine. Start your new exercise program today! (Also makes a great clothes hanger.) 555-2525

14r Plowing/Yard
ALL types of work. Clean up, haul off, tree trimming. Free estimates. 806-665-0766

14s Plumbing/Heat
BROWNING Heating & Air Cond. 665-1212. Free esti. on new equip. We service all brands!
JACK'S Plumbing, 715 W. Foster, 665-7115.

14u Roofing
WENDELL'S ROOFING CO.
Metal Roofs, Composition Roofs and Built-Up Roofs. Free Estimates. 806-665-7648

5 Special Notices
ADVERTISING Material to be placed in the Pampa News, MUST be placed through the Pampa News Office Only.

10 Lost/Found
LOST male Brittany, near Lamar Elementary Sch. Call 662-9219.
LOST Black Snowboard around Austin Park. If seen please call 669-3095.

14d Carpentry
Carpentry, Roofing, Replacement Windows, steel siding & trim. Continuous gutters. Jerry Nicholas 669-9991, 662-8169
CUSTOM Building & Remodeling. New Homes & Additions. Shawn Deaver Const., 806-662-2977.

14e Carpet Serv.
NU-WAY CLEANING SERVICE
Bob Marx Owner-Operator. Call 665-3541.

14h Gen. Serv.
CERAMIC tile work. Remodeling floor, shower, kitchen. Texture, painting, dry wall. Free esti. Call 665-3453 leave message. Jesus Barraza.
HOUSE Cracking? In bricks or walls? Childers Brothers, Inc. 800-299-9563, 806-352-9563.

WOOD & Metal Fencing & Repairs. Reasonable rates! References. 665-2859, 662-5582.
TREE trim, clean up & haul off, small jobs. All around handyman. Fence repair. Sewer clean out, Painting. Call James 665-7351.

21 Help Wanted
NOTICE
Readers are urged to fully investigate advertisements which require payment in advance for information, services or goods.

MATURE Exp. Mgr. wanted for It'll Do Motel in Clarendon. Call 665-1875.
NOW taking applications for host & wait staff. No phone calls. Please apply in person between 2 pm & 5 pm., at Dixie Cafe.

\$2000.00 SIGN-ON BONUS
Licensed Vocational Nurses
Pampa Nursing Center has openings for LVN's on all shifts. Apply in person, 1321 W. Kentucky.

DIRECTOR OF NURSING PAMPA NURSING CENTER
is taking resumes for the position of Director of Nursing. Must be a Registered Nurse. Send resumes to: Vicki Hutton Administrator 1321 W. Kentucky Pampa, TX 79065

PAMPA NURSING CENTER
has an opening for Social Services Director. Applicants must be able to handle a fast paced schedule and be able to work weekends and nights as needed. Please apply in person at 1321 W. Kentucky Pampa, TX

NEED Exp. Cook-driver's license a must. Also Part-Time Baker. Apply 1301 S. Hqbart (Old Sadie Hawkins). No phone calls please.
NEED Drivers. Haz-Mat & Tanker endorsement a must! Good pay. Call 806-886-0919.
Professional Truck Drivers We have DEDICATED driving positions open in Shamrock, TX. These runs require Hazmat and Twin / Double endorsement on your Class A CDL. Good miles, good pay, good home time and full benefit package. Contact Randy 800-632-8769 or Lavonna 877-440-7890 or see our website @ www.drivefortpsl.com EOE

HELP wanted with Retail and Greenhouse experience. Must pass drug screen. Apply in person at West Texas Landscape, & ask for Kyle.

MAINTENANCE
Various duties including light plumbing repair, HVAC, carpentry, etc. Background in nursing and / or healthcare facility a plus! Call Drew Potter, Administrator, at (806)665-5746 or apply in person, CORONADO HEALTHCARE CENTER, 1504 W. Kentucky, Pampa, EAMH - has openings for RN-DON, LVN, CNA & Dietary. Call 323-6453 or apply in person at 803 Birch St., Canadian.

DIESEL MECHANIC NEEDED
Apply in person! No Phone Calls Please
Triangle Well Service
129 S. Price Rd.
Pampa, TX.

Chiropractic Office is expanding our team. 2 positions avail. Direct Patient Care Position and Front Desk Clerical / Computer Position. On the job training. Fax resume 665-0537

SALESMAN. Full-Time position. Travel req., some overnight & weekends. Salaried position w/ the potential for earning commission. Send resume to Vibra Whirl Sports LTD., PO Box 966, Panhandle, TX 79068 or fax to 806-537-3442.

HELP wanted with Retail and Greenhouse experience. Must pass drug screen. Apply in person at West Texas Landscape, & ask for Kyle.

NEED Exp. Cook-driver's license a must. Also Part-Time Baker. Apply 1301 S. Hqbart (Old Sadie Hawkins). No phone calls please.
NEED Drivers. Haz-Mat & Tanker endorsement a must! Good pay. Call 806-886-0919.
Professional Truck Drivers We have DEDICATED driving positions open in Shamrock, TX. These runs require Hazmat and Twin / Double endorsement on your Class A CDL. Good miles, good pay, good home time and full benefit package. Contact Randy 800-632-8769 or Lavonna 877-440-7890 or see our website @ www.drivefortpsl.com EOE

NEED Exp. Cook-driver's license a must. Also Part-Time Baker. Apply 1301 S. Hqbart (Old Sadie Hawkins). No phone calls please.
NEED Drivers. Haz-Mat & Tanker endorsement a must! Good pay. Call 806-886-0919.
Professional Truck Drivers We have DEDICATED driving positions open in Shamrock, TX. These runs require Hazmat and Twin / Double endorsement on your Class A CDL. Good miles, good pay, good home time and full benefit package. Contact Randy 800-632-8769 or Lavonna 877-440-7890 or see our website @ www.drivefortpsl.com EOE

NEED Exp. Cook-driver's license a must. Also Part-Time Baker. Apply 1301 S. Hqbart (Old Sadie Hawkins). No phone calls please.
NEED Drivers. Haz-Mat & Tanker endorsement a must! Good pay. Call 806-886-0919.
Professional Truck Drivers We have DEDICATED driving positions open in Shamrock, TX. These runs require Hazmat and Twin / Double endorsement on your Class A CDL. Good miles, good pay, good home time and full benefit package. Contact Randy 800-632-8769 or Lavonna 877-440-7890 or see our website @ www.drivefortpsl.com EOE

NEED Exp. Cook-driver's license a must. Also Part-Time Baker. Apply 1301 S. Hqbart (Old Sadie Hawkins). No phone calls please.
NEED Drivers. Haz-Mat & Tanker endorsement a must! Good pay. Call 806-886-0919.
Professional Truck Drivers We have DEDICATED driving positions open in Shamrock, TX. These runs require Hazmat and Twin / Double endorsement on your Class A CDL. Good miles, good pay, good home time and full benefit package. Contact Randy 800-632-8769 or Lavonna 877-440-7890 or see our website @ www.drivefortpsl.com EOE

NEED Exp. Cook-driver's license a must. Also Part-Time Baker. Apply 1301 S. Hqbart (Old Sadie Hawkins). No phone calls please.
NEED Drivers. Haz-Mat & Tanker endorsement a must! Good pay. Call 806-886-0919.
Professional Truck Drivers We have DEDICATED driving positions open in Shamrock, TX. These runs require Hazmat and Twin / Double endorsement on your Class A CDL. Good miles, good pay, good home time and full benefit package. Contact Randy 800-632-8769 or Lavonna 877-440-7890 or see our website @ www.drivefortpsl.com EOE

21 Help Wanted
\$11.63 / hr
THERAPIST TECH V ASCI-PAMPA
8am-4pm M-F
\$11.63 / hr
Responsible for the general success of ASCI Pampa. This responsibility includes supervision of Day Habilitation staff, implementation of activities, developing and monitoring programs for clients including music, exercise, socialization skills, small and large motor skill building; supported employment, production and quality control.
Qualifications: High School Diploma or GED, plus two (2) years experience in the field of work related to the duties of the position. Successful completion of a therapist technician-training program may substitute for six (6) months experience. Must have a valid Texas Drivers License and be insurable under agency vehicle policy. **Preferred Qualifications:** Prior supervisory experience. Bilingual. Experience developing programs for persons with Mental Retardation. Supported employment experience.

21 Help Wanted
\$11.63 / hr
THERAPIST TECH V ASCI-PAMPA
8am-4pm M-F
\$11.63 / hr
Responsible for the general success of ASCI Pampa. This responsibility includes supervision of Day Habilitation staff, implementation of activities, developing and monitoring programs for clients including music, exercise, socialization skills, small and large motor skill building; supported employment, production and quality control.
Qualifications: High School Diploma or GED, plus two (2) years experience in the field of work related to the duties of the position. Successful completion of a therapist technician-training program may substitute for six (6) months experience. Must have a valid Texas Drivers License and be insurable under agency vehicle policy. **Preferred Qualifications:** Prior supervisory experience. Bilingual. Experience developing programs for persons with Mental Retardation. Supported employment experience.

21 Help Wanted
\$11.63 / hr
THERAPIST TECH V ASCI-PAMPA
8am-4pm M-F
\$11.63 / hr
Responsible for the general success of ASCI Pampa. This responsibility includes supervision of Day Habilitation staff, implementation of activities, developing and monitoring programs for clients including music, exercise, socialization skills, small and large motor skill building; supported employment, production and quality control.
Qualifications: High School Diploma or GED, plus two (2) years experience in the field of work related to the duties of the position. Successful completion of a therapist technician-training program may substitute for six (6) months experience. Must have a valid Texas Drivers License and be insurable under agency vehicle policy. **Preferred Qualifications:** Prior supervisory experience. Bilingual. Experience developing programs for persons with Mental Retardation. Supported employment experience.

21 Help Wanted
\$11.63 / hr
THERAPIST TECH V ASCI-PAMPA
8am-4pm M-F
\$11.63 / hr
Responsible for the general success of ASCI Pampa. This responsibility includes supervision of Day Habilitation staff, implementation of activities, developing and monitoring programs for clients including music, exercise, socialization skills, small and large motor skill building; supported employment, production and quality control.
Qualifications: High School Diploma or GED, plus two (2) years experience in the field of work related to the duties of the position. Successful completion of a therapist technician-training program may substitute for six (6) months experience. Must have a valid Texas Drivers License and be insurable under agency vehicle policy. **Preferred Qualifications:** Prior supervisory experience. Bilingual. Experience developing programs for persons with Mental Retardation. Supported employment experience.

21 Help Wanted
\$11.63 / hr
THERAPIST TECH V ASCI-PAMPA
8am-4pm M-F
\$11.63 / hr
Responsible for the general success of ASCI Pampa. This responsibility includes supervision of Day Habilitation staff, implementation of activities, developing and monitoring programs for clients including music, exercise, socialization skills, small and large motor skill building; supported employment, production and quality control.
Qualifications: High School Diploma or GED, plus two (2) years experience in the field of work related to the duties of the position. Successful completion of a therapist technician-training program may substitute for six (6) months experience. Must have a valid Texas Drivers License and be insurable under agency vehicle policy. **Preferred Qualifications:** Prior supervisory experience. Bilingual. Experience developing programs for persons with Mental Retardation. Supported employment experience.

21 Help Wanted
\$11.63 / hr
THERAPIST TECH V ASCI-PAMPA
8am-4pm M-F
\$11.63 / hr
Responsible for the general success of ASCI Pampa. This responsibility includes supervision of Day Habilitation staff, implementation of activities, developing and monitoring programs for clients including music, exercise, socialization skills, small and large motor skill building; supported employment, production and quality control.
Qualifications: High School Diploma or GED, plus two (2) years experience in the field of work related to the duties of the position. Successful completion of a therapist technician-training program may substitute for six (6) months experience. Must have a valid Texas Drivers License and be insurable under agency vehicle policy. **Preferred Qualifications:** Prior supervisory experience. Bilingual. Experience developing programs for persons with Mental Retardation. Supported employment experience.

21 Help Wanted
\$11.63 / hr
THERAPIST TECH V ASCI-PAMPA
8am-4pm M-F
\$11.63 / hr
Responsible for the general success of ASCI Pampa. This responsibility includes supervision of Day Habilitation staff, implementation of activities, developing and monitoring programs for clients including music, exercise, socialization skills, small and large motor skill building; supported employment, production and quality control.
Qualifications: High School Diploma or GED, plus two (2) years experience in the field of work related to the duties of the position. Successful completion of a therapist technician-training program may substitute for six (6) months experience. Must have a valid Texas Drivers License and be insurable under agency vehicle policy. **Preferred Qualifications:** Prior supervisory experience. Bilingual. Experience developing programs for persons with Mental Retardation. Supported employment experience.

21 Help Wanted
\$11.63 / hr
THERAPIST TECH V ASCI-PAMPA
8am-4pm M-F
\$11.63 / hr
Responsible for the general success of ASCI Pampa. This responsibility includes supervision of Day Habilitation staff, implementation of activities, developing and monitoring programs for clients including music, exercise, socialization skills, small and large motor skill building; supported employment, production and quality control.
Qualifications: High School Diploma or GED, plus two (2) years experience in the field of work related to the duties of the position. Successful completion of a therapist technician-training program may substitute for six (6) months experience. Must have a valid Texas Drivers License and be insurable under agency vehicle policy. **Preferred Qualifications:** Prior supervisory experience. Bilingual. Experience developing programs for persons with Mental Retardation. Supported employment experience.

21 Help Wanted
\$11.63 / hr
THERAPIST TECH V ASCI-PAMPA
8am-4pm M-F
\$11.63 / hr
Responsible for the general success of ASCI Pampa. This responsibility includes supervision of Day Habilitation staff, implementation of activities, developing and monitoring programs for clients including music, exercise, socialization skills, small and large motor skill building; supported employment, production and quality control.
Qualifications: High School Diploma or GED, plus two (2) years experience in the field of work related to the duties of the position. Successful completion of a therapist technician-training program may substitute for six (6) months experience. Must have a valid Texas Drivers License and be insurable under agency vehicle policy. **Preferred Qualifications:** Prior supervisory experience. Bilingual. Experience developing programs for persons with Mental Retardation. Supported employment experience.

21 Help Wanted
\$11.63 / hr
THERAPIST TECH V ASCI-PAMPA
8am-4pm M-F
\$11.63 / hr
Responsible for the general success of ASCI Pampa. This responsibility includes supervision of Day Habilitation staff, implementation of activities, developing and monitoring programs for clients including music, exercise, socialization skills, small and large motor skill building; supported employment, production and quality control.
Qualifications: High School Diploma or GED, plus two (2) years experience in the field of work related to the duties of the position. Successful completion of a therapist technician-training program may substitute for six (6) months experience. Must have a valid Texas Drivers License and be insurable under agency vehicle policy. **Preferred Qualifications:** Prior supervisory experience. Bilingual. Experience developing programs for persons with Mental Retardation. Supported employment experience.

21 Help Wanted
\$11.63 / hr
THERAPIST TECH V ASCI-PAMPA
8am-4pm M-F
\$11.63 / hr
Responsible for the general success of ASCI Pampa. This responsibility includes supervision of Day Habilitation staff, implementation of activities, developing and monitoring programs for clients including music, exercise, socialization skills, small and large motor skill building; supported employment, production and quality control.
Qualifications: High School Diploma or GED, plus two (2) years experience in the field of work related to the duties of the position. Successful completion of a therapist technician-training program may substitute for six (6) months experience. Must have a valid Texas Drivers License and be insurable under agency vehicle policy. **Preferred Qualifications:** Prior supervisory experience. Bilingual. Experience developing programs for persons with Mental Retardation. Supported employment experience.

21 Help Wanted
\$11.63 / hr
THERAPIST TECH V ASCI-PAMPA
8am-4pm M-F
\$11.63 / hr
Responsible for the general success of ASCI Pampa. This responsibility includes supervision of Day Habilitation staff, implementation of activities, developing and monitoring programs for clients including music, exercise, socialization skills, small and large motor skill building; supported employment, production and quality control.
Qualifications: High School Diploma or GED, plus two (2) years experience in the field of work related to the duties of the position. Successful completion of a therapist technician-training program may substitute for six (6) months experience. Must have a valid Texas Drivers License and be insurable under agency vehicle policy. **Preferred Qualifications:** Prior supervisory experience. Bilingual. Experience developing programs for persons with Mental Retardation. Supported employment experience.

21 Help Wanted
\$11.63 / hr
THERAPIST TECH V ASCI-PAMPA
8am-4pm M-F
\$11.63 / hr
Responsible for the general success of ASCI Pampa. This responsibility includes supervision of Day Habilitation staff, implementation of activities, developing and monitoring programs for clients including music, exercise, socialization skills, small and large motor skill building; supported employment, production and quality control.
Qualifications: High School Diploma or GED, plus two (2) years experience in the field of work related to the duties of the position. Successful completion of a therapist technician-training program may substitute for six (6) months experience. Must have a valid Texas Drivers License and be insurable under agency vehicle policy. **Preferred Qualifications:** Prior supervisory experience. Bilingual. Experience developing programs for persons with Mental Retardation. Supported employment experience.

21 Help Wanted
\$11.63 / hr
THERAPIST TECH V ASCI-PAMPA
8am-4pm M-F
\$11.63 / hr
Responsible for the general success of ASCI Pampa. This responsibility includes supervision of Day Habilitation staff, implementation of activities, developing and monitoring programs for clients including music, exercise, socialization skills, small and large motor skill building; supported employment, production and quality control.
Qualifications: High School Diploma or GED, plus two (2) years experience in the field of work related to the duties of the position. Successful completion of a therapist technician-training program may substitute for six (6) months experience. Must have a valid Texas Drivers License and be insurable under agency vehicle policy. **Preferred Qualifications:** Prior supervisory experience. Bilingual. Experience developing programs for persons with Mental Retardation. Supported employment experience.

Walmart
Hiring for Remodel / Set-Up
April 17, 2010
Apply at Kiosk in Store or
www.walmartstores.com
2801 N. Charles
Pampa, TX
806-665-0727

NURSING
LVNs / CNAs
IMMEDIATE OPENINGS on most shifts. Must be TEXAS State Certified or possess State license. Competitive rates! Must be able to pass background check & drug screen. EOE. Call (806)665-5746, or apply in person at CORONADO HEALTHCARE CENTER, 1504 W. Kentucky Ave., Pampa, TX

SALESMAN. Full-Time position. Travel req., some overnight & weekends. Salaried position w/ the potential for earning commission. Send resume to Vibra Whirl Sports LTD., PO Box 966, Panhandle, TX 79068 or fax to 806-537-3442.

HELP wanted with Retail and Greenhouse experience. Must pass drug screen. Apply in person at West Texas Landscape, & ask for Kyle.

MAINTENANCE
Various duties including light plumbing repair, HVAC, carpentry, etc. Background in nursing and / or healthcare facility a plus! Call Drew Potter, Administrator, at (806)665-5746 or apply in person, CORONADO HEALTHCARE CENTER, 1504 W. Kentucky, Pampa, EAMH - has openings for RN-DON, LVN, CNA & Dietary. Call 323-6453 or apply in person at 803 Birch St., Canadian.

NEED Exp. Cook-driver's license a must. Also Part-Time Baker. Apply 1301 S. Hqbart (Old Sadie Hawkins). No phone calls please.
NEED Drivers. Haz-Mat & Tanker endorsement a must! Good pay. Call 806-886-0919.
Professional Truck Drivers We have DEDICATED driving positions open in Shamrock, TX. These runs require Hazmat and Twin / Double endorsement on your Class A CDL. Good miles, good pay, good home time and full benefit package. Contact Randy 800-632-8769 or Lavonna 877-440-7890 or see our website @ www.drivefortpsl.com EOE

NEED Exp. Cook-driver's license a must. Also Part-Time Baker. Apply 1301 S. Hqbart (Old Sadie Hawkins). No phone calls please.
NEED Drivers. Haz-Mat & Tanker endorsement a must! Good pay. Call 806-886-0919.
Professional Truck Drivers We have DEDICATED driving positions open in Shamrock, TX. These runs require Hazmat and Twin / Double endorsement on your Class A CDL. Good miles, good pay, good home time and full benefit package. Contact Randy 800-632-8769 or Lavonna 877-440-7890 or see our website @ www.drivefortpsl.com EOE

NEED Exp. Cook-driver's license a must. Also Part-Time Baker. Apply 1301 S. Hqbart (Old Sadie Hawkins). No phone calls please.
NEED Drivers. Haz-Mat & Tanker endorsement a must! Good pay. Call 806-886-0919.
Professional Truck Drivers We have DEDICATED driving positions open in Shamrock, TX. These runs require Hazmat and Twin / Double endorsement on your Class A CDL. Good miles, good pay, good home time and full benefit package. Contact Randy 800-632-8769 or Lavonna 877-440-7890 or see our website @ www.drivefortpsl.com EOE

NEED Exp. Cook-driver's license a must. Also Part-Time Baker. Apply 1301 S. Hqbart (Old Sadie Hawkins). No phone calls please.
NEED Drivers. Haz-Mat & Tanker endorsement a must! Good pay. Call 806-886-0919.
Professional Truck Drivers We have DEDICATED driving positions open in Shamrock, TX. These runs require Hazmat and Twin / Double endorsement on your Class A CDL. Good miles, good pay, good home time and full benefit package. Contact Randy 800-632-8769 or Lavonna 877-440-7890 or see our website @ www.drivefortpsl.com EOE

NEED Exp. Cook-driver's license a must. Also Part-Time Baker. Apply 1301 S. Hqbart (Old Sadie Hawkins). No phone calls please.
NEED Drivers. Haz-Mat & Tanker endorsement a must! Good pay. Call 806-886-0919.
Professional Truck Drivers We have DEDICATED driving positions open in Shamrock, TX. These runs require Hazmat and Twin / Double endorsement on your Class A CDL. Good miles, good pay, good home time and full benefit package. Contact Randy 800-632-8769 or Lavonna 877-440-7890 or see our website @ www.drivefortpsl.com EOE

NEED Exp. Cook-driver's license a must. Also Part-Time Baker. Apply 1301 S. Hqbart (Old Sadie Hawkins). No phone calls please.
NEED Drivers. Haz-Mat & Tanker endorsement a must! Good pay. Call 806-886-0919.
Professional Truck Drivers We have DEDICATED driving positions open in Shamrock, TX. These runs require Hazmat and Twin / Double endorsement on your Class A CDL. Good miles, good pay, good home time and full benefit package. Contact Randy 800-632-8769 or Lavonna 877-440-7890 or see our website @ www.drivefortpsl.com EOE

NEED Exp. Cook-driver's license a must. Also Part-Time Baker. Apply 1301 S. Hqbart (Old Sadie Hawkins). No phone calls please.
NEED Drivers. Haz-Mat & Tanker endorsement a must! Good pay. Call 806-886-0919.
Professional Truck Drivers We have DEDICATED driving positions open in Shamrock, TX. These runs require Hazmat and Twin / Double endorsement on your Class A CDL. Good miles

21 Help Wanted

GRAY Co. Sheriff's Office is currently accepting applications for Female Jailers. Pick up and return application to the Sheriff's Office. No Phone Calls.

21 Help Wanted

LOOKING for a change of scenery? Experienced Diesel mechanic needed in Midland/Odessa, TX. Will help relocate. Contact Randy Craig, 800-687-3381, freightlinerofodessa.com

50 Building Suppl.

White House Lumber
101 S. Ballard
669-3291

60 Household

BLACK GE elec. cook-stove. Like new-only used 10 times. \$250. Michael 806-440-4539

69 Misc.

SOY Candles & Tarts
806-669-2158

77 Livest/Equip.

SERVICEABLE Aged Reg. or Comm. Black Angus Bulls. Bloodlines- 878, Northern Improvement, Objective, Morgan's Future Direction. Contact Gordon Thomas 580-655-4318 or 580-497-7217.

96 Unfurn. Apts.

1/2 Off 1st Mo. Rent, 1&2 BR starting at \$390 / mo. On-site laundry & w/d hookups in all 2 bdr. apts. Caprock Apts., 665-7149.

103 Homes For Sale

1008 Darby. OWC 4 bedroom, carpet. Quiet location. Pay down, then monthly. 662-7557

103 Homes For Sale

NEWLY Renovated Historic Home FSBO. 4500 sq. ft. 5 bdr., 4 ba. & basement. Corner of Somerville & Buckler. 806-255-0706.

HOUSE HUNTERS-REALTOR
NEW LISTING - 2400 Navajo

3 Bedroom, 2 Bath - Corner lot, Storm cellar, 2 car garage, Brick home with a spacious updated kitchen and dining area

New Listing - 1727 Dogwood

3 Bedroom, 2 Bath - Spacious floor plan, Den, Living room, 2 car garage. If you're looking for a new home - HERE IT IS!

JUST A REMINDER:
First time Home Buyer's tax credit is coming to a close on 4/30/10. Also, the USDA GRH Program will likely be exhausted by the end of April - this is the ONLY program with a 100% loan.

LINDA LAYCOCK BROKER, ABR, GREEN, SRES, e-Pro
806.662.1312

LARRY HADLEY ASSOC.
806.662.2779

JORDAN ONEAL ASSOC.
806.670.6623

Pampa MLS Amarillo MLS

Check out our website for other properties we have!
www.HouseHuntersPampa.com
Make yours the next on our list.

Pampa Realty Inc. 669-0007
Pampa MLS & Amarillo MLS

Century 21

Jim Davidson (BKR/OWNER)662-9021
Rebecca Akins662-2190
Katrina Bigham898-8510
Donna Courter595-0779
Twila Fisher (BKR)440-2314
John Goddard (BKR)595-1234
Linda Lapacka662-9611
Zeb Sollors664-0312
Sandra Schuneman (BKR).....662-7291
Andrea Walling664-6227

Visit CENTURY 21 COMMUNITIES™ on AOL@Keyword:CENTURY 21
Average A Home A Minute represents an average based upon all homes bought or sold through CENTURY 21 franchises during 1995 -1997 Century 21 Real Estate Corporation and ™ trademark and servicemark of Century 21 Real Estate Corporation Equal Housing Opportunity. EACH OFFICE IS INDEPENDENTLY OWNED AND OPERATED.

AUSTIN SCHOOL DISTRICT North and Northeast

3 Cypress Point	\$519,900	4/2.5/3 - 3179 SF/GCAD
2100 Charles	\$245,000	2/3.5/2 - 3445 SF/GCAD
2421 Duncan	\$194,900	5.2.75 - 2895 SF/GCAD
2518 Evergreen	\$172,900	3/2/2 - 2331 SF/GCAD
2701 Beech Ln	\$159,900	4/3.5/2 - 3710 SF/GCAD
1901 Fir	\$146,500	3/2/2 - 2101 SF/GCAD
1819 Evergreen	\$145,000	4/1.75.75/2 - 2315 SF/GCAD
2528 Charles	\$143,500	3/1.75/2 - 2132 SF/GCAD
2235 Christine	\$139,000	3/2.5/1 - 2326 SF/GCAD
2720 Seminole	\$133,999	3/2/2 - 1416 SF/GCAD
1810 Beech Ln	\$133,000	3/2/2 - 2254 SF/GCAD
2541 Christine	\$129,500	3/1.75/2 - 2050 SF/GCAD
2207 Chestnut	\$125,000	3/1.75/1 - 1950 SF/Measured
1301 Charles	\$119,900	4/2/2 - 1732 SF/GCAD
2020 Christine	\$117,500	3/1/3 - 1607 SF/GCAD
2236 Dogwood	\$79,900	3/1.5/1 - 1264 SF/GCAD
1445 N Russell	\$65,000	3/1.75/2 - 1504 SF/GCAD
700 Somerville	\$65,000	3/1.75/0 - 1650 SF/GCAD
704 E. 16th Ave.	\$59,900	3/1.5/2 - 1323 SF/GCAD
1715 Wiltson	\$58,000	3/1.5/1 - 1634 SF/GCAD
1325 Garland	\$49,900	2/1/cpt. - 762 SF/GCAD
Choumont	\$35,000	Lots 1 & 2 Block 2

AMAR SCHOOL DISTRICT Southwest

1048 Neel	\$40,000	3/1.75/1 - 1277 SF/GCAD
411 Ward	\$25,000	2/1/0 - 723 SF/GCAD
601 N Nelson	\$17,900	3/1/1 - 1548 SF/GCAD

TRAVIS SCHOOL DISTRICT West and Northwest

2132 Lynn	\$149,000	3/1.75/2 - 2484 SF/GCAD
2143 Sumner	\$115,000	4/3/2 - 1928 SF/GCAD
2120 Lynn	\$110,900	3/1.75/2 - 1872 SF/GCAD
1916 Lynn	\$88,000	4/2/2 - 2258 SF/GCAD
2101 N Wells	\$69,900	3/1.75/2 - 1435 SF/GCAD
801 N Dwight	\$60,000	3/2/2 - 1464 SF/GCAD
1100 Cinderella	\$59,000	3/1.75/1 - 1411 SF/GCAD
1129 Seneca	\$45,000	3/1/1 - 864 SF/GCAD

WILSON SCHOOL DISTRICT Southeast

532 N Red Deer	\$92,000	3/1.75/2 - 1846 SF/GCAD
512 Red Deer	\$89,900	3/1.75/1 - 1536 SF/GCAD
1128 Terrace	\$45,000	2/1/1 - 1140 SF/GCAD
316 Henry	\$39,000	2/1/0 - 892 SF/GCAD

Outside Pampa City Limits

530 Acres Near Lefors	\$530,000	Ranch West of Lefors
220 N Ballard	\$395,000	Lt. Commer. 4 bth/27,797 SF/GCAD
2642 Co Rd 17, WD	\$189,000	3/1.75/2 - 1640 SF/CCAD w/6 acres
1410 I-40 McLeon	\$89,500	35.8 Acres 2 Miles East of McLeon
1410 I-40 McLeon	\$70,000	3/2/0 - 2176 SF/GCAD
614 Gardner, Berger	\$61,500	3/2/2 - 1350 SF/HCAD
1023 Hedgecote, Berger	\$59,900	3/2/2 - 1580 SF/HCAD
412 S Grimes, WD	\$39,900	4/1/2 - 1333 SF/HCAD
7971 Turnbieweed, Lefors	\$38,900	3/1.75/2 - 1678 SF/GCAD
801 S Grimes WD	\$34,900	3/2/2 - 1400 SF/CCAD
582 E 4th, Clearendon	\$31,900	3/1.75/2 - 1845 SF/DCAD
317 E 8th, Lefors	\$25,000	2/1/2 - 1035 SF/GCAD

Century 21 We make home loans easy.

Same-day loan decision or we'll pay you \$250

Call now for a pre-approval loan decision

We guarantee you will close on time **(888) 883-2086**

ADVERTISING Material to be placed in the Pampa News MUST be placed through the Pampa News Office Only.

BATHROOM heaters, used, good condition. \$15 a piece or make offer for whole lot. 665-0415.

CARPET CLEANING!!! Furniture Clinic, 316-0713. Refinishing, Repairing & Re-Gluing.

WJ Overhead Doors Sales, Service, Repair William Wildcat Owner 665-1061 or 595-0117

SELLING Mattresses for 30 yrs. Low prices! New queen set \$266. Don Minnick, Montgomery Ward retiree. Red Barn, 1420 Hwy. 273 South. Open each Sat. Will open anytime for you. Call 665-2767

First Landmark Realty
(806) 665-0717

Country Living at it's Best
Wonderful 3 Bedroom Brick, 2.75 Baths. Isolated master bedroom with an updated bath including whirlpool tub. Great kitchen has island and a built in desk. French doors from the dining. Huge living room has double wood-burning fireplace. Large utility room with lot of small cabinets. Small basement. Tiled breezeway leading from kitchen to garage. Office. Lots of storage cabinets in the double car garage. Tons of storage in the house. Over 3,000 square feet of living space. All of this fenced on 17 acres. Wonderful place to raise horses. Call Irvine for an appointment.

Very Nice Floor Plan
3 Bedroom Brick, 2 Full Baths, WB fireplace. Large isolated master bedroom and bath. Front kitchen and dining. Yard sprinkler front and back. Great storage building. Fenced RV parking. Covered patio. Estate says sell. Call for additional information.

Investors
Might like to take a look at this 2 bedroom. Raised floor in living room. Nice sized kitchen. Detached garage. Needs some TLC. Priced below \$20,000.

Office Building
Convenient downtown location. 2,825 square feet of office space. 675 square foot attached garage. Call Irvine for additional information.

Bobbie Nisbet BKR662-8118
Irvine Riphahn GRI665-4534
Chris Moore GRI665-8172
Lilith Brainard665-4579

CALL FIRST LANDMARK FIRST FOR ALL OF YOUR REAL ESTATE NEEDS.

Pampa Realty Inc. 669-0007
Pampa MLS & Amarillo MLS

Open Houses!
Sunday, March 28 2:00 p.m. - 4:00 p.m.

2235 Christine • \$139,000



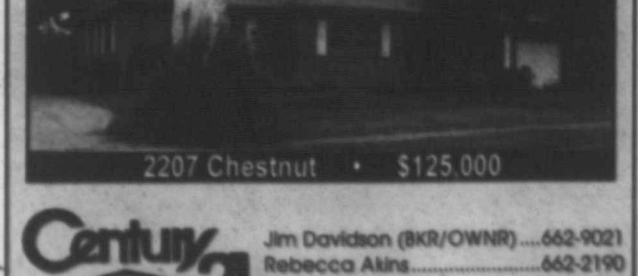
1901 Fir • \$146,500



2120 Lynn • \$110,900



2207 Chestnut • \$125,000



Century 21

Jim Davidson (BKR/OWNER)662-9021
Rebecca Akins662-2190
Katrina Bigham898-8510
Donna Courter595-0779
Twila Fisher (BKR)440-2314
John Goddard (BKR)595-1234
Linda Lapacka662-9611
Zeb Sollors664-0312
Sandra Schuneman (BKR).....662-7291
Andrea Walling664-6227

NO transportation, not a problem. These large 1 bdr. apts. w/ appliances, are in walking distance to everything you need. 665-4274.

PAM APTS
1200 N. WELLS
669-2594

REMODELED
New floors, appliances, bathroom & more!
1 & 2 bdrs.
ALL BILLS PAID
(817) 909-4766

SCHNEIDER Apartments. Call for special rates. Short term lease. Business people welcome. 665-0415

98 Unfurn. Houses
PICK up rental list, in the Black Box, at 125 S. Houston, Pampa.

1/1. Clean. Washer, dryer hookups. \$350 mo. \$350 dep. 665-1122 or 663-1073

1132 Terrace, 2/1/1. You pay utilities. \$550 mo. + dep. & lease. Call 440-3083, 662-0085.

3 bdr., 1 ba.
2635 Navajo
669-9817

IN Lefors. 3 bdr., 1 ba., cent. h/a. Washer/dryer hookups, fenced yard. 835-2860

\$100 off move in. 1011 Duncan, 2 bdrm, \$400. 508 Frost, 2 bdrm, \$300. 665-1875.

CONDO. 2 bdr., 1 3/4 ba., some appl., w/d hookups; fpl.; pool; single gar.; Austin Sch. dist. Gas/water pd. 6 month lease. \$500 dep.; \$1000 pet deposit/ \$350 non-refundable pet deposit; \$650 mo. 669-6841 Mon.-Fri. 8-5.

REMODELED 3/1/1. C h/a, new windows. 637 N. Nelson. \$550 mo., \$300 dep. 663-0561

APT. for rent. 2 bdr., 1 ba. Appliances furnished. Call 440-2866.

APTS. Houses Duplexes. K&B Properties. Ref. & dep. req. Lakeview Apts. 669-4386

BENT CREEK APARTMENTS
*Lovely 2 & 3 Bdr. Apts
*All Single Story Units
*Electric Range
*Frost-Free Refrigerator
*Blinds & Carpet
*Washer / Dryer Connec.
*Central Heat / Air
*Walk-in Closets
*Exterior Storage
*Front Porches

HUD ACCEPTED
1400 W. Somerville
Pampa, TX
806-665-3292

102 Bus. Rental
DOWNTOWN office space for rent. Utilities & cleaning service provided. Ample parking. 669-6823

OFFICE Space for rent, ask about 3 months free rent. 669-6841.

PRIME Commercial Property on N. Hobart. 1800 sq. ft. w/ storage. 669-0888, 662-4909.

Keagy-Edwards, Inc. Quentin Williams REALTORS

Becky Baten669-2214
Heidi Chronister665-6388
Darrel Sehorn669-6284
Rod Donaldson665-2800
JUDI EDWARDS GRI, CRS
BROKER-OWNER ..665-3687

Roberta Babb665-6158
Joan Mabry669-3201
Sandra Bronner665-4218
Maxine Watson662-9052
MARILYN KEAGY GRI, CRS
BROKER-OWNER ...665-1449

Selling Pampa Since 1965
669-2522 • 2208 Coffee & Perryton Pkwy.

We Need Listings!

Address	Price	Bri/Baths	gsad/sq.ft.
2239 Lynn	295,000	4/3.5	4069
230J Chestnut	290,000	3/2/2	3077
2011 Mary Ellen	179,500	3/2.5	2730
2629 Fir	172,000	3/2	2208
1826 Fir	169,500	4/2	2578
2600 Dogwood - SOLD	164,000	3/2	2300
2132 Mary Ellen	158,000	3/3	2728
1907 Evergreen - SOLD	134,900	3/2	2075
1237 Christine	108,000	4/2.75	2872
1601 N. Christy - SOLD	125,000	4/2	2000
1528 Dwight	120,500	3/2	1498
2140 Chestnut	115,000	3/1.75	1766
1129 Terry	102,000	4/2	2113
1905 Duncan	99,900	3/1.75	1868
1100 Christine - SOLD	98,000	3/2	1724
2517 Mary Ellen	92,500	3/2	1392
907 Cinderella	80,000	3/1.75	1192
1806 N. Nelson	75,900	3/2	1130
600 W. 8th WD - SOLD	74,900	3/1	1169
2214 Duncan	69,900	3/2	1092
503 Cedar	52,500	3/2.5	1998
1033 S. Sumner	38,000	3/1.75	1400
401 N. Zimmers - SOLD	35,000	2/1	980
413 N. Nelson - SOLD	25,900	2/1	808

COMMERCIAL

820/828 W. Kingsmill	299,000	10,000
103 E. 28th Street	298,000	2200
113/115 W. Kingsmill	140,000	5000
511 N. Banks	100,000	LOT
Pheasant Lane	40,000	LOT
2200 Coffee	20,000	LOT
301 N. Dwight	12,000	LOT
Harvester/Magnolia	10,000	LOT
509 N. Cuyler	1,500	LOT

SALE OR LEASE
3 bdr. 1531 N. Faulkner, \$695 mo. 4 bdr.-1132 Sierra, \$795 mo. Call 595-0234

OWNER will finance. 1123 E. Foster, 2 bdr., 1 ba. Call Gary at TruStar Real Estate, 440-1698

TRUSTAR Real Estate, 1716 N. Hobart. List with us! Property mgmt., Home staging. 665-4595.

112 Farms/Ranches

This ad is just a small sample of the properties that we currently have for sale. Please check our website scotlandcompany.com and give us a call! We need your listings both large and small, all types of ag properties (ESPECIALLY CRP)

SWINE PRODUCTION FACILITY-Moore Co., TX. 1200 Sow Farrow to Finish, capable of running 28,000 pigs annually, computerized feed mill, flex-flo feeding system, management in place. Priced to Sell!

DAWSON CO. EXPIRED CRP. West of Lamesa, 163 acres more or less, CRP grass and thick brush providing excellent cover for wildlife as well as food forage for deer, goats, sheep and cattle. Base acres in Upland Cotton.

DONLEY CO.- 328 acres, irrigated hay farm, home, live water, pavement.

HALL CO.- 1032 acre hunting ranch on Jonah Creek.

HALL CO.- 990 acres, Mulberry Creek, 3 pivots, good water, home, hunting.

www.scotlandcompany.com

Ben G. Scott
Krystal M. Nelson
Brokers
800-933-9698
day/eve

114 Recre. Veh.
03 Hitchhiker II 34 ft. 5th wh. All season, 3 slide-outs, full ba., open kitchen. Very clean. Great shape! \$23,000 obo. 806-231-2597.

115 Trailer Parks
TUMBLEWEED Acres, Storm Shelters, fenced, stor. bldg. avail. 665-0079, 665-2450.

2000 Harley RoadKing Excellent Cond.!
24K miles, \$9300
See at FINISH LINE
408 S. Cuyler Pampa, TX
or call 806-874-1779

122 Motorcycles

2000 Harley RoadKing Excellent Cond.!
24K miles, \$9300
See at FINISH LINE
408 S. Cuyler Pampa, TX
or call 806-874-1779

2000 Harley RoadKing Excellent Cond.!
24K miles, \$9300
See at FINISH LINE
408 S. Cuyler Pampa, TX
or call 806-874-1779

2000 Harley RoadKing Excellent Cond.!
24K miles, \$9300
See at FINISH LINE
408 S. Cuyler Pampa, TX
or call 806-874-1779

2000 Harley RoadKing Excellent Cond.!
24K miles, \$9300
See at FINISH LINE
408 S. Cuyler Pampa, TX
or call 806-874-1779

2000 Harley RoadKing Excellent Cond.!
24K miles, \$9300
See at FINISH LINE
408 S. Cuyler Pampa, TX
or call 806-874-1779

2000 Harley RoadKing Excellent Cond.!
24K miles, \$9300
See at FINISH LINE
408 S. Cuyler Pampa, TX
or call 806-874-1779

2000 Harley RoadKing Excellent Cond.!
24K miles, \$9300
See at FINISH LINE
408 S. Cuyler Pampa, TX
or call 806-874-1779

2000 Harley RoadKing Excellent Cond.!
24K miles, \$9300
See at FINISH LINE
408 S. Cuyler Pampa, TX
or call 806-874-1779

2000 Harley RoadKing Excellent Cond.!
24K miles, \$9300
See at FINISH LINE
408 S. Cuyler Pampa, TX
or call 806-874-1779

2000 Harley RoadKing Excellent Cond.!
24K miles, \$9300
See at FINISH LINE
408 S. Cuyler Pampa, TX
or call 806-874-1779

2000 Harley RoadKing Excellent Cond.!
24K miles, \$9300
See at FINISH LINE
408 S. Cuyler Pampa, TX
or call 806-874-1779



Holy Land trip

A group of 16 church members from Pampa's Calvary Baptist Church, along with seven others from churches in Amarillo and Panhandle, toured Israel March 12 -23. The group, led by Randy Davis, visited many of the Holy Land sites where Jesus' ministry took place. They were able to visit many historical places in Jerusalem and the surrounding area. This photo was taken at the ruins on top of Mt. Gerizim. Back row, from left are Richard Bartel, Randy Davis, Joe Zimmerman, Marty Field, Jason Jones, Rick Crosswhite, Bill Crook, and Mary Crook. Second row, from left, are Bill McIntyre, Dallas Stringer, Sharla Davis, Suzie Jameson (holding the Pampa News), Mellonee Jennings, Jeannie Parks, Janice Roy, Bill Roy, Walt Parry, Sandy Crosswhite, (kneeling) Gary Jameson, Gene Worrell, and Barbara Parry. Not-present for the photo: Diana McIntyre and Charlene Worrell.

DOLLY'S BAR & GRILL
 112 S. COTLER - 665-6087
TEXAS HOLD'EM
 EVERY THURSDAY AT 9:00 P.M.
\$20 BUY IN 3/4 OF BUY IN
 2ND PLACE \$100 1/4 OF BUY IN
APRIL 10 - 8:00 - 11:00 P.M.
 WIPPA DIXIE CLASSIC BLUES
 ROCK COUNTRY



Dear Abby...

By Pauline & Jeanne Phillips

DEAR ABBY: I'm 16 and have grown up religious my whole life. I get good grades and stay out of trouble. A lot of my friends have done crazy things like drinking and partying, but I haven't. Because of this, I have the reputation of being a "goody-two-shoes."

I'm not saying it's a bad thing being a good girl, but I don't want to be a goody-two-shoes. Part of me wants to try some of the stuff my friends have been doing, but I don't want to lose my parents' trust. Please help! -- RESTLESS IN OREGON

DEAR RESTLESS: You have your parents' trust because you have earned it. Before you try any of the "stuff" your friends have been doing, ask yourself what the consequences could be. Yes, it's hard being labeled a goody-two-shoes -- but please look closely at who is doing the name-calling. A streetwise individual once told me, "The best way out of a jam is not to get into one in the first place." That tidbit has served me well, and that's why I'm passing it along to you.

sive foreign car, but that's where it ends. Everything is in his name, and her wedding ring is one we gave her, although he paid to remove the stone and have it polished. I told her then to walk away.

They have two children. Her son is a spoiled brat, completely self-absorbed and is still at home.

More than one family member refers to her spouse as a horse's rear end. He rarely attends family events, which is really fine with everyone. At best, he can be described as rude and obnoxious.

My daughter would never leave him. She loves the lifestyle too much. If she only knew how most of her extended family think of them. I'm embarrassed by it, really.

I just thought your readers should know that marrying money isn't necessarily the pot of gold at the end of the rainbow. -- HER MOM IN WISCONSIN

DEAR MOM: I'll say. Someone who marries for money usually ends up earning every single penny.

Happy 60th!

Susie & the kids 2442

DEAR ABBY: My daughter left our small Midwestern town for the West Coast to marry money. At 37, she finally snagged her millionaire. She thought it was going to give her a blank check.

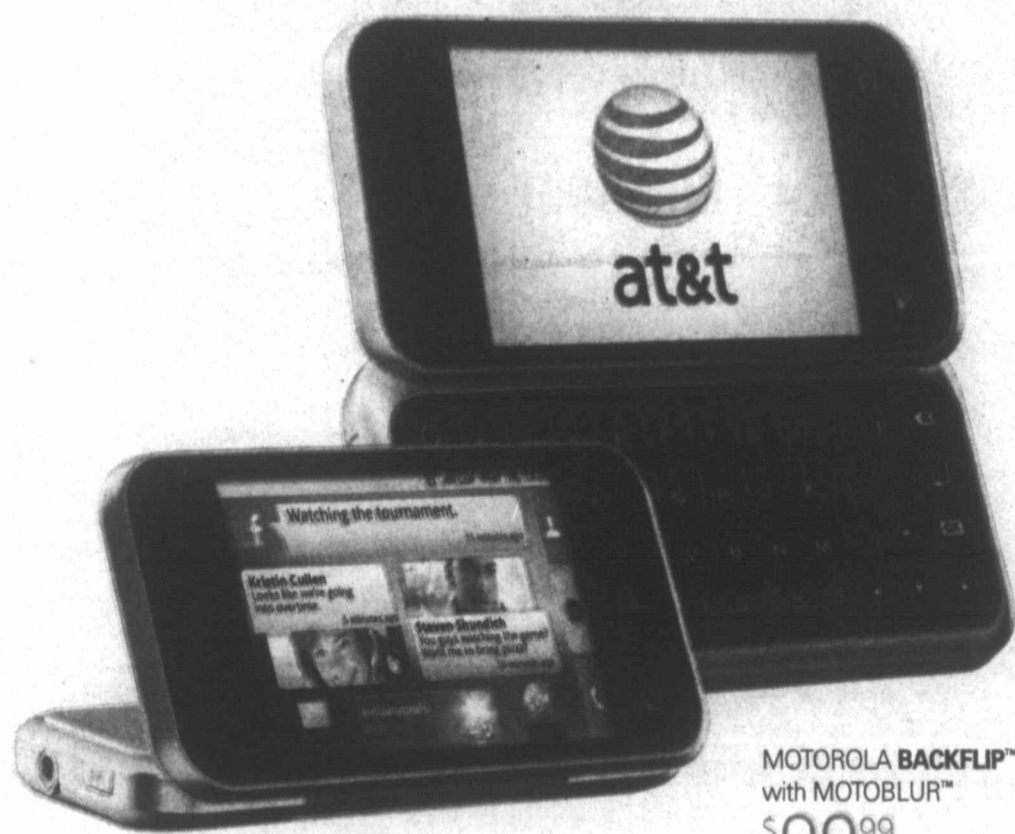
She does live in a lovely home and drives an expen-

PAMPA CIVIC CHORUS
 FAURE REQUIEM
 SUNDAY MARCH 28, 2010
 8:00 PM

Refusion
 8055 TAPP & RICE LAND
 www.refusion.com

BACKFLIP™

ONLY ON AT&T, THE NATION'S FASTEST 3G NETWORK



MOTOROLA BACKFLIP™
 with MOTOBLUR™
\$99.99
 AFTER MAIL-IN REBATE
 \$100 mail-in rebate AT&T Promotion Card with voice plan, minimum \$30/mo. data plan required & 2-year svc. agreement.

FACEBOOK,™ TWITTER,™ TEXT AND MORE STREAMING ON A SINGLE SCREEN.
 BREAKING NEWS THAT'S IMPORTANT TO YOU.

ATT.COM/BACKFLIP



1.866.MOBILITY - ATT.COM - VISIT A STORE

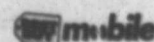


AT&T is the exclusive wireless partner of the NCAA® and The Final Four®

AT&T STORES

Pampa 2131 Perryton Pkwy., (806) 665-0500

ALSO AVAILABLE AT SELECT:
 Rebate not available



*AT&T imposes a Regulatory Cost Recovery Charge of up to \$1.25 to help defray costs incurred in complying with obligations and charges imposed by State and Federal telecom regulations; State and Federal Universal Service charges; and surcharges for government assessments on AT&T. These fees are not taxes or government-required charges.

3G not available in all areas. Coverage is not available in all areas. See coverage map at stores for details. Offer available on select phones. Limited-time offer. Other conditions & restrictions apply. See contract & rate plan brochure for details. Subscriber must live & have a mailing add: within AT&T's owned wireless network coverage area. Up to \$36 activ. fee applies. Equipment price & mail may vary by mkt & may not be available from independent retailers. **Early Termination Fee:** None if cancelled in the first 30 days, but up to: \$35 (restocking fee may apply to equipment returns; thereafter up to: \$175. Some agents impose add'l fees. **Unlimited voice services:** Limited voice svcs are provided solely for live dialing between two individuals. No additional discounts are available with unlimited plan. **Offnet Usage:** If your mins of use (including untd svcs) on other carriers' networks ("offnet usage") during any two consecutive months exceed your offnet usage allowance, AT&T may at its option terminate your svcs, deny you control use of other carriers' coverage, or change your plan to one imposing usage charges for offnet usage. Your offnet usage allowance is equal to the lesser of 750 mins or 40% of the Anytime mins incl'd with your plan (data offnet usage allowance is the lesser of 4 MB or 20% of the 4B incl'd with your plan). **AT&T Promotion Card:** Motorola Backflip price before AT&T Promotion Card, voice plan, minimum \$30/mo. data plan & with 2-year contract is \$199.99. Allow 60 days for fulfillment. Card may be used only in the U.S. & is valid for 120 days after issuance date but is not redeemable for cash & cannot be used for cash withdrawn at ATM's or automated gasoline pumps. Card request must be postmarked by 5/26/10 & you must be a customer for 30 consecutive days to receive card. **Sales Tax:** calculated based on price of unactivated equipment. NCAA and Final Four are licensed by or trademarks of the National Collegiate Athletic Association. ©2010 AT&T Intellectual Property. Service provided by AT&T Mobility. All rights reserved. AT&T, the AT&T logo and all other marks contained herein are trademarks of AT&T Intellectual Property and/or AT&T affiliated companies. All other marks contained herein are the property of their respective owners.