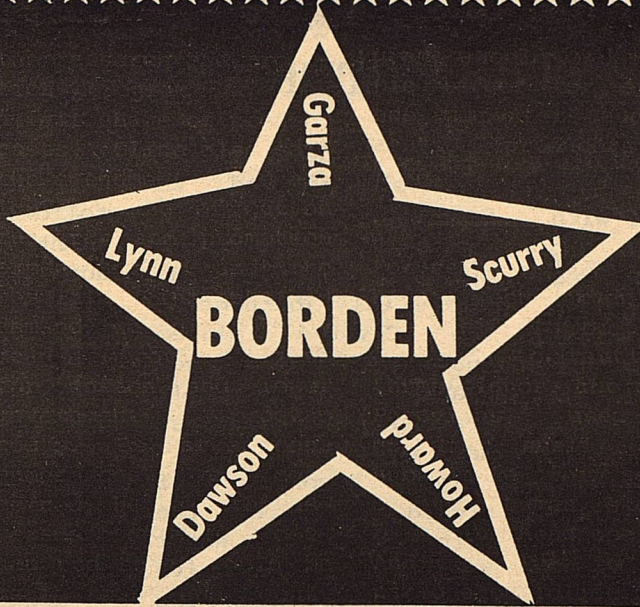


THE

VOLUME XIV



STAR

DECEMBER 9, 1987

Serving the Counties of Borden, Dawson, Garza, Howard, Lynn & Scurry

TWO CANDIDATES FOR

SHERIFF ANNOUNCE



R.D. LEWIS

Royale (R.D.) Lewis is announcing his candidacy for the office of Sheriff, Tax Collector/Assessor for Borden County in the Democratic Party primary election scheduled for March 8.

R.D. is a livestock and cotton farmer in the northeast part of Borden County and has served as the county Chief Tax Appraiser since July, 1983. He is a veteran, having served as a commissioned officer with the U.S. Marine Corps 1966-1970, and was the recipient of the Navy Commendation Medal for meritorious service in 1968 while serving in Viet Nam.

R.D. served as a deputy sheriff in Scurry County 1971-1972 and as a constable's deputy in Borden County since

1982. He is presently certified as a Texas Peace Officer and holds an Advanced Certificate from the Texas Commission on Law Enforcement Standards. He holds a masters degree from Texas Tech.

He has been a resident of Borden County since 1972. R.D. is married to Carol Sue (Patterson) Lewis and they have three children; Shelly, Amy, and Shawn, all presently attending Borden County Schools.

R.D. is a member of the Church of Christ.

"I would appreciate your support."



WARREN BEAVER

Mr. Warren Beaver has announced that he is a candidate for Sheriff of Borden County, subject to the Democratic Primary.

He was born in Flu-

vanna, Texas and now resides with wife Betty in west Borden County.

If elected sheriff, Warren promises to execute the duties of the office to the best of his ability.

TWO STRUCTURES LOST AT BORDEN SCHOOL

Fire gutted the wood shop and the equipment storage building of the Borden County Schools on Thursday evening, December 3rd, resulting in a loss of property estimated at \$50,000.

Fire departments from O'Donnell and Tahoka joined the Lamesa Fire Department in assisting volunteers at Gail to extinguish the fire.

Destroyed in the fire were woodworking tools, new lumber and building supplies, and building and grounds equipment.

Volunteers in Gail began fighting the blaze at approximately 6:15 p.m. Lamesa firemen were the first to arrive at the scene. Units from the Tahoka and O'Donnell fire departments arrived after the fire was brought under control.



ONLY 13 MORE SHOPPING DAYS LEFT BEFORE CHRISTMAS!!!



LADY COYOTES CAPTURE GARDEN CITY TOURNAMENT

For the second consecutive year, the Borden County Lady Coyotes took championship honors in the Garden City Tournament. The finals was almost anti-climatic after an exciting semi-final win over previously undefeated and untested Sterling City.

In the first game, Borden opened up a big 38-5 first quarter lead over Water Valley and then coasted to a 62-23 win. All 12 of Borden's players saw plenty of playing time with 10 getting into the scoring column. Leading the way was Elana Himes and Amy Lewis with 12 points each followed by Lisha Sternadel and Kate Phinzy with 9 each. Felicia Romero made 8, Kristi Adcock hit 4,

Rachel Romero hit 3, Ralynn Key and Shelly Lewis each had 2, and Randi Woodward made 1. Kristi and Amy each hit 100% from the field hitting 2 of 2 and 5 of 5 respectively. Felicia hit 80% from the field and Kate and Lisha each hit 67%. From the free throw line, Shelly and Amy led, each hitting 2 of 2 for 100%. Kate led in steals with 5 and Elana had 4. Amy led in rebounds with 8 and Randi was next with 6. Lisha led in assists with 5. As a team, Borden shot an excellent 52% from the field and came up with 28 steals.

Then in the semi-finals, Borden met

cont. page 2

TOURNAMENT

cont. from pg. 1

Sterling City which already owned wins over two District 13 opponents, Sands and Grady. Borden jumped out quickly to a 19-8 first quarter lead and extended it to a 33-19 half-time lead. But then foul trouble and turnovers began to hurt the Lady Coyotes. Borden held a 17 point lead when starting guard Lisha Sternadel and Kate Phinizy fouled out. With an aggressive press, Sterling City fought its way back to within two points with 2 minutes remaining. But then Elana Himes shut the door on the Eagles effort hitting 2 baskets and 2 free throws in the closing moments to hold off for a 54-49 win.

Elana dominated the contest on both ends as she was the only Lady Coyote to score in double figures with 28. She was followed by Lisha with 9, Ralynn with 6, Kate hit 5, Kristi made 4, and Elvira made 2. Lisha led in field goal percentage hitting 4 of 5 for 80% followed by Elana with 56%.

Elana led in free throw percentage with 73%, followed by Ralynn and Kristi with 67%. Kate led in steals with 5 followed by Elana and Lisha with 4 each. Elana led in rebounds with 12 and Lisha led in assists with 4.

The final was an awesome display of defense and the Lady Coyotes met the home team, Garden City. Borden jumped out to a 12-2 first quarter lead and then held Garden City scoreless the second quarter to hold a 22-2 half-time lead. In the 39-17 victory, the Lady Bearcats were not without their chances as they attempted 29 free throws, 18 attempts in the last quarter where they again went scoreless from the field and hit their only nine free-shots. Again all twelve players saw playing time with seven scoring. Elana led again in scoring with 17 followed by Kate with 8, Kristi with 5, Lisha made 3, and Elvira, Amy, and Julie each had 2. Julie led infield goals percentage hitting her only attempts for 100% followed by Kate with 75%. Elana and Amy led in free throw percentage with 50%. Elana led in steals with 5 and Elvira was next with 4. Lisha led in rebounds with 7 and Kate and Amy each had 6. Kate led in assists with 4 and Lisha had 3.

At the tournaments end, it was announced that Elana Himes, a 5'10" junior was selected as the tournaments' Most Valuable Player and Lisha Sternadel, a 5'6" sophomore was selected to the all tournament team. The Lady Coyotes record now stands as 6-2 for the year. Their next game will be in the Sands tournament against a strong AA team Stanton. The game will be Thursday at 12:00.

COYOTES LOOSE TO WATER VALLEY 51-35

The Borden County Coyotes traveled to Garden City to play Water Valley in the opening round of the Garden City Tournament. The Coyotes played against a much bigger team, but we only trailed by 5 points at half time.

The second half proved to be the turning point. Water Valley's aggressive defense shut down the Coyotes' offense, which only scored 2 field goals for the half. The Coyotes leading scorer, Shannon Bond, got into foul trouble in the first half as he picked up his 4th foul just seconds before the half ended. He sat out most of the 3rd. quarter, and fouled out in the 4th quarter

with a total of 14 points. Brian Bond followed with 10 points. Kerry Fryar added another 6, Will Phinizy 3, and Shane Kemper 2 points.

Kerry Fryar led the Coyotes in rebounding with 6. Shannon and Brian grabbed 4 each. Will and Shane had 3 apiece. Eric Lusk and Cole Vestal had 1 each.

Will Phinizy and Brian Bond chased down 5 loose balls apiece. Chris Kilmer had 3. Shannon, Shane, and Randell had 2 each. Kerry and Wayne Wilson had 1 each.

Shannon had 2 assists with Will and Brian adding 1 each.

The loss put the Coyotes in the consolation side of the bracket to face Grady.

COYOTES TRAMPLED BY LONGHORN STAMPEDE

The Borden County Coyotes traveled to Loop Tuesday and lost 83-50. The Longhorns used their pressing defense to cause the Coyotes to commit 32 turnovers.

The Coyote's scoring was led by Shannon Bond who had 15 points. Will Phinizy and Jimmy Rios scored 11 points each. Kerry Fryar and Brian Bond added 5 points apiece to the total. Randell Hollis also scored 1 point.

Chris Kilmer was the Coyotes' leading rebounder with 7 rebounds. Kerry Fryar and Will Phinizy grabbed 6 rebounds each. Shannon Bond and Jimmy Rios added 5 apiece to the total. Wayne Wilson also had 3 rebounds. Randell Hollis and Brian Bond had 1 rebound each.

Shannon Bond and Wayne Wilson recovered 2 loose balls apiece. Kerry and Jimmy recovered 1 each. Will had 2 and Shannon and Jimmy 1 each.

COYOTES FALL IN DOUBLE OVERTIME

The Grady Wildcats used their hot outside shooting to force the game into two overtimes before winning by 1 point. The Wildcats scored 4 three point shots to the Coyotes 2.

The final score 54-53.

Shannon Bond led the Coyote's in scoring with 24 points. Kerry Fryar scored 9. Brian Bond scored 6 points, and Jimmy Rios and Will Phinizy added 4 each to the total.

Shannon led the Coyote rebounders with 8. Will and Jimmy had 4 rebounds with Kerry 2, Chris 2 and Brian 1.

Shannon chased down 8 loose balls. Will and Jimmy had 5 recoveries each. Chris Kilmer collected 3 and Brian had 1.

Shannon also had 4 assists, and Brian had 2.

The Coyotes showed a more aggressive defense as they made 23 recoveries; but Lady Luck turned her eyes

on the Coyotes in the final seconds of the regular and overtime periods.



The Borden Star
Publication No. 895520
(USPS 895-520)
Publication No. 895520

Editor
Barbara Anderson

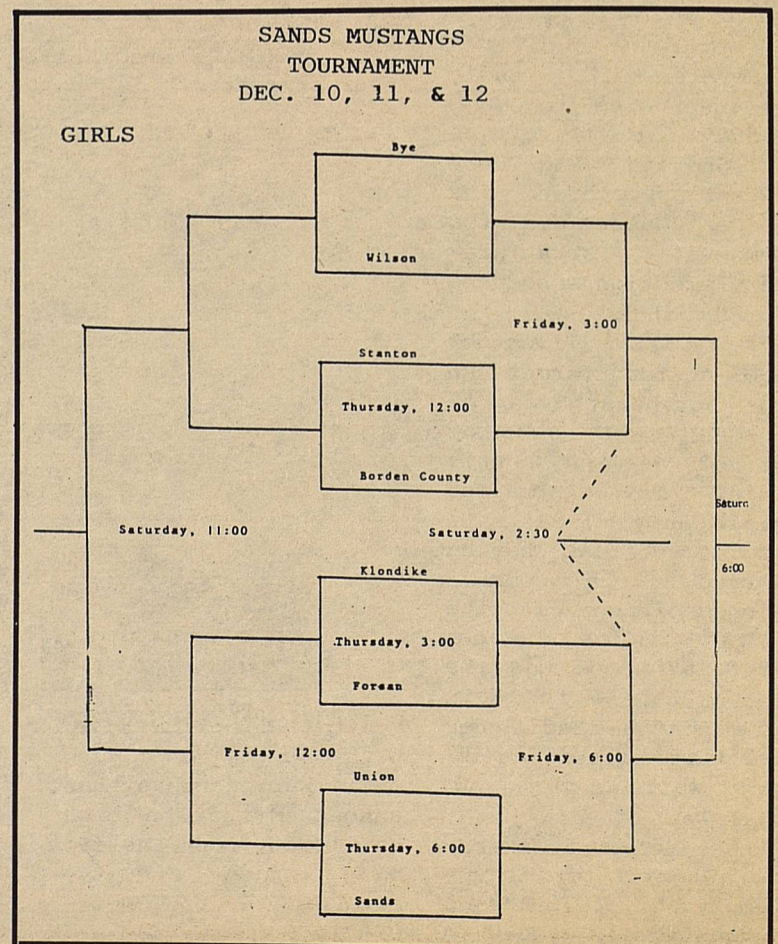
Published weekly, except for Christmas and New Years, on Wednesday at Gail, Borden County, Texas 79738, Box 137, Kincaid Street, Second Class postage paid at Gail, Texas.

Any errors that we make reflecting on the reputation or standing of any Firm, Corporation, or individual that may appear in the columns of the Borden Star will be gladly corrected when called to the attention of the staff.

Subscription Rates:
\$8.00 per year

Borden Star Owners
James McLeroy, Barbara Anderson, Doris Rudd, Pat Porter, Bob Dyess, Edna Miller, Ruth Weathers, Mrs. Nathan Zant, Sonny Tucker, Eddie Simer, Loreen Jones, Martin Parks, Dan Turner, Lela Porter, and Marge Toombs.

SANDS MUSTANGS
TOURNAMENT
DEC. 10, 11, & 12



Basketball News

LOOP WINS GAME FROM BORDEN GIRLS

Elana Himes led all scorers with 24 points followed by Lisha Sternadel with 12. Ralynn Key hit 9 points followed by Kate Phinizy and Elvira with 3 each. Shelly Lewis made 1. Elvira led in field goal percentage with 100% hitting 1 of 1 followed by Ralynn Key with 60% and Elana with 55%. Elana led in free throw percentage with 100% making 2 of 2 followed by Ralynn with 75%. Elana also led in steals with 6 and tied for top honors in rebounds with Lisha as each had 8. Kate led in assists with 5.

Just when it seemed that Borden had things all locked up on the Loop game last Tuesday, Loop made a late surge which included a basket with two seconds remaining to take a 54-52 win over the Lady Coyotes. Borden held a seven point lead with less than two minutes remaining but costly turnovers in the last moments let the game slip away. The score was tied 31-31 at half as Elvira Balaque hit a three pointer to tie it up at the buzzer. Then Borden led 44-41 entering the final stanza. With the win, Loop raised its record to 5-0.

JR. HIGH BOYS UPSET O'DONNELL

The Borden County Jr. High Coyotes traveled to O'Donnell, and they won 24-19 in an exciting, fast moving game. The Eagles were much larger and quicker than the Coyotes, but good ball handling and shooting allowed the Coyotes to come out on top.

In the first quarter, the Coyotes took the lead 10-5 with John Paul Harris accounting for 6 of those points and Klint Kemper the other 4 points.

In the second quarter the Coyotes increased their lead with balanced scoring and good defense. Juve Balaque led the Coyotes scoring in that quarter with 4 points. David Buchanan and Klint Kemper scored 2 points each. The Eagles scored only 2 points in the quarter.

In the third quarter, the Coyotes broke even with the Eagles as both teams scored 4 points. Klint and David scored for the Coyotes who began to play substitutes late in the quarter. The Coyotes were outscored

8 to 2 in the fourth quarter as the Eagles pressed the Coyote subs. Klint scored the only basket of the quarter.

Klint Kemper led all scorers with 10 points. John Paul Harris followed with 6 points, and David and Juve scored 4 points

each. Rich Holzmann and Shawn Lewis helped to put pressure on the Eagles with aggressive defense. When the starters rested, Clint Bray, Clint Anderson, Clint Wills, Heith Gammons, and Ross Hataway provided excitement for the crowd.



GO BIG BLUE

LUNCH MENU

December 14 - 18, 1987

Monday	Supper Dogs Pork & Beans Fruit Milk	Salad Bar
Tuesday	Pork Stir Fry Macaroni and Cheese Fruit Hot Bread Milk	Salad Bar
Wednesday	Chalupas Shredded Lettuce Ranch Style Beans Fruit Cobbler Milk	Salad Bar
Thursday	Turkey and Dressing Potatoes Green Beans Fruit Salad Hot Bread Milk	Salad Bar
Friday	Hamburgers French Fries Lettuce & Tomatoes Brownies Milk	Salad Bar

JR. HIGH GIRLS BOMB O'DONNELL 47-7

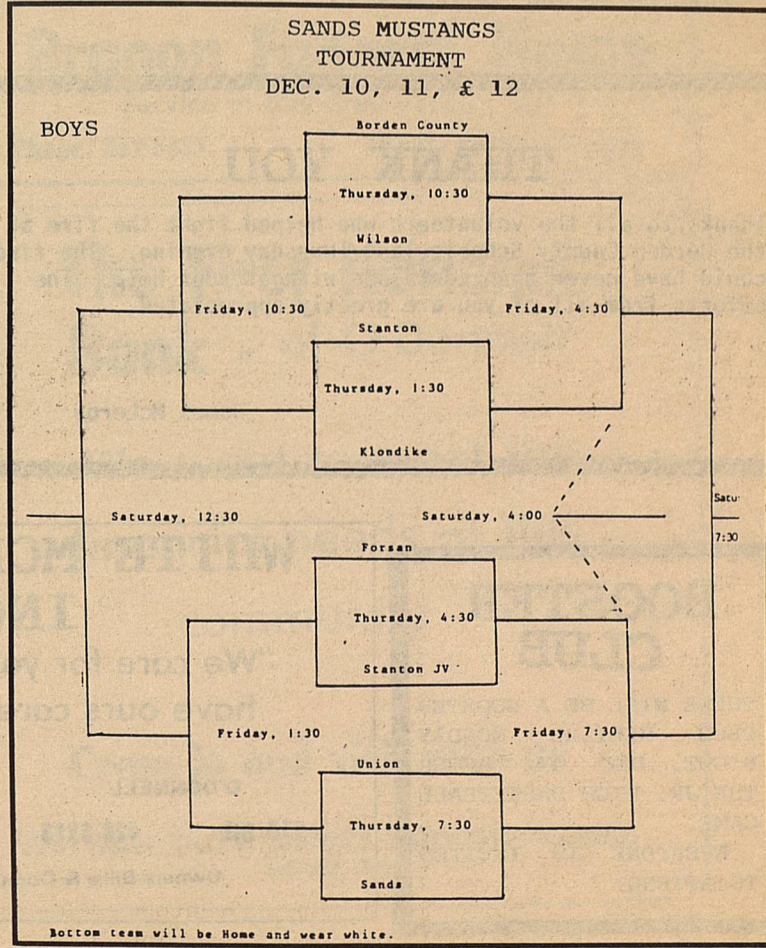
What started as a bad dream for Borden ended as a nightmare for O'Donnell, as the Jr. High girls handed O'Donnell its first defeat in district, and what a loss it was! O'Donnell jumped out to a 4-1 lead early in the first quarter but then Borden came on to take the lead at the end of the initial stanza 9-4. Things really heated up in the second quarter as Borden outscored the Eagles 14-1 to take a 23-5 half-time lead. The defense continued to dominate in the second half as the coyotes held O'Donnell to 2 points in the last two quarters, that basket coming early in the third quarter. Borden hit 14 points in the third and 10 in the last to take a convincing 47-7 victory to up their district record to 2-0 and season record to 3-1. O'Donnell falls to 2-1 in district.

did the most damage to the Eagles. Shayne led all scorers with 16 points followed by Amanda with 15. Shara Dee Woodward and Kristin Kilmer each had 6 points and Kelly Jo Ogden and Leslie Fryar each had 2. Turning in a fine defensive effort was Kristin Monger.

The night started out with a "B" game against O'Donnell. Due to a shortage of girls in the Jr. High program this year, the "B" team had only five players. One player, Angela Evans, suffered an ankle injury Friday and was confined to crutches for a week. Still she suited up and stood on the court so the game could legally start. Playing with four players on one end, the little Coyotes hustled their way to a 14-11 win over O'Donnell. One player, Melody Harrison a sixth grader, fouled out in the fourth quarter leaving Borden with only three players on one end! Still the ten O'Donnell suited up were no match for the Borden group. Leading in scoring

were the Lloyd twins hitting 10 of Borden's 14 points. A'Lise hit six points followed by M'Lys with 4. Melody had 2 points and another sixth grader, Mendy Hensley had 2, hitting the first two points of the game. Borden never trailed leading 2-0 the first quarter and 8-6 at half-time.

Next game for the Jr. High girls will be Monday, December 14, against Grady. The game played at Gail will begin at 5:00 with the "B" boys and will be followed at 6:00 with the "A" girls. This will be their last game before the Christmas break so everyone come out and support the Jr. High teams.



1987-88 SECOND SIX-WEEKS

The following named elementary and junior high students grades 5-8, have achieved academic honors for the second six-weeks:

HIGH HONORS

David Buchanan	Gr. 8
Rich Holzmann	Gr. 8
Kristin Kilmer	Gr. 8
Patsy Underwood	Gr. 8
Shara Woodward	Gr. 8
Brandon Adcock	Gr. 6
Amanda Herring	Gr. 5
Kurt Hess	Gr. 5

BETA ACHIEVEMENT

Ralynn Key	Gr. 12
Shelly Lewis	Gr. 12
Randell Hollis	Gr. 11
Kate Phinizy	Gr. 11
Rachel Romero	Gr. 10
Cody Stone	Gr. 10
Shane Kemper	Gr. 9
Eric Lusk	Gr. 9

The above students achieved an academic evaluation of 90 or above in each subject.

HONOR ROLL

Amanda Anderson	Gr. 8
Shayne Hess	Gr. 8
A'Lise Lloyd	Gr. 8
M'Lys Lloyd	Gr. 8
Kristin Monger	Gr. 8
Kurtis McCathern	Gr. 6
Gloria Portales	Gr. 5
Jill Voss	Gr. 5

HIGH SCHOOL

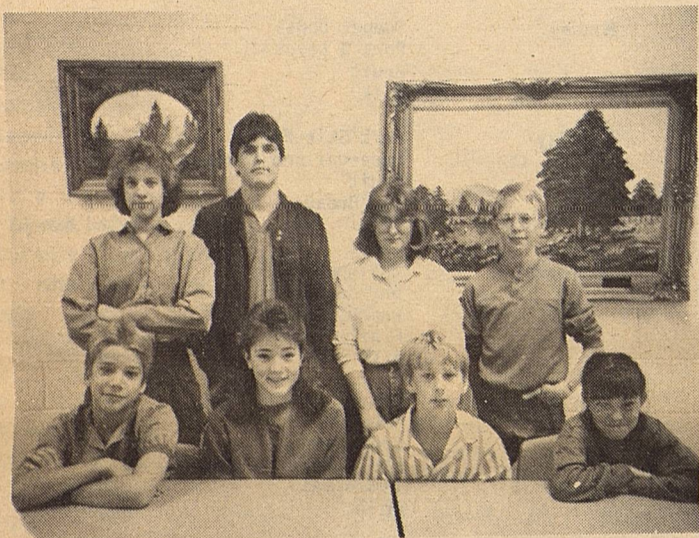
HONOR ROLL

Debra Adams	Gr. 12
Shannon Bond	Gr. 12
Will Phinizy	Gr. 12
Elana Himes	Gr. 11
D'Lyn Lloyd	Gr. 11
Kristi Adcock	Gr. 10
Julie Harris	Gr. 10
Lisha Sternadel	Gr. 10

The above students achieved an academic average of 90, with no evaluation less than 85 in a subject.



BETA CLUB: Randell Hollis, Kate Phinizy, Eric Lusk, and Cody Stone. (Bottom Row) Ralynn Key, Shelly Lewis, and Rachel Romero. (Not available for photo Shane Kemper)



HIGH HONORS: Kristin Kilmer, David Buchanan, Patsy Underwood, and Rich Holzmann. (Bottom Row) Brandon Adcock, Shara Dee Woodward, Kurt Hess, and Mandy Herring.



HONOR ROLL: Shannon Bond, Kristi Adcock, and Lisha Sternadel. (Bottom Row) Julie Harris, Debra Adams, and D'Lyn Lloyd. (Not available for photo Will Phinizy)



HONOR ROLL: M'Lys Lloyd, Kristin Monger, Amanda Anderson, and Kurtis McCathern. (Bottom Row) Jill Voss, Shayne Hess, A'Lise Lloyd, and Gloria Portales.

THANK YOU

Thanks to all the volunteers who helped fight the fire at the Borden County Schools last Thursday evening. The fire could have never been contained without your help. The efforts from all of you are greatly appreciated.

James McLeroy

BOOSTER CLUB

THERE WILL BE A BOOSTER CLUB MEETING MONDAY NIGHT, DEC. 14, AFTER THE JR. HIGH BASKETBALL GAME.

EVERYONE IS INVITED TO ATTEND.

WHITE MORTUARIES, INC.

"We care for yours as we would have ours cared for"

O'DONNELL

TAHOKA

510 8th

428-3313

1821 Main

998-4433

Owners-Billie & Donnie Everett, Gail, Tx

Your Christmas Tree Headquarters



Our Trees
Are Here
Live-Cut-Silk

ALSO HOLIDAY TREASURES

• Wreaths • Sprays • Poinsettias •
• Fruit Baskets • Centerpieces • Other Gifts •

**Green Acres
Nursery**

700 E. 17th
267-8932

Mon.-Sat.
9-5:30

Sunday
1-5

ASCS NEWS

By Jerry Stone

1988 COTTON PROGRAM ANNOUNCED

The following information has been announced for the 1988 Cotton Program:

A. Reduced Acreage - 12.5% of base

B. ACR (Set Aside) - 14.29% of planted or payment acreage

C. Target Price - 77 cents per pound

D. National Loan rate - 51.8 cents per pound for base quality (SLM, 1 1/16" premium mic)

E. Plan B marketing loan program same as 1987 will be in effect

F. No paid diversion

1988 COMMON PROVISIONS

A. Limited Cross Compliance rules apply and participating farms may not exceed the base of any program crop planted

B. No Off Setting Compliance - each farm stands on its own

C. The 50/92 provisions will apply

D. If requested by the State ASC Committee and approved, grazing will be allowed from Sept. 1, until March 31 on ACR

E. No baling of ACR will be allowed

F. History of land and minimum size of plot for ACR is the same as in years past

NAME AND ADDRESS CHANGES

Please keep us informed of any address changes, changes in ownership, or changes in the farm operator.

1987 ACR MAINTENANCE REMINDER!!!!

This is to remind you

that ACR must be maintained through the end of December. Weeds and erosion must be controlled.

SALE OF WOOL OR MOHAIR AND UNSHORN LAMBS

Wool and Mohair producers are reminded to turn in their 1987 sales receipts by no later than January 31, 1988.

Information required to determine eligibility for incentive payment under the Wool and Mohair program include:

- The original sales receipts with certification signed by the purchaser

- The number of head shorn

- The year and month shorn

- Any purchases of unshorn lambs

- And receipts for any freight paid for hauling

ACP SIGNUP

The first ACP signup period for Borden County will begin on Monday, December 7th and continue through Monday, December 21, 1987. If you plan to carry out any of the approved conservation practices you should come to the county

office and make an application during the signup period.

If you have a question concerning any of the practices or whether you are eligible please come by and check with us.

SODBUSTER PROVISIONS

Any producer who is farming highly erodible land and will file for a farm payment must certify that they have not violated sodbuster provisions.

Highly erodible land (this is determined by SCS) that was farmed to an annual crop during the years 1981-1985 and certified on ASCS records, is exempt until 1990.

Highly erodible land that was not farmed to an annual crop in 1981-1985 must be farmed in accordance with a SCS developed conservation plan or it is in violation.

All fields that are highly erodible must have a conservation plan developed by January 1, 1990. Producers should be contacting SCS soon to start a farm plan. It will not be possible for SCS to develop plans if everyone waits until the last year.

HOLIDAY

This office will be closed Friday December 25 for Christmas.

WESTERN SEED & DELINTING

Certified Cotton Seed

ACID DELINTING

Paymaster 145, 303, 404, 792
Coker 3131, S110, 500
Terra 383, SR-10, SR-482
SP-21, SP-215, CAMD-E
CAB-CS

COTTON PLANTING SEED

Hay Grazer Grain Sorghum Wheat

Wheat & Oats Cleaning

LAMESA, TEXAS
RON BUTLER

BUSINESS PHONE
(806) 872-8896
(806) 872-5388

RESIDENCE PHONE
(806) 872-5271

-CLASSIFIED-

° ° ° PART TIME ° ° °

* GOVERNMENT HOMES *

HOME MAILING PROGRAM!

Excellent income.
DETAILS:
Send self-addressed,
Stamped envelop to:
WEST
Box 5887
Hillside, N.J. 07205

Government Homes from
\$1.00 (U Repair) Fore-
closures, Repos, Tax
Delinquent properties.
NOW SELLING YOUR AREA.
CALL: (315) 736-7375
EXT. H-TX-G6
For current list. 24 HRS

HOMEWORKERS WANTED!
TOP PAY! C.I.
121 24th. Ave., N.W.
Suite 222
Norman, Oklahoma 73069

GOVERNMENT HOMES

\$1.00 (U-Repair)

BUY DIRECT!
Repos & Tax Seized
Properties.
CALL TODAY for FACTS!
1-(518)459-3546
EXT. H6634D
(TOLL-Refundable)
24 HRS.

* * * FOR SALE * * *

House and 2.75 acres

2 bedroom - 1 bath.
Roping Arena and
Horse Stalls
Located in Gail
CALL REX COX
(915) 573-0724

* * * FOR SALE * * *

* WANTED TO LEASE *

RANCH LAND
IN BORDEN COUNTY

CALL: B.W. Edwards
806-428-3809
O'Donnell, Texas

CHININA
LITE-GRAIN FEED BEEF
½ or whole
\$1.42 lb.

CALL: B.W. EDWARDS
806-428-3809
O'Donnell, Texas

TOP DOLLARS PAID

For Oil and Gas Minerals
Producing and Non-Producing
Write: MINERALS P. O. Box 7522,
Midland Texas 79708 Or Call: (915) 684-4110

Branon Funeral Home

Service in this area since 1922.

Phone: 872-8335

403 N. Austin - Lamesa

The First National Bank - of O'Donnell

We want to meet the
financial needs of this
community -

Come in and visit with us

We now have safety deposit boxes.

MEMBER FDIC



LAYAWAY: A CHRISTMAS SHOPPING STRATEGY

Before credit cards became so common, layaway was a popular means of stretching out the costs of buying Christmas gifts. If you want to avoid mounting credit card bills and the interest on unpaid balances, layaway is still a good alternative.

The whole idea behind layaway is that you make a down payment, which is usually 10 percent of the price, and then make installment payments at agreed upon intervals until you've paid for the merchandise.

Unlike other types of transactions, you can not take the merchandise home right away. The retailer holds your intended purchase until the final payment is made. That may be ideal for gifts you'd just have to hide anyway!

Before you put an item on layaway, request a written copy of the store's layaway policy. Find out if your intended purchase will be set aside or ordered, and will definitely be available when you finish the payments. Ask about the store's refund policy, in case you change your mind after making partial payment. Also consider extra costs such as penalties for late payments, or service or layaway fees.

When you buy an expensive item, such as jewelry, feel sure about the store's reputation or check with the Better Business Bureau before buying on layaway. If the store goes bankrupt before you finish making your payments, you lose the merchandise as well as the payments you've made so far, and there isn't much you can

do about it.

Avoid problems or misunderstandings with your layaway by keeping your own record of all transactions. It will help you remember when payments are due and keep track of how much you have already paid toward the purchase.

One of the best things about layaway is knowing that your Christmas gifts are paid for and you won't be facing huge credit card bills in January.

FREE BROCHURE FOR PLANTING TREES

Now is the time to be planning ahead for tree-planting projects next spring, and a free brochure is available from The National Arbor Day Foundation to assist.

The free brochure, called Conservation Trees, uses colorful photos and illustrations and easy-to-understand descriptions to guide tree planting and care.

The Conservation Trees brochure includes these sections:

- * How to use wind-breaks and shade trees to save energy in your home

- * How to attract songbirds to your yard

- * How to save trees during construction

- * How to save topsoil and help farm profits with shelterbelts

- * The right way to plant trees

- * The right way to prune trees

"The National Arbor

Day Foundation's Conservation Trees program encourages Americans to plant and manage trees to conserve soil, energy, water, and wildlife," John Rosenow, the Foundation's executive director, said.

"The Conservation Trees brochure is a central part of this educational project. It serves as a useful guide for people in all areas, whether they live in America's largest cities or in the country," Rosenow adds.

For your free brochure, send your name and address to: Conservation Trees, The National Arbor Day Foundation, Nebraska City, NE. 68410

###

CLINE TESTIFIES FOR RESEARCH, PROMOTION BILL

Extending cotton research and promotion assessments to the cotton content of imports will save the government money and have little effect on consumer prices, National Cotton Council board chairman Lloyd Cline told the House Ways and Means Committee. He said the amendment to the Cotton Research and Promotion Act would strengthen and improve

the fairness of cotton producer's highly successful 21-year old self-help program. Cline credited the program as being a key factor in U.S. consumers' record use of cotton in 1987, but noted that most of the benefit "has not gone to the people who paid for it, but to foreign mills and importers

cont. to page 8

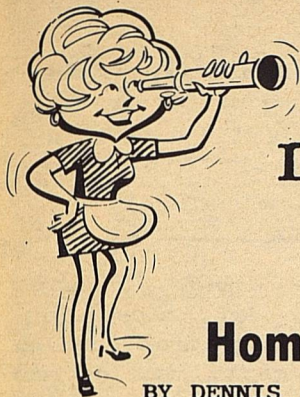
THE BETTER PECAN Co.

Herman and Christeen Ledbetter
Route 1 Box 148
O'Donnell, Texas 79351
(806) 439-6653

NEW CROP PECANS
In shell, cracked
or shelled.

IN SHELL \$1.25 CRACKED \$1.50 SHELLED \$4.00

STATEMENT OF OWNERSHIP, MANAGEMENT AND CIRCULATION		
U.S. Postal Service Required by 39 U.S.C. 3685		
1A. TITLE OF PUBLICATION The Borden Star	1B. PUBLICATION NO. 89652	2. DATE OF FILING Sept. 10, 1987
3. FREQUENCY OF ISSUE Weekly, except Christmas and New Years	3A. NO. OF ISSUES PUBLISHED ANNUALLY 50	3B. ANNUAL SUBSCRIPTION PRICE 8.00
4. COMPLETE MAILING ADDRESS OF KNOWN OFFICE OF PUBLICATION (Street, City, County, State and ZIP+4 Code) (Not printers)		
The Borden Star, P. O. Box 137, Gail, Texas 79738		
5. COMPLETE MAILING ADDRESS OF THE HEADQUARTERS OF GENERAL BUSINESS OFFICES OF THE PUBLISHER (Not printer)		
The Borden Star, P. O. Box 137, Gail, Texas 79738 Attention: Barbara York		
6. FULL NAMES AND COMPLETE MAILING ADDRESS OF PUBLISHER, EDITOR, AND MANAGING EDITOR (This item MUST NOT be blank)		
PUBLISHER (Name and Complete Mailing Address) The Borden Star, P. O. Box 137, Gail, Texas 79738		
EDITOR (Name and Complete Mailing Address) Cookie Dyess, Route 1, O'Donnell, Texas 79351		
MANAGING EDITOR (Name and Complete Mailing Address) Same		
7. OWNER (If owned by a corporation, its name and address must be stated and also immediately thereunder the names and addresses of stockholders owning or holding 1 percent or more of total amount of stock. If not owned by a corporation, the names and addresses of the individual owners must be given. If owned by a partnership or other unincorporated firm, its name and address, as well as that of each individual must be given. If the publication is published by a nonprofit organization, its name and address must be stated.) (Item must be completed.)		
FULL NAME		COMPLETE MAILING ADDRESS
See Attached List		
8. KNOWN BONDHOLDERS, MORTGAGEES, AND OTHER SECURITY HOLDERS OWNING OR HOLDING 1 PERCENT OR MORE OF TOTAL AMOUNT OF BONDS, MORTGAGES OR OTHER SECURITIES (If there are none, so state)		
FULL NAME		COMPLETE MAILING ADDRESS
None		
9. FOR COMPLETION BY NONPROFIT ORGANIZATIONS AUTHORIZED TO MAIL AT SPECIAL RATES (Section 423.12 DMM only) The purpose, function, and nonprofit status of this organization and the exempt status for Federal income tax purposes (Check one)		
<input checked="" type="checkbox"/> (1) HAS NOT CHANGED DURING PRECEDING 12 MONTHS <input type="checkbox"/> (2) HAS CHANGED DURING PRECEDING 12 MONTHS (If changed, publisher must submit explanation of change with this statement.)		
10. EXTENT AND NATURE OF CIRCULATION (See instructions on reverse side)	AVERAGE NO. COPIES EACH ISSUE DURING PRECEDING 12 MONTHS	ACTUAL NO. COPIES OF SINGLE ISSUE PUBLISHED NEAREST TO FILING DATE
A. TOTAL NO. COPIES (Net Press Run)	500	
B. PAID AND/OR REQUESTED CIRCULATION		
1. Sales through dealers and carriers, street vendors and counter sales	0	
2. Mail Subscription (Paid and/or requested)	473	
C. TOTAL PAID AND/OR REQUESTED CIRCULATION (Sum of 10B1 and 10B2)	473	
D. FREE DISTRIBUTION BY MAIL, CARRIER OR OTHER MEANS SAMPLES, COMPLIMENTARY, AND OTHER FREE COPIES	13	
E. TOTAL DISTRIBUTION (Sum of C and D)	486	
F. COPIES NOT DISTRIBUTED		
1. Office use, left over, unaccounted, spoiled after printing	14	
2. Return from News Agents	0	
G. TOTAL (Sum of E, F1 and 2—should equal net press run shown in A)	500	
11. I certify that the statements made by me above are correct and complete	SIGNATURE AND TITLE OF EDITOR, PUBLISHER, BUSINESS MANAGER, OR OWNER Barbara York, Business Mgr.	



LET ME GET MY APRON

Home Economics News

BY DENNIS POOLE, COUNTY AGENT

GET THE BEST FROM YOUR REAL CHRISTMAS TREE

When families shop for a real Christmas tree, some simple steps can make selection of a fresh, natural tree easier.

Some selection considerations include:

◦ Freshness is important when selecting your tree. Hold a branch about six inches from the tip between thumb and forefinger, and pull your hand towards you as the branch slips through your fingers. Needles should adhere to the branch and not fall off in your hand.

◦ Determine where in your home to display the tree. This will help determine the height needed and whether all four sides must be suitable for display.

◦ Lift the tree a couple inches off the ground, then bring it down abruptly on the stump end. Dry green needles should not fall off in substantial numbers, but loss of some brown needles is normal.

◦ The tree should have a fragrance and good green color.

A Christmas tree is

like a bouquet of roses, and you should care for it in your home as carefully as you would a cut flower. Here are some suggestions to keep it fresh, beautiful, fragrant and safe throughout the holiday season.

◦ If you buy your tree several days before it is to be set up and decorated, store it in a garage or on a cool porch where it is protected from the sun and wind until ready to decorate.

◦ If the tree is to be stored several days, make a straight cut across the base of the trunk about an inch from the end so the tree can take up water. Store the tree upright and place the bottom stem in a container of water.

◦ When the tree is moved to the house for decorating, make another fresh, straight cut across the stem about an inch above the original cut. Use a tree stand that holds plenty of water.

◦ Trees are thirsty. Depending on size, they may "drink" between two pints and a

gallon of water per day, so provide fresh water as needed.

◦ Place the tree away from heat sources, such as fireplaces, radiators and TV sets. Turn off the tree lights when you leave your home and before you retire at night.

◦ Do not use combustible decorations, and check all electric lights, cords and connections before you begin decorating. Do not use lighted can-

THE BORDEN STAR, WED. DEC. 9, 1987...7

GAIL BAPTIST HAPPENINGS!

The children's choir will be producing their "Super Duper Christmas" program, December 13th in the Gail Baptist church. They will start singing at 6:00 p.m.

Come and enjoy listening to these children

perform.

Stay for punch and cookies to be served after the show.

December 20th is the date set for the Young People's production of their Christmas program at the Gail Baptist Church.

The performance will start at 5:00 p.m. with caroling to follow at 6:00.

Around 8:00 or when the caroling is over, refreshments will be served.

Thank You

J.A., Don, and I would like to THANK ALL OUR friends and neighbors who gave their time and helped get L.D.'s cotton out. You were there when we needed you. So saying THANK YOU, seems so little to say, but Thank you and God Bless You. Have a Merry Christmas.

Alvin Smith
Don Smith
J.A. Smith



COMMUNITY CHRISTMAS TREE

GAIL BAPTIST CHURCH

DECEMBER 24th. AT 6:00 p.m.

There will be a program

LOOK FOR SANTA CLAUS to arrive

dles or lights with worn or frayed cords.

A Christmas tree's usefulness can continue after the holiday season. The boughs can be removed and used for mulch. The tree also can be set upright in the yard as a bird feeder with food attached. If you have a fireplace, the needles add a pleasant aroma to the house as the tree is burned as wood.

1987-88 FCA

OFFICERS

The 1987-88 FCA Officers were elected at the November meeting. They are as follows:

Pres. Shelly Lewis
Vice Pres. Will Phinizy
Sec. - Treas. Ralynn Key



Madge Hendricks,
Melba, Eurdist and
Brenda, Travis and Jim
Rinehart



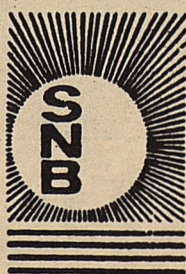
Visit our Deli

Party trays

Pastries

Custom cakes

710 N. 4th
Lamesa



We're proud to be a part of the area since 1905

Snyder National Bank

This is your Bank

Member
FDIC

1715 25th
573-2681

"FIRST A FRIEND, THEN A HOST"

Drinking drivers have left a trail of deaths, crippling injuries and property damage since the automobile emerged barely a century ago as an important means of transportation. But the month of December has always been an especially hazardous time on our highways and streets because so many have the occasion to drink and so many persons are on the highways to visit relatives and friends.

December 13 through 19 marks the sixth annual National Drunk and Drugged Driving Awareness Week across the 50 United States. The theme chosen for this year's celebration of not drinking and driving is "First a friend, then a host." The idea behind it is to get to the roots of so much impaired driving this time of the year. Holiday parties.

Adding to the dangers of the season is that few drinkers realize that two drinks can affect them to the point they become prone to accidents. Large numbers of drivers involved in accidents whose blood alcohol levels exceeded the legal limit firmly believed they were sober enough to drive. The responsible driver does not deceive himself; he arranges to have somebody drive for him or her or takes a taxicab.

Now that Texas has a compulsory safety belt law, it is not enough to stay sober to drive. Drivers and passengers should use safety belts. State Police report a reluctance on the part of many citizens to wear seat belts despite their proven record of saving lives and preventing serious injuries.

The most dangerous times on highways and streets during the holidays are from 6 p.m. December 24 through midnight Sunday, December 27 and from 6 p.m. December 31 through midnight Sunday, Jan-

uary 3, 1988.

Drivers should drive at speeds in keeping with weather conditions and the amount of traffic. They should be well rested and should avoid alcoholic drinks. If they've been to a private party, a bar or a restaurant they should have a designated driver take the wheel. All drivers and passengers should buckle up. Front seat and back seat. Such precautions are matters of life and death for everyone using streets and highways during the holiday season.

Most of all, during National Drunk and

Drugged Driving Awareness Week and during the up-coming holidays, if you're giving a party this year, remember: "First a friend, then a host."

CLINE TESTIFIES

cont. from page 6 who capitalized on it."

The Lamesa producer pointed out that cotton product imports increased their share of new domestic consumption to 41 percent during this year's first half. He said the amendment would require importers who have benefitted from

the research and promotion program to pay a fair share of program costs. Cline also said the amendment would allow doubling of cotton research and promotion expenditures, and the resulting increase in demand would probably mean improved prices for cotton and lower government program costs. As far as consumer costs are concerned, he said the assessment on a 100% cotton bed sheet would be less than one cent. "Surely figures this small could not be considered barriers to trade," Cline stated. "Actually, the overall market growth that can be expected from a greatly expanded pro-

gram should make the pie larger for everyone, importers and domestic producers alike."

For centuries, gourds have been made into everything from ladles and jugs to rattles and thumb pianos. The ancient Peruvians used the gourd's shell as a substitute for sections of the human skull in primitive head operations. And according to International Wildlife magazine, gourds even backed Haiti's currency during a coin scarcity in the early 19th century. Haiti has since gone off the gourd standard, but its monetary unit is still called the gourde.

Shop Here for That Special Man On Your List

WRANGLER COWBOY CUT

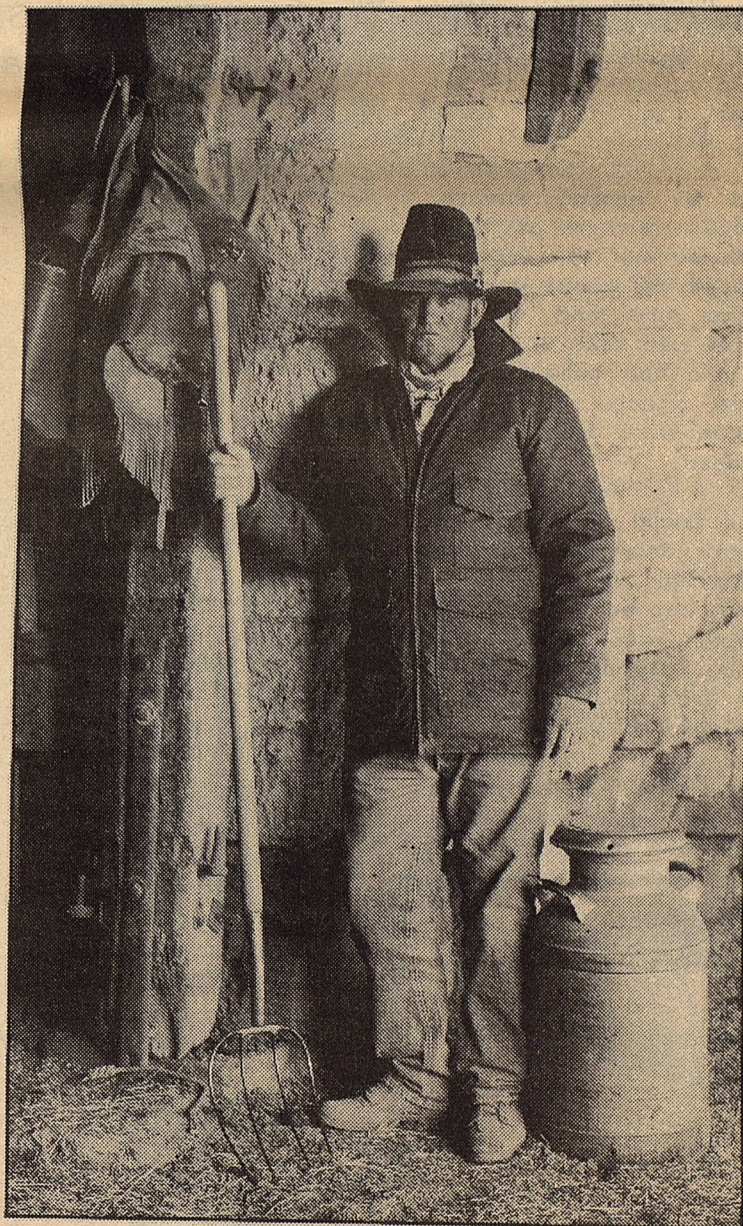
Black, Grey, Khaki, and Light Blue

Levi's
501's

Parhandle Slim
Western Shirts

John Henry
Sport Shirts

FREE
Gift Wrapping



RESISTOL
HATS
Felt Hats

Ropers
All Leather
First Quality
15 Colors

\$39
\$49
\$59

Belly Ostrich
Ropers
\$119⁰⁰

OPEN
Sundays
1:00-5:00 p.m.

-H- Western Wear

College Heights
Shopping Center