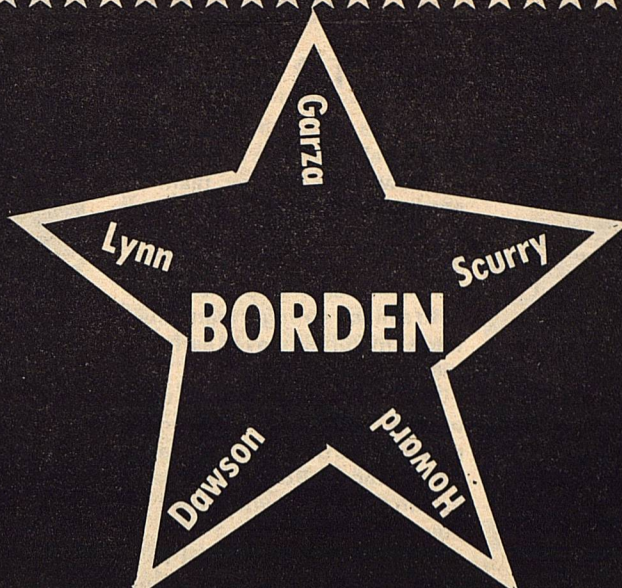


THE

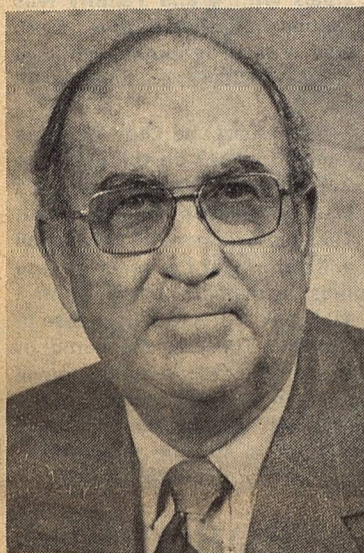
Volume XLII



STAR

JANUARY 23, 1986

Serving the Counties of Borden, Dawson, Garza, Howard, Lynn & Scurry



RICH ANDERSON

ANDERSON ANNOUNCES CANDIDACY

Rich Anderson, Borden County rancher and for many years active in agri-business and other enterprises in this area, has announced for state representative of the 69th District.

Long active in Republican party affairs, he will seek that nomination in the May 3 Republican Primary.

"One reason I am asking to be your state representative is that I think we are in a critical and changing period. Over-production and out-dated industries are forcing us to take a close look at our tax bases and our priorities," he said.

"Texas long has relied, (PH ON OIL REVENUES) Now we find this, as well as the general tax base, is limited. We have to decide what is necessary and important, and live within our means. I am, however, against a state income tax."

There is a lot of discussion about HB 72 among teachers and parents and the bill needs some changes. The cost factors will begin to bear heavily on local districts and I'm disturbed about

the loss of local control by the school boards and school administration."

"The state water plan was a good first step, but it did not address agriculture as it must eventually. We are primarily a rural district, and rural areas have been losing influence and representation. To that extent a strong voice and experience in agriculture will help stabilize this and I will do my best in reasoning with those I know in other parts of the state."

"At the same time, I recognize that technology is a coming thing, and I am now actively engaged in efforts to center attention in this respect in our district."

"I will run a positive campaign, one of ideas and philosophies. I will welcome the chance to visit and discuss these with every voter, and let them decide."

Anderson has been active in agricultural, business and public affairs in this area since 1952 when he began to manage the Muleshoe Ranch, which the family purchased in 1957. He is a bank director, has served on numerous charitable, health and educational boards, including 12 years on the Borden school board with all but two as president.

He also has been cited for his work in agriculture as one of the earliest to root-plow and apply other methods of brush eradication and water conservation. He pioneered cross-breeding of cattle in this area. He has managed the Muleshoe Ranch, a family ranch near Ft. Sumner, N.M. and his late parents' ranch in Lea County, N.M. - Since 1979 he has leased the Borden County ranch to Spade Ranches, and his son, John, is manager.

Anderson is on the executive committee of National Cattlemen's Association, chairman of NCA-P CA, and is Region IV V.P. of the NCA. He also is a member of Texas Cattle Feeders and the New Mexico

don't to

DELINQUENT PROPERTY TAXES CAN BE EXPENSIVE AND RISKY

Austin--On Feb. 1, most of the unpaid property taxes in Texas become delinquent property taxes.

"It pays to pay property taxes on time," said Ron Patterson, executive director of the State Property Tax Board. "Delinquent taxpayers must pay additional penalty and interest charges, and they run the risk of lawsuits, clouded land titles, and even seizure and sale of their property if they make no effort to pay."

Patterson emphasized that even property owners who do not receive bills must still pay their property taxes on time or else face additional delinquency charges. "Texas law states that failure to receive a tax bill does not relieve the taxpayer of his responsibility for paying property taxes on time," he explained.

Most taxing units mail tax bills in October or November with a delinquency date of Feb. 1. "If Feb. 1 is drawing near and a

taxpayer has not yet received a tax bill," Patterson advised, "he should contact the local appraisal district or taxing units to find out how much tax he owes and to make sure the correct name and address information is on record."

In most cases, property taxes that remain unpaid on Feb. 1 are considered delinquent. The delinquency date is postponed for tax bills that are mailed after Jan. 10. Special payment plans offered by some taxing units also result in later delinquency dates.

SESQUICENTENNIAL QUILT READY FOR NAMES

The 'Old Settlers Reunion Committee' is giving away a hand pieced quilt at the Reunion on June 29, 1986. Because this is our Sesquicentennial year and the year of our Old Settlers Reunion, the quilt is pieced with red, white and blue in an original design that represents the seal of the 'Lone Star State'. Names of Borden County families will be embroidered in contrasting colors. There are plenty of places, so anyone who wishes may have their name or names on the quilt.

Please send \$2.00 for each name, and the names as you want them on the quilt to The Borden County Old Settlers Reunion in care of Betty Beaver, P. O. Box 5, Gail, Texas 70738. Below is a reduced picture of one 12 x 12 inch square. Names can be added as late as June 29th, however, the sooner we get them the better. The quilt is already pieced and ready for names to be embroidered. Proceeds will go to help defer the cost of the reunion.

con't to 5

Food stamp policy changed

Austin. The U.S. Department of Agriculture recently notified the Texas Department of Human Services of policy changes regarding food stamp applicants who voluntarily quit their jobs.

Since Jan. 4, 1985, food stamp applicants who voluntarily quit a job within 60 days before they applied for food stamps were ineligible for 90 days from the day they applied.

The new policy changes the period of ineligibility to 90 days from the date the applicant quit rather than the food stamp application date.

Anyone who applied for food stamps on or after Jan. 4, 1985, and was denied because someone in the household quit a job, may be eligible for restored benefits and should contact the local DHS office for information.

RINEHART FILES FOR RE-ELECTION

Ed Rinehart has filed for re-election for Commissioner, Precinct 4, subject to the Democratic Primary.

It has been an honor for me to serve the people in Precinct 4 and all of Borden County. I appreciate your support in the past and ask for your continued support.

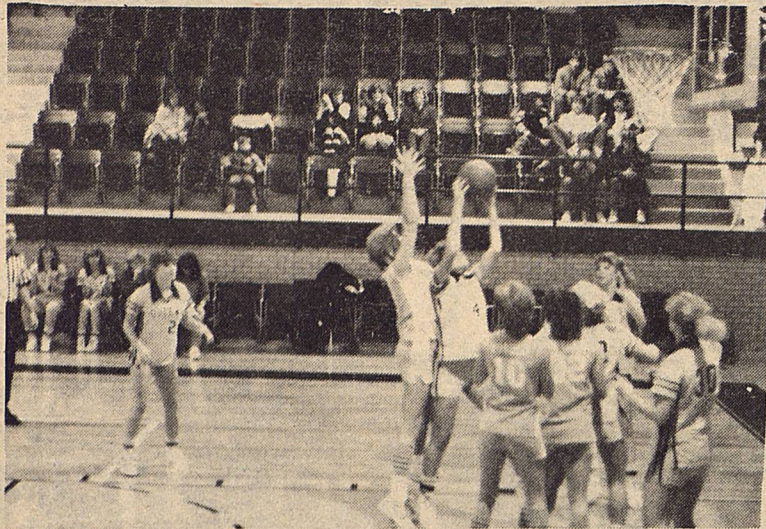
-s- Ed Rinehart

STONE ANNOUNCES FOR J.P.

Carolyn Stone has announced her intention to seek re-election to the office of Justice of the Peace for Borden County, subject to the Democratic Primary to be held May 3. Due to a constitutional amendment allowing smaller populated counties to reduce the number of J.P. precinct's, she will be running this year county-wide.

"I would like to thank you for your support in the past and ask for your continued support."

-s- Carolyn Stone



BORDEN LADY COYOTES SLIP BY SOUTHLAND

Borden traveled to Southland Tuesday night and barely escaped with a narrow 50-46 district win. The victory was a must in keeping the Lady Coyotes district chances alive for the first half title.

Borden outscored Southland by one point in each of the first two quarters to gain a 23-21 half-time lead. The game opened up a little for Borden in the third quarter as they hit for 17 points while Southland was held to 5. The Eagles came back in the last quarter as Borden had three starters foul out and two others were on the floor with four personals. Kelli Williams iced the win as she sank two free throws in the final seconds. Kelli led all scorers with 25 points. Following were Tammy Johnson

with 9, Lynn Sternadel with 8, Cindy Balague with 3, Kate Phinzy and Teri Billington each had 2, and Charla Buchanan had 1. Tammy led in field goal percentage with 60 percent followed by Cindy with 50 percent. Kelli led in the free throw percentage department with an outstanding 87 percent hitting 13 of 15 attempts. Tammy was second in free throws with 60 percent. Teri led in rebounds with 9 despite staying in foul trouble most of the game before fouling out. Lynn had 7 rebounds. Kate and Kelli each had 3 steals. Tammy led in assists with 6 followed by Kelli with 4.

The J.V. game started out slow as both teams were cold from the floor. Things didn't get going good for Borden until the last quarter when Borden held an 11-2 advantage in the 29-15 victory. Elvira Balague was the leading scorer with 12 points followed by Shelly Lewis with 8. Linda Sternadel had 6 points and Dana Douglass had 3. The J.V. now raises its record to 5-0 on the season.

Varsity record for the season raises to 14-3 and district record to 2-1. Next game is with New Home, at Gail, Friday, January 17. The game will begin at 6:30

SOUTHLAND DEFEATS BORDEN

The Southland Eagles defeated the Borden Boys in Tuesday night's cage action. The score was 79 to 40.

The Eagles used their quickness and tough pressure defense to totally dominate the Coyotes. The victory moved Southland's record to 18-2 and 3-0 in the district. The Coyotes dropped to 4-12 overall and 1-2 in district.

Chris Cooley lead the Coyotes with 26 points.

The Coyotes next play New Home and O'Donnell, both are home games.

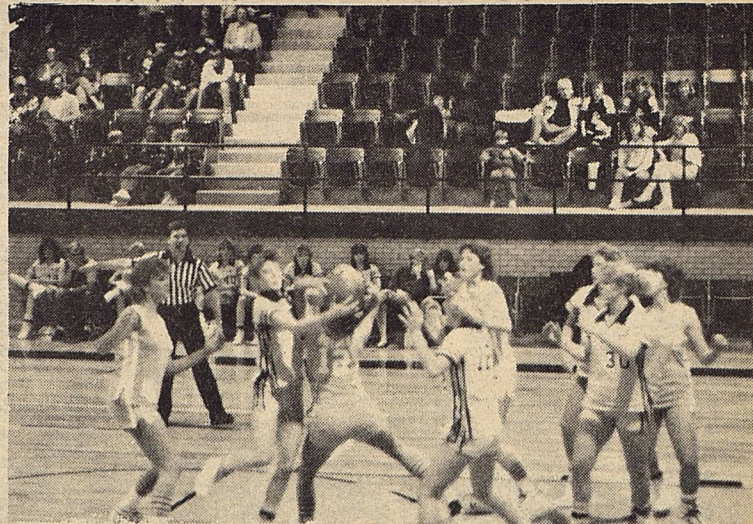
JR. HIGH BOYS FELL TO WILSON

The Junior High boys basketball team was defeated by a "new-look" Wilson team in Monday night cage action. The score was Wilson 33 and Borden 30.

Wilson came into the game with a much stronger team, than the team Borden played earlier in the season.

The Coyotes executed their offense very well, but could never score with any consistency. Borden was lead by Jim Ridenour, who scored 10 points.

The Coyotes record fell to 5 and 3, with one game remaining on the year.



TEAM EFFORT DOMINATES NEW HOME

The Borden County Lady Coyotes completely dominated New Home Friday night as all eleven players scored in a 71-16 district win over the Leopards. It was the first time this year that all members of the team got into the scoring column in the same game.

Borden jumped out to a big 26-4 first quarter lead as a full court press led to many easy baskets. Kelli Williams had 14 points in the initial quarter. The third quarter was also a big quarter as all 11 members took part in the 22-1 stanza. Kelli picked up 8 points in this quarter to finish with high point honors with 22. Teri Billington, the only other player in double figures, had 14 points. Rounding out the scoring were Elvira Balague with 6 and Lynn Sternadel with 5.

Cindy Balague, Charla Buchanan, Tammy Johnson, and Kristi Stone each had 4. Cathy York and Linda Sternadel each hit 2 for the final total. Kelli led in field goal percentage hitting 10 of 15 for 67 percent followed by Teri who hit 6 of 10 for 60 percent. Tammy and Kristi followed, each hitting 50 percent. Kelli and Cindy led in free throw percentage as each hit 2 of 2 for 100 percent. Teri was next with 67 percent. Teri led in steals with 7 and also had 7 assists to lead in that

department. Kelli was second in steals with 4 and Tammy was second in assists with 4. Lynn was tops in rebounds with 13 and Teri, Charla, and Linda each had 8.

This raises the Lady Coyotes record to 15-3 on the year and 3-1 in district. With O'Donnell's loss to Wilson Friday night, Tuesday's game with O'Donnell will determine the second place finisher in the first half of District 10A play. Should Wilson lose to Klondike Tuesday, the winner of the Borden-O'Donnell game will finish in a tie with Wilson for the first half title. There will be a J.V. game starting at 5:00 and the varsity will begin at 6:30.

BORDEN COUNTY STOCK SHOW

The county stock show will be held January 23-25, 1986 with the barrow show being held at 7:00 p.m. 1-23-86, Lamb Show 9:00 a.m. 1-24-86, Steer Show 9:00 a.m. 1-25-86, Bar-Be-Que Dinner at 12 noon 1-25-86, Premium Sale and Awards Presentation 1:00 p.m. 1-25-86.

The Borden Star
Publication No. 895520
(USPS 895-520)
Publication No. 895520

Editor
Barbara Anderson

Published weekly, except for Christmas and New Years, on Wednesday at Gail, Borden County, Texas 79738, Box 137, Kincaid Street, Second Class postage paid at Gail, Texas.

Any errors that we make reflecting on the reputation or standing of any Firm, Corporation, or individual that may appear in the columns of the Borden Star will be gladly corrected when called to the attention of the staff.

Subscription Rates:
\$8.00 per year

Borden Star Owners
James McLeroy, Barbara Anderson, Doris Rudd, Pat Porter, Bob Dyess, Edna Miller, Ruth Weathers, Mrs. Nathan Zant, Sonny Tucker, Eddie Simer, Loreen Jones, Martin Parks, Dan Turner, Lela Porter, and Marge Toombs.

JANUARY 1986						
5	6	7	8	9	10	11
	5:00 p.m. J.H. Basketball Girls & Boys *O'Donnell - Here	5:00 p.m. H.S. Basketball Girls & Boys *Klondike - Here			6:30 p.m. H.S. Basketball Girls & Boys *Wilson - Here	
12	5:00 p.m. J.H. Basketball Girls & Boys *Klondike - Here	5:00 p.m. J.H. Basketball Girls & Boys *Southland - Here	15	16	Teacher 17 Workday	18
19	6:00 p.m. J.H. Basketball Girls & Boys *Wilson - Here	5:00 p.m. H.S. Basketball Girls & Boys *O'Donnell - Here	22	23	Bad Weather 24 Day Borden County Stock Show	25
26	5:00 p.m. J.H. Basketball Girls & Boys *Southland - Here	5:00 p.m. H.S. Basketball Girls & Boys *Wilson - Here	29	30	31	5:00 p.m. H.S. Basketball Girls & Boys *Southland - Here

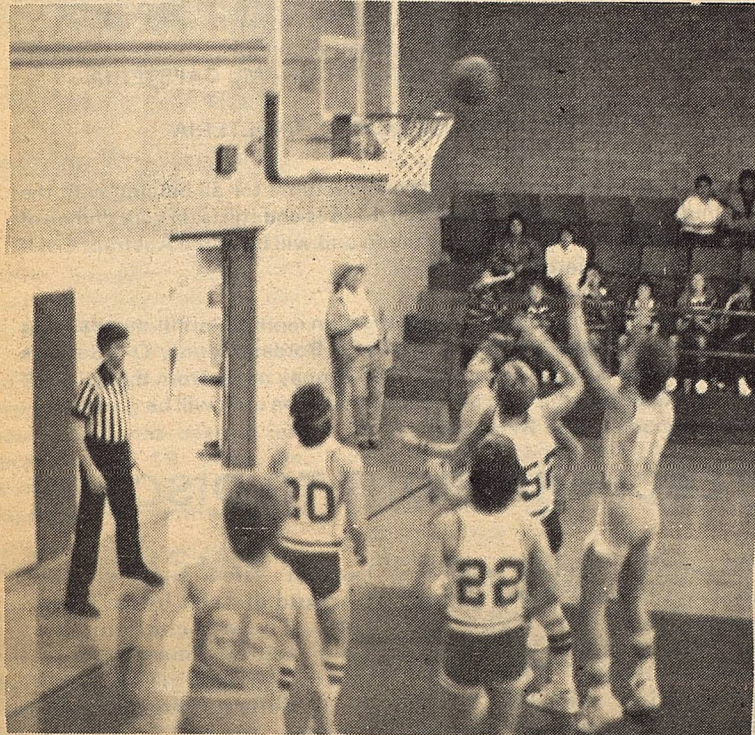
GIRLS CINCH SIXTH CONSECUTIVE DISTRICT TITLE

With still two district games remaining, Borden County's Jr. High girls basketball team has clinched the 1985-86 district championship. The title came with Monday's 39-16 win over Wilson. This is their sixth championship in a row and with the win runs their six year record to 65 wins and only 6 losses.

Monday's game with Wilson started out slow, but once the Missy Coyotes got rolling, the Mustangs were no match. The defense, which has played a

major roll in this year's season, again rose to the occasion. Holding a slim 8-3 lead after one quarter, Borden again hit eight points the second quarter but held their oponents to 1 point for a 16-4 halftime lead. The offense continued to dominate in the third stanza as Borden held a 29-8 lead entering the last quarter. Lisha Sternadel again proved to be unstopable as she racked up 26 points in the win. Kristi Adcock had 6 points, Amy Lewis hit 2, Shayne Hess had 3,

and Amanda Anderson had 2. The win runs this season's record to 9-0 and the district record to 7-0. Next game for the Jr. High will be Monday, January 27 against Southland. There will be a j"B" team game beginning at 5:00 for the 6th graders, and the "A" game will start at 6:00. Southland gave Borden its closest game thus far when the Coyotes escaped with a narrow win at Southland. Again congratulations to the Jr. High girls for the win and their 1985-86 district championship!



SCHOOL BOARD MEETING

The Board of Trustees of the Borden County Independent School District met in regular session on January 20, 1986 at 8:00 p.m.

Board members present were Ralph Miller, Jack McPhaul, Kent Holmes, Bill Phinizy, Kenny Hensley, Jon Monger, and Doyle Newton.

Administrators present were James McLeroy, Superintendent and Mickey McMeans, High School Principal.

The meeting was called to order by Ralph Miller, President of the Board.

Minutes

The minutes of the previous meeting were read and approved. The motion to approve the minutes was made by Jack McPhaul and seconded by Jon Monger.

Motion carried unanimously.

Visitors

There were no visitors present.

Bills

All bills were reviewed by the Board. A copy of the bills was sent to the Board three days in advance. A motion was made by Bill Phinizy and seconded by Jon Monger to approve the bills.

Motion carried unanimously.

Superintendent's Report

1. Financial Report

The Superintendent reported that the financial condition of the school was sound and that the school district was operating within the budget.

2. Attendance Report

It was reported that the enrollment is 59 in high school and 158 in elementary for a total of 217.

3. Building Program Report

Work on the Activity Room is approximately seven (7) days behind schedule because of the bad weather.

4. Discipline Management Plan

The procedure for the development of the Discipline Management Plan was discussed with the Board. The Board reviewed the Discipline Management Plan on an item to item basis. A motion was made by Jon Monger and seconded by Jack McPhaul to accept the Discipline Management Plan as presented.

Motion carried unanimously.

A motion was made by Bill Phinizy and seconded by Kenny Hensley to approve the Superintendent's report.

Motion carried unanimously.

SCHOOL

School Board Election

A motion was made by Jon Monger and seconded by Kent Holmes to call a school board election for April 5, 1986. Three members of the Board will be elected. The terms of Ralph Miller, Doyle Newton, and Kenny Hensley will expire in April 1986.

TASB-Political Action Committee Representative

A motion was made by Jack McPhaul and seconded by Kent Holmes to Elect Kenny Hensley as the representative from Borden County to the TASB-Political Action Committee and Jon Monger as the Alternate.

Motion carried unanimously.

Adjournment

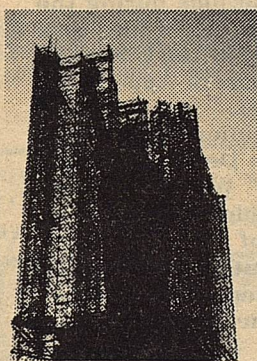
There being no further business, the meeting was adjourned.

Everybody's
THRIFTWAY

A FRIENDLY Supermarket serving West Texans with Quality Foods at Competitive Prices.

We give S&H Green Stamps Double on Tuesday after 1 p.m. All Day Wednesday.

35th and College Ave.
Snyder, Texas



If you still believe in her, help finish the job.



The Statue of Liberty-Ellis Island Foundation, Inc.
P.O. Box 1986, New York, New York 10018

I'd like to help Save The Lady. Enclosed is my tax deductible contribution for:

\$10 \$25 \$50 \$100 \$500 Other \$ _____

Please make checks payable to: Statue of Liberty.



KEEP THE TORCH LIT®

© 1985 The Statue of Liberty-Ellis Island Foundation

STATUE OF LIBERTY—ELLIS ISLAND CENTENNIAL CAMPAIGN
NEWSPAPER AD NO. SOL-85-962—2 COL.



Security State Bank

1411 Gregg

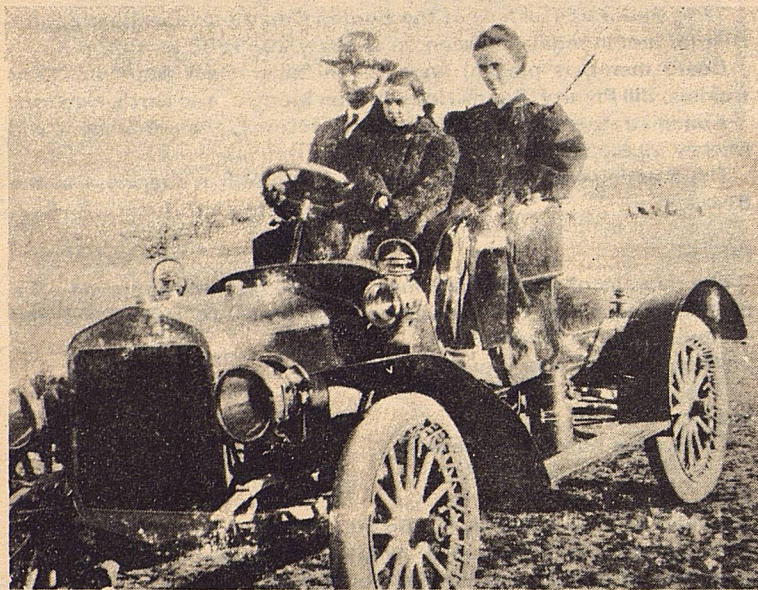
Big Spring, Texas

Member F.D.I.C.

menu

January 27-31, 1986

Monday	Chicken Nuggets Mashed Potatoes Green Beans Fruit Hot Rolls Milk	Salad Bar
Tuesday	Barbecued Beef Ranch Style Beans Lettuce Wedge Fruit Milk	Salad Bar
Wednesday	Pizza Squares Cole Slaw Buttered Corn Jello Milk	Salad Bar
Thursday	Chalupas with Cheese Shredded Lettuce Pinto Beans Fruit Salad Milk	Salad Bar
Friday	Hamburgers French Fries Lettuce & Pickles Brownies Milk	Salad Bar



THE ADVENT OF THE AUTOMOBILE AGE

It was probably a summer day in 1907 when the first car arrived in Gail. One could sense that something out of the ordinary was afoot. There was the usual crowd of men and boys gathered around the blacksmith shop and saloon on the west side of the Courthouse Square. It was rumored that the Land Office firm of L.A. Pearce and M.J. Thornton had sent young Guy Clark, son of Sheriff W.K. Clark, all the way to Roswell, New Mexico, to drive back an automobile. It would be the first most of them had ever seen and he was due back anytime. Guy was the only person in Gail who would attempt to drive a car.

About 4 o'clock in the afternoon a strange sound was heard. One bystander said, "You could hear it coming for five miles!". From around the mountain where a wagon road meandered across the ranches appeared this gasoline buggy — for it really was a buggy with a motor added. The two cylinder engine, which was cranked on the side, turned a sprocket from which a chain extended to turn the rear wheels. These high red buggy wheels had narrow iron tires filled with hard rubber. The seat was like a buggy seat and there was no top.

As the car pulled into town, the people gathered

around in great excitement. Finally a demonstration began and everyone was offered a ride at the breakneck speed of 10 to 12 miles an hour. They boiled into the car, six and seven at a time for a ride over the only road in town. To climax the demonstration, a saddle was strapped onto the hood of the car and one hardy soul mounted the "critter" and rode it 'all over town'. It is hard to realize now that people were actually afraid of these new-fangled machines. It is likely that the owners of this first car never learned to drive it because young Guy chauffeured them everywhere they went.

Vivian Clark recalls "Having never driven anything but a team of horses or mules, some funny things happened. One fellow bought a car and would only drive it in second gear. When asked why he didn't shift to high, he answered, "Why shift to high? It will run fast enough in second!" Another fellow started to O'Donnell. The corners were square then, not rounded as they are now.

When he saw he couldn't make the corner, he just ran through the fence, out into the pasture, wheeled around and went back through the opening he had made and went merrily on his way without ever slowing down. Then there was the old-timer who bought a

new car, drove on through the gate, tearing it down. One new car owner would just drive to the edge of town and walk the rest of the way after he had smashed a few fenders trying to park in Snyder.

Many were of the opinion that this "critter" would never replace the horse and buggy. In fact, it was the cause of many runaway horses. Nervous horses couldn't stand hitched when the smoke-spouting monster appeared. Whenever it approached, it was customary for the drivers to dismount and hold their horses until the car was well on its way in a cloud of dust.

When Francis E. Abney drove his beautiful new Cadillac to Frank Miller's ranch to buy some cows, Frank was allowed to go along as a passenger as they drove over the pasture for his first car ride when he was a youth. Vivian Clark, who just happened to be on the scene was not invited to ride, but, unbeknownst to Mr. Abney, hitched a ride on the spare tire as it drove away. As the car labored up an incline, Vivian hopped off and the driver never knew he had a passenger.

Guy Clark was killed in an accident at the Gail Gin in 1914 at the age of 26. Edna Clark Miller and Vivian Clark are the only direct living descendants of W. K. Clark. Mrs. Johnnie Proffitt and Mrs. Zada Mae Miller and step-daughters.

Decorated for Meritorious Service

Army Sgt. 1st Class Paul V. Cardona Jr., son of Paul and Susie V. Cardona of Rural Route 2, O'Donnell, Texas, has been decorated with the third award of the Meritorious Service Medal in Alexandria, Va.

The Meritorious Service Medal is awarded specifically for outstanding non-combat meritorious achievement or service to the United States.

Cardona is an assignment advisor with the U.S. Military Personnel Center.

His wife, Army Staff Sgt. Marie L. Cardona, is the daughter of Anthony DeVito of 230 Hillside, Paramus, N.J.

The sergeant is a 1970 graduate of Dawson High School, Welch, Texas.

OLD SETTLERS REUNION COMMITTEE SETS SCHEDULE

The Borden County Old Settlers Reunion Committee met January 16th in the Commissioners Court Room, to discuss and finalize plans for the Reunion. The following itinerary was agreed on:

BORDEN COUNTY OLD SETTLERS REUNION

June 29, 1986 (Sunday)
Borden County School
Gail, Texas

8:30 A. M.	REGISTRATION Foyer of Auditorium MUSEUM OPEN (close for Church)
10:00	CHURCH SERVICE AUDITORIUM
SHORT BREAK	
11:15	WELCOME AND RECOGNITION PROGRAM
12:00	LUNCH CAFETERIA
12:30	MUSEUM OPEN
2:00	PARK DEDICATION
2:30	PLAY DAY FESTIVITIES ARENA (goat sacking, washer pitching.)
	OLD TIME MUSIC PROGRAM CAFETERIA
	VISITING
3:00	DRAWING FOR QUILT CAFETERIA
	VISITING

It was also agreed that the official costume for all helping with the Reunion be long, checked gingham dresses and shirts, in your choice of color and pattern. One dress is made and will be at the Abstract Co. if anyone would like to see it.

The quilt top is pieced and ready to begin embroidering names. Bring or mail names and \$2.00 per name to Borden County Old Settlers Reunion, Box 5, Gail, Texas, 79738. Money made from the quilt will be used to defray the cost of the Reunion. The quilt will be given away the afternoon of the Reunion.

TEACHERS RIGHT TO DISCUSS

Austin-- Texas school districts may not deny employees the right to promote membership in the Texas State Teachers Association and the NEA through the use of school mail facilities, campus bulletin boards or during off-duty periods during the school day, according to a new ruling by the U.S. Fifth Circuit Court of Appeals.

In an opinion filed in New Orleans on Dec. 6 by Judge Jerre S. Williams, the Circuit Judges ruled that policies of the Garland Independent School District "which purport to deny teachers the right to discuss TSTA or TSTA business during non-class time are unconstitutional." The Court also ruled that "GISD policies preventing teachers from using school mail facilities to mention employee organizations denies them the right of free speech."

The ruling is the result of a

lawsuit filed against the Garland district by TSTA in 1981. The suit challenged a local school board policy which prohibited any discussions among teachers relating to TSTA or any teacher organization while on school premises during school hours. The policy also prohibited teachers from placing TSTA-related material in teachers' school mailboxes.

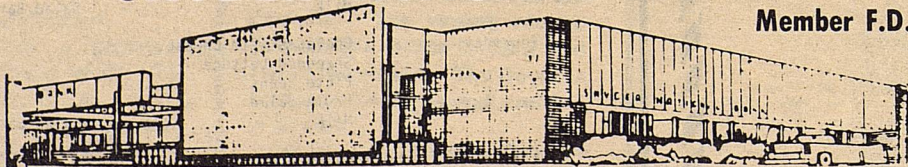
TSTA appealed an earlier U.S. District Court judgment by Northern District Court Judge Jerry L. Buchmeyer which, for the most part, ruled in favor of the school district.

TSTA President Charles Beard hailed the latest decision, pointing out that all Texas districts who have similar policies will have to comply by the ruling.

"It reaffirms that teachers do not lose their constitutional rights at the school house door," he added.

SNYDER NATIONAL BANK

Member F.D.I.C.



1715 25th

Snyder, Texas

573-2681

HOME PLATE

802 N. 4th Lamesa 872-3221

Hickory Smoked Brisket
Char Broiled Burgers
Tacos
Steak Fingers
Salad Bar

8 delicious Flavors Dipped Ice Cream
GO COYOTES
Open 10 a.m. - 10 p.m.



Mauzy Seeks Texas Supreme Court

State Senator Oscar H. Mauzy, D-Dallas, who is the Dean of the Texas Senate, filed last week as a Democratic candidate for the Texas Supreme Court.

Mauzy, who has been in the Legislature for 19 years, is Chairman of the Senate Jurisprudence Committee and a

ANDERSON

con't from 1

Cattle Growers Association. He is a director of the Texas and Southwest Cattle Raisers Assoc.

In public affairs, he was Borden County Republican chairman for 20 years, was a state republican executive committeeman and a Republican presidential elector, and is a member of the Associated Republicans of Texas.

He and his wife, the former Barbara Clayton, have always lived on the ranch. They have three children other than John--Sally Bland, Mary Anderson, and Martha Wristen, and five grandchildren. The Andersons are members of St. Mary's Episcopal Church in Big Spring. He is chairman of the Northwest Texas Diocese Long Range Planning Committee and also serves on St. Mary's Day School Board.

member of the Supreme Court's Advisory Council.

In making his announcement, Mauzy said, "For almost two decades I have been writing the law. This has prepared me to serve on the Texas Supreme Court, where many of those laws are being interpreted."

Mauzy is seeking the seat being held by Justice Sears McGee, who is 69 years old and has not filed for re-election yet.

Mauzy said, "I have proved in the Texas Senate that I am independent -- some people even say, a maverick."

"I want our courts to remain independent."

"That's why I so fervently oppose the proposal made by a small group of lawyers and a handful of judges to make our judiciary appointed."

Judges should be elected and accountable to the people."

"As a member of the Supreme Court I will speak out to keep an elected judiciary in Texas."

Mauzy practices law and has business interests in Dallas.

He is married and has three grown children.

Mauzy is a graduate of the University of Texas Law School.

As a leader in the Senate, Mauzy sponsored legislation to set up a redistricting of the court system to shorten the time between when cases are filed and when they come to trial.

Mauzy also sponsored much of the public school finance legislation in the 1970s and was the chief author of legal reform during that period, also.

LEGEND IN CONCERT--RAY CHARLES

The Midland-Odessa Symphony & Chorale, Inc. will be presenting the legendary RAY CHARLES in concert on Saturday, February 8, 1986 at 8:00 P.M. in Midland's Chaparral Center. The performance is sponsored by RepublicBank First National Midland. Tickets are currently on sale at Texas Commerce Bank in both Midland and Odessa for \$12.00 each. All seats are reserved.

From Rhythm & Blues' to 'Country & Western', from jazz to rock, Ray Charles possesses the ability to reduce the differences between styles of all music to an emotional common denominator that overcomes barriers of language and culture around the world. His musical ability and his dynamic performances have been praised by such greats as Frank Sinatra and, from the congressional floor, by former U.S. Representative Charles S. Joelson.

Born to extreme poverty in the Deep South at the start of the depression, he went blind at the age of seven, was orphaned at the age of

fifteen and has been harried by drugs. Despite all this, he has overcome those obstacles with extraordinary grace. He has been placed in a class with musical geniuses such as Billie Holliday, Bessie Smith and Louis Armstrong. In the United States, having never counted jazz as one of its blessings, he is revered by every class, color and creed. That accomplishment has placed him consistently at the top of the charts in record sales. There does not seem to be a simple explanation for this miracle, except for the fact that Ray Charles touches the emotions of his listeners with his voice; his soul-searching music offers a purgative in troubled

times. Whatever the explanation, Ray Charles is a zealously concentrated performer whose singing, presence and timing form an impenetrable hypnotic force. When Ray Charles combines forces with the Midland-Odessa Symphony on February 8th, he will be performing many of those hits that brought him to national prominence.

In addition to single seat reservations available at \$12 each, group discounts are being offered. Through this discount, a minimum order of twenty five tickets may be purchased for \$10.00 each. Call the symphony offices for more details.

Don't miss a legend in concert!

PUBLIC NOTICE

TEXAS UTILITIES ELECTRIC COMPANY hereby publishes NOTICE that, pursuant to the provisions of the Public Utility Regulatory Act and the Public Utility Commission's Substantive Rule 23.23(b)(2), it filed an application on January 14, 1986, with the Public Utility Commission of Texas seeking authority to refund to its customers a prior over-recovery under its fixed fuel factors (base rate fuel component) in the amount of \$78,002,807 as of November 30, 1985, including applicable interest, and to reduce its current fixed fuel factors.

Texas Utilities Electric Company has proposed that the refund be made and its fixed fuel factors be reduced effective with customers usage beginning with the billing month of March 1986. The proposed change in fixed fuel factors is expected to result in a \$233,413,145, or 11.88%, decrease in fuel revenues for the twelve months ended September 30, 1985, adjusted only for customer growth. All customers and classes of customers whose electric service rates include charges for fuel cost pursuant to Texas Utilities Electric Company's Rider FC, entitled "Base Rate Fuel Component," and all territories in which Texas Utilities Electric Company provides electric service through its Dallas Power & Light Company, Texas Electric Service Company and Texas Power & Light Company divisions will be affected if the application is granted.

A complete copy of said application is on file with the Public Utility Commission of Texas.

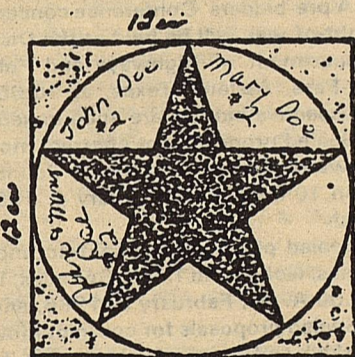
Persons who wish to intervene or otherwise participate in these proceedings should notify the Public Utility Commission of Texas as soon as possible. A request to intervene, participate, or for further information should be mailed to the Public Utility Commission of Texas, 7800 Shoal Creek Boulevard, Suite 400N, Austin, Texas 78757. Further information may also be obtained by calling the Public Utility Commission Consumer Affairs Division at (512)458-0223 or (512)458-0227, or (512)458-0221 teletypewriter for the deaf.

TEXAS UTILITIES ELECTRIC COMPANY
Dallas Power & Light Company
Texas Electric Service Company
Texas Power & Light Company

Sesquicentennial Quilt

con't from 1

Chances on the Quilt are \$1.00 for one are 6 for \$5.00.



Texas

Airman Stephen K. Matsler, son of Naomi R. Matsler of 809 W. 10th Post, Texas, has graduated from the U. S. Air Force carpentry specialist course at Sheppard Air Force Base, Texas.

During the course, students were taught cabinet and building construction, maintenance and repair, assembly of prefabricated structures, and the use and care of various carpentry tools. They also earned credits toward an associate degree through the Community College of the Air Force.

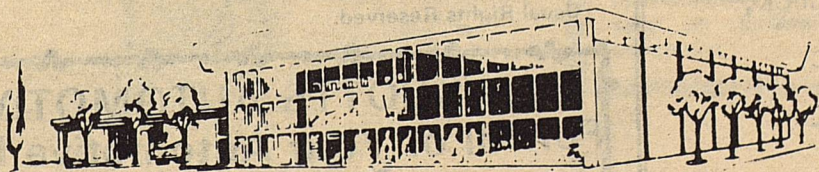
Matsler is scheduled to serve with the 21st Civil Engineering Squadron at Elmendorf Air Force Base, Alaska.

He is a 1978 graduate of Plainview High School, Texas.

To Serve In Alaska

THE FIRST NATIONAL BANK

The Symbol of Banking in Big Spring



FULL SERVICE BANKING

Member F.D.I.C.

400 Main Street

267-5513

BIG SPRING, TEXAS

STATEMENT OF NON-DISCRIMINATION

"POKA-LAMBRO RURAL TELEPHONE COOPERATIVE, INC. has filed with the Federal Government a Compliance Assurance in which it assures the Rural Electrification Administration that it will comply fully with all requirements of Title VI of the Civil Rights Act of 1964 and the Rules and Regulations of the Department of Agriculture issued thereunder, to the end that no person in the United States shall, on the ground of race, color, or national origin, be excluded from participation in, be denied the benefits of, or be otherwise subjected to discrimination in the conduct of its program and the operation of its facilities. Under this Assurance, this organization is committed not to discriminate against any person on the ground of race, color or national origin in its policies and practices relating to applications for service or any other policies and practices relating to treatment of beneficiaries and participants including rates, conditions and extension of service, use of any of its facilities, attendance at and participation in any meetings of beneficiaries and participants or the exercise of any rights of such beneficiaries and participants in the conduct of the operations of this organization.

"Any person who believes himself, or any specific class of individuals, to be subjected by this organization to discrimination prohibited by Title VI of the Act and the Rules and Regulations issued thereunder may, by himself or a representative, file with the Secretary of Agriculture, Washington, D. C. 20250, or the Rural Electrification Administration, Washington, D. C. 20250, or this organization, or all, a written complaint. Such complaint must be filed not later than 90 days after the alleged discrimination, or by such later date to which the Secretary of Agriculture or the Rural Electrification Administration extends the time for filing. Identity of the complainants will be kept confidential except to the extent necessary to carry out the purposes of the Rules and Regulations."

WHAT IS A CARAT?

The carat has an interesting history. Centuries ago, the gem dealers of the Middle East used the seeds of the carob tree to balance their scales. These seeds were called "keration" (or "little horn") in greek because the pods in which they grew were shaped like horns. The seeds were surprisingly uniform in weight. On ancient scales they balanced exactly. And even our best of modern scales cannot detect more than one three-thousandth of an ounce difference between seeds.

So the carat was the weight of a carob seed until the 19th century when the metric system was adopted universally.

What is meant by carat? There are 100 points to a carat, like the cents in a dollar. A carat is equal to 1-5 of a gram and there are 142 carats to the ounce. Diamonds are so precious that they are weighed on scales whose delicate balance even a breath can tip.

ASCS NEWS BY JERRY STONE

USDA ANNOUNCES 1986 COTTON, FEED GRAIN, WHEAT PROGRAMS

Provisions of the 1986 price support programs for upland cotton, feed grains, and wheat have been announced.

The programs include required acreage reductions of 20 percent for feed grains, 25 percent for wheat, and 25 percent for cotton. Included in these reductions is a 2½ percent paid land diversion for wheat and feed grain producers.

Signup for the farm programs is anticipated to begin in early March.

The 1986 loan rates (per bushel), will be \$1.56 for barley, \$1.92 for corn, \$.99 for oats, \$1.82 for sorghum, \$1.63 for rye, and \$2.40 for wheat. Loan rates for cotton will be announced later.

Target prices will be the same in 1986 as were in effect for 1985 crops. They are (per bushel): barley, \$2.60; corn, \$3.03; oats, \$1.60; sorghum, \$2.88; wheat, \$4.38.

Producers are eligible to earn deficiency payments on the acreage planted within the amount permitted. Producers must plant at least 50 percent of the permitted acreage to the program crop and plant the remaining acreage to a non-program crop, other than soybeans or extra long staple cotton, will be eligible to receive deficiency payments on 92

percent of the permitted acreage.

Winter wheat producers who reduce the acreage planted to wheat on the farm for harvest so that it does not exceed 65 percent of the farm wheat base may be eligible to receive diversion payments on an acreage equivalent to 10 percent of the wheat base.

Implementation of discretionary provisions relating to payments in commodities and other contractual provisions will be announced later.

Individual producers will be notified of their farm acreage bases and program yields by their county Agricultural Stabilization and Conservation Service offices.

Haying and grazing will be permitted on acreage conservation reserve land at the request of individual state ASC committees. However, haying or grazing will not be permitted on the acreage during the five principal growing months as designated by county ASC committees. Block also approved a standby measure authorizing, in the event of a natural disaster, implementation of emergency haying and grazing privileges. Approval of the emergency privileges would be made as needed on a county-to-county basis.



SUPREME FEED MILLS, INC

(806) 828-6511 · BOX 520 · SLATON, TEXAS 79364

AS IN YEARS PAST, SUPREME FEED MILLS, INC. WILL AGAIN DONATE THROUGH OUR DEALERS TO HELP SUPPORT THE STOCK SHOWS.

THIS YEAR IN CO-OPERATION WITH OUR DEALERS, A PRESENTATION WILL BE MADE TO THE OUTSTANDING YOUTH THAT FEEDS THEIR ANIMAL "TOP FLITE" FEED ALL THE WAY THROUGH FROM START TO FINISH AND PURCHASED THROUGH THE COUNTY "TOP FLITE" DEALER. THE DEALER WILL BE RESPONSIBLE FOR SELECTING THE RECIPIENT OF THE AWARD. THE DEALER PRESENTING THE TROPHY FOR BORDEN COUNTY IS SUPREME FEED MILLS, 600 RAILROAD AVENUE, SLATON, TEXAS.

THE AWARD WILL BE A HAND-MADE TROPHY BUCKLE THAT YOU CAN BE PROUD TO WEAR FOR YEARS TO COME AND TO REMEMBER THE DEALER THAT SUPPORTED YOU. THE BUCKLE WILL BE PRESENTED AT THE OFFICES OF SUPREME FEED MILLS. IF YOU FEED "TOP FLITE" FEED PLEASE TURN IN YOUR OFFICIAL RESULTS AS SOON AS POSSIBLE OR WITHIN 10 DAYS FROM YOUR COUNTY SHOW.

WISHING YOU THE BEST OF LUCK,

SUPREME FEED MILLS, INC.

Dick Davis
DICK DAVIS

"It Doesn't Cost — It Pays"

Contractors notice of Texas Highway Construction

A pre-bidders' Conference concerning contract mowing on highway right-of-way will be held at the District Headquarters Building, State Department of Highways and Public Transportation, U. S. 83-84 By-Pass, Abilene, Texas, at 10:00 A. M., January 27, 1986. All prospective bidders are encouraged to attend.

Sealed proposals for contract mowing on various tracts in Borden, Howard, Mitchell, and Scurry Counties, Texas, will be received no later than 10:00 A. M., February 4, 1986, and then publicly opened and read.

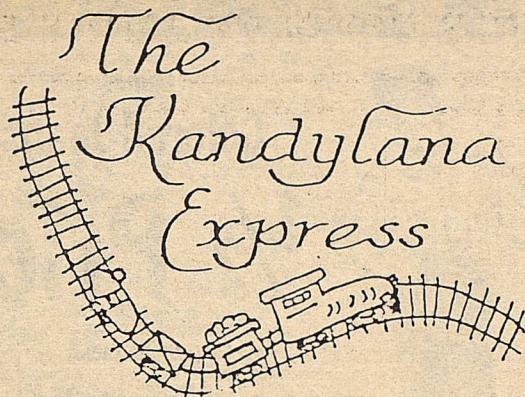
Sealed proposals for contract mowing on various tracts in Fisher, Jones, Nolan, and Taylor Counties, Texas, will be received no later than 10:00 A. M., February 5, 1986, and then publicly opened and read.

Sealed proposals for contract mowing on various tracts in Callahan, Haskell, and Shackelford counties, Texas, will be received no later than 10:00 A.M., February 6, 1986, and then publicly opened and read.

Each completed proposal shall be placed in a separate sealed envelope so marked to indicate its contents, and submitted to Mr. Roger G. Welsch, District Engineer, State Department of Highways and Public Transportation, P. O. Box 150, Abilene, Texas 79604; or, it may be hand delivered to room 225, District 8 Headquarters Building, U.S. 83-84 By-Pass, Abilene, Texas. Sealed bids for these counties will be received no later than the respective bid opening date and time schedule above.

The specifications and proposals are available at the District Maintenance Office, Abilene, Texas
Usual Rights Reserved.

SCOTTS AUTOMOTIVE
For All of Your Automotive Needs
Transmission
Brakes-Tune Ups
Air Contiotioning
805 N Lynn, Lamesa
Phone 872 5782
Night 872-5001



LESS TENDER CUTS STRETCH MEAT DOLLARS

Good, inexpensive main dishes begin with planning. That means sitting down with food ads, pencil and paper and deciding which cuts of meat are going to be the best buy for the week. Often these cuts will be less tender than those priced higher.

Then it's important to figure the cost per serving. Boneless cuts will be priced higher, but may be a better buy because they have little waste.

Here's a simple guide for the number of servings you can expect from some popular, less tender roasts and steaks:

cut	No. of 3 oz serv. per lb.
Chuck roast-bone in	2½
Chuck roast-boneless	3-3½
Round steak-roast-bone in	3¼
Round steak-roast-boneless	3¾
Rump Roast-bone in	2½
Rump roast-boneless	3½
Blade roast-steak-bone in	3
Arm pot roast-steak-bone in	2

To find the cost per serving, divide the cost per pound by the number of servings. So, for example, boneless round steak at \$2.19 per pound, divided by 3¾ servings, would be 58 cents per serving.

You can tenderize an economical, but less tender cut of meat at home by marinating in an acid mixture containing vinegar or lemon juice. Pounding the meat with a pounder or scoring it with a knife in a diamond pattern will also increase tenderness.

Meat tenderizers sold in the grocery stores will also improve the tenderness of these cuts. The enzyme meat tenderizers contain papain bromelin or tulin.

You'll get best results with chemical tenderizers by piercing the cut with a fork at frequent intervals so it can penetrate the meat. Papain penetrates less than an eighth of an inch into the meat.

For this reason, chemical tenderizers aren't effective on thick meats such as roasts. Over tenderization can also result in a mush, crumbly texture and reduced juiciness.

But you don't have to cook all these cuts as roasts. You can cut and divide them along bone and natural seam lines and then prepare each cut according to tenderness.

For example, you can take a round roast and cut it into three parts. The bottom round could be used for stews and soups or ground for chili meat. The eye of the round might be marinated and used for stir fry, ground for ground beef or chili, cut for soups and stews or braised for Swiss steak.

The top round, which is the most tender part of the cut, could be marinated and broiled the carved in thin slides across the grain.

Less tender cuts of meat can add both economy and variety to your family's meals.

EMMETT CALLS FOR TRUCK SAFETY REGULATION

State Representative Ed Emmett, a Republican candidate for the Texas Railroad Commission, has called for the Railroad Commission to take the lead in promoting truck safety. "The Texas Railroad Commission has very broad authority with regard to regulating trucks, but it has never put any emphasis on the safe operation of 18-wheelers," Emmett said. "Trucks operating in Texas have to comply with virtually no safety regulations. Shamefully, Texas leads the nation in traffic fatalities involving large trucks. The Railroad Commission should use its power to get these rolling time bombs off the highways. And, the Legislature should see to it that the Commission is supported with more legislation if it is needed," said Emmett.

"Since the Railroad Commission is responsible for issuing permits allowing trucks to operate in Texas, I propose the adoption of strong safety regulations to apply to drivers and equipment. Any trucking firm which shows a history of abuse should be banned from the roads," Emmett continued.

One frequently mentioned problem with any set of safety regulations is the lack of enforcement personnel. "If the Commission adopts the safety standards I propose, the DPS cannot possible enforce them by themselves. Major city police and county sheriffs should be given the power to enforce the regulations, too. After all, most of the truck safety problems occur near metropolitan areas," Emmett said.

SEMINAR ON BUYING FARMLAND

Buying farmland requires careful study, and the Texas Agricultural Extension Service is conducting a special seminar on this topic Jan. 28 in San Antonio. The seminar will be at the Holiday Inn North (west of the airport on Loop 410) and will begin at 9:30 a.m. The program is aimed at helping farmers and ranchers deal with the economics of farm and ranch expansion, ways to finance the expansion while minimizing risk, and the income-estate tax consequences of expansion, says an Extension Service economist.

DIETARY QUESTIONS ABOUT HIGH FIBER FOODS

College Station--Is it necessary to buy special high-fiber foods for health? Not if you're eating a well-balanced diet that includes about 15 grams of dietary fiber as a possible cancer preventative, by introducing a number of high fiber products. For example, several cereals with 9-12 grams of fiber per one-ounce serving are now on the market shelves.

But according to Texas A&M University Agricultural Extension Service nutritionist Dr. Alice Hunt, more fiber isn't always necessary.

--Nutrition research over the years has identified several useful properties of dietary fibers, says Texas A&M University Agricultural Extension Service nutritionist Dr. Alice Hunt. Reduction of cholesterol absorbed by the intestine, alteration of the ratio of types of fats absorbed or changes in the transit time of digested food through the intestine have all been reported. However, the researchers also point out that high bulk diets

may cause a loss in the absorption of essential vitamins or minerals, says Hunt. Reduced absorption of proteins, fats, minerals and vitamins can result from 35 grams of dietary fiber per 1000 calories per day. Research is continuing to determine both the best types and amounts of fiber for a healthful diet.

--The person who eats a balanced diet containing the recommended four servings of vegetables and fruit each day, as well as four servings of whole grain breads and cereals, should be able to get enough fiber from regular foods, says Texas A&M University Agricultural Extension Service nutritionist Dr. Alice Hunt. Vegetables, fruits and whole grains are the most common food sources of fiber, she adds. Some of the foods highest in fiber include broccoli, raw cabbage and carrots, dried beans and peas, wheat bran, oatmeal, dried prunes, unpeeled apples and other fruits with skins.

VALENTINE'S DAY-Feb. 14th

Let Grey Feather Make This A Valentine Day To Remember. SOMETHING For Everyone

HOT AIR BALLOON
PEARLIZED UNICORN
PEARLIZED UNICORN BOX
GINGER JARS

INDIAN RUGS
BLACK POTTERY
INDIAN STYLE POTTERY
EAGLE DANCER
WOLF DANCER

STERLING SILVER EARRINGS
14KT. GOLD EARRINGS
ITALIAN GOLD NECKLACE
ITALIAN GOLD BRACELET

WEED POTS
PLANTERS
BELLS
SQUAT POTS
CORN POTS

GREY FEATHER

Terry Smith 915-399-4572
Rosalene Hector-915-263-0977

Claiborne's
THRIFTWAY

Visit Our Deli

Party Trays Pastries Custom Cakes

710 N. 4th

Lamesa

Sale!

915 399-4572

915 399-4572

Chain link fence 33X33X33 with 2 gates.
1 piece of antron 3 carpet 13X18½-celery green
1 piece of blue carpet-11½ X 13½

bob
bob brown
olds cadillac gmc

202 SOUTH THIRD
LAMESA, TEXAS 79331
(806) 872-2144

NATIONAL COTTON COUNCIL MEETING

Memphis, Tenn., (Special)--Senator Thad Cochran (R-Miss.) and noted Washington political analyst Horace W. Busby will be among guest speakers at the National Cotton Council's 48th annual meeting Jan. 26-28 in Orlando, Florida.

Busby is scheduled to speak to the Committee for the Advancement of Cotton on Sunday afternoon, Jan. 26, and Cochran will address the Council's general session the following day.

Cochran, now serving his second term, was the first Republican in over a century to be elected to statewide office in Mississippi when he took office in 1978. He served as a U.S. representative from 1972 until 1978.

A member of the Appropriations, Agriculture, and Governmental Affairs committees, Cochran chairs three subcommittees with jurisdiction over farm programs, appropriations for the U.S. Department of Agriculture, nuclear proliferation, and other subjects.

Last year, Cochran became a member of the Senate leadership when he was elected by his colleagues to serve as secretary of the Senate Republican Conference.

Busby, who predicted the 1980 Reagan landslide, should provide attendees with a fresh insight on trends shaping up in national politics. He is author of "The Busby Papers," a highly regarded publication which offers current analysis of policies.

A native Texan, Busby joined the staff of Congressman Lyndon Johnson in the 1940's. He continued to be an advisor and close personal friend to his fellow Texan through the balance of his political career, serving as a special assistant and secretary of the Cabinet during Johnson's presidency.

He now has his own consulting firm, Horace W. Busby and Associates, in Washington. He advises both business and agricultural organizations, making a continuing study of politics for his clients.

This will mark the third appearance of the former White House aide before Council annual meetings. He first spoke at a political seminar at the Council's annual meeting in Atlanta in 1981, and was brought back by popular demand the following year in Dallas.

Joining Cochran and Busby as guest speakers will be textile executive Roger Milliken, chairman and owner of Milliken & Company, one of the 50 largest private companies in the United States. He has been described by Business Week as "one of the nation's most powerful but unpublicized industrialists."

He is scheduled to address the closing session of the industrywide organization's general assembly on Tuesday

morning, Jan. 28.

Some 1,500 industry leaders representing 19 cotton-producing states are expected to attend the Council meeting. President Samuel B. Hollis, Memphis warehouseman, will deliver the keynote address.

Delegates representing the industry's seven segments will adopt resolutions setting the Council's 1986 policies and programs after hearing committee and staff reports.

Council committees will begin meeting at the Contemporary Resort in Walt Disney World on Jan. 25 in preparation for the general session.

USED AGRICULTURAL EQUIPMENT

1980 Case 4690 4 whl dr w/cab, air, 4 remotes, PTO, duals	\$31,000.00
1978 JD 8630 4 whl dr w/cab, air, 3 remotes, duals	22,500.00
1979 Case 2470 4 whl dr	18,500.00
1975 IHC 4166 4 whl dr w/cab, air	9,500.00
1981 Case 2390 w/cab, air, 970 hrs.	22,250.00
1981 Case 2590 canopy tractor, 20.8 x 38 rear tires, 1380 hrs.	18,000.00
1980 Case 2090 w/cab, air, powershift, 806 hrs.	17,500.00
1979 Case 2090 w/cab, air, powershift	16,500.00
1976 IHC 1586 w/cab, air	13,500.00
1979 IHC 1086 w/cab, air	12,800.00
1979 AC 7060 w/cab, air, powershift	11,500.00
IHC 1066 w/cab, air	5,150.00
1970 Case 1070 w/cab, air, powershift	6,450.00
1977 JD 4430 hyd front drive	11,000.00
1973 JD 4230 w/cab, air, quadrangle	10,500.00
JD 4020 diesel	6,500.00
1971 IHC 826 diesel	5,500.00
1967 JD 4020 LPG	3,450.00
1970 Case 1170 diesel w/cab	4,750.00
1962 Case 930 diesel	2,750.00
Case 16hp lawn & garden tractor w/mower	2,150.00
Versatile 1000 gal. sprayer w/70' boom	4,150.00
JD 6 btm rev 4600 plow w/slatted btms	6,500.00
M & M 7 btm rev plow	6,250.00
M & M 8 btm rev plow	6,500.00
IHC 32' tandem disc	6,500.00
Case 13 shank chisel	1,500.00
IHC 15 shank 3 pt chisel	1,850.00
Module builder (built in Lamesa)	6,000.00
Bush Hog 21' hyd wing offset	4,500.00
Miller 14' offset	2,500.00
M & W round baler	6,500.00
New Holland round baler	3,250.00
13 row folding lister w/JD shanks & hyd markers	2,850.00
Eversman 5 yd model 450 scraper	2,750.00
Byram 12' scraper w/cyl & hoses	3,500.00
New Amco disc terracer	4,750.00
12 row hyd folding skip row shredder w/3 72' Bush Hog shredders, tail wheels & 2 pr gauge wheels	6,250.00
Several diesel tanks w/stands & pumps	

USED CONSTRUCTION EQUIPMENT

Case 1150 crawler dozer w/cab, 800 hrs.	\$38,500.00
Case 580SE loader backhoe, 100 hrs.	32,500.00
Case 580D loader backhoe w/cab	22,500.00
Case 580SD loader backhoe w/canopy, 1700 hrs.	24,250.00
Case 580D loader backhoe w/canopy, 1400 hrs.	22,500.00
Case 580C loader backhoe w/cab	17,500.00
Case 580C loader backhoe w/canopy	14,500.00
Case 580C loader backhoe w/cab, 1980 model	15,500.00
JD 300 loader backhoe, 1974 model	6,250.00
Case 580B loader backhoe w/canopy, 1975 model	9,500.00
Case 530 diesel loader backhoe	5,850.00
Case 584C forklift w/21' mast	22,500.00
Case W14 loader w/cab, air, 300 hrs.	42,500.00
Case 450 crawler w/6 way dozer	15,500.00
Case 450B crawler w/6 way dozer	18,000.00
Case 450B crawler w/6 way dozer	24,500.00
Vermeer M470 trencher	14,500.00
IHC TD 15 crawler dozer	9,500.00
AC M100 maintaner w/cab, hyd side shift	12,000.00
Howle 3 axle gooseneck backhoe trailer	3,250.00
1971 Ford truck w/oil field bed	3,250.00
1967 IHC dump truck w/drag axle	3,500.00

FEAGINS IMPLEMENT

A fresh team for today's farmer



HWY. 87 NORTH
915-263-8348

BIG SPRING, TEXAS
915-267-1953



Ladies
Colored Jeans

1/2 Price

Large Group Ladies'
Denim Jeans

Buy 1 Get
1 Free



Ladies' Coats

1/2 Price

CLEARANCE

SALE



Snyder

-H-

Western Wear

College Heights
Shopping Center

No Exchanges
No Refunds
No Returns
All Sales Final

Sweaters

30% Off

Sport Coats

30% Off

Large Group
Coats

1/2 Price

Leather Coats

1/2 Price

Don't Forget \$49⁹⁵
The Ropers

\$59⁹⁵