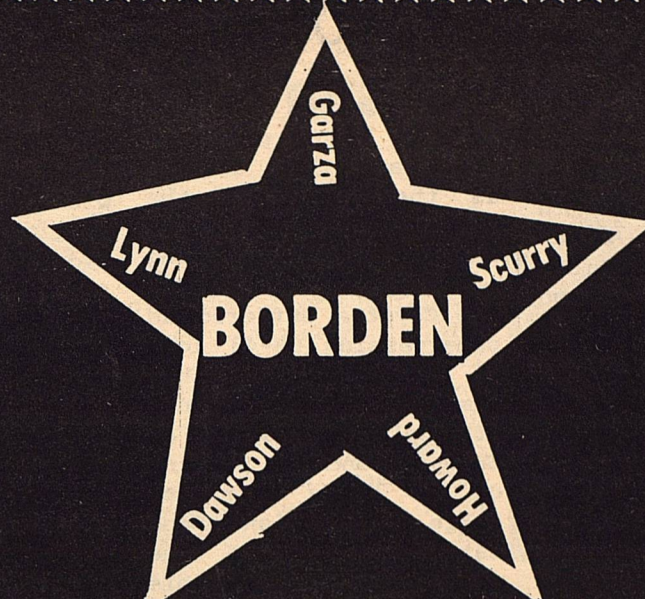


THE

VOLUMN XIV

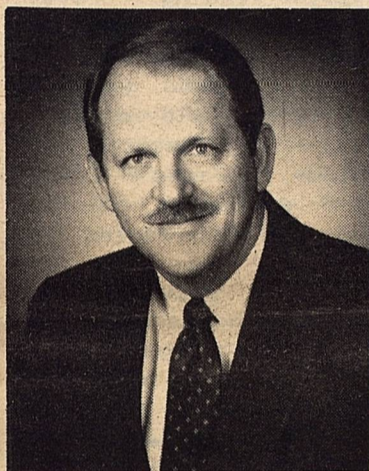


STAR

FEBRUARY 10, 1988

Serving the Counties of Borden, Dawson, Garza, Howard, Lynn & Scurry

LELAND W. "PETE" GREENE ANNOUNCES CANDIDACY



LELAND W. "PETE"
GREENE

Leland W. "Pete" Greene has announced his candidacy for the office of District Judge of the 132nd. district which includes Scurry and Borden counties of Texas.

Pete Greene is a life long resident of Snyder and Scurry County.

Pete graduated from Snyder High School in 1964, and from Baylor School of Law in 1968.

Following a two year stint with Uncle Sam from 1969 to 1971, Pete was appointed District Attorney by Preston Smith in February of 1971, a position he held until 1974. He married Donna Kirk in 1987 and they have one daughter, Erin.

The day to day experience as an elected official, who has been responsive and accountable to the public has

been invaluable says Greene. He feels his experience in serving as a District Attorney for over thirteen years makes him particularly qualified. As District Attorney, he has prepared and prosecuted all of the felony criminal cases that came before the 132nd District Court additionally Greene has represented the State of Texas in all civic cases filed in this district where the State of Texas or some State agency was party, which has included the Texas Department of Public safety, The Texas Agriculture Department, and the Texas Department of Human Resources.

Currently Pete has a private law practice and has maintained a general practice in virtually all areas of the law.

If elected it will be Pete Greene's goal to maintain professional competence in the law and see that all parties especially the citizens of Scurry and Borden counties, are treated fairly and impartially. It is Greene's feelings that a district judge should be able to communicate simply and make impartial decisions based upon the law, whatever it may be.

Absentee voting begins February 17th and ends March 4th.

The Tejas CattleWoman met Thursday January 14th at the Golden Corral in Snyder for their first meeting of 1988 with ten members and three visitors present. Tejas CattleWomen are made up of ladies of Borden, Howard, Mitchell, Nolan and Scurry counties who are interested in promoting beef and beef products.

President Yvonne Nunn called the meeting to order and Jean Everett gave the opening prayer. Treasurer Dovie Brownfield gave the Treasury report. Secretary Lisa Buchanan read some minutes of previous meetings about some of the activities and accomplishments of previous times. Yvonne introduced Sharon Applin, a guest of Snyder, who is responsible for the organization called "Gentle Doves" which is a ministry to women prisoners of the surrounding counties. Mrs. Applin expressed her desire to serve and the many needs of the women who have been arrested. Some of

Exercise one of your most important rights as an American -VOTE!- and vote for Lealand W. "Pete" Greene -- #1 on the ballot for District Judge.

TEJAS CATTLEWOMEN MEET IN SNYDER

their most urgent needs are clothing literature, non-perishable foods, household items, monetary funds, and always prayer. At the conclusion of her presentation, the Tejas CattleWomen voted to give their five beef gift certificates of five dollars each for her ministry to the women she serves.

Lucille Sterling, a member of Tejas, past president of Texas CattleWomen, Texas CattleWomen of the year 1987 and a member of the Beef Industry Council gave the program. The Beef Promotion and Research Act of 1985 was approved by the United States Department of Agriculture and Congress to provide and research designed to strengthen the beef industry's position in the marketplace, to maintain and expand foreign and domestic markets and uses for beef and beef products.

The Beef Industry Council is composed of 113 members (108 represent producers and 5 represent importers) who volunteer their services and time to represent the interests of beef, dairy, veal and general farm organizations. The "Dollar Checkoff Program" was started October 1,

1985 as the Beef Industry's response for a unified nationwide promotion program which includes four conditions 1. Everyone pays the same rate. 2. Importers pay. 3. A limit is placed on administrative costs, and 4. Both state and national producer-controlled beef promotion organizations decide where promotion and research efforts are directed. The continued existence of this program is subject to a referendum to be voted on in May by beef producers and importers.

Tejas CattleWomen meet the second Thursday of every month in Colorado City, Snyder or Big Spring. All ladies interested in the promotion of beef, or cordially invited to attend. The February meeting will be held at Furr's Cafeteria in Big Spring at 10:00 A.M. February 11th. Guests present for this meeting were, Barbara Hamlett, Sharon Applin and Shirley Drum. Members present were: Yvonne Nunn, Jeanne Bullard, Jean Everett, Gloria Griffin, Lucille Sterling, Lish Buchnana, Jackie Roden, Gerald Marie Wallace, Dovie Brownfield and Minnie Boyd.

LADY COYOTES WIN DISTRICT CHAMPIONSHIP

With the two district victories last week, Borden County's Lady Coyotes have claimed the 1987-88 District 13-A basketball championship! With the wins over O'Donnell and Grady, Borden raises its district record to 7-0 and the season record to 19-4.

In Friday's win at Grady, Borden had one of its worst shooting percentages from the floor they have had this year but still held on for a 50-40 win. The defense came up with 12 steals but forced 15 more turnovers. Hitting only 18 of 61 attempts from the floor, the Lady Coyotes had to rely on defense and fine free throw shooting as they hit an excellent 10-11 for 91%. Holding a slim 9-6 lead at the end of the first quarter, Borden extended its lead to 22-14 by half, with Elana Himes hitting a shot at the buzzer. In the third quarter, Kate Phinizy hit two three pointers and Elvira Balaque made one as Borden exploded for 19 third quarter points for a 41-26 edge enter-

ing the final quarter. Elana led in scoring with 18 points followed by Kate and Elvira with 10 each. Kristi Adcock had 6 followed by Lisha Sternadel with 4 and Shelly Lewis with 2. Shelly led in field goal percentage hitting her only attempt, followed by Kate with 50% (4 of 8). Elvira led in free throw percentage with 100% making 2 of 2 and Elana was next with an excellent 8 of 9 for 89%. Lisha and Elana led in steals with 4 each and Elana led in rebounds with 8 followed by Lisha with 6. Elvira led in rebounds with 4. Borden playing without usual starting guard Ralynn Key, who missed the game due to hazardous road conditions.

The Bi-district game had not yet been set but will be Monday or Tuesday, the 16th or 17th of February. Should they win, the area game will be Thursday or Friday, the 19th or 20th. Again Congratulations to the Borden County Lady Coyotes, 1987-88 District Champions!

LADY COYOTES HAND O'DONNELL ANOTHER DEFEAT

Anyone who attends the Borden County-O'Donnell girls' games each year, knows they can look forward to a rough and tumble match as both teams depend on aggressive defenses that force many turnovers. Tuesday's game was no disappointment! Borden had a season high 37 turnovers, but forced about as many on the Lady Eagles, and escaped with a 39-34 district win. Borden held a slim 7-6 lead at the end of the first quarter but extended it to 25-18 by half with a 18-12 scoring edge in the second quarter. Tying in scoring in the third quarter 7-7,

COYOTES SHOOT DOWN EAGLES

The Borden County Coyotes had a point to prove and they did it as they defeated the O'Donnell Eagles 77-53. In the first meeting between the two teams, the Coyotes suffered an embarrassing 68-43 loss at O'Donnell. In that game the Coyotes weren't at full strength as Shannon Bond was playing on a badly sprained ankle and Brian Bond sat out much of the game in foul trouble and eventually fouled out. The victory Tuesday was sweet, because of the first loss and the aggressive play by the Coyotes.

The Coyotes did not have a real good first quarter, and they were out scored 16-14. The second and third quarters proved to be too much for the Eagles. In the second quarter the Coyotes outscored the Eagles 29-15, and in the third quarter, the Eagles were held to only 4 points to the Coyotes 22. The Eagles outscored the Coyotes in the fourth quarter as the Coyotes played everyone on the bench.

Borden still held 32-25 lead entering the last quarter. O'Donnell edged Borden by 2, 9-7 for final margin.

Elvira Balaque, who came off the bench, led in scoring with 16 points followed by Lisha Sternadel with 10. Elana Himes was next with 8 and Ralynn Key had 5. Elvira led in field goal percentage with 63% followed by Lisha with 57%. Elana led in free throw percentage with 100% making 2 of 2. Lisha led in stelas with 7 followed by Ralynn with 4. Elana and Kristi tied in rebounds with 11 each and Ralynn led in assists with 4.

The win raises the district record to 2-0 in the second half of district play. The season record goes to 18-4, with two district games remaining before the state playoffs begin.

The Coyotes had the best balanced scoring effort of the season with all five starters scoring in double figures. Shannon Bond led all scorers with 19 points. He also had 7 steals, 8 rebounds, and 3 assists. Will Phinizy was next high with 16 points, 2 steals, 9 rebounds, and 5 assists. Brian Bond scored 11 points, made 3 steals, 2 rebounds, and 3 assists. Chris Kilmer also scored 11 points, had 6 rebounds, and 1 assist. Kerry Fryar scored 10 points, had 3 steals, 3 rebounds, and 1 assist. Jimmy Rios had 6 points, 6 steals, 3 rebounds, and 1 assist. Wayne Wilson scored 2 points, had 1 steal, 3 rebounds, and 1 assist. Randell Hollis scored 2 points and had 2 rebounds.

COYOTES DEFEATS GRADY 75-61

The Borden County Coyotes traveled to Grady through a snow storm, and they heated things up for the Grady Wildcats. The first quarter score was very close 20-18, with the Coyotes in the lead. With a change in press defense, the Coyotes began to cause trouble for the Wildcats. The Coyotes first half lead was 10 points 41-31.

In the second half the Coyotes continued their pressure defense and built on their lead. The Coyotes came up with 22 steals, and forced a 10 second backcourt violation, and several passes that went out of bounds.

The Coyotes were led by Shannon Bond who had his best effort of the season. He made 15 out of 30 field goal attempts, 6 out 7 free-throws for 38 points. He made 12 steals, 12 rebounds, and 4 assists. Brian Bond scored 16 points, had 5 steals, 5 rebounds, and 2 assists. Will Phinizy scored 14 points, had 13 rebounds,

J.V. LOSES TO O'DONNELL 41-38

The Borden County Coyotes J.V. team played the O'Donnell Eagles last Tuesday and lost by a shot at the buzzer. The Coyotes started off slow and trailed 18 to 4 at the end of the first quarter. The Coyotes then outscored the Eagles in the second and third quarters. In the final quarter, the Coyotes gained the lead, but some costly turnovers in the final minutes of the game gave the victory to the Eagles. Even though th Coyotes started slow, they did improve as the game progressed.

Shane Kemper was the Coyotes leading scorer with 15 points. Lance Latimer, who was playing in his second game of the year, played very well and scored 8 points. James Lewis also scored 8 points. Cody Stone scored 4 points. Cole Vestal scored 3 points. Eric Lusk did not score, but he did a good job handling the ball for the Coyotes.

and 2 assists. Jimmy Rios scored 4 points, had 2 rebounds, and 3 assists. Chris Kilmer scored 2 points, had 12 steal, 5 rebounds, and 2 assists. Lance Latimer scored 1 point, had 1 steal, and 2 rebounds. Kerry Fryar did not play, because he had not returned from the Ft. Worth stock show.

NOTICE

SENIOR PROJECT CONTINUED

THE DATE FOR THE COFFEE FUND RAISING PROJECT WILL CONTINUE UNTIL THE 15th. OF FEBRUARY.



The Borden Star
Publication No. 895520
(USPS 895-520)
Publication No. 895520

Editor
Barbara Anderson

Published weekly, except for Christmas and New Years, on Wednesday at Gail, Borden County, Texas 79738, Box 137, Kincaid Street, Second Class postage paid at Gail, Texas.

Any errors that we make reflecting on the reputation or standing of any Firm, Corporation, or individual that may appear in the columns of the Borden Star will be gladly corrected when called to the attention of the staff.

Subscription Rates:
\$8.00 per year

Borden Star Owners
James McLeroy, Barbara Anderson, Doris Rudd, Pat Porter, Bob Dyess, Edna Miller, Ruth Weathers, Mrs. Nathan Zant, Sonny Tucker, Eddie Simer, Loreen Jones, Martin Parks, Dan Turner, Lela Porter, and Marge Toombs.

JR. HIGH "B" TEAM ENDS YEAR UNDEFEATED

The Jr. High "B" team at Borden County ended their basketball season Monday night and did they go out in style! With their 25-4 win over the Wildcats, Borden finishes the year without a loss.

In the first quarter, Borden held a very slim 2-0 lead but in the second quarter, scored 8 points while again holding Grady scoreless, for a 10-0 lead. They extended their lead to 16-2 entering the final quarter before ending with a 21 point victory. Leading scorer for Borden was Melody Harrison with 11 points followed by Angela Evans with 10. A'Lise Lloyd had 4 points to round out scoring. Also playing were M'Lys Lloyd and Mendy Hensley.

The team averaged 24.5 points per game this year while holding their opponents to an average of 9 points per game. Their best offensive effort was 30 against Sands on January 4 and their best defensive effort was holding Grady to 4 Monday night. Melody Harrison led the team in scoring with 9.5 average followed by Angela Evans with a 6.5 average.

The season's games were as follows:

Borden 14	O'Donnell 11
Borden 30	Sands 12
Borden 29	Klondike 9
Borden 25	Grady 4

JR. HIGH COYOTES LOSE TO GRADY

The Grady Wildcats defeated the Borden County Coyotes in an exciting game at Grady. The Coyotes found themselves trailing 13-4 at the end of the first quarter but they fought back to within 5 points of the Wildcats. Both teams used full court defense to put pressure on the other offense. The Coyotes had some problems early in the game, but they

JR. HIGH GIRLS GRIND GRADY

A great defensive effort by all seven members of the Borden Jr. High girls basketball team was more than Grady could handle Monday night as Borden left Grady with 43-13 loss. Holding a 22-5 lead at half, Borden increased its lead in each of the final two quarters by 12-4 and 9-4. Borden held Grady scoreless in the second quarter while scoring 13 points of their own.

Leading scorer for Borden was Shayne Hess with 19 points followed by Amanda Anderson with 11. Kristin Kilmer scored 8 points before fouling out in the fourth quarter. Shara Woodward hit 3 points and Kristin Monger made 2 to round out the scoring. Also playing were Kelly Jo Ogden and Leslie Fryar.

This raises the Jr. High's season record to 7-2 on the year and 6-1 in district. Borden plays its last game of the season at home Monday night against Sands.

finally began to move the ball effectively.

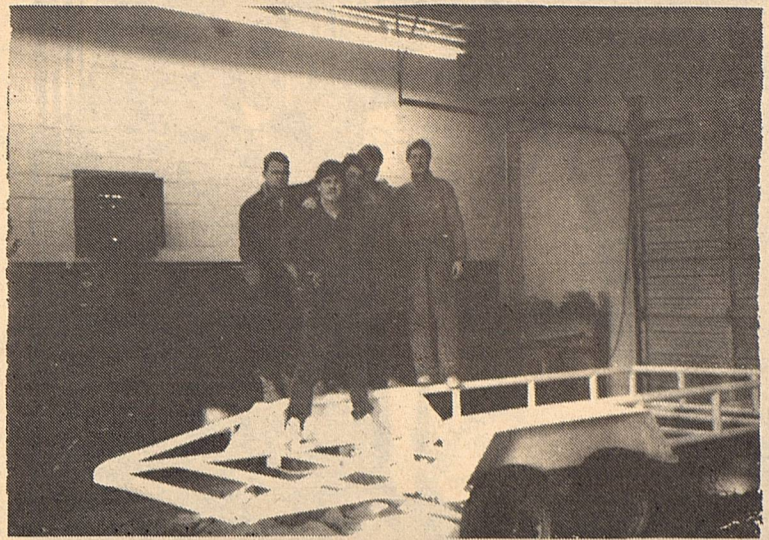
The Coyotes were led in scoring by David Buchanan who scored 14 points, 8 of which came in the fourth quarter rally. Juve Balaque, John Paul Harris, and Clint Kemper scored 4 points each. Clint Anderson scored 1 point. Rich Holzmann and Clint Wills did not score, but they helped put defensive pressure on the Wildcats.



G
O
C
O
Y
O
T
E
S

FFA NEWS

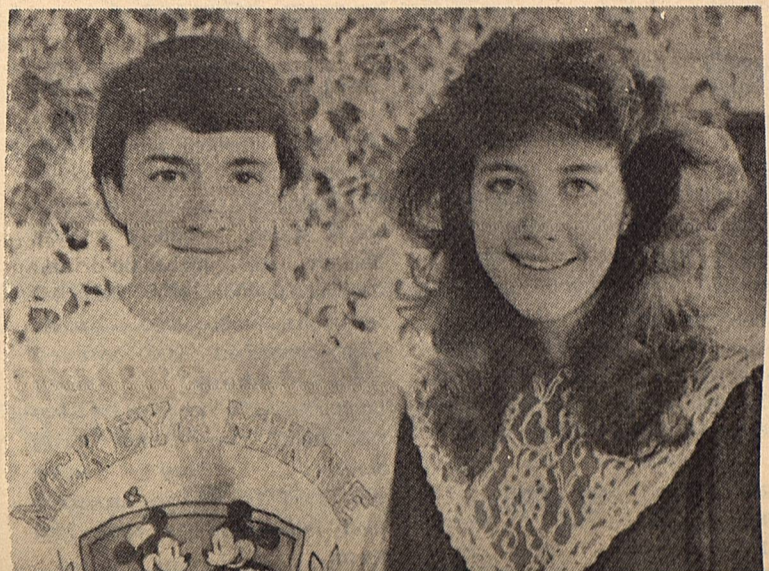
The Senior Ag. Mechanics class at Borden High School has recently completed construction of a 16' flatbed tandem axle trailer. The trailer was constructed by the class for Wayne Wilson as a gift for his Dad. The Ag. Mechanics class has constructed several nice projects during the year. The class includes Robert Buchanan, Wayne Wilson, Will Phinizy, Harold Barnes, and Kerry Fryar.



A GIFT FOR DAD!



FELICIA ROMERO



CHRISTY HOLMES, former student of Borden High School and RON BAKER, were elected Sophomore Class Favorite of Snyder High School. (SDN Staff Photo)

FFA SWEETHEART

Felicia Romero, a Senior at Borden County High School was recently elected as 1988 FFA Sweetheart by the Gail FFA Chapter. Felicia's duties include help during various FFA activities such as the Borden County Stock Show, and the FFA-FHA Banquet. Felicia will hold this award until the conclusion of the 1988 school year.



TUMBLING CLASSES

REMEMBER, SIGNUP DAY FOR TUMBLING CLASSES, WILL BE THURSDAY, FEBRUARY 11, AT 3:45 P.M. IN THE BLUE ROOM AT BORDEN COUNTY SCHOOL

LUNCH MENU

FEBRUARY 15 - 19, 1988

Monday	Sloppy Joes Pork & Beans Fruit Bun Milk	Salad Bar
Tuesday	Salmon Patties Cole Slaw Green Beans Honey Butter Hot Bread Milk	Salad Bar
Wednesday	Chili and Beans Stuffed Celery Sticks Mexican Bean Salad Fruit Corn Bread Milk	Salad Bar
Thursday	Chalupas Cheese Vegetable Salad Buttered Corn Fruit Milk	Salad Bar
Friday	Hamburgers French Fries Lettuce-Tomatoes Cookies Milk	Salad Bar



MR. & MRS. JAMES MICHAEL DOUGLASS
and MR. and MRS. DOUG NEHRING

♥ HARGROVE-DOUGLASS

Kelli Shae Hargrove and James Michael Douglass exchanged wedding vows January 16 in a candlelight ceremony at the First United Methodist Church of Cross Plains. Bro. Jerry Lewis of Stanton, Texas officiated the double-ring ceremony.

Parents of the couple are Mr. and Mrs. Jim Hargrove of Cross Plains, Mr. and Mrs. Doug Nehring of Borden County, and Mr. and Mrs. J.L. Douglass of Sweetwater.

Bro. Jerry Lewis and his wife, Sharon, cousin of the bride, sang "Just You and I" and "Whats Forever For", while Jerry accompanied one with the piano and one with a guitar. Vondean Hutchins played the organ music.

Given in marriage by her parents, the bride wore a formal gown of antique lace and cotton organza with lace applique accents. It featured pearl beaded trim on a Queen Anne neckline with a Bishop hemline extending around a wide chapel length train and matching veil.

Maid of honor was Kami Hargrove, sister of the bride, with Ashlea White of Gatesville, cousin of the bride, serving as flower girl. They wore red tea length dresses made of crepe, accented with red lace trim, and made by the bride's Grandmother.

The groom was attired in a white tuxedo with

white cumberband and white tie. Cody Newton of Borden County served as best man. Cody Smith of Abilene and Jody Hook of Brock, cousins of the bride lit candles and served as ushers. Dusty Hargrove, the brides brother, was the ring bearer. They were attired in white tuxedos red cumberbands and red ties.

The reception was held in the fellowship hall by the house party of Jean McWilliams, Rosalea Bommer, Shelly Taylor, Debbie Strength, Dawn Strength, Pam Koenig, Ticia Wilson, and Dana Douglass, sister of the groom. Jana Pickett registered guests.

The bride's table was laid on white lace accented with brass punch bowl and coffee urn. The bridal boquet

of red roses and white carnations served as the centerpiece for a three tiered wedding cake featuring cascading red roses and a horse shoe cake top with western bride and groom.

The groom's table of red bandana and gingham, featured two horse shoe German Chocolate cakes. A thistle centerpiece with cowboy hat, boots, and rope emphasized a western theme as well as the campfire porcelain coffeepot and cups.

The bride and groom will be at home on the Newton Ranch in Borden County.

OBITUARY

ILA THOMAS

Services for Ila Davis Thomas, 96, of Gail were held at 4 p.m. Monday in Peaceful Garden Mausoleum with the Rev. Clifton Igo, pastor of Second Baptist Church, officiating.

Burial was under direction of Branon Funeral Home.

She died at 1:30 p.m. Saturday in Lamesa Nursing Center after an illness.

She was born in Pagoda. She married J.C. Thomas in 1906 in Pagoda. She was a retired practical nurse. She was a Baptist.

Survivors include two daughters, Naomi Hinks of San Angelo and Juanita Kite of Gail; eight grandchildren; 18

great grand children; and 15 great-great children.

Grandsons were pallbearers.



Elect

PATRICK TOOMBS

Tuesday, March 8, 1988

SHERIFF

BORDEN COUNTY

Your Vote And Support Appreciated

PAID POLITICAL ADVERTISING BY PATRICK TOOMBS, FLUVANNA, TEXAS



THANK YOU

WE WOULD LIKE TO SAY THANK YOU TO EVERYONE FOR ALL THE LOVING KINDNESS EXPRESSED TO OUR FAMILY THROUGH PRAYERS, CARDS, FLOWERS AND VISITS DURING MY HOSPITAL STAY.

MAY GOD BLESS EACH AND EVERYONE OF YOU
OPAL, ALVIN,
CHIP, AND MELINDA SMITH



Branon Funeral Home

Service in this area since 1922.

Phone: 872-8335

403 N. Austin - Lamesa

Claiborne's
THRIFTWAY

Visit our Deli

Party trays

Custom cakes

Pastries

710 N. 4th

Lamesa

*Valentine
Gifts
from the
Heart*



Large Selection
Heart Shaped Jewelry
Earrings, Pendants, Rings

All

Gold Chains

15% off

Haney's



Jewelry

3203 College

573-1508

ASCS NEWS

By Jerry Stone

CONSERVATION RESERVE PROGRAM

The 6th. CRP sign up to take highly erodible land out of annual crop production and plant it to a permanent grass or trees began February 1 and ends February 19, 1988. Bids will be accepted for the 1988 or the 1989 crop year. Eligible land is that which has been owned for at least three years prior to January 1985. Also, land must have been planted to agricultural commodities at least two of the years 1981-1985. Bids on partial fields must have permanent posts to identify field divisions

Cost shares will be paid to producers who follow the plan agreed to by the producer and SCS to establish permanent grass on accepted bids. The limit on cost shares is 50% of the normal cost not to exceed \$55 per acre. The accepted bids for this signup will not be announced until all bids are received and evaluated on the national level.

Effective dates for accepted 1988 contracts will be the end of signup and grazing of that land must end when notified the bid of accepted. The 1989 bid will be effective October 1, 1988 or when the 1988 crop has been harvested. Grazing to end October 1, 1988 on 1989 contracts.

1988 FARM PROGRAM SIGNUP

The signup period for the 1988 Farm Program is February 16 thru April 15, 1988. The signup period for wheat and feed grain producers to participate in the 0/92 program is February 16 thru March 11, 1988.

1988 FARM PROGRAM PROVISIONS

Limited cross compliance requirements will be in effect for the 1988 crops of wheat, feed grains, and cotton. To

be in compliance with the 1988 Crop Programs, participating producers cannot plant for harvest any acreage of wheat, grain sorghum, corn or cotton that exceeds the crop acreage base of that crop on the farm.

Cotton loans for 1987 crop are available through May 31, 1988. 1988 crop bases of cotton, wheat, grain sorghum, and corn will be the five year average of the planted and considered planted of the 1983 thru 1987 crop year.

1988 UPLAND COTTON PROGRAM

Participating producers can plant 87.5% of the 1988 cotton acreage base on the farm. An acreage reduction requirement of 12.5% is in effect. The Reconciliation Act of 1987 lowered the earlier announced target price of 77 cents to 75.9 cents per pound. The national loan rate will still remain at 51.8 cents per pound. There is not a 0/92 program for cotton.

1988 GRAIN SORGHUM PROGRAM

Participating producers can plant 80% of the 1988 grain sorghum base on the farm. An acreage reduction requirement of 20% is in effect. The established target price is \$2.78 per bushel. The national loan rate is \$1.68. An optional paid land diversion will now apply due to the provisions of the Reconciliation Act of 1987. Producers can set aside an additional 10% of the grain sorghum base. The diversion payment rate is \$1.64. The diversion payment will be paid in generic commodity certificates on or about May 16, 1988.

1988 WHEAT PROGRAM

Participating producers can plant 72.5% of the 1988 wheat base on the farm. An acreage reduc-

tion requirement of 27.5% is in effect. The established target price is \$4.23 per bushel. The national loan rate is \$2.21 per bushel. There will not be a paid land diversion.

0/92 PROGRAM

Wheat and feed grain producers may elect to participate in an optional 0/92 program. Participating producers would devote all or a portion of the wheat or feed grain permitted acreage to conserving uses and receive deficiency payments on an acreage not to exceed 92 percent of the crop's permitted acreage. The deficiency payment rate on the conserving use acreage will not be less than the estimated deficiency payment rate. To minimize the adverse economic effects on rural communities, measures will be taken to limit the amount of acreage enrolled in the 0/92 program. Details are limited at this time on the amount of acreage that will be accepted, but the acreages idled under other programs and CRP will be used in considering the economic impact on rural communities.

The signup period for the 0/92 program will start February 16 and end on March 11, 1988.

EXPIRED CERTIFICATES

Have you let a commodity certificate expire? If you find any expired certificates please contact this office. Generic certificated can be redeemed up to six months after expiration, at 85% of face value. Between six through eighteen months you may receive only 50% of face value.

HOLIDAY

This office will be

THE BORDEN STAR, WED., FEB. 10, 1988...5

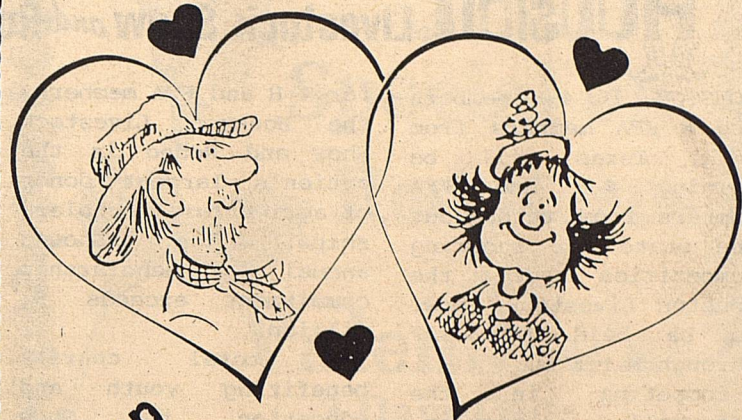
closed February 15 in observance of Presidents Day.



HAPPY
VALENTINE'S
DAY

from THE BORDEN STAR!!!

For The One You Love



Shop



Western Wear

College Heights Shopping Center

THE COYOTE COUNTRY STORE

★★★★ SPECIAL ★★★★★

6 PACK CANNED COKE \$2.19

6 PK. BOTTLE COKE \$2.59

GAS - REG. 92.9

UNLEAD 96.9

DIESEL 94.9

CONGRATULATIONS TO THE STOCKSHOW EXHIBITORS!



WESTERN SEED & DELINTING

Certified Cotton Seed

ACID
DELINTING

Paymaster 145, 303, 404, 792
Coker 3131, S110, 500
Terra 383, SR-10, SR-482
SP-21, SP-215, CAMD-E
CAB-CS

COTTON
PLANTING SEED

Hay Grazer Grain Sorghum Wheat

Wheat & Oats Cleaning

LAMESA, TEXAS
RON BUTLER

BUSINESS PHONE
(806) 872-8896
(806) 872-5388

RESIDENCE PHONE
(806) 872-5271



We're proud to be a part of the area since 1905

Snyder National Bank

This is your Bank

Member
FDIC

1715 25th
573-2681

LET ME GET MY HAT

By Dennis Poole



NEWS FROM

HOUSTON Livestock Show and Rodeo

HOUSTON- 16 4-H members and 8 FFA members from Gail, Texas will be joining 4-H and FFA members from throughout the state for showing competition at the Houston Livestock Show, to be held Feb. 17 through March 6.

Competing in the Astrohall complex, these young exhibitors are vying for prizes in the junior show, where 1988 entries are expected to exceed 15,000. These junior show entries combine with open show and horse show entries to make the Houston Show the world's largest live-show.

Junior exhibitors will be representing 809 Texas 4-H clubs and FFA chapters while open show exhibitors, primarily professional breeders and ranchers, arrive from all over the world.

Junior show and open show exhibitors will compete for millions of dollars in prize monies and premium auction prices.

Junior exhibitors show a variety of animals, including beef and dairy heifers, breeding sheep, goats, commercial steers, breeding rabbits and market lambs, steers, poultry and barrows.

The 1988 Show will have two new cattle shows: the Open Braler Cattle Show and the Junior Simbrah Breeding Beef Heifer Show.

Additionally, the upcoming Houston Livestock Show will feature its first Invitational Llama show on Sunday, Feb 21, and Sunday, Feb 28. From Friday, Feb 19 through Sunday, Feb. 28, approximately 40 head of llama will be on display.

Because in addition to providing a learning experience and exciting showing competition

for 4-H and FFA members, the Houston Livestock Show and Rodeo is the nation's largest donor of agricultural scholarships. The Show's annual scholarship commitment exceeds \$1 million.

A total charity benefiting youth and education, the Show currently has more than 1,000 students on scholarships at Texas colleges and universities.

This organization also funds more than 30 research programs at 11 colleges and universities throughout the state.

BORDEN COUNTY EXHIBITORS

FFA
Harold Barnes
Robert Buchanan
Kerry Fryar
Randell Hollis
Will Phinizy
James Smith
Cole Vestal
Wayne Wilson

4-H
Amanda Anderson
Kandy Belew
Marcus Belew
Justin Cox
Kurt Hess
Shayne Hess
Grant Key
Ralynn Key
Shelly Lewis
A'Lise Lloyd
D'Lyn Lloyd
M'Lys Lloyd
Kate Phinizy
James Smith
Cody Stone

This is a list of the 10 4-H and 1 FFA Borden County exhibitors, that participated in the Ft. Worth, and El Paso Stockshows:

FORT WORTH RESULTS:

Amanda Anderson
Amanda Anderson
1st. Place Lt. Wt.
Angus Steer
James Smith, FFA
4th Place Lt. Wt.
American Steer
Cody Stone
5th Place Lt. Wt.
American Steer

Ralynn Key
4th Place Med. Wt.
Polled Hereford
Justin Cox
8th Place Lt. Wt.
Angus Steer
D'Lyn Lloyd
7th Place Lt. Wt.
Shorthorn Steer
Shayne Hess
6th Place Hvy. Wt.
Crossbred Barrow

Kurt Hess
15th Hvy. Wt.
Hampshire Barrow
Cody Stone
11th Place Med. Wt.
Hampshire Barrow
Also exhibiting were:
M'Lys and A'Lise LLOYD
Parents and leaders-
attending:
Weldon LLOYD
Aubrey Langford
Danny Stone
Jerry Stone
Steve Hess
Roland Key
Rex and Teresa Cox
Dolores Anderson
Dennis Poole

EL PASO RESULTS:

A'Lise Lloyd
3rd Place Med. Wt.
Hereford Steer
Ralynn Key
4th Place Hvy. Med.
Charlois Steer

Shayne Hess
3rd Place Hvy. Wt.
Crossbred Barrow
14th Place Med. Wt.
Crossbred Barrow
Also exhibiting were:
Clint Anderson
Kurt Hess
Parents and leaders
attending:
Steve and Pam Hess
Karen Key
Weldon Lloyd
Dennis Poole

POLITICAL CALENDAR

U.S. CONGRESS

Charles Stenholm (D)

DISTRICT JUDGE

Gene Dulaney (R)
Tommie J. Mills (D)
LELAND W. "PETE" GREENE

SHERIFF

R.D. Lewis (D)
Warren Beaver (D)
Frank Menix (D)
Patrick Toombs (D)

COMMISSIONER

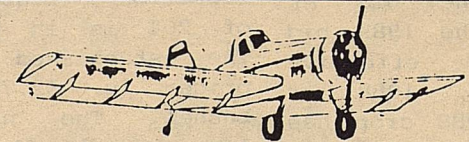
Prect.#3
Vernon Wolf (D)
Bob Buchanan (D)
Prect. # 1
Frank Currey (D)
Jack McPhaul (R)

TOP DOLLARS PAID
For Oil and Gas Minerals
Producing and Non-Producing
Write: MINERALS P. O. Box 7522,
Midland Texas 79708 Or Call: (915) 684-4110

THE
LE
D
BETTER
PECAN^{CO.}

Herman and Christeen Ledbetter
Route 1 Box 148
O'Donnell, Texas 79351
(806) 439-6653

SHELLED \$4.00



HOGG FLYING SERVICE

Spraying & Seeding

Defoliation

Dry or Wet Fertilizer Application

Phone:

Bus. 806-872-9696 - 872-7617

Res. 872-8274

GLENN W. HOGG

Owner

FAST PROFESSIONAL SERVICE

Lamesa Airport P.O. Box 281

Lamesa, TX 79331

THANK YOU

WE WOULD LIKE TO THANK ALL
THE BORDEN COUNTY FOLKS, AND THE
FLUVANNA FIRE DEPT. WHO HELPED
PUT OUT OUR GRASSFIRE ON MONDAY,
JANUARY 25TH. WE CERTAINLY
APPRECIATED ALL OF YOUR EFFORTS.
THANKS AGAIN,
MULESHOE RANCH
BORDEN-SPADE RANCH

Century 21



ALDRIDGE REALTORS
206 North Austin
Lamesa, Texas 79331-5430
806 872-2545



RESIDENTIAL COMMERCIAL
FARM & RANCH

® and ™—trademarks of Century 21 Real Estate Corporation. Equal Opportunity Employer.
EACH OFFICE IS INDEPENDENTLY OWNED AND OPERATED.

SECOND ANNUAL GOAT SHOW

SAYS
THANK YOU!

Thanks again to everyone for all the help in making the goat show possible. Special thanks to the stock show directors for pens and panels to insure safety of the children and a place to prepare the animals for the show. We also appreciated more time for the show.

Our special thanks to the following groups and individuals:

*** Joe Feagan of Feagan Energy, Inc. Midland, Texas for donating trophies and banners.

Judge Bob Benson - for his unique way of picking the champions.

Pat Ray - for another great job announcing.

Danny Stone and crew for setting up the entrance and exit alleys.

C.W. and Fannie Berryman, Pat Hensley, Frank Currey, and Lisha Sternadale for furnishing goats and labor during the show. Sorry if we have left out anyone who helped in this area.

Presenting trophies - Shayne Hess, Tammy Voss, Kelly Jo Ogden, Jill Voss, and Leslie

Fryar. Presenting Champion and Reserve Champion Banners - Kurt Hess.

Marking vinyl numbers with contestants names - Elana Himes, Ralynn Key, Julie Harris and Tana May.

The children who made the show so enjoyable:

3 year old and under class - Stacy Braswell, Tanner Poole, Johnathan McComb, Kyla Culp, Ky May, Trent May, Micah Hensley, Sterling Miller, Bo McPeak

4-5 year old class - Lacy Braswell, Tanner Miller, Rebekah Hensley, and Mikanna Herring

Kindergarten class - Shana Isaacs, Kaci Poole, Hailey Adcock, Lindsey Mills, Lindsey Smith, Ryan Sanders, Lorin Wolf and Jana Himes.

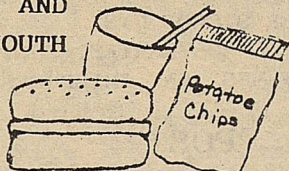
1st & 2nd. Grade class

Carey Cox, Charati Doss, Sharla Miller, James Nance, Dayna Parks, Jerod Rimes, and Weylin Wolf.

Parents, grandparents, friends and neighbors, whose time, support and cooperation is essential

SINCERELY,
RUBE & SUE SMITH
RICHARD & ALANA SMITH

HAVE A HAMBURGER, AND HELP SEND A GAIL YOUTH TO CAMP!



The Youth Dept. of the Gail Baptist Church, will be having a Hamburger fund raising on Saturday February 13, to raise money for a upcoming Youth Program in March and Camp in June.

We will accept phone orders from 11:00 a.m. to 1:00 p.m. We will also be serving in the fellowship hall AND we will deliver to Gail customers.

We will start serving at 11:00 a.m. til ???

Phone orders call 856-4363

HAMBURGER W/CHIPS AND DRINK \$2.25

CHEESEBURGER W/CHIPS AND DRINK \$2.50

For more information please contact Blane and Donna Dyess at 856-4424.

EMS
MEMORIALS

DONATIONS

Mr. & Mrs. Ralph Martin

MEMORIALS

IN MEMORY OF:
C.O. CARMACK

Mr. & Mrs. Buddy Telchik & Family

MARDES CLAYTON

Mr. & Mrs. Buddy Telchik and Family

Roland Hamilton and Family

Larry and Wanda Smith

HARVEY FRYAR

Mr. & Mrs. Buddy Telchik and Family

THOMAS GOEN

Larry and Wanda Smith
BORDEN GRAY

Mr. & Mrs. Buddy Telchik and Family

BLANCHE AHMILTON

Mr. & Mrs. Buddy Telchik and Family

BENO HENDRICKS

Mr. & Mrs. Buddy Telchik and Family

MARVIN KEY

Mr. & Mrs. Buddy Telchik and Family

Roland Hamilton and Family

Larry and Wanda Smith
CORKY OGDEN

Mr. & Mrs. Buddy Telchik and Family

Thank You

WE WOULD LIKE TO EXPRESS OUR SINCERE APPRECIATION TO ALL OF YOU THAT SHOWED SO MUCH CONCERN FOR JUSTIN DURING HIS RECENT SURGERY. ALL THE CARDS AND FLOWERS THAT WERE SENT TO HIM WAS WONDERFUL. WE WENT THROUGH KIND OF A ROUGH TIME SO YOUR PRAYERS WERE ESPECIALLY COMFORTING. WE KNOW WHO EACH OF YOU ARE AND WE LOVE YOU ALL. WITH ALL OUR THANKS AND LOVE, REX, TERESA, JUSTIN AND COREY COX

THE BORDEN STAR, WED., FEB. 10, 1988...7

ILA THOMAS

J.D. and Irene Hart

Ross, Sarah & Jason Sharp

ELLEN RINEHART

Jeff and Nicki Lackey

J.D. and Irene Hart

Special on
Red Roses
for
Valentine's!
3 Days Only -
February 12, 13 & 14

WE DELIVER
\$7.00 DELIVERY FEE MINIMUM.
*DELIVERY CHARGE
ACCORDING TO NUMBER OF
ORDERS GOING TO THE
TOWN.

The Flower
House

320 North Austin
Across from 1st Methodist Church
Lamesa, Texas 79331
(806) 872-3545
Hrs: 8:30-5:30

"MEETING ALL YOUR FLORAL NEEDS"

The First National
Bank - of O'Donnell

We want to meet the
financial needs of this
community -

Come in and visit with us

We now have safety deposit boxes.
MEMBER FDIC

Thank You

FROM THE BORDEN COUNTY JR. LIVESTOCK ASSOCIATION

BORDEN COUNTY

JIM MAC & FRANCES BURKETT
BURKETT
DEMPSEY GIN
RALPH MILLER
MARTIN PARKS
ROCKER RANCH
MULESHOE RANCH
EVERETT LAND & CATTLE
BUCK LEMMONS
MR. & MRS. JAMES McLERoy
MR. & MRS. FRANK CURREY
MR. & MRS. VERNON WOLF
MR. & MRS. LARRY SMITH
MR. & MRS. STEVE HESS
RICH ANDERSON
AUB STOKES
TWO FRIENDS
PARKS & ISAACS CATTLE CO.
MR. & MRS. WELDON LLOYD
MR. & MRS. MONTE SMITH
MOORHOUSE RANCH
MR. & MRS. VAN YORK
MR. & MRS. BILL PHINIZY
FLYING D RANCH
MR. & MRS. H.N. ZANT
FANNY FLINT
JAMES AARON
MILLER LAND & CATTLE CO.
MELBA RINEHART
MR. & MRS. RAY HERRING
BRENT MURPHY
BORDEN STAR
D & O VOLKSWAGON
MR. & MRS. DON JONES
PATRICK TOOMBS
MR. & MRS. SCOTT CLAYTON
COYOTE COUNTRY STORE
MR. & MRS. ESTON HOLLIS
DEE BURRUS
MR. & MRS. BURL BELEW
MR. & MRS. BILLY WILLS
MR. & MRS. MIKE STEPHENS
MR. & MRS. BABE
UNDERWOOD
MR. & MRS. GUY ZANT
MR. & MRS. JACK HIMES
ANNY STONE
& B KUNTREE SHOPPE
MR. & MRS. WARREN BEAVER
MR. & MRS. R.D. LEWIS
CHAPARRAL MARKETING
MR. & MRS. KENT HOLMES
MR. AND MRS. BEN JARRETT
MR. AND MRS. PAT HENSLEY
MR. AND MRS. JOE BELEW

VEALMOOR

WILLIAMS OILFIELD CONST.

DRAW

PAYMASTER GIN

LUTHERLUTHER GIN
BUCHANAN CATTLE CO.
POWELL'S GROCERY**SNYDER**

SJS, INC.
EVERYBODY'S THRIFTWAY
HOWARD GRAY MOTORS
OPAL KEY
ANDERSON & WEST
SNYDER INS.
BLANKENSHIP PACKER
SERVICE
PATTERSON DRILLING
CANON SUPPLY
KSNY RADIO
CLARK PROPANE
HIGGINBOTHAM
BELL, CYPERT, SEALE
FUNERAL HOME
NIX AUTO
HANEY' JEWELRY
CENTRAL TIRE
SCURRY CO. VET. CLINIC
EDWARD JONES
MAL DONNELSON
AMERICAN STATE BANK
STINSON' DRUG
CONCRETE INC.
SNYDER DAILY NEWS
OLNEY SAVINGS
SNYDER NATIONAL BANK
WEST TEXAS STATE BANK
KEY BROS. IMP.
THOMPSON INS.
EDDIE PETERSON PHARMACY
BLANCHE'S BERNINA
MCWHORTERS
WILLIAMSON STEAKLY INS.
C.W. HOWELL
SNYDER SAVINGS & LOAN
SCURRY AG CENTER
PRO PARTS
SAN ANDRES CO.
FRANK & FAY BEIGHTS
LINE & LINE OIL
SCURRY CO. JR. LIVESTOCK
ASSN.
BEN MURPHY
PETE GREEN
BAR H BAR
PRODUCTION PUMPS
D & D AUTO
DRYDEN'S SHOES
TWO FRIENDS EMPORIUM
MARGARET'S
THOMPSON SHOES
McDONALD WELDING
GRIMMETT BROS.
LOTA BURGER
SOUTHERN ELECTRIC
SHEPHERS OFFICE SUPPLY
SNYDER LAUNDRY
E.L. FARMER CO.
WADLEIGH CONST.
EZELL-KEY GRAIN
THE SHACK
WILSON MOTORS
SCURRY ABSTRACT
LIL' RASCALS
CLARK LUMBER
RAYMOND ROBINSON
ANTHONY'S
THORNHILLS HAIR DESIGN

LAMESA

BARRINGTON PUMP
LAMESA DELINTING
AUTOMATED CONTROLS
BOB BROWN OLDS
ROY MOTOR CO.
SAM STEVENS
UNITED GIN
KID SHOP
JOHN SALEH
QUALITY TIRE
LEE OFFICE SUPPLY
GOOLSBY BROS.
TORNADO FORD
A.W. KLUGIE-K-BUILDERS
WESTERN SEED & DELINTING
K-BOB'S
NUN COTTON CO.
BRITT TRUCKING
COPE SAND & GRAVEL
FRANKS OIL
DAVIS FURNITURE
MARY ANN'S
HUGHES PLUMBING
BRAY IMP.
FARM BUREAU
REID BETHEL TIRE
NIX IMP.
CASE POWER & EQUIP.
WILTON, NEWBERRY &
HEIDEL
JONES-McCALL DRUG
LAMESA RPINTING
B & J WELDING
TUNE ELECTRIC
J.W. STOCKES
A.G. WAUGH
MOTOR MACHINE
LAMESA NATIONAL BANK
PORTER LUMBER
McCORMICK OIL
CLAIBORNE'S
U.S.A. FERTILIZER
COLLINS
FIRST NATIONAL BANK
GRISSOM HAMPS
LAMESA BUTANE
LAMESA BEARING
BARTON'S WELDING
DEAN'S FARM STORE
THE COUNTRY STORE
GEBO'S
FEDERAL LAND BANK
HUGHES FERTILIZER
VESTAL MEAT
TERRA CHEMICAL
DAVID GEESLIN, DVM
BRANON FUNERAL HOME
QUINTON AIRHART
ADAMS INS.
HESTER COTTON CO.
LAMESA COTTON OIL MILL
HIGGINBOTHAM -BARTLETT
LASTER PUMP
WILLIAMS ELECTRIC
SOUTHPLAINS ABSTRACT
LAMESA SAVINGS & LOAN
FORT WORTH
PRITCHARD & ABBOTT

BIG SPRING

AVANT GROCERY
GOLDEN CORRAL
FIRESTONE
GRADY WALKER LP GAS
HIGHLAND ANIMAL HOSPITAL
DR. J. GALE KILGORE
MRS. H.W. FRYAR
NEW CAR DEALERS
McMAHON CONCRETE
COOP GINS
BURLESON MACHINES
HOLLAND COTTONSEED CO.
WESTERN HILLS ANIMAL
CLINIC
ROSCOE COWPER, MD
ALLSTATE INS.
G & M GARAGE
BILL WARD
E.P. DRIVER INS.
NALLEY, PICKLE, WELCH
FUNERAL HOME
AMERICAN MUFFLER SHOP
FIRST NATIONAL BANK
TRIO FUELS
FEAGIN IMP.
MEDICAL ARTS CLINIC
CLASSIC LAUNDRY
DELTA COMMODITIES
WILSON OIL
TOM BOY

O'DONNELL

BILLY HARDBURGER
FIRST NATIONAL BANK
MOORE INSURANCE
WOOLAM GIN
O'DONNELL OIL & BUTRANC
BUTANE
FARMER'S COOP GIN
WHITE'S MORTUARIES, INC.
MR. & MRS. PAT CHILDRESS

POST

DANISH IMPORTS
TWINS FASHIONS
COLLIER DRUG
HIGGINBOTHAM BARTLETT
D & W AUTO
VICTOR ASHLEY
WALLACE LUMBER
KPOS
WELLS PHARMACY
BRYAN WILLIAMS
WINDHAM BUTANE
FIRST NATIONAL BANK
JACKSON BROS.
MR. & MRS. ALBERT STONE
BJB ROUSTABOUTS

LUBBOCK

BRUNKEN CHEVROLET
LUSKEY'S
BILL PRICE WESTERN WEAR
GODBOLD, INC.

SWEETWATER

SWEETWATER LIVESTOCK
AUCTION
BILL BURNS OIL

GERMANIA INS.
GENTLEMAN'S CORNER
McCUTCHEON OIL
GLEN'S BODY SHOP
FINA OIL & CHEMICAL
PRICE CONSTRUCTION
LUSK PAINT & FRAME
JOHN DAVIS FEED STORE
GIANT FOOD STORE
MORRIS ROBERTSON BODY
SHOP
LEONARD'S PHARMACY
JIFFY CAR WASH
TJ BOOT REPAIR
GREGG ST. CLEANERS
C & L GARAGE
STATE NATIONAL BANK
WEAVER & FERGESON
BIG SPRING LIVESTOCK
AUCTION
BOWLIN TRACTOR & IMP.
BOGIE'S
CHAPMAN'S MEAT MARKET
BIG JOHN'S FEED LOT
SOUTHWESTERN CROP INS.
PHOTO MAGIC
BIG SPRING FARM SUPPLY
FAYE'S FLOWERS
NEWSOM'S GROCERY
NEAL'S PHARMACY
WARDS BOOT SHOP
JOHANSEN NURSEY

JUSTICEBURG

FORT JUSTICE

ROPEVILLE

BIG BLUE CLUB LAMBS

TAHOKA

WALKER & SOLOMON
INSURANCE
D & H TIRE & SUPPLY
POKA-LAMBRÓ
BRYANT SEED & DELINTING
J.A. PEBSWORTH INCS.
WHITE MORTUARIES, INC.

ROBY

MID-WEST ELECTRICT

LEVELLAND

M & M HOG FARM

COLORADO CITYCOLORADO CITY LIVESTOCK
AUCTION**LITTLEFIELD**

KNC & WALDEN CLUB CALVES

ACKERLYFARMER'S COOP
COLEMAN CATTLE CO.