

WEATHER

|             |    |    |     |
|-------------|----|----|-----|
| February 26 | 55 | 36 | .03 |
| February 27 | 56 | 35 | .15 |
| February 28 | 54 | 25 | .00 |

# BAILEY COUNTY JOURNAL

'The Community Of Opportunity-Where Water Makes the Difference'



Vol. 25, No. 9

10 Pages Today

Published Every Sunday at Muleshoe, Bailey County, Texas 79347

20¢

Sunday, March 1, 1987



**IT'S TIME FOR A SKI BREAK**-Thursday afternoon, shortly after school was dismissed at 1:30 p.m. for the annual Muleshoe Independent School District Ski Break, this group started gathering at the First United Methodist Church. Four vehicles, all loaded vans and suburbans, left within minutes after the picture was taken. They were enroute to Wolf Creek Pass to spend the next several days on the ski slopes. School will be resuming at the regular time on Wednesday, March 4.

## Moisture Total Still Climbs As Rain Adds To Yearly Total

Wet, muddy roads were still the "order of the day" for this entire area during the past week as continued moisture was recorded in Bailey County.

An additional unofficial half inch of moisture was recorded, although the official rainfall totaled less than a quarter of an inch.

Continuing rain, along with unseasonably high temperatures for the most part, is keeping budding fruit trees confused.

Although very few buds are open the rain, combined with the warmer temperature has kept the fruit trees ready for the past two to three weeks to burst into bloom.

Even with predictions by the National Weather Service that another round of snow would be falling in this area on Friday night, the moisture failed to materialize, and residents were seeing a brilliant sunrise.

### World Day Of Prayer Set Friday

First United Methodist Church of Muleshoe will be participating in World Day of Prayer, when it celebrates its centennial on Friday, March 6, proclaiming the theme, "Come and Rejoice."

In Muleshoe, the World Day of Prayer observance will be held in the chapel of the First United Methodist Church at 7 p.m. Leading the order of worship for the evening will be Kay Graves and Dean Gunstream, who may be contacted for further information.

"We encourage women of all denominations to come and join us in this world-wide event," said Mrs. Graves and Mrs. Gunstream.

A 100-year-old prayer movement of global dimensions, the World Day of Prayer is a worldwide expression of mutual prayer and Christian unity, explained Mrs. Graves.

She said its uniqueness lies in the fact that its expression is found in local communities and

Cont. Page 6, Col. 3

### Public School Week Plans Are Complete

Muleshoe High School and Watson Junior High School, both of the Muleshoe ISD, will host open houses on Thursday, March 5, from 7-9 p.m.

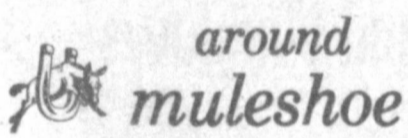
Wayland Ethridge and Bob Graves, the respective principals, invite parents and local patrons to visit the schools and talk to administrators and teachers concerning school improvement.

H. John Fuller, superintendent, has challenged each teacher and staff member of the Muleshoe ISD with the mission statement, "All Children Can Learn." During this special week, Muleshoe educators will make a concentrated effort to interpret the mission statement to the citizens of Muleshoe, Fuller explained.

Ethridge, principal of Muleshoe High School, invites parents to visit with teachers and ask questions concerning Muleshoe's Improvement Program.

Also, Bob Graves, principal of Watson Junior High School, extends a special invitation to parents to view the students' history and science projects which will be displayed.

Neal B. Dillman and Mary DeShazo elementary campuses hosted open houses during American Education Week in the fall.



Bailey County Commissioners Court will meet in Special Session in the Bailey County Courthouse at 10 a.m. on Monday, March 2, to consider the following items of business: payment of routine county bills; open bids for a new truck for Precinct Four; open bids for new mobile radios and portable radios for sheriff's department; review treasurer's report and departmental reports; and miscellaneous items.

Jennyslippers will sponsor youth skating at the Bailey County Civic Center on Friday, March 6, 7-9 p.m. Admission will be \$1 per skater.

Jim Hartline, executive director of the Muleshoe Housing Authority has completed a two-day management seminar at the Austin Merriott Hotel in Austin. He is required by FHA and HUD to attend three management training sessions yearly. The next one will be in San Antonio July 14-16. The fall session will be in Lubbock.

A total of 138 managers attended from across the state of Texas and the seminar included:

Equal Opportunity and Fair Housing Marketing; A revised waiting list; insurance needs; revised leased agreements; preparing for a complete audit; energy audits; what must be done every five years and crime prevention in apartment complexes and how to prevent crime.

Muleshoe seniors of '67 will meet Thursday, March 5, at the office of Dr. Bruce Purdy at 7 p.m.

This meeting is to plan for a 20-year reunion this summer. All members of the class of '67 are invited to attend and help plan the reunion.

Jody Copp, son of Rick and Lana Copp, of Lazbuddie, recently had a poem published in Sheep Breeder, a national magazine.

Jody is a fifth grader in the

Cont. Page 6, Col. 3

## SPS Industry Meeting Ends On Positive Note

### Business Votes Against Increase In CRP Acreage

As the latest sign-up into the Conservation Reserve Program was drawing to a close, Danny Noble, executive county director of the ASC office, saw the bid acreage was going over Bailey County's allotted 100,000 acres.

He was asked to conduct a random poll of local business to see if they support signing more than 100,000 acres into the CRP. The ASC office mailed out random polls to some 70 businesses in the county, and by Friday was tabulating results as they were mailed back in.

By late Friday afternoon, 48 persons had returned their polls which asked "are you in favor, or against, going over 100,000 acres of grass in Bailey County?"

The results-31 persons were against, and 17 for the increased acreage. Noble said all the results had to be in Washington D.C. by Monday, March 2, and the decision would be made in Washington as to how much more acres to accept from this county into the program.

### Small Industry Boosted In Area Survey, Study

Sixty-one industries that are growing and that are best suited for this part of the southwest were revealed Tuesday at a meeting of the economic development leaders from a four-state area. Two Muleshoe residents, Toni Eagle, manager of the Muleshoe Chamber of Commerce and Agriculture; and Ron Montgomery, Muleshoe CoC president, attended the Lubbock meeting.

The list is the result of a "target industry" study conducted by Public Demographics, Inc. of Cincinnati, Ohio, for Southwestern Public Service Company (SPS) for the benefit of communities the electric utility serves.

SPS provides electric service to a population of about one million in a 52,000-square-mile area comprising eastern and southeastern New Mexico, the South Plains and Panhandle of Texas, the Oklahoma Panhandle and southwestern Kansas.

"This study will allow communities to take a 'rifle' approach in seeking industry to diversify our area's economy," said Bert Ballengee, SPS chairman of the board and chief executive officer. "We haven't given our communities a magic wand that will suddenly cause new industries to flock to our area. We have provided a very necessary tool, though, for them to use as they seek more jobs and economic growth for this region."

From the list of 61 industries,

a 13 member task force of prominent area business leaders selected a "top ten" which they felt would be most beneficial for this area and would be the prospects most likely to locate here.

These ten industries are: \* Food preparations: The manufacture of prepared foods, especially frozen foods and snacks.

\* Miscellaneous plastic products: Firms that mold primary plastics or that fabricate finished plastic products.

\* Vitreous china plumbing fixtures: China and earthenware fittings and bathroom accessories.

\* Metal barrels, drums and pails: For use by oil, chemical and other industries.

\* Hardware: Includes furni-

Cont. Page 6, Col. 1

### Bailey County 4-H Youth Selling Fruit

Bailey County extension agent Spencer Tanksley, said 4-H youth are currently selling fresh fruit as a money making project. He said funds received will be used to support the 4-H general fund and the exchange project.

According to Tanksley, the assortment of fruit is very good, and includes apples, oranges, pineapple and pears.

An 18 pound box of 18 navel oranges and 18 apples is \$12; a box of 14 navel oranges and 12 apples and 10 pears is \$12; a mixed box of 32 navel oranges and 32 apples is \$17; a mixed box of 24 navel oranges, 20 apples and 16 pears is \$17; and a mixed box of 24 navel oranges, 20 apples, 16 pears and one pineapple is \$18.

Also, one half box of California navel oranges is \$9; a full box of California navel oranges is \$17; one half box of Washington Red Delicious apples is \$7; a full box of Washington Red Delicious apples is \$13; one half box of Washington d'Anjou pears is \$7; a full box of Washington d'Anjou pears is \$13 and pineapple are \$2 each.

If a 4-H youth does not contact you, you may order by calling the Extension office at 272-4583.

## Crucial Cotton Meeting Set By Extension Service

Critical decisions which normally confront Bailey County cotton producers at planting time are being compounded this year by new regulations and increasing economic pressures, says County Extension Agent Spencer Tanksley. But information which will help area farmers make those crucial decisions will be explored at a meeting March 9 in Lubbock, the agent said.

The South Plains Development Program cotton conference will be from 1-5 p.m. at the Texas A&M University Agricultural Research and Extension Center in Lubbock. The center is on FM1294, just east of I-27 at the Shallowater exit.

Considerations that will be examined, Tanksley added, will include cotton provisions of the farm bill, conservation compliance implications for area cotton, soil fertility, declining cotton yields, mill demands for

fiber quality and ways to minimize barked cotton penalties.

Provisions of the federal farm bill which affect cotton producers on the High Plains will be explored by Dr. Carl Anderson, Extension agricultural economist and cotton marketing specialist from College Station. Effects of conservation compliance regulations on High Plains cotton producers will be explained by Dr. B.L. Harris, extension soils specialist, College Station.

Programs of the Texas Agricultural Extension Service and Texas Agricultural Experiment Station to help apply farming

Cont. Page 6, Col. 3

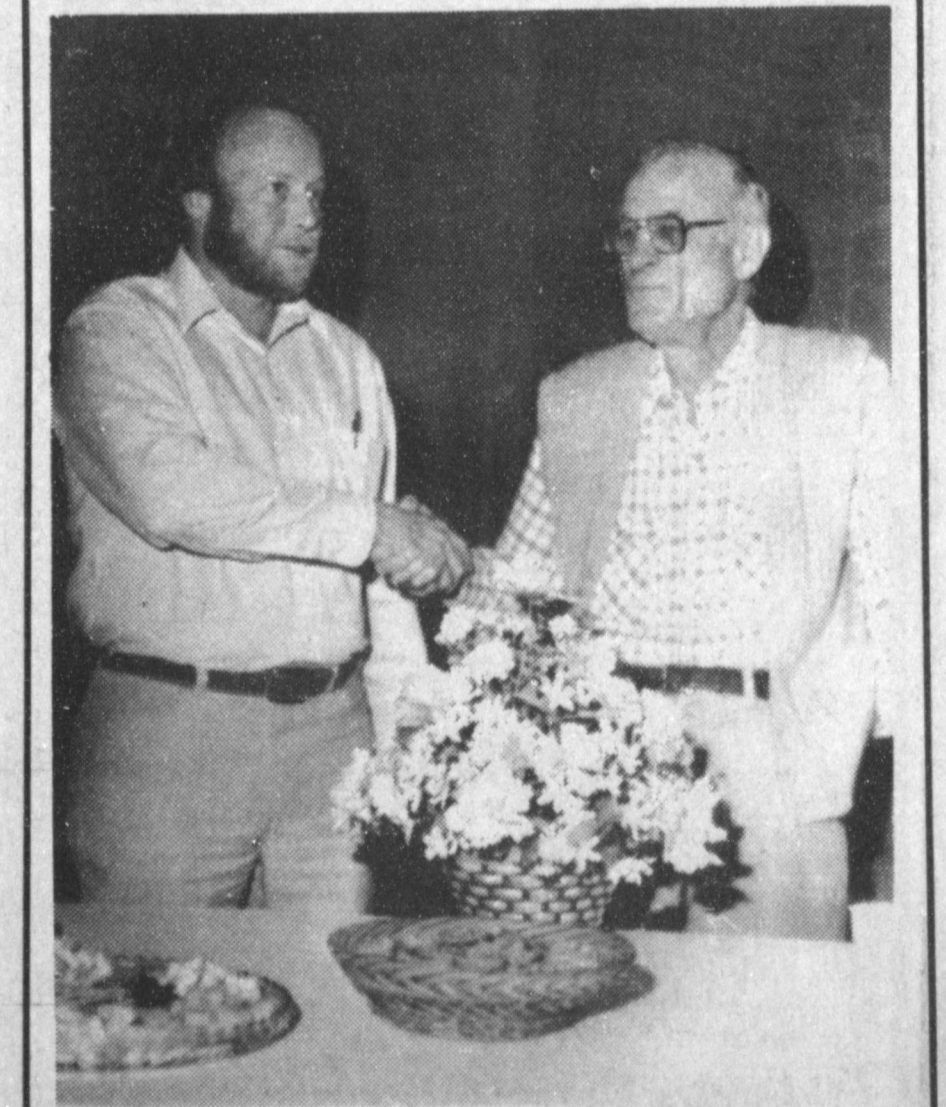
### Two Incumbents File At 3-Way For School Board

Three Way School's board of trustees has ordered a school board election for Saturday, April 4, 7 a.m.-7 p.m. Joe Sowder was appointed election judge, and Jean Parker was appointed absentee clerk.

Two positions are open on the school board, and both incumbents, who are appointees, have filed for election to the board. Jack Reeves, incumbent, was appointed to fill the unexpired term of Tommy Terrell and Jarrol Layton, incumbent, was appointed to fill the unexpired term of Gary Welch. At presstime, no one else had filed.

Persons wishing to file an application for a place on the ballot have until midnight, March 4, 1987 to file. Drawings for positions on the ballot will be held on March 5, at 9 a.m.

Absentee voting by personal appearance begins March 16 and continues through March 31. All absentee voting will be in the school business office.



**A FOND FAREWELL**-During a special reception Thursday afternoon, City Manager Dave Marr, left, bid a fond farewell to L.M. Bell, director of public works, who retired Friday after 37 years of service for the City of Muleshoe. Cleve Bland has been employed as the new director of public works.



MISS SUNNY BEE BAYLESS

## Bridal Shower Honors Miss Sunny Bayless

Miss Sunny Bee Bayless, bride elect of David Pruitt, was feted with a bridal shower Friday, Feb. 13 at 7 p.m. in the community room of Summit Savings.

Guests were greeted by the honoree; Helen Free, mother of the honoree; and Olgaline

Pruitt, mother of the prospective groom, and registered by Vana Pruitt.

Teresa Free, sister-in-law of the honoree, and Jody Ellerd served pink thumbprint cookies, nuts and mints and red hot apple cider, with red hats, and coffee from a silver tea service and crystal serving trays and cups.

The serving table was covered with a white lace table cloth over a pink undershirt, and accented with an arrangement of pink silk roses. The honoree's corsage consisted of pink silk roses and accents.

Special guests included: Mrs. Helen Pruitt, grandmother of the prospective groom, of Mulshoe; Mrs. James Brooks of Portales, aunt of the prospective groom.

The hostesses gift was a vacuum cleaner. Hostesses for the occasion included: Erald Gross, Nelda Merriott, Berta Combs, Clara Harbin, Melba McCamish, Amelia Gonzales, Iris Clements, Joy Stancell, Irma Leal, Vivi Lindsey, Ruth Briscoe, Lucy Mardis, and Chubby Douglas.

**How Ducky**  
"How did you lose your job at the dress shop my dear?"  
"Just because of something I said. After I had tried twenty dresses on a woman, she said, 'I think I'd look nicer in something flowing,' so I asked her why she didn't go jump in the river."

## Bridal Shower Honors Mr and Mrs Watson

Debbie and David Watson of Oklahoma City were honored with a bridal shower Saturday, Feb. 14 from 10 until 11:30 a.m. in the home of Gladys and Clayton Myers.

Guests were greeted by Mrs. Myers, the honoree couple and the groom's mother and father, Pat and W. T. Watson.

Special guests in addition to the groom's parents included: Bonnie and Ray Tidewell and Charles Morgan of Clovis, N.M. aunt and uncles of the groom.

Esther Marie Dillman and Johanna Wrinkle served coffee, hot spiced cider, fresh fruit and breads from brass and china

appointments. The serving table was covered with an ecru cut and applique cloth a peach and ecru silk floral arrangement as the focal point. The honoree wore a corsage of peach feathered carnations.

The hostess gift was a Cuisinart Food Processor. Hostesses for the event included: Gladys Myers, Hellen Adrain, Jean Allison, Esther Marie Dillman, Janet Ethridge, Dolores Garrett, Dean Gunstream, Pat Gunter, Ruby Henderson, Joy Whitt, Maurine Hooten, Flo Lynk Johnson, Teresa Jones, Barbara Milburn, Beth Skipworth, Lucy Faye Smith, Peggy Wheeler and Johnna Wrinkle.

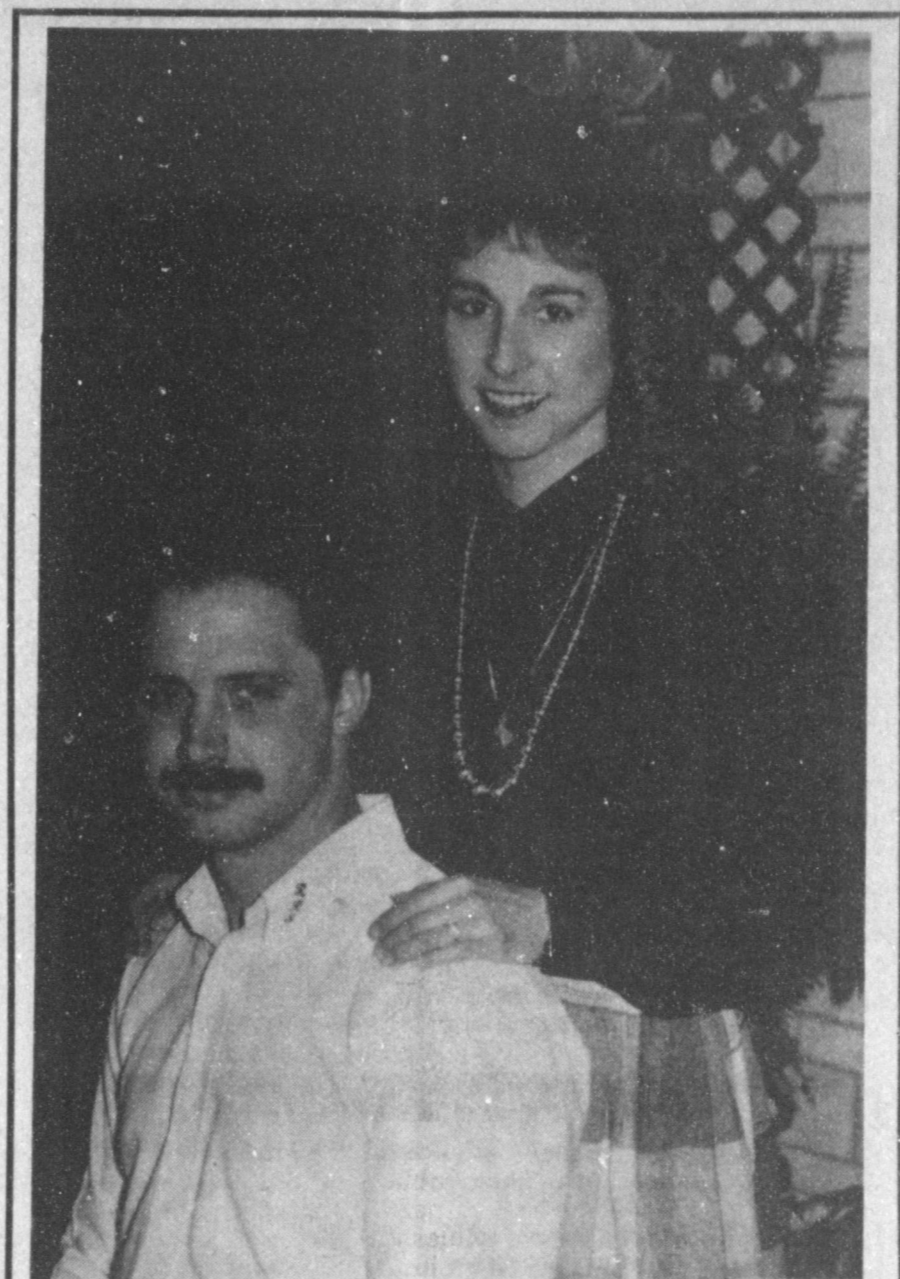


MR. AND MRS. DAVID WATSON

### RECIPE

**Mini Pizzas**  
1 10 1/2-oz. pizza sauce  
1 T. grated Parmesan cheese  
1/4 t. garlic powder  
1/2 lb. Mozzarella cheese, shredded  
1 4-oz. can sliced mushrooms, drained  
2 8-oz. cans refrigerated buttermilk biscuits  
pitted ripe olives, halved, for garnish.  
Preheat oven to 450 degrees F.  
Heat pizza sauce with Parmesan cheese and gar-

lic powder. Roll each biscuit from one can into ovals about 4 inches long. Arrange side by side in a circle on a greased cookie sheet touching each other. Press center biscuit edges together with fingers to form wide strip. Use half of each ingredient. First spread pizza sauce over biscuits, leaving 1/2-inch rim, then sprinkle Mozzarella and mushroom slices. Bake 12 minutes; garnish with olives and bake 2 minutes longer or until crust is browned. Remove to serving platter. Pull apart to serve.



**ENGAGEMENT ANNOUNCED**--Mr. and Mrs. Kenneth Don Martin would like to announce the engagement and approaching marriage of their daughter, Terrie Martin to Randy Smith, son of Mr. and Mrs. R. Dan Smith of Lazbuddie. A May 2 wedding is planned at the Lazbuddie First Baptist Church. Smith is currently employed by Joe Shipman and Son Bodyshop. Miss Martin is employed by the Honeycomb.

Quality Doors & Energy-Efficient Windows  
Reasonably Priced!

## Jenkins Doors and Windows

820 W. 6th  
Amarillo, Texas  
Ph. 1-806-372-4336 1X-1-800-697-4066

### WMU Weekly Meeting

WMU of the Trinity Baptist Church met Tuesday, Feb. 24 at the church for Bible study. Eva Ashford gave the leading prayer.

Wenona Spears reported that they had a good lesson with the reading of the book "Measure of Success", given by Maxine Carter. Pearl Dunlap dismissed the group with a prayer.

The six members present included: Ms. Carter, Clara

Coffman, Pearl Dunlap, Ms. Spears, Rosie Martin, Eva Ashford and Ms. Carter.

**Bailey County Journal** USPS 040-200  
Established March 31, 1961. Published by Mulshoe Publishing Co., Inc. Every Sunday at 304 W. Second, Box 489, Mulshoe, Texas, 79167. Second Class postage paid at Mulshoe, Texas 79167.  
**MEMBER 1987**  
**TEXAS PRESS ASSOCIATION**  
L.B. Hall, President & Publisher  
Sammy Hall, Vice President & Counselor  
Clara Williams, News Editor  
Evelyn Harris, Society Editor  
Holly Mottlap, Advertising Editor  
Lillian Smith, Bookkeeping  
SUBSCRIPTIONS:  
Mulshoe Journal and Bailey County Journal  
Bailey and surrounding counties  
Mulshoe Journal and Bailey County Journal  
Elsewhere in Texas \$14.75  
Outside of Texas \$16.50  
Yearly by Carrier \$12.00  
Advertising rate card on application.

### TOPS CLUB

Mulshoe TOPS Club chapter No. 34 met at 6:30 p.m. Thursday, Feb. 26 in the meeting room of Bailey County Electric.

Laverne James, leader, called the meeting to order. The TOPS pledge was recited and the fellowship song sung. Jewel Peeler, assistant weight recorder, called the roll with 11 members present. A new member Retha Knowles, was welcomed to the club. Rose Sain, secretary, read the minutes of the previous meeting.

It was reported that Lavenia Garlington will present a program on Beauty Control at the March 26 meeting.

Best loser for the week was Rose Sain. Runners-up were Wanda Kemp, first; and Orvidie Burris, second.

Everyone was reminded that next week will be awards night. Officers for the coming year will also be elected.

The meeting was closed with the singing of the goodnight song.

**It's Easy To Change Hats!!**

Our "New Customer 5+1 program" has corn & sorghum growers Switching to **GOLDEN HARVEST** hybrids For top yields and savings money, too!

By 5 Get 1 Free!

Cash Discounts! SEED DAYS February 23rd-March 6th  
Free Gifts Savings on orders

WHOLE FIELD YIELD RESULTS

| HYBRID          | ACRES | MOIST         | YIELD    |
|-----------------|-------|---------------|----------|
| J. T. Mayfield  |       | Friona, Tx    |          |
| GH H-2604       | 62.0  | 21.0%         | 12,426.4 |
| Austin Farms    |       | Farwell, Tx   |          |
| GH H-2601       | 30.0  | 19.5%         | 9,968.0  |
| David Pinkerton |       | Plainview, TX |          |
| GH H-2572       | 22.3  | 17.6%         | 11,015.2 |

**Golden Harvest. Golden yields.**  
**Wayne Clark 806-965-2895**

**Willis James 806-925-6716**  
**Horace Morgan 806-925-6725**

Save Copies Save Copies Save Copies Save  
Photo Copies  
**7¢ Each**  
For The First 100 Copies  
5¢ each  
For Additional Copies  
"Your Commercial Printing Headquarters"  
**West Plains Publishing**  
107 E. Ave. D. 272-4681  
Save Copies Save Copies Save Copies Save  
Copies Save Copies Save Copies Save Copies

Announcing **BUTTERICK'S**  
**\$1.99**  
**sale\***  
The best time to find out how easy Butterick patterns are to sew is when the price is incredibly hard to resist.  
**FOR ONE MONTH ONLY**  
**Ben Franklin**  
2104 W. Amer. Blvd. Mon-Sat. 8-8 Sun 12-5 272-3855  
\*excluding See & Sew Offer expires 3/31/87

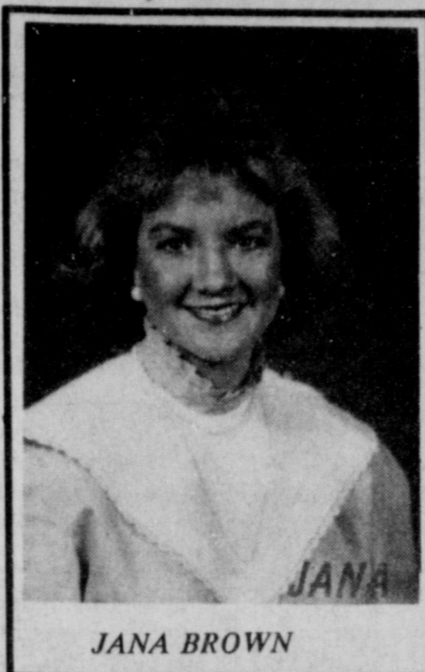


**SCOUTS VISIT FIRE DEPARTMENT**—Junior Girl Scout Troop No. 190 and Daisy Girl Scout Troop No. 322 visited the Muleshoe Fire Department recently and learned what to do in case of a fire, as well as the dangers of a fire. Those present included Juniors (back row) Bobbi Hutchinson, Kristina Soto, April Franklin, Amber Nickell (center row) Kourtnee Magby, Connie Olivas, Raquel Baeza; and Daisys (front row) Chelyn Maddox, Kayna Puckett, Anna Zera. Not pictured, Misty Dixon.

**Girl Scout Troops Visit Fire Department**

On Monday, Feb. 23 Junior Girl Scout Troop No. 190 and Daisy Girl Scout Troop No. 322 visited the Muleshoe Fire Department. Firemen Brian Rudd and Billy Tosh demonstrated fire prevention and what to do in case of a fire. The correct way to report a fire was explained and the firemen told the group to be sure and listen to any instructions that may be given to them on the phone after they have reported the fire. The firetrucks were shown and Rudd and Tosh explained how they put out fires and what they use. The equipment used for breathing in smoke was demonstrated, and some of the girls tried the machine. Questions were asked by the Girl Scouts concerning different

ways to prevent fires and also what to do in case of a fire. Rudd and Tosh answered each one and explained the dangers of a fire to the group of girls. Pamphlets were passed out for them to take home to share with their family and friends.



JANA BROWN

**Jana Brown Selected Girl Of Month**

Miss Jana Brown, Muleshoe High School senior has been selected as the February Girl of the Month by the members of the Muleshoe Branch of American Association of University Women. Jana is the daughter of Mr. and Mrs. James Brown. Planning to be a teacher, she has been a member of Future Teachers of America all four years of high school. She was a Student Council member her freshman, sophomore and junior years. Miss Brown is also a member of the Student Activities Committee and has been

actively involved in this organization during her junior and senior years. She has played basketball all during high school and ran track her freshman and junior years. Miss Brown is a member of the Muleshoe Church of Christ and is active in the youth group of the church. "The members of AAUW are very pleased to have Jana represent them as the Girl of the Month" said Lucy Fay Smith. "She was selected for this honor based on her participation in church, school, and community activities."

**Extension Homemakers Install New Officers**

The Bailey County Extension Homemakers annual Christmas luncheon was held Dec. 3 at the Trinity Baptist Church. All three Extension Homemaker Clubs had representation, Progress, Dusty Prairie and Moonlight. Installation of officers was held. Council officers are as follows, Helen Redwine, chairman; Loraine Dearing, vice chairman; Rose Sain, secretary / treasurer; and Ada Murrah, Texas Extension Homemaker chairman for Bailey County. Dusty Prairie Extension Homemaker Club officers are: Jackie Blaylock, president; Lou Knowles, vice president; Eulaine Phillips, secretary/treasurer; Clara Lou Jones, reporter; and Lorain Dearing and Eulaine Phillips, council delegates.

Moonlight EH Club officers are: Rose Sain, president; Naomi Black, vice president; Linda Huckaby, secretary/treasurer; and Maria Callaway and Myra Copley, council delegates. Officers for Progress, Eh include: Helen Redwine, president; Elzada Gulley, vice president; Fern Davis, secretary / Treasurer; and Ada Murrah and Lucille Gross, council delegates. Also installed were the standing chairman as follows: Council: Loraine Dearing, program chairman; Fern Davis, education, expansion, and exhibit; Rose Sain, finance; Linda Huckaby, 4-H Jackie Blaylock, telephone; and Lucille Gross, recreation.

Dusty Prairie: Lou Knowles, yearbook; Loraine Dearing EEE; Eulaine Phillips, finance; Jackie Blaylock, telephone; and Lucille Gross, recreation. Moonlight: Naomi Clack, yearbook, Renee Copley, EEE; Linda Huckaby, 4-H; and Kay Hailey, telephone. Progress: Elzada Gulley, yearbook; Ada Thomson, EEE; Fern Davis, finance; Alice Moore, telephone; and Ada Murrah and Alice Moore, recreation.

Woman of the Year is presented each year to the member who participates in all phases of Extension Homemaker Club work and is decided on a point system. This year's recipient was Loraine Dearing, who will be in coming council vice-chairman and program chairman.

In 1986, Ms. Dearing was the council telephone chairman and a Dusty Prairie council delegate. Mrs. Dearing resides at 217 E. Cedar. Her hobbies are sewing and baby sitting her new granddaughter. She has two children, Judy Patterson of Lubbock and Lynn Dearing of Tampa Bay, Florida and one granddaughter.



**STORY HOUR PROGRAM**—Police Lt. Wayne Holmes attended "Story Hour" at the Muleshoe Public Library Wednesday morning and visited with the children as part of the safety program. Story Hour was sponsored by the Muleshoe Young Homemakers. (L-R) Anne Camp, Muleshoe Public Library librarian; Nancy Benham, Young Homemaker member; and Lt. Holmes.

**Library News**

by Anne Camp

Fifty children were present at storyhour at the library, Wednesday morning. Young Homemaker member, Nancy Benham, assisted with the program and gave a short story of George Washington and the Cherry Tree... Five children had birthdays in February and they were all present to be honored and receive a birthday sticker.

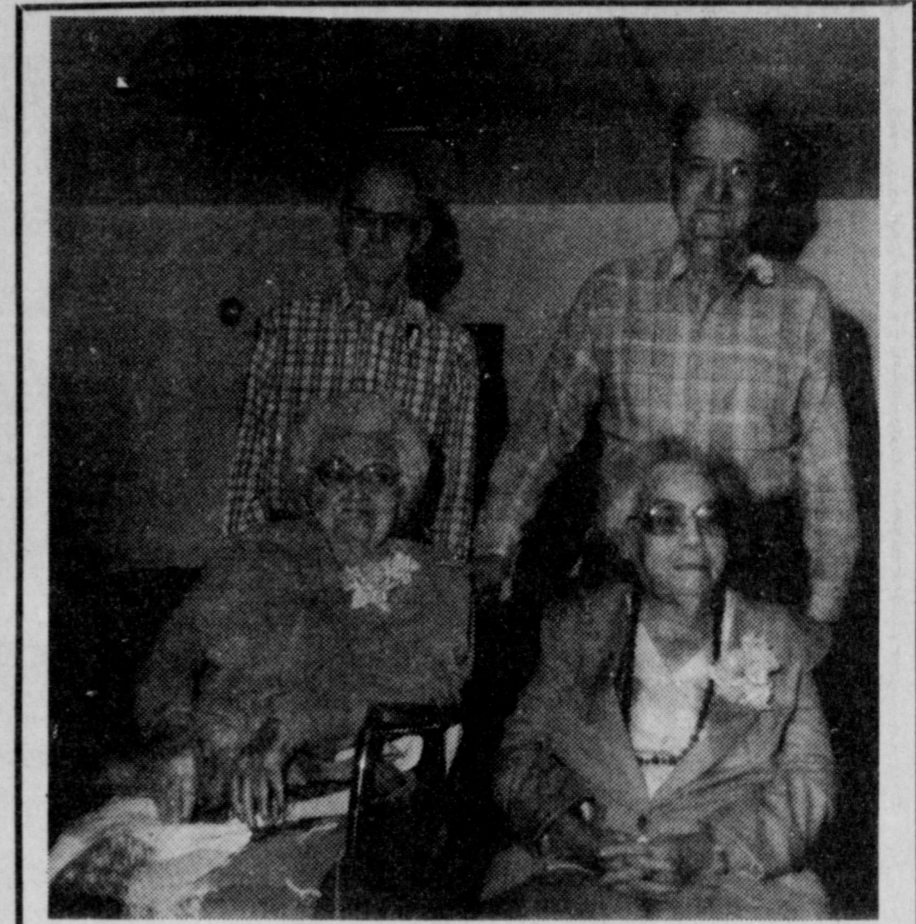
Muleshoe Police Lt. Wayne Holmes came and visited with the children as part of the Safety program. They were told that a policeman is their friend and wants to help them. He also told them that seat belts were to keep them from getting hurt in an accident, so they always need to "Buckle-Up"...

He also told them that if

belongings such as bicycles are stolen—that they need to report it to the Police, and very often they can be returned—but, that each article needs to be marked plainly with their name, so that the Police will know who to return it to. Also if they were ever lost they will help them get home, if they become ill or hurt, they will get an ambulance for them, if there is a fire, or an accident the Police are there to help. All these things, and more prove that our Policemen are very good friends to have. We thank Lt. Holmes for the visit. Two movies were shown: Zoo Animals in the Wild, and The Mole and the Lollypop, and the children were given lollypops as a treat as they left the library.

**SMILES**

**Chivalry Not Dead**  
Bertie: "I heard your new boyfriend is very polite."  
Gertie: "Oh, yes, he has excellent manners. Every time I drop something, he kicks it over to where I can pick it up more easily."



**FEBRUARY BIRTHDAYS**—Five residents of the Muleshoe Nursing Home celebrated their birthdays during the month of February and were honored with a birthday party Thursday afternoon in the day room of the nursing home. The party was hosted by the Needmore Community Club. Decorators provided corsages for the ladies and boutonnieres for the men. Mr. and Mrs. J.C. Shanks provided the music. Those celebrating birthdays included: Standing (from left) D.J. Gage, who was born Feb. 19, 1912, and B.B. Street, born Feb. 10, 1895. Seated: (from left) Margaret Beard, born Feb. 2, 1910, and Ruby McCamish, born Feb. 17, 1905. Not pictured: Inez Allgood, born Feb. 11, 1896.



Happy 30th Birthday Pamela Your Not Getting Older—Your Getting Better!

**PROM '87 OUTRAGEOUS!**

**10% Discount If Ordered By March 31, 1987**

**ANTHONY'S**

321 Main Hours 9-6 Monday-Saturday

A tax expert is a man who can out-figure the government.

**Famous heel-huggin' fit!**

1155 PECOS RED WINGS

MADE IN U.S.A.

**Fair Store**  
120 Main 272-3500

**RED WING SHOES**

**Merle Norman Spring Promises**

**All you have to spring for is \$2**

The Merle Norman Spring Promises Package. Yours for only \$2 with any \$12 minimum purchase of Merle Norman products. Including a Cleansing Bar with Sponge, Fresh 'N Fair Skin Freshener, Moisture Lotion, Lip Stay and Performance Lipstick. It's everything you need to face up to spring beautifully.

This offer is only good while supplies last, from February 16th to March 31st. Bring this ad into one of the following Merle Norman Studios. Limit one per customer.

Woman to Woman  
**MERLE NORMAN**  
Latrells Merle Norman Cosmetics

1519 W. Amer. Blvd. 272-3459



PRICE SAVER

**Paper Towels**

**3 \$1**

ROLLS



SHURFRESH

**Margarine Quarters**

**3 \$1**

16 OZ. PKGS.

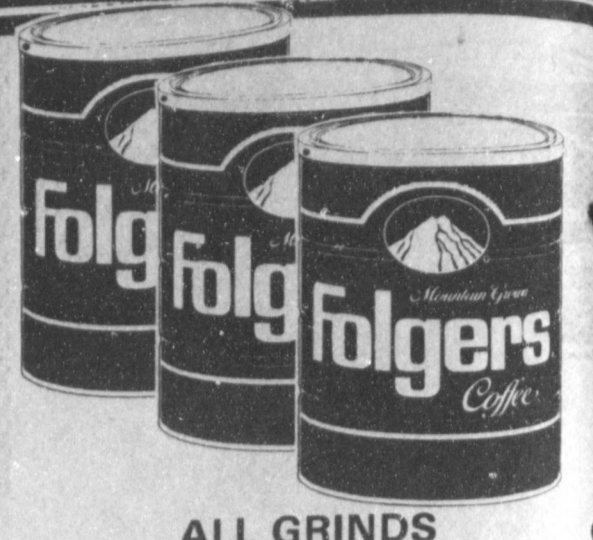


ASSORTED

**Kal Kan Dog Food**

**3 \$1**

14 OZ. CANS



ALL GRINDS

**Folger's Coffee**

**\$2.79**

1 LB. CAN

**National Brands Sale**

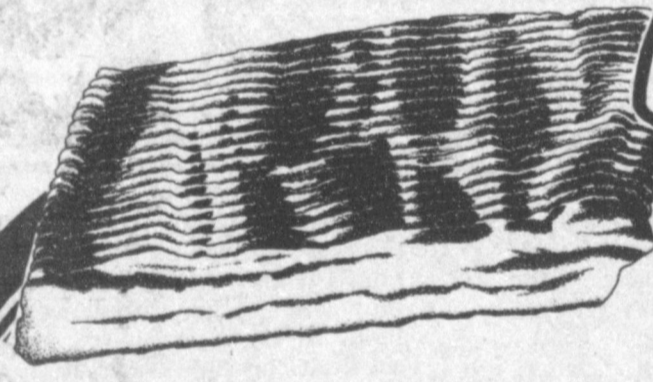
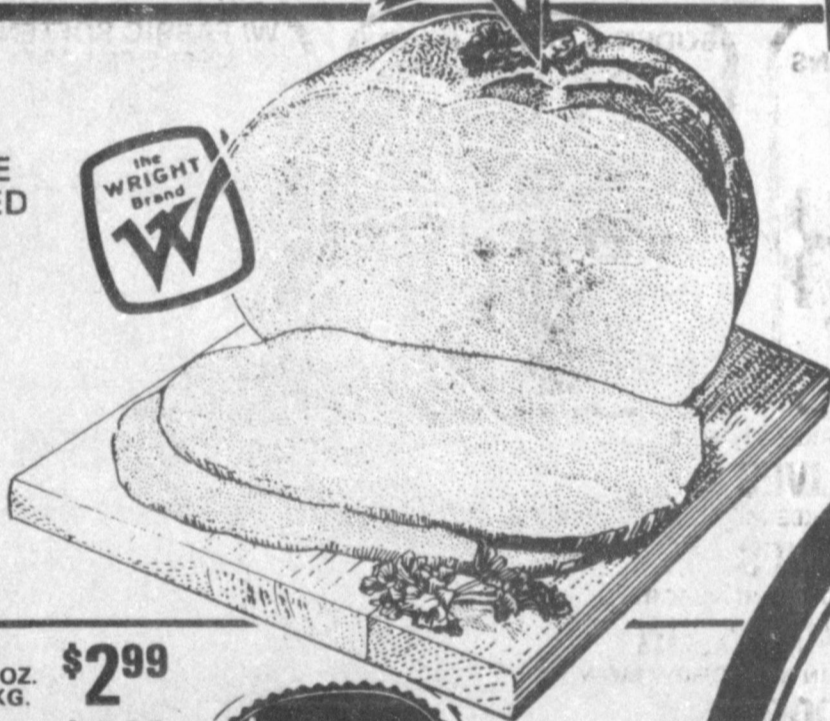
*This Country's Best!*

A lot of stores promise value, but a million thousand member buying power guarantees this country's best bargains! And its best sho

WRIGHT'S 93% FAT FREE BONELESS FULLY COOKED

**HALF HAM**  
**\$1.99**

LB.



WRIGHT'S HICKORY SMOKED SLICED

**SLAB BACON**  
**\$1.39**

LB.

HORMEL SUPER SELECT LI PORK LOINS OR PAMIR

**Pork Chops**  
**\$1.39**

- PEYTON'S SLICED COOKED HAM ..... 12 OZ. PKG. **\$2.99**
- PEYTON'S SLICED CHOPPED HAM ..... 12 OZ. PKG. **\$1.99**
- PEYTON'S BACON SLICED ..... 1 LB. PKG. **\$1.59**
- PEYTON'S MEXICAN CHORIZO SAUSAGE ..... 8 OZ. PKG. **89¢**
- WILSON'S REGULAR MEAT FRANKS ..... 12 OZ. PKG. **89¢**
- WILSON'S SLICED MEAT BOLOGNA ..... 12 OZ. PKG. **\$1.19**
- WILSON'S BEEF FRANKS ..... 12 OZ. PKG. **\$1.09**
- SELECT LEAN TRIM CENTER CUT PORK CHOPS ..... LB. **\$1.99**
- LEAN TRIM COUNTRY STYLE PORK RIBS ..... LB. **\$1.59**



CITRUS HILL FROZEN SELECT ORANGE

**Juice**  
**88¢**

2 OZ. CAN



LIGHT SPREAD

**Parkay**  
**\$1.39**

3 LB. TUB



ALL PURPOSE RUSSET

**Potatoes**  
**\$1.99**

10 LB. BAG

- BANQUET ASSORTED FROZEN DINNERS ..... 11 OZ. PKG. **99¢**
- GREEN GIANT PLAIN/SWT. & CRISPY CORN ON THE COB ..... 4 EAR PKG. **\$1.09**
- VAN DE KAMP LITE & CRISPY FISH STICKS OR FILLETS ..... 23 OZ. BOX **\$3.49**
- ORE-IDA GOLDEN FRIES OR CRINKLE CUT POTATOES ..... 32 OZ. PKG. **\$1.49**

- VELVEETA X-THICK OR REG. SLICED SINGLES ..... 12 OZ. PKG. **\$1.59**
- KRAFT CHILLED ORANGE JUICE ..... 64 OZ. BTL. **\$1.89**
- KRAFT PARMESAN GRATED CHEESE ..... 9 OZ. CAN **\$2.59**
- PILLSBURY ASST. BISCUITS ..... 2 12 OZ. CANS **\$1.00**

- CRISP GREEN CABBAGE ..... 5 LBS. **\$1.00**
- JUICY NAVEL ORANGES ..... 3 LBS. **\$1.00**
- FRESH GREEN BROCCOLI ..... LBS. **59¢**
- FRESH SNO-WHITE CAULIFLOWER ..... EA. **79¢**



HUNT'S

# Tomato Sauce

**5 \$1**

8 OZ. CANS



HUNT'S

# Tomato Paste

**279¢**

6 OZ. CANS



WATER OR OIL PAK CHICKEN OF THE SEA LIGHT

# Chunk Tuna

**59¢**

6.5 OZ. CAN



DELSEY ASSORTED/WHITE

# Bathroom Tissue

**99¢**

4 ROLL PKG.



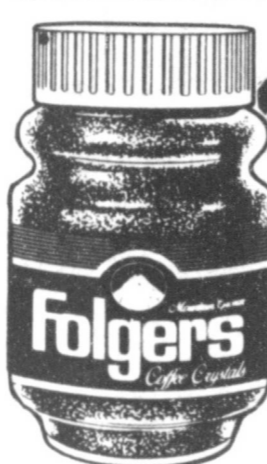
HUNT'S SQUEEZE KETCHUP **99¢**

32 OZ. BTL.



BONUS PAK DOG CHOW PURINA **849**

30 LB. BAG



FOLGER'S INSTANT CRYSTALS COFFEE **439**

8 OZ. JAR



FOLGER'S DECAFFEINATED COFFEE **569**

8 OZ. JAR

at Affiliated Foods, our more than three decades of experience. That's why we're home to the best shoppers.



**SELECT LEAN TRIM QUARTER PORK HAM**

11.99

**Pork chops 1.59**

LB.

WASHINGTON X-FANCY DELICIOUS

# Red Apples

**49¢**

LB.

ORVILLE REDENBACHER ASST. MICROWAVE POPCORN 10 1/2 PKG. **189**  
ORVILLE REDENBACHER CORN POPCORN 30 OZ. BTL. **239**

HUNT'S MANWICH BEANS 15 OZ. CAN **98¢**  
GEBHARDT'S REFRIED BEANS 2 16 OZ. CANS **89¢**

GEBHARDT'S JUMBO TAMALES 28 OZ. CAN **129**  
GEBHARDT EAGLE BRAND CHILI POWDER 3 OZ. BTL. **129**

OIL WESSON **199**

48 OZ. BTL.

WOLF WITH BEANS CHILI **79¢**

15 OZ. CAN

BODEN'S RICH & READY ORANGE DRINK OR FRUIT PUNCH **119**

GAL. JUG

FAB FAB **588**

147 OZ. BOX

PETER PAN **189**

18 OZ. JAR

POST 24 OZ. GRAPENUTS OR 20 OZ. RAISIN BRAN EA. BOX **229**  
POST GRAPENUT FLAKES 18 OZ. BOX **199**  
CEREAL PURINA COUNTRY BLEND/ORIGINAL 5 LB. BAG **289**  
CAT CHOW DINTY MOORE 15 OZ. CAN **109**  
BEEF STEW X-ABSORBENT ASST. SIZES **949**  
HUGGIES SUNSHINE SNACK CRACKERS 10 OZ. BOX **129**  
CHEEZ-ITS SUNSHINE HI-HO SNACK CRACKERS 12 OZ. BOX **149**  
SUNSHINE HYDROX COOKIES 16 OZ. PKG. **169**  
LIQUID CLEANER 20" OFF LABEL PINESOL 15 OZ. BTL. **119**

DURKEE STUFFED OLIVES 5 1/2 OZ. JAR **99¢**  
DURKEE MED. PITTED RIPE OLIVES 6 OZ. CAN **119**  
CHUN KING ASSORTED CHOW MEIN 42 OZ. PKG. **269**  
CHUN KING CHOW MEIN NOODLES 5 OZ. CAN **79¢**  
CHUN KING SOY SAUCE 10 OZ. BTL. **89¢**  
PLANTERS DRY ROASTED ASST. PEANUTS 12 OZ. JAR **198**  
AMERICAN BEAUTY LONG OR THIN SPAGHETTI 2 10 OZ. PKGS. **100**  
ASSORTED SPAGHETTI SAUCE RAGU 32 OZ. BTL. **179**  
COMSTOCK REG./LITE CHERRY PIE FILLING 20 OZ. CAN **159**

COMSTOCK APPLE PIE FILLING 21 OZ. CAN **139**  
VLASIC KOSHER DILL SPEARS OR BABY DILL PICKLES 16 OZ. JAR **119**  
LIBBY VIENNA SAUSAGES 2 5 OZ. CANS **89¢**  
LIBBY POTTED MEAT 4 3 OZ. CANS **100**  
LIBBY PINK SALMON 15 1/2 CAN **179**  
CARNATION EVAPORATED MILK 2 TALL CAN **99¢**  
CONTADINA WHOLE PEELED TOMATOES 2 14 1/2 CANS **79¢**  
OCEAN SPRAY ASST. CRANBERRY BLEND DRINKS 48 OZ. BTL. **199**  
AUNT JEMIMA WHITE OR YELLOW MIX CORN MEAL 5 LB. BAG **139**

ASST. LUNCHEON MEAT SPAM 12 OZ. CAN **149**

FACIAL TISSUE ASST. KLEENEX 175 CT. BOX **89¢**

16 OZ. PILLSBURY R.T.S. FROSTING **139**  
PILLSBURY ASST. CAKE MIX 18 1/2 OZ. BOX **69¢**

ASST. DISH LIQUID 50" OFF LABEL PALMOLIVE 32 OZ. BTL. **159**

HUNT'S SNACK PAK PUDDING 4 CT. PKG. **119**

AUNT JEMIMA WHITE/YELLOW MIX FOR CORNBREAD 5 6 OZ. POUCH **100**  
AUNT JEMIMA PANCAKE OR MUFFIN MIX 5 6 OZ. POUCH **100**  
FRESH START DETERGENT 33 OZ. BTL. **289**

AUTO. DISH DETERGENT 65" OFF LABEL PALMOLIVE 65 OZ. BTL. **289**  
KRAFT CASSEROLE PINTO BEANS 4 LB. BAG **129**  
HERSHEY ASST. MILK CHOCOLATE CHIPS 12 OZ. PKG. **179**

HERSHEY CHOCOLATE SYRUP 24 OZ. BTL. **149**  
KRAFT MAYONNAISE 32 OZ. BTL. **179**  
KRAFT VELVEETA SHELLS & CHEESE DINNER 12 OZ. BOX **119**

**Coca-Cola**  
PLUS DEPOSIT  
**\$1 99**



32 OZ. BTL.



PRICES EFFECTIVE MAR. 1-7, 1987



**THEY SET A PRETTY TABLE**--Thursday afternoon a very special reception was held in the city council chambers at the Muleshoe City Hall. The reception was to honor L.M. Bell, who was retiring after 37 years as director of public works for the city of Muleshoe. Pictured from left are Dave Marr, city manager; Mary Hicks, city secretary; L.M. Bell, and Lee Ann Gallman, city employee.

### SPS Industry

Cont. from Page 1

ture hardware and motor-vehicle parts.

\* Electronic components: Semiconductor subassemblies, microcircuit components and assorted other products.

\* Electrical machinery, equipment and supplies: Lamp bulb components, electric furnaces and other products.

\* Truck trailer industry: The manufacture of truck trailers, trailer chassis and cargo containers.

\* Surgical, and medical, instruments: For medical doctors, eye doctors and veterinarians.

Data processing services: Reports, key punching and the servicing of equipment.

As the list was being prepared over several months, Ballengee said many factors relating to each industry were weighted as to importance and desirability. For example, indus-

tries experiencing moderate growth were rated over those with quick growth in the belief that moderate steady growth would be more permanent.

The goals for all industries were fourfold: Support existing industry here by providing a market for their products and services; attract new industries; attract and retain industries that utilize the existing labor force; emphasize diversification to broaden the area's economic base of agriculture and energy.

The Lubbock meeting also featured workshops and information to help communities market themselves to prospective new industries.

**Good Substitute**  
"If you couldn't have wealth what would you choose?"  
"Credit."

### World Day

Cont. from Page 1

its leadership in laywomen of the United States in 1887 as a day of prayer for mission, has World Day of Prayer, begun developed into a movement in

### Cotton Meet

Cont. from Page 1

systems methods to conservation compliance needs will be discussed by Dr. John Abernathy, resident director of research at the Lubbock-Half-

### Muleshoe...

Cont. from Page 1

Gifted and Talented class at Lazbuddie Elementary School.

The Muleshoe Chapter of Amateur Athletics Union (AAU) will hold a girls' basketball team tryout, Saturday, March 7, at the high school gym.

All girls, ages 11 and under will try out from 10-noon. Girls 13 and under will try out 1-3 p.m.

This is designed to not conflict with the Girls' Little Drivball schedule.

For more information call Terry Field at 272-3252 or Ricki Kelley at 272-5190.

More than 2,050 Texas Tech University students qualified for the academic honor lists at the end of the 1986 fall semester.

Students making the honor rolls included the following from Muleshoe: Kelly S. Hamblen on the President's List and Debra K. Hart, Mark Alvin Lust, Sheri Kim Henry and Cristal K. Taylor, all on the Dean's list.

way Experiment Station. An update on 1986 soil fertility surveys will be presented by Wayne Wyatt, general manager of the High Plains Underground Water District No. One, Lubbock. The relationship of fertilization and declining yields will be explored by Dr. Art Onken, professor of soil fertility at the Lubbock-Halfway Experiment Station.

New technology in textile processing and its impact on fiber quality demands will be presented by Dr. John Price, head processing research in the Textile Research Center at Texas Tech University. Dr. John Gannaway, Experiment station cotton breeder at Lubbock, will look at ways to meet those quality needs.

What's being done to help farmers minimize the problems of bumpy cotton will be reported by Dr. James Supak, Extension cotton agronomist at Lubbock.

The South Plains Development Program is a coordinated regional effort of the Texas Agricultural Extension Service to promote economic development in agriculture and improved family life in 21 counties. It is sponsored through county Extension Program Councils and special SPD task forces which identify educational needs and coordinate educational activities.

### MILLIONS RETURN TO H & R BLOCK

Millions of people return to H & R Block every year for income tax preparation. They know from experience that getting your tax return prepared at H & R Block can be both a pleasant and money-saving experience.

When you come to H & R Block, you get a friendly greeting and can relax with a cup of fresh coffee. Next, you receive a personal interview and a well trained tax preparer gathers the information needed to assure you of every legitimate exemption, credit, and deduction which saves you money.

With the many changes in new tax laws and forms this year, you should try H & R Block. They'll make the new tax laws work for you.

Join the millions of American families who have discovered the advantages in using the H & R Block tax services.

224 W. 2nd

272-3332

which Christians in some 170 countries and regions of the world gather each year to observe a common day of prayer. The same theme and worship service is shared and translated into hundreds of languages and dialects. In many countries, the event serves as a catalyst for women to come together as they work to bring about change in their lives.

An International Committee chosen from each of eight major regions of the world, was formed in 1967 to assume responsibility for the global administration of World Day of Prayer. It was this committee of women who wrote the Centennial worship materials. In May of 1986, the International Committee gathered for the first time in the United States, making it possible for participants from all over the world to attend the global celebration of the World Day of Prayer Centennial at Riverside Church in New York City on May 18, 1986.

Mrs. Graves concluded, "World Day of Prayer offerings make possible, in part, the mission of Church Women

United including the Intercontinental Grants for Mission program that funds national and international projects in support of the empowerment of women, human rights, justice and peace.

### Boy's '87 Action

### Youth Basketball

### Gets Underway Here

Last Thursday night, the Boys' Muleshoe Youth Basketball season got underway with the following results:

For the third and fourth grade boys: Serv-All Thriftway (Blue), 12 and C&C Trucking, 14; and Western Drug, 2, Field's Insurance, 21.

In the fifth and sixth grade, action; McCormick Seed, 13 and Serv-All Thriftway (red), 28; and West Texas Karate 18, Poynor's, 21.

Friday night action was, third and fourth grade: Field's Insurance, 5 and Serv-All Thriftway (Blue), 8; Western Drug, 2 and Western '66' Co., 5.

Also on Friday night, the fifth and sixth grade: Muleshoe State Bank, 18 and Irrigation Pumps & Power, 22; Serv-All Thriftway (Red), 9 and West Texas Karate, 11.

**The Super Guard Light protects you all night for pennies a day.**

The high pressure sodium light bathes your yard and buildings in a golden glow to protect your property from theft and vandalism. Its 150-foot diameter of light discourages trespassers. The Super Guard Light comes on automatically at dusk and turns itself off at dawn. So you only pay for its protection when you need it.

**No installation or maintenance costs.** You pay only the very reasonable rental fee that appears on your light bill. SPS takes care of the installation, the maintenance and furnishes the electricity. Get the protection of a Super Guard Light. Contact your SPS office or ask any SPS employee.

**SPS** SOUTHWESTERN PUBLIC SERVICE COMPANY

# Buy Ten, Get One FREE!!!

## Savings Continue Through Entire Month Of March

# Mystik<sup>®</sup>

## QUALITY LUBRICANTS



# Western "66" Co.

# Worker Documentation Necessary For Everyone

Proper documentation is the key to hiring workers under the new Immigration Control and Legalization Amendments Act of 1986.

Employers should ask for and make copies of documents presented for all employees hired since Nov. 6, 1986," points out Richard Edwards, economist with the Texas Agricultural Extension Service, The Texas A&M University System. "Applicants should not be hired without proper documentation."

As far as agricultural employees are concerned, Edwards notes these provisions of the new legislation:

--It is illegal to knowingly hire, recruit or refer for a fee any person not authorized to work in this country. There are stiff penalties for violators. All employers are affected regardless of size or number of workers.

--Employers must inspect documents and attest to the legal right to work of every person hired. There are penalties for employers who do not comply with this paperwork requirement even if no illegal aliens are employed.

--Most agricultural workers will be able to attain legal status. Workers can obtain temporary resident status and, after two years, become permanent residents if they can show they have worked 90 or more mandays in producing and harvesting perishable agricultural commodities during the year beginning May 1, 1985. Those who have worked 90 mandays in the same capacity in each of the three years ending May 1, 1984, 1985, and 1986 may become residents after one year. The number allowed permanent status under the three-year consecutive years of work provision is limited to 350,000. Once either group has obtained permanent status, however, they have no obligation to continue to work in agriculture.

--Anyone who can show continual residence since Jan. 1, 1982, can be granted temporary status for 18 months and may be granted permanent status after that period.

--During a four-year period from 1989-1993, a limited number of aliens will be admitted to perform field work in fruits, vegetables and other perishable commodities if it is determined they are needed. Those admitted are obligated to do at least 90 mandays of such work for three consecutive years. They then can stay in the U.S. permanently but have no further obligation to work in agriculture.

Types of Documentation  
Edwards points out that any of the following documents or combination of documents are proof of resident status as set forth in the law:

- A U.S. passport.
- Certificate of U.S. citizenship.
- Certificate of naturalization.
- Resident alien card or other alien registration card with photo that is evidence of authorization to work.
- A current foreign passport with a current endorsement allowing the applicant to work in the U.S.
- Social Security card and a driver's license or other identification card with photo issued by the state.
- U.S. birth certificate or birth certificate which establishes U.S. nationality at birth and a driver's license or other state-issued identification card with photo.

Penalties for Employers  
"Employers who knowingly hire unauthorized aliens can be fined between \$250 and \$2,000 for each such employee for a first offense," Edwards points out. "The second violation carries a fine of \$2,000 to \$5,000 per employee found in violation, and fines range from \$3,000 to \$10,000 per offense after more than two previous citations."

If the attorney general rules that an employer is engaging in a pattern or practice of violations, that employer may face criminal charges which carry fines or jail sentences.

No citations will be issued through March 1987, says the economist. During the subsequent year through March 1988, a first offender will be cited, but no penalty will be assessed. Second and subsequent violations found during this year, however, will be penalized as previously outlined. After March 1987, all violations are subject to the full measure of the law.

For seasonal agricultural employees (90 mandays in producing and harvesting perishable commodities), no penalty will be imposed for violation until the application period for the seasonal agricultural worker program has ended in October 1988, notes Edwards.

The new law also addresses workers employed through a labor contractor. If a farmer knows the employees are not authorized to work in the U.S., he is considered to be the one doing the hiring. Any sanctions imposed will be against the farmer.

Employers who do not adhere to the documentation requirements also may be fined, adds

Edwards. The law mandates employers to maintain a record keeping system that verifies they have examined documents presented. Employers may photocopy the documentation. Those employers found in violation shall be fined between \$100 and \$1,000 for each individual in violation.

Cyrus Vance, former Secretary of State:

"To be blunt, this great nation—if it is to remain worthy of global leadership—cannot again manage its foreign affairs as an amateur."

## Three-Way News by Mrs. H. W. Garvin

Mr. W.T. Simpson and Mrs. Jim Simpson were in Lubbock Wednesday on business.

Mrs. H.C. Toombs was released from Methodist Hospital in Lubbock after having surgery several days before.

The children of Mr. and Mrs. Carl Pollard honored their

parents with a golden wedding celebration at the Home Ec. room at Threeway school Saturday. Several friends and family were there.

Mrs. Rodger Hatcher and

baby girl from Clovis, N.M. and Mrs. Elmer Lee from Goodland visited the Jack Lane home Tuesday.

The community has received quite a lot of snow the past week, which is welcome.



**EMPLOYEE OF THE MONTH**--Friday morning, a surprised Pat Moore, right, received a certificate and the traveling trophy as Employee of the Month, from Ron Montgomery, president of the Muleshoe Chamber of Commerce and Agriculture. Ms. Moore has been secretary at Ellis Funeral Home for almost three years, and is highly praised by her fellow workers and persons who are in contact with her.

### Five Point

# \$9.00

50 Lb. Bag

**HI PROTEIN DOG FOOD**

- A 26% crude protein dog food
- Formulated for hard working dogs
- For Peak conditioning and performance.

# Celebrate!

Clovis High Plains Hospital is pleased to announce the completion of their new Day Surgery Unit and the refurbishing of the hospital. You are invited to attend the ribbon cutting, open house and tour on Friday, March 6, 1987 from 3 to 5 p.m.

Please join us at the entrance to Day Surgery on the west side of the hospital.

Poynors Sells For Less
Poynors Sells For Less

## See Us For Your Auto Parts!

**Longlife**

Save \$23.00 **39.99** exch.

60 Month Eliminator Battery. 425 to 450 cold cranking amps. Reg. \$62.99

**WARRANTY**  
If battery should fail during the warranty period the replacement will be based on the length of ownership. Charging only for the months used.

**FREE INSTALLATION!**

---

**NEW! A Battery Designed Just for Your Truck or Van!**

**Longlife HD**

**WARRANTY**  
If battery should fail during the warranty period the replacement will be based on the length of ownership. Charging only for the months used.

**59.99** exch.

Truck/Van 72 Month Battery. 550 cold cranking amps. Reg. \$68.24

---

**Stock Up On This Great Bargain!**

Windshield Anti-Freeze. Gallon, pre-mixed (2-515-67)

---

**Motorcraft**

Your Choice **79c** ea.

**Non-Resistor Spark Plugs.**

|               |      |
|---------------|------|
| Pkg. of Four  | 3.16 |
| Pkg. of Six   | 4.74 |
| Pkg. of Eight | 6.32 |

**Resistor Spark Plugs.**

|               |      |
|---------------|------|
| Pkg. of Four  | 4.47 |
| Pkg. of Six   | 6.88 |
| Pkg. of Eight | 8.88 |

Sold in sets only.

---

**GUARDIAN**

**Set of 4 for 2 wheels**

**Drum Brake Shoes or Disc Brake Pads.** Sizes for most cars. (9-100-26/107-29, 149-03/185-40) Semi-Metallic Pads (9-120-89/131-29)

**7.99**

Expert Brake Installation Available At All Company Stores & Participating Dealers.

---

The Standard of Protection Since 1883.

Your Choice **89c**

30W, 10W-30, or 10W-40 Motor Oil. Detergent with WIZ-7. (19-174-26, 91, 175-09)

**1.29** ea.

WD-40 Penetrate Oil. 9 oz. aerosol bottle. Reg. \$1.56 (21-518-43)

# POYNOR'S

**HOME & AUTO STORE**

103 Main Muleshoe 272-4552

Poynors Sells For Less
Poynors Sells For Less

# Bailey County Journal

# Classified

Call 272-4536

**CLASSIFIED RATES**  
 First Insertion Per Word.....\$1.15  
 Minimum Charge \$2.30

**Consecutive Insertions**  
 Per Word.....\$1.13  
 Minimum Charge \$2.00

**CLASSIFIED DISPLAY RATES**  
 \$1.75 Per Column Inch

**Blind Ad Rates**  
 50% More

**DEADLINES**  
 12 Noon Tues. For Thursday Paper  
 12 noon Friday For Sunday Paper  
 We reserve the right to classify, revise, or reject any ad. Not responsible for any error after ad has run once.

**1. Personals**

**DEL TORO Plumbing**  
 272-4446 Rudd-Energisaver water heater with foam insulation. Remember it's not what you earn, it's what you save that counts.  
 d1-7s-stfc

Custom Grass Sowing  
 Tye Drill  
 \$6.50 per acre  
 505-478-2489  
 505-276-8261 or 8216

1-8s-4tsp

**NEW \$13.99 ONE PRICE SHOE STORE!**  
 Tremendous opportunity from Prestige Fashions to open your own shoe store with top quality name brand shoes that others offer for \$19 to \$60. Over 135 brands, 250 styles. First quality guaranteed. No seconds. \$21,900.00 includes opening inventory, in-store training, fixtures and grand opening promotions. Call Anytime. Prestige Fashions 1-800-247-9127.  
 1-9s-2tpts

**DO YOU** need secretarial assistance but not full time? Typing, light bookkeeping, etc. in my home call 965-2496.  
 1-9s-2tp

**MARY KAY COSMETICS**  
 Josie Flowers  
 272-3865.  
 f1-49s-tfc

**DAVIS COMMERCIAL PUMPING SERVICE**  
 Cess pools, Grease pits, Mud pits, Septic tanks. 20 ft. elevator boots. Bacteria & Enzyme. Digestant stocked.  
 We stress maintenance for your best results. Call us.  
 806-272-4673  
 806-272-3467  
 Muleshoe, Texas TX. Dept. of Health reg. #TDH-02009  
 1-8s-stfc

**STORAGE**  
 Rooms Available For Storage  
 \$25.00 - \$30.00 per month  
 Ted Barnhill  
 272-4903  
 b1-42s-tfc

**Kenneth Evins' Handyman & Sharpening Serv.**  
 Knives 1.00  
 Circular Saws 2.00-3.00  
 Chain saw 3.00-5.00  
 Scissors 1.50  
 Call 965-2759  
 Muleshoe, Tx 79347

**1. Personals**

**Flat rate**  
 Long distance \$125.00 monthly  
 1-800-US-Antel  
 9-5 Mon.-Fri.  
 1-7s-4tpts

**CONCERNED About Someone's Drinking? HELP IS AVAILABLE**  
 through Al-Anon  
 Call 227-2350 or 965-2870 or come to visit Tuesday nights, 8:00 p.m. or Saturday mornings at 10:30 a.m. at 1116 W. American Blvd., Muleshoe

**3. Help Wanted**

**WANTED:** Bookkeeper/Accountant. Must have in depth experience in all phases of bookkeeping including G/L, A/R, A/P, and P/L. Computer experience required. Apply at Bamert Seed Co., Rt. 3 Box 1120, Muleshoe, TX 79347. Or call 272-4787.  
 b3-8t-4tc

**STAFF R.N.'s**  
 All areas, part time/full time, salary and benefits comparable, to area with experience. Contact: Marcia Butler, RN, DON, Central Plains Regional Hospital, 2601 Dimmitt Road, Plainview, Texas 79072. 806-296-5531.  
 c3-7t-8tp

**WE NEED** a hard-working person to sell our Goodyear roof products. Write Ed Mahon, Consolidated Companies, 1801 East 9th Cleveland, Ohio 44114.  
 3-9s-3tpts

**MOSTLY BASKETS HAS ARRIVED** in Muleshoe area. We are looking for home party plans sales people. Sell baskets and wicker furniture at exciting prices. Call Edna Floyd at 1-800-521-1228.  
 3-8t-8tpts

**4. Houses For Rent**

**HOUSE FOR RENT,** 2 bedroom, double carport, fenced backyard, large metal storage building, in back. Near school. Call 817-663-5857.  
 b4-4t-tfc

**RUIDOSO CHALET:** 4 bedroom for rent by day, weekend, or weekly. Call 505-257-2622. Owner Dr. Albertson.  
 a4-49t-tfc

**SMALL** unfurnished home for rent. Call 272-3107.  
 m4-1s-tfc

**2 BEDROOM** unfurnished except range. Plumbed for washer & dryer. Good location.  
 272-7575.  
 p4-9t-tfc

**8. Real Estate**

**FOR SALE** or lease, luxury double wide mobile home, 3 bdrm., 2 bath, fireplace. Call 272-4630 or 272-3431.  
 s8-8s-stfc

**THREE LARGE** bedroom, ample closets, 1 1/2 bath, central heat, fully carpeted, garage joining house, separate garage and storage at back, near school price negotiable. 1816 W. Ave. E Ph. 272-3558.  
 w8-9s-4tc

**8. Real Estate**

**FOR SALE** 1983 Woodlake mobile home. 3 bdrm, 2 baths, fireplace, all appliances. Needs to be moved, take over payments. Call 272-3377 or 272-3319.  
 8-9s-2tp

**8. Real Estate**

**FOR SALE** by Owner Brick home 3-2-2 Central H/A (gas), Sprinkler system, nice view Richland Hills owner Licensed Realtor-272-5629.  
 8-7s-8tp

**SMALLWOOD REAL ESTATE-BROKER**  
 232 MAIN 272-4838

2 Bedroom, 1 Bath Stucko. \$500.00 down and \$158.00 per month. \*\*\*

3 Bedroom, 2 Bath Stucko, Central Heat, Evaporative Cooling on roof, Carpeted, 1360 Sq. Feet. \$19,900.00. \*\*\*

2-2 Bedroom Houses for rent.

**WHITT - REID REAL ESTATE**  
 201 Main Office 272-3611  
 If You Want It Sold- See Us"

- Homes
- Farms
- Ranches
- Commercial

Roy Whitt Broker Home 272-3058  
 Thursie Reid 272-5318  
 Joy Whitt 272-3058  
 Charles D. Jones (nights) 246-3200

"We Try Harder"

**8. Real Estate**

116 E. Ave. C. BINGHAM & NIEMAN REALTY 272-5285 --- 272-5286  
 We have homes for as little as \$600.00 total move-in cost, with payment scheduled according to income for qualified buyers!!!!

**COUNTRY HOMES**

3-1-1 Home on 1 acre, workshop-storage. \$30's.. \*\*\*\*\*

3-1-2 Home on pavement, 1 acre, Owner-financing.. \*\*\*\*\*

3-2-2 Brick, 3.3 acres, built-ins, barn & pens!!! \*\*\*\*\*

3-3-2 Brick, 3.86 acres, Geothermal A&H, built-ins, loads of extras, energy efficient!!! \*\*\*\*\*

3-2-3 carport home, built-ins, Geo. A&H, storm cellar, barns, corrals, 11 acres... \*\*\*\*\*

**RICHLAND HILLS**

**IMMACULATE** 3-2-2 Brick, corner lot, Cent. A&H, built-ins, FP, energy efficient, loads of storage & closet space, sprinkler sys.!!! \*\*\*\*\*

3-1-1 Brick, Cent. heat, Evap. air, built-ins, fenced yard. \$40's... \*\*\*\*\*

**COUNTRY VIEW**-3-2-2 Brick, corner lot, total elec., built-ins, Cent. A&H, & more!!! \*\*\*\*\*

3-1 1/2-2 Brick, corner lot, Cent. A&H, built-ins, fireplace, utility, nice home \$70's... \*\*\*\*\*

**LENAU ADD**

3-1 1/4-1 carport home, fenced yard \$30's \*\*\*\*\*

2-1 1/4-2 Brick, Cent. A&H, built-ins, fireplace, sprinkler system. PRICED TO SELL!!! \*\*\*\*\*

4-2-2 carport home, built-ins, fireplace, many more extra's. CALL FOR DETAILS..\$50's... \*\*\*\*\*

3-2-2 carport, corner lot storm windows & doors, concrete cellar. \$30's... \*\*\*\*\*

**COUNTRY CLUB**

3-2-2 Brick, Cent. A&H, Built-ins, fireplace, covered porch, fenced yard, & more!!! \*\*\*\*\*

3-2 Brick, Cent. A&H, built-ins, fenced yard. \$40's!!!! \*\*\*\*\*

**HIGH SCHOOL AREA**

**IMMACULATE** 3-1-1 Brick, Cent. heat, Evap. air, nice earhtone carpets, fenced yard, & more. \$30's!!!! \*\*\*\*\*

**DIANNE NIEMAN, BROKER**  
 "WE APPRECIATE YOUR BUSINESS"

**8. Real Estate**

**FOR RENT** 3 bedroom house fenced front yard Pleasant Valley community call 965-2881.  
 p8-9s-4tc

**11. For Sale Or Trade**

**PIANO FOR SALE**  
 Wanted: Responsible party to assume small monthly payments on piano. See locally. Call credit manager 1-800-447-4266.  
 11-9s-7tp

**FOR SALE** 50 hp electric motor with switch boxes, call 965-2752.  
 11-8t-6tp

**15. Misc.**

**WE MAKE** suckers for all occasions. All shapes and flavors available. Call after 5 p.m. 272-3701 (or) Ruthie 272-4417-Shellye.  
 p15-9s-tfc

**James Hartline**  
 Remodeling and Home Improvement  
 Carpentry - Painting - Spray Acoustic Cabinet Work - Ceramic Tile - Wallpaper.  
 CALL US FOR A FREE ESTIMATE  
 CALL COLLECT 385-6248

**Formerly With Lowery & Son Painters**

Custom Draperies - Mini Blinds - Fabric Custom Bedspreads Window Treatments of all Kinds

**Morna's Interiors**

Lisa Holt 946-3352 805 Utica  
 Morna Holt (806) 296-7951 Plainview, Texas 79072

**8. Real Estate**

**PRICE REDUCED-ASSUMABLE LOAN TO QUALIFIED BUYER-SMALL EQUITY**  
 3-1 1/4 home, corner lot, built-ins, nice carpet, fenced yard. \$20's!!! \*\*\*\*\*

3-1 1/4-2 Brick, Cent. A&H, built-ins, fenced yard, basement with fireplace. PRICED TO SELL!!! \*\*\*\*\*

3-1-1 carport, corner lot, wall furnace, evap. air, fenced yd., storage bldg. \$30's... \*\*\*\*\*

3-1 1/4- Brick, Cent. A&H, built-ins, beamed ceiling, 2 fireplaces, spacious. \$70's... \*\*\*\*\*

3-1-1 corner lot, Cent. heat, Evap. air. \$30's \*\*\*\*\*

2-1 home on 20 acres, 20 hp sub. pump, barns & corrals, many more extras... \$42,500 \*\*\*\*\*

3-2 1/4-2 carport, nice extra large home, concrete cellar...Reduced \$30's. \*\*\*\*\*

**WELL IMPROVED** 40 acre cattle set-up PRICED TO SELL!!! \*\*\*\*\*

**APPROX.** 3,000 sq. ft. bldg. with Railroad Frontage, Assessed Value over \$27,000. CASH PRICE-\$15,000!!!! \*\*\*\*\*

3-1-1 Stucco, carpet & vinyl flooring. \$20's \*\*\*\*\*

2-1-1 home, wall furnace heat, nice carpets. \$16,000.00 \*\*\*\*\*

3-2 large home with Cent A&H, gas grill, storage bldg. & more..\$30's... \*\*\*\*\*

**LARGE BLDG.** on 2 lots, Paved parking... \*\*\*\*\*

**PRICED TO SELL-** Office Bldg. across from courthouse... \*\*\*\*\*

**YL-Well-Improved** 400 irrig. acres, 3-2-2 it home, shop, barns, UG tile. \*\*\*\*\*

3-1 1/4 home, corner lot, Cent. A&H, large rooms..50's... \*\*\*\*\*

**GEORGE NIEMAN, BROKER**

**8. Real Estate**

**J.B. Sudderth Realty, Inc.**  
 Realtors/Auctioneers / APPRAISERS  
 Farwell, Texas  
 481-3288  
 Drawer 887 102 5th St

**We Need Listings**  
 Let Us Help You With Your Real Estate Needs.

Licensed in Texas, New Mexico

**J.B. Sudderth, Broker Daren Sudderth, Broker Jimmie Mace, Sales Associate**

Country living at it's best. 10 acres with extra nice brick, 4 bedroom, 3 bath 2 car garage, T.V. Dish, ge shop building, barn with fenced in cell, sprinklers pipe. Located near Muleshoe city limits. Priced to sell immediately.  
 \*\*\*

On one acre nice 2 1/2 b, 1 bath home with garage, large building and large storage building on hwy West Camp area priced for immediate sale.  
 \*\*\*

**HENRY REALTY**  
 111 W. Ave. B  
 Muleshoe, Texas  
 272-4581

**BRICK** Home North of Muleshoe on Hwy 214. 3 bedroom, 2 bath, fireplace, central air/heat. One acre. Large Hobby Shop and apartment on premises. Fruit Trees.  
 \*\*\*

4 Br, 2 bath, 2 car garage, central heat/air, large utility, carpet, near down-town. Excellent condition.  
 \*\*\*

**ONE ACRE** sites for home construction. 3 miles East of Muleshoe on HWY. 3 lots remain.  
 \*\*\*

**JUST COMPLETED** 3 bedroom, 2 bath, large living room, kitchen and dining. Excellent condition, near high school. Priced to sell.  
 \*\*\*

**COMPLETELY** remodeled 2 bedroom home. Ideal first home, must see to appreciate. Nice location with F.H.A. loan.  
 \*\*\*

**COMMERCIAL PROPERTY** on Main Street, over 4,000 sq. ft., income producing property.  
 \*\*\*

**COMMERCIAL PROPERTY**-Excellent rental income from 4 separate offices. Lease agreements in force.  
 \*\*\*

3 Br, 2 bath, spacious home outside city limits, near city on highway. 29'x40' metal building. Lot 85'x62'.  
 \*\*\*

3 Br, 1 bath, completely remodeled, edge of city on highway.  
 \*\*\*

**VACANT LOT** for Mobile home immediate possession.  
 \*\*\*

**COMMERCIAL PROPERTY** on West American Blvd. ideal location Building ready for occupancy.  
 \*\*\*

**JAMES F. HAYES & CO.**  
 AGRICULTURAL REAL ESTATE  
 Vic Coker-Agent  
 (806) 965-2468

120 Acres in Northeast Bailey County. Established in hay. **SOLD** 1/2 Acre.

80 Irrigated Acres in Lamb County on Bailey County Line. Good prospect for part time cattleman. **SOLD** 1/2 Acre. \$400/Acre.

639 Acres Northwest of Earth very good water, good soils, electric sprinklers, Home, corrals, fenced lot. Barn & other out building. **SOLD** 1/2 Acre. \$50/Acre.

1-15,000 Head feed yard complete with mill, homes, 1000 Acres of grass. MODERN FACILITY.  
 \*\*\*

5 Sections-adjacent to above feedlot. Excellent soils, good water, 3 sprinklers. Combined with feedlot, this is a vertically integrated operation. Call Vic for details.  
 \*\*\*

640 Acres Pleasant Valley on pavement. 3 electric sprinklers, 5 wells, excellent water & soils. \$700/ Acre.  
 \*\*\*

14,000 Head feedlot near Muleshoe. Good opportunity call Vic for details.  
 \*\*\*

550 Acres with 3 electric sprinklers. Adjacent to above feedlot. Excellent water, & soils. \$625/Acre.  
 \*\*\*

160 Acres very good soils, electric sprinkler, modern home. ALL for \$700/ Acre.  
 \*\*\*

335 Acres-Southwestern Castro County Good soils, excellent water, nice home on pavement, Look and make an offer!  
 \*\*\*



18. Legal

**NOTICE FOR BIDS**  
The Bailey County Commissioners Court will receive bids until 10:00 a.m., Monday, March 2, 1987, for the purchase of three mobile radio units and three portable radio units, at which time the bids will be opened. All bids must be received in the office of the County Judge of Bailey County, 300 South First Street, Muleshoe, Texas, prior to the foregoing time.

The specifications for bidding said radios are available in the office of the Sheriff of Bailey County, Texas. Payment in full will be made upon acceptance of the radios. No bond is required of any bidder.

Gordon H. Green  
County Judge  
g18-7s-3tsc

**NOTICE FOR BIDS**  
The Bailey County Commissioners Court will receive bids until 10:00 a.m., Monday, March 2, 1987, for the purchase of a new truck, at which time the bids will be opened. All bids must be received in the office of the County Judge of Bailey County, 300 South First Street, Muleshoe, Texas, prior to the foregoing time.

The specifications for bidding said truck are available in the office of the County Judge of Bailey County, Texas. Payment in full will be made upon acceptance of the truck and delivery of proper title documents. No bond is required of any bidder.

Gordon H. Green  
County Judge  
g18-7s-3tsc

**PUBLIC NOTICE**  
Five Area Telephone Cooperative, Inc. hereby gives notice it has filed with the Public Utility Commission of Texas for authority to de-tariff the maintenance and installation of simple inside and complex inside wiring in accordance with the Federal Communications Commission's Order in Docket 79-105, and to transfer ownership and single line business/residential premises equipment to the members of the Cooperative. The changes are proposed to become effective on March 26, 1987 except the transfer of ownership of single line business/residential customer premises equipment to members will become effective upon Commission approval.

The proposed changes will cause reductions in annual revenues to the Cooperative of \$23,976.00. Persons with questions or who desire more information about the requested rate changes are encouraged to contact the company at 806-272-5533 or 302 Uvalde, Muleshoe, Texas where a complete copy of the filing is available for inspection.

Persons who wish to intervene or other wise participate in these proceedings should notify the Commission of Texas, 7800 Shoal Creek Blvd., Suite 450N, Austin, Texas 79757. Further information may also be obtained by calling the Public Utility Commission Consumer Affairs Division at 512-458-0227 or 512-458-0221 teletypewriter for the deaf.

When publication is completed, please provide two (2) executed original copies of the publisher's affidavit with copies of the notice attached to Five Area Telephone Cooperative, Inc. P.O. Box 448, Muleshoe, Texas 79347, as soon as possible.  
f18-9s-4tsc

For Your Classifieds Call MULESHOE & BAILEY COUNTY JOURNALS 272-4536

# A TOUCH OF HISTORY

## Oldest Deed, The VVN Ranch Beats Countys' First Recorded Deed

The oldest document recorded in Bailey County deals with the land in the VVN Ranch.

In October 1882 the State of Texas deeded to H.S. Melven and Sylvian Blum land in southern Bailey County. The land was given in consideration of their service to the State during the 1870-1881 survey which was one of the preliminary basis for the Capitol Syndicate Company's land grants to the land company from the State, in exchange for their building the State Capitol building in Austin.

H.S. Melvin sold his land in the county to Leon H. Blum, Hyman Blum and Sylvian Blum on August 1, 1882. Adjoining this land the Blums bought and additional 130 sections of 640 acres each from the State of Texas in 1883.

In February 9, 1883, A.L. Matlock and G.P. Meade, after buying some blocks B and C from Leon Blum, sold part of the land to C.C. Rumrill. Later Matlock sold other land to J.B. Coate and James Harlan for 10,000 shares of Mountain Monarch Silver Mining Company.

On March 13, 1885, Matlock and Meade sold their land, the VVN, back to Leon Blum. The

whole portion of the original VVN was returned to Blums ownership in 1890.

The Blums leased their land to various persons and parties for grazing purposes after 1890.

D.F. White leased a part of the Melvin, Blum and Blum land on September 1, 1892, for five years and eight months. When the lease expired in 1898, he leased the land for another five years. White made a contract with the Eddy and Bissel Live Stock Company to pasture cattle for the company on the land leased from the Blums. In 1897 the Eddy and Bissel Live Stock Company sold 15,000 head of the VVN cattle located on the lease to Thomas J. Moon, Hasekiah G. Williams,

and William G. Good.

In October 1900 the Blums later sold some 157,682 acres to J.R. Coutts for \$1.00 per acre. Different ranches in the southern part of Bailey County leased land from Coutts, who never ran any cattle on it himself. After Coutts death in 1904, his widow sold some 85,844 acres to William Hurt for \$2.25 an acre. She later sold the remaining land for ranches and farms.

The McCelveys bought 20

sections; O.O. Reed secured seven sections; and W.H. Fuqua bought all of Block A. Most of the land Coutts owned is now in cultivation.

John B. Ferguson was a purchaser from the executors of 72,094 acres of land, more or less situated in Bailey County, and he sold this land to W.H. Fuqua in May, 1906.

Fuqua borrowed money on the VVN Ranch in 1931 from the First National Bank in Dallas. In

1936 he mortgaged the land and it was taken over by the West Texas Mortgage Loan Company, a Texas corporation and a branch of Stone and Webster, New York. Fuqua was a owner of the First National Bank of Amarillo.

John L. Birdwell and Cordie Birdwell, his wife, bought all of the remaining VVN Ranch land on January 31, 1948 from the West Texas Mortgage Loan Company. Upon his purchase, Stone and Webster dissolved the mortgage company and Birdwell sold some land which was suitable for cultivation.

The Birdwell family today operates the VVN Ranch, which dates back to deeds dated 1882 from the State of Texas to Leon Blum, to Leon Blum as assignee for Melvin L. and H. Blum and assignee for Thomas H. Jones, Jr. in 1882.

There's Still Time To Test Soil Content

It's not too late to collect soil samples for testing to determine fertilizer needs for this year's crops.

Collecting soil samples now and getting them tested can help farmers get a jump on the spring rush at soil testing labs, says Spencer Tanksley county agent with the Texas Agricultural Extension Service, The Texas A&M University System.

Once fertilizer needs are determined, farmers can place their orders, Tanksley says. Again, by ordering early, they can avoid the spring rush. Also, fertilizers usually cost more in the spring when demand is greater and supplies tighter.

With fertilizer at hand, farmers can begin application when field conditions permit. This minimizes spring planting delays because of tight dealer schedules and reduces the potential for moisture loss just prior to planting, explains Tanksley.

For more information concerning soil testing, contact the county Extension office, says Tanksley.

Don't Top That Tree

This is the season when homeowners and others get the urge to "top" or "dehorn" landscape trees with the assumption that the trees will be better off.

On the contrary, topping is one of the worst practices that can be employed against shade trees, emphasizes Spencer Tanksley, county agent with the Texas Agricultural Extension Service, The Texas A&M University System.

Topping refers to cutting back branches to stubs and sometimes all the way to the trunk, explains Tanksley. This severely injures trees and sets them up for attack by diseases and insects. Topping can even kill a tree outright.

People top trees to reduce their size (where power lines may be in the way, for instance), to save money on competent tree care, and because they think the practice will help the tree.

Proper pruning, on the other hand, involves removing trashy side branches in the top of the tree, says Tanksley. This practice is not nearly as noticeable as topping and therefore often goes unnoticed.

Severe topping causes a proliferation of buds at the point where the branch was cut. Shoots then arise from these buds, forming a dense mat at the end of the branch. This dense growth is shallowly attached and subject to easy breakage by wind storms, adds Tanksley.

This new mass of growth also puts a strain on a tree's root system since food reserves have to go to support it. Thus the tree's root system is weakened and overall vigor is reduced, making the tree more susceptible to attack from insects, diseases and other environmental conditions. Sunscald can also be a problem.

Topping also reduces a tree's life expectancy and therefore affects its value in the landscape. Knowledgeable appraisers will severely reduce the value of a topped or dehorned tree Tanksley, points out.

Good pruning practices will retain a tree's natural form and enable it to be a much greater asset to the landowner. Considering how long it takes a tree to reach full size, proper pruning and care should be a top priority for the homeowner, says Tanksley.

THINK CLASSIFIED!

THINK CLASSIFIED!

THINK CLASSIFIED!

THINK CLASSIFIED!

THINK CLASSIFIED!

THINK CLASSIFIED!

THINK CLASSIFIED!

THINK CLASSIFIED!

THINK CLASSIFIED!

THINK CLASSIFIED!

There's Still Time To Test Soil Content

It's not too late to collect soil samples for testing to determine fertilizer needs for this year's crops.

Collecting soil samples now and getting them tested can help farmers get a jump on the spring rush at soil testing labs, says Spencer Tanksley county agent with the Texas Agricultural Extension Service, The Texas A&M University System.

Once fertilizer needs are determined, farmers can place their orders, Tanksley says. Again, by ordering early, they can avoid the spring rush. Also, fertilizers usually cost more in the spring when demand is greater and supplies tighter.

With fertilizer at hand, farmers can begin application when field conditions permit. This minimizes spring planting delays because of tight dealer schedules and reduces the potential for moisture loss just prior to planting, explains Tanksley.

For more information concerning soil testing, contact the county Extension office, says Tanksley.

Don't Top That Tree

This is the season when homeowners and others get the urge to "top" or "dehorn" landscape trees with the assumption that the trees will be better off.

On the contrary, topping is one of the worst practices that can be employed against shade trees, emphasizes Spencer Tanksley, county agent with the Texas Agricultural Extension Service, The Texas A&M University System.

Topping refers to cutting back branches to stubs and sometimes all the way to the trunk, explains Tanksley. This severely injures trees and sets them up for attack by diseases and insects. Topping can even kill a tree outright.

People top trees to reduce their size (where power lines may be in the way, for instance), to save money on competent tree care, and because they think the practice will help the tree.

Proper pruning, on the other hand, involves removing trashy side branches in the top of the tree, says Tanksley. This practice is not nearly as noticeable as topping and therefore often goes unnoticed.

Severe topping causes a proliferation of buds at the point where the branch was cut. Shoots then arise from these buds, forming a dense mat at the end of the branch. This dense growth is shallowly attached and subject to easy breakage by wind storms, adds Tanksley.

This new mass of growth also puts a strain on a tree's root system since food reserves have to go to support it. Thus the tree's root system is weakened and overall vigor is reduced, making the tree more susceptible to attack from insects, diseases and other environmental conditions. Sunscald can also be a problem.

Topping also reduces a tree's life expectancy and therefore affects its value in the landscape. Knowledgeable appraisers will severely reduce the value of a topped or dehorned tree Tanksley, points out.

Good pruning practices will retain a tree's natural form and enable it to be a much greater asset to the landowner. Considering how long it takes a tree to reach full size, proper pruning and care should be a top priority for the homeowner, says Tanksley.

THINK CLASSIFIED!

THINK CLASSIFIED!

THINK CLASSIFIED!

THINK CLASSIFIED!

THINK CLASSIFIED!

THINK CLASSIFIED!

THINK CLASSIFIED!

THINK CLASSIFIED!

THINK CLASSIFIED!

THINK CLASSIFIED!

THINK CLASSIFIED!

THINK CLASSIFIED!

THINK CLASSIFIED!

THINK CLASSIFIED!

THINK CLASSIFIED!

THINK CLASSIFIED!

THINK CLASSIFIED!

THINK CLASSIFIED!

THINK CLASSIFIED!

THINK CLASSIFIED!

THINK CLASSIFIED!

### Sudan News

Evelyn Ritchie

Four sudan area students attending Angelo State University in San Angelo, are listed on the Dean's Honor Roll for the fall semester at the University.

Those listed on the 3.50 to 4.00 Honor Roll include Tamara Suzanne Gore, a management major, Jr Raymond C. Espinoza, a physics major, Laurie Ann Damron, a journalism major, and Patrick Joseph Demel, a finance major.

Glenda Synstschk, Amanda and Amy of Anton visited some last week with her parents and grandparents, Mr. and Mrs. Glen Cardwell.

Mr. and Mrs. Glen Cardwell visited in Plains one day last week with her brother, Daryl Hobbs.

Pam Dawson, daughter of Mr. and Mrs. Pat Kent was released recently from the Lubbock General Hospital where she was a patient last week following an auto accident last Sunday.

Jackelyn Ford was returned home from a week's vacation with her grandparents, Mr. and Mrs. Bob Ford in San Angelo.

Visiting this week with Mr. Noblett of Lubbock. Also visiting them was their granddaughter, Jackie Noblett also of Lubbock.

Maurene Thomas of Diana left Tuesday for her home

following a visit with her mother, Mrs. Oleta Reece and her sister, Mr. and Mrs. Cliff Shupe and other family members.

Mrs. Evah Doty is reportedly doing well following minor surgery last week at the Amherst Hospital as an out-patient.

The Sudan Fireman's Auxiliary met Feb. 9th at 7:00 p.m. and went to the Pizza Hut in Muleshoe. A short business meeting was held by President,

Mary Ann Gordon. Others attending were Ann Carson, Linda Summer, Jimmie L. Humphreys, Louise DeLaRiva and Norma Burnett.

Pam Kent Dawson of Snyder has been recuperating at the home of her parents, Mr. and Mrs. Pat Kent. She was in an auto accident recently.

Mrs. Katie Turner has been a patient in the Aherst Hospital for the past few days following a fall at her home where she received a broken ankle.

# TRIUMPH

## SEED

"You Can Take It To The Bank with Triumph Seed"

Triumph 1595 - Frito Lay Approved  
Yellow Corn

Triumph 1580 - Outstanding Yields  
Good Standability

Triumph 2400W - Frito Lay Approved White  
Corn Excellent Standability

Triumph Delivers The Yields  
You're Looking For!!

## Wiedebush & Co.

1620 W. Amer. Blvd. 272-4611

DOOPS!  
For this price, no controls A & M wouldn't have sold me this.



**If Price is a problem,  
you have no problem at A & M.**

Although price may be only one of the factors in choosing your metal building, we know how important it is. A & M is committed to giving you the most value for your money. WE WILL NOT BE UNDERSOLD ON ANY COMPARABLE BUILDING.

**Best Price - Best Quality**

Every customer, no matter what the price deserves the very best we can offer. Your new A & M building will be built with the highest standards of quality. THERE IS NONE BETTER THAN AN A & M BUILDING.

**You Deserve The Best**

Prove it yourself. Come by and let us show you the benefits of owning an A & M building.

WE ARE CONFIDENT THAT YOU WILL FIND NO BETTER QUALITY AT A LOWER PRICE ANYWHERE.



BUILDING SYSTEMS INC.

2600 Mabry Drive  
Clovis, New Mexico

Telephone: 769-2611  
New Mexico: 1-800-544-2255  
National: 1-800-545-2255

17. Seed & Feed

**DAVIS FEEDERS**  
Now in operation for preconditioning & growing cattle in West Texas & New Mexico area. 806-997-2216 Day. 806-285-3040 Night after 8 p.m.  
Also need graze out wheat & summer pasture.  
Robert Davis  
17-7s-8tp

THINK CLASSIFIED!

## Quality Carpet More Than Choosing Color

The same consumers who spend months researching which brand of microwave oven or dishwasher to buy, often choose carpeting just for its color.

Since carpeting is a major household investment, housing specialist Dr. Susan Quiring, says the purchase decision should involve more than decorating considerations.

"The durability of a carpet and how well it will keep its original good looks may be as important as the color in determining how satisfied you are with the carpet in the long run," adds the Texas A&M University Agricultural Extension Service home economist.

She says a strong resilient carpet fiber will resist abrasion and bounce back when walked on. Such a carpet will not show wear, crush or mat easily.

Differences in density can be checked by pressing on the carpet with your fingers to see how readily they can push through to the backing. Also bend a corner of the carpet to see how much of the backing can be seen beneath a pile.

According to the specialist, the more backing you see, the less pile there is and therefore, the poorer the carpet will perform. The better grades of carpet have dense, closely spaced yarns.

Since the pile fiber takes the abrasion and abuse, the amount of pile fiber in a square yard of carpet is critical to its performance, explains Quiring. This pile fiber is often referred to as "face weight." A face weight of at least 40 is recommended.

According to the home economist, pile density is also important. The size of the yarn bundle and the closeness of the individual tufts to each other determine carpet density. In general, the deeper, denser and heavier the pile, the better the carpet will perform.

"If you're considering a cut pile carpet, also look at the twist of the yarn," advises Quiring. "The tighter the twist the better the yarn will retain its original appearance."

She suggests judging the twist levels of various samples by looking closely at the cut tips of the individual tufts. They should be neat, well defined and should not flare open. Ask

if the yarns have been heat-set, since this process locks the twist in place permanently.

Remember too that the carpet pad or cushion will protect the carpet backing and increase the life of the carpet, notes the specialist. It also creates a softer walking surface, insulates cold floors, absorbs noise and prevents the carpet from shifting.

"Consider the true cost of carpet," Quiring advises. "If a bargain carpet wears out quickly, it may not save you money in the long run."

### DPS Recruiting State Troopers For New School

The Texas Department of Public Safety announced that July 7, 1987 has been selected as the beginning date for a recruit training school for the position of State Trooper according to Major V.J. Cawthon, Regional Commander for the Department of Public Safety.

Entrance exams and agility tests will be given at the Lubbock, Amarillo and Wichita Falls Department of Public Safety offices every Tuesday and Thursday beginning on February 24, 1987. The final day for testing out-of-state applicants will be March 19, 1987 and for Texas will begin at 8:30 a.m. on each above mentioned days and will take most of the day to complete.

Selected applicants will attend 18 weeks police training school at the Texas Department of Public Safety Academy in Austin. Recruit trainees will be paid a monthly salary of \$1,515.00 while they are attending the school.

Major Cawthon advised, "Interested persons should contact the recruiting coordinator in either Lubbock, Amarillo or Wichita Falls for employment qualifications and application forms. All necessary paperwork must be completed prior to taking the entrance exams. Employment qualifications and application forms may also be obtained by contacting your local Department of Public Safety Trooper."

The Texas Department of Public Safety is an Equal Opportunity Employer.

### Nursing Home News by Joy Stancell

Here it is March. Our calendar tells us that Spring is just around the corner although our spring flowers were recently covered by a 'winter' blanket of snow out on our patio. We took advantage of the white snow and made, what we thought was some very good snow ice cream.

Effie Smith was hospitalized in the Amherst hospital Wed. afternoon. She request your prayers and visitors.

Fri. afternoon The Assembly of God came for a Devotional with the residents. After songs were sung Becky Dysart read the 23 Psalm and expanded on it. Refreshments of cherry tarts, topped with whipped cream was served off a beautifully decorated table. Drinks of hot spiced tea and apple cider were also served to the residents who attended and those in their rooms.

We would like to express our heartfelt sympathy to the family of Walter Jay Burge. We too, miss him.

Stella Morgan has been visiting her son Mr. and Mrs. Jack Morgan from N. Carolina in the home of her daughter,

Elsie Williams. \*\*\*  
Ike Coffey's granddaughter, Mona Fay, and her children from Dallas visited with him over the weekend.

Floss Baldwin's daughter, Ruby, from Hobbs, N.M. and grandson, Michael, from Calif. are here visiting with him. His brother-in-law and sister-in-law, Mr. and Mrs. Bennett, from Plainview visited Thurs.

Cordelia Cochran was visited by Minnie May Glasscock of New Mexico and Anna Jo of Friona this week.

Sun. afternoon Betty and Dorena and girls visited Mary Sisemore.

Fri. March 6th our Sheriff Bobby Henderson will have lunch with the residents in the Nursing Home dining room.

Clifton Finney went shopping for the residents Wed. morning. He will be doing this every Wed. We really appreciate this volunteer service.

Clara Weaver was visited this week by Iva Carpenter who baked and brought her a coconut pie and some chicken and dumplings. Recent visitors were Pat Randolph and daughter, Candance, Betty Strawbridge, Susie, Vanessa & Becky.

Ralph Randolph had a good report from his visit to his Doc.

in Lubbock Fri.

We would like to thank the Spudnut Shop for bringing us a big box of fresh, fluffy spudnuts Tues.

Thurs. morning Clara Jones came to play the piano for our Devotional.

Monday afternoon LaVerne James and Ruth Clements came to play Bingo with our residents. A special thanks to our Auxiliary for sponsoring our Bingo and to the local supermarket and James Roy's Meat

Co. for donating fruit for the refreshments.

Lois Ethridge was visited by Peggy and A.J. Buhman this week. Mrs. Ethridge puts out the water glasses and bibs before meals each day.

Emma Schuster-Bro. McAdams from the Richland Hill Bapt. church, Julius Briscoe who left this note "Ich may dich und ich hoffe das Du habe e i n sehr schbene taq noute und eine besser taq morgen." Visited her this week.

**Spring Cleaning Is Just Around The Corner - - -**  
Keep Us In Your Mind For All Your Cleaning Needs  
Windows - Floors - Carpets - Paneling - Etc.  
**Muleshoe Janitorial & Supply**  
Rita Hawkins 272-5131 Night or Day

**Let Me Check And Tune-Up Your Lawn Sprinkler For The Coming Summer !!**  
Complete Lawn Sprinkler Repair & Installation  
8 Years Experience - Formerly With Colonial Turf Lawn Sprinkler Co.  
**NuWay Lawn Sprinkler Co.**  
License No. 9319 Bob Solberg, Owner  
Clovis, N.M. 505-762-4872

### Irrigation Pumps & Power Has A Deal For You!

#### New 1987 Zimmatic Center Pivot

7 Tower, 1300 Ft. Long w/Drops And

360 Degree Spray Nozzles

All For **\$18,949<sup>00</sup>**

Offer Good Until 3-10-87

**LINDSAY**

F.O.B. Lindsay N.E.

### Irrigation Pumps & Power

W. Hwy 84

272-4483

**National Brands Sale**

ALL TYPES LAY'S **POTATO CHIPS** 99¢  
ALL TYPES **COCA-COLA** 99¢

**Be Sure To Check Our Colorful Insert In Today's Bailey County Journal For Terrific Savings!**

**WRIGHT'S 93% FAT FREE BONELESS FULLY COOKED HALF HAM \$1.99 LB.**

**HORMEL SUPER SELECT LEAN TRIM QUARTER PORK LOINS OR FAMILY PAK 8-11 ASST. PORK CHOPS \$1.59 LB.**

**WRIGHT'S HICKORY SMOKED SLAB BACON \$1.39 LB.**

|  |        |   |        |
|--|--------|---|--------|
| WILSON'S SLICED MEAT BOLOGNA 12 OZ. PKG.   | \$1.19 | PEYTON'S SLICED COOKED HAM 12 OZ. PKG.      | \$2.99 |
| WILSON'S BEEF FRANKS 12 OZ. PKG.           | \$1.09 | PEYTON'S SLICED CHOPPED HAM 12 OZ. PKG.     | \$1.99 |
| SELECT LEAN TRIM CENTER CUT PORK CHOPS LB. | \$1.99 | PEYTON'S BACON SLICED 1 LB. PKG.            | \$1.59 |
| LEAN TRIM COUNTRY STYLE PORK RIBS LB.      | \$1.59 | PEYTON'S MEXICAN CHORIZO SAUSAGE 8 OZ. PKG. | 89¢    |
|  |        | WILSON'S REGULAR MEAT FRANKS 12 OZ. PKG.    | 89¢    |

**WESSON OIL \$1.99 48 OZ. BTL.**

**WOLF CHILI 79¢ 15 OZ. CAN.**

**BODEN'S RICH & READY ORANGE DRINK OR FRUIT PUNCH \$1.19 GAL. JUG.**

**PRICE SAVER PAPER TOWELS 3 \$1 ROLLS**

**FOLGERS ALL GRINDS \$2.79 1 LB. CAN**

**Borden 1 Gal. Hi-Pro Milk 2.19**

**Borden 1/2 Pint Sour Cream & Dips .59**

**ASST. WHITE BATH TISSUE DELSEY 99¢ 4 ROLL PKG.**

**CHICKEN OF THE SEA OIL/WATER PAK CHUNK LIGHT TUNA 59¢ 6 1/2 OZ. CAN**

**WASHINGTON X-FANCY DELICIOUS RED APPLES 49¢ LB.**

**ALL PURPOSE RUSSET POTATOES \$1.99 10 LB. BAG**

|                                 |        |
|---------------------------------|--------|
| CRISP GREEN CABBAGE 5 LBS.      | \$1.00 |
| JUICY NAVEL ORANGES 3 LBS.      | \$1.00 |
| FRESH GREEN BROCCOLI LB.        | 59¢    |
| FRESH SNO-WHITE CAULIFLOWER EA. | 79¢    |

**Dates On Insert Incorrect Should Be March 1- March 7**

**Double S&H Green Stamps On Wednesdays**

**WE'RE PROUD TO GIVE YOU MORE!**

**WE ACCEPT FOOD STAMPS WE RESERVE THE RIGHT TO LIMIT QUANTITIES**

**THRIFTWAY**

**PRICES EFFECTIVE March 1- March 7**

Thrifty McSaver