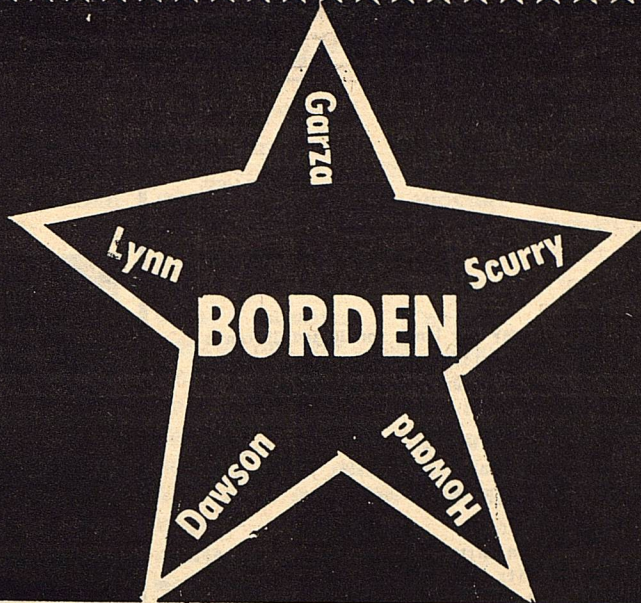


THE

VOLUME XIV



STAR

SEPTEMBER 7, 1988

Serving the Counties of Borden, Dawson, Garza, Howard, Lynn & Scurry

NEW ENGLISH TEACHER AT BHS



John Wilson

Borden County Independent School District began the 1988-89 school year on Sept. 1.

The staff and administration would like to welcome Mr. John Wilson, the new High School English teacher, to the

school system.

Mr. Wilson graduated from the University of Texas, majoring in Government and English.

He attended Snyder High School.

Before coming to Borden County, he taught school 3 years in Corpus Christi.

John considers fishing hunting and scuba as his favorite hobbies. He was a scuba instructor in San Diego, Ca.

John and his wife Terri have a son, Carter, age 9 months.

We are glad to have Mr. Wilson on our staff here at BHS. Everyone welcomes him and his family to Borden County.

BLOOD DRIVE

The Borden County EMS will be sponsoring a Blood Drive Friday, September 23, 1988, from 2:30 p.m. to 6:30 p.m. at the Borden County High School. United Blood Services of Lubbock will be conducting the blood drive in their Blood Mobile.

Fall is a busy time--preparing for school, cheering on your favorite football team and raking leaves. Amid all this activity, area hospital patients

continue to need blood. In fact, United Blood Services must collect more than 100 units of blood every day to meet those needs. You can help by donating blood.

DONATE BLOOD. It's safe, it's simple and it saves lives.

For more information

Call: Frances Burkett
915-856-4315 or
806-439-6683
Nelva Jones:
915-573-2426

JOHNNIE LOU AVERY NAMED DEMOCRATIC NOMINEE FOR HOUSE DISTRICT 69

Johnnie Lou Avery of Big Spring was selected unanimously by the Democratic District Executive Committee for House District 69 as their nominee for the state legislature. The executive committee, composed of all Democratic County Chairs in the district, named Avery to replace Larry Don Shaw on the ballot. Shaw has been declared ineligible because he moved out of the district. Her nomination was officially accepted by the Secretary of State's office this week.

"We are extremely fortunate to have such a talented, qualified candidate join our ticket in a critical, targeted legislative district," said Bob Slagle, Chairman of the Texas Democratic Party. "Johnnie Lou is well known and widely respected all over West Texas and I think her chances of victory are excellent. Slagle said phone banks had indicated that Democratic chances of holding the district were already good and added that Avery's candidacy should prove successful despite the brief 2½ months she has to campaign.

"Mrs. Avery's experience as a teacher, college

cont. to pg. 7



KINDERGARTEN CLASS OF 1988-89

Mr. McLeroy, with the help of Mrs. Copeland, present ribbons to the new Kindergarten Class for 1988-89 school year. (Seated L. to R.) Naomi Melendez, Mikanna Herring, D.J. Smith. Receiving his ribbon is Paul Portales. (Standing L. to R.) Jennifer LaRue, Rebekah Hensley, Kristin Farmer, Kolton Harrison, Poncho Rempel, Tanner Miller and Jeremias Hernandez.

BE SURE YOU ARE REGISTERED

Anyone who is now living in Borden County and IS NOT REGISTERED to vote here needs to come to the County Sheriff-Tax Assessor-Collector's office and register.

Anyone who has moved from one Election Precinct to another needs to come in and change precincts.

If you are living in the same place where you resided for years and have been registered to vote, you do not need to register.

The last day to register to vote for the November Election is October 7th.

MICKEY McMEANS
High School Principal

BOARD

JACK McPHAIL
President

BILL PHINIZY
Vice-President

JON MONGER
Secretary

Borden County Independent School District

JAMES McLEROY, Superintendent

P. O. BOX 95

GAIL, TEXAS 79738

September 1988

BEN JARRETT
Elementary School Principal

BOARD

TOM ED VESTAL

STEVE HESS

JOEL DENNIS

SCOTT CLAYTON

The Borden County School serves nutritious meals every school day. Students may buy lunch for 30 and 35 cents and breakfast for 25 cents. Children from households that meet Federal Income guidelines are eligible for free meals or reduced-price meals at 20 cents for lunch and 10 cents for breakfast. To apply for free or reduced-price meals, complete the enclosed application, sign it and return it to the school.

FOOD STAMP/AFDC HOUSEHOLDS: If you currently receive Food Stamps or "Aid to Families with Dependent Children" for your child, you only have to list your child's name and food stamp or AFDC case number, print your name, and sign the application. Since you have already given income information to the welfare office, the school can confirm your eligibility.

ALL OTHER HOUSEHOLDS: If your household income is at or below the level shown on the enclosed scale, your child is eligible for either free or reduced-price meals. To apply for meal benefits, you must provide the following information and sign the application: (1) list the names of everyone who lives in your household. Include parents, grandparents, all children, other relatives and unrelated people who live in your household, (2) list the social security number of each adult age 21 or older. If an adult does not have a social security number print "None", (3) list total monthly income and amount of income (BEFORE deductions for taxes, social security, etc.) each person received last month and where it is from, such as wages, retirement, or welfare. If you have a household member for whom last month's income was higher or lower than usual, list the person's expected average monthly income.

VERIFICATION: The information on the application may be checked by school officials at any time during the school year.

REPORTING CHANGES: If you list income information and your child is approved for meal benefits, you must tell the school when your household income increases by \$50 or more per month (\$600 per year) or when your household size decreases. If you list a food stamp case number or AFDC number, you must tell the school when you no longer receive food stamps or AFDC for your child.

FOSTER CHILD: Your foster child may be eligible for meal benefits. If you wish to apply for meal benefits for a foster child, contact the school for help with the application.

NONDISCRIMINATION: Children who receive free or reduced-price meal benefits are treated the same as children who pay for meals. In the operation of child feeding programs, no child will be discriminated against because of race, sex, color, national origin, age or handicap. If you believe you have been discriminated against, write immediately to the Secretary of Agriculture, Washington, D.C. 20250.

FAIR HEARING: If you do not agree with the school's decision on your application or the result of verification, you may wish to discuss it with the school. You also have the right to a fair hearing. This can be done by calling or writing the following official:

James McLeroy - P.O. Box 95 - Gail, TX 79738 Telephone (915) 856-4313

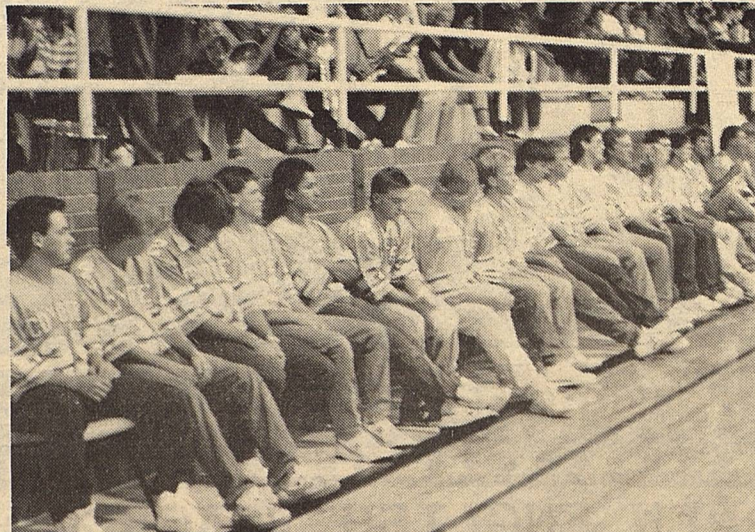
CONFIDENTIALITY: The information you provide will be treated confidentially and will be used only for eligibility determination and verification of data.

REAPPLICATION: You may apply for benefits any time during the school year. If you are not eligible now but need to apply later in the year, please fill out an application at that time.

You will be notified when the application is approved or denied.



**FIRST 1988
PEP RALLY
AT BHS!**



THE BORDEN COUNTY COYOTES



THE 1988 COYOTE BAND

The Borden Star
Publication No. 895520
(USPS 895-520)

Editor
Barbara Anderson

Published weekly, except for Christmas and New Years, on Wednesday at Gail, Borden County, Texas 79738, Box 137 Kincaid Street Second Class postage paid at Gail, Texas.

Any errors that we make reflecting on the reputation or standing of any firm, corporation or individual that may appear in the columns of the Borden Star will be gladly corrected when called to the attention of the staff.

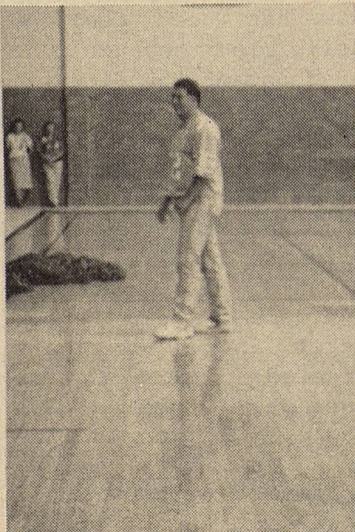
Subscription Rates:
\$8.00 per year

Borden Star Owners:
James McLeroy, Barbara Anderson, Doris Rudd, Pat Porter, Bob Dyess, Edna Miller, Ruth Weathers, Mrs Nathan Zant, Sonny Tucker, Eddie Simer, Loreen Jones, Martin Parks, Dan Turner, Lela Porter, and Marge Toombs.

**BACK-TO-SCHOOL
BROWN BAGGING**

With school underway, many parents will be sending their children to school with bagged lunches. Unfortunately, parents who bag their children's lunches often substitute non-nutritious items for those of more nutritional value. To avoid this pitfall, parents should adapt these brown bag strategies.

- * Next time you are making a sandwich, try stuffing that bread, roll or pita with chicken, chopped celery and chopped apples. Peanut butter and chopped raisins or turkey topped with tomato slices, spinach leaves and mustard offer a nutritional alternative to bologna.
- * Add cheese chunks or slices, peanut butter



Randell Hollis giving speech at the Pep Rally.

celery sticks, apple slices or hard boiled eggs to the menu.

* Complete the lunch with fresh fruits such as melons, nectarines, plums, grapefruit, peaches, grapes or pears.

* Instead of potato chips, try popcorn which is higher in



THE BORDEN COYOTES CHEERLEADERS FOR 1988: (Standing L. to R.) Shara Dee Woodward, Charlotte Ball, Julie Harris, Rachel Romero. (Seated) Elvira Balaque, and Kate Phinizy

fiber and lower in calories. Whatever is lacking from a child's lunch

* Instead of cupcakes, today can easily be changed to offer an exciting and nutritious lunch tomorrow. Do not be afraid to try new foods and break up the monotony.

* Avoid softdrinks and replace them with natural fruit juices or tomato juice.

Cont. to pg. 3

LEOPARDS OUTRUN COYOTES

The Borden County Coyotes opened their 1988 regular season play against the New Home Leopards in a fiercely fought game. The Coyotes came up on the short end of the score, but they showed a lot of determination when they fell behind 20-2 in the first quarter.

The Leopards kicked off to the Coyotes, but the Coyotes were unable to move the ball. After a short punt, the Leopards quickly moved in for their first score. Their PAT was no good.

The Coyotes offense still was sputtering and once again they were forced to punt. The Leopards almost broke the return as they returned the punt into the end zone behind tailback Darrell Paul. The Coyotes only moment of excitement for the first quarter occurred on their PAT attempt as Lance Telchik blocked the kick and Chris Kilmer scooped it up and raced into the end zone for 2 points. This is a new rule that allows the defensive team to score on an extra point attempt.

The first quarter ended with the Coyotes trailing 20-2. Marc Latimer increased the Coyotes score as he

made a very tough 6 yard run into the end zone. Randell Hollis kicked the PAT to make the score 20-10. The Coyote defense held the Leopards out of the end zone during the second quarter.

In the third quarter the Coyotes outscored the Leopards 12-8. The first score was set up by a hard pass rush by Lance Telchik who had one hand on the quarter back when he passed the ball. Chris Kilmer intercepted the pass as he raced down the sideline for 8 yards and a touchdown. The Coyotes PAT was blocked, and picked up by a Leopard that ran it into the endzone.

The Coyotes next score was set up with a pass from Brian Bond to Shane Kemper for a 41 yard gain two plays later the same combination worked again as Shane caught another pass as he scampered 25 yards for a touchdown. The PAT was not good.

The Leopards scored again early into the fourth quarter. Their PAT was blocked by Cody Cooley. Just when it looked like the Coyotes would start off with a very good field position they lost the ball about mid-field when Brian Bond fumbled

after being hit from behind. The Leopards recovered the ball and marched in for another score.

Even though the Coyotes lost, there were several bright spots during the game. Three times the defense held on 4th down attempts. Shane Kemper sacked the quarter for a 6 yard loss on one of those occasions. On another Randell Hollis met the tailback at the line of scrimmage and with added help from Shane pushed the back into his backfield on a fourth and 1 yard to go. On the other occasion a hard pass rush by Cole Vestal and Lance Telchik caused the pass to fall a little low. Paul Sturdivant had the receiver wrapped up just in case he was able to make the catch. Marc Latimer was the leading tackler for the Coyotes. He had 13 assisted tackles and 3 unassisted. Chris Kilmer also came up with some big plays as he returned a blocked PAT to score 2 points, and he also intercepted a pass and returned it for a touchdown. Chris had 6 assisted tackles. Lance Latimer also intercepted a pass and returned in 17 yards. He also caused and recovered a fumble. He also had 5 assisted tackles and 6 unassisted tackles. Several Coyote also had tackles: Randell Hollis 9, Lance Telchik 14, and also blocked PAT Brian Bond

8, James Smith 4, Cody Cooley 2 and blocked PAT, Paul Sturdivant 6, Cole Vestal 1 and Shane Kemper 10 including a Quarterback sack and a blocked PAT.

The offense wasn't able to handle the aggressive Leopard line, but they are improving each time we play. Chris Kilmer led all Coyote rushes with 41 yards on 2 carries. Marc Latimer added another 27 yards on 10 carries. Lance Latimer rushed for 19 yards on 6 carries.

Brian Bond completed 5 of 9 passes for 121 yards. Shane Kemper was 1 of 3 for 6 yards.

The Coyotes take on another tough opponent this week at Wellman. Wellman was runner-up to Lohm last year for the state championship.

GAIL BAPTIST HAPPENINGS

"Stand-Up" Rally HEY KIDS!

Come go with us to the Al Denson Concert.

He will be in Level-land Saturday, Sept. 10th, at the High School Football Stadium.

We will leave Gail around 3:00 p.m. Concert starts at 6:00 p.m. If you need a ride to Gail let us know.

Bring your friends and come join us for

BACK-TO-SCHOOL BROWN BAGGING

Cont. from pg. 2

Watch Out For Food Poisoning

Remember, many lunches sit in a child's locker all morning. To avoid the possibility of food poisoning, these safety

poisoning, keep these safety tips in mind when preparing school lunches.

*Cook food thoroughly. If the foods should be kept hot, keep them hot. If it's meant to be cold, keep it cold. Preheat or prechill insulated vacuum bottles to keep foods at adequate temperature.

*Ideally, a lunch should be kept in a refrigerator, if one is available. If not, put something cool in the bag; use an ice pack, or even a frozen beverage in a plastic container.

*Sandwiches can be made ahead of time and frozen. Take them out of the freezer in the morning and by the time lunch arrives, the sandwich will be thawed.

.....
some really GREAT Music and a GREAT time.

All kids from 6th grade & up are invited to come along with us.

For more information, call Susan or Mike Stephens, 399-4511, or talk to Verna Adcock at school, or call 399-4461

SCHOOL LUNCHES

September 12-16, 1988

<u>Monday</u>	Corn Dog with Cheese Pork and Beans Vegetable Salad Fruit Milk	Salad Bar
<u>Tuesday</u>	Frito Pie with Cheese Vegetable Salad Fruit Peanut Butter & Crackers Milk	Salad Bar
<u>Wednesday</u>	Chicken Nuggets Mashed Potatoes English Peas Jello Hot Rolls Milk	Salad Bar
<u>Thursday</u>	Chalupas Shredded Lettuce Ranch Style Beans Taco Sauce Fruit Cobbler Milk	Salad Bar
<u>Friday</u>	Hamburgers French Fries Lettuce - Pickles Tea Cakes Milk	Salad Bar

BORDEN COUNTY COYOTES 1988 Varsity Football Schedule

Sept. 2	NEW HOMEHere	7:30
Sept. 9	WELLMANThere	7:30
Sept. 16	JAYTONThere	7:30
Sept. 23	WILSONHere	7:30
Sept. 30	IRAThere	7:30
Oct. 7	* LOOPHere	7:30
Oct. 14	* KLONDIKEThere	7:30
Oct. 21	* DAWSONThere	7:30
Oct. 28	** GRADYHere	7:30
Nov. 4	* SANDSThere	7:30

* DISTRICT 6A GAMES

** HOMECOMING

Dirty Dancing

Almost all birds bathe regularly, but not necessarily in water. International Wildlife magazine reports that pheasants, quail, wild turkeys and many other birds prefer to clean themselves in dirt. This process, known as "dusting," is not only pleasurable but also beneficial. Dust absorbs excess oil in feathers, and it may also prevent the spread of parasites.



Pvt. Harold Barnes

Pvt. Harold Barnes completed his Basic Training on Aug. 25, 1988 at Fort Leonard Mo. with the Co. A, 6th Bn., 10th Inf. He received a maximum score on his End of Basic Training.

Pvt. Barnes is now in Abreedon, Maryland for special training in Track Mechanics.

Outdoor Watering: Save Now, Drink Later

STRAIGHT TALK FROM TDA



MIKE MOELLER
DEPUTY COMMISSIONER
TEXAS DEPARTMENT
OF AGRICULTURE

In many parts of Texas, September is the fourth and hottest month of summer. This September, because of the drought, water demand will be even higher than usual in both urban and agricultural areas.

Extreme heat coupled with low rainfall can produce tragic crop losses that devastate a farmer's finances. City residents are a little more fortunate. Drought conditions in town cause problems, but rarely threaten livelihoods.

Even so, there are several points to remember about urban water conservation.

Don't Take Water For Granted.

Having plenty of water available at the turn of a faucet keeps many people from appreciating the importance of conserving outdoor water. Conservation is doubly important in summer, when an estimated 50-80 percent of household water is used outdoors.

Much outdoor watering is wasted. According to the Texas Water Develop-

ment Board, a typical lawn, on average, receives twice the water it actually needs. Here's how to tell if your lawn is soaking up too many gallons and dollars.

When and How Much.

The key to water-wise lawn care is knowing when and how much to water. State water experts say you should water only when the grass really needs it. You won't hurt your lawn by waiting to water until it starts to turn dull green or until footprints leave lasting impressions in the grass.

Most lawns need anywhere from three-fourths of an inch to one and one-half inches of water every five to ten days depending on the type of grass and where in Texas it's growing. To find out your lawn's exact requirements, contact your local county Agricultural Extension agent.

Once you know your lawn's needs, determine how much water your sprinkler delivers each hour. The Texas Water Development Board recommends this simple procedure.

1. Set three to five empty cans at different distances from the sprinkler, including one near the edge of the spray.
2. Run the sprinkler

for 30 minutes.

3. Measure the inches of water collected in each can. Add these numbers and divide by the number of cans to get an average.

4. Double this figure to find out how many inches of water your sprinkler applies in one hour.

Timing and Runoff.

Remember to water early in the morning or in the evening to lessen water loss through evaporation. During the heat of the day water loss is 60% higher than during cooler hours. But don't water too late. Watering after 10 p.m. may keep your grass from drying out overnight. That can lead to fungus problems.

Sloping ground can send large amounts of water running down the curblin and into the storm sewer. To avoid this waste, place sprinklers near the top of the slope and apply water slowly for five to 15 minutes. Then turn the water off for another five to 15 minutes to let the soil absorb the moisture completely. Repeat this process until you've applied the correct amount of water.

Efficient Equipment.

The type of sprinkler you use determines how much water actually reaches your lawn. Sprinklers with fine

mists or high arching sprays waste water through evaporation. The most efficient sprinklers make large droplets and keep their sprays close to the ground.

As Texas farmers know only too well, water is a limited resource. The responsibility for conserving it must be assumed by everyone who maintains a landscape. By putting basic water-conserving ideas into practice, individual homeowners as well as apartment- and office-complex grounds crews can save millions of gallons of water on any hot September day in any city in Texas.

For more information about how to save water outside the home, contact the Texas Water Development Board, P.O. Box 13231, Capitol Station, Austin, Texas 78711-3231.

BORDEN CO. JR. LIVESTOCK GENERAL MEMBERSHIP MEETING

There will be a meeting on Sept. 20, 1988 at 7:30 p.m. in the Ag Building at the Borden Co. High School.

The agenda for the meeting will be the Election of Officers, and Planning of the Stock Show.

Everyone please try to attend this very important meeting.



September 11-17.
It's a week that could change your life

American Heart Association

Thank You...

We wish to thank our friends for the cards, flowers and expressions of sympathy after the loss of our beloved Mother and Grandmother.

Thanks so much,
The Van York family



WHITE FUNERAL HOMES

"WE CARE FOR YOU & YOURS AS WE WOULD HAVE OURS CARED FOR"

TWO LOCATIONS TO SERVE YOU

WHITE FUNERAL HOME

998-4433

1821 MAIN
TAHOKA

DON & BILLIE (WHITE) EVERETT

& GARY WHITE-

OWNERS & DIRECTORS

WHITE FUNERAL HOME

428-3313

510 8TH ST
O'DONNELL

The First National Bank of O'Donnell

We want to meet the financial needs of this community.

Come in and visit with us.

We now have safety deposit boxes.
MEMBER FDIC

POLITICAL CALENDAR

U.S. CONGRESS
Charles Stenholm (D)

JUSTICE, COURT OF APPEALS, 11th DIST.
George Hansard

DISTRICT JUDGE
Gene Dulaney (R)
Leland W. "Pete" Greene (D)

SHERIFF
R.D. Lewis (D)

COMMISSIONER
Prect. #3
Vernon Wolf (D)

Prect. # 1
Frank Currey (D)
Jack McPhaul (R)

ROCKER RANCH HERD DECLARED BRUCELLOSIS FREE

Tim Wilson, owner of the Rocker Ranch near Gail, has had his beefmaster cattle certified brucellosis-free by the Texas Animal Health Commission (TAHC). Brucellosis, an incurable bacterial disease often called "Bang's," is highly contagious among cows during pregnancy and calving, and can cause heavy losses due to abortions or weak calves.

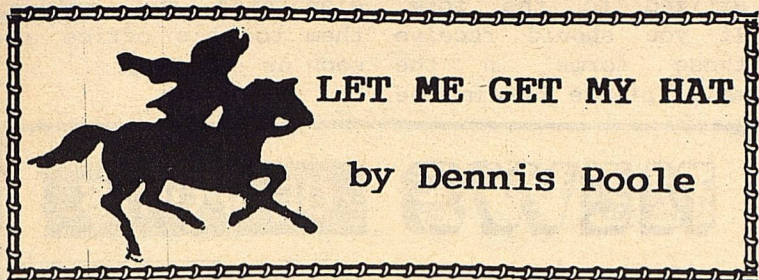
The Rocker Ranch herd is one of 1,969 certified in the state.

Producers with certified herds have the advantage of shipping or selling cattle with fewer restrictions. Also, certified cows sold as breeding stock may command a higher price.

To have a herd certified, a producer enters into an agreement with the TAHC and has the herd's blood tested to ensure none of the animals are infected with brucellosis. If certified jointly by the TAHC and the U.S. Dept. of Agriculture (USDA). To remain certified, the herd must be tested yearly and be free of brucellosis.

The TAHC and producers are working to eliminate brucellosis infection through a program that includes testing at ranches and livestock markets, removing infected cows, quarantining exposed herds, practicing management techniques to prevent spread of disease, and vaccinating calves. As of July 1988, 1,073 of the 145,899 herds in Texas were quarantined because of brucellosis.

Texas and six other southern states—Arkansas, Kentucky, Mississippi, Oklahoma, Florida and Louisiana—have 92 percent of the brucellosis infection in the



LET ME GET MY HAT

by Dennis Poole

SEPTEMBER 18-24, Set As Farm Safety Week

In conjunction with National Farm Safety Week, Governor William P. Clements, Jr. has proclaimed the week of September 18-24, 1988 as Texas Farm and Ranch Safety Week. This year's theme for Farm Safety Week, "Ensure Your Future With Farm Safety" stresses the hazards involved with agricultural production and the effort into preventing injury and illness on the farm, especially during times of economic stress.

Each year this event is observed to initiate and promote safety on Texas farms and ranches. About 100 Texas rural families suffer farm and ranch related accidents and an estimated 20,000 disabling injuries and 250,000 injuries requiring medical attention occur annually.

A further look at farm accident figures compiled by the National Safety Council show that most fatalities are caused by (in descending order) tractors, firearms, drowning, burns, falls, electrical shock and machinery. Over the past ten years, rural fatalities have been reduced by 50% due to increased awareness and improved safety design. The National Safety Council estimates for 1987, such mishaps resulted in about 1,600 death and 160,000 disabling injuries.

Most agricultural accidents and work illnesses can be prevented at little or no expense. Safety features on farm equipment and machinery should be maintained and repaired when needed. These precautions and the use of safe work procedures can reduce the needless suffering of rural accident victims and prevent the financial burden of agricultural accidents on productivity and family income.

FIELD DAY PLANNED AT A&M RESEARCH CENTER

Agriculture producers, home gardeners, and home owners can study the progress of scientific research efforts in solving crop and home horticulture problems of the Texas High Plains. These studies will be on display here Sept. 13 at the 79th annual field day of the Texas Agricultural Experiment Station at Lubbock.

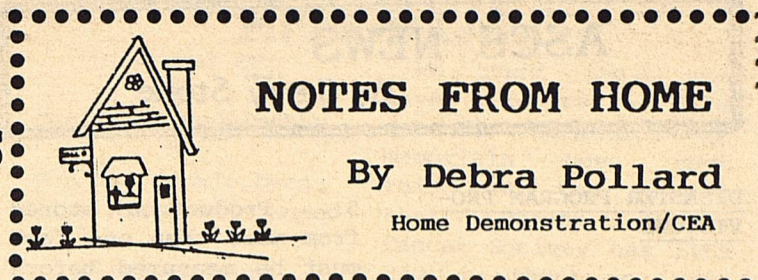
The Texas A&M Agricultural Research and Extension Center, located on FM 1294, just east of I-20 at the Shallowater exit, will be the site of this year's program.

Field tours of research projects will begin at 11 a.m. and will feature five major stops.

The stops will highlight sorghum breeding, oilseed improvement, results of studies on Russian wheat aphid, findings of the farming systems research program, types of cotton developed for high fiber quality; and a stop at the vineyard, demonstrating the rootstock effects on adaptability, winter survival, yield, and quality of grapes.

Other features of the field day include displays of equipment, farm supplies and information booths.

The field day is a cooperative presentation of TAES, the Texas Agricultural Extension Service, the High Plains Research Foundation, Texas Forest Service and U.S. Department of Agriculture—Agricultural Research Service.



NOTES FROM HOME

By Debra Pollard

Home Demonstration/CEA

Enzyme Pills Useless for Losing Weight

Enzyme pills are promoted as helping people lose weight by helping the body absorb food more efficiently. But the promotions are misleading.

Most people have all the enzymes they need, so taking extra enzymes does nothing. Even if you are deficient in certain enzymes, taking pills is of no benefit, because the enzymes are digested before they can be used.

Enzymes are special proteins whose function is to speed the chemical reactions that operate your metabolism. Enzyme pills, however, don't act like the enzymes in your body.

They're made of proteins that break down into amino acids in your stomach, just like other proteins. So instead of helping to speed the absorption of food, the enzyme pills are absorbed just like any other food.

Taking enzyme pills won't help you lose weight and maintain that loss. Eating a variety of foods in moderation and increasing exercise is still your best bet for losing pounds.

Powdered Drink Mix Poses Salmonella Danger

The Food and Drug Administration (FDA) has warned consumers that Nutrien and Vitalite powdered drink mixes produced by Sunrider International of Torrance, Calif., should not be consumed because of evidence that some of the products tested are contaminated with Salmonella bacteria. Both are nutritional supplements marketed as powdered drink mixes. Sunrider distributes its products nationally through independent distributors -- usually people who market the products for the firm, often door-to-door or among friends. Salmonella bacteria can cause nausea, fever, headache, diarrhea and vomiting in normal healthy adults.

Texas could save the state's livestock industry millions of dollars by 1990, when USDA regulations will call for tougher restrictions on moving cattle from states with high infection rates.

*** FOUND ***

Small Black, Female Do
On Willow Valley Road
Monday evening.
Call: 915-399-4461

Claiborne's
THRIFTWAY

HOME OWNED & OPERATED BY
JESS & CAROLYN CLAIBORNE
OPEN: 7 AM - 9 PM

WE ACCEPT FOOD STAMPS

710 N. 4th Lamesa, Texas

ASCS NEWS

By Jerry Stone

DISASTER PROGRAM PROVISIONS

This program may end up with more usage than originally thought with the hot dry weather that has continued to plague us in August. Although ASCS has not given the county offices the full details of the program provisions, there has been a release of some information. Each producer contemplating a less than 65% harvest of his ASCS established yield needs to know and follow the directives as known.

1. Each grain or cotton acre and its respective production must be accounted for either in a total harvest, partial harvest or no harvest. In other words, a total harvest would have yield cards, warehouse receipts or bin measurements for each farm. A zero harvest would require an appraisal. A partial harvest requires both of the above with reliable knowledge on acres unharvested via perhaps measurement service on spot harvested grain. Please check with us prior to disposing of spot harvested grain. It may involve assigned yields.

2. The appraisal will come from ASCS if your crop is not insured or your multiperil company, if insured. Please remember to file a disaster claim with ASCS prior to plowing, grazing, bailing, shredding, etc. any disaster affected acreage.

3. Appraisals done will eventually require your signature agreeing to the appraisal. Reappraisals are at the producers expense.

4. ALL PRODUCTION shall be certified on our ASCS form ASCS-658.

5. Production stored from more than one farm must be measured before commingling. All grain in the bin will be considered as 1988 production unless measured prior to the commingling.

6. Please help us by good recordkeeping. You cannot imagine what the county office goes through when a producer comes in after being paid with more production previously not submitted. Thanks.

NOTE: Second crops such as cotton, haygrazer, grain sorghum, etc. following a failed crop are not eligible for disaster coverage unless it was normal to double crop. The first crop which was failed or prevented is eligible.

WHEAT PROGRAM

It will involve a 10% set aside, a 2.06 per bushel national loan rate and a 4.10 (target price). There will be no paid land diversion

or marketing loans.

GRAIN SORGHUM AND COTTON PROGRAMS

These programs will be announced at a later date. Cotton must be announced by law by November 1, 1988.

CERTIFY CRP FARMS

All farms with CRP contracts must have the CRP acreage certified by September 15, 1988. If you are in doubt about any of these farms, it would be best to check with our office.

UPDATING POWERS OF ATTORNEY

In past years, if an individual appointed someone as their agent by signing the form ASCS-211, Power of Attorney, the signature of the spouse of the person giving the authority was not required. Now it has been determined in Texas that the spouse must also sign the form. We are again working on trying to update our files with all of the proper signatures of spouses

affixed to the form. If you should receive these forms in the mail, please obtain the signatures and return them to this office as soon as possible.

NEWS

OF SPORTS

Are you ready to set a record in sports?

Man-made materials have opened new worlds of adventure in recreation and set higher standards of performance in sports.

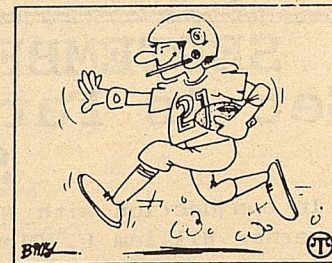
Nylon started the materials revolution in sports a half century ago. A first use was fishing line, in 1939. Nylon line made the lightweight spinning reel practical.

Nylon, invented by the Du Pont Company, began to replace gut in tennis racquets in 1941. Its debut in football came in the same year when Notre Dame tested nylon pants in its game against Army (a scoreless tie).

In the 1952 Olympics, America's Bob Mathias won the pole-vault event and the decathlon on the world's first glass fiber-reinforced plastic vaulting pole.

Fiberglass accelerated the boating boom in the 1950's, making boats lighter and easier to maintain. The new rage is Du Pont's "Kevlar", five times stronger than steel, pound for pound. "Stars and Stripes" won America's Cup with sails of nylon, "Dacron" polyester and "Mylar" polyester film reinforced with "Kevlar".

Swimming records have been set by women wearing sleek four-ounce suits of "Antron" nylon and "Lycra" spandex—instead of a pound and



a half of wet wool.

Nylon helped make camping the sixth most popular leisure activity among adult Americans. The miracle fabric hit the trail on a grand scale in the early 1960's, replacing cotton canvas for backpacks, tents and other gear. Nylon weighs only one-third as much as cotton canvas.

Materials science helped popularize skiing. Polyester thermal underwear and form-fitting nylon outerwear gave comfort and style to skiers; and fiberglass, graphite and "Kevlar" brought lightweight flexibility to skis.

Modern materials are making sports more enjoyable for the fans, too. For example, the giant Silverdome, home of the Detroit Lions, covers 80,400 spectators under a roof of fiberglass coated with "Teflon" (also invented 50 years ago by Du Pont).

Another milestone is videotape, based on polyester film. Instant replay became a judging aid for football in 1986.

BIG SPRING LIVESTOCK AUCTION

915/267-5881
915/267-3664
915/267-3665

P.O. BOX 102
BIG SPRING, TEXAS
79720



WESTERN SEED & DELINTING Certified Cotton Seed

Acid	Paymaster 145, 303, 404, 792	Cotton
Delinting	Coker 3131, S110, 500	Planting
	Terra 383, SR-10, SR-482	Seed
	SP-21, SP-215, CAMD-E, CAB-CS	

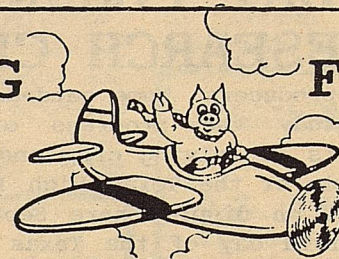
Hay Grazer Grain Sorghum Wheat

Wheat & Oats Cleaning

Lamesa, Texas
RON BUTLER
BUSINESS PHONE (806) 872-8896
RESIDENCE PHONE (806) 872-5388
(806) 872-5271

HOGG

FLYING



SERVICE

Spraying

Seeding

Defoliation
Dry or Wet

Fertilizer Application

GLENN W. HOGG
Owner

Phone: Business 806/872-9696
872-7617
Res. 872-8274

FAST
PROFESSIONAL SERVICE

Lamesa Airport P.O. Box 281

BORDEN COUNTY EMERGENCY NUMBERS

Sheriff's Office 915-856-4311
 Borden School 915-856-4313
 Highway Department 915-856-4491

●●●EMTS●●●

GAIL

Joan Gray
915-856-4455

Lisa Ludecke
915-856-4463

Tom Rowe
915-856-4416

Buster Taylor
915-856-4434

Joanne Trussel
915-856-4340

Buddy Wallace
915-856-4478

PLAINS

Frances Burkett
806-439-6683

Flight For Life
1-800-553-5333
Collect 806-796-6300

FLUVANNA

James Aaron
915-573-7760

Mitey Bilano
915-573-7312

Freida Campbell
915-573-7342

Kent Holmes
915-573-4164

Nelva Jones
915-573-2426

Carol Lewis
915-573-8900

Barbara Miller
915-573-7720

Judy Pylant
915-573-3486

Patrick Toombs
915-573-5269

POISON CONTROL NO. 1-800-392-8548

**CANCER SOCIETY
MEMORIALS**

IN MEMORY OF:

Christine Cunningham
by
Bob and Cookie Dyess
Slick and Bonnie Sneed

Sue Moorhouse
by
John and Kevva Anderson
and family

Tim and Carol Wilson

BILLY WILLS
by
Donna & Dennis Gee
and Boys
Don Cox
Rex & Teresa Cox & Boys
Dorothy Browne

BILLY GOEN
by
Lisa Ludecke

MARJORIE SMITH
by
Lisa Ludecke

MARY CHAPMAN
by
Dorothy Browne
Joyce, Jerry, Jana and
J.J. Kincheloe

DOROTHY CANON
by
Verna Ogden

We thank those who have donated. Your splendid donations and memorials have made this year the largest that Borden County Cancer Society has EVER HAD. We thank you very much.

Memorials or donations can be sent to Dorothy Browne, Memorial Chairman-Secretary-Treasurer, Box 23, Gail, Texas 79738.

-CLASSIFIED-

* * WANTED TO LEASE * *
RANCH LAND
IN BORDEN OR WESTERN
SCURRY COUNTIES
LARGE OR SMALL

BENNIE W. EDWARD
BOX 486
O'DONNELL, TEXAS 79351
(806) 428-3809

Is It True You Can Buy
Jeeps for \$44 through
the U.S. government?

Get the facts today!
Call 1-312-742-1142
Ext. 8393-A

* * FOR SALE * *

1986 16 X 60 REDMON
MOBILE HOME
Partially furnished
3 bedrooms; 2 bath
Masonite siding and
skirting.
10'X20' front deck
Full metal awning
over home and deck.

Call Randy Adcock
915-399-4461
after 5:00 pm

* * * TYPISTS * * *
Hundreds weekly at
Hundreds weekly at
home!
Write: P.O. Box 16
Clark, N.J. 07066

Help Wanted


\$60.00 PER HUNDRED
Remailing letters from
home!
Details, send self-
addressed, stamped
envelope.
Associates, Box 309-T,
Colonia, N.J. 07067

**NAMED DEMOCRATIC
NOMINEE**

cont. from pg. 1
administrator, management consultant and President of the Big Spring Area Chamber of Commerce offers a unique range of qualifications she can employ to provide outstanding representation for District 69, Slagle observed.

Slagle said that Avery has been praised by publications like the Texas Business Journal, West Texas Business Journal, and Texas Monthly, which said: "If

you have one call in Big Spring, (call) Johnnie Lou Avery, management consultant. Adroit business-woman with lots of political savvy." "Mrs. Avery's record of civic involvement, coupled with her experience in business and education, make her the kind of qualified, energetic candidate who could become as real leader in the Texas Legislature," Slagle concluded.



SEEDS FROM THE SOWER
Michael A. Guido Metter, Georgia

Recently a thunderclap shook a town in Iowa and triggered the chimes of a church. Instantly they started to play the hymn HOW GREAT THOU ART.

Yes, God is great. Nothing is too big or too small for Him. He's not limited in might or means.

God is good. Because He's good, He'll always be good and do good to His children.

God is gracious. He sent His Son into this world. He lived, He died, He rose again. Now He longs to live His life in you. He'll make His power and His eternal life available to you.

But He must have your invitation to take over. Give it, won't you?

Branon Funeral Home

Service in this area since 1922.

Phone: 872-8335 403 N. Austin - Lamesa



Security State Bank

Big Spring, Texas

Member F.D.I.C.

1411 Gregg

☆☆☆ **GAIL STATION** ☆☆☆
Full Service

Now OPEN For Your
Convenience

We fix Flats, Oil
Change & Grease

PLEASE bring your own

Oil & Air Filters
WE WILL APPRECIATE
YOUR BUSINESS

Help Your Heart



September 1988

American Heart Association

Exercise and Nutrition: Some Facts vs. Fiction

So, you think you don't have to watch what you eat because you exercise. To achieve cardiovascular health, good eating habits are essential, and exercise encourages positive changes in other lifestyle habits, like eating.

Like a car, your body will not function properly without a well-balanced mixture of fuel. Unfortunately, a great many myths exist about the nutritional needs of physically active people. One of those myths is that physically active people do not need to follow the American Heart Association's recommendations for a cholesterol-lowering diet because exercise burns cholesterol. Absolutely not true.

Exercise will not automatically reduce your cholesterol level. The truth is exercise may increase the level of "good" cholesterol (HDL) in the blood, but it will not reduce the "bad" cholesterol (LDL) that can cause so many problems. Cholesterol-lowering diets are important for reducing the blood cholesterol with most people whether sedentary or active. A high blood cholesterol is considered to be one of the three major risk factors contributing to heart disease — the leading cause of death in the United States.

Another myth related to nutrition and exercise is that exercise significantly increases vitamin and mineral

requirements. Again, not true. The vitamin and mineral requirements of physically active and sedentary people are similar with the exception of a slight increase in the need for B-vitamins where exercise is part of a person's routine.

And you may have heard the myth about exercise increasing one's appetite, making exercise a barrier for weight reduction. The truth is that moderate exercise actually improves appetite control in most people on low-calorie diets.

The American Heart Association dietary guidelines for healthy American adults offer a sound, well-balanced approach for nutritious eating, and it's easy to build those guidelines into today's lifestyles without sacrificing good taste for good health. It's like making a good investment with immediate and long-term benefits. You can enjoy a wide variety of foods that taste good. That's an immediate benefit. Long-term benefits include weight control, possible loss of weight, and reduced blood cholesterol levels.

Exercise and heart-healthy nutrition can help you achieve physical fitness and cardiovascular health. Take time to learn the facts and contact your local American Heart Association for more heart-healthy tips on exercise and nutrition. And that's the truth!

Sept. 10 - Oct 15 -- Special Exhibits, Museum and Arts Center, Longview. The "Wichita Falls Museum Print Show" is an exhibition of original prints by artists such as Goya, Benton and Cassatt. "Fabric Design and Soft Sculpture" presents

designs by a local girl, Bethany L. Cutting, who made it in the "Big City." Her works range from soft sculpture for children to fabrics for noted designers. The museum will hold its annual Fall Fest on Sept. 24-

25, featuring arts and crafts, beauty contest, fun run, entertainment, and children's activities. More information from Museum & Arts Center, 102 W. College, Longview 75601 (214-753-8103).



The first record featured inventor Thomas Edison singing "Mary Had a Little Lamb."

Boot Cut
Regular Fit 945 Denims
Slim Fit 936 Denims

\$16⁹⁵

Boys
Cowboy Cut Denims

\$12⁹⁵

Student
Cowboy Cut Denims

\$14⁹⁵

Cowboy Cut
13 MWZ Denims

\$16⁹⁵

Low's Original

Shrink to Fit

\$16⁹⁵

-H- Western Wear

College Heights Shopping Center

RAILROAD COMMISSION OF TEXAS
OIL AND GAS DIVISION

JAMES E. (KIM) NUGENT, Chairman
MACK WALLACE, Commissioner
BUDDY TEMPLE, Commissioner

DOC R. HARRIS, P.E.
Director
JERRY W. MULLICAN
Director of Underground
Injection Control

1124 S. IH 35 CAPITOL STATION - P. O. DRAWER 12957 AUSTIN, TEXAS 78711

NOTICE OF APPLICATION FOR OIL AND GAS WASTE DISPOSAL WELL PERMIT

Marshall & Winston, Inc., 310 West Tower, #10 Desta Drive, Midland, Tx
(Company Name And Address)

has applied to the Railroad Commission of Texas for a permit to dispose of produced salt water or other oil and gas waste by well injection into a porous formation not productive of oil or gas.

The applicant proposes to dispose of oil and gas waste into the Clearfork
(Formation)

Bradshaw, Well Number 1. The proposed disposal
(Lease)

well is located 12 miles NW from Gail in the Pavo Mesa (Strawn)
(Direction / Miles To Nearest Town)

Field, in Borden County. The waste water will be injected
into strata in the subsurface depth interval from 5866 to 5892 feet.

LEGAL AUTHORITY: Chapter 27 of the Texas Water Code, as amended, Title 3 of the Natural Resources Code, as amended, and the Statewide Rules of the Oil and Gas Division of the Railroad Commission of Texas.

Requests for a public hearing from persons who can show they are adversely affected, or requests for further information concerning any aspect of the application should be submitted in writing, within fifteen days of publication, to the Underground Injection Control Section, Oil and Gas Division, Railroad Commission of Texas, Drawer 12967, Capitol Station, Austin, Texas 78711 (Telephone 512/445-1373).

SHERIFF'S NOTICE OF SALE

THE STATE OF TEXAS
COUNTY OF Lubbock

WHEREAS by virtue of Writ of Execution
Issued out of the 140th District
Court of Lubbock County, Texas, on the 1st day of November
1988, in Cause No. 84-504-915, where Ken Babcock, Inc.
was/were Plaintiff
and Frank G. Woodside DBA Woodside Oil Company
was/were-Defendant, on a judgment rendered in said Court against Defendant and in favor of the said Plaintiff, for the sum of Six Thousand Seven Hundred Nine and 75/100 DOLLARS, with interest thereon at the rate of 12% per cent per annum, from date of judgment, together with all costs of suit; I did on the 25th day of August, 1988, at 9:00 o'clock A.M., levy upon the following described lots, tracts and parcels of land situated in Borden County, Texas, as the property of Frank G. Woodside, DBA Woodside Oil Company

to-wit: Being all of SE/4 of the NW/4 of Section 47, Block 25, H&TC Co. Survey Borden County, Texas and containing 40 acres more or less of any depths between the surface of the earth and the depth of 7,255 feet below the surface.

and on the 4th day of October, 1988, being the first Tuesday of said month, beginning at Gail on said day, at the courthouse ~~near~~ District Court Room Borden of said County, I will offer for sale and sell at public auction, for cash to the highest bidder, all the right, title and interest of Woodside Oil Company in and to said above described property.

Appointed agent of sheriff: Norman Sneed
Address P. O. Box 115
Phone 915-856-4311

Witness my hand this the 22nd day of August, 1988
Norman Sneed Sheriff,
Borden County, Texas
By _____ Deputy

* The description of the property shall give the number of acres, original survey, locality in the county, and the name by which the land is most generally known, but it shall not be necessary for it to contain field notes.
** Specify which courthouse door by location.