

# THE BORDEN STAR

VOLUME XVIII

FEBRUARY 21, 1990

Serving the Counties of Borden, Dawson, Garza, Howard, Lynn & Scurry

## CELEBRATE LOVE



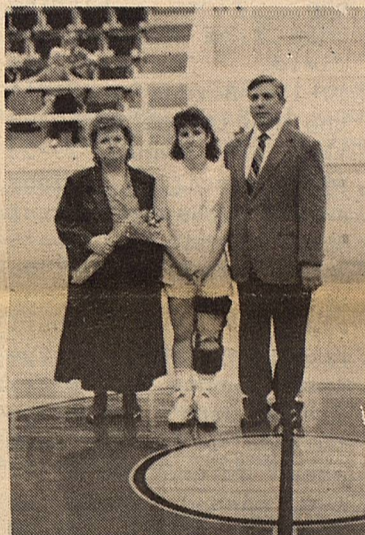
KRISTI ADCOCK,  
daughter of Randy  
and Verna Adcock



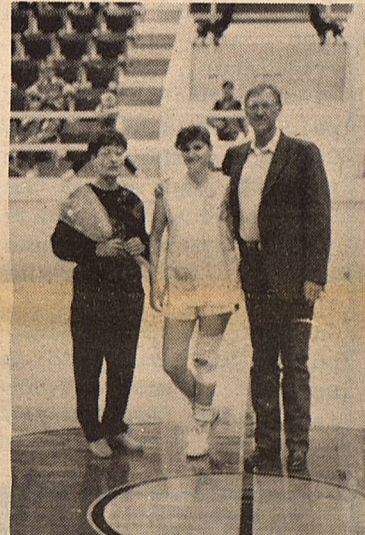
TRACY BALL,  
daughter of Larry  
and Cindy Ball.



BRIAN BOND,  
son of Joe and  
Glenda Bond.



JULIE HARRIS,  
daughter of John  
and Jackie Harris.



AMY LEWIS,  
daughter of Royal  
and Carol Lewis.

On this special day,  
we say thanks for  
your friendship and support!



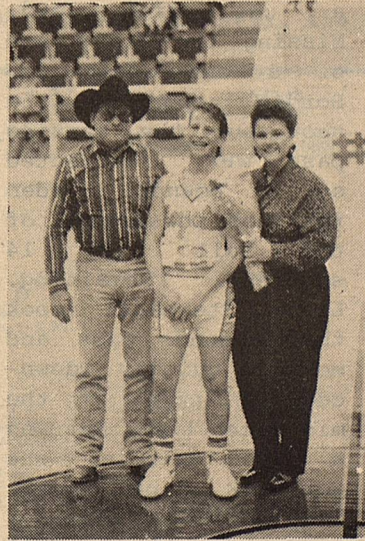
Thank You



RACHEL ROMERO,  
daughter of Erma  
Romero.



LISHA STERNADEL,  
daughter of Ed and  
Theresa Sternadel.



CODY STONE,  
son of Jerry and  
Carolyn Stone.



RANDI WOODWARD,  
daughter of Craig  
and Nona Woodward.

In keeping with tradition, 9 Borden County seniors honored their parents by presenting to them a Red Rose during the half-time of the last home district game.

The Red Rose symbolizes the love and

appreciation each senior feels for their parents for all their love, time and support they have given to them from kindergarten through the more complicated teenage years.

THANKS MOM AND DAD!



## LADY COYOTES WIN DISTRICT CHAMPIONSHIP

It's only fitting that the 1990's start out with excitement as far as basketball goes and Tuesday night was no exception. Grady forced a playoff with the lady Coyotes in this year's district race and tradition, experience, and a little bit of luck paid off for Borden County as they claimed playoff win over the Lady Wildcats. It was not without tense moments as in the closing moments, Gail's Lisha Sternadel, pulled out some heroics, Borden jumped out in front of Grady 7-0 to start out the game, but the Wildcats

fought themselves back into the contest and trailed by only two 9-7 after eight minutes of play. Then Grady edged ahead by two by half-time 10-6 as Borden went cold from the floor, hitting only 2 of 11 from the field. Trailing 17-15, Borden narrowed the gap to one entering the last stanza 29-28 where exciting things began to happen. First Grady built up a 5 point lead, only to see the margin evaporate and Borden pull ahead by one in the last minute of play. Grady sank two free throws to pull back ahead by one and after two missed shots by Borden, Grady found itself on the free throw line with 16 seconds remaining and a one point lead. Missing the front end of a one and one, Borden rebounded the shot but the ensuing pass was deflected out of bounds. Borden retained possession of the ball with 14 seconds remaining. Lisha Sternadel took the inbounds pass and moving quickly down-court slipping at the mid-court line. Keeping a live dribble, she got back to her knees, made her way free of the surrounding traffic that had gathered around her, got back to her feet, and continued downcourt. Pulling up 7-8 feet from the basket, Lisha softly banked a shot off the backboard with

## LADY COYOTES DEFEAT RANKIN IN BI-DISTRICT

Borden County jumped out to a quick 12-4 lead that would eventually extend to a 32 point bi-district victory Friday night in Forsan against the Rankin Lady Red Devils. Rankin did manage to keep things close in the second quarter, as they hit 10 points to Borden's 15 in the second stanza to give the Gail girls a 17-14 lead at half-time. Then defense took over, especially in the third quarter, where Borden held Rankin to just 2 points with an aggressive half-court press, while scoring 13 points of their own for the comfortable 40-16 lead entering the last stanza. Still it was not enough for the Lady Coyotes as they continued to pressure the Lady Red Devils into turnovers and outscored them 17-9 in the last stanza.

one tick left on the clock to give Borden the 1989-90 District Championship.

Lisha led in scoring with 15 points followed by Amy Lewis with 9. Amanda Anderson and Shara Dee Woodward each had 6 points followed by Rachel Romero with 2. Shara Dee led in field goal percentage with 67%, hitting 2 of 3 from the three point line. Lisha led in free throw percentage, making 3 of 4 for 75%. Amy led in steals with 4 and Shara Dee led in assists with 5. Lisha led in rebounds with 11 followed by Kristi, Rachel, and Shara Dee with 4 each.

The lady Coyote win upped their record to 24-3 for the year and with the district title, gave them the top seed in the playoffs out of District 16A. It was also a "threepeat" performance as Borden now has captured the last three district titles.

Amy Lewis dominated inside as she connected on a game high 18 points followed in double figures by Lisha Sternadel with 14. Amanda Anderson hit 8 points followed by Randi Woodward with 6, Julie Harris made 4, Rachel Romero and Kristi Adcock each hit 3, and Shara Dee Woodward made 1. Julie led in field goal percentage with 67% followed by Amy with 62% and Amanda with 57%. Randi led in free throw percentage with 100% making 2 of 2. Lisha led in steals with 8 followed by Amy with 5 and Shara Dee with 4. Lisha also led in rebounds with 6 and Shara Dee had 4. Shara Dee led in assists with 4 followed by Amanda and Lisha with 3 each.

With the win, Borden's record moves to 25-3 on the season. This also marked the seventh bi-district championship in the last ten years for the Lady Coyotes, their fourth in a row. Borden will meet Marathon in Area action. Should they win, they will face the winner of the Anton-Lorenzo game in the regional tournament Friday night, February 23, at 8:30 p.m. in Levelland. Congratulations to the Borden County Lady Coyotes, 1989-90 Bi-District Champions.

### WTC News

SNYDER--Eddie Parks of Snyder is one of 19 sophomore students named to Who's Who Among Students in American Junior Colleges for 1989-90.

Parks is the son of Mr. & Mrs. Martin Parks of Fluvanna and a graduate of Borden County High School. he and his wife, Becki, have one son, Hunter.

Parks is a member of Phi Theta Kappa, a national honor fraternity for students in junior colleges, and

### STUDENT LUNCHES

February 26 -  
March 2, 1990

#### MONDAY

Fish Nuggets  
Tartar Sauce  
Spinach  
Fruit  
Hot Bread  
Milk  
Salad Bar

#### TUESDAY

Enchilada Casserole  
Buttered Corn  
Fruit  
Hot Bread  
Milk  
Salad Bar

#### WEDNESDAY

Steak Fingers  
Zucchini Sticks  
Mashed Potatoes  
Pudding  
Hot Rolls  
Milk  
Salad Bar

#### THURSDAY

Hamburgers  
French Fries  
Lettuce - Pickles  
Dessert  
Milk  
Salad Bar

#### FRIDAY

No School

#### LUNCH PRICE

K-7th. \$1.00 per day  
or \$23.00 a month.  
8th-12th. \$1.25 per day  
or \$28.75 a month.  
Teachers: \$1.50 per day.  
Guest: \$2.50 per day.

The Borden Star  
Publication No. 895520  
(USPS 895-520)

#### CO-EDITORS

Verna Adcock  
Clarajane P. Dyess

Published weekly, except for Christmas and New Years, on Wednesday at Gail, Borden County, Texas 79738, Box 137 Kincaid Street Second Class postage paid at Gail, Texas.

Any errors that we make reflecting on the reputation or standing of any firm, corporation or individual that may appear in the columns of the Borden Star will be gladly corrected when called to the attention of the staff.

Subscription Rates:  
\$8.00 per year

Borden Star Owners:  
James McLeroy, Barbara Anderson, Doris Rudd, Pat Porter, Bob Dyess, Edna Miller, Ruth Weathers, Mrs. Nathan Zant, Sonny Tucker, Eddie Simer, Loreen Jones, Martin Parks, Dan Turner, Lela Porter, and Marge Toombs.

has been named to the Dean's List for two semesters. He is a business major and plans to transfer to Texas Tech University in June to work toward a degree in Business Administration with a major in Management Information Systems. Students from over 1,400 colleges across the United States were chosen for Who's Who honors this year and they will be included in the 1990 Who's Who Director. WTC's Who's Who selection will be recognized and presented certificates at the Annual Day sponsored by the Faculty Association in April.

## Jr. High Girls Season Ending Stats

The Borden County Jr. High girls ended their season last Monday night and with a much improved team due to more experience, ended their season at 6-6. In district action, Borden finished third at 5-5, behind undefeated Klondike and Sands, who lost only to Klondike during the season. Borden finished the season with 317 points for a 26.4 average per game, to their opponents' 265 points for a 22.1 average per game. Their best offensive output came against O'Donnell where they had 32 points and against Grady where they hit 31. The best defensive efforts came against Grady, where they held the Wildcats to 12 points and against O'Donnell where the Eagles were held to 13.

Melody Harrison had an outstanding year as the eighth grader was one of the leading scorers in the area with 217 points for an 18.1 average for the season. Also scoring were Bobbie Armstrong with 32 points, Brandie Smithie with 28 points, Mendy Hensley with 16, Laura Hensley with 11, Jana Kiancheloe with 7, and Mandi Herring with 1.

Borden will lose two eighth graders off this year's team, Melody Harrison and Mendy Hensley. Returning next year will be seventh graders Bobbie Armstrong, Trisha Gaskins, Mandi Herring, Jana Kincheloe, Erica Nance, and Gloria Portales. Sixth graders returning will be Laura Hensley, Nicole Lawrence, Deann Parks, Leticia Rios, and Brandie Smithie

## New drug education plan takes 'no-use' approach to drug abuse prevention

COLLEGE STATION — An imaginative new approach to drug education curricula for Texas schools intends to help pupils and teachers become a part of the solution to our nation's drug threat.

The long-range goal of the new concept, says the Texas A&M University researcher who led efforts funded by the Texas Education Agency (TEA), is a basic change in the very environment of the state's schools.

The massive curriculum — nearly 1,100 pages — has detailed lessons for

students from pre-kindergarten to 12th grade built around the theme of "Education for Self-Responsibility: Prevention of Drug Use," said project director Dr. B.E. "Buzz" Pruitt, a Texas A&M associate professor of health education.

The essential difference in this drug education curriculum and other drug prevention courses being taught is the concept of "infusing health promotion at all levels," Pruitt said.

"The curriculum strives to infuse a consistent and continuous 'no-use' message at all grade levels. We want the 'no-use' message as common in all subjects as the 'spell correctly' message," Pruitt said.

## BASIC GUN SAFETY & SELF PROTECTION WORKSHOP



THIS IS A VERY BASIC COURSE ON GUN SAFETY, CLEANING & HANDLING WEAPONS LOADING & UNLOADING, PROPER STANDE AND ACTUAL FIRING OF HAND GUNS & SHOTGUNS.

SATURDAY, MARCH 3, 1990

10:00 - 12:00 CLASSROOM LECTURE

(EXHIBIT BLDG.)

12:00 - 1:00 LUNCH BREAK

1:00 - 4:00 FIRING PRACTICE

INSTRUCTORS: OLLIE & KENT HOLMES

THERE IS NO CHARGE. WE ASK THAT YOU LET US KNOW IF YOU ARE INTERESTED

IN THIS COURSE BY FRIDAY, FEB. 23

IN ORDER FOR US TO HAVE AMPLE INSTRUCTORS,

GUNS, & AMMUNITION. MAY REGISTER

ON DAY OF CLASS.



## Regular School Board Meeting FEBRUARY 19, 1990

The Board of Trustees for the Borden County Independent School District met in a regular meeting on Monday, February 19, 1990, at 12:00 noon.

Board members present were Jack McPhaul, Bill Phinizy, Jon Monger, Joel Dennis, Scott Clayton, Kenny Hensley and Tom Ed Vestal

Administrator present was James McLeroy, Superintendent.

Jack McPhaul, Board President, called the meeting to order.

Routine business of minutes and bills were approved.

The contract of the principal, Mickey McMeans, was extended one year which gives a two-year contract beginning July 1, 1990.

The Superintendent gave a year-to-date financial report. Attendance was reported as 71 in high school and 130 in elementary for a total of 201.

The Board went into executive session to discuss personnel.

A report was given by the Superintendent on the plans for the senior trip for the Class of 1990. It was reported that the class would spend five days in the Disneyland Park in California.

It was also noted that \$53,438.00 was the net collection from the delinquent roll.

In other business, the Board approved the school calendar for the 1990-1991 school year. Also bus routes were approved for the 1990-1991 school year.

The Board approved changes and updates in School Board policies. Most of the changes came about because of new laws passed in the last legislative session and also because of interpretations made by the State Board of Education.

Mr. Bill Phinizy, Vice President of the Board, tendered his resignation as School Board member effective May 5, 1990. He stated that his reason was that his job would take him away from meetings he felt he should attend. The Board and Superintendent extended their appreciation to Bill for his past service and dedication to the school district. His resignation was accepted with reluctance.

A School Board Election was called for May 5, 1990, for the purpose of electing two School Board Members to 2 regular terms, and one school board member to the unexpired term of Bill Phinizy. The unexpired term will be for one year.

There being no further business, the Board adjourned at 3:00 p.m.

## February 1990

Sunday	Monday	Tuesday	Wednesday	Thursday	Friday	Saturday
JANUARY 1990 1 2 3 4 5 6 7 8 9 10 11 12 13 14 15 16 17 18 19 20 21 22 23 24 25 26 27 28	MARCH 1990 1 2 3 4 5 6 7 8 9 10 11 12 13 14 15 16 17 18 19 20 21 22 23 24 25 26 27 28 29 30 31			1	2	3
					H.S. Basketball Grady-T-5:00	
4	5	6	7	8	9	10
	J.H. Basketball Klondike-T-6:00	H.S. Basketball Dawson-R-5:00			H.S. Basketball Klondike-T-4:00	
11	12	13	14	15	16	17
	Textbook Committee Meeting-12:00 Noon	Play-Off Game H.S. Basketball Girls vs Grady 6:30 p.m. Lamesa Middle School Gys				Band Solo Contest
18	19	20	21	22	23	24
						U.I.L. Band Solo Contest
25	26	27	28			



Paramedics KENT HOLMES & FRANCES BURKETT demonstrating the new Heart Monitor/Defibrillator.

## New Equipment For Ambulance

Borden County Emergency Medical Service has received a new piece of equipment, thanks to the Borden County Commissioners Court. It is a Heart Monitor/Defibrillator. The Monitor part of the machine will be used on nearly every patient being transported in the ambulance since it continually displays the heart pulse rate, etc. even in the moving ambulance. This not only keeps the ambulance attendants informed of the patient's condition, but also provides information for the Emergency Room Personnel before the patient arrives at the hospital.

It is our hope that the Defibrillator will not be needed for any of our Borden County citizens, since its purpose is to treat cardiac arrest, or other serious heart problems, but very likely we will have a patient sometime with such disease. According to the American Heart Association, 500,000 deaths per year are caused by heart disease. Sixth-percent of these die within the first hour after the initial attack if there is no defibrillator available.

In 1962, prior to the use of defibrillators, only 4% of patients in cardiac arrest survived to be discharged from the hospital. By 1984,

with Paramedics using defibrillators plus cardiac drugs, the survival rate had increased to 62%.

Borden County EMS Paramedics have received protocol for advanced cardiac life support. Protocol consists of written orders from a physician to administer heart drugs and defibrillation if needed, and medications as needed for other emergency conditions, such as allergic reactions, emphysema, asthma, and so forth.

All of the members of the Borden County Emergency Medical Service are volunteers. They receive no compensation other than the satisfaction of helping those who need their services. There is no charge for the use of the Borden County ambulance. Contributions are accepted and appreciated from individuals who wish to donate.

Borden County EMS is

not affiliated with any particular hospital but can transport patients to the 4 surrounding hospitals as well as those in Lubbock. The ambulance goes whatever direction the patient or his family requests.

Borden County EMS Volunteers are constantly engaged in continuing education to qualify themselves to better serve the people of Borden County. At this time there are two Paramedics, Kent Holmes and Frances Burkett. Five more are taking the Paramedic course, and will be certified after May, 1990.

Borden County EMS has received great support from Sheriff Lewis and his office. They are now in constant radio contact with his office dispatchers, and with each other as needed. Borden County's 24 hour emergency telephone number is 915-856-4311. If you think you might be having a heart attack, call the ambulance immediately. Prompt attention by properly equipped Paramedics may save your life and minimize heart damage. Post this number near your telephone.

Thanks to all who have supported the EMS of Borden county. Especially thanks to Judge Van York, Commissioners Frank Currey, Larry Smith, Vernon Wolf and Buck Lemons.



The palm tree gets its name from the type of palm that has blades that fan out, resembling the palm and fingers of a hand.

From France

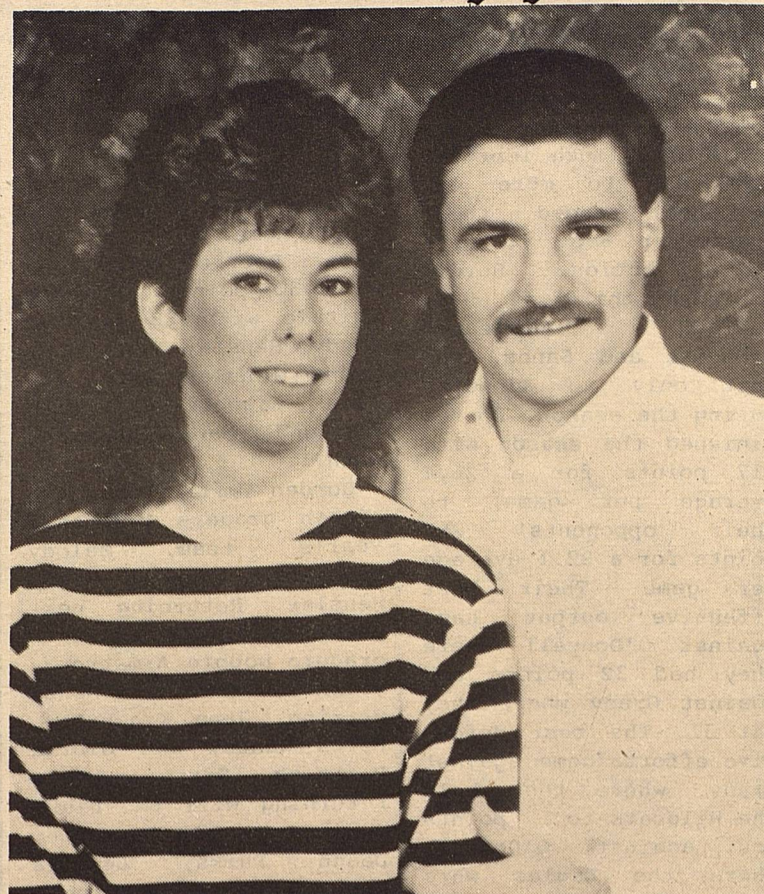
**LE CREUSET**

Enamelled cast iron cookware

Fashion • Quality • Longevity

Available in your favorite department and gourmet stores

## Announces Engagement



### Nancy Hoelscher & Roddy Murray

Mr. & Mrs. Edgar Hoelscher of Lott Texas announce the engagement of their daughter, Miss Nancy Hoelscher to Mr. Roddy Murray son of Mr. & Mrs. Duke Frisbie of Gail, Texas.

Nancy is a graduate of Mary Hardin Baylor College in Belton. Roddy is a graduate of Midwestern State in Wichita Falls, Texas.

They are both employed by the La Vega schools and reside in Waco.

The wedding will take place on March 10, 1990 in Westphalia, Texas.

## - ABSENTEE VOTING - BEGINS WED. FEB. 21

**BEN MURPHY**

CERTIFIED PUBLIC ACCOUNTANT

3902 COLLEGE AVENUE -- SNYDER, TEXAS 79549  
915/573-8992

## Branon Funeral Home

Service in this area since 1922.

Phone 872-8335 403 N. Austin, Lamesa

## WESTERN SEED & DELINTING Certified Cotton Seed

Acid	Paymaster 145, 303, 404, 792	Cotton
Delinting	Coker 3131, S110, 500	Planting
	Terra 383, SR-10, SR-482	Seed
	SP-21, SP-215, CAMD-E, CAB-CS	

Hay Grazer Grain Sorghum Wheat

## Wheat & Oats Cleaning

Lamesa, Texas  
RON BUTLER

BUSINESS PHONE  
(806) 872-8896  
(806) 872-5388

RESIDENCE PHONE  
(806) 872-5271

## Obituary

### James E. Wilson

1919-1990

James E. Wilson, 70, Lake Proctor resident, died at 9:55 o'clock Saturday night, Feb. 3, 1990, in Comanche Community Hospital following a sudden illness.

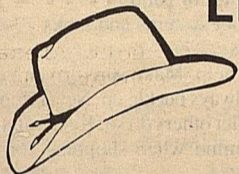
Funeral services for Mr. Wilson were held at 2:00 o'clock Tuesday afternoon, February 6, in Comanche Funeral Home Chapel. Officiating was Rev. Kenneth Vaughn, Zephyr Baptist minister.

Burial was in Comanche Gardens of Memory.

Pallbearers were Richard Carter, William J. Wilson, Jr., A. L. Humphrey, Steve Clemons, Ralph Woods, and Frankie Patterson.

Son of the late James I. and Margaret York Wilson, he was born September 29, 1919 in Fort Worth. He was married to Cloda Wyche, daughter of late Doc Wyche and Winnie Wyche, Comanche, on October 25, 1940 in Eden. Mr. Wilson was a retired service manager for an automobile dealership. He was a U.S. Army veteran of World War II, a member of the VFW and American Legion.

In addition to his wife, he is survived by a brother, Major William J. Wilson of San Angelo; and a sister, Ava Howard of Irving.



### LET ME GET MY HAT

BY DENNIS POOLE

### 1989 DROUGHT ASSISTANCE ACT

Payments under the 1989 Drought Assistance Act may be taxable, according to Dr. Wayne Hayenga, a management economist with the Texas Agricultural Extension Service.

Hayenga said a cash-method farmer can elect to defer reporting the receipt of crop insurance and certain federal disaster proceeds from the year in which the crops are destroyed or damaged until the

following year, under Code Sec. 451(d).

"In regard to federal disaster proceeds, Code sec. 451(d) specifies that it relates only to payments received under the Agriculture Act of '49 or Title II of the Disaster Assistance Act of '88," Hayenga said.

But what about the Disaster Assistance Act of '89? Since a literal reading of Code Sec. 451(d) would

exclude payments under this provision from the year-end deferral rule, it seems improbable that IRS would allow payments under the '89 Act which are actually received in '89 to be deferred until '90, Hayenga said.

The economist said following the enactment of the Drought Assistance Act of '88, Congress amended Code Sec. 451(d) to make it applicable to Title II of the '88 Act. The '89 Revenue Reconciliation Act as approved by the Senate Finance Committee would have amended Code Sec. 451(d) to make it also apply to the disaster Assistance Act of '89.

However, this provision was knocked out on the Senate floor prior to final passage of the tax bill, Hayenga said.

"No amount is payable under the Drought Assistance Act of '89 until an application is filed and approved. Farmers have until March 31, 1990 to file applications," Hayenga said.

He said it is unclear whether IRS will try to apply the doctrine of "constructive receipt."

"In other words, IRS might argue that since the payment was there for the asking in '89 (by filing an earlier application), it ought

5...THE BORDEN STAR, WED., FEBRUARY 21, 1990

to be taxable in '89," Hayenga said.

He emphasized that at this point it's not

at all clear whether IRS would make such an argument, or make the argument successfully if it did.

—YOUR VOTE AND INFLUENCE APPRECIATED—

RE-ELECT  
MELISSA "LISA" LUDECKE

CANDIDATE FOR

COUNTY TREASURER  
BORDEN COUNTY

— SUBJECT TO DEMOCRATIC PRIMARY —

Pol. Adv. Paid for by Melissa Ludecke,  
Box 153, Gail, TX 79738

### Salute To Teachers...



Bill May

Bill May is the girls' basketball coach for Borden County. During his ten years in Borden, he has shown his outstanding coaching abilities with a record of 233 wins, only 46 losses and 6 regional performances. Some think his views on basketball are "inherited." Coach May states, "Raised by two

coaches, my mom and dad, it's all I have ever known!" Aside from his religion and family - basketball is the most important thing in his life.

As a Jr. High science teacher, as well as a coach, he feels that the best quality of teaching and coaching at Borden County is the closeness found in a family sense.

During his ten years in Gail, He has had many experiences, but the most interesting was when he arrived at this school and started his new life. Here, he met and married Tana, they have two sons Ky and Trent.

Lisha Sternadel



Member FDIC

NEW  
RELEASES  
VCR  
RENTAL AVAILABLE

"THE TRADING POST"  
New Location  
IN GAIL

—6— NEW NINTENDO GAMES  
TO RENT

ONLY \$3.00  
EACH

### Can the Effects of Aging Be Reversed?

For women aged 45 to 64, the onset of menopause and the loss of estrogen—an important female hormone—may cause unpleasant effects. Without treatment, estrogen loss may cause changes in hair texture, skin tone, and a loss of sexual desire.

The effects of the aging process cannot be reversed, but some of the effects of menopause can be treated. Call your physician or call one of us. Get the facts about menopause and how you may avoid some of the annoying aspects of aging.

**Somchai Chong, MD**  
General Practice  
1005 North 16th Street  
Lamesa, TX 79331  
[806-872-6773]

**Dan Kahn, MD**  
Family Practice  
1607 North Bryan  
Lamesa, TX 79331  
[806-872-8329]

**Evelyn Smiley, MD**  
General Practice  
1510 North Bryan  
Lamesa, TX 79331  
[806-872-5441]

**Patrick Hanford, DO**  
Family Practice  
1012 North 15th Street  
Lamesa, TX 79331  
[806-872-2113]

### NOTICE TO CONTRACTORS

OF PROPOSED TEXAS HIGHWAY MAINTENANCE WORK

Sealed proposals for:

Replacement of Raised Pavement Markers  
located on Various Highways  
in Borden, Etc. County.

Will be received by the State Department of Highways and Public Transportation located at:

4250 N. CLACK, Abilene, Texas  
Until 11:00 A.M.; Monday; February 26, 1990

Then publicly read.

# ASCS NEWS BY Jerry Stone

## 1990 ACREAGE REDUCTION PROGRAM SIGN-UP

We are now taking applications for producers to sign up for the 1990 farm program, which began Tuesday, January 16th and runs through Friday, April 13th. The 1990 acreage reduction rates and factors are as follows:

	Wheat (bu.)	Corn (bu.)	Grain Sorghum (bu.)	Barley (bu.)	Oats (bu.)	Upland Cotton (lbs.)
Target Price	\$4.00	\$2.75	\$2.61	\$2.36	\$1.45	72.9c
Weighted National an Rate:						
Core Red.	2.44	1.96	1.86	1.60	1.01	50.27c
ter Red.	1.95	1.57	1.49	1.28	0.81	
Efficiency Rate	0.90	0.90	0.91	0.26	0.00	10.5c
% of Projected yment	0.36	0.36	0.364	0.104	0.00	4.2c
Advance	0.3367	0.3367	0.3419	0.084	0.00	3.685c
Maximum Permitted of CAB)	*	90.0%	90.0%	90.0%	95.0%	87.5%
acreage Reduction of planted)	5.25%	11.11%	11.11%	11.11%	5.25%	14.29%
Version	NA	NA	NA	NA	NA	NA

Producers participating in the 1990 wheat program may elect to enroll in the modified wheat program which allows them to plant wheat for harvest in excess of the farm's permitted acreage. Under the modified plan, the farm's wheat for harvest may range from 95% of the wheat base up to a maximum of 105% of the wheat base. For any acreage in excess of 95% of the wheat base, an equivalent acreage will be reduced for deficiency payment purposes. There is no ACR requirement and the 0/92 provisions are not applicable under this option.

## 0/92 AND 50/92 PROGRAMS

For 1990 producers will be allowed to plant certain approved nonprogram crops on those acres designated as CU for Pay. Approved nonprogram crops are sunflower, flax, rapeseed, canola, safflower, castor beans, mustard seed, crambe, triticale, quinoa, Jerusalem artichoke, kenof, milkweed, amaranth, and psyllium. Only one drawback, for every acre of CU for Pay devoted to one other these crops, deficiency payment is FORFEITED.

NOTE: CU for Pay acres designated under the 0/92 provisions are guaranteed the total projected deficiency rate less the reduction, no matter if the final announced rate for the applicable crop is less or even zero. On the other hand if it is higher, then payment will be the higher rate.

## 1989 DISASTER PROGRAM

Applications for 1989 crop disaster losses are still being accepted until April 2, 1990. If you had any crop in 1989 that did not produce its established yield, come by the office and we will see if you are eligible for disaster assistance.

## OATS

As in the past oats do not fall under the cross-compliance restrictions allowing producers to plant acreage in excess of the farms Oats base. For 1990, producers may temporarily designate any portion of their 1990 program crop acreage bases plus the average CU acres for FAB for 86-89, to increase the current years (1990) Oats Base.

## CRP PROGRAM

As of this date we have not received any word as to there being a 10th CRP signup. As soon as we hear when the next signup will be we will notify you.

## CERTIFICATION OF SMALL GRAINS

We realize that it is a little early to normally

be thinking about certification, but because of the present condition of our small grain crops, producers are reminded that acreage must be certified and an ASCS-574 filed before making other use of the crop when disaster affected. Other uses include planting a second crop to those acreages failed, as well as grazing out the crop after the March 15, 1990 take off date.

The final date to report or certify small grain crops for Borden County is May 1, 1990 which also includes small grain covers devoted to ACR (set-aside) and CU acreages. Small grains include wheat, a rye, barley, and oats.

## CORN AND GRAIN SORGHUM ON ACR

Corn and grain sorghum are an approved ACR cover, provided the producer drills the crop and is not planted with a conventional planter. The producer may certify this as an approved cover for ACR, pay a \$10.00 visual inspection fee, certify that the crop will not be harvested, grazed, or baled and the land will not be grazed until the crop residue is incorporated into the soil.

## 1989 FINAL COTTON DEFICIENCY RATE

It has been announced that the upland cotton final deficiency payments will be based on 13.1 cents, producers who received an advance payment of 8.56 cents per pound, will receive a balance of 4.54 cents per pound, to be paid in cash.

The earliest we will be allowed to make payments is February 15, 1990. If we have the computer capabilities by the 15th we will make all 1989 deficiency payments soon thereafter.

## ACP-LONG TERM AGREEMENT SIGN-UP (LTA)

We will have an LTA signup beginning February 15, 1990 and ending March 2, 1990.

This program gives you the opportunity to apply for conservation cost shares to help perform needed conservation practices such as terracing, water ways, diversions, etc.

Contracts cannot exceed five years. if 1991 will be the first year of the contract, it cannot extend beyond September 30, 1995.

Please contact SCS prior to making application so we can coordinate extent and cost of the practice(s).

Please remember application does not mean approval, any practice begun prior to COC approval will be ineligible for cost share.



Every part of the squirrel's field of vision is in perfect focus, not just straight ahead as with man.

We're proud to be a part of the area since 1905.



# Snyder National Bank

*We take Snyder to Heart!*



Member FDIC

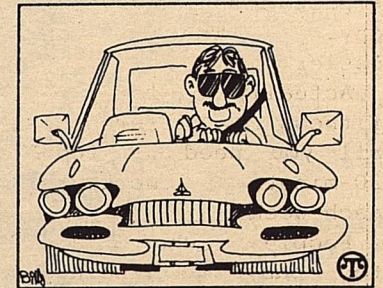
1715 25th  
573-2681

# NEWS

## OF SAFETY

### Improvements Getting Around

The road to safety is getting easier to follow these days, thanks to innovations from America's auto industry. According to the National Auto Dealers Association, cars today are engineered for safety. Automotive standards have reduced traffic fatalities by nearly a third since the 1960s. New cars have:



Buy a car with safety features and drive carefully once you get it, to help drive up your safety record.

- safety belts
- head restraints
- energy-absorbent steering columns
- shatterproof laminated glass
- tougher bumpers
- more interior padding
- safer fuel systems and tanks
- air bags

You can help. Make sure driver and passengers always buckle up. Never drink and drive or let others do so. Keep safety features in mind when shopping for a car.

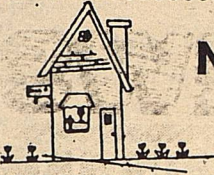
## CLASSIFIED

ACT IN T.V. COMMERCIALS

HIGH PAY..NO EXPERIENCE ..ALL AGES KIDS, TEENS, YOUNG ADULTS, FAMILIES, MATURE PEOPLE, ANIMALS, ETC. CALL NOW: CHARM STUDIOS  
1-800-837-1700  
Ext. 8219

.....  
INCOME TAX PREPARATION  
1040 EZ - 1040 A - 1040  
Call Terri Wilson at  
856-4384 or Come by  
Teacherage #2.

.....  
PIANO FOR SALE: Wanted:  
Responsible party to  
assume small monthly  
payments on piano. See  
locally. Call credit  
manager 1-800-447-4266.



## NOTES FROM HOME

BY DEBRA POLLARD

Home Demonstration/CFA

### Shaping Up Easier Than Many Think

Getting in shape doesn't have to mean a rigorous exercise program of weightlifting, jogging or high-impact aerobics every day. There's an easier way.

Actually, for a fitness difference, all you need is four 30-minute workouts each week.

People who are too busy to include exercise in their schedule can get up 30 minutes earlier or go to bed 30 minutes later. If that sounds impossible, exercise at noon and eat a quick lunch afterwards at your desk. Or exercise at home while you watch a television program.

Start any exercise program slowly and gradually increase your pace and time. Be sure to include warm-up and cool-down periods to avoid unnecessary soreness and stiffness.

If you feel you don't have enough stamina, remember that exercise ultimately gives you more energy both during and after workouts. You will feel less sluggish and discover a renewed sense of vitality.

A simple exercise program combined with a proper diet will result in a painless payoff.

If you decrease your caloric intake by eating a high fiber, low-fat diet and start an exercise program, you'll be slimmer by the first day of spring. Not only will

you look and feel better, but you also will increase your flexibility, build muscle strength and increase cardiovascular endurance.

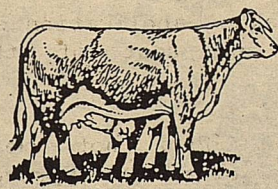
A creative approach to exercise shouldn't interfere with family time. In fact, a fitness activity is a great way to spend time together. Family bike rides, walks, and backyard basketball games are healthful and fun.

You don't need fancy clothing or expensive equipment to start an exercise program. Just wear comfortable clothes and walking shoes.

Hate exercising in cold weather? Join a mall walking club or swim in an indoor pool at a community center or nearby university.

Varying activities will help you stay interested in an exercise program. Alternate walking, for example, with aerobics, swimming or an occasional volleyball game.

The important thing, is to find a way to stay physically active on a regular basis.



## BIG SPRING LIVESTOCK AUCTION

915/267-5881  
915/267-3664  
915/267-3665

P.O. BOX 102  
Big Spring, Texas  
79720

## COMPUTER RECORD KEEPING SHORTCOURSE

FRIDAY, FEB. 23, 1990

9:00 A.M. - 4:00 P.M.

BORDEN COUNTY SCHOOL

CONFERENCE ROOM

LUNCH WILL BE AVAILABLE AT THE SCHOOL CAFETERIA.

INSTRUCTOR - DR. JACKIE SMITH

(EXTENSION ECONOMIST-MANAGEMENT)

PRE-REGISTER BY CALLING 866-4336

BORDEN COUNTY EXTENSION OFFICE

BY NOON FRIDAY, FEB. 16, 1990.

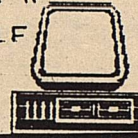
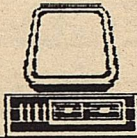
SMALL FEE OF \$10 TO COVER EXPENSES.

THE SOFTWARE TO BE USED IN THIS PROGRAM WILL BE "QUICKEN". IF

YOU HAVE AN IBM COMPATIBLE

COMPUTER, PLEASE

BRING IT WITH YOU.



## Cooking Corner

Caribbean Cuisine Treat: Jicama!

### Spicy Jicama Salad

- 1 pound jicama, peeled and French fry cut
- 1/2 sweet red pepper, diced with French fry cutter
- 1/2 green pepper, diced with French fry cutter
- 2 celery stalks, thick sliced
- 2 tablespoons lemon juice
- 1 tablespoon orange juice
- 1 tablespoon lime juice
- 1 tablespoon honey
- 1 tablespoon vegetable oil
- 1/4 teaspoon salt
- 1/8 teaspoon cayenne pepper
- 1/8 teaspoon ground black pepper
- 5 sprigs fresh cilantro or parsley

### 3 green onions, cut into 1-inch pieces

Assemble "Oster" Kitchen Center salad maker. Slice first four ingredients as indicated into large mixer bowl. Place remaining ingredients into Osterizer blender container. Cover and process 2 cycles at a medium high speed until green onion is coarsely chopped. Pour over processed vegetables and combine. Allow salad to chill before serving. (Extended marinating will intensify spicy flavor).

Yield: 6-8 servings

## Women's History Month

Each March, National Women's History Month is celebrated in schools and communities throughout the country. The concept evolved 10 years ago with the National Women's History Project (NWHP), first organized to celebrate "Women's History Week." In 1987, Congress approved a resolution extending the celebration to the entire month of March.

"Since we started the organization 10 years ago, more people have come to the realization that women's activities have touched on every aspect of American life," says Mary Ruthdotter, projects director of NWHP.

The month is designated to honor women of every race, class and ethnic background who have made historic contributions to the growth and strength of our nation in countless recorded and unrecorded ways.

This year's theme, "Courageous Voices Echoing in Our Lives," recalls the words and deeds of previous generations of women. It also symbolizes the lives of women who have sustained and passed on their families' unique cultural heritage.

The NWHP is a non-profit educational organization located in Windsor, Calif., which serves as a clearinghouse for organizations seeking information and programming ideas in respect to women in American history. **lll**

HOGG

FLYING



Spraying

SERVICE

Seeding

Defoliation

Dry or Wet

Fertilizer Application

Owner

GLENN W. HOGG

Phone: Business 806/872-9696

872-7617

Residence

872-8274

FAST

PROFESSIONAL SERVICE

P.O. Box 281

Lamesa Airport

Lamesa, Texas

# THRIFTWAY

**Claiborne's**  
THRIFTWAY

**AF** AFFILIATED  
FOODS INC.  
MEMBER STORE

STORE HOURS: 7 a.m.-9 p.m.  
Monday-Saturday  
8:00 a.m.-8:00 p.m. Sunday



WE RESERVE THE RIGHT TO LIMIT QUANTITIES  
WE ACCEPT FOOD STAMPS.

RAILROAD COMMISSION OF TEXAS  
LEGAL DIVISION

OIL AND GAS DOCKET  
NO. 8A-94,287

IN RE: CONSERVATION AND PREVENTION  
OF WASTE OF CRUDE PETROLEUM  
AND NATURAL GAS IN THE  
STATE OF TEXAS

Austin, Texas  
February 8, 1990

**NOTICE OF HEARING**  
ON THE APPLICATION OF GREAT WESTERN DRUG CO.  
TO CONSIDER APPROVAL OF THE UNIT AGREEMENT  
AND SECONDARY RECOVERY PROGRAM  
FOR THE REO (JO-MILL) UNIT  
REO (JO-MILL, LOWER) FIELD  
BORDEN COUNTY, TEXAS

NOTICE IS HEREBY GIVEN to the public and all interested persons that under the authority of Title 3, Oil and Gas, Subtitles A, B, and C, Texas Natural Resources Code, and Chapters 26, 27 and 29 of the Texas Water Code, the Railroad Commission of Texas will hold a hearing on MARCH 23, 1990, at 9:00 a.m. at the William B. Travis State Office Building, 1701 N. Congress Avenue, Austin, Texas. The hearing will be conducted in conformity with the Administrative Procedure and Texas Register Act, TEX. REV. CIV. STAT. ANN. art. 6252-13a (Vernon Supp. 1988). For room assignment, on the date of the hearing please check the bulletin board located in the 1st Floor lobby. Persons planning to attend this hearing are urged to contact the applicant (see service list) immediately prior to the hearing date to be sure that the hearing will proceed on the scheduled date.

This hearing will be held to consider the application of Great Western Drug Co. for approval of the Unit Agreement and Secondary Recovery Program for the Reo (Jo-Mill) Unit, Reo (Jo-Mill, Lower) Field, Borden County, Texas.

At the time of application, 100% of the working interests have approved the unitization and Great Western Expects to have the approval of at least 65% of

OIL AND GAS DOCKET NO. 8A-94,287

the royalty interests by the hearing date.

If a continuation is necessary, this hearing will proceed at the William B. Travis State Office Building, 1701 N. Congress Avenue, Austin, Texas, and, to the extent possible, on subsequent working days. The room number and exact time of the continuation will be announced on the record in this proceeding and recorded with Docket Services, Legal Division, Railroad Commission of Texas.

PURSUANT TO SAID HEARING, the Commission will enter such rules, regulations, and orders as in its judgment the evidence presented may justify.

Any request for postponement of this hearing must be received no later than four (4) working days prior to the scheduled date shown above. Copies of such request must be forwarded to all parties shown on the service list.

TO APPEAR in support of or in opposition to this proceeding, a party other than the applicant must file with Docket Services, Legal Division, at least five (5) days in advance of the hearing date, a notice of intent to appear.

A List of the names and addresses of those persons receiving notice of this hearing is contained in the Commission's file on this proceeding and is available for inspection at the Railroad Commission's offices in the William B. Travis State Office Building, 1701 North Congress Avenue, Austin, Texas 78701.

ALL EXHIBITS FILED AS A PART OF THE RECORD IN THIS CAUSE MUST BE SUBMITTED IN DUPLICATE. DATA IN COMMISSION RECORDS MAY BE INCORPORATED BY REFERENCE, BUT THE REFERENCE MUST BE SPECIFIC, AND IF IT INCLUDES EXHIBITS FILED IN PRIOR PROCEEDINGS BEFORE THE COMMISSION, A COPY OF SUCH EXHIBIT PROPERLY IDENTIFIED SHALL BE SUBMITTED FOR THIS RECORD.

RAILROAD COMMISSION OF TEXAS

*John J. Dennis*  
Secretary

**Texas A&M study finds roadside vendors make taxpayers pay**

COLLEGE STATION — Roadside vendors along Texas highways are not just farmers selling vegetables anymore, and those vendors will end up costing taxpayers more than \$8 million over the next five years, according to a study by the Texas Transportation Institute (TTI) at Texas A&M University.

Fewer than 3 percent of roadside vendors surveyed are classified as "the farmer selling his goods near his home on the road," says Jack Lamkin, supervisor of the six-person TTI team that conducted the study for the State Department of Highways and Public Transportation (SDHPT). Nearly 70 percent sell commercial items. More than 60 percent use the highway right-of-way due to heavy traffic, wide shoulders and nearby vendors, the study found.

Although traveling merchants foster pavement damage, increase litter problems and raise chances for traffic accidents — all highway rights-of-way and all rent-free — the present state policy of doing nothing is likely to continue, said Lamkin.

"We have a problem out there that will increase, but it is not perceived as a vital social or safety issue," Lamkin said. "There is just no major outcry to stamp out highway vendors."

The state highway department spends more than \$1.6 million a year just in maintenance and repair at roadside vending sites, the study found. Pavement and shoulder repair, vegetation and soil mending, litter cleanup and sign removal or replacement are major expenses.



**POLITICAL CALENDAR**

**REPRESENTATIVE  
17TH DISTRICT**

Charles Stenholm(D)

**COUNTY JUDGE**

Van L. York (D)

**COUNTY CLERK**

Dorothy Browne (D)

**COUNTY TREASURER**

Melissa Ludecke(D)  
Kenneth Bennett(D)

**JUSTICE OF PEACE**

Carolyn Stone (D)

**COMMISSIONER**

Prec. #2  
Larry D. Smith (D)

Prec. #4  
Hurston Lemons, Jr.(D)

**We're Not Just Western**



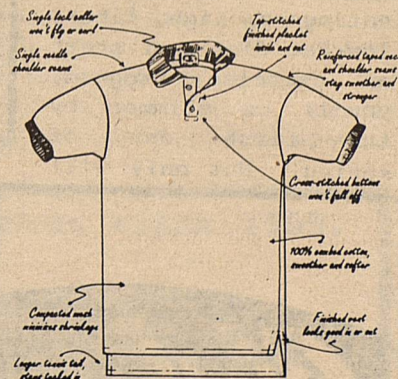
Spring 1990

**Lee** Boyfriend Rider



**Grown & Sewn  
in the USA!**

We use only long staple combed cotton in our full cut polo shirts. They just get better washing after washing. Great shirt, great colors, including: white, turquoise, pink, forest, maize, royal, red, jade, navy, coral. Machine washable.



**Western Wear**

College Heights  
Shopping Center