



25¢

The Kinney Cavalryman

USPS 100-610

VOL. 8 NUMBER 1

JANUARY 8, 1982

BRACKETTVILLE, TEXAS

LIBRARY SUIT SETTLED

HEADLINERS

NEW SALES TAX REQUIREMENTS

AUSTIN--State Comptroller Bob Bullock said Wednesday that about 1,000 Texas merchants need to be aware of new sales tax requirements on credit sales which go into effect January 1.

The new law affects merchants who make installment sales of taxable items, include the amount of sales tax due in the outstanding balance and keep their books on the "cash" basis of accounting.

According to the new law, a part of the interest paid on the sales tax portion of credit sales will be taxable. This additional amount is to be reported and remitted when the regular sales tax return is filed.

If the interest on the sales tax and the unpaid balance are the same--and the rate is 18 percent or less--the state gets half the interest on the sales tax portion of the total amount being financed.

If the rate is more than 18 percent, the state gets all interest on the sale tax amount above 9 percent. For example, a merchant charging 20 percent interest on credit sales will remit 11 percent interest on the sales tax amount to the state, assuming the rate for the sales tax portion is the same as for the rest of the unpaid balance.

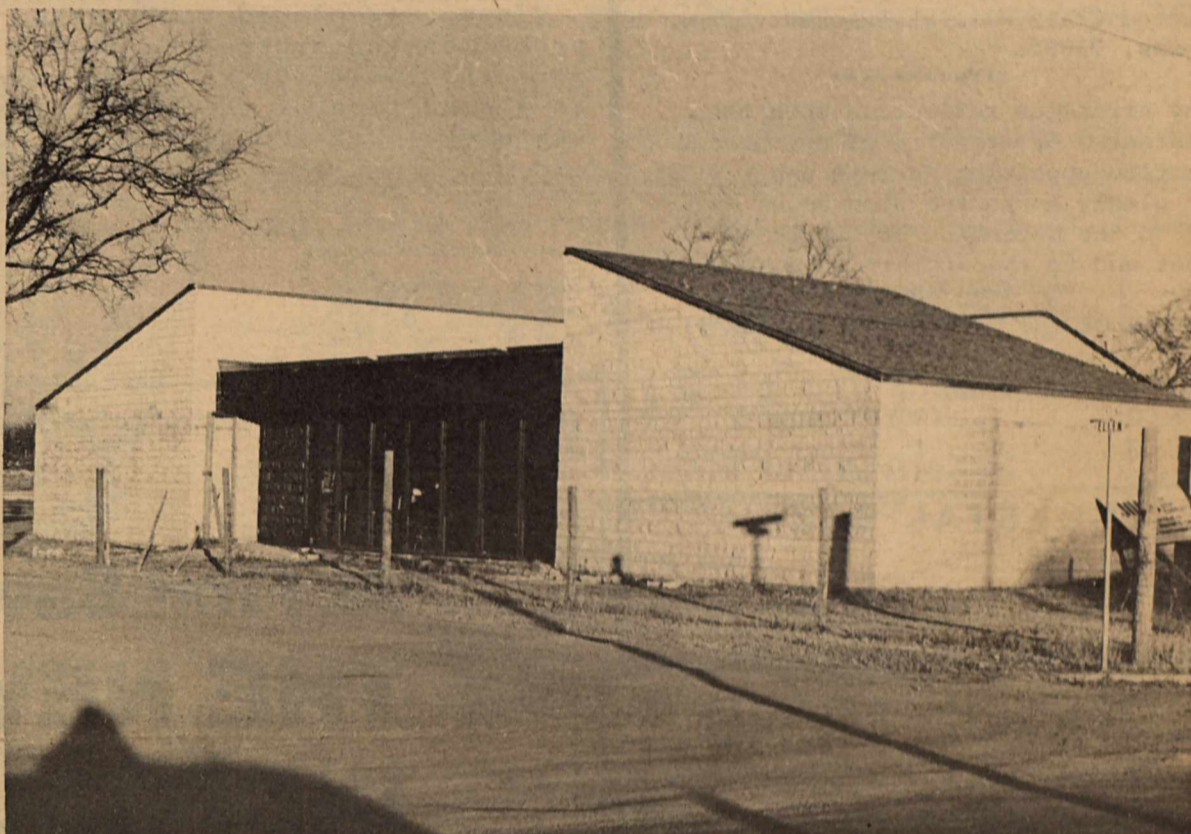
If the interest charged on the sales tax portion of the bill is different from the rate charged on the rest of the unpaid balance, the merchant must remit all of the interest paid on the sales tax portion to the state.

Taxpayers with questions about their new responsibilities should contact the Comptroller's local office nearest them or the Comptroller's Sale Tax division at 1/800-252-5555, a toll-free call from anywhere in Texas.

BINGO VOTE SLATED

AUSTIN--State Comptroller Bob Bullock said Thursday that voters in at least 12 Texas Counties and five cities will decide January 16 whether non-profit groups can legally operate bingo in their communities.

"This is going to end the confusion about Bingo in Texas. From now on, bingo is going to be approved by the voters and licensed by the state or it's going to be illegal," Bullock said.



Judge Albert Postell announced this week that the Counties; suit against Allied Fidelity Insurance was settled out of court for the sum of \$40,000.

Another suit has been filed against the Architect, John S. Graves of Uvalde, Postell stated. He added, "Without the dedicated help of the people of Kinney County, who donated their time and money to help enclose the building, we would have probably lost what was already invested in the building."

Cities, counties and justice precincts that approve bingo can also levy a 2 percent gross receipts tax on the games. The Comptroller's office will handle licensing of the games, collect the tax and return it to the communities where the games are held.

Where voters approve bingo, non profit groups must get licenses from the Comptroller's Bingo Regulation Division and can't legally operate games until 10 days after the local option election, according to Division Director George Garland.

"We are urging non-profit group in these counties and cities to apply in advance for their licenses by contacting us right away," Garland said.

Organizations should contact the division by writing to 111 E. 17th, Austin, Texas 78774 or calling 1/800-252-5555.

According to the new bingo law, cities, counties, and justice precincts that don't vote to approve bingo in January must wait until the next constitutional election date of April 3.

To call a bingo election, a

local governing body must receive a petition with the signatures of 10 percent of the number of voters who cast ballots in the last governor's election.

The Comptroller's first enforcement priority following the January voting will be to protect those groups who have obtained licenses.

"Especially where the local government has levied the 2 percent tax," Garland said, "we will be checking to make sure every bingo game is licensed. Those that don't have licenses will be urged to get them. If they don't become licensed and keep playing bingo, we will file complaints with local authorities and the Attorney General."

Counties due to vote first on the bingo question include: Guadalupe, Comal, Kerr, Maverick, Kleberg, Victoria, Fayette, Milam, Wharton, Nueces, Lavaca, Jim Well and Webb.

Cities holding January 16 elections: White Settlement, Schertz, Selma, Gregory and Reno.

THE KINNEY CAVALRYMAN

USPS 100-610

P.O. DRAWER CQ
BRACKETTVILLE, TEXAS 78832

(512) 563-2696

Judy Loos.....Publisher
Geo. Loos.....Editor
Geo. Loos.....Business Manager
RoseMary Slubar.....Production
Jean Hood.....Contrib. Editor
Crystal Loos.....Production

Published every Friday. Entered by
Second Class Mail at Brackettville,
Texas, 78832.

Any erroneous reflection upon the
character or standing of any person
or firm appearing in this paper will
be gladly corrected upon being called
to the attention of the manage-
ment and to the article in question.

MEMBER OF THE TEXAS PRESS ASSOCIATION

Subscription Rates:

\$12.00Out-Of-County

\$11.00In-Kinney-County

CRYSTAL SEZ:

"All doors are open to
courtesy." Thomas Fuller

SCHOOL MENU

JANUARY 11--Monday--

½ pint milk, hard boiled egg,
tortilla, orange juice;

JANUARY 12--Tuesday--

½ pint milk, cinnamon roll, ½
pear;

JANUARY 13--Wednesday--

½ pint milk, super fortified
bun, applesauce;

JANUARY 14--Thursday--

½ pint milk, fruit loops,
orange;

JANUARY 15--Friday--

½ pint milk, white bread/jelly,
peanut butter, peach slices;

SOCIAL SECURITY NEWS

A Damascus, Arkansas couple
has pleaded guilty to federal
charges that they lied about
their income in order to get
federal assistance payments on
behalf of their child.

According to Miss Elvia F.
Fuentes, Manager of the Eagle
Pass Social Security Office,
Virginia and Herbert Dillard, of
RR#2 in Damascus made false
statements and failed to report
Mrs. Dillard's work income to
the Social Security Administr-
ation so that Federal Supplemen-
tal Security Income Payments for
their child would continue. Miss
Fuentes explained that the SSI
payments are made to those who
are at least 65 or to severely
disabled children and adults who
have little or no other income.
The income of parents is consid-
ered when the disabled person
is a minor child. General tax
revenues, not social security
taxes, finance the program, Miss
Fuentes said.

U.S. Magistrate, Robert Faulkner
in Little Rock placed the Dillard
on 3 years probation and the
Social Security Administration
has initiated action to recover
the money fraudulently received.

**

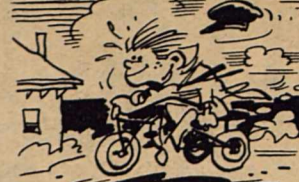
A Shreveport, Louisiana woman
has been sentenced in U.S. Dis-
trict Court after pleading
guilty of charges that she false-
ly claimed Social Security Bene-
fits as a full-time student on
the record of her deceased fat-
her.

According to Miss Elvia F.
Fuentes, Manager of the Eagle
Pass Social Security Office,
Deloris Ann Vinson of 1839 Myrtle
Street willfully failed to report
that she stopped attending school
so that her Student Benefits would
continue.

Vinson was placed on 5 years
probation and ordered to repay
more than \$1100.00 to the agency
as a condition of the probated
sentenced, Miss Fuentes said.

**

EMCY TAT!



FOR THE SAFETY OF HIS
SON, DURING THE 1880'S
JOHN DUNLOP FILLED RUBBER TIRES
WITH COMPRESSED AIR AND
FITTED THEM ON TRICYCLE WHEELS.
HIS "PNEUMATIC" TIRE HAD THE
BOY "RIDING ON AIR!"



THE ARMY'S NEW
LIGHTER AMPHIBIAN AIR
CUSHION VEHICLE 30-TON
PAYLOAD (LACV-30) IS ANOTHER
TRANSPORT FEAT. AT UP TO
57 MILES PER HOUR, IT CAN
MOVE 30-TON CARGOES TO
SHORE AND EVEN FARTHER
INLAND. ALL ON A CUSHION OF AIR!

"He who has begun his task
has half done it." Horace

At First Savings of Uvalde - THE NEW 1982 INDIVIDUAL RETIREMENT ACCOUNT (IRA)*

If you are employed — you are eligible
even if you are in another plan.
Up to \$2,000 tax-exemption.

The rate on First Savings' new 1982 IRA is tied to the
2½-year certificate which is based on the U.S.
Treasury rate. No service charges. You're allowed
annual tax deferred deposits up to \$2,000 — \$2,250
for spousal accounts. Tax penalty for withdrawals
prior to age 59½ and certificate penalty for
early withdrawals.

If you are not now in a pension plan you may qualify
for a 1981 IRA NOW. Up to \$1,500 — \$1,750 for
spousal accounts.

A FREE checking account with First Savings IRA account of \$2,000 or more.
*Effective January 1982



ASSOCIATION OF UVALDE

MAIN OFFICE:
Uvalde:
400 North Getty St.
278-7191



BRANCH OFFICES:
Eagle Pass: 370 Monroe - 773-9494
Carrizo Springs: 301 Pena St. - 876-5261
Leakey: Corner of Market & 4th - 232-6631
Hondo: 609 19th Street - 426-4325
Nueces Canyon: Hwy. 55 & 7th St. 597-3930



playing
it cool
comes
easy...

EARN UP TO \$2,000 INTEREST TAX-FREE

**"No Bank or Savings & Loan
Can Pay You More"**

Interest earned on your All Savers Certificate is exempt from income tax up to \$1,000.00 for an individual and up to \$2,000.00 on a joint return.

The All Savers Certificate is especially designed for taxpayers in the 30% or above income tax brackets.

If all of the new certificates and various interest rates have you confused, our employees can help you. There has never been a better time to invest.

MONEY MARKET CERTIFICATE

26 WEEK \$10,000 MINIMUM BASED
ON AN ANNUAL RATE OF

12.532

Effective annual yield based on reinvestment of principal and interest at maturity. Federal regulations prohibit the compounding of interest and require a substantial penalty for early withdrawal. Rate is subject to change at renewal.

FDIC Your Savings Insured to \$100,000

THE FIRST STATE BANK

COMPLETE BANKING SERVICES

BRACKETTVILLE

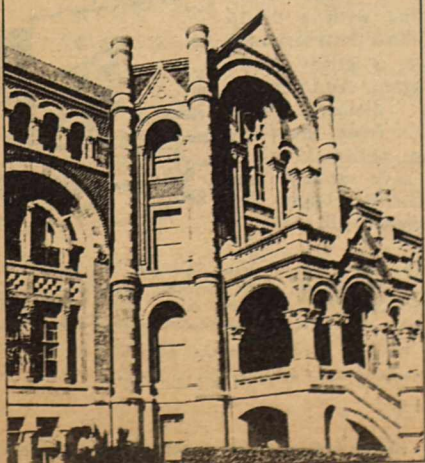
563-2451



A four-eyed fish, the anableps, has eyes divided in two. When the fish swims just below the surface, the top half of each eye sees objects above the surface and the bottom half sees underwater objects.

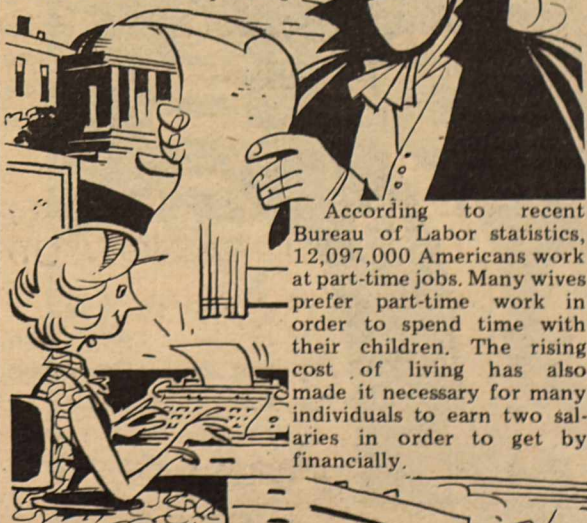
Galveston's historic "Old Red" Medical Center will be saved because enough people are interested in its past to care about its future. How much do you care about historic landmarks in your area? Write: Texas Historical Commission, P. O. Box 12276, Austin, TX 78711.

Give an old building a new lease on life.



IT'S A FACT!

One of the most famous part-time job holders in history was the third President of the United States, Thomas Jefferson. As an agriculturist, he supervised the acres at his estate of Monticello, invented a mold board plow that was widely used for many years, introduced the threshing machine to the United States and was one of the first Americans to employ crop rotation and contour plowing.



According to recent Bureau of Labor statistics, 12,097,000 Americans work at part-time jobs. Many wives prefer part-time work in order to spend time with their children. The rising cost of living has also made it necessary for many individuals to earn two salaries in order to get by financially.

It's a fact that prior service Army personnel with the grade of E-5 who enlist in the Army Reserve can depend on an extra income of over \$1,800 a year. And... a part-time job in the Army Reserve allows prior service personnel to retain most of his or her military benefits.



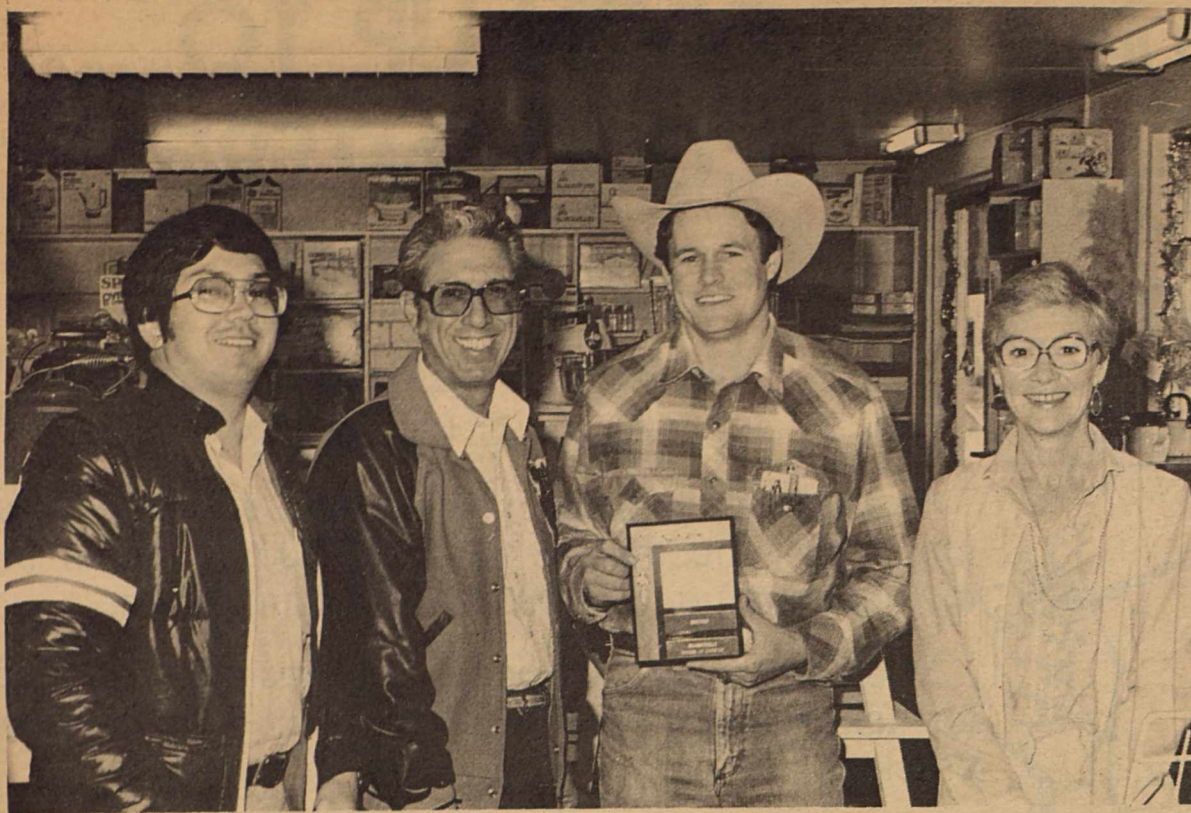
"Truth, when witty, is the wittiest of all things."
Julius Charles Hare

BURGER & SHAKE

563-2027

OPEN

11:00 AM - 8:00 PM



First Place for Business Decoration went to : DAVIS HARDWARE AND RANCH SUPPLY with Honorable Mention going to the Rio Grande Electric Coop.



First Place for Best Decocated Fort Clark Resident was presented to Mr. and Mrs. Al Kesterloot. Honorable Mention going to: Mr. and Mrs. Bill Adams.



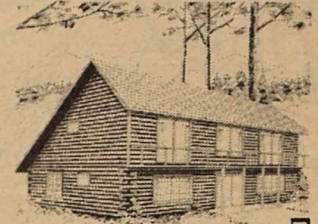
First Place Brackettville Resident was presented to Mr. and Mrs. Jaun Cardenas, with Honorable mention going to Ruben Buentello.

DECORATION AWARDS

The Brackettville Chamber of Commerce presented their annual awards for Christmas Decoration of Homes and Businesses.

Presenting the awards were Chamber of Commerce Members Louis Starzel, Molly Ardrey and Alfred Pena.

Log Homes Harness Solar Energy



A new solar log home, combining some of the most efficient living techniques of the 1980s and 1780s, has been developed by Lincoln Logs Ltd., nationally-distributed housing innovator.

The new solar home—The Salem—can virtually eliminate costs of heating and cooling. Do-it-yourselfers and/or builders can erect the weathertight shell within two weeks.

For a free booklet on solar home living, including do-it-yourself plans, write to Lincoln Logs Ltd., Gristmill Road, Chestertown, New York 12817.

Household Hints

By Samantha of Lestoil Homemakers Service

Anyone who lives in a hard-water area knows how quickly heavy mineral deposits can build up around bathroom faucets. You can clean them easily by wrapping the faucets in cloth or paper towels soaked in white vinegar and wrapping with plastic to prevent evaporation. After a few hours, the vinegar will have dissolved the mineral deposits. Wipe any residue away with a damp cloth.



Plastic shower curtains can be washed effortlessly in your washing machine. A couple of thick terrycloth towels washed with the curtain will help scrub it clean. To make sure that curtain gets really spotless, rub heavy soiled or mildewed spots with a little Lestoil before washing. Its heavy-duty cleaning action will remove stubborn mildew spots and water stains, and leave the curtain fresh and sweet smelling, too!

To keep all your bathroom fixtures shining, keep a spray bottle filled with a mixture of Lestoil and water handy. After using the sink or tub, give it a quick spray and wipe with a damp cloth. You'll never have to face a grimy bathroom again. And because Lestoil cleans everything — from the floor to the toilet bowl — you'll save money. Just one bottle cleans and deodorizes it all!



Send 25¢ for a handy new booklet, "How To Make Light Work of Laundry and Other Tough Jobs," to Lestoil Homemaker Service, 370 Lexington Ave., New York, N.Y. 10017.

"Use no hurtful deceit; think innocently and justly and, if you speak, speak accordingly." Benjamin Franklin

The Longhorn



563-2767

3 Miles West of
BRACKETTVILLE, TEXAS

HOME OF THE WORLD FAMOUS

"LONGHORN CHICKEN FRIED STEAK"

"Bragged on From Paris to Tokyo"



WELCOME !

THE LONGHORN
RESTAURANT, MOTEL & LOUNGE

YOUR HOSTESS: BERNICE HOHMAN

CATTLE RAISERS GROUP

CATTLE RAISERS CHALLENGE NEW USDA
CONSERATION PROPOSALS

FORT WORTH--In a sharply worded critique, Texas and Southwestern Cattle Raisers Association has come on in opposition to new soil and water conservation proposals made by U.S. Department of Agriculture. TSCRA, a 14,000 member livestock producer organization, found that "none of the three proposed program alternatives addresses U.S. soil and water conservation problems in the most effective fashion."

John S. Cargile, TSCRA president from San Angelo, Texas, said USDA's "Preferred Program" exceeds the legislated authority of the Soil and Water Resources Conservation Act (RCA) of 1977 to the extent that this group is asking Congress for an oversight heraing to assure compliance with existing legislation.

USDA through its Soil Conservation Service (SCS), has asked all persons and groups interested in soil and water conservation to respond by Jan. 15 to USDA'S revised draft through a widely circulated questionnaire.

TSCRA claims the response form to so blatantly biased in favor of the USDA's "Preferred Program" that portions of the questionnaire should not be used in judging public response.

The "Preferred Program" ignores conservation of rangeland, pastureland and woodlands that comprose the majority of the U.S. land surface. Instead, it redirects efforts from them to targeted priority areas. The latest proposals do nothing by add another layer of administration at the Washington level, while downgrading technical positions TSCRA asserts.

"In recent years, the SCS has become so increasingly preoccupied with internal administration and peripheral programs that SCS personnel at the state level

and above constitute 31 per cent of total personnel. The result has been to reduce the field force needed to provide technical conservation assistance on the ground to landowners and operators though locally governed soil and water conservation districts. In a sentence, SCS has become top-heavy at the expense of the field force and the people they are trying to help," Cargile said.

TSCRA praised the existing conservation planning and delivery system from SCS as the most efficient and responsive ever devised, when allowed to work. The livestock group said conservation needs can be best met without new programs and urged the reduction or elimination of non-productive efforts and personnel.

TSCRA mailed its comments to the Texas Congressional delegation, USDA Secretary Block and the Soil Conservation Service.

For more information, interested persons may contact the local SCS and ASCS offices. In Texas, public comments should be sent ot George C. Marks, State Conservationist, Soil Conservation Service, Box 648, Temple, Texas 76503 by January 15/

MEASLES AND RUBELLA---
DON'T GET THEM CONFUSED

Many people confuse measles and rubella--pershaps because a popular term for rubella is "German Measles". This is misleading since rubella is not measles but a different virus, says the Texas Medical Association. Rubella was first identified by doctors in Germany and this is probably why the misleading name "German measles" took hold.

The confusion wouldn't matter if it were not for the fact that both diseases can produce serious complications. Because of this complications, medical authorities urge vaccination against

both, ideally at age 15 months.

Before the vaccine became available, measles was an almost inevitable disease of childhood. It lasts about 10 days. At the onset the disease is characterized by a dry scratchy cough, running nose, inflamed eyes and an irregularly elevated temperature. At the end of the first three days the temperature may peak at 104 degrees, at which point a rash will appear. Although the measles rash usually covers the entire body, itching it seldom severe. After another three or four days the rash begins to fade.

Complicating pneumonia or ear infections may require antibiotics. The most serious complication of measles is encephalitis, which can be deadly or cause severe brain damage.

Rubella is often so mild a childhood disorder that many adults may either have forgotten their childhood illness or had an illness which was not recognized as rubella. Many adults, therefore, have naturally acquired immunity against rubella.

The disease usually lasts about three days. A rash often accompanies rubella but may be so faint that it goes unnoticed. It usually causes painful swelling in the glands at the back of the neck and behind the ears, along with slight fever.

Rubella is such a mild disease in both children and adults that there would be no cause for alarm were it not for a tragic exception--the danger of severe physical and mental damage to a pregnant woman's unborn child if she acquires the disease in the early months of pregnancy. Since boys and girls in early childhood are the most common carriers of the infection, most doctors recommend that they be immunized to reduce exposure of mothers-to-be.

Women should be immunized before becoming pregnant, and they must avoid any possibility of pregnancy for two or three months afterwards. While the risk of the vaccine to the unborn baby is not known, it should be avoided.

Young women can be tested for immunity to rubella at the time of their premarital exams or a test can be given during the prenatal examination.



Less To Meat Than
Meets The Eye?

The next time you buy meat to feed your family or your guests will you be getting as good a cut as you expect?

You will if a group of congressmen, consumers, and restaurateurs are successful in combatting changes to the U.S. Department of Argiculture's beef grading system.

The USDA's grading system is based on age and the amount of fat marbling. Younger beef with more fat marbling is considered more palatable and is given a higher grade, starting with Prime, then Chioce, Good Standard and on down.

The proposal is to lower standards so that Prime would include beef which has less marbling and was formerly graded Choice. Choice would include some beef with slight marbling and was formerly grade Good or not graded at all.

The recent survey of the nation's chefs, conducted by the National Restaurant Association shows that 95 percent of the chefs think marbling produces a more tender, flavorful product which less marbling results in tougher, flavorless meat.

The proposed changes in the grading system could mean that restaurants--as well as homemakers--will be buying lower quality beef at higher prices and possibly not even knowing it until the food is eaten.

The grading system experts say, should allow customer to identify and buy beef which fulfills their expectations, whether it is the juicy, tender steak found in many restaurants or leaner cuts some people want to incorporate into their diets.

What do you think of the proposed changes? Let your representatives in Washington know before it is too late.



Because they look like deer, and because of their name, many people think that reindeer belong to the deer species. But they really belong to the caribou family.

Gourmet Entrées

Treats You Can Fix Right At Home
KRAUT-STUFFED MUSHROOM CAPS



Your guests will be glad they've got room for mushrooms stuffed with sauerkraut.

These easy and attractive hors d'oeuvres are made with that natural, nutritional old-fashioned food: sauerkraut.

KRAUT-STUFFED MUSHROOM CAPS

An easy and attractive hors d'oeuvre. The mushroom caps may be stuffed in advance, then brushed with butter and broiled at the last minute.

- 4 slices bacon
- 2 tablespoons minced onion
- 1 cup bread crumbs
- 1 cup Silver Floss sauerkraut, drained and chopped
- 1 cup grated Swiss cheese
- Salt and pepper
- 24 large (at least 2" diameter) mushrooms
- Melted butter

Scrub mushrooms well and remove stems. Sauté the bacon until crisp; remove from pan, crumble and reserve. Mince mushroom stems and sauté together with onion in bacon fat until soft. Add bread crumbs and heat through. Remove from heat and add sauerkraut, cheese and seasonings to taste. Stuff mushroom cavities with sauerkraut mixture and brush all over with melted butter. Place on oiled sheet under preheated broiler until browned. Serve at once. Makes 24 hors d'oeuvres.

For a copy of the sauerkraut book featuring classic and contemporary sauerkraut recipes from around the world, write to Silver Floss, c/o Comstock Foods, P.O. Box 141, Newark, N.Y. 14513. Please include \$.35 for postage and handling.

ANYONE CAN HAVE HOUSEWIFE HANDS

Admittedly, the term "housewife hands" is out of date today, but the condition it describes isn't. Anyone--man or woman--whose hands are exposed to harsh cleaning chemicals may experience skin problems, says the Texas Medical Association.

Most people first notice the condition when the skin underneath a ring breaks out. It usually starts as a red, itchy rash but can turn into skin eruptions if not treated promptly and properly.

Although many people attribute the rash to an allergy, it is rare that a person is allergic to either the metal in rings or a cleaning product.

Some people try to protect their skin from harsh chemicals by wearing rubber or waterproof gloves. Most experts advise that when this is done thin cotton gloves (termal gloves) should be worn under the rubber gloves. If

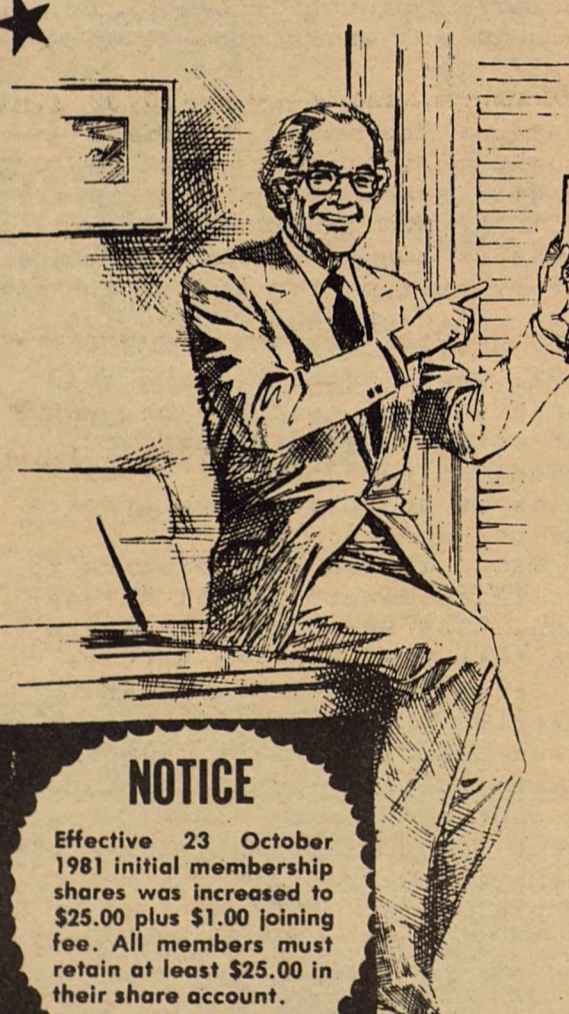
this is done, and if the gloves only are worn for 15 to 20 minutes, any adverse effects caused by the skin's inability to perspire can be drastically reduced. IN addition, for maximum protection the rubber gloves must be free of holes. Also, avoid exposing the skin above the gloves to irritating compounds.

When a rash does appear, the best course of action is to avoid the substance which produces the reaction. Although people often apply creams or lotions on the rash, sometimes a greasy preparation which covers the skin may slow down the healing process.

If the chemicals which produce the reaction cannot be identified, if the rash refuses to heal or if skin eruptions develop medical help should be sought. Since the average person comes in contact with so many chemicals each day, it often takes an expert to identify which one produces an adverse reaction.

JOIN

The Border Credit Union Today



You are probably eligible to be a member of Border Credit Union, almost everyone in Val Verde, Maverick, and Kinney County is. Compare us with other financial institutions and save with us.

POSIBLEMENTE USTED CALIFICA PARA SER MIEMBRO DE BORDER CREDIT UNION, casi todos los residentes de los condados de Val Verde, Maverick, y Kinney califican para ser miembros. Compárenos con otras instituciones de finanza y ahorre con nosotros.

We offer a complete and comprehensive Certificate of Deposit service to our members, with special certificates tailored to fit the individual members desires and needs. Come by and chat with our experts and see what we can do for you. Our only goal is to serve you.

Ofrecemos un servicio completo y comprensivo en Certificados de Deposito, con certificados especiales para los deseos y necesidades de cada uno de nuestros miembros. Pase por nuestra oficina y platique con nuestros expertos y denos la oportunidad de servirle. Nuestra meta es servirle.

NOTICE

Effective 23 October 1981 initial membership shares was increased to \$25.00 plus \$1.00 joining fee. All members must retain at least \$25.00 in their share account.

Accounts insured to \$100,000⁰⁰ by TSGCU.

BORDER CREDIT UNION

MAIN OFFICE
600 E. Gibbs 774-3503
9:00 a.m. - 4:30 p.m.

LAUGHLIN AFB BRANCH
Bldg. 336 298-3171
9:00 a.m. - 4:00 p.m.

EAGLE PASS BRANCH
8:30 A.M. - 4:30 P.M.

Call
774-3503
Ask for
John Cody
OR
Lana Smith

SHARES AND DEPOSITS INSURED TO

\$100,000

By the Texas Share Guaranty Credit Union



KINNEY COUNTY CONCRETE INDUSTRIES INC.

CONCRETE IN SMALL OR LARGE QUANTITIES

MASONRY

SMALL AND LARGE GRAVEL CRUSHED BRICK

563-2405

(HWY 90 WEST BRACKETTVILLE)

EARACHES CAN BE SERIOUS

As winter approaches with its cold air and drafts, the susceptibility to earaches naturally increases, says the Texas Medical Association.

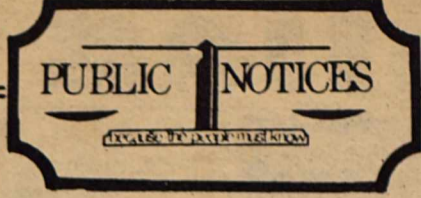
There are various ways in which an earache can develop, but the most common causes are:

An infection of the middle ear, the middle ear becomes inflamed, pus accumulates and the ear drum bulges, causing pain.

An inflammation in the ear canal--better known as "swimmers ear"--occurs when water accumulates in the ear, flushing out the protective layer of wax. This leaves a dark warm place for bacteria to grow, and if an infection takes hold, the tissue in the ear swell, resulting in an intense earache.

Wax impactions or foreign bodies--if wax in the ear becomes hard and presses against the ear drum, a particularly irritating ache can occur.

It is easy to recognize an earache because the pain is so intense, but other symptoms such as bleeding, inflammation, swelling,



Kinney County Commissioners' Court is accepting sealed bids on the following real property:

Lot No. One (1) and Lot No. Two (2) in Block No. Two (2) Lorange Addition to the City of Brackettville, Kinney County, Texas.

The Court reserves the right to reject any and all bids and all proceeds received from said sale shall be for the use and benefit of the Kinney County Library. Bids will be opened January 11, 1982, at 10 a.m.

Mail Bids To: Kinney County Commissioners' Court
P.O. Box 128
Brackettville, Texas 78832

/s/ Dolores Raney, County Clerk
Kinney County, Texas

The City of Brackettville's new sanitary landfill, located on Spofford Road will be open to the public six (6) days a week instead of five (5) passed and approved by the Council on December 14, 1981. New Operation days and times being effective December 21, 1981.

OPERATION TIME: Monday-----10:00 a.m. to 6:00 p.m.
Wednesday thru Saturday--
10:00 a.m. to 6:00 p.m.
Sunday-----10:00 a.m. to 5:00 p.m.
Tuesday----Sanitary Landfill Will Be Closed
Closed Holidays

El Dompe nuevo que esta localizado por el camino de Spofford se abrira seis dias a la semana en lugar de cinco, aprobado por el Council Diciembre 14, 1981. Horas nueva efectivas Diciembre 21, 1981.

HORAS: Lunes-----10:00 a.m. asta 6:00 p.m.
Miercoles A Sabado----
10:00 a.m. asta 6:00 p.m.
Domingo-----10:00 a.m. asta 5:00 p.m.
Martes estara cerrado
Cerado en dia de Fiesta

LAST CALL !! DEADLINE: JANUARY 15, 1982

Nominations of interested individuals who wish to serve on the Camino Real Health Systems Agency Board of Directors will be accepted if received by 5:00 p.m. Both Consumers and Providers of Health Care are needed to represent the Middle Rio Grande Area. Nominations from local governments, from other organizations or by petition of 25 residents will be accepted. Call (1) 225-4426 for details.

HURRY, LAST CALL

FOR AREA ASSISTANCE AMBULANCE

563-2757

SHERIFF'S OFFICE

563-2688

COUNTY JAIL

563-2788

MEDICAL CLINIC

563-2434

CITY POLICE

563-2100

FIRE DEPT.

563-2233

TEXAS HIGHWAY PATROL

563-2788

ling, or drainage from the ear indicate that the ear is infected.

In the absence of any drainage, an individual can usually alleviate a simple earache by placing several drops of warm mineral oil in the ear, inserting a cotton ball and lying down, with the ear pressed on a heating pad.

But if there is any drainage whatsoever, nothing should be placed in the ear until a physician can be consulted. If the ear happens to be infected, as drainage often implies, an untrained individual can easily aggravate the condition and cause the infection to spread beyond the middle ear to the brain, ultimately resulting in a hearing loss.

INCREDIBLE BUT TRUE!



The oldest army in the world has less than 100 men. It's the Swiss Guard in Vatican City, whose origins date back before 1400.

"The best way to be safe is never to be secure." Franklin



The tradition of the Army Reserve in the United States is traced to the citizen-soldier of the Revolutionary War. The tradition calls for patriots to leave their jobs and communities to become soldiers in times of National emergencies. It is a program which is thriving still, thanks to concerned and cooperative citizens in the Army Reserve.

classified ads

TUESDAY 12:NOON DEADLINE

All Classifieds--15¢ per word minimum insertion--\$2. per issue.

KINNEY COUNTY LAND CO
(512)563-2446

Lovely 3 bedroom, 2½ bath home fireplace, carpet, double garage, barn, 5 shaded lots.

3 Residential Lots on Thorn Street with water and sewer for Mobile Home.

Elegant home in Brackettville, over 3,000 square feet, more than 1 Acre fenced yard, 2 barns 2 garages. PRIME LOCATIONS

New 14 X 56' Mobile Home on Fort Clark, furnished, Assumable note.



DON HOOD

JEAN HOOD

512/563-2125

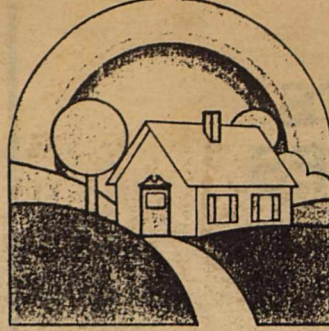
Very Large 2-story, Block Construction home on El Paso with 5 fenced lots, possible owner financing.

Small 2 bedroom home with 2 lots, fireplace, trees, also on El Paso Street.

6 PRIME LOTS in North Brackett

One Year Old, beautiful brick home, close to school. Extra Nice.

Rainbow Realty



PLAZA DEL SOL MALL
• 2205 AVENUE F
DEL RIO, TEXAS
78840

CUTE AND COZY!! An adorable 2 bedroom home on Thorn Street. Owner says Sell!!
SOPHISTICATED, GRAND, AND ELEGANT is represented in this 2 bedroom, 2½ bath home of distinction. Custom design and quality can be seen throughout the formal living, built-ins and fireplace.

Call Today: Barbara J. Voss
Agent
774-4545 or after 6 pm
563-2758

"Half a truth is a whole lie."
Yiddish Proverb

FOR SALE

FOR SALE.....
1973 Oldsmobile, fully loaded, \$500.00; Avacado "Citation" Dishwasher, 1 year old, \$150.00; 1 pair of Blue Elephant Skin Boots, size 5½B, \$250.00. Call: Pam Ricks, 563-2047.

NEW BUILDINGS AT FACTORY. All parts accounted for. All Structural steel carries full factory guarantee. Buildings 10,000 sq. feet to the smallest 1,200 square feet. Must sell immediately. Will sell cheap. Call toll free: 1/800-248-0065 or 1/800-248-0321. Ext. 777.

FOR SALE.....
Natural Gas Dearborn Heater. Six grates, complete with all connections, slightly used. Call: 563-2993.

FOR RENT

FOR RENT.....
Furnished apartment, 1 bedroom, Kitchen and bath. Contact: 563-2221.

FOR RENT.....
Brand New Apartment, 1 bedroom, 1 bath, unfurnished, Fort Clark. O'Rourke Realty, 563-2713.

LOST.....
Two (2) Schnauzers, 20 miles North of Brackettville. Please Return...REWARD OFFERED..... 563-2883.

BUSINESSES

MASON SHOES & BOOTS

Guaranteed latest styles, Men's and Ladies' highest quality, go FIRST CALSS, Reasonable Prices. Call: Robbie Robertson 563-2993.

VANN'S SEAFOOD TRUCK

In Brackettville EVERY OTHER WEDNESDAY, 10 a.m. to 1 p.m. at EXXON STATION have a FULL LINE OF SEAFOOD.

BRIGHTEN THE NEW YEAR BY SENDING A "THINKING OF YOU" SILK ARRANGEMENT.
SAGEBRUSH SHOPPE II, 563-2735.

DAVE'S TOWING SERVICE

563-2987

Thom McAn

AIR STEP JOX

Shoes for Everyone in the family!!

LaVillita Center DEL RIO

LOWEST PRICES!!

SCHUBACH LIQUORS

Across from Fort Clark Springs entrance..next to EXXON station.

563-2322

RICK'S AUTOMOTIVE & WELDING SERVICE

TUNEUPS
OIL CHANGES
OVER-HAUL WORK

CUSTOM BUMPER GATES
HEADACHE RACKS

563-2047

BRACKETTVILLE CHURCHES

CHURCH OF CHRIST

Sunday School 9:30 a.m.
Worship 10:30 a.m.
Bible Study (Sunday) 6:00 p.m.
Study (Wed.) 7:00 p.m.

UNITED

METHODIST CHURCH

Sunday School (Children) 9:45 a.m.
Sunday School (Adult) 9:45 a.m.
Morning Worship 11:00 a.m.

BARRY COX
Pastor

ST. ANDREWS EPISCOPAL

Church Services 6:00 p.m.
REV. EDWARD P. BUSH

KINNEY COUNTY LAND CO

(512)563-2446

GROW WITH BRACKETTVILLE IN 1982

OWN SOME ACREAGE IN BRACKETTVILLE WITH A LITTLE DOWN AND LONG TERM PAYOUT.

10 ACRES is the equivalent of 46 LARGE Brackettville lots. You can purchase 10 for just \$2,000. down payment and easy monthly payment over 10 years. Total price is \$20,000.00

Where can you buy lots in Brackettville for \$434.00 each?

THIS OFFER IS GOOD ONLY UNTIL MARCH 5, 1982