

Weather

	HIGH	LOW	PREC
June 12	94	52	
June 11	94	63	
June 10	89	61	
Precip. to date 3.56"			

BAILEY COUNTY JOURNAL

'The Community of Opportunity-Where Water Makes the Difference'



Volume 11 Number 23

12 Pages

Published Every Sunday at Muleshoe, Bailey County, Texas 79347

10 Cents

Sunday, June 13, 1976

FIREWORKS BACK THIS YEAR

July 4th Celebration Plans Underway



TWO HOMES DESTROYED . . . Flames engulf this home, formerly occupied by Mr. and Mrs. Larry Gregory, of the West Camp Community, late Wednesday afternoon. The Gregory mobile home was ignited by a fire which also totally destroyed the Don Armstrong mobile home shown in the far right of the picture. Both

homes were gutted by fire, and both families lost all their personal belongings. No injuries were recorded in the devastating fire, which left a total of ten people homeless. The fire was blamed on a faulty furnace which was heard "spewing gas" immediately before an explosion in the Armstrong mobile home.



Raging Fire Levels Two Local Homes

Family Of Eight Escape Injury; With 'Clothes On Their Back'

The regular monthly meeting of the Muleshoe Independent School District School Board has been postponed due to conflicts.

Originally scheduled for 8 p.m. Monday, June 14, the meeting has been rescheduled for the same time on Monday, June 21. The school business office said this would allow all the members to be present for the meeting.

I.B. (Barney) Chapman II, majority owner of the Dairy Queen in Muleshoe, is a newly elected member of the Board of Directors of the Southwestern Exposition and Fat Stock Show, held annually in Fort Worth.

He is one of 11 persons from five cities elected to the board for the coming 81st year of the show.

He is a resident of Hurst, near Fort Worth.

Cindy Crim, daughter of Mr. and Mrs. Max Crim, and Connie McDonald, daughter of Mr. and Mrs. Donnie McDonald, all of Lazbuddie, are attending summer school at South Plains College in Levelland.

Muleshoe students named to the Dean's Honor Roll at West Texas State University for the spring semester include Sharon K. Angeley; Sharon R. Bevers; Gary L. King; Jenny S. Milburn; Patti R. Nickels; Cont. on Page 2, Col. 4

Crouch Murder Investigation Is Continuing

No new developments were announced by Sheriff Dee Clements in the beating-stabbing murder of Traylor (Dude) Crouch, 59, as of press-time this week.

Crouch was found Thursday, June 3, beaten and stabbed in a room in the Muleshoe Hotel. He was treated in Muleshoe and transferred to the Veterans Hospital in Amarillo around 4 p.m. on Thursday afternoon, of the same day he was found. He underwent surgery that night to repair a perforated intestine and amputation of his left leg at the hip. He died about 2 p.m. on Sunday, June 6.

Crouch was unable to tell investigating officers much detail about what happened to him, apparently on Wednesday night, June 2.

"We feel very fortunate to have escaped with the clothes we had on, and no one was injured," said Mrs. Don Armstrong Friday afternoon. "And, we just don't know how to thank all the people who have offered to help replace our family belongings. We just have no idea who all has helped, but we do appreciate all of them."

Mrs. Armstrong was in a field behind the family mobile home a mile and a half north of the West Camp Grocery around 6:45 p.m. Wednesday when a fire broke out in the mobile home. Her husband, who was also plowing in the field went to the house and found their six children and the housekeeper had all escaped the blazing home.

However, all of the family's belongings were consumed in the fire and explosion that leveled not only their home, but the Larry Gregory mobile home sitting immediately behind their home.

At the time of the fire, Mrs. Armstrong's parents, Mr. and Mrs. W.E. Copeland of Fort Worth were visiting in their home, as well as two young nieces. All of their clothing, and money, were lost also in the fire.

She said that Elizabeth Leyba, the housekeeper and the children in the home heard a spewing sound and the housekeeper started toward the back bedroom to check. As she neared the furnace, it exploded and the house caught fire.

As firemen from Muleshoe arrived at the fire more than 12 miles West of Muleshoe, the Gregory mobile home, located some four feet behind the Armstrong mobile home, was already pouring smoke from the windows although it had not started blazing until several minutes afterward as firemen from the Muleshoe Volunteer Fire Department fought desperately to contain the fire. Using water tanks on the fire trucks, until water lines could be run from a nearby irrigation well, the effort was insufficient to contain the fire which burned virtually unchecked despite the efforts of the fire department.

When the Gregory mobile home started burning, the explosions of shotgun and rifle shells accentuated the fire fight-

ing efforts. The Gregory home was also a total loss. Mrs. Armstrong said firemen from Farwell were called out at midnight as the well house caught fire and was destroyed, along with a deep freeze in the well house. She said the two destroyed mobile homes and the well house were still smoldering Friday morning.

Clothing is needed for the Armstrong family, and persons who have items to contribute, can all Lorene Pagach at 3302 or see her at Cashway. She is a sister-in-law of Mrs. Armstrong. Don Armstrong wears a size 40-32 pants and 17-17 1/2 shirt; Mrs. Armstrong 20-20 1/2 clothing; Ronald, 40-32 pants and 16 1/2-17 shirt; Randy, 38-32 pants and 16 shirt; Ricky, 29-32 pants and 16 boys shirt; Robby, boys size 10; Darla and Diane, size 3, 4 or 5 and 10.

As far as household goods are concerned, "We just don't have any," said Mrs. Armstrong. Linens, dishes, bedding, cookware, everything will have to be replaced, and would be welcomed by the farm family.

Also, Mrs. Armstrong commented, "If anyone has a house we could live in for some two months until we can replace our home, we would be very grateful. We need a place to call home for awhile."

"It doesn't have to be fancy, or anything," she added. "I just want to settle my children down somewhere for awhile so we can

County Slates Regular Meet On Monday

A proposed housing project and programming of approximately \$38,000 Revenue Sharing funds will be the main topics to occupy the members of the Bailey County Commissioners Court Monday.

They will begin at 10:00 a.m. and continue through the day until 5:00 p.m.

Harmon Elliott is scheduled to meet with commissioners at 11:00 a.m. to discuss the housing project and the programming of the Revenue Sharing funds will follow.

get the insurance straightened out and can start over."

Persons who have any items to contribute to the family can contact Mrs. Pagach.

No monetary estimate was made on loss of the two mobile homes and well house by the fire department. Fire Chief H.E. Reeder said the fire illustrated Cont. on Page 2, Col. 4

How About Some Punch!

R.L. Pummil ran across this different and unique recipe in the Thursday, May 6 issue of the Dallas Morning News and brought it to the Journal to share.

It may have a "little kick to it" but here is the story and recipe as it appeared in the Dallas newspaper: "White Lightning" may be a little hard to find these days, but the patient punch-maker can stir up a credible approximation for his Bicentennial party.

The recipe for Muleshoe Artillery Punch was developed by the Marriott Hotels and was served from a fake still during a Cont. on Page 2, Col. 7

Deadline Near For Tennis

Tourney Sign-Up

With the noon Wednesday, June 16, deadline approaching, Terry Field, chairman of the second annual Muleshoe Jaycee Tennis Tournament, has reminded that if you want to play, get signed up.

The double elimination tournament is scheduled to begin June 18 and conclude on June 20, and trophies will be presented in both Men and Women's Doubles. The Jaycees reminded there will be no mixed doubles play this year.

Men will play in two classes; up to and including 34 years of age and the second class will be for players above the age of 35 years. Entry fee is \$12 per team.

Registration can be made with Terry Field at 272-3522 or 272-3525.

Homemakers Seek More Participants

Aw, you forgot - you really intended to do it, but time just got away from you, and you didn't get around to it. It's too late, now. Come on, all you youth organizations, before you have to kick yourself for not getting your entry in on time, sign up now. It's not too late to have a chance to make some money for your group, and have some fun while you are at it. Uh, oh, you don't even have to be a member of a group. You can enter on an individual basis.

Enter what? The Young Homemakers are still seeking entries before the June 18 deadline in the fire hydrant painting contest. You will have the opportunity to make \$25 if you win first place; \$15 for second place or \$10 for third place.

The contest is open to anyone age six to 17, and clubs and organizations are still encouraged to enter. Entrants will be responsible for their own design and paint. Enamel paint MUST BE used and inappropriate paints or designs will be disqualified, and the entrant must repaint the hydrant.

Judging will be done on Friday, July 2, and the winners announced following the parade on Monday, July 5.

Mrs. Brian Noble at 272-3444 will give you full information or you can send your name, address, age and telephone number to 214 East Date so your own individual fire hydrant can be assigned to you.

Entry blanks are also available at Muleshoe State Bank, Gordon Wilson Appliance, First National Bank and the Dairy Queen.

Muleshoe Little League Plans Hair Care Products Campaign

"Muleshoe Little League will conduct an all-out drive next week, June 14-18, selling the fine line of Henco Hair Care products to residents of the Muleshoe-Lazbuddie area," according to League President Eugene Howard.

Howard said that each of the more than 250 boys and girls who play in Muleshoe Little League will be expected to participate in this effort to raise funds for the League Operating Fund.

He added that profits from the drive will be used primarily to pay for the new uniforms which the Major League players are wearing this season. The League President stated, "Funds are also needed to offset the cost of a variety of losses which the league has incurred due to fire, vandalism and park property and several burglaries of the concession stand."

According to the Little League official every household in the area will be offered an opportunity to buy one or more units of Henco Hair-Care Products, which are similar to nationally advertised brands which cost much more.

The cost of each unit of Henco merchandise is \$2.25, with 85 cents of that amount being retained by the league. "This drive gives everyone in the community a chance to buy a good product at a fair price while helping a worthy cause," continued Howard. "Outright donations to the Little League program are also welcomed and appreciated."

It is hoped that the proceeds



TROPHIES TO BE PRESENTED . . . Terry Field, left, and Terry Gunter, show trophies to be presented winners of the Muleshoe Jaycee Second Annual Tennis Tournament scheduled for this week, June 18-20. Entries will be accepted to noon Wednesday, June 16.

Sidewalk Sale Slated July 3

Contests, Muleshoe Pitching, Art, County Fair, Parade Set

Get set . . . get ready . . . go! Go to Muleshoe on Saturday, July 3, for the annual Muleshoe Sidewalk Sale, where most merchants in town display their merchandise in a pioneer setting on the streets and sidewalks. They will be offering good prices, some prizes and unique mode of dress for the popular celebration which precedes the July 4th celebration.

This year is expected to be no different, as merchants will be decked out in full pioneer regalia for the all-day sale.

Sunday, July 4th, will be a fairly quiet day, reserved for people to worship and rest before the all-day gigantic July 4th celebration scheduled for Monday, July 5.

FIREWORKS CHANGE

Fireworks are back this year! Tommy Black, manager of the Muleshoe Chamber of Commerce, said that thanks to the merchants in town and individual contributions, \$1,100 was contributed to the fire works fund, and no funds had to be used from the limited Chamber of Commerce budget. There will be a slight change however, from the fireworks of previous years. The fireworks and family picnic will be at the new city park on West Avenue D. Black said that according to fire regulations, the fire marshal will not allow the fireworks to be shot at Benny Douglass Stadium as they have been in past years. The fireworks display is scheduled for 9:45 p.m.

To begin the full day of activities will be the annual Needmore-Muleshoe Pony Relay Race which is scheduled to begin at 7:00 a.m. at Needmore. The riders will be carrying a proclamation to be presented at the end of the race at the south city limits.

JAYCEE BREAKFAST

This will be followed by the Ride In-Fly In breakfast at the Muleshoe Airport. Sponsored by the Jaycees, the breakfast will be the official beginning of activities inside Muleshoe, which will last throughout the day.

Beginning at 9:00 a.m. will be the annual Muleshoe Pitching Contest, also at the airport.

KIDS ACTIVITIES

At 8:30 a.m. kid's activities begin with registration on the courthouse square, with some 25 different activities being sponsored by Beta Sigma Phi. A total of 180 ribbons will be presented during the events, which get underway at 9:00 a.m. A full list of available activities, which this year will include little girls, pre-school and a bicycle decorating contest, will be published in the near future.

At the same time, 9:00 a.m. - 1:00 p.m. will be a gala county fair, also on the courthouse square. Invited to participate will be all non-profit organizations in the area, including civic, churches, school classes and youth organizations. Booths will be set up with various items for sale, and activities to enjoy.

Any eligible groups are asked to contact the Chamber of Commerce office to make reservations for your booth. All proceeds will go to the organization setting up the booth for the county fair.

Some of the known booths at this time will be the Chamber of Commerce, who will have a dunking board; Rainbow girls will be selling home made ice cream and the Muleshoe Art Association will have an art booth plus an exhibit at the Muleshoe State Bank. The Art Association will also have a community painting, where any one who comes by can paint on the different and unique painting.

There will possibly be another activity scheduled from 1:5:30 p.m., with details to be released at a later date.

REUNION - PARADE

The annual old settler's reunion will be at 3:00 p.m. at the

First United Methodist Church Fellowship Hall.

Riding clubs, floats, cars, bands, and individual riders will be featured at the 5:30 p.m. parade. The parade will start forming at 4:45 p.m. at the Boy Scout Grounds, under direction of Parade Master R.A. Bradley and prizes will be awarded as trophies to riding clubs; prize money to floats; ribbons to antique cars and other prizes Cont. on Page 2, Col. 4

Otis McMillan Charge Officer At Post Office

Otis McMillan, postmaster for the past year at Farwell, has been named Officer-In-Charge at the Muleshoe Post Office following the recent death of Muleshoe Postmaster Spencer Beavers.

McMillan explained that he had been assigned to Muleshoe beginning June 9, and will drive from Farwell each day for up to four months, pending the naming of a new postmaster for Muleshoe.

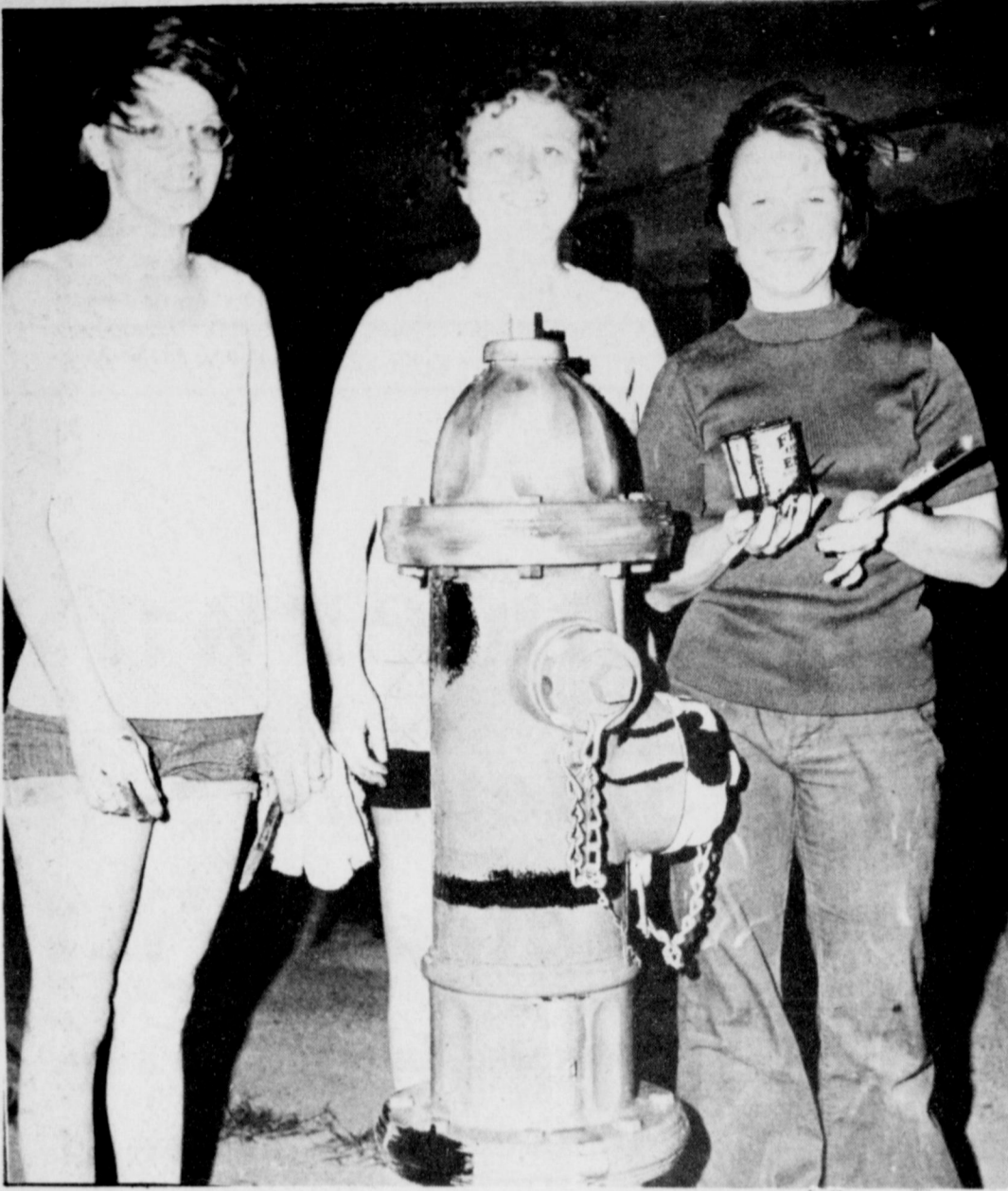
He said he is not contending for the Muleshoe Post Office, as an Officer-In-Charge cannot be named to the position of postmaster in a town or city where he is serving. McMillan added that he will be responsible for the local postoffice, and said, "I am not trying to take the place of Spencer (Beavers), but will do the best I can until the new postmaster is named."

Originally from Lubbock, he was a carrier foreman with the Lubbock Post Office before being named postmaster at Farwell in May 1975. He and his wife, Modlean, are the parents of three children, Gary, 18; Sandra, 16 and Melinda, seven.

Tom Lobaugh, who McMillan described as second in command at the Muleshoe Post Office, is under consideration for the position as postmaster. He also said that in order to name a postmaster, the officials have to consider the post office, and in the case of the Muleshoe Post Office, because of the carrier service, the new postmaster will be required to have had at least a year of supervisory duties.



OTIS McMILLAN



THIS IS HOW TO DO IT... Captured just as a brief wind and rain storm hit Muleshoe Thursday evening, these three Young Homemakers members were caught painting a 'sample' fire hydrant in Muleshoe. They are showing how easy it is to do in an effort to get more entries in the contest. The sample hydrant is located at the corner of West Avenue B and South Main Street, and the paint splattered ladies are from left, Iva Noble, Jean Richardson and Betty Bush.

The individualist is one who thinks for himself and, when necessary, by himself.

We wish all products were as good as the advertisements suggest they are.

The nerve of the borrowers is exceeded at times only by the faith of the lenders.

Around...

Cont. from Page 1
Kathy M. Pena and Regina M. Poter

DeMolay Mothers Club is having an old time luncheon on Thursday, June 17, from 11:00 to 2:00 p.m., in the Masonic Hall. Plates will be two dollars a plate. The DeMolays will be selling advance tickets. The luncheon is for the whole family and friends. For further information on tickets, contact Ginie Garth, at 272-3337.

Mrs. Mae Provence has returned to Muleshoe from Georgia. She has been staying with her daughter-in-law, Mrs. Phil Provence, who has been seriously ill.

July 4th...

Cont. from Page 1
will probably be presented immediately following the parade. There will be no barbecue for parade participants this year. In lieu of the barbecue, each parade participant will be given a ticket good for \$1 off on food purchased at any restaurant which is a member of the Muleshoe Chamber of Commerce.

BICENTENNIAL SINGING
During the family picnic, the beard judging will be held, and the Bailey County 4-H clubs will present a sculptured metal tree. Also a Bicentennial Singing is tentatively scheduled for 8:30 p.m., all at the new city park, concluded by the fireworks.

Chamber of Commerce Manager Tommy Black said other activities in the planning stage will be announced prior to the gigantic celebration and also said, "The Chamber of Commerce Board of Directors would like to thank the merchants in Muleshoe for their help and participation in letting us have a 4th of July celebration again this year. We could not do it without their support."

Each year, increased activities mark the celebration, and this year is no different, as the plans go on for a bigger and better celebration in Muleshoe in this Bicentennial year.

Fire ...

Cont. from Page 1

the need for the recent Trailer House ordinance in the City of Muleshoe, where mobile homes have to be a certain distance apart. Once they start burning, even in town it is virtually impossible to save them.

Steve O'Grady Home From West Point

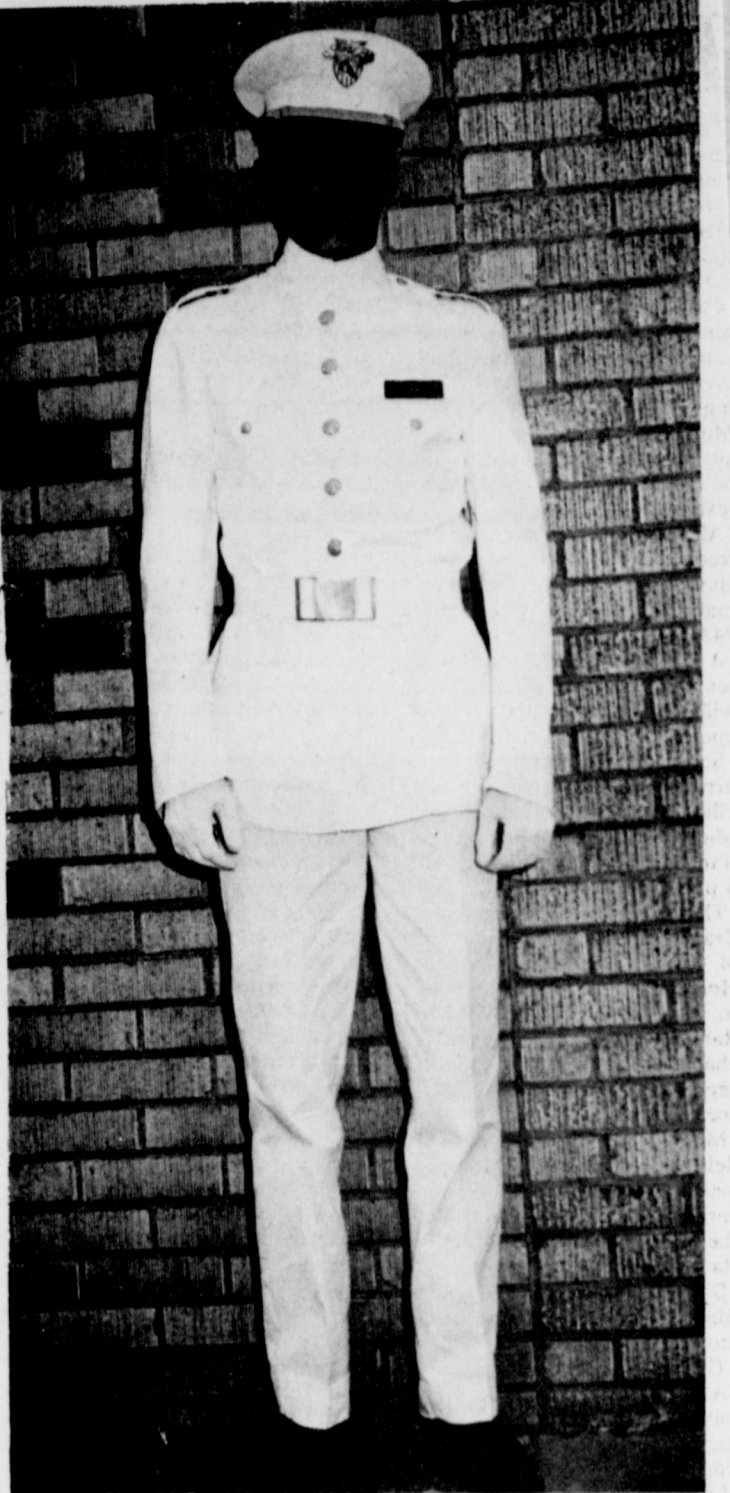
Take a transplanted Texan, and replant him at West Point; drop him from a graduating senior class of just over 100 students into a freshman class of 1300 students; hand him a group of strict guidelines and regulations and several uniforms - and you will have Steve O'Grady.

Steve, son of Mr. and Mrs. Jim O'Grady, was approved to attend the West Point Military Academy following his graduation from Muleshoe High School in 1975. Home on a five weeks leave before beginning an extensive summer training program, the former Journal employee was in the top 40 percent of his freshman class, just completed.

He said his grades for his freshman class were five Bs and one C, and he did not drop out as some 200 enrollees had by the end of the summer.

When Steve returns to West Point in July, he will go into a full training program which will include field artillery; armor; infantry and signal corps. He said the training will be equivalent to basic training in the army.

According to Steve, 80 percent of the young men who attend West Point and graduated, stay



WEST POINT CADET... Resplendent in his white dress uniform, Steve O'Grady is home on a five weeks leave from West Point. Steve has just completed his freshman year at West Point.

Greenbug Research Produces New Grain

The Texas Agricultural Experiment Station has released 23 more new greenbug resistant sorghum lines to commercial seed companies and public agencies. Research scientists expect the new material to be incorporated into commercial hybrids and made available to producers by 1978.

Considered agronomically improved over previously released greenbug resistant lines by the Experiment Station, the new lines have a greater range in maturity and higher levels of disease resistance.

Designated as Tx 2734 through Tx 2752, the greenbug resistant lines were derived from "five elite sorghum varieties" that have proved useful in Texas sorghum production.

The source of greenbug resistance used in the 23 lines is from material first identified as greenbug resistant in 1969 by the Kansas, Oklahoma and Texas Experiment Stations.

Dr. Jerry Johnson, Lubbock-based Experiment Station sorghum breeder, says the new sorghums will be used by commercial companies to incorporate into their hybrids. The new hybrids should have higher yield potential and superior agronomic characteristics equal to or better than most greenbug resistant varieties currently being grown on the Texas High Plains, he says.

The greenbug, an aphid which attacks small grain and sorghum, has cost sorghum pro-

Punch ...

Cont. from Page 1
recent exhibit of Bicentennial food suitable for parties.

MULESHOE ARTILLERY

PUNCH

- 1/4 gallon green tea
- 3 quarts catatwa or rhine wine
- 1 quart St. Croix rum
- 1 quart brandy
- 1 quart rye whiskey
- 1 quart gin
- 1 1/2 pounds brown sugar
- 1 pint maraschino cherries
- 9 oranges

9 lemons
1 (5-gal.) stone or glass crock
* Allow tea to stand overnight. Strain and add the juice or oranges and lemons. Add brown sugar, cherries and all the liquor. Cover lightly and allow to stand for two to six weeks. Strain.

To serve, mix one gallon of punch with one quart of champagne. Pour over a large piece of ice in a punch bowl.

Curtis W. Tarr, Chairman, Defense Manpower Commission:

"It would take about four months to start inductions if the government waits until an emergency to revive the draft."

Karate Students

Get Promotions

Last weekend, four students of the Muleshoe Tae Kwon Do Karate Institute, and their instructor, Danny Kelley, participated in promotion tests in San Angelo.

Tests were conducted at Nam's Tae Kwon Do Karate school by three Korean Master Instructors, who all hold the rank of sixth degree black belt or over.

Testing was conducted on an individual basis with each student being graded on his performance.

Students from Muleshoe receiving promotion were Craig Hunt, red belt; Thomas Kirven, blue belt; Tony Jaramillo, yellow belt and Cecil Chavez, yellow belt.

Bailey County Journal
Established March 31, 1923
Published by Muleshoe Publishing Co., Inc.
Every Sunday at 304 W. Second, Box 481
Muleshoe, Texas 79072
TEXAS PRESS ASSOCIATION
L. R. Hall - President
James W. Hall - Treasurer
C. W. Williams - Editor
Linda Edwards - Secretary
Publishing Office:
Bailey County Journal
Muleshoe, Texas 79072
Subscription Rates:
Bailey County Journal, and Bailey County Journal
Bailey and Muleshoe Counties - \$3.00
Muleshoe Journal and Bailey County Journal
Everywhere in Texas - \$4.00
Muleshoe Journal, and Bailey County Journal
Everywhere in Texas - \$5.00
Yearly in advance - \$3.00
Monthly by carrier - \$0.50
Advertising rates and an application

SAVE SAVE SAVE
Hale County HAIL SALE
• 15 Year FHA Loans
• Complete Service
• Write for Free Brochure
• FHA Approved Park
• Open Daylight to Dark and Sunday PM
PLAINS MOBILE HOMES
3017 Dimmitt Hwy
Plainview, Texas 79072
(806) 293-4346

"Planning for a good life calls for a good education. And a good life insurance plan. Let's talk. Professionally."

VIC BENEDICT
721 W. Ave. C
Ph. 272-3218
Southwestern Life
Helping people - person to person

LOOK CAREFULLY
"We're building a new standard for Center Pivot right here. It's called SERVICE." Give us a call today.
Special limited offer:
10 1/2 year lease plan with first 6 months interest free.
18 months between first and second payment, giving you two crop incomes before second payment.
HEREFORD-806-364-6900
MULESHOE-806-272-4266
CLOVIS-505-763-4417
AVI CORP.

YOU CAN BANK on it!
Bill Loyd, President
Muleshoe State Bank
Here's a basic checkbook tip: Don't write checks you "intend" to cover with a future deposit - even if you think you're going to do it the very next day. The reason (other than it's just not good business) ... computers are much faster than you are, and so are magnetic ink coding readers that read those funny looking numbers on your check very quickly. Computers and coding readers are machines, and therefore are impersonal. They do what their human masters tell them to do (they go wild once in a while, but it's the exception rather than the rule). Banks often cash checks the same day they are written because of this technology, and if your check reaches the bank before your deposit is recorded, you will probably wind up paying an "insufficient funds" charge. And, if something happens that is unforeseen, and you can't make the deposit, you can wind up with even more embarrassment (in some places it's downright unlawful, no matter how well intentioned you are). It's never a good idea to give a post dated check, either (dating a check in the future, so you can cover it with a deposit before it is submitted to the bank). A post dated check likely can be cashed before you intended, and since bank clerks, who are as human as the rest of us, often watch the dollar amount rather than the date, you can again wind up with an "insufficient funds" charge on your checking account.
Muleshoe State Bank
"The more you know about our business, the more we can help you!"

DON'T SIMMER THIS SUMMER COOL OFF
With An Amana Central Refrigerated Air Conditioner From Wilson Appliance.

If You Already Have Central Heating, You Can Add On An Amana Unit To Your Existing Unit.
Call Today For A Free Estimate.
We service central refrigerated air conditioning systems.
Wilson Appliances
MULESHOE 117 MAIN 272-5531

Texas Tech Bicentennial Boosts Ranching H

Four days of home on the range -- as it really was in the white man's early West -- will give Americans a true-to-life picture of their past at the Ranching Heritage Center July 2-5.

Four days of formal opening fun are planned so that many can participate in home town events but still visit the Ranching Heritage Center of The Museum of Texas Tech University in Lubbock. The center will be turned into a 25-acre historic festival site.

All America is invited and it's free, except for a tent show and chuckwagon meals. For information call Area Code 806: 742-2511.

A symbolic Texas Tech Bicentennial Longhorn Trail Drive will precede the center's formal opening.

Seventy Longhorns will be driven in San Antonio, Kerrville, San Angelo, Stamford and Midland before arriving at the Ranching Heritage Center about 5 p.m. July 2.

The celebration starts when Trail Boss Charles Schreiner III of the YO Ranch at Mountain Home turns over the tally book to D. Burns, former Pitchfork Ranch manager and honorary chairman of the Board of Overseers, Ranch Headquarters Association.

Mrs. Lyndon B. Johnson will deliver dedicatory remarks at brief ceremonies, July 2, for the center and its orientation site, the David M. DeVitt and Mallet Ranch Building.

Dale Robertson, star of TV and film, will be master of ceremonies.

Then the fun begins. A chuckwagon dinner will be followed by a country dance on the plaza of The Museum. Tommy Hancock's Super Natural Family Band will play for the dance, free to the public.

On July 3, 4 and 5 the score of buildings at the Ranching Heri-

tage Center will be open and "working".

The center is an exhibit of authentic ranching structures brought to the site and meticulously restored to depict the history of one of America's oldest industries, ranching. The National Endowment for the Humanities has funded research and development of the interpretive program of the center.

Sights will include lifestyles from campsite to ladies' sewing bees. The sounds will be predominantly music -- from the cowboy harmonica to a day of Bluegrass. The smell will be that of cooking, from campfire and log cabin survival cooking to ethnic specialties and home-on-the-early-day-kitchen-range.

Outside the center's compound there will be continuous events, including demonstrations of cutting horse training, a colorful horse show of breeds, roping, a pony express relay, with the show changing every 30 minutes.

Outside also will be the opening of the recreated Harley Sadler Tent Show presenting three favorite which toured the west a half century ago: "The Return of John Slater", "One Foot in Heaven" and "Texas Steer". The tent show is being produced by the University Theater at Texas Tech with attention to every detail of its historic predecessor, even to the Bally candy for which the customer pays more for the hope of a prize than for the dozen sweets rattlings around in an oversize box.

Visitors will see skills in black powder weaponry, shingle splitting, featherbed construction, caliche carving, rope chair lacing, churning, quilting, spinning, doll making, tatting, whitening and some 50 others.

More than 400 volunteers have special training and will be demonstrating the skills for thousands of visitors.

One of the most unusual activities will be demonstrations in the handling of wool -- from sheep shearing to weaving.

There'll be a buffalo and more than one Texas tall tale-teller at the Ranching Heritage Center. Special events will be presented on different days.

On Saturday there are to be anvil shoots, located at some distance from the center itself because the cannon-like boom might startle animals. The anvil shoot was a favorite 4th of July event in grandpa's day. One anvil is securely anchored in the ground, powder placed in a concave top surface, and a

second anvil set on top of that. When the powder is ignited, the top anvil lifts off with ear-splitting sound.

At the same time, at the center's Bairfield Schoolhouse, visitors can see in progress education, a political rally or old-time gospel singing.

On Sunday there will be a sunrise worship service, with circuit riders and choir in costume and the congregation joining in gospel singing.

In the orientation center will be special exhibits and a mercantile establishment, Cogdell's General Store, for the serious

shopper or the souvenir hunter. Exhibits will include a unique display of everyday rural apparel, the "Calico Chronicle" and, in The Museum, "A Century of American Furniture" to give visitors a view of some of the best of historic pieces. Within the Ranching Heritage Center itself there will be more antique furniture, much of it a utility type that settlers brought or made to start life in the West. Special programs in the DeVitt building will be "Pecos Bill", "America the Beautiful" and a weaving demonstration.

GLEN WATKINS
965-2196

965-2365
Pipeline Repair
Well Tie-Ins
Portable Welding

Cecil Holt
272-4802

JUNE is DAIRY MONTH

BORDENS

½ gal. ctn., all flavors
ICE CREAM..... \$1.19

CHIP-N-DIP..... each 43¢

½ gal. ctn.
BUTTERMILK..... 69¢

SOUR CREAM..... each 43¢

24oz. ctn.
COTTAGE CHEESE..... 89¢



32 oz.
COCA COLA
OR
DR PEPPER

\$1.39

PLUS DEPOSIT



Faded SMV Emblems Should Be Replaced

The red-orange triangle placed on the rear of farm tractors and other slow-moving self-propelled highway vehicles is a familiar sight to drivers. This "slow-moving vehicle" emblem, also called a SMV emblem, was created to reduce the serious problem of death dealing rear-end collisions with slow-moving highway vehicles. Its widespread use has sharply reduced highway accidents and injuries; however, many emblems need replacing as they have become faded.

"Both time and sunlight exposure have caused the colors and reflectivity of many SMV emblems to become faded," points out Dr. Gary Nelson, agricultural safety engineer for the Texas Agricultural Extension Service. "In its original condition, the SMV emblem is designed to improve driver recognition and response to slow-moving vehicles on highways to avoid collisions. Its use has become state and federal law."

The center section of the SMV emblem triangle is designed to be visible in daylight while the outside border is designed for night visibility from a distance beginning at 600 feet from the rear. "When the SMV emblem

becomes faded, it no longer provides adequate protection to the vehicle or its operator," notes the Texas A&M University System specialist.

The fading problem most recognized occurs to the center color of the emblem which is a brilliant fluorescent red-orange when new. With time and exposure to sunlight, this color fades to a relatively non-fluorescent yellow, thereby increasing the risk of rear-end collisions. Not only can such collisions cause death or bodily injury but they can also be costly in terms of property and equipment damage which could cause production delays and losses.

To deal with the fading problem, Nelson advises mounting the SMV emblem at the proper height and where it will not become damaged. He also suggests keeping it clean of soil and other debris and parking vehicles in shaded areas or inside structures where possible or covering the emblem from the sun during long periods of non-use. Of course, any SMV emblem that has faded from a bright red-orange to a non-fluorescent yellow should be replaced, he emphasizes.

FATHER'S FAVORITE Foods

Shurfine
ALUMINUM FOIL..... 49¢

Shurfine, 14 oz. Btl.
CATSUP..... 2/79¢

32 oz. Ragu
SPAGHETTI SAUCE..... 99¢

Shurfine
MANDARIN ORANGES..... 3/\$1

Shurfine, 1 lb. can
COFFEE..... \$1.19

Shurfine, #303 can
SPINACH..... 4/\$1

SAUERKRAUT..... 4/\$1

Soft, 180 count
NAPKINS..... 49¢

Shurfine, 46 oz. can
FRUIT DRINKS..... 2/\$1

Shurfine, Cut
GREEN BEANS & POTATOES..... 5/\$1

PRODUCE Specials

10 lb. Bag
POTATOES..... 89¢

Yellow
ONIONS..... lb. 9¢

CABBAGE..... lb. 9¢

BANANAS..... lb. 17¢

Red Delicious
APPLES..... 4/\$1

15 1/4 oz. can
CRUSHED, SLICED or CHUNK

SHURFINE PINEAPPLE

2 89¢

Cans

Frozen Food

6 oz. Shurfine
ORANGE JUICE..... 4/\$1

Ole South, Ass't. flavors,
COBBLER..... each 99¢

Shurfine Frozen
MIXED VEGETABLES..... 3/\$1

Shurfine Frozen
WHOLE KERNEL CORN..... 3/\$1

ALAMO DOG FOOD

\$1.09

4lb. BAG

\$2.09

8lb. BAG




32 oz. SHURFINE
SALAD DRESSING
69¢

TWINPAK
PRINGLES POTATO CHIPS
69¢



The Cardinal All Steel
SPECIAL \$4995.00

40X80X14 Implement Shed
Loafing Shed



For Information call or write CARDINAL STEEL BUILDINGS.
P. O. BOX 132 -- GRAHAM, TEXAS 76046
Phone (817) 549-1685 / 549-9054

Name _____
Phone (AC) _____
Size _____
Use _____
Date Planning To Build _____

CARDINAL STEEL BUILDINGS
Division of Profield Industries
ALL STEEL BUILDINGS
From \$1.80' Per Square Foot
NOT A LOT OF MONEY- Just A Lot Of Building For The Money!

We Welcome
USDA FOOD STAMP COUPONS

COME TO PAY 'N SAVE FOR YOUR WIC CARD PURCHASES

Pay-n-Save
QUALITY AND SERVICE.

WE GIVE GUNN BROS STAMPS

DOUBLE STAMPS WEDNESDAY WITH \$2.50 OR MORE PURCHASE
WE REDEEM AND GIVE STAMPS ON FOOD STAMPS
WE SELL AFFILIATED MONEY ORDERS
PAYROLL CHECKS CASHED



515 W. AMERICAN BLVD. OPEN 8a.m. TO 10

WEXFORD CRYSTAL ITEM OF THE WEEK:
STEMMED WINE or JUICE

WITH EACH AND EVERY \$3 PURCHASE
49¢



Miss Middlebrooks, Holcomb Exchange Marriage Vows



MRS. JAMES STEPHEN HOLCOMB

Linda Gayle Middlebrooks and James Stephen Holcomb were united in marriage on June 5 at 8:00 p.m. in the First United Methodist Church, with the Rev. Paxton Jones, Associate Minister of Lubbockview Christian Church of Lubbock, performing the double ring ceremony.

Father of the bride is Tootie Middlebrooks of Muleshoe. Parents of the groom are Mr. and Mrs. James A. Holcomb of Pampa.

The couple pledged their vows before the altar with an arrangement of pink gladiolus, pink and white carnations, daisies and baby's breath. Other decorations included candelabras with pink candles.

The couple knelt before the altar as Miss Walsh sang the Wedding Prayer. The couple then lit a memory candle while Miss Walsh sang "Starting Here, Starting Now."

The bride entered to the traditional procession on her father's arm. She wore a traditional gown of white organza with pearl beaded alencon and Venise lace. The gown featured a natural waistline wrapped with crystal pin organza, Venise lace run with petite pink satin ribbon framed the waistline. The fitted bodice noted a slit V décolletave also framed with the run venise lace. Appliqued motifs of Alencon lace, delicately beaded with seed pearls embellished the gown's bodice. Full bishop sleeves of sheer white organza were caught at the wrist with lace trimmed cuffs of pink organza. From the natural waistline the circular skirt fell full to the floor with the skirt deepening in the back to form the chapel length train.

A single tier veil of illusion edge with Chantilly lace fell from a Camelot headpiece to drift just beyond the train.

She carried a bouquet of pink roses and baby's breath.

Serving as matron of honor was Mrs. Michael Bernatis of Midland. Mrs. John Jones of Muleshoe served as brides matron with Miss Jan Jinks of Muleshoe and Miss Marcie Holcomb, sister of the groom, of Pampa, as bridesmaids. They wore formal length gowns of pastel pink quiana fashioned with a V neckline with puffed sleeves to the elbow. The empire waist flowed into a gored skirt. They wore pink picture hats with ribbon run Venise lace. They carried nosegays of pink and white carnations with daisies, baby's breath and ribbons with love knots.

Candles were lit by Miss Tena Landers, sister of the bride, and Miss Lynne Holcomb, sister of the groom.

Serving as best man was Mike Price of Pampa with Gary Middlebrooks, brother of the bride, of Houston. Michael Bernatis of Midland and Bill Nichols, of Wichita Falls, served as groomsmen.

The bridesmaids and groomsmen entered down the center aisle together, as a Bach Chorale was played.

Music selections were played by Miss Susan Sneed of Lubbock at the organ and Miss Cassie Precure, of Muleshoe, at

the piano. Miss Brenda Walsh of Lubbock sang the Wedding Song accompanying herself on the guitar.

Ushers were Ned Cornelias of Lubbock; Michael Bernatis, of Midland and Bill Nichols of Wichita Falls.

The reception was held in the Fellowship Hall. The bride's table was decorated with a spiral votive pink candle centerpiece. The bride's cake was decorated with fresh flowers and baby's breath. There was pink slush punch, mints and nuts. Serving the table was Ten nuts. Serving the table was Tena Landers and Lynne Holcomb. The groom's table was decorated with a votive candle centerpiece. German chocolate cake, nuts and coffee were served by Miss Janet Hopper of Muleshoe. Miss Cassie Precure played piano selections during the reception.

The bride wore a yellow sun dress with matching accessories and a spring bouquet corsage as a going away outfit. The couple went to Colorado for the wedding trip. The will reside in Lubbock.

The rehearsal dinner was hosted by Mr. and Mrs. James Holcomb at the XIT Restaurant.

The best way to avoid bills is to pay cash.

Never expect good luck to make up for loafing.



Miss Prisca Young

Miss Young Feted With Tea

Prisca Young was honored with a Surprise Tea in the Muleshoe State Bank Community Room, on Sunday, June 6, 1976. Prisca is completing her one year term as Grand Representative from Mississippi to Texas, Grand Assembly of Texas, Order of the Rainbow for Girls. She received this appointment at Grand Assembly in Dallas in June of 1975. Prisca has made many new Rainbow friends in her year of travel, fulfilling her duties which included visiting many area Rainbow Assemblies. Miss Young was presented a

corsage of pink carnations by the hostesses, Muleshoe Rainbow Assembly No. 161. Among the guests attending were Mrs. Jack Young, the honoree's mother; members of the Muleshoe Eastern Star Chapter and the Muleshoe Rainbow Girls.

West Plains Medical Center Briefs

Y-L 4-H Girls Learn Labels

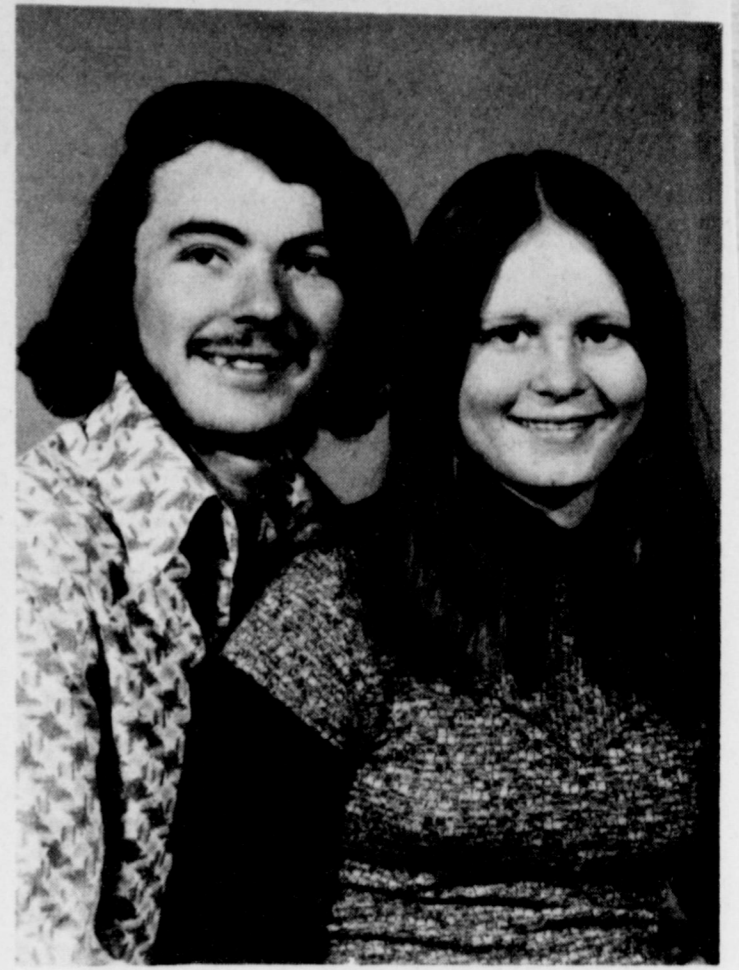
The YL 4-H Club "Happy Seamstresses" met Friday, June 4, at 3:00 p.m. in the home of their leader, Mrs. Tom Flowers. The group went to Anthony's where they learned to read labels on fabrics. They also discussed even and uneven plaids, checks and stripes. The girls then did a work sheet about places to shop.

Attending the meeting were Dana Smith, Beth Harmon, and Tamara Gilliland, reporter.

Sincerity is a pleasing and vanishing virtue.

ADMISSIONS

June 8 - Josephine Fisher, Lou Hail and Robert Wariner.
June 9 - Clyde Waggoner.
June 10 - Pablo Florez, Janice King, Ruby Waltrip, Denny Smith, Oscar Reed, Debbie Kemp and other Laswell.
June 11 - Walter Palmer, Sherri Knowlton, Shawnda Knowlton, J.W. Homes, Robert Casebolt and Hortensin Acosta.
DISMISSALS
June 8 - Buck Creamer, Mrs. Randy Gant and Don Gillard.
June 9 - Mrs. Charles Ball, Mrs. Josephine Fisher and Kadie Newton.
June 10 - Robert Wariner, Bellie Rannels and Lou Hail.
June 11 - Denny Smith, Ruby Waltrip and Debbie Kemp.



A JUNE 18 WEDDING PLANNED . . . Mr. and Mrs. Thomas Howard of Muleshoe announced the engagement and approaching marriage of their daughter, Diana Christine, to Paul Robinson Jr., son of Mr. and Mrs. Paul Robinson, Sr., of Orlando, Kentucky. Miss Howard is a 1974 graduate of Muleshoe High School. The couple plan to be married on June 18 at 8:30 p.m., in the Nazarene Church of Muleshoe. They will reside in Muleshoe.

Club Elected Officers

Enochs Home Demonstration Club met in the home of Mrs. Wilma Petree, on June 8, at 2:00 p.m. Mrs. Zelma Fred, vice-president, presided over the meeting. Mrs. Winnie Byars read the THDA prayer. Delegates and alternates were elected to attend the annual State Home Demonstration Association meeting in College Station, September 21, 22 and 23. Those elected were Winnie Byars, Wilma Petree and Bonnie Long.

Officers elected for the new year are President, Wilma Petree; Vice President, Alma Altman; Secretary-Treasurer, Winnie Byars; Council Delegates, Ada Long and Zelma Fred; Finance, Dorothy Nichols and Lillie Snitker; EEE, Alma Altman; and Telephone, Bonnie Long.

Mrs. Wilma Petree gave a demonstration on up dating furniture. She displayed a small antique table, she had removed the old finish for.

It was ready for a new coat at this time. She demonstrated all the steps in removing the old finish on the silverware chest. Mrs. Petree also passed out leaflets with instructions on how to redo furniture correctly.

She also introduced other cleaners for items such as toothpaste for silver and brass. Also the juice of one lemon and one teaspoon of salt can be used for silver. A good cleaner of aluminum is to mix 50 percent of 10 weight in motor oil and kerosene. It should be cleaned once a year.

Those attending the meeting were Alma Altman, Winnie

Byars, Lillian Fort, Zelma Fred, Lillie Snitker, Ada Long, Bonnie Long and two guests; Josey Vanlandingham and Inez Sanders. The next meeting will be June 22, with Mrs. Elnita Key.

Rainbow Girls Go To Houston

On Saturday, June 12, 1976, seven girls and three sponsors of the Muleshoe Rainbow Assembly left Muleshoe to travel to Houston for the 1976 session of Grand Assembly. They traveled to Houston with the Lubbock and Plainview Rainbow Assemblies by Charter bus.

Those attending are Sherrell Rasco, Marcia Rudd, Pam Young, Sheila Hunt, Judy Lust, Sally Lunsford, Kanetha Hysinger, Mrs. Jack Hysinger, Mrs. Robert Hunt and Mrs. Glenn Lust.

Prisca Young will be joining the group in Houston after attending the Mississippi Grand Assembly in Biloxi, Mississippi. Accompanying Miss Young from the Mississippi Grand Assembly will be Miss Cathy Vogle, who is Grand Representative to Texas.

Mix all kinds of greens for salads - cabbage, dandelion greens, spinach leaves, tender beet tops. Crisp and cold, and tossed with prepared Italian salad dressing mix, they are delicious and nutritious.

THE Over-The-Hill Society Welcomes Mr. Vernon Bleeker To Their Club On His 50TH Birthday JUNE 12

Anthony's MOVING Sale

HUNDREDS OF ITEMS ADDED SAVE FURTHER REDUCTIONS

ENTIRE STOCK LADIES or JUNIOR NEW FALL COATS JUST ARRIVED	20% off	MENS & YOUNG MENS JEANS MANY STYLES & BRANDS	\$ 6 ⁷⁶ 3 for \$18
SPECIAL GROUP LADIES, MENS BOYS GIRLS SOCKS	2 FOR \$1 values to \$1.50	MENS LEISURE SUITS SPECIAL GROUP FAMOUS BRANDS	reg. \$29.95 to \$59.00 1/3 off
ENTIRE STOCK SUMMER BAGS WHITE, BONE	1/4 off reg. \$3.99 to \$12.99	MENS LEE & LEVI JEANS DENIMS KNITS TWILLS	\$10 ⁷⁶ reg. value to \$18.50 3 for \$30
NYLON PANTY HOSE	3 PR. 99c	MENS LONG SLEEVE SPORT or DRESS SHIRTS	1/3 off reg. \$4.99 to \$10
SPECIAL GROUP BOYS JEANS & SHIRTS	values to \$8.99 \$4 ⁷⁶ each	SPECIAL GROUP JUNIOR TOPS & SHIRTS	values to \$16.00 \$2 ⁰⁰ each
FAMOUS BRANDS DRESSES, SKIRTS, COORDINATES PANT SUITS TOPS	1/3 off WOMENS or JUNIORS	TO HEAVY TO MOVE SHEETS RUGS BEDSPREADS	20% off DAN RIVER CANNON sets or singles

MIX or MATCH

Black & Decker Workmate ALL PURPOSE WORK CENTER AND VISE

GIFTS THAT HELL LOVE

Poynor's has the perfect gift for Father's Day.

A Black & Decker workmate. It has been carefully designed and manufactured to provide years of dependable service.

Black & Decker Workmate, The All Purpose Work Center & Vise

P O Y N O R ' S

103 Main Street WHITE'S STORES, INC. Muleshoe, Texas 79347



PIANO STUDENTS TRAVEL TO AUSTIN . . . Ten piano students will be travelling to Austin this year to play in an ensemble number at the Texas Music Teachers Convention to be held June 12 through June 15. They are pupils of Mrs. Jimmy Craft, Mrs. Sam Damron and Mrs. Dale Jahay. Accompanying these pupils to Austin will be their teachers: Mrs. Jimmy Craft and Mrs. Sam Damron. The

convention activities will be held in the University of Texas Music Building and the LBJ Library. Those students going to Austin are back row, left to right, Jill Turner, Stacy Campbell, Cindy Hamblen, Keva Roming, Sheila Jordan and Sharla Henry. Front row, are Mrs. Jimmy Craft, Scott Campbell, Sherri Henry, Michelle Agee and Merri Hausmann.

Muleshoe OES Held Installation, June 5

Mr. and Mrs. Elbert Nowell were installed as Worthy Matron and Worthy Patron of Muleshoe Chapter No. 792, Order of the Eastern Star, in Open Installation, Saturday evening, June 5, in Masonic Hall.

Other officers installed were: Mrs. Bob Phillips, Associate Matron; Bob Phillips, Associate Patron; Mrs. Owen Jones, Secretary; Mrs. Alex Williams, Treasurer; Mrs. Fred Payne, Conductress; Curtis Wellborn, Chaplain; Mrs. Frank Hinkson, Marshal; Mrs. Delma McCarty, Organist; Mrs. Harold Newson, Adah; Mrs. Derrell Nowell, Ruth; Mrs. Mary Farley, Esther; Mrs. Curtis Wellborn, Martha; Mrs. J.H. Clay, Electa; Owen Jones, Warder and Derrell Nowell, Sentinel.

The meeting was called to order, by Derrell Nowell, retiring Worthy Patron. The Lord's Prayer was repeated in unison, Pledge of Allegiance given and God Bless America was sung.

The Chapter was declared Open for Installation by Mrs. Derrell Nowell, retiring Worthy Matron. Installing Officers were: Mrs. Derrell Nowell, Installing Officer; Mrs. Frank Hinkson, Installing Marshal; Mrs. Mary Farley, Installing Secretary; Mrs. Bert Mathis, Installing Chaplain and Derrell Nowell, assistant to the Installing Officers. Mrs. Jimmie Craft, Earth Chapter, was Installing Organist. Preceding the open-

ing, a drill by the Rainbow Girls of Muleshoe Assembly No. 161, under the supervision of Mrs. Jack Hysinger, Mother Advisor.

Mrs. Jewell Strong presided at the Guest Register. A vocal solo, "Star of the East" was rendered by Mrs. Jimmie Craft of Earth Chapter No. 870.

Mrs. Nowell's theme is: Golden Anniversary Year. Muleshoe Chapter will celebrate her 50 anniversary in October 1976. Scripture, Proverbs, 22-28; Emblem, 50th; Colors, Gold and White; Flower, Yellow Rose; and Motto: Unselfish Love and Cheerful Giving. The year is dedicated to God; then to the Past Matrons and Past Patrons, the Pioneers who occupied the East in years past, and whose wise administration of the Chapter has been a beacon light to guide us in the performance of the duties.

Mrs. Nowell presented gifts to her installing officers and the installing officers presented her a White Bible.

The retiring Worthy Matron and Worthy Patron, Mr. and Mrs. Derrell Nowell, were the recipients of gifts from their officers and from the Past Matrons and Past Patrons. Mrs. Mary Farley presented the Past Matron's and Past Patron's Certificates and welcomed them into the Past Matrons and Past Patrons group.

One election every four years is enough.

Nursing Home News

by Myrtle Guinn

The Needmore singers came Sunday afternoon and sang for us. We enjoyed them so much.

Mrs. Gladys Phillips of Needmore comes to see her mother, Mrs. Hardin, often.

Those coming to play "42" Tuesday were Walter Damron, Mr. Head, Mrs. Madge Clements and Mrs. Mae Wilterding.

Mrs. Opal Talley came to see Mrs. Boydston, Monday.

Jack Harper comes to see his mother, Mrs. Harper, every day.

Mrs. Ola Epperly of Bovina came to see Myrtle Guinn, on Tuesday.

Mrs. Jackson came to see Mrs. Hall and Mrs. Guinn, Tuesday.

Mrs. Newton is in the hospital with pneumonia. Her daughter, Mrs. Lassiter of Whiteface is with her.

Mrs. Sybil Simpson of Clovis visited her mother, Mrs. Brown recently. She also visited her father the same day.

Mrs. Kersey came Tuesday and took Mrs. Guinn out for a drive and to have a coke.

Mrs. Spurlin went to Lubbock on Tuesday to see a specialist.

We hope she feels better soon.

Mrs. Head visited Mrs. Mae Wilterding on Tuesday afternoon. She is her niece.

Mrs. Pauline Tunnell visited her mother, Mrs. Chaney, on Monday.

Mr. and Mrs. Lex Guinn of Clovis, N.M. and Mrs. Pauline Guinn visited Mrs. Guinn on Sunday afternoon. Guinn, Ruth and Ryan had visited Allen and Pauline Guinn, Sunday.

Mrs. Donna Guinn and children of Lazbuddie visited their grandmother, Myrtle Guinn, Monday evening.



FOURTH OF JULY FLOAT . . . The Llano Estacado Civic Club held their regular monthly meeting, Tuesday, June 8, in the First National Bank Community Room, at 8:00 p.m. Business was discussed and also ideas and plans for the Fourth of July float. The club will begin work on it soon. After the meeting the hostesses served sandwiches, chips, dips and cokes. Hostesses for the meeting were Mrs. Royce Harris and Mrs. Mike Armstrong.



Amy Fadine McMannis

Mr. and Mrs. Kenneth McMannis are the proud parents of a new baby girl born June 7, 1976 at 3:28 p.m., in the West Plains Medical Center in Muleshoe. She weighed five pounds and twelve ounces and was named Amy Fadine. She is the couple's second child.

Lori Christine Phillips

S/Sgt. and Mrs. Dewayne Phillips of Lubbock are the proud parents of a new baby girl born Tuesday, May 25, 1976, at 12:17 p.m. in the St. Mary's Hospital in Lubbock. The baby weighed six pounds and fourteen ounces and was named Lori Christine.

Grandparents are Mr. and Mrs. Morris A. Phillips of Muleshoe and Mr. and Mrs. G.C. Ritchie of Sudan. Great-grandmother is Mrs. Mary Belle Hardin of Muleshoe.

Jami Rene Vickers

Mr. and Mrs. Gene Vickers of Mansfield, Ohio are the proud parents of a new baby girl born Friday, June 4, 1976, at 12:17 p.m., in Mansfield. The baby weighed seven pounds and was named Jami Rene. She is the couple's second child. They have another daughter, Kristi, age three. Mrs. Vickers is the former Sharon Kay Beauchamp.

Grandparents are Mr. and Mrs. B.A. Beauchamp, Jr. of Sudan, and Mrs. Vickers of Tipppecanoe, Ohio. Great-grandmother is Mrs. Bessie Myers of Muleshoe and Mr. and Mrs. Ben Beauchamp of Sudan.

Sudan Couple Celebrate Golden Anniversary Bible School Begins At Lariat Soon

Mr. and Mrs. Ves Patterson of 305 Temple Street in Sudan, will celebrate their Golden Wedding Anniversary on Sunday, June 13, with an open house in their home from three to five p.m.

The Pattersons, who have been Sudan residents for 50 years, came here shortly after their marriage in 1926, when they opened a small shoe shop. Through the years it expanded, from shoe repairs to include combine canvas repair work and mattress manufacturing.

During the World War II years, when gas, sugar and even shoes were rationed, Patterson made sandals from his leather rations and "out a lot of Sudan folks in shoes" for the duration. His sandals of the 40's were very similar to those of today.

Later, Patterson's expanded again to include dry goods and the manufacture of canvas irrigation sleeves.

TOPS Members Enters Parade

TOPS had their regular meeting Thursday, June 20, with 17 members weighing in. Their regular leader, Mrs. J.O. Parker was on vacation, so Mrs. Dan Vinson presided in her place. The meeting was opened with the pledge and song. They had one visitor, Lila Jones, of Houston, granddaughter of Mrs. George Chambliss. Mae Provench has returned from Florida where she has been taking care of her daughter-in-law.

Mrs. Lewis Shafer drew the gift from the birthday box. Mrs. Dale Griswold was queen for the week with Mrs. Luis Mata runner up; and a tie for second was between Evelyn Moore and

They retired in 1968 to do some fishing.

They have one daughter, Mrs. Jesse Hays of Austin and three grandchildren, Tim Gage of Houston, Tracy and Tanya Hays, also of Austin, who are hosting the celebration. Other out-of-town relatives who will be visiting the Pattersons over the weekend are Mr. and Mrs. Fred Mince and Mr. and Mrs. Glen Patterson, all from Dallas. Mrs. Patterson's sister, Miss Ruby Mince is a Sudan resident.

Members of the houseparty will include Mrs. Hays, Mrs. Mince, Mrs. Gage, Mrs. Dick West, Mrs. Burford Walsler, Ruby Mince and Miss Tracy and Miss Tanya Hays.

The Pattersons urge their friends to be a part of celebrating this special time, but request strongly, no gifts.

Panel formed to prevent shortages of resources, etc.

Mrs. Taylor Has Gathering

Those visiting and dining in the home of Mrs. Corda Taylor of Muleshoe, Sunday were her brothers, sisters and other relatives.

They were her sister, Mrs. Mage Williams, of Tollenzen, Ariz. and her daughter, Mrs. Geniva Fox, of Ontario, Oregon; a sister and brother-in-law, Mr. and Mrs. Robert Servatius, from Texico, N.M.; a sister, Mrs. Lucille Hargrove, of Anton; two brothers, Lynn Anderson of Anton and Mr. and Mrs. Lawrence Anderson, of Spade.

Other relatives were a niece, Mrs. Katy Turner, of Phoenix, Ariz.; Mr. and Mrs. Jim Slaughter and daughter, Sherry, of Guyman, Okla.; Mr. and Mrs. Gene Servatius and sons, Willie and Paul, of Lubbock; Mr. and Mrs. Billy Servatius and daughter, Leslie, of Amarillo and Rex Mauney of Plainview.

After lunch everyone made pictures and had homemade ice-cream.

Nervous tension is an expensive trait.

Hungr-buster
SALE **59¢**

This Monday through Thursday Dairy Queen is having a 59c Hungr-buster™ sale. Only 59c for "the most hunger fightin', taste delightin', sandwich in Texas."

Hungr-buster! A tender meat pattie grilled to your order, on a golden bun with your choice of lettuce, tomato, onions and mustard. Better hurry, offer good this week only, at participating stores.

Monday thru Thursday, June 14 thru 17 Only

* Reg. U. S. Pat. Off. Ass. D. Q. Corp. Copyright 1976, Texas Dairy Queens Trade Assoc., Inc. The "Hungr-buster" is a trademark of the Texas Dairy Queen Trade Assn.

How do you find the children who stay at home all day because their parents don't know that **free education** is guaranteed to every child by our state laws?

You ask every person in Texas to help.

Maybe **you** know a handicapped child who needs help. Maybe **you** can help.

Make the call that makes the difference.

TOLL FREE 1-800-692-4453

What's Behind It? Saving Money

That's more important than ever these days. There are ways you can make sure that the energy you use in your new total electric home is used in the most efficient manner possible. So efficiently that you will save 40% or more on heating and cooling cost when compared to previously accepted standards for total electric construction.

WALLS in the ENERGY EFFICIENT HOME conform to one of three options that make sure heat stays where you want it...outside in the summer and inside in the winter. Option #1 with 6" walls and R-19" insulation. Option #2 with tongue and grooved 3/4" styrofoam sheathing, 4" walls and R-11" insulation, or Option #3 with R-15" minimum insulation. Walls also have a vapor barrier of 6 mil. polyethylene or foil-backed sheetrock. Sill insulation or sill caulking between the bottom plate and the floor is required.

CEILING in the ENERGY EFFICIENT HOME is insulated with R-30*.

FLOORS (if pier and beam construction) are thoroughly insulated using R-13*. In slab floors choose between Option #1, rigid urethane or styrofoam (3/4" minimum thickness) from top of floor along the outside edge of the slab down to the brick ledge, or Option #2 - pour vermiculite in the cavity between bricks and slab up to the top of the floor.

WINDOWS AND DOORS are weather-stripped and caulked. Double pane glass or storm windows and insulated core or storm doors also ensure energy efficiency. It is recommended that glass area not exceed 8% of floor space.

OTHER RECOMMENDATIONS include the use of cool fluorescent lighting, and a heating/cooling system like the heat pump that maximizes efficiency and an electronic air cleaner to be used with moving air systems.

Having Comfort

Yes, you can save money without sacrificing comfort. The total electric ENERGY EFFICIENT HOME is the way to save 40% or more of heating and cooling cost and still enjoy all the convenience available in a new home today. Call us this week for all the details.

*The "R" value in the guidelines indicates the "Installed Resistance" of the insulation to the flow of heat.

ELECTRICITY IT DOES SO MUCH GOOD

The ELECTRIC Company
FOR SO MANY PEOPLE.

Equal Opportunity Employer

Sudan News

By Mrs. Wayne Doty

Mrs. Ola Davis, Mrs. Sharon Lumsford and Kristi, all of Wheeler visited recently in the home of Mr. and Mrs. Wayne Rogers and Gaylene.

Mr. and Mrs. Mike Fisher and children of Ralls and Lt. Radney Fisher of Phoenix, Ariz., visited over the weekend, in the home of their parents, Mr. and Mrs. Lee Roy Fisher, Missy and Kathy. Mrs. Fisher is a surgical patient in the Muleshoe Hospital this week where she under-

went minor surgery, Tuesday.

Recent visitors in the home of Mr. and Mrs. Glen Cardwell and girls were Mr. and Mrs. Ed McCowand and children of McKee, Kentucky; Mr. and Mrs. Hal Cardwell, of Lubbock; and Mr. and Mrs. Daryl Hobbs and Tana, of Plains. They also attended graduation exercises.

Recent visitors here with Ann Walker, girls and Becky Stanley were Becky's mother, Pauline and her sister, Michelle, both of Garland. They were here to attend graduation exercises.

Mr. and Mrs. Vernon Corley of Belen, N.M., visited this week in the home of his sister and family, Mr. and Mrs. G.C. Ritchie.

Mr. and Mrs. Jerry Cox, Jamie and Danene were in Lubbock recently to visit her brother and family, Mr. and Mrs. Dewayne Phillips and Christie.

Mr. and Mrs. Ted Greer recently visited her mother, Mrs. Jo Wilkinson who returned to Denver with them for about five days. Another daughter and son-in-law, Mr. and Mrs. Jack Attaway, of Casper, Wyoming, met them in Denver and she went to their home for a weeks visit. While in Casper she got to visit with three of her great grandchildren for the first time.

Following her visit there, Mrs. Greer visited with a son and family, Mr. and Mrs. Jim Wilkinson and three children of Roosevelt, Utah. On May 28, the Wilkinsons took her to Steamboat Springs, Colo. where the Greers met them. From there on to Sudan. The Greers returned to their home in Denver on Monday morning.

Mr. and Mrs. Glen Testerman and girls had dinner at the Tasty Taco Sunday evening.

Mr. and Mrs. Larry Hanna and boys of Petersburg visited over the weekend, in the home of his parents, Mr. and Mrs. Billy

Hanna and Mat. They attended the baseball game in Littlefield, where Mat played.

Mr. and Mrs. Ray May and Reagen were in Lubbock Thursday, shopping.

Dodd Haragan has returned home from the Methodist Hospital where he underwent surgery, recently. His wife, Maybell also returned home from the Medical Arts Hospital where she was taken last week.

Mr. and Mrs. G.C. Ritchie and Steve were in Lubbock over the weekend to be with their children, S/Sgt. and Mrs. Dewayne Phillips and infant daughter, Lori Christine and Miss Jan Rudd and April. Phillips, stationed at Reece Air Force Base in Lubbock, was notified Friday of his promotion to S/Sgt.

Mr. and Mrs. Bob Netherland of Lubbock visited over the weekend, in the home of her parents, Mr. and Mrs. Bruce Newman.

Mr. and Mrs. Claud Kropp returned home Friday from Hereford where he had been a surgical patient for a few days at the hospital there.

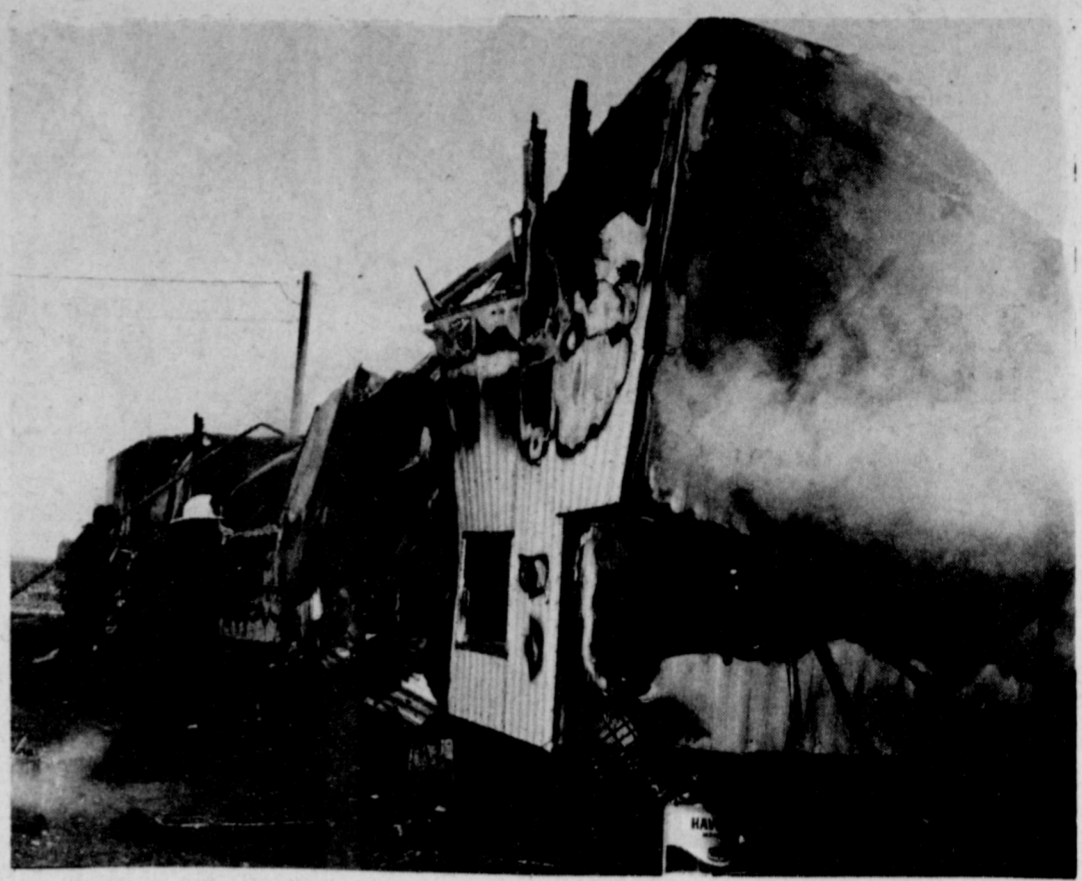
Mr. and Mrs. Bill Kuykendall, Len and Melissa, were among those from Sudan who attended the boat races Sunday afternoon at Buffalo Lake.

Mr. and Mrs. Elray Rasco, Brad and Becky are vacationing in Fun Valley, Colo. this week. Janie Brown accompanied them.

Tops No. 634 met Monday, June 7, in the community center for regular meeting. The roll call was given with weight gained or lost. There was a loss of one and three-quarter pounds. Mayfair Gaves was Queen for the Week. Treasurers report was given and the reading of the previous meeting was given and approved. The meeting adjourned.

Recent visitors in the home of Mr. and Mrs. J.C. Withrow were their children, Mr. and Mrs. Joe Price and Tim of Plains; Mr. and Mrs. Jerry Smith and daughter, of Hurst and Jackie Withrow and Kenneth Johnson, of Muleshoe.

Mr. and Mrs. Vernon Corley of Belen, N.M., visited recently in the home of his sister and family, Mr. and Mrs. G.C. Ritchie and Steve. They all attended the Sr. Babe Ruth

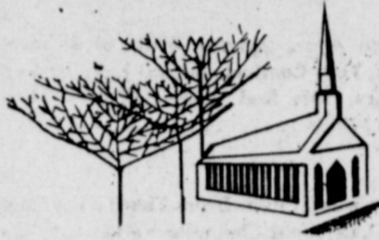


THE BUILDING COLLAPSES . . . Collapsing under the combined weight of molten metal and thin walls, and water poured upon the burning structure, the camera captured the Don Armstrong home west of Muleshoe just as the burned out former large mobile home collapsed. No one was injured in the blaze late Wednesday.

TELEX HEARING AIDS
CLOVIS HEARING AID CENTER
★ Batteries ★ Molds ★ Free Hearing Tests
SERVICE ALL MAKES
403 E. 14th Clovis, N.M. Ph. 763-6900

An investment in Your Future

ATTEND CHURCH



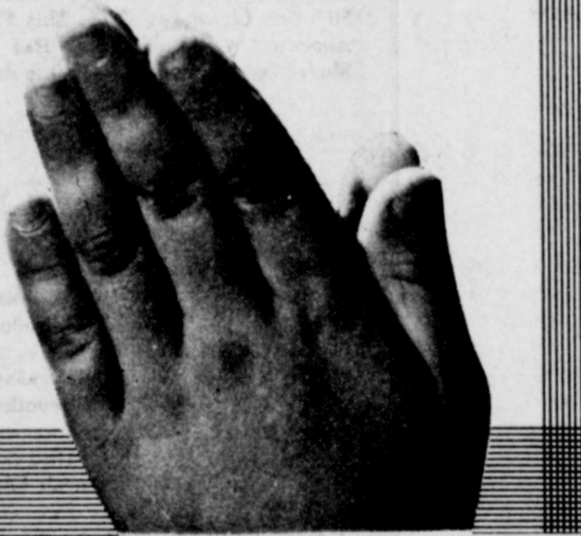
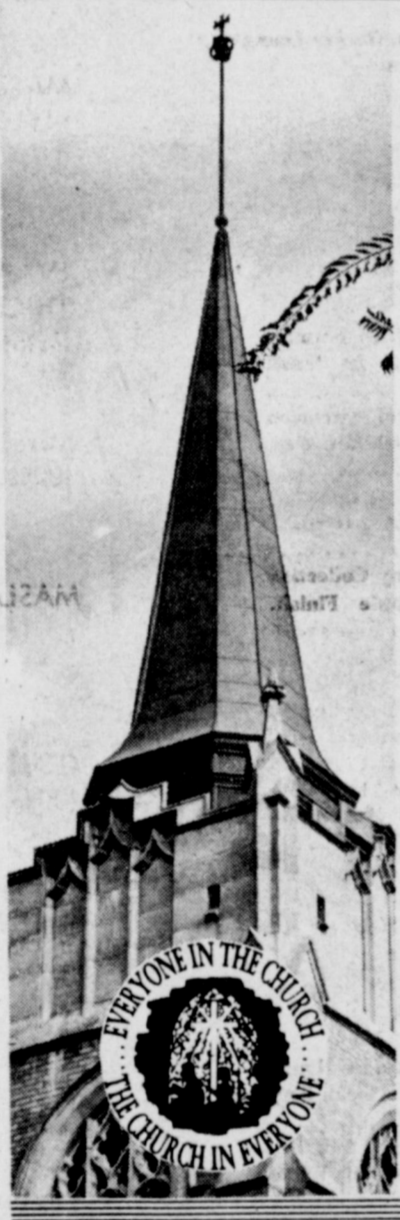
"For where your treasure is, there will your heart be also"

A PLACE TO PRAY

Man can, and should, pray anywhere. God has placed no limitations on his communing with him.

Our Lord has said, "... Ask and ye shall receive." God listens when we seek him, no matter where, however he desires that we gather together in prayer too. "... mine house shall be called an house of prayer for all people."

The Church is God's appointed agency in this world for spreading the knowledge of His love for man and of His demand for man to respond to that love by loving his neighbor. Without this grounding in the love of God, no government or society or way of life will long persevere and the freedoms which we hold so dear will inevitably perish. Therefore, even from a selfish point of view, one should support the Church for the sake of the welfare of himself and his family. Beyond that, however, every person should uphold and participate in the Church because it tells the truth about man's life, death and destiny, the truth which alone will set him free to live as a child of God.



FIRST UNITED METHODIST CHURCH
Rev. Floyd Dunn
507 West Second, Muleshoe

UNITED PENTECOSTAL GOSPEL LIGHTHOUSE CHURCH
207 E. Ave. G
George Green, Pastor

PRIMITIVE BAPTIST CHURCH
621 S. First
Arlon Richards, Elder

FIRST CHRISTIAN CHURCH
130 W. Ave. G
Rev. Walter Bartholf
Sunday School 10:00 a.m.
Worship 11:00

LATIN AMERICAN METHODIST MISSION
Ave. D & 5th Street
R. Q. Chavez, Pastor

FIRST PRESBYTERIAN
Morton Highway
Edwin L. Manning, Pastor
Sunday Morning Service

CHURCH OF THE NAZARENE
Ninth & Ave. C
David Gray, Pastor
CALVARY BAPTIST CHURCH
1733 W. Ave. C
James Williams, pastor

TRINITY BAPTIST CHURCH
314 E. Ave. B
Rev. David Evetts

MULESHOE ASSEMBLY OF GOD
517 S. First
H. D. Hunter, Pastor

JEHOVAH'S WITNESS
Friona Highway
Boyd Lowery, Minister

RICHLAND HILLS BAPTIST CHURCH
17th & West Ave. D
Gerald Pepper, Pastor

PROGRESS SECOND BAPTIST CHURCH
Clifford Slay, Pastor
1st and 3rd Sundays

Ery & FOX
401 S. FIRST MULESHOE TEXAS 78347 PH. 272-4511

TEMPLO BAUTISTA
Rev. Ynes' Aleman
Sunday School 9:45am
Preaching Service 10:45 am
Training Hour 6:00 pm
Preaching Service 7:00 pm
Wednesday Prayer Meeting 8:00 pm

MULESHOE BAPTIST CHURCH
8th Street & Ave. G
Bob Dodd, Pastor

ST. JOHN LUTHERAN
Lariat, Texas
Harman J. Scheiter-Pastor
Sunday School Classes
10:00 a.m.
Worship Services
11:00 a.m.
FIRST BAPTIST CHURCH
220 W. Ave. E
Rev. J. E. Meeks

SPANISH ASSEMBLY OF GOD
East 6th and Ave. F
Rev. Hipolito Pecina

ST. MATTHEW BAPTIST CHURCH
W. Third
E. McFrazier, Past
NORTHSIDE CHURCH OF CHRIST
117 E. Birch Street

PROGRESS BAPTIST CHURCH
Progress, Texas
Danny Curry

SIXTEENTH & D CHURCH OF CHRIST
Sunday-10:30 a.m.
Evening-6 p.m.
Wednesday-8 p.m.
Terry Bouchelle, Minister

IMMACULATE CONCEPTION CATHOLIC CHURCH
Father Timothy Schwertner
Northeast of City in Morrison Edition

MULESHOE CHURCH OF CHRIST
Chavira Highway
Pastor

game Tuesday night in Morton, in which Steve played.

Bula Fay Ledbetter was honored with a bridal shower in the home of Mrs. B.O. Sniffly, recently. Koolaid and cookies were served from tin and paper appointments. Hostesses presented Bula Fay with a rolling pin and a cast iron skillet. Presiding at the serving table was Hilda Mae Hickman and Mrs. Leroy Godsey. Out of two guests included Arnold Ziffle and Elmer Sooter. Their wedding will be July 3, at the Community Center at 1:30 p.m.

Mrs. Christine Peterson of Santa Barbara, Calif. has been visiting in the home of her parents, Mr. and Mrs. Lee Roy Simpson and Lonnie. She plans to return to her home the latter part of this week.

Sunday visitors in the home of Mr. and Mrs. Ed King were their daughter, Evelyn and her husband, of Lubbock.

Mrs. Mary Olds and Bertha Vereen were in Lovington, N.M. to visit their sister, Mr. and Mrs. John Faris.

Rev. and Mrs. Lee Roy Baker have moved to Amarillo where he will be pastoring the Tenth Street Methodist Church.

Saturday afternoon, Mrs. Gladys Terry and her brother, Clarke Boyles of Norman, Okla. visited former Sudan residents at the Amherst Manor. They included Mrs. Slate, Mrs. Doss, Mrs. Fife, Mrs. DeLoach, Mrs. Withrow and Mrs. Smith.

Bob Bryant was in Dalhart over the weekend visiting relatives. The also attended the Little Dribblers games. The Sudan Major league got second place to Hale Center girls.

Mrs. Gladys Terry returned home Friday after a two-month stay in Oklahoma City, Norman and Duncan, Oklahoma and in Houston. She visited with her sisters and brother. Her brother, Clark Boyles, of Norman returned home with her for a few days.

Members of the First United Methodist Church held a get-acquainted ice-cream, cake supper, Sunday evening, following worship services in honor of their new pastor and his wife.

Mr. and Mrs. Bill Kuykendall and children and Mr. and Mrs. R.B. Knox vacationed over the weekend, at Lake Meredith.

Mr. and Mrs. John Kropp and

children, of Hereford, visited over the weekend, in the home of his parents, Mr. and Mrs. Claud Kropp.

Mrs. Donna Lynskey, Bradley, Mrs. Debbie Phillips and Christie, of Lubbock visited Friday with their parents, Mr. and Mrs. Bu Provenance and Mr. and Mrs. G.C. Ritchie.

A&M Boosts Soybean Yield 5-Acre Contest

Texas soybean producers have an opportunity to reap additional benefits from their 1976 crop by entering the Texas Five Acre Soybean Yield Contest.

The contest is being sponsored by the Texas Soybean Association and Elanco Products Co. in cooperation with the Texas Agricultural Extension Service, announces R.J. Hodges, Extension agronomist.

"The contest is designed to be an educational tool to stimulate interest in soybean production," notes Hodges. "It affords an opportunity to compile cultural information and to recognize those individuals who achieve superior yields through the use of good management practices."

Since soybeans are primarily grown in three areas of the state -- High Plains, Northeast Texas and Coast Prairie, awards will be presented on an area and state basis. The top three producers in each area will receive 50, 25 and 15 quarts of Trellan, respectively, along with a plaque while at the state level the top producer will receive a free trip to Acapulco for two. Plaques will be presented to the top three producers in the state. All awards are provided by the TSA and Elanco.

Any producer entering the contest also becomes eligible to be named to the Texas 60 Bushel Soybean Club, points out Hodges, if he can certify a yield of 60 bushels per acre or more. Entrants in the contest must grow at least 10 acres of soybeans and the area harvested for the contest must be at least five acres in size. All entries must be in by August 15. Hodges adds that contest entry blanks and rules are available at any county Extension office.

If you can explain the universe, you have a right to think yourself smart.

Wheat Cleaned Sacked & Treated
Also For Sale
Various Varieties Of Quality
Seed Including:
Sunflower
Soybean
&
Cotton
Littlefield Delinting Co.
1/2 mile East of Littlefield On Spade Hi Way
Arthurs Summers mgr.
Box 346 Littlefield ph. 355-4533

Compliments of AVI INC. Hwy 84 W. 272-4266	Compliments of CHARLES LENAU LUMBER CO 202 E. Ash St. 272-4222	TORO GRAIN Division of Olton Feed Yards, Inc. Olton, Texas 285-2634	BAILEY COUNTY MEMORIAL PARK "Every Service A Sacred Trust" 272-4383
BEAVERS FLOWERLAND "Flowers for all occasions" 272-3024 or 272-3116	GIBSON'S DISCOUNT CENTER 1723 West American Blvd. 272-4306	HOWARD I. WATSON Alfalfa Hay 272-3552 272-4038	BLACK INSURANCE AGENCY 105 W. Avenue D 272-3292
BERRY ELECTRIC Residential-Commercial-Industrial service 104 E. Ave B 272-3375 Res # 272-4746	MULESHOE CO-OP GINS	WESTERN DRUG 114 Main	BOB'S SAFETY CENTER Wheel Aligning, Brakework Automotive Air Conditioning 272-3043
BRATCHER MOTOR SUPPLY 107 E Avenue B 272-4288	Cobb's 218 Main	WHITE'S CASHWAY GROCERY 402 Main "Where friends meet and price is talk"	DARI-DELITE DRIVE IN 210 N. First Take Out Orders 272-4482
Dairy Queen Margie Hawkins 272-3412	ST. CLAIRS 110 Main	WHITT-WATTS-REMPE IMPLEMENT CO John Deere Dealer Muleshoe 272-4297	FIRST NATIONAL BANK "Home Owned" 224 S. First
DOLLY CUP DRIVE IN Hamburgers-chicken-shrimp Twist Cone Ice Cream 102 E. Ave B 272-8957	Compliments of STATE LINE IRRIGATION Littlefield-Muleshoe-Levelland	WRINKLE WELDING & MACHINE 909 W. American Blvd. 272-4486	LAMBERT CLEANERS Steam carpet cleaning Draperly cleaning 123 Main St. 272-4726

MCDANIEL'S "SALE"

1020 Main
Clovis N.M.

CELEBRATION **1013 Mitchell**
Clovis N.M.

BEDROOM SUITES 30% to 40% OFF	GAME SETS 30% OFF	BABY FURNITURE 30% OFF	DESK 30% to 40% OFF	BAR SET & STOOLS 30% to 40% OFF	PICTURES 40% OFF	MIRRORS 30% OFF	BED CORNER UNITS 30% OFF	SAMSONITE LUGGAGE 20% OFF	CARPET REMNANTS 10% to 50% OFF
---	-----------------------------	----------------------------------	-------------------------------	---	----------------------------	---------------------------	------------------------------------	-------------------------------------	--

BEDROOM

6 Pc. Contemporary B.R. Suite Double Dresser, Mirror, Headboard, 2 Night Stands, and Chest. Walnut Veneers and Solid. Reg. 569.75 **\$429.95**

4 Pc. Bedroom Suite, Solid with Formica Tops, Dresser, Mirror, Bachelor Chest and Bookcase Hutch with Twin Captains Bed. This Is The Masters Quarters. Reg. \$1039.70 Sale **\$674.95**

Matching Student Desk and Chair With Deskbook Hutch. Reg. 399.95 Sale **\$259.55**

5 Pc. Hooker Country Manor B.R. Suite, Dresser, Mirror, Chest, Night Stand and H.B. You Will Love The Styling and Enduring Quality. Reg. 1,044.75 Sale **\$699.95**

5 Pc. Hooker Bagatelle B.R. Suite-Triple Dresser, Mirror, 2 Night Stands King H.B. Live In Style With This Spanish Group Reg. 744.80 Sale **\$450.00**

5 Pc. B.R. Suite With Engraved Knotty Oak, With Matching Plastic Tops. Double Dresser, Mirror, Chest Night Stand and H.B., This Has Antique Brass Trim and Pads. Reg. 579.95 Sale **\$399.95**

5 Pc. B.R. Suite With Crafted Oak and Veneers Solid Plate Glass Hutch Mirror, Dust Proof Drawers On Dresser, Mirror, Chest, Night Stand and Headboard. Reg. 809.75 Sale **\$484.95**

5 Pc. B.R. Suite, Masculine Design with Rustic Pine Look. Double Dresser, Mirror, Bachelor Chest, Hutch, and Headboard. Reg. 644.75 Sale **\$389.95**

Matching Student Desk with Chair. Reg. 214.90 Sale **\$140.00**

6 Pc. B.R. Suite The Lane Staccato a Contemporary Handcrafted In Warm Brown Tones, Double Dresser, Mirror, Chest, 2 Night Stands and Headboard. Reg. 1374.70 Sale **\$849.95**

4 Pc. Bassett B.R. Group Walnut Finish Double Dresser, Hutch, Mirror, Night Stand, and H.B. Reg. or Queen. Reg. 459.80 **\$319.95**

4 Pc. Broyhill Honey Pine B.R. Suite Large Triple Dresser, Hutch Mirror, Cannon Ball H.B. and Chest. A Floor Sample Close Out. Slight Damaged Chest. Reg. 1,139.80 **\$685.00**

5 Pc. Designers Oak B.R. Suite with A Country Style. Triple Dresser with Landscape Mirror, Chest, Nightstand, & B-BH. board. Regularly 854.75 Sale Price **\$499.95**

6 Piece Group In Maple. 1 Night Stand, Dresser, Twin Mirrors, Chest, and Regular-Queen Size Headboard. All Wood Construction. Regularly 919.70. Sale Price **\$554.50**

BEDDING

1 Set Only Sealy Posturepedic Imperial. Foam Mattress and Box Spring. Floor Sample. Reg. \$459.95 SET **\$349**

1 Set Only Sealy Posturepedic Premier Queen Size The Best Bed In The House, Mattress and Box Springs. Discontinued Cover. Reg. \$419.95 SET **\$329**

1 Set Only Posturepedic Imperial Twin-Long Boy Mattress and Box Springs. Discontinued Cover. Reg. \$239.90 SET **\$169**

1 Set Only Sealy Post Guard Queen Size Mattress and Box Spring. Slight Damaged. Reg. 219.98 SET **\$169**

1 King Set Only Sealy Anniversary Classic. This Is A Nice Mattress and Box Spring. Discontinued Cover. Reg. \$259.95 SET **\$189**

1 Only Queen Set Sealy Anniversary Classic Mattress and Box Spring. A Close Out. Reg. \$219.95 SET **\$169**

1 Only King Set Eathan Allen Elegance Century Mattress and Box Spring. This Is A Luxury Set. Reg. \$539.95 SET **\$399**

1 Only Restonic-Dr. Fuller A Special Health Mattress and Box Spring. Regular Size. A Close Out. Reg. 219.90 SET **\$169**

2 Sets Of Restonic My-Lady King Mattress and Box Springs. These Are Deluxe Sets. Gently Firm. Reg. \$459.95 SET **\$399**

All Sealy and Restonic Bedding On Sale For This Event.

LIVING ROOM

3 Pc. L.R. Suite Ayers Spanish With Woodframe, Loose Cushions, Very Comfortable and Easy To Keep - Sofa - 2 Chairs, Sofa Red Stripes, Velvet Chairs Solid Red. Reg. 829.85 **\$599**

2 Pc. Spanish Sofa and Chair. Dress That Living Room Up. Sofa and Chair, Gold Chermelle Velvet with Two Tone Floral. Reg. 479.95 **\$339**

Glynn Contemporary, 3 Cushion Sofa Coil Spring Foundation with Herculon-Oatmeal Cover. Reg. 599.95 **\$369**

Floor Sample Charles 2-Piece Corner Sectional A Luxurious Matelasse Cover. Excellent For Living Room or Family Room. This Is A Close Out. Reg. \$949.95 **\$499**

The Best Seat In The House. This Beautiful Sofa and Love Seat. Good For Formal, Tough Enough For the Family Room. Plush Gold and White Stripe Velvet. Reg. \$1389.90 **\$849**

Covey Queen Sleeper Sofa with Innerspring Mattress, Has Adjustable Frame to Raise Mattress for Head Rest. This Contemporary Style Has An Avocado Corduroy Cover. Reg. 659.95 **\$499**

A Luxury Ethan Allen Green Stripe Velvet Sleeper Sofa With Innerspring Mattress. Reg. \$1039.50 **\$699**

Blue and White Herculon Plaid Contemporary Sleeper Sofa with Queen Foam Mattress. Reg. \$449.95 **\$319**

Family Room Furniture Oak, Sofa and Chair With Loose Reversible Cushions in Red Plaid Tween. Reg. 509.90 **\$389**

Early American Wood Trim High Back, 3 Cushion Sofa Nylon Floral Cover. Reg. 359.95 **\$269**

Glynn Blue Stripe Velvet Love Seat, Coil Spring Foundation, A Nice One. Reg. 399.95 **\$239**

Glynn Contemporary 3 Cushion Brown-Gold Stripe Velvet. A Discontinued Style. Reg. \$759.95 **\$449**

Early American High Back Pillows Arm, 3 Cushion Sofa, Red Plaid. Reg. 434.95 **\$269**

Early American 3 Cushion Queen Size Sleeper Sofa, Orange Floral Nylon Cover. Reg. \$439.95 **\$339**

Fox Sofa and Rocking Chair, Rugged Solid Oak, 3 Cushion, Sofa Orange Plaid Rocker, Orange Tweed. Reg. 739.90 **\$449**

2 Only Spanish Lounge Chair Olive Velvet Upholstery with Oyster Welt. Lots-O-Comfort. Reg. 154.95 **\$89**

1 Only Southland Lounge Chair Blue Velvet. This Is A Discontinued Cover. Reg. 259.95 **\$159**

Large Glynn Lounge Chair, Very Comfortable Upholstery Brown Corduroy. Reg. 229.95 **\$139**

Extra Nice Southland Lounge Chair, Two Tone Oyster with Olive Welt. Reg. 179.95 **\$119**

Spanish Black Vinyl Lounge Chair With Exposed Wood. Reg. 159.95 **\$99**

Glynn Traditional Lounge Chair with Olive Velvet Upholstery. Reg. 209.95 **\$139**

Glynn Barrell Swivel Spot Chair 3 Color Terracotta Upholstery. Reg. 239.95 **\$139**

Large Lounge Chair and Ottoman. Brown Check Tweed Upholstery. Reg. 369.90 **\$219**

Glynn Lounge Chair Leaf Green Velvet Coil Spring Foundation. Reg. 199.95 **\$99**

FATHERS DAY SPECIAL

All Recliners 10% off
125 in stock

Choose From Action - Berkline - Barco Lounger - LA-Z-Boy - Syle Home Styles, Classic - Traditional - Contemporary and Early American. Covers in Naugahyde, Herculon, Nylon, and Velvets. Colors Assorted - in Solids, Tweeds, Plaids, and Florals. We Have 2 and 3 Way Recliners, Rocker Loungers, Hi-Lo and Wall Hugers Recliners.

HURRY FOR BEST SELECTIONS

DINING ROOM

5 Pc. Duchess Dining Group Walnut With Formica Table Top, 4 Upholstered Chair, Ideal for Small Areas. Slight Damage. Reg. 339.95 **\$169.95**

5 Pc. Maple Dining Group, 48" Round extension Table, 4 Maple Concord Chairs. Mismatched Group. Reg. \$479.95 **\$289.95**

7 Pc. Hooker Dining Group, The "Bagatelle" Collection. All Wood Construction In A Rich Pecan Finish. Table and 6 Chairs. Reg. \$709.65 **\$459.95**

7 Pc. Dining Room Suite, The Bay Colony Collection Hard Rock Maple - Brown-tinted Maple Finish. Pedestal Extension Table With Formica Top and 6 Chairs. Reg. \$829.65 **\$649.95**

Matching Buffet and China. Reg. \$429.90 Sale **\$349.95**

Garrison 8 Piece Dining Room Suite, Table 6 Chairs, and China. Solid Oak and Selected Veneers. Reg. \$1059.60 **\$739.95**

58" Oak China and Base. This Can Be Used With Almost Any Decor. China Has Glass Doors and Shelves and Lighted. A Nice One Reg. \$579.80 **\$399.95**

ALL DINING ROOM SUITES ON SALE

APPLIANCES

1 Only Magic Chef 30" Custom Deluxe Range Harvest Gold, Waste High Broiler and Clock. Reg. \$449.95 **\$349**

2 Only Maytag Built-In Dishwasher, Large Tub Top and Bottom, Spray Arm. Discontinued Model. White or Green Reg. 339.95 **\$239**

1 Only Maytag Portable Dishwasher with Unique Spray Action, and Micromesh Filter. Harvest Gold. Reg. 389.95 **\$299**

2 Only Frigidaire Custom Imperial Built-In Dishwasher Choice of Color Panels. These Are Discontinued Models. Reg. 459.95 **\$359**

3 Only Frigidaire Custom Deluxe Built-In Dishwasher. Choice Of Portable And Colors. These Are Good Buys. Reg. 369.95 **\$269**

3 Only Frigidaire Micro-Wave Ovens. Save Time Save Energy. These Are Discontinued Models. Reg. 375.95 **\$325**

1 Only Frigidaire Touch-N-Cook 30" Range With Ceramic Cooking Surface and The Electric-Clean Oven. Slightly Used - 1 Year Warranty. Reg. \$1029.95 **\$599**

CARPETS

SPECIAL CLOSEOUTS

OVER 500 ROLLS IN STOCK ALL REDUCED FOR THIS SALE

CHARTER - GRAND CANYON - CHARTREUSE - 100% NYLON CARPET Reg. \$12.35 Sq. yd. Installed Now **\$9.95** Sq. Yd. Installed

MASLAND CENTENNIAL - SHORT SHAG - 100% NYLON Reg. \$9.00 Sq. Yd. Installed Now **\$7.95** Sq. Yd. Installed

EVANS & BLACK - 9033 - AVOCADO - SUPER THICK PLUSH 100% NYLON Reg. \$13.55 Sq. Yd. Installed Now **\$10.95** Sq. Yd. Installed

MASLAND - WIND WARD - SCULPTURED SHAG 100% NYLON Reg. \$12.50 Sq. Yd. Installed Now **\$10.00** Sq. Yd. Installed

MASLAND - SEA SHELL - SHORT SHAG - 100% NYLON Reg. \$11.15 Sq. Yd. Installed Now **\$9.50** Sq. Yd. Installed

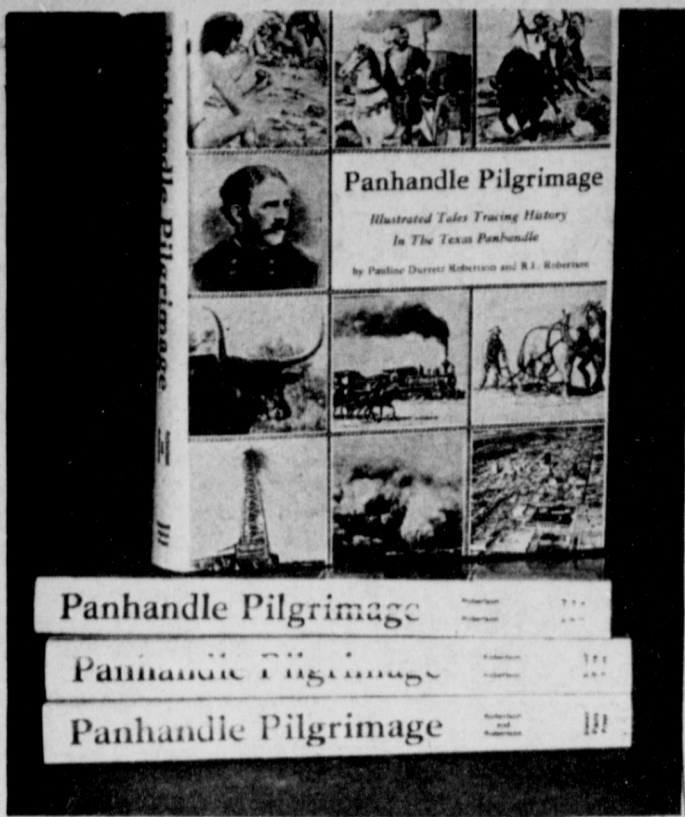
CORNET - RIPPLE MIST - LUXURIOUS SHAG - 100% NYLON Reg. \$14.30 Sq. Yd. Installed Now **\$11.95** Sq. Yd. Installed

CARPET REMNANTS

	REG.	SALE
1 Plush Celery Green 12'x12'11"	\$249.90	\$183.00
2 Short Shag Print Green 12'x22'	\$261.04	\$199.00
3 Sculptured Shag Green-White 12'x17'2"	\$190.43	\$142.00
4 Sculptured Shag Brown-Gold 12'x20'9"	\$264.25	\$195.00
5 Short Shag Brown-White 12'x26'10"	\$294.28	\$210.00
6 Sculptured Shag Sea Green 12'x16'7"	\$276.10	\$210.00
7 Short Shag Multi-Color 12'x11'9"	\$210.76	\$156.00
8 Plush Shag Pink 12'x22'	\$354.90	\$250.00
9 Shag Gold-Green 12'x20'5"	\$286.20	\$230.00
10 Saxony Plush Blue-Gold 12'x26'9"	\$338.80	\$291.00
11 Sculptured Shag Yellow Gold 12'x19'4"	\$285.00	\$215.00
12 Shag Gold 12'x20'10"	\$343.00	\$256.00
13 Saxony Plush Deep Gold 12'x28'10"	\$532.79	\$394.00
14 Plush Yellow 12'x21'	\$397.60	\$294.00
15 Saxony Plush Green 12'x17'3"	\$241.00	\$181.00
16 Plush Multi-Green 12'x21'	\$351.40	\$289.00
17 Plush Gold 12'x11'10"	\$208.40	\$138.75
18 Shag Green & Orange 12'x20'10"	\$285.00	\$195.00
19 Hi-Lo Loop Gold 12'x25'6"	\$310.00	\$235.00
20 Loop Pattern Brown 12'x19'2"	\$234.00	\$179.00
21 Sculptured Shag Red-Yellow 12'x21'10"	\$316.00	\$236.00
22 Shag Green 21'x20'3"	\$390.00	\$195.00
23 Sculptured Shag Green 12'x17'6"	\$230.00	\$174.00
24 Plush Shag Green-Gold 12'x21'9"	\$239.00	\$145.00
25 Shag Green 12'x18'6"	\$219.00	\$156.00
26 Plush Shag Gold 12'x29'9"	\$353.00	\$229.00

REGISTER FOR '76' PRIZES TO BE GIVEN AWAY

all items subject to prior sale



PANHANDLE PILGRIMAGE . . . Illustrated Tales Tracing History in the Texas Panhandle by R.L. and Pauline Durrett Robertson. The book commemorates the Centennial Birthday of the Texas Panhandle, honoring its pioneers and events.

The Sandhills Philosopher

Editor's note: The Sandhill Philosopher on his Johnson grass farm this week checks over some of his un-used notes.

Dear editor:

Some men I understand won't leave work in the afternoon till their desk is cleared off, some clean their desk off once a week, some once a month, some every spring. I have never been bound by such rigid rules. I clean mine off when it won't hold any more. It reached that peak yesterday and here are a few items I picked up after they feel on the floor:

(1) It seems to me that while it might be asking too much of human nature to expect to have politicians who won't lie, it looks like some of the more notorious ones would learn to at least stop lying about their lying. It makes you wonder about a politician's intelligence when he looks into the TV camera and says "I never was in her apartment", only to have it come out that actually he was there twice a week for two years. It looks like Congress has to do either one of two things: straighten up, or ban investigative reporting.

(2) As Mark Twain said, some people will lie on credit when they could tell the truth for cash.

(3) I understand the big New York City University has closed down because it's broke. Con-

gress ought to do something about that immediately. You start closing down public outfits because they're broke and what do you think will happen in Washington?

(4) According to a statistical firm, what a person earns from January 1 to May 1 goes for taxes, and it's not until May 2 that he actually starts working for himself. It has taken us 200 years to go from No Taxation Without Representation to No Representation Without Taxation.

(5) Washington has a hard time learning. It has been denouncing Cuba for sending troops to Angola, when it ought to be sitting back grinning. If Cuba hasn't learned from us what it can cost a nation to send troops to a country half-way around the world, it ought to be her worry, not ours.

My desk is now cleaned off. I didn't know it was that color. Yours faithfully,
J.A.

Lou Harris, pollster:
"Humphrey has become a kind of elder statesman in the Democratic Party."

Jack Brooks, House GAO Chairman, on federal employes' long lunches:
"It might make it a little easier to swallow the cost of federal government if it didn't include lunches."

Lee Marvin And Richard Burton Star In Paramount's "Klansman"

Lee Marvin and Richard Burton star in Paramount Pictures' explosive drama, "The Klansman," which opens Sunday at the XIT Theatre. The William Alexander-Bill Shiffrin Production of a Terence Young Film is a contemporary story about two social forces on a collision course in a small Alabama town—the new black militants and the old Ku Klux Klan. The explosion begins after a young white woman is raped on a lonely road at night and a black man is accused. "The Klansman" screenplay by Millard Kaufman and Samuel Fuller is based on William Bradford Huie's 1967 Pulitzer-Prize-winning novel. Co-starring with Marvin and Burton are Cameron Mitchell, Lola Falana, Luciana Paluzzi, David Hudellston, Linda Evans and football great O. J. Simpson in his film debut as Garth. Produced by William Alexander, "The Klansman" is directed by Terence Young whose many film credits include three of the James Bond movies, "Dr. No," "From Russia With Love" and "Thunderball." Executive producer is Bill Shiffrin and the director of photography was Lloyd Ahern with Aldo Tomi as supervising cameraman.

The associate producers for "The Klansman" are Joe Igner, Michael Marcovsky, Rosemary Christenson, Peter A. Rodis, Alvin Bojar, Jerry Levy and Daniel K. Sobol.

ATTENTION MULESHOE AREA CATTLEMEN
...in regard to dead stock removal... If you have a problem with service... whether in the feed yard or on the farm... Please give US a chance! Thank You.
YOUR LOCAL USED COW DEALER IN MULESHOE
Ph. 965-2903
Mobil 965-2429
Muleshoe Bi-Products

Sun.-Mon.-Tues.

Red necks. White hoods. And raped black girls. O.J.'s grabbing a gun and going to war.



A Paramount Release
A WILLIAM ALEXANDER-BILL SHIFFRIN PRODUCTION
RICHARD BURTON
LEE MARVIN
A TERENCE YOUNG FILM
"THE KLANSMAN"
Co-Starring CAMERON MITCHELL, LOLA FALANA, LUCIANA PALUZZI, DAVID HUDELSTON, LINDA EVANS and O. J. SIMPSON as GARTH
Executive Producer BILL SHIFFRIN Based on the novel by WILLIAM BRADFORD HUIE
Screenplay by MILLARD KAUFMAN and SAMUEL FULLER
Produced by WILLIAM ALEXANDER Directed by TERENCE YOUNG
A Paramount Release
R RESTRICTED

Gates open 8:45 p.m. ♦ **X. I. T.** ♦ Show Starts 9:15
DRIVE - IN THEATRE
MULESHOE, TEXAS



Fathers' Favorites

POLAROID SUPER SHOOTER



\$19⁸⁸

reg. \$23.97

Admiral

SOLID STATE FM/AM DIGITAL CLOCK RADIO

\$24⁶⁶

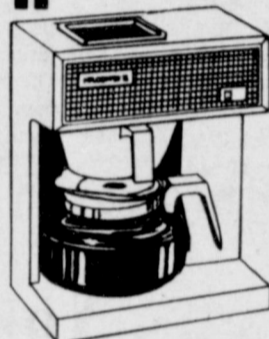


MODEL SERIES CRF1120

reg. \$49.97

Mr. Coffee II

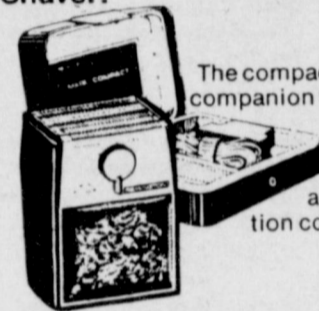
Dad will love the Mr. Coffee II. It gives you a cup of perfectly brewed coffee every 30 secs. Makes 10 cups. No CB500AC.



\$23⁸⁸

reg. \$26.97

REMINGTON® MARK C™ Compact Rechargeable Shaver.



The compact traveling companion that makes the close shave comfortable. 4 position comfort dial.

\$32⁸⁸

reg. \$39.97

Dickies Work Shirts

Men's shape set work shirt of heavy duty 65% polyester-35% cotton fabric that never needs ironing. Several colors to choose from. Sizes 14 1/2-17.

5⁹⁷
REG. 6.97

Dickies Work Pants

Permanent press, shape set, heavy duty 65% polyester-35% cotton twill fabric. Several colors to choose from. Waist sizes 29-44.

6⁹⁷
REG. 7.97

Dickies Coveralls

Men's shape set poplin coverall of 65% cotton-35% polyester permanent press fabric. Ideal for summer work or leisure wear. Sizes S-M-L-XL.

8⁹⁷
REG. 11.97



Service Oxfords 9⁹⁷
Men's black smooth military oxfords with cushion insole & non-marking PVC sole & heel.



Ranch Boots 18⁹⁷
10-inch cactus Range-hide western Wellington boots with brown cork sole & cowboy heel.

Dress Socks

Orion stretch socks. One size fits all. Assorted colors.



57^c

REG. 77^c



T-Shirts or Briefs

Cool, comfortable blend of 50% cotton-50% polyester. Sizes S-M-L-XL.

Pkg. of **3** For **2⁹⁷**
REG. 3.59

Handkerchiefs



50% cotton-50% polyester fabric needs no ironing.

Pkg. of **4** For **67^c**

PRICES GOOD JUNE 14-19

**WANT...
TO BUY?
TO SELL?
RESULTS?**

WANT ADS

**...WILL
WORK
FOR YOU!**

OPEN RATES

1st insertion, per word - 9¢
2nd and add., per word - 6¢
NATIONAL RATES
1st insertion, per word - 11¢
2nd and add., per word - 7¢
Minimum Charge - 50¢
CARD OF THANKS - \$3.00
Classified Display - \$1.25
per column inch.
Double Rate for Blind Ads -
DEADLINE FOR INSERTION
Noon Tuesday for Thursday
Noon Friday for Sunday
WE RESERVE THE
Right to classify, revise or
reject any ad.
NOT RESPONSIBLE
For any error after ad has
run once.

PERSONALS

PTL (PRAISE THE LORD)
Channels 28 and 3. 8:30 - 10:30
a.m. Monday through Friday.
15-12s-tfc

HELP WANTED

WANTED: LVN on 3 to 11 shift.
Good salary and benefits. Apply
in person at Amherst Manor.
3-24s-tfc

WANTED: Experienced mill
foreman. For information con-
tact J.D. Page, Bovina Feeders.
806-825-2103.
3-24s-2tc

WANTED: Beautician at Main
Street Beauty Shop. 272-3448.
3-21s-tfc

WANTED: Person to work in
the Deli at Pay-N-Save. Apply
in person.
3-23t-4tc

WANTED: Still taking appli-
cations for workers at Allsup's
7-11.
3-46s-4tc

APTS. FOR RENT

MOVING NOW - Nice 1, 2 and 3
bedroom apartments. Fully car-
peted, individual heat-air. 1 1/2
baths, utilities paid, play-
ground, laundry facilities.
Saratoga Gardens
1300 Walnut Street
Frona, Texas
247-3666
Office hours 10-6
5-3t-tfc

REAL ESTATE

80 acres for sale. Eight miles
west of Muleshoe on south side
of highway 84. Three irrigation
wells.

Small Wood Real Estate
116 E. Ave. C
Muleshoe, Texas

FOR SALE: 420 acres dry land
farm in Bailey County, Texas.
\$200 per acre. Good terms. Call
Carol Lumpkin **RATCLIFF SHA-
VOR REALTORS** Lubbock 795-
4126 or 799-3766.
8-23s-4tc

FOR SALE: 3 bedroom house
on 406 Austin. Exclusive.
E.E. HOLLAND
REAL ESTATE
113 WEST AVENUE D
PHONE 272-3292
8-24s-tfc

FOR SALE: 3 bedroom, three
bath brick home. Contact Andy
Douglass. 272-3001.
8-24t-tfc

TO SETTLE ESTATE:
FOR SALE: 179 9/10 acres 3 1/2
miles north of Sudan on paved
road. Mail and school bus route.
10" well. Drag-line sprinkler
system. All in cultivation.

179 9/10 acres 4 miles north of
Sudan. Extra good water. In
edge of Sandhills.
60 acres in cultivation. Will
make excellent alfalfa farm.
After 2:30 p.m. Call 806-227-
2115 for Milton Williams.
8-24t-2tc

32 acres for sale with three
rent houses.
34 acres for sale with well,
1, 2 and 3 acres for sale.
Commercial buildings and
commercial lots.
28 acres for sale.
28 acres with well and 2
bedroom house.
2 and 3 bedroom houses for
sale.

We have many more listings.
See me for your Real Estate
needs.

E.H. HALL REAL ESTATE
505 AUSTIN
PHONE 272-4784
8-22t-4tc

FOR SALE: Lot at lake LBJ.
Horseshoe Bay. 1/4 acres. Trees,
Golf Course. All private. 272-
272-4047
8-24t-4tc

FOR SALE: 522 West American
Blvd building and land. Call
806-797-7742.
8-23s-9tc

FOR SALE: 181 Acres irrigated.
1 well. Lays real good on
highway. West of Progress.
160 acres irrigated. 6" wells.
North of Bovina on FM high-
way.
320 acres north of Bovina.
Priced to sell.

15 acres with new 3 bedroom
1 3/4 bath home. Has 4" well.
Sheds and corrals. Near
Progress.

**J.B. SUDDERTH REALTY
INC.**
BOX 627
FARWELL, TEXAS
481-3288
8-15t-tfc

FARM EQUIP. FOR SALE

FOR SALE: No. 200 John Deere
haystacker and stack mover.
806-889-3409.
10-24s-tfc

Your neighbors trade at **STATE
LINE IRRIGATION** for all their
irrigation needs. Why not you?
Muleshoe, Littlefield, & Level-
land.
10-45s-tfc

FOR SALE: 60-A Hesston Stack-
hand. For hay pick up and five
side roll sprinklers. Call 925-
3152.
10-21s-4tc

FOR SALE: 40 HP Electric
Irrigation motor with switch
boxes. \$950. Phone 272-4642.
10-21s-tfc

FOR SALE OR TRADE

**FOR SALE BY M.D. GUN-
STREAM:** Good pea green
baled hay. Call 272-4515 or
272-4709.
11-18t-tfc

FOR SALE: 1976 14' x 72'
Mobile home. 2 bedroom - 2
bath. Furnished or unfurnished.
Call 272-3331 after 5 p.m.
11-17t-tfc

FOR SALE: 14 foot fishing boat.
18 HP motor. 4592 and 4611.
11-23s-3tc

FOR SALE: 1973 Honda XL 250.
Good condition. Room 16 High-
land Motel. Call after 9 p.m.
11-24t-2tp

MISCELLANEOUS

Watkins Products sold at 1610
West Avenue B, Muleshoe.
15-22s-13stp

BABYSITTING. 272-4626.
15-24s-2tc

Couple would like to rent your
camping trailer or small trailer
house during the last part of
July. Will pull trailer to Happy,
Texas and park it for five days.
Call 272-3879.
15-23s-2tc

WANTED: Wheat cutting less
than Custom rate. Call 505-372-
5402 after 9 p.m. MDT.
15-22t-3tp

**SALES, LOANS
AND
APPRAISALS**
In Bailey County 30 Years
**KREBBS
REAL ESTATE**
210 S. 1st

FOR SALE: 2 - 1974 Yamaha
motorcycles. Contact Mike Jes-
ter at 272-3822 or at work
272-5527.
15-22t-tfc

We Cover Pickup

**Truck Seats
McCormick
Upholstry &
Drapery**

1009 S. 1ST
272-4660

FOR SALE: 16" well casing,
new steel 18" 2c a lb.; 6" and
8" column pipe. 1/2 prices for
junk iron.

FARWELL PIPE & IRON
601 Ave. A
Farwell, Texas
15-46t-tfc

FOR SALE: Pace and Powell
radios. Base and mobiles.
\$120 and up. Call 272-3163.
15-15s-tfc

FOR SALE: 32 acres well
located. Two bedroom house
and a trailer court.
Some one acre tracts for sale.

POOL REAL ESTATE
214 E. AMERICAN BLVD.
272-4716
8-20s-tfc

DEPENDABLE SERVICE.

Backhoe - Frontloader
Cesspool Pumping
Drain Cleaning
Roto-Rooter
Roto-Tilling
Light-Hauling
DWAIN WHEAT
272-3378
If no answer call at noon or
after 5 p.m.
15-11t-tfc

To better serve your aerial
and high clearance ground
spraying service. Potato fun-
gicides and vine kill, corn
weeds, alfalfa weevils, etc.
J.L. COX SPRAYING
933-2300
15-22t-4tc

WANT TO BUY: NEW CROP

alfalfa cubes or number one
baled alfalfa hay. Contact David
Dye. Phone 806-296-5067.
17-20t-8tc

**Card Of
Thanks**

Words fail to express our
appreciation to each and every
one of our friends for their
Prayers, flowers, food, and sym-
pathy they showed in the loss of
our loved one, D.O. Lorance.
May God bless each of you in a
very special way.
The family of D.O. Lorance
Mrs. O.H. Lorance
The family of John R. Moore
Jr.
24s-1tp

Sows Are Proven 'Not Ideal'

Sows are often less than "ideal
mothers", and when they fail to
perform, man has had to take
care of the piglets.

Raising a dozen healthy pigs
from a litter of 12 is an optimal
situation for a pork producer,
and a short course at Texas Tech
University on June 18 will
discuss how the producer can
achieve it.

The Swine Short Course will
offer nearly 175 pork producers
the latest techniques in swine
production, early weaning and
nutrition. This is the 24th year
of the course.

The Texas Tech department of
animal science in the college of
agricultural sciences is sponsor-
ing the one-day course in coop-
eration with the Texas Pork
Producers Association and the
Texas Pork Producers Board.
Leading animal scientists and
industry experts will address
the registrants. Key speakers
are Dr. Richard Penny, Royal
Veterinary College, University
of London, England, Dr. Phil
Dziuk, animal science depart-
ment, University of Illinois, and
Bill Prestidge, a leading swine
producer from Warsaw, North
Carolina.

Dr. Penny will speak on the
influence of management practices
on diseases among pigs. Dr. Penny's
presentation will follow opening
remarks by Dean Anson R. Ber-
trand of the college of agricul-
tural sciences at the host university.
Registration begins at 8 a.m.
The morning session will be
presided over by Dr. A. Max
Lennon, chairman of the animal
science department, Texas
Tech.

The importance of measuring
production efficiency will be
explained by Dr. Dziuk. Pro-
gress in Texas Tech University's
swine research program will
also be outlined.

Dr. L.F. Tribble, Texas Tech
assistant professor of animal
science, will preside over the
afternoon session beginning at 1
p.m. Three swine producers and
an animal scientist will form a
"producers panel" to discuss
methods of weaning large litters
of pigs. Dr. Gilbert Hollis, area
swine specialist, Texas Agricul-
tural Service, Lubbock, will
serve as moderator, with swine
producers Frank Blair of Black-
well, Don Gray of Snyder and Al
Maberry of Roby as panel
members.

Dr. Dziuk will then provide
recommendations for improving
reproductive efficiency in pigs.
Dr. D.E. Orr, Texas Tech
assistant professor of animal

science, will explain the use of
automated feeding machines in
baby pig management.

"Weaning Environment for
Young Pigs" will be discussed
by Dr. J.A. Coalson, director of
Swine Feeds Research, Decatur,
Ind.

Improving the reproductive
performance of a sow through
proper nutrition will be the
subject of Dr. J.H. Hesby, of the
animal science department at

Slated New Influenza Virus Inoculation

A new strain of influenza virus
appeared in February at Fort
Dix, New Jersey. This newly
identified virus has antigenic
properties (or antibody produc-
ing characteristics) similar to a
flu virus that occurs in swine.
This small outbreak in New
Jersey was the first instance of
the swine-like influenza virus
being transmitted from man to
man.

Because of the implications of
this new flu outbreak, health
officials in Texas are now gear-
ing up for the largest mass
immunization campaign in the
state's history. Part of a nation-
wide effort to protect the Ameri-
can people from an expected
epidemic of New Jersey A flu
(sometimes called "Swine
flu"), the Texas campaign will
attempt to provide the protective
vaccine to at least 10 million
Texans.

The goal is to immunize the
population in a three-month
period running from September
through November of 1976. The
nation has never attempted an
immunization program of such
scope and intensity. It will
require a major effort by both
the public and private sectors of
health care.

Essentially, the plan relies on
the Federal government for its
purchasing power to obtain the
quantities of vaccine necessary,
and for technical leadership and
coordination through the nation-
al Center for Disease Control.
State health agencies will be
called on to translate the plans

into action, using their manpow-
er and experience in conducting
systematic immunization pro-
grams. The private health care
sector has joined in to offer its
support and its extensive medi-
cal and other health related
resources. The Texas Medical
Association unanimously passed
a resolution supporting the
mass flu immunization cam-
paign at their recent state
meeting.

The strategy is to tailor the
approach to the opportunity and
the need - using mass immuni-
zation techniques where appro-
priate, but also using delivery
points already in place, such as
physicians' offices, health de-
partment clinics, and commu-
nity health centers. The use of
volunteers and volunteer orga-
nizations will also be a very
important part of the campaign.

Actually, the first stages of the
mass immunization campaign
will begin about mid-July. A
special vaccine for older people
and people with chronic illness
will be made available at that
time. A "bivalent" vaccine
providing protection from both
the New Jersey A influenza
virus (Swine Flu) and the recent
Victoria A strain of last year will
be available to this target popu-
lation considered to be at risk.
The immunization of the general
population against the New
Jersey A virus will begin about
the first of September.

One can imagine the complex-
ity of trying to immunize almost
the entire population of the

state in such a short period of
time. Fortunately, public health
authorities and private medicine
in Texas have had a recent
experience in mass immuniza-
tion. Since the passage of the
mandatory "school immuniza-
tion law" in 1972, several
million Texas school children
have been immunized against
certain diseases. It was accom-
plished by the Texas Depart-
ment of Health Resources' pub-
lic health regions, by local
health departments across the
state, and by physicians in
private practice.

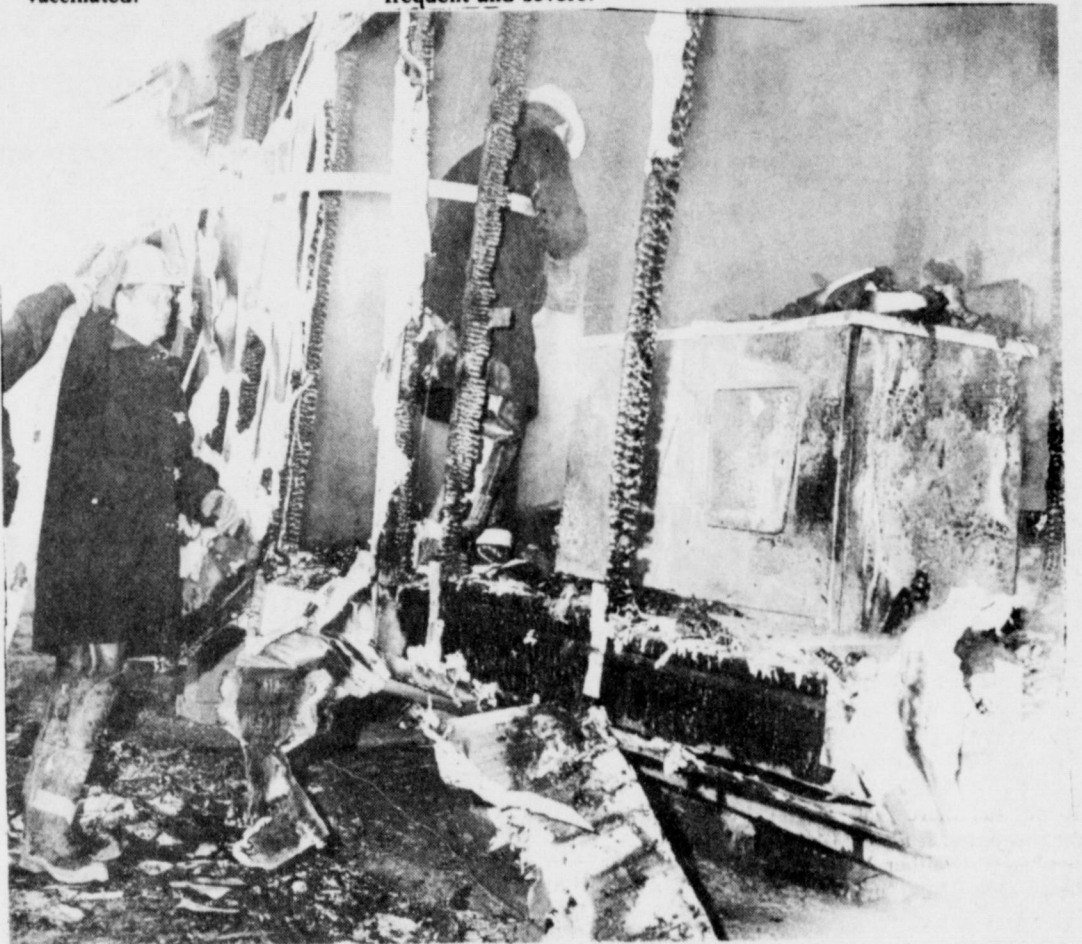
The mass flu immunization
campaign will, of course, be a
voluntary participation cam-
paign. But state health officials
emphasize that to prevent an
epidemic, it is necessary that
practically all of the people be
vaccinated.

The swine influenza virus has
been implicated in the 1918
epidemic of influenza that killed
20 million people all over the
world, with over 500 thousand
deaths in the United States. The
1918 "pandemic" (or worldwide
epidemic) was unique because
of its high mortality and the fact
that so many of the fatalities
occurred among apparently
healthy young men and women.
By comparison, the Asian flu of
1957 - the most severe influenza
pandemic since - caused an
estimated 70,000 deaths, pri-
marily among the elderly or
individuals with chronic illness.

Influenza is a respiratory dis-
ease caused by a virus. There
are two main types of influenza
virus - A and B. Each type
includes various strains. Type A
epidemics are generally more
frequent and severe.

From time to time, new virus
strains develop. When this hap-
pens, and if the strains are quite
different from previous ones,
they may cause epidemics be-
cause people have not had any
previous exposure to them.
Consequently, the population
has not built up any specific
immunity against them.

Once every 10 years or so the
change is more dramatic, and
this is when we have extensive
outbreaks such as the pandemic
of Asian flu of 1957 and the
Hong Kong flu of 1968.
When a new virus appears, it's
normally followed by an epide-
mic. Public health officials want
to keep history from repeating
itself in the form of another flu
that could take thousands of
lives.



DESTROYED APPLIANCES... The burned out washer and dryer are mute evidence of the intensity of a fire that destroyed two mobile homes a mile and a half north of the West Camp store late Wednesday. Here firemen continue to direct water into the burning structure in an effort to keep the flames from igniting the mobile home immediately behind this one.

Texas A&M University.
Prestidge will detail the man-
agement of a large commercial
swine production unit, and Dr.
James W. Dunn, of the Texas
A&M Veterinary Medical Diag-
nostic Laboratory, Amarillo, will
explain the laboratory's serv-
ices.
The course will conclude with a
report by Donald Osbourn on
the Texas Pork Producers Asso-
ciation, of which he is president.

Olton's Outdoor Drama, July 30,31

It's not the Mississippi River
Festival or Washington's Wolf
Trapp Farm where the audience
sits on the grass. It's on the
banks at the head waters of the
Brazos River, six miles north of
Olton.

"Giants of the Great Plateau"
will be produced by the Historic
Preservation Society of Lamb
County on July 30 and 31, at
8:30 p.m.

The musical drama, written by
Bettye Givens depicts the life on
the Texas plains in the early
1900's. It is the story of the
cowboy, the nester from the
north and the foreigners who
settle the area and their triumph
over the frontier.
The story concerns Tappie who

comes as a young bride and
immediately wants to go home
again, and Abe, her husband
who loved the land and wants to
stay. There is music, dancing,
romance, sadness and history.

It will be a good idea to bring a
blanket to sit on and a cushion.
Take pleasure in a simple touch
with the past. Sit on a grassy
knoll and be a part of a West
Texas evening, at the prairie
theater.

The music is composed by Ron
Lange at the University of Texas
at El Paso and his brother Ken
Lange, Professor of Music at the
University of Hawaii. Marilyn
Miller, graduate of Texas Tech
is the director. Steve Garmis, the
conductor. Suzanne Aker of
Lubbock, the choreographer.

Singleton-Elis Funeral Home
24 Hour Ambulance Service
Ph. 272-4574 Muleshoe

Toro Cut Your Water Bill
Install An Automatic Lawn Sprinkling System
"Water While You Sleep"
Twin G Yard Sprinkler Systems
LESLIE GARY Phone 889-3814 Olton Route Plainview
INSTALLATION AND REPAIRS

MULESHOE LOCKER
Fed Meat Goats (Carc Wt. App. 40 lbs.)
60¢ lb.
Fed Mutton (Sheep) (Carc Wt. App. 60 lbs.)
50¢ lb.
"Cabrito" (Carc Wt. App. 15 lbs.)
\$17.50 per hd.
ALSO "Baryate"
USDA Inspected
Muleshoe Locker
401 Main 272-4703

Air conditioning?

Don't just melt away. Breeze over to the Yellow Pages, and find where to get the cool of your dreams. For anything at all—it's there at your fingertips when your fingers do the walking through the Yellow Pages.

yellow pages

Preston Funeral Held In Farwell Friday, June 11

Hugh Preston, 65, of Farwell, died Wednesday night, June 9, in West Plains Medical Center where he had been a patient. A resident of Farwell for the past 12 years, he was a former resident of Sudan.

Preston was born February 5, 1911 in Anson and was a retired Dry Cleaner operator and a member of the First Baptist Church of Farwell.

Funeral services for Hugh Preston were conducted at 3 p.m. Friday in the First Baptist Church with Rev. J.L. Bass, pastor of the First Baptist Church of Panhandle and Rev. Cliff Ennen, pastor of the First Baptist Church in Farwell officiating. Interment was in Sunset Terrace Memorial Park in Farwell, under the direction of Singleton-Ellis Funeral Home of Muleshoe.

Survivors include his wife, Nannie; one son, Don Preston of Lubbock; one daughter, Mrs. Barbara May of Sudan; two sisters, Mrs. Gladys Pool, Amarillo and Mrs. Maybelle Latimer of Lubbock and four grandchildren.

Palbearers were Raymond Martin, Bill Christian, Ray Tarleton, Bob Westphal, Neil Stewart, Otis Huggins, Clay Henson and Leonard Haney.

Hand Salute

Hand-raising as a formal greeting originated among cave men to prove they carried no weapons. In feudal times, an armored knight raised his right arm to lift his helmet visor and to show friendship by keeping his sword hand away from the weapons. The gesture developed into the military salute. Before the 19th century, British soldiers saluted by tipping their hats.

Funeral Held For Former Muleshoe Man

Funeral services for Homer S. Sanders, 87, of Earth, were conducted at 3:30 p.m. Saturday in First United Methodist Church in Earth. Officiating was Rev. Bill Watson, pastor, with Masonic Graveside services at Bailey County Memorial Park in Muleshoe. Funeral arrangements were by Singleton-Ellis-Parson Funeral Home of Earth.

Sanders, a former resident of Muleshoe had lived in Earth for the past 18 years. He operated Sanders Lumber Company in Earth and was a member of the First United Methodist Church. He was married to Jessie Lee Brooks on September 30, 1914. Sanders was a member of Earth Masonic Lodge, the Khiva Temple in Amarillo and the Shrine in Santa Fe, N.M. He was a graduate of Texas A&M and a

member of the alumni association.

Survivors include his wife; a daughter, Aurelia Sanders of Earth; a son, Homer S. Jr. of Amarillo; a daughter L.W., of Palo Alto, Calif. and one grandchild.

Former Local Superintendent Is Promoted

Jerry Kirk, a former classroom educator and principal and superintendent of the Muleshoe Independent School District, was recently named vice president of the Oklahoma Association of School Administrators.

Kirk, who is now at Western Oklahoma Vo-Tech, at Burns Flat, Okla., left Muleshoe several years ago. He will take office on July 1, with the Oklahoma Association.

The casual borrower is a casual payer.

Bula News By Mrs. J. Blackman

Miss Juana Young from Fayetteville, Arkansas, spent from Tuesday evening until Sunday afternoon with her parents, the Paul Youngs. She also stayed with her sister and family, Mr. and Mrs. Tommie Kirk, and children, Jennifer and Brandon. Juana is head librarian of the science department, at the University of Arkansas, in Fayetteville.

Mrs. Marie Aaron of Carlsbad, N.M. spent Friday night with her mother, Mrs. Pearl Walden.

Rodney Marshall of Whitharral, spoke at both morning and evening services at the Church of Christ Sunday. The regular minister, Ed Scott and family are on a campaign for Christ in Indiana, along with several oth-

er students from the Sunset School of Preaching, in Lubbock. Marshall was accompanied by his wife, Ann. They spent Saturday night with her parents, the Nolan Harlans. Mrs. Harlan's mother, Mrs. Mary Britt, of Amherst, was also with them.

Mr. and Mrs. Ed Crume took her mother, Mrs. Irene Parker, to Eastland Friday, where she will spend some time visiting with a daughter there. She will also visit with other relatives. They returned home Sunday.

Mr. and Mrs. James Sinclair and daughter, Kelly, attended the kindergarten graduation for the Sinclair's grandson, Todd Childress, Thursday morning, at 10:00. Todd was a student at Hillander Private Kindergarten School, in Midland.

Mr. and Mrs. Jack Swanner of Plainview, were Saturday night guests of his sister, Mr. and Mrs. C.A. Williams.

V.C. Weaver is recovering from his hip surgery. The surgery was done Wednesday, May 26, at the St. Mary of the Plains Hospital, of Lubbock. Mrs. Weaver is with him, and also a daughter, Mrs. Juanita Brannen of San Antonio is here.

Mr. and Mrs. Tom Bogard accompanied by their daughter, Mrs. Ray Kennison of Olton, spent from Friday until Sunday afternoon in Clarendon and McLean. They visited in Clarendon at the nursing home with his sister, Mrs. Blanche Smith. Saturday afternoon they attended the funeral at the McLean Methodist Church for Wheeler Carter, husband of Bogard's niece.

Mr. and Mrs. Mike Bridges and Mr. and Mrs. R.L. Clark, all of Levelland, spent the past weekend, with the O.A. Warren family.

Several families of the community spent the weekend fishing.

RECIPE

By Sarah Anne Sheridan
Nutritionists tell us to serve leafy vegetables at least once a day. The vitamins that we must have are abundant in greens.

Spinach Supreme

Eggs
Seasoning
1 T margarine
1 T flour
3/4 c milk
Line custard cups with cooked, well-seasoned spinach. Break whole egg into each spinach mold. Bake in an oven 350 degrees until eggs are set. Turn out upside down and cover with seasoned cream sauce made with the margarine, flour and milk.

The worst enemies of the human race are nervous tension, and the fast living which causes it.



Piggly Wiggly

LOW PRICES

Prices Good Thru June 16, 1976. We Reserve The Right To Limit Quantities. None Sold To Dealers.



Piggly Wiggly Welcomes Food Stamp Customers



Chicken Of The Sea Light

CHUCK TUNA

49^c

6 1/2-oz. Can

2 Ply **Gala Towels** **2⁹⁹^c**

Tomato Rich **Hunt's Ketchup** **65^c**

All Flavors **Jell-O Gelatin** **6 \$1**

Piggly Wiggly Choice, Sliced

CLING PEACHES

3 \$1

16-oz. Cans



3-Breast Quarters
3-Wings, 3-Leg Quarters
3-Giblets

TUB-O-CHICKEN

45^c

Lb.

Water Added, Skinless, Whole Only, Cry-O-Vac

Smoked Picnic **88^c**

Lb.

Fresh Frozen **Fryer Livers** **79^c**

8-oz. Pkg.

Blade Cut, Piggly Wiggly Savory Tender Heavy Aged Beef Family Pack 12x16 Tray, 5-Lbs. or More

Beef Chuck Steak **88^c**

Lb.

"Red Hot" Smoked

Link Sausage **98^c**

Lb.

Combo Pack, Breasts, Drums, Thighs, Family Pack, 12x16 Tray

Fresh Fryer Parts **79^c**

Lb.

88^c

Crisp California Green Pascal Stalk

Celery **29^c**

Ea.

Firm Ripe **Honeydew Melons** **39^c**

Lb.

Garden Fresh **Yellow Squash** **39^c**

Lb.



Quart Bottles

WAGNER DRINKS

29^c

Btl.

Piggly Wiggly

Soft Oleo **39^c**

16-oz. Tub

Morton's, Frozen

Fried Chicken **\$1.99**

2-Lb. Box

Spray On Foot Powder

Desenex Powder **\$1.19**

6-oz. Can

Piggly Wiggly "Mix or Match" Cut Beans, Spinach or

GOLDEN CORN

4 \$1

16-oz. Cans