

The Borden Star

Borden ★ Dawson ★ Garza ★ Howard ★ Lynn ★ Scurry

Volume XXXVII

June 1, 2011

Dare to Live Without Limits

By Bryan Golden

Accept Instead of Expect

"Expectation is the root of all heartache."

-William Shakespeare

"Expecting the world to treat you fairly because you are a good person is like expecting a bull not to attack you because you are a vegetarian."

-Dennis Wholey

"I expect nothing. I fear no one. I am free."

-Nikos Kazantzakis

To accept is to acknowledge, understand, or regard as true. To expect is to assume, await, conclude, or consider certain.

Expectations can lead to disappointment and frustration. Expectations are associated with thoughts of how circumstances or people should be. You only have control over yourself. You don't have any control over other people or circumstances.

To expect means you anticipate a certain outcome. If you expect you will always be treated fairly, you will be disappointed. Expect everyone to be friendly, polite, and considerate, and you will be disappointed. You will be disappointed if you expect situations to change because you think they should.

Unfulfilled expectations may elicit feelings of powerlessness. By expecting, you

spend time, energy, and emotions attempting to manage external circumstances. Doing so isn't possible with any dependability. You can expect from yourself. Everything else you must accept.

A common source of frustration is having expectations of others. If people fail to meet your expectations, you can become stressed. Subconsciously we assume others should think, act, and feel the same way we do. We project our beliefs to everyone; children, spouses, partners, relatives, friends, coworkers, employers, and even strangers. Problems arise when others deviate from our standards.

Age, physical features, and the nature of time are among the facets of life people have trouble accepting. You can't change your age but can control your attitude. You can't change your physical features but can control your smile, weight, and posture. You can't slow down time, but it's up to you how it's spent.

The goal is to accept those things you have no control over and change, when appropriate and necessary, those you do have control over. Acceptance doesn't mean quitting. Never

(Continued to Page 4)

Texas Farmers, Ranchers Face Billions in Losses if Rains Don't Come Soon

By Betsy Blaney
The Associated Press

LUBBOCK — Despite recent heavy rains in North Texas, a historic drought already has cost farmers and ranchers an estimated \$1.5 billion, and the cost is growing daily as parched conditions persist in much of the state.

May is typically the wettest month in Texas, but some areas haven't seen significant rain since last August.

If the drought continues into June, losses for the nation's second-largest agriculture producer will top \$4 billion, making it the costliest season on record, experts said.

"We're well on our way to breaking the record of the past," said Carl Anderson, 79, an agricultural economist with Texas AgriLife Extension Service, referring to the 2006 season.

"This [drought] will match anything I saw in the '50s," he said.

The Lubbock area between Nov. 1 and last Tuesday got 1.17 inches of rain — about 17 percent of the normal 6.70 inches for that span.

Meteorologists blame La Nina, a cooling of the Pacific waters near the equator. It's caused extreme drought in

Texas and parts of Oklahoma, Louisiana and New Mexico even as much of the eastern half of the nation endured wet, cold weather.

The drought has dried up cattle ponds, and grass crunches underfoot in many fields.

Texas livestock producers have seen the biggest losses — about \$1.2 billion of the \$1.5 billion total, which includes increased feeding costs to pay for hay, lost value of wheat pasture grazing and the high costs associated with hauling water daily to meet animals' needs, Anderson said.

About 90 percent of Texas' beef cattle are in counties in severe to exceptional drought.

For some farmers, the season is already lost, but there's still time for those in some regions. In the South Plains region of West Texas around Lubbock, for example, cotton can be planted as late as June.

Still, Anderson estimates that southern Plains growers will produce 2 million bales less of dryland cotton — grown in fields that aren't irrigated — than usual, resulting in a \$1.2 billion loss.

Texas typically plants about half the country's cotton acreage, so a large-scale failure

could cause a price spike, though that would depend on crops elsewhere in the U.S. and in other countries as well as demand.

West Texas cotton producer Rickey Bearden usually plants dryland cotton on about two-thirds of his 9,000 acres. Without rain, he said, most of that will be lost.

"It doesn't look bright right at the moment, but I haven't given up yet," Bearden said. "We'll have to have some help from Mother Nature."

State climatologist John Nielsen-Gammon said farmers are running out of time. If rains don't arrive soon, "it'll be too hot for the crops to recover," he said.

The drought also comes when farmers already were faced with increased costs for fertilizer and diesel.

Some ranchers, faced with no hay crop, have opted to reduce the size of their herds rather than pay up to \$2 a day per head to truck in feed.

East Texas cattle producer Phil Sadler, who has ranches for about 35 years, said he could go out of business if it remains dry.

"At least we'll have to scale

(Continued to Page 3)

Five Students to Attend WTAMU Speech Camp; Fundraiser to Be Held June 3

Five Students to Attend WTAMU Speech Camp; Holding Fundraiser June 3 in Downtown Gail America

In order to help with costs of speech and debate camp, Fuzzy Ninny's will set up its county-famous barbecue truck this coming Friday, June 3.

From 11 a.m. until 2 p.m., the community has a chance to indulge in some good food as well as help a good cause.

Five BHS students (Tye Basquez, Cassie Gaines, Selena Guerrero, Mollie McMeans, and Zach

McMeans) will be working to help raise money for their June 20-26 speech camp. Tye will be attending the Lincoln-Douglas debate sessions, Cassie and Selena in the poetry groups, and Mollie and Zach will team up for CX debate.

Included in the \$8 meal will be barbecue/potato salad/beans/ and a drink. The students are also holding a bake sale in conjunction with the barbecue plates so desserts will be available.

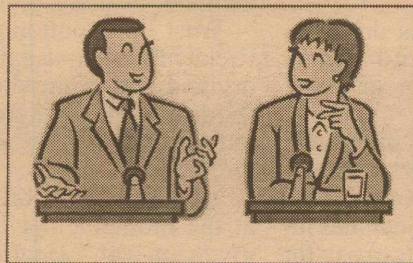
Selena's grandmother is also preparing homemade tamales

which will be sold \$10 by the dozen. Buy some to eat and put in the freezer.

The young group (all five are underclassmen with one junior, three sophomores, and one freshman in 2011-2012) will gain valuable instruction in each of their events while in Canyon working with the WTAMU Speech and Communication department. The speech team competes not only on the UIL circuit but attends fall NFL/TFA tournaments to help prepare for the spring UIL meets.

Speech Camp

Fundraiser



Friday, June 3
11 a.m.-2 p.m.
downtown Gail America

Fuzzy Ninny's
barbecue/potato
salad/beans/drink
\$8

homemade tamales for \$10

homemade baked goods
for sale

Proceeds help defray cost
of WTAMU Speech Camp

Drought..

(Continued from Page 1)

down and do things a little differently," the 64-year-old said. "If it doesn't rain it wouldn't be life as usual. Things will have to change."

Texas has a long history with droughts, and since 1998, they have cost its agriculture \$13.1 billion.

Anderson said the rest of the spring will determine how this year ranks in the history of Texas droughts.

"It's early," he said. "The question is do we get rain in the next four weeks to salvage some of the plantings."

USE OUR CARD

When you feed the family, pay the easy way with the card that's like a check or credit card, only cheaper. Once you have our debit card, you'll wonder how you got by without it. See us today.



Benefits of The Master Money Card:

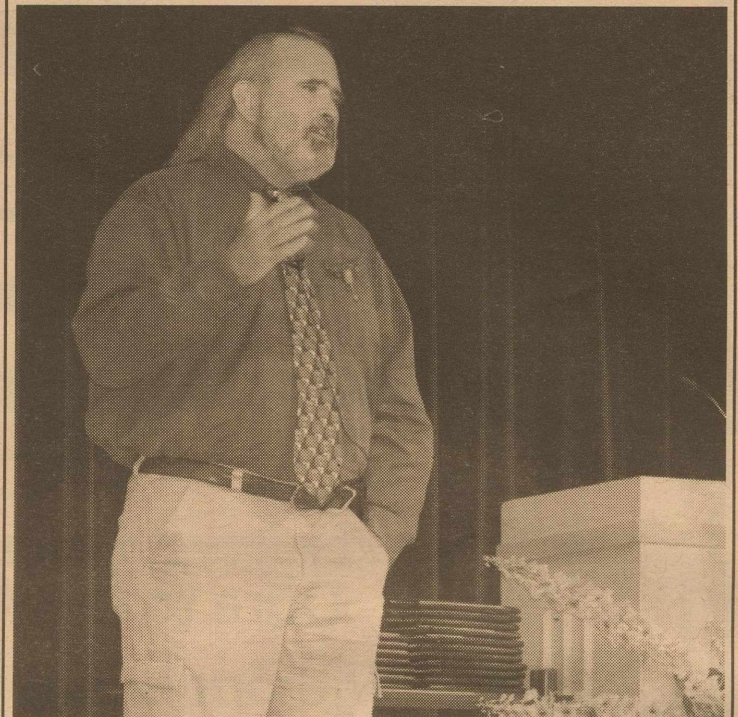
- ✓ Doubles as your ATM card
- ✓ Accepted anywhere you see the MasterCard symbol, yet there are no credit charges.
- ✓ Money to pay for your purchases is deducted from your checking account.



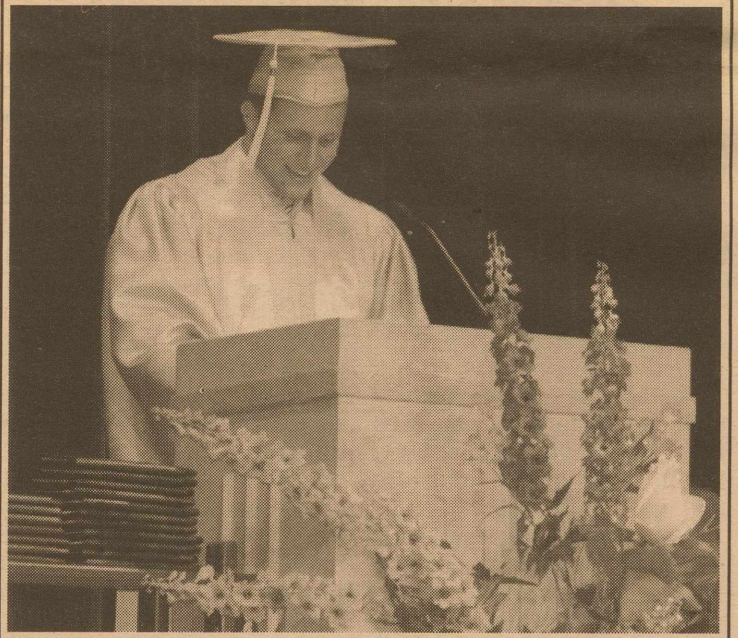
State National Bank
Big Spring Lamesa O'Donnell



Borden County Graduation Ceremonies



(Above) Motivational speaker, John Randles speaks to the graduating class of 2011 this past Friday night during graduation ceremonies. (Below) Senior, Miles Valentine delivers the Class Prophecy to his classmates.




BRANON
FUNERAL HOME
403 N. Austin Avenue
Lamesa, Texas 79331
806-872-8335 Fax: 806-872-8336
3rd & 4th generations still serving this area.

The Borden Star (USPS or PUBLICATION No. 895-520) is published weekly except Christmas and New Year's week for \$12.00 per year by the Borden Star, PO Box 137, Gail, Texas, POSTMASTER: Send Change of Address to the Borden Star, PO Box 137 Gail, Texas 79738.



Dobyns Receives Degrees at University of Texas

Borden County 2007 graduate, Becky Dobyns, graduated from the University of Texas at Austin on May 21, 2011. She graduated with a Bachelor of Arts Degree in English with a Minor in Business Foundations with Departmental Honors, and a Bachelor of Science Degree in Public Relations with College Honors.

Becky 's future plans include traveling to East Asia for language and culture study.

Poka Lambro to Offer Free Computer and Internet Basic Classes

“What’s a Google?” Do you ever ask that question? Have you heard about the Internet but need a little help learning to navigate it? If the answer is “yes” come join a Poka Lambro Computer Basics class.

Poka Lambro is providing FREE computer and Internet basics classes. A series of three classes are being offered over a three week period. Class one covers the absolute basics of what a computer is and what can be found through the Internet. Class two demonstrates how to use e-mail and Facebook. The third class reviews everything and dives

deeper into your questions.

The first class will be held June 9th at 2:00 p.m. at the new Borden County Event Center, at 127 Willow Valley Road.

Classes are free but due to limited space and class size, pre-registration is required. Please pre-register by calling the Poka Lambro headquarters and ask for Brenda Gillespie. Classes will be on-going and will be offered on Thursdays at various locations. So if you miss this one – don’t worry. We’ll be back. Contact Poka Lambro to find out when the next series of classes will be held in your area. 800-422-2387.

Alex Brown Family Visits Borden County



The family of Alex Brown, who was tragically killed in 2009 after an accident involving texting and driving, visited with junior high and high school students of Borden County this past Thursday.

Johnnie and Jeanne Brown along with Alex's sister, Katrina shared their emotional story on the loss of Alex. The students were also given statistics of texting and driving. Pictured are (left to right) Johnnie, Katrina and Jeanne Brown of Wellman.

Abilene Zoo Field Trip



Borden County Kindergarten through second grade traveled to Abilene this past week to visit the Abilene Zoo. The classes also enjoyed a picnic while away.

Thoughts for the Day

Prayer is necessary because everything else is an illusion.

--John garvey

When you steal a penny the devil makes a fortune.

--Unknown

COMMUNITY BANK OF

Snyder

(325) 573-2681

1715 25th Street

Snyder, Texas 79549

www.cbankofsnyder.com

YOUR BANK. YOUR FUTURE. YOUR SECURITY.

Borden County Youth Horse Club

BCYHC will begin Tuesday night, June 7th, 2011 at 6:30 p.m.

Participants must compete at 2 to be eligible for awards.

\$20 membership and
participants must sale raffle tickets.

Events: Western Pleasure, Barrels, Poles, Flags & Goat Tying

Age Groups: 5 & Under, 6-8, 9-12 & 13-18.

For more information, contact Cassidy Carpenter at cassidyogden@yahoo.com

OFFICE OF BORDEN COUNTY



COW/CALF MANAGEMENT IN "DRY TIMES"

LOCATION: Borden County Event Center in Gail, TX

DATE: June 6, 2011

TIME: Registration @ 9:30am
Begin @ 10:00am

FEE: \$15.00 Lunch will be served

RSVP: June 3, 2011

SPEAKERS: Dr. Ted Mc Collum-Texas AgriLife Beef Specialist
Clint Lewis- Novartis

Discussions will focus on management priorities in response to low rainfall and reduced forage production this year and different commodity feeds (sometimes referred to as byproduct feeds) available in the region and potential use as supplements on ranches.

Sponsored by
Texas AgriLife Extension in Borden, Dawson, Garza, Lynn, Mitchell, and
Scurry Counties

For more information contact Cody Hill at the Borden County Extension
Office 806-756-4336

Borden County
P. O. Box 155
140 E. Wilbourn
Gail, Texas 79738

Tel. 806.756.4336
Fax. 806.756.4486
borden-tx@tamu.edu
<http://borden-tx.tamu.edu>

Educational programs of the Texas AgriLife Extension Service are open to all people without regard to race, color, sex, disability, religion, age, or national origin.
The Texas A&M University System, U.S. Department of Agriculture, and the County Commissioners Courts of Texas Cooperating

Dare to Live...

(Continued from Page 1)

stop striving to affect unjust or unfair situations. You don't have to accept being mistreated and you should come to the defense of those who are.

To accept means to understand. It doesn't mean agreeing or endorsing. For example, you can accept the existence of criminals without agreeing with their lifestyle or sanctioning crime. It's important to accept people for who they are. This doesn't mean you have to associate with them, like them, or share their beliefs. It means you recognize and understand you can't change others. You will become frustrated and disappointed if you try.

Accept change. Change is the only consistent and reliable component of life. You have to accept the nature of time. Time goes by faster each year and it seems as if there isn't enough time to do everything. It's just the way it is.

Accept responsibility for yourself. There's no one else to thank or blame for your

situation. If you expect circumstances to change automatically, you'll be disappointed. If you expect someone else to make changes for you, you'll be disappointed.

Unfortunately, too many people live a life of expectations. Expect from yourself and accept others. Self-development never ends. There are always aspects of yourself that can be refined and improved.

Expectations often backfire causing the opposite of what you hoped for. This happens when disappointment and frustration cause anger and a negative attitude. Anger and a negative attitude attract those things you don't want.

For freedom and peace of mind, expect more from yourself, accept the world around you, and strive to improve and have a positive influence on whatever you can.

Bryan is a management consultant, motivational speaker, author, and adjunct professor. E-mail Bryan at bryan@columnist.com. © 2004 Bryan Golden

Under New Management

PM FEED AND GRAIN

(formerly Ezell Key Grain)

Keith Martin, Jeffrey Martin,

Dennis Poole &

Feed Representative-Tanner Poole

Open

MONDAY-FRIDAY 8:00-5:30 P.M.

SATURDAY 8:00 A.M.-12 NOON

Call 325/573-9373

Ezell Key Feed & Seed

(Downtown store—East of square)

Is now

FRONT OF THE LINE FEED/SUPPLY

325/573-6691