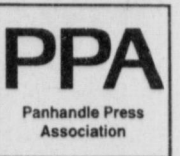




BAILEY COUNTY JOURNAL



Volume 37, No. 20

50¢

Published Every Sunday at Muleshoe, Bailey County, Texas 79347

50¢

Sunday, February 21, 1999

PAGE ONE

A QUICK READ OF THE NEWS

Candidate sign-up light

MISD school board incumbents Cindy Purdy and Nick Bamert are the only two candidates that have filed for re-election in the upcoming May 1 election.

Seven board positions across the city will be open for election on May 1. Filing for candidacy opened Feb. 17 and will close on March 17.

The MISD has three positions up for grabs: District 2, held by Purdy, District 3, held by Frank Saldana, and District 5, held by Bamert.

The City Council has two positions opening: District 3, currently held by Larry Kirk, and District 4, held by Eugene "Peanut" Hawkins.

The Muleshoe Area Hospital District will have two positions open on the board: Place 2, currently held by Tim "Buck" Campbell, and Place 4, held by Phil Kent.

State asks retiree to pay 69¢

CONWAY, Ark. — The envelope was addressed to Arthur Hoyt, a retired professor at the University of Central Arkansas, and it bore a 33-cent stamp. Inside was a bill for taxes the university paid on behalf of Hoyt's life insurance policy, and another envelope, also with a 33-cent stamp, to be returned to the college.

What did UCA want from Hoyt? Sixty-nine cents.

"It's absolutely ludicrous," said Hoyt, who taught chemistry for 23 years. He speculated the cost of the paper and the labor it took to write and post the bill probably made it more expensive to mail the bill than to lose the 69 cents. Perhaps, replied officials at UCA, but state and federal laws still requires an effort to collect the 69 cents and amounts owed by other retirees. Still, the state's deputy legislative auditor, Bill Baum, said he understands why recipients are stunned.

MHS game cancelled

The Muleshoe Mules practice game against Plainview scheduled for Monday has been cancelled because it would violate UIL rules.

MEETINGS

■ The Muleshoe Independent School District Board of Trustees, Monday, 7 p.m., business office, 514 W. Ave. G. Agenda items include re-apportionment of budgets by function, discussion on action plan for special education, informational reports and personnel considerations during a closed session.



Drawing date: Wednesday, Feb. 17
Winning numbers: 10-25-26-28-30-33
Estimated jackpot: \$10 million
Winners: none.
Next drawing: Saturday, Feb. 20
Estimated jackpot: \$14 million

On this date in history

Feb. 22 — Florida is ceded to the United States in a treaty with Spain (1819).
Feb. 23 — U.S. Marines raise the American flag on Iwo Jima (1945).
Feb. 24 — The only impeachment proceedings instituted against an American president are brought against Andrew Jackson (1868).

LOCAL WEATHER

	High	low	Pre.
Tuesday	72	28	—
Wednesday	58	27	—
Thursday	68	26	—
Prec to date	11 inches (snow)		

EXTENDED FORECAST

Sunny and windy over the weekend turning mostly cloudy Monday and Tuesday. Highs in the upper 50s to mid 60s continuing throughout the first part of the week. Lows in the 20s to lower 30s.

Managing Editor Rick White can be reached at 272-4536 or ctyankee@fivearea.com



JOURNAL PHOTO BY RICK WHITE

Bi-district champs
Members of the Muleshoe girls basketball team hold up a trophy and celebrate winning the bi-district championship Tuesday. Making their first playoff appearance in five years, the Lady Mules edged Tulia 46-44 at Canyon High and advanced to an area round game Friday against Denver City.



Journal photos by Rick White

Muleshoe clips Fillies at the wire

LEVELLAND — Denver City had already beaten Muleshoe twice this season and appeared to have the Lady Mules' number again.

With Division I signee Heather Trout putting on an offensive show, the ninth-ranked Fillies raced out a 41-31 lead with three minutes left in the third quarter during Friday's Class 3A area game at Levelland High School.

But Cinderella-story-in-the-making Muleshoe refused to let its season end.

Erin Wilhite scored 14 of her team-high 17 points down the stretch, pacing a furious fourth-quarter charge that pushed the Lady Mules past Denver City 55-53 in a game of runs.

It was Muleshoe's second-straight two-point win in the playoffs.

"It wasn't pretty at the end, but I'll take it," Gruhlkey said. "I'm just so proud of the kids for hanging in there. It's been a tough year, but the kids have shown a lot of character."

Gruhlkey said his team simply refused to lose the game.

"We showed a lot of heart," Wilhite said. "We were out there fighting. Nobody was going to give up."

Muleshoe (15-16) advances to the Region I quarterfinals against long-time rival Dimmitt, a 51-50 winner against Slaton. The game will probably be played Tuesday at a site and time to be determined.

Against the backdrop of its supporters chanting "We believe," Muleshoe ripped off a 15-2 run in the fourth quarter that turned an eight-point deficit into a 52-47 lead.

see LADY MULES on page 3

Wind songs

Eighth-grader Megan Beard (above) plays the flute Thursday with the Watson Junior High band during an assembly in the high school auditorium. (Below) Andrew Reeves plays the cymbals during the band's version of Raiders of the Lost Ark.

Entrepreneurs hungry for advice attend 'Quest for Cash' breakfast

Entrepreneurial spirit and curiosity drew more than two dozen small business operators for the "1999 Quest for Cash" kickoff breakfast Thursday at the Bailey County Coliseum.

The Muleshoe Economic Development Corporation program is offering \$50,000 in grants to assist entrepreneurs in launching a new business or expanding an existing operation.

The economic development branch of the City of Muleshoe hopes the program will show that they not only want to attract new businesses but to help expand existing ones.

Entrants must write a business plan and attend a series of mandatory workshops to be eligible for a grant. A panel of judges will decide how the grant money is distributed based on a written business plan and the viability of the

proposal.

Support staff from the Texas Tech Small Business Development Center will conduct a series of free workshops in March and will also be available for individual counseling.

Susie Pierce, administrative assistant for economic development for the City of Muleshoe and the program coordinator, urged the business community to attend the workshops even if they didn't plan to enter the contest.

The workshops will be held Monday and Tuesday, March 8-9 and March 15-16 from 6-9 p.m. at the Bailey County Coliseum. The registration deadline is March 1.

"If you've never written a business plan, it's a scary thing to do," said

see BREAKFAST on page 2



Guest speaker

Steve Anderson of the Texas Tech Small Business Development Center spoke Thursday at a kickoff breakfast for the "1999 Quest for Cash" campaign.



Patriotic pals
Several students dressed up for Patriotic Day Thursday at Dillman Elementary, including (from left) Ariana Martinez, Dillon Gallman and Nicholas Miramontes.

Lunch menus

For week of Feb. 22-26

MULESHOE
High School & Junior high
Monday
Breakfast—Hot breakfast pocket, fruit or juice, and milk.
Lunch—Sloppy joes, tator tots, pork'n beans, applesauce, and milk.
Tuesday
Breakfast—Ham & cheese toast, fruit or juice, and milk.
Lunch—Breaded chicken, potato salad, sliced carrots, hot roll, and milk.
Wednesday
Breakfast—Cinnamon roll, fruit or juice, and milk.
Lunch—Sub sandwich, french fries, mixed vegetables, lettuce, tomatoes, and milk.
Thursday
Breakfast—Pancake wrap, fruit or juice, and milk.
Lunch—Tacos, lettuce, tomatoes, spanish rice, sliced peaches, and milk.
Friday
Breakfast—Scrambled eggs/toast, fruit or juice, and milk.
Lunch—Beef stroganoff, green beans, cherry cobbler, hot roll, and milk.
MULESHOE
Dillman & DeShazo
Monday
Breakfast—Breakfast hot pocket, fruit or juice, and milk.
Lunch—Sloppy joes, tator tots, pork'n beans, applesauce, and milk.
Tuesday

Breakfast—Ham & cheese toast, fruit or juice, and milk.
Lunch—Breaded chicken, potato salad, sliced carrots, hot roll, and milk.
Wednesday
Breakfast—Cinnamon roll, fruit or juice, and milk.
Lunch—Cheeseburger, french fries, mixed vegetables, lettuce, tomatoes, and milk.
Thursday
Breakfast—Pancake wrap, fruit or juice, and milk.
Lunch—Tacos, lettuce, tomatoes, spanish rice, sliced peaches, and milk.
Friday
Breakfast—Scrambled eggs/toast, fruit or juice, and milk.
Lunch—Beef stroganoff, green beans, cherry cobbler, hot roll, and milk.
LAZBUDDIE
Monday
Lunch—Pork patty w/gravy, subs, pizza, mashed potatoes, corn, okra gumbo, fruit, salad, jello, and milk.
Tuesday
Lunch—Chicken nuggets, tacos, tuna, rice pilaf, mixed vegetables, broccoli/cheese, fruit, salad, jello, and milk.
Wednesday
Lunch—Swiss steak, rib-B-Qs, egg rolls, green beans, rice, squash, fruit,

salad, jello, and milk.
Thursday
Lunch—Steak fingers, pizza, frito pie, au gratin potatoes, ranch beans, hominy, fruit, salad, jello, and milk.
Friday
MANAGERS SPECIAL
THREE WAY
Monday
Breakfast—Banana bread muffin & sausage or assorted cereals, graham crackers, juice, and milk.
Lunch—Porkchopette w/gravy, quick baked potato, mixed vegetables, wheat rolls, fruit cup, and milk.
Tuesday
Breakfast—French toast sticks & mini links or assorted cereals, graham crackers, juice, and milk.
Lunch—Burrito w/chili, green salad, spanish rice, orange quarters, and milk.
Wednesday
Breakfast—Breakfast burrito & picante sauce or assorted cereals, graham crackers, juice, and milk.
Lunch—Steak fingers w/gravy, mashed potatoes, green beans, wheat rolls, fruit cobbler, and milk.
Thursday
Breakfast—Donuts & sausage or assorted cereals, graham crackers, juice, and milk.
Lunch—Corn dogs, waffle fries, baked beans, apple, candy treat, and milk.
Friday
NO SCHOOL

California reports large wine grape harvest

Wine grape harvest is second largest ever
California's harvested its second largest crop of wine grapes in 1998 the result largely of increased acreage.
Wine makers said quality was very high for the 2.5 million tons of grapes crushed last

year. That total is down 13 percent from the 1997 record of 2.9 million tons.
Torrential winter rains, caused by El Niño, in the nation's leading wine-producing state stalled buds for about a month and caused problems for pollination. On the other side of the weather picture, a warm October helped accelerate the harvest.
Yields per acre were lower, but more acres were being harvested.

"Because of the late, slow-paced vintage, the reds are deeply colored with softer tannins and lots of fruit," said Michael Martini, wine maker at Napa Valley's Louis M. Martini Winery in St. Helena.
Tom Stutz, wine maker at Mirassou Vineyards in San Jose, said the winery's Chardonnay, Pinot Blanc and Pinot Noir will be exceptional his year. "The '98 vintage may prove to be one of the best of the decade," he said

LETTERS TO THE EDITOR

Reader appreciates column

Dear Editor,
"A word fitly spoken," said Solomon, is like apples of gold in pictures of silver."
Such a stand-out in words are the articles written in your paper each week by Curtis Shelburne. I enjoy his inspiring thoughts and ideas. They hold my interest, influence my thinking, and enliven my sensitivity. Each week I eagerly anticipate a mental snack from Curtis' powerful phrases and

humorous incidents that he develops so eloquently into a powerful message.
More importantly, Curtis lives what he writes. His character and day to day persona are not hollow sentences and syllables. In stead, they are realities and revelations upon which he bases his existence. How fortunate we are to have him in our community!
—Carolyn Johnson
Muleshoe

BREAKFAST

from page 1

Steve Anderson, director of the small business development center. "Whether or not you are a winner, you will benefit from attending the workshops and writing a business plan."
Anderson emphasized that the development center is there only to assist in developing and writing a business plan.
"You have to do the work," Anderson said.
The Texas Tech Small Business Development Center provides free and confidential business counseling in a 15-county area around Lubbock, Anderson said.
For information about the "Quest for Cash" program contact Pierce at 272-4528.

Around Muleshoe

Almanza on president's list

Muleshoe graduates Stacy Harlan and Florinda Almanza were named to the President's list at Wayland Baptist University for fall semester 1998.

Harlan, a sophomore, is the daughter of Sam and Jean Harlan of Lubbock. Almanza, a freshman, resides in Plainview

Students must achieve a 4.0 grade point average for a class load of at least 12 semester hours.

Breast cancer screening clinic

The Women's Center of the Don and Sybil Harrington Cancer Center and Baptist/St. Anthony's Health System will conduct a Breast Cancer Screening Clinic on March 8 at the Muleshoe Area Medical Center.

Participants will receive a low-cost screening that includes a mammogram and instruction in self-examination by a registered nurse. The total cost is \$75. A minimum of 15 women need to register in order for the mobile mammography clinic to come to the Muleshoe area. Funding is available through the Texas Department of Health for Texas residents who qualify for assistance. All exams are done by appointment only. Call (806) 356-1905 or 1-800-377-4673 for more information.

Internet workshops offered by MISD

Two Internet workshops conducted by Muleshoe Independent School District technology coordinator Don McElroy are being offered in February.

The hands-on workshops, which will use Netscape Navigator, are open to the public and free of charge. They will be held in the computer lab at DeShazo Elementary.

The first two-day workshop is from 6:30 to 9 p.m. on Monday and Tuesday, Feb. 22-23. The second workshop is set Wednesday and Thursday, Feb. 24-25, also from 6:30 to 9 p.m. To register call 272-7318. The registration deadline was extended to 3 p.m. on Monday.

The deadline for items to appear in *Around Muleshoe* is 5 p.m. Monday for Thursday's edition and 5 p.m. Thursday for Sunday's edition. Items can be mailed (PO Box 449), called in (272-4536) or faxed (272-3567).

For Control Of Household Insect & Rodent Pests Call...
PESTEX
EXTERMINATION
Kenneth King 272-3817

God's People Have an "Advocate with the Father"

Jon Shelburne, my nephew from Amarillo, who is now a Marine attorney stationed with his young family in Florence, Italy, has his hands full. Jon is the lead military attorney for Capt. Richard Ashby, the Marine pilot who accidentally flew through an Italian ski lift cable on February 3, 1998, and caused the deaths of 20 people who were in the gondola that fell. Jon grew up in Amarillo and

He's got the whole Italian nation wanting to blame someone for a terrible tragedy. He's got brass in the Marines and high officials in the State Department badly in need of a scapegoat and a political pawn. And he's got the news media.

I saw Jon briefly on *60 Minutes* a week or two ago. I was a bit surprised at what a sympathetic and balanced treatment their story gave Capt. Ashby as they discussed everything from the terrain of that Italian valley, to the fact that the cable was not on the map, to the politics involved. Ashby came off as a fine aviator about to be lynched by an angry mob.

Then a few days later, I saw a piece on *Good Morning, America* featuring an Italian lady who had lost several family members in the tragedy. She appeared with her attorney, dollar signs flashing in his eyes. But most folks listening to her (and who wouldn't sympathize with her?) would gladly supply the rope to hang the man who through negligence and wanton recklessness, in her opinion, caused so much pain.

When we hurt, we want to blame somebody. Placing blame doesn't lessen the pain; it just refocuses it for a time. But it's a normal reaction that, sadly, often leaves only more pain in its bitter wake.

The Bible pictures Christ not only as our Advocate, our representative, to the Father, but also as the One who paid the price for our sins (guilty though we certainly were), and took on himself our sin and our guilt, to take away our pain.

Curtis Shelburne is minister of the 16th & D Church of Christ in Muleshoe.



Focus On Faith
Curtis Shelburne

graduated from Amarillo High School (he couldn't help it; Tascosa was out of his district). Our family is quite "spread out" age-wise, and Jon is just a few years younger than I am. The boy never did call me "Uncle" Curtis with the proper respect. But he's a fine guy, with a big job.

His client's future is very much on the line, and Jon has been assigned a case that would test the talents of Ben Matlock or Perry Mason. It might be tough even for Allan Dershowitz who, *Newsweek* reported recently, said that if Adolf Hitler had lived and he (Dershowitz) had been his attorney, he'd have mounted a vigorous defense and won the case. (Surely that quote was taken out of context? Surely even Dershowitz is not that slimy?) But Jon's got his hands full.

Bailey County Journal USPS 040-200
Established March 31, 1963. Published by Triple S Publishing, Inc. Every Sunday at 304 W. Second. Box 449, Muleshoe, TX 79347.
Second Class Postage paid at Muleshoe, TX.
POSTMASTER: Send address changes to the Bailey County Journal, P.O. Box 449, Muleshoe, TX 79347.
We are qualified members of:
Panhandle Press Association, National Newspaper Association, West Texas Press Association and Texas Press Association.
WEST TEXAS PRESS ASSOCIATION
PPA
Panhandle Press Association
© 1990
MEMBER 1999
TEXAS PRESS ASSOCIATION
Scott Stinnett, Publisher
Lisa Stinnett, Vice-President/Comptroller
Rick White, Editor
Mari Guadalupe, Classifieds
Leah Bell, Advertising
SUBSCRIPTIONS: Muleshoe Journal and Bailey County Journal By Carrier Yearly - \$22.00
Bailey County — by mail - \$24.00
Elsewhere - \$26.00
Advertising Rate Cards on Application
Advertisers should check their ad the first day of insertion. The Journals will not be liable for failure to publish an ad or for a typographical error or errors in publications except to the extent of the cost of the ad for the first day of insertion. Adjustment for errors will be limited to the cost of that portion of the ad where the error occurred.

CATCH MULE MANIA!

Every Day Is Your Lucky Day!
LOANS
\$100 to \$446
ALL APPLICATIONS ACCEPTED
Ask for Norma or Yolanda
Open:
Mon. thru Thurs.—9 am to 5 pm
Fri.—9 am to 6 pm
Continental Credit
206 South Main Street Muleshoe, TX
272-3673

"Clovis Crawfish" brings Cajun French to Dillman

By PATTI DRIVER
Journal staff writer

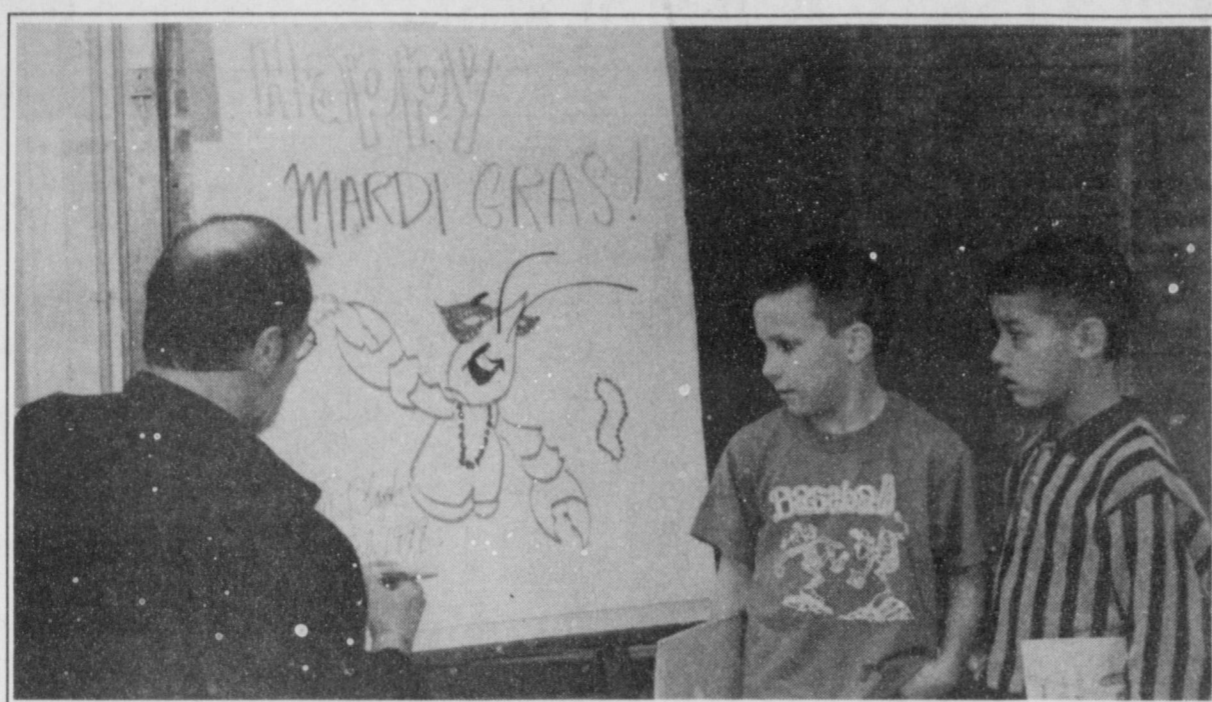
What's all the fuss about a French speaking crawfish?

Clovis (pronounced clo-vees) Crawfish is the main character in a series of children's books and the artist who brought him to life recently made a stop in Muleshoe.

Children's book illustrator Scott R. Blazek visited Dillman Elementary School Tuesday. He drew some of the characters from his latest project, Clovis Crawfish and Fedora Field Mouse, for the kindergarten through second grade students.

Virginia Bowers, librarian at Dillman, coordinated Blazek's visit this year and has for the past five years. "I keep these books in the library and read them to the students," said Bowers. "It is amazing how the students learn and can remember the French that is used in the books."

The series of books are written by Mary Alice Fontenot. She started making up the stories when she was a substitute kindergarten teacher in Eunice, Louisiana. To help defray college costs, she began working at a newspaper and was caught writing one of the stories to a former student. Her editor convinced her



Greetings from Clovis . . . Crawfish

Children's book illustrator Scott Blazek autographs a Mardi Gras greeting from Clovis Crawfish for Austin Bamert and Joseph Lopez.

to write a story on a weekly basis.

The stories were so popular that she was asked by some local school officials to consider publishing them. Although a crawfish was not always the main character, Fontenot decided on the crawfish because "there are two things in Louisiana that no other state has—Cajuns and crawfish."

The first book in the series was published in 1961. The last nine in the series of fifteen have been

illustrated by Blazek. He began working with Fontenot in 1988 after she "discovered" his work in a Rice Festival poster contest. "I had drawn an alligator, rabbit, and turtle in the poster and as an afterthought added a crawfish," said Blazek.

Blazek only works on one book per year. "It's kind of a hobby for me," he said. He was raised in New Orleans and works now as a full time Lutheran pastor and free-

lance artist. He has designed many posters and medals for Mardi Gras or commemorating special events. He designed the obverse for a U.S. \$5 gold coin commemorating the Bill of Rights.

Blazek addresses schools, libraries and other groups. He resides, coincidentally, in Clovis, New Mexico with his wife and five children.



Come Check Our Rates!

WE HAVE MONTHLY AUTO INSURANCE

Delton E. Wilhite & Associates
INSURANCE AND FINANCIAL SERVICES

1631 West American Blvd. • 272-3652 or 272-5988

CRP GRASSES

Specializing in Native Grass Seed since 1951!

- Buffalograss
 - Sideoats
 - Bluestems
 - Switchgrass
- and many others!

We produce our own seed and pay most freight.

Straight from our farm to you!

1-800-262-9892

806-272-5506
BAMERT SEED CO.
Muleshoe, Texas
bamseed@fivearea.com

Boll weevil referendum set March 12

Cotton producers should receive ballots in the mail

AUSTIN — Cotton farmers and landowners with cotton production are eligible to vote in a March 12 referendum that will determine whether to establish a boll weevil eradication program and set a maximum assessment in the five-county Northwest Plains Boll Weevil Eradication Zone.

Based on Farm Service Agency records, the Texas Department of Agriculture has mailed 3,395 ballots. Eligible voters in the Northwest Plains Boll Weevil Eradication Zone should receive an official ballot by mail after Feb. 19. A postage-paid return envelope will be included. Completed ballots must be postmarked on or before March 12 to be counted. Producers who planted cotton in 1998, but do not receive a ballot should immediately contact TDA at (512) 463-7593.

To officially establish a boll weevil eradication program in the Northwest Plains zone and set a assessment, the proposition must be ap-

proved by a two-thirds vote in the March 12 referendum, or those voting in favor must farm more than 50 percent of the zone's cotton acreage.

In addition to deciding if an eradication program should begin in the zone, voters will elect a board member from the Northwest Plains zone to serve on the statewide board of directors for the Texas Boll Weevil Eradication Foundation Inc. TDA received one nomination for this position before the Feb. 10 filing deadline.

The name of John Saylor of Bailey County appears on the ballot as a board candidate. Saylor is a cotton producer who has farmed Bailey County since 1979. Saylor currently serves as the Commissioner-appointed director for the Northwest Plains zone.

The Northwest Plains Boll Weevil Eradication Zone consists of approximately 500,000 acres in five counties: Bailey, Castro, Deaf Smith, Lamb, and Parmer.

BLACK EYE PEAS

Pay Less For Processing Your Open Market Peas

OPEN MARKET OR FIRM CONTRACTS AVAILABLE

Local Delivery

Call Us For Details... **PEAS, INC.** Pleasanton, TX
830-569-2140 or 569-6331

LADY MULES

from page 1

Wilhite, a 5-10 senior post, got it started with her second 3-pointer of the game and junior Lysie Black (six points) capped the five-minute rally with a baseline drive. Freshman Britni Gartin chipped in four points on a offensive rebound and a layup off a steal and sophomore Chyla Torres spearheaded an inspired defensive effort that frazzled Denver City.

Extending its defense to pressure Denver City's suspect ballhandlers, the Lady Mules kept the Fillies (26-3) from getting the ball to Trout, who finished with 29 points, but just two in the final six minutes of the game.

"We became real tentative," Denver City coach Brad Kinney said. "I think we were playing not to lose instead playing to win."

Trout and Denver City took advantage of Muleshoe's lazy transition defense to get its fastbreak going in the first half. Trout, a 5-10 senior who signed to play at North Texas, scored 14 points in the first two quarters, including a 360-degree spin move for a layup that gave the Fillies a 10-6 lead.

Wilhite and Gartin hit 3-pointers early in the second quarter to keep Muleshoe close. But Trout triggered a 6-0 run with a pair of transition buckets that put the Fillies up 24-16 midway with four minutes left in the half.

Muleshoe pulled within 26-23 at halftime on a Myndi Heathington 3-pointer despite making just 2 of 9 free throws in the second quarter.

Heathington's jumper two minutes in the second half sliced Denver City's lead to 31-29. But Trout took over

again, scoring the last six points in an 10-2 run that made it 41-31.

"I knew she was capable of taking over the game, but not like she did," Gruhlkey said.

Wilhite hit a jumper and two free throws and Torres added a layup off a steal as Muleshoe closed with a 6-1 run to cut the deficit to five heading into the fourth quarter.

Lindsey Field added 12 points for the Lady Mules, runner-up in District 2-3A. Heathington finished with 10 as well as guarding Trout most of the game.

Shenika Griffin chipped in 12 points for Denver City, which earned a first-round bye after winning the District 3-3A title.

Muleshoe senior Melissa Williams suffered a concussion late in the first half and didn't return to the game.

Nearly 7 million used e-mail last year to file taxes

Looking for a faster way to file and get a refund? Last year nearly 7 million people across the US used the e-file or TeleFile options offered by the IRS.

The e-file program allows taxpayers to prepare and send

their own taxes from home or from an authorized e-file provider. The TeleFile option lets the taxpayer file their tax return with just a 10 minute phone call.

TeleFile and e-file users can expect to get their refunds in

half the time than if they filed a paper return. Refunds are even faster if they are directly deposited into their bank accounts.

For more information on these faster options call 1-800-829-1040.

1999 QUEST FOR CASH

Deadline to register for seminars is March 1, 1999

The Muleshoe Economic Development Corporation's (MEDC) Quest for Cash is designed to assist entrepreneurs in launching a new small business or expanding an existing small business. Everyone who participates will gain a better understanding of how to develop and follow a realistic business plan, and qualifying entrants can request a share of up to \$50,000 in available grant funds. The MEDC, in conjunction with the Texas Tech University, College of Business Administration Small Business Development Center, will help participants prepare for the true quest: succeeding in business for themselves. If you are interested, fill out the reply form and return it to the Muleshoe Economic Development Corporation. Participants are required to attend SBDC workshops. Deadline to register for seminars listed below is March 1, 1999.

Starting Your Own Business
(A 4 Part Series, for participants proposing a new business)

Part 1 — Monday, March 8th 6-9 p.m.
Part 2 — Tuesday, March 9th 6-9 p.m.
Part 3 — Monday, March 15th 6-9 p.m.
Part 4 — Tuesday, March 16th 6-9 p.m.

Marketing and Business Planning
(A 2 Part Series, for participants proposing to expand an existing business)

Part 1 — Tuesday, March 9th 6-9 p.m.
Part 2 — Monday, March 15th 6-9 p.m.

REGISTRATION, PROGRAM MATERIALS, AND SEMINAR INFORMATION MAY BE OBTAINED BY CONTACTING SUSIE PIERCE AT 272-4528 OR COME BY MULESHOE CITY HALL 215 SOUTH FIRST STREET

MEDC 1999 QUEST FOR CASH REGISTRATION

NAME: _____ SOCIAL SECURITY #: _____
ADDRESS: _____ BIRTH DATE: _____

TODAY'S DATE: _____
PHONE: _____

I HEREBY GRANT THE MULESHOE ECONOMIC DEVELOPMENT CORPORATION PERMISSION TO CONDUCT A CHECK OF MY CREDIT HISTORY.

LEGAL NAME: _____ SIGNATURE: _____

RETURN THIS FORM TO: MULESHOE ECONOMIC DEVELOPMENT CORP., ATTN: SUSIE PIERCE, 215 SOUTH FIRST STREET, MULESHOE, TEXAS 79347

The Small Business Development Center, which operates under the auspices of the Texas Tech College of Business Administration, is partially funded by the U.S. Small Business Administration. The Center provides confidential, in-depth counseling to small businesses, at no charge, in order to promote growth and management improvement in the community. Any opinions, findings, and conclusions or recommendations expressed in this publication are those of the author's and do not necessarily reflect the views of the U.S. Small Business Administration. All SBDC programs are extended to the public on a nondiscriminatory basis. Reasonable arrangements for persons with disabilities will be made if requested two weeks in advance.

No. 9 Whiteface ends Lady 'Horns season

SUDAN — Lazbuddie's record-breaking season came to a sudden halt Tuesday during a girls Class 1A bi-district contest against Whiteface.

Summer Moses spearheaded a balanced attack with 22 points as the ninth-ranked Lady Lopes raced to a 71-48 win.

Girls playoffs

The Lady Longhorns (23-6) were making just their second playoff appearance after setting a school record for wins. The old record was 16.

Whiteface (25-7) beat Lazbuddie at its own game, according to Lady Longhorn coach Carey Sudduth.

"They were just better at (playing up-tempo) than we were," Sudduth said. "They keep running people at you and apply constant pressure."

Junior wing Scottie Brown led Lazbuddie with 19 points, including a 7 of 7 effort from the free throw line, and Holly Engelking (two 3-pointers) added nine points.

"We set some high goals and we're disappointed we didn't reach them," Sudduth said. "We just ran into a real good team in the first round. But we did achieve a lot of our goals this season."

The Lady Longhorns handled Whiteface's signature full-court pressure fairly well, which was Sudduth's biggest concern going into the game. "But we had trouble scoring out of our halfcourt offense."

Lazbuddie allowed 40 points a game during the season, but couldn't contain Moses, whose dribble penetration set up teammates for easy shots.

Becca Clawson added 10 points and all 11 Lady Lopes that played scored at least four.

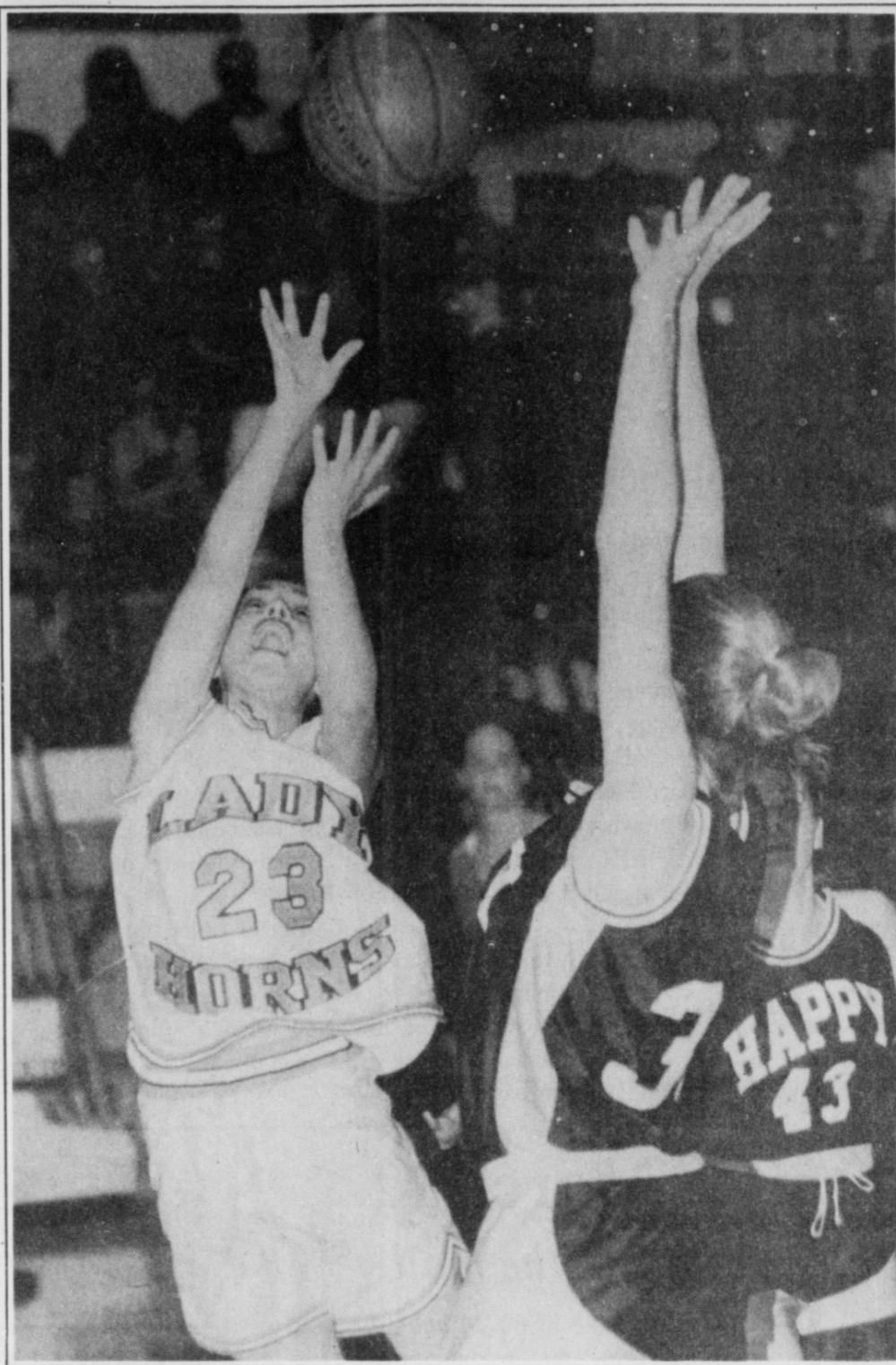
District 12-1A champion Whiteface outscored Lazbuddie 27-17 in the second quarter en route to a 45-29 halftime lead.

Lazbuddie finished as co-champions of District 11-1A, but lost a playoff game last week to Happy for the district's No. 1 seed.

Lazbuddie (48) — Foster 11-23, Engelking 31-49, Brown 67-719, Rodriguez 30-06, Via 10-12, Morris 12-54, DeLeon 05-65, Turner 00-00. Totals 1516-2548.

Whiteface (71) — McCasland 12-42, Clawson 34-710, Fietz 31-27, Precado 21-15, Moses 93-822, Carr 12-44, Albus 30-06, Sparkman 04-44, Albus 20-16, Castaneda 02-22. Totals 20(4)19-3371.

Lazbuddie 12 17 6 13 48
Whiteface 18 27 7 19 71
3-pointers — Lazbuddie 2 (Engelking 2), Whiteface 4 (Albus 2, Moses, McCasland). Records: Lazbuddie 23-6, Whiteface 25-7.



Happy to get by

Rachel Rodriguez gets off a shot against Happy in a District 11-1A playoff game last week in Olton. The Lady 'Horns lost to Whiteface Tuesday in a Class 1A bi-district game.

'Horns, Eagles play Tuesday in bi-district

The state boys basketball playoffs open Tuesday with Lazbuddie and Three Way playing in Class 1A bi-district contests.

Meanwhile, Muleshoe will have to wait until Friday after drawing a first-round bye.

Boys playoffs

Lazbuddie (21-10) faces 11th-ranked Whiteface (25-7) at a site and time to be announced while Three Way (14-13) takes on District 14-1A champion Aspermont (13-4) at Lubbock Cooper High (8 p.m.)

Muleshoe (22-7) earned the bye by winning the District 2-3A title with a perfect 10-0 mark. It was the Mules first district title since 1957.

Muleshoe coach Ralph Mason just hopes the long layoff doesn't work against the Mules.

"The layoff is a concern because we've been playing so well lately," Mason said. "It's also the first time we've been in the basketball playoffs. But the kids have shown a lot of maturity and a great work ethic all year."

The Mules await the winner of a bi-district game between 3-3A runner-up Lamesa and Kermit, which finished third in 4-3A. The area round game will probably be played Friday.

If Muleshoe wins, it could draw long-time nemesis Dimmitt in the regional quarterfinals.

In District 12-1A champion Whiteface, the Longhorns drew one the Region I favorites. The high-scoring Antelopes feature all-state candidate John Allison, a 6-3 senior averaging 26 points and 9.5 rebounds a game.

"We're going to have to play our best game of

see MULES on page 5

Lazbuddie's Miller still reaching for new heights

By RICK WHITE
Managing Editor

LAWRENCE, Kan. — Jon Colby Miller admits thinking he was a hot shot when he left little ol' Lazbuddie, Texas for the University of Kansas.

"I thought I'd come in, clear 18 feet as a freshman, and then be on my way to the Olympics," said Miller, a two-time state champion pole vaulter, during a phone interview Wednesday.

After three years of spotty success at Kansas, Miller re-dedicated himself to track this year.

Mules win Seagraves meet

SEAGRAVES — Greg Pena won the best overall lifter in the upper divisions and Muleshoe captured its first ever team title last Friday at the Seagraves Powerlifting meet.

Muleshoe finished with 38 points. Sundown was second with 30 points and Seminole was third with 28 points among the 13 teams at the meet.

Pena won the 220-pound division with a total lift of 1,300 pounds. The senior had lifts of 525 pounds in the squat, 275 pounds in the bench press and 500 pounds in the dead lift.

B.J. Gonzales and Hadley Henderson added titles in the 198-pound and 132-pound divisions respectively.

He is quietly confident heading into the Big XII indoor meet this weekend at Kansas State in Manhattan after clearing a career-best 17 feet, 3 1/2 inches recently.

"All of a sudden I started vaulting pretty well," said Miller, who was named a team captain this year. "And I really think I have a chance to go higher."

He's hoping to qualify for the upcoming NCAA Division I indoor meet in Indianapolis in March — he's currently ranked 10th in the nation.

A lot has changed in his four

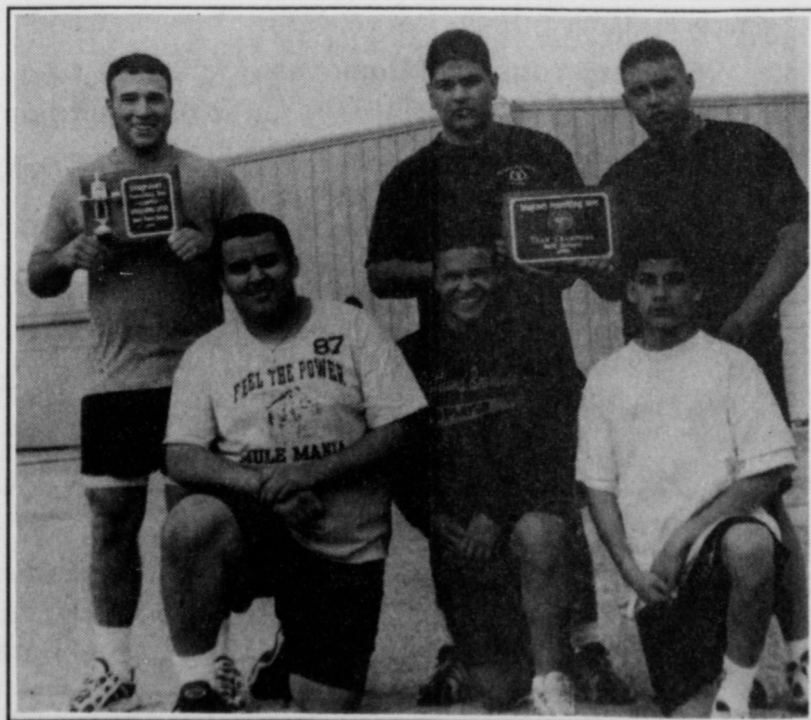
years at Kansas.

There's still the dream of making the Olympics — maybe in 2004 or 2008. But Miller has also lowered his expectations.

"If I can jump 18 feet, I'll continue vaulting for another year. And I still believe I can do it," Miller said.

But Miller, scheduled to graduate in December with a bachelor's degree in health and physical education, also finds himself thinking about going into coaching or perhaps re-

see MILLER on page 5



Medal winners

Seven Mules won medals at the Seagraves powerlifting meet. Medal winners were (back, l-r) Greg Pena, Tommy Barrera and Josh Pyle. (Front) David Burciaga, B.J. Gonzales and Zac Yanis.

Placing second for the Mules were Josh Pyle, 220 pounds, Tommy Barrera, 242 pounds, and David Burciaga, super

heavyweight.

Zac Yanis also placed fourth for Muleshoe in the 114-pound division.



1225 West American Blvd. • 272-4251 • 1-800-432-7617

Make More Of A Statement.
And Less Of A Payment.

*NEW 1998 EXPEDITIONS

Thousands less than Blue Book suggested used price.



NADA Suggested Retail \$32,250
MULESHOE MOTOR CO. PRICE

\$28,950

Example: White Eddie Bauer Expedition

*1999 FORD TAURUS SE

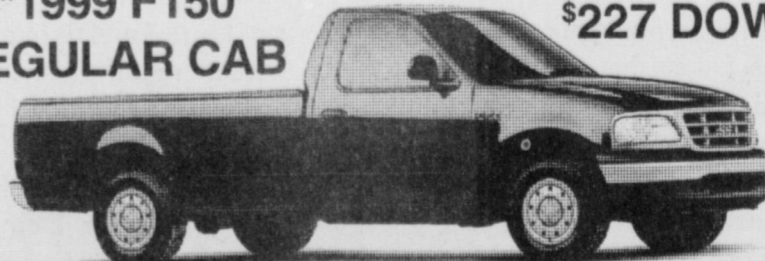
RATES AS LOW AS

0.75%



*1999 F150 REGULAR CAB

\$227 DOWN (1)



\$227
a month

Stop by and help us
welcome Staci Robbins
to the Sales Team at
Muleshoe Motor Co.



*NEW 1998 MERCURY TRACER LX

Buy this car from me and I'll make your payments until October 1999!

*All Prices plus T.T. & L. and W.A.C.
(1) MSRP 18,550; 36 month RCO with Ford Credit 4.50% Residual 56%; 12,000 miles; Balloon Payment \$10,388

1225 West American Blvd. • 272-4251 • 1-800-432-7617

State playoffs

**CLASS 3A
GIRLS
Region I
Area
Friday**

Seminole (R3) (23-6) vs Shallowater (W2) (27-4), Friday

Graham (R5) (21-6) vs Whitney (W8) (24-6)

West (T8) (20-11) vs Merkel (W6) (26-1)

Muleshoe (R2) (14-16) vs Denver City (W3) (24-2)

Slaton (T3) (22-8) vs Dimmitt (R1) (20-9)

Abilene (R6) (22-9) vs Comanche (W7) (20-9)

Clifton (T7) (22-10) vs Bowie (W5) (26-3)

Saturday

Perryton (R1) (22-5) vs Presidio (W4) (18-4)

**CLASS 1A
Region I
Area
Thursday**

Vega 65, Booker 44

Friday

Fort Hancock (R2) (22-5) vs Sterling City (R4) (13-14)

Fort Elliott (W5) (23-7) vs Sudan (R8) (27-2)

Groom (W9) (20-8) vs Smyer (R12) (22-5)

Meadow (W13) (23-8) vs Guthrie (W15) (28-2)

Wink (W2) (21-3) vs Garden City (W4) (24-2)

Claude (W10) (17-7) vs Whiteface (W12) (25-7)

Whitharral (R13) (19-9) vs Silvertown (R15) (22-8)



On the move

Muleshoe senior Melissa Williams gets a step on Tulia's Mandi Culwell during Tuesday's Class 3A bi-district game at Canyon High. The Lady Mules escaped with a 46-44 win and played Denver City Friday in an area playoff contest.

CLASS 3A AREA LEADERS

**CLASS 3A
Boys
SCORING**

Player, team	G	Pts	Avg.
Hudson, Shallowater	21	734	23.6
Cleavinger, Muleshoe	27	556	20.6
Sims, Tulia	30	555	18.5
Marshall, Tulia	30	536	17.9
Thomas, Dimmitt	33	575	17.4
Buckley, Dimmitt	33	560	17.0
Roberts, Lamesa	27	459	17.0
Ogden, Seminole	31	500	16.1
Clay, Seminole	31	499	16.1
Shuttlesworth, Cooper	24	378	15.8

Rebounding

Player, team	G	Reb	Avg.
Marshall, Tulia	30	362	12.1
Ogden, Seminole	31	350	11.3
Cleavinger, Muleshoe	27	272	10.1
Hill, Shallowater	31	270	8.7
Hallum, Roosevelt	26	213	8.2
Thomas, Dimmitt	33	262	8.0
Larra, Dimmitt	33	243	7.4
Villegas, Denver City	18	112	6.2
Boyd, Denver City	28	181	6.2
Jones, Cooper	11	67	6.1
Shuttlesworth, Cooper	24	247	6.1

**Girls
Scoring**

Player, team	G	Pts	Avg.
Trout, Denver City	26	470	18.1
Robertson, Dimmitt	28	419	14.9
Macias, Lamesa	23	337	14.7

Huddleston, Slaton	28	403	14.4
Gonzales, Brownfield	29	364	12.6
Field, Muleshoe	27	328	12.1
M. Wickson, Seminole	28	338	12.0
Wilhite, Muleshoe	30	340	11.3
Dunham, Littlefield	28	315	11.3
Kenworthy, Dimmitt	28	314	11.1

Rebounding

Player, team	G	Reb	Avg.
Gonzales, Brownfield	29	296	10.2
Roberston, Dimmitt	28	254	9.1
Griffin, Denver City	26	226	8.7
Black, Dimmitt	28	236	8.4
Caswell, Brownfield	29	232	8.0
Phipps, Lamesa	23	182	7.6
Humphries, Denver City	26	177	6.8
Wilhite, Muleshoe	30	200	6.7
Dunham, Littlefield	28	182	6.5
Krajcovic, Slaton	28	182	6.5

MULES

from page 4

the year to have a chance," Lazbuddie coach Rich Powers said. "To do that, we need to cut down on our turnovers and mental mistakes."

Three Way has made the playoffs three straight years, but is still looking for its first win.

Three Way coach Shawn Harrison said the Eagles match up well with Aspermont. "If we go out there and play good defense, I think we've got a shot at beating them," Harrison said.

MILLER

from page 4

turning to his agricultural roots. "I've missed agriculture. Planting, watching the crops grow. Farming."

Lazbuddie football and track coach Mark Scisson still marvels at Miller's abilities.

"He was a very good athlete, a tremendous leader and a workaholic," Scisson recalled. "He was the kind of kid that I had to go and tell him to quit

practicing and go home because it was getting dark."

Miller, also an all-state football player, still holds the Class 1A state track meet record of 16-9, set during his senior year. It was good enough to rank him third in the nation.

He left for college believing his future was limitless. He was in for quite a surprise.

"Coming out of a pretty small high school, I was shocked at

how good everybody was," Miller said. "It really hurt my confidence. And in pole vaulting all you have is confidence."

But Miller isn't complaining. He said the whole college experience has been great.

"I've gotten to do and see a lot of neat things and I love traveling," Miller said.

But for now, he's just interested in soaring as high as he can.

Follow all the state basketball playoff action in the Journal



Used Homes We Gotta Move 'Em Out! Buy One, Get One Free!

NO BULL! When they're gone...it's over.

OPEN HOUSE THIS SUNDAY! Popcorn & Balloons for the Kids! Come See Us!

NO BULL!

3300 N. Prince
Crosby, TX 79101
505-762-1211
1-800-306-1211



GET THE FACTS

ABOUT BOLL WEEVIL ERADICATION



Northwest Plains Zone Unique

If we pass this referendum, we become the first zone in this country to begin an eradication program before widespread damage and control costs have adversely impacted farmers' ability to grow cotton. The NWP budget calls for only \$63 per acre over four years. Other zones have budgeted costs of \$95 to \$174 per acre.



Assessment Designed to Handle Worst-Case Scenario

The assessment you are voting on is a maximum assessment. You can never pay more than \$12 per acre on irrigated land or more than \$5 per acre on dryland. Efforts to appropriate state funds for boll weevil eradication could reduce total assessments by as much as 30%.



Program Essentially Pays for Itself

At a loan price of 50 cents per pound, a grower only needs to protect 24 pounds of yield to pay for this program.



Management Burden Shifts Under Eradication

Some growers who admit that we have a weevil problem say that \$12 per irrigated acre is just too much to pay and they would rather treat their weevils themselves. If you treat the weevil on your own \$12 will get you only the two overwinter sprays needed to START a personal control effort and leave no money for diapause sprays in the fall. You would also have added expense involved in trapping your fields. In an eradication program you know what your costs will be and the Texas Boll Weevil Eradication Foundation handles all trapping and spraying operations and their costs.



If You Have Additional Questions

If You Have Questions about the Northwest Plains Boll Weevil Eradication Proposal, Please Contact: The Texas Boll Weevil Eradication Foundation at 1-800-687-1212.

SEND IN YOUR BALLOT &



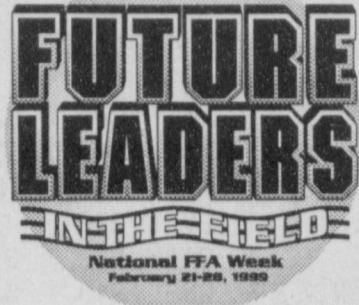
THIS AD SPONSORED BY NORTHWEST PLAINS COTTON GROWERS AND ALLIED COTTON INDUSTRY.



To All Future Farmers of America Members... We're Proud Supporters Of FFA & Our Youth!



FFA's mission is to make a positive difference in the lives of students by developing their potential for leadership, personal growth and career success through agricultural education.



**NATIONAL FFA WEEK
FEBRUARY 21-28**

Terra Distribution
Bruce Bruns-Location Manager
Highway 84 • 272-4203

Bailey County Electric Cooperative Association
305 E. Ave B • Muleshoe • 272-4504

BAILEY COUNTY FARM BUREAU
1612 W. American Blvd.
Muleshoe, Texas
(806) 272-4567

Alton Burton Service Center
ALTON BURTON TERRY BURTON
803 W. American Blvd.
Muleshoe, Texas 272-5330

DECORATORS FLORAL & GIFTS
272-4340
616 S. First Street Muleshoe

BLACKWATER AGRICULTURAL ASSOCIATION
West Hwy. 84 • Muleshoe • 272-4962

McCORMICK SEEDS, INC.
A COMPLETE LINE OF FIELD SEEDS
(806) 272-3156
1-800-451-9996
400 E. Ash • Muleshoe, Texas

Church's Chicken
1411 W. American Blvd. • 272-5581

17 Miles Southwest of Muleshoe
1-800-299-3321
COYOTE LAKE FEED YARD
CUSTOM CATTLE FEEDING
Randy Mitchell General Mgr. Office: 806-946-3321
• Personalized Service • Feeder Cattle Procurement
• Competitive Ration Prices • Wheat & Grass Pasture Programs
• Modern Mill & Quality Silage • Preconditioning & Grower Rations
• Cattle and Feed Financing • Retained Ownership Planning
• Professional Nutrition and Animal Health Care • Ideal Climate and Location with Excellent Drainage
Owners: E.W. Williams, Jr. H.P. (Bo) Brown, Jr. Texas Cattle Feeders Assn.

Harvey Bass Appliance
We're Competitive On All Our Prices!
Serving Muleshoe & the surrounding area since 1948
We Service What We Sell!
If We Don't Have It-They Probably Don't Make It!
122 S. First Street • Muleshoe, TX • 272-3030

MULESHOE LIVESTOCK AUCTION
Muleshoe Livestock conducts sales every Saturday, beginning with hogs, sheep and goats at 10 a.m. and cattle following at approximately noon.
Located east of Muleshoe of Hwy. 84 • 272-4201

Sanitary Barber Shop
113 Main St. • Muleshoe • 272-4321

WEIRD BUG PEST CONTROL
insects • rodents • vegetation
License # 10798 We'll Bug Your Pests Away!
Jose Sanchez Mora, Owner
523 W. Ave B
272-5161 or 946-8103

HI-TEK Automotive
322 N. 1st
Muleshoe, TX 272-3480

Located inside Muleshoe Area Medical Center
Precure Chiropractic Clinic
708 S. 1ST St. Suite 4
272-6784

Delton E. Wilhite & Associates
INSURANCE AND FINANCIAL SERVICES
INSURANCE IS OUR PRODUCT-SERVICE IS OUR BUSINESS
1631 W. American Blvd. 272-3652 • 800-658-2119

Gary Skaggs
SKAGGS' MOTOR MACHINE & SUPPLY, INC.
Automotive Machine Work & Parts
119 W. 3rd St. 272-3994

HIGGINBOTHAM-BARTLETT CO.
Do it center
215 Main St. • Muleshoe • 272-3351

Biggest "Little" Boot Shop In Texas
JOE'S BOOT SHOP
And Country Junction
106 E. American Blvd • 272-7504 • 1-800-658-6378

did somebody say M?
MCDONALD'S OF MULESHOE
1315 W. American Blvd. • 272-3333

A PAT ANGELEY
CERTIFIED PUBLIC ACCOUNTANT
TELEPHONE (806) 272-7502 FAX (806) 272-4198
1910 WEST AMERICAN BLVD. MULESHOE, TX 79347

Bob Stovall PRINTING
221 E. Ave B 272-3373
Muleshoe, TX Wells & Janet Hall-Owners

CW CENTRAL COMPRESS & WAREHOUSE
Mike Riley 227-2388
205 Railroad Ave. 227-2385
Sudan, Texas 79371

El Jacalito Tortillas
— Made Fresh In Muleshoe —
516 N. 1st 272-5556

GERMANIA FARM MUTUAL INSURANCE
Cindy Barnes
127 Main Street • Muleshoe • 272-3979

H&R BLOCK®
KAY WISEMAN—Owner
104 East Ave. C 806.272.3332
Muleshoe, TX FAX 806.272.5309
www.hrblock.com • If no answer call 806.946.3696 or 806.796.1040

JOE'S TRADING POST
JOE & FRANCES DEL TORO
SELL BUY ANYTHING OF VALUE
217 N. First • Muleshoe • (806) 272-4552

Main Street Beauty Salon
115 S. Main • Muleshoe
272-3448

MULESHOE AREA HEALTHCARE Center
"Committed to Caring"
106 W. Ave. H Muleshoe 272-7578

HI-PRO Muleshoe Feed Barn
FEEDS We carry a full line of Hi-Pro products
311 W. American Blvd. • 272-5626

SONIC America's Drive-In.
Muleshoe Location
1633 West American Blvd. • 272-3998

SANDY PETERSON
BOOKKEEPING & TAX SERVICE
201 Main Muleshoe, TX 79346 Office 272-5396 272-4796

Del Toro Plumbing
Rey Del Toro - Master Plumber TX M-10006
Michael Del Toro - Journeyman
Israel Del Toro - Apprentice
New Construction-Remodeling & Repairs-Drain Cleaning
Ditching Service-Plumbing Fixtures & Supplies In Stock
(806) 272-4446 PO Box 187 Muleshoe, Tx.

Muleshoe Co-Op Gin
Darwin Robertson-Mgr.
272-4794 or 272-4791

66 WESTERN 66
607 N. First • Muleshoe • 272-4556

Kuka's Burritos
272-3776
924 W. American Blvd.

RONNIE HOLT INSURANCE
INSURANCE FOR YOUR CROPS
Earth Hwy. Muleshoe 272-4271

PIVOT PRODUCTS DISTRIBUTOR, INC.
710 E. American Blvd. • Muleshoe • 272-5536
Kristy's Plants

MISSING LOCAL EVENTS?
Read A Local Paper.
The Muleshoe Journal
A Local Paper To Read.
PROBLEM SOLVED.

Muleshoe Truck & Auto Service Center
272-5111
301 N. 1st • Muleshoe

WES-TEX FEED YARDS, INC.
Custom Cattle Feeding
272-7555 Muleshoe, Texas

CERTIFIED APPRAISER
TRACTOR & FARM EQUIPMENT
APPRAISAL SCHOOL & CERTIFICATION
272-4154
Tom Flowers'
AUCTION INSIGHT

Mild winter can mean termite troubles

COLLEGE STATION — Get ready to guard your home and other property investments for a potentially destructive adversary — the termite.

Because of this year's mild Texas winter, the termite population was not set back and statewide conditions are ripe for an exceptionally active termite season. And while the insatiable insects cost Texans \$300 million annually in damage and associated expenses, Texas Agricultural Extension Service entomologists say there is something you can do to protect your investments and prevent costly damage.

Every year in early February to early March, termites go through a swarming behavior, when the king and queen leave the colony to establish new colonies. Extension entomologist Dr. Roger Gold said prime conditions for termite swarming activity include 70 degree temperatures and spring rains.

"When we see these kind of conditions, the termites will actually start to build mud tubes

on and around the structure and they will swarm from that," he said. "This is when the insects become very apparent and easy to spot for most people."

Gold said termites look a lot like ants, but have one major distinguishing characteristic.

"Termites are broadly joined at the waist unlike ants," he said. "They don't have the wasp-type waist that ants do, and they are whitish to grey in color. There can be thousands of these insects in a colony or in a section of a wall."

The mud tubes that the termites build are used as tunnels into and out of the structure, Gold said.

"These mud tubes are slightly smaller than a regular number two pencil and the insects move up and down in their own environment within the tube," he said. "This offers them protection."

Gold said these mud tubes found going up a foundation, in a weep well or dropping down from a ceiling are a sure sign that you are dealing with

termites, and a thorough inspection of the structure should be conducted.

"Many people discover these tubes when doing spring cleaning duties or as they are doing maintenance," he said. "When the wood is destroyed and it crumbles when you touch it, you may need an inspection."

Gold said the plumbing penetrations of a structure are an area that need direct attention. These areas, like penetrations underneath the bathtub and shower stalls where the plumbing comes through from the slab, are a popular entry point for termites.

"We recommend that people have this area inspected on a regular basis or that they do it themselves by installing trap doors so they can be easily accessed," he said. "That's also a good way to tell if you are getting a good professional inspection. We feel strongly that pest control operators should be doing a bathroom bathtub inspection at a minimum."

If you do have termites, Gold

says an integrated pest management approach is best to remedy the problem. A combination of termite baits and termiticide sprays can help suppress the immediate damage and continue to protect the structure from future attacks.

Gold said it has been predicted in Texas that by the time a house is 40 years old, it has a 95 percent chance of being infested with one of several species of termites that exist statewide.

Church's Chicken

1411 W. American Blvd.
Muleshoe, Texas
272-5581

NEW CRISPY FISH

reg. french fries, cole slaw & 2 hushpuppies

\$2.99

plus tax

WE STILL HAVE CATFISH!

4 PIECE W/REG. FRIES IS \$4.59
5 PIECE W/REG. FRIES & COLE SLAW IS \$5.19

2 PC. DARK Legs & Thighs w/french fries & biscuit..... **\$1.99**

12 PC. DARK Legs & Thighs..... **\$7.99**
(med. add just \$3.50)

6 PC. DARK Legs & Thighs w/family mashed potatoes... **\$4.99**
(med. add just \$1.50)

Sale starts 2/22/99

Cowboys Coming Out



BAXTER BLACK
ON THE EDGE OF COMMON SENSE

There are few things more painful to watch than the "coming out" of a cowboy.

I had known Don for 25 years. Known his family, sat at his table and leaned on him now and then. He was a good ranch manager in his day. Did things the cowboy way and was honest as a cedar post.

I recently ran into him and we had a warm reunion. "Whatcha doin' now?" I asked. He sort of hemmed and hawed. "Oh, I been doin' a little day work for a fellow up the road." "On a ranch?" I asked. "Not exactly..."

"A feedyard deal?"

"Well no..."

"Let me guess," I harassed him, "Yer leadin' tourists around the desert on a bunch of ol' plugs and tellin' em what a great cowboy you were!" I laughed at my joke. He turned pale. I suddenly got embarrassed, "I was only kiddin', I know you wouldn't ever..." His eyes began to well with tears.

"You mean?" I asked. He nodded mournfully. "I'm wranglin' dudes..." I glanced around nervously, not wanting any of our cowboy friends to overhear.

"I just sort of fell into it," he snuffled and began to confess. I handed him my hanky. "We moved to town where my wife could get a good job. I tried selling western clothes, building saddles, even tried to be a movie extra, which is awful close to wranglin' dudes, then finally this

carny kiddie ride guy offered me a job tendin' dude string. The grandkids were back with us, we needed the money."

"It's not so bad," I said patting his shoulder. "You'll get back with the cows sometime." "No... I'm already a marked man. I've learned some yodeling tricks. They tip bigger if you tuck yer pants in yer boot tops and wear a stampede string. I've even started writing cowboy poetry. I go by the name Sagebrush."

"Surely not!" I put my arm around him. It was an emotional moment. "Yes," he said through the tears, "I even have names for the horses... Fury, Black Beauty, My Little Pony, Buttermilk..."

I stopped him. "They have clinics, ya know. There's ones in Luverne, Minnesota. Not a tourist for miles. You can get back to basics. Saddle, rope, cow."

"It's no use," he said, catching his breath and sighing. "It's just that... I like it. They think I'm king of the cowboys! They like my stories. They think I'm a hero like John Wayne or Billy Crystal or Robert Redford..."

"Why they couldn't even pack your saddle," I snorted.

"I know," he said, "but we're all in show business."

I shook my head sadly. "Sorry ol' pal. Well, I'll see ya. I gotta go make some promo spots for my next appearance at the big Western Art Fest and Boot and Spur Show."

California wine grape harvest second largest

California's harvested its second largest crop of wine grapes in 1998 the result largely of increased acreage.

Wine makers said quality was very high for the 2.5 million tons of grapes crushed last year. That total is down 13 percent from the 1997 record of 2.9 million tons.

"The whole year was full of angst," said Gladys Horiuchi, spokeswoman for the San Francisco-based Wine Institute. "The bud break started a bit late and the harvest started a bit late. People were joking they'd be harvesting around Christmas."

Torrential winter rains, caused by El Niño, in the nation's leading wine-producing state stalled buds for about a month and caused problems for pollination. On the other side of the weather picture, a warm Octo-

ber helped accelerate the harvest.

Yields per acre were lower, but more acres were being harvested.

B&B Agritech

GRASS SEED & DRILLING

Custom Farming
Aer-Way Plows

Kem Bales (806) 272-5400
Cell # (806) 946-7255
Doug Bales (806) 272-4419

P.O. Box 104 • Muleshoe, TX


WESTERN SEED MULTIPLICATION, INC.

CONTRACTING COMMERCIAL (EDIBLE) PINKEYE PEAS

- I. **0.23 lb. delivered to San Jon, NM (.225 for peas plus .005 freight allowance).**
- II. **Full payment the SAME DAY peas are delivered. No charge backs except for seed.**
- III. **Seed .47/lb. to be deducted from proceeds of the harvested crop.**
- IV. **Our average dockage for all growers in 1998 was only 8.24%.**
- V. **Fulltime field rep. (Dean Cates) living in Clovis is available to assist growers from planting thru harvest.**
- VI. **Price of 0.23/lb is good only for contracts signed by MARCH 1, 1999, after which, we will re-evaluate our position.**

We have been contracting for peas in Curry County, NM and having them cleaned at Sunny States Products (formerly Rose Seed Company) in San Jon for each of the past seven years. Check out our reputation and financial standing. Call Dudley Bailey in Clovis, NM, who has consistently been our top grower (505) 985-2386, Leo Thrasher in San Jon who owns Sunny State Products (505) 576-2241 or Ann Lacey, President 1* South Bank, Montezuma, GA (912) 472-2393.

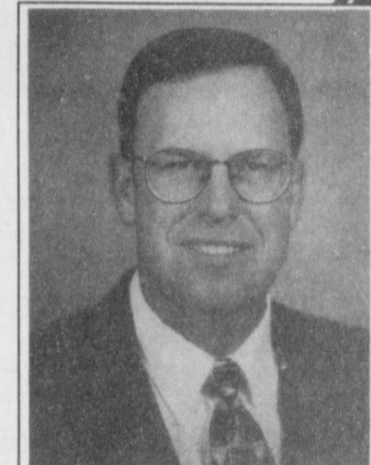
For details, call Frank Cates,
Western Seed Multiplication, Inc. (912) 472-7711.



Young Aggie!

We used to call him "Nicky." Now, we call him Nick. We think we're being sneaky as we pull this funny trick!

Happy 40th!



Old Aggie!

PUBLIC NOTICE CITY OF MULESHOE

TEXAS COMMUNITY DEVELOPMENT PROGRAM

The City of Muleshoe will hold a public hearing at 5:05 p.m. on February 25, 1999 at City Hall, 215 South First Street, Muleshoe, Texas, in regard to the submission of an application to the Texas Department of Housing and Community Affairs for a Texas Community Development Program (TCDP) grant. The purpose of this meeting is to allow citizens an opportunity to discuss the citizens participation plan, the development of local housing and community development needs, the amount of TCDP funding available, all eligible TCDP activities and the use of past TCDP funds. The City encourages citizens to participate in the development of this TCDP application and to make their views known at this public hearing. Citizens unable to attend this meeting may submit their views and proposals to Rick Hanna, City Manager, at the City Hall. Persons with disabilities that wish to attend this meeting should contact City Hall for assistance. Individuals who require auxiliary aids or services for this meeting should contact City Hall at least two days before the meeting so that appropriate arrangements can be made. **For further information, contact Rick Hanna, City Manager at the City Hall 806/272-4528.**



Do worries with your current home respiratory provider take your breath away?

Freedom to choose a new provider is yours.



ACCREDITED BY



Joint Commission
On Accreditation of Healthcare Organizations

1200 West 21st Street
Clovis, New Mexico 88101

Call 1.800.842.8278 today to find out your rights as a patient or schedule a visit with our service representative.

BAILEY COUNTY DEVOTIONAL PAGE

BRUCE, INC.
HEATING & AIR CONDITIONING
Hwy. 214 North Muleshoe 272-5114

DAMRON DRUG, INC.
308 Main St. 272-4210
Muleshoe, TX

SAIN IRRIGATION & MACHINES
Complete Pump Service
W. American Blvd. 272-4397
Walt Sain Muleshoe, TX 272-4148

MULESHOE PEA & BEAN, INC.
RR 2 Box 297 272-5589
Muleshoe, TX

NEEDMORE Co-op Gin Company
946-3361 • Sudan, TX

Henry Insurance Agency, Inc.
"Serving You Since 1964"
111 West Avenue B 272-4581
Muleshoe, TX

MULESHOE MOTOR CO.
1225 W. American Blvd. 272-4251

WES-TEX FEED YARDS, INC.
Custom Cattle Feeding
272-7555 Muleshoe, TX

TINO'S
104 W. American Blvd.
272-7528 • Muleshoe, TX
Daily Specials Owners: Tino & Linda Campoya

FARWELL CONVALESCENT CENTER
"In Christ's Love, Everyone Is Someone Special"
305 5th St.
481-9027 • FARWELL, TX

"THE FIVE AREA TELEPHONE COOPERATIVE ORGANIZATION"
West Plains Telecommunications Co.
Five Area Systems, Inc., Plateau Cellular Network
Five Area Long Distance - Five Area Internet
302 Uvalde Muleshoe, USA (806) 272-5533

AMERICAN VALLEY INC.
West Hiway 84 272-4266
Muleshoe

FIRST TEXAS FLBA MULESHOE
"Serving Farmer & Bailey Counties"
272-3010 • Fax 272-5388
316 Main • P.O. Box 424 • Muleshoe, TX

McCormick Seeds, Inc.
400 East Ash • Muleshoe, Texas
272-3156
A complete line of field seeds

HIGGINBOTHAM-BARTLETT CO.
215 Main Muleshoe
272-3351 FAX 272-6860
Bruce Hartline-Mgr.

Lowe's MARKETPLACE
401 W. American Blvd. 515 W. American Blvd.
Muleshoe 272-4585 Muleshoe 272-4406

MULESHOE FEED BARN
311 W. American Blvd.
Muleshoe, TX 272-5626

My soul melteth for heaviness:
strengthen thou me according unto thy word.
-Psalm 119:28

MULESHOE AREA HEALTHCARE Center
"Committed to Caring"
106 W. Ave. H Muleshoe 272-7578

IRRIGATION PUMPS & POWER
ZIMMATIC CENTER-PIVOTS
W. Hwy. 84 272-4483

Facts About The BIBLE BY JOHN LEHTI

WHAT CAUSED JUDAH TO BECOME GREAT?

THE TRIBE OF JUDAH HAD NO STAMP OF GREATNESS ON IT UNTIL DAVID BECAME KING. KING SAUL HAD BEEN A BENJAMINITE AND WITH HIS DEATH AT THE HANDS OF THE PHILISTINE ARMY DAVID TOOK OVER THE HELM OF LEADERSHIP AND ALSO THE THRONE OF ISRAEL. THE TRIBE OF JUDAH WAS ONLY TOO GLAD TO ACCEPT DAVID AS ITS NEW KING, REMOVING THEM FROM THE SUBSERVENCE OF THE TRIBE OF BENJAMIN. BUT ALL OF THE TRIBES WERE HAPPY TO PLEDGE THEIR ALLEGIANCE TO THIS HERO WHO HAD, AMONG OTHER THINGS, DOWNED THE CHAMPION PHILISTINE GOLIATH! AND WHAT A PICTURE HE MADE, WITH HIS HANDSOME FEATURES, AND RUDDY COMPLEXION, AND ATHLETIC PHYSIQUE, AND HOW THE PEOPLE CHEERED WHEN HE STARTED HIS REIGN. A STORYBOOK HERO IF EVER THERE WAS ONE!

SAVE THIS FOR YOUR SUNDAY SCHOOL SCRAPBOOK

This devotional & directory is made possible by these businesses who encourage all of us to attend worship services.

ASSEMBLY OF GOD
FIRST ASSEMBLY OF GOD
521 South First Street • 272-3017
Jack Stone, Min. • 272-3984
S.S. 9:45 am, W.S. 11 am & 6:30 pm, Wed. 7:30 pm
EL BUEN PASTOR
415 E. Ave. F • Pastor Felix Cadena
S.S. 9:45 am, W.S. 11 am & 6 pm; Wed. 7 pm

BAPTIST CALVARY BAPTIST
1733 W. Ave. C. Rev. Jeff Coffman
CIRCLE BACK BAPTIST
Intersection FM 3397 & FM 298
Jessie Shaver, Min • 946-3676
FIRST BAPTIST
220 West Ave. E., Stacey Conner, Min.
FIRST BAPTIST
Lazbuddie • 965-2126
PRIMERA IGLESIA BAUTISTA
223 E. Ave. E., Rev. Greg Guzman
PRIMITIVE BAPTIST
621 South First, Elder Cleveland Bass, Min.
PROGRESS BAPTIST
Progress, TX
PROGRESS SECOND BAPTIST
Arthur Hays, Min.
1st & 3rd Sundays
RICHLAND HILLS BAPTIST
17th & West Ave. D, George Malis, Pastor
ST. MATTHEWS BAPTIST
Corner of W. Boston & W. Birch
Floyd R. Monroe, Min.
THREE WAY BAPTIST
927-5467
TRINITY BAPTIST
314 E. Ave. B, Robert Brown, Min.

CATHOLIC IMMACULATE CONCEPTION CATHOLIC CHURCH
805 E. Hickory, Joseph Augustine, Min.
CHARISMATIC EPISCOPAL ST. CLEMENTS
1536 W. American Blvd. • 272-5954
Father Sergio Leal
Sun. W.S. 10:30 am

CHRISTIAN THE CHRISTIAN CENTER
Morton Hwy. • 272-5105
Reydon Stanford, Min.

CHURCH OF CHRIST LARIAT CHURCH OF CHRIST
Sam Billingsley, Min.
S.S. 10 a.m.; W.S. 11 a.m. & 6 p.m., Wed. 7 p.m.
LAZBUDDIE CHURCH OF CHRIST
Nathan Crawford, Min.
S.S. 9:30 am; W.S. 10:20 am & 5 pm; Wed. 7 pm
MULESHOE CHURCH OF CHRIST
22nd & W. American Blvd.
Harry Riggs, Min.
Albert Garcia, Min. (Spanish service)
S.S. 9:30 am; W.S. 10:20 am & 6 pm; Wed. 7:30 pm
16th & AVE. D CHURCH OF CHRIST
Curtis Shelburne, Min. • 272-4619
S.S. 10:30 am & 1:30 pm; Wed. 7:00 pm

LUTHERAN ST. JOHN LUTHERAN
Lariat, TX-Richard Greenhaner, Min.
S.S. 10:30 am; W.S. 9:30 am

METHODIST FIRST UNITED METHODIST HISPANIC MINISTRIES
E. 5th and E. Ave. D
Pastor Benito Cavazos
FIRST UNITED METHODIST
507 W. 2nd St.
Pastor Brad Reeves
LAZBUDDIE METHODIST
965-2121
EL DEVINO SALVADOR
814 W. Ave. C, Muleshoe, TX
Guadalupe Ballinas, Min.

NAZARENE NEW VISION CHURCH OF THE NAZARENE
814 W. Ave. C • 272-3622
Hugh Hayes, Interim-S.S. 10 & 11 am; W.S. 7 pm
PENTECOSTAL UNITED PENTECOSTAL LIGHTHOUSE
207 East Ave. G • 1-800-454-6051
Pastor McKibben, S.S. 10 am
Thursday, Bible Study 7 pm
INTER DENOMINATIONAL NEW COVENANT
Plainview Hwy. Jimmy Low, Min.
Steve Claybrook, Assoc. Pastor
W.S. 10 am; Wed. 7 pm

Muleshoe Area Medical Center "Your Hospital"
708 S. First St. • 272-4524
Muleshoe, TX

BAILEY COUNTY ELECTRIC COOPERATIVE ASSN.
Muleshoe — 272-4504 Morton — 266-8600

CHURCH OF CHRIST LARIAT CHURCH OF CHRIST
Sam Billingsley, Min.
S.S. 10 a.m.; W.S. 11 a.m. & 6 p.m., Wed. 7 p.m.
LAZBUDDIE CHURCH OF CHRIST
Nathan Crawford, Min.
S.S. 9:30 am; W.S. 10:20 am & 5 pm; Wed. 7 pm
MULESHOE CHURCH OF CHRIST
22nd & W. American Blvd.
Harry Riggs, Min.
Albert Garcia, Min. (Spanish service)
S.S. 9:30 am; W.S. 10:20 am & 6 pm; Wed. 7:30 pm
16th & AVE. D CHURCH OF CHRIST
Curtis Shelburne, Min. • 272-4619
S.S. 10:30 am & 1:30 pm; Wed. 7:00 pm

LUTHERAN ST. JOHN LUTHERAN
Lariat, TX-Richard Greenhaner, Min.
S.S. 10:30 am; W.S. 9:30 am

METHODIST FIRST UNITED METHODIST HISPANIC MINISTRIES
E. 5th and E. Ave. D
Pastor Benito Cavazos
FIRST UNITED METHODIST
507 W. 2nd St.
Pastor Brad Reeves
LAZBUDDIE METHODIST
965-2121
EL DEVINO SALVADOR
814 W. Ave. C, Muleshoe, TX
Guadalupe Ballinas, Min.

NAZARENE NEW VISION CHURCH OF THE NAZARENE
814 W. Ave. C • 272-3622
Hugh Hayes, Interim-S.S. 10 & 11 am; W.S. 7 pm
PENTECOSTAL UNITED PENTECOSTAL LIGHTHOUSE
207 East Ave. G • 1-800-454-6051
Pastor McKibben, S.S. 10 am
Thursday, Bible Study 7 pm
INTER DENOMINATIONAL NEW COVENANT
Plainview Hwy. Jimmy Low, Min.
Steve Claybrook, Assoc. Pastor
W.S. 10 am; Wed. 7 pm

Muleshoe Area Medical Center "Your Hospital"
708 S. First St. • 272-4524
Muleshoe, TX

BAILEY COUNTY ELECTRIC COOPERATIVE ASSN.
Muleshoe — 272-4504 Morton — 266-8600

minsa southwest corporation
P.O. Box 484 272-5545
Muleshoe, TX
FAX (806) 272-5135 (800) 852-8291

PACO FEED YARD, INC.
Commercial Cattle Feeders
P.O. Box 956 265-3281
Friona, TX
Feller Hughes-Mgr.

TEXAS FARM BUREAU INSURANCE CO.
1612 W. American Blvd. • 272-4567 • Muleshoe

WESTERN DRUG
114 Main 272-3106 Muleshoe

Springlake Potatoes, Inc.
P.O. Box 280 • Springlake, TX
262-5542

1ST BANK MEMBER FDIC
202 South First 272-4515

WINKLES TRUCKS, INC.
Box 757 (806) 247-2724
Friona, TX

PINNACLE THERAPY SERVICES
Speech/Language, Physical & Occupational Therapies
305 5th St. • Farwell, TX • (806) 481-CARE

1315 W. American Blvd.
272-3333
Muleshoe, TX

MULESHOE LIVESTOCK AUCTION
Muleshoe, TX • Sale Every Saturday
Clayton Myers • 272-4201

BAILEY GIN COMPANY, INC.
946-3397 • Sudan, TX
Peanut Hawkins, MGR

SHERLEY-ANDERSON LAZBUDDIE ELEVATOR
965-2922 Lazbuddie, TX

Leal's Tortilla Factory, Inc.
"Serving West Texas since 1957"
107 E. Ash 272-5772 Muleshoe, TX

MAPLE COOP GIN
927-5501
Maple, Texas

JAMES CRANE TIRE CO., INC.
107 Main 272-4594
Mike Hahn Muleshoe, TX

TERRA DISTRIBUTION
Hwy. 84 • 272-4203
Muleshoe, Texas
Bruce Bruns - Mgr.

churches 1411 American Blvd.
272-5581
Muleshoe, Tx.
10% Discount for Senior Citizens

HEREFORD FEED INGREDIENTS, INC.
232 Main St. • Muleshoe, Tx.
272-5871
DAVID R. TIPPS — Representative

Dairy Queen
1201 W. American Blvd.
272-3412 Muleshoe

WEST CAMP GIN, INC.
Better Ginning & Courteous Service
Route 2 Box 1000 • 925-6681
Muleshoe, TX
James Shepard / Phyllis Shepard

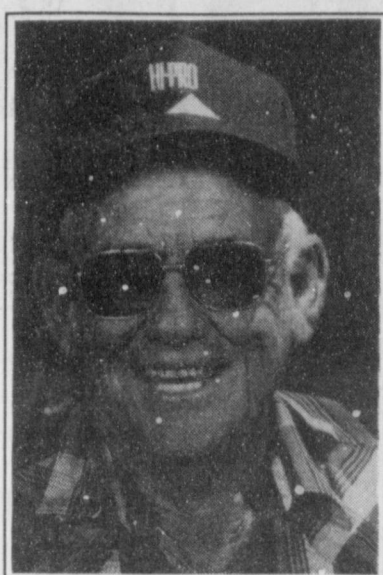
Shipman's Body Shop
Auto Painting • Wrecker Service • Free Estimates
Tractor Glass & Windshields
410 N. 1st Muleshoe, TX
272-4408 FAX 272-3366

Two locations to serve you
1900 W. American Blvd. 107 E. American Blvd.
272-5337 272-3978
Muleshoe, TX

Decorators Floral & Gifts
616 South First 272-4340
Muleshoe, TX

Nieman Realty
116 East Avenue C
Muleshoe • 272-5285
George & Dianne Nieman

OBITUARIES



CECIL "CURLY" MARDIS

Cecil "Curly" Mardis, 68, of Hereford died Wednesday, Feb. 17, 1999 at Covenant Medical Center in Lubbock.

A church service was held Saturday at Fellowship of Believers Church in Hereford with Rev. Nathan Stone, pastor, officiating. Burial was held in Muleshoe Memorial Park Cemetery under the direction of Ellis Funeral Home in Hereford.

Mr. Mardis was born May 13, 1931 in Clovis, N.M. He married Marcia Henry in Muleshoe on May 12, 1991.

Mr. Mardis lived in Hereford for 20 years. He was a member of the Texas Tech Saddle Tramps, the Block and Bridle Club, the Texas Tech Rodeo Association, and an avid supporter of the 4H stock show program. He was the general manager of Stack C. AG Inc.

He is survived by his wife, Marcia; a son, Mike Henry and his wife Monica of Lubbock; four daughters, Rhonda and husband Lance Bookout of Clovis, Sandra Burney of Portales, Kristi and husband Manny Di Mattia of Bradford, Mass., and Kacy and husband Jason Scoggin of Wichita, Kan.; ten grandchildren; and two brothers, H.B. Mardis of Clovis and Burl Mardis of Muleshoe. He was preceded in death by one son, Bobby Henry and one brother, Clifford Mardis.

The family requests a blood donation in memory of Curly Mardis at the Hereford State Bank in Hereford on Wednesday, Feb. 24.

FRANK MATTHEWS

Frank Matthews, 75, of Muleshoe died Wednesday, Feb. 17, 1999 at Covenant Hospital in Lubbock.

A chapel service was held Saturday at Ellis Funeral Home Chapel in Muleshoe with Rev. Reydon Stanford, pastor of the Christian Center of Muleshoe, officiating. Burial was held in Lazbuddie Cemetery under the direction of Ellis Funeral Home of Muleshoe.

Mr. Matthews was born Oct. 22, 1923 in Lamar County, Texas. He married Margorine Woodall in Paris, Texas on March 11, 1942.

Mr. Matthews moved to Muleshoe from Lazbuddie in 1979. He was a member of the Christian Center of Muleshoe. He had been a First United Methodist Pastor for fifteen years. He was the pastor at the First United Methodist Church of Lazbuddie for six years. He then opened a refrigeration re-

pair business in Muleshoe.

He is survived by his wife, Margorine; a son, Eddie Matthews of Easter, Texas; four daughters, Naoma Morris of Tucumcari, N.M., Patty Terry of Madill, Okla., Jane Boyd and Jan McCarty of Amarillo; his mother, Dovie Fay Matthews of Muleshoe; fifteen grandchildren; and twelve great grandchildren. He was preceded in death by his father in 1969 and a brother, Edward, in 1996.

ODIS PRUITT

Odis Pruitt, 69, of Security, Colo. died Feb. 11, 1999 in a Colorado Springs hospital.

Graveside services were held Tuesday in Rosewood Park Cemetery in Longview, Texas under the direction of Rader Funeral home.

Mr. Pruitt was born Mar. 25, 1929 in Reed, Okla. He was a former Longview resident and had lived in Colorado for five years. He was a home builder and a Baptist.

He is survived by two daughters, Bobbie Lynn Schroder of Kilgore, Texas and Odine Devers of Security, Colo.; six brothers, William Charles Pruitt of New McCamey, Texas, Jasper Lee Pruitt of Austin, Jimmy Earl Pruitt of Fredericksburg, Va., Jarrell Pruitt of Muleshoe, Carroll Pruitt of Odessa, and Howard Pruitt of Gretna, La.; two sisters, Mary Byford and Carolyn Gross, both of Odessa; and five grandchildren.

LLOYD W. BROWN

Lloyd W. Brown, 79, of Frederick, Texas, died Tuesday, Feb. 16, 1999 after a lengthy illness.

Funeral services were held Thursday in the Burkhardt

Chapel at the Frederick Memorial Cemetery with Rev. Charles Wyatt officiating. Burial was under the direction of Jackson Funeral Home.

Mr. Brown was born Jan. 1, 1920 in Temple to Willis Edward and Rosie Nell Fulton Brown. He attended school in Temple, moving to Frederick in 1935. He married Vera Veona Lawson on Oct. 26, 1940, in Frederick.

Mr. Brown served in the U.S. Army from July 14, 1942 until Dec. 23, 1945. He worked as a mechanic for Wade Watson Chevrolet until he established his own garage, Brown's Motor Service and Supply. He retired in 1960.

He is survived by his wife, Vera; two sons, Max Brown and Anson Brown of Frederick; one brother, Olen Ray Brown of Columbia, Mo.; two sisters, Lois Washington of Muleshoe, and Christine Taylor of Azle, Texas; and one granddaughter. He was preceded in death by his parents, two sisters, and one brother.

Memorials may be made to the First Baptist Church in Frederick or to the donor's choice.

JOE BAUTISTA

Joe Bautista, 47, of Morton died Thursday, Feb. 18, 1999 at Cochran Memorial Hospital in Morton.

A rosary was said Friday. A funeral mass was held Saturday at St. Ann's Catholic Church in Morton with Father Leonardo Pahamtang officiating. Burial was held at Morton Memorial Cemetery under the direction of Ellis Funeral Home of Morton.

Mr. Bautista was born July 24, 1951 in Morton. He mar-

ried Ninfa Flores in New Home, Texas on February 23, 1974.

Mr. Bautista was a lifetime resident of Morton. He was a member of St. Ann's Catholic Church of Morton. He was a 1969 Junior Golden Glove Boxing Champion. He was a truck driver. He was disabled for the past ten years.

He is survived by his wife, Ninfa; two sons, Omar Louis Bautista and Jason Bautista of Morton; his father, Joe Bautista of Morton; four sisters, Aurora Dominguez of Ft. Worth, Lucy Lovington of Hereford, Dolores Acosta of Ralls, Texas, and Ana Marie Bautista of Portales, N.M.; and a brother, Arnold Bautista of Levelland. He was preceded in death by his mother in 1982.

CRP CRP CRP CRP
 • Native Grass Is Our Business - 40 Years Experience
 • Knowledge And Quality You Can Trust - At No Extra Charge
CURTIS & CURTIS, INC.
 Clovis, New Mexico
800-753-4649
 CALL FOR QUOTES!

In Lazbuddie...
 Guess Who's
FIFTY?
 And still cute
 as can be!
 Love from
 your family!

BERKELEY

RELIABILITY IN AG IRRIGATION

Have "Sand In Your Water"?
 Do Your Submersible Pumps
 Have Brass Bearings?
 BERKELEY Submersibles incorporate "ION" hardened shafts with Rubber Bearings throughout, allowing SAND to wash through the Pump, and NOT become "Sandpaper" to your pump's shaft, destroying the life of your pump & motor.

It's Your Money!

Contact your professional pump installer.

YOUR ELECTED Officials

- **U.S. Sen. Kay Bailey Hutchison (R-Dallas)**
703 Hart Building
Washington, DC., 20510-4301
(202) 224-5922
- **U.S. Sen. Phil Gramm (R-College Station)**
370 Russell Building
Washington, DC., 20510
(202) 224-2934
Lubbock Office: Federal Building, Suite 113, 1205 Texas Ave., Lubbock, TX 79401
(806) 743-7533
- **U.S. Rep. Larry Combest (R-Lubbock)**
19th Congressional District
1026 Longworth building
Washington, D.C. 20515
(202) 225-4005
Lubbock Office: Federal Building, Suite 810, 1205 Texas Ave., Lubbock, TX 79401
(806) 763-1611
- **State Rep. Pete Laney (D-Hale Center)**
Legislative Dist. 85
1400 N. Congress Ave.
Austin, TX 78701
(512)463-1000
- **State Sen. Teel Bivins (R-Amarillo)**
Senatorial Dist. 31
203 W. 8th Street, Suite 301
Amarillo, TX 79101
(806) 374-8994
- **Bailey County Commissioners Court**
300 S. First Street • 272-3307
Precinct 1: Butch Vandiver
Precinct 2: C.E. Grant
Precinct 3: Joey Kindle
Precinct 4: Bennie Claunch
- **Muleshoe City Council**
215 S. First Street • 272-4524
City Manager: Rick L Hanna
Mayor: Robert Montgomery
Councilmen: Cliff Black, Juan Chavez, Larry Kirk, Eugene Hawkins
- **Muleshoe Area Hospital District**
708 S. First Street • 272-4524
Hospital Administrator: Jim Bone
President: Buck Campbell
Vice President: Victor Leal
Secretary: Phil Kent
Board Members: L.T. Johnson, Mike Miller
- **Muleshoe Independent School District**
514 W. Ave. G • 272-3389
Superintendent: Bill Moore
President: Cindy Purdy
Vice President: Curtis Shelburne
Secretary: Frank Saldana
Board Members: Arnold Price, Thurman Myers, David Tipps, Nick Bamert

Brought to you by the
Muleshoe Journal

Norwest Bank-Portales, PNM, & SPS Present

February 23-24, 1999
 Roosevelt County Fairgrounds, Portales, NM

- ◆ **Antique Tractor Parade & Auction**
Parades Feb. 23 & 24, 11:00am
Auction Feb. 24, 9am - 1:30pm
- ◆ **Working Dog Demonstration**
Wed. Feb. 24, 9:30am
Wed. Feb. 24, 2:00pm
- ◆ **Horse Training Seminar**
Tues. Feb. 23, 9:30am
Tues. Feb. 23, 2:30pm
- ◆ **1st Annual Red Angus Futurity Heifer Sale**
Tues. Feb. 23, 4:00pm
- ◆ **Educational Seminars & Demonstrations**
Multi-Peril Insurance for 1999
Blacksmithing and Horseshoeing Demo
Using Milk Futures in Dairy Management
Y2K-How It Will Affect You
Weather Modification on the High Plains
Ranch Management in the New Millennium
Cotton Insect Outlook for 1999

Register to Win
 John Deere Gator
 4x2 Utility Vehicle
 Must be present to Register

For more information:
1 - 8 0 0 - 6 3 5 - 8 0 3 6

LADIES GOLF ASSOCIATION NEWS

The Muleshoe Ladies Golf Association met for their monthly luncheon Feb. 17. Sheryl Engleking, our president presided over the meeting. Jana St. Clair called the roll and read the minutes from our last meeting. Rhonda Box gave the treasurer's report. Our new Vice-President is Tammy Black.

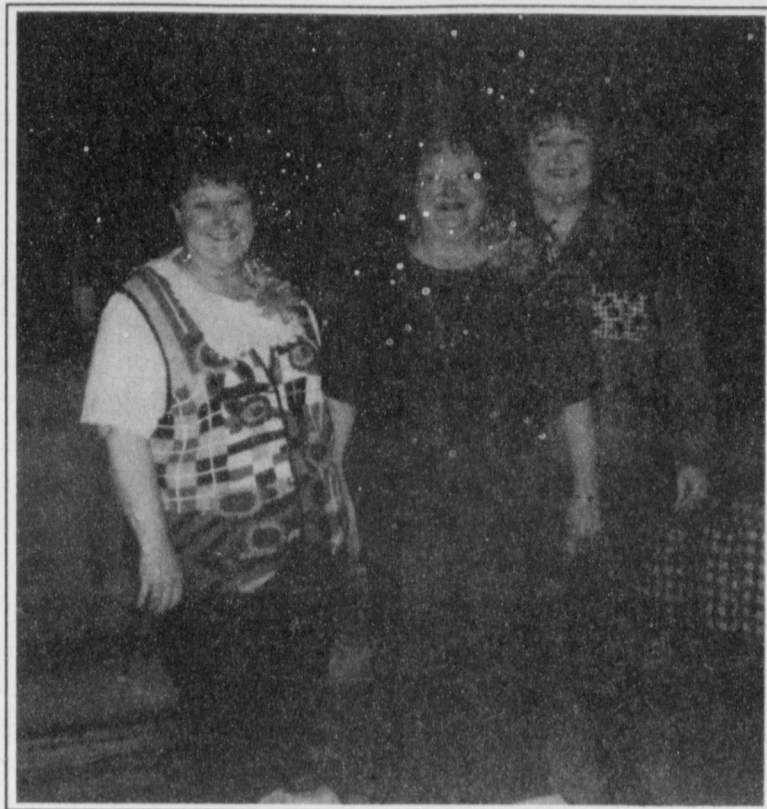
Ladies having birthdays in February are Helen Templeton and Ruby Hart. Happy Birthdays were said to them. Treg Box, new baby son of Rhonda and Jason Box, was our brief visitor with a lot of happy hugs from us all. All committees made their reports. A garage sale is planned for sometime in April. The place and time will be announced next month.

The schedule of tournaments for this year was received with lots of fun tournaments for the

ladies and men. The ladies Memorial Tournament will be May 19 after our May luncheon. Everyone is urged to establish their handicap by then.

Helen Templeton gave out Playday awards to Linda Elder for closest to pin on #7 and Deborah Noble for playing one windy Wednesday when no one else would. Our doorprize was won by Sheryl Engleking.

After the meeting the ladies played cards, since the weather kept us from playing golf. Those attending the luncheon were Helen Templeton, Laverne Winn, Claudine Elliott, Anita Allgood, Ruby Hart, Darlene Henry, Cookie Bamert, Sheryl Engleking, Jana St. Clair, Tammy Black, Deborah Noble, Cindy Baker, Dorothy St. Clair, Neats Foster, Yolonda Phillips, Heather Shipman, and Jo Rempe.



SCAC Citizens of the month

The Student Community Action Club named the January citizens of the month. They are from left to right: Kay Moncrief, Peggy Dent, and Jeanne Mills. Each were presented with a corsage in thanks for the service they have given the schools and community.

TOPS NEWS

TOPS #34 met February 11 at the Muleshoe Church of Christ on American Boulevard. The meeting was held in the Fellowship Room.

The brief meeting was followed by the weighing in of 15 members. The best loser was Ruth Clements and tying for first runner up were Neomi Sanchez and Joline Franklin. Janie Hughes was the second runner up.

The skit "Short Branch Saloon" was enjoyed by all. Bonnets and ruffled blouses and long skirts were worn by Jewel Peeler, Polly Otwell and Alma Robertson. Janie Hughes, the bullwhacker was dressed in fashionable western attire including a hat and boots. She also wore spurs and carried a whip to whack the bulls.

Alma Robertson led the group in two songs. One was "I Hold the Line" to the tune of "I Walk the Line". The other song, "I Fall For Sweetness" was to the tune of "I Fall to Pieces". Both the skit and songs gave good ideas about exercise and making wise food choices.

Laverne James opened the TOPS #34 meeting Feb. 18 with the pledge and a prayer. Neomi Sanchez led the "Thinner We'll

Be" song. Minutes from last week's meeting were read by Janie Hughes.

Alene Bryant and Betty Jo Davis were the weight recorders. Fourteen members weighed in.

The best loser was Betty Jo Davis. Laverne James and Cheryl de Graffenreid tied for first runner up. Tying for second runner up were Alene Bryant, Janie Hughes and Lucille Harp.

Contests were conducted by Jewel Peeler and Alma Robertson. Get well cards were signed to send to Mollie Davis and Evelene Harris.

The next meeting will be held Feb. 25 at the Church of Christ on American Boulevard.

OOPS!

The following pictures were inadvertently switched in the last paper. We apologize for the error.

Students audition for All Region Band



Pictured left to right: back row—Tobin Redwine, Kati Mimms, Kelsey Jones, and Nicole Lewandowski; front row—Richard Welker and Suzanne Aragon

Lazbuddie honors students



Pictured left to right: back row—David Campos, Brandy Hudson, and Esteban Pacheco; middle row—Lydia Campos and Xandra Ballanger; front row—Brooke Lennon and Victor Godinez

SPC holds Senior Sneak Preview

LEVELLAND—High school seniors from nearly 80 area high schools on the South Plains will get a sample of college life March 4 at South Plains College's annual Senior Sneak Preview.

"These students will have the opportunity to explore future careers, talk to faculty and students on campus and begin planning their future," explained Wendy Esch, coordinator of new student relations at SPC. "This is an excellent opportunity for them to investigate what college is all about."

For parents who join Sneak Preview, a special information-packed session is scheduled for them, including topics on admissions, housing, tuition and fees, financial aid, academic transfer courses and other tips.

Activities begin with registration and refreshments at noon in Texan Dome, a general assembly and introduction to the day's activities at 1 p.m., advisement sessions in both technical and academic areas at 1:30 p.m., Just for Parents Workshop at 2:30 p.m., college information fair, SPC club fair, housing tours, entertainment and a cultural diversity

event beginning at 3 p.m.

During the advisement sessions, students will choose one career exploration session to attend and have the opportunity to talk with faculty and students in those areas, discuss career choices, possible majors and prerequisites, visit program areas and tour labs and facilities.

Career areas include Allied Health, Behavioral Sciences, Business Administration, Communications, Creative Arts, Fine Arts, Industrial Technology, Mathematics, Physical Education, Professional Services, Sciences and Social Sciences.

A special session for undecided majors is also scheduled.

Door prizes will be given away during the assembly, and entertainment will be provided during the day by the SPC Touring Ensemble, Texan Cheerleaders, Terrible Tex, Jazz Band and music ensembles from SPC's Creative Art Department.

Parking will be reserved in the lot located south of the SPC track stadium.

For more information, contact Wendy Esch at 894-9611, Ext.2213.

Derby Results Posted

The Cub Scouts Pine Wood Derby was held on Feb. 6 at the Mary De Shazo gym.

Trophies were presented to Jarod Skipworth for the "Cubiest" car, Gunner Kirby "Best Design," and Cody Black "Best Paint Job".

Judges were Hugh Young, Joe King and Rick Hanna.

Participants in the Tiger Division were Steven Richards, Clay Pena, Cole Hawkins, Tony Mendoza, Xavier Mora, Jared Skipworth and Craig Black. First place was Tony Mendoza, second was Cole Hawkins, and third place was won by Xavier Mora.

In the Wolves Division participants were Wes Woods, Gunner Kirby, Mitchell Forti, and Marshall Head. First place was Gunner Kirby, second place was Marshall Head and third went to Mitchell Forti.

The Bear Division was an extremely tough race but only had two Scouts entered. Patrick

Precure was first place and Cody Gonzales ended up in second place by only a fraction of a car length.

Jonathan Martin, Mathew Richards, Jeremy Coffman, and James Coffman were the entrants in the Webelo I group. Mathew Richards won first place, James Coffman secured second place and Jeremy Coffman was a close third place. If Jonathan Martin had not developed mechanical problems early in the race, the entire results might have been changed.

The Webelos II Division were competing in their fifth year of competition and it was truly noticeable in their car designs and speed. Jarod Flores won first place, Richard Welker was a very close second place and third went to Cody Black. Michael Gonzales was fourth.

This year's competition was remarkable in the Open Division. This division is open to small and big kids, and parents.

Richard Hawkins, Corie Ann Black, Carren Black, Cliff Black, Chase Winkler, Andrew Precure, Roper Kirby, Jarad Flores, Joe Flores, Mike Richards, and Stephanie Welker rounded out the field. Stephanie Welker's car not only won First Place but dazzled everyone's imagination. A sleek design, beautiful paint job and a car cast almost entirely of lead proved tough to beat. Jarod Flores took second place with his uniquely designed Chevy Pickup and young Roper Kirby blasted his way to third place in his beautiful Roadster. The rest of the field is still shaking their heads.

A great thanks goes to this year's sponsor Five Area Telephone. It was their idea that every Tiger, Wolf, Bear, Webelo I, and Webelo II who participated received a trophy for their hard work. Every Scout ended up being a winner. Thanks to every one for making this year's derby a success.

ENTER TODAY!
The Muleshoe Journal's 5th Annual
Cutest Baby Contest

Enter any child **born in 1998** who is special to you—children, grandchildren, nieces, nephews, friends, etc.

Winner Will Receive a \$50 Savings Bond For Being Selected 1998's Cutest Baby!

Kaitlin Hope Foster
 1997 Cutest Baby Contest Winner

This year's contestants will appear in the Easter (April 11th) issue of the Bailey County Journal. A panel of unbiased judges will pick the most attractive picture to be the 1998 Cutest Baby. All baby pictures will be printed. Babies need not be born in this area.

Bring your favorite child's photo along with \$10 to the Muleshoe Journal office at 304 W. 2nd St., Monday-Friday between 8:30 a.m. and 5 p.m. or mail the coupon below with your child's photo and \$10 to Cutest Baby 1998, c/o Muleshoe Journal, P.O. Box 449, Muleshoe, Texas 79347. You may pick up your baby's picture during office hours after Monday, April 12, 1999. Arrangements must be made to return photos by mail!

Please provide phone number or address (it will not be published) so that we may contact you if we need additional information.

Baby's Name: _____
 Date of Birth: _____
 Weight at Birth: _____
 Length at Birth: _____
 Place of Birth: _____
 Mom & Dad's Name: _____
 Grandparent's Name: _____

ENTRY DEADLINE IS APRIL 6, 1999 AT 5 P.M.

NURSING HOME NEWS

Congratulations to Grace Scarbrough chosen Mrs. Valentine and Webb Watts chosen Mr. Valentine at the Valentine Party Thursday afternoon. Jacque Baker and Beckey Jones did a fine job entertaining with their songs and music and games. Friday the residents attended a Valentine dinner in the employee dining room. Several of our residents' families and friends were special guests. Hats off to our volunteer chef Edward Orozco, he does know how to grill steak. Harold and Mary Jo Burge directed the bingo game Saturday afternoon. Sunday afternoon the Muleshoe Singers shared part of Valentines

day singing and playing gospel songs and music for the residents. Pearl Helmer was visited by Dean Gunstream recently. Kathryn Hancock celebrated her birthday with her family on Monday. The February birthday party is scheduled for Thursday, Feb. 25 at 3 p.m. You are invited to attend the celebration. Beverly Waggoner, Pat Watson, Mary Jo Burge, and Claudine Embry, our faithful volunteers, came Tuesday afternoon for the weekly beauty shop social. Velta Fyie and Joe Embry visited the residents Tuesday afternoon. Jeanetta Hukill's daughter and son-in-law, Mary and Dale from

Arkansas visited her recently. Frank and Betty Wuerflein delivered two tulip plants to the Care Center Friday. Buster Kittrell, and Harold and Mary Jo Burge served donuts, coffee, and juice to the residents Wednesday morning. Harold

and Buster directed the "around the table" discussion. Brother Steve Claybrook, Maudie Mudford, and Buster Kittrell directed the Devotional/Sing-spiration. Jim Claunch visited and participated in coffee time and

devotional. Our special friend had two fresh flower bouquets delivered to the Care Center Thursday. Glenda Jennings and Jackie Scoggins came Wednesday afternoon for the weekly Sing-a-long/Puppet

Show. Gladys and Cathy Wilson visited us Tuesday and brought us refreshments and cookies. Our deepest sympathy goes to Dovie Matthews and family on the death of her son Frank Matthews. Jackie Torres, Eula Dale, Alejandro Quezada. Feb. 18—Jessie Arnold, Eula Dale, Annetta Gaasch, Juan Garcia, Billye Jones, Gaylord Latham, Marsha Lewis, Shirley Mack, Juan Moron, Alejandro Quezada, Denisse Ramirez, Ellis Sterling, Jackie Torres.

HOSPITAL ADMISSIONS

Muleshoe Area Medical reported admitting these patients: Feb. 12 — Gregory Harper, Darrell Kenemer, Vanell Phipps, Ellis Sterling, Maria Vega, Helen Bickel, Shirley Mack. Feb. 13 — Helen Bickel, Darrell Kenemer, Shirley Mack, Vanell Phipps, Maria Simental, Ellis Sterling, Jackie

Torres, Baby Tosh, Linda Tosh, Maria Vega, Zeferino Villarreal. Feb. 14 — Helen Bickel, Darrell Kenemer, Shirley Mack, Vanell Phipps, Maria Simental, Ellis Sterling, Jackie Torres, Zeferino Villarreal. Feb. 15 — Shirley Mack, Ellis Sterling, Jackie Torres, Zeferino Villarreal, Maria Simental. Feb. 16 — Jessie Arnold,

Corinne Burke, Annetta Gaasch, Billye Jones, Gaylord Latham, Shirley Mack, John Maddox, Denisse Ramirez, Baby Simental, Jackie Torres. Feb. 17 — Jessie Arnold, Annetta Gaasch, Billye Jones, Gaylord Latham, Marsha Lewis, Shirley Mack, John Maddox, Denisse Ramirez, Ellis Sterling,

Jackie Torres, Eula Dale, Alejandro Quezada. Feb. 18—Jessie Arnold, Eula Dale, Annetta Gaasch, Juan Garcia, Billye Jones, Gaylord Latham, Marsha Lewis, Shirley Mack, Juan Moron, Alejandro Quezada, Denisse Ramirez, Ellis Sterling, Jackie Torres.

Journal Classifieds

STOP & SHOP

Deadlines are 5 p.m. Monday and Thursday

Call 272-4536

Deadlines are 5 p.m. Monday and Thursday

LEGAL

Public Notice, On Feb. 16, 1999, a hearing was held before the City Council of the City of Muleshoe, Tx., to determine whether the property located at the 700 block of East Avenue D, Muleshoe, Tx. also known as 1.13 acres out of Section 54, Block Y, WD&F Johnson Survey, Muleshoe, Bailey County, Tx. is in violation of the City of Muleshoe Structural Standards Code. Following the hearing it was determined the structures located upon the property are substandard. The City Council ordered that the structures be secured and that they be repaired, removed or demolished by May 15, 1999. Persons interested in the structures may obtain a copy of the order from the City Secretary at City Hall, 215 S. First, Muleshoe, Tx. 79347. Published in the Bailey County Journal Feb. 21, 1999.

HOMES

HADLEY HOMES, INC. Family Owned Raymond & Sherry Hadley Se Habla Espanol (505) 763-1788 or 1-888-316-6111 4100 Mabry Drive Clovis, NM Fax (505) 763-0698 Sales Reps: Bowie Howard & Anna Loya

FOR RENT

Ruidoso Condo 3 Bedroom 3 Bath Sleeps 8 Call Debbie at (806) 285-3053 Storage Rooms Available \$25-\$50 Call Ted Barkhill 272-4903

REAL ESTATE

3 Bedroom 2 Bath & 2 CAR GARAGE HOME On CORNER LOT! 400 SW 11th in SUDAN. GOOD NEIGHBORHOOD CALL 933-44912

REAL ESTATE

3 Bedroom 2 Bath Home *With apartment* 1 bedroom 1 bath & living room. Total of 2000 plus square feet of living area. Call 272-5954

WANTED

Want to purchase used center-pivot, in good condition. Prefer LEPA system. (806) 983-3730, Leave message. 71-6tch

James F. Hayes & Co. AGRICULTURAL REAL ESTATE SERVICES • 320 Acres with exceptional 3 or 4 bedroom home. Large barn, 2 center pivot sprinklers adjacent to above farm. • HOUSE, BARN & EQUIPMENT CAN BE SOLD SEPARATELY. • 181 Acres, Bailey County. Center pivot, 2 wells, fronts U.S. Highway 84. Joins 320 acre tract above. • 160 acres of Bailey County on Pavement. • 160 Acres - Southeastern Farmer County. Late Model Sprinkler. Good water. Small house and barn. * In cooperation with a New Mexico Broker Vic Coker, Agent 310 Main St. Suite 103 Muleshoe Office 272-3100 Home 965-2468 WHEN LAND INVOLVES COWS AND PLOWS

Large Consignment Auction Saturday, March 6 — 10:30 Central Time Corner of Main & Ave. B in Muleshoe Vehicle and Trailers Taking consignment of good household goods and appliances. No Junk Will Be Accepted! Tools, shop equipment, furniture, and appliances. If you feel your items need advertisement, we need to know by Feb. 22. Consignment accepted thru Feb. 5. Nothing accepted day of Auction! Consignment accepted by E-Mail priest @ 3lefties.com W & J Auction Service I-800-822-1243 • 4205 S. Prince • Clovis, N.M. E-Mail priest @ 3lefties.com or check web site www.3lefties.com/priest

FOR SALE OR LEASE

Large, 3 bdrm 2 bath home. In nice area. \$395 per month. 272-4480 or (602) 816-4003-45s-tfc

FOR SALE

Glass top dining room table with 8 chairs. Call 272-3418 after 5 p.m. 8s-2tch 160 irrigated acres. Valley center pivot, good water, Oklahoma Lane Area. (806) 925-6463-8s-4tch

FOR SALE

Farm Land FOR SALE Approximately 560 acres on Bailey/Lamb county line. Two irrigated quarters with 2 Valley pivots and 4 wells, 215.4 acres CRP. Separate 80 acre tract improved grass-land. \$199,000. Financing available to qualified buyers.

Contact: Jay Messinger Muleshoe State Bank (806) 272-4561

HELP WANTED

Assistant Food Service Director, must be responsible and dependable. Experience in healthcare setting helpful. Contact Robin Dickerson, Food Service Director, Muleshoe Area Medical Center, 708 South 1st, Muleshoe, Tx 79347. (806) 272-4524. 8s-3tch

James Priest & Associates W & J Auction OUR KNOWLEDGE IS YOUR SECURITY • Auctioneers: James Priest, Butch Priest, 4205 South Prince Clovis, New Mexico TX Lic. # 11077 & 9474 1-800-822-1243

RESCHEDULED AUCTION Tuesday, February 23, 1999 SALE TIME 9:37 a.m. Located Farwell, Texas 2 miles East on US Hwy 84, then 10 miles East on FM Hwy 145, then 1 mile South on Rd 12; or from Muleshoe, Texas 10 miles South on FM Hwy 1731, then 3 miles East on FM Hwy 145, then 1 mile South on Rd 12; or from Bovina, Texas 18 miles South on Texas Hwy 214, then 7 miles West on FM Hwy 145, then 1 mile South on FM Hwy on Rd 12. Same being from Lubbock, Texas 13 miles West on FM Hwy 145 then 1 mile South on Rd 12 Mrs. David White & Others -- Owners Due to the death of my husband, the following will be sold at Public Auction: For more information call (806) 925-6463 or (806) 946-7898 or Cruce & Fletcher Auctioneers (806) 296-5050 or (806) 866-4201

SERVICE

COUNTRY DUMPSTER'S RURAL GARBAGE SERVICE NO LONG TERM CONTRACTS Locally Owned & Operated Reasonable Prices 806-385-4585

SERVICE

HENDERSON SERVICE CO. MAJOR APPLIANCE & MINOR HOME REPAIRS 272-4450

Nieman Realty 116 E. Ave. C • George Nieman, Broker • 272-5285 or 272-5286 RICHLAND HILLS — PARK RIDGE • We have several single and multi-family lots in this area!!! • NICE 3 bdrm. 2 bath w/3 car detached garage/workshop/storage, Elec. Heat Pump, built-ins, FP, 2,380' lv. area, auto. splkr., fenced yd., More!!! RH-2 • NICE 3-2-2 Brick, Cent. A&H, built-ins, FP, approx. 2100' lv. area, storage, fenced yd., MORE!!! RH-1 HIGHLAND AREA • 3-2-2 Brick, Cent. A&H, built-ins, gas log FP, fenced yd., stor. bldg., MORE!!! Price Reduced!!! HL-5 • 2-1-1 carport home, wall furnace heat, evap. air, DW, 5 fans, cov. patio, gas grill, fenced yd., MAKE OFFER!!! • 3-2-2 Brick Home, corner lot, wall furnace heat, Cent. Evap. Air, fenced yd., stor. bldgs., MORE!!! HL-4 • NICE 2-1-1 +1 Carport Brick, 2,000 + lv. area, Cent. A&H, built-ins, fans, den w/WB stove, enclosed heated pool, corner lot, fenced yd., MORE!!! \$80's!! HL-1 LENAUA - COUNTRY CLUB AREA • PRICE REDUCED 2-1-1 Carport Home, wall furnace, nice carpet, storm shelter, stor. bldg., fenced yd. \$19K!!! CC-3 • 2-1-1 Home, floor furnace, w/ ref. air, fenced yd, stor. bldg., \$18,500!!! L-1 • 3-2-2 Carport Mobile Home, Cent. A&H, built-ins, nice yd., pecan & fruit trees!! \$16K!!! COMMERCIAL • Six Unit Apartment Complex (4-2 bdrm. & 2-1 bdrm. units)!!! • 100' x 140' tract, approx. 7,400' business & warehouse building on American Blvd., PRICED TO SELL!!! • Established Business: Land, Bldg. & Equip., \$75K!!! • 56' x 140' tract, approx. 4700' bldg., \$35K!!! • NICE R.V. STORAGE, 14' x 40' metal bldg, 12' doors, 50X140 corner lot! • SNACK SHACK - Lot, Buildings, furniture & fixtures!!! HIGH SCHOOL • Nice 3-2-2 Brick, built-ins, heat pump, 5 fans, nice carpet, stor. bldg., fenced yd., MORE!!! \$60's!!! HS-3 • 2-2-2 BRICK, Cent. A&H, built-ins, corner lot, approx. 1800' lv. area!!! PRICE REDUCED! MAKE OFFER!!! HS-4 • 3-1/2-1 Home on corner lot, fenced yd., storage bldg., MORE!!! \$20's!!! HS-9

Buy It Sale It In the Classifieds!

At **LOWE'S**...

We've Cooked Up A Breakfast Sale

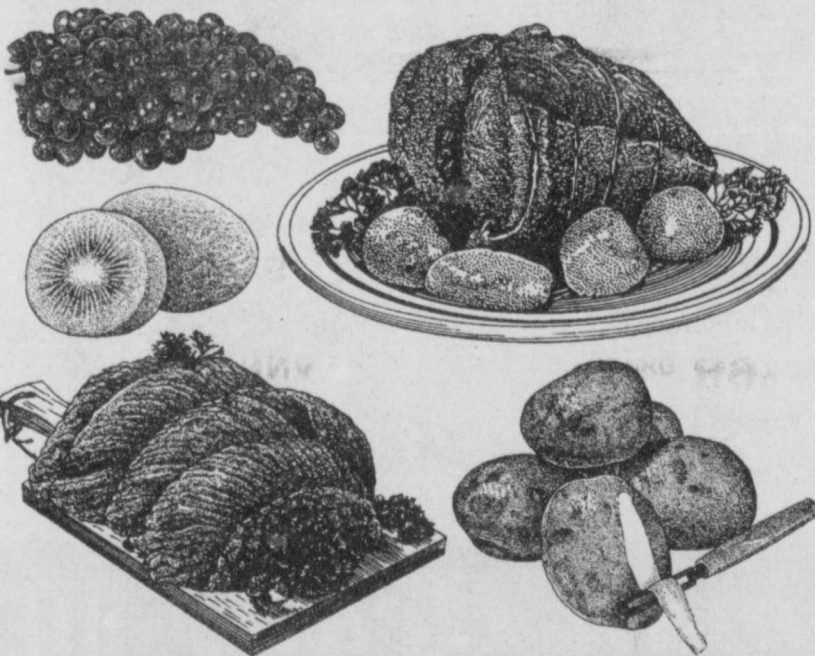
RISE & SHINE SALE

Start The Day Right!

PRICES EFFECTIVE FEBRUARY 17-23, 1999

MEAT

- PREMIUM SELECT BEEF BONELESS
RUMP ROASTLB **\$1⁶⁹**
- BEEF
SPARE RIBSLB **99¢**
- PREMIUM SELECT BEEF BONELESS
BOTTOM ROUND STEAK.....LB **\$1⁷⁹**
- PILGRIM'S PRIDE
WHOLE CUT-UP FRYERSLB **89¢**
- GROUND ROUND QUALITY
SUPERB GROUND BEEFLB **\$1⁷⁹**
- BONE-IN
PORK STEAKSLB **\$1²⁹**
- BONE-IN PORK
COUNTRY STYLE RIBSLB **\$1²⁹**
- LOBSTER CHUNKS OR
LEG/CHUNKS/FLAKE STYLE
LOUIS KEMP CRAB DELIGHTS ..8 OZ. **\$2²⁹**
- FARM RAISED
**RAW BREADED
CATFISH NUGGETS**LB **\$1²⁹**
- CLEAR COVE BREADED
FISH STICKS OR PORTIONSLB **\$1³⁹**
- DECKER THICK OR REGULAR
MEAT BOLOGNA12 OZ. PKG **89¢**
- DECKER
MEAT FRANKS12 OZ. PKG **75¢**
- CENTER CUT
ARMOUR BACON.....12 OZ. PKG **99¢**



- ASSORTED
TIDE ULTRA LIQUID50 OZ. **\$3⁴⁹**
- ASSORTED
**DAWN ULTRA
DISH LIQUID**13 TO 14.7 OZ. **\$1²⁵**
- ALL TYPES
**COCA-COLA, SPRITE
OR DR. PEPPER**6 PACK-12 OZ. CANS **\$1⁷⁸**
- ALL TYPES
**COCA-COLA, SPRITE
OR DR. PEPPER**.....3 LITER BTL **\$1³⁸**

Each Week you may purchase the 5 piece plate setting for only \$3.99 with each \$10.00 minimum purchase.

Affiliated Foods, Inc. presents

Chrome Stainless Steel Flatware!

At participating stores only.

Granada
GOURMET COLLECTION

WEEK 3
2 PIECE
SERVER SET
\$5.99

WITH \$3.00 OFF
COUPON.
REG. PRICE \$8.99

W/ \$10.00 PURCHASE
ONLY AT PARTICIPATING AFFILIATED FOODS
MEMBER STORES. ONE COUPON PER
COMPLETER PIECE.

**5-Piece Place
Setting**

With Two Patterns To Choose From

We are giving you the opportunity to purchase a flatware set to suit your household at a fraction of the regular cost! Each week different completer pieces will be featured at a special feature price with coupon so you may round out your flatware collection. Lifetime Warranty, High Quality Shine, Made in Spain, Dishwasher Safe.

PRODUCE

- SWEET TEXAS
GRAPEFRUIT..... **6/\$1**
- AMERICAN, ITALIAN OR FRENCH
**DOLE SPECIAL
BLEND SALAD**.....10 TO 12 OZ. **2/\$3**
- RED SEEDLESS
GRAPESLB **\$1¹⁹**
- FRESH TROPICAL
KIWI **3/50¢**
- U.S. NO. 1
RUSSET POTATOES15 LB. BAG **99¢**
- SWEET YELLOW
CORN.....EARS **3/\$1**

FROZEN & DAIRY

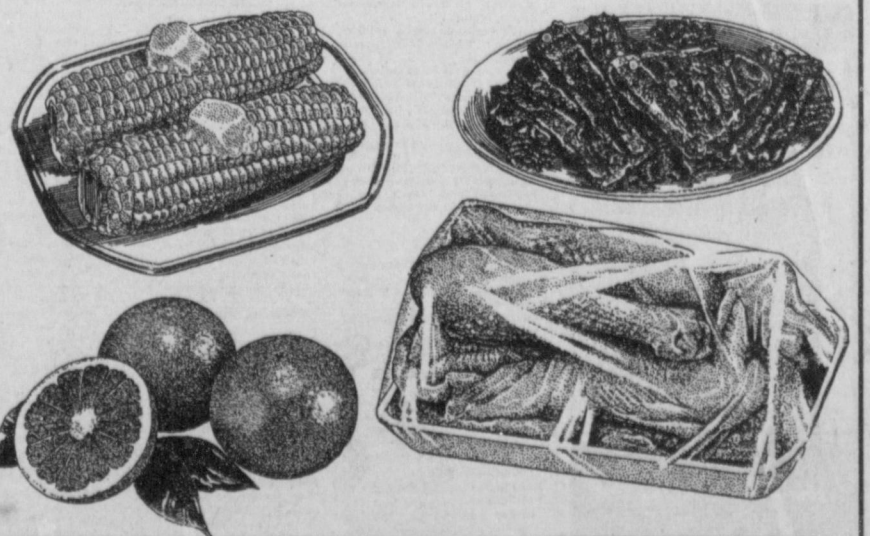
- SHURSAVING
HOMOGENIZED MILKGAL. JUG **\$2²⁹**
- ASSORTED FAT FREE FROZEN
"TCBY" YOGURT6 OZ. TUBS **2/\$1**
- TROPICANA SEASON'S BEST
HOMESTYLE OR ORIGINAL
ORANGE JUICE96 OZ. JUG **\$2⁹⁹**
- LAS CAMPANAS SHREDDED BEEF
TAQUITOS16 OZ. PKG **\$2³⁹**
- BEEF/BEAN CHIMICHANGA OR ASSORTED
**LAS CAMPANAS
BURRITOS**.....40 OZ. PKGS **2/\$5**
- 13.3 OZ. LOW FAT OR
1 LB. ORIGINAL OR BEEF
**STATE FAIR
CORN DOGS**YOUR CHOICE **\$1⁹⁹**
- 16 OZ. ORIGINAL OR 12 OZ. PUB STYLE
**FISHER BOY
FISH STICKS**YOUR CHOICE **2/\$4**
- FROZEN YOGURT, DIET, LIGHT
OR BROWN/GOLD/SILVER RIM
BLUE BELL ICE CREAM1/2 GAL. **2/\$7**
- 24 CT. CREME POPS, POP 'N
FUDGE BARS, MINI FUDGE BARS
OR 12 CT. SANDWICHES
BLUE BELL NOVELTIES **2/\$5**
- SELECTED VARIETIES VALUE
OR SELECT MENU
BANQUET DINNERS ...6.7 TO 11 OZ. PKG **79¢**
- SELECTED VARIETIES
PATIO DINNERS12 TO 13 OZ. PKG **79¢**
- AMERICAN OR 2% AMERICAN STACK PACK
KRAFT SINGLES16 OZ. PKG **\$2⁹⁹**
- ASSORTED
BANQUET POT PIES7 OZ. PKGS **3/\$1**
- ASSORTED
PATIO BURRITOS5 OZ. PKGS **3/\$1**
- VEGETABLE OIL
**SHURFINE MARGARINE
QUARTERS**16 OZ. PKG **3/\$1**
- SWIFT PREMIUM BROWN 'N SERVE
SAUSAGE LINKS OR PATTIES7 OZ. **99¢**
- SWIFT PREMIUM BROWN 'N SERVE
SAUSAGE 'N BISCUITS.....5.5 OZ. **99¢**
- GLACIER GOLD
HASH BROWN PATTIES10 CT. **99¢**

\$3⁹⁹

with each \$10.00 purchase
Reg. Price \$6.99

HEALTH & BEAUTY

- 2 BAR PKG. PLUS OR
ASSORTED 3 BAR PKG.
DIAL BATH SOAPYOUR CHOICE **\$1⁸⁸**
- SHURFINE COMPLETE
PANCAKE MIX32 OZ. **\$1²⁹**
- ORIGINAL OR LITE
LOG CABIN SYRUP24 OZ. BTL **\$2⁵⁹**
- 15.1 OZ. HONEY CRUNCH CORN
FLAKES, 20 OZ. RAISIN BRAN, 17.6
OZ. SMACKS OR 15 OZ. FROOT LOOPS
KELLOGG'S CEREALYOUR CHOICE **2/\$4**
- ASSORTED MOIST DELUXE
**DUNCAN HINES
CAKE MIXES**.....18.25 OZ. BOX **78¢**
- ASSORTED READY TO SPREAD
**DUNCAN HINES
FROSTING**.....16 TO 16.6 OZ. **\$1³⁵**
- QUICK OR OLD FASHIONED
3 MINUTE OATS42 OZ. **\$2³⁹**
- REGULAR/ELECTRIC PERK OR DRIP
SHURFINE COFFEE.....13 OZ. CAN **\$1⁸⁸**
- ASSORTED FLAVORED
SHURFINE CREAMER.....8 OZ. **\$1²⁹**
- ASSORTED
**KELLOGG'S
BREAKFAST MATES**.....4.7 TO 5 OZ. **99¢**
- MARDI GRAS
PAPER TOWELSROLL **2/\$1**
- WHITE
**SOFT'N GENTLE
BATH TISSUE**12 ROLL PKG **\$2³³**
- MINUTE MAID
ORANGE JUICE4 PACK-16 OZ. BTLs **\$2⁹⁹**
- YELLOW
JOLLY TIME POPCORN.....2 LB **99¢**
- ASSORTED
CHEE•TOS.....11 OZ. BAG **2/\$3**
- TOSTITOS®
CON QUESO DIP15.5 OZ. **2/\$5**
- DUNCAN HINES ASSORTED
CHOCOLATE LOVERS
BROWNIE MIX22.9 TO 23.7 OZ. **2/\$3**
- ECONOMY
REYNOLDS WRAP FOIL.....75 SQ. FT. **\$1⁹⁹**
- ROMA
LAUNDRY SOAP64 OZ. PKG **\$1⁹⁹**
- PURINA
HI PRO DOG FOOD.....20 LB. BAG **\$7²⁹**
- PLASTIC REYNOLDS
COLOR WRAP100 SQ. FT. **\$2²⁵**
- ASSORTED POWDER
**TIDE ULTRA 2
DETERGENT**39 TO 40 OZ. **\$3²⁹**



WESTERN MONEY
UNION TRANSFERSM
"The fastest way to send money"

Lowe's
MARKETPLACE

401 W. American Blvd.
Muleshoe 272-4585



515 W.
American Blvd.
Muleshoe
272-4406

WE RESERVE THE RIGHT
TO LIMIT QUANTITIES
IN TEXAS