

Santa Anna News

One Section — 12 Pages

"He Profits Most Who Serves Best"

Single Copy — 5c

VOLUME LXXVIII

SANTA ANNA, COLEMAN COUNTY, TEXAS, THURSDAY, SEPTEMBER 24, 1964

NUMBER 39

Point Rows

By Bob Parker

We know when we've been topped. Last week in this column, we listed the names chosen for this year's crop of hurricanes. Well, we found out, Barbara Kingsbery told us, as told to her by a third grader. You want to know? The answer is: Who ever heard of a himicane?

We don't mind playing straight man, but it hurts our ego to be topped by an eight-year-old.

It's An Ill Win That Doesn't Blow Somebody Good Department: The defection of Mountaineer supporters after the 13-0 loss to Cross Plains was nothing compared to the elation of residents of that city. This was the first game the Buffaloes had won in the last 14 tries, and the local newspaper, the Cross Plains Review, ran a four-column headline on the front page, in bright red ink, announcing "Long Losing Streak Ends As Buffs Trip Santa Anna."

Bill Hayes, of Temple, Republican candidate for congressman at large, the office now held by Joe Pool, stopped by the office the other day. Unfortunately, we were out and didn't get to talk with our former fellow-resident (we used to live in Temple, too). However, Bill left a note with the information that he has visited more than 150 Texas communities so far in his campaign.

We received a call the other day from a gentleman who identified himself as Ricky Murray, age seven, who lives across from the Santa Anna Hospital. He said he would like to put an ad in the paper, since he had found a dog and he wished to locate the owner. The description given by Mr. Murray stated that the dog was "small and short and brown and black with one white foot." So if you have misplaced a dog that is small and short and brown and black with one white foot, contact Mr. Ricky Murray. Morey Mast, of the staff of The News, who took the call, was quite impressed with the businesslike manner in which young Mr. Murray handled the matter.

Somehow, a rumor has been going around that two of our beagle hounds have been killed. Several people have called or stopped us on the street to ask about it and to express sympathy. We don't know how this rumor got started, but we are happy to say that there is no truth in it. We recently took three beagles back to their owner in Corpus Christi, for whom we had been keeping them, and someone not seeing these particular dogs among our regular menagerie, may have jumped to a false conclusion. We do want to express our thanks for the concern expressed by so many people about this rumor.

Auction For Crippled Children Set In Coleman

The annual Cattleman's Roundup for Crippled Children has set dates for the auction sales, in which livestock donated by area stockmen are sold to raise funds for benefiting West Texas crippled children.

Cattle will be sold in Abilene on Saturday, September 26, and area cattlemen who wish to donate are requested to have their animals at the Coleman Livestock Auction on the morning of Thursday, September 24, for transportation to Abilene. Sheep and goats will be sold at the Coleman Livestock Auction on Monday, September 28, and donors are asked to have their animals there that morning.

All donations are accepted and all are tax deductible. A receipt will be given for each donation for tax purposes.

Those wishing more information, may contact W. R. Hickman, of Coleman, area chairman.

Coleman Man Hospitalized Following Auto-Train Accident Here Saturday

An automobile driven by Roy Ernest Kelly, 54, of Coleman, collided with a switch engine on the spur railroad crossing of Highway 84 in the east edge of Santa Anna Saturday, September 19.

The accident took place in a steady rain as the engine, guarded by a flagman, was switching cars to the Santa Anna Silica Sand Company. Time

of the mishap was about 8:30 p.m.

The Plymouth driven by Kelly was "completely demolished" according to a spokesman for Apache Body Works, in Coleman, where it was taken following the accident. Damage to the engine was light.

Kelly was admitted to Santa Anna Hospital suffering from several lacerations and six broken ribs on his left side. At present, he was reported to be "improving, but he will be in the hospital for several more days," according to Dr. R. W. McMullin, attending physician. James F. Lake, 45, also of Coleman, was treated and released from the hospital following the accident.

GOP Candidate To Speak Saturday In Coleman

Mr. Jack Chrichton, who is Republican candidate for the governorship of Texas will be in Coleman Saturday afternoon. He will arrive by air at 3:00 p.m. He will talk to the public on the courthouse lawn soon after arrival.

Following his talk he will go to the Republican Headquarters located in the old Coulson Drug Building. The public is invited to hear this talk on the courthouse lawn and also to meet Chrichton and have coffee at the Headquarters.

Santa Anna Legion Post To Meet Monday

The regular meeting of the Jack Laughlin Post 182, American Legion will be held Monday evening, September 28, at 7:30 p.m. in the Lion's Club Building.

All members and their wives and all eligible veterans and their wives are invited to attend this meeting. Refreshments will be served.

United Presbyterian Church Holds Dedication Of New Building Sunday



BUILDING DEDICATION for the new sanctuary of United Presbyterian Church of Santa Anna will be held Sunday, September 27. The new building on the corner of Willis Avenue and Fifth Street is the second building owned by the Church in its 79-year history.

United Presbyterian Church Holds Dedication Of New Building Sunday

United Presbyterian Church of Santa Anna will hold the dedication of the new sanctuary building on Sunday, September 27.

Guest speaker for the occasion will be F. Hoytt Boles, executive of the Presbyterian Synod of Texas.

The dedication service will be held at 11:00 o'clock Sunday morning.

The new building, located at the corner of Willis Avenue and Fifth Street, is the Church's second building since its founding in 1885.

Rev. Ben H. Moore is pastor of United Presbyterian Church, a post he has held since 1943. Members of the session, governing body of the Church are, J. W. McClellan, clerk, and J. T. Oakes, M. L. Guthrie, Jr., W. E. Stepp, and Lewis Miles Guthrie.

Building committee members are John McDaniel, chairman with McClellan and Thomas Wristen. Contractor for the new building was Andrew Stewart, of Brownwood.

Sunday school superintendent is John McDaniel. President of the Women of the Church is Mrs. M. L. Guthrie, Jr. Music directors are Mrs. David Mercer and Mrs. J. W. McClellan.

The building is constructed of tan brick with white trim. Windows depict important religious symbols. A steeple rises near the center of the L-shaped building.

An invitation has been extended by the Church to anyone who would like to attend the dedication and also the open house, which is scheduled for 3:00 p.m. to 5:00 p.m.

New Mail System Changes Pickup Times, Schedules

BY JOHN C. GREGG
Postmaster

The new mail system for this area of the state will go into effect Saturday, September 26, with the delivery of the morning mail. As promised last week, we will this week announce the manner in which mail will be dispatched from the Santa Anna Post Office.

All first class mail left in the post office during the day will leave here at 4:30 p.m. each day except Saturdays, Sundays, holidays and the day before holidays. In order for first class mail to be included in the first dispatch for the day, it must be in the post office before 4:15 p.m.

All other mail and all first class mail that is deposited in the local post office after the above time will be dispatched at 6:00 p.m., but it must be in the post office by 5:30 p.m.

As stated last week, the new mail system is designed to work effectively with the ZIP Code and everyone is urged to use the ZIP Code on all classes of mail and to use it in your return address. Mail will still be handled that does not have the ZIP Code on it, but use of the ZIP Code will speed up handling and delivery of the mail.

The last dispatch of mail each evening will be picked up by truck at the post office at 7:05 p.m. each and every day, seven days a week just like it has been going by train for so many years. Also, a new mail box will be installed in front of the post office and mail that is too late to be dispatched in the post office may be put in this new box. The driver of the mail truck will pick this up at 7:05 p.m. and that will be the last mail out of Santa Anna for the day.

Plans had been made for a change in the window service hours at the post office, but definite instructions have not been received at noon on Wednesday, so, for the present at least, the window service will remain the same as it has been—from 8:00 a.m. to 5:30 p.m. Monday through Friday and from 8:00 a.m. to 12:00 noon on Saturday. If and when the new window service goes into effect, the announcement will be made previous to the time of changing the service.

Everyone is reminded again that the mail box at the depot will be removed from there on Friday of this week and mail will no longer be carried by train from Santa Anna.

SANTA ANNA FFA CHAPTER HAS MEETING

The Santa Anna Chapter, Future Farmers of America, held a regular meeting Thursday, September 17.

Several items of business were acted upon prior to adjournment.

Coleman County Cancer Society Unit Chooses Directors, Officers Recently

Officers, directors, committee members, and other personnel of the Coleman County Chapter of the American Society, were named recently.

Elected to two year terms as directors were W. H. Thate, Thomas Wristen, Jr., Allyn Gill, and W. T. Stewardson, all of Santa Anna; Mrs. Jack DeBusk and Mrs. Roger Watson, of Burkett; George Beck, of Valera; and Mrs. David Parker, Charles King, N. W. Purcell, Mrs. Weldon Davis, Dr. J. D. Duke, and Mrs. Dick Gordon.

Holdover directors include Mrs. Olen Wilson, of Gouldbusk; F. W. Taylor, Jr., Weldon Davis,

SINGING CONVENTION
The McCulloch County Singing Convention will meet at 2:00 p.m. Sunday afternoon in the Northside Baptist Church, on North Walnut Street in Brady. North Walnut Street in Brady.

Ex-Students Return For Homecoming Saturday

Several hundred ex-students of Santa Anna schools will return Saturday, September 26, for the annual Homecoming.

Max Eubanks, of Santa Anna, president of the Ex-Students Association, has announced that Mrs. Jennie Banister Seddon, of Houston, has been elected as Ex-Student of the Year. Mrs. Sedden, a music teacher and a well-known organist and pianist, will play several numbers during the Saturday afternoon program.

Mrs. Virginia Pettit Smith, of Keller, sister of A. D. Pettit, of Santa Anna, has been selected as the Coming-Home Queen.

Activities for Homecoming will begin at 9:00 a.m. Saturday morning, when registration

starts. The morning will be devoted to coffee-drinking and visitation, with class reunions scheduled to begin at noon and last through 3:00 p.m.

The business meeting and program will start at 3:00 p.m. and is scheduled to continue until about 5:00 p.m.

Dinner will be served from 5:30 p.m. until approximately 7:30 p.m., or until all the hungry exes have been fed, Eubanks said. A pep rally is scheduled for the gymnasium at 6:15 p.m., and all ex-student are invited to attend.

The Homecoming football game, matching the Mountaineers against the Bang Dragons, gets underway at 8:00 p.m. in Mountaineer Stadium. The Mountaineers will be looking for their first victory of the season, while their traditional rivals from down the road bring a 2-0 record into the game. Santa Anna has lost to Baird, Cross Plains and Clyde, three tough teams, while the Dragons have topped Rochelle and Early.

Coach Rufus Cobern is hopeful that his charges will rack up their first win before the Homecoming crowd. "If the boys play as well as they are able, we will beat Bangs," he told The News earlier this week.

Following the ballgame, the exes will go to the National Guard Armory for the dance, lasting from 9:00 p.m. until midnight. Music will be furnished by the "Scottie Three", a five-man band from Abilene.

Honored classes are those graduating in years ending in "4" and several such classes, such as 1914 and 1944, have already planned special get-togethers.

Officers of the Ex-Students Association include Eubanks, president; Mrs. Verna Newman, first vice president; Felton Martin, second vice president; Mrs. Lucille Wylie, secretary-treasurer; and Billy Campbell, Mrs. C. D. Bruce, and Lyndon Haynes, directors.

Santa Anna High School Class Officers Picked

Class officers and other class personnel have been elected by all four classes at Santa Anna High School. Following are the selections for the 1964-1965 school year:

Senior Class

President, Les Guthrie; vice president, Tommy Hays; secretary, Lynda Rutherford; treasurer, Ruth Ann Walker; parliamentarian, Donald Makuta; reporter, Linda Horner; class prophet, Velda Cullins; class historian, Lawanda Horner; student council representatives, Karen McCluskey and Nelson Perry; Homecoming representative, Karen McCluskey. Senior class sponsors are Mrs. Winnie McQueen and Fred Gray.

Junior Class

President, Ronnie McCarrell; vice president, Helen Pinson; secretary-treasurer, Melba Keeney; historian-reporter, Gary Rider; parliamentarian, Raymond Cupps; student council representatives, Pam Garrett and Mary Haynes; Homecoming representative, Linda Abernathy. Miss Virginia Sikes is junior class sponsor.

Sophomore Class

President, Carlton Watson; vice president, Loretta Broadway; secretary, Leanna Pollock; reporter, Larry Rutherford; student council representatives, Edward Anderson and Eddie Jones; Homecoming representative, Norma Jo Eubank. Sponsors of the sophomore class are Mrs. Wanna Lou Lloyd and Rufus Cobern.

Freshman Class

President, Bob Rutherford; vice president, Ted Ford; secretary, Carolyn Rowe; reporter, Roy Joe Harvey; Homecoming representative, Carolyn Rowe. Roy Mathews and A. D. Pettit are freshman class sponsors.

Telephone Co-op Holds Annual Meet

Approximately 400 persons attended the annual meeting of the Coleman County Telephone Cooperative, held Saturday, September 19 in the auditorium of the Santa Anna High School.

Reelected as directors of the Cooperative during the meeting were Tom Kingsbery and Glen Copeland, of Santa Anna, and Grady McIver, of Trickham.

Approximately 300 persons visited the new headquarters building of the Cooperative during the open house held Saturday afternoon.

Entertainment for the annual meeting included piano selections by Jimmy Benton, and musical numbers by a group called either the Termites or the Little Bits (they use different group titles for each number) made up of Pascal Hosch, Jerry Horner, Vicki Neff, Tommy Niell, and Pat Hosch. Feature of the program was a lecture by one General Christoffsen, purported to be a Danish general touring this country, but who turned out to be Cactus Prior, well-known Austin television personality.

Sizable Rains Finally Dampen Santa Anna

The rains finally came to the Santa Anna area, beginning Saturday and continuing through presstime. As of Wednesday noon, 3.90 inches of rain had fallen during that period. A cool front, which triggered the rains, kept temperature in the 70's and low 80's for most of this time, with a warming trend becoming evident later in the week.

FOOTBALL

SANTA ANNA MOUNTIES

vs.



Bangs Dragons



SANTA ANNA HIGH SCHOOL FOOTBALL SCHEDULE

September 4: Santa Anna 12, Baird 45
 September 11: Santa Anna 0, Cross Plains 13
 September 18: Santa Anna 0, Clyde 27
 September 26: Bangs, here (Homecoming)
 October 2: Bronte, there
 October 9: Dublin, here
 October 16: Burnet, there*
 October 23: Marble Falls, here*
 October 30: Goldthwaite, there*
 November 6: Open
 November 13: Early, here*
 * District Game

Mountaineer Stadium

Game Time 8:00

Saturday, Sept. 26
1964

SANTA ANNA JUNIOR HIGH SCHOOL FOOTBALL SCHEDULE

September 15: Santa Anna 0, Blanket 18
 September 22: Santa Anna 0, Early 0
 September 29: Cross Plains, here
 October 6: Bangs, here
 October 13: Goldthwaite, there
 October 20: Rising Star, here
 October 27: Open
 November 3: Open



SUPPORT THE MOUNTAINEERS



G&E Hardware & Appliance
HARDWARE HEADQUARTERS IN SANTA ANNA

West Texas Utilities Company
SUPPORTING THE FIGHTING MOUNTAINEERS

Santa Anna Hospital
ALL THE WAY, MOUNTAINEERS!

Western Auto Associate Store
SPORTS SUPPLIES AT WESTERN AUTO

Speck's Barber Shop
CLIP 'EM, MOUNTAINEERS

R. T. Caperton Chevrolet-Cadillac
CHEVROLET and CADILLAC in COLEMAN COUNTY

Fairy Williams Barber Shop
BACKING THE MOUNTAINEERS

Coleman County Telephone Co-op., Inc.
OWNED BY THOSE WE SERVE

Central Medical Clinic
SUPPORT YOUR TEAM

Santa Anna Co-op Gin
SUPPORTING THE MOUNTAINEERS

Coleman County State Bank
THE FRIENDLY COLEMAN COUNTY BANK

Cliff & Ruth Grill
STOP BY AFTER THE GAME

Mrs. J. R. Gipson, Florist
FOR YOUR GAME CORSAGE

The Man's Shop
EVERYTHING FOR MEN AND BOYS

Radio Station KSTA
PLAY-BY-PLAY EVERY SATURDAY MORNING

The Ladies Shop
BEHIND THE MOUNTAINEERS

Coleman Gas Company
SERVING COLEMAN AND SANTA ANNA

Taylor Motor Company
HOME OF THE 50,000 MILE or 5 YEAR WARRANTY

Burden Mobil Service Station
ALL THE WAY WITH THE MOUNTAINEERS

McKee's Cleaners
WHERE CLEANING IS AN ART

Santa Anna Silica Sand Company
WITH THE MOUNTAINEERS ALL THE WAY

Phillips Drug Store
WIN WITH THE MOUNTAINEERS

First Methodist Church
THE CHURCH OF THE OPEN DOOR

McCrary Premier Station
YOUR FRIENDLY PREMIER DEALER

Santa Anna Insurance Agency
INSURANCE IN ALL ITS BRANCHES

Santa Anna Quarterback Club
BACKING THE MOUNTAINEERS ALL THE WAY

Coleman Butane Gas Company
SERVING THE SANTA ANNA AREA

Santa Anna National Bank
YOUR FRIENDLY HOMETOWN BANK

Horner Humble Service Station
GO TO THE GAME WITH ENCO

Coleman County Electric Cooperative, Inc.
OWNED BY THOSE WE SERVE

Whon News

By MRS. TOM RUTHERFORD

Apparently from reports, the wonderful rains are general for Coleman County. Some places more than others, but every where in the county has received rain up until now (Monday night). And it is raining now. Our community has received five inches and over.

We congratulate the Coleman County Telephone Cooperative, located in Santa Anna for the very nice Saturday open house, for the new building and the nice program at the Santa Anna High School Saturday night.

Mr. and Mrs. Lon Minica and her father, Mr. R. A. Baker, of were recent guests of Mrs. Townsend's sister, Mr. and Mrs. Thomas Switzer and children.

Mr. Minica will return to Galveston soon for a check-up.

Mr. and Mrs. Hilary Rutherford and children, Rocky and Dena, and Mr. Sherman Hellman of Rockwood visited in the

Tom Rutherford home Sunday afternoon.

Mr. and Mrs. Floyd Morris spent Saturday night with Mr. and Mrs. Ramon Morris and son, Archie, of Camp San Saba.

Mr. and Mrs. Hart Holmsly and children, Randy and Terry, of Dallas and Mr. and Mrs. Randy Brown of Santa Anna were Saturday night and Sunday guests of the ladies' parents, Mr. and Mrs. Cleburn Stanley.

Mr. and Mrs. Joe Floyd Morris of Brownwood visited his parents, Mr. and Mrs. Floyd Morris Sunday afternoon.

Mrs. Babe Gardiner and Mr. Ray Jenkins of Brady visited in the Tom Rutherford home Sunday afternoon.

Mr. and Mrs. Wayne Townsend and children of Abilene Midland were guests in the Darwin Lovelady home from Wednesday to Saturday of last week.

Mr. and Mrs. Floyd Morris visited in the home of Mr. and Mrs. Darwin Lovelady and Randal Thursday night. They also visited with Mr. R. A. Baker and Mr. Oscar Lovelady.

Mr. and Mrs. Loyd Rutherford of Coleman were Sunday dinner guests with Mr. and Mrs. Tom Rutherford and Lynda.

Mr. and Mrs. Joe Floyd Morris, Mr. and Mrs. John David Morris and Jamie Lee Morris and Miss Jean Kline attended the West Texas Fair Saturday night.

Trickham News

By Mrs. J. E. York
Telephone DU2-3336

Rain recorded here over the weekend measured three and one-half inches up to today (Monday). Most everyone caught some water in their tanks, and everyone is so happy and thankful for the rain.

Mr. and Mrs. Frank Wallace and children of Dallas spent Friday night with her parents, Mr. and Mrs. Fred Haynes. Mr. and Mrs. Jerry Haynes and baby of Coleman and Billy Don Haynes of Ranger Junior College spent the weekend at home with their parents. Stanley James and Donnie York were Sunday dinner guests.

Mr. and Mrs. Lige Lancaster visited Thursday afternoon with Mr. and Mrs. Oscar Boenicke.

Mrs. Bond Featherston visited Mrs. Jack Dockery Thursday afternoon. Other visitors during the week were Mr. and Mrs. G. K. Stearns, and Mr. and Mrs.

Dude Watson and Martha of Coleman.

Mr. Wayne Whitley and Eldon Brown of Big Lake were Saturday night supper guests of Mr. and Mrs. Marvin Whitley.

Mr. and Mrs. Grady McIver and Mrs. Keetie Haynes of Santa Anna visited with Terry McIver at McMurry College in Abilene Sunday afternoon.

Mr. and Mrs. Oscar Boenicke were bedtime visitors with Mr. and Mrs. Carl Harris of the Mt. View Community Thursday night.

Attend church regularly.

SEED OATS

Arkansas Grown — New
Three-Bushel Sacks
Tagged and Tested
Immediate Delivery
\$1.20 Per Bushel
Call 625-5823 - 625-5165
Coleman, Texas
Moregrain, Arkwin, and
Victorgrain

Kenneth Wise Steak House

Formerly Ranch House

Open 6 a. m. to 12 p. m. Daily

Charcoal Steaks

Lots of Parking

407 Fisk (Across from City Hall)

Brownwood, Texas

TIRES ARE ALWAYS
A BARGAIN

at

RUDOLPH'S
Coleman, Texas

**WELCOME
EX-STUDENTS
to your annual
HOMECOMING**

Our Very Best Wishes

**SANTA ANNA
CO-OP GIN**



CIVIL DEFENSE
APPROVED
FALLOUT SHELTER



\$5.00 up

No Charge for Children Under 18
24-Hour Coffee Shop
Radio-Television
Completely Air Conditioned
FREE INSIDE PARKING



HOTEL *Southland*

Commerce-Murphy-Main Streets
Telephone: Riverside 2-6431
Dallas, Texas

**HELLO EXES --
-- BEST WISHES**

Homecoming 1964

Coleman Butane Gas Co.

Burkett Hiway

Coleman, Texas

625-2925

**WELCOME
EX-STUDENTS**

**SANTA ANNA
HOMECOMING**

Best Wishes

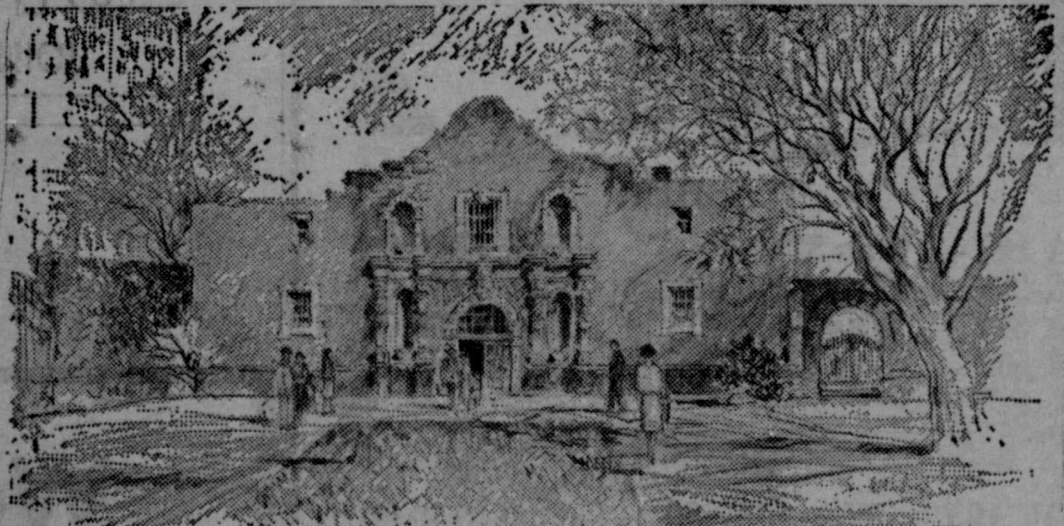
From

Coleman Gas Company

116 Cencho

Coleman, Texas

625-2114



By E. M. Schiwetz, noted Texan

"REMEMBER THE ALAMO"
-- the cry that fanned Texas' defeat to victory!

On March 1, 1836, thirty men from Gonzales broke through the lines of Mexican Army Commander Santa Anna to increase the Alamo's defenses to 187. This little band of heroes held the Alamo against overwhelming odds for five more days in one of the most heroic struggles to be found in the annals of man.

On March 6 Santa Anna with over 4,000 troops stormed the Alamo, and the last of the heroic band of Texans died fighting. Names like William Barret Travis, James Bowie, Davy Crockett and James B. Bonham became immortal.

The massacre at the Alamo inspired General Sam Houston's men at the battle of San Jacinto. Crying "Remember the Alamo!", the Texans sprang upon Santa Anna's soldiers and in a swift bloody fight won Texas its freedom.

SPEAK OUT FOR FREEDOM

... with U. S. Savings Bonds!

YOUR FRIENDLY

Santa Anna National Bank

Member FDIC and Federal Reserve Bank of Dallas

Rockwood News

By MRS. JOHN C. HUNTER

Mr. and Mrs. Floyd Smith of Santa Anna are announcing the birth of a daughter at the Santa Anna Hospital, Friday, September 18. The baby weighed 7 pounds and 11 ounces and was named Holly Jean.

Grandparents are Mr. and Mrs. M. D. Bryan of Rockwood and Mr. and Mrs. R. C. Smith of Santa Anna and Mrs. Pearl Fulcher of Santa Anna is great-grandmother.

Mrs. Lester Bryan and Mrs. A. L. Crutcher were business visitors in Coleman Friday. Mrs. Drury Estes visited with Mrs. Crutcher one afternoon. Mr. and Mrs. Harry Epps visited Monday morning.

Mrs. Betty Hobson and children of Coleman spent the weekend with Mrs. Lee Miller. Mr. and Mrs. Boss Estes and Mike and Weldon Estes and Gordon visited Saturday evening.

A great-nephew of Mr. Bob Steward's was killed in a car wreck recently. Attending the funeral in Brownwood were Mrs. Johnny Steward, Mrs. Jack Cooper and Mrs. Bill Steward.

School folks are back at work again. Mrs. Lon Gray is back at Lohn High School, Mrs. Leon McMillan is in Brady Public School system. Sonly Steward and LaQuinn Cooper are at Tarleton College, in Stephenville; Mary Rehm is in Denton and Wade Rehm is at A&M College at College Station.

The Reverend Donnie Melton preached at the Baptist Church at both Sunday services. He was a dinner guest with Mr. and Mrs. Carl Buttry. Mrs. Bill Rehm and Mrs. Lee McMillan were also dinner guests.

Mrs. Tony Rehm was admitted to the Brady Hospital for a checkup Friday.

Sunday dinner guests with Mr. and Mrs. Jack Cooper and LaQuinn were Mr. and Mrs. Tommy Davis and Mr. and Mrs. Alton Davis of Snyder, Mr. and Mrs. Denny Densman and Dorinda of Santa Anna, Mr. and Mrs. Sam Bolton and children of Coleman, Mr. and Mrs. N. V.

Bolton, Dana and Connie of Fort Pierre, South Dakota, Mr. and Mrs. Alfred Cooper and Tommy of Bangs, Sandra Cooper of Brownfield, Mr. and Mrs. Elec Cooper, David and Ronnie, Mr. and Mrs. Denver Ellis and Sissy Steward.

Attending the Bolton funeral in Coleman Sunday afternoon were Mr. and Mrs. Elec Cooper, Mr. and Mrs. Jack Cooper and LaQuinn, Mr. and Mrs. Alfred Cooper, Tommy and Sandra, Mr. and Mrs. Matt Estes and Mr. and Mrs. Henry Smith.

Mr. and Mrs. Bob Nixon of Valera were Sunday dinner guests with Mr. and Mrs. Leffel Estes and Geneva. Boss Estes and Mike, Sam Estes and James Estes visited Sunday morning. Mr. and Mrs. Harry Epps of Corpus Christi visited Monday morning.

Mr. and Mrs. Boss Estes, Douglas and Mike of San Antonio spent the weekend at their home here.

Mr. and Mrs. G. B. Phenix and Cindy of Crane spent the weekend with Mr. and Mrs. M. A. Richardson.

Weldon Estes and Gordon of San Angelo visited with the Boss Estes family during the weekend.

Mrs. Era Blackwell is in the M.D. Anderson Hospital in Houston, Room E-312.

The Reverend James Graves moved to the Methodist Parsonage Saturday to direct the work of the Rockwood Charge, including Trickham and Cleveland Methodist Churches. He was a Saturday supper guest with Mr. and Mrs. Ray Caldwell.

The Reverend Graves preached at the Methodist Church Sunday morning and was a dinner guest of Mr. and Mrs. John Hunter. Mr. and Mrs. Carl London of San Angelo visited briefly in the afternoon.

Mrs. J. S. Heflin and Mrs. Lois Mann of San Angelo spent Saturday and Sunday with Mr. and Mrs. Marcus Johnson and Nikki. Jerry Johnson of Abilene was home for the weekend.

Mr. and Mrs. James Steward and Jamie Kay of Brady spent Sunday with Mr. and Mrs. Johnny Steward. Mr. and Mrs. Mack Rehm and granddaughter, Georganna Ross, of Brownwood visited in the afternoon. G. T. England of San Angelo was a

weekend guest.

Mr. and Mrs. Denver Ellis, who have been employed on a ranch near Junction for the last 14 years have moved back. They bought the James Steward house.

Mr. and Mrs. Ercell Ellis of Winters attended the Methodist services Sunday and were dinner guests with Mr. and Mrs. Denver Ellis. Mr. and Mrs. Doc Ellis of Colorado City were also Sunday visitors.

Mr. and Mrs. A. L. King visited Saturday in Coleman with Mrs. C. A. Crump and Miss Sammie Stewardson. The Kings were among those attending the telephone meeting at Santa Anna Saturday evening.

Mr. and Mrs. Carl Ashmore of Santa Anna visited with Mr. and Mrs. King Sunday afternoon.

Mr. and Mrs. Boss Estes,

Douglas and Mike and Weldon Estes and Gordon and Mrs. Claud Box were Saturday dinner guests with Mrs. Sam Estes.

Miss Judy Bryan of Dallas was with home folks for the weekend. Mrs. Jerry McAlister and Dee Dee of Coleman spent the weekend with Mr. and Mrs. Bill Bryan and Serena. Jerry came for them and spent Saturday and Sunday.

Wednesday of last week Mr. and Mrs. Wilburn Tucker of Brady and Mr. and Mrs. Ernest Young of Fort Worth visited with the Bill Bryans.

Mrs. John Kemp and her nephew, Bobbie McCarrell, visited Saturday afternoon with Mr. and Mrs. Drury Estes. Mr. McCarrell is also a nephew of Mrs. Estes. He is enroute to Georgia, where he will be stationed in the Army. Other visitors were Mrs. A. L. Crutcher,

Mrs. M. D. Bryan and Mr. and Mrs. Boss Estes.

Mr. and Mrs. Hilary Rutherford and children of Coleman were Sunday guests with Mr. and Mrs. Sherman Heilman. The Heilmans were with the Rutherfords on Monday when other guests were Mr. and Mrs. Cecil Harnes and family of Lamesa, Mr. and Mrs. Daniel Gilbreath and children of Nebraska and Mr. and Mrs. Joe Langehenning and children.

Mrs. R. J. Deal accompanied Mr. and Mrs. Tim Siler of Melvin to Woodson last Thursday, and spent the night where they visited their mother, Mrs. Fannie Ellis, Mr. and Mrs. G. R. Ellis and Mr. and Mrs. O. W. Winstead. The Siler were Friday luncheon guests with Mr. and Mrs. Deal.

The Deals spent Friday night at Abilene at the John Richard

Deal home. The Deal baby, 11 month old Sherri, was in Hendricks Hospital very ill with pneumonia. A telephone call reports she is better.

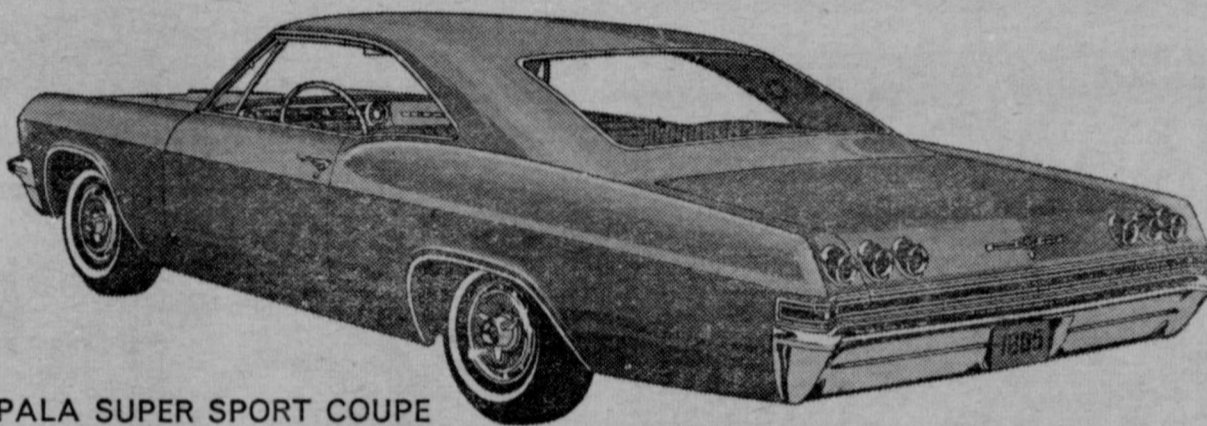
Mrs. Joe Wise reports her mother, Mrs. E. M. Tisdale of Brady, recently returned from a trip to Hartsdale, New York, where she visited her daughter, Mrs. Bob Unger and family.

Local folks visiting were Mrs. Mena Shuford and Mrs. Lee McMillan with Mrs. M. D. Bryan. Marcus Johnson and Jerry were Sunday visitors with Mr. and Mrs. Fox Johnson.

Attend church regularly.

TIRES ARE GUARANTEED
at
RUDOLPH'S
Coleman, Texas

THEY'RE HERE AND WOW!



IMPALA SUPER SPORT COUPE



CORSA CONVERTIBLE

NEW BEAUTY AND LUXURY IN 5 NEW CHEVROLETS FOR '65!

OPEN HOUSE TODAY!

JOIN THE CELEBRATION! FREE FAVORS AT OUR FUN-FOR-ALL!



Welcome To Our Open House

Thursday Thru Saturday, September 24-26

8:00 a. m. to 6:00 p. m.

Prizes - Gifts - Refreshments

See Our New Building And The New

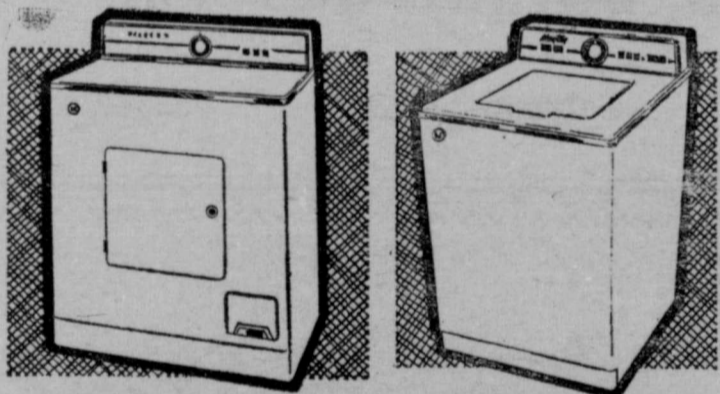
Chevrolets and Cadilacs

R. T. Caperton Chevrolet-Cadillac

1400 Commercial Avenue

Coleman, Texas

TRUCK LOAD SALE



WASHER

A 102 — Was \$249.00	Now \$199.95*
A 202 — Was \$299.00	Now \$249.00*
A 302 — Was \$309.00	Now \$269.00*
A 502 — Was \$329.00	Now \$289.00*

*With Trade

DRYER

DE 105 — Was \$189.00	Now \$159.00*
DE 500 — Was \$269.95	Now \$215.00*

PAIR

A 102 Washer — Was 249	Now 199.95*
DE 105 Dryer — Was 189	Now 159.00*

Pair 350.00

*With Trade



Maytag
THE FINEST
YOU CAN BUY!

America's favorite washer—built for years of service. Take your pick of three models. Liberal trade-in, easy terms. See them today!

WRINGER WASHER

Was \$189.00	Now \$149.00*
--------------	---------------

*With Trade

GRAY MERCANTILE CO.
Of Texas

"Crusada Bautista Nueva Vida," a crusade among Spanish-speaking citizens of Coleman County sponsored by the Baptist Church, has been in progress

this week in Coleman, at the East Coleman Baptist Chapel, beginning Sunday, September 20, and continuing through Saturday, September 26.

In connection with this crusade, Lynn Izard has been working in Santa Anna during the week. Beginning Sunday, September

27, a central campaign will be held in Brady, with nightly meetings in a tent in Richards Park, in Brady. Groups from this area will attend each to hear messages brought by Rev. Santiago Garcia, of San Antonio. Services will be conducted in Spanish. Anyone interested in attending these services should contact First Baptist Church, in Santa Anna, Izard said.

PENNY WISE SAYS - IT'S THE STORE THAT GIVES YOU MORE!..

Brown's Gro.

Prices Good Friday and Saturday

IMPERIAL — 5 LB. BAG	LIMIT 1	KIMBEL'S — 12 OZ. CAN	
SUGAR	49c	Luncheon Meat	39c
VEGETOLE — 3 LB. CAN		CABELL'S	
SHORTENING	59c	Mellorine	3 for 1.00
BREEZE — REGULAR SIZE		FRESH AND LEAN	
DETERGENT	32c	HAMBURGER	lb. 39c
MAXWELL HOUSE — 1 LB. CAN		Tokay Grapes	lb. 15c
COFFEE	79c	HOME MADE PIES BY MRS. TOM RUSHING	

Double Top Value Stamps Every Wednesday With \$3.00 Purchase or More.

Brown's Grocery
MEMBER INDEPENDENT GROCERS, INC.

Cleveland News

By Mrs. Sid Blanton

It finally rained enough for stock water. So many people were watering their cows from their wells, as the ponds were all dry for a few farmers. Our rain gauge here at our home has measured 3.70 inches in all during the weekend and it's still raining (Monday night).

Miss Mamie Martin and Mrs. Rose Genz of Palo Pinto attended the football game in Clyde on Friday night and visited during Mrs. John Howard, Mrs. Jewell Powers, Mrs. Vernon Penney and Mrs. Artie Magill went to the weekend with the R. W. Cupps and Sid Blanton families. They returned home Monday.

Mr. and Mrs. Charlie Fleming attended the West Texas Fair in Abilene one day last week.

Abilene Monday to spend the day with Mrs. Elgean Gilliam.

Mrs. R. W. Cupps, Mrs. Rose Genz and Miss Mamie Martin visited Mrs. Maud Burney in Coleman Saturday afternoon.

Mr. and Mrs. Vernon Penney and Mrs. Magill spent the weekend at Olton with Mr. and Mrs. Weldon Priest and family.

Forty percent of the 155,000 acres irrigated from Arizona's Elephant Butte Reservoir lie in Texas.

HOMECOMING

WELCOME EXES

Stop By and See Us

Moore Mercantile

Santa Anna

HOMECOMING

YOUR HARDWARE AND LUMBER HEADQUARTERS IN SANTA ANNA

Bailey Lumber Co.
Santa Anna

Patronize Our Advertisers

WELCOME TO **Homecoming** 1964

SEE US FOR THE BEST IN AUTOMOTIVE SERVICE

Mathews Moter Company
Santa Anna

WELCOME EX-STUDENTS to your annual **HOMECOMING**

We Are Glad You Were Able To Visit Your Old Schoolmates Again

COME TO SEE US!

WE BALANCE WHEELS

WE GIVE S. & H. GREEN STAMPS

TALLEY

Sinclair Service Station

SERVICE THAT CAN'T BE MATCHED

CAR-TUNES

"I Was Cruising Along When Suddenly This Family of Porcupines Start Crossing the Road!"

The moral of this story seems to be: always give porcupines the right of way! Also, when you run into any kind of car trouble, make a bee-line to us to have what's wrong made right... but fast!

We Give S.&H. Green Stamps

Burden Mobil Station
510 Wallis Ave. Phone FI 8-3191

GREETINGS EX-STUDENTS

WE EXTEND YOU A CORDIAL WELCOME TO YOUR ANNUAL **HOMECOMING** — IN SANTA ANNA — SATURDAY, SEPTEMBER 26

Once Again You Will Enjoy Meeting Your Old Schoolmates. We Are Glad For You.

WE'LL BE SEEING YOU

Wylie's Flowers
LUCILE WYLIE, OWNER

WELCOME EX-STUDENTS

We Hope You Enjoy

HOMECOMING 1964

Coleman County Electric Cooperative

Owned By Those We Serve

CLASSIFIED ADVERTISING

CLASSIFIED ADVERTISING RATES
 First Insertion — Per Word 4c
 Each Additional Insertion — Per Word 2c
MINIMUM CHARGE — 50c PER WEEK
COPY DEADLINE — 10:00 A. M. WEDNESDAYS

FOR SALE OR TRADE

FOR SALE: Good used refrigerators, automatic washers, wringer washers, clothes dryers and gas cook stoves. Terms to suit YOU. Geo. D. Rhone Co., Coleman, Texas. 48tfc.

FOR SALE: Several nice lots. Nice location on pavement. M. L. (Rat) Guthrie. 34tfc.

FOR SALE: Used Furniture and Antiques. W. M. Morgan, 602 South Houston, phone FI8-3802. 25tfc.

FOR SALE: Several used TVs in good condition. Geo. D. Rhone Co., Coleman, Texas. 48tfc.

FOR SALE: One Wisconsin air-cooled motor, 9 horsepower. Cheap. L. A. Welch Garage. 39-40c.

SINGER ZIG ZAG SELECT-O-MATIC

Buttonholes, sews on buttons, embroiders, fancy, patterns, ect. Need party with good credit to assume payments of \$7.75, or \$68.48 cash. Still under guarantee. Write Department 11, in care of The Santa Anna News, Post Office Box 697, Santa Anna, Texas. 39tfc.

FOR SALE: Arkwin Oats, Best for grazing and combining. Test 35 pounds. C. E. Kingsbery. 37tfc.

WANTED—TO BUY

WANTED: All kinds of sacks, burlap or cotton feed bags. Top market prices. Coleman Bag & Burlap Co., phone FI8-3604, Santa Anna. 4tfc.

SPECIAL NOTICES

SAVE \$\$\$ on all your drycleaning. Eight pounds drycleaned for \$2.00 per load—pressed for \$1.00 per load. Clothes left in the morning can be ready to go that afternoon. You can wash and dry your laundry too at the Coleman Poly Clean Center, 709 Commercial, Coleman, Texas. 39-40c.

WANTED: Custom plowing. E. C. Curtis. Phone Truck Harbor Cafe FI8-3387 or FI8-9120. 37-38p.

MISCELLANEOUS

ATHLETE'S FOOT GERM HOW TO KILL IT.

IN 3 DAYS if not pleased with strong T-4-L liquid, your 48c back at any drug store. Watch infected skin slough off. Watch healthy skin replace it. No more itch and burning! Use antiseptic, soothing T-4-L FOOT POWDER too — fine for sweaty feet, foot odor; stays active in the skin for hours. NOW at All Drug Stores. 19-21 & 32-35c.

HERRING'S Flower & Gift Shop. Complete line of floral displays, Phone FI8-3461. 22tfc.

UPHOLSTERING Shirley Upholstering Co.

1504 North Nueces, Coleman

IF YOU ARE thinking about improving your home ask us for free estimates on the following: Insulation to make your home easier to heat and cool; all types of siding including the new plastic, insulated, asbestos and aluminum in lovely colors and quality roofing to top it all. Call MI5-8596 Collect. Smith Roofing Company, Brownwood. 51tfc.

WHEN YOU THINK of grinding, mixing and pelleting, think of Hollingsworth Feed Mill, Coleman, Texas. 50tfc.

FOR RENT

FOR RENT: Two bedroom house at 201 N. Houston. Newly decorated. Telephone FI8-3731. 38tfc.

FOR LEASE: 200 A. 1/2 cultivation. Fair improvements. Available October 1. Three miles south on Brady Highway. Write PO Box 5188, Amarillo, Texas. 38-40c.

Use the News want ads. They get results.

Bit by bit... every litter bit hurts!

KEEP AMERICA BEAUTIFUL!

Downtown Santa Anna Building To Be New Headquarters For Utility Firm

A long-empty building on Walls Avenue, known as the old Miles Wofford building, is being remodeled as the new home of West Texas Utilities Company in Santa Anna.

The building, located in the 700 block of Walls Avenue, across the street from the Post Office, is being overhauled by Truett Aldridge, contractor from Goldthwaite.

Among features of the new building, scheduled for completion about the middle of November, will be plate glass show windows on the street, vinyl tile over concrete flooring, managers office, shop storage areas, built-in vault, lounges and restrooms, an acoustic ceiling, refrigerated air conditioning in the show room and office portions of the building, with evaporative air conditioning in the

HEATER SALE

We took advantage of early buying and will pass the savings on to you. All Dearborn Heaters in stock... for natural or butane gas. 19% off. A size for every room.

HOSCH FURNITURE COMPANY

GOOD VISION IS VITAL TO YOU



Periodic eye examinations are the one sure way to protect eyesight for a lifetime of use. And our professional skill assures your satisfaction.

Dr. E.H. Henning Jr Optometrist



117 Commercial Avenue
 Coleman, Texas
 Phone 625-2228

OFFICE HOURS
 9:00 A. M. to 5:00 P. M.
 Saturdays — 9 to 12

Tree Seedlings Now Available

Applications for the purchase of tree seedlings for reforestation and windbreaks are now available from the Texas Forest Service, County Agricultural Agents, ASCS offices and Soil Conservation District offices, Mason Cloud, head, Reforestation Section, Texas Forest Service, reported today.

Pine seedlings, primarily for planting in East Texas, consist of slash, loblolly and shortleaf pine. About six million pine seedlings will be available for sale, Cloud said. A total of 17 species are available for windbreak purposes.

Orders for less than 500 pine trees for reforestation purposes will not be accepted. A minimum of 100 trees may be ordered for windbreak plantings. Seedlings cannot be sold for ornamental purposes.

Slash, loblolly and shortleaf pine seedlings sell for \$5.61 per thousand, which includes the state sales tax. Loblolly pine seedlings from seed production areas and Bastrop seed sources sell for \$6.63 per thousand, tax included. Windbreak seedlings sell for \$1.53 per hundred seedlings, including the state sales tax. Prices for pine seedlings are FOB, Indian Mound Nursery, near Alto. Shipment of windbreak stock will be sent prepaid. Pine seedling shipments begin December 15 and continue through the end of February. Windbreak shipments extend from December 15 through March 15.

A copy of Circular 54, "How to Plant Forest Tree Seedlings," will be enclosed with each order. Additional information on tree seedlings can be obtained from your nearest district forester of the Texas Forest Service or by writing Director, Texas Forest Service, College Station.

Polish Hurts Finish

Too much wax, oil and polish can actually dim the beauty of wood finishes, says Mrs. Wanda Meyer, Extension Service home management specialist at Texas A&M University.

Furniture manufacturers themselves point this out. The best cleaning care, according to the American Walnut Manufacturers Association, is to wash furniture with suds and water.



Sign of Happy Motoring Complete One-Stop Service

CRUSHED OR BLOCK ICE

Horner Humble Service Station

WE GIVE S.&H. GREEN STAMPS

Replacement Due As Science Teacher Quits

Fred Lasswell, new science teacher, has resigned from the faculty of the Santa Anna Independent School District, it was reported by Superintendent Cullen Perry.

Poor health was the reason

given by Lasswell for his resignation.

Perry stated that a search is on to locate a replacement, and he expects to announce the hiring of a teacher to fill the vacancy shortly.

The press is the mistress of intelligence and intelligence is the mistress of the world.

—Benjamin Constant

- SALESMAN WANTED -

Santa Anna and Surrounding Area

COLEMAN MONUMENT WORKS

Phone 625-5352 or 625-2719 1301 East 9th St.
 Coleman, Texas

Mountaineer Lineman Of The Week

Game of September 11, 1964
 This Recognition of Outstanding Mountaineer Players Sponsored Every Week By

DAVEY BEAL

Santa Anna Insurance Agency

Welcome Exes

STOP BY AND EAT WITH US

Any Time — Day or Night

CLIFF & RUTH GRILL

Orders To Go

Brownwood Hiway

FI8-9150

PRESCRIPTIONS

Owl Drug Store

"Where Friends Meet"

Telephone 625-4514

312 Commercial Ave.

Coleman

WELCOME EX-STUDENTS

FRESH PORK LIVER pound 15c

FRESH PORK CHOPS pound 59c

FRESH PORK RIBS pound 49c

GOOCH ALL MEAT BOLOGNA pound 29c

BEEF CUTLETS pound 59c

FOLGER'S — INSTANT, 10 OZ. JAR COFFEE 1.39

ARROW LARGE LIMA BEANS 2 lb. bag 35c

ARROW PINTO BEANS 2 lb. bag 45c

WOLF CHILI No. 303 can 49c

WOLF TAMALES No. 303 can 29c

STURGEON BAY SOUR PITTED — NO. 303 CHERRIES 2 cans 39c

MIRACLE WHIP SALAD DRESSING quart 49c

HOME MADE PIES BY MRS. TOM RUSHING

Harvey's Grocery

MEMBER INDEPENDENT GROCERS, INC.
 PHONE FI8-3632

WELCOME EX-STUDENTS

TO YOUR ANNUAL

Homecoming

— IN SANTA ANNA —

SATURDAY, SEPTEMBER 26

We Extend Our Very Best Wishes and Hope Your Reunion With Old Schoolmates and Friends Will Be The Happiest One Yet.

Santa Anna Silica Sand Co., Inc.
 AND EMPLOYEES

SOCIAL NOTES

Garden Club Meets For First Time This Season, Prepare For The Year

First meeting of the 1964-1965 year was held by the Mountain City Garden Club at the home of Mrs. A. C. Sparks, recently.

Mrs. Arthur Casey was co-hostess.

The house was decorated in pink and green. Individual serving tables contained decorations of ivy and favors of flower seed for members.

Mrs. Charles Moseley, vice president, explained the year's theme, "From Seed to Bouquet" as she reviewed the yearbooks for the club.

Mrs. Vernon Herring, president, opened the meeting. Mrs. L. O. Garrett was named librarian of the Club, and Mrs.

Elton McDonald as reporter. One new member was present, Mrs. Alma McNutt.

Beautification of the cemetery was chosen as the project for the year, and all members were urged to participate.

Present at the meeting, in addition to those already mentioned, were Mrs. Lee Hunter, Mrs. Lola Stephens, Mrs. Rex Golston, and Mrs. Jess Howard.

Mrs. Hunter will be hostess for the next meeting, Friday, October 2, with Mrs. Lee Abernathy as co-hostess.

A man may fall many times. But, he won't be a failure until he says somebody pushed him.

Hospital Notes

ADMITTED

George Stewardson, city
Robert C. Smith, city
Mrs. Earl F. Davis, Brownwood

Mrs. Charles N. Snider, Irving
Billy Dean Griffin, Coleman
Mrs. Otto O. Kleinschmidt, Coleman

Mrs. J. P. Hensley, Coleman
Mrs. Juanita Clift, Brownwood

Mrs. C. O. Moore, Stacey
Mrs. Floyd N. Smith, city
Leslie M. Elkins, Coleman

Mrs. Ruby Pritchard, city
Roy E. Kelly, Coleman
Mrs. Alice Ackers, city

Reuben L. Thomas, Coleman
Mrs. Carrie Montgomery, city

DISMISSED
Mrs. John Wood, Coleman
Paul C. Arnold, city
Mrs. W. R. Spence, Trent

Mrs. Luther Walden, Ballinger
Mrs. Florence Story Casey, Coleman
Mrs. A. G. Sweet, Frederick, Oklahoma

Mrs. P. M. Sparks, Bangs
Mrs. Alvin Smith, Coleman
Mrs. R. E. Lewis, Coleman

Mrs. Cora B. Taylor, Coleman
Elgin F. Talley, city
Steven W. Alexander, Coleman

Mrs. John P. Dean, Coleman
George Stewardson, city
Robert C. Smith, city

Mrs. Earl F. Davis, Brownwood
Mrs. Charles N. Snider, Irving
Billy Dean Griffin, Coleman

Mrs. J. P. Hensley, Coleman
Mrs. Juanita Clift, Brownwood
Mrs. Floyd N. Smith, city

BIRTHS
A daughter, Regina Kathryn, was born to Mr. and Mrs. Charles N. Snider II of Irving, Texas on September 16, 1964. Weight was 7 pounds and 8 ounces.

A daughter, Holly Jean, was born to Mr. and Mrs. Floyd N. Smith of Santa Anna on September 18, 1964. Weight was 7 pounds and 11 ounces.

Patronize our advertisers

Super \$7.00 Special

With the purchase of \$7.00 or more in groceries, meat and produce (excluding cigarettes) you can buy

TEA - Lipton's 1/2 lb. box 55c
Limit One To The Customer

PRICES GOOD FRIDAY AND SATURDAY

- PEACHES - Hunt's Large No. 2 1/2 can 25c
- HOMINY - Kimbell's, 300 size can 3 for 25c
- BLACKBERRIES - 303 size can 2 for 49c
- DOG FOOD - Kim, Tall Can 3 for 25c
- Asparagus - All green cut spears & tips 300 Size Can 25c
- HONEY - Llano, Pure Strained 2 lb. jar 79c
- Toilet Tissue - Best Value 4 rolls 25c
- PURE LARD - Swift's 3 lb. carton 59c
- Peanut Butter - Kimbell's Large 3 lb. jar 1.15
- BOLOGNA - All Meat pound 45c
- BEEF - Arm Roast pound 45c
- HAMBURGER - Fresh and Lean pound 39c
- HAM - Cooked, Ready-to-Eat pound 98c
- MELLORINE - Gandy's 3 1/2 gallons 1.00

HOSCH GROCERY

WELCOME EX-STUDENTS to your annual HOMECOMING

— IN SANTA ANNA —

Saturday

September 26, 1964

Ladies Shop

Mrs. Ozro Eubank, Owner

Weekend Specials

- MAXWELL HOUSE INSTANT COFFEE 6 oz. 1.09
- SWIFT Mellorine 3 1/2 gallons 1.00
- EL FOODS JAMS & JELLIES 3 for 1.00
- HI-C - 46 OZ. CAN DRINKS 3 for 1.00
- MY-T-FINE PUDDINGS 3 for 29c
- GIANT SIZE NEW BLUE CHEER 69c
- CLOROX quart 21c
- THICK SLICED, KORN KIST BACON 2 lbs. 69c
- T-Bone & Loin Steak lb. 59c
- HAMBURGER 3 lbs. 1.00
- LEMONS 3 for 10c
- RUSSET POTATOES 10 lbs. 49c

New Shipment of New Mexico Apples

Williams Food Store

MEMBER INDEPENDENT GROCERS, INC.

Local Eastern Star Chapter Holds Special Friendship Meeting Here

Santa Anna Chapter 247, Order of Eastern Star, met Monday, September 21, at Masonic Hall.

Mrs. Richard Bass, Worthy Matron, opened the meeting with 10 officers in their stations. Earl Hardy, of Ralls, assisted by

Worthy Patron, leading the group in the Pledge of Allegiance.

Minutes were read and approved.

Mrs. Alice Louise Walker chose Mrs. Cliff Herndon as her honored member, and Mrs. H. A. Burden chose Mrs. Carmen Donham.

During the October meeting, Mr. and Mrs. Jack Bostick will honor members of their selection.

Following the business, a "Golden Chain of Friendship" program was resented by Hardy, Mr. and Mrs. J. T. Avants, H. A. Burden, Mr. and Mrs. H. W. Gray, Mrs. Henry Newman, Mrs. Myrtle Taylor, Mrs. M. L. Guthrie, Jr., Mrs. Donham, Mrs. Hallie Williams and Mrs. Bass.

After the formal meeting, the group assembled in the fellowship hall for refreshments furnished by Mr. and Mrs. Avants and Mrs. Floyd Smith. Approximately 16 members and guests were present.

Delta Omicron Has Regular Meeting

Regular meeting of Delta Omicron chapter of Epsilon Sigma Delta was held in the club room of the Santa Anna National Bank, Monday, September 14.

Fifteen members were present. Patsy Granad, president, led the meeting, during which the club voted to participate in the Santa Anna Christmas program by decorating downtown windows and preparing a float for the parade.

Mrs. Jack Allen, educational director, outlined her program for the coming year, which she titled "Keeping in Touch." September being school month, Cullen Perry, Superintendent of the Santa Anna Independent School District, spoke on the problems and goals of the local school system.

Refreshments were served by hostesses Mrs. Jim Rutherford and Mrs. Kenneth Bowker.

Mountaineer Back Of The Week
Game of September 11, 1964
This Recognition of Outstanding Mountaineer Players Sponsored Every Week By Santa Anna Tile Co.



Gary Williams

Light Wrecker Service

24 Hours a Day
WALLACE COLLINS, Jr., GARAGE
Guaranteed Used Cars

The News, Santa Anna, Texas, September 24, 1964 Page 7

Five years ago, on September 30, 1959, Mr. and Mrs. J. Lyndon Haynes were married in the Northside Church of Christ, in Santa Anna. Since that time they have had one child, Rebecca Gaye, and five years of happy living.

Mrs. J. W. Carroll of Temple spent the weekend with her sister, Mrs. W. L. Campbell.

HOMECOMING TO BE HELD SUNDAY, SEPT. 27

The Rockwood Community will have their fourth annual Homecoming Sunday, September 27, at the Community Center. The class of 1941-1942, the last graduating class of Rockwood High School, will be honored guests. The classes of the 40's will have a get-together Saturday at 4:00 p.m. at the

Community Center. Bread, meat and drinks will be furnished for the Sunday noon meal.

ROCKWOOD WMS HAS REGULAR MEETING

Mrs. Evan Wise was program chairman when the Woman's Missionary Society met at the Rockwood Baptist Church Monday, Mrs. F. E. McCreary and Mrs. R. J. Deal gave two chapters of the Mary Hill Davis program. Mrs. Bill Bryan was at the piano for group singing. Mrs. Ray Caldwell gave the opening prayer.

Assisting with the program were Mrs. Evan Wise, Mrs. F. E. McCreary, Mrs. Henry Smith, Mrs. Bill Bryan, Mrs. Matt Estes, Mrs. Ray Caldwell, Mrs. R. J. Deal and Mrs. A. L. King.



IS THE COST THE SAME AS THE PRICE?

Only if you pay all cash... out of your own pocket! Otherwise there's a financing charge. To keep that charge as low as possible: Get a money-saving bank auto loan here. Quick service, and convenient budget-fitting payments too.

Save time, money, with a low-cost bank auto loan!

FULL-SERVICE BANKING

Savings • Checking • Business Loans • Auto Loans
Personal, Farm & Home Loans • Financial Counsel

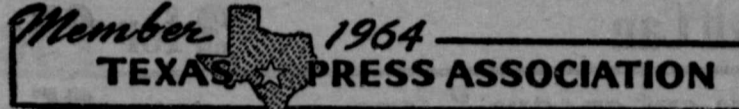
Coleman County State Bank

Member FDIC 118 West Pecan, Coleman

THE SANTA ANNA NEWS
 Established January 1, 1886
 Published by
PARKER PUBLISHING COMPANY
 Post Office Box 697 Dial Fireside 8-3545
**PUBLISHED EVERY THURSDAY AT SANTA ANNA,
 COLEMAN COUNTY, TEXAS**

SEPTEMBER 10, 1964
SUBSCRIPTION RATES
 One Year in Coleman County \$2.50
 One Year in Texas (Outside Coleman Co.) \$4.00
 One Year Outside State of Texas \$5.00
 One Year Outside of United States \$8.00

Second Class Postage Paid at Santa Anna, Texas
DISPLAY ADVERTISING RATES ON REQUEST
STAFF
 Bob Parker Editor
 Grady Sleen Production Supervisor
 Ruth Poldrack Compositor



It's Time To Act

Santa Anna needs a dog pound. Santa Anna needs a dog pound for several good reasons. And there is no good reason why Santa Anna should not have a dog pound.

Except that the people of Santa Anna have not let their city government know that they would support the establishment of a city dog pound.

Why does Santa Anna need a dog pound? For several reasons. There are a great number of stray and uncastrated dogs roaming the streets and yards of the city. City officers are powerless to do anything about them without a pound. If an officer were to dispose of such a dog on his own authority, he could face a large civil suit brought by the owner. It is not fair to ask our authorities to take this personal risk upon themselves. However, with a dog pound, a stray could be picked up, kept for the legal period (set by state law) at the pound, and then could be humanely disposed of if it was not claimed.

Why do these strays need to be controlled? Within the last couple of weeks, one Santa Anna family lost more than a dozen breeding rabbits that they raise to supplement their income to a pack of strays that broke through a fence and into the hutches, killed the rabbits, and then left. Other residents have lost great numbers of chickens to such strays, and others have had sheep injured and killed.

Stray dogs carry disease. Rabies cannot be completely eradicated, since certain wild animals provide a "reservoir" of infection—such as skunks, bats, and foxes—but it can be controlled among the domestic, canine population if all dogs receive inoculation regularly. The stray dogs do not. They are therefore a great hazard to public health. If someone is bitten by such a dog, and if the dog cannot be found so that tests can be made, that person must undergo the painful and dangerous Pasteur treatment. So these strays are a health hazard even if they do not actually carry rabies. In addition, these strays can carry the serious canine disease—distemper, hepatitis, leptospirosis—and can infect pet dogs with these diseases.

These strays also damage personal property, digging up yards, gardens and flower beds.

The damage done by these strays sometimes leads people to poison and shoot innocent pet dogs in their desire to eliminate the strays. This is the wrong way to try to solve the problem, is ineffective, and is dangerous, as was pointed out in an editorial last week, but the practice continues, primarily because of the uncontrolled strays.

Mayor Ford Barnes told The Santa Anna News that he is in favor of a dog pound, if the people of the city want one. The city has the funds to construct such a pound, and one adequate to serve the needs of this city would not have to be large, elaborate or expensive.

Who should want a dog pound for Santa Anna? Owners of chickens, rabbits, sheep, and other livestock, to eliminate the damage caused by roving packs of stray dogs.

Owners of pet dogs, to eliminate the source of canine diseases, and to stop the people who indiscriminately poison and shoot all dogs in an effort to control the strays.

Parents of small children, who are particularly endangered by strays that may be vicious or carriers of disease, and who are also endangered by the spreading of poison.

And the public as a whole, to control a very dangerous health hazard and a source of property damage.

What can you do? Call Mayor Barnes. Tell him you support the establishment of a city dog pound. Talk the subject up in your club and organizational meetings. Let the members of the city government know how you feel about this question.

Mayor Barnes told The News that Santa Anna has been needing a dog pound for more than 10 years. Isn't it time we did something about it?

Yesterday's News

FIVE YEARS AGO
 The Santa Anna Community Chest goal was set at \$3,000 in the drive starting as the paper for September 25, 1959 went to press. Roy Horne was elected chairman of the Santa Anna drive, with W. B. Griffin as co-chairman.

TEN YEARS AGO
 A norther came through Santa Anna on the Tuesday preceding publication of the paper on September 24, 1954, dropping temperatures.

The Mountaineers tied the Brownwood B squad, 13-13. Mr. and Mrs. B. F. McIntire, Santa Anna residents since 1906, have moved to Brownwood.

TWENTY YEARS AGO
 Thomas Wristen, Jr. is in an Army hospital in Italy, recovering from burns received in action in France. According to a letter received by his parents, he is doing well and expects to make a complete recovery.

TWENTY FIVE YEARS AGO
 All checker players residing in Comanche, Eastland, Mills, Coleman, San Saba, Callahan, McCulloch, and Brown counties are invited to join the Brown County Checker Association, according to an article in The

News for September 29, 1939.

THIRTY YEARS AGO
 The County Commissioners Court subscribed \$500 toward the cost of a public park near the east end of Santa Anna Mountain, north of the highway, reports The Santa Anna News for September 28, 1934.

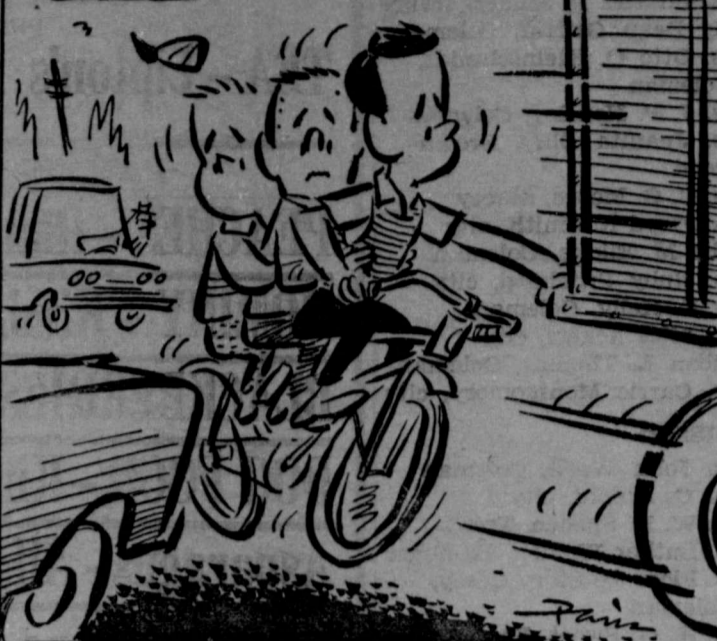
Cotton and rayon bloomers are priced from 25 cents to 59 cents at Gehrett Dry Goods Company.

FORTY YEARS AGO
 According to a frontpage story in The News for September 26, 1924: "Jed C. Adams of Dallas, Democratic National Committeeman from Texas, returned from Washington and New York last week, and states that he convinced that John W. Davis, the Democratic nominee, will be the next President of the United States." He was wrongly convinced, since Calvin Coolidge won reelection without difficulty.

Headline on an ad reads: "Pepsinated Calomel Is Better than the Old-Time Sickening Kind." Kind of sickening in itself.

Big news is the exploit of a group of US fliers, who became the first to encircle the globe by air.

BE SAFE ON YOUR BIKE!



RIDE TO THE RIGHT SIDE OF THE ROAD
 ...DON'T CARRY RIDERS... TRAVEL WITH TRAFFIC... AND DON'T HOLD ONTO A MOVING VEHICLE!

Migrant Health Top Problem

Harvest time is synonymous with autumn in the minds of many people... particularly the migrant laborer.

Over 130,000 Texans will be harvesting the nation's crops from now until the cold bite of winter sends them to their homes in southernmost Texas.

They began their migration early last spring to labor in fields or orchards — wherever they could find work. Whole families pack a few things and travel in pickups, trucks or buses, following their "crew leader" across the country.

This is the migrant way of life... with its many inherent problems.

For example, the typical migrant farm laborer is functionally illiterate — that is, he never attained more than a third-grade education. This problem is perpetuated in the younger generation as the children seldom attend school for more than a six month period.

His home, where he lives less than six months a year, is normally a small structure with little or no plumbing. On the road, following the crops, he and his family live wherever they can.

The migrant way of life makes recordkeeping almost impossible, but those who have worked closely with these people make the following estimates.

The migrant's income averages about \$900 a year. His diet, more often than not, consists of

Happy Birthday

"Happy Birthday" to all who have birthdays during the next week. Below are listed the birthdays we have this week.

- SEPTEMBER 26**
 Mrs. Jim Owen
 C. W. Rasberry
 Mrs. Clifford Stephenson
 John Hammonds
 Mrs. Vermell Hetzel
- SEPTEMBER 26**
 Sandie Lynn Lewis
 Mrs. W. P. Aldridge
 Van Aldridge
 Joyce Townsley
- SEPTEMBER 27**
 Mrs. M. A. Richardson
 Darrell Wright
 Daymond Jackson
 Mrs. Ethel Harris
 Mrs. George Richardson
 Mike Gilbert, Kimball, Nebraska
- SEPTEMBER 28**
 Mrs. Billie Guthrie
 Dale Wayne Herring
 Clifford Stephenson
 Mrs. Sam Moore
 W. A. Hamiter, Brownwood
- SEPTEMBER 29**
 Mrs. J. R. Gipson
 Leta Pollock
 Clela Pollock
 Tommy McIntire
 J. W. Lewis
- OCTOBER 1**
 Mrs. L. L. Bryan
 Mrs. M. R. Simmons
 Jim See

Would you like for your name to be published on your birthday? If so, please be sure to let us know when it is. Next week we will publish names of those having birthdays between October 2nd and October 8th.

beans and tortillas. Milk is an infrequent treat.

The averaging migrant never sees a doctor during his entire lifetime. His life expectancy is about 30 years.

Obviously, health problems are a major concern of the migrant worker and the communities where he goes. Tuberculosis and other diseases may be prevalent and go undetected. Immunization schedules—if any—are erratic, and infant mortality soars.

The Texas State Department of Health has underway a statewide project aimed at bettering health service for the migrants. Separate projects are being conducted by Laredo-Webb County, Southwest Texas Region, and Lubbock City-County and Plainview-Hale County health departments.

COTTON REPORT

The 1964 cotton harvest may pick up momentum as soon as the wet fields dry out. Two factors may delay it. They are labor for harvesting and late fruiting cotton. Cotton that has put on a second growth since the rains may have a chance to mature before frost, so some will wait, instead of defoliating. Along this line, growers should be careful not to kill any cotton unless around 80 percent of the bolls on the stalks are open. Low micronaire readings result when immature cotton is killed. Low mike cotton costs the grower in several ways. Probably the most noticeable is in the price per pound. The most costly factor may not be noticed, however, and that is weight. Low mike (or immature) cotton is lighter than high mike (or mature) cotton. Consequently it takes more to make a bale. This means you pay more for harvesting and ginning, yet end up with a bale worth less per pound.

Sample receipts have been light at the USDA Cotton Classing Office in Abilene, according to B. B. Manly, Jr., in charge. Total samples classed through last Friday was 11,066 compared to 16,625 at the corresponding date last year.

Grades have been low this year, although insect damage has been light. Last week 20 percent of the local crop was white, 67 percent light spotted, and 13 percent spotted. Middling light spot was the predominant grade with 43 percent of the cotton in this category.

Staple lengths were: 4 percent 13/16, 26 percent 7/8, 46 percent 29/32, 17 percent 15/16, 2 percent 31/32, and 5 percent was one-inch or longer.

Mike readings have been surprisingly good. Eighty-four percent of the cotton miked between 3.5 and 5.0. Less than one percent miked below 3.0.

The cotton market was inactive except in Southern District 2, where prices received by producers ranged from 15 to 35 points over the CCC loan prices on high light spotted grades. Spotted and the lower light spotted grades were bringing up to 60 points over loan values. Most gin managers in central and northern District 2 reported the amount of cotton ginned too small to create buyer interest. Cottonseed was selling at \$44.00 per ton at the gins.

State Capital NEWS

Speaking before more than 300 district and county attorneys, sheriffs and judges at a Law Enforcement Conference here, Attorney General Waggoner Carr proposed the following eight-point program:

- (1) Expand training and education of law enforcement officials;
- (2) Provide more officers and pay them better;
- (3) Teach personal knowledge of confinement to juvenile offenders;
- (4) Teach and gain increased parental responsibility;
- (5) Make parents financially responsible for damage done by juveniles;
- (6) Place responsibility on juveniles themselves through such programs as the Texas Youth Conference;
- (7) Continue and improve the annual Attorney General's Law Enforcement Conference; and
- (8) Step up local community "crime drives."

SHELL GAME

State Senator William Patman of Ganado and Representative Paul Haring of Goliad have entered strong protests with the State Parks and Wildlife Commission, on behalf of their constituency, opposing an application by Heldenfels Brothers Company of Corpus Christi to dredge for oyster shell in Copano Bay.

According to Haring, Heldenfels Brothers wants to use the shell to build a road by Copano Bay. But the State Highway Department would readily accept the use of lime instead. Protestors insist that dredging in the bay would kill off live oyster reefs and destroy fishing, sporting and tourist attractions in the area.

OPINIONS

Attorney General Carr has ruled that Representatives H. G. Wells of Tullia, who represents Brisco, Hale, Swisher and Floyd Counties, should get legislative pay through this term even though he now is attorney for the High Plains Underground Water Conservation District No. 1. Wells is not running for reelection.

Carr also held that professional roller derby contests are not taxable under the Admissions Tax Law of Texas; and that "concrete containers" to be used as burial vaults, in garden-type cemeteries to keep graves from settling, are funeral merchandise under state law and are not exempt as crypts or mausoleums.

APPOINTMENTS

Governor John Connally has appointed George Dowlen of Canyon as Criminal District Attorney of Randall County. He succeeds the late Truett G. Hull Jr.

Connally also picked Paul N. Howell of San Antonio to succeed E. E. Voigt on the San Antonio River Authority Board. Howell, an oilman, also is a director of the San Antonio Hemis-Fair.

PALMETTO DAM PROJECT

Edna and Ganado area people packed a Water Commission hearing room when Bureau of Reclamation representatives and the Jackson County Flood Control District took up consideration of the proposed Palmetto Bend Dam Project.

Most of those attending the hearing favored construction of the 15-mile dam which would control of water in the second watershed at this time," Dent said.

Commission, which will write the state's comments on the project, took the matter under advisement after six hours of discussion.

MENTAL RETARDATION PLAN

Texas' biggest effort to initiate a plan reaching into many communities for combating mental retardation is under way.

Planning work was authorized by a special committee appointed by Governor Connally.

HEARINGS CONCLUDED

A legislative study committee completed its hearings on Congressional redistricting and settled down to figuring how to draw 23 districts of equal population.

LUBBOCK CHOSEN

After inspections covering 12,000 miles and 17 cities, the State Board for Hospitals and Special Schools picked Lubbock as the site for a new school for the mentally retarded. Estimated cost is \$2,500,000.

School will serve an 84-county West Texas area.

Plainview, Odessa, El Paso, Levelland, Midland, Fort Stockton and Amarillo also were seriously considered as sites. Thirty-nine cities originally expressed interest in having the facility.

DISASTER PLAN STUDIED

A new "hospital zone support concept" which would link all Texas hospitals in the event of a major disaster was unveiled here.

Texas Medical Association and the State Advisory Committee on Health and Medical Aspects of Civil Defense have set up a statewide conference of disaster medical care directors. They will detail medical and health disaster plans.

Texas Hospital Association initiated the project for the linking of hospital services and the handling of casualties.

SHORT SNORTS

State Department of Public Safety veteran George W. Busby—who has served in Dallas, Sherman, San Antonio, Valde and Austin stations during his 28 years of service—is due a Distinguished Service Award from the American Association of Motor Vehicle Administrators.... Securities Commissioner William M. King reports permits for the sale of \$49,500,000 in stocks were issued to 42 firms during August—second largest dollar volume in the agency's history—bringing the year's total to \$337,000,000.... The Republican State Headquarters advises that Democrats Hardy Hollers of Austin and William Robert Smith of San Antonio will head a statewide Texans for Goldwater-Miller group.... Hearing on application of Portland Savings and Loan Association for a charter is set for November 25 by Savings and Loan Commissioner James O. Gerst.... State Banking Board set hearings on charter applications of Brook Hollow State Bank; Fritch State Bank, Fritch; and Harris County State Bank, Houston; and on September 25 will hear applications of Colonial State Bank, Wake Village, and Downtown State Bank, Houston.

Today's MEDITATION



The Upper Room
 © THE UPPER ROOM, NASHVILLE, TENNESSEE

Read Ephesians 2:13-21. He is our peace, who hath made both one, and hath broken down the middle wall of partition between us. (Ephesians 2:14)

Two Christians, one from India and another from New Zealand, met aboard a missionary ship. They were brothers in Christ, but could not speak to each other. They just pointed to their Bibles and smiled.

Then a happy thought occurred to the Indian. He exclaimed "Hallelujah!" The New Zealander, in delight, cried out, "Amen!" These two words were the beginning to them of one language and one speech.

God is the Father of all men whether Jew or Gentile. As children in the kingdom of the heavenly Father, we think of all men as brothers—in understanding, in sympathy, in goodwill, and in helpfulness. Our mission is to bring men together in love and worship around the cross, that we may be filled with love for the same Redeemer and have the same hope for heaven. All those who accept the lordship of Jesus Christ gain admittance to the same privileges and hopes.

PRAYER

O Lord, help me and all members of Thy church to do our part in Thy Kingdom by prayer and works of love. So may Thy church's unity win all mankind to faith in Thee. For our Savior's sake. Amen.

THOUGHT FOR THE DAY

God hopes to see us as His grace would make us — one in heart, one in love, one in fellowship.

—Lydia Mowatt (Canada)

Promotion Keeps Trade At Home

In every state, in nearly every county, of the United States are small towns in which former business areas have become ghost streets.

The scene is a common one: store windows boarded over; former banks used for storage; dust gathering on empty benches on the sidewalks. Yet, in many of these towns there are more people than ever.

The movement of trade came about as a result of better highways, faster automobiles, and poor promotion by the local merchants. The movement has been largely from villages to county seats and other small cities, which had the benefit of newspaper publicity.

But what about the future? Will super-highways, airplanes, and still faster automobiles begin to sap the commercial activity of the county seats and other flourishing small centers of trade? Not necessarily so.

The local merchant holds many advantages over distant competitors. The local consumer will remain loyal IF he thinks he will get a fair price at home. He will remain loyal IF he knows he can find the variety he seeks at home. He will remain loyal IF he realizes how much he will save in transportation and service cost by trading at home. He will remain loyal IF the local merchant demonstrates that the local store is progressive and up-to-date.

If short, every IF concerning the future of the small city merchant depends upon his use of advertising to keep the local consumer interested and informed on the ever-changing goods and services constantly being

offered to the consumer by distant competitors. —by S. S. Talbert, Ph.D., chairman, Department of Journalism, University of Mississippi.

Bible Funeral Held In California Tuesday

Mr. Wilburn Leroy Bible, Jr., 20, of Inglewood, California, passed away September 15, in Gardena, California, of injuries sustained in an auto accident. Mr. Bible was born in 1943, in Texas.

Mr. Bible is survived by his father and mother, Sgt. and Mrs. Wilburn L. Bible, Sr., of Inglewood, California, his paternal grandfather, Mr. Roy Bible, of Brownwood, his maternal

grandfather, Mr. Michael A. Sheedy of Inglewood, and several relations in the Santa Anna area.

Rosary was said at 7:30 p.m., September 17, at the Maria Regina Catholic Church with Mass being said on September 18, at 9:00 a.m. by Father Michael Casey. Burial was in the Holy Cross Cemetery.

Weah McCulloch, Sec.-Treas.
Bettie McCulloch, Mgr.

Standard Abstract Co.

City & County Maps For Sale
405 Bank Bldg. Coleman

WELCOME EXES

Stay With Us While
You Are In Santa Anna

SATANTA MOTEL

Coleman Hiway

Santa Anna

Mozelle Seniors Plan Turkey Feed

The senior class of Mozelle High School will have a turkey supper prior to the football game between the Mozelle Mus-

tangs and the Paint Rock Indians, Friday, September 25.

Serving will begin at 5:30 p.m. and will continue until 7:30 p.m. Menu will include home-cooked turkey with all the fixings, hot rolls and beverage.

Price will be \$1.00 for adults and 50 cents for children under 12. The meal will be served in the Mozelle school lunchroom.

Typewriter paper at the Santa Anna News.

Homecoming

Stop By and Say Hello!

G & E Hardware and Appliance

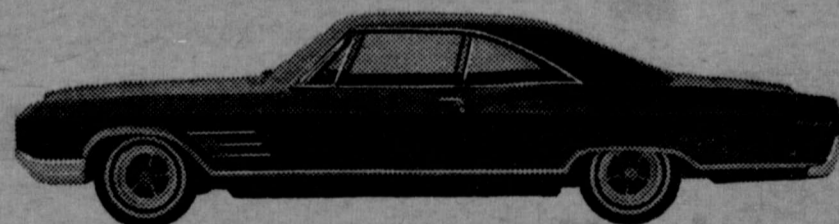
Santa Anna



Buick '65 Buick

We changed the Buick a lot this year. And you may never be the same again yourself.

We doubt you'll want to be the same. Not once you set eyes on our new Buicks. On the Buick Special and the Skylark. The LeSabre, Electra 225, Riviera. And on the sleek, modified fastback of the wild, wilder, Wildcat in the picture. True, there's a new high-style touch. But that's hardly all. Engineering still has the emphasis. It's a Buick tradition. So are the extras Buick spends a little extra on. Like finned brake drums that do a little better. And smoother drivelines. A tuned suspension to smooth ribcage roads. Now add Buick's Super Turbine transmissions—and you have an idea of what Buick owners have always liked about Buick. We think you'll feel the same.



Wouldn't you really rather have a Buick

SEE YOUR LOCAL AUTHORIZED BUICK DEALER. AUTHORIZED BUICK DEALER IN THIS AREA: _____

DAUGHERTY-PRICE PONTIAC-BUICK, 401 Commercial, Coleman, Texas

AUTOMATIC CAR WASH

25¢ 5 Min.

Open Day & Night

On Needham Street West of T. L. Sparkman's Wash-A-Matic

Coleman, Texas

ALL BUSINESS APPRECIATED

T. L. Sparkman, Owner and Operator



Protect Against Disease Loss!

Authorized Dealer

FRANKLIN

VACCINES and SUPPLIES

for CATTLE, SHEEP

HORSES, HOGS and POULTRY

Our Livestock Supply Department is Designed to Serve You — Visit Us Today.

Owl Drug Store

312 Commercial Ave. Coleman, Texas

There's Nothing Like The Texas Prison Rodeo

... exciting entertainment for old and young alike!

At the 33rd annual Texas Prison Rodeo, held in Huntsville each Sunday in October, you'll get more than your money's worth.

Thrilling inmate contests — Hard Money — Calf Tussle — Bareback Bronc Riding — Saddle Bronc Riding — Wild Horse Race — Mad Scramble — Chariot Race — Plus: the best inmate entertainment groups — Jailhouse Beaties — Barber Shop Quartet — "Red" Coffey — Gomer, Clyde, and Crowdad — The Goree Gals — Jug Band — Western Band — Military Band — plus a host of guest stars — "Duke of Paducah" on October 4 & 11; Harmonica Bascals on October 18 & 25; Jimmy Dean, Singing Sensation on October 25 — plus a Girl's Barrel Race, etc.

ALL SEATS RESERVED AT \$2.40, \$3.75, \$4.40, or \$4.95. Call, Write or Wire Rodeo Ticket Office, Huntsville, Texas—NOW!

Showtime is 2 PM

Announcing!

The Premier Showing

OF ALL THE NEW

1965 FORDS



1965 Ford Mustang



1965 Ford Station Wagon



1965 Ford Fairlane



1965 Ford Falcon



1965 Ford Thunderbird



Friday, Sept. 25th

See Them All In Our Showrooms

Everyone Is Cordially Invited
Refreshments Served All Day

Berry's Ford Sales

415 Commercial Ave. — Coleman, Texas

Shields News

By MRS. E. S. JONES

A large number of persons from this area attended the Coleman County Telephone Co-operative annual meeting at Santa Anna Saturday evening.

Friday Mr. and Mrs. G. C. McDonald visited with Mrs. Cliff Connor of Coleman, a patient in Overall-Morris Memorial Hospital.

Mrs. E. S. Jones was in Coleman Tuesday and visited with Mrs. Tom Bowers and Cora and with Mrs. J. Z. Vercher.

George Stewardson entered the Santa Anna Hospital and had surgery Monday. He was dismissed on Thursday.

In last week items with the list of young people attending college we failed to mention Tommy Stewardson who is attending Abilene Christian College at Abilene.

Sunday Rev. David Wigger was a guest of Mr. and Mrs. R. A. Milligan.

Visitors with Mrs. E. S. Jones on Friday were Mr. and Mrs. W. C. McHorse of Coleman and Mrs. Ione Caton of Santa Anna.

Most rain reports varied from three to four and four-tenths inches. Monday afternoon we had hard rain, wind and some hail.

Mrs. John Stewardson visited with Mr. and Mrs. Kinch McClain in San Angelo Monday.

Mr. and Mrs. Donald Williams and Gaylon of Ballinger visited Sunday with his parents, Mr. and Mrs. Jesse Williams.

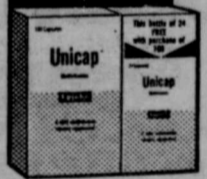
TOMLINSON

BOOT AND
SADDLE SHOP
Boot Making
Shoe Repairing
Saddle Making
Saddle Repairs

In Our New
Location
217 Commercial
Coleman, Texas

Unicap® Special

Free offer



Buy 100 Unicap
Get 24 Free

24 Bottle Free With
100 Bottle \$3.11

IT'S A FACT

DRUG TOPICS FEATURE POST N TELL



IN THE SOUTH OF A
BYGONE ERA, A SICK
HORSE WAS TREATED BY
FEEDING HIM HAY
CONTAINING
A BIBLICAL VERSE
WRITTEN ON A PIECE
OF PAPER...

"THE GOOD OLD DAYS?"
... signs of the past

A physical check-up, made while you're well, can keep you that way! See your doctor. See us for medicines.

Phillips Drug

WE GIVE S.&H.
GREEN STAMPS

SPORTS

Mountaineers Show Some Offensive Improvement Against Clyde; Lose 27-0

Despite injuries to key personnel, the Santa Anna Mountaineers looked like a football team on offense for the first time this season, in losing to the Clyde Bulldogs, 27-0, in Clyde, Friday, September 18.

The game was far better than the scoring indicates.

Santa Anna took the initial kickoff, and moved the ball from their 22 yard line to their 38, picking up a first down on the way, before punting to the Clyde 25. A five yard runback put the ball on the Bulldog 30 yard line, and the Clyde eleven moved to the Santa Anna 30 in seven downs. Then the Mountaineers pulled a switch on the problem that has plagued them, as Frank Valdez intercepted a Clyde pass, carrying to the Santa Anna 30. It was a costly good break however, as Valdez was injured on the tackle, and was out the remainder of the game. The Mountaineers moved the ball to the Clyde 42 yard line in 10 plays. A penalty for delay moved the Hillbillies to the Bulldog 47, and a punt gave the ball to the home team on their own 35. One play by the Bulldogs moved to their own 41 at the end of the quarter.

Continuing the series of downs in the second period, the Bulldogs used an 11 yard jaunt by fullback Edward Ramos and a 30 yard run by quarterback Buddy Howe to move to the Santa Anna 29. Six yards by halfback Connie Ramos, who gave the Mountaineers trouble all night with his excellent broken field running, and 11 more by Edward Ramos placed the pigskin on the local's 12. Howe took two plays to go over for the first score, with an even nine minutes remaining in the half. Howe added the extra point. Clyde 7, Santa Anna 0.

In three downs the Mountaineers could move a net of only one yard following the kickoff, and a pass failure gave the ball to the Bulldogs on the Santa Anna 40, from where they moved for the score in four downs on the running of Connie Ramos and Howe, who tallied the TD and added the extra point. With 5:20 remaining in the half, the score stood 14-0 for Clyde.

Santa Anna took an automatic touchback on the kickoff, starting their series of downs on their own 20 yard line. Three

plays later found them on their own 18, thanks mainly to a five yard penalty. The punt moved the ball to the Mountaineer 47. The Bulldogs then used six plays to score again, on ground plays featuring Jack Rolston, Howe, and Connie Ramos. Rolston scored from the two yard line, and Howe again booted the ball through the uprights for a 27-0 score. A Santa Anna drive ran out of time on the local 30 yard line.

Santa Anna kicked off to open the second half, and the Bulldogs, now quarterbacked by Cecil Eager, moved from their own 43 to the paydirt in six plays, with the always troublesome Connie Ramos going over from the 34 yard line. Howe's attempt at his fourth extra point was blocked by Nelson Perry, and the score stood 27-0.

Clyde kicked off and Santa Anna promptly fumbled the first play from scrimmage. Clyde took over on the fumble and they promptly fumbled on their first play from scrimmage, with Ronnie McCarrel pouncing on the ball for the Mountaineers. Two downs and a quickkick later, Clyde was in possession on their own 12, and managed to fight their way to the Santa Anna 20, where they fumbled again, with this one being recovered for the Mountaineers by Perry.

The fourth quarter was taken up with excursions up and down the field, as neither team could muster the punch to move across the goal. A very poor call on a play in which a Santa Anna defensive player rushed the Clyde quarterback badly as he was trying to pass, hitting him far behind the line of scrimmage and knocking the ball from his hands, hurt the Mountaineers. The official ruled the play an incomplete pass, rather than a fumble, giving the ball back to the Bulldogs on the line of scrimmage. In the last play of the game, Santa Anna intercepted a Clyde pass, but time had run out and the play did not count. Final score, Clyde 27, Santa Anna 0.

Santa Anna picked up four first downs, compared with 11 by the Bulldogs. The Mountaineers took to the air nine times, completing three, while Clyde also tried nine aeriels, and also completed three. The Bulldogs lost one pass by interception,

and the Mountaineers held the ball on all their pass attempts. Santa Anna kicked five times for a 26 yard average. Clyde kicked once, for 29 yards. The local footballers were assessed five penalties for a total of 45 yards, while their opponents were being penalized eight times for a total of 80 yards. Santa Anna lost the ball once on a fumble, and recovered two Clyde miscues. The Mountaineers gained nine yards passing and 54 on the ground, while Clyde was picking up 67 yards through the air and 309 rushing.

The Mountaineers next meet the Dragons from Bangs in the annual Homecoming game at Santa Anna, Saturday, September 26.

Picks of the Week

We improved our average again last week, picking four right out of five to bring the average for the year up to .643. We missed only the Early-Bangs game, and almost didn't miss on that one, as Bangs took a 6-0 win on a pass interception and 65 yard run in the last play of the first half. We were right about Burnet and San Saba (San Saba won, 16-12); Goldthwaite and Johnson City (Goldthwaite 28, Johnson City 8); Marble Falls and Lometa (33 for Marble Falls, 0 for Lometa); and Santa Anna and Clyde (a 27-0 Clyde win).

Only three District 9A teams will be in action this week, with Burnet meeting Round Rock, and Marble Falls going up against Boerne, on Friday, and Santa Anna and Bangs tangling on Saturday. This is the way we see this week's abbreviated schedule:

Burnet at Round Rock: The Round Rock Dragons are one of the top-rated teams in Central Texas this year. They should dispose of Burnet without too much trouble.

Marble Falls at Boerne: Marble Falls has been playing good football the last couple of weeks, but they go up against a real tough foe this time. Boerne was bi-district winner last year in class A, has three all-district players back from that team, and is picked to take the honors in the AA district in which they are now playing. Boerne by at least 12 points.

Bangs at Santa Anna: Comparative scores indicate that the Dragons from down the road should be a three touchdown favorite (Early and Cross Plains tied 0-0; Bangs beat Early 6-0; Cross Plains beat Santa Anna 13-0), but in games pitting traditional rivals, such considerations have less weight than normally. With a

healthy team, on the home field, before a Homecoming crowd, we think the Mountaineers will rack up their first win of the season by one touchdown.

Elephant Butte Reservoir, largest in New Mexico, is on the Rio Grande 120 miles above El Paso.

JUNIOR MOUNTAINEERS LOSE TO BLANKET

To make a pun, Blanket covered the field, and they smothered the Junior Mountaineers by an 18-0 score in a game played in Blanket Tuesday, September 15. Among the local squad's woes were three intercepted passes.

As Well As The Hook Improves Luck

Making the fish come to you instead of the reverse is perfectly legitimate in Texas waters, according to Marion Toole, coordinator of inland fisheries for the Parks and Wildlife Department.



We Hope You Enjoy Your Visit To Your Old Home School. We Invite You To Visit With Us While You Are Here, And Inspect Our New Headquarters Building From 9:00 a. m. to 12:00 Noon.

We Are Proud To Have These Ex-Students Of The Santa Anna Schools In Our Employ:

- Ben P. Vinson Class of 1927
- Fern McCaughan Hoke Class of 1929
- Eddie Paul Voss Class of 1931
- Velma Stewardson Benton Class of 1943
- Allyn W. Gill Class of 1944
- Jerry Clark Class of 1956

Coleman County Telephone Cooperative, Inc.



— IN SANTA ANNA —

SATURDAY, SEPTEMBER 26

IT WILL BE A PLEASURE TO HAVE YOU VISIT WITH US WHILE HERE.

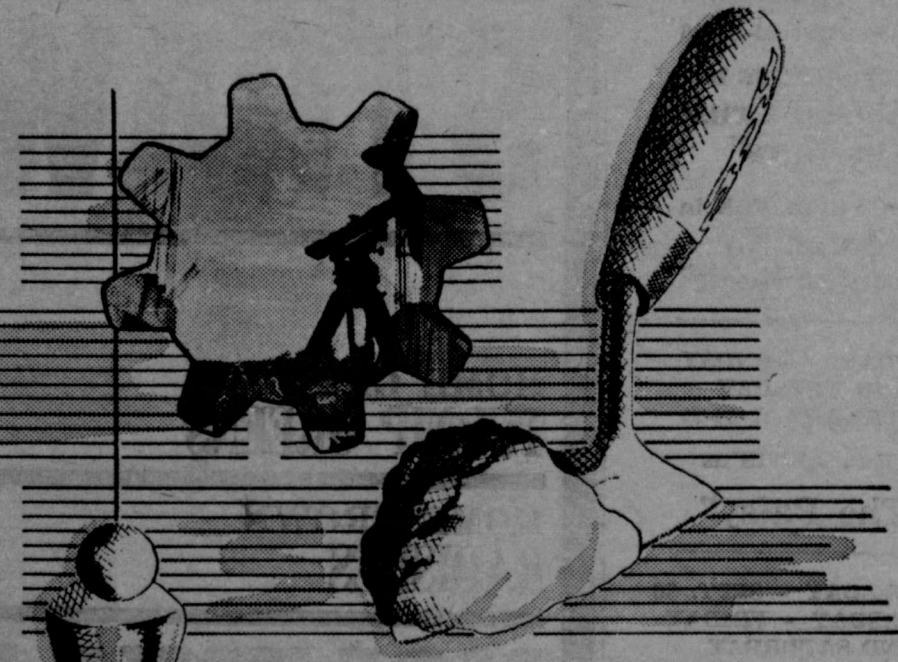
WE WISH FOR YOU A HAPPY REUNION WITH YOUR OLD SCHOOL CHUMS.

Santa Anna Tile Co., Inc.

AND EMPLOYEES



PATTERNS FOR PROGRESS



The Industrial Foundation - Tool for Community Development

In little more than ten years Industrial Foundations have been established in 182 Texas communities. These are communities — both large and very small — which have recognized the vital need for a community financing group in securing new industry.

Called by various names, the Industrial Foundation is a community-wide organization with the prime objective of creating payrolls. Its functions vary from community to community, but basically its purpose is to provide development funds for the land, brick and mortar required for new industry.

It is one of the best ways to show favorable community attitude towards new industry or to help finance the expansion of an existing local industry. By having community money invested in an industry the community becomes more interested in seeing that the industry profits and grows.

The Community Industrial Development Foundation is another PATTERN FOR PROGRESS.

WTU's area development representatives have information about the creation of industrial foundations. These facts are available to growth-conscious communities on request through your WTU local manager.




Attendance At Church Services

Reports of attendance at local churches during the weekend are as follows:

FIRST BAPTIST CHURCH
 Sunday School Enrollment 278
 Sunday School (9:45) ---- 90
 Morning Worship (11:00) - 96
 Evening Worship (7:00) -- 65
 Training Union (8:00) --- 44
 The evening service for Sunday, September 27 will be led by the young people.
 Starting Sunday, October 4, the evening service will start at 6:00.

NORTHSIDE CHURCH OF CHRIST
 Bible School (9:30) ----- 61
 Morning Worship (10:20) - 85
 Evening Worship (6:30) -- 52

Attend church regularly.



El-Food Products
 BROWN'S GROCERY
 HARVEY GROCERY
 WILLIAMS FOOD STORE

Expert Service
 —WITH—
PREMIER PRODUCTS
 Good Year Tires
 We Appreciate Your Patronage
McCRARY
 Premier Station

Cole-Anna

Drive-In Theatre
 Coleman, Texas

THURSDAY - FRIDAY
 AND SATURDAY
 SEPTEMBER 24-25-26

PAUL MANTEE in
 "Robinson Crusoe
 On Mars"

BARRY SULLIVAN in
 "Stage To
 Thunder Rock"

SUNDAY - MONDAY
 AND TUESDAY
 SEPTEMBER 27-28-29

JERRY LEWIS as
 "The Patsy"

WEDNESDAY - SEPT. 30
 THURSDAY - FRIDAY
 AND SATURDAY
 OCTOBER 1-2-3

WALT DISNEY Presents
 "The Moon Spinners"

BORIS KARLOFF in
 "Black Sabbath"

OAK

Drive-In Theatre
 Coleman, Texas

THURSDAY - FRIDAY
 AND SATURDAY
 SEPTEMBER 24-25-26

"Flipper's Adventure"

AUDIE MURPHY in
 "The Quick Gun"

SUNDAY and MONDAY
 SEPTEMBER 27-28

JOHN WAYNE in
 "The Shepherd
 Of The Hills"

ALAN LADD in
 "The Deep Six"

SANTA ANNA Piggly Wiggly

Welcome To Our Homecomers

Look Fancy Delicious APPLES 8 Pounds .98	FRESH Ham Salad lb. .69 CHEESE SPREAD Pimento lb. .69 RATH'S RACORN BACON lb. .39 RATH'S FRANKS pkg .39	Barbecued CHICKENS Only .89 Each
--	--	--

Breaded Shrimp 8-oz. pkg. .59

SUNKIST LEMONADE 6-oz. .15	GOLDEN PAPPY PEARS 303 can .27
--------------------------------------	--

303 Can HONEY BOY SALMON .59	DEL MONTE PEAS 303 can .25
--	--------------------------------------

ENCHILADA DINNERS Patio 12-oz. .59

MEAD'S BISCUITS 3 cans .25	DECKER'S PICNICS lb. .29
--------------------------------------	------------------------------------

STRAWBERRIES Frozen 10-oz. .25

VEGETABLES

HOME GROWN TURNIP GREENS Bunch 10c	CELLO CARROTS Package 10c
HOME GROWN RADISHES Bunch 10c	GOLDEN RIPE BANANAS pound 12c

NOLEN'S HONEY - - - 5-lb. jar 1.19

LOOK Gladiola Flour 5 Lb. Sack .39	Choice ROUND STEAK lb. .89	Paper Plates Hot and Cold Paper Cups Knives & Forks Everything For The Homecoming!
--	--	---

PIGGLY WIGGLY 100% For The Mountaineers