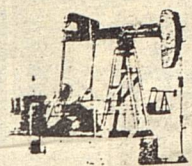


Plains Library
Box 419
Plains, TX 79355



The Plains Pride



Plains, Yoakum County, Texas
TUESDAY, JANUARY 13, 1987

VOLUME 2, NUMBER 41

30¢



"MA" THOMPSON RETIRES -- This week marks the second week of retirement, after 24 years of checking groceries for area townspeople. The community will honor Mrs. Thompson with a reception Friday, Jan. 16, from 3:30 to 5 p.m. in the Heritage Room of Plains Library.

Reception Will Honor 'Ma' Thompson's Retirement

Mrs. Cecil "Ma" Thompson has retired as cashier at Pay-N-Save Grocery after serving in that position the past 12 years. Prior to that, she worked nine years at Pic-N-Pay and three years in Tokio at Anderson Grocery.

"It has been a pleasure serving the people of Plains over the years. I have become very fond of the customers and especially love the children. I miss you all and will never forget how special you've made the past 24 years of my life," says Mrs. Thompson. "My future plans are to have time available for my children, grandchildren and great-grandchildren."

A resident of Plains 21 years, 1987 will bring about her 76th birth-

day. She and her husband, the late Dillard "Pa" Thompson were parents of four children - Velva Mae Arnold of Tulia, Patsy Ellen Leonard of Lubbock, Gloria Ann Cooper of Booneville, Ark. and Kenneth Dale Thompson of Brownfield. She is the grandmother of 12, great-grandmother of nine and honorary "Ma" to hundreds.

In honor of her retirement there will be a reception held Friday, Jan. 16 from 3:30 to 5 p.m. in the Heritage Room of Plains Library.

Hostesses in charge of the event are Linda Carey and Latrell McDonnell. Those wishing to be included as hostesses may contact these ladies. Everyone is invited.

Chamber Directors Elect Jim Warren, President

Plans for the annual Chamber of Commerce Banquet were discussed Tuesday morning in a board of directors meeting in Johnnie's Restaurant. The second annual event will be held in the latter part of March or early April.

Elected to serve as Chamber President for 1987 was Jim Warren.

Others attending were David Bunch, Dolores Davis, Carolyn

Culwell, Paul Cobb, Dick McGinty and Dean Andrews.

The Chamber meets at 7 a.m. the first Tuesday of each month. Dues are \$5 per month for businesses; \$1 per month for individuals and may be paid yearly, bi-yearly or monthly. Interested persons are invited to attend the Feb. 3 meeting in Johnnie's Restaurant.

Services Held Recently For Leonard E. Lemley

Services were conducted recently in First Baptist Church for Leonard E. Lemley, 77, longtime resident of Plains.

Officiating were the Rev. Calvin Beach of Dallas and the Rev. Jim Moseley. Interment was in Plains Cemetery under direction of Brownfield Funeral Home.

Mr. Lemley died as a patient in Hook General Hospital in Granbury following a lengthy illness. He was born in Huntsville, Ala. and moved to Seminole in 1945. He moved to Plains in 1947.

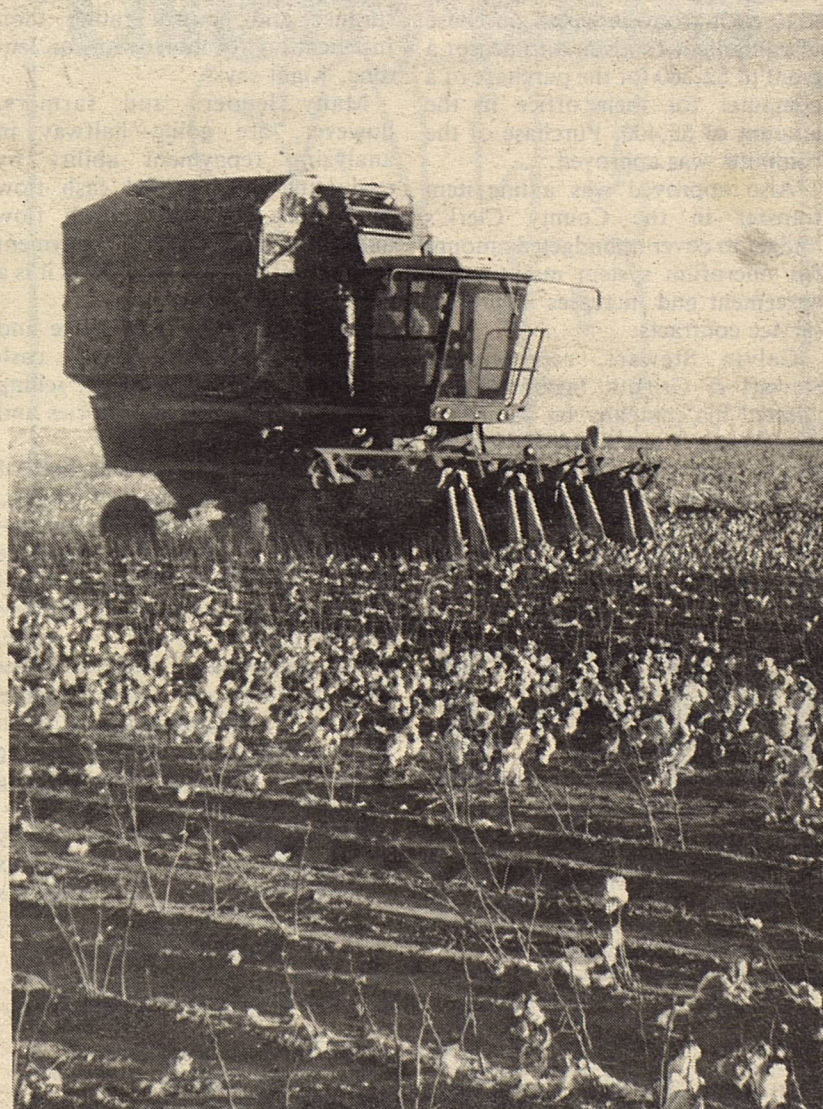
He married Ellie Olean Byrd Feb. 28, 1927 in Huntsville, Ala. He was a farmer and was employed by Yoakum County Cemetery Association, retiring in 1983. He was a member of First Baptist Church of Plains.

Survivors include his wife; a son, Dutch Lemley of Plains; two daughters, Faye Adams of Granbury and Juanez Beach of Dallas; nine grandchildren; eight great-grandchildren and a sister, Viola Pugh of New Hope, Ala.

Dry Weather Helps Farmers

Area farmers have just about finished harvesting cotton during the "holiday break" of dry and pretty weather. Normally harvest is completed before Christmas for farmers in the Plains area and other areas of the South Plains.

A wet autumn placed further burdens upon plagued farmers.



"THEY'RE ALL IN NOW" -- Rex Swann put finishing efforts into his 1986 crops Tuesday, thanks to a welcome return of dry weather. Swann, who farms 1,000 acres of cotton eight miles south of Plains, and others who were busy in fields this week, usually has the final harvesting completed before Christmas, but faced an extended season this year due to a wet fall.

THE PLAINS PRIDE

Joe & Debbie Alcorta - Publisher/Editor

The Plains Pride (USPS 757-130) is published weekly at 716 Main Street, Olton, Lamb County, TX 79064. Second Class Permit paid at Olton, TX 79064. POSTMASTER: Send address changes to THE PLAINS PRIDE, P.O. BOX 774, OLTON, TEXAS 79064-0774.

Any erroneous reflection upon the character or standing of any person or firm appearing in this paper will gladly and promptly be corrected, upon being called to the attention of the management.

—YEARLY SUBSCRIPTION RATES—
Yoakum County & Surrounding Counties, tax included\$15
Elsewhere, tax included\$16

Commissioners' Court

Yoakum County Commissioners Court convened in special session Monday. All members were present to open bids for a rubber-tired roller for precincts one and two. Bids from Bee Equipment Sales, Inc. for \$46,000 with trade-in and West Texas Equipment Company for \$48,397 with trade-in were opened. The low bid by Bee Equipment was accepted.

An appointment by County Clerk Ruby Bruton of Julia Lemley, Rhuely Edwards, Sherry DeFries, Serena Elmore and Bonnie Earnest as deputies was approved.

The court approved a recommendation by Denver City Civic and Youth Center Board hiring Rafi Akbarali as center director at a salary of \$19,000 per year effective Jan. 1.

County Agent David Kight met with the Court to request that the County Agents be allowed to use \$520 each from budgeted purchase of equipment funds and to accept a grant of \$2,360 for the purchase of a computer for their office in the amount of \$3,400. Purchase of the computer was approved.

Also approved was a line item transfer in the County Clerk's budget to cover unbudgeted amount for microfilm system maintenance agreement and increases in present service contracts.

Calvin Stewart, representing Stewart & Griffith Insurance, requested his company be named as the County's agent of record to handle Blue Cross/Blue Shield Insurance. The matter was postponed for additional study.

Bills and extra hire were read and approved for payment.

GET OUT OF THE DARK.

Open your eyes and see just how many subjects are covered in the new edition of the Consumer Information Catalog. It's free just for the asking and so are nearly half of the 200 federal publications described inside. Booklets on subjects like financial and career planning; eating right, exercising, and staying healthy; housing and child care; federal benefit programs. Just about everything you would need to know. Write today. We'll send you the latest edition of the Consumer Information Catalog, which is updated and published quarterly. It'll be a great help, you'll see. Just write:

Consumer Information Center
Dept. TD, Pueblo, Colorado 81009

U.S. General Services Administration

Greater Loan Losses Cause Lending Policy Change

Changes in agricultural lending policies and practices have resulted from greater loan losses during the past few years.

"The most dramatic change has been the increased emphasis on repayment ability," says David Kight with the Texas Agricultural Extension Service.

Until recently, most agricultural lenders based loan decisions primarily on knowledge of the borrower, the borrower's past repayment record and adequacy of collateral margins.

"While these are still necessary and important considerations, they are not sufficient. Collateral-based lending has two major weaknesses - it considers only lender protection and does not address whether the loan will benefit the borrower, and such lending is procyclical," Kight says.

Since collateral is relied upon for repayment only in the event of default, the important consideration is its expected value at the note's due date or the next scheduled payment date. Therefore, there is tendency for lenders to be more liberal and for borrowers to borrow excessively when asset values are appreciating, and to be very conservative when asset values are declining, he explains.

Large numbers of borrower failures and loan losses for lenders have resulted where asset values have declined sharply. Thus, more lending is being based on repayment ability, with collateral providing insurance and control rather than justification for borrowing or lending, Kight says.

Many lenders and farmers, however, are going halfway in analyzing repayment ability by evaluating only annual cash flow projections, he adds. Cash flow analysis is important for repayment ability, but on an annual basis it is a short-run concept.

A firm can be going broke and still be generating a positive cash flow by reamortizing debts, selling off assets including inventories and not replacing capital assets.

The frequently neglected half of repayment analysis is profitability, he explains. Without sufficient inheritances, non-farm income and/or asset appreciation to offset losses, in the long-run, a business has to make a profit to survive. While occasional or periodic losses may be tolerated, income trends need to be a major consideration in any sound borrowing or lending program intended to be an ongoing relationship, he notes.

"Profitability is evaluated usually on the borrower's cash-basis tax returns, which is fine for tax

management purposes, but it can misrepresent business performance significantly. True profitability has to be analyzed on an accrual basis, but this doesn't mean farmers need to maintain two sets of records or switch from cash-basis tax reporting," Kight says.

Accrual income can be estimated fairly accurately by adjustments to the cash-basis data to account for changes in inventories, accounts payable and accrued expenses. These adjustments are simple but critical because cash-basis accounting can hide developing profitability problems for as much as two years, and that can be critical to both the borrower and the lender.

"The change to repayment-based lending is ideal whose time has come. But it shouldn't be done halfway. It is not borrowing money that causes trouble, it is borrowing for things that won't pay for themselves," Kight cautions.

TEXAS DEPARTMENT OF PUBLIC SAFETY
BOX 4143, AUSTIN, TEXAS 78765-4143

MISSING
Persons Clearinghouse



2241

THIS SAFETY BOOT HAS A WARM PERSONALITY. (IT'S INSULATED)

ANTHONY'S
Denver City

FUTURE ENERGY SOURCES

The future for alternate energy sources looks promising. The search goes on for ways to develop energy sources that are clean, renewable, inexpensive and dependable. In the meantime, we'll continue to explore likely sites for new supplies of petroleum and natural gas.

LEA COUNTY ELECTRIC COOPERATIVE, INC.

RESOLVED FOR '87



TO PROVIDE OUR NEIGHBORHOOD FARMERS WITH THE TOOLS TO MEET TOMORROW'S CHALLENGE!

We understand the needs of farmers and are committed to the same goals in striving for a better future for everyone. We're proud to be of financial service whenever we can.

PLAINS STATE BANK

Subscriptions Expiring This Month

- Buddy's Auto Parts
- Pansy Palmer
- Winford Patton
- Plains Shamrock
- Jack Spears
- T-Text Inc.

Richard B. Brantley

AIDS Program Presented To Plains Lions Club

Plains Lions Club met Thursday noon, resuming regular schedules after a holiday interruption and delay.

Pierre StRomain presented a video tape program on AIDS.

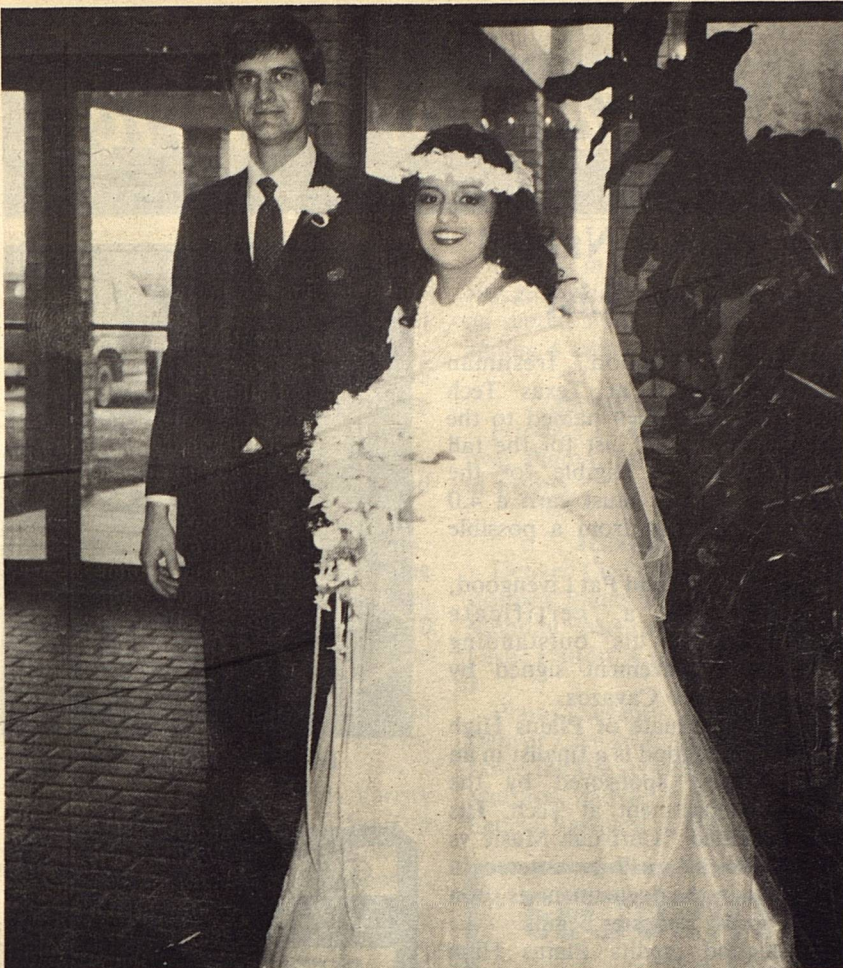
Guests attending were Alfred and Sonya Loya, Joe StRomain and Clay Johnson. Members present were Charles Oswalt, Johnnie Fitzgerald, Paul Cobb, T.J. Miller, C.M. Thompson, Dale Boulter, Edwin Livengood, Larry Mason,

Sherm Tingle, Frank Spencer and Pierre StRomain.

ABWA Meeting To Be Jan. 19

American Business Women's Association will meet at 7 p.m. Monday, Jan. 19 in the Heritage Room of Yoakum County Library in Plains.

All members and interested business women are invited.



MR. & MRS. NEAL WAYNE BEARDEN

Miss Garcia, Mr. Bearden Exchange Vows Recently

Miss Alice Garcia and Neal Wayne Bearden recited double ring wedding vows Dec. 27 in First Baptist Church.

Yoakum County Judge Paul Cobb officiated the exchange of vows before a 15-branch candelabrum adorned with greenery, yellow flowers and royal blue satin bows flanked by spiral candelabras and the unity candelabra.

Parents of the couple are Mr. and Mrs. Trinidad Garcia and Mr. and Mrs. T.J. Bearden.

Karen Cobb, cousin of the groom, sang "Love in Any Language" and "Praise the Lord". She was accompanied by Jan Horn, organist.

Given in marriage by her father, the bride wore a formal length gown of white satin fashioned with fitted bodice of Chantilly lace embellished with Venise lace appliques and simulated pearls. Appliques of Venise lace also adorned the full skirt which extended to a chapel length train. A floral wreath of pearl enhanced flowers held her chapel length veil. She carried a cascade of white silk roses accented with pearls, baby's breath and greenery.

Keeping traditions, she carried in her shoes, six-pences coined in the year of her own and the bridegroom's birth. They were placed there by her father. For "something old", she wore a gold wedding band belonging to the groom's grandmother. Her gown was "new" and she "borrowed" pearls from the mother of the groom. She also wore the traditional blue garter.

Yolanda Garcia of Evanston, Wy. was her sister's maid of honor. Bridesmaids were Rosalie Garcia, sister of the bride, and Lola Bryan,

sister of the groom. Amber Bryan, niece of the groom, was flower girl.

Feminine attendants wore tea length dresses of lustrous rachel lace over satin. Fashioned with satin trim at the neckline and lace sleeves, the dresses featured dropped waist lines accented with satin cummerbunds and bows of royal blue and yellow. They wore floral sprays in their hair and carried long stemmed yellow silk roses.

Bubba Bryan, brother-in-law of the groom, was best man. Groomsmen were Greg Black of Evanston, Wy. and Joe Humphrey, cousin of the groom. Guests were seated by Johnny Curtis and Richard Garcia, cousin of the bride. Cleve and Shain Bearden, sons of the groom, were ring bearers and lighted candles. They wore blue jackets, white pants and carried heart-shaped white satin pillows.

For her daughter's wedding, Mrs. Garcia wore a tea length dress of pink with silver accessories and corsage of pink silk roses. The groom's mother wore a tea length dress of navy blue organza accented with velvet trim and navy accessories. She wore a white orchid corsage.

A reception was held in the church hall of Sacred Heart Catholic Church. Laid with a white lace cloth, the bride's table was highlighted by the three-tiered wedding cake made by the groom's sister. Yellow punch, mints and nuts were served by Melissa Garcia, Clara Garza and Silvia Garza, cousins of the bride. Guests were presented royal blue rice bags by Dusty Bryan and Kemi Cobb.

A complete Spanish meal was served to all guests.

The couple is at home in Anchorage, Ak. where the groom is an electrician.

Yoakum County Hospital

Providing the people of Yoakum County a well-rounded, modern health care program for 33 years

*Quality Care For Neighbors,
Not For Numbers*

- | | |
|-------------------------------------|--------------------------------|
| ● Physical Therapy | ● Radiology, to include: |
| ● Surgery, Recovery & Critical Care | Diagnostic |
| ● 24 Hr Emergency Department | Ultrasound |
| ● Obstetrics | C.T. Scanning (by arrangement) |
| ● Respiratory Therapy | ● Laboratory Service |

YOAKUM COUNTY HOSPITAL is licensed by:
The State of Texas; is a member of:
American Hospital Assoc. & Texas Hospital Assoc.

Country Basket

SALE

\$1.89

Crisp, tender, chicken-fried fingers of 100% beef, golden fries, Texas toast and creamy country gravy. That's the one and only Dairy Queen Country Basket. So come on by for the Texas taste that's just this side of heaven — now at a heavenly sale price!

Monday, Jan. 5 thru
Sunday, Jan. 18

at participating stores.

Dairy Queen

"better than ever."™



★ Reg. U.S. Pat. & TM. Off.
© 1987 TX D.O. Op. Council
® Registered Trademark Am. D.O. Corp.



Plains Independent School District

From The Superintendent's Desk

DEAN ANDREWS



The Texas Education Agency has just released information concerning the 1,063 school districts and 3,127,182 students in Texas, that I find most interesting. The following are some of the facts contained in the report.

The Agency has divided school districts into sixteen groups based on size and district wealth. Our district is in a group identified as having enrollment under 1,000, wealth above average, and low income percent 40 percent and above. There are 164 school districts with 54,201 students in this group. The average size school in our group has an average of 330 students.

Our student attendance percentage was 96.3, the group 94.7, and the state 93.4. Our teacher per pupil ration is 11.5 students per teacher, the group is 11.3 to 1, and the state 17.5 to 1.

Our teaching staff of forty-four teachers has a combined total of 488 years of experience or 11.1 years per teacher.

We have \$7,020.00 revenue per student and a wealth value of \$2,017,452.00 per student. Eighty-nine percent of our district wealth is oil and gas.

I hope you find this information of interest and that I have not given you more statistics about our school than you wanted to know.

What's Cooking At School?



BREAKFAST

MONDAY - Toast, oatmeal, grape juice and milk.
 TUESDAY - Cinnamon roll, apple juice and milk.
 WEDNESDAY - Toast, scrambled eggs, orange juice and milk.
 THURSDAY - Waffles, syrup, butter, tomato juice and milk.
 FRIDAY - Fruit Loops, pineapple juice and milk.

LUNCH

MONDAY - Taco w/taco sauce, baked beans, lettuce, tomato, sopapillas, cinnamon spread and milk.
 TUESDAY - Super dogs w/mustard, French fries w/catsup, combination salad, gingerbread, butter and milk.
 WEDNESDAY - Hamburgers, lettuce, pickles, onion rings, corn chips, fruit, rolled oat cake and milk.
 THURSDAY - Beef and vegetable stew, pinto beans, garden salad, cornbread, cherry cobbler and milk.
 FRIDAY - Salisbury steak w/gravy, spinach, lettuce wedge, hot rolls, peaches and milk.

KPLN SCHEDULE Channel 3

TUESDAY, Jan. 13 at 2 p.m. - Boys & Girls Basketball against Wilson
 WEDNESDAY, Jan. 14 at 2 p.m. - 1986 Volleyball against Tornillo
 THURSDAY, Jan. 15 at 2 p.m. - Plains vs Eunice
 FRIDAY, Jan. 16 at 2 p.m. - Plains vs Wilson

SCHOOL EVENTS

MONDAY - Basketball, Seagraves, 7,8,9 Girls here, Boys there at 5 p.m.
 TUESDAY - Basketball, Loop, GB, here at 6:30 p.m.
 THURSDAY - Semester Exams, periods 1-3-5-7
 FRIDAY - Semester Exams, periods 2-4-6; Basketball, Dawson, GB, there at 6:30 p.m.
 SATURDAY - TEACHER WORK DAY; Basketball, Sundown Tournament for 7th-8th Boys and Girls

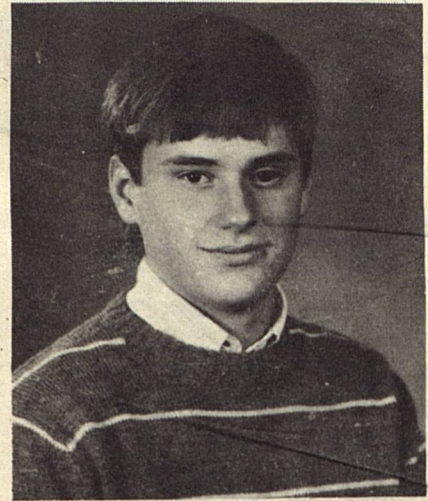
Livengood Named On Honor List

Bobby Livengood, freshman chemistry major at Texas Tech University, has been named to the President's Honor List for the fall semester. To be eligible for the honor, a student must earn a 4.0 grade point ratio from a possible 4.0.

Son of Edwin and Pat Livengood, he received a certificate acknowledging his outstanding scholastic achievement signed by President Lauro Cavazos.

A 1986 graduate of Plains High School, Livengood is a finalist in an essay contest sponsored by the English Department at Tech. His essay, entitled "Christian Music vs Secular Rock", will be entered in the finals in the department as soon as the spring semester begins.

Livengood credits Plains High School and teachers for challenging him to make the good beginning at Tech.



BOBBY LIVENGOOD

Amway
SHOP WITHOUT GOING SHOPPING

Contact Dan or Linda Wall

Petroleum Classes Offered At SPC

A wide variety of course in petroleum technology will be offered during the spring semester, according to Kim Williamson, an instructor in the two-year associate degree program.

SPC's spring registration will be Jan. 12-13, 1987, in the Student Center.

Evening registration will be 5:30-7:30 p.m. Jan. 12, followed by regular registration from 9 a.m.-noon and 1:30-4 p.m. Jan. 13.

Late registration at SPC will continue through Jan. 22. A \$10 late registration will be charged.

Regal Theatre in Brownfield, Texas

Now Showing...

"Three Amigos"

starring Steve Martin

For Recorded Showtimes Call 637-2848

Regular Admission:

\$3 Adult \$1.50 Children

TUESDAY NIGHTS ALL SEATS \$1

Saturday/Sunday Matinees \$2 Adults \$1 Children



Nothing lasts 150,000 years anymore... but you can make Old Appliances Last Longer... with NEW REPAIR PARTS.

We have parts for

- Dishwashers
- Washers/Dryers
- Refrigerators

Plains Appliance Center

Sue Randall, Mgr

Mon-Sat

456-3565

8-6

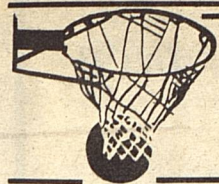
ALLSUPS CONVENIENCE STORES

PRICES EFFECTIVE JANUARY 15-16-17, 1987 WHILE SUPPLIES LAST

For Those Costly... Allsup's is Open to...

BORDEN'S ORANGE Juice 99¢ QT.

LADY BORDEN'S Orange Juice 79¢



ON THE HARD COURT

VARSITY

Plains Varsity Cowgirls won second in a pre-Christmas tournament at Union.

Brownfield JV's handed the Cowgirls a 67-37 loss in the opening game. Lynda Jimenez led the scoring with 10. Other scoring was by Juhree Stowe, 8; Eve Flores, 7 and Karen Cobb, 5.

Plains took a 52-44 win in the second game. Leading the scoring against New Home were Lydia Jimenez, 11; Karen and Juhree, 10 each; Bertha Gonzales, 8 and Vonda Fitzgerald, 7.

Against Union, the Cowgirls won 43-36. Scoring were Lydia, 18; Lynda, 7 and Juhree, 6.

In action Dec. 30, Plains Varsity girls lost to Whitharral, 27-54. Top scorers were Lydia, 8 and Lynda, 6.

Hosting their own tournament New Year's, the Cowgirls won a thrilling 42-41 bout with Petersburg. High scorers were Bertha and Lydia, 9 each; Vonda, 8 and Lynda, 6.

Eunice, N.M. handed the Cowgirls a 33-63 defeat. Leading scorers for PHS were Lydia, 12 and Vonda, 5.

Playing for consolation, the Cowgirls went down in defeat against Loop, 44-57. Top scorers were Lydia, 19; Karen, 7 and Vonda, 6.

Playing in Friona Jan. 6, the varsity girls were defeated 14-59. Vonda scored 5 with Karen and Juhree adding 4 each.

JUNIOR VARSITY

Friona's JV girls took a 56-12 win over Plains Junior Varsity Monday in Friona.

JUNIOR HIGH

Denver City's Eighth Grade girls stopped Plains Eighth Grade 28-15 Monday. Melissa Green scored 6; Leslie Patton, 4 and Michelle Lowe, 3.

Plains Seventh Grade tromped Denver City 36-6 Monday. Daphne Lowe led the scoring with 10. Rena McElroy had 8; Ashlee Winn and Leticia Vasquez, 4 each.



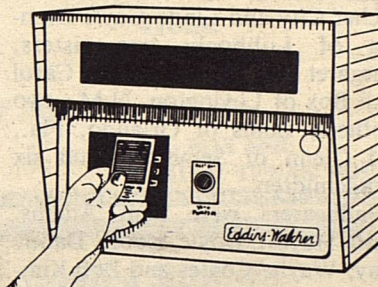
SECURITY FUELING SYSTEM 24-Hour Cost Control

Regular - Unleaded - Diesel
Eliminate Hidden Costs - Pay ONLY for Fuel

Cards are coded, if lost, are useless to finder.
Cards for each vehicle can be restricted to the type of fuel you specify.

Monthly computer print-outs provide you with an excellent accounting record.

Each fuel purchase is individually recorded with information like that shown on this example.



Card #	Date	Time	Site	Unit	Odem	Product	Qty.	Price	Amount
3798	8/2/84	?	07-1	701	41295	Regular	14.9	?	15.94
3798	8/7/84	?	12-1	702	11814	Unleaded	33.0	?	37.29
3798	8/9/84	?	07-2	703	57848	Diesel	40.0	?	49.56

SECURITY FUELING SYSTEMS are located at:

Andrews Lubbock Odessa Brownfield Denver City
Seminole Midland-2 Sundown Sonora Iraan
Hobbs, N.M.

For additional information, and how a system can be tailored to your company's specific needs, call 806-456-5199 or come by our office in Plains.

Eddins-Walcher

Gasoline and Diesel Services

FARMERS INSURANCE GROUP

RICHARDSON INSURANCE AGENCY
Box 558, 503 3rd St.
Plains, Texas 79355
A. C. 806 456-8888

AUTO • FIRE • LIFE • COMMERCIAL

UPS STORES

FAST 'N HOT
Texas Toast

LE SUPPLIES LAST

Fast n' Hot

\$1.49

EACH

ALLSUP'S

Chimichangas

89¢

EACH

"Perfect for those chilly mornings"
FILLED WITH FRESH HOT COFFEE
ALLSUP'S

Coffee Mugs

99¢

REFILLS FOR ONLY 25¢

*Coti January Nights...
is Open to Serve You!*

LADY BORDEN'S ASST.
Ice Cream

79¢

PINT

BORDEN'S ASSORTED
Dips

59¢

8 OZ. CTN.

ALL VARIETIES RUFFLES®

Potato Chips

\$1.19

REG. \$1.39

Resident's Brother Buried In Lamesa

Services for Guy Randall Hughes, 62, of Welch were held at 2 p.m. Friday, Jan. 2 in North 14th Street Church of Christ. Officiating were Calith Brown, pastor and Truman Hayes, elder. Mr. Hughes was the brother of Margaret Box.

Burial was in Lamesa Memorial Park under the direction of Branon Funeral Home of Lamesa.

Hughes died at 9:30 p.m. Tuesday, Dec. 30 in Audie Murphy Veterans Hospital in San Antonio after a lengthy illness.

He was born in Harmon County, Okla. He married Pauline Cathey on Sept. 1, 1946, in Welch. He was a farmer and rancher and a 20 year resident of Welch. He was on the board of directors of the Dawson County Appraisal District. A member of the Church of Christ, Hughes was also a member of the VFW Post in Brownfield.

Survivors include his wife; a son, Lanny Randall of Lamesa; two daughters, Cathey Lynn David of Archer City and Linda Gayle Drennan of Lubbock; two sisters, Margaret Box of Plains and Carol Beth Box of Lovington, N.M.; two brothers, Louis of Orlando, Fla., and Glenn of Seminole; and six grandchildren.

Pallbearers were Sam Adams, Keith Hayes, Doyle Coor, Danny Gray, Wayne Coates and Bob Kimble.

EDUCATION News & Notes

Could you be the Thomas Edison of 1987? If so, your battery-powered invention may win you the \$10,000 first prize in a scholarship competition.

All ninth through twelfth grade students are invited to compete for 41 awards totalling over \$30,000 in the Fifth Annual Duracell Scholarship Competition. Entrants must design and build a device powered by a Duracell® battery and submit a photo and explanation of the device by February 16, 1987. Students should use their imagination and experiment to build a practical device that's educational, useful or entertaining.

There are five second place scholarships of \$3,000 each, ten third place scholarships of \$500 each plus twenty-five cash prizes.

The scholarship competition is endorsed by the National Science Teachers Association (NSTA). The top 16 winners, their parents and science teachers get an expense-paid trip to Washington, D.C. to attend an NSTA awards banquet in March. Ask your science teacher for more information and an entry form or write: Duracell Scholarship Competition, National Science Teacher Association, 1742 Connecticut Ave., NW, Washington, D.C. 20009.



Winter Clearance

75% Off

All Blouses



30% Off

All Sweaters

Groups of Sportswear
1/4 to 1/2 Off

EVERY ITEM in store ON SALE!!

Nancy's Fashions

209 N. MAIN
DENVER CITY, TEXAS 79323

(806) 592-8125



"MA" THOMPSON

"Tribute To A Lady"

*There is a lady in our town who is wondrous wise,
Most gracious and enduring, interested in all our lives.
She is so helpful to her customers, even as you and me,
All time checking groceries, never missing a key.
She is adored by all her fellow workers in line,
The public seeks her advice, her knowledge of time.
Indeed, Mrs. Thompson is a wonderful lady worth meeting,
Lovingly known as "Ma", she answers to that greeting.*

*written by Sit Jones
in honor of "Ma"*



"We'll Miss You, Ma"

Pay-N-Save Grocery

CLASSIFIED ADVERTISING

FOR SALE

FOR SALE: 3 BR house on 2 choice lots and small mobile home. Good price and owner financed to right buyer. Call 456-2989 or (915) 292-4416 after 6 p.m. 41/tfc-3tpd

HELP WANTED

HELP WANTED: Full-Time Receptionist. Need assistance for very busy medical practice. Typing required. Spanish speaking preferred. Call for more information 592-3558. Ask for Kathie. 41/1tc

NOTICE TO BIDDERS THE STATE OF TEXAS COUNTY OF YOAKUM

Notice is hereby given that the Commissioners' Court of Yoakum County will receive bids until 10:00 A.M. on the 19th day of January 1987 for the purchase of one (1) Current Production 2 Cubic Yard Loader for Precinct 3.

Specifications may be obtained by contacting Jim Barron, Commissioner Precinct 3.

Sealed bids should be marked on the outside of the envelope and mailed or delivered to the County Judge's office, P.O. Box 456, Plains, Texas 79355.

The Commissioners' Court reserves the right to reject any or all bids.

Hazel Lowrey
County Auditor

Published Jan. 4 & 13

Winter Sale!

25% OFF Carole Fabrics
50% OFF
Labor on Custom Bedspreads
50% OFF Mini Blinds
35% OFF Vertical Drapes
CALL
J & L Draperies
FOR FREE ESTIMATE
456-6012 456-8902 456-6282

**Need
House or Office
Cleaned?**

Call
**REESE CLEANING
SERVICE**
456-4725

RICHARD CLARK ATTORNEY AT LAW

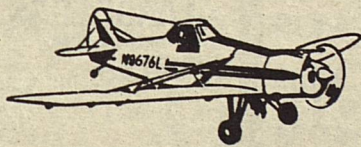
810 E Brdwy
First Nat'l Bank Bldg

806/592-3039

Box 749
Denver City, TX 79323

Two J-S Flying Service

Aerial Applicators



806/456-3580

Jack Cobb
456-7452

Yoakum Co. Airport

Plains, TX
79355

'We Don't Sell Service — We Give Service'

T-Tex Fertilizer Goodpasture Elevator

Roswell Highway

Days
456-8833

Bruce Lester/Mgr

Nights
456-6575

PUBLIC NOTICE

Poka-Lambro Rural Telephone Cooperative hereby gives notice it has filed with the Public Utility Commission of Texas for authority to detariff all customer premises equipment and all premises wiring. These services include all telephones, jacks and the wire that connects the jacks to the protector, which is usually located on the outside wall of your business or residence. The changes are proposed to become effective 35 days after filing, which will be approximately January 20, 1987. These changes will eventually affect all of the approximately 3,284 customers of the Cooperative.

The result of the changes proposed will be that the Public Utility Commission will no longer set rates or other regulations for telephone leases and wiring installation and repairs. The rates and regulations for local exchange service will not be affected by the tariffs being proposed.

The proposed tariff changes will not cause any immediate change in revenues. Persons with questions or who desire more information about the requested rate changes are encouraged to contact the Cooperative at (806) 924-7234 or at P.O. Box 1340, Tahoka, TX 79373. A complete copy of the filing is available at the offices of the Cooperative.

Persons who wish to intervene or otherwise participate in these proceedings should notify the Commission as soon as possible. A request to intervene, participate or for further information should be mailed to the Public Utility Commission of Texas, 7800 Shoal Creek Blvd., Suite 400N, Austin, TX 78757. Further information may also be obtained by calling the Public Utility Commission Consumer Affairs Division at (512) 458-0223, (512) 458-0221 teletypewriter for the deaf.

PLAINS

INSURANCE AGENCY

Crop	Auto
Health	Home
Commercial	Life

Specializing In Your Insurance Needs

JIM WARREN
Phone: (806) 456-3595

P.O. BOX 1020
PLAINS, TEXAS 79355

"We're Your Full-Service Station"

- We Fix Flats (including front tractor tires)
- Sell New/Used Tires
 - We Mount & Balance Tires
 - Unleaded - Regular - Prem. Unleaded
 - Official State Inspection Station
- 4¢ Discount (Gas Cash Purchase)
- We Wash Cars



T & B Exxon

"We Appreciate Your Business"

456-7141

ADD LIVING



SPACE

If you're adding a room, or expanding existing space, we can help! Expert advise & all the materials you'll need. Lumber, paneling, nails, insulation & tiles.

DO-IT YOURSELF CENTER

**BAYER
LUMBER & HARDWARE
CO.**

Plains

 <p>Corn PRICE SAVER W.K. OR C.S. 489¢ 16 OZ. CANS</p>	 <p>Beans PRICE SAVER CUT GREEN 489¢ 15.5 OZ. CANS</p>	 <p>Peas PRICE SAVER SWEET 489¢ 17 OZ. CANS</p>	 <p>Sugar PRICE SAVER GRANULATED \$129 5 LB. BAG</p>
---	---	--	---

 <p>Coca-Cola PLUS DEPOSIT \$259 6 PK. 32 OZ. BTLs.</p>	 <p>Mac & Cheese PRICE SAVER DINNER 699¢ 7 OZ. BOXES</p>	 <p>Oil PRICE SAVER VEGETABLE \$129 48 OZ. BTL.</p>	 <p>Shortening PRICE SAVER 89¢ 42 OZ. CAN</p>
--	---	--	--

 <p>PRICE SAVER PURE FLOUR 5 LB. BAG 59¢</p>	<h1>PRICE Saver Sale</h1>
 <p>PRICE SAVER LIQUID BLEACH GAL. JUG 59¢</p>	
 <p>PRICE SAVER FRESH CRACKERS 18 OZ. BOXES 289¢</p>	
 <p>PRICE SAVER TALL KITCHEN BAGS 15 CT. BOX 59¢</p>	
<p>PRICE SAVER COFFEE FILTERS 200 CT. BOX 79¢</p>	
<p>PRICE SAVER FACIAL TISSUE 176 CT. BOXES 299¢</p>	
<p>PRICE SAVER TEA BAGS 100 CT. BOX 98¢</p>	
<p>PRICE SAVER THICK SYRUP 32 OZ. BTL. 79¢</p>	
<p>KEN-L-RATION DCG FOOD 15 OZ. CANS 4 \$1.00</p>	
 <p>WOLF BRAND BEEF STEW 24 OZ. CAN \$1.59</p>	

WE PLEDGE TO MAKE OUR GROUND BEEF AT LEAST TWICE A DAY!

WE WILL NOT INTENTIONALLY MAKE ANY GROUND BEEF UNDER 80% LEAN!!

USDA GRADE 'A' PILGRIM'S PRIDE

Whole Fryers

49¢


LB.




Bologna or Franks
PRICE SAVER CHICKEN MEAT
79¢
1 LB. PKG.

GOOCH'S GERMAN BRAND SMOKED SAUSAGE	12 OZ. PKG.	\$1.19
SHURFRESH QUALITY HICKORY SMOKED BACON	1 LB. PKG.	\$1.69
PILGRIM'S PRIDE CHICKEN PATTIES	15 OZ. PKG.	\$2.59
PILGRIM'S PRIDE W/SAUCE CHICKEN NUGGETS	15 OZ. PKG.	\$2.59
FRESH FRYER DRUMSTICKS	LB.	89¢
FRESH FRYER THIGHS	LB.	89¢
SPLIT FRESH FRYER BREAST	LB.	\$1.39

 <p>66 SM., 48 MED., OR 32 LG. LUV'S DIAPERS BOX \$8.88</p>
 <p>BOUNTY PAPER TOWELS JUMBO ROLL 69¢</p>
 <p>BORDEN'S EAGLE BRAND ICE CREAM 1/2 GAL. CTN. \$2.49</p>
 <p>BORDEN'S FROST STICKS 6 CT. PKG. 95¢</p>
 <p>BORDEN'S CHOCOLATE MILK QT. CTN. 67¢</p>
 <p>BORDEN'S HOMO MILK GAL. JUG \$1.99</p>
 <p>OLD FASHION OR BUTTERMILK SHURFRESH BISCUITS 4 OZ. CANS 8 \$1</p>
<p>ALWAYS FRESH QUARTERS MARGARINE 3 1 LB. BOXES 89¢</p> <p>SUNNY FRESH GRADE A X-LARGE EGGS 18 CT. CTN. 99¢</p> <p>ALWAYS FRESH AMERICAN SINGLES 12 OZ. PKG. 79¢</p>
 <p>FOR 12 HOUR RELIEF ACTIFED CAPSULES 10 CT. PKG. \$2.89</p>
<p>TABLETS ANACIN 100 CT. BTL. \$4.49</p> <p>REG./NO AEROSOL CLAIMIST HAIR SPRAY 8 OZ. CAN \$1.49</p>



Lettuce
CRISP ICEBERG
2\$1
FOR




RED RIPE
SLICER TOMATOES
59¢ LB.

TEXAS FRESH GREEN
CABBAGE LB. **15¢**

SUNKIST TANGY
LEMONS 4 FOR **\$1.00**

WASHINGTON RED DELICIOUS X-FANCY
APPLES LB. **59¢**

FRESH X-LARGE
BELL PEPPERS LB. **69¢**



QUALITY AND SERVICE

PRICES EFFECTIVE: JAN. 11-17, 1987

So Long, Ma!