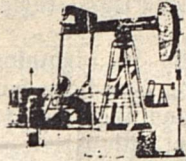


Plains Library
Box 419
Plains, TX. 79355



The Plains Pride



VOLUME 2, NUMBER 46

Plains, Yoakum County, Texas
TUESDAY, FEBRUARY 17, 1987

30¢



SET FOR THE SHOW -- Dusty Rafferty, eighth grade student at Plains Junior High will be among the county 4-H and FFA participants in the 35th annual stock show to be held this weekend. Dusty is the son of Mr. and Mrs. Richard Rafferty.

Plains School Board Members Tour TI-IN Network System

School board members toured the auditorium and newly installed TI-IN Network System during their regularly scheduled meeting Monday evening.

The 1987-88 school calendar was adopted as presented. Also approved was the Annual Performance Report. School board policy EK (local) was adopted.

Financial reports for general operating, cafeteria, tax and transportation areas were given by Superintendent Dean Andrews. He also reviewed status of various school projects, presented information concerning future school board meetings and school board training meetings. The 1987 track and tennis schedules were presented and student grade statistics for the first semester were reviewed.

The board entered executive session to consider staff evaluations and administrative staff contracts. Resuming open session, the board approved new two year contracts for Wanda Ashburn, business

manager; Robert Parks, high school principal; Jimmy Conner, junior high school principal; John Nance, elementary school principal; Arlon Alexander, counselor and Larry Devitt, curriculum director.

Basketball Royalty Given Recognition

Vonda Fitzgerald and Shane McMinn were selected for the titles of Plains High School Basketball Queen and King. Brad McWhirter, Student Council vice president, made the announcement and presented the new queen with a yellow rose corsage and the king, a boutonniere.

Miss Fitzgerald, a senior, is the daughter of Mr. and Mrs. Venum Fitzgerald. She has played basketball all four years at PHS. A junior, McMinn is the son of Mr. and Mrs. Larry McMinn. He has played basketball all three years.

35th Annual Stock Show To Be Held This Weekend

Weigh-in gets underway Wednesday afternoon for barrows in the thirty-fifth annual Yoakum County Junior Livestock Show and Sale. Lambs and steers will be weighed Thursday.

Judging begins at 8 a.m. Friday for barrows with lamb classes scheduled for 1 p.m. Beef cattle competition will conclude the show at 6 p.m.

Saturday will be another big day with the Parade of Champion and Reserve Champion animals slated to start at 10:30 a.m. Buyers Lunch will be held from 11:30 to 12:30 in the school cafeteria.

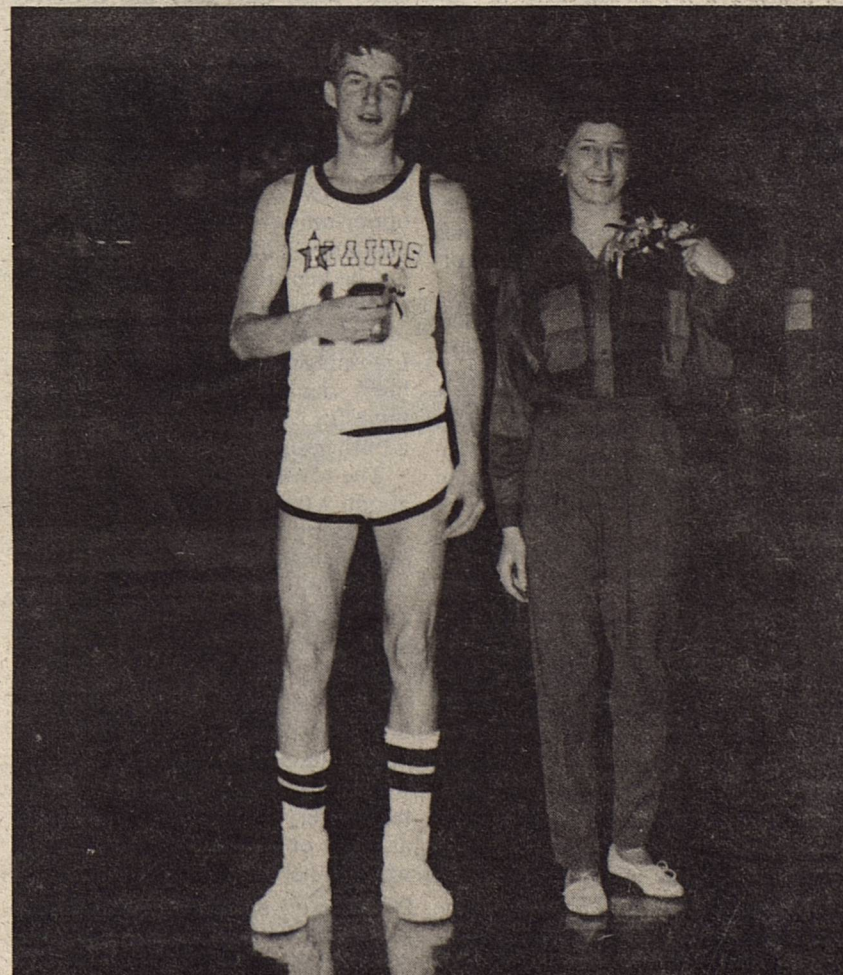
Presentation of Queen Awards gets started at 12:15 p.m. Trophies will be awarded for the grand and reserve champion animals. Trophies are donated by Eddie's Cowboy Store in Levelland.

The Rusty McGinty Award will also be presented at this time. Given annually in honor of Rusty McGinty by his immediate family, the award is given to an exhibitor selected by

the three superintendents, a young farmer and another individual. It is awarded on the basis of showmanship, sportsmanship, neatness of individual, grooming of animals, appearance of animal quarters and cooperative attitude. Mrs. Alma McGinty and girls will make the presentation.

A buckle will be awarded to the exhibitor who accumulates the most points. To be eligible for that award which is contributed by Supreme Feeds, the exhibitor must have fed their project animal with Supreme Feeds purchased from the local dealer.

Showmanship awards to be presented include the steer showmanship by the Ty Earl Powell family; barrow showmanship, by Yoakum County Farm Bureau; lamb showmanship, Jack London family; 4-H Management Award, Kenneth McGinty family; heifer showmanship, Danny Sellers and Herdsman Award, Yoakum County Livestock Association.



1987 BASKETBALL KING & QUEEN crowned recently were Shane McMinn, son of Mr. and Mrs. Larry McMinn; and Vonda Fitzgerald, daughter of Mr. and Mrs. Venum Fitzgerald.

THE PLAINS PRIDE

By *Jimmie Bayer*

Joe & Debbie Alcorta - Publisher/Editor

The Plains Pride (USPS 757-130) is published weekly at 716 Main Street, Olton, Lamb County, TX 79064. Second Class Permit paid at Olton, TX 79064. POSTMASTER: Send address changes to THE PLAINS PRIDE, P.O. BOX 774, OLTON, TEXAS 79064-0774.

Any erroneous reflection upon the character or standing of any person or firm appearing in this paper will gladly and promptly be corrected, upon being called to the attention of the management.

—YEARLY SUBSCRIPTION RATES—
 Yoakum County & Surrounding Counties, tax included \$15
 Elsewhere, tax included \$16

Commissioners' Court

Commissioners Court met in regular session Monday. All were present.

Yoakum County State Bank was the only applicant to serve as depository for county funds. The bid was accepted.

Written resignation of Paul Grahman as director of Yoakum County Industrial Development Corporation was accepted. Roy Hobstadt was named as his successor.

A grant adjustment notice regarding juvenile court officials naming Ted Welch as project director and person authorized to submit grand adjustments and Judge Dallas Brewer as authorized official was read.

A letter was read advising the court that Yoakum County has been declared eligible for Small Business Administration's loans due to county having been declared a disaster area due to crop losses from adverse weather conditions in 1986.

Bills were read and approved for payment including hospital bills totaling \$78,578.31.

GROUND BEEF COLOR AND SAFETY - You may not need to throw out that raw ground beef that turned brown after a day or two in the refrigerator. According to Mary Kinney Sweeten, a Texas A&M University Ag. Extension Service nutritionist, the color of ground meat is determined by the amount of oxygen with which it has come in contact. So brown hamburger may be as safe as pink hamburger. However, she says it's a good idea to keep raw ground beef in the refrigerator no longer than two days. Don't use the meat if it has an off odor or was left unrefrigerated for a time.

MEAT SAFETY - "Almost everyone knows that when meat isn't refrigerated and handled properly it can become contaminated by bacteria, but many people don't know how to tell a safe from a risky practice in preparing meat at home," says Mary Kinney Sweeten, a nutritionist with the Texas A&M University Ag. Extension Service. Bacteria grow best at room temperature but are killed by high heat and stopped by freezing," says Sweeten. "So it's best to keep meat cold, cook or freeze it soon after buying, and thaw it in the refrigerator, not on the kitchen counter."

Australia!! Down Under!! The Outback!! These were exciting words to us as we planned our trip to see our daughter and her husband, Sandy and Herman Kreller of Lightning Ridge, New South Wales in Australia.

We left home on Jan. 1st, and arrived in Sydney on Jan. 3rd, having lost a day to the International Date Line. Herman met us there and after a quick 30 minute tour of Sydney, we were on the way, 500 miles to Lightning Ridge. It was a beautiful, interesting journey. Everywhere we looked we had a different view. Out of Sydney about three hours, we passed through the famous Blue Mountains, and then the scenery flattened out and reminded us of the hill country of Texas without very many hills. Their grass was yellow and the trees were dusty green from the heat. I didn't see any wildflowers at this time. What they call "bush" is tall trees to us. We saw lots and lots of beautiful birds, the gorgeous pink galahs, the white cockatoos, grey crested pigeons, black and white magpies (which seem to be as common as our crows) the green, yellow and blue budgerigars and so many others that I couldn't name. They were feeding on the road and Herman had to sound his horn continuously to get them to fly up. After dark the kangaroo is a menace, as they feed right at the edge of the road and are blinded by the car lights. You have to almost stop till you see which way they will jump, as they can break your windscreen or dent your car.

Sandy and Herman live outside of Lightning Ridge and own the "Walk-In Mine and Jewelry Store". It is one of the major tourist attractions there and they are breaking ground in February for a new store in Lightning Ridge proper. Originally a working opal mine for many years, it is now a way to see how it looked. Herman also gives guided tours, and he is very, very good...twice a day you are given the opportunity to go digging under his guidance. Lots of people like this, but he kept teasing me as I was too claustrophobic to go. Then at the end of the mine is the jewelry portion. Lightning Ridge is famous for its black opals and they have lots of them for sale in all price ranges and all other shades of opal also.

The town of Lightning Ridge has about 2,000 people and no telling how many more out in the bush on their claims. There were all kinds of small shops, souvenir places, hotels, restaurants, etc. The thing that made me really realize we were in Australia, was the fact that we had to go to different stores such as the butcher, the bakery, the fruits and vegetables (they only came once a week to an open air stand) and to the grocery store. The largest store and the one I patronized the most was the news agent! No surprise to people who know me. Milton said the gas over there was 66 cents a liter which makes it about \$2 a gallon approximately. That's also why they have so many small cars.

Out in the bush are all kinds of dwellings. It seems that you pay

your mining claim fee and then you can put up any kind of building that you want to. We saw so many just made of tarpaper and tin. In fact most of the roofs over there are tin. Everywhere you looked there were piles and piles of dumped leftover ore, hoists for bringing up opal ore, leftover engines for running these and for running the puddling tanks. This is a device for getting the opals out of the ore. I brought home a piece of opal clay that has a very soapy texture to it.

In the early days of opal mining, a miner dug his shaft straight down and branched out, then would have to climb in and out to empty his buckets of ore, which now it's done by machinery.

There was a lot of sightseeing to be done there, and we mostly did it in the mornings as it would get so terribly hot in the afternoons. One day the temperature reached 112°, but luckily a big nice rainstorm came up.

We took a day tour of Lightning Ridge with a driver who was called Oxford Terry. He came to Lightning Ridge 17 years ago and worked as a miner for some time. We went to several mines, saw an opal cutting demo, a bottle house where the lady was doing all her own cement work, and putting bottles in lovely designs in window areas, and making a lovely cool house. Also a dwelling built as a castle where one of the features was the windows made of old car windows. Then another spot where a guy was building walls for a new house out of the local rocks (free) but had already used \$2,000 for cement. The walls were 24" thick. We saw a film about the old days of opal mining, but the nicest thing of all was our trip one morning to "Kangaroo Hill". This is a sort of mini-zoo where the owners take in

injured or deserted kangaroos, raise them till they can be released. He also had a wombat, a very curious animal with a funny growl, and had several cages of the galahs, cockatoos and budgerigars, eagles and others.

After two weeks in Lightning Ridge, we took the four hour bus ride to Dubbo, and the train to Sydney. Sandy went with us and on Sunday we took the "All Day Sydney" tour. This was a bus tour in the morning of different parts of Sydney and a harbor luncheon cruise. Sydney is a large, beautiful clean city and the people we met everywhere were so nice and friendly.

The Opera House and Harbor Bridge are world-famous and very beautiful. The Queen Victoria Building was right across the street from our hotel and undergoing repairs. The Pier One shops were right under the bridge and had lots of little shops in it. The subway (or trains) were underground and everywhere you looked there were little arcades of shops.

The food was very enjoyable and comparable in price to our nice restaurants. We always ordered with vegies, as they had the freshest steamed ones. The only thing odd to us was their habit of having two kinds of potatoes at once. In fact our first meal on the first day we were there had sweet potatoes, creamed potatoes and chips (French fries to us) with peas and carrots also.

However, all good things come to an end and on Wednesday the 21st, we had to leave Australia (first having to pay a \$20 departure tax) and off we came home to suitcases of souvenirs and a head full of memories.



Lay-Away Now for Spring

Boys 0-24 months Girls 0-14

Polliwogs & Pigtails

310 W. Main in Brownfield 637-8184

Explains Ext. Agent

'We May Not Need Extra Iron'

Should I take a vitamin supplement with iron? Do I always need to buy the "iron fortified" cereal? Knowing something about how iron works in the body can help you answer these and other questions about iron, says Mary D. Williams, Yoakum County Extension Agent, Home Economics.

Two forms of naturally occurring iron -- heme and nonheme iron -- are found in food. During digestion, separate pools of heme and nonheme iron form in the body. Each is absorbed differently and at a different rate.

Heme iron comes from meat, fish and poultry. About 40-60 percent of the iron in these foods is heme iron. Of this heme iron, about 23 percent is "bioavailable", or capable of actually being used in our bodies.

The rest of the iron in animal foods and all the iron in grains,

fruits and vegetables is nonheme iron, which is about 3-8 percent bioavailable. So it's easy to see why meat, fish and poultry are recommended as the best source of iron in the diet.

Even if you eat iron-rich foods, its absorption will be regulated by your body. People who already have an adequate source of iron, will absorb less than those whose iron stores are low or deficient. So if you're taking vitamin pills with iron and are already getting adequate iron from meat, your body will not absorb the added iron.

The absorption of nonheme iron is also influenced by body stores. Nonheme iron is absorbed at a lower rate than heme iron, unless certain enhancing factors are present.

For example, if you eat a food

with ascorbic acid, such as citrus fruit, at the same time you eat a food with iron, your iron absorption will increase. Also, there is some as yet unidentified substance in beef, pork, liver, lamb, chicken and fish that enhances the absorption of nonheme iron.

At the same time, some substances in whole grains, tea, coffee, egg yolk, spinach, rhubarb and chocolate inhibit the absorption of iron.

Iron works in our bodies in complex ways. But by eating a balanced diet that contains foods with both heme and nonheme iron, most people can be sure of getting enough of this important mineral without taking supplements.



2241

THIS SAFETY BOOT HAS A WARM PERSONALITY. (IT'S INSULATED)

ANTHONY'S
Denver City
Red Wings

American Music Program Given For Fine Arts Club

"Parade of American Music" was the program topic of Thursday's meeting of Plains Fine Arts Club. Held in the school cafeteria, it was hosted by Janie Parlas and Melba Crutcher.

Annette Cleveland was program director. Deborah Jones, accompanied by Cynthia Blair, sang "God Bless America". Plains High School's FFA Talent Team presented "Margarita-ville," "Cold Day in Georgia" and "Gimme Wings". The group is composed of

Brad McWhirter, Kenley Powell, Keith Earnest, Chad Wall and Lebert Powell.

Guests attending were Susie and Keri Powell, Bonnie Earnest, Jennifer Earnest and Connie McWhirter.


Other members present included Beth Ann Cain, Kelley Clay, Bar-

bara Thrash, Dolores Davis, Jeanette Wauson, Lois Miller and Stacie Layton.

Next meeting is 7:30 p.m. Thursday, March 6.



Manuela Chavira announces the arrival of a son born at 12:11 a.m. Feb. 3 in Cook Memorial Hospital in Levelland. Weighing six pounds two ounces and measuring 19 and three-quarters inches long, he has been named John Gabriel Lopez Chavira. He has a sister, Elsa Elena, 13 months. Grandparents are Manuel and Lupe Chavira.



Attend The Show & Sale

Let's Support Our Youth By Being There...

Yoakum County Co-op Gin

Best of Luck



To The Exhibitors Who Have Worked So Hard To Make This Year's Stock Show A Success!!!

Plains Appliance Center



Help To Make This Year's Show The Best Yet!

**J & R Cafe
Cowboy Car Wash
OK Coin Laundry**



Plains Independent School District

From The Superintendent's Desk

DEAN ANDREWS



I met a lady downtown this past week who complimented me on the grading article in last week's paper. I explained that my intent is to keep the community informed and asked what would she like for the articles to address in the future. She said, "Just tell us what is going on at school".

I would like to tell you that primarily there is just plain hard work taking place at school. Our students are being taught more, and in more different ways than we have ever known. We have 485 students enrolled in Plains Schools at this time. Of those 485, ninety-five percent of all elementary students are passing all subjects, eighty-four percent of all junior high students are passing all subjects, and in high school ninety percent of our students are passing all subjects. Overall ninety-one percent, or 440 students at Plains Schools are passing all subjects. Of course it is our hope and desire that all 485 students pass all subjects.

We congratulate our basketball teams for the success they have enjoyed this season. We have seen real improvement with all our teams and we are proud of their effort.

To those students who will participate in the Yoakum County Stock Show, we wish you success.

I would like to thank each of you for reading these articles and for your comments. I would appreciate any suggestions you may have, please feel free to call me at 456-7401.



ON THE HARD COURT

SEVENTH GRADE

Seventh Grade Girls played Tatum Monday, Feb. 2 with Plains coming up short, 35-29. High scorer was Janice Herrera with 7 points, followed by Rena McElroy, 6 and Daphne Lowe, 6.

On Saturday, Feb. 7, the Seventh Grade Wranglers competed in the Sundown Tournament bringing home a third place win. Playing Shallowater, Plains lost by only two points, 29-27. High point girl was Rena McElroy with 11 points. The girls played Anton for third place, winning 48-8. Janice Herrera, high scorer, contributed 10 points to the victory. McElroy, Lowe and Vasquez each collected 8 points.

Seventh Grade Wrangler Cowboys wrapped up their season with an 11-6 record. Coach McAdams complimented his players saying, "The boys worked hard and were a very fine team. They will do well when they get to high school."

In the Sundown tournament, the Plains team defeated Shallowater 38-26. Scoring found Joe Martinez

collecting 17 points. Garick Engle had 8 and Justin Stowe, Edward Cerna and Lacy McAdams had 4 each. Jason Smith scored 1 point.

Sundown edged Plains in the championship game, 26-25. For Plains, it was Justin with 8; Garick, Joe, Lacy and Jason with 4 each and Jimmy McGinty with 2.

VARSITY

Varsity Cowgirls played Friday, Feb. 6 against Union High School, claiming a victory by 13 points, 54-41. High scorer was Lydia Jimenez with 10. Juhree Stowe added 9 points on the board.

The girls played O'Donnell Tuesday, losing 77-20. High point players were Karen Cobb and Lynda Jimenez with 5 each.

The Cowgirls wrap up their season with an 8-16 record, finishing 3rd in District.

SHOP WITHOUT GOING SHOPPING

Contact Dan or Linda Wall

Plains Taekwondo

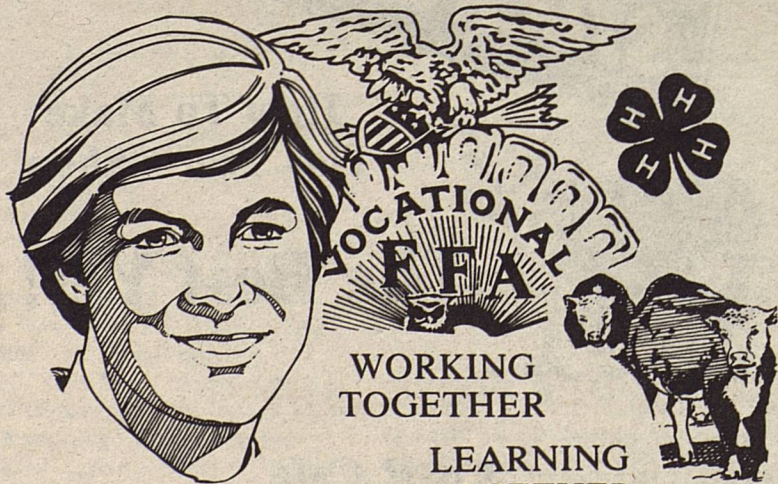
(Korean Karate)

Mon. 6:00 to 7:00 at Junior High
Wed. 6:00 to 7:00 Gymnasium

- *Professional Black Belt Instructors
- *Certified Ranks Awarded
- *Men, Women, Children 6-60
- *Weight Control, Muscle Toning, Flexibility
- *Respect, Discipline, Confidence
- *Self-Defense & Competition

Don't Just Dream About It!

(Branch School of W.C. Park - 8th Degree Black Belt)



Attend The
Yoakum County Junior Livestock Show
Plains Insurance Agency
Jim Warren



we're for you



We are Proud of our Young People...

And the fine work they have done to prepare for this show...

Visit The Annual Livestock Show!!!

Pay-N-Save

Dear Editor:

Dear Editor:

We want to thank the Plains Volunteer Fire Department, Jim Barron of Precinct 3 and all the people who worked so hard putting out the grass fire in our pasture Thursday, Feb. 11. We appreciate their responding so promptly.

Sincerely,
L.J. and Virginia Sanders

RECEIVES DEGREE

Chris Ann Guetersloh recently received her cosmetology license after passing her state board exam in Fort Worth. She is working at Marjorie's Coiffures.

Regal Theatre

in
Brownfield, Texas

Now Showing...

—SCREEN I—

Clint Eastwood stars in
"Heartbreak Ridge"
Rated R

—SCREEN II—

"Crimes of the Heart"
Rated PG13

For Recorded Showtimes
Call 637-2848

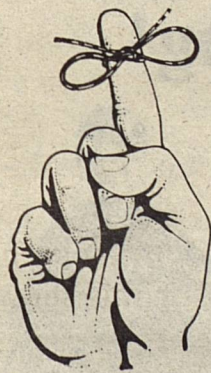
Regular Admission:

\$3 Adult \$1.50 Children

—TUESDAY NIGHTS—
"Bargain Nights"

\$2 Adults \$1 Children

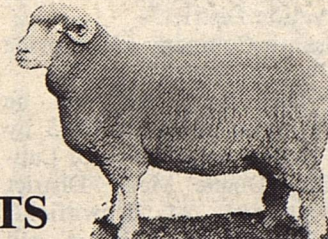
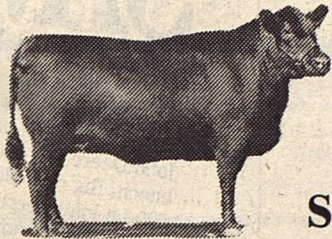
don't miss it



the
Yoakum County
Junior Livestock
Show & Sale

Plains
Chamber
Of Commerce

Yoakum County Livestock Show



SCHEDULE OF EVENTS

WEDNESDAY, FEB. 18

1:00 p.m. - Weighing of Barrows (All exhibitors in line at 6:00 p.m. will be weighed.)

THURSDAY, FEB. 19

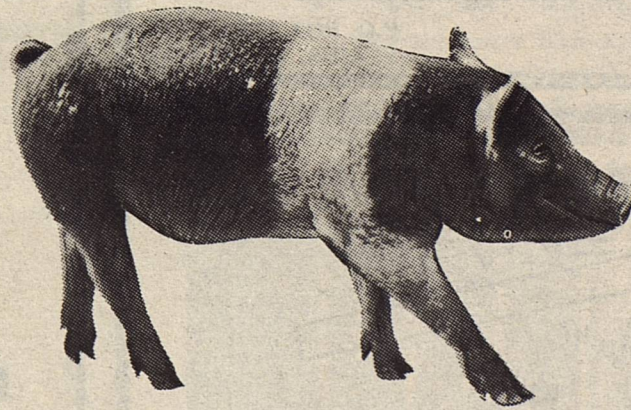
8:00-12:00 noon - Weighing of Lambs
1:00-4:00 p.m. - Weighing of Beef Cattle

FRIDAY, FEB. 20

8:00 a.m. - Judging of Barrow Classes
1:00 p.m. - Judging of Lamb Classes
6:00 p.m. - Judging of Beef Cattle Classes

SATURDAY, FEB. 21

10:30 a.m. - Parade of Champion & Reserve Champion
11:30 a.m.-12:30 p.m. - Buyer's Lunch (School Cafeteria)
12:15 p.m. - Presentation of Queen Awards
- Cow Patty Bingo
- Presentation of Awards
1:00 p.m. - Premium Sale



This Program Was Sponsored By The Following:

T-Tex Fertilizer

Rudy's Spanish Inn

Eddins-Walcher Company

Plains State Bank

Yoakum County Farmers Union



Conservation Tillage Topic Of Workshop In Brownfield

A Conservation Tillage Workshop, "Conservation Tillage in Cotton Country," will be held Tuesday, Feb. 24 from 10 a.m. to 3 p.m. in Terry County Showbarn, North 14th Street, Brownfield. It is sponsored by Terry Soil and Water Conservation District.

Monsanto Company will provide lunch.

The 1985 Farm Bill will be discussed from 10:15 to 10:45 by Monty Dollar, agronomist, of Lubbock and Duane Moss, District Conservationist, of Brownfield. Monty Henson, Terry farmer, will speak on Cotton and Wheat in a Reduced Tillage System from 10:45 to 11. Ro-Till Dryland Cropping Systems will be the topic of Joe Ike Clay, Motley County farmer, from

11 to 11:30. Dr. Dan Kreig, professor of crop physiology from Texas Tech University, will conclude the morning's program with Reduced Tillage Systems For Cotton.

Convening at 1 p.m., Dr. John Abernathy, Resident Director of Research, Texas Agriculture Experiment Station, Lubbock, will present a 30-minute program on Herbicides and Conservation Systems.

John Mason of Monsanto will speak from 1:30 to 2 p.m. on Use of Chemicals in Reduced Tillage.

A panel of conservation tillage farmers will participate in a ques-

tion and answer period from 2 to 3 p.m.



Filmtime

Filmtime at Yoakum County Library Wednesday was made special by a valentine party with cookies and punch. It was also the fifth birthday of one filmtime youngster, Justin Bennett.

Boys and girls sang the birthday song and viewed two films, "Morris's Disappearing Bag" and "Olton MacDonald Duck".

Attending were Sharla and Ashley Vantine, Jill and Taylor Gray, Jason and Ryan Swann, Leslie Rowe, Kimberly and Sarah Martinez, Justin Taylor, Skyler Johnson, Ragan McGinty, Tarren and Keenan Hancock, Kyle Kight, Elizabeth Clanahan, Candace and Kelly Bowers, Nicole Newsom, Aaron and Evan Cain, Kristen Gray, Anne and Bradley Palmer, Linzie Rust, Christopher Estrada, Brett Squyres, Ty Shearman, Jennifer Phillips, Justin Bennett, Lacey Crawford, Kelsey and Krystle Blundell, Kenni Beck, Scot and Sean Holster, Kim and Kayla Willis, Shay Ann and Megan Allsup, Kelton and Ashlei Mason, Staci Tuggle, Dawn Garland, Donita Richardson, Leticia Canon, Joshua and Daniel Clay, Scott Sears, Laura Morales and Christina Eppler.

PLAINS INSURANCE AGENCY

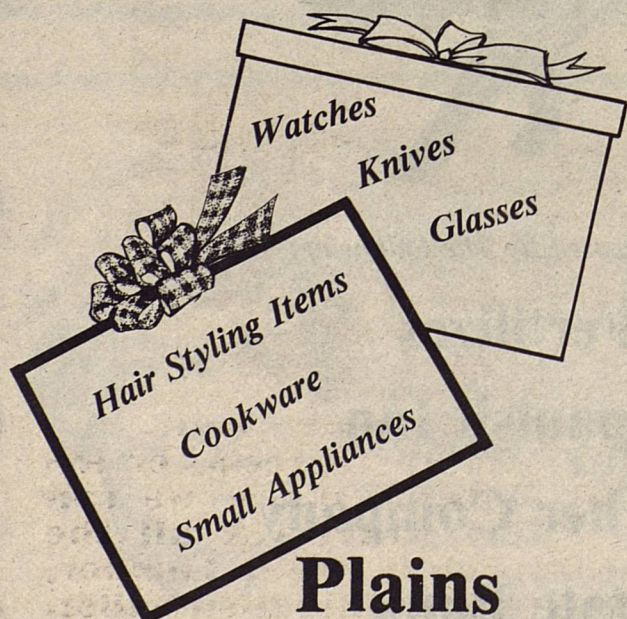
Crop	Auto
Health	Home
Commercial	Life

Specializing In Your Insurance Needs

JIM WARREN
Phone: (806) 456-3595

P.O. BOX 1020
PLAINS, TEXAS 79355

Try us first for all your gift needs.



Plains Appliance Center

Sue Randall, Mgr

Mon-Sat

456-3565

8-6

JOHN DEERE
105/190-HP TRACTORS

SAVE BIG and then some

John Deere has made us a deal that will save you a bunch. Big pass-along savings on new 105-hp to 190-hp John Deere tractors are available to you right now. Come in and save big and then save more by waving finance charges good-bye to November 1, 1987, for qualified buyers.* And you can also save money on most used tractors with a finance waiver to April 1, 1987.

See us today for a tractor deal that will save you a bunch.

*Availability of John Deere financing subject to approval of credit. This offer may be withdrawn at any time.



PLAINS FARM SUPPLY, INC.

Plains
806/456-2877

Denver City
806/592-5454

We're Proud Of Our Area Youth In Farming!

Good Luck
at your
Annual Stock Show

We wish every participant the best of luck...



Yoakum County Federal Credit Union

CLASSIFIED ADVERTISING

FOR SALE

FOR SALE: 3 BR house on 2 choice lots and small mobile home. Good price and owner financed to right buyer. Call 456-2989 or (915) 292-4416 after 6 p.m. 41/tfc-3tpd

FOR SALE: (1) 1979 model 307 Zimmatic 7 Tower Pivot. First National Leasing, Omaha, Nebraska. If interested call between 1:00-4:00 p.m. 1-800-228-4411, Ext. 2430.

FOR SALE: Furniture & Stove. Couch, 2 recliners, table and lamp. Will sell as group or separate. 36" Kenmore automatic gas range. Call 456-7437.47/1tc

FOR SALE: Three Bedroom House located at 301 Ave B - PRICE DRASTICALLY REDUCED FOR QUICK SALE! New paint, new fence, some new carpet, new wall heater. \$14,500. Call 503-392-4885 or 456-3600. 44/4tc


GOT A PROBLEM? overweight, can't stop smoking, depressed, lonely?? He can take care of anything and everything. No Cost to you, He paid all. You can find out more about this Great Physician by reading the BIBLE.

FOR LEASE

PLAINS SHAMROCK STATION for lease. Approximately \$10,000 investment required. Call 995-758-5777 for information. 47/4tc

NOTICE TO BIDDERS THE STATE OF TEXAS COUNTY OF YOAKUM

Notice is hereby given that the Commissioners' Court of Yoakum County will receive bids until 10:00 A.M. on the 22nd day of February, 1987, for the following:
For Precinct One - Crushing of 15,000 yards of caliche, not over 1 1/4 inch rock with completion date two weeks after acceptance of bid.
For other Precincts - crushing of caliche with bid in terms of cost per yard.
Sealed bids should be marked on the outside of the envelope and mailed or delivered to the County Judge's office, P.O. Box 456, Plains, TX 79355.
The Commissioners' Court reserved the right to reject any or all bids.
s/Hazel Lowrey
Hazel Lowrey, County Auditor
Published Feb. 10 & 17



PERSONAL LIFE INSURANCE


*Life	*Educational Funds	*Cancer
*Health	*Major Medical	*Surgical
*Retirement Income	*Hospitalization	*Mortgage Cancellation

— BUSINESS LIFE INSURANCE —

*Key-Man	*Group Insurance	*Corporation
*Partnership		*Pension Plans

L. CALVIN STEWART, CLU
Chartered Financial Consultant
Denver City, Texas
Phone: 592-2878

Two J-S Flying Service
Aerial Applicators



806/456-3580
Yoakum Co. Airport
Plains, TX 79355

Jack Cobb 456-7452

'We Don't Sell Service — We Give Service'

T-Tex Fertilizer
Goodpasture Elevator
Roswell Highway

Days 456-8833	Bruce Lester/Mgr	Nights 456-6575
------------------	------------------	--------------------

SAGEMONT CARPETS
Quality Carpets at Wholesale Prices

505-396-5108

Name Brand Carpets
Congoleum/Mannington
Vinyl
Ceramic Tile
also featuring Ball Blinds
Mini/Micro/Vertical
professional installation
Shop/Compare

Jane Goodman 406 N. 16th
Lovington, N.M. 88260

GRASS SEED
for C.R.P.

Jack Chapman
806-364-8059
Hereford, Texas

Garrison Seed Co.

**Subscriptions Expiring
In February**

Ruby Bruton	Felipa Villarreal
Larry Devitt	H.K. Henniger
Edwin Livengood	Coy Lowrey
Rex Swann	



**FARMERS
INSURANCE
GROUP**
Symbol of Superior Service

RICHARDSON INSURANCE AGENCY
Box 558, 503 3rd St.
Plains, Texas 79355
A. C. 806 456-8888

AUTO • FIRE • LIFE • COMMERCIAL

OTHER ENERGY POSSIBILITIES - SUNSAT

Satellite power stations consisting of large numbers of photovoltaic cells could convert sunlight into electricity and send it to earth using microwave beams. Years of research & testing lie ahead to make this potential alternative commercially attractive.


LEA COUNTY ELECTRIC COOPERATIVE, INC.

We Do
**Field Service Work
On Irrigation Motors**
& Major Overhauls
We Fix Flats & Balance Tires
On Cars & Trucks
Official State Inspection Station





T & B Exxon
"We Appreciate Your Business"
Tim Willis 456-7141 Teddy Willis

**ADD LIVING
SPACE**



If you're adding a room, or expanding existing space, we can help! Expert advise & all the materials you'll need. Lumber, paneling, nails, insulation & tiles.

DO-IT YOURSELF CENTER
**BAYER
LUMBER & HARDWARE
CO.**
Plains



Dr. Pepper
PLUS DEPOSIT
\$2.59
6 PK.
32 OZ.
BTL.

9 OZ. FRITO LAY®
BEAN DIP
99¢



Fritos®
CORN CHIPS
\$1.59
REG. \$2.29



Sauce
CONTADINA TOMATO
589¢
8 OZ.
CANS



Pork & Beans
VAN CAMPS
39¢
16 OZ.
CAN




Sugar
PRICE SAVER
\$1.29
5 LB.
RAG



Tissue
SHURFINE BATHROOM
68¢
4 ROLL
PKG.



Catsup
DEL MONTE
89¢
32 OZ.
BTL.



Palmolive
LIQUID DETERGENT
88¢
22 OZ.
BTL.



SM. 66, MED. 48, LG. 32
PAMPERS
DIAPERS **\$8.88**
BOX




\$2.50 OFF LABEL W/SOFTENER
FAB
DETERGENT **\$5.39**
147 OZ.
BOX



FOR LAUNDRY
FRESH START
\$2.49
KING
SIZE




FACIAL TISSUE
KLEENEX
BOUTIQUE **79¢**
100 CT.
BOX



GREAT FOR FRESH CLEANING
PINE SOL
57¢
8 OZ.
BTL.



PURINA
TENDER VITTLES
89¢
12 OZ.
BOX



PURINA 6 OZ. TUNA OR 8 1/2 OZ. ASSORTED
CAT FOOD **4.99¢**
CANS



ALL GRINDS BRICK BAG
FOLGERS
COFFEE **\$2.69**
1 LB.
BAG



JOLLYTIME MICROWAVE NATURAL/BUTTER FLAVOR
POPPING CORN **\$1.39**
3 CT.
PKG.



MORRISON BIS-KITS OR
CORN-KITS **5.99¢**
8 OZ.
PKGS.



ASSORTED SPAGHETTI
PREGO SAUCE **\$1.59**
32 OZ.
BTL.

GLADIOLA
FLOUR 5 LB. BAG **89¢**
COMSTOCK REG. LIGHT CHERRY PIE
FILLING 21 OZ. CAN **\$1.29**
REG. BUTTER FLAVOR SHORTENING
CRISCO 3 LB. CAN **\$2.19**
EAGLE BRAND
MILK 14 OZ. CAN **\$1.29**
VLASIC KOSHER
DILLS 46 OZ. JAR **\$1.39**

KELLOGGS ASSORTED
POP TARTS 11 OZ. BOX **99¢**
SUNSHINE
FIG BARS 16 OZ. BOX **\$1.19**
BIC
LIGHTERS 2 PKGS. **\$1.00**
LIFEBUOY
SOAP 2 BATH BARS **59¢**



12 OZ. TOTAL, 12 OZ. TRIX OR
14 OZ. CINNAMON TOAST
CEREAL
\$1.69
EACH

PRESIDENTS' P-DAYS SALE

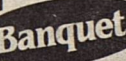



HORMEL SUPER SELECT LEAN TRIM QUARTER PORK LOINS
OR FAMILY PAK 8-11 ASSORTED CHOPS
Pork Chops **\$1.59** LB.



Pork Ribs
COUNTRY STYLE 'LOTS OF MEAT'
\$1.59 LB.

LEAN TRIM CENTER CUT PORK CHOPS	LB.	\$1.89
WAFER THIN BREAKFAST PORK CHOPS	LB.	\$1.99
HORMEL'S SPECIAL TRIM FRESH PORK STEAK	LB.	\$1.59
HORMEL'S SPECIAL TRIM FRESH PORK BUTT ROAST	LB.	\$1.49
WILSON'S MEAT FRANKS	12 OZ. PKG.	89¢
WILSON'S SLICED MEAT BOLOGNA	12 OZ. PKG.	\$1.19
SHURFRESH WHOLE HOG REG./HOT PORK SAUSAGE	1 LB. ROLL	\$1.59
SHURFRESH WHOLE HOG REG./HOT PORK SAUSAGE	2 LB. ROLL	\$3.17



BANQUET ASSORTED POT PIES	7 OZ. PKG.	37¢
BANQUET FROZEN DINNERS	11 OZ. PKG.	97¢
BORDEN CHOCOLATE MILK	1 QT. CTN.	65¢
BORDEN'S HI-PRO MILK	1/2 GAL. CTN.	99¢
BORDEN'S NUTTY BUDDIES SNACKS	6 CT. PKG.	99¢
SUNNY FRESH X-LARGE EGGS	18 CT. CTN.	
MRS. TUCKERS SPREAD	3 LB. TUB	\$1.29
BANQUET SIDE DISH OR ASST. MEATS	5 OZ. PKG.	49¢
HUNGRY JACK ASST. BISCUITS	2 1/4 OZ. CANS	79¢

JOHNSON & JOHNSON BABY SHAMPOO	11 OZ. BTL.	\$2.39
JOHNSON & JOHNSON BABY POWDER	14 OZ. BTL.	\$2.19
JOHNSON & JOHNSON BABY OIL	10 OZ. BTL.	\$2.39
SCOPE MOUTHWASH	32 OZ. BTL.	\$3.39



Iceberg Lettuce
FRESH CRISP
2 \$1
HEADS



RED RIPE SLICING
TOMATOES
69¢ LB.



Great
FRESH X-LARGE BELL PEPPERS LB. **59¢**
FRESH CRISP CUCUMBERS LB. **49¢**
CALIFORNIA FRESH BROCCOLI LB. **59¢**

Pay-n-Save
QUALITY AND SERVICE

PRICES EFFECTIVE: FEB. 16-21, 1987