

Plains Library  
Box 419  
Plains, TX. 79355

# THE PLAINS PRIDE

PLAINS, YOAKUM COUNTY, TEXAS

VOLUME 6, NUMBER 41

SUNDAY, JANUARY 13, 1991 30¢



**RETIREMENT HONORED** - Longtime City employee, John Camp was honored Monday afternoon with a retirement reception in City Hall. A resident of Plains most of his 76 years, Camp worked for the City of Plains 35 years. Mayor T.J. Miller presented Camp with a pocket watch in behalf of the city in recognition of his service to the community. Pictured with Camp, is his son, Jimmy Camp of Houston, who arrived as a surprise guest during the reception.

## Jan. 17 Irrigation Conference To Tackle Tough Issues

Agricultural producers will hear about the political issues concerning irrigation water use as well as the newest irrigation technologies at the South Plains Irrigation and Water Management Conference and Trade Show on Jan. 17, 1991 says Kirk Lewis, Yoakum County Extension Agent, Agriculture.

The general session held in the morning will focus on the effects of federal and state policies on agricultural water and chemical use. Afternoon sessions will concern increasing efficiency of water use and farm profitability with appropriate irrigation techniques and practices.

The Conference and Trade Show will open at 9 a.m. at the Lubbock Plaza Hotel on the South Loop 289. Those planning to attend need to pre-register by Jan. 15 to guarantee their lunch. The cost of the conference will be \$15 which includes lunch. Pre-registration forms can be picked up at any county extension office, the Texas A&M University Research and Extension Center, or High Plains, Sandy

Land and Mesa Underground Water Conservation Districts.

Environmental issues in the 1990 Farm Bill, the new Texas Water Plan, underground water conservation districts' powers and affecting public perception of agricultural chemical use are the topics concerning policy making. Leon Lewis, an agricultural engineer and irrigation specialist with the Texas Agricultural Extension Service will present an overview of advances in irrigation technology.

An afternoon session will consist of four professionals and several farmers discussing LEPA irrigation technologies affecting farm profitability. This session will deal with other forms of irrigation such as surge irrigation and drip irrigation for field crops.

The conference is being sponsored by the High Plains, Sandy Land and Mesa Underground Water Conservation Districts as well as the Texas Agricultural Extension Service. Speakers at the conference include Joe Pat Henson, with the Soil Conservation

...Continued to Page 6

## Emergency Loan Applications Being Accepted By FmHA

Applications for emergency farm loans for losses caused by drought and excessive heat during the 1990 crop year are being accepted at the Farmers Home Administration (FmHA) office located in Plains, FmHA County Supervisor Trueman Murdoch said today.

Yoakum County is one of seventy counties in Texas recently named by Secretary of Agriculture Clayton Yeutter as eligible for loans to cover part of actual production losses resulting from the drought and excessive heat during the 1990 crop year.

Murdoch said farmers may be eligible for loans of up to 80 percent of their actual losses or the operating loan needed to continue in business or \$500,000, whichever is less. For farmers unable to obtain credit from private commercial lenders, the interest rate is 4.5 percent.

"As a general rule a farmer must have suffered at least a 30 percent loss of production to be eligible for an FmHA emergency loan," Mr. Murdoch said. Farmers participating in the PIK or Federal Crop Insurance Program will have to figure in proceeds from those programs in determining their loss.

"Applications for loans under this emergency designation will be accepted until August 26, 1991 but farmers should apply as soon as possible. Delays in applying could create backlogs in processing and possibly carry over into the new farming season," Trueman Murdoch said.

FmHA is a credit agency of the U.S. Department of Agriculture. It is authorized to provide disaster emergency loans to recognized farmers who work at and rely on farming for a substantial part of their living. Eligibility is extended to individual farmers who are U.S. citizens and to farming partnerships, corporations or cooperatives in which U.S. citizens hold a majority interest.

The FmHA office in Plains is open from 8 a.m. to 12 noon and from 1 to 5 p.m. Monday through Friday.

## Chamber Discusses Livestock Show

Directors of Plains Chamber of Commerce met Thursday morning in Johnnie's Restaurant.

The upcoming Yoakum County Junior Livestock Show was discussed. It has been scheduled for Feb. 7-9. Also discussed was the annual Chamber Banquet, tentatively set for March.

Attending were Jim Warren, Johnnie Fitzgerald, Macky McWhirter, Jim Barron, Toni Jones, Carolyn Culwell, Mary Jo St. Romain, Paul Cobb, Dolores Davis and Billie Blundell.

## Scouts To Begin Cookie Sales

From making change to acquiring self-confidence, Girl Scouts participating in the annual cookie sale learn skills and discover abilities they will use in later life.

Each troop sets its own goal, and the girls play a training game called "Going Places" before they go out to sell cookies. The game teaches them safety procedures and sales techniques. This year, Girl Scout cookies cost \$2.50 a box. Proceeds help both individual troops and the local council, which provides services and facilities.

As in past years, Caprock Council will offer seven different varieties of cookies, including a non-sweet choice of bite-size cheddar cheese crackers. Orders are taken from Jan. 12 to Feb. 10 and cookies are delivered between Feb. 27 and March 9. Cookies may also be ordered by calling Caprock Council at 745-2855 in Lubbock or 296-7295 in Plainview.

## Tutor Volunteers To Meet Jan. 16

Literacy Tutor Volunteers will meet at 1 p.m. Wednesday, Jan. 16 in Heritage Room of Yoakum County Library. Other persons interested in becoming tutors are welcomed.

Anyone interested in having a tutor help them or someone they know learn to read or anyone wishing to ask questions concerning this volunteer program is also urged to attend.



### Travis Jones Receives Award

Travis Jones, graduate of Plains High School, has been presented a service award honoring 20 years service with Texas ALLTEL.

Jones attended Angelo State University following high school graduation. He joined the company known as Romain Telephone Company in 1970 as an accountant. He transferred to field operations in 1975, serving in several capacities. Most recently, he has served the company and its subscribers as Central Office Technician in the Plains area.



ROSALINDA MORALES

### Rosalinda Morales Is WTSU Graduate

Rosalinda Morales, daughter of Angel and Maria Morales, has recently graduated with a Bachelor of Science Degree in nursing from West Texas State University. Commencement exercises were held Dec. 20 in the Amarillo Civic Center Auditorium.

A 1986 graduate of Plains High School, she is currently employed with St. Anthony's Hospital in Amarillo.

### Vegetable Safety To Be Emphasized

A longstanding commitment to producing and handling vegetables in ways that ensure safety for growers, workers and consumers will be re-emphasized in the annual West Texas Vegetable Conference in Hereford Jan. 15, 1991, says Kirk Lewis, Yoakum County Extension Agent, Agriculture.

The conference begins at 8:30 a.m. at the Hereford Community Center, 100 Avenue C at Park Avenue. It is sponsored by the Texas Agricultural Extension Service, High Plains Vegetable Growers and Shippers Council, Texas Agricultural Experiment Station, Texas Tech University, Deaf Smith County Extension vegetable program development council and Texas Department of Agricultural. The \$25 registration fee includes lunch.



# Fat Walker's

110 E. 2nd St. Denver City 592-3504



We have a great food program that will keep you thin. Your kind of food.

### Start the New Year Right

If You Are Overweight  
or Underweight!

We work on circulation,  
back problems, arthritis,  
and bursitis.

\* 30 Minute Treatments \$5.00

\* Per Week \$20.00

\*Per Month (unlimited) \$70.00

(Good through January)

Tan - 10 times \$40 or Month Unlimited \$50

### Superior Service.

That's what you get from Farmers.

For more than half a century, Farmers has been dedicated to providing the best coverage at the lowest cost and to giving policyholders superior service.

That means fast, fair, friendly service, and the kind of service you have every right to expect when you have a claim.

Everything is done quickly and courteously to get you rolling again.

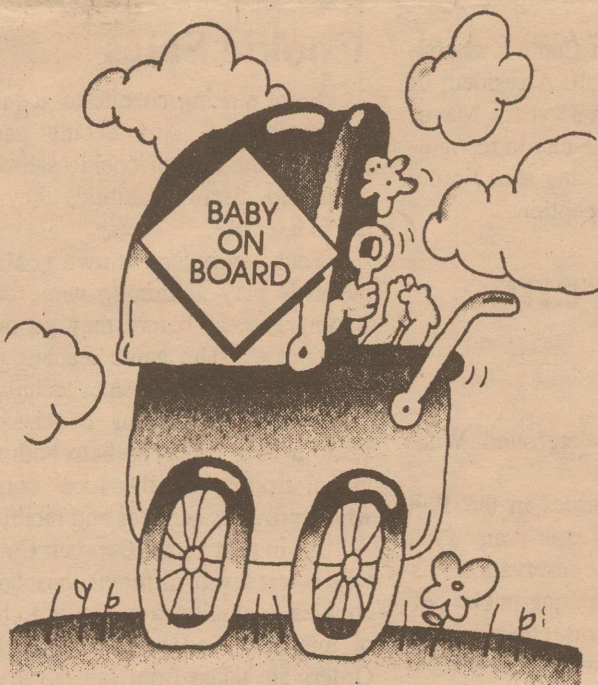
Let me show you the many ways you come out ahead with Farmers Insurance.

Why not give me a ring today?

HARRY RICHARDSON  
1002 Ave. B.  
PLAINS, TEXAS  
456-8888



# Yoakum County Hospital



announces the  
addition of

## Childbirth Education

To Our Services

If Delivering at Yoakum  
County Hospital

Classes Offered At No Charge

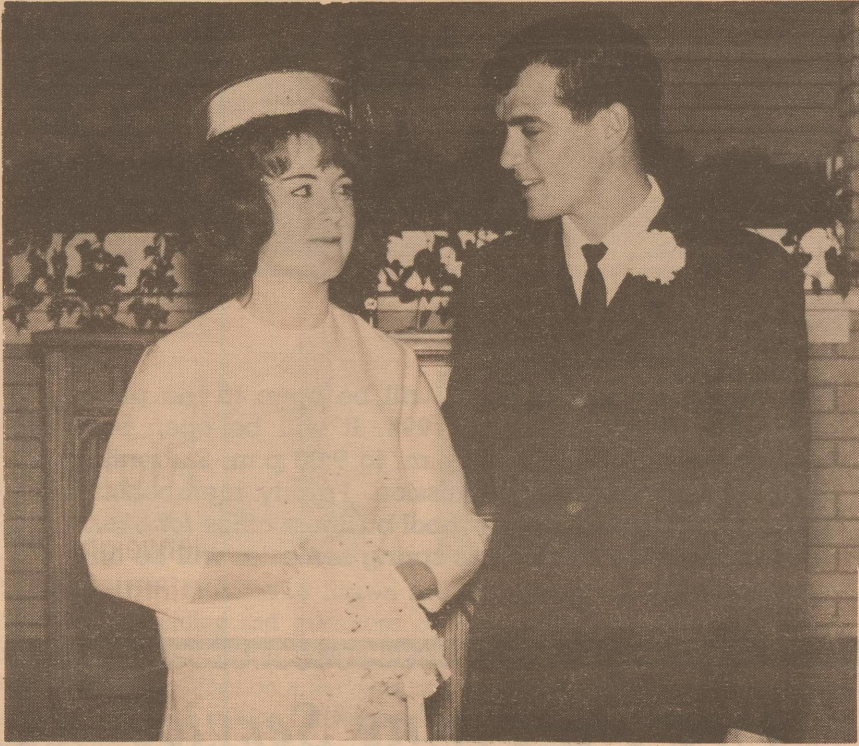
If Delivering Elsewhere - \$20.00  
for the six week session

Contact Cynthia Hunt 592-5484 or 592-3445

Sign Up Early To Ensure Proper Class Placement







SANDRA AND JOHNNY PIPPIN

## Mr. & Mrs. Johnny Pippin To Be Feted With Jamboree

There's going to be "pick'n & a grin'n", for JOHNNY AND SANDRA PIPPIN, celebrating 25 years of this life as husband and wife.

This anniversary jamboree, January 19th, will be at the homestead of Lecie Pippin.

So--shine up your boots, pull on your jeans, and scoot on by anytime from 3 to 6.

For goodness sake, don't bring a gift, your very selves will give them a lift!!!!

(The home of Lecie Pippin is 1/2 mile east of Tokio and 1/4 mile north of Hwy. 380, if you get lost, call 806-522-6638.)

**WE HAVE MOVED!!  
PLAINS INSURANCE  
AGENCY IS RELOCATING.**

**Our new address is:  
908 AVE E**

**(West of Courthouse Square)**

**Come by and visit  
and inspect our  
new office.**

Phone: 456-3595

P.O. Box 1020

**JIM WARREN**

## Fine Arts Club Program Highlights Gershwin, Porter

American Composers George Gershwin and Cole Porter were the topic of Thursday's program for Plains

Fine Arts Club. Brief history of the life of Gershwin was shared by Carolyn Culwell.

*Look  
Who's  
New*



Tracy and Darla Welch announce the arrival of a son born Christmas Day, Dec. 25, in Lubbock's Methodist Hospital. The little lad weighed eight pounds 10 ounces and measured 20 inches long. He has been named Holden Kent. Grandparents are Kent and Peggy Welch and Elvice and Laverne Duncan of Meadow. Great-grandparents are Mr. and Mrs. R.G. Hartman of Brownfield, Mr. and Mrs. M.E. Welch of Lamesa, Gertie Duncan of Meadow and Mattie Joplin of Brownfield.

Melba Crutcher accompanied herself as she sang, "Soon", "Somebody Loves Me" and "Summertime".

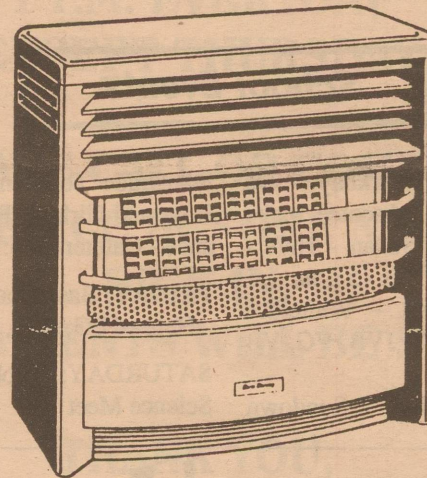
Officers elected were Mrs. Culwell, president; Martha Palmer, vice president; Jerri Ellis, secretary; Mrs. Crutcher, treasurer; Christy Brink, reporter and Billie Blundell, music director.

Others attending were Mary Dale Williams, Lois Miller, Annette Cleveland, Dolores Davis, Louise Fitzgerald and Beth Ann Cain.

Next program, Feb. 7 in the school cafeteria, will feature students from Applause School of Dance.

Myth: Children usually outgrow crossed eyes.

## The unvented heater that keeps its cool.



At last, an affordable solution to cold-room problems. The unbeatable unvented Dearborn heaters by Warm Morning.

Our floor models feature the unique "Cool Top" cabinet. This protects little fingers, allows storage on top of the heater, and assures that the paint on your heater won't fade, crack or blister.

Specially designed for economical zone heating, they're nearly 100% fuel-efficient. In fact, these four units come in sizes that let you warm the farthest corners of a drafty room — without overheating the whole house.

Installation is as simple as a gas hookup. There's no need for outside venting. No need for flues or chimneys. No costly electricity. And, of course, an oxygen depletion shutoff system makes them completely safe.

Come see us for some cool values on a Warm Morning Unvented Gas Heater.



*Warm Morning*

**Eddins-Walcher**

Plains, Texas 456-5199





## Plains Independent School District

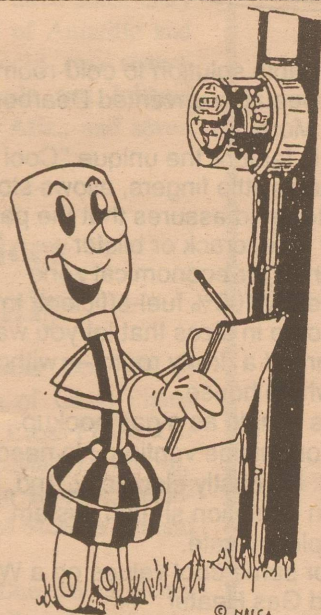
'Home of the Cowboys & Cowgirls'



FRESHMAN BOYS BASKETBALL TEAM, left to right, are Scotty Rains, Tracy Bearden, Stoney Garland, Jerry Dominguez, Jay Rushing and Lenny Morrow.

### School Events

MONDAY: Teacher Workday - No classes for students - Absentee Make up Day; Basketball - Sudan - Here - 7th/8th/9th Boys and Girls - 5 p.m.  
 TUESDAY: Basketball - Whiteface (District) - There - JVG, JVB, VG, VB - 5 p.m.  
 THURSDAY: Basketball - Sundown 8th Grade Tournament - There - 8th Boys and Girls - TBA; Stateline Insurance - Cafeteria - 6:30 to 9 p.m.  
 FRIDAY: Basketball - Sudan (District) - Here - JVG, JVB, VG, VB - 5 p.m.  
 SATURDAY: Lubbock-Dunbar Math Science Meet



HOW YOUR ELECTRIC BILL IS FIGURED....

- (1) Your meter is read.
- (2) Your previous reading is subtracted from your current reading. This tells how many kilowatt hours of electricity you have used during this period.
- (3) Your bill is figured using rates set by the electric company and government regulatory agencies.

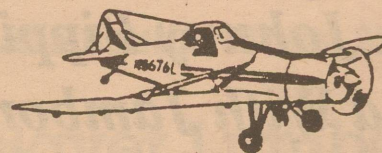
LEA COUNTY ELECTRIC COOPERATIVE, INC.

### NOTICE

Plains I.S.D. swimming pool will be open to the public beginning on January 14, 1991. It will be open each Monday evening from 6:00 p.m. to 9:00 p.m. Students of Plains I.S.D. have free admission. Family memberships may be purchased at the school business office for \$25.00 for one year. The fee for this spring semester will be on a prorated basis.

## Two J-S Flying Service

Aerial Applicators



(806) 456-3580

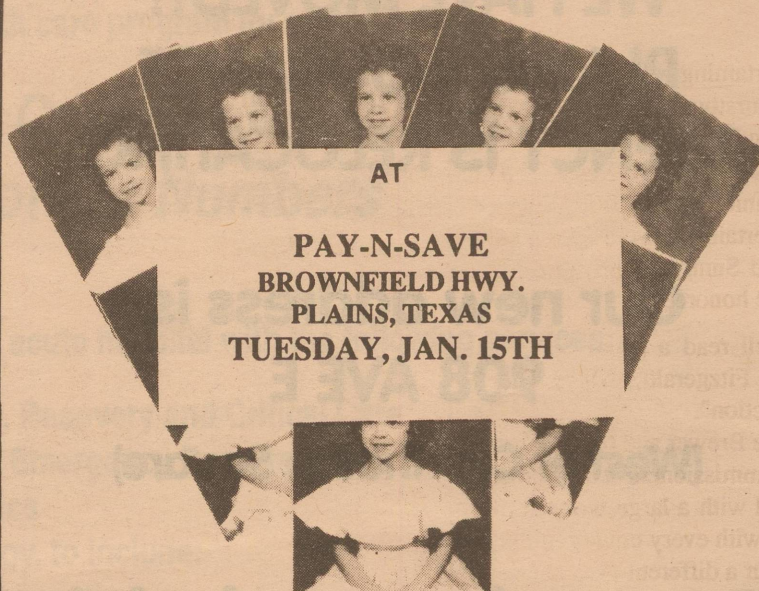
JACK COBB  
456-7452

YOAKUM COUNTY AIRPORT  
PLAINS, TX

MIKE COBB  
456-7165

**19** WALLET SIZE  
COLOR PHOTOS  
WE USE KODAK PAPER **99¢**

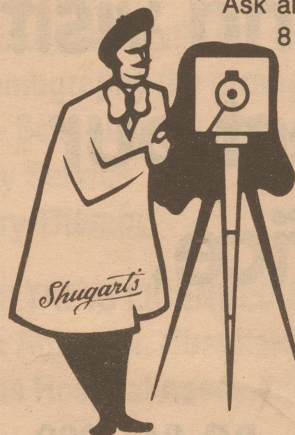
No limit on this offer



AT

PAY-N-SAVE  
BROWNFIELD HWY.  
PLAINS, TEXAS  
TUESDAY, JAN. 15TH

Ask about our FREE  
8 x 10 offer



**Shugart's**  
inc.

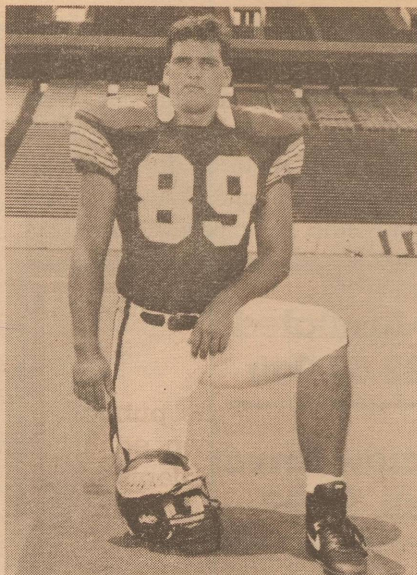


Group charge  
99¢ per person  
per 19 wallets



Kodak paper. For a Good Look at the Times of Your Life. TM



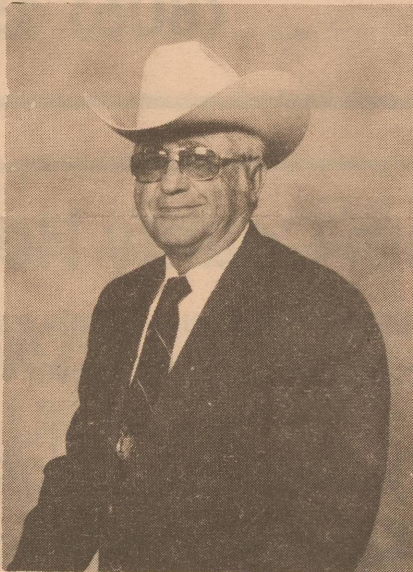


PLAINS PRIDE PRESENTS Shawn and Tag Alberding, sons of James and Mary Jane Alberding and grandsons of Bob and Lorene Alberding, former longtime residents of Plains, now of Burnet. Shawn is defensive end for the Rice Owls, attending college on a five-year scholarship. A graduate of Burnet High School and a junior at Rice University, Shawn is majoring in business management and hopes to go into pro football. Tag, who attends school at Burnet High School, is also a trumpet player in the Burnet High School Band.

## *Fitzgerald Feted Tuesday With Retirement Reception*

Johnnie L. Fitzgerald was honored recently with a "Back to the Ranch" reception of his retirement as county commissioner of precinct four. Master of ceremonies for the "roast" was Ty Earl Powell.

City, Austin, Rotan and Brownfield; and Edgewood and Clovis, N.M.



JOHNNIE L. FITZGERALD

Participating in the roast were Max Townsend, Gaines County Judge; Bob Thurston, John Avara and Jim Barron, fellow commissioners; County Judge Dallas Brewer; Toni Jones, County Treasurer; Gene Young of Edgewood, N.M. and Bill Green of Lubbock.

Entertaining were "Courtettes", Mary Thurston, Mary Avara, JoAnn Barron and Barbara Brewer, with an original selection by Mary Thurston, "Oh Johnnie, Where Will You Go?". Also entertaining were Dru DeBusk, Haley and Sunny Helms, granddaughters of the honoree.

Powell read a poem he wrote in honor of Fitzgerald, "Twas The Day After Election".

Judge Brewer and fellow members of the commissioners' court presented Fitzgerald with a large wooden plaque of Texas with every county in the state depicted in a different type of wood. It was designed by Judge Townsend.

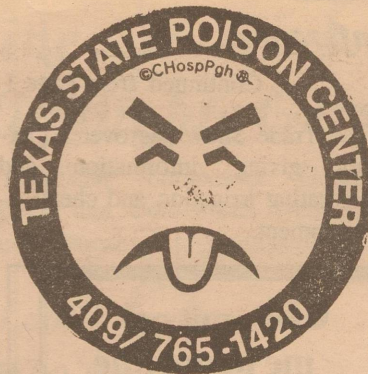
Former county judge Gene Bennett closed the program with prayer.

Three cakes, shaped as horseshoes and designed by Judy Fitzgerald were decorated with greetings.

Hosting the event were Messrs. and Mmes. Beto Gonzales, Raymon Diaz, Billy Curtis, J.R. Rivas, Ronny Cowart, Alfred Martinez, Richard Garcia, Sam Dominguez, Joe Martinez and Owen Schneider.

Fitzgerald's daughters, Johna DeBusk, Gwen Helms, Lynne Winn and Dianne Fitzgerald assisted with hospitalities.

Out of town guests attended from Lubbock, Seagraves, Idalou, Denver



### THE PLAINS PRIDE

The Plains Pride (USPS 757-130) is published weekly at 716 Main Street, Olton, Lamb County, TX 79064. Second Class Permit paid at Olton, TX 79064. POSTMASTER: Send address changes to THE PLAINS PRIDE, P.O. BOX 774, OLTON, TEXAS 79064-0774.

Any erroneous reflection upon the character or standing of any person or firm appearing in this paper will gladly and promptly be corrected, upon being called to the attention of the management.

# THANK YOU PLAINS, TX!

## FOR SUPPORTING OUR NEW DOCTOR'S OFFICE IN PLAINS.

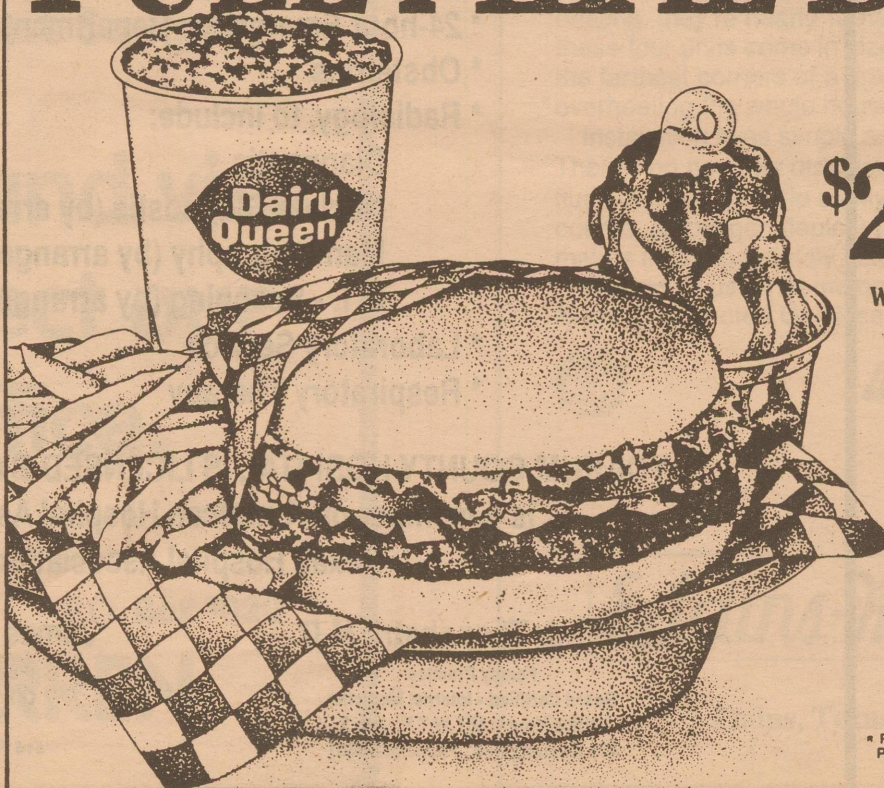
### WE ARE GOING TO INCREASE OUR HOURS HERE:

### OUR NEW HOURS WILL BE STARTING JAN. 14TH 1 P.M. EVERYDAY EXCEPT THURSDAY

### PLEASE CALL OR COME BY THE OFFICE BEFORE NOON TO SIGN IN. ALL PATIENTS WILL BE SEEN!

### THANK YOU, DR. CHUDLEIGH & STAFF

# FULL MEAL DEAL!™



**\$2.99** SALE PRICE  
JANUARY 7 thru  
JANUARY 27, 1991

With the Full Meal Deal, you get a juicy, 1/4 lb.† Homestyle® Hungr-Buster®, golden fries, a 16 oz. soft drink, and a 5 oz. Dairy Queen sundae.

ON SALE IN



\* Reg. U.S. Pat. & Tm. Off. Am. D.Q. Corp. \* Reg. U.S. Pat. & Tm. Tx. D.Q. Op. Coun. \* Tx. D.Q. Op. Coun. Prices good at participating Dairy Queen stores. †Pre-cooked weight





ELMER SIX

### Resident's Father Dies In Abilene

Services for Elmer Vernard Six, 62, of Abilene were held at 1:30 p.m. Friday, Jan. 4 in Elmcrest Baptist Church with the Rev. T.C. Melton and Rev. Burtis Williams officiating.

Burial was in Elmwood Memorial Park under the direction of Elliot-Hamil Funeral Home.

Six died Wednesday, Jan. 2 in his residence after a lengthy illness. He was under hospice care.

He was born July 13, 1928 in San Angelo and moved from Sweetwater to Abilene in 1984. He graduated from Sul Ross State University and received a master's degree from West Texas State University. He was a U.S. Navy veteran of World War II and was school superintendent in Petersburg until retiring in 1983.

He was a member of the state and national associations of school administrators and a deacon at Elmcrest Baptist Church.

Survivors include his wife, Patsy McDurmon Six; a daughter, Vicki L. Birdwell of Abilene; three sons, Gary L. of Plains, Darrell of Amarillo and Patrick E. of Lubbock; two sisters, Joan Phillips of Ovalo and Johnnie Holmans of Tucson, Ariz.; and seven grandchildren.

### Trent Services Held Recently

Services were held Dec. 26 in First Baptist Church of Cross Plains for Ray Trent, 74, of Cross Plains. Officiating was the Rev. Mark Lowthorp.

Interment was in Burkett Cemetery under direction of Stevens Funeral Home of Coleman.

Mr. Trent died Dec. 23 in Henry Medical Center in Abilene.

He had lived in Denver City from 1945 to 1988 when he moved to Cross Plains. He was a retired oil field pumper. He served a number of years as master of ceremonies for South Plains Gospel Music Festival. He was a Methodist.

Survivors include his wife, Erma; two daughters, Glenda Buming and Peggy Dennis, both of West Allis, Wis.; two sons, Billy of Odessa and Wayland of San Diego, Calif.; seven grandchildren; two great-grandchildren; two sisters and two brothers.

### Conference...

Continued from Page 1

The Trade Show has over 20 exhibitors giving information and demonstrating irrigation and chemigation equipment.

Agricultural Extension Service and the Texas Agricultural Experiment Station.

Benny Pope, Bill Weldon, Randy Hensley and Steve Spain are some of the growers who will relate their irrigation experiences on the growers' panel.

Service; Bob Thurman, with American Cyanamid; Wayne Wyatt, manager of the High Plains Underground Water Conservation District; Jerry Funck, agricultural engineer for the High Plains Underground Water Conservation District and others with the Texas

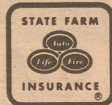
“Count on me to provide the best Homeowners insurance value in town.”



CALL ME.

LARRY HOLDER  
310 N Main  
Denver City  
592-3505

State Farm  
Fire and Casualty Company  
Home Office: Bloomington, Illinois



Like a good neighbor,  
State Farm is there.

**Cowboy Style Insulated  
PVC Boots \$22.50 Pair**

**Stanley 6 Pc. Screw Driver  
Set With Rack \$5.99**

**Alkaline "Energizer" "C"  
and "D" Batteries \$2.65 Pack**

**8 Pack "AA" Alkaline Batteries  
\$4.95 Pack**

**"Little Buffalo" Knife \$9.95**

**Bayer Lumber  
Plains, Texas  
(806) 456-4800**

## Yoakum County Hospital

Providing the people of Yoakum County a well-rounded, modern health care program for over 40 years.

**Quality Care For Neighbors,  
Not For Numbers**

A 24 bed short term, acute hospital with the following services:

- \* Surgery, Recovery and Critical Care
- \* 24-hour Emergency Department
- \* Obstetrics
- \* Radiology, to include:
  - Diagnostic
  - Nuclear Diagnostic (by arrangement)
  - Mammography (by arrangement)
  - C.T. - Scanning (by arrangement)
- \* Laboratory Service
- \* Respiratory Therapy

**YOAKUM COUNTY HOSPITAL IS LICENSED BY: The State of Texas;**  
is a member of: American Hospital Association &  
Texas Hospital Association

**Bodindr Thepchatrri, M.D.**

Family Practice  
Board Certified - Internal Medicine  
Office Hours: M,T,W,T,F, 9 to 5  
415 Mustang Ave., Phone 592-3591

**James P. Chudleigh, M.D.**

Family Practice - Obstetrics  
Office Hours: M,T,W,F, 9 to 5  
Thurs. & Sat. 9-12  
614 W. 4th St., Phone 592-9501



## Emergency Loans To Resume Soon

The Farmers Home Administration (FmHA) expects to resume approval of emergency loans for farmers who have suffered losses from last year's weather disasters in the near future, Acting FmHA State Director John E. Kirchhoff said today.

"We know many producers are reaching the point where they have to make decisions on next year's crops, and we are confident we will be able to provide assistance," he said.

"In the meantime, any farmer in a disaster-designated county who feels qualified for an emergency loan is invited to visit the local FmHA county office and file an application."

FmHA was forced to temporarily suspend final approval of emergency loans because of a provision in the 1990 farm bill which, in the end, will benefit farmers and ranchers.

Under FmHA's regular statutory authority, farmers must have crop insurance, if available, to be eligible for FmHA emergency loans, in most cases. The 1990 farm legislation, signed into law on November 28, waived that provision for loans based on losses on 1990 crops.

"Whenever there is a change in our statutory authority, our regulations have to be changed to match up," Kirchhoff said. "I am informed that the regulation change waiving the insurance requirement is now in final clearance in Washington."

He said applications are being accepted and can be processed up to the point of final approval. To assist in the timely processing of applications, any farmer, in a disaster-designated county who feels qualified for an emergency loan is encouraged to file a completed application with the County Supervisor as soon as possible.

"I have been assured that we will be notified immediately when the regulation change has been published in

the Federal Register, and loans can then be given final approval without further delay," he said. "We can and we will help our Texas producers with their credit needs."

## What's Cooking At School



### BREAKFAST

MONDAY - Teacher Workday.

TUESDAY - Toast, apricot preserves, apple juice and milk.

WEDNESDAY - Toast, hash browns, orange juice and milk.

THURSDAY - Pancakes, syrup, butter, tomato juice and milk.

FRIDAY - Toast, cereal, pineapple juice and milk.

### LUNCH

MONDAY - Teacher Workday.

TUESDAY - Pizza, corn, tossed salad, crackers, pears and milk.

WEDNESDAY - Hamburgers, lettuce, pickles, onions, Chee-tos, fruit, date cookies and milk.

THURSDAY - Mr. Rib, pinto beans, potato salad, cornbread, peach cobbler and milk.

FRIDAY - Roast w/gravy, green beans, rice, hot rolls, pineapple slices and milk.

## FOR SALE

**FOR SALE: 3 BR, 2 Bath, Double Garage, Large Storage Building, Corner Lot. 1112 - 16th Street. \$36,000. Shown by appointment only! Gary Dyer, Agt., 456-8451 after 6 p.m. Red Berry Real Estate.**

**FOR SALE: 2 BR in Plains. Handy man special. Small down pmt., owner will finance. Only \$8,000. Call Gary Dyer 456-8451. Red Berry Real Estate.**

## SUBSCRIBE TODAY!

1 year (Yoakum & surrounding counties) \$15  
 2 years (Yoakum & surrounding counties) \$25  
 1 year (outside county) \$16  
 2 years (outside county) \$26

## EXPIRED SUBSCRIPTIONS THIS WILL BE YOUR LAST ISSUE!

Alma McGinty  
 D'Lynn McGinty  
 Billy Grace Prestridge  
 Larry Morrow  
 Don Parrish  
 Roy R. Perkins  
 Wilma L. Powell  
 H.A. Richardson  
 Clyde Trout  
 Randy Tuggle  
 Doug Warren  
 Robert B. White  
 David L. Alexander

Tim Addison  
 E.C. Brantley  
 Jay Bryson  
 Tommy Burrus  
 Brenda Canada  
 Robert Canon  
 Norman A. Carr  
 Neda Chambliss  
 Thelma Cheatham  
 Barry Clayton  
 Paul Cobb  
 Harris Nursery  
 G.D. Kennedy

## TO EXPIRE IN JANUARY

J.B. Ashburn  
 Darrell Barron  
 Tom Barron  
 Linda Cole  
 Bruce Durham  
 F.W. Graham  
 A.J. Hayes  
 Pat Henard  
 Wayne House  
 Jan Lester  
 H.G. McDonnell  
 David McGill  
 A.E. McGinty  
 Kenneth McGinty  
 Dub Nelms  
 Jerry Parrish  
 Gilbert Pierce  
 Plains Insurance  
 Kenneth Powell  
 Morris Rushing  
 J.B. Wilson

Marjorie's Coiffures  
 Dan Wall  
 Tracy Welch  
 Arvel Snodgrass  
 Keith Earnest  
 Tom Hodgett  
 Yoakum County Florist  
 Edna Chambliss  
 Milton Bayer  
 Bert Bartlett  
 T.J. Miller  
 Felipa Villarreal  
 Mike Howard  
 Melvin Lowrey  
 Rhuey Edwards  
 D.H. Kerby  
 David Lollar  
 Nikki McGinty  
 Shane McMinn  
 Bobbie Rogers  
 Fred Squyres  
 Jerry Warren

## TO EXPIRE IN FEBRUARY

Joe Ancinec  
 Stanley Ashburn  
 T.J. Bearden  
 Royce Blair  
 Jimmy Conner  
 H.W. Culwell  
 Bob Johnson  
 Charlotte Kennedy

Sandy Land U.W.C.D.  
 Frank B. Spencer  
 Gary Stowe  
 Billy Winn  
 Mildred Wenzel  
 Esther Holland  
 Dallas Powell

## Real Estate Foreclosure Auction

For benefit of U.S. Small Business Administration  
**TWO GOOD IRRIGATED YOAKUM COUNTY FARMS**

### WILL BE SOLD TOGETHER

**DATE & TIME:** FEBRUARY 5 1991.....(TUESDAY).....10:05 A.M.  
**SALE & SITE:** SOUTH STEPS OUTSIDE YOAKUM COUNTY COURTHOUSE, PLAINS, TEXAS  
**LEGAL:** FARM NO. 1 SOUTHEAST QUARTER, SEC. 519, BLOCK D, JOHN H. GIBSON SURVEY, YOAKUM COUNTY, TEXAS.  
 FARM NO. 2 SOUTHWEST QUARTER, SEC. 580, BLOCK D, JOHN H. GIBSON SURVEY, YOAKUM COUNTY, TEXAS  
**LOCATION:** FARM NO. 1 APPX. 9 MILES SOUTHWEST OF PLAINS, TEXAS ON U.S. 82, THEN NORTH 1/2 MILE ON DIRT ROAD TO SOUTHEAST CORNER.  
 FARM NO. 2 APPX. 8.3 MILES SOUTHWEST OF PLAINS TEXAS ON U.S. 82 THEN 2 MILES SOUTH ON A GRAVEL ROAD, THEN 1/2 MILE WEST ALONG A TURN ROW TO SOUTHEAST CORNER OF FARM.  
**OWNER:** WENDELL HORACE NORMAN (BOTH FARMS)  
**DESCRIPTION:** FARM NO. 1 HAS 119.3 ACRE COTTON BASE WITH 482 LB YIELD - 20.2 ACRE WHEAT BASE WITH 29 BU. IRRIGATED YIELD - 28.4 ACRE GRAIN SORGHUM BASE WITH 46 BU. IRRIGATED YIELD. GOOD SOIL AND WATER. LAYS GOOD. DEED COVERS 8" WESTERN PUMP AND GEARHEAD.  
 FARM NO. 2 HAS SAME BASES AND YIELDS AS OTHER BUT LAND IS ROLLING. THIS IS A GOOD FARM WITH GOOD WATER.

#### TERMS AND CONDITIONS:

Real Estate will be sold subject to all taxes (and prior liens) to the highest bidder for cash on day of sale. Title will be conveyed by Substitute Trustee's deed. Small Business Administration reserves the right to bid.

#### PLEASE NOTE:

Sale is being made without covenant or warranty, expressed or implied, as to title possession or encumbrances. Please have your attorney or title company inspect title before the auction.

## DICK WATSON AUCTIONEERS

P.O. Box 717 Olton, Tx. 79064 (806) 285-2593  
 Texas Auctioneers License Number 6724

\$15 YOAKUM COUNTY  
 \$16 OTHER AREAS

### The Plains Pride

Box 774

Olton, Texas 79064

Subscriber's Name (Print)

Box Number or Route

Town and Zip

Years \_\_\_\_\_  New  Renewal

Amt. Received \_\_\_\_\_ Date \_\_\_\_\_





**Coca-Cola  
Dr. Pepper**  
6 PACK, 12 OZ. CANS  
**\$1.79**



POTATO CHIPS  
**Lay's®**  
REGULAR \$1.59  
**99¢**



FAMILY SCOTT BATHROOM  
**Tissue**  
6 ROLL PKG.  
**\$1.39**



REGULAR/W-BLEACH  
**Tide**  
39 OZ. LAUNDRY DETERGENT  
**\$1.99**



ASST. COLORS/DECORATOR  
**Scot Towels**  
BIG ROLL  
**69¢**



ORIG/CRUNCH BERRY/PEANUT BUTTER  
**Cap'n Crunch**  
15 TO 16 OZ. BOX  
**\$2.19**



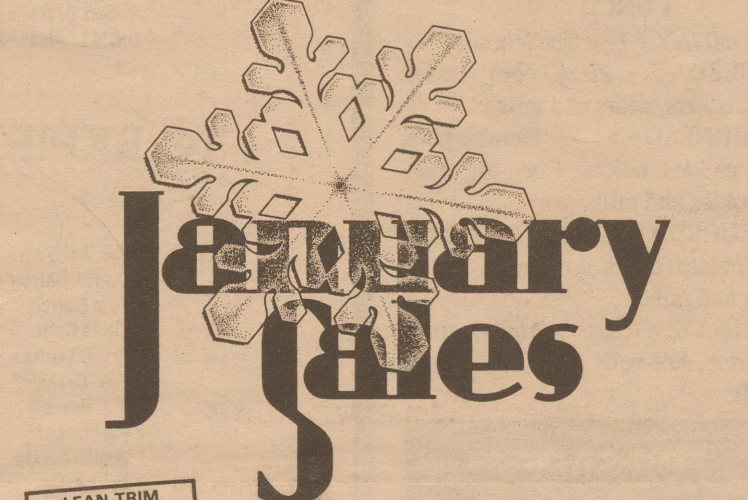
DEL MONTE TOMATO  
**Sauce**  
8 OZ. CANS  
5 FOR **\$1**



DEL MONTE  
IN NATURAL JUICE  
CRUSH/CHUNK/SLICED  
**Pineapple**  
8 OZ. CAN  
3 FOR **\$1**

**GROCERY SPECIALS**

- LIQUID IVORY REFILL 18 OZ. BTL. **\$1.49**
- ANIMAL CRACKERS/GRAHAM BEARS/SCHOOL HOUSE SUNSHINE COOKIES 8 TO 9 OZ. **\$1.29**
- REGULAR OR QUICK QUAKER OATS SMALL BOX **\$1.39**
- ASSORTED QUAKER GRANOLA BARS 10 OZ. PKG. **\$2.09**
- AUNT JEMIMA PANCAKE MIX 2 LB. BOX **\$1.19**
- DISH DETERGENT IVORY LIQUID 22 OZ. BTL. **\$1.19**
- LIQUID CLEANER SPIC & SPAN 25 OZ. BTL. **\$2.29**
- ALL PURPOSE FLOUR GOLD MEDAL 5 LB. BAG **89¢**
- PURINA CAT CHOW 7 LB. BAG **\$4.59**
- SCHILLING TEXAS STYLE CHILI POWDER 2.3 OZ. JAR **\$1.69**
- SCHILLING SEASON-ALL 9 OZ. JAR **\$1.19**



**January Sales**

**DEL MONTE SPECIALS**

- FRUIT COCKTAIL, SLICED YELLOW CLING PEACHES OR PEAR HALVES DEL MONTE FRUITS 8 OZ. CANS **2 \$1**
- CUT OR FR. SLICED GREEN BEANS, CR. STYLE OR WH. KERNEL GOLD CORN, SPINACH, SAUERKRAUT, EG BLEND SWEET PEAS OR SEASONED GREEN BEANS DEL MONTE BUFFET VEGETABLES 7 1/2 TO 8 1/2 OZ. CANS **3 \$1**
- REG/SQUEEZE DEL MONTE CATSUP 32 OZ. BTL. **\$1.09**
- ASSORTED DEL MONTE TOMATOES 14.5 OZ. CAN **69¢**
- DEL MONTE PINEAPPLE JUICE 46 OZ. CAN **\$1.19**
- DEL MONTE PRUNE JUICE 32 OZ. BTL. **99¢**




LEAN TRIM QUARTER LOIN PORK CHOPS 9 TO 11 CHOPS **\$1.89** LB.

LEAN TRIM HALF LOIN **Pork Chops** 18 TO 22 CHOPS **\$1.69** LB.

**FROZEN FOOD & DAIRY**

- PILLSBURY CINNAMON/BLUEBERRY/APPLE/STRAWBERRY TOASTER STRUDEL 11 OZ. PKG. **\$1.49**
- BANQUET BREAD TENDERS/CHICKEN NUGGETS 10 OZ. PKG. **\$1.99**
- SHURFINE FROZEN CALIFORNIA BLEND VEGETABLES 16 OZ. BAG **89¢**
- SHURFINE FROZEN BROCCOLI & CAULIFLOWER 16 OZ. BAG **89¢**
- HEALTH-BREAK ASSORTED YOGURT 1/2 GAL. CTN. **\$1.89**
- SUNNY DELIGHT FROZEN FLORIDA CITRUS PUNCH 12 OZ. CAN **59¢**
- SUNNY DELIGHT CHILLED FLORIDA CITRUS PUNCH 64 OZ. CTN. **99¢**



*Our Best to you!*  
-The Grocery Gang-

U.S. NO. 1 **Potatoes** 10 LB. BAG **99¢**

FLORIDA TOMATOES LB. **39¢**

WRIGHT'S HICKORY SMOKED **SLICED BACON** 12 OZ. PKG. **\$1.39**

PACIFIC VALLEY HASH BROWN TATER PATTIES LB. **89¢**

PRICES PIMENTO CHEESE SPREAD 14 OZ. CTN. 7 OZ. CTN. **\$2.59 \$1.49**

LOTS OF MEAT-COUNTRY STYLE PORK RIBS LB. **\$1.89**

CENTER CUT PORK CHOPS LB. **\$2.49**

EL MONTEREY GR. CHILI/BEEF & BEAN BURRITOS 40 OZ. 10 PACK **\$2.99**

**HEALTH & BEAUTY**

- WESTERN FAMILY CHERRY/ORIG. NIGHTTIME COLD FAMILY MEDICINE 6 OZ. BTL. **\$1.99**
- ASSORTED AQUA-NET HAIRSPRAY 9 OZ. CAN **89¢**
- ASSORTED LUBRIDERM LOTION 8 OZ. BTL. **\$3.69**
- ADVIL CAPLETS OR ADVIL TABLETS 50 CT. BTL. **\$4.59**
- ASSORTED COLGATE TOOTH PASTE 4.6 OZ. TUBE **\$1.39**

**PRODUCE SPECIALS**

- FRESH YELLOW ONIONS LB. **19¢**
- D'ANJOU PEARS LB. **55¢**
- CELLO PACKED RADISHES 2 8 OZ. PKGS. **39¢**
- GARDEN FRESH CARROTS 2 LB. PKG. **55¢**



PRICES EFFECTIVE JANUARY 13-19, 1991

WE RESERVE THE RIGHT TO LIMIT QUANTITIES

Money Orders  
Safeguard  
Available At Our Service Counter