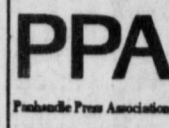




Bailey County Journal



Volume 35, No. 7

Published every Sunday at Muleshoe, Bailey County, Texas 79347

Sunday, Feb. 18, 1996

Wood new MHS football coach

By RICK WHITE
Managing Editor

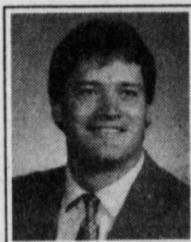
Being part of a successful program, and indirect ties to Muleshoe, led to David Wood being named head football coach and athletic director at Muleshoe High School.

Wood, offensive coordinator at Canyon Randall High School the last four years, was hired during a MISD school board meeting Wednesday.

"Probably, one of the most important factors was him be-

ing part of a good program," said MISD Superintendent Bill Moore, who recommended hiring

Wood with the help of a five-member screening committee. "We visited with our top two candidates at their schools, and after visiting with community people, school people and student athletes, it was obvious



David Wood

that David has what we're looking for."

Moore declined to name the other finalist.

Wood, 34, will take over for acting AD Randy Adair (forced to resign after an 0-10 season) as soon as he is released from his contract with Randall, which is expected to be in the next two weeks. The position pays \$43,500.

It will be Wood's first head coaching job.

"Every head coach has to

have a first job," Moore said.

Wood became a candidate after Moore called Canyon head coach Mike Wartes inquiring about another coach. Wartes won back-to-back district titles in 1978-79 at Muleshoe and lost only one district games in his three years here before moving to Denver City. Current Randall head coach Alan Cornelius was an assistant under Wartes.

"They told me the most fun

Continued on page 4

New coach well-schooled in passing

Throwing the ball is more than a passing fancy for new Muleshoe head football coach David Wood.

Wood was an all-American wide receiver and punter at then West Texas State in 1983-84. His father, Jim Wood, was head coach of the Calgary Stampeders in the pass-happy Canadian Football League and for five years at New Mexico State.

Jim currently is the head coach at Quanah High School, located 30 miles east of Childress, where David went to school.

"I rely on him a lot," David said about his dad. "He's a good source of information, especially if I have a have question about throwing against certain defenses or pass patterns."

David said he likes to throw the ball, especially play-action passes. How much Muleshoe will throw depends on personnel.

He said he likes to use multiple sets and motion to try to create mismatches.

— Rick White

On the job

Hartline oversees community housing

By MARTHA TOLES FROST
City Editor

Workers broke ground at the Harmon Elliott Senior Citizens Complex in Muleshoe recently for 16 new units of rent-assisted housing for the elderly.

Jim Hartline, 63, executive director of the Muleshoe Housing Authority for 18 years, manages the Senior Citizens Complex near the new city park as well as the Farm Labor Housing near the old city park.

The Harmon Elliott Senior Citizens Complex is named for the vice president of First Bank who started the project in 1975 when he saw a need in Muleshoe for public housing.

"He was a big civic worker and all-around good guy," Hartline said.

The first 20 units were built in 1981, with an additional 16 in 1982. With the new con-

struction, the number of senior citizens' units will reach 52, with four of the units especially fitted for handicapped residents.

The complex has a carpeted community room where the residents can gather—a kitchen is provided, along with couches, tables and chairs, a TV and a piano.

Most of the units are occupied by widows or widowers, Hartline said. To qualify for the housing, the senior citizens must be able to care for themselves, as no healthcare facilities are provided.

Although Hartline is required to inspect each apartment three times a year, "We (he and his wife, Shirley Hartline) knock on the door and talk to them regularly, to see if everything's going all

Continued on page 3

Chamber of Commerce banquet tickets on sale

Tickets go on sale Monday for the 1996 Muleshoe Chamber of Commerce & Agriculture banquet March 30 at the high school cafeteria.

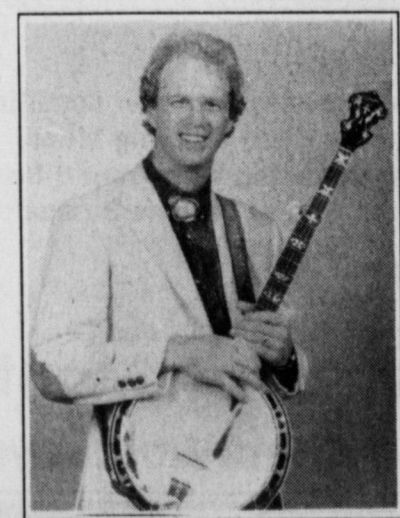
Three hundred tickets will be sold for the all-you-can-eat steak and shrimp dinner that turned out to be a big hit last year. Organizers suggest getting tickets early. Tickets are \$50 and can be purchased by calling the Chamber at 272-4248 or from any board member.

"We decided last year that we wanted the banquet to serve as our fund-raiser for the year," Chamber Board member Jim Henderson said. "That way we didn't have to go out and ask for donations during the year."

"It turned out to be great. People we're talking about it for months."

The sit-down dinner will be served by members of the chamber and Leadership Muleshoe.

Entertainment is by country musician/comedian Mike Snider, a member of the Grand



Mike Snider

Ole Opry known for his banjo playing and country wit. The Tennessee native was a member of the Hee Haw cast for seven years and a 1995 TNN Music City News Comedian of the Year nominee.

The Chamber's Farm Family, Man and Woman of the year will also be named at the banquet. The nominations deadline is March 13.

Entry forms for nomination can be picked up at the Chamber office inside City Hall at 215 S. 1st St.



Little pitchman

DeShazo third-grader Brady Broyles gives his best sales pitch for a motorcycle company as part of a skit by members of the school's Odyssey of the Mind team that performed Wednesday during the Muleshoe Lions Club's weekly luncheon.

Students learn lesson in reasoning

By RICK WHITE
Managing Editor

Odyssey of the Mind is a program designed to give children a head start in creative problem solving—a learned process that still paralyzes a good portion of the adult population.

Saturday, eight teams from the Muleshoe Independent School District competed in a regional meet in Lubbock.

In the competition, teams are given long-term and spontaneous problems to solve through skits and verbal tests.

"Students have to learn to brainstorm and improvise," said Jan King, a program facilitator at DeShazo Elementary School. "They have to think beyond just the books. It takes higher-level thinking."

"It's amazing the way they come up with how to achieve things," added King, in her third year as DeShazo's Odyssey team coordinator. "Some of the things they come up with we can't figure out how they did it."

King said Odyssey is "truly a kids-oriented program." The students produce the skits, plus design and build the sets with absolutely no adult assistance. Parent serving as coaches do provide guidance.

Teams were selected and have been practicing since November.

Students develop skits to solve problems children deal with on a daily basis. The skits must contain certain criteria, including a humorous character.

Second-grade students (8-year-olds) at Dillman Elementary came up with Dufus the Dinosaur, whose wandering lands him in trouble when he is kidnapped by a stranger.

In the process he blurts out his address and phone number, both considered wrong when dealing with strangers.

"They learn to work together as a team and that they're not always going to get their own way," said Carol Williams, a teacher for the gifted and talented at Dillman. "I've been real surprised at how they've done."

This is the first year Dillman has had a team. "This has been so much fun we'll probably expand the program at this campus," Williams said.

Four teams from DeShazo teams (grades 3-5) and three teams from Watson Junior High also competed.

Winners advance to the state meet in Plano in May.

Water District looks to skies for answers

Three years of drought conditions across the region have prompted the High Plains Underground Water Conservation District No. 1 to investigate the potential of a precipitation enhancement program to increase rainfall within its 15-county service area.

"As a result of the drought conditions since mid-1992, the District has noted significant water level declines in many wells in its observation well network," said A. Wayne Wyatt, Water District manager. "In some areas of our service area, the water level decline has been about seven feet per year for the past three years. Our farmers can't take much more of that! We need additional rainfall to give farmers a break from the nearly-continuous ground water pumpage that has taken place during the past three years," he said.

At their February 13 meeting, the Water District's Board of Directors authorized North American Weather Consultants of Salt Lake City to begin gathering data to determine the potential of a ground-based precipitation enhancement program within the District.

The first step in the data collection program involves examination of historical weather data (1985-1995), as well as information gathered from daily radiosonde (weather balloon) launches. This will help representatives of North American Weather Consultants determine the best locations for the ground generators, the preferred weather systems for seeding purposes, and the average number of days which could be used for seeding in a year.

Once this has been determined, ground generators are to be set up, and small amounts of silver iodide, along with a tracer gas, will be released into the atmosphere. An aircraft equipped with special sensors will fly at different elevations to find out if the silver iodide is making its way up into the atmosphere.

If this data is encouraging, then the Water District will consider a fully-operational precipitation enhancement pro-

Continued on page 7

AROUND MULESHOE

Bailey County Electric Cooperative reschedules annual meeting

The rescheduled annual meeting of the Bailey County Electric Cooperative Association will be held Friday, Feb. 23 at the Muleshoe High School auditorium.

Registration is from 5:30 to 7 p.m. A free meal will be served to Cooperative members and their invited guests at 6 p.m., followed by the annual meeting at 7:30 p.m.

Amarillo Women's Forum seeking Distinguished Service nominations

AMARILLO—The Amarillo Women's Forum is seeking nominations for its annual distinguished service awards.

The award honors outstanding women who have helped shape the development of the Texas Panhandle through contributions of talent and skill in their local communities.

Nominees must be women who are legal residents of the top 26 counties of the Texas Panhandle and have not previously received this award. Re-nominations are welcome.

Deadline for nominations is March 1. Presentations of the award will be made during a noon luncheon Saturday, April 13 at the Amarillo Club at Sixth and Tyler streets in Amarillo.

For nomination forms or additional information, contact Billie Bingham at (806) 378-3162.

Muleplex Productions hosting "Cardigans" male Fifties group

Muleplex Productions will host an Amarillo Little Theatre group called the "Cardigans" Saturday, April 27 at the Muleshoe High School auditorium.

"Cardigans" is the male counterpart to "Beehive," which performed in Muleshoe last year. Both groups sing Fifties' music.

For more information, or to participate in the Muleplex production of "Keepers of the Legend" July 3-9, contact Alan Finney at 272-5778 after working hours.

Earth Chamber holding annual banquet, with Ray Stone speaking

EARTH—The Earth Chamber of Commerce will hold its annual banquet in the Springlake-Earth school cafeteria Saturday, Feb. 24 at 7:30 p.m.

Speaker for the event will be Ray Stone of the Dallas Cowboy Network, sharing stories about the Super Bowl champions.

A \$15 ticket will purchase a barbecue dinner, Dallas Cowboy stories, and a chance to win an autographed Dallas Cowboy football signed by Troy Aikman, Jay Novacheck, Bill Bates, Roger Staubach, Emmitt Smith and Randy White.

"Come down to Earth" and share the fun. If you have any questions about tickets or the banquet, please call the Earth Chamber of Commerce at (806) 257-3365.

St. Ann Church in Bovina hosting annual German sausage dinner

BOVINA—St. Anne's Catholic Church of Bovina is sponsoring its annual German Sausage Dinner Sunday, Feb. 26 from 11:30 a.m. until 2 p.m. at St. Ann's Parish Hall on Third Street in Bovina.

The menu includes German sausage, creamed potatoes and gravy, green beans, sauerkraut, cranberry sauce, relish plate, bread and butter, desserts and tea or coffee.

Donations will be \$6 for adults and \$3 for children under six. Take-out plates will be available at no additional charge.

Sausage will be available by the pound the day of the dinner or by contacting any St. Ann's member.

SPC to offer concealed handgun class for magistrates

LEVELLAND—South Plains College will offer a special concealed handgun class for magistrates Feb. 29.

Continued on page 10

Keeping an eye on Texas

Movies made in Texas

Budgets for feature films made in Texas totaled \$157.7 million in 1995. The films include:

- Carried Away
- The Big Backyard
- Puro Tejano
- Powder
- Waiting for Guffman
- Ace Ventura II
- In the West
- Lone Star
- Space Marines
- Children of the Corn: Millennium's Child
- Camp Charlie
- Cadillac Ranch
- Ruta Wakening
- Spamarama
- The Whole Wide World
- Courage Under Fire
- The War At Home
- The Evening Star
- Tin Cup
- Lolita

SOURCES: John Sharp, Texas Comptroller of Public Accounts and Texas Film Commission.

GALA

GRAZING BROME

"THE ULTIMATE IRRIGATED PASTURE"

- Fast Establishment • Excellent Gains
- Ideal For Continuous Grazing

CALL US FOR DETAILS!!

Also Available, Matua, Jose Tall Wheatgrass, Plains, WW Spar or B Dahl Bluestems

CURTIS & CURTIS INC.
4500 N. Prince St., Clovis, NM 88101
(505) 762-4759

County courthouse roof under repair

Work is underway on the Bailey County Courthouse roof.

Several area roofing companies were called during the past six months to put in estimates for the work, since formal bids are not required for jobs under \$15,000.

The only positive response came from Veach Roofing of Plainview, which estimates it can complete the job for approximately \$4,800, maybe less.

Bailey County maintenance

engineer Johnny Howard reported to the County Commissioners Court some time ago that the Courthouse roof was leaking, especially the third floor law library roof, and that attempts to patch the roof had failed.

Howard said Thursday that it would take at least two more days for workers to pull all the ducking apart and strip the roof.

Next week, the third floor roof will be completely replaced and the second floor roof will be patched as needed.

GMC TRUCK

HEADQUARTERS

★ THE BEST SELECTION! ★ THE BEST PRICES!

FULL-SIZE CLUB COUPES

Brand New
1996 Model
C1500

YOUR CHOICE OF **10**

- Vortec 5000 Fuel-Injected V8 Gas Engine • Overdrive Transmission • Air Conditioning • Deep Tinted Glass
- Air Bag • 4-Wheel Anti-Lock Brakes • Cruise Control • Tilt Steering Wheel • Chrome Styled Wheels
- 60/40 Split Bench Seat • Rear Folding Seat • Floor Carpeting With Front & Rear Color-Keyed Floor Mats
- AM/FM Stereo Cassette With Seek/Scan/Clock • Front & Rear Chrome Bumpers • SLE Appearance Pkg

ONLY \$199

A Month

36 Month Smart Buy - Then Walk Away!

WE ALSO HAVE THE AREA'S BEST SELECTION & BEST PRICES ON

SUBURBANS & YUKONS!

HURRY IN WHILE SELECTION IS BEST!

* Subject to lender's approval & prior sale. Excludes tax, title, license and expenses beyond normal wear and tear. Payments based on 11.15% APR-45,000 mile contract with 20% down. See dealer for other end of term options.

STREBECK

AUTOPLEX

The very best prices and service anywhere... We personally guarantee it!

Clovis Highway • Portales, NM
(505) 356-3501 (505) 763-3501

The following people have announced their candidacy for the

BAILEY COUNTY PRIMARY ELECTION

TUESDAY, MARCH 12, 1996

- Floyd J. "Butch" Vandiver- County Commissioner, Precinct 1
- Jack Dunham - County Commissioner, Precinct 1
- Curtis Hunt - Constable
- Gary Don Gartin - Constable, Precinct 1
- Jerry Hicks - Sheriff

Paid Political Announcement

Bailey County Journal USPS 040-200

Established March 31, 1963. Published by Triple S Publishing, Inc. Every Sunday at 304 W. Second, Box 449, Muleshoe, TX 79347.

Second Class Postage paid at Muleshoe, TX.

POSTMASTER: Send address changes to the Bailey County Journal, P.O. Box 449, Muleshoe, TX 79347.

We are qualified members of:
Panhandle Press Association, National Newspaper Association,
West Texas Press Association and Texas Press Association

WEST TEXAS PRESS ASSOCIATION

PPA

Panhandle Press Association

MEMBER 1995

TEXAS PRESS ASSOCIATION

Scot Stinnett, Publisher
Lisa Stinnett, Vice-President/Comptroller
Rick White, Editor
Holly Milluap, Classifieds
Pat Durben, Advertising

© 1990

SUBSCRIPTIONS: Muleshoe Journal and Bailey County Journal
By Carrier Yearly - \$22.00
Bailey and surrounding counties: by mail - \$24.00
Elsewhere - \$26.00
Advertising Rate Cards on Application

Advertisers should check their ad the first day of insertion. The Journals will not be liable for failure to publish an ad or for a typographical error or errors in publications except to the extent of the cost of the ad for the first day of insertion. Adjustment for errors will be limited to the cost of that portion of the ad where the error occurred.

Hartline

Continued from page 1

right. I'm on call 24-hours a day for emergencies."

Rent depends on residents' income and Social Security benefits. Medical expenses are calculated and deducted from the rent senior citizens must pay.

Besides income from rentals, the apartments are funded by FmHA, HUD and the Housing Trust Fund of Austin.

Hartline's other responsibility, Farm Labor Housing, has been in existence since 1978, when 48 units were built east of the old city park in the 300 block of East Sixth Street.

Twenty-four units were added in 1991, bringing the total up to 72. Some are two- and three-bedroom units; others are one-bedroom or efficiency apartments.

The facility includes a laundry room and a playground. A new helper Rafael Franco.

Serving on the board of directors of the Muleshoe Housing Authority are chairman Buck Campbell, vice chairman Max King, Noe Anzaldua, Charles Moraw, Charles Isaacs and Hartline as secretary/treasurer.

The units have central heating and air conditioning, and Hartline paints the apartments regularly.

The population of the Farm Labor Housing at full capacity stays at about 410 counting

children. It takes two school buses to load all the students who live in the complex, which Hartline describes as "a little town."

Residents are primarily employed in agriculture in Muleshoe or Bailey County, and farm laborers of all ethnicities are invited to apply for the housing.

Hartline said most of the occupants are not migrant workers but longtime residents.

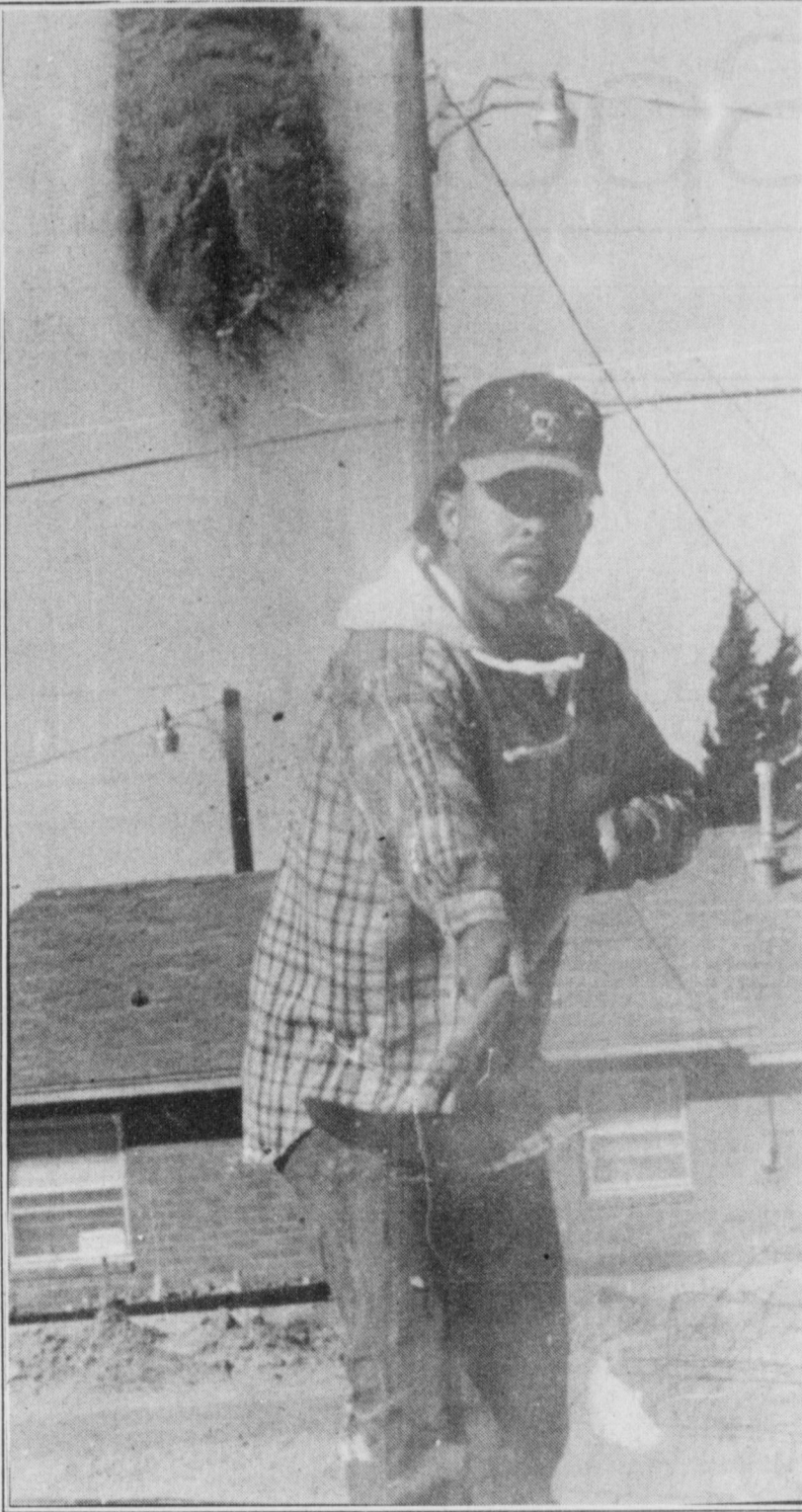
"Lots are farm laborers who have found work in Muleshoe, think it's a good place to stay, and decide to live here," he said. "Most pay the full amount of rent, which is based on income."

Hartline's profession has grown from overseeing 48 units in 1978 to managing 124 housing units when the current construction is completed.

The property and housing he manages are valued at \$3 million. The Muleshoe Housing Authority is regularly spot-audited, and Randy Field, CPA, does an independent year-end audit.

Secretary Beatrice Garcia, who helps with administrative paper work, has been working for the Muleshoe Housing Authority since May.

Maintenance worker Joe Bara, who has worked for the authority 11 years, recently got



Dirty work

Lenol Loyoa of Slatter Construction in Portales removes dirt while leveling a lot for the construction of 16 new units of rent-assisted housing for the elderly behind the old city park.

YOUR VOTE AND INFLUENCE APPRECIATED

Re-Elect
Floyd J. "Butch" Vandiver

Democratic Candidate for
Bailey County Commissioner
Precinct 1

SUBJECT TO DEMOCRATIC PRIMARY

PAID BY "BUTCH" VANDIVER



Breakfast
Burrito

Sausage Biscuit
& Hashbrown

99¢

\$1.00

14th & Mitchell • Clovis
2904 E. Mabry Drive • Clovis
1315 W. American Blvd. • Muleshoe

Come see us for lunch or dinner!

Present this coupon for a **FREE** medium soft drink with the purchase of any large sandwich at regular price.

Limit one coupon per customer per visit. Clovis & Muleshoe only. Expires 3/2/96



Subscribe to the Journal today, call 272-4536

RESCHEDULED ANNUAL MEMBERSHIP MEETING OF

BAILEY COUNTY ELECTRIC COOPERATIVE ASSOCIATION

to be held in the
MULESHOE HIGH SCHOOL AUDITORIUM
MULESHOE, TEXAS
FRIDAY, FEBRUARY 23, 1996

Registration 5:30 P.M.
Free Meal (Bar-B-Q, Chicken, and Fish) 6:30 P.M.
Business Meeting 7:30 P.M.

Purpose of Meeting ---

1. Give members a financial report, progress report and general condition of the Cooperative.
2. Elect two (2) directors for a term of three years. DISTRICT #3 AND DISTRICT #6
3. Elect a committee on nominations, District #1 and #2 to be voted upon at the 1997 annual meeting.
4. Consider and take action upon any other matters that might be presented or come before the meeting.

The nominating committee has nominated the following members to be voted on for the following district.

<u>DISTRICT #3</u>	<u>DISTRICT #6</u>
Jimmy Craft	Tommy Kirk
Steve Meiwes	Terry Sowder

Additional nominations for directors may be made at the meeting.

Note: If you are a member or shareholder of a company, corporation or civic organization and you are acting as a voting delegate, you must present a letter of authorization at the registration table signed by the president and secretary of that organization.

The facility where the meeting is to be held is wheelchair-accessible and handicapped parking is available. Request for sign interpretive service and Spanish interpreters are available upon request if received at least 48 hours prior to the meeting. To make arrangements for these or other handicapped services, call 806-272-4504.

DATED FEBRUARY 12, 1996

NELSON CARLISLE, SECRETARY

2 DAYS ONLY!

LOWEST PRICES OF THE SEASON!

Men's Levi's® 501® in Indigo 25⁹⁹	Men's Levi's® 550® in Black 29⁹⁹	Men's Wrangler® 13MWZ® in Indigo 19⁹⁹	Men's Wrangler® 936® in Black 23⁹⁹	Men's Lee® Regular Fit Jeans 18⁹⁹
Men's Lee® Relaxed Fit Jeans 22⁹⁹	Men's H.I.S.® Stonewashed Jeans 17⁹⁹	Men's H.I.S.® Triplewashed Jeans 19⁹⁹	Men's Copper Creek® Jeans 17⁹⁹	Boys' 8-14, 26-30 & Husky Levi's® 550® Jeans 19⁹⁹
Boys' 8-16 H.I.S.® Jeans 17⁹⁹	Girls' 7-16 Lee® Jeans 19⁹⁹	Jrs' Levi's® 501®, 512® & 550® Jeans 29⁹⁹	Misses' & Jrs' Lee® Denim Jeans 19⁹⁹	Juniors' & Misses' Chic® Jeans 16⁹⁹

You choose the item . . .

40% off ANY ONE REGULAR PRICE ITEM

Excludes denim jeans and athletic shoes. May not be used in conjunction with any other offer. May not be used on existing lay-aways or toward the purchase of gift certificates. Good thru February 19th. #202

ANTHONY'S and **SAVE!**



321 Main - Muleshoe
272-3478

Sports

Schmucker, Nazareth end Lazbuddie's promising season

By RICK WHITE
Managing Editor

DIMMITT — That they were even on the same floor for a bi-district playoff game with 12-time Class A state champion Nazareth said a lot about Lazbuddie.

And the final score, a 77-27 Nazareth win, doesn't in any way shorten the strides the Lazbuddie girls' program made this season.

After all, it was top-ranked Nazareth (30-2), whose only losses were to Canyon (undefeated and No. 1 in Class 4A) and Class 5A Lubbock Coronado.

And the last time the Lady Longhorns made the playoffs was the year the first man walked on the moon — 1969.

"I'm so proud of the kids," said Lazbuddie coach Carey Sudduth, beaming like a proud father after the game. "We did some good things and we didn't back down."

Lazbuddie (14-19) graduates five seniors, but returns a solid nucleus and will get help from a 12-2 JV team.

Texas Tech signee Melinda Schmucker was as good as advertised for District 7-1A champion Nazareth, dominating every aspect of the game. She got plenty of help from Amy Publmeier, who finished

with five 3-pointers and a game-high 25 points.

Still, it's Schmucker everybody comes to watch, including more than a few Lady Longhorns.

"It was a blast," said Lazbuddie senior Heather Engelking said. "It was kind of fun watching Melinda do her thing."

Reminded she wasn't supposed to be watching while she was on the floor, in Engelking laughed. "I staring in awe."

Schmucker scored 14 of her 18 points in a 33-point second quarter that gave Nazareth a 48-12 halftime lead.

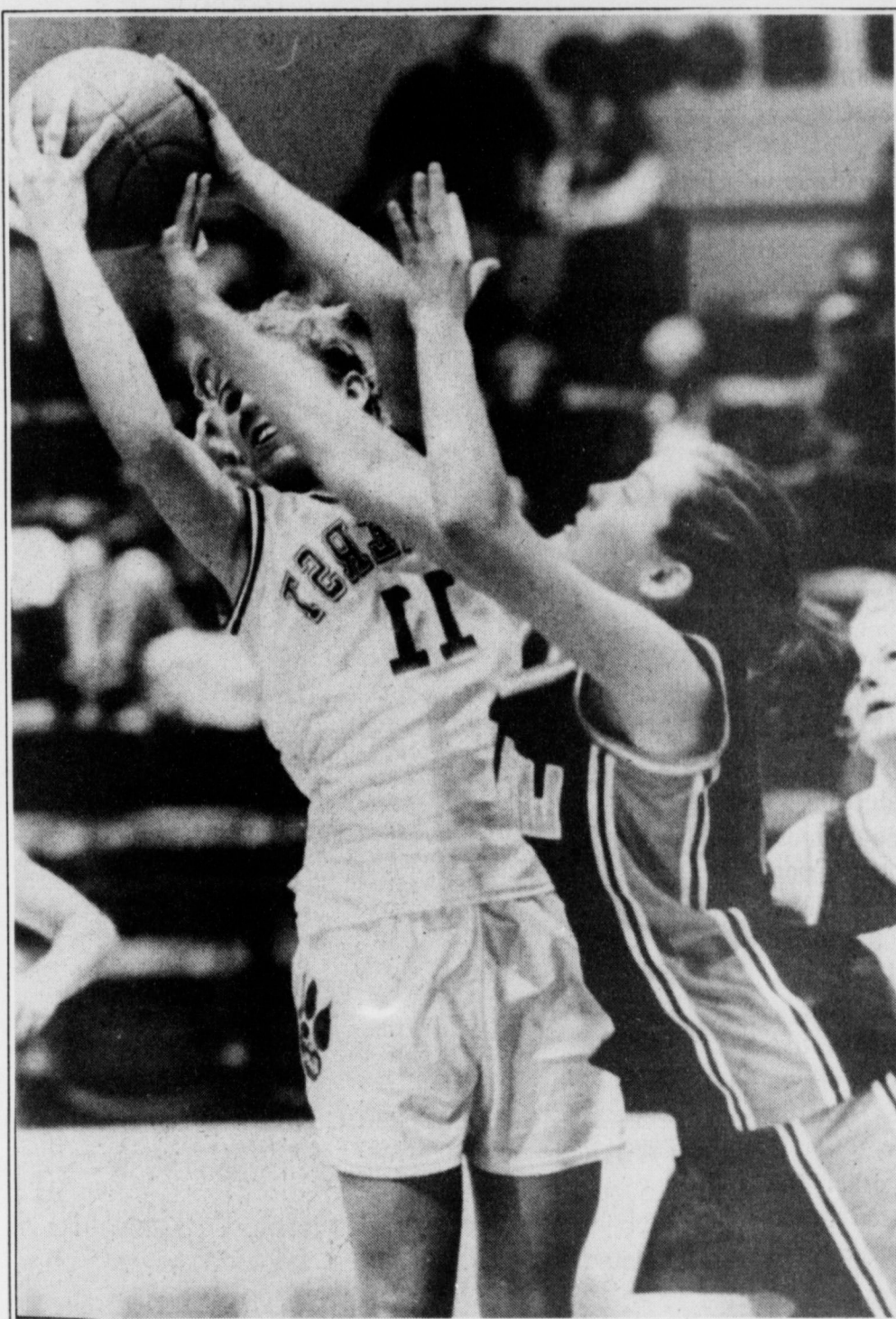
But for the most part, Schmucker was content with setting up her teammates with penetration and passes from along the baseline. On defense, her hands were more active than a pickpocket in New York City.

After missing her first two 3-pointers, Publmeier hit four in a row and finished the half with 18 points.

Freshman Heather Engelking and junior Mandy Magby led District 8-1A runnerup Lazbuddie with 8 points each.

"We want to make them walk off the court saying those girls really got after us," Engelking said.

She got her wish.



Board battle

Amherst's Shanae Bishop rips a rebound away from Lazbuddie's Roxanne Warren during a District 8-1A playoff game Tuesday in Shallowater. Nazareth ended Lazbuddie's season Friday, handing the Lady Horns a 77-27 loss in a bi-district game at Dimmitt.

Short takes

River Road upsets Friona

PLAINVIEW — Becky Gregory scored with three seconds left as Amarillo River Road rallied from a nine-point deficit in the last 6:31 seconds and beat District 2-3A champion Friona, 36-34, Thursday in a Class 3A bi-district playoff game.

Gregory, a 6-foot-3 junior, led District 1-3A runnerup River Road (20-11) with nine points.

A 3-pointer by Mary Cass gave Friona (23-8) a 29-20 lead. Friona's Britny White's 3-pointer tied the game with 15 seconds left.

In the other bi-district game, District 1-3A champion Childress beat District 2-3A runnerup Littlefield Friday, 47-34.

Spade edges Amherst in playoff

ANTON — Cody Jackson scored 27 points and Spade beat Amherst, 65-61, Thursday in a playoff game for District 8-1A's second spot in the Class A state playoffs.

Santos Garcia added 20 points for Spade (20-6), which plays District 7-1A champion on the bi-district playoffs. Amherst (8-10) got 23 points from Judd Perkins and 17 from Dewayne Miles.

Quotes of note

"It was a blast. It was kind of fun watching Melinda do her thing."

— Lazbuddie senior Heather Engelking; about playing against Texas Tech signee Melinda Schmucker

Schedule
Basketball
Class 1A bi-district playoffs
Thursday
District 8-1A champion Lazbuddie (23-6) vs District 7-1A runnerup Sudan 7 p.m. at Farwell HS
Baseball
Tuesday
Preseason
Littlefield at Muleshoe, 4:30 p.m.
Regular season
Lubbock Cooper at Muleshoe, 4:30 p.m.

Gonzales, Olivas shine in Brownfield scrimmage

It was a typical coach's reaction to the first scrimmage.

"I saw some good things and I saw a lot of things we need to work on," Muleshoe baseball coach Brad Hill said after a three-hour scrimmage with Brownfield Friday at the Babe Ruth Field.

The good things were strong pitching outings by seniors Alfredo Gonzales and Edward Olivas, and a 3-for-3 performance by pitcher/shortstop John Embry.

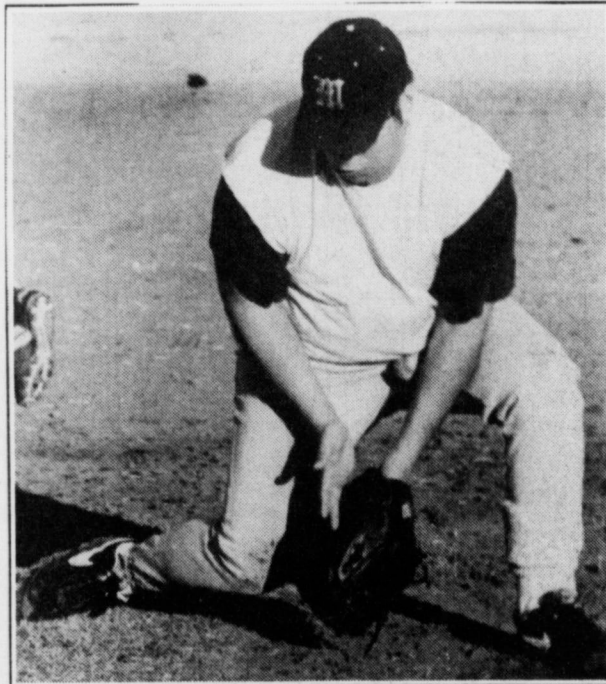
"It was a positive scrimmage against a good ballclub," Hill said. "The most important thing I think was that it gives the kids confidence we can compete against good teams."

Brownfield is coach by former MHS coach Ted Leps, who led the Mules to the bi-district title last year.

Embry, projected to be the Mules' No. 1 pitcher, struggled with his control. Some work in the bullpen will take care of that, Hill said.

Gonzales, Olivas, Embry and Layne Kemp figure to be the Mules top four pitchers.

Olivas had a solid all-around outing. The speedy senior center fielder made a couple of good running catches and cut a ball off in the gap



Diggin'
MHS senior first baseman Gabriel Mendoza fields a ground ball during practice Monday.

to keep a runner from scoring. He also bunted for a base hit.

The downside of the scrimmage. "We need to hit better to win some games," Hill said.

The Mules host Littlefield in a scrimmage Tuesday (4:30 p.m.), then open the season Friday at home against Lubbock Cooper.

Coach

Continued from page 1

they ever had coaching was those years at Muleshoe," Wood said. "They told me about Mulemania and how the town really got behind them."

Maybe it's just happenstance, but Muleshoe was Wartes' first head coaching coach, coming over from Berger. He was 25.

Wood, a two-time all-American at then West Texas

State, has been part of Randall's program since its inception in 1988. After struggling early, Randall qualified for the Class

4A state playoffs four straight years before failing to make it this season.

"I see some similarities," said Wood, considered a good communicator. "We didn't have a lot of kids out when we started. It's going to take some work to get more kids out."

"It starts with attitude. You've got to get the kids to believe in you, and believe in the program."

Wood will evaluate the current Muleshoe coaching staff this spring and is free to make any changes deemed necessary.

He becomes Muleshoe's 30th coach in 70 years.

NO MONEY DOWN

Plus 2 Year Warranty
Offer Ends Feb. 29th

BISON R.V. CENTER
1200 E. 1st • Clovis
1505-762-7200
Hours: Mon. - Fri. 9-5 • Sat. 9-2

Looking At Satellite Mini-Dishes?

UP TO
\$1000⁰⁰
INSTALLED

Theirs

\$199⁰⁰
INSTALLED

Ours

**Look Closer And The Difference Is Clear.
With PRIMESTAR® There's No Equipment To Buy.**

The difference is like night and day. With PRIMESTAR, there's no equipment to buy, so you don't have to worry about maintenance or outdated equipment. And service is completely our responsibility. There's no risk for you. Take a look at what you get with PRIMESTAR. When you compare ours with theirs, the choice is clear—PRIMESTAR.

- 95 channels of digital-quality TV
- Starting at about \$1 a day for equipment, programming and maintenance
- No contracts or commitments
- Installation just \$199

NO RISK
30-Day Money Back Guarantee**

Call Now And Get Your 1st Month FREE!
1-800-785-4COX (x333)
Hurry Offer Expires February 29, 1996.

*With the purchase of the Super Value Pack.

PRIMESTAR
By COX

*ABC, CBS, FOX, NBC, and PBS channels are intended for private home viewing and are available only to households that cannot receive that network off-the-air from the local TV station using a conventional rooftop antenna and have not received that network by cable TV within 90 days prior to satellite service.
**Try PRIMESTAR risk FREE for 30 days. If you are not completely satisfied, contact us within 30 days and PRIMESTAR will remove the equipment and refund your \$199 installation cost.

Feed grain production plummets

Feed grain production is down 27 percent compared to 1994, the U.S. Department of Agriculture reports in its 1995 crop production summary. This indicates a very tight outlook, given the strong feed grain demand.

USDA's corn-stocks report confirms corn demand has not declined, despite high prices.

"In fact the numbers indicate the most aggressive usage rate for the September-November quarter in at least 20 years," says Bret Fox, Cattle-Fax analyst.

Fox says high feed costs will continue to be reflected in calf and feeder-cattle values.

In its report, USDA says U.S. corn production (for grain) in 1995 totaled 7.374 billion bushels, 27 percent less than 1994's record high.

Soybean, wheat, sorghum and oat production was also down, with oat production at an all-time low.

USDA says corn stocks Dec. 1, 1995, totaled 6.1 billion bushels, 24 percent less than the amount on the same date the previous year. Stocks of other grains also dwindled.

Estimates for U.S. ending corn stocks were revised from December's estimates. End carryout for the year is now projected at 507 million bushels, the lowest total since 1975 and the fourth lowest since 1951.

Water

Continued from page 1
gram.

Wyatt says there are two questions often asked when discussing weather modification.

Do precipitation enhancement projects increase rain in one area at someone else's expense? This is a common misconception, according to George Bomar, Senior Technical Specialist with the Texas Natural Resource Conservation Commission in Austin. Bomar oversees the permitting of all weather modification ac-

Aunt Effie and the Mormon Boys

That they would find each other would have been as unlikely to predict as the fall of communism or the good sheep market. She was old and a lifelong Southern Baptist. They were young on a mission for the Mormon church.

A requirement of good 'Mormonism' for young men is to serve as a missionary for the church for two years. They are expected to go door to door wherever they are sent and spread the gospel of the Latter Day Saints (LDS), also called Mormons.

Now if you think that's easy, put yourself in their place. You are nineteen years old, often from a rural background, no car, in a strange place, wearing a dark suit and tie, riding a bicycle and knocking on a stranger's door. As you know, many who open that door and find out you are 'peddling religion' are not friendly.

They knocked on her door one day and explained their purpose. She said, "Well, I'm teachin' our home Bible class." They excused themselves and left. Later she said to her husband, "I'll never turn those boys away again."

Eventually they came back down her street and she said what she says to everybody that's ever knocked on her door, "Have ya eaten yet?" Well, for two boys a thousand miles from home and batchin', nothin' sounded sweeter.

For the next eight or ten years, the boys "stationed" in her little Oklahoma town beat a steady path to her door. They overlapped each other every few months and each new missionary was taken to meet Uncle Leonard and



BAXTER BLACK

ON THE EDGE OF COMMON SENSE

Aunt Effie.

Many of these boys were country raised and homesick, I'm sure. They are not allowed to call home except Mother's Day. Effie and Leonard were retired farmers, both in their 80's and sure knew how to cook for hungry boys. They played Skip Bo, ate fried chicken and peach cobbler, helped her with her garden when Leonard became unable, sang while she played on the piano and found an oasis from the pressure.

Uncle Leonard passed away last fall and Effie's havin' health problems. I visited her in the hospital recently and she talked about her *Mormon boys*. Her face lit up. It was obvious how much they meant to her. Some still write and the new ones still come by checkin' on her.

I'm sure they discussed religion, but as Aunt Effie told 'em, "Yer out walkin' the streets for your Jesus, He's my Jesus, too, and that's more than most religious folks do. I'm proud of you."

She saw their need and filled it the only way she knew how. She offered them kindness. And if you ever questioned that passage, "It is more blessed to give than receive," you ought to see her face when she talks about her *Mormon boys*.

I don't know if they're better Mormons or she's a better Baptist for knowin' each other. And I don't know if the leaders of the Southern Baptist convention and the Elders of the church of the Latter Day Saints would approve. But I do know that the human race is a little better species because these two took the time to appreciate one another as people.

West Texas starts feedyard program

Nineteen employees from 12 area feedlots are participating in a first-ever feedyard management certificate program offered by West Texas A&M University.

Students were selected for the program based on employer recommendation, management potential and interest, and compliance with the University's academic admission standards.

"The largest concentration of fed cattle in the nation is right here in the Texas Panhandle," Dr. Jerry Miller, dean of the T. Boone Pickens College of Business, said. "We have a responsibility to prepare local residents for management positions in our major industry."

WTAMU administrators and faculty designed the 30-

credit-hour, 2 1/2 year program which includes courses in English, speech, accounting, entrepreneurial studies, global economics, management, marketing, finance, computer information systems and commodity strategies.

"The program will challenge our faculty as well as the students," Miller said. "Unlike most classes, this is a very homogeneous group, and we can target all of our coursework to the cattle feeding industry."

The students meet at Hereford High School once a week from 4-10 p.m. Tuesday evenings for English 101 and CIS

105, taught by WTAMU faculty members Kathleen Ebell and Dr. Terri Giddens, respectively.

Springwall Mattress Co. Taylor Bedding

Rainbow Full Mattress Set
FULL \$149⁰⁰ QUEEN \$179⁰⁰

Morning Glory, Back Relife
FULL \$249⁰⁰

Chiropedic Deluxe
FULL \$329⁰⁰

Choice Furniture
318 Main - Clovis, NM - 505-762-2304

Home Folks Caring For Folks At Home.



MULESHOE AREA HOME HEALTH

Agency

Featured Employee

Martha Taylor is a Certified Nurse Aide and has been with the Muleshoe Area Home Health Agency for 5 months.

Martha is married to Bob Taylor and they live in Sudan. They have one daughter Sherribob Johnston from Amarillo.

Before becoming a Nurse Aide, Martha owned the Dairy Bee Cafe in Sudan.

Martha is glad she decided to become a Nurse Aide. She enjoys taking care of the patients for the Muleshoe Area Home Health Agency.



Martha Taylor

To receive Home Health Services, talk with your physician or talk with hospital personnel when you are hospitalized.

24 Hour # 272-3346
Local Nurse on call 24 hours a day to offer prompt service.

We accept Medicare, Medicaid and Private Insurance

It is Your Right To Choose The Home Health Agency You Prefer.



Affiliated with LUBBOCK METHODIST HOSPITAL SYSTEM

FREE Information On Advance Directives

Also known as Living Wills or Right To Die Directives.

You may call our agency 272-3346 for these directives. You may also obtain these forms and assistance at 623 West 2nd Street.

2 Medium Pizzas

\$14.99

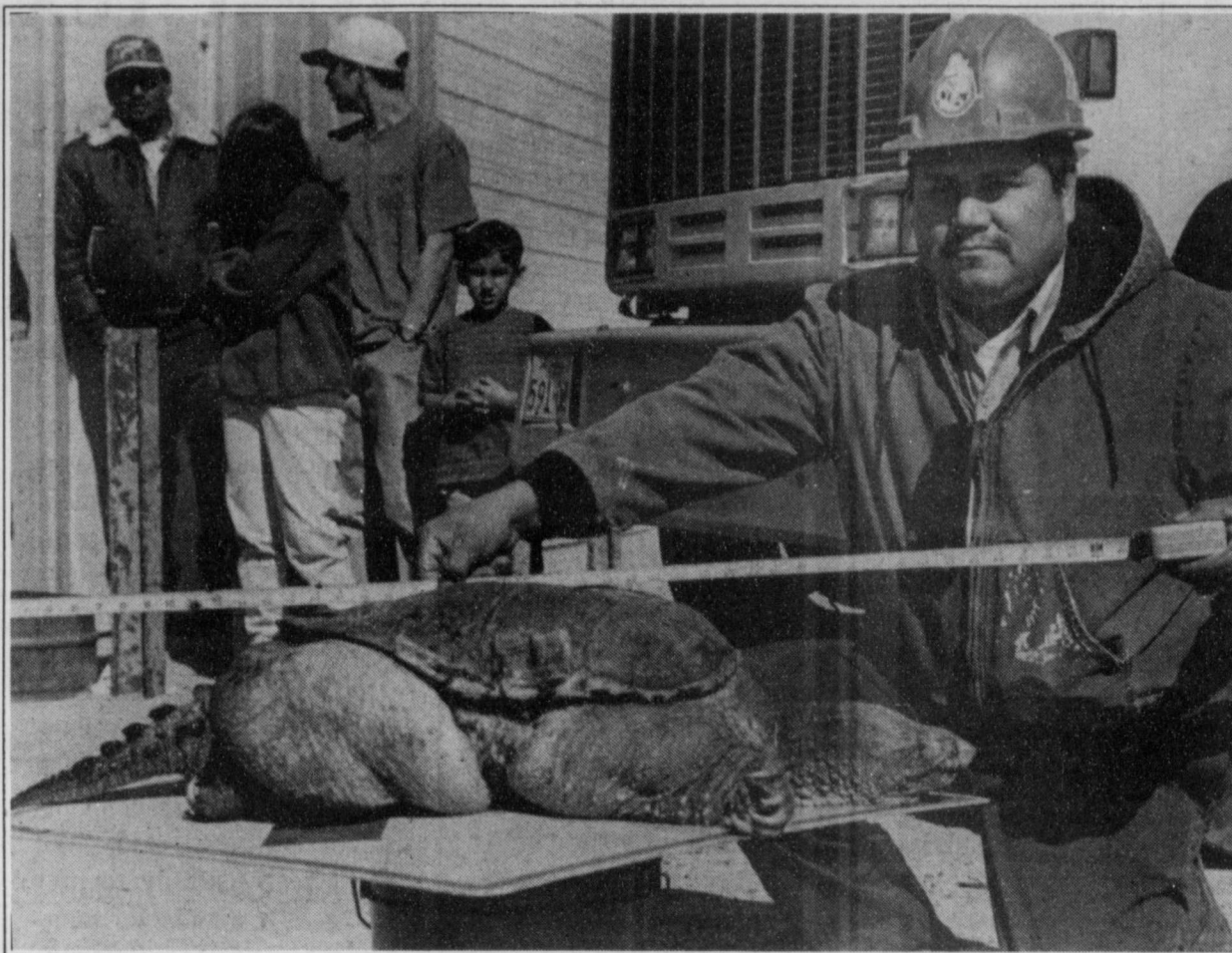
1412 American Blvd.
Muleshoe 272-4213

USDA to offer early out for CRP

About 1 million acres are expected to return to production under a recently-announced early-out option for farmers participating in the U.S. Department of Agriculture's Conservation Reserve Program, says USDA Deputy Undersecretary Tom Hebert.

Hopefully this plan will provide some relief in the tight corn market, says USDA's Chief Economist Keith Collins.

The early-out option is available for contracts scheduled to expire on Sept. 30, 1996, and USDA hopes to announce sign-up dates for the early out by the end of February.



Sewer surprise

City of Mulleshoe worker Lupe Pineda measures a dead snapping turtle discovered Friday at the City Sewer plant two miles south of town Friday. Workers said they had occasionally seen the turtle before finding it floating in one of the ponds.

Beef Council reports 1995 program results

Checkoff programs funded by Texas beef producers on both national and state levels in the last fiscal year generated positive results with domestic and international beef consumers, said Bob Nunley of Sabinal, Texas Beef Council (TBC) chairman.

Nunley made his comments upon releasing the Texas Beef Council annual report for the fiscal year ending Sept. 30, 1995. The annual report lists financial information and results of domestic and export development programs conducted in Texas by TBC and nationally by the Beef Industry Council (BIC) and by the U.S. Meat Export Federation (USMEF) during the fiscal year.

"Checkoff dollars allowed us to target key users of beef in domestic and international ar-

reas during an extremely trying year for our industry," Nunley said. "On both a national and state level, we saw progress in getting our message heard by consumers and gained access to new markets around the world."

The annual report shows that last year TBC received \$12.6 million in checkoff dollars from Texas producers. TBC sent \$6 million to the Beef Board, and approximately \$1.5 million each to BIC and USMEF, all of which helped fund national beef promotion, education and research programs. A summary of these national programs is included on one side of the annual report brochure.

TBC programs operated on approximately \$3 million. Here are some highlights of what these checkoff dollars helped

fund in the last fiscal year:

- An interactive exhibit that related how cattle impact everyday life. Approximately 90,000 persons at stock shows and other events toured this 2,500-square foot exhibit.

- An increase in impulse beef purchasing by 20 to 23 percent among consumers who took TBC recipes at centers in 1,750 supermarkets.

- Partnerships with major Texas burger distributors. Wendy's promotions resulted in an additional 275,000 pounds of beef sold. Another partnership with Burger Street sold an additional 43,000 beef patties.


- Foreign trade teams that learned about the U.S. beef production system by visiting Texas ranches, feedlots and packing houses.

Williams Bros. Office Supply
322 Main Street 272-3113

AMBASSOR GREETING CARDS
CLOSEOUT 1/2 PRICE
MAKING ROOM FOR NEW!

- New Stationary
- Embossed Note Cards & Stationary
- Bridge Tallies and Playing Cards

Q: What corn hybrid should you plant that's tough and adaptable?

A: 


Proven corn hybrids from Asgrow are the answers you need to achieve top performance for your High Plains farm. All three are well adapted to a wide range of growing conditions and deliver excellent standability for optimum harvest potential.

With these Asgrow hybrids you'll get a combination of high yields and good smut tolerance with an excellent grain quality rating - what more do you want?

All of this at a good price? Asgrow has the answer for that, too. Ask your dealer about our "early delivery, early pay" incentive that can save you money.

Call us for more information on the Asgrow corn hybrids. We'll help you decide which one will deliver proven performance for your farm.

Call Bennie Pickrell
1-800-880-2189



Elvis: "I Am Not Anything But a Canine"

Rule #2 of John Wesley's "Directions for Singing" in the preface of his 1761 hymnal *Sacred Melody*, is this: "Sing [these songs] exactly as they are printed here, without altering or amending them at all; and if you have learned to sing them otherwise, unlearn it as soon as you can."

"How precious did that grace appear / The hour I first believed!" to "The hour I first obeyed!"—which, when you think about it, makes grace a whole lot less amazing. Bad theology. Rotten rhyme. Anyway, I don't think a song entitled "Amazing Works" would ever have caught on!

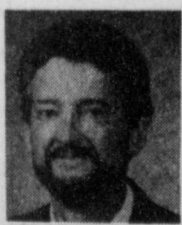
But it was every bit as good as the UCC's altered "America the Beautiful" where "America! America! / God shed his grace on thee, / And crown thy good with brotherhood / From sea to shining sea" becomes "Americas! Americas! / God grant that we may be / a hemisphere where people here / all live in harmony." Aargh!

What does it say when even an often left-leaning national magazine finds the antics of a group such as the UCC's committee utterly ridiculous? The UCC has taken leave of their senses; no wonder statistics show their members taking leave of the church.

Newsweek's Kenneth L. Woodward says that the hymn doctors cleaned up the grammar of the old Negro spiritual "Steal Away." Instead of "I ain't got long to stay here," it is now "I don't have long to stay here." And he comments, "No one would dare do that to Elvis's hound dog."

Hymn-tinkers. They take themselves very seriously. I don't know whether to gag or giggle!

Curtis Shelburne is minister of the 16th & Avenue D Church of Christ in Mulleshoe.



Focus On Faith
Curtis Shelburne

Wesley, I'm told, had little use for "hymn-tinkers." Nor, for what it's worth, do I. But I'm afraid his injunction is too mild to stop the musical mutation. Maybe we need a good old-fashioned biblical curse pronounced against those who, in the throes of politically correct hysteria, mess with the music of the ages.

Newsweek recently reported on the hymn-tinkering of a committee of hyperactive music mutants within the United Church of Christ. (No relation to our bunch, thanks. "Our" churches have their share of incomprehensible issues, but we're rarely accused of being United, and, for once, I'm glad! Yes, we've had some hymn-tinkers. One once tried changing the words of "Amazing Grace" from

30 Color Photos

\$11.99

1-10x13 (Wall Photo) 99¢ Deposit
1- 8x10 11.99 Due at Pick up (plus tax)
2- 5x7
2- 3x5
16-King Size Wallets
8-Regular Size Wallets

Have your EASTER pictures made now

Present this ad to photographer at time of sitting & receive 4 extra 3 x 5's with purchase of your package.

AT **Anthony's**

321 Main
Friday & Saturday
Feb. 23 & 24
PHOTO HOURS:
9:30 - 6:00

WE USE KODAK PAPER

Shugart's inc.

Group charge 99¢ per person

We use **Kodak PAPER** for a Great Look

FOR CREATIVE COLOR PORTRAITS

EFFECTIVE FEBRUARY 18-24, 1996
318 W. American Blvd. 272-4862

SAVE ON **Pepsi-Cola** 24 pack, 12 oz. cans **\$5.99**

ALLSUP'S

SAVE

AT YOUR LOCAL ALLSUP'S CONVENIENCE STORE!!!

ALLSUP'S FAMOUS SAUSAGE & BISCUIT FOR ONLY 79¢		ALLSUP'S DELICIOUS HOT LINKS YOU CAN GET 2 \$1 FOR	
ALL VARIETIES FRITOS® CHIPS REGULAR \$2.09 \$1.59		WILSON HOT DOGS 12 OZ. PKG. 59¢	
ALL VARIETIES HERSHEY'S BAG CANDY REGULAR \$1.69 \$1.29		LANCE FAMILY SIZE POTATO CHIPS REGULAR \$1.39 99¢	

ALLSUP'S 1.5 LB. LOAF SANDWICH BREAD 69¢ EACH OR **2 \$1** FOR

GRAVY OR CHUNK STYLE SHURFINE DOG FOOD 20 LB. BAG **\$4.49**

TIDE LAUNDRY DETERGENT 96 OZ. BOX **\$5.99**

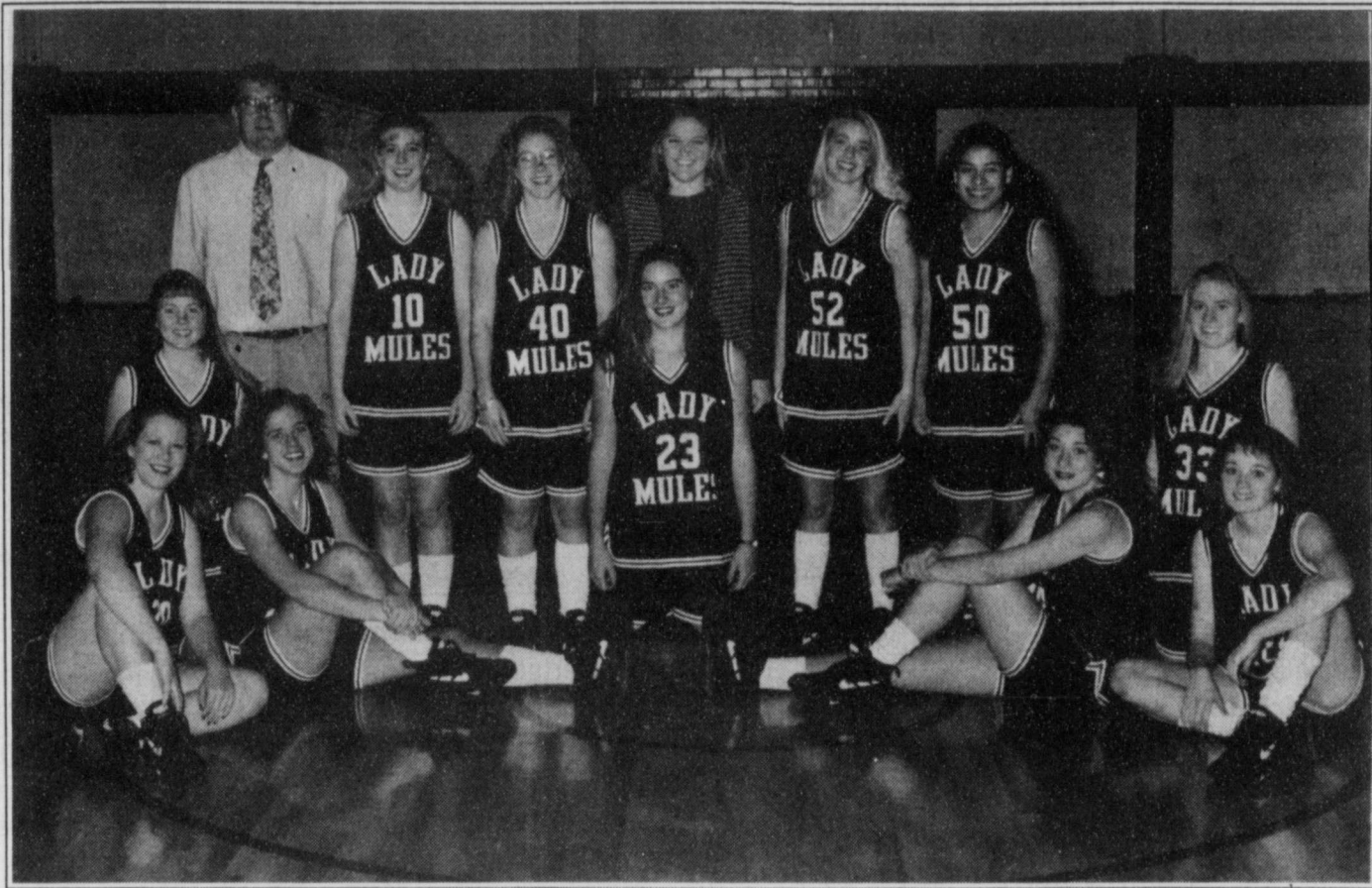
SHURFINE SALTINE CRACKERS 1 LB. BOX **85¢**

EVERYDAY LOW PRICE
Shurfine Can Goods **45¢**
Corn, Peas, Green Beans, Spinach, New-Potato

Shurfine Paper Towels Roll **89¢**

ALLSUP'S MONEY ORDERS UP TO \$299.00 FOR ONLY 29¢

Way To Go Lady Mules!



1996 MULESHOE LADY MULES - (Left to right) Michelle Williams, Holly Hutton, Coach Jim Gruhlkey, Allyson Field, Mandy Myers, Carolyn Schuster, Cassidy Cleavinger, Chelsay Conklin, Brandi Harrison, Raquel Posadas, Mandy Cleavinger, Lauri Puckett and Kristin Nichols.



Congratulations on a great season
- You battled until the final buzzer and we're proud of you!

<p>Leals Restaurant 1010 W. American Blvd. 272-3294</p>	<p>Ronnie Holt Insurance Earth Hwy. 272-4270</p>	<p>Bob Stovall Printing 221 E. Ave. B 272-3373</p>	<p>Kristy's Plants & Pivot Products 710 E. American Blvd. 272-5536</p>
<p>Sudduth Field & Co. 104 W. 2nd St. 272-4291</p>	<p>Five-Area Telephone Cooperative, Inc. & West Plains Telecommunications, Inc. 302 Uvalde 272-5533</p>	<p>Western "66" Earth Highway 272-4556</p>	<p>Dale Oil Co. Inc. 413 W. American Blvd. 272-5576</p>
<p>Henry Insurance Agency 111 W. Ave. B 272-4581</p>	<p>Pizza Hut 1412 American Blvd. 272-4213</p>	<p>McCormick Seed, Inc. 400 E. Ash Ave. 272-3156</p>	<p>Alex Tire Service 302 E. American Blvd. 272-5012</p>
<p>Mule Team Laundromat 322 W. Ave. B 272-3575</p>	<p>Lowe's Pay N Save 515 W. American Blvd. 272-4406</p>	<p>Pat Angeley CPA 1910 W. American Blvd. 272-7502</p>	<p>Muleshoe Trade Center 130 Main 272-4561</p>
<p>Joe's Boot Shop 106 E. American Blvd. 272-7504</p>	<p>Shipman & Son Body Shop 410 N. 1st 272-4408</p>	<p>Bratcher Motor Supply 107 E. Ave. B 272-4288</p>	<p>Nieman Realty 116 W. Ave. C 272-5285</p>
<p>WesTex Feed Yards, Inc. 272-7555</p>	<p>Wilson Drilling Co. W. Hwy. 84 272-5521</p>	<p>Valley Grain Products, ADM 272-5545</p>	<p>Terry Field Insurance 223 E. Ave. B 272-5551</p>
<p>State Farm Insurance 109 S. 1st 272-7519</p>	<p>Posadas Radiator 613 E. Ave. F 272-3269</p>	<p>Bailey Gin Co. 946-3397</p>	<p>Chubby's Beauty Shop 214 W. 2nd 272-3976</p>
<p>Muleshoe Pea & Bean, Inc. 272-5589</p>	<p>Terra International Clovis Hwy. 272-4203</p>	<p>Tom K. Bonds, DDS 108 W. 2nd 272-5004</p>	<p>Bailey Co. Journal 304 W. 2nd 272-4536</p>

Public Record

Births

Clayton Ryne Lewis

Bobby and Angie Lewis announce the arrival of their son, Clayton Ryne, born January 31 in the Methodist Hospital in Lubbock. He weighed 8 pounds, 4 ounces and was 21 inches long.

He has two older brothers, Dylan and Austin.

His grandparents are Ruth and Bunt Kitchens of Muleshoe and Freddy and Margaret Lewis of Morton. His great-grandparents are Berta Kitchens of Needmore, Neva Lewis of Morton and Mr. and Mrs. Eugene Kimbrell of Frederick, Okla. His great-great-grandparent is G.H. Clayton of Frederick, Okla.

Clayton Cutter Glover

Brian and Shanna Glover of Lazbuddie, announce the birth of a son born February 5 at the Methodist Hospital in Lubbock.

Clayton Cutter Glover weighed 5 pounds, 15 ounces at birth.

Grandparents include Jerry Don and Donna Glover of Lazbuddie and Gary and Carolyn Lancaster of Matador. Great-grandparents include Eugene and Mildred Redwine, Jewel and A.G. Taylor of Muleshoe and Lorene Lancaster of Matador.

Hospital

Admissions

The Muleshoe Area Medi-

cal has reported the following admissions:

Feb. 9 — Earnest Logan, Zachary Alvarado, Alex Cortez, Destiny Chavez, Joy Martin, Irma Mendez, Ruth McCarty

Feb. 10 — Earnest Logan, Destiny Chavez, Blanca Herrera, Ruth McCarty

Feb. 11 — Earnest Logan, Destiny Chavez

Feb. 12 — Earnest Logan, Michael Arresla, Cindy Arresla, Randy Facunda, Beatrice Toscano, Patsy Chance, Helen Bickel, Gloria Mahaney, Gloria Duran, Ben Rejno

Feb. 13 — Earnest Logan, Michael Arresla, Cindy Arresla, Trey Norman, Randy Facundo, Beatrice Toscano, Helen Bickel, Raymond Armendaris, Gloria Duran

Feb. 14 — Earnest Logan, Randy Facundo, Morgan Templeton, Myrtle Creamer, Gloria Duran

Feb. 15 — Earnest Logan, Randy Facundo, Morgan Templeton, Myrtle Creamer, Gloria Duran

Police Report

Feb. 13 — An employee of a business in the 300 block of 6 Main St. reported the possible theft of more the \$1,500 and less than \$20,000. The case is active.

Feb. 12 — A male in the 1900 block of W. Ash reported cruelty to an animal. The case is active.

Feb. 11 — A male in the

300 block of W. 2nd St. reported cruelty to an animal. The case is active.

Feb. 11 — A male in the 200 block of E. Elm St. reported being harassed on the phone. The case is exceptionally cleared.

Feb. 11 — A female in the 800 block of E. Hickory reported being concerned about the welfare of her daughter. The case is active.

Feb. 10 — A female in the 800 block of W. Ave. J reported being assaulted with a deadly weapon. The case is active.

Feb. 10 — A male reported the theft of a wallet valued at \$10. The case is exceptionally cleared.

Feb. 7 — A female in the 200 block of E. 5th St. reported disorderly conduct. The case is exceptionally closed.

Feb. 7 — A female reported vandalism to a vehicle in the 800 block of W. Ave. J. The case is active.

Feb. 5 — A male reported vandalism that caused \$500 in damages to a business in the 100 block of W. 3rd St. The case is active.

Feb. 4 — A female reported vandalism to a storage building in the 600 block of Ave. D. The case is active.

Feb. 3 — A female in the 900 block of W. 8th St. reported a runaway juvenile. The case is exceptionally cleared.

Feb. 3 — A female in the 1700 block of W. Ave. I reported reckless driving that caused \$1,500 in damage to an

automobile. The case is active.

Feb. 2 — A male reported vandalism to a vehicle in the 900 block of W. 8th St. The case is active.

Feb. 1 — A male in the 600 block of E. Chicago reported hit-and-run. The case is active.

Feb. 1 — A female at the high school reported the theft of a Dallas Cowboys jacket valued at \$80. The case is active.

Arrests

Feb. 10 — Sonia Herrera Sigala, 21, was charged with driving without a license, no insurance and failure to control speed following an accident.

Feb. 9 — Gary Maurice Hanks, 39, was charged with public intoxication.

Feb. 9 — Consuelo Torres, 27, was charged on a local and Hale County warrants with issuing a bad check.

Feb. 9 — Janie Lee Kiser, 25, was charged on a local warrant with theft.

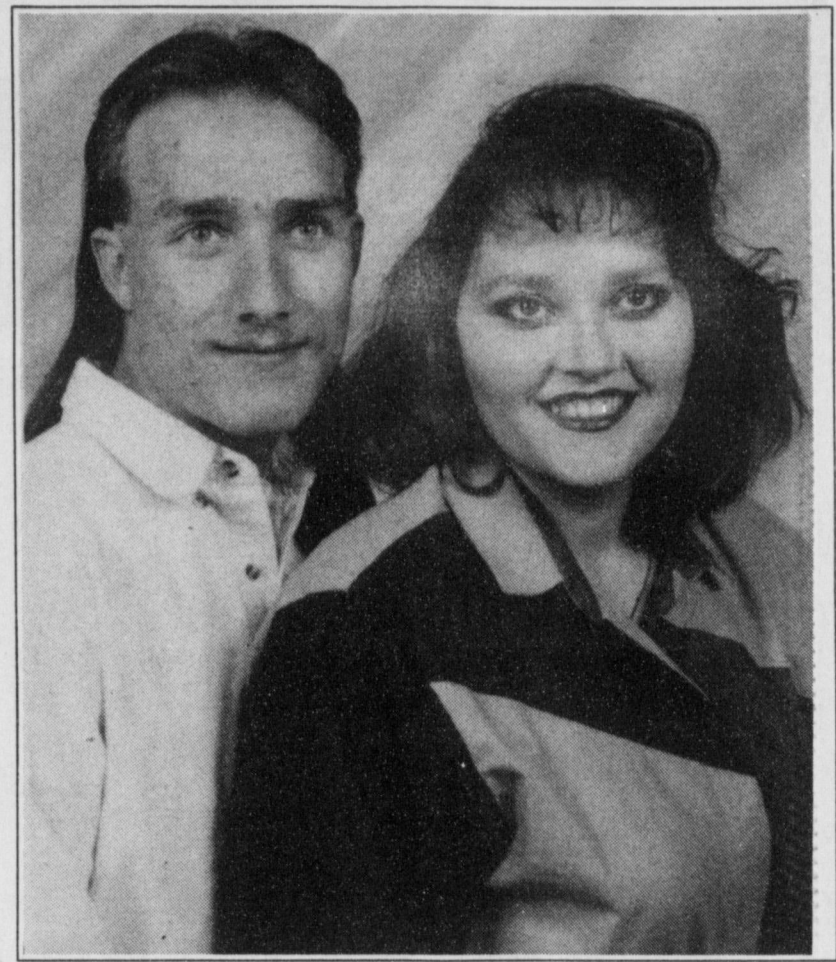
Feb. 9 — Linda Rae Madrid, 33, was charged on a local warrant with issuing a bad check.

Feb. 8 — Robert Martinez, 26, was charged on a local warrant with two counts of issuing a bad check.

Feb. 1 — Fermin Pina Nevarez, 36, was charged with driving with a suspended license and issuance of a bad check.

Feb. 1 — A 15-year-old male was charged on a Clovis (N.M.) warrant with unauthorized use of a motor vehicle, criminal mischief and shoplift-

Engagement



Shannon Robertson and Catherine Richardson

Cleta Robertson of Muleshoe announces the engagement of her son, Shannon Robertson, to Catherine Richardson, of Lazbuddie. Catherine is the daughter of George and Connie Dye of Denver City. The couple will marry Feb. 24 at 4 p.m. in the home of Lorene Obenhaus in Muleshoe, grandmother of the future groom.

ing.

Sheriff's Report

Feb. 13 — Eulalio Eduardo Jiminez, 59, was charged with public intoxication.

Feb. 12 — Larry Don Wauson, 18, has his bond revoked because of a previous felony indictment.

Feb. 8 — Jesus Montul Montiel, 37, was charged with disorderly conduct.

Feb. 7 — Dennis Gene Cates, 26, was charged on a Hale County warrant with theft and violation of probation.

Feb. 7 — Tracey L. Sertopa, 37, was charged with aggravated assault with a deadly weapon.

Feb. 4 — Simon R. Martinez, 64, public intoxication.

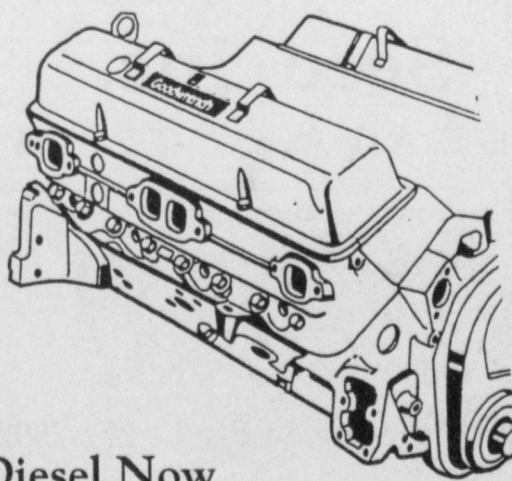
Feb. 4 — Eulalio Eduardo Jiminez, 59, was charged with DWI.

BLOWN ENGINE?

DON'T REBUILD IT YOURSELF!

USE A GM GOODWRENCH REPLACEMENT ENGINE.

Don't waste your time and money rebuilding an old engine on your own — replace it with a GM Goodwrench engine, backed by a 3 year, 50,000 mile limited warranty.* Let our factory-trained technicians handle installation for you. You'll get back on the road quicker, with a GM Goodwrench engine you can trust, because it's built to strict GM quality specifications.



6 Cylinder, 8 Cylinder & Diesel Now Available In Stock.

CALL NOW! 505-762-2986

LUBE, OIL AND FILTER CHANGE **\$19⁶⁵** Plus Tax

Includes up to 5 qts. Motor Oil, AC Oil Filter and complete chassis lube. Offer good until 3/29/96.

ENGINE TUNE-UP

\$66⁹⁵ * Plus Tax

- Complete engine diagnosis
- Replace AC plugs
- Replace fuel filter
- Check cap & rotor
- Replace air filter
- Inspect battery terminals
- Service emission control

Offer good until 3/29/96.

*For most 6-cyl. engines with air conditioning. Slightly higher for 8-cyl., 4-cyl. slightly lower.

TRANSMISSION SPECIAL

\$59⁹⁵ * Plus Tax

- WE'LL:
- Drain transmission fluid
 - Replace pan gasket
 - Refill with GM transmission fluid
 - Check vacuum system
 - Clean or replace transmission filter
 - Road test thoroughly

*Additional parts extra if required. Offer good until 3/29/96.

PONTIAC JONES mazda

Pontiac • GMC • Mazda

3300 E. Mabry Drive, Hwy 60-70-84, East Clovis, NM 762-2986



SALES AND SERVICE WITH EVERY SERVICE

Subscribe today!

Call the Muleshoe Journal 272-4536

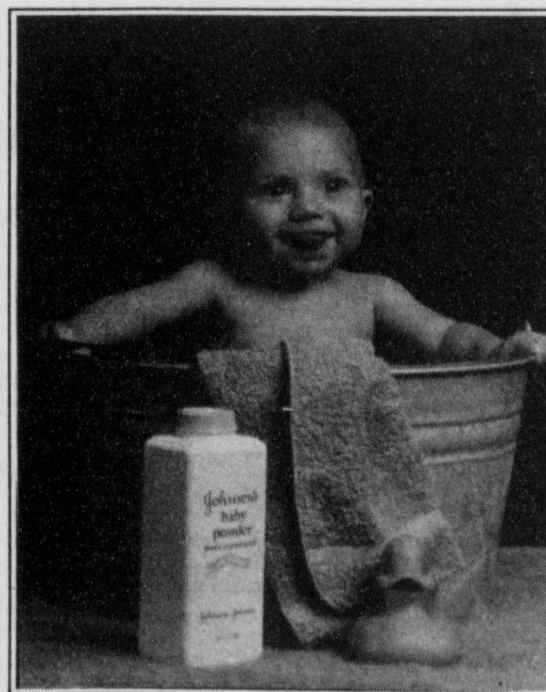
FINAL WEEK TO ENTER!

The Muleshoe Journal's
2nd Annual 1995

Cutest Baby Contest

Remember The Special Times Of Their First year By Including Your Baby's Picture in Our Cutest Baby Contest.

Enter Any Child Special To You That Was Born In 1995 - Children, Grandchildren, Nieces, Nephews.



Winner Will Receive \$50 Savings Bond For Being Selected 1995 Cutest Baby!

A panel of unbiased judges will pick the most attractive picture to be the 1995 Cutest Baby. All baby pictures will be printed. Babies need not have been born in this area. Bring your favorite child's photo to the Muleshoe Journal, 304 W. 2nd, Monday - Friday between 9:00 a.m. & 5:00 p.m. or mail coupon below with photo and \$9.75 to the Muleshoe Journal, Box 449, Muleshoe, TX 79347.

Please leave phone number or address (it will not be published) so we may contact you if we need additional information.

Baby's Name _____
Date of Birth _____
Weight At Birth _____
Place of Birth _____
Length At Birth _____
Mom & Dad's Name _____
Grandparents Name _____

HURRY! DEADLINE TO SUBMIT PHOTOS AND INFORMATION IS 5:00 P.M. THURSDAY, FEB. 22, 1996. You may pick up your baby's picture during office hours after Monday, Feb. 26, 1996. At this time you will receive a FREE copy of The Cutest Baby Contest. Additional copies will be available.

This years edition will appear in the Muleshoe Journal, Sunday, Feb. 25, 1996 issue. If you would like for your business, club or organization to be included in Cutest Baby Contest, contact the Retail Advertising Dept at 272-4536 by Monday, Feb. 19, 1996.

DEADLINE IS THURSDAY, FEB. 22, 1996

IT'S OUR GREATEST PRESIDENTS' DAY SALE

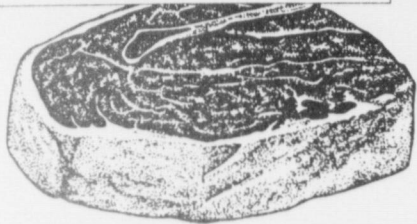
DOUBLE COUPONS EVERYDAY



All Types
Pepsi Cola
12 pack, 12 oz. cans
2/\$5

All Types
Pepsi Cola
2 liter btl. **89¢**

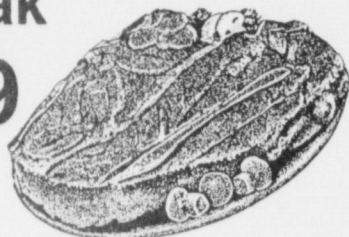
Meat



Any Size, Boneless
Chuck Roast
\$1.19
lb.

Value Pack, Boneless
Chuck Steak

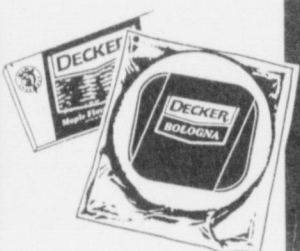
\$1.39
lb.



Small Pack
lb. **\$1.49**

Regular or Maple
Decker Bacon

\$1.49
12 oz. pkg.



Decker
Meat Bologna

79¢
1 lb. pkg.



Value Pack, Boneless Skin On
Chicken Breast
\$1.79
lb.

- Catfish Fillets lb. **\$2.99**
- Boneless California Roast lb. **\$1.29**
- Decker Chopped Ham 12 oz. pkg. **\$1.99**
- Bone-In Sirloin Pork Chops lb. **\$1.59**
- Small Pack Beef Stew Meat lb. **\$2.29**
- Beef Chuck Eye Steak lb. **\$2.99**
- Land-O-Frost Turkey Breast or Honey Ham 12 oz. pkg. **99¢**

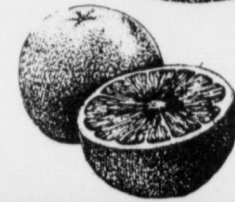


Hormel Links
Little Sizzlers
12 oz. pkg.
99¢

Produce

Texas Red
Grapefruit

5 for \$1



Golden Ripe
Bananas

4 lbs. for \$1



U.S. No. 1 Russet
Potatoes

99¢
5 lb. bag



Dole
Cole Slaw Blend

1 lb. bag **89¢**

Sno-White
Cauliflower

ea. **79¢**



SnackWells
3 for \$5

Frosted Mini-Wheats
\$2.99

Ruffles* Assorted, Reg. \$2.99 Size Bag
Potato Chips **\$1.79**

Froot Loops
\$2.99

Vienna Fingers
\$1.99

Hydrox Cookies or Vienna Fingers
\$1.99

Apple Jacks
2 for \$5

FROZEN & DAIRY

Patio Burrito
3 for \$1

Downyflake Waffles
2 for \$3

Breaded Sticks or Fillets
\$2.79

Health Smart Ice Cream or Yogurt
2 for \$6

Banquet Cream Pies
14 oz. pkgs. **3 for \$3**

Banquet Entrees ... ea. **\$1.99**

Whipped Topping **79¢**

Deep Dish Pie Shells **99¢**

Pie Filling **3 for \$3**

Kraft Singles
\$2.99

Grands! Biscuits **4 for \$5**

Shurfine Buttermilk
\$1.49

Banquet Assorted Dinners or Pasta Favorites
9-11 oz. pkg.
89¢

Mardi Gras Paper Towels
Rolls **2 for \$1**

BAMA Strawberries
\$2.39

Hot Cocoa Mix **\$1.29**

Charmin Bath Tissue
\$1.19

Chun King Chow Mein
2 for \$5

Mrs. Butterworth's Syrup
24 oz. btl. **\$2.69**

Wonder Long Grain Rice
28 oz. pkg. **99¢**

Ultra Cheer
98-106 oz. box **\$5.99**

Soy or Teriyaki Sauce
99¢

Sheba Cat Food
5.5 oz. cans For **\$2.11**

3 Minute Oats **\$1.19**

Ultra Cheer Liquid
100 oz. btl. **\$5.99**

Chun King Noodles **79¢**

HEALTH & BEAUTY

Salon Selectives **\$1.99**

Pepto-Bismol **\$2.39**

Isopropyl Alcohol **59¢**

Low's White Sandwich Bread
24 oz. loaves
2 for \$1

NEW STORE HOURS:
Monday-Saturday 7:30 a.m. to 8:00 p.m.
Sunday 8:00 a.m. to 8:00 p.m.

WESTERN MONEY UNION TRANSFER™
"The fastest way to send money"

Low's MARKETPLACE

515 W. American Blvd.
401 W. American Blvd.
Muleshoe 272-4585

Pay-n-Save

Muleshoe 272-4406

WE RESERVE THE RIGHT TO LIMIT QUANTITIES IN TEXAS

OPEN MONDAY-SATURDAY 7:30 A.M. - 8:00 P.M., SUNDAYS 8:00 A.M. - 8:00 P.M.



Rebecca Reynolds

Rebecca Reynolds honored with wedding shower

A wedding shower in honor of Rebecca (Warren) Reynolds and Rodney Reynolds was held February 4, in the home of Billie Graves.

Guests were served cookies, fruit, peach tea and punch.

Special guests were Rickie Warren, mother of the bride, Euleta Stockard and Fern Warren, grandmothers of the bride, Rhonda Warren, sister of the bride, Pam Stockard and Pat Warren, aunts of the bride, Vanita Moore and Pat Grider, great aunts of the bride and Michelle Ateberry, cousin of the groom.

Hostess gift was a set of Faberware cookware and an Oster 6 in 1 kitchen center.

Hostesses included Ray An Doshier, Pat Angeley, Vicki Black, Louvenia Garlington, Johanna Wrinkle, Billie Graves, Ruth Lance, Sherry Barrett, Raquel Bustillos, Vickie Groneman, Joyce Scott, Beckye Conklin, Betty Wuerflein, Suzanne Nichols, Gayla Toombs, Loretta Lloyd,

Muleshoe

Continued from page 2

The one-day course will meet from 5:30 to 10:30 p.m. in the SPC Petroleum Technology-Law Enforcement Building, Room 109 C. The cost is \$30 per person.

The course provides information and skills required to apply for a concealed handgun certificate.

For more information, contact the SPC Law Enforcement Office at 894-9611, ext. 2291.

Adrian Homecoming Asso. needs addresses

ADRIAN — The Adrian School Homecoming Association announces its 1996 Homecoming meeting during Thanksgiving weekend 1996.

Urgently needed are updated addresses of former students and staff. Please send updates to Box 189, Adrian, TX 79001, Fax (806) 538-6291 or call (806) 538-6357 or (806) 538-6202.

Nursing Home News

By Joy Stancell

Thursday morning Nancy Lemons, of the High Plains Ceramic Shop, came and brought ceramics for the residents to paint. Residents participating were, Lillie Wuerflein, Bootie Tiller, Rosa Sneed, Roxie Hoover, Lora Dale, Jackie Davenport, Vera Engleking, Florence Harvey, Kathrine Rogers and Nettie Quesenberry.

Pastor David McIntire directed the memorial service for Willie Waddell Thursday morning. Clara Lou Jones and Glenda Jennings directed the song service.

Friday afternoon Mr. and Mrs. J.C. Shanks ended our week with an Up-Beat Gospel Sing-A-Long.

The Followers and Truth Seekers Sunday School Classes of the First Baptist Church made donations to the Healthcare center.

Lee Ann Gallman brought young people from the Meth-

odist Church Sunday morning to visit and pass out pots of flowers that they had made, to the residents.

Lillie Wuerfleins' family hosted her a 90th birthday party, Sat. afternoon in our day room. A host of family and friends attended the celebration.

The February birthday party is planned for Thursday, Feb. 22, at 3:30 p.m. You are invited. Residents being honored on this day will be Gladys Pierce, August Edmiston, Lillie Wuerflein, Margaret Graves, Lib King, Pearl Cox and Alfred Williams.

Marquita Adamson brought her FHA class of Muleshoe, Wednesday to visit the residents and distribute the valentine sugar cookies that they had made.

Holly Millsap and Yaunda Martin participated in the Wednesday afternoon Sing-A-Long with Glenda Jennings.

Sunday afternoon the Muleshoe Singers came for a Gospel Sing-A-Long.

Tuesday afternoon Lanell Stancell, Claudine Embry, Beverly Wagnon, Mary Burge, Skeet Bradshaw and the activity department shampooed and set the ladies hair and gave manicures.

The residents met in the day room for exercise Tuesday morning, (The Pushers and Movers). In observance of Chocolate Month, we had a fruit dipped in chocolate party in conjunction with a Hula Hoop contest and music from the fifties and President Trivia game. Terri, Julia, Rosa, Chickie and Karen all tried their skills with the Hula Hoop.

Barbara Lust's Lazbuddie FHA class made Valentine tray favors for each of the residents.

Tuesday afternoon the Muleshoe Church of Christ baked and served homemade pies.



Muleshoe Square Dance Club celebrates 15 years. The Muleshoe Square Dance Club celebrated 15 years with an anniversary dance, Feb. 10. Pictured above are Mary Kalbus, Eva Nell Dale and Wilbert Kalbus. Others in the photo are unidentified.

Muleshoe Square Dancers celebrate 15 years

The Muleshoe Square Dance Club celebrated 15 years with a big anniversary dance Saturday, Feb. 10.

The celebration was held in the Bailey County Civic Center.

Approximately 250 square dancers from the area were in attendance.

A man who has been the indisputable favorite of his mother keeps for life the feeling of a conqueror, that confidence of success that often induces real success.

—Freud

Immaculate Conception Catholic Church
805 E. Hickory
Father Joseph Augustine

First Baptist Church
220 West Ave. E.
Pastor, Stacey Conner

Emmanuel Baptist Church
Iglesia Bautista Emmanuel
107 East Third
Isaias Cardenas, Pastor

Trinity Baptist Church
314 E. Ave. B
Pastor Robert Brown

Circle Back Baptist Church
Intersection FM 3397 & FM 298
Rev. Jessie Shaver
946-3676

Calvary Baptist Church
1733 W. Ave. C
Pastor Ben Davis

Progress Baptist Church
Progress, Texas

Richland Hills Baptist Church
17th & West Ave. D
Brad Gathright

St. Matthews Baptist Church
Corner of West Boston & West Birch
Pastor, Floyd R. Monroe

Progress Second Baptist Church
1st and 3rd Sundays
Rev. Arthur Hayes

Primitive Baptist Church
621 South First
Elder Cleveland Bass, Pastor

1st Baptist Church
Lazbuddie, Tx.
965-2126



REST

A day of play has tired this little one, but now sleep will bring about the needed rest. This is the time for restoring energies, and breaks the day's pace. The Lord set aside a day for rest and worship. This day allows us to be in the Lord's house and renews our energies for the week to come.

The Church is God's appointed agency in this world for spreading the knowledge of His love for man and of His demand for man to respond to that love by loving his neighbor. Without this grounding in the love of God, no government or society or way of life will long persevere and the freedoms which we hold so dear will inevitably perish. Therefore, even from a selfish point of view, one should support the Church for the sake of the welfare of himself and his family. Beyond that, however, every person should uphold and participate in the Church because it tells the truth about man's life, death and destiny; the truth which alone will set him free to live as a child of God.

Coleman Adv. Serv.



Lazbuddie Church of Christ
Minister, Nathan Crawford
Sunday School 9:30 a.m.
Morning Services 10:20 a.m.
Evening Services 5:00 p.m.
Wednesday Night 7:00 p.m.

First Assembly of God
272-3017 or 272-3984
Rev. Jack Stone, Pastor
521 South First Street
Sunday Services:
9:45 & 11:00 a.m.
6:30 p.m.
Wednesday Services 7:30 p.m.

First United Methodist Church
507 W. 2nd Street
Dr. James Bell, Pastor

El Divino Salvador Methodist Church
E. 5th and E. Ave. D
Guadalupe Ballinas, Pastor

Shepherd's Chapel - of the Sacred Heart of Jesus Christ
Non-Denominational Spirit Filled Fellowship Worship:
809 E. Fir, Muleshoe
Rev. Manuel A. Cruz-Medina
Sunday Services:
9:00 a.m. - En Espanol - Devine Services
11:00 a.m. - In English - Devine Services
6:00 p.m. - In English - Devine Services
The Doors Are open each day from 9 a.m. to 6 p.m. for whomever needs our Lord, Jesus Christ or to talk with the Pastor.

St. John Lutheran
Lariat, Texas
Sunday School and Bible Church Services 9:30 a.m.
Fellowship 10:30 a.m.
Classes 10:45 a.m.
Rev. Richard Greenthauer

The Christian Center
Morton Hwy.
Reydon Stanford
272-5105

Lazbuddie Methodist Church
965-2121
G. Scott Richards, Pastor

New Vision Church of The Nazarene
814 W. Ave. C
272-3622
Pastor David R. McIntire

Primera Iglesia Bautista
223 E. Ave. B
Roy Martinez, Pastor

"Iglesia Pentecostal Unida"
207 East Ave. G
272-3636
Pastor: Wenceslado Trevino

Lariat Church of Christ
Sunday School 10:00 a.m.
Worship 11:00 & 6:00
Wednesday Services 7:00 p.m.
Sam Billingsley, Minister

Muleshoe Church of Christ
22nd & W. Amer. Blvd
Sunday School 9:30 a.m.
Morning Worship 10:20
Evening Services 6 p.m.
Wed. Night 7:30 p.m.

16th & Ave. D Church of Christ
Sunday 10:30 a.m.
Evening 6:00 p.m.
Wednesday 7:30 p.m.
Curtis Shelburne, Minister
272-4619

Federal Land Bank Association
316 Main St. Muleshoe
806-272-3010

Long Term Financing for Farms, Ranches, Rural Housing, Operating and Improvements.

Current Variable Rate 7.8%.

Fixed rates are available.

Call for quote. A Property Rights Advocate and Equal Opportunity Lender.

Western Drug
114 Main 272-3106

Wes-Tex Feed Yards, Inc.
272-7555

Bailey Gin Co.
946-3397

Attend the church of your choice

Irrigation Pumps & Power
W. Hwy 84 272-4483

Bobo Insurance Agency
108 E. Ave. C 272-4264

James Crane Tire Co.
322 N. 1st 272-4594

Bob Stovall Printing
221 E. Ave. B. 272-3373

American Valley, Inc.
W. Hwy 84 272-4266

First Bank
Member F.D.I.C.
202 South First 272-4515

5-Area Telephone Cooperative, Inc.
302 Uvalde 272-5533

Journal Classifieds

Call 272-4536 Deadlines: For Thursday, Noon Tuesday; for Sunday, Noon Friday Call 272-4536

NOTICE!! NEW DEADLINE FOR CLASSIFIEDS

Deadline for Muleshoe Journal Monday 5 p.m.

Deadline for Bailey County Journal Thursday 5 p.m.

Want To Rent

House in the Country, size and shape not important. Call Lisa, 272-4433 or 385-6766. 8s-4tpd

Miscellaneous

Concealed Handgun Course

Hereford Feb. 22
Muleshoe March 2
10% Discount for Pre-registration
Contact
Toby Turpen
806-276-5668
8s-4tc

Want To Rent or Lease

Wanted Lease: The U.S. Department of Agriculture Farm Service Agency, Bailey County office in Muleshoe, Texas, is needing a new office location within the city limits of Muleshoe. This office requires 3200 net usable square feet on the first floor. Occupancy is required by April 1, 1996. Anyone interested should call Kim Hanlin at (806) 272-4538. 7t-3tc

For Sale

For Sale, one cemetery plot in the Memorial Park Cemetery in Muleshoe, Texas, 272-5263. 7t-4tc

1993 Ford Ranger Super Cab, EXTRA NICE, 40,000 miles, \$12,695.00 (505) 359-1775, Portales

1989 Lincoln Town Car, 4 door, high mileage, \$4,200.00 (505) 359-0947, Portales

1986 Cadillac Coupe Deville, 2 door, White, low miles, \$5,000, \$6,395.00 Portales (505) 359-1775

1990 Ford Taurus, 4 door, Maroon, \$5,995.00, (505) 359-0947, Portales

1985 Cadillac Sedan DeVille, white, \$3,995.00, (505) 359-1775

STOP! STOP! STOP!
Throwing your money away on rent. Visit Eastern NM's newest and best mobile home dealer. We always feature a quality 3 bedroom, 2 bath for under \$200 per month. Call 1-800-404-1321 or come to Portales and visit Better Living Homes. Se habla Espanol. DL681.

Sand Tables

Set of 3
(1-coffee table, 2-end tables)
Reg. \$633.00
Now \$450.00
Choice Furniture
318 Main Clovis, NM
(505) 762-2304

WANTED

We buy used mobile homes. We pay top dollar, any year, any condition. We need your used mobile home. Please Call 1-800-404-1321. 7t-tfc

FOR SALE

•1977 Peterbilt w/walk-in sleeper, 400 Cummins, new 13 speed Fuller transmission, \$7,500 or will part out.
•1994 42' Wilson hopper \$7,500
•1994 94' Merritt hopper \$6,000
•1974 46' Aztec flatbed \$5,000
•32 ft. 12 inch Industrial grain Auger \$8,000.
•20 KW Generator \$1,000
Daytime - call 505-356-6240 and leave message or call after 7:00 p.m.

TOP QUALITY HAY FOR SALE

German millet hay, milo hay, haygrazer hay, wheat hay and oat hay. Large round bales. Discounts on quantity. Call 505-276-7522, 505-276-8482 or 595-276-7527. Delivery Available!

MUST SELL 1991 Chevrolet Suburban
350 automatic transmission, power windows, power door locks, electric mirrors, dual air conditioning, tilt steering wheel, cruise control, 2 captain chairs, AM/FM cassette and much more. No old contract to assume, no back payments to make. Just need responsible party to make reasonable monthly payments.

Contact Ali Robinson
at Friona Motors 806-247-2701

MUST SELL 1989 Ford Taurus Station Wagon

Automatic transmission, air conditioning, power windows, power door locks, cruise control, tilt steering wheel, AM/FM cassette and much more. No old contract to assume, no back payments to make. Just need responsible party to make reasonable monthly payments.

Contact Ali Roder
at Friona Motors 806-247-2701

James F. Hayes & Co.

AGRICULTURAL REAL ESTATE SERVICES

152 Acres West of Muleshoe. Electric Center pivot sprinkler, 2 wells, 1/2 circle of improved grass. Good barbed wire fence. Priced for immediate sale.

1200 acres west of Muleshoe. 2 wells. Good soil. Lays good. Immediate possession available. Price reduced!

Dodd Area - 160 acres with electric center pivot. Excellent soil and water. **SOLD**

656 Acres on Arch Highway 1 mile from State line. 480 acres of C.R.P. Balance is improved grass and native grass. 4 irrigation wells with underground pipe. Priced to sell!

480 Acres on highway 1760, 3 miles from New Mexico state line. 6 wells, lots of underground pipe.

South of Lariat - 100 acres with center pivot. Priced to sell in order to settle estate. **SOLD**

639 Acres Northwest of Earth. 5 wells, 3 sprinklers, livestock feeding pens. Nice 4 bedroom home with basement. One 3 bedroom home for employee or to rent our. NICE COMPLETE OPERATION!

NEW LISTING
160 Acres Northeast of Muleshoe in Parmer County. Excellent water. Excellent soil. Electric Center Pivot Sprinkler. New set of bowls on pump. Top Notch Farm labor of C.R.P. Southwest of Muleshoe. One year left on contract. \$200 per acre.

160 Acres East of Farwell on Hwy. 145 with modest home and large quonset barn

177 Acres with center pivot Southwest of Muleshoe. Lays good, allented.

Vic Coker, Agent

310 Main St. Suite 103 Muleshoe
Office 272-3100 Home 965-2468
WHEN LAND INVOLVES COWS AND PLOWS

Real Estate

For Sale: 3 bedroom, 1 bath, brick home. Newly remodeled kitchen, 806-481-3502. 33t-tfc

Richland Hills - 3, 1 3/4, 2. Great location. Recently remodeled, lg storage building, low \$70. Call 806-272-4754. 32s-Sun tfc

House For Sale, 218 West 20th, Story and 1/2, 3 bedroom, 2 bath, double car garage, 272-3605. 8s-2tpd

House For Sale in Morton, 3 or 4 bedroom, 2 bath, workshop, double garage with carport, call 806-266-5166. 7t-4tpd

Help Wanted

POSTAL JOBS
Start \$12.08/hr. For exam and application info. call (219) 769-8301 ext TX 759, 8 a.m. - 8 p.m., Sun. - Fri. 6s-8tpd

KMUL-FM 103.1, A country music station is looking for an individual to broadcast a local Bailey County Radio Show each morning and sell local advertising. If interested contact Tom Crane or Noe Anzulada at 272-4273. 6s-4 sun. chg.

Sell In The Classifieds

Wanted

J&J Portable Welding
Build Hay Barns, pre-fab buildings, tear down gins. 893-5860 or 272-5122. 4t-8tpd

Wanted Dryland Farms to rent. (806) 293-9776. Please leave message 5t-18tc

Personals

Try Reflexology for better health in 96. For sinus, asima, P.M.S., stress, diabetes, back pain, leg cramps, sciatic nerve, overall good health and circulation of the body. Call 272-4867 for appointment. 8s-6tpd

Automobile

1987 GMC Pickup, Low mileage, 78,000 miles, clean, call 272-4256 or 272-3240. 7t-2tpd

1990 Nesson King Cab Pickup, air conditioner, AM/FM cassette stereo, 5 speed. New tires, 29,000 miles, clean. Call 272-4713 after 6:30 p.m. 7s-6tc

AUCTION

Wednesday, February 21, 1996 — Sale Time: 9:37 a.m.

LOCATED: Dodd, Texas; Or From Earth, Texas, 7 Miles North On F.M. Hwy. 1055, Then 4 Miles West On County Black Top Road No. 629; Or From Muleshoe, Texas, 12 Miles East On U.S. Hwy. 70, Then 7 Miles North On F.M. Hwy. 303, Then 2 Miles East On F.M. Hwy. 3458; Or From Lazbuddie, Texas, 5 Miles East On F.M. Hwy. 145, Then 3 1/2 Miles South On F.M. Hwy. 303, Then 2 Miles East On F.M. Hwy. 3458; Or From Dimmitt, Texas, 6 Miles West On Texas Hwy. 86, Then 13 Miles South On F.M. Hwy. 1055, Then 4 Miles West On County Black Top Road No. 629.

D.C.F. FARMS — Owners

For More Information Call: (806) 965-2462 Or Auctioneer: James G. Cruce (806) 296-5050
Limited Consignments Of Larger Items Welcome — Please Call First.
The Following Will Be Sold At Public Auction:

COMBINE, TRACTORS —

- 1-1992 John Deere 9500 Diesel Combine, Cab, A/C, Hr., Radio, Monitors, Big Engine (911 Hrs.) (Separator 636 Hrs.) 35L/32 Rubber, Spreader, 925 Grain Platform, M.B.R.
 - 1-1980 John Deere 4640 Diesel Tractor, S.G. Cab, A/C, Hr., Radio, W.F., Wts., D.H., P/S Trans., Q.H. (Power Beyond)
 - 1-1980 International 1486 Diesel Tractor, Cab, A/C, Hr., Radio, W.F., D.H., T.A., D.P.T.O., 18.4x38 Rubber
- #### COTTON STRIPPERS, MODULE BUILDERS —
- 1-1981 John Deere 484 Diesel Self Propelled Cotton Stripper, 4 Row Brush Head, Cab, A/C, Hr., Radio, 18.4x26 Rubber, 2.711 Hrs.
 - 1-1982 International 1400 Diesel Self Propelled Cotton Stripper, Cab, A/C, 4 Row Brush Head, 18.4x26 Rubber, 3.2' Max. Emerg.
 - 1-Bush Hog Husky Cotton Module Builder, Stripper Model, 32' Cab

BEET EQUIPMENT —

- 1-John Deere 4310, 4 Row, 30" Beet Digger
- 1-Heath 560, 4 Row, 30" Beet Topper, Hyd. Scalers

EQUIPMENT —

- 1-Case/900 Pflieger, Double Boxes, Monitor, B/O Opener Disc
- 1-Sunflower 34 Field Cultivator, Hyd. F.W. Spring Shanks W/LR Mulch Harrows, RB Wheels
- 1-John Deere 714 Mulch-Till Pkw. 16" W/LR Mulch Harrows
- 1-John Deere 7000 D.T. 8 Row, 30" Max Emerg. Planter, Coulters, Markers, Liquid Tanks, Monitor
- 1-John Deere 7100 Max Emerg 8 Row Planter, Double Boxes, Coulters, Roller Lock & Load, Incorporators
- 1-Byrd R.A.C. 8 Row, 3-pt. Disc Bedder, D.S.B., L.T.M., G.W., Stabilizer
- 1-Tye 3-pt. 6 Row Grain Drill, 6" Spaced, Big Box
- 1-Case International 5200, 3-pt. Grain Drill, 8"x20, D.D., P.W., Markers
- 1-Miller 24 Offset Disc Plow, Single Folding
- 1-Blue Jet 3-pt. 8 Row, 30" Furrow Rig, 5"x7" Bar, G.W.
- 1-John Deere 400, 28" Rotary Hoe
- 1-Lilliston 12 Row, 30" Rolling Cultivator W/Herbicide Booms, Complete
- 1-Byrd R.A.C. 8 Row, 3-pt. Rowweeder, Hyd. Drive, D.S.B., L.T.M., G.W. W/Knife Sides, Cleanouts, Bullet Lifts, Bed Levelers
- 4-John Deere 12 Gran Drills, 6x12 Rubber Press Wheels W/Chc
- 1-Crutchfield 35 Field Cultivator S/S W/Mulchers
- 1-Custom Ball Lay, By Rig W/Herbicide Attachment 5"x7" Bar, Sweeps, G.W.
- 1-Byrd R.A.C. 21 3-pt. Field Cultivator, T.S.S., D.G. 7" LR Mulch Blades
- 1-Hamby 8 Row Outpacker, D.S.B., L.T.M., G.W.
- 1-International 480, 21" FW Tandem Disc Plow

TRAILERS, TANKS —

- 1-Hobbs 38' T.A. Flatbed Trailer
 - 1-S.M. 16' T.A. Utility Trailer W/Enclosed Side
 - 1-Custom Built Gooseneck 18' Flatbed Trailer, T.A., W/S Dove Tail W/ 12 V Winch
 - 1-1,000 Gal. Metal Water Tank On Skids
 - 2-60 Gal. Pickup Propane Tanks
 - 1-379 Ford F-350, 1 Ton Pickup, 400 Eng., A/T, Radio, Hr., J&H 9' Flatbed, D.W., GIN Hitch
 - 1-1988 Chevrolet Suburban 4x4, 350 Eng., A/T, Renegade Package, Radio, Hr., Dual A/C, Tinted Glass
 - 1-7x8' Pickup Flatbed (Fits 1/2 - 1 Ton Pickup)
- #### VEHICLES, PICKUP BED —
- 1-1992 Ford F-150 Custom Pickup, L.W.B., 6 Cyl., 4 Sp., 4x4, Radio, Hr., A/C, 98,000 Miles
 - 1-979 Ford F-350, 1 Ton Pickup, 400 Eng., A/T, Radio, Hr., J&H 9' Flatbed, D.W., GIN Hitch
 - 1-1988 Chevrolet Suburban 4x4, 350 Eng., A/T, Renegade Package, Radio, Hr., Dual A/C, Tinted Glass
 - 1-7x8' Pickup Flatbed (Fits 1/2 - 1 Ton Pickup)

SPRAYER, GRAIN KART, WATER NURSE TANK —

- 1-Wyle 500 Gal. T.T. Sprayer, T.A./R.B. Wheels, 40 Booms, F.W. W/ Hyd. Pump
- 1-Big 12, 400 Bu. Grain Kart (new Gearbox, Good Tires)
- 1-Hamby 750 Gal. Water Nurse Tank Trailer, H.C., 4 Wheel

TRACTOR & TOOL MAKEUPS —

- 1-Set 20.8x38 John Deere Axle Duals, 4640 Hubs
- 1-Set 18.4x38 International Axle Duals, 1486 Hubs
- 1-20.8x38 Rims & Tires
- 2-16.9x28 Front Tractor Tires (25%)
- 1-Set Hamby 21" Lift Mulch Harrows
- 1-38, 3-pt. Double Diamond Toubar W/G.W.
- 12-Byrd R.A.C. Barring Off Disc Units, 1.7X3' Shanks
- 2-Sets Byrd R.A.C. Hyd. Row Markers
- 1-Set Byrd R.A.C. Gauge Wheels
- 8-Sets Tye Disc Bedder Units (16)
- 2-Byrd R.A.C. T.B. Stabilizers
- 8-Byrd R.A.C. Badger Ripper Shanks
- 1-Set Guide Cone Gauge Wheels
- 1-John Deere Lister Beam (5x7')
- 1-Lot John Deere 400 Rotary Hoe Parts, Bar, Pars. (Pieces: Hoes, Springs, Arms)
- 1-Tye Sliding Row Marker, Chain Drive
- 1-Wyle F.M. Sprayer Bracket (Fits 40-50 Series)

LIVESTOCK EQUIPMENT —

- 1-Powder River 20' Crowding Alley W/4' Gates
- 1-Summit Cattle Squares Chute
- 1-Lot E-2 Rail Spools (2 Wires)
- 1-6 Row Feeding Trough & Stalls
- 1-Lot Barless Smooth Wire
- 1-2 Wheel Round Bale Transport Trailer
- 1-Round Hay Bale Feeder Rings
- 9-5'x10' Metal Livestock Panels
- 12-4'x10' Metal Livestock Panels
- 1-3 Sheep Step-Up Sheep/Lamb Feeder
- 1-10' Metal Cattle Trough
- 1-Lot T-Posts, Wooden Posts
- 1-Lot Fence Chargers
- 1-Lot Net Fencing
- 1-Lot Electric Wire, Post, Insulators
- 1-Moormans Windvane Mineral Feeder

IRRIGATION —

- 3-Chevrolet 454 Ir. Engines (2-Rebuildable, 1-Salvage)
- 2-Ford 460 Ir. Engines (Rebuildable)
- 1-Ford 460 Ir. Eng. (Runs)
- 3-Ford 428 Ir. Engines (Rebuildable)
- 1-Chevrolet 292 Ir. Eng.
- 1-International 392 Ir. Eng.
- 1-Chevrolet 427 Ir. Eng.
- 1-Chrysler 413 Ir. Eng.
- 99-Joints 7x20' Gated Pipe, 40' Rings
- 1-Large Lot Aluminum Pipe Gated, Flowline, V/S, V/L
- 1-Wyle Chemigator Unit W/Pump, Tank
- 1-Stapleton 70 H.P. Gearhead, 4:3 Ratio
- 1-Peerless 70 H.P. Gearhead, 5:4 Ratio
- 1-Lot Electric Wire, Post, Insulators
- 5-12"x7" Hydrants
- 1-12"x8" Hydrant
- 1-Lot Aluminum Pipe Fittings, V/S
- 1-Lot Irrigation Drive Lines
- 1-Lot Sprinkler Parts, Drops & Super Spray
- 1-Lot Plastic Ir. Tubes
- 1-Lot Irrigation Drive Shafts
- 1-Lot Drive Shaft Guards
- 8-Water Furrow Bullets, 12"

NON-CLASSIFIED —

- 1-Lot Approx. 1000' 2 1/2" Upset Tubing
- 1-Large Lot Steel Sucker Rod, 1 1/2", 1 3/4"
- 1-1 Ton, 220 V Electric Chain Hoist
- 2-Scalloped Saw Horses
- 1-Lot Flat Metal
- 1-Lot Galvanized Pipe
- 2-Pickup Bulane Carburetor Systems
- 2-Side Mount Pickup Toolboxes
- 1-Lot Pickup Toolbox
- 1-Lot Used Lumber
- 1-Lot Barnails
- 1-Lot Tires & Wheels
- 1-Soace Ray Shop Heater
- 1-Lot Shop Scrap, Junk Iron, Pipe
- 1-Lot Items Too Numerous To Mention

Note: Any Announcement Sale Day Takes Precedence

Nieman Realty

116 E. Ave. C George Nieman, Broker 272-5285 or 272-5286

RICHLAND HILLS

NICE 3-3-1 Brick, cent. Heat, Evap. Air, built-ins, 2000' + lv. area, fenced yd., stor. bldg., MORE !!! \$60's !!! RH-2

VERY NICE 3-2-2 Brick, cent. A&H, built-ins, FP, approx. 2,000' + lv. area, auto, spklr., storage bldg., fenced yd., MORE !!! \$70's !!! RH-1

NICE 3-2-2 Brick, cent. A&H, built-ins, FP, approx. 2150' lv. area, fenced yd., MORE!!! \$70's!!!! RH-7

HIGHLAND AREA

VERY NICE 2-1-1 Home, wall furnace, window air, nicely decorated, storm cellar, stor. bldg. \$20's !!! HL-7

NICE 3-1-1 carport Home, wall furnace heat, evap. air, stove, fenced yd. \$25K!!!! HL-3

2 Bdrm, 1 bath home, fenced yard. \$16,500!!! HL-4

VERY NICE 3-2-2 Brick, Cent. A&H, built-ins, fenced yd., spklr. sys., MUCH MORE!!!! \$60's !!! HL-1

Very nice 3-1 1/2-2 carport home, Geothermal heat and air, dishwasher, fireplace, nice carpet, storage building, fenced yard. \$30's!!!! HL-5

JUST LISTED 3-2-2 home, Cent. A&H, built-ins, fenced yd., corner lot. \$30's !!! HL-2

JUST LISTED - VERY NICE 3-2-1 carport Home, heat pump, built-ins, nice carpet, fans, storage-workshop! MUCH MORE!!!! \$40's !!! HL-6

RURAL HOMES

BEAUTIFUL 4-3-4 carport home on 2.4 acres on Highway, Geo. Heat pump, FP, nice carpets, loads of storage. SHOWN BY APPOINTMENT. \$90's!!! HR-4

LENAU ADDITION

VERY NICE 3-2-1 Home, Heat Pump, storm windows & doors, extra insulation, nice carpet, spklr. sys. & MORE!!!! \$30's!!!! L-2

JUST LISTED - Nice 2-2-2 Brick, on corner lot, heat pump, fenced yard, storage bldg., MORE! \$40's !!! L-1

NICE 3-2-1 carport Home, geothermal heat pump, fenced yd., storage bldg. \$27,500!!!! L-3

COUNTRY CLUB

2-1-1 carport home, wall furnace heat, nice carpet, storm shelter, storage bldg., fenced yard. MORE!!!! \$20's.

HIGH SCHOOL

VERY NICE 3-1-1 Brick, Cent. A&H, stove, nice carpets, fenced yd. \$30's!!! HS-4

NICE 3-2 Home, Cent. A&H, built-ins, nice carpet, fans, stor. bldg., fenced yd. \$30's HS5

JUST LISTED - NICE 3-2-2 carport home, cent. A&H, built-ins, guest cottage or eff. apartment, insul. wkshop-stor. bldg. w/elect., fenced yd., & MORE!!!! \$40's!!!! HS2

NICE 3-2-2 Brick Home, Cent. Heat, built-ins, fenced yd., large shop & office (ideal for automotive-woodworking, etc.) storage, eff. apartment, MORE!!! \$80's HS-3

JUST LISTED - 2-2-2 carport Mobile Home, Cent. Heat, built-ins, fenced yard, More!!!! \$12K HS-1

VERY NICE 3-2-2+2 Carport Brick Home on 2.5 acres on pavement, close to town, Heat Pump, built-ins, FP, MUCH MORE. \$70K !!! HR-3

ASK ABOUT OUR COMMERCIAL LISTINGS!!!

PARMER - BAILEY CO. Area-Elevator & Cleaning Facility - 12 million lb. Capacity, Scales, Dryer, & Office on approx. 6.5 acres!!! PRICED TO SELL !!! POSSIBLE OWNER FINANCING!!!

COMMERCIAL-200' + Hwy. 84 frontage-Former Richland Hills Texaco, excellent business location. PRICED TO SELL!!!!!!



Jill Stevens

Stevens named all-state band

Jill Stevens, a junior at Dulles High School in Fort Bend County, was selected for the Texas All-State Band on the B-flat clarinet.

Jill is the granddaughter of Juanita O'Hair of Muleshoe and the daughter of Richard and Anita (O'Hair) Stevens of Meadows, Texas (near Houston).

She was selected for this honor through a series of competitive auditions held at district, region and area levels. Jill will travel to San Antonio where the All-State Band will perform Feb. 17 at the Texas Music Educators Association Convention.

Stevens is a student of Jeffrey Lerner of Houston. In addition to being an honor student, Jill's other interests include varsity basketball and piano.

What's Cooking?



Area school menus

Muleshoe High School Watson Junior High

Breakfast

Monday-No School
Tuesday-No School
Wednesday-Sausage biscuit, fruit or juice, milk
Thursday-Peach bread, fruit or juice, milk
Friday-Cinnamon roll, fruit or juice, milk

Lunch

Monday-No School
Tuesday-No School
Wednesday-Corn dog, vegetable soup, cinnamon roll, fruit cocktail, milk
Thursday-Chicken fried steak, mashed potatoes w/ gravy, milk
Friday-Fish filet, scalloped potatoes, peas n carrots, milk

Dillman, DeShazo

Monday-No School
Tuesday-No School
Wednesday-Sausage biscuit, fruit or juice, milk
Thursday-Peach bread, fruit or juice, milk
Friday-Cinnamon roll, fruit or juice, milk

Lunch

Monday-No School
Tuesday-No School

Wednesday-Frito pie, vegetable dippers w/ ranch, sliced apples, hot roll, milk
Thursday-Enchiladas, Mexicali corn, refried beans, cornbread, milk

Friday-Fish nuggets, scalloped potatoes, winter mixed vegetables, hot roll, milk

Three Way Breakfast

Monday-Pancakes, sausage, juice, milk
Tuesday-Breakfast burrito, juice, milk
Wednesday-Cereal or cream of wheat, toast or graham crackers, juice, milk
Thursday-Blueberry muffins, juice, milk
Friday-Two waffles, juice, milk

Lunch

Monday-Sloppy joe, fries, macaroni & cheese, milk
Tuesday-Bar-b-que ham, baked beans, potatoes, cherry cobbler, milk
Wednesday-Hamburger, Fries, pears, milk
Thursday-Tamales, pinto beans, Spanish rice, cracker, oatmeal cookie milk

Community calender

To get on the calender or for more information call Norma Perez at 272-4248

The deadline to appear in the Journal's Community Calendar is Thursday at 5 p.m.

Monday, Feb. 19 — No classes are scheduled in Muleshoe ISD Monday; School Board sign-up begins at Muleshoe and Maple for May 4 trustee elections; Round Dancers lessons at 7:30 p.m. at the Bailey County Civic Center, with regular dance at 8:30 p.m.

Tuesday, Feb. 20 — Muleshoe City Council meeting, 8:30 a.m. to noon at City Hall; Staff development day for teachers at MISD; Rotary Club meeting, noon to 1 p.m. in the Bailey County Coliseum meeting room.

Wednesday, Feb. 21 — Early voting in person begins for Bailey County Primary Election; Classes

resume for students at MISD; Lions Club meeting, noon to 1 p.m. in the Bailey County meeting room.

Thursday, Feb. 22 — Muleshoe Area Industrial Foundation (MAIF) annual membership meeting and fajita dinner, 7 p.m. at the First United Methodist Church Fellowship Hall. (RSVP by calling Ricki at 272-4504 by Tuesday).

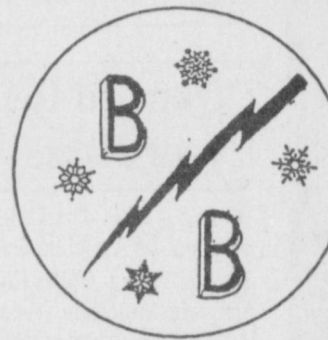
Friday, Feb. 23 — Kiwanis Club meeting, 6:30 a.m. to 8 a.m. at Viola's Restaurant; AARP meeting, noon to 1 p.m., location TBA; Bailey County Electric Cooperative reschedules annual meeting, with registration from 5:30 p.m. to 7 p.m., meal at 6 p.m. and meeting at 7:30 p.m.; Rebekah Lodge No. 114 sponsoring

skating for \$1 admission from 7 to 9 p.m., at the Bailey County Coliseum.

Saturday, Feb. 24 — Earth Chamber of Commerce annual banquet at 7:30 p.m. in the Springlake-Earth school cafeteria, Ray Stone speaking, \$15 admission for barbecue dinner, entertainment and chance to win autographed Dallas Cowboys football.

Sunday, Feb. 25 — St. Anne's Catholic Church German Sausage Dinner from 11:30 a.m. until 2 p.m. at St. Anne's Parish Hall on Third Street in Bovina, \$6 for adults and \$3 for children, take-out and sausage by-the-pound available.

Editor's note: The Community Calender will run on a weekly basis in Sunday's Bailey County Journal.



BRUCE, INC.

Route 3, Box 485, Muleshoe, Texas 79347
Hwy. 214 North
Telephone (806) 272-5114
Fax (806) 272-5323 Mobile 946-7991
TACL-B0033600 946-7396
LP 08638

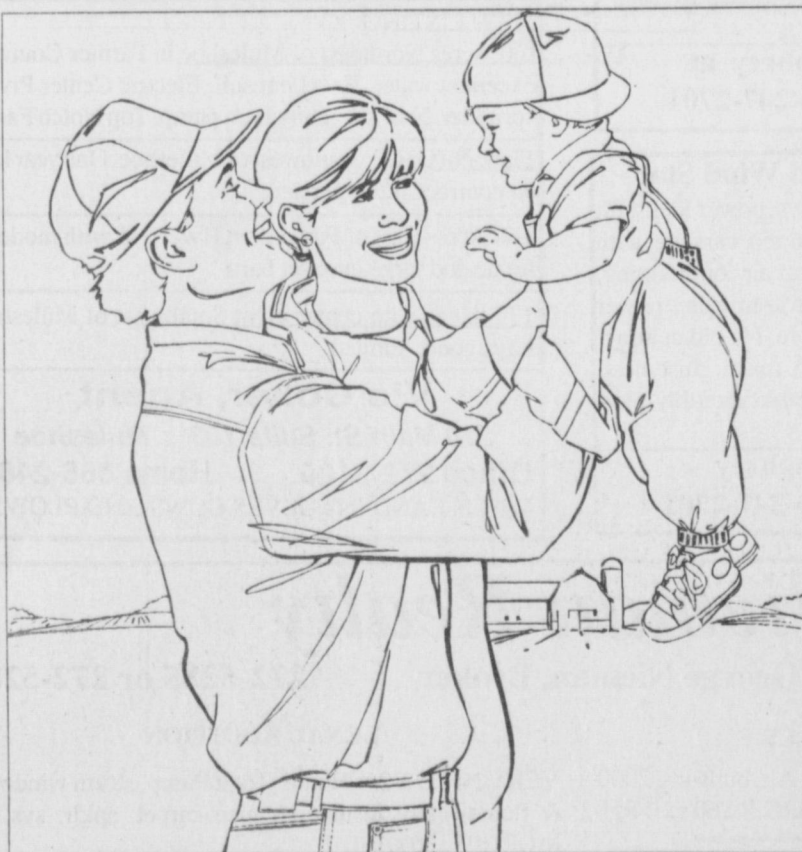
Bruce, Inc. wishes to take this opportunity to welcome Roy Lovelady and the Bryant Dealership to our company. Roy has many years experience in heating and air conditioning sales and service. He invites all his customers to call for their installation or service needs. We will continue to honor Bryant warranties. We service all brands of heating, air conditioning and commercial refrigeration equipment. We also offer residential and commercial electrical service and installation.

WeatherKing
Heating • Cooling

Call or come by our office
Hwy. 214 North
272-5114



READ THE CLASSIFIEDS



LEADERSHIP FOR A
Lifetime

We Salute Our FFA Members And
Agricultural Education
During National FFA Week, Feb. 19-25!

Salute Your
Local FFA
Chapter!

**Bailey Co. Electric
Co-Op. Assn.**
305 E. Ave. B 272-4504

**Decorators Floral
& Gifts**
616 S. 1st 272-4340

**Bailey County
Farm Bureau**
1612 W. American Blvd.
272-4567

**State Farm
Insurance**
101 S. Main Muleshoe
272-7519 • Mark Morton

**Alex's Tire
Service**
302 E. American Blvd.
272-5012

**Hi-Tek
Automotive**
215 N. 1st 272-3480

Triple S Publishing
302 W. 2nd 272-4536
Publishing the Muleshoe &
Bailey County Journals

**Pivot Products
and Kristy's Plants**
710 E. American Blvd.
272-4340

Leal's Restaurant
1010 W. American Blvd.
272-3294

**Wes-Tex Feed
Yard Inc.**
272-7555

T.J.'s Donuts
328 S. Main
272-4406

**McCormick
Seed, Inc.**
400 E. Ash Ave. 272-3156

**Farmer's
Insurance Group**
Wanda Brown 272-7548

**Electronics
Unlimited**
1532 W. American Blvd.
272-5044

**Sherley Anderson,
Lazbuddie Elevator**
965-2922

Bailey Gin Co.
HC3, Box 170
Sudan, TX

**Foster Fertilizer
Inc.**
965-2921

**Easter Grain
Inc.**
276-5255

Western "66"
607 N. 1st
272-4556