

PAMPHLET WORK

NOTICE TO Stock Associations.

The JOURNAL office is supplied with an entire new Job Outfit, including special facilities for getting out pamphlet work.

VOL. 5.

FORT WORTH, TEXAS, SATURDAY, JULY 19, 1884.

NO. 11.

TEXAS LIVE STOCK JOURNAL

Write J. B. Mitchell & Co., FORT WORTH, TEXAS. For Prices on WAGONS, Barbed and Smooth Wire, HAY PRESSES, HAY RAKES, Mowers, WIND MILLS AND PUMPS.

BANKS. THE CITY NATIONAL BANK, FORT WORTH, TEXAS. CAPITAL AND SURPLUS \$172,000.00.

SEPTEMBER EDITION of the Fort Worth Gazette A QUARTER OF A MILLION COPIES To Be Printed!

As more than 200,000 copies of this edition will find their way east among home-seekers and investors, it will prove invaluable to Land Agents, Stock Brokers and others interested in advertising the Resources and Capabilities of Texas.

INTERNATIONAL RAILROAD LAND GRANT and other land for sale by G. W. Angle, Land Dealer.

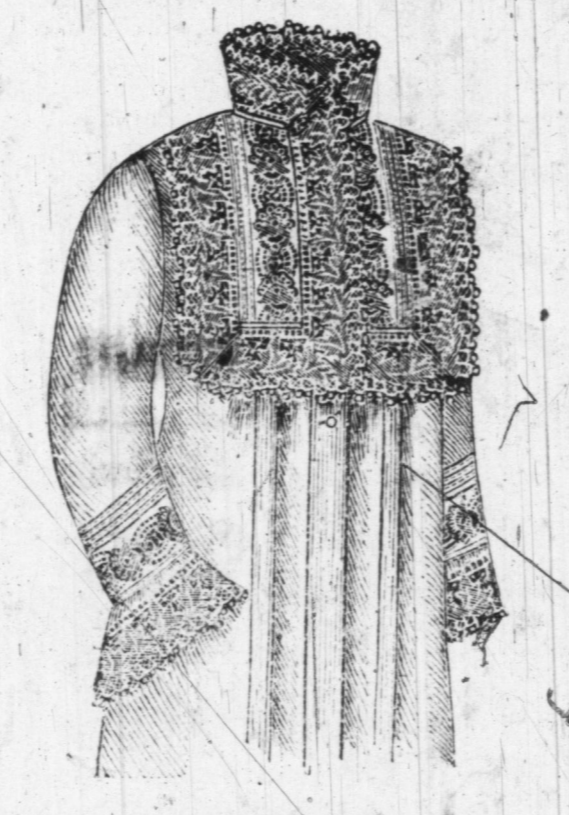
WM. BROWN, Dealer in all kinds of STAPLE and FANCY GROCERIES Produce, Provisions, Cigars and Tobacco.

TEXAS LAND, INVESTMENT AND LOAN Company. Offices at Brenham and Wichita Falls, Tex.

TAYLOR & BARR!

3,000 GARMENTS In Ladies', Misses', Children's and Infants' Cambric and Muslin Underwear, bought amidst the lightning and thunder of Panic Stricken New York!

Lot 434 is Standard Bleach Muslin, 35 inches wide, soft finish, 8c.



Lot 448 is 27-inch Printed Lawns in beautiful patterns at 6c a yard.

Out-of-town orders will be filled C. O. D., with the privilege of examination. All garments not satisfactory can be returned at our expense.

TAYLOR & BARR FORT WORTH, TEX.

GEO. B. LOVING & CO., RANCH, LAND AND CATTLE BROKERS.

We propose to give our exclusive attention to Grazing Lands and Cattle, and with our extensive acquaintance increased facilities, and knowledge of the country and business generally, we confidently believe we can make it to the interest of those wishing to buy or sell.

BANKS. M.B. LOYD, D.C. BENNETT, E.B. HAROLD, Pres't, Vice-Pres't, Cashier.

BANKS. TRADERS' BANK, Kansas City, Mo.

SAN ANTONIO. The Choate Assassination.

THE FIRST NATIONAL BANK, Fort Worth, Texas.

THE CHOCATE ASSASSINATION. A gentleman who has just returned from Dodge City, Kansas, tells the story of the killing of Bing Choate.

The Choate Assassination. A gentleman who has just returned from Dodge City, Kansas, tells the story of the killing of Bing Choate.

BROWNSON & SIBLEY Bankers, VICTORIA, TEXAS.

DODDRIDGE & DAVIS, Bankers, CORPUS CHRISTI, TEXAS.

The Choate Assassination. A gentleman who has just returned from Dodge City, Kansas, tells the story of the killing of Bing Choate.

D. SCHWARTZ & CO., CLOTHIERS, COR. HOUSTON AND FIRST STS., FORT WORTH, TEXAS.

ESTABLISHED 1872. R. F. TACKABERY, IN THE LEAD 1884.

The Choate Assassination. A gentleman who has just returned from Dodge City, Kansas, tells the story of the killing of Bing Choate.

West Weatherford Street - - - Fort Worth, Texas, Manufactures none but the BEST GRADE OF CALIFORNIA, CHEYENNE TEXAS SADDLES!

ESTABLISHED 1872. R. F. TACKABERY, IN THE LEAD 1884.

The Choate Assassination. A gentleman who has just returned from Dodge City, Kansas, tells the story of the killing of Bing Choate.

At Workmen, Uses none but GENUINE CALIFORNIA LEATHER. RAISED STAMP CALIFORNIA SADDLES From \$50 to \$100.

W. J. TACKABERY, - - MANAGER. SINKER, DAVIS & CO., Manufacturers of ENGINES, BOILERS AND MILLS, Mills for Straight Grade Patent Flour and the Latest REPLEGUE PROCESS, Corner Market Street and Pacific Avenue, DALLAS, TEXAS.

The Choate Assassination. A gentleman who has just returned from Dodge City, Kansas, tells the story of the killing of Bing Choate.

At Workmen, Uses none but GENUINE CALIFORNIA LEATHER.

W. J. TACKABERY, - - MANAGER.

The Choate Assassination. A gentleman who has just returned from Dodge City, Kansas, tells the story of the killing of Bing Choate.

RAISED STAMP CALIFORNIA SADDLES From \$50 to \$100.

W. J. TACKABERY, - - MANAGER.

The Choate Assassination. A gentleman who has just returned from Dodge City, Kansas, tells the story of the killing of Bing Choate.

SINKER, DAVIS & CO., Manufacturers of ENGINES, BOILERS AND MILLS, Mills for Straight Grade Patent Flour and the Latest REPLEGUE PROCESS, Corner Market Street and Pacific Avenue, DALLAS, TEXAS.

W. J. TACKABERY, - - MANAGER.

The Choate Assassination. A gentleman who has just returned from Dodge City, Kansas, tells the story of the killing of Bing Choate.

sold to J. H. David of this city, a car load of select mares for \$30 around. They were shipped to St. Louis.

James Moore left last Sunday for Nebraska with 250 head of mares. This makes 1250 head Mr. Moore has shipped recently to the north and west.

Col. E. R. Lane is in again from his ranch south of San Antonio, and says that his cattle are in the very finest condition.

There is again some inquiry after stock cattle, mainly coming from New Mexico, but with few sales.

Horse dealers of this city complain of the dullness of the business, and the market is glutted with stock.

There are said to be a great many stray stock in the Presidio valleys, and particularly in the Murphysville neighborhood.

Beauregard Choate was up from Goid last Monday, and sold a bunch of beefs.

Col. J. D. Staples, traveling stock agent of the Southern and Southern Pacific system, passed through the city last week on his way to Murphysville.

Mr. Alonzo Millet has just returned from a trip to Kansas City. He reports money very tight, and thinks that cattlemen will have a hard time getting rid of their cattle.

The gentlemen composing the committee representing the citizens of San Antonio who are interested in building a railroad to the Gulf, have returned from an extended tour of inspection.

The Vashinders have just returned from Dodge, where they took 2900 head of ones and twos.

Animal and Hide Inspector Campbell makes the following report of stock shipments for the week ending with the 14th.

Pittsburg Races. PITTSBURG, July 17.—A crowd of over 8,000 spectators visited Homewood this afternoon to witness the attempt of J. M. Hill's famous pacer, Westmont, to lower his record.

O. P. Zook of Missouri, is out this week prospecting for a ranch.

E. W. Perryman came up from Pearsall last week on business.

Col. Barnard is back from an extended trip to the colder clime north of us.

W. S. Carothers and W. L. Crawford of Austin, were in the city last week.

Mr. John Moore, brother of Major Alex Moore, is here from England on a visit.

W. F. Noonan was in from his Medina county ranch last Sunday and reports the country getting dry.

Mr. Hochstader and family of Fort Worth, passed through the city the other day to spend some time at Boerne, Kendall county.

H. S. Holly of Denver, was in the city again last Monday, having come down to superintend the shipment of his cattle from Murphysville.

S. Armstrong of Pearsall, last week

MITCHELL COUNTY.

Cattle Shipments—Stock Cattle Depressed—Effects of the Lease Law—Personal.

Regular Correspondence Texas Live Stock Journal.

COLORADO, July 15, 1884. A fine rain fell here last night. It came at a time to be of great benefit.

Stock water was becoming scarce and the grass drying up rapidly.

Among our cattlemen there is much activity at present. They are busily engaged in gathering bees to forward to market.

For the past two weeks shipments have been heavy.

The number to be shipped from Colorado will be far in excess of that of last year.

Those of our resident cattlemen who ship bees and pay out their money at home are in fine spirits.

They will be enabled to meet their obligations to the merchants and banks for supplies, etc.

The money goes into circulation and makes a marked change in every channel of business.

Still there is no perceptible improvement in the values of stock cattle on the range.

When money becomes easier they may get up a little in price, but there will be no permanent reaction in their favor until these lease law troubles are removed.

In spite of the assertion of the Dallas Herald in values of range stock is attributable in a great measure to the land laws now in force.

The tying up of large bodies of lands, a threatened herd law and memories of fence-cutting in the past are enough to depress values.

Men who live in this section of the state know this to be the case, and do not hesitate to say so.

If they are mistaken why is it that stock cattle are not more in demand?

Why are they offered now at \$17 to \$20, when a year ago \$20 to \$25 were the ruling prices?

Why are cattlemen hunting locations in Old and New Mexico and driving their stock out of Texas?

So long as the grass on the commons was free they were content to remain in Texas.

Before the lease system came into existence there was room for all.

Now how different is the real status. It is simple nonsense to meet arguments with mere assertions.

If the advocates of the lease system can prove that the leases will bring more revenue to the state or school fund than the sale to actual settlers, why not do so?

They know it cannot be done, and do not dare to make the attempt.

If free grass be the curse they claim, why not show it to be so by legitimate reasoning?

If the lease system is attractive to actual settlers, why was it not tried long years ago?

The federal government has never played the part of landlord with her public domain and resists every effort to dispose of it to any but actual settlers.

It does not lease an acre to any person. Then why should Texas adopt the opposite policy and foster corporations and syndicates on her public domain?

TEXAS LIVE STOCK JOURNAL

TEXAS LIVE STOCK AND LANDS.

If there is one subject more intimately blended and interwoven into the past prosperity of Texas than any other...

Nature munificently provided the pioneers of this state, a vast grazing area, upon which they found countless herds of buffalo, antelope and deer...

Prosperity in a very high degree has been attained by energetic and practical settlers who have made this grand state their abiding place.

The primary and underlying cause, yes, the very foundation stone of our present majestic proportions and magnificent structure, is due to herds and flocks.

Our grazing lands have supported farmers until farming, paid, have induced capital to build roads, open up commerce, and give us an empire of wealth second to no state in the South.

The exports of beef cattle, of horses, of wool, and mutton, and of young store cattle annually reach into millions of dollars.

When however, the policy of her lawmakers changed, and at one fell swoop her school and asylum lands were placed upon the market under seeming, but in reality, no restrictions...

The fencing into pastures large bodies of school lands by individual or corporate owners, and in inclosures containing some lands not legally controlled by the parties inclosing, led to fence-cutting, which became so indiscriminate and hurtful as to occasion a called session to check it...

Minimum price of leasing was placed so high that only parties having ranches incomplete would lease and the lands that have thus been leased keep out actual settlers and keep back small stockmen.

To remedy existing evils wrought through her land policy can only be accomplished by a repeal of the lease law, doing away with the land board and opening the lands to sale to actual settlers at reasonable prices on long time and low rate of interest.

There is quite a demand for domestic stock, and several heavy buyers are expected here this week.

Mr. John R. Adair, who has kept the ranch books for Casey, Adair & Salmon, and the Champion Cattle Company of Texas, for the past four years, ending July 1st 1884, has been compelled to resign his position owing to bad health and close confinement.

comes settled, the state gains citizens and the profits made by them out of their stock growing aids in increasing the wealth and prosperity of the state.

FENCING IN COLORADO.

We publish in to-day's paper an address or paper read in opposition to fencing government lands by stockmen, read by W. A. Towers before a committee meeting of the Stock Association of Colorado.

The fencing of the range by herders of cattle in Colorado is altogether different from the enclosure of grass lands in Texas by stockmen who have acquired legal control, either from the state by purchase or lease, or from railway companies or individual owners by lease.

The breeding, handling and raising of cattle upon the range in America, has been and is destined to continue a source of large legitimate profits to the sturdy, practical men who follow it, and the profits can be increased or diminished by the manner in which the business is conducted.

The government of the United States, impetioned and urged on by the small stockmen, will not, in Colorado, submit to the inclosure of pastures by the large cattle companies, and no rental that such companies could pay would secure to them free and undisturbed use of the inclosed lands.

All the agitation over the range problem here and in the grazing lands to the north but serves to advertise the importance of live stock growing upon the range, an industry that invites capital and benefits the world, for it presents to the investigator a grand problem, that of furnishing cheap food for the millions.

CATTLE IN BOYLE COUNTY KENTUCKY.

The Danville Advocate says there has been a lively trade in fat cattle in this section since our last report. The following sales have been made: Robert, Clerk of Garrard, 50 head, about 1600 pounds at 6 cents, to Gen. Becker of Cincinnati; L. W. Hudson, 77 head, at 6 cents, to M. Goldsmith of New York, 1650 pounds; Frank and Dave Logan, 32 head, at 6 cents, 1650 pounds, to same; P. T. Gentry, to same, 150 head, 1650 pounds, at \$6 15 per 100 pounds; Ben Spaulding of Lincoln, to same, 42 head, 1550 pounds, at 5 cents; Mr. Goldsmith, on yesterday afternoon, went out to look at the cattle of C. P. Cecil, W. F. Davison, N. I. Buster, Wakefield & Evans with a view to purchase at above quotations, according to quality.

We clip the above to show to our Texas readers what good blood, proper treatment, and good grass will do in cattle raising. The cattle above reported were 3-year old grade steers, being the produce of full-blood Short-horn bulls and common cows. The calves are raised on roughness in the winter and grass in the spring, summer and fall, until after reaching two-year old. Then they are wintered on corn and corn-fodder, until after the last of April, after which they revel in blue grass pastures until early in July when they are shipped to foreign markets.

Local Stock and Ranch Items.

Through the agency of States & Culver, the Espuela Cattle company have sold to Latham & Richards 2900 head of one and two-year-old steers at \$18 and \$20.

There is quite a demand for domestic stock, and several heavy buyers are expected here this week.

Mr. John R. Adair, who has kept the ranch books for Casey, Adair & Salmon, and the Champion Cattle Company of Texas, for the past four years, ending July 1st 1884, has been compelled to resign his position owing to bad health and close confinement.

SOUTHERN WAR MEMORIES.

How Little Children Were Served - Substitutes for Candles at a Party.

A Southern Girl in the Boston Watchman. As my home at the time was in Marietta, Ga., quite near Atlanta, and directly in Sherman's line of march, I saw a great many strange and exciting things, and suppose it is the reason I remember my life there so well, for, although a very small girl at the time, it is far more vividly real to me than each of several of my later years.

I can picture to myself distinctly the quaint figures of my little playmates, for invention, like charity, begins at home, and we little ones, being so far from our mothers' arms, and in the direction. We always wore "homespun," and as the cloth stood a good deal of wear our dresses were made large enough to last two seasons.

We must remember that there are different standards of judgment of the merit of beef animals aside from the question of adaptation to a given region. To the feeder, rapid growth, early maturity, large size and attractive appearance are more important than the best possible quality of flesh.

The special dairy breeds are hardly in competition in this class. The Channel Island breeds and the Ayrshire, although they produce milk of a constantly high quality, are too small to meet with general favor, and their friends are usually content to rest their claims on Norfolk and Suffolk.

Georgia is winning a great reputation abroad as being the home of electric women. The manifestations of Miss Lulu Hurst, and other women in northern audiences. Then Miss Matilee Lee Price, living not more than 10 miles from the home of Miss Hurst, developed the same mysterious power, and has also gone abroad to illustrate the new type of woman.

More Queer Women in Georgia. Atlanta Constitution. Georgia is winning a great reputation abroad as being the home of electric women.

The black polled Scotch breeds—especially the Aberdeen Angus—have grown into public favor with really marvelous rapidity. The following have been bred in this country—in small numbers—for twenty years or more, but attracted little attention until the success of the Aberdeens at Paris in 1878, and at other exhibitions.

Local associations are making arrangements to attend to the annual meeting, and the convention will be the largest, the wealthiest and the most important ever held in the world.—Hunter & Egan's Circular.

Broods for Best Production. (From a Paper by Prof. G. E. Morrow, read at Washington Agricultural Convention, January 26, 1884.) To attempt a comparison of the merits of different breeds seen almost presumptuous, in view of the opposing claims made by the partisans of each.

It is rarely advisable to purchase a herd of pure-bred cows from which to rear stock, as the demand for them keeps the price at comparatively high figures. Fortunately, it is not necessary to do so in order to be successful. Continued use of well-bred and wisely selected sires, in a dozen years, give animals practically equal to the pure-bred stock. Over nine-tenths of the country the much divided "common stock" furnishes a capital foundation for a herd of good beef producers, and in many sections good cross-bred or grade animals will give satisfactory results.

Every cow that is bred to the first rank in size and early maturity, of quiet disposition, fattening readily, with care in selection and management, above the average in milk-giving, the Short-horn more nearly meets the wants of the average good farmer on rich soils than does any other.

It is rarely advisable to purchase a herd of pure-bred cows from which to rear stock, as the demand for them keeps the price at comparatively high figures.

It is rarely advisable to purchase a herd of pure-bred cows from which to rear stock, as the demand for them keeps the price at comparatively high figures.

It is rarely advisable to purchase a herd of pure-bred cows from which to rear stock, as the demand for them keeps the price at comparatively high figures.

It is rarely advisable to purchase a herd of pure-bred cows from which to rear stock, as the demand for them keeps the price at comparatively high figures.

It is rarely advisable to purchase a herd of pure-bred cows from which to rear stock, as the demand for them keeps the price at comparatively high figures.

It is rarely advisable to purchase a herd of pure-bred cows from which to rear stock, as the demand for them keeps the price at comparatively high figures.

It is rarely advisable to purchase a herd of pure-bred cows from which to rear stock, as the demand for them keeps the price at comparatively high figures.

It is rarely advisable to purchase a herd of pure-bred cows from which to rear stock, as the demand for them keeps the price at comparatively high figures.

It is rarely advisable to purchase a herd of pure-bred cows from which to rear stock, as the demand for them keeps the price at comparatively high figures.

It is rarely advisable to purchase a herd of pure-bred cows from which to rear stock, as the demand for them keeps the price at comparatively high figures.

Every cow that is bred to the first rank in size and early maturity, of quiet disposition, fattening readily, with care in selection and management, above the average in milk-giving, the Short-horn more nearly meets the wants of the average good farmer on rich soils than does any other.

It is rarely advisable to purchase a herd of pure-bred cows from which to rear stock, as the demand for them keeps the price at comparatively high figures.

It is rarely advisable to purchase a herd of pure-bred cows from which to rear stock, as the demand for them keeps the price at comparatively high figures.

It is rarely advisable to purchase a herd of pure-bred cows from which to rear stock, as the demand for them keeps the price at comparatively high figures.

It is rarely advisable to purchase a herd of pure-bred cows from which to rear stock, as the demand for them keeps the price at comparatively high figures.

It is rarely advisable to purchase a herd of pure-bred cows from which to rear stock, as the demand for them keeps the price at comparatively high figures.

It is rarely advisable to purchase a herd of pure-bred cows from which to rear stock, as the demand for them keeps the price at comparatively high figures.

It is rarely advisable to purchase a herd of pure-bred cows from which to rear stock, as the demand for them keeps the price at comparatively high figures.

It is rarely advisable to purchase a herd of pure-bred cows from which to rear stock, as the demand for them keeps the price at comparatively high figures.

It is rarely advisable to purchase a herd of pure-bred cows from which to rear stock, as the demand for them keeps the price at comparatively high figures.

COMMISSION MERCHANTS. Bensely Bros. & Co., LIVE STOCK COMMISSION MERCHANTS, chauts, Union Stock Yards, Chicago, Ill. Texas Investment Co. Limited and Branch Offices General Agencies in Texas.

W. W. McILHANY & CO., Live Stock Commission Merchants, 56 Exchange Building, Union Stock Yards, Chicago, Illinois.

JOHN E. STAFFORD & CO., Live Stock Commission Merchants for the Sale of Cattle, Hogs and Sheep, Room 13 Exchange Building, Union Stock Yards, Chicago, Illinois.

WOOD BROTHERS, Commission Merchants for the sale of all kinds of Live Stock. Address: UNION STOCK YARDS, CHICAGO, ILL.

PATTERSON BROS. & CO., Live Stock Commission Merchants, Union Stock Yards, Chicago, Illinois.

DAHLMAN BROS., CLOTHIERS, 114 and 116 Houston St., Ft. Worth, Texas.

KEYSTONE PORTABLE STEAM DRILL FOR DRILLING Water Wells, Prospectors. This cut shows the Driller set up for operation. Two men can set the Driller up in ten minutes.

ST. LOUIS VISE AND TOOL COMPANY 1424 North Tenth Street, St. Louis, Mo.

COLUMBIA ATHENÆUM A SCHOOL FOR YOUNG ladies in Music, Literature, Painting, etc. No extraneous charges. Catalogues free.

If you propose buying a Windmill CHAMPION Vaneless Self-Regulating WINDMILL. GET FULL INFORMATION OF THE MERITS OF THE CHAMPION.

TEXAS INVESTMENT COMPANY LIMITED, Of Fort Worth, Texas, U. S. A. Dealers in All Kinds of Live Stock, Ranch Properties, Securities, &c.

First Annual Sale of Holstein and Jersey Cattle. RIVERSIDE STOCK FARM, Dallas, Texas. TO BE HELD AT LONG'S LAKE, DALLAS, August 7, 1884, at 11 A.M.

LEGAL AND LAND CARDS. JOHN F. GROSHON, Real Estate and Commission Broker, 268 1/2 COMMERCE ST. SAN ANTONIO, TEX.

Robinson & West, Attorneys at Law, JACKSONBO, TEXAS. Prompt attention given to all business entrusted to us.

Tom Green County Land and Live Stock Agency. Lands for ranching purposes a specialty. Collections and correspondence solicited.

No. 259, ERATH COUNTY.—450 acres, fourteen miles southwest of Stephenville, four miles from Dublin Station. 15 acres in cultivation, 255 acres under fence; one mile from school-house, two miles from postoffice; good pasturage; orchard, soil black, sandy; team; fine cotton, wheat and corn; best stock, three rooms and gallery; good water.

No. 270, HASKELL AND STONEWALL COUNTIES.—5,243 acres of which 1,200 sold; well watered, good grass. Will sell or put it in company against cattle to stock it.

No. 271, STONEWALL COUNTY.—640 acres in northeast part of county, T. & N. O. R. R. survey No. 1, on Brazos River.

No. 272, TOWN LOTS in Abilene. 23 lots in desirable location.

No. 273, PALO PINTO COUNTY.—Valuable mill and gin property at one of the best points in the county for such business, will be sold exceedingly cheap. Apply to Geo. P. Martin, Manager Land Department Texas Investment Co. Limited, Fort Worth, Texas.

BREEDERS DIRECTORY.

We call the attention of breeders to the advantages offered by the JOURNAL as an advertising medium. We guarantee a circulation among the stockmen of Texas equal to any other half-dozen papers published.

A SHLAND PARK TROTTING STUD. NEAR LEXINGTON, KY. B. J. Treacy, Proprietor.

This is strictly a breeding farm, for though raising is done, it is only for the stock belonging to the place.



RICHLAND FARM. SHORTHORN CATTLE A SPECIALTY. One Hundred Head of Pure Bred Registered Females in the Herd.

THE BEST COMBINED MILK AND BEEF BREED IN THE WORLD. The prizes taken by this breed at the recent shows in the United States, Canada and Great Britain, attest this fact.

NOTABLE. First prize as "Best Dairy Cow" at the Dairy Show in London, in November, 1883. Other breeds competing: Jersey, Guernsey, Holstein and Devon.

THE HIGHLAND HEREFORD FARM. C. O. & L. M. WHITMAN, Breeders of Pure Bred Hereford Cattle.

W. B. MONTGOMERY, Starkville, Miss. BREEDER OF JERSEY CATTLE, A. J. C. C.

FINE STOCK FOR SALE AT SCHELL CITY, MO.

I have for sale at my farm near Schell City, ninety head of cross-bred Hereford calves and forty head of Polled Angus calves.

These calves are from the very finest bred of Shorthorn cows to be found in this section of country, and are by the celebrated imported bulls Gladiolus, Meldrum and Hope-dale.

S. C. GALLUP, Manufacturer of Saddles, Bridles, Whips, Etc.



Dealer in Saddle Hardware, Leather, Horse Equipments, etc. 11 Third Street, Pueblo, Colorado.

Charcoal Tin Shingles. We offer to the people of Texas and the South the best Roof Covering on the market.

NATIONAL SHEET ROOFING CO., No. 21 Cliff Street, New York.

J. T. BERT & CO., Fort Worth, Texas. PATENTS. NO PATENT! NO PAY. Full Instructions and Blank Forms for Sale.

\$250 A MONTH. Ag's wanted. 30 best selling articles. Address JAY BRONSON, Detroit, Mich.

FROM BOSQUE COUNTY.

VALLEY MILLS, July 12, 1884. Editor Texas Live Stock Journal: Texas seems to be entering upon a new era with regard to her stock interests.

Noah McCristian of Valley Mills, and the Wallace Brothers at Turnersville, are thorough-going fellows.

J. M. Strader and N. C. Ewing are splendidly situated, their farms and pastures overlooking the waters of Bosque and Hog Creek alike.

Improvements in quality of live stock, good care of breeding animals, more attention to feeding and an increased desire to raise the best of stock of all kinds is bringing this section rapidly to the front as a county for mixed farming and stock growing.

A New Cattle Disease. ROGERS, BELL CO., TEXAS, July 12, 1884.

Editor Texas Live Stock Journal: We have a disease among the cattle here that is new and very strange to me. It is in their eye. About two weeks ago a two-year old heifer came up with one eye looking very badly.

Wichita Falls. WICHITA FALLS, July 16.—When the warm winds set in a week ago, "old croakers" were heard to say that we would surely not have another rain for three months.

The Texans at Chicago. CHICAGO, July 13.—The Texas delegation was highly complimented for their dignified and orderly appearance.

The Texans at Chicago. CHICAGO, July 13.—The Texas delegation was highly complimented for their dignified and orderly appearance.

Ladies approve of your smoking "Little Joker."

THE LAND POLICY.

Commissioner Walsh Figures on the Lease Policy, and Goes for the Free Grass Barons.

Galveston News. GENERAL LAND OFFICE, AUSTIN, TEXAS, July 10, 1884.

Dear Sir:—In reply to yours of the 8th instant, I give you the figures under sales and leases by the land board:

Total amount leased to date, 1,738,035 acres, at an average of 73-75 cents per acre, producing \$127,912 50 per annum, which represents a school tax of 12 cents on the \$100 on over one hundred millions of property.

What the effect of the lease law will be is a question for the future, for no deductions can be made from a law of only seven months age, but one thing is certain beyond any doubt, and that is no settler has been debarred by any lease so far made of his opportunity to secure a home.

The question for our people to decide is a simple one: Will they yield to the demands of a few wealthy men and pay taxes from their hard-earned money to the amount of one-quarter to one-half million annually? I say a "few wealthy men" make this demand, and I would like you to think a few moments and try to recall the names of those who have been "free grass" and calling for protection to the "poor settler."

Remembering that the sale of common fiddles in this country is from 75.00 to 80.00 annually, I feel that the public will not be tardy in appreciating an improvement which has this unsolicited testimonial from Edward Remenyi: "Your improvement is simply marvelous!"

1. I would sell to the actual settler at some fixed price, and not require him to compete with the capitalist for his homestead.

2. I would limit the lease in quantity to any one firm or person, or increase the minimum price per acre in proportion to the extent of the lease.

nor can they ever again control legislation in their private interests. I must apologize to you for the length of this communication, but the fact is I am too busy to write a short letter on this question.

CHEAP FIDDLES VALUABLE. Remenyi Astonished at a Fifty-Cent Instrument.

Hackensack Correspondence New York Sun. A few evenings since John P. Adrews of Hackensack invited a small party of gentlemen including several amateur violinists, to meet Remenyi, when an incident occurred that created a sensation and greatly astonished the Hungarian virtuoso.

Remenyi very reluctantly consented to test the fifty-cent instrument, which he called a musical anachronism, not even a fiddle. It was only a wooden box with strings on it, but he was so charmed with it that he said he would be willing to play the unsightly fiddle in a public concert.

In 1880 I had a conversation with Ole Bull in which we expressed our mutual dissatisfaction with the tone of the patent violins with the Mollenhauer improvement. In order to illustrate what he could not explain, he exhibited to me a box on the back of which was produced the pure silver bell tone that was wanted, but not found in ordinary and in many so-called extraordinary violins.

Remembering that the sale of common fiddles in this country is from 75.00 to 80.00 annually, I feel that the public will not be tardy in appreciating an improvement which has this unsolicited testimonial from Edward Remenyi: "Your improvement is simply marvelous!"

Mr. Brady is well known in the trade as the improver of the Mollenhauer patent violin. He was until recently, manager of the Patent Violin Company. Although he obtained letters patent for his sounding board on December 27, 1881, numerous obstacles have arisen which have retarded its general introduction.

Cuticura

INFANTILE BLOOD PURIFIERS AND SKIN BEAUTIFIERS.

A Positive Cure for Every Form of Skin and Blood Diseases, from Pimples to Scrofula.

"WORKS TO A CHARM." J. S. Weeks, Esq., Town Treasurer, St. Albans, Vt., writes: "My son, a lad of twelve years, was completely cured of a terrible case of eczema by the Cuticura Remedies."

"A TERRIBLE CASE." Mrs. P. H. H. writes: "My son, a lad of twelve years, was completely cured of a terrible case of eczema by the Cuticura Remedies."

FOR PALE, LANGUID, Emaciated children, with pimply, scaly skin, and other ailments, Cuticura is the best remedy. It purifies the blood, cleanses the skin, and restores the system to health.

Advertisement for Golden's Liquid BEEF Tonic, featuring an image of the product bottle and text describing its benefits for strength and health.

Strengthening—Invigorating—Fattening. GOLDEN'S LIQUID BEEF TONIC is pronounced by scores of physicians, and by thousands of people who have used it, to be the best known remedy for Debility, Dyspepsia, Indigestion, Loss of Appetite, Loss of Flesh, Etc.

IT IMPROVES THE QUALITY OF THE BLOOD and enriches it, and is therefore a most important corrective in cases of all chronic maladies which are associated with an IMPROVED STATE OF THE BLOOD.

TO PHYSICIANS AND INVALIDS. An analysis of "Golden's Liquid BEEF Tonic," by the eminent chemist, ARTHUR HILL HESSALL, M.D., F.R.S., of London, England, and an endorsement by the celebrated physician, PROFESSOR SIR ERASMUS WILSON, M.D., of London, are included on each bottle.

Advertisement for Singer Sewing Machines, showing an image of the machine and listing various models and prices.

THE Texas & Pacific RAILWAY. THE GREAT POPULAR ROUTE BETWEEN The East and the West!

SHORT LINE to New Orleans. And All Points in LOUISIANA, NEW MEXICO, ARIZONA and CALIFORNIA.

North, East and Southeast. Pullman Palace Sleeping Cars. DAILY BETWEEN ST. LOUIS AND DALLAS, Fort Worth, El Paso.

SAN FRANCISCO, CAL., ALSO Marshall and New Orleans WITHOUT CHANGE! SOLID TRAINS El Paso to St. Louis.

Fast Time, First-class Equipment, Sure Connections. See that your tickets read via Texas and Pacific Railway. For Maps, Time Tables, Tickets, Rates and all required information, call on or address any of the Ticket Agents or

H. P. HUGHES, Passenger Agent, Fort Worth, Texas. B. W. MCGILLICUDDIE, Asst. Gen. Pass. Agt., Fort Worth, Texas. Traffic Manager, Galveston, Texas.

THE GAZETTE

56 Columns, Large, Clear Type, ONLY \$1.00 PER ANNUM!

The political interest of the present year is important to all, and the WEEKLY GAZETTE will convey prompt and full information of all STATE AND NATIONAL topics of interest, and that every man may be able to keep posted, the price of subscription HAS BEEN REDUCED

to meet the ability of all. THE GREAT Weekly Gazette!

THE GREAT ADVOCATE. THE WEEKLY GAZETTE. Offers to its readers many inducements, among which are the following:

Bold, clear type and clean print, making the paper easy to read. Matter selected with especial reference to the wants of weekly newspaper readers. Timely editorials on all questions of state, local or national importance. The Gazette has the courage of its convictions, and speaks out promptly in meeting.

A comprehensive market report. A full line of Associated Press and Special Telegrams from all parts of the country. A large correspondence from all parts of the state. An unswerving devotion to Texas as a unit. Opposition to industrial antagonisms, the unity of our people and the good of all. And a price which all are able to pay.

THE WEEKLY GAZETTE. Only \$1 per Annum in Advance.

Address Fort Worth Publishing Co., Fort Worth, Texas.

FOR SALE OR EXCHANGE

Parties having any kind of live stock or land to sell, exchange or otherwise dispose of... ATTS OF ADVERTISING...

CATTLE FOR SALE

Two thousand head of steer cattle, one two, three and four year-olds, all in good condition...

LAND FOR SALE

25.05 acres, splendid grassed water, 20 to 25 miles from Dallas, Texas...

WANTED, ON SHARES

The undersigned desires to obtain on shares, 200 brood mares and 200 yearlings...

JOHNSON GRASS SEED

Orders accompanied with cash prompt or filled at \$1.50 per bushel...

STOCK CATTLE WANTED

The undersigned has a 1200-acre ranch on Llano River, Matamoros, Texas...

STRAYED AND STOLEN

Strayed from herd about May 15th last, between Cisco and Albany...

THIRTY DOLLARS REWARD

Strayed from herd about May 15th last, between Cisco and Albany...

\$100 REWARD

Strayed from herd about May 15th last, between Cisco and Albany...

\$250 REWARD

Strayed from herd about May 15th last, between Cisco and Albany...

\$100 REWARD

Strayed from herd about May 15th last, between Cisco and Albany...

ONE HUNDRED DOLLARS

Strayed from herd about May 15th last, between Cisco and Albany...

GUNS

For information FREE send to Phoenix Firearms Co., 41 Barclay Street, N.Y.

PERSONAL NOTES

W. R. Worsham, a leading cattleman of Henrietta, was registered at the Pickwick on Wednesday...

W. R. Worsham

Geo. B. Loving left for St. Louis, Mo., Thursday night and will be absent several days...

G. W. Cole

G. W. Cole of Brown county, was in the city on Tuesday looking up a buyer for 1000 head of good West Texas stock...

Bud Willett

Bud Willett came in from Colorado City on yesterday morning and reports sales coming in to Colorado rapidly...

Uncle Jimmy

Uncle Jimmy Merchant of Henrietta, the oldest of the Merchant brothers, spent Thursday in the city...

Geo. W. West

Geo. W. West of Gainesville, spent Wednesday in the city. He notified us that he would not object to grazing and keeping his young steers...

Will B. Benedict

Will B. Benedict of Graham, came in on Wednesday and says cow-punching in Texas during summer is not as cool and pleasant as a Kentucky blue-grass shade...

J. H. Hittson

J. H. Hittson, the leading range man of Weatherford, spent the 15th in the city...

Col. W. C. Young

Col. W. C. Young of this city, made a trip the first of the week to Colorado City, and while there sold and delivered 85 bales to B. Gatewood for \$36 per head...

Cattle Company herd, located in Garza county.

W. A. Stinson returned from the trail in B. I. T. on last Saturday. His 1500 steers for Hunter, Evans & Slaughter were doing well when he left them—started for Dodge City, Kan.

Abram Nave of Missouri, the senior member of the Nave, McCord Cattle company, came from Fort Worth on an extended visit to the ranch in Garza on yesterday morning and seems well pleased with his visit.

J. W. Zook came in from Colorado City on Thursday morning, returning from his Garza county ranch. The Nave McCord Cattle Company of Garza county has, in Mr. Zook, an excellent manager. He sold for them a fine lot of mares at \$35.

W. H. Merten, manager of the Iowa and Texas Cattle company, spent Sunday morning in the city, en route to Chicago with beef cattle. He will visit his Iowa home before returning and bring out his family to his new home at Colorado City.

Julius Clark of Santa Fe, New Mexico, president of the Iowa and New Mexico Cattle and Ranch company, located in the counties of Valencia and Socorro, N. M., is now in the city on a trip to the state to purchase more cattle for the ranch.

Col. Sugg was in the city Saturday and much pleased at the outlook for the good market. He is proud of the record cattle in his Indian Territory range are making. They go full fleshed to market and knock the ripe permissoms from the tallest branches.

T. M. Westbrook, of Johnson, was in on Tuesday and spent two days in the Fort. He is a stockman in cattle and has a fine herd of high bred cattle on his farm west of Cleburne. We are always glad to know such men, as they are the bone and sinew of this section.

Sam Glascock, of Mabry, Crawford & Glascock, came in from Young county on the 15th and spent a few days in the city. He reported the shipments of their company from Wichita Falls of over 400 head of good beefs this week. Grass good, range fine and the calf crop extra.

J. G. Witherspoon of Gainesville, spent Tuesday night in the city and returned home via Dallas on Wednesday. He falls to be in attendance on executive committee of Northwest Texas Cattle Raisers meeting on the 19th, thinking the meeting had been called for the 15th.

Capt. N. M. Willett of Sherman, and his son, Carleton, a talented young artist, in our city. Capt. Willett is a successful owner of Shorthorns in Texas, and will spend a few days visiting the improved herds in this section. We have known him well and are more than pleased to welcome him to Fort Worth.

Berry Gatewood and son, John Gatewood, of Ellis county, pronounced the dealers' sale in Colorado City on Wednesday morning. They report stock movements opening up lively among ranchmen. Heaves coming in were fast. They made some purchases in the city and left on the 15th, delivered in pens at Colorado City.

W. S. Ikard of Henrietta, spent the closing days of last week in the city. He is delighted at the success of cattle men of Clay and counties beyond in getting their good grass cattle off on a fine market and thinks our estimate of value of the city interviewing stock men to secure cattle for both companies. He and Mr. Julius Clark are determined to secure more cattle and have certainly reached Texas at a good time.

W. R. & S. H. Cavitt of Bryan, Texas, spent Thursday in the city. These gentlemen are deeply interested in the J. C. brand cattle of Taylor and Rannels counties. The herd now controlled by them is, with the present year's branding, over 5000 head. They expect they will ship from Abilene will reach over 400 head. We knew the stock well and regard it as one of the best in Northwest Texas. It is for sale but not for sacrifice. Particulars as to how to address these gentlemen at Abilene, or this office.

Make your wife happy by carrying home a box of Silver Loaf Baking Powder.

A Texan's Opinion of Arizona. Arizona Live Stock Journal.

James H. Parramore, Esq., a well known and experienced cattle man at Abilene, Texas, happened to Tucson early in the week. In reply to a few questions by a Journal reporter, our friend said: "It seems strange to me that nearly every live stock man I meet asks me the same question about Arizona—whether I like it, and what comparison can be made between this territory and Texas, and a score of other things. To begin at the beginning, I have to say that Arizona, in my estimation, is one of the finest grazing districts in America. I have been over the greater portion of this vast expanse, and find that it is fully as good as reported. So far as I am concerned I like the southern part of the territory best, and accordingly my friends, Messrs. A. J. Merchant of San Simon, Arizona, and James H. Hall of Los Angeles, California, have decided to locate in the San Simon valley. Of course in our run and anxiety to procure good ranges and fine herds, we must not forget that while Arizona is second to no section as a stock country, she will never carry as many cattle on the same amount of land as Montana or Texas. This fact is no drawback so long as we do not overstock the range. This climate is the finest in the world, and will never fail to produce animals with superior constitutions. The lack of water is one drawback of the few. There are many areas that can never be used on this account, and it seems almost like punishment to think of this, for if we had a plentiful supply of water, thousands of cattle could be fattened where foot-steps are never heard."

Silver Loaf Baking Powder take second place to none in the market. The best smoking tobacco is "Little Joker."

OUR DALLAS LETTER.

Stock and Ranch Properties Dull—Stock Cattle Lower—Few Sales—Fine Bulls.

Beef Market—Local Prices for Young Cattle—Personals.

DALLAS, July 17, 1884.

The JOURNAL correspondent is almost persuaded to believe that the bottom is temporarily out of transactions in cattle and land. No real estate firm will confess to having sold an acre of ground, and no dealer will admit that he has sold or purchased a hoof or horn in a month past.

The biggest item that this particular scribe has been able to run across the past week is the fact that there is activity in the hay market. (The compositor will please not make this appear as hog market. I am referring to natural grass, not free grass: It costs \$6.50 per ton.) And while I'm on this fodder subject I don't think it amiss to tell the farmer and stock raiser that this is the season to construct hay stacks and straw racks. It will cost only the labor necessary to harvest it and next winter their cattle, horses, mules and sheep may find from an inch to a foot of snow on the ground, and their bellies empty. The man who has live stock to winter ought to start in now and provide fodder and shelter in time for the severe weather to come, even though the only last of winter is a week or two in the entire winter.

Bayne and Cecil of Boyle county, Kentucky, have just imported to Dallas fifteen thoroughbred Shorthorn bulls, two and a half years old, fine looking animals and much admired by live stockmen.

Stone, Sons & Co., a few days ago, sold 200 head of ones and twos, mixed, to Charles Hedrick, for Pearce's New Mexico ranch, at \$12 and \$16.

There will undoubtedly be a considerable movement of stock cattle westward by rail early in August for New Mexico and West Texas ranches, now that the break in the Texas Pacific and the Southern Pacific roads, near Sierra Blanco, have been repaired, allowing stock trains to go through without unnecessary delays.

Although the stagnation is very depressing in Dallas, it is observable that there is much inquiry for investments. Enquirers are plentiful, but at such low figures that holders refuse to sell. The drop off in prices the past two months at Dallas, have been from \$2 to \$14 to \$15 are quoted at \$12; twos that readily brought \$18 are as low as \$15, and threes that brought \$21 to \$22 are no better than \$18.

Money matters are badly unsettled in the east; then it is a presidential year and capital is always timid in such periods until the excitement of the election is over. All appear confident that a bettering of markets and prices will come in the fall.

L. D. Bickham, from Central Kentucky, and R. S. Richardson of St. Louis, have been prospecting in Dallas the past week, and are now in North-west Texas, viewing the country around Wichita.

Gen. R. M. Gano, who has been absent in New York and the East generally, is expected home to-day. He has been conducting extensive negotiations with Eastern capitalists in regard to investments in Texas, and it is anticipated he will report good results.

Mr. Williamson, from Southern Kentucky, is in the city prospecting for ranch property investments in the West. Mr. Witherspoon of Gainesville, is in the city to-day.

Reports from the West received here to-day are to the effect that beef cattle are just beginning to move to market from that section. The class of stock has not fattened so rapidly as usual this season and are consequently a little late, having been held back to get into condition.

There is a very noticeable absence of local dealers for beef cattle at present, and as a consequence growers are shipping direct to Chicago, Kansas City and St. Louis. Dealers desiring beef cattle can find them in Dallas from this time on.

Ranch cattlemen and owners generally throughout the range districts, will be interested in the fact that the inspectors representing the different local associations have met their duties this season, by cutting out quite a number of brands not belonging to shipments with which they arrived.

Mr. J. R. Plummer of the Panhandle Association at Ft. Worth, is now in the Northwest Texas Association, are taking in the "strays" this year, and the reputation of these gentlemen as thorough cowmen leaves no doubt as to the faithful performance of the work required of them.—Hunter & Evans' Circular.

Use Silver Loaf Baking Powder. Silver Loaf Baking Powder is always pure and fresh.

THE MARKETS. Latest From Chicago, St. Louis and Kansas City.

CHICAGO MARKET. (Special Telegram to the Journal.)

ESTRAYS.

Lampassas. 1 bay horse, 4 years old, no brand. 1 bay horse, branded Z.

1 sorrel horse, branded Z. 1 sorrel horse branded T and B. 1 brown horse, no brand.

1 sorrel horse, branded NON. 1 bay horse, branded S.J. 1 sucking colt, no brand.

1 sorrel horse, no brand. 1 bay filly, no brand. 1 sorrel mare, branded SP.

1 sorrel colt, no brand. 1 bay horse, 12 brand. 1 bay horse, branded SHE.

1 bay horse, branded L and G. 1 brown horse, branded D.

1 brown filly unbranded. 1 dark sorrel mare, branded BC. 1 bay mare, branded HOO.

1 black mare, branded L. 1 brown mare, branded G.

1 brown horse, Spanish brand. 1 bay horse, branded T.J.F. and J.Q. 1 bay mare, branded M and T.

1 bay horse, branded C. 1 brown horse, blotched brand.

Lee. 1 heifer marked crop left, under slope right, branded O on left hip.

1 heifer marked swallow fork right, branded thus.

1 brindle cow and calf branded O on left side and 1 on left hip, split and underbail crop right.

1 dark bay mare, 6 years old, 14 hands high, branded HC on left shoulder, and R on left thigh.

1 sorrel mare, saddle marked, 6 years old, branded G on right shoulder.

1 dun mare pony 7 years old, branded F on right shoulder, on left shoulder.

1 sorrel horse 5 years old, branded on left shoulder.

A certain work ox 10 years old, marked swallow fork left, crop over and underbail left, branded on left side.

1 red ox marked, overbail crop left, crop and split right, branded on left hip; MB; the B blotched.

1 blue bull with some white spots, 9 years old, branded 2V on left hip, marked swallow fork left, underbail right.

ESTRAYS.

1 bay mare 7 years old, 13 hands high, branded on left shoulder.

1 two year old heifer branded W9.

1 bay mare 7 years old, 13 hands high, branded on left shoulder.

1 two year old heifer marked crop and over half crop right, underbail left, branded on right hip.

1 block horse mule 11 years old, 12 hands high, branded W.

1 brown mare 8 years old, 14 hands high, branded EM on left hip.

1 two year old filly, brown, branded EM.

1 iron gray horse 3 years old 14 hands high, branded EM on shoulder, 53 on hip.

1 bald-faced mare 5 years old, 14 hands high, sway backed, branded S2.

1 dun filly 3 years old, 12 hands high, branded O & V.

1 black mare, 9 or 10 years old, blotched brand on right jaw.

1 two-year old black colt, branded on right hip.

1 bay mare, 8 years old, no brand.

McCulloch. 1 sorrel horse, 14 hands high, white in face, 3 white feet, 9 years old, branded SF on left shoulder.

1 brown horse, white in face, white feet, 9 years old, 15 hands high, branded on right shoulder P & L (P & L connected) inverted, 73 (connected) on thigh, 11 on left shoulder, blotched brand on neck.

Mason. 12-year old mare, branded O on left shoulder, 12 hands.

1 bay mare, branded O on left shoulder, 13 hands high.

1 year old bay mare, unbranded.

1 sorrel mare, branded O on left shoulder, TH on right shoulder, on left hip, O on left jaw.

11-year old bay colt, unbranded. 1 gray gelding, 9 or 10 years old, 14 hands high, branded on jaw.

ESTRAYS.

1 brown mare, 2 years old, 12 hands high, branded on left shoulder and P on right shoulder.

1 bay pony 8 or 10 years old, branded O on right hip.

1 gray horse mule, 13 hands high, 15 years old, no brand.

1 light bay horse, blaze face, 8 or 9 years old, 14 hands high, branded 29 on left shoulder.

Morris. 1 bay pony mare, 13 hands high, 4 years old, branded E on the left shoulder and both hind feet white.

Navarro. 1 red steer marked crop and underbail left, brand 1 D on side and COW on hip.

1 white and black pided cow, over slope left crop and over half crop right, branded on hip, and her sucking calf not marked or branded.

1 white cow, mark crop and underbail left, swallow fork and underbail right, branded PD on right hip and U on right side.

Palo Pinto. 1 bay horse, 14 hands high, 12 or 14 years old, harness mark, branded D on left shoulder.

1 dun cow 10 years old, marked grub left, crop and underbail right, branded OAL on right side and I on left hip.

1 sorrel mare, blaze face, all feet white, 4 years old, 14 hands high and branded IUK on left thigh, sucking colt not branded.

1 cow and calf branded on left side and hip.

1 brown horse, Spanish brand. 1 bay horse, branded T.J.F. and J.Q. 1 bay mare, branded M and T.

1 bay horse, branded C. 1 brown horse, blotched brand.

1 heifer marked crop left, under slope right, branded O on left hip.

1 heifer marked swallow fork right, branded thus.

1 brindle cow and calf branded O on left side and 1 on left hip, split and underbail crop right.

1 dark bay mare, 6 years old, 14 hands high, branded HC on left shoulder, and R on left thigh.

1 sorrel mare, saddle marked, 6 years old, branded G on right shoulder.

1 dun mare pony 7 years old, branded F on right shoulder, on left shoulder.

ESTRAYS.

1 sorrel horse, 13 hands high, 11 or 12 years old, branded PCC on left shoulder, blaze face.

Washington. 1 dark bay mare, 14 hands high, 5 or 6 years old, no brand; with a young colt, dun color.

1 bay mare, with Spanish brand resembling a crescent A on left shoulder, star in forehead, snip on nose, four white feet, 10 years old, 14 hands high.

1 roan horse, blotched brand on left shoulder, star in forehead, three white feet, 15 years old, 13 hands high.

Williamson. 1 dark bay mare, 14 hands high, 12 years old, branded D6 on left shoulder, shod, saddle and harness marked.

1 sorrel mare, 9 years old, 14 hands high, white feet, branded A on left shoulder, blaze face.

1 black horse, 5 years old, branded T & W with W above and bar between on left hip.

1 sorrel mare, 13 hands high, 7 years old, branded BM on left shoulder.

1 sorrel horse, 13 hands high, 2 years old, branded W on left shoulder.

1 roan mare, 7 years old, 13 hands high, branded EN on right shoulder.

1 black mare, 14 hands high, 5 years old, branded Tc with bar under it on right thigh, 3 on right hip.

1 brown pony, 14 hands high, 7 or 8 years old, branded LPA the LP connected on left shoulder, harness and saddle marks.

1 black mare, 14 hands high, 5 years old, branded Tc with bar under it on right thigh, 3 on right hip.

1 brown horse, 3 years old, 14 hands high, branded S with bar over it on left shoulder, star in face.

1 brown mare, 14 hands high, 3 years old, branded IHL the HL connected on left thigh, 10 on right hip.

1 dun horse, shod, branded XD connected on left thigh, 9 on left hip.

1 gray mare, 14 hands high, 3 years old, branded HU connected and S on left shoulder.

1 sorrel mare, 3 years old, 14 hands high, unbranded.

1 sorrel horse, large Spanish brand on left thigh, UT on right thigh, 14 hands high, 7 or 8 years old.

1 bay mare, 9 years old, 15 hands high, branded triangle C connected on right thigh.

ESTRAYS.

1 bay horse, 7 years old, 15 hands high, shod all round, 14 hands high, branded W6 on left thigh.

1 sorrel pony, 8 years old, branded MR on left thigh.

1 bay mare, 8 or 9 years old, branded 3M on left shoulder, also 5 cross on left hip.

1 bay gelding, 14 hands high, 5 years old, hind feet white, branded FX on left shoulder, also road brand FF on left hip.

1 gray mare, 16 years old, 14 hands high, branded J with D connected on top of left shoulder.

1 sorrel gelding, 15 hands high, 10 years old, branded UJ on left thigh, C on left jaw, T on right jaw.

1 bay gelding, 16 hands high, 10 hands high, shod all round, blotch brand on right shoulder, a black spot in hollow of left thigh.

1 gray gelding, 11 years old, 14 hands high, harness marked, branded JH with bar under it, 10 hands high, 14 hands high, 14 hands high, branded YZ on left shoulder.

1 sorrel mare, 15 years old, 14 hands high, branded JR on left jaw, 7 on left side of neck, marked under half crop right and left, indescribable brand on left hip.

1 dark bay mare, 10 or 12 years old, 14 hands high, white spot in forehead, hind feet white, branded BR with AX on left hip, 3 on right hip, 14 hands high, branded K with bar under it on shoulder.

1 bay mare, 12 or 13 years old, branded 2 on left shoulder, and 2 on left thigh.

1 young colt.

1 black 2-year-old stallion, white face, hind feet white, no brand.

1 cow and 2 calves, cow is a blue roan color, marked under half crop right and left, indescribable brand on left hip.

1 flea-bitten gray horse, 10 years old, 14 hands high, blotched brand on left shoulder.

1 bay pony, 13 hands high, 8 or 9 years old, branded JS or J5 on left thigh, blotch brand on left shoulder.

1 brown horse mule, 14 hands high, 8 or 9 years old, branded circle 8 on left shoulder.

1 chestnut sorrel mare, 13 hands high, 7 years old, branded 4z (connected) on left shoulder.

1 sorrel mare, 10 years old, 14 hands high, brand not perceptible, has a yearling colt unbranded.

1 bay mare, 8 years old, 13 hands high, branded 42 on left shoulder, right hind foot white up to ankle, right eye out, has a dun colored mare colt, branded BOY on left thigh.

ESTRAYS.

1 bay mare, 12 or 15 years old, 16 hands high, saddle marked, and branded on left shoulder A4.

1 light bay horse, 3 or 4 years old, 13 or 14 hands high, branded HO (connected with half circle above) on left shoulder.

1 yoke of work oxen, one is red and white pided, 12 years old, branded SAM on right side, marked crop left, under crop right, and one is brown colored, 10 years old, branded 89 on left hip, marked crop left, under half crop right.

1 gray gelding, 14 hands high, 6 or 7 years old, marked crop left, under crop right, and one is brown colored, 10 years old, branded 89 on left hip, marked crop left, under half crop right.

1 chestnut sorrel mare, 14 hands high, 6 years old, branded AL connected on left shoulder, has split in left ear.

1 sorrel mare with blaze in face, 14 hands high, 11 or 12 years, branded AS on left shoulder.

1 chestnut sorrel

KANSAS.

DORSEY & CAMPBELL.

Postoffice, Wichita, Kansas. Ranch in Garden county, Texas. Branded on left hip. Two dollars per head. Will be paid for information of all lost stock.

CAMPBELL & DORSEY.

BEESON & HARRIS.

Postoffice, Dodge City, Kansas. Cattle range on Sand Creek, Clark county, Kansas. Known as the Moore brand. Cattle branded on left side. Horse, same brand.

C. A. LEUTHSTROM.

Postoffice, Dodge City, Ford county, Kansas. Range on both sides of Sand Creek. Branded on both sides of neck. Horses branded on left shoulder.

ARTHUR GORHAM.

Postoffice, Kinsley, Kas. Range on the Cimarron and Buffalo Rivers, west from the mouth of Buffalo. Brand known as half-circle. Marked on both sides. Ear marks: Swallowfork and underlip on both ears.

INDIAN TERRITORY.

NEW YORK CATTLE COMPANY.

Postoffice, Fort Supply, I. T. Range on Wolf Creek, Indian Territory. Cattle branded KH on both sides. Ear mark under slope each ear. Ear mark on increase short crop of each ear.

CHEYENNE & ARAPAHO CATTLE CO.

Postoffice address, Cantonment, I. T.

A. B. ROFF.

Postoffice, Gainesville, Ranch on Caddo Creek, Indian Territory. Cattle branded RoP on left side, marked under slope each ear. Ear mark on left side. This is brand in various marks.

SOUTHWEST TEXAS.

BUZARD & HILLARD.

Postoffice, Uvalde, Uvalde county, Texas. Range on both sides of neck. Cattle in same brand in Hill, Hopkins and adjoining counties. Horse brand same as cut on left hip.

CONCHO RANCH.

Stilson Case, Thorp, Ryburn & Co. Ranch on Dove Creek, twenty-five miles southwest of Sanburg.

DICKINSON CATTLE COMPANY.

J. W. DICKINSON, General Manager, P.O. Terrell, Kaufman Co., Texas. S. W. LYON, Assistant Manager, P. O. Sweetwater, Nolan Co., Texas.

WEST TEXAS.

AUBURN CATTLE CO.

A. C. RICHES, President, G. W. STOKES, Manager. Postoffice, Christian, Texas. Ranch, head of Little River, ratio into county.

ARLINGTON CATTLE CO.

L. J. WATSON, President; J. R. HURSON, Vice-Pres.; H. R. HURSON, Secretary and Treasurer. Postoffice, Burnet, Texas. Ranch on Sweetwater, Nolan county.

W. C. DIBRELL.

Postoffice, Coleman, Texas. Ranch on Jim Ned at Camp Colorado, Texas. Horse brand same as cut on left hip.

JEFF PA side, BILL side, PINK side.

PA left side, PA both sides. Cattle in various marks. Horse brand on left hip or shoulder.

W. C. DIBRELL.

Postoffice, Coleman, Texas. Ranch on Jim Ned at Camp Colorado, Texas. Horse brand same as cut on left hip.

W. M. ERATH'S OLD BRAND.

W. M. Erath's old brand. Please do not stray any cattle or horses in these brands.

F. C. L. FOWZER, JR.

Postoffice, Taylor, Williamson county, Texas. Ranch, San Gabriel river, 7 miles northeast of Taylor. Fine Durham and Hereford stock for sale.

G. H. GODDARD.

Care Valley National Bank, St. Louis, Mo. Ranch Manager, J. N. Clark. Postoffice, Pecos Station. Ranch on Pecos county, Tom Green county.

H. HUDSON-BROS. & WATSON.

Postoffice, Burnet, Burnet county, Texas.

LLANO LIVE STOCK AND LAND CO.

J. E. HAWLETT, President, St. Joseph, Mo. F. W. RICHARDSON, Manager, Junction City, Texas. Ranch in Kimble county, Texas. Swallowfork and underlip left crop right.

T. H. MATHIS.

Postoffice, Rockport, Aransas county, Texas. Ranch on Success River, San Patricio county. Young cattle in all improved.

F. L. MCGREGOR.

Postoffice, Stonewall, Texas. Ranch, Gillespie county, Texas.

A. H. WEBB.

Postoffice, Round Rock, Texas. Ranch in Gillespie county, Texas. Cattle branded CAVE on left side, marked under slope each ear.

W. S. BOLTON.

Postoffice, San Angelo, Tom Green county. Ranch, Live Oak Creek and Colorado River.

W. M. WEIR.

Postoffice, Brady, McCulloch Co., Texas. Ranch, Little Brady creek, McCulloch Co., Texas. No one authorized sell or use in any way any cattle in the above brand.

N. T. & W. H. WILSON & CO.

Postoffice, Junction City, Texas. Ranch 10 miles north of Junction City. Horse brand same as cut on left hip. Cattle in various marks and old brands.

WEST TEXAS.

AUBURN CATTLE CO.

A. C. RICHES, President, G. W. STOKES, Manager. Postoffice, Christian, Texas. Ranch, head of Little River, ratio into county.

ARLINGTON CATTLE CO.

L. J. WATSON, President; J. R. HURSON, Vice-Pres.; H. R. HURSON, Secretary and Treasurer. Postoffice, Burnet, Texas. Ranch on Sweetwater, Nolan county.

W. C. DIBRELL.

Postoffice, Coleman, Texas. Ranch on Jim Ned at Camp Colorado, Texas. Horse brand same as cut on left hip.

JEFF PA side, BILL side, PINK side.

PA left side, PA both sides. Cattle in various marks. Horse brand on left hip or shoulder.

W. C. DIBRELL.

Postoffice, Coleman, Texas. Ranch on Jim Ned at Camp Colorado, Texas. Horse brand same as cut on left hip.

W. M. ERATH'S OLD BRAND.

W. M. Erath's old brand. Please do not stray any cattle or horses in these brands.

ALAMO CATTLE COMPANY.

A. S. Nicholson, President; W. A. Huffman, Secretary and Treasurer; R. M. Stevenson, Superintendent. Postoffice, Phantom Hill, Jones county. Ranch on Clear Fork of Brazos River, in Jones and Shackelford counties, Texas. Also cattle in other side, marked under slope left ear, drop and underlip the right ear.

M. & B. COCKRILL.

Postoffice, Colorado City. Ranch, Deep Creek. Horse brand on right hip of horse.

M. COCKRILL.

Horse brand on left hip.

COLUMBIA CATTLE CO.

Postoffice, Columbia, Mo. Ranch on Cedar and Gotzales Creeks, seven miles southeast of Breckenridge, Stephens county, Missouri. Cattle branded with C on left side of neck.

ESPUELA CATTLE COMPANY.

Or Fort Worth. A. M. BRITTON, President; S. W. LOMAX, Secretary and Treasurer; I. L. GROFF, Superintendent. Ranch Postoffice, D. O. E. Dickson's county. Horse brand same as cut on left hip.

ALABAMA AND TEXAS CATTLE CO.

A. P. BURSH, JR., General Manager, Colorado Co., Texas. Ranch on "Colorado" river at Bull Run, Mobile, Ala.

WILLIAM EMERSON.

Postoffice, Colorado, Mitchell county, Texas. Los Ranch Secury county. Anyone knowing of any estrayed horses in this brand will come, a favor by notifying the owner.

G. K. GORDON.

Postoffice, Junction City, Kimble county, Texas. Ranch on N. Llano, ten miles above Junction City. Cattle in all marks, and generally branded on right side.

GOMAZ CATTLE COMPANY.

Postoffice, El Paso, Texas. Ranch, Antelope Springs, Presidio county, Texas. Horse brand same as cut on left shoulder.

GEORGETOWN RANCH COMPANY.

Of Georgetown, Kentucky. Ranch 30 miles northwest of Abilene, Taylor county, Texas. J. C. Breckenridge, general manager, Abilene, Texas. Cattle brands on left side, O on left jaw. Marked crop left, sharp right. These marks and brands will be kept up. Also have cattle in following brands: H, J, K, L, M, N, O, P, Q, R, S, T, U, V, W, X, Y, Z.

HILBURN, PIERCE & CO.

Ranch postoffice, Big Springs, Howard county, Texas. Ranch in Tom Green county at Lucian Wells. Horse brand same on the right hip. Cattle also branded in various marks.

C. H. HIGBEE.

Postoffice, Ft. Worth, P. P. DAVIS in charge of cattle; J. T. YATTE in charge of horses. Ranch P. O. Throckmorton, Throckmorton county. Cattle in various marks. Cattle brand, 33 on left side.

LIGOR, BROWN & GROUND.

Postoffice, Graham, Young county, Ranch, Freer county. Horse brand WO on left hip. Cattle also branded in various marks.

COCKRILL & MARTIN.

Postoffice, Colorado City. Ranch, Deep Creek. Horse brand on right hip of horse.

M. & B. COCKRILL.

Horse brand on left hip.

M. COCKRILL.

Horse brand on left hip.

COLUMBIA CATTLE CO.

Postoffice, Columbia, Mo. Ranch on Cedar and Gotzales Creeks, seven miles southeast of Breckenridge, Stephens county, Missouri. Cattle branded with C on left side of neck.

ESPUELA CATTLE COMPANY.

Or Fort Worth. A. M. BRITTON, President; S. W. LOMAX, Secretary and Treasurer; I. L. GROFF, Superintendent. Ranch Postoffice, D. O. E. Dickson's county. Horse brand same as cut on left hip.

ALABAMA AND TEXAS CATTLE CO.

A. P. BURSH, JR., General Manager, Colorado Co., Texas. Ranch on "Colorado" river at Bull Run, Mobile, Ala.

WILLIAM EMERSON.

Postoffice, Colorado, Mitchell county, Texas. Los Ranch Secury county. Anyone knowing of any estrayed horses in this brand will come, a favor by notifying the owner.

G. K. GORDON.

Postoffice, Junction City, Kimble county, Texas. Ranch on N. Llano, ten miles above Junction City. Cattle in all marks, and generally branded on right side.

GOMAZ CATTLE COMPANY.

Postoffice, El Paso, Texas. Ranch, Antelope Springs, Presidio county, Texas. Horse brand same as cut on left shoulder.

GEORGETOWN RANCH COMPANY.

Of Georgetown, Kentucky. Ranch 30 miles northwest of Abilene, Taylor county, Texas. J. C. Breckenridge, general manager, Abilene, Texas. Cattle brands on left side, O on left jaw. Marked crop left, sharp right. These marks and brands will be kept up. Also have cattle in following brands: H, J, K, L, M, N, O, P, Q, R, S, T, U, V, W, X, Y, Z.

HILBURN, PIERCE & CO.

Ranch postoffice, Big Springs, Howard county, Texas. Ranch in Tom Green county at Lucian Wells. Horse brand same on the right hip. Cattle also branded in various marks.

C. H. HIGBEE.

Postoffice, Ft. Worth, P. P. DAVIS in charge of cattle; J. T. YATTE in charge of horses. Ranch P. O. Throckmorton, Throckmorton county. Cattle in various marks. Cattle brand, 33 on left side.

LIGOR, BROWN & GROUND.

Postoffice, Graham, Young county, Ranch, Freer county. Horse brand WO on left hip. Cattle also branded in various marks.

LEXINGTON RANCH CO.

H. D. BERRY, Manager. Postoffice, Colorado, Texas. Ranch, Yellow House C. C. Garza county, Texas. Also various other marks and brands. Not kept up.

LYON & POWER.

Postoffice, Sweetwater, Nolan county, Texas. Ranch on Cottonwood Creek and Clear Fork of Brazos, Fisher county. Some cattle have same brand on left side.

G. W. MOORE & THOS. F. WEST.

Postoffice, Jacksonboro, Ranch, King county. Horse brand same as cut on left hip.

HAVE McCORD CATTLE CO.

Postoffice, Colorado, Texas. Ranch, Buffalo Head Creek, Wichita county. Same brands in various other marks and brands.

S. B. BURNETT.

Postoffice, Fort Worth, Ranch, Buffalo Head Creek, Wichita county.

H. T. BATCHLER & BROS.

Postoffice, Paris, Ellis county. Ranch on Elm, Throckmorton county. Horse B on the right brand D shoulder and on jaw. Also B kept up on right shoulder.

JOSEPH BENEDICT.

Postoffice, Belknap, Texas. Ranch, 5 miles north of Belknap, Young county, Texas. Horse brand same on left hip.

CONTINENTAL LAND AND CATTLE COMPANY.

Post-office, St. Louis, Mo. Ranch postoffice, Neosymour, Baylor county and Pecos, Texas. These brands on each side. Also on left side and hip, with various marks. Horse brand same left shoulder; also cattle.

PITCHFORK LAND AND CATTLE CO.

D. B. Gardner, Manager. Ranch postoffice, Albany, Shackelford county, Texas. General office, St. Louis, Mo. Ranch, Dickens and King counties, Texas. Brands not kept up.

NICHOLS & TRUSTY.

Postoffice, Crawford, Texas. Ranch, 5 miles east of Crawford, Tex. Also cattle branded behind left shoulder blade, and marked crop left, split and crop right.

WILLIAM EMERSON.

Postoffice, Colorado, Mitchell county, Texas. Los Ranch Secury county. Anyone knowing of any estrayed horses in this brand will come, a favor by notifying the owner.

G. K. GORDON.

Postoffice, Junction City, Kimble county, Texas. Ranch on N. Llano, ten miles above Junction City. Cattle in all marks, and generally branded on right side.

GOMAZ CATTLE COMPANY.

Postoffice, El Paso, Texas. Ranch, Antelope Springs, Presidio county, Texas. Horse brand same as cut on left shoulder.

GEORGETOWN RANCH COMPANY.

Of Georgetown, Kentucky. Ranch 30 miles northwest of Abilene, Taylor county, Texas. J. C. Breckenridge, general manager, Abilene, Texas. Cattle brands on left side, O on left jaw. Marked crop left, sharp right. These marks and brands will be kept up. Also have cattle in following brands: H, J, K, L, M, N, O, P, Q, R, S, T, U, V, W, X, Y, Z.

HILBURN, PIERCE & CO.

Ranch postoffice, Big Springs, Howard county, Texas. Ranch in Tom Green county at Lucian Wells. Horse brand same on the right hip. Cattle also branded in various marks.

C. H. HIGBEE.

Postoffice, Ft. Worth, P. P. DAVIS in charge of cattle; J. T. YATTE in charge of horses. Ranch P. O. Throckmorton, Throckmorton county. Cattle in various marks. Cattle brand, 33 on left side.

LIGOR, BROWN & GROUND.

Postoffice, Graham, Young county, Ranch, Freer county. Horse brand WO on left hip. Cattle also branded in various marks.

R. A. SMITH.

Postoffice, Rannels, Ranch, bank Colorado River in Rannels co. Marked: Crop and overlip the right and underlip the left; grab the right and underlip the left. Brand as in cut and sandy other brands not kept up.

SWENSON BROTHERS.

Postoffice, Abilene, Texas. Ranch, Jones county. Branded on left side and thigh; earmark, under slope left ear. Also cattle branded as above with various brands. Horse brand same as cut.

LUKE SHORT.

Postoffice, Ft. Worth, Texas. Ranch in Montague county, head of Belknap.

J. H. STRADLEY.

Postoffice, Jacksonboro, Texas. Ranch, Jack county. Horse brand on left thigh.

O. J. WIREN & CO.

Postoffice, Colorado, Texas. Ranch, Double Mountain Fork of Brazos, Fisher county.

VIRGINIA RANCH, LAND AND CATTLE COMPANY.

Postoffice, Baird, Calahan county, Texas. Also cattle in following brands, which are not kept up: WP right hip, same mark as above, side; crop right side; and two spits of the right ear and two spits left. Horse brand same as cut, on left hip. Any information leading to the recovery of any of the above stock, which may have strayed off, will be appreciated and suitably rewarded.

NORTHWEST TEXAS.

S. B. BURNETT.

Postoffice, Fort Worth, Ranch, Buffalo Head Creek, Wichita county.

H. T. BATCHLER & BROS.

Postoffice, Paris, Ellis county. Ranch on Elm, Throckmorton county. Horse B on the right brand D shoulder and on jaw. Also B kept up on right shoulder.

JOSEPH BENEDICT.

Postoffice, Belknap, Texas. Ranch, 5 miles north of Belknap, Young county, Texas. Horse brand same on left hip.

CONTINENTAL LAND AND CATTLE COMPANY.

Post-office, St. Louis, Mo. Ranch postoffice, Neosymour, Baylor county and Pecos, Texas. These brands on each side. Also on left side and hip, with various marks. Horse brand same left shoulder; also cattle.

PITCHFORK LAND AND CATTLE CO.

D. B. Gardner, Manager. Ranch postoffice, Albany, Shackelford county, Texas. General office, St. Louis, Mo. Ranch, Dickens and King counties, Texas. Brands not kept up.

NICHOLS & TRUSTY.

Postoffice, Crawford, Texas. Ranch, 5 miles east of Crawford, Tex. Also cattle branded behind left shoulder blade, and marked crop left, split and crop right.

WILLIAM EMERSON.

Postoffice, Colorado, Mitchell county, Texas. Los Ranch Secury county. Anyone knowing of any estrayed horses in this brand will come, a favor by notifying the owner.

G. K. GORDON.

Postoffice, Junction City, Kimble county, Texas. Ranch on N. Llano, ten miles above Junction City. Cattle in all marks, and generally branded on right side.

GOMAZ CATTLE COMPANY.

Postoffice, El Paso, Texas. Ranch, Antelope Springs, Presidio county, Texas. Horse brand same as cut on left shoulder.

GEORGETOWN RANCH COMPANY.

Of Georgetown, Kentucky. Ranch 30 miles northwest of Abilene, Taylor county, Texas. J. C. Breckenridge, general manager, Abilene, Texas. Cattle brands on left side, O on left jaw. Marked crop left, sharp right. These marks and brands will be kept up. Also have cattle in following brands: H, J, K, L, M, N, O, P, Q, R, S, T, U, V, W, X, Y, Z.

HILBURN, PIERCE & CO.

Ranch postoffice, Big Springs, Howard county, Texas. Ranch in Tom Green county at Lucian Wells. Horse brand same on the right hip. Cattle also branded in various marks.

C. H. HIGBEE.

Postoffice, Ft. Worth, P. P. DAVIS in charge of cattle; J. T. YATTE in charge of horses. Ranch P. O. Throckmorton, Throckmorton county. Cattle in various marks. Cattle brand, 33 on left side.

LIGOR, BROWN & GROUND.

Postoffice, Graham, Young county, Ranch, Freer county. Horse brand WO on left hip. Cattle also branded in various marks.

CLAY COUNTY LAND AND CATTLE CO.

Ranch in Clay county, Texas, on the Little Wichita. JOC brand kept up on all increase.

FRANCKLYN LAND AND CATTLE CO.

Postoffice, Mobeile, Texas. Ranch in Hutchinson, Carson, Gray and Roberts counties. B. B. Groom & Son, Managers. Also cattle in the following marks and brands: FAR marked crop underlip right; on left side; 0=0 on right hip; mark of underlip left, crop right; on either 73 on jaw; marked crop side; on jaw, X on shoulder, M on side; marked underlip crop left, crop right; X left side; underlip crop left, crop right; W L or L or J left, crop side; ZZZ various marks; BOL marked underlip