



# EDITORIAL

## 4-H CLUB BOYS AND GIRLS ENCAMPMENT

Eastland was host to the 4-H Clubs of the county last week. The host of boys and girls comprising the membership of these various clubs were here for two days of fun and good times after a year's work.

Under the able leadership of County Agent J. C. Patterson and Home Demonstration Agent Miss Ruth Ramey, there is being done a great constructive work with these clubs.

In these boys and girls we see the future agricultural leaders, a progressive, efficient rural citizenship. They are the producers of tomorrow. They are being taught by actual demonstration the most scientific and successful methods of production and preservation of the necessities of life. They are being shown how best to conserve their resources and profit more from their efforts, and that they are taking full advantage of their opportunities is evidenced by the products exhibited each year.

A finer, happier group of boys and girls cannot be found. We hope to have them with us again next year.

## AGE OF PROGRESS

We are living in an age of progress. Nothing stands still today.

New inventions, new methods, improved transportation facilities for passengers, freight, mail and other means of communication have brought us into immediate touch with the four corners of the earth.

These rapid developments affect the conduct of all business affairs in one way or another, and especially in the matter of service.

The newspapers of today must compete with the radio in reaching the public. To do so they are adopting new policies that will enable them to give complete coverage of a given territory in order that the services of the local business concerns may be brought before the readers with the same ease that the radio brings the announcements of the services of the more distant concerns into the homes of the country at large.

The progressive merchant of today must meet these conditions with improved services. It is no longer possible to secure a profitable volume under the old methods bringing the merchandise in and placing it upon the shelves and quietly waiting for his customers to come and take it away. The public must be advised of the many services he is rendering. His announcements through the papers is of itself one of the services. Through this service you are enabled to visualize the merchandise and practically do your shopping in the quiet and comfort of your own fireside.

Use the service the merchants are offering you; read each announcement of the various business concerns each week. They are at an expense to bring you this free service. It shows good taste and is profitable to buy from a merchant that publicly tells the world the kind of goods he sells and the price he asks for same. He is not ashamed of price or quality.

## BRECKENRIDGE FORUM HAD CHARGE OF SERVICES SUNDAY NIGHT

"The Forum," an organization of the young people of the churches in Breckenridge had charge of the Evening services on the lawn just west of the Masonic Temple Sunday Evening.

This organization is doing a great work among the young people of the churches in Breckenridge. The purpose of the organization is to develop habits of thought and study among the younger members of the various organized congregations and bring out that latent ability which in so many instances lies dormant and never develops. There is nothing that will develop faster the mental abilities of the young than to give them some part of the work and saddle them with some part of the responsibilities. Eastland invites these young people to come again.

## AN OPEN MARKET

Since the discovery of oil in Eastland County until recently there has been no special attention given to the marketing of farm produce.

In fact there has not been the usual attention given to the production of certain crops for lack of a market.

We see this condition changing. Market outlet for all farm products is being provided. Through the combined efforts of the Eastland merchants and others interested in creating an open market for all farm products, a marketing association has been launched and is now functioning. The local merchants have been taking up quantities of produce and are now finding outlet for fresh vegetables and potatoes. Local feed concerns will be in the market to handle the grain crop as it comes in and no doubt there will be representatives of other feed and flour mills here.

Plans are being matured to ship the surplus melon crop, likewise the greatset sweet potato crop that has ever been planted in the county will be cared for this Fall. Other crops maturing through the season will also find a ready market here.

The Weekly Record is glad to note this forward movement and predicts for the future a greater diversification and consequently a greater return from the farms of Eastland County than was ever dreamed of a few years ago.

## VALUE OF ROADS TO A COUNTY

Commissioner V. V. Cooper reports that the Pleasant Grove-Wayland road will soon be ready for traffic. This road connects with the highway at Pleasant Grove and will tie Eastland and Stephens counties together with another improved roadway.

Our County road system speaks volumes for the enterprise of the citizenship and the energy and ability of the commissioners for the past several years. There is scarcely a point in Eastland county today that cannot be reached easily and quickly.

With improved roadbuilding machinery and practical engi-

## Seedsman to Hunt Buried Treasure



Shirl Herr, Indianapolis seedsman, is to hunt for ancient buried treasure, believed to be buried in Hungary. He used a super-sensitive divining rod he invented. He has tried it out on Indiana farms.



neering we have a system of lateral roads in Eastland county second to none. The initial cost and upkeep of these roads is nominal as compared to the value they represent to the various communities.

They bring the remotest points into close touch with markets, schools, churches and all other activities of the county.

It is not unusual today to find the business or professional man living miles from his office in a modern farm home and at the same time conducting the affairs of his office or business with the same ease and regularity that prevailed when he found it necessary to move into town to be near his activities.

There is nothing which tends to stabilize farm values more than accessibility to the marts of trade. Our system of improved roads is tending to turn the tide back to the farm today as nothing else can do. Eventually we may expect to see the rural districts converted into small farm tracts, each producing the necessities and comforts for the numerous happy families that will occupy them. Eastland county has hundreds of just such sites awaiting development.

## To Aid Cuba's Finances



Prof. Seligman, Columbia University economist, has accepted an offer to straighten out Cuba's money tangles.

## What Is Wrong With Texas

The following was taken from an advertisement of the Davis Hat Co. a Texas institution—and is really something good for all Eastlanders as well as Texans to think over.

"Nothing's wrong with Texas, except entirely too many of us get up in the morning at the alarm of a Connecticut clock, button up a pair of Ohio pants, put on a pair of Massachusetts shoes, wash in a Pittsburgh tin basin, using Cincinnati soap, and a cotton towel made in New Hampshire, sit down to a Grand Rapids table, eat pancakes made from Minneapolis flour spread with Vermont syrup, and Kansas bacon fried on a St. Louis stove. Buy fruit put up in California, seasoned with Rhode Island spices, and sweetened with Colorado sugar. Put on a hat made in Philadelphia, hitch a Detroit mule fed on Oklahoma gasoline to an Ohio plow and work all day on a Texas farm covered with a New England mortgage, send our money to Ohio for tires, wondering why Texas taxes are \$2.75 per acre while Ohio farmers pay \$1.00 tax and drive on paved roads, and at night we crawl under a New Jersey blanket to be kept awake by a bull dog, the only home product on the place, wondering all the time where in the Hell all the money went in this wonderful state of ours. If we all would by more home manufactured products we could keep our money at home and be prosperous."

Mr. and Mrs. C. L. Donahau of Seep Springs, Texas were in Eastland over the week end. They visited friends and relatives here. Mr. Donahau was formerly an oil operator here.

## BETTER VEGETABLES MAKE BETTER PRICES

The vegetable grading short course at the Farmers' Market in Houston April 16th and 17 is not the first but may prove an important step toward the sale by farmers of well graded fruits and vegetables. Conducted by the Extension Service with the cooperation of the Farmers' Market management dealers, State and Federal departments of agriculture, the local chamber of commerce and others, this course suggests an avenue of approach to the problem of standardization that may be used in many places and at many times.

In effect, the distributing machinery of the market halts for a moment for experts to show in a trice why this basket of beans is a topper and why that one brings down the price. The cost of not knowing this is said to be formidable and is no small factor in farmer distress in so far as fruits and vegetables are concerned.

The grading course at Houston is worth watching because it may be worth repeating.

W. P. Fuller, freight clerk for the

By Ted Brown

## TIME FOR EFFICIENCY

When a private business has a deficit, it begins to cast around for ways and means to increase its earning power or decrease its overhead.

Now, that our federal government is facing a gigantic deficit, many of our law-makers are chiefly concerned with how to "increase" taxes.

Tax gatherers overlook the simple fact that in times of distress, the more taxes that are taken from the people, the less money there is for productive enterprise. And it is from productive enterprise that all taxes and employment must eventually come.

Industries and individuals have been readjusting themselves to present conditions. Let tax-levying bodies follow the same course, or admit to the people that they are incompetent to adjust government expenditures to government income.

Miss Maurine Stewart has returned from a week's vacation in Sidney. Miss Jessie Todd of Cross Roads came back with Miss Stewart. She will spend the week here in the home of Mr. and Mrs. Clyde Fisher.

## Mickle Hardware Co. Sells Dry Goods Stock

The Mickle Hardware and Furniture Co., recently sold their stock of dry goods to Mr. H. A. Bass, who moved the stock to Ft. Worth.

This gives the Mickle Store more space for their larger stock of general hardware and house furnishings.

I. J. Kinsey of Hedley spent the week's end with his daughter, Mrs. Clyde Macabee.

Mr. J. F. McWilliams was confined to his bed the early part of the week but is able to be up again.

## ATTENTION CIGAR SMOKERS

**Saturday SPECIALS**



6 FOR 25c

White Owl  
Niles and Moser  
Cremo  
John Ruskin  
Wm. Penn  
Canadian Club  
R. J. Allen  
Chancellor  
O. San  
Havana Sweet

People's Cash Store

Northeast Corner Square Eastland, Tex.

## Introductory Offer

TO ACQUAINT YOU WITH THE Popular Dress Shop

To acquaint you with this new Ladies' Store we are making the following special offer--

FOR SATURDAY ONLY

# FREE HOSE

We are giving free with any dress at \$5.95 or more a pair of beautiful hose, full fashioned, all silk, picot top, a regular \$1.35 hose.

Meet Your Friends at the Popular Dress Shop

Mrs. R. H. Kilgore East Side Square



# Sunday School Lesson



International Sunday School lesson for June 21, 1931.  
**CAUSING OTHERS TO STUMBLE**  
 Romans 14:13-23—Rev. Samuel D. Price, D. D.

The Minneapolis Times said on March 2, "Prohibition has come to the forefront as the leading national issue." This was the opinion after a poll had been taken. Administration of justice was second on the list. Thus in giving attention to the quarterly temperance lesson you are but in harmony with the popular study of the day.

Paul was writing to the Romans from Corinth and took his illustration from things that were taking place in that city. Animals were killed and certain parts only offered to idols in worship. The rest was meat absolutely good for food. Many Christians objected to eating meat which had first been offered to idols. The Apostle says that respect should be paid to personal opinion and a thing omitted for the sake of the good of another which might not be any harm in itself. He gave as a good reason for such conduct: "For the kingdom of God is not meat and drink, but righteousness, and peace, and joy in the Holy Spirit." The question about how much we will give up for the sake of another centers around the consideration of how much we really love our fellow man and desire his greatest good.

In the case of the beverage, use of liquor, the matter is decided differently, for alcohol is always poison. History does not contain a paragraph that credits intoxicating liquor with a single achievement that has benefited mankind.

A swimming party and picnic was given Tuesday evening at Bass lake, in honor of Miss Eloise Norman, of Memphis, Texas. Those present were: Miss Eloise Norman, Mr. and Mrs. Frank Killough, Hamilton McRae, Mrs. Earl Thompson, Ari Williams, and Miss Geraldine Dabney.

Mrs. Olive Williams entertained on Tuesday with a birthday dinner in honor of B. H. Neil, on his 84th birthday and for Claude Williams on his 12th birthday.

## County Auditor Weekly Report

**ROAD BOND INTEREST AND SINKING FUND.** In 1919 the voters of the county authorized a bond issue of \$4,500,000.00 for the purchase of district roads, and the further construction, maintenance and operation of macadamized, graveled or paved roads and turnpikes, and the levying and collection of a tax to provide for interest and sinking funds for said bonds. These bonds were issued in seven series in 1920, 1921 and 1922, a certain amount of which was made to mature each year and the interest on the entire amount payable semi-annually. All payments on these bonds are made out of this fund. Up to January 1, 1931, \$1,087,000.00 had been paid on the principal, leaving a balance outstanding on the date of \$3,413,000.00. Payments made in 1929 and 1930 were as follows:

1929—	\$405,378.48
1928	329,933.48
1929	411,041.57
1930	352,404.05

Paid on Principal	\$164,000.00
Paid Interest	198,589.99
<b>Total</b>	<b>\$362,589.99</b>

1930—	\$148,000.00
Paid on Principal	186,842.50
Paid Interest	
<b>Total</b>	<b>\$334,842.50</b>

Since the first of this year \$156,000 has been paid on the principal, leaving a balance of \$3,257,000.00 outstanding

**NOW OPEN**  
**PARSONS**  
**Home Laundry**  
 ACROSS FROM UNIVERSITY  
 Miss Parsons, who has been with the local laundry for 7 years, urges you to keep your work in Eastland.  
**Work Guaranteed**

at this time. To provide funds to meet the payments as they come due the Commissioner's court makes a tax levy each year the rate being determined by the total taxable values in the County after making due allowances for delinquencies. For the past several years taxes collected each year have amounted to about 85% of the current rolls, the remaining 15% becoming delinquent. The annual payments on these bonds being fixed by contract, as property values increase or decrease the tax rate is lowered or raised accordingly. The rate for 1927 was \$1.20 on the \$100 valuation; for 1928, \$1.18; for 1929, \$1.15, and for 1930, \$1.20. Taxes collected under these levies were as follows:

As the tax rolls have not been completed, the tax rate has not yet been determined. The indication at this time is that the total taxable values will be considerably below last year and that the tax rate will have to be increased so as to raise sufficient revenues to meet the payments which

**No Prizes for War Paint This Time**

Beatrice Williams, a Cherokee, (third from left) won the first beauty show ever held by redskins. The other "squaws" were winners all

mature next year. The following amount come due in 1931 and 1932:	
1931—	
Bonds	\$156,000.00
Interest	180,175.00
<b>Total</b>	<b>\$336,175.00</b>
1932—	
Bonds	\$156,000.00
Interest	171,595.00
<b>Total</b>	<b>\$327,595.00</b>

All payments which have come due this year prior to this date have been paid promptly and there is sufficient balance in this fund now to take care of all other payments maturing this year.  
 W. S. MICHAEL, County Auditor  
 Alton Roan and Eldon Purvis of Cisco were visitors in Eastland Wednesday.

**A REAL JUNE SPOTLIGHT ITEM**  
**For Fathers Day**  
 DON'T FORGET DAD—THIS IS THE ONLY DAY OF THE 365 OF THE YEAR THAT IS ALL HIS  
 MAKE HIM KNOW HOW MUCH HE IS APPRECIATED

**Shantung Broadcloth Shirts**  
**\$1.49**

Unbelievable at the price... these new lustrous solid colors in smart Shantung effects! Tailored scientifically for fit and comfort, with pre-shrunk collars. A quality and style you'd think a bargain at much greater cost!

Shantung Silk Ties to Match 98c

SEE THESE ITEMS NOW IN OUR WINDOW

**J. C. Penney Co., Inc.**  
 OPPOSITE CONNELLEE HOTEL  
 EASTLAND, TEXAS

**PIGGLY WIGGLY**

**JUNE DAYS ... are picnic days.**  
 and PIGGLY WIGGLY FOODS... make your outings more enjoyable

No. 1 New Potatoes	Home Grown 10 lbs.	15c
<b>Compound 8 lb. Pail</b>		<b>93c</b>
<b>SUGAR 10 lb. Bag</b>		<b>54c</b>
DEL-MONTE OR LIBBY'S PINEAPPLE	2 FLAT CANS	23c
STOCKLEY'S CORN COUNTRY GENTLEMAN	2 No. 2 Cans	25c
Peas Wisconsin No. 3 Sieve	2 No. 2 Cans	23c
LUNA SOAP WHITE LAUNDRY	10 Bars for	27c
KELLOGG'S Small All Bran, Korn Flakes, Shredded Wheat, Pep, Krumbles, 2 pkgs.		23c
PINTO BEANS	5 Lbs. for	19c
Q & Q Macaroni and Spaghetti	Per Pkg.	5c
HAND PACKED TOMATOES	5 No. 1 Cans 25c	3 No. 2 Cans 23c
Steak	Veal Or Baby Beef Any Cut	Lb. 24c
SEVEN ROAST		Per lb 15c
Stew Meat	Dry Salt Jowls	Lb. 10c
SWIFT Sliced Bacon		1 Lb. Pkg. 25c
DRY BACON SMALL SALT AVERAGE		Per lb 15c
Butter Jersey Gold		25c
<b>Special Sliced Bacon</b>		<b>Lb. 27c</b>

Strawberries	Large Aromas	Crate \$3.90
	15c	24 Qts.
<b>TOMATOES</b>		
Texas Pinks		29c
<b>BASKET</b>		
<b>CORN</b>		
FRESH, TENDER		
Dozen - -		30c
<b>LEMONS</b>		
Large Size		23c
DOZEN		
Cantaloupes	Jumbo Size	FOR 25c
	3	
NEW CROP		
Uvalde Honey Comb		
ONE GALLON		\$1.25
KELLOGG'S		
Rice Krispies		
Per PACKAGE		10c
WHITE KING SPECIAL		
LARGE Package		39c
MEDIUM Package		20c
White King Cocoa Almond Hard-water Soap		
4 Bars for		23c
LIBBY'S PEARS		
LARGE Can		23c
CHOICE SPRING LAMB		
LEG Per lb		20c
CHOPS Per lb		20c

**Why Go Elsewhere When We Always Sell For less at the**

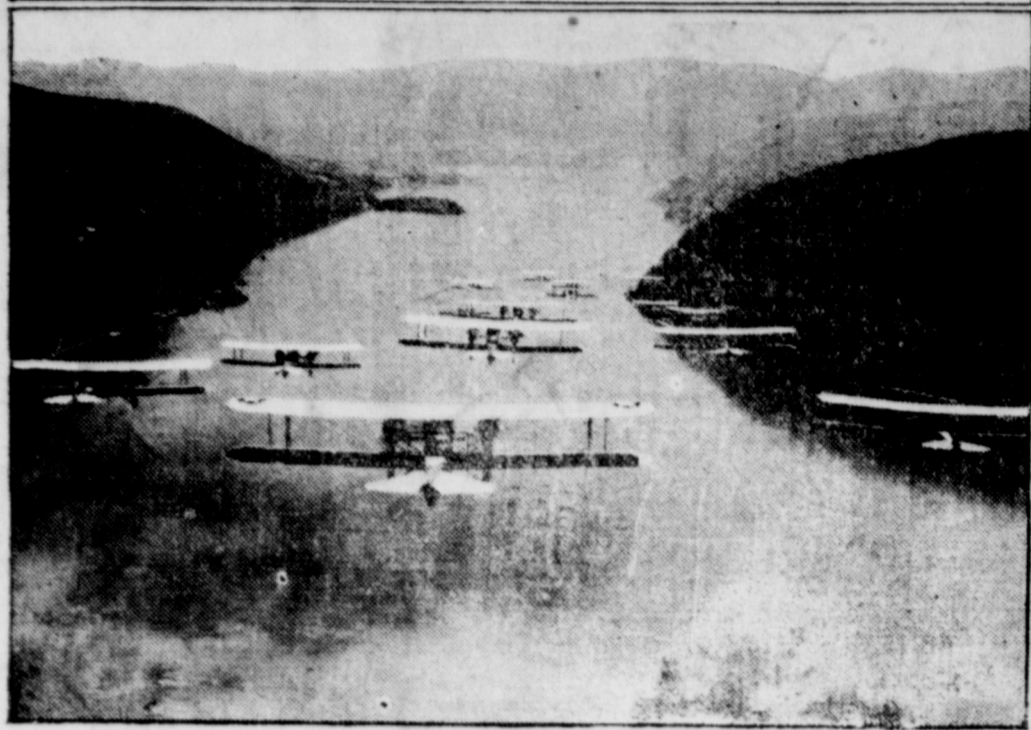
# J. H. COLE STORE

**East Side of Square**

Men's Handkerchiefs White	3c
Men's Hose in all Colors, Lisle	10c
Ladies' Silk Hose	25c
Men's Ties for Father's Day	29c
Children's Anklets, Silk	10c
Ladies' Country Club Hose \$1.95 Values	69c
Boys' Overalls	50c
Men's Overalls	65c
Men's Scout Shoes	\$1.49
Men's Union Suits	43c
Shorts and Athletic Shirts	23c
Ladies' House Dresses \$1.50 Values	50c
Ladies' Silk Dresses	\$2.45
Men's Garters, Paris	19c
Coveralls Up to 8	43c
Children's Shoes	98c
Men's Dress Straw Hats	89c
Willamantic Thread	4c
Boss Waloper Canvas Gloves	15c
Ladies' Shoes, Values to \$4	\$1.65
Ladies' Hats	50c
Men's Dress Shirts	55c
Men's Work Shirts	39c
Felt House Shoes	25c
Boys' Dress Shirts	39c
Manchester Dress Shirts	79c
Men's Dress Suits	\$13.95
Men's Dress Pants	\$1.45
White Pants for Men	98c
Dress Shoes	\$2.15

1,000 other items at prices that no other merchant can equal.

**U. S. Army Planes Flying to Defend New York City**



A few of the 600 flying machines which flew down the Hudson River to the "defense" of the metropolis are shown just after they passed West Point. Ten years ago the airplanes shown above were considered highly dangerous, because of air pockets, by fliers.

**THE EARLY POTATO SITUATION**

Through the courtesy of the Chamber of Commerce the Record brings to the farmers and cattlemen of Eastland county an article of interest. This week we are able to bring a talk on potato growing and selling by Paul Froehlich, Bureau of Agricultural Economics.

Well, folks, we'll consider today the early potato situation from both crop and market standpoints. The potato is such a humble, everyday article of food that you may wonder why we devote an entire talk to this one crop. But, if potatoes were removed from the menu of the American public, their absence would surely emphasize their importance.

In spite of relatively low prices for old potatoes during the winter and a liberal supply of this crop since last fall, growers in the earliest shipping States of the South increased their plantings about one-eighth above that of last season. In general, the yields are proving to be much better this spring. The northern part of Florida has been digging 50% more potatoes from each acre than last year, and other states which have just begun shipping also indicate improved yields. Growers in the lower Rio Grande Valley of Texas had considerable losses from frost and blight, and the crop was very short in that section. Nevertheless, for the eight earliest states together, the official reports indicate commercial crop of 15,820,000 bushels, or an increase of one-fifth over last year's production.

The active Florida season will soon be finished. Eagle Lake district of Texas is now getting under way and expects to make exceptionally large shipments. Movement of Bliss Triumph potatoes has already become very heavy in Alabama and Louisiana. Those two states have much larger crops than in any recent year. Production in South Carolina is expected to be the heaviest since 1928, and that state will begin shipping actively this week, along with the bumper crop from Georgia.

Now, let us take a forward look and see what may happen during the next two months, provided the weather remains favorable. Out in Oklahoma, a severe April freeze and an excess of rainfall damaged and delayed the early potato crop rather seriously. The Kansas crop seems to have recovered from the adverse weather con-

ditions of a month ago. Potatoes in Missouri are not doing quite so well, but the Louisville section of Kentucky expects a good crop this year. Along the Atlantic Coast, there is every indication of a good-sized crop in North Carolina, although the shipping season may be a little late. Virginia, as you all know, is the largest shipper of mid-season potatoes, often marketing 20,000 carloads or more during the two months of June and July. The slight reduction of plantings in Virginia may help to save the summer market prices from undue depression. North Carolina and Arkansas report considerable increases of acreage over those of last season, but Maryland shows a slight decrease in commercial acreage. In the entire group of six second-early states, the plantings are estimated at 151,000 acres, or only 1 1/2% more than their 1930 acreage. Of this total Virginia claims almost three-fifths. To summarize the situation, it looks as if there will be a great abundance of early potatoes this spring and summer with supplies from now until mid-June much larger than last spring but with a slight decrease in the excess after that time.

Just a few words about shipments and prices: In spite of the heavy shipments from Florida, carlot movement of new potatoes this season to date has not equalled that of a year ago, because of the lighter crop in Texas and the delayed season in Alabama and Louisiana. But the carlot figures are expected to catch up very soon, and before long they probably will exceed last year's corresponding total. Recent forwardings of new stock have averaged 500 cars daily, and old potatoes are still moving at the rate of 450 cars daily. The most noticeable feature of the potato situation this past winter and spring has been a lack of speculative demand on the part of the large receivers in city markets. And this same lack of demand is being keenly felt at the present time. Furthermore, the general level of food prices is relatively low. The best potatoes are returning only \$2.50 per barrel in northern Florida, compared with about \$6.50 a year ago. Shippers in Southern Alabama are getting only \$1.15 per sack of 100 pounds. At the same time last spring the price was around \$3. In view of these conditions, it behooves growers and shippers everywhere to put up

the best possible grades and packs, and to keep the potatoes on the farm, if they cannot be sold separately.

**THE COMMUNITY TAX QUESTION**

Oakland, California, for the past decade, has been exerting itself to encourage the development of industries within its borders. Like all sections of the country, this city has been struggling with a constantly increasing load of taxation.

Recognizing the seriousness of the present tax situation under which large cities have drawn heavily on their taxpayers' resources to make costly municipal improvements, the Oakland Post-Inquirer, in a feature editorial, says:

"Lower taxes will mean higher local prosperity.

"The people of this community are struggling under a tax burden much too heavy.

"This high tax load has reached a point where it threatens to handicap the development of the community. It is certainly a handicap to individual

**Marches Alone Now**



Gen. Edgar Warfield, 89, is the last of the gallant soldiers who answered Gen. Lee's call in 1861 from Alexandria, Va.

bank accounts.

To decrease taxes would be a sure way to increase business, to stimulate building operations, to relieve unemployment.

"Lower taxes is the most important question now confronting this community.

"Excessively high tax rates do mean in the end, lower income from taxes. They depreciate property values, they discourage new building, they frighten home owners, business men and industries away from a community. They cut down the amount and value of the property that can be taxed.

"Private business is finding ways to lower costs, fixed and otherwise, without lower efficiency, and in the end that may be the depression's great blessing in disguise for private business. Perhaps the same thing will be

true of public business."

The Post-Inquirer has summed up a situation that confronts every community. What every city, county and state needs is a smaller tax collection

from every taxpayer, not new methods of getting more taxes. Let increased tax funds come from increased business and not more taxes from less business.

**WANTED**

10,000 POUNDS

**NEW POTATOES**  
**PEOPLE'S CASH STORE**



There's an A & P Store close to your house as we could possibly put it. It's selling the best food at prices that allow hundreds of dollars in savings to remain in the homes of its customers every year.

The money you save is the money that stays to home and at your home, not somebody else's.

**IVORY SOAP FLAKES** 1ge. pkg. 19c

**GUEST IVORY SOAP** 6 cakes 23c

**Chipso, Fine Soap Chips,** 1ge. pkg. 21c

**Rajah Salad Dressing** or Sandwich Spread 8 oz Jar 14c

**Nectar Orange Pekoe TEA** 1-4 lb. Pkg. 14c 1-2 lb. Pkg. 27c

**Lifebuoy SOAP** For Health 3 Cakes 20c

**RINSO** Fine Soap Flakes 3 Small Pkgs. 23c

**Palmolive SOAP** 3 Bars 19c

**COFFEE, 8 o'clock** World's largest Seller, 21c

**MILK WHITE HOUSE** 3 Large or 6 Small Cans 20c

**PINTO BEANS** Ten lbs. 39c

**IONA CORN** No. 2 Can 10c

**RICE KRISPIES** Per Pkg. 10c

**MARSHMELLOWS** 1 lb. Pkg. 23c

**CIGARETTES** All Popular Sellers 2 Pkg. for 25c

**SYRUP Penick** One Gal. 59c

**SHREADED WHEAT** Per Pkg. 10c

**BLACK FLAG FLY SPRAY** 35c Can for 23c

**PICKLES Sour** 25 oz. Jar 23c

**KRAFT'S 1/2 lb. CHEESE** 2 Pkg. for 35c

<b>Lettuce</b>	<b>Tomatoes</b>	<b>Fresh CORN</b>
Firm Heads	Pound	Doz.
4c	5c	30c

**Grandmother's Bread**  
Whith or Whole Wheat  
Loaf 5c

**Shortening**  
8 Pound Pail  
93c

**SUGAR**  
10 Lbs. Cloth Bags

54c

**MEAT SPECIALS**

**SWIFT'S SLICED BREAKFAST BACON** Per Pound 19c

**CHUCK ROAST** PER POUND 12c

**SEVEN STEAK** PER POUND 16c

**ROUND, LOIN T-BONE STEAKS** PER POUND 25c

**DRY SALT BACON** PER POUND 11c

**RICH CREAMY CHEESE** PER POUND 17c

**PURE PORK SAUSAGE** TWO POUNDS 25c

**BULK COMPOUND** PER POUND 10c

**BOILED HAM SLICED** PER POUND 35c

**DRY SALT JOWLS** TWO POUNDS 15c



Dear Fatty -  
Your letter received and I have knot read it yet 'cause I can knot make it out, but I way glad to hear from you.

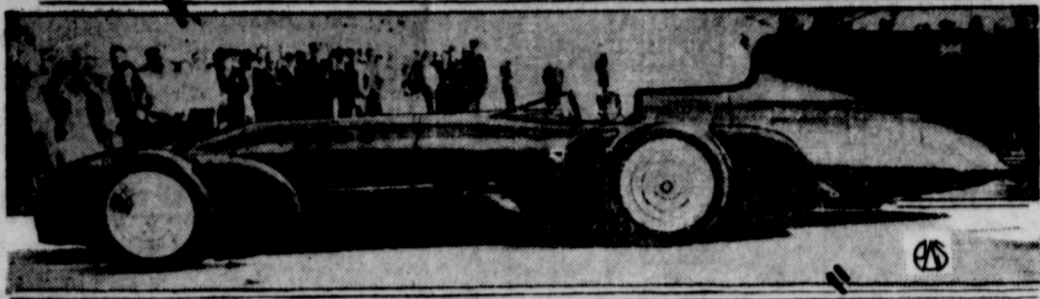
② Did you know that Freddie Smith has a baby brother but they don't know what his name is because they can't understand a word he says. I have a knife but it isn't much good. It hasn't any blade and not much of a handle. Old man Burton had an accident last week. He stopped to tie his shoe

③ When he was going through a revolving door. Are you getting any fatter? You ought to exercise more. Why don't you start collecting stamps. Dad says he spanks me because he loves me. That may be so but I can't return his love. P.S. I have to go to the dentist to have a tooth pulled out. I think I'll just go out and pick a fight instead.

**Pinkup Dinkup JINGLES**

SUITOR SEES IRATE PA.  
THUD,  
TA TA!  
SEE PINKY A HUBLE! 76

**Fastest Automobile That Ever Was Made**



Captain Malcolm Campbell of England successfully smashed all world's records for speed on the ground in this strange-looking car, which made 215 miles an hour at Daytona Beach, Florida.

men like it."

In the next company kitchen, after the preliminary questions, he said: "Do you serve milk for meals?"

"Yes, sir, for breakfast, sir."

"Enough so each man can have a glassful?"

"Yes, sir, a second if he wants it, sir."

"Say, that is fine. Milk is the best food soldiers can have. Any kicking on the meals, sergeant?"

"Yes, sir, a little bit, but it doesn't amount to much, sir."

"That's fine. If there isn't any kicking, look out because there will be something seriously wrong with the men."

General Craig is a real old-time fighting cavalryman and instead of merely advocating milk for babies and sick people, he is insisting upon it being served daily to the men in his department of the regular army.

Mr. Harvey E. Basham of Brownsville visited in the home of Martha Agness Weaver this week end. He has gone on to Crowell but will return some time next week.

Hennie Cox, Littlefield, was a week end visitor in Eastland. Mr. Cox was once a resident of Eastland. He has gone on to Baton Rouge, La., for a month's vacation. He plans to make Eastland his home upon his return.

Eastland to Dallas to visit a sister, some time next week.

Mr. and Mrs. James Hilden, Rising Star, spent Sunday with Mr. Hilden's brother, Charlie Hilden, and family.

Mr. Dick Skagg of Lockhart was in Eastland last week on business.

**Louis Pitzer's  
GRADE A DAIRY**

Pure fresh, rich jersey milk for your bottle baby.

**A. M. and P. M. DELIVERY**

Use our milk and watch your baby grow.

**RED CHAIN  
FEED STORE**  
405 S. Seaman

**REAL FOOD FOR REAL MEN**

Major General Malin Craig is probably doing more to revive the dairy industry than all the political cure-

alls ever proposed. In making an inspection of a Vancouver, Washington, barracks company kitchen, the second question he asked was:

"Do you serve milk as a regular ration?" When told, "No, sir," he replied, "That's too bad. You should do it for it's a wonderful food and

# Burr's Jubilee OF NEW Low Prices

**Fact No. 1 - Raw SILK is Now Selling the Lowest in 30 Years**

**Flat Crepe**

Burr's New Low Price

**88<sup>c</sup>**  
Yd.

Last Year's Price \$1.49

Lower market prices of raw silk make it possible for us to offer this new lower price. Exquisite new summer prints, and fashionable pastel shades. Rich, luxurious quality.

**Silk Dresses**

We have assembled a marvelous group of garments at a price that is unbelievable. Dresses that ordinarily sell at \$9.75 will be offered at Burr's New Low Price of

**\$6.75**

In this group of dresses you will find a wonderful selection that are sold elsewhere at a much higher price. Yet during Burr's Jubilee they will be sold at

**\$4.75**

**Silk Dresses**

You would have paid \$4.98 for the equivalent quality last year. This is all fresh new merchandise—individually selected by our own New York Buyer. See these big values today!

**\$2<sup>98</sup>**

Here are the **FACTS** that **Make Possible** these Most

**DRAMATIC  
VALUES**

In a Decade

**OUR NEW  
LOW PRICE  
Millinery**

**\$1<sup>88</sup>**

Nothing Higher!

We have just received a new assortment featuring white and pastel felts with the new wide, floppy brims. Also Panamas and many other smart styles in straw!

**Fact No. 2 - Never in History Has RAYON Sold for Less**

Child's Rayon Bloomers	<b>25c</b>	Non-Run Step-ins	<b>29c</b>
Child's Rayon Panties	<b>25c</b>	Non-Run Panties	<b>29c</b>
Men's Rayon Vests	<b>49c</b>	Non-Run Bloomers	<b>29c</b>
Men's Rayon Shorts	<b>49c</b>	Non-Run Gowns	<b>98c</b>
Child's Rayon Anklets 6 to 7½	<b>15c</b>	Non-Run Pajamas	<b>98c</b>
Child's Rayon Anklets 7½ to 10	<b>19c</b>	Non-Run Dance Sets	<b>98c</b>
Child's Rayon Sox	<b>19c</b>	Non-Run Slips	<b>98c</b>

**Underwear**

Men's Nainsook Union Suits of extra fine quality. Reinforced back.

**49c each**

**Two Piece  
Underwear**

Men's Shorts and Shirts of an exceptional fine quality, priced per garment

**25c**

**Fact No. 3 -- WOOL Has Not Been as Low Since 1901**

**Men's Suits**

Think of it! Tailored suits with two pairs of trousers. Every new feature is shown in these garments.

**\$19.75**

**Men's Suits**

Lightweight summer suits. Suits that formerly sold for \$15, are now only

**\$11.75**

**Marvelous Savings on HOSIERY**

Our biggest seller! Full fashioned, dull finish, pure 5 thread silk, Picot top, cradle foot—French heel, and in the NEWEST SUMMER SHADES!

**69c**

"High Priced" Hosiery is a thing of the past at Burr's. No longer need any woman pay over 98c for her finest hose. Choice of service weight or 45 gauge sheer chiffon at

**98c per pair**

**TIRES!**

When in Your Life Have You Ever Been Able to Buy **FIRST LINE** Tires at Such Low Prices as These?

**Richland 4-Ply**

29x4.40	<b>\$4.70</b>
29x4.50	<b>5.32</b>
30x4.50	<b>5.40</b>
28x4.75	<b>6.34</b>
29x5.00	<b>6.65</b>

**Richland 6-Ply**

29x4.40	<b>\$6.80</b>
29x4.50	<b>6.98</b>
30x4.50	<b>7.11</b>
28x4.75	<b>7.88</b>
29x5.00	<b>8.45</b>
30x5.00	<b>8.65</b>

**Fact No. 4 - COTTON is Lower Now Than in 16 Years!**

Triumph Percales	<b>10c</b>	Printed Flaxons	<b>29c</b>
American Beauty Print	<b>19c</b>	Dotted Swiss, tied dots	<b>59c</b>
81x90 Sheets	<b>59c</b>	Beach Pajamas	<b>\$1.59</b>
81x90 Druid Sheets	<b>79c</b>	Men's Shirts	<b>69c</b>
81x99 Druid Sheets	<b>87c</b>	Boys' Longies	<b>89c</b>
Printed Voiles	<b>25c</b>	Boys' Knickers	<b>89c</b>
Printed Batistes	<b>25c</b>	Boys' Coveralls	<b>49c</b>
Ping Pong Prints	<b>29c</b>	Child's Dresses, 2 to 6	<b>25c</b>
Soisette Prints	<b>29c</b>	Oliver Twist Suits	<b>59c</b>

**FATHER'S DAY**

Sunday, June 21st

You'll find a Full Line of Suitable Gifts at Burr's.

# L. C. Burr & Co.

West Side Square

Eastland, Texas

**Remember Father**

**Father's Day**

SUNDAY, JUNE 21st—

**Personal**

Mrs. Homer Williams and Miss Lillie Williams, have just returned from a week's trip to Jacksonville. They

visited Miss Williams' mother, Mrs. W. O. Williams.

Miss Alleane Williams and Mr. C. C. Wynn were married Sunday, June 14. Mr. Wynn was formerly of San Angelo but is now electrical engineer for the

**HOT WEATHER SPECIALS**

**Silk Dress Sale**

**\$5.90** VALUES NOW **\$3.88**

OTHER VALUES

**\$7.90 \$11.98 \$13.88**

**Brick**  
quart

**Ice Cream**  
**36c**

For One Hour  
3 to 4 o'clock, one to customer



**98c** FOR FATHERS DAY Next Saturday New Ties, Hand Tailored **98c**

Men's Rayon Unions **49c**  
Regular 98c Values

Ladie's Hats  
Some values to \$5.00  
ONLY **66c**

**HOUSE DRESSES**

Regular 98c Values, Fast Colors  
**69c**

**United Dry Goods Store**

NORTH SIDE SQUARE



Texas Electric Co., at Eastland. Mr. and Mrs. Wynn are spending their honeymoon in New Mexico. They plan to be at home in Eastland in about two weeks.

Miss Myrtle Kirkland was the house guest of friends in Denton last week.

Friends of Miss Mary Sue Rumph, formerly of Eastland now of Ft. Worth will be interested to learn of her recent marriage. She is the daughter of Mr. and Mrs. Sterling P. Rumph. She married Hoyt S. Slatton of Ft. Worth. The wedding took place Sunday, June 14, at Ft. Worth.

Miss Jennie Belond of Corpus Christi is visiting her uncle, Claude Belond, and family.

Phil Davidson of Winters, Texas, visited Miss Maurine Davenport Saturday.

Mr. J. W. Maddox, Sales manager for the Hall Tire Co., of Breckenridge accompanied by Jimmie Ferrell, District Sales Manager of Firestone Rubber Co., were in the city Tuesday visiting their new dealer, Hida's Super Service Company.

Miss Macia Bressler, of Monahan, is visiting with her brother, Philip Bressler. She plans to go to Little Rock, Ark., at the end of the week but will return within the next month, to spend the summer here.

Mr. and Mrs. H. D. Searcy and small daughter have returned from a visit

**Safe After 8-Hour Swim**



Hilda Morrison, 18, of Cherryville, Va., successfully fought the Potomac River after being tipped out of a canoe.

with relatives in Waxahachie.

Mr. and Mrs. Jay Clark, of Olden, have returned from a trip to Sasakwa, Okla., where they visited with their daughter, Mrs. Joel Bond. Their

granddaughter, LaRue, came back with them to spend the summer.

H. C. Wilkinson and family have returned from Seminole, where Mr. Wil-

**WEEKLY RECORD**

Published Every Friday  
**EASTLAND PRINTING CO.**

**Publishers**  
**OWNERS:**

V. O. HATCHER, Eastland, Texas.  
EARL T. WILLIAMS, Eastland, Texas

Delivered free over Eastland trade territory. In city of Eastland, 1,100 copies or 4,400 readers; Rural routes and suburbs, 450 copies, or 2,600 readers; all potential buyers in Eastland.

The Record is the only paper in this section covering its entire trade territory.

kinson was called on business.

Mrs. William McDonald and sons are visiting in Waco. They are the guests of Mrs. McDonald's mother, Mrs. F. G. Smith.

Mrs. Ora Grant had as guests over the week-end, her daughter, Miss Mildred Grant, and sisters, Mrs. R. A. Dunlap and Mrs. A. L. Atwood, of Ft. Worth.

Mr. and Mrs. H. D. Davenport and family have as their house guests L. S. Waddington of Mingus, nephew of Mrs. Davenport.

Mrs. H. H. Stephens, who has been quite ill at her home the past week is some what improved.

**STARNES PERMANENT WAVE**

**OIL METHOD**

A Regular \$15.00 Wave  
Now Only **\$7.50**

Other Waves At Reasonable Prices  
All Work Guaranteed

**COOLEST PLACE IN TOWN**

**Samuels Beauty Shop**

THE FAMILY SHOP

416 Texas Bank Bldg.

Phone 491

**GENERAL ELECTRIC**  
ALL-STEEL REFRIGERATOR

**ONLY 2 G. E. REFRIGERATORS**

To Sell For

**\$350. and \$175.**

Regular List Price \$480.00  
10 cu. Feet

Regular List Price \$220.00  
4 cu. Feet

New All Steel Models. An Opportunity  
That Merits Prompt Action.

**See Them Today!**

**Eastland Storage Battery Company**

J. C. Penney Bldg.

Phone 335

**GENERAL ELECTRIC**  
ALL-STEEL REFRIGERATOR

Domestic, Apartment House and Commercial Refrigerators, Electric Water Coolers



**QUALITY**

**FOODS**

We stress quality in our entire line, because anyone can match price—but to supply quality foods at low price is another thing—and this, we think is the secret of our increasing trade.

FRESH CORN LARGE EARS Per doz. **30c**

FRESH TOMATOES Just off vine lb **7 1/2 c**

BEETS AND CARROTS Three bunches **10c**

GREEN BEANS CUCUMBERS SQUASH Per lb **4c**

New Potatoes Large Red Home Grown 10 lbs. **15c**

BROOMS FOUR STRAND each **25c** | MOPS 16 Ounce each **25c**

SUGAR, Imperial 10 lb. **54c**

FLOUR Amer. Beauty, 12 lb 6 lb 2lb **39c** | Veal Loaf LIBBY'S, 7 oz. Can Two for **45c**

COMPOUND SWIFT'S JEWEL 8 Pound Pail **93c**

POTTED MEAT Six Cans **25c** | DEL MONTE PEACHES No. 1 Can No. 2 3/4 Can 2 for 25c 2 for 39c

Hamburger, Chili, Loaf Meats lb. **15c**

PORK ROAST Any Cut Pound **18c**

BACON No. 1 Breakfast 3 lb **85c**

COMPOUND In Your Pail per lb **10c**

ROAST BABY BEEF per lb **12 1/2 c**

STEW RIB OR BRISKET per lb **10c**

CHEESE No. 1 FULL per lb **19c**

BUTTER SWEET CREAM Per lb **25c**

SALT JOWLS Per lb **10c**

SAUSAGE PURE PORK Per lb **12 1/2 c**

Starts Saturday June 20<sup>8</sup> a.m.

# CLEARANCE

ENDS JULY 4th

**STORE WIDE Sale**

## A MID-SUMMER CLEARANCE

Our New York buyer has flooded our store with new, high grade merchandise. We must hold down our stock and to reduce same a Mid-Summer Clearance is our only chance. We are glad to pass this saving on to our friends just at the beginning of the season.

**STORE WIDE Sale**

Store Closed Friday

**Wash Frocks**  
To \$1.95 Values To \$1.05 Values  
**89<sup>c</sup> 50<sup>c</sup>**

You'll Never  
**FORGET THIS SILK SALE!**  
From our regular stock, materials which sold from \$1.98 to \$2.25 all at one price. Chiffon in solid and prints, sport silks, printed crepes and shantung—now only  
**\$1 00**  
We urge early buying

**Childrens Dresses**  
Size 2 to 14  
SILKS and BATISTE  
For This Clearance  
**1/2 Price**

**Draperies**  
SIDE DRAPES and CURTAIN MATERIALS  
**1/2 Price**

**Accessories**  
New Arrivals  
Purses . . . . . 98c  
IMPORTED BAGS \$2.98  
\$5.00 Values  
Jewelry 1-2 Price

**Dress Up For July 4th - - - - Sale Ends July 4th**

**SHOES**  
  
One group of broken sizes, values to \$6.85; a very unusual bargain if your size is here—  
**\$2.79**  
\$4.95 and \$5.95 values, \$7.85 values in sea sand new summer shades and ;and egg shell real hot weather numbers in materials, to close out at AAA to B's at only--  
**\$3.85 \$5.85**  
**67c HOSIERY 67c**  
Full fashioned 45 gauge sheer

**DRESSES**  
  
Don't mistake these for odds and ends of unsalable merchandise. Some of the dresses advertised in this group are on their way to our store at the time this ad is written. Come expecting new styles.  
**\$2.88**  
**\$4.88 \$7.88**  
This group consists of our regular values to \$16.50. This group consists of our regular values to \$22.50.  
**\$10.00 \$15.00**  
**Knit Suits - Silk Ensemble**  
At **1/2** Price  
**\$14.50 Values \$7.25 2 \$19.50 Values \$9.75**

**HATS**  
  
One Group **85c**  
One Group Values to \$4.50 **\$1.98**  
Values To \$6.50 Values To \$12.50  
**\$3.00 \$5.00**

**PIECE GOODS**  
Printed batiste and flaxon. 40 inches wide, fast colors, up to 49c Values  
**15c**  
Printed Crepe Rayon. Guaranteed tub fast, 40 inches wide—Values to 65c  
**29c**  
8-4 Unbleached Sheeting, seamless—limit 5 yards  
**14c**  
9-4 Bleached Sheeting. Good quality, 5 yard limit  
**19c**  
**Peter Pan Prints**  
36 in., guaranteed fast colors.  
**25c values 15c**  
**Pepperel Sheeting**  
9-4 Bleached and unbleached, 5 yd limit  
Muslin, soft finish bleached, select cotton, 5 yd. limit  
**29c 6c**

**250 Garments PURE SILK UNDERWEAR**  
  
Panties, Bloomers, Shorties, Chemises, Step-ins, Slips, Dance Sets. Every set bears a guarantee of 100 per cent pure silk.  
At this unbelievable price  
**\$1 00** Each  
Limit 5 to customer  
**Philipine GOWNS 29c**  


**Wells**

Eastland, Next Door to Post Office Texas

