

LOCAL
See Sample Ballot
See Page 8

POLITICS
Tuesday Is Election Day
See Below

BUSINESS
SPS Decreasing Rates
See Page 12

WEATHER

October 28	70	33	.00
October 29	79	35	.00
October 30	84	48	.00
October 31	83	44	.Tr

BAILEY COUNTY JOURNAL

'The Community Of Opportunity-Where Water Makes the Difference'



Vol. 25, No. 44

12 Pages Today

Published Every Sunday at Muleshoe, Bailey County, Texas 79347

20¢

Sunday, November 1, 1987

around muleshoe

Watson Junior High School Principal Bob Graves said the following students have been named 'Students of the Week' for their respective grades, and received certificates:

Donna Puckett, sixth grade; April Hugg, seventh grade and Nadine Gilliam, eighth grade.

When the Bailey County Commissioners meet in special session at 10 a.m. on Monday, November 2, they will consider the following items:

Conduct a hearing to accept public comment regarding the county's proposed application for Community Development Funds from the Texas Community Development Program; payment of routine county bills; consider approval of ratification of assessment and collection contract with Bailey county Appraisal District.

Also, review county treasurer report for year ending September 30, 1987; review departmental reports; review contract for professional services on roofing project; and miscellaneous items.

Six Texas Tech University students have been accepted as active members of the university chapter of Pi Omega Pi, the national business teacher education honor society.

Area student named to the honor is Kim Moss, daughter of Dwayne and Mary Powell of Sudan.

In Thursday night football in Muleshoe, the Muleshoe seventh and eighth grade teams fought a valiant battle against the Tulia Hornets, but lost out in narrow games.

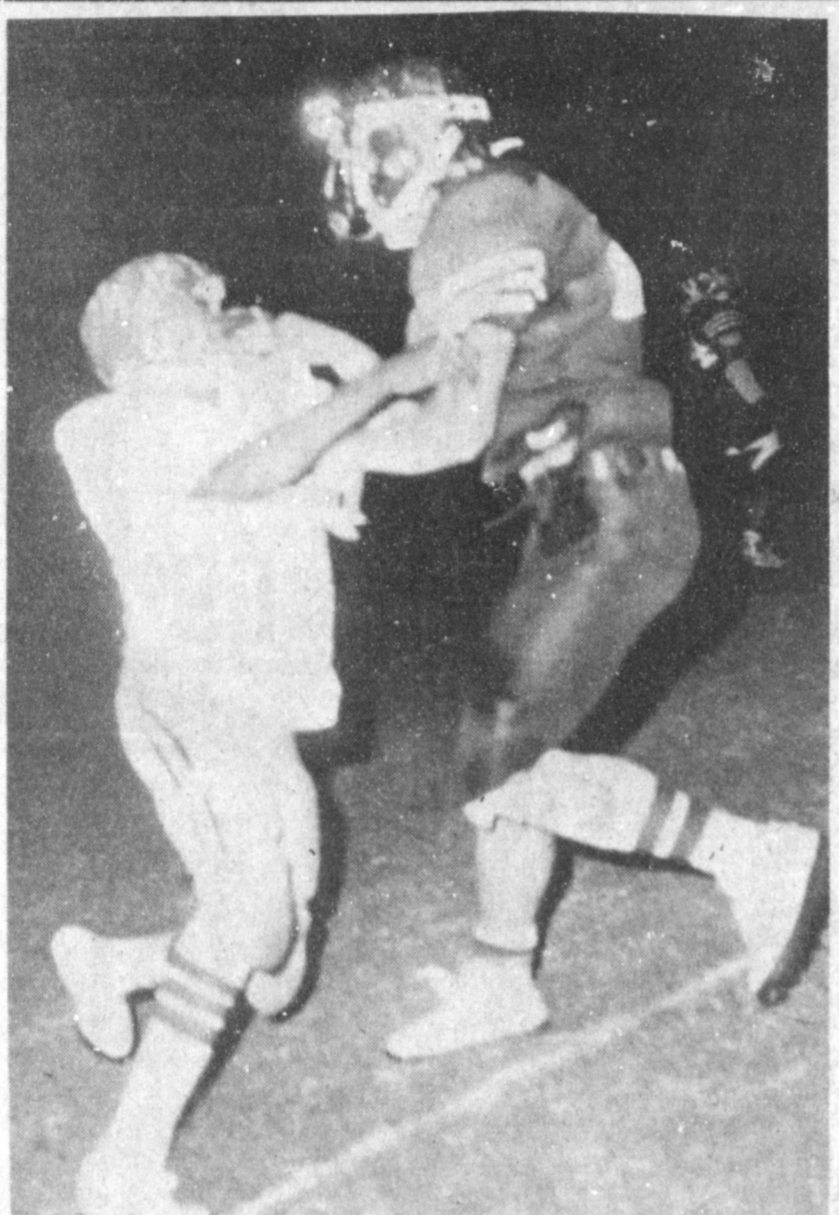
The seventh grade lost 14-6, while the eighth grade lost 22-12.

The two teams will be traveling to Dimmitt Thursday to wind up the season.

Placing at the State Fair of Texas last week in Dallas were Courtney Tanksley, who was second with her American Crossbred; and Holly Huckaby, sixth with a Crossbred.

In the lamb division, Lori Hodges was 12th with a Dorsett; Holly Huckaby, 20th with a Hampshire and Suzy

Cont. Page 6, Col. 1



SHALL WE DANCE?--Friday night, during the Muleshoe Mule, Tulia Hornets football game, this weird dance took place at one point on the field. The Mules watched the Hornets slide by for a narrow victory, 26-20.

Tulia Hornets Slide By Mules, 26-20

Well, football fans, if you missed Friday night's game between the Muleshoe Mules and the Tulia Hornets, you missed one of the best games of the season.

The first quarter looked like it was going to be another small yardage game until the Mules' third possession of the quarter. With 3:15 left in the period, #24, Daniel Olivas, took the ball 23 yards and helped the Mules keep control of the ball until the last seconds of the quarter.

With 0:04 left on the clock, Olivas took the ball from quarterback Johnny Garcia and ran sixteen yards for the first of the Muleshoe touchdowns. Olivas kicked the extra point and pulled the Mules into the lead by seven points.

Neither team seemed to be able to make any big yardage plays and the Hornets were

driven within one yard of a Mule safety, but Tulia rallied their offense and moved the ball back down the field. The Hornets took the ball steadily down the field on their next possession, and, with 1:15 left in the half, took the ball one yard into the end zone. Their by Trampus Goodwin, carried two attempts at the extra point failed, leaving them trailing 7-6 at the half.

The second half brought both teams back onto the field with new strategies and renewed enthusiasm. Muleshoe kicked off to Tulia, who took the ball for an eighty-yard scoring drive. With 8:00 left in the period, Trampus Goodwin again took the ball home on a 22-yard touchdown run and the Hornets made two extra points to put them in the lead.

Muleshoe retaliated and sent Armando Del Toro nine yards across the line to add six more points to the score. The extra point attempt failed and left Muleshoe behind, 14-13.

One of the biggest breaks for Tulia happened as Muleshoe was punting the ball back to the Hornets. Because of a high snap, kicker Alex Bachicha lost control of the ball and was taken down with a twenty-one yard loss. Tulia took advantage of their field position and again took the ball in for another six points.

Cont. Page 6, Col. 3

Amendment Election Slated Here Tuesday

Amendments Four, Six Could Be Vital To Area

November Drug Month In Muleshoe

Mayor Darrell Turner signed a proclamation in his office on October 29, designating the month of November as "Drug Awareness Month" in Muleshoe. Mayor Turner urges all citizens to become more aware of the problems of adolescent substance abuse and to support the efforts of the Central Plains Task Force.

Counselors within the Muleshoe ISD have been involved in the Central Plains Task Force on Substance Abuse during the last year. This task force is made up of nine counties in the South Plains area and each will be participating in a "Drug Awareness Month" in their cities.

The task force has as its main objective the promotion of drug education for parents and youth. Muleshoe ISD will participate in "Drug Awareness Month" with its annual "Drug Education Week" from November 9-13.

"Drug Education Week" will begin with a district-wide PTA meeting to be held on November 9 at 7 p.m. in the Muleshoe High School auditorium.

Speaker for the meeting will be Dr. Kitty Harris, staff psychologist for the Charter Plains Hospital in Lubbock.

A slogan has been planned for each day of Drug Education Week.

Slogan for the district on Monday will be "Get Smart -- Don't Start." Tuesday's slogan will be "Hugs -- Not Drugs." On Wednesday, the slogan will be "We Say No." and Thursday's slogan will be "Count Me Out." Cont. Page 6, Col. 5

Civics Classes To Have Debate On Constitution

At 10:30 a.m. on Thursday, November 5, the senior civics class from Muleshoe High School will hold a very special convention in the MHS auditorium.

They will be conducting a simulation of the Constitutional Convention of 1787.

Students are acting as the Founding Fathers who established America's government.

They are doing this program because this is the 200th birthday of the Constitution of the United States of America.

They ask, "Have you ever wondered how hard it was to set up our government? Come and hear the debates. The public is invited."

Polling Places

- Box 1...Bailey County Courthouse
- Box 2...Bailey County Coliseum
- Box 3...Three Way School Cafeteria
- Box 4...Methodist Church Fellowship Hall
- Box 5...Bula Community Center
- Box 6...Needmore Community Center
- Box 7...Muleshoe City Hall

Polls Open 7 a.m. to 7 p.m.



DIGGING FRANTICALLY FOR A VICTIM--Thursday night, just before dark, members of the Muleshoe Fire Department and Bailey County Ambulance Service were digging frantically in a pile of grain sorghum alongside an overturned truck, searching for the driver of the truck. Despite apprehension, no one was beneath the pile of grain.







WINNER OF BICYCLE--Faith Hayes, center, was the winner of the bicycle given during the recent St. Jude's Bike-A-Thon in Muleshoe. She is the daughter of the Rev. and Mrs. Dennis Hayes. Pictured from left are Ray Day, coordinator of the event; Faith and her father, Rev. Hayes, who was one of the assistant coordinators. Day said \$1,315.79 was raised during the Bike-A-Thon and that Faith turned in \$175. Day also said he wishes to thank Hubert Kidd, Five Area Telephone employees and their families for turning out in full force; the VFW for contributing \$100; and two other assistant coordinators, Percilla Sandoval and Mary Franklin.

Your Meat and Produce Store

 <p>SHURFINE CREAM STYLE OR WHOLE KERNEL GOLDEN CORN</p> <p>4 \$1 17 OZ. CANS</p>	 <p>SHURFINE FRENCH SLICED GREEN BEANS 3 \$1 16 OZ. CANS</p> <p>SHURFINE CUT GREEN BEANS 4 \$1 16 OZ. CANS</p>	 <p>SHURFINE TOMATO SAUCE 6 \$1 8 OZ. CANS</p>	 <p>SHURFINE WHITE OR ASSORTED COLORS BATHROOM TISSUE</p> <p>69¢ 4 ROLL PKG.</p>	 <p>BELL Old Fashioned VANILLA ICE CREAM</p> <p>BELL ROUNDS ICE CREAM</p> <p>\$1.69 1/2 GAL.</p>
 <p>SHURFINE LIQUID BLEACH 69¢ GAL JUG</p>	 <p>ASSORTED SHURFINE SODA POP 59¢ 2 LTR. BTL.</p>	 <p>SHURFINE ASSTD. POTATO CHIPS 69¢ 7 OZ. BAG</p>	 <p>SHURFINE 2 REG. OR MINI MARSHMALLOWS 89¢ 10 OZ. PKGS.</p>	 <p>SHURFINE DINNER MACARONI & CHEESE 5 \$1 7 1/2 OZ. BOXES</p>

<p>BONELESS CENTER CUT HEAVY GRAIN FED BEEF \$1.89 LB.</p>  <p>ROUND STEAK LB.</p>	<p>SHURFRESH HICKORY SMOKED SLICED BACON \$1.49 1 LB. PKG.</p>	<p>USDA GRADE A SHURFRESH FINEST QUALITY WITH TENDER TIMER - 10 TO 14 LBS. AVG. TURKEYS 58¢ LB.</p> 
<p>LEAN BONELESS STEAK OR ROAST SIRLOIN TIP \$2.49 LB.</p> <p>SHURFRESH QUALITY MEAT FRANKS 89¢ 12 OZ. PKG.</p> <p>SHURFRESH QUALITY MEAT BOLOGNA 99¢ 12 OZ. PKG.</p>	<p>REG OR HOT WHOLE HOG SHURFRESH SAUSAGE \$1.59 1 LB. ROLL</p> <p>WHOLE HOG SHURFRESH SAUSAGE \$3.17 2 LB. ROLL</p> <p>SHURFRESH USDA GRADE A BAKING HENS 69¢ 4 TO 6 LBS. AVERAGE LB.</p>	<p>SHURFRESH FULLY COOKED BONELESS 93% FAT FREE - HALF OR WHOLE HAMS \$2.39 LB.</p> 

<p>SHURFRESH MARGARINE QUARTERS 3 \$1.00 1 LB. PKGS.</p> 	<p>SHURFINE FROZEN SLICED STRAWBERRIES 79¢ 10 OZ. CTN.</p> 	<p>ALL PURPOSE RUSSET POTATOES \$1.69 20 LB. BAG</p> 	<p>WASHINGTON EXTRA FANCY RED DELICIOUS LARGE SIZE APPLES 3 \$1 LBS.</p> 
<p>SHURFRESH BUTTERMILK OR OLD FASH BISCUITS 6 \$1.00 10 CT. CANS</p> <p>SHURFRESH CINNAMON ROLLS 99¢ 8 1/2 OZ. CANS</p> <p>SHURFRESH HALFMOON CHEDDAR OR COLBY CHEESE \$1.29 10 OZ. PKG.</p> <p>SHURFRESH CREAM CHEESE 69¢ 8 OZ. PKG.</p> <p>SHURFRESH SWEET CREAM QUARTERS BUTTER \$1.79 1 LB. PKG.</p> <p>SHURFRESH CHILLED ORANGE JUICE \$1.69 64 OZ. JUG</p> <p>SHURFRESH FROZEN ORANGE JUICE 69¢ 12 OZ. CAN</p>	<p>SHURFINE FROZEN WHIPPED TOPPING 49¢ 8 OZ. BOWL</p> <p>SHURFINE FROZEN CORN ON THE COB \$1.29 4 EAR PKG.</p> <p>SHURFINE FROZEN BRUSSEL SPROUTS \$1.09 16 OZ. BAG</p> <p>SHURFINE FROZEN CAULIFLOWER \$1.09 16 OZ. BAG</p> <p>SHURFINE FROZEN BROCCOLI & CAULIFLOWER 99¢ 16 OZ. BAG</p> <p>SHURFINE FROZEN BROCCOLI CUTS 99¢ 16 OZ. BAG</p> <p>SHURFINE FROZEN PIE SHELLS 59¢ 2 CT. PKG.</p>	<p>TEXAS RUBY RED GRAPEFRUIT 59¢ LB.</p> <p>TELEDER GREEN BROCCOLI 59¢ LB.</p> <p>SNOW WHITE CAULIFLOWER 89¢ HEAD</p> <p>FIRM RIPE TOMATOES 59¢ LB.</p> <p>FRESH TART TANGY CRANBERRIES 79¢ 12 OZ. PKG.</p>	<p>SHURFINE STRAINED WHOLE CRANBERRY SAUCE 2 89¢ 16 OZ. CANS</p> 

<p>SHURFINE PUMPKIN 2 89¢ 16 OZ. CANS</p> 	<p>ALL PURPOSE SHURFINE FLOUR 59¢ 5 LB. BAG</p> 	<p>SHURFINE REAL CHOCOLATE CHIPS 98¢ 12 OZ. PKG.</p> 	<p>SHURFINE GRANULATED SUGAR \$1.39 5 LB. BAG</p> 	<p>ALL VEGETABLE SHURFINE SHORTENING \$1.29 3 LB. CAN</p> 	<p>ALL GRINDS SHURFINE COFFEE \$1.69 1 LB. CAN</p> 
<p>SHURFINE MARSHMALLOW CREME 39¢ 7 OZ. JAR</p> 	<p>SHURFINE MANDARIN ORANGES 2 89¢ 11 OZ. CANS</p> 	<p>SHURFINE SALTINE CRACKERS 2 \$1 16 OZ. BOXES</p> 	<p>SHURFINE VEGETABLE OIL \$1.49 48 OZ. BTL.</p> 	<p>YEL. WHT. DVLS. FD SHURFINE LAYER CAKE MIX 59¢ 18 1/2 OZ. BOX</p> 	<p>SHURFINE CRYSTAL LIGHT CORN SYRUP 79¢ 32 OZ. BTL.</p> 
<p>SHURFINE SWEET PEAS \$1.00 3 17 OZ. CANS</p> <p>SHURFINE WHOLE PEELED TOMATOES \$1.00 3 18 OZ. CANS</p>	<p>SHURFINE BLUEBERRY MUFFIN MIX 99¢ 13 OZ. BOX</p> <p>SHURFINE CORNBREAD OR CHICKEN STUFFING MIX 69¢ 6 OZ. BOX</p>	<p>SHURFINE PLAIN MEAT MUSHROOM SPAGHETTI SAUCE \$1.39 32 OZ. JAR</p> <p>SHURFINE GRAPE JELLY 79¢ 18 OZ. JAR</p>	<p>SHURFINE ULTRAELASTIC LEGWETNESS BARRIER SHURFINE DIAPERS \$6.89 32 CT. LARGE 48 CT. MED.</p> 		

272-4739 401 WEST AMERICAN BLVD. Prices Effective Nov. 1-7

Double Green Seals On Wednesday

SERV-ALL THRIETWAY





NAMED MEMBER OF THE MONTH--A surprised Todd Ellis, manager of Ellis Funeral Home, was very surprised Thursday morning to find that he had been named Member of the Month, for October, of the Muleshoe Chamber of Commerce and Agriculture. On the board of directors since January 1, 1988, he has served on several 'key' committees and has spearheaded several CofC projects. Ron Montgomery, president of the CofC presented the certificate.

Three-Way Honor Roll

KINDERGARTEN
Geoffrey Abbe, Francesca Armendariz, Monty Kirby, Marvin McCaul, Scott Pollard, Daniel Reeves, Jessica Robinson, Abel Rodriguez, Norma Rodriguez, Christian Saenz, Antonio Salamanca, Robin Tooley, Alberto Valderas, Stefan Williams and Angel Zapata.

FIRST
Jonathan Kindel, Joshua Robinson and Janice Martha.

SECOND
Elizabeth Duarte, David Graves, Shaye McAlexander, Russell Pollard, Felipe Reyes, Shane Cockrell, Marie Mendoza and Joshua Tooley.

THIRD
T.J. Davis, Hugo Luna and Melanie McCaul.

FOURTH
Keith Kindel, Brittany Kirby and Alma Pina.

FIFTH
Becky Mowery, Chad Cockrell, Craig Lentz and Erin Sowder.

SIXTH
Melissa Bennett, Tanya Graves, Luis Haros, Scott McAlexander, Albert Mendoza and Johnny Salazar.

SEVENTH
Barney Haros and Suzanne McAlexander.

EIGHTH
Denise Duarte and Marc Tucker.

NINTH
Carrie Kindel, Norma Rubalcava, Jesus Flores, Mario Guillen and Lisa Lowe.

TENTH
Melinda Turney and Sheila Tucker.

ELEVENTH
Jorge Moraleda, Jarrod Sowder and Ernesto Rubalcava.

TWELFTH
J.J. Duarte, Bryan Kindel and Kelly Tucker.

WJHS Honor Roll

SIXTH GRADE
Nicole Alanis, Leah Bruns, Mason Conklin, Gail Copley, Jeanne Cox, Misty Davenport, Shawna Delaney, Casie Dodd, April Franklin, Kris Fuller, Mark Garcia, Johnny Gonzales, Frank Guzman, Emily Harris, Lori Hodges, Kristin Holman,

HONORABLE MENTION
FIRST
Maria Pena and Victor Pina.
SECOND
Jonathan Bennett, Juan Guirton, Gustavo Gutierrez, Amanda Rodriguez and Cristina Salamanca.

THIRD
Kyle Kindel, Lupe Landeros, Ricky Medina, Carlos Rubalcava, Diana Salamanca and Cindy Valderas.

FOURTH
Jose Gutierrez, Olivia Martha, Rogelio Martha and Torrey Roberts.

FIFTH
Nick Duarte, Greg Medina, Carlos Pina, Lisa Salamanca, Rolando Suarez, Monty Turney and Jose Zapata.

SIXTH
Jesse Gutierrez.
SEVENTH
Sammy Belez, Malisa Guillen, and Martha Landeros.

EIGHTH
Cynthia Bennett, Victoria Garcia, Sidney Graves, Efrain Guillen, Magdalena Landeros and Lillian Pina.

NINTH
Jesse Haros, Pedro Haros, Lupe Silva and Rojelio Suarez.

TENTH
Adrian Medina, Selene Medina, Lynda Mendoza and Chad Welch.

ELEVENTH
Elizabeth Garcia.
TWELFTH
Albert Belez, Saul Guillen and Stacy Kindel.

Evau Kelley, Jose Lozano, Jr., Richie Macias, Donna Puckett, Kalam Puckett, Stephanie Quintana, Roxanne Rodriguez, Shane Schuster, Brooke Sinclair, Jeremy Sizemore, Sonya Smith, Courtney Tanksley, Breena Wheeler, Shawn Wheeler, Jamie Williams and Andy Wilson.

SEVENTH GRADE
Hector Arzola, Dora Barrera, Jeffrey Bradley, Michael Cearley, Kristin Chitwood, Sonya Cisneros, Chris Dominguez, Becky Donaldson, Amelia Flores, Shane Glover, Veronica Gonzales, Rebecca Green, Stacie Harris, Robin Hoviand, Jennifer Johnson, Stacey Langfitt, Aida Martinez, Scott Miramontes, Rodolfo Nunez, Gil-robot Rennels, Mandy Shipman, Douglas Snell, Jody Thomas, Cari Turner, Steven Wauson, Cory Welch, Wiley Summer and Courtney Williams.

EIGHTH GRADE
Maria Almanza, Tiffany Angeley, Audree Anzaldua, Mita Bhakta, Robert Chavez, Tina Copley, Andy Crawford, Patricia Del Toro, Dustin Elliott, Jody Field, Becky Flores, Jill Foster, Courtney Graves, Scott Gray, Jason Harmon, Gracie Heredia, Corley Hutton, Erin Kelley, Chanda Kemp, Shane Kirk, Galin Latham, Tory Matthews, Kip McCall, Jill Noble, Steven Noble, Ross Parish, Adrian Pineda, Margarita Posadas, David Quintana, Michael Richardson, Ronda Scott, Virgil Snell, Mickey Trussell, Celia Villalobos, April Watkins and Audrey Williams.



GREETINGS FROM YOUR DRIVE IN BANK--This is the duo who waited on customers at the drive-in window of Muleshoe State Bank Friday all day. They were dressed in the 'flapper' era and as 'Elvira.'

Post Office Vandalism Costly For Everybody

Through rain, sleet, snow, or dead of night the U.S. Mail gets delivered to postal customers across the nation. The elements of nature don't stop letter carriers from getting the mail into a customer's mailbox, but sometimes mailbox vandalism does.

Mailbox vandalism comes in a variety of shapes and sizes from the placement of objects inside of the mailbox to the actual theft or destruction of the mail receptacle. Letter carriers and customers have reported finding bottles, snakes, snails, food, trash, and even small animals inside their mailboxes. These items are usually easily removed and do no disrupt the delivery of mail. On the other hand, firecrackers, shotgun pellets, baseball bats, rocks, and even an occasional pickup truck usually do enough damage to cause an interruption in mail service until the box is repaired or replaced. Beyond the damage to the boxes, which costs the postal customer time and money to repair or replace, mailbox vandalism sometimes causes the loss or destruction of valuable and important mail.

U.S. Mail receptacles and the mail inside are protected by Federal law from theft, damage, and destruction. The violations are felonies which carry penalties of between three to five years imprisonment and/or fines between \$1,000 and \$2,000.

Through the years it has been discovered that the vast major-

ity of incidents of mailbox vandalism are the result of juveniles playing pranks. Juveniles, those under the age of 18, cannot be prosecuted in Federal court so frequently, even though vandalism is a Federal offense, the local sheriff or police are called upon to investigate. They can respond quickly and usually have a good idea which individuals are most likely to be involved. In addition, juveniles can be prosecuted for vandalism of mailboxes under the State law concerning criminal mischief.

The best way to prevent the destruction and vandalism of mailboxes is through education. Parents with young children should take a few moments to explain the importance of an individual's mail to them. They should also let their older children know that what may be intended as a harmless prank is actually against the law and that everyone involved loses; the prankster who can end up in jail; the customer who has to pay for the repair or replacement of the damaged mailbox and mail; and the community who pays the local sheriff or police to investigate the incident.

It's your mail - protect it. Any act of vandalism or information concerning vandalism of mailboxes should be immediately reported to the local sheriff or police and to your local postmaster.

20th Anniversary Bratcher Motor Supply

To show our appreciation to all our loyal customers who've made Bratcher Motor Supply a success over the past 20 years, we will be giving away a

Sharp VCR.

The drawing will be held **November 28th.**

Also, an **Oil Filter** will be given away **each day** during the month of November

Register Now!!

105 Ave. B

Muleshoe

272-4288

HALLOWEEN SPECIAL  **ANTI FREEZE SPECIAL \$2.99 PER GALLON**



Clean up with Phillips 66 SUPERCLEAN Unleaded Gasolines.

As little as one tankful can clean your engine to run like new.

Many gasolines don't have enough detergent to keep fuel injectors from clogging and electronic carburetors from fouling. The results? Poor performance, or even expensive repairs.

But with Phillips 66 SuperClean® Unleaded Gasolines, as little as one tankful can clean

your engine so it runs like new. And you can depend on Phillips 66 SuperClean® Unleaded Gasolines to keep it clean with continuous use.

Try SuperClean® Unleaded Gasolines: The clean-up and keep clean gasolines, from Phillips 66.

SUPERCLEAN

The Clean-Up and Keep Clean Gasolines

Phillips 66 Super Clean Unleaded Gasolines Are Available At

1. 715 West American Boulevard, Muleshoe
2. Needmore (One Block West Of The Intersection) For Farm Delivery, Call Western at 272-4556

Western "66" Company

These Western Fuel Card Locations:

Earth Highway

Muleshoe

272-4556





STUDENT WINNERS AT WATSON JUNIOR HIGH SCHOOL--It was a high-spirited group at Watson Junior High School Wednesday, when the students dressed up in Halloween costumes for the day. Roxie Johnson and Shelly Turnbow judged the students, and named the 'Tin Man' who was Rachel Adams (background) as first place winners. Other winners are shown in the picture, which includes the 'mice' members of the WJHS cheerleaders.

Americans Learn Biscuit Basics: Re-Discover Down-Home Cooking

Americans are discovering what West Texans have known all along--the best kind of cookin' is home cookin'.

Though women today don't spend as much time cooking as they once did, home cooking--beginning with the traditional, sit-down family dinner on Sunday--is back in style.

According to a recent survey by Ladies Home Journal, the women who microwave on weekdays are spending hours in their kitchens on weekends. "Families know that home-style cooking is worth waiting for all week long," says Bettie Lee Wilson, home economist for Pioneer Flour Mills in San Antonio, Texas.

Women are preparing home cooked meals for weekend company, too. The return to down-home cooking is the start of a trend that is predicted to grow even stronger as we enter the 1990s, and according to New York City-based BrainReserve, an established marketing research organization, Americans will choose to stay closer to home.

The backbone of down-home cooking is tender, homemade biscuits. "Food fads come and go, but few of us can forget the smell of freshly baked biscuits hot from the oven," said Wilson.

Wilson has taught thousands of people the secrets of baking the world's best biscuits through her work with Pioneer, the country's oldest family-owned and continuously operated flour mill. A landmark in San Antonio where C.H. Guenther started the company in 1851, Pioneer recently introduced its biscuit and baking mixes into West Texas.

Wilson has mastered the art of biscuit baking and enjoys sharing her tried and true tips for baking biscuits with other cooks. Wilson recommends using a spatula or heavy spoon for combining dry ingredients with liquids. "Biscuit makers then should roll the dough to a thickness of approximately one-half inch and use a sharp-edged cutter, not a blunt edged object or a drinking glass," she says.

The Pioneer home economist cautions her cooks never to twist the cutter as they cut the biscuits. "Finish the biscuits by brushing them with melted butter after baking," she explains.

Wilson adds that one reason biscuits are such an integral part of down-home cooking is their versatility. "Fresh biscuits are great for strawberry shortcake or as a topping for meat

pie," she says.

Biscuits are just the beginning of down-home cooking with Pioneer. "Our mixes allow cooks to make a variety of dishes, from appetizers to desserts, quickly and with fewer ingredients," she said. "One of our most frequently requested recipes is oatmeal chocolate chip cookies. Our customers tell us that they like the flavor and the convenience."

As good as home cooking tastes, Wilson says that families today expect home cooking to be nutritious and healthful, too. For Pioneer, Wilson develops recipes that allow cooks to take full advantage of Pioneer's cholesterol-free formulation.

"Since its formulation, Pioneer Biscuit and Baking Mix always has been cholesterol-free and has never contained animal fat or preservatives," she explains. Her cholesterol-free recipes use the baking mixes with water or skim milk and egg substitutes rather than the traditional milk and egg ingredients.

"We try to help cooks combine the flavor of down-home cooking with healthy eating," Wilson noted. She recommends Pioneer's recipes for biscuits, brownies, chocolate chip cookies, chicken pot pie and coconut pie as examples of some of the best of down-home cooking.

Church of Christ Women In Sudan Have Salad Dinner

Women of the Sudan Church of Christ held a salad supper on Monday, October 19, in the fellowship hall of the church with Nell Ingle and Cindy Wiseman as hostesses.

The fall theme was carried out in decorations throughout the hall.

Sandra Franks presented the lesson on "Christians in Harmony."

She brought out three main points: be with people who reflect the good in us that will build us up; that we all have to be in the same key but not all sing the same notes to be in harmony; and that it takes everyone's talents working together to make Christianity work in our lives.

Attending were Rhonda Pickrell, Evelyn Fisher, Bethelene Harper, Loretta Reid, Neal Kleman, Edith Reed, Cynthia King, Denece McDonald, Shirley Fisher, Yvonne Pierce, Donna Black, Elsie Wilson, Maxine Nichols, Peggy Ray, Lula Burnett, Lucy Kent, Betty Harlan, Georgia Newcomer and Phyllis Lynn.

Sarah Gene Sexton

Mr. and Mrs. Larry Sexton welcomed a daughter on Wednesday, October 28, at South Plains Hospital at Amherst.

Sarah Gene was born at 12:47 a.m., and weighed six pounds, 14½ ounces, and was 19½ inches long.

She has two brothers, Jason, 13 months, Michelle Sexton, three years and a sister, Stephinana, six years of age.

Grandparents include Mr. and Mrs. Doc Jones and Mr. and Mrs. Thomas Sexton, all of Muleshoe.

BIBLE VERSE



"A prophet is not without honour, save in his own country, and among his own kin, and in his own house."

1. Who spoke these words?
2. Where?
3. Where are they recorded?
4. Where are similar words found?

Answers to Bible Verse

1. Jesus.
2. In Nazareth.
3. Mark 6:4.
4. Matthew 15:57 and Luke 4:24.

Latest Arrivals



Jared Paul Flores

Jared Paul Flores was born to Joe and Linda Flores on Thursday, October 15, in Roosevelt General Hospital at Portales, N.M.

He weighed seven pounds, two ounces and was 19¼ inches long.

Jared Paul was welcomed by two sisters, Melissa, four and a half and Tiffany, two years of age.

Grandparents include Mr. and Mrs. Ray Garcia and Juanita Flores, all of Muleshoe.

Great-grandmothers are Mrs. Ramona Garcia, Lakewood, CA and Maria Guzman, Victoria.

Enochs Couple Honored On Fiftieth Anniversary

Mr. and Mrs. Bill Key were honored on their fiftieth wedding anniversary on Saturday, October 24, in the fellowship hall of the First Baptist Church in Enochs.

Mrs. Louise Newton registered the guests in the anniversary book, centered on a table laid with white lace over gold. The floral arrangement of roses were presented to the Keys by Mr. and Mrs. Andrew Wittner, and son, Eugene Wittner.

Silk flowers were made for all the tables by Mrs. Key's sister, Mrs. Bobby Adams.

The serving table was laid with a gold cloth, edged with wide gold lace. It was centered with a silk floral arrangement with a 'Key' in the center. Mrs. DeAun (Foley) Autry made the tiered wedding anniversary cake. The cake, along with gold

punch, coffee, mints and nuts were served to the 130 guests attending the celebration. The gold mints were made by Mrs. Dale Nichols.

A gift table was laid with white over gold cloths, and featured pictures from the past and a flower arrangement. The Keys wore corsages of pink roses.

Helping hostess the anniversary were Mrs. Jane White, Mrs. Dale Nichols, Mrs. Buford Peterson, Mrs. Winnie Byars, Mrs. Ann Bee Lane, Mrs. Gary Welch, Mrs. Juanita Howard and Mrs. Olive Cox.

All of Bill Key's sisters were present, including, Lola Gammon of Weatherford; Mildred Butler and family, Lucille Butler, Juanita and Homer Howard, all of Littlefield; E.G. Butler, Aledo; Mrs. Janell Estep of

Belen, N.M. and daughter, Jane White of Los Lunas, N.M. and granddaughter, Bura Estep.

The Keys' son and wife, Sid and Linda Key, and their sons, Louie Key of Seattle, Wash.; Kevin Key of Fairbanks, Alaska; Mary Miller of North Pole, Alaska; and Linda's children, C.W. and Vonna Hamilton of Roswell, N.M. attended.

Mrs. Key's sisters present were Mrs. Bonnie Long of Morton; Martha and J.P. Meek of Canadian; a daughter, Cindy, Don and Hayden Hartsfield of Amarillo; Mr. and Mrs. Bud Huff, Jr., of Three Way; Bobby Adams and Mrs. Mamie Adams, and a host of friends.

Shop Muleshoe First!

G/T Parents At De Shazo For Meeting

The G/T Staff of Muleshoe ISD hosted a Parent's Night for parents who have children enrolled in the EXPLORE Program and the Junior High and High School Gifted and Talented Program.

Gayle Fuller, the elementary coordinator of EXPLORE, gave the rationale for the kinds of activities in which students are engaged and the goals of the program.

John Gulley, Muleshoe High School teacher, and Alice Liles, Watson Junior High teacher, gave overviews of their respective programs in the secondary schools.

Venida Collins, diagnostician, explained the identification and nomination process.

Superintendent Fuller challenged parents to accept the philosophy of Muleshoe ISD that (1) All students can learn (2) Success breeds success and (3) Schools control the conditions of success.

Approximately 50 parents and school personnel attended this meeting held in the Mary DeShazo Library, Thursday, October 29.



- ...about families
- ...about children
- ...about crime
- ...about the poor
- ...about animal suffering

VOTE NO ON NOVEMBER 3!

Paid Pol Ad By Your Friends At First Baptist Church

FESTIVE FOODS FREE DEMONSTRATION

Festive Food Cookbooks, Tasting, Microwave Tips

Monday, November 2
7:00 p.m. — 9:00 p.m.

Bailey County Coliseum
West Hwy 84 — Muleshoe

Presented By:



E. KAY DAVIS
SPS Home Economist

Electricity — Efficient Use
Makes For a Wise Choice!

Sponsored by:
SPS & Bailey County Extension
Home Economic Committee



SOUTHWESTERN
PUBLIC SERVICE COMPANY

Blue Goose Catering

By Dani

Let Blue Goose cater your weddings,
banquets, parties and special occasions

Call Now For Christmas Bookings

272-4351

210 W. Ave G

A497-B-87-930.1



HAS THE GREAT PUMPKIN BEEN FOUND?--If you should visit the ASCS office in Muleshoe, this painted pumpkin is only one of the magnificent Halloween decorations you would find. The entire office, even swaying 'ghosts' on the tips of ceiling fans, is decorated. And, you should see the spider web, a big one, in the corner.

Muleshoe Students Given Opportunity At Computers

Classroom computers are now a reality for students in the Muleshoe schools from pre-kindergarten through the twelfth grade as educators across the nation celebrate Computer Education month during October. When compared to schools throughout the State of Texas, Muleshoe I.S.D. is a leader in providing up-to-date technological innovation and opportunity for Computer Assisted Instruction.

"Computers are so much a part of everyone's life now," said Georgia Pena, Director of Computer Instruction for the Muleshoe Independent School District, "because there are few occupations or opportunities today that do not require some computer knowledge. Because of this, it is the schools' responsibility to teach students how to use them."

The introduction of Computer Assisted Instruction began in Muleshoe about in 1978 at the

junior high and high school levels. A mini-computer was purchased for the 6th, 7th and 8th grades seven years ago which diagnosed the students' achievement levels in language arts, math and reading and proceeded to provide lessons for continued growth in these subjects.

Since that time, emphasis has been on purchasing micro-computers and appropriate software for the different subject areas and grade levels. Currently Muleshoe I.S.D. has approximately 200 instructional computers. All four school campuses have a modern computer lab equipped with from 20 to 25 computers. In addition to these labs, most classrooms throughout the school system have at least one computer and some have as many as three.

A concept that is becoming more and more popular is that of learning to read by using computers. The elementary schools are using Houghton Mifflin's software, "Sound Ideas," to assist students learning to read and it also serves as

motivation to reluctant readers. Teachers have found that even the very young students learn appropriate keyboarding techniques, as they work their way through the lessons.

Our elementary schools are employing computers mainly as tools to assist in teaching concepts and to provide drill and practice for students. The curriculum feed toward computer programming at the Junior High and High School levels.

Since a computer is only as good as the software which make it useful, Muleshoe I.S.D. has entered into a contract with Region XVII Education Service Center which provides economical and very useful software with a license to copy programs for use throughout the school system. "Word Munchers," "Number Munchers," and "Speedway Math" are some of the favorites of students.

Most of the students in the Muleshoe Schools would agree that computers help them learn and make learning challenging and fun.

Teachers Are Involved In Training Program

Twenty one teachers from the four Muleshoe ISD campuses met at 8 a.m. at the Hungry Mule Steak House on Thursday, October 29, to begin training in the nationally acclaimed TESA Program (Teacher Expectations and Student Achievement.)

This program was developed approximately 10 years ago by Sam Kerman and is based on research that indicates that students in the same classroom are often treated differently, frequently without the teacher's being aware of the difference, in ways that affect their engagement and achievement.

TASA developed observation and feedback procedures to help teachers get a picture of the distribution and the nature of communications in their classroom. TESA uses a large body of research on teaching for ideas on involving all students affirmatively, helping students respond, treating varieties of responses, maintaining a high level of respect and courtest in the classroom, etc.

Janis Hall, a consultant from Region XVII Education Service Center, is conducting the training which will develop over a five month period.

Teachers involved are: From Dillman Elementary - Anita Boyd, Norma J. Prather, Linda Latham, Joyce Scott, Carol Williams, Mary Helen Perez, Vovery Dodd, and Kay Lepard.

From DeShazo - Rhonda Buie, Patricia New, Tawna Ward, and Jane Foster.

From Watson Junior High School - Twila Albertson, Ginger Reedy, and Barbara Mut-schler.

From High School - Colleen

Tollett, Mike Summers, Robert Dinwiddie, Brad Eblen, Stephanie Barrett and Doris Mardis.

These teachers volunteered for this training and will serve as a core group which will, in turn, train other teachers throughout the system in techniques which Phi Delta Kappa supports as very effective teaching techniques.



THEY'RE CALIFORNIA RAISINS, I THINK--Teachers from Watson Junior High School turned out in costumes depicting them as 'California Raisins' during WJHS's dress-up day on Wednesday. This group of teachers joined in the fun, and pleased their students during the day to wear costumes just before Halloween.

Girl Scout News

All Brownies and Jr. Girl Scouts will enjoy a day at the Wildlife Refuge next Saturday, November 7. They will leave the Girl Scout Hut at 11:00 a.m. sharp and journey to the Muleshoe National Wildlife Refuge where they will have a sack lunch and register for the event.

Troops from Plainview and Friona are expected at this very special workshop. Jrs. will earn Wildlife Badge and Brownies will earn Outdoor Fun Badge.

The Scouts will learn about nature, wildlife and ecology as they explore the refuge. "Stations" are set up where the girls learn each segment of information. Don Clapp, Refuge Manager will conclude each workshop with a visit to the Refuge Office where they will see actual stuffed cranes and hear the fascinating story of our own Sandhill Cranes and answer questions.

The Scouts will have hotdogs and sing songs around a roaring campfire and then, for the most exciting part of their day, they will view thousands and thousands of sandhill cranes returning to the lakes which is a safe haven for the night. Their mass return takes place in about 20 minutes and the sky is black with returning cranes!

Mothers are encouraged to join their girls to help move the

groups and enjoy this fun-filled learning experience. Girl Scout Leaders, Boy Scouts, and others will fill the "stations" to make this an outing that they'll never forget!

TOPS CLUB

Tops Club # 34 met Thursday night October 29th in the Heritage Thrift Shop.

Jewell Peeler called the meeting to order, in the absence of Laverne James, with the TOPS Pledge and the fellowship song. Thresia Davis read minutes of the previous meeting, they were approved as read.

Jewell Peeler called roll call, there were ten who weighed in. Best loser for the week was a tie between Mary Edmiston and Thresia Davis.

Second runner up was Wanda Kemp.

First runner up was Ernestine Steinbock.

The meeting was closed with the goodnight song.

Shop Muleshoe First!

WHAT'S YOUR EXCUSE FOR NOT LOSING WEIGHT?

FINAL WEEK

Excuse #16:
Nothing seems to work for me.

Excuse #78:
I'm just not motivated to lose weight right now.

"The money you save by joining now should be motivation enough. But there's much more. Our group support combined with our Self-Discovery plan and optional exercise program will get you going in the right direction. Once you see and feel all the benefits of our amazing Quick Start Plus Plan, your success will be your ultimate motivation!"

JOIN WEIGHT WATCHERS NOW ONLY... \$10

Regular Fees:
Registration \$18.00
First Meeting \$ 7.00
Regular Price \$25.00
YOU SAVE \$15.00
Offer Ends November 8, 1987.

Joyce Nimetz
Area Director

Come to the Weight Watchers meeting nearest you.

MULESHOE Church of Christ
16th and Avenue D
Thur: 6:00 pm

NOTHING WORKS LIKE WEIGHT WATCHERS!
1-800-692-4329

Gas Pipeline Company Sets Awards Dinner

Natural Gas Pipeline Company of America will honor three area residents for employment service milestones during a dinner at the Muleshoe Country Club on November 10. The company presents awards at five year intervals.

Alfredo C. Tijerina and Jerry M. Tisdale, both of Hereford, and John J. Vallaster of Morton, will be recognized for 15 years of company service.

Leland D. Winton, superintendent of Natural's facilities at Fritch, will serve as master of ceremonies for the dinner.

Also participating will be other area employees and their spouses, as well as executives from Natural's headquarters in Lombard, Ill.

Natural Gas Pipeline Company operates 12,600 miles of interstate pipelines in a nine-state area. Its parent company, MidCon Corp., also based in Lombard, is a subsidiary of Occidental Petroleum Corporation, Los Angeles.

West Plains Medical Center
272-4524

Bailey County Journal USPS 040-200
Published March 31, 1963. Published by Muleshoe Publishing Co., Inc. Every Sunday at 304 W. Second, Box 449, Muleshoe, Texas 79347. Second Class Postage paid at Muleshoe, Texas 79347.

MEMBER 1987 TEXAS PRESS ASSOCIATION

Member NATIONAL NEWSPAPER ASSOCIATION PANHANDLE PRESS ASSN. WEST TEXAS PRESS ASSOCIATION

L.B. Hall, President & Publisher
Sammy Hall, Vice President & Controller
Clea Williams, News
Evelene Harris, Society
Dannett Bunch, Advertising
Lillic News-Bookkeeping

SUBSCRIPTIONS:
Muleshoe Journal and Bailey County Journal
Bailey and surrounding counties,
Muleshoe Journal and Bailey County Journal
Elsewhere in Texas \$14.75
Muleshoe Journal and Bailey County Journal
Outside of Texas \$18.50
Yearly by Carrier \$12.50
Advertising rate card on application.
Advertisers should check their ad the first day of insertion. The Journal will not be liable for failure to publish an ad or for a typographical error or error in publication except to the extent of the cost of the ad for the first day insertion. Adjustment for errors will be limited to the cost of that portion of the ad where the error occurred.

GTE General Telephone

SERVICE.

Meet Lajuna Chester,
Switching Services
She's one of Muleshoe's
GTE professionals who is
working to bring you
better and more efficient
telephone service.

Monitoring and serving the new electronic switching network is part of my job. At GTE I spend my time ensuring the quality of our switching network—providing you with top-notch services and limiting the chances of static, noises and interruptions when you make a phone call. I'm proud to be one of the people General Telephone is talking about when they say "We are People Service People... Muleshoe and GTE."



We make it GTEasy!

Amendment Election

Cont. from Page 1

permitted to issue up to \$125 million in general obligation bonds and establish funds to foster the development of small businesses, the development and production of new or improved products, and the production, processing, and marketing of agricultural crops by small agricultural businesses in Texas. Fifteen million dollars could be used for the initial funding of a Texas Product Development Fund, \$10 million for a Texas Small Business Incubator Fund and \$100 million for a Texas Agricultural Fund. Additional funding would come from royalties, loan repayments, loan guarantees, investment income, and other amounts deposited by the legislature or other parties. A small business incubator operating under the program would be exempt from *ad valorem* taxation. Enabling legislation requires local involvement in creating, funding, and evaluating small business incubator programs.

The purpose of this amendment is to create and preserve jobs in Texas and increase state revenues by helping small businesses and innovative products get off the ground.

AMENDMENT 8

"THE CONSTITUTIONAL AMENDMENT AUTHORIZING THE ISSUANCE OF GENERAL OBLIGATION BONDS FOR PROJECTS RELATING TO CORRECTIONS INSTITUTIONS AND MENTAL HEALTH AND MENTAL RETARDATION FACILITIES."

EXPLANATION

Amendment 8 authorizes the issuance of up to \$500 million in general obligation bonds for corrections institutions, including youth corrections institutions, and mental health and mental retardation institutions. The bond proceeds could be used for acquiring or constructing new facilities or for major repairs to existing facilities.

Legislation to implement this proposed amendment provides that these general obligation bonds would be issued by the Texas Public Finance Authority if the amendment passes. The act also authorizes the Authority to issue up to \$500 million in revenue bonds for the same purposes. (Issuance of revenue bonds does not require voter approval.) The total amount of bonds issued for these purposes is limited to \$500 million.

The act also provides that specific projects to be financed by the bonds must be authorized by the legislature before the bonds are issued. Projects that have been approved by the legislature for funding in the current biennium have a total cost of \$342 million, which is allocated as follows:

Texas Department of Corrections - \$276 million; Texas Youth Commission - \$19 million; Texas Department of Mental Health/Mental Retardation - \$47 million.

Approval by the state's bond review board is also required prior to issuance of the bonds.

AMENDMENT 12

"THE CONSTITUTIONAL AMENDMENT PERMITTING SPOUSES TO HOLD COMMUNITY PROPERTY WITH RIGHT OF SURVIVORSHIP."

EXPLANATION

The proposed amendment would permit spouses to agree, in writing, that all or part of their community property would become the property of the surviving spouse on the death of a spouse.

Community property, generally defined, is all property acquired by a spouse during marriage while separate property is that property belonging to a spouse before marriage or acquired by gift or inheritance during a marriage.

AMENDMENT 14

"THE CONSTITUTIONAL AMENDMENT GIVING THE STATE A LIMITED RIGHT TO APPEAL IN CRIMINAL CASES."

EXPLANATION

Presently the Texas Constitution prohibits the state from appealing any element of a criminal case except by a petition to the Court of Criminal Appeals for a review of the decision of a lower court of appeals on the higher court's own motion. This proposed amendment, together with the enabling legislation would allow the state the right to appeal certain orders issued by the trial court such as dismissal of an indictment, granting of a new trial, suppression of evidence, a confession, etc. The state would also be permitted to appeal a sentence on the grounds that the sentence is illegal.

AMENDMENT 17

"THE CONSTITUTIONAL AMENDMENT AUTHORIZING THE LEGISLATURE TO DEFINE FOR ALL PURPOSES THE GOVERNMENTAL AND PROPRIETARY FUNCTIONS OF A MUNICIPALITY."

EXPLANATION

This amendment would allow the legislature to define the functions of a municipality that are governmental and those that are proprietary. Governmental functions, such as law enforcement, benefit all citizens in a state. Proprietary functions, such as a library, benefit only the citizens of that town.

The Tort Claims Act sets limits on damage awards that can be collected from lawsuits arising from governmental functions. Proprietary functions are not covered by this act, so there are no limits to the amount of damages that can be recovered from a lawsuit arising out of a proprietary function.

Courts have traditionally decided whether a municipal government function is governmental or proprietary. This amendment would change that by authorizing the legislature to define which are which and by allowing the legislature to redefine functions defined previously in statute or common law. It would protect definitions made by the current and subsequent legislatures from being changed by the courts.

Legislation passed in June, 1987 defined a list of governmental and proprietary functions of municipal government, expanded the number of functions considered governmental, and raised the caps on damage awards.

AMENDMENT 19

"THE CONSTITUTIONAL AMENDMENT AUTHORIZING THE ISSUANCE OF GENERAL OBLIGATION BONDS TO FUND UNDERTAKINGS RELATED TO A SUPERCONDUCTING SUPER-COLLIDER RESEARCH FACILITY SPONSORED OR AUTHORIZED BY THE UNITED STATES GOVERNMENT, AND TO MAKE APPROPRIATE GRANTS FOR SUCH UNDERTAKINGS."

EXPLANATION

This amendment would permit the legislature to authorize an appropriate agency to issue up to \$500 million in general obligation bonds for the Superconducting Super Collider (SSC). Proceeds of the bonds would establish a fund to be used for any appropriate activities of the super collider research facility being planned by the U. S. government.

The bonds would constitute a general obligation of the state. While bonds or interest remain outstanding and unpaid, the legislature would appropriate funds to pay the principal and interest.

Implementing legislation has designated the Texas National Research Laboratory Commission as the appropriate agency to handle the development, financing, and operations of the SSC and allows this agency to issue up to \$1 billion in bonds; \$500 million in general obligation bonds, should this amendment pass, and \$500 million in revenue bonds. The commission could not issue bonds until the U. S. government announced a decision to locate the Super Collider in Texas.

The Legislative Budget Board estimates that retiring the general obligation bonds would cost \$46.5 million a year from 1988 through the next 20 years, assuming a 20-year payout at 7 percent on the \$500 million in bonds.

Mules Lose

Cont. from Page 1

Trailing by seven going into the final quarter, the Mules looked for a chance to tie the game. This hope almost died when the Hornets' Lance Grantham caught a twenty-six yard pass for still another Tulia TD. The Mules, however, did not give up and promptly bounced back. With 5:00 left to play, Daniel Olivas added another amazing run to his record and ran 80 yards for the last Mule touchdown of the game. He also kicked the extra point and brought the team within six points of Tulia.

The Hornets were unwilling to give up the ball, and after two penalties for delay of the game, they punted the ball back to the Mules. With only fifteen seconds left in the game, Johnny Garcia tried to connect with his receivers in the last four plays of the game. The

effort came up empty, though, with four incomplete passes.

The Mules now have a record of 4-5 for the season. They will travel to Dimmitt next week to play the final game of the year.

Be sure to make the trek to Dimmitt and continue your excellent support of the Muleshoe Mules' efforts to provide the Muleshoe area people the best in sports entertainment.

STATS

	Mules	Tulia
First Downs	12	16
Penalties	4-35	7-61
Fum. Recov.	0	0
Rushing Yds.	99	172
Passing Yds.	149	136
Total	248	308

West Plains Medical Center

272-4524



BAILEY COUNTY HISTORY BOOK NAMED--On Thursday night, the winner of the 'Name the History Book' contest was decided. Pictured with the winner are from left, Vivian White, Bill Taylor, winner and Anne Camp. The name of the book will be "Tales and Trails in Bailey County." Taylor won a free history book for naming the upcoming publication.

Muleshoe Offers Basic Computer Class

Muleshoe School Superintendent H. John Fuller announces that Muleshoe ISD is offering a computer course for people who want to learn the basics of using the computer. This course will include instruction in using the data base, spread sheets, word processing, and business-oriented software on the IBM compatible system.

The course will begin Monday evening, November 9, at 6:30 p.m. and continue for eight weeks. Each session will be three hours, two hours of instruction and one hour of lab practice. The fee is \$40 and the instructor will be James Evans, a Muleshoe High School math instructor.

The class will be in the Computer Lab in the Muleshoe High School. A minimum of 15 students is required before the class will be offered.

If you want to register for the course, please call Elizabeth Watson at the Administration Building 272-3325.

Lazbuddie Romps Over Loraine

Friday night, the Lazbuddie Longhorns took on the Loraine Bulldogs for the second time this season, and in three quarters of play, under the 45 point rule for six man football, put the game away.

The Longhorns defeated the Bulldogs from Loraine by 55-8.

Leading 41-8 at halftime, the 'Horns effectively by scoring 14 points early in the third quarter of the game at Loraine.

Drugs...

Cont. from Page 1

Out' while the slogan for Friday will be "Drugs Destroy Dreams."

Further information on specific campus activities for Drug Education Week will be formalized next week.

Muleshoe...

Cont. from Page 1

Hodges, 22nd with a Hampshire and 26th with a Southdown.

Sgt. Charlie Simmons of Plainview said Bailey County, troopers investigated no fatal accidents, and only one personal injury accidents; along with seven property damage accidents in the month of September.

The Muleshoe High School Theatre Department will be shining like a star as they put on their fall shows on November 2 and 3.

There will be three shows on the second and four shows on the third, in the MHS auditorium.

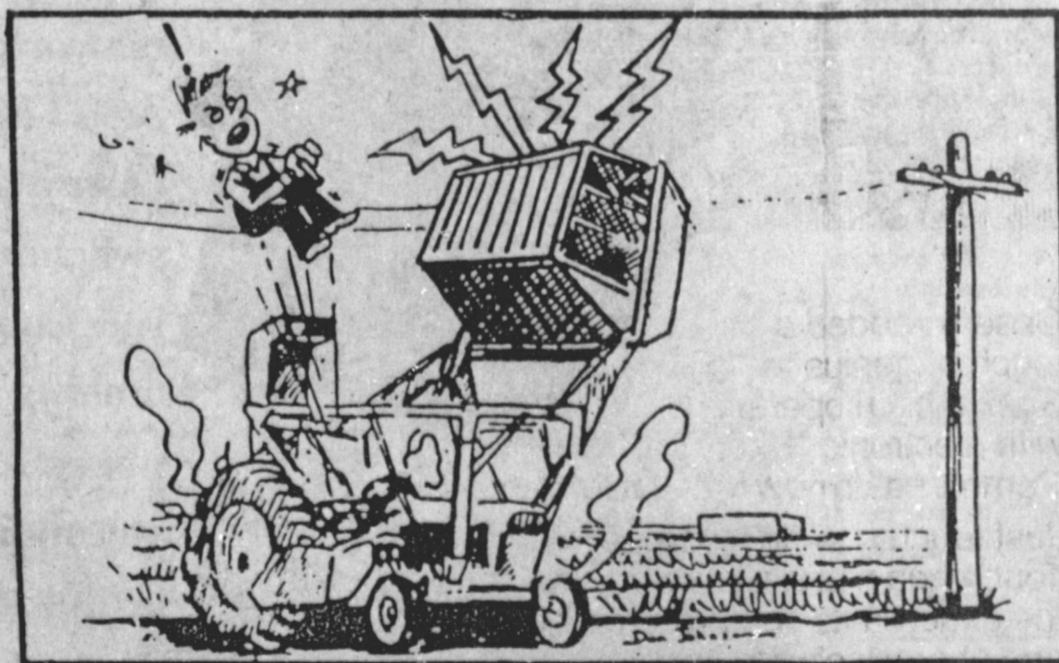
The Monday night shows are "Cheaper By The Dozen," at 7 p.m.; "The Slave With Two Faces," at 7:55 p.m.; and "A Man Called Peter," at 8:40 p.m.

Tuesday night, there will be another night of action starting off with "Dust of the Road," at 7 p.m.; "Early Frost," at 7:35 p.m.; "Goodbye to the Clown," at 8:25 p.m. and "Girl Crazy," at 9 p.m.

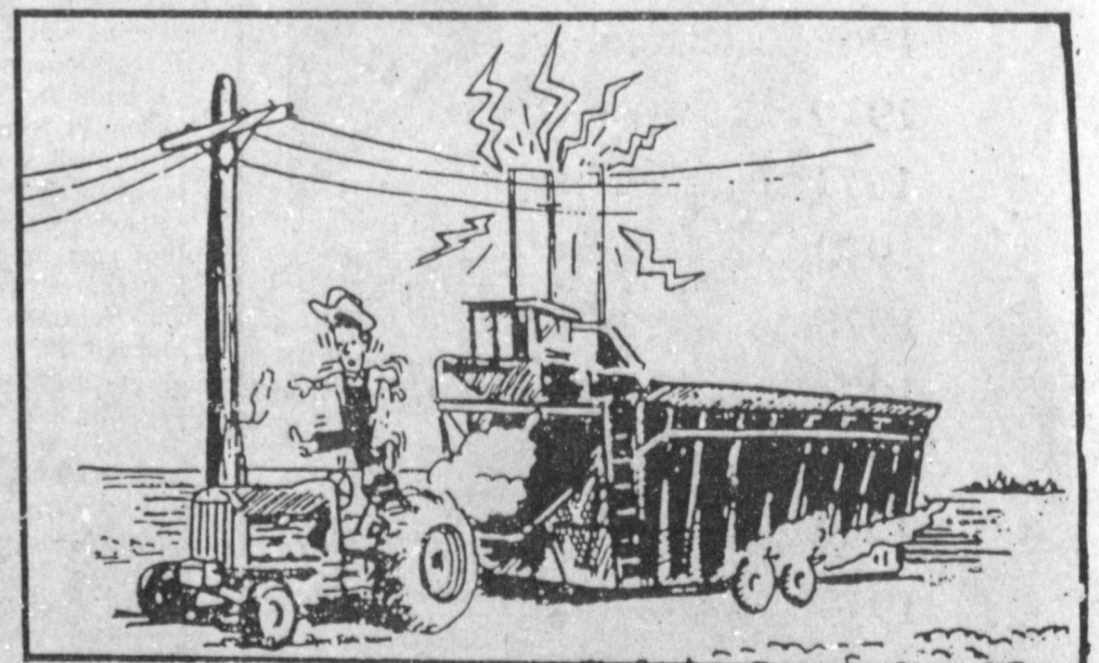
Kerry Moore, director, said, "All the students have worked really hard on all the plays. They have come from learning their lines to actually being their characters. Please come and enjoy the shows and support the MHS Speech Department."

Admission will be only \$2 to see all seven shows.

BAILEY COUNTY ELECTRIC COOPERATIVE ASSOCIATION



Proceeding down a road or turnrow with a high-riding implement requires care.



Machinery that can be mechanically elevated must be used carefully to avoid danger.

Cotton harvest is here, and the Cooperative is urging everyone to use extreme care when operating harvest and other farm equipment near electric lines. Cotton module builders, for example, can easily contact an overhead electric line. The same hazard exists with the overhead baskets on cotton strippers.

So the Cooperative urges

— specifically and emphatically — that operators of module builders make sure the packer arm is lowered as far as it will go before moving the implement from one place to another. And the Cooperative further urges

stripper operators using an overhead basket to check for overhead lines before dumping the basket.

If some piece of equipment does contact a 7,200-volt overhead line, the operator should not try to back

away. The line could break, or if the line is already broken, it could tangle in the equipment and break again, compounding the problem and increasing the danger.

The thing to do when equipment contacts an over-

head line is to jump clear of the machine, being sure not to touch the ground and the machine at the same time. Once clear of the machine, the operator should move quickly away from it at a right angle to the power line. Then, whether the line is broken or not, he should call Bailey County Electric Cooperative at (806) 272-4504 just as soon as possible.

Use caution during harvest

West Plains Medical Center
272-4524

Muleshoe - 272-4504

Morton - 266-8600

DeShazo Awards

THIRD GRADE BEHAVIOR AWARDS
Lidia Franco, Oscar Gonzales, Sarah Freeman, Shane Scoggin, Stacy Harlan, Clifton Knowles, Rachel Casanova, Crystal Castorena, Amanda Valdez, John Leven, Raquel Posados, Jessica Pedroza, Jamie Benavidez, Harvey Alfaro, Yvette Barraz, Tiffany Bond, Fidencio Cortez and Bridget Guzman.

THIRD GRADE ACADEMIC AWARDS
Kandy Wilcox, John Bryan Cowart, Jeffrey Wheeler, Sarah Watson, Colby Latham, Reagan McElroy, Cari Favor, Kermit Price, Melissa Pineda, Narciso Guana, Terri Villa, Angelica Diaz, Heather Bunch, Harvey Alfaro, Gabriela Barrera, Jerry Campos and Twyla Gear.

FOURTH GRADE ACADEMIC AWARDS
Chris Garcia, Monica Sismore, Rickey Cisneros, Samantha Caswell, Ismael Casanova, Rob Clapp, Lauri Puckett, Josh Slayden, Kimberlee Vaughn, Alfredo Gonzales, Samuel Villarreal, Priscilla Bara, Laura Toscano, Tracy Ellis and Manuel Fabela.

FOURTH GRADE BEHAVIOR AWARDS
Jessica Franco, Corey Dodd, Allyson Field, Charlie Acosta, Rosie Rodriguez, Rob Ciapp Julie Williams, Pedro Marrufo, Yolie De Hoyos, Veronica Franco, Koy Wilhite, Joann Ramirez, Samuel Villarreal, Ana Pacheco, Kelly Railsback, Rhonda Crawford, Anita Cortez and Candy Martinez.

FIFTH GRADE BEHAVIOR AWARDS
Jesus Flores, Audra Lee, Robert Toscano, Margaret Crawford, Stephanie Perez,

Troy Maxwell, Joanna Reyna, Linda Berry, Juan Rangel, Gloria Vargas, Ted Villalobos, Ray Ortega, Kourtnee Magby, Marcos Reyes, Lacey Lloyd and Michael Pharis.

FIFTH GRADE ACADEMIC AWARDS
Jesus Flores, Eldon Vanzandt, Julie Gilleland, Russell McGuire, Chris Edwards, Joji Foster, Misty Richardson, Ryan Clapp, Barbie Stout, Tommy Day, Ted Villalobos, Carlos Torres, Margaret Crawford, Louis Gomez, Angela Crawford and Heath Eagle.

THIRD GRADE PERFECT ATTENDANCE
Mary Jo Acosta, San Juana Alarcon, Linda Barron, Yvette Barraz, Gabriella Barrera, Amber Becker, Tiffany Bond, Jamie Benavidez, Rachel Cassanova, Michelle Cearley, Angelica Diaz, Amy Elliott, Rebecca Flores, Heather Fuller, Lidia Franco, Rosemary Franco, Lusila Flores, Sarah Freeman, Ruby Garcia, Twyla Gear, Stephanie Guerrero, Denise Greenhouse, Bridget Guzman, Maria Garcia, Heather Hooten, Mendy Johnson, Patricia Jaime, Lissa Leffler and Michelle Limas.

Also, Rosa Mendoza, Melissa Mata, Claudia Mendoza, Margaret Olvera, Crystal Orozco, Leslie Powell, Melissa Pineda, Jessica Pedroza, Veronica Pena, Raquel Posadas, Maria Rodriguez, Leslie Radford, Carolyn Schuster, Terri Villa, Leticia Villalobos, Amanda Valdez, Ransley Welch, Heather Bunch, Sarah Watson, Misti Williams, Darren Box, Sammy Chavez, Freddy Coleman, Joseph Chavez, Michael Cortez, John Bryan Cowart, James Cox and Darren Elliott.

Also, Kyle Embry, Samuel

Espinoza, Jarrod Fuller, Narciso Guana, Oscar Gonzales, Ace Hanaway, Bernardo Herrera, Adian King, John Leven, Benjamin Locwen, Edward Lujan, Kendall McDaniel, Mark McGuire, Jorge Martinez, Jesse Olivas, Michael Orozco, Mark Palma, Kermit Price, Yoel Reyes, Jarrod Redwine, Carlos Rojas, Scott Stockman, Stefan Sutton, Richard Sigala, Ismael Toscano, Ricky Villalobos, Manuel Venegas, Ramon Valdez, Sammy Watkins, Jeffrey Wheeler and Corey Williams.

FOURTH GRADE PERFECT ATTENDANCE
Lisa Alonzo, Priscilla Bara, Jolene Cruse, Rhonda Crawford, Melody Cody, Jackie Chapman, Samantha Caswell, Tracy Ellis, Allyson Field, Veronica Franco, Jessica Franco, Stephanie Guzman, Michella Guerra, Candelaria Garcia, Dora Hernandez, Suzy Hodges, Marthella Lewis, Cindy Martin, Rosalinda Marquez, Adelina Murillo, Cheryl Martin, Candy Martinez, Melissa Morales, Rosaura Rodriguez, Rosemary Sierra, Laura Soto and Dacia Stewart.

Also, Mandy Seales, Kimberlee Vaughn, Julie Williams, Teri Williams, Charlie Acosta, Steven Alonzo, Ramiro Bustillos, Riley Byers, Ismael Cassanova, Robbie Clapp, Richard Cadena, Edward Cadena, Raul Del Toro, Corey Dodd, Shawn Elliott, Manuel Fabela, Pete Gallegos, Leonardo Gallegos, Albert Garcia, Alfredo Gonzales, Barak Harlan, Chad Johnson, Jeff Lewis, Peter Loewen,

Gabriel Mendoza, Cyle Marr, Tyson Moncrief, Josh Otwell, Wayne Palmer, Frank Perez, Johnny Rodriguez, Kelly Railsback, Michael Sanchez, Josh Slayden and Koy Wilhite.

FIFTH GRADE PERFECT ATTENDANCE
Raquel Arreola, Emily Bomer, Linda Berry, Maria Corrales, Angela Crawford, Melina Diaz, Holly Donaldson, Ruby Estrada, Patricia Franco, Keetha Glover, Jenny Glorie, Julie Gilleland, Christy Holt, Audra Lee, Amanda Maskew, Terry Martin, Bobbi Martinez, Connie Olivas, D-Ann Rodriguez, Misty Richardson, Joanna Reyna, Barbie Stout, April Sawyer, Manuela Solis, Kristi Turner, Crista Trussell, Rebecca Warren, James Acosta, Jason Barrett, Pete Bond, Jimmy Bonham, David Bevers and Efrain Corrales.

Also, Ryan Clapp, Gilbert Castorena, Michael Elliott, Heath Eagle, Roman Franco, Bryan Field, Jesus Flores, Joe Garcia, Luis Gomez, Jimmy Guana, Manuel Hernandez, Robert Jaime, Tommy Day, Rashad Kirven, Lance Latham, Josh Lindt, Michael Nash, Nathan Noble, Jason Osuna, Raymond Ortega, Michael Pharis, Juan Rangel, Marcelo Rodriguez, Gerald Reyna, Marcos Reyes, Freddy Sanchez, Joel Sigala, Robert Toscano, Carlos Torres, Francisco Torres, Ted Villalobos, Eldon Vanzandt and Eleuterio Venegas.

Enochs News

By: Mrs. J.D. Bayless

Sidney Graves got his right arm broke in the gym Wednesday in three places. Get Well Soon, Sidney.

Guests in the home of Mrs. Ellen Bayless Thursday evening till Sunday were a niece and husband Bessie and Harold Johnson of California, then Sunday afternoon Myrtle and Leland Finley of Odessa visited her mother, Mrs. Bayless.

Those attending the annual association at Friona, Tuesday evening were Rev. and Mrs. David Graves, Mr. and Mrs. Buford Peterson and Mrs. Dale Nichols and Mrs. Bill Key.

Sidney, Tonya and David Graves were supper guests in the home of Mrs. Ellen Bayless Tuesday night.

John Snitker of Littlefield

have been having lunch with his grandparents, Mr. and Mrs. Clifford Snitker while he has been doing work out here.

Goldman Stroud visited his son, Mr. and Mrs. Arvin Stroud Thursday till Monday and did some fishing. The grandchildren Brittany and Monty Kirby spent the weekend with their grandmother, while Mr. Stroud was gone.

The telephones were out of order all day Monday so there won't be much news.

Mrs. Winnie Byars and Mrs. Inez Sanders flew to California October 15. They had a nice weeks trip. They went to Los Angeles, Long Beach, San Francisco, Ontario, saw the Spruce Goose, Sun Valley, San Walken, Queen Mary, Maryloma.

West Plains Medical Center
272-4524

Don't wait for 2nd best. We Do QUALITY WORK & GUARANTEE IT.

We save \$50 deduction on all windshields at

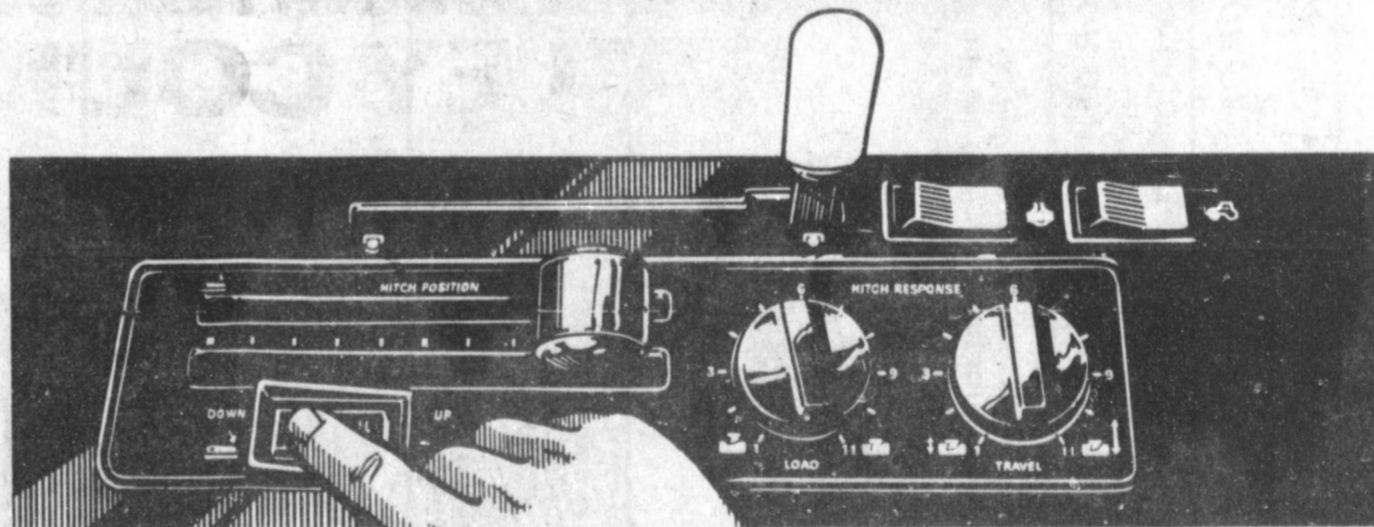
Williams Body Shop

1111 East 9th Littlefield, Texas

In business for 35 years. Give Us A Call 385-4577.



RAISE / LOWER WITH "HITCH COMMAND"



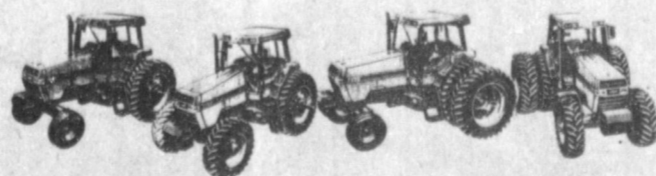
Case IH added a touch of genius to 3-point hitch operation with electronic "Hitch Command" in new MAGNUM tractors.

Just touch a switch to raise the hitch. Touch again and it lowers. Always to the exact limits you pre-program . . . and at precisely the speed that optimum operating conditions require.

Only new Case IH MAGNUM tractors give you electro-hydraulic hitch actuation that

saves time and effort at the headlands and with all soil types, implements and field conditions.

Isn't it time you switched to electro-hydraulic hitch control? It's standard on the all-new Case IH MAGNUM tractors, 130 to 195 PTO hp. See us for details.



MAGNUM means more.

C & H Equipment

Telephone 806/272-5514

West Highway 84 • Muleshoe, Texas 79347

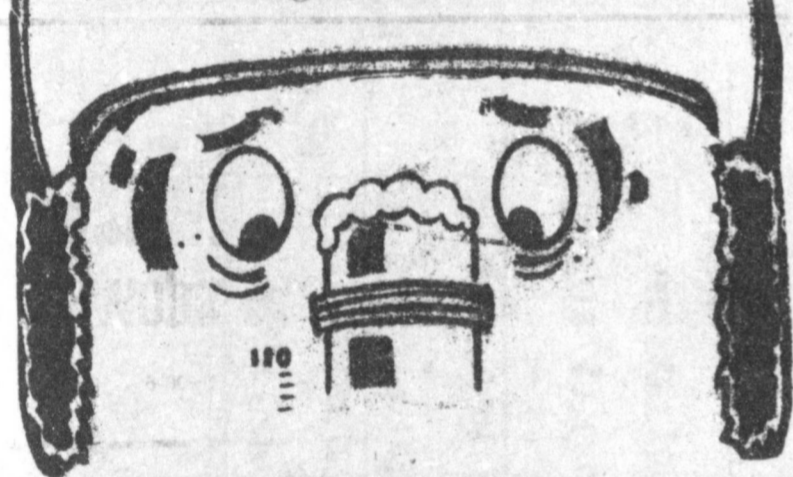
WOOD - JORDAN INC.

PHONE (806) 257-3484

P.O. BOX 415



Freeze Dates



- 1965.....October 28
- 1966.....October 15
- 1967.....October 17
- 1968.....October 18
- 1969.....October 13
- 1970.....October 8
- 1971.....October 31
- 1972.....October 20
- 1973.....October 31
- 1974.....October 16
- 1975.....October 17
- 1976.....October 8
- 1977.....November 2
- 1978.....October 24
- 1979.....October 24
- 1980.....October 19
- 1981.....October 22
- 1982.....October 20
- 1983.....September 21
- 1984.....September 21
- 1985.....October 5
- 1986.....October 12

Presented By:



Member F.D.I.C.

INSTRUCTION NOTE: (NOTA DE INSTRUCCION): Place an "X" in the square beside the statement indicating the way you wish to vote. (Marque con una "X" el cuadro al lado de la frase que indica le manera en que usted quiere votar.)

CONSTITUTIONAL AMENDMENT ELECTION (Eleccion Sobre Enmiendas a la Constitucion)

(Condado de) Bailey County, Texas November 3, 1987 (3 de noviembre de 1987)

- 1. FOR (A FAVOR DE) / AGAINST (EN CONTRA DE)
2. FOR (A FAVOR DE) / AGAINST (EN CONTRA DE)
3. FOR (A FAVOR DE) / AGAINST (EN CONTRA DE)
4. FOR (A FAVOR DE) / AGAINST (EN CONTRA DE)
5. FOR (A FAVOR DE) / AGAINST (EN CONTRA DE)
6. FOR (A FAVOR DE) / AGAINST (EN CONTRA DE)
7. FOR (A FAVOR DE) / AGAINST (EN CONTRA DE)
8. FOR (A FAVOR DE) / AGAINST (EN CONTRA DE)
9. FOR (A FAVOR DE) / AGAINST (EN CONTRA DE)
10. FOR (A FAVOR DE) / AGAINST (EN CONTRA DE)
11. FOR (A FAVOR DE) / AGAINST (EN CONTRA DE)
12. FOR (A FAVOR DE) / AGAINST (EN CONTRA DE)
13. FOR (A FAVOR DE) / AGAINST (EN CONTRA DE)
14. FOR (A FAVOR DE) / AGAINST (EN CONTRA DE)
15. FOR (A FAVOR DE) / AGAINST (EN CONTRA DE)

Presented In The Public Interest By:



Member F.D.I.C.

202 S 1st

272-4515

- 16. FOR (A FAVOR DE) / AGAINST (EN CONTRA DE)
17. FOR (A FAVOR DE) / AGAINST (EN CONTRA DE)
18. FOR (A FAVOR DE) / AGAINST (EN CONTRA DE)
19. FOR (A FAVOR DE) / AGAINST (EN CONTRA DE)
20. FOR (A FAVOR DE) / AGAINST (EN CONTRA DE)
21. FOR (A FAVOR DE) / AGAINST (EN CONTRA DE)
22. FOR (A FAVOR DE) / AGAINST (EN CONTRA DE)
23. FOR (A FAVOR DE) / AGAINST (EN CONTRA DE)
24. FOR (A FAVOR DE) / AGAINST (EN CONTRA DE)
25. FOR (A FAVOR DE) / AGAINST (EN CONTRA DE)

REFERENDUM PROPOSITIONS (PROPOSICIONES DE REFERENDUM)

INSTRUCTION NOTE: (NOTA DE INSTRUCCION): Place an "X" in the square beside the statement indicating the way you wish to vote. (Marque con una "X" el cuadro al lado de la frase que indica le manera en que usted quiere votar.)

- 1. FOR (A FAVOR DE) / AGAINST (EN CONTRA DE)
2. FOR (A FAVOR DE) / AGAINST (EN CONTRA DE)

Nursing Home News by Joy Stancell

Mrs. Layton and Mrs. Crume visited Mrs. Snow Wednesday.

Peanut Hawkins, Weldon and Alma Crim Visited their mother, Mrs. Hawkins Wed. evening.

Glenda Dale and Marilyn Wilson visited the nursing home Wed.

Thurs. afternoon Effie Smith, Ora Roberts, Lois Ethridge attended a get a Introductory tea at the Farwell Convalescent Home. Our thanks to Ruth Riley for going and helping us.

Blanch Aubrey visited Juanita

Snow and Ella Faubus Tues.

Lois Ethridge was visited by her brother Bruce Slayden Friday.

Marlene Harper was visited by her husband Dan Harper Tues.

Mrs. Skipworth was visited by her daughter-in-law Beth Skipworth Tuesday.

Thelma Stearns was visited by her daughter Joyeline Costen Tuesday.

Members of the New Covenant Church came Sunday for Gospel Singing.

Tues. Arnold Morris was visited by Richard and Karri Campbell and baby also Terry Byers.

The Progress Baptist Church came Sun. afternoon to visit and sing gospel songs with the residents.

Happy Birthday to these employees having a birthday in Nov. Conrado Cumpion, Nov. 11th; Opal Jean Moton, Nov. 12th; Minnie Page, Nov. 21st.

Residents having a birthday in Nov. are Beryl Hollis, Nov. 1st; Emma Schuster, Nov. 7th; Edith Goucher, Nov. 8th; Mary Sisemore, Nov. 10th; Allie Barbour, Nov. 19th; Birdie Warren, Nov. 10th; Cordelia Cochran, Nov. 23rd; Johnny Chappell, Nov. 27th; Mammie Askew, Nov. 30th.

The G.A. of the First Baptist Church visited us Wed. afternoon. They left a ray of sunshine to each person as they

passed by.

Juanita Snow was visited by Mrs. Ellen Bayless and Winnie Bayless Mon. afternoon, also Marie Crim and Blanch Aubrey.

Jolee Truelock was visited by Loreta Gregory Wed. Shug Killough took her out Tues.

Chubby Douglass visited the nursing home Sat.

Mrs. Hawkins was visited by Goldie Griffith and Pearl Tally Sat.

Wilmoth Clements went out with Budd Tues.

Eric Smith went home Sun. to help his daughter, Patricia Thatcher celebrate her birthday.

Emma Schuster was taken to the Doctor in Lubbock by her daughter-in-law Anna Schuster Wed.

Oneita Wagnon went out with Jeanine Gunstream Sun. for a visit. Willie Mae Graves visits her everyday.

Onieta Wagnon went out visiting over the weekend with Willie M. Walker.

Edith Bruns is visited everyday by her daughter Ruth Briscoe.

Morris Douglass has visitors daily, among them are his wife Nona Blake, his sister, and sister-in-law Chubby Douglass.

Emma Schuster was given a new perm Saturday by her daughter Johanna Wrinkle.

Dr. Douglas White who was

holding a meeting at The New Vision Nazarene Church, visited and spoke to us Wed. afternoon before the Sing-a-Long lead by Glenda Jennings.

Ike Coffey was visited by Kathy Wed. afternoon.

Ora Roberts was visited by her granddaughter Darla Kay and great grandson Johnny

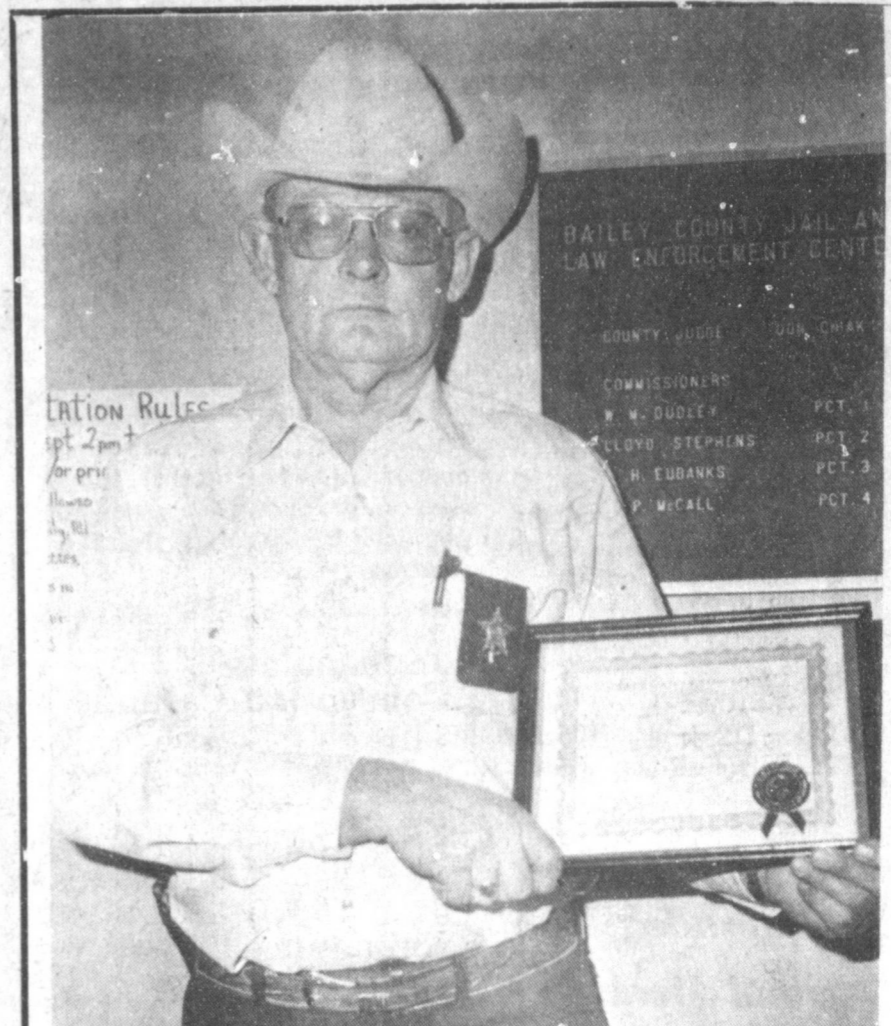
Dale, also her daughter Ruby Clark.

Lois Ethridge attended the A.A.R.P meeting with Clara Lou Jones Fri.

Mr. and Mrs. Shanks took Emma Schuster, Ora Roberts and Effie Smith to the Sr. Citizens meeting at the Depot Mon.



EMPLOYEE OF THE MONTH--Joy Stancell, a nine year employee of the Muleshoe Nursing Home, serving as Activity Director, was presented a certificate and the traveling plaque Thursday morning. She was chosen Employee of the Month, for October by the Muleshoe Chamber of Commerce and Agriculture. Making the presentation was Ron Montgomery, president of the CofC.



JAIL PASSES INSPECTION AGAIN--For the eighth consecutive year, Bailey County Sheriff Bob Henderson gets to show off a certificate showing the Bailey County jail in full compliance with state regulations, following an inspection during the past week. The certificate was awarded October 27 by the Texas Commission on Jail Standards.

BARGAINS BY THE BUSHEL

From Your **A&M** Farm And Ranch Stores

Sale Good Til Nov. 7, 87

Running Boards

Chev. No. 31101
Ford No. 32101

Now: **\$64⁹⁹**
reg. \$79.99

Automatic Gas Shut-Off Nozzle

Only: **\$34⁹⁹**

Regular Or Unloaded

No. A 2000-001
No. A 2000-196

Schumacher POWER-MATE™

10 AMP AUTOMATIC BATTERY CHARGER

for 12 Volt Batteries
SOLID STATE

Special At Only: **\$34⁹⁹**
No. SE-50M

Columbian Heavy Duty 3 1/2" Bench Vise

For Just: **\$24⁹⁹**
NO. 2035-4
reg. \$29.99

Anti-Freeze "It's Time"

At: **\$2⁹⁹** A Gal.

Pipe Insulation Kit

For: **\$24⁹⁹**
reg. \$2.69
No. GW1-25
Smith Gates Electric

BLACK & DECKER Professional 4247 M57 Series™ 4-1/2" ANGLE GRINDER

Just: **\$79⁹⁹**
Reg. \$88.39

LIM-N8 RAT KILLER

All Ready To Use in Packages

39¢
No. LIM-N8

Wire Feed Arc-Welder

Only: **\$329⁹⁹**

117-032 QUICK FIX Wire Feed Welder. Sold complete, ready to weld, with extra contact tips, nozzle, starter spool of wire and welding helmet.

Trojan Water Handler

Now: **\$199⁹⁹**
reg. \$229.99
No. A5663

12V Transfer Pump

For Just: **\$209⁹⁹**
Reg. \$259.99

GPI Dual-Flo Piston HAND PUMP

Adjustable 2-quart or 1-quart stroke

Just: **\$79⁹⁹**
No. HP-100

48" Farm Jack

Only: **\$32⁹⁹**
reg. \$37.49
No. 14000

"HEATER TAPE"

4' - 100' "HEATER TAPE" GUARANTEED

NO MORE FROZEN PIPES

All Now **10% off**

A&M Farm & Ranch

with built in thermostat

All Air Welcomed

All Stores Open Monday-Saturday 7:30 A.M. - 6:00 P.M. Sundays 12:30 - 5:00 P.M.

2600 Mabry Dr., Clovis, N.M. 1-505-762-7717
1601 S. Ave. D. Portales, N.M. 1-505-354-8543
1302 W. American Blvd, Muleshoe Texas 1-806-272-5571

Three-Way Menu

**NOVEMBER 2-6
BREAKFAST
MONDAY**
Cereal, Juice, Milk
TUESDAY
Cinnamon Toast, Juice, Milk
WEDNESDAY
Toast & Jelly, Juice, Milk
THURSDAY
Biscuit, Hash Brown, Gravy & Jelly, Juice, Milk
FRIDAY
Pancakes & Syrup, Juice, Milk
**LUNCH
MONDAY**
Bar-B-Que Weiners, Green Beans, Cream Potatoes, Hot Rolls, Milk, Honey & Butter
TUESDAY
Pizza, Peas, Salad, Milk, Fruit
WEDNESDAY
Pinto Beans, Tomato Relish, Macaroni & Tomatoes, Corn Bread, Greens, Milk, Cobbler
THURSDAY
Nacho Supreme, Corn, Salad, Milk, Cake
FRIDAY
Fish, Cream Potatoes, Black-eyed Peas, Hot Rolls, Milk, Jello

Muleshoe School Menu

**NOVEMBER 2-6
BREAKFAST
MONDAY**
Milk, Toast, Jelly, Fruit
TUESDAY
Milk, Honey Buns, Juice
WEDNESDAY
Milk, Cereal, Toast, Fruit
THURSDAY
Milk, Pancakes, Syrup, Fruit
FRIDAY
Milk, Biscuits, Gravy, Sausage, Fruit
**LUNCH
MONDAY**
Milk, Steak & Gravy, Creamed Potatoes, Green Beans, Hot Rolls, Fruit
TUESDAY
Milk, Juicy Burgers, Lettuce & Tomato, Pickles & Onions, French Fries, Cobbler
WEDNESDAY
Milk, Enchallada Cass. Beans, Spinach, Corn Bread, Fruit
THURSDAY
Milk, Corn Dogs, Veg. Beef Soup, Crackers, Cinnamon Rolls, Fruit
FRIDAY
Milk, Fish, Macaroni & Cheese, Eng. Peas, Hot Rolls, Fruit
**COMBO LINE
MONDAY**
Milk, Pizza, Mixed Veg., Pickles, Fruit
TUESDAY
Milk, Hamburgers, Lettuce & Tomato, Pickles & Onions, Tater Tots, Cobbler
WEDNESDAY
Milk, Taco's, Beans, Lettuce & Tomato, Cheese, Crackers, Fruit
THURSDAY
Milk, Corn Dogs, Veg. Beef Soup, Crackers, Cinnamon Rolls, Fruit
FRIDAY
Milk, Fried Chicken, Gravy, Creamed Potatoes, Eng. Peas, Hot Rolls, Fruit

Lazbuddie School Menu

**NOVEMBER 2-6
BREAKFAST
MONDAY**
Toast, Bacon, Juice, Milk
TUESDAY
Donuts, Applesauce, Milk
WEDNESDAY
Cereal, Juice, Milk
THURSDAY
Toast, Oatmeal, Juice, Milk
FRIDAY
Pancakes, Juice, Milk
**LUNCH
MONDAY**
Steakfingers, Potatoes and Gravy, Green Beans, Hot Rolls, Fruit, Milk
TUESDAY
Chalupas, Corn, Green Salad, Cake, Milk
WEDNESDAY
Beef Stew, Cheese Toast, Crackers, Peaches, Cookies, Milk
THURSDAY
Tacos, Green Salad, Corn, Fruit, Milk
FRIDAY
Hamburgers, French Fries, Lettuce & Pickles, Pudding, Milk
Salad Bar Is Served Daily

Services Held For Noah Kinser

Noah F. Kinser, 83, of Cleveland, TX and a former resident of Muleshoe, died at 9:05 p.m. Tuesday at Pace-Stancell Nursing Home, Cleveland. Funeral services were conducted at 2 p.m. Thursday at Pace-Stancell Funeral Home in Cleveland.

A native of Oklahoma, Kinser moved to Muleshoe in the early 1930's and resided here until the early 1980's when he moved to Cleveland. In the early 30's he was in his own carpenter shop, and later formed a painter/contractor business with Frank Lee.

Noah F. Kinser is survived by two sons, Jimmy Kinser of Ft. Worth and Lyndel Kinser of Shepard, TX; one brother, Floyd Kinser of Enid, Okla.; several grandchildren and great-grandchildren.



THEY WERE BUSINESS OF THE MONTH--Ron Montgomery, president of the Muleshoe CoFC, presented a plaque to Norene Pearson, vice president of Pearson Construction, Inc., a certificate as the CoFC's Business of the Month for October. The Pearsons have operated Pearson Construction here for the past eight years.

ABOUT YOUR HOME

By April Rhodes



Don't throw away that pumpkin meat when making your jack-o'-lantern for Halloween. Surprise your family with a pumpkin pie.

Protect your hands by wearing gloves from chilling and chapping if you prefer hanging clothes outside in cold, windy weather.

Long, cold rainy days are an excellent time to clear out clutter and arrange dresser drawers. The same thing can be done to kitchen cabinets and drawers.

Caring For Muleshoe Area Families Since 1959

Ellis Funeral Directors

272-4524

Pre-Need Funeral Plans

Monuments Granite-Marble-Bronze

Immaculate Conception Catholic Church

Father Patrick Maher
Northeast of City

First Baptist Church

220 West Ave. E.
Barry Bradley, Pastor

Emmanuel Baptist Church

Iglesia Bautista Emmanuel
107 East Third
Isabel Cardenas, Pastor

Trinity Baptist Church

311 E. Ave. B.
Rev. A.L. "Buster" Huggins

Circle Back Baptist Church

Joel E. Stafford
Intersection FM 3397 & FM 298
946-3676

Calvary Baptist Church

1733 W. Ave. C
Rev. Darrel Martin

Muleshoe Baptist Church

8th and Ave. G.
Bob Dodd, Pastor

Progress Baptist Church

Paul Brigham, Pastor
Progress, Texas

Richland Hills Baptist Church

17th and West Ave. D.
David McAdams, Pastor

St. Matthew Baptist Church

Corner of West Boston & West Birch
M.S. Brown, Pastor

Progress Second Baptist Church

1st and 3rd Sunday
Clifford Slay, Pastor

The Community Church

Morton Hwy.

A Mighty Hunter

The story of the dog as a faithful hunter and companion for man is a fabulous one. Doubtless some of our very own ancestors were kept from starvation by the skill and service of the dog, finding game where no man could hunt it out, keeping at the chase when man would have given up. Small wonder that many authors have talked of God as a Mighty Hunter for man, but in a quite different way; the game in this case is man himself. God never gives up in His search for us no matter how we try to hide from Him. Wherever we go, there He will follow though it be the end of the earth. He follows because He loves and He will have nothing less than love in return. No one is shut out from His love; He stands at the door of every heart asking for entrance—only the individual can keep the door shut.

**EVERYONE IN THE CHURCH
THE CHURCH IN EVERYONE**

Is something wrong with your life — an inner restless dissatisfaction? The answer to every human problem comes only from God our Maker. He alone can forgive and reassure.

Through the church God has committed the provisions and proclamation of His forgiveness and redeeming love. Without a church no one is securely related to God. Everyone should be in the church and the church to everyone.

© Coleman Advertising Serv.

Longview Baptist Church

965-3413
B.C. Stonecipher, Pastor

Primera Iglesia Bautista

223 E. Ave. E.
Roy Martinez, Pastor

Lariat Church Of Christ

Sunday School 10:00 a.m.
Worship 11:00 & 6:00 p.m.

Wednesday Services 7:00 p.m.
Sam. Billingsley, Minister

Muleshoe Church Of Christ

Clovis Hwy.
Bret McCasland, Minister

16th & Ave. D. Church Of Christ

Sunday 10:30 a.m.
Evening 6:00 p.m.

Wednesday 8:00 p.m.

First Assembly Of God

Rev. David C. McCune
9:45 Sunday School

11:00 Morning Worship
6:30 Evening Services

7:30 Mid Week Services
272-3984

Primitive Baptist Church

621 South First
Elder George Johnson, Pastor

Spanish Assembly Of God

East 6th and Ave. F.
Luis Campos, Pastor

First United Methodist Church

507 W. 2nd Street
Richard Edwards, Pastor

El Divino Salvador Methodist Church

5th and Ave. D.
Jose M. Fernandez, Pastor

1st Baptist Church

Lazbuddie, Tx. 965-2126
Gary Wilcox, Pastor

Lazbuddie Church Of Christ

United Pentacostal
Lighthouse Church

207 East Ave. G.
Rev. J.A. Torres

St. John Lutheran

Sunday School and Bible
Classes 9:30 a.m.

Church services
Church Services 10:30 a.m.

Rev. Mac Bearss, Pastor

Lazbuddie Methodist Church

965-2121
Larry Raid Farris, Pastor

Templo Calvario

507 South Main
Sunday 10:00 a.m.

Sunday Evening 7:00 p.m.
Evangelistic Services

J.L. Soto, Pastor

Jehovah Witness Church

Friona Hwy.
Boyd Lowery, Pastor

New Covenant Church

Plainview Hwy.
Sunday 10:00 a.m.

Wednesday 7:00 p.m.
Jimmy Lowe, Pastor

Church Of The Nazarene

9th and Ave. C.
Dennis Hayes, Pastor

Western Drug 114 Main 272-3106			Dairy Queen 1204 W. Amer. Blvd. 272-3412
Serv-All Thriftway 401 W. Amer. Blvd. 272-4739	KC Mufflers Inc. 201 North First 272-3620	American Valley Inc. Hwy. 84 W. 272-4266	Kemp's Discount Furniture 414 W. Amer. Blvd. 272-5023
Farmers Spraying Service Lazbuddie 965-2624	West Tex Feed Yards 272-7555	Central Texico 221 W. Amer. Blvd. 272-3915	Fry & Cox, Inc. 401 S. 1st 272-4511
Main Street Beauty Salon 115 Main 272-3448	Lenau Lumber 202 E. Ash 272-4222	Bratcher Motor Supply 107 E. Ave. D 272-4288	Five Area Telephone Cooperative, Inc. 302 Uvalde 272-5533
Irrigation Pumps & Power West Hwy. 84 272-4483	Lindsey Jewelry 202 Main 272-3355	Foster Fertilizer Lazbuddie 965-2921	Bobo Insurance 108 E. Ave. C 272-4264

Bailey County Journal

Classified

Call 272-4536

CLASSIFIED RATES
Per Word.....\$.15
Minimum Charge \$2.30

Consecutive Insertions
Minimum Charge \$2.00

CLASSIFIED DISPLAY RATES
\$1.75
Per Column Inch

DEADLINES
12 noon Tues.
For Thursday Paper
12 noon Friday
For Sunday Paper
We reserve the right to classify, revise, or reject any ad. Not responsible for any error after ad has run once.

1. Personals

MARY KAY COSMETICS Josie Flowers 272-3865. fl-49s-tfc

MASTERCARD / VISA! Regardless of credit history. Also, new credit card. No one refused! For information call.... 1-315-733-6062 Ext. M1950. 1-44s-6tsp

STORAGE
Rooms Available For Storage \$25.00-\$30.00 per month
Ted Barnhill 272-4903
bl-42s-tfc

CONCERNED About Someone's Drinking? HELP IS AVAILABLE through Al-Anon Call 227-2350 or 965-2870 or come to visit Tuesday nights, 8:00 p.m. or Saturday mornings at 10:30 a.m. at 1116 W. American Blvd., Muleshoe.

2. Lost & Found

LOST 500 pound steer in the Pleasant Valley community, with a pistol brand on right hip. Call 272-5035. g2-40t-tfc

REWARD OFFERED for help in recovering Black Horse (gelding) from pasture, 3 miles Southeast of Muleshoe-first week in October. Call 965-2325 or 965-2946. 2-43t-4tp

3. Help Wanted

BILINGUAL AREA MANAGER
World Book has opening for spanish speaking managers, with good educational background. Earn \$450-\$550 per week, complete company benefit package. For interview, report to Suite 610, Days Inn, 6th and Q, Lubbock, Thursday, November 5, 4:00 or 6:00 p.m. or call 806-745-8294. f3-44s-2tc

PART TIME - HOME MAILING PROGRAM! Excellent income! Details, send self-addressed, stamped envelope. WEST, Box 5877, Hillside, NJ 07205. s3-44t-6tc2ts

TYPISTS - Hundreds weekly at home! Write: P.O. Box 17, Clark, NJ 07066. s3-42s-12tcts

5. Apts. For Rent

APT. & duplex for rent. Call 272-7575. p5-38t-tfc

8. Real Estate

FOR SALE AT 711 & 713 East Fir- 2, 2 bedroom homes. If you can pay rent, you can buy one or both. Owner will finance. For more information call 272-5383, or owner J.T. Montgomery, Wilcox, AZ. 602-384-4577. m8-43s-4tc

PRICE TO SELL: Nice 3 bdrm., 2 bath, brick home, 2 car garage, high efficiency, central refrig. air & heat. Concrete patio with back yard. Call for appointment. 909 Hickory, 272-5045. c8-27t-tfc

PRICED REDUCED! For sale by owner 3 bdrm, 2 baths, 2 carport, den with fireplace, large utility room, central A/H, storage galore over 2000 sq. ft. Call 883-2704. w8-38t-tfc

GOVERNMENT HOMES
from \$1 (U-Repair) also tax delinquent & foreclosure properties. Available now for listing call 1-315-733-6062 EXT G1741. 8-39s-5tsp

BELOW appraisal 1 1/2 ac. over 3000 sq. ft. 2 story, well kept home. Call 272-4987 or 272-4344. 8-41t-8tp

11. For Sale Or Trade

FOR LEASE BY THE acre 2 - 510 Internationals, double disc drills. Phone 272-3733. 11-32s-tfc

13. Property For Lease

SALES MANAGER TRAINEE
\$500 per week (salary & commission, bonus) all benefits for those who qualify. Women encouraged to apply. Call 806-797-9322 for appointment. 13-44s-2tc

14. Farm Property

260 Acres Parmer Co. Texas, 206 CRP, 3 miles West and 1 mile North of Lazbuddie. Call 806-765-8861 Ext. 232 for information. fl-41s-8tc

15. Misc.

Public Auction at 10:05 a.m. Tuesday, Dec. 1, 1987, at the Bailey County Courthouse, Muleshoe, Tx. Property known as Tradewinds Plaza Shopping Center located at the Northwest corner of 8th Street and American Blvd. Sold for cash. Sold subject to all taxes due sold owned trustee deeds, Jack Faulks substitute trustee.

Jack Faulks Auctioneers 806-763-4919 Box 5701 Lubbock, Tx 79417 TXE018-0053. fl5-44s-1tc

8. Real Estate 8. Real Estate 8. Real Estate 8. Real Estate

JAMES F. HAYES & CO. AGRICULTURAL REAL ESTATE
Vic Coker-Agent (806) 965-2468

320 ACRES of prime farmland Southwest of Hub in Parmer County. Excellent water: 3 8" wells and 1 tailwater pit. This farm is clean. Top notch in every respect. ***

160 ACRES Northwest of Lazbuddie. 1 8" well, clean, lays good. Excellent terms Available! ***

160 ACRES WITH MODERN HOME N.E. of Muleshoe in Parmer County. Electric Sprinkler. G soil, Best water. \$700 / acre ***

640 ACRES IN PLEASANT VALLEY- 3 electric sprinklers, excellent water, productive soil, can be divided. Seller is motivated. ***

1050 ACRES OF DRYLAND- 350 acres cultivated, balance grass. Wheat allotment. 2 wells. Absentee landowner is anxious. ***

160 ACRES IN LAMB COUNTY- Excellent water, electric sprinkler, fully allotted, fenced, prime opportunity for first time buyer. ***

640 ACRES- 4 electric sprinklers, steel pens with concrete bunks, domestic well, all fenced. Best soil & water. Rare opportunity, good value. ***

Call Vic if you need farm & ranch appraisal work done.

FOR SALE: 3-2-2 Total Electric Brick Home, 1-40x75x16 All Steel Building, 1-30x40x12 Insulated Steel Building, 1-18x30 Cattle Barn with Steel Corral, 2 Submersible Irrigation Pumps-Both with high pressure underground lines. All on approximately 30 acres between West Hwy 84 and FM1760. Call Kenneth Wilhite 806-272-4975 for appointment. w8-43s-tfc

BINGHAM & NIEMAN REALTY 272-5285 --- 272-5286

We have homes for as little as \$600.00 total move in cost, with payment scheduled according to income for qualified buyers!!!!

RICHLAND HILLS
NICE 3-2-2 Brick, Cent. A&H, built-ins, FP, fenced yard, & more..... *****

IMMACULATE 3-2-2 Brick, corner lot, Cent. A&H, built-ins, FP, loads of storage & closet space, sprinkler sys.!!!! *****

PRICE REDUCED 3-1-1 Brick, Cent. heat, Evap. air, built-ins, fenced yard..... *****

HIGHLAND ADD.
SPACIOUS 2-2 1/2 Brick Home on corner lot, Cent. A&H, built-ins, fireplace, loads of storage, 2900 plus sq. ft. of Lv. area, lots of extras, undrgrd. sprinkler sys., fenced yard. A GREAT BUY!! *****

JUST LISTED-Nice 3-2-2 Brick Home (2 story), on corner lot, Cent. A&H, built-ins, and much more. LET'S LOOK TODAY!!!! *****

2-1-1 home, wall heat, evap. air, fenced yard. \$20's..... *****

PARKRIDGE
IMMACULATE 3-2-2 Brick Home, Cent. A&H, built-ins, fireplace, energy efficient, nicely decorated, plus beautifully landscaped yard. \$50's!!!! *****

HIGH SCHOOL
JUST LISTED-3-2-2 home, corner lot, nice carpet, fenced yard. \$30's!!!! *****

3-1-1 home, corner lot, Cent. A&H, built-ins. \$30's..... *****

SPACIOUS 3-2 Brick, Cent. A&H, built-ins, nice den w/FP, fenced yard, storage bldg., & much more. \$70's!!!! *****

JUST LISTED-3-1 home, nice carpets, new roof, storm windows, & much more. \$20's!!!! *****

NICELY REMODELED 3-2-1 carport home, Cent. heat, evap. air, built-ins, utility, earthtone carpets, ceiling fans, covered patio, fenced yard & more. \$30's!! *****

3-2-1+2 carport home, Cent. A&H, built-ins, fireplace, fenced yard & more. \$40's!!!! *****

JUST LISTED-NICE 2-1-1 home, wall furnace heat, earthtone carpets!!!! *****

DIANNE NIEMAN, BROKER "WE APPRECIATE YOUR BUSINESS"

LENAU ADD.
NICE 3-2-2 Brick, Cent. A&H, built-ins, fenced yard. \$40's!!!! *****

3-2-2 carport home, corner lot, nicely remodeled. \$30's..... *****

JUST LISTED-COZY 3-1 1/2-1 home, Cent. heat, nice earthtone carpets, fenced yard, storage bldg., & more!!!! *****

COUNTRY CLUB
3-2-2 Brick, Cent. A&H, built-ins, fenced yards, & more. \$50's!!!! *****

COUNTRY HOMES
JUST LISTED-2-1-1+1 carport home on 1 acre on pavement close to town, built-ins, wall furnace heat, evap. air, satellite system, and fenced area for horses or calves. \$20,s!!!!!! *****

3-1-2 home, 1/2 acre, Cent. A&H, new paint, nice carport, cellar. \$30's!!!! *****

2-1 home, 20 acres, sub. pump, -sprinkler, barns & corrals. \$40's!!!! *****

SPACIOUS 3-2 1/2-2 Brick Home on 5 acres, Cent. A&H, built-ins, fireplace, sunroom, finished basement, sprinklers sys., storage bldg., horse barn, calf barn, corrals & much more. Close to town. MUST SEE TO APPRECIATE!!!! *****

3-2 home on 1 acre on pavement close to town, Cent. A&H, built-ins, storm windows & doors, fenced yard. \$30's!!! *****

3-1 home on .59 acres on highway at edge of town plus 1-1 mobile home for rental unit, storage, or workshop. A GOOD BUY!!!! *****

LARGE BUILDING on 2 lots, paved parking..... *****

JUST LISTED-Nice, well-maintained Self-Service Laundry, 34 washers, 16 dryers in nice, modern building, excellent location. Books available to qualified Buyer. *****

PRICED TO SELL IN CONTRACT 3/4 ac. across from courthouse *****

APPROX. 3,000 sq. ft. bldg.. Railroad frontage. CASH PRICE \$15,000.00. *****

GEORGE NIEMAN, BROKER

WHITT-REID REAL ESTATE
201 Main Office 272-3611

REDUCED for quick sale - nice 2 Bedroom and attached garage. 25H-31 ***

NEW LISTING 2-1-1 with fireplace has V.A. loan 25H-32 ***

3-1-1 carport fenced back yard, cellar, gas grill & 9x10 storage. 0H-6 ***

3-1 1/4 Brick -1 ceiling fan, bar, fireplace, range-oven, dishwasher, disposal, over 2000 sq. ft. storage house fenced backyard. 50H-9. ***

3-1 1/4 & carport brick lots of storage 25H-33

We Need Listings
● We need irrigated & dry
● Acreage on pavement
● Nice 3 bedroom homes

Roy Whitt Thursie Reid
272-3058 272-5318
Certified Appraiser

17. Seed & Feed

TURN KEY job seeding CRP acres. Also have buyers for CRP acres. Wiley - Sawyer 806-769-4427, 806-396-2070. s17-39s-6tsc

18. Legal

ORDINANCE NO. 281A
OF ORDINANCES TO PROVIDE FOR THE ASSESSMENT OF SPECIAL EXPENSES BY THE MUNICIPAL COURT AS PROVIDED BY ARTICLE 45.06 OF THE CODE OF CRIMINAL PROCEDURE. THEREFORE BE IT ORDAINED BY THE CITY COUNCIL OF THE CITY OF MULESHOE, TEXAS: THAT Chapter 12 of the Muleshoe City Code of 1974 is hereby amended by adding Sections 12-21 and 12-22 and shall read as follows:
Sec. 12-21: Special Expenses
The Municipal Court may assess all such fines, a special expense, not to exceed \$25 for the issuance and service of a warrant of arrest for an offense under Section 38.11, Penal Code, or under Section 149, Uniform Act Regulating Traffic on Highways (Article 670ld, Vernon's Texas Civil Statutes); and the special expenses described in Article 17.04 dealing with the requisites of a personal bond and special expense for the issuance and service of a warrant of arrest, after due notice, not to exceed \$25.00.
Sec. 12-22. Driving Safety Course Fee.
The Municipal Court shall assess and collect a Ten (\$10.00) Dollar administrative fee from each person taking a driving safety course for the purpose of dismissing a traffic citation.
PASSED AND APPROVED THIS THE 27th DAY OF October, 1987.

Darrell Turner Mayor,
City of Muleshoe

ATTEST:
Mary Hicks City Secretary,
City of Muleshoe c18-44s-1tc



One Minute Sports Quiz

1. What college football team, of 1971, is considered the best ever?
2. When was Supreme Court Justice Byron White an All-American footballer?
3. Where is the tennis Hall of Fame?
4. How old is Darrell Evans?
5. What women tennis player won the Wimbledon singles title 8 times?

The Answers:
1. The Nebraska Cornhuskers.
2. In 1938, at the University of Colorado.
3. Newport, Rhode Island.
4. 41.
5. Helen Wills Moody

BIBLE VERSE

"A prophet is not without honour, save in his own country, and among his own kin, and in his own house."
1. Who spoke these words?
2. Where?
3. Where are they recorded?
4. Where are similar words found?

Answers to Bible Verse
1. Jesus.
2. In Nazareth.
3. Mark 6:4.
4. Matthew 15:57 and Luke 4:24.



KNOW THE WEATHER

Have you ever noticed the effect of temperature on animals and insects outside your house? Certain patterns are followed faithfully by these creatures.

Birds, of course, start south when the temperature begins to drop. How they know just when to leave is a good question, and whether they know a winter will be severe or mild one cannot say. There are many who think they do.

Other creatures follow a definite pattern. Bees, for example, are vicious at less than 50 degrees and ants will stay home at a slightly higher temperature. The calls of the Katydid can be translated into a temperature reading, depending upon the length of the call.

It's believed the black field cricket's chirp will give you a temperature reading—and some swear by this formula. At 70 degrees the cricket chirps 129 times a minute and the number of chirps decreases as the temperature drops.

So nature has many tricks concerning the weather, and temperature greatly affects many of her creatures in definite patterns you can learn to recognize.

For Your Classifieds CALL Bailey County Journal 272-4536.

Shop Muleshoe First!

GRAIN PRICES
YELLOW CORN.....340 cwt
YELLOW FOOD CORN..380 cwt
WHITE FOOD CORN..465 cwt
MILO.....298 cwt
SOYBEANS.....467 cwt
NEW WHEAT.....233 cwt
COMMODITY CERTIFICATES 104
Prices-October 30, 1987
MARKETS COURTESY OF FARMERS CO-OP ELEVATORS
272-4335 Muleshoe, Texas

SPS To Decrease Rate; Pass Fuel-Cost Savings

Southwestern Public Service Company (SPS) announced today it is preparing to file for an annual rate decrease of approximately \$13 million, or 2.8%, for its residential, commercial, industrial and other retail customers in Texas, primarily due to savings resulting from federal tax reform.

In addition, SPS is requesting to credit to its Texas retail customers \$11 million in fuel-cost savings and interest.

The lower rates and the one-time credit could be effective by December, said Sam Hunter, SPS vice president of rates and economic research.

Currently, SPS is conferring with the cities it serves in Texas and with the Public Utility Commission of Texas (PUCT) on the amount and timing of the rate reduction. In Texas, cities have original jurisdiction over base rates within their city limits. The PUCT establishes base rates in rural areas and regulates the fuel-cost portion of electric rates.

Effective with SPS's current fiscal year, which began September 1, its federal income tax rate was dropped to 34% from 44%. Although some corporate tax credits and deductions were eliminated by tax reform, the net effect is a smaller tax burden, Hunter said. Taxes are included in the cost of providing electric service.

"The fuel-cost savings resulted from several factors," Hunter said. "First, we obtained lower prices for coal and natural gas. Second, because of the relatively mild summer, we did not have to operate older, less efficient power plants as much as in the past. Third, we have continued to improve the efficiency of our plants."

SPS recently was cited as seventh best among the 100 largest investor-owned electric utilities in the United States, in terms of generating efficiency.

In New Mexico, SPS is

preparing to file for a rate deduction of \$2.65 million, or 2.1%, because of the tax reform, Hunter said. Fuel-cost savings have been passed through to SPS customers in New Mexico by monthly automatic fuel-cost adjustments, which are not allowed in Texas.

Wholesale customers of SPS -- rural electric cooperatives and municipal utilities -- in Texas, New Mexico and Oklahoma are expected to receive a rate decrease of \$13.2 million, or 6.9%, and a one-time credit of \$5 million, Hunter said. SPS is discussing the proposed wholesale rates with its wholesale customers prior to filing a rate request with the Federal Energy Regulatory Commission (FERC) in Washington, D.C. SPS provides wholesale power to 16 rural electric cooperatives in Texas, New Mexico and Oklahoma, and to municipal electric utilities in Lubbock, Floydada, Tulia and Brownfield, Texas.

For SPS's retail customers in Oklahoma, the benefits of tax reform were factored into rates from a previous rate case and placed into effect October 1. Tax-savings also will be factored into SPS's Kansas rates.

Southwestern Public Service Company primarily provides electric service to a population of about one million in a 52,000-square-mile area of eastern and southeastern New Mexico, the South Plains and Panhandle of Texas, the Oklahoma Panhandle and southwest corner of Kansas.

Shop Muleshoe First!

Everyone would like to be popular but the price that one must pay isn't worth it.



DRUG AWARENESS MONTH--Thursday afternoon, Muleshoe Mayor Darrell Turner, seated, signed a proclamation designating the month of November as 'Drug Awareness Month' in Muleshoe. Looking on as the Mayor signs the proclamation are from left, Linda Marr, Gayla Gear and Ben Gramling, MISD counselors.



HALLOWEEN AT MULESHOE STATE BANK--It was a lot of fun Friday, from a 'witch' who offered a cup of witches' brew to everyone who walked in, to the various costumes throughout the bank. Of course, there were one or two who 'don't do windows' and 'don't do dress-ups,' but it was a lot of fun, and very colorful.

Lindsey Jewelers

Closing Our Doors After 33 Years

Total Retirement Liquidation To The Bare Walls Everything Goes!

30% To 70% Off Throughout The Whole Store!

Discount Chart

GREEN 30% OFF	BLUE 40% OFF	RED 50% OFF	SILVER 60% OFF	GOLD 70% OFF
-------------------------	------------------------	-----------------------	--------------------------	------------------------

1/4 CT. TW Reg. Values To \$695
Diamond Rings
Starting at \$199

1/2 CT. TW Reg. Values To \$1195
Diamond Rings
Starting at \$399

1 CT. TW Reg. Values To \$1350
Diamond Rings
Starting at \$599

ANNIVERSARY RINGS
1/2 CT. TW \$499
1 CT. TW \$899
The ring that says you would marry her again.

Engaged? Plan to Marry?
INCREDIBLE PRICES & SELECTION ON BRIDAL SETS

BOLD HANDSOME MEN'S DIAMOND RINGS
Starting at \$145⁰⁰

Diamond Earrings
STARTING AT \$19⁹⁵
REG. \$45⁰⁰

Reg.	Sale
1 ct. TW 1495 ⁰⁰	899 ⁰⁰
1/2 ct. TW 1200 ⁰⁰	499 ⁰⁰
1/4 ct. TW 399 ⁰⁰	149 ⁰⁰
1-20 ct. TW 69 ⁰⁰	29 ⁹⁵

Seiko Watches
Drastically Reduced

Pearl Earrings
Reg 49⁹⁵
Now \$19⁹⁵

14 K Chains 55% OFF

Crystal & Glassware Too Much To List

Loose Diamonds At Remarkable Savings

All Products Similar To Picture Shown
Hours 9:30 - 5:30
Mon-Sat

To My Customers:
I'm retiring and closing my doors after 33 years in business in the Muleshoe Area.
I wish to extend my sincere thanks to my many loyal customers and fellow business associates for their business and friendship through the years. As a token of my appreciation I'm offering the finest values at the greatest savings in my store history.
After closing my retail location I intend to direct my full attention to just relaxing and catching up on things I have not had time to do over the past several years. So please come and join me in this time of celebration and we will give you savings that would not be possible if we were going to stay in business.
Muleshoe is my home, and I look forward to continuing my relationship with my many friends in this community.

SINCERELY
Vi Lindsey

Lindsey Jewelers
202 Main St. Muleshoe
1-806-272-3355

China Galore
• Plates
• Bowls
• Cups
• Saucers

Buy Now For Christmas Birthdays Anniversary

All Products Limited To Stock On Hand Subject To Prior Sale