

If you went anywhere, did anything, had visitors, got married, got sick, got well or failed to recover, that's news and your friends would like to know about it. Phone your news to the Merkel Mail, Phone 61, Merkel, Texas.

THE MERKEL MAIL

On the Broadway of America

VOL. 67, NO. 27

MERKEL, TEXAS, FRIDAY, SEPTEMBER 14, 1956

PRICE 5c COPY — PUBLISHED WEEKLY

Attend The Homecoming Oct. 13th

POST SCRIPTS By Uncle Ned

Some folks asked why this newspaper did not have a football issue last week. The only excuse we could think of is the fact that with the change of publishers and all we just did not have time to work it up.

Same with a football story. We could have run at least a plug for the game but for the life of me it did not penetrate my thick skull that the game was the first week of school.

If you will forgive us — we have a big issue this week!

Congratulations this week go to Coach Carroll Benson and the entire Badger team! They turned in top performance in defeating Ranger Friday night.

The first part of the game showed up a little rusty with fumbles and over-eagerness plaguing the team which can be ironed out with more practice each week.

The most beautiful example of alertness of the entire team was dominate when Robert McLeod intercepted the pass on his three yard line.

Never have I experienced a more beautiful exhibit down field blocking form so quickly. It was beautiful! McLeod followed his interference with those long legs of his carrying him 97 yards for the only score in the closing seconds of the game! Every man on the team accounted for himself at this point and their ability to do so decided the difference in winning and losing the game.

Merkel meets Abilene "B" team here this week. Everyone is urged to turn out and support the home team.

Last week, I said something about "Memorial Day" when it should have been Labor Day. There's a difference, you know and I know but this great mind of mine was functioning in good order last week. Well, I say in "good order", it's the same order as it always functions but it still ain't good.

Another thing . . . I owe an apology to Merkel High School. I said that "jalopy" Carson's Food Store is giving away was "orange and purple." Well, it wasn't orange . . . it was gold! Gold and Purple is the school colors and we should have known that but didn't. Excuse please!

I say we . . . this is too much for one person to take the blame for. "We" is referred to as "me" myself and I. All three of us can shoulder our share of the blame . . . so just go right ahead and blame us!

On the side of the Jim Ned Cream, have someone else to blame things on. The only trouble with that is that is that it works both ways. She also blames things on me.

If you saw someone in the cloud of dust by the side of the road coming from the football field Friday night well don't worry about it. It was me and I wasn't playing marbles. I had a flat!

I parked "old Betsy" where I could make a quick exit when the game was over. When exit time came I couldn't exit. I had to change tires while all that dust boiled from the road. I was camping along pretty good working by car lights and just about the time I had the tire changed, all the cars had gone and I had to impose on a couple of nice gentlemen for a flashlight. The moral is not to make a hasty retreat so hasty! (If there's a point to this I'll assure you I missed it).

Rex Dillard, a resident of the Valley, is a patient in an Abilene hospital in a serious condition.

Merkel Downs Ranger In Opening Game

Noodle FFA Elects Officers

The Noodle FFA Chapter held their first meeting Monday in the Ag Building and elected officers for the coming year.

The new officers were: Rex Cox, president; Ronald Perkins, vice president; Morris Chancey, secretary; Roy Justice, reporter; Larry Olney, sentinel; Bobby Sullivan, treasurer and Mr. Ernest Tate, advisor.

Committees were appointed to plan programs for the coming year and write constitution and by-laws for the new chapter. They voted to have \$2.00 dues and will hold meetings every second and fourth Monday. Their first trip was to attend the West Texas Fair in Abilene.

Merkel P-TA Holds First Meet Here Monday

The first P.T.A. meeting of the school year will be held next Thursday night, September 13, at 7:30 o'clock, in the school auditorium. Supt. Mack Fisher will speak on "Looking Forward to Our School."

Other events of interest will include a panel discussion by three local fathers, introduction of newcomers to Merkel, and introduction of the faculty.

The panel members include Leon Walker, moderator; Horace Boney, Lester Dorton and Howard Carson. The discussion will be on "Papa's Slant on the P.T.A."

Newcomers will be introduced by Mrs. Onis Crawford, P.T.A. president for this year. Teachers will be introduced by Prin. Edwin Read.

A "get acquainted hour" will follow the program.

Mrs. O. J. Adcock Dies Saturday

Funeral services for Mrs. O. J. Adcock were held in the Merkel Church of Christ Sunday afternoon with Paul E. Rogers of Odessa officiating.

Mrs. Adcock, a resident of Merkel since 1905, died in the Sadler Hospital at 4 a.m. Saturday. She had been in ill health for several months.

Born Cora Lee Bankhead on Dec. 3, 1880 in Coryell County, Mrs. Adcock moved to Merkel shortly after her marriage to O. J. Adcock in August 1905 and has lived here ever since.

Survivors include her husband; three sons, Elmer Adcock of Mertzon, Oscar J. Adcock, Jr., of Fort Worth, Waymon Adcock of Merkel; one daughter, Mrs. A. A. Betterton of Midland; three brothers, Eugene Bankhead of Odessa, Price Bankhead of Leonard and C. C. Bankhead of Texas; two sisters, Mrs. T. J. Melton of Merkel and Mrs. E. J. Graves of Lubbock; 14 grandchildren and two great grandchildren.

Burial was in Rose Cemetery under the direction of Starbuck Funeral Home.

Engagement Told

Mr. and Mrs. B. L. Bond are announcing the engagement and approaching marriage of their daughter, Peggy Burlene to Jerry Gibson son of Mr. and Mrs. Dent Gibson.

The wedding will take place on the 29th of September at 7:30 in the First Methodist Church with the Reverend Sam Tullock performing the ceremony. Miss Bond and Gibson are graduates of Merkel High School. She attended Hardin-Simmons University and he attended Texas Technological College and Hardin-Simmons University. They are both employed in Agilene.

Quarter Back Club Organized For Merkel

A meeting to organize a Quarterback Club was held in the REA office Monday night.

The Club was organized to boost attendance to Merkel Badger football games and promote their good will elsewhere.

The Club will sponsor filming of the games to be used for training purposes by the team.

Officers were elected as follows: Lester Dorton, president; Norman Winter, vice president; Dan Ray, secretary-treasurer.

Each Monday night has been set for meetings with Coach Carroll Benson explaining plays while showing films of the games. Everyone is urged to attend.

Membership dues are \$5.00 per year. Next meeting will be Monday night, September 17, 1956, at the REA office.

Jim F. Cox, 84, Succumbs

F. Cox, 84, resident of Merkel since 1948, died Tuesday at 11:50 a.m. at his residence here.

Mr. Cox was born Aug. 16, 1872 in Washington County and married Mary Ellen Cain Dec. 22, 1893, in Coryell County. She died Jan. 17, 1955.

Mr. Cox was a member of the Methodist church for 46 years and lived at Golan until his retirement when he moved to Merkel and joined with the church here.

He was a former trustee of the Golan school. Mr. and Mrs. Cox moved to Jones County in 1904, where he farmed until retiring in 1948.

Funeral will be held at 2 p.m. Thursday at the Merkel Methodist Church. The Rev. Cloy Lyles, pastor, will officiate, assisted by the Rev. H. S. Earp, pastor of the Assembly of God Church in Abilene. Starbuck Funeral Home of Merkel has charge of arrangements.

Survivors include three sons, Chester of Merkel, Orville of Sylvester and Pratt of McCaulley; seven daughters, Mrs. Gertie Mitchell of Merkel, Mrs. J. P. Ford of Azle, Mrs. Maggie Stockton of Corpus Christi, Mrs. Efford Brown of Midland, Mrs. Manson James of Midkiff, Mrs. Edward A. Lawlis of Hamlin, and Mrs. Lawrence B. Clark of Rochester, N. Y., one sister, Mrs. Betty Polk of Austin, 34 grandchildren and 57 great-grandchildren.

Grandchildren will be pallbearers.

Buck Night At Pioneer

Wednesday and Thursday, September 19-20 has been designated buck night at the Pioneer Drive-in Theatre. All cars regardless of the number of occupants will be admitted for only \$1.00. People in cars who do not take advantage of this offer will be admitted at regular admission price.

So pack up your car and the driver of the car with the most people in it will be awarded one free ticket for a later date.

Lions Change Sale Of Broom Date To

The Merkel Lions Club has changed the date for the Sale of Brooms from September 18 to 20, according to Dr. Don Warren president.

The Broom Sale is scheduled by the Lions club to aid crippled children and sight conservation. Sight conservation is the major project of the Lions Club and the Lions International, Dr. Warren pointed out.

BIRTH ANNOUNCEMENT
A girl to Mr. and Mrs. Tim

McLeod Intercepts Pass In Closing Seconds To Win 6-0

The Merkel Madgers squeezed out a 6-0 victory over Ranger in the closing seconds of the game at Badger Stadium here Friday night when Robert McLeod intercepted a Ranger pass and ran 97 yards for the only tally.

Every man on the Merkel team rallied the instant McLeod intercepted the pass and led perfect interference down the entire field.

The breath taking exhibit took place after Ranger had marched some 30 yards to the Merkel 25. Here's the way it went play by play.

Ranger chose to receive and commanded the ball almost the entire first quarter. They pushed the ball to Merkel's 10 and on fourth down a penalty gave the ball to Merkel in the first quar-

ter for the only threat by either team.

McLeod plowed through the middle for a first. A hand-off to Rutledge moved the ball out to the 40. Again McLeod hands off to Rutledge and the ball was dropped. Ranger recovered.

Ranger tried one through the middle for no gain. A hand-off to the full back moves the ball one yard. Third down, the right-half back takes the hand-off through the left side for 2 yards. Fourth down and needing 7 yards, Ranger tries a pass but is batted incomplete by McLeod.

Rutledge gets the call and moves the ball for 2 yards. McLeod keeps and moves for 4 yards through the middle. Rutledge takes a delayed hand-off and picks up a first down and moves

for another two yards.

Russell gets the call and moves through left guard for 3 yds. McLeod tries a pass, is forced to run, reaches line of scrimmage for no gain. McLeod hands off to Miller and the ball is fumbled on the Ranger 30 yard line.

King picks up 10 for Ranger on the 40. Again King moves for 5 and once again King picks up 10 yards for a first on the Merkel 45. Miller moves in to stop the next play for a yard loss. Ranger shoots a pass to the left flat, stopped by Miller. King boots a long end over end kick taken by McLeod. Down on the 35.

McLeod goes back for a pass, can't find his receiver and decides to run. Stopped for two yard loss. Again McLeod goes

back for a pass, can't find his receiver, runs past the line of scrimmage, picks up five, ten and twelve yards for a first down as the half ends.

Half time activities saw the Ranger on the playing field prancing as only a good high school band can. They played the Merkel Battle song and their own. They marched from the field as Merkel High School Band formed on one end of the field.

After three attempts, the Drum Major finally led the band on the field mid cheers of excitement. Most members were inexperienced this year but made a remarkable showing for themselves.

Merkel received the kick-off to open the second half. Rutledge picks up one yard through the middle. Russell hits left side for four. Rutledge gets the hand-off and hits left side for four. Again Rutledge gets the nod and picks up another four and a first down on Rangers 40 yard line.

McLeod keeps and picks up five through the middle. Russell through right guard for three. Rutledge goes for two yards and a first down. McLeod keeps for two yards. McLeod pitches back to Rutledge and loses six yards. McLeod picks up a first down on the 45 yard line. A jump pass to Miller is good for six yards. A flip pass back to Rutledge loses 2 yards.

McLeod keeps on a quick opener and cuts sharp into the left side to pick up 8 yards and a first. Another quick opener for McLeod is good for two yards. Rutledge takes it for one yard. McLeod keeps on a right end sweep and picks up 12 yards on the Ranger 10. Rutledge hits center for six yards.

Rutledge through center for two and a first down on the Ranger two yard line. First and goal to go, an over-eager Badger pulls out before the ball is snapped and costs the Badgers a five yard penalty as the quarter ends. McLeod hands to Rutledge who picks up two yards. Again a Badger pulls out before the ball is snapped and costs another five yards. 2nd down on the 12 yard line with goal to go and another penalty for the Badgers before the ball is snapped moves the ball back to the 17 yard line. McLeod pitches out to Rutledge for 12 yards. Rutledge makes three. McLeod tries a fourth down pass but is swarmed under on the 10. This time the Ranger team is over anxious and draws five yards for off-sides. Kink picks up five and then two. McLeod stops King for a loss of six yards. The Ranger team bogs down and kicks. Russell receives the ball and runs it back 20 yards to the Ranger 45 yard line.

McLeod twists past left guard for 9 yards. Russell picks up six and a first. A bad pass from center loses two yards. McLeod tries the left side for no gain. Rutledge tries right side for no gain and is shaken up a bit but stays in the game. McLeod passes back to Rutledge for no gain and Ranger takes over.

King picks up two yards. Ranger gains another yard through the center. A pass to King is good for 15 yards on the 41 yard line. Russell moves in to stop King after a two yard gain. A pass to the left side down field is tipped by Hargrove and goes incomplete.

Then a pass in the left flat is tipped by Hargrove and completed on the Merkel 30 yard line. One minute to play as Ranger moves the ball to the 26 yard line. A pass to the right end goes incomplete. Then Paul Hinds of Ranger tries a desperate pass into the end zone. McLeod moves in and takes the ball on his two three yard line and moves. Blockers form out of no where and nine of the Ranger eleven is laying flat on their backs. McLeod hops, skips and jumps into the secondary and from there five Badgers move in to assure him a clear field the rest of 97 yards for the only TD of the ball game.

The try for point fails as the gun sounds to end the game just as an offside penalty is called against Merkel but there's no time left and Merkel wins 6 to 0.



Merkel Meets Abilene "B" Here Friday Night At 8:00

Merkel F.H.A. Chapter Elects Officers

The Future Homemakers of America Chapter of Merkel High School met at 7:00 Monday night, September 10, 1956, in the Home Economics Department for the purpose of electing the following officers: Janice Rutledge, President; Lois Campbell, Vice President; Katy Hunter, Secretary; Elsie Ward, Program Chairman; Twyla Moore, Degree Chairman; Margaret Chancey, Social Chairman; Minta McAninch, Points Recorder; Irene Dishman, Reporter; Chera Corder, Welfare Chairman; Jocille Thompson, Parliamentarian; Janell Pitt, Song Leader; Becky Ray, Pianist; Bette Smith, Treasurer; and the yearbook committee, Mary McKeever, Patsy Oliver, Glenda Owens, Shirley Brown, Linda Winter, and Leta Hester. The F.H.A. Club's sponsor is Miss Jo Ann Southern.

Mason, Born at Hendricks Hospital in Abilene Friday. Weight: 7 1/2 lbs. Name: Jacque Lynn. Maternal grandparents: Mr. and Mrs. V. R. Justice of Noodle. Paternal grand parents, Mr. and Mrs. H. B. Mason of Abilene.

Garden Club Members Attend 'Back-Yard Supper'

Invitations were extended to the Merkel Garden Club members to attend a "Back Yard Supper Party" at the home of Mrs. A. H. McElmurray for 7:30 p.m. Thursday. The chill in the air moved the party indoors where foursome tables were centered with miniature bouquets of yard flowers.

During the business meeting the program for the following year was discussed.

Decisions were made to complete the cemetery fence project during the year.

A buffet dinner was served to Mrs. Robert T. Hodge, Mack Fisher, Dale Litton, Samuel Doan, Beuford Allen, Earl Stanford, Herbert Patterson, B. H. Jones, Dee Grimes, A. H. McElmurray, Nora Foster and Christine Collins.

NOTICE TO MERKEL EX STUDENTS

All ex students of the Merkel High School are urged to contact members of their class and notify them of the homecoming, October 19, 1956.

Merkel Badgers will meet the Abilene "B" team here Friday night at 8:00 P.M. This will be the second game of the season for the Badgers after they handed Ranger a 6-0 defeat here Friday night.

Coach Carroll Benson, reported all players in top shape with minor soreness and injuries from last week's game.

The Abilene "B" team is highly rated and holds a slight edge over Merkel; however, the Badgers are expected to hold their own Friday night.

Game time is 8:00 p.m. and the admission price is \$1.00 for adults and 50c for students.

FOOTBALL SCHEDULE

September 7—Ranger here
September 14—Abilene B here
September 21—Hamlin here
September 28—open
October 5—Anson here
October 12—Winters here
October 19—Rotan here
October 26—Stanton here
November 2—Coahoma here
November 9—Roby here
November 16—Roscoe here

The Merkel City Council has REDUCED the tax rate from \$1.50 per \$100.00 valuation to \$1.50 per \$100.00 valuation for the year of 1956.

Prospects right now are slim for winter pastures, but says E. M. Trew, extension pasture specialist, plans, seed and fertilizer should be ready if and when it rains. The new for winter for-

age is critical in most areas of the state and winter pastures, if conditions become favorable, can be used to cut wintering costs for livestock and up the output of meat and milk from the farm.

Out-Dated Insurance
is RIDICULOUS too...
and
DANGEROUS!



Ask us for a
PROTECTION
CHECK-UP
Today!

Get Your Free Merkel High School Football Stickers Here

Boney Insurance Agency

143 Edwards Street
PHONE 21

Old State Bank Bldg., Merkel
Consult Your Insurance Agent As
You Would Your Doctor or Lawyer

McCUE
COLD CAPSULES

(ANALGESIC & LAXATIVE)

DON'T BURN YOURSELF OUT
WITH ANTIBIOTICS WHEN
THIS WORKS BETTER!
MONEY BACK GUARANTEE

Distributed By

CITY DRUG

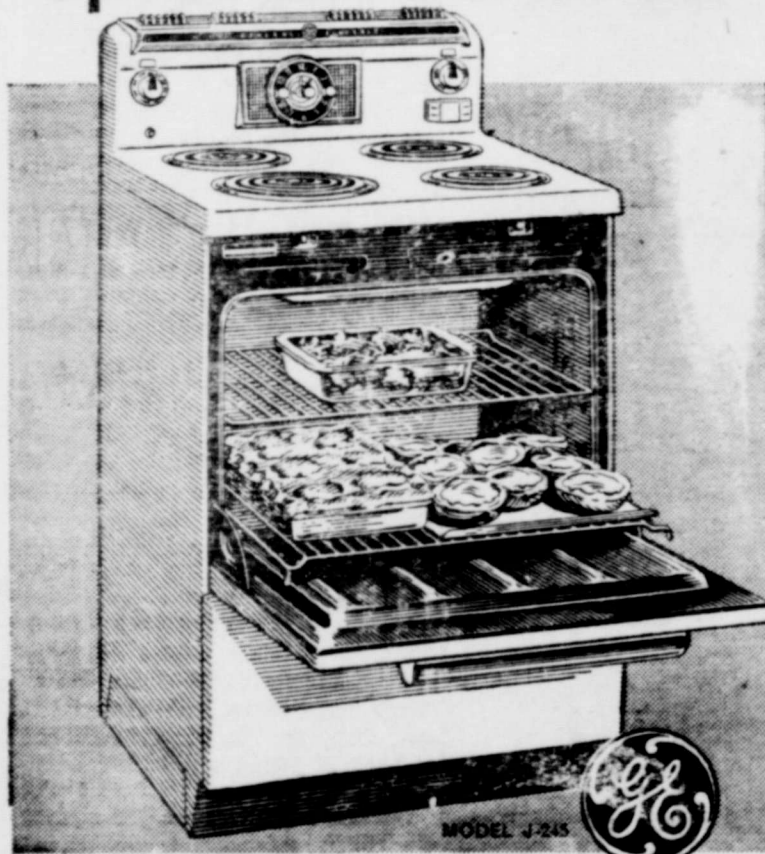
F. C. McCUE, Prop.

Merkel, Texas

Phone 9506

LOOKING FOR MORE KITCHEN SPACE?

See this **NEW G-E**
Spacemaker RANGE



Spacemaker
AUTOMATIC PUSHBUTTON RANGE

WITH HUGE 21-INCH-WIDE OVEN

\$227.00

ONLY PER WEEK
\$2.00 **after down**
payment

Want the deluxe conveniences of a big range in compact space? Try a G-E Spacemaker. It gives you full scale automatic G-E "speed cooking" with push-buttons... a huge G-E Master Oven with automatic oven-minute timer... and many more deluxe features usually found only in much bigger ranges. And it takes just 24 inches of wall space... makes more space for other things.

SPACEMAKERS IN CHOICE OF 6 COLORS

Canary Yellow, Turquoise Green, Petal Pink, Cadet Blue, Wood Tone Browns... or White. Ask us about G-E palette in matching colors.

*The 2600-watt G-E unit was tested in G-E laboratories against the large burner on each of four leading gas stoves. Tested in accordance with American Standard Assoc. electric range tests, the G-E unit brought 2 quarts of water to a boil over 20% faster. Also, one quart and 2 cups of sugar were tested; the G-E unit was faster every time. Gas burners were tested under identical conditions with burner input of 12,000 B.t.u. per hour (large burner requirement under Gas Appliance Mfrs. Assoc. certification standards).

- Pushbutton Controls
- New Faster Calrod® Surface Unit—over 20% faster than gas!
- Big Master Oven—holds meal for 24
- New Automatic Oven-Minute Timer
- "Focused Heat" Broiler
- Enclosed Calrod® Bake and Broil Units—lift out to clean
- Oven Floodlight
- Wide-spaced Surface Units
- Storage Drawer

CHURCHES

Merkel First Baptist Church
Sunday School 9:45 a. m.
Morning Worship... 11:00 a. m.
Training Union..... 6:30 p. m.
Evening Worship... 7:30 p. m.
Wednesday Prayer Service 7:30 p. m.
W. M. U. Mon. 9:30 a. m.
Sunday:
Bible Study..... 9:45 a. m.

Merkel Church of Christ
Morning Service 10:45 a. m.
Young People's Bible Class 6:30 p. m.
Evening Services 7:30 p. m.

Merkel First Methodist Church
Sunday:
Sunday School..... 9:30 a. m.
Morning Worship... 10:50 a. m.
M. Y. F. 6:30 p. m.
Evening Service 7:30 p. m.

Hebron Baptist Church
Sunday School..... 10:00 a. m.
Training Union..... 7:00 p. m.
Evening Worship... 7:30 p. m.

Wednesday:
Evening Prayer Services
Comper Baptist Church
Sunday School... 10:00 a. m.
Morning Worship, 2nd and 4th Sunday 11 a. m.

Merkel Grace Presbyterian Church
Sunday School..... 10:00 a. m.
Worship Service 11 a. m.

Merkel Assembly of God
Sunday school 10 a. m.
Morning Service 11 a. m.
C. A.'s (Young People) ... 7 p. m.
Evening Worship ... 7:30 p. m.
Tuesday W. M. C. 2 p. m.
Wed. Prayer Service ... 7:30 p. m.

Merkel Calvary Baptist Church
Sunday School..... 9:45 a. m.
Morning Service... 11:00 a. m.
Evening Bible Class... 6:30 p. m.
Evening Worship... 7:00 p. m.

OUR MOTHER OF MERCY CATHOLIC CHURCH

South 5th & Trundy

SUNDAY

The Guadaloupeno Society 10:00 a.m. (First Sunday of every Month)

Mass: 11:00 a.m. (Weekly)

Confessions: (Weekly)

Before the 11:00 a.m. Mass.

Tuesday: Ad Altare Dei Club 7:00 p.m.

Thursday: Legion of Mary 7:30 p.m.

Friday: Confessions 7:00 p.m.

Friday: Rosary Service 7:30 p.m.

Tye Methodist Church

Sunday:

Sunday School 10 a. m.

M. Y. F. 7:00 p. m.

Prayer Meeting 7:30 p. m.

Morning Service..... 11:00 a. m.

Noodle Church of Christ

Sunday:

Bible Class..... 10:00 a. m.

Morning Worship Service 11:00

Young People's Service 6:30

Evening Worship... 7:30 p. m.

Trent Methodist Church

Sunday School

..... 10:00 a. m.

Evening Worship... 7:30 p. m.

Morning Services... 11:00 a. m.

M. Y. F. Services... 6:30 p. m.

Wednesday:

Prayer Services... 7:30 p. m.

Trent First Baptist Church

Sunday:

Sunday School 10:00 a. m.

Morning Worship... 11:00 a. m.

Training Union 6:45 p. m.

Evening Services... 7:45 p. m.

Tuesday:

W. M. U. 2:15 p. m., Intermediate

G. A.'s Jr. G. A.'s 3:45 p. m.

Prayer Services... 7:30 p. m.

"You are a stranger here but once."

Pioneer Memorial Chapel

Sunday School

..... 10:00 a. m.

Morning Service... 11:00 a. m.

Evening Services... 7:30 p. m.

Wednesday:

Evening Prayer Service... 7:30

Noodle Baptist Church

Sunday:

Sunday School..... 10:00 a. m.

Morning Worship... 11:00 a. m.

Young People's Class 6:30 p. m.

Evening Services... 7:30 p. m.

Trent Church of Christ

Sunday:

Sunday 11:00 o'clock

Bible Class..... 10:00 a. m.

Morning Worship... 11:00 a. m.

Evening Services... 7:30 p. m.

Ladies Bible Class... 4:00 p. m.

Thursday:

Men's Downtown Bible Class

Sunday 8:44 a. m.

New Live Oak Baptist Church

Sunday:

Sunday School... 10:00 a. m.

Morning Worship... 11 a. m.

Training Union... 6:45 p. m.

Evening Worship... 7:30 p. m.

Tye Baptist Church

Sunday:

Sunday School... 9:45 a. m.

Morning Worship... 11:00 a. m.

Training Union... 6:45 p. m.

Evening Services... 7:30 p. m.

CONGRATULATIONS

Mr. and Mrs. Roy Thomas of Whiteman Airbase in Missouri announce the birth of a son, Wayland Morris, August 17. Weighs 6 pounds. Parental grandparents are, Mr. and Mrs. A. W. Thomas.

New 1956 Program For Texas Fair Is Complete

The State Fair of Texas has done it again.

The 1956 program, now virtually completed, is one America's biggest fair can well be proud of, officials said. The fair runs Oct. 6-21.

There are two extraordinary new features: the "Esplanade of Light", a dazzling sight to see with dramatic illumination and scenic water effects, most spectacular lighting since the Texas Centennial. And plans call for installation of America's only Monorail transit system for a thrilling ride across the fairgrounds.

There will be daily performances of "Damn Yankees", Broadway hit musical satirizing big league baseball; Ice Capades, featuring a lavish production of "Peter Pan," and Joie Chitwood's auto dare-devils.

Booked for one-day appearances are such bigtime attractions as "Fiesta Mexicana" Oct. 9, Rock 'n' Roll Elvis Presley, Oct. 11, Louis "Satchmo" Armstrong and his band Oct. 15, Jack Benny's Sportsmen Quartet and Pianist Roger Williams Oct. 16, and Victor Borge Oct. 20.

The Pan-American Livestock Exposition Oct. 6-14 will present championship beef and dairy cattle, swine, sheep, goats and poultry. Youthful Texas livestock raisers will compete Oct. 16-20 in the Junior Livestock Show. Horse shows will be held all three weekends.

Over a dozen foreign governments will exhibit in the picturesque International Center. The Agriculture Show will stress soil, water, plant and wild life conservation. The Automobile Show will be one of the three largest on the continent. The big Food Show will be staged in the setting of an old West frontier town. Farm machinery will occupy two acres of space.

Of special interest to the ladies will be the glamorous array of exhibits in the Women's Building, where free fashion shows will be presented daily, and the fabulous lineup of model kitchens.

The Museum of Fine Arts' uni-

que election-year feature will be "Mr. President" portraits of all 33 U. S. presidents.

Football games include Texas A&M-Texas Tech Oct. 6, Texas-Oklahoma Oct. 13, and Prairie View-Tennessee State Oct. 15.

Big special days are Rural Youth Day and West Texas Day Oct. 6, Mexico Day Oct. 9, Texas Public School Day and Music Festival Day Oct. 10, Crippled Children's Day Oct. 11, Negro Achievement Day Oct. 15, East Texas Day and Garden Clubs Day Oct. 16, Women's Day Oct. 17.

T.E.L. CLASS MEETS WEDNESDAY, SEPT. 6

The T.E.L. Class of the First Baptist Church met Wednesday, September 6, 1956, in the home of Mrs. Lon Stephens with Mrs. T. C. Satterwhite as cohostess. Mrs. T. J. Bird, president, presided. Mrs. W. A. McAndless led the opening prayer. The devotional was presented by Mrs. Hugh Campbell. The Secretary-treasur-

er, Miss Selena Teaff read the minutes. New officers for 1956-1957 were elected as follows:

President, Mrs. Huston Robertson; Vice President, Mrs. Fred Baker; Secretary-treasurer, Miss Selena Teaff; Reporter, Mrs. Hugh Campbell; and Group Captains, Mrs. T. J. Bird, Mrs. Liege Harris, Mrs. Jess Anderson, Mrs. S. E. Pomroy. Punch, Angel food cake, cherry sundaes, and mints was served to members present, Mrsers. E. W. King, Earl Lassiter, W. J. Largent, T. C. Satterwhite, Dollie Jones, A. R. Booth, W. A. McAndless, E. H. Thompson, E. Carnes, Pick Allen, Hugh Campbell, Lon Stephens, Fred Baker, and Miss Selena Teaff. Three visitors were present, Mrs. C. C. Sewell, Mrs. George Smith, and Miss Hary Howe.

REDDY SAYS



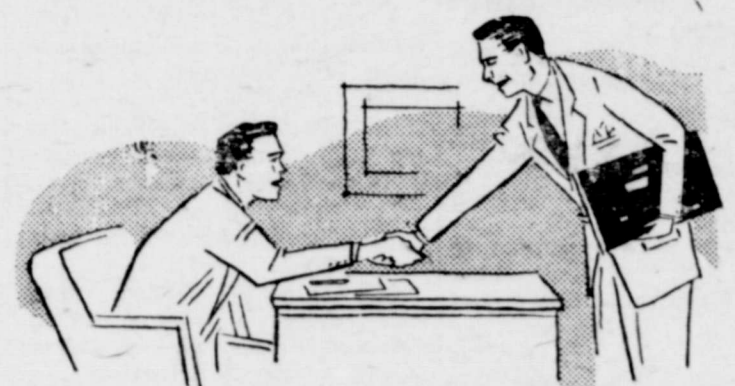
Homework's a snap when there's good light to study by.

Young eyes need good light. Fill empty sockets with the right sized bulbs!

EYESIGHT IS PRICELESS
GOOD LIGHT IS CHEAP

West Texas Utilities Company

PLENTY OF TIME
... to give to Your Needs



The individual transactions here are many and varied. Yet, you will always find an officer or member of our staff ready and willing to give you prompt attention.

Do not hesitate to come to us with your personal financial problems. All personal matters are held in strict confidence.

THE OLD RELIABLE

Farmers and Merchants National Bank
Member Federal Deposit Insurance Corporation

Dollar Day Specials

MEN'S
WORK SOX
ANKLETS OR LONG
5 pr. --- \$1.00

ONE RACK OF
FALL DRESSES
VALUES TO
19.95 - NOW \$5.95

POOL'S KHAKIS
SHIRTS --- \$2.49
PANTS --- \$2.98
SUIT --- \$5.47

BLUE CHAMBRAY
WORK SHIRTS
\$1.05

BUENA VISTA
PRINTS
FAST COLORS
5 Yds. --- \$1.00

MEN'S
SPORT SOX
Reg. 55c
3 Prs. --- \$1.00

BOY'S 13 1/2 Oz.
JEANS
AGE 6 - 18
\$2.98

CANNON
TOWELS
SOLID COLORS
SIZE 20x40
3 for --- \$1.00

RED HAWK
OVERALLS
STRIPE OR BLUE
\$2.98

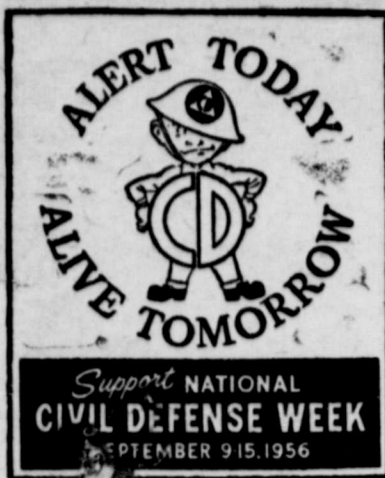
12
LARGE WHITE
HANDKERCHIEFS
\$1.00

GINGHAM
36 IN. WIDE
49c Yd.

SHOES
A TABLE OF BARGAINS ALL STYLES
\$1.00
EACH SALE FINAL

BRAGG'S

Merkel, Texas



James H. Chaney

Chiropractor

PHONE 18

211 Oak St. — Merkel

TV SERVICE
PHONE 193

We Service All Makes. Next Time
DUDLEY ELECTRIC

Higgins Blacksmith
and Welding Shop

Acetylene and Electric Welding
Completely Equipped
Come to Us With Your
Machinery Troubles
Phone 91 MERKEL

Country Eggs

Always Fresh Grade "A"

FERGUSON EGGS

PHONE 9013-M2
MERKEL, TEXAS
Candled and Ready

ANN'S

REGULAR \$7.50

PERMANENTS

\$5.00

DOLLAR DAY

ONLY

Princess Nyla

Cosmetics

ANN'S
BEAUTY SHOP

PHONE 261 611 YUCCA

Data About Cattle Water Is Compiled

Stockmen faced with the problem of carrying cattle through droughts with short water supplies may find information gathered by USDA scientists on water consumption by beef and dairy animals very helpful.

Two scientists, Dr. C. F. Winchester and M. J. Morris of the Agricultural Research Service consolidated all available published information and added data they recorded from experiments at Beltsville, Maryland.

They point out that feed and water intake are close related. If consumption of one is curtailed, the other also is limited. Water intake per unit of dry matter is the same whether cattle are on full feed or on near starvation rations. In a pinch, water consumption for a herd can be cut in half simply by halving the feed allowance. The scientists point out that this practice should never be used with lactating cows if it can be avoided. A production decline would result which might not be overcome during the lactation period.

A 1,000 pound animal on maintenance rations, not gaining or losing weight, will consume 6 gallons of water a day when air temperature is 70 degrees and 9 gallons at 90 degrees. A 1,000 pound steer or heifer gaining the normal pound a day on the range requires 10 gallons of water each day when the air temperature is 70 and 17 at 90 degrees.

Cutting feed allowances for steers on full fattening rations will decrease water consumption and may help a stockman through a short time water shortage, however, if feed allowances are sharply cut, considerable time may be required to get them back on full feed once the water shortage is relieved.

A 1,000 dairy cow gaining no weight but producing 35 pounds of 4 percent milk daily requires 18 gallons of water daily when air temperature is 70 degrees. She can be expected to drop to 25 pounds of milk at 90 degrees and will consume 19 gallons of water daily.

Body and size influence water intake and the scientists found with other factors equal, a 500-pound animal drinks .8 as much as a 1,000 animal and a 100-pound animal drinks .2 as much as a 1,000-pound one.

Using figures from the Winchester-Morris tables it is possible for a stockman to estimate the probable daily water consumption of any large herd of cattle, and to plan an adequate water system for his farm or ranch. The data are not intended for use in determining requirements of individual animals or small herds because of wide variations in water intake of individuals.

The data tables are available from the Information Division, Agricultural Research Service, U. S. Department of Agriculture, Washington, 25, D.C.

FURNITURE
UPHOLSTERING

SEE
IRA
CROSS

ON KENT STREET

CHICKS—Place Your Fall Orders Now

"Erath" White Leghorn
Austra White Hybrids
STRAIGHT RUN — \$12.95 PER 100

JAMISON HATCHERY

Phone 3154 — Sweetwater, Texas
"We Now Have Our Own Poultry Farm"

9 x 12

CONGOLIUM RUGS

\$5.95

STARBUCK CO.



SPECIALS for Thurs. - Fri. - Sat. - Sept. 13-14-15

ARMOUR'S VEGETOLE

Shortening

3 Pound Can 69¢

KRAFT'S VELVEETA

Cheese

2 Pound Box 79¢

KRAFT'S MIRACLE WHIP

Salad Dressing

Quart 49¢

FOREMOST

MELLORINE

Half Gallon 49¢

Wilson's
CHOPPED BEEF
Can -- 29c

Campbell's
TOMATO SOUP
Can --- 10c

Light Crust
FLOUR
25-lb. Print Bag
\$1.69

HUNT'S
TOMATO SAUCE - - - 3 cans 25c

LIBBY'S
PINEAPPLE JUICE - - - tall can 10c

BAMA
APPLE BUTTER - - - 20-oz. glass 25c

SUN SPUN
APPLE SAUCE - 303 can - - - 2 for 35c

PILLSBURY'S
CARAMEL CAKE MIX - - - - - box 25c

KRAFT'S
ORANGE ADE - - - - 46-oz. can 25c

AUSTEX
CHILI - - - - - Big No. 1 1/2 can 59c

GOLD COAST
SPICED PEACHES - - - No. 2 1/2 can 25c

KIMBELL'S
WAFFLE SYRUP - - - 12-oz. bottle 19c

DIAMOND — SOUR OR DILL

PICKLES - - - 22-oz. jar 25c

SUPREME
CRACKERS - - - 1 lb. box 25c

FRESH
MEATS

ARMOUR'S STAR DRESSES
FRYERS - - - - - lb. 35c

BOSS RANCH STYLE
BACON - - - 2 lbs. sliced 86c

GOOCH'S COUNTRY STYLE
SAUSAGE - - - 2 lb. bag 69c

LEAN
PORK ROAST - - - lb. 39c

TENDER
CHUCK ROAST - - - lb. 37c

KIMBELL'S
OLEO - - - 2 lbs. for 45c

Libby's Crushed

PINEAPPLE

Flat Can - 15c

Hunt's

TOMATO JUICE

46-oz. Can - 25c

Diamond

NAPKINS

80 Count Pkg. 10c

TIDE

Giant Size

69c

FRESH
PRODUCE

TOKAY

Grapes --- lb. 12 1/2c

CRISP

Cello Bag

Carrots ----- 10c

GREEN

Bell Pepper - lb. 15c

HARD & GREEN

Cabbage --- lb. 5c

KENTUCKY WONDER

Green Beans - lb. 19c

YELLOW OR RED MEAT

Watermelons ea. 49c



FRENCH FRIED
POTATOES - - - 3 pkgs. 49c

GREEN
BEANS - - - - 3 pkgs. 59c

CHICKEN OR BEEF
PIES - - - - 3 for 69c

BABY LIMAS OR
CAULIFLOWER - 3 pkgs. 79c

ORANGE
JUICE - 6 oz. can - 3 for 49c

Wilson's Food Store

PHONE 173 NEXT DOOR TO POST OFFICE

FORMERLY CAMP BELL GRO. & MKT.
WE GIVE PREMIUM COUPONS

WE DELIVER

UP THE CANYON

By TOM RUSSOM

Some of the farmers are beginning to pull their cotton, and they are finding the cotton is better than expected.

Some have finished thrashing their milo and also found that the milo was a little better than expected.

As had as the farmers needs to leave the stalks on the land, they feel that the live stock needs the grazing more. De need to get a little fill on the stock before they are sold.

Wewell McLean has been busy planting his wheat, he is planting it in rows. Dewell says he just believes it will make more wheat that way.

This writer attended the soil day last week, at the O. J. Johnson farm north of Elmdale.

It was so dry, but yet remarkable how the chisseling of the land was working. By it is remarkable what farm machinery will do in the farm age which we are living.

We saw the smallest tractor to the largest one perform, which was very interesting.

Will Butman who ranches on top of the divide is in the hospital at Merkel. We hope he will be home soon.

Many from the Canyon are planning to attend the West Texas Fair this week. We think it will be the finest yet.

Well some of the stockmen are are buying some hay, at \$40.00 per ton. That is pretty high feed we think, but that's the way it goes.

Mr. and Mrs. F. R. Merrill has sold all of their goats off of their place. The goats were sheared before going to market.

There has been another dry hole drilled in the Canyon. The Payne well was dry. There is another well being drilled on the W. H. Ensminger place in the Canyon.

There has been quite a bit of land turned back to the owners by tenants and the boys are already working on other jobs.

Some of the farmers are be-

(Published in the Merkel Mail Sept. 14, 21, 28, Oct. 5, 1956)

THE STATE OF TEXAS
To any Sheriff or any Constable within the State of Texas —

GREETING:
You are hereby commanded to cause to be published once each week for four consecutive weeks, the first publication to be at least twenty-eight days before the return day thereof, in a newspaper printed in Taylor County, Texas, the accompanying citation, of which the herein below following is a true copy.

CITATION BY PUBLICATION
THE STATE OF TEXAS
TO: Henry Milton Byrd, Defendant, Greeting:

YOU ARE HEREBY COMMANDED to appear before the Honorable 42nd District Court of Taylor County at the Court-house thereof, in Abilene, Texas, by filing a written answer at or before 10 o'clock A.M. of the first Monday next after the expiration of forty-two days from the date of the issuance of this citation, same being the 22nd day of October A. D. 1956, to Plaintiff's Petition filed in said court, on the 26th day of June A.D. 1956, in this cause, numbered 21,441-A on the docket of said court and styled MAMIE G. BYRD, Plaintiff, vs. HENRY MILTON BYRD, Defendant.

A brief statement of the nature of this suit is as follows, to-wit: Plaintiff and Defendant were legally married on the 25th day of May, 1942, and lived together until on or about April 10, 1950, at which time they were permanently separated.

Plaintiff sues for divorce on grounds of harsh and cruel treatment, and for custody of minor children. There is no community property to be divided, as is more fully shown by Plaintiff's Petition on file in this suit.

If this citation is not served within ninety days after the date of its issuance, it shall be returned unserved.

The officer executing this writ shall promptly serve the same according to requirements of law, and the mandates hereof, and make due return as the law directs.

Issued and given under my hand and the seal of said court at Abilene, Texas, this 10th day of September, A.D. 1956.

(SEAL)
Attest: R. H. ROSS, Clerk,
42nd District Court,
Taylor County, Texas.
By IRENE CRAWFORD,
Deputy.



WIN
WITH
THE
BADGERS!

BEAT ABILENE "B"

Taylor Electric Cooperative, Inc.

MERKEL TEXAS

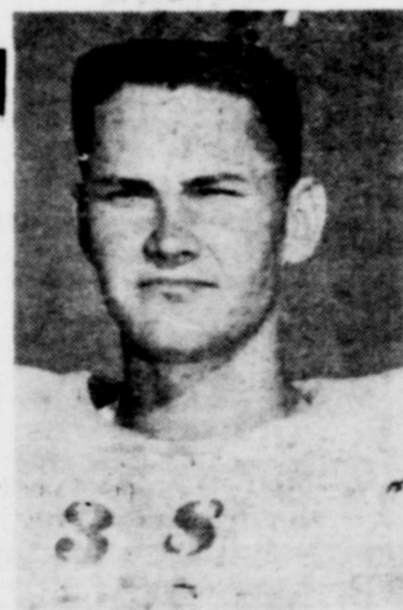


YEA-
BADGERS
We're
With You
All The
Way!

Welcome to Our Place-
MERKEL FARM MACHINERY

O. H. GRIFFIN, Mgr.

Phone 30 Merkel, Texas



ATTEND
the
BADGER
GAMES!
BOOST
MERKEL

and Boost the Merkel Badgers

MERKEL COOP STATION

Phone 208 Leon Toombs



BEAT
ABILENE
"B"
BADGERS

But Win or Lose

We're For You - All the Way!

BURTON-LINGO CO.

CLYDE BARTLETT, Mgr.

Merkel, Texas Phone 74

PICK The WINNERS

\$5 CASH WEEKLY FOOTBALL CONTEST!

Here's a contest that's fun . . . that's profitable! Think of it! You stand a chance to win a part of the \$5.00 cash prize. It's simple, it's interesting! Be sure you enter this contest today!

\$5.00 CASH WEEKLY

EACH ENTRY WILL BE MARKED ON HOUR AND DATE OF RECEIPT IN THE BUSINESS ESTABLISHMENT OR THIS NEWSPAPER OFFICE — IN CASE OF A TIE THE FIRST ENTRY WILL BE AWARDED \$3.00 AND THE SECOND ENTRY \$2.00.

\$15.00 PERFECT SCORE

HERE'S ALL YOU HAVE TO DO

To be eligible for the cash prizes is to read over carefully all the ads on this page, mark the winners of the game shown in each ad, print your name and address plainly in the box on this page . . . and bring it to one of these merchants sponsoring this page not later than 5:00 p.m. on the day of the first game to be played each week. All the games are scheduled to be played this week end, therefore your entry must be in by 5:00 u.m. Friday. Awards will be announced in this paper the following week.

PLEASE PRINT PLAINLY

NAME _____

ADDRESS _____

NOTICE

Extra Copies of this ad are available at the newspaper office.

ENTER NOW!

You are eligible to enter this contest unless you, or a member of your immediate family, are employed by the Merkel Mail. The earlier you get your entry in the better your chances . . . so don't delay! Remember . . . indicate in each ad the team you think will win, marking the winners with an "X" in the space provided. Write plainly, and you may indicate tie scores by checking both places if you wish. Guesses are as good as anything in winning!

WILSON JEWELRY

SAN ANGELO RAMS — ()
H-SU FROSH — ()

Mc's CITY DRUG

DRUGS Fountain
Gifts
CELESTE — ()
BELLS — ()

Presley's Humble Service Station

Quick and Courteous Service
West Hi-Way 80 Ph. 9512
MERKEL — ()
ABILENE "B" — ()

WHITE'S AUTO STORE

Owner — Paul Woods
ABILENE EAGLES — ()
SAN ANTONIO — ()

NOOK GRO.

OPEN 7 DAYS A WEEK
7 A. M. TO 9 P. M.

Small Enough to Serve You Personally,
Big Enough to Appreciate Your Business!
ABILENE CHRISTIAN — ()
McMURRY — ()

Merkel Farmh Machinery Co.

Your International Harvester Dealer
924 N. 1st Phone 30
STAMFORD — ()
BALLINGER — ()

Hi-Way Gulf Station

Owner — Johnny Hammond
WE FIX FLATS
BAIRD — ()
ROBERT LEE — ()

MERKEL DRUG

MORAN — ()
BLANKET — ()

BRAGGS DRY GOODS

SNYDER — ()
BORGER — ()

WILSON'S FOOD STORE

LAKE VIEW — ()
McCAMEY — ()

PALMER MOTOR CO.

Your Pontiac and Magnolia Dealer
ROSCOE — ()
SOUTH TAYLOR — ()



BEN FRANKLIN

Owner — J. W. Hammond
KAUFMAN — ()
MESQUITE — ()

DUDLEY ELECTRIC

Oldest Radio-TV Business
In Merkel
Pick up & Delivery Service
934 N. 2nd Ph. 193
MINEOLA — ()
GILMER — ()

Max Mellinger's Dept. Store

"Quality Merchandise Always for Less"
MERKEL'S LARGEST DEPT. STORE
131 Edwards St. Ph. 223
STRAWN — ()
MASONIC HOME — ()

WOOZY'S CAFE

Owner — Myrtle Woozencraft
STEPHEN F. AUSTIN — ()
NORTHWEST LOUISIANA — ()

JOHN MCKINZIE MOTORS


SWEETWATER — ()
BRECKENRIDGE — ()

MERKEL TELEPHONE COMPANY

"HOME OWNED"
LAMESA — ()
MIDLAND — ()

EAGER FEED STORE

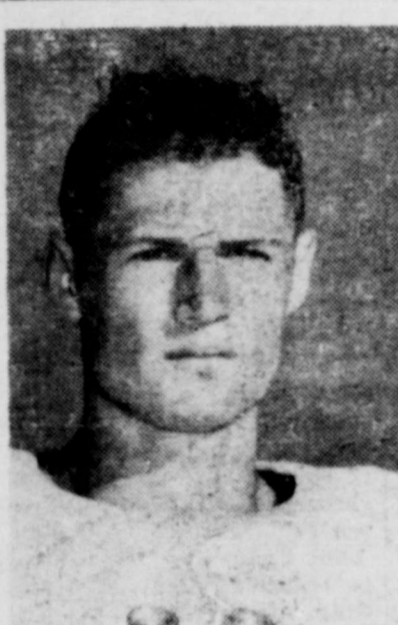
FEED — SEED — SUPPLIES
Phone 155
COLORADO — ()
SEMINOLE — ()



It's Good
To Win—
It's Good
Sportsmanship
To Loose
Cheerfully—

But Win or Lose We're 100% For You
BADGERS—

MILLER FARM MACHINERY
C. A. CHANCEY, Mgr.
Phone 55 Merkel, Texas



**BADGERS
FIGHT!**

Yea
**TEAM
FIGHT!**


We're For You —
100 Per Cent Badgers!
CITY CLEANERS
EDWIN RENFRO
CLEANERS — DYERS — HATTERS
Phone 189 121 Kent St.



**YEA-
BADGERS!**

We're
For You
All The
Way!

**MINA WINTER
BUTAN - Merkel, Texas**
PHONE 24



We're
100 Per Cent
For You -
BADGERS

WIN—
LOSE OR
DRAW!

LEMEN'S COSDEN STATION
A. T. "RED" LEMENS, Owner

**Pioneer
DRIVE-IN THEATRE**
FRIDAY & SATURDAY — SEPT. 14 - 15
FLAMING PASSIONS! WEIRD ADVENTURE
SWAMP WOMEN
A WOOLNER BROS. PRODUCTION
STARRING
MARIE WINDSOR • CAROL MATTHEWS • REVERE GARLAND
COLOR!

PLUS
CLEO MOORE — JOHN AGAR
"HOLD BACK TOMORROW"
SUN. - MON. - TUES. — SEPT. 16 - 17 - 18
PARAMOUNT PRESENTS
**JAMES
STEWART
DORIS
DAY**
ALFRED HITCHCOCK'S
**THE
MAN WHO
KNEW TOO MUCH**

WEDNESDAY & THURSDAY — SEPT. 19 - 20
BUCK NIGHT
"...the Funniest Kaye on Movie Record!"
LIFE MAGAZINE
PARAMOUNT PRESENTS
DANNY KAYE
8 BIG
SONG
HITS!
**THE
COURT JESTER**

LOOKING FOR MORE KITCHEN SPACE?
**See this NEW G-E
Spacemaker RANGE**



**Spacemaker
AUTOMATIC PUSHBUTTON RANGE
WITH HUGE 21-INCH-WIDE OVEN**

\$227.00 ONLY PER WEEK
\$2.00 after down
payment

Want the deluxe conveniences of a big range in compact space? Try a G-E Spacemaker. It gives you full scale automatic G-E "speed cooking" with push-buttons... a huge G-E Master Oven with automatic oven-minute timer... and many more deluxe features usually found only in much bigger ranges. And it takes just 24 inches of wall space... makes more space for other things.

- Pushbutton Controls
- New Faster Calrod® Surface Unit—over 20% faster than gas!
- Big Master Oven—holds meal for 24
- New Automatic Oven-Minute Timer
- "Focused Heat" Broiler
- Enclosed Calrod® Bake and Broil Units—lift out to clean
- Oven Floodlight
- Wide-spaced Surface Units
- Storage Drawer

SPACEMAKERS IN CHOICE OF 6 COLORS
Canary Yellow, Turquoise Green, Petal Pink, Cadet Blue, Wood Tone Brown or White. Ask us about G-E paints in matching colors.

*The 2600-watt G-E unit was tested in G-E laboratories against the large burner on each of four leading gas stoves. Tested in accordance with American Standard Assoc. electric range tests, the G-E unit brought 3 quarts of water to a boil over 20% faster. Also, one quart and 2 cups of water were tested; the G-E unit was faster every time. Gas burners were tested under identical conditions with burner input of 12,000 B.t.u. per hour (large burner requirement under Gas Appliance Mfrs. Assoc. certification standards).

PALMER MOTOR CO.

KERMIT RUTLEDGE ELECTED PRESIDENT OF THE SENIOR CLASS
The Senior Class of Merkel High School held its first class meeting of the year on Monday, September 10, 1956, in the new High School Auditorium. Last years class president, Kermit Rutledge, presided over the meeting.
The officers and sponsors for the 1956-1957 school term were elected as follows: President, Kermit Rutledge; Vice President, Carl McKeever; Secretary, Robert McLeod; Treasurer, Janice Rutledge; Reporter, Jocille Thompson; Sponsors, Mrs. Ruth Perkins, Mrs. Bobbie Cookey, and Mr. W. G. Reed. Kermit Rutledge has served the class as president all four high school years.

THE SOPHOMORE CLASS ELECTS POE NEILL AS PRESIDENT
The sophomore class of Merkel High School met Monday morning, September 10, 1956 for the purpose of electing sponsors and class officers. The sponsors elected were Mrs. Edwin Read, who was also their sponsor last year, Miss Leatrice West, and Mr. Chester McClintworth. The class officers are: President, Joe Neill; Vice President, Jerry McLeod; Secretary - Treasurer, Virginia Criswell; and Reporter, Katy Hunter.

ERROL RUTLEDGE ELECTED JUNIOR CLASS PRESIDENT
On the 10th day of September in the new high school auditorium the Junior Class elected their officers for the coming year as follows: President, Errol Rutledge; Vice President, Buddy Tittle; Secretary, Bette Smith; Treasurer, Suzy Bird; Parliamentarian, Minda McAninch; and Reporter, Linda Winter. They also elected their class sponsors. They are Mrs. Ellen McReynolds, Mr. George Hubbard, and Mr. A. J. Walla. In their next meeting they will decide their class colors, flower, and motto.

UNION RIDGE HOME DEMONSTRATION CLUB MET IN MRS. L. A. WATTS HOME
The Union Ridge Home Demonstration Club met in the home of Mrs. L. A. Watts, Friday, September 7, 1956, with Mrs. Lee Tipton. The president, Mrs. Kenneth Pee had charge of the business session. The roll was called with members answering on "what is your favorite vacation spot." Minutes were read and approved and the treasurer's report was given by Mable McRee. Mrs. Cox led in singing several songs. A prayer was led by Mrs. Watts. Mrs. Cox read scriptures on women of the Bible. Mrs. Hallie Burden gave a boog review, "Women of the Bible", which was enjoyed very much by the group. The meeting was adjourned until September 21, at 2 p.m. in the home of Mrs. L. S. Tipton, Jr. at which time the agent, Miss Allen will be with us. Delicious refreshments were served to four visitors, Mrs. Pick Allen, Mrs. Joe

**General
Line of
Insurance
CYRUS PEE**

**MODERN
BEAUTY
SHOP**

It's the cut that makes the hair pretty, so why not a Four-Way Cut today?
SHOP CARE . . . IS PROFESSIONAL CARE . . .
Mrs. Dent Gibson
Mrs. Clarence Perry
Operators
Phone 201 for appointments
In Rear of Merkel Drug

WEST TEXAS TV SERVICE
Service Calls \$5.00
90 DAY SERVICE GUARANTEE
Phone OR 3-7637 Abilene, Texas

Announcing —

Mr. A. L. Chancey is
the New Manager of

MILLER FARM MACHINERY
And Invites Friends in this area to see him
for
SALES AND SERVICE ON ALL
FARM MACHINERY
**Your John Deere
Authorized Dealer**
PHONE 55 MERKEL, TEXAS

CLASSIFIED RATES
FIRST ISSUE, Per Word . . . 3c
MINIMUM, first issue . . . 50c
OTHER ISSUES, Per Word . . . 2c
MINIMUM, second issue . . . 40c
TRANSIET RATE, Per Word 5c
THESE RATES APPLY TO ONLY
LOCALLY OWNED FIRMS.

NOTICE MASONS
Stated meeting of Merkel lodge No. 710, A.F. & A. S., Sat. July 21 at 8:00 p.m. All members are urged to attend. Visiting brethren cordially invited.
J. F. Butman, W. M.
C. B. Rust, Secretary.

HELP WANTED
AVAILABLE AT ONCE —
Rawleigh Business is Taylor Co. Good opportunity. Experience Helpful but not necessary. See J. G. Skelton Rt. No. 3, Sweetwater at once or write Rawleigh's Dept., TX1-10017102, Memphis, Tenn. 27-4tp.

WOMEN — "Avon Calling"
women who need Christmas money. No experience necessary. High commissions. We train you. Phone OR 2-6850, Abilene. 27-1t

FOR SALE
GAS RANGE. Nice late model Norge. \$69.50. 27-1f.
GOOD USED Refrigerator. \$50. Palmer Motor Company. 27-1f.
FOR SALE — Two Overhead Tanks — bood buy with towers — Mrs. H. Wren, 6th and Marian Street. Phone 17-H, Merkel 27-1tc.
FOR SALE — 75 White Leghorn Hens. Elsie Roland. 27-1tp.
FOR SALE — 84'x300' lot. Location is corner lot, east side, 6th and Edwards Street. Contact Mrs. W. C. Lee. 304 Kent Street. 27-1tp.
HOUSE FOR SALE — 7 rooms and bath, located close to High School — priced to sell — see by appointment only. Cyrus Pee, Agent. 27-1f.
FOR SALE — 5 Rooms, Bath, 2 porches, car shed on 2 lots. Modern house in Merkel, 402 Kent Street. Phone 6381, Noodle, Texas.
FOR SALE — One pair of ladies shoe skates. Good condition. \$10.00. Size 7. Contact Clyde Eager. 27-1tp.
WOULD LIKE some field pasture for 17 head of cattle. Phone 270, D. P. Moore. 26-1tp.
FOR MEYER ZOYSIA GRASS — See Parker Sharp 26-3tp.
FOR SALE — Three buildings. Rt. 3, Mt. Pleasant Rd. J. H. Campbell, Jr. 25-3tp.
FOR SALE — Modern six room house. Eight lots for sale, one or all. 810 Walnut, Merkel. 25-3tp.
FOR SALE — Aeromotor Windmill on wooden tower. Also small tank on wooden tower. Call OR 2-6534, Abilene, Texas, 25-3tp.
FOR SALE — 100 squares of used sheet iron at 1-2 price. See Odie Jones or call 9025-M1, Merkel. 25-3tc.
FOR SALE — 142 1-2 acres of land with one producing oil well, good three room house with bath, across from Trent school, plenty of water. Will sell half royalties and all for \$150 per acre. Half mile southwest of Trent. See L. E. Bell, Trent, Rt. 1, Texas. 25-3tp.
PIANO FOR SALE — See or call Mrs. Paul Orsborn after 4:00 p.m. Phone 9008-W-3. 25-3tc.
WE HAVE A CLIENT THAT HAS A 3-bedroom home in Abilene. Wants to trade for a nice home in Merkel. Must be on south side. DOWDY AND TOOMBS. 24-tfn.
FOR SALE — Good used lumber and sheet iron. See Oddie Jones 216 Edwards St. 23-tc
LOTS FOR SALE—Paved streets All utilities, 75 ft. and 70 ft. fronts. MERKEL DEVELOPMENT CO. H. O. BONEY 20-tfc
EXPERT ELECTRICAL APPLIANCE repairing. All work guaranteed 90 days. Free pickup and delivery after 5 p.m. Call 297w. Nite Owl Appliance Service. Bill Brazzil. 47-tfc

**HASTEN'S
Prices and Quality**
SHOES & WORK
CLOTHING
906 N. 1st
We Invite You To Come
In And Check Our
Shoes For The Entire
Family

The Merkel Mail

Published Every Friday
at Merkel, Texas

By
THE ROLAND PRINTING & PUBLISHING CO.
916 North Second St.

Orville D. Roland Editor-Publisher

Entered the Post Office at Merkel, Texas, as second class mail.

SUBSCRIPTION RATES

Merkel and vicinity (One Year) \$2.50
Outside Trade Area (One Year) \$3.00

CLASSIFIED AD RATES

First Issue, per word 3c
Minimum, charge 50c
Other Issues per word 2c
Transit Rate . . . per word 5c
Deadline for publication is Tuesday noon, prior to publication week.

These Rates Apply Only to Locally Owned Firms.

Any erroneous reflection upon the character of any person, firm or cooperation, appearing in these columns of the Merkel Mail will be promptly corrected upon being called to the attention of the editor.

Member: Texas Press Association
Representated by Weekly Newspaper Representative

The ugly side of our beautiful free country is showing in parts of Texas and other southern cities. That is the ugly stain of racial prejudice — mob rule and violence brought on by the racial issue.

Communism, the ugliest form of man's ideals, has claimed more victories by instigating violence. The National Guard has been called out to maintain order. Maintain order against a few peace loving citizens who forget to respect the rights of others.

This is the trick communists want. The fine line of difference in integration and association.

When the Supreme Court ruled out segregation, they left a crack for the communists to pry open the heart of our freedom. The bonds that bind us together in a strong nation are weakened. Weakened because of the fine line of difference in equality of man.

Hate and violence have replaced love and harmony in the weak parts of our South. A chain is as strong as its weakest link and the communists are sawing away at that link.

Hate is spreading rapidly in other parts by sympathisers and may break out anytime most anywhere.

Man is weak or he is as strong or as big as the little thing that excites him to anger. No larger.

All civilization of mankind is tossed aside in his primitive fit of anger.

God's purpose for man is to work out his own harmony with another and man has failed Him.

When mankind puts his own will between him and his Creator — hate, violence and destruction prevails. But when he obeys the instructions of God; he finds lasting peace with himself and great love for his fellowman.

God has tried to direct man to this end since the beginning of time. "God is Love." "Love is defined more clearly to us in I Cor. 13:1-13. Man's greatest masterpiece inspired by God." Though I speak with the tongues of men and of angels, and have not charity, I am become as sounding brass, or a tinkling cymbal. And though I have the gift of prophecy, and understand all mysteries, and all knowledge; and though I have all faith so that I could remove mountains, and have not charity, I am nothing."

Charity is used in this respect as greater than love. Love can be understood as an emotional state but this love is of a more enduring state. Love is eternal.

As I read the headlines of today's paper I see those who "speak with tongues of men and of angels" and their stand seems right and just. But the echoes of this voice from God resound thru my mind and I can find no place for love in their actions, and therefore it falls as "sounding brass." Nothing good can come from this.

"Charity suffereth long, and is kind; charity envieth not; Charity vaunteth not itself, is not puffed up, Doth not BEHAVE ITSELF UNSEEMLY, —

Does not behave itself unseemly — If there was one bit of "charity or love" in the principles of mobs; there would be no exhibits as an effigy hanging from the mast of the flag pole where the flag of our God loving nation should be.

If there was "love" or charity in the hearts of those who need be quelled by the militia they could see deeper than the skin which is on the surface.

If there existed such love in their hearts — they could see a force greater than the Hydrogen bomb or cosmic forces. They could see man existing with man in peace and harmony working out their problems together. They could inspire others and attract millions and the repulsion would reverberate throughout the world, behind the Iron Curtain to hearts of billions of love starved people throughout the world.

This bit of Love is the force God gave us to melt opposition and protect His children. A father would never give his son a weapon to use against his brother nor would our Heavenly Father give us strength to hate our racial brothers.

Our differences come from the lack of understanding the meaning of integration and association. We have the right to choose who we please for association in social and intellectual levels. When this right is upheld and respected we have no problem.

Before we can expect others to respect our rights we must show them we respect theirs. They (the Negro) have problems and when we show them we are interested in helping THEM work out their problems by not denying them their privileges we ourselves experience.

They must be made to realize that these privileges are not to be taken for granted and abused. That our society is not open to all. That there is a limit as to who can belong and who will be denied membership. That our societies are not open to all just because of color that we, too, must be eligible intellectually and socially.

That our educational systems are and should be maintained for development of social harmony within ourselves and when that has been accomplished we will be better qualified to take on another problem.

Force and violence only lead to hate and destruction. Love and charity leads to peace and harmony and creative powers.

1956 Amendments To The Social Security Laws

By R. R. Tuley, Jr.
Dist. Mgr. Social Security Adm.
Ablene, Texas

The old provisions regarding the evidence necessary to set up a period of disability for the disability freeze part of the law continue in effect insofar as measuring the extent of the disability is concerned. Also, the requirement that the disabled person have at least five years of social security credits out of the ten just preceding the onset of the disability and at least 1-2 years of such coverage out of the 3 years just before the disability onset date is continued.


However, instead of having to wait until age 65 to be paid cash benefits, such a disabled person can be paid at age 50, with the first month for which payment can be made being July, 1957.

The disability must be one that can be determined medically, and must be severe enough to prevent the person from engaging in any substantial gainful activity. The words permanent or total disability do not appear in the law, because it is hoped that many persons may be rehabilitated through the Vocational Rehabilitation programs of the various states. Thus, the measurement of the disability for social security purposes goes to the person's ability or inability to engage in any substantial gainful activity.

Persons desiring more detailed information about their own individual situations should write the Social Security Administration, Abilene, Texas, and arrangements will be made to interview them in plenty of time to protect all of their rights — whether for a period of disability prior to age 50 for cash payments to those past age 50. A disability that no longer exists cannot be used for social security purposes.

While it is not practical to make farm buildings strong enough to resist the full force of tornadoes, W. S. Allen, extension agricultural engineer, says the cost of making new or existing buildings strong enough to resist winds of hurricane force is not great.

Under a contract recently signed between the USDA and the Massachusetts Institute of Technology, scientists will seek to learn whether atomic or electrically-generated radiation can be used to make useful new textile products from cotton or to improve the value of cotton in its present uses.



REDDY SAYS

Eyestrain will hurt his eyesight, causing fatigue and a poor report card too.

Fill empty sockets with big bright bulbs, and get that new study lamp.

YESIGHT IS PRICELESS
GOOD LIGHT IS CHEAP

West Texas Utilities Company

Start the Fall Season on the right foot by Shopping MELLINGER'S this DOLLAR DAY - TUESDAY, SEPTEMBER 18. As usual you will find many, many money-saving items in nationally advertised brands. Of course, for best selections we suggest you shop early Tuesday morning.

ALL DOLLAR DAY PURCHASES ARE FOR CASH

GARZA Bed Sheets
Double-bed size, seamless, white bed-sheets that are cellophane wrapped. For the finest it's GARZA. FOR DOLLAR DAY ONLY
\$3.50 per pair
Cellophane wrapped pillow cases to match these fine sheets ONLY
98c per pair

Cotton Batts
2-pound roll of fully bleached cotton. Nice, soft, and fluffy. FOR DOLLAR DAY ONLY
\$1.19 per roll

COLORED BED SHEETS
A fine count in all the beautiful pastel shades. Double-bed size, seamless, and cellophane wrapped. FOR DOLLAR DAY ONLY
\$5.00 per pair
Pillow cases to match these beautiful pastel bed-sheets ONLY
\$1.25 per pair

Fall Fabrics
A nice selection of Fall shades and patterns in a nice quality percale. It's just the ideal fabric for those school shirts, blouses, skirts, and dresses. 36 inches wide. FOR DOLLAR DAY ONLY
4 yards for \$1.00

CHENILLE Bed Spreads
These help the looks of any bed room. Double bed size, heavy quality, lots of chenille, fringed edges, and all attractive colors. FOR DOLLAR DAY ONLY
\$3.50 each

CANNON Bath Towels
20x40 inches in size, double-thread construction, and lots of pastel shades to choose from. FOR DOLLAR DAY ONLY
3 for \$1.00

Nylon Panties
100 per cent Nylon panties that are real values at a much higher price. All sizes now. FOR DOLLAR DAY ONLY
59c each

Nylon Gowns
If you'll see these quality all-NYLON gowns you will buy several at such a low-low price. All sizes now. FOR DOLLAR DAY ONLY
\$2.99 each

CAN-CAN Petticoats
Full-cut, fine quality, and all sizes are available. FOR DOLLAR DAY ONLY
\$1.98 each

Brown Domestic
A good quality, smooth finish, and wide width. FOR DOLLAR DAY ONLY
5 yards for \$1.00

Birdseye Diapers
27x27 inches, hemmed, and packaged Birdseye Diapers. FOR DOLLAR DAY ONLY
\$1.79 per dozen

GINGHAMS
Don't fail to see our wide selection of new Fall colors and patterns in a nice quality, smooth finish Gingham. A real value. FOR DOLLAR DAY ONLY
59c per yard

Just Arrived!!
Beautiful, 100 per cent NYLON "dusters" for the Ladies. All sizes — all colors. FOR DOLLAR DAY ONLY
\$2.99 each

51-Gauge Hosiery
The fine quality of these VAN-ETTE 51-gauge NYLON hosiery in all the newest Fall shades can not be questioned. Sizes: 8 1-2 to 11. FOR DOLLAR DAY ONLY
\$1.00 per pair

Close-Out!!
One lot of broken sizes and odd-lots of "Bestform" bras. FOR DOLLAR DAY ONLY
79c each

MEN'S STRETCH SOCKS
Constructed of all Helanca NYLON yarn, your choice of dark or light shades, solid or fancy patterns. Remember, 1 size sock fits all size feet. FOR DOLLAR DAY ONLY
2 pairs for \$1.00

MEN'S Sport Socks
Constructed of all Durene knit cotton and reinforced heel and toe for longer school wear. All are new and attractive Fall shades and designs. Sizes: 10 1-2 to 13. FOR DOLLAR DAY ONLY
3 pairs for \$1.00

CORDUROY
Possibly the most wanted and desirable fabric on the market today and ideal for dresses, skirts, and sport shirts. You name the color; we probably have it. Narrow wale, too. FOR DOLLAR DAY ONLY
88c per yard
FREE!! FREE!!
Here's a fine gift for all the Ladies; so be sure and get your's. With the purchase of each dress, suit, or coat priced \$10.95 and up, you will receive ABSOLUTELY FREE your choice of any Ladies' hat in stock. These attractive hats are new Fall styles and materials and have just arrived.

Ladies' Crest Sweaters
They're even more popular this Fall than ever before. And more beautiful, too!! They are all-wool and many styles and colors to choose from. FOR DOLLAR DAY ONLY
\$5.95 each

FOR THE MEN
Felt Hat Day is here; so step out in a new hat this Sunday.
GROUP I
1 big shipment of fine quality Western dress felts have just arrived. We have the newest shapes, the newest trims, and all the wanted colors. Sizes: 6 5-8 to 7 1-2. This is a \$10.00 value and manufactured by the Nation's foremost hat maker. Sorry, we can't tell you who!! FOR DOLLAR DAY ONLY
\$7.95 each

GROUP II
Don't fail to see our wide selection of beautiful dress felts. Your choice of medium or narrow brims, dark, medium, and light shades, wide or narrow bands, and such popular shapes as the "Open Road." These, too, are made by that famous hat-maker. All sizes. FOR DOLLAR DAY ONLY
\$5.95 each

Sale of the Season!!!
We want you to see our large stock of new Fall shoes for the entire family, and it will be to your advantage to take heed to these savings.
GROUP I
Just arrived in time for Dollar Day. Beautiful and attractive styles in nice quality Black Suede "flats." They are so outstanding that you will want several styles. Sizes: 4 to 10. FOR DOLLAR DAY ONLY
\$2.98 per pair

GROUP II
Girls', here are the school and sport-type slippers everyone is wanting. We have them all, plus fine quality and excellent fit. Your choice of either Black or Brown smooth leather; or Black or Gray Suede LOAFERS. They fit; they look nice; and they are in demand. Sizes: 4 to 10; AA and B Widths. FOR DOLLAR DAY ONLY
\$3.95 per pair

"DICKIE'S" Pants & Shirts
Everyone knows that for longer wear, neater appearance, better fit, and perfect match of shirts and pants, always choose DICKIE Army Cloth work clothes. Made of 8.2-ounce Army Twill, they are available in either Suntan or Postman Gray. All sizes. FOR DOLLAR DAY ONLY
\$2.98 PER GARMENT

For you who prefer "DICKIE'S" Type I Army Cloth pants and shirts in Suntan color — all sizes — they are available on DOLLAR DAY ONLY
\$3.98 PER GARMENT

Men's Jeans
Constructed of 11-ounce sanforized, white-back denim, they are made to fit just like you like them to fit. All sizes. FOR DOLLAR DAY ONLY
\$2.98 per pair

MEN'S Shorts & Vests
Your choice of either fast color or sanforized slunk shorts — either gripper front or "boxer" type — and combed cotton, knitted briefs with elastic tops and cellophane wrapped. All sizes in either style. FOR DOLLAR DAY ONLY
2 for \$1.00

The vests are of combed cotton with Nylon reinforced arms and necks, panel ribbed, and extra long length. Sizes: 34 to 46. FOR DOLLAR DAY ONLY
2 for \$1.00

Final Close Out!!
Your choice of our entire stock of boys' short-sleeve sport shirts, including "T. Sawyer" and "Campus" brands. All are guaranteed washable — just what you need for school wear. FOR DOLLAR DAY ONLY
\$1.00 each

Boys' Blue Jeans
Sorry, folks, that we practically sold out last Dollar Day; but here they are again — those good, tough, and best-fitting "LONGHORN" jeans for boys. Your choice of either "regular" or "slims". FOR DOLLAR DAY ONLY
SIZES 1 TO 10
\$1.79 per pair
SIZES 11 TO 16
\$1.98 per pair

MAX MELLINGER

YOUR HEALTH

State Health Department laboratory personnel this week launched a three-year study of Chagas disease, a rare but potentially dangerous disease entity in Texas, State Health Commissioner Henry A. Holle announced today.

Dr. Holle said the study, which began September 1, is being supported by a \$2,000 research grant from the National Institutes of Health. It will run an estimated three years.

Dr. R. B. Eads, chief of the department's entomology section, will be the principal investigator. The study will concern the entire state but will be mostly confined to Gulf Coast regions, the commissioner said.

Only two human cases of the disease have ever been reported in the United States — one from Corpus Christi and one from Houston. Both occurred last

year. Why more cases haven't developed has long been a matter of puzzlement, since six species of the transmitting bugs in Texas have been found to be naturally infected.

The affliction is transmitted by various species of reduviid or triatomina bugs, commonly called kissing bugs, giant bed bugs, blood suckers, or assassin bugs. Dr. Eads invited the public to participate in his investigations by sending bug specimens to him at the State Health Department laboratory in Austin.

"We'll examine them as a means of determining the geographic distribution of the infection," Eads said.

He said also that the laboratory was maintaining a colony of triatomina bugs and that specimens would be supplied on request to private physicians interested in xenodiagnosis of acutely ill patients suspected of having Chagas disease.

The malady has been of con-

Kenny Foundation Broadens Work In Treatment, Research Fields

Minneapolis, Minn.—Scientists, professors and department heads of leading medical schools across the country are cooperating in the expanding medical program of the Elizabeth Kenny foundation, according to Marvin L. Kline, national executive director.



KLINE

The program, he explained, includes medical research, and the sponsoring of fellows and medical seminars and scholarship grants. The medical research program which the Kenny foundation is sponsoring at its own treatment centers and a number of universities across the country is not limited to the field of polio, but includes other neuromuscular disorders of various kinds, he asserted.

"Included on the medical advisory committee and planning committee set up by the Kenny foundation to help provide greater service," Kline said, "are doctors who are affiliated with the various departments of the following schools:

"University of Minnesota, Minneapolis, Minn.; Stanford University, Palo Alto, Calif.; University of California, Los Angeles, Calif.; New York University, New York City, N.Y.; Columbia University, New York City, N.Y.; Ohio State University, Columbus, Ohio; Baylor University, Dallas, Texas; Mayo Clinic, Rochester, Minn.; College of Medical Evangelists, Los Angeles, Calif.; McGill University, Montreal, Canada; Washington University, St. Louis, Mo.; University of Wisconsin, Madison, Wis.; University of Michigan, Ann Arbor, Mich.; University of Illinois, Urbana, Ill.; Herman Hospital, Houston, Texas; and Marquette University, Milwaukee, Wis.

"The Kenny foundation's expanding rehabilitation program covers help to persons of all ages who have nerve, muscle or joint disabilities which our medical staff believes may be lessened by such treatment."

The program of the Kenny foundation is made possible through funds contributed by the public.

Drouth Brings On Beeding Problems

Roughage is a scarce item these days on most Texas farms and ranches. The prolonged drouth has cut deep into supplies of all roughages and forced stockmen to turn to substitutes, says Dr. C. M. Patterson, extension veterinarian.

He reports that numerous calls and letters to his office indicate the widespread shortage of roughages and the intentions to use substitutes whenever possible. A frequent question has to do with the use of cotton burs and gin trash as a maintenance ration and whether or not there is danger of poison from cotton insecticides. The veterinarian says burs and gin trash can be fed and there is little or no danger from poison especially if no insecticides were applied to the cotton plants three to four weeks prior to harvest.

He also reports that complaints have been received that livestock have suffered from prussic acid when fed baled sudan, Johnson-grass, hegari or other sorghum hays. He says considerable of these crops were cut at a immature stage and baled before the plants had thoroughly dried and that the excessive moisture inside the bales was causing the trouble. The trouble can be remedied by breaking open the bales and letting the plants dry before feeding them.

Patterson also warns against using urea as a protein supplement where cattle are getting a very small intake of roughage or the forage is of poor quality. He says the animals cannot utilize the urea because of the low intake of carbonhydrates, and urea poisoning will result.

The veterinarian suggests that the local county agent be consulted for more detailed information on feeding and animal health problems brought on by the drouth.

Any wheat producer who has a regular wheat acreage allotment may take part in the soil bank's acreage program for the 1957 winter wheat crop, Robert Shrader, chairman of the Texas Agricultural Stabilization and Conservation Committee, has announced.

Dr. C. M. Patterson, extension veterinarian, says gin trash and cotton burs may be used as a maintenance ration for livestock with no danger from poison if insecticides had not been applied to the cotton plants for three or four weeks prior to harvest.

TOOMBS AND MOORE
will have 500 chickens to be given away September 11. Twenty-five chickens go with each 50 pound sack of feed.

TOOMBS AND MOORE
will have 1000 chickens to give away September 18. Twenty-five chickens go with each 50 pound sack of feed.

MEMORIALS OF ENDURING BEAUTY



Your Monument Dealer for 43 Years
853 Walnut P. O. Box 372 Phone 4-4176 Abilene, Tex.
SAM L. DRYDEN

Home Demonstration Notes

By LORETA ALLEN

Taylor County Home Demonstration Agent



Fall is here and many of you are planning your fall wardrobe. Here are some suggestions to keep in mind as you shop and plan. When you buy your fall dresses, keep your eye on your "lines."

Analyze the line of your figure as well as the lines of the dress. Select lines that bring out your good points and hide your poor ones.

Use these points as a guide: Well-proportioned women can wear almost any line.

Lengthwise lines give the effect of height.

Crosswise lines give the effect of width.

For short, plump necks, choose V-necklines with contrast.

For long, thin necks, choose high necklines, with contrast if desired.

For narrow shoulders, pad

lightly. Avoid raglan sleeves and short jackets.

For wide shoulders, avoid bulky padding, choose narrow lapels, raglan sleeves and vertical necklines.

For a large waistline, keep an unbroken line from shoulder to hem. Try panel effects and coat dresses. Avoid wide or contrasting belts.

For a large abdomen avoid tight-fitting dresses, double breasted blouses, and narrow skirts. Try front fullness at bust, in skirt, and on side fronts.

For thin or heavy arms avoid sleeves too tight or too loose. Try an easy fullness.

For flat chest avoid tight blouses with full gathered skirts. Wear shoulder fullness and bows at neckline. Choose crisp fabrics.

Always try garments on before a full-length mirror to get the complete effect of the costume.

L. A. 'LES' CLARK, CLU
Your personal insurance deserves professional counsel.
Life and Retirement Savings
Accident-Sickness - Disability - Hospitalization - Group.

GREAT AMERICAN RESERVE INSURANCE COMPANY
Member American Society of Chartered Life Underwriters

L. A. 'Les' Clark, CLU
IN ABILENE Box 2317 • Phones OR 2-4860 OR 3-3709



Outdoors—indoors—wherever you are!

Telephone service has a new look—and you see it everywhere in communities served by Independent telephone companies! Convenient outdoor telephone booths, useful extra telephones for the home, attractive colored telephones—even a device that answers when you're away—these features and many others give Independent service its new look... give you more for your telephone dollar!

MERKEL TELEPHONE CO.

Wet or Dry Plant For Winter Pasture

Prospects right now are slim for winter pastures, but, says E. M. Trew, extension pasture specialist, plans, seed and fertilizer should be ready if and when it rains.

The need for winter forage is critical in most areas of the state and winter pasture, if conditions become favorable, can be used to cut wintering costs for livestock and up the output of meat and milk from the farm.

When planting time comes, Trew advises dusting in oats and barley if there is subsoil moisture. Dry planted crops will be up and growing before planting could be done after a rain and the result is much earlier grazing. Don't fail to use fertilizer, emphasizes Trew. If it doesn't rain, the plant food will not be lost for it can be used by a succeeding crop.

The specialist says if possible plant a legume with the grass. The combination often gives greater yields; the forage is higher in protein and minerals and the grazing season is extended. For early grazing, Trew suggests using an upright type of barley or oats such as Goljad or Alamo in areas where these varieties are adapted. Upright types will give grazing weeks ahead of the prostrate types but don't hold up for mid-winter grazing. The specialist suggests planting about 20 per cent of the acreage to the upright types and 80 percent to intermediate types in order to get maximum winter grazing.

Generally, the small grains, oats, barley and rye and in some areas wheat, are the best bet for winter grazing. Italian ryegrass does well in east Texas, the Gulf Coast region and in the blacklands of Grand Prairie areas, Vetch, crimson clover, Hubam and Madrid sweetclover are among the legumes which can be grown in combination with the grasses.

For detailed information on varieties and seeding rates for different areas, Trew suggests that the local county agent be contacted. When the visit is made, ask for a copy of L-258, Winter Temporary Pastures.

Predictions of rainfall cannot be made on the basis of weather cycles of "wet and dry years." Recent studies of rainfall records at 31 locations dating as far back as 89 years in Texas' High and Rolling Plains by the Texas Agricultural Experiment Station show that cycles play little or no part in annual rainfall figures.

We Will Be
CLOSED
SATURDAY, Sept. 15th
In Observance of a
Religious Holiday
MAX MELLINGER

ROOFING



Let the Lydick - Hooks Roofing Co. make your estimate to reroof your residence or building.

ALL WORK GUARANTEED
We Use Genuine Rubberoid Materials

LYDICK - HOOKS ROOFING CO.

Attractive Vacation SPECIAL

BAKER Hotel

A comfortable, AIR-CONDITIONED, Double-Bedded Room. (Twin beds slightly higher)
SPECIAL BREAKFAST served in our COFFEE SHOP each morning.
SUN-BATHING in the BEAUTIFUL BAKER GARDEN and SWIMMING in our crystal-clear POOL.

An invigorating HEALTH BATH and MASSAGE, daily. CARD and OTHER GAMES planned by our SOCIAL HOSTESS. Your FAVORITE TELEVISION PROGRAM in our TV Theatre. Begin your VACATION on SUNDAY and remain THROUGH THURSDAY, or arrive on MONDAY and remain THROUGH FRIDAY.

TWO PERSONS FIVE DAYS \$50 for as little as \$36.
Special arrangements can be made for One Person for Five Days for as little as \$36.

MINERAL WELLS, TEXAS

BEST TIME-BEST BUY!

Drive a dazzling new Pontiac, with today's smoothest Hydra-Matic, the power of up to 227 horses, a road-leveling 124" wheelbase, and rugged X-member frame and high-priced car luxury! Drive it today—some big, beautiful Pontiac models cost less than many small-car models!

NOW IS THE TIME TO TRADE—
GET THE BEST BUY OF THE YEAR ON THE MOST EXCITING OF THE YEAR!

PONTIAC RECENTLY BROKE 54 NASCAR ENDURANCE AND SPEED RECORDS AT BONNEVILLE, UTAH

Pontiac

PALMER MOTOR CO.
PHONE 159 HIGHWAY 80

STORE FULL OF BACK TO SCHOOL SPECIALS

5 Big Days - DOLLAR DAYS - 5 Big Days

Thurs. - Fri. - Sat. and Mon. - Tues.
September 13-14-15-17-18

NOW HEAR THIS: DRAWING FOR SPEED BOAT WITH GAS MOTOR, TUESDAY
NOW HEAR THIS: MERKEL VS. ABILENE "B" FOOTBALL GAME FRIDAY

Spam	HORMEL 12-oz. Can	3 for -	\$1 ⁰⁰
Cake Mix	BETTY CROCKER Asst.	4 for -	\$1 ⁰⁰
Pet Milk		8 for -	\$1 ⁰⁰
Mix Fruit	STOCKTON No. 2 1/2 Can	5 for -	\$1 ⁰⁰
Strawberry	SKYWAY PRESERVES	3 for -	\$1 ⁰⁰
Cranberry	OCEAN SPRAY SAUCE	6 for -	\$1 ⁰⁰
Pineapple	DEL MONTE No. 2 Crushed	4 for -	\$1 ⁰⁰
Orange Ade	KRAFT 46-oz. Can	4 for -	\$1 ⁰⁰
Tomato Soup	CAMPBELL No. 1 Can	10 for -	\$1 ⁰⁰
Kraft Dinners		9 for -	\$1 ⁰⁰
Charlotte	BORDEN'S FREEZE	2 for -	\$1 ⁰⁰
Kleenex	COLORED 400 Count	4 for -	\$1 ⁰⁰

Finest Quality MEATS

CHOICE BEEF	Round Steak	lb.	73^c
CHOICE BEEF	Pot Roast	lb.	45^c
CHOICE BEEF	LOIN or T-BONE Steak	lb.	73^c
LONGHORN	CHEESE	- - - - - lb.	49c
CURED	HAM HOCKS	- - - - - lb.	25c
SKINLESS	WEINERS	- - - - - 3 lbs.	89c
WILSON CORN KING	Bacon	lb.	39^c
WILSON CURED	Ham Shank or Butt End	- - lb.	49^c
FRESH	Fryers	lb.	35^c

Half Hill
TUNA
5 for - \$1.00

Hormel Vienna
SAUSAGE
6 for - \$1.00

Banner
OLEO
5 for - \$1.00

Ballard's
BISCUITS
2 for - 19c

\$600⁰⁰ IN BACK TO SCHOOL PRIZES

THIS WEEK'S WINNER - Mrs. Leona Conley



3 BIG WEEKLY PRIZES LEFT
DRAWING EACH TUESDAY

GRAND PRIZE BACK TO SCHOOL JALOPY
PLUS \$50.00 IN GROCERIES TO PLEASE DAD

TUESDAY SEPTEMBER 18th

WIN A PRIZE SPEED BOAT GASOLINE MOTOR FOR THE THIRD WEEK

SAY KIDS! WIN YOURSELF A JALOPY!

This BACK TO SCHOOL JALOPY Plus 5 Big Weekly Prizes each Tuesday. So tell Mom and Dad and all to be sure to REGISTER each time they're in the store. The winner will be determined by drawing Oct. 6 at 6:00 p.m. Winner will be judged by signature of name on ticket. So register only for yourself.

THERE IS NOTHING TO BUY - YOU DO NOT HAVE TO BE PRESENT TO WIN. Drawing each Tuesday for valuable prizes. So watch Merkel Mail for winners. Every one can win. So all come in to register and have fun.

SHORTENING	Mrs. Tucker's 3 Lb. Can	69^c
COFFEE	Maryland Club One Pound Can	99^c
BREEZE	Prize Soap Giant	59^c
MIRACLE WHIP	Pint	29^c
FLOUR	Gold Medal 25 Lb. Print	1.69
TOMATO	Del Monte Juice - 46-oz. Can	29^c

DON'T let DUST! Just the new easy way!

DUSORB absorbs dust

For dust cloths and mops
INSTANT DUST RELIEF!

"Treat" your dust cloths and mops with DUSORB and dust will disappear like magic - Instantly!

Pint only **49c**

Vegetables

CORN - - -	DEL MONTE CREAM, 303	6 for \$1	BANANAS - -	2 lbs.	25c
PEAS - - -	KOUNTY KIST SWEET, 303	8 for \$1	GRAPES - - -	2 lbs.	25c
BEANS - -	DEL MONTE Cut Green	5 for \$1	K. Y. BEANS - -	lb.	19c
SPINACH -	TIP TOP 303 Can	10 for \$1	Tomatoes - - - - -	lb.	19c
TOMATOES	HUNT'S Whole	6 for \$1	Fresh Firm Lettuce - - - - -	lb.	12c
FRUIT C. T.	LIBBY'S No. 2 1/2 Can	3 for \$1	Fresh Blackeye Peas - - - - -	lb.	12c
PINEAPPLE	LIBBY'S No. 2 Sliced	3 for \$1	No. 1 Idaho Cello Bag SPUDS - - - - -	10 lbs.	49c
PEARS - -	LIBBY'S No. 2 1/2 Can	3 for \$1	Yellow ONIONS - - - - -	lb.	5c
PEACHES -	LIBBY'S No. 2 1/2 Can	3 for \$1			
SUNSHINE CRACKERS	Lb. - - - - - 23c				
SUNSHINE CANDIES	Cello - - - - - 19c				

AUSTEX **SPAGHETTI** AND CHEESE 9 300 Can \$1

213 EDWARDS ST. - PHONE 250 WE GIVE PREMIUMS

Carson FOOD STORE

Free Delivery Free Parking

ONE - STOP - SHOP