

Kiplinger Predicts Business Boom In The 1960's

Business will boom in the 60's, according to a year-end report from the Kiplinger organization on changes and growth during the next decade.

The business boom will flow from population growth, plus rising productivity which will increase the output per man-hour, plus higher incomes, plus the pull of people who want more and better things for themselves, plus the nimble shifting of business patterns, Kiplinger says.

Companies will expand, despite painful and expensive growth. They must add capacity, products, diversity and new outlets as a hedge against the rapid changes that would drive them down and possibly out.

More chains, larger stores and many stores taking on additional lines is the revolutionary picture for merchandising in the 60's. The food store will become a general store, with other things than groceries. The end of the trend is not yet for the super-super market. Pre-packaged and frozen foods, requiring more complex equipment, fancier fixtures will all bring in new kinds of warehousing needs.

Also there's automation... this tide is rising fast. It means more mechanical equipment and systems to replace muscle power. It's a must for domestic business, and it's a must for our foreign trade. Automation downgrades muscle, but it upgrades brains. Increasingly, college graduates will be lapped up and trained for top

executive posts, technical and engineering jobs. And, surprisingly, the lower-echelon jobs such as foreman and supervisor will be filled by college grads.

As business gets to be in bigger units, it will need more trained brains. As it gets more far flung, more responsibility will rest on the individual. Business processes themselves are being upgraded and the men who run them. Automation adds to the need for the trained and the educated in key spots.

Wages and salaries are bound to rise, following the pattern now. Despite higher prices of everything—probably 20 per cent higher by the late 60's—most people will be able to afford more things.

This means a continuation of inflation at about the same rate as in past decade. Savings, pensions, etc., will shrink in terms of what they will buy.

Unions will be affected by the growth of white-collar workers, specialists or experts in various fields. Unions will find it harder to unionize effectively. Union leaders are already foreseeing the trend.

More women will join the ranks of workers in the 60's. They've got to work, for the growing economy requires that they do work.

Now 60 per cent of women working outside the home are married and run households. The proportion will rise, especially women in the 45-to-54 age group

who have raised their children. 45 per cent of the women of middle age will be working by the late 60's.

Farmers Must Report Workers 1958 Wages

An important date for farm operators to remember is January 31, 1959. On or before that time, employers of farm help must report the amount of cash wages paid farm workers during 1958 to the District Director of the Department of Internal Revenue. This statement applies to all farmers who employ farm workers whose work meets the definition of Agricultural Labor, as defined by the social security law. To determine if your farm worker is covered by the social security law there are three (3) tests which can be applied.

Test No. 1 includes all agricultural workers who are paid \$150 or more in cash wages during 1958. In determining if the \$150 a year test is met, all cash wages must be included regardless of whether paid on a time, piece-work, or other basis.

Test No. 2 includes those workers who perform agricultural labor for one employer on 20 or more days during the year for an amount computed on a time basis. The time basis may be by the hour, day, week, etc. (In determining if this test is met, count only the days on which the employee worked for cash pay, computed on a time basis. However, if the 20-day-year test is met, all cash wages paid during the year, whether on a time, piece-work, or other basis, are subject to social security tax.)

The third test concerns domestic service in the private home of an employer. If the service is performed on a farm operated for profit, the domestic employee is considered an agricultural worker and must meet either test No. 1, or test No. 2.

If your agricultural worker meets any one of the three tests, your yearly report showing the worker's name, social security account number, and amount of cash wages paid during 1958 must be submitted by January 31, 1959, to the District Director of Internal Revenue. The report should be made on Treasury Department Form 943 and can be obtained upon application from the Internal Revenue Service. This form requires that the social security tax of 4 1/2% of all wages paid for 1958 up to a total of \$4200 in the year for an individual employee accompany the report (2 1/4% should have been deducted from the employee's wages and 2 1/4% is to be paid by the employer.) The employer must pay the total tax of 4 1/2% regardless of whether or not the 2 1/4% is deducted from the employee's wages. To facilitate accurate reporting, the employers should keep records showing the employee's name, social security number, number of days worked, cash paid, and the amount deducted as tax from the worker's wages.

Your failure to report an employee timely and properly may jeopardize his rights to benefits (monthly benefits at retirement age 65 for men, 62 for women,

CIVIL DEFENSE PREPAREDNESS

PREPARE:
Your family shelter and equip with two-week supply of food and water, first aid kit, battery radio.
Evacuation kit for your automobile with food, water, first aid kit, battery or car radio, blankets.

LEARN:
1. Warning signals and what they mean.
2. Your community plan for emergency action.
3. Protection from radioactive fallout.
4. First aid and home emergency preparedness.
5. Use of CONELRAD—640 or 1240 for official directions.

WHEN THE WARNING SOUNDS

A STEADY BLAST OF 3 TO 5 MINUTES FOR 3 MINUTES
This means: **ATTACK ALERT—TAKE ACTION AS DIRECTED BY LOCAL GOVERNMENT.**
Tune your AM radio to a Conelrad frequency (640 or 1240) for official directions. Proceed according to your community's emergency action plan. Don't use the telephone.

WAITING TONE OR SHORT BLASTS FOR 3 MINUTES
This means: **ATTACK—TAKE COVER IMMEDIATELY IN BEST AVAILABLE SHELTER.**
In a building: If there is no prepared shelter, go into a basement or to an interior first floor room. Stay in shelter until you get word you can leave.
Outdoors or in a car: Go to nearest shelter. If you cannot reach prepared shelter lie flat on the ground face down, or crouch on floor of car.

SURVIVAL INFORMATION of value to American families if this nation were attacked is conveniently assembled in this permanent wallet card for clipping.

ACROSS the DESK

ideas from other editors

From The Champion, Center, Texas: There's a minor stew in the Senate in Washington... on whether or not to install a public address system. Like nearly everything else that's ever come up in the Senate there's some disagreement on the matter. Correspondents in the Press Gallery often have a hard time understanding some of the Senators, who are not gifted with the voices of top sergeants.

This minor matter is of little importance compared to our legislator's being heard among their constituents back home—that is from the standpoint of vote getting and perpetuating themselves in office.

A truly conscientious Senator or Representative in Washington is faced daily with the problem of deciding where public duty ends and self promotion starts and vice versa.

To a degree these phases of public life are intertwined. Former Vice President John Nance Garner was one of the few of America's public figures who had the knack of starting and ending each of these problems at the right point. Overshadowed in a way by the great personality of Franklin D. Roosevelt, he was variously called an "evil old man," a

back-stage manipulator" and lots worse things.

Garner came in for his just share of praise also by both Republicans and Democrats alike. His ultimate aims and his devotion to his country were never questioned. He was and still is regarded as a great statesman.

Since Garner's time at the Capitol, the headline seekers seem to be more prevalent and audible than ever before. When a Congressman goes down the line for some piece of legislation that's good, there's no crime in letting his constituents back home know about it. When he votes on a measure as he thinks the people who elected him would want him to.

The chief means of notifying these people back home is the newspapers which they read and from that situation has developed the practice of advising the newspapers on their activities.

The job of separating the propaganda from the sincere, honest efforts of a lawmaker is a hard one. If newspaper space permitted maybe the best route would be to print it all—the well meant actions of considered judgment and the personal ballyhoo too. That perhaps would let the self-centered publicity seeker hang himself with a galley of type

benefits to him and his dependents if he is totally disabled at age 50) and payments to his survivors if he should die.

If you have any questions regarding coverage of your agricultural workers, please contact your local social security office. Your local office is located at 203 Finin Street, Abilene, Texas.

Seaweed is a unique material. It is used as a medium in which to grow bacteria; as a food in such countries as Japan; and, in France, for soil improvement.

The Old Timer



"Grandparents are those people you take the baby to for an over-mauling!"

Pay Your Poll Tax

WE NOW SPECIALIZE IN
ODOR-Free DRY CLEANING
SHIRT LAUNDRY SERVICE
HAT CLEANING
PHONE 27—f-o-r—F-R-E-E PICKUP and DELIVERY
MACK'S CLEANERS

For Butane Gas, Appliances
and Tractor Conversions
PHONE 169
1029 NORTH SECOND
H. W. LEMENS



LET'S TALK IT OVER

Businessmen and farmers often wonder if they can get bank loans to help in the growth of their business. To which we say: Come in and let's talk it over. We are a partner in the business development of this community and are always ready to offer financial advice and aid in sound business ventures. Let's talk it over.


THE OLD RELIABLE
Farmers and Merchants
National Bank
Member Federal Deposit Insurance Corporation

Kids DON'T FORGET
GANDY'S FREE
QUEEN THEATER PARTY
EACH SATURDAY AFTERNOON



Use Them For Admission
"Showdown at Boot Hill"
"Ride A Solent Mile"

guess about your
future—**INSURE IT!**



Boney Insurance Agency
143 Edwards Street
PHONE 21
Old State Bank Bldg., Merkel
SEE US FOR COMPLETE INSURANCE PROTECTION

SPEED WASH
DO A WEEKS WASH IN 30 MINUTES
USE AS MANY MACHINES AS YOU NEED
20¢ PER LOAD CHEAPER THAN OWNING
YOUR OWN MACHINE
DRY YOUR WASH 40 lbs. 50c
COIN OPERATED — WASH DAY OR NIGHT
920 No. 2nd AIR NEXT DOOR TO
CONDITIONED MERKEL MERKEL MAIL

Be our guest for a pleasure test...
and let Chevy do its own sweet talking!

Before you decide on any new car, here's the biggest break you can give your dollars—and yourself: Drive a '59 Chevrolet. You'll find there's no reason to want a car that costs more—and no car you want that costs less!

Here are some of the things Chevrolet will tell you about when you drive it—
ROOMIER BODY BY FISHER—more width for seating comfort, more luggage space, and new in everything but its famous soundness.
MAGIC-MIRROR FINISH—keeps its shine without waxing or polishing for up to three years.
NEW OVERHEAD CURVED WINDSHIELD—and bigger windows—all of Safety Plate Glass.
NEW BIGGER BRAKES—deeper drums with better cooling for safer stopping and up to 66% longer life.
HI-THRIFT 6—up to 10% more miles per gallon, more usable horsepower at the speeds you drive most.
VIM-PACKED V8's—eight to choose from, with compression ratios ranging up to 11.25 to 1.
FULL COIL SUSPENSION—further refined for a smoother, steadier ride on any kind of road.
TURBOGLIDE, POWERGLIDE, AND LEVEL AIR suspension head a full list of extra-cost options that make for happier driving.




See this bright new addition to the Chevrolet line—the Bel Air 4-Door Sport Sedan

now—see the wider selection of models at your local authorized Chevrolet dealer's!

BADGER CHEVROLET CO.
Kent & No. 2nd MERKEL PHONE 123

Corner on Cotton

BY BOB COLLINS

What will Congress do about the cotton program? . . . most experts agree that nothing very important will happen directly to cotton . . . feeling is that the new program must have a trial before any sizeable changes are made . . . behind the scenes a direct subsidy payment plan with restrictive payments to individual farmers is being talked, but probably won't appear on the floor of either house in the near future . . . also being talked (and there may be some action on this) is the setting of a limit on the total funds for price support and on a crop-by-crop basis . . . this results from an unexpectedly large price-support burden . . . which has helped raise total USDA outlays from an expected \$5 billion for the fiscal year to over \$7 billion if predictions prove right . . . this will equal more than two fifths of the net income of all farm operators in the country . . . the President has pointed out that by

July 1 the government will be holding farm surplus products worth \$9 billion and that the cost of such items as storage, interest, etc., will run about \$1 billion a year . . . another target is the "open end" loan in which you can pull your cotton out of the loan and sell it on the market if the price makes this desirable . . . Secretary of Agriculture Benson opposes most of these changes but he does want to abandon the parity formula and use some "market-price" method of arriving at support levels . . . this method will be tested on the 1959 corn crop . . . also, there is a move to allow a farmer who isn't going to utilize his cotton allotment to transfer it to someone else . . . under present regulations this can't be done . . . the farmer may turn his allotment back to the ASC committee for reassignment, but he doesn't have to and usually doesn't.

How's That?
Secretary Benson says " . . . if farmers had had more freedom—and less interference from Government—their production adjustment over the years would have been more realistic."

By Jan. 31
USDA will announce cotton support price based on estimate of August 1 parity by January 31 . . . choice of "A" or "B" must be made by March 16 and ASC committee notified if choice is "B" otherwise ASC will assume you take choice "A".

Pay Your Poll Tax Before January 31

Your friendly
BUTANE - PROPANE
Dealer

IRVEN THOMPSON

Merkel, Texas Phone 224 — Nights 47
Continental Warehouse East Highway 80

JACK POT WINNERS and LOSERS THIS WEEK

TUESDAY—LOSER
John A. Donnelly — 55.00
WEDNESDAY—LOSER
Mrs. Harvey Schmidt — 60.00
THURSDAY—LOSER
L. L. Tye — 45.00
FRIDAY—LOSER
Billy G. Young — 50.00
SATURDAY—LOSER
Mrs. Jessie Conley — 65.00
MONDAY—LOSER
Mrs. Della Breckenridge — 70.00

Nothing To Buy.
All You Have To Do Is Sign Register To Win.
MERKEL DRUG CO.

WASH IN COOL COMFORT
AIR CONDITIONED
COIN OPERATED
WASHERS & DRYERS
OPEN 24 HOURS
DELUXE LAUNDRY

PICKUP AND DELIVERY
210 KENT ST. PHONE 231
George & Veda West

The Merkel Mail

Established 1889
Published Weekly at 916 N. Second St., Merkel, Texas
R. E. Gardner, Owner and Publisher

Entered at the Post Office at Merkel, Texas
as second class mail.

Any erroneous reflection upon the character, standing or reputation of any person, firm or corporation, which may appear in the columns of this newspaper will be corrected, gladly, upon being brought to the attention of the publisher.

For Classified Rates: See Want Ad section.

Member of the Texas Press Association
and the West Texas Press Association.

Subscription Rates
Merkel Trade Area — \$2.50 a year
Elsewhere — \$3.00 a year

Week-end SPECIALS

SPECIALS FOR THURS., FRI., SAT. JANUARY 29-30-31

SNOWDRIFT

3 lb. Can **69¢**

COFFEE

MAXWELL HOUSE
2 LB. CAN **\$1.29**

KRAFT'S VELVEETA
CHEESE
2 Lb. Box **79¢**

BAMA RED PLUM
PRESERVES
18 oz Glass **25¢**

OUR VALUE
PEACHES
No. 2 1/2 Can **29¢**

ZEE
TISSUE
4 Roll Pkg. **29¢**

DEL MONTE
FRUIT COCKTAIL - - - 2 for 45¢

PRODUCE
AVOCADOS - each 10¢
ORANGES - 5-lb. bag 39¢

ROME BEAUTY
APPLES - - - - lb. 13¢
RUBY RED
GRAPEFRUIT - - lb. 9¢
SUNKIST
LEMONS - - - - lb. 13¢

GLADIOLA
TIDE FLOUR 25 Lb. Bag **\$1.89**
FREE WASTE BASKET
\$3.98 **CAKE MIX** Pkg. - - - - **29¢**
HOME LAUNDRY SIZE

PHONE 173 — — Merkel, Texas

WE DELIVER EVERY DAY AT 10 a.m.-4-p.m.

NEXT DOOR TO POST OFFICE

Wilson's Food Store

DON'T FORGET TO ASK FOR YOUR UNIVERSAL PREMIUM COUPONS FOR FREE OVENWARE — KITCHENWARE
ELECTRIC APPLIANCES — POTS & PANS — LAMPS — TOYS — COOKERS — TOASTERS — QUEEN THEATRE TICKETS ETC.

SUPREME CREAM SANDWICH
COOKIES
2 Lb. Bag 49¢

FROZEN FOODS
SUN COUNTRY—10 oz. pkg.
STRAWBERRIES - 19¢

STOKLEY'S
SPINICH - - pkg. 21¢

MEAD'S — pkg of 12
ROLLS - - - - ,15¢

FOUR WINDS CREAM
PEAS - - - - pkg. 23¢

DEL MONTE WHOLE — 303 Can
GREEN BEANS - - 25¢

KIMBELL'S — 24 oz. Bottle
APPLE JUICE - - 25¢

DEL MONTE — 300 size
Tomato **JUICE** - 2 for 25¢

HORMEL
SPAM - - - - Can 49¢

CAMPFIRE MARSHMALLOW
CREME - - - - Pt. Jar 19¢

KOUNTRY KIST
CORN - - - - 2 for 29¢

KIMBELL'S No. 2 Can
HOMINY - - - - 2 for 25¢

KIMBELL'S BLACK EYE — No. 2 Can
PEAS - - - - 21¢
Clear Cleaning

RANCH STYLE — 24 oz Can
BEANS - - - - 19¢

FRESH MEATS

SWIFT'S COUNTRY
SAUSAGE - - 2 lb. bag 69¢

ARMOUR'S MATCHLESS
BACON - - - - lb. 43¢

POT ROAST - - lb. 63¢

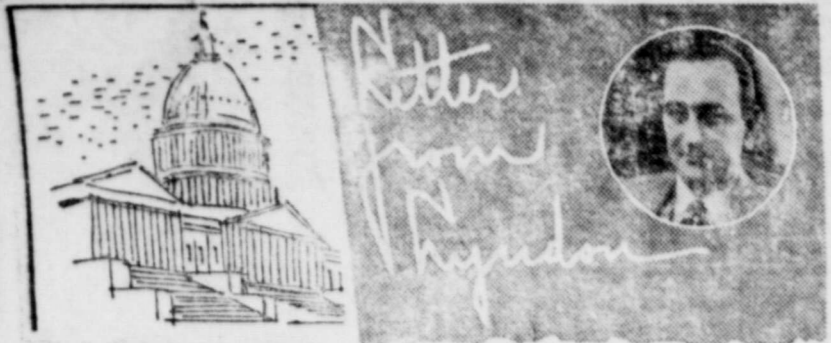
FRESH GROUND
HAMBURGER - lb. 39¢

CLUB STEAK - lb. 69¢

WISCONSIN LONGHORN
CHEESE - - - - lb. 49¢

MEAD'S
BISCUITS
Can
10¢

BORDEN'S
INSTANT
POTATOES
PKG.
29¢



Dear Friend:
This has been a good week, a busy one. Much has been accomplished. But a simple, two-syllable word is causing me increasing concern.
It is called "surplus."
This is the picture:
This nation now has on hand about \$9 billion in surplus commodities. That's a lot of food. And it is food that must be put to use.
The cost of not using it comes high.
Just to store this surplus, the Administration estimates that it will be spending by next July 1 at the rate of \$1,027,528,020 a year.
This is a costly luxury. It is one that this nation cannot afford.
The need for action to solve this problem is urgent.

The Congress will have before it a new farm bill.
Within it must be the key to unlock this problem called "surplus."
There is now under study by some very able Senators a broad plan.
Briefly this plan would:
Allow a farmer to plant all he wants to.
Assure him 100 per cent parity for that portion of his crop consumed in this country.
Provide that the portion of his basic crops sold in export would be offered on the open market.
The goals are these: Aid the farmer by easing restraints on his own free enterprise. Lighten the load on the taxpayer. And in doing this, help our friends and allies of the free world to help themselves.
This the Senate intends to do.

gabby doodle from noodle says:

DEAR MISTER EDITOR:
I see by the papers where Mr. Bernard Baruch says "hard work is the only way of defeating inflation." He goes on to say everybody has got to work hard or inflation will ruin us. That little piece spoiled the whole day for me.
Mr. Baruch is an adviser to Presidents, and I'm wondering where he gets all them un-American ideas. Certainly we'll avoid inflation if everybody works harder, and if everybody goes to jail there won't be no crime on the outside. What Mr. Baruch is advising is about like telling us we ought to burn down the Capitol to get rid of some of them Congressmen that got to Washington by mistake.
We're getting entirely too many strange ideas in this coun-

try. If Mr. Baruch wants to work harder, let him do it. It's a free country, and I'm all for him. But I got better ideas on how to cure inflation. For instance, some of them folks in Government could get out of the public trough and do half a day's honest work at somepun else. We got about four million folks on the Federal payroll and there ain't more'n half of 'em that does a honest day's work onet a week. They been lapping up the milk so long without cutting any hay fer the cow that they think everybody else is doing the same.

I see, fer instance, where the Government rents about 11 per cent of all the office space in the city of Indianapolis and about 10 per cent of all the office space in ever large city in the United States. They have filled up Washington, spread out into Virginia and Maryland, and now they is crowding into all parts of the country. And in ever office they got 'em stuffed in the rafters with Government workers.

With all due respect to Mr. Baruch, I don't aim to work no harder till them Congressmen start squeezing our Government into a little less space, and with a little less office help. He says that inflation may take a turn fer the worse by Spring. In case Mr. Baruch ain't had no experience in agriculture, I can advise him that Spring is the time of year when it's hard to tell the plant from the weed, and when grass and corn look about alike and I'm going to continue my system of waiting to see which is which afore I set out to sweat over the problem, inflation or no inflation.
Yours truly,
Gabby



RADIOLOGICAL monitoring lessons, such as learning how to charge a dosimeter (above), are being taken by members of a teen-age civil defense club in Chevy Chase, Md. The pen-like device, when charged and worn by a person, tells the amount of radiation from fallout to which he has been exposed. (OCDM Photo)

40-Minute Meat Casserole from start to table



Away with long time fussing! You can hustle this casserole together in jig time and have it out of the oven in half an hour. A casserole that's butter crumb topped, a deep pool of gravy-sauce crowded with meat, for four good servings.
This casserole is made with canned luncheon meat and canned apple sauce. Surprised? You'll find these two familiar make remarkably tasty going as a twosome. Then you bolster the flavor even further with onion, mustard, a whisper of garlic. The result is a main dish, robust and relishing.
This is a casserole to keep in mind for a rush meal, for a lunch that demands the bite substantial, for a Sunday night supper that must satisfy keen appetites in fact for any time you want a main dish easy to prepare.
Just how easy, you can see from the directions:

- 40-MINUTE MEAT CASSEROLE**
- 1/4 cup butter
 - 1 clove garlic
 - 2 cups canned apple sauce
 - 1/4 cup brown sugar
 - 2 teaspoons cider vinegar
 - 1/4 cup minced onion
 - 1 can luncheon meat
 - Prepared mustard
 - 1 cup soft bread crumbs

Melt butter; mash garlic; add to butter. Let stand 10 minutes; remove garlic. Combine apple sauce, brown sugar, vinegar and onion; mix well. Place in shallow casserole. Slice luncheon meat; spread lightly with prepared mustard. Lay in overlapping row on apple sauce. Toss crumbs in the melted butter; sprinkle over casserole. Bake in moderately hot oven, 375 degrees, 30-35 minutes. Makes 4 servings.

LEGAL NOTICE

THE STATE OF TEXAS
To any Sheriff or any Constable within the State of Texas—
GREETING:

You are hereby commanded to cause to be published once each week for four consecutive weeks, the first publication to be at least twenty-eight days before the return day thereof, in a newspaper printed in Taylor County, Texas, the accompanying citation, of which the herein below following is a true copy.

CITATION BY PUBLICATION THE STATE OF TEXAS
TO: Aubrey Watson Clendenen, Defendant, Greeting:
YOU ARE HEREBY COMMANDED to appear before the Honorable 104th District Court of Taylor County at the Court-house thereof, in Abilene, Texas, by filing a written answer at or before 10 o'clock A.M. of the first Monday next after the expiration of forty-two days from the date of the issuance of this citation, same being the 16th day of March A.D. 1959, to Plaintiff's Petition filed in said court, on the 7th day of March A.D. 1958, in this cause, numbered 8417-B on the docket of said court and styled Mildred Marie Clendenen, Plaintiff, vs. Aubrey Watson Clendenen, Defendant.

A brief statement of the nature of this suit is as follows, to-wit: plaintiff and defendant were married on or about April 2, 1955 and became permanently separated on or about Oct. 27, 1957. Plaintiff sues for divorce on grounds of cruel treatment as of such a nature that it has rendered the further living with defendant insupportable. Plaintiff alleges that there is no property to be adjudicated and no children of this marriage as is more fully shown by plaintiff's Petition on file in this suit. If this citation is not served within ninety days after the date of its issuance, it shall be returned unserved.

The officer executing this writ shall promptly serve the same according to requirements of law, and the mandates hereof, and make due return as the law directs.

Issued and given under my hand and the seal of said court at Abilene, Texas, this 28th day of January A.D. 1959.

(SEAL)
Attest: R. H. Ross Clerk, 104th District Court Taylor County, Texas.
By Irene Crawford, Deputy.
46-47-48-49

Mrs. G. D. McConnell visited her daughter and son-in-law, Sgt. and Mrs. R. F. Reed in Fort Worth last week.

Mr. and Mrs. Murry Farmer of Abilene were Sunday visitors in the home of Mr. and Mrs. J. Hamp Campbell and Mr. and Mrs. Call McLean.

Home Demonstration Notes

By LORETA ALLEN
Taylor County Home Demonstration Agent



Sybil and I are in San Angelo attending the workshop on making drapes and covering lamp shades. Start looking for wire lampshade frames, because you will probably want to attend the workshop that we have in Taylor County.

Like Abilene Home Demonstration Club met with Mrs. Jordan last Friday. They had appointed a Visitation Committee and the most have really been busy, because they had a very good attendance. If any more had attended, I don't know where Mrs. Jordan would have found a place for them.

The cake decorating workshop will be February 10, at 1:30 P.M.



Sally Lewis

For readers in rural areas, there's no need to tell you that winter means an abundance of fats. Our city readers also collect more waste fats in the colder months.

These fats can be converted into valuable household soap for very little cost and not too much work. Many housewives are surprised how easy soap making is once they've tried it.

Homemade soap is an excellent cleaner and contains natural glycerin, which commercial soap makers often remove and sell as a separate product. Natural glycerin is soothing to hands and helps make a wonderfully rich lather.

The only ingredients needed are water, lye and your waste fats. Six pounds of fat and a can of lye to make nine pounds of soap—the equivalent of about 14 large bars of "store-boughten" soap.

Good soap requires fats that are free from dirt, rancidity, lean meat, salt and other impurities. Fat rendered from tallow, meat trimmings, rinds and other meat scraps are ready for soap making. Fats from meat frying should be washed by adding an equal amount of water and bringing the mixture to a boil. Remove from stove, stir, and add cold water—1 quart to 1 gallon of the mixture. The cold water precipitates foreign substances. Remove the fat from the top when firm.

Manufacturers of good grades of household lye have complete directions for soap making available. They supply free copies of booklets on soap making and other household uses of their product.

Scents and colors are also available for home soap makers. Some creative homemakers have developed molds to make delightful—and very useful—soap for their families.

in the Coca Cola Building in Abilene.

This is the time of year that many people have colds. Are colds too common in your family? If so, check your daily menus to be sure you are serving foods containing a lot of vitamins A and C.

Both these vitamins, they say, are effective in preventing the invasion of cold germs. That's because they help the linings of the nasal passages resist bacterial invasion.

These two vitamins, plus general good nutrition, help provide resistance to all types of bacterial infections, not just colds.

Good sources of the vitamins are dark green leafy and yellow vegetables, citrus fruits, tomatoes, raw cabbage, and milk, butter, eggs, cheese, cantaloupe, strawberries and potatoes.

Vitamin A also improves the eyes' ability to adjust to light and dark; lack of it causes "night blindness." Children need vitamin A for optimum growth, and vitamin C for proper tooth formation and speedy healing of wounds and burns.

Everyone interested in attending clothing workshops this year should attend the planning meeting February 13, at 9:30 A.M. in the Coca Cola Building in Abilene. Anyone is invited to the workshops, but it is important that you register at this meeting.

head the cast of "Damn Citizen" which is an effective and interesting melodrama that deals with police work and the areas it touches. Detailed is how a civic-minded individual cleans up corruption in a state police organization. This is aided by a semi-documentary approach and on-the-scene filming. There's lots of suspense, drama, and some action in this one.
Don't forget the Pioneer Drive-In will be open Sunday night if the weather isn't bad.

For **COLDS** take **666**

TAX DEADLINE NEAR

City and School Taxes for the City of Merkel will become delinquent February 1, and penalties and interest will be charged after that date. The Tax Office is open from 8:00 A.M. to 5:00 P.M. every day in the City Hall Building at Merkel. Payments may be made by mail to the City or School Taxing Units, Merkel, Texas.

Does Your Family, Inc. have an annual report?



In some ways it certainly makes a lot of sense to look at your family as a business.

For instance, businesses set aside money each year to meet their future needs. Your family should, too, because you'll have a lot of future needs... college educations for the children... a new house... a retirement fund.

You might call the money you'll need for these things a reserve for future operating expenses. And you should start building that reserve right now.

One of the best ways to do this is by regular purchase of U. S. Savings Bonds. They're a safe, sure investment that's backed by the strength of the greatest nation on earth.

And now they're better than ever. Every U. S. Series E Savings Bond purchased since February 1, 1957 pays 3 1/2% interest when held to maturity. It matures earlier, too—in only 8 years and 11 months—and pays higher interest in the earlier years.

So this year look at your family's finances with a businessman's eye. And make it your New Year's Resolution to start building a fund for the future by buying Savings Bonds through the Payroll Savings Plan at work—or regularly where you bank.

SAFE AS AMERICA... U. S. SAVINGS BONDS
The U. S. Government does not pay for this advertising. The Treasury Department thanks, for their patriotic donation, the Advertising Council and

SCHOOL MENU

- MONDAY, FEB. 2**
Tamale pie
Red beans
Vegetable salad
Apple crisp pie
Crackers
Milk
- TUESDAY, FEB. 3**
Steak and gravy
Rice
Fresh Tomato slices
Fruit jello
Bread
Milk
- WEDNESDAY, FEB. 4**
Turkey - dressing - gravy
Green beans
Cranberry sauce
Peach halves
Rolls
Milk
- THURSDAY, FEB. 5**
Texas hash (4-H Style)
Potato salad
Lima beans
Home made rolls
Butter
Milk
Preserves and honey
- FRIDAY, FEB. 6**
Hamburgers
Potato chips
Milk
Flying saucers

SHOWTIME

Two outstanding features are coming to the Queen Theater this week and next. "Party Girl" on Sunday and Monday, and "Damn Citizen" on Tuesday and Wednesday of next week.

"Party Girl" stars Robert Taylor and Cyd Charisse. It is classified as a plush gangster meller with dance sequences and is reported to be actionful and well enacted.
Keith Andes and Maggie Hayes

ACNE, PIMPLES BLACKHEADS
• NO X-RAY • NO SHOTS
DermaCulture
for SCIENTIFIC SKIN CARE
Exclusively in This Locality by
ALPHA ALLEN
430 Victoria St. OR 4-8439
Abilene, Texas

ANDY SHOUSE
- Real Estate -
115 KENT ST
Phone 322

ALDREDGE
Shoe Shop
725 BUTTERNUT STREET
APPRECIATE YOUR BUSINESS. ALL WORK DONE TO PLEASE THE CUSTOMER.



Born in Need...

Linda holds tightly to her doll buggy to steady her weakened legs, crippled by a malformation of the spine that was present at birth. The March of Dimes can help Linda and other children handicapped not only by birth defects, but also by polio and arthritis. They all need your help.

JOIN THE MARCH OF DIMES
TOWARD GREATER VICTORIES

Linda Leach Named Local Winner Of Homemake Contest

Linda Kathleen Leach has been named 1959 Betty Crocker Homemaker of Tomorrow at Merkel high school.

She received the highest score in a 50-minute written examination on homemaking knowledge and attitudes taken by graduating senior girls in her school. She will receive a homemaking pin manufactured by Josten's, which represents the slogan, "Home is Where the Heart Is." Her examination paper will be entered in competition with those of other school winners in the state to name the state Betty Crocker Homemaker of Tomorrow.

The test is designed and judged by Science Research Associates.

Each state Homemaker of Tomorrow will receive a \$1,500 scholarship from General Mills, an educational trip April 4-10 with her school advisor to Washington, D. C., colonial Williamsburg, Va., New York City and Minneapolis, and she will be a candidate for the title of All-American Homemaker of Tomorrow. The school of each state winner will receive a set of the Encyclopaedia Britannica. General Mills will award a \$500 scholarship to each state runner-up.

There are 12,260 participating schools throughout the nation, which have enrolled 349,150 senior girls, the largest number of participants in the five-year history of this \$106,000 scholarship program. Growth has been steady since 1955 when 187,463 girls in 8,040 schools participated.

The 1959 All-American Homemaker of Tomorrow will be announced in Minneapolis April 10 at the American Table Dinner in the Leamington Hotel's "Hall of States."

The scholarship of the All-American Homemaker of Tomorrow will be increased to \$5,000. The national runner-up will receive a \$4,000 grant, third place winner a \$3,000 award and fourth place winner a \$2,000 scholarship.

Mexican Supper Set For Feb. 10

The Fortnightly Study Club is sponsoring a Mexican Supper in the school cafeteria Tuesday, Feb. 10.

The "Wetbacks," a musical aggregation directed by Prof. Raymond Bynum of McMurry College, will be featured in a program following the supper.

Tickets for the affair are \$1 for adults and 50 cents for children under 12. Tickets may be purchased from any member of the Fortnightly Club.

Menu for the supper will include chili pie, red beans, cole slaw and homemade pie.

CEMETERY FUND

Following is a list of persons who have contributed to the Merkel Cemetery Association fund:

Mrs. Ila Irvin
V. D. Jones
Mrs. Fred Hale

Mrs. R. B. Harris of Levelland spent the past week with Mr. and Mrs. Lige Harris.

NOODLE NEWS

Mr. and Mrs. W. A. Steele visited Friday evening in the home of her sister and family, Mr. and Mrs. Troy Sloan. The Steeles live in Sweetwater.

Mr. and Mrs. Garvis Tarpley, Mike and Marsha of Snyder were guests Sunday of her parents, Mr. and Mrs. J. A. Wheeler, of Trent, and Mr. and Mrs. Dock Callaway.

The Robert Campbells had as guests for lunch Sunday Marty Hooper, Minister Phillip Stayn, both of Abilene, Mr. and Mrs. B. M. Uecker, and Roy Justice.

Mr. and Mrs. Stanley King, of Merkel, ate lunch with the A. J. Barbees. That afternoon they all went to Anson to visit Mrs. O. W. Sosebe who is ill.

Vennie Lucas passed away at the Sadler Clinic Sunday. Vennie had lived at Noodle most of his life. The family has the sympathy of the community.

Mr. and Mrs. Bill Caldwell and Paula and Mr. and Mrs. Willie Smith spent last weekend with their daughter, Mr. and Mrs. D. Wood and children at Big Spring.

Mr. Prescott visited her uncle and aunt, Mr. and Mrs. Tatum Friday.

Basketball News

Pat Patterson pumped in 36 points here Tuesday night to pace Merkel's Badgers to a 77-41 victory over Clyde's Bulldogs.

The District 10-A triumph was Merkel's fourth straight district win. Clyde has lost four in loop warfare.

Joe South led the Clyde point production, meshing 11 tallies.

In the opening girls' tilt, the Clyde sextet marched to their fourth straight district win, thrashing Merkel, 56-37.

Sandy Turner ripped the nets for 23 points to pace Clyde scoring. Linda Kemper hit 14 points.

Loflin and Windham led the losers with 14 and 13 points respectively.

The Boys' box:
MERKEL: Denton 3 1 7; Seymour 2 2 6; Patterson 12 12 36; McLeod 1 1 3; Toliver 0 2 2; Reeger 3 0 6; English 1 2 4; Neill 0 2 2; Dorton 0 4 4; Totals 23-31-77.

CLYDE: Maner 3 0 6; Paylor 2 0 4; South 4 3 11; Hicks 1 2 4; Barnes 2 2 6; Cook 1 3 5; J. Hicks 0 1 1; McClure 1 0 2; J. Maner 1 0 2; Totals 15 11 41.

Abilene Educator Is Guest Speaker At Sorority Meet

Mrs. Nena Kate Lewis, director of special education for the Abilene Public Schools, was guest speaker when members of the Lambda Beta Chapter of Beta Sigma Phi met in the home of Mrs. Carrol Benson Tuesday night, Jan. 20.

In her talk on "Voice and Vocabulary" Mrs. Lewis compared the voice to a pipe organ but added that no musical instrument can match the human voice for variety.

She stressed the importance of a well modulated voice by showing how much more pleasing to the ear it is than a voice that is high and shrill.

Mrs. Lewis said that phrasing, rather than the word, is the unit of speech. She also discussed the correct pronunciation of several commonly mispronounced words such as get, just and interesting.

Members of the sorority voted to sponsor the Girl Scouts in Merkel by helping them with a fund raising project necessary each year to pay the local dues of \$350. Girl Scout leaders have had to undertake the project alone each year in the past.

Pay Your Poll Tax

KEEP THIS AD!
Over 25,000 Arthritic and Rheumatic Sufferers have taken this Medicine since it has been on the market. It is inexpensive, can be taken in the home. For Free information give name and address to P. O. Box 826, Hot Springs, Arkansas.



MRS. JOHNNIE EARL O'DELL
... formerly Shirley Ann Carey

Shirley Ann Carey, Johnnie O'Dell Are Wed In Sweetwater

Shirley Ann Carey and Johnnie Earl O'Dell were married in Sweetwater at 8:30 p.m. Jan. 10. Justice of Peace G. E. Davis performed the ceremony.

The bride is the daughter of Mrs. Truman Carey and the late Truman Carey of Merkel. The bridegroom is the son of Mrs. Earl Quinn of Lawton, Okla., and W. W. O'Dell of Albuquerque, N. M.

Honor attendants were Mr. and Mrs. Jerry Russell of Merkel.

The bride wore a peacock blue wool suit with matching accessories. Her corsage was a white orchid.

After a short wedding trip to Lawton, Okla., the bridegroom will return to Thule, Greenland, where he is stationed. The bride will remain in Merkel to finish her senior year at Merkel High School.

O'Dell is a graduate of Lawton High School of Lawton, Okla.

Troop 20 Scouts Have Cook-Out

Boy Scouts of Merkel Troop 20 went to Blowout Mountain, southwest of Merkel, for a cook-out Friday afternoon.

The Scouts left Merkel at 5:30 p.m. and returned that evening at 9:45 p.m.

They made camp in the crater where each boy made his own fire and cooked his own meal.

Queen Theater

THURSDAY & FRIDAY
"No Place To Land"

SATURDAY ONLY
"Showdown At Boot Hill" plus "Ride A Violent Mile"

SUNDAY & MONDAY
"Party Girl"
In Color
Robt. Taylor — Cyd Charisse

To be shown at Pioneer Drive-In Sunday Night.

TUESDAY & WEDNESDAY
"Damn Citizen"

'Women Will Bring World Peace,' Speaker Tells Fortnightly Club

"I am convinced that it will be the women who will eventually bring peace throughout the world," said Miss Ethel Foster, co-chairman of the program committee for the Council of International Clubs, when she spoke to the Fortnightly Study Club in the home of Miss Christine Collins Tuesday afternoon.

Miss Foster, who lives in Sterling City, is a past president of the Sixth District of the Texas Federated Clubs and is a Texas General Federated Woman's Club Board Member.

As a member of the Council of International Clubs, she has visited many of the clubs in foreign countries and was well qualified to speak on "Clubs of Other Lands."

One of the objects of the Federation, she said, is to unite the clubs of the United States as well as those of other lands. Although there are federated clubs in 48 countries, Miss Foster said there are none in Russia or anywhere behind the iron curtain.

There are prominent women all over the world in federated club work, Miss Foster informed the group. Good friends of the Federation include Queen Juliana of Holland and Queen Frederika of Greece, both of whom have been entertained by the Council of International Clubs in Washington and have entertained Council members in their countries. The club women's reception has not been so good in England, Miss Foster said. Members who have visited clubs there have not met a Queen and Winston Churchill broke an engagement he had with them.

Miss Foster pointed out that the distance between countries can be bridged by the exchange of letters. Clubs are asked to correspond with club women in foreign countries. They have also been urged to contact foreign students and make them feel welcome.

GFWC projects, designed to help promote friendly relations with women in other countries through service to them, have included sending blankets to Holland, sheets to Germany, toys and clothes to an orphanage in Switzerland, and clothes to Korea. The Federation also sponsors an Oriental scholarship. At present the GFWC is working through Care to send people in other lands things to help them help themselves. Individual clubs are asked to send seeds to the Philippines, reference books for libraries in Puerto Rico and money for club women whose dues have necessarily become delinquent.

In an effort to tie the countries together a bulletin is sent to clubs in other lands outlining the program being carried out in this country, and every club abroad gets "Clubwoman," the monthly magazine put out by the Federation.

Miss Foster said, "We must school ourselves to feel for others. To survive we must serve."

Mrs. Ben Hicks, program chairman, introduced the speaker to club members and their guests.

Scout Tommy "Cook" Riney had the best meal with "no sand", while Scout Robert "Sandy" Shouse had the best meal with sand.

After a game of "Capture the Flag" in the crater, the scouts made a moonlight trip down the mountain.

Scouts making the trip were David Hammond, Robert Shouse, Larry Hargrove, Tommy Riney, Gerry Adcock, Elmer Barnes, Hayden Griffin, Rommie Ferguson, Danny Cypert, Hammond, Shouse and Hargrove served as patrol leaders.

The boys were accompanied by John Hammond and his son, Bob, and assistant Scoutmaster Ike Turner.

Mr. and Mrs. T. J. Amason were in Abilene Saturday to visit their son, Mr. and Mrs. R. B. Horton, and sister, Mrs. Mae Douglas.

Dr. Kenneth Morrison is attending the annual mid-winter dental conference in Dallas.

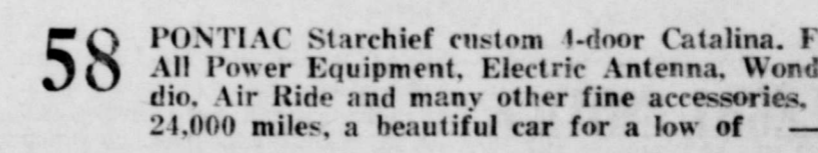
MRS. HOUSEWIFE

STUCK AT HOME WITHOUT A CAR?
No need to be... bring your husband in and look over our huge selection of Goodwill Used Cars!

- 58 BUICK SUPER, 4 door hardtop. Factory air conditioned. Power steering and brakes. Electric seats and all the other accessories. This is an actual 9,200 mile car like new and with a New Car Guarantee. \$2995
- 58 PONTIAC Starchief custom 4-door Catalina. Factory Air. All Power Equipment, Electric Antenna, Wonder Bar Radio, Air Ride and many other fine accessories. One owner, 24,000 miles, a beautiful car for a low of \$2795
- 55 FORD 4-door Fairlane. Air Conditioned with Automatic Transmission, Radio & Heater, New White tires. A nice one \$1195
- 55 FORD 2-door Custom, Red & White, R & H, Std. shift. One owner — a nice car for only \$995
- 5 LATE MODEL STATION WAGONS TO CHOOSE FROM
- 5 USED PICKUPS, ½ & ¾ ton, FORD, CHEVROLET and INTERNATIONAL HARVESTER.

Many other cars to choose from
TWO USED CAR LOCATIONS

THESE GOODWILL USED CARS ARE EXTRA CLEAN AND DEPENDABLE!
And, there are many, many more outstanding buys on our lot for you to choose from! Come in and look over our Goodwill Used Cars—the best in town! Every one of 'em has been thoroughly checked, road-tested, and re-checked to make sure it's in perfect condition. Best of all—every Goodwill Used Car is sold with our written warranty! So bring your husband in today!



Palmer Motor Co.
Phone 159 MERKEL, TEXAS Phone 159

SHOPPERS!

Try us for all your drug needs —
We feature year-round savings.

Only \$119

Only 59c

Only 98c

Only 29c

Only 98c

These and any other drug items you will find in our store.

We appreciate your patronage and will strive to please.

Only \$198
McCUE DRUG
Phone 9506

BIRTH DEFECTS

NEW target... NEW hope

JOIN THE MARCH OF DIMES

Army Enlistment Option Designed To Help Individual Choose Career

Placing the right man in the right job is the intent of the new "Army Career Group" enlistment option which became available to Regular Army enlistees on 1 January 1959, Colonel Garlen R. Bryant, Commanding Officer of the Fourth U. S. Army Recruiting District, announced today.

Under the "Army Career Group" option, individuals will be qualified through a battery of tests at the nearest U. S. Army Recruiting Main Station, and a career field within his occupational aptitude area may be selected by the individual.

In effect this is a choose-it-yourself vocational training system. The individual can choose the exact career group in which he would like to receive training.

More than 60 Career Groups, covering virtually all of the Army's occupations, are offered.

Qualified men are guaranteed either schooling or on-the-job training in the career field which they select, and the guarantee is

entered on their Army records when they enlist.

For example, a man who is interested in learning photography as a trade could enlist for the "pictorial" career field. After completing basic training he is assured of an assignment to advanced training, either at a photography school or on-the-job training. Thereafter he may be assigned as a photography helper, a photographer, an audio specialist, a photo laboratory specialist, a television cameraman, a film library specialist or a television production specialist.

Men interested in serving in the Airborne can enlist directly for Airborne duty in addition to choosing an assignment in a career group. More than 30 of the career fields are utilized by Airborne units.

Many of the career fields are open to qualified young women who enlist in the Women's Army Corps.

Details on each of the career fields are described in the catalog, "Army Occupations For You," which is available for study at the nearest U. S. Army Recruiting Station. The catalog summarizes the duties and responsibilities of each career field, lists the necessary qualifications for applicants, shows the training which will be given, and the related civilian jobs for which the individual will become qualified.

Counselor for the applicants under the "Army Career Group" option is Master Sergeant Frank Lockman, the local U. S. Army Recruiter, whose office is located at 900 N. 3rd St., Abilene. Complete information on this and other Regular Army enlistment options is available without obligation.

Tax Man Sam Sez:

If you own or operate a farm you will probably want to get and read the "Farmer's Tax Guide," Publication 225. This is a free booklet that tells farmers in a dirt farmer's language how to prepare their farm tax return. Preparing a farm return on Form 1040-F and on Form 1040 is a complex business. It is probably the most important piece of paper work the average farmer has to do every year. Knowing how to prepare your tax return for a farm can save money as well as trouble. All of the County Agents and the Internal Revenue Service offices have this free booklet. Go by and get your copy and then study it carefully.

Spotlight on HEALTH

Science Features
Your Father's Heart

With cardiovascular disease now taking 800,000 lives a year, many Americans are asking what they can do to prevent heart attacks. Physicians are making great efforts to predict heart trouble before it starts. The victim who, like President Eisenhower, has already suffered a coronary blood clot, is usually placed on a low-fat diet, is advised to take life easier and may also receive drugs which make an arterial blood clot less likely.

But all researchers agree that the most important goal is to prevent the clogging of arteries before trouble begins.

Recently a research team at Johns Hopkins Medical School decided to test the still unproven reliability of high blood-cholesterol levels as an advance warning of heart trouble. Cholesterol is the fatty substance which narrows the channel when deposited on the inner walls of arteries, a condition known as atherosclerosis. Atherosclerosis is responsible for some 600,000 deaths a year in the U. S., or three quarters of all deaths from cardiovascular disease.

The physicians cross-checked the blood cholesterol levels of 561 medical students with health records of their fathers. They found that heart disease or high blood pressure was almost three times as common among sons of parents who had suffered from these two conditions. But even more important, they found that three times as many fathers of students with high blood cholesterol content had had heart trouble, as compared with fathers of students with normal cholesterol levels.

Such statistical data cannot be considered final proof of the sig-



nificance of cholesterol levels, but it is encouraging that drugs are now available which, in combination with sensible eating habits, can bring such levels down toward normal.

One such drug, a capsule called Lenic, has been tested for over a year and has been found to bring about sharp drops in blood-cholesterol levels, which can be maintained indefinitely on reduced dosage.

Extensive studies now under way with such cholesterol-reducing drugs should soon give medical science a good idea of how effective lowered cholesterol levels are in reducing the present high rate of deaths from heart attacks.

able from other sources. This bill, among many other things, proposes 300 million dollars be made available to clear up this backlog and help these veterans and their families get their homes.

A very similar bill passed the senate last year, but lost out in the House. However, considering the changes which have been made in the Congress, I believe a very effective law can be worked out which will meet the urgent needs of the nation's housing problem.

and has been employed by the Higginbotham Co., at Dallas to acquaint herself with the latest creations.

Lee Tipton has returned from California, having been discharged from the army.

Ray Adams has returned from overseas duty.

Marshall Counts is layed up with the "Flu". J. A. Burford is acting in his stead.

D. M. Floyd, son of Dr. and Mrs. H. C. Floyd, has returned from overseas duty. He has some wonderful experiences, which we hope to report later.

needed some adjustment or repair.

Col. Homer Garrison, Jr., director of the safety department, said this is an improvement over the general condition of motor vehicles six years ago when the inspection program began. At that time more than 50 per cent needed repairs.

"We hope that owners of motor vehicles will take advantage of the inspection facilities now and avoid the inconveniences of waiting in line as the April 15 deadline approaches," Colonel Garrison said. "This safety factor is important to safe driving on our streets and highways—and that is our goal."

Mr. and Mrs. Criswell Doan and children, Sherry, Jimmie, Patsy, Peggy and Marsha, of Stamford were guests of his parents, Mr. and Mrs. D. C. Doan.

20 YEARS AGO

IN MERKEL

There were 166 names on the honor roll of the Merkel Public for the third six week's period, released this week by Supt. Connor Robinson. Of these 54 were in High School and 112 in the Grammar School.

Wheat and other small grains were further benefited by a light rain Sunday night, measuring only a quarter of an inch by gauge. The precipitation was accompanied by thunder and lightning, with some sleet and ice.

The Grable Motor Company has recently installed a new Sun Motor Tester and Analyzer that works on all models and shows the exact condition of the motor under actual operating conditions and tests. It gives a scientific carburetor diagnosis and a scientific engine diagnosis.

In reviewing the accomplishments of the FFA chapters of Texas during the year just closing, Roy B. Mefferd, professor of agricultural education at John Tarleton College and FFA advisor from Area IV, pointed out the work accomplished by the Merkel Chapter as being outstanding.

Miss Annazell Seago, whose engagement and approaching marriage to Zed Bright on January 20 was being announced at the same time, was complimented with a gift shower on Wednesday, January 18, in the club room of the Goodman School, with Mesdames Karl Bonneaux, J. W. Tiner, J. E. Bowers and Roy Williams as co-hostesses.

Safety Inspection Deadline April 15

Austin, Texas—The Texas Department of Public Safety warned motorists of the inconveniences of a last-minute rush at safety inspection stations before the deadline, April 15.

More than 3,000,000 of the 4,000,000 Texas motor vehicles have yet to receive their 1959 safety inspection sticker.

In urging motorists to "do their shopping early" and avoid the rush at the 4,400 inspection stations, the safety department warned that those who fail to do so will be subject to traffic summons after April 15. The average cost of the safety inspection since the program began six years ago is \$1.19 for needed repairs and \$1 for the inspection fee.

The inspection stations check such items as brakes, lights, horns, mirrors and windshield wipers and have found that 39 per cent of the vehicles have

IKE TURNER—CONTRACTING

Electrical
Concrete
Commercial Roofing
Air Conditioning & Heating
Phone 50 1038 N. First St.
Merkel, Texas

40 YEARS AGO

IN MERKEL

A number of Merkel's talented lovers of art gathered at the Commercial Club rooms and perfected the organization of Dramatic Club. Funds from the organization will be given to charity. Mrs. Litton Howard was elected chairman; Miss Dorothy Duckett, vice-chairman; Wallace Bragg, secretary, and Miss Eva Williams, music director.

Miss Willie Swann has accepted a position as milliner for Woodroof-Bragg Dry Goods Company. She has worked as assistant milliner for the past two seasons

SENATOR ★ ★ ★ Yarborough's Report

Within a few years, we may see many thousands more tourists attracted to the Texas Gulf Coast for vacations at the seashore.

This is sure to happen when we are able to establish Padre Island National Park in compliance with a bill I filed in the Senate shortly after the new session opened.

This bill, S. 4, would keep for public use a substantial portion of this unique island which extends the southernmost 115 miles of the Texas coast. This beautiful half-mile wide natural beach, with its mild climate and beautiful wildlife, is one of Texas' greatest recreation resources.

Properly developed, there is no question that as a national park, Padre Island would become the winter park of America just as Yellowstone, Yosemite, Glacier National and the Great Smokey Mountains are summer playgrounds.

Looked at from a standpoint of historical interest, Padre Island is one of the closest links Texas and the United States have with the past for it was there that one of the earliest explorers set foot on New World soil. The explorer, Alonso Alvarez de Pineda, a Spaniard, in 1519 sailed the Gulf coastal waters from Florida to the Mexican port of Tampico, and mapped the coast for future navigators.

I am asking state legislators and other officials to enact necessary supporting state legislation on this subject and I hope that all Texans will give their backing to creation of Padre Island National Park.

Right now, five million American families are living in below average homes! And a few programs set up to help these people into better

housing are handicapped because there isn't enough money available to properly do the job. In addition, funds haven't been available at all under past programs for building homes in rural areas, in small towns and on the farms.

Believing that something must be done about these needs as quickly as possible, I have joined in sponsoring The Housing Act of 1959, which I feel will provide for them. It will extend and expand such programs as Federal Housing Administration insurance authorization, contracting authority for public housing, low-cost public housing, a revolving fund for college housing loans, and direct loans to veterans. But the biggest chance in the law provided by the bill is the direct loan to Veterans provision which provides credit for building homes in small towns and on the farms.

In the past, federal credit for housing has helped force people off the farms and out of the small towns and into the cities, simply by furnishing credit for homebuilding in the cities, and denying it in the country. This is more than another housing bill—this is a bill to equalize housing benefits, and give the country man a square credit deal with the big city home buyer.

It will help stop the flight of people from the small towns to the cities by furnishing long time low interest rate credit for home building in the country.

The need for quick action in these programs is painfully clear. For example, there are now more than 50,000 veterans who have asked for loans to build their own homes but, because of a lack of money available, haven't had their applications approved yet. These loans can be made only in areas where credit is not avail-

TO RELIEVE SORE THROAT
Due to a cold, try DURHAM'S ANAESTHESIA-MOP and see how pleasant and effective a mop can be. Generous bottle with applicators only 75c at your Druggist.

INCOME TAX SERVICE
For Salaried Employees DAY OR NIGHT
VERNON SIMPSON
211 Cherry — Phone 49-W

Belts
Button Holes
Custom Sewing
VERA'S Custom Shop
1021 N. 2nd

ARTHRITIS HURTS

Doreen is too young to understand that she has rheumatoid arthritis but she knows it hurts—it hurts bad. Yes, children have arthritis too, and they—like those crippled by polio and birth defects—need the trained care that can be provided by the March of Dimes. They all need your help.

JOIN THE MARCH OF DIMES
MARCH TOWARD GREATER VICTORIES

LAFF OF THE WEEK

ACME THEATRICAL AGENCY

"Good news, honey—I got the job."

DETOUR →

No "narrow-gauge" car can offer comfort like PONTIAC!

The wheels are moved out 5 inches for the widest, steadiest stance in America.

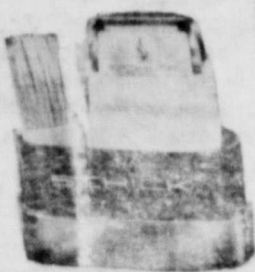
Road-test the only car with Wide-Track Wheels

Driving like this was never before possible. With the widest stance on the American road, Pontiac reduces sway and lean to an absolute minimum... hugs the curves like magic... takes the bumps and the corners with unbelievable ease. In only a few minutes you'll discover the most beautiful roadability in the whole wide world!

America's Number 1 Road Car!
DRIVE IT AND YOU'LL BUY IT!

SEE YOUR LOCAL AUTHORIZED PONTIAC DEALER

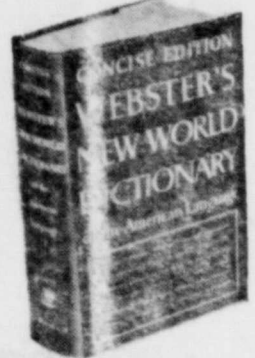
PALMER MOTOR CO.
Phone 159 Merkel, Texas



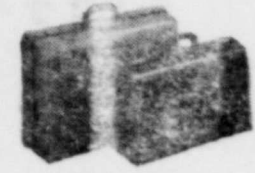
FREE!
No. 435



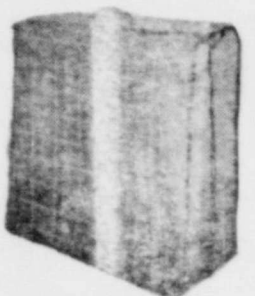
FREE!
No. 439



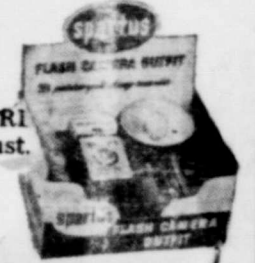
FREE!
No. 580



FREE!
No. 505



FREE!
No. 496



FREE!



FREE!



FREE!



FREE!



FREE!



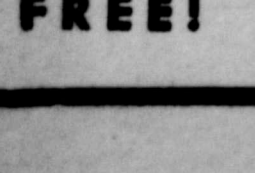
FREE!



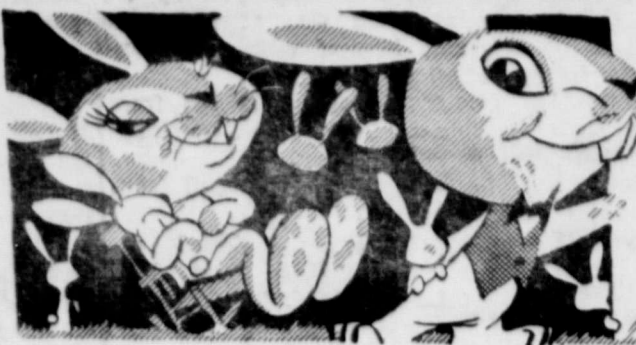
FREE!



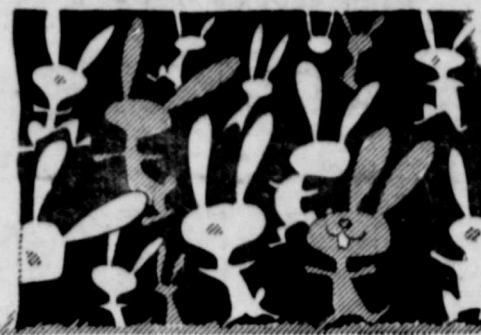
FREE!



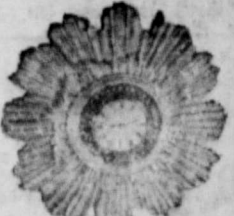
FREE!



MULTIPLY YOUR SAVINGS!



WE AGAIN HAVE EXTRA FINE F.F.A. Club Beef FOR YOU. MEAT AT ITS BEST



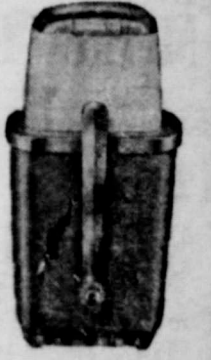
FREE!
No. 518



FREE!
No. 531



FREE!
No. 461



FREE!
No. 243



FREE!
No. 441



FREE!



FREE!



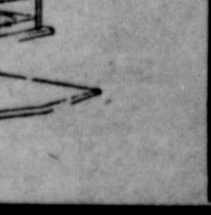
FREE!



FREE!



FREE!



FREE!

• F.F.A. BEEF AT ITS BEST THIS WEEK •

F.F.A. CLUB BEEF Club STEAK Lb. **73¢**

F.F.A. CLUB BEEF—Loin or T-Bone STEAK Lb. **93¢**

F.F.A. CLUB BEEF SHORT RIBS Lb. **35¢**

F.F.A. Club Beef ROUND STEAK --- Lb. 98c

Plum Rose Boneless PORK LOINS --- 2 lb. can \$1.98

Armour's Star Fresh PORK STEAKS --- Lb. 49c

Armour's Star HAMS shank or butt end --- Lb. 55c

ARMOUR'S STAR BACON 2 lbs. **\$1.09**

ARMOUR'S STAR FRANKS Lb. **53¢**

AUSTEX SPAGHETTI and

MEATBALLS 24-oz. CAN --- **39¢**

COFFEE Maryland Club 2 lb. can --- **\$1.39**

SHORTENING Vegetole 3 lb. can --- **59¢**

MORTON Salad Dressing --- **39¢**

FLOUR LIGHT CRUST 25 lb. **\$1.89** 5 Lbs. **39¢**

SWIFT GEM OLEO Lb. **15¢**

WOLF CHILI 300 CAN **45¢**

MORTON'S POTATOE CHIPS Bag --- **25c**

TIDE METAL WASTEBASKET HOME LAUNDRY --- **\$3.69**

LIQUID IVORY CIANT CAN --- **59c**

COMET Reg. CLEANSER **17c**

DASH JUMBO BOX --- **\$2.29**

JOY REGULAR CAN --- **43c**

ZEST REG. BAR 2 for **23c**

CHEER REG. BOX --- **31c**

CORN OUR DARLING 303 Can --- 2 for **33c**

TOMATOES HUNT'S Solid Pack --- 2 for **29c**

APPLE SAUCE WIN ALL 303 Can --- 2 for **25c**

TOMATO HUNT'S JUICE—46-oz. --- **29c**

TURNIP DIAMOND --- 2 for **10c**

PEAS GREEN GIANT No. 303 Can --- 2 for **39c**

Garden Fresh VEGETABLES

FLORIDA TEMPLE ORANGES Lb. --- **12¢**

SUNKIST LEMONS --- Lb. **10c**

CALIFORNIA CARROTS --- cello **10c**

Fresh Ruby Red GRAPEFRUIT --- 6 for **39c**

Fresh CABBAGE --- Lb. **5c**

Fresh CELERY --- Lb. **12c**

BEKO RUSSETS SPUDS --- 10 lbs. **39c**

BAMA PEANUT BUTTER 18-oz. JAR --- **39c**

Betty Dill or Sour PICKLES 1/2 gal. --- **39c**

Scott's WALDORF TISSUE 4 rolls --- **29c**

PRICES GOOD JANUARY 29 — 30 — 31st

BE SURE TO PAY YOUR POLL TAX

VAL VITA 2 1/2 CAN PEACHES --- 2 for **49¢**

DOLE GRAPEFRUIT and PINEAPPLE Juice 32-oz. **23¢**

DIAMOND 12-Oz. Bottle Tomato CATSUP --- 2 for **29¢**

NOLAN PURE HONEY --- 1/2 Gal. --- **98¢**

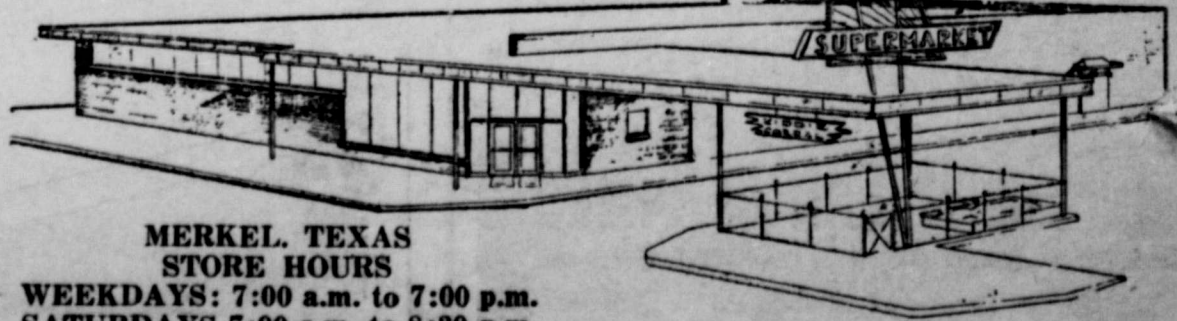
WELCH'S 10-Oz. Jar GRAPELADE Each **19¢**

Sunshine Hi Ho --- Lb **29c**

Sunshine Candy cello **29c**

Premium CRACKERS Lb. --- **25c**

CARSONS' SUPERMARKET



MERKEL, TEXAS STORE HOURS WEEKDAYS: 7:00 a.m. to 7:00 p.m. SATURDAYS 7:00 a.m. to 8:30 p.m. TRADE WITH US AND BANK THE DIFFERENCE