

STATE CAPITAL
Highlights
AND
Sidelights
by Vern Sanford

AUSTIN, Tex.—A hectic final night ended the special session of the Texas Legislature. Two major problems—loan regulation and appropriations—were left unfinished. Senate killed the loan regulatory bill by a two-vote margin, after the House had approved it by 13 votes. It was described by experts as the strongest loan regulatory law in the nation. Death came to the appropriations bill in the House. It would have provided money to advertise for

tourists, repair San Jacinto Monument, repair damages done to state properties by Hurricane Carla and by fires, pay Senate employees, and finance a number of other items.

Gov. Price Daniel called it a very productive session, nevertheless.

He said it had settled two long-standing issues — bank check reporting and farm-to-market road policy.

Daniel was disappointed about the failure of the loan legislation, the advertising, and San Jacinto Monument repairs. But he said he would not call this Legislature back into session in the foreseeable future.

Lawmakers headed for home to file for re-election and begin their campaigns for the same or other offices.

This session set some sort of a record for fast action on bills to solve local problems. These ranged from closing the season on alligators in Orange County, to a score of bills creating new water districts to undertake drainage, hurricane protection or water supply projects.

Daniel was pleased at the bill changing the name of the State Board of Water Engineers to the Texas Water Commission, and reworking it into an image of the State Highway Commission. The chief engineer takes over full administrative control, leaving policy matters in the hands of the three member commission.

Governor Daniel studied a flood of mail, telegrams and phone calls, which he had elicited, and decided that there was a definite public demand for him to try to become Texas' first four-term governor.

WHO SHOULD CENSOR? — Question of school book censorship was buffeted about by 22 witnesses when the House Textbook Investigating Committee held its fourth weekly public hearing.

Some 200 persons attended the hearing.

Frank Wardlaw, director of the University of Texas Press, said, "There are no men wise enough to serve as censors." He stated that he would prefer that this children's textbooks be censored by authoritative professors, rather than by unqualified individuals.

Author J. Frank Dobie said "the more textbooks are censored the weaker they become."

The opinion that regulation of teaching materials by elected trustees has worked satisfactorily was expressed by former Baylor University trustee Joseph M. Dawson.

Other witnesses, such as Mrs. A. A. Forester of Texarkana, Richard L. Harvey of Tyler and M. F.

Farm Facts

The U. S. Department of Agriculture points out that farm real estate taxes were three times higher in 1960 than they were in 1942. In fact, the rise in these taxes in the United States (not including Alaska and Hawaii) has been uninterrupted in the past 18 years.

Because the acreage of farmland in private ownership has changed little since 1942, taxes per acre have increased in the same proportion as total farm real estate taxes.

Farm real estate taxes in the 48 states totaled \$1,284 million in 1960. This was 8% more than the total for 1959. They increased in every state except Delaware, where they remained the same as in 1959. Since 1945, increases in farm real estate taxes have averaged 7% a year. The USDA attributes this rise to the sharply increased cost of local government, largely financed in rural areas by the property tax. Local government costs jumped fourfold from 1946 to 1959.



Farm real estate taxes have tripled since 1942.

The depression and war years left local governments with a backlog of capital requirements and faced with higher prices for things to meet these needs. Population growth and demands for more services added to the problem.

Gable of Hopkins, criticized the Board of Education's formula for

believe that modern textbooks fail to instill a sense of patriotism and love of country.

Committee will hold another hearing February 9.

NAMES IN THE HAT — With Legislature ended, candidates for the special session of the Texas State offices quickly grabbed the spotlight.

Most surprising announcement was the filing of former Gen Edwin A. Walker as a Democratic candidate for governor.

Then came Gov. Price Daniel's statement that he would seek re-election to a fourth term as governor.

Land Commissioner Jerry Sadler predicted that Daniel would run again, and cancelled his tentative plan to seek the post. Instead he announced for re-election.

Attorney General Will Wilson said failure of the loan shark bill to pass was the determining point in his decision to file as candidate for governor.

John Connally, already actively campaigning for the office of governor came to Austin to pay his \$1,000 filing fee and left immediately on a flying organizational trip to West Texas.

Gubernatorial candidate Marshall Formby opened state headquarters in Austin. He appointed Dr. James B. Ray of Austin, Wendell Garbill, Dr. Joe Webb and Clint Formby to organize his campaign.

Don Yarborough, Houston attorney, paid Austin a visit to announce his candidacy for governor.

So far, the only Republican contender for governor is Jack Cox of Breckenridge.

Agriculture Commissioner John C. White filed for re-election to the post he has held since 1950. White said 1962 should be a turning point in achieving greater self-determination for farmers and ranchmen.

J. Evetts Haley of Canyon is the only other announced candidate for commissioner of agriculture.

Other candidates for state offices flooded the State Democratic Central Committee headquarters.

Willard G. Street of Littlefield filed for associate justice of the Supreme Court. Others already seeking that office are incumbent Zollie Steakley and James R. Norvell.

County Judge Woodrow W. Bean of El Paso and Warren G. Moore of Tyler filed for Congressman-at-large, post now held by Martin Dies Sr. of Lufkin.

Judge W. T. McDonald of Bryan, Court of Criminal Appeals justice, joined the attorney general race.

Immediately after the House passed the loan bill, Speaker of the House James A. Turman announced for lieutenant governor.

That brought the total of Democrats running for the second top spot to six: Sen. Preston Smith Lubbock; Sen. Crawford C. Martin of Hillsboro; Sen. Robert W. Baker of Houston; Sen. Jerrard Secrest of Temple and former representative Gen. Smith of Fort Worth, plus Turman.

There was activity on the Republican side, too.

O. W. (Bill) Hayes of Temple and Kellis Dirbrell of Semin both filed as candidates for lieutenant governor. Dirbrell practices law in San Antonio. Hayes is vice president of Continental Belton Company in Belton. Both are 43 years old.

Earlier, two other Republicans had filed for the same office — Congressman-at-large. They were Giles E. Miller, Dallas publisher, and Desmond Berry, Houston industrialist.

SUGGESTS FORUM — Tom Reavley, Austin attorney running for attorney general, suggested joint appearances for himself and opponents, Weggoner Carr of Lubbock, Les Procter of Austin, Tom

James of Dallas and Judge W. T.

Joint appearances of the candidates will bring the issues and the candidates squarely before the people of Texas," he said.

SECRET SPORTS

Governor Price Daniel announced the appointment of Rep. B. H. Dewey Jr. of Bryan to the executive committee of the Southern Regional Education Board.

In another appointment, Governor Daniel named J. Walter Friberg, Wichita Falls attorney, as district judge to fill the unexpired term of newly-elected Congressman Graham B. Parcelle Jr.

State Highway Commission ordered State Engineer D. C. Greer to start plans for a four-lane highway to serve the NASA space center in Harris County.

Assistant Attorney General Gordon C. Cass resigned effective March 1 to practice law in Lampasas.

For Butane Gas, Appliances
and Tractor Conversions
PHONE 169
1112 North First
H. W. LEMENS

**NEW CONDITIONS,
NEW PROBLEMS,**

May we Help You

These are not ordinary times. The pace of events is faster. It is more than the average man can do to keep up with all the changes that are taking place. But the bank has certain advantages in the way of facilities, information, contacts. While we make no claim to "knowing it all," there have been many cases where we have been able to help with financial problems.

We are ready to do our best to cooperate with you in similar fashion.

THE OLD RELIABLE
Farmers and Merchants
National Bank

Merkel, Texas

Member Federal Deposit Insurance Corporation

WE NOW SPECIALIZE IN
**ODOR-FREE DRY CLEANING
SHIRT LAUNDRY SERVICE
HAT CLEANING**
PHONE 27—f-o-r—F-R-E-E PICKUP and DELIVERY
MACK'S CLEANERS



Get many Valuable Premiums

Carson's Super Market
217 Edwards Street
Merkel, Texas

We Give Double Gift Bond Stamps on Wednesday



**A New Low Rate for
Your Winter Electric
Heating Needs ****

NOW, you can use more safe, clean Flameless Electricity for your home or business heating needs. The new, low winter rate for WTU Resident and Commercial customers is only 1¢ per kilowatt-hour. (*)

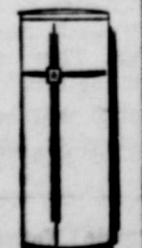
(*) PLUS, Fuel Adjustment Clause and State Tax.

SO LIVE BETTER...
ELECTRICALLY

West Texas Utilities
Company an investor owned company

A NEW 1¢ RATE FOR UN-CONTROLLED ELECTRIC WATER HEATERS, TOO! (*)

1¢ per kilowatt-hour for 400 KWH after the first 300 KWH at the regular residential rate. Enjoy this flameless clean safe way to have plenty of hot water for all your needs.



** For details contact your local WTU office

**New low-cost luxury in two
just-out Chevy II Nova sedans**

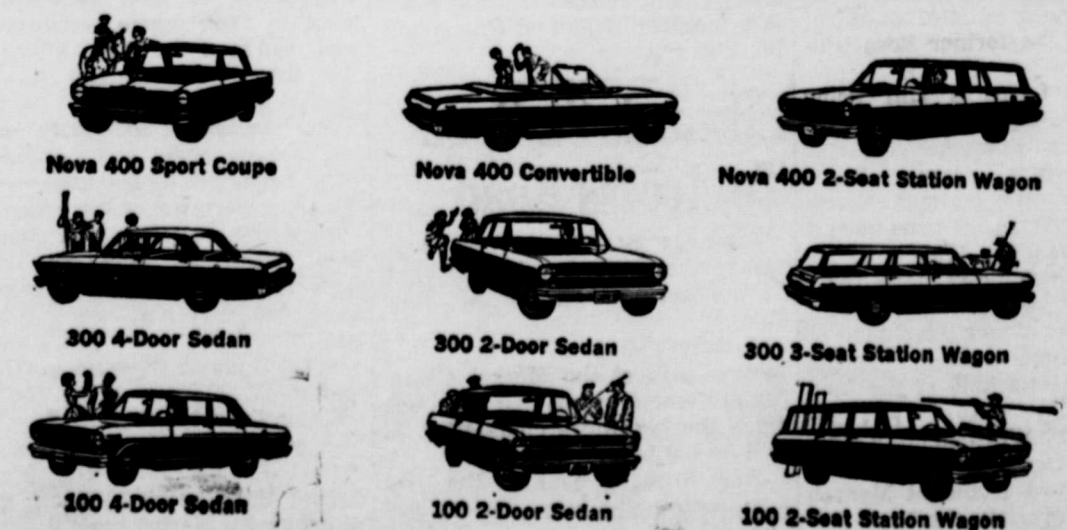


• Luxury and low cost have never been more beautifully blended than in these two newest additions to the Chevy II line! Like their running mates—the Nova 400 Sport Coupe, Convertible and Station Wagon—they have the same more-for-your-money features that have made Chevy II the winner of Car Life magazine's Engineering Excellence Award for 1962. Soft-riding new Mono-Plate rear springs, proved in the equivalent of 2,000,000-plus test miles. Thrifty 6-cylinder engine

that gets more "git" out of a gallon of regular. Body by Fisher roominess that fits big families and small parking places. An easy loading vacation-sized trunk. New ideas that save on upkeep. Plus trim, tasteful styling, inside and out. See the smart, sassy, saving Chevy II Novas—and the other sensibly sized, sensibly priced Chevy II models—at your Chevrolet dealer's.

Chevy II Nova

New Chevy II Nova 2- and 4-Doors—plus a wonderful choice of other Chevy II models



See the new Chevy II at your local authorized Chevrolet dealer's

BADGER CHEVROLET CO.
200 KENT STREET
PHONE 123



Chime in on our Old Fashioned BARGAIN DAYS

SPECIALS FOR THU. FRI. SAT. FEB. 8-9-10

- GLADIOLA
FLOUR 10 Lb. Bag **83¢** 25 Lb. Bag **1.98**
- KRAFT'S STRAWBERRY
PRESERVES 18 oz. Glass **45¢**
- WHITE SWAN WHOLE
GREEN BEANS 303 Can **25¢**
- VERMONT MAID
WAFFLE SYRUP 24-Oz. Bottle **49¢**
- GOLD COAST
SPICED PEACHES No. 2 1/2 Can 2 For **43¢**
- MISSION
PEAS 303 Can 2 For **31¢**
- SWIFT'S
PEANUT BUTTER 16 oz. Jar **39¢**
- GLADIOLA
MEAL 5 LB. BAG **39¢**

- WHITE SWAN
COFFEE
- GOLDEN
FLUFFO

- (LIMIT ONE)
Lb. **55¢**
- 3 Lb. can **69¢**

FOREMOST
ICE CREAM

HALF GAL **69¢**
FREE CONES FRI. & SAT.

KRAFT'S
VELVETA
CHEESE

2 Lb. Box **79¢**

- Frozen Foods**
- DONALD DUCK
ORANGE JUICE 12 oz. can 35c
- KIETHS
FISH STIX EA 29c
- ELCHICO MEXICAN STYLE
DINNER EA 45c



- CABBAGE** LB. 5c
- FLORIDA
GRAPEFRUIT LB. 10c
- BANANAS** LB. 11c
- CELLG Bag
CARROTS 9c
- KEY BRAND LONG WHITE
SPUDS LB. 7c

MARSHMALLOW CREME
HIP-O-LITE 16 oz. Jar 19c

SUPREME LEMON SUGAR CHOCOLATE
COOKIES 11 oz. 25c

WHITE SWAN
Pork & Beans 300 size 2 for 25c

HORMEL
VIENNAS 2 for 39c

NABISCO
Crox 1 lb. Box 27c

DOUBLE
PREMIUMS ON
WEDNESDAY
ON PURCHASE
OF \$2.50
OR MORE
IN MERCHANDISE

- BORDEN'S INSTANT
POTATOES 16-Oz. Pkg. 43c
- WILSON'S
CHILI 24-Oz. Can 69c
- AUSTEX
TAMALES No. 300 Size 25c
- BORDEN'S
DUTCH CHOCOLATE 1-Lb. Box 39c

MEATS

ARMOUR STAR
BACON 2-Lbs. 98c 1-Lb. 53c

ARMOUR STAR
WIENER'S 1 lb. 47c

ARMOUR'S ALL MEAT
BOLOGNA 1 lb. 39c

CHOICE
CLUB STEAK 1 lb. 69c

BEEF
STEAKETT'S 1 lb. 59c

CHOICE BEEF
CHUCK ROAST 1 lb. 49c

TIDE Giant 65c

MR. CLEAN Giant 49c

WILSON'S FOOD STORE

REFRIGERATED
PARKING LOT IN REAR
CONVENIENT
NEXT DOOR TO POST OFFICE
PHONE 173 — TWO DELIVERIES DAILY AT 10:30 A.M.
& 4:30 P.M.

SAVE CASH REGISTER TAPES FOR VALUABLE PREMIUMS

HOME DEMONSTRATION NOTES

By LORETA ALLEN

Taylor County Home Demonstration Agent

To guard against colds, include foods rich in vitamins A and C in the diet.

It is pointed out that menus rich in foods containing these two vitamins — plus general good nutrition — provide resistance to all types of bacterial infections, as well as the common cold.

Vitamins A and C are effective in preventing the invasion of cold germs since they help the linings of the nasal passages to resist bacteria. Vitamin A also helps improve the eye's ability to adjust to light and dark, and aids in preventing "night blindness."

Children need vitamin A for optimum growth, and vitamin C is necessary for proper tooth formation and quick healing of burns and wounds.

Among best sources of the vitamins are dark green leafy and yellow vegetables, citrus fruits, tomatoes, raw cabbage, milk, butter, eggs and cheese, potatoes, strawberries and cantaloupes.

Texas home demonstration club women, 4-H Club girls and Extension farm and home development program facilities reported conserving foods valued at \$5,633,444 last year. Taylor County home demonstration women reported—

canning 8,461 pints fruits and vegetables

canning 310 pints fresh meat, fish and poultry

making 4,388 pints pickles, relishes, jams, jellies and preserves.

freezing 13,398 pints fruits and vegetables

freezing 15,169 pounds of meat, fish and poultry

storing 1,131 pounds vegetables (potatoes, onions, dried beans, peas etc.)

The savings realized from freezing, drying, storing, preserving and canning foods — some home-produced and other foods bought in large quantities while in good supply and moderately priced — helped stretch the food budget dollars tremendously for the participating families.

A softer more feminine look is due in women's sportswear this season.

Waistlines will be marked, but not cinched.

Expressions of the feminine influence will include ruffles, flounces, frills and fringes. Skirts may have pleats or gentle flares.

Overblouses will be more fitted and a bit shorter.

Knitwear will follow two directions: there will be fine gauge knits as well as bulky textures. Sweaters may be worn tucked in for the first time in a long time.

Stretch fabric will be widely used in pants, jackets, pullovers, skirts and tops.

Colors, which have been on the vivid side, will swing away from the brights toward the darks.

Union Ridge HD Meeting Held

The Union Ridge Home Demonstration Club met in the home of Mrs. O. E. Harwell on Feb. 1, with the president Mabel McRee presiding.

Roll call was answered with "Something new I have and like."

A program on "gardening" was brought by Mrs. Wynona Scroggins.

Refreshments were served to the following members: Mmes. Wynona Scroggins, E. O. Carson, O. E. Harwell, M. L. Douglass, Buntin Beauford, W. C. Newton, Dennis Cox, J. H. Clary, Andy Baker, Ike Turner and Mabel McRee.

The next meeting will be in the home of Mabel McRee on Friday, Feb. 16.

ANDY SHOUSE - Real Estate -

INSURANCE

115 Kent

Phone 322

Eyes Examined

Visual Training

Contact Lenses

Drs. John and Ed Dressen

Optometrists

Making West Texans See Better

Since 1907

504 Cedar

Abilene



which is the GAS DRYER?

(the one that does 5 loads for the price of 1)

They look exactly the same. But the GAS dryer gives you an unbeatable bargain: dries 5 loads for the price of 1 load in the other type. Only GAS does a load of laundry for about a penny—compared with a nickel or more a load for non-gas dryers. And only gas is so fast—because there's no warm-up wait in the cycle. Special controls for wash 'n' wear clothes save you ironing time, too. Now's the time to enjoy gas dryer thrift, convenience, safety. Shop today!

Save during Dryer Buyer Days

AT GAS APPLIANCE DEALERS AND LONE STAR GAS COMPANY

YOUNG IDEAS
from Polly Ponds

Watch your skin and stay away from too many rich fatty foods, soft drinks and desserts. Eat more fresh vegetables, broiled meat and fish and drink plenty of fruit juice and at least three glasses of water a day.

Deep cleanse your skin and keep your pores free from dust and hardened oil by washing your face nightly with cold cream. Simply smooth it over your skin, work it in with gentle upward-outward motions of your hands, then remove the excess cream with tissues. Make this treatment a regular habit and you'll have a better looking skin to show for it now, and for many years to come.

© Copyright 1961 Pond's Good Grooming Service 132

IRS Campaign Set To Assure Right Tax Filing

District Director Ellis Campbell Jr., of the Dallas Internal Revenue District announced a district-wide campaign by the Internal Revenue Service to make sure that owners of heavy trucks and busses have filed Federal Highway Use Tax returns covering the use of such equipment on the public highways.

Director Campbell said that the Internal Revenue Service has gone to great lengths to obtain voluntary compliance with the Highway Use Tax filing requirements before resorting to enforcement measures. Various informational and publicity programs have been undertaken to acquaint owners of trucks and busses with the filing requirements so that they can avoid liability for penalties and interest, in addition to the tax, for failure to file or for late filing.

This campaign will utilize various available leads to those who failed

to file Highway Use Tax returns and is designed to assure that all owners of trucks and busses, whose use on the highways is subject to the tax, pay their fair share of the tax. Director Campbell said that the Highway Use Tax became effective July 1, 1956, and that the

TOO LATE TO CLASSIFY

For Sale — House in Trent. Phone 22454 or see J. M. Heatley. 48-tp

Lost — Part Collie dog. Yellowish brown with white collar, small spots on hip, white feet. Answers to name of Rip. If found notify Luther Land, Merkel. 48-tp

For Sale — Small 2-bedroom house with good water well House and yard in excellent condition. Shown by appointment only. Call Margaret Gary at 132-J. 48-tfc

For Sale — One 12 disk Krause one-way plow. Phone 135-J. 48-2tp

Found — Pair of glasses in brown leather case with inscription on side reading "Sylvester's Dispensing Opticians—Dallas, Tex. If owner will come by the Merkel Mail office and pay for this ad, they may have them. 48-ftc

Lost — German Sheppard male dog. Black body with tan legs and wearing a chain collar. Please call 9010 J2. 48-ltc

For Rent — Unfurnished 3 1/2 rooms. Everything private. No pets. See at 910 Rose St. or phone 120 J. 48-ltc

For Sale — Large old farm house. Call or see Grady Parmelly. OR 2-3744 in Abilene. 48-ltp

revenue derived goes back to the states in the form of Federal contributions to help pay the costs of the Interstate Highway System now under construction.

Truck and bus owners were urged to contact their nearest Internal Revenue Office for information on the Highway Use Tax filing requirements and to ask for Internal Revenue pamphlet, Publication No. 349, Revised, which contains information on the types and weights of vehicles whose use on highways is taxable as well as on the due dates for returns and the rate of tax. Highway Use Tax returns Form 2290 can also be obtained at these offices.

The District Director said that another phase of the campaign calls for an audit of Highway Use Tax returns to assure that taxpayers are correctly reporting their use tax liabilities. This audit will be aimed at seeing that all taxable trucks and busses are reported in the returns and that they are reported in the correct taxable categories.

Director Campbell emphasized that returns covering highway use of vehicles at any time during July 1961 were due August 31, 1961, and that returns covering first use during December 1961 will be due January 31, 1962.

Mr. and Mrs. W. A. Stockbridge spent the weekend with her mother, Mrs. Nannie Glenn, and sister, Mr. and Mrs. J. T. Collins.

Mr. and Mrs. S. R. Scott went to Louisiana to visit their children, Mr. and Mrs. Don Hewitt and daughter, Kristi.

SCOTT - SEYMORE WEDDING PLANS TOLD

Mr. and Mrs. Leon Scott are announcing the engagement and approaching marriage of their daughter, Donna Sue, to Larry Wendell Seymore, son of Mr. and Mrs. Tom Seymore.

Miss Scott is a graduate of Merkel High School and attends North Texas State University. She is employed as secretary to Jack K. Curry, Abilene attorney. Her fiancé is also a Merkel High School graduate and attended Texas Technological College. He is employed by J. B. Drilling Co.

The couple will exchange nuptial vows at 7 p.m. Feb. 23 in the home of the bride-elect's parents at 1405 Sunset Dr.

WASH IN COOL COMFORT
AIR CONDITIONED

COIN OPERATED

WASHERS & DRYERS

OPEN 24 HOURS

DELUXE LAUNDRY

Pickup and Delivery — Newest Modern Water Heaters
210 KENT ST. PHONE 231

George & Veda West

CRAWFORD'S MEN'S WEAR

"QUALITY AND SERVICE"

We Have Purchased the Men's Wear and Shoe Departments of Bragg Dry Goods Co. The Store Will Be Operated As Crawford's Men's Wear.

We Will Continue to Stock and Add to the High Quality and Service of the Former Management.

Shop Here for Well Known, Dependable, Nationally Advertised Brands, Such as Jarman Shoes, Red Wing Shoes, U. S. Keds Shoes, Cooper's Jockey Underwear and Sox, Style Mart Suits and Coats, Samsonite Luggage, Levi's Pools Lee's, Jayson Shirts, Botan, Shirts Tex 'N Jeans, Rob Roy and Many Other Fine Brands.

Smooths the Way...

Just as oil lubricates the machinery of business so does NEWSPAPER ADVERTISING smooth the way to greater sales by the local merchant; increase his profits; and enable him to point out to the people of his community not only where to buy but how to save.

TEXAS PRESS ASSOCIATION
16 SAN ANTONIO ST. • AUSTIN, TEXAS

It's the Law in TEXAS



NO WILL? WHO INHERITS PROPERTY?

What will happen if you should die without executing a legal and proper will? Who will inherit your property? Your husband, wife, mother, father, children, your wife's relatives. The best way you can say who will have it is to provide a will which will protect your rightful beneficiaries and dispose of your property in accordance with your wishes.

When a deceased has no will, or dies "intestate" as the law calls it, the property of that person is distributed according to a detailed formula fixed by law. In some cases this may be the way you yourself would divide it—but in many cases it is not.

The provisions of the law concerning the distribution of the property of a person who dies without a will are rather complicated, and all of the possibilities cannot be covered by a general statement.

There are different rules for real estate and for personal property, for community property and for separate property, for homestead property, and for all of the many possible combinations of surviving relatives. Each situation must be carefully studied to determine the correct distribution of the property.

For example, here is a general idea of how the community property which you and your spouse have accumulated will be divided if you do not make a will prior to your death.

If your husband or wife survives and there are no children, the surviving spouse receives all of the property.

If, in addition, there are surviving children or descendants of deceased children, they would divide one-half of the property, while the surviving spouse would receive the other one-half.

Of course, grandchildren do not share in the estate unless their parent who would inherit is deceased. And when descendants of previously deceased children do inherit, they receive only the portion that the child would have received, regardless of the number of such descendants.

An odd note, perhaps, is that the surviving spouse already owns one-half of the community estate prior to your death, and the law adds nothing to this share where there are children surviving.

When there are only children and their descendants surviving, they divide the entire community estate between them.

(This newsfeature, prepared by the State Bar of Texas, is written to inform—not to advise. No person should ever interpret any law without the aid of an attorney who is fully advised concerning the facts involved, because a slight variance in facts may change the application of the law.)

Pastor To Speak At Noodle P-TA

The Rev. Bill Love will be speaker when the Noodle P-TA meets at 7:30 p. m. Monday, Feb. 12 in the school auditorium.

Rev. Love's topic will be "Effective Learning for Community Strength."

FHA girls will keep the nursery. Refreshments will be served following the meeting.



Wm. C. McCord
Gas Co. manager

Gas Co. Names New Manager

Dallas: William C. McCord of Greenville, East Texas regional sales and promotion manager for Lone Star Gas Company, has been promoted to manager, utilization section, Sales and Promotion Department, in the Company's General Division of Distribution.

His appointment, effective January 1, was announced by J. M. Lynn, Jr., general sales and promotion manager for General Division.

The General Division's service area includes more than 250 Texas and 35 Oklahoma cities, towns and communities, including Merkel.

Mr. McCord, whose office is in Dallas, will plan and develop work in the utilization of natural gas and liquefied petroleum gases. His section will assist the Division's four regional managers in developing programs to aid chambers of commerce and similar organizations in attracting new industries to the area as a part of Lone Star's expanded Area Development Program.

Industrial utilization activities also include the development of data for market research pertaining to new industrial uses for gas and acceptable equipment for gas applications to industrial and large-tonnage air conditioning.

Garden Club Meets In Home Of Mrs. Odum

The Merkel Garden Club met Thursday in the home of Mrs. H. N. Odum with Mrs. John Shannon as co-hostess.

Program topic for the day was "Pleasures In Visual Education." Mrs. Dent Gibson, leader, introduced Mrs. Odum who showed slides she made on a recent trip to Hawaii. Mrs. Shannon spoke on "Informal Horticulture Workshop" and Pruning An Espalier.

Mrs. Ernest Teaf, recording secretary, read invitations from Coleman and Albany clubs. Club members voted to accept an invitation from the Fortnightly Study Club to attend their meeting Feb. 27 in the home of Mrs. W. T. Sadler.

Mrs. Charlie Sherrill reported on preparations for the flower show to be held in April.

Members decided to plant roses at the Rest Home and Rose Hill Cemetery.

Winners in dried arrangements brought by some of the members were Mrs. W. S. J. Brown, first; Mrs. Dale Litton, second; and Mrs. John Hughes, third.

There were 24 members and two guests Mrs. Earl Stamford and Mrs. B. H. Jones, present.

The next meeting will be Feb. 22 in the home of Mrs. Litton. Mrs. Carroll Benson will be co-hostess.

Odds and Ends

THINGS TO COME —

A new line of pencil sharpeners pointed at the school children market has been introduced; they're plastic sharpeners, molded into the shape of Walt Disney characters.

Car-comfort note: A robot self-starter for auto engines has been developed to keep cars warm by automatically turning the engine on when the temperature reaches 50 degrees, off when it reaches 70 degrees.

Small communities may soon boast "air age" transportation facilities all their own. A new plan—to establish scheduled airline service among small cities and towns across the nation—is currently in the talk stages, and may become a reality in the near future.

Advocates of the plan point out that small town air service is mostly a hit-or-miss proposition at present, with only air taxi or charter service available in most communities. Local service—using small, six-passenger aircraft on scheduled routes—would solve a major transportation problem for the U. S., they contend.

FIREARMS —

Seventeen-year-old Leland Larioso of Hilmar, Calif., shot himself in the right foot with a 20-gauge shotgun as he demonstrated to friends how he had shot himself a few weeks before in the

right foot with a 20-gauge shotgun.

SHOCKING TWIRLER —

Fourteen-year-old Steven Harding announced he was giving up baton twirling after he shock up Venture, Calif. with a mighty toss. Steve sent his baton so high that it struck two 4000-volt power lines. This blacked out a 10-block area for an hour started a grass fire, and knocked a radio station off the air.

POINTS TO PONDER —

Human beings are strange creatures. We spend the first two years of a child's life trying to teach him to walk and talk, and the next 16 to sit down and be quiet. — Advoctis, Greenville Ill.

Service Guild Meets With WSCS

Members of the Service Guild of First Methodist Church were guests when the W.S.C.S. met Tuesday night in the home of Mrs. Barrett Williams.

Mrs. Alvis Cooley led the group in singing. Mary Collins gave the devotional and Mrs. Lynn Knight led the prayer.

Mrs. Don Dudley spoke on "Unifec" taken from the World Outlook.

Refreshments were served to 16 members and guests.

Mrs. Cox Hosts Fortnightly Club

The Fortnightly Study Club met Tuesday afternoon in the home of Mrs. Johnny Cox.

Mrs. Ray Wilson introduced the program on "Mental Health And The Home." Mrs. Mack Fisher spoke on "Accidents In The Home."

The next meeting will be a guest day tea on Feb. 13 at the Merkel Country Club when Dr. George Steinman of McMurry College will be guest speaker. He will speak on "The Pursuit of Happiness."

Cargill Heads Baptist Group

The Rev. W. B. Cargill, former Merkel resident, was elected president and moderator of the North Texas Baptist State Fellowship.

The election marked Cargill's third time to be elected president. Rev. W. W. Baker, Fort Worth, was elected secretary-treasurer.

Cargill is pastor of the Aabernacle Baptist Church in Wichita Falls where the meeting was held. Attending were Baptist ministers from throughout North Texas and Southern Oklahoma.

KELSO-POWER ENGAGEMENT TOLD

Mr. and Mrs. Roy Kelso announce the engagement of their daughter, Marilyn Ann (Madie), to Delvin L. (Bobby) Power of Amarillo, son of Mrs. J. L. Griffith of Oceanside, Calif., and H. L. Power of Coleman.

Miss Kelso, a graduate of Merkel High School, will be graduated from Abilene Christian College in May. The prospective bridegroom, a graduate of Archer City High School, attended Oceanside Junior College, Oceanside, Calif. He is stationed with the U. S. Air Force at Amarillo Air Force Base.

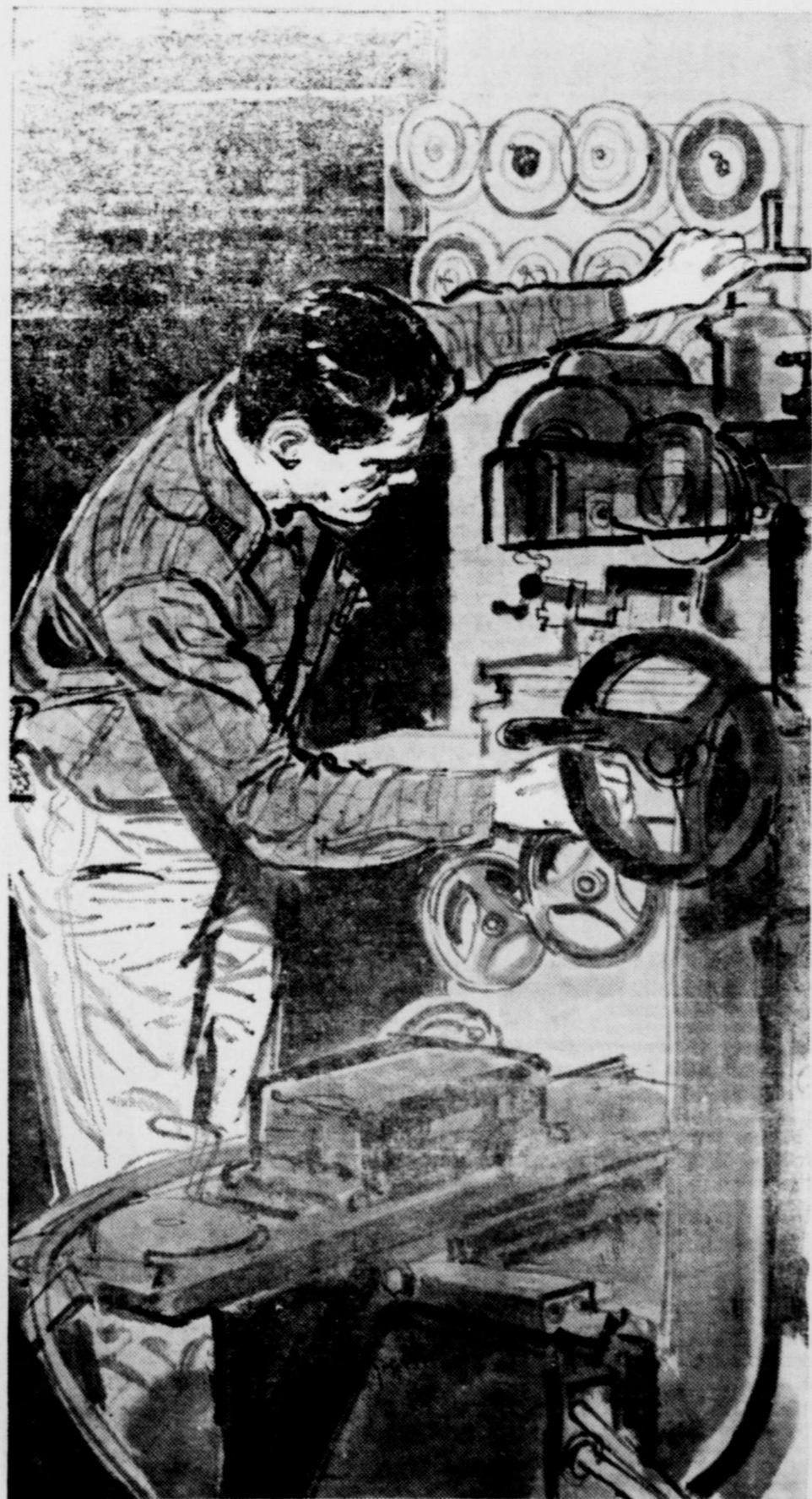
The couple will exchange wedding vows March 9 in the chapel of the College Church of Christ.

ONE WEEK SPECIAL THURSDAY to THURSDAY

All Wallpaper	1/2 Price
White House Paint	\$4.25 Gal.
1 x 12 decking	\$6.50
8 x 7 Steel Garage Doors and Hardware (overhead)	\$35.00
Galv. Barb Wire	\$7.65
Cedar Posts (4" wires)	40c

Now is the time to add a room or make all repairs you need. N. Down Payment. Pay by the month. Call us for estimates.

BURTON-LINGO CO.
MERKEL. PHONE 74



HE'S VITAL doing his job... and doing his job for his country

The National Guard has a unique mission... and a vital one. Constantly at the ready, it is on immediate call for the disturbances and disasters of peacetime as well as for the supreme demands of battle.

This dual mission is carried out by 472,000 citizen-soldiers of the Air and Army National Guard, men you know as your neighbors. The protection provided by these community men makes it possible to keep America's defenses up without the

larger dollar outlay needed to maintain similar numbers of active Army and Air Force personnel.

Today, the National Guard is better trained and better equipped than ever before. Famous since Concord, the Guardsman is... in every way... an Up-to-the-Minute Man, today. On runway alert... at air-defense Nike-Ajax installations... in swift striking efficiency... in everything vital to our country, the Guardsman is vitally needed.

YOUR NATIONAL GUARD

Farm Facts

In 1960, the cost of the standard "market basket," which the government uses to measure price trends, averaged about 2% below 1958 and about the same as in 1952.

The average factory worker in 1960 could buy a market basket of farm foods for a whole month with the earnings from 43 hours of work. In 1952, he worked 55 hours and in 1947 he worked 64 hours to buy the same amount of food.

We spent \$394 per person for food in 1960, compared with \$319 in 1947-49, but the 1960 food costs represented only 20% of our disposable income, compared with 26% in 1947-49. If we ate the same foods as we did in 1939, only 15 cents of our spendable dollar would go for food rather than 30 cents.

Price spread—difference between what the farmer gets and what the consumer pays—rose from 45% to 60% between 1949 and 1959 as a result of higher taxes and higher costs of labor and transportation.

Food prices in 1960 were about the same as in 1952.



Only major factor in price spread which has declined since 1946, according to the Grocery Manufacturers of America, is the net profit per dollar of sales for food manufacturers and distributors.



SENATOR ☆☆☆ Yarborough's Report

Dear Fellow Texan:
President Kennedy has handed to the Congress a balanced national budget for the fiscal year starting July 1, 1962. The President's estimate of a balanced budget is based upon a hoped-for business upturn and on the proposed post-

al rate increase. I don't think the President is being overly-optimistic because business did pick up very sharply in 1961, from the 1960 recession, and it is reasonable to expect that this improvement will continue. It is my belief also that a bill for new postal rates will pass this session of the Congress.

The budget contains many expenditures for projects in Texas, most of which represent years of planning and work by local groups and by their elected representatives. The list of Texas projects is a long one, but it includes for this year:

\$10 Million for the Waco Res-

ervoir, \$4.6 Million for the Proctor Reservoir on the Leon River in Comanche County, \$2,080,000 for the Navarro Mills Reservoir near Corsicana in Navarro County; the Guadalupe River Channel to pass Christi Waterway; \$450,000 for \$850,000 for the Port Aransas-Corine-Neches Waterway; \$3.2 Million Victoria; \$1.5 Million for the Sabal for the Canyon Reservoir on the Guadalupe, \$10.2 Million for the great McGee Bend Dam in East Texas; \$1.7 Million for the Stillson County Reservoir in Lampasas County; \$1.5 Million for the Somerville Reservoir in Burleson County; \$500,000 for the great Matagorda Ship channel, which will make Port Lavaca a deepwater port and again make this one of the important ports on the coast as it was before the turn of the century.

In addition, sums into the millions were designated for flood control in Bexar, Harris and Galveston Counties. Under the reclamation program, \$10 Million will go for the great Canadian River Project in Hutchinson County which, though its pipelines, will serve cities in the Panhandle and South Plains; \$2,770,000 for the reservoir and dam at San Angelo, Tom Green County, and a total of \$3,749,000 for the Mercedes and the La Feria division of the lower Rio Grande rehabilitation projects. For domestic use, more water for in Texas more water conservation

All of this adds up to more jobs irrigation, more water for municipalities, more water for industrial use in Texas, better flood control, safer homes, crops and pastures and increased trade for Texas. Many local groups in Texas are continuing to work unceasingly for the worthwhile projects they are supporting and I intend to do everything I can to help in the advancement of sound projects that are beneficial to our state and its people.

This is a large budget but after all these projects that I've outlined in Texas are merely a minor part of it compared to the amount of money allowed for payment on past wars and to guard against future wars. In that, of the total budget of \$92.5 Billion, \$67.4 Billion or 71 percent of that whole budget is for the cost of past wars and future wars, including \$52 Billion for military preparedness now, \$8 Billion for interest on past debt, \$5.3 Billion on veterans affairs.

Fellow Texan, for all this, we seek to keep our economy moving in an atmosphere of freedom. And if we are successful in this, freedom will be preserved, though at a heavy cost. Freedom must be preserved, whatever the cost.

Mr. and Mrs. Polly Poliver and children, Tony and Galasia of Midland visited their parents, Mr. and Mrs. D. O. Toliver and Mrs. Edna Harden and their grandmother, Mrs. T. J. Amason.

Mr. and Mrs. ... visited in the home of ... and Mrs. ...

Mr. and Mrs. ... and children of ... visited in the home of ... Mrs. Carl ... and family ...

FOSTER CHILD ACROSS THE SEA



This was Nga, age 4, a few short months ago. Perhaps you've seen her face before. She's a typical Foster Parents' Plan child. She lived with her mother, sister and brother in a shed with a thatched roof and beaten earth floor in Viet Nam. Her mother and sister were seriously ill and unable to work. They had sold their only possession—a bed—for \$2.08. Such was Nga's desperate situation when she came under the care of Foster Parents' Plan.

Today, through an American foster parent, Nga is being helped so that she, in turn, may eventually help her family and her people. For a few pennies a day, Nga's foster parent is able to provide her with new clothing, blankets, food packages, education and medical care, as well as other necessities and gifts. Nga knows the name of her foster parent; has seen pictures of her and received her letters. Can you imagine Nga's eternal gratitude to her foster parent? There are thousands of other children across the sea like Nga—in France, Italy, Greece, South Korea and Hong Kong—in desperate need. If you would like to be a foster parent, write to Foster Parents' Plan, Inc., Dept. J, 522 Park Avenue South, New York 10, New York. A Public Service Message from Festina Laboratories.

VETERANS INFORMATION

Q—How can the orphan child of a dead peacetime veteran qualify for educational benefits under the War Orphans Educational Assistance program?

A—If a serviceman dies as the result of illness or injuries incurred in extra-hazardous duty during his peacetime service, his children become eligible for all the provisions of the War Orphans Educational Assistance Act.

Q—Will Social Security officials credit me with my time in military service when I am about to retire?

A—Yes. Veterans with 90 days active service between September 16, 1940, and December 31, 1956 whose discharge was other than dishonorable, may receive gratuity. Social Security wage credits of \$160 for each such month of active duty. These credits are not actually listed on your Social Security earnings record until you apply for benefits. At that time proof of your military service will be required.

Q—To receive either electronic or mechanical aid as a blind veteran, is it necessary that my blindness be service-connected?

A—No. But you must be blind in both eyes and be entitled to compensation for some other service-connected disability.

Q—Will the Veterans Administra-

tion naturalize an alien who served in the Armed Forces?

A—Naturalization of aliens in the province of the Immigration and Naturalization Service of the Department of Justice. However, the Veterans Administration may help the applicant by certifying his service during World War I or World War II and eliminating the waiting periods, etc. Since there are certain conditions which must be met, individuals should check first with the nearest VA office.

Mrs. and Mrs. Roy Doan of Bellflower, Calif. visited his sisters, Mr. and Mrs. Adren Farmer and Mr. and Mrs. T. J. Amason, and his brothers, Mr. and Mrs. D. C. Doan, Mr. and Mrs. V. L. Doan and Mr. and Mrs. Carl Doan.

Dr. Bennie A. Mann CHIROPRACTOR

211 Oak

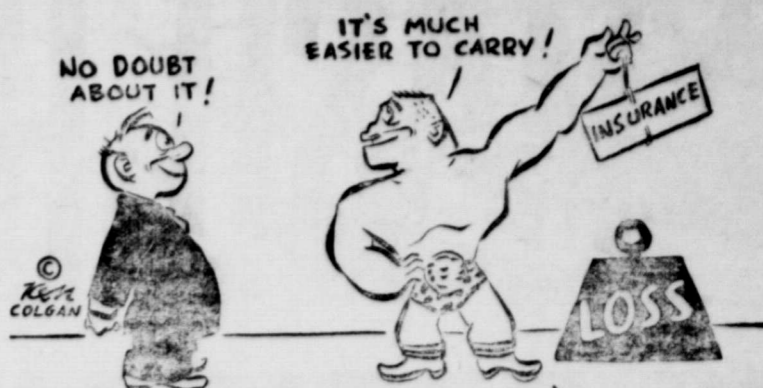
Merkel, Texas

Phone 18

Office hours 8:30 a.m. - 6 p.m.

Closed Tuesdays and

Saturdays at noon.



OUR HOUSE, YOUR CAR, WHAT ARE YOU OWN
PROTECT WITH ALL YOUR MIGHT
INSURANCE WILL
REPLACE A LOSS
AND MAKES THE BURDEN LIGHT

Boney Insurance Agency

FEBRUARY SPECIALS

WE MUST MOVE THESE CARS AT ONCE

58	CHEVROLET STATION WAGON. Radio, heater, factory air, brown and white color, automatic transmission	\$1195.00
58	FORD FAIRLANE '500' 2-Door sedan. Radio, heater, automatic transmission white tires, a nice one ONLY	\$1095.00
56	INTERNATIONAL 3 4 TON PICKUP, heater, color light green	\$695.00
59	PONTIAC CATALINA 4-DOOR. Radio and heater, automatic transmission. Decor group. Factory air conditioning	\$1675.00
55	PONTIAC STATION WAGON, Radio and heater, hyd. drive, tutone green. Good leather upholstery. Going for Only	\$495.00
2-56	PONTIAC 4-DOOR HARDTOPS, Radio and heater, hyd. drive, factory air conditioner. Good Ones. Reduced to	\$595.00
55	FORD STATION WAGON, Radio and heater, auto trans., factory air and power. Too Cheap. Reduced to	\$495.00
55	OLDSMOBILE 88 4-DOOR. Radio and heater, hyd. trans. New Motor overhaul. Good tires, light blue color	\$568.00
59	ENGLISH FORD. Good condition. New Motor Overhaul. Reduced to	\$550.00
56	BUICK CENTURY 4-DOOR HARDTOP, Radio and Heater, automatic trans., power equipment, new tires, one owner, white color. Reduced to	\$695.00
57	A Real Buy MERCURY 4-DOOR MONTEREY. Radio and heater, power air conditioned, A Real Buy Reduced to	\$695.00

SEVERAL MORE CARS TO CHOOSE FROM

\$106 DOWN WILL BUY ANY OF THESE CARS ...

WITH CREDIT APPROVAL

WE WILL TRADE — SEE US TODAY

Palmer Motor Co.

PHONE 159

MERKEL

PHONE 159

For
COLDS
take 666

FARM & RANCH HEADQUARTERS

Fertilizer

Grass Seed

Fencing Material

Field Seed

Stock Salt & Mineral

AUTHORIZED BUTLER DEALER

MERKEL ELEVATOR

COMPANY

ED SANDUSKY, Manager

NEW VALUE! CONSOLETTTE TV



\$269.95

23DT-1 Mah. or Wal.

ⓔ Packard Bell 23" CONVERTIBLE TV

— converts to wireless Roto/Remote any time!

- ★ Choice of manual, 2-rotor, or 4-rotor wireless Roto/Remote control!
- ★ Roto/Remote! Drop-proof, shock-proof—lab-tested for 10 years' trouble-free normal use!
- ★ 20,000-volt hand-wired transformer chassis, air-sealed filtered lens!
- ★ 23" (diagonal measure) picture, COMPUTER Dial, Set-N-Forget fine tuning, Constant/Contrast—D.C. Restorer Circuit!
- ★ Front speaker and tone control, hand-finished all-hardwood cabinet!
- ★ 23DT-1, Mahogany, Walnut, Maple. Legs optional. Convertible TV, Roto/Remote, Computer Dial patents pending.



Manual controls include famous COMPUTER Dial! Add 2-rotor wireless Roto/Remote to manual controls! Here's the best—4-rotor wireless Roto/Remote!

As Low As \$2.50 Per Week

PALMER MOTOR CO.

1208 NORTH FIRST STREET

MERKEL, TEXAS

SMASH HIT SALE

CHERRIES Comstock 2 No. 2 Cans **59¢**
TAMALES Pie Filling 2 Cans **59¢**
FLUFFO Ellis Jumbo 2 Cans **59¢**
COFFEE No. 2 1/2 Can 2 For **59¢**
VELVEETA Golden 3-Lb. Can **63¢**
 Maryland Club (ONE LIMIT PLEASE) 1-Lb. Can **55¢**
 CHEESE 2-Lbs. **79¢**

NEW WISH-BONE DELUXE FRENCH DRESSING
 Hugs the salad. Not the plate.
 8 OZ. BOT. Only **29¢**



COMET RICE 2-Lb. Box 43¢	MARYLAND CLUB COFFEE 6-Oz. INSTANT 63¢	GLADIOLA FLOUR 10-Lb. Bag 79¢	NABISCO CRACKERS PREMIUM 1-Lb. Box 27¢
PARL DOG FOOD TALL CANS 3 for 39¢	SCOTT'S TOWELS REGULAR ROLL 2 for 39¢	CUT RITE WAX PAPER 125-Ft. Roll 25¢	SCOTT'S NAPKINS 80 COUNT BOX 2 for 29¢

FFA CLUB CALF BEEF
 FFA CLUB CALF CHUCK ROAST Lb. **53¢**
 CLUB CALF 1-BONE OR SIRLOIN STEAK Lb. **93¢**
 CLUB CALF STEAK Lb. **69¢**
 FFA CLUB CALF SHORT RIBS Lb. **29¢**
 GOOD FOR SEASONING Lb. **25¢**
 HORNEL WHOLE HOG PORK SAUSAGE Lb. **55¢**
 HORNEL RANGE BRAND BACON 2 Lbs. **89¢**
 HORNEL DAIRY BRAND HAMS Shank or Butt End Lb. **49¢**
 HORNEL ALL MEAT FRANKS Lb. **49¢**

ARMOUR'S STAR BROAD BREASTED TURKEYS Lb. **29¢**
 OCEAN SPRAY CRANBERRIES 1-Lb. Box **10¢**
 BY EACH CLOROX Qt. **19¢**
 DISH WASHER TREND Gt. Box **39¢**
 SCOTT TISSUE 2 Rolls **25¢**

DOUBLE STAMPS
 GIFT BOND
 EACH WEDNESDAY ON \$2.50 PURCHASE OR MORE



Special 6¢ OFF ON SPECIAL SALE PACKAGES
NEW LIPTON Cream Style CHICKEN SOUP 2 PACK 33¢
NEW LIPTON Country Style POTATO SOUP 2 PACK 29¢

WINNERS IN GUESSING CONTEST
 1st—Mrs. Robert Higgins
 2nd—John C. Brady
 3rd—Mr. W. A. Allred
 4th—Mrs. S. D. Campbell
 5th—Mrs. H. Newby
 6th—Mr. Lee Ward
 7th—Mrs. Sam Butman
 8th—to 12th—Check at Store


HAND LOTION Reg. \$1.00 SIZE **39¢** Plus Tax
DUNCAN HINES EARLY AMERICAN CAKE MIX 2 Boxes **59¢**
 Well give you **25¢** TO TASTE THE Fresh-brewed Flavor OF NEW LIPTON INSTANT TEA
 Simply send the inner seal from any jar of Lipton Instant Tea, your name and address, to: LIPTON INSTANT TEA BOX 600, ST. PAUL, MINN. and receive 25¢ by return mail. HURRY! OFFER EXPIRES MARCH 31, 1962 (Limit one refund per family.)
LIPTON INSTANT TEA 3 OZ. JAR 73¢

PANTRY STOCK-UP SALE
HEINZ — 25 OZ. SWEET PICKLES Jar **39¢**
HEINZ — 14 OZ. KETCHUP 2 for **43¢**
WES-TEX — QUART WAFFLE SYRUP Jar **39¢**
EI. FOOD — 18-OZ. PRESERVES STRAWBERRIES Jar **33¢**
SKINNERS - SPAGHETTI OR MACARONI 2 Boxes **25¢**
RENOWN — NO. 300 SIZE TOMATOES 2 Cans **23¢**
RENOWN WHOLE — NO. 303 CAN GREEN BEANS 2 Cans **39¢**
KOUNTY KIST — 12-OZ. CAN GOLDEN CORN 2 Cans **29¢**
PET SUPER DIET FOOT SEGO 3 for **73¢**

COLGATE DENTAL CREAM WITH A CAPTAIN KANGAROO MUG GT. TUBE BOTH FOR **43¢**

FROZEN FOODS
KEITH'S FISH STICKS 2 Pkgs. for **49¢**
MORTON'S — COCOANUT, CHERRY, PEACH OR APPLE PIES Each **29¢**
SEA TREASURE BREADED — SHRIMP Pkg. **39¢**
BLUE— ALL 10-Lb. Box **\$2.19**
PRIZE SOAP — LARGE BOX BREEZE **29¢**
LIQUID — LUX Gt. Bot. **59¢**

Garden Fresh Vegetables
WASHINGTON RED DELICIOUS APPLES Lb. **15¢**
FRESH RADISHES Cello **5¢**
FRESH GREEN ONIONS 2 Bunches **15¢**
SUNKIST LEMONS 6 for **15¢**
FRESH CARROTS Cello **10¢**
BEKO RUSSETTS SPUDS 10-Lb. Bag **35¢**

CARSONS' SUPERMARKET

MERKEL, TEXAS STORE HOURS
 WEEKDAYS: 7:00 a.m. to 7:00 p.m.
 SATURDAYS: 7:00 a.m. to 8:00 p.m.
 TRADE WITH US AND BANK THE DIFFERENCE
PRICES GOOD THURSDAY, FRIDAY, SATURDAY FEBRUARY 8, 9, 10