

The Merkel Mail

Thursday, May 8, 1986 ... Merkel, Texas

Our 98th Year



A birds eye view of Merkel taken two weeks ago.

Photo by Danny Tabor-Clyde Journal

Dudley downs Bridges, Keenan-Mashburn race goes to June 7th run-off election

Taylor County Precinct 2 Commissioner Don Dudley was re-elected and a runoff will be held June 7th in the Precinct 2 Justice of the Peace race between Jack Keenan and incumbent Leo Mashburn.

In county-wide races, Aleta Hacker was elected judge of the 326th District Court, James Holway as county judge and Anna Moore was elected county treasurer.

Final totals in the JP Precinct 2 race included Jack Keenan leading the way with 432, Leo Mashburn had 376 votes and Stuart Bishop received 234 votes. A runoff between Keenan and Mashburn will be held June 7th to determine the winner in that race. Ballots will be cast in the same locations as in Saturday's election.

In The County Commissioner's race, incumbent Don Dudley defeated former Abilene City Councilman Julian Bridges 1,794 to 631. Dudley is not facing a Republican opponent in the November general elections.

In local results in the governor's race, Mark White gathered 245 votes in Merkel, 24 in Trent, 26 in Tye and five at rural precinct 27. Bill Clements received 20 in Merkel, one in Trent, 26 in Tye and five rural box 27.

The local numbers of people voting were good but did not set any records, according to Taylor County Elections Administrator Pauline Pittman.

3rd grade visits local dairy

Harold Hohhertz of Hohhertz Dairy recently conducted the annual third grade tours through his dairy Southeast of Merkel and things have changed quite a bit, not so much at the farm, but at the number of students making the annual trip.

It started more than 10 years ago with less than 50 students, two teachers and they had to beg adults to attend.

It's grown into over 100 students, four teachers, and lots of parents and under school-age children.

Lillie Braune, a third grade teacher here told *The Mail* "WE have a lot of parents who now go on the field trip and we see all kinds of 'farm life' examples. A lot of the kids who live here have never seen a farm."

Hohhertz and his dad, A. E. Hohhertz started the dairy in 1958.

Merkel's 3rd grade students have made the trip 12 years.

All because Harold Hohhertz takes the time to show the kids what a dairy farm is all about.



Harold Hohhertz explains the MISD students. The third grade milking process at his dairy here has made the trip the past 12 Southeast of Merkel to 3rd grade years.

Pursley, Beaver qualify for state

Merkel's Brit Pursley and Trent's Bebo Beaver have qualified for the State Track Meet in Austin May 16 & 17.

Pursley jumped 15'0" at the regional meet in Odessa last weekend to place second and earn a spot in the state finals on May 17th at Memorial Stadium.

Memorial Stadium has been

kind in the past to Pursley's. Older brother Brad won the state meet in the pole vault in 1978 and later won the Texas Relays while a college student at Abilene Christian.

Britt has been the track team's leading scorer throughout his sophomore year. He qualified in the regional meet in the pole

vault, high jump and 110 hurdles. He has jumped 15'10" twice this season.

Beaver at Trent is headed for Austin for his second year in a row in two events.

Beaver jumped a personal best of 23'7" at last weekend's regional meet and also placed second to qualify in the 220. Beaver is a senior at Trent High.

Badger Band takes top honors at festival, sets May 19 concert

The Merkel High School Band became the big winner at the 16th annual Greater Southwest Music Festival in Amarillo last weekend. The local band received a first division rating in both concert and sightreading, won the trophy for the Outstanding Concert Band in Class AAA, won the overall sightreading trophy for Classes A, AA, and AAA, and was awarded the Weinburger Trophy presented each year to the Overall Outstanding Concert Band in Classes A, AA and AAA. Merkel was the only band in Class AAA to receive 1st division awards. Booker High School in Class A, Olney and Petrolia High Schools were awarded first division in Class AA. Iowa Park High School won the concert award in Class AAAA and Monterey High School in Lubbock received the AAAA award. Monterey also won the Overall Concert Band in Classes AAAA-AAAAA.

Sixty-one bands attended the three day event, along with 24 orchestras, 20 stage bands, 69 choirs, and 10 show choirs. Festival officials estimated 10,000 students competed in the event.

Judges for the band portion of the event were: Bill Dean, director of the Texas A&M Symphonic Band, Mel Montgomery, director of bands at Stephen F. Austin State University, Robert Winslow, director of the famed North Texas State University Concert Band, and Charles Nail, director of the Permian High School Band of Odessa, Texas.

The local band left Merkel Thursday afternoon after school and arrived in Amarillo at 10:00 p.m. They performed at 9:20 a.m. on Friday morning. During their free time in Amarillo, they heard other competing bands, went shopping at the new mall in Amarillo, swam at the motel, and went to the Wonderland Amusement Park before returning home Saturday evening at 10:30 p.m. Mr. and Mrs. Obie Coker remained in Amarillo to attend the awards concert on Saturday evening and they received the awards from festival officials. They then relayed the word to band direc-

tor's wife, Myrna Woods, and she told the band the results upon their return to Merkel.

This year marks the second year in a row for the Merkel Band to receive the Outstanding Concert Band award in Class AAA at the Amarillo festival. Greater Southwest Music Festival is sponsored by the Amarillo Chamber of Commerce and the Arts Council of the city of Amarillo.

A final concert will be presented

by the Merkel High School Band on Monday evening, May 19th at 7:30 p.m. in the high school auditorium. This concert will feature the 6th grade beginning band, the 7th and 8th grade middle school band, the award winning wind ensemble of the high school, and the Concert Band. This concert will be free to the public. Music for the concert will feature popular music. Directors of the Merkel bands are Bill Woods and Cherry Curry.

Election, band, track ...more

by Cloy A. Richards

Well, we will still have "our" rural commissioner as incumbent Precinct 2 County Commissioner defeated challenger Julian Bridges by a 2-1 margin in Saturday's Democratic Primary.

We still don't know who the next Justice of the Peace will be as challenger Jack Keenan led the way in a three man field in that race. Keenan and incumbent Leo Mashburn will face off again June 7th in a special election.

The question in that race is who will get the lion's share of the 234 votes Stuart Bishop received in Saturday's election?

Keenan received 56 more votes than the Mashburn did Saturday so the runoff should be close as well.

Mark White and Bill Clements will lock horns in the November general elections and I bet Texas school teachers are now looking for new strategies to make their influence felt on state political policies.

Former Governor Bill Clements was certainly no friend to Texas teachers while he was in office (check your pay raises in his administration) and teachers have certainly made their feelings known about Mark White.

Maybe they should start buttering up Lt. Governor Bill Hobby or Senate Finance Chairman Grant

Jones.

Two fine local athletes will be in the state track meet in Austin May 15, 16 & 17.

Brit Pursley of Merkel will be seeking the pole vault championship and Trent's Benjamin Beaver will be in two events, the 200 and the long jump.

This is Beaver's second trip to the state meet in both events and for Pursley, it is his first, but he's a sophomore.

Pursley has had one of the best five jumps this year by any Texas high school pole vaulter and will be a force to be reckoned with in Austin.

Not only this year, but the next two as well.

The Merkel High band just keeps raking in the honors as they won three trophies at this past weekend's Greater Southwest Music Festival, including the prestigious "Best Band" award for the second year in a row.

The Band was judged First Division in all four parts of the contest, the only band to do so at the event.

The following message is from Sharon Harris, Buddy Poppy Chairman for the local Veterans of Foreign Wars.

"The sale of Buddy Poppies" preceding Memorial Day is the traditional way of bringing attention to the sacrifices made by the

nation's war dead in their struggle to keep America free.

Remember the men who can't forget. Buy a Buddy poppy in their memory on Memorial Day."

For those of you who did not see a breakdown in the local JP's Democratic Primary, we have it. In Voting Box 24, Jack Keenan 339, Stuart Bishop 193 and Leo Mashburn 275.

In Voting Box 25 Keenan 55, Bishop 27, Mashburn 32. In Voting Box 27 Keenan 12, Bishop 5 and Mashburn 11 and in Voting Box 22, Keenan 16, Bishop 5 and Mashburn 30. Absentees were 10 for Keenan, 4 for Bishop and 28 for Mashburn.

Keenan and Mashburn will be paired in a June 7th run-off election. Keenan edged Mashburn 432-376 Saturday.

I have heard a lot of folks talking about the way the state party primaries are held in Texas.

It seems a lot of folks would like to see the primaries changed so voters could select candidates from both parties, as in the November general elections.

That argument makes sense and that may be its downfall.

Like the flat rate tax argument.

It makes too much sense to work and that's not what lawmakers in Washington, or Austin, are famous for. No sir, simple ideas in those two places end up being complicated, tabled, or lawyered to death.

SUN water sets meeting

Do you like barbershop harmony?

Don't miss the good music and good times May 13th when the membership of SUN Water Supply Corporation gathers for their annual meeting at 7:30 p.m. at the conference room at Taylor Electric.

Three members will be named to the board of directors. They are Candidates are Jacky Reynolds, Bill Tippen, Kenny Duncan, Bill Tims, Greg Henderson and Gary Heurman. Max Murrell, who has served the board a number of years, will be retiring.

The program promises to be both entertaining and enlightening. Dwayne Hargesheimer, Director of Water Utilities for the City of Abilene, will briefly discuss the water picture for today and in the future.

As SUN celebrates its 10th anniversary, you are invited to help celebrate the harmony that exists between the membership, the board, the Farmers Home Administration and employees. It does take understanding and co-operation from all to realize the dreams of having good water. Rural Water Systems in Texas are relatively new in terms of public utilities. Harmony is the name of the game. With harmony as their theme and goal, Abilene Barbershoppers in the form of The Classic Tradition, promises and evening of entertainment.

Only members of the corporation are entitled to vote. Anyone is invited to come and enjoy the entertainment and fellowship.

Door prizes will be awarded to the members whose names are drawn.

Senior Citizens group plans May 23-24 garage sale

The Senior Citizens met Monday at 7 p.m. for their monthly singing. A large group was present. Refreshments were served to our out of town guests from Abilene, Blackwell, and Taylor. The next meeting will be a luncheon at noon, May 14th. A good program is planned May 23 and 24. There will be a donation garage sale May 23 at 8 a.m. to 4 p.m., Sat. 24 from 8 a.m. to 12. Come and set up your own table or donations will be picked up. Call The next meeting will be a

Henry Brady at 928-4339.

Weatherman explains watches, warnings

by Jerry Eckhart

Our severe weather season is unfolding. Already, we've had several thunderstorms in the Merkel area and several Watches and Warnings issued. Rest assured, there will be more to come.

When should you head for shelter? What does it mean? Is my life threatened? These are some of the questions we all ask from time to time. It doesn't help when we hear unfamiliar terms that sound alike, yet continue to be confusing.

There is a system of Guidelines used by the National Weather Service to inform the public. If we learn and understand them, it could save our lives.

The Severe Thunderstorm Watch is issued by the National Severe Storms Forecast Center in Kansas City. Generally, it is an area between 80 and 160 miles wide and from 250 to 500 miles long. This is designated in the Watch. The Watch specifically means that conditions are favorable in that area for the development of severe thunderstorms. It is usually valid for a period of six hours.

Remember, a Severe Thunderstorm is one in which winds have

Services held for

Velma Mashburn

Private services for Velma Mashburn, 70, of Merkel, wife of Precinct 2 Taylor County Justice of the Peace Leo Mashburn, were held at 2 p.m. Sunday at Elliott-Hamil Funeral Home with the Rev. John Wagoner officiating. Burial was in Rose Hill Cemetery. She was found dead of an apparently self-inflicted gunshot wound Friday at 10 a.m.

Born in Sulphur Springs, she was retired from employment with Abilene State School. Survivors include her husband, Leo Mashburn of Merkel; a son, Gary Stutts of San Angelo; a daughter, Sue Henderson of El Paso; two brothers, Fred Horton of Trent and Melvin Horton of Abilene; three sisters, Mattie Cooper of Ozona, Sybil Corbin of Seagoville, Dessa Brewer of Dallas; and a grandson.

Services held for

Beaver's son

Bradley Earl Beaver, 17 month old son of Richard and Cindy Beaver, died Thursday at a local hospital after a sudden illness. Services were held at 2 p.m. Sunday at Trent Church of Christ with Bobby Wheat officiating, directed by Starbuck Funeral Home.

He was born December 10, 1964, in Abilene.

Survivors include his grandparents, Mr. and Mrs. Johnny Beaver of Trent, Jerry Turner of Abilene and Lilly Williams of Merkel.

Former Mail

employee's services

Services for Troy Barnes, 45, of 3817 Earls Court, a former Reporter-News ad salesman who died Thursday in a local hospital were held Friday at Elliott-Hamil Funeral Home with Dr. Ed Lang officiating. Burial was in Elmwood Memorial Park.

Born in Amarillo, he was raised in Pueblo, Colorado, served in the Navy from 1959-61 and attended Trinidad State College. He moved to Abilene from Amarillo in 1968.

During his newspaper career he worked for the Star Journal Chieftain in Pueblo, the Merkel Mail and the Reporter News.

Survivors include his wife, Carla; a son, Duane Pruitt Barnes of Abilene; two daughters, Charmain Black of Millborn, Va., and Melissa Ann Barnes of Pueblo; his mother, Helen Harp of Pueblo; two brothers, David Harp of Big Springs and Jack Harp of Austin; and a sister, Sandy Gallo of Pueblo.

HAPPY BIRTHDAY MOMMA WE LOVE YOU JIMMY, JERRY & JACKY

reached 58 mph and/or hail is at least 3/4 inch in diameter (penny size). Either will produce damage.

The Tornado Watch is also issued by the Severe Storms Forecast Center and is described the same as the Severe Thunderstorm Watch. These Watch areas are termed "boxes" and are of about the same size as those for the Severe Thunderstorm Watches. The Tornado Watch means that conditions are favorable in that area for the development of Severe Thunderstorms that will produce tornadoes.

Similar to the Severe Thunderstorm Warning, the Tornado Warning is an issuance of the local National Weather Service Office. They are issued on a county by county basis and for about an hour in length. Tornado Warnings mean that there has been a visual sighting of a tornado by a trained storm spotter, or a certain unmistakable indication on radar.

The Watches and Warnings are transmitted to the public by several methods. First, warnings are sent by telephone to local city and area warning systems (i.e. sirens sounded). Secondly they are transmitted by NOAA Weather Radio. You can purchase one of these weather radios for about \$20 at most radio stores. The third step is through the NOAA Weather Wire which is received by most television and radio stations. The message is taken from this wire and broadcast to the public.

In Abilene, there is an intermediate step which has proven to save considerable time. The National Weather Service has a direct phone line into the broadcasters' control rooms. When the line is activated an alert tone is triggered and the warning message is relayed over television and radio directly from the National Weather Service.

As this severe weather season

unfolds be sure you have a workable severe weather plan for your home. Know where to seek shelter in your home, apartment or mobile home park. Know where the safest areas are in shopping centers, malls, or businesses. Have your personal disaster plan worked out for your family and practice. The time and extra effort can someday be worth it.

Ads Work!



GORILLA BASKETBALL CAMP

Grades 3-8
Cost \$20
Place- Trent H. S. Gym
June 2-6
1 to 3 p.m.
Contact Robbie Shugart 862-6228 after 5 p.m.
OR MAIL THIS FORM TO
GORILLA BASKETBALL CAMP
BOC 181
MERKEL, TEXAS 79536
Name _____
Address _____
Grade _____
Shirt Size _____

FOR GIRLS ONLY

L & W Snack Bar

1035 N 2nd 928-5484

WELCOME POLLY TO THE WONDERFUL WORLD OF RESTAURANTS- MAY YOUR HEADACHES BE SMALL AND YOUR SUCCESS BE GREAT

WE WILL HAVE A LARGE SALAD BAR WITH A VARIETY OF SALADS AND JELLO MOLDS. BAKED BONELESS BREAST OF CHICKEN SUPREME BRISKET OF BEEF SWISS PORK CHOPS BEEF TIPS WILD RICE DRESSING BAKED POTATO MASHED POTATO And, SWEET POTATO, BROCCOLI, CORN & ITALIAN MIXED VEGETABLES, CREAM SAUCE, brown sauce, CHEESE SAUCE, HOMEMADE ROLLS AND SOUR CREAM AND BUTTER

Mother's Day Buffet

Saturday Luncheon Special

TOSSED SALAD, MASHED POTATOES & CREAM GRAVY, CHICKEN FRIED STEAK, HOMEMADE ROLLS \$2.69

ORDERS TO GO 25 CENTS EXTRA

WE MAY NOT BE THE BEST BUT YOU'D HAVE TO GO A LONG WAY TO FIND ANY BETTER BUT IN OUR HUMBLE OPINION THERE IS NONE BETTER IF YOU DON'T BELIEVE THAT-JUST ASK ME

WATER A POTENTIAL TIME BOMB.



Time is running out. We're polluting our lakes and streams. We're poisoning our underground water supplies. It's a sure threat to your health at a ticking time bomb.

What can you do? Invest now in ChlR-O 2000's state-of-the-art technology. It's guaranteed to make your drinking water safe again.

CLEAN WATER SYSTEM

For More Information: JERRY ECKHART 928-5478

HAPPY MOTHER'S DAY MORLENE WE LOVE YOU

STORMY, MOM & DAD & FAMILY

SAVE \$5.00 ON OIL & FILTER CHANGE

★ INCLUDES LUBE

2 DAYS ONLY THURSDAY & FRIDAY MAY 8 & 9

30 WT \$15.00

10W40 \$17.00

TIMS SHELL 211 KENT

FIRST COME FIRST SERVED

PHARMACY PLUS

FACTS ABOUT BLOOD PRESSURE

§ Blood pressure represents the force of blood against the arterial walls. It is measured in millimeters of mercury (mmHg) by two numbers: § Systolic Reading: the first (and greater) number, represents the blood pressure when the heart is pumping. § Diastolic Reading: the second (and lower) number, represents the blood pressure when the heart is at rest between beats. § Blood pressure may vary as much as 30 to 40 points during the course of the day. It can rise with exercise or nervousness and can be low while you sleep. A single reading may not be representative of the average daily blood pressure.

Generally and average daily blood pressure reading of higher than 140/ 90 is cause for concern. If the diastolic [second number] is greater than 110, you should contact your physician promptly. § High blood pressure is a common, but serious disease; it can, however, be treated and controlled. § High blood pressure has few symptoms. The best way to find out is to have your blood pressure checked periodically. § Uncontrolled high blood pressure is a major cause of heart attacks and strokes. § 80 per cent of all doctors, in a recent survey, would recommend that patients with high blood pressure be trained to take their own blood pressure readings at home as a supplement to regular office visits.

High Blood Pressure when uncontrolled can lead to heart attack, heart failure, stroke, and kidney failure. Ask your Pharmacist for a free brochure on high blood pressure. Next time you are in Merkel Drug, have your blood pressure checked free. It's just one of our many services for you.

MODANE

30 Tablets
MODANE SOFT

30 Capsules

\$3.29

Your Choice

HEALTHCHECK

DIGITAL BLOOD PRESSURE KIT

#BP-1

\$29.99

CHLOR-TRIMETON

ALLERGY RELIEF

Chlor-Trimeton

4 mg 24's

\$1.79

DERMOPLAST

2 1/2 oz

\$2.59

ALKA-SELTZER

Original or Flavored

12's

\$1.29

MAALOX PLUS

12 oz

\$2.39

MAALOX PLUS

50's

\$1.82

PTK

Pregnancy Test Kit

\$4.99

MURINE EAR WAX REMOVAL SYSTEM

\$4.99

MURINE EAR DROPS

5 oz

\$3.19

ASPERCREME

3 oz

\$2.44

NATURE MADE VITAMIN C

500 mg

2 100 ct. Bottles

\$2.99

WITH ROSE HIPS

2 100 ct. Bottles

\$4.29

SLIM FAST

16 oz

Asst. Flavors or 12 Chocolate Bars

\$4.69

ANACIN

50 Tablets

\$2.29

BACTINE

2 oz

\$1.19

TRONOLANE

1 oz Cream or 10 Suppositories

\$2.27

MYCITRACIN

1/2 oz

\$1.69

SCHICK DISPOSABLE RAZOR

5's

79¢

LIQUIPRIN

1.16 oz

\$1.89

PLAYTEX NON-DEODORANT TAMPONS

28's

\$2.79

ASCRIPTIN

100's

\$2.69

CLEAR EYES

1/2 oz

\$1.69

PRICES GOOD THROUGH MAY AND ARE LIMITED TO STOCK ON HAND

DON'T FORGET MOTHER'S DAY WE HAVE OVER 80 HARD TO FIND PERFUMES & COLOGNES RIGHT HERE AT HOME AT

Merkel Drug

928-5012

FREE GIFT WRAPPING ON PURCHASES MORE THAN \$8

201 Edwards

"WHERE FRIENDS MEET"

Temporary grain storage approved

(LUSK) The Texas Department of Agriculture has for the first time approved temporary storage facilities to hold the overflow grain anticipated this year. However, TDA's storage requirements will go considerably beyond those required by the federal government, and all grain will have to be stored in covered facilities which meet stringent bonding requirements.

"Literally, our cup is overflowing," said TDA Deputy Commissioner Mike Moeller. "The federal government has mandated a policy that in 1986 again forces our farmers to produce far more grain than can be stored this year. This is in addition to last year's tremendous overproduction, most of which still remains in local storage elevators across the country."

"Through formulas and computer equations that make the Theory of Relativity look like kindergarten math, our federal policy makers have hit farmers and taxpayers alike with a double whammy. First, they have driven crop prices so low that farmers have to look up to see the bottom of the barrel. Then, because there's so much surplus grain on the market, taxpayers must shell out millions of tax dollars to keep it in storage."

"In typical USDA fashion, the federal bureaucrats have chosen only to address the shortage of available grain storage facilities in a cursory fashion. We at TDA, working with commodity representatives and the grain storage industry, have developed fair and reasonable requirements. The regulations that TDA has formulated under its authority to license and inspect grain storage facilities represent the first, and hopefully the last time that such measures are needed."

"The only real answer to this growing dilemma is a sensible, long-term Farm Bill that ends taxpayer subsidies for low crop prices and allows producers to obtain a fair, realistic price from the marketplace," Moeller said.

TDA established a list of eight requirements which must be met before the temporary storage sites can be approved.

1. TDA must be reached in advance before construction on the temporary facility can begin. The temporary storage will be approved exactly as if it were a permanent facility, which means the temporary location must meet all casualty insurance and bond liability requirements as well as be subject to normal licensing fees.

2. Outside storage must be Average Texas farmer receiving less than 1¢ return on investment

constructed on a base of either asphalt, concrete or compacted earth. All types of base construction must be within tolerances and guidelines satisfactory to both state and federal regulators. Construction specifications must be approved in advance.

3. All temporary storage must have rigid sidewalls. The height, construction material and other conditions must be satisfactory to TDA and federal regulators.

4. All temporary storage must have a complete covering that is waterproof. No outside grain piles that are uncovered will be allowed. Outside grain storage that is uncovered will not be measured by TDA during regular grain warehouse examinations and will not be included in the warehouse inventory.

5. All temporary storage must have a proper and sufficient aeration system to maintain the quality of the grain in the same condition as it was received.

6. The grain warehouse bond must be increased at the required rate specified by law before approval to use the temporary facilities will be granted. TDA will advise each licensee of the amount of bond increase required after the warehouse examiner has made the initial inspection.

7. The grain must be fully insured against all risks specified in the grain warehouse law, and the increased amount of insurance must be in force before approval to use the temporary facilities will be granted.

8. Grain stored in the temporary or non-conventional storage facility must be moved into the regular permanent facilities as space in the permanent facilities becomes available.

Moeller said, "A survey of the state indicates we simply do not have enough existing storage space to take in this year's harvest. Our challenge is to see to it that temporary facilities can be used without adversely affecting the quality of the grain. It's very important that the same insurance and bonding requirements be maintained for the temporary facilities that we already have for the permanent storage sites. That will protect the farmers, and it will also protect the licensed grain warehouse owners."

There are approximately 745 grain warehouses licensed by TDA. Those in the Wichita Falls area, in the heart of the wheat-growing region, are already 77 percent full, according to Darrell Ketchum, director of TDA's grain warehouse program.

regular farm loan," notes the economist.

"All this means that net farm income in Texas will likely fall 10 to 15 percent from the depressed \$1.4 billion level estimated in 1985, says Anderson. That's a particularly sad situation considering Texas farmers only realized about a 1 percent return on their investment last year."

The 1985 farm bill is aimed at getting crop acreages down across the nation, and that approach seems to be working in Texas. Consequently, farm income is also expected to tumble.

With Texas farmers still in the thick of the spring planting season, overall crop acreages should be down sharply when the dust settles, says Dr. Carl Anderson, economist with the Texas Agricultural Extension Service, The Texas A&M University System.

Rice and soybean acreage is expected to be about one-third less than 1985 plantings, the sorghum crop should be down 16 percent, cotton acreage should be 12 percent less, hay production should drop 9 percent, and the corn and peanut crops should be off 3 percent from last year's plantings.

The deadlines in Texas plantings should be greater than in the nation as a whole, Anderson points out. Nationally, cotton acreage should be down 10 percent, corn 6 percent and sorghum 3 percent.

"While the new farm bill provides a safety net under farm income by keeping the same target prices as last year, the main feature of the bill is to let U.S. prices fall to market clearing levels," Anderson says. "That should boost use of crops and discourage production somewhat—especially in foreign countries. All this should encourage recovery of U.S. exports markets."

Although a weaker dollar overseas and lower prices could lead to a sharp increase in exports by 1987, the economist believes a noticeable market price recovery is still several years away.

"Market prices for 1986 should be near the adjusted loan rates," predicts Anderson. "These include \$2.40 per bushel for wheat, \$1.92 per bushel for corn, \$3.25 per hundredweight for sorghum, \$3.60 per hundredweight for rice and \$5 per bushel for soybeans."

The adjusted loan repayment level for cotton will be 80 percent of the base loan rate, says Anderson.

"Since most market prices for crops are expected to fall below the variable costs of production, most farmers will likely comply with the farm program for target price protection and use of the

HAPPY MOTHER'S DAY WEEK MAY 5th - 11th

FLOWERS SAY IT BEST. MOTHER'S ARE VERY SPECIAL PEOPLE. REMEMBER YOUR MOTHER WITH SOMETHING SPECIAL FROM ANN'S FLOWERS. WE CAN DELIVER A FRESH ARRANGEMENT, A BEAUTIFUL PLANT, IVY, BUD VASE, AND ARRANGEMENT OF ROSES OR A CORSAGE. LET US HELP YOU CHOOSE THE PERFECT GIFT. ORDER EARLY

Ann's Flowers
1025 N 2nd 928-4742



"The sooner you buy the bigger you save" SALE

John Deere row-crop tractor savings countdown

We have a good selection of John Deere 4050 through 4850 Row-Crop Tractors that you can buy at huge savings. The earlier you buy, the more you can save. See us for details.

- Interest-free financing* until January 1, 1987 on new models. (October 1, 1986 on used models).
- Discount in lieu of finance waiver on new models.
- Very attractive factory discounts passed on to you.

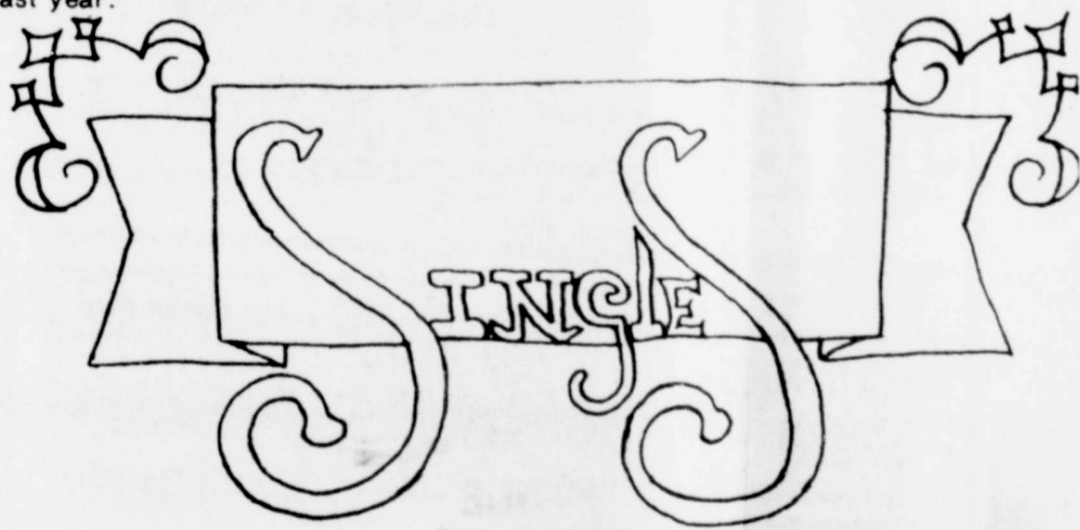
*Availability of John Deere financing subject to approval of credit.

See us right away—the sooner the better



Abilene Farm Supply
3526 S Treadaway
692-2255

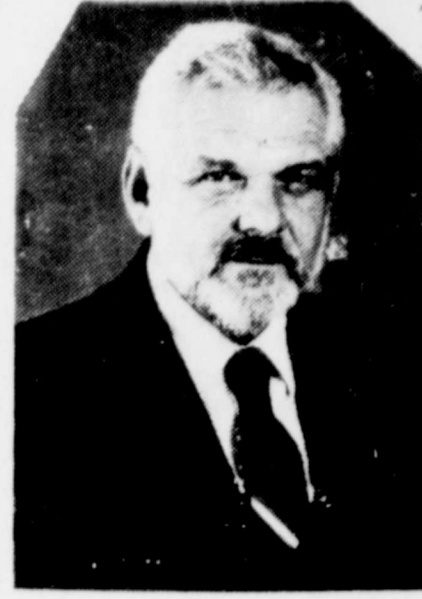
HURRY—Selected programs expire May 31, 1986



IT'S ALL UP
Come Join the Fun!!
NEW BEGINNING
Class
DISCUSSIONS
ON
Single Living

All Denominations Welcome to
Iye Baptist Church
207 Morgan
Fellowship Hall
7:00 P.M. EVERY TUESDAY

REFRESHMENTS
AND
NURSERY PROVIDED



Thank you for your support in the May 3rd primary. I would appreciate your continued support in the June 7th run-off for Justice of the Peace in Precinct 2
Jack Keenan

Political Advertisement

Paid For By

Jack Keenan, Rt. 1 Box 5, Merkel

REWARD!

\$100⁰⁰

FOR INFORMATION LEADING TO THE ARREST AND CONVICTION OF THE PERSON OR PERSONS RESPONSIBLE FOR THE SLASHING OF 10 NEW TIRES ON 4 NEW TRUCKS ON THE NIGHT OF MAY 1st. CONTACT Palmer Pontiac & GMC 928-5113

Political Ad paid for by Don Dudley

To all Taylor County Supporters

Thank you to all who supported me in any way: with your time, your work, your money, your encouragement, your support, and your vote last Saturday. I appreciate everything that you have done to help re-elect me as your County Commissioner. I realize that you are placing your confidence in me to represent you, to the best of my ability. My sincere thanks and appreciation to everyone!

Don Dudley

Lower Your House Payments

by contacting Counsellor Mortgage to refinance your first mortgage...
...if your current mortgage rate is 11.5% or more!

ACT NOW!

- Lower your house payments
 - Save on Total Interest Costs
 - Almost all closing costs can be financed
- Phone or stop by today!

	PRESENT NOTE	REFINANCED NOTE
Financed Amount	\$65,000	\$65,000
Rate	14.5%	9.5
PAYMENT	\$795.96	\$546.56
SAVINGS OF \$249.40 PER MONTH		

We Also Finance and Refinance Mobile homes On Land

COUNSELLOR MORTGAGE 698-9610

A FINANCIAL SERVICES CORPORATION 278 S. Pioneer
WITH COUNSELLOR MORTGAGE, A LOCALLY OWNED COMPANY,
YOUR LOAN WILL RECEIVE OUR PERSONAL ATTENTION!

Classifieds

CALL IN YOUR
CLASSIFIEDS
928-5712

For Sale

-We make hydraulic hoses.
P & L Auto Parts
135 Edwards
162-11p

928-4738
TFC

P & L Auto Parts is open from 7:30 a.m. until 6:30 p.m., Monday through Friday and from 7 a.m. until 3 p.m. each Saturday.
TFC

New Holland Baler for sale, model 281. Call 928-5050 \$2,000.
162-41p

For Sale: Travel trailer, 28', real nice. Call 928-5378 see at 311 Ash.
162-TFC

Mowers for sale and rent. Small engine and Bicycle repair. Garden tilling and lawn mowing. Sharpening service Buffalo Energy 928-4827, 1-9 p.m.
162-21p

For Sale: 5 piece living room suite, include Lay Z Boy rocker and recliner. Call 928-5947.
162-11c

Two 16" Schwinn bicycles with training wheels in excellent condition. Call 928-5852.
162-11c

Garage Sales

Big Sale Continued. Due to mix up and amount left, open Thursday and Friday, 8-8. Wimberly Road and FM 1235 2 1/2 miles NE of Allsup's Aluminum boat with 7 1/2 hp motor and trailer \$450. El Camino camper hull, 3 hp gasoline water pump, video disc player, meat smoker, moto cross chest pads, ceiling lights, paper backs, AKC Cocker Spaniel female \$100, misc galore.
162-11c

Garage Sale: Fri. and Sat. 9 to 5, 311 Runnels.
162-11p

Garage Sale: 605 Rose Street, lots of stuff, blouses and dresses, if you don't see what you want, ask us, we might have it. Friday and Saturday.
162-11p

Garage Sale: Thursday and Friday, 1 block west of Walls. Follow signs.
162-11p

Garage Sale: Saturday only at 819 Yucca. Clothes, various accessories, 8 am until 5 pm.
162-11c

For Rent

For Rent: 3 bedroom, 2 bath, furnished, water paid, close to school, washer-dryer, dishwasher. Call 928-5378.
160-TFC

For Rent: 2 bedroom all electric apartments. Upstairs \$250 with \$150 deposit. Downstairs with dishwasher \$275 with \$150 deposit. 928-5194.
149-TFC

Mobil home for lease with option to buy; two bedroom, 1 bath, completely furnished, one bedroom has a king sized bed, before 5 p.m. call 692-0702, after 5 call 928-4034.
107-TFC

For Rent: 3 bedroom house with stove & refrigerator, washer & dryer, ceiling fans, fenced yard \$300 per month \$150 deposit. 928-5194.
134-TFC

For Rent: 2 bedroom rock house, stove, refrigerator, \$250 per month \$150 deposit, 2 blocks from school. 928-5194.
134-TFC

Equal Housing Opportunity SHANNONSIDE APARTMENTS

1, 2, & 3 bedroom apartments, all electric, central heat & cooling. For more information call 928-5038.
89-TFC

1, 2 or 3 bedroom mobil home for rent in Merkel. Call 928-4973.
27-TFC

For Rent: 2 bedroom, living room, dining room, kitchen, central air and heat, stove, refrigerator, washer & dryer, edge of town on 1 acre \$375 per month \$150 deposit. Call 928-5194.
142TFC

For Rent: 1 bedroom, furnished apartment, water paid, central air, \$160 a month, call 928-5635, early morning or night.
162-21p

For Rent: 2 mobile home lots, 50 X 255 feet, call 928-5302.
162-21c

Real Estate

For Sale: 14 X 80 Schulz Mobil home. Will trade for equal value. Call 928-5673, ask for Joyce.
161-TFC

House For Sale By Owner: nice Locust street location, large living room, den with fireplace, 3 bedrooms, 1 3/4 bath, central heat and air, fruit trees, pecan trees, cement cellar, and water well. All of this for under \$40,000, call 928-5717.
159-TFC

Land for sale by owner. 160 acres after 6 call 928-4916.
157-TFC

For Sale: 3 bedroom 1 1/2 bath home at 1532 Sunset. Remodeled price reduced. Call Ted Smith 928-4728 or home 928-5081.
156-TFC

4 bedroom, living room, dining room, utility room, water well, call Cyrus Pee 928-5613.
153-TFC

House For Sale By Owner. Nice Locust street location, large living room, den with fireplace, 3 bedrooms, 1 bat3/4 bath, central heat and air, fruit trees, pecan trees, cement cellar and water well. All of this for under \$40,000. Call 928-5717.
155-TFC

For Sale By Owner 1 1/4 acres with 2 trailers, front trailer 2 bedroom 1 1/2 bath, kitchen, dining room separate, central heat & air, furnished nice, screened in front porch. Back trailer 3 bedroom, 1 bath, good furniture \$27,500. Call 928-5175.
155-TFC

Misc. Babysitting in a very Christian home. Monday-Friday anytime 6 a.m. to 6 p.m. Meals and snacks are furnished. Call 928-4011.
161-21p

PLEASE HELP. This is my last chance for adoption. I'm a nice Cocker Spaniel and I can fetch and play ball. Call Merkel Vet Clinic 928-5235.
162-11nc

Pee's Carpet Cleaning. Call for free estimates. 928-4896.
162-41p

New In Merkel H&B Lawn Mower Repair, quick service try us. 311 Runnels.
162-11p

Lost Small White Mixed Breed Dog. Part Poodle. Answers to Bridgett Reward, call 928-4476.
162-11c

Property management company is seeking a couple to manage Cherry Street Apartments and mini-storage warehouses in Merkel. Apartment and utilities furnished. Send resume to Omega Properties 2135 Hickory, Suite D in Colorado City 79612.
160-TFC

Evaporative cooler special. We will install new pads, clean and lubricate, adjust belt & water well. Also check for leaks and proper operation. \$16.25 Call 928-4986. We also make repairs and installation.
161-21c

Bob's Electric Service. Quality work, reasonable rates, construction or re-wiring, ceiling fans installed. No Job Too Small 928-5795.
159-TFC

KID'S KORNER DAY CARE CENTER 2nd & Oak. Open Monday through Friday 6:30 am until 5:30 p.m. Call 928-4381.
66-TFC

Germania Insurance Company. For your insurance needs. Local represented by Donna Carter. 928-5348.
33-TFC

LVN needed for the 2 to 10 p.m. shift. Also need an extra housekeeper. Apply in person at Starr Nursing Home.
158-TFC

Rabbit meat, Rabbits, cages, feeders, water bottles, rabbit feed, chicken scratch, cat and dog food, rabbit manure Buffalo Rabbit Farm 928-4827, 1-9 p.m.
162-21p

PROFESSIONAL DOG GROOMING ALL BREEDS HAND FLUFF DRY HAND SCISSORING FREE POLISH BOWS & COLOGNE. Please call Faye at 928-4474 after 1 p.m. for an appointment.
137 TFC

Cards of Thanks

The kindness and sympathy of neighbors and friends in our recent sorrow will always remain with us as a precious memory. Our sincere thanks and gratitude for those comforting acts.
Ruby Shipman and Family
162-11nc

Thank you for your words of concern, flowers, food, cards and prayers in the tragic loss of our loved one. These acts are deeply appreciated and gratefully acknowledged.
The Family of Velma Mashburn.
162-11nc

Public Notices

NOTICE OF SHERIFF'S SALE THE STATE OF TEXAS -County of Taylor NOTICE IS HEREBY GIVEN THAT BY virtue of a certain Writ of Execution issued out of the Honorable County Court at Law of Taylor County, of the 9th day of April, 1986, by Judgment of said County Court At Law for the sum of One Thousand Eight Hundred Eight Dollars & 66/100 Dollars and costs of suit under a judgement, in favor of NQR Pertol-eum, Inc. vs. Don Caraway, placed in my

hands for service, I, John W. Middleton as Sheriff of Taylor County, Texas, did, on the 9th day of April 1986, levy on certain Real Estate, situated in Taylor County, Texas, described as follows, to-wit: All Undivided Working Interest Which Consist Of 04800000 Down Hole Interest, Pump Jack, Heater Treater, Salt Water Tank, 2-210 Barrell Oil Storage Tanks. Sale will be held at 10.00 a.m.

153 acres of land out of the East side of the A. L. Vail Survey No. 427, Abstract 414, Taylor County, Texas, insofar as it covers the proration unit for the Jacobs 1A Well being located 330 feet from the East line and 1841 feet from the South line of A. L. Vail Survey No. 427, and levied upon as the property of Don Caraway, and that on the first Tuesday in June, 1986, the same being the 3rd day of said month at the Court House door, of Taylor County, in the City of Abilene, Texas, between the hours of 10 a.m. and 4 p.m. by virtue of said levy and said Writ of Execution I will sell said above described Real Estate at public vendue, for each, to the highest bidder, as the property of said Don Caraway.

And in compliance with law, I give this notice by publication, in the English Language, once a week for three consecutive weeks immediately preceding said day of sale, in the Merkel Mail, a newspaper published in Taylor County, Texas.

for County. Witness my hand this 22nd day of April, 1986. John W. Middleton Sheriff, Taylor County Texas by Eddie Swanson Deputy
90-162-31c

Omega Properties will hold a public auction on Tuesday, May 20th, 1986 at 7 p.m. at the Auction Gallery, 738 E 2nd & Highway 80 in Colorado City on various stored goods of Manuel Corales, Unit M 33. The auction conducted by Doyle Mitchell, auctioneer, Licensed and bonded TXS 0361676.
162-21c

Public Hearing The City of Merkel, Texas will conduct a Public Hearing at 7:00 P.M., May 12, 1986, at the Council Chambers, 107 Lamar Street, Merkel, Texas, for the purpose of soliciting citizen input for the develop-

ment of a Community Development Program. Application to be submitted to the Texas Department of Community Affairs. All citizens, particularly low income residents, are invited and encouraged to attend.

Kent Satterwhite Mayor
162-11c-22

Public Notice The City of Merkel, Texas will receive sealed bids until 4:30 P.M., Monday, May 12, 1986, on the rehabilitation of our residence and the demolition of one commercial building.

Bid information may be procured at City Hall, 107 Lamar and any and all bidders are invited to submit bids on this Community Development Project.
Kent Satterwhite Mayor
162-11c-18

Consolidated Plumbing
ALL WORK GUARANTEED
FULL TIME ANSWERING SERVICE 928-5627
RADIO DISPATCHED TRUCKS FOR FAST DEPENDABLE SERVICE IF NO ANSWER CALL 928-5263
OLD AND NEW WORK
TRENCHER AVAILABLE

Small Engine Repair
BROWNE ENTERPRISES
★ MOWERS ★ TILLERS
★ 2 Carson Circle ★ CHAIN SAW
★ WEED EATERS
928-4307
GOOD USED MOWERS FOR SALE
ALL REPAIRS WARRANTED
OPEN 8-6 CLOSED ON WEDNESDAY

VIC'S ROOFING
5 YEAR GUARANTEE
OVER 10 YEARS EXPERIENCE
IN MERKEL AREA ALONE
FOR FREE ESTIMATE CALL
928-4703
VICTOR LERMA
OWNER & OPERATOR

GENERAL REPAIRS
MOWER & TILLER SERVICE
WELDING ETC
N 2nd & Taylor STREET

FOR ALL YOUR INSURANCE NEEDS SEYMORE INSURANCES
Auto, Property, General Liability
Crop, Health, Life, Disability,
Tax shelters, Retirement,
Educational Plans
102 Edwards 928-5379

FOR SALE APARTMENTS-11 UNITS PLUS LAUNDRY & MINI STORAGE
100% OCCUPIED
ONLY 3 YEARS OLD
EXCELLENT TAX SHELTER
CALL 915-728-8619

NINTH STREET SATELLITE SALES
1207 S 9th 928-5331
MERKEL 928-4027
WEEKLY & MONTHLY SATELLITE TV GUIDES ARE AVAILABLE

The Merkel Mail

First Published
March 3, 1889

Cloy A. Richards—Editor—Co-Publisher
Melanie Richards—Co Publisher
Published at 916 North 2nd Street
Merkel, Texas

Entered As Second Class Mail at the U. S. Post Office in Merkel, Texas 79536

SUBSCRIPTION RATES
\$10 Per Year in Taylor County
\$11.75 Anywhere in Texas
\$12.50 Out of State

Professional Affiliations
TEXAS PRESS ASSOCIATION
NATIONAL NEWS PHOTOGRAPHERS ASSOCIATION

NOTICE

Typographical or other errors must be brought to our attention before the second insertion or claims for refund will not be recognized

CLASSIFIED RATES
Classified ads are \$2 for the first 18 words and 10 cents for each additional word if paid in advance. A 75 cent billing fee will be added to all charged ads. Ads that are charged and not paid within 30 days will be charged \$1 for each additional billing

PUBLIC NOTICE RATES
Legal notices are 55 cents per line for the first insertion and 45 cents per line for each additional insertion

Business Phone (915) 928-5712
Recorder on after hours or when out of office
Please Correspond top Box 428, Merkel

Merkel's Oldest Business
Publishing weekly since 1889

"Congress Shall Make No Law Abridging The Freedom of the Press

Subscriber Reserve the Right to Cancel Any advertisement at any time

WE WANT YOU TO READ OUR MAIL

NOW 9.9%
Annual Percentage Rate Financing
Save On All Used Motorcycles
KENT'S HONDA
642 Walnut St.
(915) 673-7103
Closed Sundays & Mondays



Funeral Pre-arrangement
The last and most loving bequest for your family.
Let us help
STARBUCK FUNERAL HOME
201 Edwards 928-4711

KOFOED'S REFRIGERATION & AIR CONDITIONING
SPRING START UP SPECIAL
FOR CENTRAL AIR SYSTEMS
\$24⁹⁵ INCLUDES FULL SYSTEM
CHECK & UP TO 1 LB OF R-22
CALL 928-5939

TIRE COMPANY, INC.
NEW & USED
• Truck Tires
• Truck Wheels
• Light Truck & Car
• Tubes
4 Miles West of Tye
120 N. Access Road
(Exit 272 West)
CALL 915-928-4376

Tall Tractor Barn
Extra-large 12' x 20' barn for garage storage. Heavy-gauge baked enamel steel siding. Heavy floor, no foundation needed. Lock.
SAVE \$300⁰⁰
Morgan Buildings
2775 S. Treadaway
Abilene, Texas 915-692-8100

LESTER HUMPHREY
TERMITE & PEST CONTROL
1202 PINE 677-2413

MERKEL VETERINARY CLINIC
OPERATED BY
BRADLEY R. BANNER, DVM
KATHRYN L. BANNER, DVM
SAME LOCATION FM 126 N
HOURS: MON-FRI 8:30-5:30
CLOSED FROM 12-1 SATURDAYS FROM 8 UNTIL NOON
928-5235 Appointments
928-4176 Emergencies

Texas farmers not breaking even, TDA Farm Crisis Task Force says

(AUSTIN)—"From the top of the Texas Panhandle to the Gulf Coast, Texas farmers just finished their worst year since the Great Depression with producers in almost three-fourths of the state unable to break even on a single major crop," Agriculture Commissioner Hightower reported at a State Capitol news conference. "By every indication, the farm crisis in Texas will be much worse in 1986."

"Unfortunately for Texas farmers, farm prices in 1986 are headed even lower, with the price for wheat, the first crop to be harvested in 1986, having plummeted almost 10 percent since it was planted," Hightower said.

"To date, the seriousness of the farm crisis in Texas has largely been gauged by the frequency and the length of different newspaper stories and television reports. To determine the true depth of the Texas problem, I appointed a 15-member Farm Credit Task Force, chaired by State Representative Steve Carriker, a family farmer from Roby, to make a detailed analysis of the Texas farm scene. Task Force members also included State Treasurer Ann Richards; James Rogers, president of the Farm Credit Banks of Texas; John Shivers, immediate past president of the Independent Bankers Association of Texas; Dr. Dean Hughes of Texas Tech University; Bishop Charles Grahmann of the Victoria Diocese; as well as bankers and farmers from across the state.

"The report, *Crisis in Texas Agriculture*, that has been delivered to me and released, reveals that thousands of Texas farm families are living a personal nightmare. A lot of people, including some government officials, have tried to portray the farm crisis as just a Midwestern phenomenon, contending that Texas farmers are largely better off financially than their counterparts in other states. Clearly, *Crisis in Texas Agriculture* dispels that myth and documents that falling crop prices, deteriorating land values, and faltering equipment sales have hit home with a vengeance," Hightower said.

"I commend all the members of the Task Force for their extensive research



Agriculture Commissioner Jim Hightower explained the effects the farm crisis is having on the northernmost counties of the Texas High Plains during a Capitol news conference to announce the release of *Crisis in Texas Agriculture*. The report was put together by the Hightower-appointed 15-member Farm Credit Task Force. Behind Hightower are (l-r) Richard Daly of the Texas Catholic Conference and State Rep. Steve Carriker (D-Roby), who chairs the Task Force.

effort. Their report is the most definitive documentation available of the toll the farm crisis is taking on the state and looks to the cause of those problems to make recommendations on solutions we should pursue.

FINDINGS

"The Task Force reached unanimous agreement that depressed farm prices are the cause of the farm crisis, but until this report there has not been a comprehensive, crop-by-crop, region-by-region study of just how low farm prices have really fallen," Hightower said.

"The Task Force also reports that only six of the 22 farming regions in Texas have a market price above the breakeven level for even one major crop, which is the price needed to recover the costs of production, including government payments."

The "breakeven figures" were

developed by Texas Tech professors Dean Hughes and Don Ethridge at the request of the Task Force. Hughes served on the Task Force as chairman of the Data Collection Subcommittee.

"Perhaps more dramatic than that, however, was the Task Force discovery that prices on 26 major crops in 14 farming regions are actually below the 'shutdown level,' which is the market price needed to recover only the variable costs of production, forgetting the cost of land and management," Hightower said. "The prices for both of the major crops—rice and soybeans—grown along the Upper Gulf Coast are below shutdown levels. Four out of six major crops grown in the Edwards-Aquifer region and in the Winter Garden region—dryland and irrigated sorghum, soybeans, and irrigated wheat—are below the shutdown level, and four out of five crops in Northeast Texas are below the shutdown level."

Mayor proclaims Buddy Poppy week

A PROCLAMATION WHEREAS: The annual sale of Buddy Poppies by the Veterans of Foreign Wars of the United States has been officially recognized and endorsed by governmental leaders since 1922; and

WHEREAS: V. F. W. Buddy Poppies are assembled by disabled veterans, and the proceeds of this worthy fund-

raising campaign are used exclusively for the benefit of disabled needy veterans, and the widows and orphans of deceased veterans, and the citizens of this community to recognize the merits of this cause by contributing generously to its support through the annual sale of Buddy Poppies on the day set aside for the distribution of these symbols of "Honoring the Dead by Helping the Living"; and

WHEREAS: I, Kent Satterwhite, Mayor of the city of Merkel do hereby urge the citizens of this community to recognize the merits of this cause by contributing generously to its support through the purchase of Buddy Poppies on the day set aside for the distribution of these symbols of "Honoring the Dead by Helping the Living"; and the proceeds of our honored

I urge all patriotic citizens to wear a Buddy Poppy as mute evidence of our gratitude to the men of this country who have risked their lives in defense of the freedoms which we continue to enjoy as American citizens.

Signed: Kent Satterwhite Mayor

CALL IN
YOUR
CLASSIFIEDS
928-5712

TIRE COMPANY, INC.
NEW & USED
★ TRUCK TIRES
★ TRUCK WHEELS
★ LIGHT CAR & TRUCK
★ TUBES ★ REMINGTON

EAST OF WYLIE SHAMROCK
1 MILE NORTH ACCESS ROAD
OPEN SUNDAYS CALL 928-4376

Public Notices

NOTICE TO ALL PERSONS HAVING CLAIMS AGAINST THE ESTATE OF VARINA E. LASTER, DECEASED

Notice is hereby given that original letters Testamentary for the Estate of Varina E. Laster were issued on April 28, 1986, in Cause No. 17,101, pending in the County Court of Taylor County, Texas, to:

Ray Inzer, Sr.
The residence of such Executor is Taylor County, Texas. The post office address is: c/o Gaston Welborn, Jr. P.O. Box 3812 Abilene, Texas 79604

All persons having claims against this Estate which is currently being administered are required to present them within the time and in the manner prescribed by law.

DATED the 30th day of April, 1986.
By Gaston Welborn Jr., Attorney for the Estate 162-11c-36

CAUSE NO. 17,040 NOTICE TO ALL PERSONS HAVING CLAIMS AGAINST THE ESTATE OF JOHN BRIGGS SIMONS, DECEASED

Notice is hereby given that Original Letters Testamentary for the Estate of JOHN BRIGGS SIMONS were issued on March 12, 1986, in Cause No. 17,040 pending in the County Court of Taylor County, Texas, to:

InterFirst Bank Abilene, Texas
The residence of such Executor is Taylor County, Texas. The post office address is: c/o Brad Harris Jackson & Jackson P.O. Box 878 Baird, Texas 79504

All persons having claims against this Estate, which is currently being administered, are required to present

them within the time and in the manner required by law. DATED the 1st day of May, 1986.

Brad Harris Jackson & Jackson P.O. Box 878 Baird, Texas 79504 (915) 854-1016 State Bar 09061800 Attorney for the Estate of JOHN BRIGGS SIMONS 162-11c-46

CITATION BY PUBLICATION THE STATE OF TEXAS TO: GEORGE (LAST NAME UNKNOWN) ADDRESS UNKNOWN, Respondent:

GREETINGS: YOU ARE HEREBY COMMANDED to appear and answer before the Honorable 326th District Court, Taylor County, Texas, at the Court-house of said County in Abilene, Texas, at or before 10 o'clock a.m. of the Monday next after the expiration of 20 days from the date of service of this citation, then and there to answer the petition of MAY GREEN, Petitioner, filed in said Court on the 24th day of April, 1986, against GEORGE (LAST NAME UNKNOWN), Respondent, and said suit being numbered 399-CX on the docket of said Court, and entitled "In The Interest of MAY GREEN, a Child", the nature of which suit is a request to determine what parent-child relationships exist between the child and any other persons, that an Attorney at Litem be appointed by the Court to represent the interest of those persons cited by publication, and that all such parent-child relationships be terminated. Petitioner prays for general relief. Said child was born the 13th day of April, 1986, in Abilene, Taylor County, Texas.

The Court has authority in this suit to enter any judgment or decree in the child's interest which will be binding upon you, including the

termination of the parent-child relationship and the appointment of a conservator with authority to consent to the child's adoption.

If this citation is not served within ninety days after the date of its issuance, it shall be returned unserved.

The officer executing this writ shall promptly serve the same according to requirements of law, and the mandates hereof, and make due return as the law directs.

Issued and given under my hand and the seal of said Court at Abilene, Texas, this the 24th day of April, 1986. Rilla Mahoney, Clerk, 326th District Court, Taylor County, Texas. By Rita Moore, Deputy. 162-11c-87

CITATION BY PUBLICATION THE STATE OF TEXAS TO: UNKNOWN FATHER Address Unknown, Respondent:

GREETINGS: YOU ARE HEREBY COMMANDED to appear and answer before the Honorable 326th District Court, Taylor County, Texas, at the Court-house of said County in Abilene, Texas, at or before 10 o'clock a.m. of the Monday next after the expiration of 20 days from the date of service of this citation, then and there to answer the petition of CHRISTIAN HOMES OF ABILENE, INC., Petitioner, filed in said Court on the 8th day of April, 1986, against Unknown Father, Respondent, and said suit being numbered 385-CX on the docket of said Court, and entitled "In The Interest of BABY BOY McCAIN, a Child", the nature of which suit is a request to the Court to determine what parent-child relationship exist between the child and the Unknown Father, and that all such parent-child relationship be terminated. Said child was born the 22 day of March, 1986, in Sweetwater, Nolan County, Texas.

The Court has authority in this suit to enter any judgment or decree in the child's interest which will be binding upon you, including the

ent-child relationship and the appointment of a conservator with authority to consent to the child's adoption.

If this citation is not served within ninety days after the date of its issuance, it shall be returned unserved.

The officer executing this writ shall promptly serve the same according to requirements of law, and the mandates hereof, and make due return as the law directs.

Issued and given under my hand and the seal of said Court at Abilene, Texas, this the 8th day of April, 1986. Rilla Mahoney, Clerk, 326th District Court, Taylor County, Texas. By Jo Ann Lackey, Deputy. 162-11c-81

Notice is hereby given that the Governing Body of the City of Tye subject to the provisions of Articles 2559/2566a, V.T.C.S., will receive applications from all interested banking institutions in the City of Abilene and Merkel, to serve as prime depository for the City of Tye and maintain custody of the funds of the City following acceptance by the City Council. Any such application shall be delivered to the office of the City Secretary, 205 North St., prior to 3:00 P.M. Monday May 19, 1986. Formal acceptance will be given the bids at the regular meeting of the City Council on Tuesday, May 20, 1986, at 7:00 P.M. 162-11c-27

Notice is hereby given that the Annual Report of the Claude and Mae Moss Charities, Inc. for the fiscal year ended December 31, 1985, will be available for inspection by any citizen upon request at its principal office at 1850 Elmwood, Abilene, Texas, during the regular hours of business from 8:30 a.m. to 5:00 p.m. Monday through Friday, for a period of 180 days from May 15, 1986.

The Claude and Mae Moss Charities, Inc., 1850 Elmwood, Abilene, Taylor County, Texas, Richard L. Spalding, Sr., Registered Agent. 162-11c-23

Allsup's wishes you a Happy Mother's Day

FAST 'N HOT
Burrito
85¢
5 OZ. PKG.

BORDEN'S HI PRO Milk
99¢
1/2 GAL. CTN.

ALLSUP'S 30 YEAR COMMEMORATIVE
Mug
FILLED WITH YOUR FAVORITE FOUNTAIN DRINK
99¢
ONLY REFILLED FOR 49¢

BORDEN FUDGE FROSTY Pops
\$1.39
24 CT. PKG.

ALLSUP'S
Ice
\$1.09
8 LB. BAG

PRICES EFFECTIVE MAY 8-9-10, 1986 WHILE SUPPLIES LAST

SUPPORT SPECIAL OLYMPICS BY PURCHASING DECKER PRODUCTS AT ALLSUP'S

FRESH HOT Corn Dogs 2 FOR 89¢	DECKER Bacon 1 LB. PKG. \$1.49
FRESH ORDER OF ONLY Onion Rings 59¢	DECKER Bologna 12 OZ. PKG. 99¢
USE OUR ONLY MoneyOrders 19¢	DECKER GOLD Chopped Ham \$1.09 6 OZ.

MEMBERSHIP \$1 MONDAY WEDNESDAY RENT 1 GET 1 FREE 2 MOVIES FOR \$3 VCR RENTAL \$5 PER DAY

16 OZ 6 PKCK
\$2.09

USDA accepting bids on set-aside crop land

Texas farmers will have another opportunity to put their erodible cropland into the government's Conservation Reserve Program when bidding reopens May 5-16.

Because the number of acres accepted into the program during the first signup period in March was less than expected, farmers can resubmit bids on land that was not accepted in Round One. At the same time, they can submit bids for 1987.

"The process is the same as during the first signup period," points out Dr. Bill Harris, soils specialist with the Texas Agricultural Extension Service, The Texas A&M University System. "A farmer or landowner must determine the eligibility of his land through the local Soil Conservation Service office. Then he must file the necessary paperwork at the Agricultural Stabilization and Conservation Service office and submit a bid on the land. This bid should reflect an acceptable income from the land plus costs of establishing and maintaining a permanent cover for the 10 year contract period."

Extension Service economist have developed a special worksheet that farmers can use to help them determine a responsible bid price. These worksheets are available at any county Extension office, Harris says.

The specialist reminds landowners and farmers that the CRP is a long-term soil conserving effort. Individuals whose bids are accepted enter into a 10 year contract and must establish per-

manent cover (grass or trees) on the land to protect it from wind and water erosion. Cost of establishing this cover will be shared 50-50 with the government.

Annual rental payments on the land will be limited to \$50,000 per farmer and will be in addition to annual commodity program payments.

The signup earlier this year fell far short of the acreage expected to be accepted into the program, Harris points out. Nationally, about 838,000 acres of highly erodible cropland were entered into the CRP, with only 29,052 of those acres being in Texas.

The U.S. Department of Agricultural had initially targeted 5 million acres for the program in 1986-825,000 of those in Texas. Over a five-year period, the USDA hopes to put some 45 million acres of the nation's cropland into the program, with 11.5 million acres targeted in Texas.

According to Harris, bid prices on land accepted into the program during the first signup period ranged from \$5 to \$90 per acre across the nation, with the average being \$41.82.

"Acceptable bid rates in Texas ranged from \$35 per acre in western sections to \$50 an acre in coastal and southern parts of the state," notes Harris. "Acceptable rates for the second bidding period are not directed by those accepted during the first round. Producers are encouraged to submit bids that are reasonable from their standpoint since the bids could become 10-year contracts."

MISD lunch menu

The Merkel School menu is as follows:

Monday May 12: Tacos, pinto beans, lettuce, cheese, cherry cobbler

Tuesday May 13: Bar-b-q pork, pork n beans, mix vegetables, hot rolls, rosey pears.

Wednesday May 14: Fiesta, pinto beans, lettuce, tomato,

cheese, stewed potatoes, hot rolls, blueberry squares.

Thursday May 15: Fried chicken with cream gravy, whipped potatoes, green beans, hot rolls, whipped jello.

Friday May 16: Hamburgers, french fries, lettuce, tomato, pickle, onion, peanut butter cookies.

Political Ad paid for by Leo Mashburn

To the voters in the Democratic Primaries on May 3rd.

I want to express

to you my sincere thanks and appreciation for your vote and support in the Democratic primaries on May 3rd. I still need your vote and support in the up-coming run-off election. Your confidence in me as your Justice of the Peace is deeply appreciated. Sincerely Leo Mashburn

FREE \$1000 HOMEOWNER'S COUPON PACK



2515 South Treadway
Abilene, Texas 79602
7 days a week
891-0221

Quality Equipment - Free Estimates - Sales & Service

Bob King
915-891-1602
Mobile Phone
873-2031 (home) 1517



TRANE

Ted Dement
915-893-5309
Ernest Park
915-893-4572

50 million people take comfort in it.

GIANT TRUCK SALE ON ALL GMC TRUCKS

33 Units to choose from...2% over cost



List \$13,772.00

1986 GMC SIERRA CLASSIC SHORTWIDE

SALE PRICE \$11,590.26

\$500 DN plus TT&L Monthly Payment \$287.87

8.9% Based on 8.9% Annual percentage rate
For 48 months. (on approved credit)

Includes: Air, tilt, cruise, 5.0 V-8, 3 speed automatic, power windows & locks, AM/FM stereo cassette, rally wheels, two-tone paint and much, much more.

MERKEL - I20/LOOP 39 - "IN MERKEL"
YOU'LL LIKE OUR PRICES
We Sell 'Em - We Lease 'EM

PALMER PONTIAC & GMC

RON PALMER KENT SATTERWHITE BOB PAZOUR
573-1182 - Abilene - 576-8921 Merkel Phone 928-5113

WILSON'S JEWELRY

STORE 141 Edwards 928-5621

For Mother's Day

A NEW SHIPMENT OF COSTUME
JEWELRY EAR SCREWS \$4.00 - \$5.00
BEADS \$6.50 - \$8.50 NEW GOLD FILLED
AND GOLD NECKLACES AND
EAR SCREWS

MANY PRETTY DECORATIVE
ITEMS FOR THE HOUSE

For Graduation

MANY NEW ITEMS FOR THE BOYS

GOLD FILLED NECKLACES
AND EAR SCREWS

FOR GIRLS \$12.50 AND UP

GOLD FILLED AND GOLD CHAINS

DIAMOND JEWELRY

WE INVITE YOU TO PAY ON ITEMS
SELECTED BY THE GRADUATES
WE HAVE

BULOVA & CARACELLE WATCHES
WE WILL SPECIAL ORDER THESE
OR TIMEX WATCHES

IF WE DON'T HAVE WHAT YOU WANT
'GRADUATES' COME SEE US OFTEN !!

HAMMOND
INSURANCE



AGENCY

A FULL SERVICE AGENCY

* HOMEOWNERS * AUTOMOBILE
* COMMERCIAL FIRE & CASUALTY
* LIFE * HEALTH

PERSONAL ATTENTION

WE ARE HERE

WHEN YOU NEED US

BOX 547 MERKEL 928-4122



HOT WEATHER

IS ON THE WAY!!

Get Your Air Conditioner Ready!!

\$26.00 16 pt. Checkup Includes: cleaning, lubrication, adjusting, and checking out the entire air conditioning system. Includes 1st pound freon free (\$4.00 value) if needed.

Residential And Commercial Air Conditioning!

Sales - Service - Repair - FREE Estimates

- * Commercial refrigeration service and repair.
- * Window units serviced and repaired.
- * One year guarantee on parts and labor (most repairs).
- * 10 percent Senior Citizen discount.
- * We accept MasterCard, Visa, and American Express.
- * Up to \$2,000 instant credit to qualifying home owners.
- * Fully licensed, bonded and insured.

* Serving 50 Mile Radius Of Abilene *

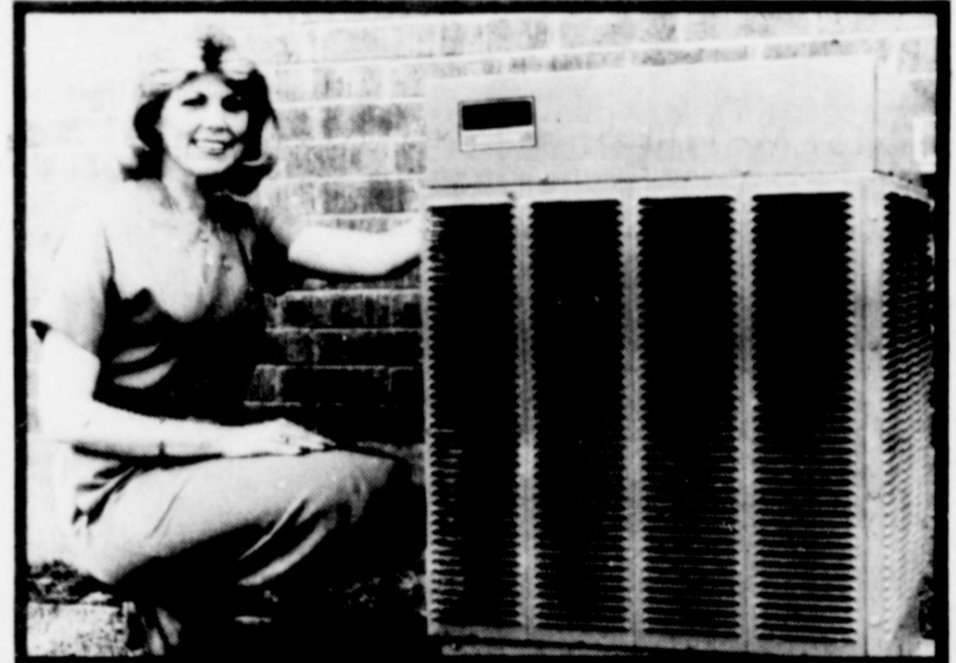
Call Collect

BIG COUNTRY
AIR CONDITIONING

672-2217
Comfort Maker
Magic Chef

BEFORE YOU BUY, BUILD, OR REMODEL, FIND OUT THE ADVANTAGES OF WTU'S NEW AND IMPROVED ENERGY SAVING PLAN...

... featuring
the energy-
efficient electric
HEAT PUMP
for both
cooling & heating!



THE NEW & IMPROVED E.S.P. PROGRAM WILL *PAY YOU LARGER CASH ALLOWANCES FOR INSTALLING:

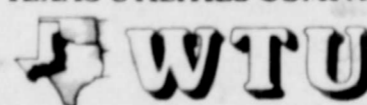
- Electric Heat Pumps
- Energy-Efficient Air Conditioners
- Heat Recovery Units

CASH ALLOWANCES AVAILABLE FOR:

- Single-family Homes (New & Existing)
- E.S.P.-Approved Apartments to Owners
- New & Existing Small Commercial Businesses.

*To Qualify, You Must Meet The E.S.P.
Requirements and Be Served by WTU.

WEST TEXAS UTILITIES COMPANY



A Member of The Central and South West System

For More Information on the NEW & IMPROVED E.S.P. Program, Call WTU.

4th grade students
tour Austin,
San Antonio

The 4th grade Gifted/ Talented students from Merkel I.S.D. made a tour May 2nd and 3rd to Austin and San Antonio. They visited historical sites which added to their celebration of Texas Sesquicentennial. Included on their tour was visiting the State Capitol, L.B.J. Library, San Antonio Missions, Institute of Texan Cultures and the Alamo.



[L to R] Pictured in front of the Alamo are Dana Hammond, Heather Henderson, Amy Podrovitz, Corey Dennis, Troy Roberts, Hyrum Mills, and Sandi Wood.

Rx For Consumers

Take one. It's free, and you don't need a note from your doctor.

It's the latest Consumer Information Catalog, the right prescription at the right price for the right information on issues that affect your health and home and pocketbook. The Catalog lists more than 200 federal publications you can send for. Many are free and all are helpful.

The Consumer Information Catalog. It's just what the doctor ordered. You can order one, too. It's your free by writing—

Consumer Information Catalog
Department Rx
Pueblo, Colorado 81009

U.S. General Services Administration

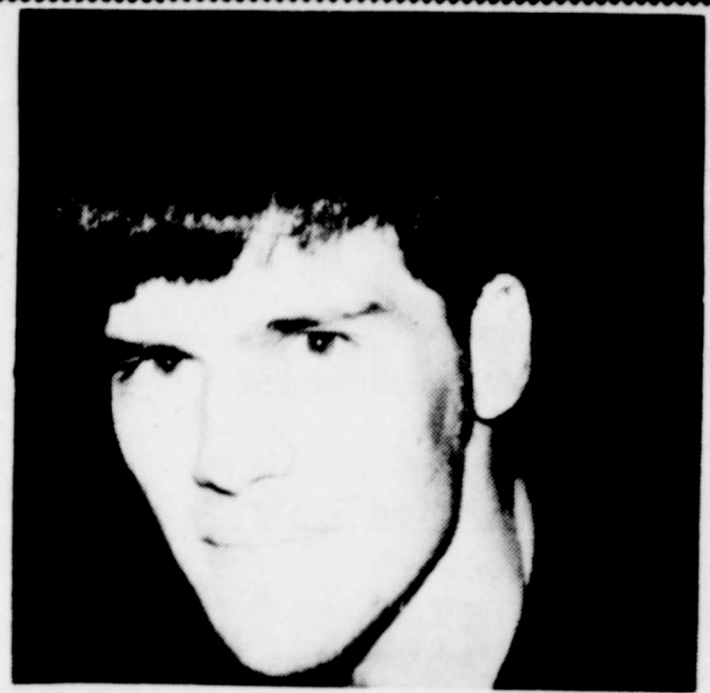
congratulations to the
badger band
for winning top honors at the
greater southwest music festival

PHILLIP WEST

PROFESSIONAL

BODY & PAINT

WORK



Call 928-5113

Palmer Pontiac & GMC

HANDY FOOD STORE
COCA COLA \$1.98 PLUS TAX
ALL FLAVORS 6 PACK
FOOD STAMPS WELCOMED
Fresh Sliced Lunch Meats and Cheeses
Bologna, Summer Sausage, Ham, Cervelat, Pressed Ham, Pimento Loaf, Bar B Q Loaf 1400 N. 1st 928-4912

Abilene Bedding Co.
677-5102 1149 Butternut
SAVE 20% OFF REGULAR PRICE
★ BOOKSPRING
★ NEW MATTRESS ★ RENOVATING
RENOVATE your mattress NOW & SAVE MORE
open 9-4 Monday - Thursday



IT'S UPSIDE
DOWNRIGHT
THICK

"DQ"
BLIZZARD

HAS THERE EVER BEEN A TREAT THIS THICK?
Introducing the BLIZZARD from DAIRY QUEEN, the most scrumptious treat ever! Try a BLIZZARD in our new flavors: get a BLIZZARD made with a Heath Bar, a Butterfinger, cookies, fruit—the choice is yours. Get carried away by a BLIZZARD soon, at a participating DAIRY QUEEN store near you.



WE TREAT YOU RIGHT

Welcome Spring Sale



WE'RE "SPRINGING" TO SAVE YOU \$\$\$
Get any or all cable-tv services for only...

\$1

installation
SAVE UP TO \$24!

- Offer good only in normal cabled areas.
- \$1 Special applies to installation charges only.
- Offer subject to close at the discretion of the Cable Company.

Merkel 928-4750

**Big Country
Cablevision**

STOREWIDE **LOW PRICES** **A BIGGER BAGFUL** for the Money!

PRICES GOOD THUR-FRI-SAT MAY 8, 9 & 10 STORE HOURS 7:30 a.m. - 6:30 p.m. MON THRU SAT CLOSED SUNDAY

TOOTH PASTE CREST \$1.09
4.6 OZ TUBE REG ONLY

TEA BAG LIPTON
1 LIMIT **\$1.63**
24 COUNT BOX
WITH \$15 IN TRADE OR MORE EXCLUSIVE OF CIGARETTES

FRITOS POTATO KINCAIDS CHIPS 6.4 OZ BAG **98c**

PINEAPPLE CRUSHED 19 OZ CAN **79c**
SUNSWEEET

PRUNE JUICE QT JAR **93c**

GREEN BEANS 2 FOR **89c**
DEL MONTE 303 CUT

GOLDEN CORN 2 FOR **89c**
DEL MONTE 303 W. K.

SWEET PEAS 2 FOR **89c**
DEL MONTE 303

SPINACH 2 FOR **89c**
DEL MONTE 303

TOMATOES 2 FOR **89c**
HUNTS 300 WHOLE

SEASON BEANS 23 OZ CAN **69c**
RANCH STYLE

PICKLES QT **89c**
H. B. DILL PARADE-SLICED

PUDDING 4 PACK **\$1.19**
DEL MONTE SNACK PACK CRTN

COCOA MIX 12 CT **\$1.19**
SWISS MISS BOX

FRESH PORK STEAK TENDER EXTRA TRIM LEAN **\$1.39**
LB

PORK CHOPS LEAN END CUT **\$1.39**
LB

PORK CHOPS CENTER CUT LEAN LB **\$1.83**

BRISKET PACKER TRIM 7-9 LBS **\$1.15**
GOOCH BR LB

GERMAN STYLE SAUSAGE 12 OZ PKG **\$1.39**
SMOKED

BACON NO 1 LB **\$1.79**
ARMOUR STAR

FRANKS BEEF OR ALL MEAT 12 OZ PKG **\$1.29**
ARMOUR STAR

BOLOGNA MARKET SLICED ALL MEAT LB **\$1.39**

GROUND TURKEY LB **\$1.09**
LOUIS RICH

CHILI WOLF 19 OZ CAN **\$1.09**

COUNTRY CROCK OLEO 1 LB TUB **69c**

POP-ICE 18 PK STICKS **83c**
FLA-VOR

COFFEE 13 OZ BAG **\$2.79**
2 LIMIT

PURITAN FLAKES 32 OZ JUG **\$1.73**
COOKING OIL

HAMBURGER HELPER 8 OZ BOX **\$1.19**
BETTY CROCKER ASST

WHIZ 8 OZ **\$1.19**
KRAFTS ASST

CRACKERS LB BOX **89c**
SUN SHINE

CORNBREAD MIX 16 OZ BOX **59c**
PIONEER

MACCARONI & CHEESE DINNER 2 FOR **49c**
PARADE 7.4 OZ BOX

SAUSAGE 2 FOR **83c**
LIBBYS 5 OZ VIENNA

GRAPE JELLY 18 OZ JAR **79c**
PARADE

MILK GAL **\$1.98**
JUG DAIRYLAND HOMO

PIZZA 12 OZ ASST PKG **99c**
PARADE 8 OZ WHIP

TOPPING 24 OZ BAG **69c**
STILWELL EA

SHORTENING 42 OZ CAN **\$1.29**
JEWEL

SUGAR 5 LB BAG **\$1.39**
1 LIMIT

FLAKES 18 OZ BOX **\$1.29**
POST TOASTIES CORN

HELPER 8 OZ BOX **\$1.19**
BETTY CROCKER ASST

WHIZ 8 OZ **\$1.19**
KRAFTS ASST

CRACKERS LB BOX **89c**
SUN SHINE

CORNBREAD MIX 16 OZ BOX **59c**
PIONEER

MACCARONI & CHEESE DINNER 2 FOR **49c**
PARADE 7.4 OZ BOX

SAUSAGE 2 FOR **83c**
LIBBYS 5 OZ VIENNA

GRAPE JELLY 18 OZ JAR **79c**
PARADE

MILK GAL **\$1.89**
JUG FOREMOST LOW FAT

JELLO 2 SM. BOXES **79c**
NUTRA SWEET

COOKIES 12 OZ ASST **\$1.19**
DUNCAN HINES

CHEESE 12 OZ PKG **\$1.59**
VELVEETA SINGLE SLICED

WHIP QUART JAR **\$1.49**
1 LIMIT
MIRACLE KRAFTS

STRAWBERRIES Large... Luscious... **59c**
PT
CALIFORNIA

BROCCOLI LB **59c**
FRESH

BANANAS LB **39c**
GOLDEN

MUSHROOMS EA **99c**
FRESH 8 OZ

ORANGES **\$1.39**
CALIFORNIA 4 LB BAG

CABBAGE LB **15c**
FRESH GREEN

ONIONS LB **19c**
YELLOW

SPUDS 10 LB BAG **\$1.09**
RUSSET

CHEESE 16 OZ CRTN **\$1.29**
FOREMOST COTTAGE

MILK 1/2 GAL CRTN **\$1.09**
FOREMOST BUTTER

TIDE GT BOX **\$1.79**
DETERGENT

JOY 22 OZ BOTTLE **99c**
LIQUID

TOWELS JUMBO ROLL **59c**
HI-DRY

STAMPS EACH WEDNESDAY **ON \$5 OR MORE IN TRADE**
DOUBLE GIFT BOND

CARSON'S SUPER MARKET
WE WELCOME FOOD STAMPS