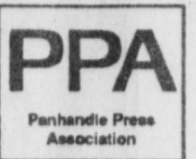




BAILEY COUNTY JOURNAL



Volume 36, No. 10

Published Every Sunday at Muleshoe, Bailey County, Texas 79347

Sunday, March 9, 1997

Election interest light as filing deadline nears

By SAMUEL VILLARREAL
Journal Staff Writer

With the filing deadline just days away, only one of the five area elections features contested races.

While six people have filed for the three at-large positions on the Lazbuddie School Board, elections for school board in Muleshoe and Maple have yet to see any opposition. The story is the same in the Muleshoe mayoral and hospital district races, where the incumbents are the only candidates who have filed or shown an intention to file.

Candidates have until March 19 to file for candidacy in the the area elections, all of which are scheduled for May 3.

In Lazbuddie, incumbent school board members Thomas Martin and Gail Morris have drawn opposition from Garvin Thom, Donnie Coker, Vernon Turner and Charleson Steinbock. If the field remains the same through filing day, at least one of the challengers will be elected because Randy Tho-

ELECTION UPDATE



March 19 is the deadline for the May 3 general election.

mas, who has served on the LISD school board for six years, has announced he will not run for re-election.

Martin has held an at-large position for the past 3 years while Morris is a six-year veteran of the LISD board.

Applications to be placed on the ballot must be received in the LISD administration offices by the March 19 deadline. The election will be held in the Lazbuddie School auditorium.

Muleshoe Mayor Robert Montgomery, who has served in the position since 1992, is

Continued on page 3



JOURNAL PHOTO BY LESLI RADFORD

From the heart

Watson Junior High's Laura Wood performs "Against All Odds" Thursday during the Muleshoe High School Student Council's third annual talent show. Fifty percent of the proceeds will be donated to St. Jude's Childrens Hospital.

Diaz wins Muleshoe spelling bee

By SAMUEL VILLARREAL
Journal Staff Writer

DeShazo Elementary fifth-grader Elida Diaz correctly spelled "porcupine" to win the Muleshoe spelling bee Thursday afternoon.

The spelling bee, which took place in the administration building of the Muleshoe Independent School District, included sixteen students from DeShazo Elementary and Watson Junior High School.



Diaz

The competition ended only after a long final round between Diaz and WJHS eighth-grader Michael Collins.

At the start of the final round, consisting of occupations, Collins misspelled "obstetrician", only to be redeemed when Diaz misspelled "sculptor".

The two spellers then blazed through medical terms like "cancer", "mumps" and "fracture," until Collins once again stumbled, this time missing "coronary." He was once again saved when Diaz misspelled "seizure."

The two spellers moved on to mammals, but after two rounds, Collins incorrectly spelled "leopard." Diaz went on to spell "porcupine," letting out a dramatic sigh of relief when told she was correct.

Diaz will represent Muleshoe at the regional spelling bee March 29 at Cavazos Junior High School in Lubbock.

Other students participating in the bee included Ashley Williams, Juanita Mendoza, Paje Depalma, Elida Diaz, Jeremy Norman, Sarah Dominguez, Latasha Glover, Ashley Beggs, Judy Marquez, Kelsey Beggs, Travis Tunnell, Louie Pacheco, Zach Barrett, Adrienne Ashford and Tarrell Tunnell.

Continued on page 3

Bruns invited to participate in international organ event

By Samuel Villarreal
Journal Staff Writer

Muleshoe native Jeremy Bruns is one of four Americans and the only Texan among 12 competitors selected to participate in the first Dallas International Organ Competition on April 7-15.

The winner of the competition will appear as a soloist with the Dallas Symphony Orchestra later this year.



Bruns

Bruns will be joined by competitors from Scotland, Canada Japan and Germany.

The 1991 graduate of Muleshoe High School says he prefers playing the organ because of its versatility.

"The organ allows you to play a wide range of music, from soft to loud and everything in between," Bruns said in a phone interview Wednesday.

Bruns first began playing the organ in eighth grade, after several years studying piano.

After graduating from MHS, Bruns went on to earn a bachelor's degree in organ performance at the Texas Tech School of Music in Lubbock.

In 1996, Bruns received his

Continued on page 2

West Texas Rural Telephone to elect Parmer County directors

West Texas Rural Telephone Cooperative members will elect a Deaf Smith County director and two directors from Parmer County during their 43rd annual meeting March 18, at the Hereford Bull Barn.

The annual meeting will begin with registration and serving of a buffet-style barbecue supper at 6 p.m.

The business session, set to begin at 7 p.m., will include a report on the financial status of the cooperative by WTRT Manager Thomas Hyer.

Charles Myers, the incumbent director for the Hub exchange, is unopposed.

Incumbent Floyd Schueler will run against John Mars for the Parmer exchange seat.

Incumbent Dick Fellers and Lawrence Broman are candidates for the Dawn exchange position on the board.

Myers, a grain and cotton farmer in Parmer, has represented the Hub exchange on the WTRT board since 1973. He has held board offices including president, vice-president, and secretary-treasurer. During his board tenure, Myers has served on and chaired the Program Planning Committee of the National Telephone Cooperative Association, and has also served on the Economic Development and Finance Committees of the NTCA. Myers has also served as a member of the board of directors of the Parmer County Farm Bureau.

Schueler has served the Parmer exchange as director since 1985 and has held WTRT board offices including secretary-treasurer. A Parmer County native, he is engaged in farming near Friona. He has also served as a member and officer of the Rhea/Hollene Volunteer Fire Department.

Mars, 48, is a Parmer County grain, cotton, and livestock farmer, and has been a WTRT member since 1972. He grew up near the Black community and is a graduate of Hereford High School. He received a degree in agriculture business from West Texas State University.

He and his wife, Evelyn, who is employed by Parmer County Implement Company, have two daughters and a son, and two grandchildren.

Mars is a member of the Friona Chamber of Commerce Ambassadors, and has served as Friona Chamber president. He and his wife are active in the American heart Association. He has served as Master of the Masonic Lodge in Friona. The Mars are members of the Friona United

Continued on page 3

Teen Leadership receives statewide recognition

By SAMUEL VILLARREAL
Journal Staff Writer

Muleshoe High School's Teen Leadership organization is receiving statewide attention for their newsletter and class projects.

The MHS Teen Leadership Class was recognized in the latest newsletter of the Texas Leadership Education Foundation for their work on their own local newsletter, which highlights the activities and accomplishments of Teen Leadership members.

The newsletter's "Spotlight on Success" featured MHS' Teen Leadership organization along with organizations from much larger Houston and Dallas schools.

Teen Leadership Instructor Carolyn Johnson believes the state newsletter learned about her class through Flip Flipper, the man who organized the Teen Leadership organization in Texas. Flipper, who receives the local newsletter, also works with the Texas Leadership Education Foundation.

In addition to gaining attention for their newsletter, the MHS Teen Leadership classes was recognized for their work with state legislators in coordinating a tour of Austin.

Students have been earning points during the school year through extra work and projects. The students with the

Continued on page 5



JOURNAL PHOTO BY SAMUEL VILLARREAL

Their own medicine

Muleshoe High School Teen Leadership reporters (from left) Stephan Sutton, Lisa Garcia and Amanda Valdez read an article in the Texas Leadership Foundation's quarterly newsletter, which featured an article on MHS's own leadership newsletter.

AROUND MULESHOE

Cancer screening price change announced

Information previously released by the Don and Sybil Harrington Cancer Center concerning the cost of the March 10 cancer screening clinic in Muleshoe was incorrect, according to Center representative Jeanne Brown. The cost of the screening will be \$75.

Participants will receive a lost-cost screening that includes a mammogram and instruction on self-examination by a registered nurse.

Funding is available through the Texas Department of Health for Texas residents who qualify for assistance. All exams are done by appointment only. Call 359-4673 or 1-800-377-4673 ext. 176 for more information.

Alzheimers group meeting March 13

The Alzheimers Care Group will meet at 7 p.m. March 13 at the United Methodist Church in Muleshoe.

For more information, call Mary Nell Bleeker at 272-3696.

MISD considering Spanish night course

The Muleshoe Independent School District is considering a beginning conversational Spanish class, to start March 18. Cost would be \$100.

The six-week course would be held Tuesday evenings from 6:30 - 8:30 p.m. at DeShazo Elementary (room 22) and be taught by Connie Alanis.

Persons interested in taking the class should call the MISD administration building curriculum office at 272-3325. A minimum enrollment of 10 people is required for the class to be offered.

Soup and Sandwich luncheon March 13

This month's Soup and Sandwich Luncheon meeting will be held March 13 from noon to 1 p.m. at the fellowship hall of the 16th and D Church of Christ in Muleshoe. The meal will feature chili.

This month's program will be a Easter video presentation portraying the Last Supper.

Kids First ministry meeting Tuesdays

The First Baptist Church of Muleshoe will hold an after-school children's ministry each Tuesday afternoon, except for spring break, from 3:30 - 4:45. The group meets at the First Baptist Church Activity Center, 219 E. Avenue B.

The meetings are led by responsible adults and teens, and feature activities and recreation for the kids.

For more information, call the First Baptist Church at 272-4224.

MISD spring break March 24-28

The Muleshoe Independent School District will dismiss students and teachers March 24-28 for the scheduled Spring Break holiday.

School will resume on Monday, March 31 instead of Tuesday, April 1 due to one day of school being missed earlier this winter for bad weather.

PSA training course in Morton March 15

The Texas Farmers Training Coop will present part I of the "Top Quality Producer" training program March 15 the Cochran County Activity Building in Morton.

Part I of the Top Quality Production training program is required before any other courses can be taken and will not be offered again in Morton until Fall 1997.

For additional information, contact R.G. Detlefsen at (817)772-2013 or Karen Harlan at (806) 546-3200 (evenings).

WTAMU hosting Junior/Senior preview

West Texas A&M University's Students Foundation, along with the Office of Admissions will host Junior/Senior Preview March 22. The event is for high school students interested in attending WTAMU or finding out more about the university.

There is no charge for Junior/Senior review, but reservations must be made before March 19.

For more information, contact the Office of Admissions, WTAMU Box 907, Canyon, Texas 79016, or call (806) 656-2020 or 1-800-99-WTAMU.

LOCAL WEATHER AT A GLANCE

	HIGH	LOW	PRECIP
3/4	74	30	—
3/5	74	22	—
3/6	56	42	—
3/7	62	24	—

Source: F.G. Bennett, Observer - National Weather Service

Extended Forecast

Cloudy through the weekend, with a chance of thunderstorms on Saturday. Weekend lows in the 30's, highs in the upper 50's. Clear skies by next week, with lows in the 40's and highs in the 70's.

School Menus

For the week of March 10-14

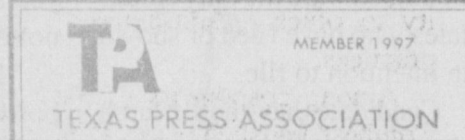
MULESHOE	Jr. High and High School
Dillman & DeShazo	Breakfast
Breakfast	Monday—French toast, fruit or juice, milk. Tuesday—biscuit w/ gravy, fruit or juice, milk. Wednesday—oatmeal, cinnamon toast, fruit or juice, milk. Thursday—pancake, fruit or juice, milk. Friday—cinnamon roll, fruit or juice, milk.
Lunch	Monday —Mexican pile-on, rice, pinto beans, lettuce, tomatoes, milk. Tuesday—foot-long chili dogs, baked beans, veggie stix, sliced peaches, milk. Wednesday—creole spaghetti, crinkle carrots, mixed fruit, Italian bread, milk. Thursday—corn dog, veggie soup, cinnamon roll, pears, milk. Friday—fish filet, macaroni & cheese, apple cobbler, hot roll, milk.

Bailey County Journal USPS 040-200

Established March 31, 1963, Published by Triple S Publishing, Inc. Every Sunday at 304 W. Second, Box 449, Muleshoe, TX 79347. Second Class Postage paid at Muleshoe, TX. POSTMASTER: Send address changes to the Bailey County Journal, P.O. Box 449, Muleshoe, TX 79347.

We are qualified members of: Panhandle Press Association, National Newspaper Association, West Texas Press Association and Texas Press Association.

WEST TEXAS PRESS ASSOCIATION



PPA Panhandle Press Association

Scot Stinnett, Publisher

Lisa Stinnett, Vice-President/Comptroller

Rick White, Editor

Jessica Orozco, Classifieds

Pat Durben, Advertising

© 1990



SUBSCRIPTIONS: Muleshoe Journal and Bailey County Journal By Credit Yearly \$22.00 Bailey and surrounding counties (normal) \$24.00 Elsewhere \$26.00 Advertising Rate Guide on Application

*Advertisers should check their ad the first day of insertion. The Journal will not be liable for failure to publish an ad or for a typographical error or errors in publications except to the extent of the cost of the ad for the first day of insertion. Adjustment for errors will be limited to the cost of that portion of the ad where the error occurred.

Bruns

Continued from page 1

masters degree in music performance and literature from the Eastman School of Music in Rochester, N.Y.

Bruns said he prefers the baroque style of music, which was developed during the Renaissance and written specifically for royalty. Bruns said he enjoys the challenge of playing such regal music.

Bruns attributes his success as an organist to the encouragement he receives from his family and instructors.

Bruns, who played organ at the United Methodist Church in Muleshoe for six years, is currently serving as organist at the United Methodist Church in Shreveport, La.

CORRECTION

Brice Redwine of Lazbuddie, had the reserve breed champion at the Houston Livestock Show & Rodeo.

In a March 6 story, the Journal listed Brice Foster of Lazbuddie as having the reserve Main Anjou champion at Houston.

The Journal regrets the error and any inconvenience the mistake may have cause.

Easter Basket Supplies... Just in time for the Easter Bunny...

Basket supplies - Flowers - Craft items - ART Supplies Available to order

See All the Treasures your heart can imagine... at Treasure's from the Heart

Visit Booth #79

MUN Creations
305 E. Birch St.
Muleshoe, TX 79347 272-5064

Treasure's from the Heart
W. American Blvd. Muleshoe

Sounds are measured in decibels. Those quieter than ten decibels are hard for the human ear to detect. Those louder than 120 decibels can be painful. A watch ticks at about 20 decibels.

HEADS UP!

Roy Snodgrass uses his some 40 years of experience to custom crease that hat of your choice.

Super Hat Sale!

Inventory Reduction on Resistol Hats

40% Off

All 4X Beavers (silver belly, black)

20% Off All Others

NO SECONDS!

Rip's In Texico
314 Wheeler
482-3363
800-748-2459

WE ACCEPT:

Layaways Welcome

Open Monday -- Saturday
9 a.m. -- 6:30 p.m. cst

Home Folks Caring For Folks At Home

MULESHOE AREA HOME HEALTH Agency

Featured Patient

Beatrice Vaughan has lived in Lazbuddie since 1947. She is married to T.D. Vaughan. They have three children - Theron Vaughan Jr. of Georgetown, Shelia May of Amarillo and the late Larry Vaughn. They have four grandchildren and two great-grandsons.

The Vaughan's attend the Baptist Church. Mrs. Vaughan enjoys the girls from the Muleshoe Area Home Health Agency very much. They have been a great help.

Beatrice Vaughan

To receive Home Health Services, talk with your physician or talk with hospital personnel when you are hospitalized.

24 Hour # 272-3346
Local Nurse on call 24 hours a day to offer prompt service.

We accept Medicare, Medicaid and Private Insurance
It is Your Right To Choose The Home Health Agency You Prefer.

FREE Information on New Out Of Hospital Advance Directives will be available soon!

Watch this ad for further info as it comes available.

We care for you at home

Affiliated with Lubbock Methodist Hospital Systems

Combest introduces pea & bean legislation

WASHINGTON — U.S. Rep. Larry Combest (R-Lubbock) is working to reinstate needed flexibility for farmers of the Texas High Plains to plant a follow-on crop of black-eyed peas, if their main commodity crop fails.

As vice chairman of the House Agriculture Committee, Combest on Tuesday introduced the legislation, H.R. 913.

He noted that it has been a long-standing practice for farmers to plant a vegetable crop when their cotton crop fails because of drought, pest infestations, or other adverse weather conditions.

Under previous commodity program regulations, farmers could plant a fallback fruit or vegetable crop without losing their deficiency payments.

However USDA will not grant an exception provided for failed acres under the 1996 Farm Bill, despite its similarity to other "grandfathered" practices.

Among cosponsors of the Combest legislation are U.S. Representatives Charles Stenholm (D-Texas), Mac Thornberry (R-Texas), and Frank Lucas (R-Oklahoma).

"A number of producers have found that ghost cropping black-eyed peas can effectively spare them economic loss when they lose their first, primary crop," said Combest. "This very narrow technical fix keeps the ground productive with a useful crop that presents very little, if any, unfair competition to the nation's produce industry."

Telephone

Continued from page 1

Methodist Church, where he serves on the administrative board, the board of trustees, and the finance committee.

A catered barbecue dinner will be served by K-Bob's Steak House of Hereford, and drawings for doorprizes valued at over \$1,000 will be held. The grand doorprize will be a beef gift certificate for \$200.

Have a nice day!



Presidential aid

Sharon Grant, president of the Muleshoe Association to Serve the Hungry (MASH) refills a cup of ice tea during a fundraising luncheon Thursday at the First Baptist Church. Grant called the luncheon "an overwhelming success."

Election

Continued from page 1

currently the only person to have filed for a place on the May 3 ballot.

Two positions on the Muleshoe Area Hospital District Board will also be up for election: Position 2, currently held by Tim "Buck" Campbell, and Position 4, currently held by Bob Finney. Both Finney and Campbell have requested applications to be placed on the ballot for the election. No other applications have been requested so far, according to MAHD administrative secretary Sharon Plott.

Campbell and Finney have each served on the hospital board since its creation in 1989.

Seats 1 and 4 on the Muleshoe Independent School District Board of Trustees will be up for election.

Arnold Price, who has held Position 1 on the MISD board for six years, and Curtis Shelburne, who has held Position 4

for nine years, have both filed for re-election.

The elections for MISD school board and Muleshoe Area Hospital board positions, as well as the mayoral election, will be held May 3 in the Muleshoe High School cafeteria.

Three at-large positions will be up for election on the Three Way ISD board.

The three positions are currently held by Robert Kindle, Jr., Terry Pollard and James Kindle, but no one has yet filed to run. Applications for candidacy are available at the Three Way Business office, and must be filed by March 19.



Most children will have a full set of 20 teeth by the age of three years.

LETTER TO THE EDITOR

Dear editor,

We are writing regarding the announced changes that will take place in upcoming months as Southwestern Public Service merges with Public Service of Colorado.

We are very concerned that the "75 years of good service" may be coming to an end. For well over 30 years, SPS has had an office that has played a vital role in Muleshoe from not only a service standpoint, but also through the active involvement of the employees in the community.

We have long felt that your company has been a friend and an ally in economic development in rural West Texas and Eastern New Mexico, but by closing the office here, your company will be dealing our community a severe economic blow.

Certainly customer service and customer satisfaction will suffer when the convenience and personal consideration for customer concerns are gone.

We feel that the business community will also miss the high quality of service and response that we have had in the past.

Muleshoe businesses serve all communities in Bailey County as well as Lazbuddie,

consider closing the Southwestern Public Service office in Muleshoe.

We look forward to your response.

The Muleshoe Chamber of Commerce & Agriculture is also urges concerned citizens to write a letter to the Public Utility Commission of Texas, Consumer Affairs, 7800 Shoal Creek Blvd., Suite 272N, Austin, TX 78757 and to SPS Chief Executive Officer Bill Helton, P.O. Box 1261, Amarillo, TX 79170.

— Board members of the Muleshoe Chamber of Commerce & Agriculture

your goal was for it to be "invisible to the customers."

As the plan now stands, nothing could be further from the truth. Since the local office is supported by the local customers, and since the proposed changes will certainly require new costs, why make the change?

The savings don't seem to be there.

We implore you to recon-

March Madness

SHOE OF THE WEEK



Air Diamond Elite
Nike's #1 Sports Training Shoe
Reg. \$94.95 - SALE SPECIAL
\$79.95

March Madness is 10% OFF on any regular priced item

Williams Athletics

322 Main, Muleshoe
806-272-MULE
(6853)

Let "The Luck of the Irish" Be With Thee -
Tis No Blarney - Come Celebrate



35th Anniversary
March 11th & 12th
Barrels of Fun • Prizes Galore
• Refreshments Provided
20% Discount on Spring Merchandise
Tuesday & Wednesday only!

500 Main
Clovis, NM
505-763-7153
Sizes 3 thru 18

THERE ARE TWO CHOICES FOR PEOPLE WATCHING CABLE TV WITHOUT PAYING...



\$2000
in fines
6 months
in jail



THE CHOICE IS YOURS!

Our house-to-house audit to spot cable theft will soon be underway. If you are receiving unauthorized cable service, call to sign up for cable amnesty and become a paying customer. No penalties. No questions asked.

CALL TODAY



1-800-999-8876
Community * Commitment * Customer Service

YOUR FARM & RANCH SAVINGS SOURCE!

Payless Cashways

PRICES GOOD THRU 3-15-97

PANELS & GATES



52"x16' Stock Panel
4-gauge steel. All galvanized, welded steel. (442226) **\$12.49**



52"x16' Combination Panel (159222) **\$16.49**



12' Utility Corral Panel
Powder coated in a leather brown finish. Chain connectors. (472447) **\$52**



12' Brown Entrance Panel With Gate (479405) **\$95**



10' Utility Tube Gate
50" high. Includes chain latch, adjustable hinges and lag bolts. (470224) **\$46**



12' (471423) \$49 14' (471458) \$58 16' (472203) \$65



52"x10' Steel Panel Gate
Hardened 24-gauge galvanized spring steel. Fully riveted. Includes chain latch, hinges and lag bolts. (159387) **\$37**



52"x12' (159395) \$40 52"x16' (159415) \$52 52"x14' (159407) \$48

WIRE FENCE



48"x100' Non-Climb Horse Fence
12-gauge galvanized wire. Stiff stay knots are smooth on both sides to prevent injury to animals. (159143) **\$79**



60"x100' (159151) \$93 72"x100' (159178) \$119 39"x330' High-Tensile Field Fence
14-gauge Class 3 galvanized wire. (340225) **\$67**



47"x330' (316852) \$74 32"x330' Hinge Joint Field Fence
14-gauge galvanized wire. (159021) **\$58**



39"x330' Square Deal
12-gauge (959818) **\$74 47"x330' Square Deal**
12-gauge (959893) **\$84**

T-POSTS



5 1/2" Medium Duty T-Post
Tough, resilient rail steel. Industrial quality baked-on finish. T-shape for added strength. #125 (159876) **1.95**



6' (159884) 2.05



6 1/2' (159892) 2.19

STOCK TANKS



100-Gallon Poly Stock Tank
Contains UV inhibitors to prevent deterioration from sunlight. (642647) **\$57**



150-Gallon (642698) \$79

BARBED WIRE & CABLE TWIST WIRE



2-Point High-Tensile Barbed Wire
Class 3 zinc coating for rust resistance. 80 rod roll. 15-gauge. (852522) **22.75**



2-Point 12-gauge. (158686) 25.75



Cable Twist Wire
12-gauge barbed cable. Galvanized Made in the USA. 80-rod roll. (473787) **28.75**

LUBBOCK

5921 34th STREET
W. 34th St. & Loop 289
793-7451 164

LUBBOCK

102 E. 50th STREET
50th & Ave. A
763-4346 46

AMARILLO

5200 SOUTH WESTERN STREET
(806) 359-8501 196
(806) 359-5451 COMMERCIAL PHONE



Mules rebound with 5-1 win at Frenship

WOLFFORTH—Layne Kemp pitched a six-hitter and Rodney Alanis drove in four runs, leading Muleshoe to a 5-1 win over Lubbock Cooper Thursday in the first round of the Frenship Junior Varsity Tournament.

Muleshoe (2-2) played Olton Friday in the championship quarterfinals. Olton beat Ralls 8-6 in the first round.

Sophomore Josh Pyle was expected to start for Muleshoe against Olton.

Kemp (1-2) struck out eight and walked two while going the distance.

Muleshoe coach Brad Hill was happy with the way his team rebounded from a 32-2 shellacking at the hands of Seminole Monday.

"It was important that we came out and played well to put that game behind us," Hill said.

Muleshoe jumped out to a 3-0 lead in the bottom of the first.

Singles by Kemp and Jarrod Redwine plus a walk loaded the bases for Alanis, who chased home the first two runs with a sharp single to right.

BASEBALL

Frenship JV Tourney

at Wolfforth

Thursday

1st round

Idalou 13, Shallowater 4

Abernathy 9, Dimmitt 2

Frenship JV 10, Lamesa V 6

Olton 8, Ralls 6

Muleshoe 5, Cooper 1

Levelland JV 5, Snyder JV 4

Friday

Championship quarterfinals

Idalou vs Abernathy

Olton vs Muleshoe

Championship semifinals

Idalou/Abernathy winner vs

Frenship JV

Muleshoe-Olton winner vs

Levelland JV

Consolation quarterfinals

Dimmitt vs Lamesa JV

Cooper vs Snyder JV

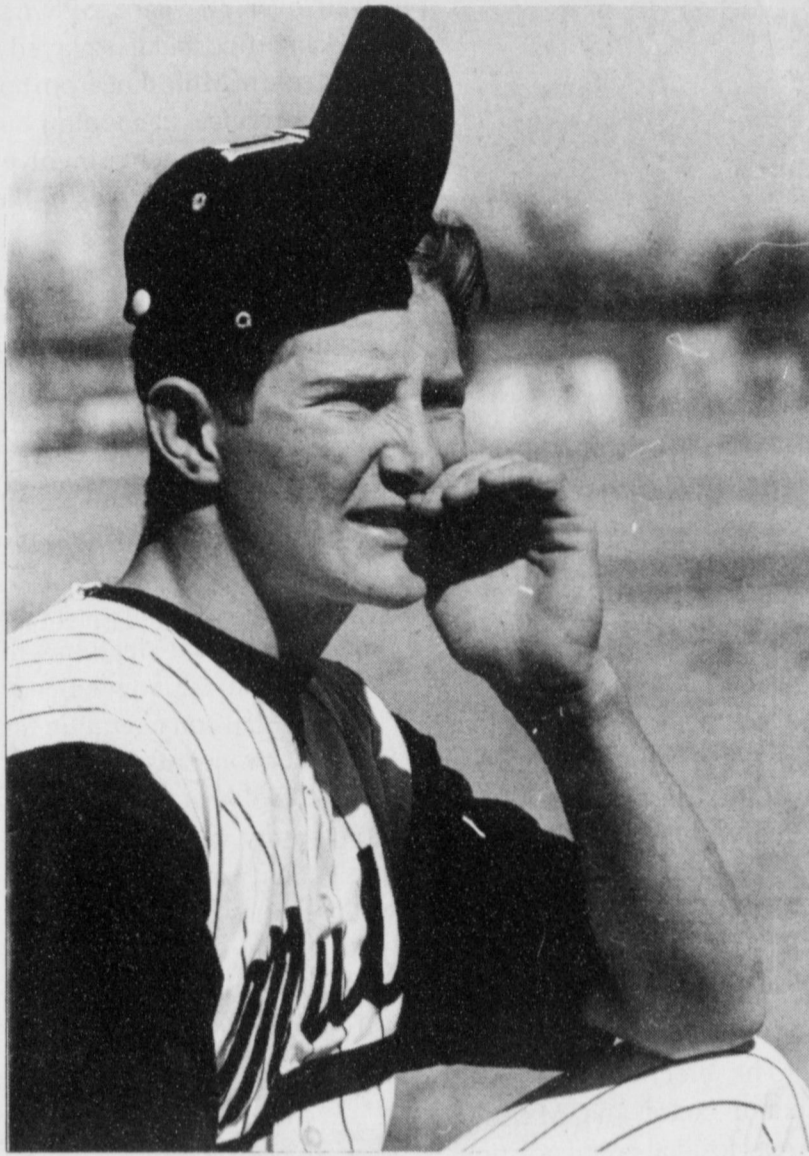
Redwine scored on Matt McClanahan's ground out to make it 3-0.

Cooper scored a run in the fifth on three hits to make it 3-1.

Alanis singled in Kemp in the bottom of the fifth to make it 4-1. Kemp singled, stole second, and scored on Alanis' third hit of the game.

The Mules scored their final

Continued on page 5



Rally cap

Muleshoe senior Jeffrey Wheeler will try anything to help his team rally against Seminole in a game earlier this season. Muleshoe beat Lubbock Cooper Thursday 5-1 in the first round of the Frenship Junior Varsity Tournament. The Mules played Olton Friday in the championship quarterfinals.

Muleshoe 5, Cooper 1

Cooper	ab	r	h	bi
Velasquez, cf	4	0	0	0
Vitz, 2b	4	0	0	0
Olivarez, p	3	0	1	0
Davis, ss	4	1	1	0
Harrist, lf	4	0	1	1
Savell, c	2	0	1	0
Husky, rf	3	0	0	0
Fuller, 1b	3	0	1	0
Shuttlesworth, dh	2	0	1	0
Howell, 1b	0	0	0	0
Totals	29	1	6	1

Muleshoe (2-2)

Wheeler, ss	3	1	1	0
Kemp, p	4	2	3	0
Redwine, lf	4	1	1	0
Alanis, 3b	3	0	3	4
Woodard, c	2	0	0	0
McClanahan, cf	3	0	1	1
Purdy, dh	3	0	0	0
Barrett, 1b	3	0	0	0
Pineda, 2b	2	1	1	0
Flores, rf	0	0	0	0
Totals	27	5	10	5

Olivarez and Savell. Kemp and Woodard. WP—Kemp (1-2). LP—Olivarez. LOB—Cooper 10, Muleshoe 9. DP—none. 2B—Harrist (C). SB—Vitz (C), Kemp (M), Alanis (M).

Pitching summary

	ip	h	r	er	so	bb
Cooper						
Olivarez, L	6	10	5	5	3	4
Muleshoe						
Kemp, W	7	6	1	1	8	2

MHS frosh lose 19-17

Littlefield beat Muleshoe 19-17 in a freshman baseball game Tuesday at the city baseball field.

Leading 16-15, Littlefield scored three runs in the top of the sixth. Muleshoe pushed across a pair of runs in the bottom of the sixth to make it 19-17, but the game was called due to time constraints.

Catcher Clint Black had a pair of doubles for Muleshoe (0-1), which finished with nine hits. Left fielder Lucio Soto added a pair of singles.

Littlefield collected 10 hits off of two Muleshoe pitchers.

Littlefield jumped out to a 9-0 lead after an inning and a half.

Muleshoe fought back with seven runs in the second inning and pulled within 12-11 with four runs in the third.

By Muleshoe could never catch Littlefield, which scored at least two runs in every inning.

Kyle Hahn started and pitched the first three innings for Muleshoe. Cameron Nix pitched the final three innings and was charged with the loss.

Continued on page 5

Warren earns all-district honors

Lazbuddie junior makes second team

Roxann Warren stood tall all year for the Lazbuddie Lady Longhorns.

Despite playing against players three to four inches taller most games, the 5-7 junior post still managed to average 16 points and 5.8 rebounds a game.

Warren was rewarded for her hard work by being named to the District 3-1A second team.

"She plays with a lot of emotion and just works hard at everything she does," Lazbuddie coach Carey Sudduth said "She was our most dependable scorer and became the leader of our team."

District runner-up Nazareth placed two players on the first team, juniors K'Lynn Gerber and Amy Pohlmeier. Farwell's Candace Travis, Vega's Cami Rea and Happy's Leah Lair rounded out the first team.

District champion Happy also placed two players on the second team.

Lazbuddie's Kia Morris earned honorable mention. Morris averaged eight points

BASKETBALL

All-District 1-3A

GIRLS

FIRST TEAM

Leah Lair, sr. Happy

Candace Travis, jr. Farwell

Cami Rea, soph. Vega

Amyv Pohlmeier, jr. Nazareth

K'Lynn Gerber, jr. Nazareth

SECOND TEAM

Jamie Vick, soph., Happy;

Karen Moudy, jr.; Happy;

Veronica Mace, jr., Farwell;

Roxann Warren, Jr. Lazbuddie;

Misty Ball, sr. Nazareth.

HONORABLE MENTION

Kia Morris, Lazbuddie, soph.

game and was the Lady Longhorns best defender and rebounder, Sudduth said.

Hodge wins Friona Invite in playoff

FRIONA — Muleshoe freshman Ryan Hodge birdied the first playoff hole to win the Friona Invitational boys golf tournament Thursday at Friona Country Club.

Hodge and Tyler Chadwick of Farwell were tied at 4-over par 76 at the end of 18 holes.

Muleshoe did not field a team in the tournament.

Freshman Kolbe Magby also competed for Muleshoe, shooting a 118.

Morton captured the team title with a 329. Friona was second at 333 and Farwell third at 337.

In the girls tournament played Tuesday, Muleshoe finished eighth and Lazbuddie 10th.

Vega won the girls team title with a 407. Tulia was two shots back at 409. Muleshoe shot a 452 and Lazbuddie a 512.

Jennifer Beaversdorf of Littlefield was the medalist with an 80.

Junior Keisha Whitt led Muleshoe with a 99. She was one of only 10 golfers to break 100. Nikki Sutton added a 101 for Muleshoe.

Jill Hodges led Lazbuddie with a 125.

GOLF

Friona Invitational

Tuesday at Friona CC

GIRLS

Team totals — 1. Vega 407, 2.

Tulia 409, 3. Friona 423, 4. Here-

ford 432, 5. Littlefield 438, 6.

Farwell 450, 7. Dalhart 450, 8.

Muleshoe 452, 9. Hart 505, 10.

Lazbuddie 512.

Medalists — 1. Jennifer

Beaversdorf, Littlefield, 80;

2. Heather Basford, Vega, 83, 3.

Traci Dolle, Littlefield, 86; 4.

Goldie Harrelson, Friona, 83; 5.

Caroline Combest, Tulia, 96.

Local team results

Muleshoe — Keisha Whitt 99,

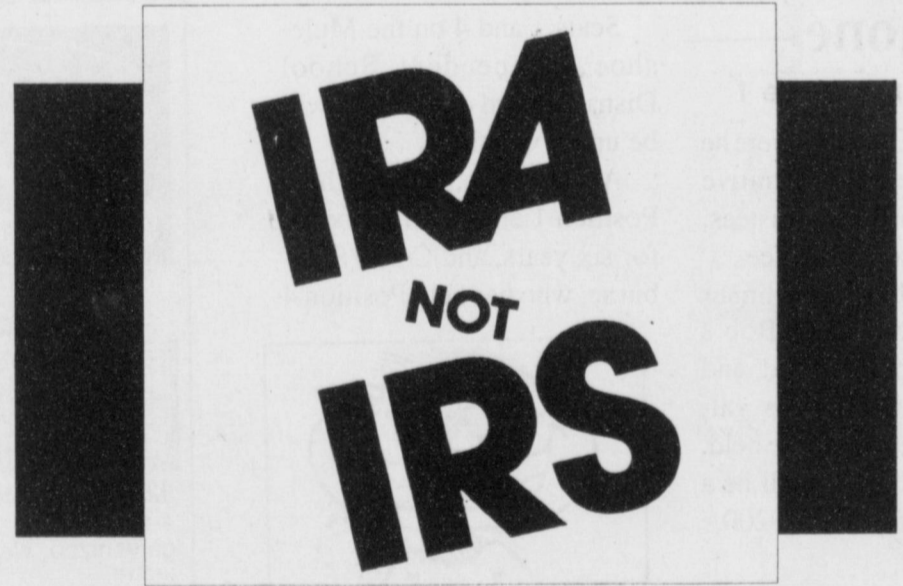
Nikki Sutton 101, Heather Hooten

125, Brandi Harrison 127, Leslie

Powell 141.

Subscribe Today!
Call the Muleshoe Journal
272-4536

Time's Running Out!



April 15th Will Be Here Soon

- Contributions are tax deductible
- Interest on your contributions are tax sheltered and compounding until you take it out.

MULESHOE STATE BANK



101 W. American Blvd.
272-4561 Muleshoe, TX

801 Ave. A
481-9580 Farwell, TX



Odyssey of the Mind teams ready for competition

By **SAMUEL VILLARREAL**
Journal Staff Writer

The Mary DeShazo Odyssey of the Mind (OM) teams competed Saturday at the regional competition in Amarillo.

Three teams competed against schools from the Panhandle area in three separate events.

For the first event, "Double Trouble", students designed and construct two balsa wood structures.

The structures, which must weigh at or less a combined 35 grams, are tested to see how much weight they can support. In practice tests, the DeShazo structure was supporting more than 200 pounds.

Students in the "Double Trouble" event were Jamie Carpenter, Mitchi Hawkins, Brittany Williams, Cami Jo Vandiver, Kyle Yell, Brady Broyles and Amber Cowart.

In the second event, "Heroic Proportions," students must create a skit in which a character uses proportion in a positive manner.

The DeShazo students wrote a skit in which a detective takes a growth potion so he can stop a large bank robber.

The potion backfires and the detective shrinks to such small proportions that his own backyard becomes a jungle. He meets a ladybug and helps her paint herself red so she can blend into a tomato garden to eat safely.

The ladybug returns the favor by asking some bumblebees to help her new friend. The bees sting the thief as he tries to sneak into the bank, foiling his robbery.

Students in the "Heroic Proportions" event include Brady Black, Hillary Tipps, Sarah Pace, Erin Gallman, Marlee Black, Bryan King and Tyrel Gear.

In the third event, "OMerdroids," students designed and built robots that could perform specific functions, such as blinking, walking and raising its hand.

Students in the "OMerdroids" event were Brant Wedel, Erin Newton, Robbie Jan Barrett, Jonathan



Blending in
Hillary Tipps (left) helps a ladybug, played by Marlee Black, paint her black spots red so she can hide in a tomato garden. The skit was performed Saturday in Amarillo as part of the Odyssey of the Mind competition.

Marlow, Trevor Turnbow, Kayla Spradling and Jessica Hall.

OM coach Jan King said the students do all the work on their own. Parents and teachers are allowed to

teach students any skills they may need, but the students must then use the skills on their own. The students write skits and construct projects entirely on their own.

Mules

Continued from page 4
run in the sixth inning when Alanis drew a bases loaded walk.
Alanis went 3 for 3 and Kemp was 3 for 4 as the Mules pounded out 10 hits.
The Mules host Portales, N.M. Monday at 5 p.m.

Frosh

Continued from page 4
LITTLEFIELD 19, MULESHOE 17
Littlefield 4 5 3 2 2 3 19 10 5
Muleshoe 0 7 4 1 3 2 17 9 9
Jephcott, Johnson (3), Markes (4) and de la Santos. Hahn, Nix (4) and Black. WP—Markes. LP—Nix. 2B—Black (M) 2, Kirby (L), Joyce (L).

Teens

Continued from page 1
highest number of points will be selected to go to Austin in May.
House Speaker Pete Laney will personally guide the students through the state capital, governors mansion, and the LBJ Library. The students will

also sit in a session of the Texas legislature.



Sweet as butterscotch
DeShazo fourth grader Sarah Dominguez nervously twiddles her fingers as she spells "butterscotch" during the Muleshoe Spelling Bee, held Thursday in the administration building of the Muleshoe Independent School District.

MULESHOE MOTOR CO.

FORD MERCURY

1995 Ford Escort LX (4 door)	\$8,499
1991 Ford Explorer XLT 4x4 (56,000 miles)	\$11,900
1993 Ford F250 Supercab 4x4	\$8,900
1993 Mercury Topaz (49,000 miles)	\$5,900
1989 Buick LeSabre	\$3,999
1988 Ford Taurus	\$2,699

Many below NADA Wholesale. SHOP AND SAVE.
We want to be your car & Truck Dealer

1225 W. American Blvd. 806-272-4251 or 800-432-7617

Three Way Senior Class
invites your team to the

Annual Volleyball Classic
1997
March 21 & 22

ENTRY FEE \$50
For Information, Call 927-5530
Women, Men & Mixed Teams

Muleshoe Cattle Market

Saturday, March 1, 1997

624 head of cattle, 113 hogs and 183 sheep and goats were sold.
All stocker and feeder cattle sold steady. Pairs and bred cows were fully steady to stronger with good demand while packer cows sold \$2-\$3 higher.

REPRESENTATIVE SALES		
Seller, City	# Type	Wt. CWT or PH
Jerry Veach, Plainview	2 Hol. Strs.	440 lbs. at \$57.00
J.R. Banks, Springlake	Red Bull	210 lbs. at \$91.00
K.P. Farms, Lubbock	Rwf. Str.	390 lbs. at \$87.00
Sam Lee Pruitt, Hereford	2 Red Bulls	408 lbs. at \$78.00
A-2 Cattle, Dimmitt	7 Mixed Strs.	448 lbs. at \$74.25
Gabrinio Guillen, Muleshoe	Char. Bull	480 lbs. at \$76.00
Kirby Cattle, Sudan	3 Blk. Bulls	517 lbs. at \$79.00
Maribel Lopez, Bula	Blk. Bull	595 lbs. at \$74.00
Alkali Cattle, Muleshoe	3 Blk. Bull	618 lbs. at \$69.00
Norris Conklin, Muleshoe	2 Limo. Strs.	490 lbs. at \$80.00
Norris Conklin, Muleshoe	4 Limo. Strs.	626 lbs. at \$74.50
Norris Conklin, Muleshoe	6 Limo. Strs.	889 lbs. at \$67.50
Carson Cattle, Bovina	42 Mixed Strs.	708 lbs. at \$71.50
Mark T. Roberts, Morton	2 Red Bulls	708 lbs. at \$68.50
Danny Williams, Morton	2 Bwf. Strs.	768 lbs. at \$70.50
Danny Williams, Morton	Red Str.	660 lbs. at \$74.50
JR & LE Farms, Morton	3 Mixed Strs.	823 lbs. at \$69.25
JR Banks, Springlake	Red Hfr.	310 lbs. at \$73.00
Ronnie Griffith, Hereford	Rwf. Hfr.	315 lbs. at \$73.50
John Hill, Abernathy	3 Brang. Hfr.	397 lbs. at \$77.50
Felix Hipolite, Plainview	Blk. Hfr.	410 lbs. at \$72.00
Noel Cano, Hereford	Yell. Hfr.	470 lbs. at \$67.00
Chico Cattle, Abernathy	3 Brang. Hfrs.	505 lbs. at \$72.25
JV Stancell, Muleshoe	5 Mixed Hfrs.	593 lbs. at \$67.25
Dale Demel, Sudan	2 Blk. Hfrs.	575 lbs. at \$69.00
Norris Conklin, Muleshoe	12 Mixed Hfrs.	621 lbs. at \$69.00
JR & LE Farms, Morton	4 Red Hfrs.	763 lbs. at \$67.50
Danny Williams, Morton	2 Blk. Hfrs.	713 lbs. at \$67.50
Bill Bradley, Amherst	Rwf. Pair	\$730.00
T-Top Farms, Earth	Blk. Pair	\$670.00
Dee Clements, Muleshoe	Limo. Pair	\$630.00
Sam Lee Pruitt, Hereford	Blk. Cow, P6	\$515.00
C.B. Hightower, Enochs	Limo. Cow, P7	\$450.00
T-Top Farms, Earth	Blk. Cow, P8	\$600.00
T-Top Farms, Earth	Blk. Cow	1205 lbs. at \$50.00
T-Top Farms, Earth	3 Blk. Cows	1395 lbs. at \$48.00
Dee Clements, Muleshoe	Limo Cow	1265 lbs. at \$47.50
J.R. Banks, Springlake	Char. Cow	1005 lbs. at \$40.00
Tasko Farms, Fieldton	Wf. Cow	1040 lbs. at \$37.75
Ramon Mendoza, Dimmitt	Blk. Cow	945 lbs. at \$43.00
Sandhill Dairy, Portales, NM	2 Hol. Cows	1575 lbs. at \$44.00
Prairie View Dairy, Muleshoe	2 Hol. Cows	1563 lbs. at \$43.75
D & J Dairy, Rogers, NM	2 Hol. Cows	1820 lbs. at \$43.00
Harold Pollard, Enochs	Red Bull	1515 lbs. at \$44.25

The Muleshoe Cattle Market is brought to you each week by Muleshoe Livestock Auction, located east of Muleshoe on U.S. 84. Muleshoe Livestock conducts sales every Saturday, beginning with hogs, sheep and goats at 10 a.m. and cattle following at approximately 12 noon.

FOR INFORMATION ON SALES OR TO CONSIGN CATTLE, CALL (806) 272-4201.

Subscribe Today!

Muleshoe Journal and Bailey County Journal

SUBSCRIPTION RATES

Carrier	\$22⁰⁰ Year
Muleshoe-By Mail	\$24⁰⁰ Year
Out Of Town	\$26⁰⁰ Year

Call Today

272-4536

BAILEY COUNTY DEVOTIONAL PAGE

Risinger Plumbing
 Serving Muleshoe Area
 All Plumbing Repairs
272-6772

El Jacalito
 Tortilla Factory
 516 North First Muleshoe
 272-5556
 Mon.-Wed.-Thurs. Alfredo & Mariann Anzaldúa

EASTER GRAIN, INC.
 Easter Labuddie
 272-5255 965-2817

Triple S Publishing
 304 W. 2nd 272-4536
 Muleshoe, TX

ALEX'S TIRE SERVICE
 302 E. American Blvd.
 272-5012 Muleshoe

IRRIGATION PUMPS & POWER
ZIMMATIC CENTER-PIVOTS
 W. Hwy. 84 272-4483

MAPLE COOP GIN
 927-5501
 Maple, Texas

Leal's Tortilla Factory, Inc.
 "Serving West Texas since 1957"
 107 E. Ash 272-5772 Muleshoe, TX

O & C OSONS
 Erection Sprinkler Ser. Welding & Repair
 Repair & Assemble 272-5018 909 W. American Blvd. 272-3475
 Lupe Olivarez

Discount Computer & Repair Service
CompuTeK
 206 Main 272-5404
 1-800-687-3816

BOBO INSURANCE AGENCY
 108 E. Ave. C 272-4264

Shipman's Body Shop
 Auto Painting • Wrecker Service • Free Estimates
 Tractor Glass & Windshields
 410 N. 1st Muleshoe, TX
 272-4408 FAX 272-3366

SAIN IRRIGATION & MACHINES
Complete Pump Service
 W. American Blvd. 272-4397
 Walt Sain Muleshoe, TX 272-4148

Bob STOVALL Printing
 Quality -- Service
221 E. AVE. B 272-3373
 C.R. & EVA NELL DALE MULESHOE

TERRA INTERNATIONAL, INC.
 272-4203
 Muleshoe, Texas

RONNIE HOLT INSURANCE AGENCY
 Specializing in Crop, Life & Health Insurance
 Western 66 Office Bldg.
 272-4271 Muleshoe, TX

PACO FEED YARD, INC.
 Commercial Cattle Feeders
 P.O. Box 956, 265-3281
 Friona, TX
 Feller Hughs-Mgr.

WESTERN '66' COMPANY

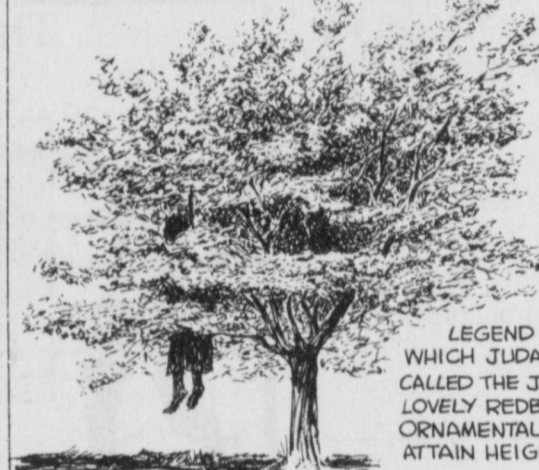
GOOD YEAR JAMES CRANE TIRE CO., INC.
 107 Main 272-4594
 Mike Hahn Muleshoe, TX

Facts About The BIBLE BY JOHN LEHTI



JUDAS ISCARIOT, THE BETRAYER OF JESUS, WAS THE ONLY MAN AMONG THE ORIGINAL TWELVE DISCIPLES WHO DID NOT HAIL FROM GALILEE. THAT HE WAS STRONGLY DISLIKED FROM THE OUTSET BY THE OTHERS IS APPARENT FROM THE VERY WORDS OF JOHN (JOHN 12:6). JUDAS WAS THE TREASURER OF THE GROUP—"HOLDING THE BAG" WAS THE EXPRESSION THEY USED—DENOTING THAT HE RECEIVED ALL GIFTS AND MONEY CONTRIBUTIONS FROM THE PUBLIC, PAID FOR ANYTHING THE GROUP MIGHT NEED (FOOD, CLOTHES, ETC.), AND DISPENSED MONEY TO THE POOR, ALL IN JESUS' NAME. BUT JOHN SPOKE FOR ALL OF THEM WHEN HE SAID JUDAS WAS A THIEF WHO DIDN'T CARE FOR THE POOR AT ALL, BUT CARRIED THE BAG OUT OF HIS LOVE FOR THE MONEY THAT WAS IN IT AND THE SENSE OF POWER AND IMPORTANCE IT GAVE HIM!

WHY HE BETRAYED JESUS HAS ALWAYS BEEN A CONJECTURE OPEN TO LENGTHY DISCUSSION. SOME HAVE SAID IT WAS PURELY HIS GREED FOR THE THIRTY PIECES OF SILVER, OTHERS MAINTAIN IT WAS OUT OF ANGER AT THE REBUKE HE RECEIVED FROM JESUS... (JOHN 12:1-8), ANOTHER THEORY IS THAT JUDAS, ALWAYS ANXIOUS AS TREASURER TO GET MORE MONEY, SAW AN EASY CHANCE TO ENLARGE THE TREASURY WITH NO REAL DANGER TO JESUS—FOR, HE REASONED THAT THE SON OF GOD COULD COMMAND LEGIONS OF ANGELS TO RESCUE HIM WHENEVER HE WISHED! BE THAT AS IT MAY, ONCE THE DEED WAS DONE AND THE COLD LIGHT OF REASON REVEALED TO JUDAS THE ENORMITY OF HIS CRIME, HE REPENTED IN A FRENZY OF DISPAIR, HURLED THE BLOOD MONEY BACK AT THE PRIESTS AND RUSHED OUT AND HANGED HIMSELF!



LEGEND SAYS THAT THE TREE ON WHICH JUDAS HANGED HIMSELF (SINCE CALLED THE JUDAS TREE) WAS THE LOVELY REDBUD TREE, A FLOWERING ORNAMENTAL SHRUB WHICH CAN ATTAIN HEIGHTS OF FORTY FEET!

NEXT WEEK: A SOUTHERN QUEEN—WHO WAS WISE!

SAVE THIS FOR YOUR SUNDAY SCHOOL SCRAP-BOOK

This devotional & directory is made possible by these businesses who encourage all of us to attend worship services.

ASSEMBLY OF GOD
FIRST ASSEMBLY OF GOD
 521 South First Street • 272-3017
 Jack Stone, Min. • 272-3984
 S.S. 9:45 a.m., W.S. 11 a.m. & 6:30 p.m.,
 Wed. 7:30 p.m.

BAPTIST CALVARY BAPTIST
 1733 W. Ave. C. Rev. Jeff Coffman
CIRCLE BACK BAPTIST
 Intersection FM 3397 & FM 298
 Jessie Shaver, Min • 946-3676
FIRST BAPTIST
 220 West Ave. E.
 Stacey Conner, Min.
FIRST BAPTIST
 Lazbuddie • 965-2126
PRIMERA IGLESIA BAUTISTA
 223 E. Ave. B Roy Martinez, Min.

PRIMITIVE BAPTIST
 621 South First
 Elder Cleveland Bass, Min.
PROGRESS BAPTIST
 Progress, TX
PROGRESS SECOND BAPTIST
 Arthur Hays, Min.
 1st & 3rd Sundays
RICHLAND HILLS BAPTIST
 17th & West Ave. D
 Brad Gathright, Min.
ST. MATTHEWS BAPTIST
 Corner of W. Boston & W. Birch
 Floyd R. Monroe, Min.
THREE WAY BAPTIST
 927-5467
 James Sinclair, Pastor
TRINITY BAPTIST
 314 E. Ave. B
 Robert Brown, Min.

CATHOLIC IMMACULATE CONCEPTION CATHOLIC
 805 E. Hickory
 Joseph Augustine, Min.
CHRISTIAN THE CHRISTIAN CENTER
 Morton Hwy. • 272-5105
 Reydon Stanford, Min.
CHURCH OF CHRIST LARIAT CHURCH OF CHRIST
 Sam Billingsley, Min.
 S.S. 10 a.m.; W.S. 11 a.m. & 6 p.m.,
 Wed. 7 p.m.

LAZBUDDIE CHURCH OF CHRIST
 Nathan Crawford, Min.
 S.S. 9:30 a.m.; W.S. 10:20 a.m. & 5 p.m.;
 Wed. 7 p.m.

MULESHOE CHURCH OF CHRIST
 22nd & W. American Blvd.
 John Knox, Min.
 S.S. 9:30 a.m.; W.S. 10:20 a.m. & 6 p.m.;
 Wed. 7:30 p.m.
SIXTEENTH & AVE. D CHURCH OF CHRIST
 Curtis Shelburne, Min. • 272-4619
 W.S. 10:30 a.m. & 6 p.m.;
 Wed. 7:30 p.m.

LUTHERAN ST. JOHN LUTHERAN
 Lariat, TX
 Richard Greenhaner, Min.
 S.S. 10:30 a.m.; W.S. 9:30 a.m.

METHODIST FIRST UNITED METHODIST HISPANIC MINISTRIES
 E. 5th and E. Ave. D
 Pastor Benito Cavazos
FIRST UNITED METHODIST
 507 W. 2nd St.
 Pastor John Wagoner
LAZBUDDIE METHODIST
 965-2121
EL DEVINO SALVADOR
 814 W. Ave. C, Muleshoe, TX
 Guadalupe Ballinas, Min.

NAZARENE NEW VISION CHURCH OF THE NAZARENE
 814 W. Ave. C • 272-3622
 David R. McIntire

PENTECOSTAL IGLESIA PENTECOSTAL UNDA
 207 East Ave. G • 272-3636
 Wencelado Trevino, Min.

INTER DENOMINATIONAL NEW COVENANT
 Plainview Hwy. Jimmy Low, Min.
 S.S. 9:30 a.m.; W.S. 10:15 a.m.;
 Wed. 7 p.m.

WINKLES TRUCKS, INC.
 Box 757 (806) 247-2724
 Friona, TX

Lowe's MARKETPLACE
 515 W. American Blvd.
 401 W. American Blvd.
 Muleshoe 272-4585
 Muleshoe 272-4406

Decorators Floral & Gifts
 616 South First 272-4340
 Muleshoe, TX

SHERLEY-ANDERSON LAZBUDDIE ELEVATOR
 965-2922 Lazbuddie, TX

1ST BANK MEMBER FDIC
 202 South First 272-4515

WES-TEX FEED YARDS, INC.
 Custom Cattle Feeding
 272-7555 Muleshoe, TX

AMERICAN AVI VALLEY INC. West Hiway 84 272-4266 Muleshoe

BAILEY GIN COMPANY, INC.
 946-3397
 Sudan, TX
 Peanut Hawkins, MGR

WESTERN DRUG
 114 Main 272-3106 Muleshoe

Delton E. Wilhite & Associates
 Home, Auto, Crop, Life & Health Insurance
 1631 W. American Blvd., Muleshoe 272-3652

HERITAGE HOUSE INN
 2301 W. American Blvd. 272-7575
 Muleshoe, Texas
 Clint & Evelyn Peat - Resident Owners
 Reservations 1-800-253-5896

BRUCE, INC. AIR CONDITIONING
 Hwy. 214 North 272-5114
 Muleshoe, TX
 TACL-B003350C, LP08638

MULESHOE COOPERATIVE GINS
 P.O. Box 569
 272-4794 Muleshoe, TX

MULESHOE AREA HEALTHCARE Center
 "Committed to Caring"
 106 W. Ave. H Muleshoe 272-7578

MULESHOE MOTOR CO.
 1225 W. American Blvd. 272-4251

"THE FIVE AREA TELEPHONE COOPERATIVE ORGANIZATION"
 West Plains Telecommunications Co.
 Five Area Systems, Inc., Plateau Cellular Network
 Five Area Long Distance - Five Area Internet
 302 Uvalde Muleshoe, USA (806)272-5533

WANDA BROWND INSURANCE AGENCY
 118 E. Ave. C Muleshoe 272-7548
 Since 1957 - The Original

Leal's Mexican Restaurant
 1010 W. American Blvd. 272-3294
 Muleshoe, TX Victor & Debbie Leal

Triple S Publishing
 304 W. 2nd 272-4536
 Publishers of the Muleshoe Journal and Bailey County Journals

5 Area donates computer to South Plains College

Five Area Telephone Cooperative, Inc. and West Plains Telecommunications, Inc., recently donated their IBM AS/400 model F35 Computer to South Plains College in Levelland.

On hand for the presentation of the computer equipment from SPC were Debbie Lamprecht, assistant professor of their computer science department; Jerry Gilmer of SPC and Scott Rotramel of SPC. According to Gary McDaniel, president of South Plains College, the equipment will be a tremendous asset to their ongoing programs in teaching computer science at the college.

Making the presentation to South Plains College were

Hubert Kidd, manager and executive vice president of Five Area Telephone Cooperative, Inc. and West Plains Telecommunications, Inc.; Kay Harris, data Processing supervisor for Five Area/West Plains; and Sharla Saylor, data processing Clerk for Five Area/ West Plains.

The IBM AS/400 Model F35 Computer was recently updated to the new IBM AS/400 Model 500. Five Area Telephone Cooperative, Inc. and West Plains Telecommunications, Inc. is proud to help South Plains College in a way that's beneficial to both the cooperative and the students who will benefit the most from this donation.



In tune

Members of the Muleshoe High School choir performed Thursday during a MASH fundraising luncheon at the First Baptist Church.

HOSPITAL ADMISSIONS

The Muleshoe Area Medical Center has reported the following admissions:

Feb. 28 — Terry Williams, Altha Turner, Ruie Dutton

March 1 — Terry Williams, Altha Turner, Ruie Dutton

March 2 — Terry Williams, Lino Salas, Altha Turner, Ruie Dutton

March 3 — Lino Salas, Altha Turner, Nettie Quesenberry, Richard Cunningham, Ruie Dutton

March 4 — Lino Salas, Nettie Quesenberry, R.B. Cunningham, Ruie Dutton

March 5 — Sabrina Guerra, Lino Salas, Pearlina Roberts, Nettie Quesenberry, R.B. Cunningham

March 6 — Sabrina Guerra, Lino Salas, Pearlina Roberts, Nettie Quesenberry, R.B. Cunningham, Laura Reese

NURSING HOME NEWS

By Joy Stancell

Lib King, Modean Graves, August Edmiston, Naomi Black, Gladys Pierce and Lillie Wuerflein were all honored with a birthday party Thursday, Feb. 27. Glenda Jennings entertained with fun and song. Party hostess were volunteer plus, the activity dept. Donna Locker and Glenda Jennings. Lasting Impressions provided

the flowers.

Thursday morning Nancy Lemons brought ceramics for the residents to paint Thursday morning. Residents participating were Naomi Black, Kathrine Rogers, Aline Locke, Florene Harvey, Boatie Tiller, Hazel Riddle, Nettie Quesenberry, Rosa Sneed, Pearlie Helmer, Lora Dale,

Lillie Wuerflein.

Pastor David McIntire visited Thursday morning and directed the devotional/reflection time.

Carolyn Johnson's leadership class, Adopt a Grandparent Program, visited Thursday afternoon and played Bingo with the grandparents. This was a time of laughter and sharing and getting acquainted.

In recognition of National Florist week Betty Wuerflein, our local florist and owner of Decorators Floral and Gift, demonstrated flower arranging to the residents and visitors Friday afternoon.

The Muleshoe Church of Christ have communion Services each Sunday morning for the residents.

The Calvary Baptist Church came for Church services Sunday afternoon.

Up coming events in March are, St. Patrick's Day Party, hosted by the Lazbuddie Young Homemakers, Monday March 17th at 10 a.m.; Easter

Party, Friday March 28th at 3 p.m.; March Birthday Party Thursday, March 27th at 3 p.m.; Toast to Texas Friday March 7th 10-11 a.m., 3 p.m.

Claudine Embry, Lanell Stancell, Mary Jo Burge, Pat Watson, Beverly Wagnon, Skeet Bradshaw, Jolene Espinosa, Leesa Gable came to shampoo and set the ladies hair and give manicures.

Carolyn Johnson brought one of her classes to the Care Center Tuesday to clean up the patio. Ronnie Shafer also came to share his expertise with the group.

Happy March Birthday to Florence Harvey 3/3; A. Hernandez 3/6; Patricia Orozco 3/15; Nettie Quesenberry 3/7; O. Wisian 3/15; Irene Splawn 3/19.

The Truth Seekers Sunday School class of the First Baptist Church gave a donation to the Healthcare Center. Also the local A.A.R.P.

Wednesday morning Buster and Wanda Kittrell hosted

Coffee/Donut time. Following the coffee, conversation and a bit of humor. Buster and Nancy Kidd lead the group in a sing-spiration devotional time.

Students in Carolyn Johnson's leadership class visited their adopted grandparents Wednesday. They each decorated their "grandparents' door for St. Pats day.

T.R. White was visited by

grandchildren and great-grandchildren this week.

At this writing R.B. Cunningham and Nettie Quesenberry are in the local hospital. Please keep them in your prayers for the speedy recovery.

Rosie Toscano received a visit from a grandson and his family in which she had not seen in several years this Wednesday.

OBITUARIES

Viva Curry Lindsay

Funeral services for Viva Curry Lindsey, 74, of Muleshoe were held March 5 at 16th & Ave. D Church of Christ, Muleshoe with Curtis Shelburne, minister officiating.

Burial followed in the Muleshoe Memorial Park Cemetery under the direction of Ellis Funeral Home, Muleshoe.

Mrs. Lindsey died March 4 at her residence. She was born Feb. 22, 1923 in Hollis, Okla. She married Truman Lindsey July 11, 1943 in San Bernardino, Calif. He died Sept. 3, 1976.

Mrs. Lindsey had lived in Muleshoe since 1953, moving from Perry, Okla. She was a member of the 16th and Ave. D Church of Christ, Muleshoe.

She was co-owner of Lindsey Jewelry, Muleshoe from 1954 to 1988. She was a member of the Muleshoe Chamber of Commerce and Muleshoe Jennyslippers. She had been working part time for the Ambassador Greeting Cards. She was preceded in death by two sisters, Gracie Taylor and Tressie Curry.

Survivors include one daughter, Charlene Shafer of Friona; one brother Lloyd Curry of Hollis; two grandchildren, Traci Helms and Culley Shafer.

The family suggests memorials to 16th & Ave. D Church of Christ, Muleshoe, TX 79347 and American Heart Association, 3403 73rd St. Suite 1, Lubbock, Texas 79423.

EPSILON DELTA NEWS

Johanna Wrinkle, president of Epsilon Delta, presided over the March meeting held in Sudan in the elementary school library with approximately 25 members present.

This meeting marked the 39th anniversary of the founding of Epsilon Delta Chapter in Bailey and Lamb Counties.

The highlight of the evening was the recognition of four of the Charter Members of the organization. They were honored by presentations of Charter Certificates and red roses. A birthday cake, complete with candles, added to the festive celebration.

The active charter members in Epsilon Delta are Elizabeth Watson of Muleshoe, Elsie Wilson and Maxine Nichols of Sudan, and Mary B. Obenhaus of Abilene. Two of the charter members, Elizabeth Watson and Elsie Wilson, were present to receive their honors. They shared some interesting remembrances of the first meeting held 39 years ago.

The last meeting of this year will be held in May in Muleshoe at which time several new members will be initiated in the Chapter.

Are We Really In the Grip of Grace?

I spent a little time on Friday reading the first few pages of Max Lucado's new book *In the Grip of Grace*. If you've not read Lucado, you've missed a treat! I don't know anyone who presents the Good News in a more biblical, compelling, readable, and enjoyable way. Anything he writes is good.

I thought I might have a small claim to fame since my brother Gene



Focus On Faith
Curtis Shelburne

was asked by Word Publishing to write the book jacket information for at least one of Max's previous books. I thought I recognized Gene's work on this one, but, alas, he tells me it was someone else. Whoever did, did well. That writer says that Max is asking in this book a very important question as he (Lucado) writes a series of essays dealing with truths from Paul's amazing *Letter to the Romans*. Since it's a question all believers and many others ask, I bet you've asked it, too.

"Can anything separate us from the love Christ has for us?"

"This is what we want to know. Does God really love us forever? Not just on Easter Sunday when our shoes are shined and our hair is fixed. Deep within we want to know how God feels about me when I'm a

jerk? When I snap at anything that moves; when my thoughts are gutter-level; when my tongue is sharp enough to slice a rock. How does he feel about me then?"

"That's the question. Can I drift too far? Wait too long? Slip too much? Did I out-sin the love of God?"

"The answer is found in one of life's sweetest words—grace.

"Ponder the achievement of God," Max offers. 'God doesn't condone our sin, nor does he compromise his standard. He doesn't ignore our rebellion, nor does he relax his demands. Rather than dismiss our sin, he assumes our sin and, incredibly, incredibly sentences himself. God is still holy. Sin is still sin. And we are redeemed.'

Max invites us "to walk the mountain peaks of God's mercy. *In the Grip of Grace* will remind you that the God who first made you is strong enough to sustain you."

I believe it! I hope you do, too, because it is the truth of the Gospel and it is deeply and beautifully true. I don't give many overt commercials in this column, but I think I will this week. Sunday afternoon at 1:30 in the fellowship hall of the 16th & D Church, we're going to start reading Max's book together and using it as a springboard to some very informal Bible study, discussion, and sharing. Anybody interested in that kind of study is welcome to come and read with us. No strings, no obligations, no deposit, and you don't have to return. We'll have the coffee on.

Curtis Shelburne is minister of the 16th & D Church of Christ in Muleshoe.

NOTICE OF SALE

The Bailey Central Appraisal District will offer for sale by means of competitive bids an office building at 104 East Avenue C, Muleshoe, Bailey County, Texas. Being legally described as a rectangular tract of land 100 feet by 60 feet and being more particularly described as the Westerly 60 feet of Lots 21, 22, 23, and 24, block 21, Original Town of the City of Muleshoe, Bailey County, Texas. The structure can be inspected by calling Kaye Elliott, Chief Appraiser at 806-272-5501.

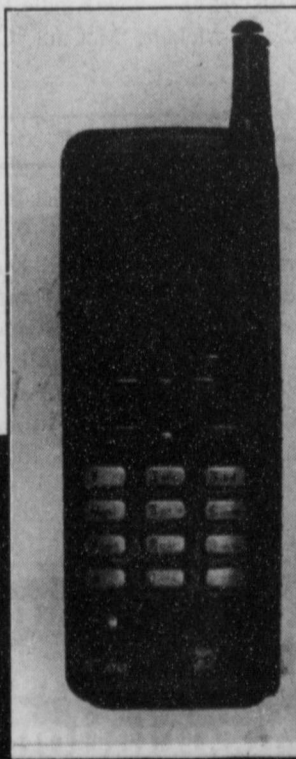
All bids must be in writing, in sealed envelopes, marked as follows: "Bid for office building at 104 E Ave C" and submitted to the Appraisal District office at 302 Main Street, Muleshoe, Texas, no later than May 14, 1997. Bids will be opened at the Appraisal District Board of Directors meeting, at the Appraisal District Conference room Thursday, May 15, 1997 at 1:00 p.m.

The Board of Directors reserves the right to accept or reject any or all bids. A letter of credit from an authorized financial institution must accompany the bid. Financing arrangements must be completed within 24 hours of acceptance of the bid.

Published in the Bailey County Journal March 9, April 6, April 13, May 4 and Muleshoe Journal March 13, April 24, May 1, May 8.

Free Yourself from Home Phones

You Can Have Access to a Phone Anytime, Anywhere, Anyplace



Sale Ends March 31st

Hand Held Cellular Phone \$29.99*

AT&T, Model #3770 Comes with a battery, ac/dc rapid charger

* Activation Required, Some Restrictions Apply. Authorized Distributor For Plateau Cellular Service

Wilson Appliance
117 Main Muleshoe 272-5532

When you need someone to help call 806-272-3323

Dixie Jesko (Wednesday is Mother's Day Out)

Serving Muleshoe, Farwell and Clovis

Infants, Toddlers, My home or yours, Senior Adults, Hospital or Home

L AZBUDDIE FEBRUARY STUDENTS OF THE MONTH

The Lazbuddie High School students of the month for February are:

Josh Morris, 15, is the son of Melvin and Vicki Morris. His birthday is March 4. Mexican food and root beer are his idea of great cuisine. Forrest Gump ranks as best picture. Home Improvement wins his approval for TV entertainment. Roping and sports exemplify what he enjoys the most. Maroon expresses him. The Hobbit specifies his area of literary choice.

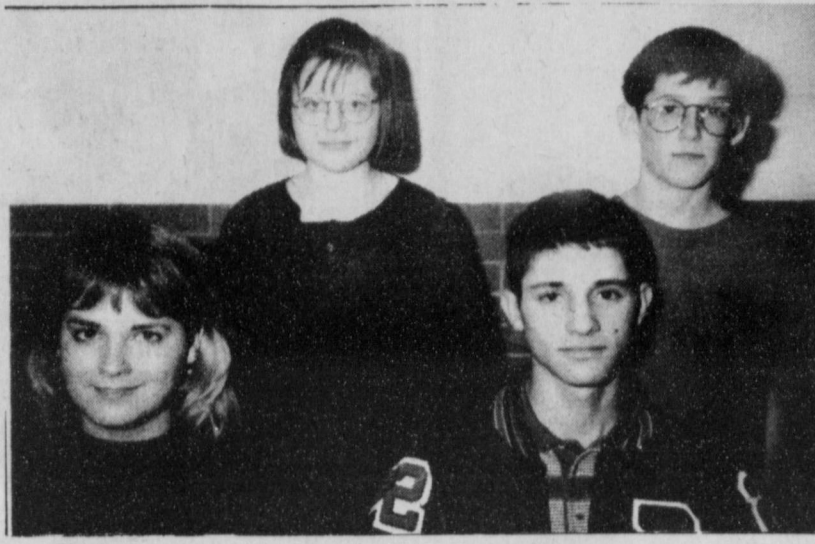
Jamie Bohler, 17, is the daughter of Jim and Terri Bohler. Her birthday is April 20. She enjoys Dr. Pepper and Pizza. "Margaritaville" typifies top tune. Tommy Boy makes its mark as best picture. Seinfeld entertains her. Band expresses her creative talents. Swimming and gymnastics represent fun for her. Dark green is a color preference. The

Scarlet Letter emphasizes her literary specialty. Becoming a surgical nurse is a goal upon graduation.

The Lazbuddie Junior High students of the month of February are:

Andy Martin, 12, is the son Linda and Tommy Martin. He was born Sept. 26. His choice meal is sirloin steak at the Steak and Ale with a Surge to wash it down. "We Are The Champions" ranks as hit song. Mission: Impossible exemplifies best picture. Home Improvement characterizes his idea of family fun. Math is an area of academic achievement. Car collecting is his special pastime activity. Green connects him. He likes Queen as his best music group. Screamers typifies his genre of literature. Playing basketball is a top priority to him in the future.

Candice Randolph is the



Students of the month for February
Pictured are: (top-left) Candice Randolph, Andy Martin, (bottom-left) Jamie Bohler, Josh Morris.

daughter of Lyneldon and Pat Randolph. She was born Sept. 1. Pizza and a cherry lime epitomize the best in eating. "R.I.O.T." ranks as top song. "A Cry In the Wild" ranks as best flick. Touched by an Angel expresses her kind of TV show. Computer Literacy show

is her area of academic expertise. Basketball is an area she enjoys as pastime fun. Purple is her color. Point of Grace explains her musical group. Sixteen is her favorite book. Her goals are to attend the college of her choice, find a job, and have a family.



Students of the month of March
Pictured are: (back-left) Richard Welker, Adrian Ruiz, Raul Mata, (front) Amberlee Steinbock, Regina Mata, Richie Aguilar, Callie Sterling.

L AZBUDDIE 4TH SIX WEEKS HONOR ROLL

The following Lazbuddie Elementary School made the 4th six weeks honor roll:

- "A" Honor Roll**
2nd Grade — Castle Crawford, Clint Grahm, Brandy Hudson, Jennifer Pesch, Amberlee Steinbock, Montana Steinbock
3rd Grade — Nathan Pesch, Madison Smith
4th Grade — Chris DeLeon, Tanner Gartin, Mandy Haney, Susie Juarez, Brett Mimms, Garrett Scisson
5th Grade — Shonah Black, Nicole Lewandowski, Robert Martin, Bethnie Sanchez
"A-B" Honor Roll
2nd Grade — Bradley Branscum, Jason Davis, Erica Derma, Bryce Haney, Kyra Kimbrough, Stephanie Williams

- 3rd Grade** — Kirby Kimbrough, Roper Smith, Richard Welker
4th Grade — Ana Hernandez, Cory Puckett, Adrian Ruiz, Melanie Winters
5th Grade — Violet Aguilar, Suzanne Aragon, Cobey Branscum, Kelli Harris, Kera Lewandowski, Raul Mata, Michelle Scott, Sterling Via, Kolby Wilkerson, Kevin Williams
 The following students were named to the Lazbuddie High School six weeks honor roll:
Principal's "A" Honor Roll
6th Grade — Andy Martin, Tobin Redwine
7th Grade — Savannah Black
8th Grade — Kati Mimms, Crystal Scott, Laura Jo Via, Kendra Gallman

- 9th Grade** — Amy Angeley, Desirae Brakebill, Scottie Brown, Jason Jesko, Veronica Mata, Leah Turner
10th Grade — Seth Black, Jill Hodges, Josh Morris, Kia Morris, Cade Morris, Shena Seaton
11th Grade — Deon Gallman, Cameron Turner, Dustin Weir
12th Grade — Rocio Aguilar, Jamie Bohler, Shana Foster, Mandy Magby, Blake Mimms, Edward Terry
Principal's "AB" Honor Roll
6th Grade — Lucas Deleon, Andrew Martinez, Brady Mimms
7th Grade — Kelsey Jones, Jeffrey Guillen, Kayla Kimbrough, Candice Randolph, Jay Seaton, Jodie Coker

- 8th Grade** — Fabian Guzman, Mayra Hernandez, Stephanie Sharp, Cole St. Clair
9th Grade — Randy Bohler, Kristen Carson, Michael Carson, Staci Foster, Garrett Magby, Zulema Marquez, Bobby Martha, Jeffery Seaton
10th Grade — Holly Engelking, Javier Lopez, Rachel Rodriguez, Adam St. Clair
11th Grade — Don Burch, Brice Foster, Robert Nail, Brice Redwine, Juan Salazar, Chris Smith, Jason Thomas, Roxann Warren
12th Grade — Tina Bohler, Heath Brown, Janis Hernandez, Jennifer Hill, Rebecca Mata, Justin St. Clair

L AZBUDDIE STUDENTS OF THE MONTH

The students of the month for March have been named at Lazbuddie Elementary School. These students have displayed outstanding qualities of character, citizenship, and leadership. They have proven to be an asset to their class and to their school. Each student was presented a ribbon and commended for their efforts. They are the following:

Pre-kindergarten — Callie Sterling, daughter of Bill and Susie Sterling
Kindergarten — Richie

Aguilar, son of Julio and Teresa Aguilar
1st grade — Regina Mata, daughter of Eraul and Valentina Mata
2nd grade — Amberlee Steinbock, daughter of Dennis and Tanya Steinbock
3rd grade — Richard Welker, son of Ralph and Nancy Welker
4th Grade — Adrian Ruiz, son of Albert and Juana Garcia
5th Grade — Raul Mata, son of Eraul and Valentina Mata



For thickening soups and sauces, you can use cornstarch instead of flour. One tablespoon of cornstarch equals two tablespoons of flour.

T THREE WAY SCHOOL HONOR ROLL

The following students made the fourth six weeks honor roll at Three Way School:

- All "A" Average**
1st Grade — Tiffany Davis, Marco Marines, Cenee Hood, Cassie Kirby
3rd Grade — Caleb Heinrich, Trevor Hood, Cody Kirby, Lauren Layton
4th Grade — Rigo Rodriguez
5th Grade — Buddy Holmes, Kaylie James
6th Grade — Sammy Castillo, Ashley Layton, Monica Walker, Julie Salamanca
11th Grade — Russell Pollard, Josh Tooley
12th Grade — April Cook, Diana Salamanca
"A" Average
1st Grade — Colton Heinrich,

- Luis Vironche
3rd Grade — Nathan James, Cristal Landeros, Jose Vironche
4th Grade — Norma Baeza, Cory Conteras, Sarah Furgeson, Chris Kindle, Jennifer Kirby
5th Grade — Katye Cook, Veronica Martha
7th Grade — Joel Armendariz, Leanne Draus, Anthony Furgeson, Jimmy James, Christy Mills, Robert Rodriguez
8th Grade — Ernesto Navarro, Eric Sowder
9th Grade — Kasey Davis, Scott Pollard, Rosa Soliz, Sid Weekes
10th Grade — Jonathan Kindle
11th Grade — Katie Arens, Sammy Soliz
12th Grade — Kyle Kindle, Lupe Landeros, Melanie McCaul, Chris Soliz

W JHS 4TH SIX WEEKS HONOR ROLL

The Muleshoe Watson Junior High announce the following students to the honor roll:

- 6th Grade** — Gradee Adrian, Wyndolyn Allison, Crystal Bailey, Bailey Barrier, Larry Broyles, Juan Cortes, Jordan Dale, Krystal Deaquino, Valarie Ellis, Carla Estrada, Lilia Flores, Jenny Hall, Jodi Hawkins, Laura Lewis, Mindy Locker, Felicia Mumau, Susan Ortega, Ryan Powell, Eva Pylant, Micah Ruthardt, Deirdre Sotelo, Cydni Vandiver, Eric Villa, Jami Wedel, Erica Whalin
7th Grade — Ricardo Aburto, Megan Barrett, Amanda Bell, Laura Bonds, Austin Buhrman, Jessica Carpenter, Elizabeth Castorena, Monica Chavez, Mirra Contreras, Nicole Felan, Carmen Flores, Kayla Glover, James Hancock, Jessica Hardt, Lorie Herington, Olimpica Hernandez, Rendi Hodge, Candace Hutto, Michael Johnson, Brandi Jones, Kayla Kelley, Matthew Lopez, Matthew Luna, Kristen Magby, Ashley May, Suzanne Messenger, Brandon Mount, Jennifer Rempe, Lincoln Riley, Stephan Shelburne, Janna Skaggs, Brenda Villezcas, Laura Wood, Zacarias Yanis
8th Grade — Lindsey Altman, Adrienne Ashford, Letti Barrera,

- Zachary Barrett, Brandon Broyles, Kinsee Estep, Melissa Flores, Diana Gable, Jessica Hernandez, Tommie Hernandez, Jeffrey King, Stephani Kirk, Jerrell Otwell, Westin Price, Rosa Recio, James Robinson, Aubrey Ruthardt, Joey Stone, Vincent Thomason, Megan Tipps, Joshua Williams, Stephen Woodard

Federal Land Bank Association
 316 Main St., Muleshoe
 806-272-3010

Long Term Financing for Farms, Ranches, Rural Housing, Operating and Improvements.

Current Variable Rate 7.95%.

Fixed rates are available. Call for quote. A Property Rights Advocate and Equal Opportunity Lender.

A Brand New Video... BAXTER BLACK by Himself

BAXTER PERFORMING HIS POETRY, ONE-ON-ONE. JOIN HIM AS HE TAKES YOU TO THE CORRAL FOR *THE SQUEEZE CHUTE* AND *JOSÉ AND THE HOODOO COW*. OR GO TO THE WOODS WITH HIM IN *SPRINGTIME IN THE ROCKIES* AND *THE WILDERNESS WALL*. AND OF COURSE WE CAN'T FORGET THE ARENA WITH *THE ROPER'S RULE, HEADER OR HEELER?* AND *THE DOG AND THE RABBIT*.
17 IN ALL, AND ALL PURE BAXTER...



Yes, send me copies of BAXTER BLACK by Himself at \$22.95 each = \$

More? You want more? ... help yourself!

- NEW** BAXTER BLACK - COWBOY PRIDE (cassette tape) \$ 9.99 \$
NEW BAXTER BLACK BUCKS OFF (cassette tape) \$ 9.99 \$
 DUNNY AND THE DUCK (64 pg softcover book) \$12.95 \$
 HEY, COWBOY, WANNA GET LUCKY? (223 pg hardback book) \$21.00 \$
 CROUTONS ON A COW PIE, VOLUME II (203 pg hardback book) \$24.95 \$
 COYOTE COWBOY POETRY (208 pg hardback book) \$24.95 \$
 BAXTER BLACK'S FIRST VIDEO (62 min/video) \$19.95 \$
 BAXTER BLACK LIVE ON PUBLIC TV (78 min/video) \$19.95 \$
 BAXTER BLACK LIVE UPTOWN (cassette tape) \$ 9.99 \$
 BAXTER BLACK LIVE AT THE GRANGE (cassette tape) \$ 9.99 \$
 BAXTER BLACK ON MONDAY (cassette tape - 3 VOLUMES Available) ... \$ 9.99 \$
 (Please select one or more Tape #1, Tape #2 or Tape #3 at \$9.99 each)
 4 PAK Cassette Collection (4 cassette tape set) \$25.75 \$
 (Baxter Black Live, Baxter Black & Friends, Generic Cowboy Poetry & The Buckskin Mare)

Shipping Charges	Order total:	Add
	Up to \$20.00	\$2.00
	\$20.01 to 35.00	\$3.00
	\$35.01 to 50.00	\$4.00
	\$50.01 to 75.00	\$5.00
	\$75.01 & up	\$6.00

Total \$
Shipping Charges \$
Grand Total \$
 (U.S. Funds)

Please send your check or money order to: **COYOTE COWBOY COMPANY**

NAME _____
 ADDRESS: _____
 CITY: _____ STATE: _____ ZIP: _____

ATTN: DEPT MULE
 P.O. BOX 190
 BRIGHTON, CO 80601
 MC & VISA

Journal Classifieds

Call 272-4536 Deadlines: For Thursday, 5 p.m. Monday; For Sunday, 5 p.m. Thursday Call 272-4536

PUBLIC NOTICE

The Bailey County commissioners Court will be accepting SEALED PROPOSALS for the following insurance coverages: Comprehensive General Liability Insurance Automobile Liability & Physical Damage Law Enforcement Liability Public Officials Liability County & District Clerk's Error's & Omissions Property

Proposals are to be mailed or delivered to Marilyn Cox, County Judge, 300 S. 1st, Muleshoe, TX 79347, and must be received by 11:00 a.m., Monday, March 24, 1997, at which time they will be opened and read.

The effective date for all coverages is April 1, 1997. For specifications contact Judge Cox at the above address or call (806)272-3077 between the hours of 8:00 a.m. and 5:00 p.m., Monday through Friday.

All proposals must be plainly marked "Insurance Proposal" and specify the type of coverage being bid. Bidders may submit proposals on one or all of the coverages listed.

Bailey County reserves the right to accept or reject any or all proposals submitted.

Published in the Bailey County Journal Feb. 16, March 2, and March 16.

FARMS & RANCHES

LET'S LOOK

240 acres between Muleshoe and the state line, on pavement, two good houses, sprinkler, 3 irr. wells & domestic well, good barns, shop, boxcar & steel pens, poss. of lease on 2 - 1/4's with sprinklers with purchase of 240 acres. OWNERS WOULD CONSIDER SELLING 80 ACRES SEPARATELY.

207 acres - Hub area - choice land, irr. well on electricity, 700 GPM sprinkler, good allotments, adjoining 348 acres with sprinkler for sale also if larger unit desired.

WE HAVE

other farms (both larger & smaller), most with sprinklers, some row-watered, some dryland, RANCHES - 5 1/2 sections, on pavement, west of Lubbock - Irrigation potential, 5055 acres east of Muleshoe (good fences, well watered, on pavement, good pens) and a good 48 section N.M. ranch approx. 32% deeded, balance leased, good home, on pavement. In coop with N.M. broker.


SCOTT LAND CO.
Ben G. Scott
(806) 647-4375 D/N

HomeHealth Preferred
Hereford, Texas

Director (Full Time; RN Required)
Registered Nurses (Full Time and On Call)
HomeHealth Aides (Full Time and Part Time)
Department Secretary (Full Time and Part Time)
Licensed Physical Therapist (Per Visit)

Applications will be accepted on March 11 and March 18 from 10:00am - 2:00pm at 804 W. Park Avenue, Hereford, Texas.

St. Mary Hospital
An Equal Opportunity Employer




The Sacred Cod hangs over the rear of the chamber of the Massachusetts House of Representatives in Boston. The five-foot carved fish symbolizes the importance of the fishing industry in the state's early growth and development.

Subscribe to the Muleshoe Journal 272-4536

HELP WANTED

Plains Memorial Hospital is now recruiting RN's and LVN's for the newly established Geropsych unit in Dimmitt, Tx. Please contact the Human Resource Department at 806-647-2191 ext. 423 or send resume to Plains Memorial Hospital, 310 W. Halsell, Dimmitt, Tx 79027. Equal Opportunity Employer.

9t-4tc

Plains Cotton Growers, Inc. Enhanced Boll Weevil Diapause Program

Now taking applications for seasonal employees. Jobs entail driving and map reading. ability to keep records and work with numbers is essential. Call 1-800-866-6388 for application.

11s-6tc

REAL ESTATE

House for Sale: 3 bdrm, 1 3/4 bath call 965-2477.

9t-4tc

3-2-2 on 1 acre w/trailer hook-up, fenced, store room, within City limits. 272-3334.

10s-4tc

BRICK - 3 bdrm, 1 3/4 bath, family room, fireplace, kitchen w/built-ins, dining, utility, garage, central heat/air, fenced corner lot. 1815 W Ave I. Joann Chester Realty 806-227-2368.

1815 W. Ave I

11s-4sunc

For Sale: Custom Brick Home, 401 Boesen St., Sudan, 5 rooms plus kitchen, laundry, 2 bath, 2 car garage. Double Lot. Central air/heat. Must sell. Estate. Make Offer. Call Collect: Mr. or Mrs. Clifford Kerr, (707) 446-0762.

10t-8tpd

2-2-1 Brick House, 1 acre fenced - work shop 24 x 30 on Hwy. 806-272-3449.

11s-4tpd

BRICK - 3 bdrm, 1 3/4 bath, Family room - Fireplace, Kitchen w/built-ins, Dining, Utility, Garage, Central Heat/Air, Fenced corner lot. 1815 W Ave. I. Joann Chester Realty, 806-227-2368.

1815 W Ave. I

11s-4eosunc

For Sale: 14 x 60, 2 bedroom, 1 bath Mobile Home. New Carpet - To Be Moved. Call 272-4917.

11s-4tpd

Wanted Cash Lease

160 acres with center pivot irrigation systems. Minimum of 700 gallons per minute water well required. Call 806-785-0082 or 806-797-5913 after 7:30 p.m.

10t-5sunc

WANTED

\$\$WANTED\$\$

We buy used mobile homes. We pay top dollar, any year, any condition. We need your used mobile home. Please call 1-800-404-1321.

7t-tfc

Wheat Grazing Wanted

272-3061 or 272-4990.

11s-3tc

Forrest Insulation and Construction. We insulate attics, sidewalls and metal buildings. We do all types of remodeling and fence buildings. 411 Elm St., Hereford, Tx

11s-2sunc

HANDYMAN!

No Job too Small. Repairs, improvements, all types. Free estimates. Call Mick 272-6791

James F. Hayes & Co.

AGRICULTURAL REAL ESTATE SERVICES

656 Acres of C.R.P. - Clays Corner Hub Area. Two years left on contract. 3 irrigation wells, 1 domestic well. 90% lays good with good soils. Will be productive farm when it comes out of C.R.P.

640 Acres Oklahoma Lane - 2 Sprinklers, 4 irrigation wells, 115 Acres of pasture, modest home, 2 domestic wells

120 acres west of Muleshoe. 2 wells. Good soil. Lays good. Immediate possession available. \$250.00 per acre.

160 Acres Northeast of Muleshoe in Parmer County. Excellent water. Excellent soil. Electric Center Pivot Sprinkler. New set of bowls on pump. Top Notch Farm

317 Acres in Lamb County on Bailey County line. 3 wells, 1 sprinkler, lays good. Call for details!

654 Acres in southern Bailey County. Grain sorghum & wheat allotment. Signed into program.

320 Acres - Lazbuddie area. 2 wells, 1 sprinkler, 60 acres of C.R.P. Good Soil

SOLD SOLD

640 Acres of New Mexico State Lease Land. Half mile Center Pivot Sprinkler. 2 irrigation wells, Barns, Pens. *

240 Acres in Northwestern Lamb County near Bailey County line. Good Soil, Lays good, 3 wells.

Oklahoma Lane 320 acres with small home. 3 irrigation wells, 1 quarter is sprinkler ready. Good soil and lays good.

Vic Coker, Agent

310 Main St. Suite 103 Muleshoe
Office 272-3100 Home 965-2468

WHEN LAND INVOLVES COWS AND PLOWS

* in cooperation with a New Mexico Broker

HAY FOR SALE

Haygrazer and large round bales. Delivery available, Discounts on quantity. Call (505) 276-7522, 477-2220, 359-0947, 276-7527

41t-tfc

PRIMESTAR

Call Gabriel Today and Save Over \$100

272-3072 or 1-800-815-2358

pin 9240

7s-suntc

BETTER LIVING

MOBILE HOMES

We Have A Good Selection of 4 Bedroom Mobile Homes

Single Wide 4 Bedrooms starting at \$26,000. YOUR PAYMENTS WOULD BE LESS THAN RENT!

Doublewide, tape & texture, over 2000 square feet - nicest home on the market

WE EVEN HAVE 5 BEDROOMS AVAILABLE!

1-800-404-1321 Portales, NM (505)356-5448

Lic. # D00681 'Se Habla Espanol'

Byrd Realty

Ronald Byrd Farwell, Texas Licensed Broker

Office (806) 481-3846 Mobile (505) 760-1495

Crista Bass Sales Associate Home (806) 925-6464

308 Third St., Farwell, TX

78 Acres NW of Muleshoe, Highway Frontage. Excellent development property. Owner will sell as one unit for \$40,000 or will divide into 5 or 10 acre tracts at \$750.00 per acre. If you have wanted a small acreage, this is your prime opportunity

320 Acres N.E. of Muleshoe. 4 wells, 2-Electric sprinklers, large 2 story stucco house, large barn, lays well

AUTOMOBILE

'81 Buick Skylark for sale \$750. Call 272-3574.

10s-4tc

AUTOMOBILE

'92 Ford Club Wagon, can be seen 2 miles East on Hwy 70. 965-2929 after 5:30.

10t-2tpd

AUTOMOBILE

'90 Chevy 1/2 ton, 4x4, 88,000 miles, \$11,595., (505)359-0947 Portales, NM

AUTOMOBILE

'89 Ford 1/2 ton, White and Grey, 37,000 miles, \$9,195., (505)359-1775 Portales, NM

Nieman Realty

116 E. Ave. C George Nieman, Broker 272-5285 or 272-5286

RICHLAND HILLS - PARKRIDGE AREA

NICE 3-3-1 Brick, cent. Heat, Evap. Air, built-ins, 2000' + Iv. area, fenced yd., stor. bldg., MORE !! \$60K !!! RH-2

NICE 3-2-2 Brick, cent. A&H, built-ins, FP, approx. 2150' Iv. area, fenced yd., MORE!!! \$69K!!! RH-7

VERY NICE 3-2-1 Brick, Cent. A&H, built-ins, fans, new paint, carpet, & drapes, fenced yd. \$60K!!! RH-1

NICE 3-2-2- Brick, Cent. A&H, built-ins, FP, cov. patio, fenced yd. \$50's!!!

HIGHLAND AREA

2 Bdrm, 1 bath home, fenced yard. \$16,500!!! HL-4

VERY NICE 3-2-2 Brick, Cent. A&H, built-ins, fenced yd., spktr. sys., MUCH MORE!!!! \$60's !!! HL-1

NICE 3-2 Home, Heat Pump, FP, fenced yd., stor. bldg. \$30's!!! HL-3

NICELY REMODELED 3-2-1 Brick, Cent. A&H, built-ins, FP, nice carpet & tile, fenced yard, storage building, MORE!!! \$60's!!!! HL-8

LENAU - COUNTRY CLUB AREA

VERY NICE 4 bdrm. 2 1/2 bath double wide, corner lot, built-ins, heat pump, FP, MUCH MORE !!! \$50's!!! CC-2

NICE 2-2-2 Brick, on corner lot, heat pump, fenced yard, storage bldg., MORE!! \$40's !!! L-1

2-1-1 Carport Home, wall furnace, nice carpet, storm shelter, stor. bldg., fenced yd. \$20's!!!!CC-3

NICELY REMODELED 3-1 1/2-1+ 2 Carport Home, Cent. A&H, DW, Stor-wkshp., More !!! \$30's !!! L-2

HIGH SCHOOL

VERY NICE 3-2 Home, Cent. A&H, built-ins, fans, fenced yd., stor. bldg., MUCH MORE!!!! \$30's!!! HS-5

VERY NICE 3-2-1 Home on corner lot, Cent. A&H, built-ins, ceiling fans, fenced yd., stor. bldg.!! \$30's!!! HS-3

NICE 2-1-1 Brick, Heat Pump, nice carpets, well insulated, storm windows & doors. \$30's!!!! HS6

BUSINESS FOR SALE-SNACK SHACK - Lot, Buildings, furniture, and fixtures!!!!

EARTH - NICE 3-2-1 Brick Home, Cent. A&H, built-ins, FP, Stor. Bldg., Fenced Yd. - \$33K!!!!

RURAL HOMES

JUST LISTED -3-2-2 Home 1.36 ac. on pavement, Cent. A&H, built-ins, freshly painted interior & exterior, fans, fenced yd., 31' x 40' barn !!! \$40's!!! HR-2

2-2-1 carport Mobile Home on .665 acres on pavement close to town, Cent. heat, evap., air, DW, large barn, stor. bldg. and MORE!! \$25K!!! HR-5

VERY NICE 3-11/2-1 Home on 8 acres, on pavement close to town, Cent. A&H, built-ins, sun room, concrete cellar, storage bldgs., fenced yd., RV cover, mobile home hookups, stock pens, fenced acreage, & MORE!! \$50's!!! HR-6

ASK ABOUT OUR COMMERCIAL LISTINGS!!!

160 acre tract, 8" well, circle spktr. w/drops, fully allotted!!!

REAL ESTATE AUCTION

320 ACRES, M/L
PARMER COUNTY, TEXAS

Monday, March 10, 1997 ----- Sale Time: 11:00 A.M.

Auction Location: Bovina, (Parmer Co.) TX
Bovina EMS Bldg., 109 Third Street (Next to GTE Bldg.)

Property location: From Bovina, TX 2.2 miles South on FM Hwy 1731, then 1 mile East on CR S to Northwest

Corner of Property: or from Farwell, TX 9 miles East on FM Hwy 145, then 7 miles North on FM 1731, then 1 mile East on CR S to Northwest Corner of Property; or from Muleshoe, TX 10 miles Northwest on US Hwy 84, then 11 miles North on FM Hwy 1731, then 1 mile East on CR S to Northwest Corner of Property

James T. Hull Estate -- Owner Mary Sue Hull, Trustee

For more information contact: Cruce & Fletcher Auctioneers (806) 296-5050 or (806) 866-4201

LEGAL: North 1/2 of Section 35, Township 7, South Range 2 East, out of Leagues 528 & 529 of a Capitol Syndicate Subdivision, Parmer County, TX containing 320 Acres, m/l

ASCS: Parmer County Farm #900
320 acres Farmland 287.4 acres Cropland 43.1 acres Wheat 139.6 acres Corn
97.1 acres Cotton 6.1 acres Barley 1997 Estimated Payment \$9,942 to \$11,805

Farm Status: Farm is rented on Crop Basis for 1997 Crop Year. Buyer will assume present owners position receiving 1/3 of Crop Rent & Government Payments. Buyer will also assume present owners expense regarding crops. Contact Auctioneers as to Rental Agreement. (806 296-5050)

Irrigation: 1-8" Well 2-6" Wells 1-Tailwater Pump Approx. 2 miles of Underground Pipe Pumps & Gearheads go with lease of land. Motors & sprinklers belong to tenant.

Improvements: Older Barn Minerals: Buyer will Receive 1/2 of Seller's Equity.

Manner of Sale: Dollars per acre X 320 acres to determine Total Sales Price.

Terms: Cash. Successful bidders will be required to execute a real estate contract and deposit 10% of total purchase price with escrow agent.

Title: Property is to be conveyed to purchaser by General Warranty Deed with Updated Abstracts.

Taxes: 1997 Taxes To Be Paid By Buyer. Closing: Closing to be March 31, 1997 or sooner.

Possession: Buyers shall take possession at Closing with possession from tenant as 1997 crops are Harvested.

Buyer Note: All prospective buyers shall examine the property, its improvements and all relevant documentation carefully as each bidder is responsible for evaluating the property and shall not rely on the seller or the auctioneers. Prospective buyers are responsible for conducting their own independent investigation, inquires and due diligence research concerning the legal documents, the property and its improvements. Seller and Auctioneers are assuming that the bidders have inspected the property and all improvements thereon and are satisfied and accept them "AS-IS-WHERE IS" and without representations and warranties expressed or implied. The failure of any bidder to inspect, or to be fully informed as to the condition of all or any portion of the property sold, will not constitute grounds for any claim or demand for adjustment or withdrawal of a bid. Announcements made sale day take precedence.

Owner Will Be Given 20 minutes to Accept or Reject Bid

JAMES G. CRUCE
Plainview, TX
(806) 296-5050
Lic. # 6704

Cruce & Fletcher
Auctioneers & Real Estate Brokers
P.O. Box 609 -- Wolfforth, TX 79382

BOBBY FLETCHER
Wolfforth, TX
(806) 866-4201
Lic # 7131



END OF WINTER SALE



All Types
Lowe's Drinks
6 pack, 12 oz. cans
99¢

MEAT

- SHURFINE FULLY COOKED QUALITY BONELESS **Whole Hams** lb. **\$1.99**
- SHURFINE FULLY COOKED QUALITY BONELESS **Half Hams** lb. **\$2.19**
- PILGRIM'S PRIDE BONELESS **Skinless Breasts** lb. **\$2.39**
- SHURFINE REGULAR OR HOT, 2 LB. ROLL **Breakfast Sausage** .. **\$3.59**
- SHURFINE REGULAR OR HOT, 1 LB. ROLL **Breakfast Sausage** .. **\$1.89**
- SHURFINE REGULAR OR POLISH, 1 LB. PKG. **Smoked Sausage** **\$1.49**
- Preferred Trim Boneless **Arm Roast** lb. **\$1.49**
- Preferred Trim Boneless **Chuck Steak** lb. **\$1.49**
- Preferred Trim Boneless **Charcoal Steak** lb. **\$1.79**
- Preferred Trim Boneless **Beef Short Ribs** lb. **\$1.99**
- Cubed Beef **Stew Meat** lb. **\$1.99**
- Fresh **Ground Chuck** lb. **\$1.49**



PREFERRED TRIM BONELESS
Chuck Roast
\$1.29
lb.

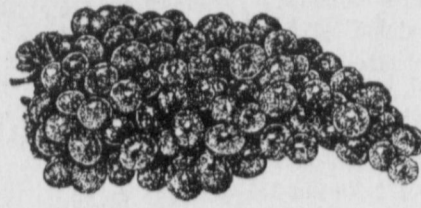
- Shurfine Quality **Sliced Bacon** 1 lb. pkg. **\$1.89**
- Shurfine **Meat Wieners** 12 oz. pkg. **69¢**
- Shurfine **Beef Wieners** 12 oz. pkg. **\$1.19**
- Shurfine Jumbo **Meat Wieners** 1 lb. pkg. **89¢**
- Shurfine P&P Loaf, Salami of **Meat Bologna** 6 oz. pkgs. **59¢**
- Shurfine Sliced **Bologna** 1 lb. pkg. **99¢**
- Shurfine Oval **Ham Steak** 8 oz. pkg. **\$1.99**
- Shurfine **Link Sausage** 11 oz. pkg. **99¢**
- Shurfine **Corn Dogs** 1 lb. pkgs. **2/\$3**
- Shurfine **Corn Dogs** 27 oz. pkg. **\$2.29**

LENTEN SPECIALS

- | | |
|--|--|
| Shurfine Reg. or Jal. Pimento Cheese Spread 7.5 oz. ctn. \$1.39 | Farm Raised Catfish Nuggets lb. \$1.99 |
| Shurfine Regular Pimento Cheese Spread 14 oz. ctn. \$2.19 | Farm Raised Catfish Fillets lb. \$2.99 |

- Shurfine Assorted Spaghetti **Sauce** 30 oz. jar **\$1.29**
- Shurfine Rings or W/Cheese **Spaghetti** 15 oz. cans **2/\$1**
- Shurfine Assorted With Meat **Pastas** 15 oz. cans **5/\$4**
- Shurfine **Beef Stew** 24 oz. cans **2/\$3**
- Shurfine No Beans **Chili** 15 oz. can **89¢**
- Shurfine With Beans **Chili** 15 oz. can **79¢**
- Shurfine, 12 oz. cans **Luncheon Meat** **2/\$3**
- Shurfine Corned Beef **Hash** 15 oz. can **\$1.29**
- Shurfine Red Plum, Grape or Apple **Jelly** 18 oz. jar **99¢**
- Shurfine Plain Straw. or Asstd. Frosted **Toaster Pastries** .. 11 oz. box **99¢**
- Western Family Wheat or Cheese Snack **Crackers** 10 oz. box **\$1.29**
- Shurfine Snack or Animal **Crackers** 12-13 oz. box **\$1.29**
- Western Family, Assorted Pecan or Chip-A-Riffic **Cookies** 18-19 oz. pkgs. **2/\$5**
- Western Family Striped Shortbread or **Fudge Graham's** ... 16 oz. pkg. **\$1.39**
- Western Family Fudge Sticks or Asstd. **Crepe Wafers** 9 oz. pkg. **\$1.79**
- Shurfine Assorted **Potato Chips** 6 oz. bag **69¢**
- Shurfine Assorted Saltine **Crackers** 15-16 oz. box **79¢**
- Plain or Iodized **Shurfine Salt** 26 oz. ctns. **3/\$1**
- Shurfine **Instant Coffee** 2 oz. jar **\$1.29**
- Shurfine **Coffee Creamer** 11 oz. **89¢**
- All Purpose **Shurfine Flour** 5 lb. bag **79¢**
- Shurfine Creamy or Chunky **Peanut Butter** 16 oz. jars **2/\$3**
- Shurfine, gallon jugs **Drinking Water** **2/\$1**
- Shurfine Apple **Cider or Juice** 64 oz. btl. **\$1.69**
- 14.5 oz. can, Diced, No Salt, Stewed, Whole Peeled or Stewed, Italian **Shurfine Tomatoes** **2/\$1**
- Shurfine, 8 oz. cans **Tomato Sauce** **6/\$1**

PRODUCE



THOMPSON
Seedless Grapes
lb. **89¢**



- RED RIPE **Roma Tomatoes** 10 for **\$1**
- NEW CROP **Strawberries** small basket **99¢**
- GARDEN FRESH **Green Broccoli** lb. **59¢**
- SWEET JUICY **Cantaloupe** lb. **49¢**
- DOLE **Salad Mix** 1 lb. pkg. **89¢**
- GARDEN FRESH **Crisp Carrots** 1 lb. pkg. **3 for \$1**
- FRESH TROPICAL **Mangos** each **69¢**
- WASHINGTON RED, 3 LB. BAGS **Delicious Apples** 2 for **\$3**

Cello Wrapped
Jumbo Lettuce
each **59¢**

— Grocery Specials —

- Shurfine 8 oz. **Foam Cups** 20 ct. pkg. **2/\$1**
- Shurfine White Facial **Tissue** 175 ct. box **89¢**
- Shurfine Assorted **Napkins** 120 ct. pkg. **99¢**
- Shurfine Sandwich **Bags** 150 ct. box **99¢**
- Shurfine Tall Drawstring **Kitchen Bags** 20 ct. box **\$1.99**
- Shurfine **Standard Foil** 12"x25" roll **69¢**
- Shurfine Liquid Pump **Hand Soap** 8 oz. btl. **\$1.19**
- Shurfine Liquid Hand Pump **Soap Refill** 16 oz. btl. **\$1.49**
- Shurfine Liquid Laundry **Detergent** 64 oz. btl. **\$1.99**
- Shurfine, Fabric **Softener Sheets** 20 ct. box **89¢**
- Shurfine Softener **Fabric Rinse** 128 oz. btl. **\$1.69**
- Shurfine Water Softener **Pellets** 40 lb. bag **\$3.99**
- Shurfine Assorted Deluxe **Dog Food** 13 oz. cans **5/\$2**
- Shurfine Dry **Cat Food** 3.5 lb. bag **\$1.69**
- Shurfine Asstd. Microwave **Popcorn** 3 ct. pack **99¢**
- Shurfine Plain **Instant Rice** 14 oz. box **\$1.19**
- Shurfine Asstd. Flavored **Instant Rice** 6.8-6.9 oz. box **79¢**

- Shurfine Assorted Instant **Oatmeal** 12-15 oz. box **\$1.69**
- Shurfine **Quick Oats** 42 oz. box **\$1.89**
- Shurfine Complete **Pancake Mix** 32 oz. box **\$1.29**
- Shurfine Asstd. Pancake-Waffle **Syrup** 24 oz. btl. **\$1.29**
- Shurfine Assorted **Gelatin** 3 oz. boxes **3/\$1**
- Shurfine Van. or Choc. Instant **Pudding** 3.5-4 oz. boxes **2/79¢**
- Shurfine Elbo Macaroni or Long **Spaghetti** 24 oz. pkg. **99¢**
- Shurfine Extra Wide **Lasagna** 16 oz. pkg. **99¢**
- Shurfine Dry Roasted or Unsalted **Peanuts** 16 oz. jars **2/\$5**
- Shurfine Wide, Medium or Extra Wide **Noodles** 12 oz. pkg. **69¢**
- Shurfine Deluxe Shells & Cheddar **Dinner** 12 oz. boxes **2/\$3**
- Shurfine Whole or Diced **Green Chilies** 4 oz. can **69¢**
- Shurfine Assorted Cranberry Drinks or **Cocktail** 64 oz. btl. **2/\$5**
- 64 oz. btl., Shurfine **Reg./Tangerine Ruby Red Grapefruit Juice** **\$1.99**
- Shurfine Fancy **Tomato Juice** 46 oz. can **99¢**
- Shurfine Instant **Potatoes** 13 oz. box **\$1.19**
- Shurfine Reg. or Kosher Whole **Dill Pickles** 32 oz. jar **\$1.69**

Frozen & Dairy

- Shurfine **Apple Juice** 12 oz. can **\$1.19**
- Shurfine **Grapefruit Juice** 12 oz. can **99¢**
- Shurfine **Sliced Strawberries** 10 oz. can **89¢**
- Shurfine **Corn on the Cob** 4 ear pkg. **2/\$3**
- Shurfine **Shurfine Fries** 32oz. bag **2/\$3**
- Shurfine **Fried Chicken** 25 oz. box **\$2.69**
- Shurfine • Baby Lima Beans • California Blend Veg. • Mediterranean Blend Veg. • Oriental Blend Veg. • Chopped Broccoli • Broccoli Cuts **Frozen Vegetables** 16 oz. bag **99¢**
- Shurfine **Ice Cream Bars** 6 ct. pack **\$1.29**

Shurfine Buttermilk or Butter Flavor
Jumbo Biscuits
16 oz. can **99¢**

- Shurfine Jumbos **Cinnamon Rolls** 16.9 oz. can **\$1.79**
- Shurfine **Cottage Cheese** 24 oz. ctn. **\$1.79**
- Shurfine **English Muffins** 12 oz. pkg. **59¢**
- W/S American Reg. or Fat Free **Shurfine Singles** 12 oz. pkg. **\$1.89**
- Shurfine Longhorn Colby, Cheddar or Colby Jack **Halfmoon Cheese** 10 oz. pkg. **\$1.89**
- Shurfine Cheddar, Cheddar Jack or Mozzarella **Shredded Cheese** 6 oz. pkg. **\$1.69**
- Shurfine Lowfat **Chocolate Milk** 1/2 gal. jug **\$1.29**

Shurfine Ultra - Small, Extra Large, Medium Boys, Medium Girls, Large Boys, Large Girls

Diapers
18-36 ct. pkg. **\$3.99**

Shurfine Reg., Elec. Perk or Drip **Coffee**
13 oz. can **\$1.69**

Shurfine **Decaf Coffee**
13 oz. **\$2.99**

Shurfine • No Salt WK Golden Corn • Reg. CS or WK Golden Corn • Reg. or No Salt Cut Green Beans • Reg. or No Salt Sweet Peas • Reg. Fr. Sl. Green Beans
Vegetables
14.5-15.2 oz. cans **3/\$1**

•Mex. Style Chili Beans • Pinto Beans • Dark Red Kidney Beans • Chop. Mustard Greens • Chop. Turnip Greens • White Hominy • Golden Hominy • Sliced New Potatoes • Whole New Potatoes
Shurfine Vegetables
YOUR CHOICE 13.5-15 oz. cans **3/\$1**

Shurfine Asstd. **Ice Cream**
1/2 gal. round ctn. **\$1.89**

Shurfine Frozen Reg. or W/Pulp **Orange Juice**
12 oz. cans **69¢**

Health & Beauty Aids

- Western Family 5 Gr. Non Coated **Aspirin** 250 ct. btl. **\$1.69**
- Western Family Severe Cold **Psuda-Tabs Caplets** 10 ct. pkg. **\$1.49**
- Western Family Reg./Cherry Nighttime or Regular Daytime **Cold/Flu Medicine** 6 oz. btl. **\$1.99**
- Western Family, Fruit or Grape Chewable **Children's Non-Aspirin** .. 30 ct. btl. **\$1.39**
- Western Family, Tablets or **Ibuprofen Caplets** 24 ct. btl. **\$1.39**
- Western Family **Petroleum Jelly** 3.75 oz. jar **99¢**
- Western Family **Bismate Tablets** 30 ct. box **\$1.99**
- Regular or Super, 32 ct. pkg. **Western Family Tampons** **\$2.99**

WESTERN UNION MONEY TRANSFER™
"The fastest way to send money"

Lowe's MARKETPLACE

515 W. American Blvd.
401 W. American Blvd.
Muleshoe 272-4585

Pay-n-Save

WE RESERVE THE RIGHT TO LIMIT QUANTITIES IN TEXAS

Muleshoe 272-4406

PRICES EFFECTIVE MARCH 5-11, 1997
OPEN MONDAY-SATURDAY 7:30 A.M. - 8:00 P.M., SUNDAY 8:00 A.M. - 7:00 P.M.