

Office



Ranger Times

© 1991 Eastland County Newspapers Inc.

McCleskey No. 1 - October 1917

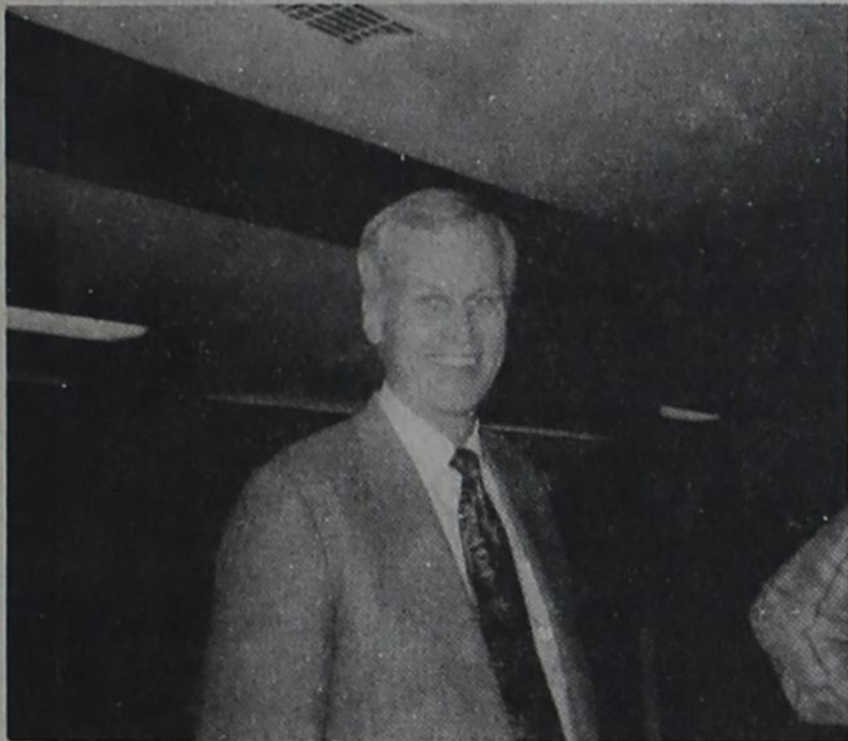
Ora. B. Jones No. 3 - November 1985

50¢

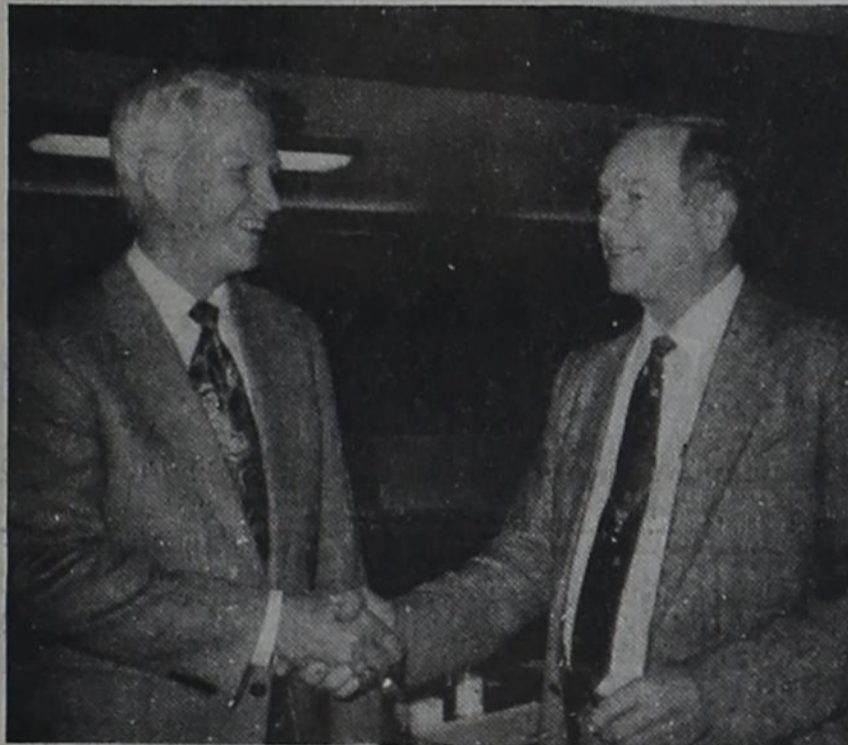
Volume 88 Number 5

"City Of Flowing Gold" Thursday, January 16, 1992

Congressman Charles Stenholm Visits Ranger



Congressman Charles Stenholm



Congressman Charles Stenholm shakes hands with Jerry Edwards of Edwards Funeral Home in Ranger. He was one of the several people who showed up to meet and talk with Stenholm.

Ranger Garden Club News

The Ranger Garden Club met Thursday afternoon in the home of Marie Mahaffey with Deloris Britt presiding over business session. Roll call answered, minutes of previous meeting given. Since so many missed reading the names of the Christmas decorated homes, here it is again; 1st - Sara Neal, 2nd - Barbara Wheat, and 3rd - Rev. and Mrs. Kenneth Colgrove. It was discussed that and accepted that the business people who live on the outskirts of the city limits and transact their business in Ranger, should be recognized as part of the city when judging time comes again.

Again the club will sponsor the Valentine party at Western Manor February 13. Be sure you bring two or more Valentines for the 50 people there.

The placing of a sprinkler system in the Mathew garden at the railroad was discussed pro and con. Those of us who were members before 1978 remember how the then, sprinkler functioned. Water ran down the street on to the highway old 80.

Fortunately no wreck did occur. Can you be sure that it will be properly overseen and who will be willing to come across with the huge expense such a project would incur? answer please.

Parliamentary rules change as well as other things. Ruby Halbert the Parliamentarian reviewed procedures that need to be observed.

Thelma Powell having visited Hawaii and taken slide pictures of the flowers, scenery and history showed and explained slides, some taken on a 10 mm which was dark and the 35 which were very good emphasizing the 6 different cultures that make up what we know as Hawaii. Refreshments were served to Eva K. Poyner, Ruth Glenn, Joan Allsup, Mildred Black, Ruby Halbert, Maxell Townsend, Thelma Powell, Mary Stie, Linda Plumley, Lorraine Feltmann, Vinetta Young, Doris Smith, Mildred Brooks, Genova Ishman, Marjory Lamb, Lois Raley, and hostesses Marie Mahaffey, Louease Britt and Sue Allsup.

COUNTY COMMISSIONERS: AGRICULTURE TEAM TO SURVEY FLOOD DAMAGE

Eastland County Commissioners heard Monday that an Emergency Management Team would be in the County Thursday, Jan. 16 to assess agricultural damage from the December floods. Anyone who had damage to crops, fences or livestock should contact the local ASCS office and report this damage.

The Commissioners reported that a Federal Emergency Management Team surveyed county road damage on Thursday of last week, after Eastland County was declared a Disaster Area. The roads were traveled, and each site assessed. Pct. 1 Comm. Richard Robinson was the only one reporting that each site he asked help for was approved. He said he had only two places that were so bad felt sure they wouldn't be turned down.

On one, he said he "Took him (the inspector) as far as we could go, and then backed up a half mile to get out."

Pct. 4 Commissioner Reggie Pittman had 26 places approved for assistance. Pct. 2 Commissioner Calvin Ainsworth

had 21, and Pct. 3 Commissioner L. T. Owen 20. Each of these commissioners had put in requests for more sites than were approved.

Pittman said that he "showed him (the inspector) a lot more than he wanted to see!"

The Commissioners were told that the only sites approved were those that were "washed completely out," and would cost "real bad expense" to fix. There would be "about a \$250 minimum on each site," or 80 percent of the cost.

There would be no funds allowed for "improving" the county roads, just for getting them back into the shape they were before the December floods.

Each commissioner will need to keep an account of the money spent on repairs.

In other business, Commissioner Richard Robinson said he hadn't heard what the target date would be on the use of the 9-1-1 Emergency System.

He said testing was going on now at the County Dispatch, but there were still a few homes in the county with

no address and information listed. Robinson said he expected this to be cleared up soon.

He said there was also another problem - some people living just outside of Eastland County are listed on the County 9-1-1 System. These residents have to be "flagged" so that when they call in their messages can be given to proper authorities.

During Monday's meeting representatives of Protective Life Insurance Co., informed the court there would be changes in what the insured from the County paid on medical prescription.

County Judge Scott Bailey questioned whether a company had legal authority to change the price of insurance when it was on a contract.

He was told this was not a change of premium rates - and that Federal laws on Cooperative Ins. were not that definite.

One insurance official told the court that Eastland County had paid \$98,000 on premiums from August - December 1991, and collected around \$225,000 in insurance. Much of this cost

was in medical prescriptions, he said, so measures had to be taken to help with the loss.

This item is expected to have further discussion by the commissioners.

An Executive Session to discuss litigations was listed on Monday's agenda. After coming out of this discussion the commissioners approved payment of \$3,765.20 in attorney's fees in a 1989 lawsuit styled against "Sheriff Don Underwood and others."

Vance said that "Underwood and the County are not liable in the suit." There was a "tactical error by defense counsel," he added.

On other law enforcement matters, Comm. Pittman brought a report from the County Jail. He said there were 17 prisoners currently in the jail, with one for TDC, 11 awaiting trial, one on a bench warrant and four on blue warrants.

Five prisoners have been held less than 30 days, four over 30, one over 60 and one over 90 days, he said.

Beta Sigma Phi Sorority Met Thursday, January 8

Beta Sigma Phi Sorority Texas Laureate Beta Chi # 1063 met Thursday, January 8 in the Community Room at Freedom Bank with Joy Anne Hathcock as hostess.

The meeting was called to order by President Joy Anne Hathcock. Minutes were read by Cletis Williamson and approved.

Several projects of interest were discussed.

The meeting was adjourned.

A table of delicious food was served to: Inez Bourdeau, Wanda Isbell, Mildred Black, Sue Allsup, Joy Anne Hathcock, Marj Lamb, Cletis Williamson, Reba Rawls, and Lorene Oliver.

Games were played as our program for the evening.

Everyone had a "Fun Time."

Our next meeting will be at Thurber Inn with dinner served.

Police Report

1-06-92—One white female in jail for criminal trespassing

1-11-92—One white female in jail for theft over \$20.00

Local Woman's Daughter Killed In Las Cruces, N.M.

Daughter of Betty and Elbert Holder was killed January 3rd when a Peterbilt Conventional Tractor Trailer ran a red light at an intersection, crossed the median and collided with two vehicles. Dead was Yvonne Jane Rutherford, 36 years old, of Las Cruces N.M. When the truck collided with Mrs. Rutherford's van, the drivers side door was sent spinning about 1,000 feet down the highway striking a GMC Blazer driven by Kevin Marshall of Arrey and his wife Billie, she received minor injuries.

The GMC actually got stuck on the semi, otherwise the people inside would have been killed or more seriously injured.

Mrs. Rutherford is survived by her husband, Robert Rutherford of Las Cruces; two sons, Richard Steve Hinson of Las Cruces and Leroy Lewis

Hinson of New York; one daughter, Monica Sue Hinson of Red Oak, Tx.; her father, Lloyd and step-mother, Nelda Fowler of Hico, Tx.; her mother, Betty Holder of Ranger, Tx.; five half sisters, Sandy Fritz of Snyder, Tx., Danta Green, Lin Whiteley, Debbie Fowler, Kristi Medina, all of Hico, Tx.; her maternal grandmother, Ida Johnson of Ranger, Tx.; and her paternal grandmother's Loretta West and Edna Prisk, both of Hico, Tx. She was preceded in death by two half sisters, Mona Parker of Hico and Sharon Bolling of Ranger.

Funeral services were held Thursday, January 9th in Las Cruces, with Burial in Las Cruces. Betty Holder was in Las Cruces for the funeral. Sandy and Tod Fritz of Snyder were in Las Cruces.

Mrs. E.F. Arterburn Celebrates Her 90th Birthday

Mrs. E.F. Arterburn was honored on her 90th Birthday with a reception given by her children, grandchildren and great-grandchildren in her home on Lake Leon.

Mrs. Arterburn was born in Menna, Arkansas on January 13, 1902. She moved by covered wagon to Oklahoma where she married her husband, Earnest Forest. They lived in Drumwright, Oklahoma until moving to Ranger with their five sons in 1936.

The reception was attended by many family and friends. Guests came from as far as California. All of her sons and their wives were able to come to the celebration. From the oldest to the youngest they are: Earnest and Evelyn from Albuquerque, New Mexico; D.C. and Dorothy from Amarillo; Walter and Clara from Bryan; Leonard and Francis from Baytown; and Junior and Joyce from Lubbock.

Mrs. Arterburn also received numerous gifts and telephone calls from family and friend as far away as Florida and Hawaii.

The day was filled with expressions of love and gratitude for the life Mrs. Arterburn has lived.

Mrs. Arterburn has been an active member of Eastern Star Lodge, Royal

Breakfast Club, Lone Cedar Country Club and is currently a member of the First Baptist Church of Ranger. She is known for her wonderful hospitality, incredible cooking skills and her hard work.

She began working the cane fields at the age of 12 alongside both her parents. While raising her five boys she continued to work alongside her husband, keeping the office at Art's Tool and Supply on Main Street. Mrs. Arterburn refined her fishing skills over the years, able to catch stringers of crappie while others came back empty handed. She has been an inspiration to all her family through the years.

Presently Mrs. Arterburn has five children, eleven grandchildren and eleven great-grandchildren. They have all spent hours in Mrs. Arterburn's home playing dominoes, fishing, water skiing, boating, and eating great food.

When asked her secret for a long and fulfilling life, Mrs. Arterburn said, "I've tried to live a Christian life and be a good mother to my children. I tried to teach them to never hold a grudge, sit down and work out your problems with people rather than let them grow. I've always wanted to treat others the way I wanted to be treated."

4-H NEWS RANGER By: Holly Greenwood

The Ranger 4-H Trailblazers Horse Project group led by Holly Greenwood will meet Sunday, January 19th, 1991 from 2:00 to 4:00 P.M. at the

Greenwood's Arena. All interested boys and girls are encouraged to attend.

This is the third meeting of a series.

READ THE CLASSIFIEDS

Four Members Of The Gifted & Talented Class Competed In The KTXS-TV Academic Challenge



From L to R: Stachia Sharp (Spokesperson), Jeremy Barron, Katherine Jameson, Joanna Wallace, and Jason Zollinger.

The Ranger High School Gifted and Talented class competed in the KTXS-TV Academic Challenge in Abilene on Monday, January 6. Four members of the class made up the team that competed against Haskell High School. Jeremy Barron, Katherine Jameson, Joanna Wallace, and Jason Zollinger were the panel, and Stachia Sharp

was the spokesperson. Ranger maintained a large lead, and eventually topped out with a huge win over Haskell. The final score was Ranger 250, Haskell 60.

The contest will air on Sunday, January 19, at 5:30 P.M. on cable channel 23 and satellite and regular channel 12. Each team receives \$100.00 for its school library. The

money is donated by the Coca-Cola Company to the thirty schools participating.

Ranger will continue on to the finals sometime in March. The public is welcome to ride the bus to Abilene with the team. Please contact Frances Palmer, team coach, if you would like more information.

By: Stachia Sharp

Brownie Troop 207 Of Ranger Has Been Busy



Top Row (L to R): Joni Huerta, Amy McCullough, Linda Freeman, Lesa Herod, Joan Allsup, Dorothy Huerta, Oma Fonville, and Diana McCullough.
Front Row (L to R): Reagan Herod, Amy Thomas, Joanna Fonville, Jessica Allsup, Leah Herod, Keri McCullough, Cruz Perez, Melissa Hoerner, Brandi Tedford, and Sally Burke.



From L to R: Melissa Hoerner, Sally Burke, Keri McCullough, Leah Herod, Jessica Allsup, Joni Huerta, Amy Thomas, Cruz Perez, Brandi Tedford, and Genny Murry.

Brownie Troop 207 of Ranger has really been busy this year. In October the girls made hand puppets and wrote their own skits which advocated Halloween safety. The Brownies performed the puppet show for grades Pre K through 4th grade. They did a very fine job. In November we went to Abilene, and visited a

recycling plant. We took our aluminum cans which we had been collecting and sold them there for \$68.00 which added to our slide fund. The girls saw them weigh and store the cans. We also learned that newspapers are recycled into sheet rock, computer paper into toilet paper, and cardboard boxes back into cardboard boxes.

After our tour we had a sack lunch and went to the movies and saw *Beauty and the Beast*.

To continue with our fun and activities we began our annual cookie sale January 10, 1992. We hope you will support our troop and the other troops of Ranger and buy our cookies. As you can see, it is money well spent.

STATE CAPITAL



HIGHLIGHTS

By Lyndell Williams
TEXAS PRESS ASSOCIATION

AUSTIN - Using fancy footwork, Democrats in the Texas Legislature battled the clock with a series of trick plays, hoping to move the redistricting football past three federal judge linebackers.

Gov. Ann Richards' special session had until Jan. 10 to substitute new political boundaries for the court-drawn maps.

Basically, the session is a last ditch effort by Democrats to regain control of the redistricting football which they fumbled away on Christmas eve.

After the Texas Supreme Court threw out the senate plan, federal judges drew their own maps since none legally existed, and ordered primaries to be held on schedule.

Alarmed that the court's plan might elect a Republican majority in the Texas Senate, Democrats unveiled some creative playmaking, including a ploy to create more time.

Postpone Election
Senate Democrats threatened to withdraw Texas from the March 10 presidential primary unless federal judges allow them to protect white incumbents.

A bill by state Sen. Bob Glasgow, D-Stephenville, would postpone all state elections for this year only to April 11, if the Legislature fails to adopt a plan in time.

Texas Secretary of State John Hannah has said Jan. 10 is the last day candidates can file if Texas is to participate in the March 10 Super Tuesday primaries across the South.

Glasgow has a special interest in changing the court's plan, which added several GOP precincts to his district.

Less Than The Alamo
Outnumbered Senate Republicans prepared to stall a Senate vote with a series of parliamentary maneuvers.

Invoking senatorial privilege, Sen. David Sibley, R-Waco, kept senators from considering the maps for four days.

The nine GOP senators, joined by two conservative Democrats, prepared to filibuster.

"The Alamo held out for 13 days. I don't know if we have it in us to hold out that long or not," Sibley commented.

House: Multiple Plans

House committee Democrats adopted the court-drawn plan for 1992 only, to be substituted with a plan favoring Democrats for 1994 and beyond.

House members appeared reluctant to delay the primary, and leaders predicted the roll call vote would not challenge the court.

Meanwhile, an East Texas lawmaker who is openly challenging House Speaker Gib Lewis said he will ask for an unusual vote to declare the speakership vacant.

Rep. Billy Clemons, D-Pollak, planned to ask members for a majority vote on his resolution declaring the speaker's post vacant, and installing Speaker Pro Tem Wilhelmina Delco, D-Austin.

Lewis, who faces trial later this month on two misdemeanor ethics indictments, said he would announce before the end of the session whether he will seek reelection.

Colossal Waste of Money?

But despite the potential for upheaval, some lawmakers in both parties predicted the session was a tempest in a teapot.

Indeed, many observers' eyes are focused on the Legislature to see whether Gov. Richards' tactics will be a colossal waste of taxpayers' money.

Some leaders are already convinced that it is. "This is a joke," said Tom Craddick, House GOP leader. "We're not even voting on a bill that affects the 1992 elections. Lawmakers will return in 1993 to undo whatever is done now for the 1994 elections. So, we're just wasting time and tax money."

Hispanic leader Rep. Roman Martinez, D-Houston, said any change for this year would ultimately end up back in court before the same judges before the election.

PARADE OF LITTLE PEOPLE

Get ready for our Parade of Little People!
Mom, Dad, Grandpa and Grandma, Here's a chance to show off the pride and joy of your family. The Ranger Times will publish its annual Parade of Little People on Thursday, Feb. 13 -- just in time for Valentine's Day.

All youngsters born from Jan. 1, 1986 to Dec. 30, 1991, are eligible. Bring in or send your youngster's picture with \$5 to The Ranger Times, Box 118, Ranger 76470 by Feb. 1. (Our street address is 211 Elm Street.) No matter where you live, a picture of your eligible Little Person will be accepted. The charge is for processing your child's photo for printing.

Wallet size pictures are preferable to large portrait size pictures. Color pictures, except Polaroid, are acceptable although black and white is preferred. Snapshots do not reproduce well.

Print the child's full name on the back of the photo and please furnish the following information on a separate piece of paper, with each photo: child's full name, hometown, birth date, parents' names and grandparents' names. This information will be printed under the child's photo in the Parade of Little People. You may begin sending or bringing the photos as soon as you like. Photos will be returnable.

The Ranger Times

U.S. Slashes Interest Rates To 27-Year Low In Bid To Jumpstart Economy

The nation's key interest rate has been cut a full point by the Federal Reserve Board, plunging the cost of credit to the lowest level since 1964.

"This is a bold step aimed at jumpstarting our sluggish economy and putting people back to work in new jobs," said U.S. Sen. Phil Gramm.

Interest rate cuts by the Fed normally trigger widespread cuts in bank lending rates, making it possible for many Americans to purchase the homes, cars and other items which had been outside of their financial reach, the senator noted.

"Increased consumer spending in response to low interest rates can be a potent cure for recession," he said. "It constitutes an investment that can pay massive dividends in terms of job creation to meet consumer demand."

"I strongly believe that dramatic action such as this is sorely needed to end this lingering recession," said Gramm, who holds a Ph.D. in economics.

The senator has proposed a series of legislative proposals designed to stimulate the economy. The President is expected to announce his own package in his State of the Union message in January and Congress is expected to follow up quickly with legislation.

Read The Ranger Times Classifieds

READ THE COUNTY CLASSIFIEDS

Thousands read The Ranger Times all week long!

The Classifieds Get Results

Newspaper Deadlines

In order for us to provide our readers with a more efficient and better publication, our deadlines are:

THURSDAY EDITION
5 P.M. MONDAY
SUNDAY EDITION
5 P.M. THURSDAY
If Proofs Are Needed the Deadline is 12 Noon

READ THE RANGER TIMES CLASSIFIEDS



THE RANGER TIMES
Thursday, January 16, 1992

RANGER TIMES

RANGER TIMES MEMBER 1992
and Weekly Chronicle TEXAS PRESS ASSOCIATION
Publication No. (USPS 455-400)
647-1101 P.O. Box Ranger, Texas 76470
©1992 Eastland County Newspaper Co.

POSTMASTER: Send address changes to Ranger Times P.O. Box 118, Ranger, Texas 76470.

Second Class Postage paid at Ranger, Texas, under Act of Congress in March, 1870. Published every Thursday and Sunday.

SUBSCRIPTION RATES:
In Eastland County \$18.00; Adjoining Counties \$23.00; In Texas \$25.00; Out of Texas \$35.00. No Out of U.S. Without APO.
Publishers Mr. and Mrs. H. V. O'Brien
Editor-Cisco Joan Elliott
Editor-Eastland H. V. O'Brien
Editor-Ranger Carlotta Wilson
Editor-Rising Star Carolyn Ratliff
Editor - Baird Debbie Smedley
Office Staff Margaret Hallmark
Office Staff Sheila McCoy
Computer Operator Ladonna Clement
Advertising Representative Tim Hull
Production Supervisor Ted Rogers
Production Raymond McCoy
Production John McCoy
Feature Writer Viola Payne
Commercial Printing Hale Danson

State Farm Sells Life Insurance.
Jim Wortman
214 S. Seaman
Eastland
629-1096
STATE FARM INSURANCE COMPANIES
Home Offices, Bloomington, Illinois

they won't mix.

Use The Classifieds

Ranger Elementary Perfect Attendance

GRADE 6
J.D. Wilson, Rickey Zarate, Joseph Allgood, Nick Burke, Heather C de Baca, Lori Dempsey, Brandy Green, David McClain, Kellie Odom, JoLynn Stagner, Troy Taylor, and Honey Waddle.

I want to apologize to these children for leaving their names off of the perfect attendance list last Sunday, January 12th.

Carlotta Wilson

CHILD ABUSE 24 HOUR HOTLINE 1-800-252-5400

To Help You Make The Ranger Times Classifieds Ads Work Harder For You:

AD WRITING TIPS
"The More You Tell - The More You Sell"

Include answers to as many of the points noted in each type of ad shown below for maximum response to your reader ad. A national survey by the CLASSIFIED ADVERTISING MANAGERS' ASSOCIATION has shown these are the features that people want to know when answering an ad. They are listed in order of importance.

AUTOS FOR SALE Make Year Model Body Style Motor (V-8? Horsepower?) Transmission Power Equipment Finish Mileage Previous Use (One Owner?) Mechanical Condition Accessories Tires, Battery Interior Price, Terms, Down Payment	RENTALS Location Number Of Rooms Closets Bath, Shower Garage Heating Air Conditioning Furnishings Utilities Furnished Elevator Neighborhood Convenience To Schools, Stores And Transportation Children Accepted Pets Allowed Privileges - Phone, Kitchen Laundry, Television, Etc. When Available Price	MERCHANDISE AND MISCELLANEOUS FOR SALE Item Brand Name Size Age Color Condition Specifications Previous Usage Upholstery Finish Accessories & Attachments Hours To See Offering Price
HELP WANTED Kind Of Job Hours Security Benefits Facilities Vacation Privileges Advancement Opportunity Wages Experience Necessary Qualifications Location How To Apply	REAL ESTATE Location Construction (Frame? Brick?) Architecture, Landscaping Number Of Rooms, Description Number Of Bedrooms Condition, Age Possession Date Convenience To Stores, Schools and Transportation Lot Size, Zoning Garage Bathrooms Kitchen (Disposal?) Basement, Recreation Room City Sewer, Utilities Heating Fireplace Plumbing Built Ins, Closets Features For Children Price, Terms, How Much Down?	LIVESTOCK AND PETS Kind Of Animal Breed Age Sex Or Weight Color, Markings Registered Price
FARM ITEMS Item Make (Brand Name) Model Year Condition Overhauled Attachments Hours Of Previous Use Paint Price	BUSINESS SERVICES Kind Of Service Experience Special Equipment Trained Personnel Guarantee Follow-Up Service Hours Insured? Bonded? Prices	

LEGAL NOTICE

The Ranger I.S.D. will accept bids to rewire and air condition the Ranger Recreation Building located at 112 S. Marston. Volume of building is 129,000 cu. ft. occupancy 5-600.

Access to building is possible by calling 817-647-1187, 8 a.m. to 5 p.m.

Monday through Friday. Sealed bids will be accepted until 4 p.m. Monday, January 20th at Ranger Independent School District Administration office or mailed to Rt. 3, Box 12D, Ranger, Texas 76470.

(1-12, 1-16, 1-19)

Stew and Cornbread Dinner with Dessert

Eastside Baptist Church

Ranger, Texas
January 31,
5:00 P.M. to 8:00 P.M.
Adults - \$3.50
Children under 12 - \$2.50
Carry Out Available

J and J Air Conditioning & Appliances

Maytag Appliances, and Frigidaire Appliances

License # TACLB002300C

201 So. Lamar 629-2251

CER104-77

Carbon News

Bro. Keith Henson has been bringing some very good messages at the First Baptist Church of Carbon. We invite you to attend the services with us. John and Stephanie Hogan visited the Hensons Sunday evening and attended church services.

James and Mary Donham of Huckaby visited her mother, Donnie Rone last Wednesday evening.

There was a mistake in the last paper about the Hale family Christmas dinner. It should have read: Donald and Marcia Hale and Brandon and Ronald and Connie Hale and Tava. We are very sorry it came out wrong in the paper.

Addie and Bill Walker, Phillip and Collin of Burkett visited her parents Sunday afternoon. They are Mr. and Mrs. Collin Campbell.

Tim and Darlene Stacy of Arlington came by Sunday afternoon to visit his mother, Billie Stacy. They had been to Abilene to take their daughter back to ACU. Also visiting with them were Charles and Maxine Morgan and Terry and Brad Stacy of Carbon.

Mr. and Mrs. Eugene Bell of Whitmore, Lake Michigan, spent last week with his sister, Mildred and Earl Freed. They all visited Rusty, Carol and Carly Freed of Stephenville. Little Miss Carly returned home with them for a visit.

Marc Morgan of Azle visited his parents, Charles and Maxine Morgan over the weekend.

Joyce Berry of Cisco and Mattie Donaldson of Eastland visited with R. Lee McDaniel Friday evening.

Congratulations to Truett and Pat Spruill of Carbon for being the farm family of the year at the Chamber of Commerce banquet at Eastland Thursday night, January 9.

Our sympathy goes out to the family of John R. Harris of DeLeon who passed away last Sunday, January 5. He was the nephew of Mrs. Hazel Campbell of Carbon. Mr. and Mrs. Collin Campbell and daughters, Reba Reeves of Fort Worth, Colleen Lamb of Nimrod and Addie Walker of Burkett attended the funeral services at DeLeon.

Mr. and Mrs. Euell Allison were in Fort Worth last Monday and Tuesday the 6th and 7th of January to attend the Baptist Evangelistic Conference of Texas. They visited in the home of their son, Alvie and Linda Allison, Adrienne Stacia and David of Arlington while they were there.

Mr. and Mrs. Lavoy Lowrie of Ropesville visited their son, Shane and Alice Ann Lowrie, Nathan and Kimera last week. They also visited with the Euell Allisons.

Darla Dale is recovering from major surgery at the home of her grandmother, Mrs. Jim Hogan. We wish her a speedy recovery. Also visiting is Darla's mother, Shirley Morgan.

Mr. and Mrs. Monty Hull of Brownwood are the proud parents of a baby boy. His name is Jonathan, and weighed eight pounds. The happy paternal grandparents are John and JoAnn Hull of Brownwood and great grandmother is Mrs. Jim Hogan of Carbon. This is John and JoAnn's first grandbaby. Congratulations to all.

Bowling Report

WEDNESDAY NIGHT LADIES

January 8, 1992

- Team Standings**
- Mitchell Electric
 - J & W Kwik Stop
 - Bubba's Liquor Store
 - Beaty Travel Agency
 - Thrift Mart
 - Buckeye Energy Inc.
 - Myo-Massage Clinic
 - Breckenridge Affiliated
 - Team #10
 - RCG Leasing Ind. Game
 - Jennie Ewing 203
 - Peg Morris 199
 - Susan Moore 190
 - Ind. Series
 - Peg Morris 505

Eastland Telegram, Ranger Times, Cisco Press
Thursday,
January 16, 1992

- Chris Langford 496
 - Edwards/Ewing 495
- Team Game**
- Mitchell Elec. 805
 - Mitchell Elec. 783
 - Bubba's Liquor 773
- Team Series**
- Mitchell Elec. 2313
 - Bubba's Liquor 2234
 - J & W Kwik Stop 2162
- Splits Converted**
- Wilma Cantwell 3-10
Nickie Horton 3-10

READ THE CLASSIFIEDS

EVENING COLLEGE

Over 100 Degree - Related Night Courses
TARLETON STATE UNIVERSITY

REGISTRATION
Tuesday, January 14, 1992 6 PM-8 PM
TARLETON CENTER

Call 817-9121 for information

CROSSWORD SOLUTIONS

ACROSS

1. Ebbid 4. Wages 8. Air 9. Arrow 10. Fluff 11. Don 12. Pedal
13. Creator 16. Coward 19. Update 23. Posture 26. Nerve 28. Ban
29. Thump 30. Allow 31. Kin 32. Forge 33. Taxed

DOWN

2. Bored 3. Dawdler 4. Wrench 5. Gaffe 6. Stunt 7. Defer 9. Aspic
14. And 15. Off 17. Ohio 18. Ant 20. Pennant 21. Event 22. Rebuke
23. Pithy 24. Scuff 25. Upper 27. Relax

OPEN UNDER NEW MANAGEMENT!!

Bill Wyatt Tire Center Now Operated By
Bobby Williamson

Stop in for all your tire needs --
We carry a full line of new multi-mile tires,
as well as full line of used tires.
Oil change and lube,
and wash and wax vehicles.

Watch for Grand Opening At A Later Date.

3-10

State of Texas
Comptroller of Public Accounts

City Sales and Use Tax Comparison Summary - January 1992

County/City	Net Payment This Period	Comparable Payment Prior Year	% Change	1992 Payments To Date	1991 Payments To Date	% Change
Eastland	\$0.00	\$0.00	*	\$0.00	\$0.00	*
Carbon	274.87	88,081.78	14.76%	\$9,274.87	\$8,081.78	14.76%
Cisco	2,287.48	26,770.50	-9.28%	\$24,287.48	\$26,770.50	-9.28%
Eastland	1,905.64	1,223.60	55.74%	\$1,905.64	\$1,223.60	55.74%
Gorman	598.05	4,857.11	-5.33%	\$4,598.05	\$4,857.11	-5.33%
Ranger	286.60	1,286.60	-51.53%	\$623.67	\$1,286.60	-51.53%
Rising Star	693.67	42,219.59	-3.62%	\$40,689.71	\$42,219.59	-3.62%
County Total	\$40,689.71	\$42,219.59	-3.62%	\$40,689.71	\$42,219.59	-3.62%

Hospital Report

EASTLAND MEMORIAL HOSPITAL Admissions
January 10, 1992
Rosalina Chavez
Baby Girl Chavez
Cordie F. Dick
Elvera A. Gomez
Vicki L. Johnson
Baby Boy Johnson
Arlie D. Taylor
Alice L. Willingham

Dismissals
Laura M. Barton
Darla J. Dale

Admissions
January 11, 1992
Elizabeth A. Evatt
Vivian I. Schofield

Dismissals
Atlanta L. Chatham
Clotiel Colburn
Lonnie E. Hunter
Vicki L. Johnson
Baby Boy Johnson
Cora F. Owings

Admissions
January 12, 1992
Lois Adling
Clarence E. Carbary
Jeff A. Seaton

Dismissals
J.W. Hounshell
Cuba A. Morris

Admissions
January 13, 1992
Mary K. Fry
Leo J. Kitchens
Lena M. Shubert
Houston E. Stockstill

Dismissals
Travis R. Brooks
Clarence A. Carbary
Dorothy M. Chatham
Elizabeth A. Evatt
Elvera A. Gomez
Nancy L. Pryor
Jeff A. Seaton

Wedding Invitation

Henderson-Anderson Wedding Saturday
Shelly Henderson and Kyle Anderson will be married on Saturday, January 18, 1992 at 2:30 p.m. at East Cisco Baptist Church 506 E. 11th. Reception will follow and nursery will be provided. All friends and relatives are invited.

cash in with a classified ad...

Men In Service

Marine Lance Cpl. Danny B. Lane, son of William H. and Geraldine M. Norman of Rt. 3, Cisco, TX recently received the Good Conduct Medal. The medal recognizes the servicemember's honest and faithful service during a three-year period. To earn it, Lane achieved and maintained a satisfactory level of performance and an unblemished conduct record for the entire period. He is currently assigned with Ordnance Maintenance Battalion, 1st Force Service Support Group, Camp Pendleton, CA.

The 1988 graduate of Eastland High School, Eastland, joined the Marine Corps in September 1988.

Use The Classifieds

Harris Home Health Erath County

Prostate problems can make you uncomfortable and can be stressful. You do not have to live with these problems. Get the facts about Prostate problems plus a free screening.

WHEN: Friday, January 17
TIME: 2-5 PM
WHERE: Harris Methodist Erath County-Community Room, Stephenville
WHAT: Call 965-1599 for reservations/appointment

Dr. Avi Deshmukh, Board Certified Urologist, will be conducting the screening.

THE ONLY CLASSIFIEDS



FAMILY VALUES




FULL MEAL DEAL™

\$2.99

1/4 lb.† Hungr-Buster® Fries,
16-oz. Drink, Sundae

DO KIDS' MEAL

\$1.99

Your Choice Of: Hungr-Buster®, Jr., Steak Fingers & Gravy, Corn Dog or Hot Dog. Plus Fries, Drink, Choice of Treats and a Free Prize!







ON SALE
JANUARY 6-26, 1992

© Reg. U.S. Pat. & Tm. Off. Am. D.Q. Corp. *T.M. Reg. U.S. Pat. & Tm. D.Q. Op. Coun. © Tx. D.Q. Op. Coun. †Pre-cooked weight

Guest Slot

By H.V.O.

FOR THE most part it was the name of an un-pronounceable town in Germany, but we did know that Oberammergau was the passion play and wood carving town, and since we've always been somewhat of a whittler, it was a place we wanted to visit. And while our own creations have pretty much been saw dust and shavings, we weren't disappointed in what we saw in the little German Alpine village. The three of us bused from Garmisch on a cold and drippy day, and found a warm and picture book-pretty dream town. The main streets are lined with beautifully frescoed houses and shops, occupied by families whose men are engaged in highly skilled wood-carving craft, which has flourished for over three centuries there. Fine carving was Oberammergau's route to economic recovery after the ravages of the Thirty Years' War and the art and the town thrive today, thank goodness. The town is probably better known for the Passion Play, which is performed once every decade in years ending with zero in faithful accordance to a solemn vow. The play started as an offering of thanks, commemorating the fact that the Black Plague stopped in 1633 as though by miracle, just short of the village. It was first performed in 1634 and has been repeated every decade.

Oberammergau

We visited the amphitheater where the 16-act, 5 1/2-hour play is presented depicting the final days of Christ from the Last Supper through the Crucifixion and Resurrection, against an open-air mountain backdrop from late May to late September. Some 1,500 locals are involved in the production, and the little town is swelled by thousands and thousands of people during the Play season. It must be a traffic nightmare, and a not-to-be-forgotten experience.

Unbelievably detailed and fine carvings fill the shops and the windows. Nativity scenes in particular, angles, traditional figures and all the gee-gaws so familiar to wood carving are to be found. And we're talking BIG bucks for the hand-done pieces, although router-reproduced, and/or castings of the more familiar pieces are available at reasonable prices. You get the impression that the carvers are a tightly-knit guild of craftsmen who closely guard their skills and keep the prices UP. We were there in November and the crowds were not heavy so we're guessing that they may have three months or so of severe winter, with few sales, so they have to make it the rest of the year when crowds are heaviest.

In season, classes in carving, pottery and painting are available, and the museums are open year-round. The frescoes here are famous, although they can be seen in most of Bavaria. We understand that local ordinances prohibit altering or removing these colorful housing decorations once they are in place.

The locals tell you that the long, hard mountain winters preclude much income from farming and agriculture, so the people turned to crafts, and so born out of need,

their work is known worldwide. Dating to the Roman Empire, the carvings were found as early as the 16th century. Nearby forests of linden and alderwood in vast quantities provide the raw materials, and from the beginning, Bible themes were the most popular: Christ's crucifixion, Mary, and the crib scenes, and the most famous "Christ on the cross," theme led to the nickname Herrgottsschnitzer, God carvers. Kraxenträger (curbstone traders), or what we'd call peddlers, using a wooden carrying frame (Krax)

took the carvings all over Europe to sell. Today, a model in the village square is a reminder of those times of long, long ago.

Another unique Oberammergau skill is that of glass painting in which the work is done in reverse: on the backside with the background done last! Beautiful and so fine.

King Ludwig II, a benefactor of the town, is remembered by the village and his famous Linderhof Castle is nearby. Gene and Clara White of Eastland lived in this area while he was in the service.



SCENES IN THE VILLAGE

Star Trek VI At Majestic This Weekend

Star Trek fans will be delighted to know that Star Trek VI, "The Undiscovered Country," will show at the Majestic in Eastland Friday, Jan. 17 through Monday, Jan. 20. Curtain time will be 7:30 each evening, with tickets \$3 at the door. This brand-new movie is in demand across the country, and you can be certain ticket prices are higher than \$3 in cities.

Twenty-five years of Star Trek magic culminated in 1991 with the production of this movie. The cast includes (clockwise from right of picture) Leonard Nimoy, William Shatner, DeForest Kelley, Walter Koenig, George Takei, Nichelle Nichols and James Doohan.

In this latest Star Trek you'll find that legendary adversaries are bracing themselves for the unthinkable - peace.

This movie is rated PG, indicating that some material may not be suitable for small children. Will it be the last Star Trek ever produced? See what you think!

Read The Classifieds

MAJESTIC THEATRE

629-1322

Fri. • Sat. • Sun. • Mon.
All Shows: 7:30 p.m. - \$3.00

January 17 thru 20

Majestic Classic Film Series

2 p.m. Sun Jan 19
7:30 p.m. Tue Jan 21

629-1322

MAJESTIC THEATRE

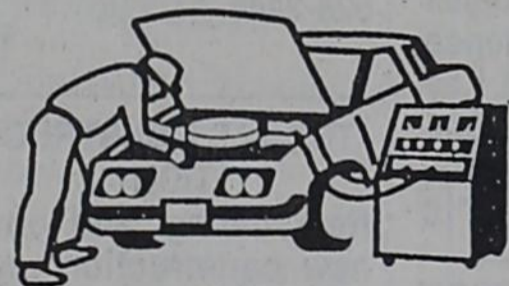
D. J.'s Custom Cut
Firewood Service
Delivered & Stacked
Cut any size 12" to 24"
\$1 a mile after 10 mile radius.

\$70⁰⁰ Cord
\$40⁰⁰ Rick
Call: 817-629-2805
Oak - Mesquite
Also: Tree Trimming and Removal

Gaines Automotive

Hi Tech Care For Hi Tech Cars

Computer Control & Ignition Analysis



Hours: Mon.-Fri.
8:00 till 5:30
Sat. 8:00 till Noon

State Inspection Station

314 W. Main

Eastland

Owner
Blake Gaines
629-1008

DON'T OVERLOOK
YOUR INSURANCE NEEDS

Serving Eastland County Since 1919

CONTACT

D.L. KINNAIRD
GENERAL INSURANCE

629-2544

629-8606

Sallie Kinnaird

104 N. Lamar

Mike Perry

Cisco Press - Eastland
Telegram - Ranger
Times - Rising Star -
Callahan County Star
Thursday,
January 16, 1992

Classifieds Get Results!



EASTLAND FARM & RANCH INC.
301 N. Seaman
Eastland, Texas 76448
(817) 629-2173 or 629-8035



Offering You Only the Best

Feed - Seed - Vet. Supplies - Liquid Feed - Pet Supplies
Lawn & Garden - Herbicides - Insecticides
Dry Fertilizer - Liquid Fertilizer - Custom Application

A-1 BUILDERS

Building & Remodeling

- ROOFING
- SIDING
- METAL BUILDINGS
- PLUMBING
- ELECTRICAL
- CONCRETE

Commercial * Residential

Jerry Maston • Owner 629-8148

FOR SALE

Why do bad things happen to good people? Does God allow us to suffer? "God Sent a Man," a book written by Carlyle B. Haynes, helps to answer these questions and many more by taking a close look at the Old Testament Bible Story of Joseph. Copies available at Eastland Telegram.

T104

MEN'S 5-BUCKLE Overshoes to fit over Cowboy boots. Size 7-13, fleece lined, \$31.99. Johnson's Dry Goods, Cross Plains.

C5

Baby Calves for sale. \$70.00 and up. Call 817-734-2610.

T104

FOR SALE: 11 Simbrah Heifers, 3 black baldies, 12 regular Brangus cows, all long bred regular quarter horses running and working bred. Call 817-643-3226.

T8

AUTOS

FOR SALE: 1990 Chev. Conversion Van. Excellent condition. 629-3223.

T5

GARAGE SALES

PORCH SALE: Friday, & Saturday, Jan. 17, & 18. 1401 W. 15th, Cisco.

C5

AUCTION

AUCTION - 200 W. 8th in Cisco at 1:00 p.m. Sunday, Jan. 19. Excellent furniture, beautiful glassware, antiques and collectibles, coins, knives, jewelry and lots and lots of misc. items. Cook Auction Service, Jasper Cook, 9634 expects a truck load from East Texas also.

C5

WANTED

WANTED: In or near Ranger - a place to keep a Stud Colt - with a shed if possible. Call (817) 647-3311 and ask for Lanette.

R104

DEER LEASE WANTED: 806-747-1297 or 806-793-8095.

T7

WANTED: Good used Mobile Home, 2 or 3 BR, in Eastland County area - \$2500 - \$3500. Call Marjie, 629-2481.

T104

PETS

Needs a Home! Cute black and brown male dog, part collie, about one year old. Well-behaved, can sit and "shake hands." Call 442-3684.

C7

D.L. Kinnaird General Insurance

Since 1919

Contact us if you want to save money on all your insurance needs

Call 629-2544

E104

LOST & FOUND

REWARD

For the return of a 6 week old gray and tan male Huskey pup lost Friday, Jan. 10, at East 16th and Beech St. in Cisco. The pup has a brown collar. Call 442-3576 or 442-4407.

C6

Eastland Telegram, Ranger Times, Cisco Press

Thursday, January 16, 1992

Paul Williams Roofing Co.

- FREE Estimates •
- All Work Guaranteed •
- Hot Tar & Gravel Composition •
- Shingles • T-Locks • Wood Shingles •

25 Years Experience In Eastland Area

Paul Williams Carbon, Texas

817-639-2330

If No Answer Call 817-629-1020

CER104

Rescue Line

Battered, abused, alcoholism, suicidal, divorced, troubled marriage, etc.

There is free help for Eastland County Women

Listen to KVMX 97 F.M. 442-4479

6:00-7:00 Monday night

CER104

MAMMOGRAPHY CAN SAVE YOUR LIFE!!

If you are a healthy woman over 40 who never has had a mammogram, The American Cancer Society recommends that you have this simple life saving procedure now. Since one woman in ten develops breast cancer at some point in her lifetime, the urgency is real.

A screening mammogram is an x-ray of the breast using extremely low dosages of radiation (usually comparable to dental x-rays) and is designed to find very early cancers.

A female technologist who is highly trained in mammography will perform the examination. These images are then interpreted by a Board Certified Radiologist, and a report is sent to your own doctor. It takes only a few minutes, and can detect incipient breast cancer as small as the period at the end of this sentence.

Early detection (18 months sooner than a lump can be felt) not only permits treatment before the problem becomes serious, but the cure rate is over 90%. Mammography cannot only save your life, but help you avoid the need for disfiguring surgery too.

You don't need to have been a previous patient of ours to receive this screening, but you do need to make an appointment at a time convenient to you.

PHONE NOW: 817-893-2011 Ext. #228

Appointments will be scheduled: Tuesday and Thursday of Each Week From 1:00 PM to 4:00 PM

This Service is Available Beginning January 14, 1992

at **De Leon Hospital** 407 S. Texas Street De Leon, TX 76444

3-10

NEW LOCATION

Pat Albus Bookkeeping Service

1331 Hwy 80 East

Maynard Bldg. Suite 6 & 7

Phone 629-3327

CER104-78

TRADERS CORNER

We Buy & Sell Used Furniture • Tools • Appliances • Heaters & A.C.s •

Much! Much! More!

Come by 219 W. Main Ranger Tx or Call 647-3072

CER6

Vic's Welding

323 N. Commerce Ranger, TX 76470

- Heliarc & Wire Feed Aluminum
- Welding - Heavy or Light
- Portable & Shop Arc Welding
- Custom Fabrication

Call 817-647-5120

Phone answered 24 hours, 7 days

Owner: Vic Huerta

CER104

Keys Made Locks Changed or Repaired

ELROD'S MOBILE LOCK SHOP

423 W. Main Ranger, Texas 76470

Phone 647-3444

Bonded Locksmith

Auto - Residential - Commercial

CER104

ANTIQUES

FOR SALE: Antique glass and furniture and other collectibles. "We Buy Estates." The House of Antiques, 908 S. Bassett, Eastland, Texas. Open every day. 817-629-1124.

T104

Remodeling - Siding

Windows and Doors

Jobbers For All Sides

Reynolds, Mastic and B.M.D.

Siding, Windows, and Doors

Also Remodeling & Add-Ons.

Cover Facers and Overhang on Brick Homes.

All Work Guaranteed.

Butler & Fox

Phone 629-2149 or 629-2814

CER104

DriveRite

Defensive Driving

1-800-460-3508

Budget Host Inn

I-20 Eastland

Saturday, Jan. 18

Saturday, Feb. 22

Saturday, March 14

Saturday, April 11

8:30 a.m. - 5:00 p.m.

Walkins Welcome

State Approved Driving Safety Course

Certified AUTO GLASS

314 W. Main Eastland - 629-3251

Ralph Tucker Owner

- * Commercial Glass * Auto Glass
- * Residential Glass * Tinting
- * Mirrors

FREE MOBILE SERVICE

1-800-262-7369

CER104

Squires Roofing Contractors

45 Years In Service

Carbon - Eastland

653-2397 653-2354

CER104

1500 PRIMROSE - 3 BR, 2 Bath, Study, LR/DR, Fire-place all for only \$81,000.

700 W 7TH - 3 BR home reduced to \$25,000.

908 AVE F Reduced to \$7,500.

809 W. 6TH - 3 BR, 1 3/4 Bath, living room, den/kitchen, util., with 2 car garage on pretty corner lot. \$65,000.

1308 Primrose - 3 BR, 2 1/2 Bath, living rm, den/kitchen, 2 car garage. \$70,000.

1601 Railroad Ave. - 3 bdrm, w/fireplace, shop and small house. Needs a handy man. \$11,500.

1503 Liggett-home or office on triangle of land. \$54,000.

County Rd #126-8 miles W of Cisco, 3 bdrm, 1 1/2 bath, 3 carport and storage on 5 1/2 acres with stock tank: \$26,000.

1412 Bliss - 3 BR, 1 3/4 bath, 1 car garage on corner lot, \$34,500.

511 W. 4th - 3 BR, 1 3/4 bath, 2 garage, builtin kitchen, central heat and air on corner lot. \$50,000.

McMillan Real Estate

Yvonne McMillan-Broker

8th & C. Hilton Ave. - Cisco, Texas 442-3846

Nancy Bacon, Associate 442-2679

CER104

Cozart Repair Service

- Washers • Dryers
- Refrigerators
- A/C • Lawn Mowers

22 Years Experience

Carbon 639-2424

3-104

THANK YOU

The family of Ima Howard appreciates the many kindnesses shown during the illness and at the death of our loved one.

Ben Howard, Johnny Walton, Shelly Tucker, Claude Tucker, Eva Choate, and Ellen Box

EVENING COLLEGE

Over 100 Degree - Related Night Courses

TARLETON STATE UNIVERSITY

REGISTRATION

Tuesday, January 14, 1992 6 PM-8 PM

TARLETON CENTER

Call 817-9121 for Information

READ THE CLASSIFIEDS

M.H. Perry Insurance

104 N. Lamar Eastland, TX

Phone 629-1566

- Life Insurance
- Hospitalization
- Group
- Cancer
- Supplement
- Medicare

CER104

Caring Hands Inc.

The following professional services are now available to our senior citizens in Eastland County.

- House Cleaning
- Yard Maintenance
- Travel
- Transportation
- Minor Repairs
- Attention to pets
- Pick-up & Delivery
- Errands run
- Shopping
- Assistance paying bills

- Insurance, Medicare & Social Security problems
- 24 hr. Emergency Help
- Security Consulting
- Income Tax Preparations
- Bookkeeping
- Estate Planning
- Investment Advice

Over 50 years combined experience

Jack Hallmark or Allan Miller, Owners & Lifetime residents of Eastland, TX.

Call 629-8616

811 W. Main St. Eastland, TX

Reasonable Charges - We Care.

3-10

BRING YOUR OWN DESIGN OR USE ONE OF OURS. WE CAN ALSO HELP YOU DRAFT A FORM FOR YOUR UNIQUE SITUATION.

LETTERHEADS STATEMENTS INVOICES CHECKS LABELS

Posters

Handbills

Flyers

Calling Cards

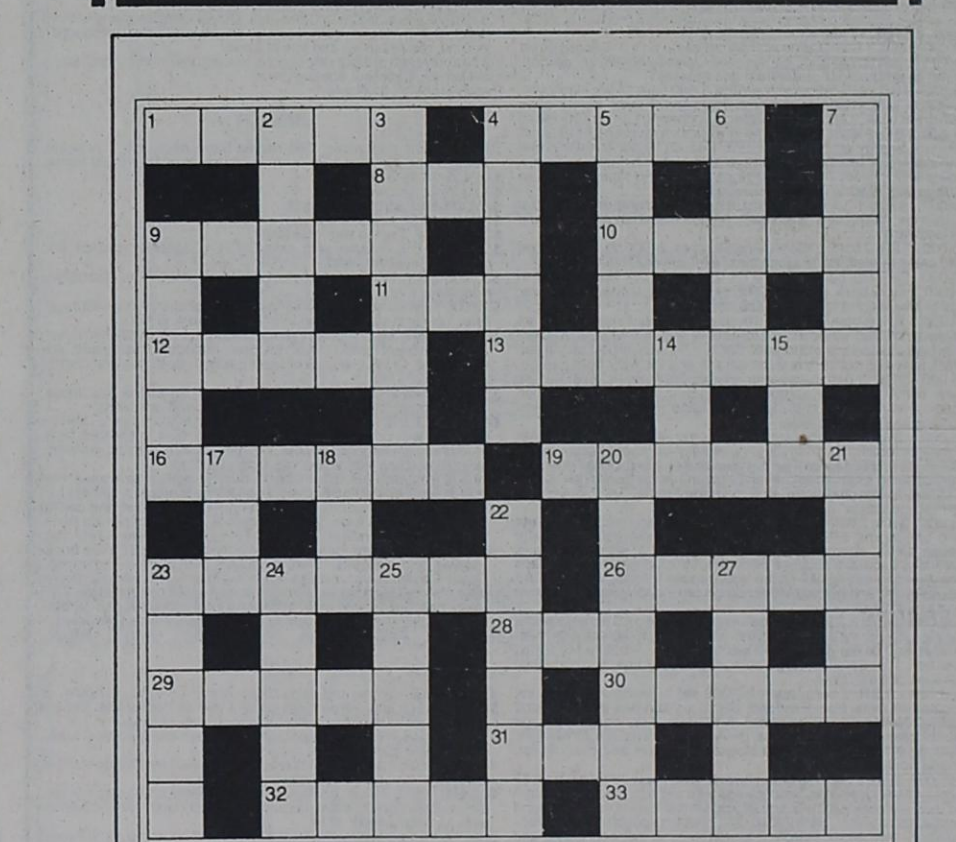
Formal Invitations

SEE US FOR A COMPLETE LINE OF BUSINESS FORMS AND RELATED PRODUCTS.

Your Local Newspaper Does Quality Work

Talk To Hale Dunson

817-647-1101 Today!



CLUES ACROSS

1. Receded
4. Remuneration
8. Ventilate
9. Shaft
10. Soft down
11. Put on
12. Cycle
13. Originator
16. One without courage
19. Modernize
23. Stance
26. Pluck
28. Outlaw
29. Heavy, dull sound
30. Assign
31. Relatives
32. Counterfeit
33. Levied

CLUES DOWN

2. Disinterested
3. One who dallies
4. Mechanic's tool
5. Faux pas
6. Exploit
7. Postpone
9. Savory meat jelly
14. Also
15. Frequently
17. Surprised exclamation
18. Termit
20. Streamer
21. Occurrence
22. Reprimand
23. Concise
24. Scrape
25. Higher
27. Take it easy

Sponsored by Eastland Drug

New Arrival Of Books At The Eastland Telegram

215 S. Seaman

Eastland

Hardback King James Version
of The Holy Bible

#1 Best Seller - America In Prophecy

God Sent A Man by Carlyle B. Haynes

Books For Children Including:

Coloring Books

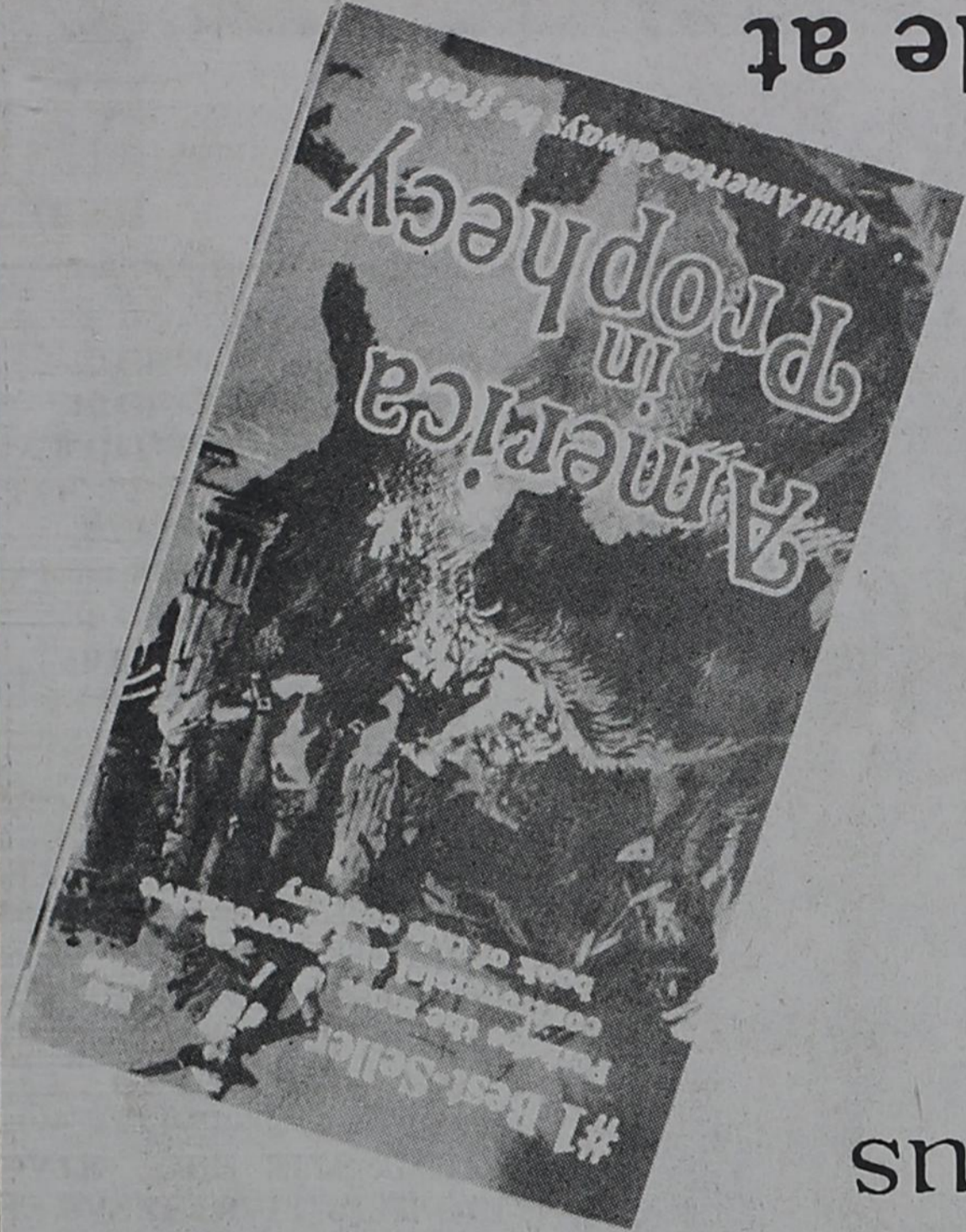
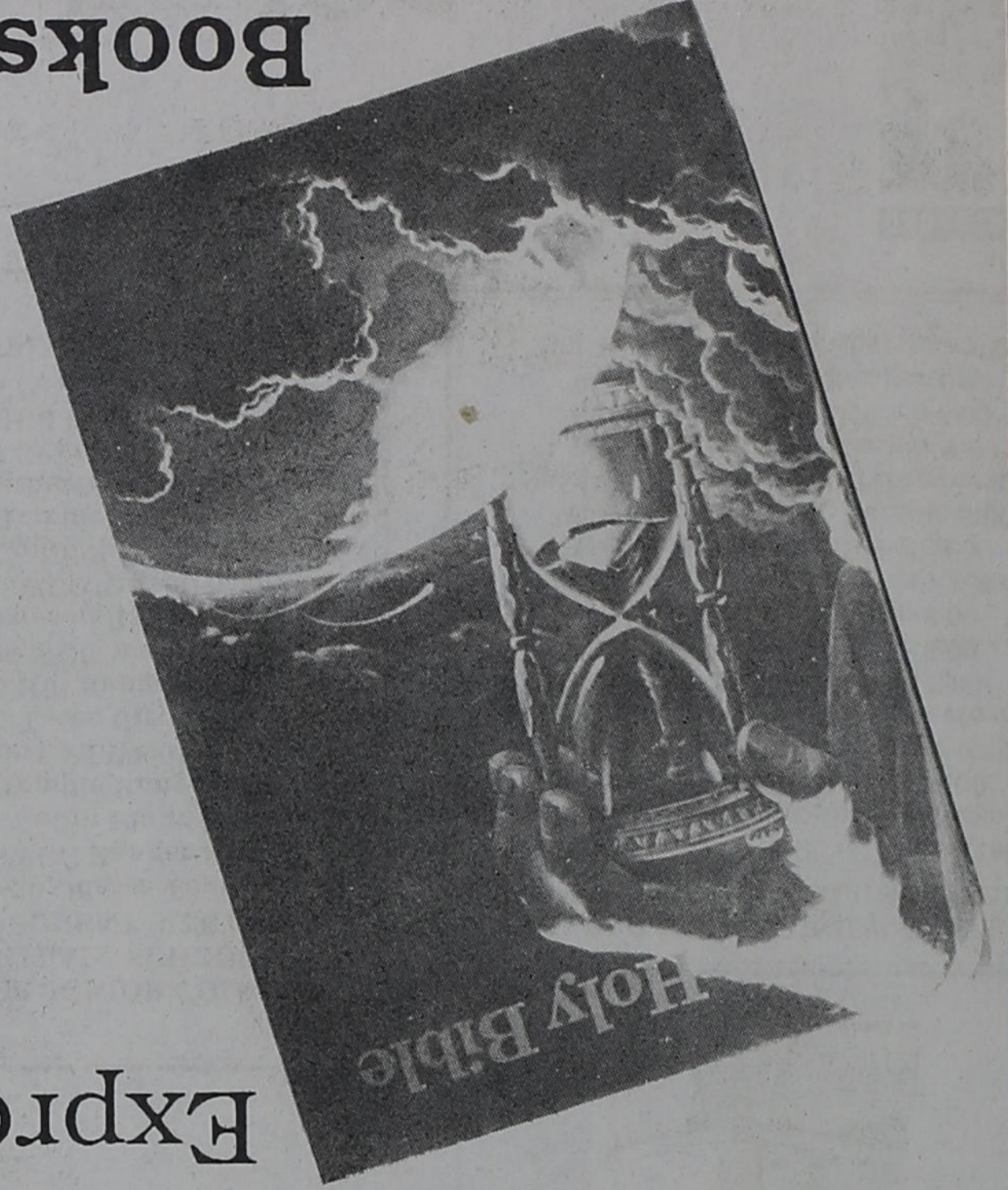
Story Books - Jesus Friend of Children

& The Story Book

16" X 20" Fine Art Portraits:

Expressions of Jesus

Stationery



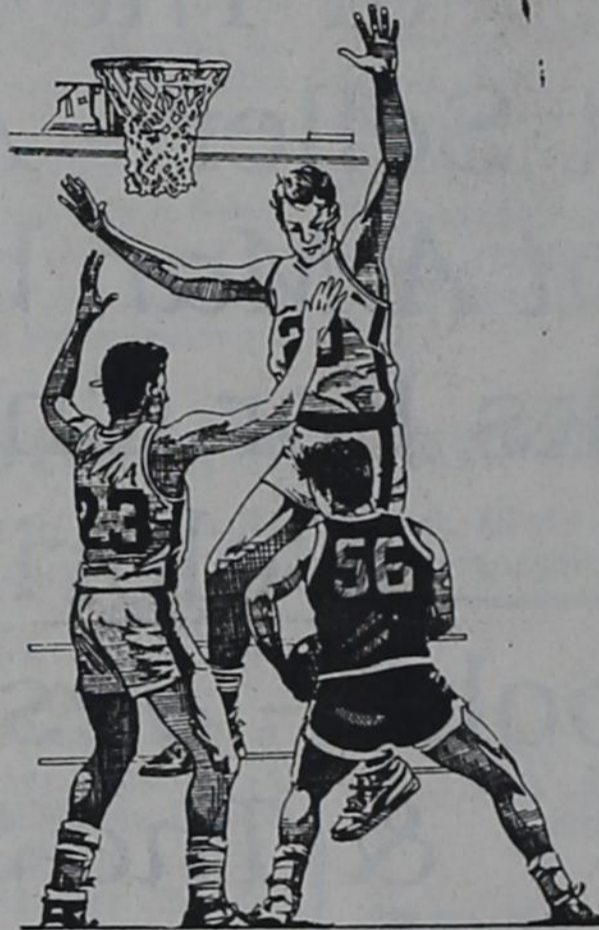
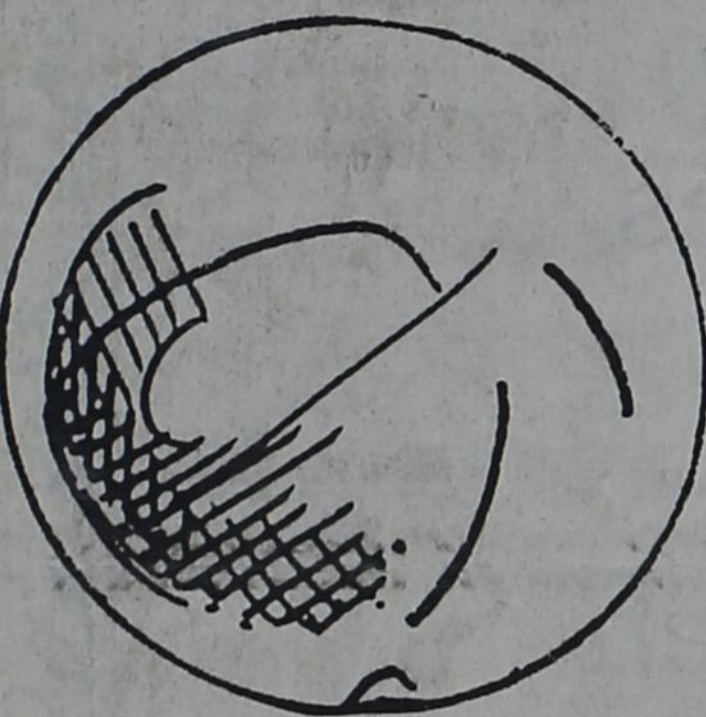
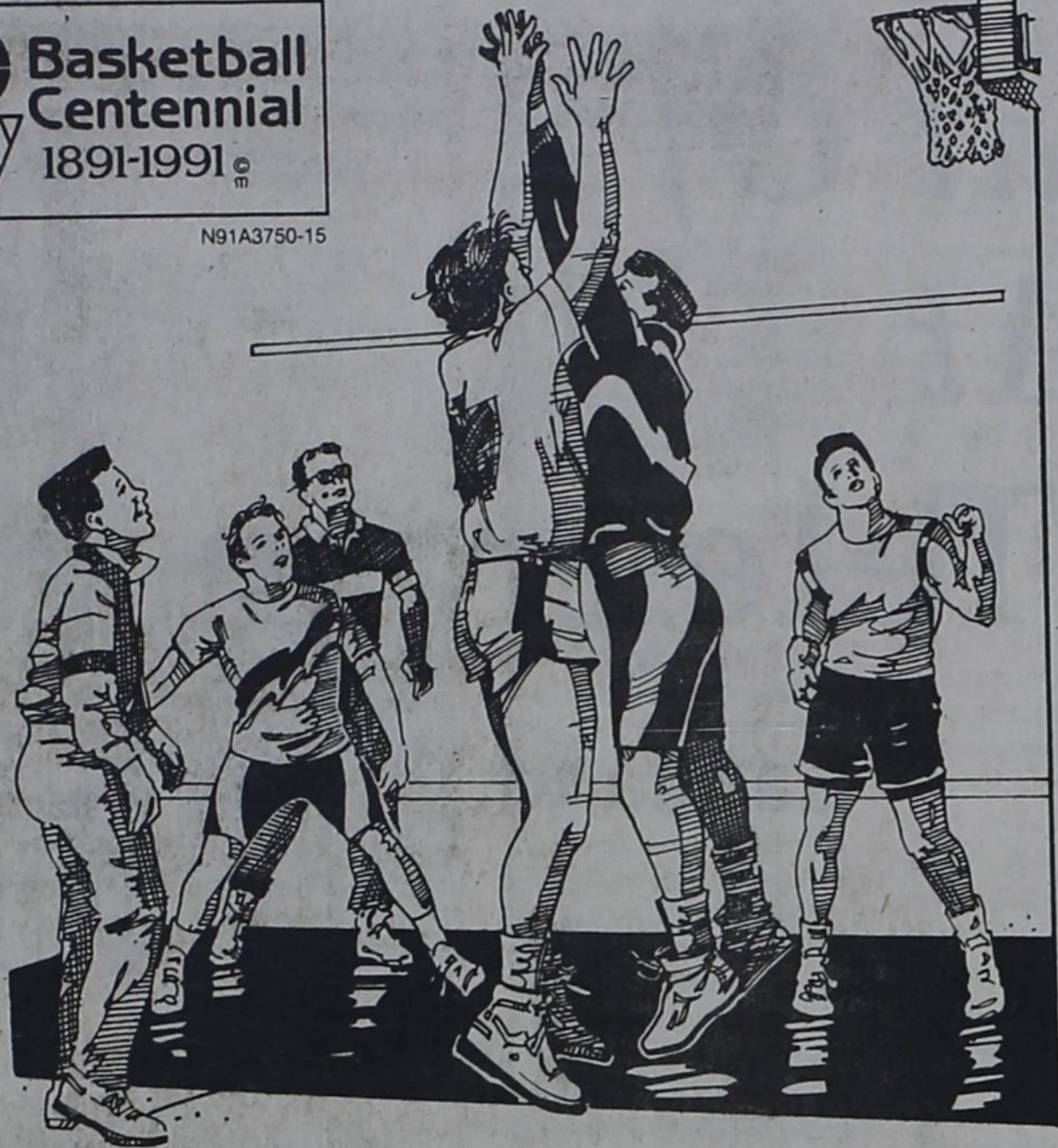
Books also available at

The Cisco Press The Ranger Times

The Rising Star

BASKETBALL '91

Basketball Centennial
1891-1991



1991-92 RJHS BASKETBALL SCHEDULE

DATE	OPP	SITE	TIME
Nov. 18	Graford	T	4:00
25	Graford	H	4:00
Dec. 2	Eula	T	4:00
9	Breckenridge	H	5:00 Girls
9	Breckenridge	T	5:00 Boys
16	Breckenridge	T	5:00 Girls
16	Breckenridge	H	5:00 Boys
Jan. 6	Eastland	H	4:00
11	Eastland	7th Tournament	
13	DeLeon	H	5:00 Girls
13	DeLeon	T	5:00 Boys
20	Cisco	H	5:00 Girls
20	Cisco	T	5:00 Boys
25	Eastland	8th Tournament	
27	Eastland	T	4:00
Feb. 3	DeLeon	T	5:00 Girls
3	DeLeon	H	5:00 Boys
10	Cisco	T	5:00 Girls
10	Cisco	H	5:00 Boys

RANGER HIGH SCHOOL BASKETBALL 1991-1992

DATE	OPP	SITE	TIME
Nov. 19	Hico	T	5:00 VG, JVG
22	Baird	T	4:00 VB/G, JVB/VG
23	Albany	T	10:00 9th boys
25	Coleman	T	6:00 9th boys
26	Tolar	H	5:30 VB/G, JVB
Dec. 2	Coleman	H	6:00 9th boys
3	Albany	T	4:00 VB/G, JVB/VG
5-7	CJC Tournament VB/G		
9	Eastland	T	6:30 9th girls
10	Albany	H	4:00 VB/G, JVB/VG
12-14	Glen Rose Tournament VB		
12-14	Huckaby Tournament VG, JVG		
12 & 14	Gorman Tournament JVB, 9th girls		
17	Eastland	T	6:00 VG, JVG
19-21	Eastland Tournament VB/G		
30	Merkel	T	5:00 VB, JVB
Jan. 3	Coleman	H	4:00 VB/G, JVB/VG
4	Albany	H	10:00 9th boys
7	Bangs	T	5:00 VB/G, JVB/VG
10	Cisco	H	4:00 VB/G, JVB/VG
13	DeLeon	T after Jr. High	9th boys
13	DeLeon	H after Jr. High	9th girls
14	DeLeon	H	4:00 VB/G, JVB/VG
17	Goldwaithe	T	5:00 VB/G, JVB/VG
21	San Saba	H	5:00 VB/G, JVG
24	Eastland	H	4:00 VB/G, JVB/VG
25	Albany	9th Tournament	9th boys
27	Eastland	H	6:30 9th girls
28	Coleman	T	5:00 VB/G, JVB/VG
31	Bangs	H	5:00 VB/G, JVB
Feb. 3	DeLeon	H after Jr. High	9th boys
3	DeLeon	T after Jr. High	9th girls
4	Cisco	T	4:00 VB/G, JVB/VG
7	DeLeon	T	4:00 VB/G, JVB/VG
11	Goldwaithe	H	5:00 VB/G, JVG
14	San Saba	T	5:00 VB/G, JVB
18	Eastland	T	6:00 VB, JVB

1991-92 RANGER JUNIOR COLLEGE MEN'S BASKETBALL SCHEDULE

DATE	DAY	OPPONENT	SITE	TIME
Th-F-S Nov 28-29-30		Odessa Tour	Odessa	
Sat Dec 7		SWCC Ranger		8:00
Sat Jan 11		Collin Plano		8:00
Wed Jan 15		Temple Ranger		8:00
Sat Jan 18		Weatherford Weatherford		8:00
Wed Jan 22		Cisco Cisco		8:00
Sat Jan 25		Hill Ranger		8:00
Wed Jan 29		MCC Waco		8:00
Sat Feb 1		Grayson Ranger		8:00
Wed Feb 5		SWCC Terrell		8:00
Sat Feb 8		Collin Ranger		8:00
Wed Feb 12		Temple Temple		8:00
Sat Feb 15		Weatherford Ranger		8:00
Wed Feb 19		Cisco Ranger		8:00
Sat Feb 22		Hill Hillsboro		8:00
Wed Feb 26		MCC Ranger		8:00
Sat Feb 29		Grayson Sherman		8:00

1991-92 RANGER JUNIOR COLLEGE WOMEN'S BASKETBALL SCHEDULE

DATE	DAY	OPPONENT	SITE	TIME
TH-F-S Nov. 28-29-30		Odessa Odessa	TBA	
Sat Dec 7		SWCC Ranger		6:00
Wed Jan 15		Temple Ranger		6:00
Sat Jan 18		Weatherford Weatherford		6:00
Wed Jan 22		Cisco Cisco		6:00
Sat Jan 25		Hill Ranger		6:00
Wed Jan 29		MCC Waco		6:00
Sat Feb 1		Grayson Ranger		6:00
Wed Feb 5		SWCC Terrell		6:00
Wed Feb 12		Temple Temple		6:00
Sat Feb 15		Weatherford Ranger		6:00
Wed Feb 19		Cisco Ranger		6:00
Sat Feb 22		Hill Hillsboro		6:00
Wed Feb 26		MCC Ranger		6:00
Sat Feb 29		Grayson Sherman		6:00

BASKETBALL



BASKETBALL '91

BASKETBALL



G. E. Railcar Repair Service
NE of City
647-3223

Mathews Pharmacy
300 Hwy 80 W.
647-1115

Adams Grocery & Market
114 N. Austin
647-1144

Ranger Times
211 Elm
647-1101

Edwards Funeral Home
211 Pine Street
647-1133