

WEATHER

August 7 92 59
August 8 88 63
August 9 92 59

BAILEY COUNTY JOURNAL

'The Community Of Opportunity-Where Water Makes The Difference'



© 1990

Vol. 69, No. 32

Published Every Sunday At Muleshoe, Bailey County, Texas 79347

Member
TA TEXAS PRESS
ASSOCIATION

20¢

SUNDAY, AUGUST 11, 1991

Bailey County West Plains Fair-Mule Days Set

New Personnel Added To MISD

The Muleshoe Independent School District will open its doors to students for the 1991-92 school year on Wednesday, August 21. The MISD faculty will have two preparation days on August 19 and August 20 to prepare for the opening of school.

It has been an exciting and busy summer for the MISD administrators with twenty-six new people being added to the school's professional staff. Muleshoe ISD will have four new administrators including Buck Johnson as Assistant Superintendent for Operations, Al Bishop as High School Principal, and Frank Maldonado as High School Assistant Principal. Also working as an Assistant Principal at Muleshoe High School will be Scott Turner. Mr. Turner will be directly responsible for the district's new Alternative Education Program.

The other twenty-two new employees will be classroom teachers or teacher/coach combinations. Seven new teachers have been assigned to Muleshoe High School, 4 will be Watson Junior High, 9 will be on the DeShazo Elementary campus, and 2 will be at Dillman Elementary.

Superintendent Bill Moore said, "The principals have worked very hard this summer interviewing and selecting new faculty members. I think those selected will be excellent additions to our faculties. We're looking forward to a great year!"

Following is a list of teachers new to Muleshoe ISD for the 1991-92 school year.

Shirley Aguirre, Nora Burris, Donna Coe, Ramona Gallardo, Terry Graves, Kim Gregory, Lori Haseloff, Debbie Jo Kemp, Brenda Lackey, Janie Larimore,

Cont. Page 6, Col. 1



SWEET CORN--At Ben Roming Farms the sweet corn is being processed for shipping. Tanks on the left are for precooling the corn in order to keep the fresh flavors as long as possible. Ice is blown on top of the crates when they are shipped. Roming ships corn to Oklahoma, Kansas, Missouri, Louisiana and major cities in Texas.

School Sets 1991-92 Lunch Prices

The Muleshoe Independent School District takes part in the National School Lunch Program/School Breakfast Program. Meals are served every school day.

Costs for lunch meals are High School, \$1.35; Jr. High, \$1.35; DeShazo, \$1.10; Dillman, \$1.10; Adults, \$1.85.

Breakfast prices are: High School, .50; Jr. High, .50; DeShazo, .45; Dillman, .40; Adults, .75.

If you now get food stamps or AFDC for your children, your children can get free meals. If your total household income is the same or less than the amounts on the Income Chart (available at the school), your children can get free meals or reduced price meals. A foster child may get free or reduced price meals regardless of your income. The reduced price is \$.40 for lunch and \$.30 for breakfast.

To get free or reduced price meals for your children, you must complete an application and return it to the school. We cannot approve an application that is not complete.

Your eligibility may be checked at any time during the school year. School officials may ask you to send papers showing that your children should get free or reduced price meals.

You may talk to school officials if you do not agree with the school's decision on your application or the results of verification. You also may ask for a fair hearing. You may do this by calling or writing Bill Moore, 514 W. Ave. G, Muleshoe, Texas 79347--(806) 272-3911.

If your children get free or reduced price meals because of your income, you must tell the school if your household size decreases or your income increases by more than \$50 per

month or \$600 per year. If your children get meals because they get good stamps or AFDC, you must tell the school when your are not getting AFDC or food stamps for the. You may then fill out another application giving income information.

School officials use the information on the application only to decide if your children should get free or reduced price meals.

You may apply for meals anytime during the school year. If you are not eligible now but have a change, like a decrease in household income, an increase in household size, become unemployed or get food stamps or AFDC for your children, complete an application then.

In the operation of the child feeding programs, no child will be discriminated against because of race, sex, color, national origin, age or handicap. If you believe you have been discriminated against, write immediately to the Secretary of Agriculture, Washington, D.C. 20250.

You will be notified when the application is approved or denied.

Football Season

Tickets On Sale Monday

Persons who held reserve seat tickets for the 1990 football season may pick up their options on these tickets at the School Business Office, 514 West Avenue G, starting Monday, August 12, 1991, through Friday, August 30, 1991. Those persons whose names appear on the chart may pick up their tickets in person, by mail with ticket holder's personal check or by third party if tickets are purchased with ticketholder's personal check.

Beginning September 2, 1991, all remaining tickets will go on sale on a first come, first serve basis. Reserve tickets may be purchased at the School Business Office during regular office hours from 8:30 a.m. to 5:00 p.m.

The cost of a reserve season ticket for five home games will be \$17.50. Any reserve seats remaining after the season starts will be \$4.00 each for each home game.

The cost of tickets is \$17.50 for reserved seat tickets, \$7.50 for student season ticket, \$3.00 for adult general admission or \$2.00 for student general admission.

Rotary Hears Commander

The Muleshoe chapter of the Rotary Club met in its regular session August 6 at the Bailey County Civic Center with about 35 members attending.

President Randy Field introduced ten visitors. He also introduced Paul Wilbanks who was in charge of the program.

Wilbanks introduced Col. V.B. Corn, a Division Artillery

Commander with the U.S. Army. Corn spoke to the group on the process of deploying forces out of Germany into Saudi Arabia during the recent conflict.

"We had about 87 hours of combat," Corn said. "A total of 17,000 soldiers were deployed." This was the first time that a force was deployed out of

Europe. One hundred eighty-two trainloads of soldiers and equipment were moved. The force's first mission was to establish a base camp with latrines and other facilities.

"Our plan called for up to 30 days of air war before the ground attack began," said Col. Corn. "We wanted to destroy 50 percent of the Republican Guard Army."

A satellite network helped inform officers in the war. This made it possible for the forces to attach from behind.

"When we destroyed the Republican Guard's Army not one piece of equipment was left operational on the battlefield. We attacked from the rear against the Medina Division."

Corn noted that our forces took 10,000 pieces of equipment into the desert. "Imagery showed us where every Iraqi formation was," Corn said.

During the conflict a series of five battles occurred. "First we pounded the enemy with air strikes in an air attack. The enemy was silenced by our attack," Corn noted.

"We destroyed every tank and took no casualties. Within 1 and a half hours we had killed the entire enemy," Corn explained a new system of aerial weapons describing it as a long range system. The force he was in charge of included 2,600 soldiers.

"We had an awesome artillery punch," he said. After the attack, the U.S. force had destroyed 343 tanks, 96 artillery

Cont. Page 6, Col. 4



DISCUSSING MILITARY TACTICS--at the recent meeting of the Rotary Club is Col. V.B. Corn, Division Artillery Commander in the U.S. Army. He spoke to the club and described some of the details of the strategy for Operation Desert Storm.



PRISCILLA LYNN OROSCO

Cystic Fibrosis Benefit Saturday

The Community Relations Team of Southwestern Bell Telephone will be having its fourth annual "Climb for Cash" benefitting Cystic Fibrosis. The climb is scheduled for Saturday, August 17, from 8 a.m. to noon. It will be held on the steps of the Texas Tech University Health Sciences Center, 4th and Indiana, Lubbock, Texas. The goal this year is \$15,000. The team has raised \$26,000 the past three years through this activity.

Cystic Fibrosis is a fatal disease that attacks the respiratory and digestive systems of its victims by producing abnormal amounts of mucus, which interferes with breathing and digestion. Only half the children who have the disease now live to be twenty-one.

While there is not yet a cure, there is hope. Scientists have

isolated the gene that causes cystic fibrosis, and research goes on daily, looking for the final answer. They have succeeded in prolonging life, and improving the quality of life with various medicines. Money raised at the Climb for Cash will go to the Cystic Fibrosis Foundation for national programs and medical research.

For more information, please call 806-741-6362. If you would like to make a personal contribution, these can be mailed to: Climb for Cash, P.O. Box 291, Room 138, Lubbock, Texas 79408.

In Muleshoe, Priscilla Orosco, 4 year-old daughter of Maria Luisa Orosco has cystic fibrosis. For more information on Priscilla you can call her grandmother, Dolores Orosco, 272-3867. Local residents wishing to participate may call 272-3867.

Cont. Page 6, Col. 4



THRIFTWAY and COCA-COLA

BRING YOU THE *Jetaway-Getaway*

WIN A FABULOUS TRIP FOR FOUR to Disney World

Just Register to win at any participating Thriftway Store. There's no purchase necessary. Your trip includes airfare, hotel accommodations, tickets to Disney World Parks and spending money. Just look for the special Coca-Cola display in Thriftway for all the rules and details.

REGISTER TO WIN \$100 Shopping Spree From THRIFTWAY

Each participating THRIFTWAY Store will be giving away Four \$100 Shopping Certificates...Drawings will be held in each Thriftway the weeks of August 18, August 25, September 1 and September 8, 1991.

FAMILY PACK HEAVY GRAIN FED BEEF

Top Sirloin Steak

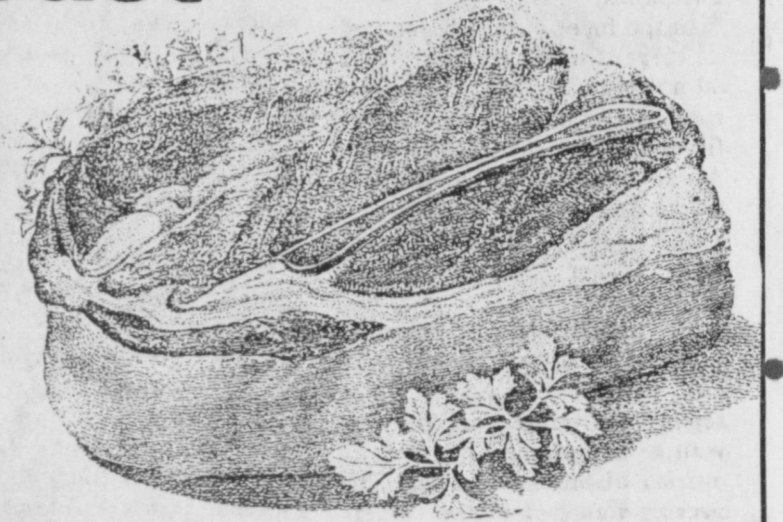
\$2.97 LB.



BLADE OR 7-BONE BEEF

Chuck Roast

\$1.27 LB.



FAMILY PACK FRYER
Thighs or Drumsticks
67¢ LB.

BEEF BONE IN CHUCK
Arm Roast
\$1.99 LB.

3 for \$5 SALE
Chicken by George
CAJUN, TERIYAKI, MESQUITE OR MEXICAN



Little Sizzlers
Hormel Bacon
BLACK LABEL
1 LB. PKG.

BUY a Hormel Cure #1 Whole Mini Ham at \$3.99 a Lb. and Get A 1 Lb. Pkg. of Hormel Light & Lean Franks FREE!



BATH TISSUE

WHITE CLOUD

4 ROLL PKG.

89¢



TONY'S ASSORTED MICRO PIZZA OR Italian Pizzas

MIX OR MATCH

3 \$ 5 FOR



ABSORBENT PAPER

DELTA TOWELS

JUMBO ROLLS

2 89¢ FOR

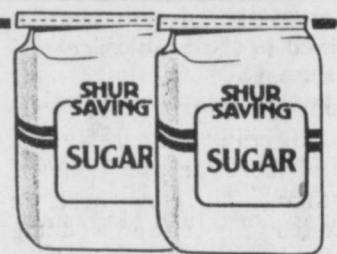


CITRUS HILL PLUS CALCIUM ASSORTED FROZEN

ORANGE JUICE

12 OZ. CAN

69¢



GRANULATED

SHURSAVING SUGAR

5 LB. BAG

99¢

WITH COUPON
FIRST 5 LB. BAG 99¢
THEREAFTER \$1.79 EA. ONE COUPON PER FAM.
COUPON GOOD THRU 8-21-91

THRIFTWAY/LA TIENDA COUPON



11 OZ. PKG. DUNCAN HINES ASSORTED

R.T.S. COOKIES

\$1.19



\$2.99 SIZE ALL TYPES

DORITO CHIPS

\$1.99



3 OZ. JAR TEA

NESTEA INSTANT

\$2.49



GM MULTI-GRAIN

TRIPLES CEREAL

13 OZ. BOX

\$1.99



GM CEREAL APPLE CINNAMON

CHEERIOS

15 OZ. BOX

\$2.89



GM CEREAL

GOLDEN GRAHAMS

18 OZ. BOX

\$3.39



JONNY CAT

CAT LITTER

10 LB. BAG

\$1.99

SWEET JUICY
Water-Melons

15¢ LB.

RED RIPE
Tomatoes

59¢ 4 PACK

MEDIUM White Onions 2 LB. \$1	NEW MEXICO HATCH Green Chili LB. 47¢	CALIFORNIA Sweet Plums LB. 57¢	GARDEN Fresh Cucumbers 4 FOR \$1	U.S. NO. ONE Russet Potatoes 10 LB. BAG \$1.37	FRESH GREEN Leaf Lettuce EA. 57¢
---	--	--	--	--	--

FACIAL TISSUE
PUFF'S PLUS
108 CT. BOX
\$1.09

REG./FREE FACIAL
PUFF'S TISSUE
175 CT. BOX
\$1.09

5 OZ. BATH BAR
ZEST
3 BAR PKG.
\$1.89

MINUTE MAID ASSTD.
ADES OR PUNCHES
12 OZ. CAN
79¢

TABLETS/CAPLETS
BAYER ASPIRIN
100 CT. BTL.
\$3.99

WITH THIS COUPON
FIRST 100 CT. BTL. \$3.99
THEREAFTER \$4.99 EACH
ONE COUPON PER FAMILY

THRIFTWAY/LA TIENDA COUPON
COUPON EXPIRES 8-21-91

VELVEETA SLICES 16 OZ. PKG. \$2.99	SHURFINE COTTAGE CHEESE 24 OZ. CTN. \$1.39	SHURFINE SPREAD 3 LB. TUB \$1.39
--	--	--

BANQUET ASSTD. DINNERS 9 OZ. BOX \$1.19	ULTRA SLIMFAST ASSTD. ENTREES 12 OZ. BOX \$2.99	TOTINO ASSTD. FAMILY PIZZA 16.4 OZ. BOX \$1.99
BLUE BUNNY ASSTD. SHERBET 1/2 GAL. SQ. CTN. 99¢	BLUE BUNNY SUGAR FREE LITES 12 CT. BOX \$1.79	BANQUET REG./ASSTD. FRIED CHICKEN 28 OZ. BOX \$2.59

TABLETS/CAPLETS BENADRYL MOUTHWASH	24 CT. BTL.	\$2.99
LISTERINE MURINE	32 OZ. BTL.	\$3.99
EYE DROPS EYE DROPS...PLUS	.5 OZ. BTL.	\$1.99
MURINE EYE DROPS	.5 OZ. BTL.	\$1.99
CLEAR EYES	.5 OZ. BTL.	\$1.99

THRIFTWAY

401 W. Amer. Blvd. 272-4585

AAFFILIATED FOODS INC.
MEMBER STORE

WE ACCEPT FOOD STAMPS...
WE RESERVE THE RIGHT TO LIMIT

PRICES EFFECTIVE
AUGUST 11-17, 1991

ALL TYPES
Dr. Pepper
6 PACK, 12 OZ. CANS
\$1.69

Chantel Robison and Dion White United in Marriage

Chantel Kay Robison of Muleshoe and Dion E. White of Roswell, N.M. were united in marriage in a candlelight ceremony at 7 p.m., Friday, June 28 at the First Baptist Church of Muleshoe. Stacy Connor, minister of the First Baptist Church, officiated the double ring ceremony.

Parents of the couple are Wendell and Brenda Robison of Muleshoe, Don White of Roswell, N.M. and Angie White of Los Lunas, N.M.

In the foyer of the church was an elegant white Grecian pedestal holding a crystal bud vase of rose slipper orchids and a white framed picture of the couple. An array of crystal candlesticks on a mirrored base holding rose candles were surrounded by rose slipper orchids on the credenza.

The guests were registered by Michelle Dent and Lupita Pineda, both of Muleshoe. The registration table was covered with a white linen cloth and an overlay of battenburg lace. The overlay was tied at the corners with a ribbon of gold. A crystal basket with slipper orchids entwined in the handle accentuated the table.

Inside the crystal basket were scrolls inscribed with a favorite verse of the bride and groom, 1 Corinthians 13. Each bore an ink sketch of doves and wedding bells designed by Elizabeth Black.

Sister of the groom, Amanda White of Roswell, presented the scrolls. Also on the table was a guest registry album covered in moire fabric, accented with satin ribbon flowers and pearl sprays.

Musical selections of organ pieces were played by Jeremy Bruns as the grandmothers were seated by Bill Noffsfer, uncle of the bride, and Collin Robison, brother of the bride. Mrs. Lee Mason of Clovis and Mrs. Opal Robison, grandmothers of the bride, and Mrs. Estella Cordova of Los Lunas, N.M., grandmother of the groom, were seated by the ushers. The mother of the groom, Angie White, and the mother of the bride, Brenda Robison, were seated in pews decorated with arrangements of ivy, flowers, ribbon and tulle.

Candelabras, which consisted of one fifteen branch and two spirals, a total of 45 candles, were embellished with maple ivy, rose colored ginger tipped with burgandy, and accented with large rose bows. An arrangement of palms in brass containers also decorated the altar. Candles were lit by the brother of the bride, Collin Robison.

After a brief welcome given by the pastor, Stacy Connor, the groom, best man, and ring bearer entered the church. The groom wore a grey full-dress tuxedo with a fine black stripe. The best man and brother of the groom, Richard White of Roswell, wore a similar tuxedo featuring a short coat. Craig Foster of Henderson, KY., the ring bearer, wore a grey suit and carried a satin heart pillow adorned with satin rosettes and rose ribbon tied in love knots with small silver wedding

bands. As the wedding march played softly, the matron of honor, Jan Noffsfer of Clovis, entered wearing a rose moire two-piece floor-length suit presenting a peplum and a lace overlay on the shoulders and sleeves. She carried a nosegay of rose spider mums surrounded by ivy and small white slipper orchids. Wearing a tea-length rose moire dress and a bow of the same fabric in her hair, the flower girl, Amanda Foster of Henderson, KY. entered the sanctuary carrying a satin covered basket of rose-colored rosettes.

As the wedding march continued, the bride descended down the staircase that was decorated with swags of tulle and emerald bows. She was awaited at the foot of the stairs by her father who escorted her to the altar. The bride wore a formal wedding gown of white satin. The gown's fitted bodice had an antebellum waistline and a jewel neckline trimmed in lace and was embellished with hand beaded pearls, iridescent sequins and schiffle embroidery. The dress also featured gibson sleeves adorned with iridescent sequins, hand beaded pearls and schiffle embroidery that came to a point at the wrist. The cathedral length train was accented with a satin ruffle, schiffle embroidery, hand beaded pearls and iridescent sequins.

The double-layered waist length veil adjoined the halo headpiece of white roses and sprays of pearls. The veil also featured a full pouff in the back. The bride carried a cascade of five large white orchids surrounded by ivy, rose slipper orchids, and rose clusters of ribbon.

Following the wedding tradition, the bride wore a ruby solitaire ring which was borrowed from her aunt, Jan Noffsfer who also wore the ring in her own wedding. The ring originally was an engagement ring belonging to the late Bertha Hardage, the bride's great grandmother. As "something old," the bride wore a handkerchief in her garter given to her by her grandmother, Opal Robison. The bride's dress was "something new." A blue garter was worn by the bride as "something blue." To complete the wedding tradition, she wore in her satin slippers pennies minted in the year of the bride and groom's birth.

During the ceremony, a memory candle surrounded by maple ivy, white ribbon and pearl sprays was lighted as Bart Bull of Amarillo sang "Just You and I." He also sang "I Will Be Here" as the bride and groom stepped up to the altar.

Following the ceremony, a reception was held in the fellowship hall of the church. The serving tables consisted of a round table covered with an emerald moire cloth and skirted with white taffeta. It was topped with a lace topper. Extending from the round table were two rectangular tables covered with white linen cloths with garlands of stephanotis and white moire bows accented with gold hearts. The bride and groom's table was adorned with a three tiered



MR. AND MRS. DION WHITE
(nee Chantel Robison)

round cake with a fountain underneath which was designed and created by Jan Noffsfer, aunt of the bride. The fountain was surrounded by fresh baby's breath and leatherleaf.

Five round cakes surrounded the larger cake and were connected with trails of tulle and strings of pearls. The top pillar was separated by corinthian pillars and topped with a pair of doves inset in white flowers and pearls. Beneath the top cake was a spray of rose satin flowers, and upon each of the surrounding cakes were small sprays of rose flowers tulle and pearls. The entire cake was embellished with strings of tiny pearls, white doves, and cherubs. Rose colored punch was served from crystal appointments. Nuts, and rose and emerald colored mints were also served. Behind the tables was white lattice featuring tulle swags, flowers and white wedding bells.

Serving at the bride and groom's table was Tisha Foster of Henderson, KY and Ursula Gentile of Plainview. Members of the house party were Mrs. Harlan Davis, Mrs. Nick Black, Mrs. Terry Yell, and Mrs. Robert Johnson.

The gift table was covered with an emerald taffeta cloth with a white lace overlay and

parents of the bride.

A special touch created by Mrs. Terry Yell was the memory table which consisted of photographs and keepsakes belonging to both the bride and the groom. Keepsakes included the bride's first Bible given to her by her parents on her first birthday, track and field trophies and medals belonging to the groom.

Photographs were made by Robert and Ann Johnson.

Out of town guests were from Plainview, Seagraves, Vernon, Amarillo, Lubbock, Brownfield, Levelland, Clovis, Roswell, and Los Lunas, New Mexico, and Henderson, Kentucky.

The bride chose a royal blue two piece suit accented with gold buttons as her going away dress. The couple spent the

weekend in Lubbock and traveled to Plainview where they will make their home.

The bride is a 1987 graduate of Muleshoe High School and is a May honor graduate of Wayland Baptist University. She is currently employed by the Plainview Independent School District. The groom is a 1987 graduate of Roswell High School and will be a December graduate of Wayland. He is employed by Wal-Mart Distribution.

Immediately following the rehearsal on June 27 members of the wedding party were treated to ice cream sundaes served from a festive table decorated with streamers and confetti. The bride and groom presented their attendants with gifts.

ATTENTION !!!!
Please Do Not Touch The Watering System (OFF -ON- or Otherwise) At the Muleshoe Memorial Park Cemetery.
You will blow the underground pipe or ruin one of the wells.
Thank You

ANTHONY'S

Starts Monday

1/2 PRICE SALE

SAVE 50%

SHOP AND SAVE 50% ON FASHIONS FOR THE FAMILY

- | MEN | WOMEN | KIDS |
|---|---|---|
| <ul style="list-style-type: none"> All Banded Bottom Sport Shirts including Imprints® and Members Only® All Swimwear All Tank Tops All Fashion Shorts | <ul style="list-style-type: none"> All Swimwear All 2-Piece Short Sets All Shortalls All Tank Tops All White and Bone Handbags All Summer Jewelry All Summer Sandals | <ul style="list-style-type: none"> All Swimwear Large Group of Shorts All Short Sets All Shortalls All Tank Tops |

Selection, sizes and colors will vary by store. Sorry... no layaways or rainchecks.

1/2 Price **ENTIRE STOCK** COLORFUL COTTON BEACH TOWELS

ANTHONY'S
Looking Better Every Day!

321 Main Muleshoe, Tx. 272-3478

Bailey County Journal
Established March 31, 1963. Published by Muleshoe Publishing Co., Inc. Every Sunday at 304 W. Second, Box 400, Muleshoe, Tx. 79347. Second Class Postage paid at Muleshoe, Tx. 79347.

TA MEMBER 1991
TEXAS PRESS ASSOCIATION

L.B. Hall, Publisher
Sammy Hall, Vice-President/Comptroller
Evelyn Harris, News
Joyce Adams, Society
Holly Millap, Advertising
Dana Bernes, Classified

SUBSCRIPTIONS
Muleshoe Journal and Bailey County Journal
Bailey and surrounding counties
Muleshoe Journal and Bailey County Journal
Elsewhere in Texas \$14.75
Muleshoe Journal and Bailey County Journal
Outside Texas, \$18.50
Yearly By Carrier
\$12.50

Advertising Rate Card on Application
*Advertisers should check their ad the first day of insertion. The Journal will not be liable for failure to publish an ad or for a typographical error or errors in publication except to the extent of the cost of the ad for the first day of insertion. Adjustment for errors will be limited to the cost of that portion of the ad where the error occurred.

Now Is The Time To Control Your Lawn & Garden Pests!

Broad Spectrum Fungicide For

Lawn, Roses, Ornamentals, Vegetables and Melons

Ionate - Soil Acidifier For Lawns, Flowers, Trees and Shrubs - Corrects Yellowing

Oftanol - Season Long White Grub Control On Lawns

Amdro The Proven Fire Ant Killer
Insecticide - Easy To Apply with No Mixing & No Odor!

Kristy's Plants

710 E Amer. Blvd.

272-5536

Jennifer Bennett and Ricky Railsback United in Marriage

Jennifer Melina Bennett of Muleshoe and Ricky Allen Railsback of Muleshoe were married at the Calvary Baptist Church at 7:00 p.m. June 7, 1991 with Rev. Darrel Martin of Midland officiating.

Jennifer is the daughter of R.G. and Veronica Bennett of Muleshoe. Ricky Allen Railsback is the son of Richard and Kathy Railsback. It was a double ring ceremony.

The church was decorated with brass candelabras and unity stand which were entwined with silk English ivy and peach bows. Stephanotis, garlands and votive candles lined the altar rails. There were peach bows on pews with flowers in parents bows.

Music selections included "Just You and I" and "As for Me and My House." Rev. Darrel Martin and Barbara presented the songs. The bride was given in marriage by her father.

The bride wore an elegant gown of white raschel lace and crystalline organza. The bodice, beaded with sequins and pearls, featured a sweetheart neckline, gathered ball gown sleeves and a shirred basque waistline. The full skirt was accented with crystalline organza filament ruffles at the floor length hemline. The bride carried a silk cascading bouquet of dendrobium orchids, white bridal roses, stephanotis miniature English ivy and peach sweetheart roses accented with pearls and lace ribbons.

The maid of honor was Kristi Bennett of Muleshoe, sister of the bride. Bridesmaids were Heather Baker of Portales, N.M., cousin of the bride, Charlotte Martin of Midland and Nicole Alanis of Muleshoe.

The bride's attendants wore jade taffeta dresses with fitted bodices with scooped neck dropped pointed waists, full skirts and back bodice bows and straps. The dress was tea length. The Maid of Honor's bouquet was a silk nosegay of peach phalaenopsis orchids and white and peach miniature carnations.

The bridesmaids carried summer arm bouquets of peach and enchantment lilies, baby's breath and English ivy.

The best man was R.G.



MRS. RICKY RAILSBACK
(nee Jennifer Melina Bennett)

Bennett IV of Muleshoe. Groomsmen were Kelly Railsback of Muleshoe, brother of the groom, Jeff Davis of Lubbock, cousin of the groom and Virgil Snell of Muleshoe.

The flower girl was Brandi Whalin of Muleshoe and she wore a peach tea length taffeta full skirt drawn up in gathers on the hem accented with fabric roses and sash in the back.

Ring bearer was Sean Farrington of Louisiana. Candlelighters were Cindy and Sheryl Martin of Midland.

The bride's mother wore a jade and white taffeta two piece dress and her corsage was silk gardenias.

The groom's mother's dress was a peach two piece dress and she wore a corsage of silk gardenias.

The reception was held at the Calvary Baptist Church. Registering the guests was Dawn Merriott. Serving the guests were Gayle Morris, Bette Freeman and Jeanine Morgan. The bride's table was covered with

a white linen cloth and skirt. The table was graced with a wedding cake, crystal punch bowl, silver tea service, a silver candelabra, bride's and attendants' flowers, stephanotis garlands and wedding bells.

Following a short wedding trip, the couple will be residing at 1002 S. 1st in Muleshoe. The bride's traveling outfit was black and white rompers and a white silk corsage.

A rehearsal party was given by the groom's parents and a bridesmaids' luncheon was given by the bride's mother.

Out of town wedding guests included Mr. and Mrs. Roy Baker and family; Mr. and Mrs. Bob Railsback; Mr. and Mrs. Joe Gilley; Tommy and Amy Abbott; Mrs. Mike Davis and family, Tammy Berry and Mr. and Mrs. Dwight Holt; Mr. and Mrs. Roy Blaylock; Mr. and Mrs. Tom Wright; Rev. and Mrs. Richard Morgan; Chris Farrington and family; Shelly Curry and Jimmy Railsback.

Tops Club

Tops chapter No. 34 met at 6:30 on Thursday, August 8 in the Heritage Thrift Shop. Leader Laverne James called the meeting to order. The TOPS pledge was recited and fellowship song sung. Mrs. James led the group in a prayer.

Billy Jo Davis, weight recorder, called the roll with 21 members answering with the amount they had lost or gained. Minutes of the previous meeting were read by Aurora Mata, secretary, and they were approved as read.

Molly Davis was named best loser for the week. Runners-up included Yvonne Hale, first; and Betty Jo Davis, second.

Two contests were started. One to end in 8 weeks, the other one will end when Snoppy Bank is full of pennies.

Laverne James received a check for a free hair set for losing 6 weeks in a row.

Jewell Peeler had a birthday and received a gift from the birthday box and a song sung by the tops group.

September 14 ARD meeting will be in Olton, Texas. Money has to be in by September 1.

Rose Sain received a gift for being best loser last week and losing again this week.

The meeting was adjourned with the goodnight song.

 For Your
 Mary Kay Cosmetics
 Josie Flowers
 272-3865
 8 a.m. - 12 noon
 & after 6 p.m.

Recipe Contest Announced

Texas Cooks are invited to submit their favorite original Texas recipes in a new contest announced by Golden West Publishers.

Golden West, specialists in cookbooks, are sponsoring this contest in search of recipes to be included in "The Best of Texas Cook Book", soon to be published.

Recipe categories include breakfast, lunch and dinner dishes. Side dishes and desserts are also included. Outdoor events, camping favorites and unusual family-tradition recipes are encouraged. Golden West is seeking recipes which reflect the true flavor of Texas cooking.

Contestants should include titles for their recipes, indicate number of servings, list the ingredients (as they appear in the directions), and write clear instructions.

Winners will receive a copy of "The Best of Texas Cook Book" upon publication.

Official recipe contest entry blanks are available now from Golden West Publishers, 4113

N. Longview Ave., Phoenix, Arizona 85014. Recipes must be received no later than September 1.

Seniors Plan Fall Trips

The Hockley County Senior Citizens in Levelland will be sponsoring two fall tours, one to Tennessee and one to the Ozarks.

The trip to Tennessee is scheduled to depart the Levelland Senior Center on Monday, September 30, with overnights in Memphis and 4 days in Nashville.

The Ozarks tour scheduled for departure on October 21 through the 28 features good ole country fun in Branson, Missouri and Eureka Springs, Arkansas. Visits to the Passion Play, Shepherd of the Hills, Thorn-crown Chapel, country music shows, Big Band and more. For additional information please contact the tour planner at 806-894-2228.

Jewelry and WATCH REPAIR

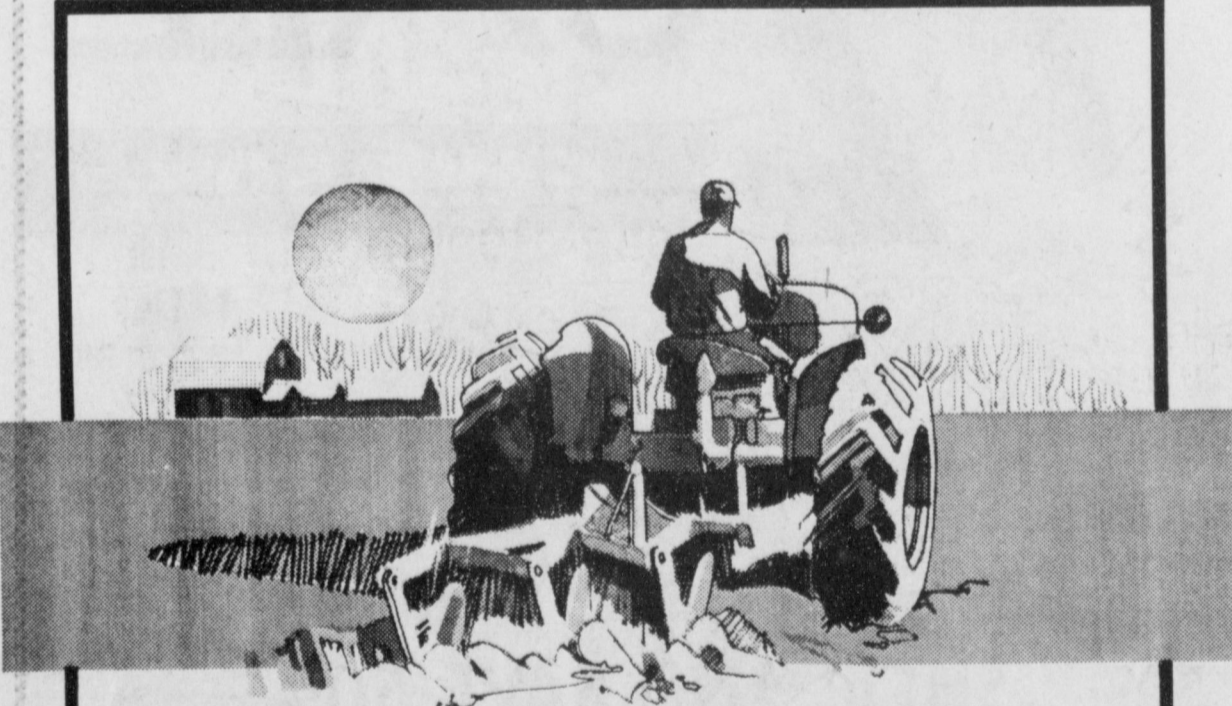


- Ring Sizing 2 Day Service
- Remounting & Diamond Setting
- Full Line Watch Batteries
- Neck Chains Repaired
- Jewelry Appraised for Insurance
- Faster Service
- Diamond Re-Tipping
- Prongs Repaired

Paying Best Prices for Old Pocket Watches and Wristwatches




Holmberg Jewelry
 Celebrating 50 YEARS 1941-1991
 312 Main 762-9376



Farming's our field, too.

Over the years, we've been committed to our Agricultural Community.

We're concerned about your crops, your livestock, your equipment, and your future.

Why?

The answer is simple. The better you do, the better we do.

Whether you need money to keep your farm going or growing, come to us...

We do what's good for you!



And Muleshoe Too!



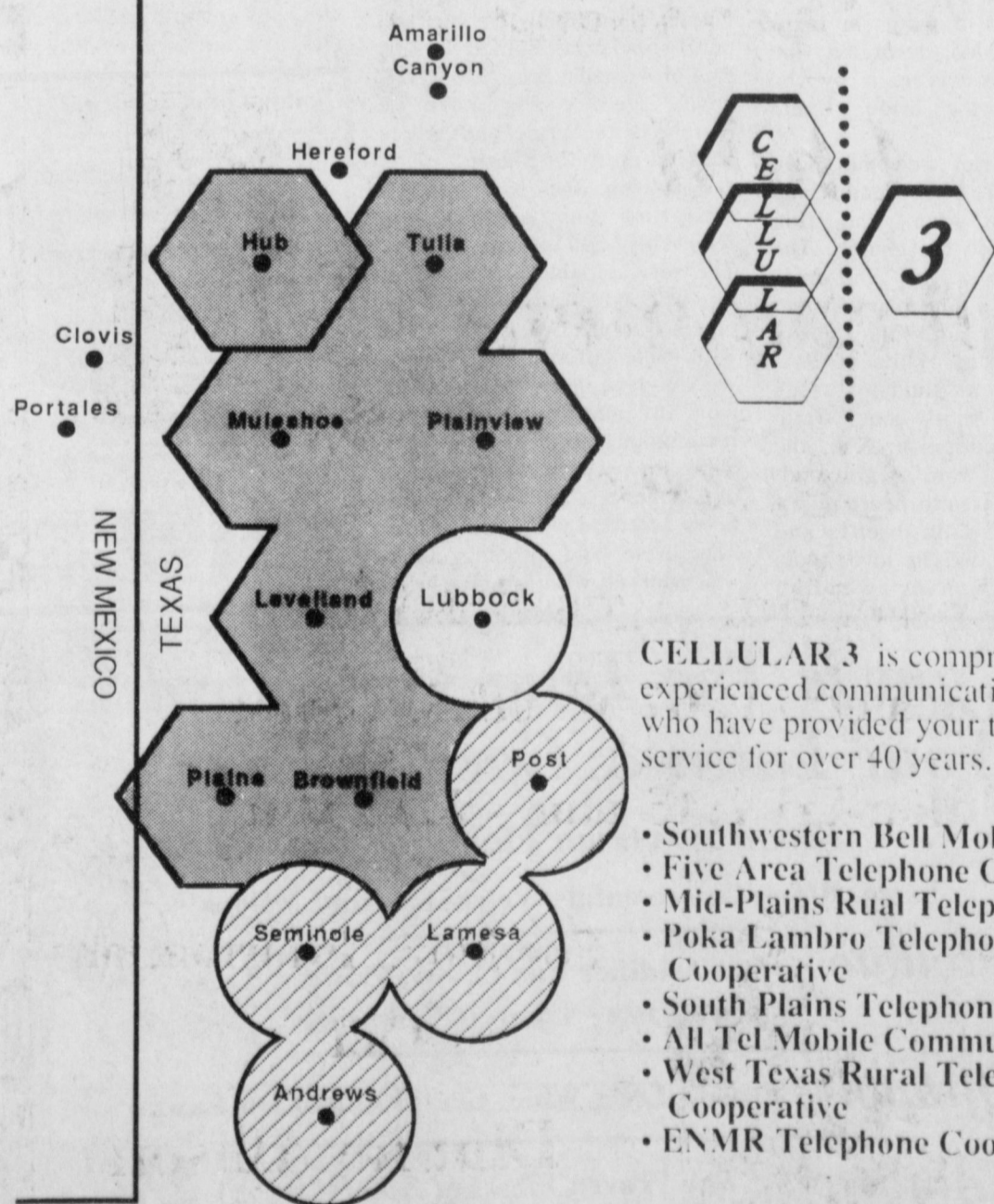
MULESHOE STATE BANK

MEMBER FDIC

101 West American Blvd. Phone 806/272-4561
 MULESHOE, TEXAS 79347

EXPERIENCE CELLULAR 3

THE POWER OF



CELLULAR 3 is comprised of experienced communications experts who have provided your telephone service for over 40 years. . . .

- Southwestern Bell Mobile Systems
- Five Area Telephone Cooperative
- Mid-Plains Rural Telephone
- Poka Lambro Telephone Cooperative
- South Plains Telephone
- All Tel Mobile Communications
- West Texas Rural Telephone Cooperative
- ENMR Telephone Cooperative.

Cellular 3 Southwestern Bell Mobile Systems Digital Cellular

• Hub - Near Completion
 • Approximate Coverage Area

EXPERIENCE THE POWER OF CELLULAR 3

Five Area Telephone Coop.
 272-5533

Creative Living

by: Sheryl Borden

Information on disposable diapers and myths about red meat will be the featured topics on "Creative Living" on Tuesday, August 13 at 12 noon and Saturday, August 17 at 2 p.m. (All times are Mountain.) "Creative Living" airs on public broadcasting station, KENW-TV, from Eastern New Mexico University.

Dr. Bill Sammons, pediatrician, author, and spokesman for the Diapers Manufacturers Group, will discuss a new study regarding disposable diapers and present recycling options that are more in tune with American's concern for the environment. The Franklin Study reports that disposable diapers use significantly less energy and water resources than cloth alternatives. The research study also concludes that disposable diapers produce considerable less air and water pollution than cloth diapers. Sammons is from Charlotte, Vermont.

Joy Best, Extension Home Economist with the Roosevelt County Extension Service, will talk about the importance of beef in the diet. Red meat is an excellent source of protein, vitamins, and minerals. She will also dispel twelve common myths regarding red meat. Ms. Best lives in Portales, N.M.

On Tuesday, August 13 at 9:30 p.m. and on Thursday, August 15 at 12 noon, "Creative Living" will present information on carving fruit and direct selling as a career.

Kea Bardeen, representative of Pumpkin, Ltd., will show how to create attractive fruit carvings she calls "Pati-O-Lanterns," by using very small drills and saws. Although these special drills and saws were originally designed to create Jack-O-Lanterns, there are many other uses for them, such as on watermelons, crenshaw, or honeydew melons.

With the unique drills and saws, it is easy to make very small, intricate carvings, which are especially pretty when lighted. Ms. Bardeen lives in Denver, Co.

Elsie Shealy, Lexington, SC has been working as a direct salesperson for World Book, Inc. for almost 40 years. She will talk about the advantages and benefits of direct selling as a career, and explain why over 42,000 people are employed either full or part-time in direct sales.

"Creative Living" is produced and hosted by Sheryl Borden. The show is carried on more than 100 PBS stations in the United States, Canada, Guam and Puerto Rico and is distributed by Pacific Mountain Network, Denver, Co. Viewers can request copies of materials offered on the show by sending one 29 cent stamp for each handout requested. Send the stamps, along with your name, address and booklets requested to: "Creative Living" Requests % KENW-TV Station #52 Eastern New Mexico University Portales, N.M. 88130

MEXICAN BEEF STIR-Fry
Preparation time: 15 minutes
Cooking time: 8 to 10 minutes

1 pound beef top round steak
2 tablespoons vegetable oil
1 teaspoon each ground cumin and dried oregano leaves
1 clove garlic, minced
1 red bell pepper, cut into thin strips
1 medium onion, cut into thin wedges
1 to 2 jalapeno peppers cut into slivers
3 cups sliced, romaine lettuce, cut 1/4 inch

Cut beef top round steak into 1/8-inch thick strips. Combine oil, cumin, oregano and garlic; reserve half. Heat half the seasoned oil in large nonstick

frying pan over medium-high heat until hot. Add red pepper, onion, and jalapeno pepper; stir-fry 2 to 3 minutes or until crisp tender. Remove and reserve. In same pan stir-fry beef strips (half at a time) in reserved oil 1 to 2 minutes. Return vegetables to pan and heat through. Serve beef mixture over lettuce. 4 servings.

MACARONI-BEEF SKILLET SUPPER
1 cup elbow macaroni
1 pound lean ground beef
1 cup diced onions
1 clove garlic, mashed
2 tablespoons oil
2 8-ounce cans tomato sauce
Freshly ground black pepper
1 8 ounce can mushroom stems and pieces, drained
2 tablespoons Worcestershire sauce
1/2 teaspoon Italian seasoning

Cook the macaroni in boiling water according to package directions. Drain and set aside.

Saute the meat, onion and garlic in oil until the meat loses its pink color and the onions are tender. Add pepper, tomato sauce, mushrooms, Worcestershire sauce and Italian seasoning. Bring mixture to a boil, then simmer gently for about 5 minutes. Mix in the cooked macaroni and simmer for five more minutes.

Three Way News

by: Mrs. H.W. Garvin

Mr. and Mrs. D.A. Williams from Morton visited her father George Tyson Tuesday evening.

Mrs. Bobby Kindle and Robin was in Lubbock Thursday to take the Jeffcoat girls to meet their mother. They had been staying with the Bobby Kindles.

Mr. and Mrs. James Gillentine from Lubbock and Mr. and Mrs. Kenneth Fox from Clovis spent the week end with their mother Mrs. H.W. Garvin to help her celebrate her birthday.

Mr. and Mrs. Bill Dolle and Darla were in Clovis Saturday afternoon shopping.

Littlefield Trades Day Set

Littlefield Chamber of Commerce will sponsor Trade Days again this fall. The event, which proved to be so successful in the spring, will be moved to the first Saturday of each month beginning in September.

Saturday, September 7, will kick the fall season off, followed by October 5 and November 2 dates. When Santa comes to Littlefield on December 7, a Christmas Bazaar will be held.

June Armistead and Eva McDonald who chair these events for the Littlefield Chamber stated that the participants during the spring had asked for this date change from the third Saturday of the month to the first Saturday.

"Now people can come to town for our Trades Day and stay for some wonderful bluegrass music," added Armistead.

The monthly Bluegrass Jam-boree at the Ag Center located on Hall Avenue will follow each of these scheduled dates.

The trades event will be held on Delano Avenue near the depot lot. Booth spaces will be east and west of the Santa Fe Depot along Delano Avenue.

The show will open at 9 a.m. and close at 5 p.m. Set-up time will be from 7:30 until 9 a.m. The booth operators should bring any needed equipment. Table, chairs and other display items are not provided. The booth area must be clean and attractive. The area must be cleaned after the show. Parking is provided.

Booth fee is \$10 per space. \$15 will be charged if electricity is needed. Contracts and fee must be sent in advance. Wednesday prior to each event is the last date to register and pay.

Arts, crafts, antiques, collectibles, flea market items, clothing, food, cars and car parts, swap meet items are all a part of the varied merchandise which may be purchased or traded.

Churches, organizations and individuals are all invited to participate in this fun-filled day.

Sudan Gets 911 Number

Sudan citizens now have access to fire, EMS and law enforcement service through their enhanced 911 system. The system went into effect August 1.

All 911 calls will first be answered by the Littlefield Police Department. Once the dispatcher is able to determine the nature of the emergency, the call will be forwarded or dispatched to the appropriate agency. If you call the 911 number, your location will flash on the screen and an address locked-in for the service you need. In Sudan all calls will be forwarded through the present emergency number and you will still be able to converse with the local EMS personnel. The added benefit would be that the address would be locked-in if the caller became disabled and that you would be in contact with all emergency services with one call. It will also weed out all prank calls. However, for the time being Sudan callers may still use the local emergency number 227-2292 to report fires or medical needs.

Lamb County 911 Plan was submitted to the Advisory Commission on State Emergency Communications for approval in September, 1989. Following review of the plan, the commission authorized GTE, South Plains Telephone, and Five Area Telephone to begin collecting 911 fees in Lamb County in January, 1990.

The Lamb County system will be one of several fully enhanced 911 systems in Texas to be implemented under the state plan. The system is now available to all Lamb County residents including rural areas. Pay Phone users will be able to call at no charge. Everyone is urged to use the 911 number for emergency assistance.

Youth Receives Scholarship

Monty Edwards of Sudan FFA was chosen a recipient of the \$10,000 San Antonio Livestock Exposition Scholarship at the 63rd Annual Texas FFA Convention held July 9-12 in El Paso. Edwards was selected based on academic achievement, FFA and Agri-Science activities including the Supervised Agriculture Experience Program, leadership in school and community and interviews.

Monty, son of Mr. and Mrs. Steve Edwards, was valedictorian of the 1991 graduating class of Sudan High School. He garnered numerous awards during his four years of high school and was very outstanding scholastically and in leadership. Monty will attend Texas Tech University this fall, majoring in animal science.

The San Antonio Livestock Exposition awarded \$140,000 in scholarships to Texas FFA members this year. Presentation of the scholarship to Monty was made by Mary West Traylor, chairman of the San Antonio Livestock Exposition Scholarship Committee.

Texas FFA has over 54,000 members in some 950 local chapters. More than 2,000 members were recognized for achievement and \$600,000 in scholarships were awarded at the recent State Convention.

Also attending the awards program were Mr. and Mrs. Steve Edwards and Kenneth Carr, Sudan FFA advisor.

Announcing Allison Funderland Will Open August 19 Child Development Center

Preschool Ages 3,4&5

Located At 307 W. 6th Muleshoe

Mon-Fri 7:45 a.m. - 5:15 p.m.



For More Information

Call

Dianne Allison

272-3304



3 DAY DAYS SALE

Curry County Fair — Aug. 19 - 24

<p>Men's Suits One Group \$99⁹⁸</p> <p>Straw Hats 50% OFF</p> <p>Men's Long Sleeve Shirts... 20% OFF One Group Rocky Tops..... 50% OFF Rocky Shorts.. 50% OFF</p>	<p>Justin Ropers \$79⁸⁸</p> <p>4X Beaver Hats One Group \$65⁰⁰</p> <p>All Other Beaver Felt Hats 20% OFF</p> <p>Rocky Mountain & Panhandle Slim JEANS.....as low as \$19⁹⁸</p>	<p>Hi Ties \$95⁹⁸</p> <p>Childrens Ropers..... \$46⁹⁸ Hi Ties..... \$54⁹⁸</p> <p>Boy's Shirts Panhandle Slim and Miller 10% OFF Girls' Blouses 50% OFF</p> <p>Wrangler Jeans 13 MWZ Adults Denim..... \$14⁹⁸ Colored..... \$19⁹⁸</p>
--	--	--

Rip's

* Layaways Welcome *
* Free Gift Wrapping *

IN TEXICO 314 Wheeler Ave. 482-3363
OPEN 8:00 am to 6:30 pm CDT or 800-748-2459

MISD Agenda August 12

The Muleshoe Independent School District Board of Trustees will meet at 7:30 p.m. Monday, August 12 in the School Administration Building at 514 West Avenue G., Muleshoe, at which time the following subjects will be discussed:

1. Call to order
2. Invocation
3. Recognition of visitors and school officials present at meeting
4. Approval of minutes special meeting held on July 18, 1991, the special meeting held on July 22, 1991, the regular meeting held on July 22, 1991, and the called meeting held on August 5, 1991
5. Open Forum/Audience Participation
6. Business Items
 - 6.1 Canvass the results of the election held August 10, 1991
 - 6.2 Discuss recommended changes in the Dress Code for 1991-92
 - 6.3 Discuss preliminary schematics for courtyard area at Muleshoe High School
 - 6.4 Discuss security lighting at Dillman and DeShazo
 - 6.5 Discuss Watson Jr. High

renovation and take appropriate action

- 6.6 Adopt the Texas Teacher Appraisal System Appraisal Calendar
- 6.7 Consider revised policy DGBA and DGBA (Local) and take appropriate action
- 6.8 Consider Policy DEC and DEC (Local) and take appropriate action
- 6.9 Discuss the administrative appraisal process to be implemented in 1991-92
- 6.10 Appoint JoAddine Mayhugh as a trustee of the MISD Group Health Plan Trust
- 6.11 Discuss the 1991-92 budget
 7. Informational Reports
 - 7.1 Board President
 - 7.2 Superintendent
 - 7.3 Assistant Superintendent for Business
 - 7.4 Assistant Superintendent for Instruction
 8. Personnel Considerations
 - 8.1 Executive Session (Article 6252-17, Section 2)
 - a. Accept resignations
 - b. Employ new personnel
 9. Take Appropriate Action Following Executive Session
 10. Announcements
 11. Adjournment

Teachers...

Cont. from Page 1

Ted Leps, and Nina Maldonado. Also Chris Mardis, Trish Moore, Tim Moore, Kevin Noack, Susan Noack, Belinda Steinbock, Vicki Surrent, Ron Welch, Malia Whalin, and Deborah Williams.

Cash Rewards

Up To \$1,000

For Information!

Call

Bailey County
Crime Line

272-HELP

Commissioners Court Agenda

The Bailey County Commissioners Court will meet in REGULAR SESSION in the Bailey County Courthouse, Monday, August 12, 1991.

The meeting will begin at 10:00 a.m., and will continue until all business is concluded, with the following items on the agenda:

1. Approve the minutes of the previous meeting.
2. Review departmental reports.
3. Review County Treasurer Report for July.
4. Payment of routine County bills.
5. Consider Budget Amendment No. 7 to FY 1991 Budget.
6. Discuss District Judge's appointment of new Court Reporter.
7. Set date for Commercial

around Muleshoe

Parents of Senior students at Muleshoe High School are raising money for Project Graduation. Everyone is encouraged to come and receive a free cup of homemade ice cream on Monday, August 19 from 10 a.m.-3 p.m. at the Muleshoe State Bank. The Muleshoe State Bank will donate \$1 for each cup of ice cream that is given away. Come by and support the Senior Class.

The Fine Arts Boosters will meet Monday, August 19 at 7:30 p.m. at the 16th and Ave. D Church of Christ. We need all parents of Band, Art and Speech students to attend. We will be making plans for the concession stand at the home football games on Thursday and Friday nights. Please, parents, we need your support.

Remember your Annual Heritage Foundation Meeting, Monday, August 12- 7:00 p.m. at the depot.

Drivers License School.
8. Set date for Budget Hearing.

9. Set date to set tax rates.
10. Canvass votes of Constitutional Amendment Election.
11. Map Resource, Inc. to present redistricting initial evaluation. (1:00 p.m.)
12. Sheriff to discuss heating and air conditioning unit in jail.
13. Sid Felan to discuss possible funds for Juvenile Probation Department.

Marilyn Cox
County Judge

WASHINGTON NOTES

Summit
President Bush and Mikhail Gorbachev definitely will hold a summit this summer, a spokesman for the Soviet president said.

Rotary Club

Cont. from Page 1

pieces, 1143 trucks and had taken 1,453 prisoners. "We suffered 6 casualties and had 53 soldiers wounded," Corn said.

Three weeks after the cease fire, the U.S. forces continued to destroy the rest of the enemy's equipment so that it could not be repaired.

"The Iraqi army was poorly trained and poorly led. By the time of the ground war, the Iraqis had given up their will to fight."

"Because of our strategy, we saved a tremendous number of young American lives," Corn said. "We were happy to have the support of the American people. Our home front support was superb."

As a footnote to his talk Corn mentioned that this was the first war in U.S. Army history in which no alcohol was allowed. As a result, the forces had the best safety record ever recorded.

This was also the first war in which no war brides were brought home.

"We brought our top computer team into the war," Corn said.

In answer to a question from one of the members, Corn noted that there were some problems in keeping the equipment operational in the sand. "However," Corn said, "we started with 342 M-1 tanks running and finished the war with most of them still running."

Four divisions still remain in Europe but according to Corn, this force will soon be reduced to two. He thinks that our military force there will be completely withdrawn from Europe in 10 to 15 years.

Corn concluded his talk by saying that the number of P.O.W.'s taken during the conflict was a big problem.

New Student

Registration

/Schedules

Registration for students new to Muleshoe are asked to register at all school campuses on Thursday and Friday, August 15 and 16 between the hours of 8:00 to 12:00 and 1:00 to 4:00. Students who will be in pre-kindergarten through second grade will attend Dillman Elementary, third through fifth grade attend De Shazo Elementary, sixth through eighth attend Watson Jr. High and ninth through twelfth graders attend Muleshoe High School. All new students need to bring social security numbers, birth certificates, health records, and withdrawal forms, transcripts, or report cards from a previous school attended.

Teacher assignments for students at Dillman Elementary and De Shazo Elementary will be posted on Monday, August 19 at each campus. Students returning to Watson Jr. High are asked to pick up their class schedules between 10:30 and 12:00 A.M. on Tuesday, August 20. For additional information concerning registration or schedules call Dillman Elementary at 272-7541, De Shazo Elementary at 272-7546, and Watson Jr. High at 272-4841.

All Muleshoe High School students may pick up schedules Tuesday through Friday, August 13-16, from 8:00 to 12:00 and 1:00 to 4:00 at the counselor's office. Students may select lockers at that time. Please call high school at 272-3080 for further information or if a different time is needed to pick up schedules.

Mule Days

Cont. from Page 1

walkers, all entries will be grouped. They may be on bikes, mules, horses, in wagons or on foot.

Animals will be judged on uniformity of pair or group, grooming, tack, gear, showmanship and parade ability.

All entries must be at the Boy Scout Grounds located at the south-east of Main Street one hour prior to parade time. No entry which consists of people on foot may unreasonably detain the progress of the parade. Any such entry which slows the parade will be asked to let the parade pass. Each entry with children must be accompanied by an adult.

Entries are being taken by the Muleshoe Chamber of Commerce and Agriculture.

Fair booths inside the Civic Center are being rented at \$50 each. To rent a booth, contact Harvey Bass at 272-3030.

Mule Day Funtime booths on the parking lot of the Civic Center are being rented at \$25 each. For information, contact

the Chamber of Commerce at 272-4248. You can also contact Lonnie Adrian at 272-3487 or 272-5617 to rent a Mule Day Funtime Booth for September 14.

A chili cookoff is also planned for Mule Days. It will be held Saturday, September 14 at the Bailey County Civic Center. Plaques will be awarded in two different categories. A people's choice award will accompany a plaque and a \$25 prize and a showmanship award will also be given. Entry fee for the cookoff is \$15. After September 9, the fee will be \$25.

Chili will be judged in both red and green divisions. There will also be a jalapeno eating contest. For more information on the chili cookoff, contact the Muleshoe Chamber of Commerce at 215 S. 1st. Phone: 272-4248.

Shop
Muleshoe

CALL
Mark Mortu
109 S. 1st Muleshoe
272-7519
State Farm
Mutual Automobile
Insurance Company
Home Office
Bloomington, Illinois

NOTICE OF CALCULATION EFFECTIVE TAX RATE, ESTIMATED UNENCUMBERED FUND BALANCES, AND DEBT SCHEDULE

This notice presents information about three tax rates. Last year's tax rate is the actual rate used to determine 1990 property taxes. This year's effective tax rate would impose the same amount of taxes on the same properties as last year. This year's rollback rate is the highest tax

rate the taxing units may set before taxpayers can start rollback procedures. This notice contains a summary of the effective and rollback tax rate calculations. You can inspect the full calculations at Bailey County Appraisal District, 104 East Avenue C, Muleshoe, Texas.

Name of person preparing this notice Margaret Johnson.
Title Chief Administrator/Assessor Collector
Date prepared August 8, 1991

NOTICE OF 1991 EFFECTIVE AND ROLLBACK TAX RATE FOR:	MULESHOE AREA HOSP. DIST.	CITY OF MULESHOE	BAILEY COUNTY GENERAL FUND	BAILEY COUNTY FARM MARKET ROAD
LAST YEAR'S TAX RATE				
Last year's operating taxes-----	\$ 566,318	551,165	704,500	149,730
Last year's debt taxes-----	\$ -0-	-0-	-0-	-0-
Last year's total taxes-----	\$ 566,318	551,165	704,500	149,730
Last year's tax base-----	\$ 226,527,351	90,162,771	234,833,527	230,353,585
Last year's total tax rate (per \$100 value)-----	\$.25	.6113	.30	.0650
THIS YEAR'S EFFECTIVE TAX RATE				
Last year's adjusted taxes-----	\$ 566,146	551,138	704,148	149,526
This year's adjusted tax base-----	\$ 223,013,188	91,761,607	231,977,305	227,477,825
This year's effective tax rate (per \$100 value)-----	\$.2539	.6006	.3035	.0657
1.03 Maximum rate unless unit publishes notices and holds hearings-----	\$.2615	.6186	.3126	.0676
THIS YEAR'S ROLLBACK TAX RATE				
Last year's adjusted operating taxes-----	\$ 566,146	551,138	819,929	149,526
This year's adjusted tax base-----	\$ 223,013,188	91,761,607	231,977,305	227,477,825
This year's effective operating rate-----	\$.2539	.6006	.3534	.0657
1.08 This year's maximum operating rate-----	\$.2742	.6486	.3816	.0709
This year's debt rate-----	\$ -0-	-0-	-0-	-0-
This year's rollback rate before adjustment-----	\$.2742	.6486	.3816	.0709
Sales tax adjustment rate-----	\$ N/A	N/A	.0497	N/A
Rate to recoup lost state funds-----	\$ N/A	N/A	-0-	-0-
A. Rollback rate-----	\$ N/A	N/A	.3319	.0709
B. Rate that would result in Maximum state funds-----	\$ N/A	N/A	N/A	N/A
Rollback rate (greater of A or B)-----	\$ N/A	N/A	N/A	N/A
SCHEDULE A: UNENCUMBERED FUND BALANCES				
The taxing units estimate the following balances will be left at the end of this fiscal year. These balances are not encumbered by a debt obligation. Estimated unencumbered M&O or General Fund Balance-----				
	\$ -0-	-0-	\$625,000	N/A
SCHEDULE B: DEBT SERVICE-----				
	\$ -0-	-0-	-0-	-0-
The taxing units estimate the following amounts will be paid from property tax revenues (or additional sales tax revenues) for long-term debts that are secured by property taxes.				
SCHEDULE C: EXPECTED REVENUE FROM ADDITIONAL SALES TAX-----				
	\$ N/A	N/A	\$115,780	N/A

Bailey County Appraisal District

104 East Ave. C.

Muleshoe, Tx.

272-5501

Cal Farley Boys Ranch

Rodeo Set

Approaching at a gallop is another exciting rodeo at Cal Farley's Boys Ranch where more than 200 young cowboys and cowgirls will compete over the Labor Day weekend.

This forty-seventh annual event will be held Sunday, September 1, and Monday, September 2 at the Ranch, 36 miles northwest of Amarillo. In hopes of winning belt buckles or All-Around Cowboy honors, boys of all ages will be riding calves, bulls, broncs and steers.

Also competing for awards and recognition will be young cowgirls from the campuses of Girlstown, U.S.A. at Whiteface and Borger, Texas. The girls will join the boys and area riding clubs in the Grand Entries. Both Girlstown residents and Boys Ranch staff daughters will participate in rodeo events.

Especially enjoyable will be this year's rodeo clowns, about 8 boys who have worked hard to

earn this position. A two-day seminar, conducted by professional rodeo clown Dustin Brewer of Elk City, Oklahoma, helped prepare the boys for the rigorous job of clowning. While gaining a knowledge of safety, the boys also acquired new antics to humor the rodeo fans.

Up to 10,000 people are expected to fill the rodeo grandstands, most of which are covered. Tickets for children (6-12) are \$1.00; general admission, \$2.50; and reserved bleacher seats, \$3.50. Barbecue plates, prepared and served by the boys at noon each day, will be sold for \$3.50. Rodeo action begins at 2:30 p.m.

The Boys Ranch Rodeo is the Panhandle's largest Labor Day weekend event, and is the only rodeo of its kind in the nation. Additional information and reservations are available by calling (806) 372-2341, or by writing P.O. Box 1890, Amarillo, Texas 79174.

Alvin Davis Speaks Lions Club

The Muleshoe chapter of the Lions Club met in its regular session August 7 at the Bailey County Civic Center with about 25 members attending.

Mike Caldwell presided and five guests were introduced. There was discussion on raising the dues to \$27. This is necessary because of the increased cost of meals served at the club.

The success of the broom sale was mentioned. Also mentioned was the upcoming steak supper scheduled for Friday, September 6.

Mike Caldwell introduced David Sudduth who was responsible for the program. Sudduth introduced Alvin Davis, executive vice-president and director of the Ranching Heritage Center in Lubbock.

Davis is a poet and sculptor. He had recently returned from a Cowboy Poetry Gathering in Colorado.

Before reciting several of his cowboy poems, Davis gave a brief history of the Ranching Heritage Center. The Center was established on July 4, 1976, with its conceptual beginning in 1966. Since the Center's begin-

6th Annual Perinatal Symposium

A number of nationally known speakers will address a wide variety of topics during the Sixth Annual Perinatal Symposium on August 15 to 17 at the Lubbock Memorial Civic Center. This symposium is designed to provide quality education opportunities for perinatal nurses on the South Plains.

Some topics that will be discussed are high risk obstetrical/gynecological nursing, neonatal nursing, issues for maternal child nurses and number methods of care with

ning, 30 buildings have been moved onto the site.

"One hundred thousand people visit the Ranching Heritage Center annually," said Davis. He explained that a crew of ten people are paid to support the work of the museum and Texas Tech University provides grounds maintenance.

Davis has been in his position with the Center for the last 10 years.

As a cowboy poet Davis uses history to help in writing his poems. In order to make them humorous, he often takes a joke and turns it into a poem.

Davis has traveled to seven states to recite his poetry. "The early cowboys wrote poetry while sitting around the campfires at night. Then they set these poems to music," Davis said.

Davis amused the group by reciting several humorous poems. Among them were: "Cowboy Religion," "Cowboy Wedding," and "Cowboy Catastrophe."

"The American cowboy is our mythical national hero," Davis said.

current standards of the nursing practice.

Special social activities are scheduled, including an authentic cowboy cookout at the McNeill ranch and an image enhancement discussion.

The symposium will officially open on Thursday morning at 8:00 with by a proclamation from Lubbock's Mayor "Peck" McMinn declaring August 12-17 as Perinatal Health Awareness Week.

Contact Yvonne Schue, RNC, BSN, at (806)793-4212.

Texas Farm Bureau Report

Texas farmers and ranchers are alarmed by what they understand are alternatives being considered in the Texas House of Representatives regarding taxes, according to S.M. True, president of the Texas Farm Bureau.

"Proposals to increase the state fuel tax by 13 cents to a total of 28 cents a gallon is bad enough for all Texans," True said. "But, changing the off-road exemption for tractors and other production equipment to a once-a-year refund-as proposed--substantially increases producers' up-front production costs."

The president of the state's largest general farm organization said the damage becomes even more severe with the concept of allowing the refund to equate to only 75 percent of the charge.

"That would result in a new 7-cents-per-gallon tax on fuel used for food and fiber production," True said. "That is unacceptable and intolerable. We strongly urge that this entire concept be dropped."

The farm leader said another proposal floating in the Texas House of extending the state franchise tax to farm and ranch enterprises is no more than an "income tax in disguise."

Texas Farm Bureau has expressed support for streamlining government, increasing the state sales tax by one percent, and a voter-approved state lottery, True said. All of these actions would affect farmers and ranchers the same way as all citizens of the state, he explained.

"The fuel tax proposal and the franchise tax extension are grossly unfair, as agriculture is the only industry that cannot pass along taxes to consumers," True said. "The proposals are not the proper means to address the budget dilemma."

Top Ten Songs For The Week

1. She's In Love With The Boy-Trisha Yearwood
2. Here's A Quarter-Travis Tritt
3. Here We Are-Alabama
4. Somewhere In My Broken Heart-Billy Dean
5. I Am A Simple Man-Ricky Van Shelton
6. You Know Me Better Than That-George Strait
7. Don't Rock The Jukebox-Alan Jackson
8. Lord Have Mercy- Don Williams
9. Fallin Out Of Love-Reba McEntire
10. Down To My Last Tear-drop-Tanya Tucker

Changing Workforce Adds Value to Two-Year Degree

By Joyce Boatright

While communities nationally deal with mounting unemployment, Texas is flush with rising employment opportunities. From North Texas to the High Plains to the Gulf Coast to South Texas, the economy is slowly diversifying and, overall, the labor market looks bright.

Still, a strong economy and hot job prospects mean nothing without a trained workforce, says Dr. Raymond Hawkins, president of the Texas Public Community-Junior College Association. And, experts have warned for the last decade that as much as three-fourths of the labor market requires post-secondary training. A high school diploma is not enough, not even for most entry-level positions.

"The associate degree is becoming the degree of first choice for many employers in

Texas," Dr. Hawkins said. "The state's community colleges are poised to respond quickly to the diverse manpower needs that are rising to the top of the economy."

Texas long ago made a sound investment in its 49 public community-junior college districts, which have superior track records in job readiness training, skills upgrading and retraining, adds Hawkins. Annually, these colleges train and upgrade the skills of more than 100,000 Texas workers.

Statewide, according to the Texas High Education Coordinating Board, Texas public two-year colleges enroll nearly half-42 percent-of the state's post-secondary student population. By fall semester audited figures, there are more than 371,000 men and women this

year in career preparation programs.

Statistics released by the U.S. Department of Commerce reveal the average difference in monthly earnings between a community college graduate with an associate degree and a high school dropout have grown to \$1,006.

In its report, "What's It Worth? Educational Background and Economic Status," the Department of Commerce estimates that monthly earnings for an associate (two-year) degree rose 22.7 percent between 1984 and 1987, outpacing the bachelor's (four-year) degree which rose 18.8 percent in the same period. The monthly earnings of a person holding a vocational certificate increased by almost 10 percent.

As significantly, the Commerce Department reports earnings differences between two-year and four-year degrees remain fairly constant-about \$371 per month.

PRICES EFFECTIVE AUGUST 11-17, 1991

318 W. Amer. Blvd. 272-4862
Muleshoe, Tx.

OSCAR MAYER HAM & SWISS OR TURKEY & CHEDDAR LUNCHABLES
4.5 OZ. PKG. **\$1.19**

GOLD STAR FRUIT DRINKS
GALLON **89¢**

LAUNDRY DETERGENT SURF
39 OZ. BOX **\$1.99**

NABISCO CHIPS AHoy!
18 OZ. BAG **\$1.79**

HOMOGENIZED ALLSUP'S MILK
½ GALLON JUG **99¢**

ALLSUP'S

Chips Ahoy!

PEPSI

ALL TYPES PEPSI-COLA
2 liter 99¢

ALLSUP'S BEEF, CHEESE & GREEN CHILI CHIMICHANGA
EACH ONLY **89¢**

CRANBERRY, CRAN-APPLE, PINK GRAPEFRUIT OCEAN SPRAY JUICES
48 OZ. BTL. **\$2.29**

Hunts 18 oz. BBQ SAUCE **69¢**

4-Roll CHARMIN **\$1.19**

HAM, EGG & BISCUIT EACH **79¢**

WITH PEANUTS **FIDDLE FADDLE** PKG. **99¢**

ARTIFICIAL SWEETENER **SWEET-N-LOW** 100 CT. BOX **\$1.99**

HOT FOODS MENU AVAILABLE AT ALL ALLSUP'S LOCATIONS

BARBECUE BEEF SANDWICH	99¢	9 PIECE BOX CHICKEN	\$4.99
BARBECUE PORK RIBS (LB.)	\$3.99	BEEF & CHEESE CHIMICHANGA (MEAD)	69¢
BARBECUE WHOLE CHICKEN	\$3.99	CORN DOG	59¢
ALLSUP'S BURRITO	79¢	DELICIOUS HAMBURGER	99¢
BREAKFAST BURRITO	99¢	WILSON HOT LINKS	99¢
BURRITO BEEF & SALSA	\$1.19	SAUSAGE ON A STICK	\$1.59
DELICIOUS CHEESEBURGER	79¢	SAUSAGE & BISCUIT	79¢
CHICKEN FRIED STEAK	\$1.59	SAUSAGE, EGG & BISCUIT	\$1.09
3 COUNT CHICKEN STRIPS	\$1.49	SAUTEEYA SAUSAGE	\$1.09
W/POTATO WEDGES/ CHICKEN (2 PCS) BISCUIT	\$1.99	4 COUNT STEAK FINGERS	\$1.00

CALL-IN ORDERS WELCOME CHECK OUR WEEKLY SPECIALS

PLAY TODAY

Convenient Cash

Pick Up Your FREE Instant Win Scratch-Off Game Ticket

Over 325,000 Chances to win CASH, FREE PRODUCTS & FREE FOOD

Enter Our Second Chance Sweepstakes and Cruise The Caribbean

OR Be one of 9 lucky people who will win FREE GAS FOR A YEAR*!

(*8 Gallons a week for 52 weeks)

7 Day Cruise For Two Can Be Yours (a \$5000 Value) With \$300 Spending Money!

CORN DOGS

2/99¢

3 lb. **CRISCO** **\$2.49**

Premium 1 lb. **SALTINES** **\$1.19**

\$1000+ WINNERS
GENEVA KILPATRICK, HEREFORD, TX.
CARLOS CARRILLO, HOBBS, N.M.
ALFONSO ALVARADO, HOBBS, N.M.
BARBARA HAGGARD HOLEMAN, GAINESVILLE, TX.
MIKE REYNA, CLOVIS, N.M.
JIMMY NORTHCUTT, ELECTRA, TX.
GAS FOR A YEAR WINNERS
PATSY FIERRO, CARLSBAD, N.M.
LISA CLARDY, QUITAQUE, TX.

Attention Farmers and Ranchers

Summer Feed Sale

At The

Alcohol Plant

Giant Refineries - Portales, NM Plant

Sorghum Dried Grain With Solubles (DDGS) Crude Protein-30% minimum; Crude Fiber-15% maximum Crude Fat-6% minimum; Moisture Content-10% maximum	99⁰⁰ Ton
Sorghum Condensed Distillers Solubles (Syrup) Crude Protein-3.0% minimum; Crude Fiber-5% maximum Crude Fat-2.5% minimum; Moisture Content-75% maximum	18⁰⁰ Ton

For More Information Call:

Kevin Elkins — 356-3555

Kiwanis News

 By R.A. Bradley

Eleven Kiwanians, two honorary Kiwanians, Stacy Morris and Robbie Clapp and Sweetheart Marsha Wilson met for breakfast at the Dairy Queen this morning. Marsha was to leave for Levelland at 7:30 for college orientation. She has now gone from a dignified Senior to a poor dumb Freshman. Is this really progress? Good Luck, Marsha, we will sure miss you as you go away to college. Please come back every time you are in Muleshoe on Friday mornings. You have truly been a Sweetheart and will always be.

President Glen Morris called the meeting to order. Randy Lewis led the club in the pledge to the flag. R. A. Bradley gave the invocation. J.O. Parker who has been looking for a friend for the last week decided at first to keep the friendship coin for another week to see if he could find a friend but then gave the friendship coin to Herb Langfitt since Herb let J.O. set by him. Good Luck, Herb. The Kiwanis Club decided to donate \$200 to the law enforcement to help purchase surveillance video cameras in the police cars. The Chamber of Commerce asked the Kiwanis Club to be in charge of the turtle races on Mule Days. The Kiwanis Club voted to do this since we decided if we had a relay team we might outrun the turtles.

Everyone is trying to get in their last minute vacations before school starts. Hurry up, guys and get back to Kiwanis. We miss you.

**John E. Birdwell II
 Funeral Services
 Held Thursday**

Texas Water Commissioner John E. Birdwell II of Lubbock died Tuesday night in his residence after a lengthy illness. He was 62.

He married Gene Bateman June 5, 1949.

Services were held at 2 p.m. Thursday in Central Baptist Church with the Rev. Harlan "Steve" Birdwell officiating.

Graveside services were at 5 p.m. Friday in the State Cemetery in Austin under direction of Rix Funeral Directors of Lubbock.

Survivors include his wife; two sons, John E. III of Lubbock and Richard Clay of Canyon; a daughter, Genee Lee Black of Midland; three sisters, Christine Keeney of Lubbock, Arlene Phelps of Muleshoe and Johnnie Brown of Rotan; and 11 grandchildren.

The family suggests memorials to the John E. Birdwell Scholarship Fund for the College of Agricultural Sciences at Texas Tech, in care of the Texas Tech University Foundation.

**Oscar Rudd
 Funeral Services
 Held Saturday**

Services for Oscar Rudd, 65, of Muleshoe were held at 2 p.m. Saturday in First Baptist Church with the Rev. Stacy Conner, pastor, officiating.

Burial was in Muleshoe Memorial Park Cemetery under direction of Ellis Funeral Home.

Rudd died at 8 a.m. Thursday in Lubbock's Methodist Hospital after an illness.

He was born in Hereford and moved from Lubbock to Muleshoe in 1955. He married Jane Griffiths on July 14, 1951, in Lubbock. He had worked for a farm equipment dealership. He was an Army Air Corps veteran of World War II and a member of First Baptist Church.

Survivors include his wife; a son, Brian of Muleshoe; two daughters, Debra Uphoff of Madison, Wis., and Marcia Benton of Amarillo; a sister, Myrta Carter of Clovis, N.M.; and six grandchildren.

The family suggests memorials to a favorite charity.

**Enochs News
 by: Mrs. J.D. Bayless**

Mr. and Mrs. Buford Peterson and children, The Harold Abney family and the Morris Peterson family spent the week in Cloudcroft. ***

Rev. Donnie Howell attended R.A. Camp at Floydada where she taught a class of boys. There were 390 boys and workers attended. ***

David Charles (Pops) Pearson of Three Way died Sunday a.m. July 29 in Levelland. His services were at George Price Funeral Home in Levelland with Rev. Phillip Guorum officiating. He is pastor of 2nd Baptist Church of Levelland. A military

service with a 21 gun salute was held at the Enochs Cemetery. A supper meal was served at the fellowship hall of the Enochs Baptist Church, the family wishes to thank the church for the use of the church fellowship hall and for the ones that served the food for them. ***

Mr. and Mrs. Ted Thomas have moved to Ft. Worth the family and friends will miss them very much. ***

Visitors at the Baptist Church Sunday were Jackie Price from Kentucky. She brought the special music and another visitor Steven Peterson of Hissboro. ***

Sarah Jones of Statesboro, Georgia attended the Bula school reunion and will be visiting her mother and brother,

Mrs. Lorella Jones and Wendell. ***

Ellen Bayless, also a brother, Mr. and Mrs. Chester Coffman of Big Spring spent Friday night with a sister, Olene and Ray Cunningham, and attended the Bula school reunion at Lubbock. ***

The Buford Peterson and family visited Faye Montgomery and M.L. and Eloise MCRae in Idalou Saturday, and Steven Peterson visited his grandparents during the weekend. ***

I was sorry to hear of Mrs. Faye Jones having to have knee surgery and that her daughter Darlene Alexander being in the hospital also. Get well real soon, you two. ***

G.O. Smith of Pep visited Mr. and Mrs. Clifford Snitker Sunday morning. ***

Mrs. Goldman Stroud and daughter, Mrs. Lill Pollard and granddaughter Britany Kirby attended Mrs. Strouds, the Smith reunion at Murry Lake in Oklahoma Friday till Sunday. ***

Dorothy Nell Kiland of Great Bend, Kansas visited her brother and wife, Mr. and Mrs. Pete Thomas during the weekend. ***

Mr. and Mrs. Roger Jones family of Luders, visited his mother and brother Mrs. Lorella Jones and Wendell recently. ***

Bryan Roberts is home visiting his parents. Mr. and Mrs. Burley Roberts and Tory, Mr. and Mrs. Norvill Roberts of Jacksonville also visited with them Sunday. They all visited an Uncle, Mr. and Mrs. Arnold Archer in Muleshoe. ***

**Patients In
 Muleshoe Area
 Medical Center**

AUGUST 6
 Eugene Tigue, Darrell Turner, Margie Monreal, Yadera Marquez, Marvin Hukill, Ralph Sanchez

AUGUST 7
 Eugene Tigue, Darrell Turner, Margie Monreal, A.C. Bryant, Marvin Hukill, Mary Watson, Tara White, B.Girl White

AUGUST 8
 Eugene Tigue, Darrell Turner, Margie Monreal, A.C. Bryant, Marvin Hukill, Mary Watson, Tara White, B.Girl White

- Immaculate Conception Catholic Church
 Father Patrick Maher
 Northeast of City
- First Baptist Church
 220 West Ave. E.
 Pastor: Stacey Conner
- Emmanuel Baptist Church
 Iglesia Bautista Emmanuel
 107 East Third
 Isaias Cardenas, Pastor
- Trinity Baptist Church
 314 E. Ave. B.
 Rev. Dale Berry
- Circle Back Baptist Church
 Intersection FM 3397 & FM 298
 Rev. Jessie Shaver
 946-3676
- Calvary Baptist Church
 1733 W. Ave. C.
 Rev. Rick Michael

- Progress Baptist Church
 Progress, Texas
- Richland Hills Baptist Church
 17th and West Ave. D.
 Rev. Gerald Gladden
- St. Matthews Baptist Church
 Corner of West Boston & West Birch
 M.S. Brown, Pastor
- Progress Second Baptist Church
 1st and 3rd Sunday
 Rev. Arthur Hayes
- Primitive Baptist Church
 621 South First
 Elder Cleveland Bass, Pastor
- 1st Baptist Church
 Lazbuddie, Tx.
 Gary Wilcox, Pastor
 965-2126



Around almost any home you will find flowers that someone planted, watered, and with tender care, helped bring forth into a thing of beauty. People are very much like flowers, and it is wonderful to see a child walking in the path of the Lord, being trained and taught the ways of the Lord. Then one day you realize the fruits of your labor as they blossom forth and show their appreciation and love for God. Bring your children to church where others can help you in this labor of love.



The Church is God's appointed agency in this world for spreading the knowledge of His love for man and of His demand for man to respond to that love by loving his neighbor. Without this grounding in the love of God, no government or society or way of life will long persevere and the freedoms which we hold so dear will inevitably perish. Therefore, even from a selfish point of view, one should support the Church for the sake of the welfare of himself and his family. Beyond that, however, every person should uphold and participate in the Church because it tells the truth about man's life, death and destiny; the truth which alone will set him free to live as a child of God.

© Coleman Adv.

- The Christian Center
 Morton Hwy
 272-5992
- St. John Lutheran
 Sunday School and Bible Classes 9:30 a.m.
 Church Services 10:30 a.m.
 Rev. Mac Bearss, Pastor
- Jehovah Witness
 Friona Hwy
 Jack Tiffin, Minister
 Warren Meeks, Minister
- Lazbuddie Methodist Church
 965-2121
 Doug Chapman, Pastor
- New Covenant Church
 Plainview Hwy
 Sunday 10:00 a.m.
 Wednesday 7:00 p.m.
 Jimmy Lowe, Pastor
- Templo Calvario
 507 South Main
 Sunday 10:00 a.m.
 Sunday Evening 7:00 p.m.
 Evangelistic Services
 J.L. Soto, Pastor
- New Vision Church of the Nazarene
 814 W. Ave. C.
 272-3622
 Pastor, David R. McIntire

- Primera Iglesia Bautista
 223 E. Ave. B.
 Roy Martinez, Pastor
- Lariat Church Of Christ
 Sunday School 10:00 a.m.
 Worship 11:00 & 6:00 p.m.
 Wednesday Services 7:00 p.m.
 Sam Billingsley, Minister
- Muleshoe Church Of Christ
 Clovis Hwy
 Bret McCasland, Minister
- 16th & Ave. D. Church Of Christ
 Sunday 10:30 a.m.
 Evening 6:00 p.m.
 Wednesday 7:30 p.m.
 Curtis Shelburne, Minister
- Lazbuddie Church Of Christ
 Minister, Keith Courmier
 Sunday School 9:30 a.m.
 Morning Services 10:20 a.m.
 Evening Services 5:00 p.m.
 Wednesday Night 7:00 p.m.
- First Assembly Of God
 Rev. G. Dean Reid, Pastor
 Sunday School 9:45 a.m.
 Morning Worship 11:00 a.m.
 Evening Services 6:30 p.m.
 Mid-Week Services 7:30 p.m.
 272-3984
- Spanish Assembly Of God
 East 6th and Ave. F.
 Mike Doyle, Pastor
- First United Methodist Church
 507 W. 2nd Street
 Richard Edwards, Pastor
- El Divino Salvador Methodist Church
 5th and E. Ave. D.
 Jose M. Fernandez, Pastor
- United Pentacostal Lighthouse Church
 207 East Ave. G.
 Rev. N.W. Thompson
 272-3258
- Truth Tabernacle Pentecostal Church
 200 E. Ithaca & Fir
 Pastor, Les James
 272-3391

Attend The Church Of Your Choice!

Western Drug 114 Main 272-3106	Serv-All Thriftway 401 W. Amer. Blvd. 272-4585	American Valley, Inc. W. Hwy 84 272-4266	Dairy Queen 1204 W. Amer. Blvd. 272-3412
Richland Hills Texaco 1914 W. Amer. Blvd. 272-4875	Combination Motor & Salvage 272-4458	Muleshoe Trade Center 272-4906	Viola's Restaurant 2002 W. Amer. Blvd. 272-3838
Bob Stovall Printing 221 E. Ave. B. 272-3373	W.T. Services, Inc. 319 E. Amer. Blvd. 272-4888	Bratcher Motor Supply 107 E. Ave. B. 272-4286	Bobo Insurance 108 E. Ave. C.
Irrigation Pumps & Power West Hwy 84 272-4483	Wes-Tex Feed Yards, Inc. 272-7555	Bailey County Farm Bureau 1612 W. Amer. Blvd. 272-4567	5-Area Telephone Cooperative, Inc. 302 Uvalde 272-5533

CLASSIFIEDS 272-4536

CLASSIFIED RATES
 15 Words & Under Minimum Charge \$2.30
 Thereafter \$2.00
 16 Words & Over 1st Insertion 15 cents per word
 2nd Insertion 13 cents per word

CLASSIFIED DISPLAY RATES
 \$1.75
 Per Column Inch

DEADLINES
 12 noon Tues. For Thursday Paper
 12 noon Friday For Sunday Paper

To receive the reduce rate after the first insertion ad must run continuously.

We reserve the right to classify, revise, or reject any ad. We are not responsible for any error after ad has run once.

1. Personals

CONCERNED About Someone's Drinking? HELP IS AVAILABLE
 through Al-Anon
 Call 272-2350 or 965-2870 or come to visit Tuesday and Thursday nights, 8:00 p.m. & through AA call 965-2870 or come visit Tuesday nights, 8:00 at 620 W. 2nd, Muleshoe.

Volunteers Needed
 Texas Department of Human Services needs volunteers. Good opportunity to brush up on your office skills. For more information, call 272-3981 or go by 209 East Ave. B. T1-32s-4tc

BIRD DOG PUPPIES TO GIVE AWAY TO A GOOD HOME.
272-3540

3. Help Wanted

EXPERIENCE UNNECESSARY-Immediate openings available for persons to remail letters! We pay \$60.00 per hundred, plus postage expenses! Easy, exciting, occupation. Information/ application? Send self-addressed envelope. P.O. Box 75, Ruckersville, Va. 22968-0075 m3-30s-8tc

MAJOR TELEPHONE CO. now hiring. Technicians, installers Acct/Serv. Reps, Operators. No experience necessary. For information, call 1-219-736-9807 ext. T-8265 8 a.m.-8 p.m. 7 days. c3-31s-6tp (ts)

WANTED: Feed truck driver. Apply in person at Olton Feed Yard. O3-31s-4tc

Excellent part-time job. Corresponds with school schedule-272-5285 or 5286. N3-32s-2tc

3. Help Wanted

Wanted: Full or part time employee. Come by Fry and Cox, 401 W. 1st, Muleshoe and pick up an application. F3-31t-4tc.

4. Houses For Rent

Large 3 bdrm., 2 bath, carport, extra-large family room, excellent condition with spacious storage areas, over 1900 sq. ft. \$395.00 + deposit. 217 East Elm. Call (806)537-3131. S4-32s-tfc

5. Apts. For Rent

APARTMENT FOR RENT
 1 room plus kitchen and bath-\$165 per month. Call 272-5414. B5-32s-3tc

10. Farm Equip. For Sale

FOR SALE
 John Deere 6 row-30 corn header. Call (806) 258-7349. M10-32s-3tc

11. For Sale Or Trade

FOR SALE:
 Very clean, 1981, 32 foot, Dodge Cruise-Air Motorhome. 33,000 miles. \$17,000.00 Call Eva Nell Stovall-272-3373 S11-29s-tfc

1984 Chevy 1/2 ton P.U., automatic transmission, air-conditioner, AM-FM cassette, dual gas tanks, power windows, power door locks, tool box, sliding rear window, blue and white-\$6750. Phone 272-3157 8 a.m. to 6 p.m. 9-32t-2tp

Green Beans, Black-eyed Peas, Yellow and Zucchini Squash, Okra and Sweet Corn for sale. Will pick and deliver. Call 965-2471. H11-31s-4tc

FOR SALE: Overhead camper for pickup. Ref., stove, sink, full bed. Call 946-3417 K11-31s-tfc (S)

FOR SALE: Wheat Seed---Cleaned & Sacked-60 lb. sacks. \$5.50/bushel. Call 965-2193 or 965-2776 11-29t-8tp

15. Misc.

FILLING SCHEDULE
 for Fall Piano Lessons. Beginner thru Advanced. Ann Johnson 272-5746 J15-31s-tfc

ROUND-UP APPLICATION
 Pipe-wick mounted on high-boy. 30 in. or 40 in. rows. Cotton, milo, soybeans and Vol. corn. Call: Roy O'Brian 265-3247

15. Misc. 15. Misc.

FAST LOANS
Bad credit. No credit.
Loans up to \$50,000
Upon proof of employment
Call now!
1-800-453-5044

WHATLEY COMM. PUMPING
Call for Informallom and Free Est.
Cesspools Pumped and Treated
Septic Tanks Cleaned and Treated
Mud Pits Cleaned
Grease Traps Cleaned and Treated
Flooded Cellars Drained

Our office is located at J and G Bargain Center 1918 West Amer. Blvd. Box 92 Muleshoe Texas 79347

Office-806-272-4350
Home-806-272-4964
Call Anytime (Day or Night)

Texas Dept. Health (Permit#21450)

If it's part liquid we will try to drain it!

George Whalley

8. Real Estate 8. Real Estate 8. Real Estate 8. Real Estate

Bingham & Nieman Realty
 116 E. Ave. C. **George Nieman, Broker** 272-5285 272-5286

RICHLAND HILLS
PRICE REDUCED-IMMACULATE 3-2-2 Brick, Cent. A&H, built-ins, newly remodeled kitchen, FP, sunken lv. area w/cathedral ceiling, ceiling fans, earthtone carpets, storage !!!!!!!!!!!!!

3-3-2 Brick, Cent. A&H, built-ins, FP, Spklr. sys., storage-wkshp., fenced yd., much more!!!!!!!!

PRICED REDUCED-ASSUMABLE LOAN 9 1/2 A.P.R.-3-2-2 Brick, Cent. A&H, built-ins, FP, fans, workshop-storage, fenced yd. !!!!!!!!!!!!!

3-2-1 Brick, Cent. A&H, built-ins, fans, fenced yd. \$40!!!!

NICE RESIDENTIAL LOTS/ \$5,000 UP....

Nice-3-2-1 Home, built-ins, heat pump, fans, storm windows, & doors, workshop-storage, fenced yd., & more. \$30's !!!!!!!!!!!!!

NICE 3-3-2 Brick, Heath Pump, built-ins, FP, gameroom, sunroom, finished basement, 2,800+ sq. ft. of lv. area, fenced yd. & more. \$80's!!!!

HIGH SCHOOL
3-2-1 Brick, Cent. heat, FmHA financing to qualified Buyer. \$20's!!!!

4-2-1 Brick + 2 carport, built-ins, Cent. A&H. 2 car Det. garage & workshop, fenced yd. sprinkler sys., Much More. \$40's!!!!

FmHA FINANCING to qualified buyer-3-1-1 Brick, Cent., heat earthtone carpet, st. bldg., fenced yd. !!!!!!!!!!!!!

2-1 Home, nicely remodeled kitchen & den, Cent., heat, fenced yd., large garage-shop. \$20's!!!!

HIGHLAND AREA
3-2-1 Home, wall furnace, window evap. fenced yd. \$20's!!!!

Nice 3-1-1, heat pump, nice carpets, fenced yd. Much More. \$30's!!!!

LENAU ADD.
2-2-2 Brick, Cent., A&H, built-ins, FP, spklr. sys., fenced yd. Price Reduced!!!!

3-1 Home, Corner lot, wall furn., fenced yd. \$20's

Nice 4-2-2 Carport Home, Cent. A&H, built-ins, FP, Cent. Vac., Office, Sewing area, fenced yard. \$30's!!!!

JUST LISTED-3-2-1 Brick, Cent. heat, built-ins, ceiling fans, fenced yd. \$29,900 "as is"!!!!

JUST LISTED-3-1 1/2-1 Home, Cent. heat, evap. air, nice carpets, cov. patio, fenced yd. st. bldg.!!!!

JUST LISTED-3-2-1 CP Home, Cent. heat, evap. air, built-ins, fenced yd., st. bldg. VERY NICE!!!!

VERY NICE 3-2-2 Brick, 3,000+ sq. ft. of lv. area incl. nice finished basement, built-ins, geothermal A&H energy-eff., loads of closet & storage, on 7.86 acres, fence, stock tank, sideroll, & many more amenities, close to town.

3-2-3 Carport Home on 11 ac. edge of town, Cent. A&H, built-ins, cellar, barns & corral. MAKE OFFER

NICE 3-2-1 Home on 1 acre close to town, Cent. Heat, Evap. Air, Nice Carpets, Remodeled. \$30's!!!!

NICE 3-2-2 Brick on 1 ac. tract on hwy. close to town, Cent. A&H, built-ins, fenced yd., & more \$70's!!!!

RESTAURANT BLDG., LAND., & Equipment-A GOOD BUY!!!!

OFFICE BLDG.-7000+ sq. ft. of area, paved parking, excellent location.

GYMNASIUMS STUDIO-BLDG., & Equipment-PRICED TO SELL!!!!

COMMERCIAL TRACT 175'x100' (HWY 70 & 84, RR spur acces, approx. 1200 sq. ft. bldg. PRICED TO SELL!!!

24 ac. W. Hwy 84 8" well, 3 homes, 14 mobile hook ups, & also has veg. & fruit stand!!!!!!!!

Nursing home News
 by: Joy Stancell

Lillie Bell Baker was visited by her sisters Alda Odom and her other sister several times this week.
 *** Allie Barbour was visited by her son Pinkie Barbour this week.
 *** Monday afternoon Grace Scarborough and Gladys Wilson visited and brought ice cream and ice cream cones that Grace and Helen Free served to all the residents and staff.



15. Misc. 15. Misc.

FOR RENT: Large Self Storage rooms with 24 hour a day access. Call J&J Self Storage at 272-4307. S15-28s-tfc

Mini-Mule Cheerleading Clinic--August 16, 9:30-2:30 at the high school gym. Bring \$10 and a sack lunch. M15-32s-2tc

STORAGE!
 Rooms Available For Storage \$25.00-\$30.00 Per Month
Ted Barnhill 272-4903

Fresh Vegetables DVJ FARMS
 6 Miles South of Farwell on State Line Road 348 CALL (806) 825-3420
 We grow sweet corn, beets, green beans, pickling and slicing cucumbers, squash, okra, cabbage, watermelon, cantalope, peppers, blackeyed peas, pinto beans, tomatoes & 1015 sweet onions

Our thanks to the Mary Martha and Lydia Sunday School classes of the First Baptist Church for their donation to the Healthcare Center.

Please help us make welcome two new residents. They are S.W. Inman birthdate February 12 and Eva Roberts birthdate February 11. Welcome to our Healthcare Center "family." Also August Edmiston February 5.

The Needmore Community Club will host our monthly birthday party Thursday August 22 at 3:00 p.m.

Wednesday afternoon Anita Taylor came to sing and play the piano for our Wednesday Sing-a-Long.

Tuesday afternoon Claudine Embry, Bonnie Green, Beth Watson, Laverne James, Larhonda and Ashley came to shampoo and set the ladies' hair. Helen Free gave manicures.

Wednesday morning Melvin Griffin hosted our men's coffee time. Guy Kendall was co-host.

S.W. Inman was visited by Bobby Free and Mrs. Redwine Wednesday.

Guy Kendall went out to have dinner and visit with his family over the weekend.

Elodice Reyna went out with her family recently.

20. Public Notice

PUBLIC NOTICE CITY OF MULESHOE TEXAS COMMUNITY DEVELOPMENT PROGRAM

The City of Muleshoe will hold a public hearing at 7:00 p.m. on August 15th, 1991 at City Hall in regard to the submission of an application to the Texas Department of Commerce for a Texas Community Development Program (TCDP) grant. The purpose of this meeting is to allow citizens an opportunity to discuss the citizen participation plan, the development of local housing and community development needs, the amount of TCDP funding available, all eligible TCDP activities, and the use of past TCDP funds. The City encourages citizens to participate in the development of this TCDP application and to make their views known at this public hearing. Citizens unable to attend this meeting may submit their views and proposals to Dave Marr, City Manager at the City Hall. Handicapped individuals that wish to attend this meeting should contact City Hall to arrange for assistance. S18-32s-1tc



Classify Call 272-4536

8. Real Estate 8. Real Estate

NEW LISTING
 For Sale--3,547 sq. ft. remodeled and renovated brick residence featuring spa and sunroom, located at 622 West 7th Street. Call Mike Caldwell at 272-7535 or 272-5146 for information. C8-32s-tfc

FARMS & RANCHES FOR SALE
PARMER COUNTY
 Choice 567 acres, four good 8 inch wells, 12 power sprinkler, balance U.G. pipe. Nice help house, good allotment, owner financing. FENCE TO FENCE GRASS (and all headed out) 9 1/2 sections Northern Panhandle. Well watered by mills, sub, springs, and dirt tanks. All weather road located in super good country. Financing considered. Scott Land Company Ben G. Scott Dimmitt, Tx. 79027 806-647-4375 Day or Night S8-31s-tfc (S)

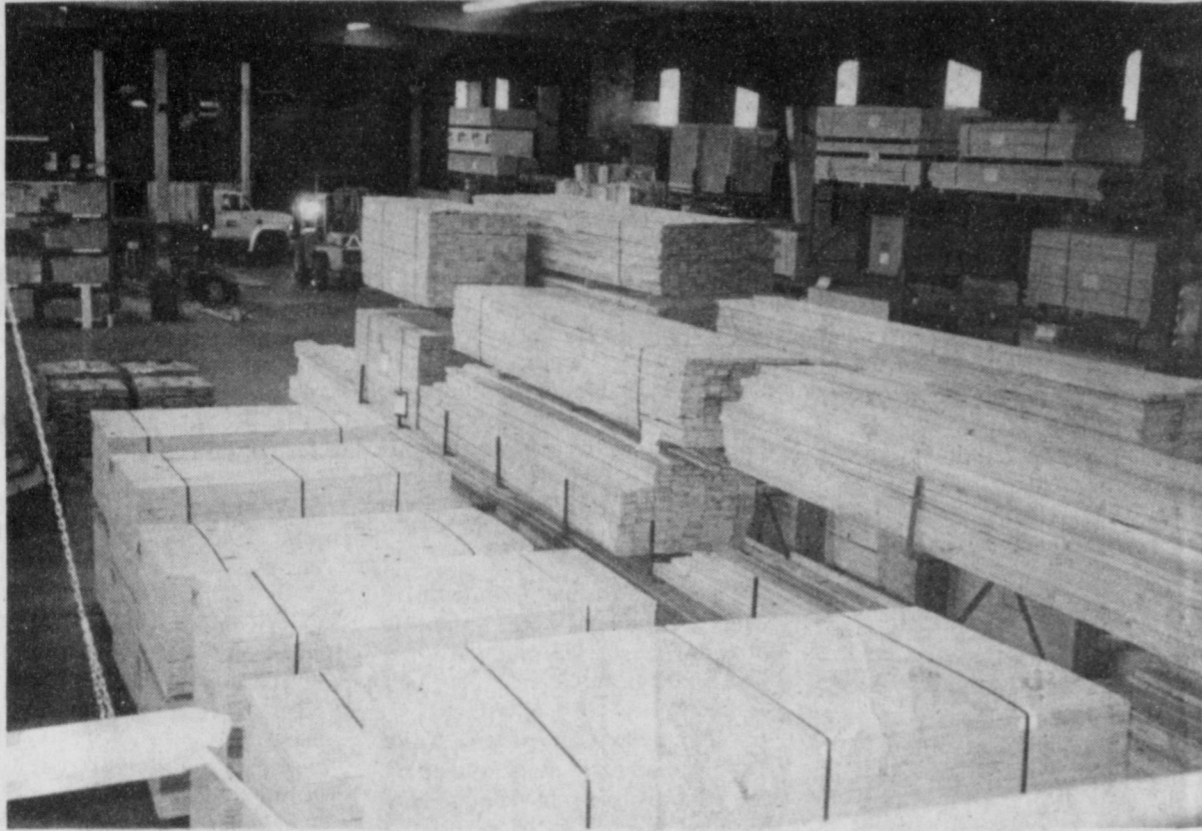
FOR RENT
 Restaurant in Ranch House Club (Muleshoe) Call 272-4261 for more information. R4-32t-2tc

FARM FOR SALE
 1281 acres, eight irrigation wells, good water, underground lines, 900 acre grain base, home, steel barn, pipe corrals, price reduced, owner finance part. 10 miles north of Hereford. (409)543-5636. H8-32t-8tc

HCR REAL ESTATE REPO
 Reduced For Quick Sale Large 2 Bd, 2 1/2 bath, double carport-Brick. Good Location. \$500. bonus to the seller.
 For Sale: 3 bdr., 1 Bath, Double Car Garage. **Thursie Reid 272-5381**

Smallwood Real Estate
 232 Main 272-4838

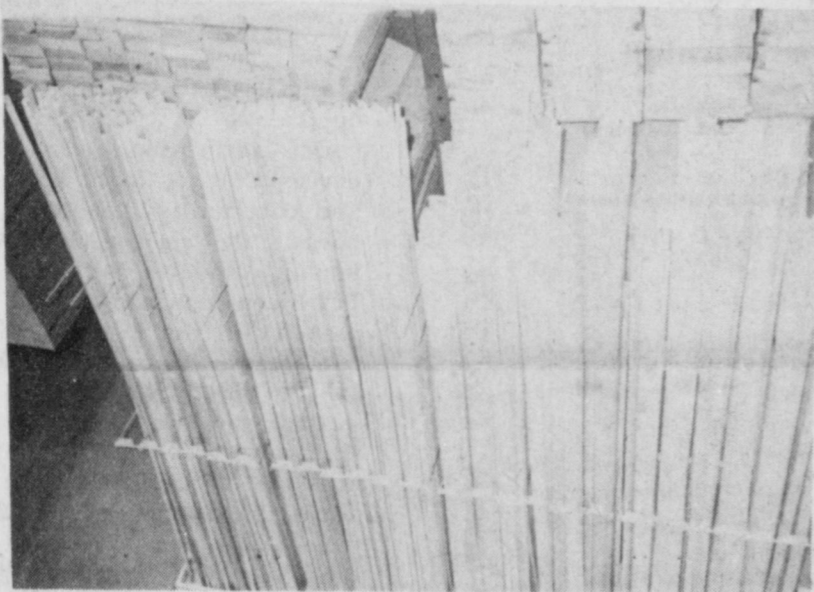
Lumber Is Arriving Daily!



Our Lumber Area Is Open To The Public!

Come in, walk through and check our prices!!

Our True Value Affiliation allows us to be competitive with discount warehouses.



**We Now
Have
Lumber
And
Building
Supplies**



We are in the process of enlarging & remodeling our hardware area in order to better serve you.

New merchandise is arriving daily, existing departments are being expanded and new ones added!!



Fry & Cox True Value

Hardware, Lumber & Building Supplies

Open Mon. - Sat. 8 a.m. - 6 p.m.

Muleshoe

401 S. 1st.

272-4511

