

BAILEY COUNTY JOURNAL

'The Community Of Opportunity-Where Water Makes The Difference



© 1990

Volume 30 No. 36

Published Every Sunday At Muleshoe, Bailey County, Texas 79347

Member
TA TEXAS PRESS
ASSOCIATION

20¢

SUNDAY, AUGUST 25, 1991



PREPARING FOR FOOTBALL—Muleshoe's Varsity Mules are practicing in preparation for the upcoming football season. Football season officially opens September 6, when the Muleshoe meet Brownfield at 8 p.m. in Benny Douglas Stadium. (Journal Photo)

Two Therapists To Join Hospital Staff

Two physical therapist will join the staff of Muleshoe Health Care Center, according to an announcement made by Richard Murphy, hospital administrator, at Thursday night board meeting. The husband and wife team will begin their work here on October 1. "They will turn out a rehabilitation and physical fitness program that will pay for both, based on what we have been doing," Murphy said. "The schools will contract with us." Dr. McClanahan is presently in charge of physical therapy.

Four representatives from Volunteer Plus met with the hospital board Thursday night. Lona Embry was the spokesperson for the group. She reported that Volunteer Plus had elected officers for the first six months but declined to name a committee, of three, to work with the hospital board on Memorials and Donations to Muleshoe Area Health Care Center. Mrs. Embry stated that they would prefer to wait until they had another meeting as they were expecting some new members. "We should have our tax number within the next 10 days or two weeks," Mrs Embry said.

Officers of Volunteer Plus include: Lona Embry, president; Joyeline Costen, vice president; Betty Ramage, secretary; and Lucy Faye Smith, secretary-reporter.

Volunteers meeting with the board were: Lona Embry, Betty Ramage, Joy Stancell and Joyeline Costen.

Buck Campbell called the regular meeting to order at 7 p.m. Minutes of the previous meeting were approved as read.

Murphy gave a financial report on the hospital and Muleshoe Health Care Center.

He also reported that he had researched a tax review. Following a discussion, a 25 cent rate

was established.

Rachel Holman, Muleshoe Health Care Center administrator, reported that there are 52 residents in the Muleshoe Health Care Center, with one available bed.

The board authorized Murphy to advertise for bids for three party insurance administrator. He noted that their main duty would be to review claims and process them.

He was also authorized to advertise for bids for an auto

service for the coming year.

It was reported that each year all doctors and registered nurses have to be reviewed. The nurses recommended the approval of all doctors and nurses with the exception of Dr. Dixon, with an amendment on Dr. Dixon. When he finishes his schooling on Microscopic surgery for the removal of gall-blader, hernias and etc, he will be approved.

Following these business concerns the group went into executive session.

SPS Files For Customer

Fuel Cost Adjustment

Southwestern Public Service Company has filed with the Public Utility Commission of Texas to credit \$11.3 million to its Texas retail customers for savings in fuel costs.

The proposed credit includes \$10.7 million in actual fuel savings and \$600,000 in interest, based on an annual rate of 11.7 percent.

A Texas residential customer using 1,000 kilowatt hours of electricity a month would receive a one-time credit of \$11.15.

SPS expects to receive swift approval on the filing, said SPS Group Manager of Rates and Regulation Gerald Diller.

"We hope to be able to apply the credit to our customers' October bills," he said. The credit would cover fuel expenses from April 1990 through June 1991.

Retail customers include residential, commercial and industrial users.

The primary factor which made the savings available to

the cutomers, according to Diller, was lower natural gas prices.

"Gas purchases for power plants made at spot prices have been extremely favorable during the past few months," Diller said. "Even our contract gas prices have been reduced."

Certain low-sulfur coal prices also have been somewhat lower, due to negotiations with suppliers.

Five SPS power plants are fueled by natural gas, two are fueled by clean, western coal. However, half the company's capacity is provided by the two coal plants.

SPS President and Chief Operating Officer Coyt Webb said the company expends significant effort to remain a low-cost producer. "The cost of fuel makes up about half of an electric bill, and our ability to control this cost is very important to our customers," Webb said.

Because other states served by SPS have forms of automatic fuel-cost adjustments, savings as they occurred already have been passed through to SPS customers in New Mexico, Oklahoma and Kansas.

Bailey County

Redistricting

Meeting Set

A public hearing has been set on Aug. 30 concerning the redistricting of Bailey County for voting purposes.

A five member committee consisting of Harvey Bass, Juan Chavez, Alfonso Posados, Pat Prater and A.V. Wood has been appointed. This committee will hold an organizational meeting Monday night.

The committee will collect information and submit a plan for the redistricting to the Commissioners Court. The final plan will have to be approved by the Commissioners Court.

After it is approved by the commissioners, the plan is then sent to the Justice Department and must reach them by October 1.

Once the Justice Department receives the plan they have up to 60 days to either approve or disapprove it.

MISD Provides Comprehensive Education For Handicapped

The Muleshoe Independent School District provides comprehensive education services for handicapped children living in the district, and these services include an Early Childhood program. This program for early childhood is known as Early Childhood Education for the Handicapped (ECEH). It provides for early detection and education of handicapped child-

ren from birth to five years of age.

Services may be provided through special classes in one or more of the following areas: Speech-language development, social-emotional development, self-help skills, mental development, and fine and gross motor development.

The Early Childhood Special Education program is a source

of early intervention for aiding young children with handicapping conditions. This program will provide the opportunity to raise the level of functioning and potential of handicapped children.

The Early Childhood classes are available free of charge to all eligible children in the district. Eligibility is determined by a battery of comprehensive tests after a referral is made. Anyone may refer a child who may have problems in the following areas: speech or language disability, mental retardation, orthopedic handicap, hearing and/or visual impairment, deaf/blind, learning disability, emotional disability, autistic, and other health impairments.

The classes are located on the campus of Neal B. Dillman Elementary School. Daily instruction is provided from 8:00 A.M. to 11:00 A.M., and 12:25 to 3:25 P.M. Class size is kept to a minimum by offering two classes to provide as much individual assistance to each

Cont. Page 6, Col. 3

Senior Citizens

May Obtain

Pass Card

All senior citizens 65 and over have the opportunity to obtain a Local Pass card for Muleshoe ISD activities again this year. The Local Pass is issued on a yearly basis and is good only for local events sponsored by the Muleshoe Independent School District. This includes all athletic events.

The Local Pass card does not cover such things as UIL plays, dinner theater productions, class suppers, or departmental fund-raisers. The Local Pass covers only one admittance and is non-transferable.

Senior citizens wishing to obtain one of the Local Pass cards may go by the MISD

Cont. Page 6, Col. 3

Registration Law Requires

Proof Of Insurance

In September, the simple matter of registering a motor vehicle in Texas will become a little more complicated. The

change is a result of insurance reform enacted by the 72nd Legislature.

Beginning Sept. 1, the owner of a motor vehicle must submit current proof of financial responsibility with an application for initial registration, renewal of registration or transfer of registration. Also for the first time, Texans will have to show proof of insurance to receive or renew their driver's licenses and vehicle inspection stickers.

"Many states have found that tying these responsibilities to proof of insurance increases compliance with mandatory liability law," said Arnold Oliver, engineer-director of the State Department of Highways and Public Transportation. "But the Legislature was really responding to public pressure. Insured drivers—that's about 75 percent of us-wanted to tighten enforcement on the other 25 percent."

The most common evidence of financial responsibility is a liability insurance card issued to the policyholder by the insurance company. Examples of other types of acceptable proof include insurance policies and binders, pool coverage documents, certificates of self-insurance, and certificates of bond.

The new law applies to registration handled in person or by mail. The original or a photocopy of the evidence will satisfy the requirement of proof

Cont. Page 6, Col. 3

Phase I Of Construction Complete

Superintendent Bill Moore and the MISD Board took a tour of Phase I of the Watson Junior High construction during their board meeting Tuesday night. Phase I consists of a library, media center and four classrooms. The board voted to accept Phase I as finished and school personnel began moving in Tuesday morning, just in time for the first day of school Wednesday.

The board also reviewed bids for fuel for the 1991-92 school year. The low bid was submitted by Dale Oil, and was accepted.

Again this year the board decided to go with Alta as third party administrator for their third party insurance.

Buck Johnson was appointed to the National School Lunch and Child Nutrition Program.

A discussion was held on the budget and a hearing has been scheduled for 6:30 p.m. September 3 with a board meeting following.

Meet The 'Mules' Planned Tuesday Night

The Muleshoe Athletic Boosters Club will host it's annual "Meet the Mules" Tuesday evening at 7:30 p.m. at the Benny Douglas Stadium.

Athletes and their coaches representing Watson Jr. High, seventh and eighth grade football along with Freshman, J. V. and Varsity runners under the coach of Kyle Cranford will also be introduced to the general public.

Cheerleaders from each grade will be on hand to demonstrate their gymnastic abilities and talents.

The Mighty "M" Band under the direction of Carlos Acevedo will be performing during the gayla event.

A watermelon feast for all those attending will be held behind the stadium immediately following.

All dads of athletes will be serving slices of watermelon to the public. There is no charge, however their will be a booth set up for everyone to purchase

a signature ad for the football program. These may be purchased for a small fee of \$10.00 per family. All proceeds will go directly back into the Booster Club.

Some of the fund raisers and purchases made for the past year is as follows:

Sponsored ice cream supper for meet the Mules 1990, painted street between High School and Jr. High, furnished meals for athletes at Ralls Scrimmage, put signs in yards of all varsity athletes and coaches, furnished programs for football games, bought muscle stimulator machine for all sports injuries, sponsored outside basket tournament, bought jerseys for freshmen boys and girls, basketball teams, bought trophies for J.B. basketball tournament, sponsored volley ball tournament, bought record cards for track coaches, bought discus for girls track, bought flowers for homecoming,

Cont. Page 6, Col. 3



Meet The Mules

Tuesday Night 7 p.m.



Three Way Menu

AUG. 26-30 MONDAY BREAKFAST
Eggs, Bacon, Juice, Biscuit and Milk

LUNCH
Frito Pie, Salad, Corn, Crackers, Milk and Cake

TUESDAY BREAKFAST
Pancake, Sausage, Juice and Milk

LUNCH
Chicken Nuggets w/Gravy, Creamed Potatoes, Green Beans, Hot Rolls, Milk, and Strawberry Jello

WEDNESDAY BREAKFAST
Hot Cereal, Juice, Toast and Milk

LUNCH
Spaghetti w/Meat Sauce, Mixed Veg., Salad, Garlic Bread, Milk, and Cherry Cobbler

THURSDAY BREAKFAST
Waffles, Juice, and Milk

LUNCH
Hamburger w/Cheese, Hamburger Salad, French Fries, Pickles, Onions, Milk and Ice Cream

FRIDAY BREAKFAST
Sausage, Juice, Biscuit and Milk

LUNCH
Steak Fingers w/Gravy, Whipped Potatoes, Mixed Veg., Hot Rolls, Milk and Rice Krispie Treats

Lazbuddie Menu

AUGUST 26-30 MONDAY BREAKFAST
Cereal, Toast, Pears, Milk, and Juice

LUNCH
Pizza, Onion Rings, Peaches and Milk

TUESDAY BREAKFAST
Waffles, Apricots, Juice and Milk

LUNCH
Burritos, Chili and Cheese, Fiesta Pudding and Milk

WEDNESDAY BREAKFAST
Biscuits, Gravy, Bacon, Juice and Milk

LUNCH
Steakfingers, Potatoes & Gravy, Green Peas, Hot Rolls, Jello with Pineapple and Milk

THURSDAY BREAKFAST
Scrambled Eggs, Toast, Juice and Milk

LUNCH
Corn Dogs, Baked Beans, Tator Tots, Pears and Milk

FRIDAY BREAKFAST
Cinnamon Rolls, Sausage, Juice and Milk

LUNCH
Macaroni & Cheese, Little Smokies, Beets, Hot Rolls, Pineapple and Milk

SALAD BAR SERVED DAILY

Muleshoe Menu

AUGUST 26-30 MONDAY BREAKFAST
Milk, Cereal, Toast, Fruit

LUNCH
Milk, Steak & Gravy, Creamed Potatoes, Green Beans, Hot Rolls, Fruit

TUESDAY BREAKFAST
Milk, Cheese Toast, Fruit

LUNCH
Milk, Hamburgers, Lettuce & Tomato, Pickles & Onions, French Fries, Cobbler

WEDNESDAY BREAKFAST
Milk, Toast, Jelly, Hash Browns, Orange Juice

LUNCH
Milk, Enchilada Cass., Beans, Salad, Corn Bread, Jello

THURSDAY BREAKFAST
Milk, French Toast, Syrup, Sausage, Fruit

LUNCH
Milk, Chili Dogs, Pork & Beans, Potato Salad, Fruit

FRIDAY BREAKFAST
Milk, Breakfast Corn Dog, Fruit

LUNCH
Milk, Baked Ham, Creamed Potatoes, Blackeyed Peas, Corn Bread, Fruit

There will be a hamburger line everyday.

Battle Of The Bulge Veterans Set Meeting

The Veterans of the Battle of the Bulge, Inc. (VBOB) was founded in Arlington Virginia, on December 16, 1981, as a non-profit, educational veterans organization. VBOB is composed of veterans who fought in the six-week Ardennes Campaign in Belgium and Luxembourg in fog, snow, rain and ice in the bitter cold winter of 1944-45 and of relatives, friends and history buffs. Since its formation, VBOB has grown to over 8,000 members and is continuing to experience steady growth.

The Battle of the Bulge was one of America's greatest hours in the field of battle and helped turn the tide of World War II. Winston Churchill, in addressing the House of Commons shortly after the battle, stated: "This is undoubtedly the greatest American battle of the war and will, I believe, be regarded as an ever famous American victory."

With the 50th anniversary of the Battle of the Bulge rapidly approaching, VBOB is expanding its efforts in search of World War II veterans who served in this battle.

As plans are being formulated for grand celebrations and ceremonies in commemoration of this battle's 50th anniversary

in 1994, VBOB is most anxious that as many veterans of this battle be located as possible. Plans are now being developed for all divisions, regiments, units, etc., to hold their reunions in conjunction with the VBOB reunion. This will unite men with members of their own groups, plus enable them to locate men from other groups with whom they shared foxholes, etc.

VBOB will hold its 10th Annual Reunion in Charleston, South Carolina, September 5-7, 1991, at the Sheraton Airport Inn. Many activities are planned; however, the most important part of these reunions is the fellowship and camaraderie which develops among the veterans. Many new friendships are made and many old friends are found at these events.

Those who fought in the Battle of the Bulge will never forget it. The Veterans of the Battle of the Bulge, Inc., was organized to make certain that it will never be forgotten. VBOB's objectives are:

- To perpetuate the memory of the sacrifices involved during the battle,
- To preserve historical data and sites relating to the battle,
- To foster international peace

and good will, To promote friendship among the battle's survivors and descendants.

If you are a veteran of this battle, a family member, a history buff, or someone who is interested in learning more about VBOB, please write for further information to: VBOB, P.O. Box 11129-P, Arlington, Virginia 22210-2129.

Three Way News by: Mrs. H.W. Garvin

The members of Maple Church of Christ took their minister to Littlefield after services Sunday evening for dinner.

The Three Way football team was in Muleshoe Sunday for their physicals. Monday August 12 they start football practice.

Mr. and Mrs. Bobby Kindle were in Lubbock Wednesday on business.

Duwayne Simpson and family from Lake Charles, La. visited his grandmother Thursday afternoon.

Texas Business Failures Decline

State Comptroller John Sharp reports that Texas lost more than 36,000 business establishments since 1986, but that the rate of loss has declined dramatically in recent years.

"As the Texas economy continues to rebound, we've left that high rate of business failures in the rearview mirror," Sharp said.

"In 1986, at the height of the real estate and oil bust, Texas lost 214 of every 10,000 businesses in the state," Sharp said. "Last year, by contrast, the failure rate was 87 for every

10,000 business."

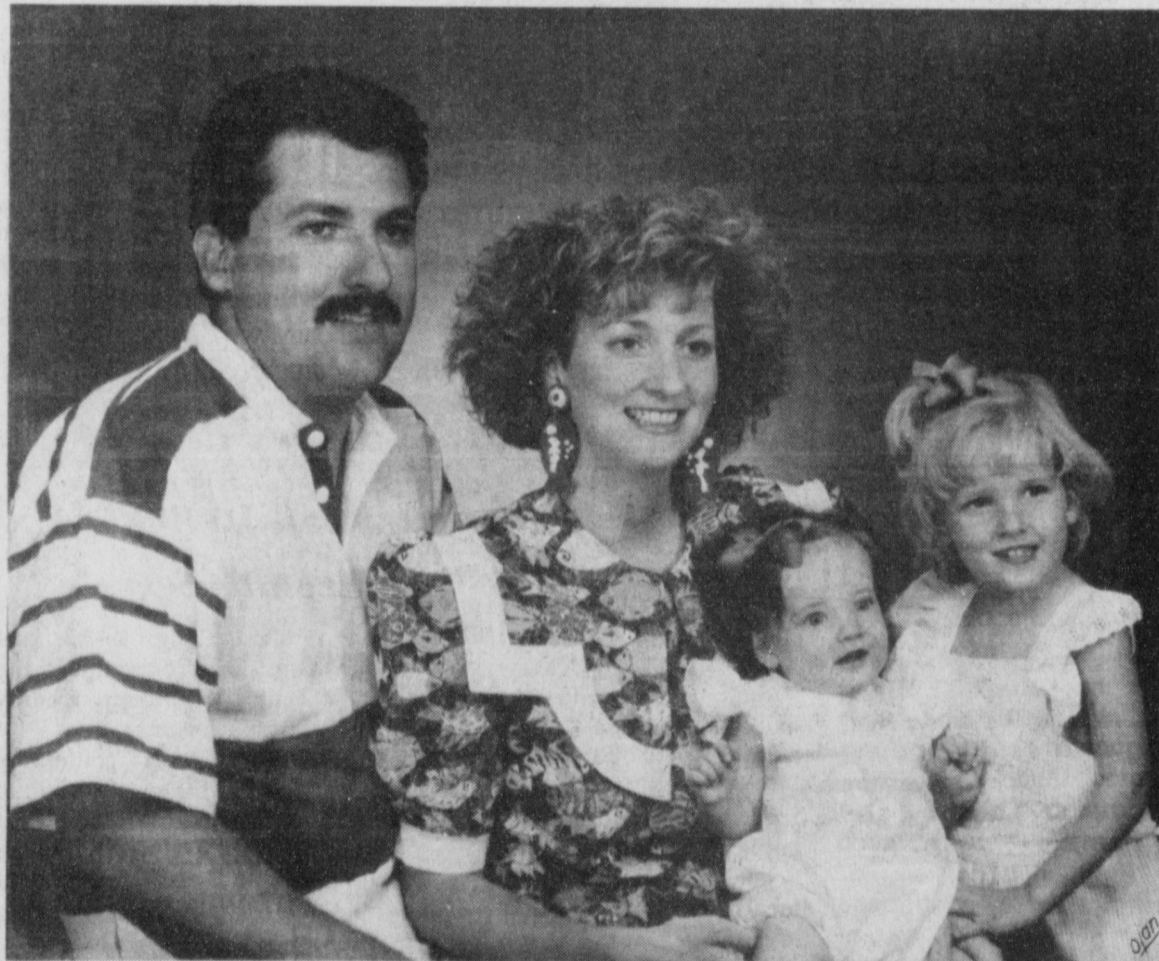
Data contained in the current edition of *Fiscal Notes*, published by the Comptroller's Office, shows that 199 per 10,000 Texas business failed in 1987; 188 per 10,000 failed in 1988; and 79 per 10,000 failed in 1989.

Unlike other economic gauges, such as employment figures that show how the economy is doing currently, the business failure rate is a lagging economic indicator that reflects the lingering aftershock of Texas' economic recession.

"Some businesses that were hit hard during the 1986-87 bust managed to hang on for some time beyond the recession before finally folding," Sharp said. "That explains, in part, why such high rates of failure stayed with us for so long."

They're Thankful
"I wonder how Thanksgiving originated?"
"It was probably instituted by parents whose sons had survived the football season."

Welcome To Muleshoe



WELCOME TO MULESHOE--This week we would like to welcome Mike and Brenda McDearman to Muleshoe. Mike comes to Muleshoe from Amarillo where he was employed by S.P.S. He is now the new manager of the Southwestern Public Service office here in Muleshoe, which services Sudan and Amherst as well as Muleshoe. McDearman and his wife, Brenda, have 2 children, Kelsy, 3, and Alyssa, 7 months. The McDearmans are Baptist and as hobbies, Mike enjoys golf, traveling, and photography. Brenda enjoys quilting, sewing and crossstitch. As you see this young family out and about town give them a "Big" Muleshoe welcome!
(Guest Photo)

James Crane Tire Co.

GOODYEAR

322 N. 1st

272-4594

Henry Insurance Agency

111 W. Ave. B.

272-4581

Damron Rexall Drug

308 Main

272-4210

1991 Property Tax Rates in Lazbuddie ISD

This notice concerns 1991 property tax rates for Lazbuddie ISD. It presents information about three tax rates. Last year's tax rate is the actual rate the taxing unit used to determine property taxes last year. This year's effective tax rate would impose the same total taxes as last year if you compare properties taxed in both years. This year's rollback tax rate is the highest tax rate the taxing unit can set before taxpayers can start tax rollback procedures. In each case these rates are found by dividing the total amount of taxes by the tax base (the total value of taxable property) with adjustments as required by state law. The rates are given per \$100 of property value.

Last year's tax rate:	
Last year's operating taxes	\$ 417,238.63
Last year's debt taxes	\$ 42,837.24
Last year's total taxes	\$ 460,075.87
Last year's tax base	\$ 46,946,517
Last year's total tax rate	\$.98 /\$100

This year's effective tax rate:	
Last year's adjusted taxes (after subtracting taxes on lost property)	\$ 460,026.87
This year's adjusted tax base (after subtracting value of new property)	\$ 45,180,663
This year's effective tax rate	\$ 1.0182 /\$100

1.03 = maximum rate unless unit publishes notices and holds hearing	\$ 1.04874 /\$100
---	-------------------

This year's rollback tax rate:	
Last year's adjusted operating taxes (after subtracting taxes on lost property)	\$ 417,779.50
This year's adjusted tax base	\$ 45,180,663
This year's effective operating rate	\$.924686 /\$100
.72 for school district (or zero)	\$.20468
1.08 (or add \$.08 for schools) = this year's maximum operating rate	\$.28468 /\$100
This year's debt rate	\$.0902 /\$100

(A school district must insert the following lines)

- This year's rollback rate before adjustment	\$.37488 /\$100
+ Rate to recoup lost revenue	\$.03067 /\$100
= Adjusted rollback rate	\$.40555 /\$100

This year's rollback rate	\$.40555 /\$100
---------------------------	------------------

SCHEDULE A: Unencumbered Fund Balances

The following balances will probably be left in the unit's property tax accounts at the end of the current fiscal year. These balances are not encumbered by a corresponding debt obligation.

Type of Property Tax Fund	Balance
	\$245,000.00

SCHEDULE B: 1991 Debt Service

The unit plans to pay the following amounts for long-term debts that are secured by property taxes. These amounts will be paid from property tax revenues (or additional sales tax revenues, if applicable).

Description of Debt	Principal or Contract Payment to be Paid	Interest to be Paid	Other Amounts to be Paid	Total Payment
Total required for 1991 debt service			38,718.00	
Amount (if any) paid from funds listed in Schedule A			-0-	
Excess collections last year			-0-	
Total to be paid from taxes in 1991			38,718.00	
Amount added in anticipation that the unit will collect only _____% of its taxes in 1991			2,037.79	
Total Debt Service Levy			40,755.79	

This notice contains a summary of actual effective and rollback tax rate calculations. You can inspect a copy of the full calculations at Garner C.A.D.

Name of person preparing this notice Ronald E. Procter
Title Chief Appraiser
Date prepared August 20, 1991

SBA Marks 38th Anniversary

The U.S. Small Business Administration (SBA) recently marked its 38th anniversary, according to Walter Fronstin, district director of SBA's Lubbock office. He said the agency celebrated a track record of delivering more than nine million loans, contracts, counseling sessions, and other forms of assistance—an average of nearly 3,000 instances of assistance to small businesses in every American county.

The SBA, launched on July 30, 1953, during the Eisenhower Administration, is an independent federal agency structured to assist and counsel those who want to start a small business, to continue to champion the estimated 20 million small businesses already thriving, and to help those successful ventures consider the rewards of expanding into export markets.

Small business is the backbone of this country's competitive free-enterprise economy, providing almost half of all new jobs created from 1984 to 1988. In addition, for example, the local, state and federal taxes raised in just the past two years from 10 top companies previously receiving SBA assistance far exceeds the cost of the program designed to assist them.

"When I appeared earlier this year before the Senate confirmation panel considering my appointment," SBA Administrator Patricia Saiki, "I committed my team to supporting and vitalizing the agency's existing programs, thereby fulfilling the mandate of our basic mission as outlined by Congress in 1953. That original mandate was to help entrepreneurs get into small business and help them stay in business. That remains the SBA's goal."

"Administrator Saiki re-emphasized the agency's mission at SBA's recent National District Director's Meeting in Newport, Rhode Island," Fronstin said. Fronstin was one of more than 120 directors, regional administrators and

central office managers who gathered in Newport July 22-25 for the annual field and program analysis.

"We have to return to the basic intent of our agency," Saiki said. "We have many programs to deliver and we have to deliver them effectively."

We must continue to reach out and encourage the risk-takers and entrepreneurs who want to enter small business and help provide them the tools to achieve success," she encouraged her directors.

Saiki message was well-received, and reports from those attending indicated that the agency's morale is high and employee commitment remains strong.

The SBA is comprised of a Washington central office, 10 regional and 67 district offices, with some additional branches and duty posts in less populated parts of the country. It is the only agency in the federal government with outreach capacity into every county of the nation.

SBA's programs include the offices of business development, private sector initiatives, international trade, women's business ownership and veterans affairs, as well as national disaster assistance offices.

According to the SBA's program directors, from July 1953 to April 1991, the agency has provided or directly brought about:

- 597,883 business loans and loan guarantees;
- 237,346 disaster loans to businesses and farms;
- 234,483 surety bond guarantees;
- 69,671 small businesses financed by SBICs;
- 7,868,998 small business contracts for goods and services or research and development.

The total amounts to more than nine million instances of direct assistance to small businesses.

The booming sound of a plane passing the sound barrier cannot be heard by the pilot.

Report From State Senator Teel Bivins

The special session is coming down to the wire, and the Legislature is being forced to do what it dislikes: make tough decisions. Specifically, lawmakers are trying to decide where to cut and which taxes and fees to raise.

I used to think that most everyone in my district wanted me to cut the state government to pieces, stopping only short of shutting down the entire operation. And I'm sure there are a few who would close everything and sell the Capitol.

During the regular session, my office was flooded with letters and phone calls from constituents instructing me to cut, cut, cut. "There's too much waste," they'd say. "Cut it out." "There's too much mismanagement, Cut it out." "Why does the state need so many airplanes? Cut them." "Legislators make too much money. Cut their \$600 a month salary." There are too many DPS troopers on the road, especially on I-27. Cut them."

That's a pretty clear message, one I thought my constituents and I were attuned to. Then it happened: Comptroller John Sharp and his army of auditors completed their fine-tooth examination of the state government, and released two volumes of recommended cuts, streamlining measures, efficiency moves and revenue enhancements. Few Texans would be left untouched.

Sharp suggested combining regulatory and licensing agencies to save administrative costs. He proposed breaking up the health-and-human-services agencies and reorganizing them based on the types of services provided to avoid duplication. He recommended raising college tuition. Sharp pointed out numerous services that could be provided by the private sector rather than the state.

Then the mail and phone calls that were demanding "cut, cut, cut" turned to "don't cut me, don't cut me." One morning I got several letters saying, "Don't cut any social-service programs, cut the highway department." That afternoon letters came heralding the merits and efficiencies of the highway department. Cosmetologists, pharmacists and accountants denounced Sharp's plan to merge the independent licensing boards of these and other professions into the Department of Licensing and Regulation, and licensed vocational nurses spoke out against being grouped with registered nurses for regulatory purposes. Meanwhile, constituents close to various social programs informed me why some of these services should not be cut but instead expanded; university officials echoed similar assertions for their schools.

The message I got from all of this was, "You can cut all you want, just don't involve me or anything I'm involved with." Of course, that doesn't leave many places to cut, because every state program, no matter how seemingly useless to the majority, touches someone. And few of those complaining offered good suggestions on how to address the budget mess, other than to leave them out of any solution. They should know, however, that when the Legislature is under pressure to leave state agencies alone and even increase spending for such programs as prisons and public education, it forces lawmakers to consider tax and fee increases.

These conflicting messages make budget writing a very difficult job. As this session winds up, we legislators are going to make a lot of people mad. We're going to cut some and tax some. But remember, we're just trying to do what we think our many constituents want.

Nursing Home News

by: Joy Stancell

We are enjoying the fresh produce brought to us by our friends in the community. We are so thankful to live in a place where people share and care. Roman Reyna brought watermelons, Fern Warren potatoes and Dustie Jones-peaches—all home grown and delicious.

Tuesday afternoon Laverne James, Nobe Phipps, Beth Watson, Bonnie Green, Ashley and Larhonda came to shampoo and set the ladies' hair. School will be starting soon and Ashley and Larhonda will not be able to do volunteer work in the beauty shop. They have been such good help. We will miss them.

Sunday afternoon The New Covenant Church came for church services.

Monday Grace Scarborough made and brought fresh baked brownies for the resident's enjoyment.

Foreign Visitors Enjoy Fort Worth Museum

A small jewel of a museum in downtown Fort Worth is providing further evidence of Texas' enduring appeal for foreign visitors, and of the visitors' fascination with art of the American West.

In just the past six months, travelers from 38 countries (as well as every U.S. state) have stopped in to view the Sid Richardson Collection of Western Art, 52 paintings by Frederic Remington and Charles M. Russell. The paintings—acquired by oilman and philanthropist Sid W. Richardson—are housed in a restored turn-of-the-century building in downtown Fort Worth's Sundance Square. Admission is free.

The museum has attracted more than a quarter-million visitors since opening in late 1982, but has kept a guest book only since this January. Signing

it have been visitors from Australia to Zambia, nearly every country in Western Europe and South America, many from Japan, and travelers from Egypt, China, Romania, Tonga and Singapore. "And that's just those who have signed our book—maybe 20 percent," said Jan Brennehan, director of the museum.

Comments in the guest book range from "A jewel for all international guests," to "Smashing" to "Catches the spirit of the West." And one visitor wrote, "Thanks, Sid."

Visitors to the Sid Richardson Collection of Western Art also can view Sid Richardson's silver-and-gold show saddles, as well as a selection of western bronzes on loan from Fort Worth's Amon Carter Museum. The Sid Richardson Collection is open every day except Monday.

Linda's Kitchen

(Located in Damron Drug)

Will Be Closed

August 26 - September 2

Will Re-Open Sept. 3 at 8 a.m.

Your Business Is Appreciated & We Look Forward To Seeing You When We Re-open!!

ALL VARIETIES
COCA-COLA
6 pk. 12 oz. cans
\$2.09

SAUSAGE & BISCUIT
EACH **59¢**

GARDETTO SNAK-ENS
6 OZ. PKG. **99¢**

BAR-S BOLOGNA
16 OZ. PKG. **99¢**

NABISCO SALTINE CRACKERS
16 OZ. BOX **99¢**

SHURFINE CORN OIL QUARTERS MARGARINE 16 OZ. PKG. **69¢**

TOM'S POTATO CHIPS
REGULAR \$1.39
\$1.09

ALLSUP'S HOMOGENIZED MILK GALLON **\$1.89**

ALLSUP'S HOT LINKS
2 FOR 99¢

HERSHEY'S MILK CHOCOLATE

ALL VARIETIES HERSEY'S CANDY BARS
3 FOR \$1

Folger's Coffee **\$1.99**
13 oz. can

Sylvania Soft White Bulbs **\$1.49**
60, 75 and 100 Watt

COOKED FRESH 24 HRS. A DAY		HOT FOODS MENU	AVAILABLE AT ALL ALLSUP'S LOCATIONS
BARBECUE BEEF SANDWICH	99¢	9 PIECE BOX CHICKEN	\$4.99
BARBECUE PORK RIBS (L.B.)	\$3.99	BEEF & CHEESE CHIMICHANGA (MEAD)	\$1.19
BARBECUE WHOLE CHICKEN	\$3.99	CORN DOG DELICIOUS HAMBURGER	69¢
ALLSUP'S BURRITO	79¢	WILSON HOT LINKS	99¢
BREAKFAST BURRITO	99¢	SAUSAGE ON A STICK	\$1.59
BURRITO BEEF & SALSA	\$1.19	SAUSAGE & BISCUIT	79¢
DELICIOUS CHEESEBURGER	79¢	SAUSAGE, EGG & BISCUIT	\$1.09
CHICKEN FRIED STEAK	\$1.59	SAUTEYA SAUSAGE	\$1.09
3 COUNT CHICKEN STRIPS	\$1.49	4 COUNT STEAK FINGERS	\$1.00
W/POTATO WEDGES/CHICKEN (2 PCS)/BISCUIT	\$1.99		

Hunts 18 oz. BBQ Sauce 69¢

Fresh Cooked Potato Wedges 59¢
5 To An Order

Tallsups 59¢
32 oz. With Favorite Drink

PRICES EFFECTIVE AUGUST 25-31, 1991

318 W. Amer. Blvd. 272-4862

Help us spot and prevent gas pipeline emergencies!

Natural Gas Pipeline Company transports natural gas along thousands of miles of underground steel pipelines. And we take great care to install and maintain our system in the safest manner possible. That's because we're committed to protecting everyone who lives and works along our pipeline route.

But despite all our safeguards, emergencies occur, primarily through outside forces, such as natural disasters and damage by persons working near our lines. We need your help to spot and report pipeline emergencies so we can react promptly. Better yet, we need everyone's cooperation to prevent accidents from taking place.

How to prevent a pipeline accident:

- Call BEFORE you dig, drill or doze.
- Watch for our signs at road, railroad and river crossings, at fence lines, ditches and other sites.
- For no-cost location of ALL underground facilities, call the Texas Excavation Safety System (TESS) at 1-800-DIG-TESS. Please call 48 hours in advance.

Signs of a pipeline emergency:

- Hissing or shrill SOUND.
- Unusual BLOWING dirt or dust.
- Persistent BUBBLES in water.
- DYING PLANTS amid healthy ones.
- FIRE or EXPLOSION near pipeline.

How to report a pipeline emergency:

- Phone 1-800-733-2490, our toll-free, 24-hour line.

How to respond to a pipeline emergency:

- Evacuate the area immediately.
- Avoid potential ignition sources.
- Warn others to stay away.

Natural Gas Pipeline Company of America
A MIDCON CORP COMPANY

Bailey County Journal
USPS 040-200
Established March 11, 1963. Published by Muleshoe Publishing Co., Inc. Every Sunday at 304 W. Second, Box 449, Muleshoe, Tx. 79347. Second Class Postage paid at Muleshoe, Tx. 79347.

TA MEMBER 1991
TEXAS PRESS ASSOCIATION

L.B. Hall, Publisher
Sammy Hall, Vice-President/Comptroller
Evelyn Harris, News
Joyce Adams, Society
Holly Millip, Advertising
Diana Berman, Classified

SUBSCRIPTIONS
Muleshoe Journal and Bailey County Journal
Bailey and surrounding counties
Muleshoe Journal and Bailey County Journal
Eldorado in Texas \$18.75
Muleshoe Journal and Bailey County Journal
Outside Texas, \$18.50
Yearly By Carrier \$12.50

Advertising Rate Card on Application
Advertisers should check their ad the first day of insertion. The Journal will not be liable for failure to publish an ad or for a typographical error or error in publication except to the extent of the cost of the ad for the first day of insertion. Advertisers' errors will be limited to the cost of that portion of the ad where the error occurred.



SEPTEMBER DATE SET—Mr. and Mrs. James E. Curtis of Farwell announce the approaching marriage of their daughter, Tonja DeAnn, to Theodore Dean Ogilvie, son of Mr. and Mrs. S. Lee Ogilvie of Clovis, N.M. Vows will be exchanged at Central Christian Church in Clovis September 21 at 6 p.m. DeAnn is a 1986 graduate of Farwell High School and received her B.S. in Pharmacy from Southwestern Oklahoma State University. She is employed by Farwell United Drug. DeAnn is the granddaughter of Mr. and Mrs. A.D. Stancell of Muleshoe. Ted is a 1985 graduate of Clovis High School and received his bachelors degree from the University of New Mexico, obtaining a Master of Business Administration from Southwestern Oklahoma State University. He is employed by Clovis High Plains Hospital. (Guest Photo)

Fair Tickets On Sale

Steve Lewis, general manager of the Panhandle-South Plains Fair, announced that tickets for shows by Ricky Van Shelton, Don Williams, The Oak Ridge Boys and the Texas Tornados are now on sale at three locations in Lubbock.

Tickets may be purchased at Luskey's Western Store, 2431 34th St., Ralph's Records and Tapes, 909 University, and the fair office, 105 E. Broadway.

The 74th annual extravaganza kicks off September 21 and wraps up its eight-day run on September 28.

Williams will perform one show at 7 p.m. on opening night, with tickets priced at \$10.

Ricky Van Shelton, country music's entertainer and male vocalist of the year, has been booked for one show at 7 p.m. September 27. Tickets for his performance are \$12.

The Oak Ridge Boys will give a matinee performance at 4 p.m. September 28 and then close out the fair's 1991 coliseum shows with a 7 p.m. performance. Tickets for the matinee are \$8, while the evening show will cost \$12.

For more information contact the fair's box office at 744-9557.

Lewis urged fans to purchase tickets early for the best seats. "Advance ticket sales have gone very well," he noted.

Lewis said free shows will be offered in the coliseum on the other four nights of the fair. However, details of sponsors and ticket locations have not been finalized.

"We'll announce details of the free shows in the next few weeks," he said. "Just as soon as all the details are worked out, we'll let fans know what's going to be offered. We've got some exciting things in the line-up. I think fairgoers will be pleased."

Then there are those who like jokes—on the other fellow.

Friendship is something few people understand or enjoy.

Farmers working by the sun aren't bothered by clock-watching fever.

Country Club Report

by Marlene St. Clair

August 20 was a luncheon day for the ladies. We had only eighteen ladies. Ladies attending were Jeanetta Precure, Dorothy St. Clair, Helen Templeton, Claudine Elliott, Jerri Mayo, Melzine Elliott, Ruby Lee Kerr, Ruby Hart, Charlotte Field, Kay Field, Analita Haley, Linda Elder, Jeannine Gunstream, Martha Young, Carlean Hamilton, Sherri Shipman, Neats Foster and Darlene Henry. We all enjoyed a nice lunch and our usual visiting.

Jeanetta Precure, president, called the meeting to order. Sherri Shipman had roll call and reading of the minutes. Kay Field gave our treasurer's report in the absence of Yolanda Bell. Linda Elder gave the High Plains report. Five ladies went to Dimmitt, Jeanetta, Helen, Claudine, Linda and Neats. Jeanetta won low net in her flight. Linda had low putts in her flight. Next High Plains playday will be at Farwell September 11. Playday chairman Helen Templeton awarded golf balls to Ruby Hart, least rough shots, Jeanetta, Arglee, Helen longest putt on No. 6,

Mary Frances, Neats, Arglee, and Kay closest to pin on No. 5. Helen also had the teams for our monthly scramble. First team Jeanetta, Dorothy, Claudine, Melzine and Terry. Second team Kay, Helen, Charlotte, Neats and Analita.

President Jeanetta appointed a nominating committee to find officers for another year. The committee is Helen Templeton, Claudine Elliott and Analita Haley.

Jeanetta thanked Kay and Charlotte Field for their hard work on our Jennyslipper tournament August 10. Thank you Kay and Charlotte for a job well done.

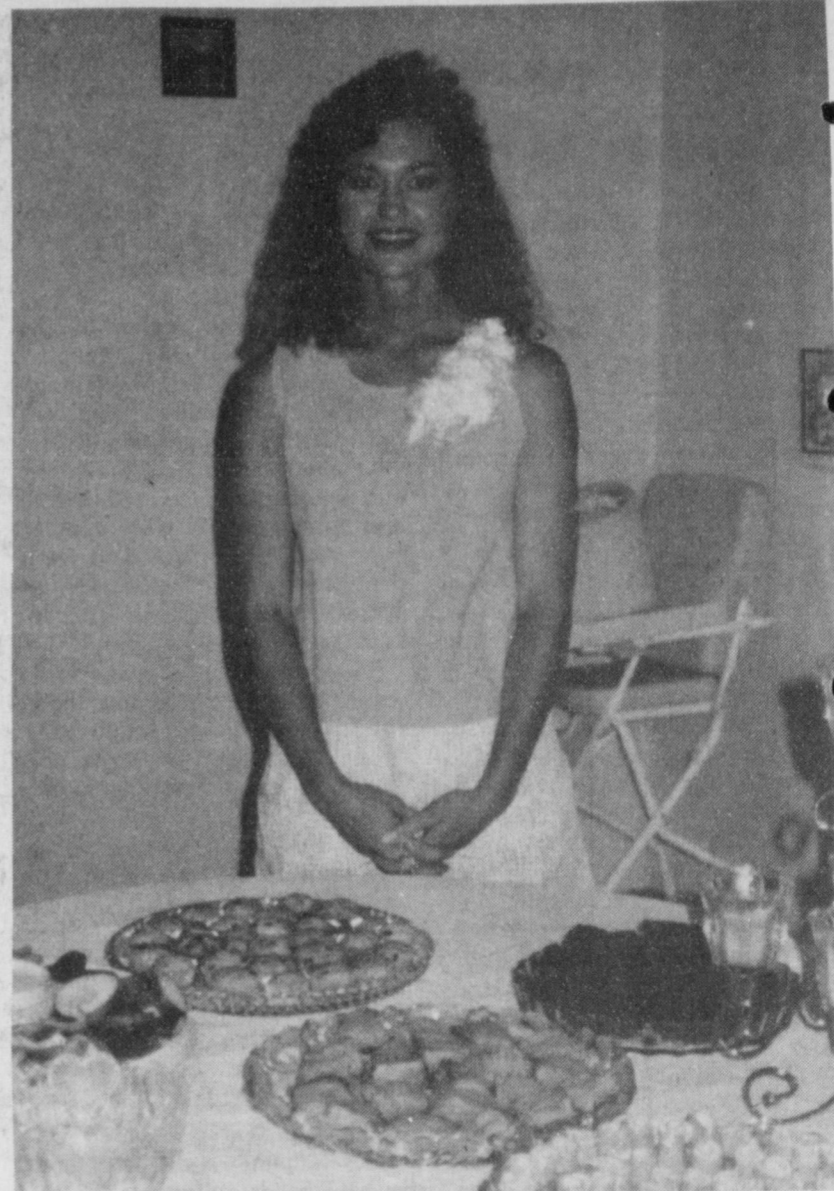
Birthday Ladies for August are Sherri Shipman and Carlean Hamilton. Meeting adjourned.

The lucky team today was second team, Kay, Charlotte, Helen, Neats and Analita.

DeBerry Named Secretary

Dawn DeBerry of Olton, daughter of Dale and Deborah DeBerry was named Secretary of the Texas 4-H Council last week in Trinidad, Texas. Dawn is an eight year member of Lamb County 4-H and is currently serving as President of the District II 4-H Council, President of the Lamb County 4-H Council and President of the Olton 4-H Club.

Dawn's 4-H projects include Leadership, Foods and Nutrition, Swine, Steers, Lambs, Clothing, Wool Judging and Electrical Energy. She has exhibited livestock at major stock shows throughout the state, participated in the State 4-H Food Show and is a past recipient of the Dan Forth "I Dare You" Award.



BECKY JONES HARMON

Shower Honors Becky Harmon

A surprise bridal shower honoring Becky Jones Harmon, bride of Brad Harmon was held Thursday, August 8 at 7:30 p.m. at 607 West Ave. G. in Muleshoe.

The table was decorated with a rose lace tablecloth accented with candleabra with rose candles.

Cheese and ham rolls, cheese sandwiches, a vegetable tray, brownies, muffins and mints were served.

The honoree's corsage was made with rose and aqua flowers. The hostess gift was a Daisy Sandwich Maker-Waffle Iron.

Out of town guest was the

bride's mother, Patty Coulter from Amarillo.

Hostesses were Pam Atwood, Pam Doolittle, April Smith and Valerie Hagermon.

To economize one must do without something.

To read with understanding is to be educated.

All buyers want price control; all sellers are against it.

Fishing solves a surprising number of problems.


Remember Those Back To School Cookouts!



1/2 Beef
\$1.44 lb.
Cut & Wrapped To Your Specifications

Larry's Own
Breakfast Sausage
6 Lb. Box Sliced
\$1.50 lb.

Whole Loins
K C Strips
\$3.99 lb.
Cut & Wrapped To Your Specifications


Larry's Award-Winning Home Cured Bone-In
\$2.19 lb.

Pork Loins
By The Loin
12-15 lb. each
\$1.79 lb.

Larry's Award-Winning German Sausage
\$2.09 lb.

Winkler Meat Co.
401 Main 272-4703

Rip's

WESTERN WEAR
In Texico
314 Wheeler Ave.

A Collection of Favorites From Sharon Young Fall 1991



FINAL CLEARANCE
Ladies Spring Clearance Ends Aug. 31
10% up to 75% OFF

482-3363 or 800-748-2459

Complimentary Gift Wrap
Layaways Welcome



Creative Living

by: Sheryl Borden



MR. & MRS. ALLEN BEASLEY
(nee Stacey Haley)

Stacey Haley And Beasley Repeat Marriage Vows

Miss Stacey Haley of Muleshoe became the bride of Allen Beasley July 30 at 6 p.m. on the Bailey County Courthouse lawn. Double ring vows were read by County Judge Marilyn Cox. The bride was given in marriage by her father.

Parents of the couple are Jerry and Barbara Haley of Muleshoe and Jerry and Faye Beasley of Snyder, formerly of Muleshoe.

The Maid of Honor was Tanya Wilcox of Amarillo, cousin of the bride. The Best

Man was Justin Obenhaus of Muleshoe.

A wedding reception was held at the Muleshoe Country Club. Crista Whatley, cousin of the bride, served cake and punch.

The bride is a 1988 graduate of Muleshoe High School. The groom is a 1985 graduate of Muleshoe High School.

Out of town guests were Mr. and Mrs. Jerry Beasley of Snyder and Mr. and Mrs. Everett Smith, Gina and Justin Reid.

The couple will make their home in Muleshoe.

Information on creative table settings and help for children with learning problems will be the featured topics on "Creative Living" on Tuesday, August 27 at 12 noon and Saturday, August 31 at 2 p.m. (All times are Mountain.) "Creative Living" airs on public broadcasting station, KENW-TV, from Eastern New Mexico University.

Deborah Durham, creative consultant to JC Penney Home, will show how to go from casual to formal with basic fiestaware, adding and subtracting flatware, table linens and other items. She will also explain how easy it is to mix and match table settings. Ms. Durham lives and works in New York City.

Debbie Mayes-Chambers, manager of Sylvan Learning Center in Lubbock, TX, will talk about providing help for parents when their children are having trouble in school with poor grades. She explains that there is hope and help at Sylvan Learning Centers, and they are becoming popular all across the country.

On Tuesday, August 27 at 9:30 p.m. and on Thursday, August 29 at 12 noon, "Creative Living" will present information on projects for children's rooms, developing life-long learners, and cooking oriental cuisine.

Deborah Durham, representative of Wamsutta-Pacific Home Products, will demonstrate and explain how to make 3 easy projects for children's rooms. These include a toy hamper, a puppet show theater, and a teepee bed tent. Ms. Durham is from New York City.

Dr. Alvin Granowsky, nationally known reading expert, author, and consultant to World Book, Inc., will talk about ways parents can help their children become life-long learners. He will also discuss what a "literate" home is, talk about how to

build on a child's interests to encourage reading, and emphasize the importance of parents as role models. Granowsky is from Chicago, IL.

Karen Babin, a home economist with the Rice Council of America in Houston, TX, will tell how ethnic foods are increasing in popularity. She will prepare several oriental recipes while explaining the health benefits of rice.

"Creative Living" is produced and hosted by Sheryl Borden. The show is carried on more than 100 PBS stations in the United States, Canada, Guam and Puerto Rico and is distributed by Pacific Mountain Network, Denver, Co. Viewers can request copies of materials offered on the show by sending one 29 cent stamp for each handout requested. Send the stamps, along with your name, address and booklets requested to: "Creative Living" Requests, KENW-TV Station 52, Eastern New Mexico University, Portales, N.M. 88130

Shrimp Fried Rice
1 tablespoon vegetable oil
1 cup sliced fresh mushrooms
1/2 cup sliced green onions including tops
1 teaspoon minced fresh ginger
1 egg, beaten
2 cups cooked rice, chilled
1 1/2 cups cooked shrimp, cut in small pieces
1 tablespoon soy sauce
Heat oil in large skillet or wok over medium-high heat. Add mushrooms, onions, and ginger; stir-fry 1 minute. Push vegetables aside; pour egg into skillet and scramble. Stir in rice, gently separating grains. Add shrimp and soy sauce; stir until thoroughly heated. Makes 4 servings. Each serving provides 189 calories, 13.5 g. protein, 5.2 g. fat, 20.8 carbohydrate, 351 mg. sodium, and 149 mg. cholesterol.



KELLY, JAN & WHITNEY KUEHLER



Whitney Lee Kuehler

Kelly and Jan (Whitt) Kuehler became the proud parents of Whitney Lee Kuehler July 23 at 8:39 a.m. She was born at HCA Medical Center near their Arlington residence. Whitney weighed 8 lbs., 3 oz. and was 20 inches long. Her great-grandparents are Webb and Olene Watts of Muleshoe and Della Eidson of Seymour. Her grandparents are Roy and Joy Whitt of Muleshoe and Ben and Irene Kuehler of Morton.

Hayden Dillard Saylor

Scott and Sharla Saylor proudly announce the birth of their second child, Hayden Dillard Saylor, born Sunday, August 11 at 8:44 in Clovis High Plains Hospital, Clovis N.M. He weighed 7 lbs. and 13 oz. and is 21 inches long. He has a big brother, Jordan, who will be three years old in September. They reside in the West Camp Community where Scott farms and Sharla is employed at First Bank in Muleshoe.

Grandparents are Herman and Joyce Morrison of Muleshoe and Mr. and Mrs. Jake Saylor of the West Camp Community. Great-grandparents are Mr. and Mrs. E.W. Morrison of Clarendon.

Ben Franklin
Better quality for less
2104 W. Amer. Blvd. 272-3855
Mon. - Sat. 8 a.m. - 8 p.m. Sun. 12 p.m. - 5 p.m.

★ **Committed To** ★
★ **Bring You** ★
★ **Lower Prices** ★

Ladies White
Canvas Shoes
Reg. \$5.99
Price Rollback **\$3.88**

Purex All Temp 32 oz.
Laundry Detergent
Reg \$1.99
Price Rollback **89¢**

Lander 51 oz.
Kiddies Bubble Bath
Reg. \$1.99
Price Rollback **77¢**

Colgate 11 oz. can
Shaving Cream
Reg. \$1.29
Price Rollback **50¢**

Clairol Non Aerosol Finel Net
Hair Spray
Reg. \$2.79 Each
Price Rollback
Buy 1 at \$1.99
Get One **FREE**

Kleenex
Bathroom Tissue
Reg. \$1.29
Price Rollback
4 Roll Pk. **85¢**

Fun Size Bars 17.5 oz. Bonus Bag
Butterfingers
Reg. \$3.49 Price Rollback 2 bags **\$5**

NOTES, COMMENT

Life is not short.

Regular exercise is one secret of old age.

To keep your friends, be less than frank.

A broadminded person is one who takes your side.

Tops Club

TOPS Chapter No. 34 met at 6:30 p.m. on Thursday, August 22 in the Heritage Thrift Shop, with our meeting starting with our guest speaker, Helen Adrian. Her topic was the positive and negative sides of different colors. Her talk was very interesting.

Then our leader Laverne James called the meeting to order. The TOPS pledge was recited and fellowship song was sung. Mrs. James led the group in prayer.

Betty Jo Davis, weight recorder, called roll with 17 members answering with the amount of weight gained or lost. Aurora Mata read the minutes of the previous meeting. They were approved as read.

Linda White was best loser for the week. Runners-up included: Lucille Harp, first; and Joy Harp as second runner-up.

A get well card was sent to Zana Kelly. Our meeting was adjourned with a good night song.

Piano Lessons

Places Still Available

Beginners Thru Adult

Call

Fran Hamilton 272-4759

After 4 p.m.

Now Is The Time To Control Your Lawn & Garden Pests!

Broad Spectrum Fungicide For
Lawn, Roses, Ornamentals, Vegetables and Melons

Ionate - Soil Acidifier For Lawns, Flowers, Trees and Shrubs - Corrects Yellowing

Oftanol - Season Long White Grub Control On Lawns

Amdro The Proven Fire Ant Killer
Insecticide - Easy To Apply with No Mixing & No Odor!

Kristy's Plants

710 E Amer. Blvd.

272-5536

For Your
Mary Kay Cosmetics
Josie Flowers
272-3865
8 a.m. - 12 noon
& after 6 p.m.

around muleshoe

Kelli G. Caldwell, daughter of Mr. and Mrs. Michael R. Caldwell of Muleshoe, is among a record 558 students from more than 40 states and 15 foreign countries who have enrolled as new cadets at New Mexico Military Institute for the 1991-92 school year.

Another 438 cadets have returned from last year, bringing total enrollment to 996, just seven short of the all-time record set in 1986. Of the total, a record 137 are girls.

Classes began Tuesday at the state-supported, four year college preparatory high school and two-year junior college, which is celebrating its centennial in 1991.

The Winners' Circle Equestrian program will be holding their second annual Ride-A-Thon on Oct. 12 at 9 a.m. The Celebrity ride is scheduled for 10 a.m. Awards will be presented at 4:30 p.m.

The event will be held at the Buffalo Lake National Wildlife Refuge, southwest of Canyon, and is open to anyone wishing to ride their horse along scenic trails to benefit a good cause.

Riders are asked to seek pledges for friends and co-workers for amounts based on the number of hours they ride.

For more information you may contact Marilyn Johnson at 622-1167 (evenings/weekends) or 378-1000, ext. 3406.

Gary Benjamin Allison of Muleshoe received his bachelor of science degree from Sul Ross State University during summer commencement Aug. 17.

Commencement speaker was Dr. Charles W. Benson, superintendent of the Corpus Christi schools.

Becky Espino, member of the Texas State University System Board of Regents and business manager for the Fort Stockton Independent School District, presented diplomas to the graduates. Espino is the first

Sul Ross graduate to serve on the board.

The MISD board will meet at 7:30 p.m. Monday, Aug. 26 in the School Administration Building. The following items will be on the agenda:

1. Call to order
2. Invocation
3. Recognition of visitors and school officials present at meeting
4. Approval of minutes regular meeting held on August 12, 1991 and the called meeting held August 19, 1991.
- Open Forum/Audience Participation
6. Business Items
 - 6.1 Consider contracting with Map Resources, Inc. to review Muleshoe ISD voting districts and take appropriate action.
 - 6.2 Amend the 1990-91 Budget.
 - 6.3 Review the report from the Committee for Evaluating the course offerings at Watson Junior High and Muleshoe High School.
 - 6.4 Consider the administrative appraisal process and take appropriate action.
7. Financial Reports
 - 7.1 Tax Collection Report
 - 7.2 Bank Balances
 - 7.3 Fund Balances
 - 7.4 Consider approval of payment of current bills
8. Informational Reports
 - 8.1 Board President
 - 8.2 Superintendent
 - 8.3 Assistant Superintendent for Operations
 - 8.4 Assistant Superintendent for Instruction
 - 8.5 Business Manager
9. Personnel Considerations
 - 9.1 Executive Session
11. Take Appropriate Action Following Executive Session
12. Announcements
13. Adjournment

Notice is hereby given that a special meeting of the governing body of the Muleshoe Independent School District will be held on Sept. 3 at 6:30 p.m. in the School Administration Building. The following subjects will be discussed:

- Public Hearing on the 1991-92 Proposed Budget

Bury The Problem By Burying Small Businesses

By Larry Combest

It may be nearly impossible for small business owners to dig their way out of a hole when the government keeps pouring more regulations down on top of them. This month, the Environmental Protection Agency (EPA) announced the possibility of a 14-month pause in the downpour of regulations for the smallest of gasoline station owners with underground storage tanks. The EPA has required these small business owners to prove they can handle the financial cost of third-party lawsuits if one of their gasoline storage tanks leaks into the groundwater supply.

The EPA regulations pose a double burden on gasoline and convenience store owners, who are hit with a one-two punch from the EPA. First, the EPA

Boosters...

Cont. from Page 1 donated money to cheerleaders, bought recognition sign for baseball team, bought recognition sign for golf teams, bought Aire-Dyne Bicycle for athletes, gave banquet, for athletes and coaches, sponsored Punt Pass and Kick contest, had mural painted in the Jr. High Gym, and had Mule Mania painted on outside of High School Gym. Now the Booster Club offices are ready for a new year and a lot of other things need to be done for each upcoming sport. The Booster Club meets each Tuesday night at 7:30 p.m. at the high school cafeteria.

Insurance...

Cont. from Page 1 of financial responsibility. All original documentation will be returned.

Questions about proper evidence of financial responsibility for vehicle registration may be directed to your automobile insurance company, your county tax assessor-collector, or to the local Division of Motor Vehicles regional office. For information about driver's licenses and vehicle inspection stickers, contact the Department of Public Safety.

Education...

Cont. from Page 1 child as possible. For additional information and/or referrals contact the Special Education Office in the Muleshoe High School building, telephone 272-5239, Herb Parks, Director.

Pass...

Cont. from Page 1 Superintendent's Office at 514 West Avenue G and see Jean Richardson. Anyone who is unable to go by the office may obtain a pass by calling Mrs. Richardson at 272-3389.

Bertha Walden

Services Held

At Morton

Funeral services for Bertha Walden, 71, of Morton were held at 2 p.m. Saturday in the Eastside Church of Christ at Morton with John Garcia, minister of the Iglesia de Cristo in Levelland, officiating.

Burial was in Morton Memorial Cemetery under the direction of Ellis Funeral Home of Morton. Mrs. Walden died Thursday at her residence.

Born in Bell County, Texas, she moved to Morton in 1938, from Levelland. She married Mike Walden on September 1, 1940 in Levelland. She was a homemaker and a member of the Eastside Church of Christ.

Survivors include her husband, Mike Walden; two daughters, Reva Martinez of Lubbock and Patsy Ann Fairchild of Moorehead, Kentucky; a brother, Bill Garrett of Lubbock; two sisters, Beatrice Allen of Houston and Lorene Cunningham of Quenado; five grandchildren; and three great grandchildren.

has required owners to buy new noncorrosive tanks and install

Texas First

\$1 Million Day

For the first time in state history, Texas Treasury investments earned \$1 million during a one-day period, State Treasurer Kay Bailey Hutchison has announced.

"This is terrific news for Texas. It was literally a 'million-dollar day' for state taxpayers," said Mrs. Hutchison in announcing the investments earning milestone.

On Friday, Aug. 2, the State Treasury earned \$1,019,965 by taking profits on its portfolio of marketable securities. Mrs. Hutchison attributed the state's record-breaking day to a combination of investment strategy and a weak money supply that led to a rally in the bond market.

"The day's events are proof positive of our commitment to manage the state's money in a sound, conservative and prudent manner, while earning as much interest as possible for Texas taxpayers," said Mrs. Hutchison, the state's chief investments officer.

For the last several months, Texas Treasury investments have outperformed comparable funds nationally. During the first seven months of 1991, state treasury investments have earned more than \$190 million in interest for state taxpayers.

"What makes this extraordinary investment performance so remarkable is that it has come during a period of declining interest rates," said Mrs. Hutchison.

leak detection equipment. Next, owners are hit with the extra requirement of budgeting enough money to cover third-party lawsuits. The financial burdens of both tank replacement and third-party liability amount to higher costs of doing business at the pump. If stations cannot cover the costs or pass them along, they go out of business. In the business jungle, the larger retailers survive, and motorists go on the hunt for an open station.

Gasoline retailers are already meeting the costly requirements for replacement and monitoring of these underground tanks. During the past two years, gas station and convenience store owners have monitored and replaced tanks for each blend of gasoline they sell at an average cost of \$6,400 per tank.

At the same time, the cost of premiums for third-party liability coverage have averaged \$1,415 per tank for each gasoline pump. As a practical matter, small business owners can find it financially difficult to set aside money for pollution

liability lawsuits at a time when they are installing new corrosive-proof tanks. Also, it can be frustrating for business owners because obtaining financing for new tanks often hinges on securing the liability coverage.

I am pleased that the EPA has agreed on the need for this proposed delay of costly financial responsibility requirements, although it suggests a delay only until December 1992. It is ironic and unfortunate when EPA's third-party liability requirement diverts a business' limited budget away from the primary effort to monitor and replace tanks. The requirement of older underground tanks will reduce the liability premiums, but only after costly new tanks are installed.

Gasoline retailers surveyed by the Petroleum Marketers Association of America expect to close approximately 17 percent of their outlets over a three year period because of these costly regulations. Gas station closings mean decreased competition with fewer choices and increased prices for the motorist. The EPA is inviting comments by September 13 on their proposed delay of financial responsibility requirements. Without a balance between businesses and the environment, both customer and business will literally run out of gas.

Attention Soybean Producers

CONTINENTAL - COF COMPANY
of Plainview
is now contracting
SOYBEANS
for harvest delivery.

For more information call:
John at 1-800-858-4094
from 7:30 am to 5:30 pm

HUNTER'S HEADQUARTERS!

Firearms You Want!!

Remington Express Shotgun Sale **199⁹⁹**
Express pump shotgun, 12 gauge, 26 or 28" vent rib barrel or 20 gauge, 28 or 21" vent rib barrel. One choke tube included. Hardwood stock. (600-2992, 3008, 3032, 3057)

Winchester Ranger Pump Shotgun Sale **209⁹⁹**
28" VT pump shotgun with 3 choke tubes. Walnut finish stock with recoil pad. 12 or 20 gauge. (602-5415, 5423)

Game Load Special

Your Choice:

Remington or Winchester. Sale **3⁸⁸**
2 3/4" — 12 gauge — 6, 7 1/2, 8;
16 gauge — 8; 20 gauge — 7 1/2, 8
Federal. 2 3/4" — 12 gauge — 6, 7 1/2, 8;
16 gauge — 7 1/2; 20 gauge — 6, 7 1/2, 8

Dove Season Opens
September 1!
We Have Hunting Licenses!

P O Y N O R S

103 Main Muleshoe 372-3552

CONTACT CELLULAR 3 THE POWER OF

Amarillo Canyon
Hereford
Hub Tulla
Clovis
Portales
Muleshoe Plainview
NEW MEXICO
Levelland Lubbock
Texas
Plains Brownfield Post
Seminole Lamesa
Andrews

CELLULAR 3 keeps you in contact and here's how:



- Entire 806 **Local Calling Scope**
- **Automatic Call Delivery** in RSA 3 service area and Lubbock, Post, Seminole, Lamesa and Andrews.
- **Cell-Sites** within the Levelland, Brownfield, Plainview, Tulla, Plains and Muleshoe Areas.
- **Automatic Call-Handoff** in RSA 3 service area and Lubbock, Post, Seminole, Lamesa and Andrews.

CELLULAR SAVVY

Local calling scope - area within which cellular local calling occurs.
Automatic call delivery - a call is automatically delivered to the cellular receiver anywhere within the call delivery area.
Cell Site - the location from which the cellular signal is transmitted.
Automatic call handoff - as the cellular user drives through the "handoff area" his signal is passed on from one cell site to the other assuring the strongest signal at all times.

Cellular 3
 Southwestern Bell Mobile Systems
 Digital Cellular

CONTACT THE POWER OF CELLULAR 3


Five Area Telephone Cooperative Inc.


DRAWER 448
MULESHOE, TEXAS 79347

PHONE
806-272-5533

TEXAS RSA 3 CELLULAR PARTNERSHIP - SOUTHWESTERN BELL MOBILE SYSTEMS, FIVE AREA TELEPHONE COOPERATIVE, MID PLAINS, BELL TELEPHONE, POKA LAMBRO TELEPHONE COOPERATIVE, SOUTHWESTERN BELL MOBILE SYSTEMS, ALL TEL. MOBILE COMMUNICATIONS, WEST TEXAS BELL TELEPHONE COOPERATIVE AND FIVE AREA TELEPHONE COOPERATIVE, OPERATING AN CELLULAR

Muleshoe Roping Club Activities



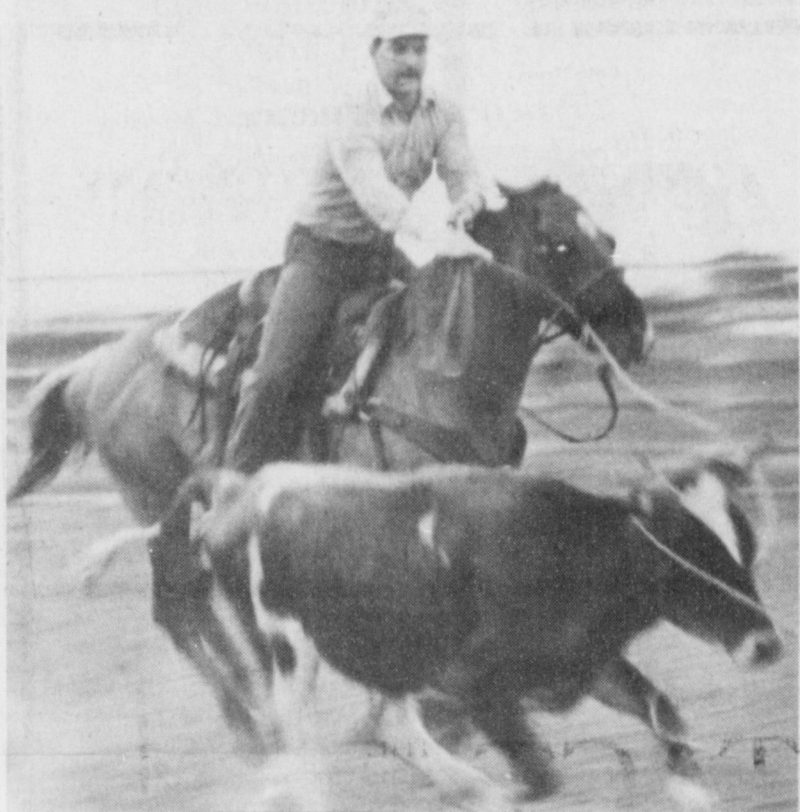
FLAG BEARERS---Gary and Jim Fields, astride matching grays, present the colors for the Grand Entry of the Junior Rodeo held Saturday, August 17, at the Muleshoe Roping Arena.

(Journal Photo)



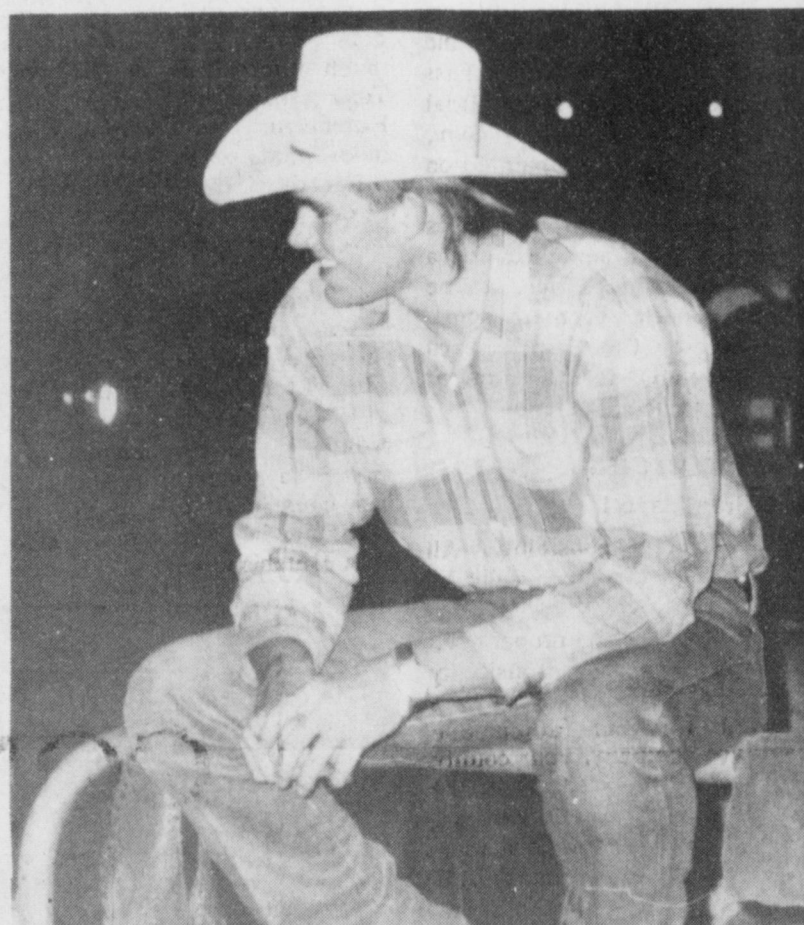
BEFORE COMPETITION---Josh Slayden of Muleshoe "horse sits" before the Junior Rodeo competition begins.

(Journal Photo)



THE CHASE IS ON---Gary Fields catches quick for a good run as team roping competition continues.

(Journal Photo)



RODEO CONTESTANT---Dusty Rhodes awaits his turn for the cow riding event at the Junior Rodeo held Friday and Saturday nights. The event was sponsored by the Muleshoe Roping Club.



JUNIOR RODEO TIME---Deedra Brooker was one of the contestants at the Junior Rodeo.

(Journal Photo)



GOTCHA---Bill Havens trips the steer and gets the catch at the regular Thursday night Muleshoe Roping Club competition.

(Journal Photo)



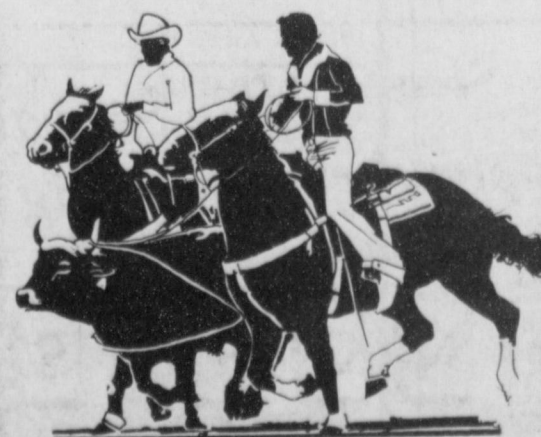
BARREL RACING---Youngsters ages 8 thru 19 performed in several rodeo events Friday and Saturday nights.

(Journal Photo)



THURSDAY NIGHT BUCKLE ROPING---Team ropers compete here for the coveted best header and best heeler buckles.

(Journal Photo)



Gene Smith Funeral Services Held Friday

Funeral services for Gene Smith, 59, of Lazbuddie were held at 11 a.m. Friday, August 23 in the First Baptist Church of Lazbuddie with the Rev. Gary Wilcox, pastor, officiating. Burial was in Lazbuddie Cemetery under the direction of Ellis Funeral Home. Smith died at 9:08 p.m. Wednesday in his residence.

Born in Lazbuddie, Smith had been a lifetime resident of the Lazbuddie community. He was a farmer and a member of First Baptist Church in Lazbuddie. He married Betty Littlefield on December 11, 1954 in Lubbock. Survivors include his wife, Betty; a son, Tim Smith of Lazbuddie; a daughter, Tammie Turner of Lazbuddie; four brothers, Lavern Smith of Overton, Nevada; Chuck Smith of Lazbuddie; Dan Smith of Lazbuddie; Jerry Smith of Clovis, N.M.; three sisters, Faye Lamcke of Liberal, Kansas; Joy Runyon of Earth; Kay Anne Handley of Lubbock and five grandchildren.

The family suggests memorials to First Baptist Church in Lazbuddie or the Ronald McDonald House, 1212 Indiana Ave., Lubbock.

Patients In Muleshoe Area Medical Center

AUGUST 20

John Soto, Margie Monreal, Guadalupe Garcia, A. C. Bryant, Rosemary Pool, Callie Dyck, Jewel Bruton, Erika Unruh, Darla Stagner, Glenna Roberts, Edith Temple, Audrey Langfitt, Jean Cole

AUGUST 21

Otilie Wisian, Margie Monreal, Guadalupe Garcia, Richard Rodriguez, Rosemary Pool, Martin Felan, Jewel Bruton, Glenna Roberts, Edith Temple, Audrey Langfitt, Jean Cole

Otilie Wisian, Margie Monreal, Guadalupe Garcia, Richard Rodriguez, Rosemary Pool, Martin Felan, Jewel Bruton, Glenna Roberts, Edith Temple, Audrey Langfitt, Jean Cole

Sudan News
by Ann Gaston

Mr. and Mrs. Glen Cardwell were in Lubbock Sunday afternoon to welcome their granddaughters, Christa and Danniele Nettles, home from spending the summer in Hawaii.

Attending the State 4-H Horse show in Abilene last week were Mr. and Mrs. Mike Morris, Kyla and Kody; Mr. and Mrs. Norman Humphreys, Mrs. Ruth Duncan, and Mrs. Sue Cardwell. Also joining them there were Mr. and Mrs. Mart Davison and children. Kyla participated in the show. She is also participating in the High Plains Association Horse Show this week in Lovington.

Bonita West is a patient at St. Mary's Hospital in Lubbock. She was transferred Monday from the Littlefield Hospital.

Marvin Greathouse is also a patient at St. Mary's Hospital.



We carry Red Wing Shoes in 125 different sizes and widths to make sure you "feel fit" and feel comfortable all day long. Stop in soon.

Fair Store
120 Main
272-3500
RED WING SHOES
Made in U.S.A.

Courthouse News

MARRIAGE LICENSES

Steve Ciseros-Earth to Eva Marrufo-Earth.
Brad Kenton Harmon-Muleshoe to Rebecca Kay Jones-Muleshoe
John L. Looney, III-Tyler to Kimberly J. Giammaria-Burbank, Calif.
Carey Brent Stancell-Muleshoe to Pentroilla Kathran Grantham-Muleshoe
Kevin Lee Craig-Portales, N.M. to Barbara Sue Opal Buchanan-Portales, N.M.
Norman Troy Perez-Burlington, KS. to Angelia Lynn Combs-Burlington, KS.

WARRANTY DEEDS

I.W.O. Timms to Patti Robinson-all of Lot (1) of Block No. (5) of Lenau Subdivision to the City of Muleshoe, Bailey County, Texas.
Maxine Crawford to W. T. Simpson and wife, Sammie Simpson-all of the South 200 acres of the East Half of Section 23, Block C, Melvin, Blum and Blum Survey, Bailey County, Texas.
J.D.R. Cattle, Inc. to Gary Ramage-a tract of land out of Tract No. (3), John De Pauw Subdivision of part of Sections

(38), (39), (54), (55), Block Y, W.D. and F.W. Johnson Subdivision (2) in Bailey County, Texas.
C.R. Jasper and wife, Esther Jasper to Charles Franklin Lorange-Lots (78), (80), (82), Block (7), Applie Street to the Town of Progress, Bailey County, Texas.
First Savings Bank to Bailey County, Texas-all of Lot (14), in Block (11) to the original Town of Muleshoe, Bailey County, Texas.

COUNTY COURT

Earl William Fry-Possession of Marijuana; \$500 fine
John Davis-Possession of Marijuana; \$250 fine
Elizar Ybarra-Motion to Dismiss
Raymond Bachicha-Motion to Dismiss
Elvira and Manuel Flores-Mo-

tion to Dismiss
Ruben Reyna-Motion to Dismiss
Bolivar Coleman Andrews, III-Possession of Marijuana; \$250 fine
Andrea Cardona-Theft; \$100 fine
Vernoica Arias Davila-Theft; \$100 fine
Melissa Martinez Garcia-Theft; \$100 fine
CIVIL MINUTES

Simmacher Ag, Inc. VS. H.E. McCraw-Order to Dismiss
Margaret Burris and Horace Burris-DV

Optimist
An optimist is a fellow who expects a candy bar to be the size of the wrapper.
-Independent, Reno.

Cash Rewards Up To \$1,000 For Information!
Call **Bailey County Crime Line 272-HELP**

HEALTH INSURANCE CALL Mark Morton 109 S. 1st Muleshoe 272-7519

Immaculate Conception Catholic Church

Father Patrick Maher Northeast of City

First Baptist Church

220 West Ave. E. Pastor: Stacey Conner

Emmanuel Baptist Church

Iglesia Bautista Emmanuel 107 East Third Isaias Cardenas, Pastor

Trinity Baptist Church

314 E. Ave. B. Rev. Dale Berry

Circle Back Baptist Church

Intersection FM 3397 & FM 298 Rev. Jessie Shaver 946-3676

Calvary Baptist Church

1733 W. Ave. C. Rev. Rick Michael

Progress Baptist Church

Progress, Texas

Richland Hills Baptist Church

17th and West Ave. D. Rev. Gerald Gladden

St. Matthews Baptist Church

Corner of West Boston & West Birch M.S. Brown, Pastor

Progress Second Baptist Church

1st and 3rd Sunday Rev. Arthur Hayes

Primitive Baptist Church

621 South First Elder Cleveland Bass, Pastor

1st Baptist Church

Lazbuddie, Tx. Gary Wilcox, Pastor 965-2126

Cures All

To a child a band-aid is the quickest cure, and will heal and protect any wound. This is a wonderful trust . . . how wonderful it would be if we would place the same trust in the Lord. "Ye that fear the Lord, trust in the Lord: he is their help and their shield." Confidence and faith grows greater with practice. Attend church regularly, study God's word and . . . "they that know thy name will put their trust in thee: for thou, Lord, hast not forsaken them that seek thee."

The Church is God's appointed agency in this world for spreading the knowledge of His love for man and of His demand for man to respond to that love by loving his neighbor. Without this grounding in the love of God, no government or society or way of life will long persevere and the freedoms which we hold so dear will inevitably perish. Therefore, even from a selfish point of view, one should support the Church for the sake of the welfare of himself and his family. Beyond that, however, every person should uphold and participate in the Church because it tells the truth about man's life, death and destiny; the truth which alone will set him free to live as a child of God.

© Coleman Adv. Dallas, Texas



The Christian Center
Morton Hwy 272-5992

St. John Lutheran
Sunday School and Bible Classes 9:30 a.m. Church Services 10:30 a.m. Rev. Mac Bearss, Pastor

Jehovah Witness
Friona Hwy Jack Tiffin, Minister Warren Meeks, Minister

Lazbuddie Methodist Church
965-2121 Doug Chapman, Pastor

New Covenant Church
Plainview Hwy Sunday 10:00 a.m. Wednesday 7:00 p.m. Jimmy Lowe, Pastor

Templo Calvario
507 South Main Sunday 10:00 a.m. Sunday Evening 7:00 p.m. Evangelistic Services J.L. Soto, Pastor
New Vision Church of the Nazarene
814 W. Ave. C. 272-3622 Pastor, David R. McIntire

Attend The Church Of Your Choice!

Western Drug 114 Main 272-3106	Serv-All Thriftway 401 W. Amer. Blvd. 272-4585	American Valley, Inc. W. Hwy 84 272-4266	Dairy Queen 1204 W. Amer. Blvd. 272-3412
Richland Hills Texaco 1914 W. Amer. Blvd. 272-4875	Combination Motor & Salvage 272-4458	Muleshoe Trade Center 272-4906	Viola's Restaurant 2002 W. Amer. Blvd. 272-3838
Bob Stovall Printing 221 E. Ave. B. 272-3373	W.T. Services, Inc. 319 E. Amer. Blvd. 272-4888	Bratcher Motor Supply 107 E. Ave. B. 272-4288	Bobo Insurance 108 E. Ave. C.
Irrigation Pumps & Power West Hwy 84 272-4483	Wes-Tex Feed Yards, Inc. 272-7555	Bailey County Farm Bureau 1612 W. Amer. Blvd. 272-4567	5-Area Telephone Cooperative, Inc. 302 Uvalde 272-5533

CLASSIFIEDS 272-4536

CLASSIFIED RATES

15 Words & Under
Minimum Charge \$2.30
Thereafter \$2.00

16 Words & Over
1st Insertion 15 cents per word
2nd Insertion 13 cents per word

CLASSIFIED DISPLAY RATES
\$1.75 Per Column Inch

DEADLINES
12 noon Tues.
12 noon Friday
For Sunday Paper

To receive the reduce rate after the first insertion ad must run continuously.

We reserve the right to classify, revise, or reject any ad. We are not responsible for any error after ad has run once.

1. Personals

CONCERNED About Someone's Drinking? HELP IS AVAILABLE through Al-Anon
Call 272-2350 or 965-2870 or come to visit Tuesday and Thursday nights, 8:00 p.m. & through AA call 965-2870 or come visit Tuesday nights, 8:00 at 620 W. 2nd, Muleshoe.

BIRD DOG PUPPIES TO GIVE AWAY TO A GOOD HOME.

272-3540

FREE Terrier Puppy. Has been spayed and has all her shots. Very playful. 272-5125. C1-34s-2tc

3. Help Wanted

NEEDED
Assistant Manager
40-50 hrs. weekly.
Neat in appearance. Must be mature and responsible. Good personality. Apply in person to Stacy Davis at Pizza Hut in Muleshoe.
P3-34t-2tc

4. Houses For Rent

FOR RENT: 3 bedroom, 1 bath house. Call 272-4011. H8-33t-2tc

HOUSE FOR RENT
618 W. 5th, Call 272-446-3 Bdrm., 2 Bath, Dishwasher, Electric or Gas outlet for stove, Gas Central Heating, Refrig. Air Conditioning. Fenced back yard.
D4-34s-4tc

FOR RENT
Remodeled 3 bdrm., 2 bath with fireplace home. (505) 763-5771 or (806) 272-3767.
B4-34t-2tc

ATTENTION!

Would the party who borrowed the burner and large frying pot from *Bobby Redwine* please return them.
Thankyou

11. For Sale Or Trade

FOR SALE: Overhead camper for pickup-Ref., stove, sink, full bed.
Call 946-3417
K11-31s-tfc (S)

FOR SALE: Very clean, 1981, 32 foot, Dodge Cruise-Air Motorhome. 33,000 miles, \$17,000.00
Call Eva Nell Stovall-272-3373
S11-29s-tfc

15. Misc.

Build your own recession-proof business with one of America's fastest growing companies. No risk, no investment, just work, with excellent income, and unlimited opportunity. Send Name, Address, and Phone number to:
JK, POB 85
Portales, NM 88130
15-33t-5tp

FOR RENT: Large Self Storage rooms with 24 hour a day access. Call J&J Self Storage at 272-4307.
S15-28s-tfc

FILLING SCHEDULE for Fall Piano Lessons. Beginner thru Advanced. Ann Johnson 272-5746
J15-31s-tfc

ROUND-UP APPLICATION
Pipe-wick mounted on high-boy, 30 in. or 40 in. rows. Cotton, milo, soybeans and Vol. corn. Call:
Roy O'Brian
265-3247

STORAGE!
Rooms Available For Storage \$25.00-\$30.00 Per Month
Ted Barnhill
272-4903

8. Real Estate

FARMS & RANCHES FOR SALE
PARMER COUNTY
Choice 567 acres, four good 8 inch wells, 12 power sprinkler, balance U.G. pipe. Nice help house, good allotment, owner financing.
FENCE TO FENCE GRASS (and all headed out) 9 1/2 sections Northern Panhandle. Well watered by mills, sub, springs, and dirt tanks. All weather road located in super good country. Financing considered.
Scott Land Company
Ben G. Scott
Dimmitt, Tx. 79027
806-647-4375
Day or Night
S8-31s-tfc (S)

18. Legals

NOTICE OF PUBLIC HEARING

The Bailey County Commissioners Court will hold a Public Hearing for the purpose of reapportioning County Commissioners Precincts, Justice of the Peace Precincts, Constable Precincts, and Voter Tabulation Districts (Election Precincts). The objectives of the reapportionment are as follows:

1. Total maximum deviation should be no more than 10%.
 2. Avoid dilution of the hispanic voting strength. Specifically, the percentage of hispanic voters in Commissioner Precinct #4 should be maintained at no less than 65%.
 3. Change the precinct boundaries as little as possible to avoid confusion as to boundary lines.
- The hearing will be held at the Bailey County Courthouse on Friday, August 30, 1991, at 5:30 p.m. All persons are invited to come and participate.
Marilyn Cox
County Judge
C18-34s-1tc

Balance your life as you would balance your bank account.

Why is it that the people who should listen always talk?

8. Real Estate

18. Legals

PUBLIC NOTICE BUDGET HEARING

The President of the County Education District #5, pursuant to Section 23.45(a) of the Texas Education Code and Article 29e, V.A.T.S., has called a meeting of the Board for the purpose of adopting a budget for the 1991-92 fiscal year.

The meeting shall be held on the 27th day of August, 1991, at 7:30 p.m. in the board room in Morton, Texas.
Any taxpayer of the districts may be present and participate in the hearing under methods prescribed by the participating districts board policies.
M18-34s-1tc

18. Legals

The Muleshoe Board of Trustees will meet in the Administrators Office building at 6:30 p.m. Tuesday, September 3, 1991, for the purpose of conducting a public hearing on the 1991-92 proposed school budget.
M18-34s-1tc

Final date for the Kiwanis Banquet are being set and everyone will be notified. Our sweetheart Marsha Wilson is off to school to see if she can get some smart. Good luck, Marsha. We love you.
Brad

8. Real Estate



Kiwanians, two honorary kiwanians and a guest met August 23 for breakfast at the Dairy Queen. Our honorary Kiwanians were Jon Keith Turner and Chad Johnson. Our guest this morning were Cody Turner and John Stephens.

President Glen Morris called the meeting to order. R.A. Bradley led the club in the pledge to the Flag and Jim Lutz gave the invocation. Randy Lewis had been looking for a friend-Randy gave the friendship coin to Jon Keith Turner. Jon Keith, good luck in finding a friend.

John Stephens, a member of the MAC was our program. John told about the upcoming Fair. The Fair will be 13th and 14th. They will set up on Sept. 12th. There will be 10x10 booths at a cost of \$50.00 each. At the present time there are 22 booths-this year there will be Elsie the Cow, the Robot Cop and they will be entertainment every hour on the hour. The MAC committee will be giving away a Muleshoe Bench. Tickets will be \$2.00 per chance or 3 for \$5.00. The proceeds from this will be given to the Highway Patrol and County Officers to help purchase video cameras for their cars.

Final date for the Kiwanis Banquet are being set and everyone will be notified. Our sweetheart Marsha Wilson is off to school to see if she can get some smart. Good luck, Marsha. We love you.
Brad

8. Real Estate

Bingham & Nieman Realty

116 E. Ave. C. George Nieman, Broker 272-5285 272-5286

- LENAAU ADD.
3-2-1 + 2CP HOME, storm windows & doors, built-ins, fans, MUCH MORE!!!!
- 2-2-2 Brick, Cent., A&H, built-ins, FP, splkr. sys., fenced yd. Price Reduced!!!!
- 3-1 Home, Corner lot, wall furn., fenced yd. \$20's
- Nice 4-2-2 Carport Home, Cent. A&H, built-ins, FP, Cent. Vac., Office, Sewing area, fenced yard. \$30's!!!!
- 2-2-2 BRICK, Cent. nice carpets, spacious rds of closet & storage!
- JUST LISTED 3-2-1 Brick, Cent. heat, built-ins, ceiling fans, fenced yd. \$29,900 'as is'!!!!
- JUST LISTED 3-1/2-1 Home, Cent. heat, evap. air, nice carpets, cov. patio, fenced yd. st. bldg.!!!!
- JUST LISTED 3-2-1 CP Home, Cent. heat, evap. air, built-ins, fenced yd., st. bldg. VERY NICE!!!!
- VERY NICE 3-2-2 Brick, 3,000+ sq. ft. of lv. area incl. nice finished basement, built-ins, geothermal A&H energy-eff., loads of closet & storage, on 7.86 acres, fence, stock tank, sideroll, & many more amenities, close to town.
- 3-2-3 Carport Home on 11 ac. edge of town, Cent. A&H, built-ins, cellar, barns & corral. MAKE OFFER
- NICE 3-2-1 Home on 1 acre close to town, Cent. Heat, Evap. Air, Nice Carpets, Remodeled. \$30's!!!!
- NICE 3-2-2 Brick on 1 ac. tract on hwy. close to town, Cent. A&H, built-ins, fenced yd., & more \$70's!! Maker Offer
- RESTAURANT BLDG., LAND., & Equipment-A GOOD BUY!!!!
- GYMNASIUMS STUDIO-BLDG., & Equipment-PRICED TO SELL!!!!
- COMMERCIAL TRACT 175'x100' (HWY 70 & 84, RR spur acces, approx. 1200 sq. ft. bldg. PRICED TO SELL!!!!
- 24 ac. W. Hwy 84 8' well, 3 homes, 14 mobile hook ups, & also has veg. & fruit stand!!!!!!

Help Your Heart

American Heart Association

No Butts About It: You Shouldn't Smoke

Getting rid of an old flame isn't easy, but cigarette smoking is a habit worth snuffing out. Let's look at the facts:

- About 435,000 Americans die yearly from disorders directly related to smoking—such as heart disease, emphysema and lung cancer.
- Pack-a-day smokers are more than twice as likely to have a heart attack as non-smokers. The earlier you start smoking, the greater your risk of heart attack.

puff. Nicotine can increase your blood pressure, heart rate, and the flow of blood from your heart. It also causes your arteries to narrow and harden. Carbon monoxide reduces the amount of oxygen the blood can carry. This, combined with the effects produced by nicotine, causes a shortage of oxygen in your blood.

Cigarette smoking increases the development of atherosclerosis, which occurs when fatty deposits, cholesterol and other substances build up on the inner walls of the arteries. This narrows and hardens the blood vessels. Cigarette smoking also causes the platelets in your blood to stick together and clot sooner. Clogged arteries are a major cause of heart attack and stroke. If you already have high blood cholesterol and high blood pressure, smoking will increase your risk of heart attack even more.

But there's good news. No matter how long or how much you've smoked, your risk of heart disease rapidly drops when you quit. Ten years after ending a pack-a-day habit, your risk of death from heart disease is almost the same as for people who have never smoked.

Not only that, you'll miss fewer work days because of smoking-related health problems. You'll save time and money spent on the habit. And you'll reduce the risk of heart and lung diseases for others in your family.

In short, some damage from long-term heavy smoking can't be reversed. But the health benefits are both instant and cumulative when you stop.

So put out the flames before smoking puts you out. Contact your doctor or nearest American Heart Association office. They've got information to help you strike up a plan to quit.



• A woman who smokes and uses birth control pills is up to 39 times more likely to have a heart attack than one who does neither. She's up to 22 times more likely to have a stroke than a woman who neither smokes nor uses birth control pills.

Smoking is a health hazard to you and even to non-smokers who are inhaled in sidestream smoke, says the American Heart Association.

Your body responds instantly to the chemicals in the smoke while you

8. Real Estate

FARM FOR SALE
1281 acres, eight irrigation wells, good water, underground lines, 900 acre grain base, home, steel barn, pipe corrals, price reduced, owner finance part. 10 miles north of Hereford. (409)543-5636.
H8-32t-8tc

FOR SALE
Irrigated Farm close to Muleshoe; 159 acres. Valley Circle Sprinkler. Ready to plow for wheat crop. \$325 per acre. Good terms to right person.
946-3484.
C8-34t-8tc

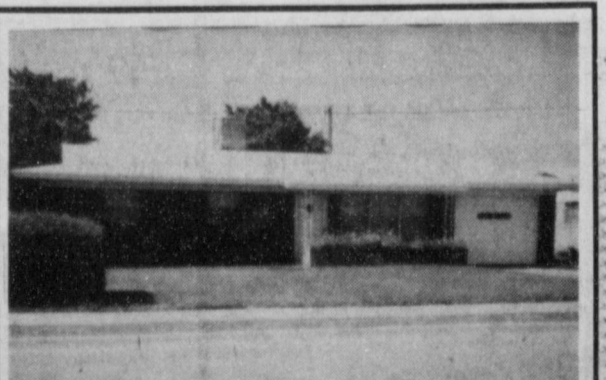
NO DOWN PAYMENTS
New homes. 2 new loan programs. Gold Leaf Homes. 1-800-989-1445.
G8-34s-11tc

8. Real Estate

HOMES FOR SALE BY GOVERNMENT AGENCIES. \$1.00 (U-repair) or \$1600 (move-in). 1-800-564-6500 Ext. HA 12221 for immediate response.
8-33t-5tp

NEW LISTING
For Sale--3,547 sq. ft. remodeled and renovated brick residence featuring spa and sunroom, located at 622 West 7th Street. Call Mike Caldwell at 272-7535 or 272-9146 for information.
C8-32s-tfc

HCR REAL ESTATE
For Sale: 3 bdr., 1 Bath, Double Car Garage.
Thursie Reid
272-5381



Brick, 2 Bedroom, 1 Bath, 1 Car garage. Central heat, Evaporative cooler, Stove and Refrigerator. Fenced back yard, Storage building. Will sell for the F.H.A. appraisal price. Can buy with furniture or without.

Brick-3 Bedroom, 1 1/2 Bath, Kitchen, Dining Area, Living Room, Central Heat and Refrigerated Air. 1 Car Garage.

Smallwood Real Estate
232 Main 272-1838



WIN A FABULOUS TRIP FOR FOUR TO Disney World

Just Register to win at any participating Thriftway Store. There's no purchase necessary. Your trip includes airfare, hotel accommodations, tickets to Disney World Parks and spending money. Just look for the special Coca-Cola display in Thriftway for all the rules and details.

REGISTER TO WIN \$100 Shopping Spree FROM THRIFTWAY

Each participating THRIFTWAY Store will be giving away Four \$100 Shopping Certificates. Drawings will be held in each Thriftway the weeks of August 18, August 25, September 1 and September 8, 1991.

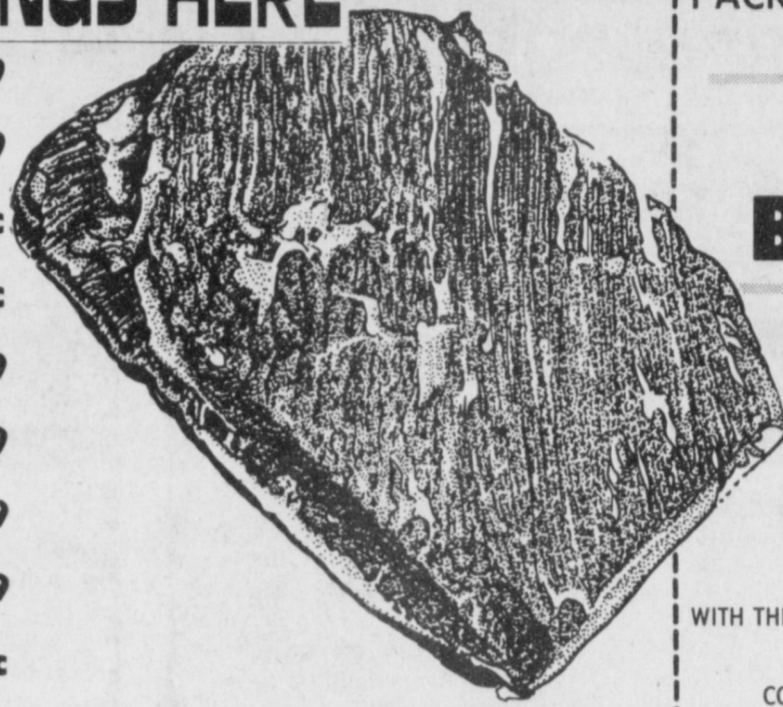
HICKORY SMOKED SLICED SLAB **WRIGHT'S BACON** LB. **\$1.29**

FRESH FRYER 10 LB. BAG **LEG QUARTERS** LB. **39¢**

SMALL PKG. LB. **49¢**

GREATER MEAT SAVINGS HERE

MARKET TRIMMED BEEF BRISKETS LB. \$1.89
MERINADE AND CHARCOAL BONELESS CHUCK STEAK LB. \$1.69
FAMILY PAK FRESH FRYER DRUMSTICKS LB. 69¢
FAMILY PAK FRESH FRYER THIGHS LB. 59¢
FRESH PORK MEDIUM SIZE SPARE RIBS LB. \$1.69
WILSON'S REG/ POL/ BF/ CHS SMOKED SAUSAGE LB. \$2.29
HEAVY GRAIN FED BEEF BONELESS ARM CHARCOAL STEAK LB. \$1.79
FAMILY PAK GUARANTEED 81% LEAN GROUND BEEF LB. \$1.69
CORN KING MEAT FRANKS 12 OZ. PKG. 79¢



PACKER TRIM IN THE BAG 9-12 LB. AVG.

BEEF BRISKETS

LB. **99¢**

WITH THIS COUPON

WITH THIS COUPON FIRST BRISKET AT 99¢ LB. THEREAFTER \$1.19 EACH ONE COUPON PER FAMILY COUPON EXPIRES SEPT. 4, 1991



TENDERCRUST HAMBURGER/

CONEY BUNS

8 CT. PKGS.

3 FOR \$1



VAN CAMP'S 16 OZ. PORK & BEANS/ REG/ W/ JALAPENOS

RANCH STYLE BEANS

15 OZ. CANS

3 FOR \$1



KRAFT REG/ THICK 'N SPICY

BARBECUE SAUCE

18 OZ. BTL.

89¢



LAY'S® ALL TYPES

POTATO CHIPS

REG. \$1.59 SIZE BAG

79¢



ALL TYPES

COCA-COLA

6 PK., 12 OZ. CANS

99¢

WITH THIS COUPON WITH THIS COUPON FIRST 4-6 PKGS. AT 99¢ THEREAFTER \$1.69 6 PACK ONE COUPON PER FAMILY COUPON EXPIRES SEPT. 4, 1991



4 ROLL PKG. ASSTD. BATHROOM TISSUE

ANGEL SOFT

89¢



JUMBO ROLL PAPER

BOUNTY TOWELS

79¢



32 OZ. BTL. DEL MONTE

SQUEEZE KETCHUP

99¢



JIF CREAMY/ CRUNCHY PEANUT BUTTER 40 OZ. JAR **\$4.79**



ASSORTED CANNISTER SNACKS **FRITO LAY** 7 1/2-10 OZ. CANN. **\$1.49**

SOLO 9" **PARTY PLATES** 15 CT. PKG. **\$1.29**

SOLO 16 OZ. **PARTY CUPS** 20 CT. PKG. **99¢**



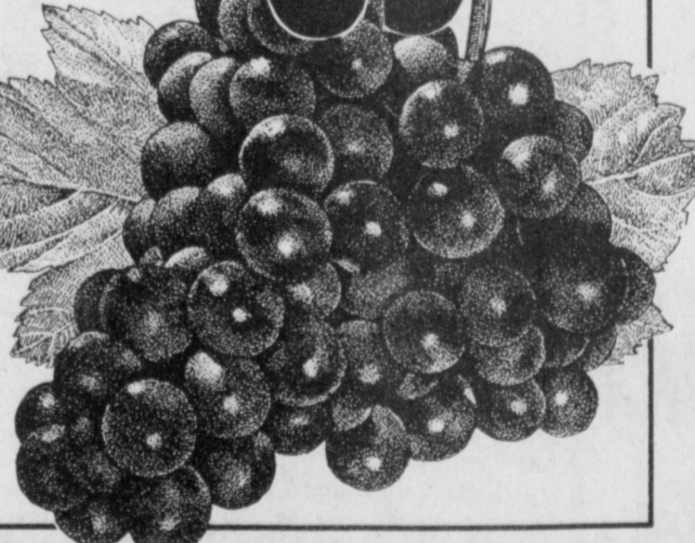
VLASIC HAMBURGER **DILL CHIPS** 16 OZ. JAR **99¢**

U.S. NO. 1 NEW CROP BAKING **POTATOES** 4 LBS. **\$1**

SWEET & JUICY CALIFORNIA NECTARINES LB. 69¢
FRESH RED RIPE WATERMELONS EA. \$1.89
FRESH & TENDER BROCCOLI LB. 69¢
SNO WHITE CAULIFLOWER EA. 89¢
CALIFORNIA PEACHES LB. 49¢
GREEN OR RED LEAF LETTUCE EA. 49¢

GRAPES

RED SEEDLESS LB. **69¢**



PURINA **HI-PRO DOG FOOD** 20 LB. BAG **\$6.99**

ASSORTED FABRIC SOFTENER **BOUNCE SHEETS** 36-40 CT. BOX **\$2.29**



LAUNDRY DETERGENT **LIQUID TIDE** 64 OZ. BTL. **\$3.99**

ASSORTED LAUNDRY DETERGENT **ULTRA TIDE** 42-46 OZ. BOX **\$2.99**



ALL FABRIC **BIZ BLEACH** 30 OZ. BOX **\$2.79**

LITE/ REGULAR/ HOT OR MILD MEXICAN **VELVEETA** 16 OZ. BOX **\$2.49**

KRAFT STACK PAK AMERICAN **SINGLES** 16 OZ. PKG. **\$2.99**

RAVE ASSORTED **HAIR SPRAY** 7 OZ. SIZE **99¢**

ADVANCED THERAPY/ ADVANCED THERAPY X-DRY **JERGENS LOTION** 10 OZ. BTL. **\$2.49**

TABLETS/ CAPLETS **BUFFERIN** 100 CT. BTL. **\$4.99**

RAVE ASSTD. SHAMPOO/ **CONDITIONER** 15 OZ. BTL. **99¢**

COPPERTONE ASSTD. **SUNTAN LOTION** 4 OZ. BTL. **\$4.99**

BLUE BUNNY ASSTD. **ICE CREAM** 1/2 GAL. SQ. CTN. **\$1.69**

ASSTD. SUNNY DELIGHT/ SUN-SIP **FRUIT DRINK** 12 OZ. CANS **6 FOR \$1.99**

SHURFINE ASSTD. **TWIN POPS** 6 CT. BOXES **2 \$1**

KRUSTEAZ ASSTD. FRENCH TOAST/ **PANCAKES** 12-19 OZ. BOX **\$1.39**

SHURFINE **FUDGE BARS** 6 CT. BOX **99¢**

CHIC. BREAD FILLETS/ STRIPS/ NUGGETS/ PATTIES **PILGRIM'S PRIDE** 9-10 OZ. BOX **\$1.99**

SHURFINE **CHARCOAL BRIQUETS** 10 LB. BAG **\$1.69**

thriftway

401 W. Amer. Blvd. 272-4585

AT AFFILIATED FOODS INC. MEMBER STORE

WE ACCEPT FOOD STAMPS... WE RESERVE THE RIGHT TO LIMIT

PRICES EFFECTIVE AUGUST 25-31, 1991

SQUEEZE YELLOW **FRENCH'S MUSTARD** 16 OZ. BTL. **99¢**