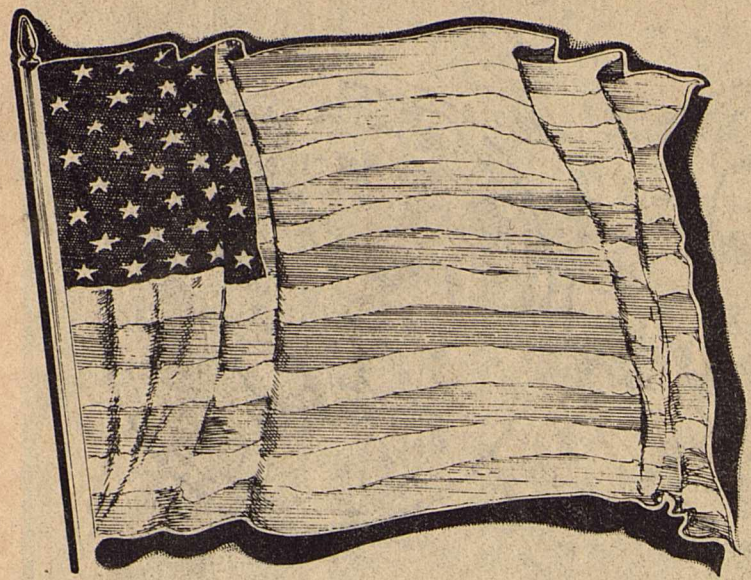


# Independence Day



## Astros Win Senior League

The Astros of the Senior League of the Sonora Little League won their Division

with a record of 10 wins and 2 losses. Congratulations Astros!

## The Weather

Compiled By Pat Brown

Date	R	HI	Lo
June 26		94	68
June 27		94	65
June 28		96	63
June 29		99	65
June 30		98	66
July 1		97	68
July 2		97	69

# The Devil's River News

Eighty-Eighth Year, Forty-Fifth Week

Wednesday, July 4, 1979 The Devil's River News Sonora, Texas

25 cents

## Sonora Senior Division Little League Announces All-Stars

This is the first season for Sonora to compete in the Senior Division of the Little League program. This program is designed to help the boys coming out of Major Little League to continue their interest and skills in baseball.

The Senior Little League is made up of boys ages 13, 14, and 15. The Senior Little League can enter two teams in the post season tournament. One team is composed of all thirteen year old players and the other team will be composed of 14 and 15 year old players.

The following players and manager were named to the 13 year old All-Star team: Frank Gamboa, manager, Gilbert Martinez, Scott Miller, Jeff Brittain, Ruben Garza, Frankie Gonzales, Ricky Mesa, Mike Poloczek, Edward Mata, Drew

Wallace, Phillip Vargas, Jimmy Vaughn, Marney Sorenson, Jessie Guerra, Joe Mike Noriega. The first alternate is Louis Oliver and second alternate is Ty Fincher.

The following players and manager were named to the 14-15 year old All-Star team: Chip Savell, manager, John Blankenship, Scott Savell, Chris Reynolds, Randy Mounce, Allen Stewart, Eddie Vallejo, Tino Martinez, Mark Doan, Jimmy Gonzales, DeVoc Smith, Philip Kemp, Albert Chavez, Alex Noriega, Fernando Ramos. First alternate is George Sanchez and second alternate is Terry Vickers.

The thirteen year old team will enter All-Star play Saturday, July 14, at 6 p.m. against San Angelo West, at Mathis Airport Complex. They will come back home Wednesday July 18 and play San

Angelo West again at 6 p.m. This is a double elimination tournament. If there is a third game, Sonora will go back to Mathis Field on Saturday, July 21, at 6 p.m. The winner will advance to regional play.

The 14-15 year old All-Star team will enter All-Star competition July 16, at 4 p.m. at the Mathis Field complex. This is a four team double elimination tournament. The four teams are Sonora, Ozona, San Angelo West, and San Angelo East.

President of the Sonora Little League, Harold Miller, had this to say, "We congratulate each player and manager who will be representing Sonora in this, our first year of Senior Little League play. Good Luck on your tournament play."



The Whiz from Sonora took 4th place in the First Sonora Men's Softball 3-2 Tournament. See related story on page 1B.

## Tax Office Election Set For August 11th

The election to allow separation of the Sutton County Tax Office and the Sheriff's Office has been rescheduled for August 11, 1979.

Absentee voting will start July 23 and run through August 7th. Thursday, July 12, is the last day to register to vote for this election. Voters have to be registered 30 days before the election in which they wish to vote.

County Clerk Turner announced the location of voting boxes; Precinct 1 at Sutton County 4-H

Barn, Precinct 2 at Sonora Wool and Mohair Co., Precinct 3 - all boxes at the Court House, Precinct 4 at the Sonora Fire Station. Polling places will be open from 7 a.m. to 7 p.m.

This election to separate the Tax Assessor's office and the Sheriff's Office, has been brought about by changes in regulations that require the Tax officer to be certified by the State Board.

The job of Tax officer is vastly different from that of the Sheriff.

Primarily the Sheriff deals with people while the Tax Officer deals with figures and paper work. The more complex the state makes our tax laws the more the Tax Officer will have to specialize in the tax field.

The Sheriff will have to take time from his duties as Sheriff to spend more and more time keeping up with tax office work.

Voters should take the time to vote on this matter, August 11 is the Saturday to vote.

## City Council Hears Public's Views On Animal Ordinance

The Sonora City Council held a special meeting Thursday, June 28, for the purpose of getting input from the people of Sonora as to the need for, and what an animal ordinance should cover. The ordinance being discussed is in regard to large animals such as sheep, goats, calves and horses. Those people in attendance were primarily concerned with 4-H

project animals. After a discussion of several alternatives, such as the use of community pens outside of town, or on the 4-H grounds, the most viable solution seem to be requiring permits to keep animals inside the city limits.

About 30 people were present and participated in the discussion with Council members. However, most of those present were for

retaining the right to keep such animals inside the city limits. There were very few of those people present opposed to the idea.

The Council will continue the search for an answer to the problem at a later date. No determinations were made at this meeting as the purpose of the meeting was to give the public a chance to air their view with the Council.

## City Hires Freese and Nichols Inc. Consulting Firm

Jim Dover, Sonora City Manager, recently announced the hiring of Freese and Nichols, Inc. Consulting Engineers to handle the city's Step 1 work on the sewer waste

treatment plant. "We are very pleased to have such a firm as Freese and Nichols working on our sewer plant," commented Jim Dover.

Freese and Nichols, Inc. offers a full range of planning and

engineering services, fulfilling the needs of cities, regions, and industry in connection with their water systems, sewer systems, etc.

The firm has specialized in water and wastewater planning, facilities design and construction for 85 years. The firm is staffed by 105 persons in Fort Worth and 16 in Austin. The firm believes quality of service should always take precedent over firm size or number

of clients.

The Austin office staff is made up of people with in-depth experience in municipal operation and expertise in water planning and design. This office's location, its up to date experience in PL 92-500 products and its relatively small number of clients offers those clients an ideal combination of knowledge, experience and personal attention in water quality management work.

## Little Leaguers Swim Party Thursday Night

Harold Miller, President of the Little League announces Thursday, July 5, 1979, the Little League will sponsor a swimming party to honor

all major Little League and Senior Little League players. If you have not turned in your uniform and do not need it for All-Star play, please

turn it in before the party. The time will be from 7 p.m. till 8 p.m. with hot dogs and drinks served after the swimming is completed.

## City Sales Tax Receipts For June Announced

Jim Dover, Sonora City Manager, announced the Sales Tax receipts received this week by the city. \$31,366.11 was received for the

June period. This figure brings the year to date figures to \$125,379.10 of the estimated \$170,000.00 in this year's budget.

The Sales Tax receipts are slightly ahead of last year's figures. The figures indicate solid growth in the economy of Sonora.

## Improper Storage Of Gasoline Dangerous

With Texas motorists becoming increasingly concerned over short supplies of gasoline and strict allocation plans in the state's major metropolitan areas, a dangerous problem could become critical-the improper storage of gasoline.

Doug Williams of Dallas, chairman of the Texas Automobile Insurance Service Office, suggests the only safe place to store gasoline may be in your car or truck's fuel tank or in an approved gasoline storage container in a well-ventilated area. A gasoline can stored in the trunk of a car is like carrying a bomb that could go off at any minute.

Technicians have compared the destructive force of a two-gallon can of gasoline to that of several sticks of dynamite. Williams said, "A spark from starting the engine, the flame of lighting a cigarette, or the impact of a collision could blow the vehicle apart, causing death or injury."

Unfortunately, the TAIISO chairman says, the fear of running out of gas may put a lot of rank amateurs into the gas storage game.

"Many of those who handle gasoline for a living are quick to note that a container with a small amount of fuel can be more dangerous than a full tank," Williams said. "The reason is that a small amount of gasoline in a can creates a highly

explosive gas-air mixture which is more explosive than liquid gasoline itself."

Another problem brought on by the gas crisis, according to TAIISO, is the use of secondary or auxiliary gas tanks, many of which are improperly installed or are not manufactured to industry standards.

Though an auxiliary fuel tank may extend the time between stops at the gas pump, it can also be just as deadly as a can of gasoline in the trunk if improperly installed. Many dealers of auxiliary gas tanks have seemingly sprung up overnight selling poorly constructed or poorly installed merchandise.

Though gasoline storage in cars is a major concern of safety officials, gasoline storage in homes can be as, if not more, dangerous. Houses have been lifted off foundations and set afire by a basement full of gasoline fumes ignited by a water heater or furnace pilot light.

In one California fire, seven members of a family were badly burned when they tried to store fuel in a plastic trash container in a bedroom closet.

Thus, what might look like a convenient way to beat a gasoline shortage on the road or in the home could have tragic side effects if precautions are not taken. Here are a few tips from TAIISO:

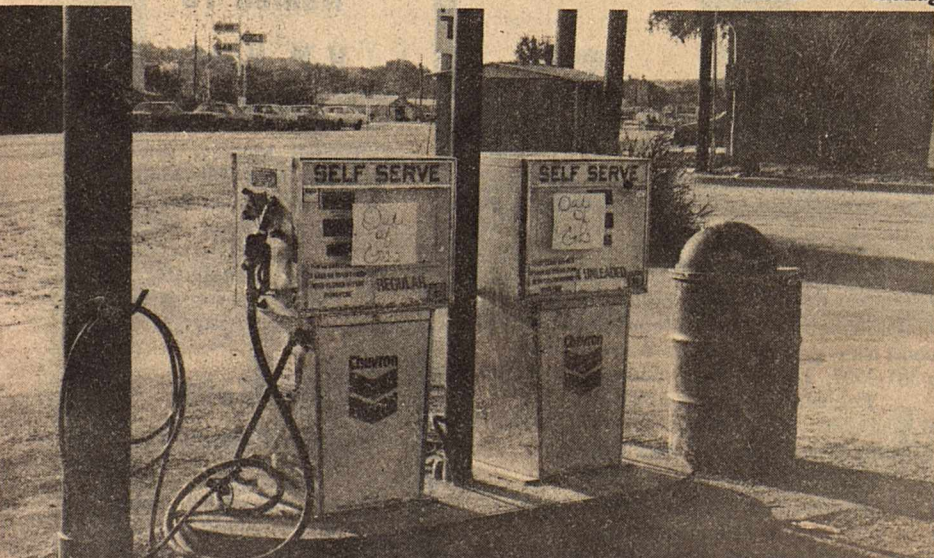
--Keep all gasoline in containers tightly capped if they contain any fuel.

--Once a container is empty and thoroughly ventilated, leave the cap off to allow fumes from the remaining drops of gasoline to evaporate.

--Never put gasoline in anything but a container specifically designed for fuel.

--Keep gasoline where only an adult can get it. The smell of gasoline is often intriguing to children; don't let their curiosity cause them or anyone else harm.

--Stored gasoline must be kept away from heat and flame. Remember that gasoline will expand in volume as temperatures rise and may seep out of even the best container.



Out of Gas! Fortunately for Sonorans we have not seen many of these signs. This one on the pumps at Hurry Up stayed only one day. A survey of local Gas Stations revealed no particular lack of gas in Sonora.



# JUST ARRIVED!



WHEN YOU TRY ON YOUR NEW TIDDIES, YOU'LL

HAVE TO MAKE A FEW ADJUSTMENTS. YOUR TIDDIES HAVE UNIQUELY ADJUSTABLE TUBING STRAPS.

- READ CAREFULLY:
1. DETERMINE WHICH STRAP(S) IS TOO LOOSE.
  2. UNPLUG ONE END OF THE STRAP FROM THE "Y" CONNECTOR.
  3. CUT THE STRAP TO THE DESIRED LENGTH WITH A PAIR OF SCISSORS.
  4. WET THE INSIDE OF THE STRAP AND PLUG BACK ON THE "Y" CONNECTOR PLUG ON ALL THE WAY.
  5. READJUST YOUR TIDDIES EVERY ONCE IN A WHILE TO KEEP THEM SNUG.

REMEMBER: TOO LOOSE TIDDIES WEAR OUT LONG BEFORE THEIR TIME. LET A FRIEND KNOW ABOUT YOUR TIDDIES!

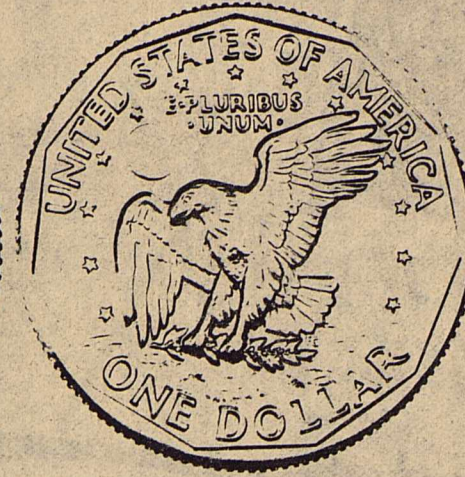
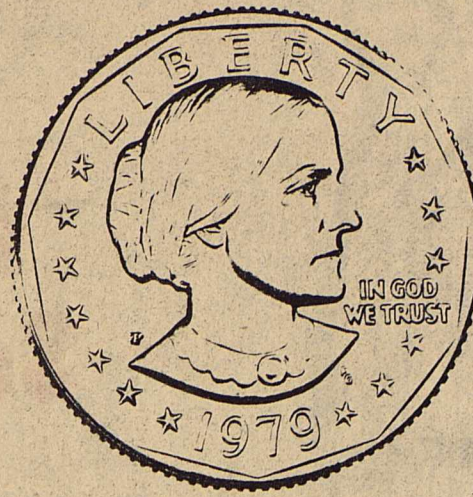
# Hurry-Up

We've Got It All! Hwy 290 West

## New \$1 Coin

Five hundred million of the new Anthony dollars will be available for release on July 2, said Director of the Mint Stella B. Hackel. The new dollar will be distributed by the 37 Federal Reserve Banks to commercial banks, who in turn will distribute them to the business community and to the public. Mrs. Hackel noted that the 500 million coins available for the initial release will provide sufficient coins to the public so that they are readily available. Production and distribution of the coin will continue after release at a rate needed to meet the demand.

"Providing that consumer acceptance meets expectations, the new dollar should generate significant savings," she said. The Treasury Department is already saving 60% of the cost of minting dollar coins when comparing production costs of the large Eisenhower dollar to the Anthony dollar. As the coin displaces the need for the dollar note, the Federal Reserve System could achieve dollar savings as high as \$50 million a year through reduction of printing, processing and destruction costs for dollar bills.



We're Just A Phone Call Away!

You'll feel secure in knowing that we're on hand 24 hours a day! Call anytime for fast and efficient service.

## BRONCO PHARMACY

JOE KIOWSKI, Pharmacist  
116 N.W. Concho Sonora  
PHONE 387-3534  
"Thank You" We Appreciate Your Business

## Loeffler Elected To House Admis. Comm

Congressman Tom Loeffler has been elected to serve on the powerful House Administration Committee, the committee which is "the keeper of the purse" for the House of Representatives.

"I am very pleased to receive this particular committee assignment," Loeffler noted, "because the Committee has such broad jurisdiction over the fiscal affairs of the House, including the employment of committee staff, salaries, and a variety of rules and regulations concerning the conduct of the House."

The new Loeffler assignment, coming after only six months of service by the Freshman Republican, came about through a chain of events which began in early June. At that time, Congressman John Anderson of Illinois, Chairman of the House Republican Conference and third ranking Republican, announced, his candidacy for the Presidency of the United States. He subsequently resigned as Conference Chairman. Congressman Sam Devine

of Ohio was then elected Chairman of the Conference, which prompted him to resign his position on the House Administration Committee. Devine then nominated Loeffler to fill his seat on House Administration, and the nomination was approved unanimously by the Republican Committee on Committees.

## Loeffler Gains Seat On Sub-committee

Congressman Tom Loeffler has gained a seat on the communications Subcommittee of the Interstate and Foreign Commerce Committee. The subcommittee is currently in the process of holding lengthy hearings on legislation which would rewrite the Communications Act of 1949.

"This is a great challenge," Loeffler said. "The Communications Act of 1979 is certainly one of the most sweeping pieces of legislation which will come before this Con-

gress, and it will affect the lives of all Americans." The Communications Subcommittee has jurisdiction over all interstate and foreign communications, including all broadcast, radio, television, cable, wire, telephone, microwave, satellite or other modes of transmittal of information. "If nothing else but television fell under the jurisdiction of this committee," Loeffler noted, "it would still be one of the most important responsibilities I could undertake as a CONGRESSMAN because television programming and content has such a tremendously strong influence on our children as they grow up and form life-long opinions and attitudes which are greatly influenced by thousands of hours of exposure to TV."

The appointment to the subcommittee came about as part of a continuing readjustment of committee assignments necessitated by the announcement by Representative John Anderson of his candidacy for the Presidency, which led to his resignation from the Republican Conference Committee chairmanship with subsequent changes in House Republican leadership roles.

## Connally Comments On Issues

John Connally of Texas recently spoke before the U.S. Conference of Mayors in Pittsburgh, Pa. Here are some excerpts from that speech regarding several issues that are expected to be discussed in next year's Presidential race.

**Revenue Sharing:** "I, as Secretary of the Treasury, had the responsibility for carrying general revenue sharing through a Congress which still today refuses to recognize that the dollars they spend are the peoples' dollars, not federal dollars. ... Let me be clear regarding my continued commitment. I strongly support general revenue sharing and feel that in light of our current urban crisis, we should consider broadening and expanding our revenue

sharing programs." **City Problems:** "Again, what we should do is search for ways to expand, not limit, the powers of cities to perform the services necessary to meet the needs of their citizens."

**Energy Crisis:** "Every government and every society in the free world is dangerously exposed by the conditions presently existing with respect to the supply of petroleum. The lines are stretched taut and thin all around the globe. Should a tanker run aground—or two ships collide—in the narrow and treacherous straits at the entrance to the Persian Gulf, 40 percent of the oil supplies of the West would be shut off. ...

"What we perceive as an energy crisis is, in fact, a political crisis."

Over the whole span since petroleum became our principal source of energy just before midcentury, elements of our national politics have pursued a course destined to produce the tragic harvest which we are now experiencing.

"Not for three years, but more nearly for three decades or longer, our prevailing politics had devoted itself to frustrating, obstructing and preventing the measures necessary to produce the oil and gas, mine and burn the coal and eliminate the costly and unnecessary delays in the construction of our nuclear power plants.

"Domestic politics delayed the pipelines, blocked offshore exploration and drilling, frustrated development of Alaskan oil, brought refinery production to a standstill, made it more difficult to mine and burn coal, unnecessarily prolonged the time required to construct nuclear power plants, insisted on cheap energy, and completely disregarded the enormous vulnerability of being a hostage to the OPEC nations."

"On the issue of energy, we have had in Washington long enough those whose only interest has been 'Politic-Politic-Politic. What these times ahead require is leadership that lives for the objective: Produce-Produce-Produce."

### Mobley Named To V.P. Honor Roll

Darrell Mobley, son of Mr. and Mrs. Bill Mobley of Sonora, made the Vice Presidents Honor Roll at Texas State Technical Institute at Sweetwater for the spring quarter with a grade point average of 3.8.

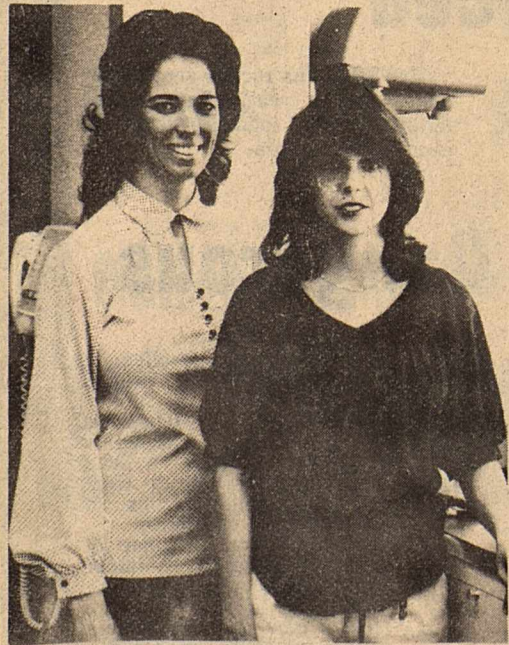
### Cold Water Saves Energy

Save energy by using cold water instead of hot water to operate sink food disposer, advises Nancy Granovsky, a family resource management specialist with the Texas Agricultural Extension Service, The Texas A&M University System.



## DRIVE-UP CONVENIENCE...

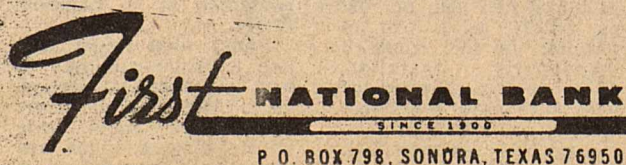
.....Saves your valuable time.. After all, the comfort convenience and efficiency in handling your financial affairs are a major concern at YOUR bank.



### Meet Our Drive-Up Tellers

Liz Gold and Dorothy Cramer are always ready to help you with fast and efficient service at our Drive-Up Windows...

They'll greet you with a smile everytime!



## McMillon's Texaco

corner of Del Rio Hwy & Crockett  
Offering You

- ★ Full service
- ★ Wash
- ★ Oil change
- ★ Lubrication
- ★ Self Service
- ★ Tire repair
- ★ Diesel Fuel
- ★ Brake Jobs
- ★ Tune-Ups



387-2131



The Devil's River News (SECD 155-920)

"Your home town newspaper." Published weekly on Wednesday. Second class postage paid at Sonora, Texas. Phone 387-2507, 220 NE Main, Sonora, Tx. 76950. Publisher.....Gus Allen. General Manager.....John D. (Darrell) Rasberry. Office Manager.....Nan Friend. Production.....Sharon Ellison.

Yearly Subscription rate is \$6 in county, \$8 out of county, and \$10 out of state. Postmaster: Send address change to Devil's River News, 220 NE Main, Sonora, Texas 76950



TEXAS PRESS ASSOCIATION MEMBER 1979

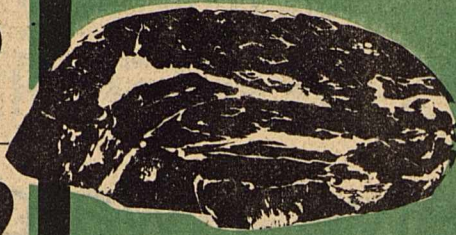


# DOLLAR-STRETCHING

# DISCOUNTS

WE GIVE  WE GIVE  WE GIVE  WE GIVE  WE GIVE 

USDA Heavy Beef	<b>\$1.19</b>
<b>Chuck Roast</b>	Lb
USDA Heavy Beef	<b>\$1.29</b>
<b>7-Bone Roast</b>	Lb
USDA Heavy Beef	<b>\$1.49</b>
<b>Arm Roast</b>	Lb
USDA Heavy Beef	<b>\$1.49</b>
<b>English Roast</b>	Lb
USDA Heavy Beef	<b>\$1.39</b>
<b>Chuck Steak</b>	Lb



**Closed Wed. July 4th**  
**Prices in this Ad.**  
**Effective**  
**Thurs, Fri, & Sat.**  
**July 5, 6, & 7th.**

Cubed USDA Heavy Beef	<b>\$2.39</b>
<b>Chuck Steak</b>	Lb
USDA Heavy Beef	<b>\$1.49</b>
<b>Beef Neck Bone</b>	Lb
USDA Heavy Beef	<b>\$2.09</b>
<b>Ground Chuck</b>	Lb
Dankworth, Sliced	<b>99¢</b>
<b>Slab Bacon</b>	Lb
Price's Pimiento	<b>\$1.59</b>
<b>Cheese Spread</b>	14 oz Tub

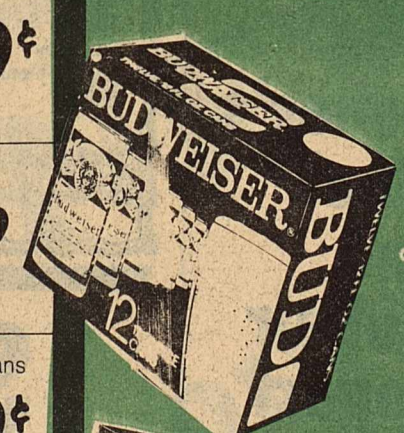
Hunt's 8 oz Cans	<b>6 \$1</b>
<b>Tomato Sauce</b>	For
Hunt's Slices or Halves No. 2 1/2 Cans	<b>2 \$1</b>
<b>Peaches</b>	For
Duncan Hines Layer 18 oz Box	<b>69¢</b>
<b>Cake Mixes</b>	
Lipton's 4 oz Can	<b>\$1.89</b>
<b>Instant Tea</b>	
Nabisco 12 oz Box	<b>69¢</b>
<b>Vanilla Wafers</b>	
Nabisco, Ritz 1 Lb Box	<b>79¢</b>
<b>Crackers</b>	
Del Monte 32 oz Jug	<b>79¢</b>
<b>Catsup</b>	
Rainbo Hamburger Sliced Dill 16 oz Jar	<b>59¢</b>
<b>Pickles</b>	
Tide King Size Box 5 Lb 4 oz	<b>\$1.99</b>
<b>Detergent</b>	

Crystal Clear Liquid 35 oz Btl	<b>89¢</b>
<b>Detergent</b>	
Chicken of the Sea Chunk 6 1/2 oz Can	<b>79¢</b>
<b>Tuna</b>	
Downy 64 oz Btl	<b>\$1.99</b>
<b>Fabric Softener</b>	
Del Monte Stewed No. 303 Cans	<b>2 For 88¢</b>
<b>Tomatoes</b>	
Dermassage 12 oz Btl	<b>2 For 89¢</b>
<b>Liquid Detergent</b>	
Budweiser 12 Pack 12 Oz Cans	<b>\$2.99</b>
<b>Beer</b>	
Ranch Style No. 300 Cans	<b>3 For 99¢</b>
<b>Beans</b>	
Big Taste 16 oz Box	<b>79¢</b>
<b>Mashed Potatoes</b>	
Zest 5 1/2 oz Bars	<b>3 \$1</b>
<b>Bath Soap</b>	For

Irish Spring 5 oz Bars	<b>2 For 79¢</b>
<b>Bath Soap</b>	
Charmin 4-Roll Pkg	<b>88¢</b>
<b>Toilet Tissue</b>	
Bounty Jumbo Roll	<b>59¢</b>
<b>Paper Towels</b>	

Ore Ida 2 Lb Bag	<b>79¢</b>
<b>Tator Tots</b>	
Whole Sun 6 oz Cans	<b>3 \$1</b>
<b>Orange Juice</b>	For
Old South 2 Lb Pkg	<b>\$1.49</b>
<b>Fruit Cobblers</b>	

"Bud" Wrapped Head	<b>39¢</b>
<b>Lettuce</b>	
Firm Slicers Lb	<b>39¢</b>
<b>Tomatoes</b>	
Clip-Tops 1 Lb Cello Bag	<b>3 \$1</b>
<b>Carrots</b>	For
Calif. Red Beauty Lb	<b>59¢</b>
<b>Plums</b>	
Calif. White Rose 10 Lb Bag	<b>\$1.09</b>
<b>Potatoes</b>	



**Hershel's**

**FOODWAY**

We Accept  
 USDA  
 Food Stamps

Locally Owned and Operated

387-3708

Store Hours  
 7:30AM to 6:30PM







Loraine Creek  
To Wed  
Ronnie Surber

In a ceremony to be performed in the First Baptist Church of Sonora, Miss Loraine Creek will become the bride of Ronnie (Scooter) Surber. Miss Creek is the daughter of Mr. and Mrs. Luther Creek of Sonora, and Ronnie the son of Mr. and Mrs. J.C. Surber also of Sonora. The bride-elect is a 1979 graduate of Sonora High School and the prospective bridegroom is a 1975 graduate of Sonora High and attended A.S.U. for two years. He is presently employed by Halliburton Services in Sonora.

## It's Time For Barbecue Chicken

Time's at hand for some lip-smacking barbecued chicken. Texas weather is right for barbecuing, and some broiler chickens are one of the most popular meats to barbecue, says Dr. David B. Mellor, poultry marketing specialist with the Texas Agricultural Extension Service, Texas A&M University System. For tastebud-tantalizing chicken barbecue, cook

slowly over a glowing fire, turning the meat frequently and basting often to keep it moist, emphasizes Mellor.

Barbecue whole birds on a rotisserie or place halves, quarters or parts on a grill. Charcoal or wood fire, open pit or small patio grill--no matter what you use, barbecued chicken is always good, Mellor says.

Some people marinate chicken overnight and use the remainder of the marinade for basting.

Others partially cook chicken in marinade on top of a stove and then finish it on a grill. Purists don't marinate at all, but barbecue slowly over an open fire, says the specialist. According to Mellor,

each American consumed 47.6 pounds of chicken last year, most of this being broilers. And broilers should be plentiful this year, with production expected to increase 10 percent.

So, stock up on broilers at your favorite supermarket and get ready for some chicken barbecue, urges Mellor. It's right

for a big social gathering as well as for a family event.

**HOW PERSONAL CAN YOU GET!**

**Signature**  
the ultimate personalized ring

The Signature ring is the first man's and lady's ring to feature an exact replica of your signature—the ultimate in personalized jewelry. Other options include first name, nickname, company or group logo, designs, symbols—just about anything you can imagine.

Available in 14K Yellow Gold or Valadium, the beautiful step beyond platinum.

**Ruth Shurley Jewelry**  
J.T. Hill Owner  
Downtown Sonora 387-2755

## Six Texas Cities Receive Awards

Six Texas cities were named winners of the statewide Governor's Community Achievement Awards competition today by Rita Clements, wife of

Governor William P. Clements, Jr. Winners of the awards are Arlington, McKinney, Angleton, Alice, Paducah and Clarksville. The

"Award of Excellence", given to the city judged to have conducted the best overall job of community-wide beautification and improvement of environmental quality during the past year, was awarded to Angleton.

The Governor's Community Achievement Awards were announced in Houston at a luncheon culminating in the Twelfth Annual Meeting of the Beautify Texas Council, where several hundred beautifiers from across the state were in attendance.

The awards are made annually to six cities in Texas which have accomplished the most for cities

in their population categories in the areas of community beautification and environmental improvement. The annual competition is sponsored by the statewide, non-government, garden clubs, civic workers and civic groups working together at the grassroots to make Texas "the cleanest, most beautiful state in the nation".

Assisting the Council in their statewide efforts are the Governor's Office of Volunteer Services, Texas Agricultural Extension Service and the Regional Chambers of Commerce.

Winning cities received large cast aluminum

plaques which are signed by the Governor and are suitable for display either in an indoor or outdoor setting in the community. The 1979 "Award of Excellence" presented to Angleton is an engraved silver bowl.

Special "State Awards" were also given by the Beautify Texas Council in the following six categories: "Industry"—Willowbrook, Inc. of Dallas; "Initiative"—Houston

profit Beautify Texas Council—a voluntary organization with representatives from business and industry, state and local

Anti-Litter Team, Inc., which is now a part of the Houston Clean Community Commission; "City Official"—Mr. Clifford Johnson, City Manager, City of Grand Prairie; "Public Service Facility"—Baylor University Medical Center, Dallas; and "Media—

Houston Home and Garden magazine, and, The Daily Sentinel, Nacogdoches.

Each was recognized for "setting an outstanding example—one that is contributing greatly toward an increased awareness of the benefits of a cleaner, more

beautiful city," said George McKinney, president of the Beautify Texas Council.

For more information about the Beautify Texas Council and the annual "Governor's Community Achievement Awards", contact the Council at P.O.

Box 2251, Austin, 78768, telephone: 512/475-4210.



In parts of China it was customary for an engaged girl to give shoes as a gift to her fiance and all his brothers.

### The Old Shop

Featuring:

- Old Baskets
- Godiva Candy
- Imported Baby Dresses
- Traditional Reproductions
- Oriental Porcelains
- Exquisite Linens
- Crane Stationery
- Hand Embroidered Lingerie
- Metropolitan Museum of Art
- Reproduction Crystal
- Silver, China and Pewter
- Old Coverlets and Quilts
- Perfumed Sinya candles from Paris
- Dried Bouquets
- Hand decorated towels
- Needle work and all the trimmings

Hours:  
Mon.-Fri.  
10a.m.-5p.m.  
Sat.—by  
appointment  
only.



"a little bit of everything nice"

2140 Hunt Street  
Sonora, Texas 76950

915-387-2713  
915-387-2142

## Do You Drink Enough Water

Water, water everywhere—but do Texans drink enough?

Adults need a little more than two quarts a day, says Marilyn Hag-

gard, a foods and nutrition specialist with the Texas Agricultural Extension Service, The Texas A&M University System. "Water is an often

neglected nutrient," she says. Still, it's critical to human survival—and good health.

It transports nutrients that nourish cells, and it helps the body get rid of waste products.

**Drink, Drink, Drink**  
Every day, it's important to replace water that is lost through urine,

pores, skin and lungs. Adults can get most of their two quarts of fluid from beverages and a little from solid foods.

Infants use more than twice as much water as adults, so they need more water for each pound they weigh than adults do for each pound of weight. Ask your doctor about the needed amount.

**Special Summer Needs**  
During summer months, the body loses larger amounts of water through perspiration.

It's important to replace that water, too.

Let your natural thirst be your guide, Miss Haggard stresses. Also, sodium (salt) is lost through perspiration—and it must be replaced.

**Exercise 'N Water**  
During strenuous exercise, drink water often.

Since the usual salt level in the American diet is already high.

If not, the sodium level in the cells is diluted and too much fluid collects there. This can cause a

drop in blood pressure, weakness and muscle cramps.

Again, thirst is usually a good indicator of how much you need.

On the other hand, the intake of extra salt is probably not necessary,

### The Old Shop

has the wonderful selections that

Frances Schneider and Len Mertz have made for their wedding

Come see them soon

Hours:  
Mon.-Fri.  
10a.m.-5p.m.  
Sat.—by  
appointment  
only.



"a little bit of everything nice"

2140 Hunt Street  
Sonora, Texas 76950

915-387-2713  
915-387-2142

## REAL ESTATE FOR SALE

- 3 bedroom rock located on Taylos Ave, \$20,000.
- 2 bedroom frame located on Plum St., \$17,000.
- 3 bedroom asbestos siding located on Tom Green Ave., \$20,000.

Three lots on Taylos Ave. each 50'x140', zoned residential.

9.6 acres of land on Hwy 277 N. 6 miles from Sonora—has 360' water well and pump, 1,750 gallon septic tank, and all utilities.

## Doyle Morgan-Real Estate

213 E Main Phone 387-3912

## True Value Summer Time is Fun Time

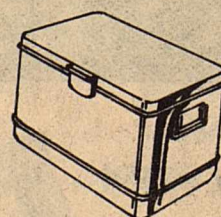
### Stay Cool With IGLOO

Water Coolers 2 gal now \$10<sup>25</sup>  
also select from 3 gal and 5 gal.

Igloo Playmate Ice Chest \$12<sup>30</sup>

86 Qt Ice Chest Features \$56<sup>25</sup>

- \*FULL THREE-YEAR WARRANTY
- \*Fully-insulated with polyurethane foam in lid and body
- Keeps food fresh, drinks icy cold or fish and game fresh.
- \*Two different-sized food trays The largest holds a 25-lb. block of ice, smaller tray can be used as a lid or cover.
- \*Handy one-gallon jug Great for icy cold drinks.
- \*Interchangeable food trays and water jug 27 different ways to reposition inside the chest.
- \*Durable cutting board
- Resists chips, rust, odors, stains and corrosion.
- \*Seamless, high-density ABS plastic interior Easy to clean, stays odor-free.
- \*Handy seat-top lid Supports 300 lbs.
- \*Sturdy, swing-up side handles
- With tie-down loops.



## Sonora Wool & Mohair Co.

210 S.W. College

387-2543

## Glen Fisher's Wool and Mohair Report

There is not much news to report in either market and everything is very quiet. There have been no reported sales of wool or mohair in Texas in the last week. It now appears that mohair may remain quiet until September since most of the firms are already holding inventories and evidently no new orders are coming in. Also, we are approaching the vacation period for English firms and normally there is no activity during the vacation period. We have finished going through our graded wools and should be able to pay for them next week. This was an above average wool clip with higher percentages of staple and less french and clothing than last year. The wools were well grown and on an average were slightly better yielding than last year.

The impending recession has shut down the wool market as most firms are concerned about a slowdown in consumer spending. Interest rates are also affecting the present market and buyers would rather wait until fall to buy more wool if they need it at that time.

## Sonora Churches

**Primera Baptist Church**  
Rev. Basilio Esquivel  
Sunday School 9:45 a.m.  
Worship 11:00 a.m.  
Training Union 5:30 p.m.  
Worship 7:00 p.m.  
Worship 7:00 p.m.  
WMU Tuesday 6:00 p.m.  
Wed. Serv. 7:00 p.m.

**First United Methodist Church**  
Rev. Paul Terry, pastor  
Church School 9:45 a.m.  
Worship 10:45 a.m.

**First Baptist Church**  
Rev. Clifton Hancock, Pastor  
Sunday School 9:45 a.m.  
Morn. Worship 10:50 a.m.  
Eve. Worship 7:00 p.m.  
Wed. Serv. 7:00 p.m.

**Church of Christ**  
Bible School 10:00 a.m.  
Worship 11:00 a.m.  
Sunday Eve. 6:00 p.m.  
Wed. Eve. 7:00 p.m.

**Hope Lutheran Church**  
John E. Hafermann, Pastor  
Sunday School 10 a.m.  
Worship 11 a.m.  
Adult Inquirer's Class 6 p.m.  
Saturday Confirmation Instruction 9 a.m.

**Jehovah's Witnesses**  
Sunday  
Public Talk 10:00 am  
Watchtower Study 10:50 am

Tuesday:  
Theocratic School 7:30 pm  
Service Meeting 8:30 pm  
Thursday  
Bible Study 7:30 pm

**First Assembly of God**  
Rev. Ned Smith, Pastor  
Sunday School 10:00 a.m.  
Morn. Worship 11:00 a.m.  
Eve. Serv. 7:00 p.m.  
Wed. Serv. 7:30 p.m.

**St. Ann's Catholic Church**  
Rev. John Waldron  
Sat. Vigil Mass 7 p.m.  
Sunday Masses 8 a.m. 10 a.m.

Holy Day Mass 7 p.m.

**Saint John's Episcopal Church**  
The Rev. John W. Fritts, Rector  
Sunday  
8:00 am Holy Eucharist  
11:00 am Holy Eucharist  
(2nd and 4th Sun. MP)  
Wednesdays  
7:00 pm Holy Eucharist  
Holy Days as announced

**The Church of the Good Shepherd Presbyterian**  
The Rev. Jim Miles  
Sunday:  
Church School 10:00 a.m.  
Fellowship 10:45 a.m.  
Worship 11:00 a.m.  
(Communion on first Sunday of each month)  
Inquirer's Class 7:30 p.m.  
(Session and Diaconate meet at 7:30 on the 3rd Wed. of each month)

**Sonora Tabernacal United Pentacostal**  
Rev. Kenneth Doyle, Pastor  
Sunday School 10:00 a.m.  
Worship 11:00 a.m.  
Eve. Worship 7:30 p.m.  
Wed. Services 7:30 p.m.

### Ruth Shurley Jewelry

### Kerbow Funeral Home

### Neville's

Your Complete Department Store

### Southwest Texas Electric Coop, Inc.

Owned by Those it Serves



**Dr. Fields**

**Spaks To Group**

Dr. John W. Fields of the Sonora Animal Hospital addressed a group of Texas and Mexico veterinarians in Puerto Vallarta, Mexico. The occasion was a continuing education seminar being held by the Texas Academy of Veterinary Practice, June 20-23. Dr. Fields spoke on herd health management.

Dr. Fields is a member of the American Veterinary Medical Association, Texas Veterinary Medical Association, The American Association of Bovine Practitioners, Texas Academy of Veterinary Practitioners, and The Flying Veterinarians Association. Dr. Fields also serves on the Ethics and Grievance Committee of the Texas Veterinary Medical Association.



**Toll Free Number For Medicare**

Medicare beneficiaries can telephone, toll free, the Medicare carrier who

handles the Medicare Part B reimbursement claims.

By telephoning the Medicare carrier directly, the beneficiary can inquire about his claim for Part B reimbursement.

Listed below are the toll-free telephone numbers which Medicare beneficiaries can use:

- Arkansas-Blue Cross/Blue Shield: 800-482-5525;
- Louisiana-Pan American: 800-362-6740;
- New Mexico - Equitable: 800-432-6660;
- Oklahoma-Aetna: 800-552-9079;
- Texas Blue Cross/Blue Shield: 800-442-2620.

The state in which the medical treatment was received would be that state in which the Medicare claim is handled.

If the state in which you received medical treatment is not listed above, and you wish to inquire about a Medicare claim, contact the San Angelo Social Security Office located at 2214 Sherwood Way. The telephone number is 949-4608. Residents of Ballinger, Big Lake, Brady, Junction, Mason, Ozona, Sonora and Winters can call toll free by dialing "Operator" and asking for "Enterprise 2059".

**Barker Makes Dean's List**

Richard L. Barker of Sonora has made the Dean's Honor Roll for the 1979 spring semester at the University of Oklahoma.

In most colleges on the Norman campus, the minimum grad point average for the honor roll listings is a 3.5 on a 4.0 scale.

**Susie Womac Visits Thorp Home**

Visiting from Houston is Susie Womac. She is staying with her sister, Carole Thorp, wife of Steve Thorp and their two sons, Jericho and Casey. She will return to Houston after a weekend trip to Midland.

**Commercial Restaurant Will be CLOSED**

**July 1-15 For Vacation.**

**We'll Open For Business as Usual July 17th**

**Double-digit Inflation Increases Taxes**

Thanks to double-digit inflation, Washington's tax collectors are laughing all the way to the bank. With your money.

Tax collectors had a big month in April. Tax payments gave the government its first monthly budget surplus this year, according to Treasury Department figures--\$52.2 billion in tax receipts, or almost \$10 billion higher than April a year ago.

Tax receipts from last October 1, when the fiscal year commenced, through April totaled \$253.8 billion, compared with \$212.4 billion for the same period in 1978--a whopping increase of \$41.4 billion or almost 20 percent.

According to the Chamber of Commerce of the United States, double-digit inflation already has helped reduce the size of the federal budget deficits for fiscal 1979 and 1980 by extracting larger tax payments from workers' paychecks and from corporate profits.

Inflation pushes people into high tax brackets as they obtain pay increases trying to offset inflation. Thus, a larger percentage of their earnings goes for income taxes.

Dr. Jack Carlson, chief economist of the U.S. Chamber, estimates \$15 billion in higher federal revenues helped bring down the 1979 deficit, to \$33 billion. In January, 1978, the budget deficit was projected by President Carter at \$61 billion. A slower rate of federal spending, some appropriation changes by Congress, and a smaller-than-expected reduction in revenues from the 1978 tax cut voted by Congress accounted for the remainder of the \$28 billion reduction

in the estimated deficit.

"This is not what taxpayers had in mind when they adopted tax-cutting proposals like Proposition 13 and the

host of other tax protest measures," said Dr. Carlson. "They want control of spending, not higher taxes."

Now Congress is counting on at least \$5 billion in additional revenues--again largely due to inflation--to hold down the size of the deficit for fiscal 1980, which begins October 1.

Estimated at \$29 billion in January, the deficit for the new fiscal year now will be \$23 billion, according to the 1980 budget resolution just adopted by Congress. This resolution sets targets on spending and revenues and the size of the projected deficit.

But when a group of House members thought it would be a great idea to let the public in on the sleight of figures by which the deficit is reduced, the House voted down the amendment, 112 to 56.

Rep. John M. Ashbrook (R-Ohio), who sponsored

the amendment, said it would be helpful if the House Budget Committee would bring in a special report indicating anticipated increases in reve-

nues in the ensuing year, with the portion of such increases attributed to inflation, growth in GNP (Gross National Product), etc.

"It is, in fact, a truth in government bill," Rep. Barber B. Conable, Jr. (R-N.Y.), one of its supporters in the floor debate. "This simply requires the Committee on the Budget to report the tax increases that occur not by action of the Congress but as a result of

inflation or other reasons, and it permits also the inclusion of a statement estimating the impact of each of the items so specified on individual taxpayers according to family size and income level...

"Frankly, I think we owe to the American people to let them know what is happening to them, whether we have done it by direction or whether the interaction of

inflation and the graduated income tax are the reasons for the increases that are inflicted upon us."

If inflation persists, Washington may yet pro-

duce a balanced budget for 1981 by greatly increasing the tax burden on all American workers and business people.

But is this any way to fight the war against inflation?

**Now In Sonora**

**"Espree" the wonderful Aloe Vera based skin care program..**

We offer a non surgical face lift. Beauty classes each evening. Come and you will see a more radiant looking you. For appointment contact

Ottoneese Gentry 387-5180

Clip this add and receive \$1.00 off any \$10.00 or more purchase

**A Bride-to-be's First Stop**

**Ruth Shurley Jewelry**

The following brides and brides-to-be have made their selections with us...

- Rosemary Hernandez, bride-elect of Ramiro Perez
- Brenda Vaughn, bride-elect of Jack Sykes
- Kathy Drake, bride-elect of Jimmy Black
- Mr. and Mrs. Gary Hardgrave
- Maura Hernandez, bride-elect of Joseph S. Weingart
- Mrs. Terry Wallace, nee Susan Dunnam

Store Hours: Monday-Saturday 9:00-5:00 Phone 387-2755

**Tedford**

Bridal Registry

Phone 387-2434



- Brenda Vaughn, bride-elect of Jack Sykes
- Mrs. Joe Weingart, nee Maura Hernandez
- Kathy Drake, bride-elect of Jimmy Black
- Rosemary Hernandez, bride-elect of Ramiro Perez
- Mrs. Terry Wallace, nee Susan Dunnam



Two peices from the Salisbury pewter collection embody the techniques of hand casting turning and finishing. Prices start at \$13.50. From America's oldest silversmith. See the collection at Tedford's.

**Tedford Jewelry**

Downtown, Sonora

387-2434

**NEW in Sonora! "QUICK-SNAK"**

at the **Hurry-Up**

Self-serve Fountain Coke Machine  
Wide Selection of Sandwiches.....  
Micro-Hot or Crispy Cold.

**FREE COFFEE**  
6:00a.m. til 8:00a.m.

**We've Got it All**  
**Hurry-Up**

Hwy 290 West



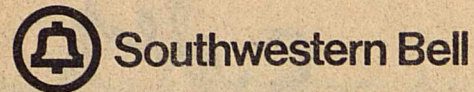
# Find It All In The Classifieds

## Public Notice

Southwestern Bell, in accordance with the rules of the Public Utility Commission of Texas, hereby gives notice of the company's intent to implement a new schedule of telephone rates in Texas effective August 3, 1979.

It is expected that the requested rate schedule will furnish a 6.09 percent increase in the company's intrastate revenues.

A complete copy of the new rate schedule is on file with the Public Utility Commission at Austin, Texas, and with each affected municipality, and is available for inspection in each of the company's public business offices in Texas.



## Legal Notice

The Sonora ISD hereby announces that all persons are entitled to receive an exemption of \$5,000 from the market value of their residence homestead for the purpose of school taxes. In addition, all persons who are 65 or older or under a disability for purposes of payment of Federal Old-Age, Survivors and Disability Insurance are also entitled to an additional exemption of \$10,000 from the market value of their residence homesteads for the purpose of school taxes. To qualify for these exemptions, an application must be filed with the school district tax office by July 19, 1979. Application forms are available at the school tax office located at 807 S. Concho St. 4C44

The Sonora ISD hereby announces that all persons are entitled to receive an exemption of \$5,000 from the market value of their residence homestead for the purpose of school taxes. In addition, all persons who are 65 or older or under a disability for purposes of payment of disability benefits under Federal Old-Age, Survivors, and Disability Insurance are also entitled to an additional exemption of \$10,000 from the market value of their residence homesteads for the purpose of school taxes. To qualify for these exemptions, an application must be filed with the school district tax office by July 19, 1979. Application forms are available at the school tax office located at 807 South Concho St., Sonora, Texas. Don O. Wootan Tax A/C Sonora ISD 5C42

In obedience to an order of the Board of Equalization regularly convened and sitting, notice is hereby given that said Board of Equalization will be in session at the County Courthouse in the City of Sonora, Texas, Sutton County, Texas, at 9 o'clock a.m., beginning on Friday the 13th day of July, 1979, and from day to day thereafter, for the purpose of determining, fixing and equalizing the value of any and all taxable property situated in the said Sonora Independent School District, until such values have finally been determined for taxable purposes for the year 1979, and any and all persons interested, or having business with said Board are hereby notified to be present. DONE BY ORDER OF THE BOARD OF EQUALI-

**ZATION OF THE Sonora Independent School District, Sutton County, Texas at Sonora, Texas, the 17th day of May, A.D., 1979.**  
Don O. Wootan  
Secretary, Board of Equalization  
Sonora Independent School District 2C45

In obedience to an order of the Board of Equalization, regularly convened and sitting, notice is hereby given that said Board of Equalization will be in session at its regular meeting place in the Courthouse in the town of Sonora, Sutton County, Texas at 9 a.m., beginning on Friday, the 13th day of July, 1979, and from day to day thereafter, for the purpose of determining, fixing and equalizing the value of any and all taxable property situated in Sutton County, Texas, until such values have finally been determined for taxable purposes for the year 1979, and any and all persons interested or having business with said Board are hereby notified to be present.  
Erma Lee Turner  
County Clerk  
Sutton County Texas  
Sutton County  
Sonora, Texas  
This 14th day of May, 1979

## Autos For Sale

'74 Datsun B-210. Good Second car. \$500. '73 Ford V-8 400 c.i. engine w/trans. \$250. Call 387-3707.

1968 Ford Fairlane 500 air and automatic, \$275. 387-2954.

76 Grand Prix. Cruise control, power brakes and steering. AM tape player, AC and heating. 387-2447.

78 Chevy Malibu. Good gas mileage. 1110 Taylor. \$3,500. 387-3275.

For Sale. 1972 Buick Stationwagon. Call Guggie Thorp 387-2666.

## Business Service

Brick, Stone Block Work, Fireplaces Our Specialty  
Custom Homes and Barbecues  
Local References-Free Estimates  
Call 392-3528  
Mike Jester-Ozona

YOU can steam clean carpets professionally with portable RINSEVAC. Rent AT Perry's.

ALL TYPES OF ROOF REPAIRS and quality roofs. Kent Elliott Roofing. 655-2800, San Angelo, Texas.

Lawn mower and garden equipment repair and service. 1302 Glasscock or call 387-3642 after 4 p.m.



Complete Refinish or Spot Repair  
Call us first  
301 W. 1st Sonora

## Free

Free puppies. Phone 387-2476.

## Help Wanted

Meter Reader for City of Sonora. Permanent Employment, vacation, employee benefits. Must be 18 or older--Apply at City Hall--Equal Opportunity Employer.

Applications are being taken at the Sonora Chamber of Commerce located at 214 NE Main St. for the position of Secretary-Manager.

Lillian M. Hudspeth Memorial Hospital and Nursing Home need registered nurses and licensed vocational nurses. Call 387-1521 for more information.

Permanent Position. Immediate opening for person who is self-started and will handle responsibility. Various duties depending upon qualifications. Salary negotiable and some fringe benefits. Call for appointment. 387-2543 or 387-3242 after 5 p.m.

Must be 21 years old and possess good driving record. Apply at CRC Wireline, Shurley Enterprises, 2 1/2 miles S 387-3617.

Auto mechanic, experienced only, must have own tools. 44 hour work week, apply in person. Sonora Motor Co.

Cocktail waitress and bar tender. Apply at Circle Bar Club, Circle Bar Truck Corral, Ozona.

Cook and waitress. Apply in person to Big Tree Restaurant.

Cocktail waitress wanted. Must be 18 or over. Good working conditions. Apply in person to Wanda Briggs after 4 p.m. Waterhole #9. (Next door to the Hurry Up).

## Homes For Sale

3 bedroom, 1 bath home on 50x150 ft. lot. Nice neighborhood, conveniently located within walking distance of school and the football field. Call 387-3892 after 5 p.m.

large utility room. Total electric central heating and air. Fenced yard, patio, boat port, storage building. Good location. Phone 387-2648.

## Mobile Homes

1975 Lancer. 14x80, 3 bedroom, 2 bath, fenced yard. 387-2746.

1977 Springwood 14x72 mobile home. Kitchen appliances. 2 bedroom, 2 bath, central air. Lot 87 J&V Trailer Park, 387-3540.

1973 Graham 14x70, 2 bedroom, 2 bath, kitchen appliances. 4 ton central air, underpinning. Available 1st week in August. Hershel Davenport. Phone 387-2768 or 387-3708.

1974 Flamingo mobile home. 2 bedroom partially furnished. \$1200 down. Take up payments of \$83.36. Call 387-3789.

14x70 Vindale. 2 bedroom, 2 baths, central air, kitchen appliances plus washer and dryer. 387-3269.

LICENSED BONDED  
For your plumbing needs  
**CHANO BRAVO PLUMBING**  
NEW WORK — REPAIR REMODEL  
61 Love Street  
Phone 653-7252 San Angelo, Texas 76903

**AUCTION**  
ZIA WELDERS, INC.  
Formerly : BIBLE WELDERS  
2 MILES WEST SONORA, TEXAS  
ON I-10 SERVICE RD.  
TUESDAY, JULY 17th, 10:00A.M.  
Welding, Pipe line, Roustabout Construction equipment. 1972 T.D.9 Int. Tractor with side boom. 1972 T.D.9 Int. Turbo charged dozer, T.D.8 Int. series E dozer, 3500 Int. loader backhoe, 2-1976 Chev. haul trucks, 2-1976 King 30 ft. trailers, 20 ton HC70 truck mount link belt crane, 1970 & 1974 Chev. welding trucks fully equipped, 1975 Ford winch truck, 1974 Chev. winch truck, 1965 Chev. winch truck, 1963 Ford winch truck, 4 Chev. 3/4 ton pickups, 1976 Chev. double cab 3/4 ton pick-up, 1974 Chev. suburban, 1976 Worthington air compressor, Large selection of shop tools and related items, Office equip.  
JAMES GEGIL AUCTIONEERS  
505-393-4917  
NMS-010-024

## Motorcycle For Sale

1978 750 Honda Windjammer. Luggage rack, sissy bar. 387-3939.

1975 Kawasaki 400. Real good. New tires, new chains, new shocks. Call 387-2353 or see at Space 5 Crites Trailer Court.

## Notice

Responsible Party Wanted to own and operate candy or confection vending route. Sonora and surrounding area. Pleasant business. High profits items. Can start part time. Age or experience not important. Requires car and \$1495 to \$4995 cash investment. For details write and include your phone number: Eagle Industries, 7515 Wayzata Blvd., Minneapolis, Minn 55426.

I will not be responsible for any debts other than my own.  
Mike Umphress

I will not be responsible for any debts other than my own.  
Roddy Arnett

## Pickups For Sale

1972 Dodge Van. P.S., A.T., P.B., new paint and interior. 387-2140 after 5:30.

## For Rent

14x82 unfurnished mobile home. 2 bedroom, 2 full bath. Kitchen appliances. Small storage building, total electric. 387-2701.



West Texas Realty  
213 Sawyer Dr.  
Sonora, Texas  
387-3437

If no answer call 512/775-7421.

Cool Contemporary Make it a point to see this lovely 2 story home with over 2100 sq. ft. of living area. Has large game room, den with fireplace, 3 bedrooms and 2 full baths. This house has all energy saving features for a cool summer.

## Inflation Beater

The price is right on this 3 bedroom, 2 bath home with established yard. Has fireplace and den with cathedral ceiling. Isolated master bedroom and 2 car garage. Call 387-3437.

Choice lots still available Meadowcreek Addition

It will make a WORLD OF DIFFERENCE on your utility bills in a NEW ENERGY SAVING DAYTON HOME.

Bob Kemper-Broker

## For Sale

GE double oven, electric range, white, \$150. 387-2954.

Fabric, Fabric, Fabric at the Patchbox Etc., downtown Junction. Come see our selection of Comal cottons, plaids, the newest-disco satins, even material for a bikini for less than \$5. All types of sewing needs at The Patchbox Etc., 610 Main, Junction.

Special bargains at The Patchbox Etc., downtown Junction. Buttons 2 cents per card, zippers 10 cents each, some current McCall's patterns 1/2 price. 610 Main, Junction.

Would like to sell brand new piano. If interested call 387-5065.

Mini warehouse in your back yard. All sizes. Convenient and safe. Delivery and terms. Morgan 3220 Sherwood Way. 949-8696.

14x80, 3 bedroom, 2 bath. Phone 387-3759 after 5.

3 trailer spaces for rent. \$55 each per month, contact Durwood Neville, 387-3910.

Nice, furnished outside bedroom with refrigerator and bath. Call 387-2261 after 5 p.m.

Mini-Storage Shurley Enterprises 8x12, \$18.50 monthly; 12x24, \$40.00 monthly.

Portable building going out of business. 12'x24'. Red barn \$18,000. Call 653-3731.

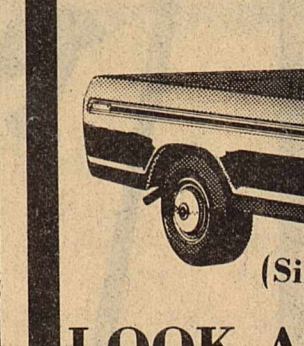
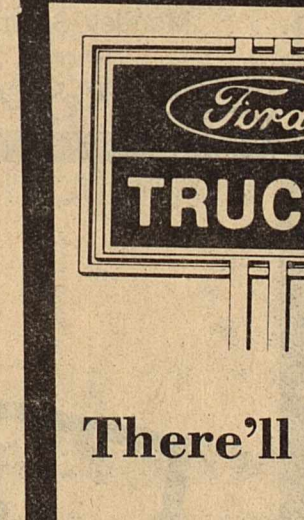
Small piano and organ will be available for local delivery by July 3, 1979. Interested parties may take an enormous savings. Payments available to persons with good credit. Call San Antonio Music Co. Regional Services Office 512-681-1549.

Carl Pool Products  
B-R-61-Plant Food Root Activator  
Lawn Food Instant Flower, Shrub & Tree Spray  
Copperas  
Potting Soil  
Garden Worm Dust  
All At  
Flowers By Irene  
308 Railroad  
387-3914

\$NEW DOGS Breeders Needed Start now raising purebred dogs for PROFIT! Get higher East Coast prices. We assist all new breeders, if qualified. Possible to turn one-half acre of your idle ground into a \$10,000 income. Call: 345-3822 or write: "Kennels" R 1-95, Edwards Mo. 65326

Triangle Tire Service  
"If you need us, call us, we'll be there"  
Day or Night  
Anytime - Anyplace  
★ 387-2808 ★  
★ 3 Trucks on call  
★ 24 Hour Road Service  
Tubes - Wheels & Tires  
Cold Beer - To Go  
Corner of Main & Crockett

ONLY ONE LEFT  
SUPER CAB  
F-150 PICKUP  
139" Wheelbase  
There'll be no more of these fine units!  
"STYLESIDE"  
Custom Package  
BIG 300  
6-Cylinder



- LOOK AT THESE FEATURES
- ★ Solid Walnut Glow Color
  - ★ Automatic Shift
  - ★ Power Steering
  - ★ Airconditioned
  - ★ Knitted Vinyl Seat Trim
  - ★ Radio
  - ★ Step Bumper
  - ★ Whitewall Tires.

Texans are Big on Ford  
Sonora Motor Co.  
Durwood Neville-Owner 387-3910

## Now Available

Refillable  
Pilot Pens  
razor point  
4.98  
Devil's Office Supplies 387-2507  
NE Main

Business & Professional Directory

H & H Feed & Trucking  
Jack and Allen Hearn  
Call 387-2806

JOHN'S BODY SHOP  
387-2802  
24 Hour Wrecker Service  
387-2802-Day  
387-2447-Night

IIVE OAK 66 STATION  
Open 24 Hours  
Phone 387-2740

Good, Used Furniture  
Appliances, Antiques,  
New Linoleums  
Gonzales Welding  
277 South 387-3008  
Sonora

Ram Wrecker & Auto Body  
Custom Painting  
Free Estimates  
Call 387-3571  
24 Hour Wrecker

Esquivel Plumbing  
Repair and Remodel  
Electric Sewer Service  
Call 387-2070

VARGAS PAINTING  
Commercial Residential  
Ranch  
Phone  
Ozona Sonora  
392-3865 387-3205

A.P. Avila & Sons  
SPRINKLER SYSTEMS  
Manual & Automatic  
Repairs and  
trenching  
Call 387-3769

Westex  
Communications  
Two-Way Radio  
and Service  
Mobile Telephones  
802 W. Crockett  
387-3831

ENEDINA'S  
HAIR FASHIONS  
330 SW Gonzales  
387-2812  
Open Tuesday-Saturday

Mario Duran  
Water Well Drilling  
and Clean Outs  
Phone 387-2752  
SONORA

Concrete Contractor  
Floors, Sidewalks,  
Driveways, Flatwork  
Free Estimates  
Richard Sanchez  
Dial 387-5298



## Men's Softball Antiques, Whiz Continue Lead

In the Men's Softball League, Whiz continues to lead the American League while Antiques are still at the top of the National League. The Antiques stand at 10-3 for the season and Whiz is at

11-1. In action starting last June 18, Bishop downed Dowell by a 34-6 score. Bishop's Steve Tackle and Bill Woods had home runs in the game. The Antiques took OFT

by a score of 24-5. Winning pitcher Norm Rousellot faced 24 batters allowed 5 runs on 14 hits. Whiz won over Hooper 26-4. Bob Granger pitcher for Whiz faced 25 batters allowing 14 hits and 4 runs. Bobby Granger, Wayne Doyle, and Bruce Kerbow had home runs for Whiz.

Western slipped by HNG 14-13. This exciting game saw HNG take the lead at the end of the third inning by a score of 6-5. In the fourth inning, Western's Jim Grimsrud hit his first home run of the season to help boost Western to a 5 run lead. In the fifth and sixth innings, HNG scored seven runs to take a short lived lead. Western tied the score in the bottom of the sixth inning. Jim Grimsrud got the winning hit in the bottom of the seventh inning.

Bishop won over S&S 21-4. Winning pitcher Robert Day faced 21 batters allowed only 12 hits and the 4 runs. HNG's game with S&S was postponed.

Whiz handed Dowell the loss by a 14-1 score. Bud Smith and Bob Granger pitched for Whiz facing only 16 batters and allowing only 12 hits.

Western took the easy win over OFT when the received a forfeit.

Antiques took Amoco by 17-7. Sam Stewart was on the mound for the Antiques and John Casparis pitched for Amoco. Sam faced 30 batters allowing 21 hits and 7 runs. John faced 38 batters allowing 27 hits and the 17 runs.

Hooper edged past Gassers with a score of 13-9. Larry Hooper got the win by pitching to 42 batters allowing 24 hits and 9 runs. He walked five. Gene Jackson returned after an injury,

The Indians won the Championship of the Major Little League Friday night by beating the Astros two games out of the best of three series.

The Astros had evened the series last Wednesday night by beating the Indians 9-4.

faced 44 batters, allowed 30 hits and no walks.

Bishop got their second win of the week over Hooper by a close score of 8-7. At the end of four innings, Hooper had the lead 7-4. Bishop tied the game in the fifth when Steve Tackle hit his fifth home run of the season. Bishop went ahead to stay in the bottom of the sixth inning.

OFT got their second win of the year over S&S by 18-8. George Kristie faced 30 batters giving up 20 hits and 8 runs to get the win. Rick Cagle took the loss giving up 26 hits to 38 batters.

Whiz blasted the Gassers 13-4. Gasser's Gene West faced 40 batters allowing 24 hits and walking 3. Wayne Doyle hit a home run for the Whiz. Bob Granger of Whiz faced 33 batters for 23 hits and 4 runs.

Dresser over took Western for a final score of 16-13. Western had a 13-8

lead at the bottom of 4 innings but was unable to hold on to the game. Dresser went on to put 8 more runs across the plate in the bottom of the fifth and sixth innings. Frank Gamboa hammered his 4th home run of the season over the fence in the fourth inning.

Halberts handed Antiques their third loss of the season by a score of 4-3. Antiques took the loss from a team who is improving very much in the National League standing. In the bottom of the fourth inning, the Antiques had the lead at 2-1. Halberts broke loose in the top of the fifth to score 3 runs on 8 hits. Antique's Rick Young scored the other Antique run with a homer run in the seventh inning. Halbert's Ken Thomas faced 34 batters allowing 18 hits and walking 3. Mike Sipes of the Antiques faced 31 batters allowing 22 hits and 1 walk.

## Men's Softball League Standings

<b>American League</b>	<b>National League</b>
Whiz 11-1; Bishop 9-3; Hooper 6-6; Gasser 5-6; Dresser 4-5; Dowell 2-8	Antiques 10-3; HNG 6-5; Amoco 6-5; Halberts 6-4; Western 5-5; OFT 2-9; S&S 2-11

## Broccoli-Stalks Provide Vitamins

One-half cup of broccoli-stalks cut into one-half-inch pieces - contains about one-third of the day's need for vitamin A and more than enough vitamin C needed daily,

points out a foods and nutrition specialist, Frances Reasonover, with the Texas Agricultural Extension Service, The Texas A&M University System.

## Buy U. S. Savings Bonds

**Texas FB** FARM BUREAU INSURANCE  
LIFE - AUTO - FIRE

**JACK HEARN, JR.**  
CAREER AGENT  
SUTTON - SCHLEICHER - CROCKETT COUNTIES

HOME PH (915) 387-2764      OFFICE PH (915) 653-1287

**Carpet Cleaned \$19.95** Any Living Room & Hall

Any Living Room, Dining Room & Hall Cleaned **\$29.95**

Call for appointment today  
San Angelo 944-1112

**GUARANTEE SYSTEM**  
Since 1945

★ **WARRANTY** ★  
Our expert crews will clean your carpet BETTER than you have ever seen before, or your money is returned in FULL. Upholstered furniture area and oriental carpets included in this pledge.



The Indians won the Championship of the Major Little League Friday night by beating the Astros two games out of the best of three series.

The Astros had evened the series last Wednesday night by beating the Indians 9-4.



Bruce Kerbow of the Whiz hit a Grand Slam home run to help the Whiz beat Owen's Bros. of San Angelo by a score of 15-8. This action took place Saturday afternoon in the First Sonora Men's Invitational Softball Tournament held this past weekend.

## 11 Teams Compete In

## Sonora's First Softball Tourney

The first Sonora Invitational Softball 3-2 Tournament was held June 29 and 30. With five local teams and six teams from San Angelo playing.

A lot of local players and fans saw their first 3-2 softball games. The double elimination tournament is played with 30

minute time limits on each game and the batter steps up to the plate with a count of 3 balls and 2 strikes.

In the 23 games played this past weekend, there were about 111 home runs hit by the 11 teams. The top four teams scored 95

of the 111 home runs. Super sports of San Angelo won the tourney

with no losses. Second place was taken by San Angelo Lease Car, third place went to San Angelo Merchants, and fourth place went to Whiz of Sonora.

## Sutton County

## ASCS Office News

**\*\*\*A C P\*\*\***  
As you complete your 1979 ACP practices, please come by the Crockett County ASCS Office as soon as possible to certify the completion of your practice. You will need to bring us an itemized bill from the contractor who actually performed the work.

Also, do not forget that July 9, 1979 is the deadline for completion of work under the 1979 ACP Program. If, however, you will not be through with your practice by then, and do plan to complete it, you may receive an extension. But you must call or come by the office and tell us of this and request an extension.

Remember, July 15th is the end of the aerial spraying season for mesquite in Crockett County.

If for any reason you are not going to complete the ACP Practice you have been approved for, please cancel your application for someone else to be able to put the money to good use.

**\*\*\*WOOL\*\*\***  
Please bring your 1979 wool sales receipts and unshorn lamb weight sales receipts as you receive them. This will enable us to start processing them to mail off to the ASCS Computer Center in Kansas City. It will help avoid a "log Jam" of applications at the end of 1979.

Please be prepared to report the number of head sheared and date of shearing. Unshorn lamb receipts must contain a certification from the buyer that they were unshorn lambs.

**\*\*\*FUEL SHORTAGES\*\*\***  
Some portions of the United States are experiencing fuel shortages. We have a supply of fuel allocation forms for agriculture producers who are having difficulty obtaining necessary fuel.

**\*\*\*FARMERS NEWSLINE\*\*\***  
The toll free number 800-424-7964 will give you the latest crop, livestock and economic reports from the Department of Agriculture.

**\*\*\*MARKETING SPREADS: FROM RANCH & FARM GATE TO FOODSTORE\*\*\***

Americans spent \$140 billion in foodstores on domestically produced farm foods last year --- 11 percent more than the year before. The increase was the result of higher retail prices, since there was little change from 1977 in the volume of food purchased. Of that \$140 billion, ranchers and farmers received \$55 billion--- up \$8 billion from the year before --- or an average of 39 cents of each dollar spent in the grocery store for domestically produced farm foods in 1978. This was almost 2 cents more than in 1977 and the first increase in 5 years. Marketing costs took the remaining \$85 billion.

This office will be closed July 4th in observance of Independence Day.

All programs administered by the Crockett County ASC Committee are available to any eligible person regardless of race, creed, color, sex or national origin.

Van Bruce Wilson  
County Executive Director  
Anita McPherson &  
Alice Poage

## America's Favorite Drive-In



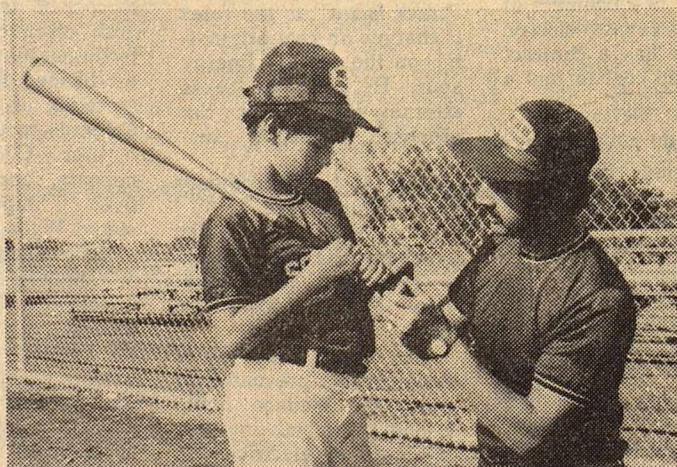
**HAMBURGERS  
ONION RINGS**

**Don't Wait,  
Phone in  
Your Order**

**387-5292**

**Hwy  
277 N**

**"When my coach  
isn't coaching,  
he's a WTU man"**



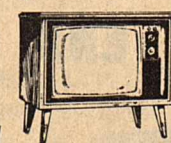
WTU people enjoy being good neighbors. That's why you'll find them involved in all kinds of community activities. From linemen to secretaries, WTU folks are busy coaching Little League teams, heading Scout troops, volunteering for hospital work, leading the PTA, ringing door bells for charities.

Their interest in helping people shines on the job too. Their good-neighbor attitudes help us serve you better. Through the concern, the courtesy and the dedication of WTU people you can be assured of receiving the same efficient, dependable electric service you've grown accustomed to.



## Jerry's T.V. Service

**Sylvania Supersets**  
as well as



**Repairs and  
Installation**  
**853-2314**

214 S. Main Eldorado



# Edwards Plateau Petro News

## Railroad Commission Raises Questions On Reopening Whalen Lake

The Railroad Commission will seek clarification of the Texas Department of Water Resources' role, if any, in oilfield brines disposal before reopening Whalen Lake or continuing an eight-months-old ban on the use of the desertlike basin in Andrews County as a discharge site for salt water produced with oil and gas.

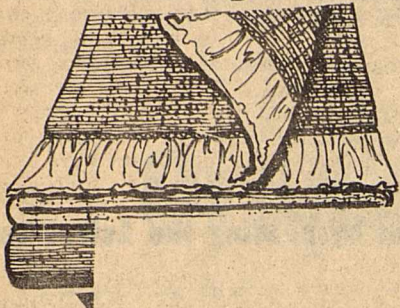
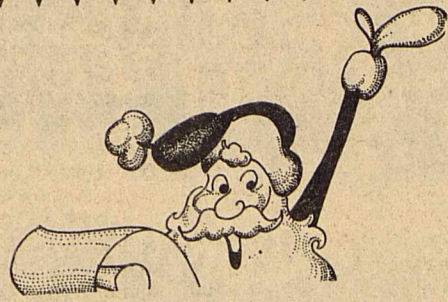
Chairman John H. Poerner and Commissioners James E. (Jim) Nugent and Mack Wallace made that determination Monday after receiving from RRC General Counsel Rex H. White Jr. an analysis of the Commission's statutory position in the Whalen Lake proceeding, statutes dealing with the jurisdiction of oilfield brines disposal and responsibilities of the Department of Water Resources as pertain to waters of the state.

White reported that his review of the Whalen Lake situation indicated:

their report on discussions with the Department of Water Resources officials.

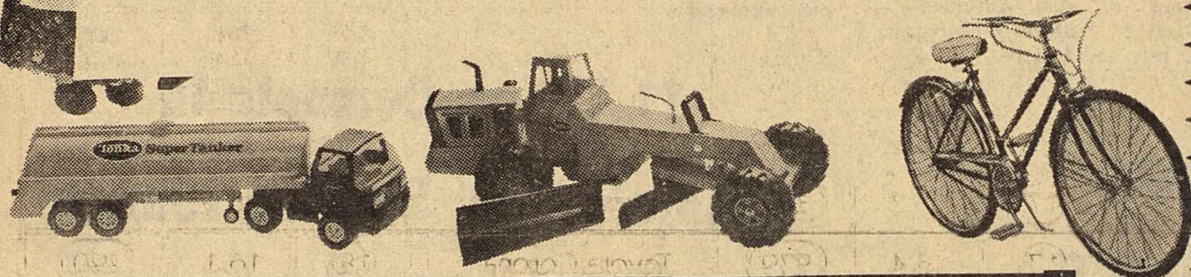
### Thrifty Santa Sez

**PLAN AHEAD**



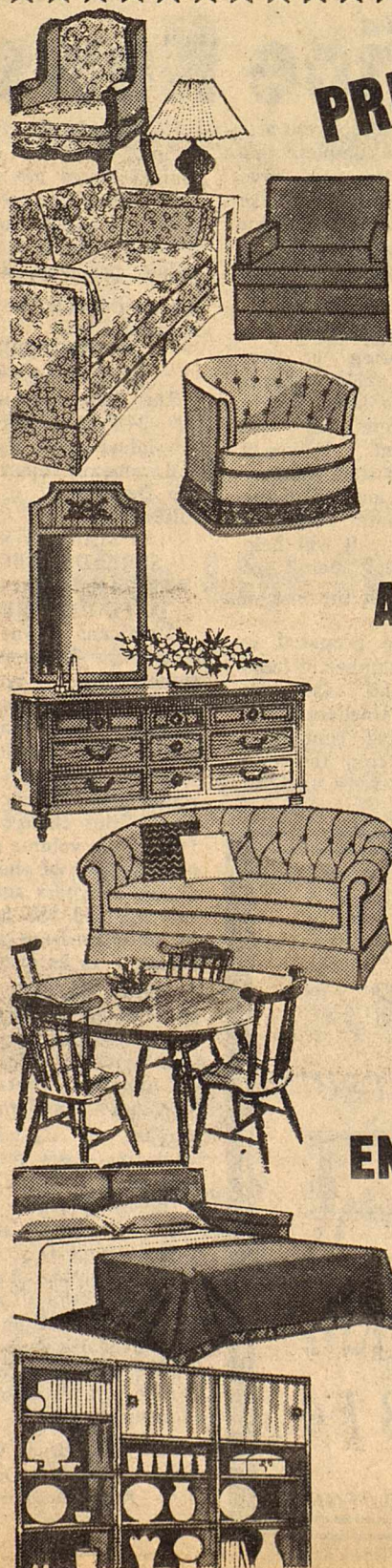
**LAYAWAY NOW FOR CHRISTMAS!**

- ★ No Money Down
- ★ No Payment for 30 Days
- ★ Out By Christmas Eve



**PERRY'S**  
Hwy 277 N. Sonora

**PRE-MARKET CLEARANCE SALE** Starts July 5 through Sidewalk Sale July 14th



- OCCASIONAL CHAIRS** Southern Comfort **20% off**
- DECORATOR CHAIRS** Fairfield Good Selection **10% off**
- LOVE SEAT SLEEPER** 3 only Twin Size Reg. \$269<sup>95</sup> Sale **\$239<sup>95</sup>**
- GREEN VELVET SOFA** 1 only Reg. \$525<sup>00</sup> Sale **\$399<sup>95</sup>**
- ALL PICTURES & LAMPS** **20% off**
- WALL MIRROR HAT RACK** 1 only Reg. \$69<sup>95</sup> Sale **\$58<sup>00</sup>**
- FLORAL SOFA CHAIR** Reg. \$349<sup>00</sup> Sale **\$299<sup>95</sup>**
- LA-Z-BOY CHAIRS** Reduced **10-20% off**
- ORANGE VELVET SUITE** 1 only 2 piece Early American Reg. \$809<sup>00</sup> Sale **\$699<sup>00</sup>**
- WALLAWAY RECLINER** Berkshire Reg. \$279<sup>95</sup> Sale **\$249<sup>00</sup>**
- HALL TREE** 1 only Desoto Reg. \$469<sup>95</sup> Sale **\$415<sup>00</sup>**
- END, COFFEE & SOFA TABLES** Reduced **10% off**
- BEDROOM FURNITURE** Open Stock **10% off**
- BEDROOM FURNITURE** Orphaned **20% off**
- ALL DINING ROOM FURNITURE** **10% off**

Convenient Budget Terms

**Kerbow Furniture**  
Downtown Sonora

At the May 7 conference, the Commission was presented an examiners' recommendation calling for conditioned reopening of the lake in view of substantial changes in Whalen Corp's disposal procedures. Whalen Corp. is the operator of the principal discharge facilities at the lake.

White, at that conference was instructed to review the examiners' proposals for decision. The examiners pinned seven conditions to their recommendation to reopen the disposal facilities.

In his analysis Monday, the RRC general counsel said the Railroad Commission has authority to issue permits governing discharges of waste from oil and gas activities but issuance must be done in accordance with standards set by the Department of Water Resources.

White said state statute requires the department to set standards for discharges, but "playa lakes may not be covered" by the Water Resources jurisdictional umbrella.

White reported that his review of the Whalen Lake situation indicated:

\* Discharge of salt brines into the lake does not affect ground water.

\* Use of the lake by animal life is not heavy and that evidence of any damage to wildlife is inconclusive.

\* Produced water discharges do not significantly affect surface water in the playa lake.

Mound Lake is a playa lake in Terry County, some 10 miles east of Brownfield. The Cities Service Oil Co. has used the lake as a disposal point for produced water since 1963.

Senior Staff Engineer Willis C. Steed, who conducted a review hearing on Mound Lake operations last February, recommended that Cities Service be allowed to continue the use of Mound Lake subject to these conditions:

- 1) Sufficient collecting tanks and skimming pits must be maintained to prevent any oil from entering the lake.
  - 2) Samples of the discharged brines must be taken at random times of 30 to 40 days from each discharge, analyzed by a qualified analyst, and a report filed quarterly with the Commission district office showing the oil content. The quarterly oil and grease content of each discharge will be limited to 35 milligrams per litre.
- The proposal carries a stipulation that authority may be cancelled at any time on failure of the authorized operator to meet RRC standards for use of the Mound Lake disposal system.

## Texas Oil Production Down In April

Reported and estimated unreported production of Texas crude oil totaled 81,667,823 barrels in April 1979, the Railroad Commission's Oil and Gas Division reports.

The preliminary figure compares with final compilations of reported March 1979 production totaling 85,432,064 barrels and April 1978 production of 86,793,362 barrels.

Texas oil production averaged 2,722,261 barrels daily in April, down from 2,755,873 barrels daily in March. The April allowable totaled 106,852,133 barrels

for the month. The preliminary April summary indicated Texas oil production was 23.57 percent under the allowable for that month.

## Wallace Urges Rejection Of Provision

Railroad Commissioner Mack Wallace has urged the Interstate Commerce Commission to reject a track factor surcharge provision in a purchase proposal involving a Colorado railroad spur over which Texas-bound coal will move.

Wallace, in a statement filed with the federal regulatory agency and released today, warned that the surcharge concept in the acquisition proposal of Denver & Rio Grande Western Railroad Co. contains "the seeds of a bogus new rate escalation device...which will exacerbate the rate inflation problem."

The Texas energy and transportation official said ICC approval of the surcharge could lead to more than a million dollars a year in additional costs of service of customers of a South Texas electric utility that has a contract for Colorado coal to fuel a generating plant.

D&RGW seeks ICC authorization to acquire 6.48 miles of railroad near Craig, Colo., built and owned by Empire Energy Corp. of Des Plaines, Ill. A Texas corporation, Empire Energy operates a coal mine approximately 7.5 miles southwest of Craig. Coal moves from the mine over the Empire Energy spur to Ute, Colo., where it connects with a rail line operated by D&RGW for further shipment to intra and interstate customers.

More than half of the coal traffic that would use the Empire Energy spur and another rail extension

to a coal mine at Axial, Colo., is destined for an electric generation plant at Coletto Creek in South Texas. The plant is owned and operated by Central Power & Light Co. of Corpus Christi.

Wallace wrote the ICC that implementation of the Track factor surcharge "would almost certainly result in significant increases in freight rates to be paid by CP&L on coal it will soon begin shipping" from Axial over the spur line.

In the acquisition agreement, Wallace noted, D&RGW promises it will add a 24 cents per net ton "track factor" to the rates it charges on coal originating on the Empire Energy spur. He noted the Texas attorney general views the proposed D&RGW sur-

charge as "an unorthodox ratemaking device."

Wallace described the surcharge as the "sleeping" in the D&RGW/Empire Energy acquisition pact.

Use of the track factor device, if not prevented by the ICC, Wallace maintained "will both increase the cost of electricity to CP&L's ratepayers, and, ironically, encourage the substitution of imported coal for domestic coal."

Furthermore, observed Wallace: "The increased rates would result, not from passing on of legitimate

and necessary costs incurred by the railroads to handle CP&L's coal traffic, but rather from D&RGW's attempt to reap profits through exploitation of its monopoly power over transportation of coal mines located along its lines."

In event D&RGW acquired the longer Axial rail extension utilizing the track factor surcharge, Wallace said it is conceivable that CP&L ratepayers, alone, would wind up in paying an additional million dollars a year for electric service.

Wallace said the extent to which the Texas utility accelerates the conversion to coal of its existing gas and oil-fired generating facilities hinges on rates established for the transportation of its coal from Colorado to Coletto Creek. "But CP&L has, it appears, another alternative: imported coal," stated Wallace.

"Obviously, substitution of imported coal for imported oil for domestic natural gas will do nothing to solve our balance - of - payments problems or achieve our energy self-sufficiency goals which are the major reasons justifying this nation's coal conversion program.

"Nor would such a substitution do anything to help improve railroad revenues," Wallace advised the ICC.

## Railroad Commission Authorizes Operation Of New Oil-Producing Sector

The Railroad Commission has authorized operation of an 1,139-acre oil-producing sector of Fisher County as a unit and initiation of a water-flood program there that is expected to yield an additional 1,365,000 barrels which otherwise would not be produced.

Chairman John H. Poerner and Commissioner James E. (Jim) Nugent

and Mack Wallace approved the unitization/secondary recovery application of Texas Pacific Oil Co. during Monday's weekly

conference on Oil and Gas Division matters. The action established the Pardue (Canyon Sand) Unit, Pardue, (Canyon Sand) Field.

The field was discovered in 1949 and has produced more than 2.3 million

barrels of oil. Testimony at the hearing on the Texas Pacific application indicated the field, although 95 percent depleted, can produce 1.3 million-plus more barrels of oil if operated as a unit

with the proposed secondary recovery program. The West Central Texas field has 10 producing wells, making four barrels daily per well.



# Edwards Plateau Ranch News

## Decision In Wyoming, 1080 Case Bad For Stockmen

Stockmen have been dealt a blow by a recent Court of Appeals ruling in the Wyoming 1080 case. The U.S. 10th District Court of Appeals ruled, essentially, that the case itself was invalid. The Wyoming lawsuit

sought to enjoin enforcement of EPA's ban on predacide 1080. Among charges brought by the

State of Wyoming and such participants as the State of Texas and sheep and goat industry organiz-

ations was a claim that EPA had failed to issue an environmental impact statement prior to their 1080 ban.

The case originated in 1974 and has been in and out of court, denied, reaffirmed and denied

again, and stalled repeatedly by various federal agency actions.

The Court of Appeals ruled once that EPA had not been required to issue an environmental impact statement. That court's justification for its opinion

may well confirm suspicions long held by many common citizens that the federal government, regardless of the supposed guarantees of the checks and balances system, has gotten completely out of hand.

The 10th U.S. Court of Appeals ruled that "it was not necessary for EPA, engaged as it was in the protection of the environment, to go through the formalities of an (environmental) impact statement." In other words, the court considers EPA, the prime authority on what is good or bad for the environment, incapable of error, and exempt from laws and regulations that grant non-government experts or even experts from other branches of government a chance to dispute the agency's decision.

This assumption holds EPA incapable, by virtue of its supposed concern with the environment, of making a politically moti-

ated decision, of failing to consider all possible facts and evidence before making a decision, or of simply using bad or misguided judgement. In short, EPA, because it is a government agency, may do whatever it diddley well pleases without explaining or justifying its actions to anyone, least of all the mere commoners over whom it has been appointed lord and master.

Wyoming district judge Ewing T. Kerr, whose decisions in favor of Wyoming and the livestock industry apparently prompted the government's mad dash to a friendly appeals court, accepted the higher court's ruling, as he was bound to do by law. He apparently interpreted the wording of the ruling, however, to indicate that other charges in the original case were still open to decision. Accordingly, he set the case for court on one or more of those remaining grounds. Within a couple of

weeks, the government was back in the appeals court seeking a ruling against Judge Kerr. The ruling the government sought was that, essentially, Kerr acted beyond his jurisdiction in setting the case for trial. The government, of course, was not actually concerned with the limits of Kerr's jurisdiction. Rather, it was incensed at his audacity in ordering a trial to question the validity of a royal proclamation issued by a federal agency.

Dutifully, the appeals court handed down a ruling favorable to the government, much as a good soldier would carry out a direct order from a superior. That ruling? The Court of Appeals announced that Wyoming and its supporters had failed to challenge the 1080 ban early enough.

The law under which EPA supposedly operates allows complaints 60 days to challenge a regulation or proclamation. The \$1,080 suit was not filed

for two years. Industry spokesmen say they didn't issue a challenge during the first 60 days because such challenges are considered for acceptance or dismissal by EPA itself, hence they knew ahead of time that their challenges would be refused. Had they known then what they do now, they would have issued an admittedly futile challenge anyway, so that the ensuing legal battle would not be cut short on a technicality.

They simply didn't realize, they say, that the government would go to such lengths and split such slim hairs to prevent an open, court-ordered review of the motives behind a decision made by one of its agencies.

The Wyoming suit is stalled for now, but participants plan a meeting in the near future to consider further action. The Texas Sheep & Goat Raisers' Association will be watching for new developments.

## Crops In Good Shape

Status quo best describes farm and ranch activity in Southwest Texas last week.

Hay harvesting was by far the major agricultural activity, and prevailing

hot, dry conditions allowed many farmers and ranchers to step up hay baling operations.

Some farmers in the Winter Garden also took advantage of the weather

to look ahead to fall crops. County Extension Agent Ray Caraveo said many

farmers in Zavala County either prepared land or began planting fall vegetable crops such as

cabbage, carrots and some tomatoes.

Cotton, grain sorghum, and corn crops also made ample use of the warm sunshine. Those crops are in good shape throughout the 19-county area.

## Fed. Gov's Appetite For Power

There's a revolution brewing in many of the Western states, a revolution against the federal government's increasing appetite for power.

Washington is getting strong warnings about the upcoming clash, but incredibly, or possibly inevitably, the feds seem bent on extending their authority and exercising their power all the more.

A major source of western displeasure comes from Washington's increasingly heavy-handed administration of public lands, and the bureaucrats are currently in the process of pushing things even farther in that department.

Texas sheep and goat producers, fortunately, suffer little direct damage from public land decisions, but they are part of an industry heavily dependent in other states on public grazing land. Too, federal policy toward public grazing lands is seen by some as a foreshadowing of future federal policy regarding private land use as well—the thrust of public land play in recent years runs directly parallel with the wishes of those who would do away with private land ownership entirely.

Recent developments in New Mexico could be very enlightening.

Much of Southeastern New Mexico is made up of

public lands administered by the Interior Department's Bureau of Land Management. It is almost entirely grazing land and is checkerboarded among private and state-owned lands. In many cases ranchland owners absolutely must have use of surrounding or intermingling BLM lands to make a go of their operations; loss of grazing on the public land would force foreclosure and loss of their deeded holdings as well.

If this looks like stage-setting for a gruesome story—it should. The BLM has recently proposed grazing cutbacks they say would average 28 percent on much of this Southeastern New Mexico lands. Ranchers claim the cuts are closer to a 40 percent average because BLM is basing its figures on recent stocking levels already depressed by several years of droughty weather.

Ranchers, bankers, merchants and community residents of the affected area are up in arms over the loss of livestock income the proposals would cause, as well as disruption in the job market when ranchers unable to survive at the lower stocking rates are forced to seek work in town.

State officials, too, are hot, and some are said to

be favoring "Sagebrush Revolution" proposals that would demand the federal government hand over control or even ownership of these lands to the states within whose borders they lie.

Apparently destined to be a ticklish issue in deliberations over the stocking reduction issue is just how such a proposal ever came about in the first place.

The reduction proposal is part of a series of environmental impact statements concerning grazing of public lands in general. The impact statements themselves were the outgrowth of a lawsuit questioning the government's right to lease land for grazing at all, and filed by an outfit called the Natural Resources Defense Council.

The lawsuit was settled out of court, essentially, the judge in the case instructing both sides to get together on a compromise which he would then adopt as a decision. It's at this point that the going gets sticky—very sticky indeed.

Sources in a position to know contend that at least one of the Interior Department lawyers involved in reaching the compromise was himself a former counsel for NRDC!

Small wonder that states with considerable public

land acreage are seriously considering trying to get that land into more responsible hands.

## Want more miles per tankful? These imports aren't the answer!

Import Model	EPA Est. MPG	Fuel Tank Cap.	Est. Cruising Range	Import Model	EPA Est. MPG	Fuel Tank Cap.	Est. Cruising Range
Audi 4000	23	11.9	274	Honda Accord	28	13.2	370
Audi 5000	17	19.8	337	Peugeot 604 SL	14	18.0	252
BMW 528i	17	16.4	279	Toyota Corona	18	16.1	290
BMW 733i	19	22.5	270	Toyota Cressida	18	17.2	310
Datsun 510	24	13.0	312	Volvo 260	17	15.8	269
Datsun 810	20	15.9	318	VW Dasher	23	11.9	274
Fiat Strada	28	12.2	342	VW Rabbit	25	10.6	265

## Delta 88 is:

18

EPA EST. MPG

450

MILES

EST. CRUISING RANGE

27

HIGHWAY EST. MPG

675

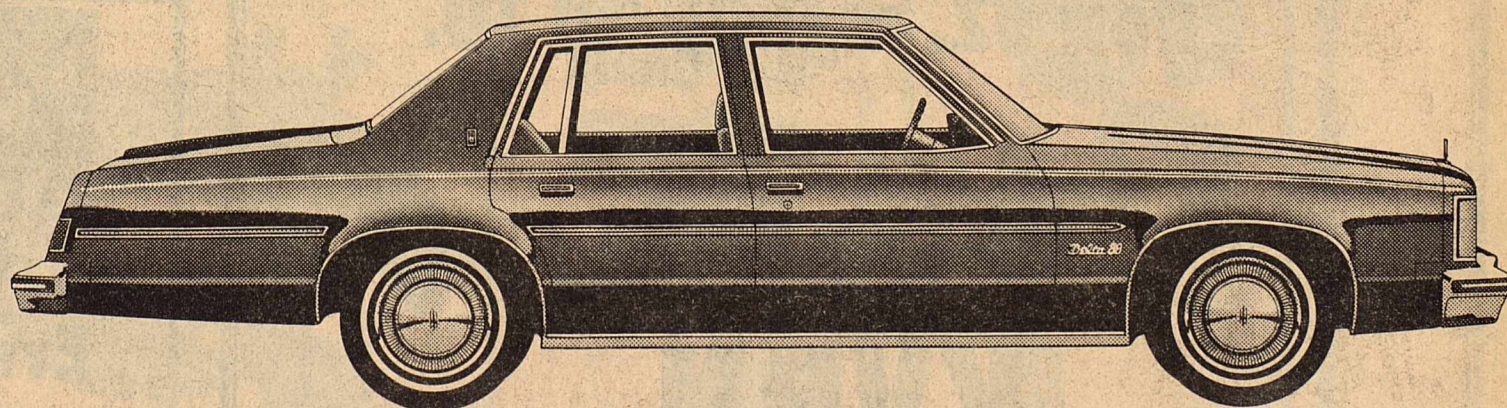
MILES

EST. HIGHWAY RANGE

**Remember:** The circled EPA estimate is for comparison to other cars. Your mileage and range depend on your speed, weather and trip length; your actual highway mileage and range will probably be less than the highway estimates. Cruising range estimates are

obtained by multiplying the EPA and highway estimates by the standard fuel tank capacity ratings (Delta 88: 25 gal.). Oldsmobile Delta 88s are equipped with GM-built engines produced by various divisions. See your nearest Oldsmobile dealer for complete details.

## Long after this summer is over, you'll be glad you bought an 88!



**Room.** Delta 88 is trim outside. But there's room for six people inside—who don't want to settle for less than full-size comfort.

**Ride.** Smooth, quiet and solid. A ride that makes Delta 88 a great and comforting road car. So important for the long haul.

**Trunk space.** Lots of easy-loading trunk space. In fact, there's over 20 cubic feet. Family-size all the way.

**Olds value.** It's value that's built in. It's solid engineering and quality. And it's affordability—at a price that's a nice surprise to budget-minded families.

**Test drive the long-haul Delta 88 today!**

**Ken Braden Motors, Inc.**

Golf Course Road at I-10

387-2529

### Franklin Chairman Of Rehab Center

Jim Franklin of San Angelo, co-owner of M.L. Leddy & Sons of Texas, has been appointed chairman of Southwest Texas region of West Texas Rehabilitation Center's

Cattlemen's Round-Up for Crippled Children.

"Franklin sees West Texas ranchmen everyday as they come into the

Leddy Boot Shop in San Angelo," commented Shelley V. Smith, WTRC executive director. "He is the right man for the job!"

Area chairman will be contacting their friends and neighbors enlisting their donations of livestock and cash, looking to special auctions this fall in Abilene, Coleman and

Junction. The Cattlemen's Round-Up is a major fund-raising campaign for WTRC each year. The Round-Up idea was initiated by the late Conda Wylie of Coke County.

James M. (Jim) Alexander of Abilene, a third generation cattlemen, is statewide chairman of the Cattlemen's Round-Up.

### Eldon List Finder

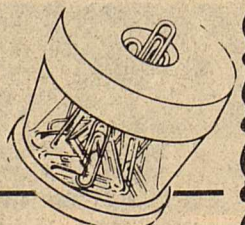
Includes memo pad and pencil

9<sup>50</sup>

### Scovill Clip Caddy

magnetic clip dispenser

2<sup>00</sup>



### Scotch Tape Dispenser

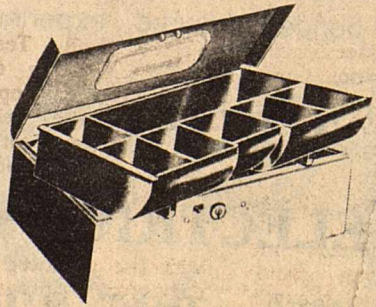
3<sup>68</sup>



### Hunt Lit-ning Cash Box

with clipsnap lock and tray

14<sup>50</sup>



Devil Office Supply

220 NE Main



# A&M Small Town Study Yields Important Information

A Texas A&M University study of six small towns in Texas has yielded some important information on the effects much-sought-after new industry is having on the state's rural communities.

The study, conducted between the Spring of 1975 and the Fall of 1976, investigated six rural communities located in east and south central Texas for the purpose of evaluat-

ing the net economic impact new industry is having on the state's rural towns.

The study is entitled "Economic Benefits and Costs of Industrialization in Rural Texas Communities". The research work was conducted by Dr. Lynn Reinschmidt for the Texas Agricultural Experiment Station. The study has been summarized and is available to the public

through County Extension Agents in Texas. It also contributed to the development of a practical industrial impact model now being used by Texas A&M to help local communities.

Reinschmidt gathered the primary information for the evaluation from personal interviews with plant managers or officials, chamber of commerce personnel, industrial foundation members and other local individuals. Employees of the new industries studied also were surveyed by mail questionnaires and telephone interviews.

Four of the communities surveyed are located in eastern Texas and two in south central Texas. All six communities are located in counties which border one of 24 Standard Metropolitan Statistical Areas (SMSA) in Texas.

"All of the communities studied were at one time predominantly dependent on agriculture or natural resource-based economies but industrialization was being sought to broaden the economic base of each community," said Dr. Lonnie L. Jones, a Texas Agricultural Experiment Station economist who helped conduct and summarize the Reinschmidt study.

Community populations for the survey ranged from 1260 to 10,646 by 1973

census estimates. With only one exception, population levels in the six communities increased from 1950 to 1973, while county population continually declined during that period.

"For the nine firms surveyed, the annual employment ranged from 20 to 152 employees with two firms hiring in excess of 100 individuals," Dr. Jones said. "The average employment for all plants was 65 employees."

Total annual payroll ranged from a low of \$144,000 to a high of \$1,050,000 with an average of \$417,058 per plant. The average annual payroll per employee ranged from a low of \$4,114 to a high of \$9,611 with an average for all plants of \$6,352.

Total annual sales per plant ranged from a low of \$250,000 to \$10 million. Sales averaged \$2.4 million for all plants. Only two industries were classified by their management as product suppliers solely for national markets.

Another two firms described their markets as state and national and two firms indicated they supply state and local markets. Two firms served local markets and, one firm indicated their product is supplied to all markets.

Total plant investment in land, building and

equipment ranged from a low of \$50,000 to a high of \$2.5 million," Dr. Jones said. Average total investment for all nine plants was \$699,256."

Dr. Reinschmidt's employee questionnaire revealed the average employee age of all respondents to be 34.5 years with an average of 11.5 years of education. Average previous earnings for all

employees was \$5,547, in comparison with the present \$6,794, an average net increase of \$1,247.

Survey results also showed that 68 percent of the workers were married with 72 percent of the spouses also working. Of families with children, the average was slightly more than two children per family.

"The questionnaires also revealed that prior to this job, 27 percent of these people were unemployed," Dr. Jones said.

"Of the employees surveyed, about 8 percent received public assistance and 7 percent of the workers said this was the first job they ever held."

Workers who moved to the surveyed communities and counties made up 15.6

percent of the total industry labor force surveyed. About 33 percent of the work force commute to their jobs from outside the community. The average distance traveled

to work was 7 miles. Twenty percent of the community and county jobs vacated by these employees were not refilled.

## Carpentry

Residential, Construction  
Commercial Blueprints Drawn

• Repairs • Remodelling • Cabinets  
• Trim Work • Concrete Work

Large of small jobs residential and commercial contractor

## Pimentel Brothers

Omar and Tony

Phone 387-3056 402 Santa Clara Sonora

## Safeguard Your Home



Our low-cost homeowners insurance gives you complete coverage... including theft. Protect your home... act now!

Get The Facts

Doyle Morgan

Insurance and Real Estate

213 E. Main Sonora, Tx

387-3912

Save

General Tires  
Michelin

Fina Gasoline

R. S. Teaff  
Oil Company

387-2770

Sonora

The All New  
92  
KVRN - FM

Now you get more KVRN than ever! AM-98, FM-92, TV cable Channel 4. The All New 92, nightly 'til 10.

Tri-City Radio

KVRN



mutual broadcasting system, inc.

## Home Owners Concerned About Fleas

Every year about this time the Texas Agricultural Extension Service is flooded with phone calls from concerned home owners about the presence of fleas inside or around the home.

This year is no exception, says Dr. J.W. Stewart, an area entomologist located at Uvalde.

The adult flea is a blood sucker and has the potential to transmit plague disease to man and tapeworm in dogs. They often breed in large numbers where pets and livestock are kept. They say the most common fleas encountered in South Texas are the dog and cat fleas.

Although two entirely different species, they feed interchangeably on dogs, cats and people. "Understanding the life cycle of this pest is important in eliminating it

from the home," the entomologist said. It is relatively simple: Although the female may lay several hundred eggs during her lifetime. Eggs may drop off the host in the home or lawn then hatch into tiny pearly white larvae about one-sixteenth inch long, which feed on particles of dead animal and vegetable matter that become lodged in cracks, crevices or in the carpet. After pupation the larvae emerges as adult fleas, seeking a host and a blood meal.

The whole life cycle (from egg to adult) may require from 2-3 weeks to several months, depending on conditions.

Controlling fleas can be easy or difficult, according to the situation in the home. The following procedure is recommended.

--Shampoo all pets with an approved flea soap; dust or dip with an approved flea preparation, then put on a new flea collar.

--Clean the home thoroughly--vacuum and shampoo carpets, throw rugs, and remove any debris from cracks and crevices where larvae and pupae may be situated (such as behind the cushions in chairs).

--Clean the resting area where your pets frequent, and destroy old bedding.

--Treat the entire home with an approved pesticide. When applying insecticides inside the home use coarse spray on the floors and baseboards about a foot up on the wall. In kennels, make sure the old bedding is destroyed before applying insecticide. Complete coverage of the entire yard

is necessary since larvae, pupae, and adult fleas may be present in the grass and/or sand. Treating under the home is often necessary, since many pets rest there during the warm days.

--Most important is retreatment of the entire area with insecticide in 7-10 days to kill new larvae which have hatched from the eggs. Fleas are not impossible to control--it just takes a concerted and dedicated effort. A third application is sometimes required to clean up remaining fleas.

Some insecticides labeled for fleas include carbaryl (Sevin (R)), propoxur (Bagon (R)), Diazinon, Malathion and Ronnel. Be sure to note precautions and restrictions on the label, they conclude.

## Rehab Center Has Admission Increase

West Texas Rehabilitation Center's San Angelo campus has shown a 78.7 percent increase in total admissions in the first five months of 1979.

The announcement was made at the regular monthly meeting of the WTRC-San Angelo director, stated physical therapy treatments were up 21.3 percent and the special education program here showed a 14.9 percent growth. Speech therapy and occupational therapy were down, how-

ever.

The diagnostic and treatment center for the handicapped operating campuses in San Angelo, Abilene and Snyder showed a 13.1 percent growth in total admissions at all locations for the first five months ending in May. PT treatment showed a 14.8 percent increase in combined campuses figures.

First appeal letter for the annual Cattleman's Round-Up for Crippled Children has just been sent out, according to Shelley V. Smith, WTRC executive director. The

Round-Up in the fall is a major fund-raising event for WTRC. "Obligations of \$200,000 net is needed from the cattle industry," he added.

Smith also told directors the Bob Hope Benefit Dinner set for Abilene August 3 is a sell-out. The event will kick-off the annual Joint Venture for Crippled Children, the fund-raising division of WTRC, conceived and organized by oilmen.

In other business the WTRC board discussed plans to acquire a building site for a new facility here. "Services are being demanded more

and more as a result of the increasing availability of the handicapped of the Southwest," said Smith. "Our increase in orthotics alone is requiring us to have a brace man in San Angelo one day per week, and we may need him here more."

Richard Salmon, WTRC Board of Directors vice president, said at the close of the meeting he will select a special committee to investigate possible building sites and type of structure needed and "Hopefully, that committee can report back to the board in August."

## The Land Bank

Dependable long-term credit through good times and bad...

See us:



Federal Land Bank of Sonora

A. E. Prugel, Mgr.  
387-2777

## July 11 Rep. To Answer Tax Questions

State Comptroller Bob Bullock will have a representative from his San Angelo office in Sonora on July 11, 1979 to assist local taxpayers and answer questions about state taxes.

Bullock said Enforcement Officer Esther T. Esparza will meet with local taxpayers in the

Driver's License Room in the County Courthouse from 1 to 2:30 p.m.

"If Sonora area merchants, or anyone else for that matter, have any questions about state taxes or need help in preparing state tax forms, Ms. Esparza will be there to assist them," Bullock said.

"We're trying to cut the red tape in this office, and we believe these face to face sessions with taxpayers help do just that," Bullock added.

The San Angelo office, headed by Thomas M. Goff, serves San Angelo and surrounding counties.

## Hospital Notes

Patients receiving treatment at Lillian M. Hudspeth Memorial Hospital during the period from Sunday, June 24 thru Thursday, June 28.

Odelmira Flores\*  
Elsa Galvan\*

Lavina Smith\*  
Candido Duran\*  
Bill Mason\*  
Isabel Esquivel  
Maria Esquivel  
Yolanda Martinez  
Willie Andrews  
Thelma Phillips  
Gladys Martin\*  
Manuela Mendez  
Ernestina Vasquez

Otto Turman  
Granville Barker\*  
David Bernal  
Jose Franco  
Lola Archer  
Leoner Galindo  
Lauren Taylor

\*Patients dismissed during the same period.

for all your electrical needs.

We have electric fans, window refrigerated units, central units

Good supply electrical needs  
Licensed, bonded, insured, experienced

SUTTON  
ELECTRIC

Downtown Sonora

387-3297



Ranchers  
Everything you need for fencing

Posts, steel posts, barbed wire, field fence.

Hardware, Lumber  
Paints, Tools



Concho and Plum  
387-2536