

# The Winters Enterprise

VOLUME EIGHTY-TWO

USPS NO. 687-220

WINTERS, TEXAS 79567, THURSDAY July 31, 1986

PRICE 25 CENTS PLUS TAX

NUMBER 19

## Wait a minute... By Kerry Craig

That meeting in Ballinger last Wednesday could lead to a lot more than the future of Stacy Dam.

There have been indications for quite some time that the U. S. Army Corps of Engineers did things like they wanted to, regardless of the general public's wants or needs or those reflected by our elected representatives in Washington D. C.

One can only hope that the ruling from the Corps is favorable to the dam project. If it is not, we will know for sure that our federal government has created a monster.

Of all the folks that attended the meeting and those that spoke, our U. S. Senators and Congressmen went on record, along with their counterparts in the state and local governments, as being favorable to the construction of Stacy Dam.

With such comments from the big guns, it shouldn't take the Corps of Engineers very long to arrive at the right decision—if they are responsive to the wants and needs of the area.

At this point only time will tell.

If their finding prevents or further delays the construction of the much needed lake, we can be sure that at least one federal agency needs to have its wings clipped and be put in its place.

Several weeks ago there was a news item published that was originated at City Hall. It issued a reminder (or warning) to residents that grass and weeds must be mowed and property kept clean.

In looking back, one can find a paradox or two.

In one instance the city attempted to force the cleaning of two specific pieces of property with out success, even the state couldn't do it. If a ruling cannot be enforced in one place, how can it be enforced elsewhere if the property owner doesn't want to comply?

The other instance brings to mind the old adage, "what's sauce for the goose is sauce for the gander." How can the city expect to demand that the property owners keep their property mowed and the city not mow its own?

Maybe all of this is the result of a "Catch-22" type situation. You know, you just can't get there from here.

While around the subject of cleaning up, our downtown area looks good for the most part. There are some buildings that really need something done to them.

There are some that front on main streets downtown that have walls so thin that you can see air through them.

A visit recently with the Chamber of Commerce to discuss a meeting of Chambers from a wide section of the area led to discussion of how to make a community more attractive to new business and folks looking for a place to live.

One of the things mentioned was the overall appearance of a community's business district.

The thought of folks looking for a new place to move to brings to mind a story about two separate families who were moving to somewhere else.

Family number one, while going across country stopped at a service station to let the kids head for the potty. The station operator asked the father if he could fill their car with gas. The father said no, that they had gotten gas somewhere else. He told the gas station guy that they were moving and looking for a place to live.

The station operator then inquired as to the kind of folks they were leaving in the community they were moving from. The man had nothing good to say about his former community at all—nothing nice.

The gas station man suggested that they continue look-

## Winters All-Star Girls capture second in Sectional Tourney



Winters All-Star Major League Girls

After losing the first game to the Weatherford All Stars, the Winters All Star Major League Girls came back to make a strong showing and worked their way into the final game that decided the Sectional Winner. Had the girls won their game, they would have been one of the four teams playing for the State Title in Waco. This, by playing in the final game at the Sectional level, the Winters All Stars held a ranking as one of the top eight teams in Texas, a notable achievement.

Following the first loss to Weatherford in this double elimination Sectional Tournament, the Winters All Stars were forced into the "Losers Bracket". In the Losers Bracket, each game played resulted in the elimination of the losing team and the only way to advance was to win. And win they did! On Monday Graham was eliminated by Winters. Tuesday our girls defeated and eliminated Pampa. On Wednesday, our girls had a rematch with Weatherford, who had lost to Paris, and this time Winters won. By Thursday, only two teams remained—Paris, with no losses, and Winters, with one loss. Thursday night's game was a must and the Winters All Stars came thru, beating Paris by a sure 10 to 3 and setting the stage for a final matchup between the two teams on Friday.

Although the girls came up short on the scoreboard in Friday's game, they are each and everyone true winners and can take pride in their accomplishments. They beat every team playing in Weatherford, advanced to the highest level yet for a Winters All Star Team received a very nice trophy, learned to play (win or lose) as a team and won the hearts and respect of fans, players, coaches

and sponsors who witnessed their "Junk-Yard Dog—Never Give Up" style of play at Weatherford.

The Winters All Stars Major League Girls Team was led by an experienced group of twelve year olds: Kimberly Deike (Pitcher and first base); Michelle Carter (pitcher and short-stop); Paige Polston (catcher) and Emila Ochoa (center field). The younger players on the team, and those eligible to return next year are, Stacy Deike (over); Ashly Alcorn (second base); Susan Leady (short-stop and first base); Tasha Snuffer (third base); Linda Luz (left field); Rabbit Smith (right field); Cara Cathey (right field); Cara Bahlmann (catcher); Natasha Smith (outfield); and Kayla Pridy (outfield). Alternates also were very important members on this team, they were, Mindi Wade, Tanya Brockington, and Carla Smith.

The team was managed by Mitzi Deike and coached by Mike Deike. Also coaching this team throughout tournament play were Jimmy Smith, Bill Caffey and Benny (Mike) Polston.

Sponsors who kept the girls at night and provided the whole team with food beverages and support were: Fran Polston, Cindy Cathy, Ruby Carter, Sharon Deike, Melanie Wade, Ginny Smith and Frank and Mrs. Ann Antley.

The Directors of the Winters Area Little League wish to thank each of you in the community who have helped support this team, its fan, coaches and manager. This also expresses its thanks to the Winters Community for supporting its Post Season Play.

Winters State Bank was a sponsor and has the trophy and team picture on display in the lobby.

## WHS Band practice schedule announced

The August practice schedule for the Winters High School Band has been announced by the Winters Band Director Bailey McNulty.

The schedule is as follows:  
August 7 and 8: Individuals may check out school equipment and instruments (not uniforms) between the hours of 8 a.m. and 12 noon. Rental fees for instruments will be discussed.

August 12, 13, 14 and 15 (FULL BAND)—7:30 p.m. till 9:30 p.m.

August 18, 19, 20 and 21 (FULL BAND)—7:30 p.m. until 9:30 p.m.

August 25, 26, 27 and 28 (FULL BAND)—7:30 p.m. until 9:30 p.m.

Section Rehearsals: BRASS ONLY—August 14, 18 and 21-10 a.m. WOODWINDS ONLY—August 15, 19 and 22-10 a.m. until 11:30 a.m. PERCUSSION members will be contacted about a general meeting in order to establish section rehearsal times.

All rehearsals including the first one will be with instruments. Flags and Twirlers should contact their sponsor after August 1 about their respective practices if they have not been notified earlier.

The WHS Band is comprised of band students in grades 8

## Band Boosters to meet August 4

The Winters Band Boosters will meet Monday, August 4, at 7 p.m. in the Band Hall.

All officers and parents are anyone interested in the Winters High School Band, Jr. High Band or Beginners Band are urged to attend.

## Bench marks for school district budgets in Texas

*Editor's note: For the past three years this same type of information has been received from the Texas Research League. In the past two years, some of the TRL information has not matched information available from the Winters Independent School District. We were unable to compare figures with WISD officials early this week and, as in the past, some of the figures, compiled in Austin, may not reflect the complete local picture.*

In the two years since the legislature enacted HB 72, local school budgets have grown by \$2.7 billion. This higher spending level has been funded as much by local property taxes as by record-setting increase in state taxes. Over the past two years, an added \$1 billion in state aid was matched by a \$1 billion increase in local school property taxes. Last year trustees in the 1,063 local school districts levied the largest school property tax increase in Texas history—\$551 million—for a total tax bill of \$4.6 billion.

Locally, the Winters ISD's tax levy was increased by a 6.7 percent for 1985-86 as compared to a 13.3 percent increase for the

average school district in Texas.

The figures come from the latest issue of *Bench Marks for 1986-87 School District Budgets in Texas*, an annual publication of the Texas Research League, an Austin-based, educational corporation engaged in governmental research.

School budgets adopted last year called for spending \$3,346 per student for current operations. Winters ISD's budget provided for \$3,191.71 per student based on the 871 students in average daily attendance in 1984-85.

Four dollars in five were spent for salaries. Statewide, payroll expense averaged \$2,705 per student, as compared to \$2,330.91 in Winters ISD. Payroll expense is a combination of salary levels and staffing patterns.

The average salary for classroom teachers paid by Winters ISD in 1984-85 was \$1,965.40. The average among all school districts in Texas was \$23,281 per classroom teacher. While legislature and local school trustees focused discussion on classroom teachers'

(See **Budget** page 14)

ing, that they would only find the same kind of folks in the town where they had stopped.

A short while later, family number two drove up. "Fill'er up?" the station man asked. Daddy responded, "sure, but it won't hold much. We are moving and looking for a new community to call home."

The gas station man asked the same question about what the family was leaving behind and the daddy said that they were leaving some of the most wonderful folks anywhere. That they hated to leave but, he had to find a new job.

The gas station man had the same response, "You will find the same kind of folks here."

The station operator then said that a business down the street was in need of help and, that there was a house available just up the street and two blocks to the left.

## Food Commodities to be distributed

Food Commodities will be distributed in Winters August 7, 1986 at the Winters Multi-Purpose Center, 601 West Pierce Street, from 8 a.m. until 12:30 p.m.

## Approved school supply list page 8



## Hot engine

Winters firemen were called during the week end to extinguish a fire under the hood of an auto driven by Mark Blackshear of Winters.

The flames were snuffed out before they could

spread from the engine compartment. The car caught fire near the intersection of North Church and Parsonage Streets.

through 12. Any new student with band experience is invited to participate. You are asked to come by the band hall after August 1 and meet with Mr. McNulty between the hours of 8 a.m. and 12 noon.

Your attendance at all designated practices is expected. Call the band director if you cannot attend any practice. The first public performance is

Friday, September 5 at the Winters vs. Ballinger football game. The Band is also entered in the West Texas Fair Parade on Saturday, September 6. This makes our preparation time very important so as to insure our best possible showing at these early performances.

## Football workouts begin August 6

Football workouts for the 1986-87 year are as follows:

August 6, will be the issuing of shoes from 5-7 p.m.; August 11, first two-a-day workouts 8 a.m. and 6 p.m.

All freshmen must have physicals and also anyone else who has not been active in athletics.

## Farm Bureau Barbecue slated

The annual Runnels County Barbecue will be held Thursday, August 7, at 6:30 p.m. in Ballinger City Park.

Each member is entitled to two free plates.

Tickets for a child's plate will be \$1.50, adult non-member tickets will be \$3.50 per plate.

In case of bad weather the Barbecue will be held in the Community Center.

**TPA** MEMBER 1986  
**TEXAS PRESS ASSOCIATION**

**The Winters Enterprise**  
 Published by RyKel Corporation  
 (USPS 687-220)

915/754-5221 P.O. Box 37 Winters, Texas 79567  
 Yvonne Thomas, President  
 Kelley Thomas Craig, Vice-President  
 Kerry Craig, Managing Editor  
 Lee F. Craig, Business Manager  
 Jerre Heathcott, Circulation Manager

Entered at Post Office, Winters, Texas 79567,  
 As Second Class Matter

**SUBSCRIPTION RATES**

In Runnels County, One Year.....\$10.51  
 In Other Texas Counties, One Year.....\$12.62  
 Outside Texas, One Year.....\$16.00

Any erroneous reflection upon the character, standing, or reputation of any person, firm or corporation which may appear in the columns of this newspaper will be gladly corrected upon due notice of same being given to the editor in writing personally at this office.

**Poe's corner**  
 by **Charlsie Poe**

**Ghost Town Comes Alive!**

The ghost town of Marie lives again. The walls of the old rock store building were used when Norma Gentry purchased the property recently and built her new home.

Marie was named in honor of Buck Gentry's wife, Norma's, great aunt, when the post office was established by Walter C. Bass on May 8, 1906.

In 1899 Charlie Black came to Runnels County from Milam County and settled in what was later known as the Marie Community, about 35 miles northwest of Ballinger, the County Seat.

He met Jessie Parks who had come to the Bronte area, from Falls County with her parents in 1897. They were married January 1, 1903 and moved into a house Charlie had built in 1900, with lumber he hauled from Ballinger. He had 589 1/2 acres of land after he sold some to his brother, John, off the northeast corner. John was living there when he married Laura Gregory.

Charlie Black's twins born October 18, 1903, were the first twins that Dr. Leonard at Bronte ever delivered. Their names were Earl and Earnest.

Then a girl, Ella Clyde, was born in 1905 and Annie Laura in 1907.

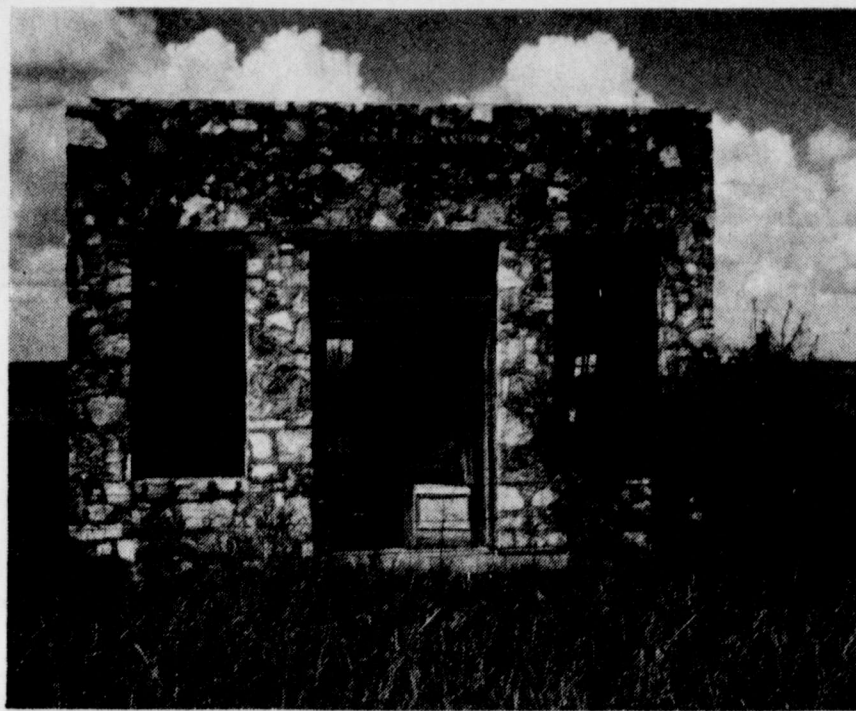
The first store at Marie was moved from Norton, across the steep bank of Oak Creek, by a Mr. Turner, located on what was called the Gentry place. The community was growing to the west after six months the store was moved about a mile to the northwest.

In connection with the post office, Bass operated a general store bought from a Mr. Turner who built it in 1902. The next owner, Isaac J. Wright, lived on it a year.

"His casket was built out there on the porch of the store. They put white cloth on the inside and black cloth on the outside—the people did," said Annie Laura Black.

In the fall of 1908 Charlie and John Black bought the store from Wright's widow and ran it until 1915. Charlie sold to John who razed the old store and erected a rock building where he continued in business until 1938. John was postmaster from 1908 until 1939.

At that time W. A. Land leased the store from John and operated it for two years. He was postmaster until the office



Pictures of the Post Office before the house was built



was closed June 14, 1941. The first mail was brought from Mavrick by a Mr. Thompson on horseback. When the railroad came to Bronte, the mail was brought first to Marie and then to Maverick and Norton by Walter McLaughlin.

Charlie Black did the freighting from Ballinger in a wagon before the railroad came to Bronte. Earl, his son, went with him many times and they stayed all night in Ballinger in the wagon yard in the summertime—but in the winter they'd go down the street to the Stokes Hotel—it took three days—one day to go, next day to load, and the following day they started home, carrying dry goods, groceries and hardware.

There were three houses in Marie: one at the gin, one at the blacksmith shop and one south of the store. Built in 1904, the steam press gin that used cordwood for fuel was bought by Bill Glenn the following year and operated by him until 1916. Cotton seed was hauled to Ballinger until the railroad came to Bronte. Sometimes there would be as many as 15 or 20 bales on

the yard at once. Glenn sold to a Mr. Browning who operated the gin one more year. Harding had the blacksmith shop until 1910, when he left. There was a barbershop at Marie during the first World War, built on the south side of the store, later used

**Wessels, Kruse 11th reunion held**

The descendants of the late Mr. and Mrs. John P. Wessels and Mr. and Mrs. Charles Kruse, Sr. held their 11th family reunion at the Ballinger City Park July 12.

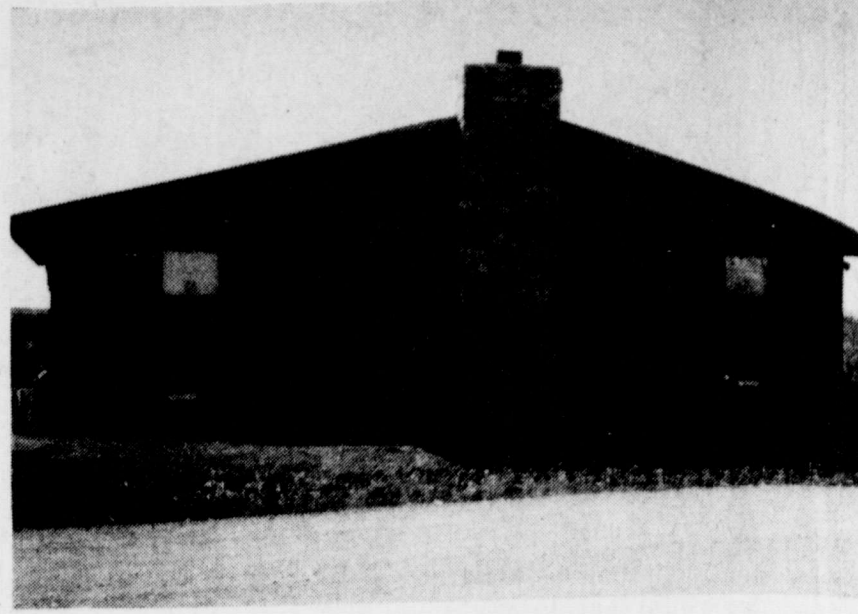
They celebrated their German Heritage along with the Texas Sesquicentennial Celebration by bringing along their favorite German dishes and Texas style foods. They came dressed in either Red/White/Blue or Pioneer Texas or Texas Western attire. The descendants also enjoyed a very warm "WELLKOMMEN" (Welcome) followed by a Talent Show at about 4:00.

Young John Lang, son of David and Gail Lang, modeled an authentic costume of knee pants and high button shoes, which had belonged to one of his ancestors, while singing a patriotic song. They also had a SongFest and enjoyed listening to various types of music.

The families also enjoyed hearing a history of the Kruse family by Dorothy Splawn and the Wessels family by Anita O'Dell followed by "Reminiscing" between Alfred and Emma Wessels, Irene Gerhart, and Edna Wessels. They were also treated with seeing old movies made by Dorothy Splawn of Grandma and Grandpa Wessels along with other "famous characters."

Seventy-one attend the Reunion including, Charles and Florence (Kruse) Secrest; Dorothy (Kruse) Splawn, Virgie (Kruse) Cromer, Dixon and Frances (Wessels) Miracle and John William Junkin all of Dallas. Also attending were Harry Reints of Freeport, Illinois, Pat (Wessels) Dearing, Brian Dearing and Joy Dearing, Cindy (Miracle) Fuller and Leslie Fuller of Grand Prairie, Geraldine (Wessels) Lang and Jan Lang of Castell, David, Gail and John Lang of Llano.

J. C. and Margaret Wessels of Bryan, Jeanita (Whittenberg) Watson and Lorri Watson of Coleman, Stan and Evelyn (Wessels) Roth and Stephen Roth of Phoenix, Dennis, Deza and Dedra Wessels of Monahans, Bill and Wanda (Wessels) Howell, Doug Howell and Regina Rowell of Midland, Lynann (Kruse) Simpson of Stephenville, Mrs. John J. (Edna Kruse) Wessels, Walter and Dorris (Wessels) Pannell of Ballinger, Randy and Ramona Wessels of San Angelo, A. C. and Carolyn Wessels of Kerrville, Clarence and Betty Wessels of Ovalo, Milton and Betty (Wessels) Ehlers of Tahoka, David D. Miracle of Midlothian and Troy and



Picture of Marie Store and Post Office after the completion of house

ed as a storeroom. There was a buggy shed back of the barbershop. The store handled dry goods, groceries, hardware, finally Kerosene and then gasoline. The rock store buildings and several foundations were still standing in Marie in 1970.

The first school at Marie was built down on Oak Creek and called Center Point, but in 1902 it was moved to the corner of Seay's ranch and an addition built on the north end with a Woodman Hall over the addition. It was a one teacher school. There was another one teacher built down south on the Gentry place. In 1915, when school was out, the building on Seay's ranch was razed and a two-teacher school built close to where the old store stood—northeast of

Marilyn (Wessels) Pennington and Jason Pennington who will be moving to California.

Also in attendance were Delbert Kruse, Ervin Ray and Helen Wessels, Clara Bell (Wessels) Whittenberg, Ralph and Dianne Whittenberg, Linda (Whittenberg) Bethel and Rhonda Bethel, Duane and Saam (Roth) Geistman and Leslye Geistman, Anita (Gerhart)

the store on the side of the hill. It lasted from 1916 until 1938 when it was moved to Bronte.

One of Charlie Black's twin sons, Earl, married Mollie Barns, who taught there in 1927. Stella Smith was the last teacher.

The school building was also used by the churches, a Baptist Church was organized in 1903, first called Center Point, but later changed to Marie. For some time Charlie Black was the only male member and was later ordained as a deacon. When the church was dissolved the members went to Bronte. John Black went into the Methodist Church with his wife and became a steward when it was organized in 1916.

The Blacks originated in Germany and from the family Bible it was learned that the name had been changed from Schwartz to Black, the English meaning.

O'Dell, Blake O'Dell, Mitchell, Connie, Tiffany and Tye O'Dell, Robert and Irene (Wessels) Gerhart, Thelma Hoppe, Alfred and Emma Wessels and Mrs. Charles (Eula Mae) Kruse all of Winters.

READ THE CLASSIFIEDS!

**Filling Station**  
 707 N. Main 754-4877  
**Special**  
**Catfish Plate.....Regular \$3.39**  
**Thursday & Friday.....Only \$2.79**  
 Includes Catfish, Fries, Slaw  
 And Hush Puppies  
 Prices Subject To Sales Tax  
 Take Out Orders—Inside Service

**"Boy, Would I Like A NEW CAR!"**

**Don't Pass Up Your GOLDEN OPPORTUNITY...**

We'll Make You A Great Deal At Old-Fashioned Interest Rates As Low As **5.9%\***

At **Charles Bahlman Chevrolet**

**Live It!**

134 S. Main Winters, Texas 754-5310

\* to qualified buyers on selected models

**Every Money Service you'll ever need under one roof**

- Savings Accounts
- Certificates
- Checking
- Loan Services Of All Kinds
- Safe Deposit Boxes
- Business Banking Services

**YOU NAME IT!**

**WINTERS STATE BANK**  
 Your Full Service Community Bank!

754 5311 500 South Main Member FDIC Winters, Texas

Tammy are u

Tammy Mark Sta united in m Saturday, First Unite of Winters. The brid Mr. and Mr of Winters son of Mrs Lindsay, O The do was perfor Holloway of Methodist, Texas. T decorated candel in entertwine blue bows, used in fron daisies and were in bra adorned wit canted with daisies and Music organist. Winters a Holloway ctions inclu With Love, Begun," "T and Traditi music. The bride riage by her Gibbs. She torian gowr with silk v high neck motifs and line. The sh accented w full boufant chapel leng cented with hemline



Mrs. Mark Stanley Kaczyk

**Tammy Gibbs, Mark Kaczyk are wed**

Tammy Melissa Gibbs and Mark Stanley Kaczyk were united in marriage at 2 p.m. on Saturday, July 26, 1986 in the First United Methodist Church of Winters.

The bride is the daughter of Mr. and Mrs. Connie Mac Gibbs of Winters and the groom is the son of Mrs. Mildred Kaczyk of Lindsay, Oklahoma.

The double-ring ceremony was performed by the Rev. Bob Holloway of Action First United Methodist Church of Granbury, Texas. The church was decorated with tapered blue candles in brass, candelabras entwined with greenery and blue bows. A unity candle was used in front of the altar. White daisies and blue silk rosebuds were in brass vases. Pews were adorned with white lace fans accented with silk blue rosebuds, daisies and blue streamers.

Music was provided by organist, Deonn Deaton of Winters and vocalist, Judy Holloway of Granbury. Selections included "Surround Me With Love," "We've Only Just Begun," "The Lord's Prayer," and Traditional organ wedding music.

The bride was given in marriage by her father, Connie Mac Gibbs. She wore a white victorian gown of organza chiffon with silk venise lace. It had a high neck trimmed with lace motifs and fitted front waist line. The short puff sleeves were accented with lace motifs. The full boufant skirt sweeping to a chapel length train was also accented with silk motifs with the hemline trimmed in lace.

Descending from a headpiece of silk lace flowers the walking length white tulle veil was adorned with silk venise lace and silk lace motifs. The bride carried a white family bible with a bouquet of a white silk orchid, blue silk rosebuds, daisies, and baby's breath.

The groom wore a white tuxedo with a white shirt, blue cummerbund and bow tie. His boutonere was a blue rosebud.

Mrs. Bill Polston and Mrs. Frank Ledbetter were Matrons of Honor. The brides attendents and the flower girl wore matching formal length dresses of Lt. blue satin with blue lace overlay bodice and lace puff sleeves. The attendents carried white lace fans decorated with blue silk rosebuds, white daisies and blue streamers.

Flower girl was Brooke Kaczyk, daughter of the groom. Ringbearer was Leslie Kaczyk, son of the groom. Best man was Johnny Kaczyk of Sweetwater, brother of the groom. Groomsman was Kenny Gibbs of Winters, brother of the bride. They also served as ushers. The bestman, groomsman, father of the bride and the ringbearer wore silver grey tuxedos with white shirts, blue cummerbunds and bow ties. Their boutonere were white silk rosebuds.

Mrs. Kelly Blackerby of Coleman registered guests in the church foyer.

The rehearsal dinner was held Friday evening, June 27th, at Holloway's Barbeque. Tables were decorated with white cloth and blue and white bandana runners, miniature bales of hay with

bandana bows silver horseshoes and a white dove, also the tables were decorated with hurricane lamps accented with silk bluebonnets and blue bandana bows.

A reception was held in the fellowship hall of the church following the ceremony hosted by the parents of the bride. A white lace cloth covered the bride's table which held the double two tiered wedding cakes with atouch of blue. The cakes were connected with a miniature archway of greenery and white miniature angels. An arrangement of white fresh daisies and blue silk rosebuds also decorated the bride's table. Carol Kozelsky baked and decorated the wedding cakes. Serving at the bride's table were: Jean Boles, Sherry Kurtz, Suzy Bates, and Connie O'Dell.

The groom's table was covered with a white lace table cloth and accented with a silver coffee service and a horseshoe shaped chocolate cake, also silver appointments and a hurricane lamp accented with blue silk bluebonnets. Serving at the groom's table were: Julie Kaczyk of Sweetwater and Lynda Ford of Risingstar. Also serving in the houseparty were: Oneta McKnight, Eva Leta Smith, Marilyn Tennison, Ann Vinson, and Billie Middlebrook.

The bride is a 1981 graduate of Winters High School. She is employed by the Winters State Bank.

The groom is a 1977 graduate of Panama High School, Panama, Oklahoma. He is employed by C City Energy.

After a wedding trip the couple will be at home in Winters.

Pre-nuptial showers included a bridal shower Friday evening, June 26, 1986 in the Fellowship Hall of the First United Methodist Church, Winters. Hostesses were: Jane Allcorn, Marie Allen, Inoyce Cavanaugh, Sandy Griffin, Bonnie Hood, Sherry Kurtz, Ruth Ledbetter, Soon Lee, Pat Meguffin, Earline Springer, Sue Spill, and Ann Vinson.

A lingerie shower was given Monday evening, July 14, 1986 in the home of Mrs. Randall Boles. Hostesses were: Jean Boles, Shirley Hall, and Carmela Polston.

**Read the classifieds**



Mrs. Mark Ray Bridgeman

**Yolanda Lujano marries Mark Ray Bridgeman**

Yolanda Lujano and Mark Ray Bridgeman were united in marriage at 2 p.m. on Saturday, July 12, 1986 in the Mount Carmel Catholic Church of Winters.

The bride is the daughter of Mr. and Mrs. Frank Lujano of Winters and the groom is the son of Mr. and Mrs. Kenneth R. Cross of Albany, Kentucky.

The double-ring ceremony was performed by Father John Hoorman of Mount Carmel Catholic Church of Winters. The church was decorated with baskets of gladiolas in shades of pink and white, spiral candleholders and the unity candle on the altar.

Music was provided by, Deonn Deaton of Winters. Selections included "Endless Love," "Wedding Song" (Bridal

a headpiece of white silk flowers and pearly beads. She carried a bouquet of white silk and pink silk roses.

Dahlia Hernandez of Abilene, Texas was Maid of Honor. Bridesmaids included Amy Tugle of Winters, Terri Cavazos of Ballinger, Yvonne Pesina of El Campo, Yvette Ysa of Ganado, and Anna Vera of Abilene. The brides attendents wore long gowns made of pink satin with a lace bodice and puffed lacy sleeves. They carried long-stemmed silk pink carnations with pink bows tied to the stem.

Flower girl was Cristen Casias of San Antonio. Ring bearer was Nate and LisAnn Smith of Winters.

Best man was Phil Smith of Winters. Groomsman were Fidel Lujano of Winters, Joe Martinez of Winters, and Ronnie Lujano of Fort Hood, Texas.

Ushers were Leo Hernandez of Roscoe, Junior Hernandez of Roscoe, and Cory Crow of Commerce, Texas.

The rehearsal dinner was held at the Winters Bakery and was hosted by the brides parents Mr. and Mrs. Frank Lujano.

A reception was held at the Winters Community Center and dinner was served by Calvin Holloway and the brides family.

The bride is a 1982 graduate of Winters High School, attended one year at Midland College. She is employed at Main Drug in Winters.

The groom is a 1981 graduate of Clinton County High School in Albany, Kentucky. He is employed at Win-Tex Cattle Feeders in Winters.

After a wedding trip to Kentucky, the couple will be at home in Winters.



Emma Hart Willard is known as the first American woman publicly to support higher education for women.

**Pat Walker's**  
 Where Resolutions Become Realities  
 St. 106 110 S. Main Winters, Texas  
 M-F 8-7 Sat. 9-11 754-5569

**REPEAT OF A SELLOUT!**

**BUY ONE GET ONE FREE**

**THURSDAY! FRIDAY! SATURDAY! JULY 31, AUGUST 1 & 2**

**Don't Miss This Incredible Sale!**

**HIGGINBOTHAM'S**  
 Over 100 Years of Quality and Service

108 Eighth St. 365-2626 Ballinger

Buy this style...  
 Get the matching recliner FREE!  
 NOW ONLY \$299

Buy this style...  
 Get the matching recliner FREE!  
 NOW ONLY \$399

Buy this style...  
 Get the matching recliner FREE!  
 NOW ONLY \$499

Buy this style...  
 Get the matching recliner FREE!  
 NOW ONLY \$599

Buy this style...  
 Get the matching recliner FREE!  
 NOW ONLY \$599

Buy this style...  
 Get the matching recliner FREE!  
 NOW ONLY \$599

**HOMESTYLE Full Meal Deal**  
 only \$2.59  
 July 21 thru August 24, 1986

The sweetest deal in town is the Dairy Queen Full Meal Deal. With a juicy quarter-pound Homestyle Hungr-buster. Golden french fries. Your favorite ice-cold soft drink. And a creamy 5-ounce Dairy Queen sundae with your choice of topping. The \$2.59 Full Meal Deal. It's a steal.

**Dairy Queen**

tion of  
 the hill.  
 until 1938  
 Bronte.  
 k's twin  
 Mollie  
 e in 1927.  
 the last

was also  
 Baptist  
 in 1903,  
 pint, but  
 rie. For  
 was later  
 When the  
 the mem-  
 John Black  
 Church  
 became a  
 rganized

d in Ger-  
 ily Bible  
 ame had  
 wartz to  
 aning.

Mitchell,  
 e O'Dell,  
 Wessels)  
 e, Alfred  
 and Mrs.  
 use all of

RIEDS!

877  
 39  
 79

di  
 RI!"

# CLASSIFIED ADS... for results

## CLASSIFIED RATES

**CASH**  
Minimum—\$3.00, 1 time  
20 words; 10 cents per word  
for over 20 words.  
**CHARGED**  
Minimum—\$3.50, first in-  
sertion, \$3.00 per insertion  
thereafter, 10 cents per  
word over 20 words.  
**DEADLINE FOR ALL ADS**  
12:00 noon Tuesday week  
of publication.

**FLOWERS, ETC.**  
Full Service Florist.  
Funerals, weddings,  
wire service. Something  
for all occasions. Mary  
Ellen Moore, Owner.  
754-5311

## FOR SALE

**BUY & SELL** used washers &  
clothes dryers, repair parts  
on washer, dryer, stoves,  
evaporative air condi-  
tioners. Garland Crouch,  
504 Enterprise St. Winters  
754-4712. 52-1fc

**FOR SALE:** 1982 Pop-up  
camper, sleeps 6, excellent  
condition. Call after 5 p.m.  
754-5013. 18-2tc

**WATKINS PRODUCTS:** For these  
fine products call Maurine  
Davis 754-4450. 19-3tc

## AUTOMOBILES FOR SALE

**FOR SALE:** 1984 Chevrolet  
Suburban fully loaded, lug-  
gage rack, running boards  
etc... Priced to sell. Call  
754-4531 or 754-4422. 3-1fc

**FOR SALE:** '72 Ford Courier  
pickup. Call 754-4640 after  
5 p.m. 18-1fc

**'83 SUZUKI** 125 DR Dirt Bike  
400-800 miles on it. Bell  
Moto-3 Helmet included  
\$850. Call 743-2342. 19-2tp

## REAL ESTATE

**NICE 3 BEDROOM HOUSE:** S.  
Penny Lane, brick, central  
H/A, curbed & paved. Dead  
end street. Call K.W. Cook,  
754-4719. 30-1fc

**HOUSE FOR SALE 3 BR, 1 B,**  
built in appliances, central  
H/A, quiet neighborhood,  
and pecan trees, 214 N.  
Church Street, or call  
754-5215. 33-1fc

## REAL ESTATE

**FOR SALE:** Recently remodel-  
ed 2 story country style 3 BR  
home. Built-ins, new kit-  
chen cabinets, 2 car garage,  
3 car carport, has separate  
1 BR garage apartment. Call  
754-4690. 15-5tp

**HOUSE FOR SALE:** 608 W. Com-  
merce. Phone 754-4128. 17-4tp

**FOR SALE:** 3 BR, 1 B, separate  
dining area, kitchen ap-  
pliances, wood burning  
stove, ceiling fans, pecan  
and fruit trees on large lot.  
Call 754-4640 after 5 p.m.  
18-1fc

**HOUSE FOR SALE:** Nice 2 BR, 1  
B, fireplace, with all ap-  
pliances. Fenced backyard  
with big pecan trees, on  
corner lot. Call 754-4917,  
18-2tp

**FINANCING AVAILABLE:** Extra  
nice 3 BR, 2 B, carpet, dou-  
ble carport, garage, fenced  
yard. Call Shirley Brewer  
754-5073. Real Estate  
Agent. 19-1tc

**PRICED TO SELL:** Remodeled 2  
BR, 1 B, corner lot. Call  
Shirley Brewer 754-5073.  
Real Estate Agent.

**HUNGRY**  
for the OLD FASHIONED  
GOSPEL  
Second Baptist  
Church  
200 Wood Street  
Sunday School 9:45  
Worship—11:00 & 7:30  
Prayer Meeting 7:30  
**YOU ARE INVITED**  
AND  
**WELCOME!**

## FOR RENT

**FOR RENT:** 2 downtown lots  
and 3 mobile home parking  
lots. See at 213 S. Main or  
208 S. Church or call  
754-5473 or 754-5098. 17-3tp

**FOR RENT:** 1, 2, or 3 BR apart-  
ments. An Equal Housing  
Opportunity. Call Winters  
Housing Authority 754-4232  
or come by 300 N. Grant.  
18-6tc

**UPSTAIRS FURNISHED APART-  
MENT** for rent, couple only.  
Call 754-4259. 18-2tp

## HELP WANTED

**WINGATE SCHOOL** has an  
opening for a cafeteria  
supervisor, interested per-  
sons should contact Ed  
Farmer at 915-743-6540. 18-2tc

## HELP WANTED

**PART TIME WORK AND FULL  
TIME PAY:** Ladies show name  
brand toys and unusual gifts  
now until December. Work  
your own hours. Absolutely  
no investment, free \$300  
kit. House of Lloyds  
754-4914. 17-4tc

**WINGATE SCHOOL** has opening  
for a combination  
maintenance and bus driver  
position. Interested persons  
should contact Ed Farmer at  
915-743-6540. 18-2tc

## WANTED

**SCRAP IRON** copper — brass  
— Auto — Tractors —  
Machinery — Engines —  
Motors — Radiators. BALL-  
INGER SALVAGE, PINE ST.  
SALVAGE, Abilene. 17-1tc

The State Legislature  
Of Texas  
Has Authorized the is-  
surance of official State  
of Texas gold and silver  
medallions. I will be glad  
to supply your needs for  
these medallions as they  
become available.  
**Floyd Sims**  
754-4224 or 754-4883

## AGRICULTURE

**CUSTOM HAY BAILING** round  
and square bales. Round  
bales of Hay for sale, call  
723-2242 or 723-2378. 7-1fc

**CUSTOM HAY BAILING** Call  
767-2048. 13-8tc

## SUN

**Computer  
Wheel Balancing  
Carl Grenwelge  
Texaco  
903 N. Main  
Winters, Texas**

## Lawn Mower Repair

Lawn Mower Won't Start  
Need Tuneup Or Overhaul  
Blade Need Sharpened  
Blade Need Balanced  
Call  
**J. P. Drake**  
209 Circle Dr.  
754-4804  
All Present Equipment For Up To  
8 HP Engine

## NOTICE

**BURGER HUT  
WINTERS**  
201 East Hwy. 53  
754-4181  
**OPEN**  
10 A.M. To 2 P.M.  
6 P.M. To 9 P.M.  
Mon. Thru Sat.  
Open Sunday Night

**Have Trailer  
and Tractor  
Will Travel**  
Medium-size  
4-wheel drive  
tractor with  
mower,  
front-end loader  
and tiller  
Large or small  
places  
cleaned by the  
hour,  
or by the job  
Call 754-4179

## Caps

By the  
**DOZENS**  
Two dozen or more  
Personal logos or  
Business name  
order through the  
**Winters  
Enterprise**  
124 West Dale 915/754-5221

## BUSINESS OPPORTUNITIES

**OWN YOUR OWN BUSINESS** Own  
your Own Jean-Sportswear,  
ladies apparel, childrens,  
lodge size, combination,  
store accessories, Jor-  
dache, Chic, Lee, Levi, Easy  
Street, Izod, Esprit, Tom-  
boy, Calvin Klein, Sergio  
Valente, Evan Picone, Liz  
Claiborne, Members Only,  
Organically Grown,  
Healthtex, over 1000  
others. \$14,300 to \$25,900  
inventory, training, fix-  
tures, grand opening etc.  
Can open 15 days. Mr.  
Loughlin (612) 888-6555.  
19-1tp

## PETS

— **COUNTRY KENNELS** — Board-  
ing dogs and cats. Call  
Ginny 754-5487. 19-1tc

**2 POINTER PUPPIES:** to give  
away, champion blood line.  
Call 754-4855, or come by  
113 Penny Lane.

Find Out Why  
Leasing Makes  
Sense. Talk to  
**Charles at  
CHARLES  
BAHLMAN  
CHEVROLET.**  
754-5310

## MISCELLANEOUS

**COMPLETE BACKHOE SERVICE**  
Approved septic systems in-  
stalled. K.W. Cook,  
754-4719. 37-1tc

**ROY CALCOTE & SONS, INC.**  
Yard dirt for quick delivery.  
Dozers, maintainers,  
backhoes, loaders, and  
dump trucks. 24 hour ser-  
vice. 915-767-3241, P.O. Box  
896, Winters, TX. 24-1fc

**THE WINTERS LAUNDROMAT &  
Shirt Laundry,** 103 Murray  
Street. Let us send your gar-  
ment out for professional  
laundry service & dry clean-  
ing. **Two day service.** Com-  
pare our special prices.  
Men's long sleeve shirts 99¢  
Drive-in window for your  
convenience. Phone 754-5673  
7-1fc

**Swatches Electric Co.**  
Oil Field, Commercial & Residential Wiring  
Air Conditioning Sales & Service  
Authorized Dealer for:  
GE - GIBSON - ROPER - FRIEDRICH  
Phone 754-5115 • P.O. Box 307 • Winters, Texas 79567

## BUSINESS SERVICES

**WINTERS  
SHEET METAL  
& PLUMBING  
WORKS**  
Plumbing, Heating,  
and Cooling  
215 W. Dale  
Phone: 754-4343

**MANSELL  
BROTHERS**  
Ballinger-Winters  
"Your Authorized  
John Deere Dealer"  
Ballinger 365-3011  
Winters 754-4027  
Parts and Service  
Complete Shop Facilities  
Hwy. 53 West

**Harold W.  
Shelburne**  
Certified  
Public  
Accountant  
100 W. Dale  
Winters, Texas  
915/754-5753

## PUBLIC NOTICE

To all Interested persons and parties  
You are hereby notified of the opportunity for written public comment concern-  
ing the Special permit application No. 5-17389 by Household Mfg. to construct a  
pyrolysis Furnace in the plant at Winters, Texas, Runnels County, Texas. The pro-  
posal location is at the west end of State Street all of blocks 17-18 & 19. This facility  
proposes to emit the following air contaminants: Nitrogen, Oxide, particulate  
matter, Carbon Monoxide, Volatile Organic compounds, Sulfur Dioxides. This is a  
painting facility that paints grills. Registers and diffusers for air-cond. & heating.  
A copy of all materials submitted by the applicant is available for public inspection  
at the Texas Air Control Board Regional office, Commerce Plaza Office Building,  
1290 South Willis, Suite 205, Abilene, Texas 79605 (915) 698-9674.  
All interested persons may inspect these material and submit written comments  
to the Executive Director of the Texas Air Control Board. Any person who may  
be affected by emissions of air contaminants from the proposed facility may re-  
quest a hearing from the Board. All comments received in writing and postmarked  
by August 15, 1986.

## PUBLIC NOTICE

Pursuant to the Gas Utility Regulatory Act, Lone Star Gas Company  
hereby gives notice of the Company's intent to implement a new schedule  
of rates effective August 23, 1986 to be charged for natural gas service  
to residential and commercial customers in the environs area (outside in-  
corporated limits) of Winters, Texas.

The rate schedule, which is already in effect for customers within the  
city limits, is expected to furnish less than one percent increase in the  
Company gross revenues in the environs of Winters, Texas.

A statement of intent has been filed with the Railroad Commission of  
Texas and is available for inspection at the Company's business office  
located at 116 North Main, Winters, Texas.

Any affected person desiring to contest such changes in rates can file  
a complaint with the Director of the Gas Utilities Division, Railroad Com-  
mission of Texas, William B. Travis Bldg., 1701 North Congress, Austin,  
Texas 78701.

LONE STAR GAS COMPANY  
(July 31, August 7, 14, 21, 1986)

## MISCELLANEOUS

**SUMMER "HOT" SALE!** Flashing  
arrow sign \$269! Lighed  
non-arrow \$259!  
Nonlighted \$229! Free let-  
ters! Few left. See locally.  
1(800)423-0163, anytime.  
19-1tp

## GARAGE SALE

**GARAGE SALE:** Friday & Satur-  
day 9 a.m. - 6 p.m. Kitchen  
items, recliners, clothes,  
many misc. items, 509  
Tinkle. 19-1tp

**GARAGE SALE:** 300 E. Pierce,  
Saturday, Aug. 2, 2  
families. Furniture, tools,  
small appliances,  
Something for everyone.  
19-1tp

**GARAGE SALE:** 608 Floyd St.  
Saturday, August 9 a.m. - 4  
p.m. Childrens clothes and  
misc. 19-1tp

**GARAGE SALE:** Friday, August  
1, 203 Paloma, 8 a.m. - 6  
p.m. 19-1tc

## PUBLIC NOTICE

In compliance with the  
Revenue Sharing Act, a copy  
of the City of Winters self-  
evaluation report will be  
available for inspection at the  
City Administrator's Office.  
Scott Epperson  
City Administrator  
City of Winters, Texas  
(July 31, 1986)

## PUBLIC NOTICE

In compliance with the  
Revenue Sharing Act, a copy  
of the Runnels County self-  
evaluation report will be  
available for inspection at the  
County Judge's office.  
Michael B. Murchison  
County Judge  
Runnels County, Texas  
(July 24, 1986)

## PUBLIC NOTICE

A Copy of the Audit Report  
for Runnels County, Texas for  
the year ending December 31,  
1985 is now available for in-  
spection at the Runnels Coun-  
ty Court House. The report  
can be inspected at the Judge,  
Clerk, and Auditor's Office  
from 8:30 A.M. until 5:00 P.M.  
Monday thru Friday.  
Michael B. Murchison  
County Judge  
Runnels County, Texas  
(July 24, 1986)

## PUBLIC NOTICE

The Board of Trustees of the Winters In-  
dependent School District will meet  
Tuesday, August, 19, 1986, at 7:30 p.m.  
in the School Administration Office to  
consider a proposed budget for the  
school year of 1986-87. Public notice is  
hereby given as required by law, and any  
person desiring to discuss the proposed  
budget is invited to attend.  
(July 21, August 7, 1986)

years, and has proved to  
be a safe and inexpen-  
sive means of preven-  
ting food spoilage. In the  
U.S., pharmaceutical  
supplies, some spices,  
and the Astronauts'  
food are sterilized by  
irradiation.

"Most important for  
people to understand is  
that no radioactivity re-  
mains in the food. None  
does, but American con-  
sumers are ultra-cau-  
tious about anything  
they associate with  
radiation," Baker said.  
"The very name of ir-  
radiation wrongly sug-  
gests to some people  
that irradiated foods  
contain radioactivity."

Bakers aid the Fed-  
eral Food and Drug Ad-  
ministration exerts  
strict controls over  
which foods may be ir-  
radiated and how much  
radiation may be used in  
the process. "The FDA  
has taken a very conser-  
vative approach in set-  
ting irradiation levels,"  
he said. "And since no  
radioactivity is left  
behind in the food,  
(TDH) feels that irradi-  
ation could be a preferred  
alternative to chemical  
preservatives and pes-  
ticides now in use."

Still, the food in-  
dustry hesitates to gam-  
ble on whether it will be  
able to sell its products,  
no matter how safe ir-  
radiation might be, since  
the public already tends  
to reject the process.  
"The irony is that the  
same people who object  
to irradiated foods—  
which emit no radia-  
tion—will gladly use col-  
or TV's, microwave  
ovens, and suntan ap-  
pliances, which do emit  
low-level radiation,"  
Baker added.

You can do very little  
with faith, but you can  
do nothing without it.  
Samuel Butler

The best answer to an  
atheist is to give him a  
good dinner and ask him  
if he believes there is a  
cook.  
Louis Nizer

**SAM'S AUTO-RAD-  
WELDING SERVICE**  
1200 So. Concho Phone 625-5000 Coleman, Texas

**KOZELSKY CABINET SHOP**  
908 N. TRINITY  
WINTERS, TEXAS  
FREE ESTIMATES  
YOU CAN AFFORD THE BEST  
MAILING ADDRESS:  
605 NOVICE ROAD  
WINTERS, TEXAS 79567  
TELEPHONE:  
(915) 754-4713

Small Engines Combine Diesel Motors  
**BOWDEN'S REPAIR**  
Leonard Bowden  
(915) 754-4653  
Automotive  
& General Repair  
114 Magnolia  
Winters, TX 79567

**The MUFFLER  
SHOP**  
Joe Kozelsky, Jr.  
200 Broadway  
Ballinger, Texas  
**NOW OPEN**  
5 1/2 Days A Week  
For Your Convenience

**ARE YOU  
PUTTING  
ME ON?**  
MAKE THE  
CONNECTION  
FOR SAFETY!  
A MESSAGE FROM THIS  
NEWSPAPER AND THE  
DPS TROOPERS

**UNDERWOOD  
Real Estate**  
754-5128 135 West Dale

<b>NEW LISTING</b> 3 BR, 1 B, remodeled, mid teens.	<b>NEW LISTING</b> Assumable loan, 3 BR, 2 B, good location.	<b>NEW LISTING</b> Completely remodeled, 2 story, 3 BR, 1 B, mid 30's.
<b>NEW LISTING</b> Edge of town, 3 BR, 1 bath, mid 20's.	<b>NEW LISTING</b> Beautifully decorated, 3 BR, 2 B, w/indirect lighting on 3 acres.	<b>FOR RENT</b> 1 BR, 1 B, in private home.
<b>NEW LISTING</b> 3 BR, 2 B, in very good condition.	<b>COUNTRY CHARM</b> 3BR, brick on 7 acres, with all the extras.	<b>NEW LISTING</b> 3 BR, 2 B, older style, in good condition, \$20,000.
<b>CIRCLE DRIVE</b> 3 BR, 2 B, H/A, make us an offer.	<b>OUTSIDE CITY LIMITS</b> Neat 3 BR, 1 bath, fenced, reasonably priced.	<b>NEWLY DECORATED</b> 5 BR, 3 1/2 B, large play room, 2 wood burning stoves.
<b>REMODELED</b> 3 BR, 2 B, with eff. apart- ment, on large lot.	<b>AFFORDABLE ELEGANCE</b> 3 BR, 3 1/2 bath, brick, with all the extras.	<b>7 ACRES</b> Red Top Station with Liv- ing quarters.
<b>LOW 20's</b> 2 BR, 1 B, cellar, on 2 lots in good condition.	<b>LOTS</b> Residential lots, call for information.	<b>OWNER FINANCE</b> 142 acres east of town, spring-fed, creek.
<b>TO BE MOVED</b> Mobil Home with range & refrigerator, \$6,000.	<b>DRASTICALLY REDUCED</b> 4 BR, 3 1/2 bath, with all the extras, workshop.	<b>REMODELED</b> Two BR, 1 B, in good con- dition. Mid 20's.
<b>ON 3 ACRES</b> 3 BR, 1 B, storm win- dows, insulation.	<b>TWO STORY</b> 3 BR, 2 B, with swimming pool, and all the extras.	<b>COLONIAL CHARM</b> Two story, 4 BR, 1 1/2 B, on 5.9 acres.
<b>BROADWAY</b> 3 BR, 1 B, Central H/A, chain link fence.	<b>OLDER HOME</b> 2 BR, 1 B, large rooms, low teens.	<b>OWNER ANXIOUS</b> Extra nice, 2 BR, 2 B, central H/A.
<b>SUPER LOCATION</b> 3 BR, 2 B, H/A, fireplace and appliances, has dou- ble garage.	<b>NEGOTIABLE</b> 3 BR, 2 B, brick home, H/A, double garage.	<b>SUN LAWN ADDITION</b> Two BR, 1 B, chain link fence on corner lot.
<b>COMMERCIAL</b> New building on one acre with offices and work shop.	<b>TO BE MOVED</b> Two small houses, make offer.	<b>PRICE REDUCED</b> 3 BR, 2 B, on 1 1/2 lots, \$14000, or best offer.
<b>VERY NEAT</b> 3 BR, 1 B, rock house on lg. corner lot.		

**Kraatz  
Plumbing**  
754-4816  
If no answer, call  
754-5610

Tu  
G  
Our mo  
dry. Sev  
some hail  
places. S  
sorghum f  
stressed f  
The old  
hulk of the  
and first  
square. Ou  
problem m  
cotton flec  
seeing son  
and apid  
some field  
Just a li  
being har  
of it is be  
ranges for  
merging. C  
now are w  
bugs that  
expected t  
levels soon  
Those fl  
causing so  
to repeat  
already pr  
portant pe  
Remember  
first week  
the fleahop  
15-20 per  
and if the  
below 80%  
needed.  
As we p  
thrid week  
stand a few  
tle more so  
pers excee  
and the sq  
7%, additi  
needed.  
Excessiv  
on young  
make the c  
vegetative  
likely to c  
it should.  
Stike  
Many of yo  
trol fleahop  
bollworms.  
That's gre  
sive applic  
you're app  
in a band  
questio  
chemical te  
Folks, w  
label! And  
ly one pin  
acres spr  
ping per ac  
ing your ch  
part of you  
sprayed. E  
treated sh  
a mixture t  
pint of ch  
acre.  
Another  
this. If you  
gallons of

West

John

W  
We  
repl  
on  
soo

# Turnrow Tidbits

## General Situation

Our moisture situation ranges from very wet to getting pretty dry. Several areas received some hail last week, severe in places. Some of the grain sorghum that is booting now is stressed for moisture.

The oldest cotton in our area has reached first bloom but the bulk of the crop is at matchhead and first one-third grown square. Our most serious insect problem now continues to be the cotton fleahopper. We also are seeing some bollworm activity and aphids are building up in some fields.

Just a little grain sorghum is being harvested now and most of it is being dried. The crop ranges from hard dough to just merging. Our most serious pests now are whorlworms and greenbugs that the sorghum midge is expected to build up to damaging levels soon.

## Fleahopper Fits

Those fleahoppers are really causing some fits! I don't want to repeat the information we've already printed in the newsletter, but fleas are our most important pest in cotton right now.

Remember that during the first week or so of scouting, if the fleahopper numbers reach 15-20 per 100 plant terminals and if the square set drops below 80%, control may be needed.

As we progress on into the third week of squaring, we can stand a few more fleas and a little more square loss. If fleahoppers exceed 25 per 100 terminal and the square set drops below 7%, additional control may be needed.

Excessive fleahopper damage on young cotton will tend to make the cotton start growing vegetatively and it will be less likely to continue squaring like it should.

## Stike up the Band!

Many of you are choosing to control fleahoppers and, if necessary, bollworms, using a ground rig. That's great and a less expensive application for you. Many of you are applying the insecticides in a band and it's raising some questions about how much chemical to use.

Folks, we need to follow the label! And if the label says apply one pint per acre, then the acres sprayed should receive 1 pint per acre. If you are applying your chemical in a 20" band, part of your ground will not be sprayed. But the part that is treated should be sprayed with a mixture that will provide one pint of chemical per sprayed acre.

Another way to look at it is this. If you are putting out 10 gallons of water per acre and

you should be applying one pint of insecticide per acre, then you should put 1 pint of insecticide every 10 gallons of water you spray out there.

Do not cut your rates because you are banding the chemical! The rate you use should be consistent with the label.

## Scouts are Special People

Many of you are having your cotton fields scouted through the Pest Management Program or by other individuals. PLEASE tell your scout when you are going to spray!! Let's don't risk having one of our scouts get sick; they're special people and we need them!

For those of you in the scouting program, you can call me at home (365-5317) or call Jodi at the office (365-5212) or call Steve Ocker at home (442-2712) and let any one of us know what you're spraying and when and we'll let the scouts know. Or you can just call you scouts and they'll let us know!!

THANKS!!

## Test soil now for fall wheat

Runnels County farmers should take time in the next few weeks to collect soil samples from those fields which will be fall planted to wheat or other small grains.

Soil test results will be returned early enough to allow plenty of time to apply recommended nutrients and incorporate them into the soil during final seedbed preparation.

Incorporating or knifing nutrients into a moist seedbed is important to reduce nitrogen volatilization losses associated with surface-applied urea-containing fertilizers, points out Allen Turner county agent with the Texas Agricultural Extension Service, The Texas A&M University System. It also allows placement of non-mobile nutrients such as phosphorus into the activity root zone of plants.

Small grains which are grazed naturally require more fertilizer than ungrazed grain because of nutrients removed by grazing. About 30 to 40 pounds of nitrogen are removed in forages grazed by stocker cattle for each 100 pounds of beef produced per acre. This nitrogen, less some recycling, must be replaced to provide adequate nutrition for grain production after livestock are removed, he points out.

A soil test is still the best way to determine fertilizer needs. How much of a given nutrient to apply depends on the level of that nutrient in the soil, residue levels, cropping history, available moisture, grazing prac-

tices and general management. A general "rule of thumb" says that wheat requires about 2 pounds of nitrogen per bushel of grain produced, says the Agent. Therefore, a 30-bushel yield would remove about 60 pounds of available nitrogen per acre. A soil test will determine the amount of residual nitrate-nitrogen in the soil and reduce nitrogen recommendations by that amount.

Producers who have not yet made a final decision to plant wheat this fall, but wish to leave the door open to plant corn, sorghum or cotton later on, can submit a soil sample now and request fertilizer recommendations for all cropping alternatives. Resulting fertilizer recommendations then can be used to assist each person in making cropping decisions, Mr. Turner points out.

Extension Service Soil Testing Laboratories at Texas A&M University and Lubbock are ready to assist wheat producers in making these economically important decisions. Although new automated laboratory procedures and computerized integration and reporting of soil test results have improved speed and precision, soil test recommendations will be no better than the quality of the soil sample analyzed, he emphasizes. Therefore, it is important to collect soil samples which are truly representative of the field being tested.

To take a soil sample, remove the top inch and collect soil samples to a depth of 6 inches. Soil sample bags and detailed instructions for sample collection are available at the County Extension office, adds the agent.

## VA Home loans aimed at record year

The Veterans Administration's home loan program—spurred by favorable market conditions and low interest rates—is poised for a record-setting year.

VA Administrator Thomas K. Turnage said the popular mortgage guaranty program is running at a pace that will probably exceed \$35 billion in loan commitments by the end of fiscal year 1986, three months from now. That level, Turnage said, would be the largest dollar volume of loans guaranteed in the program's 42-year history.

With VA-guaranteed fixed rate mortgages now at 9½ percent—the lowest in seven years—the agency has experienced extraordinary demand for both new and refinanced loans. Qualified veterans can use their entitlement to purchase, construct, alter, improve, repair, or refinance conventional homes, condominiums, and manufactured housing. Loans are made by private lenders and VA-backing frequently allows veterans to obtain mortgages with little or now down payment.

VA loan guaranty officials said the current level of market activity is being felt throughout the mortgage and housing industry. Processing backlogs are not unique to VA, the officials noted.

Turnage urged veterans to apply early and plan accordingly. "These favorable conditions have boosted home-buying and financing activity all across America," Turnage said. "The VA is a significant part of this truly positive economic news," he added.

We should behave toward our country as women behave toward the men they love. A loving wife will do anything for her husband except to stop criticizing and trying to improve him. That is also the right attitude for a citizen.

J. B. Priestley

## Commission well plugging, pollution penalties total \$64,000 for week

The Railroad Commission handed out \$64,000 in administrative penalties Monday, July 14, for problems under the Commission's pollution and well plugging rules with \$19,000 of the assessed penalties going to a Mineral Wells-based firm.

After failing to appear at hearings called by the Commission, Inter-America Minerals, Inc. was penalized \$19,000 for unplugged wells on several leases. The penalties included \$3,000 for one well on the Wowaka lease, Haskell County; \$3,000 for one well on the Weaver Creek lease, Nolan County; \$3,000 for one well on the L. M. Riggins lease, Taylor County; \$3,000 for two wells on the North K. Kemp lease, Coleman County; \$4,000 for one well on the L. M. Riggins "69" lease, Taylor County; and \$3,000 for one well on the N. E. Baird lease, Callahan County.

King Exploration & Development Company of Pasadena, also failing to appear at a Commission hearing, was penalized \$6,000 for plugging violations on three wells on the Goose Creek Independent School District lease, Harris County.

Two Humble-based companies received penalties for unplugged wells. They were Richland Investments, Inc., \$10,000 for one well on the Barton lease, Ector County; and Lancaster Petroleum Corp., \$12,000 for eight wells on the J. J. Perkins lease, Archer County.

In other penalty action, Lancelot Operations, Inc. of San Antonio was penalized \$10,000 for 10 saltwater discharges found over a one-year period on its Emory Rauschhuber lease, Frio County. Commission tests of the salt water showed chloride concentrations of 11,000 to 17,000 parts per million.

Conroe Salt Water Disposal, Inc. of Conroe agreed to pay a \$5,000 penalty for dumping at least two truckloads of saltwater into Gum Branch, a tributary of Peach Creek in the area of the Friendswood Development Company lease, San Jacinto County. Game wardens saw two loads being dumped. Commission tests of the affected water showed chloride concentrations of 6,400 parts per million.

Two companies agreed to pay penalties for unplugged wells on leases they operate without admitting any violation of Commission rules. They were P. D. Petro, Inc. of Abilene, \$500

## Do we really eat too much meat?

For years Americans have thought of themselves as big meat eaters, but new ways of measuring meat consumption show that isn't the case. Until last year, annual per person red meat consumption was figured by the U.S. Department of Agriculture on the basis of carcasses sold, says meat specialist, that's like reporting the yearly sweet corn consumption by including the weight of the corn stock, husk, corn silk and cob in the figure. New figures take into account that meat is placed in the grocery store meat case. Hale says these figures show that the average daily consumption of red meat is 2.1 ounces per day, which is less than the recommended daily allowance of two 3-ounce servings of cooked lean meats or meat alternates.

for one well on the Pettus lease, Young County; and Vestoil, Inc. of Bristol, Conn., \$500 for one well on the Liberty Townsite lease, Liberty County and \$1,000 for one well on the E. B. Pickett-Devine lease, Liberty County.

To date in 1986, the Commission has levied more than \$756,000 in pollution and well plugging penalties. Last year the Commission assessed more than \$1 million in such penalties.

**BIG SALE TOP SOIL**  
12 Yd. Load Of Top Soil  
Total Price ONLY \$49  
Regular \$8.50 Per Yard  
Sale Runs Thru August  
Call 767-3241 Or 767-2058  
Roy Calcote & Sons Inc. Dirt Work

You'll like them or we'll replace them.\*  
GAS-MATIC® Shocks  
Now Only... \$21.95  
Covers U.S., import cars, light trucks  
The Monroe 60-day Ride Offer: If they don't give you the best ride ever, we'll replace them at no charge with any comparably priced shock. See your dealer for details!  
MONROE  
**The Muffler Shop**  
200 Broadway, Ballinger 365-2891

**165-HP 4650 TRACTOR**




Big power and terrific traction for big jobs and tough fields  
Big jobs and tough fields demand big power. But they require big traction, too.  
The 4650 can be equipped with Caster/Action™ mechanical front-wheel drive. It's the best way we know to deliver both big power and big traction.  
That's because it reduces wheel slip to save both time and fuel. But you don't sacrifice maneuverability or adaptability.  
See us for more details on the remarkable field efficiency of the 165-hp 4650 from John Deere.

**MANSSELL BROS.**  
Hwy. 53 West Winters, Texas

Permit Application No. 5.17389  
Household Mfg., Dry Division  
Paint Shop  
West end of State St. Blocks 17, 18 & 19  
Winters, Texas  
For more information look in Public Notice Section

**John Deere parts perform**



Only John Deere parts fit and wear like the original equipment  
We stock a full line of top quality John Deere replacement parts. We have what you need on hand for the busy season ahead. See us soon.  
**MANSSELL BROS.**  
Hwy. 53 West Winters, Texas

**MAC OIL FIELD COMPANY, INC.**  
Kill Trucks Transports  
Water and Mud Hauling  
Test Tank Rental  
ANYWHERE — ANYTIME  
Celebrating 23 Years in the Oil Industry  
W.M. Bunger, Owner  
(915) 754-5565

Winters In- will meet 7:30 p.m. Office for the notice is w, and any proposed (86) proved to in expe- preven- ge. In the ceutical spices, ronauts' lized by tant for rstand is tivity red. None ican con- ultra- anything e with ker said. ne of ir- ngly sug- people d foods ctivity." he Fede- Drug Ad- exerts ls over ay be ir- ow much e used in The FDA y conser- h in set- n levels," since no is left e food, t irradi- preferred chemical and pest- ue." food in- s to gam- it, will be products. y, safe ir- be, since dy tends process. a that the ho object foods — o radia- y use col- rowave antan ap- do emit liation."

ery little you can out it. l Butler

ver to an ve him a ask him here is a is Nizer

Dale

deled. . mid

private

yle, in 0,000.

to play rning

th Liv- z town.

ed con-

1 1/2 B.

2 B.

ION in link ot. s lots. Her.

# Obituaries

## Juanita Self

Services for retired teacher, Juanita Pentecost Self, 77, of Abilene were held at 10:30 a.m. Monday at St. Paul United Methodist Church in Abilene with the Rev. David Hamblin officiating.

Burial was in Tuscola Cemetery, directed by North's Funeral Home, 242 Orange.

She died Saturday at her home.

Born in Glen Cove, she grew up in Winters and moved to Abilene in 1948.

She attended McMurry College, received a bachelor's degree in English from Texas Tech University in 1929 and double master's degrees in English and elementary education from Hardin-Simmons University in 1952.

Her teaching career began at the age of 18 in Thrift. In the late 1930s, she taught at Rising Star. Her late husband, Houston Self, was a superintendent at Rising Star.

A teacher at Bowie Elementary, she also taught at Bonham and Fair Park in Abilene, retiring in 1974.

She was a member of St. Paul United Methodist Church and a member of the Dorcus Sunday School Class for more than 30 years. She also was a member and past matron of the Cora Posey Chapter No. 1017 of the Order of the Eastern Star and a member of the Retired Teachers Association.

Survivors include a daughter, Carolyn Self of Denton; a son, Dr. Jack Self of San Angelo; a sister Ouida Bennett of San Angelo; and three grandchildren.

## Ruby Waggoner

Ruby Ann Waggoner, 86, of San Angelo, formerly of Winters died at 9:10 a.m. Wednesday morning, July 23, at Riverside Manor Nursing Home in San Angelo.

She was born Ruby McPherson on January 3, 1900 in Tecumseh, Oklahoma. She married C. E. Waggoner on December 28, 1920 in Hugo, Oklahoma, they moved to Hylton in Nolan County in 1912, settling on a farm. She lived there until moving to San Angelo in 1980.

Her husband preceded her in death June 18, 1982.

She was a member of the Methodist Church and the Hylton Eastern Star.

She is survived by two daughters, Maudena McLaughlin of Arlington, Gladys Eskew of San Angelo; three sisters, Inez McPherson of Oklahoma City, Oklahoma, Voila

Ward, Meeker, Oklahoma, Loisten Upton of Selma, California; four grandchildren; and one great-grandchild.

Services were held at 10:30 a.m. Friday in the Winters Funeral Home Chapel with Dr. Earl Dunn, minister of Harris Avenue Baptist Church officiating. Burial was in Hylton Cemetery under the direction of Winters Funeral Home.

Pallbearers were members of the Eastern Star.

## Delia Lopez

Delia Perez Lopez, 41, died at 6:30 p.m. in Humana Hospital, San Angelo.

She was born March 6, 1945 in Ballinger and was a waitress, a member of St. Mary's Catholic Church.

She is survived by her mother, Pauline Perez, San Angelo; five daughters, Loretta Ann Lopez, Ft. Worth, Debra Ortiz, Cisco, Jessica Lopez Martinez, San Angelo, Cynthia Lopez, San Angelo Anita Kay Lopez De La Cruz, San Angelo; one son, Aruthur Lopez of San Angelo; one sister, Olivia Gonzales, Ballinger; three brothers, Joe Perez, Herford, Rudy Perez, San Angelo, and Danny Perez also of San Angelo; eight grandchildren also survive.

Services for Delia Perez Lopez were held at 10:30 Friday at St. Mary's Catholic Church, with Father Sam Homsey officiating. Rosary was said at 7 p.m. Thursday in Rains-Seale Funeral Home Chapel.

Burial was in Winters Lakeview Cemetery.

Pallbearers were: Rudy Perez, Danny Perez, Eloy Martinez, Joe Gonzalez, Sr., Joe Gonzalez, Jr. and Joe Perez.

## Lutheran ladies met

St. John Lutheran Church Women held their quarterly meeting in the yard at Mr. and Mrs. Walter Spill's Home, on Saturday evening, July 26, 1986 at 7 p.m.

Hot Dogs with all the trimmings were served with tea, punch and sweets, hosted by the Executive Board. Mrs. Lela Thormeyer led the table prayer.

Members present were: Mrs. Walter Spill, Mrs. Jake Presley, Mrs. Fred Watkins, Mrs. Hnery Minzenmayer, Mrs. Walter Gerhart, Mrs. Erwin Schroeder, Mrs. Herman Spill, Mrs. Jack Sentz, Mrs. Walter Kraatz, Mrs. R. C. Kurtz, Mrs. E. E. Thormeyer, Mrs. Ellis Ueckert and Miss Minnie Belitz.

After the meal, Mrs. Thormeyer, vice-president called the meeting to order. Devotion was given by Mrs. Kraatz from John 1-8.

The minutes were read by Miss Belitz, treasurer report was given by Mrs. Presley. Secretary of Stewardship, Mrs. Ueckert, reported 17 quilts were tacked in February and March and shipped and extra quilts are in storage for local use. Forty-five Health Kits are ready to be shipped to Lutheran World Relief.

A Seminar will be held in Sagerton, Texas for the officers of the W.O.C. at the church on the first Saturday in October.

Mrs. Adolph Minzenmayer was elected treasurer.

The fourth quarterly meeting will be held in the Fellowship Hall on December 6, 1986.

The women of the church will sponsor the food and hand-craft, etc. at the booth for the Lutheran Church October Festival in October at the Community Center.

Meditation was given by Mrs. Ueckert and a Love Offering was collected. The meeting was closed with the Lord's Prayer.

## Boles reunion held

The family of J. S. and Sallie Boles, who were pioneer residents of Norton, Maverick and Winters areas met in the Winters Community Center for their first reunion in about twenty-five years. Six of the seven surviving children were present.

Children attending were, Mrs. Ethel Fowler of Odessa; Mrs. Irene Fowler of Madell, Oklahoma; Albert Boles and Jewel Skaggs of San Angelo; Ruby Bailey and Monore Boles of Winters.

About fifty attended including grandchildren and great-grandchildren from Odessa, Midland, Abilene, Winters and Mountain Home.

## Hospital

### Notes Admissions

July 22  
Bob McCullough

July 23  
J. W. Earnest

Santiago Ovalles

Linda Ceja

July 24  
Bessie Webb

Coy Hord

July 25  
Mauricia Montoya

and baby girl

Maria Williams

Tom Poe

July 26  
Lodema French

Lucille Virden

Connie McNeill

and baby boy

July 27  
Taina Davis

Bobbie Altman

None

DISMISSALS

July 22  
Norma Hogan

July 23  
Inez Nichols

July 24  
Winnie Patterson

Alma Hughes

Bob McCullough

July 25  
None

July 26  
Effie Kornegay

John Rodgers

Linda Ceja

Mauricia Montoya

and baby girl

July 27  
Santiago Ovalles

Maria Williams

Coy Hord

Lucille Virden

Connie McNeill

and baby boy

Taina Davis

July 28  
Ethel Herman

Vishti Waddell

Juan Esquivel

## Challenge of the Clubs scheduled

Challenge of the Clubs hosted by the Merkel Riding Club has been set for August 1 and August 2. Events include barrels, poles, flags, goat ribbon race and goat tying. Handmade sterling silver belt buckles with 14Kt. gold overlay will be awarded to the winners of the team championship and the all-around winners in each of the five age groups. A trophy saddle will be awarded to the overall high point individual of the Challenge. Point accumulation will be based on the 10 point system. A \$35 open barrel race will be held nightly. Participants may enter upon arrival. A calf scramble will be held each night for children under 12 years of age. Entries for the Challenge are to be received by July 29, 1986.

A 1986 HONDA SPREE motor scooter donated by HOME STATE BANK in Trent, Texas will be given away at a drawing held August 2, 1986 at the riding club arena. Tickets for the drawing may be purchased at Home State Bank in Trent or by any riding club member.

The Merkel Chamber of Commerce will be holding a Western Heritage Day Saturday, August 2, beginning at 10 a.m. Activities will begin at the corner of North 3rd and Edwards Streets.

Events planned that day include a style show, demonstrations of roping, branding, horse shoeing, gun fight reenactments. The Order of the Arrows will be performing their Indian dancing, also planned are children's games for all ages. The world famous Hardin Simmons Six White Horses will lead a parade from downtown out to the riding club at 4 p.m. Trophies will be awarded to the winners in the parade categories including the oldest and youngest rider, best sesquicentennial costume and the best Riding Club, Saddle Club or Sherriff Posse competing in the

parade. KEAN's Bobby and Bonnie will be the parade judges, while Jerry Eckhart the parade grand marshal has predicted sunny weather.

A BBQ brisquet supper prepared by widely known chef, Fred Heady, will begin following the parade at 6 p.m. at the riding club arena. Advanced tickets are on sale from any Merkel Riding Club member or any of the Queen, Princess or Sweetheart contestants. Tickets for the BBQ may be purchased Saturday night at the gate. Crowning of the contestants will be held during opening ceremonies of the Challenge Saturday night. For more information call Jan Beck at 915-928-5012 or Ann Payne at 928-5632.

## New vehicle sales tax to earn money

State Comptroller Bob Bullock and Treasurer Ann Richards said a new electronic transfer of motor vehicle sales taxes will earn extra interest for the state.

"We're using the best technology available to earn as much money as we can for the state and Texas sure needs every penny we can get now," Bullock said.

The new program will earn at least \$250,000 a year in additional interest.

Under the new motor vehicle rapid deposit program, county tax assessor-collectors deposit motor vehicle sales tax receipts in a local State Treasury bank account and the funds are electronically transferred to an account in Austin.

"This is an excellent example of two agencies cooperating to bring modern cash management techniques to state government," Treasurer Richards said. "Bob Bullock has always been innovative in streamlining the functions of the Comptroller's office. I'm proud that the State Treasury could be of assistance in this program."

The Treasury now has 12 rapid deposit programs in opera-

tion in state government.

The pilot program now includes the state's 15 largest counties. By September, 48 of the largest counties will have the rapid deposit program, bringing in 87 percent of the motor vehicle sales tax revenue. In fiscal year 1985, motor vehicle sales taxes generated almost \$900 million—the fifth largest income producer for state revenue.

The new system will earn interest for days previously lost, and replaces the older courier system for depositing money in the Treasury.

The 15 counties in the pilot program are Bexar, Collin, Dallas, El Paso, Grayson, Harris, Jefferson, Lubbock, McLennan, Nueces, Tarrant, Taylor, Travis, Victoria and Williamson.

## Offshore production down in April

State offshore leases produced 149,102 barrels of oil during April, down from 157,740 barrels in March, according to Railroad Commission Chairman James E. (Jim) Nugent.

Gas well gas production from state leases amounted to 8,236,323 Mcf (thousand cubic feet) in April, against 8,970,601 Mcf in March.

Casinghead gas production totaled 227,871 Mcf in April, compared to 179,099 Mcf in March. Casinghead gas is natural gas produced from oil wells.

Condensate production from state leases amounted to 28,313 barrels in April, against 27,893 barrels in March. Condensates are liquid hydrocarbons produced from gas wells.

In April, offshore crude production made up about 0.2 percent of total estimated crude production in Texas. Offshore gas well gas production was approximately 2.4 percent of the estimated state total.

Offshore production in state waters was reported in April from 46 oil and 409 gas wells.

### CONSOLIDATED REPORT OF CONDITION (Including Domestic and Foreign Subsidiaries)

(Dollar Amounts in Thousands)

LEGAL TITLE OF BANK		STATE BANK NO.	
The Security State Bank		1876-37	
Box 137		FEDERAL RESERVE DISTRICT NO.	
Wingate, Texas 79566		11 13 17637	
CITY		CLOSE OF BUSINESS DATE	
Wingate	COUNTY	June 30, 1986	
Runnels	STATE	Texas	
	ZIP CODE	79566	
Dollar Amounts in Thousands			
	Bil	Mil	Thou
<b>ASSETS</b>			
1 Cash and balances due from depository institutions:			
a. Noninterest-bearing balances and currency and coin		290	1 a
b. Interest-bearing balances		2,599	1 b
2 Securities		409	2
3 Federal funds sold and securities purchased under agreements to resell in domestic offices of the bank and of its Edge and Agreement subsidiaries, and in IBFs		800	3
4 Loans and lease financing receivables:			
a. Loans and leases, net of unearned income	5,247		4 a
b. LESS: Allowance for loan and lease losses	49		4 b
c. LESS: Allocated transfer risk reserve	NONE		4 c
d. Loans and leases, net of unearned income, allowance, and reserve (item 4 a minus 4 b and 4 c)		5,198	4 d
5 Assets held in trading accounts		NONE	5
6 Premises and fixed assets (including capitalized leases)		93	6
7 Other real estate owned		33	7
8 Investments in unconsolidated subsidiaries and associated companies		NONE	8
9 Customers' liability to this bank on acceptances outstanding		NONE	9
10 Intangible assets		NONE	10
11 Other assets		154	11
12 Total assets (sum of items 1 through 11)		9,676	12
<b>LIABILITIES</b>			
13 Deposits:			
a. In domestic offices:			
(1) Noninterest-bearing		8,790	13 a
(2) Interest-bearing	993		13 a (1)
b. In foreign offices, Edge and Agreement subsidiaries, and IBFs:			
(1) Noninterest-bearing	7,797		13 a (2)
(2) Interest-bearing	NONE		13 b
14 Federal funds purchased and securities sold under agreement to repurchase in domestic offices of the bank and of its Edge and Agreement subsidiaries, and in IBFs		NONE	13 b (1)
15 Demand notes issued to the U.S. Treasury		NONE	13 b (2)
16 Other borrowed money		NONE	14
17 Mortgage indebtedness and obligations under capitalized leases		NONE	15
18 Bank's liability on acceptances executed and outstanding		NONE	16
19 Notes and debentures subordinated to deposits		NONE	17
20 Other liabilities		NONE	18
21 Total liabilities (sum of items 13 through 20)		75	19
22 Limited-life preferred stock		8,865	20
<b>EQUITY CAPITAL</b>			
23 Perpetual preferred stock (No. of shares outstanding)		NONE	21
24 Common stock (No. of shares a. Authorized b. Outstanding)	2000		22
25 Surplus		200	23
26 Undivided profits and capital reserves		200	24
27 Cumulative foreign currency translation adjustments		411	25
28 Total equity capital (sum of items 23 through 27)		811	26
29 Total liabilities, limited-life preferred stock, and equity capital (sum of items 21, 22, and 28)		9,676	27

MEMORANDA: Amounts outstanding as of Report Date:

1 a Standby letters of credit, Total

1 b Amount of Standby letters of credit in memo 1 a conveyed to others through participations

NOTE: This report must be signed by an authorized officer(s) and attested by not less than three directors other than the officer(s) signing the report and is true to the best of my knowledge and belief. This Report of Condition has been prepared in conformance with official instructions and is true to the best of my knowledge and belief.

SIGNATURE OF OFFICER(S) AUTHORIZED TO SIGN REPORT

DATE SIGNED 7-23-86

NAME AND TITLE OF OFFICER(S) AUTHORIZED TO SIGN REPORT

EDNA RUTH SELF, CASHIER

AREA CODE/PHONE NO. 915-743-6550

We the undersigned directors, attest the correctness of this Report of Condition and declare that it has been examined by us and to the best of our knowledge and belief has been prepared in conformance with official instructions and is true and correct.

SIGNATURE OF DIRECTOR

State of TEXAS County of RUNNELS

(MAKE MARK FOR Sworn to and subscribed before me this 23 day of JULY 19 86

NOTARY'S SEAL) My commission expires 3-23-19 88

Signature Notary Public

**Bazaar**  
And  
**Hamburger Supper**  
Sponsored By Second Baptist Church  
August 9  
5 P.M. — 7 P.M.  
Bazaar From 11 A.M. — 7 P.M.  
Space Available For Booths  
\$15 Per Space  
Contact Norma Hogan — 754-4698

**HOLLOWAY'S**  
**BAR-B-Q BARN**  
Highway 53  
Regular Hours 11-2 Monday Through Friday  
**Trades Day Special**  
August 1  
Chopped Sandwich \$1.00 Bowl Beans 50¢  
**We Will Be Closed**  
August 2 To August 18  
**Gone Fishin!**  
Catering Available  
Please Phone — 754-4984

**Job Printing**

We have a modern computer for typesetting your invoices, order forms, stationery, note pads, envelopes, receipts, and other business forms. Offset and letterpress. See us for all your printing needs.

**The Winters Enterprise**



FOOD STAMPS WELCOME

900 North Main

**SUPER  
DUPER**

LIMIT RIGHT RESERVED

Effective Dates  
July 30 thru Aug. 5



HEINZ HAMBURGER SLICED

**DILL PICKLES**

32-oz. jar

**69¢**



TOPCO  
**CHARCOAL**

10-lb bag

**99¢**



In Oil or Water  
STARKIST

**TUNA**

6 1/4-oz. can

**69¢**

WHOLE SUN  
**ORANGE JUICE**

6-oz. can

**3/\$1.00**

<b>Movies</b> Mon. - Thurs. <b>\$1.99</b> Per Day	<b>VCRS</b> Mon. - Thurs. <b>\$4.00</b> Per Day
<b>Fri-Sun</b> <b>\$2.49</b> Per Day	<b>Fri. - Sun.</b> <b>\$6.00</b> Per Day

16-oz.  
**RUBBING ALCOHOL**  
3 for **\$1.00**

11-oz. **67¢**

BARBASOL  
**SHAVING CREAM**

RAINBOW  
**CATSUP**

32-oz. bottle

**69¢**



ALL FLAVORS  
**USA WET  
SPORTS DRINK**

32-oz. Bottle

**69¢**



OCEAN SPRAY  
PINK OR WHITE  
**GRAPEFRUIT JUICE**

48 oz.

**69¢**

MARYLAND CLUB CUSTOM ROAST



**COFFEE**

11.5-oz. can

**\$2.99**

LYNDEN FARMS FROZEN

2-lb. bag

**FRENCH  
FRIES**

**59¢**

LYNDEN FARMS FRENCH FRIES SHOESTRING STYLE OR TV

**SHOESTRING  
POTATOES**

**2/89¢**

20-oz. bag



NABISCO NILLA  
**VANILLA  
WAFERS**

12-oz. Pkg.

**\$1.19**



SNAP  
**FIX-A-FLAT**

12 OZ. SIZE

**99¢**



NABISCO  
PREMIUM  
**SALTINE  
CRACKERS**

1b. Box

**89¢**

HEFTY  
**FOAM  
PLATES**



50-ct. Pkg.

**\$1.19**

GULF  
**CHARCOAL  
LIGHTER**



32-oz. Bottle

**\$1.29**



**LAWN BAGS**

GLAD  
10-ct. Pkg.

**\$1.29**

JENO  
**PIZZA**

**99¢**



KRAFT  
MACARONI & CHEESE

**DINNERS**

**3/\$1.00**

HUNGRY JACK  
**BISCUITS**

10-ct

**2/89¢**

MIGHT DOG  
**DOG FOOD**

6 1/2-oz. can

**4/\$1.00**



Lipton Lipton

24 F2

Lipton

24 FAMILY SIZE

MAKES TEA BAGS

MAKES PITCHERS OF TEA EASILY

FAMILY SIZE

LIPTON

**TEA BAGS**

**\$1.99**



Blue  
Bonnet  
Margarine

BLUE BONNET  
1-lb. Pkg. qtr.

**OLEO**

**2/\$1.00**



**White, Frank**

Frank P. White, born July 39, 1889 at Carbon, Eastland County, Texas came with his folks, the James F. Whites, to Runnels County from Comanche County in a buggy, bringing three wagons and driving the cattle and horses in 1904. Frank's brothers were, Lee, Earl and Eugene. They settled in the Truitt-Harmony community.

On September 6, 1909 at Truitt, he married Lilly May King, born September 27, 1890, at Crews. They farmed and ranched nine miles east of Winters on Elm Creek.

When their child, Wade, was to be born in 1917, Dr. Fred Tinkle found Elm Creek on a big rise, since there was no bridge over the creek at that time, he took his old mare from the buggy (with little black bag in hand) and swam across the creek and delivered another of his many babies.

The family attended the Baptist Church. Frank died April 13, 1960, and Lilly died June 19, 1961, both are buried at Crews.

The following children were born to this couple: Audrey Vivian, born May 17, 1914, died June 7, 1967, married H. P. Self; Wade Wilson, born May 24, 1927, married Mary McConaty of Denver, Colorado at Drew Air Force Base on June 2, 1944 at Tampa, Florida; Ruth, born April 21, married Robert Callison.

Their grandchildren are: Phyllis Self Morrow, Betty White, Mary Jo White Tucker, Susan Jere Gerner, Wade White, Jr., James F. White, Bobby Callison, Patsy Callison, and Victor Callison.

Some of Lee White's descendants are: Louise Reed, Dale Lea Reed, Carroll White, Leo Eubanks, Elma Eubanks, Jr., Pamela Eubanks, Mozelle Lou (dec), Richard Low, and W. A. Low.

Earl White's descendants are: Tommy White, Greg White, Gene White, and Chris White.

Some of Eugene White's descendants are: Barbara Horton, Betty Horton, David Horton, Mary Ann Horton, and Fay White Briley Maxfield.

Frank White also had two sisters, Ethel and Laura. Ethel Bishop's descendants are: Clarice Broyles, Michael Lee Broyles, Duane Michael Broyles, James Edward Broyles, Dorothy Ivey, Billy Ray Ivey, Judy Ivey, Royce Ivey, Allen Bishop, Paul Allen Bishop, Page Allen Bishop, and Mary Bishop. Laura Talley had only one descendant, Edith Whittenberg (dec).



**Stoecker, August**

The August Stoeckers first settled at Lowake in Concho County. In 1911 they purchased farm property one and one-half miles south of Winters and moved on the property.

They had a family of eight children, four are living in the area; Emma Goetz of Ballinger, Katie Minzenmayer; Homer Stoecker; and Seonea Ueckert, who lives on the home place.

There are a large number of descendants scattered over the state of Texas. The family were members of the St. John's Lutheran Church.



**Onken, George**

George J. Onken was born November 8, 1870 in Schweindorf, Germany. He married Becca Johanna Wessels in Georgetown, Texas. Becca Johanna Wessels was born February 3, 1873 in Norden, Germany.

They came to Runnels County by train in 1898 and farmed 2 miles south of Winters.

The first year, their garden fence garden and yard were demolished by a cattle drive. Mr. Onken had a horse drawn metal drag that he used to keep the road (what is now Hwy 83) passable.

The Onkens received a letter from Germany in 1906, saying that since they did not appreciate living in Germany and wouldn't do their duty by serving in the army. Their property in Germany had been taken by the government the letter was signed by Kaiser Wilhelm.

The family attended the Lutheran Church. He died April 15, 1960, and she died June 26, 1962; both are buried in the Northview Cemetery.

Their daughter Alma Anna still lives on the home place and George Paul lives in Winters.



**Reeves, William**

William Bennett Reeves was born October 20, 1886 at Nacogdoches, Texas. He came to Runnels County by train in October of 1921, looking for work.

He married Freda Mae Hord (b: 1 Jan. 1900 in Waco, Tx) on June 4, 1922 at her family's home in Winters.

The Hord family came to Runnels County in a covered wagon in 1903. William served in World War I and is the only living veteran in Winters. William and Freda farmed in the Puckett community before they retired and moved to Winters. The family attended the Baptist Church.

Their children are: Annie Mae (b: 12 May 1923, m: Jim Sumner); Charlie



**Henniger, Henry**

Henry W. Henniger and Lena Wagner were married in 1883 in the Lutheran Church in Round Top, Texas.

They lived in Shelby where he owned a leather shop. He made saddles and boots until 1895 when they moved to Milam Co. where they farmed until 1904.

In 1904 they moved to Runnels County in a covered wagon with their nine children: Hetty, Eweald, William, Leonara, Ella, Emma, Harold, Leon, and Hildegard.

They first settled in the Hatchel community in 1907 then moved to the Dale community and farmed. In 1928 they retired and moved to Winters.

Family members are: Mrs. Charles Leonara Adams of San Antonio, Mrs. Walter Hildegard Kruse of Winters, and one daughter-in-law Mrs. Harold Lera Henniger of Denver City, Texas.

**Smith, Andrew**

Native of Alabama, Andrew Lee Smith was born in 1875. He came to Texas with his parents in 1886 and the family settled in Bell County. The couple lived in Mills County until 1904, when they came to Runnels County and established their home near Wingate.

Andrew was active in his farm operations and the family moved into Winters in 1924.

He served on the City Council for a number of years and was inactively associated with Smith Drug Store.

The couple had four children, Eura Lloyd of Pumphrey; Wylene Smith (dec); T. A. Smith (dec); and Dr. Travis Smith of Abilene.



**Mitchell, Martin**

Martin Luther Mitchell was born in 1878 in Coryell County, Texas. He married Nancy Elizabeth Yancy in 1900 at Killeen, Texas. The couple came to Runnels County in a covered wagon in 1904 and farmed in the Pumphrey community.

The town of Winters was very young so they traveled to buy their household goods, groceries and clothing, this was a two day trip usually. Later the Pumphrey community developed two general stores, a drug store, a doctor, barber shop, blacksmith shop, a school and two churches (Baptist and Methodist). By 1920 all the stores had moved out except one that remained until 1950. One convenience the early pioneers had was the peddler, who came by every two weeks selling groceries, hardware and dry goods.

There were very few cars in the community before 1915. The Mitchell's purchased their first car in 1917 (Model T Ford).

The Mitchell's had three children, Zora, Ila, and Audra L. Mitchell. Zora married Omer Hill, Ila married Robert Conner, Audra L. married Lila Smith.

Their grandchildren are: Elizabeth Young, Albuquerque, New Mexico; Marilyn Rock, San Antonio; A. L. Mitchell, Houston; Mike Mitchell and Randall Conner, Winters; Evelyn Voelkel, Ballinger; Elvin Hill (dec); Alphaeus Hill, Wingate; Glynn Hill, Bishop, Texas.

Great-grandchildren are: Jeffrey and Stephen Young, Tony and David Rock, Juli Ann and Douglas Mitchell, Jason and Justin Mitchell, Kevin, Dennis and Craig Conner, Brenda Smith, Gary Voelkel, Susan Hibbitts, John Hill, Suzanne Robinson, Melinda Hoppe, Belinda Schwartz, Leslie Hill, Lisa Wendland and Lana Hill.

Great-great-grandchildren are: Adrea Smith, Shelby Smith, Amber Robinson, Chanda Hoppe, Chris Hoppe, Meggan Schwartz, Curtis, Stacy and Krystal Wendland, A. J. and Bennett Rock.

Mr. and Mrs. Luther Mitchell belonged to the Pumphrey Baptist Church and later joined the Drasco Baptist Church, where they were faithful members as long as they lived.

Mrs. Mitchell passed away in 1925, Luther Mitchell passed away in 1936. They were buried in Fairview Cemetery.

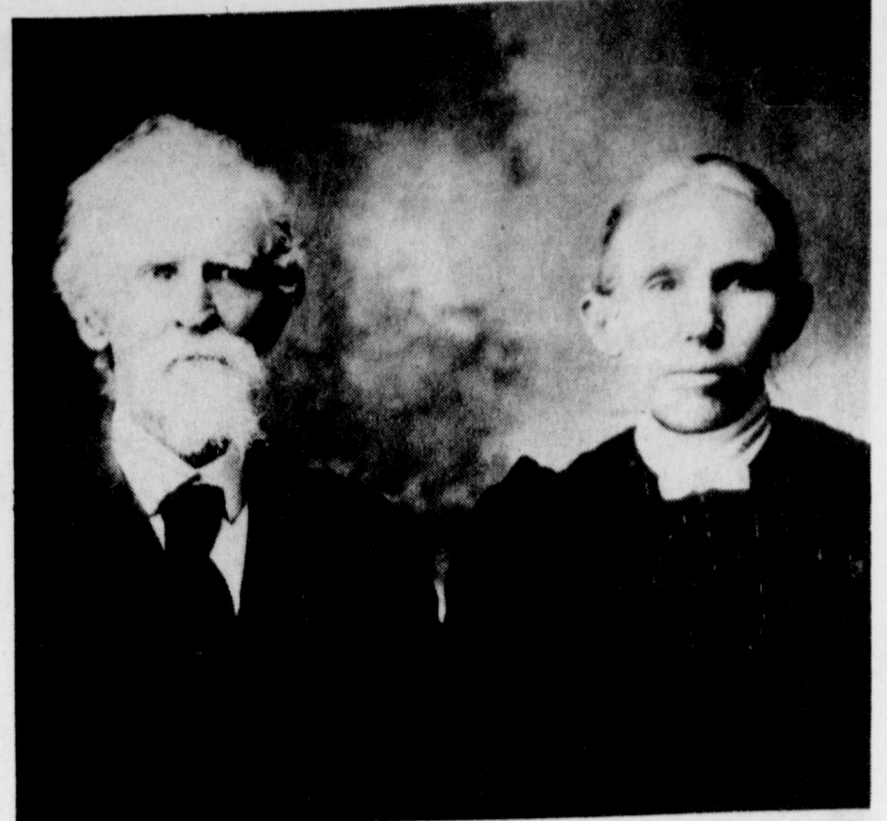
**Patton, James**

The J. L. Patton family moved to Runnels County by wagon in 1928, purchasing a farm near Wingate.

Before coming to Runnels County, Mr. Patton worked in the oil patch near Ranger and the family lived at Haskell.

They had four children, Jim, Jack, Veona and Mildred.

Veona lives in Kyle, Texas; Mildred and Jim live on the home place in the same house the family moved into from Haskell; Jack and Carolee have a farm near by.



**Holshouser, A. J.**

A. J. Holshouser landed on Galveston Island in 1845 and moved to Runnels County in 1903, settling on a farm seven miles north of Winters in the Baldwin community. He died in 1909.



**Poe, William**

W. W. Poe was born July 22, 1862 in Tuscaloosa County, Alabama. His father died of measles in the Civil War before he was born, because of the abuse of his stepfather, he left home at the age of 13. He came to Hill county, near Itasco, and worked for a Mr. McLeary. Mrs. McLeary taught him to sign his name.

He married Jerusha Evaline Cline, born January 29, 1868 at Tuscaloosa, April 5, 1885 at her brother's home in Seymour, Texas. By hard work, he acquired two farms in Hill County, which he sold to come to Runnels County November 6, 1904. The family of eight children came by train to Ballinger and moved their household goods by wagon and the family by buggy to a farm six miles west of Winters. Eva and George were born after the family moved to Winters.

Poe gave two acres of his land for the location of a school. The community was named Poe's Chapel in his honor. He served as trustee of the school from the time of its erection in 1911 until he moved to Winters in 1919.

In 1913 citizens of the community realized the need of a church; and Mr. Poe gave another acre for a building and contributed to its erection. It was a Methodist Church, but other denominations were privileged to use the facilities. The church became inactive in 1934, and the building was moved to Wingate in 1937 where it was again used as a Methodist Church until 1966, when a new lodging was purchased. The school was disbanded in 1936 and the structure moved to Winters in 1948 (used as an FFA Building at the school until a new one was constructed).

Mr. Poe owned 1,500 acres of fertile farm land in this one block. This land is still owned by members of the Poe family and is farmed by grandsons in the main. Three highways (53,384, and 211) now intersect in front of the original Poe homeplace and it is designated as "Poe's Corner". The land is now dotted with a number of oil wells, first discovery was March 11, 1952.

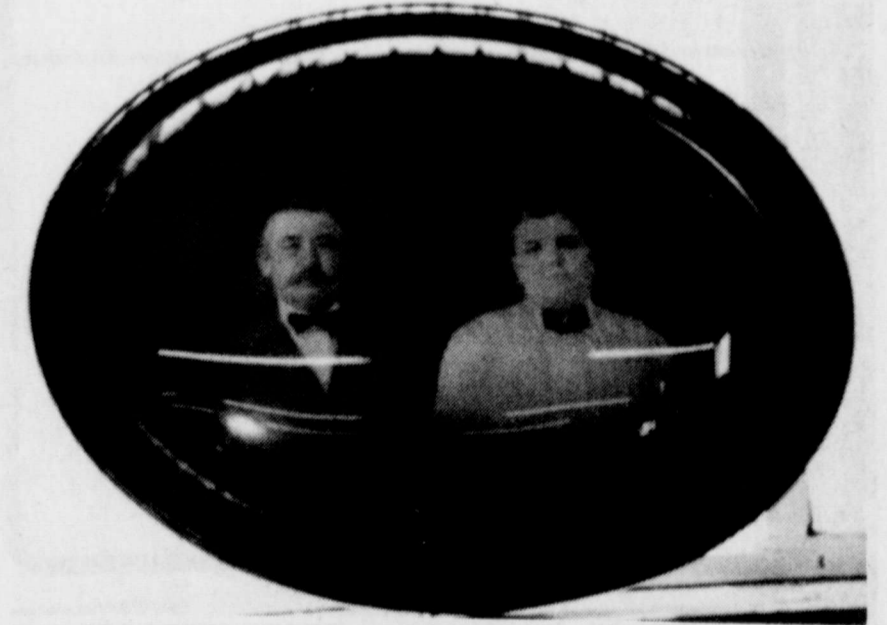
The fifteen years that followed the move to Runnels County were busy ones. All farming was done with single row cultivators and planters, a son, Howard, introduced the first 4-row farming with a Case tractor bought in 1930.

As early as 1908 the family owned a Buick automobile. It had an open top, carbide lights, and cranked on the right hand side. It was never used except to drive to church on Sunday morning in pretty weather and occasionally it could not be driven Sunday night because it scared the teams of the other church-goers.

Following the drought of 1918 and upon a guarantee of \$2 a bushel by the government for wheat, 1000 acres of the farm was sowed in wheat. A bumper crop was harvested in 1919, and the family moved to Winters that fall.

After moving to town, Mr. Poe served one term as trustee and one term on the City Council and contributed toward the building of a new Methodist Church in 1924. Mrs. Poe continued her activities of making lye soap, sewing, quilting, president of the Cemetery Association, visiting the sick and helping with dinners at the First Methodist Church.

Family members still living are: Ozella Bugg, Florence, Arizona; Eva Cook, Albuquerque, New Mexico; Charlie Poe, daughter-in-law, Winters. Four grandsons live in Winters, Tom Poe, Clifton Poe, Harold Poe and Dennis Poe. Three grandsons also live here, they are Perry Brandon and Freddie.



**Vogler, Carl**

Carl Vogler was born April 3, 1856 in Kreis County, Breslau, Germany. He served as a Border Patrol with the German Army. He married Louise Gerlich in 1885.

Carl later worked as a meat inspector before coming to America in 1892, entering the Port of Galveston.

He took a job on a ranch and in the spring of 1893, Louise and their five children joined him. Five more children were born. The family farmed in DeWitte County then moved by covered wagon to Milam County and farmed there. In December of 1900, the family came by train to Ballinger and settled on a farm they bought in the Cochran community. They sold the farm and moved to the Dale community. They built a home on this farm, and lived there until the 1930's. They are buried at Roscoe, Texas.

The family was Lutheran.

The Vogler family reunion is held annually in April at the Winters Community Center.

**Schwartz, Karl**

Born in Germany in 1851, he and his brother left the families vineyards and winery in Stuttgart in 1868 for American, leaving their parents, brother and sister behind. He Americanized his name to Charles William Schwartz and settled in Webbville (Travis County) Texas, there marrying Martha Caroline Bradley. The brother stayed in the Chicago area.

The family moved from Mills County to Runnels County in 1899 settling on a farm 2 miles north of Crews, that was purchased for \$5 per acre. The Schwartz family saw the town of Crews grow until at one time there were three grocery stores, blacksmith shop, a cotton gin, two drug stores, a justice of the peace, a school and gym.

One son, Charlie, farmed for a number of years in the Dale community. Charlie later purchased property in the Drasco community. Charlie not only farmed but he did some freighting and cattle trading.

There are a great number of the descendants of this family in the area.

**Kruse,**

Charles J. Fayette County 1872. Dorothy, Germany, on to America with a letter at Ind. Fayetteville, to Gonzales. On Decem Dorothy we the bride's Nickolaus Wolfdorf. T.

**Wessels,**

John P. W came to America 17 years in Germany, many in 1886 Germany, in from Brenne Maryland to brother, Omer Autjue, for voyage was

**Neely,**

J. S. Ne County in son County west of Dr is now L.C.

**Tinkle**

Dr. Fr County in Meek in Lura Lee Dr. Tink fire career developm Winters. Lura L (ret) pres lives in Al Lura L Garrett, w a daughter Abilene. Jay Wise, Lura L (ret), who and a gr lives in A





**Kruse, Charles**

Charles Kruse, Sr. was born in Fayette County, Texas, on October 13, 1872. Dorothea Schroeder Kruse, whose father was a tailor, was born in Hanover, Germany, on April 22, 1872. She came to America with her parents in 1878, settling at Industry, a community near Fayetteville, Texas. Later they moved to Gonzales County.

On December 4, 1896, Charles and Dorothea were married at the home of the bride's parents, Mr. and Mrs. Nikolaus Schroeder, by the Rev. Wolfdorf. They lived on their farm at

Cheapside, a small community near Gonzales, until 1942. At that time they moved to Winters, Runnels County, Texas, settling on their farm one and one-half mile east of town.

Charles and Dorothea had five children, all of whom were born at Cheapside. All of the five met and married Runnels County mates. Therefore, in order to be near their children and grandchildren, Mr. and Mrs. Kruse, too, moved to Winters. Helga (Mrs. Pete J.) Wessels married and moved near in Winters in 1920; Edna (Mrs. John J.)

Wessels, in 1924; Walter (who married Hildegarde Henniger), in 1926; Charles Jr. (who married Eula Mae Barker of Ballinger), in 1930; and Lydia (Mrs. Carl Wessels), in 1933.

Edna (Mrs. John J.) Wessels of Ballinger is the only survivor of the immediate family.

Throughout the years, the Kruse offsprings have been accomplished tillers of the soil and have remained loyal to their heritage. For over fifty years, they have been dedicated, supporting members of St. John's Lutheran Church of Winters.



**Bedford, W. G.**

The Bedfords originally came from Ireland in 1811 to Missouri. In 1848 sixteen families moved to Texas near Ft. Worth.

W. G. Bedford served in the Texas Rangers and the Confederate Service.

W. G. and Sarah Shaw had nine children, among them were their sons Fred, Jay and Lee.

Lee came to Winters in the early 1900's and had the first water system. It consisted of two dug wells on North Main Street.

Fred came to Winters in 1907 with his wife, Cordelia Thomasson, following a year later.

He and his brothers operated the Bedford and O'Dell Hardware store on North Main Street. Later he owned the Bedford Mule and Horse Barn, trading horses and mules until 1936 when he became a County Commissioner, an office he held for 20 years.

He served on the school board, being president many years. He was a Charter Member of the Winters Country Club, Lion's Club and Chamber of Commerce. He was well known for his gospel quartet singing.

Fred and Cordelia had been married 64 years when he passed away in 1967 and Cordelia in 1969.

They had ten children, W. G. (Gladden) is a lawyer still living in Winters with his wife, Dorothy, he has five children. Lola Mae married Boyd Eiland and has one son. She passed away in 1927.

Brevard (Barney) and his wife Lillian Liles, lives in Abilene and have three children.

Marvin and his wife, Nina Bridwell, live in Winters where he was Fire Chief for 18 years and has been a member of the Volunteer Fire Department for 47 years, he and Nina have three daughters.

Fred, Jr. and Nelda lived in Chicago, Illinois for many years. He flew as a Captain for United Airlines, they have three children. He passed away in 1968.

Wayne and Dorothy lived in Winters where he was associated with Marvin in the Bedford Insurance Agency for many years. He passed away in May of 1971, they have four children.

Norville was married to Cal Mostad and lived in the Winters area, he passed away in 1965 and she died in 1977, they have four children.

Lorma Lee and her husband, Jimmy Kendrick, have lived in Graham many years, they have three children.

John Boyd and his wife, Nadine Stoecker, live in Winters where he has a Tax Consultant Office, they have six children.

David married Betty Graham and lives in Abilene, they have five children.

When Robert Bedford, son of John Boyd and Nadene, graduates from Winters High School, there will have been a child from Fred and Cordelia's family bearing the Bedford name in attendance for 85 continuous years in the Winters School system.

Six of their ten children are still living, there are 38 grandchildren; 74 great-grandchildren; and 27 great-great-grandchildren.

**Turk, Otto**

Otto F. Turk was born 5 April 1872 in Austria and he came to America at the age of seven. He Americanized his name after coming to America-Turk. He and Minna Schroeder had four children before she died in 1906. He married Theresa Wild in 1907, and they had seven children. In the fall of 1913, the Turk family came to Runnels County and settled on a farm in the Antelope community (now the Victory community).

Otto's children: (1) Alexander Turk was born March 13, 1899 and died November 26, 1900 of croup. (2) Alma Turk was born November 2, 1900 she married the Rev. Otto Baack she died January 20, 1968. (3) Hilda Turk was born October 21, 1902 and still lives in Winters; She married Bill Bredemeyer. (4) Otto Turk was born October 11, 1905 he married Laura Gerhart and he died November 11, 1972. (5) Bill Turk was born April 10, 1908 he married Irene Smith. (6) Hertha Turk was born September 28, 1909 and she married Calton Smith-dec. she married Authur Bates, and they live in Ballinger. (7) Hedwig (Hattie) Turk was born November 26, 1911 she married Henry (Skeet) Minzenmayer she lives in Winters. (8) Leona Turk was born March 19, 1914 she married Herbert Piel. (9) Carl Turk was born March 6, 1916 he married Ruby Huback and they live in Winters. (10) Raymond (Sam) Turk was born June 16, 1918 he married Virgie Huback-dec. He and his present wife live in Ballinger. (11) Ellfrieda Turk was born August 31, 1924 she married Lamar Muston.

**Young, Thomas**

Thomas B. Young, born December 10, 1868, in Woodburn, Kentucky, married Carrie E. McMillan on November 26, 1896 at Brookton, Texas. The family came from Hill County to Winters in 1917. The family traveled by car and the household goods by train, they farmed near Winters and attended the Methodist Church. Thomas died in 1938 and Carrie in 1964.

Children born to this couple were: Edna Young Caudle of Ballinger; Willie Lois Young Nichols of Winters; M. K. Young (dec) Fred M. Young, Winters; Ray G. Young (dec); Roy E. Young, Winters; and W. J. Young of Canyon Lake, Texas.

Grandchildren are: Patricia Caudle Rivers, David Caudle, Relda Young Dickson, Garner Young, Dick Young, Kay Young Colburn, Sylvia Young Summer, Mack Young, Tommy Young, Mary Young Aldridge, Gary Young, Janice Young Foster, Jean Young Tyner and Carol Ann Porner.

Fred, Roy and Willie Lois still live in Winters as does one granddaughter, Kay Colburn.

The Sykes were farmers and worked in the oil field during his early years. Liking the looks of Winters and Runnels County he moved his family to Winters and opened a variety store on West Dale Street near the old Queen Theatre. Later he purchased farm and ranch land East of Winters, this property still belongs to Albert and Elizabeth.

The Sykes had two daughters, Mary Margaret she married Robert B. Leathers and has two children, Margaret Jo Leathers Schumann, she has two girls and one boy; Leonora Sykes Wilkerson married Joyce Wilkerson, she has one girl, two boys and two grandchildren.

Albert Sykes died in 1968 and Mrs. Sykes is 92 years old and still living in Winters.

**Minzenmayer, William**

William Minzenmayer was born in 1870 in Toledo, Ohio. He met Wilhemina Caroline Ernst while the two families were living in Williamson County, Texas.

The Ernst family moved to Runnels County in 1898, later in the year William came to Runnels County to marry his sweetheart in 1898. Two of William's brothers, John and Henry, also moved to Runnels County.

The family farmed north of Winters. William and Minnie were charter members of St. John's Lutheran Church, they held early services in Minnie's home.

All of the children from this union lived in the area. Louise Gottschalk, Helen Gerhart (dec), William F. (Bill) Minzenmayer, Frederick Otto Minzenmayer (dec), Mary E. Kurtz, Adolph C. Minzenmayer.

They also have eight grandchildren, six great-grandchildren and eight great-great-grandchildren.

There are a large number of descendants in this area.

**Sykes, Albert**

Father of Albert Sykes came to American from England landing in Galveston in 1866. Albert was born in Mills County and married Elizabeth Hudson in Goldthwaite in the year of 1918.



**Wessels, John**

John P. Wessels born in Germany came to American when he was approximately 17 years old, leaving his parents in Germany. His mother died in Germany in 1885 but John did not return to Germany, instead he bought passage from Brenner, Germany to Baltimore, Maryland for his Poppe Jansen, his brother, Ome, and two sisters, Becha and Antje, for approximately \$100, the voyage was a 14 day trip.

Becha married George Onken and moved to Winters in 1898. Antje (Annie) married Jacob G. Goetz and moved to the Winters area in 1902. Poppe Jansen then came to Winters by train in 1906 (age 63) to live with his daughters. He died in March 1930 and is buried in the Northview Cemetery.

In January of 1913 John J. P. moved with his family, Pete, John, Lena, Ger-

tie, Carl, Alfred and Irene, from Illinois to Runnels County on a farm near Hatchel, which he had purchased for approximately \$27 an acre. The two oldest daughters remained in Illinois (Tina and Hannah).

A large number of the descendants still live and farm in this area.

Charles (Charlie) Luther Graham, came to Runnels County May 1915 and settled in Winters.

Family members: Gladys Swofford and two sons; Gaston and Jerry live at Clyde, Charlie Pose and Son Dennis live at Winters and daughter Jammie at Tillamook, Oregon. There are 10 great grandchildren and 8 great-great grandchildren.

C. L. (Charlie) Graham and Eula Mae Cooke were married August 12, 1906 in North Park, Abilene at the home of the bride's parents, Dr. and Mrs. Robert Cooke. Charlie was farming with his father in Jones County that year.

Their first home was on a farm at Clyde. Following a hail storm in 1911 and several years of drought, the family moved to Winters in May 1915. Graham worked for Jeanes Grocery and Produce for 9 years. He continued in the grocery business for 30 years with various partners. His last store was Graham Grocery, owned and operated with his son, George. In 1945, he retired and moved to a farm at Drasco, which the couple sold when they moved back to Winters in 1956.

In 1968, Charlie and Eula celebrated their 60th wedding anniversary. He was head usher at the First Baptist Church for 20 years; she, a former school teacher served as a Sunday School teacher and pianist in various departments of the church.

Mrs. Graham died July 25, 1972 and he died September 8, 1972; both are buried in Northview Cemetery. Charles Robert, the youngest son, died in 1945 and George in 1975.

Eula Mae Cooke was born September 20, 1887 in Kentucky Town, Grayson County. She came here with her parents, in 1889, the year before the town was named Winters and the first little school was built. Dr. Cooke practiced medicine here until they moved to Colorado City in 1892.

Miss Cooke graduated from Simmons Academy in Abilene, and attended summer courses to earn a certificate to teach first grade. In 1906-07 she taught at old Dewey in South Taylor and received a salary of \$50 a month because she could teach Latin.

The following year she taught at Turner's Chapel north of Abilene. Among her pupils was Wiley Post, who became the first man to fly solo around the world and who died in 1935 in a plane crash that also killed Will Rogers.

While teaching at Turner's Chapel, she made her home with Mr. and Mrs. G. W. Graham. He was a trustee of the school. Their son, Charlie, born March 1, 1887 in Luling, had been working away from home since he was 17. He returned home in the Spring of 1908 and met the young school teacher. They were married in August.



**Graham, Charles**

Horace K. Reid and his wife, Bertha, moved from Oenavill, Bell County, Texas to Winters in the fall of 1899.

Mrs. Reid's father, John Eoff, who had moved to Runnels County in 1898 owned a farm west of Winters. He gave the farm to H. K. and Bertha, they settled there with their two children, Noel Reid (dec. 1952) and Alice Reid Suttle (dec. 1953). Three of their children, Renna Armstrong, Gunter, Texas; Faye Reid, Dallas, Texas; and H. K. Reid Jr. (dec. 1972) were born in Winters.

In 1906 he purchased a house located on the east side of North Main Street from John Eoff. At that time only one or two houses stood between there and the business section. This house was torn down in 1953, the property is still owned by a member of the family.

Mr. Reid owned and operated a gin in Winters for many years, he served on the City Council for several terms.

Mrs. Noel (Ellen) Reid, daughter-in-law, and Mrs. Homer (Doris) Stoecker, granddaughter of H. K. and Bertha Reid are currently residents of Winters.

Noel Reid owned and operated a gin in Winters for many years, he served on the City Council for several terms.

Mrs. Reid owned and operated a gin in Winters for many years, he served on the City Council for several terms.

Mrs. Noel (Ellen) Reid, daughter-in-law, and Mrs. Homer (Doris) Stoecker, granddaughter of H. K. and Bertha Reid are currently residents of Winters.

Noel Reid owned and operated a gin in Winters for many years, he served on the City Council for several terms.

Mrs. Reid owned and operated a gin in Winters for many years, he served on the City Council for several terms.

**Reid, Horace**

Horace K. Reid and his wife, Bertha, moved from Oenavill, Bell County, Texas to Winters in the fall of 1899.

Mrs. Reid's father, John Eoff, who had moved to Runnels County in 1898 owned a farm west of Winters. He gave the farm to H. K. and Bertha, they settled there with their two children, Noel Reid (dec. 1952) and Alice Reid Suttle (dec. 1953). Three of their children, Renna Armstrong, Gunter, Texas; Faye Reid, Dallas, Texas; and H. K. Reid Jr. (dec. 1972) were born in Winters.

In 1906 he purchased a house located on the east side of North Main Street from John Eoff. At that time only one or two houses stood between there and the business section. This house was torn down in 1953, the property is still owned by a member of the family.

Mr. Reid owned and operated a gin in Winters for many years, he served on the City Council for several terms.

Mrs. Noel (Ellen) Reid, daughter-in-law, and Mrs. Homer (Doris) Stoecker, granddaughter of H. K. and Bertha Reid are currently residents of Winters.

Noel Reid owned and operated a gin in Winters for many years, he served on the City Council for several terms.

Mrs. Reid owned and operated a gin in Winters for many years, he served on the City Council for several terms.

**Minzenmayer, William**

William Minzenmayer was born in 1870 in Toledo, Ohio. He met Wilhemina Caroline Ernst while the two families were living in Williamson County, Texas.

The Ernst family moved to Runnels County in 1898, later in the year William came to Runnels County to marry his sweetheart in 1898. Two of William's brothers, John and Henry, also moved to Runnels County.

The family farmed north of Winters. William and Minnie were charter members of St. John's Lutheran Church, they held early services in Minnie's home.

All of the children from this union lived in the area. Louise Gottschalk, Helen Gerhart (dec), William F. (Bill) Minzenmayer, Frederick Otto Minzenmayer (dec), Mary E. Kurtz, Adolph C. Minzenmayer.

They also have eight grandchildren, six great-grandchildren and eight great-great-grandchildren.

There are a large number of descendants in this area.

**Sykes, Albert**

Father of Albert Sykes came to American from England landing in Galveston in 1866. Albert was born in Mills County and married Elizabeth Hudson in Goldthwaite in the year of 1918.



**Neely, J. S.**

J. S. Neely, family came to Runnels County in the fall of 1902, from Williamson County. They first located 1 1/2 miles west of Drasco. In 1903 moved to what is now L.C. Hill place. Then in 1903 they

moved to old Neely place 7 miles North of Winters.

His occupation was farming and carpenter work.

Family reunions were held in Austin, Texas in 1953, Waco in 1955, Abilene in 1957, Fort Worth in 1956, Tyler 1980, Fort Worth in 1979. Lavera and R. A. Neely joined the later Neely reunions.

**Reid, Horace**

Horace K. Reid and his wife, Bertha, moved from Oenavill, Bell County, Texas to Winters in the fall of 1899.

Mrs. Reid's father, John Eoff, who had moved to Runnels County in 1898 owned a farm west of Winters. He gave the farm to H. K. and Bertha, they settled there with their two children, Noel Reid (dec. 1952) and Alice Reid Suttle (dec. 1953). Three of their children, Renna Armstrong, Gunter, Texas; Faye Reid, Dallas, Texas; and H. K. Reid Jr. (dec. 1972) were born in Winters.

In 1906 he purchased a house located on the east side of North Main Street from John Eoff. At that time only one or two houses stood between there and the business section. This house was torn down in 1953, the property is still owned by a member of the family.

Mr. Reid owned and operated a gin in Winters for many years, he served on the City Council for several terms.

Mrs. Noel (Ellen) Reid, daughter-in-law, and Mrs. Homer (Doris) Stoecker, granddaughter of H. K. and Bertha Reid are currently residents of Winters.

Noel Reid owned and operated a gin in Winters for many years, he served on the City Council for several terms.

Mrs. Reid owned and operated a gin in Winters for many years, he served on the City Council for several terms.

**Tinkle, Fred**

Dr. Fred Tinkle came to Runnels County in 1900, setting up a Medical Practice at that time. He married Lee Meek in 1910, two children, J. S. and Lura Lee were born to this union.

Dr. Tinkle practiced medicine his entire career in Winters and saw the development of the first hospital in Winters.

Lura Lee (now Mrs. George M. Garrett) presently resides in Winters, J. S. lives in Abilene.

Lura Lee has a son, George Lee Garrett, who lives in Lawn and J. S. has a daughter, Martha Wise, who lives in Abilene. Martha has two sons, Jeff and Jay Wise, who live in Abilene.

Lura Lee has a grandson, Nial Garrett, who lives in Van Nuys, California, and a granddaughter, Elizabeth who lives in Azle.

**Paxton, J. Frank**

Frank Paxton was born in Cherokee, Texas in 1888. He came to Winters in 1911 and married Willie Allred of Winters in 1912.

The family moved to McCamey and San Angelo, after approximately six years he returned to Winters and purchases the City Drug Store and served as a druggist for 43 years.

Mr. Paxton was active in church work. He served as Mayor for four years and on the City Council. Mr. Paxton was the Sunday school superintendent at the First Methodist Church for 15 years and also served as president of the board of stewards.

Two daughters still live in Winters, Mary Roller and Cordie Adams.

**Henslee, Carl**

Carl Henslee and Margaret Butchree were married in Buffalo Gap where Carl was employed in the bank.

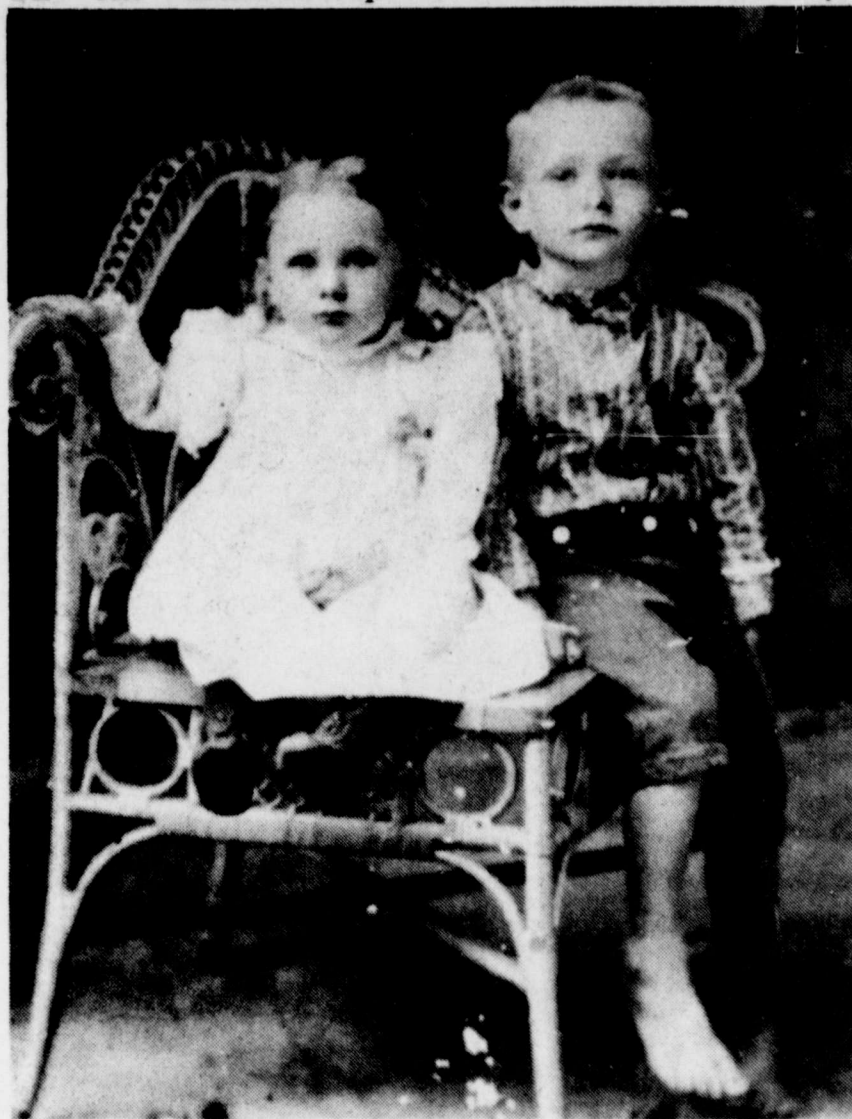
They moved to Hawley, Texas and he was in the banking field.

Their children were born there, they are: Leeshen, Joyce, Carolee and Kenneth.

In 1919 they moved to Winters from Hawley and Carl worked in the Winters State Bank until he retired.

Their son, Kenneth, was killed serving in the armed forces during World War II. Leeshen ran a local cleaners for many years in Winters and died in 1961. Joyce Morgan lives in South Carolina and Carolee Patton lives in the Wingate area.

**More reunions and family histories may be found on page 12**



O'Dell, Robert

Robert Mack O'Dell, born February 9, 1985 in Springfield, Mo., married Sarah Frances Gibbins, born August 30, 1857 in Izard County, Arizona. About 1900 they lived for a short time at Wingate and did not return to Runnels County until 1915, where they farmed in the Crews community. Of the ten children born of this union, Bennie E. O'Dell (born April 16, 1897, died January, 1973) married Ella Mae Traylor, resided in Runnels County until his death. Bennie and Ella Mae had fourteen children (7 sons and 7 daughters). One daughter, Mrs. Douglas Overman and one son Survern live in Runnels County at the present time.

**Bryan Family**

The Bryan Family history has been thoroughly researched and many interesting facts uncovered. The Bryan family originated in Ireland with actual dates being traced as far back as 1490. About the 1600's, Bryans began immigrating to America and settling in Virginia, Conn., and Maryland. The following facts of history are considered worthy of note:

Many of the Bryans lived in the Shenandoah Valley, near Linville, in Rockingham County, Virginia where General George Washington marched in 1781. In 1784, and is reported as saying, "What a beautiful land the Bryan place was."

The Lincolns and the Harrisons lived near the Bryans and several Bryans witnessed John Lincoln's will.

Perhaps one of the most interesting facts concerning the Bryans is their marriages to the Boones. Daniel Boone married Rebecca Bryan, daughter of Joseph Bryan. Martha Bryan became the wife of Edward Boone, brother of Daniel; and, Daniel Bryan married Mary Boone.

In Texas history, Emily Austin, sister of Stephan F. Austin, married James Bryan. They had a son whose name was Moses Austin Bryan.

During the American Revolution, there were many Bryans residing in Virginia and Kentucky who were much involved in defending the new country. In fact, Bryan's Station was a fort defended mainly by the Bryan families living there.

Robert Hudson Bryan and his brother, Edward Floyd Bryan, with their ten small families, about the year of 1903 moved from Osceola, Hill County, Texas to Runnels County, and acquired farm land about four or five miles north and east of Norton, Texas. Their farms were located about one mile from each other near where the Church of Christ now known as the Old Norton Church of Christ is situated. These two Bryan brothers resided with their families at

of Matilda of Flanders, wife of William the Conqueror, with whom he came to England in 1066 and became the first Baron O'Dell. The title and estates were bestowed upon the first Baron O'Dell. The titles and estates were bestowed upon the first Baron O'Dell by William the Conqueror for distinguished military services in the conquest of England. The head of the barony was at O'Dell, Bedfordshire, England, where his O'Dell church and O'Dell castle remains.

Queen Mary (Bloody Mary) of England confiscated the estates of the direct line and drove them out of England. The others changed their names to protect themselves and their property. These are five places in the United States known as Odell.

these locations until their deaths.

The next fifty-five years brought many hardships requiring, in some years, because of drought, short returns back to Hill Country, their birth place, to earn enough to get by the next crop year but never did they abandon their new homelands.

They were pioneers in the true sense and their tenacity paid off. The community of Old Norton and the members of the Church of Christ there will always be proud of the fact that they came and stayed for a season and left a challenge for their descendants to follow and a memory to cherish.

In the days when Robert H. and Edward F. Bryan first arrived in Runnels County, about seventeen miles southwest of Winters, Texas and about twenty-five miles west and slightly north of Ballinger, Texas it was difficult to find a place to worship God. It was not long until these two Bryans set to work.

In the early years land was donated or procured and materials bought by them, and with their own hands built the first wooden building in which to worship, even to finishing the pews both were talented carpenters. This building served for many years. As the years progressed around these families there now stands a very modern brick and masonry building fully air conditioned and comfortable for seating over one hundred people. The seed that these two brothers planted and the support that their sons, daughters and grandchildren and other descendants give to carry on the work is a living tribute to them, although it was done not for that purpose but in the true spirit of christian love.

Two services are conducted on Sundays and on Wednesday night a bible study and prayer service. What makes this unique is that the Old Norton Church of Christ is out in the country five or six miles from the town of Norton and with no other buildings or settlements nearby. It is hard to find a stranger here as almost all of the sixty

to seventy-five members of the congregation are descendants of Robert Hudson Bryan and Edward Floyd Bryan. Descendants of Robert Hudson Bryan, many of which live in this area are: Rick Dry, Chris Dry, Tammy Dry, Gary Dry, Shannon Dry, Roger Bryan, Pam Helm, Tabitha Bryan, Sanford Bryan, Frances Sumrall, Cal Sumrall, Necia Harp, Clinton Harp, Calvin Bryan, Debbie Shacklaman, Gregory Shacklaman, Rachel Shacklaman, Bryan Shacklaman, Cathy Bryan, Beth Bryan, Mike Bryan, Lou Ann Scott, Ken Scott, Andrew Scott, Barry Scott, Betty Allard, Alyn Allard, Jane Walker, Jill McMurray, Zachary McMurray, Jennifer McMurray, Bill Wayne Walker, Kelli Walker, Kari Lynn Walker, Jody Walker, Alton Bryan, Jr., Sunny Higgins, Bryan Higgins, Ruth Ann Powlett, Brad Bryan, Sommer Leigh Bryan, Brandon Lee Bryan, David Michael Bryan, Carolyn Cole, Megan Cole, Conda Richards, Alisa Richards.

Descendants of Edward Floyd Bryan are: Charles Bryan, Clara Brooks, Karen Glascock, Ronnie Lewis, Para Lee Gibbs, Wesley Ash, Bonnie Dry, Tony Dry, Tony Dry, Jr., Christine Barker, Cindy Easterling, Heather Easterling, Casey Easterling, Cathy DiMaria, Christina DiMaria, Toni Lynn DiMaria, Connie Bryan, Joe Bryan, Becky Airhart, Jared Airhart, Doug Bryan, Lisa Blake, Tommy Eubanks, James Arthur Eubanks, Truett Eubanks, Margie Kay Holloway, Christopher Holloway, Douglas Bryan, Dewitt Bryan, Marsha Powell, Lance Feldhouser, Flint Feldhouser, Gary Bryan, Susan Bryan, Angela Bryan, Kendra Nitsch, Shauna Nitsch, Jason Nitsch, Leion Bryan, Brent Bryan, Cheryl Pritchard, Kayla Pritchard, Vickie Blackerby, Alex Blackerby, Milton Bryan, Lucretia Arrott, Brian Arrott, Dustin Arrott, Greg Bryan, Glen Bryan, Richard Bryan, Janabeth Bryan, Volene Vogler, Donny Vogler, Monty Vogler, Dan Vogler, Karen Vogler, Clifton Bryan, Christy Bryan, Cherry Bryan, Eva Hutton, LaVon Hutton, Rhonda Finch, Stephan Finch, Stephanie Finch, Ronald Hutton, Brian Hutton, Carrie Hutton, Kyle Hutton, Diane Putnam, Aaron Putnam, Renee Putnam, Debra Weir, LaVerne Harper, Edwin Harper, Glenda Petrusky, Cheri Petrusky, Christa Petrusky, Shere Barr, Wayne Bryan, Truett Bryan, Keith Bryan, Ginger Bryan, Shara Fox, Kevin Fox, Craig Fox.

Bryan, Richard Bryan, Janabeth Bryan, Volene Vogler, Donny Vogler, Monty Vogler, Dan Vogler, Karen Vogler, Clifton Bryan, Christy Bryan, Cherry Bryan, Eva Hutton, LaVon Hutton, Rhonda Finch, Stephan Finch, Stephanie Finch, Ronald Hutton, Brian Hutton, Carrie Hutton, Kyle Hutton, Diane Putnam, Aaron Putnam, Renee Putnam, Debra Weir, LaVerne Harper, Edwin Harper, Glenda Petrusky, Cheri Petrusky, Christa Petrusky, Shere Barr, Wayne Bryan, Truett Bryan, Keith Bryan, Ginger Bryan, Shara Fox, Kevin Fox, Craig Fox.



**NEWCOMERS**

Announcing the arrival of Brandon Howard Pritchard, son of Dr. Larry Jack and Katherine Pritchard of Waco, Texas, born July 2, 1986 at 4:45 p.m., weighing eight pounds and three ounces and was 20 1/2 inches long.

Grandparents are Jack Howard and Lucille Pritchard of Wingate, Texas.

Mr. and Mrs. Rodney (Tammy) Fenwick of Ballinger announce the birth of their son, Rodney Joe Fenwick, Jr.

Rodney was born June 16, 1986, at 6:23 p.m., weighed seven pounds and 4 1/4 ounces and measured 20 1/2 inches long.

Paternal grandparents are Mr. and Mrs. Vernon (Dean) Fenwick.

Maternal grandparents are Mr. and Mrs. Tommy (Sue) Chambliss, Sr., of Ballinger and Mr. and Mrs. Moses (Donna) Casaras, Sr. of Winters.

Paternal great-grandparent is Mrs. Thurman (Mary Agnes) Thompson of Coleman.

Maternal great-grandparents are Mr. and Mrs. Alvis (Dorothy) Waldrop and Mr. Nealy Chambliss, both of Winters.

Mr. and Mrs. Joe Eubank of Winters are proud to announce the birth of their son, Michael O'Shea.

Michael was born at 3:26 a.m., June 28, 1986. He weighed seven pounds 11 1/2 ounces, and was 20 1/2 inches long.

Michael was welcomed home by a sister, Jennifer and brother, Matthew.

Paternal grandparents are, Mr. and Mrs. Charley Eubank, Jr. of Winters. Paternal great-grandparents are, Mr. and Mrs. Jesse Lowrance of Abilene, and Charley Eubank, Sr.

Maternal grandparents are Mr. and Mrs. Ray Walters of San Angelo. Maternal great-grandparent is Billie Nichols of San Angelo.

**Correction**

Andy and Tina Smith are proud to announce the arrival of their daughter, Kati Paige Smith, born July 8, 1986. She weighed 7 pounds and 14 oz., and was 20 inches in length.

Paige is welcomed home by her sister, Jaci DeAnn Smith.

Maternal grandparents are, Mr. and Mrs. Johnny Merrill.

Paternal grandparents are, Mr. and Mrs. J. R. Smith.

Great grandmothers are: Mrs. L. L. Merrill, Pearl Kile, Jackie Cockran, and Grace Smith.

The days that make us happy, makes us wise.

John Masefield



Traylor, William

William Edward Traylor was born October 16, 1876 in Titus County, Texas. He married Oma Ann Bynum on September 24, 1899 in Cookeville, Oma Ann Bynum was born September 12, 1883 at Cookeville in Titus County.

Since William had asthma, his doctor ordered a higher climate. In October of 1915, they came by passenger train to Talpa and settled at Crews. Their household goods came later by freight train. William died May 23, 1923.

To this couple the following children were born: Ella Mae (b: 1 Sept. 1900, m: Bennie E. O'Dell); Wallace Beaugard (m: Lottie Brown); Jewell Edward (m: Ivy Blackmon); John Marvin (m: Geraldine Clanton); Horace Eugene.

Some of their grandchildren, who live in the Runnels County area today, are: Suvern O'Dell, Mrs. Douglas Overman, and Marvin Traylor, Jr.

The Traylor family descended from Edouard Traillour (b: 7 May 1639 at Nouzon in Ardennes, France). His parents were Edouard and Louise (Pascal) Traillour. They are believed to be of French Huguenot origin and lived for a time in Hampton Parish, England. Edward came to America in 1662 and settled in the Colony of Virginia. He married Martha Randolph, a sister of William Randolph. He died in Henrico County, Va. 1677.

Several Traylor's fought in the American Revolutionary War. After living in Georgia some seventy years, four families of Traylor's went in search of new land. It took twenty wagons and 60 days to transport these families with their slaves, household goods, etc. to Titus County, Texas in 1852. There were about twelve Traylor's who fought in the Civil War.

**News from the Nursing Home**

by Margie Clough  
Activity Director

July has been a fun month. The residents have really been enjoying our regularly scheduled activities. They especially enjoy the homemade doughnuts and the popcorn.

We have several new residents to welcome to the facility. They are, Myrtle Coffman, Alma Hues, Annie Mayo and Verna Fox. We are glad they chose this facility and we hope they enjoy it here.

Our bingo winners last week were Curtis Morrison, Mike Krause, and Vicki Shaw. Congratulations to these winners.

Thanks go the volunteers who helped me with the birthday party this month. Also thanks to Noma Eoff for supplying the birthday cake, everyone enjoyed the cake and punch. Our birthday people this month were Laura Stanley and Melissa Smith. Happy Birthday to them both.

Senior Citizens Nursing Home is in need of volunteers, anyone interested should call Margie Clough at 754-4566 or come by 506 Van Ness, Winters, Texas.

**Visitors**

Roeneal and Phyllis Boles of Clinton, Mississippi, surprised his parents when they landed at the Winters Airport last Tuesday for a few days visit.

They flew on to Dallas to meet their son, Keith, to help him celebrate his 20th birthday.

Roeneal is a graduate of Winters High School and A&M University. He earned his pilots license about 1971.

**Bryan reunion to be held**

The Bryan family reunion is to be held August 2nd and 3rd at the Norton Community Center.

Saturday afternoon and evening their will be visiting and Sunday they will be visiting all day and a lunch is to be served at noon.

Families of Bob and Ed Bryan. Everyone is invited to be with them on this occasion.

**Card of Thanks**

Odessa and I want to thank all our friends who were so thoughtful and concerned while I was in the hospital and since I came home.

The visits, flowers and most of all your prayers for my recovery were very much appreciated.

We hope we can be of help to you when you're in need.

M. L. and Odessa Dobbins

**Card of Thanks**

I would like to thank Dr. Y. K. Lee and all of the staff and the nurses at North Runnels Hospital for the excellent care they provided for me during my stay there.

I also want to thank my friends and relatives for the flowers and visits they gave me during my stay at the hospital.

Sincerely,  
Bessie Webb

The Family Group of the nursing home will meet August 4 at the Hitchin' Post Restaurant. Everyone with family members in this facility is urged to attend. For more information call 754-4566 or contact Helen Smyth.

**GT**  
GOOD TIMES TRAVEL

**Let The "Good Times" Roll!**  
Try Your Luck In Las Vegas  
Choice of Entertainment in August  
Featuring

**Las Vegas**  
FROM ONLY  
**\$195.95**  
AIRFARE AND HOTEL

Dean Martin  
Rich Little  
Sammy Davis, Jr.  
Roy Clark and Glen Campbell  
Bill Cosby  
Dolly Parton  
Mack Davis  
Harry Belafonte  
Gladys Knight and The Pips  
David Brenner

Call Good Times 1-800-592-4452  
Ask For Star 69  
And  
Let The "Good Times" Roll

**Dr. Thorpe's office**  
will be closed  
August 4-8  
for vacation

For Emergencies  
Including Obstetrics  
Call North Runnels Hospital

**K C House**  
Bronte, Texas  
Phone 473-6761  
Open 10 A.M. - 10 P.M. Closed Monday

Small Chicken Fried Steak .....\$4.50  
Large Chicken Fried Steak .....\$5.50  
Hamburger Steak With Onions & Brown Gravy ....\$4.75  
**Thursday Night Special**

K-C For 2 .....\$15.00  
**Friday Night Special**

Shrimp Platter .....\$6.90

The Above Served With Salad Bar,  
Baked Potato, or French Fries, Texas Toast  
**Sunday Lunch \$4.00**  
Includes Salad Bar

**Tired of Weekend Cooking? Have Dinner With us!**

**Triple J Grocery**  
754-5413  
Weekend Special  
Friday - Saturday - Sunday  
August 1 - 2 - 3

**Complete Meal To Take Home**

Whole Fried Chicken.....\$3.99  
Potato Salad.....\$1.39  
Holsum Ranch Rolls .....99 for 24  
Plus All Other Deli Items  
Call Your Order In Ahead Of Time For Faster Service

Coke 6 pk. Cans \$1.99  
Ground Chuck lb. \$.129  
Parade Ice Cream 1/2 gal. \$1.49  
Ice Cold Melons \$2.29

By H

The real the groom all washed

Jack Olive bright, Ft. see Mrs. E and during Hambricht grass and Nila Osborn her some g odd jobs.

Hazel Ma Hale and A Coleman T Coleman were in L business, w Mary Coza O. M. Arch ing from a Paul Bak tion KIDY, ing the cor day, it was gratulation. The Sam recently fre in Colorado During t and Doug E Therin Ost Brent and Vickie and Coleman. Jason Nits Kayla Pritc Dale Eul in a tight s started in Ranch, star when his p him betw pickup for Alfred and up and free is the big asked me to the Collom Congratu Coleman celebrated sary on Fr David Houston with Ruth Doris an Ft. Worth C. is in the treated for Jerry Al Casey, dow with his gr another so

**Appro school**

The app supplies ne the followi

Pre- 1 jar white Crayons (E 2 Husky P 1 pr. scisse 1 box Klee 1 pkg. mar 12"X 18" 1 pkg. as struc tion 1 Nifty 11 BE SUR SUPPLIES NAME.

K 1 tablet 1 Nifty per Primary pe King Col 2-1g. pkg. construc Kleenex-1 Scissors-bl Crayons-B 1 Elmers g cigar box 1 bar deod 2-#2 lead p Special Kleenex (2 1 box 16 cr 1 pair blur 1 med. Elm Big Chief 2 pencils 1 large per Notebook 1 pkg. co paper

1 roll of S 1 folder W 1 lg. pkg. (size 12" 2 Primary OR King 2-#2 lead 2-tablets (washable scissors-pe crayons-B Kleenex (2 2-Big Chic

## Crews

By Hilda Kurtz

The reason they never give the groom a shower is that he's all washed up anyway.

Jack Olvera and Ricky Ham-bright, Ft. Worth, were out to see Mrs. Effie Dietz last week and during the week Clarence Hambright came and mowed the grass and did some odd jobs. Nila Osborne came and brought her some goodies and did some odd jobs.

Hazel Mae Bragg carried Alta Hale and Ann Fuller to lunch in Coleman Tuesday.

Coleman and Lawan Foreman were in Lamesa Thursday on business, while their the visited Mary Cozart and Mr. and Mrs. O. M. Archer, who are recovering from a serious car wreck.

Paul Baker won a TV on station KIDY, San Angelo, guessing the correct temperature that day, it was 101 degrees. Congratulations Paula.

The Sam Faubions returned recently from a weeks vacation in Colorado.

During the week with Larue and Doug Bryan were, Nila and Therin Osborne, Lelon, Doris, Brent and Dawn Bryan, Kelly, Vickie and Alex Blackerby from Coleman, Kendra, Shauna and Jason Nitsch, Rex, Cheryl and Kayla Pritchard of Lubbock.

Dale Eubanks found himself in a tight squeeze Thursday, he started into the John Sims Ranch, started to open the gate when his pickup rolled penning him between the gate and pickup for over an hour, when Alfred and Keith Collom drove up and freed him. So Dale here is the big "THANK YOU" you asked me to put in our column to the Collom friends of yours.

Congratulations to Lawan and Coleman Foreman, who celebrated their 15th anniversary on Friday.

David and Lee Craig of Houston spent the weekend with Ruth and Bradley Pape.

Doris and Marion Wood are in Ft. Worth the G. C. Walters, G. C. is in the hospital there being treated for pneumonia.

Jerry Alexander brought son, Casey, down to spend a few days with his grandparents and took another son, Dusty, home. S. K.

Alexander and son, Blue, of Amarillo spend two days with Norval and Helen.

Raymond Alcorn of San Saba spent the weekend with Fairy and Wilbert Alcorn.

The Walters Jacobs visited with Mrs. Amber Fuller at her new home in Holiday Hill, Coleman, she's real happy to be there with relatives and friends.

Margie Jacob, Carol and Kathrine Kozelsky attended the wedding of Tammy Gibbs Saturday evening.

Sunday dinner with the Noble Faubions were: Mrs. Beatrice Dye of Oklahoma, Nila and Therin Osborne, and Rodney, Bernie and Bryan.

Mrs. Beatrice Dye was a visitor in the Hopewell Baptist Church Sunday.

Corra Petrie and Hazel Mae Bragg attended Mr. Phil Anderson's funeral on Tuesday. On Saturday Corra attend the wedding of Gina Yates and Scott Lange in the First United Methodist Church in Ballinger.

Nila Osborne spent Sunday afternoon with her mother, Mrs. Viola Foster, in Winters. Viola returned home Tuesday after several days out in Odessa with her granddaughter, the Mickey Crawford family. While there she also visited her daughter, C. B. Tippet. Viola came home with infected ear trouble, the Crawfords returned home after a few days here.

Sixty-six people attended the Kraatz three day reunion at Hords Creek Lake, everyone had such a good time and promised to come again next year. Folks came from Lockhart, Dallas, Ft. Worth area, San Marcos and Abilene.

Jerry Kraatz came home from Kerrville V.A. Hospital on Friday and will return in a month.

Before attending the Coleman County R.E.A. meeting Therin and Nila Osborne visited with Mrs. Amber Fuller in Holiday Hill Nursing Home, then visited with Mrs. Alta Hale and Ann Fuller and later with Mrs. Lemma Fuller.

Bernie Faubion's grandmother, Beatrice Dye of Oklahoma, is visiting a few days with the Rodney Faubion family.

### Approved list of school supplies

The approved list of school supplies needed by students in the following grades are:

#### Pre-Kindergarten

- 1 jar white paste (8 oz.)
- Crayons (Basic 8 count)
- 2 Husky Pencils
- 1 pr. scissors-blunt end
- 1 box Kleenex (200 count)
- 1 pkg. manila drawing paper-12" X 18"
- 1 pkg. assorted colored construction paper 12" X 18"
- 1 Nifty 112 Manuscript tablet
- BE SURE TO LABEL ALL SUPPLIES WITH STUDENT'S NAME.

#### Kindergarten

- 1 tablet
- 1 Nifty pencil tablet #2047
- Primary pencil-Huskey #683 or King Cole #77
- 2-lg. pkg. assorted colored construction paper 12" X 18"
- Kleenex-(1-200 count box)
- Scissors-blunt end
- Crayons-Basic 8 ONLY
- 1 Elmers glue-4 oz.
- cigar box
- 1 bar deodorant soap
- 2 #2 lead pencils

- Special Ed./Self Contained**
- Kleenex (2-200 count box)
- 1 box 16 crayons
- 1 pair blunt scissors
- 1 med. Elmers glue
- Big Chief tablet
- 2 pencils #2 lead
- 1 large pencil eraser
- Notebook paper
- 1 pkg. colored construction paper

#### First Grade

- 1 roll of Scotch tape
- 1 folder WITH POCKETS
- 1 lg. pkg. manila drawing paper (size 12" X 18")
- 2 Primary pencil (Huskey #683 OR King Cole #77)
- 2 #2 lead pencils
- 2-tablets (Nifty Pencil-green)
- washable glue or paste
- scissors-pointed
- crayons-Basic 8 or 16
- Kleenex (2-200 count boxes)
- 2-Big Chief Tablets

- 1 bar soap
- eraser
- school box
- wooden ruler
- ★ Teacher will ask for \$1 per student for colored construction paper to be ordered through the school.

#### Second Grade

- 2 Rolls of Scotch tape
- Big Chief tablet - 1
- 2 tablets -Nifty #2179
- Manuscript
- Ruler-12 inch, wooden
- Elmers glue (in plastic bottle)
- erasers (pink or blue)
- 2 pencils #2 lead
- scissors-sharp pointed
- crayons BASIC 8
- Kleenex (2-200 count box)
- 1 lg. Spiral composition book (reg.)
- 2 lg. pkg. assorted colored construction paper
- 2 lg. manila drawing paper (12" X 18")

#### Third Grade

- Scotch tape
- Wide Ruled Notebook paper
- pencils #2 lead
- ruler-12 inches with centimeters
- Elmers glue
- scissors-pointed
- crayons
- Kleenex (1-200 count box)
- tablet (#3, Zaner-Blosers, Inc., #140023-1)
- 1 eraser
- 1-RED pen
- 1 Pkg. construction paper-(assorted 12" X 18)
- 1 Pkg. manila paper-12" X 18")

#### Fourth Grade

- 1 Pkg. assorted construction paper (either size)
- Kleenex-(2-200 count box)
- 1 box - 16 crayons
- 1 pair pointed scissors
- 1 box map colors
- 1 ruler
- 2 red pencils or pens
- Notebook paper
- 1 large pencil eraser
- 1 pkg. Scotch tape
- 1 pkg. 9" X 12" manila paper
- 1 Elmers glue-8 oz. plastic bottle
- 3 expansion folders-WITH POCKETS

#### Fifth Grade

- 1 protractor
- 1 pkg. construction paper-assorted colors-either size
- Notebook paper-reg. lines
- 1 pair pointed scissors
- 1 box crayons
- 1 ruler-metric & standard
- 2 pencils-#2 lead
- 2 boxes Kleenex (200 count)
- 2 red pens or pencils
- 1 pkg. typing paper
- 1 pkg. Scotch tape
- 1 Elmers glue
- 1 pkg. manila paper
- 1 box colored magic markers
- 3 expansion folders-WITH POCKETS

#### Sixth Grade

- Notebook paper-3/8" standard ruling
- 10 Expansion folders with pockets and paper holder
- 1 pair pointed scissors
- 1 box map colors
- 1 ruler
- 3 blue (NOT BLACK) ball point pens
- 2 red lead pencils or pens
- 3 #2 lead pencils
- 2 boxes Kleenex (200 count)
- 1 pkg. manila paper-12" X 18" ONLY
- 1 pkg. typing paper
- 1 compass
- 1 protractor
- 1 Elmers glue-4 oz.
- 1 box crayons-24 count
- 2 pkg. construction paper-assorted colors-9" X 12" ONLY
- 2 Spiral notebooks-40 sheets
- 1 pkg. assorted colors of tissue paper
- 1 set of water colors
- 1 green ballpoint pen
- 1 box CRAYOLA Felt Tip Markers-8 count
- 1 pkg. graph paper (4 sq. per inch)
- 1 roll scotch tape
- 1-1/2 inch wide Utility paint brush
- 1 pkg. sponges (pkg. of 3)
- 3 poster boards 22" X 36" (white)

### Texas Farm Bureau endorses tax reform

The board of directors of the Texas Farm Bureau has endorsed the Senate version of the tax reform measures now being considered by the House-Senate conference committee.

Texas Farm Bureau supports the Senate version of tax reform, the board announced, provided the final bill:

- Keeps individual tax rates of 15 and 27 percent;
  - Permits the self-employed to deduct payments of premiums for health insurance policies;
  - Allows farmers and ranchers to use income average;
  - Retains the present law regarding deductions for multi-year soil conditioners such as fertilizers (as provided in the Senate version);
  - Adopts the House bill treatment of capital gains;
  - Allows carry-forward of the full value of all unused investment tax credits (as contained in the House bill);
  - Permits timber producers to continue treating proceeds from the sale of timber as capital gain.
- The TFB board urged Farm Bureau members to contact their congressmen in support of the Senate bill.

### Food preservation without sugar

Foods can be preserved at home with less sugar, but the results may or may not be acceptable to your tastes, says a Texas A&M University, Agricultural Extension Service specialist. Before trying no-sugar recipes on your produce, nutritionist Marilyn Haggard advises experimenting with small batches first to see if you are pleased with the results. Recipes for canning fruits call for the addition of sugar or sugar syrup to maintain the texture, shape and color of the fruit and to improve the flavor, she explains. Omitting the sugar will primarily affect the fruit texture and flavor. When canning without sugar, the specialist says to use only firm ripe or slightly under-ripe fruit so it won't become too soft for canning. By adding ascorbic acid or a commercial anti-darkening agent, fruit will retain better color. "If you plan on using artificial sweeteners, add it when the fruit is served," says Haggard. "The heat of processing can cause some artificial sweeteners to become bitter and others to lose their sweetening power."

### "Just Say No" Drug abuse program

Of the many groups organized to battle the drug abuse crisis in the United States, "Just Say No" is unique; it was created by children for children and adolescents who need positive peer pressure to avoid the threat of drugs. In the July/August issue of ATPE NEWS, Editor Nora Sheppard Bender examines the scope of adolescent drug use and the nationwide effort to establish "Just Say No" clubs to get at the root causes of the problem.

Also in this issue of ATPE NEWS, official magazine of the Association of Texas Professional Educators (ATPE), Associate Director of Research Donna Blevins previews the newly released report, "A Nation Prepared: Teachers for the 21st Century," issued by the Task Force On Teaching as a Profession of the Carnegie Forum on Education and the Economy. The report makes eight specific recommendations that could change the way the nation's schools "do business," according to Blevins. Her critique of the Carnegie Report includes ATPE's possible stand on these recommendations that could profoundly affect the teaching profession in this country.

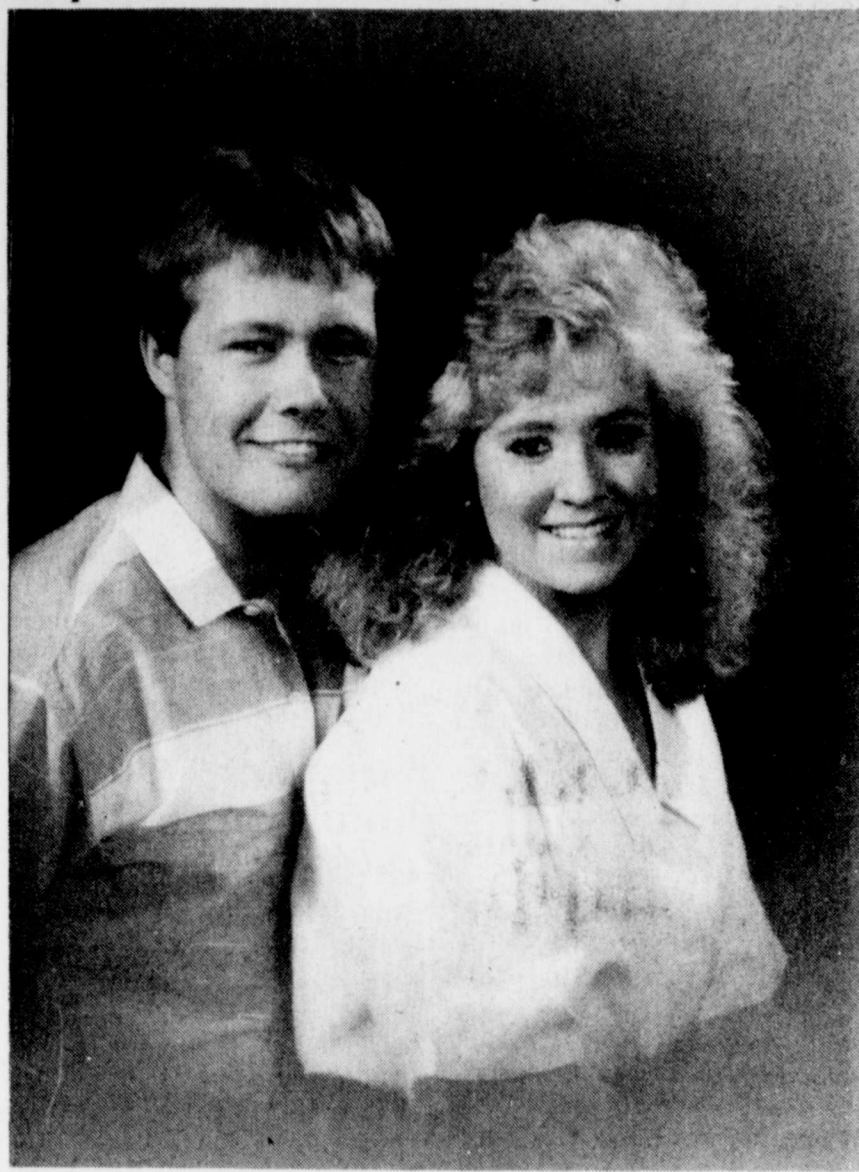
Other articles of interest to educators in the July/August issue of ATPE News include information about Austin ISD's successful Living Material Center and Science Materials Center. The magazine also updates the status of the latest lawsuits regarding House Bill 72's no-pass, no-play rule.

ATPE NEWS is published bimonthly by ATPE, Texas' second-largest and fastest growing teacher association. Approximately 94 percent of ATPE's members are classroom teachers, but the membership also includes paraprofessionals, principals, superintendents and other school personnel.

Subscriptions to ATPE NEWS are \$10 per year and are available by writing to the Editor, ATPE NEWS, 7715 Chevy Chase Drive, Suite 210, Austin, Texas 78752-1589.



The first wall paper was used by the poor and consisted of painted imitations of tapestry and velvet hangings that decorated walls in Europe during the 1500s.



### Susan Conway to wed Jeff McDorman

Mr. and Mrs. A. L. Stone, Jr. of Abernathy and Ann McDorman of Stephenville are proud to announce the engagement and approaching marriage of their children, Susan Elizabeth and Jeffrey Scott.

The bride-elect is employed at

Saint Mary's Hospital and attends South Plains College.

The prospective groom is employed at Goodhousekeeping Appliance Center in Lubbock and attends Texas Tech University.

The Couple plan an August 16th wedding in Winters, Texas.

### Jenifer Sheen to wed Mark Whitlow

Mr. and Mrs. John Sheen of San Angelo announce the engagement and approaching marriage of their daughter, Jenifer to Mark Whitlow.

He is the son of Mr. and Mrs. Jerry B. Whitlow of Winters.

The bride-elect is a 1982 graduate of Central High School.

San Angelo, Texas and is a candidate for graduation from Angelo State University in December, 1986.

The prospective groom is a 1980 graduate of Winters High School and is self-employed.

The couple will be united in marriage August 30, 1986.

### Don't feed treated seed

Because of the recent hepatitis contamination of milk in Arkansas and surrounding states, dairymen are urged to avoid feeding treated seed or seed byproducts to their herds. Feeding treated seed to dairy cows can lead to milk contamination and thus result in serious financial losses to producers,

says a dairy specialist with the Texas Agricultural Extension Service, The Texas A&M University System. Treated seed usually pink in color, is legally available on the commercial market. However, such seed is intended for planting and not for use as animal feed.

## McBEE Discount Liquor 3

South of Winters  
915/365-3624

Complete Selection of All Your Beverage Needs  
Drive the Extra 1/2 mile and SAVE!

### NEW BEER PRICES



#### SILVER BULLET

BEER	QUANTITY	PRICE	6-Pack
COORS & COORS Light	24 12-oz. cans	\$11.38	\$2.83
BUDWEISER	24 12-oz. cans	11.38	2.83
OLD MILWAUKEE	12-oz. cans	8.21	2.06
MILLER & MILLER Lite	12-oz. cans	11.38	2.83
SCHLITZ	12-oz. cans	9.99	2.50
CARLING Black Label	12-oz. cans	6.10	1.54
SCHAEFFER & SCHAEFFER Lite	12-oz. cans	7.11	1.78
MILWAUKEE BEST	12-oz. cans	7.30	1.87

Also Check Our Low Liquor Prices!

All Prices Plus Tax.

### Budget —

salaries, statewide only two-fifths of the 1985 budget increase was used for that purpose.

In Winters ISD the average salary for administrators was \$33,666, and \$20,913 for other professional support employees (librarians, counselors, nurses, supervisors, etc.)

Taxpayers provided one teacher for 15.0 students in Winters ISD compared to a statewide pupil-teacher ratio of 1 to 16.3. Because of small classes, especially at the high school level, and abbreviated teaching schedules, many classes have more than the average number of students. HB 72 requires no more than 22 students in kindergarten, first, or second grade classes next year, but one-fourth of the districts obtained a waiver from that restriction last year.

The average school district imposed a property tax at the rate of 76.3 cents per \$100 of appraised value, which value averaged 89.2 percent of market value (selling price). The "true tax rate" was 68.1 cents (76.3 times 89.2 percent) statewide. Locally, the rate on market value in Winters ISD was \$.732. The tax on a house in this district that would sell for \$80,000 would have been \$475. If the homeowner were eligible for homestead exemptions, the tax would have been \$445, and if owned by a person 65 years or older, the tax on an \$80,000 house in this district would have

### Second Baptist to host Bazaar

On August 9, 1986 Second Baptist church will host a Bazaar and Hamburger Supper at the Winters Community Center. Booths may be rented to anyone interested in art and crafts, (no food). The cost will be \$15 per space. Anyone interested in space should contact Norma Hogan for more information, 754-4698.

Tickets for the Hamburger Supper can be obtained from any member or at the door.

The Bazaar will be from 11 a.m. to 7 p.m.; hamburgers will be served from 5 p.m. to 7 p.m.

All proceeds will go the building fund.

averaged \$386, or less if subject to a tax freeze.

Revenue lost from exemptions totaled \$915 million, which was \$135 million more than the previous year. To balance school budgets, the revenue loss from exemptions was imposed on other taxpayers in the school district.

Local property taxes plus state aid was \$3220 per student in Winters ISD as compared to \$3,299 statewide. The primary purpose of state aid is to equalize state and local tax resources among schools. In 1985-86 tax resources ranged from less than \$2,500 per student in ten districts to more than \$10,000 in 12 districts.

### Four take top honors at state 4-H fashion show

Fifty-six top young seamstresses and tailors from across the state competed in the 1985 Texas 4-H Fashion Show, held July 14, in Austin.

Top awards went to Audrey Pfeiler, of Nueces County, active sport and specialty wear; Michael Richardson, of Mills County, tailored daywear; Kimberly Etheredge, of Nolan County, nontailored daywear, and Anne Marie Jarvis, of Hansford County, evening wear. Runners-up in each category were Shelly Schultz, of Tarrant County, active sport and specialty wear; Carol Lynne Braune, of Guadalupe County, tailored daywear; Stacie McDonald of Gray County, nontailored daywear; and Donna Smith, of Lamb County, evening wear.

Each first place winner received a scholarship from the Mary Kay Foundation. Runners-up received a bond from London Fabrics of Austin and the 4-H Foundation as well as sewing shears and thread clips from White Sewing Machine Company.



Bertha Knight Landes was the first woman to serve as mayor of a major U.S. city—Seattle, Washington from 1926 to 1928.

### Members enjoy Annual Meeting

Coleman County Electric Cooperative held its 48th Annual Meeting this past Friday night, July 25, 1986, at the Coleman Rodeo Grounds.

This meeting consisted of information, business, and entertainment which held the attention of the members in attendance. Each member in attendance received a door prize along with everyone in attendance receiving a free cup of homemade ice cream which was gladly received due to the high temperature of 98 degrees in the shade.

The meeting was opened by welcoming remarks from Manager James Barr. The members tended to serious business with the re-election of three directors. These were Wilma Davis who defeated V. D. Cooper for Place 2, Garland Abbey who defeated Sandy Neal for Place 4, and Tom Kingsbery who defeated Hilburn Henderson for Place 9.

Vice President Fuchs in his report to the membership, noted that 1985 was a good growth year for the Cooperative. Over a million dollars in plant has been added by upgrading and maintenance of the system.

He also stated that the move has been underway from the present R.E.A. administration to do away with the R.E.A. by 1990. The strength of our Cooperative as well as all Cooperatives are the members, so let the elected officials know that the Cooperatives job is not done.

In a report to the membership, Manager Barr stated also that the Cooperative had a good year in 1985 due to controlled expenses along with an increase in KWH sales. A large part of this was due to the oil activity of 1985. So far this year due to the decrease in oil activity we haven't seen a decline buy wouldn't be surprised if this happened. He also stated that with the support of a good Board of Directors and employees, the Cooperative will continue to prosper for the membership.

The members enjoyed the music of the band, Southern Cross, who by the way have two employees, Buddy Bird and Woody Maddox.

After the entertainment the members enjoyed drawing for attendance prizes, such as an ice cream freezer, a deep fryer, a desk fan and the grand prize a 19" color television. The grand prize winner was Rusty Wells. Several prizes were also given to the kids in attendance, such as a football, basketball, a Monopoly game and a Cabbage Patch Kids Koosas. Kristi Snider assisted in drawing the names for the prizes.

The meeting was then closed and all in attendance were dismissed until next years annual meeting.

### Card of Thanks

I want to thank everyone who has helped me the past seven years and five months.

Thanks to the ones who made Harry's visits to town a pleasant time.

Thank everyone for the flowers, memorials and the kindness shown during the loss of Harry Gerhart.

Thank you to Pastor Steve Byrne, and the members of St. John's Lutheran Church Choir, and to Ted Meyer and all the staff at the Winters Funeral Home.

Alvina Armbrecht

### Runnels Big Country registration scheduled

Registration for the 1986-87 Runnels-Big Country Soccer Association, will take place Saturday morning, August 2, 1986 from 9-11:30 a.m. at Springer Fabrics, 104 N. Main. First time players ARE REQUIRED to bring their birth

### Memo From Kay

We are very proud of the girl's baseball team, congratulations for such a successful season. We know you have worked hard and have done your best. You can feel proud for what you have accomplished this summer. You have represented Winters well. The coaches and families deserve congratulations for their time and efforts.

Summer is past the halfway mark and for anyone still planning vacations—we have added a number of maps and brochures to our map rack of places to visit in Texas. We will be happy to send for other information to help you with vacation plans.

With the slow-down in business, everyone seems to need a boost—so why not do a good deed each day by passing along some kind and considerate words of encouragement to whoever you talk with. We can all help to boost each others spirits, but if you really must grouch—grouch at the dog, he want mind and he will still be your friend.

Support our local merchants as you plan for school and fall needs. Try Winters first, you might be surprised to find what you want for less cost and less wear and tear on your car.

### State Comptroller orders cutbacks

State Comptroller Bob Bullock Tuesday ordered a reduction in his agency's workforce and the closing of 15 local offices to save the state an estimated \$11.2 million.

"The budget deficit dictates that those responsible for the operation of government trim and cutback in a manner that reflects the seriousness of the state's financial condition. These actions are being done to comply with Governor Mark White's executive order and legislative committee requests," Bullock said.

He said that the reduction of staff would mean that 134 employees would be let go and that 15 of the agency's field offices would be closed or merged.

Bullock said office closings would affect Dallas, Fort Worth, Arlington, Wichita Falls, Longview, Conroe, Corpus Christi, Galveston, Houston, San Antonio, Brownsville, Belton and San Angelo.

About half of the employees leaving the agency will come from field offices and the other half from the Austin headquarters.

"I hope this cutback doesn't effect tax collections, but I know it will reduce some taxpayer services and conveniences," Bullock said.

He said the reductions were fairly scattered throughout the agency and that they would be finished before the start of the state's fiscal year on September 1.

Bullock said the cutbacks were accomplished by eliminating some agency functions and on a seniority basis.

"Many good employees will be leaving this agency and we will assist in every way to get other job opportunities. I hope that if any Texas business can use good employees, they will give me a call."

Last year, the Comptroller's workforce was reduced by more than 225 persons through cutbacks and a shift from labor-intensive operations to increased use of automated procedures.

The last round of cutbacks will bring the total number of employees working in the agency to less than 2,400 statewide.

### Revival to be held at Drasco Baptist

Revival services will be held at the Drasco Baptist Church August 3-10. Services will begin at the regular time on Sunday, August 3, with Sunday School at 10 a.m. and the Morning Worship service at 11 a.m. The Sunday evening service will be at 6 p.m. During the week services will begin at 8 p.m. each evening. Wednesday evening has been designated as "Visitors Night" with a special fellowship to be

held after the services. On Sunday, August 10, lunch will be served at the church and an early service will follow Sunday afternoon.

The Rev. Charles Mitchell of Glen Cove, Texas, will be the visiting evangelist. Connell Taylor of Abilene, will be in charge of the music. Evelyn Edmonds also of Abilene will be pianist.

Everyone is invited to attend.

### Stenholm announces winners of annual Freedom Competition

Congressman Charles Stenholm has announced the winners of the second annual Freedom Competition. Ten winners were selected from a field of 42 entries in the annual competition which is open to fifth and sixth grade students in the 17th district. By submitting short essays, cartoons, and poems, the students had to address the statement: "Democracy means both privileges and responsibilities for every American citizen."

Four summer interns working in Congressman Stenholm's office served as judges and selected ten winners.

The winners represented a wide area within the district. They include: Staci Richardson, daughter of Mr. and Mrs. William E. Richardson of Jacksboro and a student of Miss Lowrance at Jacksboro Elementary. Tonya Struble, is the daughter of Doris Harris and student of Mrs. Werrello at Bonham Elementary in Abilene. Chris Vines of Mineral Wells is the son of Mr. and Mrs. Alex Vines and the student of Mrs. Schatzle at Lee Intermediate School. Steven Newcomb attends Austin Elementary in Abilene and is the son of Mr. and Mrs. Charles A. Newcomb. Steven's teacher is Kathy Thur-

man. Kristy Franklin of O'Donnell is the daughter of Mr. and Mrs. Jerry D. Franklin and attends O'Donnell Elementary as a student of Nancy Greenlee. David Cummings is the son of Mr. and Mrs. Alex Cummings of Gainsville and is the student of Fran Schully at Edison Elementary. Kara Babers of Gainsville also attends Edison Elementary. Kara is the daughter of Mr. and Mrs. Ron Babers and is the student of Jane Stout. Angela Farmers is the daughter of Mr. and Mrs. John E. Farmer of Perrin. Angela attends Perrin-Whitt Elementary and is the student of Mrs. Billie Whaley. Angie Patterson of Big Spring is a student of Karen Adams at College Heights Elementary and the daughter of Harvey Patterson and Mrs. Joe Vann. Lori Wink is the daughter of Robert and Marsha Wink of Robert Lee and is a student of Janie Coulter at Robert Lee Elementary.

All winners will receive a certificate of accomplishment and a Congressional bookmarker.

Never argue with a woman when she's tired—or rested.  
H.C. Diefenbach

**Choi's**  
**Tae Kwon Do**

Beginners 4-13 6-7 P.M.  
Adults 7:15-8:15

SPECIAL CLASSES  
In Self-Defense For Men, Women And Children

**Monday & Wednesday**  
City Hall, Winters  
**Tae Kwon Do Karate & Judo Academy**  
**Wagner Byler**  
Black Belt/Instructor

3138 Sherwood Way San Angelo, Texas Phone (915) 949-5667

**The Hitchin' Post Restaurant**

Hwy. 53 West 754-4814 Winters, Texas

**Thursday Night Special**  
**Steak Fingers With Salad Bar**  
**All You Can Eat .....\$5.25**

**Saturday Night Special**  
**K C Steak With Salad Bar**  
**All You Can Eat .....\$7.25**  
Per Person

**Remember Friday Night Fish Fry**  
**And Sunday Buffet**

**Open 5 A.M. Every Day**

REDUCED

FINAL

July Clearance Sale

Ladies — Girls  
Swimwear, Shorts, Skirts, Dresses,  
Knit Tops, Pants  
Boys Corduroy Shorts  
One Large Group Of Summer Sandals  
And Dress Shoes

1/2 Price

Men & Boys Straw Hats 30% Off  
Rack Of Jog Shoes For  
Ladies, Children & Men

Value to \$16.95 **\$5.95**  
**Boys & Student Wranglers**

Boot Jean Value \$14.95 **\$8.95**

Summer Mdse. In Every Department  
On Sale — No Lay-Away On Sale Mdse.

HEIDENHEIMER'S

105 S. Main Winters, Tx 79567 915/754-4401

Purchase Your  
Texas Sesquicentennial  
Commemorative Coins  
1856-1986

At  
**Peoples National Bank**  
Available In Bronze, Silver  
And 22 K. Gold Plated

Peoples National Bank

Member F.D.I.C. 158 N. Main Winters, Texas 79567

"The Bank With the Personal Touch"